

Burkburnett Star

LIKED BY MANY - CUSSSED BY SOME - READ BY EVERYBODY

THURSDAY EDITION

BURKBURNETT, WICHITA COUNTY, TEXAS, THURSDAY, MAY 23, 1963

NUMBER 37

Chamber of Commerce Luncheon Each FIRST MONDAY at Town Hall. Everybody Invited Each Pays for His Meal

Texas Chamber of Commerce Honors Listed Meet In Wichita Falls May 24-25 At Burkburnett

Forty-fifth Annual Meeting of the West Texas Chamber of Commerce will be held in Wichita Falls this Friday and Saturday, May 24 and 25. Headquarters for this year's convention will be the Kemp Hotel. The theme is "Emphasis on Changing Economy" and the program features: FRIDAY, MAY 24, 8:15 A. M. - EARLY ARRIVALS - In-lodging tour - all our nation's new missiles - Sheppard Air Force Base. 12:00 NOON - Luncheon Programs Opens. 2:00 P. M. - Education and Growth of the South - L. V. Berkner, President, Graduate Research Center, ...

POPPY DAY May 25, 1963



On Saturday, May 25, 1963, all of us will be asked to wear a red Memorial Poppy. As most of you certainly know, once each year Americans observe Poppy Day which is a voluntary tribute to our dead and disabled servicemen. Volunteers who offer the poppies to the public - unlike the disabled veterans - receive nothing tangible for their work. However, these workers gain satisfaction from their contribution to a program which honors the war dead while assisting the living. Money dropped into contribution boxes in exchange for poppies goes directly to the welfare activities of the American Legion and Auxiliary; all funds are used for the aid of disabled veterans, their families, and the families of deceased servicemen.

Understanding the character and purpose of Poppy Day, would any of us wish to ignore this appeal? I am sure all of us will consider it a privilege to wear a Poppy again this year on Poppy Day. Richard Kepler of Burkburnett received an honorable mention Friday (May 17) at the annual student contest for creative excellence in art at North Texas State University. Winners were chosen from 132 entries and announced Friday during an afternoon program in the NTSU Art Building. The exhibit will remain open 9:00 to 5:00 p. m. daily through Saturday (May 25) in the NTSU Art Gallery. Judge for the fourth annual contest was Raymond C. Entenmann, director of the Fort Worth Art Center. Kepler, who was recognized for his advertising art entry, is the son of Mr. and Mrs. Glenn T. Kepler, 213 Wigham. He is a sophomore advertising art major.

Richard Kepler Received Honorable Mention In Contest

Richard Kepler of Burkburnett received an honorable mention Friday (May 17) at the annual student contest for creative excellence in art at North Texas State University.

First Memorial Poppy Sold

Ann Dorland, president of the American Legion, sold the first Memorial Poppy to Mayor James ...

BURKBURNETT HIGH SCHOOL Salutatorian Valetorian

Salutatorian: KIM McCLEAN Valetorian: ELAINE HASTINGS



Miss Elaine Hastings was chosen valetorian and Kim McClean salutatorian of the Burkburnett High School graduating class. Miss Hastings is the daughter of Mr. and Mrs. Don Hastings, 513 Sycamore, and McClean is the son of Major and Mrs. C. W. McClean, 108 Atlas, Capehart Housing at Sheppard Air Force Base.



The Commencement Exercises will be Thursday evening, May 30th at 8:00 p. m. in the High School Football Stadium. Baccalaureate will be May 26 at 8:00 p. m. in the First Baptist Church.

Graduation Set At Burkburnett

Francie Mills Honored With Graduation Parties

The home of Mr. and Mrs. Rayford Young was the setting for two nights of graduation parties honoring Miss Francie Mills, senior graduate of Burkburnett High School. On Thursday, May 9th, a reception was held for Francie with junior and senior girls attending. The refreshment table was covered with a white lace cloth. Centering the table was a white milk glass vase with an arrangement of red roses. The vase and arrangement was presented to the honoree by the hostesses, Mrs. M. A. Mills and Mrs. R. L. Young. White carnation corsages were presented to Francie and her mother, Mrs. H. A. Mills.

Former Burkburnett Resident Dies In Hospital Thursday

A native of Wichita County, Mrs. M. J. Clines, 29, died late Thursday following a brief illness in a Wichita Falls hospital. Born Julia Faye Lane, in Electra, December 28, 1933, Mrs. Clines had lived in Wichita Falls seven years. Her husband is employed by Jack Grace Drilling Company, and is brother of Cliff Clines, city editor of the Wichita Falls Record News. She lived at 107 South Glencoe.

Clara-Fairview Community Enjoys Social

The Clara-Fairview Community enjoyed an evening of games and fellowship. We had a short business meeting. Entries for the wheat following legumes were turned in. Plans were made to go ahead and have the kitchen cabinets made.

Den 2 - Pack 156

We met April 24, 1963 in the home of our Den Mother, Mrs. Florence Gann. Bobby Dilbeck led us in the Flag Ceremony and the Pledge of Allegiance. We started work on the gifts for our mothers for Mother's Day. When we finished, we went outside and played games with our Den Chief. We closed the meeting with the Living Circle and the Law of the Pack.

Grace Lutheran Children Entertain Mothers and Friends

Mothers and friends were entertained by the children of Grace Lutheran Kindergarten on May 21. Mrs. Sylvia Ramm, teacher, welcomed the parents and briefly explained the kindergarten program and displayed some of the work accomplished in the course of the year. Rev. P. Otten announced that enrollments are now being taken for next year's school term.

Methodist Church Announces New Time For Services

Rev. Carrol Copeland, pastor of First Methodist Church, has announced a new schedule of church services for the summer months. Beginning on June 2, Sunday School will begin at 9:00 a. m. and the Morning Worship Service will begin at 10:15 a. m. There will also be a change in the evening services at the church with the Methodist Youth Fellowship groups meeting at 6:30 and the Evening Worship Service beginning at 7:30 p. m. This new schedule of services will remain in effect through August.

Methodist Church Announces New Time For Services

Rev. Carrol Copeland, pastor of First Methodist Church, has announced a new schedule of church services for the summer months. Beginning on June 2, Sunday School will begin at 9:00 a. m. and the Morning Worship Service will begin at 10:15 a. m. There will also be a change in the evening services at the church with the Methodist Youth Fellowship groups meeting at 6:30 and the Evening Worship Service beginning at 7:30 p. m. This new schedule of services will remain in effect through August.

Grace Lutheran Children Entertain Mothers and Friends

Mothers and friends were entertained by the children of Grace Lutheran Kindergarten on May 21. Mrs. Sylvia Ramm, teacher, welcomed the parents and briefly explained the kindergarten program and displayed some of the work accomplished in the course of the year. Rev. P. Otten announced that enrollments are now being taken for next year's school term.

Grace Lutheran Children Entertain Mothers and Friends

Mothers and friends were entertained by the children of Grace Lutheran Kindergarten on May 21. Mrs. Sylvia Ramm, teacher, welcomed the parents and briefly explained the kindergarten program and displayed some of the work accomplished in the course of the year. Rev. P. Otten announced that enrollments are now being taken for next year's school term.

BURKBURNETT SWIMMING POOL TO OPEN SATURDAY, MAY 25

The Burkburnett Swimming Pool is scheduled to open Saturday morning, May 25th at 10:00 a. m., weather permitting. A definite time schedule will not be decided until school is out for summer vacation. All interested persons are requested to watch the bulletin board at the swimming pool for the schedule until school is out. Mrs. Ray Anderson will be manager of the swimming pool this year. Life guards are Ken Van Loh, Jackie Cornelius, Johnny Karstetter and Max Crowley. Family season passes are now available from Mrs. Joe Crowley, 569-3439, or Mrs. Finis Taylor, 569-3213. The cost is \$20.00 for members and \$30.00 for non-members. Passes will be good for the entire season for each member of the family to swim as often as he likes.

Burk Optimist Club Sponsoring Minstrel Show

Strike up the band! Sound the cannons! The RANDLETT MINSTREL SHOW is coming to town. As a special fund-raising project, the BURKBURNETT OPTIMIST CLUB is sponsoring this exceptional production on Friday evening, May 24, at 8:00 p. m. in the Burkburnett High School Auditorium. "Proceeds will be used by the Optimist Club to further its YOUTH WORK in Burkburnett," announced Bill Reasoner, Optimist President. The colorful show will feature the fabulous RANDLETT ELECTRATONES under the direction of Mr. Wallen Holt. This musical group needs no introduction to most residents of Burkburnett. Plan now to spend an enjoyable evening watching THE RANDLETT MINSTREL SHOW and at the same time, enable the BURKBURNETT OPTIMIST CLUB to continue its expanding work with the YOUTH of Burkburnett. Tickets are \$1.00 (Adults) and \$.50 (Students and Children over six.) They can be obtained from any Optimist member. Admissions will be sold at the High School Auditorium on the night of the show.

C. C. Powell Rites Friday, May 24th

Cecil C. Powell, 70, of Burkburnett, died at his home Wednesday following a lengthy illness. A resident of Burkburnett for the past three years, he was born March 13, 1893, at Crowley, Louisiana. He was a retired farmer and a member of the Baptist Church. He was married to the former Jewel Crow on August 27, 1916 in Burkburnett. Prior to moving to Burkburnett, he had lived at Temple, Oklahoma. Funeral will be at 2:00 p. m. Friday from the First Baptist Church with Rev. Hollis Morris, pastor, officiating. Burial will be in Burkburnett Cemetery under direction of Owens & Brumley Funeral Home in Burkburnett. Pallbearers will be Will Teal, Jimmy Johnson, Jim Ady, Ralph Brookshier, W. B. Short and E. R. Burns. Survivors include the widow; two daughters, Mrs. Curtis Young of Eastland, Texas, and Mrs. Richard Snyder of Mount Vernon, Illinois; his mother, Mrs. Mattie Powell of Temple, Oklahoma; a sister, Mrs. Alonzo Hale of Temple, Oklahoma, and four grandchildren.

New Wheat Is Coming In At Steady Rate

After a delayed start, the 1963 wheat is coming in at a steady rate in Burkburnett. A rain, from one-half to three-quarters of an inch in this area Sunday, stopped everything. But, by Monday afternoon, combines were busy on the hilltops where wheat was thin. Although yields of 50 bu. per acre have been reported, the big heavy wheat in the lowlands has not been cut yet. The average yield is running around 30 bushels per acre. The grade is very good and the test is running about 62 lbs. per bu. Most farmers who have cut wheat were surprised at the high yield and test. There seems to be plenty of combines in this area. They are just waiting until the wheat ripens more, and of course hoping rains stay away until they complete the job here.

Methodist Church Announces New Time For Services

Rev. Carrol Copeland, pastor of First Methodist Church, has announced a new schedule of church services for the summer months. Beginning on June 2, Sunday School will begin at 9:00 a. m. and the Morning Worship Service will begin at 10:15 a. m. There will also be a change in the evening services at the church with the Methodist Youth Fellowship groups meeting at 6:30 and the Evening Worship Service beginning at 7:30 p. m. This new schedule of services will remain in effect through August.

Grace Lutheran Children Entertain Mothers and Friends

Mothers and friends were entertained by the children of Grace Lutheran Kindergarten on May 21. Mrs. Sylvia Ramm, teacher, welcomed the parents and briefly explained the kindergarten program and displayed some of the work accomplished in the course of the year. Rev. P. Otten announced that enrollments are now being taken for next year's school term.

Grace Lutheran Children Entertain Mothers and Friends

Mothers and friends were entertained by the children of Grace Lutheran Kindergarten on May 21. Mrs. Sylvia Ramm, teacher, welcomed the parents and briefly explained the kindergarten program and displayed some of the work accomplished in the course of the year. Rev. P. Otten announced that enrollments are now being taken for next year's school term.

Grace Lutheran Children Entertain Mothers and Friends

Mothers and friends were entertained by the children of Grace Lutheran Kindergarten on May 21. Mrs. Sylvia Ramm, teacher, welcomed the parents and briefly explained the kindergarten program and displayed some of the work accomplished in the course of the year. Rev. P. Otten announced that enrollments are now being taken for next year's school term.

Grace Lutheran Children Entertain Mothers and Friends

Mothers and friends were entertained by the children of Grace Lutheran Kindergarten on May 21. Mrs. Sylvia Ramm, teacher, welcomed the parents and briefly explained the kindergarten program and displayed some of the work accomplished in the course of the year. Rev. P. Otten announced that enrollments are now being taken for next year's school term.

Grace Lutheran Children Entertain Mothers and Friends

Mothers and friends were entertained by the children of Grace Lutheran Kindergarten on May 21. Mrs. Sylvia Ramm, teacher, welcomed the parents and briefly explained the kindergarten program and displayed some of the work accomplished in the course of the year. Rev. P. Otten announced that enrollments are now being taken for next year's school term.

Grace Lutheran Children Entertain Mothers and Friends

Mothers and friends were entertained by the children of Grace Lutheran Kindergarten on May 21. Mrs. Sylvia Ramm, teacher, welcomed the parents and briefly explained the kindergarten program and displayed some of the work accomplished in the course of the year. Rev. P. Otten announced that enrollments are now being taken for next year's school term.

Grace Lutheran Children Entertain Mothers and Friends

Mothers and friends were entertained by the children of Grace Lutheran Kindergarten on May 21. Mrs. Sylvia Ramm, teacher, welcomed the parents and briefly explained the kindergarten program and displayed some of the work accomplished in the course of the year. Rev. P. Otten announced that enrollments are now being taken for next year's school term.

The Burk Burnett Star

HARRY C. DODSON, Owner and Editor



Printed weekly at Burkburnett, Wichita County, Texas. Entered as second class matter at the post-office at Burkburnett, Texas, August 19, 1907, under the Act of Congress of March 3, 1879.

Mrs. Lola Mae Bailey, Bookkeeper-Society Editor
Chas. L. Wisdom, Mechanical Foreman
Forrest Green, Linotype-Pressman
J. W. Brookman, Commercial Printing

Notice to the Public: Any erroneous reflection upon the character, standing or reputation of any person, firm or corporation, which may appear in the Star, will be gladly corrected as soon as it is brought to the attention of the publisher.

SUBSCRIPTION RATES PER YEAR

In Wichita and Cotton Counties **\$3.00**
Outside These Counties **\$4.00**

Business Service Station

Most of us find it pretty tough to dip up enough dollars to pay our bills and taxes, but at least we are dealing with just one kind of money. It has been a depreciating kind these past 20 years and is not likely to improve by the looks of the projected federal budget and deficits. It may be a comfort to realize that things were worse in the old days when Americans had about ten thousand different kinds of paper money of varying and usually uncertain value. It's hard to believe that such a condition actually existed prior to February 25, 1863, when Abraham Lincoln signed the National Currency Act establishing our first sound and uniform currency and setting up the basis for our present commercial banking system.

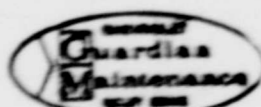
This legislation provided for a network of national banks to operate side by side with the state chartered institutions and so established the basic financial framework which helped implement the imagination of Americans who developed the resources and built the industries that turned a continental wilderness into the world's greatest land of plenty. Additions have been made to this framework through the years, as for example, central regulation of the supply of money and credit established by the Federal Reserve Act of 1913. Banking today is as different from a hundred years ago as is everything else.

The Grundy County Herald of Tracy City, Tenn., observes that "...modern banking concepts and practices enable today's 'supermarkets of finance' to offer services undreamed of a century ago—so that they now offer more services, more conveniently, for more people than any other banking institution in the world."

Private commercial banks are service stations to lubricate the workings of business and industry. They are in the best tradition of American private enterprise and can help the individual with a good idea turn a dream into a productive reality.

Classifieds In The STAR Get Results

GUARDIAN MAINTENANCE



Always look for this Emblem for the best in Quality Automotive Service

MOTORS -- BRAKES -- TRANSMISSION
WHEEL ALIGNMENT -- MUFFLERS

AIR CONDITIONER SLUGGISH?
WON'T COOL—NOT GETTING FULL PERFORMANCE?

THEN DRIVE IN TODAY FOR THIS SPECIAL OFFER!

- Line Test Feron Gas and Pressure
 - Replace Feron Lost
 - Pressure Test Lines For Leaks
 - Inspect Belts for Serviceability and Tightness
- ALL AT ONE LOW PRICE

Earl West In Charge of Complete
PAINT and AUTO BODY SHOP
ALL WORK GUARANTEED

For Fast Efficient

WRECKER SERVICE



DAYS
569-3381

NIGHTS
569-3745

MATHIS

CHEVROLET CO.

IRVIN "Smitty" SMITH, Service Manager

WASHINGTON AND "SMALL BUSINESS" By C. WILSON HARDER

According to last reports, the Federal Trade Commission is still engaged in a study of trading stamps. But perhaps like so many bureau procedures, by the time FTC gets finished with its "study" the parade will have passed by.

The facts are now that trading stamps are no longer being issued by the Federal Reserve Board of bringing new customers to a retail establishment, and maintaining a hold on old customers.



In fact, the law of supply and demand has started to work in its classic manner, because now with trading stamps issued by so many retailers, no one is getting an advantage from stamps.

Hence, there has come into being such devices as lottery type games such as Split the Dollar, Lucky Bucks, Split 6-4-4-4, Super Poker and other cash prize games.

But in most cases, the retailers engaging in this type of promotion are continuing to give stamps, not as a positive force, but as a defensive move.

Some states have outlawed trading stamps, some have laws requiring them to be redeemed in cash.

There are some brave psychologists who have attempted to explain what goes on in the housewife's mind relative to trading stamps. Some claim everybody is against trading stamps except the housewife.

This may, or may not be true, and presumably could be argued exhaustively with no conclusions reached. And perhaps if it is ever found that the majority of housewives do prefer stamps, the issue of whether government has the right to deprive them of this pleasure becomes almost a constitutional question.

But there does seem one logical approach to the problem. If, as some in government are now asserting, that some consumer labels mislead or fail to give the buyer the information she is entitled to have before purchasing, then it is equally as valid she should also be informed as to premium paid for stamps.

A food store, for example, using the average trading stamp plan, must pay out for stamps an amount equal to 2% of its monthly sales. Food retailing is so competitive that no grocer can absorb this cost. Thus, when stamps are given, prices must be raised.

Thus, it would seem if there is any validity in government prescribing what shall be carried on a label, it is equally as valid that a store issuing stamps should be required to inform the shopper of the true situation.

For example, if all stores issuing stamps were required to post legible signs in prominent places stating something to this effect: "The pricing schedule in this store reflects the 2% cost for trading stamps; the public would be protected. If the housewife wished to pay a premium to obtain stamps, she would not be under delusion that something is being given for nothing."

I don't know how much tired blood there is in my social circles, but I do know there's plenty of tired talk.

Some of these moaning females on television make a man want to go into hiding for a spell.

The deepest principle of human nature is the craving to be appreciated.—William James.

APARTMENTS

According to the Southern Pine Association, wood components are playing a useful role in apartment building.

Large roof trusses of Southern Pine, clear-spanning sixty feet or more, have a favorable effect on rooms below. The roof is so strong that there can be fewer partitions and larger living space and storage. Such systems also reduce the cost of construction.

DUE TO INCREASED POSTAL RATES

Burkburnett Star

subscription notices WILL NOT be mailed out in advance of due date as has been the policy of this office for the past several years.

All subscribers are requested to check the expiration date of their paper which appears just to the right of their name and address, and mail remittances accordingly.

Subscription Rates are \$3.00

Per Year For Both Issues Of The STAR

In Wichita and Cotton Counties

Outside These Counties

The Rate Is \$4.00 Per Year

Your Cooperation in This New Policy Will Be Sincerely Appreciated.

BURKBURNETT STAR

Most women think an old man should stay up till midnight or 1 a. m. to prove his devotion.

I. O. O. F. LODGE
BURKBURNETT, TEXAS

Meets at I. O. O. F. LODGE
Every Tuesday Night 7:30 p. m.
Visitors Welcome
JOHN ROGERS, Noble Grand
GEO. BENTON,
Vice Grand and Treasurer
BILLY RAY DAVIS,
Fin. Secy. and Recording Secy.

For Results—Advertise

SUMMER SPECIAL

CM The Hillsdale One Year Warranty
CORTIS MATHEWS
HIGH FIDELITY COMBINATION TV - STEREO - AM-FM RADIO

- 23,000 VOLT PICTURE POWER
- HAND CRAFTED CHASSIS
- SELECTED HARDWOOD CABINET
- 23" PICTURE TUBE

\$269.95 With Trade

BILLS TV FURNITURE & APPLIANCES

301 Avenue D BURKBURNETT, TEXAS Phone 569-3651

BURKBURNETT... HISTORY

Revised By The Star Files 10 Years Ago

Guests in the home of Mr. and Mrs. W. H. Beasley over the week end were Mr. and Mrs. W. H. Harvey, Mr. and Mrs. Bill Harvey and boys, all of Fort Worth, a niece, Mrs. Willard Ford of Hollywood, California, Mr. and Mrs. Leon Beasley and baby from Oklahoma City, Mr. and Mrs. Augdon Beasley and children of Burkburnett. Afternoon guests were Mr. and Mrs. Robert Hinkle and children of Burkburnett.

Mr. and Mrs. Joe Dockery and son Joe Mac of Altus, Oklahoma spent Sunday with Mr. and Mrs. Homer Gilbert.

H. A. Meyer of Manhattan Beach, California, is visiting his grandparents, Mr. and Mrs. G. T. England and other relatives here.

Mr. and Mrs. C. H. Reager from Philadelphia, Pennsylvania are visiting in the home of Mr. Reager's brother, Mr. S. S. Reager and family of Burkburnett.

Mrs. Eldon Morris entered the Bethania hospital last Friday for surgery. She is reported doing nicely.

J. A. Suttles has returned

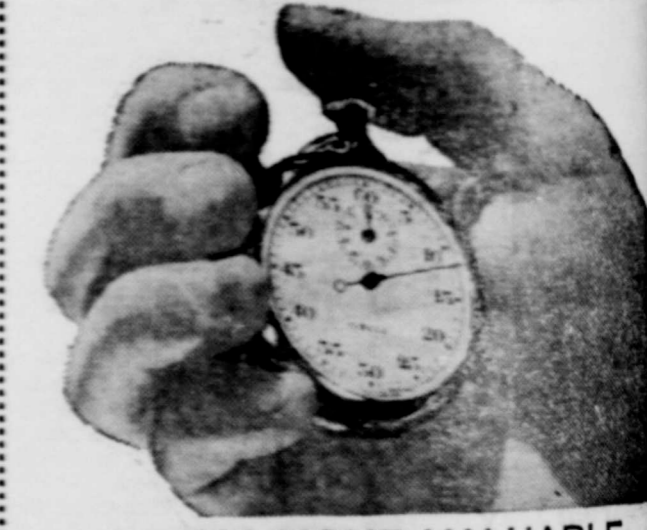
Lawn Mowers Serviced AND REPAIRED

BRING YOUR LAWN MOWER IN FOR A SPRING CHECK-UP — HAVE IT READY FOR SPRING

Avoid That Last Minute Rush
ALL WORK GUARANTEED

BURK SERVICE CENTER
209 EAST 3rd STREET PHONE 940-3

IN THE FEW SECONDS IT TAKES YOU TO READ THIS MESSAGE...



...ALL YOUR VALUABLE PERSONAL PAPERS COULD GO UP IN SMOKE!

Better move them to a low-rental safe deposit box in our steel-and-concrete vault, at your earliest opportunity! Cost is mere pennies weekly!

INTEREST PAID ON SAVINGS

3 1/2% **4%**

6 MONTHS 1 YEAR
● DRIVE IN BANKING

NEW DRIVE IN BANKING HOURS:
Mon. Thru Fri. 9 a. m. to 2 p. m.—1 p. m. to 6 p. m.
Saturday 9 a. m. to 12 Noon

First NATIONAL BANK
BURKBURNETT, TEXAS

"SERVING BURKBURNETT SINCE 1897"

MEMBER
Federal Deposit Insurance Corporation

WE GIVE S.N. GREEN STAMPS

TRIPPLE
S.N. Green Stamps
Thursday - Friday - Saturday
MAY 23 - 24 - 25
WITH \$2.50 OR MORE PURCHASE

PARKER'S QUALITY PRODUCE

TOMATOES Fancy Florida Pound **25¢**

LETTUCE, Jumbo Iceberg 2 heads **29¢**

RED GRAPEFRUIT lb **15¢**

CELLO, CELERY pkg **25¢**

TODAY'S BEST BUY

WHITE ONIONS 2 lbs .. **19¢**

GREEN BEANS pound .. **19¢**

PARKER'S

LOW PRICES

KEEP FOOD COSTS LOWER!

ARMOUR'S STAR
Beef

S.N. GREEN STAMPS

ALWAYS BEST! PARKER'S MEATS! GUARANTEED 101%

FRANKS Burlison's Tasty **3 Lb. Bag \$1**

BOLOGNA Butcher Boy SLICED No. 1 Quality 100% All Meat **POUND PKG. 49¢**

PICNICS Rodeo, Fully Cooked **Pound 25¢**

Ground Beef Extra Lean, Dated For Freshness **3 Lbs. \$1**

SLICED BACON Butcher Boy, No. 1 Quality **lb pkg 45¢**

BRAUNSCHWEIGER ... ea. **29¢**

BEEF RIBS lb .. **29¢**

ARM ROAST lb .. **59¢**

T-BONE STEAK lb .. **98¢**

CHEESE, Kraft's 10 oz **39¢**

BREADED SHRIMP 2 lb pkg **\$1.29**

DOG FOOD
Horse or Beef
can ... **10¢**

MUSHROOMS
FANFARE
cans and Pieces
can ... **67¢**

ALUMINUM FOIL
KAISER
ft roll ... **33¢**

WASHDAY
DETERGENT
Breeze
g Size **\$1.36**

TOILET SOAP
LIFEBUOY
g bars ... **23¢**

TOILET SOAP
LUX
g bars ... **21¢**

TOILET SOAP
LUX
bath bars **29¢**

HOUSEHOLD
CLEANSER
HANDY ANDY
oz bottle **69¢**

TOILET SOAP
PRAISE
g bars ... **29¢**

TOILET SOAP
PRAISE
bath bars **39¢**

DETERGENT
RINSO
g Size **\$1.29**

CRACKERS
Supreme Saltines
1 lb box ... **31¢**

DETERGENT
SURF
15c Off Label
Giant Size . **60¢**

LIQUID
DETERGENT
Wisk, Plastic Bottle
1/2 gal .. **\$1.35**

ALL
DISHWASHER
20 oz pkg . **43¢**

DETERGENT
FLUFFY ALL
3 lb pkg .. **79¢**

ORDER BLANKS FOR YOUR PICTURE PAL

AT

WHERE YOU GET LOW PRICES PLUS

ARMOUR'S STAR

Get In The Picture With NORM CASH or over 200 Big League Stars of Your Choice Picture Pal

PEAS Del Monte First 4 Cans **15¢** Thereafter 2 for **39¢**

Shortening Bakerite **3 Lb. Can 49¢**

Lunch Meat Oscar Meyer **3 12 Oz. Cans \$1**

Tomato Juice Stokley's 46 Oz. Can **23¢**

PEACHES Pacific Gold Yellow Cling No. 2 1/2 Can **19¢**

TABLET
DETERGENT
VIM
38 oz pkg. **69¢**

LIQUID
DETERGENT
SWAN
13c Off Label
32 oz size . **76¢**

Condensed
DETERGENT
ALL
3 lb pkg .. **75¢**

BLUING
Blue-White Flakes
2-2 oz pkg **23¢**

NAPKINS, Zee, ass't colors **80 count pkg 10¢**

PIE MIXES Wilderness, Mix or Match, Apple, French Apple, Cherry, Lemon, Raisin **4 No. 2 Cans \$1.00**

DOG FOOD, Gaines Burgers **18 oz pkg ... 43¢**

MELLORINE TOP-22 Assorted Flavors **3 1/2 gal crts \$1.00**

PEANUT BUTTER, Bama **18 oz jar 43¢**

SPAGHETTI, Picnic **3 No. 300 cans 25¢**

HEALTH AND BEAUTY AIDS

Deodorant Secret, Roll-On Large Size **54¢**
10c Off Label Tax Included

HAIR SPRAY Nestle, Tax Incl. Regular **73¢**
Regular **98¢**

BAND-AID Johnson & Johnson **77¢**
Regular **89¢**

BABY OIL Johnson & Johnson **47¢**
Regular **59¢**

THESE VALUES GOOD IN BURKBURNETT MAY 23-24-25
We Reserve the Right to Limit Quantities

CHOW CHOW, Granny's Hot or Mild 12 oz jar **29¢**

TOMATO SAUCE, Contadina ... 3-8 oz cans **29¢**

PORK & BEANS, Campfire 51 oz can **29¢**

PREAM, powdered cream 4 oz jar **33¢**

MIXED GREENS, Allen's chopped No. 300 can **10¢**

Hominy Campfire, white or golden 3-300 cans **25¢**

PEAS, Campfire Blackeyes No. 300 can **10¢**

RICE, Comet, long grain 2 lb box **49¢**

BROWNIE MIX, Pillsbury 16 oz pkg **35¢**

PANCAKE MIX, Aunt Jemima 2 lb box **39¢**

PIE APPLES, Comstock, sliced No. 2 can **23¢**

Pudding, My-T-Fine, reg ass't flavors 3 1/2 oz pkg **11¢**

APPLE BUTTER, White House 28 oz jar . **29¢**

MIX NUTS, Thriftee 13 oz can **69¢**

OKRA, Trappey Cut 2-No. 303 cans **35¢**

PARKER'S FROZEN FOODS
BANQUET

CREAM PIES
Banana, Coconut
Lemon, Strawberry, Chocolate
or Butterscotch, 14 Oz. Pie **29¢**

PIES Blueberry or oysenberry 22 oz pie **49¢**

PEAS Seabrook Green 2-10 oz pkgs **31¢**

GRAPE JUICE Minute Maid 2-6 oz cans **37¢**

Lowest Prices ... Greatest Variety ... always at ...

PARKER'S

"New Dimensions Achieved Through Knowledge" Theme of Burk Study Club

The Burkburnett Study Club ended a successful club year with a dinner at the Wichita Falls Women's Forum. The tables were beautifully decorated using ships, shells, fern, pink roses and fuchsia candles. Thus completing the installation theme of the ship's crew. The following officers were installed:

President, Mrs. George McClarty; Vice President, Mrs. Jack Smith; Recording Secretary, Mrs. E. D. Potter; Treasurer, Mrs. Jack Mathis; Corresponding Secretary, Mrs. M. E. Bean; Parliamentarian, Mrs. James Bohner; Historian, Mrs. H. C. Preston, Jr.; and Reporter, Mrs. Harold Van Loh.

The President, Mrs. Harold Preston was Mistress of Ceremonies. She introduced Mrs. Glen Bear who gave the invocation. Mrs. Preston also gave a report from the District Convention in Vernon. Club members participating in the convention were:

Mrs. Preston, a Judge in the District Sewing Contest and Fashion Show.

Mrs. Philip Carpenter was Convention Program Chairman.

Mrs. George McClarty was the President's Aid.

Mrs. Harold Van Loh was one of the Registrars.

Mrs. H. C. Preston Jr. was one of the Judges of the President's Reports.

Six other members of the club attended the Convention. "Goals We Have Achieved" was given by Mrs. James Bohner. She reported that it is hard to realize how much work a club does until it is summarized. These are the awards won at the District Convention.

Mrs. Jack Smith won first on the Press Book, Class C.

In the Conservation Department, Mrs. D. H. Smith and Mrs. M. E. Bean placed first in Recreation Areas; first in Minerals - Wildlife; first for Special Days division and a first for the most wins in the Conservation Department.

Mrs. Harold Van Loh and Mrs. Maxine Creel won first on Communications in the Education Department; first in CARE-Lit-

eracy division and second in Leadership Mobilization.

In the Fine Arts Department, Mrs. Rudolph Robinson and Mrs. James Bohner won first in the Art Division.

Mrs. Jim Frye placed second in the Family Economics-Home Management division in the Home Life Department.

The International Affairs Department placed twice; first in the Americas division and second in National Defense. Mrs. Frances Felty and Mrs. Geo. McClarty, co-chairmen.

Mrs. Philip Carpenter and Mrs. Glen Bear won first for the Council of International Clubs report.

Chairman, Mrs. H. C. Preston Jr., Co-Ordinating Agencies, won first in the Safety Division and first in American Studies.

First place in Legislation was won by Mrs. Philip Carpenter.

The Club received a Certificate of Commendation from the National Safety Council in Chicago for their traffic program. We are the only club in Texas to receive the citation. Mrs. Harold Van Loh entered the report.

The club also received a certificate for 100 percent subscription to the Texas Clubwoman Magazine.

Next on the program was the Treasurer's Report by Mrs. D. H. Smith.

Projects for the coming year were read by Mrs. E. D. Potter. They were voted on and accepted.

Mrs. Jack Smith, Soloist and Mrs. Bill Vincent, Pianist, presented a delightful musical program of Jerome Kern's songs, "Dearly Beloved" and "Love-ly to Look At" from "Roberta." "Make Believe" and "You are Love" from "Showboat." "The Song is You" and "Music in the Air" and "Yesterday" from "Roberta."

Mrs. Glen Bear presented in rhyme, gifts to Mrs. Smith and Mrs. Vincent.

To Mrs. E. D. Potter for the Best Program of the Year.

To Mrs. Philip Carpenter for Most Valuable Member of the Club.

To Mrs. Harold Preston, Out-

Most-Used Kitchen Appliance Deserves Good Position



This electric refrigerator-freezer enjoys just the right position in the kitchen. It's near a door (not shown), has counter space beside it for unloading groceries, and is well within "walking distance" of range and sink to spare homemaker from extra steps.

Position in life may not be everything, but in your kitchen it's mighty important. Take the position of an electric refrigerator-freezer, for example.

This is your hardest-working kitchen appliance. It performs its job day and night, and it's the appliance you use most frequently. Having the right unit for your family's needs and positioning it properly in the kitchen can save you considerable time and many tiring steps.

But first, be sure your refrigerator-freezer is large enough. The average family today chooses a 14-cubic-foot unit, and many who have three or more children, or who entertain frequently, prefer even larger ones. Since the new units have slimmer walls, they offer much more food storage space, often without occupying any more kitchen space. By holding more food and keeping it fresh longer than the older ones, they help you cut down on shopping trips.

Your refrigerator-freezer should be located within a few steps of both the sink and the range. If possible, it should also be reasonably near the outside kitchen entrance, to facilitate putting away the groceries.

Be sure there's counter space next to the refrigerator for unloading your bags of groceries and for holding food as you take it out at mealtime.

It's a good idea to make the refrigerator-freezer not only the focal point of a complete food storage center, with cabinets and shelves for non-perishables, and pull-out bins for root-vegetables. Narrow shelves, just one can deep, are convenient for canned goods.

With its sleek lines and decorator finish, a new electric refrigerator-freezer with good "position," will give a tired-looking kitchen a fresh, contemporary look, while making it a far more efficient homemaking center for you.



IN A MATTER OF A FEW HOURS, this happy do-it-yourself family will have their house, with its bogus brick siding, transformed into what looks for all the world like an expensive lovely white painted real brick house . . . and they're having fun doing it to boot. They're using a new emulsion exterior finish, developed by Du Pont laboratories, that is ideal over all kinds of siding—wood, masonry, block, composition shingles and simulated brick siding.

Called "Lucite" house paint, it is eminently suitable for beautifying an "ugly duckling" home, garage, outbuilding or weekend cottage sheathed in fake brick.

The first coat needs to be applied with a vigorous scrubbing motion to fill the mortar lines and cover each granule. Coat two, which is necessary for best appearance, goes on like a dream. Since no skill is involved, all members of the family can be recruited as painters.

DEVOL NEWS

Mrs. C. O. Woodley, Reporter

Mrs. Uthe read the scripture in her home Thursday afternoon when the Devol Demonstrators met for a social meeting.

Mrs. Uthe read the scripture from Matt. 17:16-21. Mrs. E. N. Miracle demonstrated the first finished club friendship quilt top. Mrs. Uthe had two beautiful quilts on display.

The next meeting will be May 23 in the Community Building with Mrs. Ethel McCasland hostess.

Two visitors were present, Minnie Potts of Oklahoma City and Lovella Barton of Fort Worth, Texas and thirteen members.

Rains Sunday afternoon halted grain harvest for a while. Several harvest crews have arrived. Mr. and Mrs. Floyd Dominick and family and crew from Kiowa, Kansas, and Mr. and Mrs. O. W. Smotherman and family and their crew from Tyro, Oklahoma, also several others whose names we did not obtain. The Dominick and Smotherman families have been re-

turning each year now, until they have made many friends who welcome them back each year.

Mr. and Mrs. C. O. Woodley returned home Thursday from Wichita Falls, where Mr. Woodley underwent major surgery in the Bethania hospital. He is able to be up and about some at this time. Mrs. Ethel McCasland was kind enough to write the Devol news the past two weeks.

John Shirley of Fort Worth visited Mr. and Mrs. J. B. Stevens Sunday. A grandson, Mark Miller of Grandfield was also a guest of the Stevens Sunday.

Sgt. Loren Raleigh left last week for a tour of duty in the Philippines. Mrs. Raleigh and the children plan to join him there some time in the future.

Aubrey Mays accompanied the Seniors on their trip to Washington, D. C. and New York. They will return this

FREE GENUINE ENGRAVED LETTERHEADS
DIES & DESIGNING \$17.00 per 1000

BURKBURNETT STAR

NEED A SIGN IN COLOR?
Water-Proof
Glow at Night
In Sizes 4x11 and 8x14

Large Signs, 8x14
Printed and Ready for use
Apartment for Rent,
Closed, For Rent, For
Sale, House for Rent,
No Hunting, No Parking,
No Smoking, No Trespassing, Open

Large size 69¢

Small Size, 4x14
Apt. for Rent, Cashier,
Checks Cashed, Closed,
Danger, Employees Only,
Exit, Fire Escape, For
Rent, For Sale, Fur. Apt.
for Rent, Garage for Rent
Information, Help Want-
ed, Keep Out, Men, No
Checks Cashed, No Credit
No Fishing, No Hunting
Allowed, No Minors Al-
lowed, No Pets, No
Parking, No Smoking, No
Riders, No Trespassing,
No Soliciting, Not Re-
sponsible for Lost Art-
icles, No Vacancy, Office
Open, Private, Out to
Lunch, Quiet Please, Re-
served, Rooms, Room for
Rent, Sold, Thank You
Call Again, Vacancy,
Waitress Wanted, Women

Small size 35¢

NOW ON SALE
AT THE
Burkburnett
Star Office

SEASON SPECIALS!

MUFFLERS
Top quality mufflers for '49 to '60 Fords. Price includes all parts and labor.
Aluminized mufflers for later models slightly higher.
Only **\$15.85**

SHOCK ABSORBERS
Each — Including all parts and labor.
Just **\$8.32**

BRAKE JOB
Safety special includes: reline brakes, adjust hand brake linkage, check grease seals, wheel cylinders and master cylinder. (reparis extra if required), add fluid.
Only **\$24.65**

AIR CONDITIONER SPECIAL
Genuine Ford air conditioners. We service and install air conditioners for all makes of cars.
As Low As **\$239.50**

SEE US TODAY
Fast Service!
Top Quality
Low Prices!

WOLFE Ford Co.
217 East 4th Street
Burkburnett, Texas
Phone 543-2275

GRAD PLEASERS

WE GIVE \$2 GREEN STAMPS
Manhattan DEPARTMENT STORE
WE GIVE \$2 GREEN STAMPS

BUILDING or REMODELING?

A flameless ELECTRIC water heater installs almost anywhere

Because an electric water heater is flameless and needs no flue or ventilation, it can be installed almost anywhere in the house, close to the point of greatest use. This flexibility of location makes a flameless electric water heater easy to install. And there's no need for long heat-wasting pipe runs. An electric water heater with its immersed heating elements heats the water and not the tank. Its quick recovery operation assures plenty of hot water for every household need. You get flameless safety, cleanliness and completely silent operation, too. See the quick recovery electric water heaters now on display. Your appliance dealer or plumbing contractor will gladly help you choose the model that best fits your family's needs.

ASK ABOUT OUR LOW RATE FOR ELECTRIC WATER HEATING

TEXAS ELECTRIC SERVICE COMPANY
J. B. ADY, Manager 569-3373

Choice of table top or round models. The table top model is designed for kitchen or laundry installation, the flat top providing extra work surface.

week.

Bob McCullough has been reported on the sick list.

Clyde Carner, minister of Grandfield Church of Christ visited in the Bob McCullough and C. O. Woodley homes day evening.

Mr. and Mrs. Joe Billson and children of Wichita Falls visited her parents and Mrs. Audrey Mays week.

The Vacation Bible School in progress at the local Church this week.

After you've done what is needed a public service, your say you did it for the public.

Some of us are old and know it unless our kind remind us.

PALACE
BURKBURNETT, TEXAS

NEW STARTING
Matinees Sat. and Sun.
Window Opens 1:30
Show Starts 2:00

Evening Shows:
Boxoffice Opens 6:00
Show Starts 7:00

25¢
DOUBLE FEATURE
FRI.-SAT. - May 24

Walt Disney's
Son Of Flubber
FRED MACMURRAY

2 Rode Together
JAMES STEWART
JAMES STEWART
SHIRLEY JONES

25¢
SUN.-MON. - May 25

40 Pounds of Trouble
COLOR
TONY CURTIS

Tarzan's Greatest Adventure
GORDON SCOTT

TUESDAY
BARGAIN NIGHT
ALL SEATS 15¢
DOORS OPEN 7:00 P.
Show Starts 7:30 P.
ONE COMPLETE SHOW ONLY

CLOSED
WED. - THUR.

DAIRY
Fine Food at
CALL
MR. and MRS.
Wichita Hwy.

Lee Ba Church
Travis McMin
Cross from Juni
School
Sunday Se
Ship Service, 9
Sunday Set
ing Union, 6:4
ing Worship, 7:0
oday—
thers and Off
rch in Prayer—
Practice, 8:1
ge enough to a
enough to apf

Church of Nazaren
Main at Holl
Bohannon, 1

Day School, 9:
ing Worship,
ing Peoples Se

Society, 6:4
ing Worship,
uesday Praye
n.

Church of (
Gene Gilmore,
Study Sunday
ship, 10:45 a.
ing Peoples Clas
ship, 6:00 p. 1
Study, Wedne

ier Bible Clas
n. m.
welcome you
services."

TAKE YOUR PROBLEMS TO CHURCH -- MILLIONS LEAVE THEM THERE

Texas Electric Service Co.
J. B. ADY, Manager

LAX MOTOR CO.
A. C. and Case Farm Equipment
New and Used Cars—GMC Trucks
112 Wichita Highway Ph. 569-3363

PAT'S ELECTRIC
All Kinds of Electrical Wiring
Light Fixtures and Repairs
Phone 569-1331
E. 3rd
Mr. and Mrs. M. L. Patterson

ROYD BROS. DEPT. STORE
General Merchandise-Furniture
Maytag and G. E. Appliances
117-123 Main — Phone 569-2214

BURKBURNETT FLORIST
Member Florist Telegraph Delivery
Mr. and Mrs. L. V. Richards
5 South Ave. B — Phone 569-2281

UNITED SUPER MARKETS
Kenneth Palmer
Manager
Wichita Highway
And Tidal Street

WOLFE FORD COMPANY
Complete Service and Sales
Phone 569-2275

BOOMTOWN BOWL, Inc.
MPF "Magic Triangle" Pinspotter
Back Bar—Nursery—Phone 569-8139
1001 Wichita Highway

Dairy Products
Milk — Ice Cream
Cottage Cheese
Always The Peak Of
Perfection

DAIRY MART
Fine Food and Friendly Service
CALL IN ORDERS
MR. and MRS. JOHN GRATTON
Wichita Hwy. Phone 569-8114

Ask any boy and he will tell you... IT'S A WONDERFUL FEELING

When winter is past and most of the spring rains have come and gone, what a joy it is for a boy to go barefoot and feel the warm moist earth oozing up between his toes and the hot sun on his back... It's a wonderful feeling — remember?

If it has been some time since you were in the warm company of like-minded Christians and basked in the warmth and love of God's glory and grace as manifested in His Church, attend this coming Sunday. It's a wonderful feeling to sense that you are in tune with God, your fellow man, and the universe.

"I was glad when they said unto me, let us go into the House of the Lord."
Psalm 122:1.



ATTEND THE CHURCH OF YOUR CHOICE THIS SUNDAY

B. H. Alexander, Jr.
BUILDER
General Insurance — Real Estate
114 East 3rd Street
Phone 569-2831

Payton Cozby
Plumbing and Heating
409 East Main Street
PHONE 569-3911

Gray Investment Company
303 Avenue C Phone 569-2171

Lloyd Clemmer Lumber Co.
YOUR BUSINESS APPRECIATED
See Us For Prices Before You Buy
OKLA. CUTOFF PHONE 569-2911

LORITA'S FLOWERS
Flowers For All Occasions
Artificial Flower Arrangements and Gifts
201 N. Ave. D Phone 569-3371

CORNER DRUG STORE
George McClarty
320 East 3rd Street

Hofacket Humble Service Sta.
Road Service — Mechanic On Duty
S & H GREEN STAMPS
College and Ave. D Phone 569-3712

**Farmers Co-op Gin, Feed
and Supply**

C. D. Shamburger Lbr. Co.
Gene A. Ien, Manager
200 West 3rd Street

Preston Dairy Products
For The Finest In Dairy Products
Hugh and Buddy Preston
219 East 2nd Street

Manhattan We Give
DEPARTMENT STORE S. & H.
Green
Stamps

Lee Baptist Church
Travis McMinn, Pastor
Services from Junior High School
Sunday School, 8:30
Bible Study, 9:45 a. m.
Sunday School, 10:45
Training Union, 6:00 p. m.
Evening Worship, 7:00 P. M.
Prayer Service, 7:00 p. m.
Members and Officers 7:00
Prayer in Prayer—8:00 p. m.
Prayer Practice, 8:15 p. m.
We are glad to accommodate,
and enough to appreciate.

Church of the Nazarene
Main at Holly
Bohannon, Pastor
Sunday School, 9:45 a. m.
Morning Worship, 11:00 a. m.
Evening Peoples Service, 6:45
Prayer Society, 6:45 p. m.
Evening Worship, 7:30 p. m.
Wednesday Prayer Service,
8 p. m.

Church of Christ
Gene Gilmore, Minister
Bible Study Sunday, 9:45 a. m.
Sunday School, 10:45 a. m.
Evening Peoples Class 5:00 p. m.
Sunday School, 6:00 p. m.
Bible Study, Wednesday, 7:30
Bible Class, Tuesday,
8 p. m.
We welcome you to any of
our services.

Church of God
J. W. Jackson, Pastor
10:00 a. m., Sunday School.
11:00 a. m., Hour of Morn-
ing Worship.
7:00 p. m., Evangelistic Ser-
vices.
7:30 p. m., Wednesday, Young
Peoples Endeavor.
If you haven't a church home,
we would like very much for
you to visit us where the full
gospel is preached in the old
time way. There is special mu-
sic and singing each service.
Each and every one has a warm
and hearty welcome to come
worship with us.

Central Baptist Church
814 Tidal St.
Kenneth D. Bradshaw, Pastor
Sunday School, 9:30 a. m.
Morning Worship, 10:45 a. m.
Training Union, 6:00 p. m.
Evening Worship, 7:00 p. m.
Wednesday Night Prayer
Service, 7:30 p. m.
"A Friendly Progressive
Southern Baptist Church"

**Free Church of God
In Christ
In Jesus Name**
West 6th St.
W. W. Dixon, Pastor
Saturday—
9:45 a. m., Sabbath School.
11:00 a. m., Preaching Service.
Thursday Night Service, 7:00
p. m.
We welcome all colored and
white people to our services.

Calvary Baptist Church
College and Ave B
Ray C. Morrow, Pastor
10:00 a. m., Sunday School.
An Independent Southern
Baptist Church.
We use the Bible as our only
literature.
11:00 a. m., Song, Preaching
Service.
7:00 p. m., Young Peoples
Services.
7:30 p. m., Night Preaching
Service.
Wednesday Night—
6:45 p. m., Teachers Meeting.
7:30 p. m.—Prayer Meeting.

First Christian Church
2nd Street and Avenue D
Phone 569-2062
Rodney W. Spittler, Minister
Residence 500 Mimosa Drive
Phone 569-1236
SUNDAY—
9:45 a. m., Church School
10:50 a. m., Morning Worship
6:00 p. m., Youth Meetings
and Junior Choir
7:30 p. m., Evening Worship
8:00 p. m., Fellowship Hour
WEDNESDAY—
7:30 p. m., Choir

NOTICE
Burkburnett residents are in-
vited to attend the First Pres-
byterian Church in Grandfield,
Oklahoma.
Sunday School—10:00 a. m.
Morning Worship—11:00 a. m.
Wednesday Bible Study—7:30
p. m.
Rev. Campbell B. Long, Pas-
tor.

The First United Pentecostal Church of Jesus Christ
We want to invite you to
any or all of our Services. You
have a standing invitation
where you can hear the Bible
preached in the old fashion
way.
Come and bring some one.
Service Nights—
Thursday, 7:45 p. m.
Saturday, 7:45 p. m.
Sunday, 7:45 p. m.
Sunday School, 10:00 a. m.
Pastor, Rev. E. H. Menton
Phone 569-1108
606 E. 6th Street

First Church of Christ Scientist
2156 Avenue H
Wichita Falls, Texas
Sunday School for children
under 20 years of age, 11:00
a. m. in the Church Edifice.
Nursery.
Services at 11:00 a. m.
Wednesday Evening Services,
8:00 p. m.

Trinity Lutheran Church
Pastor, Rev. David W. Janosky
Eight Miles West of Burkbur-
nett on State Highway 240
Sunday
8:45 a. m.—Sunday School
and Bible Classes.
9:45 a. m.—Worship Service.
Communion Service — First
Sunday of each month.
Walter League meetings
every Wednesday, 8:00 p. m.
A Church of the Lutheran
Church—Missouri Synod

Assembly of God Church
H. J. Lackey, Pastor
Sunday School, 9:45 a. m.
Morning Worship, 11:00 a. m.
Evening Worship, 7:30 p. m.
Women's Missionary Council,
Tuesday, 2:00 p. m.
Youth Service, Tuesday, 7:30
p. m.
Prayer Meeting, Thursday,
7:30 p. m.

First Baptist Church
DEVOL, OKLAHOMA
Sunday School, 9:45 a. m.
Morning Worship, 11:00 a. m.
Training Union, 7:00 p. m.
Evening Worship, 8:00 p. m.
Prayer Meeting, Wednesday,
7:30 p. m.
Intermediate and Junior G. A.
each Tuesday evening at the
Church, 4:00 p. m.
Sunbeams at Church Tuesday
evening at 4:00 p. m.
You are cordially invited
to our services.

Cashion Baptist Church
Wichita Highway
Rev. Robt. White, Pastor
SUNDAY:
Sunday School, 9:45 a. m.
Morning Worship, 11:00 a. m.
Training Union, 6:30 p. m.
Evening Worship, 7:30 p. m.
TUESDAY:
WMU — 7:30 p. m.
WEDNESDAY:
Beginners and Primary Sun-
beams Junior Choir, Christian
Development Program, 6:45 p.
m.
Hour of Power, 7:30 p. m.

Worship With Us At
Church Of Christ
Randlett, Oklahoma
Corky Grisham, Minister
Home-Office Phone Ly 9-2893
WORSHIP SERVICES
SUNDAY —
10:00 a. m., Bible Study.
10:45 a. m., Morning Worship.
6:00 p. m., Evening Worship.
WEDNESDAY —
7:30 p. m., Bible Study.

Pentecostal Church Of God
Berry Street
Rev. Alfred B. Qualls, Pasto
Sunday School, 9:45 a. m.
Morning Worship, 11:00 a. m.
Sunday Night Evangelist Ser-
vice, 7:00 p. m.
Saturday Night Fellowship
7:30 p. m.

Grace Lutheran Church
Third St. and Ave E
Philip M. Otten, Pastor
The Church of the Lutheran
Hour, TV's "This is the Life".
Sunday, 9:15 a. m., Sunday
School and Bible Classes.
You are cordially invited to
our services.

Episcopal Church Of St. John the Divine
1000 South Berry Street
Sunday—12:15 p. m. — Sun-
day School.
12:30 p. m.—Sunday evening
prayer service and Holy Com-
munion.
Nursery available.
Monday — 4:00 p. m. — Girls
Catechism Class.
7:30 p. m. — Brotherhood of
St. Andrews.
Tuesday 4:00 p. m. — Boys
Catechism Class.
8:00 p. m. Choir practice.
Wednesday — 4:00 p. m. Aco-
lyte Practice.
7:30 p. m. — Adult Inquiries
class.
Vestery meets the first Sun-
day evening of every month.
Bible Study is on the second
and fourth Sunday evening of
every month.
The Faculty meets on the
third Sunday evening.
The Episcopal Church Wom-
en meet every second Thurs-
day of every month.
The Alter Guild meets on the
fourth Thursday of every
month.

First Methodist Church
Avenue C and 4th Street
Phone 569-3778
Carroll D. Copeland, Minister
Merwin K. Turner, Assoc. Min.
Morning Worship, 8:30 a. m.
—10:50 a. m.
Sunday School, 9:45 a. m.
Methodist Youth Fellowship,
5:45 p. m.
Evening Worship, 7:00 p. m.
Bible Study, 7:00 p. m., Wed-
nesday and Thursday.
Nursery provided for all
Church Services.

First Baptist Church
Rev. Hollis Morris, Pastor
Corner Ave D and 4th St.
Sunday School, 9:30 a. m.
Morning Worship, 10:45 a. m.
Training Union, 5:30 p. m.
Evening Worship, 6:30 p. m.
Prayer Meeting, Wednesday,
7:30 p. m.
"In the heart of the city for
the hearts of the city."

Burkburnett High School
BACCALAUREATE SERVICE

FIRST BAPTIST CHURCH
SUNDAY, MAY 26, 1963

8:00 P. M.

Processional—Pomp and Circumstance Edgar
Sally Mitchell
Invocation Rev. Kenneth Bradshaw
Central Baptist Church
"The Lord Is My Shepherd" Smart
Mrs. J. L. Ragan and Carolyn Craft
Address Rev. Earle Crawford
First Presbyterian Church, Wichita Falls
"Oh, Divine Redeemer" Gounod
Mrs. J. L. Ragan
A Personal Message to the
1963 Senior Class Roy L. Silkwood
High School Principal
Benediction Rev. Carrol Copeland
Pastor of First Methodist Church
Recessional—War March of the Priests Mendelssohn
Sally Mitchell

Processional and Recessional led by Johny Nyby
and Dixie Van Reenan

USHERS

Carol Stoneman Jackie Cornelius
Janet Mathis Johnny Koller
Ann Jennings Gary Owen

Redeem Your
GUNN BROS. STAMPS
For Beautiful Gifts
Right Here in Burkburnett
in the New Gunn Bros.
Store Across the Street
from UNITED



TEXAS FANCY
 **CANTALOUPE** Lb. **10**

TEXAS FRESH CLIPPED

CORN
6 Ears For **19¢**

FANCY SUNKIST

LEMONS
LB. **15¢**

FANCY TEXAS

Cucumbers
Each **5¢**

the **GRADUATE'S CHOICE!**

Parents, your graduates will soon be home. Keep them happy with gifts from Herring's Hardware.

FOR HIM

Your boy will want to keep the lawn looking neat all the time. Make his job a pleasure with a brand new

Lawnmower

Of course he'll want to keep the other premises looking nice too, so he'll appreciate new

Hoes and Rakes

Hedge Clippers

Pruning Shears

Many other appropriate gifts

FOR HER

Graduate Sister Sue will enjoy the vacation months at home if she is encouraged with a few nice thoughtful gifts such as new:

Electric Sweeper

Mops and Brooms

Garden Hoes

Car Washing Brush only \$2.59



HERRING'S

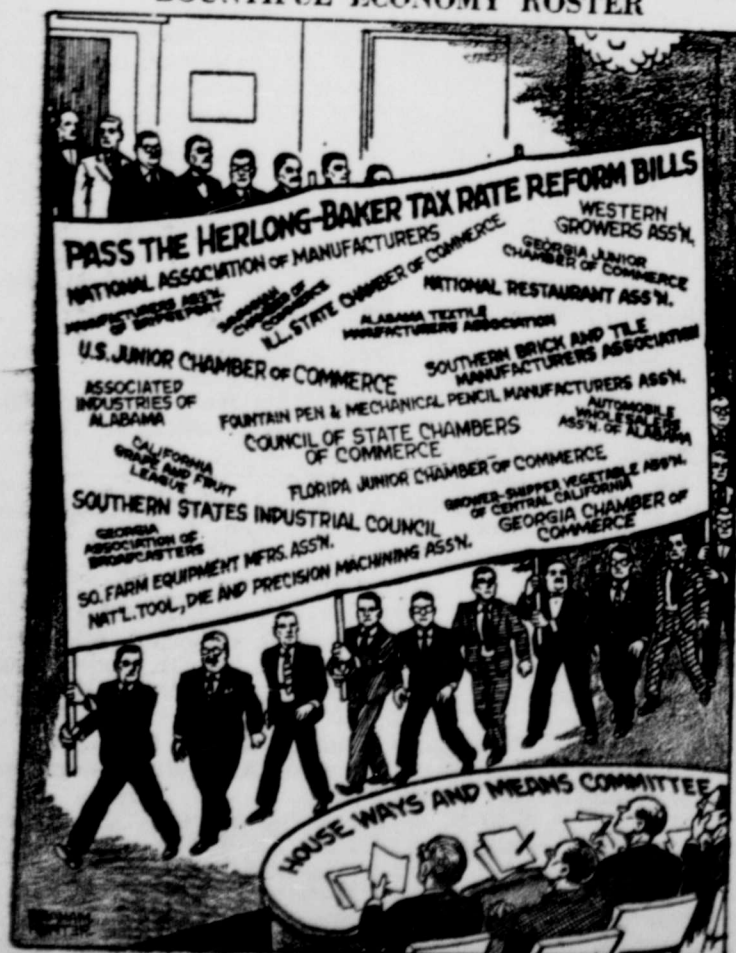
Hardware & Appl.

Phone 569-2711

201 E. Main-Cor. Ave. B & 3rd



BOUNTIFUL ECONOMY ROSTER



SHURFINE

Milk 8 Tall Cans **\$1.00**

SUN DRENCHED ELBERTA

PEACHES 3 No. 2 1/2 Cans **79¢**

FOOD KING

SWEET PEAS 8 303 Cans **\$1.00**

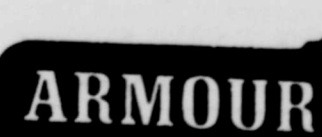


FOLGER'S INSTANT

COFFEE 10 Oz. Jar **99¢**

HONEY BOY

SALMON 1 Lb. Can **59¢**



TREET 12 Oz. Can **45¢**



Crisco 3 LB. CAN **69¢**

ENERGY

Charcoal

10 LB. BAG

4.95

CHARCOAL

LIGHT

Quart Can

3.95

GARDEN CLUB

SALAD

DRESSING

PINT JAR

1.95



SALE

DOUBLE



Gunn Bros. Stamps

THURS., FRIDAY and SAT. WITH \$2.50 PURCHASE OR MORE



Junior University Study Club Met In Garden Room of the Country House

To Be Featured Dancer In Ballet



KAREN SUE REASONER

Karen Sue Reasoner, 11-year-old daughter of Mr. and Mrs. J. T. Reasoner, 701 Gayle Drive, will have the lead in the ballet performance "Flame of Love," to be held in the Burkburnett High School Auditorium, Saturday night, May 25th at 7:30 p. m. Karen will dance two roles . . . that of the Indian Princess and the Great Spirit.

This will be the 8th annual performance of the Billie Barger School of Dance. The recital will consist of three parts: "Flame of Love" ballet and "Vacation Time" and "The Toy Shop" which will feature tap, toe, modern jazz and twirling.

The following students will appear in the program: KINDEGARTEN: Robin Wampler, Johnny Reasoner, Jana Robertson, Mary Smith, Kim Bevering, Mark Dake, Yolanda Mills, Traye Young, Tami Taylor, Laura Bloodworth and Cynthia Ruther.

INTERMEDIATE: Karen Dake, Janie Renfro, Terrie Young and Candi Goettman

ADVANCED: Kathy Reasoner, Karen Reasoner, Tai Kreidler, Sandy Park, Myra Wilcoxson, Rahe Marie Dunn, Nelda Walker, Chatha Blanchard, Jennifer Todd and Linda Stevens.

Admission is free and the public is cordially invited to attend.

On May 9th, the "Garden Room of the Country House" Restaurant in Wichita Falls was the place for the final meeting of the year and installation of officers for the coming year for the Junior University Study Club.

After a delicious steak dinner, Mrs. Walter Koller, retiring president presented each member with a corsage and her appreciation for services rendered during the club year. She then yielded the floor to Mrs. Russell Kelley, incoming president, who gave a very clever installation ceremony. She presented the idea of the club as an airplane flight with herself as pilot; Mrs. E. D. Landrum, vice president as co-pilot; and each officer with a similar responsible position. She presented each incoming officer with a token symbol of their positions. Mrs. Koller was given a miniature mock parachute so that she might "bail out." Other officers installed for the coming year were as follows:

Recording Secretary, Mrs. Brack Preston, Jr.; Corresponding Secretary, Mrs. Floyd Martin; Treasurer, Mrs. Finis Taylor; Reporter, Mrs. Howard Clement; Historian, Mrs. Bob Sprague; Parliamentarian, Mrs. Zac Henderson.

A short business meeting with Mrs. Kelley presiding, was then held, at which time she appointed the following committees for the coming year:

Projects and Finance, Mrs. Floyd Marten and Mrs. Brack Preston, Jr.

Gift and Flower, Mrs. Ellis McCullough.

Telephone, Mrs. James Pearson and Mrs. B. H. Alexander, Jr.

Federation Counselor, Mrs. J. B. Riley, Jr. and Mrs. Finis Taylor.

Year Book Committee, Mrs. Gene Robertson, Mrs. Howard Clement, Mrs. Bill Vincent, Mrs. Zac Henderson and Mrs. Russell Kelley.

KID BASEBALL

Pee Wee League

FIRST WEEK STANDINGS

Team	W	L	PC
Superior Maint.	2	0	1000
Riley Mach	2	0	1000
Corner Drug	1	0	1000
Randlett	1	0	1000
Parker's	1	1	500
Preston	1	1	500
Grandfield	1	1	500
United	0	2	000
White's	0	2	000
Monaghan	0	2	00

SCORES

Monday, May 13
Randlett 13
Parkers 2 Superior 3
Grandfield 23
Tuesday, May 14
Preston 2
Whites 2
Thursday, May 16
Monaghan 2
Superior 7
Friday, May 17
Riley 11
Preston 16

WHY WORRY?
I CARRY ANTI-WORRY INSURANCE.
A Regular Ad In This Newspaper

Chuck ROAST Lb. 35¢

Blade Cut

SWISS ARM STEAK Lb. 49¢

Family Style STEAK Lb. 49¢

CLUB STEAK Lb. 59¢

SHORT RIBS Lb. 29¢

Ground Beef FRESH 3 Lbs. For \$1

CKER'S BOLOGNA Sliced Fresh Daily Lb. 49¢

Hormel Range Brand BACON 2 89¢ LBS. FOR



ROUND Steak Lb. 69¢

Swift's Premium Lb.

WILSON'S CERTIFIED LUNCHEON MEAT
pickle and Pimento, Olive Loaf, Macaroni and Cheese Liver Loaf or All Meat Bologna
4 6 Oz. Packs For \$1

PER MARKET TED

Civil Defense Preparedness

PREPARE:

Your family shelter and equip with two-week supply of food and water, first aid kit, battery radio.

Evacuation kit for your automobile with food, water, first aid kit, battery or car radio, blankets.

LEARN:

1. Warning signals and what they mean.
2. Your community plan for emergency action.
3. Protection from radioactive fallout.
4. First aid and home emergency preparedness.
5. Use of CONELRAD—640 or 1240 for official directions.

WHEN THE WARNING SOUNDS

A STEADY BLAST OF 3 TO 5 MINUTES

Means ATTACK PROBABLE — TAKE ACTION

AS DIRECTED BY LOCAL GOVERNMENT

Tune your AM radio to a CONELRAD frequency (640 or 1240) for official directions. Proceed accordingly to your community's emergency action plan. Don't use the telephone.

WARBLING TONE OR SHORT BLASTS

FOR 3 MINUTES

Means: ATTACK IMMINENT — TAKE COVER

IMMEDIATELY IN BEST AVAILABLE into a basement or to an interior first floor room. Outdoors or in a car: Go to nearest shelter. If you

SHELTER.

In a building: If there is no prepared shelter, go cannot reach prepared shelter lie flat on the ground face down, or crouch on floor of car. Stay in shelter until you get word you can leave.

Buy Auto Liability From The Travelers Insurance Co. I

IT DOESN'T COST ANY MORE
BE SURE
HOWARD CLEMENT, Agent
New Location - Next to Legion

Movable Shelves
Make Storage
More Convenient



Door shelves in this new electric refrigerator-freezer are adjustable to suit the housewife's food storage needs, and cheese and butter compartments slip open at the push of a button. These are among the features that make the 1963 models more convenient. They also hold more food and keep it fresh longer.



FREE TRADING STAMPS
Of Your Choice
For
RC & NEHI
Bottle Caps

One Bottle Cap Worth ONE STAMP

The following Crowns Are Good For Trading Stamps:

- ROYAL CROWN COLA
- NEHI ORANGE
- NEHI STRAWBERRY
- NEHI GRAPE
- NEHI LEMONADE
- UPPER 10

- A. Crowns that are good for free trading stamps are the ones that bear our name on the Crown. The crown reads like this: BOTTLED BY ROYAL CROWN BOTTLING CO., WICHITA FALLS, TEXAS, AND ALTUS, OKLAHOMA
- B. Customers in Wichita Falls and Altus should turn your crowns in at our plant between 8:30 a. m. and 4:30 p. m. Monday through Friday.
- C. Customers living in other towns turn your crowns to your Royal Crown Cola dealer after you have saved 100 or more. Put your name and address on the sack and in the sack with number of crowns and the kind of stamps you want. The dealer will give Crowns to our Royal Crown salesman and will mail direct to you.
- D. Pick up an extra carton of Royal Crown Cola or one of the delicious flavors today at your favorite store and start saving the crowns now.

Royal Crown Cola Bottling Co.

1206 Indiana
Wichita Falls, Texas
Altus, Oklahoma
927 East Broadway

Favor your Fabrics
by MRS. ANNE STERLING
Director of Consumer Education
for the Professional Laundry Industry
(Copyright, 1963 by American Inst. of Laundering)

Grass Stains on Little League Uniforms—Unightly grass stains on any clothing is a problem that faces every homemaker this time of year. The simplest way is to call your professional laundry and point out the grass stains when you give them the garments. To do it at home, the best method is to blot at the stain with a clean cloth soaked in alcohol. This will remove the green coloring and you will then be able to launder out the brown stain by working in a heavy duty detergent and washing with hot water.



Fashion Loves Linen—The news from the latest fashion showings in Paris tell us that Linen will be big this year. Designers are rediscovering the fine qualities of this fabric with its wonderful crispness. Home sewers have long enjoyed the wonderful tailoring possibilities with Linen and we now have new added qualities.

Of most importance is the new quality of wrinkle-resistance. This is sometimes imparted by a finish on the Linen and at other times by blending Linen with Dacron. Some designers prefer working with the Linen-look Rayons which are less wrinkle-resistant also.

Caring for Blended Fabrics—In caring for blends such as the Linen-Dacron blend mentioned above, it is important to remember that we must also treat it as we would the weaker of the fabrics being blended. In other words, in the Linen-Dacron blend, we must care for the fabric as we would care for Dacron. We cannot subject it to the high temperatures in both laundering and ironing that would be satisfactory for linen but must modify our treatment to the more moderate temperatures used for Dacron.

Hang Tag Habit—One of the best habits to get into these days is that of saving the manufacturers' hang tags that come on your clothing. With the complicated world of fabrics today, no homemaker can be expected to keep all the specialized information in her head. Much better to collect it in a recipe file box or post it on a bulletin board on the inside of your closet door or even keep it right on a certain hanger which would be assigned to a specific garment.

Anyone for Elbow Patches?

—One of the newest fads in casual clothes is that of elbow patches. Stolen from the leather patches often sewed on men's sweaters, these are having a great fad among teenagers. Seems the brighter the better, for these with unexpected color combinations rating tops. Easy to do at home with iron-on patches intended for mending purposes. No sewing—no raveling—no danger of color fading off.



Moths Like Little Things Too

—In sending your woollens to be stored for the summer don't neglect the little things. Scarfs, hats and mittens that are all of part wool are just as tasty for Mr. Moth as your loveliest dress or coat. Leaving these items at home may attract moths. Then they will be on hand to move on to bigger things next fall. Moths have no appetite for clean garments so get all your woollens dry cleaned before summer.

Keeping White Wool White

One of fashion's darlings this year is white wool and one of the homemaker's problems is how to keep it white. If you decide to tackle it at home and not send it to a professional dry-cleaner, be very careful about keeping it away from chlorine bleach and strong soap. Another agent which may yellow the wool is hot water. To prevent yellowing of wool you should wash it often, before it is soiled. Use mild suds and lukewarm water.

If wool has yellowed from too much heat or from chlorine bleach, there is no way to whiten it again. However, if it has been yellowed by strong soap or detergent try soaking it in a solution of two tablespoons of hydrogen peroxide to 1 gallon of cool water. Soak for at least one half hour and rinse. This may help to whiten the wool again.

TIGHTNESS ESSENTIAL

Because of the extensive use of air conditioning, homes should be tighter than they once were.

A dwelling will stay snug if pre-shrunk lumber is used for the structural framework. According to the Southern Pine

Association, the pre-shrinking process gives an advantage of as much as 400 per cent in the ultimate nail holding power of a structure.

Even though the look is contemptuous, it seems to please some women to be gazed at by other women.

POPULAR PATTERN
A reverse boards-and-battens effect is increasingly popular with Southern Pine paneling. In this pattern, the full thickness of boards projects from the walls. For variety's sake, different colors may be applied to panels and batten strips.

The average family travels 50 miles daily.

Indifference must be cultivated; few can achieve it gracefully.

MEN'S BIBLE CLASS
FIRST BAPTIST CHURCH

Invites you To
Worship With Them
Each Sunday Morning at 9:30
A. R. Hill, President
W. R. Carswell, Teacher
C. R. Chambers, Secretary

YOU CAN'T QUIT ADVERTISING
YOU'RE TALKING TO A PARADE
NOT A MASS MEETING



Chevy II Nova 400 6-Passenger Station Wagon

A Chevy II wagon looks this big when you load it up



and this big when you gas it up

That, in the eyes of most Chevy II wagon owners, is just about the size of it.

A king-size appetite for cargo. But a dainty one for gas. And this, we hardly need add, is just the kind of wagon we planned it to be.

Taut and trim as it is on the outside, we went to great lengths to keep it BIG where a wagon should be BIG. The load platform extends a full nine feet from the back of the front seat to the tip of the lowered tailgate.



AT YOUR CHEVROLET DEALER'S

And for all the pepper we packed into that 6-cylinder engine (there's also a choice of an even thrifter 4 in most models), we were careful to keep it simple, easy to service—and a real stickler on economy.

Feel in a traveling mood? Well—happy coincidence—this is the time of year your Chevrolet dealer feels in his most generous trading mood. Looks like it's high time you two got together.

CHECK HIS TNT DEALS ON CHEVROLET, CHEVY II, CORVAIR AND CORVETTE

MATHIS CHEVROLET COMPANY

300 East 2nd Street

Phone JO 9-3381

Burkburnett, Texas



what happens when you turn electric ranges "off"...



never happens with **GAS** ranges! (and they're on sale now!)

When the flame's off, the heat's off. There's no hangover heat. No pot-shuffling. No guesswork. Kitchen's cooler, cleaner, too! The new automatics are on sale at Gas Appliance Dealers and Lone Star Gas — so now's the best time to buy!

you get more for your money with modern **LONE STAR GAS COMPANY**

Edlett News

R. Elliott, Reporter

While Scientists Try to Tame the Weather, Air Conditioners Furnish Instant Comfort



Direction of air flow of today's room air conditioners is adjustable for greater comfort.



Through-the-wall room air conditioner leaves window free. Grille blends with any decor.



Filtering action of room air conditioners like this one keeps out most dust, dirt, pollen.

While scientists ponder the problems of controlling weather from the skies, down-to-earth families are relying more and more on room air conditioners for their instant comfort.

Here's what home owners and apartment dwellers who shop for a room air conditioner this year can expect to find:

1. Variety—Families can choose either window units or those installed through the wall. Both are available in a very wide range of cooling capacities from as low as 4,000 BTU's per hour to 32,000 BTU/hr units capable of cooling several rooms or an entire house.

2. Compactness—Design improvements make it possible to pack more cooling power into slimmer, trimmer packages than ever before. Front panels blend well with room decor, and many models fit flush with walls or window sills. Some have a furniture-look.

3. Quieter operation—Improved blower and compressor designs coupled with the use of new insulating techniques reduce operating sounds to a whisper.

In addition, the use of weather-resistant materials and finishes assures that today's room air conditioners will provide years of trouble-free service with minimum maintenance.

Care should be taken to buy a model that has the proper cooling capacity for the area to be air conditioned. Authorities point out that an oversize unit will cost more to buy and to operate, and will not provide adequate dehumidification. On the other hand, if a unit doesn't have enough cooling power, it won't do the job expected of it.

Let a competent appliance dealer help determine the capacity needed, and help him do this by providing the following information: size and use of room, its orientation, number and placement of windows, whether insulation is used, and the voltage of your electric circuits.

Friendship Class Met Thursday, May 16th

The Friendship Class of the First Baptist Church met in the Mary-Martha Classroom Thursday, May 16, at 2:00 p. m. Members of group two were hostesses.

With Mrs. B. F. Hewell at the piano and Mrs. Earl Van Deren leading, the class sang "Have Thine Own Way, Lord," Miss Ella Billingslea led in prayer.

Mrs. Will Teal presided over a short business session in which the minutes of the previous meeting were read, treasurer's report given, and group reports made.

Mrs. J. D. Kennedy brought the devotional, selecting for her scripture reading Psalm 24:1-5. She spoke of the inadequacy of man to reach the high level of perfection that God expects of His followers. But she stated that the feeling of inadequacy is only natural.

Mrs. Kennedy pointed out five things that every Christian could and should do to become a more adequate follower of Christ. He should read the Bible, pray, show love for his fellow man, forgive, and walk humbly before the Lord.

In concluding her remarks, Mrs. Kennedy said: "The only ladder long enough and strong enough to serve man is the ladder of God's adequacy placed at his disposal by Jesus himself. But it is only a ladder if men use it."

In honor of Mrs. Preston Johnson's birthday, Mrs. C. R. Chambers led in a "Happy Birthday" game. Then she presented Mrs. Johnson with a lovely birthday gift, as the class sang "Happy Birthday to You."

From a table covered with a white lace cloth and centered with a bowl of pink roses, the hostesses served lovely refreshments to the following members: Mesdames Preston Johnson, J. B. Ady, E. R. Burns, Hubert Butts, C. R. Chambers, W. V. Combs, B. F. Hewell, Bob Hinkle, J. D. Kennedy, R. W. Kent, V. C. Skipwith, Will Teal, R. P. Thaxton, Jim Turner, Earl Van Deren, Sam Weaver, J. R. Wright; Misses Addie Dickson and Ella Billingslea; service members, Mesdames H. A. Goodwin, J. G. Cheney, and Mrs. B. H. Preston, Sr.

I try to report my life as it is but if I did it would be too dull to be interesting.

Read Market Ads, Buy Specials To Save Money

Smart shoppers look for supermarket specials, make room at home to store them, keep menus flexible enough to use them, and stay posted on the items that are featured often.

This advice comes from a study done recently by Stanford University on the percentage savings possible through buying "specials" when shopping at supermarkets.

By following the advice of the Stanford marketing specialists, you can average savings of 20 per cent over non-specials, and trim your food bills as much as 10 per cent.

This means studying the supermarket ads in Thursday's papers, according to Family Circle Magazine, which is doing a series of articles based on both the Stanford report and suggestions made by the Consumer Advisory Committee of the National Association of Food Chains.

It also means having an electric refrigerator-freezer large enough to hold your weekly purchases of bargain-priced fresh and frozen foods, plus ample storage space for food which doesn't need refrigeration.

Today's electric refrigerator-freezer, often called a "supermarket in the kitchen," provides much more storage space than a unit only five or six years old, thanks to more efficient insulation which allows thin walls.

The new electric refrigerator-freezers also protect food quality far better than older units because of new interior designs and specially cooled and humidified compartments for meat, dairy products and greens.

Generous zero-zone freezer sections can be used to store bargain-priced frozen foods or to freeze and store fresh fruits, vegetables, and meat bought at low prices during peak seasons of production.

Local Births

Birth certificates were issued to the following Burkburnett parents last week, Messrs. and Mesdames:

- Edward A. Glowatski, girl, Robin Renee.
- Benny R. Kerlin, boy, Kris Russell.
- Lloyd W. Gray, girl, Natalie Gayle.
- Dallas P. Oglesby, boy, Paul Ray.
- Howard W. Westbrook, boy, John David.

FOR RESULTS — ADVERTISE

When you are doing your best to make the afternoon memorable, a nice smile from your hostess offsets a yarn from your host.

the TOPS in Gifts for GRADS

Manhattan DEPARTMENT STORE

We Give **SN** GREEN STAMPS

spent Sunday with her parents. Mr. and Mrs. C. H. Thompson. Mr. and Mrs. Wayne Cox of Grandfield spent the week end with her parents, Mr. and Mrs. J. H. Hayes.

Mr. and Mrs. J. F. Martin spent Sunday with Mr. R. G. Wampler of Norman, Oklahoma, whom is recovering from an operation.

Mr. and Mrs. Cleo Harris and children visited her parents, Mr. and Mrs. James Martin Velma-Alma, Oklahoma Sunday.

Mr. Bill Dorton visited his sister, Mrs. Zaida Bryant Saturday.

Mr. John Seuh of Cache, Oklahoma visited Mr. and Mrs. R. H. Rhoads Sunday afternoon.

Mr. Fred Harrison of Devo, Oklahoma visited his son, Mr. and Mrs. Bill Harrison and children Saturday night.

Tommy Dudley of Wichita Falls is visiting with his grandparents, Mr. and Mrs. T. L. Wileman.

Mr. and Mrs. Cecil Perryman and sons of Seymour; Mr. and Mrs. Emmett Boles of Lawton, Oklahoma visited Mr. and Mrs.

M. M. Bowles and Cindy Sunday. Mr. and Mrs. Jerry Rhoads en route from Ft. Leonard Wood, Missouri to their home in Guyman, Oklahoma spent from Thursday till Sunday morning with his parents, Mr. and Mrs. R. H. Rhoads. Jerry has put in six months active service in the Army at Ft. Leonard Wood, Missouri.

Mr. Dwain Cornstubble and Miss Wendlyn Goins of Burkburnett visited Mr. and Mrs. D. A. Cornstubble Thursday night.

Mrs. C. M. Morris and Dick returned home Monday of last week from a short visit with her son, Mr. and Mrs. M. B. Morris of Dallas.

Mr. and Mrs. E. L. Martin, Larry, Mrs. F. M. Boggs and Mrs. Gertrude Tucker, Mrs. J. L. Duggins visited relatives in Seminole, Oklahoma Sunday.

Mr. and Mrs. Douglas Hendricks who have been visiting with his grandmother, Mrs. Zaida Bryant the past three weeks moved to Burkburnett this week.

Newcomers Welcomed to Burkburnett

The Burkburnett Chamber of Commerce and the Greeters Service wish to welcome the following newcomers to our city.

Robert Juza
Jerry Cupps
C. D. Alderman
Ronnie Blacketer
T. E. Heffington
Ronnie Slabaugh
Donald Gryder
Lyn Turnbow
Vernon Sampley

if you are a newcomer to Burkburnett and have not been contacted, please call Mrs. Savage, 569-2180, or the Chamber of Commerce Office, 569-3393.

I avoid using words such as ambivalent, schizophrenia, and anomalous because I dislike their sound.

Wedding Invitations

\$12.95 FOR 100

SPECIAL Summer Savings

on

Carrier Air Conditioners

Now is the **THRIFTY** time to buy a **Carrier ROOM AIR CONDITIONER**

- NO MONEY DOWN
- 24 MONTHS TO PAY
- LARGE SELECTION
- PROMPT, EXPERT INSTALLATION

Why suffer through another summer? If you act now, you can enjoy the quiet, comfort cooling of a Carrier Room Air Conditioner... and it won't cost you one cent until next Spring! There's a model to match any size room, any budget... from 6,000 to 24,000 BTU. Realize big savings. Stop in today!

NO PAYMENTS 'TIL JUNE 1st

HILLS TV Furniture & Appliance
301 North Ave. D Phone 569-3651
Burkburnett, Texas

SALE

UTILITY AIR COOLERS
Regular \$159.95 **\$119.95**
4100 CFM

SPRING PAINT JAMBOREE
LUCITE WALL PAINT
LUCITE HOUSE PAINT
SAVE ONE DOLLAR PER GALLON NOW

SPECIAL ON USED COOLERS
ALL RECONDITIONED AND READY FOR A NEW HOME
SAVE \$\$ NOW

6 TRANSISTOR RADIO... \$12.88
Regular \$19.95

BEST TV VALUES OF THE YEAR

Curtis Mathes
CURTIS MATHES

SUMMER SPECIALS

The Westchester
\$149.95 WITH TRADE

- HEAVY DUTY POWER TRANSFORMER CHASSIS
- 23,000 VOLTS OF PICTURE POWER
- GENUINE WALNUT CABINET
- ONE FULL YEAR WARRANTY
- HAND WIRED CHASSIS

ALL MODELS REDUCED NOW

Burkburnett Riding Club In Wichita Falls Rodeo Parade

Thirty-one members of the Burkburnett Riding Club rode in the opening day parade of the Wichita Falls Rodeo Celebration and Grand Entry May 8th, 1963.

Miss Sandra Gage, the sweetheart of the riding club was beautifully attired in a blue brocade riding outfit trimmed in lace and rhinestones.

Two of the members, Miss Wendlyn Goins and Miss Sue Drake participated in the Wichita Falls Rodeo Queen Contest. They attended and were introduced at each performance. Miss Goins was selected First Runner-Up to the Queen for 1963.

Those riding in the parade were: Mr. Elmer Burns, Sgt. Horace Butler Mr. and Mrs. Payton Cozby, Miss Denise Cozby, Mr. Cotton Cozby, Steve Cozby, Mr. Newt Crane, Mr. Darnell Krc, Major Paul Drake, Mr. Claude Elliott, Mr. Ken Gage, Miss Sandra Gage, Mr. R. C. Gilbow, Mr. Doc Goins, Mr. Wendell Goins, Terrell and Brenda Goins, Allen Green, Mr. and Mrs. Delmar Luke, Mrs. Goldena Griffin, Mr. Porgie Griffin, Gary Martin, Mr. Noel McGill Mr. Pete Negri, Mrs. Frances Ooten, Miss Gayla Ooten, Mr. Brack Preston, Mr. Rufus Redman, and Mrs. J. A. Tibbets.

CARD OF THANKS

To all who offered prayers, sent cards, letters, flowers and gifts during my recent surgery, may I take this means of expressing my gratitude and thanks. Also the kindness, calls and consideration shown my family were deeply appreciated. Your thoughtfulness will always be remembered. May God bless each of you.

Robert W. Morine 37-11P

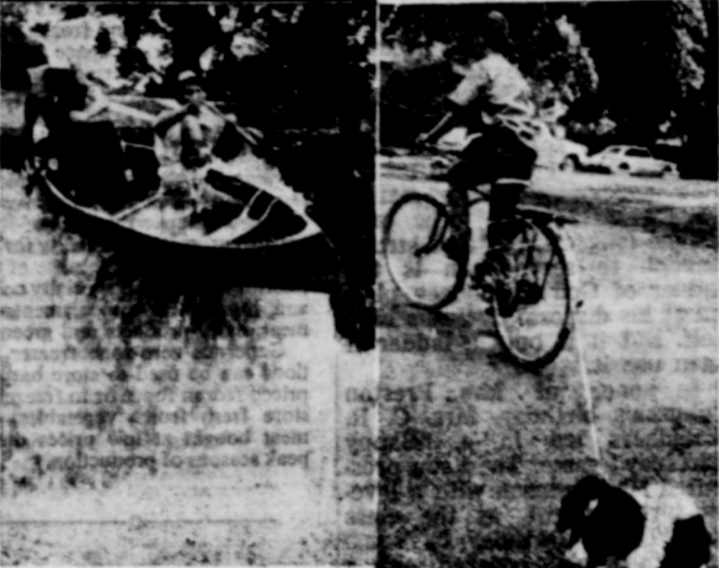
Standard baseball bats are made from ash wood.

Central States News Views

MIDWESTERN COLLEGES may get dormitories like model being viewed by L. Walter Lundell, president of C.I.T. Financial Corporation, which offers to build dorms, lease them to schools for up to 12 years and then give title to schools.



PUPPY LOVE can lead to strong attachments, as this hook-up between Jeff Brandon, 11, of Nashville, and his pet, a pooch named "Angel," clearly shows.



HIGH AND DRY, but not for long, are two contenders headed for a spill in the Texas Water Safari, a 500-mile marathon race between San Marcos and Corpus Christi.

Two small boats are shown in a body of water, likely participating in the Texas Water Safari.

Classifieds In The STAR Get Results

Notice of the Names of Persons Appearing as the Owners of Unclaimed Amounts Held By:

First National Bank In Burkburnett

P. O. Box 458, Burkburnett, Texas

This notice is given and published pursuant to Section 3, Article 3272b, Revised Civil Statutes of the State of Texas, in an effort to locate persons who are the depositors or owners of amounts in accounts that have remained inactive or dormant according to the provisions of Article 3272b for more than seven (7) years. The unclaimed amounts due the depositors or owners listed herein will be paid upon proof of ownership at the office of the named depository within (9) months, and if unclaimed thereafter they may be subject to report to and conservation by the State Treasurer in accordance with said Article 3272b.*

ITEM NO. OF THIS REPORT	NAMES OF MISSING DEPOSITORS	LAST KNOWN ADDRESS
		ROUTE, BOX NO., NO. AND ST., ETC., IF ANY CITY AND STATE
1.	Boatman, A. C. or Mary	None None
2.	Boyer, T. F.	None None
3.	Carlile, A. T.	None None
4.	Evans, F. F.	None None
5.	Friedman, Sam	None None
6.	Goins, F. M.	None None
7.	Gray and Gernes	None None
8.	Hickey, T. P.	None None
9.	Hoffman, O. E.	None None
10.	Mills, L. R.	None None
11.	Nelson, Mrs. Carl	None None
12.	Palmer, J. H.	None None
13.	Mr. Arnold (Cashier's Check)	None None
14.	Texas Refrigeration and Machine (Cashier's Check)	None None
15.	Mendfe, Ywadolym (Cashier's Check)	None None
16.	Mr. Grayson (Cashier's Check)	None None
17.	Fraser, Pop (Cashier's Check)	None None
18.	Kramer, G. R. (Bank Draft)	None None

AFFIDAVIT OF DEPOSITORY OFFICER

THE STATE OF TEXAS, COUNTY OF WICHITA

Before me, the undersigned authority, on this day personally appeared JERRY L. THOMAS who, after being by me duly sworn, deposes, says, and certifies as true the following:

- That he is Vice President and Cashier of the First National Bank in Burkburnett, the Depository named in the above Notice.
- That the foregoing is a full and complete list of the names of all depositors and creditors for whom dormant deposits or inactive accounts have been held for more than seven (7) years and whose existence and whereabouts are unknown to the Depository.
- That such listed depositors and creditors have not asserted any claim or exercised any act of ownership with respect to their deposits or accounts during the past seven (7) years.

(Signature) JERRY L. THOMAS

Sworn to and subscribed before me this the 15th day of May, 1963.

(SEAL)

(Signature) EVELYN MAXWELL, Notary Public Wichita County, Texas.

Lt. Col. Jane Sewell Honored Sat. Morn. In McClarty Home

Mrs. George McClarty entertained with a lovely Brunch, Saturday morning, in her home at 310 Ellis, in honor of Lt. Col. Jane Sewell, Miss Sewell is visiting Mrs. J. H. Brumley after a two year tour of duty in Japan. She was with Chief Traffic Management Headquarters, 5th Air Force in Fuchu, Japan.

The party rooms were decorated with beautiful spring bouquets and the Brunch Tables were pretty in pink and white cloths, China and crystal. Centerpieces of greenery and pink roses in Venetian glass containers.

Miss Sewell modeled an elaborate Japanese Costume of Red Brocade with gold Obi and gold Zori's (thongs) and white Tabi's (socks) and black headdress. This is a dress kimono which would be worn to parties. She has collected jewelry in all the foreign countries she has visited.

From Bangkok, Thailand she purchased several rings. A cocktail ring with 23 facet cut rubies, one with three matched black star sapphires. One with a blue star sapphire stone and another with a ruby star sapphire surrounded with 16 facet cut, white matched sapphire stones from India. A princess ring which tells a story, and has eight different cut stones with earrings to match.

From Japan, a cultured pearl necklace, earrings and ring. These are Mikimoto pearls. Also displayed were a cut crystal vase from Japan, White brocade material, Kanebo woven. A set of sterling silver iced tea sippers also from Japan. Cloisonne vases made to Kyoto, Japan and a bronze bar-b-que set with rosewood handles from Bangkok.

Guests for the occasion were Mesdames J. H. Brumley, J. H. Rigby, I. E. Harwell, Grady Fuqua, Grandfield, Oklahoma; John Page, Howard Henderson, Philip Carpenter, Rudolph Robinson, Glen Bear, Jim Frye, Harold Van Loh, the honoree, Miss Sewell and the hostess, Mrs. McClarty.

Community Tour Held By Clara-Fairview Community

The following places were visited on a tour recently held by the Clara-Fairview Community: Hubert Kiesling, O. W. Prechel, Elmer Klinkerman, Newt Crane, Joe Dunham, E. J. Simons, Dude Smith, James Ludke, and then revisited the Community House.

The community was being judged by Mr. Curley Hayes and Mrs. Deane Valentine for the Texas Electric Community Improvement contests.

The community received word that they had won fourth place.

Guests from Burkburnett were Mr. Jerry Thomas from the First National Bank; B. J. Vincent, Texas Electric; Web Sharp, Chamber of Commerce.

Other guests included B. T. Haws, county agent; Thelma Wirges, county home demonstration agent; Gad Garland, Texas Electric; Fern Hodges.

The first power-producing public utility was built in New York City in 1882.

President Woodrow Wilson was football coach at Princeton in 1890.

MEN'S BIBLE CLASS FIRST BAPTIST CHURCH

Invites You To Worship With Them Each Sunday Morning at 9:30 A. R. Hill, President W. R. Carswell, Teacher C. R. Chambers, Secretary

Emergency ..



THESE LAWN MOWERS HAVE GOT TO GO!

Direct Factory Purchases of a Fine Line of Lawn Mowers. We Bought More Than We Can For.

The FACTORY Says So we Are Passing the Savings On You Because They Must Be Sold WHOLESALE AND BELOW

You Can Buy NEW MOWERS From At Less Than Used Mower Prices. Can Trade Now During This EMERGENCY At a BIG SAVINGS.

IF YOU DON'T SEE US FIRST - YOU WILL MISS THE BEST DEAL

HERRING'S HARDWARE AND APPLIANCE

210 E. Main Street Phone 568 Burkburnett, Texas

Burk Locker

301 AVENUE C PHONE 569-3101

PACKAGE PLAN

50 LBS. of QUALITY MEAT FOR ONLY \$25.95

- 10 lbs Ground Beef
- 5 lbs Pork Shoulder Roast or Pork Steak
- 3 lbs Bacon
- 2 lbs All Meat Franks
- 5 lbs Cured Ham
- 5 lbs Short Ribs
- 10 lbs Chuck Roast
- 10 lbs Round or Sirloin Steak

PACKAGE PLAN

25 LBS. of QUALITY MEAT FOR ONLY \$13.50

- 5 lbs Ground Beef
- 3 lbs Bacon
- 2 lbs All Meat Franks
- 5 lbs Chuck Roast
- 5 lbs Pork Steak
- 5 lbs Round or Sirloin Steak

LOT FED CHOICE BEEF

One-Half BEEF, 200 lbs and up lb 47¢
Hind Quarters, 100 lbs and up lb 59¢

INQUIRE ABOUT OUR CREDIT PLAN

Store Hours 6:30 A. M. to 6 P.M., Mon. Through Saturday



Pick Freshness

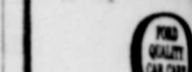
MRS. BAIRD'S STAYS FRESH LONGER ENRICHED BREAD

John Milton used different words in his "Disse Lost." The first permanent works was built in 1645.



While we Service your...

Bring your car in... our quiet, comfortable while we give you free wait service on shocks, mufflers, batteries, plugs, and many other. Let our Ford know you precious time... while you relax.



WOLFE COMPANY 317 East 3rd St. Phone 569-3222

Vertical text on the right edge of the page, including 'Burkburnett, Wichita County', 'MAY 1', 'MAY 2', 'MAY 3', 'MAY 4', 'MAY 5', 'MAY 6', 'MAY 7', 'MAY 8', 'MAY 9', 'MAY 10', 'MAY 11', 'MAY 12', 'MAY 13', 'MAY 14', 'MAY 15', 'MAY 16', 'MAY 17', 'MAY 18', 'MAY 19', 'MAY 20', 'MAY 21', 'MAY 22', 'MAY 23', 'MAY 24', 'MAY 25', 'MAY 26', 'MAY 27', 'MAY 28', 'MAY 29', 'MAY 30', 'MAY 31', 'JUNE 1', 'JUNE 2', 'JUNE 3', 'JUNE 4', 'JUNE 5', 'JUNE 6', 'JUNE 7', 'JUNE 8', 'JUNE 9', 'JUNE 10', 'JUNE 11', 'JUNE 12', 'JUNE 13', 'JUNE 14', 'JUNE 15', 'JUNE 16', 'JUNE 17', 'JUNE 18', 'JUNE 19', 'JUNE 20', 'JUNE 21', 'JUNE 22', 'JUNE 23', 'JUNE 24', 'JUNE 25', 'JUNE 26', 'JUNE 27', 'JUNE 28', 'JUNE 29', 'JUNE 30', 'JUNE 31', 'JULY 1', 'JULY 2', 'JULY 3', 'JULY 4', 'JULY 5', 'JULY 6', 'JULY 7', 'JULY 8', 'JULY 9', 'JULY 10', 'JULY 11', 'JULY 12', 'JULY 13', 'JULY 14', 'JULY 15', 'JULY 16', 'JULY 17', 'JULY 18', 'JULY 19', 'JULY 20', 'JULY 21', 'JULY 22', 'JULY 23', 'JULY 24', 'JULY 25', 'JULY 26', 'JULY 27', 'JULY 28', 'JULY 29', 'JULY 30', 'JULY 31', 'AUGUST 1', 'AUGUST 2', 'AUGUST 3', 'AUGUST 4', 'AUGUST 5', 'AUGUST 6', 'AUGUST 7', 'AUGUST 8', 'AUGUST 9', 'AUGUST 10', 'AUGUST 11', 'AUGUST 12', 'AUGUST 13', 'AUGUST 14', 'AUGUST 15', 'AUGUST 16', 'AUGUST 17', 'AUGUST 18', 'AUGUST 19', 'AUGUST 20', 'AUGUST 21', 'AUGUST 22', 'AUGUST 23', 'AUGUST 24', 'AUGUST 25', 'AUGUST 26', 'AUGUST 27', 'AUGUST 28', 'AUGUST 29', 'AUGUST 30', 'AUGUST 31', 'SEPTEMBER 1', 'SEPTEMBER 2', 'SEPTEMBER 3', 'SEPTEMBER 4', 'SEPTEMBER 5', 'SEPTEMBER 6', 'SEPTEMBER 7', 'SEPTEMBER 8', 'SEPTEMBER 9', 'SEPTEMBER 10', 'SEPTEMBER 11', 'SEPTEMBER 12', 'SEPTEMBER 13', 'SEPTEMBER 14', 'SEPTEMBER 15', 'SEPTEMBER 16', 'SEPTEMBER 17', 'SEPTEMBER 18', 'SEPTEMBER 19', 'SEPTEMBER 20', 'SEPTEMBER 21', 'SEPTEMBER 22', 'SEPTEMBER 23', 'SEPTEMBER 24', 'SEPTEMBER 25', 'SEPTEMBER 26', 'SEPTEMBER 27', 'SEPTEMBER 28', 'SEPTEMBER 29', 'SEPTEMBER 30', 'SEPTEMBER 31', 'OCTOBER 1', 'OCTOBER 2', 'OCTOBER 3', 'OCTOBER 4', 'OCTOBER 5', 'OCTOBER 6', 'OCTOBER 7', 'OCTOBER 8', 'OCTOBER 9', 'OCTOBER 10', 'OCTOBER 11', 'OCTOBER 12', 'OCTOBER 13', 'OCTOBER 14', 'OCTOBER 15', 'OCTOBER 16', 'OCTOBER 17', 'OCTOBER 18', 'OCTOBER 19', 'OCTOBER 20', 'OCTOBER 21', 'OCTOBER 22', 'OCTOBER 23', 'OCTOBER 24', 'OCTOBER 25', 'OCTOBER 26', 'OCTOBER 27', 'OCTOBER 28', 'OCTOBER 29', 'OCTOBER 30', 'OCTOBER 31', 'NOVEMBER 1', 'NOVEMBER 2', 'NOVEMBER 3', 'NOVEMBER 4', 'NOVEMBER 5', 'NOVEMBER 6', 'NOVEMBER 7', 'NOVEMBER 8', 'NOVEMBER 9', 'NOVEMBER 10', 'NOVEMBER 11', 'NOVEMBER 12', 'NOVEMBER 13', 'NOVEMBER 14', 'NOVEMBER 15', 'NOVEMBER 16', 'NOVEMBER 17', 'NOVEMBER 18', 'NOVEMBER 19', 'NOVEMBER 20', 'NOVEMBER 21', 'NOVEMBER 22', 'NOVEMBER 23', 'NOVEMBER 24', 'NOVEMBER 25', 'NOVEMBER 26', 'NOVEMBER 27', 'NOVEMBER 28', 'NOVEMBER 29', 'NOVEMBER 30', 'DECEMBER 1', 'DECEMBER 2', 'DECEMBER 3', 'DECEMBER 4', 'DECEMBER 5', 'DECEMBER 6', 'DECEMBER 7', 'DECEMBER 8', 'DECEMBER 9', 'DECEMBER 10', 'DECEMBER 11', 'DECEMBER 12', 'DECEMBER 13', 'DECEMBER 14', 'DECEMBER 15', 'DECEMBER 16', 'DECEMBER 17', 'DECEMBER 18', 'DECEMBER 19', 'DECEMBER 20', 'DECEMBER 21', 'DECEMBER 22', 'DECEMBER 23', 'DECEMBER 24', 'DECEMBER 25', 'DECEMBER 26', 'DECEMBER 27', 'DECEMBER 28', 'DECEMBER 29', 'DECEMBER 30', 'DECEMBER 31'.

All Insurance is the same 'til you have a claim

Burk Insurance Agency
HOWARD CLEMENT
New Location—Next to Legion Hall

Baseball Schedule 1963

1st HALF
Game Starts 6 o'clock.
Game Starts 8 o'clock.

Visitor

MAY 23
Whites—Grandfield

MAY 24
Superior—Preston

MAY 27
Drug—Whites
Monaghan

MAY 28
Preston

MAY 30
Riley

MAY 31
Drug—Randlett
Grandfield

JUNE 3
Parker

JUNE 4
Drug—Riley
Randlett

JUNE 6
Open

JUNE 7
Grandfield

JUNE 10
Superior
Randlett
United

JUNE 11
Open

Choose the Right 'Coldmine'



These new electric refrigerator-freezers illustrate the diversity of styles available today. Generous side-by-side refrigerator and freezer sections in model above hold an abundance of fresh and frozen foods. Zero-zone freezer section is at top of unit shown at right above, and at bottom of the one at left. Frost never forms in any of these new models. All have today's built-in look.

Superior—Corner Drug
Parker—Grandfield
JUNE 13
United—Monaghan
Randlett—Preston
JUNE 14
Superior—Riley
Parker—Corner Drug
JUNE 17
Preston—Riley
Parker—United
JUNE 18
Monaghan—Corner Drug
Open—Open

AT GRANDFIELD
Games Start at 7 o'clock.
MAY 13

United—Grandfield
MAY 20
Whites—Grandfield
MAY 27
Randlett—Grandfield
JUNE 3
Preston—Grandfield

TWIN VALUES
While best noted for its sunny color, Southern Pine has two other qualities which are important in wood paneled walls. The first is high resistance to blemish and marring; the second, proper seasoning for size stability. These twin values assure minimum maintenance.

STORAGE CORNERS

If you're suffering from a lack of storage, it may be rewarding to appraise the room corners.

In many homes, corner space is little-utilized and can be converted into useful storage area through remodeling. According to the Southern Pine Association, the job requires little more than framing lumber and conventional tools. Storage centers can be built diagonally across the room corners with attractive decoration such as wood paneled doors.

By walking eight miles, you can lose a pound of weight, provided you eat and drink sparingly after the hike.



Poppy Day Set Sat., May 25th

Each year, usually on the Saturday before Memorial Day, millions of Americans walk to their homes and offices wearing little red poppies. These small flowers are offered to the public by the women of the American Legion Auxiliary and other volunteer workers who donate their time and effort for this purpose.

Of course, most of you already know the poppies are worn in memory of the men who lost

their lives in our nation's wars—but I wonder if you know just how the poppy came to be the memorial flower.

From 1914 until 1918 the battlefields of Europe were trampled by the boots of millions of fighting men. From 1917 until 1918 American troops were part of the Allied forces which fought to bring peace to Europe and liberty to its subjected peoples. Months of hard fighting and thousands of lives were the price paid for this objective. As American troops advanced thru France and Flanders the only touch of life and beauty they saw were the wild poppies that bloomed amid the rubble of war.

Along the trenches, around the shell craters and among the barbed wire and wreckage the little poppies grew and bloomed. The tiny blossoms also covered the graves of American fighting men who had fallen on the battlefields: they soon became a symbol of sacrifice to the living. Other wars have

been fought since that time, and it is still the emblem of high ideals for which these fighting men gave their lives and many of their comrades suffered injury.

This is why we pin on a poppy as a tribute both to the dead and living American servicemen. The poppies still cover the fields of France beneath which many of them lie. On Poppy Day we all have an opportunity to place this memorial flower over our hearts in tribute to the sacrifice which they made.

"GOLDEN WOOD"

Southern Pine is often described as the "golden wood"—a reference to its sunshiny color.

For Results—Advertise

Cement Work

Driveways, Storm Cellars, Sidewalks, Fallout Shelters, Patios, etc.

Backhoe Work
Fill Sand and Road Rock

Harlis Sales

Phone 569-3775
111 Linden Dr.



BURKBURNETT STAR

OWENS-BRUNLEY FUNERAL HOME

AMBULANCE SERVICE

PHONE 569-3361

Harold Van Loh
President

Joe Allcorn
Manager

REPAIR REMODEL

HOME IMPROVEMENT SERVICE

NO DOWN PAYMENT
NO RED TAPE
WE HANDLE LOAN DETAILS

BURK INSURANCE

ADD-A-ROOM MODERNIZE

Phone 569-3333

MICKEY FINN
Lank Leonard

HOW ABOUT YOU TAKING A FEW?

BELIEVE ME, I KNOW WHAT THEY CAN MEAN TO A FAMILY!

BULLETIN BOARD

WANTED! A GOOD HOME FOR A UNITED STATES SAVINGS BOND

Now you get extra savings during
RAMBLER'S TRADE PARADE

More than 2,000,000 smart car buyers have switched to Rambler—switched by the hundreds of thousands from the other most popular makes. Come in and see why. See how you get a better car at bigger savings during the Trade Parade to Rambler.

ATTENTION! If you own a '59, '60, '61 Ford, Chevy, Plymouth, or any year Rambler

YOU MAY HAVE ALREADY WON

\$10,000 or one of thousands of other prizes in Rambler's \$1,000,000 Giveaway. Check your car's serial number at your Rambler dealer. It may be a big winner. Sorry, offer void in Conn., Fla., N.J., Wis., and wherever else prohibited by federal, state or local regulations. In these areas, see your Rambler dealer for other special offer.

ONLY RAMBLER—AND NO OTHER CAR AT ANY PRICE—GIVES YOU ALL THESE EXTRA-VALUE FEATURES

- Rattle-free Advanced Single-Unit construction
- Deep-Dip rustproofing up to the roof
- Double-Safety Brake System, self-adjusting, too
- Ceramic-Armored muffler and tailpipe
- Design and engineering leadership that won the Motor Trend Magazine "Car of the Year" Award
- Most miles per gallon of all cars in all classes—1963 Pure Oil Economy Trials, 1963 Mobil Economy Run (American 440)

USA's Best-Selling 6-Cylinder Wagon. Hidden compartment under rear cargo floor is standard on the Rambler Classic 770 wagon above.

TULLIS MOTOR COMPANY Okla. Cutoff. Burkburnett, Tex.

HOW SOON CAN YOU START BUILDING?

That happy day when you can start construction of a home of your own may come a lot sooner than you now think! We have brought "home owning time" closer for many people, just like yourself. Look into a convenient, low-cost Home Loan which you can repay "just like rent." Down payments and monthly payments will be geared to YOUR needs!

Savings Earn A BIG **4 1/4%** Dividend Payable Or Compounded Quarterly

New Anticipated Dividends

First Savings & Loan Assn.

314 East 3rd Street
Burkburnett, Texas
Phone 569-2206

Member Federal Savings and Loan Assn. — Member Federal Home Loan Bank

