

# Burkburnett Star

LIKED BY MANY - CUSSSED BY SOME - READ BY EVERYBODY

BURKBURNETT, WICHITA COUNTY, TEXAS, THURSDAY, AUGUST 1, 1963

NUMBER 47

Chamber of Commerce Luncheon Each FIRST MONDAY at Town Hall. Everybody Invited Each Pays for His Meal

The God who gave us life, gave us liberty at the same time.

Puzzling: The people who drive thousands of miles to enjoy scenery, and leave rubbish.

## GENERAL ROBERT M. STILLMAN ASSUMES DUTIES AS COMMANDER OF SHEPPARD AIR FORCE BASE

Morris Stillman was born in Greenville, Ohio, Nov. 19, 1911. He was graduated from high school at Puyallup, Wash., in 1929, attended Colorado College in Colorado for two years, was graduated from the U. S. Military Academy at West Point, N. Y., June 12, 1935 and received a second lieutenant's commission in the Army.



MAJOR GENERAL ROBERT M. STILLMAN UNITED STATES AIR FORCE

do, Graduated 1929. College — Colorado College, Colorado Springs, Colorado, 1927-1931; U. S. Military Academy, Graduated 1935. SERVICE SCHOOLS Army Air Force Flying School, Graduated 1936. Army Air Force Staff Officer's Course, Graduated March 1945. Air Force Staff College, Graduated July 1947. National War College, Graduated June 1951. Jet Transition School, Graduated April 1952. COMBAT Two Combat Missions, B-26. Shot down on second mission and German prisoner of War, May 1943 to April 1945. PROMOTIONS Commissioned a Second Lieutenant, June 12, 1935, he was promoted to First Lieutenant, June 3, 1938, to Captain (temporary) October 9, 1940, to Major (temporary) December 5, 1941, to Lieutenant Colonel (temporary) February 19, 1942, to Captain (Permanent) June 12, 1945, to Colonel (temporary) September 29, 1945, to Lieutenant Colonel (permanent) July 1, 1948, to Colonel (permanent) October 19, 1949, to Brigadier General (temporary) July 16, 1955, to Major General (temporary) June 30, 1959 (with date of rank October 6, 1954), to

Brigadier General (permanent) May 16, 1960 (with date of rank March 6, 1958.) Hobbies: Golf, hunting and fishing, Chess. Interests: Boy Scouts of America, Youth Programs. Religious Preference: Protestant. Tastes: Food line—is considered a cosmopolitan eater and enjoys any type of food. Dress: Conservative. Personal Mottoes: Integrity. Evaluation: General Stillman is held in high esteem by civilians, military, superiors and subordinates alike as substantiated by the fact that when General Stillman departed Lackland Military Training Center for Okinawa, the San Antonio Chamber of Commerce presented him with a wrist watch as a small token of their appreciation for his untiring efforts in all matters pertaining to the Chamber of Commerce. This is the first time in the history of the Chamber that any such honor has been bestowed upon a member of the military. To further illustrate the point, the 1961 Lackland football squad sent the football used in the game between Lackland Military Training Center and the Air Force Academy Score (13-0) autographed by the team to General Stillman after his departure from Lackland.

## Burkburnett Police Department Solves Recent Burglaries, Thefts With Arrest of 22 Year Old Man

The arrest of a 22 year old former Burkburnett man by the Burkburnett Police Department solved 6 home burglaries and 4 thefts of over \$50.00. Robert Lynn Brock was taken into custody Sunday and admitted he alone was responsible for the 10 above offenses committed here since July 14th. Chief of Police Ken Gage praised highly the efficient work done by D. L. Bryan in gathering evidence to pin point the accused. Buck Abbott also assisted Bryan in his investigations. The 6 home burglaries were made at the following places: Mrs. T. H. Evans, 709

- Maple. Lee C. Kennedy, 507 Oak.
- Jerold Row, 702 Shady Lane.
- Floyd Marten, 706 Sunset.
- Cliff Wampler, 700 Sunset.
- Charles Hofacket, 105 Terrace.
- Thefts were made at: Neal Tullis, 125 Avenue F.
- Harold Sanders, 615 Hazel Drive.
- E. H. Smith, 722 Maple.
- According to Stanley Kirk, District Attorney, the case will be presented to the Grand Jury August 7th.
- Mr. and Mrs. Jack Northcott and Nancy of Kilgore are visiting relatives and friends here for a few days.

## Clyde Marshall Metz Died Sat., July 27th At Temple, Okla.

Clyde Marshall Metz, 74, a native of Temple, Oklahoma, died Saturday, July 27th at his home in Temple, after a lengthy illness. Services were held at the First Methodist Church Monday, July 29th, at 10:00 a. m. at Temple. Handling the arrangements was Pearson Funeral Home. Burial was in the Temple Cemetery. Survivors are his widow, Minnie, five sons, James Edward Metz, Burkburnett; Clyde Marshall Metz, Leveland; Raney Metz and Dr. Gene Metz of Anaheim, California; Lt. Col. Robert Metz, Newark, New Jersey, one brother, George Metz, Glendale, California; two sisters, Mrs. Martha Jefferies, Mrs. Mary Harper, both of Tulsa, Oklahoma and 15 grandchildren.

## Cashion School Reunion Sunday

The Cashion Alumni Association will hold a reunion Sunday from 10:00 a. m. to 3:00 p. m. at the Perkins Reservation southeast of Burkburnett. A picnic lunch will be spread at the noon hour. Bill McLean, president will give the welcome. Virgil Evans is secretary-treasurer. There will be an election of officers in the afternoon. The Cashion school was built and organized in 1928 and consolidated with the Burkburnett schools in 1934. A reunion has been held several times with a good attendance. An estimated crowd of 75 to 100 persons is expected this year, coming from as far as California.

## GINNERS NIP HOLTS; BURK, HOBOS TO STATE

### Wichita Falls County 4-H Rally Day, Monday, August 5th

The Wichita County 4-H Rally Day will be held on Monday, August 5 at Perkins Reservation according to the Assistant County Home Demonstration Agent, Sandra Herrell, and the Assistant County Agriculture Agent, Bob Wurzbach. The camp, which is located three miles northeast off of the Wichita Falls-Burkburnett highway, will begin at 9:30 a. m. The program includes swimming in the morning along with three educational programs scheduled for the afternoon. The days activities will be concluded with a vespers services about 6:00 p. m. that evening. Junior leaders who planned this years Rally Day include Cecilia Childers, Sue Cantrell, Phyllis Morris, David Johnson, Glen Baxter and Gary Morris. All Wichita County 4-H boys and girls are invited to attend.

Burkburnett's Ginnners rallied in the sixth inning to edge Holt's Sporting Goods 7-5 Tuesday night in Connie Mack play-off action at Spudder Park and drew the remaining berth for the state tournament which starts Thursday in Fort Worth. The Ginnners join the First Wichita National Hobos, who got their spot Tuesday after winning two straight games.

Burk's Gary Olsen gave up only four hits in posting the victory in the see saw battle. Steve Keller, with six hits against him was pinned with the loss. Burk has been dubbed the Wichita Falls area No. one team and will meet the host team from Fort Worth in Thursday's play at 6:30 p. m. The number two team Hobos, will meet Beaumont Thursday at 8:30 p. m. The Fort Worth winner will play in the Regional Tournament in Bryan August 8-10. Teams from Texas, Arkansas, New Mexico, Oklahoma, Missouri and Louisiana will compete. The winner plays in the national Connie Mack tournament August 23-27 at Springfield, Illinois.

A total of 63 teams in Texas competed in Connie Mack play in 12 leagues in Texas this season. Holt's 000 320 0-5 Burkburnett 040 003 x-7 WP-Gary Olsen (four hits). LP-Steve Keller (six hits).

## Watermelon Festival Scheduled For Friday Night, August 9th

The Retail Merchants Council of Burkburnett Chamber of Commerce has announced that they will sponsor a Watermelon Festival Friday, August 9 beginning at 7:00 p. m. This will be the second annual watermelon festival in Burkburnett. Last year an estimated crowd of 2,500 attended. This years promotion will be hosted by local chamber of commerce businessmen and will feature free watermelon and entertainment for the general public. Approximately six tons of watermelon has been ordered for the affair.

### Life Saving And Water Safety Course

Morris Seay, water Safety Instructor is conducting an 18-hour Red Cross approved Life Saving and Water Safety Course of practical and written methods at the Burk Swimming Pool that will be concluded Friday, August 2nd. Six girls and thirty boys are enrolled in the class and if they qualify could become life guards, but the main purpose is to be able to save themselves or others from drowning if necessary. Mr. Seay is being aided by Jim Davey, Shelia Davey and Peggy Anderson. It has been announced that area merchants are sponsoring an all out Area Swimming and Diving Contest, Sunday, August 18th. Further information will be published next week concerning the contest.

### Tumbleweed Chapter Of ABW Entertained Prospective Members

The Tumbleweed Chapter of American Business Women, Wichita Falls, entertained prospective members of a future ABWA Chapter to be chartered in Burkburnett Sunday afternoon at the Texas Electric Auditorium at 2:30 p. m. Fourteen guests were present at the "Get Acquainted" tea and showed much interest in getting organized in their city. A panel discussion was held with five Tumbleweed members outlining the purpose, aims and advantages of the ABWA organization and a question and answer period followed which enlightened the prospective members. The Wichita members will again meet with Burkburnett ladies Monday night, August 5th at 7:30 p. m. at the Texas Electric Auditorium. Please be assured, if you are a working lady and have not been contacted, that you are invited to attend. At least twenty-five ladies must join to charter a chapter and you will want to have your name on the charter of your Burkburnett Chapter.

Mr. and Mrs. Bill Donnell and Eddie have returned home from a weeks vacation in Durant and Oklahoma City, Oklahoma. They visited their parents and other relatives and also enjoyed some fishing.

## BURK CHAMBER ENDORSES CITY'S "CLEAN-UP, FIX-UP AND PAINT-UP" CAMPAIGN

### Devol Alumni Banquet Scheduled Saturday, August 10

The Devol Alumni Banquet has been scheduled for Saturday, August 10th, 7:00 p. m. at White's Cafetorium in Wichita Falls. All former students and teachers of the Devol, Oklahoma, School are cordially invited to attend. For reservations call James Frye, 569-3791 Burkburnett or Mrs. Joed Inman Ly 9-2463, Devol, Oklahoma.

### Newcomers Welcomed To Burkburnett

The Burkburnett Chamber of Commerce and the Greeters Service wish to welcome the following newcomers to our city.

- Joe Coughlin
- Russell Macey
- Arvis Forbis
- Celestino, Garcia
- M. L. Wakeham
- Tommy Hudson
- B. G. Wallis
- Wm. Ames
- David Chenoweth
- A. E. Sawyer
- F. P. Jolly

If you are a newcomer to Burkburnett and have not been contacted, please call Mrs. Savage, 569-2180, or the Chamber of Commerce Office, 569-3393.

## NORTH TEXAS SOCIETY FOR CRIPPLED CHILDREN AND ADULTS SLATES BARBECUE

Some 200 or more area residents are expected to attend a Western Babecue Friday at the Tom Medders Ranch as guests of the North Texas Society For Crippled Children and Adults. Initiating the activities for the day will be "howdy time" at 4:00 p. m. at the Treatment Center, 516 Denver, where tours of the facility will be conducted while the party is gathering to drive to the ranch.

Hostesses for the tours will be the Crippled Children's Auxiliary, a group which has actively participated in the operation of the center since it moved to the new location a year ago. Assisting in taking the visitors on tours of the building will be the therapists, Mrs. Betty Wages, director and physical therapist; Mrs. Lee Elwinger, occupational therapist, and Mrs. Nina Jackson and Miss Thalia Conroy, speech therapists. "Eatin' and Speakin' time" will begin at 5:00 p. m. at Medders Lake Creek Ranch. All of the food for the affair is being donated (no Easter Seal funds are being used, Mrs. Wages pointed out) and is being prepared by various volunteers recruited from the membership of the auxiliary and by parents of patients who receive treatment at the center. The meat purchase and preparation is being handled by Wichita Falls men who have, throughout its existence, been staunch supporters of the center. Barbecue beef, potato salad and baked beans will be served chuck wagon style to the guests who will be seated on bales of hay under huge shade trees. Serving the supper will be the men and Red Cross Volunteers under supervision of the auxiliary. Informality will be the keynote of the barbecue, with Western style dress in fashion. Bandanas bearing words about Easter Seals will be distributed to all the participants. Mrs. Wages said that "Chicago cousins" of the Easter Seal Society will be attending the barbecue and that the affair is planned to introduce them to those people of the North Texas area who have supported the Easter Seal Society. The Wichita Falls center is an affiliate

In concurrence with the Proclamation by Mayor James E. Frye respecting the week of August 5-10, 1963, as "Clean-Up, Fix-Up and Paint-Up Week," Chamber of Commerce President W. T. (Bill) Donnell announced the appointment of Roy T. Magers as chairman of the chamber's supporting clean-up campaign.

The following editorial by Roy urges the entire community to roll back their sleeves next week and participate in this year's campaign: We love Burkburnett—and we want our City to be appealing to all our visitors and newcomers. What are your initial impressions upon entering a town for the first time? Usually you notice: Are the houses well painted? Are the yards beautiful? Are the back alleys and vacant lots clean? Our Mayor has declared the week beginning August 5 to be "Clean-Up, Fix-Up and Paint-Up" time. Everything will be hauled away free of charge. Clean your premises at once and you and your neighbor clean the vacant lot between you — scour the back alleys — leave nothing undone in getting our City cleaner and in a more healthful condition than ever before. We are proud to tell people we live in Burkburnett — so let us all do everything possible to make our town more beautiful; and make it more appealing to our visitors and newcomers.

of the State Easter Seal Society which is associated with the National Society. From Chicago will be Miss Jayne Shover, associate director of the National Society and director of care and treatment, who will speak. Miss Eleanor Bader, program consultant in charge of care and treatment; and Mrs. Irene Rowland, consultant in organization and administration. Texas representatives will be Martin Ricker, Dallas, executive directors of the State Society; and Dub Moore, Dallas, field director. Main purpose of the visit by the officials is to orientate those attending the affair with the ways in which individual centers work with the state and national associations. Special guests will be members of the board of the North Texas Society for Crippled Children and Adults and especially the new out-of-town directors who include Mrs. L. C. Young, Graham; Hayden Farmer, Olney; John Fall, Archer City; Speigle Berry, Bowie; Arthur Slagle and Dulen Day, both of Henrietta; Murray King, Vernon; Tom Craddock, Seymour; Cleo Nipper, Iowa Park; Mrs. W. T. (Dub) Zimmerman and James Frye, both of Burkburnett; and Dr. J. O. Ramsey, Jacksboro.

### CARD OF THANKS

We wish to take this means of thanking all from the depths of our hearts for all the kind words and acts of sympathy shown us in the time of sorrow in the loss of our loved one. For the floral offerings, the singers and the food, we are deeply grateful. We especially wish to thank Dr. Davey for his efforts and kindness and Mrs. Virginia Boatright who so faithfully helped care for our loved one. We also wish to thank Bro. Eugene Gilmore and Bro. Adam Klein for their words of comfort and for conducting the service. May God's richest blessings abide with each of you. Mrs. and Mrs. Russell Duvall Mrs. Frances Watson and Family

For Results—Advertise

# The Burkburnett Star

HARRY C. DODSON, Owner and Editor



Printed weekly at Burkburnett, Wichita County, Texas. Entered as second class matter at the post-office at Burkburnett, Texas, August 19, 1907, under the Act of Congress of March 3, 1879.

Mrs. Lola Mae Bailey, Bookkeeper-Society Editor  
Chas. L. Wisdom, Mechanical Foreman  
Forrest Green, Linotype-Pressman  
J. W. Brookman, Commercial Printing

**Notice to the Public:** Any erroneous reflection upon the character, standing or reputation of any person, firm or corporation, which may appear in The Star, will be gladly corrected as soon as it is brought to the attention of the publisher.

Subscription Price \$2.00 Per Year

## THE FACT OF CHANGE

No one, needless to say, likes to see his job disappear. And society at large feels a wrench when progress makes certain jobs obsolete. Secretary of Labor Wirtz recognized this situation when he said: "The presiding fact in our time is the fact of change. A job used to be something that a man expected to have all his life, and our trouble today is that is what he still expects, yet a job is no longer something which most people can reasonably expect to have or to perform the rest of their lives. There is going to be a change."

The change lies in technological advances, and in the forces of competition. A primary current example lies in the obsolete railroad work rules—the source of "feather-bedding" which cost this hard pressed industry something like \$600 million a year. A distinguished Presidential Commission recommended sweeping changes. The federal courts, including the Supreme Court, have held that the railroads have the legal right to make adjustments.

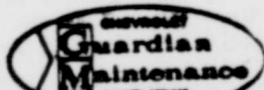
But human values have not been abandoned. The Commission also recommended protective provisions for workers which have been termed unprecedented in cost and magnitude—and which the railroads accepted. No displaced worker would be summarily dismissed. To provide one illustration, the Commission agreed that 27,000 firemen now in road freighter or yard service with 10 or more years' seniority should be kept on with full job rights until retirement, death or other attrition ends their jobs. Those with lesser seniority will also get substantial benefits, retaining for other work among them.

The clock ticks on, and no one can stop it. In railroad-ing, one hour must follow the next—the happy part is that the human element has been considered as seriously as the economic element.

## Grass Roots Opinion

MILES CITY, MONT., STAR: "The Administration's failure to solve the unemployment problem is being used as a potent argument on Capitol Hill for rejection of many of President Kennedy's legislative proposals and for greater reliance upon the private enterprise system."

### GUARDIAN MAINTENANCE



Always look for this Emblem for the best in Quality Automotive Service

MOTORS -- BRAKES -- TRANSMISSION  
WHEEL ALIGNMENT -- MUFFLERS

**AIR CONDITIONER SLUGGISH?**  
WON'T COOL—NOT GETTING FULL PERFORMANCE?

**THEN DRIVE IN TODAY FOR THIS SPECIAL OFFER!**

- Line Test Feron Gas and Pressure
  - Replace Feron Lost.
  - Pressure Test Lines For Leaks
  - Inspect Belts for Serviceability and Tightness
- ALL AT ONE LOW PRICE

Earl West In Charge of Complete  
**PAINT and AUTO BODY SHOP**  
ALL WORK GUARANTEED

For Fast Efficient

**WRECKER SERVICE**



DAYS  
569-3381

NIGHTS  
569-3745

**MATHIS**  
Chevrolet-Oldsmobile

**CHEVROLET CO.**

IRVIN "Smitty" SMITH, Service Manager

## WASHINGTON AND "SMALL BUSINESS"

By C. WILSON HARDER

If anyone finds themselves unable to pay their note at the bank, pay their utility bills, pay wages, pay suppliers, or perhaps even pay taxes, they should explain to their creditors that their inability to meet their obligations shows they are operating with great strength.

And there is authority to back up this position.

For as Congressman John Ashbrook points out, operating at a deficit is now considered a measure of strength.



He quotes no less an authority than Walter Heller, the government's chief economic advisor. Mr. Heller, who has more than a modicum of what used to be called "book learnin'" is not at all concerned about proposed budget close to \$100 billion creating an estimated deficit of \$11 billion.

In fact, his reply to this matter perhaps will go down in history as a classic bon mot of left economics.

He merely says this deficit, as well as the estimated \$7 billion deficit for the fiscal year just ending are "deficits of strength."

This is a wonderful phrase. It is too bad for people in past that Heller's statement was not issued in an earlier era.

Think how it would have warmed the hearts of the people in the old fashioned country.

poor houses who could have pointed to their condition as a position of strength.

Think how many bankrupts could have faced their creditors with the greatest of sang froid just by pointing out to them that they were now in a position of strength.

The only fly in this delightful conjecture is that if Mr. Heller had been around to make such an utterance forty to fifty years ago the men in white coats would have picked him up.

It is a question as to how long a people can remain moral with an immoral government. History shows that people have maintained their moral standards for quite some time despite the example set by their government. But eventually, there has always been an explosion created by the people finally losing their own moral standards.

The Hellers, the Galbraiths and the rest of these orbiting theorists have apparently not yet succeeded in destroying the moral fiber of all the people.

The best evidence of that is the nationwide surveys of independent businessmen taken by the National Federation of Independent Business.

Even though the independent proprietors of America not only want, but badly need a reduction in taxes, they have strongly expressed themselves that they only want a tax reduction if there are slashes in government spending. They fail to recognize that there is strength in any deficit. Thus, government has not yet destroyed the morality that built America, despite its consistent efforts.

Opponents contend that all such problems can best be dealt with at the local level and that the best contribution the federal government can make is to moderate—in the right way—the present confiscatory tax system and permit enterprise to function effectively.

ASHLAND, ORE., TIDINGS: "The old standards for observing eclipses of the sun—sun glasses, smoked glass or exposed photographic film—should never be used. They are unsafe. There have been numerous cases of eye damage. Use a simple device made by punching a tiny round hole in a sheet of cardboard so the sun's rays can be focused through the hole onto another piece of white cardboard. Look only at the reflection on that second sheet."

GREENSBURG, IND., TIMES: "Millions of tax dollars are now going into research projects to study the family life of monkeys, crabs and cockroaches might better be diverted to practical training for young men who will be desperate for jobs next year."

### BALES OF BACK STOPS

We are advised that a plain old bale of hay or straw makes a good backstop for sighting in a rifle or pistol. It's a last resort backstop to be sure, and we strongly recommend you keep the loads light and check carefully that the bale is stopping them well. But if all IS well, it might serve as an easily available, low cost, effective bullet stopper.

### FOR RESULTS — ADVERTISE

**I. O. O. F. LODGE**  
BURKBURNETT, TEXAS  
Meets at I. O. O. F. LODGE  
Every Tuesday Night 7:30 p. m.  
Visitors Welcome  
JOHN ROGERS, Noble Grand  
GEO. BENTON,  
Vice Grand and Treasurer  
BILLY RAY DAVIS,  
Fin. Secy. and Recording Secy.



## BURKBURNETT... HISTORY

Revealed By The Star  
Files 10 Years Ago . . .

Mr. and Mrs. Roy Magers have returned from a business trip to Arlington, Texas.

Mr. and Mrs. Troy Miller and grand daughter Sharon Ramsey have returned from a nice vacation in Alabama and North and South Carolina.

Mike Harms spent last week end in Dallas Texas.

Mr. and Mrs. Jim Pirtle of Burkburnett accompanied Mrs. Jack Copeland of Walters, in a trip to Nebraska and South Dakota.

Mr. and Mrs. Cecil Todd, Mrs. Ralph Click, and Mrs. H. D. Mabry are visiting their sister, Mrs. Helen Badaux in Palo Alto, California.

The C. M. Archers have returned from a vacation in California.

Mr. and Mrs. Claud Nolan and family visited in the Jack Alexander home a few days last week. The Nolans are from Premont, Texas.

Mr. and Mrs. Ralph Winkles and sons, from Velma, Oklahoma, visited in the Ralph White home over the week end. David stayed for a longer visit.

Mr. and Mrs. Howard Clement and Mr. and Mrs. Clarence Gilbert are spending this week in New Orleans, Louisiana.

Mrs. A. L. Scott visited her daughter, Mrs. Noys Silkwood and family in Abilene over the

### NOTICE

Marion Thornton has given up his business location (Burk Service Center) in downtown Burkburnett and is now repairing lawn mowers and motors at his home.

Phone 569-3155

607 Meadow Drive

## BOOMTOWN BOWL'S Rainbow Bananza

Sharpen up your bowling game by gaining skill on Rainbow Lane.

Come Out And Enjoy

**The Families Favorite Sport BOWLING**

ALSO SIGN UP FOR BOWLING CLASSES IN AUGUST FOR BOTH MEN AND WOMEN  
GET READY FOR WINTER LEAGUES

**Sign Up For Winter Leagues**  
MEN-WOMEN-MIXED TO START IN SEPT.

**Bantams - Juniors - Seniors**  
SIGN UP NOW FOR SATURDAY MORNING LEAGUES TO START IN SEPTEMBER

EAT AT

**Boomtown Bowl's Snack Bar**  
BEST HAMBURGERS AND STEAKS IN TOWN  
Serving lunch and dinner 7 days a week

## OWENS-BRUMLEY FUNERAL HOME

AMBULANCE SERVICE

PHONE 569-3361

Harold Van Loh  
President

Joe Allcorn  
Manager

NEW DRINK, THE RC...  
Latest new drink in the area where it is...  
If you come here in late...  
adian fishing lake and...  
cold, wet and damp...  
out, you are likely to...  
ed this drink; two ounces...  
burbon, two ounces...  
syrup (tapped locally)...  
ces boiling water. Don't...  
if you like different...  
new flavors.

For Results—Advertise

### SERVICES

WE REPAIR  
Washing Machines,  
Stoves And  
Air Conditioners  
Also Lay Floor Coverings

Milstead & P...

Phone 569-34...



Dig For  
"Diamonds"  
in June—July  
and August!

Under the cork in some of our RC caps will be a RED PRINTED DIAMOND which if turned in at our plant will be worth 100 FREE TRADING STAMPS! Under some RC caps will be a RED PRINTED DIAMOND, which if turned in at our plant, will be worth 100 FREE TRADING STAMPS of your choice!

BUY A CARTON OR A BOTTLE TODAY AND DIG THE CORK OUT AND SEE IF YOU HAVE A WINNER!

**FREE**

FREE TRADING STAMPS Of Your Choice for Clean ROYAL CROWN and NEHI BOTTLE CAPS —Look in the carton for details!

### BANK-FINANCED



Instead of a raccoon's tail...

Some motorists believe that a raccoon's tail brings good luck. All motorists who buy cars with bank Auto Loans from us know they're in luck. Borrowing cost is low; repayment terms are truly convenient.

DEMONSTRATION ON REQUEST: COME IN!

INTEREST PAID ON SAVINGS

**3 1/2% 4%**

6 MONTHS 1 YEAR  
● DRIVE IN BANKING

NEW DRIVE IN BANKING HOURS:

Mon. Thru Fri. 9 a. m. to 2 p. m.—1 p. m. to 6 p. m.

Saturday 9 a. m. to 12 Noon



"SERVING BURKBURNETT SINCE 1907"

MEMBER

Federal Deposit Insurance Corporation

# Buy Auto Liability From The Travelers Insurance Co. I

IT DOESN'T COST ANY MORE TO  
**BE SURE**  
HOWARD CLEMENT, Agent  
New Location - Next to Legion Hall



aluminum clothesline wire to make loops 2 and 5 inches high. Insert these into the holes in the shelf and you've got rust-proof dividers to separate and hold your odd-shaped pans and plastic mixing bowls. You might try this for your base cabinet too.

This method has proven easier for many homemakers than regular built-in dividers. However, directions for built-in dividers and other kitchen storage devices is available from your county home demonstration agents office.

Many Wichita County homemakers have used the devices and find their kitchens much easier to use. The devices make storage space easy-to-see, easy-to-reach and easy-to-use. Mrs. Joe Sloma, Mrs. Albert Brockriede, Mrs. Jim Roberts, Mrs. J. L. Graham, Mrs. Bill Laik, Mrs. C. H. Arnold are among the homemakers using these devices in their own kitchens.

Will the washing machine need replacing this year and maybe the refrigerator too? How much longer can we expect the electric range to last?

Questions such as these are important to the family interested in planning a fairly long-term budget. Estimates on "life expectancy" or length of service for different pieces of equip-

ment will help fit needed replacements into family spending plans.

Following are some estimates for selected items of furnishings and equipment offered by Thelma Wirges, county home demonstration agent.

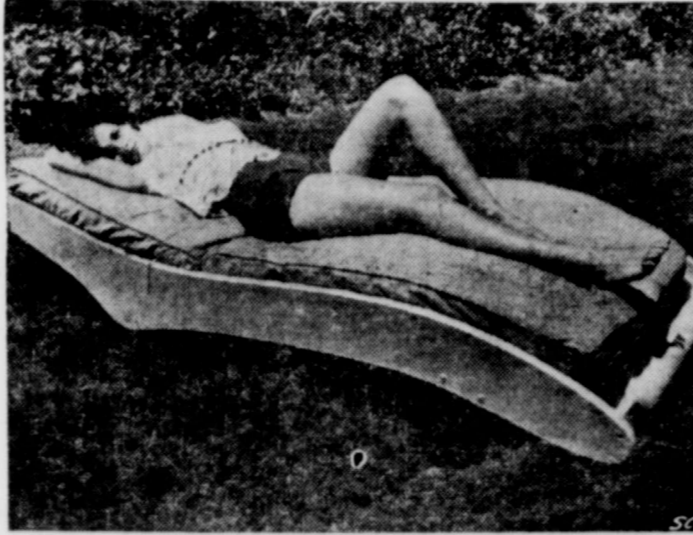
- Electric washing machine—Automatic and semi-automatic, 11 years.
- Wringer and spin dryer, 10 years.
- Electric refrigerators, 15 years.
- Electric or gas ranges, 15 years.
- Vacuum cleaners—Upright, 18 years.
- Tank, 15 years.
- Wool living room rugs, 14 years.

Miss Wirges also points out proper care and use can increase or decrease these estimates.

Want to guard against clothes-moth damage? Then you may want to spray DDT on surfaces of closet walls or on clothing and blankets stored in tight trunks about twice a year, suggests Thelma Wirges, county home demonstration agent.

Rugs and the top of rug pads can be treated with DDT to prevent carpet beetle infestations. Spray bookcases and other areas with DDT where silverfish crawl to eliminate these pests

## Build Summer Furniture Now



The outdoor furniture season is here again and home handy-men can economize and have fun at the same time by building the comfortable and good looking Beverly Hills style chaise lounge shown above. Simple to build and durable enough for years of ready-made relaxation when waterproof glue is used, the chaise will be a welcome addition when guests come over for barbecues, or when any member of the family looks for a quiet, pleasant spot for sun or shade.

The novice do-it-yourself man need have no qualms about the project because a full-size pattern and complete instructions are available that help make the job an easy, uncomplicated one. Elmer's Waterproof Glue is ideal to use when building this backyard chaise.

This is a two part adhesive that forms a waterproof bond that is actually stronger than

the wood itself. Practically essential for outdoor furniture construction, this waterproof glue resists prolonged wet weather, mold, fungus, acids, alkalis, solvents and heat. Simply mix the powder and liquid together, apply at a temperature above 70 degrees, and let cure for 10 hours or more under pressure. It bonds hard-to-glue joints with great strength, so it can be used on joints that are not perfectly fitted and it requires only moderate clamping pressure.

Usually, all the material for your backyard project will cost half as much as a ready-made outdoor chaise lounge.

The full-size working pattern for the Beverly Hills Chaise, pattern No. 312, may be obtained for 50 cents from Elmer's Pattern Dept., East-Bild Pattern Company, Box 215 E, Briarcliff Manor, N.Y.

## FAVORABLE GROWTH RATIO

Despite the fact that they are providing enough lumber to build a million homes each year, the Southern Pine forests are constantly increasing in volume.

Current growth of Southern Pine "sawtimber" exceeds harvest by at least 30 per cent. "Sawtimber" is a term for trees of sufficient size and quality for lumber.

The favorable growth-harvest ratio is attributed to good forest management and to the success of the "tree farms movement" — a program sponsored by the forest products industries.

Americans lost an average of sixteen days per person through illness and injury in the past year, which included six days of confinement in bed.

## FEET ACHE, ITCH?

1/4 of all your bones are in the feet. No wonder they ache, swell, perspire, itch. Bathe feet twice daily with T-L-4 Solution for relief of the 52 bones, 66 joints plus ligaments. Curbs athlete's foot, too (sloughs off infection — watch healthy skin replace it) or your 48c back at any drug store if not pleased IN ONE HOUR. TODAY at —

CORNER DRUG STORE

5 & 10 M & N 5 & 10  
"S. & H." Green Stamps "S. & H." Green Stamps

REGULAR \$1.50 **STYLE HAIR SPRAY Spec 57c**

REG. 89c—14 Oz Size **LISTERINE Spec 57c**

Reg. 25c Black and Bronze **Rubber Tip BOBBY PINS 2 for 25c**

Reg. \$4.98 Red-Black 'By Debbie' **Suede Penny LOAFERS Spec. 3.00**

Reg. \$1.49 Square Heavy Duty **14 Qt. Plastic DISH PAN Spec 66c**

BARBARA PRODUCTS' **Reg. 98c Silicone Ironing Board Pad and Cover Set Spec 66c**

Coats & Clark ONT 6 Cord **White Sewing Thread Spec 19c**

Reg. 29c Yd. **Unbleached Domestic Spec 17c**

Reg. 29c Luncheon and Cocktail **Pastel Stripe Napkins Spec 21c**

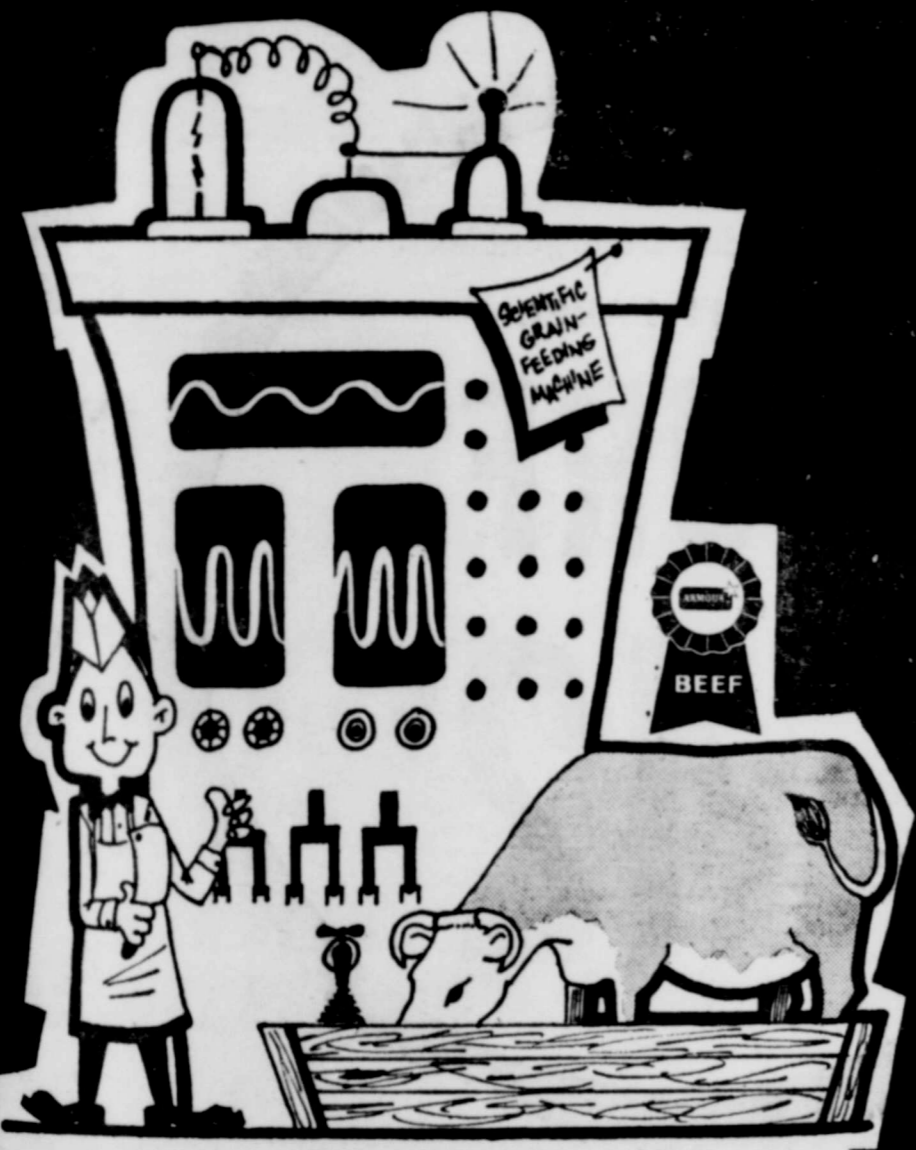
from your home, the agent suggests.

Malathion sprays can be used in similar manner, except that they should not be sprayed on clothing or blankets. One should spray malathion behind drawers, water pipes, baseboards and other hiding places to get rid of cockroaches.

Chlordane is another useful household insecticide. It should be used as a 2 percent spray or 5 percent dust to rid the house of ants, carpet beetles, flour and meal moths, cockroaches, and silverfish. Applied

to the soil as a 1 percent water emulsion, it will prevent subterranean termite damage to your house.

Other useful insecticides are lindane, dieldrin, ronnel, DDVP, Diazinon, and several others. When you purchase a product containing an insecticide read the label carefully and follow instructions, observing the precautions listed. The USDA does not approve of continuous action vaporizers for use in the home, no matter which insecticide is to be used in the vaporizer, the agent cautions.



# PIGGLY WIGGLY BEEF IS SCIENTIFICALLY GRAIN-FED

FOR A PERIOD OF 4 TO 6 MONTHS

Lean, juicy and tender, Piggy Wiggly beef has the best flavor in town . . . all because it is always scientifically grain-fed. Our meat buyers insist on this! Piggy Wiggly beef is firm and hearty with the right texture that promises the right taste. You'll say it's the best beef you ever tasted! If you are not already acquainted with the high quality and perfect eating of Piggy Wiggly beef . . . won't you stop in and see for yourself? And remember . . . Piggy Wiggly beef is always priced low . . . with an extra thrifty "value-trim" to remove all excess bone and fat. DOUBLE-YOUR-MONEY-BACK if every bite is not the most delicious beef you ever ate!



# CLOSING OUT SALE!

ON ALL 1962

# FRIGIDAIRE APPLIANCES

DURING MONTH OF AUGUST

RECEIVE UP TO **\$200<sup>00</sup>** For Your Old Appliances **ACT NOW...**

## LOOK LOOK LOOK

- ONE—40 INCH ELECTRIC RANGE (Copper)
- ONE—AUTOMATIC WASHER (Copper)
- ONE—ELECTRIC DRYER (Copper)
- ONE—GAS DRYER (Copper)
- ONE—11 CU. FT. FREEZER
- ONE—21 CU. FT. FREEZER
- FIVE—15 CU. FT. REFRIGERATORS
- ONE—PORTABLE DISHWASHER

**SORRY PRICES TOO LOW TO ADVERTISE**

THEY WON'T LAST LONG, SO HURRY

AUTHORIZED FRIGIDAIRE SALES AND SERVICE

# BILLS TV Furniture & Appl.

301 North Avenue D

Phone 569-3651

Burkburnett, Texas

**BLACK PEPPER**  
Schilling  
**2 oz can 23¢**

**PAPER TOWELS**  
SCOTT  
**big roll 35¢**

**FACIAL TISSUES**  
Scotties, 400 Count  
**pkg 27¢**

**DETERGENT**  
Vim Tablets, 72 Count  
**pkg \$2<sup>19</sup>**

**DETERGENT**  
Swan Liquid  
**32 oz bot. 89¢**

**AMMONIA**  
Little Eo-Peep  
**qt bottle 25¢**

**RICE**  
RICELAND  
Cello. Package  
**2 lbs 31¢**

**LIQUID ALL**  
DETERGENT  
**qt can 73¢**

**FLUFFY ALL**  
Detergent Powders  
**3 lb pkg 75¢**

**DETERGENT**  
Dishwasher All  
**20 oz pkg 45¢**

**ALL**  
Condensed Detergent  
10c Off Label  
**3 lb pkg 65¢**

**DETERGENT**  
Liquid Wisk  
**pt bottle 39¢**

**DETERGENT**  
Surf Powders  
15c Off Label  
**giant pkg 60¢**

Vitamin Rich Produce From Piggly Wiggly

# BANANAS

FANCY GOLDEN Lb. **10¢**

**APRICOTS** Flavor Packed Royals lb ... **19¢**  
**LETTUCE** Crisp Iceberg ... **2 heads .. 29¢**  
**Russet Potatoes** New Crop ... **5 lb bag.. 29¢**  
**RADISHES** Garden Fresh ... **2 bunches 15¢**

*TODAY'S BEST BUY*  
**CORN, Sweet and Tender** ... **3 Ears .. 25¢**  
**CHERRY TOMATOES** ... **pint .. 25¢**

VELECIA

# FACIAL TISSUE

**6 400 Count \$1 Pkgs.**

AT PIGGLY WIGGLY, YOU GET  
**LOWEST PRICES**  
**PLUS** 5¢ GREEN STAMPS,  
THE MOST FAMOUS STAMP  
IN AMARILLO AND THE US!

Washday Detergent  
15c OFF LABEL

# SURF

Giant Pkg. **42¢**

Good-N-Rich  
Devils Food, White and Yellow

# CAKE MIXES

**5 19 Oz. \$1 Pkgs.**

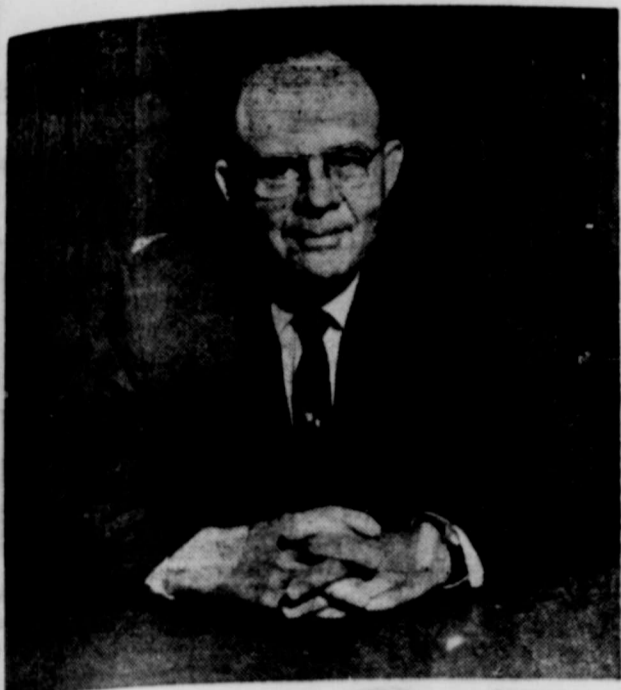
- Viennas** Ellis Sausage **6** 4 Oz. Cans \$
- Pork & Beans** Hunt's **12** No. 300 Cans \$
- Pineapple** Santa Rosa Crushed **6** No. 300 Cans \$
- Catsup** Hunt's Tomato **6** 14 Oz. Bottles \$
- Peas** Stokley Honey Pod **6** No. 303 Cans \$
- Corn** Marshall Cream Style, Golden **9** No. 303 Cans \$

# CONGRATULATION

Mr. Wilcox  
on Shop-Rite's 10<sup>th</sup> Anniversary

Hey Kid  
Get Your  
Picture  
Order Blank  
at  
Piggly Wiggly  
Now

These Values  
In Burkburnett  
August 1, 2 & 3  
1963  
We Reserve  
Right to Limit  
Quantities



**OPEN LETTER TO OUR PRESIDENT,  
MR. HERBERT WILCOX**

Congratulations, Mr. Wilcox, on the 10th Anniversary of our Company! We, (all 2,500 of us), wish to take this opportunity to salute you on the spectacular growth of our Company, ShopRite Foods, Inc., since its beginning in July, 1953. Many of us have witnessed this steady progress over the past ten years, and our Company has expanded and grown from one to 73 stores, too, have enjoyed opportunity for advancement in their careers within the food industry.

Your leadership has opened many avenues of opportunity for employment in the communities in which we live. Our Company is an outstanding example of free enterprise operating in America... and we are proud to be a part of it.

Our best wishes for your success in the years to come. We look forward to a future bright with continued growth under your leadership... as we meet and serve our friends, old and new, across the Piggly Wiggly counters!

Sincerely,

Signed,

Employees of ShopRite Foods, Inc.

**CHUNK TUNA**  
Breast O' Chicken, Light  
**No. 1/2 can 33¢**

**GREEN BEANS**  
Libby, Cut  
No. 303 Cans  
**5 for \$1.00**

**TOMATOES**  
Hunt's, Solid Pack  
No. 300 Cans  
**2 for 39¢**

**APRICOTS**  
Hunt's, Whole, Unpeeled  
No. 2 1/2 Cans  
**3 for \$1.00**

**Aluminum Foil**  
Kaiser Broiler  
**20 ft roll 49¢**

**PICKLES**  
MA BROWN  
Dill or Kosher  
**qt jar 37¢**

**MUSTARD**  
Kraft Prepared  
**6 oz jar 10¢**

**INSECTICIDES**  
REAL-KILL  
Bug Killer With Sprayer  
**qt. bottle 98¢**

**PEANUT BUTTER**  
First Prize  
**3 lb jar \$1.00**

**SPAGHETTI**  
Franco American  
**2 No. 1 cans 29¢**

**BEAN DIP**  
FRITO  
**No. 300 can 27¢**

**HEALTH AND BEAUTY AIDS ITEMS**

**SHAMPOO**

BRECK, 4 Oz. Bottle  
Dry, Normal or Oily  
**REGULAR 60c 37¢**

Regular 65c Retail  
**BANDAID, Johnson & Johnson, Lg. Size 43c**  
Regular \$1.35 Plus Tax  
**SKIN CREAM, Noxzema... 10 Oz. Btl. 88c**  
Regular 53c  
**TOOTHPASTE, Colgate... Giant Size 39c**

HUNT'S  
**TOMATO JUICE**  
**5 46 oz. Cans \$1**

Piggly Wiggly Frozen Foods  
**MEAT PIES**

**BANQUET, Beef, Chicken, Turkey, 8 Oz. Pie 15¢**  
Apple, Apricot, Boysenberry, Cherry, Peach, Plain Custard  
**PIE, Johnston... 34 Oz. Pkg. 75c**  
Plain or Coconut  
**CUSTARD PIES, Banquet. 3-22 Oz. Pies \$1**  
**GREEN PEAS, Seabrook... 10 Oz. Pkg. 21c**  
Seabrook, Italian  
**GREEN BEANS... 2-9 Oz. Pkgs. 55c**  
**WAFFLES, Downyflake. 2-6 Ct. Pkgs. 29c**

BURKBURNETT STAR  
AUGUST 1, 1963



Perhaps the most popular fish in Texas is the perch. This little bluegill or bream — or whatever you prefer to call the scrappy little fellow — infests every fishing water of the state. The art of perch fishing has been lost to many. This, despite the fact that they can be caught almost any place water is found in the state.

There are many different kinds of perch. And each has its own way of being playful. But one thing for sure, a frypan filled with perch — the size of your hand — is a delicacy no one should pass up.

So many, many of us nowadays go out with casting or spinning tackle and artificial lures that we have just about forgotten this great fun fishing perch-catching game. Even a great many youngsters have missed the thrill of perch fishing.

**Worm Fishing Popular**

Best bait for perch fishing is the garden worm. Probably more perch have been caught on worms than on all other baits combined.

Next most successful bait is a light spinner or a small bug-like lure cast out either on a fly rod or on ultra-light spinning equipment.

Occasionally a perch is caught on a plug. In most waters they'll follow a plug all the way to the boat. Often they will hit at it with their tails. We've seen them slap at a top-water lure so hard they would knock the lure as far as 15 to 20 feet. Sometimes you'll think you've just missed a king-size bass, when all it was was a slap-happy perch.

**Where To Find Perch**

Perch can be caught from a boat, a dock, the bank or by wading.

Like all other fish there are certain hot spots for perch and fishing is best at certain times of the day.

My own favorite spot to catch perch is along some high cliff, where a few old trees have fallen in to the water.

There isn't much to rigging up for perch fishing. A cane pole of medium length is ideal for the purpose. You need a small split-shot sinker, a very small hook with a long shank, and some sort of bobber.

It doesn't make too much difference about the line. It can be monofilament or braided.

**Use Large Fresh Worms**

Be sure your supply of worms is fresh and that they are not so small they can't be threaded on a hook. Occasionally a perch will grab a whole mouthful of worm at one gulp. Other times he will suck on it, keeping the bobber moving about until you think he has gone.

Then all at once he'll take it. Usually the bigger perch are deeper down. In the early morning or late evening they'll be working along the banks, especially around tree tops and in the shade of high cliffs.

You may have to try varying depths. But you'll find perch most everywhere.

In the Lakes of East Texas fishermen in flatbottom boats scull their way around from one old stump to another hunting perch. Some use crickets for bait. They drop their baited hook down beside a tree trunk protruding from the water. If a big perch is there it will take the bait quickly. Otherwise, you may as well move on to another spot.

**Live Bait Wells Popular**

Real perch fishermen have live wells in their boats and just toss the fish into these wells.

Others use fish baskets, or perhaps even a gunnysack, hanging over the side of the boat. Perch can be kept alive in this manner long after they are caught, unless of course they've been injured badly by hook removal.

Perch don't string too well. Furthermore, around good perch holes there always are a few water snakes. And snakes like perch.

There is no creel limit on perch. Biologists like to see many of them caught because too many perch in an impoundment are harmful to the large-mouth bass population, and to catching bass.

Biologists also will tell you never to throw a perch back into the water. They just continue to be a nuisance.

Little perch make excellent trotline bait. Many trotline fishermen, seeking catfish catch a dozen or two small perch with which to bait their lines. And it pays off.

If you want to go fishing and really catch something useful and good to eat, try for perch.

**FREE!**  
3 lb Can of  
**CRISCO**  
WITH \$10.00  
OR MORE PURCHASE

**PIGGLY WIGGLY MEATS! CUSTOM-CARVED, IF YOU WISH!**

**Cooked Picnics**

Rodeo's Deep Hickory  
Smoked—WHOLE  
**POUND 27¢**

**T-BONESTEAK**

Armour's Star  
"Valu-Trim"  
Aged Heavy Beef  
**POUND 98¢**

**SHORT RIBS**

Armour's Star  
"Valu-Trim"  
Aged Heavy Beef  
**POUND 19¢**

USA Government Grade "A"  
**TURKEYS** Young Tender Hens  
10-16 Pound Average **lb 39¢**

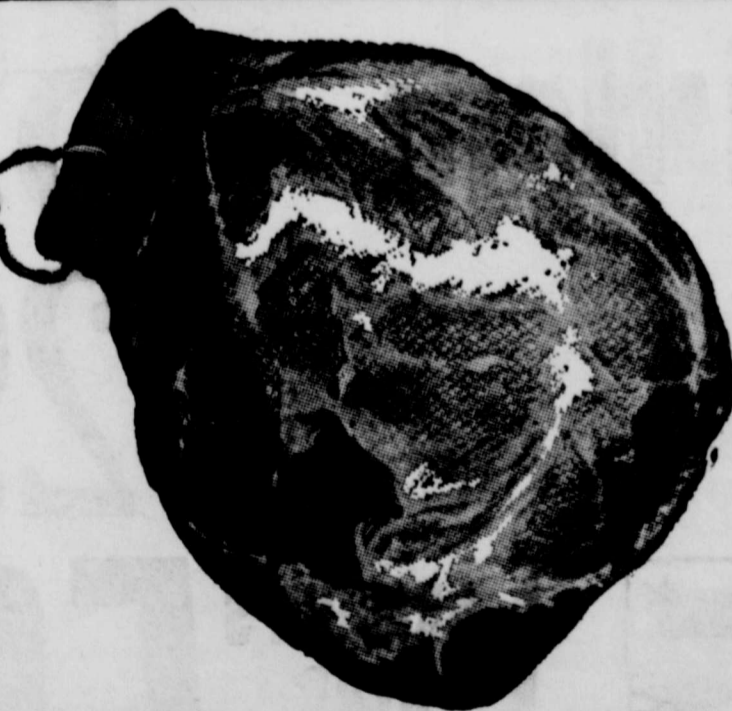
Armour's Star, "Valu-Trim", Boneless  
Aged Heavy Beef  
**CLUB STEAK ..... lb \$1.19**

Carlson's Tasty Family Size  
**KRAUNKFURTERS 3 lb bag \$1.00**

Kraft's Mellow Creamy—Block Style  
**CHEDDAR CHEESE .. lb 59¢**

Rodeo's Ranch and Rail, Hickory Smoked  
**SLICED BACON ..... lb 49¢**

Boneless Rolled Armour's Star Beef  
**BRISKET ROAST ..... lb 89¢**

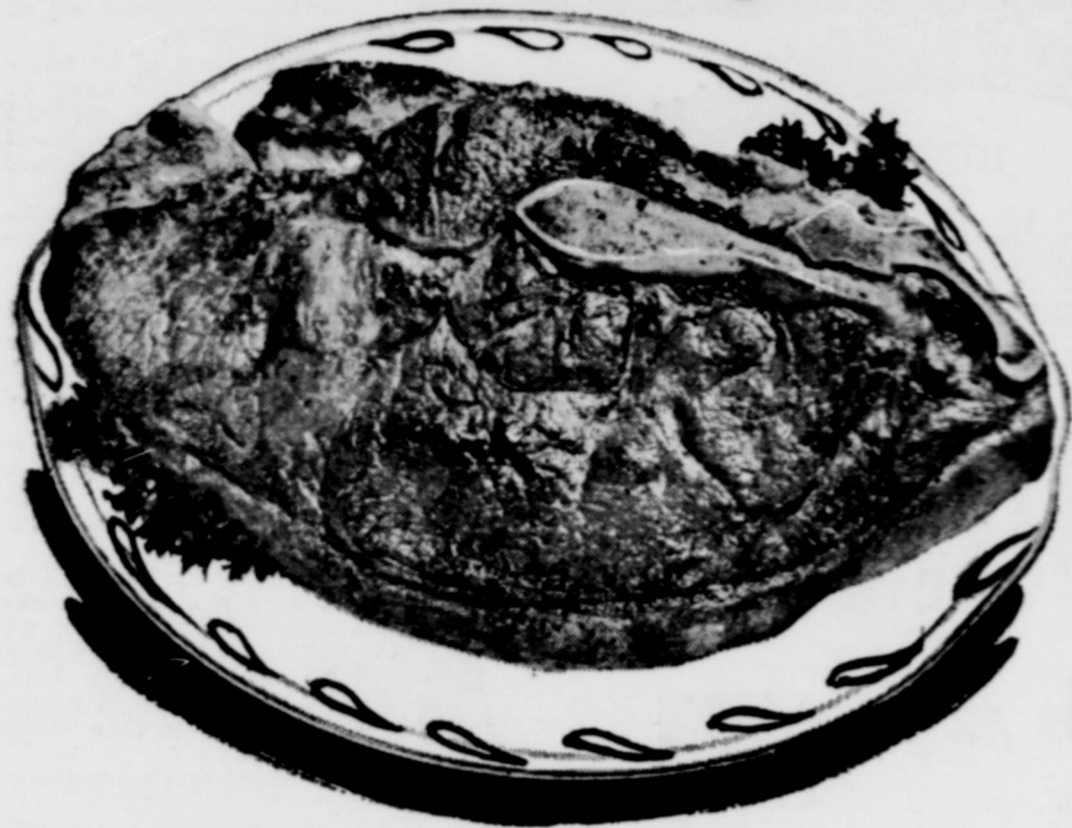


SeaPak Fresh Frosty, Perch, Cat, Cod, Haddock  
Mix 'em or Match 'em. 10 Oz. Pkgs.  
**FISH STICKS .... 3 for \$1.00**

Armour's Star Veal Steaks—Bulk  
**QUICK STEAKS ..... lb 79¢**

Armour's Star "Valu-Trim" Aged Heavy Beef  
**RIB STEAK ..... lb 79¢**

# Everyone **WINS!**



## Steak Sale!

ROUND **STEAK**  
 SIRLOIN **STEAK**  
 CLUB **STEAK**

# Lb. 79¢

Prices Good  
Thursday, Friday  
and Saturday

Pure  
Vegetable



HONEY BOY

# SAC

## T-BONE STEAK RUMP ROAST

Lb. **99¢**  
Lb. **69¢**

**DOUBLE GUNN  
BROS. STAMPS  
EVERY WEDNESDAY  
With \$2.50 Purchase**

# GROUND BEEF FRESH GROUND **3 LBS. FOR \$1**

ARMOUR'S STAR

## ALL MEAT Bologna

6 Oz. Pack

# 29¢

ARMOUR'S STAR

## Cooked Ham

5 Oz. Pack

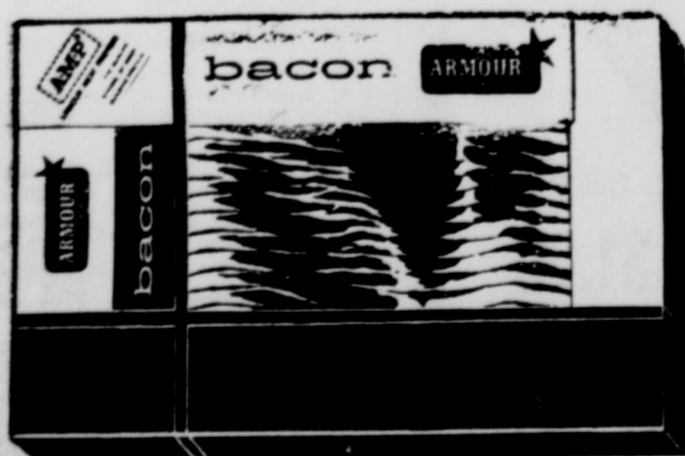
# 59¢

ARMOUR'S STAR

## SOUSE

6 Oz. Pack

# 29¢



ARMOUR'S  
STAR  
TRAY PACK  
BACON

1 Lb. Tray

# 59¢

SPREDIT

## CHEESE SPREAD

2 Lb. Box

# 59¢

NO. 1

## SALT PORK

Lb.

# 39¢

RANCH STYLE

## BEANS

**8** 300 Cans **\$1.**

SHURFINE WHOLE

## BEETS

**8** 303 Cans **\$1.**

ZESTEE

## JAM

Strawberry, Grape or Peach

**3** 18 Oz. Jars **\$1.**

In Addition to Money-Saving Values, We Give You  
Gunn Bros. Stamps as an EXTRA BONUS!



# UNITED SUPER MARKET

# LUCKY 13

STAMPEDE

TO PLAY "LUCKY 13 STAMPEDE" now. Be sure to bring your store and have your card. When you have the FREE PUNCH SECTION or question under last week's card and if your card has 200 Free Stamps or more, you may receive a FREE PUNCH SECTION.

UP YOUR CARD TODAY... EVERYONE WINS!

FREE PUNCH SECTION

50,000 Stamps

LUCKY 13

FREE 1 2 3 4 5 6

## Randlett News

Mrs. Mollie R. Elliott, Reporter

Mr. and Mrs. Jerry Collier of Grandfield, Oklahoma; Mr. and Mrs. Lonny Williams, Mr. and Mrs. Larry Williams of Wichita Falls visited Mr. and Mrs. Jack Williams Sunday.

Mrs. Clifford Rhoads and daughters of Frederick, Oklahoma visited Mr. and Mrs. R. H. Rhoads Wednesday.

Mrs. Laura Hopkins was reported ill at her home last week.

Mr. and Mrs. Frank Swindle and children of Oklahoma City, Oklahoma visited Mr. and Mrs. F. W. Kemp and sons Sunday. Jessie and David Kemp returned home with them for a week's visit.

Bro. John Evans of Lawton, Oklahoma filled the pulpit Sunday night at the Baptist Church in Randlett in the absence of the regular pastor.

Mrs. Eddie Stewart of Wichita Falls visited Mrs. Flora Hatcher Wednesday evening, then she spent the night with Mr. and Mrs. R. O. Brown.

Mr. and Mrs. Lanny Keen of Lawton, Oklahoma spent the week end with her mother, Mrs. G. M. Starks and Dickie.

Mr. and Mrs. Reburn Copeland and children of Iowa Park accompanied by Mr. and Mrs. J. H. Duggins and children spent the day Sunday at the Wichita Mountains.

Mr. and Mrs. Kenneth Young and family moved to Burkburnett last Saturday.

Mrs. Joe Lindsay and children of Norman, Oklahoma visited her mother, Mrs. Laura Hopkins last week.

Mr. and Mrs. Guy Blair of Springtown spent the week end with his sister, Mrs. Alma Capps.

Mr. and Mrs. A. L. Patterson took Mrs. Erma Bentley of Jacksboro home Saturday after a three weeks visit with them.

Mr. and Mrs. N. R. Kirkpatrick visited her parents, Mr. and Mrs. G. W. Bowers of Temple, Oklahoma Sunday.

Mr. and Mrs. C. L. Watson visited friends in Ratliff, Oklahoma Saturday and Sunday.

Mrs. Pearl Best, Mrs. Thelma Reading of Wichita Falls visited Mrs. C. M. Morris and Mrs. Robbie Best Sunday.

Mr. and Mrs. B. L. Ressel and son, Ray Lee vacationing in Colorado last week and this.

Neal Taylor was reported ill last week.

Mr. and Mrs. Oran Wilson and children of Burkburnett spent Saturday night with their parents, Mr. and Mrs. C. O. Wilson.

Mr. and Mrs. W. T. Oliver had as dinner guests in honor of their daughter's 5th birthday, Friday, were Mr. and Mrs. Earl Oliver of Burkburnett; Mrs. W. G. Harwell of Wichita Falls; Mr. and Mrs. C. B. Ressel, Mr. and Mrs. Wayne Ressel.

Mrs. Clark Bynum of Ada,

## Clara-Fairview Community Holds Barbecue July 12

The Clara-Fairview Community held a barbecue Friday, July 12th. Barbecued hamburgers were served and all the trimmings. After eating, we enjoyed playing "42".

The following families were present: Messrs and Mesdames James Roderick, E. W. Roderick, Elmer Klinkerman, Dude Smith, Newt Crane, E. J. Simons, Arnold Kieseling, Bill Horne and Claude Adams.

Children present were: Larry and Gary Roderick, Marilyn and Gay Lynn Hageman, Dee Ellen and Mark Adams, Charles and Judy Klinkerman, Phyllis Kieseling, Vern and Mark Smith and Jan Brown.

The Clara-Fairview Community will hold its regular meeting Friday, July 19, at 7:30 p. m. at the Community House.

## Hernandez-Wilson Wedding Is Held

In a six o'clock candlelight ceremony Saturday evening at the First Methodist Church of Burkburnett, Miss Barbara Ann Wilson, daughter of Mr. and Mrs. Floyd K. Wilson of Burkburnett became the bride of Airman 1/C Carlos Luis Hernandez.

The groom is the son of Mr. and Mrs. E. G. Hernandez, Miami, Florida, and is stationed at Sheppard Air Force Base.

The Rev. Carrol Copeland officiated at the double-ring ceremony. Tall baskets of white mums and gladiola graced the altar setting. Seven branch candleabra holding white tapers stood at each side.

Soft nuptial music was played by Mrs. George W. Yarbro, who also accompanied the vocalist, Mrs. Toby Green.

The bride, who was escorted to the altar by her father, was attired in a floor length white satin gown. It was fashioned with a fitted bodice, sweetheart neckline and long sleeves. Her skirt was bouffant.

Her elbow length veil was held in place by a pillbox crown of white satin. She carried white carnations on top of a white Bible.

Mrs. Donnie Stubblefield of Duncan, Oklahoma, attended the bride as matron of honor. Her dress of blue was ballerina length. Miss Karen Igo of Clinton, Oklahoma, was bridesmaid and wore a frock identical to

that of the matron of honor.

Miss Toni West of Burkburnett was the candlelighter. Frank Germondo and Vernon Eckles, both of Sheppard Air Force Base were best men and attendant, respectively.

The bride's parents were hosts for the reception in their home. Mrs. Donnie Stubblefield, Miss Karen Igo and Miss Toni West assisted in the reception duties.

The bride attended the Burkburnett schools and is employed in Wichita Falls.

The groom attended schools in New York State, Miami, Fla., and Midwestern University of Wichita Falls. He is employed part time as desk clerk at the Villa Motel and is with the Air Force enlisted personnel.

After a few days at Lake Texhoma, the couple will live in Wichita Falls.

Out of town guests attending the wedding were — Mr. and Mrs. Sam Stehr and Mr. and Mrs. Albert Igo all of Clinton, and Mr. and Mrs. Bob Weisel and Lee Wilson, all of Custer City, Oklahoma.

## CARD OF THANKS

The Metz family wishes to express their appreciation for the thoughtfulness of their friends during the recent death of their father. For the food, prayers and flowers, we are deeply grateful. Your kindness will always be remembered.

James Metz  
Marshall Metz  
Ramey Metz  
Lt. Col. Robert Metz  
Dr. Gene Metz

Pure Vegetable

3 Lb. Can **69¢**

1 Lb. Can **49¢**

CARNATION FAMIL SIZE CAN **39¢**

ICEBERG Lettuce 2 Large Heads **25¢**

Watermelons Lb. **9¢**

SEEDLESS GRAPES Lb. **19¢**

ONIONS Lb. **9¢**

FOLGER'S COFFEE 3 Lb. Can **\$1.69**

new! from Procter & Gamble

Thrill for dishes Reg. Size **31¢**

COMET Amazing New Kind of Cleanser Reg. Size **33¢** Qt. Size **49¢**

MR. CLEAN Procter & Gambles NEW all-purpose liquid cleaner Reg. **39¢** Giant **69¢**

OXYDOL REGULAR **35¢** GIANT **79¢**

NEW! from Procter & Gamble Salvo DETERGENT Giant Size **79¢**

IVORY LIQUID detergent Perfect for DISHES, fine fabrics **31¢**

Personal Size 4 FOR IVORY **33¢**

DUZ DETERGENT Small Size **59¢** Giant Size **99¢**

TIDE FOR THE CLEANEST CLOTHES POSSIBLE Large Size **33¢**

try new pink dref IT'S MILDER! Large Size **33¢**

AUTOMATIC DISHWASHER OWNERS — Ask about Cascade's Fabulous "FINEST LIVING" Contest Cascade **45¢**

99 44/100X PURE IVORY SOAP LARGE FOR **2 for 35¢** MEDIUM FOR **3 for 33¢**

LAVA SOAP LARGE SIZE **2 for 33¢**

CHEER reg. **33¢**

Dash Low Suds Miracle For Automatic Washers Reg. **43¢**

NEW! from Procter & Gamble Downy FABRIC SOFTENER Regular Size **43¢** Giant Size **79¢**

Zest Reg. Size **2 for 29¢** Bath Size **2 for 41¢**

JOY reg. **31¢**

SPIC and SPAN **29¢**

There's COLD CREAM now in CAMAY COMPLEXION SIZE **2 for 31¢ 3 for 33¢**

BE WISE MODERNIZE

THERE'S NO PLACE LIKE HOME NO TIME LIKE NOW

With A Title I FHA Loan

FROM

CICERO SMITH Lumber Co.

NO MONEY DOWN 36 MONTHS TO PAY

TAKE YOUR PROBLEMS TO CHURCH -- MILLIONS LEAVE THEM THERE

PAT'S ELECTRIC
All Kinds of Electrical Wiring
Light Fixtures and Repairs
209 E. 3rd Phone 569-1331
Mr. and Mrs. M. L. Patterson

BOYD BROS. DEPT. STORE
General Merchandise-Furniture
Maytag and G. E. Appliances
117-123 Main - Phone 569-2214

BURKBURNETT FLORIST
Member Florist Telegraph Delivery
Mr. and Mrs. L. V. Richards
415 South Ave. B - Phone 569-2281

UNITED SUPER MARKETS
Kenneth Palmer Manager
Wichita Highway And Tidal Street

WOLFE FORD COMPANY
Complete Service and Sales
Phone 569-2275

BOOMTOWN BOWL, Inc
AMF "Magic Triangle" Pinspotter
Snack Bar -Nursery-Phone 569-8139
1001 Wichita Highway

FAIRMONT Dairy Products
Milk - Ice Cream
Cottage Cheese
Always The Peak Of Perfection

DAIRY MART
Fine Food and Friendly Service
CALL IN ORDERS
MR. and MRS. JOHN GRATTON
909 Wichita Hwy. Phone 569-8114

Texas Electric Service Co.
J. B. ADY, Manager

LAX MOTOR CO.
M-M-A. C. and Case Farm Equipment
New and Used Cars-GMC Trucks
1310-12 Wichita Highway Pho. 569-3363



It takes a Good Eye...

TO THREAD A NEEDLE

Did you ever thread a needle? ... Most everyone has, it takes a good eye, for the opening is small. Did you ever try to thread one while someone else held the needle? ... This is almost impossible. All this brings us to the point that ... there are some things that we must do ourselves. We can not send someone else to church for us, we can not have someone else worship the Lord for us. These things are strictly on an individual basis. ATTEND CHURCH THIS SUNDAY ... YOU'LL BE GLAD THAT YOU DID.

The Church is God's appointed agency in this world for spreading the knowledge of His love for man and of His demand for man to respond to that love by loving his neighbor. Without this grounding in the love of God, no government or society or way of life will long persevere and the freedoms which we hold so dear will inevitably perish. Therefore, even from a selfish point of view, one should support the Church for the sake of the welfare of himself and his family. Beyond that, however, every person should uphold and participate in the Church because it tells the truth about man's life, death and destiny; the truth which alone will set him free to live as a child of God.



©Coleman Adv. Ser., P. O. Box 20067, Dallas 20, Texas

ATTEND THE CHURCH OF YOUR CHOICE THIS SUNDAY

Jan Lee Baptist Church
Rev. Travis McMinn, Pastor
Across from Junior High School
Early Sunday School, 8:30 a. m.
Worship Service, 9:45 a. m.
Late Sunday School 10:45 a. m.
Training Union, 6:00 p. m.
Evening Worship, 7:00 P. M.
Wednesday-Teachers and Officers 7:00 p. m.
Church in Prayer-8:00 p. m.
Choir Practice, 8:15 p. m.
Large enough to accommodate, small enough to appreciate.

Church of the Nazarene
Main at Holly
Ivey Bohannan, Pastor
Sunday School, 9:45 a. m.
Morning Worship, 11:00 a. m.
Young Peoples Service, 6:45 p. m.
Junior Society, 6:45 p. m.
Evening Worship, 7:30 p. m.
Wednesday Prayer Service, 7:30 p. m.

Church of Christ
Eugene Gilmore, Minister
Bible Study Sunday, 9:45 a. m.
Worship, 10:45 a. m.
Young People Class 5:00 p. m.
Worship, 6:00 p. m.
Bible Study, Wednesday, 7:30 p. m.
Ladies' Bible Class, Tuesday, 9:30 a. m.
"We welcome you to any of our services."

Church of God
J. W. Jackson, Pastor
10:00 a. m., Sunday School.
11:00 a. m., Hour of Morning Worship.
7:00 p. m., Evangelistic Services.
7:30 p. m., Wednesday, Young Peoples Endeavor.
If you haven't a church home, we would like very much for you to visit us where the full gospel is preached in the old time way. There is special music and singing each service. Each and every one has a warm and hearty welcome to come worship with us.

Central Baptist Church
814 Tidal St.
Kenneth D. Bradshaw, Pastor
Sunday School, 9:30 a. m.
Morning Worship, 10:45 a. m.
Training Union, 6:00 p. m.
Evening Worship, 7:00 p. m.
Wednesday Night Prayer Service, 7:30 p. m.
"A Friendly Progressive Southern Baptist Church"

Free Church of God In Christ In Jesus Name
West 6th St.
W. W. Dixon, Pastor
Saturday-9:45 a. m., Sabbath School.
11:00 a. m., Preaching Service.
Thursday Night Service, 7:00 p. m.
We welcome all colored and white people to our services.

Calvary Baptist Church
College and Ave B
Ray C. Morrow, Pastor
10:00 a. m., Sunday School.
An Independent Southern Baptist Church.
We use the Bible as our only literature.
11:00 a. m., Song, Preaching Service.
7:00 p. m., Young Peoples Services.
7:30 p. m., Night Preaching Service.
Wednesday Night-6:45 p. m., Teachers Meeting.
7:30 p. m.-Prayer Meeting.

First Methodist Church
Avenue C and 4th Street
Phone 569-3778
Carrol D. Copeland, Minister
Merwin K. Turner, Associate Minister
Church School - 9:00 a. m.
Morning Worship - 10:15 a. m.
Methodist Youth Fellowship - 6:30 p. m.
Evening Worship - 7:30 p. m.
Bible Study - 7:30 p. m.
Wednesday and Thursday.
Nursery provided for all Church Services.

NOTICE
Burkburnett residents are invited to attend the First Presbyterian Church in Grandfield, Oklahoma.
Sunday School-10:00 a. m.
Morning Worship-11:00 a. m.
Wednesday Bible Study-7:30 p. m.
Rev. Campbell B. Long, Pastor.

The First United Pentecostal Church of Jesus Christ
We want to invite you to any or all of our Services. You have a standing invitation where you can hear the Bible preached in the old fashion way.
Come and bring some one.
Service Nights-Thursday, 7:45 p. m.
Saturday, 7:45 p. m.
Sunday, 7:45 p. m.
Sunday School, 10:00 a. m.
Pastor, Rev. E. H. Menton
Phone 569-1108
606 E. 6th Street

First Church of Christ Scientist
2156 Avenue H
Wichita Falls, Texas
Sunday school for children under 20 years of age, 11:00 a. m. in the Church Edifice.
Nursery.
Services at 11:00 a. m.
Wednesday Evening Services, 8:00 p. m.

Trinity Lutheran Church
Pastor, Rev. David W. Janosky
Eight Miles West of Burkburnett on State Highway 240
Sunday-8:45 a. m.-Sunday School and Bible Classes.
9:45 a. m.-Worship Service.
Communion Service - First Sunday of each month.
Walter League meetings every Wednesday, 8:00 p. m.
A Church of the Lutheran Church-Missouri Synod

Assembly of God Church
H. J. Lackey, Pastor
Sunday School, 9:45 a. m.
Morning Worship, 11:00 a. m.
Evening Worship, 7:30 p. m.
Women's Missionary Council, Tuesday, 2:00 p. m.
Youth Service, Tuesday, 7:30 p. m.
Prayer Meeting, Thursday, 7:30 p. m.

First Baptist Church
DEVOL, OKLAHOMA
Sunday School, 9:45 a. m.
Morning Worship, 11:00 a. m.
Training Union, 7:00 p. m.
Evening Worship, 8:00 p. m.
Prayer Meeting, Wednesday, 7:30 p. m.
Intermediate and Junior G. A. each Tuesday evening at the Church, 4:00 p. m.
Sunbeams at Church Tuesday evening at 4:00 p. m.
You Are Cordially Invited to Our Services.

Cashion Baptist Church
Wichita Highway
Rev. Robt. White, Pastor
SUNDAY:
Sunday School, 9:45 a. m.
Morning Worship, 11:00 a. m.
Training Union, 6:30 p. m.
Evening Worship, 7:30 p. m.
TUESDAY:
WMU - 7:30 p. m.
WEDNESDAY:
Beginners and Primary Sunbeams Junior Choir. Christian Development Program, 6:45 p. m.
Hour of Power, 7:30 p. m.

Worship With Us At Church Of Christ
Randlett, Oklahoma
Corky Grisham, Minister
Home-Office Phone Ly 9-2893
SUNDAY -
10:00 a. m., Bible Study.
10:45 a. m., Morning Worship.
6:00 p. m., Evening Worship.
WEDNESDAY -
7:30 p. m., Bible Study.

Pentecostal Church Of God
Berry Street
Rev. Alfred B. Qualls, Pastor
Sunday School, 9:45 a. m.
Morning Worship, 11:00 a. m.
Sunday Night Evangelist Service, 7:00 p. m.
Saturday Night Fellowship 7:30 p. m.

Grace Lutheran Church
Third St. and Ave E
Philip M. Otten, Pastor
The Church of the Lutheran Hour, TV's "This is the Life".
Sunday, 9:15 a. m., Sunday School and Bible Classes.
You are cordially invited to our services.

First Baptist Church
Corner Ave D and 4th St.
Sunday School, 9:30 a. m.
Morning Worship, 10:45 a. m.
Training Union, 6:00 p. m.
Evening Worship, 7:00 p. m.
Prayer Meeting, Wednesday, 7:30 p. m.
GO TO CHURCH SUNDAY

Episcopal Church Of St. John the Divine
1000 South Berry Street
Sunday-12:15 p. m. - Sunday School.
12:30 p. m. - Sunday evening prayer service and Holy Communion.
Nursery available.
Monday - 4:00 p. m. - Girl Catechism Class.
7:30 p. m. - Brotherhood of St. Andrews.
Tuesday 4:00 p. m. - Boy Catechism Class.
8:00 p. m. Choir practice.
Wednesday - 4:00 p. m. Adult lyte Practice.
7:30 p. m. - Adult Inquiry class.
Vestery meets the first Sunday evening of every month.
Bible Study is on the second and fourth Sunday evening of every month.
The Faculty meets on the third Sunday evening.
The Episcopal Church Women meet every second Thursday of every month.
The Alter Guild meets on the fourth Thursday of every month.

First Christian Church
2nd Street and Avenue D
Phone 569-2062
Rodney W. Spitzer, Minister
Residence 500 Mimosa Drive
Phone 569-1236
SUNDAY-
9:45 a. m., Church School.
10:50 a. m., Morning Worship.
6:00 p. m., Youth Meeting and Junior Choir.
7:30 p. m., Evening Worship.
8:00 p. m., Fellowship Hour.
WEDNESDAY-
7:30 p. m., Choir

Lloyd Clemmer Lumber Co.
YOUR BUSINESS APPRECIATED
See Us For Prices Before You Buy
OKLA. CUTOFF
PHONE 569-2828

LORITA'S FLOWERS
Flowers For All Occasions
Artificial Flower Arrangements and Gifts
201 N. Ave. D
Phone 569-3333

CORNER DRUG STORE
George McClarty
320 East 3rd Street

Hofacket Humble Service Station
Road Service - Mechanic On Duty
S & H GREEN STAMPS
College and Ave. D
Phone 569-3777

Farmers Co-op Gin, Feed and Supply

C. D. Shamburger Lbr. Co.
Gene Allen, Manager
200 West 3rd Street

Preston Dairy Products
For The Finest In Dairy Products
Hugh and Buddy Preston
219 East 2nd Street

Manhattan DEPARTMENT STORE
We Give S. & H. Green Stamps

B. H. Alexander, Jr. BUILDER
General Insurance - Real Estate
114 East 3rd Street
Phone 569-2831

Payton Cozby Plumbing and Heating
409 East Main Street
PHONE 569-3911

Gray Investment Company
303 Avenue C
Phone 569-2171

UTD

favorite fish ... knows!

the flounder is a fish ... the most ... the fluke ... fluke as a ... what a fish

a fish flat ... steam roller ... fish to

near fishing ... considered o ... night fish ... found in sh ... tern or a ... similar m ... the last i ... anglers ... that bait ... can be ... under will ... that w ... trout ... it will n ... shrimp and ... grab ... an cat ... fishing off ... the midd ... Or in any ... bers along ... There is ... nder fish ... from Rocky ... label.

der put up ... light tack ... live or Ar ... fall Doug ... Bango bait ... the concre ... around th ... at Port M ... killing t ... being re ... a concre ... he kn ... der. He ... as many ... time a ... working de ... canal dec ... ight off

Th Ju

Mid

Hot Oil ... \$4.5

(Includ ... \$15

OPERAT ... (Op ... LODI ... E. Co

AMERI ... WH ... AIR C ... ND SAV

It's not too ... here be ... NIGHT NEW ... AMERICAN ... day! Then, ... COST? Lat ... equipment ... AMERICAN ... factory. Ca ... save a lo



Burk Burnett, Wichita County, Texas



**OUTDOORS IN TEXAS**  
By VERN SANFORD

Favorite fish in the Gulf  
co knows no particular  
the flounder... one of  
most unusual of all fishes.  
is a fish with many  
the most popular of  
the fluke. Webster de-  
fines it as a mistake. And  
what a flounder looks

near the Port Mansfield cut  
They caught flounder until they  
tired.  
A group of Sweetwater busi-  
ness men, headed by Earl Webb  
go to Port Isabel each summer.  
They fish in Laguna Madre in  
the vicinity of Three Islands  
and catch enough flounder in a  
couple of days to fill their deep  
freezer.

a fish flattened by na-  
stream roller in the pro-  
creation. But it is a  
fish to catch and

Usually flounder are found  
on the bottom, where they do  
their feeding in the mud. That  
is why in the fall of the year  
they move into the shallow wa-  
ters, along the coastline, to  
feed.

**Fish For Flounder  
Day or Night**

can catch flounder  
fishing off boat docks.  
the middle of Laguna  
Or in any of the back-  
waters along the Texas  
There is particularly  
flounder fishing along the  
from Rockport south of  
abel.

There is tremendous flounder-  
ing activity in the vicinity of  
Port Aransas during the early  
winter months. Hundreds of  
persons, wearing hip waders  
and carrying lanterns and gigs,  
work these shallow waters.

der put up a wonderful  
light tackle.  
Live or Artificial Bait  
fall Doug English, who  
Bingo baits, was stand-  
the concrete wall of the  
around the Red Fish  
at Port Mansfield. He  
killing time while his  
is being readied.

By shining the light down on  
the water they are able to see  
the backs of these flounders as  
the fish groops through the mud  
looking for small crustaceans.  
When sighted they are speared  
and dropped into gunny sacks  
trailing in the water behind the  
fishermen.

der flipped a yellow Bingo  
a concrete revetment.  
ing he knew he had a  
nder. He caught a half-  
n as many casts.  
er time a group of bio-  
working down the intrac-  
anal decided to spend  
off Padre Island

Although dried flounder is  
delicious, undoubtedly one of  
the most appetizing fish dishes  
served anywhere is a stuffed  
flounder.  
Many seafood restaurants  
along the coast make a spe-  
cialty of this delicacy.

**Cooking the Flounder**

Wedding  
Invitations  
\$12.50  
FOR  
100

Stuffing of the flounder is  
simple. After they are cleaned  
and placed flat in a well-greas-  
ed pan, they are slit down the  
middle of the exposed side.  
Flesh then is pulled back to  
make room for stuffing.  
Stuffing is made of a mix-  
ture of onions, cracker crumbs  
and celery, held together with  
your favorite dressing or sauce.  
Once stuffed, the flounder is  
placed in the oven and cooked  
until done.

There are many recipes in  
the cookbooks so you can take  
your choice. But whichever one  
you select, you'll be surprised  
at how delicious flounder can  
be.

And if you've never tried  
flounder fishing, give it a whirl  
this year. You'll have fun. It  
isn't hard work. Anyway, not  
TOO hard.

Company  
hone 569-2171

There are many recipes in  
the cookbooks so you can take  
your choice. But whichever one  
you select, you'll be surprised  
at how delicious flounder can  
be.

al Church O  
n the Divine  
th Berry Street  
2-10 p. m. - Sun  
n. - Sunday even  
ice and Holy Com

OPERATORS - Clodella and Romona Bridges  
(Open Late By Appointment)  
**LODELLA'S BEAUTY SHOP**  
1/2 E. COLLEGE  
PHONE 569-2671

LOOK INTO  
AMERICAN-Standard  
WHOLE-HOUSE  
AIR CONDITIONING  
AND SAVE MONEY NOW!



It's not too early to plan on air conditioning. The heat will  
be here before you know it.  
Right now, while we're not swamped, we can install a quality  
AMERICAN-STANDARD unit for you fast. Takes less than a  
day! Then, when those heat waves hit—you're all ready!

COST! Less than you might think. \$100 less than other  
equipment... plus \$60-\$70 savings on installation because  
AMERICAN-STANDARD does much of the work back at the  
factory. Call us today for a free estimate. Be set for summer  
—save a lot. EASY TIME PAYMENTS.

Christian  
Church  
t and Avenue D  
ie 569-2062  
Sptler, Minister

**PAYTON COZBY**  
Plumbing and Heating  
407 I. Main  
Burk Burnett,  
PHONE 569-3911

**Family  
FINANCIAL  
PROTECTION**

Policyholder Questions Answered  
by the Institute of Life Insurance

Q. What is "joint life insur-  
ance"?  
A. It is a rare type of policy  
which covers the lives of two or  
more persons (seldom more than  
three persons) and which pro-  
vides that the full amount of the  
policy will be payable when any  
one of the persons dies. It is often



payable to the policyholders who  
survive. This type of policy is  
bought primarily by people who  
are associated together in a busi-  
ness enterprise.

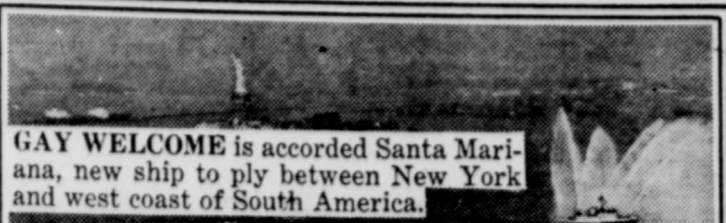
Q. My life insurance policy,  
which I took out several years  
ago, has a clause which says that,  
after the policy has been in force  
for two years, it is "incontestable  
except for non-payment of pre-  
mium." Does this mean I might  
lose my insurance if I miss pay-  
ing a premium, even though the  
policy has more than enough cash  
value to cover the premium?

A. Probably not. This phrase  
is a hold-over from the early days  
of life insurance, when policies  
contained no special features to  
keep them in force if a policy-  
holder missed a premium. Al-  
though the phrase is somewhat  
superfluous in today's permanent  
cash-value policies, it is still re-  
quired by many states.

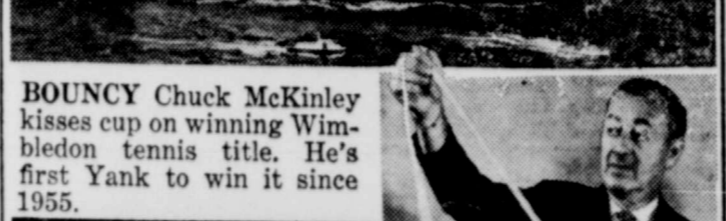
Your policy undoubtedly con-  
tains an "automatic premium  
loan" feature, under which you  
can request that your insurance  
be kept in full force by a loan  
against the cash value to cover  
any premium you might miss.  
Your life insurance agent prob-  
ably included such a request in  
your original application for the  
policy. However, if you are un-  
certain, ask him about it.

Of course, if you already have  
a loan outstanding against your  
policy there might not be enough  
cash value available to cover a  
new premium loan.  
If you do not request the "auto-  
matic premium loan" feature,  
when you miss a payment your  
life insurance can continue as ex-  
tended term insurance or a small-  
er amount of paid-up insurance.

**People, Spots In The News**



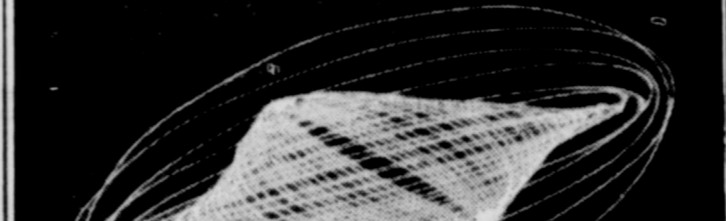
**GAY WELCOME** is accorded Santa Mar-  
lana, new ship to ply between New York  
and west coast of South America.



**BOUNCY** Chuck McKinley  
kisses cup on winning Wim-  
bledon tennis title. He's  
first Yank to win it since  
1955.



**BIG BUILDER** William  
Levitt reads tape as trading  
in his firm's stock begins on  
American Stock Exchange.  
Company has built more  
than 60,000 homes since  
1929.



**COSMIC SHAPE?** No flying saucer, this; merely a time  
exposure of a flashlight being whirled about on a string  
in a darkened room. Photographed in Paris.

**Classifieds In The STAR Get Results**

**Clean-Up Week  
August 5, 1963**

Trash pick-up schedule. Be-  
ginning August 5th the city per-  
sonnel and equipment will pick  
up old lumber, tree limbs, rub-  
bish and other material nor-  
mally not picked up by the gar-  
bage contractor.  
All this material to be placed  
at the front or curb at 8:30 a.  
m. or before.  
One day pick-up in each sec-  
tion of the city as follows:  
MONDAY August 5, the area  
North and including College  
Street and West of the Rail-  
road.  
TUESDAY, August 6th, the  
area North and including Col-  
lege Street and East of the  
Railroad.  
WEDNESDAY, August 7, the  
area South of College Street

and East of the Railroad.  
THURSDAY, August 8th, the  
area South of College Street  
and West of the Railroad.  
We ask your cooperation in  
placing your material out early  
on your area day as listed  
above. There is no charge made  
by the city during the Clean-Up  
Week.  
JESS WHATEY,  
City Manager

**BINGO**  
The Public Is Cordially  
Invited To Play  
**BINGO**  
Sat., Night Aug. 3  
8:00 P. M. AT THE  
**American Legion  
HALL**  
Sponsored by the Catholic  
Building Fund.

**CM The Greensboro**  
COURT MATRES  
**HIGH FIDELITY COMBINATION**  
**TV - STEREO - AM-FM RADIO**  
● 23,000 VOLT PICTURE POWER **\$269<sup>95</sup>**  
● 23" PICTURE TUBE  
● HAND CRAFTED CHASSIS  
● SELECTED HARDWOOD CABINET  
**BILLS TV FURNITURE & APPLIANCES**  
301 Avenue D Phone 569-3651  
BURKBURNETT, TEXAS

Store Hours 9 A. M. to 6:30 P. M.  
**Discount City**  
On the Burk Burnett Highway  
Across From Sheppard Field  
Next to Capehart Housing Area  
Many Novel Styles Choice Colors  
**49c EACH**

**Summer Stock Liquidation Sale  
Final Clearance**  
Odd Lot Bargains  
**CHILD'S CHAIR**  
Aluminum Frame  
Plastic Cover **\$1.88**  
8 Only - EACH  
**Jumbo Utility Mat**  
Giant 24x48" Size  
Sturdy Plastic Many Uses—EACH **98c**  
Household Brooms  
Durable Corn Straw—19 ONLY **66c**  
**14 Oz. Spray Paint**  
\* Red \* Pink \* Ivory  
\* Lt & Dk. Green \* Lt. & Dk. Blue **47c Can**

Store Hours 9 A. M. to 6:30 P. M.  
**Discount City**  
On the Burk Burnett Highway  
Across From Sheppard Field  
Next to Capehart Housing Area  
4 Pc. Mixing Bowl Sets  
\* Colorful \* Sturdy \* Ideal Size  
**\$1.54 Set**

**DOOR BUSTER BARGAINS**  
**WOMEN'S WHITE HANDBAGS**  
Imported Toyo Cloth Styles Woven Wicker Styles  
**Choice \$1.00 Plus Tax**

**HAND TOOLS**  
\* Assorted Pliers  
\* 3 Piece File Set  
\* 8 Oz. Steel Hammer  
\* Sink and Drain Cleaner  
\* 5 Pc. Nail Punch Set  
\* 1/2 In. Bench Vise  
\* Wood Burning Set  
\* 6 Piece Saw Set  
\* Oil Pouring Spout  
\* Various Other Tools  
**Your Choice \$1 2 FOR**

**BARGAIN HUNTER SCOOPS**  
**BIG 19 Oz. ICE TEA GLASSES**  
Simple, Clear Pattern Reg. Price 15c. NOW **12 for \$1.00**

**GLASS CLEANER IN SPRAY CANS**  
Just Spray and Wipe Clean Leaves No Greasy Film Regular Price 47c NOW **4 cans \$1<sup>00</sup>**

**Boys' Short Pants**  
Zipper Fronts, Ass't Colors  
Most Sizes **pr. 49c**  
4 Thru 12

**CASTING REEL, ROD, 50 Yds. Line**  
A Fisherman's Bargain Complete, Ready to Fish **SET \$2.99**  
Regular Price \$4.75. 6 ONLY

**VIM Beauty Mist HAIR SPRAY**  
Extra Soft - Lanolin Enriched  
\* Long Lasting \* Water Soluable  
\* No Lacquer. \* Large 15 Oz. Can... **ea. 29c Plus Tax**

**Boys' Swim Trunks**  
Sizes 4-6-10—Ass't. Colors  
Limited Quantity Shop Early **pr. 88c**

**CLOTHES PIN BAG and 108 PINS**  
Sturdy Striped Bag, Strong Springed Pins. A full \$1.53 Val. **only \$1.00**

**SPRAY CAN CLOSE-OUT**  
\* Insect Killer \* Roach and Ant Killer  
\* Charcoal Starter Room Freshener **3 cans \$1<sup>00</sup>**

**COMPLETE 45 PIECE SET**  
**TEXAS WARE MELMAC**  
Guaranteed 2 Full Years Four Glamorous Colors A Real \$29.95 Value **\$14<sup>88</sup>**  
ONLY 5 SETS TO SELL AT

**CAPRI'S, JAMAICA'S, BLOUSES**  
Outstanding Quality Broadcloth Beautifully Tailored Styles Popular Sizes in Stock **\$1.99 EACH**

**PAYTON COZBY**  
Plumbing and Heating  
407 I. Main Burk Burnett,  
PHONE 569-3911



**ISN'T IT TIME TO TRY FREE ENTERPRISE?**

By Harry Browne

Editor, Freedom Magazine (formerly American Progress)

"Isn't the current railroad-union controversy proof that our free enterprise system needs government regulation to function properly?"

The impasse over feather bedding — between management and union leaders — has undoubtedly led many people to wonder if free enterprise can survive without government intervention.

The truth, of course, is just the opposite. The railroads are not ailing from too much freedom. For years, they've had a severe case of TOO MUCH GOVERNMENT. They've been denied the opportunity to try free enterprise!

**EXAMPLE**

Did you know, for example, that railroads are not allowed to charge freight rates that are LESS than the minimums established by the federal government? This raises the prices of products you buy that are shipped by rail. The railroads are also forced to pay exorbitant

"social security" type costs under the Railway Retirement Act. And they're not even permitted to drop an unprofitable passenger route or merge companies without government consent.

On top of this, they are compelled by law to bargain with union leaders who have virtual immunity from taxation, court injunction or the local laws against violence and trespassing.

All of these federally imposed roadblocks exclude the railroads from the free society guaranteed to all of us by the Constitution.

**OBVIOUS SOLUTION**

With these facts in mind, solutions to our present day railroad problems are obvious. We must take the government out of railroad regulation, repeal the unfair privileges enjoyed by union leaders, and allow the railroads to compete for their sales and profits on the basis of service to their customers — as is the tradition in a capitalist nation.

The result will be better service and lower prices to all transportation customers. For now the railroads will be free to cut costs and lower rates.

Even union workers will be better off. Their job security will be based upon true need for their services instead of temporary union tyranny over the employer.

**FACTS**

The free enterprise system produces greater service and a higher standard of living for everybody. In a free system, you must SERVE your customer or employer in order to receive his money. While in the welfare state, profits and job security depend upon political manipulations — which injure our standard of living. When we realize the extent of artificial government intervention into our economy, it's no wonder that we're having such a tough time "getting the country moving."

Let's repeal the socialist-style welfare-state laws that are holding back progress. Let's let freedom of choice solve our labor-management and buyer-seller problems. Let's restore the system that made America the most prosperous nation in the history of the world!

**Breakfast's Ready — Campstyle**



Planning a camping trip? Cooking's no problem. Plan menus around canned and dried foods and mixes. Concentrate on one or two-pot meals. Cook plenty; outdoor appetites are ravenous! Children along? Take evaporated milk and instant nonfat dry milk for cooking and drinking. One morning, try this:

- Chili Pancakes**  
1 cup Biscuit Mix      2/3 cup Pet Evaporated Milk (1 small can)  
one-half 1-lb. can (3/4 cup) Beans in Chili Gravy
- Mix all ingredients in bowl. Put skillet on burner or in hot coals. Grease pan well. (It may be necessary to add more shortening later.) Bake pancakes until bubbles appear on top and edges are cooked. Turn. Bake until other side is brown. Makes about eight 4-inch pancakes.
- CORN PANCAKES**—Use one-half 1-lb. can (3/4 cup) Cream-style Corn in place of beans.
- Camper's Cocoa**  
1/4 cup Sugar      1-1/2 cups hot Water  
1/4 cup Cocoa      1-2/3 cups Pet Evaporated Milk (1 tall can)  
few grains Salt      1 teasp. Vanilla
- Mix sugar, cocoa and salt. Stir water in gradually. Stir in evaporated milk. Place saucepan on burner or coals. Cover. Heat until steaming, but do not boil. Stir now and then. Take off heat and stir in vanilla. Serves 4.

**CANNED CAMPFIRE POTATOES**

FLASH! DID YOU BAKE POTATOES IN CAMPFIRE WHEN KID? STOP. THEY TASTED GREAT DIDN'T THEY? STOP. BUT NOW THEY TASTE LIKE ROCKS. STOP. WANT TO KNOW WHY? YOU AREN'T A KID ANY LONGER. THAT'S WHY. STOP. SOLUTION: PUT THE POTATOES IN AN OLD TIN CAN AND PUT IN THE FIRE. COOKS 'EM EVEN. KEEPS 'EM FROM BEING BURNED. STOP. MAKES YOU FEEL LIKE A KID AGAIN. DON'T STOP.

**GAME CARRIER**

The large pins hardware stores sell to hang shower curtains on make good game carriers if you slip them through your belt. Animals head slips through big end, neck jams down into small end.

When all else fails, including aspirin and psychiatry, take a long walk, in the rain, in the sun, or in the snow.

**HOUSEHOLD HINTS**

by Joan March Worden



Do you use disinfectants in your home? Eighty-one percent of the women interviewed in a recent Gallup survey do. Big use is in bathroom cleaning but more than half the respondents use disinfectants in general cleaning. Here's how to lower the germ count all around your house.

**BABY'S ROOM** — Keep chair, bathette, and crib clean and reasonably germ free by sponging furnishings daily with a pine oil cleaner-disinfectant solution mixed with water as the manufacturer recommends. Rinse small-fry furniture with lots of clear warm water after using any disinfectant.

**BATHROOM** — Eight out of 10 women use disinfectants here. Clean, disinfect and deodorize all porcelain and tile — sinks, bowls, and tubs — and shower curtains and bathmats by using a pine oil product.

**COMMUNICATION LINES** — Keep communication lines free of germs. Sponge phone and mouthpieces occasionally with a pine oil disinfectant solution — especially in the sneezy season.

**HOUSEKEEPING TOOLS** — Mops, cellulose sponges, dustcloths, and your favorite clean-up gadgets do a better job if they are clean and disinfected. After each use soak your "tools" in a solution of pine oil cleaner and hot water.

**SICKROOMS** — All around the sickroom sanitation means cleanliness plus. Disinfect and clean at the same time by using a pine oil disinfectant in the wash, and the recommended dilution on floors and furniture. For a set of eight free "Household Hints" leaflets and a Cleaning Checklist, write to Dept. MN, Pine Cleaner Information Center, 1028 Connecticut Avenue, Wash. 36, D. C.

For Results—Advertise

**Old Fort At Mexia**

Mexia, a thriving little city in Central Texas, Limestone County, fast is becoming a business-minded, industrial center.

This is far removed from its history as an early oil-boom town.

You can imagine what happens when an oil strike abruptly changes a town of 4,000 into a town of 50,000. That's what happened to Mexia. But many things are stable and settled now.

Another site, with a stormy history, still stands nearby though — Old Fort Parker. The Parker's young daughter,

Cynthia Ann, was kidnapped by the Comanche Indians, and became the mother of the noted Comanche warrior Geronimo. Cynthia was recaptured by whites but never was seen again. She died in 1864, four years after her return to live in the white man's world.



**SEE YOU SATURDAY AT THE GRAND OPENING OF YOUR BABY NEEDS STORE AND PHOTO STUDIO**

316 E. 3rd St. Burkburnett, Tex

A COMPLETE LINE OF FURNITURE AND ACCESSORIES FOR ALL AGE GROUPS. TERMS AVAILABLE. ALSO BABY BEDS FOR RENT.

Come In And Get A FREE 8 x 10 PHOTOGRAPH Of Your Baby With Any Purchase Saturday

STUDIO SPECIAL REGULAR \$10.00 VALUE... BLACK AND WHITE 8x10 Photograph ..Only... JIM TEMPLETON, Owner

**THE CHRISTIAN SCIENCE MONITOR**

Accurate Complete News Coverage

Printed in BOSTON LOS ANGELES LONDON

1 Year \$22 6 Months \$11 3 Months \$5.50

Clip this advertisement and return it with your check or money order to: The Christian Science Monitor, One Norway Street, Boston 15, Mass. PS-16

**Buy U.S. Savings Bonds REGULARLY**

RING THE BELL! JOIN PAYROLL SAVINGS!

**Burk Locker**

301 AVENUE C PHONE 569-3101

OUR MEAT IS CUT FROM CHOICE HEAVY CALVES

**EVERY DAY LOW PRICES**

PACKAGE PLAN . . .

**25 POUNDS OF QUALITY MEAT FOR ONLY \$13.50**

- 5 LBS. HAMBURGER
- 5 LBS. ROUND STEAK or T-BONE STEAK
- 5 LBS. CHUCK ROAST
- 5 LBS. PORK CHOPS
- 5 LBS. RIBS

FRESH GROUND BEEF . . . . . 3 Lbs. for \$1.00

CHOICE T-BONE STEAK . . . . . Lb. 89¢

CHUCK ROAST . . . . . Lb. 45¢

FOR A QUICK, EASY MEAL TRY TASTY MINUTE STEAKS . . . . . Lb. 69¢

NEW SUMMER HOURS  
7:00 A. M. TO 5:00 P. M. — MONDAY THRU SATURDAY

All Meat Sold In Our Market Is Inspected By The Texas Department of Health.

**Protect Those Valuable**

Everyone Can Afford This New Fire Protection Chest at the lowest price ever.

The New High Quality, Low Cost Fire Protection Chest

**DESCRIPTION AND SPECIFICATIONS**

**Fire Protection Chest**

Made of heavy gauge steel inside and out, all electric welded. Between these steel walls is 1-2 inches of solid

**Fire Proof Vermicule Insulation**

which has over 300,000 tiny air cells to the square inch. It has the universally used tongue and groove principle around the door with a 1-2 inch Fire Proof Seal completely around it. No chest, regardless of price, has a better insulation.

Outside Dimensions 14x11 1/2 x 7 1-2 in.  
Inside Dimensions 8 1-2 x 11 x 4 1-2 in.

Equipped with a heavy standard type lock, with 2 keys. Color, Gray, very attractive.

**Tested One Hour At 1700 Degrees**

Supply Limited At This Special Price \$19.95

ON DISPLAY AT The Burkburnett Star

W. B. Babs Weekly Rec...  
Discusses The Living...  
Scratch This...  
KINI FOR...  
ROLL NOW FOR THE...  
GRAM INCL...  
Readiness, B...  
Music, Da...  
Bible Stori...  
Information...  
TEACHEI...  
Arthur Ra...  
723-2082...  
Registration M...  
Starting Dat...  
family size fish and game prese...  
an ELECTR FREEZE

# All Insurance is the same 'til you have a claim

**Burk Insurance Agency**  
 HOWARD CLEMENT  
 New Location—Next to Legion Hall

## W. Babson Weekly Report



W. BABSON

**Discusses The Living**  
 years ago I used to grumble about the cost of living wherever I went. The other day it occurred to me that I had not heard much complaining along those lines for quite a while. I wondered whether consumers had simply become used to ever-climbing retail costs or whether the long-term climb had stopped without my realizing it.

**What the Figures Show**  
 Scouting about in my business library, I soon found some figures that I would like to pass along to you, because I believe you will be surprised at what they tell us about the present economic condition of the average American family. Living costs have, of course, been on the rise, long term, ever since the pit of the terrible depression of the early 30's. On several occasions, especially after World War II, the advances were spectacular, and were keenly felt by all consumers.

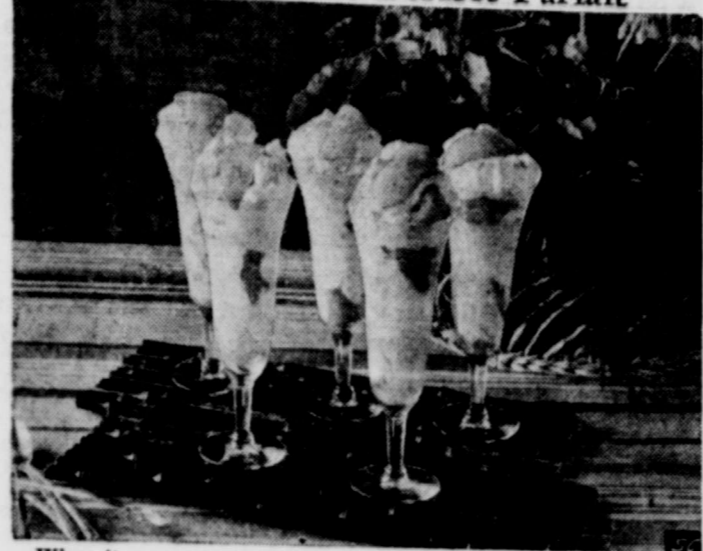
But here is something that I do not see commonly stressed in the papers and magazines. Over the fast five years, the consumer price index has moved ahead on average only 1% a year. While this does represent some pressure on the upside, it shows remarkable stability when you consider that since 1939 the cost of living as measured by the Labor Department has skyrocketed 119%. So it is not surprising that the average consumer has not suffered seriously from the 1% annual boost of the past five years. Gains have simply not been big enough to cause grumbling.

**Prices Versus Incomes**  
 Beyond that, too, incomes

have been swelling at a far more rapid rate than have retail prices of goods and services. Tracing the figures back to 1947, about half way between the end of World War II and the beginning of the Korean War, they show that the cost of living has moved up 30% since that time. But take a look at U. S. incomes for the same span: They have climbed 127%. Even the rather abrupt jump in consumer prices from 1957 to 1959 of 5.4% looks pale beside the uprush of 24% in personal income for the same two-year spell.

There is no question but that American consumers are better off right now than they were

## Peaches Make Perfect Parfait



When it comes to summertime desserts, a homemade parfait is perfection itself. But you're a calorie counter? Well, here's a low-calorie style parfait which has been devised by the Borden Kitchen just for you. It features a base of easy-to-make whipped nonfat dry milk, an inexpensive source of fat-free milk nutrition, and peaches, either fresh or canned. If fresh peaches are used, peel and slice. Then slip the slices into the whipped mixture. The complete combination of ingredients makes a tempting parfait to serve for a bridge party, at a family dinner, or for company dessert.

- Peach Puff Parfait**  
 (Makes six 5-ounce parfaits)
- |                                 |  |
|---------------------------------|--|
| 1/2 cup cold water              | 1 tablespoon sugar   |
| 1-1/2 teaspoons ReaLemon Juice  | 16 large marshmallows (one 4-oz. pkg.), cut into quarters        |
| 1 teaspoon almond extract       | 1 (1 lb. 14 oz.) can sliced peaches, drained and cut into thirds |
| 1/2 teaspoon vanilla extract    |  |
| 1/4 cup Starlac nonfat dry milk |  |
- Combine cold water, lemon juice, extracts and nonfat dry milk in small mixer bowl. With electric mixer, beat at high speed for 6 minutes, or until stiff peaks form. Gradually add sugar while beating, until well blended, about 1 minute. Gently fold in cut marshmallows. Begin with the whipped milk-marshmallow mixture and arrange alternate layers of it and the peaches in each of the six parfait glasses, ending with peaches. Top each with spoonful of whipped milk mixture. Garnish with peach slice. Chill in freezer about 1-1/2 hours, or until whipped milk is firm.

ple badly. Over the past five years, while the pinch became very faintly tighter, it did not intrude so bitterly upon disposable income of those with fixed spending power as it had in previous years.

I am often asked whether the upsurge of retail prices and wage rates that has persisted since the early 1930's will continue indefinitely. At present there does not seem to be any reason to expect a reversal of this long-term wage-price inflation. But there are many factors which will be likely to hold it within reasonable check, at least for a considerable length of time.

**Competition Has Its Value**  
 Perhaps the most powerful checkrein on the consumer price index over the past five years have been competitive both domestic and foreign. Rivalry will become only the more intense over the period ahead, and it will be virtually impossible for manufacturers or service vendors to hike prices substantially without losing their competitive position in both domestic and overseas markets. More likely, savings will be sought via wider technological improvements and automation. This will tend to hold at a minimum further wage-price increases.

## Texas' Kissin' Trees

Texas offers an added attraction to out-of-state tourists. An abundance of mistletoe seasonally is found growing among trees in both town and country.

This is a common site to Texans. But to many out-of-staters mistletoe is seen only at Christmas time . . . and then only in small bunches . . . bought at fairly high prices.

Mistletoe has a varied history. It was the instrument of death, in the form of an arrow, that was used to kill the Sun God, Balder, in Norse mythology. It also was known as a medical charm to Europeans who once carried it around for good luck, as well as a cure for ulcers, epilepsy and infertility.

But Texans and the rest of the nation seem to prefer the modern use of mistletoe — an excuse to kiss some fair lady.

**BLONDIE Chic Young**

THE GREATEST CONTRIBUTION YOU AND I CAN MAKE TO OUR COUNTRY'S FUTURE IS TO BUY U. S. SAVINGS BONDS!

**For Results—Advertise**

**IRVIN J. VOGEL**  
 ATTORNEY  
 312 City National Bank  
 PHONE 723-4105  
 WICHITA FALLS, TEXAS

## PRE-SCHOOL KINDERGARTEN FOR 5 YEAR OLDS

ENROLL NOW FOR GOOD PREPARATION FOR THE PUBLIC SCHOOL GRADES

PROGRAM INCLUDES—Reading Readiness, Num-Readiness, Beginning Science, Social Development, Music, Daily Milk, Field Trips, Recreation, Bible Stories, Christian Atmosphere.

Information and Application Forms, CALL

TEACHER Mr. Arthur Ramming 723-2082	SUB TEACHER Mrs. Omer Liefer 322-3605
---	---

Registration Meeting — Aug. 16th, 7:00 P. M.  
 Starting Date — Sept. 3, 8:30 A. M.

even five years ago. They have the actual money to buy more than they ever have been able to before in our nation's history. And I would like to point out, also, that the quality of goods obtainable is, on the whole, better than ever. This applies not only to our own goods, but even to those being imported so heavily from foreign lands. This is a reflection of the improved industrial standards emerging in Western Europe, South America, Japan, etc. And, of course, many products from overseas are available to our consumers at prices considerably below those of our native goods, a boon for the buyer.

**How About Pensioned Workers?**  
 When the cost of living climbs, nobody suffers more than those with a fixed income, such as those living on pensions, social security or investments with a set interest. After the end of World War II and after the Korean War the swift uprush of living costs hurt such peo-

## Beat the Heat... Save Money, too WITH QUALITY AMERICAN-Standard WHOLE-HOUSE AIR CONDITIONING

Say "stop" to those sweltering nights, scorching days. Here's air conditioning that's "right" for you in two ways. "Right" in the wonderful comfort it gives. "Right" in the big savings you make. You save \$100 to start with . . . save almost that much more on installation! No big structural changes, no big holes in the wall. Unit hooks right to the furnace—saves on ductwork. Factory assembly saves tubing and refrigerant costs.

**And one man does the whole job in less than a day!**

Live cool. Sleep cool. Be cool all summer long and for many more to come. CALL US FOR OUR FREE ESTIMATE NOW! Easy Time Payment Plan.

This equipment is "right and ready" to give you INSTANT COMFORT.

**Cox Heating & Air Conditioning**  
 406 GULF ROAD PHO. 569-1531  
 ALSO 24 HOUR Refrigeration Service

## PALACE Theatre BURKBURNETT TEX

**NEW STARTING TIME**  
 Matinees Sat. and Sun.  
 Window Opens 1:45  
 Show Starts 2:00

**Evening Shows:**  
 Boxoffice Opens 6:45  
 Show Starts 7:00

25¢ THUR.—FRI.—SAT. AUGUST 1-2-3  
 PAUL NEWMAN IS "H U B" PARANOID

25¢ SUN.—MON.—AUG 4-5  
 COME FLY WITH ME Color DOLORES HART

13 FRIGHTENED GIRLS MURRAY HAMILTON KATHY DUNN

25¢ TUE.—WED — AUG 6-7  
 THE MAN WHO SHOT LIBERTY VALANCE JAMES STEWART JOHN WAYNE

25¢ THUR.—FRI.—SAT. August 8-9-10  
 DONOVAN'S REEF Technicolor JOHN WAYNE VARAN — THE UNBELIEVABLE

family-size fish and game preserve"

an **ELECTRIC FREEZER**

Fishermen or hunters in your family? There need be no "closed season" on enjoying fish or game when you have an Electric Freezer. It's like having your own private fish and game "preserve". With your own private fish and game "preserve", you can keep fish and game frozen and ready to serve anytime. You'll also have plenty of storage space for frozen foods of all kinds . . . it will enable you to keep a wide variety of foods on hand for family meals or unexpected guests. See your electric appliance dealer soon about an Electric Freezer that will help you Live Better Electrically.

TEXAS ELECTRIC SERVICE COMPANY

## THE MOST IMPORTANT CAP IN THE WORLD!

We're talking about the cap that goes with the gown on college graduation day. Nothing you can think of will mean so much to the future of your son or daughter. Of course, it's pretty expensive headgear . . . and getting more so all the time! Which is why you should start thinking NOW about how you're going to foot the bills.

Basic to accumulating the necessary funds for your children's college education is a comprehensive and flexible savings plan. Come in and let us help you tailor a plan to your specific needs, taking into account the ages of your children, your income, etc. The sooner you get started, the easier!

**First Savings & Loan Assn.**  
 314 East 3rd Street Phone 569-2206  
 Burkburnett, Texas

MEMBER FEDERAL SAVING AND LOAN ASSOCIATION FEDERAL HOME LOAN BANK SYSTEM

Savings Earn A BIG **4 1/4%** Current Dividend

Payable Or Compounded Quarterly

