

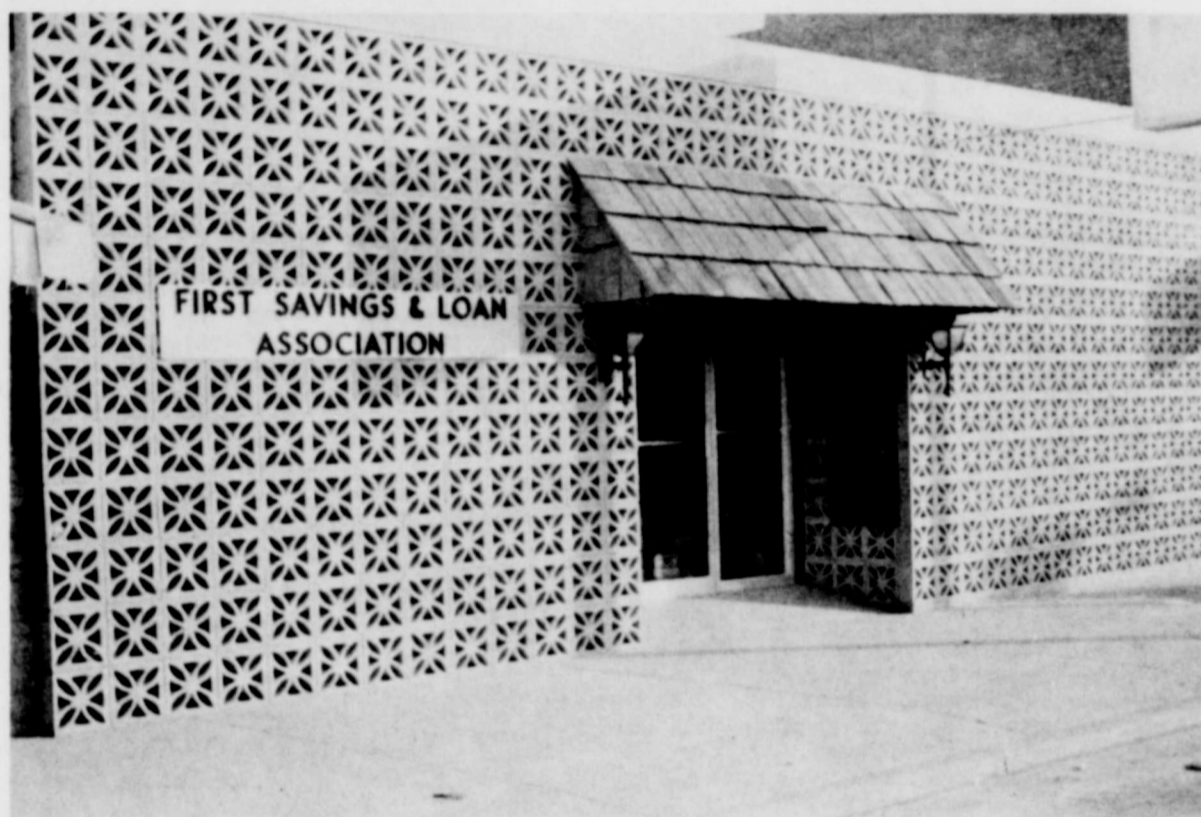
First Savings & Loan Association Special Section

Burkburnett Star

BURKBURNETT STAR, THURSDAY, JUNE 12, 1969

First Savings Begins 10th Year Of Service To Burk

**MODERN, EFFICIENT
OFFICE PROVIDES
SERVICE TO PUBLIC**



Hello,

We at First Savings are celebrating our 9th anniversary during the month of June. Just as these 9 years could not have been successful without your help, we cannot have a happy celebration without your participation. Elsewhere in this section you will find a list of more than \$1,000.00 in prizes being offered during the month of June. Please help us celebrate by winning them.

In a more serious vein we would like to say "Thank You," and to impress upon you the importance of the contributions you are making when you have an account at First Saving and Loan. Since our beginning in 1960, we have assisted in the purchase, upgrading, expansion, and refinancing of residential, commercial, and farm and ranch property to the tune of some 12 million dollars. That is a lot of money, and the effects on the economy by our trade area are far reaching.

We hope you will take pleasure from it because you made it possible.

Very truly yours,
Albert Dillard
President

The Savings and Loan Association

A savings and loan association is a place (1) to save money; and (2) to get a home loan. It is a community financial institution which lends the savings entrusted to it to people who want to buy or build homes and who must have credit in order to do so. The loans which it makes are paid back in monthly installments. It is the only specialized home-owner credit institution in the entire American financial system.

There are some 6,232 such associations in active operation in the United States today. Typically they confine lending activities to their respective communities. With the same freedom as any other savings institution, however, an association may, and often does, have savers living in all parts of the globe.

An association does its two-fold work in the community under local management. Policy is determined by boards of directors composed of local business and professional men from among the savers. Either the state or federal government, depending on the source of the charter for the particular institution, supervises the association. This public supervision involves an annual examination of accounts, security behind the loans, and of compliance with the code or charter governing the association for the public's protection.

Various Governmental devices and agencies are employed from time to time to add strength to the existing structure of the savings and loan system. Basically, however, the association remains a citizen's enterprise, run along business lines, deriving its principal safety from strong reserves and from the integrity and sound judgment and experience of the management.

The combined resources of the 6,232 savings and loan associations reached \$135,000,000,000 at the year-end 1966. More than 40,000,000 persons had entrusted their savings to these institutions and nearly 11,000,000 were paying for their homes with credit from these same associations. Savings and loan associations have made nearly 25% of all the home loans made to World War II and Korean veterans since the Servicemen's Readjustment Act of 1944 was placed in operation. They are the source of 44% of all the home loans currently obtained by all types of borrowers, veterans and non-veterans.

The Test Of Time

The first savings and loan association in the United States was organized in Frankford (suburb of Philadelphia), Pennsylvania in 1831, patterned after similar institutions which had been operating under the name of "building societies" in England for a half century prior to that. The first house on which the first American association made a loan is still standing at 4276 Orchard Street, Philadelphia. It has been dedicated as a home ownership shrine by the savings and loan associations of Philadelphia and Pennsylvania, and now bears a bronze plaque signifying its distinction in the American home ownership tradition.

After that one small association, which had 37 people saving up their money out of weekly and monthly pay envelopes, associations were organized and spread all over the United States. Their establishment in frontier towns was simultaneous with the coming of the first evidences of permanent culture and community life in nearly every case. They have offered for four generations a way to thrift which can be fitted to diverse types and sizes of individual and family incomes. Thus, they have definitely encouraged thrift as well as offered a safe employment for the funds of those already following the time honored American practice of setting aside something for the future.

By originating the monthly instalment plan for paying for a home, the savings and loan associations have been, from the beginning, a great influence in making home ownership possible for people of all income classes.

One hundred and thirty-five years after the founding of the first association, 63% of the American families had reached the desirable status of home-owners,

Saving Money

Probably the least complicated way to be thrifty which has ever been devised is to put money into a savings and loan association. Amounts as small as \$1.00 or as large as one wishes can be put in.

Savings can be mailed to the association. The saver is always entitled to receive back the full amount he has paid in, plus credited earnings. He always knows exactly much he will get if he withdraws all of his savings.

Savings may be built up by additions to the account at any time that is convenient to the saver or at regular intervals; and by the crediting of earnings directly to the account. Or, savings may be placed in the institution in lump-sums with earnings to be paid at regular intervals by check.

One of the minor but important simplicities of the savings method of these institutions is the fact that a lost savings account book or a lost investment account certificate can be replaced without annoying red-tape. The legal nature of the association, the handiness of its records, and the personal character of its service permit replacements without long delays and with only those technicalities which are necessary for the protection of the saver.

The return paid on the savings at work in a savings and loan association is usually larger than that paid by any other savings institution. The overhead of an association is traditionally small; and most important, it has larger earnings to distribute than other savings institutions by virtue of the simple fact that the major part of its funds are invested in home loans which, being long term traditionally command a higher rate of interest than business loans and other short term investments.

The table shows the sum that would be accumulated by a person saving \$10 each month for the number of years indicated at the rate of 4%.

GROWTH OF \$10 SAVED MONTHLY	
at end of	4% %
7 years	\$ 996.46
10 years	1,534.51
12 years	1,937.70
15 years	2,618.10
20 years	3,988.36

The Safety Factor

From the safety point of view, the record of savings and loan associations is a remarkable one over a period of more than a century and a third. Local management of the institutions, the excellence of homeowners as a moral and credit risk, the simplicity of the savings and loan plan of operation, the reserves of the associations whose adequacy ranks high among financial institutions, all make for the essential safety of this type of savings institution.

Associations whose assets make up some 96% of the entire savings and loan resources of the country now carry insurance on the funds of their savers up to \$15,000 per insured account. This insurance is carried with the Federal Savings and Loan Insurance Corporation and is an added factor assuring the saver that his money is as safe here in one of these associations as an agency of the United States Government can make it.

Investments by trustees, fiduciaries, life insurance companies and estates are also part of the funds of many savings and loan associations. Most states have laws permitting trust funds to be invested in this type of institution, and savings and loan accounts have been used by many trustees for the safe investment of funds under their supervision.

Should an insured savings and loan association be faced with default, the Federal Savings and Loan Insurance Corporation acts to protect the savers whose funds are insured by its provisions. An insured association need not be closed before the FSLIC acts to correct an unsound condition, however. The Corporation may make loans to, purchase assets of, or make contributions to, insured associations to prevent default or to restore insured associations in default to normal operation.

If, despite these provisions, default should occur, payment of each saver's account in that insured institution, when surrendered and transferred to the Corporation, shall under the law be made as soon as possible.

Borrowing For A Home

Single family homes are the principal type of property acquired with a savings and loan association loan. People borrow to build or buy such homes and those who already have homes frequently borrow on their security to obtain cash. In addition to single family home, small flat buildings and combination store and flat buildings are generally included in the associations lending operations. To a limited extent apartment buildings of various sizes can be bought or built with funds borrowed from a savings and loan association.

Typically the money borrowed is paid back in monthly installments to the association. The period over which repayment may be stretched varies with any number of factors, including the association's appraisal of the personal risk represented by the loan applicant as well as the physical condition, location and marketability of the property. The range is from fifteen to thirty years. Naturally, the longer a borrower takes to repay his loan, the smaller the monthly payments. Conversely, the shorter the time he permits the debt to remain on the property, the larger payments he must make per month, but the smaller will be the overall amount of interest he pays.

Monthly payments of \$116.11 would be required on a \$10,000 loan written at a 7% rate of interest if the loan were to be paid off in 10 years. If 15 years were taken to pay off the loan, monthly payments would be cut to \$89.89 and \$77.53 on a 20 year term.

Usually, but not invariably, a down payment of from 20% to 30% of the total amount to be invested in the building and the lot is expected, with the association lending the balance of the price of the property to the borrower.

The interest rate charged by a savings and loan association is usually comparable to that charged elsewhere in the community for home loans. The better the risk the loan is to the association, the lower rate the borrower can obtain within the range of the association's current policy on rates. In the last five years the typical home loan rates have been 6% to 7%.

Savings and loan associations can make all types of home loans so that a borrower has a wide choice in making his interest payment and principal repayment arrangements. (This is the major phase in which the different types of home loans make any difference to the borrower.) The choice may include FHA-insured loans and loans to veterans guaranteed or insured by the Veterans Administration.

The borrower's chief concern, in arranging for his home loan, is in fitting the repayment schedule to his income, getting a sound house, paying a sound price for it in terms of the market, and having a sensible and workable relationship with the lending institution in case something happens to upset the original arrangement.

(PRIZE ARTICLE)

First Savings & Loan Passes \$4 Million Mark

Albert Dillard, Executive Vice President of the First Savings and Loan Association announced today that total assets of the Association had passed the 4 million dollar mark.

The Association has enjoyed a good steady growth since its formation five years ago by a group of local businessmen who saw a need for an institution devoted to serving the saver and the homeowner.

The Association points proudly to its strong reserves which places it among the five top associations of its size in the state of Texas.

First Savings and Loan Association is a member of the Federal Home Loan Bank System, the Texas Savings and Loan League, and is insured by the Federal Savings and Loan Insurance Corporation, a permanent agency of the federal government.

Directors . . .



ALBERT S. DILLARD
President, Director

Mr. Dillard and his wife Dixie reside at 718 Sunset. They have 3 children. The Dillards moved to Burkburnett in 1961 where he was employed by the Burkburnett school as a teacher and football coach.

He has been the Chief executive officer of First Savings and Loan Association since August of 1962.

Active in community affairs, Mr. Dillard is a past president of the Burkburnett Chamber of Commerce. He has been chairman of the Boy Scout Fund Drive and Cancer Crusade. He has served on the School District Tax Equalization Board. His memberships include the Burkburnett Chamber of Commerce and Rotary Club. He is the current Chairman of the North Texas Area Savings and Loan Managers Conference. He was nominated to Who's Who in American Business in 1967. He presently is a member of the Burkburnett City Council. The Dillards are members of the Church of Christ.



PHILLIP A. CARPENTER,
M.D.—Director

Dr. Carpenter and his wife Virginia reside at 722 Sunset Drive. Both Dr. Carpenter and his wife have dedicated many years of service to our community.

His many activities include membership in the Lions Club Wichita County Medical Society, Texas Medical Association, and the American Medical Association. He is on the Board of Directors of the Wichita County General Hospital. He is a past president of the Wichita County Medical Society. He is currently on the Board of Directors of the Wichita County Heart Association and is Chairman of the Wichita General Hospital Building Committee.

He is a past chairman of the Board of Trustees of the United Methodist Church. In 1963, he was selected by the Chamber of Commerce as the outstanding Citizen of Burkburnett.



WILLIAM H. CLEMENT
Director

William H. Clement and his wife Frances reside at 714 Maple Avenue. They have 4 children.

Mr. Clement is the owner of the Burk Insurance Agency. Last year his agency was the first place winner in this region for progressive advertising. In addition to the insurance business, he has been developer or co-developer of Magnolia Park and Circle Plaza in Wichita Falls and Selena Heights, Ashton and Clement Additions in Burkburnett. He also has the distinction of being the largest taxpayer on the Burkburnett tax rolls.

He served as a Lieutenant in the Air Force during W.W. II. He is a member of the Burkburnett Chamber of Commerce and a past president and founding father of the original Junior Chamber of Commerce. His church affiliation is Church of Christ. He is a life-long resident of Burkburnett.



JACK W. MATHIS
Director

Jack W. Mathis and his wife Peggy reside at 903 Easy Street. They have 2 children. The Mathis family has been residents of Burkburnett for the past 15 years.

Mr. Mathis is the owner of Mathis Chevrolet, Pontiac and Oldsmobile. As a result of his successful operation, he has been named to the Dealer Planning Commission for the Chevrolet and Pontiac Divisions of General Motors. In 1967 his dealership was the only one to win every major award sponsored by Chevrolet, Pontiac and Oldsmobile divisions.

Mr. Mathis is a member of the Maskat Temple and Masonic Lodge. He is a member and past president of the Burkburnett Chamber of Commerce. For the past several years he has served as Chairman of the Military Affairs Committee at the Chamber. He was a Lieutenant in the Air Force, during World War II. He is a member of the United Methodist Church.

BRIEF HISTORY OF FIRST SAVINGS & LOAN

An application for insurance of accounts was filed with the Federal Savings and Loan Insurance Corporation in October of 1959. The original officers were Harold Van Loh, President, and C. R. Meadows, Executive Vice President. The Directors were Harold Van Loh, C. R. Meadows, Alvin Hill, Glen Bear, Jack Mathis, D. C. Dodson, Dr. R. R. Robinson, Dr. Philip A. Carpenter, and Harlan A. Mills.

The Capital Stock was set at \$100,000.00 and an additional \$50,000.00 was placed in Paid in Surplus. The insurance of accounts was approved in March of 1960, and the Association received approval from the Texas Savings and Loan Commissioner a few months later, and the doors were opened.

Burkburnett was experiencing something of a building boom during that year, and the demand for loans was high. Assets at the close of business each year were as follows:

Dec. 31, 1962	\$2,403,649
Dec. 31, 1963	\$2,880,372
Dec. 31, 1964	\$3,374,709
Dec. 31, 1965	\$4,425,848
Dec. 31, 1966	\$5,719,893
Dec. 31, 1967	\$6,093,517
Dec. 31, 1968	\$6,839,214

In 1966 the Association expanded its loan activities outside of the real estate area. They now provide economical financing for the purchase of automobiles, furniture and appliances, or for any other worthwhile purpose.

Despite dividends to stockholders over the years, the original Capital and Surplus of \$150,000.00 has increased to well in excess of \$400,000.00. Among the many associations of comparable size in the State of Texas, First Savings ranks in the top 5 per cent in earnings and reserves.

(PRIZE ARTICLE)

First Savings Passes \$5 Million Mark

First Savings and Loan Association passed the Five million dollar mark in total resources during the month of January according to Albert Dillard, President of the Association.

Mr. Dillard cited the continuing support of Burkburnett and the surrounding area and the increasing strength of the economy

in the North Texas and Southern Oklahoma area as being the key to the growth.

The Association was formed in 1960 and has enjoyed near record growth since that date. It ranks among the top five per cent in reserves for associations its size in the State of Texas.



Employees: Bennie Lee Dodson, Elaine Hubbard and Margaret Williams

PRIZES . . .

(IF YOU CAN'T WIN ONE OF THESE, YOU ARE A BORN LOSER)

- \$25.00 each to the first two people bringing in an issue of the Burkburnett Star which carried the articles marked "Prize Article" listed elsewhere in this issue.
- A first prize of \$50.00; \$25.00 for second and \$10.00 for third will go to the three people guessing closest to the number of nickles in the glass bowl in our office.
- A prize of \$50.00 will be given to the club having more than 15 members on its official roster who has the highest percentage of its members with an account in excess of \$100.00 on June 30. We must have a letter from the club during June requesting they be considered a contestant.
- Ten of our savings ledgers for accounts opened during the month of June have been marked with a star and the people who open an account on these ledgers will receive the greater of \$5.00 or \$1.00 for each year they have been a resident of Burk.
- We will keep a running total on the number of savers making deposits on accounts they now have in our Association. The person making the 5th, 20th, 40th, 50th, 60th, 70th and 90th deposits during the month of June will receive the greater of \$10.00 or \$5.00 for each year he or she has had an account in our association.
- \$10.00 to any saver in our office at any time the fire siren blows during the month of June.

The following prizes will be won by a drawing to be held June 30th. You may register once each day during the month of June for these prizes. You do not have to open an account or be a customer of ours to register or win.

- The gasoline for your personal automobile for the month of July at the Burkburnett service station of your choice.
- All of the groceries you can carry from the shelves of Piggly Wiggly grocery store to the check out stand in three minutes. The winner of this prize will gather his groceries at 4 o'clock P.M. on Saturday, July 5th. We predict the TV cameras may be there. (Only one trip to the meat market)
- \$50.00 toward the purchase of a new car at Wolfe Ford or Mathis Chevrolet during the month of July.
- The electric bill for your residence during the month of July.
- All the ice-cream you can eat during the month of July on the premises of Corner Drug Store.
- \$25.00 in cash.
- 5 cash prizes of \$5.00 each.
- \$1.00 for each pound you are over or under weight according to the AMA official medical charts.
- All of your traffic fines from the Burkburnett Police Department during the month of July.
- One-half of the purchase price of a new boys or girls' bicycle purchased from a Burkburnett merchant during the month of July.
- 2,500 S&H Green Stamps

All drawings will be held June 30 and the winners will be announced in the July 3rd edition of the Burk Star. You do not have to be present to win. Prizes are not transferrable.



First Savings & Loan Association

314 E. 3rd STREET

BURKBURNETT, TEXAS

500-2206

SERVING THE SAVER AND THE HOME OWNER

The younger generation will soon find out that the Man from Uncle is the tax collector.

Burkburnett Star

LIKED BY MANY -- CUSSSED BY SOME -- READ BY EVERYBODY

Chamber of Commerce Luncheon Each FIRST MONDAY At Town Hall, Everybody Invited Each Pays For His Meal

VOLUME 62

BURKBURNETT, WICHITA COUNTY, TEXAS (76354) THURSDAY, JUNE 12, 1969

NUMBER 40



SOFTBALL CHAMPS—These are the Cornelius Insurance softballers, who captured the championship in the Meridian, Oklahoma tournament Sunday. Front row are Butch Johnson, Walter

Ingle, Bill Keziol, Gayhardt Jeanies, Royce Reller. Top row, T. M. Cornelius, bat boy, Gene 'Hoot' Gipson, Jim Phillips, Jim Turner, Stan Owne, Bill Froman and Gary Owen.

Cornelius Softballers Win Tourney POP CORN IS SALTY BRONC

Cornelius Insurance of Burkburnett won the annual Men's Softball Tournament at Meridian, Okla., Sunday afternoon.

besting Atlas of Amarillo in the final game.

Royce Reller scored both runs for the champs, getting on base on an error one time, and scoring on a single in the second.

In the fourth inning, he scored on an error after slugging out a double with one out.

Jerry Turner hurled for the champs, allowing just two hits. Walter Ingle, shortstop for Cornelius, was named outstanding player of the tournament, and received a trophy.

The Cornelius team will be taking part in the Wichita Falls tournament this week.

Department Of Public Safety Seeks Applicants

A call was issued recently by the Texas Department of Public Safety for applicants to fill a recruit training school to begin in July.

Applicants must be between the ages of 20 and 35, a height of at least 68 inches, a weight of not less than two pounds or more than three and one-half pounds per inch of height, and be in sound physical condition. They must have completed high school or submit a certificate approved by the Texas Education Agency showing an equivalent educational background. They must be a citizen of the United States and be of good moral character.

Those selected will take their basic training at the Texas DPS Law Enforcement Academy in Austin. This training period is approximately four months in length. Upon graduation, the patrolmen will be assigned to one of the four uniformed field services — Highway Patrol, License and Weight, Motor Vehicle Inspection and Drivers License. Because of the short time remaining to test applicants, immediate inquiry is urged for young men to contact the nearest DPS office or patrolman.

James Sparkman At Navy School

SAN DIEGO, Calif. (FHTNC) May 22 — Hospitalman James B. Sparkman, USN, son of Mr. and Mrs. Byford H. Sparkman of 509 N. Hilltop Circle, Burkburnett, Tex., is attending the 14-week basic Hospital Corps School, San Diego, Calif.

The school is located at the Naval Training Center here and is designed to train both men and women of the Navy and Coast Guard.

Taught by Navy nurses and hospital corpsmen, the curriculum covered instruction in patient care, the study of anatomy and physiology, minor surgery, the nature and prevention of communicable diseases and the administering of medicines.

In addition to attending classes, he will work with doctors and nurses at the Balboa Naval Hospital where he will put to practical use the knowledge gained in the classroom.

Staff And P.L.C. Meeting Is Held

The staff and patrol leaders council of Troop 154 met June 6 to plan the schedule for the month of June. The theme to be carried out this month will be personal fitness.

Fairview Reunion Set For Saturday

The Fairview School and Community Reunion will be held Saturday, June 21 at the Burkburnett Town Hall.

Anyone who went to school at Fairview, was a resident there, worked there, was a school teacher or anyone interested in attending is extended a cordial invitation to attend.

Registration will begin at 10 a.m. and lunch will be served at 12 noon.

A business session will be held after lunch, then the afternoon will be spent in visiting and renewing old friendships.

Reservations for the luncheon can be made by writing to: Herman Miller, 607 Park St., Burkburnett, Texas. Tickets are \$3.00 per person.

Anyone who has clippings, awards, or mementos pertaining to the Fairview Community are asked to bring these to the reunion where they will be displayed.

Sweethearts Vie For Queen

Sweethearts of each of the riding clubs in the Burkburnett rodeo parade will be eligible for judging for the title of Rodeo Queen.

The parade will begin at 5 p.m. Thursday, but units will begin forming at the intersection of Avenue D, Sheppard Road and Davey Drive at 3 p.m.

HERE and THERE AROUND BURKBURNETT

Mrs. Lillian E. Berger from Oxford, Calif., and Mrs. W. E. Knowles of Barstow, Tex., visited their cousin Mrs. Cordie Lawrence last week. It was the first time they had seen each other in 32 years.

Mr. Russell Lewis has been moved from the Intensive Care Ward of the Wichita General Hospital to a private room and is getting along as well as can be expected.

Mrs. Myrtle Hennis received

word that her brother Elmer Wellington of Salt Lake City, Utah, a former resident of Burkburnett, is critically ill having suffered a heart attack Friday. He is in the Intensive Care Ward in LDS Hospital in that city.

Mrs. Myrtle Hennis has been in Houston for some time caring for her daughter, Juanita Groves, who underwent major surgery early in May. Mrs. Hennis returned home last week and brought Juanita back with her to recuperate through the summer.

Rev. and Mrs. Richard Brewster and family of Saco, Mont., visited his mother, Mrs. E. C. Mallett here last week. They were en route to Dallas where Rev. Brewster will take some special work in his ministerial career.

Mr. and Mrs. Donald Mills have moved back to Burkburnett. Mrs. Mills is employed in the Leer Mfg. Co. office in this city. Donald who is with a construction company in Lubbock will join his family as soon as some of his contracts are completed.

Mrs. J. C. Adams and daughter Melissa left Wednesday for Hamilton, Tex., for a few days to visit Jill's mother, Mrs. Frances Miller.

Mr. and Mrs. Jimmy Hunt and daughters, Melody and Susan of Las Vegas, Nev., arrived last weekend for a visit with their parents, Mr. and Mrs. Fred Hunt of this city and Mrs. Dick Ellis of Electra. Jimmy had recently returned to his home in Las Vegas from doing a cementing job for Mobil Oil Company, on the north slope of Alaska where it was 35 degrees below zero. He is employed by Haliburton Company.

Mr. and Mrs. Claude A. Reed have returned from a most enjoyable two week trip in the West. They visited their son and wife, David and Shirley Reed in Riverside, Calif. Also visited Mr. Reed's brother and wife, Mr. and Mrs. J. T. Reed and his two sisters, Mr. and Mrs. Israel and Mrs. Eva Fry all of Modesto, Calif.

Mr. and Mrs. Scott Grizzle of Irving, Tex., and their daughter Mrs. Katherine Wright and son, Jimmy visited Mr. Grizzle's sister and husband, Mr. and Mrs. Fred Hunt and other relatives this past weekend.

Mrs. Howard Smith and Carol spent a few days this week in Amarillo on business.

John Page Jr., a student at Texas Wesleyan College in Fort Worth, is spending the summer at home with his parents. He made a short talk at the morning service in the United Methodist Church last Sunday.

Mr. and Mrs. Dave Fowler and their son Howard and wife of Troy, Tex., are expected in Burkburnett the latter part of the week to visit Mr. and Mrs. Howard Smith and Carol.

Mrs. Paul Browning returned to her home in Los Angeles, by plane, Friday. Mrs. Hattie Smith accompanied her to visit her daughter and husband, Shirley and Jack Reed in Riverside, Calif.

Mrs. Frank Hodge entered the SAFB Hospital Monday. After several tests and X-rays she will undergo back surgery possibly Friday.

Mrs. Stanley Bohenek and sons, James, John and Stan visited her sister and family, Dr. and Mrs. C. C. Andrews in Plainview over the weekend. They attended the Friday night wedding of Mrs. Bohenek's nephew, Danny Andrews.

Mrs. Paul Browning returned to her home in Los Angeles, by plane, Friday. Mrs. Hattie Smith accompanied her to visit her daughter and husband, Shirley and Jack Reed in Riverside, Calif.

Mrs. Frank Hodge entered the SAFB Hospital Monday. After several tests and X-rays she will undergo back surgery possibly Friday.

Mrs. Stanley Bohenek and sons, James, John and Stan visited her sister and family, Dr. and Mrs. C. C. Andrews in Plainview over the weekend. They attended the Friday night wedding of Mrs. Bohenek's nephew, Danny Andrews.

Mrs. Paul Browning returned to her home in Los Angeles, by plane, Friday. Mrs. Hattie Smith accompanied her to visit her daughter and husband, Shirley and Jack Reed in Riverside, Calif.

Mrs. Frank Hodge entered the SAFB Hospital Monday. After several tests and X-rays she will undergo back surgery possibly Friday.

Mrs. Stanley Bohenek and sons, James, John and Stan visited her sister and family, Dr. and Mrs. C. C. Andrews in Plainview over the weekend. They attended the Friday night wedding of Mrs. Bohenek's nephew, Danny Andrews.

Mrs. Paul Browning returned to her home in Los Angeles, by plane, Friday. Mrs. Hattie Smith accompanied her to visit her daughter and husband, Shirley and Jack Reed in Riverside, Calif.

Mrs. Frank Hodge entered the SAFB Hospital Monday. After several tests and X-rays she will undergo back surgery possibly Friday.

Woodworking Classes Are Set At Service Center

Mr. John Crater will teach a woodworking class at the C. S. Center beginning June 23 at 9:30 a.m.

Boys age 7 through 12 who qualify under our O.E.O. guidelines will be given instruction on handling and maintaining woodworking tools while building an item that can be used around the home.

Classes will be from 9:30 a.m. to 12 noon each Monday, Wednesday and Friday, Mrs. Blankenship announced recently.

Mrs. Blankenship, also requested that anyone having scraps of wood particularly plywood to please call the Center or bring it by for use by the boys in constructing their projects.

Mr. John Crater is donating his time and services to this community service project for our young boys.

Mrs. R. C. Matherly Wins \$100 Drawing

Mrs. R. C. Matherly of 617 Glendale Avenue was the winner of this month's \$100 drawing by the Burkburnett Chamber of Commerce.

The drawing was held in the offices of the Chamber of Commerce.

Mrs. Matherly received her prize in script, good at any of the forty-some firms taking part.

USE CLASSIFIED ADS . . . THEY GET RESULTS



SKEETS HENNIS, who has donned hours of welding service to the summer baseball program, was accorded the honor of tossing out the first ball to open the girls softball schedule last week. Here Skeets winds up for a mighty toss as Mayor McCandless looks on. (Burk Star Photo)

RODEO QUEEN CONTESTANTS



JEANINE WALKER Bowie



ELAINE McADA Clay County



LAURENE HASS Duncan



THELIA ANN GRIGSBY Nocona

USE OF BURK LIBRARY SHOWS 50% INCREASE DURING YEAR

The folks in and around Burkburnett appreciate their fine library, as shown by the 50 percent increase in book circulation during the past year.

Cliff Wampler, president of the Friends of the Library, gave that report when he spoke to the Burkburnett Rotary Club Tuesday noon.

Wampler gave a short history of the conception, fund raising and the construction of the handsome edifice which serves the reading needs of the area.

He said that in 1967-68, 10,761 adult books were circulated, and children checked out another

12,640. But in the 1968-69, 13,321 for adults, and 18,690 for children.

The library now contains about 8,225 volumes on its shelf, which are designed to handle twice that many.

The hot summer months seem to be the most popular time for reading, according to Wampler's report. On July 13, 1968, 241 units were checked out, and the total for the same month was 3364.

The library, which contains 5950 square feet of floor space, represents an investment of more than \$100,000.

Kampgrounds Of America (KOA) To Have Formal Opening June 15

A new tourist accommodation will be formally opened for business on June 15, 1969 at Burkburnett.

It is the first KOA Kampground constructed by Walter Doerre and managed by Walt and Marge Doerre.

This campground is a link in the nationwide system of family campgrounds franchised by Kampgrounds of America (KOA).

KOA is a rapidly expanding network of public campgrounds, with nearly 300 campgrounds in 41 states. The Red River KOA campground will be an important member of this network and will be heavily advertised throughout the nation.

Latest government figures show that there are nearly 30 million campers in the U.S. today.

Today's sophisticated American camper is demanding more and better campgrounds.

The Red River KOA Kampground is meeting this demand by providing campers with clean restrooms, free hot showers, laundry facilities, a grocery store, and gift shop, as well as picnic tables and fireplaces. The campground covers 10 acres and is designed to accommodate 120 campers.

The formal opening will begin at 1:30 p.m.

"We feel there is a definite need for a campground in Burkburnett, Boomtown USA," Mr. Doerre said. "Traveling Americans need a safe place to camp along major highways. The add-

ed conveniences we have to offer — clean restrooms, free hot showers, and other services — are a real necessity to the modern traveling camper. We hope that people from Burkburnett, Wichita Falls area will come out and visit our campground during our grand opening and see what a fine addition the Red River KOA is to Burkburnett."

The stock of Burkburnett Nursing Home, Inc., has been acquired by Monterey Nursing Inns Inc., a public corporation of Columbus, Ohio.

The transaction was effective Friday, June 6.

Included in the deal was Evergreen Manor of Burkburnett, Pioneer Manor of Henrietta, and Pioneer Manor of Wichita Falls.

Charles Greb, administrator of the Burkburnett home, said he will no longer be connected with the home, but hopes to remain in Burkburnett.

He further expressed his appreciation for the fine manner in which residents of Burkburnett helped the residents of Evergreen Manor in so many ways.

653-2191 For Quality Printing

The Burk Burnett Star

HARRY C. DODSON, Owner and Editor



Printed Each Tuesday At Burkburnett, Wichita County, Texas

Printed weekly at Burkburnett, Wichita County, Texas. Entered as second-class matter at the post office at Burkburnett, Texas, October 1, 1963, under the Act of Congress of March 3, 1879.

Second-class Postage Paid At Burkburnett, Texas

Notice to the Public: Any erroneous reflection upon the character, standing or reputation of any person, firm or corporation, which may appear in The News, will be gladly corrected as soon as it is brought to the attention of the publisher.

Subscription Rates:

Burkburnett Star \$3.00 Per Year
 Burkburnett News \$3.00 Per Year
 Burkburnett Star and News \$4.00 Per Year

ANSWERING THE SKEPTICS

Space flights capture the public's imagination. But, they also raise the ancient query that has plagued explorers, inventors and pioneers since the dawn of time. What good are they? The answer is a great deal of good. The billions of dollars that have been spent toward putting a man on the moon have not been rocketed into space as many people seem to think. They have been spent here on earth. Like an iceberg, space flights are but the visible tip of massive advances in knowledge that can be turned to the resolution of earth problems.

A top participant in the space effort and a company that has aggressively applied space technology to commercial manufacturing, North American Rockwell Corporation, notes in one of its advertisements that, "Every time we take on outer space, we learn more about how to tackle the problems on earth. Already, the nation's space program has sparked breakthroughs in fields like medicine, electronics, materials and weather forecasting. And we've hardly gotten off the ground." The head of the company, Mr. Willard F. Rockwell, Jr., in recommending specific cooperative action on the part of government and industry to prevent man from disrupting and "destroying his environment," says that, "Industries with high technical potential should be called upon to increase their commitment to perfecting conservation and antipollution devices and procedures."

The effort that has gone into the space program has infused a large segment of science and industry with new life that could be the salvation of the country in years to come.

FACT AND OPINION

The National Agricultural Chemicals Association observed that the Federal Water Pollution Control Administration's latest report on pollution-caused fish kills found that of over 11 million fish killed, only 2.9 per cent was caused by pesticides. Drainage from manure and sludge killed four times more fish than pesticides.

Governor Ronald Reagan of California stated, "The first priority of any government—ranking above every other goal—must be to protect its citizens against lawlessness."

T. M. CORNELIUS

Life — Accident — Hospitalization
 Income — Disability — Estate Planning

111 Tejas—Burkburnett

Now Open Tuesday thru Saturday—9 a.m. to 6 p.m.

Crane Hairstyling

On Reagan St. North From Parker Plaza
COMPLETE BEAUTY SERVICE

Specializing in creative styling,
 tinting — bleaching — frosting

(Penegen Skin & Hair Care Program)

Guestena Cash Joyce Gaur Jan Jones
 Treva Nunn Catherine Crane
 Phone 569-1141

News From The County Agent

The District III 4-H Horse Show will be held at the Santa Rosa Roundup Grounds in Vernon on July 25 and 26. We will have a number of Wichita County 4-H boys and girls who will enter the District Horse Show. Entries will be due in the District office on Monday, July 7.

The Wichita Falls Area Junior Vegetable Show will be held at Sears Garden Section in Wichita Falls on Saturday, June 14. This show is sponsored annually by the Wichita Falls Chamber of Commerce. The show is open to 4-H boys and girls and FFA members in Wichita, Clay, and Archer Counties.

All vegetable entries are to be in the store by 8 a.m. The show will be judged by Dr. Gordon Powell, Vegetable Specialist, Texas A&M University. Chairman for this year's show is Bob Hillery. Ribbons and trophies will be awarded.

The Wichita County 4-H Horse Play Day will be held on Saturday, June 21 beginning at 1 p.m. in the Sheriff's Posse Arena on F.M. Road 389 in Wichita Falls. All 4-H club members are urged to bring their animal and enter.

The regular 4-H Horse Club meeting will be held on Tuesday, June 17 in the Lone Star Gas Company Auditorium in Wichita Falls beginning at 8 p.m. All club members are urged to attend.

Horn flies are a continuous problem on beef animals in Wichita County during the warm months, says county agent B. T. Haws. These blood-sucking parasites frequently develop large populations in county beef herds. In addition to the direct damage through blood losses, horn flies cause tremendous annoyance and irritation to animals. The constant attempts to fight the flies is a continuing drain on the animal's energy and nutrition, and the cattle may be unable to graze normally. Days and weeks of such attack results in immeasurable losses by the animals, Haws points out.

Horn flies are easily controlled with modern livestock insecticides. Numerous insecticides and methods of treatment are effective and the producer has a wide range of choices to fit his individual operation. Before purchasing and applying livestock insecticides, carefully read the label and pay particular attention to precautions and restrictions listed. Observe strictly the slaughter intervals as clearly stated on the label.

It is real important that farmers make close checks of their fields of growing grain sorghum in order to spot diseases and make plans for next year's control. Downy mildew and maize dwarf mosaic are among the most damaging; headsmutt, anthracnose and seedling diseases are also being reported.

NEW—
 Linda Starnes
 Matthew Bearden

RENEWALS—
 Mrs. J. H. Cecil
 Don S. Youngblood
 Mrs. Beulah Durickson
 J. B. Foyce
 J. D. Holman
 Mrs. James W. Kincaid
 M. L. Van Wey
 Mrs. James S. Ross
 Dr. Noel Bright
 Virgil Klinkerman
 S. W. Bell Tele. Co.
 Robert Clark Hibbard

With Our Subscribers ...

NEW—
 Linda Starnes
 Matthew Bearden

RENEWALS—
 Mrs. J. H. Cecil
 Don S. Youngblood
 Mrs. Beulah Durickson
 J. B. Foyce
 J. D. Holman
 Mrs. James W. Kincaid
 M. L. Van Wey
 Mrs. James S. Ross
 Dr. Noel Bright
 Virgil Klinkerman
 S. W. Bell Tele. Co.
 Robert Clark Hibbard

Crossword Puzzle

ACROSS
 1. Hog fat
 4. Asian fruit
 9. Large feline
 10. Angry
 12. Humorous play
 13. Take away
 15. Portent
 16. Always
 17. Bird's home
 18. Body of water
 21. Numbers
 22. Suffix
 23. plural
 24. import secretly
 26. Tellurium: chem.
 27. Arrange
 28. Jewish month
 30. Soaked
 32. Since
 34. For fear that

DOWN
 1. Green fruit
 2. Representatives
 3. Color
 4. Arid
 5. Tree
 6. Wrath
 7. Germ cell
 8. Cooking appliance
 9. Volumes
 11. Happening
 12. Ice-cream—

ANSWER TO PUZZLE

36. Route: abbr.
 37. Comfort
 39. Seaweed

40. Poker stake
 41. Amend
 44. Moved restlessly
 46. Memento
 47. Turkish title
 48. Tall grass
 49. Fasteners

14. Gaelic
 18. More positive
 19. Heron
 20. Open-mouthed
 24. Rug
 25. Strong alkali
 28. Winglike
 29. Produce
 30. Hit
 31. Desensitize
 32. Flower
 33. Germ of life
 35. Taste
 38. Mountain range
 42. View
 43. Stop
 44. Ravine
 45. French "friend"

MIDGET BASEBALL SCHEDULE

First Game, 6 p.m., Second Game 8 p.m.

JUNE 2
 Burk Bank vs. Optimist
 Carpenters Union vs. Home Builders

JUNE 3
 First National Bank vs. Mills Grain
 Burk Bank vs. Home Builders

JUNE 5
 Optimist vs. Mills Grain
 Carpenters Union vs. First National Bank

JUNE 6
 Mills Grain vs. Burk Bank
 Home Builders vs. First National Bank

JUNE 8
 Optimist vs. Carpenters Union
 Burk Bank vs. First National Bank

JUNE 10
 Mills Grain vs. Carpenters Union
 Home Builders vs. Optimist

JUNE 16
 Burk Bank vs. Carpenters Union
 First National Bank vs. Optimist

JUNE 17
 Carpenters Union vs. Optimist
 Mills Grain vs. Home Builders

END FIRST ROUND

JUNE 19
 Home Builders vs. Carpenters Union
 Optimist vs. Burk Bank

JUNE 20
 Home Builders vs. Burk Bank
 Mills Grain vs. First National Bank

JUNE 23
 First National Bank vs. Carpenters Union
 Mills Grain vs. Optimist

JUNE 24
 First National Bank vs. Home Builders
 Mills Grain vs. Burk Bank

JUNE 26
 Optimist vs. Home Builders

Auto Supply-Toons

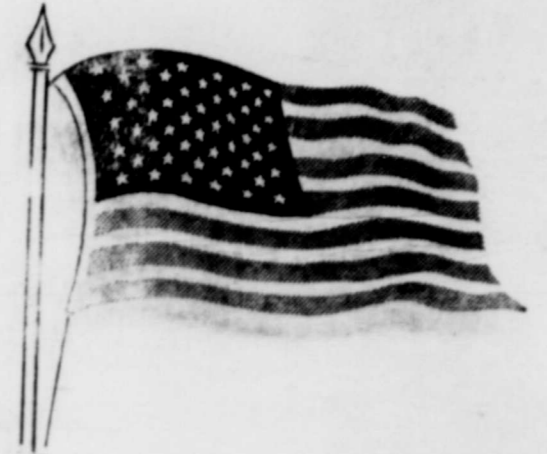


Why Don't You Save Her? I'm Going To

Harry Elliott Auto Supply
 If We Don't Have It, We'll Get It.
 Phone 569-3322
 300 East Second
 Burkburnett, Texas

Classified Ads Get Results

FLAG DAY



SATURDAY, JUNE 14

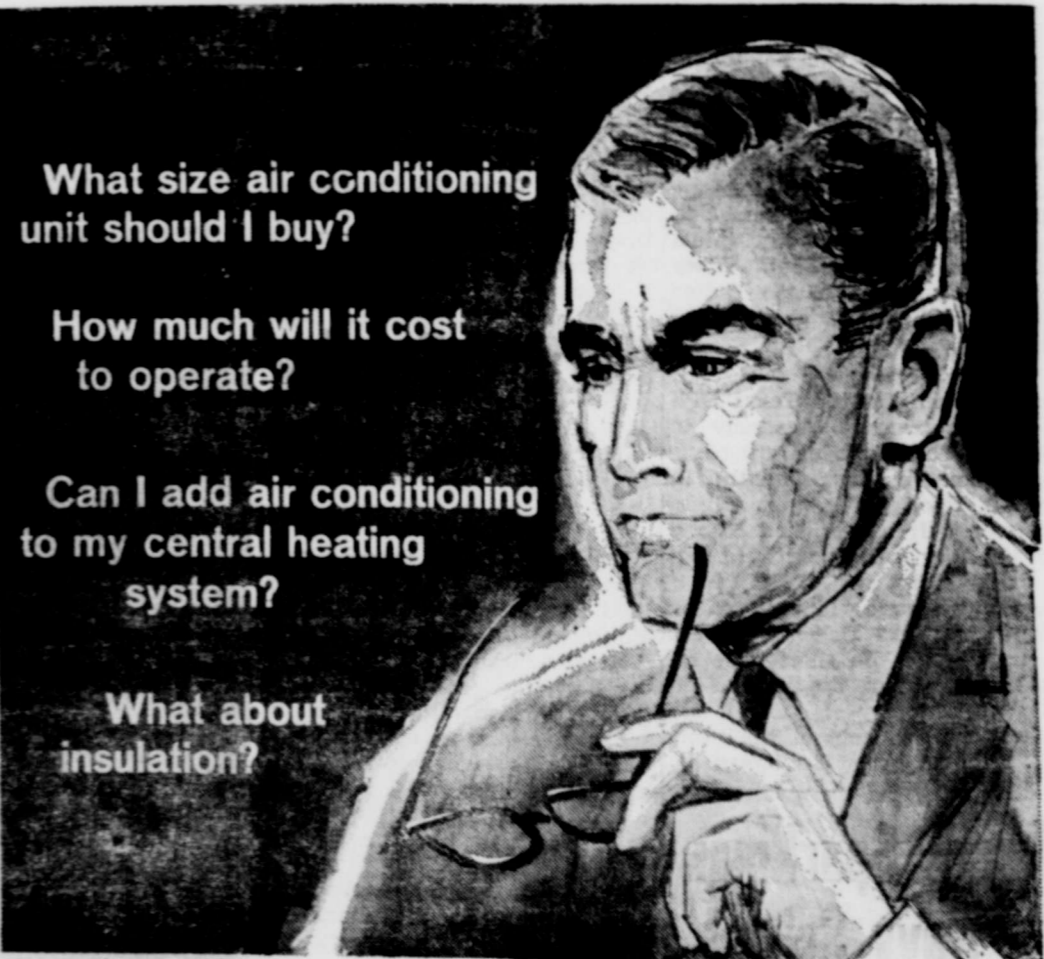
It's our flag and yours, the proudest symbol of our land . . . fly your flag proudly Saturday — Flag Day

- Prompt Loan Services
- Savings Accounts
- Safety Deposit Boxes
- Checking Accounts
- Low-Cost Mortgages
- Drive-In Banking

YOU MAY BANK WITH CONFIDENCE AT



Serving Since 1907



What size air conditioning unit should I buy?

How much will it cost to operate?

Can I add air conditioning to my central heating system?

What about insulation?

Looking for answers to your questions about air conditioning? Call us.

When you want information about air conditioning, give us a call. Our air conditioning specialists can give you accurate, up-to-the-minute facts about available equipment, proper installation, insulation and operating costs, although we do not sell or service air conditioning equipment.

They'll also provide you with useful tips on how to operate your equipment efficiently to keep the cost low. There is no charge for this advisory service. It's another of the ways we work to help you get the maximum benefit from your use of electric service.



Eddie Rushing

David Looney

OWENS-BRUMLEY FUNERAL HOME

EXPERIENCED PERSONNEL

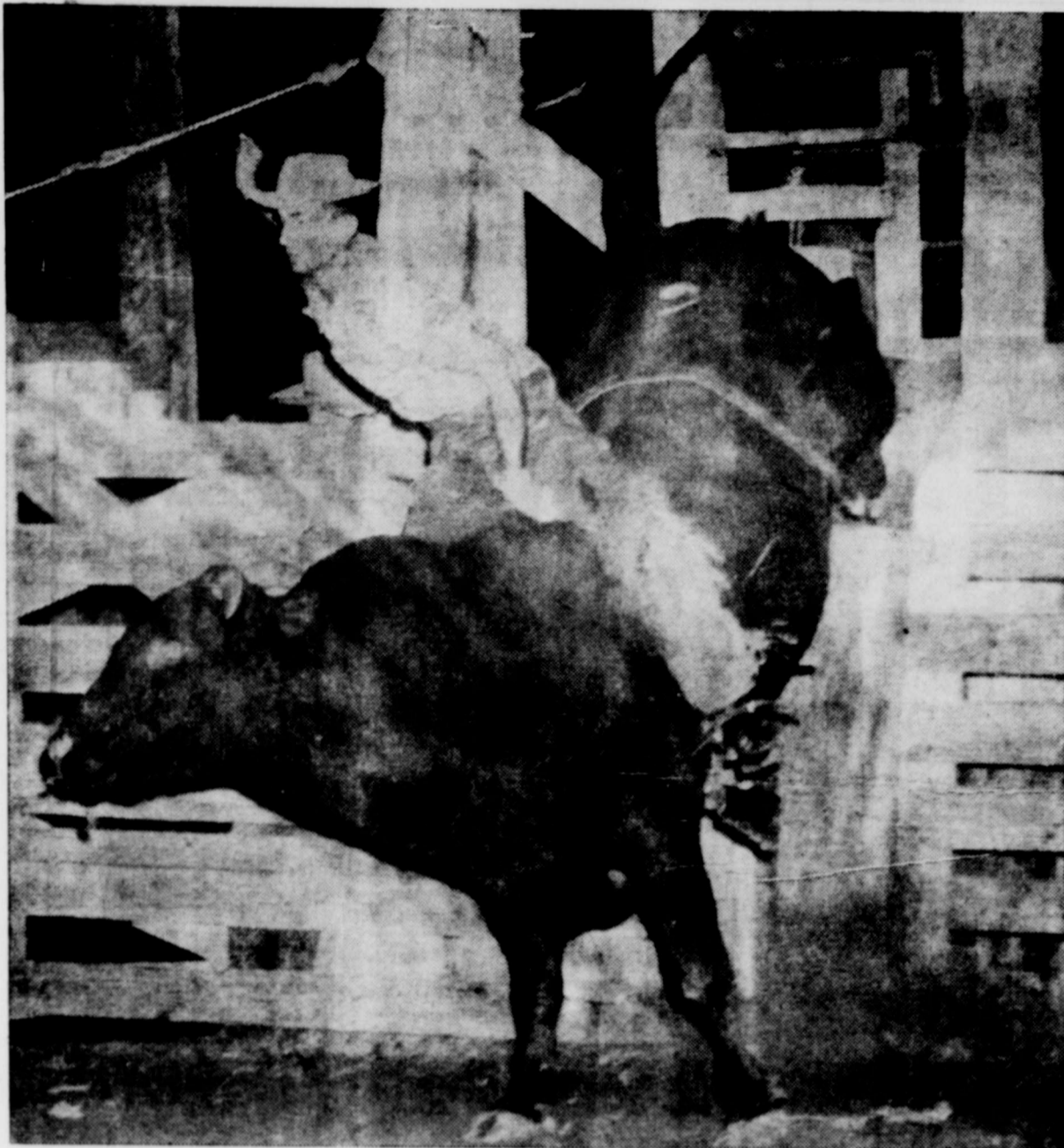
PHONE 569-3361

SERVING YOU SINCE 1921

Quaid Richburg,
 Funeral Director

Harold Van Loh,
 President

Mrs. J. H. Rigby
 Receptionist



MERLE MORRIS of Decatur, one of the better known riders of North Texas, is slated to appear in the annual Boomtown Rodeo here this weekend. Here

Morris rides one of the meaner animals supplied by Bill Yale and Sons, who are providing the stock for the Burk Rodeo.

GIRLS' SOFTBALL SCHEDULE

MONDAY, JUNE 2
Virgil Mills Const vs. Burkburnett Bank
Clayton Bait and Tackle vs. First Savings and Loan

THURSDAY, JUNE 5
First Savings and Loan vs. First National Bank
Clayton Bait and Tackle vs. Burkburnett Bank

MONDAY, JUNE 9
Virgil Mills Const. vs. Clayton Bait and Tackle
Burkburnett Bank vs. First National Bank

THURSDAY, JUNE 12
First National Bank vs. Clayton Bait and Tackle
First Savings and Loan vs. Virgil Mills Const.

MONDAY, JUNE 16
Burkburnett Banks vs. First Savings and Loan
First National Bank vs. Virgil Mills Const.

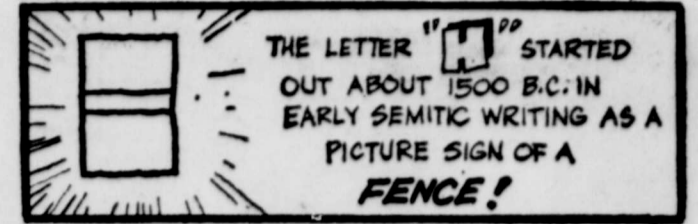
THURSDAY, JUNE 19
First National Bank vs. Burkburnett Bank
Clayton Bait and Tackle vs. Virgil Mills Const.

MONDAY, JUNE 23
First Savings and Loan vs. Clayton Bait and Tackle.
Burkburnett Bank vs. Virgil Mills Const.

THURSDAY, JUNE 26
Virgil Mills Const. vs. First National Bank
First Savings and Loan vs. Burkburnett Bank

MONDAY, JUNE 30
Burkburnett Bank vs. Clayton Bait and Tackle
First National Bank vs. First Savings and Loan

THURSDAY, JULY 3
Virgil Mills Const. vs. First Savings and Loan
Clayton Bait and Tackle vs. First National Bank
Games will begin at 6:30 p.m. and 8:00 p.m.



THE LETTER "F" STARTED OUT ABOUT 1500 B.C. IN EARLY SEMITIC WRITING AS A PICTURE SIGN OF A FENCE!

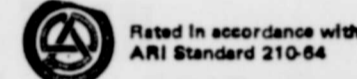


The fabulous **Carrier** air conditioner with exclusive round design

Nothing Down - Up To 5 Years To Pay

- WHISPER QUIET INDOORS
- LOW-VOICE OUTDOORS
- BUILT TO LAST
- LOCATES ANYWHERE
- COMPACT AND RUGGED

This is the first air conditioner styled to distinguish your home from other air conditioned houses ... and do it better. Beautiful to look at ... it's architecturally styled to blend into shrubbery for either modern or traditional home. Call us for a free survey. We can install it with a minimum of fuss.



Rated in accordance with ARI Standard 210-64

McDONNELL AIR CONDITIONING

503 Hilltop

Burkburnett, Texas

Phone 569-3404

Authorized **Carrier** Dealer

PERSONAL

Mrs. Tom Boyd attended the high school graduation of her granddaughter, Cynthia Matthews, Thursday, May 29, in Dallas. Cynthia is the daughter of Mr. and Mrs. Bill H. Matthews.

Read And Use
CLASSIFIED ADS
... They Get Results

Boomtown Rodeo SALE

WELCOME RODEO VISITORS

We Have ...

LADIES' and MEN'S
WESTERN WEAR

STA-PREST
LEVI'S
FLARED LEGS
Perfect For Wearing With Boots

\$7.50
TAN, BLUE, SAGE

MEN'S
WESTERN SHIRTS

Patterns and Solids
Short and Long Sleeves
\$4.98 thru \$8.95

WESTERN
STRAW HATS
\$2.98 up

Gifts Galore
For Dad, Too

Remember ...
Sunday, June 15
Is Father's Day

10% OFF
On Acme and Justin
WESTERN BOOTS
Thru June 14

REGISTER FOR OUR FREE DRAWING—

First Prize—2-Week Vacation for Two to Greece

- 2 Second Prizes—Magnavox Color TV's—where gold looks gold
- 3 Third Prizes—Monogrammed Fine Gold Flatware—5-pc. place setting for four
- 5 Fourth Prizes—Ladies' or Men's Helios Gold Watches
- 90 Fifth Prizes—Golden Cake and Pie Servers
- 900 Sixth Prizes—Longines Symphonette's "Golden Hits Record Albums of the Sixties"
- 110 Prizes—A Year's Supply—6 tops and 6 bottoms of Golden Fruit-of-the-Loom Underwear

NO PURCHASE REQUIRED

THE *Famous* DEPARTMENT STORE



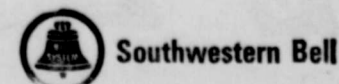
Ruby Watson just saw her phone ring!

(Saw her phone ring?)

Ruby has difficulty hearing. A powerful lamp which flashes when the phone rings lets her know someone is calling. And a volume control switch on the phone receiver makes it possible for her to hear and carry on a normal phone conversation. This is one of many devices we've developed to help the handicapped make full use of telephone service.

If we can help a member of your family, let us know.

We may be the only phone company in town, but we try not to act like it.





INSTALLATION CEREMONIES for officers of the Burk chapter of the Order of the Eastern Star were held Friday night. Outgoing Worthy Matron and Wor-

thy Patron were Audre Hucks and J. K. Hubbard. Incoming Worthy Matron and Patron were Bertie Smith and Irvin Hoosens (Burk Star Photo)

PEE WEE LEAGUE SCHEDULE

First Game, 6 p.m., Second Game 8 p.m.

JUNE 2
Corner Drug vs. United
American Legion vs. Piggly Wiggly

JUNE 3
Beginners
Whites Auto vs. Preston

JUNE 5
Preston vs. Piggly Wiggly
American Legion vs. Mathis

JUNE 6
Beginners
Whites Auto vs. United

JUNE 9
Piggly Wiggly vs. United
Preston vs. Mathis

JUNE 10
Beginners
Whites vs. Corner Drug

JUNE 16
United vs. Mathis
Preston vs. American Legion

JUNE 17
Beginners
Piggly Wiggly vs. Corner Drug

JUNE 19
United vs. American Legion
Mathis vs. Corner Drug

JUNE 20
Beginners
Piggly Wiggly vs. Whites Auto

JUNE 23
Corner Drug vs. American Legion

JUNE 24
Mathis vs. Whites Auto

JUNE 24
Beginners
United vs. Preston

JUNE 26
Mathis vs. Piggly Wiggly
Corner Drug vs. Preston

JUNE 27
Beginners
American Legion vs. Whites

Tourney Following First Half Play

Lt. and Mrs. Marvin Arthington are the proud parents of a baby girl, Andrea Dawn, born June 3, 1969 weighing eight pounds seven ounces.
Lt. Arthington is stationed at Laredo AFB, Tex., finishing his pilot training.

... They Get Results
USE CLASSIFIED ADS

HAVE YOU NOTICED The Price of Perishable Foods In Your Local Market Lately?

Call Southwest Food Service for a real savings on your food bill

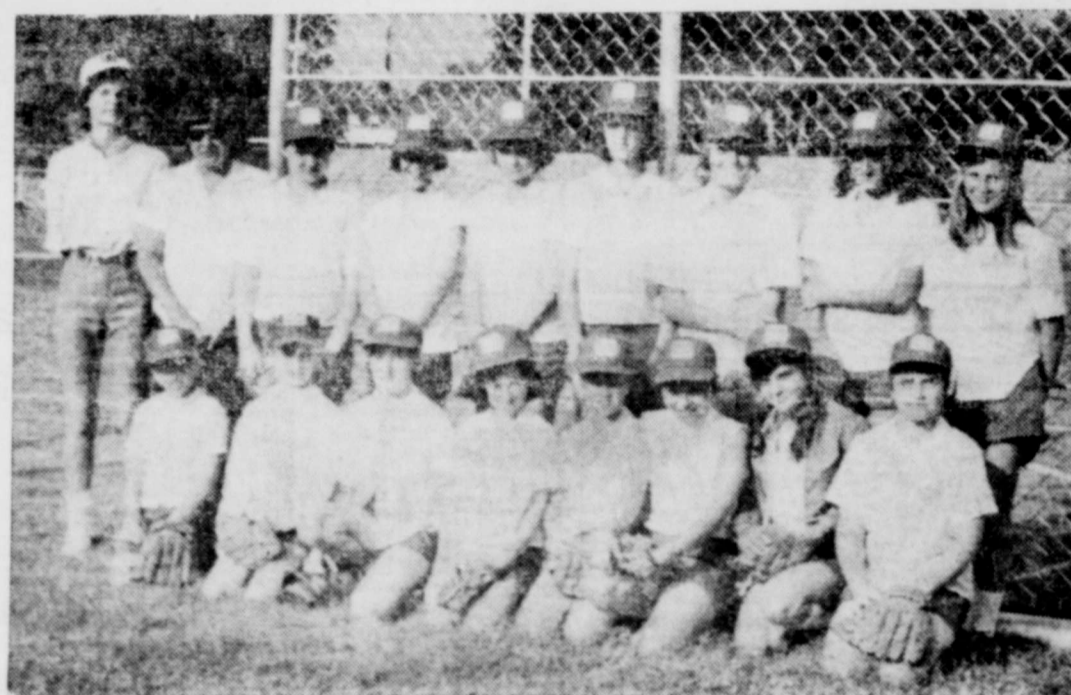
FOR LESS THAN ... \$11.00 per wk. including a freezer with the food

We can provide your family with all your meats: Such as Steaks, Roasts, Ground Beef, Stew Meats, Pork, Bacon, Fryers, Lunch Meats, etc. Plus Vegetables, Juices, Oleo, Crisco, Sugar, and Many, Many other Food items—Just like a Supermarket in your own home.

SOUTHWEST FOOD SERVICE
767-0836

We're proud of our girls . . .

The BURKETTES



Sponsored, of course, by



OF BURKBURNETT

FRONT ROW—Theresa Askins, Donita Roberts, Cynthia Myhand, Jackie Brown, Jean Motley, Lynn McGraw, Donna Edwards and Christie Key.

TOP ROW—Mrs. Kay Clark, coach, Mrs. June Brown, manager, Tracy Janeke, Laura Bloodworth, Becky Skaggs, Elaine Ellis, Janice Martin, Cindy Brown and Ricki Gann.

FATHER'S DAY GIFT GUIDE

Sunbeam
ELECTRIC SHAVER
REGULAR \$29.95
\$23.88

For The Tummy . . . Reg. \$1.79

MAALOX 99¢



200-COUNT
BAYER ASPIRIN
Regular \$1.73
\$1.23

Reg. 17c . . . Pint Size Plastic Bottle

ALCOHOL 14¢

Reg. \$1.45 . . . Gillette Double Edge

"SPOILER" BLADE 97¢

Regular \$1.00

SCORE Spray Deodorant . . . 63¢

WORLD'S LARGEST SELLING HAIRDRESSING



83¢

Reg. \$1.19
Family Size



NOXEMA SKIN CREAM
Regular \$1.10
77¢

STEREO TAPES
POLAROID CAMERAS
INSTAMATIC CAMERAS

Regular \$1.19
COLGATE 100 MOUTHWASH 77¢

Regular 99c
AQUA NET HAIR SPRAY 53¢

30-Gallon
30-gallon GARBAGE CAN \$2.88

Regular \$8.99
TRANSISTOR 10 RADIO \$6.99

TRIPLE D DISCOUNT CENTER

IN PARKER SQUARE

BURKBURNETT, TEXAS

All Insurance is the same 'til you have a claim

Burk Insurance Agency
 HOWARD CLEMENT
 303 Avenue C Phone 569-325



Norman Manley Wins Lions Club Scholarship

Norman Manley, graduating senior of Burkburnett High School, Class of 1969, has been recipient of the Burkburnett Lions Club scholarship to be used at the University of his choice.

The Lions Club Scholarship is presented each year to a deserving student who wants to further his education. Norman Manley is enrolled

for the summer Session at Midwestern University, and is working part time at Piggly Wiggly. He plans to continue this arrangement when he attends Midwestern University this fall. Norman, who was second vice president of the local chapter of the National Honor Society in his senior year, is a grandson of Mr. and Mrs. J. M. Pogue of Burkburnett.

CARD OF THANKS

Words cannot adequately express our humble gratitude for the generous kindness and expressions of sympathy extended to us by neighbors in our recent sorrow. God bless everyone.

The family of
 Mrs. Stella Chapman
 (Mr. and Mrs. W. W. Sims)



Doctor in the Kitchen

by Laurence M. Hursh, M.D.
 Consultant, National Dairy Council

JUNE DAIRY MONTH

Since June is Dairy Month it's apropos to talk about milk and its products, long favorites of the American consumer. The popularity of milk is deserved when one realizes the nutritional contribution it makes to our food supply. For example, dairy foods — one of the four basic food groups — give us:

- Over three-fourths of the national supply of calcium.
- More than a fifth of the protein.
- Over a third of the nation's phosphorus.
- More than two-fifths of our riboflavin supply.
- About a seventh of the vitamins, in our food plus many other vitamins and minerals.

And weight watchers will be interested to know that with all this nourishment, milk and its products give us only 10% of the calories in our national food supply.

Numerous studies in recent years have demonstrated that the dietary habits of individuals from nearly all age, sex, and income groups can be improved. Calcium and iron often are below recommended levels.

A recent U.S. Department of Agriculture report, for example, reads, in part:

"This report . . . reinforces the need for increased consumption

of milk and nonfat milk products, fruits and vegetables. In addition, it indicates the need for better food sources of iron, especially for infants, young children, and for girls and women."

In its annual publication, "How Americans Use Their Dairy Foods," the National Dairy Council reports: "Several new sales records for dairy foods were established last year. Sales of fluid nonfat and low fat milk, for example, were at an all-time high of 44.5 pints per person in 1968 — more than 5 pints above the 1967 sales level and more than double the per capita rate of sales in 1960.

"Consumer demand for cheese was at a record level also . . . to a high of 10.1 pounds per person . . .

"Sales of ice cream and other frozen dairy foods were consumed in a record-setting 21.6 quarts per person during 1968." Ice cream sales alone represented 15.6 quarts per person.

Butter remained unchanged at 4.9 pounds per person. Says NDC: "The long-term downward trend in per capita sales of butter appears to have leveled off." Fluid whole milk and fluid cream declined slightly. Sales of nonfat dry milk rose to 5.2 pounds per person. Consumer demand for cottage cheese remained constant at 4.5 pounds per person.

THAT'S A FACT

WHAT'S IN A NAME?
 WHEN AN INDIAN OF THE IROQUOIS TRIBE (BRITISH COLUMBIA), NEEDS MONEY HE BORROWS IT AND LEAVES HIS NAME AS COLLATERAL UNTIL THE LOAN IS REPAYED THE BORROWER IS NAMELESS!

DID YOU KNOW...
 THAT U.S. SAVINGS BONDS MAY BE REDEEMED FOR THEIR PURCHASE PRICE PLUS ANY INTEREST EARNED ANYTIME AFTER TWO MONTHS FROM THE DATE OF ISSUE? U.S. SAVINGS BONDS ARE NOT AFFECTED BY THE FLUCTUATIONS OF THE MARKET.

BIG CHEESE!
 THE LARGEST CHEESE EVER WAS MADE BY THE WISCONSIN CHEESE FOUNDATION FOR EXHIBITING AT THE NEW YORK WORLD'S FAIR. IT WAS A CHEDDAR THAT WEIGHED 34,591 LBS!

BUYING U.S. SAVINGS BONDS HELPS PROVIDE A BULWARK FOR OUR FREE ENTERPRISE SYSTEM!

you are cordially invited to the
FORMAL OPENING OF
Red River KOA Kampground
 Sunday, June 15, 1969, 1:30 P.M. TO 4 P.M.
 Located On Oklahoma Cutoff (Next To Oil Park Museum)



FREE PRIZES TO ALL
 BALLOONS FOR THE KIDDIES
 LITTER BAGS FOR EVERY CAR
 FREE COFFEE FOR EVERYONE
 FREE PEPSI-COLA FOR ALL

RED RIVER KOA KAMPGROUND
 Burkburnett, Texas
 Walter and Marge Doerre, Owners

W.M.S Ladies Meet Recently In Community Room

Twenty-one women of the W.M.S. of the First Baptist Church met in the Community Room of the Burkburnett Bank on Monday evening for their Royal Service Program. The meeting was opened by all members singing "Higher Grounds."

Mrs. R. P. Thaxton, president of the night W.M.S., conducted a short business meeting and asked Mrs. James Taylor to bring the "Call to Prayer." Mrs. Taylor read Psalm 42 and prayed for all Baptist workers and missionaries.

Mrs. Fred Hunt, mission study chairman, introduced the program on "Churches Ministering in the Community." Mrs. Hunt called on Mmes. C. B. Beldon and Ray Flippin to speak on Baptist Centers and Week Day Ministries. Mrs. Thaxton dismissed the meeting in prayer.

Members attending the meeting and enjoying delicious refreshments were Mmes. Jack Robinson, Fred Hunt, James D. Taylor, Claude Reed, Clifford Willmon, A. H. Lohofener, Howard L. McCrary, H. L. Lawrence, Buren King, Carl Miller, I. C. Evans, Howard L. Smith, H. S. Butts, A. C. Houser, Wayne Bowles, C. B. Beldon, R. P. Thaxton, Ray Flippin, and Misses Lois Reed and Hazel Wagoner. Mrs. Dyle Vaughn attended the meeting as a visitor.

PERSONALS

Mrs. Bernice Leggett of Wopella, Ill., is here visiting her daughter and husband, Mr. and Mrs. Charles Arthington, 1019 Frances St.

NOTICE

There Will Be No Bus Service
 To
First Baptist Church
 On
Sunday, June 15
 The Regular Schedule
 Will Be Resumed Sunday, June 22

Sunday, June 15th is that great day...
FATHER'S DAY!

Shirts & Shorts
 By Arrow and Hanes

Jump Suits . . . 10.95

Sweet Ties . . . 1.50 to 3.50

BVD Robes . . . 5.98-7.95

Windbreakers
 100% Nylon
 Ass't. Bright Colors
\$5.95

BVD Sta-Press SHORTY PAJAMAS \$3.99

Boat Oxfords and Canvas Casual Footwear \$3.50 - \$3.99

Men's Sport Coats . . . 32.50 to 37.50
Stevens Dress Straws . . . 2.99 to 6.95
Men's Bathing Shorts . . . 2.99 and 3.99
Hickock Belts . . . 2.50 to 3.50
Billfolds . . . \$4-\$5-\$6
Hickock Jewelry . . . 1.50 to 6.00
Interwoven Sox . . . 1.00
Sta-Pre's Walking Shorts . . . 4.98
Mock Turtle Knit Shirts 2.99 and 4.98
Haggard Slacks . . . 9.00 to 18.00
Men's Sta-Pre's Western Shirts . . . 5.95
Acme Cowboy Boots 19.95 to 26.50
Western Straws . . . 2.99 to 8.95

ATTEND THE BURK BOOMTOWN RODEO
 Thursday, Friday, Saturday, June 12, 13, 14

THE Manhattan
 BURKBURNETT'S LEADING DEPT. STORE

We Give S&H Green Stamps

Free Gift Wrap

BLOCK AND PACKAGED ICE

Not Mill Run Packaged Ice, But Screened To Remove Snow and Packing
 Manufactured By People's Ice Co. of Wichita Falls

AVAILABLE NOW AT
KOA KAMPGROUND
 Located East of Oil Park Museum
 On Oklahoma Cutoff

This Distinctive Insignia Symbolizes the Finest in High Quality Campgrounds

Kampgrounds of America, Inc.
 Located East of Oil Park Museum
 On Oklahoma Cutoff
 Owners: Marge and Walt Doerre, Ph. 817-569-3081

EVERYTHING'S OK WHEN YOU TRAVEL KOA

For your comfort, convenience, and enjoyment your Red River KOA Kampground offers you . . .

- Attractive Location
- Adequate Spacing
- Showers
- Rest Rooms
- Laundry Facilities
- Staple Groceries
- Sundries
- Adequate Lighting
- Recreational Areas
- Level Parking
- Clean Grounds
- Insect and Weed Control
- Mail and Messenger Service
- Block and Crushed Ice
- Coupon Books Available
- Briquettes
- Telephones
- Utilities
- Bulletin Boards
- Charcoal Grills
- Picnic Tables
- Camp Supervision
- Area Activities and Tourist Information
- Sanitary Dump Station
- Nationwide Reservation System

First Methodist Church

Avenue C and 4th Street
Phone 569-3778
Rev. Don Youngblood, Minister
Sunday School — 9:30 a. m.
Morning Worship Service — 10:35 a. m.
Methodist Youth Fellowship — 5:45 p. m.
Evening Worship Service — 7:00 p. m.
Bible Study — 7:30 p. m., Wednesday.
Nursery provided for all Church services.
Kindergarten — Week Days, 8:30 — 11:30 a. m.

Calvary Baptist Church

College and Ave. B
Ray C. Morrow, Pastor
10:00 a. m., Sunday School.
An Independent Southern Baptist Church.
We use the Bible as our only literature.
11:00 a. m., Song, Preaching Service.
7:00 p. m., Young Peoples Services.
7:30 p. m., Night Preaching Service.
WEDNESDAY NIGHT — 8:45 p. m., Teachers' Meeting.
7:30 p. m., Prayer Meeting.

First Baptist Church

DEVOL, OKLAHOMA
Sunday School, 9:45 a. m.
Morning Worship, 11:00 a. m.
Training Union, 7:00 p. m.
Evening Worship, 8:00 p. m.
Prayer Meeting, Wednesday, 7:30 p. m.
Intermediate and Junior G. A. each Tuesday evening at the Church, 4:00 p. m.
Sunbeams at Church Tuesday evening at 4:00 p. m.

Randlett Baptist Church

RANDLETT, OKLAHOMA
Jerry Couch, Pastor
SUNDAY —
Sunday School, 9:45 a. m.
Morning Worship, 11:00 a. m.
Training Union, 6:30 p. m.
Evening Worship, 7:30 p. m.
Wednesday Evening Prayer Service, 7:30 p. m.

Episcopal Church Of St. John The Divine

1000 S. Berry St.
853-3376 723-7418 569-3258
The Reverend R. E. McCrary, Vicar
SUNDAY —
11:00 a.m. Sunday School
12:00 p.m. Choral Holy Communion
7:00 p.m. EYC
THURSDAY —
5:00 p.m. Acolyte Practice
6:00 p.m. Holy Communion
7:30 p.m. Christian Orientation

the RIGHT LIGHT

THE PROFESSIONAL PHOTOGRAPHER gives careful thought and study to lighting his subject. Contrasts must be right and reflections must be right to achieve the best effects.

Individuals' lives reflect how they think and what they believe. Our lives count most, when we attend church regularly and walk in the light of the Lord.

EVERYONE IN THE CHURCH
THE CHURCH IN EVERYONE

The Church is God's appointed agency in this world for spreading the knowledge of His love for man and of His demand for man to respond to that love by loving his neighbor. Without this grounding in the love of God, no government or society or way of life will long persevere and the freedoms which we hold so dear will inevitably perish. Therefore, even from a selfish point of view, one should support the Church for the sake of the welfare of himself and his family. Beyond that, however, every person should uphold and participate in the Church because it tells the truth about man's life, death and destiny; the truth which alone will set him free to live as a child of God.

© Coleman Adv. Serv.

Church Of The Nazarene

Matt at Holly
R. B. Fitzgerald, Pastor
Sunday School, 9:45 a. m.
Morning Worship, 11:00 a. m.
Young Peoples Service, 6:15 p. m.
Junior Society, 6:15 p. m.
Evening Worship, 7:00 p. m.
Wednesday Prayer Service, 7:30 p. m.

Assembly Of God Church

Corner of College and Ave. E
Rev. J. W. Hocker, Pastor
Sunday School, 9:45 a. m.
Morning Worship, 11:00 a. m.
Evening Worship, 7:15 p. m.
Women's Missionary Council, Tuesday, 2:00 p. m.
Prayer Meeting, Wednesday, 7:30 p. m.

Trinty Lutheran Church At Clara

(Missouri Synod)
8 Miles West On Hwy. 240
Walter Strelcher, Pastor
Sunday — 9:00 a. m., Sunday School and Bible Study.
10:00 a. m. — Worship Service.
Wednesday — 6:30 to 8:30 p. m., Weekday School.
1st and 3rd Sunday 5 p. m. Walther League Meeting.

First Baptist Church

Lamoin Champ, Pastor
Bill Snough
Minister of Music and Youth
Corner Avenue D and 4th
Sunday School — 9:30 a. m.
Morning Worship — 10:40 a. m.
Training Union — 5:30 p. m.
Evening Worship — 6:30 p. m.
WEDNESDAY —
Teachers and Officers Meeting — 6:30 p. m.
Prayer Meeting — 7:30 p. m.

Cashion Baptist Church

Wichita Highway
Rev. Henry Ditmore, Pastor
SUNDAY —
Sunday School, 9:45 a. m.
Morning Worship, 11:00 a. m.
Evening Worship, 7:00 p. m.
TUESDAY —
WMU — 9:30 a. m.
WEDNESDAY —
Hour of Prayer, 7:00 p. m.

Janlee Baptist Church

1004 Janlee Drive
(Opposite Burkburnett High School)
Don Lewis Burks, Pastor
Sunday Morning, 9:45 a. m.
Sunday Evening, 6:30 p. m.
Wednesday Evening, 7:30 p. m.
(Nursery provided during all services)

Church Of God

Rev. Aaron Farrar, Pastor
10:00 a. m., Sunday School.
11:00 a. m., Morning Worship.
7:00 p. m., Evangelistic Service.
7:30 p. m., Wednesday, Young People's Endeavor.
7:30 p. m., Friday, Prayer Meeting.

First Church Of Christ Scientist

2156 Avenue H
Wichita Falls, Texas
Sunday School for children under 20 years of age, 11:00 a. m. in the Church Edifice.
Nursery.
Services at 11:00 a. m.
Wednesday evening services, 8:00 p. m.

NOTICE

Burkburnett residents are invited to attend the First Presbyterian Church in Grandfield, Oklahoma.
Sunday School, 10:00 a. m.
Morning Worship, 11:00 a. m.
Wednesday Bible Study, 7:30 p. m.
Rev. Campbell, B. Long, Pastor.

First Christian Church

Alva T. Browning, Minister
2nd Street and Avenue D
Phone 569-2062
Res. Phone 569-1236
SUNDAY —
9:45 a. m., Church School.
10:50 a. m., Morning Worship.
5:45 p. m., Youth Fellowship.
7:00 p. m., Evening Worship.
WEDNESDAY —
7:00 p. m., Choir.

Grace Lutheran Church

Third St. and Ave. E
Philip M. Otten, Pastor
The Church of the Lutheran Hour, TV's, "This Is Life."
Sunday, 9:15 a. m., Sunday School and Bible Classes.
Worship Service at 10:30.

Pentecostal Church Of God

Berry Street
Rev. Herman Harrison, Pastor
Sunday School, 9:45 a. m.
Morning Worship, 11:00 a. m.
Sunday Night Evangelistic Service, 7:00 p. m.
Saturday Night Fellowship, 7:30 p. m.

St. Jude

Catholic Church
Father Richard Beaumont, Administrator
600 Davey Dr. 569-1222
Sunday Mass 11:30 a. m.
Confessions, Saturday 4:5 p. m.

Church Of Christ

RANDLETT, OKLAHOMA
Raymond McCaghen, Minister
Home-Office Phone Ly 9-2893
WORSHIP SERVICES
SUNDAY —
10:00 a. m., Bible Study.
10:45 a. m., Morning Worship.
6:00 p. m., Evening Worship.
WEDNESDAY —
7:30 p. m., Bible Study.

Church Of Christ

1st & Ave. C
Ed Morris, Minister
Bible Study Sunday, 9:45 a. m.
Worship, 10:45 a. m.
Young People Class 5:00 p. m.
Worship, 6:00 p. m.
Bible Study, Wednesday, 7:30 p. m.
Ladies' Bible Class, Wednesday, 10:00 a. m.

Central Baptist Church

814 Tidal Street
REV. MAX DOWLING
Sunday School, 9:30 a. m.
Morning Worship, 10:45 a. m.
Training Union, 6:00 p. m.
Evening Worship, 7:00 p. m.
Wednesday Night, Prayer Service, 7:00 p. m.

THIS SERIES OF CHURCH ADS IS BEING SPONSORED BY THE UNDERSIGNED INDIVIDUALS AND BUSINESS INSTITUTIONS:

Hofacket Humble Ser. Sta.
Road Service — Mechanic On Duty
We Give S&H Green Stamps
College and Ave. D Phone 569-8129



THE BURKBURNETT BANK
MEMBER OF FBIC

WOLFE FORD CO.

Complete Service and Sales
Sheppard Road
Phone 569-2275

AT PIGGLY WIGGLY

Parker Plaza
Burkburnett
Greater Variety
Lowest Prices
We Give S&H Green Stamps

BOOMTOWN BOWL

John Powell, Manager
AMF "Magic Triangle" Pinspotter
Snack Bar—Nursery Phone 569-3340
1101 Wichita Highway



Working to make our service ever more helpful
BILL VINCENT, Manager

COMPLIMENTS OF
THE FAMOUS DEPARTMENT STORE



BURKBURNETT FLORIST
Member Florist Telegraph Delivery
Mr. and Mrs. L. V. Richards
415 So. Ave. B Phone 569-2281

CLIFF WAMPLER

For Insurance Of All Kinds
208 N. Ave. D. Phone 569-1461
Burkburnett, Texas

GREENWAY FINA STATION

448 S. Avenue D Phone 569-2942
Burkburnett, Texas

BRING A FRIEND
WITH YOU
THIS SUNDAY



ATTEND CHURCH
THIS SUNDAY

E. E. Bangs, Mgr. Ph. 569-2201

TWILITE INN MOTEL
Sheppard Road, Burkburnett, Tex.
"Not The Biggest — But The Best"
REASONABLE RATES

UNITED SUPER MARKET

Kenneth Palmer, Manager
Wichita Highway and Tidal Street

THIS SPACE
FOR SALE
CALL 569-2191



We Give S&H Green Stamps

ROARK OFFICE SUPPLY

Everything for the office worker
Western Union Telegraph Service
305 1/2 West Third Phone 569-3741

Lloyd Clemmer Lumber Co.

Your Business Appreciated
See Us For Prices Before You Buy
Okla. Cutoff Phone 569-2911

Triple D Discount Center

E. V. Van Bebbler, manager
"Shop and Save the Triple D Way"
In Parker Plaza

Monaghan Furn. & Apl. Co.

TV's G. E. Appliances
Furniture Color Stereos
200 East 3rd St. Phone 569-3112

Ranch House Restaurant

Open 6 a. m. to 10 p. m. —
Sunday thru Thursday
Open til Midnight Friday & Saturday
903 Sheppard Road

JUNIOR HIGH HONOR ROLL

6th SIX WEEKS

6-1 PATE

Cretia Arthur
Susan Brown*
Robert Felty*
Scottie Simpson
Elaine Ellis
Phillip January

6-2 HENDERSON

Patti Darden
Tracy Jancke
Rice Schroeder
Mark Cummings

6-3 ALBRIGHT

Jerry Beckett
Alfred Claycamp
Joanna Dale
Lynn McGraw
Fawn Taylor

6-4 SIMON

Debbie Dempsey
Teresa Dilks
Mary Smith
Rhonda Ward

6-5 RAY

Dennis Rivard
Steven Webb

6-6 MORTON

June Hunter
Gwen Rogers
Briekley Sjolin

6-7 PAWLOSKI

Marty Hudson
Colleen Murphy
Robbie Pemerton
Mark Rorabow
Tanya Stephens
Cynthia Sullivan
Janette Wilson

6-8 BAGGS

Connie Hale
Louis Kriedler
Patti Scobee
Gregg Swaim
Debbly Wood
Bill Savage
Patty Todd
Karen Whitaker
Debra Bowers
Lewis Burks
Carla Largin

7-1 McDERMID

Ramona Oeschlagar
Sandra Teeter

7-2 SIMONSON

Deborah Ainsworth
Edward Alexander*
Carol Bratina
Katherine Casburn
David Robinson
David Todd*

7-3 GORDON

Deborah Cooper
Gail Cullison
Gary Dilbeck

7-4 HOGUE

Dennis Barnes
Cheryl Mead
Linda Pearson
David Ruetsch

7-5 SJOLIN

Marsha Milan
Dean Pace
Margaret Smith
Leon Ward
Linda Watts
Bobbie Winfrey

7-6 ENGLISH

Susan Briggs
Darrell Coleman
James Grimmer
Barbara Brown
Stewart Tomlinson

7-7 NESBITT

Allen Cole*
Debbie Eubank
Paul Fowler
Michael Lang
Georgianna Neal*
Christina Padilla
Nancy Peters
Debra Searcy
Zack Stockett
Robin Davidson

7-8 DUKE

Greg Cox
Robby Reasoner
Becky Tate
Benny Wilkinson
Robin Wilkinson
Thomas Harvey

7-9 VEACH

Dwight Caldwell
Mary Grandy
Donna Hooks
Susan Houpt
Stacy Muller
Stacey Soper
David Hargrove

7-10 BUCK

Shelly Moore
Chris Strayhorn
Kenneth Schroeder

8-1 COST

John Powell*
Terri Shepard*
Terri Taylor*

8-2 REED

Diana Awtry
Paula Merchant
Morgan Moore*
Debra Smith
Kandra Stalaker
Randy Westcott

8-3 RATLIFF

Susan Barad
Mike Bennett
Donna Gantt
Janet Meador



WALK AND BE HEALTHY

Children's Foot Health Stressed During Foot Health Week

The living room floor might be a safe place for youngsters learning to walk, but it is not so good for their feet, says a Chicago podiatrist, stressing the importance of foot health for children during Foot Health Week, May 9-16.

In fact, walking on flat, unobstructed surfaces could be largely responsible for pigeon-toed and slow-footed gaits in children, according to Dr. Philip R. Brachman, professor of podopediatrics and director of the Department of Orthopedics at the Illinois College of Podiatric Medicine.

The varied terrain which tended to develop equally all muscles of the locomotive system has been covered up and smoothed over with flooring, sidewalks, asphalt and other flat surfaces of "civilized" society, Dr. Brachman asserted.

This civilizing process, he said, has actually gotten to the point where parents possibly should use some type of restraining device for all infants and young children to train them in walking.

"By using such restraining devices on a temporary basis, we can correct inordinate patterns of severe intoeing and outtoeing, and we can create better balance for those chil-

dren who lack proper coordination," Dr. Brachman suggested.

A persistent coordination problem which hampers a child learning to walk often may be traced back to peculiar crawling patterns in the pre-walking phase, the podiatrist continued.

The parents of a child who crawls backward or sidewise think it cute," he said, "but there may be some obstruction in the development of the motor system that makes it necessary for the infant to move about in this manner."

"When a child crawls properly, he develops the muscular power and coordination that will enable him to walk better. Children should crawl normally," Dr. Brachman said, "anywhere between their fifth and ninth months with the walking phase beginning between the 12th and 14th months."

"Children who take an additional month or two before they begin to walk should not be considered abnormal in most instances," Dr. Brachman concluded. "However, if the child is still not walking by the 16th month, an examination should be conducted to determine why walking has been delayed."

Janna McGee
Stephanie Muller
Brenda Swinford
Dan Walker
Pearl Dahmen
Valeri Schenerverk

8-4 MATHERLY

Lee Cray
Rebecca Jones
Janette Maek*
Edwena Wood
Mary Boudreaux

8-5 CARSON

Sue Hasbrouck
Pam Hensley
Ranette Hudson
Mike Wyatt

8-6 BARON

Rosalie Bills
Stan Bohenek
Debbie Bryant
Kathy Derland
Monica Hubbard
Mark Tucker
Theresa Hargrove

8-7 MANLEY

Phyllis Gremillion
John O'Malley

8-8 BAGGS

Donna Bryant*
Carlene Cullison
Greg Marsh
Scott Smitch

8-9 GARD

Debra Bryan
Patti Fleming
Teri Garland*
Karen Greer
Debra Kekuna
Shelley Wood
Vicki Hess

8-10 RADKE

Debbie Deel
Judy Frye
Pam Glover
Joseph Odell
Sedelta Verble

*Denotes Students With Straight A's.

Welcome To These NEWCOMERS To Burkburnett

Larry Glidewell
W. H. Parent
B. F. Vivian
D. G. Worthington
Virgil B. Ward
Raymond Reaves
Claude B. White
Albert C. Bolbach
J. S. Gay
Vernon D. Nelson
Robert W. Ettor

Use Classified Ads . . . They Get Results

MRS BAIRD'S



The hand-twisted loaf

Summer YOUTH ACTIVITIES CALENDAR



Texas State Bicycle Inspection

Will be held Saturday, June 21st, at 9:30 A.M. on the Methodist Church parking lot. The inspection will be under the supervision of the Chief of Police Abbott.

Valuable prizes will be presented to the cyclists that excel in riding ability, courtesy and safety conditions of their cycle.

Rules for safe driving and a film will be presented at the Town Hall to all interested.

Qualified judges will be present to award valuable prizes that will be furnished by local retailers of bicycles and parts.

Presented As A Public Service By

FIRST SAVINGS & LOAN ASSOCIATION

Serving the Saver and the Home Owner

FIRST SAVINGS & LOAN ASSOCIATION OF BURKBURNETT ANNOUNCES A —

NEW DIVIDEND POLICY

EFFECTIVE JUNE 1, 1969

Regular Passbook Accounts

No Minimum Is Required on New Accounts Or Additions to Present Accounts to Continue Earning 4.75 Per Cent Paid or Compounded Quarterly

Time Certificate Accounts

\$1,000 AND ABOVE WILL NOW EARN

5.25 PER CENT

Paid On Quarterly Basis . . . No Insured Institution in the Nation Can Offer You A Higher Rate Than This.

Free Flatware Set

During June and July, For Each New Account Of \$250 Or An Addition Of \$250 or More to Your Present Account Will Entitle You to a 16-Piece Set of Stainless Steel Flatware. (Limit, One Set Per Account) . . . OR . . . You May Choose 750 S&H Green Stamps Instead

Savings In By The 10th Earn From The 1st

Don't Watch Us Grow . . .

COME AND GROW WITH US

FIRST SAVINGS & LOAN ASSOCIATION

SERVING THE SAVER AND THE HOME OWNER OF BURKBURNETT, TEXAS

314 East Third Street

Phone 569-2205



Buy Auto Liability From The Travelers Insurance Co.

IT DOESN'T COST ANY MORE TO
BE SURE
HOWARD CLEMENT, Agent
303 Avenue C Phone 569-3333

CLASSIFIED RATES
5c per Word 20c per line
60c Minimum Charge

FOR RENT

CHECK YOUR TV TUBES
FREE AT BEAVER FURNI-
TURE, 222 E. 3rd Phone 569-
2801.

**Burkburnett
MOBILE MANOR**
Now renting spaces at \$25.00
per month. Patios. Fenced
yards.
Call OSCAR McBRIDE
Phone 569-3105
40-2C

FOR RENT — 2 bedroom fur-
nished house. 903 N. Ave. C.
Pho. 569-1240. 40-11P

FOR RENT — Unfurnished 3
bedroom house. 113 E. 6th. \$45
per month. Call LY 9-2807, Ran-
dlett. 40-11C

FOR RENT — 2 bedroom fur-
nished house. Can be seen Sat-
urday. Call 569-3012. 40-11C

FOR RENT — Unfurnished 3
bedroom house. 2 baths. Vacant
mid June. 1110 Shady Lane.
\$110.00 mo. Pho. 569-1009. 40-11C

FOR SALE

FOR SALE—Tropical fish and
supplies. Bula's Pet Shop, 1008
Evelly Loop. Open 10-10. Call
569-1110. 8-CZ

USED CARS
Buy . . . Sell . . . Trade
WRECKER SERVICE—
24 Hours A Day
ELDON MORRIS
404 E. 3rd Street
569-8102 PHO. 569-2325
27-CBZ

**CALL
569-1461**
FOR
Auto — Business
Home — Life
INSURANCE
Cliff Wampler
203 N. Ave. D

BEST THINGS IN LIFE
BOB E. CARTER
419 Ave. C
Phone 569-2902
Burkburnett, Tex.
State Farm Life Insurance Company

FOR SALE — Comfortable
older home. 3 bedrooms. Large
kitchen. Garage. Storage room.
Nice, fenced yard and garden.
Allen's Real Estate. Pho. 569-
2755 or 692-0911. 33-CZ

GARAGE SALE
(Four Families)
FRI, SAT, SUN
End tables, coffee tables,
small electric appliances, ce-
ramics, clothing and other
misc. items.
503 Harriett
40-11C

FOR SALE or LEASE — Vel-
ma's Cafe, 212 E. 3d. St. Doing
good business. Selling due to
illness. 40-11C

FOR SALE

FOR SALE
FOR QUICK SALE . . .
LIST YOUR PROPERTY
WITH US!
We Buy Equities!

NOTHING DOWN . . .
THREE BEDROOM FRAME.
Total price \$3,000.00. Only
\$45.00 monthly.

TWO LOTS . . .
100 x 150 FEET. West College
St. Total price only \$2,000.00.

MIMOSA BEAUTY . . .
THREE BEDROOM BRICK.
Wall to wall carpeting. 2
baths. Spacious paneled fam-
ily room — electric kitchen.
Central heat and air condi-
tioning. Double garage. Fen-
ced. Immediate possession.

NEAT 1 BEDROOM HOME
ATTACHED GARAGE. Fen-
ced. Total price only \$3,200.
Vacant.

DUPLEX . . .
1 BEDROOM EACH UNIT.
Total price only \$3,750.00.
Vacant.

\$350.00 DOWN . . .
ASSUME LOAN. \$71.00 mon-
thly. Total price only \$8,500.
3 bedroom frame. Spacious
kitchen. Built-in range. Quick
possession.

Jo Smith Realty
Phone 569-3490
**VA MANAGEMENT
BROKER**

**Summer
Chain Link
Fence Sale**
We will not be undersold
**QUALITY
FENCE**
Construction Co.
PHONE. 569-3995

FOR SALE OR TRADE

Three bedroom brick
home. Den. 1½ baths.
Central heat and air
conditioning. Cellar, dou-
ble garage, beautifully
landscaped yard. Tool
shop. Garden. 2½ acres.
Pho. 569-2206
After 6 p.m. Call
560-2724
40-CZ

569-2191 For Quality Printing

FOR SALE

FOR SALE
DO YOU WANT TO SELL
YOUR PROPERTY?
I NEED LISTINGS ! ! !

MEADOW DRIVE . . .
Redecorated large 2 bedroom
Home. Carpet. Floor furna-
ce. 2 car garage. Fenced.
\$7,000.00.

THREE BEDROOM BRICK . . .
Central heat. Carpet. 1½
baths. Built-ins. Fenced yard.
Near schools. \$74.40 per
month.

REAL CLEAN . . .
Three bedroom brick. Panel
and carpeting in living and
dining room. Built-in kitchen.
1½ baths. Hardwood floors.
Fenced.

THREE BEDROOM BRICK . . .
All electric kitchen. Dish
washer. Disposal. 1¾ baths.
Utility. Central air-heat. Cel-
lar. Fruit trees. High fence.

**SPACIOUS 3 BEDROOM
BRICK . . .**
In beautiful green acres.
Must see to appreciate.

**THREE BEDROOM OLDER
HOME . . .**
On ½ acre. Room for 2 mo-
bile homes.

**HAVE SEVERAL OLDER
HOMES FOR SALE AT
VERY REASONABLE
PRICES**

Loise Bean Realty
569-3986 PHONE 569-2321

**MONUMENTS
ENDERSON MONUMENT CO.**
A Manufacturer since 1906
001 Jacksboro Hwy.
Wichita Falls
Pho. 767-7750 Res. 767-1064
A monument at a price any
Family can afford
Rock of Ages—Georgia Marble
Stone Eternal
8-CZ

GARAGE SALE
STARTS FRIDAY TO ????
4000 CFM, 2 speed evapora-
tive air conditioner, used 5
months; darling white with
blue bunk beds; nice rocking
chair; many good clothes of
all kinds; and lots of other
misc. items. Also Hamsters.
801 MIMOSA
40-11C

FOR SALE — Well built 2
wheel trailer with lights and
1969 tags. Call 569-1391. 40-11P

FOR SALE — Girls 20" bi-
cycle. Good condition \$15.00.
216 Beech. 40-11P

**ROLLS, DONUTS, TURN-
OVERS** — Fresh daily. Henry's
Bakery, 311 E. 3rd. St. Pho. 569-
3201. 40-11C

FOR SALE — New Carrier
refrigerated air conditioner. 1½
ton. Reasonable price. Call 569-
2206. After 6 p.m. call 569-
2724. 40-CZ

FOR SALE — Dewberries and
blackberries. J. H. Enderli, West
3rd St. Pho. 569-2193. 40-21P

FOR SALE — 1964 Pontiac
Bonneville, 4 door. Radio, heat-
er, factory air, power steering
and brakes. Good condition. \$300
equity, assume payments of
\$54.00 monthly. Call 569-1489 af-
ter 3:00 p.m. 40-11C

FOR SALE — Prizes galore
at First Savings & Loan Associa-
tion. Priced to sell since you can
win just by registering at First
Savings & Loan, 314 E. 3rd St.
40-41C

FOR SALE

FOR SALE
Putting YOU first
Makes Us First

EXCELLENT LOCATION
and excellent buy on spa-
cious 3 bedroom home.
Nice and clean. 2 full
baths. Pretty kitchen with
built-in dishwasher. Sepa-
rate utility. Quick posses-
sion.

\$500.00 MOVES YOU INTO
3 BEDROOM, asbestos sid-
ing home. Corner lot. Only
\$59.00 monthly. Available
Aug. 1.

**B. H. AND MARGARET
ALEXANDER**

**REAL ESTATE
BROKERS**

901 Sheppard Road
Phone
569-2831 569-3434

FOR SALE — 3 G.E. refriger-
ated air conditioners, 5,000,
6,000, and 12,000 BTU. Pho. 569-
2728. 40-11C

SERVICES

CONCRETE WORK
Driveways, curbs and gutters,
Patios, Sidewalks,
Also Yard Leveling
Free Estimates
KENNETH BENSON
Phone 569-1387
27-11C

SCULPTRESS figure control
and custom fit bras. Mattie Bat-
es. Pho. 875-2939, Walter, Okla.
35-81P

BEWARE
Be on the lookout for
Bagworms and other Insect
Damage Around Your
Residence
FOR SPRAYING CALL
Gad Garland
Pho. 569-1517
35-CZ

For The BEST In
PEST CONTROL
Call
ARLIS KEY 569-3265

Key Pest Control
501 E. 6th. St.
Burkburnett, Texas
30-CZ

**DUMP TRUCK
HAULING**
Top Soil, Fill Sand,
Concrete and
Driveway Material
LEO BRYANT
PHONE 569-3704
Or 322-9132
609 Tidal, Burkburnett
51-CZ

POODLE GROOMING. Free
pickup and delivery. Pho. 569-
2730. 22-CZ

SERVICES

ROTARY TRACTOR MOWER.
Yards leveled. Light hauling.
Plowing. Trees removed. A. L.
Elliott, 811 N. Ave. E. Pho. 569-
1310. 39-11P

SERVICES — Will keep chil-
dren in my home or yours,
night or day. Qualified L.V.N.
Pho. 569-1722. 39-21P

SERVICES — Will babysit in
my home for working mother.
Experienced. Pho. 569-1285.
39-21P

POODLE SHOP — All types
clips for poodles at reasonable
prices. Tick and flea dip free
with each grooming during June.
Call 569-1208 for appointment.
39-41C

**HOUSER'S
MOWER SHOP**
Tune-up and repairs on all
makes mowers and small
engines
Crankshafts straightened
507 E. 4th St. Burkburnett
24-CZ

ROOFING & ROOF REPAIRS
Residential and Commercial
Guaranteed Work
Free Estimates
SAM CASH
Phone 569-1368
33-CZ

HANNAH'S husband Hector
hates hard work so he cleans
the rugs with Blue Lustre. Rent
electric shampooer \$1. Wackers,
416 S. Ave. D. 40-11C

FOR better cleaning, to keep
colors gleaming, use Blue Lus-
tre carpet cleaner. Rent electric
shampooer \$1. Corner Drug
Store, 320 E. 3rd. St., Burkbur-
nett. 40-11C

WANTED

WANTED
—Good Used Furniture
—Used Air Conditioners
—Used Gas Ranges
Will Buy or Take On Trade
Bill's TV & Furn.
Phone 569-3651
27-CZ

HELP WANTED — Need good
friendly Burkburnett people to
win our prizes to be given away
during our June Anniversary
Celebration. Register at First
Savings & Loan Association, 314
E. 3rd. St. 40-41C

NOTICE

**RODEO
DANCE**
SATURDAY, JUNE 14
10:30 p.m.—2:00 a.m.
American Legion Hall
Burkburnett, Texas
Country and Western
Music
Admission—
\$2.00 per person or
\$3.00 per couple
Everyone is invited to
attend
40-11C

LOST

LOST — White and tan 13
year old female Chihuahua named
Lady. Disappeared from 503
E. 4th St. about 8:30 p.m. Tues-
day. Call 569-2360. 40-11P

Delivery Service On Prescriptions
Or Drug Needs — Phone 569-2251
(After 8:00 p. m. Call Joe R. Gillespie, 569-1898 or
Cliff Cannon, 569-2427)

**CORNER
DRUG PRESCRIPTIONS STORE**
320 East Third St. Phone 569-2251

Top Clowns Set For Burk Rodeo

Two of the most talented ro-
deo clowns in the state will be
in action here for the Burkbur-
nett Rodeo this weekend.
They are Buzz Crenshaw of
Fort Worth, and Howard Step-
henson of San Antonio, Bill
Yates, stock producer, reported.
The clowns, while adding a
bit of spice and humor to the
show, also perform a valuable
service in distracting animals
from a fallen rider.
Announcer for the shows will
be Johnny Manns of Fort
Worth.
Judges will be Ronnie Camp-
bell of Saginaw and Phillip Co-
zy of Burkburnett.
The show will be held Thurs-
day, Friday and Saturday nights
in Morgan Stadium, beginning
at 8 p.m.

New Church Sets Open House Sun.

Open house will be held at
the re-organized Church of
Jesus Christ of Latter Day
Saints in Wichita Falls Sunday.
The new church will open for
the open house from 11 a.m. to
5 p.m.
E. D. Potter of Burkburnett
is pastor.
Guest speaker at the 11 a.m.
services will be Melvin Ritten-
house, district president, of
Woodward, Okla.
Refreshments will be served
until 5 p.m.
Evening services will be at
7:30 p.m. The church is located
at 611 North Beverly.
Members of the congregation
invite the public to attend the
services to hear the distinguish-
ed speaker, and to attend the
open house.

Mr. and Mrs. Gary Nardin of
Houston, Tex., spent several
days this last week visiting in
the home of Mr. and Mrs. Al-
fred Lange. Mr. Nardin is Mrs.
Lange's nephew.

Al/C Larry Lange and Al/C
Rex Simmons of Carswell AFB
in Fort Worth visited Mr. and
Mrs. Alfred Lange and Mr. and
Mrs. Joe Hull and Stephanie
over the weekend.



(Cancer, June 22-July 22)
The spoon chrysanthemum
is the flower of those born un-
der the sign Cancer, most
agree their birth-
stone, and emo-
tion their main
characteristic,
according to
FTD astrologers.
Cancerians
have a well-
developed protective streak,
and if female are instinctively
drawn to domes-
tic life. Male
Cancerians have
strong feelings
about preserving
the family unit
and home.
It's not at all
surprising that Cancerians
beautify their homes through-
out the year with colorful
flowers.
Cancerians are
protective and
tenacious, and
this is why they
must guard
against clinging
too tightly to
others for security.

Calendar of Events

JUNE 12, 13, 14 — Boom-
town Rodeo.
JUNE 13, Friday — Rotary
Club District Assembly.
JUNE 24, Tuesday — Instal-
lation of officers, Burkbur-
nett Rotary Club.

This Calendar of Events
Is Brought To You As
A Service Of
**THE
BURKBURNETT
BANK**
Member Federal Deposit
Insurance Corporation

Phone 569-1461
203 N. Ave. D
**BUSINESS
HOME
AUTO**
Cliff Wampler
General Insurance

Want Better Housing For Less Money?
Would You Like An Apartment With
Private Bath — Lavatory,
Commode and Tub ?
Large Kitchen With Re-
frigerator and Stove ?
Water, Sewer and Garb-
age Furnished ?
**And Would You Believe
Rents Start At . . .**
\$18.50 Mo.
And Up . . .
Based On Income
Burk Haven Homes
Burkburnett, Texas
R. E. Browning
569-2165—Phones—569-3211

•SELL•RENT•SWAP•HIRE•BUY•SELL•RENT•SWAP•HIRE•BUY•SELL•RENT•SWAP•HIRE•
LOW COST CLASSIFIED ADS GET RESULTS
•HIRE•BUY•SELL•RENT•SWAP•HIRE•BUY•SELL•RENT•SWAP•HIRE•BUY•SELL•RENT•