

HISTORY

Touch Of History

--See Page 3

YOUTH

Youth Exhibit Pride

--See Below

LOCAL

Hospital Survey Page

--See Page 7

Preman Company
Box 68
Manmouth, Ill. 61462

WEATHER

June 10	76	57	.13
June 11	84	59	.00
June 12	86	60	.00
June 13	89	58	.00

BAILEY COUNTY JOURNAL

'The Community Of Opportunity-Where Water Makes the Difference'



Vol. 25 No. 24

10 Pages Today

Published Every Sunday at Muleshoe, Bailey County, Texas 79347

20¢

Sunday, June 14, 1987

POSITIVE THINGS ABOUT MULESHOE

Muleshoe Youth Exhibit Pride In Their City

Art, Clean-Up, Clean Youth

Attest To Their Dedication

"Too many times, we are guilty of grouping people together without thinking," said Toni Eagle, manager of the Muleshoe Chamber of Commerce and Agriculture. "How many times have you said 'those kids tear up everything!' or 'those kids will never learn to take care of things!'"

Debbie Isaac

Leading Scorer

In AAU Game

Talk about living dangerously... and the Clovis Vets, an AAU State Tournament team will know just what you're talking about! In their opening stanza in the AAU tournaments on Thursday, the team almost saw a victory slip away.

Well, it all racks up this way! The Vets are made up of all-state and all-district basketball players from New Mexico and West Texas, including Debbie Isaac of Muleshoe.

And, not only that, the team is coached by Jerry Johnson, coach at Muleshoe High School. Despite nearly "losing it" to the Lubbock-Bryant team, the Clovis team came back with a "squeaker" 57-54 victory.

Debbie Isaac gave the team plenty to be happy about in the first half, lofting in 14 big ones for a Clovis team. Her points helped the Vets have a most comfortable 15 point lead at halftime. Coach Johnson said Isaac dumped into the basket in the first half on short jumpers and offensive rebounds.

Everything started turning around in the second half, when the Vets went "cold," missing shots, and the basket literally closed down on the team. Debbie Isaac became the contender, lofting in 12 points in the second half after scoring only two points in the first half.

With 11 minutes left to play, Lubbock first cut the lead to 10 points, then in the next nine minutes, pulled within one point of the struggling Clovis team.

Debbie Isaac hit a desperation 12-footer Cont. Page 6, Col. 2

"The young people of Muleshoe are citizens that we can be proud of. They have shown us that they care and are willing to work just as hard or even harder to help Muleshoe than some of the adults."

"The Chamber began a Clean-up Fix-up, Beautification project and the young people of Muleshoe responded," she added.

Mrs. Eagle explained how the fourth grade students turned out in force to clean up and plant flowers. "These students gave up a whole day to clean up and help Muleshoe, and they really WORKED," she emphasized.

The CofC manager went on to praise the cheerleaders, who painted a 'beautiful' mural downtown. "We can only guess the time that went into the planning and painting of this fantastic project," she said.

"The art department from MHS helped out greatly with painting of fire hydrants to help brighten Muleshoe," she added. "This bunch of kids could be seen at all hours of the day out planning and painting."

"We owe these groups of students a debt of gratitude. They have worked to help better Muleshoe and they have also set a standard for the rest of us to live up to," said Mrs. Eagle.

And, take a look at the SCAC youth, who work diligently, helping especially right now, with the Muleshoe Heritage Foundation.

"Take another look at our very successful YES summer work program for youth, she continued. "We, as adults, can take lessons from these young people on Muleshoe Pride..."

Continued Mrs. Eagle "While on the subject of young people, the Chamber would like to take time to brag on a group of young people that help us with all kinds of projects. These are our Ambassadors and Ambassadors," she added.

"The Chamber had four graduating seniors acting as Ambassadors, Tracy Long, Jana Brown, Susan Mendoza and Melissa Martel. Continuing to serve Muleshoe and the Chamber are Sergio Gonzales, Scotty Spies, Johnny Garcia, Deborah Lackey, Sue Haire and Elizabeth Posadas.

Cont. Page 8, Col. 3

around muleshoe

Navy Petty Officer 2nd Class Joe D. Briscoe, son of Kenneth and Ruth Briscoe of Muleshoe, twice came to the aid of Vietnamese refugees recently while participating in a combined naval exercise with the Royal Thai Navy in the Gulf of Thailand, aboard the destroyer USS Elliott, homeported in San Diego, as part of the Seventh Fleet.

The first incident occurred on February 25, 1987, when the Officer of the Deck observed a small vessel in distress. To aid their travel, the men of the Elliott provided the passengers with food, fresh water and other supplies.

A second incident occurred in the morning of February 27, 1987. The forward lookout spotted a small, overloaded vessel signaling Elliott. The vessel, with 17 people aboard, was not considered seaworthy. The refugees embarked with what few possessions they had and were transferred to United Nations authorities for resettlement.

A 1975 graduate of Muleshoe High School, he joined the Navy in December, 1986.

Included among students who were named to the 1987 spring semester Dean's Honor Roll at Eastern New Mexico University-Clovis, was Robert D. Green of Muleshoe.

Leslie Langfitt of Muleshoe, has been named to the Sul Ross State University Dean's List for the spring semester with a grade point average of 4.0.

She is the daughter of Herb and Pat Langfitt of Muleshoe.

Cont. Page 6, Col. 3



SIGNING A LETTER OF INTENT--Last Wednesday evening, a Muleshoe High School graduate, Norma Castorena, signed a letter of intent to attend Kansas Wesleyan College at Salinas, Kansas, on a track scholarship. On hand for the signing were from left, seated, MHS Track Coach Jerry Johnson, Norma Castorena, and Kansas Wesleyan Coach David Fritz. Looking on in the background are Norma's parents, Mr. and Mrs. Jesse Castorena.

Farm Bankruptcy, Programs Discussed By Bailey County ASC

With troubled times for farmers and ranchers, more and more appear to be turning to the bankruptcy courts to seek solutions to depressed crop prices, inflated farming costs and other expenses.

Danny Noble, county executive director of the Bailey County ASC office, has just released the following information, outlining the ASC's role once a bankruptcy action has

started:

Due to depressed economic conditions together with numerous other contributing factors, many ASCS producers have decided to seek the protection afforded by the federal bankruptcy laws. Others are now pondering if they should make the same decision.

Over the past four years, ASCS has become increasingly involved in the area of bankruptcy. It continues to receive much criticism for the way in which bankruptcies are handled. This letter is written to inform our producers of the procedure necessary for county offices to follow when producers become involved in bankruptcy proceedings. This procedure is national policy, which means it is directed by our Washington Office. We cannot change or deviate from the policy; we must follow it.

When a county office becomes aware an ASCS producer has filed a bankruptcy petition, all program activity involving that producer, such as issuance of program payments, loan redemptions / issuances, etc., are suspended. Washington policy directs county offices to seek legal advice from the Office of General Counsel (government attorneys) before any action is taken to disburse payments loans, etc. A copy of the bankruptcy petition must be obtained by the county ASCS Office and provided to the ASCS State Office together with all ASCS program documentation involving the bankrupt producer. Many payment decisions are made at the State ASCS level. Cases requiring preparation of legal documents on behalf of ASCS or CCC are referred to our Office of General Counsel in Temple, Texas. The automatic stay that goes into effect when a bankruptcy case is filed prevents ASCS/CCC from conducting business-as-usual with the debtor.

In Chapter 11, 12 and 13 bankruptcy cases, an Authorization to Participate In Federal Farm Progress, signed by the bankruptcy judge is needed, before any pending program payments, if due the producer, can be issued. This Authoriza-

tion also allows participation in the CCC loan program. This form is available in the local ASCS Office.

Since ASCS may not become aware of a bankruptcy filing for many months, it is to the producer's advantage to inform the County ASCS Office when a bankruptcy petition has been filed. This will allow county offices to begin the process they are directed to complete. In this respect county offices can be of better service to the producer if they are aware a bankruptcy has been filed.

The State Office and the County Offices are inundated with telephone calls and letters from bankrupt producers, their attorneys, financial consultants, etc., demanding certain actions to be taken on bankruptcy cases. It is difficult to process the volume of cases being

Cont. Page 6, Col. 1

Local Pony League Team Still Leads

In an exciting double header Tuesday night, despite being behind in each game, the Muleshoe Pony League team came out the winner in each game with Friona Bi-Wize, widening their season record to 5-0, still the only undefeated team in the league.

In the first game, it was Muleshoe 12 - Friona Bi-Wize 7, although it took the Muleshoe team nine runs in the fourth inning to nail down the victory. The team did not bat in the fifth inning.

Muleshoe trailed by two after the first inning, came back with three in the second for a narrow, 3-2 lead; in the third, Bi-Wize widened up the score to 3-5; and scored two runs to nine for the Muleshoe team in the fourth.

Winning pitcher was Larry Gonzales, and leading hitters were Larry Gonzales, Hector Flores, Juan Perez and Ricky Flores.

Taking the field for the second game, the Muleshoe team started off leading after the first inning by 3-2; in the second, they scored three more runs for a very comfortable 6-2 lead. The Muleshoe Pony League failed to score in the third, and the Friona Bi-Wize team scored one run. Going through the fourth inning, neither team scored, with Muleshoe falling behind Friona Bi-Wize team scored one run. Going through the fourth however, the Muleshoe Pony League team came back with two runs, for a narrow 8-7 victory.

Winning pitcher was Beto Diaz and outstanding hitters were Beto Diaz, Larry Gonzales, Hector Flores and Chris Dominguez.

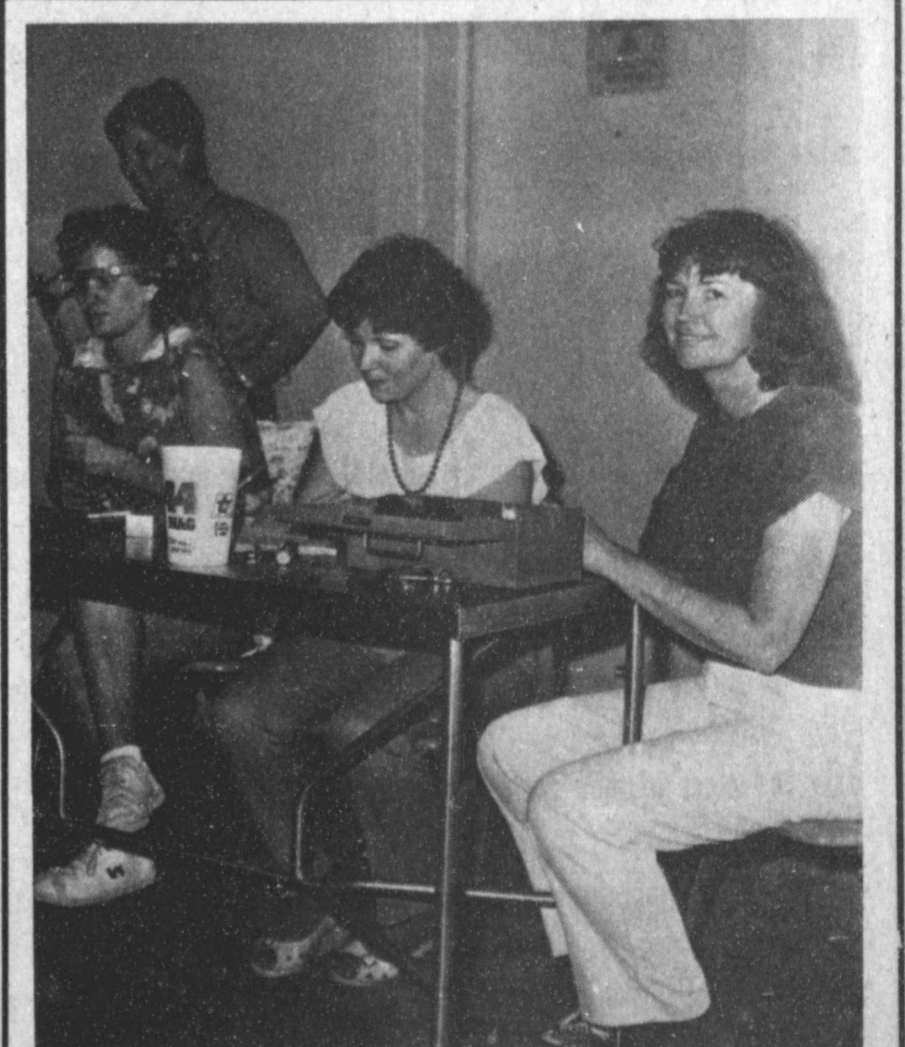
After five games, the hitting averages include Junior Olivarez, .666; Larry Gonzales, .536; Hector Flores, .500; Beto Diaz, .462; Colin Tanksley, .444; Chris Dominguez, .400; Juan Perez, .308 and Ricky Flores, .198.

At this point in the season, the team standings are as follows: Muleshoe, 5-0; Friona Bi-Wize, 2-3; Farwell, 1-3 and Friona Cattletown, 1-4.

Team Manager Sam Gonzales commented, "The Muleshoe team was behind in both games during one time or another. In fact, we had to score some difficult runs in some innings. Overall, the kids did a very good job."

Sam Gonzales is manager of the team; Everisto Sanchez, assistant manager and Jerry Don Gonzales, coach. Team members are Juan Perez, Larry Gonzales, Beto Diaz, Ricky Diaz, Ricky Flores, Ruby Guana, Chris Dominguez, Anthony Garcia, Rodney Reynolds, Colin Tanksley, Hector Flores, Junior Olivarez and Daniel Rodriguez.

Friday night, the Muleshoe Pony League team played Farwell in Muleshoe.



GETTING READY TO REGISTER--From Left, Zanna Huckaby, LecAnn Gallman and Mary Hicks are ready to register dogs and cats during the annual Rabies Clinic sponsored at the old fire department building in Muleshoe Thursday afternoon. In the background is Linda Huckaby.

5 Local Youth Are Chosen Here For FB Seminar

Gary Hooten, president of Bailey County Farm Bureau, said five local youth have been chosen to attend the Texas Farm Bureau Citizenship Seminar on the campus of Angelo State University in San Angelo, June 15-19.

Attending will be Deborah Lackey, daughter of Mr. and Mrs. Walter Lackey; Selina Gonzales, daughter of Ana Gonzales; Jennifer Green, daughter of Mr. and Mrs. Ben Green; Johnny Garcia, son of Mr. and Mrs. Manuel Garcia; and Brandon Wilson, son of Mr. and Mrs. Barry Wilson.

The students will leave tomorrow, Monday, by chartered bus from the Lubbock County Farm Bureau for Angelo State, where they will join more than 400 students for the seminar.

"These students were chosen to represent Bailey County because of their leadership ability, scholastic achievement and character," said Hooten.

The seminar is designed to give the students a better understanding of the various

forms of government and their responsibilities as citizens. Comparisons of the different kinds of economic systems are outlined in lectures, history and economics.



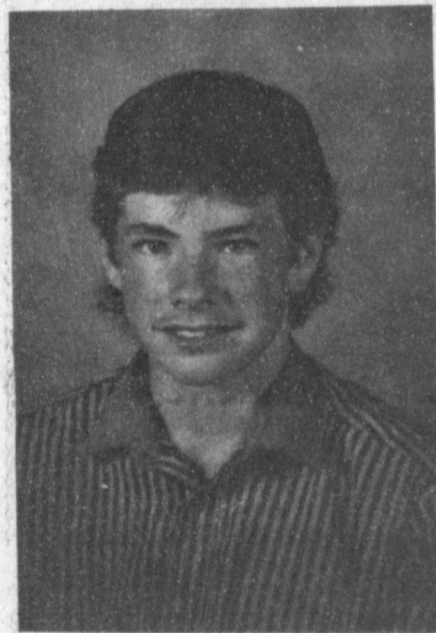
DEBORAH LACKEY



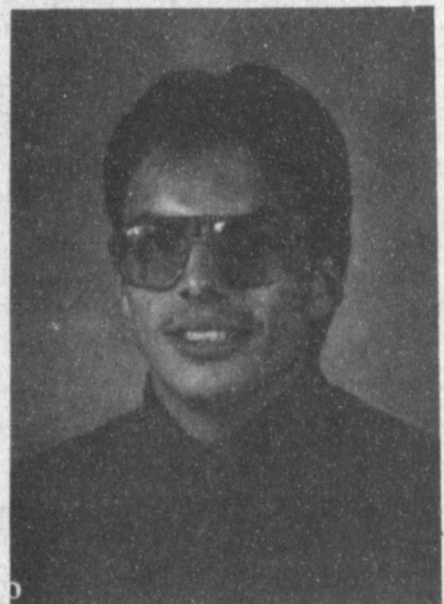
SELINA GONZALEZ



JENNIFER GREEN



BRANDON WILSON



JOHNNY GARCIA

If You Need An Ambulance Call 272-4200

Check 'Skip' Cotton Before You Replant

The calendar date and the number of plants lost are major considerations for farmers when deciding to replant storm damaged cotton.

In evaluating stand losses, it is generally recommended that if two or more plants per foot of row survive and if there aren't too many long skips, the stand is still good enough for optimum lint production, said Dr. James Supak, a cotton agronomist for the Texas Agricultural Extension Service in Lubbock.

If a poor, skippy stand can be replanted in late May or early June, the odds are that the

CofC Reminds Of Activities Set Up Here

Busy as usual, the Muleshoe Chamber of Commerce and Agriculture has several ongoing projects and ideas at this time. CofC Manager Toni Eagle has issued a reminder of several of the activities.

JULY 4th CARDS

The Chamber of Commerce and Agriculture has cards for the Fourth of July on sale now at the Chamber office. If you know of someone who would enjoy getting a 'bang' out of this Fourth of July, send them a card from Muleshoe.

Mrs. Eagle said the cards are sold individually or in sets of eight. Go by the Chamber office today and pick of Fourth of July cards, designed especially for Muleshoe.

PHEASANT HUNT

This fall, the Chamber of Commerce is planning a Pheasant Hunt. It is in need of land for the pheasant hunt. Any landowner who would like to submit their land for use can contact the CofC office before July 1.

Each landowner will be paid per hunter placed on their land. This project will not only benefit the landowner, but the entire City of Muleshoe as well, reminded Mrs. Eagle.

Tim McCormick and Jeri Wiedebush are answering questions for the landowners. If you are interested, you must call by July. Plans need to be finalized now to secure hunters for the 1987 hunting season.

EMPLOYEE, BUSINESS OF THE MONTH

The CofC manager also said, "Don't forget to call the Chamber office with your nomination for the Employee and Business of the month."

"It is a great way to give recognition to deserving individuals," she said.

replanted crop will be more productive and therefore justify replanting expenses, he said. A May planted crop, even with a skippy stand, is more likely to produce a higher yield and more mature fiber than a perfect stand of cotton resulting from a planting after the June cutoff date, warned Supak.

Under good growing conditions, the plants on either side of a two to three foot skip can compensate for the missing plants with little or no loss in yield, said Supak.

Studies were conducted from 1981 through 1984 at the Texas Agricultural Research and Extension Center in Lubbock to determine the effects of skips on cotton yields. In these tests, skips of varying lengths were scattered throughout the field ranging from 1.5 to 9.0 feet. "The skips were positioned at random to approximate the situation typically encountered under field conditions," added the agronomist.

He said the number of skips were controlled to provide three types of stands: normal stands, which include about four plants per foot with no skips longer than one foot, 25 percent stand loss, which has approximately three plants per foot with random 1.5 to 9.0 foot skips, and a 50 percent stand loss which contains two plants per foot with random 1.5 to 9.0 foot skips.

The accompanying Table I summarizes results of a four year study measuring the effects of skippy stands on cotton yields. The study showed that a 25 percent stand reduction, reduced lint yields about 13 percent, while a 50 percent stand reduction cut lint yields approximately 26 percent. Comparable lint yield loss can be expected from similar skippy stands under actual field conditions, added Supak.

He said the possibility of planting thin, skippy stands depends largely on the calendar date.

The accompanying Table II gives the results of a planting date study conducted at Lubbock. The table shows that replanting prior to June 1 will likely result in a yield reduction of less than 10 percent while replanting after June 10 is likely to lower yields in excess of 20 percent.

Local Teachers, Attend Workshop

Sixteen Muleshoe teachers and administrators were among more than 800 teachers who attended a two day workshop sponsored by the Region XV Education Service Center in San Angelo, June 8-9.

Attending from Muleshoe ISD were Barbara Finney, Twila Albertson, Barbara Neal, Stephanie Barrett, Beth Skipworth, Ginger Reedy, Dickie Reedy, Vowery Dodd, Anita Boyd, Linda Latham, Elizabeth Watson, Betty Jennings, Georgia Pena, Jean Allison, Pat Seymore and Joe Cearley.

Dr. Madeline Hunter, an educational research psychologist at the University of California, Los Angeles, was the consultant. Much of Dr. Hunter's educational research was used in the development of the Texas Teacher Appraisal System as well as the artistry used by teachers in implementing the lesson cycle.

The conference focused on effective teaching practices that lead to increased student achievement. "Teaching is now as technical and scientific as medicine," Hunter said. "But the biggest educational abuse now is failure to constantly check whether students are learning the material taught. Monitoring students' learning is called 'dip-sticking' and is similar to checking oil levels in a car," Hunter stated. "It is as important as checking to see if medical instruments are sterile," she said.

"The training that these educators received will enhance the school improvement program adopted by Muleshoe ISD," says H. John Fuller, Muleshoe ISD superintendent.

TOPS CLUB

Eleven persons weighed in at the weekly meeting of the Muleshoe TOPS Club No. 34 Thursday night, answering the roll call given by Jewell Peeler.

Best loser of the week was Rose Sain, with first runner-up Jackie Jean Whatley and second runner up, Laverne James. Nan Gatlin was TOPS best loser.

A report was given on the all day TOPS Work Shop and Luncheon last Saturday. Attending the session were Laverne James, Ruth Clements, Thresa Davis, Ernestine Steinbock, Jewell Peeler and Orvide Burris.

TOPS started a new contest called, 'Gone Fishing.' The contest will last eight weeks and the one who with the most fish left at the end of eight weeks must present a Skit for the members.

Thresa Davis presented the program for the evening, on 'Massage.' Receiving a massage from her were Laverne James and Jackie Jean Whatley.

The meeting was closed with the goodnight song.

IMMIGRATION PHYSICALS

Adult \$51⁰⁰

A.R. Parmar M.D.

5201 Indiana Lubbock, TX

806-793-5824

Open

7 Days A Week

9 a.m. - 9 p.m. Mon. - Fri.

9 a.m. - 1 p.m. Sat. & Sun.

People

Jump...

**Out Of Bed
Hit The Showers
Brush Their Teeth
Fix Breakfast
Pack Lunches
Kiss The Kids
Park The Car
Punch The Clock**
(with a smile)

and
Open The Doors

Just Hoping You'll Come In ...

So We Can Help You With All Your Banking Needs.



202 S. 1st

Member FDIC

272-4515

NOTICE TO TAXPAYERS

Taxpayers in the Bailey County Appraisal District will have an opportunity later this month to protest values proposed for their property for local taxes. The district's appraisal review board (ARB) will begin hearing taxpayer protests on June 22, 1987. The property owner must file a written "notice of protest" with the ARB before June 22, 1987.

Official forms for a notice of protest are available at the Bailey County Appraisal District office, 104 E Ave C. A letter from the taxpayer is also acceptable as long as it identifies the property owner, the property which is the subject of the protest, and indicates dissatisfaction with some decision or action of the appraisal office.

Each protesting taxpayer may offer evidence or argument either in person or by filing an affidavit with the ARB. Taxpayers should be aware that the ARB has no authority over tax rates or taxing unit spending and will not hear protests of those matters.

The ARB will schedule hearing as property owners file protests and will inform them of the time, date and place of their individual hearings.

The State Property Tax Board has issued a pamphlet called "Taxpayers' Rights, Remedies, Responsibilities" available at the Bailey County Appraisal District office, 104 E Ave C, which explains how to prepare and present an appeal to the ARB.

TOUCH OF HISTORY

Methodists Start At Old Hurley

With Once-A-Month Services

Most things start "In the beginning", so this is a proper way to begin an article tracing the history of the Methodist church in Bailey County and Muleshoe.

In the beginning the original town of Old Hurley was the birthplace of Methodism in this community in August 1908. Old Hurley was about 2 1/2 miles north of present-day Muleshoe on the Friona highway number 70.

This first church building, which was used as a community church for many years, was built by Steven A. Coldren of the Coldren Land Company, developers of Bailey County. The building was made from heavy oak timbers cut and sawed in Michigan and shipped in, all ready for erection at Hurley.

The church in Old Hurley held the Methodist services only once a month, as the church was on a circuit with Bovina, Summerfield and Black in 1908. The pastor was Rev. V.H. Trammel who was known as the Cowboy Preacher and Rev. G.S. Hardy was the presiding elder of the district, this position now being known as the district superintendent.

The Methodist families of this first organization in the Bailey County Methodist church were: W.M. Wilterding, John Wilterding, R.B. Canfield, J.T. Lindsay, Elmer Grush, a Mrs. Miles, Edward Barnhill, A.C. Gaede and Mrs. W.H. Kistler. The last two still live in Bailey County and attend the Muleshoe First Methodist Church. Miss Dottie Wilterding, who attends the YL Methodist Church, was the first organist and was Sunday School teacher for many years. John Metsker, who ran the store and was first postmaster at Hurley, led the singing at the Community Church while Miss Dottie played the organ.

MOVE TO MULESHOE
In 1913 the coming of the Santa FE Railroad brought many changes. One was the formation of a new town named Muleshoe and when the railroad did not pass through Old Hurley, the land company decided to move in the spring of 1913 the Community Church building down to Muleshoe, where the train stopped.

The heavy timbers made it a terrific task to move the oak structure through sand so deep the teams could not get through with such a load to Janes, so it was left in the sand until Muleshoe was established. Mrs. Beulah Carles, who came to Bailey County in 1911 and now lives in Oklahoma City, and Miss Dottie Wilterding told The Journal in 1954 that there were many families there with their teams to try to help move it; among the families were Mrs. Belle Snyder, Mrs. Carles, H.B. Bearden, Vern Bearden, and Mrs. Leota Wilterding. But it proved too heavy for the teams and stood on the prairie for several days and was finally moved by all of the teams with

the help of Bob Morris' Rumley tractor, the only tractor in Bailey County at that time. It was moved to a lot in the east part of town, now the location of the new Latin-American Methodist Church -- "The Church of the Divine Savior." The old church building continued to be used by all denominations, as a Community church and as a school for several years.

When the Old Hurley Methodist congregation moved into Muleshoe in 1914, Sunday School was held in the Santa Fe depot, while the old building was being repaired, with Rev. Watenbarger, a Congregational minister presiding and A.C. Gaede as Sunday school superintendent.

A letter addressed to Mrs. Carles from Rev. W.M. Pearce gives much interesting information: Mr. and Mrs. M.P. Smith, Mr. and Mrs. W.B. Gwynn and Mr. and Mrs. A. J. Tayes were listed in the reorganization of the Methodists of Muleshoe, June 1914. Muleshoe was taken off the Bovina circuit in the fall of 1914 and did not have a pastor for three years. In 1917 Gaede wrote asking that a pastor be sent to Muleshoe and telling "that new Methodists were moving in all the time - the Hardens, the Harts, and many others" - so in November, 1917, the Conference sent to Muleshoe Rev. D.C. Ross, who came up from Lubbock on the train twice a month.

The late Mrs. I.W. Harden told The Journal back in 1954 that she recalled the Missionary society, as the W.S.C.S. was called in those days, met regularly in the homes of members.

In July 1920, after the Santa Fe had deeded the present lots owned by the Methodist church (which had been deeded to them directly from E.K. Warren when the town was first surveyed), the old church building, twice moved, was purchased by the Muleshoe Methodists from Coldren Land company and moved to its present location by I.F. Willman, and he had a Rumley Tractor too. Union services were continued until 1925 when the parsonage was built and Rev. J.D. Farmer became a full-time resident pastor. At that time A.C. Gaede again became Sunday School superintendent.

As the town and community grew so grew the church. The building was remodeled many times - in 1929 it was stuccoed; 1937 it was remodeled and enlarged - and in 1942 the present Fellowship Hall was built.

PRESENT EDIFICE
The needs for an adequate church plant had long been felt by the entire congregation. Under the general chairmanship of Noel Woodley, and associates Sam Fox, Bess Edwards, Bill Moore and D.B. Lancaster the present modern building was announced in November 1954 and dedicated on June 24, 1956, when the congregation moved into the present edifice under

the leadership of Rev. Clarence Stephens. Bishop William C. Martin was present for the first Worship service in the new building. Certainly this was a day long to be remembered by Methodists. Here was a church rich in the history of service to humanity standing on the threshold of new beginnings.

The official building committee for the new building was headed by Sam Fox, with Horace Edwards, Buford Butts, Inez Bobo, and Bess Edwards on his committee.

As a reminder of this faith of the fathers, the old bell rings from the tower as it has been doing for 53 years. Rich in tone and melody its resonance continues to call people to the great calling in Service to the Master. "The Cathedral of the Black-water Valley" is a testimony to Christian love and faith, known as "The friendly church with a spiritual emphasis." The church is debt free in 1963. The old church bell, which was given by E.K. Warren was transferred to the present church building, which incorporated portions of the old structure.

The ministers who have served Methodism here are: V.H. Trammel, J.P. Swinney, A.H. Hussey, W.M. Pierce, D.C. Ross, C.A. Duncan, Raymond Van Zandt, George R. Fort, Preston Florence, I.D. Farmer Payne, W.B. Hicks, E.C. Roney, J.F. Luker, R.S. Watkins, Jim Sharp, R.N. Huckabee, George Turrentine, T.C. Willett, W.B. Vaughn, T.G. Craft, H.W. Hanks, Clarence Stephens, Edwin L. Hall, Horace Brooks, and the present pastor J. Frank Peery serving in his third year.

PARSONAGE
In 1955 the Parsonage was built. It is ideally situated on a corner lot across from the church property. This parsonage was built through the generosity of three families of the church and Homer Sanders, Jr., was the contractor. Another member gave the lot and brick fence around the patio. This house has 2,600 square feet of floor space and a double garage and is beautifully appointed with the best of furnishings.

It is valued at \$35,000.00 and no indebtedness, truly one of the most beautiful parsonages in Methodism.

GROWTH
The Men's Bible Class of the First Methodist Church of Muleshoe has initiated a scholarship fund for students going from this church into full-time life service of the church. The scholarship will provide \$500 per year to students in need, for tuition and scholastic fees at an accredited college or university. To date four students have made use of the fund.

Membership in June 1963 is 680 members, with an average of 300 in church school this year. The church supports mission work in 39 acres of conference national and world mission fields.

The First Methodist Church proposes to build a Fellowship Hall-Educational unit to cost \$175,000 before the end of 1964.

HINTERLAND OF 1870s
The hinterland to the west of Fort Worth, an outpost town with a few thousand inhabitants, was practically a wilderness, the "Staked Plains" - a land of waste, they said after the Civil War in the 1870s.

BUFFALO ON THE PLAINS
The American bison, the famous buffalo of pioneer days, roamed in great numbers over the plains of Texas. Old-timers still remember herds in Texas as late as the eighties.

Mary DeShazo Honor Roll

Honor Roll
6th Six Weeks
THIRD GRADE

Josephine Alonzo, Ramiro Bustillo, Marthella Lewis, Peter Loewen, Michael Orozco, Kelly Railsback, Ceferino Sierra, Riley Byers, Samantha Caswell, Anita Chavez, Kit Dominquez, Laura Lira, Johnny Rodriguez, Amanda Seales, Becky Spell, Koy Wilhite, Barak Harlan, Dacia Stewart, Cindy Martin, Julie Williams, Gabriel Mendoza and Hope Jaramillo.

Also Yolanda DeHoyes, Kimberlee Vaughn, Cyle Marr, Candy Garcia, Samuel Villarreal, Holly Hutton, Sylvia Vasquez, Josh Otwell, Sharon Johnson, Joann Ramirez, Allyson Field, Jeff Lewis, Melody

Three-Way News

By: Mrs. H.W. Garvin

The Three Way Baptist Church Vacation Bible School had a very good school with 74 children attending.

The Three Way senior class returned home Friday after sight seeing in Florida.

Mrs. Jack McCarty and children from Logan N.M. spent the week with her parents, the Joe Sowers, and helped in the Vacation Bible School.

Mr. and Mrs. S.G. Long and Mrs. H.W. Garvin visited in Clovis Saturday with Mrs. Garvin's daughter, the Kenneth Box family.

Mrs. Minnie Dupler was a dinner guest in the home of her son, the Bill Duplers.

Mr. and Mrs. Bill Dolle and Darla met Mrs. Dolles parents and sister Mr. and Mrs. Ralph Davis and Mr. and Mrs. James Parker from Lubbock in Littlefield at Pizza Hut for supper Saturday evening.

Crops in the community are growing. Some farmers have thrrips in their cotton.

Mr. and Mrs. Rayford Masten attended the high school graduation at Whitherell Tuesday night. Their grandson Wade Pollard graduated.

Cody, Frank Perez, Rachel Velasquez, Sandra Armendariz, Frank Arzola, Priscilla Bara, Ricky Cisneros, Shawn Elliot, Summer Gibbons, Suzy Hodges, Laura Hurtado, Eduardo Olivas, Laura Soto, Rosa Villalobos and Sarah Villarreal.

Also Michelle Williams, Natasha Ronek, Lauri Puckett, Meri Ott, Clay Myers, Adelina Murillo, Melissa Morales, Kimberlee Casebolt, Corey Dodd, Raul Del Toro, Stephanie Guzman and Chad Johnson.

FOURTH GRADE

Fara Black, Jared Clarkson, Heath Eagle, Keetha Glover, Anna Mendoza, Nathan Noble, Chris Page and Crista Trussell, Junior Venegas, Jason Barrett, Monica Chavez, Bradley Ellibe, Julie Gilleland, Audra Lee, Stephanie Perez, Misty Richardson and Robert Toscano.

And Kristi Turner, Angela Bean, Jacqueline Burciaga, Brent Lingnau, Lacey Lloyd, Donnie Matthews, Russell McGuire, Jose Mendoza, Manuela Solis, Jennifer Taylor, Gina Ramirez, Shawn Porter, Jeff Pope, Jodie Foster, Michael Elliot, Holly Donaldson, Charles Villarreal, Rebecca Warren and Julie Villalobos, Lance Latham, Genny Eggers and Christy Holt. Also Dink Pitcock, Michael Villarreal, Chad Page, Freddy Sanchez, Raquel Areola, Josh Lindt, Michael Rosas, Jason Carlson, Angela Crawford, Tommy Day, Jesus Flores, Barbie Stout, Francisco Torres and Felicia Villarreal.

FIFTH GRADE

Mason Conklin, Misty Davenport, Shawna Delaney, Cathy Espinoza, April Franklin, Andrea Torres, Jamie Williams, Brian Box, Casey Estep, Frank Guzman, Emily Harris, Lori Hodges, Oralia Mendoza, Loni Puckett, Shane Schuster and Jodi Morris.

Also Gloria Mendoza, Kristin Holmans, Jenna Glover, Mark Garcia, Kris Fuller, Chad Freeman, Nicole Alanis, Brooke

Barrett, Allie Riley, Garren Fuller, Lena Garcia, Ana Loewen, Jose Lozano, Chad Montgomery, John Villalobos, Brooke Sinclair, Jeanne Cox, Stephanie Quintana, Gage Angeley, Kelli Caldwell, Gail Copley, Amber Nickell, Sonya Smith and Jackie Thomas.

Swine Producers To Attend Course

Area swine producers will have an opportunity to improve their herd management techniques during a swine short course which will be offered at 8:30 a.m. at the Texas Tech University Livestock Arena June 20.

Herd health and farrowing management will be the theme for this years course, said Stanley Young, Lynn County Extension Agent.

A \$10 registration fee will enable the producers to hear keynote speakers such as Dr. Billy R. Clay a Technical Services Veterinarian with the UpJohn company in Kalamazoo Mich., David Graf, a swine producer from Vernon, Dr. Bruce Lawhorn, an Agricultural Extension Swine Veterinarian from College Station, along with several others, said Dr. John McGlone, a Research Scientists for the Texas Tech animal science department.

"The course is a combined effort aimed to keep area producers abreast of new information and informed on the services available to them," said McGlone.

This years program is tailored for the smaller and new producers in the swine industry, said Young.

The swine course is co-sponsored by the Texas Agricultural Extension Service, West Texas Pork Producers Association, Texas Producers Association, and Texas Tech University.



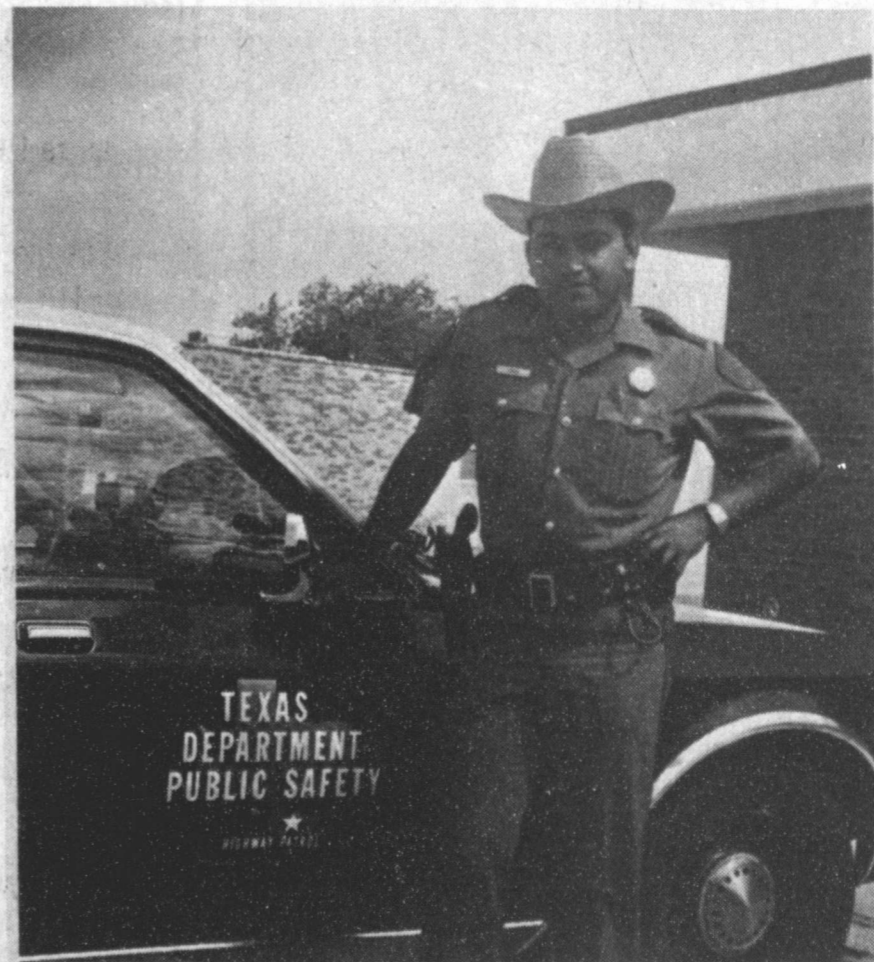
Head into summer with an exciting new look!

Come in Monday, June 15th, and get a perm, hair cut and style for \$27.50

Ana's House of Beauty

109 Ave B 272-4152

Welcome To Muleshoe



WELCOME TO MULESHOE--This week, being given a 'hearty WELCOME TO MULESHOE' is Manuel Ponce. DPS Trooper, who moved here last week. Recently undergoing training as a DPS Trooper at the academy in Austin, Ponce has been in 6-months training in Plainview. A native of Ropesville, he graduated from Ropesville High School, and attended South Plains College in Levelland. He is single, and enjoys softball and running. He is a Baptist. Join The Journals in welcoming DPS Trooper Manuel Ponce.

James Crane Tire Co.

322 N. 1st

GOODYEAR

272-4594

Henry Insurance Agency

111 W. Ave. B.

272-4581

Damron Rexall Drug

308 Main

272-4210

Sudan New

By Evelyn Ritchie

Visiting during the weekend with Mr. and Mrs. Glen Testerman and Mrs. Mary Lena Maxwell were their sister and daughter, Mr. and Mrs. Lynn Drum of Caddo Mills and their family. Mr. and Mrs. Billy Drum, Bryan and Debra & Tosh of Lubbock. They also visited with their brother, Mr. and Mrs. Freddie Maxwell & boys. They attended the eighth grade graduation when their niece, Glenna was among the graduates of the 8th. Also Brenda was among the graduating seniors. Visiting was Charlotte Holms & Tracey of Levelland.

Mr. and Mrs. Charles Mixon of Amherst were visitors here Thursday night when their granddaughter, Kendra Fisher was among the Eighth grade graduating class.

Country Crafts & Gifts

Dejon Cole

Craft Supplies Class Instruction

Delivery Available

New Location

No. 9 Highland Shopping Center

Main & Manana Clovis NM 88101 (505)762-2277

Community Action Home Health Office

is pleased to announce the opening of its

Muleshoe Office

We are an agency that cares about you and the people close to you.

We realize that illness is often easier and more positively dealt with in familiar home surroundings. It is also less costly than long term hospital care.

Our agency brings together the services needed and delivers them to your home under the direction of your personal physician and a skilled nurse.

For information concerning how we may be of assistance to you, Please call one of the Local Representatives.

Judy Jacobs RN 272-4845 Carol Delaney RN 272-5661

Farm Bankruptcy

Cont. From Page 1

submitted because so much time is being expended on satisfying questions on an individual case by case basis. Once the required bankruptcy information is provided to the State Office by a county office, it usually takes a week to 10 days for payment advice to be received by county offices.

Thank you for taking time to read this letter. It is hoped the explanations provided will be helpful to you if you have or may become involved in the filing of a bankruptcy. In spite of the recent accusations and criticisms directed toward ASCS regarding the bureaucratic handling of these cases, our goal has always been and will continue to be service to the farmer.

Noble also has released the following information, timely for all producers in the area:

IMPLEMENTING 0/92 PROVISION

The President has signed the Farm Disaster Assistance Act. This Act provides deficiency payments for producers of winter wheat on an average up to 92 percent of the farm's permitted wheat acreage with no planting requirement.

Winter wheat producers who have previously enrolled in the 1987 wheat program may earn deficiency payments on an acreage up to 92 percent of the farms permitted wheat acreage if additional conserving uses (CU) is designated and ACR requirements are met. Producers who have not previously enrolled in the 1987 wheat program and have less than 50 percent of the permitted wheat acreage devoted to wheat, must sign CCC-477 to participate in the 1987 wheat program no later than July 15, 1987.

For producers who may qualify under the 0/92 provision and designate additional CU acres, the CU acreages less than 50 percent of the permitted acreage may not be hayed or grazed after July 15, 1987. Please feel free to contact this office for further information concerning the 0/92 program.

1986 DISASTER PROGRAM

It has been signed into law under the Farm Disaster Assistance Act to increase the 1986 disaster payments on previously approved disaster applications from 73.9 percent to 100 percent. Producers will automatically receive payments in the form of CCC-6's (certificates) for the remaining 26.1 percent. The Act also provides a disaster payment for losses of 1986 upland cotton production because of quality. The quality losses must be because of drought, excessive heat, hail floods, and excessive moisture in 1986. Producers **MUST** submit 1986 cotton production records showing quality, staple length, and micronaire by no later than June 26, 1987. The adjusted loan rate will be based on 4232 in determining the quality loss. New applications will be accepted only for losses because of quality.

FINAL CERTIFICATION DATE

The final date to request aerial measurement service or certify to all spring seeded crops, conservation use acreage, and ACR, is July 15, 1987. A

complete acreage report must be filed including all program crops, sunflowers, soybeans, alfalfa, vegetables, and etc., by this deadline. An accurate certification is very important, so don't guess. The reported acreage cannot differ from the measured acreage by more than the larger of 1.0 acre or 5%, or the farm could be ineligible for program benefits.

FAILED ACRES

Any cotton that has failed due to excess rain, hail or for any other reason beyond the producers control, must be certified and an ASCS-574 (Disaster Application) filed before the crop is disturbed and/or replanted to a different commodity. All required ACR must be maintained for the failed acres. These requirements must be met for the cotton to be eligible for program benefits.

MAINTENANCE OF ACR

Don't forget that ACR (set-aside) requires a cover crop. ACR land must be free of weeds and maintained in a workmanlike manner throughout the calendar year. Don't jeopardize your program benefits by neglecting to properly farm this acreage.

MEASUREMENT SERVICE

SMALL GRAINS

Due to the cloudy weather, the company that takes our slides have been delayed. We will notify you as soon as we have completed the service. If you start cutting wheat before we can complete the service, you will need to certify your crop and we will refund the money. Sorry for the delay.

CRP WEED CONTROL

If you have land in CRP that was planted to grass this year or last year, you should begin to apply a weed control practice as soon as possible. The SCS office recommends applying ALLY at this time since it will not damage young grass that has recently sprouted. This chemical should be applied before weeds get taller than 2 inches in height. Contact your SCS office for further information about controlling weeds on CRP land.

1987 PAYMENTS

We will prepare and mail out the remainder of the 1987 advance payments and the CRP cost share payments as soon as we are notified of CCC funding.

INTEREST RATE

The loan interest rate for June is 6.875%.

OFFICE CLOSED

This office will be closed July 3, 1987 in observance of Independence Day.

OFFICE HOURS

We will again be open from 8:00 A.M. to 5:00 P.M., Monday through Friday. We appreciate your cooperation while we were closed for the one-half days.

Isaac...

Cont. From Page 1

juniper to make it a 57-54 game.

Debbie ended with 18 total points for the game. Behind her was Susanne Standefer with 10. Cindy Baker lobbed in seven, Amy Claborn and Mindy Neal each added an additional six points each; Andrea Chavez had four; and Lisa Villarreal and Sylvia Sanders each had two.

On Friday, the Vets were in quarterfinals.

Vegetables Good Alternative Crop

By Roland E. Roberts

Extension Vegetable Specialist

Recently, hundreds of inquiries concerning what vegetables could be grown profitably on the Texas Plains have been received by county extension agents and the Texas A&M University Research and Extension Center in Lubbock. The truth is that there is no vegetable crop which guarantees a profit to the grower at either the farm, wholesale or retail level. The supply of vegetables reaching the market place, the market prices and the dollar returns to growers are not manipulated by our government. However, the marketing system is strictly regulated to assure fairness in business transactions and safety to the consumer.

Vegetable crop marketing and production provide good but hard-won incomes for the relatively small number of families involved in the fresh vegetable industry. There is a profit potential for perhaps only a relatively few additional people in this business at any one time.

For those who can acquire the knowledge, foresight, financial stability and summon the strength to build a profitable enterprise there may be a chance for, but no guarantee of success. Just because farmers can grow high quality and large yields of onions or potatoes does not mean that their efforts will result in profit. Additional planted acres of onions and potatoes offer little or no potential for profit to the grower. Consumers are currently well satisfied with the supply of these two vegetables. For example, U.S. consumers buy about 120 pounds of fresh and processed potatoes per person

Muleshoe...

Cont. From Page 1

Saturday, June 27. Registration will be at 2 p.m. and a \$6-per plate meal will be served at 6 p.m. by the local FFA and FHA Chapters. There will be no advance sales, with everyone paying at the door.

Teachers and ex-teachers of these two schools will receive special recognition this year, and all teachers and ex-teachers are invited who teach or formerly taught at either Bula or Three Way.

Three Way School opened its doors in 1946 and Bula opened in 1926. The schools consolidated in 1975.

The Brownfield Chamber of Commerce is sponsoring a Men's Softball Tournament on June 26-28 at the Brownfield Men's Softball Park.

Entry fee is \$110 and June 23 is deadline to enter. Each team is limited to 15 players. ASA sanctioned umpires will be used. The 10 run rule after five innings will apply, and each game will have a 55 minute time limit. Hit your own ball. Blue dot balls are required. Tournament is limited to 16 teams.

Windbreakers will be given to the first place team. Tee shirts will be given to second and third place teams. The most valuable offensive and defensive player will receive a trophy and a sportsmanship trophy will be awarded.

To enter, call the Brownfield Chamber of Commerce at 806/637-2564, between 8:30 a.m. and 5 p.m. After 5 p.m., call Jimmy Hammons 806/637-8643, Bruce Woods 806/637-9354, or Bobby Slack 806/637-6375.

The Sandhills Arts & Crafts Show, sponsored by Olton Young Homemakers of Texas, will be held on Saturday, November 28, 1987.

Requests for applications for a booth may be made by contacting Sandhills Arts & Crafts Show, HC 2, Box 48, Littlefield, TX 79339, or by calling Kayla Parkey at 806/262-4021. Booth rental is \$30. Deadline for receiving application is August 15, 1987.

Hale Manufacturing Company has asked the Lazbuddie 1SD to sell a one year old, white, 16x5 ft. trailer for \$1,650.

For more information, call 806/965-2156.

Two Muleshoe area students attending Angelo State University in San Angelo, are listed on the Dean's Honor Roll for the spring semester at the University.

Those listed on the 3.00 to 3.49 honor roll include Aaron Lowell Hargett, a computer science major.

Those listed on the 3.50 to 4.00 honor roll include Marsha Elaine Williams, an elementary education major.

Billie Downing, chairman of the recent Chamber of Commerce and Agriculture contest 'What's Right About Muleshoe' said another contributor to the prizes for the contest was Muleshoe Livestock Auction Co.

annually. We eat these potatoes at a relatively constant rate of about ten pounds per month. If more than ten pounds are available to us in a particular month we may increase our consumption by an ounce or two buy only if the price drops by ten percent or more. Consumer reluctance to increase consumption even when the price drops significantly is known as inelastic demand. Onions and potatoes have relatively inelastic consumer demand as compared to tomatoes. Right now we consume about 12 pounds of onions per person annually and unless someone comes up with a very popular new recipe using onions, this pattern of consumption of about a pound a month will remain stable regardless of price. Therefore, growers can forget about raising more summer onions and potatoes on the high plains until they analyze the market place and initiate programs to cause a dramatic increase in demand for our onions and potatoes.

There are several vegetables for which consumer demand has increased steadily. Broccoli production has risen eight to nine percent annually in the past few years, at a rate faster than the growth in population. People are eating more fresh broccoli, cooked and raw, in salads. More people are enjoying crisp-cooked broccoli in oriental cuisine. Cauliflower has enjoyed a similar pattern of increased consumption.

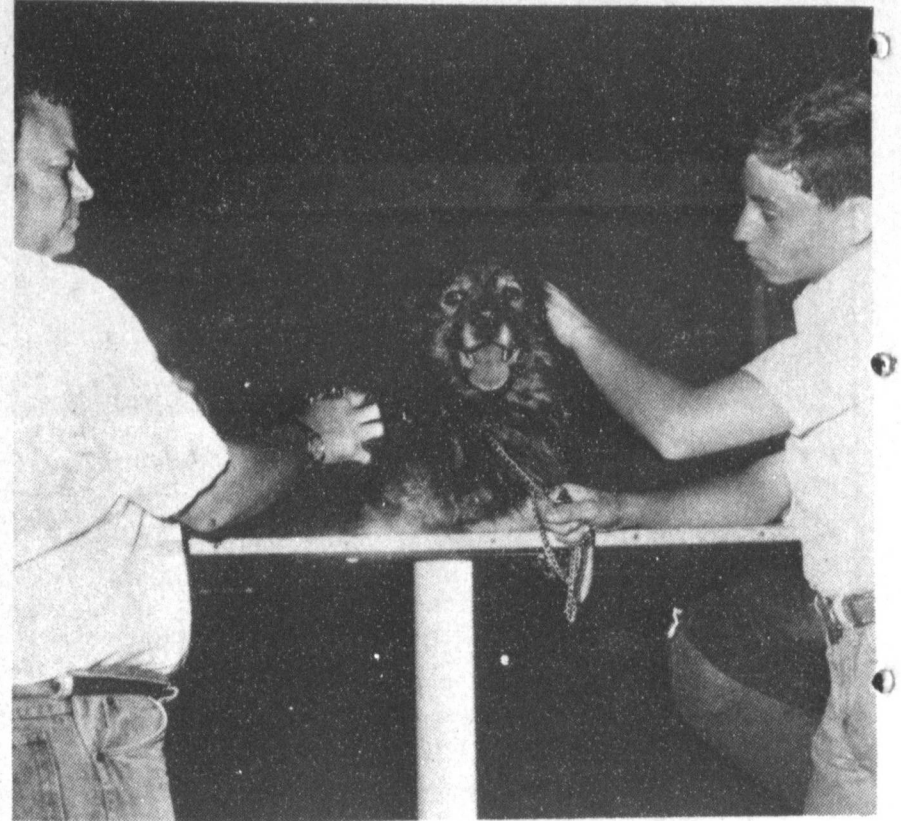
Most broccoli and cauliflower consumed in the winter and spring is produced in south Texas, California and Arizona. Summer crop production has been confined to the northern states or high elevations where the temperature seldom exceeds 80 to 85 degrees. But with the development of heat tolerant and cold tolerant varieties the Texas High and Rolling Plains now have a chance to grow these crops for late spring, early summer and early fall harvests. High quality Green Comet Hybrid broccoli has been harvested in Lubbock during every month except January, February and March. Snow Crown Hybrid Cauliflower has been harvested here during seven months of a year. Research with cultural practices including the scheduling of plantings of new heat and cold tolerant varieties for the plains would make this potential become a reality. Research could be started if growers would unite and work with their Texas Agricultural Extension Service

and Texas Agricultural Experiment Station to set goals, define objectives and raise necessary funds for research.

Spinach for processing and fresh market has strong potential for the High and Rolling Plains. Our high elevations and relatively dry climate provide three distinct harvest seasons for high quality spinach: fall harvest from late summer planting; early spring harvest from a fall seeded-over-wintered crop; and late spring harvest from late winter-seeded spinach. We can raise both the flat leaf and savoy leaf types of spinach for processing and fresh

market. Texas Spinach could dominate the market for more than six months a year. Texas Agricultural Extension Service demonstrations in Parmer County have shown the varieties which are adapted for fall and spring planting.

Other specialty vegetable crops which offer the potential producer a good chance for profit including: sweet potato, fresh market cucumbers, snapbeans, pumpkins and winter squashes, fresh leafy greens, root crops, caged tomatoes, and the list could go on. Each has its unique marketing and production requirements in relation to our climate and people.



C'MON, I'M READY-Mike Richardson, left, and his son, Michael, hold "Rascal" a Keeshon combination, while he waits for Dr. Jerry Gleason to get shots ready during the annual Rabies Clinic in Muleshoe. Rascal was a "good dog" though and didn't object too much.

The family of D.J Gage wishes to express their sincere appreciation for all the visits, food, cards, flowers and prayers that were offered up in our behalf.

Mrs. Lena Hawkins

V.L Hawkins

Rev. & Mrs. Milton Gage

Wiedebush & Company

Buy 3



Get 1 FREE!



You can SAVE on seeding costs by ordering your Conlee Seed Hybrid Grain Sorghum NOW! Buy 3 bags of your choice of Hybrid Grain Sorghum seed . . . and GET THE 4th BAG FREE!

All Hybrid Grain Sorghums qualify (May be Mixed and Matched!).

Quantities are limited --

While supplies last.



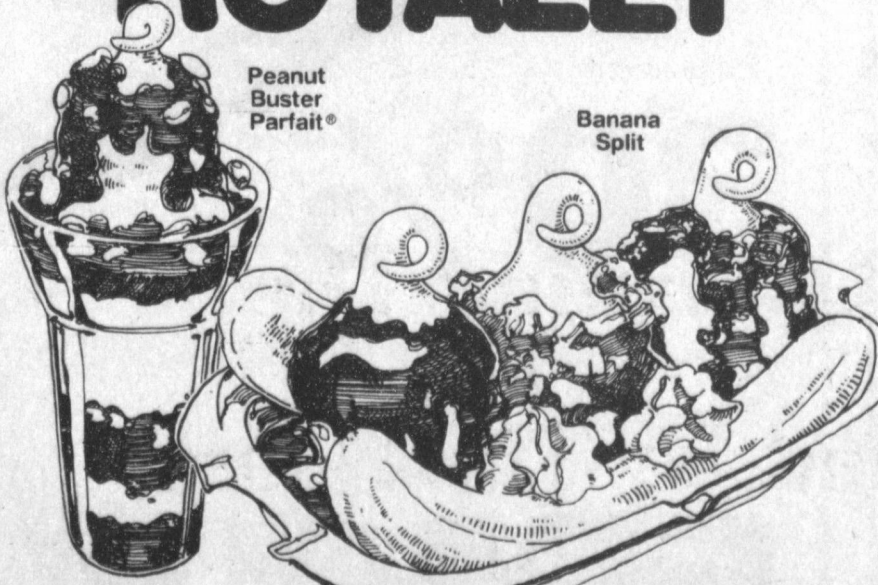
Wiedebush & Company

272-4611

1620 West American Blvd.

Muleshoe, Texas

TREAT YOURSELF ROYALLY



Royal Treats 99¢

Offer good Monday June 15 Thru Sunday June 28 at participating stores



Are You Interested In Having A Hospital In Muleshoe ?



Cathy Owen and Linda Tucker locking the doors of West Plains Medical Center, November, 13, 1987.

Are You Willing To Pay A Tax To Have A Hospital To Serve The Muleshoe Area ?

Are You Willing To Consider - - -

1. A City Operated Hospital
2. A County Operated Hospital
3. A Hospital District Operated Hospital With A South Boundary Being The Same As The Muleshoe I S D South Boundary
4. A For-Profit Management Company Operating The Hospital Within Guidelines Established By The Board Of Trustees Of West Plains Medical Center Inc. With No Tax

An Ad Valorem Tax Would Be Type Used. Funding Hospital Operations With A Sales Tax Is Not Permitted By State Law



SUE HAIRE



DEBORAH LACKEY



JOHNNY GARCIA



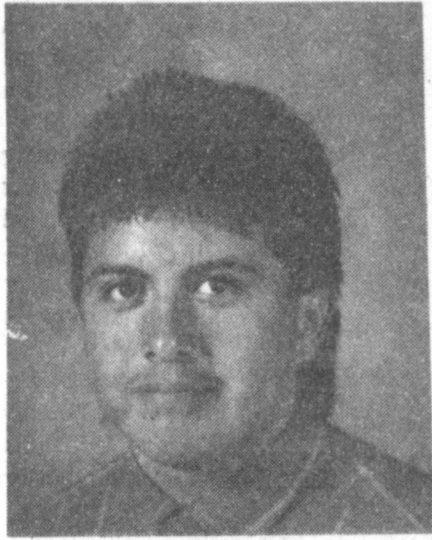
TRACY LONG



SELINA GONZALES



JANA BROWN



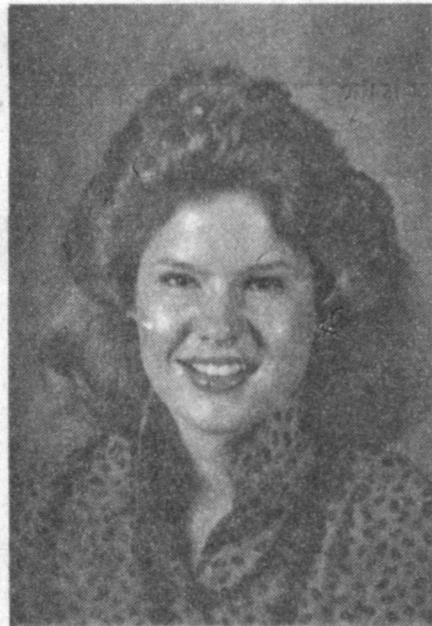
SERGIO GONZALES



ELIZABETH POSADAS



MELISSA MARTEL



JUSTINE HANES

Democrats Set Regional Meet At Levelland

Next Saturday, South Plains College, Levelland, will be the location for a 31st District Regional Conference for Democrats.

The meeting gets underway at 10 a.m. at the Student Activity Center, in the Sundown Room.

Democrats will be discussing political needs, according to Laura Garner, and she asks that you make reservations by calling 806/245-6643 or 806/894-3491 at night. Registration is \$10 which includes the luncheon.

Opening the meeting will be Jim Rudd, House Appropriations Committee; followed by Pete Laney, State Affairs Committee and Bill Sarpalius, Senate Sub-Committee on Agriculture. All these speakers will

be prior to the luncheon featuring key note speaker Hon. John Bryant, United States Congressman, Dallas.

In the afternoon will be candidate recruitment, how to do it and how to win; getting out the vote in rural areas and a business meeting. The seminar will close out at 4 p.m.

Ms. Garner commented, "Please plan to attend this important event. The Counties of Region III have worked hard to put together a good program for you."

"Important decisions which will have an impact on West Texas are made in these meetings. If you want to be heard, please attend."

Fear is kin to both envy and a guilty conscience.

Muleshoe Youth

Cont. From Page 1

"Newly appointed Ambassadors are Justine Hanes and Selina Gonzales," said Mrs. Eagle. "At present, two more new positions have been created for Ambassadors to the Chamber."

These are our young CofC Ambassadors and Ambassadors:

TRACY LONG

Tracy is 18, and was a senior this year.

She participated in the One-Act play, was class officer, HERO president, and May AAUW Girl of the Month.

She enjoys reading, and works at the Dairy Queen.

Tracy plans to attend Texas Tech and hopes to become a teacher.

She has three younger brothers.

JANA D. BROWN

Jana was active in school, a member of FTA, SCAC, Mock Trial Team, Annual Staff, Honor Student, member of National Honor Society, AAUW Student of the Month.

She says her future plans are to go to summer school and enroll in Texas Tech in the fall and major in elementary education.

MELISSA MARTEL

Melissa Martel, another 1987 MHS graduate, was a member of FTA, Drama, One Act Play, Junior Class Publicity, Senior Class Secretary/Treasurer, Best All-Around, Mule's Tale editor, Mule's Bray Producer, Yearbook Staff, and won a number of major awards during her high school years.

She plans to enter Texas Tech University and major in pre-medicine. She said her minor will probably be in journalism.

SERGIO GONZALES

Sergio will be a senior this fall.

He is a member of SCAC, FTA, FCA.

He was junior class president, member of the varsity football and basketball teams.

JUSTINE HANES

Justine Hanes is a junior at Muleshoe High School.

She is the FTA District 17 Historian, involved in speech and an honorary member of Student Council.

In the future, Justine plans to attend Eastern Montana College and go into an airline profession.

SELINA K. GONZALES

Selina is a varsity cheerleader, Student Council secretary, Band secretary, class vice president, Science Club historian, member of SCAC and FCA, and involved with basketball and tennis.

ELIZABETH POSADAS

Elizabeth is a member of the MHS band, having made All Region, Chaplain, Flag Captain and Section leader; she is a member of Student Council, historian of SCAC, the National

Honor Society, a junior class officer.

A member of Immaculate Conception Catholic she is secretary of CYO (Catholic Youth Organization).

Her future plans are to attend the University of Texas at Austin or Texas Tech University.

JOHNNY GARCIA

Johnny Garcia, who will be a senior this fall at MHS, is president of the Student Council, and is president of the Speech and Theatre Department. He is also a member of the National Honor Society.

He participates in football, and is a returning starter for varsity as quarterback. He is also involved with varsity basketball, and as a third year starter, plays guard and forward.

DEBORAH LACKEY

Deborah will be a senior this fall, and is in the National Honor Society.

She says she loves school and enjoys reading, volleyball and singing.

Deborah plans to attend college and major in education.

SUE HAIRE

Sue Haire will be a senior at MHS this fall.

She is listed in Who's Who in American High Schools; a GA leader at First Baptist Church; is Mighty 'M' Band assistant drum major; is in SCAC; All Region Band and FTA.

She is a member of National Honor Society, American Heart Association Volunteer for seven years; and was recently chosen as Mighty 'M' Drum Major for 1987-88.

She has won several awards as a student at MHS.

REMEMBER DAD...

Father's Day

46.50
Finishing Sander w/dust collector offers 1.6-amp motor, 10,000 orbits per min. MM8570

37.99
Variable-Speed Jigsaw with 1/3-HP motor, 0-3,200 SPM speeds. MM8540

39.99
7 1/4-In. Circular Saw has a high-torque 2-HP motor, handy scales. MM8550

29.99
Square Charcoal Grill with 2-position cooking grid. Baked-enamel finish. 8008M

27.88
25W Lantern-Style Insect Killer covers 3/4 acre. Kills gnats, flies, more. 8259

Fry & Cox, Inc.

401 S 1st. 272-4511

NOTHING BUT THE BEST

For your GM Vehicle!

A super deal. For you and your GM vehicle. On the best... genuine GM quality parts and service. But, hurry... these special prices are available for a limited time only!

Save... with a great deal on two Summer service specials:



Shock Absorbers
Installed Struts Not Included **\$69.95**

Complete Oil Change
(Includes: Lube, Oil & Oil Filter) **\$21.95**

Good Thru June
Robert D. Green, Inc.
2400 W. American Blvd. 272-4588

Mr. Goodwrench

Best of Press

Trial and Error

He who never makes a mistake actually never makes a discovery either.

-Grit.

How True

Never question your wife's judgment—look who she married.

-Tribune, Oakland.

Advice

Note to the college graduate: The world is all wet; don't burn up all your energy trying to set it on fire.

-Herald-Courier, Bristol.

Biggest Nut

It takes hundreds of nuts to hold an automobile together, but only one to jolt it apart.

-Herald, Dubuque.

Most people have generous impulses as long as they don't cost money.

Attention CRP Participants

We have an inexpensive Sorghum-Sudangrass Cover Crop for your accepted CRP acres.

1. Three-Way Cross
2. Heavy Foliage
3. Drought Tolerant
4. Fast Growth
5. Noxious Weed Free



DINE-A-MITE
Hybrid Sorghum-Sudangrass

Wiedebush & Company

PHONE 272-4611 1620 WEST AMERICAN MULESHOE, TEXAS

Bailey County Journal

Classified

Call 272-4536

CLASSIFIED RATES
Per Word.....\$15
Minimum Charge \$2.30

Consecutive Insertions
Minimum Charge \$2.00

CLASSIFIED DISPLAY RATES
\$1.75
Per Column Inch

DEADLINES
12 noon Tues.
For Thursday Paper
12 noon Friday
For Sunday Paper
We reserve the right to classify, revise, or reject any ad. Not responsible for any error after ad has run once.

1. Personals

CUSTOM ROUND hay baling call after 7:00 Larry Free 925-6739. 11-18s-tfc

MARY KAY COSMETICS Josie Flowers 272-3865. 11-49s-tfc

MASTERCARD / VISA! Regardless of credit history. Also, new credit card. No one refused/For info. Call 1-315-733-6062. EXT. M1741. 1-23s-5tpts

OWN YOUR OWN beautiful discount shoe store. Offering over 300 top designer name brands and over 1500 styles at unbelievable retail prices of 6.75 and up. All first quality merchandise. Satisfaction Guaranteed. *Andrew Geller *Evan Picone *Naturalizer *Stride Rite *Bandolino *Reebok *Amalfi *9 West *Gloria Vanderbilt and many more. Hand bags and accessories also. \$16,900.00 to \$39,900.00 includes beginning inventory, training and fixtures. Call Anytime. Prestige Fashions 1-800-247-9127. 1-24s-21pts

STORAGE
Rooms Available For Storage \$25.00-\$30.00 per month Ted Barnhill 272-4903 b1-42s-tfc

A NEW U
Tan ahead for summer, tighten & tone. Lose inches that stay off, with A NEW U Body Wrap. Call for appointment Farwell, 481-3848. 1-14s-13tsc

CONCERNED
About Someone's Drinking? HELP IS AVAILABLE through Al-Anon Call 227-2350 or 965-2870 or come to visit Tuesday nights, 8:00 p.m. or Saturday mornings at 10:30 a.m. at 1116 W. American Blvd., Muleshoe.

2. Lost & Found

LOST ORANGE & white Brittany Spaniel hunting dog weighs approximately 30 lbs. approximately 18 inches tall. Last seen May 3, 8 mi S South west of Muleshoe on Rabbit Road. \$100 Reward. Call Matt Pheasant 25-6485 after 5:00 p.m. or co-owner Nick Pheasant 272-4787 day 5664 night p2-20s-12tc

3. Help Wanted

PART TIME LVN, RN, or EMT to take health history for insurance company. Reply to Portamedic, P.O. Box 6705, Lubbock, Texas 79413. Include telephone number. t3-24t-2tc

APPLICATIONS ARE being taken for Full time & Part time Sales Clerk. Call 272-5278 for appointment. m3-24t-2tc

WANTED
Newspaper Carrier. must have own transportation. Apply in person only. No phone calls excepted. The Journals 304 W. 2nd.

4. Houses For Rent

NEED TO RENT 3 bedroom, furnished house or apt., for July and August. Call 272-4630. s4-20s-tfc

FURNISHED GARAGE apt. for rent. Water paid. See after 5:00. 202 W. 8th. c5-24t-tfc

8. Real Estate

DESPERATE!!! MAKE OFFER, WILL TRADE EQUITY FOR ANYTHING OF VALUE. HOME FOR SALE. 3 bedrooms or 2 bedrooms and 2 living area, 1 1/4 baths, double garage, fireplace, yard sprinkler system, quiet neighborhood. 510 E. Chicago. If interested call Marilyn at 965-2123. After 5:00 PM call 272-5690 or 505/392-1173. B8-24t-6tc

HOUSE FOR SALE by owner. 2 bdrm., 1 bath, fireplace, and efficiency apartment in back. Owner financing. Call 272-3006 or 272-5813. g8-18s-tfc

PRICED TO SELL
Nice 3 bdrm. home efficient Geothermal heat pump; in ground heated swimming pool, storage shed, storm windows and jungle gym set. Call 272-5334. b8-10s-stfc

ABANDONED HOME
Take up payments. 806-763-4051. Call Collect. a8-22s-tfc

FOR SALE 3 bdrm., 1 1/4 bath, carport, large utility, new patio cover must see to appreciate. Call 272-5038. w8-21s-tfc

MOBILE HOMES
New-Used Instant Financing Low Prices Trades Welcome
GRAHAM HOME CENTER
Plainview 1200 I-27 S 293 - 8355 8-17t-tfc

James F. Hayes & Co.
Agricultural Real Estate Sales & Appraisals
Vic Coker - Agent 806-965-2468

8. Real Estate

HENRY REALTY
111 W. Ave. B Muleshoe, Texas 272-4581

BRICK Home North of Muleshoe on Hwy 214. 3 bedroom, central air/heat, large Hobby Shop and apartment on premises. Fruit Trees. **IN CONTRACT**

4 Br, 2 bath, 2 car garage, central heat/air, large utility, carpet, near down-town. Excellent condition.

ONE ACRE sites for home construction. 3 miles East of Muleshoe on HWY. 3 lots remain.

JUST COMPLETED 3 bedroom, 2 bath, large living room, kitchen and dining. Excellent condition, near high school. Priced to sell.

COMMERCIAL PROPERTY on Main Street, over 4,000 sq. ft., income producing property.

COMMERCIAL PROPERTY-Excellent rental income from 4 separate offices. Lease agreements in force.

3 Br, 2 bath, spacious home outside city limits, near city on highway. 29'x40' metal building. Lot 85'x62'.

3 Br, 1 bath, completely remodeled, edge of city on highway.

VACANT LOT for Mobile home immediate possession.

COMMERCIAL PROPERTY on West American Blvd. ideal location Building ready for occupancy.

2 BR. 2 bath, carport, storage buildings, heat pump, near school. Price in \$20's.

WHITT-REID REAL ESTATE
201 Main Office 272-3611

JUST listed 3-2-1 stucco good location for \$28,000.00

"If You Want It Sold-See Us"

Roy Whitt 272-3058
Thursie Reid 272-5318
Broker, CREA, Appraiser
"We Try Harder"

116 E. Ave. C. BINGHAM & NIEMAN REALTY 272-5285 --- 272-5286

We have homes for as little as \$600.00 total move-in cost, with payment scheduled according to income for qualified buyers!!!!

RICHLAND HILLS
NICE-3-2-2 Brick, Cent. A&H, built-ins, FP, fenced yard, & more.....

IMMACULATE 3-2-2 Brick, corner lot, Cent. A&H, built-ins, FP, loads of storage & closet space, sprinkler sys.!!!!

PRICE REDUCED-3-1-1 Brick, Cent. heat, Evap. air, built-ins, fenced yard...

SPACIOUS-3-3-2 Brick, Cent. A&H, built-ins, FP, large den, sunroom, basement, utility, fenced yard, much more!!!!

HIGH SCHOOL
OWNER FINANCE-3-2 home, corner lot, built-ins, nice carpet, fenced yard. \$20's!!!!

IMMACULATE-3-1-1 Brick, Cent. heat, Evap. air, fenced yard. \$30's.....

PRICE REDUCED-3-2-2 Brick, Cent. A&H, built-ins, nice carpet, FP, basement!!!! \$40's.....

JUST LISTED-3-2-2 home, corner lot, nice carpet, fenced yard. \$30's!!!!

3-1-1 home, corner lot, Cent. A&H, built-ins. \$30's.....

SPACIOUS 3-2 Brick, Cent. A&H, built-ins, nice den w/FP, fenced yard, storage bldg., & much more. \$70's!!!!

2-1-1 home, wall furnace heat, nice carpets. \$16,000.....

JUST LISTED-3-1 home, nice carpets, new roof, storm windows, & much more. \$20's!!!!

LENAU ADD.
DIANNE NIEMAN, BROKER
"WE APPRECIATE YOUR BUSINESS"

8. Real Estate

SMALLWOOD REAL ESTATE-BROKER
232 MAIN 272-4838
2-bedroom, one bath, stucco, small lot. \$200.00 Down, \$200.00 per month. *****
3-bedroom, two bath mobile home. 917 Hickory. \$500.00 down, \$200.00 per month. *****
STUCCO, 3-bedroom, two bath, central heat, evaporative cooling on roof, carpet. 1360 sq. feet. \$19,900.00. *****
RICHLAND HILLS, corner lot, 3-bedroom, 1 1/4 bath, 2-car garage, central heat, evaporative roof cooler, range, dishwasher, carpet, drapes.

9. Automobiles For Sale

1985 Blue Camero fully loaded with T-top & new tires. 965-2986. k9-20s-tfc

Without police protection there would be comparatively little civilization.

11. For Sale Or Trade

FOR SALE large round bales milo & haygrazer. 272-4351, call after 8:00 p.m. h11-16s-tfc

FOR SALE: Black rattan chairs with white ultra suede cushions. 272-3747.

KNOW THE WEATHER

With summer not far away, and summer lightning storms, or thunderstorms, approaching, the facts about lightning become especially timely. Lightning, it is true, kills a number of people each year. Dangerous places are under a big tree, in the bathtub, or around or between metal objects—during a lightning storm. In the average all-metal automobile, or in an all-metal airplane, you are safe. Lightning is caused by up-and-down drafts in thunderheads which change the electrical composition of the air, building up cloud areas of positive or negative charge. Such a cloud area, coming near an oppositely object, exchanges electrical charges with it. If you observe that lightning is active in the west, it will probably be upon you soon, but seeing it in other directions usually means it will not molest you. The old rule for judging the distance of lightning by counting the seconds is still valid. If you see the flash, count the number of seconds until you hear thunder. Then divide the seconds by five, because sound travels only a fifth of a mile a second. Your answer is the distance of the lightning from you—in miles. Telling other people what is best for their own good is the world's least needed business. No problem in life has ever been solved by dodging facts and running away from the truth.

8. Real Estate

3-2-2 carport home, Cent. A&H, large den w/FP, encl. patio, loads of storage. \$50's!!!!

NICE 3-2-2 Brick, Cent. A&H, built-ins, fenced yard. \$40's!!!!

3-1 1/2-1 home, Central Heat, Nice. Priced To Sell.
3-2-2 carport home, corner lot, nicely remodeled. \$30's.....

JUST LISTED-2-1-1 home, nice carpets, storm windows. \$20's!!!!

LARGE BLDG. on 2 lots, paved parking...

PRICED TO SELL-Office Bldg. across from courthouse.....
APPROX. 3,000 sq. ft. bldg., Railroad frontage. CASH PRICE \$15,000.00 *****
COUNTRY CLUB
3-2-2 Brick, Cent. A&H, built-ins, fenced yards, & more. \$50's!!!!

COUNTRY HOMES
JUST LISTED-Nice 3-2-2 Brick home on 2.5 acres, built-ins, fireplace, on pavement close to town!!!!

3-2-3 carport home, built-ins, Geo. A&H, storm cellar, barns, corrals, 11 acres.....

3-1-2 home, 1/2 acre, Cent. A&H, new paint, nice carpet, cellar. \$30's!!!

2-1 home, 20 acres, sub. pump, sprinkler, barns & corrals. \$40's!!!!

WELL IMPROVED 40 acre cattle set-up. PRICED TO SELL.....

HIGHLAND ADD.
JUST LISTED-2-1-1 home, wall heat, evap. air, fenced yard. \$20's!!!!

GEORGE NIEMAN, BROKER

18. Legal

CITATION BY PUBLICATION THE STATE OF TEXAS
TO: Paula Ortega Molina, Respondent: GREETINGS:
YOU ARE HEREBY COMMANDED to appear and answer before the Honorable District Court, Bailey County, Texas, at the Courthouse of said County in Muleshoe, Texas, at or before 10 o'clock a.m. of the Monday next after the expiration of 20 days from the date of service of this citation, then and there to answer to petition of FRANCISCO MALDONADO MOLINA. Petitioner, filed in said Court on the 10th day of June, 1987, against PAULA ORTEGA MOLINA, Respondent, and said suit being numbered 5727 on the docket of said Court, and entitled "In The Matter Of Marriage of FRANCISCO MALDONADO MOLINA and PAULA ORTEGA MOLINA", the nature of which suit is a request to Divorce. The Court has authority in this suit to enter any judgment or decree dissolving the marriage and providing for the division of property which will be binding on you. If this citation is not served within ninety days after the date of its issuance, it shall be returned unserved. The officer executing this writ shall promptly serve the same according to requirements of law, and the mandates hereof, and make due return as the law directs. Issued and given under my hand and the seal of said Court at Muleshoe, Texas, this 10th day of June, 1987. Nelda Merriott Clerk, District Court, Bailey County, Texas. By Elaine Parker, Deputy. e18-24s-1tc

BUSINESS OUTLOOK
by Edward Thorlund

In the last year the price of gold has increased about ten percent. But the price of many gold funds has increased up to fifty or even a hundred percent. The question many investors now ask themselves is whether the boom in the price of gold funds can continue after such a rise. The top ten performing mutual funds, for the year ending May 1st, were all funds which took advantage of big rises in gold or other precious metals stocks or companies. Investors choose between a bullion fund and an equity fund. One recalls that the price of gold shot up a few years back to unprecedented levels. That was a time for ownership in bullion. Few forecasters predict such a surge in the near future. And gold mines have no trouble, the experts say, in making money when gold is selling above \$400 an ounce. A cat may have nine lives but, when you are on the highway, remember you are not a cat.

THINK CLASSIFIED!

GRAIN PRICES
CORN.....345 cwt
MILO.....315 cwt
SOYBEANS.....45 above July
WHEAT.....225 new crop
COMMODITY CERTIFICATES
105%
Prices 6-12-87
FARMERS CO-OP
272-4335

SUBSCRIBE TODAY!
Fill In-Clip Out & Mail with your check or money order or bill me accordingly to
Muleshoe Publishing Co.
Box 449
Muleshoe, Texas 79347

Name _____
Street _____
Apt. _____
County _____
State _____
Zip Code _____

Muleshoe Journal & Bailey County Journal By Mail & Surrounding Counties \$14.75
Muleshoe Journal & Bailey County Journal By Mail (Elsewhere) \$16.50
Muleshoe Journal & Bailey County Journal By Carrier \$12.50