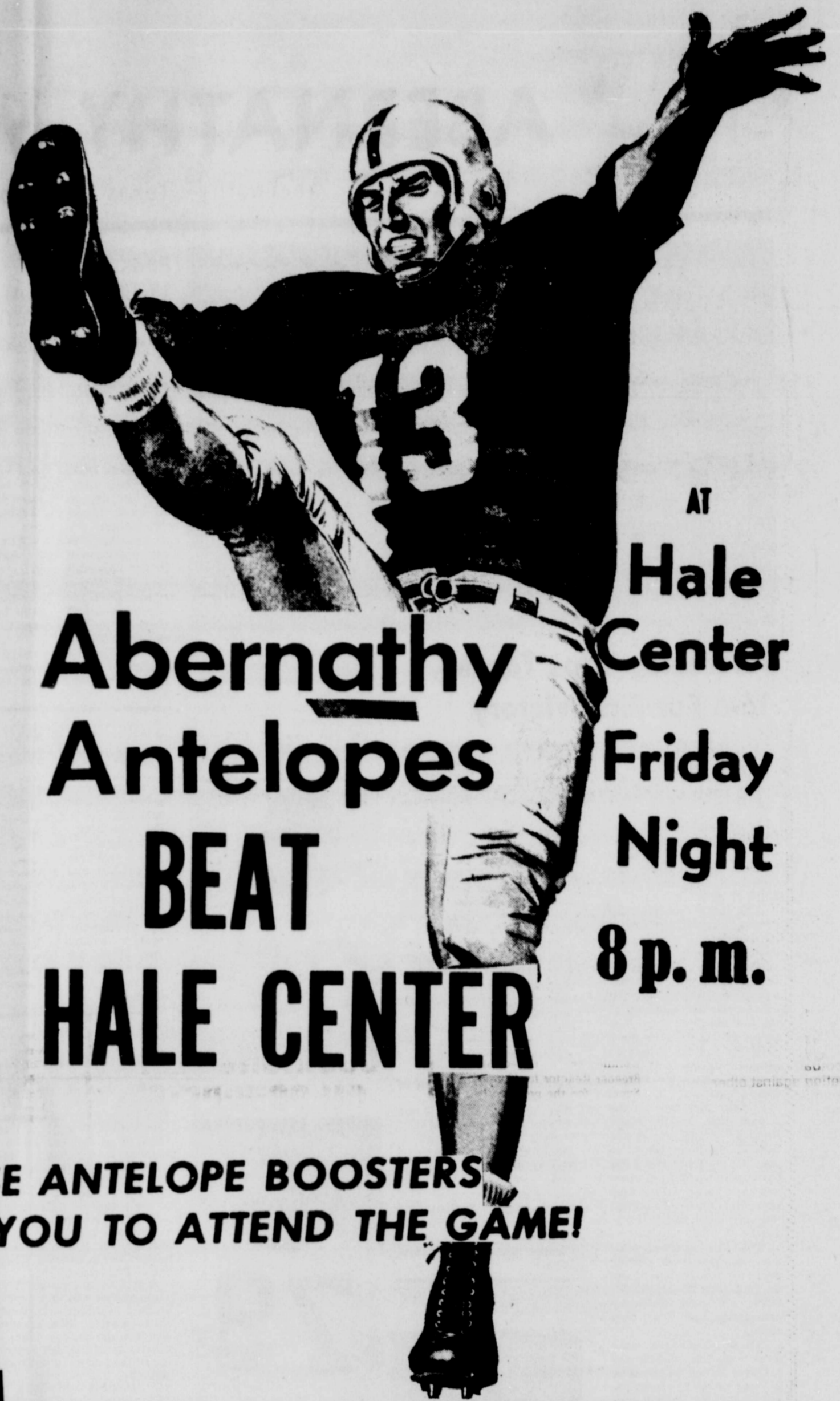




ATTENTION LOPE SUPPORTERS:

The Antelopes are up for another gruelling game September 20th at 8:00 against Hale Center at Hale Center. Let's all be there and really get behind the Lopes as they trample the Owls! LET'S BE NO. 1 IN SPIRIT!
-The Cheerleaders

SEE YOU AT THE GAME



AT Hale Center
Abernathy Antelopes
BEAT
HALE CENTER
Friday Night
8 p. m.

THESE ANTELOPE BOOSTERS URGE YOU TO ATTEND THE GAME!

SAV-A-LOT FAMILY CENTER Food Supermarket and A Line of General Merchandise	GORDON AUTOMOTIVE Dependable Repair Service		
DAIRY MART of ABERNATHY Meet Your Friends Here For A Treat	HALE COUNTY Savings Association ABERNATHY: Nystel Building, 418-A 9th Street Post Office Box 340 - (806) 298-2514	STRUVE IMPLEMENT CO. Visit Us at US 87 & FM 54 Crossroads IH Tractors & Implements	ABERNATHY FARMERS CO-OP GIN Service the Year Around - 298-2527
This Space For Sale	This Space For Sale	ABERNATHY WEEKLY REVIEW Serving Abernathy Since 1921	Co-op Grain Company of Abernathy & Heckville The Business Owned by Those We Serve
SMITH'S THRIFTWAY SUPERMARKET 298-2627 - We Give Green Stamps	ABERNATHY OIL COMPANY Dealer for Goodyear Tires	CONSUMERS FUEL ASSOCIATION In New Building on West Service Street	WOLF IRRIGATION Come Shop our Hardware Store
ABERNATHY FLORAL & GIFTS Whatever Else You Do, Give Flowers, Too.	CITY CLEANERS & LAUNDRY Pick Up & Delivery - 298-2242	LON CLEANERS-LON FASHIONS Beautiful Fashions, Come to See Us.	HIGGINBOTHAM-BARTLETT CO. Lumber, J-B Paints, Hardware
SHIRES AUTOMATIC LAUNDRY 1211 West Service Street	ACE WELDING A. C. Harris, Jr. Bobby Cuevas 1204 Avade D Phone 298-2219	JOE THOMPSON IMPLEMENT CO. "The John Deere House"	SANDERS AUTO SUPPLY Automotive Parts & Service
LOVELACE LIVESTOCK SUPPLY 1312 Ave. D-Abernathy-Phone 298-4028 Livestock Medicine, Dugan Goose-neck Trailers, Tony Lama Belt-Buckles and Tony Lama Purse For The Ladies	ABERNATHY MOTOR CO. Ford & Mercury Sales & Service	DAVIS GROCERY-DAVIS SNACK BAR Early 'til Late, Sundays & Holidays	JACK EASON Your Precinct 3 Commissioner Call Me When I Can Serve YOU
PLAINS GRAIN & FARM SUPPLY Grain & Farm Chemicals Dealer	DON'S CHEVROLET, INC. New Cars & Trucks, OK Used Cars	Nelson Automotive 298-2757 Abernathy	ABERNATHY FIRST STATE BANK Member FDIC -- Here To Serve You

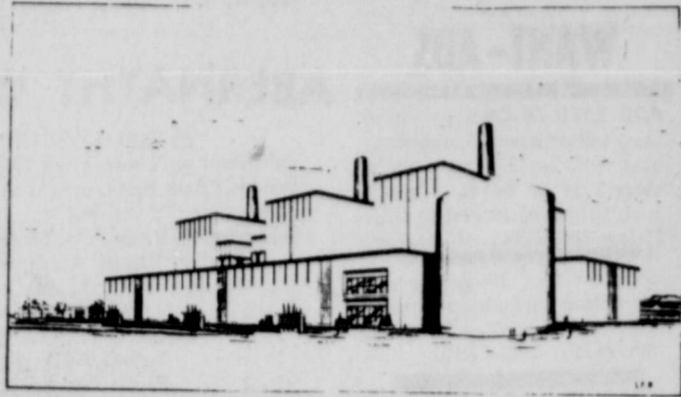
Mrs. Neff Turner was a patient in Highland Hospital, Lubbock.

Mrs. L. Q. Oswalt was a patient in a Lubbock hospital.

V. A. Dodson is still a patient in Methodist Hospital, Lubbock, where he underwent surgery to repair a hip.

Brenda Bowen, daughter of Mr. and Mrs. Charles Bowen, had surgery last week in Methodist Hospital, Lubbock.

Mrs. M. M. Evans is a patient in University Hospital, Lubbock.



Artist's rendering of how Southwestern Public Service Company's proposed 300,000 kilowatt GCFR nuclear demonstration plant might look adjacent to a conventional coal or gas-fired generating

station. The cylindrical structure on the right houses a prestressed concrete reactor vessel, 84 feet in diameter and 71 feet high, and contains the principal components of the nuclear steam supply system.



ABERNATHY CITY Mail Carrier Royce L. Shires, his wife and daughter and the Ray Martins took an extended trip earlier this summer. They were in nine North-western and West Coast states on their 4,500-mile trip. Royce said they did not see an auto accident on the entire trip, part of which was through mountains. "The nearest thing to a highway accident we saw was a big tractor truck in a barrow ditch beside the highway," Royce said. "We did, however, see two train wrecks," he added. The above picture shows freight cars from one of the train wrecks. They brought back samples of silver ore from the Galena Mine in Wallace, Idaho. They visited the Shires' son, Garald, who resides in Bellevue, Wash. They also visited Royce's mother in California.

Mrs. G. M. Carr is a patient in West Texas Hospital, Lubbock.

Mr. and Mrs. Ray Willis have this address: 4215 Western Ave., Apt. 3, Amarillo, Texas 79109. They recently returned to Amarillo from Globe, Ariz., where he was employed for several months. Ray (Shag) a former Tuco employee, currently is working as an electrician on an industrial construction job in Amarillo.

CITY GARDEN CLUB STARTS NEW SEASON

The City Garden Club met Thursday, Sept. 12, at 3 p. m. in the City Club room for the first meeting of the new season.

Mrs. J. O. Pope, the president, presided over the business session. The secretary, Mrs. Vera Hawkins, read the minutes from the previous meeting which were approved as read. Mrs. Ruby Hill, treasurer, gave the treasurer's report, handed out the year books and collected dues.

Mrs. Vera Hawkins read "A Sonnet For Gardeners" from the year book. Goals and programs for the new year

were discussed.

The twelve members present were: Mmes. Mel Bog-gus, T. A. Brewster, T. O. Brown, H. B. Coggin, J. M. Gardner, Vera Hawkins, Ed Heath, R. V. Hill, A. R. Knight, J. O. Pope, Dewey Price, and Floyd Shipman. The next meeting will be Sept. 26.

Reporter,
Dorothy Boggus

Arlic Paxton is home from the hospital, where he underwent surgery to repair a broken arm.

Mr. and Mrs. Clayton Enger of Abernathy and the O. R. Howards of Lubbock flew to Washington, D. C., where they visited the Honorable George H. Mahon. They also visited relatives in the Philadelphia and Baltimore areas.

YOUNGSTERS 8-13 COMPETE

win big



ENTER THE PUNT, PASS & KICK COMPETITION

You can show your football skills while competing against other youngsters your own age. Just bring your parent or guardian to register. Get a free Tips Book and start practicing.

REGISTRATION ENDS OCTOBER 4

SIGN UP TODAY FOR PP&K IN OUR SHOWROOM

Abernathy Motor Company
Ford & Mercury

SWPS LEADING ROLE IN GCFR

Southwestern Public Service Company today (Wednesday) announced the first step in a program which sets the stage for the company to take a lead role in the construction of the nation's first power plant to use a gas-cooled breeder reactor.

Roy Tolk, chairman and president of the electric company, said the Gas-Cooled Fast Breeder Reactor (GCFR) plant, would have a generating capability of 300,000 kilowatts and would be located on a site provided by Southwestern.

"We have signed a letter of intent with General Atomic Company of San Diego, in which we would contribute \$100 million to the project. Substantial additional financial support will be required from the electric utility industry and the U. S. Atomic Energy Commission," Tolk said.

"Our long-range projections call for additional generating capability in the mid-1980's; so, this development program fits right into our growth pattern and could very well be our introduction to nuclear power. We will, of course, have a conventional generating unit in service to meet our customer's needs, if that is necessary, but are enthusiastic about the prospects for the breeder unit being available," Tolk said.

General Atomic has been working on a Gas-Cooled Breeder Reactor for 13 years. Support for the program has come from the Atomic Energy Commission and a GCFR Utility Committee comprised of 57 investor-owned utilities, 55 rural electric cooperatives and three European electric utilities. Included in the cooperatives participating in the program are the Rita Blanca Electric Cooperative, Dalhart; the Bailey County Electric Cooperative, Muleshoe; and the Tri-County Electric Cooperative, Hooker, Oklahoma. Breeder reactors have the unique capability of producing more nuclear fuel material than they consume. Because of this potential to stretch nuclear fuel resources, breeders are regarded as an essential component of the long-range success of the nuclear power industry. In operation, the GCFR will produce nearly 1 1/2 times as much fuel material as it consumes.

Dale Change On New 350,000 K Coal-Fired Unit

Roy Tolk, chairman and president of the Southwestern Public Service Company, announced today that the completion date for the second 350,000 kilowatt coal-fired generating unit at the company's Harrington Station, near Amarillo, has been moved up from 1979 to 1978.

"The area we serve continues to grow and this means more industry and more people. In order to continue to provide our customers with the electric service they need, we found it necessary to have the second unit at Harrington Station ready a year sooner than we had first planned," Tolk said.

The first coal-fired unit at Harrington Station is now under construction and is scheduled for completion in mid-1976. It is also a 350,000 kilowatt machine and construction is on schedule.

When both units are completed and on the line, the SPS system generating capability will be increased to almost 3-million kilowatts, with the coal-fired units representing 22 per cent of the total.

The turbine-generator for the 1978 unit will be made by Westinghouse and the boiler by Combustion Engineering, Inc., and these manufacturers have assured SPS that the equipment will be available.

CUSHIONS FEET ON CONCRETE

IN STOCK NO WAITING

5 o'clock feet

RED WING

HOPPY'S SHOP

1935 STUDY CLUB MEETS

A luncheon was enjoyed by the members of the 1935 Study Club at 12 o'clock Sept. 12th in the home of Mrs. Thomas Johnston. Co-hostesses were: Mrs. Glen McDonald and Mrs. Jack Jackson.

After the delicious meal, the president, Mrs. John Hale presided during the business meeting. Minutes of the previous meeting were read and approved as read.

A very interesting program was given by Mrs. Frank Lovelace and her committee, Mrs. Waldo Cox and Mrs. Jack Hackler, who had spent many hours of hard work on a scrap book, giving the history of the club from 1935 to 1975.

We were happy to have Mrs. Ray Pinson of Marble Falls, Texas, who was a charter member of the club and a very faithful member for almost forty years.

Members present were: Mmes. Robert Carter, Waldo Cox, W. V. Cunningham, Lee Echols, Jack Hackler, E. A. Houston, Jack Jackson, Thomas Johnston, John Hale, Frank Lovelace, Robert McAllister, Glenn McDonald, Arno Struve, Joe Thompson, Cal Tucker and Dan Ward.

Mrs. C. F. Phillips recently returned from a visit in the home of her son-in-law and daughter, Mr. and Mrs. Dwayne Taylor, of Fort Collins, Colo. Mr. and Mrs. Virgil Phillips went to Fort Collins to bring his mother home.

Hong Lou Restaurant

2417 Broadway
744-4342

Next time you come to Lubbock, drop by and try our fine Chinese Food. You'll make your shopping trip more enjoyable.

11 A. M. to 2 P. M. - 5:30 to 10:00 P. M.
Tues., Wed., Thurs., Sunday
11 A. M. to 2 P. M. - 5:30 to 11:00 P. M.
Friday & Saturday
Closed on Monday

Paying Highest Interest Rates Allowed By Law

Daily Compounding of Dividends

Savings Deposited By the 10th Earn from the 1st

HALE COUNTY Savings Association

ABERNATHY: Nystel Building, 418-A 9th Street
Post Office Box 340 - (806) 298-2516

PLAINVIEW: Skaggs Building, 7th & Broadway
Post Office Drawer 130 - (806) 293-4461

No Frost
Ice Maker
Model EXD19PM

\$529.95 With Trade

19 Cu. Ft. Adjustable Shelves

Newton Radio & TV
In Downtown Abernathy
310 Main Street . . . 298-2338

BRIGHT STAR IN THE GALAXY OF ELECTRIC HEAT

THE HEAT PUMP

ENERGY EFFICIENT...

We call the heat pump a "Bright Star" because although the idea has been around for some time now . . . there's a lot more interest in saving energy than ever before . . . people want to save energy, but they don't have to give up their comfort. With the heat pump, you don't have to give up anything. The heat

pump makes wise use of energy because it uses otherwise wasted heat and electricity to heat and cool your home. Electric heat, in any form, is a wise use of precious energy and the heat pump is today's star of the system . . . more than 100% efficient at the point of use - actually provides more energy than it

uses. Call us this week for a free electric heat cost survey of your home . . . and ask about the heat pump!

The Future Is Electric!

Boilerless • Boiling Dishes • Furnaces • Wall Heaters

THE ELECTRIC COMPANY

15-4

We are looking forward to Serving YOU during the current

Grain Sorghum - Soybean Harvest SEED WHEAT

Elbon Rye ★ DeKalb 581 HYBRID WHEAT
★ Oats

After You Have Checked the Rest... Come Do Business With The Best.

THE ONLY ELEVATOR IN TOWN THAT YOU OWN

Co-op Grain Company

Abernathy Heckville

TELEPHONES:
Abernathy: 298-2511
Heckville: 892-2908
Lubbock: 795-1145
Area Code: 806

GRAIN - FEED - SEED - FERTILIZER

