



PROCLAMATION

AMERICAN AGRICULTURE MOVEMENT DAY

JANUARY 20, 1978

WHEREAS, the abundant food and fiber supply raised by farmers is the basic strength of this area and America; and

WHEREAS, prices received by farmers for their products do not cover the cost of production; and

WHEREAS, all other segments of our economy are protected through the minimum wage or the ability to pass their costs on to the consumer; and

WHEREAS, the farmer has become the victim of inflation and indifference from the President and the Congress; and

WHEREAS, every person in this community will suffer if the farmer's plight is not alleviated;

NOW, THEREFORE, I, Pete Thompson, Mayor of the City of Abernathy, Texas, do hereby proclaim Friday, January 20, 1978, as "AMERICAN AGRICULTURE MOVEMENT DAY", and urge all of our citizens to gain a better understanding of the farmers economic situation and help him gain his fair share of America's bounty.

IN TESTIMONY WHEREOF, I have hereunto signed my name officially and caused the Seal of the City of Abernathy to be affixed thereto, on this the sixteenth day of January, 1978.

*J. Pete Thompson*  
Mayor J. Pete Thompson

ATTEST:

*Ottavia Clement*  
City Secretary



Father Julian Rousseau

\*\*\*\*\*  
Important Mission (Revival) Planned For St. Isidores Catholic Church Here

A well-known Franciscan Missionary, Father Julian Rousseau, from Pena Blanca, New Mexico, is to conduct a program of spiritual renewal, or Parish Mission, in St. Isidore Catholic Church

here, from Sunday, January 29 until February 4. The main service, consisting of Biblical sermons, prayers, and hymns, will take place every evening at 8:00 p.m. A special program for

ABERNATHY YOUNG FARMERS CHAPTER TO BE HONORED AT MEETING IN WACO

The Abernathy Young Farmers chapter will be honored January 20 at the Area I Outstanding Chapter of the State Association of Young Farmers of Texas.

A trophy will be presented during the 24th annual convention of the association at the Waco Convention Center. Production Credit Association sponsor the chapter awards.

Ten outstanding area chapters were selected in Texas, and one will be named the Outstanding Chapter for the state. Outstanding area chapters are on Monday, Tuesday, and Wednesday.

Father Julian, far from being a stranger in this area, has been preaching Missions or Revivals, in both English and Spanish, throughout the Southwest for the last 25 years. Originally from Ecanaba, Michigan, he spent many years preparing himself for this work as priest and missionary, by studying Holy Scripture, Philosophy, and Theology, in various colleges of Ohio, Michigan, and Indiana. Born June 23, 1909, he was ordained to the Holy Priesthood June 8, 1939.

IRISH RESIDENCE IS BURGLARIZED

Hale County sheriff's deputies and Abernathy police investigated a burglary at the residence of J. L. Irish of Abernathy which was reported Thursday evening.

Taken during the daylight burglary were \$1,100 in travelers checks in \$50 and \$100 denominations, \$300 in new \$10 and \$20 bills, and \$104 in pennies which were in a can-type bank. Also taken were a camera, a pair binoculars, a brief case, a bag containing several trading stamps and a .38 caliber pistol.

Area law enforcement officers are searching for a subject who had been seen at the residence earlier in the day.

C. C. Committees Meet Here Jan. 12

The crime committee of the Chamber of Commerce met with Judge Morris Stevens on Thursday morning, January 12, at 10:00 p.m. The topic of discussion was the enforcement of penalties for shoplifting. At a recent meeting the Chamber of Commerce had decided to have posters printed which would be placed in all the local businesses stating that shoplifters would be prosecuted. The signs will read that "Shoplifting is a Criminal Offense and all violators will be prosecuted." The fine for a first offense will be \$50.00 and second offense fine will be \$100.00. Judge Stevens stated that all offenders will be fined without exception.

The brochure committee also met at this time and plans were finalized for the new brochures for Abernathy. They will be out within the next month.

The new brochures will be most interesting and helpful to the city of Abernathy to our endeavors to grow and attract newcomers.

HALE COTTON GROWERS TO NAME DIRECTOR

Hale County cotton producers and agribusinessmen will elect a Producer Director to Plains Cotton Growers, Inc. at noon January 24 at the Hale County Agriculture Building, Plainview. The election will be held in conjunction with the Hale County Soil Fertility Day scheduled on that date.

Announcement of election arrangements comes from Owen Benn of Abernathy, current Hale County Producer Director to the 25-county commodity organization, and John McQueen of Plainview, Businessman Director. Each of the counties in PCG territory has two directors, one a businessman and the other a cotton producer. They are elected on alternate years to serve two-year terms. Each is eligible for re-election every second year.

Benn and McQueen are urging all interested parties to attend and take part in election, in which both farmers and businessmen are eligible to vote.

A member of the PCG staff from Lubbock will conduct the election, present a brief summary of PCG objectives and activities and answer any questions concerning the commodity organization and its work.

CONSUMERS FUEL TO BEGIN CLOSING ON SATURDAY NOON

S. W. (Dub) Royal, manager of Abernathy Consumers Fuel Association, reports that the firm will start closing at noon on Saturdays. The Saturday noon closing at Consumers Fuel Association will begin this Saturday, Jan. 21. See Consumers Fuel ad in this paper for a list of telephone numbers to call in cases of emergency on Saturday afternoons.

JANUARY CLARANCE SALE Struve Hardware & Dry Goods and Hoppy's Mens Store will have their Jan. Clarance Sale Jan. 19, 20 and 21. See their ads in this edition of The Review.

STRIKING FARMERS HEAR SPEAKERS IN LUBBOCK MEET

Abernathy area farmers were among the some 3000 persons at Fair Park Coliseum, Lubbock, Thursday night to hear speakers discuss the current problems agriculture is having in the world's market place. That meeting was the last major area event in the current American Agriculture Strike seeking 100% parity for farm and ranch products. Major thrust of the American Agriculture Strike this week is aimed at officials of federal government. Farmers from across the nation converged on Washington, D. C., this week to take their price-problems to the seat of the Country's government.

Visiting speaker on the program at Fair Park Coliseum was Don Kimball, Amarillo agribusinessman. Also speaking on that program was Johnny L. Lutrick, Lubbock, who recently was promoted to assistant vice president as an officer in the agricultural loan division of Lubbock National Bank. An AHS and Texas Tech graduate, Lutrick is the son of Mr. and Mrs. Harvey Lutrick of (Con't. on Page 2, Col. 1)

LOCAL FARMERS TO WASHINGTON

Following is a tentative list of area farmers who planned to fly to Washington, D. C., to join other farmers from over the nation this week in seeking better prices for farm products: Marvin, Darrell and Reggie Stephens, Lindell and Tommy Myatt, Roy Lee Knight, J. F. Buske, Lewis and Harvey Lutrick, Carroll Dunn, Bill and Jim Waits, J. W. Hamilton, Donald Blackmon, Ronnie Hamilton, A. B. Teaff, Mr. and Mrs. Loren West, Tommie Wages, J. W. Shadden, Bill Houston, Troy Larson, and Don Presley, Dan Foady, Don McKenzie, Ruwayne Struve.

CITY SEEKS WATER LOAN

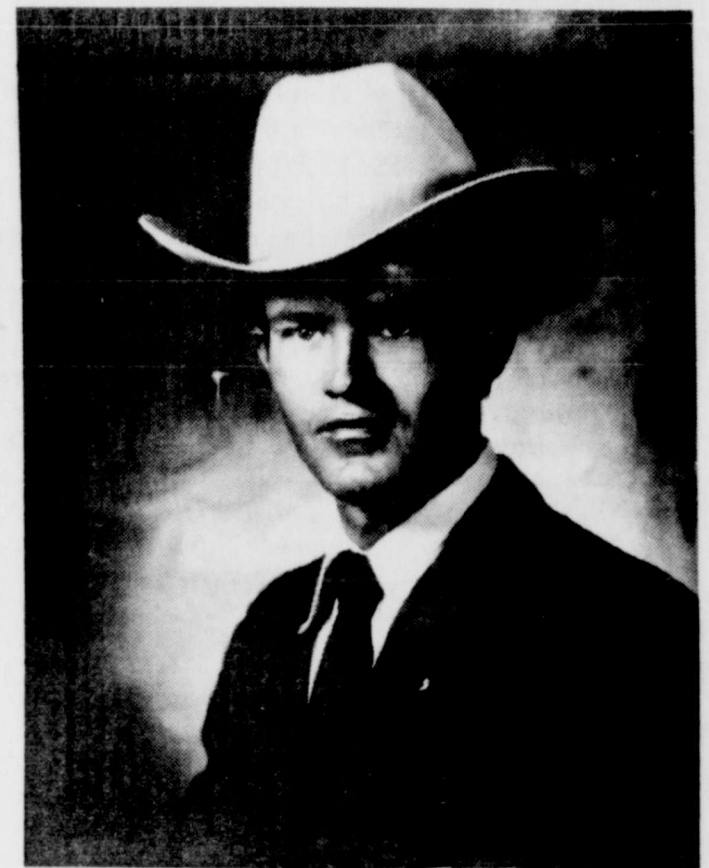
AUSTIN-----The Texas Water Department Board will hear a request from the City of Abernathy for a \$275,000 loan at its regular monthly meeting Jan. 23.

The appointment of Dr. Delwin Webb was announced by Gov. Briscoe's re-election campaign office. J. F. Townley, superintendent of the Irving Public School, was named chairman of the panel.

DR. WEBB NAMED TO COMMITTEE

AUSTIN--The superintendent of Abernathy Public Schools has been named to the steering committee of School Administrators for the Briscoe re-election campaign.

The appointment of Dr. Delwin Webb was announced by Gov. Briscoe's re-election campaign office. J. F. Townley, superintendent of the Irving Public School, was named chairman of the panel.



Steve Jackson

STEVE JACKSON TO BE HONORED AS AREA I STAR YOUNG FARMER

A 29-year-old Abernathy farmer, Steve Price Jackson, is being honored January 20 as the Area I Star Young Farmer during the 24th annual convention of the State Association of Young Farmers of Texas in Waco.

He will be honored at the Young Farmers annual awards banquet at 6 p.m. January 20 at the Waco Convention Center. More than 600 persons are expected to attend.

The area award winner is selected on the basis of the farmer's inventory; cropping and livestock practices; soil and natural resource conservation practices; contributions to community, state, and nation as well as general

information on the success of his farming operation.

Jackson rents 1,280 acres. His crops include cotton, grain sorghum, wheat, soy beans, and some pasture land.

In the Abernathy Young Farmers chapter, Jackson has served as president, secretary, and vice-president. He has also been vice-president for Area I of the Young Farmers.

The State Association of Young Farmers is an educational organization sponsored by the Texas Education Agency for persons under 35 years old who are involved in agriculture. The association has 4,000 members in 225 local chapters.

FARMERS URGE PEOPLE TO SEND TELEGRAMS

People of the community and area are urged to send telegrams and mailgrams to President Carter and Secretary of Agriculture Bergland to voice their support of the American Agriculture Movement.

The First Baptist Church carried 25 farmers to the airport Tuesday morning at 6 a.m. in the church van. They will return back to Abernathy Saturday.

There were 25 farmers from Abernathy and 7 farmers from New Deal making the trip to Washington, D. C.

SUNSHINE GROUP WILL MEET THURSDAY, JANUARY 19

Meeting will be in the City Hall Club Room.



SPC LIVESTOCK TEAM WINS RESERVE CHAMPIONSHIP AT ARIZONA-----The five-man livestock judging team from South Plains College recently carried off reserve championship honors from the Arizona National Livestock Show in Phoenix. Team members are (from left) Don Arwine of Levelland, who took first in beef, fifth in swine and sixth in overall judging; Scott Hendley of Fort Sumner, N. M., who took third in sheep,

fifth in beef and eighth in overall; Hoy Shakespeare of Levelland, who took fourth in horses, fifth in sheep and third in overall; Brad Walden of Littlefield, who took second in beef judging; and Ron Presley of Abernathy.



ABERNATHY WEEKLY REVIEW

ESTABLISHED IN NOVEMBER OF 1921

Published on Thursday of Each Week in Abernathy Texas
Second Class Postage Paid at Abernathy Texas 79311
Located at 916 Ave. D, in the city of Abernathy
P.O. Drawer D--Phone (806) 298-2033
Abernathy Texas

Any erroneous reflection upon the character of any firm, corporation or individual which may appear in the columns of the Abernathy Weekly Review gladly will be corrected upon being brought to the attention of the publishers.

SUBSCRIPTION RATES: \$5.50 per year in Hale and adjoining counties. \$6.00 per year in rest of Texas and \$7.00 per year when mailed out of Texas.

Richard and Vicki Havens...Publishers
Vicki Havens...Editor
Billie Rantz...Advertising & News
Edith Howard...Typesetter
Buford F. Davenport...Staff

FARMERS HEAR SPEAKERS CONT. FROM PAGE 1

Following is the text of the speech Lutrick presented to the gathering at Fair Park Coliseum in Lubbock, Thursday night:

As most of you are aware, the farmer is now caught in a major price squeeze situation. The cost of fuel, oil, fertilizer, herbicides, machinery and equipment, and labor are at an all-time high. The cost of these essentials needed in the production of your crops are steadily increasing, while the price of your products are not at a break-even level. If production costs are to continue to rise, so must the price of our commodities. Grain, cotton, and cattle producers are reporting losses.

The prospects for 1978 do not look good. Dry weather conditions and extensive surpluses in the grain and cotton markets continue to make 1978 look bleak as far as agriculture is concerned.

The main problem is agriculture today is the law of supply and demand. There has been no extra attempts to lower our inventory levels on commodities. There has been no extra attempts to create a price stimulate in

our marketplace. The farmer has fulfilled his obligation by operating at full production. It is now up to our "appointed" Agriculture Officials to fulfill their obligations and produce more market demands for our commodities. The farmer does not want a government hand-out. The farmer does not want the government mingling in our free market system. All the farmer is asking is an expansion of our export volume of trading. Prices will take care of themselves.

The American farmer must come first, and importing our country beef is not putting the American Farmer first. We have all the problems we can encounter here in our own country, and these problems need immediate attention.

I cannot speak for all bankers, but for bankers in general we are willing to stay with, work with, and help the farmer through this crisis in anyway possible. We have a problem we cannot hide from. We must face this problem head-on: solutions are available. With expanding the export market trading area, better management and inflation controls, there is a

chance to survive this critical year of 1978.

The bankers are sympathetic with farmers problems. Your problems are our problems, and should be the problems of every American who is now eating food or wearing clothes. The farmer must make a profit to stay in business.

During the meeting, Don Kimball presented the striking farmers' own proposed 12-point plan designed to bring market prices to 100% parity levels:

NEWS & COMMENTS BFD

NGC---"TEXAS" will begin its 13th season June 24 at Pioneer Amphitheatre in Palo Duro Canyon, east of the City of Canyon. Shows will be Monday through Saturday, at 8:30 p.m. There will be one Sunday performance, July 2, at 8:30 p.m. We have brochures.

NGC---The Southwestern Exposition and Fat Stock Show and Rodeo in Fort Worth will be from Jan. 25 through Feb. 5. We have brochure.

NGC---Billy Carter's beer soon will be brewed and distributed by Pearl Brewing Company in San Antonio.

ENERGY TRAVEL



THE NUMBER OF AMERICANS WHO GO CAMPING IN THE GREAT OUTDOORS HAS RISEN FROM 15 MILLION TO 58 MILLION IN THE PAST 30 YEARS. BY 1980, IT IS EXPECTED THAT THE NUMBER OF CAMPERS WILL REACH 70 MILLION!



CAMPERS FIND OUTDOOR LIVING INCREASINGLY ENJOYABLE THANKS TO U.S. ARMY INVENTIONS OF FREEZE-DRIED FOODS, NET-PACK MEALS AND WATER REPELLENT MATERIALS--ALL ORIGINALLY DEVELOPED FOR SOLDIERS!

--- Laws making it illegal for anyone to buy, sell or trade any agricultural product at a price less than 100 per cent of parity as determined by the U.S. Department of Agriculture.

--- Total abstinance by the United States government from buying or selling any agricultural product except for its own use or unless government purchases are made on the open market on the same basis as any other trade or business.

--- Consolidation of all federal departments with functions dealing with agricultural products under a special administrative commission whose members would be agricultural producers elected by their peers to represent farmers of each major commodity.

Storage Plan Wanted
--- Establishment of price provisions to pay for the cost and storage of agricultural products until they can be used. For products requiring lengthy storage, the market price would be set at 95 per cent of parity and then be adjusted at 1 per cent per month for one year to pay for costs, according to the proposal.

--- All perishable or immediately processed agricultural goods be priced at 100 per cent of parity.

--- Provisions to be made for the long range production of items such as timber that would take into consideration such factors as the long term use of the land, labor and taxes.

--- Permission to negotiate the price for quality products on a marketing and supply basis where agricultural producers would organize their own marketing structures.

--- A ceiling price of 115 per cent of parity on agricultural products at the producer level to protect the consumer against excessive price manipulation.

--- Unrestrained planting of any crop item guided only by USDA need projections. Farmers would be issued marketing certificates based on the anticipated production and needs of the nation proportionally to their history of crop production to assure every producer the opportunity to market a fair share of the market's needs.

--- Laws making goods produced above domestic and export needs the sole property and responsibility of the producer.

--- Establishment of the United States parity level as the world price level in all trade transactions with other countries. Under this provision, agricultural products imported would not be allowed to enter the country for less than 110 per cent of the American established market price. Tariffs from imports would be placed in a credit hold for exporting countries to purchase American goods at American prices. All imported goods would be labeled imported until purchased by the consumer.

--- Enlargement of the federal minimum wage law to cover farm laborers, with the minimum wage set at the same price level as 100 per cent parity for a bushel of corn.



QUALITIES In Sound

Lovers of quality sound will never want to cut short the "Barber of Seville" if, before choosing an amplifier, they keep in mind the size of the room in which they'll be listening. Generally, the larger the space, the more amplifier power you'll need.

YOUNG FARMERS CON'T. FROM PAGE 1.

selected on the basis of educational activities, community service, and leadership and recreational activities.

The Abernathy Young Farmers chapter conducted programs for its 16 members during 1976-77 on a variety of educational topics: water conservation, seed production, dust control in cotton gins, electric motor safety, and cloud seeding. Members attended fairs and seminars and new equipment and steer fitting, feeding, and showing.

Among its other activities, the chapter sponsored a turkey shoot, barbecue Christmas social, a swine short course, the Abernathy FFA-4H Club Project Show, and various field days. The members also assisted the Lions Club in their broom sale to raise funds for the blind.

The 1976-77 officers of the Abernathy Young Farmers were Ronnie Hamilton, president; Steve Jackson, vice-president; Larry Lutrick, secretary; Glenn Darrett, treasurer; Bill Waits, reporter; and Jerry Adams and Walter Cox, advisors.

The State Association of Young Farmers is an educational organization sponsored

Hospital Briefs

Mrs. Mary Johnson is a patient in the I. C. U. at Highland Hospital.

Annie Bell Stevens returned home from Nichols Hospital in Plainview last Saturday and had to go back to the hospital on Sunday.

Mrs. J. T. Bryant who was a patient in West Texas Hospital is now at home.

Mr. Guinn is now at home after being in the hospital at Littlefield.

Mrs. H. L. Robertson, Jr. had surgery last week and is now at home.

BRIEF: Jimmy Jackson of Joe Thompson Implement Co. attended a John Deere service school in Dallas last week.

THOT: Seven days without church makes one WEAK!

by the Texas Education Agency for persons under 35 years old who are involved in agriculture. The association has 4,000 members in 225 local chapters.

Form 64p (State) (6-77)

PUBLISHER'S COPY

State Bank No. 553

Consolidated Report of Condition of The First State Bank

of Abernathy in the State of Texas and Domestic Subsidiaries at the close of business on December 31, 1977.

Table with columns: BALANCE SHEET, ASSETS, LIABILITIES, EQUITY CAPITAL. Rows include items like Cash and due from banks, U.S. Treasury securities, Obligations of other U.S. Government agencies, etc.

MEMORANDA table with columns: Item, Amount. Rows include Average for 30 calendar days ending with call date, Standby letters of credit outstanding, etc.

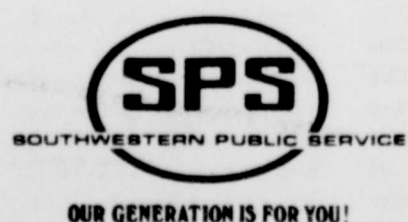
Mayo Loper, Cashier, of the above-named bank, do solemnly swear that this report of condition is true and correct, to the best of my knowledge and belief. Correct-Attest: Mayo Loper, Directors.

State of Texas, County of Hale, Sworn to and subscribed before me this 12th day of January, 1978.

I hereby certify that I am not an officer or director of this bank. My commission expires 9-30, 1978. Notary Public.

Advertisement for Energy Efficient Home. Text: 'built to save ENERGY EFFICIENT HOME CONSERVING DOESN'T MEAN HAVING TO DO WITHOUT...'

There is a new concept in home construction that provides the utmost comfort and convenience yet saves-saves-saves on heating and cooling. The Energy Efficient Home... a Total Electric concept in home building that is as modern as tomorrow - it can save forty percent or more on heating and cooling costs when compared to previously accepted standards for Total Electric construction. AND YOU KNOW WHAT? YOU'LL BE FAR MORE COMFORTABLE TOO. GIVE US A CALL.



**rites held for  
JIM B. HENRY, 72**

LUBBOCK---Services for Jim Henry, 72, of 4117 E. 3rd Place, were held Thursday in Parkway Drive Baptist Church with the Rev. Wayne Williams, pastor, officiating.

Burial was in City of Lubbock Cemetery under supervision of Rix Funeral Directors.

Henry died at 2:19 p.m. Jan. 10, in Lubbock Osteopathic Hospital.

Henry, a Lubbock resident for 53 years, married Betty Sidgwick Nov. 10, 1953 in Hobbs, N. M.

Survivors include his wife; three sons, James of Brownfield, and Elton and Erwin Johnson, both of Hobbs, N. M.; four daughters, Mrs. Joan Attebury of Abernathy, Mrs. Cora Kitchens of Frederick, Okla., Lovella Todd of Brownfield, and Mrs. Debrah Fancher of Crowley; a brother, Seawright of Lubbock; four sisters, Mrs. Treacy Snowden of Bakersville, Calif.; Mrs. Maud Morris of Cisco, Mrs. Virgie Morris of Lubbock and Mrs. Josephine Robbins of Sears, Calif.; 22 grandchildren and nine great-grandchildren.

**Please Turn In All News & Advertising Copy By The 4:00 P. M. Deadline On Monday. Thanks.**

**Services Saturday  
For C. E. Bundick**

Services for C. E. Bundick, 67, of Abernathy, were held Saturday in Northside Baptist Church with the Rev. David Vicker, pastor, officiating, and the Rev. Hollis Shewmake, pastor of South Plains Baptist Church at Levelland, assisting.

Bundick died Thursday in HI-Plains Hospital in Hale Center after a brief illness.

The carpenter was born in McCulloch County and moved to Abernathy from Spade in 1960. He was a deacon of the Northside Baptist Church.

Survivors include his wife, Mildred; two sons, Mike of Plainview, and Pat of Odessa; five daughters: Mrs. Christine Chennault, Mrs. Colleen Phillips, and Mrs. Donna Crites, all of Lubbock; Mrs. Yvonne Evans, Abernathy; and Mrs. Nancy Waddell, Jr. of St. Louis, Missouri; four sisters: Miss Ethel Bundick and Mrs. Lois Lee Tomlinson, both of Littlefield; Mrs. Jane Orman of Sandown; and Mrs. Mary Sipes of Spade; and five brothers: Clyde and Richard Bundick, both of Blanket, Texas; Wyche Bundick of Hallsville; Travis of Buena Vista, Arkansas; and Ernest Bundick of Spade.

Pallbearers were Ralph Hanes, Clyde Pittman, Jesse Knight, W. W. Brantley, Bob Rogers and Tom Conway.

**rites Tuesday for  
M. L. PRATHER, 68**

BROWNWOOD (Special)-M. L. Prather, 68, of Lake Brownwood and a former Abernathy and Denver City resident, died at 8:50 p.m. Sunday in Brownwood Community Hospital after a sudden illness.

Services were held Tuesday in the Davis-Morris Funeral Home Chapel at Brownwood.

The Rev. Leon Aduddell, pastor of Coggin Avenue Baptist Church in Brownwood, officiated.

Graveside services were at 4 p.m. Tuesday in Denver City Cemetery.

The Stonevall County native was a retired oil field pumper and a member of the First Baptist Church in Denver City. He also was an Odd-fellow.

Prather had lived at Lake Brownwood the past three years, moving there from Denver City.

Survivors include two sons, R. L. Prather of McCamey and Paul Dink Prather of Ennice, N. M.; two brothers, Boyd Prather of Hale Center and R. D. Prather of Ennice; six grandchildren; and a great-grandchild.

**Larry Griffin's  
Father Dies Jan. 10**

EARTH(Special)-Services for Abe Griffin, 72, of Earth, were held 2:30 p.m. Thursday in First Baptist Church with the Rev. David Burum, pastor, and Elder Afton Richards from Ralls, both officiating.

Burial was in Earth Cemetery under direction of Parsons-Ellis Funeral Home.

Griffin died at 2:40 p.m. Jan. 10 in an Amherst Hospital.

The retired farmer was born in Denton and moved to Earth from Olustee, Okla., in 1943. He was a member of Primitive Baptist Church in Muleshoe.

Survivors include his wife, Alene of the home; a son, Larry of Abernathy; two sisters, Mrs. Bertha French of Lubbock and Mrs. Hattie Akers of Olustee, Okla.; a brother, Norman of Altus, Okla.; and two grandchildren.

**Hanes Delivers  
Daily Paper**

Ralph Hanes is delivering the Lubbock Avalanche-Journal to homes and news stands in Abernathy. Mr. and Mrs. Joan Edwards resigned as of Dec. 31 from that job, which they had held since 1961.

**L. B. GRIFFIN  
RECEIVES MINISTRY  
DOCTORATE DEGREE**

Lester Beron Griffin, son of Dr. and Mrs. Joe R. Griffin of Weatherford, received the degree of doctor of ministry during winter commencement ceremonies at Southwestern Baptist Theological Seminary December 16. Mrs. Griffin, the former Betty Tow, is the daughter of Mr. and Mrs. Maurice Tow of Littlefield and the granddaughter of Mr. and Mrs. T. A. Fleming of Abernathy.

The seminary's largest winter graduating class received degrees and diplomas from Seminary President Dr. Robert E. Naylor. Over 265 candidates from the seminary's three schools, including 25 doctoral candidates, were recognized.

Southwestern Seminary is a fully accredited graduate institution designed to train men and women for the Christian ministry. The world's largest seminary with over 3,800 enrolled this past year, Southwestern is one of six seminaries owned and operated by the Southern Baptist Convention.

Dr. Joe R. Griffin and family are former Abernathy residents. Dr. Griffin was pastor of the First Baptist

**BRIEFS:**

Dennis Rapstine, son of Mr. and Mrs. Herbert Rapstine of Plainview, made a 3.8 grade average at San Angelo University where he is a student.

Kathy Williams, an English major at Texas Tech University, made a 4.0 grade average for the fall semester and is on the Dean's List. Kathy has been on the Dean's List every semester she has been in school at Tech. She is the daughter of Mr. and Mrs. Claudy E. Williams of 1206 13th St., Abernathy.

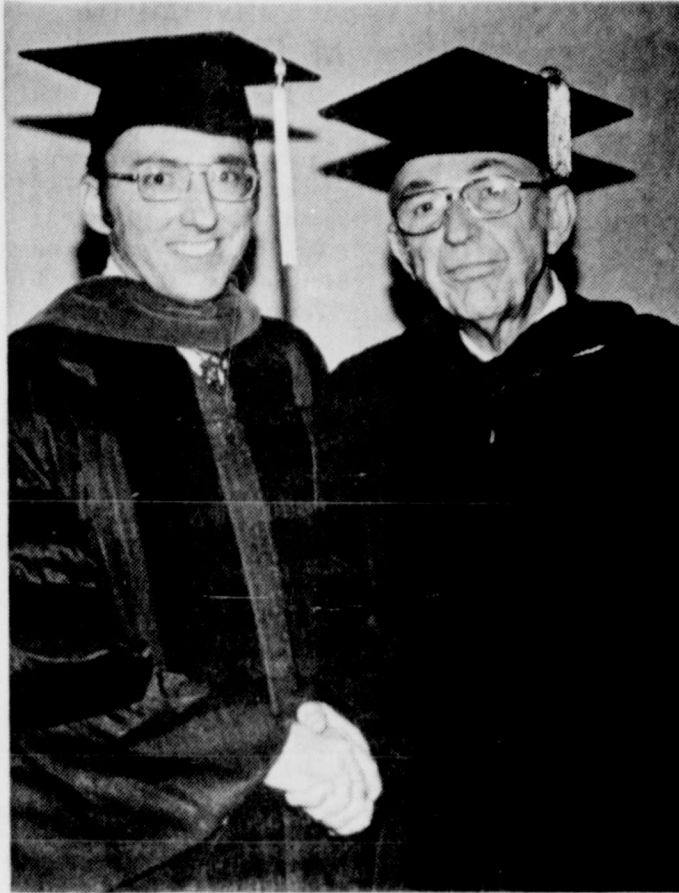


The first permanent wave was introduced by Karl Ludwig in Germany 1872. He beat out Parisian stylist Marcel Grateau, father of the famed Marcel Wave, by a short time for the honor.

"When our integrity declines, our taste does also." La Rochefoucauld

Church here.

Mr. and Mrs. Maurice Tow are also former Abernathy residents.



Lester Beron Griffin, pastor of Stadium Drive Baptist Church in Fort Worth & son of Dr. & Mrs. Joe R. Griffin of Weatherford, is congratulated by Seminary President Robert E. Naylor upon being conferred the doctor of ministry degree during fall commencement exercises held recently at Southwestern Baptist Theological Seminary, Fort Worth.



The Chinese claim to have invented the toothbrush in 1498—and it appears to be basically the same as the modern brush.

**BOUQUETS & CORSAGES**  
ROSES - MUMS  
ORCHIDS  
GIFTS, FOR ALL OCCASIONS.  
WE OFFER A COMPLETE FLORAL SERVICE.

**ABERNATHY FLORAL**  
JAN HILL-OWNER  
1312 Ave. D Ph. 298-2334

"They just think I'm not watching my savings grow."

Savings Account  
Checking Accounts  
Certificates of Deposits

**LOANS, Farm, Commercial and Installment**  
Safe Deposit Boxes — Night Depository  
Bank by Mail  
All Your Banking Needs

**ABERNATHY  
FIRST STATE BANK**  
Phone 298-2556 Abernathy  
Member FDIC

**AN OPEN LETTER  
TO OUR FARMING FRIENDS**

**PIONEER**  
PIONEER HI-BRED INTERNATIONAL, INC.  
SOUTHWESTERN DIVISION  
BOX 788 • PLAINVIEW, TEXAS 79072 • PHONE (806) 293-5231

An Open Letter To Our Farming Friends--

Charges are being made to the effect that Pioneer Hi-Bred International, Inc., is not sympathetic to the financial difficulties you are experiencing. I want to emphatically state that such is not the case. Nothing could be further from the true stand of Pioneer Hi-Bred International, Inc.

No company or organization is more aware of the contribution American farmers make to the economic health of the U.S. and to the survival of the world's population. In fact, Pioneer has spent untold manhours and dollars telling this story to the general public and to economic and governmental leaders...NOT for just the past four or five months, but from our company's earliest beginnings.

No company or organization is more aware of the economic pressures put on you, either. In fact, our success is directly tied to you. You're not just a customer. Many of you help produce our seed. And then many of you also help market Pioneer brand seeds. To understand your problems is as basic to our business as is the research, production and marketing of our planting seed.

The man who founded Pioneer Hi-Bred International, Inc., dedicated his life to the welfare of the American farmer. It was our founder, Henry A. Wallace, who first produced and marketed hybrid seed on a large scale...which may be the greatest individual contribution in the history of agriculture. To suggest that the company he founded does not understand or support you, the farmer, is a serious error and a supreme injustice.

A letter written by an individual of the Garst and Thomas Hybrid Corn Company of Coon Rapids, Iowa--an independent company which distributes Pioneer brand products in Southwestern Iowa, Kansas, Nebraska, Colorado and Missouri--is being circulated among farmers. The comments in that letter do not reflect Pioneer policy and attitudes. The letter was NOT written by an official of Pioneer Hi-Bred International, Inc. It reflects ONLY the views of its writer.

I will not speculate about who is spreading this charge among you...or why it is being done. Farmers who know Pioneer, and the work we've done to support your cause, will know this charge is NOT true. If you don't know already, we hope you'll recognize that, through honest error or malicious intent, you are being misled if told that Pioneer Hi-Bred International, Inc., is not the farmer's friend.

Sincerely,  
*James W. Lindsey*  
James W. Lindsey, President  
Southwestern Division

PLANTING SEED — HYBRID CORN — COTTON — HYBRID SORGHUM — HYBRID WHEAT — ALFALFA

® Registered trademark of Pioneer Hi-Bred International, Inc.



Bennie Pope and Donna Reed

**WEDDING PLANS TOLD**

That with one accord you may with one voice glorify the God and Father of our Lord Jesus Christ. Romans 15:6.  
In the spirit of Christian joy Donna Marie Reed and Bennie Dale Pope will vow their lives to one another forever in a life of sharing, caring and a love of endless giving together on Saturday the 25th of February at 8:00 in the evening at the First Baptist Church of Lubbock, 2201 Broadway. The prayer

we carry in our hearts of love and faith and peace we give to all of you with hope that these will never cease. We would like to invite all our friends and relatives to attend the ceremony.  
Donna is the daughter of Mr. and Mrs. W. D. Reed, formerly of Lorenzo. She was a 1971 graduate of Lorenzo High School and received her bachelors degree in education from Texas Tech in 1975. She is presently teaching in Shallowater, Bennie, is the son of Mr. and Mrs. Otis Pope of Abernathy. He was a 1969 graduate of Abernathy High School and received his degree in Agricultural Business from Texas Tech in 1974. He is presently engaged in farming west of Abernathy.

**HOURS GIVEN FOR R. H. CENTER**

LUBBOCK-The Ranching Heritage Center of Texas Tech University will remain open on Mondays through Fridays, 10 a.m.-5 p.m., weather permitting. Dr. Leslie C. Drew, The Museum director, announced today.

Previous plans had called for the center to be closed until April 1. Drew explained that popular demand had led to revision of these plans in order to accommodate school children and other visitors.

He stressed, however, that the center will be closed on weekends until April 1. The Ranching Heritage Center contains more than 20 historic structures representing the development of ranching in Texas. These are located on a tract adjacent to The Museum building on 4th Street and Indiana.

**SCRIPTURE:**

Study to show thyself approved unto God, a workman that needeth not to be ashamed, rightly dividing the word of truth.  
2 Timothy 2:15

THOT: It's a good idea to tune your instrument by prayer before the concert of the day begins.

**NEW SHAMROCK MANAGER, WIFE ARE HONORED**

Mr. and Mrs. Harris Wiggins were honored with a get acquainted coffee on Friday night at 7:30 p.m. in the home of Mr. and Mrs. Josh Howard.

Mr. Wiggins is the new manager of the Diamond Shamrock Corporation Terminal at Abernathy.

Mr. Wiggins and his wife, Duffy, come here from Tucumcari, N.M. where he had been employed as manager of the Terminal there since July, 1958. He began work for Diamond Shamrock in Amarillo and was Terminal manager at Turpin, Oklahoma for one year before moving to Tucumcari.

The Wiggins have four children: Sandra of Atascadero, Calif.; Janice of Willorado, Texas; Ron of Denver, Colorado; and Don of Tucumcari, N.M.

They are members of the Baptist Church and we welcome them as new members of our community.

The ones attending the coffee were: Mr. and Mrs. Steve Wilkins, Mr. and Mrs. Claudy Williams, Mr. and Mrs. Hilbert Rantz, Mr. and Mrs. Dale Powell, Mr. and Mrs. Joe Reeves, Mr. and Mrs. Charles Evans, Mr. and Mrs. Wendell Hughes, Mr. and Mrs. Marvin Toler, Mr. and Mrs. Harris Wiggins, Mr. Lawson Hager, Mrs. Mary Henley, Mrs. Mike Gainer, Mrs. Jesse Knight, Jr. and Mr. and Mrs. Josh Howard.

**JV Girls Win 3rd Place**

The Abernathy girls Junior Varsity team won third place in the Slaton J. V. tournament last weekend.

The A. H. S. J. V. girls of Coach Betty Cagle nudged Cooper, 29-28, in their opening game, but then lost their early Saturday morning contest to Levelland, 46-34. In their Saturday afternoon game for 3rd place, the Abernathy ferns outscored Roosevelt, 43-15.

Miss Lesa LeMonie was the leading scorer for Abernathy, gathering 10 points in each contest.

**Freshman Girls Defeat Floydada**

The Abernathy girls' Freshmen team of Coach Diana Lewis chalked up another victory Monday night, blitzing Floydada, 49-36, and running their season record 13-2.

Coanoy Wolf led the home team, dunking 18 points and grabbing 12 rebounds. Also taking 12 rebounds was Darla McGuire. Cindy Stillwell also hit in double figures, netting 16 points.

Davis was high scorer for Floydada with 9 points.

**ALL INVITED TO ND FFA MEETING**

The New Deal FFA welcomes all interested persons to attend the monthly meeting, January 23 at 7:00 p.m. in the New Deal Ag Shop. There will be a special speaker Dr. Ashdown from Texas Tech, he will discuss the "hazards and proper use of pesticides". All people are welcome to attend this program.

The New Deal Chapter selects an Ag student of the month every month for outstanding participation. The New Deal Radio Team, placed first at district and second at area. The four participants: Donna Bufe, Carrie Lovenz, Cindy O'Briant, and Max Hill were selected as the Ag. students of December.

The New Deal local Stockshow will be held February 18 at 9:00 a.m. Anyone interested in showing animals should contact the Ag. Department.

**METHODIST CHURCH NEWS**

The High School youth of the Methodist Church will serve a chili and spaghetti dinner in the Fellowship Hall after worship services Sunday, January 29. Everyone is invited to come and enjoy this meal the youth are preparing.

**SUNSHINE GROUP TO MEET JAN. 19**

Abernathy's Sunshine Group will have its first regular meeting of 1978 on Thursday, January 19th, starting at 11 a.m. It will be a luncheon and program in the city hall clubroom. Officials of the Sunshine Group want to emphasize that membership in the organization is always open. The membership is composed of retired persons and those in the Golden Years of Life, and others who choose to meet with the group. This invitation to become a member of the Sunshine Group is extended to the longtime residents and to the new residents who move into this community. We believe you will enjoy the fellowship, the program and the good food. Come join us Jan. 19.

(Those who would like to have more information on the Sunshine Group may call the president, Floyd Shipman, 293-2004, or Mrs. Dot von Struve, reporter, 293-2496, or members HB and Blanche Coggin, 293-2396, or any other members whose names you have seen in the write-ups of the meetings turned in by Mrs. Struve.)

**WORDS OF WISDOM:**  
The Lord is watching everywhere and keeps His eye on both the evil and the good.

**1935 STUDY CLUB TO MEET JAN. 26**

Abernathy's 1935 Study Club is scheduled to meet at 3 p.m. Thursday, Jan. 26, with Mrs. H. E. Williams as hostess. Program parts will be "Energy Conservation" by Mrs. Thomas Johnston, and "New Sources of Energy" by Mrs. Waldo Cox.



**Look Who's Here**  
Mr. and Mrs. Larry Fields are parents of a daughter born Jan. 12, weighing 8 pounds 2 ounces. Fields is Abernathy City Manager.

**Moves To Dublin**

Mr. and Mrs. H.V. Gallaway, longtime residents here and in New Deal, have moved to this address: 640 East Live Oak, Dublin, Texas 76446. Mr. Gallaway was school bus manager here for several years before retiring after the end of school in 1977. He was school bus manager at New Deal before coming to Abernathy.



Danny C. Meason and Cynthia Ann Reeves

**ENGAGEMENT ANNOUNCED**

Mr. and Mrs. Joe B. Reeves announce the engagement of their daughter Cynthia Ann Reeves to Danny C. Meason, son of Mr. and Mrs. A. C. Meason of Idaho.

The bride is a 1974 graduate of Abernathy High School and is presently training at the Shannon Hospital of San Angelo to

become a medical technologist.

The future bridegroom is a 1973 graduate of Roosevelt High School and is employed by the Texas Agricultural Experiment Station of Lubbock.

A March wedding is planned by the couple.

<p><b>ASSEMBLY OF GOD</b> 1404 Ave. B. 298-2060 Randy Sims</p> <p>Sunday: Sunday School 9:45 a.m. Morning worship 10:45 a.m. CA youth, CC 6:00 p.m. Evening worship 7:00 p.m.</p> <p>Tuesday: WMC 1:30 p.m.</p> <p>Wednesday: Worship Services 7:30 p.m.</p>	<p><b>BETHEL BAPTIST CHURCH</b> East 1st St. REV. J. B. LESTER, pastor</p> <p>Sunday: Sunday School 9:45 a.m. Morning worship 11:30 a.m. Ladies Union 6:00 p.m. Evening worship 7:30 p.m.</p> <p>Monday: Women's Missionary Union and Brotherhood 7:00 p.m.</p> <p>Wednesday: Prayer Service 7:00 p.m.</p> <p>Friday: Chair rehearsal 7:00 p.m. Mrs. J.B. Lester, chair director</p>	<p><b>CENTER COMMUNITY CHURCH</b> 5 mi. east on 597, then 2 mi. south on 2902 746-6184 BRO. EARNEST BREWER, pastor</p> <p>Sunday: Sunday School 9:30 a.m. Morning worship 11:00 a.m. Evening worship 8:00 p.m.</p> <p>Wednesday: Children's &amp; Adults' Bible Study 7:30 p.m. Buck Attebury, song leader</p>	<p><b>CHURCH OF CHRIST</b> 10th St. &amp; Ave. E. 298-2718 CONDY BILLINGSLEY, Minister</p> <p>Sunday: Sunday School 9:30 a.m. Morning Worship 10:30 a.m. Youth meetings 5:00 p.m. Evening Worship 6:00 p.m.</p> <p>Wednesday: Ladies Bible Study 9:30 a.m. Mid-week services 7:30 p.m. Lanny Newton, youth minister</p>	<p><b>CHURCH OF THE NAZARENE</b> 511 Ave. E. 298-2832</p> <p>Sunday: Sunday School 9:45 a.m. Morning worship 10:45 a.m. Youth Services 6:00 a.m. Evening worship 6:45 p.m.</p> <p>Wednesday: Worship services 7:30 p.m. Phil Grindstaff, music director Pastor, Russell Brubaker</p>	<p><b>COUNTY LINE BAPTIST CHURCH</b> Route 2, Abernathy 757-2134 Rev. John Martin (Interim)</p> <p>Sunday: Sunday school 10:00 a.m. Morning worship 11:00 a.m. Evening worship 7:00 p.m.</p> <p>Wednesday: Prayer meeting 8:00 p.m. Martin Kennedy, music-youth director</p>	<p><b>FIRST BAPTIST CHURCH</b> 411 7th St. 298-2367 REV. JACKY NEWTON, pastor</p> <p>Sunday: Sunday school 9:30 a.m. Morning worship 10:40 a.m. University of Christian Living 6:00 p.m. Evening worship 7:00 p.m.</p> <p>Wednesday: Prayer meeting 7:30 p.m. Mike O'Donnell, music director</p>	<p><b>FIRST UNITED METHODIST CHURCH</b> 704 Ave. D. 298-2240 REV. AL E. JENNINGS, pastor</p> <p>Sunday: Sunday school 9:45 a.m. Morning worship 11:00 a.m. Evening worship 6:00 p.m. LWV 7:00 p.m.</p> <p>Wednesday: Chair practice 7:30 p.m. UMW meets 2nd Monday of each month at 10:00 a.m. George Riddell, music director Chris Waten, church secretary Don Fosdy, director of children's work</p>	<p><b>LAKEVIEW METHODIST CHURCH</b> 2 mi. north &amp; 6 mi. east of city on FM 54 REV. HB COGGGIN, pastor</p> <p>Sunday: Sunday school 10:00 a.m. Morning worship 11:00 a.m. Evening worship 7:00 p.m.</p> <p>Wednesday: Prayer meeting 8:00 p.m. Mrs. Lawrence Amerson, secretary Herbert Watson, SS superintendent</p>	<p><b>LATIN AMERICAN CHURCH OF THE NAZARENE</b> Ave. A. &amp; 5th St. 298-2474</p> <p>Sunday: Sunday school 10:00 a.m. Morning worship 11:00 a.m. Evening worship 7:00 p.m.</p> <p>Wednesday: Prayer meeting and Bible Study 6:30 p.m.</p>	<p><b>NORTHSIDE BAPTIST CHURCH</b> 16th St. &amp; Ave. E. 298-2497 Rev. David N. Vickers</p> <p>Sunday: Sunday school 9:45 a.m. Morning worship 11:00 a.m. Training union 6:00 p.m. Evening worship 7:00 p.m.</p> <p>Wednesday: RA's, GA's, Midweek Prayer Meeting 7:30 p.m. Music Director - Ralph Hanes, S.S. Superintendent - Tom Conway Training Union-Eldon Benton</p>	<p><b>PRIMERA MISION BAPTISTA</b> 1117 Jerome 298-2613 REV. JOSE M. RODRIGUEZ REV. JOSE M. RODRIGUEZ, pastor</p> <p>Sunday: Sunday school 9:45 a.m. Morning worship 10:45 a.m. Training union 6:00 p.m. Evening worship 7:00 p.m.</p> <p>Wednesday: Prayer meeting 7:30 p.m. Youth meetings and Bible Study 8:00 p.m. Matthew Pendar, music &amp; youth director</p>	<p><b>ST. ISIDORE'S CATHOLIC CHURCH</b> South Ave. D. FATHER CLIFTON CORCORAN</p> <p>Sunday: Morning Mass 9:00 a.m. Youth prayer meet 6:30 p.m. Tuesday: Chair religious 7:00 p.m.</p>
<p><b>LET'S KEEP THE LAW OF THE LORD</b></p> <p>BLESSED is the man that walketh not in the counsel of the ungodly nor standeth in the way of sinners, nor sitteth in the seat of the scornful. 2. But his delight is in the law of the LORD; and in his law doth he meditate day and night. 3. And he shall be like a tree planted by the rivers of water, that bringeth forth his fruit in his season; his leaf also shall not wither; and whatsoever he doeth shall prosper. 4. The ungodly are not so: but are like the chaff which the wind driveth away. 5. Therefore the ungodly shall not stand in the judgement, nor sinners in the congregation of the righteous. 6. For the LORD knoweth the way of the righteous; but the way of the ungodly shall perish. (Psalms 1: 1-6)</p>												
<p><b>THE FOLLOWING MERCHANTS URGE YOU TO GO TO CHURCH</b></p>												
<p><b>Allsup's Convenience Store</b> 511 Ave. D Abernathy</p>	<p><b>Smith's Thriftway Supermarket</b> Pho. 298-2627 We give Green Stamps</p>	<p><b>Wolf Irrigation</b> Lubbock Hwy. Pho. 298-2114</p>	<p><b>ABERNATHY FLORAL &amp; GIFTS</b> Owner-Jan Hill 1312 Ave. D Ph. 298-2334</p>	<p><b>Ace Welding</b> A. C. Harris, Jr. 1204 Ave. D</p>	<p><b>Don's Chevrolet, Inc.</b> New &amp; OK Used Cars &amp; Trucks 711 Ave. D Pho. 298-2561</p>	<p><b>Venture Discount Food</b> <b>Ben Franklin Variety</b> Food supermarket and a line of general Merchandise</p>	<p><b>Consumers Fuel Association</b> "The Business Owned by Those We Serve" 829 W. Service Rd. Pho. 298-2584</p>					
<p><b>Co-op Grain Company</b> of Abernathy &amp; Heckville</p>	<p><b>Sanders Auto</b> Lubbock Hwy. Pho. 298-2578</p>	<p><b>Joe Thompson Implement Co.</b> "The John Deere House" 105 Ave. D Pho. 298-2541</p>	<p><b>Plains Grain &amp; Farm Supply</b> Grain &amp; Farm Chemical Dealer, 701 Texas Ave. Pho. 298-2521</p>	<p><b>Abernathy Farmers Co-op Gin</b> "Service the Year Round" Pho. 298-2527 Abernathy</p>	<p><b>Anderson Grain Corp.</b> Mr. Farmer: Want to Hedge your 1977 Crop? Ken Spieker, Manager, Pho. 298-2661</p>	<p><b>Pope Insurance Agency</b> 920 Ave. D Pho. 298-4127</p>	<p><b>Abernathy Weekly Review</b> 916 Ave. D Pho. 298-2033 Serving Abernathy Since 1921</p>	<p><b>The Richard Havens Family</b></p>				

**Your Best Buys Are Still Here At Home, Where We Feature;**

**Top Quality Products -**

**NEWTON RADIO & TV**

Serving The Abernathy Area For 24 Years

PH. 298-2338 310 MAIN, ABERNATHY, TEXAS

Shop for service when you buy --and when you need it we will service it.

ATTEND THE CHURCH OF YOUR CHOICE THIS SUNDAY

# Vows Spoken



Mrs. Stephen Bradley (nee Rhonda Stephens)  
\*\*\*\*\*

In candlelight ceremony Saturday January 14, Rhonda Dawn Stephens became the bride of Stephen Darrell Bradley in the First United Methodist Church in Abernathy. The Rev. Murry Brewer officiated the double ring ceremony.

Parents of the bride are Mr. and Mrs. Darrell Owen Stephens of Abernathy. The groom's parents are Mr. and Mrs. James Sprawles of New Deal.

The bride was given in marriage by her father. She wore a white gown of organza enhanced with venise lace touched in pearls. The gown featured a v neckline and empire bodice with bell sleeves edged with lace, with a semi-flow skirt and a chapel length train. The cathedral length veil fell from bandeau and was trimmed with pearls and edged with venise lace.

For something old the bride carried a gold wedding band belonging to her grandfather, the late Mr. H. B. Richardson.

Becki Lutrick, sister of the bride, was matron of honor. Bridesmaids were Vicki Bradley, sister of the groom, of New Deal, Lee Anne Phillips and Debby Oswalt both of Abernathy.

Glen McCullough, of New Deal, served as the groom's best man and groomsmen were Wayne Stephenson of Lubbock, Mike McNeely and Richie Koonce both of New Deal.

Wedding music was provided by the brides grandparents Mr. and Mrs. Marvin Stephens prior to the ceremony. Mrs. Rodney Tullis was pianist and Mr. Clinton Barrick played the organ. The Wedding Prayer, The Wedding Song, and Wither Thou Goest was sung by Miss Rhonda Webb.

Candlelighters were Miss Tonya Blankenship, sister of the groom, and Miss Regina Powell of Abernathy. Ushers were Larry Lutrick, Rodney Tullis, Jerry Hill, and Brent Jones. A special couple, Mr. and Mrs. Harold Thomas, prior to the ceremony was presented with a rose and boutoniere and was ushered in. Sunshine Shadden, daughter of Mr. and Mrs. Bryan Shadden served as flower girl and Linc Lutrick was ring bearer, the son of Mr. and Mrs. Larry Lutrick. Guest were registered by Miss Lyntha Newton and Mrs. Sharla Hill.

The reception followed in the Fellowship Hall with music provided by Mr. Marvin Stephens. Serving at the brides table was Miss Debra Thomas of Lubbock, and Mrs. Gary Lovelace of Abernathy. Mrs. Sherry Burgess and Mrs. Retha Watson, sisters of the groom, served at the grooms table. Members of the house-party were Mr. and Mrs. Emmitt Crow, Mr. and Mrs. Joe Lovelace, Mr. and Mrs. Harold Thomas, Mr. and Mrs. Kenneth Phillips, Mr. and Mrs. Lewis Lutrick, Mr. and Mrs.

## ABERNATHY GIRLS BASKETBALL SCHEDULE 1977 - 1978

DATE	OPPONENT	SITE	9th	J.V.	Varsity
Jan. 19-21	NEW DEAL TOURN.			X	
*Jan. 20	Floydada	There			6:30
*Jan. 24	Lockney	Here		5:00	6:30
*Jan. 27	Tulia	There		5:00	6:30
Jan. 30	Tulia	There	7:00		
Jan. 31	Roosevelt	There		5:00	6:30
*Feb. 3	Idalou	There		5:00	6:30
*Feb. 6	Lockney	There	7:00		
*Feb. 7	Floydada	Here			6:30
*Feb. 10	Lockney	There			6:30
*Feb. 14	Tulia	Here		5:00	6:30

Feb. 27-29 Bi-District  
Mar. 3-4 Girls Regional  
Mar. 9-12 Girls State Tournament

### \*District Games

## ABERNATHY BOYS BASKETBALL SCHEDULE 1977-78

DATE	OPPONENT	PLACE	J.V.	Varsity
Jan. 20	Dloydada	T		8:00
Jan. 19-21	New Deal Tourn.			
Jan. 24	Lockney	H	5:00	8:00
Jan. 27	Tulia	T	5:00	8:00
Jan. 31	Roosevelt	T		8:00
Feb. 3	Idalou	T		8:00
Feb. 7	Floydada	H	5:00	8:00
Feb. 10	Lockney	T	5:00	8:00
Feb. 14	Tulia	H	5:00	8:00

Feb. 20-21 Bi-District  
Feb. 24-25 Regional Tournament  
March 2,3,4 State Tournament

## JUNIOR HIGH BASKETBALL SCHEDULE 1977-78

Each site will have a 7th, 8th, and 9th grade game, unless indicated otherwise. Games will begin at 5:00 p. m.

Jan. 30	Tulia	Girls - There	Boys - Here
Feb. 6	Lockney	Girls - There	Boys - Here

The city fellow spotted an old New Englander fishing. "How many fish did you catch?" he asked. "Well, sonny, I'll tell you," he said. "If I catch this one I'm after, and two more, I'll have three."

SCRIPTURE: Trust in the Lord with all thine heart; and lean not unto thine own understanding. In all thy ways acknowledge him, and he shall direct thy path. Proverbs 3:5-6

Please Turn In All News & Advertising Copy By The 4:00 P. M. Deadline on Monday. Thanks.

A family of leopards ambled by a store window and saw the skin of a relative, now made into a coat. The price tag said \$2,000. Commented the father leopard: "He was much better off when he wasn't worth so much."

Dale Powell. A rehearsal dinner was given by the grooms parents at the New Deal Club House on Thursday night. A bridesmaid luncheon was given in honor of the bride January 14, in the Gold Room at Hemphill Wells. A spice and rice party was given on January 5th by Mrs. Bryan Shadden. The couple will be at home in Lubbock.

# NEWS OF ENERGY

## Nuclear Here Now

Just 20 years ago, in December, 1957, a small nuclear power plant began producing electricity in Pennsylvania, thereby launching the age of commercial nuclear energy.

"Since then, nuclear energy has made big contributions in medicine and naval programs, but it is in electricity generation where it contributes most to our daily lives," points out Carl Walske, president of the Atomic Industrial Forum, an organization interested in the peaceful uses of nuclear energy.

"The United States is already receiving about 12 percent of its electricity from nuclear energy, which is more than we're getting from hydro-electric plants. We have 67 nuclear stations in operation, 94 others being built, and 56 more on order. Forty-one other countries also have nuclear energy commitments: 140 operating stations, 120 being built, 50 on order, 175 more planned." Nuclear energy is clean, economic, safe, Walske says. "A kilowatt hour from a nuclear plant cost a total 1.5 cents last year, compared with 1.8 cents from coal and 3.5 cents from oil. As for safety, nuclear plants have an outstanding record." The comprehensive safety study (conducted by Dr. Norman Rasmussen of MIT an endorsed by leading engineering and scientific organizations) estimates that for the average American, the risk per year of injury, with 100 reactors operating, is only one chance

in eight million. "Cars, dams, cigarettes, and many other things pose much greater risks," Walske points out. "Our growing use of nuclear energy for electricity makes sense," he says. The world is running low on oil; problems with coal are being worked out, but we have to use it efficiently; solar power's role, according to solar experts, will grow, but mainly in supplying heat, cooling, and hot water in milder climates, not for generating large amounts of electricity.

"Nuclear energy is here now," Walske concludes, "it's doing a good job and it will do more."



Currently the most expensive land in the world is that in the City of London. In mid-1973, the price on small prime sites reached \$4,875 per square foot and one 6 1/2 acre site is worth about \$562,500,000. The 600-foot National Westminster Bank on a 2 1/4 acre site is worth over \$2 million.

**CARPET CLEANING**

**WE DO**

**QUALITY CLEANING PUT IN ZIPPERS MOTHPROOFING SIZING**

**REPLACE BUTTONS MINOR REPAIRS SOFT SET CLEANING FOR COLORS ODORLESS CLEANING**

Do any kind of alterations for men & women

All Knits Measured BEFORE and AFTER Cleaning

OUR SPECIALTY IS EXTRA GOOD SERVICE

**LON CLEANERS AND FASHIONS**

Phone 298-2826 - Abernathy

# BASKETBALL SEASON

## Abernathy Antelopes

CALLING ALL LOYAL ANTELOPE FANS! FILL THE GYM

We Are Proud of Them And Our Coaches.

<b>DAIRY QUEEN</b> South Service Road Ph. 298-2828	<b>ANDERSON GRAIN CORP.</b> 1109 Jerome St. Ph. 298-2661 914 Ave. D Ph. 298-2421 "A Complete Floral Service" Dontha Deering Jerry Prasley	<b>CONSUMER'S FUEL ASSN.</b> "The Business Owned By Those We Serve" 829 W. Service Road Ph. 298-2584	<b>WOLF IRRIGATION</b> Lubbock Highway Ph. 298-2114
<b>ABERNATHY FIRST STATE BANK</b> Member FDIC Ph. 298-2556	<b>SANDERS AUTO SUPPLY</b> South Ave. D Ph. 298-2215	<b>POPE INSURANCE AGENCY</b> See Us For All Your Insurance & Real Estate Needs! 920 Ave. D Ph. 298-4127	<b>JOE THOMPSON IMPLEMENT CO.</b> 105 Ave. D Ph. 298-2941
<b>SMITH'S THRIFTWAY SUPERMARKET</b> We Give Green Stamps 405 Ave. D Ph. 298-2627	<b>PLAINS GRAIN &amp; FARM SUPPLY</b> 701 Texas Ave. Ph. 298-2521	<b>SIXTY SIX BUTANE &amp; FERTILIZER CO.</b> Plainview Hwy. Ph. 298-2438	<b>ABERNATHY WEEKLY REVIEW</b> "Serving Abernathy Since 1921" 916 Ave. D Ph. 298-2000

## STRUVE IMPLEMENT CO.

IH SALES AND SERVICE

986-1086-1486- & 1586 DIESEL TRACTORS

1-1256 Diesel Tractor - used  
1 1026 D. Hydrostatic Tractor-used

4 & 5 Bottom Breaking Plows  
NOBLE MULCHERS &  
SPRINGTOOTH HARROWS

HAMBY PRODUCTS  
LILLISTON ROLLIN CULTIVATORS

Struve Implement Company

PHONE 298-2507 ABERNATHY  
Three Miles North of Abernathy At Intersection of Highway 87 & Highway 54

## SHIPMAN INSURANCE AGENCY

SERVICE SINCE 1952

REPRESENTING COMPANIES YOU KNOW AND TRUST

JIM HORTON

SHIPMAN INSURANCE AGENCY

924 Ave. D  
Pho. 298-2536

<b>JAMES GRAHAM RESTAURANT</b> Featuring Cafeteria & Banquet Room 921 Ave. D Ph. 298-2783	<b>GOODPASTURE, INC.</b> Tuco Corners Ph. 298-2552
<b>WEST TEXAS PIPE &amp; SUPPLY</b> 1603 Ave. D Ph. 298-2434	<b>JIM HORTON-SHIPMAN INS. AGENCY</b> "For All Your Insurance Needs" 924 Ave. D Ph. 298-2536
<b>ABERNATHY OIL CO.</b> Your Goodyear Tire Dealer 709 Ave. D. Ph. 298-2255	<b>SAV-A-LOT DISCOUNT FOODS &amp; BEN FRANKLIN 5 &amp; 10 VARIETY</b> 1411 Ave. D Ph. 298-2866
<b>CO-OP GRAIN CO.</b> Abernathy & Heckville Ph. 298-2511	<b>NELSON AUTOMOTIVE</b> South Abernathy Ph. 298-2757
<b>JOE CONNELL INS.</b> Office Ph. 762-8744 Home Ph. 298-4225	<b>ABERNATHY BODY WORKS</b> Complete Body & Repair Work 417 S. Ave. D Ph. 298-2084
<b>DAVIS FOODS &amp; DAVIS SNACK BAR</b> 306 Ave. D - Ph. 298-2336 Ph. 298-2380 "Early 'Til Late" Sundays & Holidays	<b>NEWTON RADIO &amp; TELEVISION</b> 310 Main St. Ph. 298-2238
<b>DON'S CHEVROLET, INC.</b> New & OK Used Cars & Trucks 711 Ave. D Ph. 298-2561	<b>ABERNATHY WEEKLY REVIEW</b> "Serving Abernathy Since 1921" 916 Ave. D Ph. 298-2000

### LOW FARM PRICES, HIGH COSTS PUT PRESSURE ON FARMERS

COLLEGE STATION-The combination of low farm prices, high energy costs, and decreasing water supplies in some areas could substantially reduce Texas agricultural production, contends an economist with the Texas Agricultural Extension Service.

Sixty percent of Texas crop production comes from irrigated land, notes Dr. Ron Knutson. Studies indicate that unit costs of production from irrigated land for major Texas crops such as cotton, wheat, milo and corn are substantially higher than lower yielding dryland costs and above current market as well as farm program target prices.

For example, the economist indicates that total irrigated cotton costs on the High Plains average 53 cents per pound and dryland cotton costs aver-

age 46 cents per pound while the target price for cotton is 52 cents per pound. Irrigated wheat costs average \$4.72 per bushel; dryland, \$3.39, and the target price is \$3. Milo costs in the Rio Grande Valley on irrigated land are estimated at \$5.26 per hundred weight; dryland costs are \$4.04. The target price for milo has not yet been announced but is expected to be about \$4.

Knutson explains that under the 1977 Food and Agriculture Act, the government pays producers the difference between the target price and the average market prices whenever the average market prices fall below the target price. Market prices are currently substantially below target prices for all major Texas crops except rice. Target prices are

based on the U.S. average cost of production. These costs consider out-of-pocket costs, machinery costs, overhead costs, a return to management and family labor, and a 3.5 percent return to land.

"These cost figures indicate there is trouble ahead for many Texas producers," says Knutson. "While Texas production cost estimates cited here are not strictly comparable -- and substantial cost variation exists among producers -- a comparison of target prices and average costs clearly indicates serious pressures exist on many producers to make ends meet financially."

A continuation of producer prices in the neighborhood of U.S. target prices over a period of years could result in a realignment of land values, increased risk of financial failure, increased consolidation of farm operations, conversion from irrigated to dryland production, and even a reversion from crop to ranching and cattle production in some areas of the state. The result could be an absolute reduction in Texas crop output, contends the economist. The magnitude of these effects is not known and must await further study. What is known is that a further increase in energy costs, wasteful use of water supplies, and continued low prices will increase the severity of the problem.

Research has shown that through the use of new crop production systems, it is often possible to produce crops at lower cost using less energy, water, fertilizer and chemicals. Some drought and disease resistant varieties are also available. However, this research is just beginning and has not yet been applied on an extensive basis.

Are there any current solutions to the farmers' dilemma?

Knutson suggests that potential policy solutions to the problem might lie in

### PLAINS GRAIN CO. EARNS PLAQUE FROM PIONEER

Plains Grain Company was honored recently for 10 years of service as a dealer for Pioneer brand seeds. And to mark the occasion, the Abernathy company received a plaque bearing its name and years of association with Pioneer Hi-Bred International, Inc.

"Plains Grain Company joined Pioneer as a dealer in 1967 and has represented Pioneer well in their area," Jim Lindsey, president of the Plainview, Texas company, said in noting the anniversary. "Our most vital ingredient for success is people. And it's people like those at Plains Grain Company who have enabled us to serve farmers in the Southwest."

"We appreciate the time and effort they have given to serving the needs of Abernathy area farmers. And we hope that they have realized a certain amount of gratification from their efforts."

Pioneer markets planting seed in the Southwest for sorghum, corn, cotton, wheat and alfalfa through approximately 800 dealers in Texas, Oklahoma and New Mexico. The Plainview based firm is a division of Pioneer Hi-Bred International, Inc., Des Moines, Iowa.

### Mahon to Speak At Cotton Meeting

MEMPHIS (Special)-Rep. George H. Mahon, chairman of the House Appropriations Committee, will be a featured speaker at the National Cotton Council's annual meeting Feb. 6-7 in Houston. He is scheduled to address the cotton industrywide convention at 11:30 a. m. Monday.

A veteran legislator, the Texas Democrat has served in Congress since creation of 19th Congressional District in 1934. He became a member of the appropriations committee in 1939 and has been chairman since 1964.

Born in Louisiana, Mahon moved with his family to a cotton farm in West Texas as a young child and has been engaged in farming all his life. He graduated from Simmons College in Abilene (now Hardin-Simmons University) and received his law degree from the University of Texas. He has been awarded honorary doctorates from five colleges.

Mahon began his law practice in Colorado City, Tex. in 1925 and was elected county attorney the following year. Appointed district attorney in 1927, he

### Food, Fiber Close-at-Hand

You can depend on a fresh, close-at-hand supply of food and fiber the year round in Texas. Each year, an increasing portion of the two and one half tons of food consumed by you and your family is being produced within this state where each farmer can now grow enough to feed himself and 52 others. That's a big increase over 30 years ago when the average farmer produced enough food and fiber to supply ten people, according to Agriculture Commissioner John C. White.

was elected to three successive terms before running for Congress.

In addition to Chairman Mahon, other speakers at the meeting will include Interior Secretary Cecil D. Andrus and Council President Jack G. Stone, Stratford, Calif., producer.

Some 1,500 cotton industry leaders from 18 states are expected to attend the Council's 40th annual meeting at Houston's Hyatt Regency. Program committees will meet at headquarters hotel Feb. 3-4 to review Council programs and map plans for 1978.

### NAMES & ADDRESSES OF CONGRESSMEN

Abernathy farmers are seeking the cooperation of everyone in this area in a concerted "Mail-To-Washington" drive asking the president and Congressman to give immediate attention to the plight of agriculture in the United States. We support the Farm Strike -

"The White House, Washington, D. C.," would be sufficient to address the president.

Following are addresses of Congressman:

Congressman George Mahon  
2314 Rayburn House  
Office Bldg.  
Washington, D. C. 20515

\*\*\*  
Congressman Jack Hightower  
House Office Building  
Washington, D. C. 20515

\*\*\*  
Senator John Tower  
142 Russell Bldg.  
Washington, D. C. 20510

\*\*\*  
Senator Lloyd Bentsen  
240 Russell Bldg.  
Washington, D. C. 20510

To phone: call 202-224-3121 and ask for the Senator or Representative that you want.

### SOIL FERTILITY MEET IS JAN. 24

The date for the annual Hale County Soil Fertility day has been set for Tuesday, January 24, beginning at 10:00 a. m. This meeting will be held in the Hale County Agriculture Center in Plainview, according to S. M. True, Jr., Chairman of the Hale County Extension Program Building Committee.

In a meeting at the Chamber of Commerce office, the Fertility Committee listed a number of subjects to be considered for the program, most of which dealt with the New Farm Program, new cotton varieties, pro's & con's of cotton modules, corn vs. sorghum vs. cotton, weeds and the pesticide certification program.

Fifteen people attended the committee meeting and assisted in planning this program, according to Ollie Limer, Hale County Agent who will act as chairman of the overall program planning committee.

The Plainview Chamber of Commerce officials stated that they would provide lunch for those in attendance at the meeting on the 24th of January.

## NOTICE

EFFECTIVE SATURDAY, JANUARY 21

### Abernathy Consumers Fuel Association

WILL CLOSE AT NOON EVERY SATURDAY.

IN CASES OF EMERGENCY, CALL:

DUB ROYAL, 298-2014

KEITH ELLIS, 298-2780

JOE MANZANALES, 298-4104

ROY VILLANUEVA, 298-4116

DEADLINE FOR TURNING IN NEWS AND ADVERTISING COPY TO THE REVIEW IS 4 P. M. ON MONDAY

READ and USE WANT ADS REGULARLY

higher target prices for higher cost production areas, subsidies on input prices used in agriculture, or substantially increased research and extension support for discovery and implementation of cost-reducing production techniques.

OPEN 7 AM TILL 11 PM. 7-DAYS A WEEK



# Minit Mart

FOR A SNACK OR A MEAL  
HOT FOOD  
CORN DOGS - BURRITOS  
HERBY SANDWICHES  
Remington Western  
Ammunition

PRICE EFFECTIVE - THUR-SAT. JAN 21ST - 1203 AVENUE ABERNATHY

SAVE on your POTATOES NOW!

US. No. 1

POTATOES

COLO. RUSSETS. 10-LB BAG 69¢

WHITE SWAN WITH COUNTRY FLAVOR SOFT

MARGARINE

1-LB TUB 49¢

DEL MONTE SWEET PEAS

303 CAN 29¢

DEL MONTE CUT GREEN BEANS

303 CAN 29¢

Minute Maid 100% ORANGE JUICE

ORANGE JUICE

100% ORANGE JUICE 3 FOR \$1.00

Boyardee CHEF-BOYARDEE

FROZEN PIZZA PIZZAS

ASST VARIETIES LARGE SIZE 89¢

JUMBO ROLL PAPER

SCOTTOWELS

ASST COLORS ONLY 65¢

PRESTONE

ANTI-FREEZE

GALLON JUG \$2.98

FROM OUR HOT FOOD DEPT.

CORN DOGS

2 FOR 39¢

RATH PORK SAUSAGE

1-LB ROLL 59¢

# SALE The Dude



## 79¢

Texas Tastin' Good!™  
The Dude. Countrified, chicken-fried meat, crisp fresh lettuce, and red, ripe tomato on a golden bun.

Tuesday thru Sunday  
January 17 thru 22 only.



Only at participating stores.

Trademarks of the Texas Dairy Queen Trade Assoc. © Copyright 1978 Texas Dairy Queen Trade Assoc.

## 12 AHS ANTELOPE BAND STUDENTS MAKE ALL REGION BAND



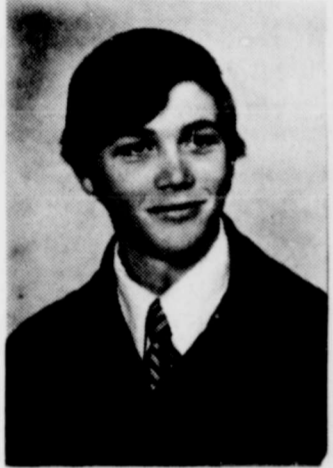
Clinton Barrick



Shari Cecil



Kelly Henderson



Lee Richerson



David Brightbill



Eric Todd



Gene McDonald



Tammy Shafer



Sherril Adams



Weldon Patterson



Christina Garza



Janie Rowan

Twelve Antelope Band members were named to the Region 16 South Zone Class AA, A and B All-Region Band after tryouts held at Lubbock Christian College last Saturday. These students were in competition with individual students from over 15 other area schools for chairs in the All-Region Band. They will participate in the All-Region Clinic, under the directorship of J. R. McEntyre, Supervisor of Music for the Ector County Independent School District. The Clinic will be held at Lubbock Christian College on the 26th, 27th and 28th of January. It will close with a concert at Monterey High School at 7 p. m. The concert is open to the public, with a small admission charge.

AHS students who made the band are: Janie Rowan, daughter of Mr. and Mrs. Kenneth A. Rowan, 2nd alternate Flute; Sherril Adams, daughter of Mr. and Mrs. Jerry Adams, 8th chair clarinet; Christina Garza, daughter of Mr. and Mrs. Joe Garza; 15th chair clarinet; Tammy Shafer, daughter of Mr. and Mrs. Bill Shafer, 2nd chair contra-bass clarinet; Weldon Patterson, son of Mr. and Mrs. Lewis Patterson, 3rd chair alto sax; Clinton Barrick, son of Mr. and Mrs. Clayton Barrick, 2nd chair French Horn; Kelly Henderson, daughter of Mr. and Mrs. Charles Henderson, 6th chair cornet; Shari Cecil, daughter of Mr. and Mrs. Oris Cecil, 15th chair cornet; David Brightbill, son of Mr. and Mrs. Bruce Brightbill, 6th chair Trombone; Gene McDonald, son of Mr. and Mrs. Glenn McDonald, 8th chair Trombone; Lee Richerson, son of Mr. and Mrs. Truman Richerson, 2nd chair tuba; Eric Todd, son of Mrs. Harry Todd, 6th chair Tuba.

For Lee Richerson, Clinton Barrick, and Kelly Henderson, this marks the 4th year of All-Region membership. David Brightbill has been a member for 3 years. Gene McDonald and Weldon Patterson have been named to the band for 2 years. Eric Todd was a member of the Midland All-City Band last year.

## LETTER TO EDITOR

Lubbock, Texas  
January 3, 1978  
Abernathy Review  
Mr. Davenport  
Abernathy, Texas

Dear Sirs,  
The Tops Club Inc. is interested in starting a Top Club in Abernathy. We are a National Non Profit Organization. Take Of Pounds Sensibly. The enclosed literature explains our program.  
Would you be able to print the following notice in the paper to enable us to try to reach interested people? Your cooperation will be greatly appreciated.  
"Are you Interested in losing weight? Meet with others who have a similar problem. We are trying to organize a TOPS (Take Of Pounds Sensibly) Club in Abernathy. If you are interested Please call Dora Goheen, Abernathy 298-4118 (after 6 p. m.). If you need to lose weight, we would like to help you.  
Neva McMakin  
Tops Captain  
Route 8, Box 33G-103  
Lubbock, Texas 79407  
(Literature explaining the program is on file at The Review office. Interested persons are welcome to come by and check the information.)

## SOCIAL SECURITY

Questions and Answers

By RAY PURCELL  
Social Security Representative  
Q. If a person has rental income from rental property, will the rental income be included in the \$300 exempt amount for 1977 and the \$3240 exempt amount for the year 1978?

A. No, rental income (and income such as royalties, interest, pensions, retirement benefits, and the like) is not counted in determining the amount of your earnings for purposes of the so-called "retirement test". Only income from wages or from working in self-employment is considered.

For further information regarding Social Security benefits please contact the Social Security office, 1401-B West 5th Street, Plainview, telephone 293-4371.



"JOY IN THE MORNING"  
Ps. 30:5b

Life has always given many problems and much sorrow. This was not God's original plan. The Bible book of Genesis shows that the first man, Adam, was happy and perfect in body and health. It was after this man's disobedience to God that sin and suffering entered the world. God loved His created people so much that He found a way for man to come back to peace and strength.

John 3:16: "For God so loved the world, that he gave his only begotten Son, that whosoever believeth in him should not perish, but have everlasting life."  
Jesus Christ died so that man could receive forgiveness, a clear conscience, a new heart, new physical healing.

We hope the following verses will help you and let you know that there can be "joy in the morning for your life."

Psalms 103:3-4: "Who forgiveth all thine iniquities; who healeth all thy diseases; who redeemeth thy life from destruction; who crowneth thee with loving kindness and tender mercies;"

Proverbs 3:5-6: "Trust in the Lord with all thine heart; and lean not unto thine own understanding. In all thy ways acknowledge him, and he shall direct thy paths."

III John 2: "Beloved, I wish above all things that thou mayest prosper and be in health, even as thy soul prospereth."

Romans 15:13: "Now the God of hope fill you with all joy and peace in believing, that ye may abound in hope, through the power of the Holy Ghost."

Psalms 34:5: "Commit thy way unto the Lord; trust also in him; and he shall bring it to pass."

Psalms 84:11: "For the Lord God is a sun and shield;

the Lord will give grace and glory; no good thing will be withhold from them that walk uprightly."

Psalms 27:1: "The Lord is my light and my salvation; whom shall I fear? the Lord is the strength of my life; of whom shall I be afraid?"  
Psalms 34:4: "I sought the Lord, and he heard me, and delivered me from all my fears."  
I Peter 5:7: "Casting all your care upon him; for he careth for you."

No one is too young, too old, or too perfect to be in need of spiritual help.

The first man Adam, disobeyed and turned away from God. Because of this sin, all mankind must find a way back into God's peace.

I know and believe that Jesus Christ, God's Son, is the way toward peace with God "Therefore being justified by faith, we have peace with God through our Lord Jesus Christ." Romans 5:1

To become a child of God (Christian believer) it is as simple as A-B-C. A-Admit you're a sinner and accept God's only antidote for sin-faith in the life blood of

Jesus Christ. B-Believe that Jesus is the Son of God and that "He became sin for us, who knew no sin, that we might be righteousness of God through faith in him."  
2 Cor. 5:21, John 3:16. C-Confess your sin and call on the name of the Lord for salvation, for whoever does this shall be saved. Romans 10:13.

If you desire Jesus Christ to come into your life, pray this prayer: Jesus Christ, I ask you to forgive my sin and come into my life. I believe that you are the Son of God and that you died on a cross for my sins. I accept you now into my life and I thank you for loving me.

## REPORT FROM BOARD MEETING

The Board of Trustees met in regular session on Monday, January 9, 1978, in the Board Room of the High School.

In formal action, the board accepted a preliminary architectural report for additional vocational facilities. Mr. Herbert Brasher, architect of Brasher, Coyette, and Rapier Firm, was instructed to prepare working drawings and be ready to accept construction bids in March. Also, Mr. Brasher was instructed to present plans for upgrading the present high school regarding heat, lighting, energy, maintenance, and appearance. The new facilities and refurbishing are budget items for 1977-78. Approved was given by the board to renew membership in the Texas Association of School Boards.

Resignations were accepted from the following personnel: Cindy Curtis, HONDA Program of Hale Center; Clara Harp, 5th grade; and Sandra Wilhite, teacher aide/bus driver. Brenda Hall, HONDA Program, Hale Center; and David Vickers, Abernathy, bus driver were approved for employment. A contract extension for the superintendent of schools was approved by the board.

In discussion, the board recommended that a tour of the Education Service Center be made during the month of April. Also, a recommendation was made that there be a facilities inspection tour during the spring.

The following reports were accepted by the board without formal action: (1) budget progress; (2) tax collection report-95.03% completed; (3) Enrollment of 1103 compared to 1139 at the end of November; elementary-467; Junior High-263; High School-373; (4) Cafeteria Report-average daily participation-635.



## HOPPY'S SHOP

SHOES AND MEN'S CLOTHING

314 Main Street  
Phone (806) 298-2505  
Abernathy, Texas 79311

"JANUARY CLEARANCE"  
19-20-21

SAVE UP TO 50% ON "MENS' WESTERN BOOTS" - ONE GROUP

TONY LAMA - JUSTIN - COWTOWN

MENS' HOUSE SHOES - 1/2 OFF  
MENS' DRESS SHOES - REG. 39.98 - NOW 27.98  
REG. 36.98 - NOW 21.98  
REG. 24.98 - NOW 19.98  
REG. 30.98 - NOW 21.98

ALL "CHILDREN'S" SHOES - 3/4 OFF

ALL "LADIES" SHOES - 3/4 OFF

MENS' WESTERN SUITS "PANHANDLE SUM" - ONLY 6 LEFT - 3/4 OFF

MENS' SPORT COATS - 3/4 OFF

MENS' SUITS - 2/3 TO 3/4 OFF

MENS' DRESS PANTS - 2/3 OFF

ONE GROUP SPORT AND DRESS SHIRTS - 3/4 OFF

TIES - 3/4 OFF

ONE GROUP MENS' WESTERN FELT HATS - REDUCED

"WRANGLER" NO-FAULT - REG. 14.50 NOW 12.50

"LEVI" REG. BELL - REG. 15.50 NOW 13.50

"LEVI" SUPER BELL - REG. 16.50 NOW 14.50

ONE GROUP SWEATERS - 1/2 OFF

"LEE" CORDORDY SUITS - ONLY 4 LEFT - 1/2 OFF

"FASHION" DENIM JEANS - ONE GROUP - 3/4 OFF

ONE GROUP - "SADDLEMAN BOOT JEAN" - 3/4 OFF

"BARGAIN TABLES" - MISC. ITEMS - CHEAP

## STRUVE HARDWARE & DRY GOODS, Inc.

"Founded in 1912"

318 Main Street Phone (806) 298-2531  
ABERNATHY, TEXAS 79311

JANUARY CLEARANCE SALE  
Jan-19-20-21

"LADIES"

SELECTED DRESSES - 1/2 PRICE

"RALPHS" PANTS - ONE RACK 40% TO 50% OFF

BLOUSES - 1/2 PRICE

SLIPS - "CLOSE OUT" SALE

COATS - "BOYS - GIRLS - WOMEN" - DRASTICALLY REDUCED

"JR. SHOP"

OVERALLS - JUMPSUITS - DRESSES - PAJAMAS - TOPS

ALL SELECTED GROUPS - 1/2 PRICE

"BOYS DEPT."

ALL DENIM "LEVI" AND "WRANGLER" - 2.00 OFF REG. PRICE

COLORED "JEANS" SIZE AGE 8 THRU 30" STUDENT - 5.00 SALE RACK

"SHIRTS" - 1/2 PRICE

PAJAMAS - "CLOSE OUT" SALE

MATERIAL AND OTHER SPECIAL PRICED ITEMS -

DRASTICALLY REDUCED

= 10% OFF ALL HARDWARE =

"CLOSE OUT" OF UNWANTED HEATERS - 1/3 OFF

NOTICE - NO ALTERATIONS OR EXCHANGE ON SALE ITEMS

## SEEDS FROM THE SOWER

By Michael A. Guido, Metter, Georgia



A man said to the ticket agent, "Give me a ticket for Virginia."

"Which part?" he asked.

"All of her," answered the man. "That's my daughter, Virginia, over there."

That is what the Lord wants - all of you, from the top of your head to the very tip of your toes. He wants you, every part of you, lock, stock and barrel. When you think of what He has done for you, is this too much to ask?

All for all is a good motto. The Lord gave all for you. I dare you just now to give all of self for all of time to the Almighty!

The Living Bible says in Romans 6:12 to 14, "Do not let sin control your puny body any longer; do not give in to its sinful desires. Do not let any part of your bodies become tools for wickedness, to be used for sinning; but give yourselves completely to God - every part of you - for you are back from death and you want to be tools in the hands of God, to be used for His good purposes."

On the night of his graduation from medical college, Dr. Howard A. Kelly, great surgeon and gynecologist, gave all that he had to God. He wrote in his diary: "I dedicate myself, my time, my capabilities, my ambition, everything to Him. Blessed Lord, sanctify me to Thy use. Give me no worldly success which may not lead me nearer to my Saviour."

### CREAMY BROCCOLI BAKE

2 pounds fresh broccoli, coarsely chopped  
 1 (10 3/4-ounce) can condensed cream of chicken soup  
 1 (8-ounce) container plain yogurt  
 1/4 cup milk  
 1 1/2 teaspoons Worcestershire  
 1 (4-ounce) jar DROMEDARY Diced Pimientos  
 3 1/2 cups Cheese NIPS Artificially Flavored Crackers, finely rolled (about 2 cups crumbs)  
 1/3 cup butter or margarine, melted  
 2 teaspoons basil leaves

Place broccoli in boiling salted water; cover and cook 10 minutes; drain.  
 Combine next five ingredients; blend in broccoli. Place in a 2-quart shallow baking dish. Combine next three ingredients; spoon over top. Bake in a preheated moderate oven (350°F.) 20 to 25 minutes or until bubbly. Makes 10 (about 5-ounce) servings.

## School Lunch Room Menu

Abernathy Public School  
 Lunchroom Menu  
 January 23-27, 1978

**MONDAY**  
 Green Enchilada Casserole  
 Tossed Salad  
 Corn  
 Chocolate Pudding  
 Corn Bread & Butter  
 1/2 pt. Milk

**TUESDAY**  
 Pochito  
 Baked Potatoes  
 Green Beans  
 Cobbler  
 1/2 pt. Milk

**WEDNESDAY**  
 Pinto Bean Casserole  
 French Fries  
 Corn Relish  
 Story Book Cake  
 Corn Bread & Butter  
 1/2 pt. Milk

**THURSDAY**  
 Spaghetti & Meat Sauce  
 Tossed Salad  
 Buttered Carrots  
 Peanut Butter Cake  
 French Bread & Butter  
 1/2 pt. Milk

**FRIDAY**  
 Hamburger  
 Hamburger Salad  
 Potato Chips  
 Pink Applesauce  
 1/2 pt. Milk

## REAL ESTATE SALES

FARMS, RANCHES & ALL your general REAL ESTATE NEEDS. We appreciate your listings. (tsr)

J. D. WEBB  
 Shipman Real Estate  
 Phone 298-2313

3 bedroom, 2 bath, kitchen-den combination, utility room, living room. Carpet, rig. atr, central heat, concrete cellar, storage house, fenced back yard. \$32,000.00. \*\*\*

3 bedroom, 1 bath, large basement, garage, on paved street. Fenced back yard. \$16,500.00. Ph. 298-2697, 298-2313 or 298-2700.

SHIPMAN REAL ESTATE

J. P. BARTON  
 Nelson Real Estate  
 Phone 298-2765 (tsr)

FOR SALE: Brick, 3 bedroom, 2 car garage, living, den, enclosed patio, 1822 sq. ft., central heat, in Phillips Addition. Call Milt Pope at Pope Insurance Agency. Phone 298-4127, 920 Ave. D, Nelson Real Estate.

FOR SALE: 3-bedroom, 2 bath, kitchen and den, utility, living room, carpet, central air and heat. Phone 298-4122. (tsr)

FOR SALE: Nice 2-bedroom house by owner. Low equity buy and \$90.00 monthly. Call 747-5821 weekdays. (1-26-p)

10 acres, 8 acres permanent grass, large steel corral, big hay barn and steel box car, feed and other storage, good well. 29% down and owner will finance balance. \*\*\*

Also have some Kow-Kandy hay for sale. Has been kept in barn.

RIEKEN REAL ESTATE  
 Ph. (806) 799-8356. If no answer call 746-6112. (1-19-p)

FOR SALE BY OWNER: Restaurant building and equipment at 16th and Ave. D, Abernathy, Texas - has sleeping quarters. Small down payment, carry balance, low rate of interest. See Junia Spear. 298-8893 or 298-4177. (tsr)

# CLASSIFIED ADS

### FOR SALE \$55

NICHOLS SWEEPS  
 We have a complete stock of Nichols Chisels and Cultivator sweeps. Plains Grain and Farm Supply, Abernathy. Phone 298-2521. (tsr)

BUY GOODYEAR TIRES from ROYCE HENSON at Abernathy Oil Company. (tsr)

ANDERSON GRAIN CORP. Treflan-\$111.00-5 gal.; Caporal-\$3, 20-4 lb.; Temik \$156-\$1.64; Treflan-55 gal.-\$1,190.00. Call Ken \*at 298-2661.

PEAK-ANTIFREEZE----  
 \$3.49-Gal. Plains Grain & Farm Supply. Phone 298-2521. (tsr)

ANDERSON GRAIN CORP.  
 Liquid Fertilizer, Best buy in town. Call Ken at 298-2661.

FOR SALE: Yard fertilizer, 16-8-8 with iron, zinc and sulphur. \$4.50 per 50 lb. bag. Plains Grain & Farm Supply. (tsr)

Graph 500 and Graph 200 Pens. All Colors in Bic Pens. See at The Review Office.

### REPAIRS

CARPENTER WORK  
 Do you need to add a room? Add a bath? Do you plan to remodel and improve your house? Call James Anderson for all your carpenter work. Painting, Repair, Acoustic Ceilings. Free Estimates. Phone 298-2409. (tsr)

ROOFING: All kinds, repair or new roofs. Ten years experience. Work Guaranteed. Free estimates. Call Ray Brown, 298-2728. (tsr)

Small appliances repaired: Irons, toasters, fans, vacuums, etc. Hayden Blalock, 1705 Ave. H. Phone 298-4063. (tsr)

CARPENTRY  
 Remodeling, cabinet work, panelling, painting, interior and exterior. Storm windows and doors for sale. CHARLES O'NEILL Phone 298-2838 after 6 p.m.

Yes, LON CLEANER'S will clean your carpets for you anytime. Call 298-2826. (eow)

See, RINSE'N VAC, the incredible new portable steam type carpet cleaning system. It does the job of professional carpet cleaners at a fraction of cost. Rent one now at Struve's Hardware & Dry Goods, 318 Main St. Phone 298-2531.

Deadline For Turning In News & Advertising Copy To The Review Is Mon. At 4 P. M.

We Can Do All Your Auto Body Repairs- From A Dent To A Complete Wreck  
**AUTO GLASS**  
**Windshield & Door Glass**  
**AUTO PAINTING**  
 Let Us Re-Paint Your Car, Pickup Or Truck  
**ABERNATHY BODY WORKS**  
 417 S. Ave. D  
 Ph. 298-2084  
 Nights 298-4119  
 Waymon Jones

**ATTENTION**  
 Your new authorized MAYTAG DEALER Complete Service, Air Conditioning, Heating, Plumbing, Brightbill Heating and Air Conditioning.  
 906 Ave. D 298-2705  
 Abernathy, Texas

### POLITICAL ANNOUNCEMENTS

(The Review has been authorized to list the following for consideration of the voters in the First Democratic Primary Election, 1978.)

FOR STATE SENATOR, 30th Senatorial District of Texas:  
 RAY FARABEE, for Re-Election.

HALE COUNTY:  
 HENRY HECK, for County Judge, Re-election.

MILDRED TUCKER, for County Clerk, Re-election.  
 DOROTHY SINCLAIR, for District Clerk of Hale County, Re-election.

### FOR RENT

FOR RENT: Mobile Home Spaces, 1-block to super market, laundry mat and city park with childrens playground. All utilities available, telephone, sewer, trash pick-up, on pavement. Call 298-2351 after 6 p.m. (1-20-p)

### LOST & FOUND

LOST: American Eskimo white fluffy dog. Answers to Tiro. Please call 298-2641. (1-19-c)

FOR SALE: Pick of the litter- Male Irish Setter puppy-only 1! \$50.00. Call 797-0170 evenings or weekends. (1-19-p)

New policy on want ads: The Review will run want ads only on a cash basis. This does not include ads that are run every week and have a regular account with The Review. All want ads will need to be paid in advance before they are run. We have adopted this policy so we will not have to at this time, increase our charge for want ads.

WE HAVE MANY OLD PHOTOS WHICH WERE PRINTED IN PAST ISSUES OF THE REVIEW. COME BY OUR OFFICE & CLAIM YOURS.

It would probably cost less to buy thermal underwear than to insulate the attic.

**JERRY COOMBES PHOTOGRAPHY**

- \* WEDDINGS
- \* PORTRAITS
- \* SPECIAL EVENTS
- \* REUNIONS
- \* GROUPS
- \* FAMILY PORTRAITS IN YOUR HOME

503 Ave. K - Phone 839-2169  
 Hale Center, Texas

**TAX RETURN PREPARATION**  
 Financial Records  
 Complete bookkeeping - tax service  
 Hours: Mon-Sat 8:30 - 8:00 p.m. 5117-B 34th St. Lubbock, Tx. Phone 795-8000 - 863-2260

**OPEN 24 HOURS**

# ALLSUP'S

**CONVENIENCE STORES**

**OPEN 24 HOURS**

THE SAVINGS ARE ON US!

SPECIALS GOOD JANUARY 19-22, 1978

## SUPER FOOD SAVINGS EVERY DAY!

Perfection ROUND TOOTHPICKS 250 ct. .35¢	BORDEN'S BUTTER-MILK  1/2 GAL. CTN. <b>89¢</b>
BORDEN'S PREMIUM ICE CREAM  1/2 GAL. RD. CTN. <b>\$1.19</b>	<div style="border: 2px solid black; padding: 5px; text-align: center;"> <h3>POLAROID FILM</h3> <p>HALF PRICE</p> </div>
Ocean Spray CRANBERRY JUICE COCKTAIL 1 qt. .89¢	Hereford CORN TORTILLAS .69¢
Patio MEXICAN STYLE COMBINATION DINNER .69¢	Ken-L-Ration DOG FOOD 12 oz. .24¢      6/\$1.00
Toastum POP-UPS assorted .69¢	Johnson's GRAHAM CRACKER PIE CRUST .70¢
ALL-WAY'S SOFT 6oz. 3/.49¢	Bold DETERGENT .99¢
Morton POT PIES 4/\$1.00	Filtrator COFFEE FILTER .39¢

512 Ave. D Phone 298-8895

THE STAFF OF  
 THE ABERNATHY REVIEW

requests the privilege of showing you without obligation  
 Bride & Groom's outstanding line of Wedding Invitations featuring  
 a large selection of newest styles, the latest photo lettering scripts and finest papers  
 Informals, Thank You's, Napkins, etc.  
 Please stop in at your convenience.

See Us About  
 A New,  
**Hot Battery**  
 for  
**Cold Mornings**

... how's the  
**ANTI-FREEZE**  
 in your vehicles?

NOT ALL "STRANGERS" ARE BAD, BUT WE DO HAVE THE POPULAR BRANDS OF ANTIFREEZE.

Harvest Time Is  
 Tire-Trouble Time

WE CAN HELP YOU.  
 NEW TIRES.....USED TIRES  
 OR TIRE REPAIR

## Abernathy Oil Co.

709 AVE. D -- 298-2255  
 ROYCE HENSON -- 298-2671