





# HERE'S WHERE YOU GET THE BEST FOODS MONEY CAN BUY AND YOU SAVE MORE!

**CHICKEN-OF-THE-SEA**  
**Tuna**  
 6 1/2 OZ. CAN **89¢**



**HILLS BRO.**  
**Coffee**  
 ALL GRINDS  
 1 LB. CAN **\$1.89**



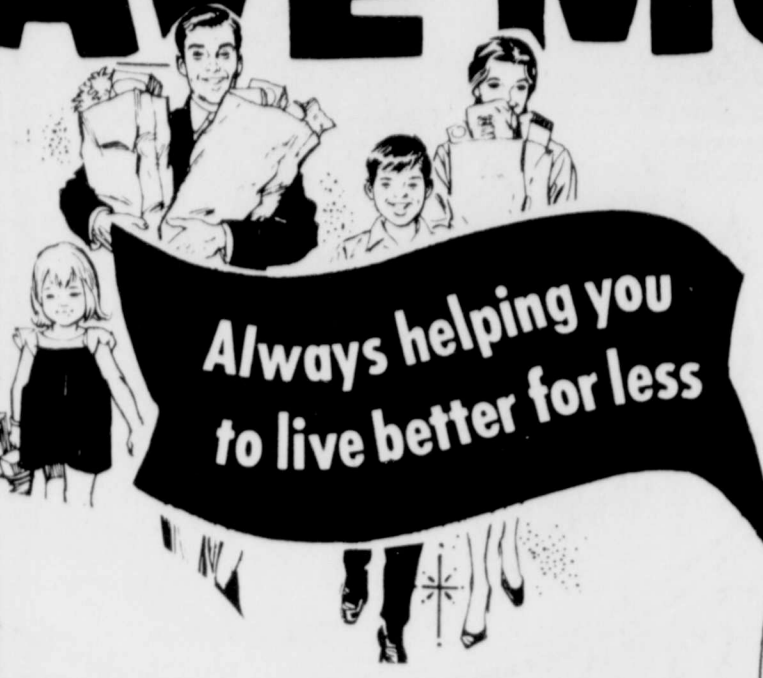
**SUPER DISCOUNT SPECIALS**  
 WITH FILLED GOLD BOND SUPER DISCOUNT BOOKLETS

**WHITE SWAN SHORTENING**  
 3 LB. CAN **\$1.09**

**CHARMIN BATH TISSUE**  
 4 Roll **39¢**

**WHITE SWAN INSTANT TEA**  
 3oz. 24pk **99¢**

**GIANT BOY SUPER SUDS**  
 3oz. 24pk **39¢**



**DELTA BATHROOM TISSUE**  
 4 ROLL PACK **79¢**

**CLOROX BLEACH**  
 1/2 GAL. **69¢**



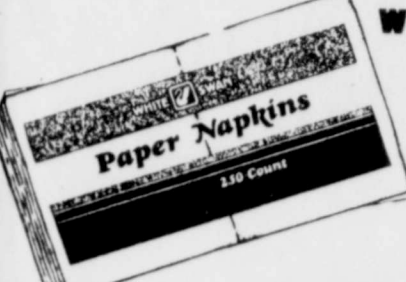
**FREE UP TO 400 Extra Gold Bond Stamps**

SAV-A-LOT FAMILY CENTER  
 Abernathy, Texas  
 11th Week Coupon Good April 19-April 25, 1981


- Stamps with a purchase of \$5.00 to \$9.99
- Stamps with a purchase of \$10.00 to \$19.99
- Stamps with a purchase of \$20.00 to \$29.99
- Stamps with a purchase of \$30.00 or more

Limit 1 Per Family--Adults only

**NAPKINS**  
 WHITE SWAN  
 250 COUNT **\$1.19**



**DETERGENT**  
 SUPER SUDS LAUNDRY  
 40 OZ. **\$1.39**



**CRISCO OIL**  
 25¢ OFF LABEL  
 48 OZ. BOTTLE **\$1.99**



**WHITE SWAN MACARONI & CHEESE**  
 7 1/4 OZ. PKG.  
**4 FOR 99¢**

**We Guarantee-- YOU'LL LOVE OUR MEATS**  
 NOT ONLY THE FINE QUALITY, BUT OUR PRICES, TOO!

**COUNTRY PRIDE**  
**Fryers**  
 GRADE A WHOLE BODY LB. **59¢**  
 CHICKEN DRUMSTICKS COUNTRY PRIDE LB. **89¢**  
 CHICKEN THIGHS COUNTRY PRIDE LB. **89¢**



**SPLIT CHICKEN BREAST**  
 COUNTRY PRIDE LB. **99¢**

**TYSON CHICKEN 12 OZ. CHICKEN FRANKS**..... **75¢**  
**CUBANY GOLD CORN CANNED BONELESS CANNED PICNICS 3 LB.**..... **\$4.49**  
**SWIFT BREAKFAST STRIPS 12 OZ. REG. SIZZLEAN OR BROWN SUGAR**..... **\$1.39**  
**WISCONSIN REG. SPLIT RIND CHEESE LONGHORN**..... LB. **\$1.99**  
**CRD FARM FRESH WHOLE CATFISH "POND RAISED"**..... LB. **\$2.19**

**CHICKEN**  
 SWANSONS CHUNK WHITE  
 5 OZ. CAN **69¢**



**SOFT 'N' LIGHT ALL PURPOSE FLOUR**  
**Flour**  
 SOFT & LIGHT 25 LB. BAG **\$3.99**  
 5 LB. BAG **79¢**



**Frozen Foods**  
**WHITE SWAN WHIPPED TOPPING**  
 8 OZ. TUB **2 FOR 99¢**  
**COBBLERS**  
 STILLWELL FRUIT ASSORTED FLAVORS 2 LB. **\$1.49**  
**COUNTRY DINNER FRIES**  
 ONE-IDA 24 OZ. PKG. **89¢**



**Always the best in produce!**  
 TAKE HOME THESE MONEY-SAVING SPECIALS

**Strawberries** CALIFORNIA RED RIPE PINT **49¢**

**CANTALOUPE** VINE RIPE LB. **49¢**

**BELL PEPPERS**  
 FRESH GREEN PODS **3 FOR \$1**

**GREEN BEANS**  
 FLORIDA KENTUCKY WONDER LB. **49¢**

**GREEN ONIONS**  
 ARIZONA FRESH GREEN BUNCHES **7 FOR \$1**



**ORANGES**  
 VALENCIAS 4 LB. BAG **79¢**



**PURE VEGETABLE Shortening**  
 WHITE SWAN 3 LB. CAN **\$1.59**

**Health & Beauty Aids**  
**MOUTHWASH**  
 LISTERINE 16 OZ. **\$1.69**  
**SHAMPOO & CONDITIONER**  
 REVLON FLEX 16 OZ. **\$1.69**  
**LOTION**  
 JERGENS REG. OR EXTRA DRY 15 OZ. **\$1.69**




**Save a Lot**  
 FAMILY CENTER  
 ABERNATHY, TEXAS  
 WHERE YOU SAVE EVERYDAY!

**Bobby McAlister- Independent Distributor of Fine Borden Products**

Abernathy

**The Ember's Steakhouse**

U.S. Choice Hickory Broiled Steaks & Free Birthday & Anniversary Cakes  
1703 13th St. 744-2798-Lubbock  
And 1605 50th St.

**Jackson Delinting Plant Inc.**

Charles A. Ross, Jr. - 795-2653  
W.O. Simpson - 762-8046  
North University & Erskine-  
762-3692-Lubbock

**Caprock Metal Works, Inc.**

2121 E. 50th St. 744-4350 Lubbock

**Farmers Co-op Compress**

Ask For Cotton First  
3800 Southeast Drive  
763-9431 Lubbock

**Gilbert's Auto Supply**

Quality Parts At Discount Prices  
Open Seven Days A Week For  
The Farmer's Convenience  
708 4th 747-4676 - Lubbock

**Discount Meat Center**

Processing For Home Freezers - Beef-Pork  
Cut & Wrapped - Flash Frozen -

9 a.m. To 7 p.m. Closed Sundays

4116 Avenue Q-747-3338 Lubbock

**Hale's Quality Market**

"Selling Quality Beef To Lubbock For A  
Quarter Of A Century"

5612 Slide Rd. -  
793-0090 - Lubbock

**Gardski's Loft**

"The Taste of The Town"

2009 Broadway-744-2391 - Lubbock

1619 S. Kentucky, Wellington Square  
353-6626-Amarillo

3370 N. 1st -676-8279 Abilene

**Attebury Farm Store**

General Farm Supply - Fertilizer  
Farm Chemical  
746-6833 - New Deal

**West Texas Turf Farm**

Lawngrass Sales & Installation Landscaping  
91st Tahoka Highway - 745-3445 - Lubbock

**Plainview Savings & Loan Association**

3000 Olton Road - Plainview  
Branches: Highway 70 -Matador  
Main Street - Hale Center  
217 W. California - Floydada

**Steere Tank Lines, Inc.**

Tom Burnham - Manager  
Dimmitt Highway - Plainview  
293-5281 - 293-5282 -293-3482

**Vanderpoel Jewelry Company**

Diamonds - Gifts - Watch Repair  
Serving Plainview Since 1910  
709 Broadway - 293-1467 -Plainview



# SALUTE TO THE BEEF PRODUCERS

CONSIDER ALL COSTS



Your beef selection is not the only key to an economical dinner. Avoid spending the money saved by a wise beef choice on costly recipe ingredients. Out-of-season produce, gourmet spice packets and sauces, foods in limited supply—such items can blast the budget of the careful beef buyer.

Do select beef recipes that use to advantage economical vegetables and fruits in season. But compare the cost of adding fresh, frozen or canned vegetables to a stew or pot-roast. Often, but not always, canned produce is less expensive than frozen and fresh counterparts. There are exceptions, however, so be on the alert for them. Upon occasion frozen vegetables, especially when on sale, may be the better buy, but those in butter or seasoned sauces are not for a frugal shopper.

Read labels on canned and frozen foods, for as in the case of beef purchases, it's cost per serving that counts. Store brands often are the best buy. Do not choose the highest quality unless the intended use merits it. For example, there's no need to select canned fancy whole tomatoes for a casserole.

Nonfat dry milk is the least expensive form of milk and is a handy money-saver. Another tip—you can pay much more for special seasoned pasta and rice products, so become adept at using spices and make worthwhile savings.

**Dr. C. L. Goodpasture-Chiropractor**

Chiropractic Society Of Texas -

Clinic Open Monday, Tuesday,  
Wednesday & Friday 8:30-11:30,  
1:00-5:30 Closed Thursday & Saturday  
2105 Oxford - 799-7683 - Lubbock

**Patrick's Restaurant**

Ken Patrick-Owner  
Friday Fish Fry-All You Can Eat  
Sunday Buffet-Homemade Rolls&Bread  
Highway 82-623-5231 -Dickens

**Losson's Restaurant**

Open 6 Days A Week - 6:00 a.m.  
to 9:00 p.m. Closed Sunday  
"If You Like Fish You'll Love Our Friday  
Night Fish Fry"  
684-2322-Kress

**Partain's Frozen Foods**

Specializing In Custom Processing Of  
Beef & Hogs Homemade German Style  
& Breakfast Sausage-Beef Jerkie.  
255 W. Garza-828-5854 - Slaton



**Vigo Park Store**

The Oldest Store in the Area  
In Business Since 1907  
633-4419 - Vigo Park

**George Warner Seed Company, Inc.**

Representatives From Swisher County  
Henry McPherson-Happy;Harold Obehaas  
-Kress; Robert McPherson - Silverton.  
364-4470 - Hereford

**Case Power & Equipment**

Farm Tractors - New & Used-  
Sales & Service. 3302 Slaton Hwy  
745-4451-Lubbock. Also 983-2836-  
Floydada & 872-5861-Le Mesa

**Matthews Oil Company Phillips 66**

Sam Matthews - Owner  
Gasoline - Diesel - Propane -Oil-Tires  
Complete Field Service For Tractor Tires  
667-3741 - Petersburg

**Warren Drilling Company**

We Furnish Trash Hole & Burners  
Septic Tanks & Gravel Packed Lines  
1310 North Date St-296-9212 - Plainview

**Cotton Center Farmers Co-op Gin**

Bill Ivins - Manager  
879-2150 - Cotton Center

**Anton Producer's Co-op**

James Grace-Manager  
Gin-Elevator-Fertilizer & Chemicals  
Santa Fe St. - 997-3101 - Anton

**Asgrow Seed Company**

Agronomic Seed Sales - Research Production  
North of Plainview - 293-2647

**South Plains Feed Yard**

Jim Witt - Manager  
Pat Shepherd - President  
879-2104 - Hale Center

**Sugarland Feed Yards, Inc.**

West of Hereford  
364-0536 and 364-3381

**Allen & Beach, Inc.**

879-2156 - Cotton Center

**G & G Trucking**

Gayle McCoy-Owner  
233-2151 - If Busy Call 233-2081 -Spade

**They're #1 With Us**

It's so easy to buy meat in the stores that we tend to forget who's behind it all! The dedicated men and women producers are always doing their best to get us quality beef...100% of the time! We're very proud to support their hard work and great results!

May is Beef Month!

## BEEF MONTH

THINK "COST PER SERVING"

The smart shopper considers cost per serving rather than cost per pound. Some boneless cuts priced a bit more are better buys because they have little waste. Keep in mind it's cost per edible portion that really counts.

The amounts of bone and fat a cut contains help determine the number of 3 to 3 1/2 ounce servings of cooked beef it will provide. Cooking method, temperature and degree of doneness also are factors. In general you can count on:

**4 servings per pound for . . . boneless cuts such as beef for stew, ground beef and cubed steak**

**3 servings per pound for . . . tip and boneless rump roasts; round, top loin and rib eye steaks**

**2 to 3 servings per pound for . . . sirloin steak and boneless roasts from the chuck**

**2 servings per pound for . . . arm and blade pot-roasts; most steaks with a bone**

**1 to 2 servings per pound for . . . short ribs; shank cross-cuts**

To determine the approximate cost per serving, simply divide the price per pound by the number of servings per pound the cut will provide.

**Fuel Distributors**

1401 Erskine Road - 762-8791 -Lubbock  
Gulf Oil Products

**Jim Simpson's Tri-State Transmission Center**

308 S. Pierce St. 376-5906 -Amarillo  
Also: 2803 Avenue H 765-7484-Lubbock

**Wylie LP Gas, Inc.**

Bob Olive & Bill Tipton  
Butane Gas - Parts & Oil  
Highway 54 West 667-3591  
Petersburg

**Western Beef, Inc.**

704 W. 9th 373-6837 -Amarillo  
Also: Western - Lockney, Ltd.  
Hank Winter - Manager  
P.O. Box 54c 652-3308 Lockney,  
Texas-79241

**Swift Distributors, Inc.**

520 E. Houston 983-3721 - Floydada

**Shallowater Airport**

Bob Groves-Operator  
Maintenance-Painting-  
Fabric Work -Inspections  
Construction -Etc.  
832-4584 - Shallowater

**Robcowell Service, Inc.**

704 Avenue H 894-3148 - Levelland

**Riverside Chemical**

Hubert Backus - Manager  
All Types Fertilizer Seed & Chemical  
North Highway 385 647-4125 -Dimmitt

**Ring Around Seed**

233-2676 - Plainview

**Lynn Chemical Company, Inc.**

Specialist in Industrial Chemical &  
Janitorial Supplies Water Well Acid Stick  
509 E. 42nd - 747-3359 - Lubbock

**Levi Strauss & Company**

3800 Quincy - 293-4131 - Plainview

**Vanderpoel Jewelry Company**

Diamonds - Gifts - Watch Repair  
Serving Plainview Since 1910  
709 Broadway - 293-1467 -Plainview

**South Plains Feed Yard**

Jim Witt - Manager  
Pat Shepherd - President  
879-2104 - Hale Center

**Sugarland Feed Yards, Inc.**

West of Hereford  
364-0536 and 364-3381

**Allen & Beach, Inc.**

879-2156 - Cotton Center

**G & G Trucking**

Gayle McCoy-Owner  
233-2151 - If Busy Call 233-2081 -Spade

**PLAINS GRAIN & FARM SUPPLY**  
 ABERNATHY, TEXAS

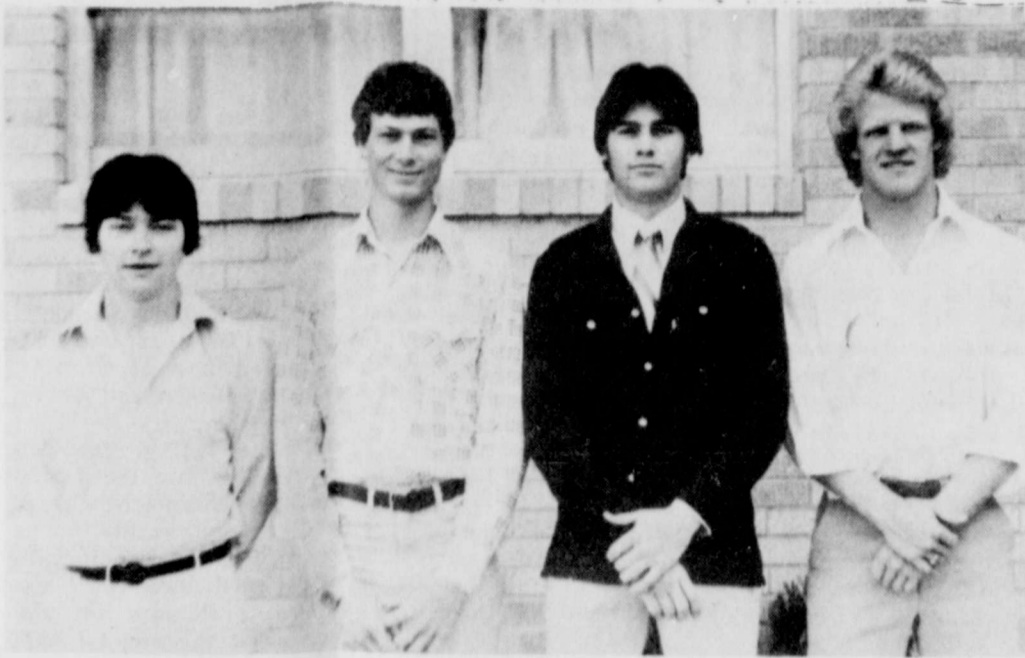
FOR ALL YOUR FARMING NEEDS.

PHONE  
 Abernathy, Texas 298-2521      Lubbock Number 763-4868

A NAME-BRAND PRODUCT does not ensure a quality product, reminds Bonnie Piernot, a family resource management specialist.

Quality is usually determined by the durability of a product and its function rather than form, she adds.

Mrs. Piernot is on the home economics staff of the Texas Agricultural Extension Service, The Texas A&M University System.



**FFA SCHOLARSHIP** hopefuls pictured left to right, Brad Bowen, Tim Presley, Tom Richardson and Russell Windham. These students will be participating at the Area I FFA Convention to be held in Amarillo May 8 and 9.

**JOHN DEERE**

Abernathy Phone 298-2511      Lubbock Phone 762-1038

GENUINE JOHN DEERE PARTS

**Joe Thompson Implement Company**  
 105 Avenue D  
 ABERNATHY, TEXAS 79311

**Hale 4-H's Attend Contest**

Over 100 Hale County 4-H members and parents were present at the Method Demonstration Contest last Thursday evening, April 23, according to Brent Crossland, County Extension Agent. The contest was held in Plainview at the Hillcrest Elementary School.

Plainview; Mary Bass, Olton.

Superintendants included: Tommy & Bobbie Painter, Edmonson; Charlotte Carver, Abernathy; Patt Terrell, Plainview; Susie Howard, Abernathy; Betty Stout, Hale Center and Gale Davis, Abernathy.

Edmonson 4-H Club hosted

the awards program. The welcome was given by Alan Tanner. Pledges were led by V. Sarabia and Tracie Painter. The registration of guests was handled by Penny Tanner and Suzie Sarabia. Refreshments were provided by Tracie Painter, Sherry Block and Michelle Box.

Members participating from Abernathy were as follows: Family Life - Micki Neve and Laura Phillips; Landscape Horticulture - Jim Bob Carver and Bill DuBose; Poultry - Lonnie Howard.

**TAXING FARMS BASED ON THEIR USE** - Taxing farms and ranches according to their agricultural use rather than their fair market value can mean substantial savings to farm families on the death of the landowner. Savings in estate taxes can be as much as 50 percent for those that qualify, said a Texas A&M University professor of accounting at a recent Extate Planning Seminar sponsored by the Texas Agricultural Extension Service, Texas A&M University System. IHS Code Section

2032A enacted in 1976 set forth provisions for special use valuation of farms and ranches.



Steel rails used by railroads in the early 20th century often weighed less than 60 pounds per yard. Today they weigh more than 150 pounds per yard.

**FFA Competes In Judging Contest**

The Abernathy F.F.A. members competed in the Texas Tech Judging Contest April 11 in Lubbock. Livestock Judging Team composed of Alan Neis, Grady Shuey and Collins Miller placed 4th in the Plainview district.

The Dairy Products team with members Kirk Nesbitt, Scott Wesley, Lane Nelson and Ronald Harrell placed 2nd in district.

Dairy Cattle Judging team members Brian Smith, Bill McClement and David Kemp placed 7th in the Plainview district.

The Poultry Judging team members consisted of Micah Griffin, Randy Houston, Russell Shuey and Mark Benton, placed 4th in district competition.

Meats team members Ricky Powell, David Davis, Trey Stone and Randell Stillwell placed 4th in the Plainview district.

The proportion of divorces involving three or more children has declined since 1965, says Betty Jo Smith, a family life education specialist.

Land Judging team composed of team members Charles Chambers, Randy Brightbill, Todd Knight and Jimmie Salitros placed 1st in district competition.

Adults find it easier to cope after divorce if no children are involved, she adds.



**NEW FFA OFFICERS** pictured left to right: Collins Miller, vice-president, Max Riley, secretary, Rick Houston, president, Alan Neis, reporter, Alan Pettit, treasurer, and Stacey Mills, sentinel.

**Space Uniforms 100% Cotton**

Cotton is on top of the world again.

Once king of all fibers, the fluffy white stuff went into space with astronauts John Young and Robert Crippen. Their in-flight uniforms were made of Fire Stop cotton for the uniforms over an array of synthetic fibers because "of its excellent flame resistant properties and its comfort."

Thanks to the efforts of Cotton Incorporated, the marketing and promotion arm of cotton producers, astronauts will be wearing 100 percent cotton during future space shuttle flights.

And not only are astronauts wearing all-cotton training and flight uniforms, but many of the nation's leading fire departments protect their firemen with flame-resistant 100 percent turnout coats and station wear. What does all this mean to the cotton producer? About a 100,000 bale per year market potential representing roughly \$35 million.

expensive than synthetics," said Dr. Fred Dawn, special assistant at NASA's Lyndon B. Johnson Space Center in Houston.

In extensive testing by NASA, cotton excelled particularly in comfort and electrical resistivity.

The future of flame resistant cotton seems promising. Cotton's comfort, its cost, and flame resistant properties, make it the natural choice for those interested in protective clothing.

Other cotton qualities which helped NASA make its choice over previously used aramid synthetic fibers were electrical resistivity, absence of odor and the fact that cotton doesn't give off toxic fumes when heated.

And, of course, comfort and cost were big factors.

"We were looking for low cost and cotton is less

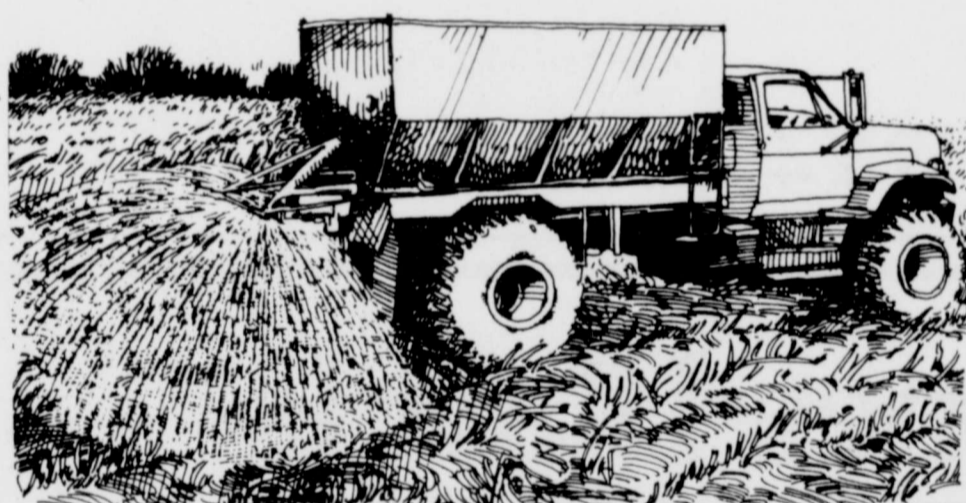
rocket propellant, says Glenn Morton, manager of Cotton Incorporated's textile services laboratory.

**MIXED FERTILIZER IS AN INVESTMENT THAT PAYS.**

Now, more than ever, your profits depend on high yields. Yields that, in turn, depend on adequately fertilized soils. With mixed fertilizers your crops get the right amount of plant foods at the right price. So protect your investment in a crop. See us today for the mixed fertilizer that will pay off for you.

**ATTEBURY FARM STORE**

NEW DEAL, TEXAS PHONE 746-6833



Come by and let us help you with your sidedress equipment needs and ask about credit available through W. R. Grace

**RANGER SEED CO.**

**RANGER RV-12** Certified cotton seed

- Had the best verticillium rating at Halfway Experiment Station in 1980.
- Had the highest micronaire in 1978 Vert Test at Lubbock.
- Had the best disease rating among all varieties tested at Alabama Nematode Fusarium Test in 1980.
- Did not break micronaire in 1979 (the low mic year) at Wilson Coop Gin.
- Stormproof — did not fall out after 20 inches of snow in 1980 on the Dale Zant farm in Lynn County.
- Maximum Disease Tolerance

TWO MORE BLUE RIBBON WINNERS with an Edge — Developed for the special needs of the High Plains growing conditions

**RANGER RV-64** — AN EARLY-CERTIFIED COTTON SEED — Superior Vert Wilt tolerance ● Nematode and Blight tolerance ●

- Premium micronaire under disease conditions
- Stormproof
- High Oil Content
- Medium tall for good stripping

**RANGER 55** — Certified — THE ORIGINAL, NATIVE BORN, RANGER VARIETY.

- Gets out of the ground fast and loads up early for good production...
- STORMPROOF — will wait on the stripper
- Good strength and micronaire

2 miles north of Tahoka on Hwy. 87  
 Book your seed now for fast delivery.

**RANGER SEED COMPANY**

Tahoka, Texas

Mason Hawkins-Cotton Research

OFFICE PHONE: (806) 998-4935  
 SEED PROCESSOR & DISTRIBUTOR  
 BRYANT SEED & DELINTING  
 Phone (806) 998-4497  
 NIGHT NUMBERS: (806) 998-4935  
 (806) 998-5093  
 (806) 745-4192  
 (806) 765-6953

**SAVE UP TO \$3500 150TH ANNIVERSARY SAVINGS**

**SAVE BIG ON IH TRACTORS WITH RED POWER BUYER'S CHOICE**

The Red Power Buyer's Choice gives you two ways to save on any new IH Tractor in stock during the International Harvester 150th Anniversary. And you begin your savings selection with great Red Edge Rebates.

**Buyer's Choice No. 1... Get Red Edge Rebates Worth up to \$3,500.**

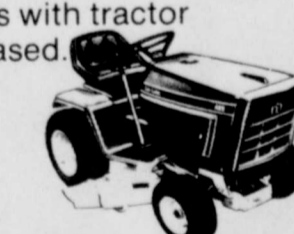
When you buy any new International Harvester Tractor that we have in stock between now and April 30, 1981, you can get a Red Edge Rebate of up to \$3,500 direct from the Company. See the chart for a full list of rebates available.

**Buyer's Choice No. 2... Get a Free Cub Cadet Tractor.**

Now through April, you can get a free Cub Cadet® Tractor when you buy any Series 86, 4WD or 2+2 Tractor. So if the Red Edge Rebate isn't the savings you need, maybe this is. The chart below has a complete listing of free Cub Cadet models with tractor purchased.



**These tractor savings may never be matched again. See us today for your best selection of IH Tractors... and for your selection of Buyer's Choice Savings.**



MODEL	RED EDGE REBATE OR	FREE CUB CADET
4386, 4586, 4786 4WD Tractors	\$3,500	19 hp Cub Cadet 982 \$4,885 Value*
All 2+2s	\$3,000	17 hp Cub Cadet 782 w/44" mower deck \$4,225 Value*
1586	\$2,500	17 hp Cub Cadet 682 \$3,295 Value*
1086, Hydro 186, 1486	\$2,000	16 hp Cub Cadet 582 \$2,880 Value*
786, 886, 986	\$1,500	11 hp Cub Cadet 482 \$2,465 Value*
ALL Series 84	\$ 500	Not offered

\*Manufacturer's suggested list price F.O.B. Louisville, KY, less mower deck unless otherwise noted. This program ends April 30, 1981. See your participating IH Dealers for complete details.

**INTERNATIONAL AGRICULTURAL EQUIPMENT**

Phone 298-2507 ABERNATHY  
 3 Miles North of Abernathy at Intersection of Highways 87 & Highway 54.

**STRUVE IMPLEMENT CO.**

## SPS President Springer Chief Executive Officer

Berl M. Springer, president of Southwestern Public Service Company, has been named to the additional position of chief executive officer.

in action taken today by the electric utility's board of directors. Springer assumes the chief executive officer responsibilities from Roy Tolk who continues as chairman of the board.

Tolk and Springer had served in their former capacities since 1976.

Tolk said, "We are taking this step to continue the orderly transition of management at Southwestern. I have announced my planned retirement from active management of the company, effective December 31, 1981." He plans to stay on the board as a director after his retirement.

Springer is a graduate of Texas Tech University, with a bachelor of science degree in industrial engineering. He started his career with SPS in 1946 as a draftsman. He served as statistician-engineer, and rate manager

before being elected vice president of rates and budgets in 1969. He was elected executive vice president in 1972 and was named to the board of directors in 1974.

Also at its meeting recently in Amarillo, Texas, the board declared regular quarterly dividends on all series of preferred stock and a regular quarterly dividend on 34 1/2 cents per share on the common stock.

The common stock dividend is payable June 1, 1981, to holders of record May 15, 1981, and the preferred stock dividends are payable August 3, 1981, to holders of record July 20, 1981.

Southwestern Public Service Company, based in Amarillo, provides electric utility service to the Panhandle and South Plains of Texas, the Panhandle of Oklahoma, Eastern New Mexico and Southwestern Kansas.

## Friona Industries To Purchase Leases In N. Dakota

Friona Industries, Inc. announced April 24 that it intends to invest approximately \$2,000,000 over the next 12 months in a program to acquire oil and gas leases and topleases in the Williston Basin of North Dakota.

The purchase of oil and gas leases and topleases will be made by a limited partnership consisting of Friona and another party, as limited partners, and Berco Resources as general partner. Berco Resources, which has offices in Buffalo, Wyoming and Denver, Colorado, will be responsible for all lease acquisitions. Berco, along with its principals, has been engaged in the

acquisition of leases and topleases in the Rocky Mountain Region of the United States for the past 20 years.

The limited partners will contribute to the partnership approximately \$2,500,000, or 75%, of the total capital and the general partner will contribute approximately \$883,000, or 25%, of the total capital.

The Limited Partnership Agreement provides that all cash distributions will be made 75% to the limited partners and 25% to the general partner until the partners have received an amount equal to their capital contributions; thereafter, cash distributions will be

## NEW DEAL NEWS

### New Deal Tennis

The Lion tennis team is coached by Steve Bigham. Members of the girls varsity tennis team are as follows: singles division - Marivel Gonzales; doubles - winning 2nd at district, Cindy Fairman and Cheryl Robbins.

Sheila Mathes and Michele Thiel are the second doubles team for New Deal. The boys varsity tennis team is as follows: singles - Gordon Koonce and Juan Olguin. Players on the doubles teams are: 1st team - Terry Simpson and Doug Sanders, and second team - Danny Brennan and Tommy Heald.

The Lady Lion girls junior varsity tennis team is made up of singles players Nina Ruiz and Pam Logan who won 3rd place in district. There were no players on the Lion boys JV team.

On the JV girls doubles team are Diane Buford and Shanna Teeter, who won 4th place in district. Jenny Sosa and Lydia Ruiz make up the second team for New Deal.

Cindy Fairman and Cheryl Robbins advanced to regionals where they lost to the regional champs from Marfa in the first round 6-4, 6-3. These two girls are only sophomores and hopefully should go farther next year - hopefully to State.

The tennis team did not play in any tournaments except district, but did play several matches against Lockney, Shallowater and Roosevelt.

### Band Receives II IN U.I.L.

By J.N. Hudson  
April 26, the New Deal band received a II rating in the U.I.L. concert competition in Seagraves, Texas. The band played Lethbridge Overture, Australian Rhapsody and Newcastle March.

Contest judges had nothing but high praise for the group from New Deal and commented that they had improved over past years.

The band also received a II in sight-reading competition. This marks the first time in the history of New Deal that the band has received a division II in marching, concert and sight reading.

Additional band members, better attitude, and a strong support from the school are contribution factors to the band's recent success.

Band director Charley Crocs has given band members much incentive over the past two years since he's been at New Deal. His hard work and dedication have paid off.

Congratulations to the Green Sheen Marching Band!

### School Lunch Menu

Friday, May 8  
**Breakfast**  
Bacon & Gravy  
Hash Browns  
Toast  
Milk  
**Lunch**  
Fried Chicken  
Gravy  
Green Beans  
Whipped Potatoes  
Plums  
Hot Rolls  
**OR**  
Bologna Sandwich  
French Fries  
Tossed Salad  
Milk

J.B. Shinn Obituary  
Services for J.G. Shinn, 78, of New Deal were at 10 a.m. Monday in First Baptist Church in New Deal with the Rev. James McGuire, pastor, officiating.  
Burial was in City of Lubbock Cemetery under direction of Franklin-Bartley Funeral Home.

Shinn died at 4:15 p.m. Friday at his residence. Justice of the Peace Earl Yarbrough of Idalou ruled natural causes in the death.

The Russellville, Ark., native moved to Lubbock County in 1924. He was a farmer and a Baptist.

Survivors include three daughters, Mrs. Dorothy Hudson of Lubbock, Mrs. Loretta Maughn of New Deal and Patricia Phillips of Lorenzo; a son, K. Don of New Deal; three sisters, Irene Ragsdale, Virginia Barnett and Ellen Mears, all of Russellville; a brother, Ed of Covina, Calif.; five grandchildren; and two great-grandchildren.

DON'T ADD SALT or sugar to your infant's baby foods, says Mary K. Sweeten, a foods and nutrition specialist.

## HOLLEY PLUMBING, HEATING AND AIR CONDITIONING

NO MILEAGE CHARGE LICENCED & BONDED  
COMMERCIAL, INDUSTRIAL and RESIDENTIAL  
SERVICE AND REPAIRS

201 South Main:  
Hale Center, Texas

PAT BUSH  
Phone 839-2113  
Phone 839-2049  
Phone 293-4991

**SAVE \$30**  
\$30 off regular retail price of a new push-type or self-propelled 21-inch John Deere Mower  
Offer expires May 31, 1981.

## Deluxe John Deere 21-inch Mowers



John Deere 21-inch Deluxe Mowers are now available in three models — push type, self-propelled, and electric-start self-propelled. Side discharge is standard on all three. An optional 2 1/2 bushel rear bagger can be added to make clipping pickup neat and easy.

The push-type mower has a 3 1/2-hp engine. The self-propelleds have 4-hp engines and rear-wheel gear drive for excellent traction in all mowing conditions. All feature steel wheels with ball bearings. Aluminum die cast deck. And two cutting height adjustment levers that let you set the mower in any of six positions — 7/8 to 2 3/4 inches above ground. See us for a demonstration today.

**Joe Thompson  
Implement Co.**

Phone 298-2541  
Abernathy  
762-1038  
105 Ave. D  
Lubbock

**Sofas & Love Seats**  
AS LOW AS **\$599** Values \$999

**WHY PAY RETAIL WHEN YOU CAN BUY FACTORY DIRECT**

**MITCHELL'S FACTORY DIRECT FURNITURE**

CREDIT TERMS AVAILABLE 762-3031 804 North Univ. Just North Clovis Road 804 N. University

LOCAL DELIVERY AVAILABLE Open 10-6 Mon-Sat

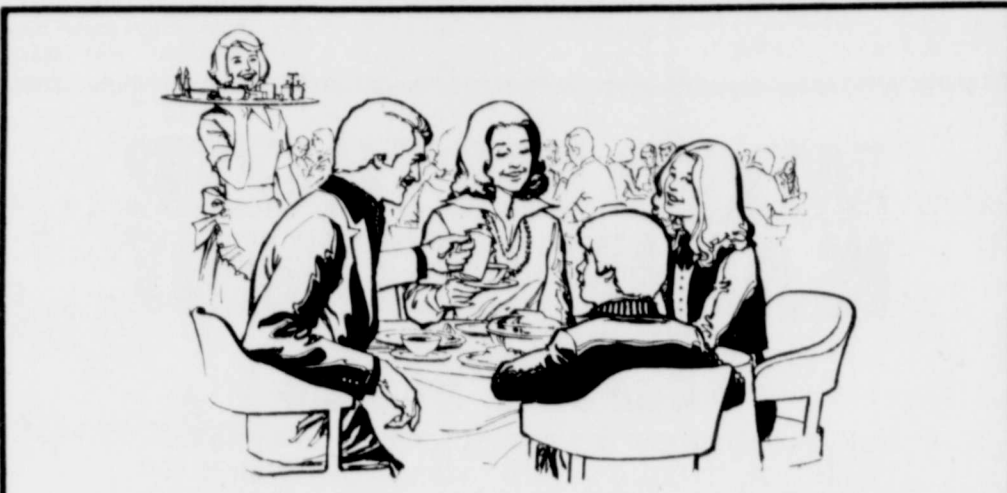
**LARGE SELECTION SLEEPERS**  
MATCHING LOVESEATS AVAILABLE  
AS LOW AS **\$399** VALUES TO \$599

**STRATOLOUNGERS OR LANE RECLINERS**  
AS LOW AS **\$189**

divided 50% to the limited partners and 50% to the general partner. During the life of the partnership, profits will be divided 50% to the limited partners and 50% to the general partner.

"We are constantly evaluating diversification and investment opportunities, and management believes that this limited partnership venture into the energy industry offers good potential for return on capital and future growth possibilities for Friona," said Ron Davenport, president.

Friona Industries, headquartered in Friona, Texas, recently reported net income of \$1.9 million, or 85 cents per share, on revenues of \$101 million for the six months ended December 31, 1980. Friona's common stock is traded on the American Stock Exchange under the symbol FI.



## Give Your Mom The "Star" Treatment On Her Day

Mom's the Star of the day, and we tell her so! Excellent service...gourmet food...friendly, relaxed atmosphere...just for Mom, with our love. And her family's, too!

**924 STEAK HOUSE**

# MICROWAVE COOKING School

TUESDAY, MAY 12th  
5:15 p.m.



Joy Parnell & Connye Gist

Learn basic microwaving

- \* Meatloaf
- \* Vegetables
- \* Candy
- \* Sandwiches
- \* Casserole
- \* See utensils & new cook books

Abernathy City Hall  
Club Room  
811 Ave. D

No rever  
No reservations needed



# Jones-Blair is spreading the word.

SAVE 30% OFF SELECTED PAINTS  
AND 50% OFF SELECTED ACCESSORIES\*



### WASH 'N WEAR LATEX SEMI-GLOSS ENAMEL

For beautiful, soft sheen woodwork, trim and walls. Quick-drying, tough, durable, colorfast. Clean up with soap and water. Ready-mixed and custom-mixed colors. **\$11.95**



### SATIN-X LATEX WALL PAINT

Our easy to apply interior latex that dries to a beautiful flat matte finish. Available in ready-mixed and custom-mixed colors. Soap and water cleans it up. Value and quality you can count on. **\$ 9.95**



### POLYFLEX LATEX HOUSE PAINT

Our premium house paint for wood, brick and other masonry surfaces. Goes on easy and dries to a low lustre in 30 minutes. Fade, blister, crack and peel resistant... even if you have to use it on damp surfaces. Quality you can count on. Available in ready-mixed and custom-mixed colors. **\$10.95**

\*OFF MANUFACTURER'S SUGGESTED RETAIL PRICE AT PARTICIPATING DEALERS. CUSTOM-MIXED COLORS SLIGHTLY HIGHER.

**Jones-Blair**

When the lid goes on the quality stays in

**Higginbotham-Bartlett Co.**

1002 Avenue D

Phone-298-2010

# WANT ADS DO IT ALL! BUY • SELL RENT • TRADE

**CLASSIFIED ADVERTISING RATES**  
 Published Every Thursday, Deadline is 4p.m. Monday, Phone 298-2033.  
 Classified advertising rates are based on a minimum of 17 words. One insertion is \$0.10 per word with a \$1.75 minimum. For consecutive insertions with no copy change the rate is \$0.08 per word, minimum \$1.25.  
 Classified display advertising (boxed ad), is \$1.50 per column inch.  
 Card of Thanks (reasonable length) \$2.00.  
 CASH IN ADVANCE unless advertiser is on a regular account.

For summer comfort, select fibers that are absorbent, such as cotton, linen, silk, wool and rayon - to keep the body cool, advises Nancy Brown, a clothing specialist.

These fibers absorb the body's moisture, allowing perspiration to evaporate.

**WANTED TO BUY**

I would like to buy cannas and mums for my yard. Phone 298-2655. (27-1tp)

Want to buy good used 14 foot fishing boat with trailer. I have motor. Phone 298-2033 or 298-2103 nights. (22-4tp)

**Abernathy Motor Company, Inc.**  
 317 Main  
 298-2548  
 Sales & Service Dept. are now open for business  
 Mechanic  
 317 Main Street  
 Phone 298-2548 on duty to service foreign domestic cars, or pickups & trucks.  
 8 to 5 Weekdays  
 8 to Noon Sat.  
 Night Phones  
 Sales: C.R. Hobgood 298-4091  
 Pete Knox 298-2328  
 Service: Oscar Colbert 298-2736  
 Parts: Harris Scott 298-4170

**AUTOMOBILE BODY WORK**  
**SPECIALISTS**  
 Auto Body Repairs From A Dent To A Complete Wreck  
 Windshield - Door Glass  
 Let Us Re-Paint Your Car, Pickup or Truck  
**Abernathy Body Works**  
 Waymon Jones  
 417 S. Ave. D  
 Phone 298-2084  
 Night 298-4119

**Notice**

**Public Hearing Notice**  
 The City of Abernathy will conduct a Public Hearing at 5:00p.m. on June 25, 1981 at the Abernathy City Hall located at 811 Ave. D. The purpose of the hearing is to afford interested persons an opportunity for written and/or oral comments on the proposed wastewater treatment facility plan and associated environmental information document. One of the purposes of this hearing is to discuss the potential environmental impacts of the project and alternatives to it.

The proposed project includes improvements to the existing lift station as well as the construction of a flow measuring device, a standby generator, a facultative lagoon, site improvements, and refurbishing an existing holding pond. All of the major components of the existing plant will continue to be utilized and the effluent will continue to be utilized for irrigation of agricultural land.

The total project cost is estimated to be \$339,640

with the local share approximately \$50,946. Estimated monthly operation and maintenance costs will be \$1,765.

Other alternatives considered included land treatment, facultative ponds, an oxidation ditch, and aerated lagoons.

Detailed information is available for public review at the City Hall during normal business hours and includes financial information, treatment alternatives considered, and environmental impacts of the project. Additional information may be obtained by contacting Rod Ellis, City Hall, P.O. Box 310, Abernathy, Texas 79311 phone (806) 298-2546. (5-7-81)

CREATIVE Stitchery offers a great opportunity for you if you are interested in stitchery and would like to earn extra money. You make 25% clear profit plus prizes such as microwaves, tape recorders, etc., not to mention lots and lots of beautiful free titchery. And it's a lot of fun too! Call 828-4506 for more details! (10tp)

**REAL ESTATE**

**FOR SALE** by owner: Three bedroom, two bath home. 1105 1st Street. 298-2682 (24-4tp)

**FOR SALE:** Two 100' lots. Pinson Place. Will build to suit. Call Don Fondy, Homestead Real Estate 298-2268 or 797-7331. (24-2tc)

**FOR SALE** - Very nice office building in Abernathy. 1,000 sq. ft. partially furnished. Financing available. Phone 298-2801 or 298-2251 after 6p.m. (11-6-tscr)

**HOMES FOR SALE** - Why rent? We are planning to build new 2, 3, 4 bedroom homes starting at \$36,900 with down payment \$1345 FIA or \$500 for qualified veterans. Call Don Fondy, Homestead Real Estate, for application. 298-2268 or 797-7331. (13-20-tscr)

**CLASSIFIED ADS NEED TO BE PAID IN ADVANCE.** Please.

**Abernathy Apartments**  
 911 Ave. H  
 Managers Raymond or Taffy Naron  
 Apartment #5  
 NOW LEASING \$250 Month  
 2 bedroom, dishwasher, garbage disposal, carpet, coin operated washer/dryer  
 No Pets

**FOR SALE**

Buy Goodyear Tires from Royce Henson at Abernathy Oil Company. (10-tscr)

**BEAUTIFUL** 8x10 colored prints, of mountains, flowers, rustic houses and wagon wheels and fence, bird in flight and animals. See at the Abernathy Weekly Review, 916 Ave. D.

**FOR SALE:** Nice 17 ft. Whirlpool refrigerator-freezer. 1009 1st. Call 298-2369. (27-1tp)

**Card of Thanks**  
 The family of Jack Hacker wishes to thank you for your prayers, visits, cards, flowers, memorials, food and services from so many friends.  
 Evaughn, Billy Jack, Geri and Lauren

If you thought of us, washed a dish for us, brought food or flowers, said a prayer, made a visit or said a kind word we thank you. We appreciate all the love and concern that has been shown at the parting of our husband, father, son and brother.  
 Joyce Connell  
 Cindy & Scott Lutrick  
 Joe Jack & Cody Connell  
 Jack & Pam Connell  
 Mannie & Charlotte Connell  
 Sallee & Wendell Barrick  
 Carol & Howard Halford

**BUSINESS SERVICES**

**LAWN MOWING** and yard work. Phone 298-2834. Small hauling. Call between 6 and 9p.m. (25-2tp)

See, RINSE-N-VAC, the incredible new portable steam type carpet cleaning system. It does the job of professional carpet cleaners at a fraction of cost. Rent one now at STRUVE'S HARDWARE & DRY GOODS. 318 Main. Phone 298-2531.

**YARDS MOWED** reasonable. Call 298-4014. Monte Williams. (27-1tp)

**C & G BUILDERS**  
 Remodeling, paneling, acoustic ceilings, painting, all types home repair. No job too small. Satisfaction Guaranteed. 1609 Ave. D. Phone 298-2086.

**MISCELLANEOUS**

1606 Ave. F. **SATURDAY.** Porch swing, tiller, china cabinet, kitchen cabinet, dishes, clothes, and lots of junk. (27-1tp)

**WANT TO GIVE** our St. Bernard to someone who will give it a good home. Phone 298-2200. (27-1tp)

**GARAGE SALE** Friday & Saturday, 9a.m. to 6p.m. 511 4th St. Pot plants, new crochets for Mother's Day gifts, many miscellaneous items. (27-1tc)

**PUPPIES FOR FREE**, 10 to choose from, nine males and one female. Collie & German Shephard mixed. Call 757-2203. (27-1tp)

**HELP WANTED**

**DIRECT SALES PERSON** Opening for temporary outside sales in towns surrounding Lubbock. Opportunity for experienced individual to make good money. Requirements include: sales experience, willingness to learn, business-like appearance and ability to work with people. Sales and product training provided. Call 806/892-2338. Ask for Mrs. Fulfer. (27-2tc)

**HOMESTEAD Real Estate**  
**DON FONDY**  
 1701 Ave. H  
 Abernathy Res. 806-298-2268

**Richard DuBose real estate**  
 994 Ave. D  
 Pho. 298-2536  
 Lubbock 762-1440  
 Beautiful 2 year old lake home on Possum Kingdom fully furnished. Large loan @ 10% can be assumed.  
 Trailer Home and lot. very nice--like new. 1509 Ave. E.  
 2 bedroom home, 3 lots. Priced to sell. 311 3rd.

**Aloe Vera Health Beauty Products Household & Bath Care**  
 NEED PEOPLE TO SELL ALOE VERA PRODUCTS.  
 CONTACT:  
 Gerri Gartin Division Manager  
 1011 Ave. E Pho. 298-2758

**Lubbock Board of Realtors**  
 NEW FLAGG HOMES  
 703 1st St.  
 3 Bedroom, isolated master, ready to move into.  
 904 16th St.  
 3 bedroom, isolated master, formal dining. Buy now and pick your colors.  
 2 Bedroom/Trailer on 75' Lot  
**MILT POPE** 298-4127  
**JAMES POPE** 298-4019  
**JIM BOB SMITH** 298-2801 795-7126  
**LANDMARK REALTORS**  
 920 Avenue D • Abernathy

**Slat-Co PRINTING**  
 All types of business printing Envelopes, Letterheads, and Business Cards.  
**FOR ALL YOUR PRINTING NEEDS**  
 Call Keith at 298-2033

**BRIDES TO BE ...**  
 COME IN AND SEE OUR CELEBRATION ALBUM OF FINE WEDDING STATIONERY  
**ABERNATHY WEEKLY REVIEW**  
 298-2033  
 Elegant Stationery in every price range  
 Trained Consultants to help with any problems, plus a large selection of accessories.  
 Celebration by Tates Corp.

**HOLY LAND TOUR**  
 Rev. and Mrs. Luther Kirk, Sr. invites you to go on a trip of a lifetime.  
 11 day jet cruise to Jerusalem, Bethlehem, Nazareth, Sea of Galilee, Hebron with a 2 night cruise to Patmos, Ephesus and Mykonos, Corinth and Athens.  
 Contact, Dr. Luther Kirk, 3005 59th St. Lubbock, 79413 or phone 799-6585.

**Harrell's Auto**  
 We Buy Autos for Salvage Cars and Pick-ups  
**Harrell's Texaco**  
 Washing Greasing Flats Batteries  
**AAA ON FULL SERVICE**  
 298-2763 298-2787  
 1501 Ave. D 1001 W. Service Rd

**GO GOODYEAR TIRES**  
 A Good Ride A Safe Ride  
 Better Handling Drive Peace-of-Mind  
 BECAUSE YOU ARE RIDING ON THE BEST TIRE IN THE WORLD.  
 the Goodyear TIRE  
 Trade TODAY, at Abernathy Oil Company for one, or a Full Set, GOODYEAR TIRES for CARS-PICKUPS-TRUCKS and our FAST COURTEOUS SERVICE...  
**Abernathy Oil Company**  
 Smoother Go GOODYEAR  
 Go Safer  
 ROYCE HENSON  
 709 Ave. D  
 Phone 298-2255  
 Night-298-2671

**New Subscribers: SAVE \$4.40**  
 A years subscription to the Review is \$6 in Hale & Lubbock Counties and the paper will be delivered to your door each week. If you buy the Review each week on the newsstands, you end up paying \$10.40 a year.  
**SAVE \$4.40**  
**Fill Out This Blank Now**  
**Subscription Blank**  
 \$6.00 for those living in Hale or Lubbock County, \$6.50 for the rest of Texas, and \$7.50 out of Texas. Please use the blank below for your convenience.  
 The Abernathy Weekly Review, Drawer D, Abernathy, Texas 79311.  
 Enclosed is \$.....for my subscription.  
 Name.....  
 Route.....Box.....  
 City.....  
 State.....Zip Code.....  
**Let The Review Come To Your Door.**

YOU CAN INCREASE the efficiency of a smoke alarm system by locating several alarms throughout the house - in different rooms. Wire them so that when one goes off, they all do, says Linda McCormack, a family resource management specialist.

**HAIL INSURANCE**  
 WE HAVE IT  
 We write any type of Hail Insurance available in the State of Texas including All Risk - - Same as Federal Crop.  
 It is written and adjusted through our office with our adjusters.  
 We have been writing hail insurance many years and know the business.  
 Please call or come by for a quote.  
**Richard DuBose insurance**  
 P.O. BOX 580, 924 Avenue D ABERNATHY, TEXAS 79311  
 PHONE (806) 298-2536 or Lubbock No. 762-1440

## News And Comments

By Buford Davenport

The following is from The Abernathy Weekly Review dated October 6, 1927:

Services will be conducted by Minister M.M. Young at Abernathy Church of Christ on the second and fourth Sundays. On first Sundays of each month he will conduct services at County Line, and on third Sundays he will be at Becton.

Salt water strata is struck in Richter No. 1 oil test well at about 900 feet.

Radio bug again is rampant in Abernathy - it's the World Series this time.

The Santa Fe is building new water tower and pump station in Abernathy.

H.E. Richter was advertising "money to loan on farms at 5 1/2% interest".

Abernathy Farm Bureau

GIN turned out its first bale of cotton Wednesday...two bales for J.A. Avery and one each for C.F. Buske and A. Hill.

Wheat acreage is increased 18% this year in Hale County.

One of the most unique and interesting exhibits at the Hale County Fair in Plainview was that of Garland Nystel of Abernathy, who had on display a number of mechanical toys which he had made. They took first place in the boys club handicraft division.

J.P. Nystel's winter squash took first; Richard Neis won second with his Irish potato display, and Claude Havenhill took first on his peanuts.

Gas service by West

Texas Gas Company comes to Abernathy this month in 1927.

Mrs. Ola Legg of Plainview and Mrs. Bert Pinson of Hale Center visited in Abernathy Sunday. (Mrs. Legg, an early-day school teacher in Abernathy, and later Hale County School Superintendent, was a sister of Ray Pinson of Abernathy...now of Marble Falls.)

Mr. and Mrs. J.T. Crow and Mr. and Mrs. Arthur Crow left Sunday for Post City, where they expect to spend the winter.

Walter Harp and family returned Friday from Abilene. While there, they took part in the celebration in honor of the visit of Charles A. Lindbergh.

Eagle Springs School is progressing nicely. There were a few new pupils this week. There would be several more pupils if it were not for cotton picking.

The Baptist young people organized a B.Y.P.U. at the Bartonsite Baptist Church Sunday night.

From Australia: On the shores of Sydney harbor there has arisen a white amphitheater, the seats of which are reserved by persons who expect a second coming of Christ across the waters of the harbor.

H.E. Richter buys George W. Ragland insurance agency.

The first services were held in the Church of the Nazarene new building in Abernathy last Sunday. The church moved here from Science Hill School northwest of town. Dr. W.T. Givens of Abernathy preached the first sermon to be heard in the new church house. (Dr. Givens was Erceel Givens' grandfather.)

They came a long way for Abernathy apples - E.M. Crow says advertising pays. (Mr. Crow had 720 apple trees in his orchard northeast of Abernathy. There were so many Crow families in this community at that time that E.M. Crow was known as "Apple" Crow.)

With natural gas coming to Abernathy, Struve Mercantile advertised New Process Gas Ranges with the Loraine oven heat regulator.

In 1927, there were 37,328 acres of land in the Abernathy School District. The 1981 total is 115,840 acres.

### SCHOOL MENU

#### Breakfast Menu

May 11-15  
Monday  
Apple Sauce  
Doughnut  
1/2 pt. Milk  
Tuesday  
Stewed Prunes  
Toast  
1/2 pt. Milk  
Wednesday  
Orange Juice  
Scrambled Eggs  
Biscuits  
1/2 pt. Milk  
Thursday  
Grape Juice  
Oatmeal  
1/2 pt. Milk  
Friday  
Pineapple Juice  
Sausage w/ Toast

1/2 pt. Milk  
Lunchroom Menu  
May 11-15  
Monday  
Pizza  
Tossed Salad  
Corn  
Fruit  
1/2 pt. Milk  
Tuesday  
Turkey & Gravy  
Sweet Potatoes  
Green Beans  
Cheese Rolls  
Fruit Salad  
1/2 pt. Milk  
Wednesday  
Taco w/ Cheese  
Lettuce and Tomato  
Pinto Beans  
Peach Cobbler  
1/2 pt. Milk  
Thursday  
Pigs in a Blanket  
Potato Salad  
Pinto Beans  
Prune Cake  
1/2 pt. Milk  
Friday  
Cheese Burgers  
Lettuce, Pickles, Onions  
French Fries  
Peanut Butter Cookies  
1/2 pt. Milk

Fact or Fallacy: Good nutrition has no relation to physical fitness.

Answer: A good program of fitness includes careful attention to diet. Well-balanced meals which include meat, dairy products, fruits and vegetables, breads and cereals can contribute to proper weight maintenance. A variety of foods and a variety of activities is the best formula.

### Granddaughter Of Local Family Wins District

Representing Petersburg junior varsity doubles in tennis are Sheri Thompson and Alicia Davis. They won district in Plainview April 3-4. They defeated other doubles teams representing Ralls, Lorenzo and New Deal and won district.

They advanced to the regional tennis tournament held in Odessa April 23-25. Alicia, a freshman, travelled with the varsity girls as an alternate.

Alicia is the daughter of Mr. and Mrs. Harold Gene Davis of Petersburg and the granddaughter of Mr. and Mrs. Harold Davis of Abernathy.

## Idalou To Sponsor Track Meet

Idalou Band Boosters will sponsor a Junior Track Meet, Saturday, May 9, at Reddell Field west of the high school.

The meet is open to boys and girls ages 3-12. Registration will begin at

9:00 a.m. The registration fee is \$1.50 per participant and there is no limit on the number of events entered. Ribbons will be awarded in each event.

A concession stand featuring sandwiches, candy

and soft drinks will be provided by parents of band members.

Funds raised from this project will be used to support activities of the Idalou Wildcat Band.

## Hale Rifle Team Fourth

The Hale County Junior Rifle Team came in fourth out of nine counties that participated in a recent rifle contest held at the American Legion Post in Lubbock.

Members on that team included Jim Bob Carver

and Dan Evans of Abernathy and Clifton Pinnell of Plainview and Lee Logan of Hale Center.

The Senior team included Ricky Clark and Kalynn Lancy of Hale Center and John Amonett of Petersburg.

### WORD of GOD

The fear of the Lord is the beginning of knowledge; but fools despise wisdom and instruction.

Proverbs 1:7

## FLOWERS the Special Gift for Mom

Miniature Rose Bushes, Azaleas, Gloxinia, Geraniums, Hydrangeas & many more

10% DISCOUNT ON CASH AND CARRY  
\$1.00 DELIVERY CHARGE IN TOWN  
\$2.00 DELIVERY CHARGE OUT OF TOWN

Green plants | Blooming plants  
\$5.00 to | \$8.50  
\$35.00 | to \$25.00

Abernathy Floral

Phone 298-2334

1312 Ave. D



Cindy Davis is shown sitting in a field of Deltapine SR-5 at a family farm northeast of Hale Center.

## COTTON FARMERS

1980 was a tough, dry year... and like the old saying, "WHEN THE GOING GETS TOUGH, THE TOUGH GET GOING." CERTIFIED DELTAPINE SR-5\* proved itself to be tough enough to yield #1 in the Hale County Extension Agent's test northeast of Hale Center.

TEST RESULTS:	SR-5*	Pay 266*	GSA 71*
Yield acre	886	814	779
Staple	32	31	33
Mike	3.3	3.4	3.1
Gross	\$725.86	\$651.66	\$645.67

SEE YOUR GINNER OR DELINTER ABOUT

CERTIFIED DELTAPINE SR-5\*  
DELTAPINE...  
HIGH YIELDS+PREMIUM FIBER

\*U.S. PROTECTED VARIETY. See warranty limitations printed on bag.

## HAPPY MOTHER'S DAY FROM

REAL TEXAS CHOPPED BBQ SANDWICHES

BUY ONE GET ONE FREE

## ALLSUP'S CONVENIENCE STORES

"THERE'S ONE NEAR YOU"  
PRICES EFFECTIVE MAY 7-9, 1981  
SPECIALS GOOD WHILE SUPPLIES LAST

BORDEN'S ASSORTED FLAVORS ICE CREAM	1/2 GAL. HD. CTN.	\$1 59
SUNSHINE CHIP-A-ROO'S	12 OZ. PKG.	\$1 29
BORDEN'S ASSORTED FLAVORS YOGURT	8 OZ. CTNS.	2 99c

DIET PEPSI MOUNTAIN DEW OR PEPSI

\$ 1 99

2 LITER BTL.

GLADIOLA FLOUR	5 LB. BAG	\$1 09
SCHILLING BLACK PEPPER	4 OZ. CAN	\$1 39
MORTON BEEF/CHICKEN POT PIES	8 OZ. PKGS.	3 \$1 00
BORDEN'S FRUIT DRINK	GAL.	99c

OPEN 24 HOURS - 365 DAYS A YEAR