

# Antelopes And Lady Lopes Win First Round

The Abernathy Antelopes and Lady Lopes won the first round of District 3-3A competition here Friday night by defeating Floydada teams.

The Antelopes already had the first round sewn up with the best district record of 4-0 before playing Floydada. The Lockney fems had a chance of

## Teams Win First Game Of Second Round

tying the Lady Lopes if the Lope fems had lost to Floydada.

**Lady Lopes**  
In the first game, the Lady Lopes stunned Floydada 62-44.

They took an early lead by scoring 17 points in the second quarter to lead 28-18 at intermission.

The Lady Lopes had a comfortable 10 point lead, but Floydada remained at a competitive level scoring 12 points to the Lope fem's 13 in the third. The Lady Lopes capped the victory by scoring 21 in the fourth to Floydada's 16 and the game ended 62-44.

Vicky McKenzie was the leading scorer with 26 points and Stacey Kelley followed with 14. The Lady Lopes remained undefeated at 5-0 and the Floydada fems dropped to 2-3.

### Antelopes

The Abernathy Antelopes stomped Floydada 70-55 to win the first round of district competition. This gave the Lopes their fifth consecutive victory.

Both teams came out shooting accurately with the Lopes scoring 20 points to Floydada's 16 in the first quarter. The Lopes maintained the lead in the second scoring 14 more points to lead at halftime 34-27.

The Lopes scored 15 in the third quarter before exploding in the fourth quarter with 21 points while holding Floydada to 16 and 12 points. The Lopes won easily 70-55.

Rodney Cannon was the leading scorer with 26 points, followed by Malcolm Dunn with 14 and Rick Houston 11.

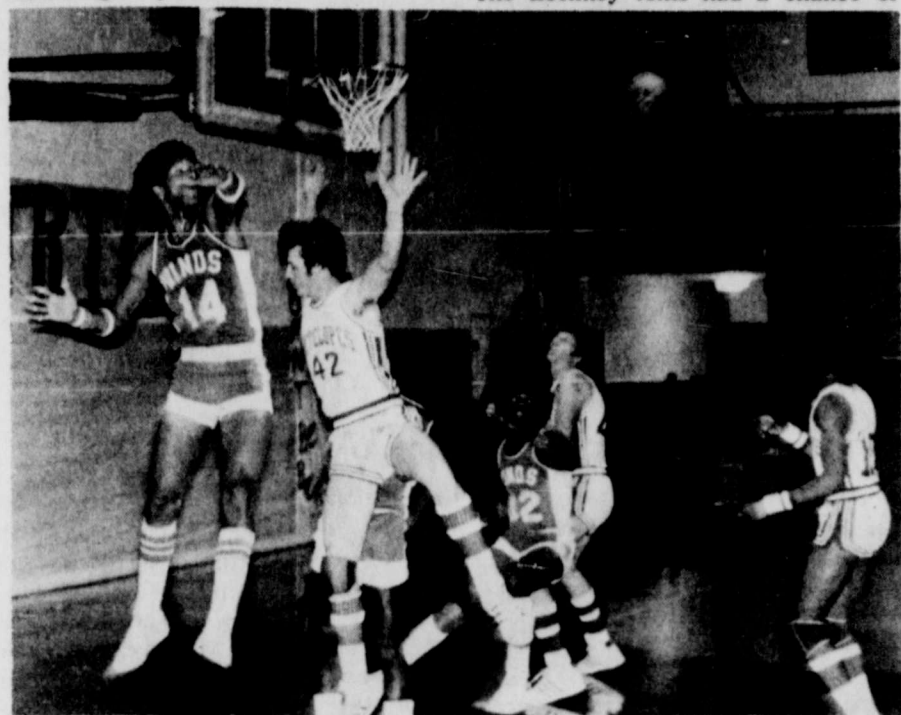
**Lady Lopes, Lopes Defeat Childress**  
The Lady Lopes and Antelopes defeated both Childress teams last Tuesday night at Childress.

The Lady Lopes won 57-47. They were behind until the fourth quarter when they scored 13 points while holding the Childress fems to only 3 points.

Leading scorers were Vicky McKenzie with 27 and Regina Powell 10.

The Antelopes edged Childress 56-54. At the end of the first half the Lopes held led by 2 points, 29-27. Then in the last 16 seconds of the game, with the score 56-54, Childress had the ball and attempted to shoot 4 times, but failed to connect with all four. Malcolm Dunn blocked one of the attempts.

The leading scorer was Rodney Cannon with 26 followed by Rick Houston with 10.



**WHERE DID IT GO?** There was a loose ball after a struggle near the goal as Abernathy players Rodney Cannon, Rick Houston and Malcolm Dunn attempted to get the rebound. The Antelopes won easily and took the first round of District play. (Review Photo by Doyle Albrecht)

Tuesday night the Antelopes and Lady Lopes defeated Lockney to re-

main on top of the district standings with records of 6-0.



**MARGARET COOPER** throws to Regina Powell while playing Floydada Friday. This win gives the Lady Lopes a perfect 5-0 record and winners of the first round in District 3-3A. (Review Photo by Doyle Albrecht)

## Election Discussed At School Board Meeting

The Abernathy School Board met Friday, January 29, to discuss several items of business. The February meeting was held early while Delwin Webb was the acting Superintendent. Friday was his last day.

The meeting began with Thomas Pettit giving the invocation.

The Board began discussing the School Board election, which will be held April 3 with the City election. Locals will vote at City Hall from 7 a.m. to 7 p.m. at this time.

Places 2, 5 and 7 on the Board will be open. David Pinson presently holds place 2, Jerry Oswald place 5 and Bob Riley place 7.

Those who wish to be placed on the election ballot for these positions could file as early as Feb. 3, yesterday. Deadline for filing is Wednesday, March 3 at 5 p.m.

The election judges will be: Leland Phillips, as Judge; Dan Ward, Alternate Judge; Orelia Clements, Absentee Clerk; and Clerks, Mrs. Donald Huffaker, Mrs. Herman Lambert, Mrs. J.R. Smith and Mrs. L.A. Suttle.

### Public School Week

The first week of March has been designated Public School Week and Abernathy Schools will be open to visitors. The Board decided to let the

school administrative staff outline procedures for open house that week.

### Other Business

Tax collections are moving right along with \$2,230,190 of the \$2,246,471 budgeted for collected up to date. This is 99.27 percent of school taxes that have been collected.

The enrollment report revealed that there has been a decline of 22 students since the Christmas Holidays.

The lunchroom account is presently in the red \$9,637. \$20 thousand was transferred from the general operating fund to the lunchroom fund to replace the deficit experienced this last year in this account. An average of 651 students are eating lunch and 107 breakfast.

The Abernathy Basketball Tournament grossed \$2,218. \$1500 of this was used for expenditures and the \$705 profit went into the athletic fund. The board also discussed the growing expense of hiring officials to officiate basketball games. Officials were paid approximately \$840 all together to officiate the Abernathy Tourney.

The board will allow Prowl and Dekalb to sponsor a banquet for the school ag department February 13 at the school cafeteria.

## Abernathy Riding Club To Meet

The Abernathy Riding Club will meet Saturday, February 5th at 7:30 p.m. in the City Hall Club Room.

Officers are: President M.D. Evans, Vice-president Gary Gobel, Secretary Beth Evans, Treasurer Ercell Givens, Reporter Dorothy Brightbill and Parole Marshall J.C. Gobel and Charles Evans.

The Riding Club would like to extend an invitation to others not only to visit but to consider joining this fine club. Plans are shaping up to make 1982 another successful and exciting year for the Abernathy Riding Club.

Shareholders of the Abernathy Riding Club, Inc. will have a meeting Thursday, February 4th, at 7:00 p.m. in the Abernathy City Hall. This is the annual meeting of the shareholders

and a very important meeting. Everyone should try to attend.

## Painting Classes

Mrs. Georgia Bartlett, Abernathy Schools art teacher, is starting a class for beginners in oil painting. The class will be in the art lab at the high school building starting February 15 and will last from 6:30 to 9:30 Monday nights.

The class will deal with basic oil painting methods and will consist of a series of four lessons. A 16 inch by 20 inch landscape will be completed in the course.

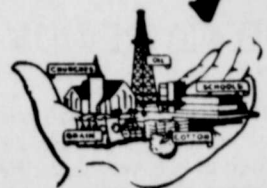
For more information, call Mrs. Bartlett at 298-2253 after 4 o'clock in the afternoon.



**PREPARE LAMB FOR STOCK SHOW...** Ag Instructor Scotty Windham and Shad Kelly prepare a lamb for an upcoming stock show. This is the time of year when Abernathy Ag students show their animals at stock shows all over the state. The Abernathy Project show is March 8-9. (Review Photo)

friends on May 1st, 1982," she said. "Thank you for your confidence in the past. I ask for your trust, for I do care about you," Tucker ended.

# ABERNATHY WEEKLY REVIEW



VOLUME 61 NO. 12

Serving Hale, Lubbock Counties

THURSDAY, FEBRUARY 4, 1982

U.S.P.S. NO. 003-340

20¢

## 85,125 Bales Ginned At Area Gins

Ten gins within a 15 mile radius of Abernathy reported ginning a total of 85,125 bales of cotton for the 1981 season. This is a 15,825 bale increase over the 1980 count of 69,300 bales ginned at these ten gins.

The ten area cotton gins reporting their totals were: City Gin, Hygrade Gin, White Gold Gin, Abernathy Farm-

ers Co-op Gins, Farmers Tuco Gin, County Line Co-op Gin, Teakell Gin, Ross Gin, New Deal Co-op Gin and New Deal Gin Company.

Nine of the gins reported an increase in bales ginned in 1981 over 1980. Several gins experience substantial increases over 1980.

## Boys Junior Basketball Draft Feb. 13

WEATHER				
Jan.-Feb.	High	Low	Rain	
27	63	34		
28	74	29		
29	60	27		
30	73	34		
31	36	18	Snow .05	
1	54	15		
2	56	25		
Total Jan. 07				

The draft for boys signed up to play Junior Basketball will be February 13th at the Junior High Gym. Boys in the 9-10 year old division will try-out from 9:10-30 a.m. Boys in the 11-12 year old division will try out from 10:30 a.m.-12:00 noon.

Those interested in coaching a team should contact Diane Peoples at 298-4257 or 298-2412.

evading arrest, 5 disorderly conducts, 3 drinking alcoholic beverages after legal hours, 1 driving while intoxicated and 1 traffic offense.

### Accidents

Seven accidents occurred during January. Five of these were minor accidents and two major. One of the major accidents occurred January 2 on the North 87 overpass when a 20 year old Mexican American male lost control of his vehicle and knocked over a light post and part of the overpass fence. Two minors were riding with the man, but no one was seriously injured. The wreck resulted in \$3,000 damage to the highway and the car was totalled.

In another wreck, an 18 year old white male ran into a fire hydrant, damaged 20 feet of fence and ran from the scene without reporting it. He has since been found and charged with 4 offenses, Naron said.

### Spray Paint Problem

There has been several spray paint incidents that have been reported recently, Naron said. Someone is painting buildings, houses, street signs, etc. and spelling mainly obscene words, Naron added.

According to Naron, spray painting public and private property is a criminal mischief charge and punishable with a \$200 fine for each incident.

It is a misdemeanor if damages are less than \$200. Damages exceeding \$200 is considered a felony. Naron said. The people spraying paint all over town will be filed on if caught, Naron added.

### Arrests-Citations

January traffic citations totalled 51 and there were 34 arrests. Of the 34 arrests, 26 were adults and 8 were minors. All the arrests involving minors were alcohol related.

Of the 26 adult arrests, 15 arrests were for public intoxication, 1 for

## Mildred Tucker Announces For County Clerk



Mildred Tucker

Mildred Tucker announces her candidacy for the office of County Clerk of Hale County, subject to the May 1 Democratic Primary.

She was born in Oklahoma, moved to Plainview from Memphis, Texas in 1965, and graduated from Plainview High School and a Business College.

"I will appreciate your support and vote. The records in the County Clerk's office are yours. The office personnel and I will remain devoted to keeping them in order and assist you in obtaining any record that you wish. I will process each paper as accurately as possible. The records of this office will make the history of Hale County in later years," Tucker said.

She was appointed to the office in 1982, to fill out the unexpired term, by the commissioners court. "I will appreciate your vote and those of your

## Burglaries Worth Over \$2,000 Head Police Report

Four burglaries, occurring this past month, were at the top of the list of crimes on the January police report for Abernathy. The burglaries resulted in the loss of over \$2,000 worth of private property, according to Police Chief Raymond Naron.

A burglary took place at 1411 Ave D,

January 2 when a tool box, tools and various other items were taken from a vehicle owned by Eldon Sparkman, Naron stated.

The second burglary took place at the W.R. Flinn residence, 1205 1st Street, the evening of January 15. A cutting torch and 2 hydraulic jacks

worth \$600 were taken from Flinn's vehicle during the night, Naron said.

The third burglary was at the Junior High parking lot while Dr. John Hale was watching a basketball game. Four spoke wire hubcaps, worth \$125 each, were removed from his car. The loss is estimated at \$500, Naron said.

Last Tuesday night the fourth burglary took place at the cemetery when a John Deere riding mower, K-Mart pusher mower and a pair of pruning shears were taken. This was the third riding lawn mower to be stolen from the cemetery in the past four years, Naron said.

Police Chief Naron stated that these burglaries are being investigated. Of the \$2,530 worth of items taken in burglaries during December, \$2,365 of this has been recovered, Naron added.

An attempted theft took place at Allsups January 31. Four boys tried to take a box of Valentine candy from the store, but they were caught and later released by Abernathy Police, Naron said.

## On The County Line

By: Keith Tooley

**TUESDAY WAS GROUNDHOG DAY** and the groundhog woke up on the wrong side of bed, therefore we will have winter for at least another six weeks.

Groundhog Day is a tradition that was handed down to Americans and began to be practiced in America in 1887. I think it used to be called Camel Day in Germany.

Anyway, if the groundhog sees his shadow, there will be six more weeks of winter weather. If he does not see his shadow, there will supposedly be an early spring.

Sounds ridiculous to me. Of course we're always going to have six more weeks of winter. It is Feb. 4 and it is always cold through March. So why is it necessary for someone to go out and monitor the early morning sunning habits of a groundhog that claims to be a weather forecaster?

But on the other hand, if a groundhog could talk, he might be able to predict the weather more accurately than a meteorologist. We were supposed to get snow Tuesday morning, but instead the sun was shining and it was dry that morning.

A really smart groundhog might be able to tell farmers what they should plant next year. If he sees his shadow, they should plant cotton. If he does not see his shadow, plant sorghum or corn, and finally, if he sees a tractor, it will be time for him to find a new home.

**FROM TIME TO TIME** we borrow interesting articles from the Antelope Outlook, Abernathy's High School paper. This is a good school paper and a credit to the Abernathy school system. We appreciate Charlotte Carter and the Outlook staff for their assistance this past year. We hope to work closely with you in the future to bring all the news to Abernathy.

### IT WAS BROUGHT TO MY ATTENTION

from a representative of the Lubbock Better Living, Better Breathing Association, that this group meets ever 2nd Thursday of the month.

This is a group of people who get together and practice easier breathing techniques, most of which have emphysema and chronic bronchitis. The people in this group learn how to cope with breathlessness and how to clear their breathing passages.

Lubbock Better Living, Better Breathing meets every 2nd Thursday of the month. This month's meeting will be held at Community Hospital, 5301 University Avenue, in the doctor's dining room.

The American Lung Association sponsors this group. The A.L.A. also has several good books on breathing aids and how to live enjoyable lives despite breathing illnesses.

For more information contact Bill Higginbotham at 792-7112, or come see me at the Review and I'll tell you how you can get active in this breathing group and where to order the books.



# Appreciation Dinner Held For Delwin Webb

An appreciation dinner, hosted by the Abernathy school employees, was held for Dr. Delwin Webb Saturday, January 30 at 7:00 p.m. in the school cafeteria. The program consisted of a covered dish dinner, entertainment provided by Miss Jill Blalock, talented A.H.S. vocalist, and humorous and serious speeches concerning Dr. Webb given by Mitch LeMoine, Charles Bowen, David Sharp, and Gid Adkison. Jimmy Thomas, President of the Abernathy Classroom Teachers, read excerpts from elementary students

which were essays written on the topic, "What is a Superintendent?" at the suggestion of Mrs. Ruth Fulton. These essays were extremely good and quite humorous. One delightful young writer wrote that "Dr. Webb was the man who cleaned the restrooms and made out the cafeteria menus." The essays were neatly bound in maroon and given to Dr. Webb. Thomas also read an unauthorized synopsis of "This is Your Life, Delwin Webb", which was enlightening as well as entertaining. An engraved plaque from

the school staff was presented to Dr. Webb which read "In appreciation for your dedicated service to the Youth of Abernathy, 1963-1982, along with a gift certificate from S & Q. Richard Howard, President of the Abernathy School Board, served as Master of Ceremonies for the event.

Dr. Webb will assume his new post as Executive Director of Region XVII Educational Service Center February 1 after having served Abernathy Public Schools as superintendent for nineteen years.

# Junior Class To Present "Finders Creepers"

Fourteen members of the junior class will be featured in Donald Payton's play "Finders Creepers", February 19. Mrs. Webb, a junior class sponsor, said, "This play is straight comedy." The junior class will provide a free nursery for those

people attending with small children. After the play a pie supper will be sponsored by the class with pies being sold by the slice and being sold whole. Members of the play cast include the following: Mark Riddell, Roger Gagg, Tammy Lloyd, Susan Stone,

Christy Ortiz, Donna Burgess, Johnny Shafer, Angie Attebury, Darren Knox, Jimmy Salitros, Mandy Tennell, Cletus Irlbeck, Kellye DuBose and Barry Tilley. The cast will perform three times presenting two matinees and a night performance.

## UIL Adds Soccer

Soccer has been added as a UIL sanctioned activity according to the November issue of "The Leaguer," a UIL publication. The Legislative Council established guidelines for the participation of students

in the sport with implementation to begin next year. From The Antelope Outlook.

The wild cherry tree, "brother" to the fruit-bearing orchard cherries, is native to America. Its fruit is rarely tempting but it's wood is prized for making furniture of high sheen and polish.

# HEALTHY ADVICE

by Fred Lucas, M.D.

## Exercise Pays Dividends

Many of us feel guilty about not doing exercise. We continue to put it off although we know a regular schedule of exercise is one of the keys to a healthy, productive life.

Exercise to some sounds boring although just about everyone who jogs or runs claims to eat better, sleep better and feel better. And most of them do look better. But, somehow, exercise just doesn't seem much fun.

But with a large dose of willpower and patience, a faithfully kept schedule of exercise will pay dividends in good health. The first month or two of activity may tax your willpower because the benefits don't develop overnight. It will be a few weeks before you get that bounce in your step that suggests you're hooked on exercise and physical fitness.

Then, you may find it easier to cope with everyday stresses and cut down on cigarettes, coffee and alcohol. But the most important thing is to stay with the commitment.

Find a program that delights and captivates you and suits your lifestyle.

Search for activities that challenge you physically. As your endurance increases, your circulation and breathing will improve. Your heart and lungs will function better and become stronger as your body muscles become firm and supple.

A note of caution: While weak stomach or leg muscles can make you less attractive or cause discomfort, you can overdo the exercises—particularly in the beginning. Overtaxing a heart that is weak from lack of exercise can be fatal.

The best exercise for your heart involves rhythmic, repetitive motions. You should be able to sustain the exercise for two or more minutes without huffing and puffing for maximum benefit and to indicate you are becoming more physically fit.

Once you discover the joy of stimulating activity, you are likely to continue it for the rest of your life. Eventually, you'll look forward to exercising. You may even feel vaguely uncomfortable if you skip the exercises.

Remember, you're never too old to start, and you're never too much out of shape to change.



Dr. Lucas is medical director of National Heritage Insurance Co. of Austin. National Heritage is a subsidiary of Electronic Data Systems Corp. of Dallas. EDS underwrites and administers the Texas Medicaid Program.

# 3rd Six Weeks Honor Roll

Honor roll students at Abernathy High School for the 3rd six weeks are as follows:

Seniors: Dee Ann Attebury, Jill Blalock, Randy Brightbill, Tina Covey, Timmy Cox, Patsy Davis, Jon Mark Fulton, Amy Garcia, Rachel Gonzales, Beatrice Guillen, Lisa Marez, Stacey Mills, Martha Mullins, Alan Neis, Ricardo Ortiz, James Pace, Hector Ramos, Carrie Smyers,

Mandy Thompson and Sherri Watts.

Juniors: Melinda Almaguer, Angie Attebury, Diann Grisham, Jay Harrison, Lonnie Howard, Tammy Lloyd, Cody Payne, Shannon Pettit, Mark Riddell, Jimmy Salitros, Johnny Shafer, Bryan Stallings, Susan Stone and Barry Tilley.

Sophomores: Amy Boyles, Lin Davis, Ruben Garcia, Susan George, Anton Gerep, Terri Gist,

Kristi Goodwin, Melissa Hagstrom, Vicky McKenzie, Tony Ortiz, Regina Powell, Frances Salitros, Trey Stone, Melissa Thompson and Kathy Valdez.

Freshmen: Ross Bennett, Ross Bradley, Scott Cunningham, Kelley Hill, D'Ana Howard, Mark Kitchens, Bobby Morgan, Tracy Murray, Dinah Neve, Amy Pettit, Robert Salinas, John Vandygriff, Laura Waits, Wade Wesley and Donnie Williamson.

## The Scientists Tell Me...

# Future Advice to Farmers Will Be Based on Weather

By Robert L. Haney  
TAES Science Writer

Agricultural producers of the future will be better able to cope with Texas' highly variable weather when a high-technology advisory system is completed by scientists with Texas A&M University.

Present inadequate weather information, collected primarily for aircraft, is poorly suited to the needs of farmers and ranchers. Crop and range production risks are great and yields are highly variable.

Scientists with the Texas Agricultural Experiment Station working with several departments at Texas A&M, the USDA, and the National Weather Service, are developing an effective system to collect weather information for Texas, interpret it, and provide useful and timely production advisories.

"While this won't improve the weather, it should cut production risks and increase economic returns," according to Dr. G. F. Arkin, Experiment Station scientist at Temple.

Automatic equipment for weather information gathering is being studied. Only the best

will be selected for installation across the State.

In addition, alternative means of collection of weather information (for example, radar data for precipitation estimates) are being examined, according to Dr. William Dugas, agricultural meteorologist at Temple.

Meanwhile, crop growth "models" are being developed that can be used with weather and climate information for predictive purposes.

These "models" are really

detailed production systems that contain every factor that goes into crop or livestock production.

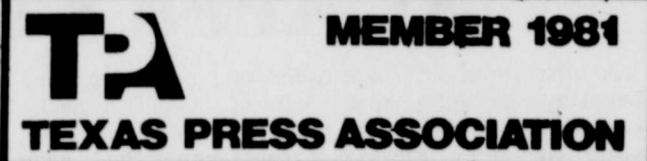
By incorporating crop growth and weather models into economic models, more realistic economic assessment can be made of production systems.

SHOP ABERNATHY  
FIRST-SAVE TIME  
GAS AND MONEY

## ABERNATHY WEEKLY REVIEW

Established in November of 1921... published on Thursday of each week in Abernathy, Texas. Second Class postage paid at Abernathy, Texas 79311, located at 916 Ave. D, in the city of Abernathy, P.O. Drawer D, Phone (806) 298-2033. Any erroneous reflection on the character of any firm, corporation or individual which may appear in the columns of the Abernathy Weekly Review gladly will be corrected upon being brought to the attention of the publisher. Subscription Rates: \$7.00 per year in Hale and adjoining counties, \$7.50 per year in rest of Texas and \$8.50 per year when mailed out of Texas.

Editor



## INSIGHT INTO EYESIGHT

J. DAVIS ARMISTEAD, O.D.  
DOCTOR OF OPTOMETRY

## PARENTS' ATTITUDE VITAL

Ten-year-old Johnnie had trouble seeing the blackboard. He did poorly at little league baseball. He couldn't focus on the moving ball. An eye examination indicated that Johnnie came home with Mom wearing his first pair of glasses. As they entered the front door, Johnnie's father was obvious about his disappointment. This negative attitude can be devastating to the self-esteem of a youngster.

The greatest problems encountered with children who wear glasses originate from parents-not children. Children are quite willing and sometimes even eager to wear glasses. They are

quick to understand that glasses will allow them better vision and thus give them an easier time at school and at play. The idea that there is something wrong is usually picked up from their parents.

Advice: Try not to express disappointment in your child's presence if glasses are indicated. For the sake of the child, try to be positive about the visual benefits glasses will afford.

In the interest of better vision from the office of:

Drs. Armistead, Moore, & Gibson  
2132-50th St. Lubbock, Tx. 79412  
747-1635

## Junior Basketball Assoc. Meets

The Abernathy Junior Basketball Association held its general meeting January 26th to elect officers for 1982.

New officers are: Overall President Mike Gainer, Boys President, Diane Peoples, Boys Agent Druann Shadden, Boys Secretary-treasurer Jeannie Johnson, Girls President, Jan Wesley, Girls Agent, Sandra Gainer and Girls Secretary-treasurer Bobbie Wages.

Other items of business approved was to increase the registration fee to \$12.50 and to order New All-Star Uniforms. A trophy will be awarded to each child who participates in the program.

One pound of raw potatoes, unpeeled, makes about two cups when mashed.

## Lakeview Locals

By Mrs. Norman Matthews  
(Reporter For Lakeview News Since 1945)

Mr. and Mrs. Floyd Shipman of Abernathy attended services at Lakeview Church, Wednesday night, January 20th. Mrs. Shipman was the featured speaker for the services.

Mr. and Mrs. Clayton Enger were in Lubbock several days this week with her father, O. L. Howard, who is a patient in Methodist Hospital.

Dena and Keri Gilmore of Lubbock spent the weekend with their grandparents, Mr. and Mrs. H. C. Barnwell.

Mr. and Mrs. J. C. Montgomery visited in Littlefield in the home of Mrs. L. D. Sinclair, Thursday. Mr. Mont-

gomery's sisters, Mrs. Mary Bell Stewart, Mrs. Gladys Lynn and Mrs. Kathy Burnett of Levelland met them and all attended the Senior Citizens meeting.

Mrs. E. G. Mahagan visited her brother, Claud Burton in Plainview Hospital, Sunday.

Mrs. Elenor Collins is visiting her son, Boyce Lynn in Abilene this week.

Mrs. N. J. Fred spent the weekend in Lubbock with her children, Mr. and Mrs. N. A. Malone and Patsy Steward and family.

Mrs. W. A. Goldston of Littlefield visited her sister, Mrs. E. G. Mahagan during the weekend.

The dawn of a new life...



# Wedding Stationery

Invitations · Announcements  
Napkins · Bridal Books  
Accessories

We would like to help you with your invitations, and other accessories. We have three wedding books to choose from. We have the latest additions to the wedding invitations.

Abernathy Weekly Review

916 Ave. D

Phone 298-2033

Anderson Grain Corporation cordially invites you to spend an enjoyable evening with us.

Place: Abernathy High School  
Vo - Ag Building

Time: 7:30 p.m. Saturday,  
February 13, 1982

Sponsors: Prowl and Dekalb

Meal will be served by  
Abernathy FFA Chapter.  
Door prizes will be given.

# did you know?



Inflation affects the electric company just as it affects you. The cost of borrowing money for new power plants and the construction of those plants to assure a dependable supply of electricity for the future, also affects your electric bill.

Jack King, Division Auditor, Lubbock.

Area and industrial development is a high priority at SPS. Southwestern can provide the electric power needed by new and expanding industries that locate in our part of the "Sunbelt." SPS area development consultants assist community leaders in our service territory with the growth of existing businesses and in attracting new industry. Planned, sensible growth means more jobs, more retail sales and a healthier economy.

Jon Krebs, Area Development Consultant, Amarillo.



Southwestern Public Service has 42,813 holders of common stock and 2,102 holders of preferred stock. These stockholders are the "owners" of the company who, in return for furnishing money for construction and other costs, receive payment for their investment in the form of dividends.

Lorene Lacer, Investor Relations Supervisor, Amarillo.

Knowing what electricity is worth is worth knowing. For answers to your questions, call or write your SPS manager.



SOUTHWESTERN PUBLIC SERVICE COMPANY

930.1



### Hays-Rantz Wedding Planned

Dr. and Mrs. John Hays of Lubbock are pleased to announce the engagement and upcoming marriage of their daughter, Charlotte Lea, to John Rantz, son of Mr. and Mrs. Hilbert Rantz of Abernathy. The couple is planning a May 15th wedding at St.



John Rantz and Charlotte Hays

Luke's United Methodist Church in Lubbock. Charlotte is a 1974 graduate of Monterey High School in Lubbock, a 1978 graduate of McMurry College in Abilene and Texas Women's University at Denton in 1980.

John graduated from Abernathy High School in 1974 and Texas Tech University in 1979.



Mr. and Mrs. Mike D. Hennig, of New Deal, are proud to announce the birth of Carolyn Darlene Hennig, born January 15th at Hi-Plains Hospital in Hale Center.

Their daughter weighed 6 pounds 10 1/2 ounces and was 20 inches long at birth.

Grandparents are Mr. and Mrs. Kenneth Rowan of Abernathy and Mr. and Mrs. Marlin Hennig of New Deal.

Mr. and Mrs. Arthur Torrez of Abernathy announced the birth of their son, Jacob Lucieno. He weighed 9 pounds and 3 ounces and was born January 29th in Community Hospital at 3 p.m.

Grandparents are Mr. and Mrs. Vince Torrez of Abernathy and Mr. and Mrs. R.D. Adams of Plainview.

Mr. and Mrs. Brian Stewart are the proud parents of a girl, Blair Nicole, born Tuesday, January 26, at 1:15 a.m. at Methodist Hospital. Blair weighed 5 pounds and 11 ounces.

The Grandparents are Mr. and Mrs. Craig Stewart of Abernathy and Mr. and Mrs. Chuck Konold of Ashland, Oregon.

Mr. and Mrs. Mackey Buck, of Shallowater, are the proud parents of a son, born at 11:01 a.m. Saturday, January 23 in Methodist Hospital. He weighed 7 pounds and 13 ounces.

## Accent On Health

A state health official says Texas is winning its battle to have very young children immunized against the potentially dangerous or deadly childhood diseases. A survey of two-year-old children — those born in 1978 who had not reached their third birthdays — shows that 82 percent had received a complete series of immunizations, reports the Texas Department of Health (TDH).

Euel Smith, director of the TDH Immunization Division, said 91 percent of the children surveyed had received three or more doses of the diphtheria, tetanus, pertussis (DTP) vaccine; 89 percent had received three or more doses of polio vaccine; 87 percent had received one or more doses of measles vaccine; and 86 percent had received one or more doses each of mumps and rubella vaccines. Smith said 82.4 percent had received all needed immunizations.

The survey, now in its third year, has seen a rise in immunization levels in two-year-old children, according to James W. Drake, director of programs in the Immunization Division.

"This gives us much-needed information and fills in the gaps between children in this age bracket and those enrolled in day care centers and schools," said Drake. Legislation passed in

1971 made complete immunizations mandatory for those attending public or private schools and child care facilities. Since 1970, said Drake, Texas has had about a 92 percent reduction in morbidity (cases) and an 89 percent reduction in mortality for immunizable diseases.

In the seventies, immunization levels rose sharply for school-age children and those attending day care centers when immunizations became compulsory. The danger areas were the preschoolers, and emphasis was given to the younger children.

Dr. C. E. Alexander, Chief of the Bureau of Communicable Disease Services, urged parents and physicians to assure that every child in need of a basic series of booster immunizations receives them at the recommended time.

Dr. Alexander emphasized that if a child isn't immunized completely before the third birthday, there is a tendency among parents to wait until time for school enrollment. During this period, disease can strike the unimmunized, he said.

Collection of data on two-year-olds began with 1976 births under a United States Public Health Service requirement which asked for a sampling of 600 children. The first year, only 484 of the targeted children were located to gain the information, which showed that 78.8 percent were fully immunized.

From 1977 births, the number rose to 506 children actually surveyed with a complete immunization record of 79.6 percent. In the 1978 births, records were compiled on 544 of the 600 children, with the 82.4 percent immunization completion.

The Immunization Division currently is working on a survey of babies born in 1979, and the program is being expanded to include 1,800 newborns — 150 for each of the department's 12 Public Health Regions.

# Society and Features

## Father Rousseau To Speak At St. Isidore Church

According to the Father Matthew F. D'Souza, Pastor of St. Isidore Catholic Church, a well known Franciscan Missionary, Father Julian Rousseau O.F.M., from Pena Blanca, New Mexico, is to conduct a program of spiritual renewal at St. Isidore Catholic Church here, February 8 to February 13.

The main service consisting of Biblical sermons, prayers and hymns, will take place every evening

Monday through Saturday. A special program for children, up to grade eight, will be at 4:15 p.m. February 8, 9 and 10. The youth from grades 9 to adults will have their program in English at 7:30 p.m. February 8, 9 and 10. The program in Spanish will be February 11, 12 and 13 at 7:30 p.m. for all those who prefer Spanish.

Father Rousseau, far from being a stranger in this area, has been preaching to Missions in both English and

Spanish throughout the Southwest for almost 30 years. Originally from Escanaba, Michigan, he spent many years preparing himself for his work as priest and missionary by studying Holy Scripture, Philosophy, and Theology in various colleges of Ohio, Michigan and Indiana.

Together with Father Matthew F. D'Souza, the visiting Missionary cordially invites and stongly urges all Christians of this area to attend these services.

## Delwin Webb Honored With Reception

Sunday afternoon, January 31, a reception honoring Dr. Delwin Webb was held in the new administration wing of the elementary building. Hosting this event were members of the Abernathy School Board and their wives.

The lace-covered serving table featured appointments of brass for punch, coffee, and cookies. Brass candelabra with brown candles of various sizes completed the appointments. On another table, centered with a large brass container of ivy and an engraved brass tray, a gift

from the school board members and their wives. Also displayed was an engraved plaque from the school board.

After guests were greeted and served, they were offered a tour of the new administration building.

Talk Of The Town Bryan Blackstock, from Little Rock, Arkansas, visited in the home of his grandparents, Mr. and Mrs. Paul Isbell, of Shallowater, Thursday through Tuesday



Father Julian Rousseau

## Rev. Horn To Speak At Baptist Assoc. Meeting In Lubbock

Primera Iglesia Bautista, Lubbock, will host the Executive Board/Fellowship Meeting of the Lubbock Baptist Association, February 15, 1982, 7:00 p.m. Joe Torres is the pastor. Refreshments will be served by the host church.

The inspirational speaker for the evening will be Ken Horn, pastor of Northside Baptist Church, Abernathy. Ken is a native of Littlefield. He attended Wayland Baptist University and is currently attending Texas Tech.

Before coming to Northside, he served as pastor of Francitas Baptist Church and Evangelism for several years holding revivals in Texas, New Mexico, and California.

Adam Zepeda, music director at Primera, Lubbock, will lead the congregational singing and provide the special music.



Ken Horn

The doughnut was brought over to America from the Netherlands more than 300 years ago by Dutch colonists.

## 1935 Study Club Meeting

The 1935 Study Club met in the home of Mrs. Owen Benn at 3:00 p.m. Thursday, January 28th. The program was "The Religious Policy and Practice in Communist China", presented by Mrs. Hilburn Barrick. Delicious cake and coffee was served by the hostess.

Those present included 1 visitor, Mrs. Asa Reynard, and the following members: Mrs. Ralph Davis, Mrs. Lee

Echols, Mrs. Robert Carter, Mrs. Jack Hacker, Mrs. John Hale, Mrs. Jack Jackson, Mrs. Glenn McDonald, Mrs. J.C. Mills and Mrs. Arno Struve.

The next meeting will be February 11th in the library. The social committee will serve as hostesses. Mrs. Ralph Davis will bring the program, "China, The Other Communism."

## Odom-Pope Engagement Announced

Jim and June Odom are proud to announce the engagement and approaching marriage of their daughter, Keila to Kerry Pope of Levelland. Kerry is the son of Claud and Barbara Pope of Levelland.

The wedding will be March 5th at the First Baptist Church in Abernathy at 7:00 p.m.

Keila graduated from

Abernathy High School in 1980. She attended South Plains College in Levelland and graduated from American Commercial College in 1981.

Kerry graduated from Levelland High School in Levelland in 1981.

Kerry and Keila are employed by Red Devil Oil Services of Levelland.

## Study Series Offered

### "Weight Off Wisely" 7-Week

A new educational program has been started with one group of adults, states Mrs. Wynon Mayes, County Extension Agent. The Weight Off Wisely series of seven lessons is designed to help the participants increase their nutritional knowledge so that they are more skilled at selecting nutritionally adequate, low-calorie foods.

One group has been organized and this group lost a total of 33 1/2 pounds the first week. All were enthusiastic and are hopeful of being able to identify inappropriate food habits and make changes where needed.

If anyone is interested in being involved in the 7-week

study series, they should contact me at the Extension office, states Mrs. Mayes.

There is no charge and groups can be formed at a convenient time if there is an interest. Call 293-8481, Ext. 269 to register, and tell us the time you prefer, states Mrs. Mayes.

### Those To Remember

The family of Mrs. J.V. Newton, Bertha Hunt, Mancel Smith, Wayne Holleman and Mrs. Nora Porter.

Mrs. Evie Miller, J.L. Miller's Mother, is in St. Mary's Hospital.

J.R. Miller is in Hi-Plains Hospital in Hale Center.

Jesse Webb is in Lubbock General Hospital.

Mrs. Hattie Forbus is in West Texas Hospital.

Mrs. H.S. Tennell was in Methodist Hospital last week.

Talk Of The Town Marine Cpl. Adolph Tagle, brother of Arturo Tagle of P.O. Box 58, New Deal, has been promoted to his present rank while serving with Wing Engineer Squadron 37, Marine Corps Air Station, El Toro, Calif.

Wrap a gift for a new baby in the front page of the newspaper printed the day the baby was born. Also include the horoscope and the weather report.

## Affairs of Life



The bee that gets the honey doesn't hang around the hive.

The human likewise should be prudent in all matters.

## SHIPMAN AGENCY

Billy Shipman, Rola B. Covey, Roddy Shipman, D'Aun Shipman

## LOSE WEIGHT FAST!

Next to stress, obesity is the hardest

thing on your heart!

DON'T DELAY

Lose unwanted lbs. before Spring

I WILL HELP YOU.

BETTY CAGLE 298-2282

ATTEND THE CHURCH OF YOUR CHOICE THIS SUNDAY

ASSEMBLY OF GOD  
1101 Ave. B 298-2060  
RENA RICE  
Sunday School 9:45 a.m.  
Morning Worship 10:45 a.m.  
CA Youth CC 6:00 p.m.  
Evening Worship 7:00 p.m.  
Tuesday WMC 1:30 p.m.  
WEDNESDAY:  
Worship Services 7:30 p.m.

BETHEL BAPTIST CHURCH  
East 1st St. 298-2118  
REV. J.B. LESTER  
Sunday School 9:45 a.m.  
Morning Worship 11:30 a.m.  
Training Union 6:00 p.m.  
MONDAY:  
Women's Missionary Union and Brotherhood 7:00 p.m.  
WEDNESDAY:  
Prayer Service 7:00 p.m.  
FRIDAY:  
Choir Rehearsal 7:00 p.m.

LAKEVIEW METHODIST CHURCH  
3 Mi. North 6 Mi. East of City on FM 51  
REV. HB COGGINS  
Sunday School 10:00 a.m.  
1st and 3rd Sundays  
Morning Worship 11:00 a.m.  
Bible Study 7:00  
Evening Worship 7:30 p.m.  
WEDNESDAY:  
Worship Service 8:00 p.m.

CHURCH OF CHRIST  
10th St. & Ave. E 298-2718  
Sunday School 9:30 a.m.  
Worship 10:30 a.m.  
Youth 5:00 p.m.  
Evening Worship 6:00 p.m.  
WEDNESDAY (Sept.-May):  
Ladies Class 10:00 a.m.  
Bible Class 7:30 p.m. (c.s.t.)  
8:00 p.m. (d.s.t.)

CHURCH OF THE NAZARENE  
511 Ave. E 298-2832  
ROSSWELL BRUNNER  
Sunday School 9:45 a.m.  
Morning Worship 10:45 a.m.  
Youth Services 5:30 p.m.  
Evening Worship 6:15 p.m.  
WEDNESDAY:  
Worship Service 7:30 p.m.

FIRST UNITED METHODIST CHURCH  
704 Ave. D 298-2240  
REV. TOMMIE BECK  
Sunday School 9:45 a.m.  
Morning Worship 11:00 a.m.  
Evening Worship 6:00 p.m.  
UMY 7:00 p.m.  
WEDNESDAY:  
Choir Practice 7:30 p.m.  
U.M.W. 2nd Monday of each month

66 BUTANE AND FERTILIZER  
298-2451  
Plainview Hwy.

ABERNATHY FARMERS CO-OP GIN  
"Service The Year Round"  
Phone 298-2527 Abernathy

SAV-A-LOT FAMILY CENTER  
BEN FRANKLIN VARIETY  
Food Supermarket and a line of general merchandise

CO-OP GRAIN COMPANY  
of Abernathy  
Phone 298-2511

BRIGHTBILL HEATING AND AIR  
906 Ave. D  
Abernathy  
298-2705

PAY-N-SAVE SUPERMARKET  
Phone 298-2627  
We give Green Stamps

WOLF IRRIGATION  
Lubbock Hwy.  
Phone 298-2114

RICHARD DUBOSE INSURANCE, REAL ESTATE  
298-2536 762-1440  
P.O. Box 580, 924 Ave. D

JOE THOMPSON IMPLEMENT CO.  
"The John Deere House"  
105 Ave. D Phone 298-2541

FIRST BAPTIST CHURCH  
111 7th St. 298-2587  
REV. LLOYD E. RIDDLES  
Sunday School 9:30 a.m.  
Morning Worship 10:40 a.m.  
Church Training: 6:00 p.m.  
Living 6:00 p.m.  
Evening Worship 7:00 p.m.  
WEDNESDAY:  
Prayer Meeting 7:30 p.m.

CENTER COMMUNITY CHURCH  
5 Mi. East on 597, then 2 mi. south on 2902-746-6184  
BRO. EARNEST BREWER  
Sunday School 10:00 a.m.  
Morning Worship 11:00 a.m.  
Evening Worship 5:00 p.m.  
WEDNESDAY:  
Children's & Adult's Bible Study 7:30 p.m.

COUNTY LINE BAPTIST CHURCH  
Rt. 2-757-2134  
REV. ROYCE JENNINGS  
Sunday School 10:00 a.m.  
Morning Worship 11:00 a.m.  
Evening Worship 6:00 p.m.  
WEDNESDAY:  
Prayer Meeting 8:00 p.m.

CHURCH OF THE NAZARENE  
Ave. A & 5th St. 298-2832  
Sunday School 10:00 a.m.  
Morning Worship 11:00 a.m.  
Evening Worship 7:00 p.m.  
WEDNESDAY:  
Prayer Meetin-Bible Study 6:30 p.m.

NORTHSIDE BAPTIST CHURCH  
16th St. & Ave. E. 298-2497  
REV. KENNETH HORN  
Sunday School 9:45 a.m.  
Morning Worship 11:00 a.m.  
Training Union 5:00 p.m.  
Evening Worship 6:00 p.m.  
Prayer Meeting 7:30 p.m.  
RA'S GA'S Midweek Prayer Meeting 5:00 p.m.

PRIMERA MILION BAUTISTA  
1112 Jerome 298-2613  
REV. JOSE RODRIGUEZ  
Sunday School 9:45 a.m.  
Morning Worship 10:45 a.m.  
Training Union 6:00 p.m.  
Evening Worship 7:00 p.m.  
WEDNESDAY:  
Prayer Meeting 7:30 p.m.  
Youth Meeting & Bible Study 8:00 p.m.

ST. ISIDORE'S CATHOLIC CHURCH  
South Ave. D  
REV. MATTHEW D'SOUZA  
Morning Mass 9:00 a.m.  
WEDNESDAY:  
Religious Education Classes 7:30 p.m.  
Mass 8:30 p.m.  
THURSDAY  
Mass 7:30 p.m.

The Sponsors On This Page Support The Churches Of Abernathy



WE'VE GONE WHOLE HOG!



# Pork Sale



FARMLAND MAPLE RIVER BRAND  
BONELESS  
**WHOLE HAM**

LB. **\$1.59**

HALF HAM ..... LB. **\$1.69**

WHITE SWAN GUEST QUALITY  
VAC-PAC  
**SLICED BACON**

1 LB. PKG. **\$1.39**

WHITE SWAN PIMENTO  
CHEESE SPREAD..... 14 OZ. **\$1.49**  
7 1/2 OZ. **89c**

ECKRICH  
**SAUSAGE**

•SMOKED  
•BEEF SMOKED  
•POLISH SMOKED ..... LB. **\$1.98**



COUNTRY PRIDE GRADE A

**BAKING HENS**..... 5-7 LB. AVG. **69c** LB.

**DEL MONTE CATSUP**  
32 OZ. **\$1.19**

The Makings of Success



DEL MONTE CUT  
**GREEN BEANS**  
16 OZ. **2/89c**



DEL MONTE WHOLE NEW  
**POTATOES**  
16 OZ. **2/89c**

**DEL MONTE PINEAPPLE**  
PACKED IN ITS OWN JUICE  
•TIDBITS •SLICED •CRUSHED  
**59c**  
15 1/2 OZ.

**DEL MONTE CORN**  
17 OZ. **2/89c**  
•CREAM STYLE  
•WHOLE KERNEL

**DEL MONTE PINEAPPLE ORANGE & PINEAPPLE GRAPEFRUIT JUICE DRINK**  
46 OZ. **79c**

**DEL MONTE FRUIT COCKTAIL**  
17 OZ. **59c**

NICE 'N SOFT  
BATH  
TISSUE..... 4 ROLL **99c**

**DEL MONTE EARLY GARDEN SWEET PEAS**  
17 OZ. **2/89c**

**DEL MONTE HOT TOMATO SAUCE**  
8 OZ. **6/\$1**



DEL MONTE CHOPPED  
**SPINACH**  
15 OZ. **2/89c**

**DEL MONTE PEACHES**  
•HALVES  
•SLICED  
16 OZ. **59c**

**DEL MONTE PEAR HALVES**  
16 OZ. **59c**

**CREATE YOUR OWN SAVINGS**

And, get a FREE "Creative Me" T-Shirt Set. See official order form in our store!

Palmolive Dishwashing Liquid 22 OZ. **\$1.19**

Dynamo Laundry Detergent 64 OZ. **\$3.39**

Ajax Cleanser 14 OZ. **39c**

Fab Laundry Detergent 49 OZ. **\$1.99**

Frozen Foods

PATIO 12 1/2 OZ. •MEXICAN •BEEF ENCH. **89c**  
DINNERS •FIESTA •CHEESE ENCH.  
MORTON'S 9 OZ. •GLAZED **79c**  
DONUTS •CHOC. •JELLY  
WHITE SWAN CRINKLE CUTS 32 OZ. **89c**

Health & Beauty Aids

AIM TOOTH PASTE 4.6 OZ. **\$1.29**  
SIGNAL MOUTHWASH 12 OZ. **\$1.59**  
ST. JOSEPH ASPIRIN FOR CHILDREN 36 CT. **59c**

Fresh Produce

CALIF. MINNEOLA **TANGERINES**..... LB. **49c**  
SALAD SIZE **TOMATOES**..... LB. **59c**  
FRESH GRN. BUNCHES **BROCCOLI**..... LB. **69c**  
TEXAS RUBY RED **GRAPEFRUIT** 4 LBS. **\$1**  
YELLOW OR ZUCCHINI **SQUASH** LB. **59c**  
SNOW WHITE HEADS **CAULIFLOWER** EACH **79c**

## SAVE A LOT

LUBBOCK 1411 Ave. D ABERNATHY  
PHONE 799-4864 Abernathy, Texas PHONE 298-2266

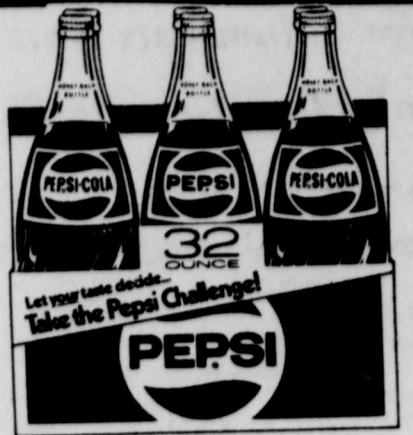
**WHERE YOU SAVE EVERYDAY**

PRICES FEB. 4 - FEB. 10





# TAKE THE PEPSI CHALLENGE FRIDAY AND SATURDAY AT DON'S SAVE-A-LOT



5TH

6TH

ALSO PEPSI COLA 6 PACK 32 OZ.

BUY ONE 6 PACK AT \$2.99 GET TWO 6 PACKS FREE

**GRADE A WHOLE FRYERS** 49¢ LB.  
**CUT-UP** 59¢ LB.

**KAL KAN** 14 OZ. **DOG FOOD** 3/\$1.00  
**ZEE PAPER TOWELS** 69¢

**SPECIALS FROM THE GROCERY DEPARTMENT**  
**BANQUET POT PIES** \$3/\$1.00

**ALPO** **DOG FOOD** 25 LB. \$6.59

**STAR KIST TUNA** 6 1/2 OZ. 89¢

**PINESOL** 15 OZ. 99¢

**FRANCO AMERICAN SPAGHETTI & MEATBALLS** 14 3/4 OZ. 69¢

**WOLF BRAND CHILI** NO BEANS 19 OZ. \$1.19  
**EAGLE BRAND MILK** 14 OZ. \$1.09

**WELCH'S GRAPE JUICE** 40 OZ. \$1.49

**TONY'S PIZZA** SAUSAGE, HAMBURGER, PEPPERONI \$1.49

**FRITO LAY FRITOS** REG. \$1.59 \$1.09

**BORDEN COTTAGE CHEESE** 24 OZ. \$1.39

**PURINA CAT CHOW** 12 LB. \$5.49

**WHITE SWAN PURE VEGETABLE SHORTENING** 48 OZ. \$1.59

**BETTY CROCKER RTS FROSTINGS** 16.5 OZ. \$1.39

**BORDEN FRUIT DRINK** GAL. 99¢

**ATKINS HAMBURGER DILL PICKLE SLICES** 32 OZ. 79¢

**BETTY CROCKER BLUEBERRY MUFFIN MIX** \$1.09

**BETTY CROCKER CAKE MIXES** 79¢

**WHITE SWAN BLACK PEPPER** 4 OZ. 69¢

**KRISPY 1 LB. CRACKERS** 69¢

**IMPERIAL 10 LB. SUGAR** \$2.89

**GARDEN CLUB STRAWBERRY PRESERVES** 18 OZ. 99¢

**BONUS SPECIALS WITH ONE FILLED BOOKLET**

<b>GLADIOLA FLOUR</b> 5 LB. 29¢	<b>WHITE SWAN 1 LB. BACON</b> \$1.19
<b>CHICKEN OF THE SEA TUNA</b> 6 1/2 OZ. 39¢	<b>RED HEART 4-PLY YARN</b> 99¢

**BONUS SPECIALS**

**Discover BEN FRANKLIN® Where quality is right at home!**

**10-Inch Heavyweight Aluminum Fry Pan** only \$5. each

**3-Tier Collapsible Wire Hanging Baskets** only \$4. each

Great for plants or kitchen storage! 7x3 1/2, 9x4, 11x5-in. baskets! 26-in. high.



## Lakeview Philosopher Says Columnists And Congress Only Two Groups That Haven't Struck



Editor's note: The Lakeview Philosopher on his Johnson grass farm reflect on strikes this week.

Dear editor:  
While nobody has ever been able to get Congress to go out on strike, it's about the only organization that hasn't given it a whirl.

Baseball players, movie actors, air traffic controllers, coal miners, TV writers, steel workers, school teachers, postal employees... they've all struck at one time or another or threatened to.

Eventually the strikes are settled, although negotiators have never caught on to what time of day to do it. They always try it in the morning or afternoon, when they ought to know the time to settle a strike is 4 a.m. when everybody is worn out, sleepy and eager to get it over with. I got to thinking, there's one group,

other than Congress, that has never struck. Newspaper columnists. And I think I know the reason why.

Sure, columnists are able to print a sign, ON STRIKE, and nail it to a stick and most of them are able to walk up and down.

Take me for example. I could hoist a sign and march up and down in front of my 9x12 office out here, but where's the TV camera crew interested in televising one man walking back and forth in front of a ramshackle office out in the country?

And unless you can get on television, what's the fun of striking?

If we could get television cameramen themselves to strike, no telling how unruffled things would be all around the world. And if we could get Congress to go out on strike...

Yours faithfully,  
J.A.

## 7th Girls, 8th Boys Defeat Floydada

**7th Girls Defeat Floydada**  
The 7th girls defeated Floydada Monday night 37-31 at Floydada. Mikki Webb was the leading scorer with 14 points followed by Sandy Garcia with 10. The 7th girls having a winning record of 9-4.

**Floydada Slips By 8th Girls**  
The 8th grade fems were defeated by Floydada Monday night 23-28 at Floydada. Sharon Thomason scored 9 points in this game. The 8th girls now have an overall winning record of 8-5.

**9th Girls Lose**  
The 9th Lope fems lost to Floydada by one point, 43-44 last Monday night at Floydada.

**7th Lops Crushed By Floydada**  
The 7th boys were crushed by Floydada 29-50 Monday night at Abernathy. Chuck Thompson was the leading

scorer with 9 points. The 7th boys record is 4-10.

**JV Boys Beat Floydada**  
The Abernathy JV Lops beat Floydada here Friday night 71-53. Ed Teal had 23 points, Scott Ferguson made 18 points and Billy Nunn 17 points.

**8th Boys Improve Record**  
The 8th boys improved their record to 8-6 with a win over Floydada here Monday night 46-34. Carver, Cooper, Evans and Mansanales scored 10 points each in this game.

**9th Boys Lose To Floydada**  
The 9th boys lost to Floydada 25-42 Monday night at Abernathy. Cody Jones, Mike Givens, Kelly Hill, Ross Bennett and Darrell Young had four points each.

**Sewing box a tangled mess of spools and threads? Use discarded egg cartons as nifty compartments for spools.**



**FRESHMEN GIRLS BASKETBALL TEAM...** Pictured on the front row, from left to right is Holly Shafer, Kristy Thompson, Amy Pettit, Dinah Neve and Beth Scott. On the back row, from left to right is Rita Williford, Cristana Parker, Tracy Murray, Sandra Hunt, Johnnia Harrell and Coach Phyllis Jones. (Review Photo)

## Two Earn Promotions At Shallowater Bank

Mabry Brock, president of First State Bank of Shallowater, has announced the promotion of Diana Higginbotham for assistant vice president, to vice president, and Bill Ireland to banking officer in addition to serving as security officer.

An employee of the bank since 1977, Mrs. Higginbotham's primary responsibilities will be in accounting and credit administration. She is a graduate of Holiday High School and attended Midwestern University in Wichita Falls. She has been

involved in Texas banking for over 10 years and now resides in Lubbock with her husband and two children.

Ireland is a long-time resident of Shallowater and is a graduate of Shallowater High School. He graduated from Texas Tech University in 1956 with a B.A. degree.

After a tour in Viet Nam with the U.S. Army, Ireland, spent 12 years in credit management in Lubbock. He currently serves as a member of the City Council of Shallowater.

He and his wife, Shirley, has two children and live in Shallowater.



Spider silk is stronger than the silk produced by silkworms, and was once used for the cross hairs in telescopes.

## Shallowater Boys Remain Undefeated With Win Over Crosbyton

The Shallowater boys remain undefeated in district play with a 10-0 record following a victory over Crosbyton last week 38-34.

The first quarter was a defensive battle with Shallowater edging Crosbyton 7-4. Shallowater took the initiative in the second quarter scoring 15 more points to lead at intermission 22-13.

Shallowater maintained their lead in the third quarter scoring 12 points to Crosbyton's 11 and was ahead 34-24 going into the fourth quarter.

Crosbyton rallied in the fourth and attempted to come back by scoring 10 points and holding Shallowater to 4, but the four point Shallowater lead was

too great. The game ended 38-34.

Shallowater's overall record now stands at 20-2. Crosbyton is 14-8 overall and a district record of 5-5.

Leading scorer for Shallowater was Tommy Garland with 12 points. Crosbyton's Kevin Logan scored 13 points.

## Shallowater Fems Edge Crosbyton

The Shallowater fems edged Crosbyton 53-50 last week.

In the first quarter Crosbyton scored 16 points and Shallowater scored 14 points. Shallowater was in the lead by one point at halftime, 25-24.

In the third quarter Shallowater scored 14 points to extend their lead by 7 points as Crosbyton scored 8 points. The fourth quarter, Shallowater scored 14 points and Crosbyton ended with 18 points. Shallowater

byton out-scored Shallowater 10 to 9. In the second quarter Shallowater scored 16 points and Crosbyton scored 14 points.

Shallowater was in the lead by one point at halftime, 25-24.

In the third quarter Shallowater scored 14 points to extend their lead by 7 points as Crosbyton scored 8 points. The fourth quarter, Shallowater scored 14 points and Crosbyton ended with 18 points. Shallowater

won 53-50.

Leading scorers for Shallowater were Haralson with 15 points and Applegate with 13 points. Leading scorers for Crosbyton were Jenny Dwyer with 18 points and Tammy Cortinez with 10 points.

Overall record for Shallowater is 14-9 and Crosbyton 8-14. District records are Shallowater 5-5 and Crosbyton 2-8.



**LOPES FIFTH STRAIGHT VICTORY** was over the Floydada Whirlwinds 70-55 last Friday night at Abernathy. Cletus Irlbeck has a choice of two Lopes to throw to, Rodney Cannon or Rick Houston as Floydada defenders close in. (Review Photo by Doyle Albrecht)



**CLOSE FRIENDS!** Richard Wagner, the 1982 March of Dimes National Poster Child, and his dog Sam live and play together in Vancouver, Washington. Richard is traveling the country this year representing the March of Dimes and its goal to protect the unborn and the newborn against birth defects.

# DETERMINATION

That's what has made the South Plains a viable economic region.

A determination to stay with it--through good times and bad.

For over two decades we've stood by with our resources to help determined people realize the full potential of this land.

We share your concern and we reaffirm our commitment.



**FIRST STATE BANK  
OF SHALLOWATER**

MEMBER FDIC

A Little ... Better Bank

SHALLOWATER

832-4525

### WHY IS IT...

A MAN WAKES UP IN THE MORNING AFTER SLEEPING UNDER AN ADVERTISED BLANKET ON AN ADVERTISED MATTRESS AND PULLS OFF ADVERTISED PAJAMAS.

TAKES A BATH IN AN ADVERTISED TUB, SHAVES WITH AN ADVERTISED RAZOR, WASHES WITH AN ADVERTISED SOAP, PUTS ON ADVERTISED CLOTHES, PUTS ON AN ADVERTISED HAT, SITS DOWN TO BREAKFAST OF ADVERTISED COFFEE.

RIDES TO HIS OFFICE IN AN ADVERTISED CAR, WRITES WITH AN ADVERTISED PENCIL...

THEN, HE REFUSES TO ADVERTISE, SAYS ADVERTISING DOESN'T PAY.

IF A BUSINESS ISN'T GOOD ENOUGH TO ADVERTISE... HE ADVERTISES IT FOR SALE.

IF YOU BELIEVE IN YOUR BUSINESS AND WANT TO BUILD IT...

ADVERTISE  
THE ABERNATHY  
WEEKLY REVIEW

## New Deal Boys Lose

## To Lorenzo

The New Deal Boys lost to Lorenzo 65 to 90 last Friday night. In the first quarter, New Deal scored 11 points to Lorenzo's 23 points. The second quarter New Deal scored 14 points and Lorenzo scored 19 points. At halftime New Deal was behind 25-44.

In the 3rd quarter New Deal made 19 points and Lorenzo 37, fourth and final quarter New Deal allied late for 21 points to 11 points scored by Lorenzo.

Leading scorers for New Deal were Jeff Greenhill with 26 points, Charlie Johnson with 16 and Steve Johnson with 11.

Overall record for New Deal is 11-15, Lorenzo 22-3. District record for New Deal is 2-8 and Lorenzo 9-1.

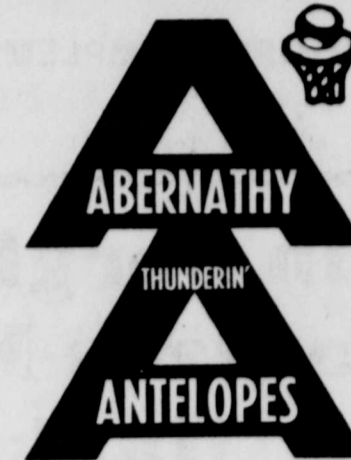




# ANTELOPES

**GOOD LUCK ABERNATHY AGAINST  
IDALOU FEB. 5 & TULIA FEB. 9**

1980 State Champion



Lady Lopes 1981 State Champs

THESE SPONSORS ARE  
BEHIND THE LOPES  
100 PERCENT

## PATTON'S PARTS PLACE

604 Ave. D 298-2534

## PINSON PHARMACY

322 Main St. 298-2222

## FIRST STATE BANK

(Member of F.D.I.C.)

402 9th St. 298-2556

## HIGGINBOTHAM BARTLETT CO.

1002 Ave. D 298-2010

## CONSUMERS FUEL ASSOCIATION

829 Service Rd. 298-2584

## RICHARD DUBOSE INSURANCE & REAL ESTATE

924 Ave.D 298-2536

## ANDERSON GRAIN

1109 Jerome 298-2661

## ACE HARD FACING & MANUFACTURING

1204 Ave. D 298-2219

## ABERNATHY BODY WORKS

WAYMON JONES

417 S. Ave.D 298-2084

## PAY-N-SAVE

405 Ave. D 298-2627

## CO-OP GRAIN COMPANY

714 Texas Ave. 298-2511



Phyllis Jones Larry Steele

### FREE THROWS

VICKY MCKENZIE	68%
MARGARET COOPER	62%
TINA COVEY	55%

### FIELD GOAL

VICKY MCKENZIE	44%
TINA COVEY	41%

### REBOUNDS

MARGARET COOPER	123
TINA COVEY	150
STACEY KELLEY	168
REGINA POWELL	209

### TOTAL POINTS

TINA COVEY	229
VICKY MCKENZIE	520
STACEY KELLEY	257
REGINA POWELL	181
MARGARET COOPER	263

### OVERALL 1563 TEAM POINTS

### FREE THROWS

CLETUS IRLBECK	64%
RODNEY CANNON	56%

### FIELD GOAL

RODNEY CANNON	46%
RICK HOUSTON	43%

### REBOUNDS

MALCOLM DUNN	205
RODNEY CANNON	269

### TOTAL POINTS

MALCOLM DUNN	265
CLETUS IRLBECK	217
RODNEY CANNON	519

### OVERALL 1686 TEAM POINTS

*1-29	FLOYDADA	H	6130	8100
*2-2	LOCKNEY	H	6130	8100
*2-5	IDALOU	T	6130	8100
*2-9	TULIA	T	6130	8100
*2-12	CHILDRESS	H	6130	8100
*2-16	FLOYDADA	T	6130	8100



Kristi Godwin Peggy Rosales

**GO LOPES ALL THE WAY TO STATE**

## SHIPMAN AGENCY

Billy Shipman, Rola B. Covey,  
Roddy Shipman, D'Aun Shipman  
Abernathy Lubbock  
298-2313 762-2124

## A-1 LIQUIDATORS & SUPPLY

410 S. Ave D 298-2880

## SANDERS AUTO SUPPLY

Lubbock Hwy. 298-2215

## FARMERS TUCO GIN

298-2467 Box 698

## DON'S CHEVROLET

711 AVE D 298-2933

## CERAMIC PEEPLER

718 Ave.C 298-2412

## DAIRY QUEEN (Do a little, live a little)

200 Service Road 298-2828

## ABERNATHY OIL CO.

709 Ave.D 298-2255

## SAV-A-LOT FAMILY CENTER CENTER

1411 Ave.D 298-2266

## ABERNATHY WEEKLY REVIEW

Drawer D 298-2033

## S & H WELDING

315 Main St. 298-2924

## ABERNATHY CO-OP GINS

298-2527

## WEST TEXAS INDUSTRIES INC.

Plainview Hwy. 298-2740

## JOE THOMPSON IMPLEMENT

105 Ave.D 298-2541

## BURGER HUT

303 Ave D 298-2874

## 66 BUTANE AND FERTILIZER

PLAINVIEW HWY. 298-2451

## CO-OP GRAIN COMPANY

714 Texas Ave. 298-2511

## 924 STEAK HOUSE

924 Ave D 298-2988


## STRUVE IMPLEMENT

HWY. 54 W. 298-2507

## PLAINS GRAIN AND FARM SUPPLY

701 TEXAS AVE 298-2521



Abernathy 298-2541 Lubbock 762-1038  
  
 GENUINE JOHN DEERE PARTS  
**JOE THOMPSON IMPLEMENT**  
 105 Ave D  
 Abernathy, Texas 79311

**FARM PAGE**



**PLAINS GRAIN & FARM SUPPLY**  
 Abernathy, Texas  
 FOR ALL YOUR FARMING NEEDS  
 PHONE  
 Abernathy, Texas 298-2521 Lubbock, Texas 763-4868

## Grain Sorghum Team Analyzes Mexican Market

Mexico may buy as much as one million metric tons (40 million bushels) of U.S. grain sorghum this year. A sorghum promotion team returning from Mexico reports that a very large 1981 grain crop in that country will cut imports in half this year. The team predicts, however, that Mexico will continue to be a good customer for U.S. sorghum.

The team was led by Grain Sorghum Producers Association (GSPA) Executive Director Elbert Harp and GSPA President Mabry Foreman of Felt, Oklahoma. John Brethour, a beef cattle research specialist for Kansas State University, accompanied the team. He conducted nutrition seminars and consulted with livestock producers in Torreon and Guadalajara. The team met with government and railroad officials in Mexico City. The U.S. Feed Grains Council sponsored the project and made arrangements.

Other team members were sorghum farmers: Walter Cox of Abernathy, Texas; Donald Epperson of Hutchinson, Kansas; and H.H. Deaver of Bishop, Texas. The expenses of the three farmers were paid by Funk Seeds International, Ciba-Geigy Agricultural

Division and Pioneer Seed International, Inc.

Sorghum is virtually the only grain used in livestock feed in Mexico. Corn is regarded as a food grain for human consumption. The Mexican government requires a license, issued by its agency, Conasupo, for all grain imports. President Lopez Portillo has pressed for self-sufficiency in grain production by the end of his term and is using the large 1981 crop to drastically cut imports in this, his last, year in office. Livestock producers throughout Mexico, however, are facing severe hardships because of the lack of adequate feedgrain supplies. Government officials admit that more grain will be necessary to finish the year.

The U.S. Feed Grains Council and GSPA are planning projects to demonstrate to the Mexican government and livestock producers that higher grain rations will result in more efficient livestock feeding.

"There is no doubt that the demand for feed grain imports by Mexico will increase," Harp said. "Their domestic production will not be able to keep pace with the rapid rise in livestock feeding needs. We expect their needs to vary greatly from year to year in relation to the size of Mexico's domestic crop. We see Mexico as a growing market for our grain," Harp continued, "but much work needs to be done to develop its potential."

The agenda also will include reports on the new tax law, boll weevil and pink bollworm eradication developments, and the planting intentions survey. The committee also will finalize its recommendations on price and policy matters to the Industry Practices and Policies Committee which, along with other Council program committees, will meet the following day.

The Council annual meeting is set for February 7-9. EXPORT SALES GROW: Net new cotton sales for the

## COTTON TODAY

A NATIONAL COTTON COUNCIL SERVICE

**RANK TO SPEAK:** Everett "Bud" Rank, Agricultural Stabilization and Conservation Service administrator, will be on the program for the Producer Steering Committee meeting at the National Cotton Council annual meeting February 5 in Dallas.

The agenda also will include reports on the new tax law, boll weevil and pink bollworm eradication developments, and the planting intentions survey. The committee also will finalize its recommendations on price and policy matters to the Industry Practices and Policies Committee which, along with other Council program committees, will meet the following day.

The Council annual meeting is set for February 7-9. EXPORT SALES GROW: Net new cotton sales for the

1981-82 marketing year totaled 173,000 running bales during the week ended January 14. This brought the season's total commitments to 5,617,600 bales.

The major buyers were Japan, 97,400 bales; South Korea, 30,300; and Taiwan, 26,900. The week's export shipments were 126,700 bales and net new sales for the 1982-83 marketing year were 9,100 bales.

**NEW PESTICIDES REGISTERED:** The Environmental Protection Agency has approved one new insecticide and one new herbicide for use on cotton. The insecticide is "Payoff," a synthetic pyrethroid, and the herbicide is "Goal," a weed killer applied post-emergence to control some hard-to-kill broadleaf weeds. Both products are expected to be available to cotton farmers this year.

## Abernathy 4-H's Place At Amarillo Livestock Show

Abernathy 4-H's did well at the recent Amarillo Livestock Show held last week, according to Tom Conerly, County Extension Agent.

In the medium heavy weight class, D'Anna Howard from Abernathy 4-H club exhibited the sixth and fifteenth place steers.

Lonnie Howard, Abernathy 4-H club, exhibited the 8th place heavy weight steer and Linda Smith, Hale Center 4-H club, exhibited the tenth place heavy weight steer.

Christy Harrell, Halfway 4-H club, exhibited a steer in the medium weight class.

D'Anna Howard sold 2 steers at the auction and Steve Reese of Plainview, sold one steer. All three steers brought good premiums. One of D'Anna Howard's steers was purchased by Patton's Plumbing Co. and Frank's Plumbing Co., of Amarillo. D'Anna's other steer was

purchased by Amarillo

Packing Co. Steve Reese's steer was purchased by Amarillo By-Products.

It was a very successful show for the Hale County 4-H's and they should all be congratulated on their participation, conduct, and sportsmanship. The parents and 4-H leaders also deserve recognition for their part in making Hale County 4-H better.

County Extension Agent, Ollie Liner, also attended along with 4-H Leaders and parents.

**DON'T LET YOUR EARNEST MONEY** lie dormant during the signing and closing period of homebuying. Request that the money be put in an interest-bearing account until the sale is final, encourages Dr. Jane Berry, a housing and home furnishings specialist.

Berry is on the home economics staff of the Texas Agricultural Extension Service, The Texas A&M University System.

## Locals Participate In County Wide 4-H Electric Project

New brass lamps will adorn the homes of twenty-nine 4-H's who participated in the County Wide Electric Project Saturday, Jan. 16 at the Hale County Ag Center, according to Melissa Roberson, County Extension Agent-Home Economics.

The project was initiated by the 4-H and Youth Committee and was carried out by teen leaders in the County 4-H program. This county wide project is the first in a series of three to be offered by teen leaders during the year. Joan and Patsy Davis and Lonnie Howard, of Abernathy, and Mark Ebeling, Marie Hooper and Mandy Igo of Halfway served as leaders for the day.

4-H's attended sessions from 9:30-3:30 on the following subjects: Edison, consumerism, small appliances, and safety. A craft was provided with instruction from Doug Maxey of Southwestern Public Service in Plainview. Maxey served as resource person for the entire electric project.

Those attending the project completed project record forms and are now eligible for year pin recognition at the annual achievement banquet in October.

4-H's attending were: Abernathy-Joan Davis,

Patsy Davis, Lonnie Howard; Edmonson-Money Boger, Kathy Tuckness, Gilbert Perez III, James Perez, Norma Flores, Irene Flores, Marcela Flores; Hale Center-Alicea Logan, Lee Logan, Donna Stout; Halfway-Rodney Ebeling, Paul Barton, Marie Hooper, Mandy Igo, Mark Ebeling, Robert Igo, Paul Henderson; and Plainview-Jeff Dorman, Colbie Pinnell, Clifton Pinnell, Rob Hamilton, Brent Hamilton, John Hamilton, Pepper Dodson, Richard Rice, Kevin Kennon, Brad Ikard, Kristy Hall, Nikki Reed, Jena Baucum, Lisa Luna, John Burnett and Carol Shaha. Agents Ollie Liner and Melissa Roberson also attended.

In the past, homebuilders warranties have traditionally covered only problems encountered by the original owner, but the courts have ruled in South Carolina and in Wyoming that builders can be liable for latent defects discovered within the first few years.

Berry is on the home economics staff of the Texas Agricultural Extension Service, The Texas A&M University System.

SHOP ABERNATHY FIRST-SAVE TIME GAS AND MONEY

**Specializing In Repair & Field Work**  
**STEEL • HARD SURFACING**  
**Stephenson Welding & Repair**  
**Larry Stephenson-Owner**  
 PORTABLE WORKER  
 1 Mi N 1 1/2 Mi W  
 New Deal  
 748-6006

## Lakeview Philosopher

### Comes Up With A Plan To Finance New Cars On International Level

**Editor's note:** The Lakeview Philosopher on his Johnson grass farm looks at foreign policy this week, we think.

**Dear editor:** Sometimes it looks like U.S. foreign policy is designed to teach a lesson to every country except ours.

For example, two years ago we shut off grain sales to Russia when she invaded Afghanistan and it sure taught her a lesson. It taught her that if she couldn't buy grain from American farmers she could buy it from Canada, Argentina, etc.

Now Washington is going to cut off caterpillar tractors, drill bits and a lot of technical stuff because of Russia's hand in Poland. Other countries are grinning and rubbing their hands.

One group that probably wishes something else had been cut off a lot earlier is some big city banks. They've loaned the Communist government of Poland millions of dollars and can't get it back. Can't even collect the interest.

In fact, the Polish government has asked for \$350 million more in loans to pay off the interest. I don't know if the banks will be interested, but if they are I'd like to get in touch with them. If a person could borrow money, then

borrow more to pay the interest every time it comes due, he could live comfortably the rest of his life, although from the looks of things Poland wouldn't be the place to do it in.

If banks won't go for this, I have hit on another idea you might say is up on the international financial level.

As I understand it, the economy is sagging because people aren't buying and the reason they aren't buying is they're short of cash. There's a remedy for this, provided the Post Office understands international finances.

Say you'd like to help get the car industry back on its feet by buying a new car but don't have the down payment. Go to the Post Office and buy a money order equal to the down payment and drive off in the model of your choice. But, and here's the revolutionary new idea, buy the money order on the installment plan at \$2 a week from now on.

Thus for a few dollars you can buy a brand new car and get the economy booming. If you don't have a few dollars, embargo grain and caterpillar tractors to Russia and maybe that'll do it.

Yours faithfully,  
 J. A.

## Non Tillage Cotton Now Reality

No-tillage production of cotton in the Southern Great Plains is fast approaching reality according to two Texas Agricultural Experiment Station Researchers, Drs. Allen Wiese and Wyatt Harman at the Texas A&M Research and Extension Center at Amarillo have set the stage with studies conducted near Tulia, Texas in 1981. They revealed results at the Weed Science Research Conference at the Beltwide Cotton Production and Research Conference at Las Vegas, Nevada on January 5. In their studies, no-tillage cotton yielded 50 pounds per acre more lint than cotton grown normally. In addition, tillage and weed control cost was less with no-tillage than conventional tillage.

Wheat-cotton-fallow is a common dryland cropping sequence in the Southern Great Plains. Two crops are produced in three years. Previous research by Wiese and USDA researchers, Dr. Paul Unger and Ron Allen, proved that no-tillage increased water storage in the soil by 2.5 inches compared to conventional tillage in the 11-month fallow from wheat

harvest to sorghum planting. The additional soil water usually increased sorghum yield 1000 pounds per acre.

Because of the potential for improving yield of cotton and reducing cost of production in a wheat-cotton-fallow cropping sequence, the researchers started a study on the Levon Harman farm after wheat harvest in July, 1980. Herbicides were applied to six-inch pigweed, puncture vine and purslane growing in the wheat stubble. The researchers applied atrazine at 1.5, 2, and 3 pounds per acre to control weeds that would germinate during the fallow period prior to planting cotton. Paraquat, Roundup, Evik and Caparol were mixed with atrazine to kill existing vegetation. Cotoran and Bladex were other herbicides used that persist in the soil. These herbicides were compared to repeated applications of Roundup at 1.5 pound per acre in check plots in the study area and tillage operations in a field outside the study area.

Because it was very dry in late summer 1980, only two sprays with Roundup

were used to control weeds during the 11-month fallow period. One was applied to control pigweed in August, and another in the spring of 1981 to control volunteer wheat and winter annual mustard. The farmer used three tillage operations to do the same job as two sprays with Roundup.

Atrazine at 2 pounds per acre combined with 0.5 pound per acre paraquat, 1 pound per acre of Roundup, 2 pounds per acre of Evik, or 4 pounds per acre of Caparol eliminated the need for the two sprays or three tillage operations. Cotoran mixed with Evik each at 2 pounds per acre also eliminated all weed control operations.

In late May 1981, the researchers planted cotton into the untilled soil and sprayed with 2 pounds per acre of Caparol with 0.5% surfactant to kill a few existing weeds and prevent weed growth during the summer. The crop was hoed once, but time per treatment was not determined. Available water in the top 3 feet of soil at cotton planting in the no-tilled area was 1 inch more than in an adjacent plowed area. Lint yield on the no-tilled plots varied from 200 to 290 pounds per Acre.

## WHAT'S KNITTED? WHAT'S WOVEN?

To tell the difference, inspect fabric closely, says Becky Saunders, a clothing specialist on the home economics staff of the Texas Agricultural Extension Service, The Texas A&M University System.

Knits are looped-together

yarns with built-in stretch, while wovens generally are more stable fabrics made by lacing yarns together at right angles.



**Mr. Farmer:**  
 Are You Interested In  
 A 20% Cut In Your  
 Treflan Costs? If You  
 Are, Call Me Or Come  
 By Our Offices.

**ANDERSON  
 GRAIN**

298-2661

1109 Jerome

**WE'RE CUTTING PRICES ON JOHN DEERE CHAIN SAWS**



**SAVE \$30 ON MODELS 28 AND 30**

MODEL	SUGGESTED LIST PRICE	SALE PRICE
<b>MODEL 28</b>		
10-inch bar	\$149.95	<b>\$119.95</b>
12-inch bar	159.95	<b>129.95</b>
14-inch bar	169.95	<b>139.95</b>
<b>MODEL 30</b>		
12-inch bar	\$199.95	<b>\$169.95</b>
14-inch bar	209.95	<b>179.95</b>

John Deere 28 and 30 Chain Saws are quality built for comfort, durability and long life. Handles are well-spaced for balance and superb saw control. One-piece crankshaft/connecting rod is counterbalanced for smooth operation. Guidebars (except the 10-inch size) are equipped with a sprocket nose and a semi-chisel chain for lightning-quick cutting. For woodcutting quality you can see and feel, why not visit us soon? Better hurry. These saws won't last long at these special prices.

  
**JOE THOMPSON IMPLEMENT**  
 105 Ave. D  
 Abernathy 298-2541

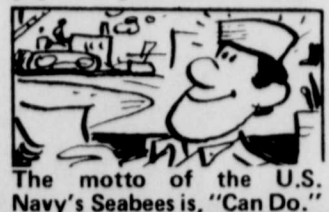


## Beware The "Easy-Out" For Paying Income Tax

Never pay income tax again! That's a very tempting idea. Proponents of this notion are making speeches and offering seminars around the country on the "how-to's" of tax evasion. Taxpayer, beware, the Internal Revenue Service cautions. Working toward tax reform certainly is not illegal, the IRS points out. For example, contacting a member of Congress and urging changes in the tax laws is the right of every individual. Neither is arranging one's

affairs to pay the lowest possible tax against the law. If you hold securities so as to have a long-term instead of a short-term capital gain, the law supports your move. On the other hand, illegal tax protest, such as advocating or participating in a scheme that results in the illegal underpayment or non-payment of taxes, or the non-filing of required tax returns, is illegal. The IRS has the duty, given by Congress, to enforce the Federal tax laws. When some individuals remove themselves from the

law, the burden of taxes is greater for those who willingly comply. In the interest of fairness for all taxpayers, the IRS will continue to enforce all Federal tax laws, including laws governing those who place themselves above the law by illegally refusing to pay their just share of tax.



## SCHOOL LUNCH MENU

**Breakfast Menu**  
February 8-12  
**Monday**  
Apple Sauce  
Doughnut  
1/2 pt. Milk  
**Tuesday**  
Stewed Prunes  
Toast W/ Jelly  
1/2 pt. Milk  
**Wednesday**  
Orange Juice  
Sausage-Biscuits  
1/2 pt. Milk  
**Thursday**  
Apple Juice  
Waffles W/ Syrup

1/2 pt. Milk  
**Friday**  
Pineapple Juice  
Rice W/ Toast  
1/2 pt. Milk  
**Lunchroom Menu**  
February 8-12  
**Monday**  
Fish W/ Cheese Sticks  
Cole Slaw  
Carrots  
Biscuits  
Pink Apple Sauce  
1/2 pt. Milk  
**Tuesday**  
Spaghetti & Meat Sauce  
Tossed Salad

English Peas  
French Bread  
Purple Plums  
1/2 pt. Milk  
**Wednesday**  
Western Burgers  
Mashed Potatoes  
Green Beans

Brownies  
1/2 pt. Milk  
**Thursday**  
Beans & Franks  
Tomato Relish  
French Fries  
Corn Bread  
Apple Cobbler

1/2 pt. Milk  
**Friday**  
Char-Burger  
Lettuce-Pickles-Onions  
French Fries  
Valentine Cake  
1/2 pt. Milk

Help Prevent Birth Defects - The Nation's Number One Child Health Problem.



Support the **March of Dimes** BIRTH DEFECTS FOUNDATION

This space contributed by the publisher

# LITTLE WANT ADS! BIG PLUSES FOR BIG RESULTS!

### REAL ESTATE

**LANDMARK REALTORS**  
298-2140  
1 Large 4 BR Custome built home. \$110,000  
1 Abernathy Landmark 2 story 5 BR; \$30,000  
2-4 BR; \$30,000 & \$35,950.  
2-3 BR; 40,000 ea.  
2-2 BR; 26,500 & 3400.  
1-2 BR Mobile Home; \$12,000.  
**JAMES POPE 298-4019**  
**JIM BOB SMITH 298-2801**

Three bedroom house, pretty interior decor, and two bedroom cabin. Aluminum siding for house will be included with property. Owner financing. Good investment. Chris White, Realtors, 792-6271 or local 757-2104. (11-2tp)  
For Sale: 6 lots to be sold together in south part of Abernathy. Gall Waymon Jones. 298-2084, 298-4119. (8rts)

**Homestead For Sale:** Large seven room house, two baths, half basement, two car garage with storage rooms, chicken house, orchard, fully fenced, on two-thirds acres of land. Corner lot, fully paved. \$60,000; to settle estate. Nystel Realty, (806) 298-2326 or 799-0400; Drawer 700, Abernathy, TX. (12-1tc)

### JIM SMITH REALTY

3 bedroom, 2 bath, fire place, 2 car garage with passive greenhouse & workshop. **SOLD**  
3 bedroom, 2 bath, fire place, study, finished basement.  
Will Build To Suit-2100 ft. lots, Pinson Place.  
**Don Evelyn Fondy**  
RES. (800) 298-2268  
BUS. (800) 795-9590

Newly redeccorated, Cozy 1 bedroom home. Bright Sunny kitchen with new carpet and paneling. 1011 Ave. G. \$150. 298-2385 (12-1tp)  
Exceptionally clean, newly redeccorated 1 bedroom home. Quite residential neighborhood. New carpet, paint and paneling. 1009 Ave. G. \$160. 298-2385. (12-1tp)  
2 room furnished apartment for rent. Bills paid. 511 Ave. D. (12-1tc)

### BUSINESS SERVICE

**C & G Builders**  
Remodeling, paneling, acoustic ceilings, painting, all types home repair. No job too small. Satisfaction Guaranteed. 1609 Ave. D. Phone 298-2086. (36-rts)  
**TREE & SHRUB spraying.** State licensed. Phone 298-2494 or 233-2211. (29-1cs)

For Sale-nice used Parade Saddle. 3 years old, full stamped, full buckstitched, 15 1/2" padded seat, comfort cantle, real nice for lady. \$350. See it at Stone Saddlery 298-2187. (12-2tp)  
**Shaklee Products**  
We have a complete line of Shaklee food supliments, personal care and house hold products fully guaranteed. Need distributors: Contact Ina Robison Assistant Supervisor, 1007 1st Street, Phone 298-2478. (11-rts)

### CARD OF THANKS

Your thoughtfulness in bringing food, remembering us in your prayers, your cards, flowers and kind words of comfort when you visited us, while our hearts were heavy with sorrow in the loss of our Mother will always be remembered. Thank You again.  
The Newton Family  
Cliff & Wilma  
Carl & Minnie  
Harold & Inez  
Lucille & A.D. (12-1tc)  
We wish to express our sincere appreciation for the concern and kindness shown our son and brother during his illness. Your expression of love in prayers, flowers, cards, food and visits after his passing away meant so very much to the family.  
The Family Of  
(12-1tp) Wayne Holleman

The family of Mancil Smith wishes to express their sincere thanks to those who remembered us during our time of loss. A special thank-you to those who made the time and effort to stay with him at night. May God richly bless each of you. Phil. 1: 3.  
Gladys, Wanda, William (12-1tc)

We, the United Methodist Youths would like to express our appreciation to all of you who supported our brisket dinner. It was a great success! Special thanks to all of those who donated or prepared the food. Again, we thank you all.  
United Methodist Youths

We wish to thank each of you who sent food, made a phone call, sent a card or helped in any way in the sorrow from the loss of our dear Mother and Grandmother.  
May God bless each of you.  
The Family of Bertha Hunt (12-1tp)

### MISCELLANEOUS

Mary Kay Cosmetics. Senior Beauty Consultant. S.R. Barrick 757-2126. (1-10tp)

### FOR SALE

Baldwin Organ, four 15" Mag wheels and tires, three Bar Stools. 298-2280. (11-2tp)

### Job Opportunity

Own your own Jean-Sports-wear Shop or Jean Program. Offering all Nationally Known Brands such as Jordache, Chic, Lee, Levi, Vanderbilt, Calvin Klein, Wrangler, over 100 other brands. \$8,900.00 to \$16,500.00 includes beginning inventory, airfare for 1 to Fashion Center, training, fixtures, Grand Opening Promotions (Also Infant-Pre-Teen Shop). Call Mr. Loughlin (612) 835-1304. (12-1tp)

**ALOE VERA HEALTH BEAUTY PRODUCTS HOUSEHOLD & BATH CARE**  
NEED PEOPLE TO SELL ALOE VERA PRODUCTS CONTACT  
**Geri Gartin Division Manager**  
911 Ave. H Apt. 3  
Phone 298-2758

**Richard DuBose insurance real estate**  
VERY NICE 4 BEDROOM BRICK HOME 811 15th ASSUMABLE LOAN  
SMALL HOUSE-VERY GOOD CONDITION. TO BE MOVED  
SMALL 1 BEDROOM, ALL NEW INSIDE. SEE TO APPRECIATE. 1107 AVE. G.  
Very Very Nice Home Outside city limits of Petersburg. \$35,000.  
320 ACRES, LAYS PERFECT, LIGHT WATER, \$500 ACRES, 5 MILES NORTH OF PETERSBURG  
320 ACRES, 9 MILES NORTHWEST OF ABERNATHY, GOOD WATER.  
160 Acres Dryland lays perfect. 3 1/2 miles northwest Petersburg  
**NEW LISTINGS**  
**TWO BEDROOM HOME** 1511 AVE D, ASSUMABLE 8 1/2% LOAN.  
Phone (806) 298-2536  
P.O. Box 580, 924 Avenue D  
Abernathy, Texas 79311

**Local News? Call The Review 298-2033**

**Political Calendar**  
SUBJECT TO THE MAY DEMOCRATIC PRIMARY  
HALE COUNTY DISTRICT CLERK  
DOROTHY SINCLAIR  
Pol. Adv. paid for by Dorothy Sinclair  
HALE COUNTY COUNTY CLERK  
MILDRED TUCKER  
Pol. Adv. paid for by Mildred Tucker

**FEDERAL CROP INSURANCE**  
We have it and all other lines of crop insurance. We would like to be your agent. We have 12 years experience in the crop hail business and have built our business on service and satisfaction  
**Richard DuBose insurance real estate**  
PH:298-2536 AVE. D

Hardworking Feet Deserve **The "FOOT-PRINT" FIT** of these Field Boots  
Large selection of sizes and widths  
**RED WING HOPPY'S SHOP**

**Grandparents: Here's a chance to make your children & grandchildren happy!**

A Big *Valentine* from YOU

Send or bring us a cute photo of **YOUR GRANDCHILD**  
Ages: 1 day to 6 years  
(We promise to return it unharmed)

We'll place it in a heart (like the one on the left) including name, and on **Thursday, February 11**  
(the last paper before) **Valentine's Day,**  
**YOUR LITTLE VALENTINE WILL APPEAR IN OUR PAPER!**

HURRY, NOW! **DEADLINE IS February 8th**

the cost is only **\$7.00** per heart

**THE ABERNATHY WEEKLY REVIEW**



**"A Glance At The Past"**

By Buford F. Davenport

From The Abernathy Weekly Review dated March 4, 1965:

Morris Stevens held a grand opening at his Texaco Station March 6, 1965. (1981: He retired a few years ago and sold the station. Currently, he is Abernathy's Municipal Judge.)

Airman Jose Hernandez, Jr., whose parents reside in Abernathy, completed U.S. Air Force basic military training at Lackland Air Force Base, San Antonio. His next station will be Amarillo Air Force Base.

Weather Reports: A light "wet" snow started falling in the Abernathy area at 5 a.m. Monday, and clouds continued to hover over this area at press time Wednesday.

Clark Riley, Abernathy 4-H Club member, will be a contestant in the calf scramble at the Houston Livestock Show and Rodeo March 6, 1965.

WEDDINGS: Miss Vada Sue Driver and T.J. (Red) Attebury at New Deal, February 20, 1965. Miss Margaret Lelloine Horton and George David Waits at Greenville, February 27, 1965.

Charles A. Bucks was promoted to vice president-sales of Continental Airlines effective March 1, 1965. It was announced by Robert F. Six, president of the Los Angeles based carrier.

From The Abernathy Weekly Review dated November 4, 1965:

Clark Riley, Abernathy 4-H Club member, exhibited the Reserve Champion Steer at the Texas State Fair in Dallas. Rodney Huffaker won the State Fair Showmanship Trophy in the swine division. A large number of local 4-H Club members and FFA members exhibited livestock in the State Fair, winning places ranging from the Reserve Champion steer to other blue ribbons, red ribbons and 3rd place, and other ribbons.

Abernathy 4-H Club members with livestock entries in the State Fair at Dallas were: Clark Riley, Rodney Huffaker, Gordon Settle, Monte Hobgood, Mark Hobgood, Rickie Covey, Smitty Covey, Donna Huffaker, and Gregg Barton.

AHS FFA members with livestock exhibits in the State Fair were: Johnny Lutrick, Steve Barton, Randy Hendrix, David Sinclair, Terry Barton, Johnny Peters, Steve Jackson, Gary Phillips and Gary Lovelace.

AHS twirlers participating in the UIL contest at Sundown next Saturday will be: Janice Phillips, Redgie Beeson, Jane Thompson, Pam Pittman, Kathy Kerr, Patsy Lambert, Marilee Echols and Lynn Philips. Representing Abernathy

Junior High School in the contest at Sundown will be: Anita Johnston, Jeanene Crowder, Joy Wright, Sandra Furgeson, Terri Sinclair, Cathy Pinson, Beverly Sanders, Dreunann McCune and Gayla Walker.

Abernathy's Barton-Hood American Legion Post was sponsor of the new Boy Scout Troop 481. Some of the first members of the new Troop were: Dennis Smith, Pat Collins, Tommy Overstreet, Tim Hill, Fritz Struve, and Randy Hendrix.

Cristie Givens, a student at Lubbock Christian College, was home the weekend with her parents, Mr. and Mrs. Lloyd Givens.

Members of the Abernathy Junior High School football squads this (1965) season were:

Seventh Grade, Maroon Squad: Mark Reagan, Carl Rankin, Kirk Lane, Danny Cuevas, Lloyd Buchanan, Mark Harrison, Jim Bruce, Robert Slough, Steve Newsum, Larry Klafka, Jim Forbes, Johnny Davis, David Bray, Tommy Myatt, Varric Horne, Gordon Settle, and Clinton Reeves, manager. Grey squad: Mike Kerr, Billy Turner, Johnny McGuire, Rodney Huffaker, Terry Kitchens, Billy Balentine, Paul Coombes, Terry Franklin, James Henderson, Dayne Stanton, Micky Nesbitt, Larry Deering, Johnny Pace, Benny Jackson, Keith Lambert, and Kenneth Evans, manager.

Members of the eighth grade Maroon football squad: Hershel Smith, Louis Olguin, Darvin Allen, Winford Mullins, Travis Knight, Rudy Estrada, Hershel Peters, Ronald Harkey, Gene Cannon, Charles Mathis, Raynard Macha, Glenn Durrett, Mike Fielding, Henry Edwards, and Cecilio Garcia, manager. Eighth grade, Grey squad: Don Snodgrass, Joe Deleon, Joel Perez, Garland Ellison, Joel Pittman, John Hobgood, Gus Morgan, Victor Attebury, John Lara, Larry Turner, Nickey Linton, Tony Loper, George Hernandez, Phillip Marcy, and Gilbert Lopez, manager.

Coaches: Wendell Jones and Charles Williams. Gary L. Cope, son of Mr. and Mrs. Lynn Cope, was commissioned a 2nd Lieutenant in the U.S. Air Force upon graduation from Officer Training School at Lackland Air Force Base, San Antonio.

From The Abernathy Weekly Review dated Sept. 17, 1942:

Gerald Selke and Marvin Burress volunteered for service as mechanics in the Air Corps.

BIRTHS: Mr. and Mrs. Jack Patton are parents of a daughter born Sept. 10, 1942. A daughter was born Sept. 12, 1942, to Mr. and

Mrs. M.D. Evans.

W.A. Amerson, son of Mr. and Mrs. A.G. Amerson of Shallowater, formerly of Lakeview, and Miss Virginia Collins, daughter of Mr. and Mrs. Lucen Collins of Willow Branch, Indiana, were married at the First Methodist Church in the bride's hometown September 4, 1942.

Mr. and Mrs. L. O'Brien Thompson and children of Amarillo visited here. He is a son of Mr. and Mrs. E.G. Thompson and she is a daughter of Mr. and Mrs. J.W. Pool.

M.G. Ellison of Sayre, Oklahoma, visited in the home of his son, J.L. Ellison.

**IRS Interest Rates**

**Increased To 20% Feb. 1**

Whether you plan to file your tax return early or wait until the April 15th deadline nears, it's a good idea to begin computing your federal income tax now to be sure you can pay any tax due by the deadline. This is especially good planning in light of the increase in the annual interest rate IRS charges on overdue tax bills to 20%.

According to R.C. Voskuil, Director of the Dallas District of the Internal Revenue

Service, the annual interest rate charged on delinquent tax accounts and paid on overpayments rises from 12 percent to 20 percent effective February 1. In addition, if tax due on this year's 1040 is not paid by the April 15th deadline, payment penalty accrues at the rate of one half of 1 percent per month for a total of 26 percent in addition to the tax due.

The rate change is made under Internal Revenue Code section 6621 (b), which was amended by the Economic Recovery Tax Act of 1981. The new law provides that the rate is set by each October 15 and is based on 100 percent of the average prime interest rate for the preceding month. Previously the rate was set every two years and was based on 90 percent of the prime rate.

**TRANSITION**

**Bertha Hunt**

Services for Bertha Hunt, 91, of Abernathy were at 10:30 a.m. Wednesday in Abernathy Church of Christ with Condy Billingsley officiating.

Burial was in Resthaven Memorial Park under the direction of Chambers Funeral Home in Abernathy.

Mrs. Hunt died Tuesday, January 26, in High Plains Hospital in Hale Center after a lengthy illness.

A native of Coryell County, she moved to Abernathy from Idalou in 1925. She was a member of the Abernathy Church of Christ.

Survivors include a daughter, Laval Lacy; a sister, Emma Ballard of Gatesville; 3 granddaughters; 5 great grandchildren; and a great-grandson.

Elders served as pallbearers.

**Zelma Newton**

Services for Mrs. Virgil Newton 76, of Petersburg were held Friday, January 29th, at 10:00 a.m. at the Church of Christ in Petersburg. Officiating were Dean Brookshire, associate minister of Plainview 9th and Columbia Church, and Blackie Ellison, minister of the Church of Christ in Jal, New Mexico.

Burial was in Petersburg Cemetery under the direction of Chambers Funeral Home in Abernathy.

Mrs. Newton, known to everyone as "Bill", died about 2:30 p.m. Tuesday, January 26th, in Methodist Hospital in Lubbock after suffering a heart attack.

She is survived by her husband Virgil who resides in the Hale Center Nursing Home, three sons, Clifton of Abernathy, Harold of Buena Vista Colorado, and one daughter, Mrs. Lucille Williams of Lubbock and one sister, Mrs. Estelle Jones of Jonestown, ten grandchildren and six great-grandchildren.

Grandchildren sang at the service, they were Mr. and Mrs. Lanny Newton of Lub-

bock; Mr. and Mrs. Brent Newton of Beardstown, Illinois; Mr. and Mrs. Terry Newton of Petersburg; Mr. and Mrs. Chris Newton of La Junta, Colorado; Mr. Tommy Newton of Lubbock; Mr. and Mrs. Randy Williams of Lubbock; Mr. and Mrs. Tim McKenzie of Lubbock and Mr. Gary Williams of Shreveport, Louisiana.

Serving as pall bearers were her nephews Raymond Tolley of Seagraves; Clifford Tolley of Electra; Orville Tolley of Vernon; Willard Rainwater of Lorenzo; Alford Rainwater of Lorenzo; Wayne Rainwater of Dougherty; and Kenneth Jones of Galveston.

**Nora Porter**

Services for Nora Mae Porter, 88, of Abernathy were at 10 a.m. Thursday at First Baptist Church in Abernathy with the Rev. Kenneth Horn, pastor of Northside Baptist Church, officiating, assisted by the Rev. Lloyd Riddles.

Burial followed at Abernathy Cemetery under direction of Chambers Funeral Home here.

Mrs. Porter died at 6 a.m. Tuesday, January 26, at Hale Center Rest Home after a long illness.

Born in Wise County, Mrs. Porter was a member of First Baptist Church. Her husband, William, died five years ago.

Survivors include a daughter, Audra Brooks of Lubbock; two sons, Marvin of Lubbock and William of New Deal; five grandchildren; three step grandchildren; and nine great-grandchildren.

**Wayne Holleman**

Services for Wayne Holleman, 39, of Abernathy were at 2 p.m. Thursday at Northside Baptist Church with the Rev. Ken Horn officiating.

Burial was in Abernathy Cemetery under direction of Chambers Funeral Home of Abernathy.

Holleman died at 8 p.m. Monday, January 25, at Methodist Hospital after a lengthy illness.

Holleman was a native of Abernathy. Survivors include his father, Bill of Abernathy; a brother, James of Abernathy; and a sister, Mrs. C.R. Brewer of Albuquerque.

**Diabetes Association To Meet**

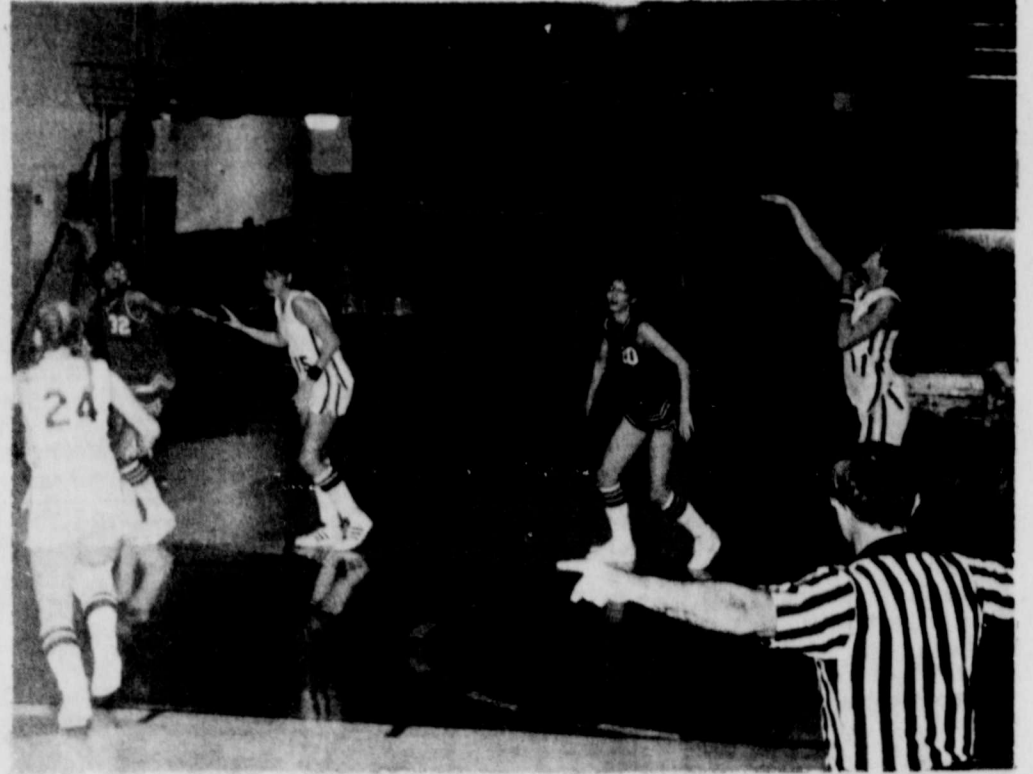
The Greater Lubbock Chapter of the American Diabetes Association will have its monthly meeting Monday, February 8, at 7:30 p.m., in Room 5A-100, Texas Tech Medical School.

A representative from the accounting firm of Mason, Nickels, and Warner will be the guest speaker. There is no charge, and the public is invited. For more information call 792-0675.

SHOP ABERNATHY FIRST-SAVE TIME GAS AND MONEY

Love is beautiful simply by being what it is. Abernathy Weekly Review

Let us show you our beautiful collection of contemporary wedding stationery by Tete. Come in and select your wedding stationery and accessories from a wide variety of styles in every price range.



FREE THROW...Vicky McKenzie shoots a free throw against Floydada last Friday night. Tina Covey, 24, and Regina Powell, 15, look on. The Lady Lopes won 62-44. (Review Photo by Doyle Albrecht)

**Auditions For Music Scholarships At W.T.S.U.**

About \$20,000 in scholarships will be awarded by the West Texas State University Department of Music through auditions beginning on Saturday, Feb. 6.

High school senior and college transfer students will be eligible to audition. Students wishing to audition for a scholarship should

phone or write the WTSU Department of Music for an application form.

Other audition dates are March 27 and May 15. Initial contact with the music department should be made at least one week prior to the audition date, said Dr. Harry Haines, head of the Department of Music.

**FTA Students Earn Trip To Houston**

Four FTA students earned the right to attend the state convention in Houston, February 19 and 20.

Sherry Martin, Vicki Perkins, Shannon Pettit, and Jay Harrison achieved scores of over 600 points each when the points were compiled by sponsors, Mrs. Malena Gough and Mrs. Wanda LeMoine.

The four students and the two sponsors will leave for Houston February 18 and will return February 21.

Students earned points by

participating in certain optional activities related to education and to helping their fellow man.

Students who have over 150 points will be eligible to student teach on FTA Student Teacher Day in the spring.

From Antelope Outlook.

The first annual dog show in America was held in 1877 at Gilmore's Garden in New York, sponsored by the Westminster Kennel Club.

If you trade your car in every two years or so, it doesn't pay to buy near the end of the model year. You'll lose an extra year in depreciation.

**Treflan and Prowl for sale.**

Compare our Prices before you buy. Day 741-7414. At night 797-5729, ask for Rusty Abbe

**TROTTER CHEMICAL COMPANY**

"Now, aren't you glad we saved for this at the

**FIRST STATE BANK**

**WE ARE EAGER TO SERVE YOU**

- ★ Savings Accounts
- ★ Certificates of Deposits
- ★ Safe Deposit Boxes
- ★ Bank By Mail
- ★ Checking Accounts
- ★ Night Depository
- ★ Loans-Farm, Commercial and Installment

**FOR ALL YOUR BANKING NEEDS**

**ABERNATHY FIRST STATE BANK**

402 - 9th Street Member FDIC Phone 298-2556

**PRICES EFFECTIVE FEBRUARY 4-6, 1982 WHILE SUPPLIES LAST**

**SCHILLING BLACK PEPPER** 4 OZ. CAN **\$1.39**

**SUNSHINE KRISPY CRACKERS** 1 LB. BOX **89¢**

**BORDEN'S COTTAGE CHEESE** 12 OZ. CTN. **69¢**

**BORDEN'S ICE CREAM SANDWICHES** 6 CT. PKG. **99¢**

**BORDEN'S NUTTY BUDDY'S** 6 CT. PKG. **99¢**

**BORDEN'S HI-PROTEIN MILK** 1/2 GAL. CTN. **\$1.09**

**MORTON BEEF OR CHICKEN POT PIES** 3 8 OZ. PKGS. **\$1**

**ALLSUP'S CONVENIENCE STORES**

**"THERE'S ONE NEAR YOU"**

**LARGE SELECTION OF SCHAFFT'S VALENTINE CHOCOLATES**

**\$1.40 TO \$2.95**