



# Society and Features

## Phillips-Buxkemper Wedding Vows Exchanged Oct. 23

Miss Reva Jan Phillips and Keith Edward Buxkemper, exchanged double ring wedding vows in a candle-light ceremony at 6 p.m. Saturday, October 23 in the First Baptist Church of Abernathy. Officiating the

ceremony was Condly Billingsley, minister of the Abernathy Church of Christ.

The bride is the daughter of Mr. and Mrs. Coy Phillips, Jr. of Abernathy. Parents of the groom are Mr. and Mrs. Leon



MRS. KEITH EDWARD BUXKEMPER

Buxkemper of Slaton.

Vows were pledged before an altar decorated with a long arched candelabrum entwined with greenery. Flanking each side of the arch were bird cage candelabras entwined with greenery. Centered was the unity candle.

The bride was presented in marriage by her father, after her mother and the groom's mother lit the single candles adorning the Unity Candle, and she selected a white organza gown lavishly trimmed with chantilly lace. The Queen Anne neckline featured a stand up collar. The bodice and top portion of the bishop sleeves were covered in chantilly lace. The bishop sleeves continued in sheer organza, finished by fitted cuffs covered with chantilly lace accented by an organza ruffle. The full organza skirt fell from an empire waistline into a sweep train with the edge adorned by chantilly lace overlaying the skirt in an A-line sweep to the back.

Her sweep train veil of illusion fell from a small cap of organza and was bordered with chantilly lace the entire length of the veil. She carried a bouquet of long stemmed silk beige roses, intermingled with baby's breath, greenery and baby blue wildflowers adorned with light champagne ribbon.

The bride wore the traditional blue garter. For something old, the bride wore a pearl necklace worn by her mother on her wedding day, given to her mother by her father. For something borrowed, she wore pearl earrings belonging to her Aunt, Sylvia Phillips. In her shoes were coins minted in the

year of the bride and groom's birth.

Attending the bride as Maid of Honor was Sherrice Coalson of Marble Falls. Bridesmaids were Denise Pinder, sister of the bride of Lubbock and Marilyn Jarvis of Lubbock.

The bridal attendants wore identical floor length gowns of dark satin champagne with puff sleeves and full gathered skirts with bright royal blue satin bodices with Queen Anne neckline and stand up collar. They wore three silk rose buds with light champagne ribbon on a comb in their hair. Their bouquets were three long stemmed silk roses with a touch of greenery and baby blue wildflowers tied with light champagne ribbon.

The groom was attended by Robbie Buxkemper, brother of the groom of Slaton as Best Man. Groomsman were Bryan Strube, and Brady Tipton, both of Slaton. Ushers were Russ Phillips of Crane, Rodney Phillips of Hobbs, New Mexico, cousins of the bride, and Doyle Buxkemper, brother of the groom of Slaton. Chad Buxkemper, son of the groom, was ringbearer. The groom and his attendants were attired in tan Ashford tuxes with ivory wing shirts and brown bow ties.

Pianist for the wedding was Bettie Hardin of Abernathy and organist was Mary Ann Norman of Lubbock. Vocal selections were "Let It Be Me," "One Hand, One Heart," "The Wedding Prayer," and "On Top of the World," sang by Rob Pinder, brother-in-law of the bride, of Lubbock

The bride's mother wore a mid-length, long sleeved light blue crepe dress with draped skirt and self material bow at the waist. The groom's mother wore a mid-length long sleeved dark blue chiffon dress with a belted full skirt.

The reception followed in the fellowship hall. The bride's table was covered with a white cloth. It featured a three-tiered cake decorated with silk flowers, brass appointments and centerpiece of fresh flowers in the bride's colors. Serving at the bride's table were Rebecca Phillips of Levelland and Traci Phillips of Hobbs, New Mexico, cousins of the bride.

The groom's table was covered in an ivory cloth. It featured a chocolate cake decorated in grapes, complimented by brass appointments and cotton boll mints. Serving at the groom's table were Donna Buxkemper and Janice Tipton, sister's of the groom.

Candace Cookston, friend of the bride of Levelland, registered guests.

For her wedding trip, the bride chose a light blue crepe, long sleeve blouse and medium blue velvet skirt complimented by an orchid corsage.

After a wedding trip to the coast, the couple will reside south of Lubbock. The bride graduated from Abernathy High School in 1977. Howard Jr. College in 1979 and Methodist School of Nursing in 1981. She is employed as a surgical nurse at Methodist Hospital. The groom graduated from Cooper High School in 1977 and is farming.



MITCH AND WANDA LEMOINE with some of their art and photo displays for the Abernathy Arts and Crafts Bazaar coming up November 20. (Review Photo)

## LeMoines To Display Art And Photographs At Local Arts And Crafts Bazaar Nov. 20

Mitch and Wanda LeMoine are among the many people who will be displaying their talents and skills at the 3rd Annual Christmas Bazaar, Saturday, November 20, at the Community Room, Abernathy.

Mitch LeMoine, who first became interested in photography while he was in the U.S. Navy, will display some of his photographs taken on board the U.S. Bairoko. Today, Mitch especially enjoys taking photographs of windmills, sunsets

and scenic areas. Many of

these outstanding pictures, matted and framed, will be on sale at the Bazaar.

Wanda LeMoine has always been interested in oil painting, but has been painting for only a few years. She enjoys painting landscapes, flowers and Old West scenes, including old barns and wagons, and she will have paintings on sale in these three categories.

Wanda is furthering the education of her talents and skills by attending art workshops, such as the one she has recently attended in Kermit, Texas. The instructor for the workshop was Lee K. Parkinson, one of the United States' greatest Western Artists.

Wanda was fascinated by Mr. Parkinson's work and said, "I wouldn't have

missed the workshop for the world! He is an outstanding artist and instructor."

Mitch and Wanda LeMoine are also displaying some of their photographs and paintings in the Abernathy Library during the months of November and December.

### THOSE TO REMEMBER

Admitted to Methodist Hospital last week was Pete Peacock for surgery. He is home now.

Ronald Harrell suffered a head injury while playing football last week. He was treated at Methodist.

Peggy Duffy's daughter, Amber, was also admitted to Methodist Hospital last week for a virus. She is 5 months old.

## Revival At First Church Of Nazarene Begins Oct. 26

Abernathy First Church of the Nazarene will have a revival meeting October 26-31. The Services will be every evening at 7:30 p.m. and 10:45 a.m. Sunday

morning and 6:15 p.m. Sunday evening.

The Evangelist is Rev. R.E. Zell of Weatherford, Texas. Rev. Zell is an ordained elder in the Nazarene. He has pastored for 27 years, on six different Districts. He started his pastoral ministerial in the West Texas District and has pastored four different churches in the district.

He has been in the evangelistic field for three

years, holding revival meetings in 10 different districts.

Rev. & Mrs. Zell carry the musical program as well as his preaching. His preaching emphasis is salvation, with special concern with the infilling of the Holy Spirit. Also he has a great concern for family life.

The public is invited to attend all of the services and enjoy the good music and preaching of God's word.



REV. R.E. ZELL

## Jill Blalock To Sing In Tech Opera

Jim Blalock, a freshman Music Major at Tech, will sing this weekend, Oct. 28, 29 and 30 at the opera Tech presents at the Civic Center in Lubbock.

Jill was the only freshman chosen for a part. There will be three gypsies and Jill will be one of the three gypsies singing. She will be singing for three nights with this group in the opera.

## Affairs of Life



No one worldly organization, church, or person, holds all the secrets or answers.

When such a promise is made, beware, there are usually ulterior motives.

1 Cor. 2:13-14

## SHIPMAN AGENCY

BILLY SHIPMAN  
ROLA B. GOVEY  
RODDY SHIPMAN  
D'AUN SHIPMAN

### ATTENTIONS

Homeowners Insurance  
Up to 35% Off  
Call 298-4127

Farmers Insurance Group

## WHAT ARE "FUNFLOWERS"?



They're flowers just for fun. By the colorful bunch for you to arrange and enjoy. Put a little fun in your life. Pick up a bunch of "FUNFLOWERS" today or any day this week at a special price that adds to your fun, too!

Our nice fresh casual bunch of "FUNFLOWERS" \$10 Specially priced!

MEMBER FLORIST NAME ADDRESS INFORMATION

Express your thoughts with Special Care

## ATTEND THE CHURCH OF YOUR CHOICE

### "Patience"



BY KEN HORN  
NORTHSIDE BAPTIST

PATIENCE: the highly sought after but rarely achieved characteristic that we want after it's too late. Yet, everyone at one time or another has prayed, "Lord, give me patience!" Soon thereafter, our problems become more intense and we dismiss our prayer as something not answered by God.

The truth is, that God did answer that prayer; it is our ignorance of the Bible that

leads to the breakdown of our prayers.

The Bible, in James 1:3 and Romans 5:3, reveals that tribulation, here translated "trials", worketh patience. The trying of our faith is working constantly to increase our patience. To be sure, patience is more than merely enduring. Patience is enduring with the attitude of cheerfulness and gratefulness.

Patience is not completely

attainable through one trial or problem nor is it a once used, always kept quality. We may find patience exercised in one area, and then because of our lack of faith, "lose our patience." Hebrews 11:6 says that without faith it is impossible to please God, and the very trying of that faith worketh that elusive quality of patience we have so often prayed for.

So the next time we silently ask for patience, remember that God has already begun to answer that prayer.

66 Butane  
And  
Fertilizer

Assembly Of God  
1404 Ave. B 298-2060  
Renay Rice

Bethel Baptist Church  
Eat 1st St. 298-2118  
Rev. J.B. Lester

Wolf  
Irrigation

Abernathy  
Farmers  
Co-op Gin

Lakeview Methodist Church  
3 Mi. North 6 Mi. E. of City  
Rev. HB Coggin

Church Of Christ  
10th & Ave. E 298-2718

Joe  
Thompson  
Implement  
Co.

Pay-N-Save  
Supermarket

1st Church Of Nazarene  
6th St. Ave. E  
298-2832  
Rosswell Brunner

St. Isidore Church  
South Ave. D  
Rev. Matthew D'Souza

Brightbill  
Heating  
And Air

Richard  
DuBose  
Insurance

County Line Baptist Church  
Rt. 2 - 757-2134  
Rev. Danny Jackson

Iglesia Del Nazareno  
Ave. A & 5th St.  
Lester Anderson  
298-4068

Co-op Grain  
Company

Abernathy  
Weekly  
Review

Northside Baptist Church  
16th St. & Ave. E. - 298-2497  
Rev. Kenneth Horn

Primera Mission Bautista  
298-2613  
Rev. Jose Rodriguez

Piggly Wiggly  
Formerly  
Sav-A-Lot

First United Methodist Church  
Rev. Tommie Beck

First Baptist Church  
411 7th Street  
298-2587  
Lloyd E. Riddles

Center Community Church  
5 Mi. E or 597, then 2 mi. S on 2902  
746-6184 Bro. Earnest Brewer

Monte De Las Olivas  
108 4th  
298-2679

## ABERNATHY WEEKLY REVIEW

Established in November of 1921...published on Thursday of each week in Abernathy, Texas. Second Class postage paid at Abernathy, Texas 79311, located at 916 Ave. D, in the city of Abernathy, P.O. Drawer D, Phone (806) 298-2033.

Any erroneous reflection upon the character of any firm, corporation or individual which may appear in the columns of the Abernathy Weekly Review gladly will be corrected upon being brought to the attention of the publisher.

Subscription Rates: \$8.00 per year in Hale and Lubbock Counties, \$8.50 per year in rest of Texas and \$9.50 per year when mailed out of Texas.

Keith Tooley, Editor  
Delayne Thomason, Secretary/Typist  
Helen Wade, Society

MEMBER 1982  
TEXAS PRESS ASSOCIATION



I WOULD LIKE TO TAKE THIS METHOD TO COMMUNICATE WITH YOU THE PUBLIC TO REQUEST YOUR SUPPORT AND INFLUENCE IN THE UPCOMING ELECTION. IT HAS BEEN A PRIVILEGE TO SERVE AS YOUR JUSTICE OF THE PEACE FOR 8 YEARS AND IT IS MY SINCERE DESIRE TO CONTINUE TO SERVE YOU. THE DUTIES OF THIS OFFICE ARE SUCH THAT IT IS IMPOSSIBLE TO VISIT EACH OF YOU PERSONALLY AS I WOULD PREFER. THEREFORE WITH THE GREATFULL ASSISTANCE OF FRIENDS AND SUPPORTERS I WILL PRESENT TO YOU A REQUEST FOR THE CONSIDERATION OF YOUR VOTE ON NOVEMBER 2, 1982.

JEANNE MARR  
JUSTICE OF THE PEACE, PREC. 3

Pol. Political Ad. By Jeanne Marr



# we're haunted WITH... HOW A Halloween Party WITH THESE VALUES ...BARGAINS BARGAINS...BARGAINS

FAST FRIENDLY SERVICE ALL THE WAY TO YOUR CAR

**BLUE BONNET MARGARINE**  
 QUARTERS 16 OZ **49¢**

RANCH STYLE PINTO RED KIDNEY OR NAVY BEANS 3 FOR 15 OZ **\$1 00**

EARLY CALIF PITTED RIPE OLIVES MEDIUM 6 OZ **\$1 09**

ARMOUR VIENNA SAUSAGE 5 OZ **\$1 00**

CORAL BAG FLAKED COCONUT 14 OZ **99¢**

PLANTERS REG UNSALTED COCKTAIL PEANUTS 12 OZ **\$1 59**

CUT SUGARY YAMS 23 OZ **79¢**

PILLSBURY BANANA OR DATE BREADS 14 OZ 15 OZ **\$1 39**

LEAF SPINACH 7.75 **35¢**

GOLDEN GRAIN MA & CHEDDAR DINNER LIMIT 4 7 1/2 OZ **\$1 00**  
 4 FOR

**DEE-LICIOUS SAVINGS ON PRODUCE:**

THOMPSON SEEDLES WHITE GRAPES LB **59¢**  
 MIX OR MATCH IMPERIOR RED GRAPES LB **59¢**

FRESH GREEN ONIONS **\$1 00**  
 5 BUNCHES

CELLO RED RADISHES **\$1 00**  
 6 OZ 5 FOR

CAULIFLOWER EACH **59¢**

PURPLE TOP TURNIPS LB **39¢**

PRICES OCT 28 - NOV 3

QUARTER PORK SLICED LOIN LB **\$1 68**

GIANT SIZE SUPER SUDS 49 OZ **\$1 49**

SOFT N PRETTY TOILET TISSUE 6 Roll **\$1 59**

DEL MONTE FRUIT COCKTAIL **45¢**

DEL MONTE YELLOW CLING PEACHES 8.75 OZ **45¢**

DEL MONTE ASSORTED PINEAPPLE JUICE PRODUCT 8 OZ **39¢**

PILLSBURY HUNGRY JACK BUTTERMILK PANCAKE MIX 32 OZ **\$1 19**

SUNSHINE KRISPY CRACKERS 16 OZ **69¢**

FOLGERS FLAKED COFFEE 13 OZ **\$1 89**  
 LIMIT ONE

Ben Franklin Now 30% Off Come On In And Take Advantage Of Our New Low Prices. We're Open 9-6 Sunday For Your Convenience. 8-8 Monday Through Friday. We Cash Payroll Checks And Gladly Accept Food Stamps Double Coupon Every Saturday

## MEAT SPECIALS

CENTER CUT PORK CHOPS LB **\$1 98**

WAFER THIN PORK CHOPS LB **\$2 09**

FRESH GROUND BEEF LB **\$1 29**

WILSON BOLOGNA LB **\$1 69**

WILSON BEEF OR REG FRANKS **\$1 09**

WHITE SWAN BACON 1 LB PKG **\$1 79**

BEEF TRIPE OR PIGS FEET LB **49¢**

PEDRO TAMALES 18 OZ 12 PACK **\$3 49**

FACIAL SIZE N SOFT TISSUE 200 CT **79¢**

KARO RED OR BLUE LABEL SYRUP 32 OZ **\$1 79**

KARO WAFFLE PANCAKE SYRUP 32 OZ **\$1 49**

VIVA PAPER PRINT NAPKINS 140 CT **79¢**

NIBLETS WHOLE KERNEL GOLDEN CORN 12 OZ 2 FOR **89¢**

DEL MONTE GREEN FRENCH STYLE BEANS 8 OZ **31¢**

DEL MONTE SWEET PEAS 8.5 OZ **35¢**

NINE LIVES CAT FOOD 6 1/2 OZ **\$1 00**

DR PEPPER 16 OZ BOTTLE **\$1 25**

# PIGGLY WIGGLY

# RICHARD MOORE

## Incumbent District Attorney

### A Prosecutor - Not A Politician



Richard, Jo Ann, Rodney

**KEEP**  
**RICHARD MOORE**  
**DISTRICT ATTORNEY**

**The position of District Attorney is not a political office. There is no Republican or Democrat way to prosecute criminals- only the right way.**

**Richard is the only candidate with experience as District Attorney**

Paid Political Advertisement by  
**CITIZENS FOR RICHARD MOORE**  
JERRY HARDER-Chairman  
Co-Treasurers  
LARRY WALTER, BOB GARDNER  
P. O. Box 1931  
Plainview, Texas 79072

**PLAINS GRAIN & FARM SUPPLY**  
Abernathy, Texas  
FOR ALL YOUR FARMING NEEDS  
PHONE  
Abernathy, Texas 298-2521  
Lubbock, Texas 763-4868

# FARM PAGE

Abernathy 298-2541  
Lubbock 762-1038  
GENUINE JOHN DEERE PARTS  
**JOE THOMPSON IMPLEMENT**  
105 Ave D  
Abernathy, Texas 79311

## Stored Grains-Residual Treatments

Grain may be protected from damage by insects by treating it as it enters the bin. Malathion is labeled as a grain protectant and may be applied as a dust or spray. Sprays can be applied with hand sprayers, compressed air sprayers, or motor driver pump sprayers. Sprays mixtures can be made by adding one pint of 57% premium grade malathion to 2.5 gallons water. This amount will treat 1,000

bushels of grain, according to Greg Cronholm, Extension Agent-Entomology. Another procedure for treatment of grain is to use a drip-on method. Dripping malathion onto grain before it enters the auger provides protection equal to its application as a directed spray. This system can be constructed using a plastic jug, a shut-off cock, a needle valve (similar to those used for an evaporator

ive cooler water supply) and appropriate length of plastic tubing. Calibration requires that one know their auger capacity. The needle valve can then be adjusted for the desired volume of tank mix in the number minutes it takes to auger 100 bushels of grain. After the apparatus is calibrated, the needle valve should not be disturbed. The shut-off cock should be used to stop the

flow of insecticide when grain loading stops. Where indian meal moth larvae have been a problem in past years, another insecticide selection should be made because most populations are now resistant to malathion. The other insecticides which may be used for residual treatment are methoxychlor or 0.1 percent pyrethrin plus 1 percent piperonyl butoxide.

Premium grade malathion, methoxychlor and pyrethrin plus piperonyl butoxide are registered for use in storage bins for barley, corn, oats, rye, sorghum and wheat, but not soybeans.

Watch for other topics on farm-stored grain. For additional information contact Greg Cronholm, Extension Agent-Entomology at the Hale County Extension office or call 293-8481, ext. 273.

**COTTON TALKS**  
FROM PLAINS COTTON GROWERS, INC.

LUBBOCK, Friday, October 22, 1982  
Wherever you care to take it, the vote is unanimous: supplies of cotton, corn, sorghum and wheat must be whittled down to levels more nearly in line with demand. There's no other way agriculture can emerge from what has been called the current "economic swamp."

Leaders of farm organizations, congressmen and senators, U. S. Department of Agriculture officials, economists and marketing specialists to a man are exhorting producers to comply with 1983 acreage reduction programs. Financial ruin, economic suicide, perpetual poverty and an enduring economy-wide depression are among the terms used to describe the alternative.

USDA, to its credit, is beefing up export credit programs, offering more attractive interest rates and repayment terms and considering other means to lure more foreign buyers of U.S. agriculture commodities. But the mountain of surpluses defies all hope of near-term price boosting success for these actions unless they are supplemented by producer plant-

ing restraint next spring.

Ideally farmers without exception would comply with 1983 acreage reduction programs to the fullest, cutting cotton acreage 25 percent and idling 20 percent of wheat, corn and sorghum acres. Failure to comply renders a producer ineligible for government commodity loans, deficiency and diversion payments.

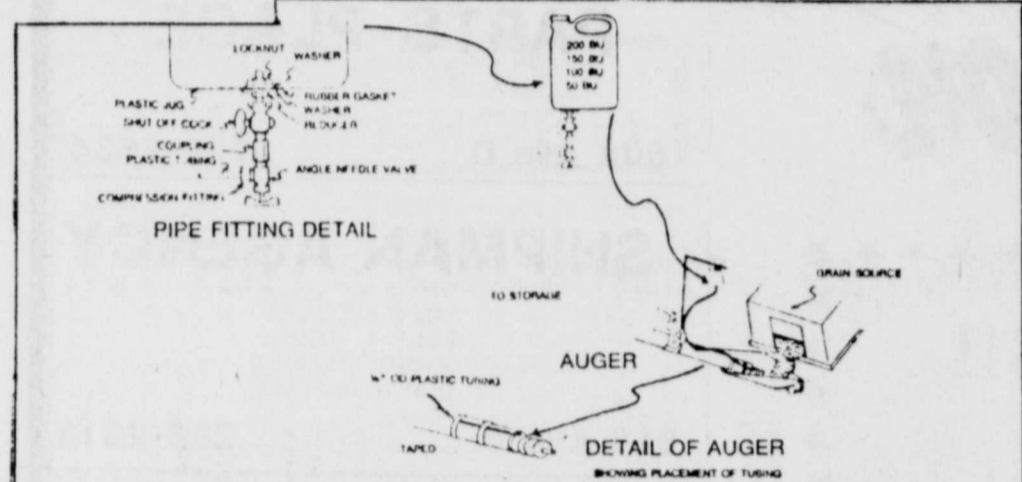
Similar but smaller reduction plans for these commodities were in effect in 1982, but their effectiveness was blunted by a \$50,000 per person limit on aggregate government payments. Large farmers, who produce a high percentage of the crops, preferred to take a chance on market prices rather than lay out high priced land in return for partial payments and eligibility for loan levels below their cost of production.

The results have been far worse than anyone expected. Both corn and wheat are selling in the cash market at prices below loan levels, and December futures for both are quoted even lower than cash prices.

Cotton producers, a higher percentage of whom complied with program, have fared only slightly better. A small volume of cotton is being sold below the loan, but most is either being held off the market or sold slightly above its loan value. And except for a brief period, December futures have held above or near the loan plus tendering cost. In short, for the most part the loan has served as a floor under prices.

"But," says Donald Johnson, Executive Vice President of Lubbock-based Plains Cotton Growers, Inc., "if we produce another large crop in 1983, and if half of it or more is ineligible for the loan, the floor will collapse just as it has for grains."

Partial payments for large producers may not be much of an incentive to participate in acreage reduction, Johnson continues, "but without high program participation, 1983 market prices 10 or 15 cents below the 55-cent 1983 base quality loan level are a very real threat, and that alone should be enough to make every farmer think long and hard before going outside the cotton program."



A simple method of metering a grain protectant onto the grain as it is augered into the bin. Insert (upper left) shows details of the equipment (Courtesy USDA).

## COTTON TODAY

**CUSTOMER TOUR SET:** Twenty-five textile executives from eight of U.S. cotton's top export markets in the Far East will arrive in Washington, D.C. October 28 to begin a two-week

orientation tour, the National Cotton Council reports. The program in the nation's capital will kick off with a briefing by Cotton Council International representatives and a welcome from the administrator of the Foreign Agricultural Service. Other officials will discuss the role of foreign market development for cot-

ton and other crops, the world cotton situation, and U.S. CREDIT PROGRAMS. Textile officials also will hear reports on cotton legislation for U.S. foreign programs, cotton classing, and the U.S. cotton situation.

The group will receive a briefing on Cotton Incorporated's agricultural and textile research in Raleigh November 1.

Other stops include Memphis, November 2; Greenwood and Greenville, Mississippi, November 5; Dallas, November 7; Lubbock, November 9; Bakersfield, November 11; Corcoran, November 12; and Fresno, November 13. In each area local cotton organizations and firms will host activities designed to give the participants an industry from seed breeding to harvesting.

Participants are from Japan, Korea, Hong Kong, Taiwan, Thailand, Indonesia, The Philippines, and Malaysia.

**BRITISH TO SEE U.S. COTTON:** The story of the U.S. cotton industry will be carried in a future issue of a British magazine, according to the National Cotton Council.

A photographic and model crew from London will arrive in Memphis, Tennessee, October 22 to begin shooting scenes in the Mid-South area. The crew is scheduled to move to the Phoenix, Arizona, area October 27 for additional filming. The photographs will feature models clad in all-cotton ladies' wear from Simpson's, a leading British department store.

The project is part of an effort by Cotton Council International to increase sales of U.S. cotton.

## Hale County Ranks 63rd In Oil Production

The sale of crude oil and natural gas from Hale County wells in 1981 enriched the county's economy and accounted for \$188-million of the \$44-billion value placed on Texas petroleum production last year.

In a report on the economic impact of oil and gas industry operations in the significant producing counties of Texas, Dallas-based Texas Mid-Continent Oil & Gas Association said the county ranked 63rd among Texas' 254 counties on the basis of value of its marketed petroleum production. This production includes condensate and casing-head gas.

The county's wells produced 5.4-million barrels of crude oil, valued at \$186.7-million and 762.9-million cubic feet of natural gas, valued at \$1.3-million. Owners of royalty in the county received \$23.5-million as their share of the output, the association noted.

"Although the oil and gas industry is suffering through a slowdown in drilling-attributable in large part to a worldwide decline in demand for petroleum products it continues to be the cornerstone of the economy of Texas and many of its counties," said the Association's chairman, Avery Rush, Jr., of Amarillo. "Oil and gas producers operating in Texas remain committed to the drilling of every well that is economically feasible," Rush added.

In addition to paying local, county, and state property taxes, producers in the county supported state government through production tax payments estimated at \$8.7-million, according to Association. Crude oil taxes amounted to \$8.6-million, while natural gas levies totalled \$102,243.

Based on Texas Employment Commissions figures, some 126 oil and gas industry employees in the county received wages of about \$2-million in 1981.

"HANDICAPPED FOR A DAY" can mean greater understanding for life, says Dorothy Taylor, a family life education specialist.

To gain an understanding of -- and empathy for -- handicapped persons, wear ear plugs or a blindfold for a day, or try to walk on crutches, or tie an arm behind your back for a morning of household chores, she suggests.

Taylor is on the home economics staff of the Texas Agricultural Extension Service, The Texas A&M University System.

## Don't Let This Once-In-A-Lifetime Opportunity Slip Away.

**Our All Savers Certificate Offers a One-Time Exclusion up to \$2,000 Interest Income on your Income Taxes.**

Briercroft Savings All Savers Certificate offers you an opportunity to shelter interest income from income taxes. And when the All Savers' interest rate is combined with its tax exempt advantage you get a high yield on a low minimum, short term certificate.

But hurry! This tax exemption can only be taken once in a lifetime and the All Savers Certificates are available only until December 31 of this year. And this account is fully insured by F.S.L.I.C. Don't let this one slip away. Join the revolution and open your Briercroft Savings All Savers account today.

**Rate: 7.48%**  
GOOD THROUGH OCT. 30

\$500 minimum, 1 year term. Substantial penalty required for early withdrawal. No compounding permitted.



Home Office: Lubbock, Texas  
Serving West Texas  
Member F.S.L.I.C.

## AUCTION

80 Acres of prime Hale County farmland.  
1 mile south and 1 mile east of Hale Center.  
Saturday Oct. 30 10 a.m. Two 6 inch wells.  
8% assumable loan, and landowners portion of the cotton crop.

**Walling & Associates**  
Auctioneers

Hereford, Texas 806-364-0660

License No. TXS - 122-0459

## RED EDGE PERFORMANCE SAVINGS

**IN TIME FOR HARVEST! LOW RATE FINANCING, WAIVER OF FINANCE OR CASH SAVINGS UP TO \$4,000 ON ANY NEW AXIAL-FLOW.**

We're proud to announce we're continuing our Red Edge Performance Savings. That means when you buy and take delivery from now through October 31, 1982, you can take advantage of three special savings options on new International® Axial-Flow Combines.

Save with low, 9.9% financing for 3 years or 11.9% for 5 years\* when you buy any new Axial-Flow and finance through IHCC. Special 11.9% 3 year financing is also available on used combines.

Or get a check up to \$4,000 from IH. For cash settlements, you can receive a check directly

from IH. This is in lieu of any other offer. See chart for exact amounts.

Or, choose waiver of finance instead of any other savings option. Finance through IHCC and interest payments won't begin until June 1, 1983. Applies to used combines, too. Special lease and short term rental rates are also available. Come in and ask us for complete details on how you can get Red Edge Performance Savings on a new Axial-Flow.

NEW INTERNATIONAL AXIAL-FLOW	LOW RATE FINANCING*	CHECK FROM IH	WAIVER SEE US FOR DETAILS
1420, 1482	9.9% For 3 Years	\$1,700	YES
1440, 1460		\$2,300	YES
1480	11.9% For 5 Years	\$2,900	YES
1470		\$4,000	YES
Used Combines	11.9% 3 yrs		Until 6/1/83**

\*Financing rates calculated at an annual percentage rate  
\*\*At participating dealers.

"Where You Buy Is As Important As What You Buy."



INTERNATIONAL HARVESTER

Hwy 54 N

This offer is subject to change or cancellation by International Harvester at any time without obligation.

**Struve Implement Inc.**

298-2507

# Fumbles And Interceptions Plague Antelopes In Loss To Tulia

The Abernathy Antelopes were once again plagued by mistakes Friday night as they lost to the Tulia Hornets 6-38. The game was played at Tulia where the temperatures dipped and the cold crisp air made the ball hard to handle for the Lopes.

Much like most of the other games Abernathy has played this year, they were once again plagued by fumbles and interceptions. The Lopes fumbled 5 times and were intercepted 4 times. This made all the difference in the game as the statistics were almost the same for both teams. Abernathy had 183 yards rushing to Tulia's 187 and 15 first downs to Tulia's 16. Tulia edged Abernathy a

little in the passing department. The Hornets had 91 yards passing to the Lope's 40. Total rushing and passing yards for the Lopes was 212 to Tulia's 278.

The Lopes played an extremely clean game, having only 2 penalties for 10 yards compared to Tulia's 7 penalties for 70 yards.

### FIRST HALF

The Lopes were in the ball game for the entire first half, excluding 2 pass interceptions that stopped 2 of their drives.

The Lopes stopped Tulia on their first drive and got the ball following a Hornet punt. The Lopes put together a 7 play drive that carried them to the Hornet's 36 yard line, before the Horn-

ets intercepted a pass.

The Hornets were stopped on their second offensive attempt and were forced to punt again. The Lopes put together another drive that took them from their own 25 yard line to Tulia's 46, before they were forced to punt.

Tulia got the ball for the third time and put a successful drive together this time. In 12 plays, the Hornets marched from their own 20 yard line to the Lope's 20 yard line. From the 20, Hornet running back Clifford Jackson slipped a few tackles and ran in from 20 yards out to put Tulia ahead 7-0 at the first of the second quarter. The PAT was good and Tulia led 7-0. The Lopes put together

their third impressive drive of the night. They started on their own 17 yard line and 8 plays later had advanced to Tulia's 20 yard line. In this drive, quarterback Jamie Mansanales ran 15 yards, Allen Lester caught a Mansanales pass good for 15 yards, runs by Mark Riddell and Billy Cooper added 18 yards, Mansanales ran 15 more yards, then the drive was halted, just as many of other Lope drives had been stopped, when the Lopes fumbled on the next play at Tulia's 20 yard line.

Tulia scored again in the second quarter on a 9 yard halfback pass play. The PAT was good and Tulia led 14-0. The Lopes put together one last successful drive

in the first half. They went from their 14 yard line to the 50 where they were intercepted on the next play.

The Lopes had put together 4 good drives in the first half, but three drives were stopped when the Lopes turned the ball over to Tulia.

### SECOND HALF

The Lopes were behind 14-0 going into the second half. Tulia kicked to them first and the Lopes really got cold hands then. They fumbled on the kick at their own 20 yard line. Tulia took over and scored 2 plays later on a 21 yard run. The PAT attempt was bad and Tulia went on top 20-0.

Tulia kicked to the Lopes again, and again they fumb-

led on the kick to hand Tulia the ball on the Lope's 21 yard line. Tulia took advantage of the field position and scored again 2 plays later on a 16 yard run. The PAT attempt was bad and Tulia led 26-0.

Believe it or not, Tulia kicked again to the Lopes and the Lopes fumbled a third time on the kick. Tulia got the ball on the Lope's 26 yard line this time. Two plays later, they ran the ball in from 26 yards out and led 32-0.

A game that was still close at halftime, went beyond the reach of the Lopes with less than 2 minutes gone in the third quarter, following the three fumbles by Abernathy. It might have been the quick-

est 18 points made by a team this season.

The Lopes never gave up, even though they were down 32-0. In the fourth quarter, Jamie Mansanales intercepted a Hornet pass and the Lopes got the ball deep in Hornet territory on their 8 yard line. Four plays later, Gordon Havens jumped high to pull down an 11

yard pass for the Lope's only score, and it was 32-6.

Tulia scored again late in the fourth quarter on a 10 yard pass play, but the Lopes never gave up and continued to play hard, even though they were beyond the point of return.

The loss give the Lopes an undeserved record of 1-7 and Tulia a record of 3-5.

The Lopes will take on Littlefield this Friday night at Antelope Stadium at 7:30 p.m.

### ABERNATHY-TULIA STATISTICS

Yards Rushing	183	187
Yards Passing	40	91
Total Yards	212	278
First Downs	15	16
Penetrations	2	7
Penalties	2 for 10 yards	7 for 70 yds.
Fumbles	5	0
Interceptions	1	4
Punts	4 for 32 yds. ave	5 for 45 yds ave

**FARM BUREAU INSURANCE**  
CORALIE COX

298-4064 1010 West 16th

**PIGGLY WIGGLY**

1411 Ave D 298-2266

**ABERNATHY BODY WORKS**

417 S. Ave D 298-2084

**ABERNATHY FIRST STATE BANK**

402 9th 298-2556

**PLAINS GRAIN & FARM SUPPLY**

701 Texas Ave 298-2521

**CO-OP GRAIN CO.**

714 Texas Ave. 298-2511

**CONSUMERS FUEL ASSN.**

829 W. Service Rd. 298-2584

**ABERNATHY FARMERS CO-OP GINS**

Box 218

**PAY-N-SAVE**

405 Ave. D 298-2627

**S & H WELDING**

315 Main 298-2924

**BEARD'S GOLF SHOP**

328-5261

# Football Season

\*\*\*\*\*  
 GO LOPES!!  
 BEAT  
 LITTLEFIELD  
 HERE 7:30  
 FRIDAY NIGHT  
 \*\*\*\*\*

### RUSHING

Brian Smith 11 carries for 58 yds.  
 Jamie Mansanales, 7 carries for 50 yds.  
 Billy Cooper, 9 carries for 49 yds.  
 Harold Miller, 11 carries for 41 yds.  
 Mark Riddell, 8 carries for 23 yds.

### TACKLES

Jamie Mansanales 9  
 Cody Payne 10  
 Lin Davis 12  
 Rene Vecchio 6  
 Randy Houston 12

### OTHER STATS

Ross Bradley recovered a fumble. Jamie Mansanales had a reception. Gilbert Camacho punted 4 times for a 32 yard average. Mansanales completed 2 of 12 passes for 26 and Brian Smith completed 1 of 6 for 12.

### PASS RECEPTIONS

Allen Lester 1 catch for 15 yds.  
 Randy Houston 1 catch for 12 yds.  
 Gordon Havens 1 catch for 11 yds

### 1982 Abernathy Antelopes Football Schedule

Date	Opponent	Place	Time
Sept. 3	Petersburg	Home	8:00
10	Olton	Away	8:00
17	Hale Center	Away	8:00
24	Roosevelt**	Home	8:00
Oct. 1	Lockney	Away	7:30
8	Muleshoe*	Away	7:30
15	Friona*	Home	7:30
22	Tulia*	Away	7:30
29	Littlefield*	Home	7:30
Nov. 5	Dimmitt*	Home	7:30

MEET THE LOPES



**ROGER RAY** is number 99 for the Lopes. He plays the position of tight end. Ray is a senior this year. He weighs 155 pounds.

**GILBERT CAMACHO** is number 45 for the Lopes. He plays the position of tight end. He is a senior this year. Camacho weighs 150 pounds.

**BILLY COOPER** is number 21 for the Lopes. He plays the position of right back and is a freshman this year. He weighs 155 pounds.

**ABERNATHY OIL CO.**

709 Ave. D 298-2255

**JENNINGS BURGER HUT**

303 Ave D 298-2874

**HENRY'S TEXACO**

Hwy. 87 298-4101

**SANDERS AUTO SUPPLY**

Lubbock Hwy. 298-2215

**PATTON'S PARTS PLACE**

604 Ave D 298-2534

**SHIPMAN AGENCY**

BILLY SHIPMAN  
 ROLA W. COVEY  
 RODDY SHIPMAN  
 D'AUN SHIPMAN

919 Ave D 298-2313

**FARMER'S TUCO GIN**

Plainview Hwy 298-2467

**SIXTY-SIX BUTANE & FERTILIZER**

Plainview Hwy 298-2451

**STEVE MILES INSURANCE**

418 9th St. 298-4127

**STRUVE IMPLEMENT**

Hwy. 54 N 298-2507

**JOE THOMPSON IMPLEMENT**

105 Ave D 298-2541

**NEWTON RADIO & T.V.**

306 Main 298-2338

**RICHARD DUBOSE INSURANCE & REAL ESTATE**

924 Ave D 298-2536

**A-1 LIQUIDATORS & SUPPLY**

410 S Ave D 298-2880

**ABERNATHY WEEKLY REVIEW**

Drawer D 298-2033

## Freshman, 7th And 8th Games With Tulia

The Freshman Lopes lost a close one to Tulia last Thursday here by a score of 0-10.

The Freshman Lopes racked up 59 yards passing and 74 yards rushing to Tulia's 4 yards passing and 141 yards rushing. The Lopes had a total of 133 yards offense to Tulia's 145.

Tulia beat Abernathy in

the first down department with 13 to the Freshman Lopes 7, but Abernathy suffered losing 2 fumbles to the Hornets.

The Freshman Lopes had 3 penalties for 15 yards to Tulia's 2 for 10 yards.

Leading rushers for the Lopes were Joseph Ruiz with 20 carries for 73 yards, and Bruce Lloyd had 6

carries for 16 yards.

In the passing department, Joseph Ruiz completed 2 of 4 passes for 42 yards, both to receiver Dan Evans. Jim Carver completed 1 of 4 passes for 17 yards to receiver Tim Conway.

Punter Paul Lara had 1 punt for 44 yards. Tim Conway intercepted a Hornet pass.

## Abernathy Booster Club Meets

The Abernathy Booster Club met Oct. 18 in the school cafeteria.

The film of the Abernathy-Friona game was viewed by coaches, players and members.

The coaches went over the games of the 7th, 8th 9th and JV games.

It was voted to decorate the bus that will be taking the cross country students

district. The Boosters will do this after the meeting Oct. 25. The students go to district Oct. 26.

The Cross Country Team and their parents will be guests at the Oct. 25 meeting. The Booster Club also extends a special invitation to the parents of the band members to be sure and come to the meeting Nov. 1.

There are only two more football games and both of these are home games. Everyone is invited to come out and support the Lopes. They need support and backing.

Those serving refreshments were: Marie Riddell, Minnie Kemp, Pauline Stone, Billie DuBose and Ellen Gereau.

## 7th LOSES, 8th TIES

The 7th Lopes lost to Tulia 26-0 last Thursday night. The 8th grade tied with Tulia 6-6 in a defensive struggle, both games were played at Tulia.

Today, (Thursday), the Freshman Lopes will play Littlefield there. The JV Lopes will also play Littlefield there. Last week the JV Lopes did not have a game.

The 7th and 8th Lopes will play Littlefield here with play beginning at 5 p.m. today.

## Caprock Council Of International Reading Association To Meet Nov. 4

The Caprock Council of the International Reading Association will present its second program for 1982-83 Thursday, November 4 at 7:30 p.m. at the Goedke Branch Library, 6601 Quaker in Lubbock.

Doris Hill, who has taught for more than a decade at Hale Center Junior High School, will be

speaking on "101 Ideas for Teaching Reading." Mrs. Hill has acted as a consultant for numerous language arts workshops in this region. She recently made a presentation at the Texas Conference for Migrant Education in Corpus Christi. Her activities as classroom teacher give her programs a vitality that is appreciated

by everyone who participate in her sessions. She is a graduate of West Texas State University.

The Caprock Council of the International Reading Association is an organization for all people interested in promoting reading. Teachers, administrators, consultants, librarians, students, parents and friends of reading are invited to share in activities and meetings.

The local council meets four times a year to present new and old ideas concerning ways to become excited about reading both for fun and for information.

The February program will feature John Allen, a teacher from Wautirna, Australia, who will be at Texas Tech University for a number of weeks this spring

in a consulting capacity. Mr. Allen is a public school teacher and his presentation will focus on effective methods of teaching literature. In May at the South Plains Mall, the Caprock Council will sponsor Reading Day which will feature booths and displays so shoppers and interested persons can participate in reading activities.

Guests are always welcome to attend all programs and meetings, but if you would like to join the local International Reading Association council, send a check for \$5.00 to Dorothy Randolph, Membership Chairman, 4620 10th Street, Lubbock, Texas 79416 or membership dues will be accepted before and after the program on November 4.

## FFA Greenhand Orientation Held Oct. 19

The Greenband Orientation was held Tuesday night, October 19. All greenhands and their parents were invited.

The Abernathy F.F.A. Chapter officers gave speeches on what FFA has done for them and District Officer Melissa Hagstrom gave a speech on different

projects and what FFA has done for her. Mrs. Wilma Stillwell also gave a speech on what FFA has done for her son, Randal.

A slide presentation was shown on last years' activities and refreshments were served.

The meeting was adjourned.

**CHAPTER MEETS**  
The Abernathy F.F.A. Chapter met Wednesday, October 19 during activity period.

The upcoming stock shows and projects for the year were discussed. Mr. Kelley announced that he would be going to pig sales, and if anybody wanted to go they could contact him.

The meeting adjourned.



### SCHOOL LUNCH MENU

**BREAKFAST MENU**  
**MONDAY:** Apple juice, Hot wheat cereal, milk.  
**TUESDAY:** Pineapple juice, Sausage, Biscuits, Milk.  
**WEDNESDAY:** Banana, Cereal, Toast, Milk.  
**THURSDAY:** Orange juice, Cheese toast, Milk.  
**FRIDAY:** Fruit Juice, Waffles/syrup, Milk.

**LUNCH MENU**  
**MONDAY:** Pigs in a blanket, Potato Salad, Pork

& Beans, Fruit Pudding, Milk.  
**TUESDAY:** Lasagna, Tossed Salad, Buttered Carrots, French Bread, Peanut Butter Cake, Milk.  
**WEDNESDAY:** Fish with Cheese Sticks, Catsup, Baked Potatoes, Green Beans, Biscuits, Brownies, Milk.  
**THURSDAY:** Chili Beans, Coleslaw, French Fries, Corn Bread, Peaches, Milk.  
**FRIDAY:** Cheese Burgers, Lettuce-Pickles-Onions, Tater Tots, Sugar Cookies, Milk.



HOUSTON MCGAUGH, District Executive of South Plains Council of the Boy Scouts of America, is pictured talking to Abernathy kids and parents interested in starting a local Cub Scouts program. The meeting was held Monday, Oct. 18 at the City Hall Club Room. (Review Photo)



Most people estimate the speed of a roller coaster as being 80-100 miles per hour; really it's only 24-35 miles per hour.



Death Valley, in southeast California, is 282 feet below sea level - the lowest point in the nation.

Elect  
**SHIRLEY GROCE**  
By Write-In Vote  
Justice of the Peace  
Precinct 3  
Hale County  
General Election Nov. 2

Paid For By Shirley Groce



BILLY COOPER was one of the leading rushers for the Lopes Friday night. He is pictured running around two Tulia defenders to gain several yards. (Review Photo)

## FARM MORTGAGE INSURANCE

**CAN YOUR WIFE PAY THE DEBTS?**

**\$500,000 Indemnity**

Available For Ages 21-65  
Must Meet Eligibility Requirements

**Example**  
31 year old male-non smoker  
**\$71.57 per month**  
1st Year Level Includes Waiver Of Premium

Contact: Steve Miles  
Call 298-4127  
418-9th  
Next to Energas

Fast • Fair • Friendly

Now's the time to buy that new John Deere cotton stripper.

Make your best deal and postpone finance charges until October 1983

A new John Deere cotton stripper could make a world of difference in your productivity. You can't find a better time to get one. We're ready to deal. And on top of the deal you make by October 30 this year, all your finance charges will be waived until October 1, 1983. It's a winning combination that can keep more of your money available for other uses. Come on in and let's talk it over.

**JOE THOMPSON IMPLEMENT**

298-2541 Abernathy

## Difficult times demand wise decisions... and strong decision-makers like Lt. Gov. Bill Hobby.

Texans are facing some difficult times. Now, more than ever, we need experienced, compassionate leaders in our state government.

We need a leader like Lt. Gov. Bill Hobby who has our interests at heart. Here's how Hobby stands on the issues concerning Texans:



**EDUCATION.**  
HOBBY will not be satisfied until our education system is the best in the nation. His efforts to improve the quality of public education for your children and grandchildren begin in the classroom. He is for improving teacher salaries and benefits. He is for giving more control to local school districts.

**JOBS.**  
HOBBY is working to create more and better jobs for Texans. He is making sure jobless Texans receive their full unemployment benefits. He is working to increase the efficiency to the Texas Employment Commission. He is stimulating economic growth and new jobs through responsible state spending and one of the lowest tax rates in the nation.

**CRIME.**  
HOBBY is for strong laws and certainty of punishment of criminals, backed by better training and pay for our police officers. He is helping upgrade our courts to speed up trials of accused criminals. He is for improving our prison system and parole system.

Re-elect  
Bill  
**Hobby**

... A STRONG  
LT. GOVERNOR,  
HONESTLY.

Political Advertisement paid for by the Re-elect Lt. Gov. Bill Hobby Committee, P.O. Box 567, Austin, Texas 78767

# IT'S HALLOWEEN

## BE-WITCHING HALLOWEEN VALUES

YES  
**DETERGENT**  
 32 OZ **79¢**



MINUTEMAID  
**LEMONADE CRYSTALS**  
 8 QT **\$2.19**

FLAVOR ICE 24 PACK **99¢**



SWIFT CHILI 15 OZ **79¢**



TENDER CRUST 2 FOR **99¢**  
 BREAD 1 1/2 Lb Loaf

ALL WATCHES  
 25% OFF

ALL SUNSHADES  
 1/2 PRICE

HOT STEAM  
**VAPORIZER \$5.95**

KRAFT  
 GRAPE  
**JELLY**  
 2 LB **99¢**



QUAKER STATE DELUXE  
**MOTOR OIL 89¢**

WILSON  
**LARD 25 POUND \$9.99**



EAGLE BRAND  
**MILK 15 OZ 99¢**



**PINESOL 99¢**



**IVORY LIQUID 22 OZ 99¢**



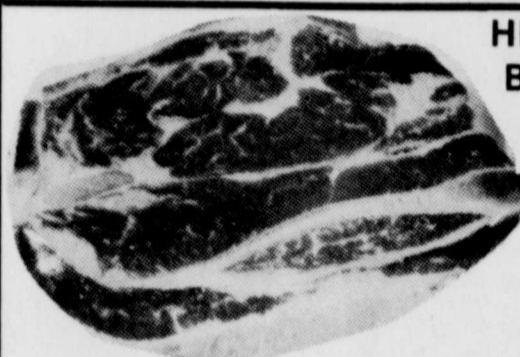
**ERA 64 OZ \$3.29**



FAMILY SIZE  
**BOLD \$6.59**

ALL HALLOWEEN  
 CANDY  
 25% OFF

### MEATS



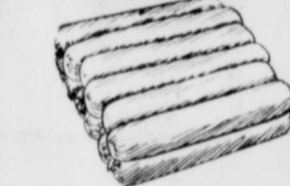
HEAVY GRAIN FED BEEF  
 BONELESS CHUCK  
**ROAST LB \$1.59**



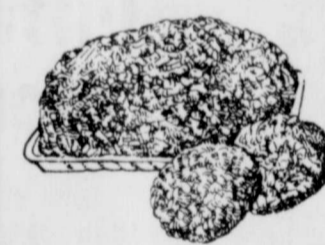
RUMP  
**ROAST LB \$1.99**



HEAVY GRAIN FED BEEF  
 BONELESS CHUCK  
**STEAK LB \$1.79**



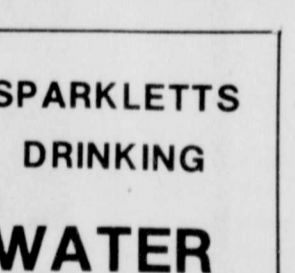
**SHORT RIBS LB \$1.19**



BONELESS STEW  
**STEW MEAT LB \$1.89**



Oscar Mayer Reb/Jbo/Chse  
**FRANKS 1LB PKG \$1.69**



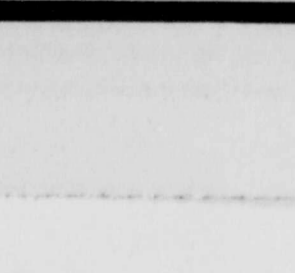
BONELESS FAMILY PAK ROUND  
**STEAK LB \$1.99**



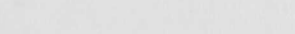
Extra Lean Fresh Chuck Quality  
 Guaranteed 80%  
**GROUND BEEF LB \$1.69**



SELECTED SLICED YOUNG  
**BEEF LIVER LB 89¢**



OSCAR MAYER SLICED  
**BOLOGNA 12 OZ PKG \$1.59**



Heavy Grain Fed Beef  
**BRISKETS 8 - 12 Lb Avg \$1.29**  
 WHOLE IN BAG PACKER TRIM LB

SPARKLETT'S  
 DRINKING  
**WATER 3 FOR \$1.00**  
 1 GAL

**COCA COLA**  
 32 OZ  
 6 PACK  
**\$1.49**  
 Plus Deposit







**PAMPERS**  
 DAYTIME 60's  
 TODDLER 48's  
 NEWBORN 90's

**LUV'S**  
**\$7.99**

**FISHER PARTY PEANUTS**  
 12OZ **\$1.49**

**GO FOR THE GREEN**

**HEINZ KETCHUP**  
 32 OZ **\$1.19**



V-8  
**JUICE**  
 46 OZ **69¢**

**DEL MONTE TACO SAUCE**  
 3 FOR 8 OZ **\$1.00**



**SWIFT PREMIUM VIENNA SAUSAGE**  
 3 FOR **\$1.00**

**FEDERAL AND REMINGTON SHOTSHELLS**  
**\$3.99**

**SHURFINE DOGFOOD**  
 25 LB **\$3.99**

**Double S & H Green Stamps**  
**Sat.**  
 Closed All Day Sunday  
 We Gladly Accept Food Stamps  
 We Redeem WIC Cards  
 We Cash Payroll Checks  
 We Make Home & Business Delivers

**SHURFINE MUSTARD** 9 OZ **35¢**

**NESTLE HOT COCOA MIX** 12 OZ BOX **89¢**

**TOM SCOTT MIXED NUTS** 12 OZ **\$1.49**

**BORDEN ICE CREAM** 1/2 GAL **\$1.49**

**BETTY CROCKER CAKE MIX** **69¢**

**ATKINS HAMBURGER DILL SLICES** 2 FOR 16 OZ **89¢**

**SYLVANIA STANDARD BULBS** 2 PACK **59¢**

**NITE GLOW CANDLES** REG **\$1.95 99¢**

**DURA FLAME LOGS** **99¢**

**ALPO BEEF CHUNKS** 3 FOR **\$1.00**

**TEXSUN GRAPEFRUIT JUICE** 46 OZ **69¢**

**ARMOUR TREET** 12 OZ **\$1.19**

**FARM FRESH PRODUCE**

**ALL PURPOSE RUSSET POTATOES** 10 LB BAG **89¢**

**YELLOW SWEET ONIONS** LB **13¢**

**LONG GREEN SLICERS CUCUMBERS** LB **19¢**

**FRESH JUICY GRAPEFRUIT** 5 LBS **\$1.00**

**DELICIOUS APPLE** 3 LB BAG EACH **89¢**

**RED ROME EXTRA FANCY APPLES** LB **46¢**

**LIPTON FAMILY SIZE TEA BAGS**  
 24 CT **99¢**





MR. AND MRS. OTIS ASHMORE

### Ashmores Celebrate 50th Wedding Anniversary Sunday

Mr. and Mrs. Otis Ashmore, of Shallowater, will celebrate 50 years of marriage with a reception from 2-4 p.m., October 31 in their home at 1106-15th. Hosting the occasion, will be Mrs. Otis McMenemy of Tucumcari, N.M.; Mrs. Harold Williams of Lubbock; Mrs. Wayland

Richardson of Clyde; and Mr. Clarence Ashmore of Hale Center, all are children of the couple. The former Bonnie Redwine and Otis Ashmore were married October 29th, 1932, in Lubbock. The couple has 9 grandchildren and 5 great grandchildren.

### Shallowater TOPS Club Meets

The Shallowater TOPS Club met Tuesday evening and the "Best Loser of the Week" was Melba Adams. Cathy Sires showed the

members some exercises to do to help with their "battle of the bulge." So come on and join with us in "taking it off."



MARY WARREN inspects damages to her house from a small fire recently. Her friends gathered to help her clean up after the fire. (Review Photos)

A free pamphlet that reveals how legislators voted is available by writing to: The American Conservative Union, 38 Ivy Street, S.E., Washington, D.C. 20003.

### Hobby Challenges Texans To Overcome Voter Apathy

Lt. Gov. Bill Hobby today challenged Texans to overcome voter apathy and urged them to vote on November 2 for the most important office in the nation—that of citizen.

"No office in the land is more important than that of citizen," Hobby said. "As citizens, we have the power to help our state weather the recession and continue our prosperity by exercising our right to vote."

Hobby said he is disturbed by recent polls that show most Texans are neither Democrats nor Republicans; instead, they list themselves as "undecided."

"Apparently, apathy is high this year. This is particularly alarming when you consider that more than 200 elective offices, including all top state officials and all Texas House and senate seats, are up for grabs."

Hobby said that Texans should ask themselves, "Who will I have to blame if Texas fails to maintain its status as one of the best states in the nation in which to live?"

"Our Texas Constitution guarantees the right of free speech and free assembly and all the other basic freedoms," Hobby said. "How sad it is that so many thousands of Texans, enjoying the blessings of liberty and the high quality of life that has become characteristic of our state, will refuse to exercise the fundamental process of free democracy in a free republic."

Hobby said that the history of Texas is proof the struggle for prosperity is an ongoing process and never a final achievement.

"I believe that Texas will continue to be a land of opportunity, as it has since its inception more than 100 years ago," Hobby said. "This will happen only if the people of Texas combine

Eighty-two major international shows were held in Germany in 1981, attended by seven million people from all over the world. Some 75,000 exhibitors took part in the shows at about 15 different cities' fairgrounds in Germany. The German trade fairs offered businessmen a total of 38 million square feet of exhibit space in 1981.

### BIRTHS

Congratulations to Mr. and Mrs. Robert Terry on the birth of a son, Robert Michael, born October 12 at 12:45 p.m. at Lubbock General Hospital. He tipped the scales at 8 lbs 3 ozs and was 21 inches long. Proud grandparents are Mrs. Eva Terry of Shallowater, James Joplin of Lubbock, Barbara Hall of Lubbock, and Mr. & Mrs. Spencer of Lubbock. Great-Grandmother is Mrs. Joplin of Lubbock.

### KAPPA KAPPA IOATA MEETS

Kappa Kappa Ioata, a sorority of women interested in the teaching profession, met in the home of Jan Spence Saturday, October 23 for an international luncheon.

Jan Spence and Juanelle Smith were hostesses for the meeting. Fourteen members were in attendance.

After a delicious lunch of food prepared from recipes around the world, Theresa Mason presided over a short business meeting.

The next meeting will be held in Abernathy at the 924 Restaurant November 20. The hostesses will be Bettie Hardin, Nell Revier, and Betty Avery.

### Shallowater United Methodist Youth Meet

The Shallowater United Methodist Youth met Sunday night to re-organize and elect officers.

Quint Wilburn was elected President, Jeff Oliver as Vice-President, and Patti Middlebrook as Secretary-Reporter. After the election, a film was shown called 'Johnny

Baker's Last Race.' The Methodist Youth reorganized and are ready to serve Jesus. They invite any youth of the community to come join them.

Time of the meetings are as follows: 5:00 - Jr. High Youth, 6:00 - Church, 7:00 - Sr. High Youth. Those present Sunday

night were Kathy and Connie Parr, and visitor Connie Bullard, Amy Stephenson, Joe Bob Blackburn, Brian Green, Darren Head, Jeff Oliver, Clay Enger, Jordan Cox, Becky Aylesworth, Patti Middlebrook, Renae Applegate, Tim Short, Dana Blackburn, Quint Wellburn and Todd Oliver.

### Wedding Shower For Jeanie Shipp

Jeanie Shipp was honored with a miscellaneous shower in the home of Mrs. Jim Adams October 16.

The bride's colors of red and white were used to decorate the table, which was covered with a red cloth over which was used a crocheted cloth made by Mrs. Adams grandmother. A red miniature silk para-

sal, with red and white silk flowers, formed the centerpiece and red punch was served with cookies and nuts.

Some thirty five guests registered. The hostesses who were Mesdames Connie Davis, John Anglin, Garland Boozer, Bryan Burgett, Jack DuLaney, Jack Cowart, Julie Hohenberger, Herman

Wittie, Lavone McAuley and Curtis Howell of Altus, Oklahoma presented the honoree with a hand painted snack set painted by Mrs. Adams.

The prospective groom, Pat Ford of Paris, Texas was a guest at the request of the bride so that he could meet the brides friends.

### Family Reunion Held At Muleshoe

There was a family reunion held in the home of Mr. and Mrs. Bob McDaniel of Muleshoe Sunday, October 24. Mrs. McDaniel is the mother of Clint Fannon and the grandmother of Kathy Gravett, both of Shallowater.

There were 4 of Mrs. McDaniel's 7 children there: Clint & Gloria Fannon from Shallowater; Nadine & Bill

Lockwood from Walnut Creek, Ca.; Weldon & Gloria Fannon of Floydada; and Pauletta & Jimmy Crawford of Muleshoe.

5 grandchildren and 5 great grandchildren were also present. There were 4 sets of 4 generation families present.

### Jr. High Teams Fall To Seagraves

Both Shallowater Junior High Football teams lost to Seagraves Thursday night. The 7th grade lost by a score of 28-0. Seagraves scored once in the first quarter and twice in the second quarter while shutting down the Ponie's offense to win.

Teeth are bones—but harder than most of the other bones in the body.

In the 8th grade game, Seagraves again stomped Shallowater with a final score of 38-8. The Ponie's only scoring drive came in the first quarter, while the Eagles scored once in the first quarter and twice in the second quarter for a 22-8 halftime lead. Seagraves pulled off two more touchdowns in the second half for a final score of 38-8. Both teams will play O'Donnell starting at 4 p.m.

### Orders For Yearbooks Being Taken

The Journalism staff will be selling yearbooks October 25 through November 10.

The Yearbooks are \$16 and may be personalized for \$2 per name. Funds will be used to pay for publication of the yearbooks.

Orders may be placed through classrooms in grades K-12 or a message may be left with the high school office at 832-4531 extension 33 and a yearbook staff member will be assigned to follow-up on your order.

### SHALLOWATER FLOWERS & GIFT SHOPPE

606 Clovis Rd. JUNE BISHOP - OWNER

832-5717  
9-5:30 Mon.-Fri. 832-5717 Sat. 9-1 LOCAL - LUBBOCK DELIVERIES DAILY

### Arts And Crafts Festival

Abernathy is having its 3rd annual Arts & Crafts Festival Saturday, November 20, at the Abernathy Community Center Complex.

Anyone interested in reserving a booth for this year's festival contact: Jane Murray 298-4291, Diana Phillips 298-2369, or Betty Neve 298-2984, after 5:00 p.m.

### Appliance Service Center

Repairs  
Refrigerators Freezers  
Washing Machines, Dryers  
Dishwashers, Ranges  
Area Service  
832-5531

### Dee Dee Moore

You've Come A Long Way Baby



Happy 13th  
Birthday  
Love You  
Grannie and Pop

### KEEP WAYNE LECROY

Working for the People of Lubbock County



- ★ Qualified by Experience and Education Draughtons Business College-Accounting & Office Management
- ★ Presently supervising clerks that keep over 100,000 legal records
- ★ Serves on three important Lubbock County Committees by appointment of The Commissioners Court

1. Computer Software Evaluation
2. Personnel Policies
3. Criminal Justice Computer Users

### Wayne LeCroy for District Clerk Democrat

Pd. Pol. Adv. Wayne LeCroy Campaign Committee, Lubbock Tx 79417, Rexell Mitchell Treasurer

### JOIN

### THE CLUB

All these great services for only \$6.00 a month, deducted automatically from your checking account:

**MONEY MARKET CERTIFICATES**  
High yield savings program.

**UNITED STATES SAVINGS BONDS**  
Issued and cashed free to Club members

**NOTARY SERVICE**  
Whenever you need the services of a notary, come to us. We'll notarize your signature at no charge.

**SYSTEMATIC SAVINGS**  
As a member of The Club, you're entitled to take advantage of our automatic savings plan. Tell us how much you want to save. We'll transfer that amount from your checking account to your savings account each month.

**SAFEKEEPING OF WILLS**  
Even if you don't maintain a safe deposit box with us, we'll take care of your will by keeping it for you in a locked vault.

### AND MORE

### FIRST STATE BANK

A LITTLE...BETTER BANK

BOX 160, SHALLOWATER

MEMBER FDIC

## Senior Spotlight...Tim Chandler and Sally Alvarado

This week's Senior Spotlight shines on Timothy R. Chandler and Sally Alvarado, both students are active in the "half-day" program this school offers.

Tim Chadler (know affectionately as "Flash") is the son of Mr. and Mrs. Robert Chandler. As stated previously, Tim has a job at Save-N-Gain. He goes to school for the first four classes and gets credit for the last two class periods by working.

In his spare time, Tim enjoys listening to country music, building model cars, and watching M\*A\*S\*H\*. Tim stated that he "really enjoys being a Senior." After graduation, he plans on joining the Air Force.

Sally Alvarado is our next Senior. She's active in the VICA program; going to school four periods, and working as a Cosmetologist. Sally likes playing volleyball, fixing hair (which is what she does best!), and listening to "all kinds of music." She also likes going out to eat Pizza and Mexican Food.

Sally feels that this year, being her last, "It's the best of all my school years!" In the future, Sally hopes to become one of the best Cosmetologists and eventually open her own Beauty Salon. By Kisty Tipton



TIM CHANDLER AND SALLY ALVARADO

## Scout Troop And Cub Pack To Attend Scout-O-Rama

The Shallowater Scout Troop 515 will be participating in the Scout-O-Rama this weekend in Lubbock. The Scout's will present a camping display and talk about camping, rappelling and putting together camping stands and equipment. The newly formed Cub Scout Pack 515 will also be

participating in a bean bag throwing game in which all participants will receive a prize.

Both the Troop and Pack enjoyed being in the Lion's Club harvest parade and talking to all people that stopped by their display at the clubhouse. Thank you Lions for a real fun day.



BOY SCOUTS camping scene outside of the scout clubhouse. The scouts are learning how to rough it and survival skills. (Review Photo)

## Shallowater Art Students Observe Professionals

The Shallowater High School Art Students took a trip to Lubbock's Warp and Weave to observe and learn about weaving crafts. Several different demonstrations were given.

Mandalla weaving techniques, which students will be learning shortly, were demonstrated by Nancy Beck. Mandalla weaving is a type of needle weaving done by hand. There are four types of stitches: tabby, chaining, twinning and soumak.

Tom Beck demonstrated Harness Loom weaving. Harness Loom is a weaving done by machine that is worked by the weaver's feet.

The students were shown many weaving made by internationally known artists. Clothes made of yarn, spun and woven by the artist, were also on display.

The students said "It was an interesting trip and we had a lot of fun." Charla Carson, teacher of the art class, agreed. By Gracie Duenes

## Harris-High School Principal 7 Years

Mr. Beryl Harris has been principal of Shallowater High School for 7 years and has seen about 420 of his students graduate.

"I enjoy the feeling that I am able to help my students," he replied when asked what he thought of being principal of SHS. He thinks that recent students of Shallowater have "become more knowledgeable in world and national affairs, as compared with students of other years."

Mr. Harris says that he likes his job, but there are things he has to do that he doesn't like. He thinks "the kids are lucky to have such

good teachers." He also thinks that SHS has a good curriculum for the size of the school.

Mr. Harris had some advice for the students of Shallowater. "I encourage the students to think about what is important to them and their families, and to base their decisions on carefully considered priorities. Also, try to be aware of what the results of your actions will be. He had a quote to relate to us also.

"If you don't know where your going, you are going to wind up some where else." By David Stalter

## SCHOOL MENU

NOVEMBER 1-5, 1982  
MONDAY: Enchiladas, Buttered Corn, Combination Salad w/Dressing, Sliced Peaches.

TUESDAY: Fried Fish Fillet w/Tarter Sauce, Macaroni & Cheese, Seasoned Spinach, Hot Rolls Banana Pudding.

WEDNESDAY: Tacos, Lettuce & Tomatoes, Pinto Beans, Fresh Fruit Jello.

THURSDAY: Hamburgers, Lettuce, Tomato, Pickle & Onions, French Fries w/Catsup, Peanut Butter Cookies.

FRIDAY: Roast Beef & Gravy, Baked potatoes topped with cheese, Green Beans, Hot Rolls, Mustang Brownies.

1/2 pint of milk served with each lunch

Lake Superior is our nation's largest lake with a total area of more than 31,000 square miles.

be a need for only one more strong money-making project. By Kristy Tipton

**Little Folk's Day Nursery**  
604 7th Street  
Shallowater, Texas

"Drop Ins" Welcome  
State Licensed Day Care  
Competitive Rates  
Rides To And From School  
Doug and Barbara Rowden

832-4039 Business Phone 832-4307 After 6:00 p.m.

## FHA Shooting For \$900

FHA's first money-making project soared to over \$800 dollars with the sale of HENCO's Acrylic Classics. Each member was urged to sell at least 20 items and most filled that requirement.

The purpose of all of this year's sales focuses mainly

upon the annual Sweetheart Banquet to be held in February. FHA is aiming high this year with TARA Restaurant as the goal location for their banquet.

After delivering and selling extra Acrylic Classics, they hope to make close to \$900. As a result, there will

AMERICAN GROWERS SERVING AREA FARMERS WITH MODERN-EFFICIENT GIN SERVICE PHONE 832-4300 SHALLOWATER, TEXAS

AMERICAN GROWERS

**SHALLOWATER CO-OP GIN**  
BOX 130  
SHALLOWATER, TEXAS 79363

## SHALLOWATER CHURCHES WELCOME YOU

12TH ST. CHURCH OF CHRIST  
10:00 Bible Class  
10:45 Worship  
6:00 Sunday Night Worship  
7:30 Wed. Night Bible Study

FIRST BAPTIST CHURCH  
9:45 Bible Class  
10:55 Worship  
7:00 Sun. Night Worship  
7:30 Wed. Night Church

METHODIST CHURCH  
9:45 Sunday School  
10:45 Worship  
6:00 Sun. Night Worship  
7:00 Wed. Night Choir practice

ST. PHILLIPS BENEZI CATHOLIC CHURCH  
11 a.m. Sunday Morning Mass  
8 p.m. Thursday Night Mass

### Parable of Jesus

How think ye? if a man have a hundred sheep, and one of them be gone astray, doth he not leave the ninety and nine, and goeth into the mountains, and seeketh that which

### WORD of GOD

is gone astray? And if so be that he find it, verily I say unto you, he rejoiceth more of that sheep, than of the ninety and nine

which went not astray.

Even so it is not the will of your Father which is in heaven, that one of these little ones should perish.

Matthew 18:12-14

The Following Merchants Sponsor These Churches

- Shallowater Review
- Buchanan & Associates Real Estate
- Real Estate Corral
- Shallowater Insurance Agency
- Horton's Frame Gallery
- True Value Hardware
- Vera's Automatic Laundry
- Germania Insurance

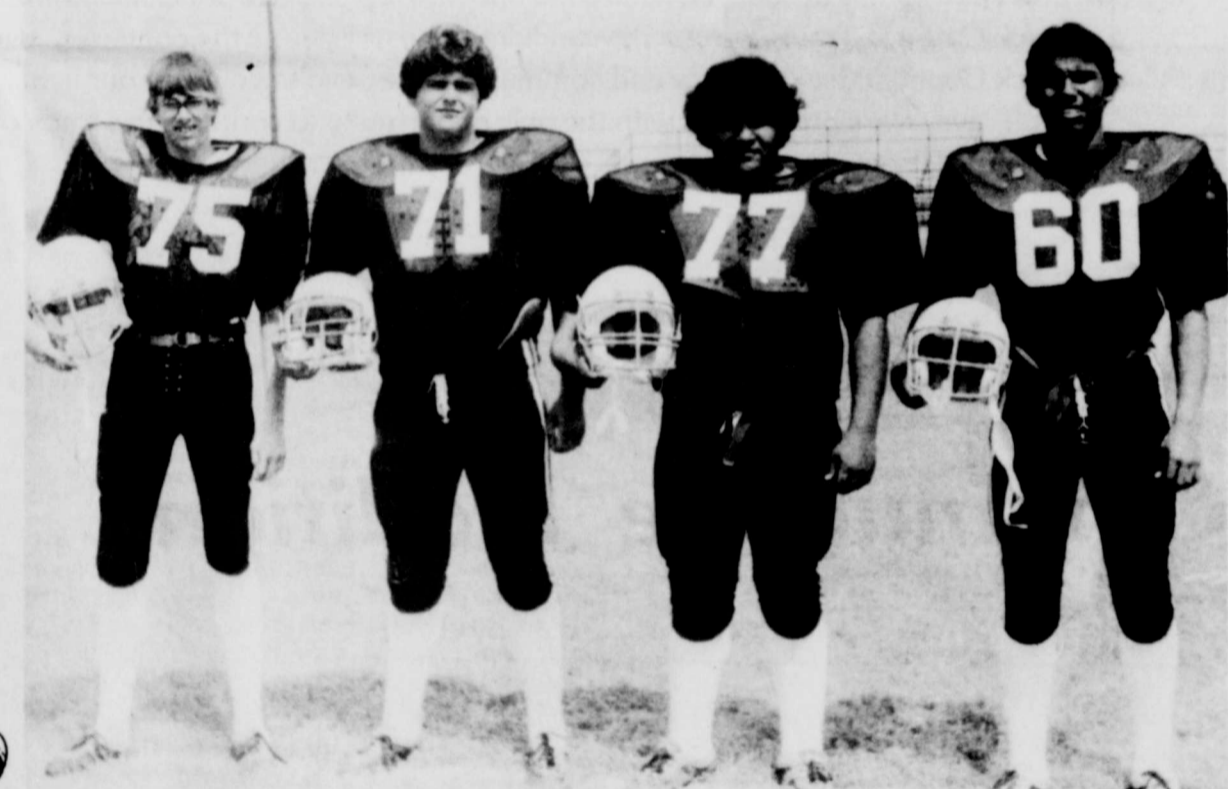
# GO MUSTANGS

BEAT O'DONNELL HERE 7:30 FRIDAY

Meet The Mustangs

VICTORY ROSTER

- Shallowater 7 Idalou 0
- Shallowater 35 Cooper 0
- Shallowater 30 Springlake 0
- Shallowater 38 Oton 0
- Shallowater 32 Plains 6
- Shallowater 33 Morton 14



JON SELLERS wears number 75 for the first time. On offense he plays the position of end and on the second string, and on defense he plays the position of defensive end also on the second string. Jon had two years experience on J.V. and is classified as a Junior at Shallowater High School.

LANCE FOERSTER wears number 71 on the field for the first time. On offense he plays the position of second string center, and on defense he plays the position of defensive nose guard, second string. Lance had 1 year experience on J.V. He is classified as a Sophomore at Shallowater High School.

VICTOR ORTIZ wears number 77 on the field for the first time. On offense he plays the position of second string guard, and on defense he plays the starting position of nose guard. Victor has one year experience on J.V. He is classified as a Sophomore.

JOE CUEVAS wears number 60 on the field for the first time. On offense he plays the position of second string guard, and on defense he plays the position of second string end. Joe has had one year of experience on the J.V. he is classified as a Sophomore at Shallowater High School.

<b>JULIA'S HAIR CARE</b> 832-4640	<b>VIRGIL BETTS STANDARD SERVICE</b> Clowis Hwy. 832-5038	<b>MITCHELL CONSTRUCTION</b> Go Mustangs Go!!! Shallowater, Texas
<b>HUTTON'S DRIVE IN</b> 832-4478	<b>CIRCLE S FOOD</b> We Support The Mustangs Corner 12th & Ave. L 832-4856	<b>THE JOE COX FAMILY</b> We Support The Mustangs!
<b>SHALLOWATER SUPER MARKET</b> Choice Meats Is Our Specialty 801-Ave. F 832-4607	<b>THE JIMMY FOERSTER FAMILY</b> We Got The Eye Of The Tiger And We're Going To Go For It.	<b>THE HIGHLEYS</b> Dee, Caran & Girls <b>THE CONNERS</b> Clifford, Sandra, Steve, Andra, Courtney <b>THE SIMMONS</b> Tracy & Seena
<b>SHALLOWATER TRUE VALUE HARDWARE</b> 832-4042 501 Clowis Rd.	<b>SHALLOWATER TEXACO</b> Wayne & Fayr Owners & Operators Service Is Our Business Shallowater, Tex. 832-4779	<b>Acid Delinters</b> Ron, Beth, Tamya, & Amy Armes 832-4448
<b>CHANDLER REALTORS</b> 503 Clowis Rd. 832-4586	<b>SHALLOWATER AUTOMOTIVE</b> Go Team!!! Owner Danny Everette 832-4610	<b>The Clean Sweep Company Chimney Sweep</b> Brian Jungman Go Mustangs!!! Shallowater 832-4262

# TOUGH, AGGRESSIVE PROSECUTION . . . LEADERSHIP IN LAW ENFORCEMENT . . . TRAVIS WARE — A TRADITION . . .

## *In The Courtroom*

As Chief Felony Prosecutor, Travis has committed himself to giving the citizens of Lubbock County the best representation possible in their courts of law and his ability in the courtroom is widely recognized. Spending long days and nights in case preparation, Travis has built a trial record second-to-none in the Criminal District Attorney's Office. Having tried approximately 100 felonies, Travis has lost only one and the defendant in that case was later tried by Travis in a different case; this time he received a 99 year sentence.

## *In Administration*

It was from Travis' association with John Montford, as his associate in private practice, that he became a principal in the establishment of a new direction and program for law enforcement and the Criminal District Attorney's Office of Lubbock County. In the months preceding the 1978 election for Criminal District Attorney, between Montford and Alton Griffin, Travis spent countless hours with Montford and other key members of the campaign in formulating the programs and policies that would become the foundation of the Montford administration. Between the election and when the new administration took office in 1979, Travis was a key leader in the transition team which worked toward solidly implementing these programs and policies as quickly as possible. Considering his leadership and outstanding ability in the courtroom, it was logical, when Montford began choosing his staff, that he first turn to Travis. Accepting his offer, Travis entered the Criminal District Attorney's Office with John on January 1, 1979.

## *On The Streets*

Travis' time has not been spent just in the courtroom or office. John Montford promised the citizens of Lubbock County the most aggressive leadership in law enforcement and prosecutions available. Following this policy, Travis has spent many hours, day and night, at crime scene investigations, at autopsies, working up warrants, providing legal advice to law enforcement officers and generally assisting in the making and breaking of criminal cases. His dedication and support has won him the respect and support of the law enforcement community in Lubbock County.

Travis has spent better than 4 years as a key leader in the creation and implementation of a tradition in law enforcement for Lubbock County. His experience and ability are unequalled. He is committed to the policies that have served us well in the past; he is willing and able to bring new ideas and energy to our continuing fight against crime. As we proceed into this decade, we need someone who has played a principal role in establishing this tradition of tough, aggressive law enforcement that has come into being in Lubbock County. Travis Ware is the candidate who will give us the continuity of leadership and policy we must have. He is the only candidate who can give the citizens of Lubbock County the experience and commitment we need to continue our fight against crime. We have set a tradition that is looked to by others throughout the State of Texas; Travis Ware provides us with the only opportunity to continue this tradition and move forward to greater accomplishments. We have made a beginning. We must not turn back now.

## *Continue the Tradition....*

### *On November 2nd*

### *Elect*

## *Travis S. Ware*

### *Your Criminal District Attorney*



PD. POL. ADV. TRAVIS S. WARE CAMPAIGN FUND,

P.O. BOX 2025, LUBBOCK, TX, 79408, B.C. "PECK" McMINN, TREASURER



# New Deal News

by Sharla Attebury

## First Baptist Church Revival To Begin Sunday At

Revival services will begin Sunday morning, October 31, and will continue through Thursday evening, November 4, at the First Baptist Church in New Deal.

Services will be at the regular worship hours of 11 and 7 Sunday, and at noon and 7:30 Monday through

Thursday. Lunch will be served each day at noon.

Leading the revival services will be Evangelist E.C. Chron, who makes his home in Carrollton, Texas. Rev. Chron has been in fulltime evangelistic work since 1972. He is a native of Ralls, and has pastored churches in Texas and Alaska, including Northside Baptist in Abernathy. He has conducted over 300 revival campaigns. This will be his second such campaign at the New Deal church.

Music leader for the revival will be Bill Shough, evangelistic singer. A native of Elk City, Oklahoma, Bill has been in the music ministry for 25 years, serving churches in West Texas and Muldoon Road Baptist Church in Anchorage, Alaska.

The public is cordially invited to attend these



EVANGELIST E.C. CHRON

**HAPPY ANNIVERSARY** this week to Mr. and Mrs. Darrell Beopple, Mr. and Mrs. Gene Williamson and Mr. and Mrs. Kenneth Thiel.

**GO LIONS---STOMP THE COWBOYS!!**

**GO LIONS!!  
BEAT  
PLAINS  
HERE  
FRIDAY  
NIGHT**

**HIGH SCHOOL PEP RALLY FRIDAY**

A pep rally will be held at 2:30 Friday in the high school gym. Everyone is encouraged to come boost the Lions to another district win.

The Lions will host the Plains Cowboys at New Deal. Game time is 7:30 p.m. Friday

**Meet The Lions**



**CRAIG HARRINGTON**, a senior, wears number 10 on the field. He plays the positions of quarterback and cornerback. He is the son of Mr. and Mrs. Charles Harrington of Lubbock.



**MARK HARRINGTON** also a senior, wears number 88 on the field. He plays the positions of tight end and cornerback. He is also the son of Mr. and Mrs. Charles Harrington of Lubbock.

A fumble was recovered by John Attebury and a pass intercepted by Steve Johnson.

Leading rushers for New Deal were: Donnie Bradley, 11 carries for 66 yards, 1 T.D. and Robert Jackson, 6 carries for 45 yards, 1 T.D. Leading receivers for New

Deal were: Steve Johnson, 4 receptions, 62 yards, 1 T.D., Nathan Shannon, 3 receptions, 54 yards, M. Harrington, 3 receptions 61 1 T.D., R.L. Villegas, 1 reception, 40 yards, 1 T.D., J. Villegas, 1 reception, 11 yards and R. Jackson, 1 reception, 22 yards.

DISTRICT 6-A STANDINGS	Season	District
New Deal	7-0-1	3-0-0
Shallowater	7-1-0	3-0-0
Plains	6-2-0	2-1-0
Seagraves	6-2-0	1-2-0
Morton	1-7-0	0-3-0
O'Donnell	0-8-0	0-3-0

## Lions Roar Past O'Donnell 37-0

The New Deal Lions continued their winning ways last Friday night with an easy 37-0 romp over the hapless O'Donnell Eagles. The victory upped the Lions season record to 7-0-1 and a perfect 3-0-0 record in district.

The loss dropped the Eagles to a 0-8-0 season mark and 0-3-0 in district play. In the first quarter, the Lions took charge early as Henry Ramirez almost ran the opening kickoff all the way, only to be stopped by one last Eagle Defender.

After two more running plays by Ramirez, the Lions were sitting pretty deep in Eagle territory. However, the Lions were going to have to win this game without the services of Ramirez, due to a severely sprained

ankle he received after being gang tackled by the Eagle defense.

With only 1:30 elapsed off the clock, the Lions put the first points on the board as fullback Robert Jackson blasted across the goal line and Donnie Bradley kicked the PAT good and the Lions were up 7-0. That was the extent of the scoring in the first quarter.

In the second quarter, the Eagle offense found themselves in a hole as the Lion defense had backed them up to the goal line. As the next play got under way, New Deal nose-guard, James Brisco, tackled O'Donnell QB Wayne Barton in the end zone for a safety. That made the score New Deal-9, O'Donnell-0.

New Deal got the ball shortly thereafter and scored again, this time on a

screen pass from QB Craig Harrington to Robert Lee Villegas. Villegas showed his athletic ability as he maneuvered himself to the open field and darted to the end zone from 40 yards out. Bradley added the PAT and Lions led 16-0.

With time running out in the first half, the Lions were not satisfied with the lead they had and decided to add one more score before halftime. The Lions moved the ball quickly down field to the Eagle 26 yard line. There was only time for one play, and if the Lions were to score, it would have to be a pass. Sure enough, QB Craig Harrington dropped back and heaved a pass to the end zone in the direction of Slotback Steve Johnson, who made his patented leap in the air to snatch the ball out of the waiting arms of a shocked and heartbroken Eagle defender. Bradley, again, was true on the extra point and the Lions went to the dressing room at halftime with a comfortable 23-0 lead.

In the third quarter, the Lion defense stopped the Eagle offense in its tracks, just as they did the entire first half. At one time, though, the Eagles did manage to put a scare in the Lions as they had eight tries from the 3 yard line and failed to score. The Lion Defense would not be soered on this particular night. This was very frustrating to the Eagle football team as tempers flared ever so often.

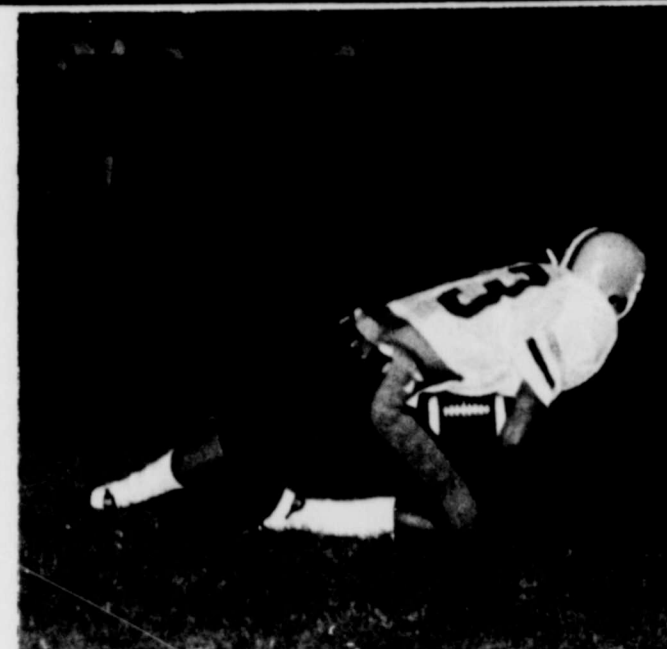
The Lions continued to move the ball against the outmanned Eagle defense

and did score again as QB Harrington fired a quick pass over the middle to his brother Mark from 15 yards out. Bradley the PAT and the score at the end of the third quarter was, New Deal-30, O'Donnell-0.

In the fourth and final quarter, the Lions had their second team offense on the field. However, the first team defense did stay in the game to assure no scoring by the opposition.

New Deal scored its final touchdown of the night as reserve fullback Donnie Bradley broke through the Eagle goal line from a yard out and then kicked his fifth extra point and the Lions were up by 37-0 count. That was all the scoring in the game as time ran out.

The statistics of the game were as one sided as the score, as O'Donnell could manage only 5 first downs, 47 yards rushing, and 4 yards passing for only 51 total yards. The Lions, on the other hand, rolled up an impressive 24 first downs,



**A NEW DEAL LION** is pictured catching a pass last Friday night at the game against O'Donnell. The Lions won easily. They are ranked 7th in State 2-A football last week and remain undefeated. (Review Photo by Sharla Attebury)

194 yards rushing and a whopping 252 yards passing for 446 total yards.

The next district opponent for New Deal will be the Plains Cowboys. Plains will come into the game with a season record of 6-2-0 and 2-1-0 mark in district competition. The Cowboys always play the Lions tough. New Deal will try to avenge last year's humiliating loss at the hands of the Cowboys. That score was 21-0!

### NEW DEAL-O'DONNELL STATISTICS

	NEW DEAL	O'DONNELL
First Downs	24	5
Rushing Yards	194	47
Passing Yards	252	4
Total Yards	446	51
Plays	13/24/0	2/9/1
Passes Intercepted by	1	0
Punts/Average	3/38.3	7/32.6
Fumbles Lost	2	1

**HAPPY BIRTHDAY** this week to the following New Deal locals: Tracy Vines, Joe Robbins, Carlla Dudley, Joey Sher-

man, Joan Sherman, Frances Ramirez, Shirley Sprowles, Lyle Blanchard, Randy Dunn, Cindy Lusk, Shanna Edwards, Tim Atte-

### School Menu

**MONDAY:** In Service  
**TUESDAY:** Sloppy Joe, Green Peas, Mixed Salad, Cherry Cake, Homemade Buns, 1/2 pt Milk.

**WEDNESDAY:** Fried Fish, Tarter Sauce, Macaroni & Cheese, Pinto Beans, Tossed Salad, Spice Cake, Corn Bread, 1/2 pt Milk.

**THURSDAY:** Beef & Cheese Pizza, Green Beans, Buttered Corn, Pineapple, 1/2 pt Milk.

**FRIDAY:** Hamburgers, Mustard, Salad Dressing, Catsup, French Fries, Lettuce, Tomato, Onion, Pickles, Cookie or Bars, Buns, 1/2 pt Milk.

bury, Bertha Boone, Juanita Bazan, Tonya Blankenship and Polly Hobgood.



**YOUNG HOMEMAKERS PRESIDENT** Patti Jones is pictured at the New Deal Young Homemakers Bazaar held last Saturday at New Deal. (Review Photo by Sharla Attebury)

## These Concerned Businesses Support The New Deal! School And Town 100%

<b>MARKHAM'S GROCERY</b> New Deal, Phone 746-6868	<b>GO! FIGHT! WIN! THE HARRINGTONS</b>	<b>D.C. WRECKING INC.</b> Clovis Hwy. Phone 762-8739	<b>WESTERN GLOVE CO.</b> Lubbock 747-8716
<b>NEW DEAL GIN CO.</b> New Deal, Texas Phone 746-5666	<b>FARMERS DEPOT</b> Phone 746-5510	<b>NEW DEAL COOP GIN</b> New Deal, Texas Phone 746-5313	<b>JOE KIRK WHOLESALE MEATS</b> Rt. 3 Lubbock 746-5307
<b>ATTEBURY FARM STORE</b> New Deal, Texas	<b>NEW DEAL FIRE DEPARTMENT</b> New Deal, Texas	<b>KELLEY'S GARAGE</b> New Deal, Texas Phone 746-5055	<b>ABERNATHY WEEKLY REVIEW</b>
<b>SHARP'S GROCERY STOKE</b> New Deal, Texas Phone 746-5257	<b>HUB CITY MACHINE &amp; MANUFACTURING, INC.</b> South University & 115th Street Lubbock Phone 745-3313	<b>NEW DEAL BAND &amp; ATHLETIC BOOSTER CLUB</b>	<b>STEPHENSON PORTABLE WELDING</b> New Deal, Texas 746-6006
<b>NEW DEAL FLYING SERVICE</b> New Deal, Texas Phone 746-6331	<b>JONES PRODUCE &amp; FARMS</b> 721 Erskine Ave. Lubbock 744-5562	<b>FARMERS CORNER</b> 4529 Clovis Rd. Lubbock Phone 762-8191 762-3521	<b>G &amp; G Aero-Service Lubbock International Airport</b> 747-1296

# FAST RESULTS WITH WANT ADS

## Real Estate

**LANDMARK REALTORS**  
 298-2440  
 1714 Ave. H  
 Large 3 br - 2 bath - 2 car garage. Heavy Shake Roof - Brick - Extra large utility room [9x13] Extra large closet in master bedroom [6x11] New loan available and below Market Rate.  
**PRICE REDUCED TO \$76,000**  
 207 Ave. M  
 2 Bedroom - 2 bath - 2 car garage  
**SOLD**  
 Yes & We Can Sell Your Home Too!  
 50,000.  
 5 BR, 2 1/2 BATH, 30,000  
 4 BR, 2 1/2 BATH, LUXURY HOME \$99,500  
 James Pope 298-4019  
 Jim Bob Smith 795-7126

**For Sale Home And Income Property:** 1 - two bedroom, 1 bath house with basement. Carpet. Energized with ceiling insulation. Stucco-brick exterior, 1250'. 1 efficiency, furnished and rented for \$150 per month, 400'. Also 1 bedroom house, living room, kitchen and bath furnished and rented \$150 per month, 480. Garage and shop in rear could be made into efficiency, 420'. Outside trim on all recently painted. All on corner lot, 2 blocks from school, 3 blocks from downtown. 901 Avenue F, Abernathy, Tex. \$28,000 cash or 50 percent down and owner will carry balance or apply for new loan under South Plains Housing Finance Corp. Would consider renting package with option to buy. Call to see. J. Ray Givens, 806-675-2144, Crosbyton, Tx. or 806-866-9279, Wolfforth. (49-4tc)

**For Sale By Owner:** 3 Bedroom, 3 bath, large kitchen, Separate living room, utility room, 2 car garage, basement, fireplace, cathedral ceiling, and workshop 33 x 65. 1611 Ave. F. Call 298-2882. (46-5tc)

**FOR SALE:** Firewood approximately two cords, hardwood \$100 per cord. 298-2700 (50-rt)

## Garage Sale

**GARAGE SALE: Friday & Saturday, 511-4th. Pot plants, new crochet, dolls, animals, hot mats, house shoes, make nice Christmas gifts. Clothes and other misc. items. [50-1tp]**

**GARAGE SALE:** Air hockey, girls bike, sewing machine, twin box springs, yarn, curtains and much more. 601 Ave. A. Thursday and Friday, Oct. 28th & 29th. (50-1tp)

## Miscellaneous

**Mary Kay Cosmetics.** 757-2126 S.R. Barrick. (46-14tp)

**CLEAN RUGS** like new, so easy to do with Blue Lustre. Rent electric shampooer \$1. Struve Department Store.

**SEE RINSE-N-VAC.** the incredible new portable steam type carpet cleaning system. It does the job of professional carpet cleaners at a fraction of cost. Rent one now at Struve's Department Store, 318 Main. Phone 298-2531.

## Card Of Thanks

**CARD OF THANKS**  
 To our Christian friends, we thank you for the love and kindness shown to us during Sandy's illness and death.

May God bless each of you.  
 Sincerely,  
 Buddy Lutrick  
 Terry, Tim & Roby  
 Pete & Ina Robinson  
 Donald & Sue Robinson  
 Bobbie & Verbal Peeples

**CARD OF THANKS**  
 Our thanks and praise to the Abernathy Emergency Medical Service Volunteers. The efficiency of these dedicated people is truly appreciated by Jesse & Maudill Webb, J.D. & Clyde Webb Lindsey, Barbara and Milka Webb Rachael Webb (50-1tp)

Even though Motorola no longer makes home television sets, Japanese companies that are today's giants in consumer electronics buy millions of quality components from this American company!

## Job Opportunity

**JOB OPPORTUNITY**  
 \$100 per week part time at home. Webster, America's favorite dictionary company needs home workers to update local mailing lists. All ages, experience unnecessary. Call 1-716-842-6000, Ext. 6886. (50-2tp)

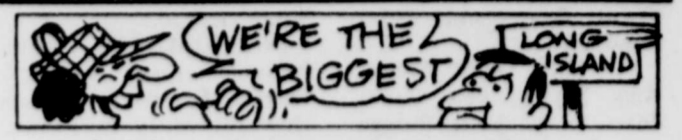
**Immediate Positions** available in 31 bed hospital for R.N.'s and LVN's. Must be eligible for Texas License. Base salary RN's: \$20,000, LVN's: \$12,600. Excellent fringe benefits. Contact Triva Wilson RN, Director of Nurses, Muleshoe, Texas. West Plains Medical Center 806-272-4524 ext. 226 or 219. Equal opportunity employer. (49-2tc)

**Operating Room Supervisor** position available in 31 bed hospital. Only experienced persons need apply. Salary is negotiable. Benefits include Hospitalization Insurance, Life Insurance Policy, 6 paid Holidays, and two weeks paid vacation after one year of employment. Excellent working conditions. Contact Triva Wilson, RN, Director of Nurses, West Plains Medical Center, Muleshoe, Texas. 806-272-4524 ext. 226 or ext. 219. (49-2tc)

## Notice

**SHALLOWATER PUBLIC NOTICE**  
 The City of Shallowater is now accepting sealed bids on a 1978 Dodge Monaco Police Car. Bids should be addressed to the Honorable Mayor and City Council, City Hall, Shallowater, Texas 79363. Bids will be accepted until 5:30 p.m. November 8, 1982. The City Council reserves the right to reject any and all bids.  
 City of Shallowater  
 Nancy Archer  
 City Secretary (50-1tc)

**BEETS**  
 Beets are high in iron content. You can serve them hot with parsley butter and a little lemon juice or cold with a vinaigrette dressing.



Greenland is the largest island in the world.

## CLASSIFIED AD POLICY

Classified ads must be paid for in advance...before 4 p.m. Monday of each week. We cannot afford to bill classified ads. If payment is not received by our Monday deadline, a 25 cent postage fee will be added to your bill. Please pay for classifieds in advance, unless you have a regular account with us. Thank you!

"Germania Farm Mutual Aid Association, Reasonable, Sound Insurance Protection for your home and other property. If you want to save, contact:

CARL IRBLECK

1509 Ave. G Abernathy Tex. 79311 298-2119

# I SHOULD'VE VOTED.

You know that's what you're going to say if your candidate doesn't win.

A Public Service of the National Association of Secretaries of State, this Publication and the Advertising Council



**Aloe Vera Liquid Drink, Cosmetics And Weight Control. Wholesale and Retail Distributorship Available.**  
**806-747-1398**

**Richard DuBose insurance real estate NEW LISTINGS**  
 709 5th - 3 bedrooms, 2 bath Priced To Sell  
 1111 Ave. F. Two story needs some repair. Make Offer  
 Very Nice Miller On Two 1/2, 210-1th Good Buy  
 1307 Ave. H 3 Bedroom and Basement Very Nice  
 Phone (806) 298 2536 762 1440 P O Box 580, 924 Avenue D Abernathy, Texas 79311

**JIM SMITH REALTY BARGAIN HUNTERS!**  
 3 bedroom, 2 baths, basement, large modern kitchen.  
 Comfortable-medium priced 3 bedroom, 2 bath, basement, stove and refrigerator stays. Seller will make allowance for repairs.  
**UNIQUE...LUXURY...ENERGY EFFICIENT...**  
 3 Bedroom, 2 bath, extra storage, special features.  
 298-2268 DON EVELYN FONDY Bus. 795-9590

**TO MAKE EACH WORKING DAY GO BETTER...**  
**Put yourself in our shoes!**  
 Red Wings "set the standards" for work shoe fit, comfort and wear. These rugged 8" full-grain, oil-tanned leather boots "set the standards" for continuing popularity. Try a pair on and you'll quickly see why!  
 SIZE A-EEEE/6-15" \*Not all sizes in all widths  
**Red Wings**  
 STRUVE DEPT. STORE

**Celebration WEDDING STATIONERY**  
 Beautiful Wedding Stationery  
 INVITATIONS • ANNOUNCEMENTS  
 NAPKINS • BRIDAL BOOKS  
 ALL DESIGNS  
 ABERNATHY REVIEW

**For All Your CEMENT needs Call Center Ready Mix AT WEST BUILDERS SUPPLY**  
 Finisher and Labor available if desired  
 Hale Center 839-2102

**C & G BUILDERS**  
 Remodeling, Paneling, Garage Conversions, Patios, Storm Doors and Windows. Painting all types of home repair. No Job too small. 1609 Ave D; Abernathy 298-2086

**LOG HOME SALES SKY-ROCKET**  
**1 BILLION DOLLARS IN LOG KIT SALES PROJECTED FOR 1982**  
 Manufacturer taking applications for a dealer in this area Dealer can average \$4,500 on a log kit sale alone  
**— FEATURING —**  
 • 8" solid uniform, treated logs  
 • Flat or round interior walls  
 • Hand-hewn exterior look  
 • Custom, commercial and contemporary buildings available  
 • Protected territory  
 • Two-day free training school  
 • Now introducing to the industry pre-assembled log walls (1-day shell erection on most models)  
**UNLIMITED Income Potential**  
**— REQUIREMENTS —**  
 • Must be capable of purchasing a \$15,000 model home (2200 sq. ft.)  
 • Meet our high standards  
 • Desire to succeed  
 Call Mr. Taylor COLLECT for an application (704) 932-6137  
 Yesterday Log Homes, P.O. Box 1046, Mooresville, N.C. 28115

**did you know?**  
 The fuel cost adjustment pass-through is fair to our customers. Costs of coal, natural gas, and fuel oil Southwestern Public Service buys to generate electricity change frequently. Sometimes fuel costs go up, and — we're glad to report — sometimes they go down. As set forth by regulatory authorities, the fuel cost adjustment pass-through requires SPS to reflect those changing costs in each customer's monthly bill. The fuel cost adjustment is designed so that each customer is charged only for the fuel that was required to generate the amount of electricity he actually used. There is no profit for SPS figured in the fuel cost adjustment. The customer pays only the current price for that fuel.  
 Doyle Moore, Amarillo District Manager  
 SPS works hard to keep down the cost of fuel. Some people say that because fuel costs are charged directly to the customer, SPS has no incentive to keep fuel costs down. That's just not true. We have a commitment to keep electric bills as low as we can. Our customers are our partners, and we want to help them save money. Too, we always remember that electricity competes with other energy forms for the customer's dollar. So it's simply good business to keep the total cost of electric service as low as possible.  
 Maurice Johnson, Senior Engineer, System Planning, Amarillo.  
 Coal-fired generating plants help you and SPS hold down fuel costs. SPS now has two coal-fired generating plants. The newest, Tolk Station near Muleshoe, Texas, has just come on line. Fuel costs at coal-fired plants are significantly lower than fuel costs at the older, natural gas-fired plants. On the average, in fiscal 1982, the fuel cost of a kilowatt-hour generated by natural gas was 3.178 cents. The fuel cost of a kilowatt-hour generated by coal was 1.803 cents. So maximizing use of Tolk and our other coal-fired plant, Harrington Station near Amarillo, will help us, as your partners, hold down fuel costs.  
 Kurt Shaughnessy, System Accounting Coordinator, Amarillo.  
 For answers to your questions, call or write your SPS manager.  
**You and SPS, partners managing electricity, make the difference.**  
**SPS**  
 SOUTHWESTERN PUBLIC SERVICE COMPANY

**NEW DEAL INDEPENDENT SCHOOL DISTRICT STATEMENT OF REVENUE AND EXPENDITURES FOR THE SCHOOL YEAR ENDED AUGUST 31, 1982**

Revenue	
Revenue from Local & Intermediate Sources	519,970
Revenue from State Sources	602,595
Revenue from Federal Sources	189,947
<b>Total Revenue</b>	<b>1,312,512</b>
Expenditures	
Instruction	686,487
Instructional Administration	27,045
Instructional Resources & Media Services	20,233
School Administration	65,663
Guidance & Counseling Services	9,629
Health Services	11,930
Pupil Transportation - Regular	50,256
Co-Curricular Activities	42,384
Food Services	455
General Administration	114,652
Debt Service	54,222
Plant Maintenance & Operating	125,975
Facilities, Acquisitions & Construction	73,738
<b>Total Expenditures</b>	<b>1,282,569</b>
Excess Revenue over Expenditures	29,843

## First Six Weeks AHS Honor Roll Students

First six weeks honor roll students at Abernathy High School were announced recently. They are as follows:

**FRESHMAN:** Donna Colbert, Dan Evans, Rhonda Neis, Tony Rodriguez, Trent Ryan and Philip Vandygriff.

**JUNIORS:** Laurie Barrera, Amy Boyles, Pete Cantu, Joan Davis, Scott Furgerson, Ruben Garcia, Anton Gereau, Terri Gist, Kristi Godwin, Melissa Hagstrom,

Larita Howard, Rachel Lopez, Vicky McKenzie, Sarah Miller, Stacy Nichols, Tony Ortiz, Regina Powell, Frances Salitros, Trey Stone, Melissa Thompson, Mary Trevino, Kathy Valdez and Susan George.

**SOPHOMORES:** Ross Bennett, Ross Bradley, Michelle George, D'Ana Howard, Mark Kitchens, Keith Lester, Kevin Lester, Lupe Mejorado, Tracy Murray, Dinah Neve, Amy

Pettit, Kristy Thompson, John Vandygriff, Wade Wesley and Donnie Williamson.

**SENIORS:** Angie Attebury, Patricia Garcia, Diann Grisham, Jay Harrison, Lonnie Howard, Tammy Lloyd, Billy Nunn, Cristy Ortiz, Yolanda Ortiz, Martha Salinas, Jimmy Salitros, Johnny Shafer, Bryan Stallings, Susan Stone and Barry Tilley.

## Hale 4-H Food And Nutrition Nov. 6

The Hale County Food and Nutrition Show will be Saturday, Nov. 6 at the Hale County Ag Center. Registration will be from 9 to 9:30 a.m., judging 9:30 to 12:00. Lunch will be at 12:30 and the Awards Presentation will be at 1.

The categories are: Main Dishes, Fruit & Vegetables, Breads & Cereals and Nutritional Snacks & Desserts. The winners of each category, in the Junior and Senior Divisions, will participate in the District Food Show in Lubbock Dec. 11 with twenty other counties.

## Local 4-H'ers Exhibit Livestock At State Fair

Hale County 4-H'ers did well when they exhibited their livestock projects at the State Fair of Texas in Dallas last week, October 18-23, according to Tom Conerly, County Extension Agent-Agri.

One of highlights of the steer show was when William Hancock, Plainview 4-H, exhibited the Champion Hereford. Also Dodson, Plainview 4-H, had the

second place light-middle weight Crossbred steer, Donna Freese, Plainview 4-H, exhibited the third place middle weight crossbred and Steve Reese, Plainview 4-H, had the sixth place middle weight Hereford.

Also John Hamilton, Plainview 4-H, had the eighth place light-heavy Crossbred and Lonnie Howard, Abernathy 4-H, had the eighth place heavy

Crossbred steer. Brent Hamilton, Plainview 4-H,

exhibited the eleventh place heavy Crossbred and Mandy Igo, Halfway 4-H, had the eighteenth place light-heavy Crossbred steer.

Also entering steers were Rhonda Hancock of Plainview 4-H and D'Ana Howard of Abernathy 4-H.

John Hamilton also exhibited a sixth place Limousin heifer in the Open Breeding Cattle Show and Brent Hamilton had a third place Limousin heifer in the Junior Breeding Cattle Show.

Steve Reese, Plainview

4-H, had the second place heavy Southdown in the Lamb Show. Reese also had the twenty-fifth place heavy Hampshire Lamb. Matt Kelly, Abernathy 4-H, had the twenty-fifth place heavy Fine Wool Cross lamb.

Pepper Dodson of Plainview 4-H exhibited the eleventh place heavy Hampshire and the sixteenth place heavy Cross in the Junior Barrow Show.

The 4-H Club members were accompanied by their parents, leaders and Extension Agents, Ollie Liner and Tom Conerly.

## Air Force Association Sponsors Senior's Scholarship Essay Contest

The Lubbock Chapter of the Air Force Association (AFA) of Texas is sponsoring a \$3,000 scholarship essay contest open to all high school seniors in the State of Texas.

The topic of this year's essay is "Portrait of a Responsible American Citizen." The student submitting the best essay to the Lubbock Chapter will receive a \$100 Savings Bond. The winning entry will then be entered into the statewide competition against eighteen other chapter winners.

Five college scholarships will be awarded to the best

entries statewide. First place will be worth \$1,250; second place \$750; third place \$500; and two fourth place entries will receive \$250 each.

To enter the contest, students should contact their local high school counselor or Eldon K. Turner, Lubbock AFA Scholarship Chairman, 5306 77th Street, Lubbock, Texas, 79424.

When extra ice cubes are needed for punches, or ice buckets at parties, use muffin tins instead of buying new ice cube trays. The big ice cubes will last longer.

## This and That

By Helen Wade

We went to Oklahoma over the weekend. Mr. and Mrs. W.G. Spruiell invited us to go with them. Their daughter and son-in-law,

grandchildren, Jerod and Joshon, are really growing.

We got to visit with Inez's two daughters and their families. We saw all of them except one of the son-in-laws. He had already made plans to be out of town.

Inez took us all out to eat steaks Saturday night and we visited together.

Sunday morning we attended services at Sunnylane Methodist Church with Inez.

Mr. and Mrs. James Miller, live in Mustang, Okla. and we visited our sister-in-law, Mrs. Inez Wade of Del City, Okla. We had a good trip and enjoyed going. The Spruiell's two

\*\*\*\*\*

Mr. and Mrs. Y.F. Snodgrass visited in Odessa Saturday. They visited their son Scott and daughter-in-law Cindy. Y.F. and Mary Jo also attended the Permian Basin Oil Show while they were there.

Mrs. Garnett Nall returned home this week from an extended tour of Southern Europe. The countries she visited were: Germany, Austria, Italy, France and Switzerland.

\*\*\*\*\*

Dickie Overstreet spent Sunday in Abernathy visiting his parents Mr. and

Letter To The Editor

Dear Editor:  
Hi! I'm a lonely Texas boy locked away here in the Indiana State Prison. I am writing to see if you could help me find someone to correspond with. I have written to a few church groups, but with no reply.

I have very little family left and receive almost no mail...I would very much like to hear from your reader's. I consider myself a good person with good thoughts. Maybe I could even brighten up someone else's life a little; it would sure bring sunshine into my life in doing so.

Prison is a lonely place, and even sad at times; especially at mail call as I watch the mail man pass on by.

Any help will be greatly appreciated. I'm 29 years old, German, Irish, and Indian.

Thank you for your time and consideration.  
Sincerely,  
Ray Hunley #16031  
P.O. Box 41  
Michigan City, In. 46360

ATTENTIONS  
Good Drivers  
Save Up To 20%  
On Your Auto Insurance  
Call 298-4127  
Farmers Insurance Group

## Billie Harrison Secretary Of Education Service Center Board

An Education Service Center Board member since June of last year, Billie Harrison of Abernathy, is now the secretary.

He was a member of Abernathy's board of trustees for 21 years; he

attended Tech's College of Business Administration and is a farmer. He has served on the state advisory committee for vocational education, as a director in cotton cooperatives, and is an active member in Aber-

athy's Methodist Church and civic organizations.

He and his wife are parents of four boys-two in business, one working on a doctorate at the University of Illinois, and the youngest a senior in high school.

## Computers Play Varied Role At Abernathy Schools

Twelve schools in Region XVII believe that one way of helping schools tailor a program to meet student needs is through the instru-

ctional computing program offered by the Education Service Center.

In a classroom the computer serves as media, as an object of instruction, as a new way to think, design, create or solve, and as an approach to individualized instruction. Educators have characterized three broad purposes for computer uses in instruction:

1. To help teachers and students do better what they already do: instruct and learn
2. To make new topics of instruction available
3. To expand intellectual capabilities of learners.

Strengths and other findings of the operation, environment, and organization of ESC's data processing services have been revealed in a recent report shared by Texas Education Agency

auditors; the report described Region XVII's overall program as being "productive and efficient," and "within budget limitations, quite responsive to user needs."

Campuses subscribing to the Center's Computer Assisted Instruction program are Abernathy, both intermediate and junior high, Cooper, friendship, Idolou, Lorenzo, New Deal, both junior high and high school, O'Donnell, Smyer, Southland, Tahoka, Union and Wellman.

Besides the CAI program, 23 districts contract for payroll services, 17 for finance, 8 attendance, 10 grade reporting, 14 scheduling, 48 test scoring, 3 tax accounting, 6 inventory and 68 film booking.

David Cobb is director of the Data Processing Division.



"We should have known they'd have their money in an insured savings account at

### FIRST STATE BANK

WE ARE EAGER TO SERVE YOU

- ★ Savings Accounts
- ★ Certificates of Deposits
- ★ Safe Deposit Boxes
- ★ Bank By Mail
- ★ Checking Accounts
- ★ Night Depository
- ★ Loans-Farm, Commercial and Installment

FOR ALL YOUR BANKING NEEDS

## ABERNATHY FIRST STATE BANK

402 - 9th Street Member FDIC Phone 298-2556



**Borden's HOME FOR THE HOLIDAYS**

**VALUE**

ALLSUP'S ICE CREAM 1/2 GAL. NO. CTR. **\$1.59**

KRAFT VELVEETA 1 LB. BOX **\$1.89**

KRAFT AMERICAN CHEESE SINGLES 12 OZ. PKG. **\$1.99**

**SPOOKY TIME Specials**

PRICES EFFECTIVE OCT 28-30, 1982 WHILE SUPPLIES LAST

KRAFT CARAMELS 14 OZ. BAG **99c**

KRAFT MIRACLE WHIP 32 OZ. JAR **\$1.19**

RATH PURE PORK SAUSAGE 1 LB. ROLL **99c**

RATH FRANKS 12 OZ. PKG. **99c**

GERMAN SAUSAGE SANDWICH **99c**

BORDEN'S BUTTERMILK 1/2 GAL. CTR. **\$1.09**

BORDEN'S ASSORTED DIPS 8 OZ. CTR. **59c**

CLOVER CLUB REG. \$2.29 POTATO CHIPS 1 LB. PKG. **\$1.79**

KRAFT DELUXE CHEESE SLICES 8 OZ. PKG. **\$1.39**

KRAFT HALFMOON LONGHORN CHEESE 8 OZ. PKG. **\$1.89**

ALLSUP'S HALLOWEEN GRAB BAGS FULL OF FUN TREAT EACH **49c**

WE HAVE A LARGE SELECTION OF HALLOWEEN BAG CANDY - LOOK FOR OUR SPECIALS


# ALLSUP'S CONVENIENCE STORES

## Quality Education at a Lower Cost.

The General Land Office of Texas generates revenues from our public lands for public education. Effective management of these revenues means more dollars for education without raising taxes.

Elect Garry Mauro — Democrat for Texas Land Commissioner.

Pol. Adv. paid for by Garry Mauro Campaign, Leon Thompson, Jr., Treasurer, P.O. Box 13083, Austin, Texas 78711



# Garry Mauro

for Texas Land Commissioner.



# The Montford News

Page 1

## MONTFORD CAMPAIGN ROLLING

### People are ones who count—JTM

John T. Montford said when he announced his candidacy for state senator "a legislator's strength lies in his commitment to the people who elect him.

"I intend to keep my word and the commitments I make to you during this campaign in order to keep your trust."

That has been the Montford creed since becoming a public servant.

It's a pledge he intends to live by as long as he holds public office.

Montford says his door will be always open to his constituents "because those are the people I'll be working for."

"No special interest group or organized group of any kind will have my ear because I will listen only to the people who elected me and seek their advice and counsel before casting a vote."

Montford, a strong conservative, believes in keeping our right to work law in Texas.

"Our state has been fortunate because of the business climate, and I want that climate to remain," he says.

Montford will open a district office in Lubbock and travel throughout the district when the Legislature is not in session.

"I will be always available, and in Austin I'll stand up to the big city senators. My voice will be heard in the Senate chamber on behalf of all of the people of West Texas," says Montford.

**Take a friend to the polls on Nov. 2—  
Vote Montford**



JOHN MONTFORD—Our next senator.

"It is absolutely essential that West Texas be represented by a Senator of integrity and credibility, a person who understands the needs of all citizens of the 28th Senatorial District. What West Texas needs is a Senator who will stand firm for the interests of his constituents. This I will do."

—John Montford in announcement statement

### Join your neighbors; vote Montford Nov. 2

The John T. Montford for Senate Special is rolling ahead at full steam toward a resounding victory on Nov. 2 that will send John to the Texas Senate in Austin.

Reports are pouring in from all of the 14 counties in the huge 28th District that Montford is running ahead.

"Both Debbie and I have seen thousands of voters throughout the district in the last few weeks," John reports, "and the things they are telling us are very reassuring."

Montford says "one of the greatest things about campaigning is getting out there early every morning to visit with folks at the coffee shops and hear what they want from their senator."

Montford already has visited every city and town in the district at least once and will pay a return call to many of them before election day.

"People are worried and concerned about state government, and they want someone in Austin who will fight for West Texas and not just sit around and fill up a seat in the Senate," John comments.

Refusing to stoop to personal attacks as his opponent has done, John is continuing to talk about issues—concerns and needs of the people.

Some of the top priorities on John's action agenda are water, unemployment, agriculture, crime and education.

"We have developed a water plan centering around conservation and, at a later date, importation which I am confident I can sell to the other senators," says John.

In the field of agriculture, John believes firmly that better markets and a strong program to push West Texas products is desirable and can be done.

"They'll know I'm in Austin," says John, "because I'll speak up daily and forcefully for our part of the state."

John's program also calls for attracting more light industry and small businesses into West Texas to create more jobs.

He says the petroleum industry must be put back on sound footing through offering proper incentives for exploration.

On education, John is firmly committed to hiring and retaining the best teachers "because our children are our future."

See MONTFORD Page 4

### Campaign is family affair

Running for the Texas Senate is a family affair for John T. Montford because he has always been a strong family man.

Wife Debbie has hit the campaign trail on her own as well as travelling with John T. as often as possible.

"I love to campaign," she says, "because I get to see a lot of old friends and make new ones along the way."

Debbie is a good speaker as is her talented husband, but admits "he has honed his speaking skills working for the people in the courtroom as a prosecuting attorney."

Both Debbie and John T. take time when possible to help with school homework, and, of course, keep busy with the routine home chores.

The Montfords are members of Westminster Presbyterian Church, and both Debbie and John are active in civic and church affairs.

Debbie is the former Debra Kay Mears of Friona while John is a native of Hurst.

John, 39, attended public schools in Hurst and holds both a B.A. degree and a law degree from the University of Texas.

Upon his graduation from law school he entered active duty with the U.S. Marine Corps, where he was a company commander and a military judge and attorney.

John was elected criminal district attorney in Lubbock in 1978 and has filled the job since that time.



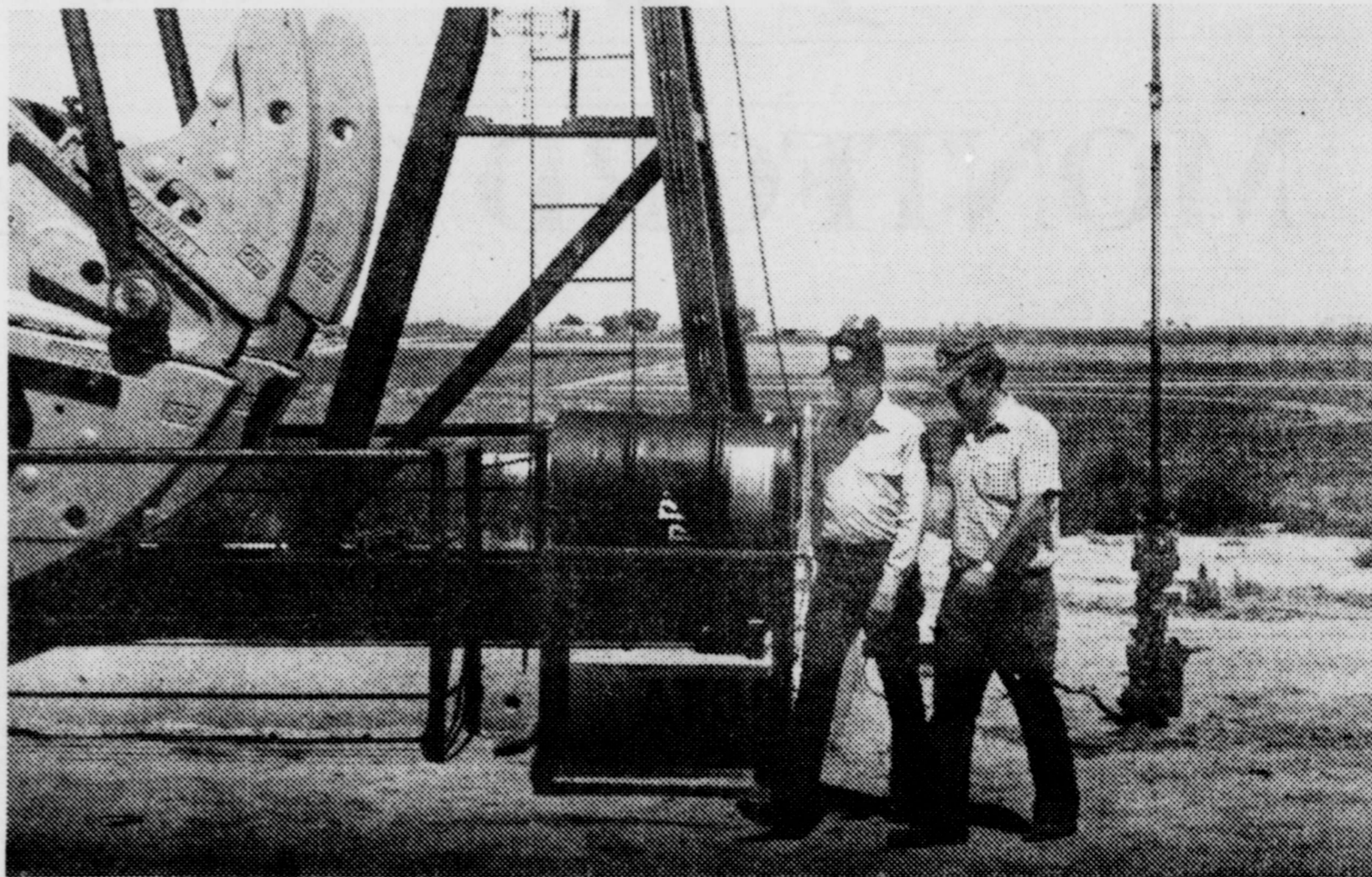
THE MONTFORDS—Debbie, Melonie, John T., John R., Mindy.

**Montford—He'll stand up to the "Big City" senators.**

# Montford will get the job done in A

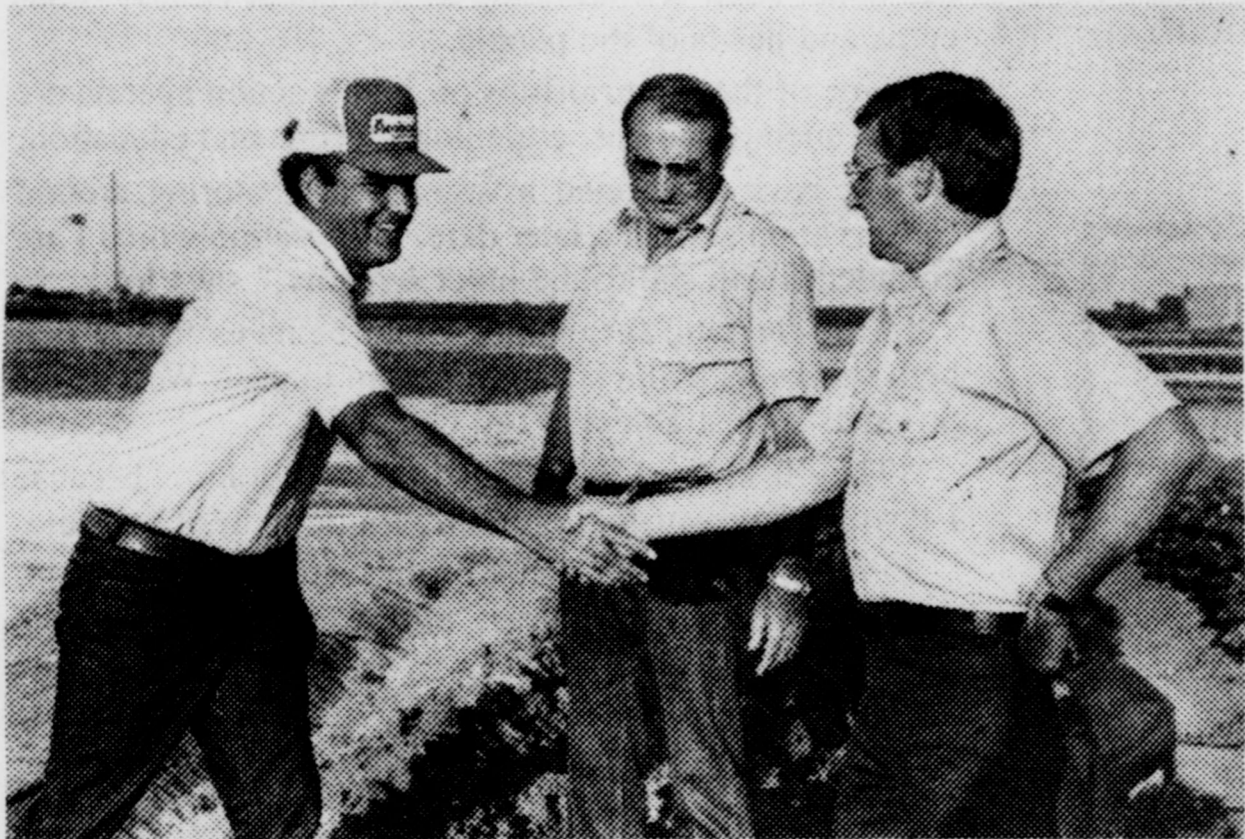


**CHECKING DAMAGE**—John Montford is keenly aware of the tough times agriculture in West Texas has had this year. Above he is shown checking some of the problem areas. As senator, he will seek ways to help when hard times hit.



**OIL INDUSTRY SUPPORT**—Senate Candidate John Montford knows the importance of the oil and gas industry in West Texas. He has pledged to fight for more incentives for new oil and gas exploration and to back legislation to protect Texas resources for Texans.

## Montford talks issues with voters



**CAMPAIGNING IN THE FIELD**—John T. believes in asking for votes where the people are. Here, a busy farmer takes time out to shake his hand and listen to the Montford program for relief of agriculture. Stronger agriculture markets and better breaks for farmers are at the top of the Montford program.

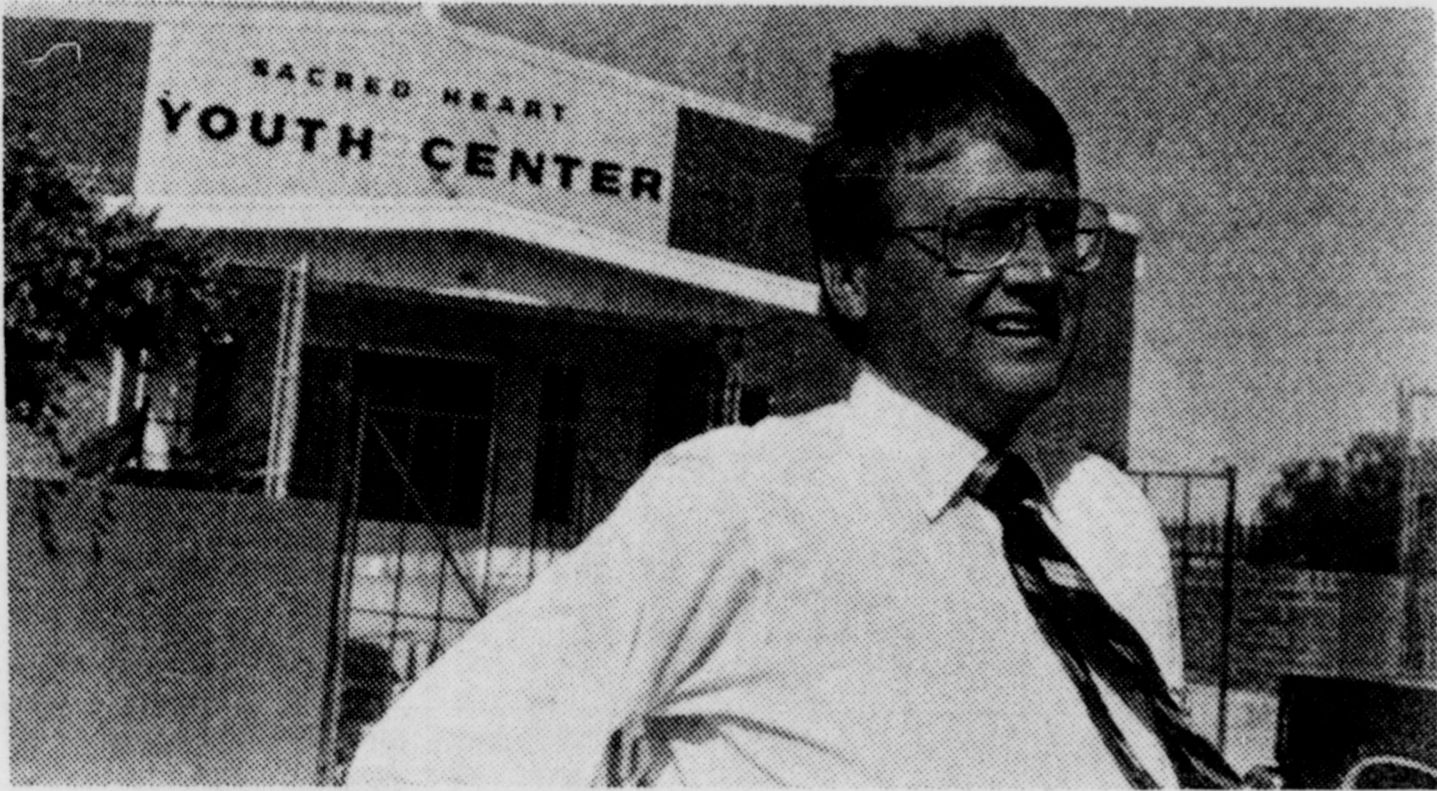


**IT WON'T LAST FOREVER**—John is acutely aware of water problems facing West Texas and he knows in order to keep the precious water flow it's time to stop talking and start working toward a viable water program. Montford has spent hours visiting with officials of all water agencies seeking their views and theories and he is becoming firmly convinced that stronger conservation measures must be implemented with an eye toward water importation down the road when it can become economically feasible.



**GOOD LISTENER**—John listens intently as he hears an explanation of how the water may be here now but steps are going to have to be taken to make sure a workable water program for the future is in store for West Texas. As state senator, Montford will always listen to the voters.

# Austin — he'll fight for West Texas



## Farm crisis is severe

John Montford is the only candidate in the 28th State Senate race who has consistently spoken out from the platform and in his campaign material on the importance of agriculture to West Texas.

West Texas depends heavily on agriculture and the agricultural business community.

"Farmers don't need to be told we have a problem. They know it. And they are tired of hearing officials say 'it's a complex problem, and we're studying it,'" says Montford.

He points out that the farm dollar multiplies roughly eleven times throughout the state's economy and seven times through the local economy of West Texas.

John will fight any efforts to repeal the gasahol tax exemption "because it's one of the few pieces of legislation passed by the state to assist the farmer in gaining his fair market price."

You can look for John to take a strong lead in Austin in new programs to promote the farm industry by seeking out new, innovative marketing concepts being used in other states.

"I'll be a fighting senator who will not run from debate or a vote when it comes time to push better and more supportive programs for farmers," says John.

When John announced for the senate he made a strong commitment to promotion of agricultural commodities.

"It's a commitment which I will never back away from. We need to let the rest of the nation know we produce the best cotton, the best grain sorghum and the best corn in the country right here in West Texas and on the South Plains," John declared.

One program he would like to see promoted is more extensive use of cotton products here at home and abroad.

"We must stop these foreign imports which are hurting our own people right here at home," says John.

**VISITING SCHOOLS**—Senate Candidate John Montford pauses outside one of the many schools in the 28th District. Montford believes strongly that we must hire and retain the highest quality teachers and that Texas' school systems must be second to none.

## Oil, gas support

John Montford will be a strong spokesman in the Texas Senate for the oil and gas industry which is so vital to the economy of West Texas.

John believes the well-being of our oil and gas industry is one of the foundations of the entire State of Texas but especially to West Texas.

"Before the summer slow-down new drilling rigs were once again springing up all over West Texas and bringing new jobs and an injection of new money into the economy," says John.

Montford says he is very hopeful that the temporary slump in some parts of the area will soon be over.

"To help the industry continue to produce we must find additional incentives for more exploratory drilling, and we must stop the federal government from interfering in the oil and gas business," says John.

He believes new capital must be found for exploration of oil and gas.

The petroleum industry must be allowed to grow and prosper.

When the oil and gas industry is hurting, the entire economy of West Texas is hurting, he believes.

"When unemployment hits this critical area it does damage to the entire economy, and we must find ways to get people back into those jobs," says John.



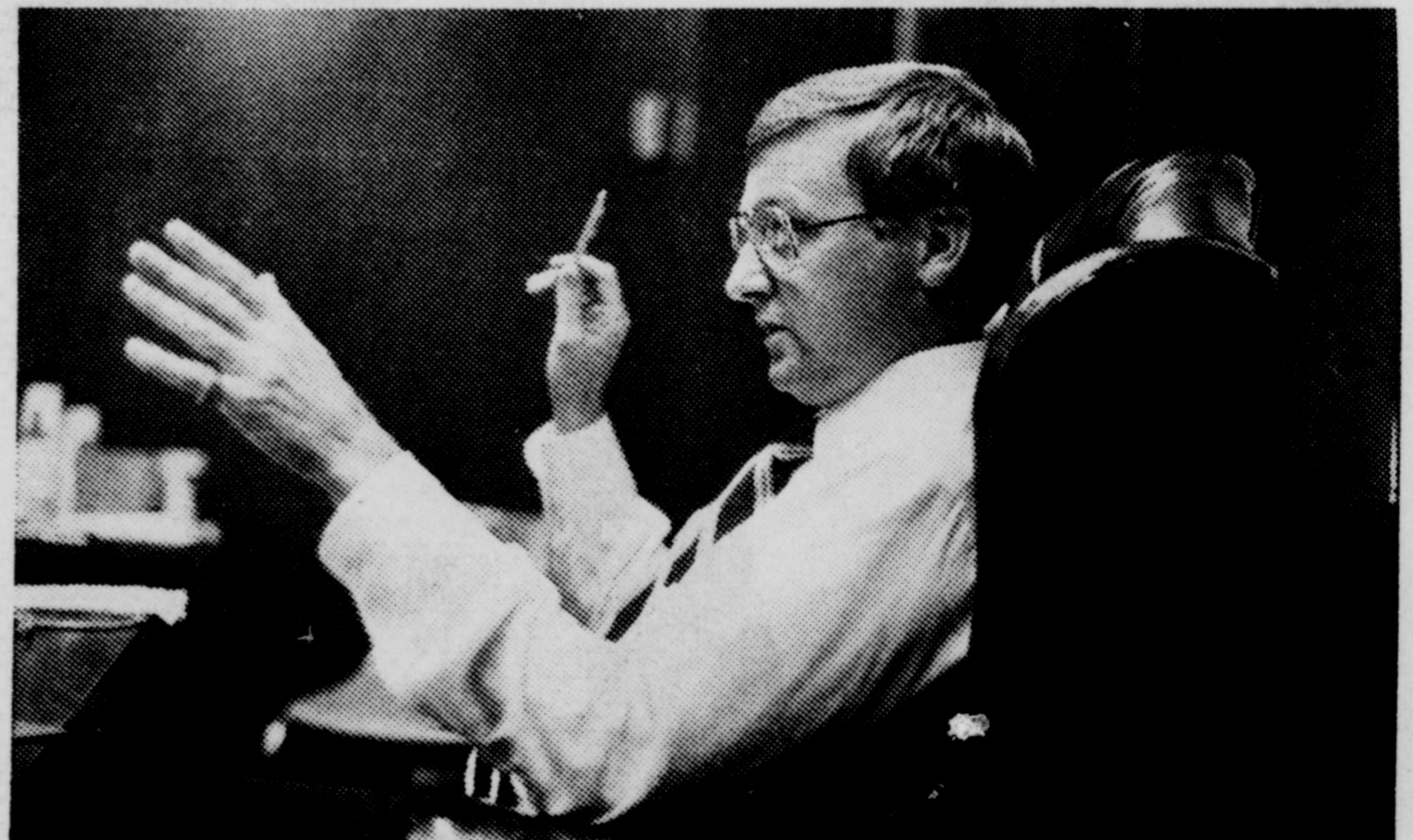
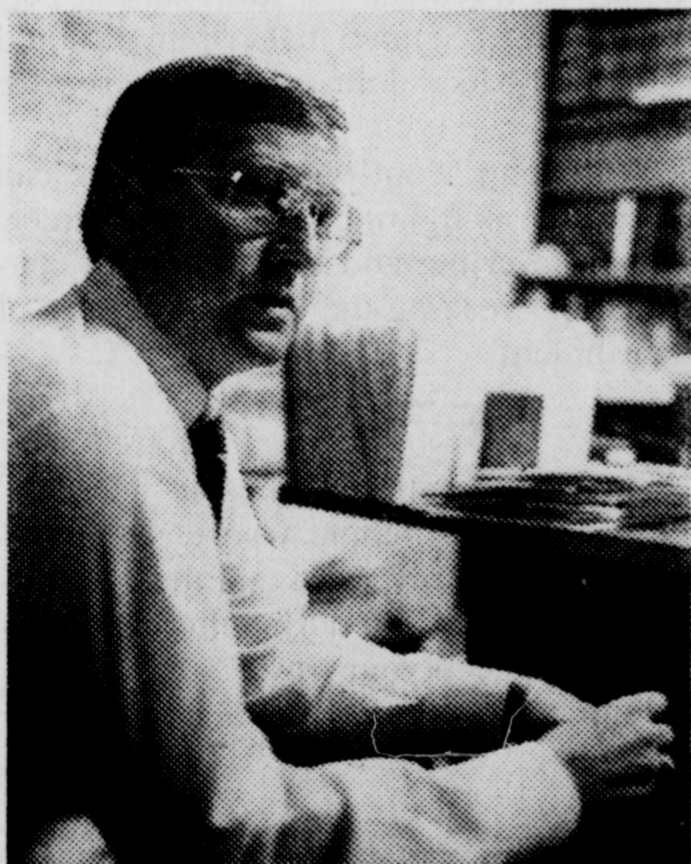
**A MAN OF COMPASSION**—John T. Montford is a man who believes in listening to voters and their ideas and problems. He has shown his compassion toward helping those handicapped and truly less fortunate citizens and senior citizens. Our senior citizens helped make West Texas what it is, and we must not forget them, Montford says.



**You can vote for John Montford regardless of how you voted in primary elections**



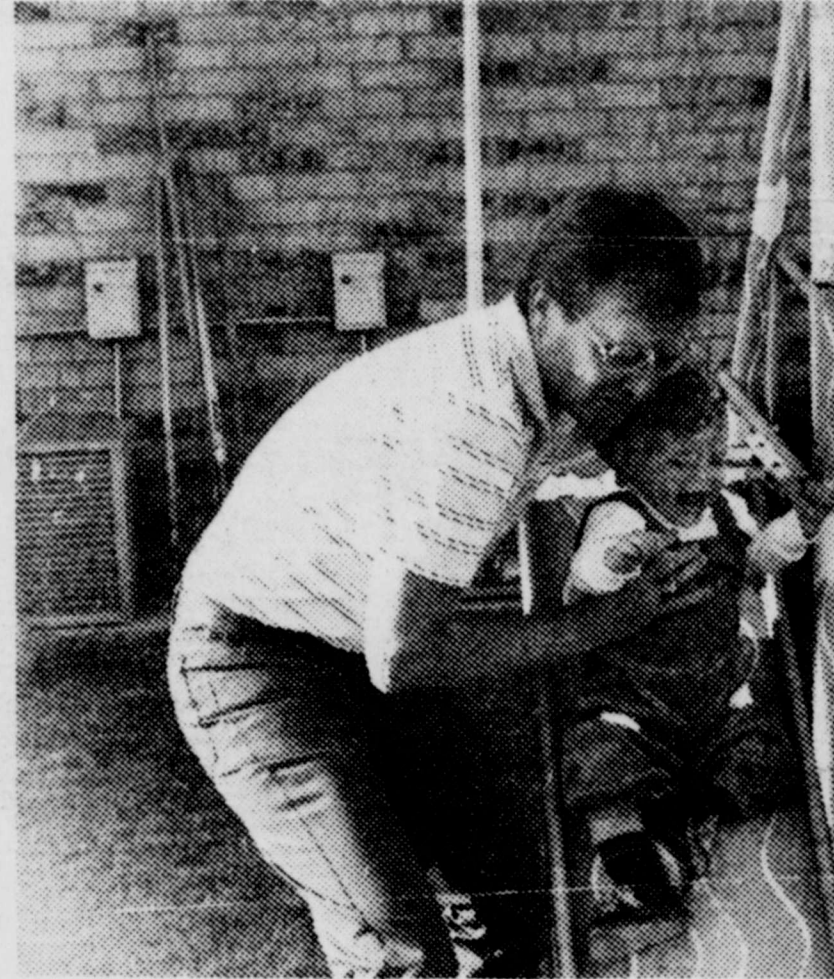
## Public service is serious business to John Montford



**A SERIOUS DISCUSSION**—John is shown discussing the issues and problems of people during a brief session off the campaign trail. John knows the voters don't want to hear meaningless rhetoric and half-baked promises but that they want action from their elected officials. "I don't believe there is any place in campaigning for a candidate

who has nothing to do but try and tear down his opponent. The voters are not going to be fooled because all he is doing is trying to hide his own lack of qualifications," says Montford.

# Time for Family Fun



**OFF THE TRAIL**—John T. Montford takes a little time away from the campaign trail to have some family fun. At left, he gives Mindy a tip on a basketball free throw. Second from left, little sister Melonie wants in the act, too, but Mindy seems a little

dubious of her range. At right, son John R. gets his kicks on the family's backyard swing set while Debbie looks on with approval.

## Montford Winning Race

*Continued from Page 1*

As a Texas Senator, John will introduce one of the toughest crime packages ever put forward in Texas, including stronger laws on DWI, preventive detention for criminals caught in the act, reexamination of the juvenile justice system and opposition to any attempt to repeal the Texas Habitual Offender Statute.

"We're winning this Senate race," John declares, "but we have thousands of folks out there helping us. Debbie and the kids and I will always be thankful for that help, and you can bet we won't forget it."

## JTM—man of many honors

Seldom has a young man in public service so short a time as John T. Montford been cited with as many honors. He was named Outstanding Young Man of the Year in Lubbock in 1973.

In 1979 he was named both Headliner of the Year and Man of the Year in Law Enforcement.

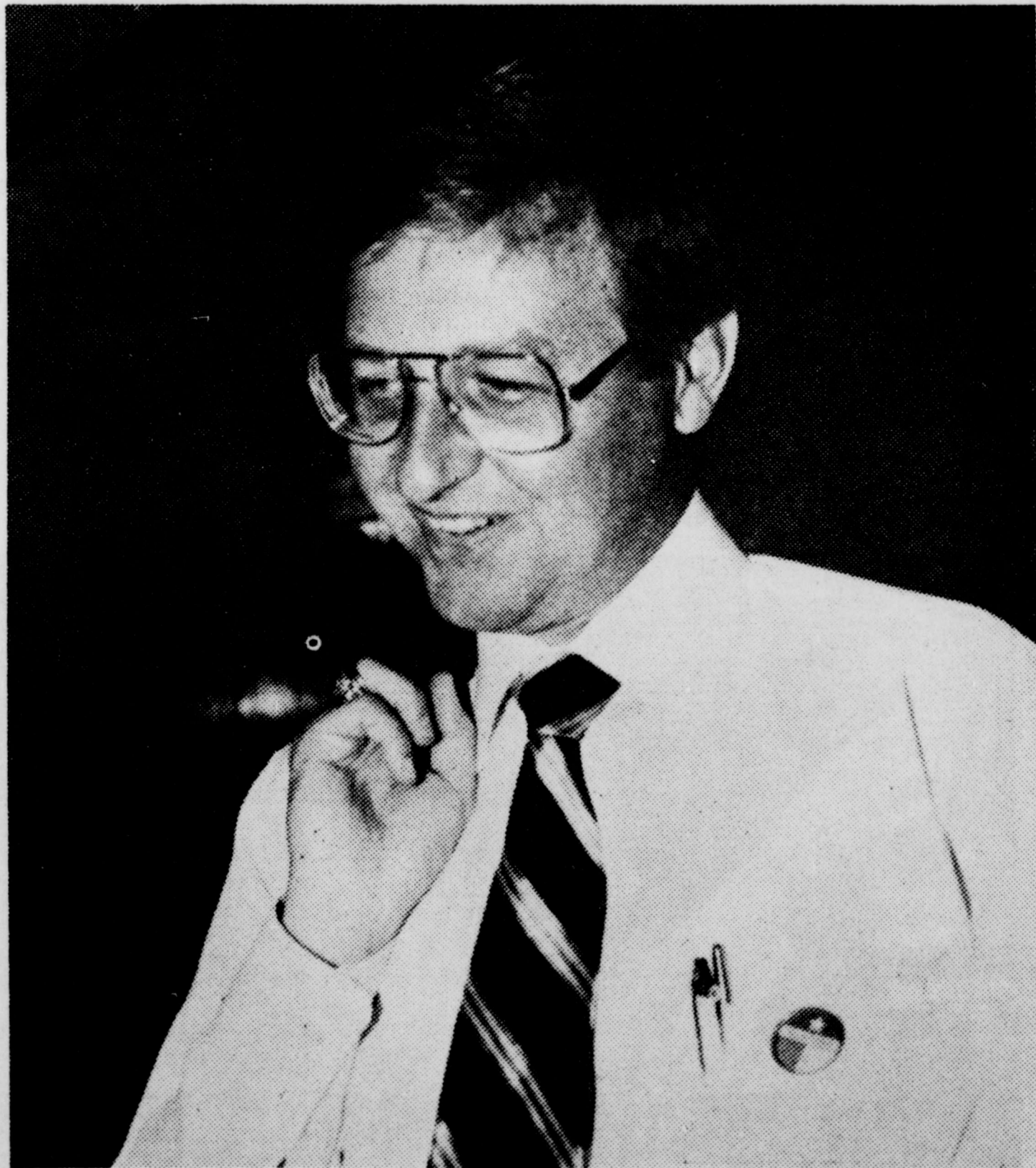
The award for Boss of the Year came his way in 1980 and in 1981 he was named Executive of the Year.



West Texans need a Senator with integrity



# West Texas needs Montford in the Senate



## Montford tough on crime—criminals

The credentials of John T. Montford on law and order are impeccable and voters in the 28th State Senatorial District are going to keep that in mind when they go to the polls on Nov. 2.

As a criminal district attorney John set a record for chasing the criminal element out of West Texas which has seldom been seen before.

It earned him statewide attention.

As a state senator, John will introduce a tough anti-crime package that will attack the state's spiraling crime rate.

"This means tougher penalties for drunk drivers, preventive detention for criminals caught "redhanded" committing a serious offense, reexamination of our juvenile justice system, and opposition to any attempt to repeal the Texas Habitual Offender Statute," says Montford.

Criminals belong behind bars and not out roaming the streets, John declares, adding it's time to take the shackles off our lawmen and put them on the criminals where they belong.

High on the list of priorities will be stronger penalties for drug pushers and dope peddlers.

John also deplores the mockery which has been made of the insanity plea in our justice system and wants to make some drastic changes.

As prosecutor, John continually refused to enter into plea bargaining with first offenders convicted of using a deadly weapon or causing serious bodily injury during a robbery.

"When someone pokes a gun in the face of a law-abiding citizen and takes his money or threatens his life I take it personally and I believe that criminal should be behind bars," John told a news service reporter.

With John Montford in Austin we can be sure he is fighting to make our streets safe from crime and those who are convicted of breaking the law will be sure of punishment.



"A legislator's strength lies in his commitment to the people who elect him. I intend to keep my word and the commitments I make to you during this campaign in order to keep your trust."

—John Montford in announcement statement

**JOHN T. MONTFORD, Democratic nominee, will be a fighting Senator.**

★ **Polls open from 7 a.m. to 7 p.m.** ★