

## \$14, Thousand Being Spent To Expand And Improve IOOF Cemetery

The Independent Order of Odd Fellows are spending \$14 thousand to expand and improve the IOOF Cemetery, located on the northwest

corner of Abernathy just off the I-27 service road.

Four more acres were purchased by the Odd Fellows, three acres on the

west side and one on the north side of the cemetery. The land was purchased from Owen Benn.

Not only has the cemetery been expanded, but also a new fence has been put around the old and new sections. New brick gates have also been constructed, by Mark and Tommy Beck, at the opening of the new four acre expansion.

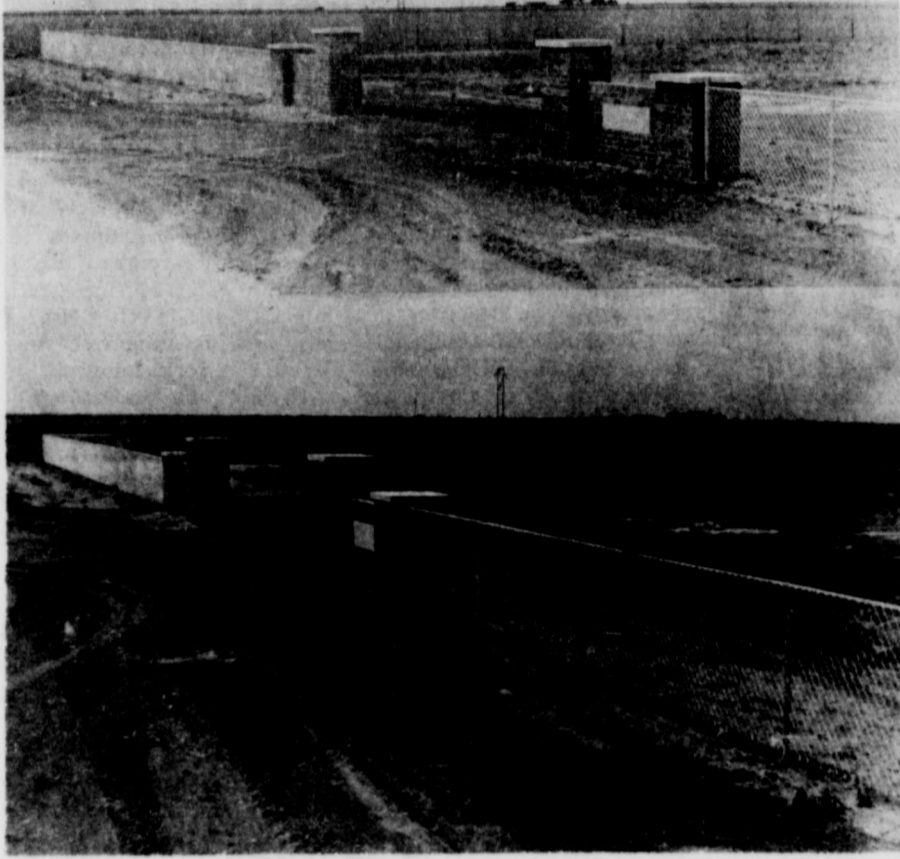
The new section will not be used until the west portion of the older section (known as the flat section) has been completely filled. There is still

room for 200 graves in the flat section.

Hale County Commissioner Henry Reif has been very helpful during the project, as he has had the bar ditch filled and the cemetery area levelled, according to Joe Chambers, member of the Odd Fellows. Chambers also stated that the Abernathy Cemetery Association will help beautify and maintain the new four-acre section of the cemetery.

The Odd Fellows will start planting grass in the new section soon and are presently having caliche spread around the road and entrance areas.

When the Odd Fellows build up their improvement funds, Chambers stated that the road will probably be paved in front and within the new section.



IOOF CEMETERY BEING EXPANDED and pictured is part of the new four-acre section. The new section was taken from two angles. The new brick gate and fence can be viewed in these pictures. A new fence was also put around the old section of the cemetery. (Review Photo)

## Depot To Be Moved Soon

The Santa Fe Depot (future Senior Citizens Center) is being prepared to be moved to its new location just north of the Methodist Church parking lot.

It was reported that it will be moved next Tuesday, or soon after Tuesday, at a cost of \$3,600. Henry and Henry Movers of Plainview will move the depot. This is the same company that moved the Hale Center and Lockney depots.

Last weekend, a crew of seven men - H. B. Coggin, Arno Struve, Wayne Arthur, John Hale, Clayton Enger, Hoppy Toler, Bid Totty, Owen Benn and R. C. Patterson, removed the loading platform from around the base

of the depot and prepared it to be moved. Some of these men also helped in having the footing constructed for the new foundation, north of the Methodist Church parking lot. The footing is made up of steel bars secured with cement. The cost of the footing was approximately \$500.

"The entire project could not even have gotten off to a good start without the help of Harold Thompson, who allowed the use of his fork lift," stated a Chamber spokesman.

The railroad timbers, presently under the depot, are in good shape and will be put back under the depot when moved to its new location.



OLD AND NEW LOCATIONS for the Santa Fe Depot (future Senior Citizens Center). In the top photo is the depot after a crew removed the loading platform from around it this past weekend, so it can be moved. In the bottom photo is the new location, just north of the Methodist Church parking lot. Pictured is the cement footing. (Review Photos)

## Abernathy VFD Officers Elected

At the Abernathy Volunteer Fire Department meeting held May 24, the 1983-84 officers were elected.

The newly elected officers are as follows: President-Oliver Shadden, Vice-President-James Neve, Fire

Chief-Lindsey Webb, Secretary-Jerry Howard and Training Officer-James Conn.

The three trustees are Tommy Overstreet, Wayne Lamb and Terry King.

## Abernathy Open Tennis Tourney Begins Today

The Abernathy Open Tennis Tourney, which is attracting some of the best players in the entire region, will begin today (Thursday) and continue through Saturday evening at the school tennis courts.

Players from all over the region -- Olton, O'Donnell, Muleshoe, Slaton, Tulia, Abernathy, Anton, Lubbock, Tahoka, Floydada and many other towns will be competing in the tourney this year. Many of the top notch players in the area will be playing.

The tourney will begin at 9 a.m. Thursday with the junior, junior high and high school divisions. The first round of singles will be played, followed by the first round of doubles.

The finals of the junior, junior high and high school divisions will be played Friday morning.

Then, at 1 p.m. Friday, the first round of the open division, 35 and over division and mixed doubles division will begin. These divisions will be completed Saturday.

Sponsors of the tourney are Keith Tooley and Carl Irlbeck. For more information, call Keith or Carl.

Proceeds from the tourney will be donated to the Senior Citizens Center fund.

Everyone is invited to come out to the tourney and see tennis played at its best.

## Ortiz SPS Guest At Science Symposium

Tony Ortiz, junior at Abernathy High School, is to participate in the 23rd annual Texas Energy Science Symposium at the University of Texas (UT) at Austin May 31 through June 3.

Ortiz is the son of Mr. and Mrs. Antonio Ortiz of 1411 Jerome St., Abernathy, Texas. He is among 41 outstanding high school students and teachers from the Panhandle and South Plains invited to the symposium as guests of Southwestern Public Service Co. (SPS).

The symposium is expected to attract more than 400 students and their teachers from across Texas to tour the science laboratories at UT and to hear nationally known scientists and

engineers discuss energy related topics. The participants were selected by the school systems they represent.

Keynote speaker will be Mack Wallace, chairman of the Railroad Commission of Texas, discussing energy, economics, and national security. Among the other speakers will be Dr. Edward Teller, a nuclear physicist with Lawrence Livermore National Laboratory, talking about "The Ultimate Renewable Resource," and Dr. Hubert Alyea, professor emeritus of chemistry at Princeton University, who will conduct a special workshop for teachers and speak on "Lucky Accidents, Great Discoveries, and the Prepared Mind."

The symposium is sponsored by the

University of Texas and the Texas Atomic Energy Research Foundation (TAERF). The foundation, organized by ten investor-owned Texas utility companies, sponsors research at UT with the ultimate goal of using energy from fusion reactions for the generation of electricity. SPS is a charter member of TAERF, and SPS board chairman and chief executive officer Berl Springer presently is president of TAERF.

Ortiz represented Abernathy High School in University Interscholastic League district competition in interpretation and journalism and has participated in band, science club, FTA, and drama club.

## STAR CATV Investment Corp. Purchases Panhandle Cablevision

Panhandle Cablevision, the local cable company serving Abernathy, was acquired by Star CATV Investment Corp. today, according to Don R. Mansell, President of Star.

Star CATV is based out of Waxahachie, Texas and currently has over 60 completed cable systems in Texas, Arkansas and Louisiana.

They are in the process of conducting programming and signal studies to determine any improvements or expansions which should be made, according to Mansell. "Our

goal within the community is to provide improved service to our valued subscribers," said Mansell. Therefore, the office for customer service, installations and information will continue to be located in Idalou. However, the name of the cable company will be changed from Panhandle Cablevision to Star CATV.

"We are delighted to become a part of your community," said Mansell, "and look forward to providing quality home entertainment."

many times has it gotten down to 45 degrees May 31 in Abernathy, but that was the case Tuesday morning.

Warmer temperatures and more moisture will be needed to get this year's crop off to a good start.

Chamber Meets Today  
The Abernathy Chamber of Commerce will meet today, Thursday, at 7 a.m. at the small City Hall meeting room. All members are urged to attend and guests are welcome. Breakfast will be served before the meeting.

that city's total to \$13,685.

Petersburg will receive a check for \$3,689, down 8 percent, bringing that city's total to \$8,615 for 1983.

Hale County as a whole is down 6 percent in the amount rebated to county towns. Abernathy showed the greatest increase in rebates in the county.

In Floyd County, Floydada will receive a check for \$14,987, down .55 percent, bringing that city's total rebates to \$40,935. Lockney will receive a check for \$5,530 this period, up 1.2 percent over last year.

As for Lubbock County, New Deal will be rebated \$927, up 12.5 percent, bringing that city's total to \$1,758. Idalou will receive a check for \$5,826,

up 5 percent, bringing that city's total to \$15,669. Slaton will be rebated \$28,481, up 6 percent, bringing that city's total to \$78,248.

In Swisher County, Tulia will be rebated \$17,565 this period, up 6 percent, bringing that city's total to \$55,932 for 1983.

The City and MTA sales taxes are collected along with the state sales tax by merchants and rebated monthly to the cities in which they are collected by the Comptroller.

The May checks were for taxes collected on sales made in March and reported to the Comptroller by the end of April.

## School Board Meets Monday

The Abernathy School Board will meet at the School Administration Building Monday evening for their

June meeting. Everyone is invited to attend.



BELIEVE IT OR NOT, it is finally spring time, even though Abernathy has experienced several unseasonable cold fronts. Pictured are some of the beautiful flowers in front of City Hall. The City lot is maintained by C. R. (Pappy) Vecchio and many beautiful flowers are in bloom. (Review Photo)

## ON THE COUNTY LINE

BY KEITH TOOLEY

GHOST TOWN would be the best way to describe Abernathy Monday (Memorial Day). Even most of the die-hard businesses that usually stay open on Memorial Day were closed.

The Review is one of those die-hard businesses. Well, actually we don't want to be open on holidays, but in this business, the show must go on.

Just by driving around town, you can tell that it is vacation time. Those who leave town should have their neighbors watch their home. And while travelling, be careful and watch out for the other guy.

### LOYALTY

If you work for a man, in heaven's name work for him, speak well of him and stand by the institution he represents.

Remember--an ounce of loyalty is worth a pound of cleverness. If you must growl, condemn and eternally find fault, resign your position and when you are on the outside, damn to your heart's content; but as long as you are a part of the institution, do not condemn it. If you do, the first high wind that comes along will blow you away, and probably you will never know why.--Elbert Hubbard.

HERE'S PROOF that it pays to advertise: Dear Editor, Last week I lost a gold watch which I valued very highly. Immediately, I inserted an ad in your lost and found column and waited. This week I went home and found the watch in the pocket of another suit. You certainly have a wonderful paper!

SOME OF THE area pharmacies are selling what is called the Dallas Diet. This is where you watch "Dallas" on TV and skip dinner...or it may be where you spend a big weekend in Dallas at a big hotel and then you can't afford to eat for the next week.

From Woodwork by Dalton Wood, The Lynn County News.

"WHY DON'T YOU play golf with Carl any more?" asked the wife one morning.

"Well," the husband replied, "would you play golf with someone who puts down the wrong score and moves the ball when he thinks you're not looking?"

"Certainly not!" she replied in astonishment.

"Well, Carl won't either," grumbled the husband.

## Abernathy Area Moisture Down From Last Year

The Abernathy area has received less moisture so far this year compared to last year at this time.

Thus far for 1983, Abernathy has received 5.83 inches. Last year by the end of May, Abernathy had received 7.57 inches of moisture. Therefore, Abernathy is down 1.74 inches compared to May 1982. These figures stand true up to Tuesday, May 31.

An unseasonable cold front hit Abernathy Monday and brought very cold temperatures to this area. Not


WEATHER			
Date	High	Low	Rain
5-25	89	59	.12
5-26	80	56	.14
5-27	86	54	
5-28	89	58	
5-29	89	59	.01
5-30	88	58	.10
5-31	80	45	.03
Total rain for May - 1.40			
Total by May 1983 - 5.83			
Total by May 1982 - 7.57			







**GENUINE JOHN DEERE PARTS**



**JOE THOMPSON IMPLEMENT**

Abernathy 298-2541      105 Ave D      Lubbock  
Abernathy, Texas 79311      762-1038



**FARM PAGE**

**PLAINS GRAIN & FARM SUPPLY**

Abernathy, Texas

**For All Your Farming Needs**

**PHONE**

Abernathy, Texas 298-2521      Lubbock, Texas 763-4868

## Farm-Retail Price Spread To Widen

Looking at the farm to retail price spread, it's basically a case of "the poor getting poorer."

Farmers are continuing to get less of the dollars that consumers spend at supermarkets and restaurants, says an economist with the Texas Agricultural Extension Service, Texas A&M University System.

"Last year only 28 cents of every dollar spent on food went back to the farmer," points out Dr. Forrest Stegelin, "while 32

cents went for labor and the remaining 40 cents covered marketing costs."

This difference between what farmers receive and what consumers pay for food products is called the "farm to retail price spread" and represents food industry charges for handling, processing and retailing farm food commodities, notes the economist.

That difference rose 5.1 percent in 1982 and is expected to grow even larger this year. Why?

"Because, while the farm value of food is expected to rise only 1 to 4 percent in 1983, marketing costs are forecast to increase 4 to 7 percent," says Stegelin. Thus the trend of marketing costs rising faster than the farm value is expected to continue as it has for the past three years.

"This means that the overall food price increases have been influenced less and less by changes in farm prices and more and more by changes in the cost of

packaging, processing, fabricating, transporting and distributing, and food industry wages," says the economist. "This year the higher marketing bill will account for more than three-fourths of the increase in total consumer spending on food."

Marketing costs are particularly high for highly processed crop products, notes the economist, while they are lower for animal products. The farm value represents 50 to 60 percent of the retail prices for meats, dairy products, and poultry and eggs, but only about 20 percent of the retail prices for processed fruits and vegetables and some 14 percent for bakery and cereal products.



**COTTON TALKS**

FROM PLAINS COTTON GROWERS, INC.

LUBBOCK, Friday, May 27, 1983

Conditions too dry for planting and too wet for planting, respectively, are prompting the same questions from cotton producers on the High Plains and in the mid-South and Southeast, according to Donald Johnson, Executive Vice President of Lubbock-based Plains Cotton Growers, Inc.

All want to know whether they will be eligible for price deficiency payments this fall (1) if they are unable to plant cotton at all this spring, (2) if they can't plant cotton until after the "final planting date" established for their farm or (3) if they plant their permitted base cotton acres to another crop after the final planting date.

Unfortunately, USDA's lawyers have answered with a flat "no" when asked if unplanted cotton acreage will be eligible for deficiency payments. They quote a parenthetical provision, carried over from the 1977 farm act to the 1981 law, which says payments in no event will be made "... on a greater acreage than the acreage actually planted to cotton for harvest ..."

PCG, the National Cotton Council, the Agricultural Council of Arkansas and perhaps others have sought ways to reduce the impact of this provision on farmers unable to plant for reasons beyond their control. "But this ruling from the attorneys is apparently irreversible without new legislation," Johnson says,

"and that's a practical impossibility in time for the 1983 crop."

Planting after the established final planting date, a State official of USDA's Agricultural Stabilization and Conservation Service has told PCG, will qualify producers for deficiency payments if payments are due. However under certain conditions if planting occurs so late as to preclude the possibility of making a normal yield, the amount of any payment could be reduced by the County ASCS Committee.

"Since there are no definite guides to follow in this regard," Johnson says, "producers who find it impossible to plant before the final planting date might do well to discuss the matter, in advance, with county ASCS offices."

Also, PCG is advised that producers who "dry plant" will retain deficiency payment eligibility if the planting is done in a bona fide effort to produce a crop.

As to the third question, the State ASCS office says producers who fail after making every effort to get and keep a stand of cotton through the final planting date may plant and harvest another crop on base cotton acres and still collect deficiency payments. The second crop may be any non-program commodity or, since there is no cross-compliance, may be any program crop provided the producer has not agreed to participate in the program for that commodity.

"As always," Johnson says, "the final word on program administration must come from the ASCS, and producers should maintain close contact with county offices to assure themselves of maximum program benefits."

## System Developed To Improve Crop Spraying

A new system has been developed to increase the effectiveness and efficiency of aerial application of pesticides.

It all involves a spray deposit analysis system that accurately measures an aircraft's spray pattern, says Henry O'Neal, an agricultural engineer with the Texas Agricultural Extension Service, Texas A&M University System.

The new system was developed by the U.S. Department of Agriculture,

and O'Neal is working with the Texas Agricultural Aviation Association in its testing. A total of 14 testing sessions are being conducted this spring throughout Texas to help aerial applicators analyze their spray patterns.

Spray patterns have traditionally been measured with a card of paper pattern test that depends on a visual check. However, the new system provides precise measurements of spray patterns, says O'Neal.

"This system is actually an automated quantitative system that analyzes the total swath width of an aircraft sprayer," explains the engineer. "It is an educational tool for illustrating the characteristics of sprayer systems for aerial application."

The new system works this way. A strip of film is placed across the flight path and sprayed with dye. The film is then reeled through a detection unit that measures the amount of dye

deposited. The data is then fed into a microcomputer and a graph of the spray deposit pattern is plotted during the analysis. Final results show the uniformity of the deposit and thus help applicators determine the optimum width of the flight path.

"This information will help aviators arrange the spray nozzles on their equipment for optimum performance," says O'Neal. "The improved performance will mean more effective pest control plus reduced production costs to the producer."

## Abernathy 4-H'ers To Attend State 4-H Roundup

Hale County will be well represented at Texas A&M University June 7-8 at the 1983 State 4-H Food Show, Roundup and Project Show. The county's 4-H members will be among some 1,600 from across Texas taking part in a host of activities.

Jim Bob Carver of Abernathy and Donna Stout of Hale Center will be among the 4-H'ers from fourteen districts participating in the

State 4-H Food Show. The county Entomology team is made up of Joan Davis of Abernathy, Mike Harrell of Halfway 4-H and Robby and Cammy Campbell of Hale Center 4-H. The county method demonstration teams include: Carol Kerns-Plainview 4-H and Marcheta Gattis-Halfway 4-H in Agronomy; Rhonda Nivens-Hale Center 4-H and Clifton Pinnell-

Plainview 4-H in Community Improvement; Marie Hooper and Mandy Igo-Halfway 4-H in Energy; Paul Young and Christi Harrell-Halfway 4-H in Farm & Ranch Management; Donna Cummings and Donna Stout-Hale Center 4-H in Food and Nutrition; Melissa Nivens and Alicea Logan-Hale Center 4-H in Health and D'Ana Howard of Aberna-

thy 4-H and KaLyn Laney of Hale Center 4-H in Open.

Lonnie Howard of Abernathy, a member of the state 4-H Council, will assist with the State Roundup, Food Show and Project Show.

A special feature of this year's Roundup will be a 75th anniversary celebration commemorating the beginning of the 4-H program in Texas. The 1,600 4-H'ers attending Roundup will assemble on Kyle Field at Texas A&M to form a huge 4-H clover leaf.

Activities will get under way with the State 4-H Food Show on June 7 followed by 39 Roundup contests and the Project Show on June 8.

The opening assembly for Roundup will begin at 6:45 p.m. June 7 with the recognition of 72 outstanding 4-H members who will receive scholarships totaling more than \$332,000. Five long-time supporters of the 4-H program also will be recognized with special awards from the Texas 4-H Foundation. That evening the 4-H'ers will gather on Kyle Field to form the gigantic clover leaf.

A special luncheon on June 8 will recognize 28 outstanding 4-H adult volunteer leaders from across the state who will receive special plaques from the Texas 4-H Foundation.

4-H'ers competing in the State Food Show and Roundup contests must qualify by winning in county and district competition. The State Project Show is open to all 4-H youth who are interested in preparing exhibits about particular project areas in which they have excelled.

### Participants Wanted For Farm Bureau Queen Contest

The Lubbock County Farm Bureau is wanting contestants for a Queen Contest. The requirements are that a girl need to be between the ages of 16 to 21 by September 1, 1983. She must be single (which means to never have been married) and be the daughter or sister of a Lubbock County Farm Bureau Member.

Those in Lubbock County interested can contact Wendell Barrick at 757-2126 or call the Lubbock County Farm Bureau office at 747-5271.

## How To Acquire A Private Applicators License

For the past several years, farmers and home owners using certain chemicals have been required to have a Private Applicators License in order to purchase these chemicals.

County Agent Ollie Linder stated that a person can receive a Private Applicators Certificate by dropping by the Extension Office in Plainview and picking up a publication MP-1289, "Using Pesticides - Private Applicator Manual," studying it and filling out a questionnaire; then sending this together with an application back to the Texas

Department of Agriculture in Austin.

Effective this month requests for certificates and applications received by the Texas Department of Agriculture in Austin on Monday through Wednesday will be issued and mailed not later than Friday of that same week.

Linder suggests that farmers and home owners who use chemicals should get a Private Applicators Certificate, which is free, by completing the questionnaire and application in publication MP-1289.

**Anderson Grain Corp.**  
will open their Abernathy and County Line Elevator to receive grain June 6.

We appreciate your past patronage and look forward to serving you in the future.

**Anderson Grain Corp.**  
298-2661



**ATTENTION PIK CONTRACT HOLDERS**

### INTERNATIONAL HARVESTER ANNOUNCES NEW CROP SWAP™ PROGRAM

**TURN YOUR PIK ENTITLEMENT INTO CASH TODAY.**

Your PIK entitlement is as good as cash...today. And we're your official IH Crop Swap dealer who can turn that "cash" into new International® equipment performance.

**How does the International Harvester Crop Swap work?**  
Simple. Just bring in your 10-30% PIK participation contract or whole base bid letter of verification. You may assign your PIK commodity to a major grain trading company that is cooperating in Crop Swap, sell it for a future delivery date, and receive cash for it right away.

Corn, cotton, sorghum and wheat are eligible for trade.

**Apply your Crop Swap cash toward the purchase of new International® equipment.** That includes all International tractors, Axial-Flow combines, harvesting equipment, Early Riser planters, and primary and secondary tillage equipment.

**International Harvester Crop Swap...let it help you improve your bottom line.** See us today for complete details on how you may benefit from the biggest savings on new International equipment.



**Struve Implement**



P.O. BOX 307  
ABERNATHY, TEXAS 79311



### NOTICE OF ANNUAL STOCKHOLDERS' MEETING

The 43rd Annual Meeting of the Common Stockholders of Co-op Grain Company of Abernathy, Texas will be held **TUESDAY NIGHT, JUNE 7, 1983** at the **ABERNATHY CITY HALL COMMUNITY ROOM**, beginning at **8:00 PM** with fish and chicken catered by FINS & HENS of Lubbock, and music for your dining pleasure by MARVIN STEPHENS of Abernathy.

The business meeting to follow will include the Annual Audit Report, the Manager's Report, and the Election of Two Directors to fill the expiring terms now held by Walter Cox and V.L. Neis.

You and your family are cordially invited to attend this very important activity of your local grain and fertilizer cooperative. Drawings for door prizes will be held throughout the evening. This is your opportunity to exercise a voice in the affairs of your own "Farmer-Owned and Operated" organization. We sincerely hope that you will make plans to join us for this occasion.

ATTEST:

*Rennie Hamilton*  
Secretary

CO-OP GRAIN COMPANY

*Walter M. Cox*  
President



*The CO-OP Farmer... more of the future in his own hands*





## Northwest Texas Methodists Announce 59 Pastoral Changes

Fifty-nine new pastoral appointments for United Methodist Churches throughout Northwest Texas were announced Thursday during the final day of the Northwest Texas Conference's annual meetings at Lubbock's First United Methodist Church (UMC).

Sixty-four churches will be receiving new pastors and associates as a result of the actions taken by the Conference's Cabinet and Bishop Louis W. Schowen-gerdt, who is presiding over the meetings.

Two of the Conference's larger churches - St. Stephen UMC of Amarillo and Levelland UMC - will receive new pastors. James Smith becomes the new minister at St. Stephen's UMC in Amarillo, succeeding Jim T. Pickens who was named pastor of St. Paul's UMC of Albuquerque, N.M. last week. The new pastor at Levelland UMC is Jack Riley, who spent the last five years at Perryton and replaces the retiring Harold Cates.

Cates was one of five Conference ministers who are retiring. Others include Hendrix Townsley, pastor of Baird UMC; Louis Crenshaw, pastor at Lazbuddie UMC; Eldon Wyatt, an associate pastor at First UMC of Lubbock; and Harold Q. Marcom, pastor of Ralls UMC.

Several other ministers who were granted leaves of absence for a variety of reasons also had to be replaced.

There were several pastors transferring into the Northwest Texas Conference from New Mexico and other places. Eight recently graduated seminary students were assigned to their first churches. A few positions were filled with student lay pastors.

Amarillo had the most changes with four churches receiving new pastors and one receiving a new associate pastor. Two churches in Abilene were assigned new pastors and another, a new associate pastor.

### PLAINVIEW DISTRICT

**Floydada** - Earl N. Blair is the new pastor at Floydada UMC. He comes from Kingswood UMC in Amarillo, where he served seven years. He succeeds James W. Smith, who was at the church seven years and becomes pastor of St. Stephen's UMC in Amarillo.

**Hale Center** - Jim K. Teeter is the new pastor of Hale Center UMC. He comes from Chillicothe UMC, where he served five years. He succeeds John C. "Jack" Webb, who was at the church two years and becomes pastor at Hamlin UMC.

**Kress** - James R. Taylor is the new pastor at Kress UMC. He comes from Wesley UMC in Andrews, where he served two years. He succeeds John Dorn, who was at the church two years and becomes pastor of Union-Ira UMC in Snyder.

**Littlefield (Associate)** - William M. Beachy is the new associate pastor at Littlefield UMC. He comes

from the Asbury Theological Seminary in Wilmore, Ky., where he just completed his studies. This is a new position.

**Ralls** - David D. Ray is the new pastor of Ralls UMC. He comes from First UMC in Plainview, where he served as an associate pastor for four years. He succeeds the retiring Howard Q. Marcom, who was at the church five years.

### Lakeview Locals

By Mrs. Norman Matthews

Mr. Glen Pool was the featured speaker Wednesday night, May 25, at Lakeview Methodist Church.

Dr. Glenn Harrison and Berle Burnett of Plainview visited her mother, Mrs. S. M. Harrison, last week.

Lesia Lynn of Littlefield spent the weekend with her grandmother, Mrs. Oleta Gilmore.

Mr. and Mrs. Glenn Smith of Anton and Mrs. W. A. Goldston of Littlefield visited Mrs. E. G. Mahagan Sunday.

Mr. and Mrs. Mickey Meadors and daughter, Teresa of Longview, visited his parents, Mr. and Mrs. H. N. Meadors early last week. Both families went to Espanola, New Mexico to see Mr. and Mrs. Horace Sanders. From there, they went on to Colorado and rode the special train 50 miles to Durango and Silverton, Colorado.

Mr. and Mrs. Preston Mitchell of Albuquerque, New Mexico visited her mother, Mrs. S. M. Harrison over the weekend.

Mr. and Mrs. Agee of Friona visited their daughter and family, Mr. and Mrs. Neal Barnwell.

Mrs. N. J. Fred spent the weekend with relatives in

### Davis On ASU

#### Honor Roll

Patsy Kay Davis of Abernathy, a student attending Angelo State University in San Angelo, is listed on the Dean's Honor Roll for the spring semester at the University.

Ms. Davis, an accounting major at ASU, is listed on the 3.00 to 3.49 honor roll.



THE CAPROCK GIRL SCOUT COUNCIL went on a "Texas Heritage Tour" recently. Pictured are the girl scouts and sponsors who went on the trip. Some of the girls are from New Deal and Abernathy. (Review Photo)

## Area Girl Scouts Go On "Texas Heritage" Tour

Learning about history can be fun if you are with a busload of other Girl Scouts. Forty junior high age Cadette Scouts from the Caprock Council, along with their adult sponsors, spent May 29 through June 1 discovering their Texas heritage.

The itinerary included the Lyndon B. Johnson Historic Site, Fort Concho at San Angelo, the Texas Capitol, the Alamo, Mission San Jose, Brackenridge Park

and the San Antonio Zoo, and Indian hieroglyphics near Paint Rock. An Austin highlight was viewing the legislature in session. While touring, girls had the opportunity to learn Texas folk songs, history, geology and other interesting facts and "tall tales" about the area through which they travelled.

The girls had been planning for this trip since last fall, with over three-fourths of them earning at least half of their trip fee selling girl scout cookies during February. Detailed planning of routes, packing techniques, special events and points of interest also helps interest-

ed girls complete a Travel Interest Project recognition. Cadettes from Lubbock, Abernathy, Slaton and Levelland took part in the tour. Trip leaders were Kathy Hunt, director; Janie Rodriguez, photographer; Becky Williams, finance; and Vicki Hamlen, first aid.

The trip was sponsored by the Caprock Girl Scout Council, a United Way agency. It is offered every three years, rotating with a camping trip to the Girl Scout National Center in Wyoming, and a trip to the International Girl Scout Cabana in Cuernavaca, Mexico, planned for the summer of 1984.

### Summer Workshops Planned For Area

#### Girl Scouts Workshops

Piloting, sailing, water-skiing, horsemanship and rappelling headlined some of the workshops planned for girls of senior high school age, scheduled during July, August, and September by Caprock Girl Scout Council. Other interest groups being offered later in the Fall include miniatures, aerobics and weight control, career exploration and youth concerns.

Sponsored by Senior Girl Scouts in Abernathy, New Deal, and Lubbock, the workshops will be open to all senior high age girls at a nominal fee. Brochures have been passed out in the schools explaining the programs and the registration procedures.

Girls, 9th through 12th grade may register for the workshops from 7-9 p.m., Monday, June 14, at Southwestern Public Service Co., Reddy Room, 4201 Frankford Ave. Additional information may be obtained by calling the council service center at 745-2855.

Minnows have teeth in their throat.

### This And That

By Helen Wade

It was my privilege to meet Mrs. Norman Matthews last week. I talk to Mrs. Matthews on the phone each week to get the Lakeview news, but I had never met her.

She is a very energetic lady, and we had an enjoyable afternoon together. It seemed like I already knew her, since I had been talking to her on the phone each week.

We welcome newcomer Mrs. Fran Land and her son Lee to this area. They recently moved to New Deal. Mrs. Land is a Business Education teacher at Dunbar High School in Lubbock.

She was raised in El Paso and taught school there for 5 years. Mrs. Land also taught school at the Ramah Navajo Indian Reservation in New Mexico.

Lee attends school in New Deal. Mrs. Land is a member of the Methodist Church in New Deal. The Methodist church will soon have a new preacher. He is Rev. Neil Baumgart, coming from Lubbock First Methodist Church, where he was assistant pastor. His first Sunday will be this Sunday, June 5th at the New Deal First Methodist Church.

Mrs. Charles (Kathy) Evans of Abernathy had her mother, Mrs. Margaret Stoddard of San Diego, California fly in and visit her and her family.

They attended a family reunion in DeKalb over the weekend.

Bill Selke of Clairmont, California, visited his mother, Mrs. Ollie Selke and family. He returned home Monday, Memorial Day.

Omer and I attended funeral services Sunday for one of my brother-in-laws in Lamesa. They are needing rain badly in that area. They had a small shower Sunday afternoon.

Brian & Johnna Hunt visited Keith Tooley in Abernathy last week. They are faithful subscribers to the Abernathy Review in Phoenix, Arizona. Brian is the manager of Arizona Charter Enterprises of Phoenix.

Funeral services for Blake Sattfield of Corpus Christi, were held May 8th in Corpus Christi. Blake was 22 years old. He died of heart complications. He was the son of Sam Sattfield and Yvonne Hager Sattfield of Corpus Christi.

Sam is the minister of recreation of First Baptist Church in Corpus Christi.

Mrs. Rita Casserly and Miss Anita Taylor of Hous-

## Did You Know

## We Now Carry

### Fostoria Stemware

### and Mikasa Pottery.

## Abernathy Floral

298-2334      1312 Ave. D

NOW PAYING  
**HIGHEST RATES**  
**AVAILABLE!**

9% On Money Market Fund Account  
8% On Super NOW Account

FIRST STATE BANK  
SHALLOWATER  
IS UP ON...

# SATURDAY MORNING!

WEEKDAY DRIVE IN BANKING

Monday - Friday

7:30 To 4:00

Saturday

9:00 To Noon

At First State Bank we realize that it may be hard to do your banking during a busy work week. That's why we're now offering drive in banking on Saturday morning! In short, we want to make it convenient for you not the other way around!

## FIRST STATE BANK

Located five miles west of Lubbock on the Shallowater - Clovis Highway

Member FDIC

Piggly Wiggly wants to

congratulate this week's

5,000 stamp winner

**Mary Ferguson**

## H A I L

**No Matter How It Falls—It Spells DISASTER To Growing Crops**

...but you can prevent financial DISASTER from hail by insuring your crops before the storm.

**Richard DuBose**  
insurance  
real estate

PO Box 580  
924 Ave. D      Phone 298-2536



## For your information

### WTSU ORIENTATION SESSIONS SLATED

Five orientation sessions at West Texas State University in June and July will provide the opportunity for beginning freshman students to ask questions and to become acquainted with campus.

For the first freshman orientation session Friday, June 10, 192 students who plan to enter WTSU as freshmen in the fall semester have registered, said Dr. Bob Stout, associate director of the University Counseling and Testing Center which sponsors the annual summer orientation sessions.

Other dates are Friday, June 24; Thursday, June 30; Saturday, July 9; and Monday, July 25.

Students and their parents may check in and receive orientation materials beginning at 7:30 a.m. each of the mornings at the WTSU Activities Center.

Additional information concerning the orientation program may be obtained from Stout at the University Counseling and Testing Center.

### FLYING QUEENS AND PIONEER BASKETBALL CAMPS

A limited number of openings are still available in this summer's Flying Queens and Pioneer basketball camps at Wayland Baptist University.

Six weeks of intensive training for youngsters through high school age who will not be participating in varsity sports next year will begin with the first Flying Queens camp June 13-18. Subsequent girls' camps are scheduled for June 20-25 and June 27-July 2, while the Pioneer camp for boys will also feature three sessions: July 10-15, July 17-22, and July 31-Aug. 5.

Registration for the Flying Queens camp is \$125 per girl, \$50 of which is paid as a deposit with the remainder due on the opening day of the session. The fee covers room and board, insurance, tuition, entertainment and a personalized camp T-shirt. Enrollment is limited to 135 campers each week and is open on a first-come, first-served basis.

For more information on either camp, contact the Wayland Athletic Office at 296-5521.

### CAMP FOR DIABETIC CHILDREN

As summer rolls around, children begin to look forward to attending camp. This year, children with diabetes will have a week of fun in the sun at Camp Butman near Merkel, Texas.

Sponsored by the West Texas District Rotary Clubs, the camp is under the direction of Texas Tech University Health Sciences Center (TTUHSC) Departments of Pediatrics, Nutrition and Social Work and the Texas Tech University Department of Physical Education.

Diabetic children ages 6 through 18 are eligible to apply for camp. Applications should be directed to S. K. Varma, M.D., or M. J. Bourgeois, M.D., of the TTUHSC Department of Pediatrics, Lubbock, Texas, 79430, or phone (806) 743-2310. Deadline for application is June 15. Camp will be August 1-9.

### GOVERNOR WHITE PROCLAIMS "SAFE BOATING WEEK" JUNE 5-11

Governor Mark White has proclaimed June 5-11 "Texas Safe Boating Week" and the U.S. Coast Guard has named it "National Safe Boating Week." The special statewide designation was issued by Governor White in a ceremony at the Texas State Capitol.

Groups participating in the proclamation were the Boating Trades Association of Texas, Marina Association of Texas, Texas Parks & Wildlife, Texas Safety Association, U.S. Coast Guard Auxiliary and U.S. Power Squadrons. The six organizations teamed up to form a coalition for Texas boating safety and to remind Texans that "safe boating is fun."

Boating operation and safety information is available from the organizations joining in the coalition. Many materials are free.

### MEDICAL JURISPRUDENCE REVIEW FRIDAY

Even though medicine and law are separate disciplines, it is becoming more and more important for the modern physician to keep abreast of how the law affects his medical practice.

The fourth annual Medical Jurisprudence Review, set for June 3 at the Texas Tech University Health Sciences Center (TTUHSC), is designed to serve as a review for practicing physicians and graduating students preparing for licensure examination by the State Board of Medical Examiners.

The course provides an overview of regulations governing medical licensure and practice in Texas and will examine such areas as patient rights, medical liability, medical records, death, anatomical gifts, controlled substances and mental health codes.

### FIRST 1983 PERFORMANCE OF "TEXAS" JUNE 15

Canyon, Texas...The eighteenth Gala Opening celebration of "Texas" is only weeks away, and preparations are being made for the show's first performance of 1983 at 8:30 p.m., June 15 in Palo Duro Canyon's Pioneer Amphitheatre.

This year's celebration will be a tribute to the fifty states of the United States that send their tourists to the drama each summer. A colorful display of each state flag is being planned, and it is hoped that each state will have a representative at the opening of the show.

It is a busy time for everyone connected with the show's production, but there is still time to take ticket reservations and to answer any questions that any patron might have.

For tickets or information, call or write "Texas," Box 268, Canyon, Texas, 79015 or call 806-655-2181.

### CONCERT TO BENEFIT YOUTH CENTER

Texas Revolution won't be singing for its supper, but the band will be entertaining in Lubbock June 4 to help raise money for the Auxilio Youth Drug Prevention Center.

Proceeds from benefit dances throughout the year have provided funds for the center's operations through July; this concert will help raise money for the remainder of the year.

The 8 p.m. concert at the Lubbock Civic Center will feature Ruben and Alfonso Ramos and the Texas Revolution Band, one of Texas' most popular Hispanic groups, along with Ben Bietela and the Cruiser Band.

For more information about the concert, contact Gilbert Herrera, director of the Auxilio Drug Rehabilitation Center, at 806-763-9578.

### VERBAL AND NON-VERBAL COMMUNICATION COURSE OFFERED

Teachers and school administrators who don't teach speech, but who want to know more about verbal and non-verbal communication with students, will have opportunities to learn through two graduate courses offered for the first time at Texas Tech University.

For more information contact Graduate Admissions, 03 Holden Hall, (806) 742-2787, or call Dr. Wheelless (806) 742-3911.



**ABERNATHIAN WITH PRIDE...**Niccolo Ambrose, son of Albert and Teresa Ambrose of Abernathy, was proud to sit in the lap of Country and Western Music Star Charlie Pride recently. The Ambrose family was on a flight to Pittsburgh, Pennsylvania to visit relatives, when they met Charlie Pride on the plane.

## Transition

### Bonnie Culp

Services for Bonnie Culp, 73, of Lamesa were at 2 p.m. Sunday at First United Methodist Church in Lamesa with the Rev. Bob Metzger officiating, assisted by the Rev. Newton Starnes.

Burial was in Lamesa Memorial Park under the direction of Branon Funeral Home.

Culp was dead on arrival at Medical Arts Hospital at 6:30 p.m. Friday.

Born Jan 5, 1910, in Coryell County, he moved to Dawson County in 1916. He married Ethyl Ann Strickland Sept. 28, 1930. He was a retired farmer and a 40-year member of the United Methodist Church.

Survivors include his wife; a son, Ronnie of Lamesa; a daughter, Joy Boyd of Big Spring; two sisters, Lena Buckingham of Huntington Beach, Calif., and Viola Baker of Westminster, Calif.; three brothers, Vernon of Seligman, Mo., O. L. of Bellflower, Calif., and Clarence of Lamesa; three grandchildren; and two great-grand-

children.  
Mr. Culp was a brother-in-law of Mrs. Omer Wade of Abernathy.

### Lydia Mirelez

Services for Lydia Mirelez, 51, of Abernathy were held at 3 p.m. Friday, May 27 at St. Theresa Catholic Church of Hale Center with the Rev. Glenn Rosendale, pastor, officiating.

Rosary was at 8 p.m. Thursday at Chambers Funeral Home in Abernathy.

Burial will be in Abernathy Cemetery under direction of Chamber Funeral Home.

Mrs. Mirelez, a native of Largato, died at 10 a.m. Wednesday at her home of an apparent heart attack. Justice of the Peace Shirley Groce ruled that the death was by natural causes.

Mirelez came to Abernathy in 1970 from Hale Center.

Survivors include four daughters, Sylvia Ramirez, Nancy Olguin and Anita, all of Abernathy, and Theresa Valdez of Lubbock; three sons, Benito of Lubbock, Gilbert of Abernathy and Lupe of Liberal, Kan.; three

brothers; a sister; and seven grandchildren.

### Betty Johnson Henry

Services for Betty Johnson Henry, 69, of 4117 East 3rd Place, were Thursday at 10:30 a.m. at Parkway Drive Baptist Church. The Rev. Wayne R. Williams, pastor, officiated. Mrs. Henry died at 12:45 a.m. Tuesday, May 24, in Methodist Hospital following a brief illness. Interment will follow graveside services at 2 p.m. Thursday (MDT) in Prairie Haven Cemetery, Hobbs, New Mexico, under direction of Rix Funeral Directors of Lubbock.

She was born on November 13, 1910 in Grayson County, Texas and married Wright Miller Johnson on December 28, 1932. He died on September 21, 1951. She married Jim Henry on November 10, 1953 in Hobbs, New Mexico.

They farmed in the Wellman community until their retirement in 1971 when they moved to Lubbock. He died January 10, 1978.

She was a member of the Parkway Drive Baptist Church.

Survivors include three sons; Elton E. Johnson and Erwin W. Johnson, both of Hobbs, N.M. and James (Pete) Henry of Wellman. Four daughters; Joan Attebury of Abernathy, Texas, Lovella Todd of Brownfield, Texas, Cora Sue Kitchen of Frederick, Oklahoma and Debrah Fancher of Odessa, Texas. One sister, Willie Mae Newson of Brownfield; three brothers, Fred Sedgwick of San Antonio, Texas; 21 grandchildren and 19 great-grandchildren.

Pallbearers were Kelly Attebury, Jimmy Todd, Johnny Todd, Wade Johnson, Erwin W. Johnson and Eric Johnson.

### Henry Marvin Bryant

Services for Henry Marvin Bryant, 53, of Lincoln, Missouri were at 2 p.m. Wednesday, June 1, at Criswell Funeral Chapel in Ada, Oklahoma.

Henry died Saturday morning in a Kansas City, Missouri hospital after a lengthy illness.

He is survived by his wife, Sally; his mother, Pearl Bryant of Abernathy; five sisters, Eva Morgan of Abernathy, Inez Holt, Athalea Smith and Ada Wright of Odessa, and Gloria Jean Daily of Lubbock; two brothers, Paul of Lubbock, and



## From The Postmaster's Desk

By Postmaster Ken Moreland

Biting dogs are a problem throughout the year. However, during the warmer days, and school is out, more doors are open, more pets are outside, and the frequency of dog bites increases.

How serious is this problem? Last year a letter carrier in California died from complications resulting from a dog bite. Many others were disfigured, partially or permanently disabled. Nearly 10 percent of all injuries suffered by postal employees are dog bites. The cost of these attacks is estimated in excess of \$1 million.

I suggest to you that if I were reporting that nearly 6,000 Americans had contacted a new strain of flu virus, every news media in America would be reporting an outbreak of nearly-epidemic proportions...that's exactly where we are with dog bites. The annual onslaught of dog attacks has reached nearly epidemic proportions. By any standard of measurement—num-

Billy of Tucson, Arizona; and numerous nieces and nephews.

Henry was a native of Abernathy.

bers, human suffering or financial losses—dogs that bite are a threat to any community.

The painful, expensive incidents of dog bites would not occur if dog owners would only recognize that one of the primary responsibilities of dog ownership is to protect the pet and those it might come in contact with. I would hope that those of you that own dogs will realize you are the key person responsible for the control of your pet.

I realize that it's human nature to feel that your sweet, lovable, domesticated pet is harmless, but the facts state otherwise. Dogs are territorial by nature and can be fiercely loyal to an owner and his or her property. This is precisely why dogs are used by military forces, police and security forces and by millions of our citizens hoping to protect their homes and property.

The procedure is a simple one. We ask that you keep your pet in a securely fenced area, tethered in an area or otherwise isolated from your mailbox and the areas your carrier uses for access to your property.



**PRICES EFFECTIVE JUNE 2-4, 1983**

WHILE SUPPLIES LAST!  
OPEN 24 HOURS  
FOR YOUR CONVENIENCE!  
SELF SERVE GAS

**June is Dairy Month**

 <p><b>HOMOGENIZED ALLSUP'S MILK \$2.19 GALLON</b></p>	
<p><b>Chopped Beef Sandwich 99¢</b></p>	<p><b>Burritos 2/99¢</b></p>
<p><b>Sliced Beef Sandwich 99¢</b></p>	<p><b>Corn Dogs 2/99¢</b></p>



**COCA-COLA \$1.99**  
16 Oz. BTL. 6 PACK NON-RETURNABLE

**NEW! FAST-N-HOT TEXAS**

**HAM & CHEESE SANDWICH \$1.59**  
ON BUN AND A 16 OZ. CUP OF FRESH BREWED ICED TEA REG. \$2.29 ONLY

**COOKED FOOD SPECIAL OF THE WEEK!**

<b>Chicken Whole BBQ</b>	<b>\$1.99</b>
<b>Sandwich BBQ Chicken</b>	<b>2/99¢</b>

READY TO GO AT ALLSUP'S FAST FOOD-CENTERS!

<p><b>Taco Rolls 2/99¢</b></p>	<p><b>Chicken Patty Sandwich 99¢</b></p>
<p><b>Chicken Fry Sandwich 99¢</b></p>	<p><b>Ham &amp; Cheese Sandwich 99¢</b></p>
<p><b>Hot Links 2/99¢</b></p>	<p><b>Smoked Sausage 2/99¢</b></p>
<p><b>Mild Links 2/99¢</b></p>	<p><b>Sausage on Stick Each 99¢</b></p>

## Affairs of Life



How wonderful it is to have eyes to see and ears to hear.

Use them to edify one another.

### Shipman Agency

Billy Shipman  
Rola B. Covey  
Roddy Shipman  
D'Aun Shipman

### ABERNATHY WEEKLY REVIEW

Established in November of 1921...published on Thursday of each week in Abernathy, Texas. Second Class postage paid at Abernathy, Texas 79311, located at 916 Ave. D, in the city of Abernathy, P.O. Drawer D, Phone [806] 298-2033.

Any erroneous reflection upon the character of any firm, corporation or individual which may appear in the columns of the Abernathy Weekly Review gladly will be corrected upon being brought to the attention of the publisher.

Subscription Rates: \$8.00 per year in Hale and Lubbock Counties, \$8.50 per year in rest of Texas and \$9.50 per year when mailed out of Texas.

Keith Tooley, Editor  
Carol Boyd, Secretary/Typist  
Helen Wade, Society

**TPA MEMBER 1983**  
**TEXAS PRESS ASSOCIATION**



"Of course I gave him a tip. I told him to save his money at

## FIRST STATE BANK

WE ARE EAGER TO SERVE YOU

- ★ Savings Accounts
- ★ Certificates of Deposits
- ★ Safe Deposit Boxes
- ★ Bank By Mail
- ★ Checking Accounts
- ★ Night Depository
- ★ Loans-Farm, Commercial and Installment

FOR ALL YOUR BANKING NEEDS

## ABERNATHY FIRST STATE BANK

402 - 9th Street Member FDIC Phone 298-2556



# New Deal News

By Fern Bigham

**HAPPY BIRTHDAY TO:** Denise Kirk, Richard Davis, Monty Stephenson, Karol Tyson, Linda Connors, Margie Edwards, Bobby Greenhill, Tonya Tyson, Missy Sherman, Patti Jones, Don Young, Melissa Peters, Marks Storrs and Raymond Olquin.

**HAPPY ANNIVERSARY TO:** Mr. & Mrs. Don Voyles, Mr. & Mrs. David Parrish, Mr. & Mrs. John Johnson, Mr. & Mrs. Rex Kirk & Mr. & Mrs. Mike Carter.

**EVENTS THIS WEEK IN LION COUNTRY:** Monday, June 6...Lions Club. Tuesday, June 7...Volunteer Firemen's Meeting.

**FIRST BAPTIST CHURCH HAS VBS:** The Vacation Bible School for the First Baptist Church will be held June 6th through June 10th, from 8:30-11:30 each morning. Classes will be held for ages 3 years

through 6th grade. Refreshments will be served each day. On Friday immediately after class there will be a picnic for everyone attending at Maxey Park in Lubbock. On Friday evening at 7:00, there will be the commencement exercises in the auditorium of the church for all parents and friends. Everyone is invited to attend!

## New Deal Girl Scouts Sponsor Family Fun Night

Girl Scout Troop 12, of New Deal, is sponsoring a gigantic skating party for the whole family June 2, from 6 to 10 p.m. at the Skate-Away, 5002 34th (formerly the Skate Machine). Your help is needed to make it a success.

Tickets will sell for \$3 each. This includes 4 hours of skating, 2 video game tokens and a 25-cent Coke.

## Former New Deal Resident On "South Pacific"

Texas Tech University and Civic Lubbock, Inc., announced today that the cast for the Summer Rep production of "South Pacific" includes Yvonne Griffis as Lt. Genevieve Marshall. Griffis is a former resident of New Deal.

Lubbock Summer Rep is a joint city and university production of three musicals each summer. Now in its third year, it involves the cooperation of the Texas Tech Departments of Theatre Arts and Music, Civic Lubbock, Inc., and the Lubbock Cultural Affairs Council.

This year's productions

will make up an "entertainment cruise" starting June 17-28 and 24-25 with "South Pacific," followed by "H.M.S. Pinafore" July 1-2 and 8-9 and "Anything Goes" on July 15-16 and 22-23. Rodgers and Hammerstein's "South Pacific" has become a classic in American musical theatre. Set in World War II, it tells of two romances: one between a French planter and an American nurse, and the other between a Marine Lieutenant and a beautiful Polynesian girl.

"H.M.S. Pinafore" is Gilbert and Sullivan's most famous comic operetta. Set on a British naval ship, the play spoofs the proper and strict British class distinctions of the late 1800's.

Cole Porter's "Anything Goes" presents a comedic view of a cruise in the 1930's. The passenger list includes Moonface Martin, Public Enemy #13; Reno Sweeny, famed evangelist; and a love triangle involving an English baronet, his fiancée and an up-and-coming Wall Street man.

Season tickets for all three productions are available at a single price of \$16 or a "twofer" price of \$30. Individual performance tickets went on sale May 30 and are priced at \$5 and \$7 per show. For more information call (806) 742-1936 or write Lubbock Summer Rep at Box 4298, Texas Tech University, Lubbock, Tx., 79409.



Yvonne Griffis

## 75th 4-H Roundup

What do you have if you assemble 1,600 4-H'ers in the form of a clover leaf? You have a gigantic clover leaf full of vim and vigor.

That's exactly what will happen at Texas A&M University June 7 during the opening of the annual Texas 4-H Roundup. Some 1,600 4-H youth who will be participating in a host of

contests and other events will assemble on Kyle Field to form a huge clover leaf in celebration of the 75th anniversary of the beginning of the 4-H program in Texas.

The effort should provide an avalanche of pictures that will find their way into a mass of publications during the remainder of 1983, points out George McArthur, a 4-H and youth specialist with the Texas Agricultural Extension Service, Texas A&M University System. The Extension Service is the parent organization of 4-H, a program for youth between the ages of 9 and 19.

Along with the 75th anniversary celebration, Roundup activities June 7-8 will feature the traditional State 4-H Food Show, State 4-H Project Show and competition in 39 different contest areas.

The State 4-H Food Show is held the first day followed by a special assembly at 6:45 p.m. in Rudder Auditorium. Five individuals and businesses will be honored at the assembly for their long-time support of 4-H, and 68 outstanding 4-H members will be awarded scholarships totaling more than \$332,000.

Contests ranging from method demonstrations in agronomy and clothing to public speaking and livestock judging will command attention the second day of Roundup. 4-H'ers competing in these contests must have won at the county and district level to qualify for state competition, said McArthur. Roundup contest winners will be recognized at a special assembly that evening at 8 p.m.

## Mike Flores Named To SPC President's List

Mike Flores of Abernathy, has been named to the President's Honor List at South Plains College for the 1983 spring semester.

To qualify for the President's List at SPC, students must maintain a 4.00 or "straight A" grade point average while enrolled for at least 12 semester hours. "We wish to extend our congratulations to these fine students who have demonstrated academic excellence

which is found at South Plains College," said Dr. Bud Joyner, vice president for academic affairs. "We are always proud of the students who are named to the President and Dean's Honor Lists."

A total of 197 students were named to the President's List, and 285 students to the Dean's List for the 1983 spring semester at SPC.

## Bennett Awarded Four Year Scholarship

Robin Bennett, daughter of Col. and Mrs. Clyde E. Bennett of Abernathy, has been awarded a four year tuition scholarship to Texas Tech University Health Sciences Center School of Medicine. She will begin classes Aug. 4.

Miss Bennett is a member of the social sorority of Pi Beta Phi, the American Society of Microbiology, the pre-medical honorary Alpha Epsilon Delta, the history honorary Phi Alpha Theta

and MENSA. She is a microbiology major with a 4.0 overall grade point average. She was offered a position with NASA as a research scientist upon her graduation from Texas Tech. She turned down this offer in order to pursue a career in medicine.

Miss Bennett is the granddaughter of Mr. and Mrs. Kenneth Roberson of Petersburg.

**go classified!**  
you'll love the results!

LIFE - AUTO - FIRE - HEALTH  
ESTATE PLANNING  
RETIREMENT PLANS

For all your insurance needs  
**Randy Dunn**  
Lubbock Co. Farm Bureau  
5605 S. Ave Q  
Lubbock, Texas 79412  
Bus. Phone 747-5271  
Home Phone 328-5354

## For Sale

**PIANO FOR SALE**  
Wanted: Responsible party to assume small monthly payments on spinet/console piano. Can be seen locally. Write: (include phone number) Credit Manager, P. O. Box 478, Lockhart, Tx., 78644-0478. (28-3tp)

**FOR SALE:** Full size Wurlitzer Organ with rhythm box, excellent condition. Phone 995-3535 or 995-4442. (18-rt)

**FOR SALE:** Honda 175 XL Motorcycle \$450. Call 298-2436. (16-rt)

**FOR SALE:** 1976 Olds Cutlass. Excellent condition. Call Richard DuBose. 298-2536

**FRAMED PHOTOS FOR SALE**  
Keith Originals, framed and matted pictures of animals, mountains, old structures, wagon wheel and many more to choose from. The perfect gift for only \$17.50 each. Come to the Abernathy Weekly Review and see our display. (24-rt)

**MARY KAY COSMETICS.** Ask about our new colors for spring and summer. 757-2126. Sally Barrick. (22-16tp)

**FOR SALE:** 1974 Olds Omega - One owner. Excellent condition. New Radial tires-shocks-brakes-\$1500. 757-2395. (29-1tp)

**FOR SALE:** 1978 F-100 Custom pickup, air, cruise, AM-FM stereo. Camper shell. Call 762-1906. (28-2tp)

**\*CREDIT PROBLEMS?\***  
IF YOUR MOBILE HOME LOAN WAS TURNED DOWN FOR ANY REASON I WILL HELP!  
Call David Collect At 0-806-763-5319 A-1 Lubbock (27-7tp)

**\*A-1 IS NUMBER ONE\***  
LOWEST PRICES  
FREE DELIVERY  
SAME DAY APPROVALS!  
Call David Collect At 0-806-763-5319 Lubbock (27-7tp)

**\*5 PERCENT DOWN\***  
ONLY 5 PERCENT DOWN PAYMENT ON ALL TIFFANY'S ONLY AT A-1 MOBILE HOMES  
Call David Collect at 0-806-763-5319, Lubbock (27-7tp)

## Real Estate

**FOR SALE:** Great value, restricted area, 3-2-2, sprinkler system, basement. Call Don Evelyn Fondy, 298-2268, Edwards & Abernathie, Inc., 792-5166.

**FOR SALE:** Owner will consider trade for home in town. 3-2-2, country property - fireplace - completely remodeled. Call Don Evelyn Fondy, 298-2268, Edwards & Abernathie, Inc., 792-5166.

**House For Sale:** 1409 Ave. L, 4 bedroom, 2 bath, large den, living room, basement, garage, 1900 square feet. Call for appointment. 298-2404. (26-rt)

**House For Sale:** By owner; reasonably priced; 3 bedrooms, 2 baths, large country kitchen, dining, living, den, basement, 298-2733. (28-4tp)

*Love is beautiful simply by being what it is*

**Abernathy Weekly Review**

Let us show you our beautiful collection of contemporary wedding stationery by Tazax. Come in and select your wedding stationery and accessories from a wide variety of styles in every price range.

**LANDMARK REALTORS**

**298-2440**

\$3,000 DOWN  
2 bedroom, 1 bath, steel siding, assume 12% FHA Loan.

3 bedroom, 3 bath and large shop \$72,500

**PRICED REDUCED \$26,950**

Very nice mobile home and lot. 2 bedroom, 2 bath, carport, 2 storage buildings and fence.

James Pope 298-4019  
Jim Bob Smith 795-7126

## Hints for Homemakers

**Keep That Bathroom Shining**  
One bottle that's likely to be right on your bathroom shelf can help keep the bathroom sparkling. It's rubbing alcohol. Inexpensive, alcohol removes soap film with ease. Pour it on a wad of tissue and rub the mirror first. Next, wipe the wash basin, then the toilet fixtures. Before you know it, the whole room will shine.

## Business Services

**Need An Electrician?**  
We do it all  
**NEW CONSTRUCTION RESIDENTIAL COMMERCIAL INDUSTRIAL**  
WE ALSO GIVE FREE ESTIMATES  
**DEAN WESLEY ELECTRIC**  
298-2028

For All Your Cement Needs  
Call  
Center Ready Mix  
At WEST BUILDERS SUPPLY  
Finisher & Labor available if desired  
Hale Center 839-2102

**C & G BUILDERS**  
Remodeling, Paneling, Garage Conversions, Patios, Storm Doors and Windows. Painting all types of home repair. No Job too small. 1609 Ave D; Abernathy 298-2086.

**Pick a Pair O' PECOS**

- Full grain, oil tanned leather
- Fully leather lined
- Long wearing Chermung sole and heel

Western  
**Red Wings**  
STRUVE DEPARTMENT STORE

## Job Opportunities

**Help Wanted**

A single parent needs a responsible babysitter. Only 3 days one week and 4 days every other week. Come by 1004-15th St. on Monday or Tuesday. (29-1tp)

**Work Wanted**

Teenage girl would like to babysit this summer. Daytime, if possible. Full-time or part-time. Phone 298-4212. (27-6tp)

**Job Opportunities**

Make money working at home! Be flooded with offers! Offer details rush stamped addressed envelope and 25 cents service fee - D. R. Bergeron, 903 Peach St., Dept. 15, Houma, La., 70360.

## Miscellaneous

**BEST DIET PLAN**-lose weight fast and safe. Contact Betty Cagle. 298-2282. (20-RTS)

**SEE RINSE-N-VAC**, the incredible new portable steam type carpet cleaning system. It does the job of professional carpet cleaners at a fraction of cost. Rent one now at Struve's Department Store, 318 Main. Phone 298-2531.

**CLEAN RUGS**, like new, so easy to do with Blue Lustre. Rent electric shampooer \$1. Struve Department Store.

Each human eyelash lasts about 150 days.

**Skate-Away**  
June 2, 1983  
6-10 p.m.  
5002 - 34th St.  
Lubbock

Tickets \$3.00, includes skating & 2 video game tokens & 25-cent Coke (refill with your cup 25 cents).  
Sponsored by Troop 12 New Deal Girl Scouts. Call 746-6117, 746-5527 or 298-2094 for more information.

**Your Subscription To The Review Expires In June**

Gerald Adams	Danny Jackson
Mrs. J. D. Adkisson	Steve Jackson
Wayne Arthur	Jesse Knight
David Attebury	Mitch LeMoine
E. H. Attebury	Grady Loyd
Red Attebury	G. W. Manley
Billy Balderas	L. R. McLain
Wade Attebury	J. C. Mills
Tim Barton	Clay Mimms
Clyde Benn	Janet Mitchell
Mrs. Mary E. Boone	Tommy Myatt
Charlotte Carter	Harold D. McCune
Robert Carter	Henry G. Nunn
Coca Cola	Pete Peacock
Coop Grain Co.	Hayden Pearce
County Line Co-Op Gins	Don Presley
LaVern Cope	Sue Purnroy
J. C. Danford	Relta Smith
Don Evelyn Fondy	W. G. Spruiell
Dr. Kenneth Gregory	Larry Stansifer
Patty Hall	Rudolph Struve
A. C. Harris, Sr.	Harold G. Thompson
Ray Higginbotham	Pete Thompson
Marvin Toler	Nona Tucker
Neff Turner	D. R. Williams
Tim Hill	

\$8 for Hale and Lubbock Counties  
\$8.50 for all other Counties in Texas  
\$9.50 for those living out of state

**Mail Your Subscription Fee**  
**Abernathy Weekly Review**  
Drawer D,  
Abernathy, Texas 79311

**Senior Citizens Drive**

**DONATIONS COLLECTED - \$11,447.99**

**Those Who Have Contributed**

Methodist Jr. High Sunday School Class	Mr. and Mrs. Melvin Johnson
Mrs. Chris Benn	Otelia Clement
Vecchio's Burger Hut	Lon Carmickle
Clayton Enger	D.Z. Ward
Vic Struve	Abernathy Lions Club
A.D. Helm	W.A. Young
G.G. Woods	Reita Smith
Bernice Smith	Mrs. Elmer Galloway
Ted Major	Cecil McCurdy
R.L. Adams	W.R. Flinn
Abernathy Weekly Review	W.F. Wolf
E.H. Attebury	Mrs. U.L. Moreland
Hayden Pearce	Junia Speer
Hugh Vaughn	Arno Struve
Ken Moreland	Milton and Juanita Bell
Flim Dunn	Joe Thompson Implement
J.C. Mills	Joe Chambers
Richard DuBose	Merle Enger
Abernathy Volunteer Fire	Jimmie T. Davis
Ted Hill	Danny Ward
Y. F. Snodgrass	Andy Reid
Jimmy Gragg	C. L. Owen
Pay-N-Save	Nealie Konesko
C. R. (Pappy) Vecchio	Kenneth Sims
R. A. Lutrick	Mr. & Mrs. A. L. Stone, Jr.
Raul Cano	Abernathy First State Bank
Jesse E. Webb	Royce Shires
Wayne Attebury	Cody Turner
Jerry Phillips	Mrs. Homer Hunt
Chamber of Commerce	Harlow Neis
Pete Thompson	John Hale
Floyd Shipman	Mrs. W.V. Talbott
Polly and Cal Tucker	Joe Thompson
Jerry Adams	L. Webb
L. Cannon	O.B. Pope
Dot Struve	Hoppy Toler
Gid Adkisson	L.J. Coombes
Waits Dairy	John Kveton
Leo Lebow	Bill Houston
HB Coggin	Artie Oswalt
Bill Pope	Oma Toler
Lloyd Edwards	Mr. and Mrs. R.H. Lacy
Randy Peoples	Carl Phillips
Irvin Rhodes	Marvin Toler
Bobby Cunningham	J.L. Irish
Mrs. W.V. Halford	Ercell Givens
Patton's Parts Place	Jerry Givens
Pinson's Pharmacy	L.G. Montgomery
Ray Sanders	Harold Davis
Lorraine Davis	JoDolph Adkisson
Owen Benn	Cliff Brashear
Lewis Patterson	Bob Pike
Charles Nelson	Aaron DuBose
Omer Wade	Abernathy Hobby Club
Abernathy Young	Minnie Northcutt
Home-makers	J. L. Miller, Jr.
Charles Wilson	Opal Shipman
Frank Bartlett	Marion B. Rankin
J. O. Pope	Rachel Webb
	W. R. Brown
	Walter W. Cox
	Ollie Selke
	Clyde Benn

**Farmer or gardener if you plant any seed for better root system, better stalk, better production, you must use Cytosyme.**

Call H.V. Davis 757-2301

**Richard DuBose insurance real estate**

**NEW LISTINGS**  
1111 Ave. F, 2 story, completely remodelled inside.  
Trailer House on 1 1/2 lots, 1008 15th St., \$11,000.  
709 5th - 3 bedrooms, 2 bath, Priced to Sell.

1714 Avenue H, 3 bedroom, 2 bath...Very Nice  
480 Acres N.W. of Petersburg, Lays Level

Phone (806) 298-2536 P.O. Box 580, 924 Avenue D 762-1440  
Abernathy, Texas 79311