



# The Olton Enterprise

CONSUMER'S BUTANE CO.  
Phone 3971  
Olton, Texas

"The Golden Gate To The Golden Road"

Volume 30

OLTON, LAMB COUNTY, TEXAS, THURSDAY, JANUARY 12, 1956

Number 2

## School Officials Stress Importance Of Jan. 20 Pre-Registration Session

School pre-registration, scheduled here Friday morning, Jan. 20, is of extreme financial importance to the Olton Independent School District, Supt. Carl Macon pointed out this week.

Each child enumerated at that session, Macon explained, makes this district eligible for per capita state aid, which this year averages about \$71 per child in this school district.

"We urge that all children who will be six years old before Sept. 1, 1956, enroll for school on Friday morning, Jan. 20, at the Olton primary building," Mr. Macon said.

It is necessary that all eligible children enroll at that time so that their names can be placed on the school census. The complete census must be forwarded Feb. 1 to Jerry Lumsden, county superintendent of schools, and then to state officials at Austin.

School officials are attempting to include in that census the names of all children eligible to attend school here born on or after Sept. 1, 1938, and not after Sept. 1, 1950.

Family census blanks for children now in school will be distributed through the school, by classes, next week. "It is the pre-registration session, however, where we have missed enumerating many children in prior years, and we want to emphasize its importance," Supt. Macon said.

If possible, a copy of the child's birth certificate should be brought at the time of enrollment on the morning of Jan. 20, Macon said. It will not be necessary, however, to have one on file at school until Sept. 1, 1956, he explained.

The children may eat lunch in the school lunchroom on registration day, but must be picked up not later than 11:30 a. m., school officials point out. The present first grade students are to stay home that day.

The school census currently being prepared will determine the amount of per capita state aid which this school district receives for the 1956-57 school year. Olton Independent School District this year will receive a total of \$84,306 in per capita state aid, based on the 1955 school census of 1,181. That figure approximately \$71.38 per capita.

## Games Party To Be Staged Saturday Night

A games party to which the public is invited will be held at 7:30 p. m. Saturday, Jan. 14, in the lobby of Olton Food Bank, according to Mrs. B. C. Cooner, Worthy Matron of O. E. S., the sponsoring organization.

Each player will pay 50c, Mrs. Cooner said.

O. E. S. members have been asked to bring tables and games.

## Two Men Charged In Cotton Thefts

Two men have been charged in cotton and trailer thefts in the Olton community.

Deputy Sheriff V. L. Smith identified the pair as J. W. Lee, 21 years old, Olton farmer, and R. F. Glover, also 21, itinerant farm worker employed by Lee.

The officer said Glover, also a suspect in connection with the burglary of a cafe at Hart, is being held in Castro County jail at Dimmitt. Lee is free on bond.

The Olton deputy, along with Castro County Deputy Bill Ford of Hart, has been investigating cotton thefts and the burglary for the past two and a half months.

Smith said the two are suspects in the theft of a trailer and two bales of cotton Nov. 14 of last year from the Floyd Light farm and a trailer and a bale of cotton Nov. 17 from the Paul Ray Spain place.

The two also are suspects in Hale County in connection with the Nov. 22 theft of a bale of cotton from George Nichols, four miles east of Olton, officers reported.

Smith said the trailers were altered and painted. Both were recovered at Mayfield Co-Op Gin.

Deputy Sheriff Smith said Glover made a statement to Lamb County Attorney Curtis R. Wilkinson, Sheriff Dick Dyer, Castro County Sheriff Jack Cartwright, District Attorney Joe Cox and Deputies Smith and Ford. He said Glover's statement led to the arrest of Lee.

County Attorney Wilkinson said Glover told of taking two pickup loads of grain from the Grisham Switch Elevator between Hart and Plainview and selling it to the Roy Burrus Elevator in Hart. Ironically, both elevators belong to the same man.

Wilkinson said Glover admitted taking some \$200 worth of tools from county maintainers in Lamb and neighboring counties.

## County Attorney Will Speak On "Making Wills"

"Current Methods of Making Wills" is the topic of the talk that Curtis Wilkerson, county attorney, will present here Monday night at 7:30.

Scene for the meeting will be the Olton Methodist Church. Olton Study Club is sponsoring the meeting.

Mrs. Basil Sherman, study club reporter, explained that the public is invited to attend.

# Officers Question Olton Youth In Yule Hit-and-Run Tragedy Here

## Bloody Cane Figures As Prime Clue

A 17-year-old Olton boy is being questioned this week in connection with the hit-and-run tragedy which took the life of an 82-year-old Negro here Dec. 19.

The youth is being held in Lamb County jail, according to officers.

Victim of the hit-and-run was John Henry Douglas.

The accident occurred in front of Olton Implement Company as Douglas was walking down Highway 70.

A bloodstained cane found on a Plainview street was the clue that shed the first ray of light on the Yule-tide tragedy.

Deputy Sheriff V. L. Smith said Douglas' name was carved on the cane. The officer surmises that the cane must have struck the grill of the car and was carried on to Plainview and then dislodged and tossed aside by the frightened occupant or occupants of the death car.

Smith said the cane, clothing worn by the dead man, and the license plate of the suspect's car are being examined by the state laboratories at Austin.

The clothing, too, is being examined for traces of paint which may be tied to the car which killed Douglas.

Witnesses described the death car as a late model blue Chevrolet sedan.

Douglas had been living with a son, George, on the H. G. Walker farm.

Deputy Sheriff Smith said the suspect has not made a statement.

The case is being investigated by members of the Sheriff's Department, Texas Rangers, Highway Patrol and City Marshal Vernie Head.

## JUVENILE IS HELD IN THEFT

A 13-year-old youngster was being questioned Wednesday morning in connection with the theft of \$40 from the purse of a grade school teacher.

Handling the investigation is Deputy Sheriff V. L. Smith.

Smith said the lad already is on probation as an aftermath of a forgery spree last fall. The boy was paroled to relatives by County Judge Bob Kirk.

Deputy Smith said the boy was caught in the forgery incident as he tried to pass a forged check at White Auto Store in December. The officer said the checks ranged from \$10 to \$38 and were drawn on farmers for whom the lad's father had worked.

## Filing Deadline Is Feb. 15 For Farmers, Ranchers

Farmers and ranchers this year have until Feb. 15 to file their 1955 income tax returns, Internal Revenue Service officials pointed out this week.

Deadline for filing these reports formerly was Jan. 31.

IRS officials point out that farmers and ranchers may extend the filing date to April 15 by filing an estimate and paying the estimated tax by Jan. 15.

Farmers this year will pay self-employment tax for the first time.

## LIONS CLUB TO SPONSOR STAGE REVUE

The Crotser Revue, a variety stage show, will be presented under sponsorship of the Olton Lions Club at 7:30 p. m. Friday, Jan. 20, at the high school auditorium, it was announced this week by Lion Boss Carl Macon.

The two-hour show will include a variety of comedy, magic and music, and has been enthusiastically received in other cities, Mr. Macon said.

Lions will launch advance ticket sales on Tuesday. Admission will be \$1 for adults and 50c for students.

## Thieves Loot Olton Station Friday Night

Mean thieves ignored a wreath on the door of Roberson & Givens Service Station Friday night and looted the service station of some \$70.

Crooks smashed a rear window to the wash rack to get into the establishment.

They pried open the cigarette machine and took some money which had been hidden there in a bank bag.

The station had been closed earlier in the day for the funeral of Mrs. Givens' father who died last Wednesday at his home in Plainview.

## YOUNG PEOPLE NEED LEADERS; NOT MORE ACTIVITIES, SPEAKER SAYS

Young people today need leaders more than they need more organizations!

This statement came from Rev. W. H. Vanderpool of Littlefield at the Olton Parent-Teacher Association's "Pot Luck Supper" Thursday night.

Rev. Vanderpool said that what today's young people need is more love and understanding at home. He stressed the power of the home and declared that the problems that young people have, seem big to them, and if parents do not help straighten them out, they can grow into something big.

"If more parents would volunteer to be leaders and sponsors for the organizations and clubs that our young people have, there would be no need for more activities," Rev. Vanderpool said.

Voted Littlefield's Man of the Year last year, Rev. Vanderpool is district Commander of the Boy Scouts and pastor of the Littlefield Methodist Church.

## OHS CAGE TEAMS TO OPEN DISTRICT SCHEDULE HERE THIS FRIDAY AGAINST POWERFUL TULIA

## DEATH TAKES FATHER OF OLTON WOMAN

Lewis Miller, 45 years old, Plainview, father of Mrs. C. J. Givens of Olton, died at 3:35 o'clock a week ago Wednesday afternoon at his home.

He had been in ill health for some time.

Funeral services were held at 3 o'clock last Friday afternoon in Date Street Baptist Church with the Rev. Everett Smaltz, pastor, officiating.

Burial was in Plainview Memorial Park Cemetery under direction of Lemons Funeral Home.

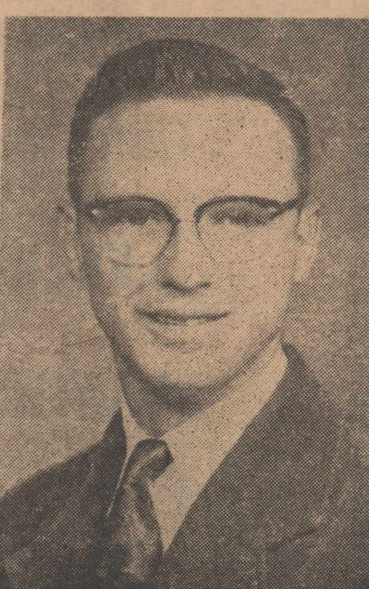
Survivors, other than Mrs. Givens, include the widow and another daughter, Mrs. Eldon Milstead, also of Plainview, six brothers, and a sister.

Mr. Miller moved to Plainview from Lawton, Okla., in 1929. He was employed as a salesman before ill health forced his retirement.

## POLL TAXES

Poll tax receipts are obtainable throughout January at City Hall or at Loveless Appliance, according to an announcement this week by Herbert Dunn, county tax-assessor-collector.

## Stovall Leads Class In SW Print School



Bobby Stovall

Bobby Stovall, son of Mrs. Vaneta Stovall, is among the leaders of his class at the Southwest School of Printing in Dallas, where he is attending on a scholarship.

Bobby also is one of the youngest students in the class. From a standpoint of scholastics he is second in his group.

Bobby has made one grade of 90 and the remainder of his grades range from 94 to 99. He has been operating the press room at the Hilton Hotel in downtown Dallas.

At the Southwest School of Printing, Bobby will study three months of general printing and then will study the offset printing press.

Bobby is a 1955 graduate of Olton High School and he began in the printing trade as an employee of The Olton Enterprise.

## PRODUCERS CO-OP WILL GET CHARTER

An Olton farm group will organize a farm labor cooperative to be known as Olton Co-operative Producers. They will apply for a charter immediately.

The organization already has about 100 members. Membership goal is 200, according to Milford Lambright, who is acting as secretary.

C. W. Phillips, chairman of the temporary board of directors, and J. C. Lane this week visited in the office of the Department of Labor at Lubbock. Officials there promised cooperation with the Olton organization.

They will hold another meeting at 7:30 o'clock next Monday night in the vocational agriculture room at Olton High School.

## SALK VACCINE IS AVAILABLE HERE THIS MONTH

This is the last month that children who have had their first polio Salk vaccine may receive their second shot.

The vaccine is available at any Olton doctor's office.

# Five Mustang Gridders Named To All-District Dream Squad

Olton High School placed five players on the 2-AA all-district football team named here Monday night by district coaches.

In this year's balloting, coaches selected all-district offensive and defensive teams from a list of all-opponent teams chosen by players on the six clubs in the district.

Chosen from Olton on the 22-member squad were Jarrell Edwards, offensive end; Jackie Gray and Teddy Estes, offensive backs; Donald Powell, defensive end, and Edward Feathergill,

defensive tackle.

All but Estes are seniors. Estes is a junior.

Olton players receiving honorable mention were Jerry Edmondson, Wally Stewart, Max Wozencraft and John Jefferies.

Littlefield placed six players to dominate the 2-AA dream squad. Olton and Dimmitt placed five each, and Muleshoe, Lockney and Tulla placed two each.

All-district offensive team:

ENDS: Wayne Wicker, Littlefield, and Jarrell Edwards, Olton. TACKLES: Joe Hoover, Little-

field, and Donald Cheek, Dimmitt.

GUARDS: James Lee, Littlefield, and Carroll Herring, Dimmitt.

CENTER: Billy Gafford, Dimmitt.

BACKS: Teddy Estes and Jackie Gray, Olton; Mike Greer, Littlefield; Alton Bates, Dimmitt.

All-district defensive team:

ENDS: Donald Powell, Olton, and Jackie Tidwell, Muleshoe. TACKLES: Edward Feathergill, Olton, and Benny Ballard, Lockney.

GUARDS: Weldon Jones, Lockney, and Buddy Pool, Muleshoe.

CENTER: Paul Yarborough Littlefield.

BACKS: Wayne Potter and Billy Chandler, Tulla; Jerry Brown, Dimmitt; Max Morris, Littlefield.

Coaches who participated in the all-district voting included Joe Turner, Olton; Leo Fields, Dimmitt; Gene Mayfield, Littlefield; Ralph Stewart, Tulla, and Wayne Mantooth, Muleshoe.

Lockney's coach, Rudy Haile, was not present.



## SHORT GRASS

By G. P. T.

The Olton Quarterback Club started its 1955-56 year "in the red" by \$450. Thanks, however, to the businesslike presidency of Bill Kelley and the cooperation of club members, the organization struggled its way out of debt and currently boasts a solvent operation, with a modest bank account of \$21.30 and all bills paid.

That happy state of affairs could vanish easily, though, on Saturday night, Jan. 21 . . . the night of the annual football banquet which the club sponsors. We don't believe it's going to, though.

A and B squad football boys, basketball boys and girls, the coaches, etc. will be guests of the club at that affair, and some 250 or more tickets will need to be sold to foot the bills. Speaker for the occasion will be the widely-renowned Slingin' Sammy Baugh. It will cost money to get Baugh here. But everyone says he is well worth hearing, and if we're to have a good one.

Tickets to the banquet, on sale by QB Club members and football boys, cost \$2 each. Which brings up the point that some are saying \$2 is too much. Less than \$2 could be charged if the football and basketball players paid their own way. But not a great deal less. And doing so would defeat the entire purpose of the affair: to honor the youngsters who represent our town on the athletic field.

Let's say you lay down \$4 for a couple of tickets to the banquet for you and your wife. Actually, that \$4 will pay for you and your wife, and will foot the bill for one of those youngsters.

So plan to be on hand for what promises to be a mighty pleasant evening in honor of Olton's high school athletes.

One reason, incidentally, why QB Club members want so badly to break even on the banquet and wind up the year out of debt is that they are anxious to promote at least one major project for the 1956-57 year. No

major club project was possible this year—outside of filming the football games and paying half the cost of new warm-up jackets for the OHS girl cagers—because of the necessity of paying off the burdensome \$450 debt.

Next year, though, with no debt staring them in the face, the club hopes to build a good fence around Olton Memorial Stadium's playing field, or perhaps purchase an electric clock and scoreboard. Either of which would be worthy projects.

The year of 1955 included a higher-than-usual number of oddities in the field of sports. Among the notable ones were these:

Tommy Doolittle of Oklahoma City Classen High broke away at midfield and tripped on the 10-yard line when his pants fell down, leaving the final score 0 to 0.

Don Newcombe was held to a double when the Cardinals protested his "home run" actually had gone through a hole in the screen at Brooklyn. He later looked and found there was no hole there.

Boxer Govan Small of Oakland, Calif., mistook a ringside telephone call for the end of the round, dropped his guard and was kayoed.

A prisoner at Leavenworth complained to a federal judge because officials wouldn't let him boo the prison baseball team.

Wyoming's football team kicked a field goal with 10 seconds left to lead Denver, 3-0, then watched Denver run back the kickoff for the winning touchdown as time ran out.

Lew Byrer, Columbus (O.) sports editor, was informed he could share in his grandfather's \$16,000 estate only if he could prove he didn't smoke or drink; but for years his column has carried a picture of Byrer smoking a cigar.

Plan to drop over to the gym this Friday night and see the OHS girls' and boys' cage teams open their district basketball schedule against Tulia. Tulia has a pair of crackerjack teams, and Olton has been improving fast. The Hornet varsity holds an early season win over the highly-touted Pampa Harvesters of District 1-AAAA; so if the Mustangs could get by Tulia this Friday, that should be sufficient evidence that they'll be in the thick of the scrap for the

district cage title.

Coach Louise "Poodle" Boyles' girls lost one of their best players, Anita Sorley, here Monday night in a game against Anton. Anita, a starting guard, played basketball with the prowess and competitive spirit of a boy, and her presence will be sorely missed.

Another starting OHS guard, Bettie Lois Daniel, has been piling up honors for herself. She was named to the all-tournament teams at both the Abernathy and Floydada invitational

tournaments, both of which are regarded as top drawer affairs. Betty Sides, incidentally, is the only senior on this year's team. The Mustang girls should be doubly tough next year.

My favorite brunette, who teaches second grade, tells this one:

A street sign read: "School—don't kill a child." Beneath was a childish scrawl: "Wait for a teacher."

—ATTEND CHURCH SUNDAY—

FROM OVERSEAS DUTY

Herbert Hatley, who is in the US Army, has returned to the states after serving overseas. He is stationed at Lawton, Okla.

SELLS BUSINESS

Frank Harborn has sold OK Rubber Welders to Jesse Wallace. Mr. Wallace formerly operated a service station in the south part of Olton.

IN BLEY HOME

Mrs. Grace Loyd of Dimmitt visited the Winston Bleys Sunday.

**STILL IN PROGRESS!!**

# OUR ANNUAL

## 79c ON \$1 SALE

### YOU SAVE . . . . . 21%

(And Much More On Many Items!)

**EVERYTHING IN THE STORE**

**DRASTICALLY REDUCED TO CLEAR!**

# J. C. Jones Co.

OLTON'S NEW FAMILY DEPARTMENT STORE

Charter No. 1608

**BANK'S OFFICIAL STATEMENT OF FINANCIAL CONDITION OF THE**

## Olton State Bank

AT OLTON, TEXAS

at the close of business on the 31 day of DECEMBER, 1955, pursuant to call made by the Banking Commissioner of Texas in accordance with the Banking Laws of this State.

RESOURCES	
1. Loans and discounts, including overdrafts	698 318 03
Commodity Credit Corporation Loans (Cotton & Grain) fully guaranteed	2 583 755 85
2. United States Government Obligations, direct and guaranteed	244 718 75
3. Obligations of states and political subdivisions	172 455 88
4. Other bonds, notes, and debentures	NONE
5. Corporate stocks, including (None) stock in Federal Reserve Bank	NONE
6. Cash, balance due from other banks, including reserve balances, and cash items in process of collection (including exchanges for clearing house)	965 521 78
7. Banking house, or leasehold improvements	96 906 90
8. Furniture, fixtures, and equipment	26 797 83
9. Other real estate owned	NONE
10. Other assets	1 00
<b>11. TOTAL RESOURCES</b>	<b>4 788 476 02</b>

LIABILITIES AND CAPITAL ACCOUNTS	
1. Common Capital Stock	125 000 00
2. Income debentures	NONE
3. Surplus: Certified \$125 000 00, Not Certified (None)	125 000 00
4. Undivided profits	90 395 97
5. Capital reserves (and debenture retirement account) (Not to include specifically allocated reserve for expenses, or valuation allowances)	NONE
6. Demand deposits of individuals, partnerships, and corporations	4 285 349 60
7. Time deposits of individuals, partnerships, and corporations	NONE
8. Public funds (Incl. U.S. Govt., states and political subdivisions)	114 689 56
9. Deposits of banks (excluding reciprocal balances)	NONE
10. Other deposits (certified & cashier's checks, etc.)	35 540 89
11. Total all deposits	\$4 435 580 05
12. Bills payable, rediscounts, or other liabilities for borrowed money	NONE
13. Other liabilities—Current Dividend payable Jan. 17, 1956	12 500 00
<b>14. Total Liabilities and Capital Accounts</b>	<b>4 788 476 02</b>

**SCHEDULE A—LOANS AND DISCOUNTS**  
(Including rediscounts and overdrafts) Item (1) of Resources

1. Commercial and industrial loans	17 750 00
2. Loans secured by agricultural commodities, covered directly or indirectly by purchase agreements of Commodity Credit Corporation (C.C.C. Loans)	2 583 755 85
3. Other agricultural loans (including loans secured by livestock)	414 131 30
4. Bills of exchange	NONE
5. Consumer loans to individuals (including retail installment paper and personal cash loans to individuals)	11 050 00
6. Real estate loans (on farm land, residential, or other property)	250 233 51
7. Loans for purchasing or carrying stocks, bonds and other securities	NONE
8. Loans to banks	NONE
9. All other loans (including overdrafts)	5 153 22
10. Gross Loans and Discounts	3 282 073 88
11. Less valuation allowances or reserve for bad debts	NONE
<b>12. Total Loans &amp; Discounts (to agree with item (1) of "Resources")</b>	<b>3 282 073 88</b>

**SCHEDULE B—MATURITY OF U.S. GOVERNMENT OBLIGATIONS, Item (2) of Resources**

1. Direct Obligations:	
a. Treasury bills, cert. of indebtedness, notes, bonds, incl. U.S. Savings Bonds, maturing within 5 years from date of call	148 000 00
b. U.S. Bonds maturing after 5 but within 10 years from date of call	NONE
c. U.S. Bonds maturing after 10 but within 20 years from date of call	96 718 75
d. U.S. Bonds maturing after 20 years from date of call	NONE
e. Total Direct Obligations of U.S. Government	244 718 75
2. Obligations Guaranteed by U.S. Government	NONE
<b>3. Total items (1-e) and (2); Must agree with item (2) of "Resources"</b>	<b>244 718 75</b>

**SCHEDULE C—OTHER ASSETS, Item (10) of Resources**

1. Income earned accrued but not collected	NONE
2. Insurance and other expenses prepaid	NONE
3. Cash items not in process of collection	NONE
4. All other (please itemize): Bank Auto	1 00
<b>5. Total (Must agree with item (10) of "Resources")</b>	<b>1 00</b>

**SCHEDULE D—OTHER LIABILITIES, Item (13) of Liabilities and Capital Accounts**

1. Dividends declared but not yet payable	12 500 00
---	-----------

STATE OF TEXAS )  
COUNTY OF LAMB )

I, Gene Trotter being Cashier of the above named bank, do solemnly swear that the foregoing statement of condition is true to the best of my knowledge and belief.

GENE TROTTER

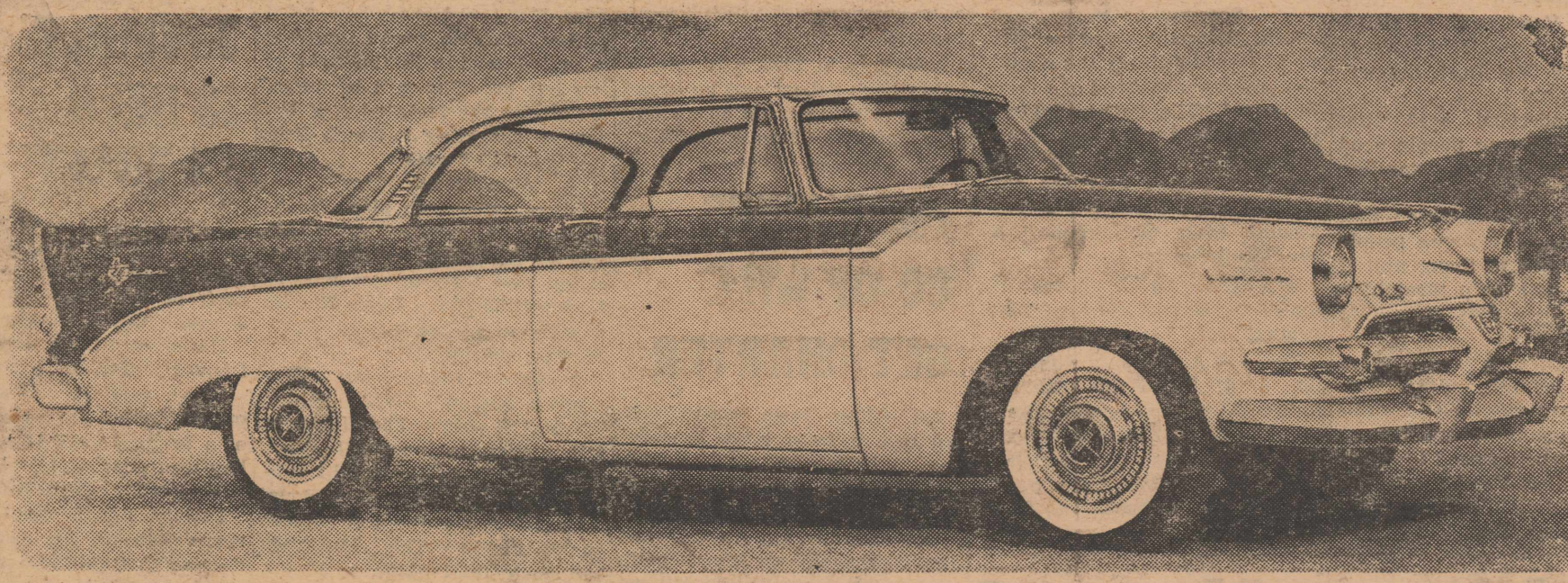
Subscribed and sworn to before me this 6th day of January 1956.

MARGIE CARLISLE  
Notary Public, Lamb County, Texas

(SEAL)

CORRECT—ATTEST:  
OWEN NORFLEET  
D. M. GRANBERY  
W. N. YATES  
DIRECTORS

# Dodge presents... "The TEXAN"



Choice of this dashing Lancer Hardtop or the big, rangy 4-Door Sedan

The Texan by Dodge!

A handsome, rugged car big as all outdoors, with the surging power of a quarter horse, sweeping lines of a gull in flight, the relaxed touch of push-button driving!

The Texan is built for Texas driving. It skims swiftly along the big broad highways, it rips over hills like a hungry cougar, it takes the bumpiest, ruttiest, sandiest road and comes back for more. Powered by the mighty engine that busted the AAA record book wide open at Bonneville Salt Flats, it gives you the same superior engineering and design that made Dodge the greatest sales-gainer in the industry in 1955.

Plenty of special features, too . . . specially designed interior trim, special paint combinations, jaunty twin exhaust pipes, and other smart touches. The Texan's name is proudly blazoned on both rear fenders. And the brave crossed flags of the Lone Star State are right up front where your fellow-Texans can admire them!

Best of all, the Texan is priced right down with the so-called "low-priced three." Yet it's big and powerful and luxurious . . . rivaling cars costing as much as a thousand dollars more! Visit your nearest Dodge Dealer now and drive the Texan!

## The Texan

BY

# DODGE

SOLD BY YOUR FELLOW-TEXAN—YOUR DODGE DEALER

## BUSBY MOTOR COMPANY

Highway 70
Springlake, Texas



### Next Year's 1st Graders Should Enroll Jan. 20

Children who will be six years old before Sept. 1 should enroll January 20, Friday, at the primary school building.

These children should be enrolled on that date in order that their names will be placed on the school census. Parents should bring a birth certificate for these youngsters at that time if possible.

Parents may make arrangements for the children to eat lunch at the school lunchroom. Mrs. Mardema Ogletree, school secretary, stressed that the parents must take their children home at 11:30 a. m.

#### Helps Organize Brotherhood

Rev. Glen Godsey, who is outgoing promoter for the Brotherhood of the Plains Baptist Mexican Association, helped in organizing a Brotherhood at Petersburg Friday night.

"Men Working for Christ" was the topic of Rev. Godsey's talk. There were 21 men present and 6 intermediate boys.

#### OKLA. & ARK. RELATIVES

Mr. and Mrs. Ben Henson have returned from a trip to Arkansas. They visited relatives in Double

Springs, Halleyville, Russellville, Spruce Pine Jasper, and Pine Bluff. They also visited in Oklahoma at Swanee, Oklahoma City and Tecumseh.

#### IN PLAINVIEW HOSPITAL

In the Plainview Hospital and Clinic this week are Mrs. Athol Light's aunt, Mrs. Joe Allen and her daughter, Mrs. John Hodges. Their conditions are described as fair.

#### IN HOME SUNDAY

Visiting in the Ray Johnson home Sunday were Mr. and Mrs. Romie Cannon and daughter of

Cotton Center, Mr. and Mrs. Jed Walker and children of Littlefield, and Mr. and Mrs. Jack May and Phyllis Ann.

#### —ATTEND CHURCH SUNDAY—

#### MALLOW BROS. HOUSEMOVING

CA 4-7652 CA 4-4406  
1602 Quincy 3202 W. 5th  
PLAINVIEW, TEXAS

### ALVIN C. WEBB

CERTIFIED PUBLIC ACCOUNTANT

Announces The Removal Of

Office To New Building Location

at 823 LFD Drive.

PHONE 190 LITTLEFIELD, TEXAS

# SHERMAN FOOD



## CRISCO



Three-Pound Can.

**79c**

## Friskies



Dog Food—16-oz. Can

**2 For 29c**

## Strawberry Preserves

PARR. 20-Ounce Glass

**43c**



CARNATION POWDERED MILK

Eight-Quart Size

**69c**

- WHEATIES
- CHERRIOS
- TRIx
- KIX

LARGE SIZE BOXES

**2 For 49c**

## Flour

GOLD MEDAL. 5-Pound Bag

**49c**

RED SPUDS 10-POUND BAG **39c**

DELICIOUS LIPTON TEA 1/4-POUND BOX **35c** (16-count Bags ..... 21c)

CRISP CARROTS CELLO BAGS **2 For 25c**

SORGHUM SYRUP, Blackburn's Half Gallon Glass Jar, Only... **49c**

## Breeze

GIANT SIZE BOX

**69c**

(Good For Fried Pies) DRIED APRICOTS 12-OUNCE CELLO BAG **45c**

COMSTOCK PIE APPLES SIZE 303 CAN **2 For 35c**

BIG AND BRIGHT DRIED PEACHES 12-OUNCE BAG **33c**

DOUBLE GUNN BROS. THRIFT STAMPS ON WEDNESDAY WITH PURCHASE OF \$2.50 OR MORE

## CHECK THESE APPLIANCE BUYS:

### 1955 Hotpoint Electric Dryer

Absolutely new!! Regularly sells for \$239.95. Drastically reduced to clear at **ONLY \$179.95**

### 1955 Hotpoint Deluxe Pushbutton Automatic Electric Range

The stove that your wife has dreamed about!! Regularly \$339.95. With your old range, our clearance price is... **\$269.95**

OUR ANNUAL JANUARY CLEARANCE SALE IS STILL IN PROGRESS!!

Drastic reductions throughout our big store... save now on livingroom and bedroom suites, chrome dinettes, platform rockers, occasional chairs, etc. All first quality merchandise at rock bottom prices! Shop now!



## Thomas Furniture

YOUR HOTPOINT APPLIANCE DEALER  
East Side of Square Phone 4631

Olton, Texas



QUALITY MEATS

# SHERMAN FOOD

PHONE 3701

WE RESERVE THE RIGHT TO LIMIT QUANTITIES



FREE DELIVERY



### "GIVE THEE THINE OWN" IS PROGRAM

"We Give Thee But Thine Own" was the title of the program presented by the Blanch Groves Circle at the Womens Missionary Union meeting at the First Baptist Church.

Scripture was read by Mesdames C. B. Turner, Robert Edwards, F. L. Burrow, C. W. Phillips, and W. A. DeBerry. Prayer emphasis was given by Mrs. R. L. Hipp.

Different nationalities were portrayed in an interest center.

Attending were Mesdames Joe Hatley, R. A. Burgess, J. G. Estes, L. O. Langley, Roy Thurman, Marlin Truelock, James Ellis, Tom B. Hankins, Wayne Hair, Gene Cottrell.

J. A. Phillips, J. F. Miller, Loyd Graham, H. B. Carson, Brent Burrow, John Lewis, Louis Clark, M. E. Tabor, Rufus DeBerry, Dora Walthall, Maude Funderburk.

A. C. Brigrance, Robert Edwards, Clyde Ray, R. W. Green, Barton Prestridge, Nellie Turner, John Lambright, F. L. Burrow.

Wilbur Andrew, Robert Hipp, W. P. Holley, Louie Cross, Garner Ball, William DeBerry, C. L. Phillips, and Hubert Waldrop.

### "Characters Of Bible" Is Topic

"Characters of the Bible" was the subject for discussion at the New Century Study Club meeting last week.

Mrs. M. T. James was hostess and Mrs. Sammy Hale assisted with hostess duties.

Mrs. Ed Thompson spoke on "Ruth, the Faithful Daughter." Mrs. Wilton Bodkin talked on "Esther, the Patriot Queen" and "Children of the Bible" was the topic of Mrs. Carroll Brown's talk.

Members present were Mesdames Wilton Bodkin, Carroll Brown, R. A. Burgess, Brent Burrow, Tom Carlisle, Raymon Carson, Glen Exter.

Fred George, Don Spain, Ed Thompson, Ben Souders, Frank Struve, Hale and James.

### TO FAVOR WITH POST-NUPTIAL

Post-nuptial courtesy will compliment Mrs. Max LaDuke, the former Miss Pat Harborn, Thursday afternoon at 2:30 p.m.

Party scene is the home of Mrs. H. E. Owens.

### Is Honored With Layette Courtesy

HART CAMP—Colors of blue and white were featured at the Layette courtesy favoring Mrs. Don Muller in the home of Mrs. K. W. Mehaffey of Hart Camp last week.

Laid with a white lace cloth over blue, the serving table was centered with a large stork carrying a baby in his beak. Cookies and hot punch were served.

Assisting with hospitalities were Mesdames Paul Hukill, Blanton Martin, W. H. Robinson, T. H. Heck, Omer Neely, Roy Osthus, Aubrey Neinast, J. W. Wells, and Royce Goyne.

Attending were the honoree and Mesdames H. E. Lacy of Spade, J. C. Muller, H. E. Field, R. N. Nicholas, R. M. Nicholas, Jim Robinson, Junior Muller.

Duane, Field, R. A. Reed, Lloyd Joyner, Don Joyner, Archie Howard, W. P. Neinast, Fred Muller, Ted Royal, Garland Adams, Henry Haupt, Bruce Porcher, and Jerry Lanford.

Approximately 24 gifts were sent by those unable to attend.

### Sharon Porter Is Scout President

Sharon Porter was selected by the Girl Scout Troop 37 to be their president.

Other officers elected at the Thursday meeting were Patsy Rucker, vice-president; Linda Gail Hendrix, secretary; Hazel Beth Smith, reporter; Pat Small, parliamentarian; and Welda Edwards, song leader.

Bobbie Campbell and Welda Edwards served the refreshments.

## News For Women

### Mr. and Mrs. C. M. Owen Are Honorees At Golden Wedding Anniversary Reception

Mr. and Mrs. C. M. Owen were honored on their Golden Wedding Anniversary Sunday afternoon with an Open House in the home of Mr. and Mrs. Euel C. Jones.

Hosts and hostesses for the affair were children of the honorees, Mr. and Mrs. Paul Burrus, Mr. and Mrs. L. L. Holyfield, Mr. and Mrs. D. M. Granbery, Mr. and Mrs. Euel C. Jones, and Mr. and Mrs. Douglas Owen of Maryland, who were unable to attend.

Laid with a white lace cloth, the serving table was centered with an arrangement of yellow chrysanthemums. The three-tiered wedding cake and punch in an heirloom silver punch service was served by Misses Naomi Burrus, Ellen Jones, and Charla Granbery, three of the couple's eight grandchildren.

**Yellow Is Featured**  
Decorations throughout the receiving rooms were yellow, with bouquets of yellow chrysanthemums, daffodils, and gilded leaves.

Mr. and Mrs. Owen were married on January 6, 1906 in Palmer. They moved to West Texas in 1918. Approximately three years later, Mr. and Mrs. Owen moved to Olton where they owned and operated Olton's original independent telephone exchange.

During the past thirty-two years of living in Olton, Mrs. Owen said that she and her husband have witnessed and accepted many changes but that they have always kept abreast of the times.

Approximately 180 guests registered during calling hours.

**From Out-Of-Town**  
Members of the family attending the reception were Messrs. and Mesdames L. L. Holyfield of Lubbock, Charles Farrar of Waxahachie, Fred Wadley of Arlington, Dick Wynne of Palmer.

C. P. Owen of Burleson, and Billy Owen and Karen of Fort Worth, and Mrs. Minnie Owen of Everman, O. E. Eubank of Tahoka, and Henry D. Farrar of Dallas.

Guests from out-of-town included Messrs. and Mesdames J. M. Marshall of Aiken; C. P. Cunningham, Frank Gunn, Bill McKenzie, Sim Griffin, Charlie Ikard, Mark Burns, and Eugene Hancock of Lubbock.

Roy Burrus of Plainview; Elmo Bell and Lonnie Bell and sons of Dimmitt; and G. W. Willis and O. C. Owens of Littlefield; and Mesdames E. C. Bell and Evelyn Gladson of Lubbock and Ruth Gautier and G. W. Robertson of Plainview.

### "Mums" Are Olton Garden Club Topic

"Chrysanthemums" was the topic of the talks given to the Olton Garden Club at their meeting Thursday in the home of Mrs. H. B. Carson.

Mrs. Jack Allcorn acted as co-hostess. Mrs. Lindsey Dennis gave a talk on "Preparing Chrysanthemum Beds" and Mrs. A. D. Melton talked on "The Kinds of Chrysanthemums That Grow Best Here."

The club selected a nominating committee to nominate new officers for the next two years. Attending were Mesdames H. G. Walker, A. D. Melton, L. E. Silcott, Lindsey Dennis, Doyle Pinson, E. D. Harper, R. G. DeBerry, Lloyd Graham, Jack Allcorn, and H. B. Carson.

### Pink & Blue To Compliment Mrs. Clayton

The home of Mrs. Dora Duncan will be the scene for the Pink and Blue shower for Mrs. Ray Clayton at 3:30 p. m., Thursday, Jan. 26.

The hostess list includes Mesdames Duncan, Charlie Bodkin, Grace White, Robert Dennis, Foreman Crowder, Don Huguley, and Tom Whisenhunt.

### WSCS To Begin New Study Mon.

"Five Spiritual Classics," is the study that will be introduced Monday night at the meetings of the circles of the WSCS of the Olton Methodist Church.

Mrs. Owen Norfleet will be the hostess for the Elsie Reynolds Circle and Mrs. J. C. Brown, for the Martha Circle.

### W. S. G. MEETS TUESDAY NIGHT

Mrs. Gene Trotter will be hostess for the Wesleyan Service Guild of the Olton Methodist Church Tuesday night.

Mrs. Gerald Bizzell will present the study, "Five Spiritual Classics."

### Sunbeams Hear About Indians

SPRINGLAKE—A story on Indians was told to the Sunbeams of the Springlake First Baptist Church Monday afternoon at their meeting.

Mrs. Billy Clayton told the story to the youngsters. Mrs. Clayton and Mrs. Jimmy Banks are Sunbeam leaders.

The Sunbeams had a period of hand work coloring Indian pictures.

Refreshments of cookies and orange juice were served to Cynthia Busby, Delpha Banks, Gene Brown, Donna Watson, Jemma Sue Banks.

Randy Washington, Brenda Clayton, Jenna Lou Banks, Debbie Watson, Dianna McNamara, Jerry Don Sanders, and the leaders.

### To Meet In Hulsey Home

Home Builders Demonstration Club will meet in the home of Mrs. C. T. Hulsey Tuesday to make definite plans for the year's work.

Also, names will be drawn for "Secret Pals."

### Royal Service Program Held At Hart Camp

HART CAMP—Royal Service program was held at the meeting of the Womens Missionary Society of the Hart Camp Baptist Church Monday.

Present were Mesdames C. H. Vanlandingham, L. W. Sullivan, Homer Worley, R. S. Moore, W. T. Moore, and Junior Muller.

### Joyce Gray Is President

Joyce Gray was elected president of the Girl Scout Troop 6 at their Friday's meeting in the scout house.

Sharon Dennis was elected vice-president and Nelda Green, secretary and reporter. Song leader is Terry Gail Hooper and parliamentarian is Barbara Nicholson. Janice Campbell was selected treasurer.

Mrs. Buster Nicholas served refreshments to about 10 members of her troop.

### Notes To You

BY NELDA ROACH

(Springlake Teen-ager News)

The annual Football Banquet, given by the pep squad and the band, honoring the football squad, will be held Thursday, Jan. 26.

The high school faculty and board members are cordially invited to attend. Acting as master of ceremonies will be Clarence Hamilton. Everyone is hustling and bustling around

night in Muleshoe.

These eighth graders are getting ahead of some of the high school kids! Tom Messer and Jenna V Brock were together Friday night in Earth.

Here is someone new that we wouldn't expect to be seen together: Donald Stevens and Carolyn Parish. They were in Earth Saturday night.

Eunice Jenkins and Richard Bills is a couple that believe in going to church. Wednesday and Sunday they were good and went to church. Saturday night they were seen at the movie.

June Gregory believes in training Doug Parish early. Every time Doug eats supper with June he has to wash the dishes.

Good work, June!

A new freshman couple we have this week is Mike Simmons and Molly Inglis. They were together Saturday and Sunday.

Doyal Bills has come up with a new girl, Tommye Lilly from Dimmitt Saturday night they were dating in Dimmitt.

Marilyn McGeath and James Cooper saved some expense by spending a quiet evening at home Saturday night. They were in the show together Friday night.

Butch Foreman and Rita Crawford don't miss anything because they're together every night of the week. Sunday they were in Littlefield with Naomi Starkey and Gene Banks.

## Olton Bakery

SPECIALS

Friday—Saturday, Jan. 13-14.

## Pies

EGG CUSTARD AND COCOANUT SYRUP PIES.

REG. 50c EACH

39c

Honey Drop

Reg. 30c Dozen

COOKIES.....

23c

Old Fashioned

Reg. 45c

MINCE RING.....

36c

Butterscotch

Reg. 30c Dozen

ICE BOX COOKIES.....

23c

PHONE 3756

## Clearance Sale

Our sale continues with greater values every day—wonderful selections left—shop now.

Dresses

Coats

Suits

Blouses

Sportswear

Shoes—

High heels, medium heels, and low heels . . . all colors—all kinds in broken lots—

Values to 8.95.....	3.90
Values to 10.95.....	4.90
Values to 14.95.....	5.90
Values to 16.95.....	6.90
Values to 18.95.....	9.90

**Paynes'**  
PLAINVIEW

## NOTICE...

I will be at the Olton City Hall on Monday and Tuesday, January 16-17, for the purpose of collecting state and county taxes. Poll tax receipts may be obtained from Mrs. Virginia Moss at the City Hall or from Mrs. Charles Loveless at Loveless Appliance during the month of January.

**HERBERT DUNN**

ASSESSOR-COLLECTOR  
Lamb County



## Tells Of Girl Scout Needs; G. S. Staff Member To Speak Here

By Mrs. C. S. Silcott

A plan to bring better scouting to more girls is being studied by a representative group from towns all over the South Plains section of Texas. This Study Committee has been meeting since September

to make a plan of work and a budget for this proposed council's first year of operation. Mrs. Paul Burrus is chairman of the committee and Mrs. C. S. Silcott is a member.

**To Speak Here**

On Tuesday, Miss Virginia Burgess, National Field Staff member of the Girl Scouts of America, will be in Olton to explain this plan to the local residents. She will speak before members of the Lions Club at their regular luncheon and immediately following to all scout parents and interested scout friends.

The latter meeting will be held in the study hall on the second floor of the elementary school building. Here, Miss Burgess will also feature the showing of a film, "Under the Green Umbrella," a vivid portrayal of Girl Scouting at its best.

"Experience shows that only in concerted action can Girl Scouting be more available to all girls who want to belong," Mrs. Burgess said recently.

The public is invited and urged to be present at 1 p. m. on Jan. 17, Tuesday, to hear Miss Burgess speak and see the film.

Maddox, 18, was a mainstay of the Olton High School and American Legion baseball teams during his high school career. He established an outstanding record as a pitcher, and also compiled a highly-respected batting average.

Maddox pitched a no-hit game for Olton's Legion team against Plainview in the district tournament at Plainview during 1954. He and Guy Granbery pitched the OHS team to the district and bi-district championships in both 1954 and 1955.

He is a part-time employe at Olton postoffice.

### QB Club Meet Slated Tonight

Olton Quarterback Club members will meet at 7:30 p. m. this Thursday to discuss arrangements for the football banquet to be held Saturday night, Jan. 21.

"This will be an important meeting, and I hope that all

members can attend," said Bill Kelley, QB Club president.

Speaker for this year's banquet will be Sam Baugh, head football coach at Hardin-Simmons University.

All football boys and basketball boys and girls will be guests of the Quarterback Club at the banquet.

Tickets are \$2 per plate. Ticket sales began this week and will continue throughout next week. QB Club members who are selling tickets include Jess

Parker, Bill Kelley, Major James, Gordon Tompkins, Howard Hall, A. A. Smith, Basil Sherman, L. H. McAdams, Gene Trotter, and I. B. "Doc" Holt. Football boys and basketball boys also are selling banquet tickets.

**TAX COLLECTION**  
Herbert Dunn, county tax assessor-collector, will be at Olton

City Hall on Monday and Tuesday, Jan. 16-17, for the purpose of collecting state and county taxes, it was announced this week.

**BAKE SALE**  
Members of Girl Scout Troop 6 will hold a bake sale on Saturday, Jan. 14, at Botkin Food Store.

## ABOUT INCOME TAXES

By Bill Thomas

Farm and ranch operators have until February 15, 1956 to file their 1955 Income Tax Return. The previous deadline for filing the reports was January 31.

However, a farm and ranch operator may extend his filing date to April 15, by filing an Estimate and paying his estimated tax on or before January 15.

For the first time this year farmers will have to pay self-employment tax. Farmers who are operators of the farms are subject to this tax. Rents received from a farm cannot be counted as self-employment income. A sharecropper or a person who receives a crop as part pay for his labor is subject to this self-employment tax.

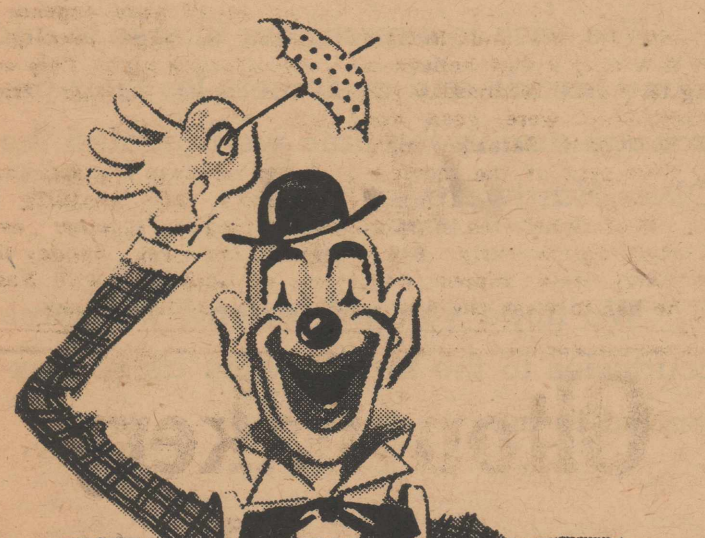
Farmers reporting income on the cash receipts and disbursements basis have an option of figuring their net earnings from farm self-employment for Self-Employment tax purposes only.

If their gross income for the year from farm self-employment is \$1,800.00 or less, they may report one-half of their gross farm income instead of their actual net earnings from farming. If their gross income from farm self-employment is more than \$1,800.00 and their actual net earnings are less than \$900.00, they may report \$900.

Self-employment tax is reported on the same form and at the same time income tax is paid.

Social Security taxes on an employe are due on or before January 31. This tax must be reported on Form No. 943.

WHEN YOU THINK OF INSURANCE—THINK OF THE THOMAS AGENCY



### We're Not Kidding Folks . . .

Now is an excellent time to have your . . .

**IRRIGATION WELL MOTORS REPAIRED**

. . . so they'll be ready for use when you need them. We have the facilities to do a good job for you on ANY TYPE OF WELL MOTOR.

Free pick-up and delivery within 50 miles.

**FREE!!**

We steam clean your well motor free of charge with each well motor overhaul. We have a modern steam cleaner and are equipped to clean any motor at any time.

Why wait longer? We are ready to serve you.

## Hines Motors

Authorized Ford Sales and Service  
HIGHWAY 70 OLTON, TEXAS

### Spain Becomes Sole Owner Of Farm Supply

Don Spain now is sole owner of Olton Farm Supply.

Spain bought Paul Edwards' interest in the business, effective the first of this month. Olton Farm Supply had been operated as a partnership business by Spain and Edwards since Dec. 18, 1951.

Mr. and Mrs. Edwards and their young daughter moved from Olton this week to make their home at Hagerstown, Md.

### Postal Volume Tops \$20,000

Postal receipts here for 1955 totaled \$20,002.52, the largest in Olton's history, it was announced this week by Postmaster I. B. "Doc" Holt.

The 1955 postal volume topped 1954 receipts of \$19,292.30 by \$710.22. Each month of 1955 showed a gain over the corresponding month in 1954 with the exception of October, which showed a sharp drop, Mr. Holt explained.

"October was off because of the late cotton crop and the reduced number of transient laborers, who normally transact a big volume of postal business," the postmaster said.

December postal business was \$3,841.25. "It was the biggest postoffice month in history here," Mr. Holt said. "And despite the heavy volume of traffic, things went off more efficiently than ever before. Postal personnel want to extend their sincere thanks to the public for their cooperation in preparing packages properly and in separating mail for local and out-of-town delivery. The cooperation was excellent, and it helped tremendously in prompt handling of the Christmas mail."

### MADDOX SIGNS PRO CONTRACT WITH PONIES

Cecil Maddox, 1955 graduate of Olton High School, has signed a professional baseball contract with the Plainview Ponies, it was announced this week.

## DAY'S DRIVE-IN CLEANERS

The Only Drive-In Cleaner in Plainview

—ONE DAY SERVICE—

"TRY US AND YOUR CLOTHES WILL SHOW THE DIFFERENCE"

Corner of 5th & Quincy on the Olton Highway  
PHONE CA 4-4250  
PLAINVIEW, TEXAS

## STORE WIDE SAVINGS

Specials Start Friday, Jan. 13.

Oleo

KIMBELL'S OLEO. PER POUND, ONLY 19c

Mellorine BELL'S. HALF GALLON 49c

RED 10-POUND BAG FIRM HEADS PER POUND  
POTATOES 39c CABBAGE 6c

Flour GOLD MEDAL. 25-POUND BAG \$1.99

QUART BOTTLE SAVE AT DIAMOND SIZE 303 CAN  
CLOROX 17c TOMATOES 2 for 25c

Pin-It PIN CURL. HOME PERMANENT. \$1.50 SIZE 85c

FRESH GROUND PER POUND Gold Crown Tra-Pak Per Pound  
HAMBURGER 29c BACON 33c

## Botkin Food Store

Phone 3591 — We Deliver — Olton, Texas — Louis Botkin, Owner

WE GIVE S. & H. GREEN STAMPS

—Double on Tuesday with Purchase of \$2.50 or More—

ONIONS FRESH—PER BUNCH 10c

TOMATOES PER POUND 15c

POTATOES Red or White—Ten Pounds 43c

RADISHES FRESH—PER BUNCH 10c

## BOB'S FRUIT MARKET

• ALL KINDS OF FRESH FRUITS AND VEGETABLES • ICE • MILK • BREAD • COLD DRINKS • ICE CREAM

BOB COKER, Owner

East Side of the Square



## HART CAMP NEWS

By Yvonne Huff

Leaving Tuesday for Austin to enroll at Texas University were Billy Frank Johnson and Kenneth Field. They were accompanied by their mothers, Mrs. H. E. Field and Mrs. Ray Johnson.

Mrs. W. C. Huff visited Mrs. Delma Scott, a cousin at County Line, Sunday.

Sue Sullivan and Waylan Hukill visited with Yvonne Huff and Don Oliver in the W. C. Huff home Sunday.

News was recently received from Mr. and Mrs. H. V. Lynch who are staying in Ardmore. Mr. Lynch is shuffleboard director and they will soon start matches for elimination for state champs.

Mr. and Mrs. Blanton Martin and Suzanne visited in the W. C. Huff home Sunday afternoon.

Mr. and Mrs. John Rushing and family recently moved to Dimmitt where they will farm. Waylan Hukill will soon be in El Paso where he will work in telegraphy.

Visiting in the R. C. Franklin home Sunday were Betty Franklin and Walter Ledford of Abernathy.

Mr. and Mrs. M. W. Wheeler and Sammy visited Mr. and Mrs. Jim Taylor of Carlsbad, N. M., recently.

Mr. and Mrs. Brian Kimbell from Quitaque are moving here. The Jimmy Lee Robinsons, who had lived on their place, are moving to Fieldton.

Ceryll Moore of Lubbock and the W. T. Moores of Cortez, Colo., visited in the R. S. Moore home over the week-end.

The C. E. Timmons moved to the Bobby Sageser farm last week where Delbert will work.

The Homer Worleys spent the week-end with relatives at Midland. Laura Sageser spent the week-end with Barbara Worley and Phyllis Worley stayed with Yvonne Shakleford of Cotton Center.

The Reverends C. H. Vanlandingham, Fred Smith of Fieldton, Fred Smith of Spade and Carl Testerman left for Fort Worth for the Baptist Evangelistic Conference.

Mr. and Mrs. Aubrey Neinast and Ramona Kay returned from Georgia after spending the holidays with Mrs. Neinast's relatives.

Mrs. Roy Osthus and sons vis-

ited in Ruidosa, N. M. with her parents, Mr. and Mrs. Walter Brian, Rev. and Mrs. Trevis McMean and Debra were also their guests.

Dewey and Gary Parkey visited in Floydada Thursday. Mr. Parkey had a light heart attack and is confined to the bed for several weeks.

The Harvey Joneses are the

owners of a new two-tone green Chevrolet.

The Bernie Parkeys of Floydada visited the Dewey Parkeys Tuesday.

H. R. Monroe was admitted to West Plains Hospital at Muleshoe Tuesday and released Friday.

Rev. C. H. Vanlandingham underwent chiropractic treatment last week.

Mr. and Mrs. Garland Adams of Dimmitt visited the J. C. Mullers recently.

Mr. and Mrs. Junior Muller and Glenn Wayne visited H. R. Monroe Wednesday in the hos-

pital. Mr. and Mrs. M. W. Wheeler, Mrs. H. R. Monroe and Glenn Wayne also visited him last week.

Mrs. H. R. Monroe visited her mother, Mrs. Cody, at Springlake last week.

Pfc. and Mrs. Don Muller will return to Chicago Tuesday after being here for the holiday with their parents.

Visiting in the Junior Muller home Saturday were Mr. and Mrs. J. C. Muller, Mr. and Mrs. Don Muller, Mr. and Mrs. Bruce Porcher, and Mr. and Mrs. Jerry Langford. Sunday they were entertained in the Bruce Porcher home at Littlefield.

## Hobby Show Is Planned. Need Entries

A hobby show will be staged in the school lunchroom January 30 by the Olton Study Club.

Purpose of the hobby show is to stimulate interest in hobbies. Anyone who would like to exhibit their hobbies may see any member of the study club.

"We would like for everybody to enter their hobbies and make our show a success," said Mrs. C. S. Silcott, club member.

For Office Supplies Drop By The Enterprise

## THANKS FOLKS:

We wish to express our thanks to our many friends and customers for their patronage during the time we operated the Olton Hardware.

We hope you will extend the same courtesies to the new owners as you extended to us.

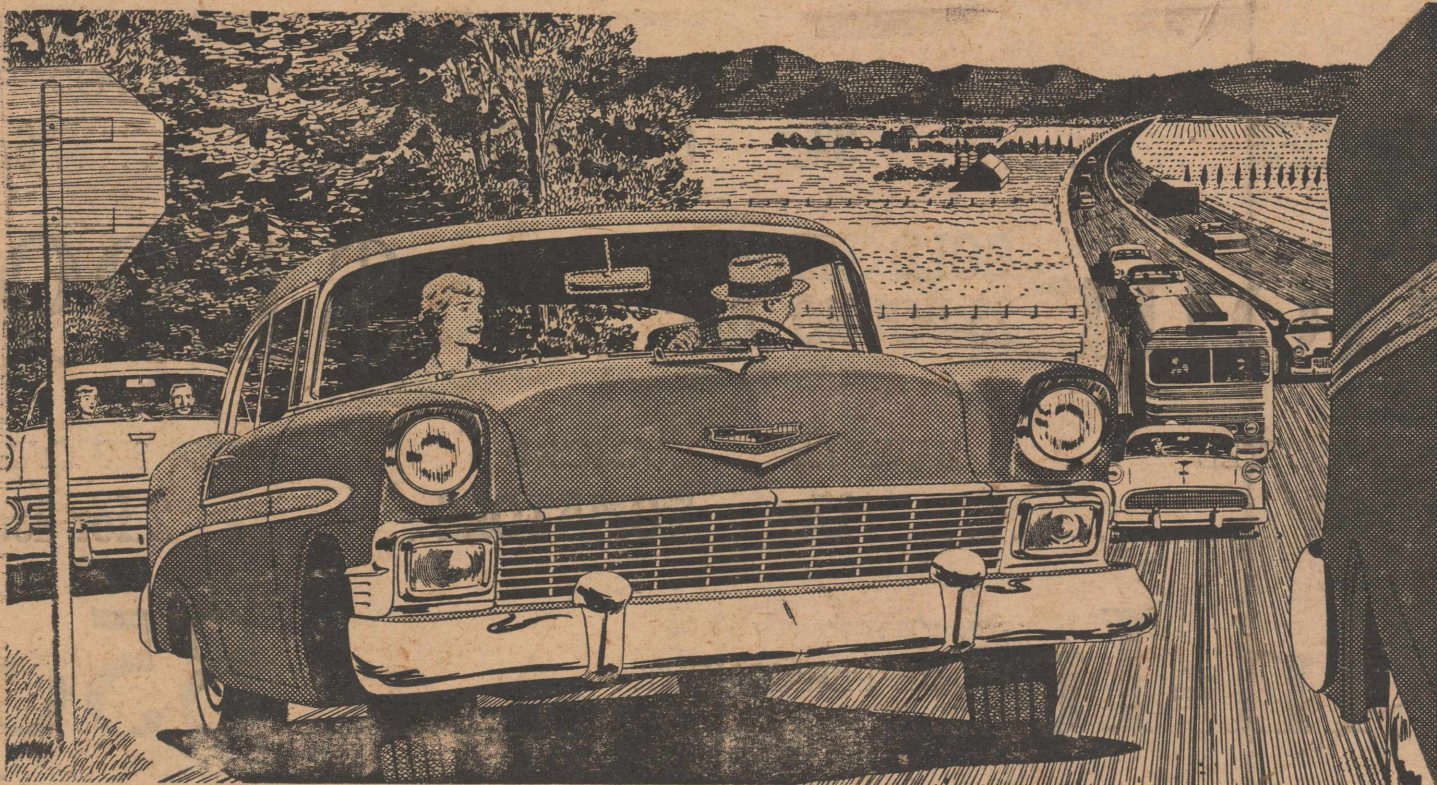
Bill and Mary Smith

# BEN F. SMITH GRAIN COMPANY

## OFFERS YOU

1. Top market for corn, hegari, kafir, wheat and milo.
2. Storage and handling facilities unequalled in Lamb County.
3. Friendly service and attention for any of your grain needs.

Speaks softly and packs a powerful wallop!



THE BEL AIR SPORT COUPE—one of 19 high-priced-looking Chevrolets, all with Body by Fisher.

Soft-spoken, yes. (One reason is the hydraulic-hushed valve lifters now in all Chevrolet engines—V8 or 6.) And this handsome traveler packs a horsepower wallop that ranges up to 205! It's charged with sheer, concentrated action.

Action that can save you precious seconds for safer passing! Action that lets you take steep hills in ef-

fortless stride! Action that helps you zoom out of trouble spots!

And action isn't all. Chevy holds the road like part of the pavement!

Of course, Chevrolet brings you the security of safety door latches. Instrument panel padding and seat belts, with or without shoulder harness, are offered at extra cost.

\*Come in and highway-test it.



THOMPSON CHEVROLET COMPANY  
HIGHWAY 70

OLTON

TEXAS

# January Clearance Sale

## DOTTY DAN BOYS' WEAR

- SUITS. Sizes 1 to 4. Brown or blue. Reg. \$12.98. Shop early because these have been reduced to \$7.98
- JACKETS. Sizes 1 to 4. Reg. \$6.98. NOW \$4.98
- CORDUROY COVERALLS. Red, blue or brown. Sizes 1 to 4. Regularly \$5.98. We are clearing these at \$4.00
- CORDUROY SLACKS. Reg. \$4.98. Sale-priced at \$3.00
- CORDUROY ZIPPY PANTS. Reg. \$4.98. NOW \$3.50
- CORDUROY SHIRTS. Sizes 1-6. Reg \$2.98, NOW \$1.50
- PLAID COTTON SHIRTS. Sizes 6-12. Reg. \$1.98—NOW \$1.29

One Rack—Ladies' - Children's

## SKIRTS

Good Selection—To Clear At

1/3 OFF

ONE RACK

## GIRL'S DRESSES

Values from \$3.98 to \$9.98.

Sizes 1 to 14.

1/3 OFF

GIRLS' DRESSES, Sizes 1-14. One rack.... 1/2 Price

## PEDDLE PUSHERS

Sizes 7 to 14—Reg. \$7.98 sets

\$5.00

Size 3 to 6x—Reg. \$3.98

\$2.50

Reg. \$2.98 Peddle Pushers ...

\$1.98

## ALL SWEATERS

Regular \$3.98 and \$4.98 values.

Both pullover and cardigan styles. These are sharply reduced to clear at ...

\$2.50

## GIRLS' AND BOYS' KNIT SLEEPERS

Sizes 2 to 14. Regularly \$2.98.

Sale-priced at ...

\$2.00

## GIRLS' COATS

Sizes 1 to 8

1/3 OFF

Girls' and Boys' Caps

\$1.00

One Table Items, Values To \$5.00, Only.... \$1.00

- NO EXCHANGES ● ALL SALES CASH
- NO REFUNDS ● ALL SALES FINAL

# Bizzell's Children's Shop

OLTON, TEXAS



**Springlake News**  
BY MRS. ERNEST BAKER

Mr. and Mrs. Roy Byers, Jr., left Sunday for Temple, where he will go through the Scott-White Clinic.

Among those visiting in the Baptist Church Sunday was Tommy Lumsden, son of Supt. and Mrs. O. E. Lumsden. Tommy recently returned from Germany where he served 27 months in service.

Little Bruce Bridges of Sunnyside visited Sunday with Mr. and Mrs. Ernest Green.

Mr. and Mrs. Wes Duckett of Ropesville were Sunday guests in the home of Mr. and Mrs. A. C. Loftis.

A large number of Springlake people attended the funeral of Mrs. Ferguson in Sunnyside community Sunday.

Mrs. Almon Whitford and Jen-nav shopped in Littlefield Saturday morning.

Mrs. Z. L. Byers shopped in Lubbock Saturday.

Mr. and Mrs. A. J. Jones of Hereford visited over the week-end with her parents, Mr. and Mrs. Almon Whitford.

Mr. and Mrs. Doug Higgins of Canyon visited her parents, Mr. and Mrs. Furche Riley, over the week-end.

Mrs. Bounds of Levelland visited her parents, Mr. and Mrs. Swanner, Sunday.

Mrs. Douglas Avery and chil-

dren of Muleshoe visited her mother, Mrs. H. A. McClanahan Sunday.

Ernest Green, Gus Parish, and Rev. J. T. Williams transacted business in Dimmitt last Tuesday.

Mrs. Ernest Green spent the day with Mrs. Janie Way last Tuesday.

Mrs. J. T. Gibson spent Thursday in Olton visiting friends.

The baby of the Mexican Baptist Mission pastor, Roque Puente, was confined to the Castro County Hospital in Dimmitt several days last week.

Mrs. Ashley Davis was on the sick list last week.

Mrs. Bob Boone shopped in Littlefield Saturday.

Little Misses Anita, Donita, and Connie Jo Kelley of Earth, visited Monday with their grandparents, Mr. and Mrs. W. T. Clayton.

Mr. and Mrs. W. T. Clayton visited Tuesday in Lubbock with Grandmother Clayton.

Walter Farris was in Littlefield Tuesday.

Mr. and Mrs. Leslie Watson transacted business in Dallas last week.

Mr. and Mrs. Ernest Baker transacted business in Plainview and Lubbock last Thursday.

Mrs. Willis White shopped in Littlefield Tuesday.

Mr. and Mrs. Leslie Watson were in Littlefield Tuesday.

Mr. and Mrs. Gibson of Halfway visited with Rev. and Mrs. J. T. Williams Monday night.

Mrs. Ernest Baker and Mrs. J. T. Williams shopped in Littlefield Tuesday.

Mrs. A. C. Loftis and Mrs. W. B. Hucks transacted business in Lubbock Tuesday.

Pete Stafford is here visiting with his sister, Mrs. Esther Bomar.

Rev. and Mrs. John T. Williams left Monday for Fort Worth to attend the Baptist Evangelistic Conferences.

Jimmy Ray Banks visited with his grandmother, Mrs. Banks, who is a patient in the Plainview hospital. Her condition remains about the same.

Mrs. Bill Burrow and children shopped in Earth Monday afternoon.

W. O. Watson is doing fine now and was able to attend church Sunday.

Mr. and Mrs. Walden are new residents of the community. They live on the Sanderson farm four miles north of town.

Mr. and Mrs. Harlon Watson spent Saturday night in the home of her uncle, Mr. and Mrs. Bob Waide, west of Earth.

Mr. and Mrs. Bryant Hucks shopped in Lubbock Monday.

**FAVORITES ARE ELECTED FOR CLASSES**

SPRINGLAKE—Class favorites were elected recently by the Springlake High School students.

Charlene Hamilton and Ernie Watkins are senior favorites and junior favorites are Shirley Green and Philip Jennings. The sophomore class selected Pat Armstrong and Melvin Lewis as their favorites and the freshmen

chose Elaine Riley and Mike Burgess.

The class favorites will be featured in the SHS '56 year-book.

**MOVES TO OLTON**

Clyde Bloodworth has moved to Olton from Ackerly. Ackerly is located between Big Spring and Lamesa.

—ATTEND CHURCH SUNDAY— —ATTEND CHURCH SUNDAY—

FINE CHARCOAL BROILED STEAKS

**McGrath's Fine Foods**

2000 W. 5th (Olton Highway) Plainview, Texas

**For Office Supplies Drop By The Enterprise**

ACCORDING TO THE WORD OF GOD—  
WHAT ARE THE AGES OR  
DISPENSATIONS OF THE BIBLE?

ACCORDING TO THE WORD OF GOD—the AGES OR DISPENSATIONS of the Bible are:

**THE PATRIARCHAL AGE.** The PATRIARCHAL AGE began with Adam and extended to the giving of the Law on Mt. Sinai. In this age of family religion the fathers or heads of families (patriarchs) were in charge of the worship and offerings (Gen. 4:3-5, 6, 7; 8:20-22) and it lasted for about 2500 years.

**THE JEWISH AGE.** THE JEWISH AGE was in effect from the giving of the Law on Mt. Sinai (Ex. 20) to the crucifixion of Christ (Col. 2:14), which was an age of the national religion for about 1500 years. The worship in the JEWISH AGE included the tabernacle, temple, and the synagogue. All Jews were to keep the law of Moses (Deu. 27:26; 28:15; Jer. 11:1-4). "The Law is become our tutor to bring us to Christ" (Gal. 3:24; Mat. 5:17; Col. 2:14).

**THE CHRISTIAN AGE.** THE CHRISTIAN AGE began on the first Pentecost after the resurrection of Christ (Acts 2) and will last until the end of time. Christ is the mediator of the CHRISTIAN AGE (Heb. 1:1, 2; 9:15; 12:24). When the Law (to the Jews only) ended, the GOSPEL to all peoples of the earth began (Mk. 9:4, 7; Heb. 10:9). We who live now are under the law of Christ and are not under the Law of Moses (Gal. 3:10, 24, 25; Eph. 2:15; Heb. 17:18, 19). The first four books of the New Testament cause us to have faith in Christ (John 20:31). The book "Acts of the Apostles" gives the history of the early church and how people became members of the church.

WELCOME TO THE

**Main Street Church of Christ**

SUNDAY: BIBLE STUDY	10:00 a.m.—6:00 p.m.
WORSHIP SERVICE	10:50 a.m.—7:00 p.m.
TUESDAY: LADIES' BIBLE STUDY	4:00 p.m.
BIBLE STORY HOUR	4:00 p.m.
WEDNESDAY: BIBLE STUDY	7:00 p.m.

E. R. HIGGINS, Preacher

**DO YOU NEED  
A BREAKING PLOW?**

See Us Now  
For A Demonstration

On The New

**John Deere Reversible  
Disc or Mold Board**

**Thompson Brothers Implement Co.**

YOUR JOHN DEERE DEALER

Phone 2211

Olton, Texas

**JOHN DEERE**  
QUALITY FARM EQUIPMENT

**The Home of Quality Service  
and Genuine JOHN DEERE PARTS**

**1st PRIZE**  
REPAIR  
MICKY

**BOOT & SHOE REPAIR**  
Complete Western Store.  
**RAGLAND'S**  
WESTERN WEAR  
622 Broadway Plainview

We offer complete insurance service covering your every insurance need.

You'll find that our service is prompt, friendly and dependable. Talk over your insurance problems with us at your first opportunity.

**GRANBERY**  
Insurance Agency

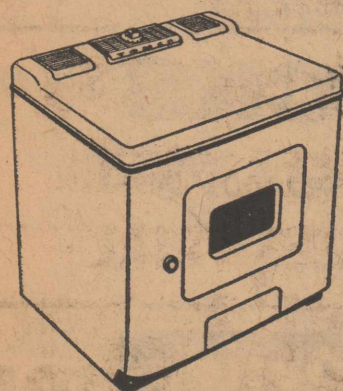
Phone 2921 Olton, Texas

ENTERPRISE WANT ADS  
GET RESULTS

*Promise her  
anything...  
but  
Buy her*

The best automatic clothes dryer  
Naturally... it's Gas

(Natural Gas for drying clothes costs approximately \$2.60 a year for the average family.)



- ✓ Dependable
- ✓ Fast
- ✓ Economical

Illustrated at left is a Temco automatic Gas clothes dryer. This dryer is approved by the American Gas Association testing laboratories.

**Pioneer Natural Gas Company**  
FUEL FOR A GROWING EMPIRE

THESE ARE  
IMPORTANT PEOPLE  
IN YOUR LIFE



*Dear Friends*

The people in the picture in this advertisement are Humble researchers on their way to work in Humble's Houston Research Center.

They are important people in your life, because their studies and their constant experimentation have only one purpose: to supply your increasing needs for oil and natural gas.

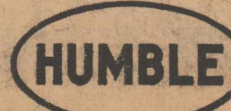
At the Houston Research Center, they pool their efforts to make the finding and production of oil and natural gas more efficient. And since they are top people in their different fields, their work has met with notable success.

It has helped to make the Humble Company not only the largest but also one of the most efficient producing companies in the country.

The new ideas, new methods and new practices developed by Humble researchers have resulted in the discovery of new reservoirs of a valuable natural resource; in making these reservoirs more productive; and in prolonging their life for your future benefit.

*Sincerely*

HUMBLE OIL & REFINING CO.





# The Olton Enterprise

Published each Thursday at Olton, Texas.  
**Troy F. Martin** ..... Publisher  
**Gordon P. Tompkins** ..... Editor  
**Miss Sue Macon** ..... Women's Editor  
**Wayne Moore** ..... Mechanical

Entered as second class matter at the post office at Olton, Texas, under the act of Congress, March 3, 1897.

Any erroneous reflection upon the character, firm or corporation which may appear in the columns of The Olton Enterprise, will be gladly corrected upon being brought to the attention of the Publisher.

x x x

Subscription rates: \$3.00 per year in Lamb and neighboring counties; \$4.00 per year elsewhere.



## Will Observe "Smile Week"

"Smile Week" has been declared and will be observed next week, Monday through Friday, in Olton High School.

After a week of smiling, the OHSers will elect a "Smile King and Queen," Friday in assembly.

Also, Friday at the voting, the "Cutest OHS Couple," "Most Dependable Boy and Girl," and the "Wittiest Boy and Girl" will be selected.

### ON FISHING TRIP

Mr. and Mrs. Ben Henson are spending a fishing trip this week at Marble Falls. They plan to go on to San Antonio and visit their son, George, who is a former resident of Olton.

### PARENTS' HOME

Mrs. John Watt of Lovington, N.M., has been visiting in the home of her parents, Mr. and Mrs. Floyd Gray.

### A Good Place To Buy . . .

We have a complete assortment of quality sporting goods, boys' clothing, etc.

. . . Toys, games, sporting goods.

### The Sport Shop

620 Broadway Plainview

## MARCH OF DIMES CARDS IN BANK

More emphasis was made this week on the March of Dimes cards in the Olton State Bank by Rev. Glen Godsey, head of the drive.

The cards, which spell out "March Of Dimes," have places where individuals may put in dimes. According to Rev. Godsey, several letters have not been filled.

Olton Parent-Teacher Association contributed \$11.65 to the drive last week.

## LEAVES FOR GERMANY

Pvt. Jearld D. Lawson, son of Mr. and Mrs. William B. Lawson, is scheduled to leave the U.S. for Germany this month as part of Operation Gyroscope, the Army's unit rotation plan. Private Lawson's unit, the 11th Airborne Division, now stationed at Fort Campbell, Ky., will replace the 5th Infantry Division in Europe.

The 24-year-old soldier is an ammunition bearer in Company L of the division's 503rd Infantry Regiment. He entered the army last May and completed basic training at Fort Ord, Calif.

### HAS SURGERY

Mr. and Mrs. Gordon Tompkins spent the week-end in Roswell, N.M., where Mr. Tompkins' mother, Mrs. G. P. Tompkins, underwent major surgery

on Friday at Eastern New Mexico Medical Center. Her condition is reported as good.

## New Course To Be Offered

Texas History, a new course, will be offered in Olton High School for the first time next semester, according to J. A. Williams, principal.

Mr. Williams also said that either Commercial Law or Business Arithmetic may be offered to high school students next semester.

### VISITING PARENTS HERE

Mrs. Hallie Earthman and son, Don, of Houston are visiting in the home of her parents, Mr. and Mrs. Ira Foster. They plan to visit here about two weeks.

## FLOWER & WHAT-NOT SHOP

MRS. ANN BLYTHE

"FLOWERS BY WIRE"  
ANYWHERE — ANYTIME

For Weddings - Sick Rooms and Funerals  
Day Phone 4116 or Night 2281  
Olton, Texas

## "Saunter With Sue"

by Sue Macon

Two new approaching marriages this week: Loy Goynes to Bennie Doggett and Phyllis May to Bobby Crawford of Littlefield. Loy and Bennie have set their date for February 3 and Phyllis and Bobby say they will wed in the next few weeks—but no date has been decided upon. When I say I am wishing you both the very best and lots of happiness, I mean it!

S-W-S

Our O.H.S. basketball teams have been playing some exciting games—and doing mighty well! They could do even better with more backing and larger crowds. I think you would enjoy seeing them play—why don't you attend?

S-W-S

This is my ideal woman this week: Mrs. D. M. Granbery, smile; Mrs. Guy Porter, attractive; Mrs. Ralford Daniel, personality; Mrs. W. M. Smith, neatness; Mrs. George Redinger, complexion; Mrs. Owen Norfleet, figure; Mrs. Jimmy Briggs, hair; Mrs. G. H. Bley, poise; and Mrs. Louis Hair, charm.

S-W-S

Danny Bledsoe didn't surprise me when he came into Olton at the wheel of a "bran' new" blue Buick convertible! College has changed that guy. He used to wear levis, crew-cuts, boots, and cowboy hats and like hillbilly music—now he wears real "Cat-

ty" sport clothes and is a fraternity man at Tech. Real gone, Dannio!

Donald "Duck" Sikes moved to Slaton where he plans to go into business with his father. We already miss his smiling face and humor around here—Torchie Cure and Clifford Curry say they're not engaged anymore, but still go together every chance they get!—Joyce Keasler and Don Joe Dodd seem to like each other's company—Andy Stroebel has the days counted until he and Cathy Dodd say their wedding vows . . . just ask him!

S-W-S

The school loses \$68 every time someone, who plans to attend school in Olton next year, fails to fill out their census

blanks. If every child, who will be six years old before Sept. 1, would enroll Jan. 20, just think how much money that would save the school.

### ARIZONA VISITORS

Mrs. J. R. Laurence and Gary of Wilcox, Ariz., arrived here Sunday to visit with her sister, Mrs. Ira Foster.

For Office Supplies  
Come To  
The Enterprise

ATTEND THE CHURCH OF  
YOUR CHOICE SUNDAY.

## Announcing . . .

Mrs. Fred Hicks is a new operator at our shop. We believe you will like her work. Your patronage is cordially invited.



• Complete Beauty Service •

## PEGGY'S BEAUTY SALON

OLTON, TEXAS

"We need your head in our business."

## HUBERT'S BARBER SHOP

Hubert - Parley - Morlex

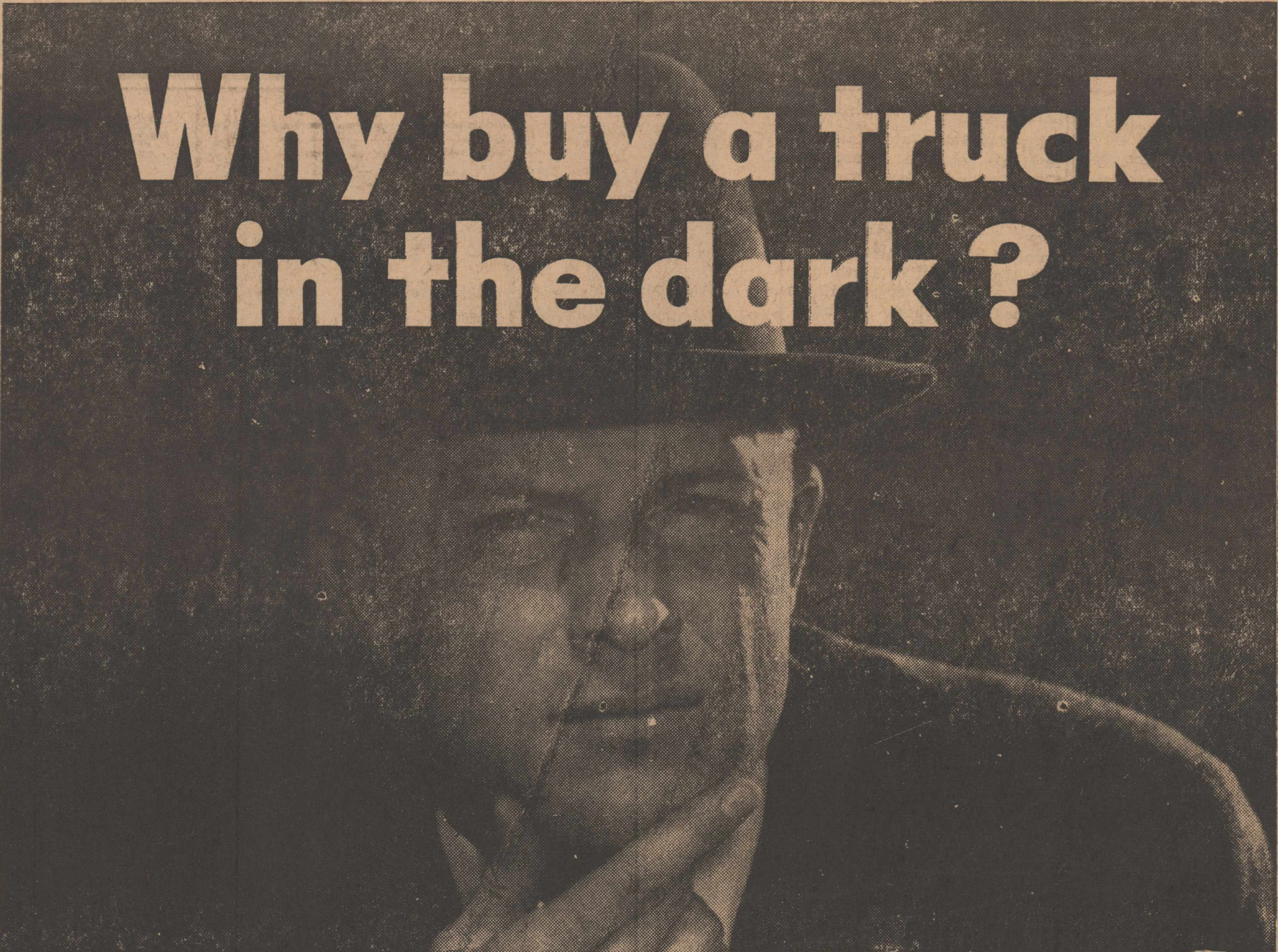
# Paymaster

WESTERN COTTONOIL CO.

PLAINVIEW, TEXAS

FRANK CUMMINGS, Agent

# Southland Life Insurance Co.



# Why buy a truck in the dark?

If you buy a new truck after looking at only one make, it's like making a deal in the dark. You can't be sure of getting the most for your money.

A smarter way to buy is to "spotlight" real truck value—weigh and compare competitive claims with these Dodge truck facts:

- ★ Most standard V-8 horsepower of all leading makes—½-ton through 3½-ton range. You'll get faster trips—more work done with DODGE.
- ★ Shortest turning radius. You'll park more easily, wheel through traffic quicker with DODGE.

★ Biggest cabs, with biggest wrap-around windshield. You'll enjoy roomier comfort, safer vision with DODGE.

★ Highest payload capacities . . . pick-ups providing up to 22% more payload than others. You'll haul bigger, more profitable loads with DODGE.

★ Prices down with the lowest. Comparative facts show that, feature for feature and dollar for dollar, the real value is DODGE.

Next truck you buy, don't deal in the dark. Turn a bright light on the facts—see Dodge before you buy.

# DODGE Job-Rated TRUCKS

WITH THE FORWARD LOOK



## Uncle Math Says:

Talk about BIGGER STALKS, MORE BOLLS, And LONGER STAPLE.. I've Got Them.. Thanks to MATHIESON!



You, Too, Can Make Your FERTILIZER DOLLAR PAY OFF!

A Dollar Invested In Mathieson High Analysis Pelletized Fertilizer Still Returns Up To \$7 In Crop Dividends.

AMMO-PHOS 16-20-0  
13-39-0  
AMMO-PHOS with POTASH  
12-24-12  
13-13-13

Balanced Fertilizer Can Be Applied In One Operation!



SEE US NOW!!

Come by the store for your free soil sample bags and information on how to take soil samples.

## OLTON FARM SUPPLY

Phone 3101

Don Spain

Get Your Dodge Dealer's Deal Before You Decide

## BUSBY MOTOR COMPANY

Highway 70

Springlake



# Fastest Way to Find a CAR HOUSE DOG SECRETARY

## Read and Use the WANT ADS

### Classified Ads Rates

Rates on classified advertising are: 6 cents per word first insertion; 3 cents per word second insertion, and each additional consecutive insertion. Minimum 60 cents first insertion, 25 cents additional insertions; The Enterprise is not responsible for mistakes after first insertion. Please read your ad.

#### • For Sale

FOR SALE: Anhydrous ammonia and dry fertilizers. Farmers Butane. Phone 4001. 43-tfc

FOR SALE: 1954 Chevrolet, Bel Air, 4-door sedan, radio & heater. See J. D. Thomas at Thomas Agency. 15-tfc

FOR SALE: Hamilton, America's most trusted watch. Yandell Jewelry. 20-tfc

FOR SALE: Four rooms and bath, six lots for \$5,000. Only \$1,000 down and the rest like rent. V. L. Smith, phone 2131. 21-tfc

FOR SALE: House, 24 x 28. Two bedrooms and bath. Was new in July. \$2,000. 2 mi. south, 2 mi. west, 1/4-mile south of Circle. Billy Russell. 1-tfc

One house to be moved. Frame, 12 by 24. One 1952 Westinghouse refrigerator. One 1952 Westinghouse electric range. See Albert Walthall. 1-2tc

#### • For Sale

National Farmers Union Insurance, a stock company. The Farm Agency Box 741, Phone 4581, Olton, Texas. 9-tfc

FOR SALE: All kinds of poster supplies—Tempera colors, artists brushes, posterboard, lettering stencils and Higgins India ink. The Olton Enterprise. 35-2tc

FOR SALE: All types of rubber stamps and notary seals. The Olton Enterprise. 35-2tc

FOR SALE: 1953 Hot Point electric stove. 1951 Westinghouse refrigerator. Reasonably priced. Located in Olton at J. W. Bailey house. Call Mrs. John Watson, phone 3539, Muleshoe. 46-tfc

FOR SALE: 2 4-room houses on pavement and sewer. Call 3161 in Earth. 1-3tc

FOR SALE: More eggs per pound of feed! That's what you'll get with your choice of Swift's five great layers. Boost your egg profits. Order now from Olton Farm Supply. 2-1tc

FOR SALE: Staggered-top Roper gas range. Excellent condition. Clury Phillips, phone 2808. 2-2tp

#### • For Sale

LOWERS AND GIFTS for all occasions. Flower & What-Not Shop. 47-tfc

FOR SALE: Kimbell piano. Good condition. Phone 3581 or 2771. Mrs. Herman Meyer. 42-tfc

FOR SALE: Inventory sheets, ledger sheets, post binders, file folders, index guides, etc. The Olton Enterprise. 45-2tc

FOR SALE: Two 25-foot lots, No. 16 and 17 in Block 62. See Mrs. W. C. Dennis. 46-tfc

FOR SALE: '54 model Chevrolet irrigation motor. 3-disc breaking plow, Case. 8-foot tandem disc. C. F. Williams, 4 mi. north, 1/2 w. of Circle. 1-4tp

#### • Notice

NOTICE—Need more farm listings. If you are interested in buying a farm, see us. We buy cotton. The Farm Agency. 34-tfc.

NOTICE: If your teeth need struck, set or filed to go through a two by four with ease. bring your saw to C. M. "Polly" Owen. tfcdh

#### • For Rent

FOR RENT: Three-room house. Phone 4012. 43-tfc

FOR RENT: Four-room modern house. Phone 4012. 46-tfc

FOR RENT: Three-room house. J. T. Jolly, phone 2611. 2-2tp

FOR RENT: Third and fourth, 240 acres irrigated land, two 8-inch wells with purchase of equipment, pumps and motors. See F. A. Harcrow, 5 miles east and 1/2 north of Olton. 48-1tp

#### • Wanted

WANTED: Real estate listings. Farm or city property. The Thomas Agency, Olton, Texas. 39-tfc

WANTED: Deep breaking with 2-way Mandard plow or deheading bundles. Neil Wall, Box 117, Hart, phone 2491. 2-2tp

WANTED: To make buttons, button holes, buckles, belts. Miss Willena Gordon, phone 3081. 2-tfc

WANTED: A home for 3 small kittens. See Sue Macon, phone 2896 or 3361. 2-1tc

FOR THE FINEST IN OFFICE SUPPLIES COME TO THE ENTERPRISE

DIAL 3016 For Prompt, Dependable Television Repair

K. & S. TV SERVICE Across from City Hall Olton, Texas

For Sale: USED MERCHANDISE

1—Heavy duty 10 ft. tandem disc. Oliver row crop. '88" tractors and equipment in A-1 condition.

1—Oliver 10-foot tandem disc. 1—1952 Oliver 88 with equipment. 1—1952 Oliver 88. 1—Eleven-foot used Hoeme. 1—3-disc reversible plow. 1—Wetmore feed mill.

BODKIN & NIXON

Local & Long Distance MOVING We Specialize in Packing Crating and Storage TRANSFER & STORAGE "MOVE SAFE WITH"

BRUCE & SON DIAL 4-6349 Plainview, Texas

"PORTRAITS THAT MUST PLEASE YOU" Children's Portraits a Specialty.

GROUPS • WEDDINGS • PARTIES • COMMERCIAL

ASH STUDIO 901 Austin Ph. 4-9534 PLAINVIEW, TEXAS

ARMY & NAVY STORE 122 East Fifth Street — Plainview, Texas C. L. BAYLEY, Owner All Kinds of Camping Supplies, including Camp Stoves — Sleeping Bags — Air Mattresses, Folding Cots, Comforts & Blankets; Also Tarps, irrigation Dams and Rolls of Canvas to be sold by the Yard.

#### LEGAL NOTICE

ORDINANCE NO. 87 AN ORDINANCE REGULATING THE SPEED OF MOTOR VEHICLES UPON CERTAIN PUBLIC STREETS IN THE CITY OF OLTON, TEXAS, AND PROVIDING A PENALTY THEREFORE AND REPEALING ALL ORDINANCES IN CONFLICT HERewith:

BE IT ORDAINED BY THE CITY COMMISSION OF THE CITY OF OLTON, TEXAS: Section 1. That all ordinances or any part thereof in conflict with or inconsistent with the

#### • Miscellaneous

COME AND GET your salesbooks before you run out again. We have plenty on hand. The Olton Enterprise, phone 3361.

For Beauty Counselor Cosmetics and free demonstration see Mrs. Emmitt Harper, 3 1/2 miles east of Olton, Phone 3848. 23-tfc

Would buy good hammer mill that will handle both grain and bundles. Plains Agricultural Service. 42-tfc

For deep-breaking see L. S. Stovall, 5 mi. south and 1 mi east of Olton. 2-3tp

#### MOTOR TUNE UP

Plainview Motor Service

DOSS WAYNE OTTIE

Associated with Shepard Chevrolet for over ten years.

Expert Auto Repair

CA 4-5845 1000 W. 5TH OLTON HWY. MOTOR REPAIR

#### Welcome To . . .

Alcove Restaurant Full Course Dinners Featuring — Delicious Steaks, Chicken & Mexican Foods Reasonable Prices — Courteous Service Hi-way 70-W. - 908 W. 5th DIAL 4-5744 Claude Carter and Curtis Nicholson, Props. Plainview, Texas

CESSPOOL DRILLING CRANE & SHOVEL WORK Cesspool - Septic Tanks Cellars — Basements Pier Holes For Foundations Expert Workmanship

UTE DRILLING COMPANY 1608 S. Date Ph. 4-4260 Plainview, Texas

#### POLITICAL ANNOUNCEMENTS

For Sheriff, Lamb County: DICK DYER, Re-Election

For Lamb County Commissioner, Precinct One: DON BRYANT, Re-Election

For Tax-Assessor-Collector, Lamb County: HERBERT DUNN, Re-Election

Section 2. From after the passage and publication of this ordinance it shall be unlawful for any person operating a motor vehicle which is self-propelled, to operate said motor vehicle at a greater speed than hereinafter set out, as to the following portions of the following streets: AVENUE "H": From 6th Street to 9th Street—Both Sides—15 m. p. h.—School Zone. AVENUE "G": From 6th Street to 9th Street—Both Sides—15 m. p. h.—School Zone.

Section 3. Any person who violates any of the provisions of this ordinance shall be fined in any sum not less than \$1.00 nor more than \$100.00.

PASSED, APPROVED AND ADOPTED this the 6th day of December, 1955.

G. H. BLEY Mayor, City of Olton, Texas

ATTEST: C. M. MOSS City Secretary

2-2tc

#### WILL HEAD MEXICAN ASSOCIATION

Rev. Glen Godsey, pastor of the Baptist Mexican Mission, was elected president of the Baptist Mexican Association Sunday at Tulla.

The associational meeting was held for the purpose of electing officers.

Other Olton people selected to offices were Mrs. Godsey, WMO president, and Ramon Galindo, Brotherhood president.

Approximately 250 people were present.

#### BUSINESS TRIP

Mr. and Mrs. M. T. James, Jr. will be in Wichita Falls this week-end for a showing of White Auto Store spring merchandise.

2-2tc

YOUR HEAD IN THE CLOUDS AFTER WE GET IT OUT OF THE BRUSH! City Barber Shop

Smith & Struve OLTON, TEXAS

Body & Fender REPAIRING Seat Covers — Upholstering Windshield and Door Glass Installed Newman Motor Chrysler Plymouth 623 Austin St. Dial 4-2768 Plainview

Storm Windows Storm Doors Metal Awnings Chain Link Fencing No Money Down 36 Months To Pay. WEST TEXAS RUSCO CO. 611 W. 24th Ph. 4-7967 PLAINVIEW, TEXAS

IRRIGATION PUMP REPAIR. CLEAN OUT SERVICE. Pressure Pump and Windmill Repair. Winch Work of All Kinds. LAMB COUNTY IRRIGATION SERVICE G. H. BUCHENAU Box 488 Phone 2351 Olton, Texas

FOR FLOWERS CALL 3536 Mrs. Chas. A. Loveless —Representing— Arch Keys Flowers PLAINVIEW

Our Only Business is RADIATORS Stovall-Booher Radiator SALES & SERVICE Phone 4-2885 Plainview, Texas

OPEN BOWLING Thursday, Friday and Saturday nights and Sunday afternoons. Four fine alleys Plainview Bowling Club 827 Broadway Phone 3-9077

Shop Every Thursday Nite 'till 9 —at— Meinecke Bros. 205-11 West 5th Plainview, Texas

We are the official SCOTTIE STAMP REDEMPTION CENTER We are remaining open every Thursday nite until 9 p. m. WE CLOSE AT 6 P. M. SATURDAYS

CESSPOOL DRILLING • STORM CELLARS • PIER HOLES 30" 36" 42" 48" Holes H. E. WARREN 907 W. 12th. Plainview PRIVATELY OWNED Dial 4-9210

Sincere personal service since 1931. Moderate prices. WE ACCEPT ANY FUNERAL HOME BURIAL POLICY. Wood-Mitchell Funeral Home Dial CA 4-2721 Plainview, Texas

Dr. Woods & Armistead OPTOMETRISTS B. W. Armistead, O.D. Glenn S. Burk, O.D. Ira E. Woods, O.D. 406 LFD Drive Phone 1000 Littlefield Texas

BUY A PRESSURE PUMP OR DRILL A WELL.

No Money Down! Pay in the fall or by the month. Don R. Cook Drilling & Supply 2401 N. Columbia Ph. 4-9204 (On Amarillo Highway) PLAINVIEW, TEXAS

FURNITURE UPHOLSTERING • Custom Built Furniture • Wide Selection of Latest Materials Available • Free Pickup and Delivery Draper Furniture Mfg. Co. 510 E. 9th Phone 4-5605 PLAINVIEW, TEXAS

OLTON LODGE NO. 1257 A. F. & A. M. Stated Meetings 3rd Thursdays ERNEST BAKER, W. M. C. D. Kirkpatrick, Secretary Visitors Are Welcome. Members Urged to Attend.

C. W. GRANT Insurance Agency Fire — Auto — Life — Hospitalization MR. FARMER: 1. Your Income tax report should be filed by February 15. 2. You must have a social security number. 3. We have application forms at our office. 4. If you had a farm hand during 1955 you must have an employer's number. 5. Form 943 must be filled out and mailed by January 31 reporting all wages paid regular employees. Don't wait until the last minute to have your income tax filled out. "WE OFFER COMPLETE INCOME TAX SERVICE"

CESSPOOL DRILLING 30" 36" 42" 48" ROUND HOLES FISH & SON 509 Smythe Phone CA 4-5828 PLAINVIEW, TEXAS

3% For Your SAVINGS Current Dividend Rate Whether you have \$1.00 or \$10,000 to invest, this association offers you a convenient investment plan with INSURED PROTECTION. Let us discuss this insured investment plan with you. Plainview Savings & Loan Ass'n Plainview, Texas Dial 4-6236





Where Friendly Service makes food shopping a pleasure

**COFFEE** WHITE SWAN. POUND CAN ..... **79c**

(White Swan Coffee Will Be Served Free Friday and All Day Saturday)

**Shortening**  Bake-Rite. 3-Pound Can ..... **69c**

AUNT JEMIMA  
**PANCAKE MIX**  
2½-POUND CAN

**33c**

DEL MONTE—CRUSHED  
**PINEAPPLE**  
NO. 2 CAN

**25c**

KIMBELL'S  
**PRUNE JUICE**  
QUART BOTTLE

**29c**

**PEARS**  HUNT'S—Halves. SIZE 300 CAN ..... **21c**

PINEAPPLE PRESERVES, Kimbell's, 20-Ounce Decorated Glass ..... **37c**

**Kit Cake Mix** New—Pillsbury. YOU SAVE AT ..... **29c**

LUSTRWAX  
**FLOOR POLISH**..... **23c**

OCEAN SPRAY  
**CRANBERRY SAUCE** ..... **19c**

**Chopped Beef** WILSON'S. 12-Ounce Can ..... **29c**

BLACKEYED PEAS and BACON, White Swan, Size 300 Can ..... **2 For 19c**

**BEANS** Libby's Deep Brown. 14-OUNCE CAN ..... **10c**

SHEDD'S LADY BETTY  
**CUCUMBER WAFERS** ..... **19c**

DIAMOND  
**TOMATOES**..... **2 For 25c**

**BREEZE** GIANT BOX..... **69c**

**SPECIALS BEGIN  
FRIDAY, JANUARY 13.**

**MEATS**  
**BACON**

SWIFT PREMIUM—POUND PACKAGE

 **49c**

**Picnic Hams**

ARMOUR'S STAR. WHOLE—PER POUND ..... **29c**

CHOICE PER POUND  
**RUMP ROAST**..... **49c**

FRESH BOSTON BUTT PER POUND  
**PORK ROAST**..... **37c**

CHOICE PER POUND  
**CLUB STEAK**..... **69c**

CHOICE PER POUND  
**ROUND STEAK**..... **79c**

**PRODUCE**  
**YAMS**

FANCY MARYLAND SWEETS. PER POUND ..... **7c**

FANCY GREEN PER POUND  
**CABBAGE**..... **4c**

FANCY CALIFORNIA Pound Cello Bag  
**CARROTS**..... **10c**

TEXAS 5-POUND BAG  
**ORANGES**..... **29c**

**FROZEN FOODS**

**Fruit Pies**  
..... **49c**

PET-RITZ APPLE, CHERRY OR PEACH. YOU SAVE AT

EL CHARRO ONLY ...  
**MEXICAN DINNER**.... **49c**

SNOWCROP 10-OUNCE PKG.  
**ENGLISH PEAS**..... **21c**

Double Gunn Bros. Stamps  
Every Wednesday  
With Purchase Of \$2.50 or More.

Free Delivery

Phone 3581

**CASH WAY**

Where Friends Meet and Prices Talk



SPECIALS EVERY DAY

**FOOD STORES**