

# Rotan Star-Record

The Voice Of Fisher County Since 1907

## ROTAN ADVANCE

VOL. 79 NO.25

THURSDAY, JULY 31, 1986

SIX PAGES

35¢ Plus Tax

### Rotan School Board Offers Rotan High School Principal Job To Mickey Early

The Rotan School Board officially offered the high school principal's job to Rotan resident Mickey Early at a special meeting of the board last Friday night. A motion was made, after Superintendent Alton Fields, recom-

mended Early for the position and the motion passed by a 3-2 vote. Voting in favor of hiring Early were board members Donald Gruben, Donna Kennedy, and Leo Long. Against hiring were Pete Fowler and Joe

Morrow. Absent from the meeting and not voting were Larry Landes and Roger Blackwelder.

Early had not accepted the position at press time and is not expected to give an answer to the offer until he returns from a short vacation trip to Colorado toward the end of the week.

Early is a 1971 graduate of Rotan High School, 1975 graduate of Southern Methodist University and has a master's degree. He

taught one year in the Dallas Independent School District system; taught at Roby for two

years, taught at Hobbs and 6 years ago returned to Roby as elementary school principal.

### Joe Granada Pleads Guilty To Theft, Gets Probation

A Rotan man, arrested in November of 1985 by Fisher County Sheriff's Department officers and charged with "theft in excess of \$20,000", pled guilty to the charge last week in 32nd District Court under Judge Weldon

Kirk. Joe Granada, a former employee of Glen's Thriftway Grocery Store in Rotan, received an 8 year probation and was ordered to pay restitution of \$21,492.50 plus a fine of \$750.00, court costs and probation fees.

He made an initial restitution payment of \$10,000 and is to pay the remaining \$11,492.50 in installments over the 8 year probation period, according to Bettie Hargrove, District Clerk.

Granada pled guilty to "theft, second degree" on July 23rd, 1986. He stole the funds while manager of Glen's Thriftway.

### Yellowhammer Booster Club Sets Meeting

The Yellowhammer Booster Club will meet in the cafeteria at the Rotan High School Monday, Aug. 4th at 8:00 p.m. Everyone is urged to attend. Plans will be made for fund raising for the coming year and new video equipment will be discussed. Please plan to come out and support our athletes this year.

### Sheriff Counts Is Attending Annual Association Meet

Fisher County Sheriff Mickey Counts is attending the annual meeting of the Texas Sheriff's Association in El Paso, Texas.

The meeting is scheduled to conclude on Wednesday, August 2nd.

### Commodities To Be Distributed Saturday, Aug 2

The Rural Wrens Home Extension Club will be distributing commodities on Saturday, August 2, starting at 8:30 a.m. at the Pink Building in Roby. The Young Farmers will be assisting the Rural Wrens.

### Hamlin Tennis Association Hosting Tourney, Aug 7 - 10

The Hamlin Tennis Association will host its annual tennis tourney August 7-10. This will be a doubles tourney only with championship and consolation play (guaranteed two matches). Age brackets will be middle and high school; adults 19-39; and experienced adults 40 and over. Divisions will include men's, women's and mixed.

Entry fee will be \$12.50 and one can of tennis balls per team.

Entry deadline which includes paying fee will be August 3rd. Please specify age bracket and give a phone number where you can be reached when entering. Prizes will be awarded from 1st place through consolation. If there are not enough entries for competitive play, the division will become open. To enter please call 915-576-3261 during the day or 915-576-2990 at night.

### Joint Fisher - Jones Stocker Cattle Meeting

A joint Fisher-Jones Stocker Cattle Meeting has been set for Monday, August 4, 10:30 a.m. at the Oil Mill in Hamlin, according to Richard Spencer County Agent.

John McNeill, Area Beef Cattle Specialist from Amarillo will be the morning speaker. McNeill has developed one of the best stocker

cattle programs in the nation. The afternoon session will be devoted to panel of stocker cattle operators who will discuss "Forward Marketing Strategies that are successful for them."

Lunch will be served at noon. Cost of the meal will be \$5.00.

The program should conclude by 2:00 p.m. The deadline for signing up for the program will be July 31 in order that arrangements for the meal can be made. Please call our office if you plan to attend.

### County 4-H Record Book Judging Is Completed

Thirty-four Fisher County 4-H'ers had record books entered in the District 3 4-H record book judging Tuesday.

Seven seniors won first place in District competition and will have their record books sent to State 4-H Record Book Judging which will be in August. The seven district winners and categories entered include Michelle Burk, recreation; Matt Floyd, beef; Carye Gruben, fashion revue; Jan Posey, food and nutrition; Reggy Spencer, Santa Fe; Gary Teague, swine; and Charla Wiley, health.

Other seniors records judged in District contest included Kenlee Dennis, sheep; Mary Lee Hicks, clothing; Rocky Roberts, Santa Fe. Seniors entered in County competition included: Joey Teague, swine; Norris Green, Jr., beef; Stephen Henington, sheep; David Shipp, beef; Jesse Carreon, Jerry Carreon, Benny Carreon, sheep; Kevin Smith, field crops; Millie Gaspar, natural resources; Evette Gruben, beef.

Juniors winning blue ribbons in District judging; Jessica Moore, Zachary Clark, Mark Marshall, Stephanie Frierson, Bryce Moore, Coby Moore, Anita Floyd, Jennifer Kincaid, Michael Hull, Traci Hull, Brandy Long, Mike Counts, Melissa Burk, Brandon Sheehan, Jason Gruben, Audra Lewis, and Stephanie Hunsaker. Winning red ribbons were Robert Elliott, Sheila Green, Buffy Shipp, Amy Blackwelder, Dee Dycus, Buster Frierson. Brian Mauldin won a white ribbon.

Entering junior project forms in County were Jody Price, Shanna Schooley, Janet Martin, Dawn Tandy, Mandye McKinney, Missy McKinney, Jamie Leigh Rovner, Chris Boone, and Eric Smith.

### Annual Hale Reunion To Be Held On Saturday

The Hale reunion will be held Saturday, August 2, at the Longworth Community Center, Longworth, Texas.

### Rotan Man Is Arrested By Sheriff Deputies

A Rotan man was officially arrested and charged with "indecentcy with a child" last Monday afternoon by Fisher County Sheriff Gene Pack and Deputy Dwayne McKay, after a complaint was lodged with law enforcement officials by the 9 year old male child's mother.

Arrested was David Wray Smith, age 38, of 107 West Burnside, according to Leland Hicks, Chief Deputy Sheriff. Smith was charged with "indecentcy with a child", after being arrested Monday afternoon, July 28th. The charge is a second degree felony.

He was released on a \$5,000 bond. Hicks indicated that the case would come before the Fisher County grand jury in August.

An arrest is not necessarily an indication of guilt, but is an action taken in response to an alleged crime or complaint.

### Roby Educator Barbara Martin To Receive Teaching Award

Barbara Martin of Roby will be presented an award by the Vocational Home Economics Teachers Association of Texas at their Twenty-Third Annual Awards Luncheon to be held at the Hyatt Regency Hotel, in Dallas, on Wednesday, August 6. The award is in recognition of her dedication and service to the teaching profession.

Mrs. Martin, a teacher at Roby High School, will also participate in a three-and-one-half State Inservice Conference for the professional development of vocational home economics teachers. The theme of this year's conference is "Vocational Home Economics Education: A Proud Past-A Promising Future."

The conference, arranged and planned by the Vocational Home Economics Education Division of the Texas Education Agency, will be highlighted by 30 special interest sessions offering a diversity of subjects to expand the teaching skills of vocational home economists. Some of the sessions to be featured at the conference, which will be presented by national business authorities and educators, include such topics as computers for home and classroom use; programs to enhance student motivation and communication; tips to help students with special needs; and sessions on home management, entrepreneurship, fashion, nutrition, and family relationships. A Dallas psychologist and feature host of a week-day radio show will present a special program

on how to help students cope with stress.

VHETAT President, Wava Hurley, Yantis, said, "Vocational Home Economics programs have grown to see the proud past shape a more promising future. The Texas Education Agency has planned workshops for the conference that will help us improve our teaching skills as well as learn new marketing strategies which can be

utilized to help others understand and appreciate the value of vocational home economics education. It's going to be an exciting conference from which teachers will gain many new ideas to take back into their classrooms and communities."

President Hurley said approximately 3,000 teachers are expected to attend the 1986 conference.

### David Stevens Awarded 2 Year UIL Scholarship

A local student has been awarded a two-year \$1,250 Houston Endowment Scholarship by the Texas Inter-scholastic League Foundation.

The Houston Endowment awarded 20 grants to students who have participated in UIL State Academic Meet contests and who have compiled outstanding records of academic and extracurricular achievement.

David Todd Stevens, competed in the 1986 State Meet One-Act-Play, placed sixth in the 1985 State Meet Debate contest, Who's Who Among American High School Students, Who's Who in Music, Daughters of the American Revolution Good Citizen Award, Class awards in Drama, English III, and Science, National Honor Society President, Student Council President, University of Texas Summer Theatre Workshop, Future Farmers of America Secretary, Yearbook Staff, Rotan District Goal Setting Committee, Rotan Discipline

Committee, plans to attend the University of Texas at Austin and major in Drama.

### Royston Reunion Scheduled For August 16th

Royston residents and former residents, make your plans now to attend the annual Royston Community reunion, Saturday afternoon and evening, Aug. 16th, 1986 and all day Sunday, August 17, 1986, at the Rotan Community Center, 600 N. Garfield, in Rotan.

Bring sandwiches and dessert Sunday. Plates, silverware, and drinks are furnished.

### County Senior Citizens Music Set For Aug 1st

The Fisher County Senior Citizens will be having religious and old time music, Friday night, August 1st at 7:00 p.m.

### Annual Fisher County Fair & Rodeo Dates Set, Aug 28-30

The forty-first Annual Fisher County Fair and Rodeo will be at the Fair and Rodeo grounds in Roby August 28-30, 1986. The board of directors has made a decision not to have fair catalogues printed this year because of the expense. Therefore, the County Extension Office will have available from our office a few copies of the list of those exhibits to be placed in the fair building. Anyone wishing a copy should come by the County Extension Office in the Courthouse.

We are also urging those who plan to exhibit to come by the Extension Agent's office and pick up the tags to go on your entries. If you have all entries tagged when you bring them to the exhibit building, it will speed getting entries processed.

Exhibits will be put into the building between 9:00 a.m. and 5:30 p.m. on Wednesday, August 27. The exception to this is fresh baked foods and fresh horticulture. Baked foods

must be in and ready for judging by 10:00 a.m. on Thursday, August 28.

Judging of all exhibits will be done Wednesday night or Thursday morning except Horticulture.

Horticulture and crops should be in place by 10:00 a.m. Friday, August 29 and will be judged at 1:00 p.m. the same day. All exhibits

must be left in place until 4:00 p.m. August 30.

If you have further questions regarding fair exhibits call Florene Stuart Chairman of Adult Division at 776-2740, Brenda Sheehan, Chairman of the Youth Division at 735-2041 or the County Extension Office, 776-2171.

### Eddie Thornburg In Group Taking Area Roping Honors

Former Roby resident, Eddie Thornburg, son of Mr. and Mrs. Lowell Thornburg of Roby, teamed with three others to take top honors in the Stockholder's Roping, held in Snyder during the Scurry County rodeo held recently.

Thornburg, from Pecos, joined Vance Voss to win first place in the team roping with a 25.57 on three head. They were in fifth place going into the final run of the team roping but flashed a 7.55 to putt out the victory.

Thornburg also roped

for second place with Kenny Hart and teamed with Karl Hall for fifth place. Thornburg clocked a 25.97 total with Hart and a 26.88 with Hall.

Thornburg copped the top prize, a horse trailer, along with a buckle.

### Senior Citizens Fifty Cent Day Set For August 1

The Fisher County Senior Citizens Center will be having their annual 50 cent day on Friday, August 1st.

### Farmers To Implement Conservation Plan By ASCS For Erodible Wetland

To remove inconsistencies between soil conservation goals and traditional commodity program benefits, the U.S. Department of Agriculture recently issued sodbuster and swampbuster rules which were required by the 1985 Farm Bill.

Billy Don Atkinson, County Executive Director of the Fisher County Agricultural Stabilization and Con-

servation Service, said producers who fail to meet the rules will not be eligible for price and income supports, disaster payments, crop insurance, Farmers Home Administration loans, farm storage facility loans and other farm program benefits.

According to Mr. Atkinson, farmers will have a grace period to implement a conservation plan on highly

erodible land that was cultivated for the production of an agricultural commodity in any year from 1981 through 1985. "Many will be able to develop and apply a conservation plan that will allow them to plant highly erodible land to grasses or trees, either on their own or in conjunction with the Conservation Reserve Program." Producers will not

lose eligibility before January 1, 1990, under the highly erodible land conservation provisions for farm program benefits, as a result of producing an agricultural commodity on highly erodible land that had been cultivated to produce any of the 1981-1985 crops, or that was used for set aside, diverted or not cultivated under a

USDA acreage reduction program. Mr. Atkinson said these exemptions will allow affected producers to continue producing agricultural commodities on highly erodible land through January 1, 1990, without having to actively apply a conservation plan for program eligibility.

"Also, farmers who cultivated highly erodible land or converted

wetlands after December 23, 1985, and planted a crop before the conservation rules were published will remain eligible for USDA program benefits for the 1986 crop year," said Atkinson. To retain eligibility for subsequent crop years, however, he said the farm must apply an approved conservation system on the highly erodible land. With

regard to wetlands converted after December 23, 1985, the farmer cannot, except under limited circumstances, produce agricultural commodities on such lands and retain eligibility for farm program benefits.

Fisher County has several thousand acres of highly erodible agricultural land with potential for conversion

to cropland, and no acres of wetlands with potential for conversion to cropland, according to Mr. Atkinson.

"Farmers who think they may be farming highly erodible land, or who think they need a conservation plan for any reason, should contact the Fisher County Soil Conservation Service", the ASCS official said.

# County Agent Report

By Richard Spencer

The Fisher County Fair and Rodeo is set for August 28-30. Advance rodeo tickets will go on sale in early August. Charlie Thompson will return this year as rodeo producer. John Kearney a Nolan County native and currently Vo Ag Teacher at Sterling City will be rodeo announcer. Rodeo tickets will be \$3.50 and \$2.50 again this year. County students age 9 through high school students may sell advance tickets. Contact Terrye at the Extension Office if interested. If purchased by advance tickets sales, you will save 25 cents. Fisher County ropers will have the opportunity to win a trailer this year at the County Team Roping. The trailer will have advertising displayed on it.

\*\*\*\*  
Thanks to Lance McWilliams, Gary Floyd, and Gary Daniel for the Show Barn Work the past week.

\*\*\*\*  
Over 1/2 of the grain sorghum is ripening. Steve Carriker indicated to me that he will cut some maze next week. He has one of the earlier planted fields and for drilled sorghum. This will probably be a record yield for the county.

\*\*\*\*  
Fisher County farmers should take time in the next few weeks to collect soil samples from those fields which will be fall planted to wheat or other small grains. Soil test results will be returned early enough to allow plenty of time to apply recommended nutrients and incorporate them into the soil during final seedbed preparation.

Incorporating or knifing nutrients into a moist seedbed is important to reduce nitrogen volatilization losses associated with surface-applied area-containing fertilizers. It also allows placement of non-mobile nutrients such as phosphorus into the active root zone of plants.

Small grains which are grazed naturally require more fertilizer than ungrazed grain because of nutrients removed by grazing. About 30 to 40 pounds of nitrogen are removed in forages grazed by stocker cattle for each 100 pounds of beef produced per acre. This nitrogen, less some recycling, must be replaced to provide adequate nutrition for grain production after livestock are removed.

A soil test is still the best way to determine fertilizer needs. How much of a give nutrient to apply depends on the

level of that nutrient in the soil, residue levels, cropping history, available moisture, grazing practices and general management.

A general "rule of thumb" says that wheat requires about 2 pounds of nitrogen per bushel of grain produced. Therefore, a 30-bushel yield would remove about 60 pounds of available nitrogen per acre. A soil test will determine the amount of residual nitrate-nitrogen in the soil and reduce nitrogen recommendations by that amount.

Producers who have not yet made a final decision to plant wheat this fall, but wish to leave the door open to plant corn, sorghum or cotton later on, can submit a soil sample now and request fertilizer recommendations for all cropping alternatives. Resulting fertilizer

recommendations that can be used to assist each person in making cropping decision.

Extension Service Soil Testing Laboratories at Texas A&M University and Lubbock are ready to assist wheat producers in making these economically important decisions. Although new automated laboratory procedures and computerized integration and reporting of soil test results have improved speed and precision, soil test recommendations will be no better than the quality of the soil sample analyzed. Therefore, it is important to collect soil samples to a depth of 6 inches. Soil sample bags and detailed instructions for sample collection are available at the County Extension Office.

## Rotan Nursing Center News

We would like to thank the ladies of the First Baptist Church that gave us our birthday party for this month. We would also like to thank the First Baptist Church for their

singing and bible study last Wednesday.

The weather has been so hot that we haven't been getting out and walking as much lately.

We have a new resident. His name is Sylvester Martin. We are happy to have him with us. Everyone is enjoying hearing Minnie play the piano when she comes to visit Sylvester.

Sylvester's son, Weldon Martin, was here to visit him over the weekend. Other visitors in the home were Leona Stephens and Christina Johnson of Hamlin. We have had several visitors from Rotan to come by and visit and we are always happy to have them come by.

## Legal Notice

The City of Rotan is soliciting qualified consultants for management/administration services required for the implementation of its Community Development Program Grant. Statements of Qualifications will be received and will be evaluated according to the firm's overall qualifications, background of the principals involved in the proposed project implementation, and previous work experience and demonstrated technical competence in community development planning, management, administration, and related areas. Major areas of concern will include environmental review, financial management, labor standards/EEO requirements, and project monitoring/reporting. The firm selected will be given an opportunity to negotiate a contract for administration services involved in the implementation of the program. Statements of Qualifications will be accepted until 4:00 P.M., August 8, 1986, at 201 W. Snyder, Rotan, Texas, 79546. The City of Rotan is an Affirmative Action/Equal Opportunity Employer.

Jerry A. Marshall  
Mayor  
25:1tc

# Matthew Gruben Is Receiving Chemotherapy

Matthew Gruben, three year old son of Rickey and Karen Gruben of Royston, was admitted to the Cook Medical Center in Ft. Worth on July 2. He was dismissed from the

medical center on July 16, and is receiving treatment for acute lymphocytic leukemia (ALL) as an outpatient. Mrs. Gruben said the family expects to be in Ft. Worth through mid-

August. The doctors should know by the first week of August if his condition is in remission. If in remission, he will continue to have chemotherapy for two and one-half years. Rickey is a self-employed farmer in Royston and Karen is a

part-time secretary at the Conoco Gas Processing Plant on the Hamlin highway. Matthew has a six-week old brother, Daniel, who is in Ft. Worth with the family. The Grubens are members of the Methodist Church in Rotan.

The family's address is in care of the Ronald McDonald House, 1804 Eighth Avenue, Ft. Worth, Texas, 76104.

Friends and co-workers started a special fund to aid the family with expenses at this time. Donations may be mailed to First National Bank, Drawer D, Rotan, Texas, 79546 and designated to the Matthew Gruben ALL

Fund, or deposits may be made at the bank. Matthew is the grandson of Dick and Peggy Gruben of Royston.

## F.C. Nursing Home News

We had a very nice birthday party last week for Nash Miers. Nash's birthday was July 23rd, and the Agape Class brought cake and punch and gave him a party. Ladies present at the party were Jimmie McCright, Hilda Rollins, Bonnie Taggart, Ila Burk, Cleatie Gruben, Vera Morrow, and Lometa Little. We thank them for the delicious cake and for their company. The residents really enjoyed their visit.

Sue Hitt, our Administrator was ill last week and in the hospital. We are glad she is well and back at work.

Reyna Garcia and Deannie Blaine, LVN, went to Abilene last Thursday for a training workshop. They enjoyed it and learned some useful information on exercising for older adults. They showed part of the workshop on Channel 4 that night.

Elise Carter's visitors were Maude and Roy Pennington from Eloy, Arizona and Stella Carter and June Wallace. Hazel Smith's visitors were Blandon Rembert and Rickey Winnans of San Angelo. Vera Jennings from Throckmorton, her great niece, Alice

Youngblood from Green Forrest, Ark., Bertie and Ilene Hale were also here.

Susie Soliz's visitors were Henry and Mary DeLeon from Ft. Worth and Susie's great niece, Tiffany.

Sally Wright visited Mr. Tillitson and Jewell Branch.

Doris Branch, Lorena Darden and Marshal Bennett also visited Branch. Louise Ashley enjoyed Betty Ashley's company.

Gene Harvey from Roby visited Julia Harvey. Walter Miers visited his parents the Nash Miers.

Roy's visitors were David Cummings and Carole Green. Miss Lavina visited Bessie and Maude.

Reyna Garcia

## Card Of Thanks

The family of Curtis Acker wishes to thank each one for their expression of sympathy, the cards, prayers, flowers, and food. Thanks to Bro. Steve Peace and the special music, the ladies who prepared and served the noon meal.

We love and appreciate each one of you.  
Bob & Nancy Sparks & family  
Buck & Edith Reed & family  
Bob & Dorothy Cave & family  
Vida Frazier  
25:1tp

## Dr. Bryan Cave

Eye Examinations  
Contact Lenses (All Types)  
Children Welcome  
Snyder, Texas

Cogdell Center  
(915) 573-5571 Or  
Wed., Thurs. & Fri.  
Call 573-4792

Office Hours  
Mon. 9-6:00 p.m.  
Tues. 8-5:00 p.m.

Lubbock Office (806) 797-4216

**FOR RENT**  
Storage Spaces  
From \$15.00  
Per Month  
Lock It And  
Leave It  
Rotan Self  
Storage  
735-3171

**AAA**  
FLYING SERVICE, INC.  
Roby, Texas

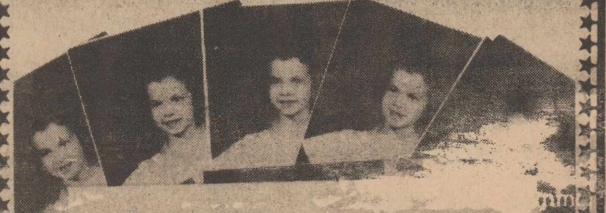
Bob Terry (915)776-2727  
Herbert Lakey (915)736-6806  
P.O. Box 457 Rt. 1 - Box 26  
Roby, TX 79543 Sylvester, TX 79560

We Sell  
BIBLES  
At The  
Newspaper  
Office

Carpet,  
Linoleum &  
Carpet  
Remnants  
All Work  
Guaranteed By  
Professional  
Installers  
Landes  
Furniture  
113 Garfield  
Rotan, Texas

1-10x13 30  
(Wall Photo)  
1- 8x10 COLOR  
2- 5x7 PHOTOS  
2- 3x5  
16-King Size 10<sup>99</sup>  
Wallets 99c Deposit  
8-Regular \$10.00 Due At  
Size Wallets Pick up  
Plus Tax

WE USE KODAK PAPER



AT: Winn's  
110 West Snyder  
DATE: Wed., August 13  
PHOTO HOURS: 9-5:30

Present this ad to photographer at time of sitting & receive 4 extra 3 X 5's with purchase of \$10.99 package.



Shugart's  
inc.

GROUP CHARGE COLOR  
99c per person PHOTOS  
Kodak paper. For a Good Look at the Times  
of Your Life. TM

## LIFE AT ITS BEST

Read: Genesis 22:1-13 ... you have not withheld your son, your only son, from Me. Genesis 22:12  
BRAHAM'S heart must have pounded until he was afraid his son Isaac would hear it as they stood on Mount Moriah. Undoubtedly his head throbbed and perspiration rolled down his face. He had offered many sacrifices during his lifetime, but this one was different. God was asking him to place his son of promise on the altar and yet retain his confidence in the love and integrity of the Almighty. When it became clear that Abraham was ready to slay Isaac, an angel stopped him and provided a ram instead. Abraham had totally surrendered his all to the Lord, and as a result his son Isaac was returned to him, as it were, from the dead.  
I read a story from nature that illustrates the idea of total submission. When two wolves fight over a territorial boundary, the conflict ends in an unusual way. When one animal realizes he can't win, he indicates surrender by exposing his jugular vein to the teeth of his adversary. He desires and deserves to be Lord of all. Only when we are willing to let go of what we love the most can we experience the joy and freedom that come by yielding to the One who wills nothing but our good.  
Surrender is the secret to life at its best! —M.R.D. II

FIRST BAPTIST CHURCH Roby, Texas  
Sunday School 9:45 Worship 10:55  
Sunday Eve.-Church Training 6:00 Worship 7:00  
Wed. Night 7:30 Steve Peace-Pastor

CROSS ROADS BAPTIST CHURCH Roby, Texas  
Sunday School 10:00 Worship 11:00  
Sunday Eve.-Training Union 6:00 Worship 7:00  
Wed. Night 7:00 James P. (Pat) Anderson-Pastor

LITTLE ZION BAPTIST CHURCH Roby, Texas  
Sunday School 9:45 Worship 11:00  
Worship 11:00 James Carrington-Pastor

FIRST BAPTIST CHURCH Roby, Texas  
Sunday School 10:00 Worship Service 11:00  
Sunday Evening 6:00 Worship 7:00  
Wed. Night 7:00 Alvin Petty-Pastor

CALVARY BAPTIST CHURCH Roby, Texas  
Sunday School 10:00 Worship 11:00  
Sunday Eve.-Bible Study 6:00 Worship 7:00  
Wed. Night 7:00 Dutch Parks-Pastor

EMMANUEL BAPTIST CHURCH Roby, Texas  
Sunday School 10:00 Worship 11:00  
Sunday Eve. 6:30 Wed. Night 7:30  
Andrea Rodriguez-Pastor

SYLVESTER BAPTIST CHURCH Sylvester, Texas  
Sunday School 10:00 Worship 11:00  
Sunday Evening 6:00 Wed. Night 7:00

HOBBS BAPTIST CHURCH Hobbs Community  
Sunday School 9:45 Worship 11:00  
Sunday Evening 6:00

MCCAULLEY BAPTIST CHURCH Roby, Texas  
Sunday School 10:00 Worship 11:00  
Sunday Evening 6:00 Rick McMinn-Pastor

## Worship This Week At A Fisher County Church

MISSION BAPTISTA CALVARIO Roby, Texas Sunday School 9:45 Sunday Evening 5:30 Wed. Night 7:30 Worship 11:00 Worship 6:00 Eli Sepeda-Pastor	FIRST UNITED METHODIST CHURCH Roby, Texas Sunday School 9:15 Sunday Eve. 6:00 Terry Lowe-Pastor
FIRST UNITED METHODIST CHURCH Roby, Texas Sunday School 9:45 Sunday Eve. 5:00 UMYF Wed. Night Choir Practice 7:00 Jim Hawthorne-Pastor	FIRST UNITED METHODIST CHURCH Roby, Texas Sunday School 10:00 Wed. (2nd Wed. in each month family nite 7:00) Alvin G. Smith-Pastor
FIRST UNITED METHODIST CHURCH Sylvester, Texas Sunday School 10:30 Every 3rd Tues. Evening Community Dinner 6:30 Alvin G. Smith-Pastor	CHURCH OF CHRIST Roby, Texas Sunday School 9:45 Sunday Evening 6:00 Wed. Morn. Ladies Bible Class 9:30 Wed. Eve. Bible Study 7:30 Donald Dawes-Minister
CHURCH OF CHRIST Roby, Texas Sunday School 10:00 Sunday Evening 6:00 Wed. Night 7:00-Nov. April 8:00 May-Oct. Wardell Halliburton-Minister	CHURCH OF THE NAZARENE Roby, Texas Sunday School 9:45 Wed. Night Worship Lyle Whitmeyer-Pastor
FOUR SQUARE CHURCH Roby, Texas Sunday School 10:00 Sunday Evening 6:00 Ira Burns-Pastor	ST. JOSEPH'S CATHOLIC CHURCH Roby, Texas Sunday Morning 9:00 a.m. Mass Saturday Evening 7:30 p.m. Mass Father Austin Kittredge
MARANATHA CHURCH Roby, Texas Sunday School 9:45 Sunday Evening 6:00 Worship 11:00 Wed. Evening 7:00	

Rotan Motor Company Ray Brown Archib Nealey Rotan, Texas	Midwest Electric Cooperative 776-2244 Roby, Texas	Citizens State Bank Member FDIC Roby, Texas	Higginbotham-Bartlett Greg Rains-Mgr 735-2215 Roby, Texas
Farmers Union Co-op Gin Roby, Texas	Central Lumber & Supply 776-2371 Roby, Texas	Rotan Nursing Center Roby, Texas	Martinez Dairy Rudy, Louise & Jeff Martinez Hobbs Community
First National Bank Of Rotan Member FDIC	Fisher County Farm Bureau 215 W. Snyder Roby, Texas	Roby Insurance Agency 776-2361 Roby, Texas	Rotan Insurance Agency Joe Burk-Agent Roby, Texas
Weathersbee Funeral Home Roby, Texas	Landes Furniture Loys & Larry Landes 735-3171 Roby, Texas	H.L. Davis & Company Bill & Elaine Day Roby, Texas	Bart Strayhorn 735-2231 Roby, Texas

**Roby School**  
Surplus and  
Old Equipment  
SALE

The Roby School will have a sale of surplus and old equipment, chairs, desks, lawn mowers, typewriters.

First come, first serve basis. Sale on Tuesday, August 12, beginning at 8 a.m. at the south end of Roby Elementary School.

## News From South Fisher County

By Bertha Warren

Hello from down south.

Well, it's the end of July. Where has our summer gone?

Helen Thornburg had knee surgery in Lubbock last week, but is home now and doing fine. Their granddaughter, Linda Carter, is spending a few days with them to help out.

Carrol and Lena Hodges had a picnic for the Trinity Baptist Church Sunday at their home. They had lots of ice cream and some of them played baseball and went for walks, then after a pot luck supper had church services out under the stars. About 65 to 70 attended.

Everyone, young people and older folks had a wonderful time. Carrol and Lena attended the Martin-Bryan-Etheredge reunion at Sweetwater Sunday morning. They saw and talked with so many old friends they had not seen in a long time and enjoyed visiting and talking with everyone.

Jerry and Karen Hodges took Rachel back to Lubbock Sunday. Karen fell Sunday afternoon and injured her knee and had to stay in the hospital over night. Hope she is up and around soon.

Melissa and Amy Hodges returned to Snyder Monday.

Ollie Ogden's cousin, Vida Patterson, from Tucson, Az., visited with the Ogden's from Thursday thru Sunday. She and Ollie did a lot of visiting, they attended the Senior Citizens bingo game at Rotan Friday. Vida went to church with Mary Etta O'Donald at Roby Sunday. Eircle and Mary Etta had visitors from Sweetwater last week.

They were Clair Kidd and Betty Steele. It's so good to see Clair out and about again. Other guests were Delbert and Melba O'Donald, Jeff and Ida McCain. Karl O'Donald had been visiting her grandparents for a few days.

### Martin-Bryan-And Etheredge Reunion

The Martin-Bryan-Etheredge Centennial Reunion was held in the Sweetwater Coliseum Annex, Saturday and Sunday, July 26 and 27, 1986.

Approximately 300 relatives and visitors were registered from Texas, New Mexico, Colorado, Oklahoma, California and Tennessee.

On Saturday visiting and family trees and family histories were enjoyed. Also entertainment by Joe Martin of Cleburne at the piano; Mrs. Alvin Schultz of Roscoe at the piano and Mrs. Don Goates of Sweetwater who sang and played the piano.

On Sunday, Ted Etheredge of Sweetwater acted as M.C., Pete Etheredge of Roscoe gave a welcome. A song was presented by Kim Etheredge of Roscoe. Rev. Bob Posey of Bogata, Texas lead in prayer. Family histories were given by Mrs. Anson (Dorothy) Martin of the Martin family; Ferlin Tutt, the Bryan family; and Melissa Coffin, the Etheredge family. Bob Etheredge of Gorman gave a devotional. Bob also lead congregational singing with Nettie Etheredge at the piano. Rusty Etheredge of College Station acted as auctioneer. Lunch was

Eircle took her back to Don's Thursday and stayed till Monday.

Bobby and Francis Morgan have had all their children and grandchildren home. Letha, Nikki and Jennifer Moyer from London, England have been

catered. Connie Tutt of Hobbs, Dorothy Martin of Camp Springs and Mike Pierce of Ridgecrest, California, were recognized as having contributed very much to the centennial celebration by their preparation of family histories.

A special introduction was made by Letha Mae Martin, widow of Robert Martin and Pelham Martin. Lurline Unnewehr and W. Carl Martin, all of Roby, were introduced as the three of the generation being grandchildren of the Rev. Robert Martin. The rest of us are great-grandchildren, great-grandchildren, etc.

Clara Hayter Womack of the Bryan Clan and her husband, Victor Womack of Lubbock were introduced as the oldest two present at 88 years of age. And a seven week old baby, a great grandchild of Calvin Bryan of Seagraves, was the youngest present.

here several days and another daughter, Linda Clark, and sons, Shawn and B.J. and their son, Robert and Melanie Morgan from Graham. Also Francis's sister and family, Lavern Young and Lavern's daughter, Dale and Mark Roberts of Ft. Worth. Letha and girls have gone to Florida for a couple of weeks to meet Tom, then they will return here and stay until around Sept. when they return to London in time for the girls to start back to school. Jeanie Edgar attend-

### Hospital News

Patients admitted to the Fisher County Hospital from July 22 thru July 28 were: Julie Morgan; Shirley Underwood; Jo Ann Carrillo; Sue Hitt; Baby Girl Carrillo; Abijah Hudnall; Gilbert Rameriz; Aurora Soliz; T. Francis Cochran; John Anderson; Linda Williams; Florrie Foster; Danny Weaver; Lyndell Martin; all of Rotan; Marvin Ashely; William Slusher; Grace Doyle; Thurman Terry; Nita Neves; all of Roby; Jackie Young, Spur; Karen Hodges, Sweetwater; Ruby Matthews, Jayton; Ronda Havins; and Baby Boy Havins, both of Aspermont.

ed the birthday party of Sunni Shipp last Sunday. She is Sunni's aunt. Callie Shipp has been in Abilene for some tests but is home now. Her daughter, Dorothy Walton, is spending a few days with her.

The Brazee's had a reunion at John and June Wallace's home Sunday. All the children were present. They were Owen Brazee from Guthrie, Sally Carter of Abilene, Maude Pennington of Eloy, Az., Dan Brazee of Hawley and June of Rotan. Ronnie, Maude's son, made the trip with her. On Monday, all of them traveled to the home of Owen and Viola's for the day.

Lydia Henry attended the Blankenship reunion at Trent. There were 12 or 15 to register. Her niece and family from California came the farthest. They are Bill and Melba Galoosis and children. She reported having a great time.

Summertime is a time for reunions and lots of get togethers and another reunion this weekend was the Adair reunion on the Clear Fork River at Lee Raspberry's. Rachel Adair Warren of Roswell, N.M. and her 2 daughters, Charlotte from Truth or Consequences, N.M., and Nan-

cy from Wickman, Az. and Nancy's daughter, Wanda and 2 grandchildren came to visit us on Thursday before going on to the reunion on Friday. Wayne and I visited at the campsite Saturday night. And they sure had a crowd. We had lots of different foods and after it cooled off a little we listened to several of the men play some good music. They had around 75 to 80 to attend and they came from all around.

Besides Roby and Rotan, they were from Azle, Wickman, Az., Roswell, N.M., Ft. Worth, Clyde, Artesia, N.M., Truth or Consequences, N.M., Comanche, Texarkana, Port Naches, Abilene, Lubbock, Odessa, and Seminole. Everyone broke camp Sunday and returned home. Plans were made for next year's reunion.

The annual Hale reunion will be held at the Longworth Community Center at Longworth, Saturday, Aug. 2nd.

Stephanie and Tonya Warren, two of our Snyder granddaughters,

visited us on Monday and Tuesday. We enjoyed having them.

C.W. and Sue Dulin and Jewel Ratliff spent Sunday at our house, we made ice cream in the afternoon.

Paul and Shelia Warren and children have moved to Castor, La. Paul is pastor of the Assembly of God church

outside of Castor. They seem to like it very much and say the people are so friendly and have made them feel at home.

Erna Lee Hartgraves reports the quilting that was scheduled for the 7th of Aug. has been cancelled.

Call and let us know what's going on in your world.




**Easy to use on:**

- Shrubs
- Trees
- Flowers
- Vegetables
- Foundations

**For a greener lawn**  
**ferti-lome**

*Martin's Feed & Garden*  
735-3261 Rotan, Texas

\*\*\*\*\*  
  
 Before You Purchase A New Car  
 Or Pick Up...Give Us A Chance  
 To Show You How Much You'll  
 Save At

### F&M Chevrolet-Buick

Complete Sales & Service

111-117 South Cleveland

Rotan, Texas

735-2244

SUBSCRIBE  
 BY CALLING  
 735-2562  
 Rotan Advance  
 Roby Star Record

planning a...  
**wedding**

Cakes / JAYE NEICE CLEMENTS  
 phone 735-2010  
**Photography**



## Wrangler

# \$500

## Rebate on 2 Pair Jeans

**HERE'S HOW**

**1 BUY**  
Any two pair of Wrangler Jeans.

**2 MAIL**  
Materials specified on mail-in form.

**3 RECEIVE**  
A \$5.00 rebate for each qualified submission.

**Wrangler \$500 Rebate** Mail-in form  
 on 2 Pair Jeans

Mail to: WRANGLER REBATE OFFER P.O. BOX 9963 Maple Plain, MN 55393

Enclose mail-in form, proof of purchase tag from two pairs of Wrangler Jeans (see drawing below) and original store-identified cash register receipt dated between July 23, 1986 and September 30, 1986. Circle the Wrangler prices on the register receipt. Receipt must be from store shown on mail-in form.

Within six to eight weeks of receipt, Wrangler Brand will send you a \$5 rebate for each qualified submission.

Limitations: One \$5 rebate per form. Four \$5 rebates per person, family, group or address. Offer void outside USA and where prohibited by law. You assume the risk of lost or delayed mail.

Offer expires: September 30, 1986

IMPORTANT: All rebate requests must be postmarked by October 17, 1986. Rustler jeans do not qualify for this offer.

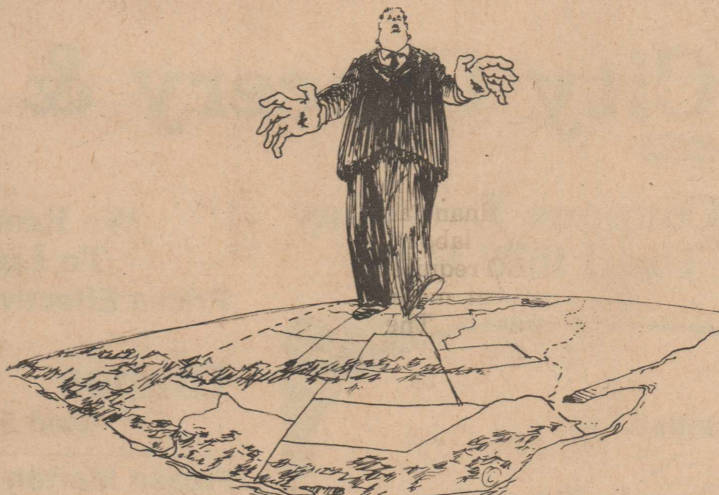
**H.L. Davis & Co**

**H.L. Davis & Co.**

"The Friendly Store"  
 Rotan, Texas

**YOUR LOCAL**

INDEPENDENT BANK



The new "GIANTS" of the financial industry can't compete with us!

By banking at home you enjoy the best in full service banking while you deal with people who live and work in our community! WE CARE ABOUT YOU!

"Your Dependable Bank of Service"

The 1<sup>st</sup> National Bank of ROTAN

Member FDIC    Rotan, Texas    735-2224

Member Independent Bankers Association of America. Representing the nation's community banks.

### Tax Planning By Gerald Rodgers CPA



#### IRS AUDITS (Don't Lose Sleep)

The IRS has three levels of examination (audits) of income tax returns. All are intended to review the facts and see that your return is properly filed. The agent is not to harass or belittle you. If you have filed your return with the correct numbers, don't lose sleep over an upcoming audit.

The simplest of the audits is a "direct correspondence". You may be asked to send photo copies of a few specific checks or documents.

An "office audit" will often be more detailed and may require you to take certain records to your nearest IRS office. A call to the examining officer for more information on what to bring could save you an extra trip.

The "field audit" is held at your home or place of business. It usually involves a full review of all major income and expense items. If you have income from a partnership or small corporation, they may also be brought into the audit.

The IRS has had excellent results by letting their computer select which returns are to be audited and most likely to produce added revenue for the government. The computer checks for certain "norms" in your return depending on the nature of your business, income level, etc. If you have abnormal figures such as excessive interest expense, high medical bills, etc., you should attach a photocopy of the document supporting the deductions. Such documentation may keep the IRS from contacting you.

If you receive correspondence from the taxing authorities, respond timely. Ignoring their first few notices will not gain you favor when you finally meet, and you will.

**Sponsored By:**  
James E. Rodgers & Company  
Certified Public Accountants  
20 Southwest Third St. Hamlin, Tx.

### Lawlis Reunion

The 39th annual Lawlis reunion was held in the Fisher Community Center, July 20th. There was 63 attending from Rotan, Sweetwater, Hamlin, McCaulley, San Angelo, Royston, Sylvester, Abilene, Novice, Roby, Floydada, Brownfield, Lovington, N.M., Andrews, Jal, N.M., Slaton, and Clarksville, Texas.

enjoyed by everyone and the day was one to be remembered until the same time in 1987.

### Waddell Family Reunion Adds Names Attending

The following people, attending the Waddell reunion in Roby, were omitted by mistake: Mr. and Mrs. Billy John Waddell, Terry and Billy Joe Waddell of Anson.

Lots of good food was

## Hustling Around Hobbs

We still need a good rain, especially as this wind blows almost every day. I didn't think the fields would get so dry after all that good rain we got earlier, but everyone you talk to says a good rain would sure help. It's been so hot, 100 degrees and more every day, and the only time its pleasant is early, early in the mornings.

Belated congratulations to Mr. and Mrs. Nash Miers who celebrated their 60th wedding anniversary on the 4th of July. They had a party that day in the Fisher County Nursing home, with lots of folks present.

Mr. and Mrs. Larry McBeth and three children from Abilene spent the day Tuesday with Mrs. Bea Hardin. Mrs. Jane Deaver from Snyder spent Saturday afternoon visiting with Bea.

Haven't heard from Mrs. Sue Medrano, but we are expecting her to be home from Dallas any day now, that is if she feels well enough to travel.

Mr. and Mrs. Clarence Anderson went to Clovis, New Mexico, on Friday and visited with Mr. and Mrs. Wayne Anderson, David and Steven. While there they helped Steven celebrate his 3rd birthday. Happy 3rd birthday to him. Clarence and June returned home Sunday.

Mrs. J.W. Etheredge and Mrs. Jim Wilburn, Shannon and Courtney all went to San Angelo on Friday. They spent the night and came home Saturday. Shannon went to the college and registered; she is planning on playing basketball for the San Angelo Ramettes this fall. While in San Angelo they also visited with Mr. and Mrs. David Etheredge. Saturday and Sunday the Etheredge reunion was held in Sweetwater, and the J.W. Etheredges attended. Also Mr. and Mrs. Randy Etheredge, Mr. and Mrs. Todd Etheredge and family from Snyder, and Mr. and Mrs. David Etheredge from San Angelo. They reported a big crowd at the reunion. After the Etheredge reunion, Mr. and Mrs. Sam Etheredge entertained the following for supper: Mr. and Mrs. Ernest Etheredge, Tyler; Mr. and Mrs. Alvin Etheredge and children of Tyler; Mr. and Mrs. Edwin Etheredge of San Francisco, Cal.; Mr. and Mrs.

Windell Barrett of Snyder; Mr. and Mrs. Corby Barrett and Lacey of Stephenville;

Jackie Barrett and Cheryl Denman of Glen Rose; Charlotte Barrett of Glen Rose; Taina Bar-

rett and friends of Snyder; all the J.W. Etheredge family and grandchildren.

### Center Extension

The Center Extension Homemakers met Tuesday, July 22, at the annex in Roby. Elizabeth Billingsley and Louise Mahaffee gave a program on drug abuse and gave pointers on steps toward a drug free community. They had prepared a good report on drugs in our nation, county, and community stating drugs had become the most criminal and social problem in the U.S. as well as the second largest business. They stated there were sixteen million regular users and most under 17, and pushers were usually among the younger group. You say drugs are only in the larger schools and cities, right? Wrong. Drugs are in smaller schools and towns as well as the larger schools, so they urged parents and people to take a stand in your community, to detect and keep it as drug-free as possible.

Fay Anderson presided for a short business meeting on fair conces-

sions and duties for the up coming County Fair, August 28, 29, 30.

Coe Palmer and Ora Bennett hosted the club, and served delicious refreshments to Florene Stuart, Bylinda Rains, a visitor, Louise Mahaffee, Elizabeth Billingsley, Audie Burk, Eilene Cave, Britty Turnbow, Imogene Harvey, Bernice Randolph, Martha and Margaret Billingsley, Melissa Cleveland, and Luella Waddell.



John Marvin Clark born to Gary and Judy Clark of Pecos, July 14, 1986 at 12:45 p.m. in Odessa, Texas. He weighed 8 lbs. 3 ozs. Grandparents are Jimmy and June Wright, great grandparents are Floyd and Velda Wright of Roby and Bobbie Clark of Pecos.

**HOMESTYLE Full Meal Deal**  
only **\$2.59**  
July 21 thru August 24, 1986

The sweetest deal in town is the Dairy Queen Full Meal Deal. With a juicy quarter-pound Homestyle Hung-buster. Golden french fries. Your favorite ice-cold soft drink. And a creamy 5-ounce Dairy Queen sundae with your choice of topping. The \$2.59 Full Meal Deal. It's a steal.

#### HOT WEATHER



## Easy MEAL MAKERS

### City Grocery & Deli

776-2225

Roby, Texas

Double Coupons Everyday  
Open Until 9:30 P.M.

We Reserve The Right  
To Limit Quantities  
Prices Effective July 31-Aug. 6, 1986

Boneless  
**Chuck Roast**  
**\$1.19** Lb.

Grapes **79¢** Lb.  
Red Seedless

Frozen Morton **Pot Pies**  
8 Oz. (asstd) **2/69¢**

Palmolive **Betty Crocker**  
Lemon-Lime **Cake Mixes**  
Liquid **18.5 oz. 78¢**  
22 oz. **\$1.09**

**Broccoli**  
Calif. U.S. #1 **49¢** Lb.

Jif **Peanut Butter**  
18 oz. **\$1.69**  
(Cream or Crunchy)

**Lemons** Sunkist **5/\$1.00**  
**Northern Bath Paper** 6 roll **\$1.79**

Deli **Chopped Bar-B-Que**  
**\$1.99** Lb.

Post **Natural Bran Flakes**  
16 oz. **\$1.49**

Purina **Luckydog Food** 5#  
**\$2.59** Lb.

Best Maid **Sliced Dills** 32 oz. **\$1.09**  
Duncan Hines **Cookies** 12 oz. asstd **\$1.29**

## Statement Of Condition Citizens State Bank

CONSOLIDATED REPORT OF CONDITION (Including Domestic and Foreign Subsidiaries)  
(Dollar Amounts in Thousands)

LEGAL TITLE OF BANK		STATE BANK NO.	
Citizens State Bank, Roby, Texas		1699-06	
Box 488		FEDERAL RESERVE DISTRICT NO.	
Roby, Texas 79543		11 13 21898	
CITY	COUNTY	STATE	ZIP CODE
Roby	Fisher	Texas	79543
		CLOSE OF BUSINESS DATE	
		June 30, 1986	
Dollar Amounts in Thousands			
ASSETS			
1. Cash and balances due from depository institutions:			
a. Noninterest-bearing balances and currency and coin		428	1.a.
b. Interest-bearing balances		300	1.b.
2. Securities		9 046	2.
3. Federal funds sold and securities purchased under agreements to resell in domestic offices of the bank and of its Edge and Agreement subsidiaries, and in IBFs		1 145	3.
4. Loans and lease financing receivables:			
a. Loans and leases, net of unearned income	4 604		4.a.
b. LESS: Allowance for loan and lease losses	056		4.b.
c. LESS: Allocated transfer risk reserve	None		4.c.
d. Loans and leases, net of unearned income, allowance, and reserve (item 4.a minus 4.b and 4.c)		4 548	4.d.
5. Assets held in trading accounts		None	5.
6. Premises and fixed assets (including capitalized leases)		016	6.
7. Other real estate owned		007	7.
8. Investments in unconsolidated subsidiaries and associated companies		None	8.
9. Customers' liability to this bank on acceptances outstanding		None	9.
10. Intangible assets		None	10.
11. Other assets		280	11.
12. Total assets (sum of items 1 through 11)		15 770	12.
LIABILITIES			
13. Deposits:			
a. In domestic offices		14 345	13.a.
(1) Noninterest-bearing	1 720		13.a.(1)
(2) Interest-bearing	12 625		13.a.(2)
b. In foreign offices, Edge and Agreement subsidiaries, and IBFs		None	13.b.
(1) Noninterest-bearing	None		13.b.(1)
(2) Interest-bearing	None		13.b.(2)
14. Federal funds purchased and securities sold under agreement to repurchase in domestic offices of the bank and of its Edge and Agreement subsidiaries, and in IBFs		None	14.
15. Demand notes issued to the U.S. Treasury		None	15.
16. Other borrowed money		None	16.
17. Mortgage indebtedness and obligations under capitalized leases		None	17.
18. Bank's liability on acceptances executed and outstanding		None	18.
19. Notes and debentures subordinated to deposits		None	19.
20. Other liabilities		177	20.
21. Total liabilities (sum of items 13 through 20)		14 522	21.
22. Limited-life preferred stock		None	22.
EQUITY CAPITAL			
23. Perpetual preferred stock (No. of shares outstanding	none		23.
24. Common stock (No. of shares a. Authorized	500		
b. Outstanding	500		
25. Surplus		150	24.
26. Undivided profits and capital reserves		550	25.
27. Cumulative foreign currency translation adjustments		548	26.
28. Total equity capital (sum of items 23 through 27)		1 248	28.
29. Total liabilities, limited-life preferred stock, and equity capital (sum of items 21, 22, and 28)		15 770	29.
MEMORANDA: Amounts outstanding as of Report Date:			
1.a Standby letters of credit, Total		None	1.a.
1.b Amount of Standby letters of credit in memo 1.a conveyed to others through participations		None	1.b.

NOTE: This report must be signed by an authorized officer(s) and attested by not less than three directors other than the officer(s) signing the report.

I/We, the undersigned officer(s), do hereby declare that this Report of Condition has been prepared in conformance with official instructions and is true to the best of my knowledge and belief.

SIGNATURE OF OFFICER(S) AUTHORIZED TO SIGN REPORT: *Zanna Anderson* DATE SIGNED: 7-23-86

NAME AND TITLE OF OFFICER(S) AUTHORIZED TO SIGN REPORT: ZANNA ANDERSON, V.P. & CASHIER AREA CODE-PHONE NO.: 915-776-2261

We, the undersigned directors, attest the correctness of this Report of Condition and declare that it has been examined by us and to the best of our knowledge and belief has been prepared in conformance with official instructions and is true and correct.

SIGNATURE OF DIRECTOR: *Duncan Hines* SIGNATURE OF DIRECTOR: *Carl J. King* SIGNATURE OF DIRECTOR: *Patricia Anderson*

State of Texas, County of Fisher ss.

(MAKE MARK FOR NOTARY'S SEAL) Sworn to and subscribed before me this 23rd day of July, 1986.

and I hereby certify that I am not an officer or director of this bank. My commission expires 9-30-1988.

*Beth Daught*  
Signature Notary Public

## Lamb And Wool Producers To Give Approval To Continuation Of Program

Lamb and wool producers will have an opportunity during an August 18-29 referendum to vote on whether they want the American Sheep Producers Council, Inc., to continue its market promotion and improvement program on their behalf.

According to Milton Hertz, Acting Administrator of the U.S. Department of Agriculture's Agricultural Stabilization and Conservation Service, the agreement to be voted on is similar to one approved in 1982, except it would authorize deductions of up to 6 cents per pound on shorn wool and 30 cents per hundredweight on unshorn lambs marketed in 1986. Deductions from producer incentive payments for 1982 through 1985 were 4 cents and 20 cents respectively, he said.

Hertz also said the new agreement would permit USDA to withhold part of any wool incentive payments that might be made to producers on 1987-90 marketings to finance the council's promotion activities.

He said deductions would be used by the council to finance advertising and sales promotion programs for wool and lamb and programs to develop and disseminate information on product quality, production management and marketing improvement for wool and sheep.

ASCS county offices will distribute copies of the agreement and ballots to sheep producers in early August. Producers may cast their ballots by mailing or delivering them in person to county ASCS offices by the close of the referendum, Hertz said.

Anyone who has owned sheep six months old or older for at least 10 consecutive days during 1985 may vote. Votes may be cast by individuals or by cooperatives. Members of cooperatives which cast votes would not be eligible to vote separately in the referendum. The agreement requires approval by two-thirds of the total volume of production represented in the referendum.

The National Wool Act of 1954 provides the authority for deductions and for promotion activities. Sheep producers have approved the program in each of the eight referendums held since 1954. In the most recent referendum, in 1982, 72.6 percent of the producers approved the program.

## New Mexico Couple Visiting In County

Mr. and Mrs. Don Cave from Farmington, New Mexico, have been here visiting the J.C. Caves. They came Saturday and stayed until Sunday evening. Mrs. Billy Carter from Brownwood also came Saturday and stayed until Sunday, so they really had a good time together.

Mr. and Mrs. Neil Hyer and Leah from Andrews have been here visiting with Mr. and Mrs. J.D. Kincaid. They spent Monday, Tuesday and Wednesday visiting here.

Jim and I have been

staying close to home, as he is busy trying to plow the cotton, and just about everything has gone wrong, but the tractor never breaks down until you really need to be plowing. We did go to Snyder on Thursday and again early Saturday morning.

Not too much news this week; know I have missed some of you but will try to catch you next week.

## California Couple Visits Relatives

Rev. and Mrs. Floyd Strickland from San Diego, Cal. and Mr. and Mrs. George Noles from Marble Falls, Texas, recently visited in the home of Mr. and Mrs. Truett Strickland and Mr. and Mrs. Dick Edwards and attended the Strickland reunion.

**Roby Star Record**  
The Voice of Fisher County Since 1907  
**ROTAN ADVANCE**  
Post Office Drawer A, Rotan, Texas 79546

(915) 735-2562 Office  
(915) 735-2278 Office  
(915) 735-3115 Home

Kim Pease-Editor/Publisher

Published in Rotan, Texas Weekly. Entered as Second Class mail at the Post Office, Rotan, Texas 79546 under acts of Congress.

POSTMASTER: Send Address Correction to the Newspaper Office, P.O. Drawer A, Rotan, Texas 79546.

Advertising rate is \$2.00 per column inch. Classified rate is \$3.00 for first 15 words and 10 cents for each additional word. \$3.50 if billed. Classified display rate is \$2.50 per column inch. Card of Thanks \$5.00 minimum charge.

Subscription Expiration dates are listed on each mail subscribers newspaper delivery label each week. Newspapers must be renewed prior to the expiration date. Postal regulations say that subscriptions must be paid in advance to qualify for 2nd class postage regulations.

News and advertising deadline is 12:00 noon on Tuesday of Each Week. The Rotan Advance-Roby Star Record is published 52 weeks a year.

Notice: Any erroneous reflection upon character standing or reputation of any individual firm or corporation will be gladly corrected when brought to the attention of the publisher.

Mail To:  
The Newspaper Office  
P.O. Drawer A  
Rotan, Texas 79546 New Renewal

Please Find Enclosed:  
1 Year-\$12.00-In County  
1 Year-\$15.77-In Texas  
1 Year-\$17.00-Out of State

Name \_\_\_\_\_  
Address \_\_\_\_\_  
City \_\_\_\_\_ State \_\_\_\_\_ Zip \_\_\_\_\_

## BLACK INVESTMENTS

Real Estate Sales-Appraisals-Petroleum Landwork  
107 North Garfield

SOLD-105 El Johnson, 3 BR brick veneer  
SOLD-137 acres East of Rotan, mixed land

SPECIAL: 100.6 acres S. of Rotan on Hwy. 70, cultivation or suitable building site, 1/2 minerals, \$432.50 per acre, CASH

HOBBS AREA: 160 acres versatile farm (cotton, bermuda grass, pasture) with residence, pens, tank, minerals

ROBY AREA: 87 acres, Class II cultivation, some pasture, hay barn, 3 BR brick home

ROYSTON: 3 BR home on one acre, \$22,000

ROBY: Nice 3 BR, large den area, patio, privacy fencing, corner lot  
TO BE MOVED: 3 BR frame, well maintained, just off Hwy. 70, \$18,000

E-Z CAR WASH: Rotan established business

MOBILE HOME: fence, owner financing, \$8,000

CORNER LOT: 2 BR, 1 1/2 bath, carpet, \$25,000

PRICED RIGHT: 3 BR, bath, kitchen, bar, \$14,000

TWO-STORY: 5 BR, plus servants quarter, well, \$45,000

MODERN: 3 BR brick, corner lot, \$40,000

WHITE BRICK: 2 BR, wood burning stove, \$36,000

SKYLIGHTED BEDROOM: 3 BR, carpet, \$22,000

VINYL SIDING: 3 BR, corner lot, \$31,500

Come By The Office For Discussion On Other Residential Properties As Well As Farm & Ranch Listings.

**MYLA BLACK, BROKER, MSA, MRA, MFLA**  
Office & Home Telephone (915) 735-3091

FOR SALE: Washers and dryers. 60 day warranty. 962-5446, McCaulley. 52:tf

FOR SALE: House in Roby, brick, 3-2-2 cp. All the extras. Call 915-776-2371 or 776-2377 or 573-3465 after 5:00 P.M. 11:tf

FOR SALE: 2 bedroom house, N. 2nd St. Roby, good water well. 776-2367 after 5 p.m. \$9,000.00. 10:tf

FOR RENT: 2 bedroom, 2 bath, mobile home in country. 735-3477. 23:tf

NOTICE: Managers, full/part-time, Rotan area. Rapid advancement, career opportunities, bonuses! Resume to Ron, P.O. Box 1577, Sweetwater, 79556. 22:4tp

NOTICE: Custom hay baling and hauling round bales only. Also have haygrazer and hegarri round bales for sale. Call Mac Rains, 735-2640. 23:2tc

RENT OWN: Amana refrig., microwave, Maytag washer and dryers, stoves, used also. Bill's Appliances, 113 W. Broadway, Sweetwater, Texas, 235-4349. 23:tf

FOR SALE: 8 mm sound movie camera and projector. Like new. 735-2596. 21:tf

NOTICE: Test hole and water well drilling using air rotary drilling rig. Jacuzzi pump sales and service. Ed Chapman, Anson. 915-823-3534. 25:2tp

BEAUTIFUL PIANO: Must transfer to good local people. Call Joplin Piano, 1-800-641-4645, Ext. 244. 25:1tc

## NEW HOME SEWING MACHINES:

Electrolux cleaners, repair all makes. H.B. Stevens, 1101 James St., Sweetwater, 235-2889. 27:tf

DIRT WORK: Backhoe, \$30.00 hr., dirt hauling, 776-2859. 4:tf

NOTICE: Bill's Auto Salvage is now open in Snyder. Late model used parts, Chevy, Ford, Chrysler, Toyota, Datsun. East Highway 180 at the traffic circle. 573-9569 or nights 573-9010. 45:tf

FOR SALE: Alfalfa or haygrazer hay. Square bales. Call 735-3171. Landes Furniture. 34:tf

CHRISTMAS DECORATIONS: Now hiring demonstrators in your area for season. Free \$300 kit, no investment, collecting or delivery. Party plan. Own hours. Weekly paycheck. Also need hostess who would like \$40 and up in free merchandise. Call Evonne 915-735-2302 or 735-2556. 21:5tc

NOTICE: Franks TV and Jewelry in Hamlin is in the Rotan-Roby area 3 times weekly to service your television, VCR or satellite system...we also do antenna work...call us at 576-2122 or 576-2167 nights..Franks TV and Jewelry, 218 S. Central in Hamlin. 8:tf

NOTICE: Close out of 1986 fiscal year. Make offer on 4 bedroom, 2 bath house, and lot located in Sylvester. \$500 down and 10% fixed financing rate. Call collect and ask for Russell Reese, 915-872-4249. 25:2tc

HOUSE LEVELING: 25 years experience, call collect, 576-2357 or 695-5273. 25:4tp

GARAGE SALE: Sat., Aug. 2nd, 8:00 a.m. to 5:00 p.m. Lots tools, books, used carpet, motorcycle, car, boat, trolling motor, and lots other things. Come by and see us. Corner of Mead and Richard St. 25:1tp

NEEDED: Local general farm hand. Fencing, trenching, tractor servicing, etc. 9 miles S.E. Rotan. Shell, 735-2956. 25:1tc

GARAGE SALE: 901 Lakeview, Saturday only, 8 a.m. 25:1tc

CUSTOM HAY BALING: New John Deere equipment. For information call Windell Barrett, 573-6438. 24:4tp

WANTED: Experienced tractor driver. Call David Hudnall, 735-3597. 24:2tc

REWARD: If the one who found the Masonic ring with diamond in center in parking lot of Post Office will call and return it, a \$50.00 reward will be paid. 735-2149. 25:3tp

RESPONSIBLE PERSON: Wanted to own and operate candy vending route. Pleasant business with high profit items. Can start part time. Cash investment of \$3996 to \$12,996. Call 1-800-328-0723. EAGLE INDUSTRIES 27 years of service. 25:1tp

CARPENTRY SALE: Sat., August 2nd, 8:00-5:00 p.m., North 3rd and College St. Adult clothes, boys clothes, tiller, dishes, toys, twin bed and mattresses and other misc. 25:1tc

BACKYARD SALE: 908 E. 5th, Friday, 8-5 and Saturday, 8-12. Lots of clothes. 3 families. 25:1tp

NOTICE: Taking bids on 1974 Dodge, three quarter ton pickup. Hydraulic lift tailgate and side tool boxes. Also included 200 lb. spray tank pump unit. Contact First National Bank, Rotan, 735-2224. 25:1tc

PORCH SALE: Friday and Saturday, August 1-2. 210 S. Orange, Roby. 25:1tc

GARAGE SALE: Friday, Aug. 1st, 711 E. McArthur. Baby items, toys, girls size 4-6. Lots of misc. 25:1tp

LOST: One 36" ridg w/ stilson wrench. 735-3509. 25:2tc

GARAGE SALE: Corner sleeper/sofa, exercise bike, mini trampoline, plenty of clothes, shoes, misc. 602 E. Burnside, Saturday, Aug. 2, beginning at 8 a.m. 25:1tc

FOR SALE: A corner sofa/sleeper, in excellent condition and an exercise bike; mini trampoline. Call 735-3506 home; 735-3130 work. 25:2tc

FOR SALE: 2 bedroom home, fenced back yard, covered patio, attached garage. United Real Estate, Harmon Holcomb, 776-2131.9:tf

APARTMENTS FOR RENT: Now accepting applications for 2 and 3 bedroom apartments. We are an Equal Housing Opportunity Agency. Rotan Housing Authority. 915-735-2471. 10:tf

FOR SALE: 1984 Chevrolet Suburban, fully loaded. Call Wes Morrow, 735-2252 or 735-2187. 6:tf

CUSTOM COMBINING  
Dick Gruben  
735-2042

Masterview Book Store  
235-2940  
Sweetwater, Texas

\*Bibles, Books, Gifts & Christian Music Items  
\*Specializing In Personalized Engraving, Name Plates, Plaques & Souvenir Items!  
Featuring: Precious Moments

SUBSCRIBE By Calling 735-2562 Rotan Advance Roby Star Record

ADS PAY

ADVERTISER

SUBSCRIBE By Calling 735-2562 Rotan Advance Roby Star Record

SUBSCRIBE By Calling 735-2562 Rotan Advance Roby Star Record

ESTATE AUCTION

1:30 P.M. SUNDAY 3 AUGUST 1986  
G.A. MAGGIE SEYMORE ESTATE (1924)  
2 Miles West of Hamlin, on Botom Hwy. Hamlin, Texas

Cane back chair, sofa & rocker, 3/4" Mahogany velvet, (2) Side chairs, Old pictures, wooden frames, Bookcases, Candle stand, Set of Roby's Brith rs silverware, Crack churn & bowls, Egg scaps, Woon, 1 rolling pin, Large set of china, Crystal glasses, Brookfront, Cranberry dish, Daisy churn, Butter mold, Plate with advertising, Carnival glass candy dish, Wedgewood vase, McCoy cookie kettle and platter, Cherry table, 6 chairs and buffet, Oak buffet, (2) Wicker chairs, (2) Bedroom suits, Franklin sewing machine, kerosene lamps, Assorted glass, Dudley wood and kerosene heaters, Electric cook stove, Catalina refrigerator, Deep freeze, Desk, irge quilt box, All miscellaneous kitchen items, Old quilts, quilt tops, bed linens, Crocheted afghans, Table linen, (3) Old rocking chairs, old books.

Many other miscellaneous related items and collectibles too numerous to list.

Rocky Ash AUCTION CO.  
Clyde, Texas (915) 893-5663

Know A News Tip??  
Call The Newspaper Office  
735-2562

**Fashion sewing needs**



**Roby Flower, Fabric & Gift Shop**  
Erwin, Maxine & Michelle  
776-2292  
Roby, Texas

**GANN'S BAR-B-Q**  
Varsity Square Shopping Center  
Snyder 573-6487  
Catering Available  
Call Your Order In and Pick It Up At The Take Out Window



# State Capital Highlights

Some mighty good lawmakers are working day and night to resolve the state budget deficit, but it's not easy. In fact, it's a lawmaker's nightmare.

The comptroller has raised the official short-fall estimate to \$3.1 billion, the governor has no plan to solve it, and the voters will be waiting in November to pass judgement at the ballot box.

To raise taxes or not to raise taxes?

The president and the lieutenant governor, even if they had orchestrated it, couldn't have provided a starker contrast of the two sides of the problem wrestling with Texas legislators.

President Reagan visited Dallas and blamed the Democrats' pro-tax mentality for the state's economic ills. That same day, Lt. Gov. Bill Hobby accelerated his push for a tax hike to ease the state deficit.

## GOVERNOR CRITICIZED

Reagan was in Dallas for a \$1 million GOP fundraiser for former Gov. Bill Clements, a \$5,000-a-plate bash which fortified his anti-taxation campaign.

Hobby was preparing for a seven-city swing to promote his plan, a combination of budget cuts and tax raises. He is, in effect, filling the vacuum of leadership which many senators and representatives say exists.

Governor Mark White so far has not produced a plan for solving the budget crisis, and more and more he is being openly criticized for lack of leadership by members of both parties.

## VOTERS GUT-CHECK

The Appropriating Committee has been working to slice the budget, but even some conservative members will confess their fears

that they've cut too deep into services.

Last week they postponed a vote to cut \$1.8 billion from the budget, mainly because they were waiting for the governor's plan. At this point, even Democratic lawmakers are not inclined to face the heat for White, now or on the campaign trail this fall.

So Hobby has stepped in, impatient with White's timidity and hardly content to wait for Reagan's trickle-down to reach the ravaged economy of the Lone Star State.

Hobby, like many others, believes voters will accept a tax hike, if they understand how badly it's needed. At the same time, Clements and the GOP ticket are waiting to use a tax bill like a club on the campaign trail. It's a gut-check for Texas voters.

## THREE-ACT PLAY

Thus, the stage is set for the anticipated special session August 6, a drama of three parts.

On one side is the Clements-GOP bunch which doesn't want a tax hike, period. They'll use the issue on the campaign trail to defeat anyone who votes for higher taxes, if they can, particularly the governor.

On the other end is the Hobby crowd which has already made up its mind that a tax hike will be good for Texas. Generally, they have no strong GOP opposition, or have districts where services are needed.

In the middle is the gang led by House Speaker Gib Lewis, which wants to cut spending first and wait until January's regular session to pass a tax increase. They don't want a three-day special session to pass a tax bill just before Election Day.

## RAVAGED ECONOMY

Meanwhile, signs indicate the Texas economy continues to move backward.

Unemployment for June jumped a full point. Texas business foreclosures were up, and home sales were down.

Local property taxes were poised to increase, and a study released by the non-profit Texas Research League found local school budgets had its highest increase in history last year to fund the HB 72 school reforms.

## OTHER HIGHLIGHTS

The leader of a Tennessee based Paramilitary group said its members will patrol the Rio Grande border in spite of warnings from Texas Attorney General Jim Mattox. Known as the Civilian Material Assistance, the group has drafted plans to patrol for drug smugglers in August and

September.

The attorney for Texas prison inmates asked the feds to fine the state \$5.5 million for not meeting court-ordered reforms and to release early some 400 inmates.

Two Supreme Court justices facing allegations of misconduct will be allowed to take depositions from a former state supreme

court employee who testified at a public hearing.

When Texas Agriculture Commissioner Jim Hightower balked at trimming his budget, word leaked to

his GOP opponent, Bill Powers. Powers ripped Hightower for not working with the House Appropriations panel, but not before Hightower caught on and began cooperating.

(915) 573-5937  
**SMITH'S MUSIC PLACE**  
 SNYDER'S COMPLETE MUSIC STORE  
 J.D. SMITH, Pres.  
 DONNA SMITH, Treas.  
 JON ALAN SMITH, Vice Pres.  
 PAM SMITH, Vice Pres.  
 GARY LINDSEY, Sales Rep.  
 P.O. BOX 1384  
 2509 COLLEGE AVE.  
 SNYDER, TEXAS 79549

## Fisher County Entomologist Report

General Situation:  
 \*\*Bollworm moth trap numbers up July 19-23.  
 \*\*Cotton ranges from three & four true leaves to bloom/boll.  
 \*\*Watch for fleahoppers and bollworms!!  
 Fleahoppers

Fleahoppers have been found in economic numbers in area fields. Fleahoppers range from 0 to 45 per 100 terminals.

June planted cotton should be watched for fleahoppers. Cotton that is past the first three weeks of squaring (bloom/boll) will be able to withstand more fleahopper pressure.

Bollworms  
 Bollworm moth trap numbers were up July 19-23. This generally means egg numbers will increase. All scouting indicates that bollworm egg numbers are indeed up!

Bollworms are ranging 0 to 20 per 100 terminals. Bollworm eggs are ranging 0 to 23 per 100 terminals.

In blooming cotton you should lower your threshold to 8 to 10

worms per 100 plants. Read through the "Bollworm Basics" that are attached.

Boll Weevils  
 First generation boll weevil adults are emerging in fields. Damaging weevil infestations are present in some fields.

Please-Be Checking Your Fields!!!!

If you have questions, please feel free to give me a call.

Life History

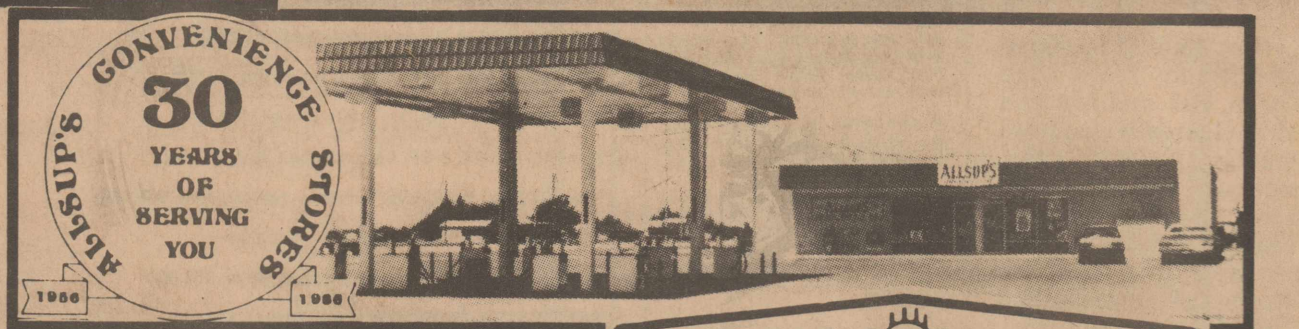
The bollworm egg is about the size of the head of a common pin. It is shaped like an inverted coffee cup and has vertical ridges. The egg is milky white when first laid, turns tan or brown on the second day and gets darker and hatches on day three or four depending on weather conditions. The eggs are laid singly and are scattered over the plant but most often occur in the plant terminals (top 3-4 inches of plant) on lush tender foliage.

Newly hatched larvae (about 1/16" long) are generally clear to cream colored with a con-

spicuous dark head. They feed on tender leaf buds and very small squares in the plant terminals before moving down the plant to attack larger squares and bolls. Larger worms, up to 2" in length, vary in color from dark brown to cream to pale green and rose. Light and dark bands extend along the sides and back.

**ADS PAY**

**WELCOME**  
 We Invite You To Visit Our Display Of  
**MONUMENTS**  
 Located At The Corner Of Snyder Avenue & McKinley Street (Next to Garcia's Bakery)  
 - Call Us For More Information -  
 We also cut dates on stones in place. Cost of one line, month, day and year - \$50, additional lines \$25 each.  
 Monuments by Abilene Memorial Company  
 N.E. (Peck) Springer, Area Representative  
 P.O. Box 448 (915)735-2149 Rotan, Texas 79546



**ALLSUP'S CONVENIENCE STORES**

PRICES EFFECTIVE JULY 31-AUGUST 1-2, 1986 WHILE SUPPLIES LAST

**on the GO!**

**ALLSUP'S 30 YEAR COMMEMORATIVE Mug**  
 FILLED WITH YOUR FAVORITE FOUNTAIN DRINK  
**99¢**  
 ONLY REFILLS ONLY 49¢

**ALLSUP'S Ice**  
**\$1.09**  
 LARGE BAG MADE WITH 99% PURIFIED WATER

**BORDEN'S ASSORTED Fruit Drinks**  
 1 GAL. BTL. **79¢**

**BORDEN'S ICE CREAM SANDWICHES OR Nutty Buddies**  
 6 CT. PACK **99¢**

**FRESH HOT Corn Dogs**  
 42 Oz. **2 FOR 89¢**

**Family Size Tea Bags**  
**\$1.69**

**Tide**  
**\$1.99**

**Sharrock Saddle Shop**  
 313 Pecan Sweetwater, Texas 79556

\*New And Used Tack  
 \*New And Used Saddles  
 \*Buy And Trade Saddles And Tack  
 \*Complete Saddle & Tack Repair  
 \*Custom Handmade Leather Items

**FISH**

Now is the time for Pond and Lake Stocking Hybrid Bluegill, Florida Hybrid Bass, Channel Catfish, Fathead Minnows.

The Hybrid Bluegill will REACH the weight of 2 1/2 to 3 lbs. We furnish your Hauling Containers.

We guarantee live delivery.

Delivery will be Wednesday, August 6, at the times listed for the following towns and locations.

Sweetwater-Kessler's Farm and Ranch 8-9 am 235-5474  
 Roby-Farmers Union Coop Gin 10-11 am 776-2237  
 Snyder-Ezell-Key Feed Store 12-1 pm 573-6691  
 Colorado City-Colorado City Feed and Seed 2-3 pm 728-5071  
 Big Spring-Jay's Farm and Ranch Center 4:30-5:30 pm 263-1383

Call your local Feed Store to place your order or call collect: 405/777-2202

Fishery consultant and pond rotenoning available.  
 Special Deliveries on large ponds and lake orders.

**DUNN'S FISH FARM**  
 P.O. Box 85  
 Fittstown, OK 74842

**Main Street Cafe**  
 Sweetwater, Texas

\*The Freshest Seafood This Side Of Galveston  
 \*The Best Mexican Food Between San Antonio & Albuquerque  
 \*The Finest Steaks This Side Of Kansas City..

Located North Side Of Square In Historic Downtown Sweetwater

Patio Dining Available Private Club Available On A Membership Basis Only

**O'Gradys Potato Chips** FROM FRITO LAY®  
 REGULAR, AU GRATIN OR HEARTY  
 REGULAR \$1.39  
**89¢** NOW ONLY

**Steak Sandwich** 99¢

**Pepsi cans** \$1.89 6 pack

**Pepsi Diet-Pepsi Slice Mountain Dew**