

J. 6R2-034 -EXP 01/88
 J P PHILLIPS
 RT 2 BOX 37
 ROTAN TX 79546



RECEIVE AWARDS: At the annual employees Christmas party, twelve Midwest Electric employees were presented service awards in recognition for their years of service. Those pictured above from left to right are: Terry Palmer, 10 years; Jimmy Kiker, 30 years; Barbara Rasco, 3 years; R.D. Hale, 3 years; Ann Park, 25 years; Dalvin Alexander, 5 years; David Boyd, 3 years; Robby Cearley, 3 years; Larry Field, 10 years; Jerry Scrivner, 20 years; Charles Wheeler, 5 years; Rickey Jeffrey, 5 years.

Henry's Quick Stop Grand Opening Sat.

The new owners of Henry's Quick Stop in Roby have scheduled their grand opening for Saturday, January 10th. "We had hoped to hold the grand opening sooner, but sickness has prevented using any earlier dates, said Glenda Field, co-owner.

Glenda Field and Betty Bruner purchased Henry's Quick Stop on November 21st. Betty moved back to Roby last year and has two children, Betsy Griffin of Snyder and Mike Bruner of Mount Pleasant, Texas. Glenda has been a resident of Roby all her life and has one son, Larry, a Staking Engineer for Midwest Electric Cooperative in Roby, Texas.

On Saturday, beginning at 11:00 a.m. and continuing until 2:00 p.m., Henry's Quick Stop, in celebration of the Grand Opening, will be serving a family style Fried Chicken Dinner for \$4.25. The meal will be all-you-can-eat and will feature delicious fried chicken, salad,

vegetables, hot rolls and a choice of tea, coffee or Coke.

"We want the people of Fisher County to taste our fried chicken because whole fried chickens and homemade cream pies are two of the items we'll be specializing in to prepare for customers to take out," said Betty Bruner.

In addition to the fried chicken dinner,

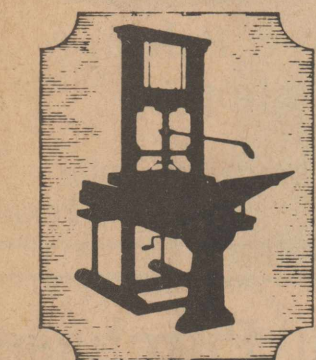
there will be in-store specials on groceries.

Henry's Quick Stop rents VCR's and movies. "we have a total of over 250 movies on hand to rent", said Glenda Field.

Beginning on February 1, 1987, the new owners of Henry's Quick Stop plan on starting a Rent-A-Book Nook for the Fisher County residents.



NEW BUSINESS OWNERS: Glenda Field, left, and Betty Bruner, right, are holding the Grand Opening of their recently purchased business this Saturday. The Grand Opening of Henry's Quick Stop will feature fried chicken dinner served between 11 a.m. and 2 p.m.



Roby Star-Record

The Voice Of Fisher County Since 1907

ROTAN ADVANCE

VOL. 78 NO. 48 THURSDAY, JANUARY 8, 1987 TWELVE PAGES 35¢ Plus Tax

Fisher County Stock Show Tops \$41,000, Terry Gin Top Buyer, Rotan Bank Second

The Fisher County Junior Livestock Show held this last weekend was a tremendous success. When the chips are down Fisher County folks always come through. The sale on 80 lots grossed over \$41,000.00 Terry Gin again was the big spender with over \$2600.00 gross. First National Bank of Rotan was runner-up with over \$1300.00 gross.

The Grand Champion Steer, was a heavyweight Chianinacross owned by David Shipp of Roby. The steer sold for \$2100.00 to the Village Market of Sweetwater and was bred by Gene Terry of Roby. The Reserve Champion also a Chianinacross was exhibited by Cody Smith of McCaulley. The steer sold to Thriftway Grocery of Rotan for \$1,770.00. The reserve steer was bred by Jeffrey Cattle Co. of McCaulley.

In the Market Hog Show, Glenn Overby of Rotan showed the Grand Champion. The heavyweight barrow sold to Big 3 Pork Producers for \$500. The Reserve Champion Market Hog was exhibited by Tim Bob Smith of McCaulley. The pig sold for \$400.00 to Farmers Gin of Rotan and was bred by Russ Baize of Stamford.

Almost a record

amount of sheep were shown in the lamb division. Kenlee Dennis of Roby showed the Champion Finewool which sold to Roby Drug and Robert Nemier of Sweetwater for \$630.00. Jason Gruben of Roby showed the Reserve Champion Finewool lamb which sold for \$475.00 to Farmers Union Coop of Roby. Both Finewool lambs were bred by Spencer Bros. of Roby. The Champion Finewool Cross Lamb was shown by Misty Kidd of Palava and sold to Armstrong Implement Co. of Roby for \$410.00. The lamb was bred by John Kearney of Sterling City. The Reserve Champion Cross was shown by Jason Gruben and bred by Spencer Bros. of Roby. The Champion Medium Wool was exhibited by Jennifer Kincaid of Roby and sold to West Texas Utilities of Roby and Bennett-Walls of Rotan for \$450. The Reserve Champion Medium Wool was exhibited by Brandy Long of Rotan and sold to Rotan Insurance for \$520.

The Champion Pen of Rabbits were exhibited by James Cathey of Roby and sold to Citizens State Bank of Roby for \$260. The Reserve Rabbits were owned by Amanda Moore of Roby and also

amount of sheep were shown in the lamb division. Kenlee Dennis of Roby showed the Champion Finewool which sold to Roby Drug and Robert Nemier of Sweetwater for \$630.00. Jason Gruben of Roby showed the Reserve Champion Finewool lamb which sold for \$475.00 to Farmers Union Coop of Roby. Both Finewool lambs were bred by Spencer Bros. of Roby. The Champion Finewool Cross Lamb was shown by Misty Kidd of Palava and sold to Armstrong Implement Co. of Roby for \$410.00. The lamb was bred by John Kearney of Sterling City. The Reserve Champion Cross was shown by Jason Gruben and bred by Spencer Bros. of Roby. The Champion Medium Wool was exhibited by Jennifer Kincaid of Roby and sold to West Texas Utilities of Roby and Bennett-Walls of Rotan for \$450. The Reserve Champion Medium Wool was exhibited by Brandy Long of Rotan and sold to Rotan Insurance for \$520.

The Champion Pen of Rabbits were exhibited by James Cathey of Roby and sold to Citizens State Bank of Roby for \$260. The Reserve Rabbits were owned by Amanda Moore of Roby and also

sold to Citizens State Bank for \$300.

Michelle Burk of Roby continued her winning tradition in the Broiler Show by exhibiting the Champion Pen again this year. The Broilers sold to Don Clayton Chevrolet of Sweetwater for \$260. The reserve Champion Pen of Broilers were shown by Audra Lewis of Roby and sold to Luskey's Western Wear of Abilene for \$155.

Judges for the show were Steve Mason of Brownfield-Steers, Kenneth Dudensing of Sweetwater-Market Hogs, Tommy Everett of Garden City-Sheep, Albert Maberry of McCaulley-Broilers and Rabbits and John McMackin of Snyder-Showmanship.

The Fisher County Young Farmers presented Showmanship Buckles to Carter Edmondson-Swine, Kenlee Dennis-Lambs and Evette Gruben-Steers.

Alan Kiker served as Auctioneer for the Premium Sale.

The floor buyers were Sweetwater Livestock Auction for steers, Gooch Packing for hogs and Olen Dennis for Lambs.

Individual Stock Show Results:
 Pen of 3 Rabbits
 First and Champion-James Cathey, 4-H.

- Second and Reserve-Amanda Moore-4-H**
 Pen of 3 Broilers
 1. Michelle Burk-4-H
 2. Audra Lewis-4-H
 3. Stephanie Frierson-4-H
 4. Rhonda Henry-4-H
 5. R.J. Lewis-4-H
 6. Buster Frierson-4-H
 7. Rusty Turner-4-H
 8. Reene Turner-4-H
 9 & 10. Shane Jagers-4-H
 11. James Cathey-4-H

- Market Hogs Lightweight**
 1. Joey Teague-Roby FFA
 2 & 3. Steve Dickson-Rotan FFA
 4 & 5. Rusty Goodwin-Rotan FFA
 6. Bobby Carrillo-Rotan FFA
 7. Buddy Williamson-Roby FFA
 8. Wylie Reyes-Rotan FFA
 9. Rebecca Coleman-4-H
 10. Jan Posey-Rotan FFA

- Middleweight**
 1. Buddy Williamson-Roby FFA
 2. Christopher Silvas-Rotan FFA
 3. Joey Teague-Roby FFA
 4. Junior Almanza-Rotan FFA
 5. Pat Moffett-Rotan FFA
 6. Tim Bob Smith-4-H
 7. Jeff Branson-Roby FFA
 8. Mandy McKinney-4-H
 9. David Rambert-Roby FFA
 10. Travis Whitley-Rotan FFA
 11. Joey Teague-Roby FFA
 12. Lance Ragan-Rotan FFA
 13. Gilbert Carreon-Roby FFA
 14. Sheila Green-4-H
 15. Mitch Whitefield-Rotan FFA
 16. Chris Reddin-Roby FFA
 17. Kye Lamm-4-H

- Light Heavyweight**
 1. Tim Bob Smith-4-H
 2. Carter Edmondson-Roby FFA
 3. Joey Teague-4-H
 4. Shawn Donham-Roby FFA
 5. Rusty Goodwin-Rotan FFA
 6. Brandon Weaver-4-H
 7. Tracy Hull-4-H
 8. Rachel Coleman-4-H
 9. Michael Hull-4-H
 10. Mitch Whitefield-Rotan FFA
 11. Norris Green, Jr.-4-H
 12. Chris Reddin-Roby FFA

- Heavyweight**
 1. Glenn Overby-Rotan FFA
 2. Jeff Branson-Roby FFA
 3. Carter Edmondson-Roby FFA
 4. Caroline Atkinson-4-H
 5. Jeff Green-Roby FFA
 6. Casey Green-Rotan FFA
 7. Shawna Speck-4-H
 8. Buffy Shipp-4-H
 9. Cody Smith-McCaulley FFA
 10. Brad Atkinson-4-H
 11. Norris Green, Jr.-4-H
 12. Casey Green-Rotan FFA
 13. Buffy Shipp-4-H
 14. Kelli Weaver-4-H
 15. Marcus Silvas-Rotan FFA
 16. Sheila Green-4-H
 17. Billy Wayne Speck-Rotan FFA
 18. Mitch Whitefield-Rotan FFA
 19. Sheila Green-4-H
 20 & 21. Norris Green, Jr.-4-H

Grand Champion Market Hog-Glenn Overby Reserve-Tim Bob Smith

- Market Lambs**
 Lightweight Finewool
 1. Bryan Mauldin-4-H
 2. Bryce Moore-4-H
 3. Chris Estes-4-H
 4. Steve Estes-4-H
 5. Jessica Moore-4-H
 6. Chris Estes-4-H
 7. Danna Parr-4-H
 8. Heather Kidd-4-H

- Heavyweight Finewool**
 1. Kenlee Dennis-4-H
 2. Jason Gruben-4-H
 3. Melissa Burk-4-H
 4. Steve Estes-4-H
 5. Chris Estes-4-H
 6. Kelly McWilliams 4-H
 7. Kasey Green-4-H
 8. Kasey Green-4-H
 9. Kasey Green-4-H
 10. Kasey Green-4-H
 11. Kasey Green-4-H
 12. Kasey Green-4-H
 13. Kasey Green-4-H
 14. Kasey Green-4-H
 15. Kasey Green-4-H
 16. Kasey Green-4-H
 17. Kasey Green-4-H
 18. Kasey Green-4-H
 19. Kasey Green-4-H
 20. Kasey Green-4-H
 21. Kasey Green-4-H
 22. Kasey Green-4-H
 23. Kasey Green-4-H
 24. Kasey Green-4-H
 25. Kasey Green-4-H
 26. Kasey Green-4-H
 27. Kasey Green-4-H
 28. Kasey Green-4-H
 29. Kasey Green-4-H
 30. Kasey Green-4-H
 31. Kasey Green-4-H
 32. Kasey Green-4-H
 33. Kasey Green-4-H
 34. Kasey Green-4-H
 35. Kasey Green-4-H
 36. Kasey Green-4-H
 37. Kasey Green-4-H
 38. Kasey Green-4-H
 39. Kasey Green-4-H
 40. Kasey Green-4-H
 41. Kasey Green-4-H
 42. Kasey Green-4-H
 43. Kasey Green-4-H
 44. Kasey Green-4-H
 45. Kasey Green-4-H
 46. Kasey Green-4-H
 47. Kasey Green-4-H
 48. Kasey Green-4-H
 49. Kasey Green-4-H
 50. Kasey Green-4-H
 51. Kasey Green-4-H
 52. Kasey Green-4-H
 53. Kasey Green-4-H
 54. Kasey Green-4-H
 55. Kasey Green-4-H
 56. Kasey Green-4-H
 57. Kasey Green-4-H
 58. Kasey Green-4-H
 59. Kasey Green-4-H
 60. Kasey Green-4-H
 61. Kasey Green-4-H
 62. Kasey Green-4-H
 63. Kasey Green-4-H
 64. Kasey Green-4-H
 65. Kasey Green-4-H
 66. Kasey Green-4-H
 67. Kasey Green-4-H
 68. Kasey Green-4-H
 69. Kasey Green-4-H
 70. Kasey Green-4-H
 71. Kasey Green-4-H
 72. Kasey Green-4-H
 73. Kasey Green-4-H
 74. Kasey Green-4-H
 75. Kasey Green-4-H
 76. Kasey Green-4-H
 77. Kasey Green-4-H
 78. Kasey Green-4-H
 79. Kasey Green-4-H
 80. Kasey Green-4-H
 81. Kasey Green-4-H
 82. Kasey Green-4-H
 83. Kasey Green-4-H
 84. Kasey Green-4-H
 85. Kasey Green-4-H
 86. Kasey Green-4-H
 87. Kasey Green-4-H
 88. Kasey Green-4-H
 89. Kasey Green-4-H
 90. Kasey Green-4-H
 91. Kasey Green-4-H
 92. Kasey Green-4-H
 93. Kasey Green-4-H
 94. Kasey Green-4-H
 95. Kasey Green-4-H
 96. Kasey Green-4-H
 97. Kasey Green-4-H
 98. Kasey Green-4-H
 99. Kasey Green-4-H
 100. Kasey Green-4-H

- Lightweight Finewool Cross**
 1. Cassidy Early-4-H
 2. Jerry Carreon-4-H
 3. Stephanie Hunsaker-4-H
 4. Melissa Burk-4-H
 5. Stephanie Hunsaker-4-H
 6. Matt Counts-4-H
 7. Kelly McWilliams 4-H
 8. Kasey Green-4-H

- Heavy Finewool Cross**
 1. Misty Kidd-4-H
 2. Jason Gruben-4-H
 3. Jesse Carreon-4-H
 4. Kenlee Dennis-4-H
 5. Coby Moore-4-H
 6. Mary Lee Hicks-4-H
 7. Kenlee Dennis-4-H
 8. Stephen Henington-4-H
 9. Stephen Henington-4-H
 10. Stephen Henington-4-H
 11. Stephen Henington-4-H
 12. Stephen Henington-4-H
 13. Stephen Henington-4-H
 14. Stephen Henington-4-H
 15. Stephen Henington-4-H
 16. Stephen Henington-4-H
 17. Stephen Henington-4-H
 18. Stephen Henington-4-H
 19. Stephen Henington-4-H
 20. Stephen Henington-4-H
 21. Stephen Henington-4-H
 22. Stephen Henington-4-H
 23. Stephen Henington-4-H
 24. Stephen Henington-4-H
 25. Stephen Henington-4-H
 26. Stephen Henington-4-H
 27. Stephen Henington-4-H
 28. Stephen Henington-4-H
 29. Stephen Henington-4-H
 30. Stephen Henington-4-H
 31. Stephen Henington-4-H
 32. Stephen Henington-4-H
 33. Stephen Henington-4-H
 34. Stephen Henington-4-H
 35. Stephen Henington-4-H
 36. Stephen Henington-4-H
 37. Stephen Henington-4-H
 38. Stephen Henington-4-H
 39. Stephen Henington-4-H
 40. Stephen Henington-4-H
 41. Stephen Henington-4-H
 42. Stephen Henington-4-H
 43. Stephen Henington-4-H
 44. Stephen Henington-4-H
 45. Stephen Henington-4-H
 46. Stephen Henington-4-H
 47. Stephen Henington-4-H
 48. Stephen Henington-4-H
 49. Stephen Henington-4-H
 50. Stephen Henington-4-H
 51. Stephen Henington-4-H
 52. Stephen Henington-4-H
 53. Stephen Henington-4-H
 54. Stephen Henington-4-H
 55. Stephen Henington-4-H
 56. Stephen Henington-4-H
 57. Stephen Henington-4-H
 58. Stephen Henington-4-H
 59. Stephen Henington-4-H
 60. Stephen Henington-4-H
 61. Stephen Henington-4-H
 62. Stephen Henington-4-H
 63. Stephen Henington-4-H
 64. Stephen Henington-4-H
 65. Stephen Henington-4-H
 66. Stephen Henington-4-H
 67. Stephen Henington-4-H
 68. Stephen Henington-4-H
 69. Stephen Henington-4-H
 70. Stephen Henington-4-H
 71. Stephen Henington-4-H
 72. Stephen Henington-4-H
 73. Stephen Henington-4-H
 74. Stephen Henington-4-H
 75. Stephen Henington-4-H
 76. Stephen Henington-4-H
 77. Stephen Henington-4-H
 78. Stephen Henington-4-H
 79. Stephen Henington-4-H
 80. Stephen Henington-4-H
 81. Stephen Henington-4-H
 82. Stephen Henington-4-H
 83. Stephen Henington-4-H
 84. Stephen Henington-4-H
 85. Stephen Henington-4-H
 86. Stephen Henington-4-H
 87. Stephen Henington-4-H
 88. Stephen Henington-4-H
 89. Stephen Henington-4-H
 90. Stephen Henington-4-H
 91. Stephen Henington-4-H
 92. Stephen Henington-4-H
 93. Stephen Henington-4-H
 94. Stephen Henington-4-H
 95. Stephen Henington-4-H
 96. Stephen Henington-4-H
 97. Stephen Henington-4-H
 98. Stephen Henington-4-H
 99. Stephen Henington-4-H
 100. Stephen Henington-4-H

- Lightweight Medium Wool**
 1. Jennifer Kincaid-4-H
 2. Chris Reddin-4-H
 3 & 4. Stephen Henington-4-H
 5. Brandy Long-4-H
 6. Timothy Moore-4-H
 7. Chris Reddin-4-H
 8. Jennifer Kincaid-4-H

- Heavy Medium Wool**
 1. Christi Parr-4-H
 2. Brandy Long-4-H
 3. Danna Parr-4-H
 4. Julie Parr-4-H
 5. Mary Lee Hicks-4-H
 6. Bryce Moore-4-H
 7. Kenlee Dennis-4-H
 8. Stephanie Hunsaker-4-H
 9. Brandy Long-4-H
 10. Cassidy Early-4-H
 11. Mike Counts-4-H
 12. Jennifer Kincaid Reserve-Christi Parr

- Market Steers**
 Lightweight
 1. Evette Gruben-4-H
 2. Linda Rains-Rotan FFA
 3. Blake Morrow-4-H
 4. Brad Long-Rotan FFA

NOTE

If Your Address Label Has A Yellow Line Through Your Name... Your Subscription Is Now Due.



GRAND CHAMPION STEER: David Shipp owned the Grand Champion Steer at last Saturday's Fisher County Livestock Show. The steer was purchased by Village Market in Sweetwater for \$2,100.



SHOWING CHICKENS: The above three Fisher County young ladies took part in the livestock stock shows poultry division last Saturday. Left to right: Stephanie Frierson, Julie Parr and Christi Parr.

Subscriptions Due To Advance - Star Record

Rotan Advance-Roby Star Record readers, for the most part, have subscriptions expiring on January 1, 1987.

If your address label has a yellow line through it, our records indicate that your subscription has expired.

Renewals can be mailed to The Newspaper Office, P.O. Drawer A, Rotan, Texas, 79546 or can be paid in person at 114 Snyder Avenue.

The renewal rate for a subscription in Fisher and surrounding counties for one year is \$12.00-\$32.40 for three years.

\$15.77 for 1 year and \$42.58 for three years and out of state

subscribers is \$17.00 for 1 year and \$45.90 for three years.

Dr. David Morris Files For Position On Hospital Board

Dr. David Morris has filed as a candidate for a spot on the Fisher County Hospital Board.

Dr. Morris, currently a Roby resident, will be running to fill one of the spots occupied by Board President Glen Copeland, or Board member Billy Jeffrey. Both of their terms expire this year. The election being

held on April 4, will complete the five member board consisting of Dave Williams, Frank Mitchell, and Marion Reed, who have one year remaining to their elected terms.

Neither Copeland or Jeffrey has filed for re-election.

6 1/4% 5 1/4% STATE + 1% CITY

Sales Not More Than		Sales Not More Than		Sales Not More Than		Sales Not More Than		Sales Not More Than	
07	00	07	25	07	50	07	75	07	100
0.07	0.00	0.07	0.25	0.07	0.50	0.07	0.75	0.07	1.00
23	01	4.23	26	8.23	51	12.23	76	16.23	101
39	02	4.39	27	8.39	52	12.39	77	16.39	102
55	03	4.55	28	8.55	53	12.55	78	16.55	103
71	04	4.71	29	8.71	54	12.71	79	16.71	104
87	05	4.87	30	8.87	55	12.87	80	16.87	105
1.03	06	5.03	31	9.03	56	13.03	81	17.03	106
1.19	07	5.19	32	9.19	57	13.19	82	17.19	107
1.35	08	5.35	33	9.35	58	13.35	83	17.35	108
1.51	09	5.51	34	9.51	59	13.51	84	17.51	109
1.67	10	5.67	35	9.67	60	13.67	85	17.67	110
1.83	11	5.83	36	9.83	61	13.83	86	17.83	111
1.99	12	5.99	37	9.99	62	13.99	87	17.99	112
2.15	13	6.15	38	10.15	63	14.15	88	18.15	113
2.31	14	6.31	39	10.31	64	14.31	89	18.31	114
2.47	15	6.47	40	10.47	65	14.47	90	18.47	115
2.63	16	6.63	41	10.63	66	14.63	91	18.63	116
2.79	17	6.79	42	10.79	67	14.79	92	18.79	117
2.95	18	6.95	43	10.95	68	14.95	93	18.95	118
3.11	19	7.11	44	11.11	69	15.11	94	19.11	119
3.27	20	7.27	45	11.27	70	15.27	95	19.27	120
3.43	21	7.43	46	11.43	71	15.43	96	19.43	121
3.59	22	7.59	47	11.59	72	15.59	97	19.59	122
3.75	23	7.75	48	11.75	73	15.75	98	19.75	123
3.91	24	7.91	49	11.91	74	15.91	99	19.91	124
								20.07	125

SALES OVER \$20

Amount	Tax	Amount	Tax
\$30.00	\$1.88	\$ 70.00	\$4.38
\$40.00	\$2.50	\$ 80.00	\$5.00
\$50.00	\$3.13	\$ 90.00	\$5.63
\$60.00	\$3.75	\$100.00	\$6.25

HOW TO FIGURE THE TAX:
 Example: Sale of \$85.95
 Tax on \$8

Dr. J. David Hellums, Rotan Graduate, Is Recipient Of Prestigious Merit Award

Rice University's Dr. J. David Hellums, a 1946 graduate of Rotan High School and one of the nation's foremost biomedical engineering authorities, has been honored with the prestigious Merit Award by the National Institutes of Health.

The Merit Award recognizes Dr. Hellums' "past record of scientific achievement and demonstrated leadership" in the area of basic blood platelet research. For well over a decade, Dr. Hellums has been active in research on reactions of human blood platelets in response to various physical and chemical stimuli with emphasis on the influence of stresses induced by flow conditions.

Platelets are blood cells which play important roles both in thrombus formation, and in arterial disease.

Thus, the studies on platelet reactions contribute to the understanding of the causes of heart disease and stroke and are particularly relevant to the thromboembolic problems associated with artificial heart valves, artificial hearts, and other circulation assistance devices.

Dr. Claude Lenfant, director of the Washington-based National Heart, Lung, and Blood Institute, announced the award to Dr. Hellums who is Rice's Foyt Family Professor of Engineering and Dean of the George R. Brown School of Engineering. Dr. Lenfant said, "Prospective candidates for the prestigious Merit Award do not submit applications for the Award, but are singled out for consideration by the Institute staff or members of its National Advisory Council."

Dr. Lenfant added, "Criteria for selection include an area of research of recognized importance or of special promise." He added that Merit Award honorees "become eligible for long-term, stable financial support which may be up to a total of 10 years." In the case of Dr. Hellums, Dr. Lenfant stated that the Merit Award would make the Rice University scientist "freer to exploit more effectively his demonstrated creativity and to devote more time and effort to his research productivity."

The Merit Award to Dr. Hellums is the only one of its type so far this

year, according to Dr. John T. Watson, head of the Institute's Devices and Technology Branch. Dr. Watson counts Dr. Hellums "among the top scien-

tists in his field, nationally and internationally. Dr. Hellums works in an area that is particularly difficult to study. He brings unique capabilities to this

multidisciplinary work and he employs very contemporary methods in his research at Rice which has spanned many years and draws upon long experience

with engineering in medicine."

That experience began some 26 years ago when Dr. Hellums joined the Rice faculty as an assistant professor of chemical engineering. He became a full professor in 1968, the year he also assumed the directorship of Rice's Biomedical Engineering Laboratory. Between 1970 and 1976, Dr. Hellums served as chairman of the Department of Chemical Engineering. He became Dean of Rice's George R. Brown School

of Engineering in 1980. In 1985 he was named Foyt Family Professor of Chemical Engineering.

Born 57 years ago in Stamford, Texas, Dr. Hellums received B.S. and M.S. degrees from the University of Texas in 1950 and 1958, respectively. In 1961 he received the Ph.D. from the University of Michigan. In addition to his teaching, research, and administrative duties at Rice, Dr. Hellums holds adjunct professorships in the Departments of Medicine of Baylor College of Medicine and the University of Texas Medical School at Houston. He is a consultant to the National Institutes of Health and is active in a number of scientific and professional societies.

County Gins Back In Gear With Help Of Mother Nature

Hard work and a little help from Mother Nature has helped in raising the total county bale count to 8695 bales. The Rotan Gin recorded the highest total of the 6 county gins with a count of 3735, and the Longworth Gin registered the lowest count of 492.

Since December 23, the Rotan Gin produced 965 bales bringing their season total to 3735. It is the leading county producer for this two week period and remains the highest season producer.

The Terry Gin recorded a two week increase of 396 earning the title of the second highest producing gin. This increase raises their

Rotan ISD Will Elect Two Board Members in 1987

Members of the Rotan Independent School District will have the opportunity to elect two people to the Rotan school board in 1987.

The elected positions of Joe Morrow and Larry Landes expire in 1987. Landes indicated last Tuesday morning that he had not made up his mind concerning re-election. Joe Morrow was unavailable for comment.

Other board members include Leo Long, Pete Fowler with terms expiring in 1988; Roger Blackwelder, Donna Kennedy and Donald Gruben with terms expiring in 1989.

The board election will be held on Saturday, April 4th, 1987.

season total to 1503 bales for the season. The Hobbs Gin reported an increase of 401 bales raising their season total to 1185. They have established the third highest producing county gin.

The Farmers Gin at Rotan registered the fourth highest two week total. Their increase of 323 gives them a season total of 1145 and also a

fourth place in season production. The Farmers Union Gin recorded an increase of 220 bales raising their season total to 635. The increase of 218 for the Longworth Gin raises their season total to 492 bales.

The total two week increase of 2523 bales for the six county gins raises the season total to 8695 bales.

Jeb Menefee Long Funeral

Jeb Menefee Long, 83, Rotan pharmacist, died at 10 P.M., Tuesday, Dec. 23rd at his home in Rotan. Funeral services were held at 2 P.M. Friday, Dec. 26th at the Rotan First Baptist Church. Officiating was Rev. Steve Peace, the pastor. Burial was in the Belvieu Cemetery of Rotan under the direction of Weathersbee Funeral Home.

Mr. Long was born April 21, 1903 at Mexia. He was the son of the late Jeb Stuart Long and his wife, Elizabeth Menefee Long. He grew up in West Texas and New Mexico and graduated from the University of New Mexico in 1925 with a Bachelor of Science Degree in Electrical Engineering. He became a registered pharmacist in 1933. He was associated with Stinson Drug in Snyder from 1948 to 1964. In 1964, he moved to Rotan and was a pharmacist at the Clinic Pharmacy.

He married Oma Payne, May 24, 1940 at Midland.

Mr. Long is preceded in death by a brother,

Stuart, in 1977.

He is survived by his wife; a son, Stuart and his wife, Judy Mixon Long of Houston; three grandchildren: Meredith, Garrett and Brittany, all of Houston.

Roby To Elect Mayor In April Elections

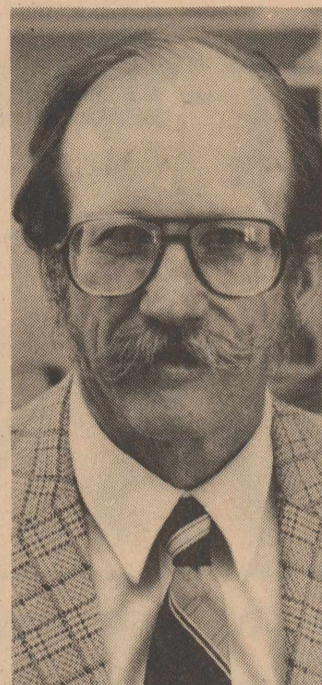
The residents of the City of Roby will vote in April of 1987 on the full Roby City Commission.

The terms of Roby Mayor W.C. Matthies expires in 1987 as does the elected terms of the two Roby City Commissioners Murray Simmons and Melvin Thomson.

The election will be held on Saturday, April 4, 1987.

County 4-H Jr. Leaders To Meet This Sunday

Fisher County 4-H Jr. Leaders will meet at 2:30 p.m., Sunday, January 11, at the Courthouse Annex. This is a 4-H Club for all high school students in Fisher County. If you are interested in becoming a 4-H member please come to the meeting.



AWARD RECIPIENT: Dr. J. David Hellums, a graduate of Rotan High School was presented a Merit Award by the National Institute of Health.

January SEWING NEEDS

Roby Flower, Fabric & Gift Shop

Erwin, Maxine & Michelle
776-2292 Roby, Texas

Before You Purchase A New Car Or Pick Up ...Give Us A Chance To Show You How Much You'll *## SAVE ##* At

F&M Chevrolet-Buick

Complete Sales & Service

735-2242 111-117 South Cleveland
Rotan, Texas

Worship This Week At A Fisher County Church

Church Name	Worship Times
MISSION BAPTISTA CALVARIO Roby, Texas	Sunday School 9:45 Sunday Evening 5:30 Wed. Night 7:30 Worship 11:00 Worship 6:30 Eli Sepeda-Pastor
FIRST UNITED METHODIST CHURCH 735-2334 Rotan, Texas	Sunday School 9:15 Sunday Eve. 8:00 Worship 10:30 Terry Lowe-Pastor
FIRST UNITED METHODIST CHURCH 776-2308 Roby, Texas	Sunday School 9:45 Sunday Eve. 6:00 UMYF Wed. Night Choir Practice 7:00 Jim Hawthorne-Pastor Worship 10:30 Worship 6:00
FIRST UNITED METHODIST CHURCH McCauley, Texas	Sunday School 10:00 Wed. (2nd Wed. in each month family nite 7:00) George Ragsdale-Pastor Worship 9:30
FIRST UNITED METHODIST CHURCH Sylvester, Texas	Sunday School 10:30 Every 3rd Tues. Evening Community Dinner 6:30 George Ragsdale-Pastor Worship 9:30
CHURCH OF CHRIST 735-2344 Rotan, Texas	Sunday School 9:45 Sunday Evening 6:00 Wed. Eve. Bible Study 7:30 Donald Dawes-Minister Worship 10:45
CHURCH OF CHRIST 776-2496 Roby, Texas	Sunday School 10:00 Sunday Evening 6:00 Wed. Night 7:00-Nov.-April 8:00 May-Oct. Wardell Halliburton-Minister Worship 10:45
CHURCH OF THE NAZARENE Rotan, Texas	Sunday School 9:45 Wed. Night Worship Lyle Whitmeyer-Pastor Worship 11:00
FOURSQUARE CHURCH 735-2553 Rotan, Texas	Sunday School 10:00 Sunday Evening 6:00 Ira Burns-Pastor Worship 11:00 Wed. Night 7:00
ST. JOSEPH'S CATHOLIC CHURCH 735-3285 Rotan, Texas	Sunday Morning 9:00 a.m. Mass Saturday Evening 7:30 p.m. Mass Father Austin Kittredge
MARANATHA CHURCH Roby, Texas	Sunday School 9:45 Sunday Evening 6:00 Worship 11:00 Wed. Evening 7:00

We're Dedicated to The Good Health of our Community

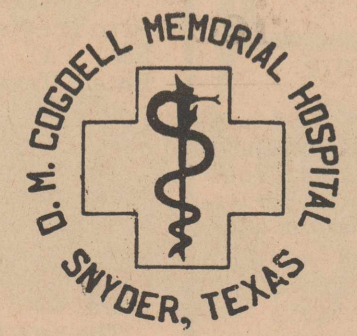
The American Cancer Society has recommended a baseline mammogram (for purposes of later comparison) between the ages of 35 and 40, followed by mammograms every 1 to 2 years from ages 40 through 49, and every year from age 50.

Cogdell Memorial Hospital is now offering Xero-Mammography Screening. Your physician may refer you or you may have this screening done on your own initiative.

The fee, which includes interpretation, is \$60.00. Please make arrangements to pay at the time of the screening.

Appointments are requested and can be made by calling the X-Ray Department at the hospital, 573-6374.

"... an ounce of prevention is still worth a pound of cure"



Roby Star-Record
The Voice of Fisher County Since 1907

ROTAN ADVANCE

Post Office Drawer A,
Rotan, Texas 79546

(915) 735-2562 Office
(915) 735-2278 Home
(915) 735-3115 Home

Kim Pease-Editor/Publisher

Published in Rotan, Texas Weekly. Entered as Second Class mail at the Post Office, Rotan, Texas 79546 under acts of Congress.

POSTMASTER: Send Address Correction to the Newspaper Office, P.O. Drawer A, Rotan, Texas 79546.

Advertising rate is \$2.00 per column inch. Classified rate is \$3.00 for first 15 words and .10 cents for each additional word. \$3.50 if billed. Classified display rate is \$2.50 per column inch. Card of Thanks \$5.00 minimum charge.

Subscription Expiration dates are listed on each mail subscribers newspaper delivery label each week. Newspapers must be renewed prior to the expiration date. Postal regulations say that subscriptions must be paid in advance to qualify for 2nd class postage regulations.

News and advertising deadline is 12:00 noon on Tuesday of Each Week. The Rotan Advance-Roby Star Record is published 52 weeks a year.

Notice: Any erroneous reflection upon character standing or reputation of any individual firm or corporation will be gladly corrected when brought to the attention of the publisher.

Mail To:
The Newspaper Office
P.O. Drawer A
Rotan, Texas 79546 New Renewal

Please Find Enclosed:
1 Year-\$12.00-In County
1 Year-\$15.75-In Texas
1 Year-\$17.00-Out of State

Name _____
Address _____
City _____ State _____ Zip _____

 Midwest Electric Cooperative 776-2244 Roby, Texas	Citizens State Bank Member FDIC Roby, Texas	Higginbotham-Bartlett Greg Rains-Mgr 735-2215 Roby, Texas
Farmers Union Co-op Gin Roby, Texas	Central Lumber & Supply 776-2371 Roby, Texas	Rotan Nursing Center Roby, Texas
First National Bank Of Rotan Member FDIC	Fisher County Farm Bureau 215 W. Snyder Roby, Texas	Rotan Insurance Agency Joe Burk-Agent Roby, Texas
Weathersbee Funeral Home Roby, Texas	Landes Furniture Loys & Larry Landes 735-3171 Roby, Texas	H.L. Davis & Company Bill & Elaine Day Roby, Texas
		Bart Strayhorn 735-2231 Roby, Texas



The Words of Wisdom Column

Don Dawes
Rotan Church of Christ
Rotan, Texas

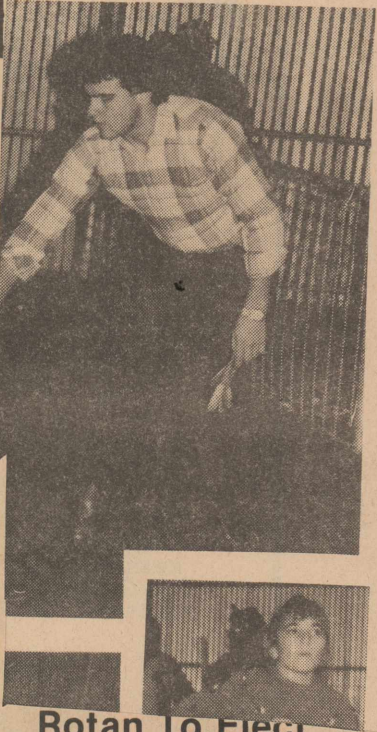
All I can really remember is that it was hot, I was tired and it was so dusty. As I leaned my leg against the hot metal of that old fender my skin would crawl. I had to bump up against it several times before I could put my weight on it and sit down. I can remember the smell of sweat as the sun weighted us down with it's heat. It wasn't fun but I knew Dad had to plant the crop and for some reason he wanted me by his side. I suppose Dads have always wanted their children by their sides.

God is that way. He wants his children to be with him. And it works. As I recall riding the tractor with Dad, I can't think of a time that I was closer to him.

Have you ridden the tractor with God recently. Remember what Jesus said "for God so loved the world, that He gave His only begotten Son, that whoever believes in Him should not perish, but have eternal life." Jesus then gave eternal life. It's definition John 17:3 "And this is eternal life, that they may know Thee, the only true God, and Jesus Christ whom hast sent."

Do you know Jesus and God the Father? Do you know Him well enough to ride with him and be close to him?

7 Fisher County Junior Livestock Show & Co
Random Shots



Rotan To Elect Mayor, 2 Council Members in 1987

Residents of the City of Rotan will be voting on the office of Mayor and will be electing two people to positions on the Rotan City Council in 1987, according to Rotan City Secretary Kenneth Vann.

Dr. Jerry Marshall is completing his first two year term. Voters will be electing a Mayor for two years and will also be filling two council seats currently occupied by Phil Springer and Jim McCright.

The other members of the council with terms expiring in 1988 include: Hooper Shelton, Charles Atwell, and Ernest Armstrong.

Two residents of the Roby Independent School District board of trustees have elected terms expiring in 1987.

The current posts held by Judy Mauldin and Steve Terry are up for expiration in 1987.

The election will be held on Saturday, April 4, 1987. Other board members are Andy Moore and June Wright with terms expiring in 1989 and Jeff McClure, Ronald Henry and Calvin Elkins with terms expiring in 1988.

SUBSCRIBE By Calling 735-2562 Rotan Advance Roby Star Record

CLEARANCE

Rotan, Texas

January Clearance Sale
January 7th And Continuing
January 10th.

Childrens Warm Ups Odds & Ends 1/2 Price	Childrens Pajamas & Gowns 1/2 Price
Ladies Sweaters 1/2 Price	Winter Gowns & Robes By Miss Elaine & Vassarette 1/2 Price
Ladies Skirts By Jessica, Sasson, Surry, Donovan & Ship-N-Shore 1/2 Price	Ladies Ladies Suits By Hagar & Ship-N-Shore 1/2 Price
Childrens Dresses Cindrella & Helath Tex 1/2 Price	Ladies Suits By Hagar & Ship-N-Shore 1/2 Price
One Group Of Ladies & Jr Corduroy Jeans By Wrangler \$6.98 Each	Jr Dresses By P. B. J. 1/2 Price
Mens Suits & Sportcoats By Hagggar & Levi 1/2 Price	Blouses By Cardin, Wynne, Wrangler, Teddie & Galvani 1/2 Price
Ladies Coats 1/3 Off	Childrens Dresses By Hagggar & Jaymar 1/2 Price
Jr Sportswear By Wrangler 1/2 Price	Ladies Sportswear By Koret & Wrangler 1/2 Price
Mens & Boys Sweaters By Munsingwear & Wrangler 1/3 Off	Colored Jeans By Wrangler Size 27 To 31 & All Students 1/2 Price
Ladies Purses 1/2 Price	Western Shirts By Wrangler & Panhandle Slim-Long Sleeve 1/3 Off
Mens Jackets 1/3 Off	Mens Warm Ups Odds & Ends-Broken Sizes & Colors 1/2 Price
Mens Leather Coats 1/3 Off	All Jeans Have \$2.00 A Pair Off Our Already Low Price
	Mens & Boys Knit T Shirts Short Sleeve By Wrangler & Munsingwear 1/3 Off
	Entire Stock Boys Sport Shirts Munsingwear & Wrangler 1/3 Off
	180 Pair Tony Loma & Ace Boots 1/2 Price
	All Tennis Shoes \$3.00 A Pair Off

Nora Millwee Funeral

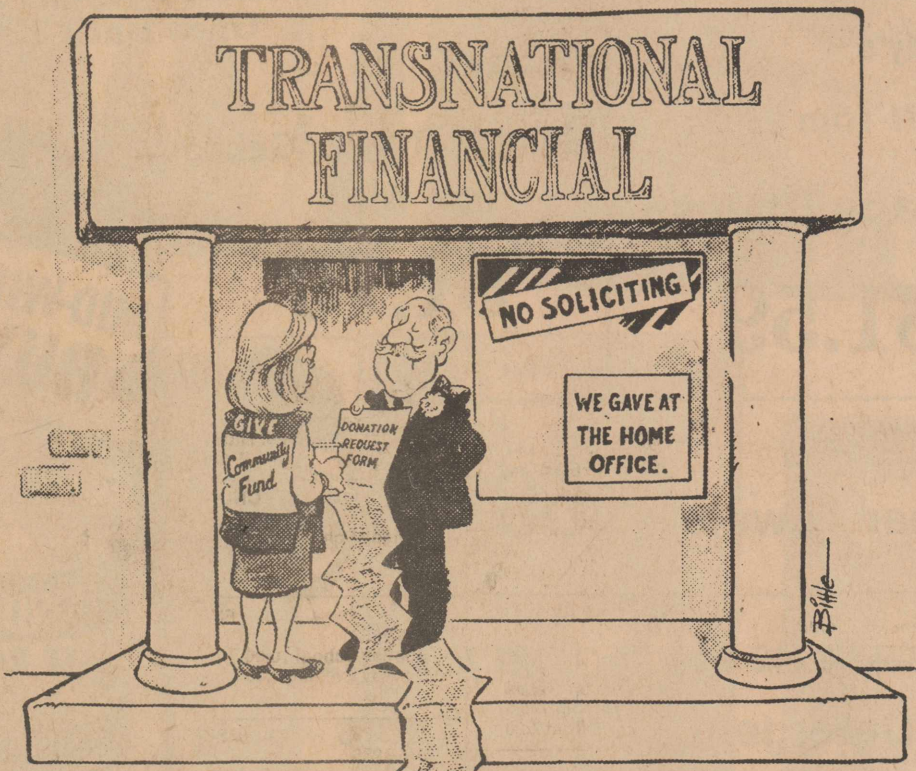
Nora Millwee, 99, longtime resident of Kent and Fisher Counties, died at 7 p.m., Monday, Dec. 29 at Fisher County Nursing Home. Funeral services were held at 2 p.m., Wednesday, Dec. 31 at Weathersbee Chapel in Rotan with Donald Dawes, Minister of the Rotan Church of Christ officiating. Burial was in the Jayton Cemetery.

Millwee in 1903 at Crockett. They moved to Kent County from Idaho in 1952. Mr. Millwee died June 21, 1957. Mrs. Millwee had been a resident of the Fisher County Nursing Home since 1973. She was a member of the Church of Christ.

Mrs. Millwee was born April 12, 1887 in Houston County, Texas, the daughter of the late John and Victoria Bennett. She married C.H.

She is survived by two sons: A.M. Millwee of Buchanan Dam, and J.L. Millwee of Big Lake; one brother: Eddie Lee Bennett of Crockett and three grandchildren and three great grandchildren.

DOES YOUR FINANCIAL INSTITUTION THINK COMMUNITY SERVICE SIMPLY MEANS LONGER BANKING HOURS?



Why deposit your hard-earned dollars with a financial institution that feels community service ends at the close of the business day? The deposit takers sit at their desk or telephone taking your money, but if you try to get their support or contributions, they say they gave at the home office. At our local Independent Bank

we're glad to join in and share in what you do. Bank the Independent Way where the money you deposit goes to work right here... where it will do the most good. Our local Independent Bank. We're people you can turn to when you need a helping hand.

You Know Us. We Know You.



"Your Dependable Bank of Service"
Member FDIC Rotan, Texas 735-2224

Member IBA
Member Independent Bankers Association of America.
Representing the nation's community banks.

Tax Planning

By Gerald Rodgers
CPA



AGE 55-RESIDENCE SALE

The federal income tax law allows you to sell a residence and pay no income tax on up to \$125,000 of gain, if you qualify. In addition to being at least 55 years old before the sale, you must have owned and used the property as your principal residence for a total of at least three out of the last five years. You may elect the \$125,000 exclusion only once in your lifetime.

Note that the exclusion is on \$125,000 of gain, and not \$125,000 of sales price. In other words, a residence purchased for \$100,000 and sold for \$225,000 would go untaxed if you otherwise qualify.

You are also entitled to use this age-55 exclusion in conjunction with the replacement of residence tax provision. This is very useful for people who want to sell their larger family residence and purchase a smaller home.

The following example illustrates how a residence costing \$50,000 can be sold for \$200,000 without creating a current tax liability.

Example:

Selling price of residence	\$200,000
Less: Fees and expenses	12,500
Amount realized (adjusted selling price)	187,500
Less: Cost of residence	50,000
Gain realized	137,500
Less: Over-55 exclusion	125,000
Gain recognized (taxable)	\$12,500

The \$12,500 of gain will not be taxed if you purchase a new residence for \$62,500 or more (\$12,500 gain plus \$50,000 cost of old home) within two years.

Don't apply this tax information to your specific situation without professional assistance.

As with all tax laws, there are other considerations which need to be reviewed before you enter into any binding agreements.

Sponsored By:
James E. Rodgers & Company
Certified Public Accountants
20 Southwest Third St., Hamlin, Tx.

Dr. Bryan Cave
Eye Examinations
Contact Lenses (All Types)
Children Welcome
Snyder, Texas

Cogdell Center (915) 573-5571
Wed., Thurs. & Fri.
Call 573-4792
Office Hours
Mon. 9-6:00 p.m.
Tues. 8-5:00 p.m.
Lubbock Office (806) 797-4216

Hustling Around Hobbs

Happy New Year! We have been having some good cotton stripping weather this past week, and out this way everyone has really been busy. There are still some wet areas, but most of the fields are now dry enough for stripping, even if they are having to skip some of those boggy places.

Mr. and Mrs. Billy Carter and three boys from Brownwood visited with the J.C. Caves on Friday; they went to Mrs. Edd Carter's on Friday night and then went home Saturday night. The Carters had their Christmas on Saturday. Loretta and Mr. and Mrs. J.C. Cave all attended the funeral of Lucy Kincaid on Friday.

and he and his mother both attended the funeral of Lucy Kincaid. Congratulations to Ricky and Melody Gordon on their new baby daughter who was born December 23rd in Sweetwater at the Rolling Plains Hospital. They named her Ricia DeeAnn. Congratulations also to the proud grandparents, Mr. and Mrs. Howard Gordon and Mr. and Mrs. Albert Hataway of Roby. Also to Dale and Doshia Cave who are the paternal great grandparents and Mrs. Othell Hataway of Snyder, who is the maternal great grandmother.

and Tom parted company 41 years ago. Seemed funny to hear Jim called "Tex" again. Jim and I attended Lucy's funeral on Friday and then we went to

By e's Receive Guests
Mrs. Darrell and Doug of Iowa Park, Mrs. Jewel George of Weatherford, Mr. and Mrs. John Voelkle and Johnnie Lou of Dickinson, Texas and Sherry Bassinger of Post.

Morris Hardin from Lubbock visited Sunday and Monday with his mother, Mrs. Bea Hardin.
Mr. and Mrs. Rudolph Martinez went to Snyder on Sunday and visited with Mr. and Mrs. Steve Warren and family.
Glenn Phillips from Post visited with Mrs. Opal Phillips on Friday,

and he and his mother both attended the funeral of Lucy Kincaid. Congratulations to Ricky and Melody Gordon on their new baby daughter who was born December 23rd in Sweetwater at the Rolling Plains Hospital. They named her Ricia DeeAnn. Congratulations also to the proud grandparents, Mr. and Mrs. Howard Gordon and Mr. and Mrs. Albert Hataway of Roby. Also to Dale and Doshia Cave who are the paternal great grandparents and Mrs. Othell Hataway of Snyder, who is the maternal great grandmother.

and Tom parted company 41 years ago. Seemed funny to hear Jim called "Tex" again. Jim and I attended Lucy's funeral on Friday and then we went to

South By Bertha Warren
Saturday evening with us. They spent the weekend with Jewel. Trudy Whitworth had the grand champion Hampshire in the Sweetwater school livestock show and Sabrina got first place with the light weight Duroc. Congratulations to these young ladies. The Nolan Co. livestock show will be Jan. 9th and 10th. Circle and Mary Etta

The Rotan girls varsity basketball team, sporting a 14-2 pre-district record, played their first district game last Tuesday night and play Jayton in a home contest on Friday night, January 9. In pre-district competition, Rotan suffered two losses-one at the hands of Aspermont in the Rotan tournament by two points and the other to perennial playoff contender Paint Fork in the Aspermont

Rotan Girls District Co

Co. livestock show will be Jan. 9th and 10th. Circle and Mary Etta

and he and his mother both attended the funeral of Lucy Kincaid. Congratulations to Ricky and Melody Gordon on their new baby daughter who was born December 23rd in Sweetwater at the Rolling Plains Hospital. They named her Ricia DeeAnn. Congratulations also to the proud grandparents, Mr. and Mrs. Howard Gordon and Mr. and Mrs. Albert Hataway of Roby. Also to Dale and Doshia Cave who are the paternal great grandparents and Mrs. Othell Hataway of Snyder, who is the maternal great grandmother.

and he and his mother both attended the funeral of Lucy Kincaid. Congratulations to Ricky and Melody Gordon on their new baby daughter who was born December 23rd in Sweetwater at the Rolling Plains Hospital. They named her Ricia DeeAnn. Congratulations also to the proud grandparents, Mr. and Mrs. Howard Gordon and Mr. and Mrs. Albert Hataway of Roby. Also to Dale and Doshia Cave who are the paternal great grandparents and Mrs. Othell Hataway of Snyder, who is the maternal great grandmother.

and he and his mother both attended the funeral of Lucy Kincaid. Congratulations to Ricky and Melody Gordon on their new baby daughter who was born December 23rd in Sweetwater at the Rolling Plains Hospital. They named her Ricia DeeAnn. Congratulations also to the proud grandparents, Mr. and Mrs. Howard Gordon and Mr. and Mrs. Albert Hataway of Roby. Also to Dale and Doshia Cave who are the paternal great grandparents and Mrs. Othell Hataway of Snyder, who is the maternal great grandmother.

and he and his mother both attended the funeral of Lucy Kincaid. Congratulations to Ricky and Melody Gordon on their new baby daughter who was born December 23rd in Sweetwater at the Rolling Plains Hospital. They named her Ricia DeeAnn. Congratulations also to the proud grandparents, Mr. and Mrs. Howard Gordon and Mr. and Mrs. Albert Hataway of Roby. Also to Dale and Doshia Cave who are the paternal great grandparents and Mrs. Othell Hataway of Snyder, who is the maternal great grandmother.

COOPER
Linda Cooper & Associates
* Professional Bookkeeping Service
General Ledgers, Payroll, Profit & Loss Statements, Financial Statements
* Tax Preparation
Individuals, Farmers and Ranchers, Businesses, Estates
* Railroad Commission Reporting
(915) 576-3139 Hamlin, Texas

Mo
Clearance
H&M Department Store
Jayton, Texas
Annual 1/2 Price Clearance Sale
Sale Begins January 8th And Continues Thru January 17th

Special

Chicken Planks \$2.99
Sale Effective January 8-14, 1987
Rotan Hatahoe
735-2276

Prices Effective January 8-14, 1987

BEST FOOD BUYS of the WINTER

City Grocery & Deli Roby, Texas 776-2225

We Reserve The Right To Limit Quantities

winter BARGAINS Folgers 1 LB. Bag Coffee \$2.79	Armour 15 Oz. Sloppy Joes 99¢	Best Maid 32 Oz. Salad Dressing 89¢	Gandy's Slim-N-Trim 24 Oz. Cottage Cheese \$1.59	Gandy's Slim-N-Trim 1/2 Gal. Ice Milk \$1.79	MID-WINTER BUYS! Borden 14 Oz. Eaglebrand Milk \$1.25
Lays Assorted Flavors Reg. \$1.39 \$1.09	Armour 15 Oz. Cornbeef Hash 99¢	Purina 5 LB. Dog Chow \$2.49	Mini Bounty Paper Towels 59¢	#1 East Texas Yams 39¢ LB.	
Del Monte Cut Green Beans 303 Can 2/79¢	Oscar Mayer Pure 8 Oz. Beef Bologna 99¢	Dawn 22 Oz. Liquid \$1.09	Bold 3 (42 Oz.) Detergent \$1.99	California Avocados 4/\$1.00	
Parade 32 Oz. Catsup 89¢	Frozen Morningstar Breakfast 8 Oz. Patties Or Links \$1.49	Large Steak Sandwich 99¢	Aunt Jamima 24 Oz. Syrup \$1.99	Green Cabbage 15¢ LB.	

LEGAL NOTICE

THE STATE OF TEXAS COUNTY OF FISHER by virtue of an Order of Sale issued out of the Honorable 32nd Judicial District Court of Fisher County, on the 5th day of January, 1987 by the Clerk thereof, in the case of

Legal Notice

THE STATE OF TEXAS COUNTY OF FISHER by virtue of an Order of Sale issued out of the Honorable 32nd Judicial District Court of Fisher County, on the 5th day of January, 1987 by the Clerk thereof, in the case of the ROTAN INDEPENDENT SCHOOL DISTRICT VS. GENTRY, JERRY, ET AL Cause No. 4024 and to me, as Sheriff, directed and delivered, I will proceed to sell, at 10:00 a.m. on the 3rd of February, 1987 which is the first Tuesday of said month, at the North door of the Courthouse of said Fisher County, in the City of Roby, Texas, the following described property, to wit:

TRACT I: All that certain Lot 2 in Block 45 of the original town of Rotan, Texas, more fully described by deed of record in Volume 502, Page 122, Deed records of Fisher County, Texas. Levied on the 5th day of January, 1987 as the property of JERRY GENTRY, 210 W. Burnside, Rotan, Texas, 79546; DORIS GENTRY, 210 W. Burnside, Rotan, Texas, 79546; RODNEY DENTON, (IN REM ONLY), 611 W. Burnside, Rotan, Texas, 79546 to satisfy a judgement amounting to \$269.52 with interest from the 23rd day of August, 1985 at 10 per cent, per annum, and all costs of suit in favor of ROTAN INDEPENDENT SCHOOL DISTRICT, ET AL; GIVEN UNDER MY HAND THIS 5th day of January.

Mickey A. Counts
Sheriff Fisher County
Texas
48:3tc

CITY OF ROTAN VS. ANTONIO YANEZ, JR. Cause No. 3809 and to me, as Sheriff, directed and delivered, I will proceed to sell, at 10:00 a.m. on the 3rd of February, 1987 which is the first Tuesday of said month, at the North door of the Courthouse of said Fisher County, in the City of Roby, Texas, the following described property, to wit:

Legal Notice

THE STATE OF TEXAS COUNTY OF FISHER by virtue of an Order of Sale issued out of the Honorable 32nd Judicial District Court of Fisher County, on the 5th day of January, 1987 by the Clerk thereof, in the case of CITY OF ROTAN VS. CLARA MAE DANIELS; Cause No. 4018 and to me, as Sheriff, directed and delivered, I will proceed to sell at 10:00 a.m. on the 3rd day of February, 1987 which is the first Tuesday of said month, at the North door of the Courthouse of said Fisher County, in the City of Roby, Texas, the following described property, to wit:

BEING ALL THAT CERTAIN EAST 30 feet of Lot 8 and all Lot 9 in Block 191 of the inside addition to the City of Rotan, Texas, and being more more fully described by that deed of record in Volume 354, Page 246, deed records of Fisher County, Texas. Levied on the 5th day of January, 1987, as the property of CLARA MAE DANIELS, 701 E. Wheeler, Rotan, Texas, 79546 to satisfy a judgment amounting to \$282.69 with interest from the 11th day of October, 1986 at 10 per cent, per annum, and all costs of suit in favor of ROTAN INDEPENDENT SCHOOL DISTRICT, ET AL; GIVEN UNDER MY HAND THIS 5th day of January.

Mickey A. Counts
Sheriff Fisher County
Texas
48:3tc

Tract I: All that certain North 70 feet of the Northeast Quarter of Block 21 of the Original Town of Rotan, Texas, more fully described by deed of record in Volume 440, Page 132, Deed Records of Fisher County, Texas.

Levied on the 5th day of January, 1987 as the property of ANTONIO YANEZ, JR., 611 N. McKinley, Rotan, Texas, 79546; SOPHIA YANEZ, 611 N. McKinley, Rotan, Texas, 79546; G.T. PAGE, if living, LEOCADIC YANEZ, if living;

GIVEN UNDER MY HAND THIS 5th day of January.

Mickey A. Counts
Sheriff Fisher County,
Texas
48:3tc

Ruberto Gauna Is Air Force Enlistee

Ruberto Abel Gauna, son of Mr. and Mrs. Manuel Gauna of Rotan, enlisted in the Air Force's Delayed Enlistment Program, according to Sergeant George Clay, Air Force Recruiter located at

4201 N. 1st, Abilene, Texas. Ruberto Abel Gauna, a 1985 graduate of Rotan High School, is scheduled for enlistment in the regular Air Force on May 18, 1987. Upon graduation from the Air Force's six-week basic

training course at Lackland Air Force Base, San Antonio, Texas, he is scheduled to receive technical training in the Vehicle Mechanic career field.

He will be earning credits toward an Associate Degree in Applied Sciences through the Community College of the Air Force while attending basic and technical training schools.

Legal Notice

Fisher County Commissioners Court will accept bids for insurance coverage for vehicles, heavy equipment, property and general liability. Bids will be opened January 16, 1987 at 9 a.m. in County Courtroom, Courthouse, Roby, Texas.

Marshal Bennett
County Judge
48:2tc

Legal Notice

The Fisher County Commissioners Court will accept bids on a 1968 Chevrolet 2 ton truck for salvage. Bids will be opened January 16, 1987 at 9:00 a.m. in County Courtroom, Courthouse, Roby, Texas.

Marshal Bennett
County Judge
48:2tc

AUCTION

January 31, 1987

Consignments
Welcome

Sponsored By:
Farm Tractor &
Service
Rotan, Texas
915-735-2252

SUBSCRIBE
BY CALLING
735-2562
Rotan Advance
Roby Star Record

CLASSIFIED ADS

NOTICE: Franks TV and Jewelry in Hamlin is in the Rotan-Roby area 3 times weekly to service your television, VCR or satellite system...we also do antenna work...call us at 576-2122 or 576-2167 nights..Franks TV and Jewelry, 218 S. Central in Hamlin. 8:tc

ANTIQUES: We have fine furniture, over 400 clocks, and numerous old lamps for your purchase, plus many gift items. We also repair and refinish clocks, lamps, and furniture. Call us or bring in. All work guaranteed. House of Antieks, 4008 College Ave., Snyder, Texas, 79549. 915-573-4422. 27:tc

MASTVIEW BOOK STORE
103 Arizona 235-2940
Sweetwater, Texas
Hours: 10:30 to 6:00 p.m.
Monday-Saturday

*Bibles *Books *Gifts
*Music

New Items including Christian Mother Goose and Amy Grant Bibles Stories Now Available

All Special Orders Received in One Week!
Call in Orders Welcome

FOR SALE: 2 bedroom house, N 2nd St., Roby, good water well. 776-2367 after 5 p.m., \$9,000. 10:tc

NEW HOME SEWING MACHINES: Electrolux cleaners, repair all makes. H.B. Stevens, 1101 James St., Sweetwater, 235-2889. 27:tc

APARTMENTS FOR RENT: Now accepting applications for 2 and 3 bedroom apartments. We are an Equal Housing Opportunity Agency. Rotan Housing Authority. 915-735-2471. 10:tc

FOR RENT: 2 bedroom house, 1 mile south of Roby on Hwy. 70. \$175.00. Harmon Holcomb, 776-2131. 31:tc

HOUSE FOR SALE: 912 N. McKinley. Jo Tankersley, 735-3614 or 735-3382. 47:2tc

FOR RENT: Small two bedroom house, \$150.00 month. Call Marvis McClain, 735-2217 or 735-3505 after 5:00 p.m. 41:tc

FOR SALE: Cedar posts, also corner posts. We got 'em. Farm Tractor and Service, Rotan, 735-2252. 47:4tc

FOR SALE: Nice baby bed with mattress, \$35.00. Call 735-3611. 47:2tc

FOR SALE: Alfalfa or haygrazer hay. Square bales. Call 735-3171. Landes Furniture. 34:tc

RENT OWN: Amana refrig., microwave, Maytag washer and dryers, stoves, used also. Bill's Appliances, 113 W. Broadway, Sweetwater, Texas, 235-4349. 23:tc

NOTICE: Will pay \$15.00 each for old worn out quilts. Nathalies, 735-3122. 1111 N. Cleveland. 34:tc

FOR RENT: 1 to 3 bedroom apartments starting at \$170. Call 776-2579. 18:tc

FOR SALE: Washers and dryers. 60 day warranty. 962-5446, McCaulley. 52:tc

FOR SALE: TAM 105 wheat \$5.50/bushel; grazing oats \$3.50/bushel. Rotan Seed Delinting Co., 735-3341. 33:tc

ROCK HOUSE, barns, pens and seven acres for sale. 5 bedrooms, 2 baths, living-dining, kitchen-breakfast, den, utility, and fireplace, with central air and heat and on city water line. Also garage, cellar, and fruit trees. Located 2 1/2 miles North of Rotan. Call Betty Helms, 735-2945 or Tennie Cade, 735-2944. 41:tc

FOR RENT STORAGE SPACES
From \$15.00 Per Month
Lock It And Leave It
Rotan Self Storage
735-3171

NOTICE:
Whoever Borrowed My Chain Saw, Would You Please Return It.

Neal Hargrove, Rotan

NOTICE: Mature woman to live in and care for elderly lady. Light housekeeping. Call 776-2160 or 776-2896. 45:tc

FURS UNLIMITED: Wanted, coon, coyote, opossum, fox, badgers, bobcats, and unskinned skunks. Fur buyers will be in Roby, beginning Dec. 2 at Southside of Courthouse, from 2 to 2:30 each Tuesday, throughout fur season. Furs Unlimited, Box 291, Cross Plains, Texas, 76443, (817) 725-7350. We buy rattle snakes. 42:8tp

FOR RENT: 2 bedroom, 601 Burnside. \$170 plus deposit. Call 928-4487. 46:2tc

FOR RENT: 3 bedroom, central heat. 901 5th St. \$210 month. Call 928-4487. 46:2tc

FOR SALE: Used G.E. electric cook top and vent-a-hood. \$40. Call 735-2576. 46:2tc

HELP WANTED: Excellent income for part time home assembly work. For info, call 504-641-8003, Ext. 8532. 45:4tp

FOR RENT: 3 bedroom house. Call W.D. Rushing, 735-2195. 44:tc

NOTICE: Will do general yardwork. Please call 735-2478. 48:1tp

SALE: Jan. 5-17. 708 E. McArthur. Lots of misc. items. 48:2tc

FOR RENT: Small house. Wanda Murphree 735-2349, nights or weekends. 48:3tp

FOR SALE: Two lop eared rabbits and two plain rabbits. Call 735-2091. 48:1tp

FOR SALE: AKC Cocker Spaniel puppies, 7 weeks old. Call 915-573-7662. 48:2tp

HANDYMAN: House painting inside and out. Repair old trim and siding, plumbing. Real good with old house. 735-3576 or 735-3316. 48:2tp

NEED TO RENT FARM LAND: Contact Harold Gruben, 735-3260 or 735-3555. 48:2tp

HAYGRAZER HAY FOR SALE: Square or round bales. Call 735-2400. Horace Carter. 48:3tp

NOTICE: Lost your keys? We make keys, house, car, etc. Look out calls. Hall's, Rt. 1 Box 170, Hamlin, Texas. Phone 576-2496. 48:4tp

FOR SALE: 79 Dodge Omni, 4 door. Needs some repair. \$600. Call 776-2254. 48:2tc

Carpet, Linoleum & Carpet Remnants
All Work Guaranteed By Professional Installers
Landes Furniture
113 Garfield
Rotan, Texas

SUBSCRIBE By Calling 735-2562
Rotan Advance Roby Star Record

BLACK INVESTMENTS
Real Estate Sales & Appraisals
107 North Garfield
Rotan, Texas

FIRST TIME ON MARKET IN ROBY: Extra nice 2 BR on Neves Street. With good credit and down payment, monthly payments can be under \$210 (9% Loan).

90 ACRES 3 MILES WEST OF ROTAN: Class II cultivation, 520 lb. yield on 2-in-1 cotton, 1/4 minerals, \$700/ac

TWO PRIME LOTS ON ROTAN MAIN STREET: \$4,000 plus closing costs before Jan. 1; \$5,000 plus closing after Jan. 1

TAKE ADVANTAGE OF REDUCED PRICES IN ROBY: Choice of two 2 BR homes, small monthly payments with cash down and credit check, 8 year payout

E-Z CAR WASH MUST SELL: Present price is \$35,000; have out-of-town client thinking seriously; higher profit to local buyer-manager

BRICK HOME AND 87 ACRES: SE of Roby, Class II cultivation, hay barn, some pasture, have to see to appreciate

BACKYARD VIEW OF ROTAN FOOTBALL GAMES: 3 Br, 1 1/2 baths, excellent condition at good price, \$35,000

TWO-STORY: 7 BR, 2 bath, fireplace, \$66,500

REDUCED PRICE: 1 1/2 story Strickland home, 2 bath, corner lot, well, detached apartment, \$35,000

ROYSTON AREA: 3 BR on one acre, \$22,000

ONE MILE WEST OF ROTAN: 3 BR frame on one acre, \$24,500

BEST BUY: Corner location, 2,800 sq. ft., 4 BR, fireplace, great interior decoration, reduced to \$48,000

MYLA BLACK, BROKER, MSA, MRA, MFLA
Office & Home Telephone (915) 735-3091

Sardis Cemetery Association Of Fisher County Donations & Memorials

December Year 1985		December Year 1986	
Lona Kessler	\$100.00	Joyce Noles	\$10.00
Howard & Joyce Noles	10.00	Mabel Warren	20.00
(In Memory of Martin Warren)		Martin & Jorelene Palmer	25.00
Mabel Warren	20.00	Vada Edwards	20.00
Dutch & Norma Lou Parks	25.00	Mr. & Mrs. P.R. Warren	20.00
Martin & Jorelene Palmer	25.00	Mrs. Thelma Haley	10.00
Lalia Webb	15.00	Lurline Unnewehr	25.00
(In Memory of Alva McHaney)		1986 Expenses (None)	\$130.00
Mr. & Mrs. P.R. Warren	20.00	Bal. From 1985	273.00
Mr. & Mrs. Roy Klett	5.00		1403.00
Mr. & Mrs. Fred Hawkins	50.00		
Lurline Unnewehr	25.00		
	\$295.00		
1985 Expenses	-22.00		
Carried to 1986	\$273.00		

One Community Mowing done each year. All extra mowing done free by Martin Palmer.

Legal Notice

A pre-bidders' conference concerning contract mowing on Highway Right-of-Way will be held at the District Headquarters Building, State Department of Highways and Public Transportation, U.S. 83-84 By-Pass, Abilene, Texas, at 10:00 a.m., January 13, 1987. All prospective bidders are encouraged to attend.

Sealed proposals for contract mowing on various tracts will be received, publicly opened, and read on January 20, 1987, at the following respective time schedules: Borden, Howard, and Mitchell Counties, 9:00 a.m.; Fisher, Nolan and Stonewall Counties, 9:30 a.m.; Callahan, Shackelford, and Taylor Counties, 10:00 a.m.; Kent and Scurry Counties, 10:30 a.m.; Haskell and Jones Counties, 11:00 a.m.

Each completed proposal shall be placed in a separate sealed envelope so marked to indicate its contents, and submitted to Mr. William G. Burnett, District Engineer, State Department of Highways and Public Transportation, P.O. Box 150, Abilene, Texas, 79604; or, it may be hand delivered to Room 25, District 8 Headquarters Building, U.S. 83-84 By-Pass, Abilene, Texas.

The specifications and proposals are available at the District Maintenance Office, Abilene, Texas. Usual rights reserved. 47:2tc

PRIMITIVE FRIENDS
and many other
unique gifts
all lovingly
HANDCRAFTED
Nathalie's
735-3122 ROTAN, TX.

HEY, AMERICA... LOOK HERE!

The new Erik SW "Environmentalist"
wood stove from Nordic

A new generation wood stove with unique "self generating" action that produces less emissions, puts out more heat with less fuel, burns wood completely to a fine powder ash.

- Big, 4 cu. ft. capacity firebox; holds up to 24" logs.
- Economical 6" flue size.
- Choice of optional door panels: steel or heat-resistant glass.
- Standard heat shield permits reduced clearance installation.
- Optional twin-fan blower system for circulating heat.

An American idea, built with American materials in America's heartland by American workers for American homeowners!

Wood Stoves
6 Mi. W. Of City-Roscoe
I-20, Exit 230
766-3948
SPECIAL PRICES NOW

When Is Your Selling

CLASSIFIED INFORMATION

No Secret At All?
WHEN OVER 7000 PEOPLE READ IT IN ROTAN ADVANCE ROBY STAR RECORD

If you've got something to sell... we'll get your message across! And our big readership guarantees you lots of prospects!

Buck Ash Funeral Held December 29

Buck Ash, 81, of Rotan, died at 12:15 a.m. Sunday, Dec. 28 at his farm home west of Rotan. Funeral services were held at 2 p.m. Monday, Dec. 29th at Weathersbee Chapel in Rotan. Officiating was Rev. Pat Anderson, pastor of Cross Roads Baptist Church. Burial was in the Belvieu Cemetery of Rotan.

Mr. Ash was born November 6, 1905, in Montgomery County. The son of the late Mr. and Mrs. John Will Ash, he came to Fisher County in 1924 from Hico.

He was a member of Cross Roads Baptist Church and had farmed until his retirement a few years ago. He married Marie Rutledge March 10, 1934, at Rotan.

He is survived by his wife of the home; a daughter, Elder Lee Miller of Odessa; a sister, Vernnie Lea Whitfield of Dallas.

Pallbearers were Kevin Copeland, Robin Roberts, Rocky Roberts, Harold Roberts, Freddy Carreon, and Horace Carter.

Effie Atwell Funeral

Effie Atwell, 78, of Rotan, died Friday, Jan. 2 at Fisher County Hospital. Funeral services were held at 2 p.m. Sunday, Jan. 4 at the First United Methodist Church in Rotan with Rev. Terry Lowe, the pastor, officiating. Burial was in the Belvieu Cemetery under the direction of Weathersbee Funeral Home.

Mrs. Atwell was born July 1, 1908, near Brady, Texas. She was the daughter of the late Walter Lee and Beulah

Burk. She married Charles E. Atwell, January 1, 1934 at Breckenridge. They moved to Rotan in 1935 to open Atwell Cleaners and operated it until retiring in 1983. She was a member of the First United Methodist Church. She also was active in the Daughters of the American Revolution and served as secretary-treasurer of the local chapter.

She is preceded in death by a brother, H.L. Burk.

She is survived by her husband, Charles E. Atwell of Rotan; a sister: Marie Thomas of Robert Lee; and a brother: J.D. Burk of Rotan.

Pallbearers were Melvin Clements, Jay Hendon, Red Bennett, Jim McCright, Buck Denton, Bill Day and Carlton Burrow.

Eugene Duke, 77, Died December 24

Eugene Duke, 77, of Snyder, died at 3:15 p.m. Wednesday, Dec. 24th at his home. Funeral services were held at 4 p.m. Friday, Dec. 26th at Weathersbee Funeral Home Chapel in Rotan. Officiating was Rev. Ben G. Clamon and burial was in the Hobbs Cemetery.

Mr. Duke was born August 16, 1909 at Camp Springs, Texas. He moved to Yuba, Oklahoma as a child and was raised there. He married Georgia Bell, December 23, 1938 at Durant, Oklahoma. They moved to the Camp Springs area where Mr. Duke farmed and ranched from 1939 to 1982 except for several years in California. He moved to Snyder in 1982 at the time of his retirement.

Mr. Duke was a member of the Baptist Church. He was the son of the late James Franklin Duke and Nannie Shanks Duke.

He is survived by his wife of Snyder; three daughters: Barbara Lucille Johnson, Achille, Oklahoma; Betty Kathryn Bailey, Loraine, Texas; and Clorette Faulkenberry, Snyder, Texas; one son: Bert Brown of Snyder; two brothers: Everett Duke of Boswell, Oklahoma and Arlen Duke of Yuba, Oklahoma; one sister: Sally Saletti of San Francisco, California; twenty grandchildren and thirty nine great grandchildren.

Pallbearers were Dale Cave, Jack Aaron, J.D. Sharp, Howard Gordon, Sims Groves, and George Maule.

Roby Varsity Defeats Blackwell 67-41

The Roby varsity boys basketball squad, with a season record of

11-3, defeated Blackwell 67-41 on January 2nd.

High point individual was Jason Terry with 18; Carter Edmondson had 12; Jeff Branson 11; Jody Mauldin 2; Jerry Carreon 4; James Gantt 5; Reggy Spencer 4; Rick Onofre 4; David VornKahl 5 and David Shipp 2.

Earlier Roby defeated Hamlin 69-57 with Jerry Carreon scoring 34 points.

In the Roscoe tournament Roby defeated Hamlin 63-73 with Carter Edmondson scoring 30; Jody Mauldin scoring 11; Jeff Branson 8; Jerry Carreon 6; James Gantt 9; Jason Terry 8 and Reggy

Spencer 1. Against Eula, Roby won 75-72. Carreon had 21, Edmondson 17 and Branson 12. In the Haskell contest, Roby won 47-45.

Roby Jr. Boys Win Over Jayton In A 42-24 Runaway

The Roby junior high boys outscored Jayton by the score of 42-24 recently with E. Onofre capturing high point individual honors with 16 points. Others scoring were: J. Amador 6; J. Terry 8; J. Petty 8; N. Dickson 2; J.R. Lipke 2.

Jess Brooks Funeral Service

Jess Brooks, 80, of Roby, died at 4:15 a.m. Sunday, Jan. 4 at Fisher County Nursing Home. Funeral services were held at 10:30 a.m. Tuesday at First Baptist Church in Jayton. Officiating was Rev. Alvin Petty, pastor of First Baptist Church of Roby, and Rev. Gerald Aalbers, pastor of First Baptist Church of Jayton. Burial was in the Girard Cemetery

under the direction of Weathersbee Funeral Home.

Mr. Brooks was born August 28, 1906, in the Royston Community of Fisher County. He was the son of the late Maudine and Gray Brooks. He married Louise Woodson, April 19, 1930 in Jayton. Mr. and Mrs. Brooks lived at Girard for 52 years before moving to Roby 4 years ago. He was a

member of the Girard Baptist Church. He was a worker in the construction business.

He is survived by his wife, Louise of Roby; two daughters: Dorothy Huff of Midland and Joann Huff of Roby; a brother: Walter Brooks of Girard; a sister: Beulah Weaver of Marble Falls; seven grandchildren and six great grandchildren.

Great grandparents are LeeRoy and Corinne Clark, N. Hwy. 70, Sweetwater and Bertha Allen of Rotan.

David And Kari Underhill Parents Of New Son, Joshua David, Born Dec. 31

David and Kari Underhill of Rotan are proud to announce the birth of their son, Joshua David, born Wednesday, December 31, 1986 at Hendricks Medical Center in Abilene. Weight was 8

lbs. 10 oz. and length was 21 1/2 inches long.

Maternal grandparents are Roy and Betty Mize of Roby.

Paternal grandparents are Charles and Juanita Underhill of

Rotan. The family of Mrs. C.H. Millwee would like to take this opportunity to thank everyone who had a part in easing our sorrow: the doctors, nurses, ladies of the Rotan Church of Christ, Bro. Don Dawes, etc. To the friends that have been so nice, all the kindnesses. Thank You Very Much.

The Millwee Family

48:1tp

Roby Varsity Girls Down Blackwell

The Roby varsity girls, after compiling an 8-7 season record, downed Blackwell on January 2nd by the score of 74-26.

Double figure scorers in that contest were Missy Turpin with 13, Cheri Feagan with 25 and K. Martin with 10.

On December 30th the varsity girls were defeated by Hamlin by the score of 60-35. In that contest M. Turpin had 10, C. Wiley had 2;

K. Upshaw 9; C. Feagan 9; B. Kiser 5.

In the Roscoe Tournament Roby's varsity girls defeated McCaulley 47-45; beat Stamford 43-41 and lost to Hamlin 45-52.

Roby JV Wins Against Hamlin With 62-28 Tally

The Roby junior varsity boys defeated Hamlin's junior varsity by the score of 62-28 recently.

The team won the Roscoe varsity tournament for the first time and recently defeated Eula. Eula is ranked seventh in the state.

Rotan JV Girls Win Over Abilene Christian Squad

The Rotan junior varsity girls defeated the Abilene Christian High School junior varsity by the score of 39-17 on January 2nd.

Julie Pease scored a total of 14 points to capture high scoring honors.

Others scoring were Cathy Jones 8; T. Johnson 3; Denise Powell 6; S. Boone 4 and Shannon Hull 4.

PIZZA BARN

117 West Snyder 735-3537 Rotan, Texas

Pizza Barn Plate Lunch Menu For January 8th-15th

Thursday, January 8th

Beef patty/cheese melt, french fried potatoes, baked beans, oriental vegetables, texas toast, tea.

Friday, January 9th

Chicken fried steak, gravy, creamed potatoes, green beans, roll, butter, tea.

Saturday, January 10th
6:00 p.m.-9:00 p.m.

Fried catfish, tartar sauce, french fried potatoes, cole slaw, hush puppies, tea.

Sunday, January 11th

Fried chicken, gravy, creamed potatoes, broccoli/rice casserole, roll, butter, tea.

Monday, January 12th

Barbeque, potato salad, baked beans, tossed salad, texas toast, tea.

Tuesday, January 13th

Fried chicken, gravy, creamed potatoes, english peas, roll, butter, tea.

Wednesday, January 14th

Meat loaf, pinto beans, cooked cabbage, cornbread, butter, tea.

Thursday, January 15th

Ham, sweet potatoes, english peas with white sauce, roll, butter, tea.

Hospital Report

Patients admitted to the Fisher County Hospital from Dec. 30 thru Jan. 5 were: Maude Gruben; Shannon Hull; Effie M. Atwell; Fannie Albert; Sybil Howard; and Sandra Daniels, all

of Rotan; Rebecca Frieron, Roby; Alicia Carrion, Lubbock; William Reilly Nail; and Ruby Meador, both of Albany; Martin Rodriguez, Jr., Oklahoma City.

Freddy Joe Green Makes Angelo State Honor Roll With 4.0 Ave.

Freddy Joe Green, son of Ruby Green Hubble of Roby, made the honor roll at Angelo State University with a 4.0 average. Joe is ma-

joring in History. Joe and his wife, Barbara, have one child, Covey Jordan, and reside in San Angelo.

Card Of Thanks

The family of Mrs. C.H. Millwee would like to take this opportunity to thank everyone who had a part in easing our sorrow: the doctors, nurses, ladies of the Rotan Church of Christ, Bro. Don Dawes, etc. To the friends that have been so nice, all the kindnesses. Thank You Very Much.

The Millwee Family

48:1tp



Western Wear

Sale Continues

30% Off

Men's Sweaters & Flannel Shirts

Men's Sport Coats

All Men's Coats

All Ladies Sweaters & Blouses

All Ladies Colored Pants

Snyder, Texas

College Heights Shopping Center

WINTER CLEARANCE

Limited Quantities

Now In Progress

30% OFF

Please, All Sales Final No Charges or Layaways No Refunds, or Returns

Credits & Gift Certificates Welcome on Regular Price Merchandise



915/573-7103



915/573-5914



GRAND OPENING

Henry's Quick Stop

776-2330 Roby, Texas

Saturday, January 10th

From 6:00 a.m. To 11:00 p.m.

Featuring-Family Style Dinners

From 11:00 a.m. To 2:00 p.m.

Serving-Fried Chicken, Vegetables, Salads & Hot Rolls

\$4.25-All You Can Eat!!!

FREE COKES, COFFE & TEA

During Grand Opening Only

You May Also Place Orders Anytime For...

*Cream Pies *Whole Fried Chickens *Brisket

Also Specializing In *Wedding Cakes

Place Your Order By Calling

776-2330

Beginning January 11th-Breakfast Will Be Served Daily From 6:00 a.m. To 10:00 a.m.

Also Starting February 1st-We Will Feature

RENT-A-BOOK NOOK!! WATCH FOR IT..



Video Rentals And VCR'S Available

Nonprogram Crops Can Be Considered For Compensation

Nonprogram crops will be considered individually when determining if producers in disaster-affected counties qualify for compensation under the 1986 disaster payment program, Under-Secretary

of Agriculture Daniel G. Amstutz said. Amstutz said eligibility for disaster assistance requires that a producer must have suffered more than a 50 percent loss of production in 1986 because of

floods or hail or excessive heat or moisture.

Amstutz said "If the nonprogram crop's value was affected adversely by the disaster, this factor will be considered in determining eligibility for assistance as well as payment level."

In determining the eligibility, Public Law 99-500 provides that two factors must be considered; whether there has been a substantial loss of production of the nonprogram crop and whether an economic emergency has occurred.

The statute provides only for consideration of a loss of actual production for program crops. Therefore, a quality adjustment will not be considered for wheat, feed

grains, upland cotton, rice, soybeans, sugar beets, sugar cane and peanuts.

The above actions were taken by USDA following a review of comments received on

the disaster payments program interim rule published in the Nov. 19 Federal Register, Amstutz said. "Most producers requesting disaster program assistance should have already furnished acreage and production reports to their county Agricultural Stabilization and Conservation Service office," Amstutz said.

Producers eligible for disaster program assistance must file an application for their disaster payment during the period Jan. 12 through Jan. 30, 1987. Amstutz said other program provisions include:

-Program crops will be considered individually in determining compensation for

losses. -With respect to program crops, eligible counties are those in which Farmers Home Administration emergency loans are available for losses of 1986 crops caused by drought, excessive heat, excessive moisture, flood or hail. For non-program crops, eligible counties are those in which producers became eligible subsequent to July 1, 1986 to receive FmHA loans.

-Producers requesting disaster program assistance will be required to furnish acreage and production reports on forms provided by their county ASCS office.

The county Agricultural Stabilization and Conservation Committee will use the reports to determine

whether the producers have sustained a loss of production that will qualify for disaster assistance. The producers must also provide, when available, evidence of their actual yield for 1983, 1984, and 1985 for all crops except wheat, feed grains, upland cotton, peanuts and certain kinds of tobacco.

-In the case of wheat, feed grains, upland cotton and rice, only producers who participated in the 1986 commodity production adjustment program for the respective crop are eligible for disaster assistance. For nonprogram crops, eligible producers are those who suffered losses as the result of natural disasters that create an economic emergency for the producer.

-Payments will be made in generic commodity certificates.

-In general, payments to eligible producers for a crop will be computed by multiplying the product by the payment rate. The payment rate will be the price support loan rate for the crop. For a crop for which there is no loan rate, the payment rate will be an average market price for the crop.

-Payments to a person will be limited to \$100,000 for program crops and \$100,000 for nonprogram crops.

The changes announced were published in the Dec. 24 Federal Register.

Rotan Nursing Center News

A New Year has started and most of the New Year resolutions were that this year would be as good or better than last year, but whatever happens we will make the best of it.

The ladies of the First Baptist Church gave us a birthday party the 31st. Birthdays for December were Eva McKimney, Ethel Adams, and Jewell Willingham.

Jewell Willingham is still in the hospital at Abilene but the family tells us that she is doing fine and should be back in the next week or two.

Visitors in the home last week were Maria Moreno and family of Lubbock visiting Maria's mother, San Juana Sepeda. Nancy Bagwell had a lot of visitors to start the year off with. Lori Cuellar of Abilene, Mr. and Mrs. Austin Bagwell and Jamie of San Antonio, Mr. and Mrs. Craig Bagwell and

Travis of Adkins and Mr. and Mrs. Kerry Bagwell and Heather Bagwell and Chad Pearson, all of Militos, Cal. all visited her the first day of the year.

Ruth and John Hamilton of Lubbock visited Gerrald Finch and Era Mae Woody of Sweetwater visited Romie Kersh.

Lora Cleveland

FmHA Emergency Loan Applications Being Accepted Until August

Applications for emergency farm loans for losses caused by heavy rainfall are being accepted at the Farmers Home Administration (FmHA) office located in Rotan, Texas, FmHA County Supervisor, Gregory L. Pruitt, said.

Fisher County is one of five primary counties in Texas recently named by Secretary of Agriculture Richard E. Lyng as eligible for loans to cover part of actual production losses resulting from the heavy rainfall.

Mr. Pruitt said farmers may be eligible for loans of up to 80 percent of their actual losses or the operating loan needed to continue in business or \$500,000, whichever is less. For farmers unable to obtain credit from private commercial lenders, the interest rate is 4 1/2%.

"As a general rule, a farmer must have suffered at least a 30 percent loss of production to be eligible for an FmHA emergency loan," Mr. Pruitt said. Farmers participating in the Federal Crop In-

urance program will have to figure in proceeds from this program in determining their loss.

"Applications for loans under this emergency designation will be accepted until August 12, 1987 but farmers should apply as soon as possible. Delays in applying could create backlogs in processing and possibly over into the new farming season," Mr. Pruitt said.

FmHA is a credit agency of the U.S. Department of Agriculture. It is authorized to provide disaster emergency loans to recognized farmers who work at and rely on farming for a substantial part of their living. Eligibility is extended to individual farmers who are U.S. citizens and to farming partnerships, corporations or cooperatives in which U.S. citizens hold a majority interest.

The FmHA office in Rotan is open from 8:00 a.m. to 5:00 p.m. Monday through Friday.

Rotan School Menu

MONDAY: Barbecue on bun, ranch style beans, oven fried potatoes, sweet relish, frosted cake, milk.

TUESDAY: Burritos w/chili, buttered corn, tossed salad, cookies, milk.

WEDNESDAY: Fried chicken w/gravy, whipped potatoes,

English peas, hot rolls, butter, fruit, milk.

THURSDAY: Spaghetti w/meat sauce, blackeyed peas, Texas slaw, garlic toast, peanut clusters, milk.

FRIDAY: Corn dogs w/mustard, cheese nachos, pork & beans, cinnamon roll, orange wedge, milk.

Fisher County Nursing Home Losses Two Residents

We want to express our sympathy to Nora Millwee's family and to Jess Brooks family. These two residents passed away in the last 2 weeks.

The residents and staff received two boxes of fruit. Mr. and Mrs. P.A. Martin from Roby and Mabel Cabaness from Mt. Pleasant, Texas sent us apples and oranges. We thank you very much.

Today, Monday, the 5th is Bill Starnes' birthday. Also Louise Ashley, Willard Tillison, and Fred Houghton have birthdays. Three of our employees have birthdays in Jan. also. Eva Carreon, the 2nd, Geneva Alaniz, the 3rd and Mary Ann Rodri-

quez, the 4th.

Our visitors for the last two weeks were Betty Mauldin to see her parents, Nash and Bessie Miers. Carrie Allen and Loveta Allen, Stella Goodwin and Gladys Farrar visited Mrs. Kinsey. Mr. Denton's visitors were all from Snyder. Jean Turner, John and Joyce Ramby, Ramon, Mike, Tiffani, Brandi, Destani, Brance and Beth. Altha Pearce from Anson visited Ray Morrow. Roy's visitors were Ronnie Peek, David, Becki, and Lynn, Ginger, and Glen Gowan and Mrs. Turnbow.

Dove Blevins is back with us. Reyna Garcia

Card Of Thanks

Words cannot express my sincere thanks to all our friends and relatives for the many kind deeds that were done for us while Buck was ill and at his death.

Your prayers, visits, calls, cards and each word of encouragement have meant so much.

Our prayer is that God's richest blessings will be bestowed upon each of you.

Marie Ash
Vennie Lee Whitfield
Elda Lee Miller & relatives
48:1tp

Public Notice

The Roby I.S.D. will receive sealed bids on a pre-engineered steel building to house a new cafeteria facility. Plans, specifications, and bid forms are available only at Wadleigh Construction, Inc., Drawer 189, Snyder, Texas, 79549, phone 915-573-6381. A deposit of \$50.00 by cashiers check is required. Additional plans available at \$8.00 per set. Bids must be received by 3:00 P.M. February 2, 1987.

48:2tc

Roby School Menu

Monday: Beef casserole w/cheese, buttered peas, hot rolls, fruit.

Tuesday: Barbecue on bun, french fries, salad, oatmeal cookie.

Wednesday: Tacos w/cheese, ranch style beans, salad, jello.

Thursday: Fish w/tarter sauce, cheese stick, cream potatoes, corn, ice box pie.

Friday: Hamburgers w/cheese, potato chips, lettuce, tomato, onions, pickles, fruit, brownie.

First Class Mail Forwarding Back To Twelve Month Limit As Of October 1986

The period of time you can have your First-Class Mail and Express Mail forwarded to you at your new address has changed. Effective October 21, 1986, the forwarding period for First-Class Mail and Express Mail reverted to 12 months.

It was in October, 1983 that the Postal Service amended its regulations to provide for retention of change of address information for 18 months. In conjunction with that change, the forwarding period for First-Class Mail and Express Mail

was extended from 12 months to 18 months "for a limited 3-year period in order to provide senders of those classes of mail an opportunity to improve the quality and the accuracy of their address lists." That grace period automatically expired

October 21, 1986. Thus, the forwarding period for undeliverable-as-addressed First-Class Mail and Express Mail returned to 12 months beginning October 22, 1986. The change of address information, provided on Form 3575, Change of Address

Order, will remain on file for 18 months; however, First-Class Mail and Express Mail will now be forwarded only during the 12 month period. For months 13 through 18 this mail will be returned to sender with an address correction on the piece of mail at no extra charge.

County Agent Report

By Richard Spencer

The rose is not only America's favorite flower but has recently been recognized as our official national flower. The genus Rosa covers numerous species including some natives. The major appeal of roses is in the color and beauty of the blossoms. Some bloom almost year round while others provide massive displays for several weeks.

There has been considerable controversy over the landscape value of roses. Actually there are some roses that lend themselves very well to use as vines, masses, hedges or even specimen use. Hybrid Tea roses, which are the most common class of roses currently available, are best grown in well prepared, sunny beds where they receive at least half a day of sun and good air circulation. Hybrid Tea roses require a regular spray program for prevention and control of black spot and mildew diseases.

Garden roses require very little cold weather to satisfy their dormancy requirements. This means that it is possible to successfully grow roses in all parts of Texas. They are best transplanted during the winter from late December through February. Many garden centers order bare root plants for delivery in

December and January. Immediately upon arrival, these plants are potted in containers. This method allows the planting season to be extended later into the spring. Most rosarians like to set out new plants during January and February so that the root systems can be well established before the hot weather arrives.

January and February is pecan tree planting time in Texas. In order for trees to make good growth the first year, a few key points need to be followed at planting.

1. Buy the trees as soon as they are available.
2. Use 4 to 8 foot trees.
3. Do not let the roots dry out prior to planting.
4. Plant in a well drained full sun location at least 30 feet from other trees.
5. Dig the hole only as large as the root system. The transition zone between the stem and root should be at the soil line with the tap root sitting firmly on the bottom of the hole.
6. Use the soil that came out of the hole. Special soil mixes or sand can cause serious problems if the tree is planted in clay soil.
7. Do not apply fertilizer, starter tablets or starter solution to the planting hole.
8. Pack the soil firmly in layers until the hole is completely full.

9. Remove 1/2 of the top immediately after planting.
10. Irrigate with 5 gallons of water immediately after planting. The trees should be watered once per week the first year. Do not allow trees to go over 3 weeks without watering. As growth reaches 6 inches in length, zinc sprays and one very small fertilizer application can be made.
11. The tree should be maintained weed free the first year.
12. Wrap the lower 18 inches of trunk with aluminum foil to prevent sunburn, rabbit damage and herbicide injury.
13. Never use a weed eater around pecan trees. They can cut through the bark and girdle the tree.

Rubber Stamps

The Newspaper Office
735-2562

OFFICE PRODUCTS Spotlight ON VALUE

JANUARY RECORD STORAGE SALE

ANDERSON HICKEY FILING CABINETS

Durable steel files. 25" depth, full suspension.

LETTER SIZE 2 Drawer Desert Sage (1621TL-DS) Black (1621TL-BK) Sand (1621TL-SD) 102.19 EA. REG. \$124.19	LEGAL SIZE 2 Drawer Desert Sage (1622TL-DS) Black (1622TL-BK) Sand (1622TL-SD) 116.05 EA. REG. \$140.68
---	--

4 Drawer Desert Sage (1641TL-DS) Black (1641TL-BK) Sand (1641TL-SD) 146.28 EA. REG. \$174.65	4 Drawer Desert Sage (1642TL-DS) Black (1642TL-BK) Sand (1642TL-SD) 173.33 EA. REG. \$206.78
--	--



FILE LOCK KIT
Readily installed in 1600 TL series files listed above. (15400)

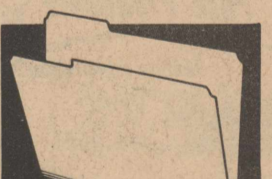
22.80 EA.
REG. \$27.14

FILE FOLDERS

Manila, third cut assorted. 100 per box.

ESSELTE/OXFORD
LETTER SIZE
(753-1/4)
5.96 BOX
REG. \$10.65

SMEAD
LETTER SIZE
(153L)
5.96 BOX
REG. \$10.95



ESSELTE/OXFORD
LEGAL SIZE
(753-1/4)
7.79 BOX
REG. \$13.99

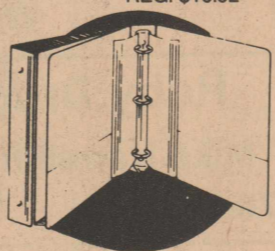
SMEAD
LEGAL SIZE
(153C)
7.79 BOX
REG. \$14.45

SPARCO VINYL-RING BINDERS

3-ring binders for 11" x 8 1/2" sheets.

1" CAPACITY Black (64140) Dk. Blue (64141) 1.95 EA. REG. \$3.40	3" CAPACITY Black (64490) Dk. Blue (64491) 6.60 EA. REG. \$10.92
---	--

2" CAPACITY
Black (64440)
Dk. Blue (64441)
3.65 EA.
REG. \$6.95



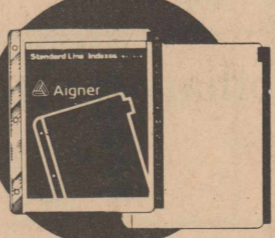
AIGNER RING BINDER INDEX

Red imitation leather tabs with gold characters. Reinforced edge, 3 hole punched. Buff paper. 11" x 8 1/2".

A-Z (I213)
2.18 SET
REG. \$2.90

MONTHLY (I213-12)
2.25 SET
REG. \$3.00

NUMERICAL (I213-31)
3.75 SET
REG. \$5.00



SMEAD SELF ADHESIVE FOLDER FASTENERS

Self adhesive or may be inserted in pre-punched holes for extra strength. 100 per box.

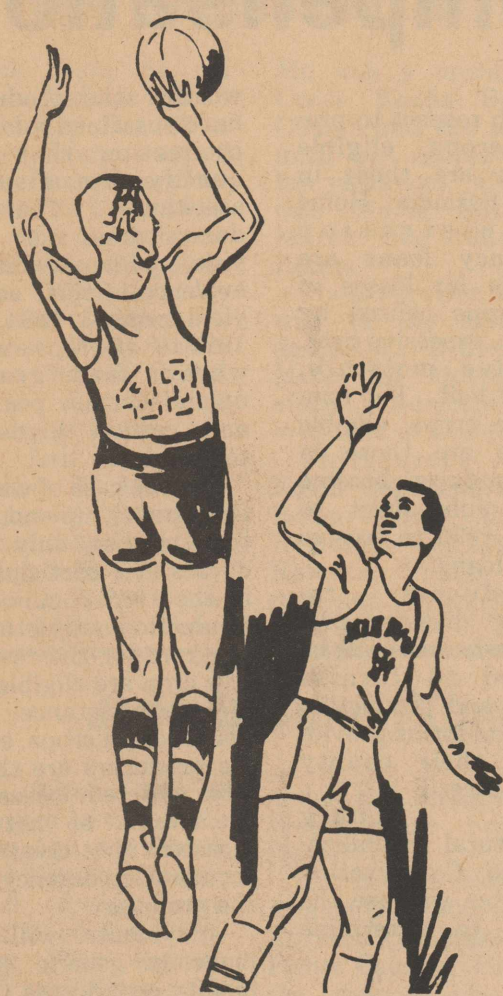
1" CAPACITY
(1ABF)
4.99 BOX
REG. \$7.50

2" CAPACITY
(2ABF)
5.79 BOX
REG. \$8.25

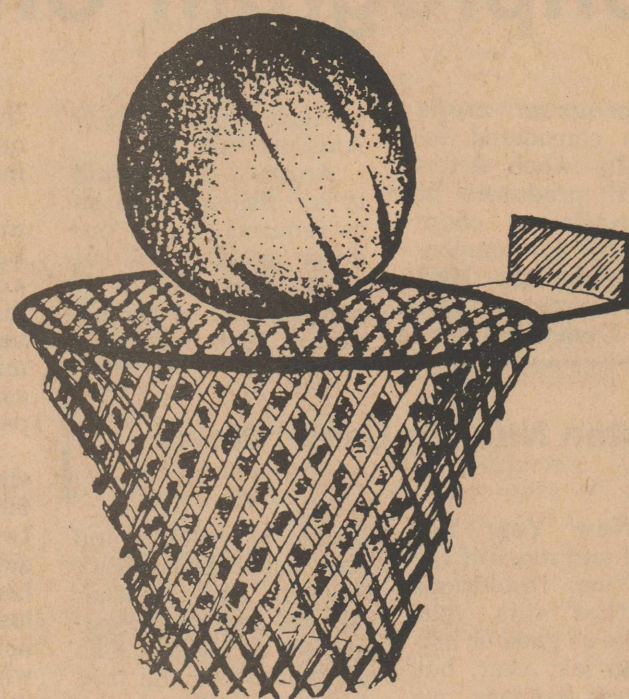
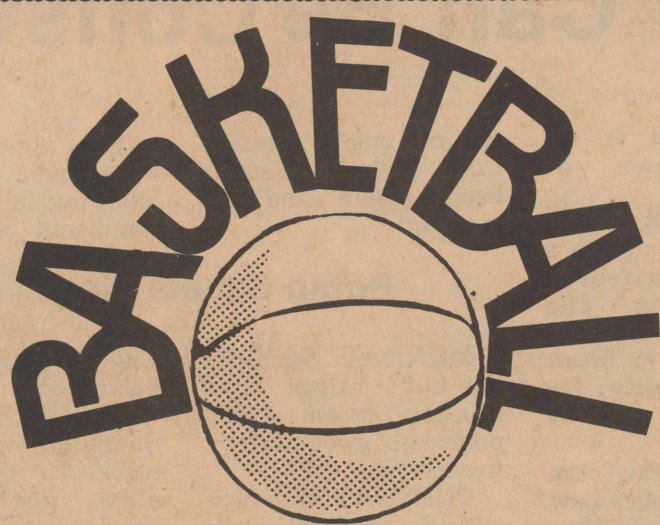


The Newspaper Office

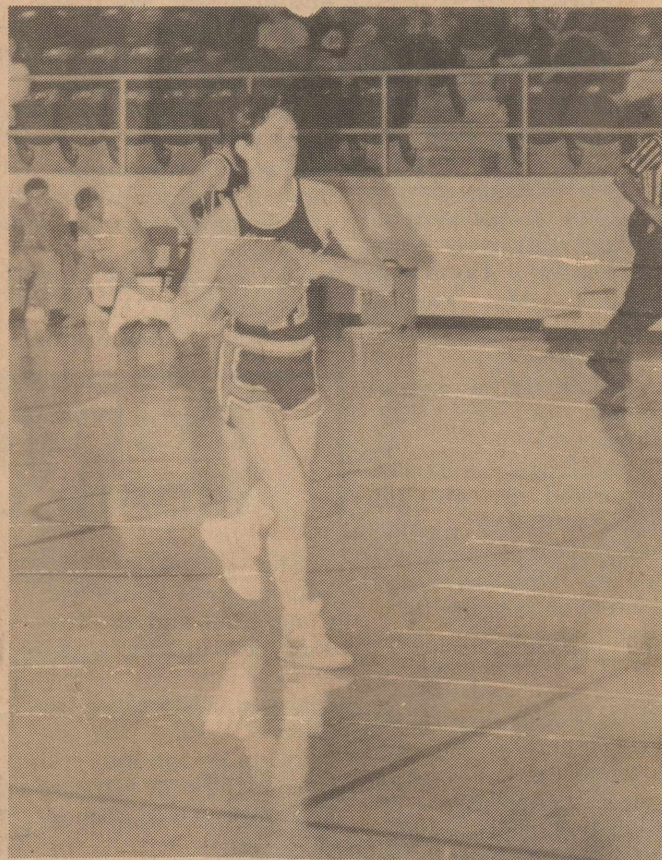
Rotan, Texas



**FISHER
COUNTY**



**SUPPORTING THE
ROTAN YELLOWHAMMERS
&
THE ROBY LIONS**



**Rotan
Yellowhammer
Basketball
Schedule**



January 9th
Jayton-Here-5:00
V-B&G-JV-B

**Roby Lions
Basketball
Schedule**



January 9th
McCaulley-There
V-G&B-JV-B

**Farmers Union
Co-op Gin**
Bud Guelker-Mgr.
776-2237
Roby, Texas

**National Bank
of ROTAN**
Member FDIC
'Your Dependable Bank
Of Service'
735-2224
Rotan, Texas

**Callan
Clinic**
Dr. M. Callan
Dr. B. LeBleu
735-2211
Rotan, Texas

Bennett
BW
Walls

**Rotan
Insurance**
Joe Burk-Agent
735-2571
Rotan, Texas

**Citizens
State
Bank
Member FDIC**
Roby, Texas

**Big 3
Pork Producers**
Johnny Edmondson
Owner
776-2661
Roby, Texas

Dr. Wayne R. Viehweg
Fisher County Doctors' Clinic
735-3611
Rotan, Texas

Silver Spur Cafe
Hwy. 180
Friday-Fish & Shrimp
Daily Plate Lunch
776-2744
Roby, Texas

**LADIES and GIRLS
FASHIONS**
**LIZZIE B's
EMPORIUM**
ELIZABETH BILLINGSLEY, owner
Hrs. 9:00 To 5:30
HAND-MADE,
SPECIALTY items

**Casa
Morales
Restaurant**
"Serving The Finest In
Mexican & American Foods"
735-2658
Rotan, Texas

**Midwest Electric Co-op
& Employees**
776-2244
Roby, Texas

Central Lumber & Supply
776-2371
Roby, Texas

Nu Tone Cleaners
115 W. Snyder
735-2552
Rotan, Texas

**Fisher County
Hospital
& Staff**
Gary McGee-Adm.
735-2256
Rotan, Texas

F&M Chevrolet-Buick
Yoke Fleming
Murl McKinney
735-2244
Rotan, Texas

ZONE 'N' TRIM
FIGURE TONING STUDIO
• hours by appointment
210 1/2 W. SNYDER
ROTAN, TEXAS 79546
ALTA HINSON
915-735-3514

FLOWERS
**Roby Flower, Fabric &
Gift Shop**
Erwin, Maxine & Michelle
776-2292
Roby, Texas

**KNIGHT'S
MEAT and LOCKER**
*Custom Processing
*Individual Meat Sales
From 1 lb. to 1,000 lbs.
OWNERS
D.L. Knight Herschel Shipp
217 W. Snyder
After Hours
735-2512
Rotan, Texas

Wynelle's Beauty Shop
Specializing In All Your
Beauty Needs
776-2233
Roby, Texas

Henry's Quick Stop
Gas, Ice, Deli
776-2330
Roby, Texas

H.L. Davis & Company
"The Friendly Store"
735-2591
Rotan, Texas

Gold Bond Building Products
Division Of
National Gypsum Company
Rotan Plant

Rotan Veterinary Hospital
1101 Cleveland
735-2491
Rotan, Texas

Video Village
*Complete Video Rentals & Movies
Tammie Stanford-Owner
Jean Stanford-Owner
735-2155
Rotan, Texas

PIZZA BARN
117 West SNYDER
phone 735-3537
ROTAN, TX.

Higginbotham-Bartlett
735-2215
Rotan, Texas

Roby Drug
Mike Harrell-RpH
776-2431
Roby, Texas

**Weathersbee Funeral
Home**
735-2241
Rotan, Texas

**Larry's
Automotive**
1210 N. Cleveland
735-2425
Rotan, Texas

Roby Hydro
Archie & Bettie Rivers
776-2240
Roby, Texas

Nathalie's
"Tomorrow's HEIRLOOM
TREASURES"
1111 CLEVELAND
ROTAN, TX. 79546
phone 735-3122

**Landes Furniture
Loys & Larry Landes**
735-3171
Rotan, Texas

1987 Fisher County Junior Livestock Show

Random Shots



Presented In The Interest Of Youth By;

Midwest Electric Cooperative

Ernest Adams, 81, Died Dec. 29

Ernest Adams, 81, longtime Rotan resident, died at 6:30 a.m. Monday, Dec. 29th at the Fisher County Hospital. Funeral services were held at 2 p.m. Tuesday, Dec. 30 at Weathersbee Funeral Home Chapel. Officiating was Rev. Steve Peace, pastor of First Baptist Church with burial in the Belvieu Cemetery of Rotan.

Mr. Adams was born May 1, 1905 in Houston County and moved with his parents, the late J.F. and Texanna Little Adams, to Fisher County in 1919. He married Bertie B. George, June 21, 1924, in Fisher County. Mr. Adams was a member of First Baptist Church and the

Fisher County Sheriff's Posse. He farmed in the Rotan area until his retirement.

Mr. Adams is preceded in death by a son, Paul in 1925, and one sister and four brothers.

He is survived by his wife; a daughter, Mrs. Eugene (Mary) Hudnall of Rotan; a son, Roy of Rotan; four sisters: Mrs. Jim Wallace of Abilene; Mrs. T.C. Adams of Tulia; Mrs. C.D. Hicks of Hawley; and Mrs. Ruple Morrow of Rotan; five grandchildren and eight great grandchildren.

Pallbearers were Barney Horton, Roy Eaton, Cass Lightfoot, Blair Berry, Billy Eaton and D. Bridges.

Hustling Around Hobbs

By Joy Walker

Happy New Year! We have been having some good cotton stripping weather this past week, and out this way everyone has really been busy. There are still some wet areas, but most of the fields are now dry enough for stripping, even if they are having to skip some of those boggy places.

mainder of the family. Mr. and Mrs. Billy Carter and three boys from Brownwood visited with the J.C. Caves on Friday; they went to Mrs. Edd Carter's on Friday night and then went home Saturday night. The Carters had their Christmas on Saturday. Loretta and Mr. and Mrs. J.C. Cave all attended the funeral of Lucy Kincaid on Friday.

Morris Hardin from Lubbock visited Sunday and Monday with his mother, Mrs. Bea Hardin.

Mr. and Mrs. Rudolph Martinez went to Snyder on Sunday and visited with Mr. and Mrs. Steve Warren and family.

Glenn Phillips from Post visited with Mrs. Opal Phillips on Friday,

and he and his mother both attended the funeral of Lucy Kincaid. Congratulations to Ricky and Melody Gordon on their new baby daughter who was born December 23rd in Sweetwater at the Rolling Plains Hospital. They named her Ricia DeeAnn. Congratulations also to the proud grandparents, Mr. and Mrs. Howard Gordon and Mr. and Mrs. Albert Hataway of Roby. Also to Dale and Doshia Cave who are the paternal great grandparents and Mrs. Othell Hataway of Snyder, who is the maternal great grandmother.

Congratulations to Debra and David Etheredge of San Angelo, on the birth of their new baby boy, who was born Tuesday, December 30th in San Angelo. He weighed 8 lbs. 5 ozs. and was 19 1/2 inches long; they named him Dustin Ray. Congratulations also to the proud grandparents, Mr. and Mrs. J.W. Etheredge and Mr. and Mrs. Teal of the Claytonville Community. Tuesday morning the J.W. Etheredges and the Randy Etheredges and Cody Wayne all went to San Angelo to be with David and Debra and the new baby.

and Tom parted company 41 years ago. Seemed funny to hear Jim called "Tex" again. Jim and I attended Lucy's funeral on Friday and then we went to

Abilene to watch the Rotan girls and boys play ACHS at their new gym; sure is a nice gym. Saturday we went to Roby and watched the 4-H calf show. Evette

Gruben, our granddaughter, showed one of her calves in the 4-H show. Well, this is about all for this week. See you next Thursday.

News From Down South By Bertha Warren

We were all saddened by the death of Lucy Kincaid. Our sympathy goes out to her family.

Charlie and Thelma Smith's guests for Christmas were Ted and Nell Smith and Penny, of Merkle, Kenneth Smith of Sweetwater, granddaughter, Jerri Kay and Bill Hall of Abilene, another granddaughter, Cindy and Ron Ronson and Rachel of Odessa.

Fannie Albert is in the Fisher County Hospital. She was taken on Friday and is still in the hospital today (Tuesday). We hope she will be able to come home soon.

Clair Kidd has moved to the Holiday Nursing Home in Sweetwater and she invited all her friends to come by and visit her for if you can't visit, drop her a card. She is in room 206.

Bobby and Frances Morgan's son, Robert, Melody and Brittany

Morgan of Graham came down for the Fisher County livestock show and for a visit.

Letha and Tommy Moyer and girls have returned home to London, England after spending the holidays with Bobby and Frances. Linda Clark of Pecos has the flu. Hope she gets to feeling better soon. Sure a lot of folks with the flu this time of year.

Lorene Henderson went to San Angelo for a check up and we're happy to report she received a good report.

Ed and Ollie Ogden went to Brownwood Friday to see George, Carolyn and Allen Ogden. They also got to see Greg, Becky, and Tyler of Midland. The men went hunting but with no luck. They returned home the same day.

Max and Melba Ratliff of Rising Star and Jewel Ratliff spent

Saturday evening with us. They spent the weekend with Jewel.

Trudy Whitworth had the grand champion Hampshire in the Sweetwater school livestock show and Sabrina got first place with the light weight Duroc. Congratulations to these young ladies. The Nolan

Co. livestock show will be Jan. 9th and 10th.

Circle and Mary Etta O'Donald's guests were Delbert and Melba O'Donald of Abilene and Orena and Alvin Melton of Snyder.

That's all for this week. Call and let us know what's going on in your world.

Rotan Girls Begin District Competition

The Rotan girls varsity basketball team, sporting a 14-2 pre-district record, played their first district game last Tuesday night and play Jayton in a home contest on Friday night, January 9.

In pre-district competition, Rotan suffered two losses-one at the hands of Aspermont in the Rotan tournament by two points and the other to perennial playoff contender Paint Creek in the Aspermont

tournament.

Over the holiday break Rotan defeated Anson by the score of 37-24 with Evette Gruben scoring 22 points in that contest and they defeated Abilene Christian 64-25.

In the ACS game, Evette Gruben had 18; Vikki Wright had 15; Jan Posey 6; Shanna Bennett 4; Lori Garcia 4; Millie Gaspar 6; Lucy Stinson 6; Jerri Lynn Boone 2 and DeeAnn Montez 3.

Country Basket

SALE \$1.89

Crisp, tender, chicken-fried fingers of 100% beef, golden fries, Texas toast and creamy country gravy. That's the one and only Dairy Queen Country Basket. So come on by for the Texas taste that's just this side of heaven—now at a heavenly sale price!

Monday, Jan. 5 thru Sunday, Jan. 18



NOW WITH FOUR NEW SAUCES

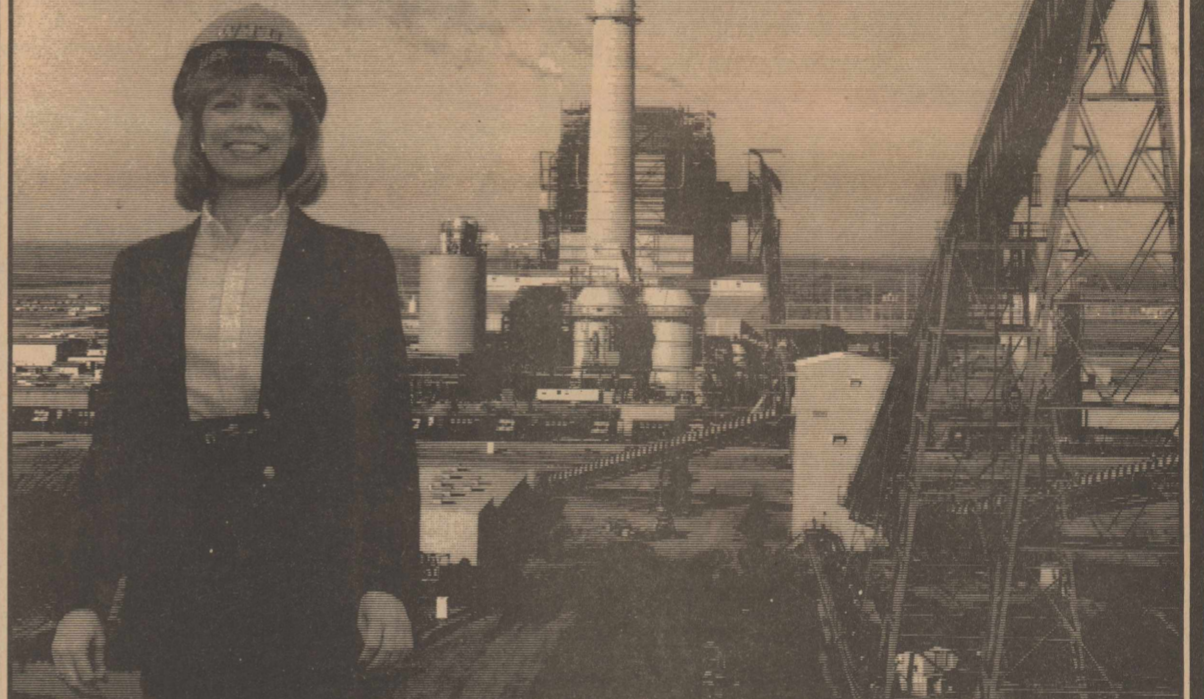
Dairy Queen

"better than ever."

at participating stores.

Reg. U.S. Pat. & TM. Off. © 1987 TX D Q Op. Council. Registered Trademark Am. D Q Corp.

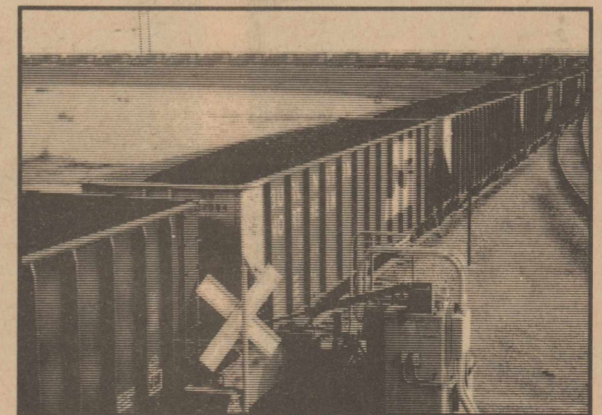
Oklaunion



Our Declaration Of Independence

WTU's new Oklaunion Power Station is a coal-burner and it's our "Declaration of Independence!" We're no longer dependent on just one source of fuel for our power plants. Natural gas has always been our main boiler fuel, and right now it is plentiful and fairly priced again. But recent history has revealed uncertainties about the future supply and cost of natural gas.

Our new "fuel mix" of coal and natural gas means cheaper energy for all our customers in the long run. In the short run, more stable fuel costs will help offset higher base rates necessary to pay for the new power plant.



Coal Delivery at Oklaunion



We're happy the Oklaunion Power Station is coming on line! It will be good for our Company and good for our customers!

FOR THAT BIG THIRST
Allsup's

Commemorative Mug

FILLED WITH YOUR FAVORITE FOUNTAIN DRINK

32 Oz.
Cup

FOR ONLY
Refills 49¢

99¢

ALLSUP'S DEEP FRIED & GOLDEN BROWN PERFECT FOR SNACK TIME ALLSUP'S

Corn Dogs

Onion Rings

59¢
EACH

59¢
ORDER

Shurfresh Margarine 1 LB. 3 For 99¢

BORDEN'S
Chocolate Milk QT. CTN. 79¢

BORDEN'S
Hi-Pro Milk 1/2 GAL. CTN. 99¢

BORDEN'S NUTTIE BUDDIES OR ICE CREAM SANDWICH 6 CT. PAK \$1.09

ALLSUP'S
CONVENIENCE STORES

PRICES GOOD JAN. 8, 9, 10, 1986
WHILE SUPPLIES LAST

Allsup's
Poor Boy
Sandwiches

99¢

Coca Cola, Diet Coke, Cherry
Coke Or 7 Up

16 Oz.
4 Pack

\$1.79

CONGRATULATIONS!

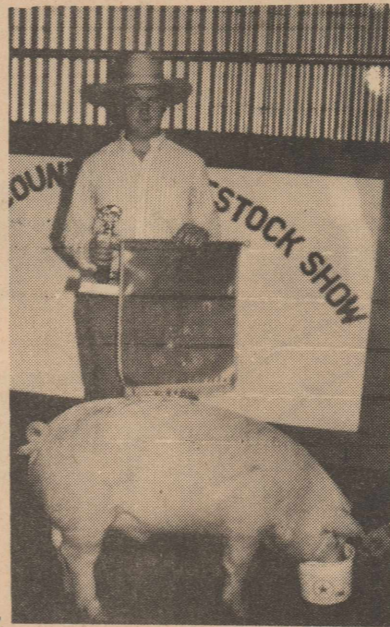
Congratulations 1987 Fisher County Livestock Show Winners



\$2,100

GRAND CHAMPION STEER

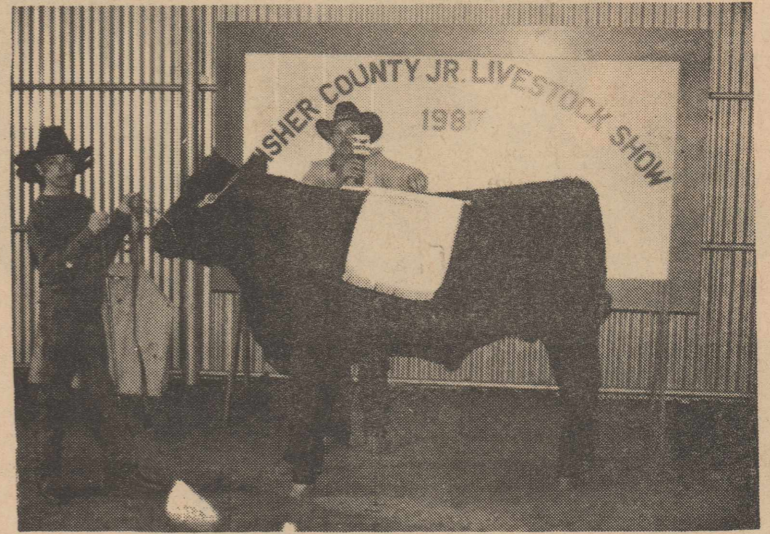
Owned By
David Shipp
Purchased By
Village Market



\$500

Grand Champion Hog

Owned By
Glenn Overby
Purchased By
Big 3 Pork Producers



\$1,770

RESERVE CHAMPION STEER

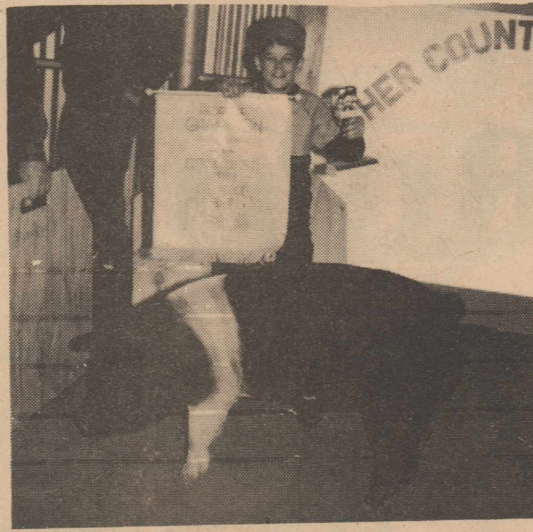
Owned By
Cody Smith
Purchased By
Thriftway Grocery



\$260

CHAMPION PEN OF RABBITS

Owned By
James Cathey
Purchased By
Citizens State Bank Of Roby



\$400

RESERVE CHAMPION HOG

Owned By
Tim Bob Smith
Purchased By
Farmers Gin Of Rotan



\$260

GRAND CHAMPION PEN OF BROILERS

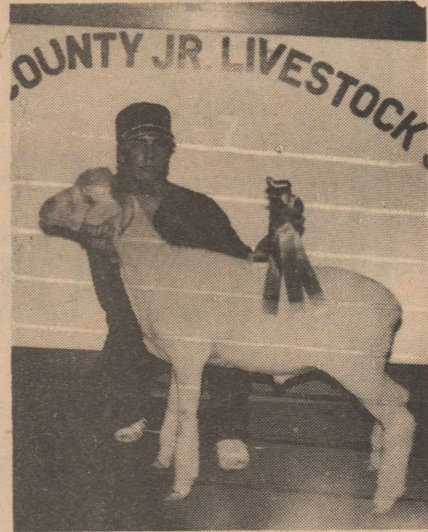
Owned By
Michelle Burk
Purchased By
Don Clayton Chevrolet



\$410

GRAND CHAMPION FINEWOOL CROSS

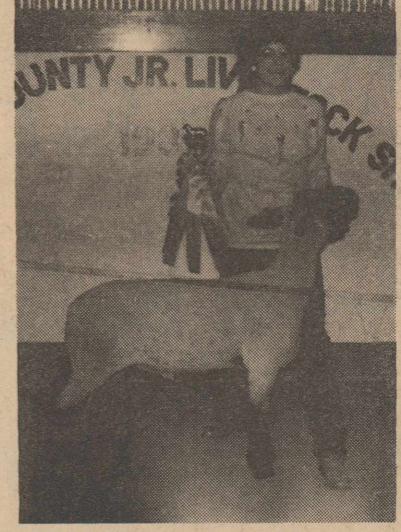
Owned By
Misty Kidd
Purchased By
Armstrong Implement



\$630

GRAND CHAMPION FINEWOOL

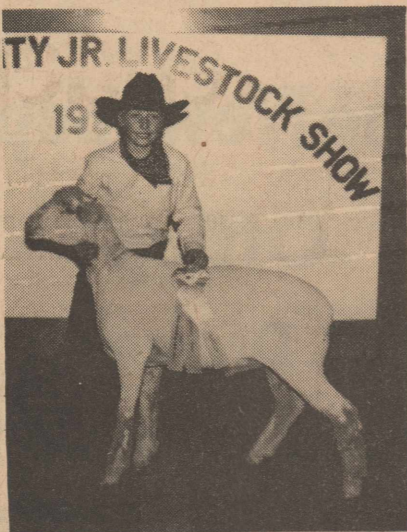
Owned By
Kenlee Dennis
Purchased By
Roby Drug & Robert Nemier



\$450

GRAND CHAMPION MEDIUM WOOL

Owned By
Jennifer Kincaid
Purchased By
WTU-Roby & Bennett-Walls



\$475

RESERVE CHAMPION FINEWOOL

Owned By
Jason Gruben
Purchased By
Farmers Union Co-op Gin Of Roby



RESERVE CHAMPION FINEWOOL CROSS

Owned By
Jason Gruben



\$520

RESERVE CHAMPION MEDIUM WOOL

Owned By
Brandy Long
Purchased By
Rotan Insurance Agency

This Page Sponsored By:

Upper Clear Fork Soil And Water Conservation District



It's Time To RENEW Your Subscription To The Rotan Advance Roby Star Record

**Check
Your
Mailing
Label
NOW**
If The Date
(Expiration)
Shown Reads
-Exp. 01/87-
**You
Must
Renew**

**PLEASE RENEW ALL
SUBSCRIPTIONS IN DECEMBER!**

**Fisher County
& Surrounding
Counties**
\$12.00 1 Year
Tax
Included
\$32.40
3 Year Rate

**Texas
Subscribers**
\$15.77 1 Year
\$42.58
3 Year Rate

**Out Of State
Subscribers**
\$17.00 1 Year
\$45.90
3 Year Rate

Mail Subscription
Renewal Forms To:
**The Newspaper
Office**
P.O. Drawer A
Rotan, Texas 79546

SUBSCRIPTION
RENEWAL FORM

PLEASE PLACE YOUR MAILING
LABEL HERE

NEW

GIFT

RENEWAL

SUBSCRIBERS NAME _____

ADDRESS _____

CITY _____ STATE _____ ZIP CODE _____