

WEATHER

July 27	92	62	.00
July 28	89	62	.00
July 29	93	64	.00
July 30	90	57	.00

# BAILEY COUNTY JOURNAL

The Community Of Opportunity-Where Water Makes The Difference



Vol. 26, No. 30

12 PAGES TODAY

Published Every Sunday At Muleshoe, Bailey County, Texas 79347

20¢

Sunday, July 31, 1988

## CofC Agrees To Coordinate City's 75th Birthday

### Mule Day Celebration Will Benefit West Plains Hospital

In a special, called meeting of the board of directors of the Muleshoe Chamber of Commerce and Agriculture late Thursday evening, approved coordinating a 75th Anniversary Celebration, commemorating the 75th Birthday of the City of Muleshoe.

Less than a quorum was present from the board, but those present unanimously agreed the CofC should coordinate such an effort.

Following lengthy discussions, the board of directors decided to coordinate a 75th Anniversary celebration in conjunction with the annual Bailey County West Plains Fair. Pat Moore, employee of the Bailey County Extension office said Friday morning that September 8-9-10 are the dates for the fair this year, which will be held at the Bailey County Civic Center.

It was determined that the CofC manager, Mrs. Toni Eagle, and her secretary, Sharon Langford, would coordinate the birthday activities.

In 1963, when the 50th Birthday celebration was held, a week long celebration brought thousands of people to Muleshoe for daily or nightly activities.

At that time, different civic clubs and social clubs handled all the activities, which were coordinated through the Chamber of Commerce.

Tentative plans call for businesses being encouraged to have their employees in period costumes; for business windows to be painted; banners across the

highways; a gigantic birthday cake.

A suggestion for the cake is for local women to bake a square or rectangular yellow cake, take it (uniced) to a predetermined location where all the cakes will be put together and iced and decorated into a gigantic birthday cake.

Other suggestions included booster tours to other towns; special balloons; a box supper in the city park; a domino and '42' tournament for those interested; a watermelon seed spitting contest; a washer pitching contest; a miniature golf tournament; kids' activities at some location in town and perhaps other activities throughout the celebration.

Also, *The Muleshoe Journal* will be publishing a special Silver Jubilee edition of *The Journal* and will be including many, many historical items from back issues of *The Journal* to 1924.

The special issue will probably be printed for Thursday, September 8, although the original plans had called for Thursday, August 11.

It is presumed that the CofC office will be issuing press releases as plans are finalized.

#### MULE DAYS CELEBRATION

Also meeting with the CofC board was Jeff Smith, accompanied by his wife, Andra.

Smith told the group that for the last couple of years, Mule Days has "come up very short. It lost \$2,000 in 1986 and broke even in 1987."

He asked, "Is the town interested in having Mule Days? if so, I need some help! It has grown so big now, and I am putting in a new business, and will probably be moving from Muleshoe."

He also told the group that for the last couple of years, he has received '0' in donations from local businesses.

In 1987, some very expensive events were cut out, such as the hot air balloons, the old fiddler's contest and other events that cost a lot of money.

"Also, at this point," he added, "some people are burned out, like Rex Black, who has coordinated the mule rodeo every year since it started. We are drawing good crowds, but it takes people to put it together."

Smith said there will be a Mule Day Festival this year, but it will not be in the magnitude it has been in the past.

After some discussion, it was decided that all proceeds from Cont. Page 6, Col. 4



\*\*\*  
The Texas Department of Agriculture would like to know who would be willing to donate hay from CRP acres, if they are able to recover their baling costs of approximately \$30 per ton.

Secretary Lyng has made this allowance in Minnesota and the TDA expects Texas farmers will also be allowed to help their neighbors, too.

So that TDA can know how much acreage will be available, please call the 1-800-DIAL HAY program.

\*\*\*  
MAC (Muleshoe Activities Committee) will be hosting a partner-low ball tournament at the Mule Putt Golf Course on Monday night, tomorrow.

Partners will be drawn prior to tee-off at 7:30 p.m. Registration gets underway at 6:30 p.m.

MAC Bucks and trophies will be presented the winners.

\*\*\*  
Jarrah Redwine of Muleshoe, representing Parmer County 4-H, placed 10th in working cow horse in the open division of the 26th annual Texas 4-H state horse show in Abilene July 25-30 at Taylor County Expo Center.

About 800 4-H youths from across the state competed in 30 events at the annual state show, largest of its type in the nation. Top entries advance to the 4-H southern region championship August 8-11 in Baton Rouge, La.

\*\*\*  
Meals on Wheels is seeking drivers for Thursday noon and Friday noon.

If you have one to one and a half hours you can volunteer on these days, please contact Robin Taylor at 272-3196.

Your pay will be the satisfaction of knowing a senior citizen or disabled person, or persons, receives a hot meal at noon.

\*\*\*  
The next MAC drawing will be on Saturday, August 6, at 2 p.m. at the corner of Main Street and Avenue C.

This month, the drawings will be for \$25, \$50, \$75 and \$100 in MAC Bucks, which are spendable at around 40 Muleshoe businesses.

Be ready for the drawing next Saturday.

\*\*\*  
With the 1988-89 football season approaching, members of the Muleshoe Athletic Boosters Club are seeking signature ads Cont. Page 6, Col. 3



**BUSY WOMEN AT ANNUAL JAMAICA**--Sunday, these women were very busy in the kitchen at the Catholic Center, preparing and selling tamales to hordes of hungry people. Pictured from left are Clara Flores, Conchita Estrada, Betty Rejino, Josefina DeLaRosa, and Esther Ybarra. Each year, their tamales are one of the main attraction at the celebration, which draws hundreds of people from throughout the area. Music, fun and games, along with fantastic food were featured all afternoon. (Journal Photo)

## Local Youth In Workshop On 'Living On The Moon'

The moon has no atmosphere, no oxygen, no gravity and no air. This makes it difficult to live there but scientists aren't ruling that possibility out altogether. Students attending the "Living on the Moon" workshop at Eastern New Mexico University at Portales, recently learned about the concept of living on the moon and the changes in lifestyle it would entail.

Twenty-four students stared in awe at slides of the different faces of the moon as Dr. Gary Rolison narrated. "Are there diamonds on the moon?" "Where did the craters on the moon come from?" and "Where did the moon come from?" are just some of the questions the 4th-6th graders asked the assistant professor of physics.

The workshop was limited to those who scored in the 95th percentile or above on a standardized test, whose IQ was determined to be 125 or above on IQ tests, or those who had a teacher's recommendation.

In his presentation, Rolison explored the social, biological, aesthetic and work needs of a person in becoming a lunar settler. "If you live on the moon,

you cannot have a conversation with anyone on earth," he pointed out. There is a two second delay in voice transmission which means that a response would take four seconds to be heard. Some psychological experiments with people subjected to two-way delay in conversation while talking on the phone showed a considerable change in the flow of communication.

According to Dr. Rolison, research proved that "the conversation became confused and formal, you could talk but the sharing and spontaneity of conversation was not there."

Rolison also illustrated the different theories of the origin of the moon and its relationship with earth. The fission theory is that the moon and the earth formed together, the capture theory is that the moon formed somewhere else and was captured

### Bus Driver School Set Next Week

In accordance with Texas law, school bus drivers will undergo training in Muleshoe next week.

David Gray, instructor, said classes get underway at 1 p.m. in room 16 at Muleshoe High School.

He said any person employed to drive a school bus in the state of Texas, is required to complete a Bus Driver Training Course. Once completed, the driver must periodically take a refresher course.

On Monday, the school will conclude at 5 p.m. On Tuesday, school hours are 1-6 p.m.

Wednesday, the school begins at 1 p.m. and will conclude at 6 p.m. Thursday's hours are 1-5 p.m. and on Friday, the last day of school, it will be conducted 1-3 p.m.

Gray said he will be utilizing both classroom and actual driving of the buses during the five day school.

He said his instructions will not only include the basic driving course, but will also include a refresher course for the 20-hour school.

To register, call 272-3086 or 272-4412.

ed by the earth's gravitational pull. Some scientists also believe that the moon formed when a piece of the planet mars collided with earth.

Another element to be looked at when considering life on the moon is the presence of the many craters there. "Does nothing hit the moon anymore?" asks Dr. Rolison. The answer was yes, Dr. Rolison explained that probes from lunar landings determined that 80 to 150 probes from lunar landings determined that 80 to 150 meteors hit the moon every year. These meteors are anywhere from one-fourth of a pound to a ton in weight.

The lecture explored the need for a lunar habitat that would "protect you from the environment while allowing you to interact with it." Rolison pointed out, much to the dismay of his students, that on the moon, "you can't go outside and play."

With all the reasons why we shouldn't live on the moon, why are earthlings still considering it? Dr. Rolison believes that people want to know what's there, minerals and such, and to better study the stars, "astronomy is no fun on earth, the atmosphere is in the way."

Mason Conklin, son of Norris and Beckye Conklin of Muleshoe,

Cont. Page 6, Col. 3

### Special Singers Will Visit Here At New Nazarene

On Sunday, July 31, the Lighthouse Singers from Dimmitt will be presenting the morning services at the New Vision Nazarene Church in Muleshoe at 10:30 a.m.

A fellowship will be held at the church following the services.

The Music Ministry of Frank and Joyce Taylor of Dimmitt; and their three sons, David on the lead guitar; Ricky on the bass guitar; and Mike on the drums. Their daughter, Tawnya, will be on the omnichord. Rev. Frank Taylor will be on the accordion and guitar. Also assisting with the singing will be Joyce Taylor, and their daughters-in-law.

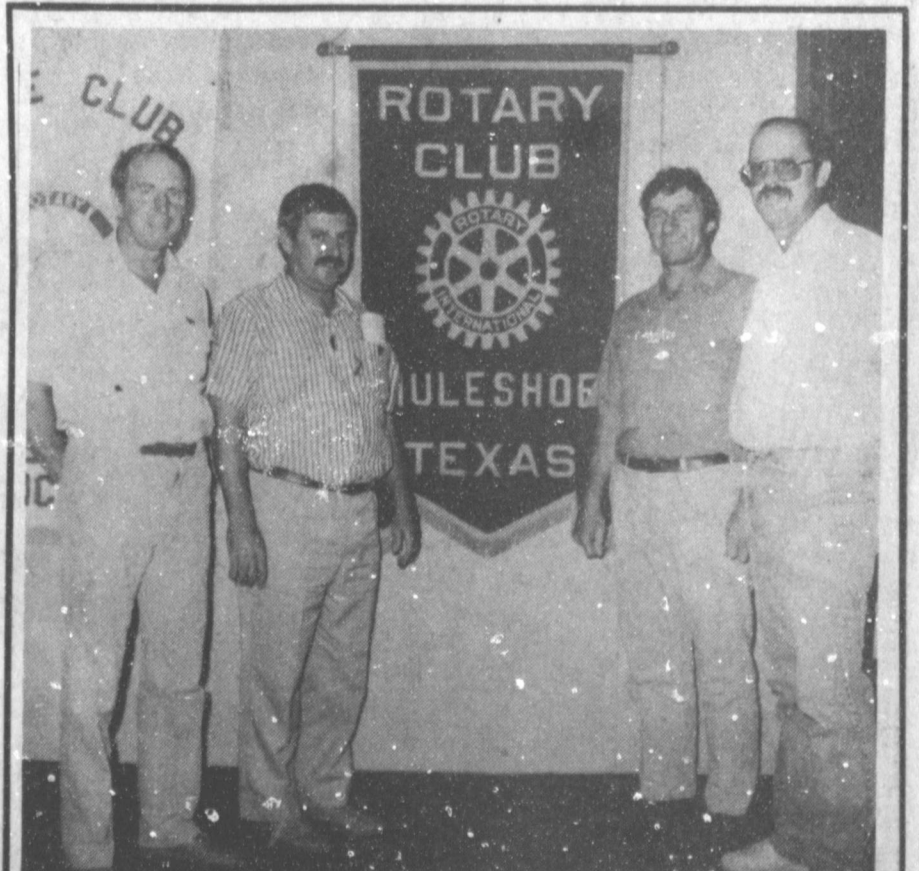
All interested persons will be welcome at this special service.

## Montgomery Resigns Presidency

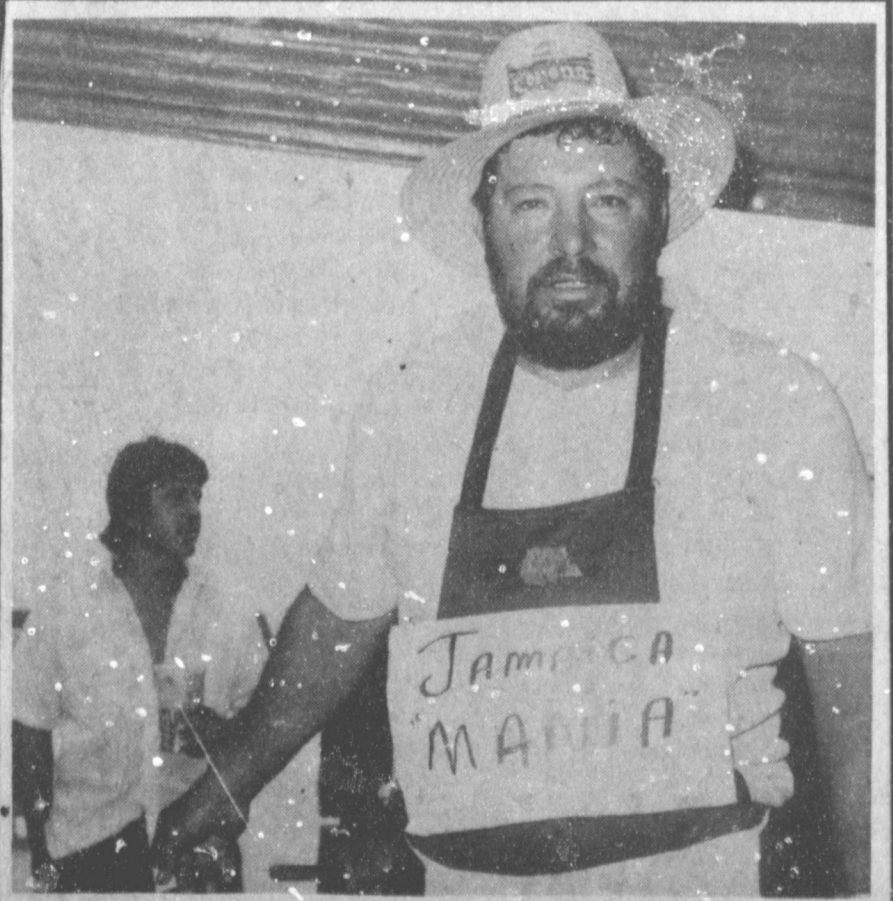
Ron Montgomery, seven months into his second term as president of the Muleshoe Chamber of Commerce and Agriculture confirmed at mid-afternoon Friday that he resigned Friday morning as president of the CofC.

In a telephone conversation with Montgomery, he said that the pressure of business was causing him to do "less than an adequate job as president."

"If I can't devote the proper time to the job (as CofC president) then I needed to resign," he said.



**AUSTRALIAN VISITORS AT ROTARY**--Tuesday at noon, several Australian farmers and wool producers attended the Muleshoe Rotary Club and spoke on Australian agriculture. Pictured from left are Kingsley Green, Trevor Smith, A. Clinton Lockhart, and Kansas wheat farmer, Ed Swenson. (Journal Photo)



**READY FOR ACTION**--Jose Triana may or may not be properly attired for the Jamaica Sunday afternoon, but the sign he was wearing on his apron may have 'said it all.' He was busy cooking all afternoon Sunday for the hungry people at the annual celebration. (Journal Photo)

# Lifesaver

LIFESAVER IS CLOVIS HIGH PLAINS HOSPITAL'S QUARTERLY NEWSLETTER

TOM CAMMACK, Administrator

ANITA WESTBROOK Editor

## BECAUSE WE CARE...

A new administrator, expansion and re-rubishment of the Intensive Care/ Coronary Care unit, development of a complete wellness program for all ages, a new Auxiliary Outpatient Emergency Room Greeter program, and additions to the medical staff headline the accomplishments of fiscal year 1988.

### CAMMACK SETTLES IN

Tom Cammack assumed the post of administrator of Clovis High Plains Hospital July 13. "Working with medical staff, CHPH managers and trustees has been very rewarding," he commented. "All of us are interested in not only continuing our reputation for quality, but expanding the services we provide to our community." Since arriving in Clovis Cammack has become involved in the community through the Chamber of Commerce Board of Directors, Curry County United Way, Rotary Club and Executive Club.

### ICU RENOVATION

An additional swing bed for ICU patients and/or after-hours recovery patients was added to the ICU, and the entire area was refurbished. "The addition of glass doors to four ICU beds, as well as acoustical material for sound control, has greatly helped in noise reduction for ICU patients," according to Karen Tibbs, RN, department manager for ICU. "Not only is the area aesthetically pleasing, but it provides a more quiet and restful atmosphere for patients."

### HEALTH PROMOTION

"People can improve the quality of their lives by taking more responsibility for their own health." This is the premise behind the health promotion program at Clovis High Plains Hospital.

As a part of Health Net New Mexico, wellness campaigns included Tobacco Free workshops and clinics, Eat Right's educational and behavior modification series, and Get Fit exercise programs.

Work sites were developed throughout the community and 617 people signed up for the Eat Right program; 472 signed out and 306 people lost weight, for a total of 1773 pounds lost: almost a ton of fat in Clovis. Three Freedom From Smoking classes were taught for adults, and numerous school presentations were made to students of all grade levels as a part of Tobacco Free New Mexico. Get Fit's exercise program focused on walking as the exercise of choice; CHPH's Mall Walkers monthly programs were a part of this effort.

Public health fairs and corporate health screenings were also a part of the wellness program. Over 400 people were screened for blood cholesterol levels; cardiac risk questionnaires; nutritional counseling; cancer risk screenings; blood pressure screenings and diabetes screenings were also provided.

Additionally, CHPH participated in Diabetes '87, a statewide health promotion, and provided free diabetes screenings to 621 area residents at the hospital. Of that number, 91 individuals were referred to physicians for follow-up.

As a part of the wellness focus, CHPH administration and staff implemented a "Smoking Limited to Designated Areas" policy at the hospital. Now only patients can



PRIDE NURSING AWARDS... LEE SMITH, assistant administrator (l), and PAT BAKER, RN, emergency department, are congratulated by TOM CAMMACK, administrator, for receiving the PRIDE nursing awards. Baker received the nursing award for excellence and Smith received the nurse manager award for excellence. PRIDE awards are given annually to a selected few outstanding nursing personnel in the SCHS system.

smoke in patient rooms (with some restrictions) and visitors may smoke in one of only five areas: cafeteria, coffee shop, ICU Smoking Waiting Room, ER Waiting Room, and courtyard outside day surgery.

"Staying Healthy After Fifty" is a wellness program designed for seniors through promoting awareness, encouraging a healthier lifestyle, and offering constructive suggestions to an individual responsible for her or her own health management. The 11-session, six-week program is taught by community volunteers Winnifred Conner, Lois Cox, Charles Pruet, Dick Sullinger and Vernon Mills.

### NEW AUXILIARY SERVICE

In April, the Auxiliary volunteers began the Outpatient/Emergency Room Greeter Program. According to Dorothy Jones, Coordinator of the program, this service satisfies several different needs.

Anyone entering the hospital through the Outpatient/Emergency entrance will be greeted by an Auxiliary. The Auxiliary will direct visitors to patient rooms, and can help patients register and escort them to the proper department for lab or radiology work.

The volunteers can be found comforting waiting patients, providing wheel chairs, and keeping information flowing to family members.

CHPH salutes the Auxiliary volunteers for recognizing and addressing these needs.

### MEDICAL STAFF GROWS

Drs. Dik Cheung, John Haller, Bruce Cross and Joaquin Rico joined the medical staff during the past year. Dr. Dik Cheung comes to Clovis from Fort Hood, Texas where he was associated with the Darnell Army Community Hospital. Dr. Cheung is certified by the American Board of Ophthalmology. His practice is located at 912 West 21st Street.

Dr. John Haller, a general and vascular surgeon, joined Associated Physicians, located at 2211 N. Thomas. He comes to Clovis from Jacksonville, Florida, where he was a staff surgeon at the Naval Hospital.

Dr. Bruce Cross, obstetrician/gynecologist, joined the practice of Moss, Boese and Abshire in September. Dr. Cross was formerly the Chief of Obstetrics/Gynecology at the USAF Hospital at Cannon Air Force Base. His office is located at 912 West 21st.

Dr. Joaquin Rico, anesthesiologist, joined Clovis Anesthesia Associates, 1600 W. 21st, Suite C, and began providing anesthesiology services in March, 1988. Dr. Rico was formerly with Indian Health Services in Gallup.

HOSPITAL STATISTICS	FY 1987	FY 1988*
Total inpatient admissions	4,866	4,678
Total patient days including newborns	28,455	26,548
Average daily census	76.2	72.5
Percent of occupancy	71.8	68.4
ICU admissions	410	395
Surgeries	3,631	3,874
Emergency room visits	8,770	9,024

### REVENUE AND EXPENSE STATEMENT

	FY 1987	FY 1988
<b>OPERATING INCOME</b>		
from patient billings and other income	\$23,857,728	\$25,879,591
<b>ADJUSTMENTS to income, for free care, bad debts, and Medicaid/</b>		
Medicaid allowances, were	\$ 7,015,410	\$ 7,956,319
<b>TOTAL INCOME, then, was</b>	<b>\$16,842,318</b>	<b>\$17,923,272</b>
<b>EXPENSES we incurred for such things as salaries, supplies, property maintenance, depreciation and interest, etc.</b>		
	\$14,603,589	\$15,916,603
<b>REVENUE available for capital equipment expansion, improvements for patient care, and new services</b>	<b>\$ 2,238,729</b>	<b>\$ 2,006,669</b>

\*Fiscal Year ends March 31, 1988

## THE PEOPLE AT CLOVIS HIGH PLAINS HOSPITAL

### BOARD OF TRUSTEES

Harry Eastham, Chairman	Stephen Haynes, MD
Dr. Jay Gurley, Vice-Chairman	Sam Neff, MD
Tom Cammack, Secretary	Carl Thompson
William E. Brack	Flora Urioste
Edith Brown	Lila Dotson, Emeritus
James Cammack	Helen Stimms, Emeritus
Cleo Carpenter	Lois Worley, Emeritus

### ADMINISTRATION

Thomas Cammack Administrator	Lee Smith Assistant Administrator
---------------------------------	--------------------------------------

### DEPARTMENT MANAGERS

John Caley, CRNA Anesthesia	Martin Kos Maintenance	Beulah Mattingly, RN Pediatrics
Ardis Nuzum Business Office	Anita Westbrook Marketing	Catherine Fuehring Personnel
Keith Risdon, RRT, RCP Cardiopulmonary	Leroy Nuzum Materials Management	E.G. Abernathy, RPH Pharmacy
Diane Cassell, RN Emergency Department	Diane Martin, RN Medical Unit	Jerry Jacobs, PT Physical Therapy
Lyn Henderson, RN Hemodialysis	Helen Schuster, RRA Medical Records	Michael Luscombe, RT Radiology
Barbara Oriik, RN Home Health Care	Virginia Barboza, CMSC Medical Staff	Jean Marie Hilvers, MSW Social Services
Karen Tibbs, RN Intensive/Coronary Care	Harry Barnes, RD Nutritional Services	Sharon Henderson, RN Surgical Unit
Katherine Thomas Housekeeping	Camille Jackson, RN Acting Manager	Joe McPherson, RN Women's Unit
Monty Owens, MT(ASCP) Laboratory	Operating Room	

### MEDICAL STAFF

<b>ANESTHESIOLOGY</b>	<b>OBSTETRICS/GYNECOLOGY</b>
Joaquin Rico, MD	Lynn Abshire, MD
<b>DENTISTRY</b>	Bruce Cross, MD
Kennedy Merritt, DDS	C.L. Davison, MD
Jacob Moberly, DDS	<b>OPHTHALMOLOGY</b>
<b>FAMILY &amp; GENERAL PRACTICE</b>	R. Joe Cannon, MD
Oswald Graham, MD	Dik Cheung, MD
William Green, MD	Arthur Weinstein, MD
G.A. Wilson, MD	<b>ORTHOPAEDIC SURGERY</b>
<b>GENERAL SURGERY</b>	Fred Hensal, MD
Robert Boese, MD	Jose Velez, MD
John Haller, MD	<b>OTORHINOLARYNGOLOGY</b>
Allan Haynes, Sr., MD	(Ear, Nose, Throat)
Stephen Haynes, MD	Nicholas Rowley, MD
Samuel Neff, MD	<b>PATHOLOGY</b>
<b>INTERNAL MEDICINE</b>	Dorothy Lee, MD
Obadiah Ferrari, MD	<b>PEDIATRICS</b>
Harry Loree, MD	Salvatore LaFata, MD
James Moss, MD	Thien T. Luu, MD
Pasupathy Padmanabhan, MD	Hoyt McClintock, MD
Brian Willmon, MD	<b>RADIOLOGY</b>
<b>NEUROSURGERY</b>	Martin Goodwin, MD
Haq Babur, MD	C. Thomas Hill, MD
<b>UROLOGY</b>	Michael Rowley, MD
Allan Haynes, Jr., MD	Earl Tyler, MD



Rodeo Days Tours... Marsha Pearson, thirteen-year-old pediatrics patient, enjoys a visit with this year's Pioneer Days Rodeo Clowns and Rodeo Queens. Each year the rodeo entertainers visit patients of all ages at CHPH.



# Miss Carroll, Watson United In Marriage



MRS. DENNIS LEE WATSON  
(nee Deborah Faye Carroll)

Miss Deborah Faye Carroll became the bride of Dennis Lee Watson at 3 p.m. Saturday, June 25 at the Church of Glad Tidings in Austin. Rev. Vic Schober, pastor, and the Rev. Tommy Thompson of Ft. Worth performed the ceremony.

Parents of the bride are Mr. and Mrs. Doyle Carroll of Galena Park. Watson is the son of Mr. and Mrs. W.E. Meyers of Muleshoe and Mr. and Mrs. Leo Watson of Lubbock.

Wedding vows, written by the couple, were exchanged in a setting of candlelight created by an arch of candles flanked by seven-branch votive candelabras. Recessed above the arch, white tapers in brass candelholders were arranged to outline the entire setting before a trellis background and brass plant stands of Boston fern. Hurricane lamp candelabras lined the processional and recessional aisles. Garlands of smilax, palm branches, baby's breath, white candles and bows of white ribbon were used throughout to express the atmosphere of solemnity.

Beneath the arch a double kneeling bench was placed for the couple to kneel facing each other to receive communion as their first sacrament of marriage.

Kathy Stewart of Austin, played traditional processional and recessional selections. Soloist, Marty James of Austin, sang "Parent's Prayer" as the groom escorted his mother and the mother of the bride to light individual candles beside the unity candle before they were seated. Other selections "For Always" and "Household of Faith" were sung by Marty James and Leona Ikelberry. They were accompanied by flutist, Arleta Green and violinist, David Young.

Presented in marriage by her father, the bride chose for her special day a gown of white satin with re-embroidered lace designed by Eve Musico for Miami. The fitted bodice, adorned with hand beaded lace and sequins, featured modified leg of mutton sleeves and a high neckline of applique lace inlaid with tear-drop pearls. From the V-waistline fell a full graceful skirt, adorned with lace heart motifs

## Jennyslippers

### Re-Schedules

### Ice Cream Social

Muleshoe Jennyslippers met at noon Tuesday at the library for a brown bag luncheon and by-monthly meeting. Sandi Robinson, president elect, was in charge of the meeting and Evelyn Peat read the minutes of the previous meeting, in the absence of the secretary.

It was announced that the ice cream social has been re-scheduled for Tuesday, Aug. 23 at the Putt Putt course.

Everyone was reminded that all Jennyslippers are to wear their red vests to the noon meeting at the Depot on Tuesday, Aug. 9. A group picture will be made for the history book "Tails and Trails of Bailey County".

Judges of the "Garden Spot of the Week" were named and are as follows: Nelda Merriott, chairman, Evelyn Peat and Vivian White.

A discussion was held on giving a door prize at the fair, which is scheduled for Sept. 8, 9, and 10.

It was voted to sponsor skating this fall on the Friday following the first Jennyslipper meeting each month.

Thursie Reid celebrated her birthday Tuesday and the birthday song was sung.

and bordered by re-embroidered lace, which swept from a large lace bow at the waist into a scalloped train of cathedral length.

Her veil of multilayered shimmering illusion, outlined with a band of white satin ribbon, was softly gathered to a caplet of white organza petals entwined with strands of pearls. She carried a cascade of white silk roses, pink rosebuds, and baby's breath entwined with strands of pearls and streamers of white ribbon. She wore pearl earrings which were a wedding gift from the groom.

Mrs. Lannis Jenkins, of LaPorte, sister of the bride,

## Earth Quartet

### Entertains

### Senior Citizens

Bailey County Senior Citizens met Monday, July 25 for their regular covered dish luncheon. Marvin Sanders from Earth gave the invocation.

There were 36 present including 11 visitors, Marvin and Oleta Sanders, Charlie and Annie Lee Miranda, Donald Runyon and Mrs. Maxsey, all from Earth; Lou Knowles' granddaughter, Rennee Pipins from Arlington, TX; Maurine and her granddaughter, Heather Hooten; Velma Guinn and Rose Sain.

There are two new members, Bob and Irene Dilts. Mr. and Mrs. Elmer Cornelison of Lubbock were also present.

Following the luncheon, Mae Wiltzling had charge of the program and she introduced the quartet from Earth, accompanied by Mrs. Maxsey at the piano.

They sang ten numbers including: "I Want His Song to Be My Song", "Lord I Want To Be Ready", "The Darkest Hour Comes Before Dawn", "I Want To Be More Like Jesus", "God Watches Over Me", "My Burdens Rolled Away", "Love Took It Away", "Love Beyond Compare", and "His Blood Has Made Us One". Also a solo by Marvin "He Touched Me".

It was reported that the Senior Citizen Jamboree will be August 19 from 9 a.m. to 3:30 p.m. in the Lubbock Memorial Civic Center Exhibit Hall.

Mrs. Clara Coffman was elected as "Outstanding Senior Citizen".

Minutes of the previous meeting were read and approved.

The birthday song was sung for Opal Robinson, who was absent in June when she had her birthday.

Cards were sent to Clifton Finley and Ray Edwards.

Bob Dilts gave the dismissal prayer.

served as matron of honor. Bridesmaids were Miss Maria Gomez of Austin, Mrs. Winn Cantwell of Austin, sister of the groom, Miss Karen Hafer of Houston, and Mrs. Heather Jenkins of LaPorte, niece of the bride.

They wore gowns of rose moire taffeta featuring V-neckline, both front and back, full pleated sleeves and gathered tea length skirt. Each carried a bouquet of delicate rose and blue silk flowers.

Angeia Cantwell, niece of the groom, served as flower girl. She wore a dress of white satin and Chantilly lace with a Southern Belle skirt which swept into a demi-train.

Joel Brather of Ft. Worth served as best man. Groomsmen were Gary Eiland of Dallas, Charlie Cantwell of Austin, brother-in-law of the groom, Marty James of Austin and Steve Hutsell of Ft. Worth.

The groom was attired in a formal white tuxedo and his attendants wore silver gray tuxedos with rose bow ties and cummerbunds. Usher, Dale Von Heeder of Austin, was assisted by the groomsmen. Brett Cantwell, nephew of the groom, was ringbearer and was dressed in a white tuxedo.

Following the ceremony, a reception was held in the fellowship hall of the church. Guests were greeted by the couple and their parents before a white trellis background with palm trees placed throughout the area and a pair of white doves nearby. Near the gift table decorative stands and hand decorated baskets held blue and rose roseettes.

The bride's table was covered

in white lace and draped with garlands of smilax and baby's breath and featured a silver punch bowl, silver candelabra with rose tapers and a bouquet of pink gladiolas. The four-tier bride's cake, served from a separate table, was decorated with fresh alstromerias, pink roses and baby's breath and was mounted above a pink flowing fountain. Those who served were Regina Ward, Christy Wolther, Kathy Tomison and Donna Shepherd.

Candy Reimer and Pam Sanders served at the groom's table which was covered with white lace over blue and featured a silver coffee service and German chocolate cake surrounded by garlands of smilax and fresh fruit. A four-tier arrangement of fresh fruit complemented the table.

Following a wedding trip to Estes Park, Colo., the couple will make their home in Austin.

The bride received a bachelor of science degree from the University of Texas at Austin and teaches second grade at Desau Elementary School in Pflugerville.

The groom earned a bachelor's degree in finance from Texas Tech University and is employed as a loan officer for Austin Municipal Federal Credit Union.

Friends and relatives attended from Houston, Dallas, Ft. Worth, San Angelo, San Antonio, Plainview, LaPorte, Amarillo, Waco, and Pasedena.

A rehearsal dinner was held in the fellowship hall of the church. The theme of Texas was carried out with table accents of bluebonnets and Texas emblems to compliment the menu of barbecue with trimmings.

## Harper Family Annual Reunion Held At Littlefield

The annual reunion of the "Jeff and Nancy Harper" family was held in the Southwestern Public Service Willie room of Littlefield on Sunday, July 10.

Approximately seventy attended bringing along their basket lunches of home cooked goodies, which it was reported that everyone enjoyed.

Entertainment was stories of family history fun-incidents told by older members of the family. Lewis Harper of Sudan told the younger farmers of the family how "Pa" Harper planted his first grain crop with Georgia-stock plow pulled by a yoke of oxen in Alabama in 1892. He invented a planter box which he made with a gallon syrup bucket. One hole was made in the bottom of one side of the bucket which turned as the plow was pulled, this dropped a grain at regular distance of 16 to 18 inches apart, making a grain crop of about 25 acres which "P" was very proud of.

her fun story of "Today's Senior Citizens".

Donations were made to accommodate a fund for the purpose of buying small markers for the seven unmarked graves of the "Loved Ones" buried in the Harper block in the Newlin Cemetery.

Beth Harper Vaughn and family, daughter of Roy Lee Harper, traveled the most miles coming from Collinsville, Ill. Special guests who made the event more pleasant were "Old Time" neighbors of the Harpers, Gladys Helm Read and Annie Margaret Helm Clark of Lubbock, Jane Bird Nichols and Jack Withrow of Littlefield.

Allen and Ethel Beale were recognized for receiving a special plaque award for outstanding Senior Citizens of the Sudan Booster Club.

Those immediate family members attending included: Maude Harper and family of Sudan, the Felton Harper family of Muleshoe, the Lewis Harper family of Sudan, Ella Harper Gresham family of Munday, Mozell Harper, Skinner Spruill family of Amarillo, and Gennie Bell Harper and Ed Fowler of Hereford.

Edwin Harper served as the year's president, treasurer and LaQuita Williams Weaver of Amherst served as secretary.

Wally Kos... COSMETICS  
In Stock  
Josie Flowers  
(806)272-3865

Entire Remaining Stock Of  
Summer Merchandise  
**1/2**  
Sale Starts Saturday, July 30th  
Lookin' Good  
206 Main Phone 272-5052

**BREAST CANCER DETECTION UNIT AVAILABLE TO AREA WOMEN**  
Saturday, August 13, 1988  
Muleshoe, Texas  
A Service of West Plains Medical Center

A mammogram can detect a cancer this small, ●  
A female technologist who is highly trained in mammography will perform the examination.  
The charge for the screening is \$50.00.  
The Unit accepts cash, checks, Visa, Mastercard and American Express.  
For more information or to make an appointment call Vickie at 272-4524  
Saturday, August 13th, 9 a.m. to 7 p.m.

Bailey County Journal USPS 040-200  
Member 1988 TEXAS PRESS ASSOCIATION  
Member NATIONAL NEWSPAPER ASSOCIATION PANHANDLE PRESS ASSN. WEST TEXAS PRESS ASSOCIATION  
E.B. Hall, President & Publisher  
Sammy Hall, Vice President & Controller  
Cleta Williams, News  
Evelyn Harris, Society  
Dorset Branch-Advertising  
Lillian Nims-Bookkeeping  
SUBSCRIPTIONS:  
Muleshoe Journal and Bailey County Journal  
Bailey and surrounding counties  
Muleshoe Journal and Bailey County Journal  
Elsewhere in Texas \$3.75  
Muleshoe Journal and Bailey County Journal  
Outside of Texas \$16.50  
Yearly by Carrier \$12.00  
Advertising rate card on application.  
Advertisers should check their ad the first day of insertion. The Journal will not be liable for failure to publish an ad or for a misprint or error in publication, except in the case of the first day of the ad for the first day of insertion. Adjustment for errors will be limited to the cost of the portion of the ad which the error occurred.

**CLEAR THE RACKS!**

All Summer Merchandise  
Men's Shop & Ladies' Apparel - Junior & Missy

**50-75% OFF**

**JEANS by JAY**

MasterCard 1015 W. 2nd Portales 356-3787  
2 Blocks From ENMU VISA



CARREN AND CODY BLACK

## Baby Shower Honors

### Mrs. Black, Cody

Cody Garrett Black, son of Clifford and Carren Black, was honored with a baby shower Saturday, July 23 in the home of Barry and Jo Ellen Cowart. Jo Ellen and Robin Cowart

greeted the guests as they arrived between the hours of 10 and 11:30 a.m. Robin Cowart registered the guests.

The hostesses served bran and blueberry muffins and a fruit tray from crystal and china appointments.

A baby blue table cloth with an embroidered overlet covered the serving table which was adorned with a bouquet of blue balloons. Mrs. Black was presented a corsage consisting of a baby rattle with blue ribbon.

Special guests included Mrs. Ann Moore, grandmother, Mrs. Gladys Black, grandmother, Mrs. Vicki Black, aunt, and Debbie Green, aunt.

The hostesses gift was a Fisher Price car seat. Hostesses for the occasion included Jo Ellen Cowart, Nancy Barrier, Nancy Benham, Suzanne Nichols, Lena Gartin, Pam Hancock, Linda Turner, Juana Shelbourne, Sherry Kennedy and Janette Burden.

### In Fashion

A silky shawl in a bright contrasting color adds sophistication to evening dresses featuring sweetheart necklines and strapless tops.

Why not create a new look with last year's suit? For black suits choose colorful shoes with matching pantyhose in emerald green, pink or violet.

Black and white cotton gingham checks are smart in summer wear.

## MHS 1953 Graduating Class Holds Reunion

The Muleshoe High School graduating class of 1953 held their 35th reunion Saturday, July 2 in the Bailey County Civic Center.

The afternoon visiting began at 4 p.m. The tables were decorated with centerpieces depicting the "50's" theme of confetti, the small bottled coke, records, sunglasses—all created by Rosemary Bell. The registering table was decorated with a floral arrangement of red, white, and blue. Letters, pictures, and memorabilia from those unable to attend were displayed on a bulletin board.

Billie Downing reported that the meal was catered by the Muleshoe Rebekah Lodge.

Roald "Buck" Johnson was master of ceremonies for various presentations including one to Allen Turner for travelling the farthest distance to attend, and Bill Aylesworth for entertainment on behalf of "Pots; Cline". Others receiving awards were Rosemary (Stinson) Bell, Betty (Chisholm) Klaehn, and Billie (Redwine) Downing.

Class members and their husbands/wives who attended were: Jim Burkhead and Betty (Dalton) Burkhead of Albuquerque, N.M.; Sam and Mamie (Freeman) Bussey from Amarillo; Buck and Carolyn Johnson from Austin; Wil and Betty (Chisholm) Klaehn of Midland.

And Norma (Graves) Waggoner from Clarendon; Alan and Dottie Turner from Kingsville, TX; Bill and Martha (Thomas) Aylesworth from Clovis, N.M.; George and Bessie (Griffin) Elder from Dimmitt; Cleve Bland and Frances (Toten) Bland; Maxine (Black) Rogers, Jody Blaylock from Ft. Worth, TX; Wendell and Maudie (Coffman) Speck; Rosemary (Stinson) Bell; Clinton and Evelyn (Sowder) Peat; Howard and Judy Watson; Wanda

(Anders) Dudley; Lonnie Ellen Nickels, from Lovington, N.M.; Elmer and Billie (Redwine) Downing; and Joe Simnacher and grandchildren.

"Several members then enjoyed the musical entertainment by the Baker Brothers Band in the coliseum arena area" said Mrs. Downing.

The class will again hold their reunion in 1993.



MULESHOE HIGH SCHOOL GRADUATING CLASS OF 1953

### Three Way News

By Mrs. H.W. Garvin

The home of Mrs. Ted Simpson was the scene of a bridal shower Sunday afternoon honoring Martha Cobb, bride elect of Wayne Parkman.

We wish to express our sympathy to Mr. and Mrs. Pete Tarlton on the death of Mrs. Tarlton's sister, Jerry Henndon, of Memphis. She died Thursday in Methodist Hospital. Funeral services were held in Crosbyton Saturday afternoon.

Beadie Powell and Ravanell Todd visited Mrs. Rayford Masten Monday. Beadie Powell now lives in Lubbock and Mrs. Todd lives in Levelland, both lived in our community several years ago.

## Congratulations!



Iris-N-Ariel

on your

First  
Wedding  
Anniversary

from your parents,  
Celia Lopez

&

Mr. & Mrs. Evaristo Sanchez

### Who Knows?

1. Is ordontodynia contagious?
2. For what is Henry Bacon best known?
3. Name the Treasure State.
4. What results when hydrogen is burned?
5. What is a williwaw?

### Answers to Who Knows

1. No, it's a toothache.
2. He was the architect of the Lincoln Memorial in Washington, D.C.
3. Montana.
4. Water forms.
5. A violent, cold wind blowing from mountains to coast in far northern or southern latitudes.

## Welcome To Muleshoe



WELCOME MR. AND MRS. JOHN HIME AND FAMILY---We would like to take this opportunity to introduce you to John Hime, the new service manager at C&H Equipment. John has been in Muleshoe since February and his wife and children have joined him in Muleshoe within the last month. The Hime family is from Bangs, Texas. He says his hobbies include fishing and water skiing. John's wife, Kathy, has graduated from Howard Payne University in Brownwood where she was taking secretarial courses. In her spare time Kathy enjoys water skiing and needlepoint. John and Kathy have three children; Cindy, 13, an 8th grader, John, 8, a 3rd grader and Kristy, age 6, 1st grade. The children like to swim, ride bikes, skate, and Cindy likes basketball. Since arriving in Muleshoe the family has been attending First Baptist Church.

## James Crane Tire Co.

322 N. 1st

GOODYEAR

272-4594

Henry Insurance Agency

111 W. Ave. B.

272-4581

Damron Rexall Drug

308 Main

272-4210

# Rip's

Western Wear  
In Texico

314 Wheeler Street

482-3363

BOOT CAPITAL OF THE SOUTHWEST

ALL FIRST QUALITY  
NO SECONDS  
NO IRREGULARS  
THOUSANDS OF PAIRS

OUR LARGEST BOOT SALE EVER

ALL JUSTIN ROPERS.....	79.98
LADIES' TEXAS ROPERS.....	44.98
ELEPHANT BOOTS starting at.....	139.98
SHARKSKIN BOOTS starting at.....	109.98
BULL HIDE BOOTS starting at.....	89.98
ALL LEATHER WORKBOOTS starting at.....	79.98

Also

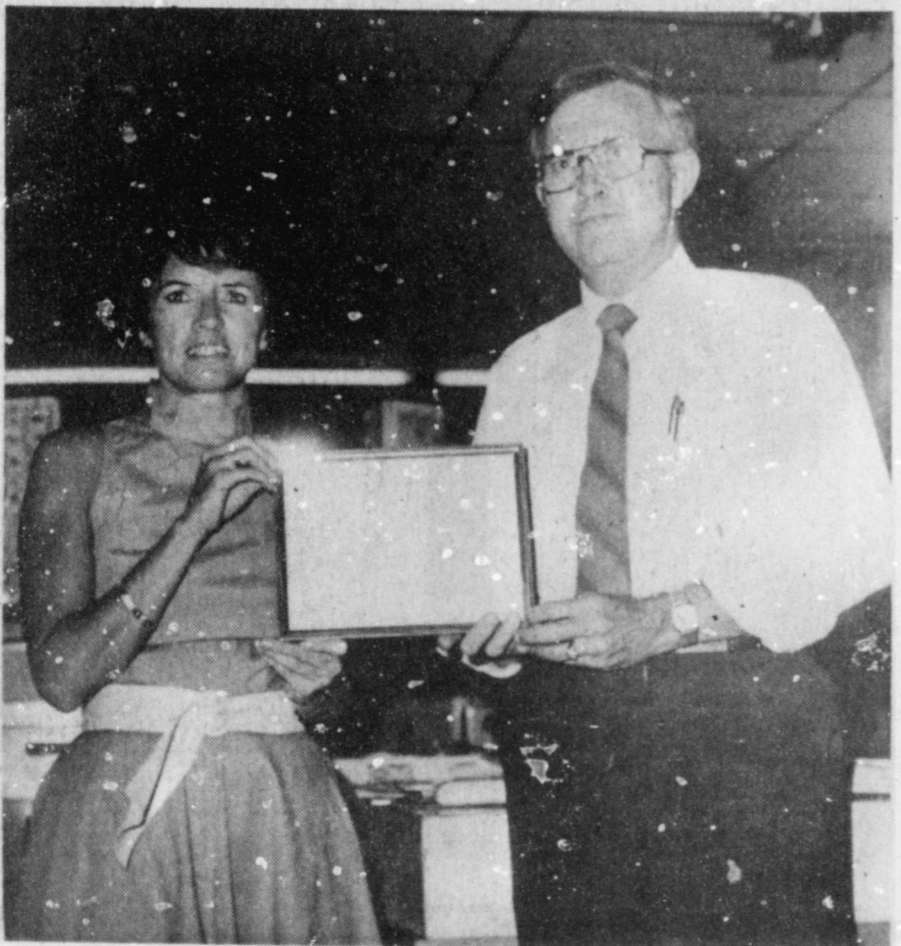
<p style="font-size: 1.2em; margin: 0;">ALL STRAW HATS</p> <p style="font-size: 1.5em; margin: 0;">30% off</p>	<p style="font-size: 1.2em; margin: 0;">ALL FELT HATS</p> <p style="font-size: 1.5em; margin: 0;">20% off</p>	<p style="font-size: 1.2em; margin: 0;">LAYAWAYS WELCOME</p> <p style="font-size: 1.2em; margin: 0;">COMPLIMENTARY GIFT WRAPPING</p> <p style="font-size: 1.2em; margin: 0;">Open 8:00 A.M.-6:30 p.m. c.d.t.</p>
--	---	--

WE ACCEPT

MASTERCARD  
VISA  
DISCOVER  
AMERICAN EXPRESS



**JULY BUSINESS OF THE MONTH**--Daria Rhodes and Staci Baldwin, far left, and center, accepted the certificate designating Joe's Boot Shop as Business of the Month for July. Toni Eagle, manager of the CofC, right, made the presentation. (Journal Photo)



**COFC MEMBER OF THE MONTH**--Friday morning, Jerry Hailey, left, was presented a certificate as Muleshoe Chamber of Commerce and Agriculture 'Member of the Month' for July. He is the owner/operator of the Muleshoe Ben Franklin store. Making the presentation was Toni Eagle, CofC manager. (Journal Photo)

## Around Muleshoe

Cont. from Page 1

for the football programs this year.

If you would like to be included, at a one time cost of \$10, call Doris Palmer at 272-3734.

Or, you may mail your \$10 to Muleshoe Athletic Booster Club at 1610 West Avenue D, Muleshoe.

A special meeting of the Board of Trustees of the Muleshoe Independent School District has been called for Monday, August 1, at 7:30 p.m. in the school administration building.

H. John Fuller, superintendent, said items on the agenda will include to consider athletic insurance policy for the 1988-89

### Workshop...

Cont. from Page 1

was one of the 24 students who attended the "Living on the Moon" workshop. He was among students participating in various activities dealing with the concept of living on the moon and attended lectures on the subject.

### Senior Citizen

#### Advisor Speaks

#### To Kiwanis Club

By: R. A. Bradley

Eight members and one guest met Friday morning at the Old Corral. In the absence of President Keith Turner, who is on vacation, R. A. Bradley called the meeting to order.

J' Don Kube led the club in the pledge to the flag and Lyndon Huckaby gave the invocation. Merlyn Neel, who has the friendship coin, was absent, and we presume he is still looking for a friend. Most of our members are away on vacation before school starts again.

Guest Friday morning was Glen Williams. Glen is the coordinator for the Community Service Advisor office, which is in the courthouse. They assist in the Senior Citizen care -- Meals on Wheels -- Veterans -- Indigent Care, etc.

Glen told about some of the things his office does for this community. Glen is very active in community affairs and has always been. This community is very fortunate to have Glen.

The Meals on Wheels program needs volunteers to help deliver these meals. If enough people could help, it would only take about one hour per week to help deliver the meals. Please consider and volunteer.

The Kiwanis Club presented Glen with a \$100 check for the Senior Citizen program.



Who's This?

school year; gasoline bids and employment contracts.

Assistant Superintendent Tom Jinks has been named interim superintendent while the Muleshoe Independent School District seeks a new superintendent.

Staci Vandiver Marchand, daughter of Mr. and Mrs. Butch Vandiver of Muleshoe, graduated from Abilene Christian University recently.

### Birthday...

Cont. from Page 1

the Mule Day Festival would be given to West Plains Medical Center -- who would 'fit' under the Mule Day Festival Foundation guidelines, as a non-profit operation.

According to Board member Bob Stovall, after being informed that 2,000 people were fed at the celebration last year, and most of them being from out of town -- "If it pulls that many people, especially from out of town, I think the Chamber needs to get behind it."

Board members present informally agreed to take over the Mule Days Festival after this year.

The Muleskinners plan a trail ride on Friday, August 12; followed by the actual Mule Day Festival activities on Saturday, August 13.

The annual celebration will wind up on Sunday with a mule show at the arena two miles east of Muleshoe on Highway 70. The Muleskinners will be hosting both the trail ride and the mule show.

CofC board members present at the meeting included Ron Montgomery, president; Bob Stovall, Ronald Ashford, Gene Atkins, Ray Day, Jerry Hailey and Jeri Wiedebush, along with CofC manager, Toni Eagle.

Also attending the meeting were Jeff and Andra Smith, and Cleta Williams.

ed from Abilene Christian University recently.

Marchand received a bachelor of science degree in nursing.

The Fourth Annual MDA Golf Tournament, sponsored by Town & Country Food Stores, will be held Saturday, August 20, through Sunday, August 21, at Elm Grove Golf Course. The tournament is a two-man, low-ball event and entry fee is \$80. The entry fee includes green fees and awards dinner.

Trophies and plaques will be awarded in four flights: championship, first, second and third place. Tournament coordinator, Tony Snook, stated that major prizes will be awarded throughout the event, too.

Entry deadline is August 17, and registration can be placed at Nevada Bob's or Elm Grove Golf Course.

All net proceeds will benefit the Muscular Dystrophy Association.

## Enochs News

By:  
Mrs. J.D. Bayless

Mrs. Brenda George of Lubbock and Mrs. Dolores Mosser of Slaton took their mother, Mrs. E.N. McCall, to Ft. Sumner to attend the funeral service of her aunt, Pearl Knighten, at the First Baptist Church there.

Mrs. Bill Key visited in the home of Mr. and Mrs. Homer Edwards at Pep, Texas Thursday.

Mrs. Ellen Bayless was in Muleshoe Tuesday morning and visited Mrs. Clara Coffman, Mrs. Juanita Snow and Jim Swanner.



**MAKING A BIG SPLASH**--One of the big attractions at the annual Jamaica at Immaculate Conception Catholic Church Sunday afternoon was the dunking board. Tommy Lucero makes a bit, big splash as he hits the water. (Journal Photo)

# SUPER \$2 REBATE

## ON SUPER PREMIUM 15 YEAR WARRANTY JONES • BLAIR PAINT!

Polyflex Latex House Paint

Fade Resistant  
Resists Flaking, Peeling  
and Blistering

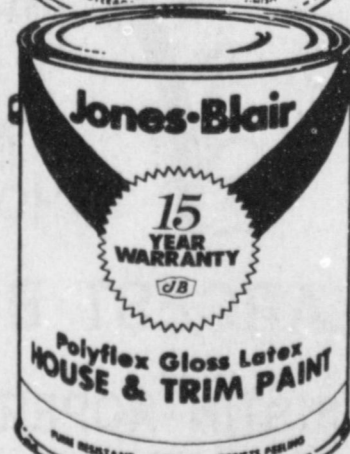


Satin-x Latex Wall Paint

Easy to Apply  
Splatter Resistant  
Washable  
One Coat Coverage

Glamor Latex Satin Enamel

Finest Latex Wall & Trim Paint Available  
Splatter Resistant  
One Coat Coverage



Polyflex Latex House & Trim

Medium Gloss Finish  
Fade Resistant  
Resists Flaking, Peeling  
and Blistering

Save \$2 per gallon  
Up to \$20 on 10 gallons  
Only through August 26, 1988

SEE DETAILS IN OUR STORE

"Professional Advice and Service"

Higginbotham-Bartlett

215 Main

"The Friendly Ones"

272-3351

## Family Night

Wednesday

2 medium, single topping  
pan or thin pizza

\$10.99

Treat yourself to the BEST  
Soup & Salad Bar

only \$1.99

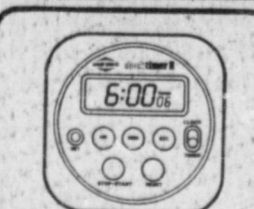


1412 W. Amer. Blvd.  
Muleshoe  
272-4213



True Value  
HARDWARE STORES

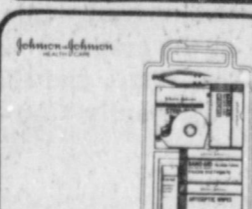
BARGAIN  
OF THE MONTH



5.99  
ClockTimer II counts up or down to 24 hrs. Also a digital clock. Colors. With batt. 40029  
QUANTITIES LIMITED

True Value  
HARDWARE STORES

HARDWARE  
VALUE  
OF THE MONTH



6.97  
First Aid Handyman Pac incl. 72 first aid items plus eye wash and pads. With guide. #153  
QUANTITIES LIMITED

True Value  
HARDWARE STORES

True Value  
OF THE MONTH



2.99  
Brass Combination Padlock guards lockers, bikes and sheds--in a snap! #00018  
QUANTITIES LIMITED

Fry & Cox, Inc.

401 S. 1st

272-4511



215 Main

"The Friendly Ones"

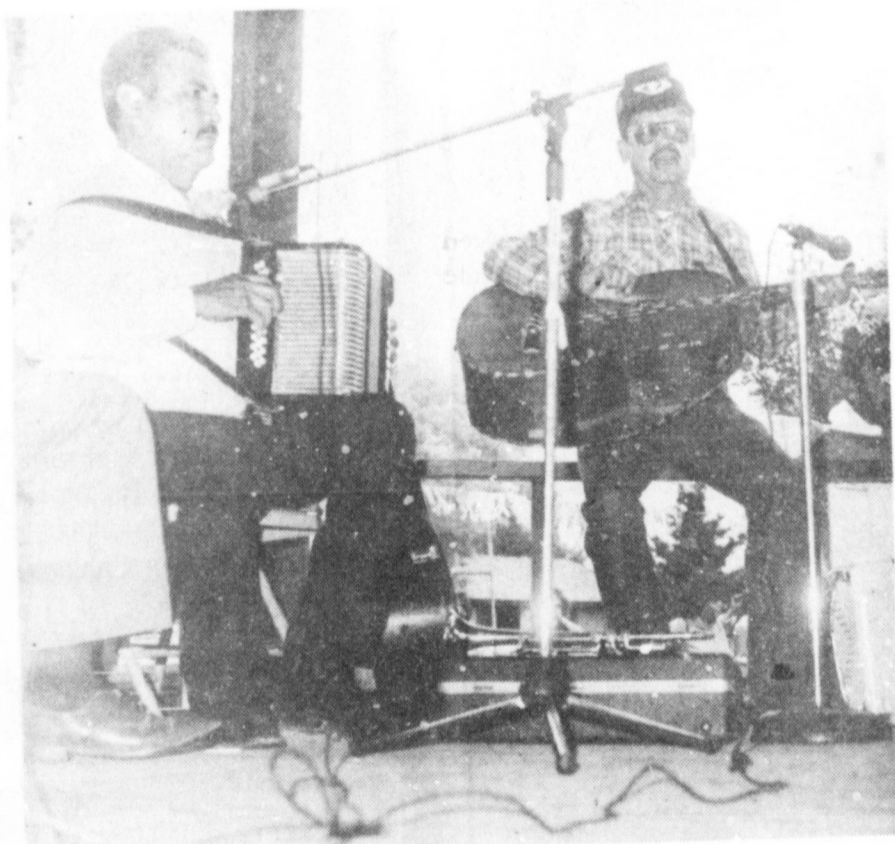
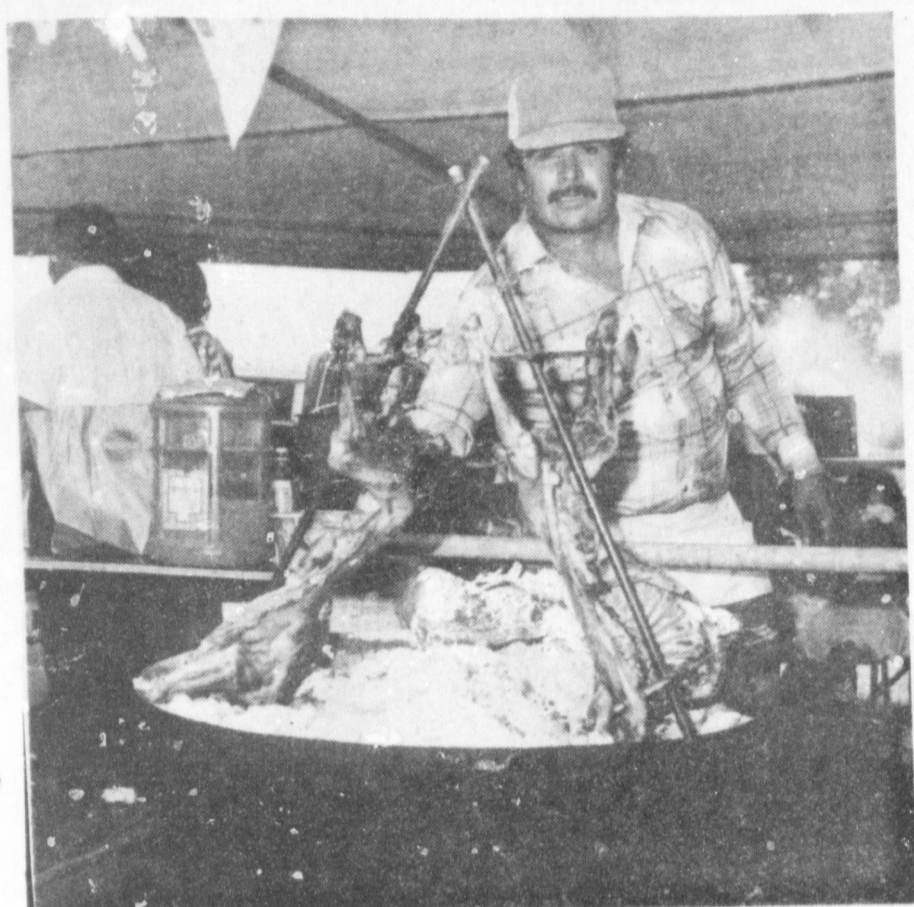
272-3351



272-3351

# Scenes From The Annual Jamaica At Immaculate Conception Catholic Church

Sunday, July 24, 1988



**Enochs News**

By: Mrs. J.D. Bayless

\*\*\*  
Sid Key took Rev. and Mrs. David Graves to Lubbock last Sunday to catch the plane to Houston where he had eye surgery. We are so thankful it was a success. They returned to Lubbock, her mother, Mrs. Nova

Louise, met them at the plane Friday and they spent the night with her and she brought them home Saturday. Last Saturday an uncle, Jack Reuton, from Albuquerque, N.M. came for the Graves' children, Sidney, Tonya and David and they spent the week with him and his wife. He brought them home Saturday.

\*\*\*  
Winnie Byars attended her family, the Roller family, reunion last Saturday at Lubbock. All

seven of her brothers and sisters were present. There were 150 relatives and friends in attendance.

\*\*\*  
Mrs. Ollie Cook of Levelland died at 2:00 p.m. Saturday. We express our sympathy to the family and friends of Mrs. Cook.

**SPS Gives '88 Dividend Share Rate**

The Board of Directors of Southwestern Public Service Company (SPS) declared a regularly quarterly dividend of 53 cents per share on common stock and regular quarterly dividends on all series of preferred stock.

The dividend on common stock is payable Sept. 1, 1988, to holders of record at the close of business August 15, 1988. Dividends on preferred stocks are payable Nov. 1, 1988, to holders of record at the close of business October 20, 1988.

Directors also elected Amarillo businessman Danny H. Conklin to the board. Conklin, 53, is a petroleum geologist, a partner in Philcon Development Co. and chairman of the Independent Petroleum Association of America.

A long-time Amarillo resident, he also serves on the boards of The First National Bank of Amarillo, First Amarillo Bancorporation, Inc., Parallel Petroleum Corporation, and the Panhandle Producers and Royalty Owners Association.

Conklin is active in Amarillo civic affairs and chairman of Amarillo Medical Center, Inc. He is a graduate of Oklahoma State University.

SPS is a regional electric utility that primarily provides electric service to a population of about one million people in a 52,000-square mile area of the South Plains and Panhandle of Texas, eastern and southeastern New Mexico, the Panhandle of Oklahoma, and southwestern Kansas. Southern Division headquarters are in Lubbock.

**Can't Win**  
Pity the cop. If he shoots first, he's a brute or a coward; if he doesn't, he's a dumb cluck or a corpse.  
—Free Press, Detroit



**GARDEN SPOT OF THE WEEK**—The beautiful yard of Mr. and Mrs. Doyle Turner on the Plainview Highway, with its well kept lawn and the many flowering plants captured the eyes of the Jennyslipper judges for the "Garden Spot of the Week". If you haven't nominated your favorite garden spot, call the Chamber of Commerce office before noon on Wednesday and make your nomination.  
(Journal Photo)

Annual  
**20/20 Coat Sale**  
20% Off - 20% Down Holds  
Your Selection in Layaway.  
Sale Starts 8/1/88, Ends 8/20/88  
**Playmates & young sirs** 224 Main Clovis

**BUSINESS DOLLARS**

**YOU CAN PROFIT FROM OUR LOANS**

"It takes money to make money." Every business, big or small, needs financial assistance from time to time. You may have the best product or service in town, but without the financial resources to expand, you're simply not making the most of what you've got.

We're good at helping a business like yours grow with loans for new equipment, inventory, remodeling acquisitions, and much more. And when we help our town's commerce grow, the entire community benefits.

Stop in for details. You'll profit from seeing us.

**WELBANK**  
MULESHOE

202 S. 1st. Member FDIC 272-4515

**Friena Slates Soil Moisture Monitor Clinic**

Area producers are invited to learn how soil moisture monitoring tools may benefit their farming operation at a free clinic, Tuesday, August 2, at 1:30 p.m. at Friena State Bank.

Mike Risinger, soil scientist with the USDA-Soil Conservation

Service in Lubbock, will explain the various types of soil moisture monitoring techniques including the 'feel' method, tensiometers, neutron moisture meters, gypsum blocks and resistance meters. A question and answer session will follow.

"These soil moisture monitoring devices offer producers a 'window into the soil' and allow them to check their soil moisture conditions before irrigation. With this information, the farmer can manage his water resources to

avoid over-irrigation or under-irrigation," says Risinger.

The clinic is sponsored by the Parmer County Extension Service, the Parmer County Soil and Water Conservation District and the High Plains Underground Water Conservation District No. 1.

For additional information, contact the Parmer County Soil and Water Conservation office at 806/247-2220 or the High Plains Underground Water District No. 1 at 806/762-0181.

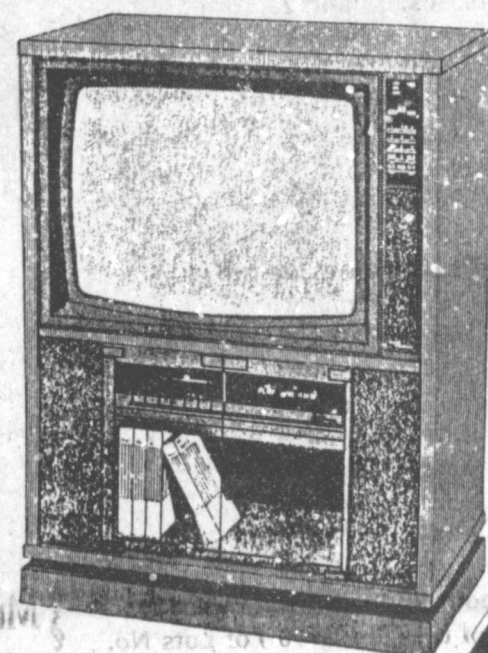
**SUMMER SALE**

SAVE \$300  
**TV & VCR COMBO**

**UPRIGHT STEREO TV VCR VIDEO CENTER**

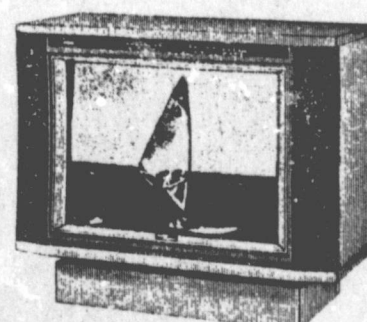
- STEREO TV 25"
- TV SWIVELS
- REMOTE VCR With On-Screen Programming

**TV & VCR \$51.64 PER MO.**  
On Approved Credit

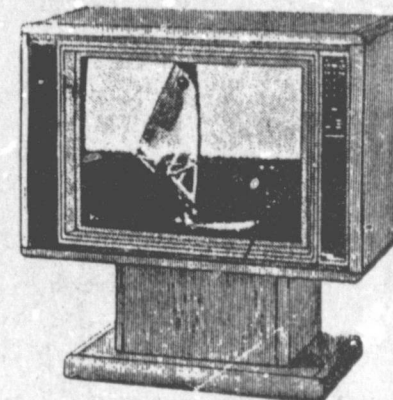


\*Cash Sale Price \$1498 Sales Tax \$84.26 - Down pmt. \$152.26  
36 Monthly Pmts. of \$51.64 each at 18% APR

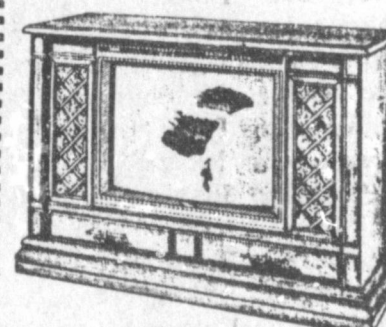
**SAVE up to \$300 on STEREO CONSOLE TELEVISIONS**



- 27" Stereo Console with Unified Remote
- Quartz Digital Timing
- Twin Stereo Speakers
- Elegant Veneer Cabinet

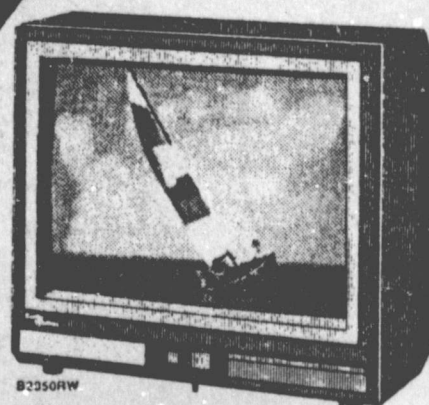


- 26" Stereo Console
- Quality Performance
- Contemporary Styling



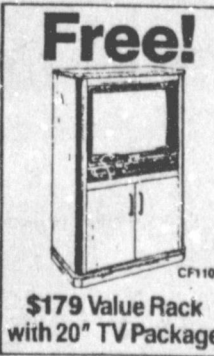
- 27" Stereo Console
- Balance/Tone Controls
- On-Screen Wireless Remote
- 142 Channel Cable Compatible

**20" TV Package:**



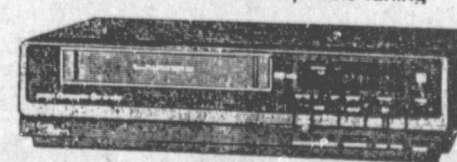
**\$34.30 PER MO.**  
On Approved Credit

Price \$999 - Tax \$53.69 - Total \$1052.69 - Down pmt. \$102.69, Finance Chrg. \$285.00 - 36 pmts. of \$34.30 at 18% APR.



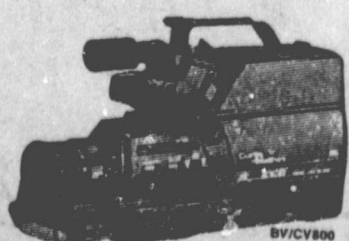
**Free!**  
\$179 Value Rack with 20" TV Package

- 20" TV Package:**  
**20" Component TV with wireless remote.**
- Wireless Remote Control
  - 139-Channel Cable-Compatible
  - Quartz Digital Tuning
  - Programmable Channel Scan
  - Component Styling
- 3 Head HQ VCR with wireless remote.**
- 3 Video Heads for Great Special Effects
  - 3 Week/4 Event Programming
  - On-Screen Program Display
  - Wireless Remote Control
  - Cable-Compatible Tuning



**\$999**  
CU730

**VHS Video Camcorder**



**\$54.88 PER MO.**  
On Approved Credit

**\$1599**  
PRICE \$1599  
Sales Tax \$85.95 - Down Payment \$164.94 - Finance Charge \$45.36  
36 Monthly Payments of \$54.88 - 18% APR

- WEDDINGS
- VACATIONS
- BIRTHDAYS
- NEW BABY
- FAMILY REUNIONS

**Curtis Mathes**  
HOME ENTERTAINMENT CENTER



**762-3743**  
1611 N. Prince  
M-TH - 9 to 7 F-S - 9 to 8





**Nursing Home**

**News**

By: Joy Stancell

We were so pleased that the A.A.R.P. had their monthly meeting and luncheon in our yellow dining room Friday. We enjoyed the fellowship the meal and the special entertainment by Mr. and Mrs. Wayland Ethridge.

Lois Ethridge was visited by her son and daughter-in-law, Mr. and Mrs. Wayland Ethridge and her niece, Peggy Buhrman, also Pearl Dunlap.

Effie Smith was visited by Billie Jean Whalin and grandson Tuesday morning.

Those delicious fresh green beans that the residents had for their meal were snapped and shelled by Ora Roberts, Effie Smith, Mamie Askew, Lois Ethridge, Emma Schuster, Oneita Wagon and Julia Hawkins and Ella Faubus.

Our thanks to Susie Smith for donation of garden fresh vegetables for our residents meals.

Many thanks to the A.A.R.P. for their donation to our nursing home.

Oneita Wagon was visited by Willie May Graves and her daughter, Jeane.

Tuesday morning Louise Legg, from Me Ma's Ceramic shop in Sudan brought ceramics for the residents to paint. Residents participating were Stelle Morgan, Emma Schuster, Julia Hawkins, Thelma Stearns, Lois Ethridge, Ora Roberts, Effie

Smith and Clara Weaver.

Julia Hawkins attended her granddaughters wedding in Hereford Saturday.

Ella Faubus' family hosted a birthday party (dinner) for her Sunday at the Primitive Baptist Church. She said she "never saw so much good food and so many nice people". Five generations of her family were represented.

Ora Roberts had lunch with her son, James Duncan, over the weekend.

Eric Smith was visited by his wife, Lucy Faye, Monday. Lucy Faye has been out of town for a few days attending a convention. Eric was visited last week by his daughter, Patricia Thatcher, of Portales.

Ruth Williams enjoys going on outings with her husband, Reihl Williams.

Wednesday afternoon Jonessa Jennings came to play the piano and sing with the residents.

Thursday afternoon Ed Harp took us out in the Senior Citizen van for a ride in the country. We enjoyed seeing the pretty crops. Residents going for the ride were, Roy Taylor, Oneita Wagon, Emma Schuster, Julia Hawkins, Ora Roberts, Thelma Stearns. Our special guests were Lena Hawkins and Mrs. Wuerflein.

Friday morning Lena Ruthardt brought an enjoyable and entertaining film from the library, to show the residents. Our special guest was M.E. Hickman.

The Progress Baptist Church came Sunday to visit and sing and play gospel music.

Edith Bruns will be celebrating her 99th birthday, Aug. 1st. Please help her celebrate by remembering her with a Birthday Greeting Card.

**Low Nitrate-Nitrogen In Unfertilized Fields**

A proper balance of water and soil nutrients increases water use efficiency and improves your opportunity for maximum crop yields. District-wide pre-plant soil fertility tests by the High Plains Underground Water Conservation District No. 1 indicate low levels of nitrate-nitrogen in unfertilized fields.

If you have not soil tested or applied fertilizer, it is not too late. An accepted method to calculate the amount of nitrogen to apply after the cotton crop is established is to side-dress five pounds of nitrogen for each inch of available water in the top two feet of the soil at planting time. If the top two feet of the soil are wet, 15 to 25 pounds of nitrogen per acre should get your crop off to a good start.

Then, add five pounds of nitrogen for each inch of water applied to the crop either by irrigation or in the form of precipitation until mid-August. Chisel the nitrogen into the center of the furrow during the growing season.

For more information on fertility and water use efficiency, contact your local Soil Conservation Service office or the High Plains Underground Water Conservation District No. 1 at 2930 Avenue Q, Lubbock, Texas, or call 762-0181.

**Good Question**

Father—When I was a young man girls knew how to blush.

Daughter—Why, father, whatever did you say to them?

**Courthouse News**

**WARRANTY DEEDS**

Maria Elena Marquez to Carlos Diaz and wife, Consuelo Diaz--The Westerly 60 feet of Lot No. 6, in Block No. 1, Murrah Addition to the Town of Muleshoe, Bailey County, Texas.

Hector J. Leal and wife, Irma Leal to Jose Guadalupe Nunez and Maria Elena Marquez--All of Lot No. 3 of the Subdivision of Lots Nos. 19 and 20, in Block No. 2, Legion Addition to the City of Muleshoe, Bailey County, Texas.

Leon Stratton and wife, Oma Stratton to Cleo Ward--The (N'ly 1/4) of Lot No. 35, and all of Lot No. 36 in Block No. 6, Lenau Subdivision to the City of Muleshoe, Bailey County, Texas.

Joe L. Smallwood to Tom Landry and wife, Kathy Landry--The Northwesterly 25 feet of Lots (10), (11), and (12), and the Southwesterly 73.8 feet of Lots (13), through (15), in Block (40), Original Town of Muleshoe, Bailey County, Texas.

Winona L. Joedan to Joe P. Rhodes and wife, Darla Rhodes--All of the (SW 1/4 70') of Lots No. (1), (2), (3), (4), and (5), in Block (3), (4), and (5), in Block Number (5), to the Original Town of Muleshoe, Bailey County, Texas.

**COUNTY COURT**

Manuel Sanchez Ronquillo, DWI, \$250 Fine, 1 Year Probation

Curtis Randall Fuller, Driving While License Suspended, \$500 Fine, 6 Months Probation

Vicente Mesa Montes, Driving While License Suspended, \$150 Fine

**DISTRICT COURT**

Rusty S. Whitt VS The Central National Insurance Company of Omaha, Motion to Dismiss

Martha M. Young and Jack Dale Young, DV

Charlotte Davis and Allan Lee Davis, DV

**NEW VEHICLES**

Myrick Grn Co, 1988 GMC PU, Robert D. Green Inc.

Scott D. Klinger, 1988 Chev Sub, Robert D. Green Inc.

H.G. Watson, 1988 Buick 2dr, Robert D. Green Inc.

Jo Nell and Phil Slack, 1988 GMC Sub, Robert D. Green Inc.

Gerald Farr, 1988 Chev PU, Robert D. Green Inc.

**Patients At West Plains Medical Center**

JULY 25

Ronnie Kenmore

JULY 26

Tanner Gartin, Ronnie Kenmore, Marley Hall, Amanda Bara, Manuel Alfaro, Jr., Susan Salazar, and Lisa Rhodes

JULY 27

Tanner Gartin, Amanda Bara, Dona Teague, Marley Hall, Manuel Alfaro, Jr., Susan Salazar, Gilbert Apodaca, and Lisa Rhodes

JULY 28

Tanaer Gartin, Amanda Bara, Cora Duncan, Dona Teague, Marley Hall, Debbie Proudfoot, Manuel Alfaro, Jr., Susan Salazar, Gilbert Apodaca, Lisa Rhodes, Janie Lopez, and Bessie Whisenhunt

**Immaculate Conception Catholic Church**

Father Patrick Maher Northeast of City

**First Baptist Church**

220 West Ave. E. Barry Bradley, Pastor

**Emmanuel Baptist Church**

Iglesia Bautista Emmanuel 107 East Third Isaias Cardenas, Pastor

**Trinity Baptist Church**

314 E. Ave. B. Rev. Dale Berry

**Circle Back Baptist Church**

Joel E. Stafford Intersection FM 3397 & FM 298 946-3676

**Calvary Baptist Church**

1733 W. Ave. C. Rev. Danny Mann

**Muleshoe Baptist Church**

8th and Ave. G. Bob Dodd, Pastor

**Progress Baptist Church**

Paul Brigham, Pastor Progress, Texas

**Richland Hills Baptist Church**

17th and West Ave. D. Allen Petersen, Pastor

**St. Matthews Baptist Church**

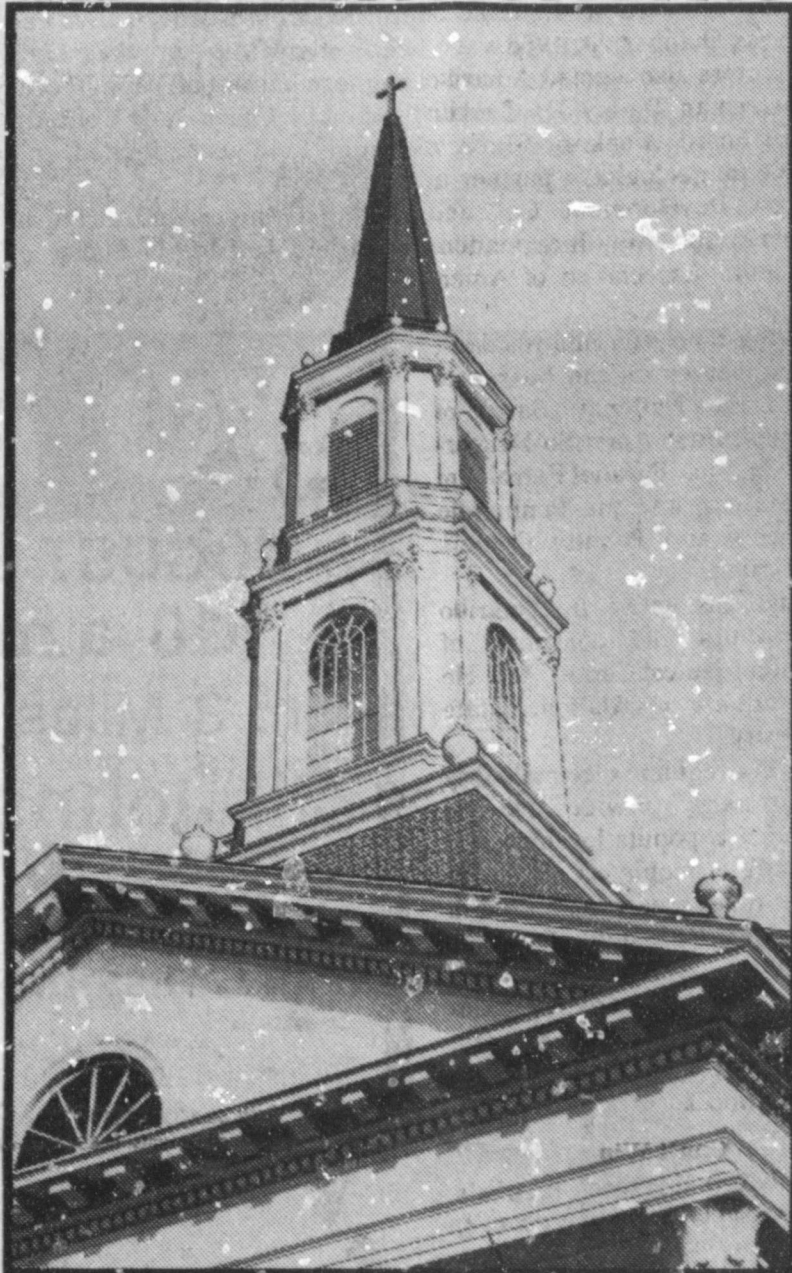
Corner of West Boston & West Birch M.S. Brown, Pastor

**Progress Second Baptist Church**

1st and 3rd Sunday Clifford Slay, Pastor

**The Community Church**

Morton Hwy. Jim Cope, Pastor, 272-5992



Is something wrong with your life — an inner restless dissatisfaction? The answer to every human problem comes only from God our Maker. He alone can forgive and reassure. Through the church God has committed the provision and proclamation of His forgiveness and redeeming love. Without a church relation no one is securely related to God. Everyone should be in the Church and the Church should be in everyone!



**Pointer To Heaven**

Did you ever stop to wonder why so many churches have steeples? The answer is simple — a steeple has meaning — it is a finger pointing to Heaven. The steeple is the architect's way of showing what is important about life, and that is life's relation to God. The steeple also symbolizes the role of the Church as showing men the way to eternal life. Eternal life is not just an extra tacked on to the end of life, but those who know God, and thereby really know themselves aright, share now in the eternal, or heavenly, kind of life, for theirs is the Kingdom of God. If you would live, look for the nearest steeple, and go there to find the meaning of life.

**Longview Baptist Church**

965-3413 B.C. Stonechipper, Pastor

**Primera Iglesia Bautista**

223 E. Ave. E. Roy Martinez, Pastor

**Lariat Church Of Christ**

Sunday School 10:00 a.m. Worship 11:00 & 6:00 p.m. Wednesday Services 7:00 p.m. Sam Billingsley, Minister

**Muleshoe Church Of Christ**

Clovis Hwy. Bret McCasland, Minister

**16th & Ave. D. Church Of Christ**

Sunday 10:30 a.m. Evening 6:00 p.m. Wednesday 8:00 p.m.

**First Assembly Of God**

Rev. David C. McCune 9:45 Sunday School 11:00 Morning Worship 6:30 Evening Services 7:30 Mid Week Services 272-3984

**Primitive Baptist Church**

621 South First Elder Cleveland Bass, Pastor

**Spanish Assembly Of God**

East 6th and Ave. F. Luis Campos, Pastor

**First United Methodist Church**

507 W. 2nd Street Richard Edwards, Pastor

**El Divino Salvador Methodist Church**

5th and Ave. D Jose M. Fernandez, Pastor

**1st Baptist Church**

Lazbuddie, Tx. 965-2126 Gary Wilcox, Pastor

**Lazbuddie Church Of Christ**

United Pentacostal Lighthouse Church

207 East Ave. G. Rev. J.A. Torres

<b>Western Drug</b> 114 Main 272-3106			<b>Dairy Queen</b> 1204 W. Amer. Blvd. 272-3412
<b>Little Gulf</b> 202 W. Amer. Blvd. 272-4918	<b>Baker Farm Supply</b> 1532 W. Amer. Blvd. 272-4613	<b>American Valley, Inc.</b> Hwy. 84 W. 272-4266	<b>Robert D. Green, Inc.</b> 2400 W. Amer. Blvd. 272-4588
<b>Fry &amp; Cox, Inc.</b> 401 S. First 272-4511	<b>Bob Stovall Printing</b> 221 E. Ave. B. 272-3373	<b>James Roy Meat Market</b> 506 W. Amer. Blvd. 272-4361	<b>Lookin Good</b> 206 Main 272-5052
<b>Main Street Beauty Salon</b> 115 Main 272-3448	<b>1st Bank</b> 202 South First 272-4515	<b>Bratcher Motor Supply</b> 107 E. Ave. D. 272-4288	<b>Five Area Telephone Cooperative, Inc.</b> 302 Uvalde 272-5533
<b>Irrigation Pumps &amp; Power</b> West Hwy. 84 272-4483	<b>Farmers Co-Op Elevators</b> 113 N 1st 272-4490	<b>Foster Fertilizer</b> Lazbuddie 965-2921	<b>Richland Hills Texaco</b> 1914 W. Amer. Blvd. 272-4875

**Sudan News**

By: Evelyn Ritchie

\*\*\*  
Zetha Young of Amarillo was here Sunday to attend the funeral services for Margaret Bellar.

\*\*\*  
Maureen Barnett of Arlington has been here visiting her daughter, Mr. and Mrs. Joe Kent and Phil.

\*\*\*  
Mr. and Mrs. Wayne Doty were in Odessa during the weekend to visit their daughter, Mr. and Mrs. Billy Wayne Gore. They also took their granddaughter, Stephanie back home following a week's visit here with them and other family members.

\*\*\*  
Recently visiting with Mr. and Mrs. Billy Hanna were his sister, Mr. and Mrs. Clyde Garvin and Gary Garvin of Albany and Mr. and Mrs. Bobby Don Garvin of Midland. They were enroute to vacation in Oregon and Washington.

\*\*\*  
Mr. and Mrs. Troy Moss, Mr. and Mrs. Tommy Moss and Mr.

and Mrs. Carroll Legg and family vacationed recently in Ruidoso, N.M.

\*\*\*  
Mr. and Mrs. Marvin Tollett were in Hobbs, N.M. last Saturday, to attend the 50th wedding anniversary of one of her high school friends, Mr. and Mrs. Lowell Peyton.

\*\*\*  
Illetes daughter, Mr. and Mrs. Ray Shafer of Beaumont and their grandchildren, Garrett and Ashlee Kemble of Marietta, Ga. visited here with them last week. Joining them were Mr. and Mrs. Burke Tollett and Zach of Lubbock. They all went to Rogers, N.M. to visit Mr. and Mrs. Wayne Tollett and then ate at Poor Boys in Clovis. On Thursday they took Zach back to his home in Lubbock.

\*\*\*  
Edith Williams enjoyed visiting and having supper on Monday with her grandchildren and families, Cheryl Puckett and Kevin and Gregory Williams in Muleshoe.

\*\*\*  
Paul Gordon of Austin visited during the weekend with his dad, the Waymon Gordons and brother, Mr. and Mrs. Phillip Gordon. He was here to attend the class of 1965 reunion.

\*\*\*  
Mr. and Mrs. Billy Chester were in Colorado during the weekend and their grandchildren, Brad Hanna, Ryan and Stacey Masten of Evans returned home with them. Brad will be visiting his other grandparents, Mr. and Mrs. Dale Hanna and Ryan and Stacy will be visiting Mr. and Mrs. W.C. Masten and other family members.

\*\*\*  
Mr. and Mrs. Mike Fisher were in Austin recently to be with the girls that were in the National A.A.U. basketball tournament.

\*\*\*  
Pee Wee Lance and Winona Dudgeon were in Ruidoso, N.M. some last week. Winona will be going to Houston soon for a check up there. Her son, Roy Don, will accompany her.

\*\*\*  
Mrs. Gary West and Angie of Littleton, Colo. were here to visit their parents and grandparents, Mr. and Mrs. W.C. Masten and also attended the bridal shower of their niece and cousin, Sharla Harrison.

\*\*\*  
Mrs. Joy Pruitt of El Paso was here recently to visit Mr. and Mrs. Pat Kent and attended the bridal shower for her daughter, Denise, bride-elect of Paul Kent.

\*\*\*  
Mrs. Joyce Thompson and

\*\*\*  
Andy of Munday were here recently to visit her daughters, Mr. and Mrs. Craig Doty and Kimberley and Mrs. Terri Brown and Stephanie and attended the birthday party for her granddaughter.

\*\*\*  
Mrs. Pete Wright of Farmington, N.M. visited last week with Mr. and Mrs. Homer McLaury.

\*\*\*  
Mr. and Mrs. Jim Ingle and T.J. were in Ruidoso, N.M. during the weekend.

\*\*\*  
Visiting with Mr. and Mrs. Halbert Harvey were their son, Dennis, who is in the process of moving to Lubbock from Abilene and also her mother, Mrs. Luella Kendrick of Lufkin.

\*\*\*  
Grace Patterson was released from the Methodist Hospital and is recuperating at home as is Oletta Reece, who was dismissed on Saturday.

\*\*\*  
Mr. and Mrs. Mike Fisher, Tanya and Shannon have just returned from Austin. Tanya had been competing in the Lady Longhorn basketball camp that is directed by Coach Judy Conradt. Suzanne Reid also attended.

\*\*\*  
Kathy Granger and Brett of Brownfield and Missy Fisher of

\*\*\*  
Lubbock were home recently to see the basketball game and visit with their mother, Josephine Fisher, and brother, Mr. and Mrs. Mike Fisher and family. Joe Ky Shultz of Dimmitt also visited. While here, they took Josephine to Lubbock to help her celebrate her birthday.

\*\*\*  
The Pee Wee League Expos ended their season with third place. The team members were Michael Brito, Monica Castillo, Dusty Cannon, Bradley Black, Kris Weaver, Carl Walker, Jody Keeney, Pine Salinas, Jonathan Richey, Johathan Edwards, Becky King, Tommy King, and Dekrita Galightly. Coaches for this group were Alan Black, Rick Walker and Tim Cannon.

\*\*\*  
The Yankees of the Pee Wee League finished first in the season and in the tournament held Amherst. Team members are Jonathan Martin, Nicholas Martin, Dustin Provence, Russ King, Rocky McAdams, Mitch Seymore, Eric Edwards, Jennifer Lynn, Candace Lynn, Miram Williams, Garrett Flowers and Camron Nix. Coaches are Kyle Martin, Dennis Flores and Darren Provence.

\*\*\*  
Sudan All Stars placed first in the All Star Tournament held in

\*\*\*  
Amherst recently. They defeated Earth All Stars 17-0 and team members are Everst Williams, Jarod Fisher, Chad King, Timmy Williams, Jacob Fisher, and Tim Golightly from the Rangers; Ryan Netherland, Ryan Brumley, Britton Roberts, Grant Gatewood and Garlad Weaver of the Dodgers. Their coaches were Freddy Legg and Kevin Humphreys.

\*\*\*  
Louzell Serratt has returned home from vacationing in the mountains in Colorado with her son, Dr. and Mrs. Delbert Serratt, Jimmy and Juli.

\*\*\*  
Recently visiting with Louzell Serratt were Bud and Mary Ann Snyder of Sawnee, Okla. Joining them for visiting were Bea and Wayne Howell. Also visiting recently with Louzell were her sons, Melvin of Rico and Kenneth of Amarillo.

\*\*\*  
Kay Lynn Gordon, Chris Harper and Buddy Lowrance have been in San Angelo this week to attend a Student Council Workshop.

\*\*\*  
Shirley Martin and Joe and Mr. and Mrs. Gordon Martin and Malcom attended a family reunion during the weekend at the lake.



**JULY BIRTHDAYS CELEBRATED**--Three residents of the Muleshoe Nursing Home celebrated their birthdays during the month of July and were honored with a birthday party Thursday afternoon in the day room of the nursing home. Hosting the party was the Needmore Community Club. Mr. and Mrs. J.C. Shanks and the Needmore Community Club provided the music and Decorators Floral and Gift provided the flowers. Those celebrating birthdays were: Vera Gunstream, left, who was born July 5, 1898, and Ella Faubus, born July 29, 1898. Not pictured, John Seid, born July 25, 1900. (Journal Photo)

**Three-Way News**

By: Mrs. H.G. Garvin

\*\*\*  
Early Thursday morning the community received rain amounts from 1 1/2 up to over 2 1/2 inches.

\*\*\*  
Mr. and Mrs. Nelson Carlisle were in Seminole Wednesday and had dinner with her sister, Dixie Smith, and son.

\*\*\*  
Thursday afternoon the Three Way Baptist women took cake and punch to the nursing home in Morton. Ladies going were Carrol Mast, Mrs. Jack Lane,

\*\*\*  
Mrs. Leslie Robinson and Mrs. Bud Huff.

\*\*\*  
Mr. and Mrs. Mike Sowder and son from Conrow, Arkansas and Mrs. Jack McCarty and children from Logan, N.M. spent the past week with their parents, the Joe Sowders.

\*\*\*  
Several from the community attended the wedding Saturday evening in Lubbock for Sielli Terrell and Brad Stegall. Both young people were raised in the community.

\*\*\*  
Mr. and Mrs. Bill Sikere and daughter from Aroro, Ill are visiting her parents, the Rayford Mastens. Also visiting his grandparents Sunday were Mr. and Mrs. Wade Pollard from Levelland.

**Who Knows?**

1. Which continent has no desert areas?
2. What is a sabot?
3. Name the first American to land on the moon?
4. Where was the first automatic parking meter installed?
5. Who is credited as the founder of Canada?

**Answers to Who Knows**

1. Europe.
2. A wooden shoe worn by peasants in Europe.
3. Neil A. Armstrong.
4. Oklahoma City, Oklahoma, in July 1935.
5. Jacques Cartier

**BIBLE VERSE**

"Men judge by outward appearance, but I look at a man's thoughts and intentions."

1. Who was the author of this statement?
2. To whom was it spoken?
3. What is the interpretation of it?
4. Where may it be found?

**Answers to Bible Verse**

1. The Lord.
2. To the prophet Samuel.
3. The human tendency is to judge by looks, but the divine estimate of a man is based upon his character.
4. I Samuel 16:7b (The Living Bible).

**In the Past**  
She: "What tense is 'I am beautiful?'"  
He: "Past."

# TWO BIG DAYS

**Friday, AUGUST 5 & Saturday, AUGUST 6**  
**10 a.m. Each Day**

Location: 3 Miles N.E. of Portales, NM at...

## The Bill Johnston Auctioneers Lot

**On Hwy. 70**

We Appreciate All Consignments One Item or a Complete Set Up Bring It On In!

**We Accept Consignments Through the 3rd of August**

SELLING: Tractors, Combines, Grain Trucks, Farm Equipment, Boat, R.V.'s, Vehicles, and other Farm related items.

A  
U  
C  
T  
I  
O  
N

FOR MORE INFORMATION CONTACT  
MIKE ARCHIBEQUE

**Bill Johnston Auctioneers**

Ph. (505) 356-5982 or 356-4052




NOW SCHEDULING FOR  
THE FALL & WINTER SEASON!

**CARPENTS AND PATIO COVERS**




- Protect your auto, van or RV from damaging hail and hot sun. Let us install a Carport today.
- Install a Patio Cover early and enjoy the cool comfort of your patio all summer.
- Financing Available.
- Free Estimates.
- Direct From Factory to You.




Call Now  
1-800-293-9526

76.5' Open Load    Drawer 369    Plainview, TX

JOHN DEERE OIL



JOHN DEERE FILTERS





SAVE on the PROTECTION PARTNERS

Dent & Co.

W. Hwy. 84
Muleshoe
272-4296

Engineered to work together, to give your equipment maximum protection.

# Leaf Through Classifieds

Call 272-4536

**CLASSIFIED RATES**  
Minimum Charge \$2.30

Consecutive Insertions  
Minimum Charge \$2.00

**CLASSIFIED DISPLAY RATES**  
\$1.75  
Per Column Inch

**DEADLINES**  
12 noon Tuesday  
For Thursday Paper  
12 noon Friday  
For Sunday Paper  
We reserve the right to classify, revise, or reject any ad. Not responsible for any error after ad has run once.

## 1. Personals

**FRANK'S**  
Refrigeration & Appliance Service Parts & Repairs.  
817 Gum  
Muleshoe, Texas  
79347  
PHONE  
Business 272-5090  
Home 272-3822  
fl-6s-tfc

**STORAGE ROOMS & office space for rent call 272-4754.**  
s1-53s-stfc

**IF YOU OR SOMEONE** in your family need home care, you have piece of mind with a live in. For shut-ins, after surgery or elderly. A professional live in service can be the answer. Phone 806-793-1931 ask for Kay or Kathy. 11-31s-1tc

**PIANO FOR SALE**  
WANTED: Responsible party to assume low monthly payments. See locally. 1-800-288-4260. 1-27t-10tp

**SILAGE CHOPPING WANTED**  
CORN OR FORAGE 30" x 40" ROWS  
NO JOB TO SMALL  
WES MYERS  
PH. 316-376-4510

**STORAGE Rooms Available**  
For Storage \$25.00-\$30.00 Per Month  
Ted Barnhill  
272-4903  
b1-42s-stfc

**CONCERNED About Someone's DRINKING? HELP IS AVAILABLE**  
through Al-Anon  
Call 272-2350 or 965-2870 or come to visit Tuesday nights, 8:30 p.m. or Saturday mornings at 11:00 a.m. and through AA call 965-2870 or come visit Tuesday nights, 8:30 at 620 W. Second, Muleshoe.

## 11. For Sale Or Trade

**FOR SALE:** Ford Factory Camper Sale Fiberglass Sliding Window. \$275.00. Call 965-2131 or 965-2917. fl-31s-3tc

## 3. Help Wanted

**GENERAL SHELTERS**  
Of Texas, Inc.  
The fastest growing manufacturers of portable buildings is seeking a dealer in the area for retail sales of portable buildings. Lot and small investment required. Excellent opportunity to expand existing business with low risk.

Contact Mike Wulf  
General Manager  
1-800-634-8103  
3-29t-8tpts

**HELP WANTED** needing an LVN or RN preferably home care experience. Full time office sales & delivery must be able to deliver heavy equipment. Physical required. For interview call 272-5256, Mark Benedict B&B Medical Supply, Inc. b3-24t-tfc

**TOWN & COUNTRY**  
Food Stores is taking applications for full time & part time positions as store clerk. Starting pay for store clerk position is \$4.00 per hr. If you are aggressive and willing to work, learn & contribute apply at 1900 W. Amer. and 107 E. Amer. Blvd. t3-30t-4tc

## 4. Houses For Rent

**FOR RENT** 4 bdrm, 3 bath, 4000 sq. ft. living space in country. Contact Carl Gable 272-3315. g4-25t-tfc

## 8. Real Estate

**4 BDRM.** home in good location fenced in yard with storage building. 1621 W. Ave. C. Call 894-3889. s8-15t-tfc

**NICE 3 bedroom, 2** bath house, 2 miles west of Muleshoe. With large barn. Nice location. Call 946-3340. d8-25s-tfc

**FOR SALE by owner**  
Richland Hills 3 bdrm, 2 bath, fireplace, stormwindows, central ai. & heat, large storage building. 272-5194. f8-27t-16tc

**FOR SALE:** 14 X 72 Cameo II mobile home at 406 W. 8th. Excellent Condition. Priced to sell. Call 272-5719. 8-29t-4tp

## 9. Automobiles For Sale

**FOR SALE:** 1983 Club Cab Ford Pickup. Very clean. \$4,800. Call 946-3628. 9-31s-4tp  
**FOR SALE** 1980 Chevy Suburban. Call 272-3774 after 5 p.m.

## 10. Farm Equip. For Sale

**EQUIPMENT** for sale 2 tractors, 2775 Massey, tub grinder, road grader, 3 feed trucks, terex payloader & other equipment. 272-3315. g10-25t-tfc

## 8. Real Estate



FEATURED THIS WEEK BY:

### Whitt-Reid Real Estate

You can't beat this over 2000 feet of living space well kept 3 bedroom, 2 bath, double carport, attached apartment already rented. You have got to see. 25H35

### BROKER AND CERTIFIED REAL ESTATE APPRAISER

CALL ROY

HOME 272-3058

OR THURSIE

OR GEORGE

272-5318

272-4047

## Think Classified!

116 E. Ave. C.

BINGHAM & NIEMAN REALTY

272-5285 or 5286

**PRICES REDUCED UP TO \$7,000** on 2 & 3-1-1 Brick Homes, Cent. heat, Energy Efficient.

**PRICED FROM \$23,500!!!** Approx. \$600.00 total move-in, payments based on income for qualified Buyers!!!

### RICHLAND HILLS

**IMMACULATE** 3-2-2 Brick, corner lot, Cent. A&H, built-ins, FP, loads of storage & closet space. much more!

\*\*\*\*\*

**PRICE REDUCED** 3-1-1 Brick, Cent. Heat, Evap. air, built-ins, fenced yard.....

\*\*\*\*\*

**JUST LISTED** Very nice 3-2-3 Home, Cent. A&H, built-ins, FP, fans, splkr. sys., fenced. **PRICED TO SELL!!!!**

\*\*\*\*\*

**JUST LISTED** 3-2-2 Brick, Cent. A&H, built-ins, FP, nice patio, & more. \$60's!!!

\*\*\*\*\*

### HIGHLAND & STEWART

**JUST LISTED-VERY NICE** 3-2-2 Brick, Cent. A&H, newly remodeled kitchen with built-ins, storm windows, fenced yard, storage bldg. and much more!!!!

\*\*\*\*\*

**NICE** 3-2-2 Brick Home (2 story), on corner lot, Cent. A&H, built-ins, and much more. **LET'S LOOK TODAY!!!!** 60's

\*\*\*\*\*

**JUST LISTED** 3-2-1 carport Brick, Cent. A&H, built-ins, fenced yard, & much more. **PRICED TO SELL!!!!**

\*\*\*\*\*

**JUST LISTED** Nice 5-3 Brick Home, Cent. A&H, built-ins, utility earhtone carpets, covered patio, fenced yard, & much more! \$60's!!!!

\*\*\*\*\*

### HIGH SCHOOL

**3-2-1** Brick+2 carport, Cent. A&H, built-ins, fenced yard. Eff. Apt. or workshop & storage area. \$40's!!!!

\*\*\*\*\*

**JUST LISTED** Very well kept 3-1 1/2 Home, Cent. heat, nice carpets, storm windows, storage bldg. & more. \$40's!!!!

\*\*\*\*\*

**3-1-1** home, corner lot, Cent. A&H, built-ins. \$30's.....

\*\*\*\*\*

**3-1-1** home, new carpets, floor furnace, evap. air, built-ins, storage. Completely repainted interior & exterior \$20's.

\*\*\*\*\*

**IMMACULATE** 3-2-1+2 carport, Brick Home, Cent. A&H, built-ins, nice finished basement with fireplace, sprklr. sys., & much more!!!!

\*\*\*\*\*

**8% A.P.R. FINANCING TO QUALIFIED BUYER** on this 3-2 Brick, Cent. A&H, built-ins, 2 fireplaces, nice large rooms, sprinkler sys.!!!!

\*\*\*\*\*

**JUST LISTED** 3-1-1 Home, new carpets, new roof, stucco, & much more. **\$20's IN CONTRACT**

\*\*\*\*\*

**3-1-1** Brick Home, Central air and heat, Like New.

DIANNE NIEMAN, BROKER

## 8. Real Estate

## 8. Real Estate

**SMALLWOOD REAL ESTATE**  
232 Main Muleshoe 272-4838

\*\*\*  
3 Bedroom, 1 Bath, 1 Car Garage, Brick. Estimated Closing Cost \$650.00 For Qualified Buyers. Small Down Payment If Not Qualified.

\*\*\*  
1,000 Gallon Tank on skidss with electric pump, \$450.00

\*\*\*  
3 Bedroom, 2 bath, 2 car carport, stucco house, 150 foot lot. Owner will finance.

**J. Sudderth Realty, Inc.**  
109 FIFTH STREET  
(806) 481-3288 (806) 481-9194  
FARWELL, TEXAS  
Realtors/Certified Appraisers  
WE NEED FARM LISTINGS

**NEW HOMES FOR SALE:**  
THREE BEDROOMS, TWO BATHS, LIVING ROOM, DINING ROOM, UTILITY ROOM, AIR CONDITIONED, AND MANY MORE FEATURES.  
NO MONEY DOWN,  
100% FINANCING AVAILABLE.  
OPEN 8:30 a.m. to 6:00 p.m.  
AFTER 6:00 p.m. CALL (806) 793-0103  
a8-31s-tfc

## 8. Real Estate

## 8. Real Estate

**JAMES F. HAYES & CO.**  
**AGRICULTURAL REAL ESTATE**  
Vic Coker-Agent  
806) 965-2468

\* **160 ACRES** South of Clovis lays good, good water, good Center Pivot Sprinkler Fully **SOLD**. A nice one!

**2 LABORS SOUTH OF MULESHOE**  
Longview Area, Good Soil, fully allotted Call for more details.

**460 ACRES WEST OF BOVINA** on State Line. 300 gallon **SOLD**, good soils, 70 Acres of grass, good allotments, terms available!

**313 ACRES** on Farmer County-Castro County line. 2 wells, 2 tailwater pits, good allotments, steel barn, terms available.

**2-160** Acre tracts northwestern Lamb County line. 2 wells, 2 tailwater pits, good soil; lay good, immediate possession.

**1-210** Acre Farm-Lamb County: Steel barn & other improvements, 2 wells lots of underground pipe good soil & lays good. Immediate possession available.

**120 Acres** - Bailey County - West of Muleshoe. Allotted, will accommodate a circle sprinkle. Some terms possible.

**640 ACRES NORTH OF LAZBUDDIE** - ON PAVEMENT, 1 sprinkler, good soil water, some grass.

**80 ACRES** East of Muleshoe with center pivot sprinkler, wheat & alfalfa, good opportunity.

**107 ACRES** East of Muleshoe, center pivot sprinkler, many improvements, wheat & alfalfa. **NICE**

**2311** Acres Lamb County Southeast of Earth. 1100 Acres **SOLD**, 1200 Acres grass. 2 electric **SOLD**. Pads for 4 more sprinklers. Excellent water. Terms Available.

**15,000** head capacity feed yard with rolling stock. 200 Acres of **SOLD** with 2 sprinklers. Good **SOLD** & water. Rare opportunity.

\* In cooperation with a New Mexico Broker.  
Call Vic for Farm & Ranch Appraisals

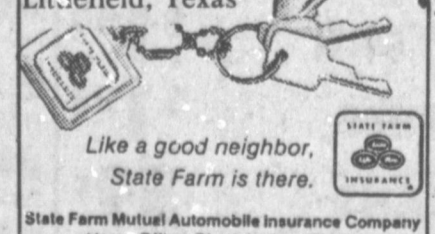
## 15. Misc.

## 15. Misc.

**Storm Cellars**  
Concrete & Iron Reinforced Ref. In Muleshoe.  
Lynn Miller  
Littlefield, Tx 385-6801

**Money-saving news for State Farm drivers 50 and over.**

State Farm's new reduced car insurance rate is saving money for many State Farm Mutual policyholders 50 and over. Call and see if you qualify.  
F.L. Newton Agent  
128 East 10th  
Phone 385-3055  
Littlefield, Texas



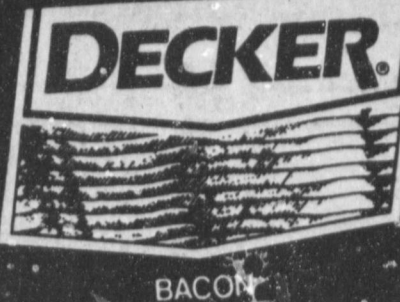
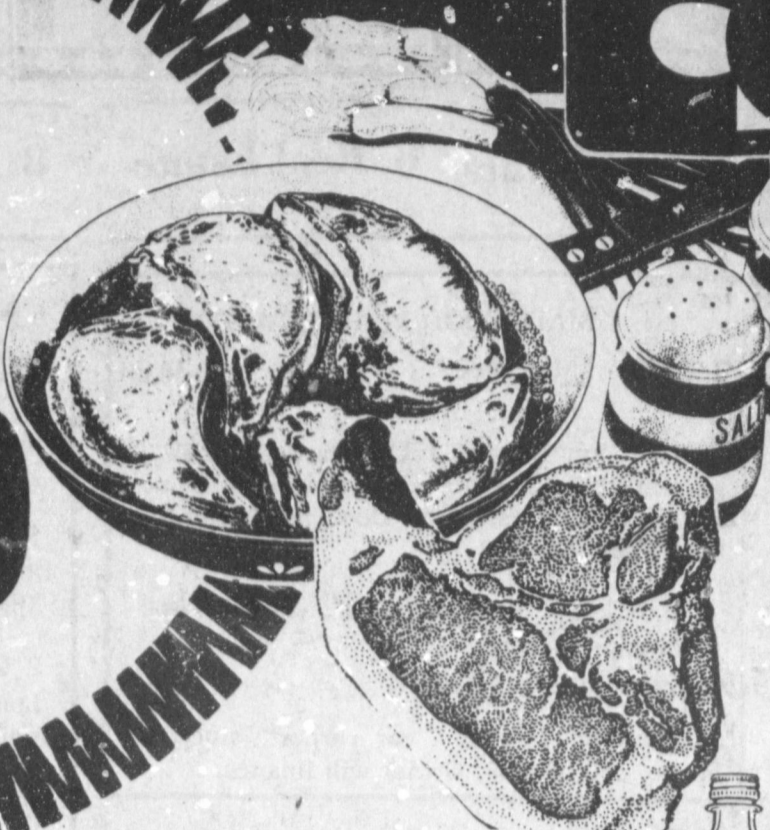
**GRAIN PRICES**  
YELLOW CORN...4.25 cwt  
YELLOW FOOD CORN...call  
WHITE FOOD CORN...call  
MILO...3.63 cwt  
SOYBEANS... 6.31 cwt  
NEW WHEAT... 3.05 cwt  
COMMODITY CERTIFICATES  
100%  
Prices-July 29, 1988  
MARKETS COURTESY OF  
FARMERS CO-OP  
ELEVATORS  
272-4335 Muleshoe, Texas

**For Your Classifieds**  
Call 272-4536

# PRICE COOLDOWN

LEAN TRIM FAMILY PACK  
3-11 ASSORTED CHOPS

**PORK CHOPS**  
**\$1.59**  
LB.



DECKER QUALITY  
**SLICED BACON** 1 LB. PKG. **\$1.29**

FRESH-73% LEAN-FAMILY PACK <b>GROUND BEEF</b> 3 LBS. OR MORE 1 LB. <b>\$1.19</b>	DECKER QUALITY SLICED <b>BOLOGNA</b> 12 OZ. PKG. <b>89¢</b>
LEAN TRIM CENTER CUT <b>PORK CHOPS</b> LB. <b>\$2.19</b>	DECKER QUALITY <b>MEAT FRANKS</b> 12 OZ. PKG. <b>89¢</b>
COUNTRY STYLE-LOTS OF MEAT <b>PORK RIBS</b> LB. <b>\$1.59</b>	ARMOUR'S PRE-COOKED CHICKEN FRIED <b>BEEF PATTIES</b> LB. <b>\$1.19</b>

SELECT/PLUS CALCIUM  
**GRAPEFRUIT JUICE**  
12 OZ. CAN **79¢**

CITRUS HILL FROZEN SELECT/PLUS CALCIUM  
**ORANGE JUICE**  
12 OZ. CAN  
**79¢**

**Family Scott**  
Easy Start Roll  
6 ROLLS

BATH TISSUE  
**FAMILY SCOTT**  
6 ROLL PKG.  
**\$1.18**

**Coca-Cola** CLASSIC  
**DIET, CHERRY COCA-COLA**  
3 LITER  
**\$1.19**

New  
**Surf**  
Removes Dirt and Odors

**\$1.50 OFF LABEL SURF DETERGENT**  
147 OZ. BOX  
**\$4.99**

**THRIFTWAY MAIL-IN REFUND OFFER FORM**

- Buy (1) one package Green Giant® 4-Ear Frozen Corn On The Cob.
- Send the UPC symbol along with this refund form to receive a coupon good for:

**FREE**  
**Green Giant® 6-Ear Frozen Corn On The Cob**

SEND TO:  
GREEN GIANT® CORN ON THE COB OFFER  
P.O. BOX 0015  
EL PASO, TEXAS 78560-0015  
SEND MY FREE CORN ON THE COB COUPON TO:

NAME \_\_\_\_\_  
ADDRESS \_\_\_\_\_  
CITY \_\_\_\_\_ STATE \_\_\_\_\_ ZIP \_\_\_\_\_

OFFER EXPIRES OCTOBER 31, 1988

Limit one offer per family or street address. Group entries and other rights may not be assigned or transferred. The refund offer form is required and may not be reproduced in any manner. This offer form must accompany your purchase. Any requests for other forms mailed to this P.O. Box or Pillsbury will not be acknowledged. Offer good in U.S.A. and APO-FPO addresses only. Void where prohibited, restricted or taxed by law. Please allow 6-8 weeks for delivery.

HUNT'S <b>TOMATO SAUCE</b> 5 8 OZ. CANS <b>\$1.00</b>	HUNT'S TOMATO <b>KETCHUP</b> 32 OZ. BTL. <b>\$1.19</b>	WESSON OIL 48 OZ. BTL. <b>\$1.99</b>
--	---	--------------------------------------

ABSORBENT PAPER <b>BOUNTY TOWELS</b> JUMBO ROLL <b>79¢</b>	BEST MAID HAMBURGER <b>DILL SLICES</b> 32 OZ. JAR <b>99¢</b>	BEST MAID <b>SALAD DRESSING</b> 32 OZ. JAR <b>89¢</b>
---	---	--

**SHELF SPECIALS**

RAID PROFESSIONAL FLYING <b>INSECT SPRAY</b> 12 OZ. CAN <b>\$3.69</b>	RAID PROFESSIONAL <b>ANT &amp; ROACH</b> 16 OZ. CAN <b>\$3.69</b>	RAID <b>ROACH TRAP</b> 2 CT. PKG. <b>\$1.39</b>
PURINA MAINSTAY <b>DOG FOOD</b> 40 LB. BAG <b>\$9.99</b>	PURINA HAPPY CAT ASSORTED <b>CAT FOOD</b> 3 LB. BAG <b>\$2.99</b>	WHITE/ASSTD. FACIAL TISSUE <b>KLEENEX</b> 250 CT. BOX <b>\$1.39</b>
REGULAR OR SUPER <b>KOTEX</b> 12 CT. BOX <b>\$2.07</b>		

THE STORE IS **100** THE SAVINGS ARE HOT

PURINA

<b>DOG CHOW</b> 25 LB. BAG <b>\$6.99</b>	TENDER CRUST SANDWICH <b>WHEAT BREAD</b> 1 1/2 LB. LOAF <b>69¢</b>
PETER PAN SMOOTH/CRUNCHY <b>PEANUT BUTTER</b> 28 OZ. JAR <b>\$2.99</b>	WELCH <b>GRAPE JELLY</b> 32 OZ. JAR <b>\$1.39</b>
<b>IBC ROOT BEER</b> 6 PACK <b>\$1.89</b>	HAMBURGER/HOT DOG <b>VLASIC RELISH</b> 10 OZ. JAR <b>89¢</b>
<b>DISH DETERGENT</b> 22 OZ. BTL. <b>\$1.19</b>	<b>DAWN LIQUID</b> 18 1/2 OZ. BOX <b>99¢</b>
DUNCAN HINES LAYER ASSORTED <b>CAKE MIX</b> 16 1/2 OZ. CAN <b>\$1.39</b>	DUNCAN HINES R.T.S. ASSTD. <b>FROSTING</b> 50 OZ. BOX <b>\$2.39</b>
<b>CASCADE POWDER</b> FOR YOUR FURNITURE: 9 OZ. CAN <b>\$1.49</b>	<b>FAVOR POLISH</b> 8 OZ. CAN <b>\$1.59</b>
<b>DUSTER PLUS</b> 8 OZ. CAN <b>\$1.59</b>	

CALIFORNIA THOMPSON SEEDLESS  
**SWEET GRAPES**  
**69¢**  
LB.

FRESH PECOS LARGE  
**CANTA-LOUPE**  
**3 \$1**  
LBS.

LEMON OIL

<b>PLEDGE</b> 30" OFF LABEL-STAIN REMOVER 16 OZ. BTL. <b>\$2.39</b>	<b>SHOUT LIQUID</b> 22 OZ. BTL. <b>\$1.59</b>	<b>MICRO POPCORN</b> 10 1/2 OZ. PKG. <b>\$1.99</b>
ORVILLE REDENBACHER REG./HOT <b>PICANTE SAUCE</b> 16 OZ. JAR <b>\$1.29</b>	ROSARITA <b>REFRIED BEANS</b> 16 OZ. CAN <b>59¢</b>	HUNT'S <b>MANWICH SAUCE</b> 15 1/2 OZ. CAN <b>\$1.09</b>
FOR SPAGHETTI-ASSORTED <b>RAGU SAUCE</b> 15 1/2 OZ. JAR <b>\$1.19</b>	SEVEN SEAS ASSORTED <b>SALAD DRESSING</b> 8 OZ. BTL. <b>89¢</b>	HONEY NUT <b>CHEERIOS CEREAL</b> 20 OZ. BOX <b>\$2.99</b>
FOR BREAKFAST <b>TOTAL CEREAL</b> 18 OZ. BOX <b>\$2.99</b>	BETTY CROCKER <b>POTATO MEDLEYS</b> 4-5 OZ. PKG. <b>\$1.09</b>	DUNCAN HINES BAKERY STYLE BLUEBERRY <b>MUFFIN MIX</b> 23 1/2 OZ. BOX <b>\$2.29</b>

**SHOPPERS SPECIALS**

CITRUS HILL CHILLED SELECT/PLUS CAL. <b>ORANGE JUICE</b> 64 OZ. CTN. <b>\$2.19</b>	CITRUS HILL PLUS CALCIUM <b>GRAPEFRUIT JUICE</b> 64 OZ. CTN. <b>\$2.19</b>
MARGARINE QUARTERS <b>PARKAY</b> 1 LB. PKG. <b>39¢</b>	PILLSBURY ASSTD. <b>BISCUITS</b> 5 7 1/2 OZ. CANS <b>99¢</b>
SINGLES <b>SANDWICH MATE</b> 12 OZ. PKG. <b>\$1.39</b>	HALFMOON CHEDDAR/COLBY <b>SHURFINE CHEESE</b> 10 OZ. PKG. <b>\$1.39</b>

CALIFORNIA FRESH GREEN

<b>ONIONS</b> 4 BUNCHES <b>\$1.00</b>	FRESH CRISP <b>CARROTS</b> 2 LB. BAG <b>49¢</b>
TEXAS FRESH YELLOW <b>SQUASH</b> LB. <b>49¢</b>	EXOTIC <b>KIWI FRUIT</b> 3 FOR <b>\$1.00</b>
U.S. NO. 1 RUSSET <b>POTATOES</b> 10 LB. BAG <b>\$1.49</b>	

**HEALTH & BEAUTY**

EXTRA STRENGTH TABLETS <b>TYLENOL</b> 100 CT. BTL. <b>\$4.99</b>	TOOTHPASTE <b>CREST</b> 6.4 OZ. TUBE <b>\$1.49</b>
DEODORANT-ROUND/WIDE/ASSTD. <b>SECRET SOLID</b> 2 OZ. SIZE <b>\$2.89</b>	DEODORANT-ASSORTED <b>SECRET ROLL-ON</b> 1 1/4 OZ. SIZE <b>\$2.19</b>
ANTI-PERSPIRANT DEODORANT <b>SECRET SPRAY</b> 4 OZ. CAN <b>\$2.69</b>	

**THRIFTWAY**

WE ACCEPT FOOD STAMPS...WE RESERVE THE RIGHT TO LIMIT

AFFILIATED FOODS INC. MEMBER STORE

**"WE CARE"**

PRICES EFFECTIVE JULY 31-AUG. 6, 1988

HOME OWNED & OPERATED

ORE-IDA REGULAR/ASSORTED <b>TATER TOTS</b> 2 LB. BAG <b>\$1.49</b>	TYSON ASSORTED <b>CHICKEN ENTREES</b> 7 1/2-9 OZ. PKG. <b>\$2.99</b>
WELCH FROZEN CONCENTRATE <b>GRAPE JUICE</b> 12 OZ. CAN <b>99¢</b>	GREEN GIANT <b>CORN ON THE COB</b> 4 EAR PKG. <b>\$1.29</b>
EL CHAKRITO ASSORTED <b>MEXICAN DINNERS</b> 13-14 OZ. BOX <b>\$1.49</b>	