



# Ponies Rip Petersburg, 44-20

Olton's Mustangs used a 1-2 punch to send Petersburg sprawling, 44-20, in the first game of the football season for both clubs here Friday night.

The Class AA Ponies, playing before 1,500 partisan fans, scored early on the Class A Buffaloes and never let up.

At the end, Petersburg was fighting gamely, but the Olton club had worn down the Buffs with quick running by Rande Buchenau, 170 pound halfback, and the bull-like rushes of 190-pound Fullback Robert Priest.

Buchenau scored four times and Priest twice in the rout. Halfback Frankie Miller, playing his first year, got the other Pony score on a 35-yard runback of an intercepted Buff pass.

The superiority of the Olton eleven showed up in the statistics, where the Mustangs led in first downs, 21-16, and net yardage, 468-279.

Quarterback Johnny Schenk got into the act with a pair of touchdown passes which came the only two times the Ponies went to the air.

The Mustangs built up an 18-0 lead before Petersburg scored. Priest got the first touchdown after three minutes of play had elapsed. The score climaxed a 65-yard drive.

Priest and Buchenau alternated carrying the ball. After Priest got five to the Mustang 40, Buchenau hit the middle for a seven-yard gain.

Then Priest racked up seven more yards in two carries to the Petersburg 46. On third down, "Bull" tromped his way to the Buff 38, but the play was rubbed out by a penalty.

Buchenau came back to rip off a 21-yard gainer to the Buff 22. Priest got four yards, Buchenau one and then Priest barreled his way 17 yards for a score.

It was 6-0, Olton, after the snap was fumbled on the try for extra point.

Petersburg then got its first chance with the ball, and picked up a first down when Hollis Mahagan ripped off 18 yards in two carries to the Buff 38. There, two running plays failed, but the Buffs got to the 43 on a 5-yard riles

infraction by Olton. Ken Stevens' pass went awry and Sammy Matthews punted to the Olton 25, where Safetyman Schenk scooped in the ball and returned it five yards to the 30.

On the first play, Frankie Miller hit the middle for 15 yards, Priest fumbled on the next try, with Petersburg recovering on the Olton 49. A running play gained two, but two pass tries went incomplete and Matthews again dropped back to punt.

Mustang End Jimmy Lawson rushed hard to block the kick Charlie Burrus pounced on the ball at the Buff 46.

Priest cracked the Buff line for a 15-yard gainer on the first play, then Miller gained three at left tackle. Buchenau, with Priest landing a key block, ran 13 yards to the buff 15.

On first down, Miller got eight to the Buff 7, but Olton was penalized back to the 11 and Buchenau as trapped for a 10-yard loss back to the 21.

Then Schenk hauled out his throwing arm and connected with Buchenau at the 11 and the Olton back raced into the end zone free as a bird. Buck's try for extra point was wide and Olton led, 12-0.

After the kick-off, which Petersburg trapped on its own 43, the Buffs tried a sweep that saw the Mustangs' Lawson throw Don Pegram for a three-yard loss.

A Buff pass went incomplete and then Olton's other flanker, Fred Riney, nailed Pegram for an 8-yard loss. With fourth and 21 to go on the 32, Matthews punted, the ball sliding off his foot and going out of bounds on the Buff 32.

From there it took Olton six plays to score, despite a 15-yard penalty against the Mustangs.

Halfback James Loveless started it with a three-yard gainer, then Buchenau gained four at left guard, Priest shot 11 yards to the Buff 19 and a first down.

Buchenau gained five, but a 15-yard miscue by Olton set the Mustangs back to the 23. Priest ripped of nine yards to the 14 and then Schenk threw a strike to Buchenau for the touchdown. Buck's kick for the extra point was wide, making it 18-0.

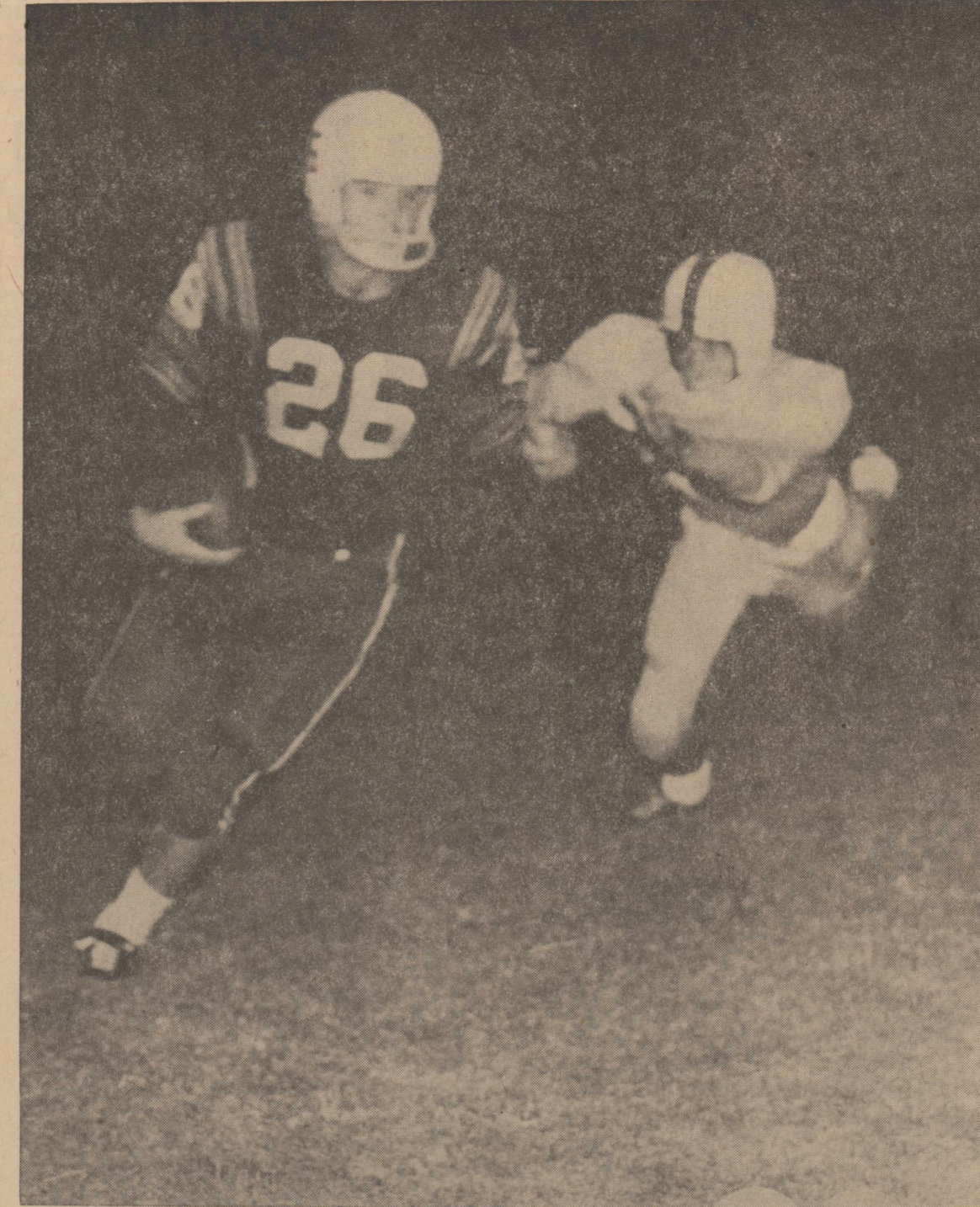
That seemed to jolt the Buffs into action, for after the kick-off they scored in 10 plays.

Pegram ran the kickoff back 26 yards to the Buff 42, then Matthews ran left end for 13 to the Olton 45.

After three plays gained only a yard, Matthews went back in punt formation. Instead of kicking, he threw an 18-yard strike to Mahagan at the Olton 26.

On first down, QB Stevens faked a pass and gained three. Then he pitched to HB Tommy Haney in the right flat and the 120-pound Haney ran to the Pony 3. Mahagan hit the Pony line twice, scoring for the extra points and it was 18-3, Olton, with half the second quarter gone.

Olton came back with the kick-off and scored in seven plays. Schenk ran the kick back 25 yards to the Olton 42, then Priest



Buchenau Rambles

RANDEE BUCHENAU, fleet Olton halfback, sprinted 16 yards to the Petersburg five-yard-line on this play, outrunning this last-gasp effort by a Buff tackler. Buchenau scored from the three-yard line two plays later to send Olton into a 38-14 lead toward the end of the third quarter.

got 17 yards in three tries.

With first down on the Buff 41, Priest plunged 11 yards to the 30. Loveless racked up five yards through right guard and Priest came back with an 18-yard gainer to the Buff 7.

Schenk started wide on the option play, pitching at the last moment to Buchenau and the fleet Mustang back raced into the end zone to make it 24-8, Olton. Buchenau's kick was good and Olton led, 25-3.

Petersburg came right back with a touchdown drive, with Mahagan running the ball back to the Buff 31.

Haney tried left tackle but he was hit hard by the Mustangs' Wendell Scribner and Bobby Brown. After QB Stevens' pass fell incomplete, HB Pegram ran right end for 11 yards to the Buff 42.

On the next series of downs, Pegram got six more at right end, then lost three when he tried to go the other way. Scribner nailed him for the loss.

With fourth down and seven coming up, QB Stevens faked a punt and passed complete to Mahagan at the Olton 39. The Stevens-Mahagan combination worked again for 29 yards and the Buffs were at the Olton 10 with 52 seconds left in the half.

On the next play, Stevens passed to Haney for the touchdown. It was 25-14, Olton, after Stevens' pass for the extra point went incomplete.

It didn't take long for the Mustangs to score after the second half kick-off. After Petersburg gained to the Olton 45, the Buffs fumbled and Olton recovered.

On the first play, Fullback Priest rambled 55 yards up the middle for the touchdown. Buchenau's try for the conversion failed and it was 31-14, Olton.

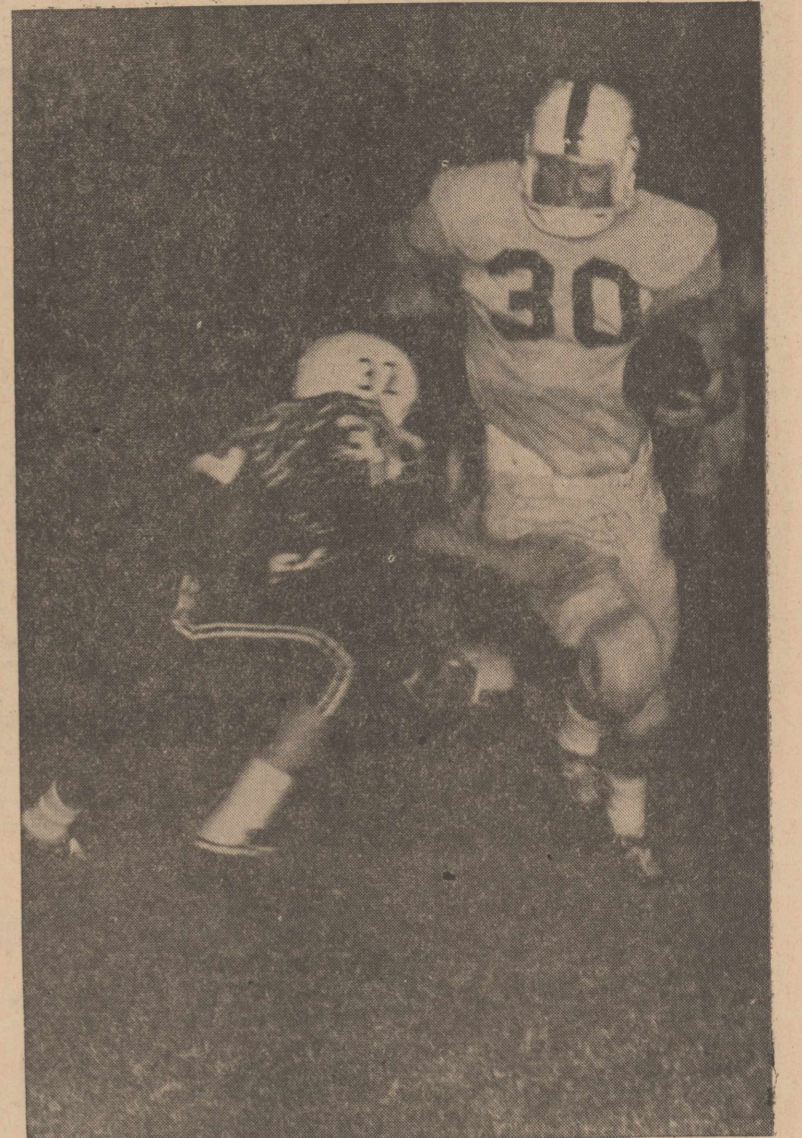
Petersburg gained only five yards in three tries after the kick-off and Matthews punted 33

yards to the Olton 25. Freshman Halfback George Jones returned it 14 yards to the Olton 39.

Priest got three and Loveless added three more, then Buchenau raced 18 yards to the Petersburg 38. Priest bulled for three, then got 14 more for a first down at the Buff 21.

Buchenau reeled off 16 yards to the five-yard line for another first. Then Priest got two and Buchenau scored on the next play. Priest

FOOTBALL CONTINUED ON NEXT PAGE



Paydirt-Bound

PETERSBURG'S Sammy Matthews skirts left end to rack up two extra points after the Buffs scored their first touchdown. He encountered resistance here from Olton's George Jones, but slipped through for the two points.



Flying High

OLTON'S Robert Priest sails through the air and over Petersburg tacklers to rack up a 27-yard runback of a Petersburg kickoff. The runback started Olton on its way to the Buff 11-yard line, where a fumble spoiled the drive.

**School Clothes**  
**LOOK NEW**  
**FEEL NEW**  
when they're  
**SANITONE-CLEANED**

**POLLARD'S CLEANERS**  
PICKUP & DELIVERY SERVICE ANYTIME  
PHONE 5241 OLTON, TEXAS

Nationally Advised  
**Starck**  
**PIANOS**

awarded the  
coveted  
**COMMENDATION**  
of  
**PARENTS' MAGAZINE**

Seal of  
Commendation of  
Parents' Magazine

- for workmanship
- for tone quality
- for performance

**Cost less**  
than  
**ordinary**  
Pianos

LOW  
DOWN  
PAYMENT  
•  
EASY  
MONTHLY  
PAYMENT

Why pay more? Before you buy any piano, see the beautiful new Starcks at

2310 19th St. LUBBOCK

HAROLD DEAN CARSON  
LOCAL REPRESENTATIVE  
PH. 3226 504 AVE. D. OLTON

**SAVIN' SPECIALS**  
**FREE**  
Ski Belt with each pair of  
Water Skies, Pair . . .  
**\$14.95 and up**

Insulated 5 Gal. Water Can. . . . . **\$7.25**  
Sleeping Bags . . . . . **\$7.79**  
From . . . . .  
Tents . . . . . **\$6.95**  
From . . . . .

2000 CFM Portable Air Conditioner, 3 Speeds  
Regular \$59.95 . . . . . **\$49.95**

**Bracero Supplies**

Baseball Gloves . . . . . **\$3.95**  
Reg. \$5.95 . . . . .  
Ice Chest . . . . . **\$7.49**  
Reg. \$8.95 . . . . .

Wide Variety Of Crock Jars  
**ARMY & NAVY**  
**STORE**  
PLAINVIEW, TEXAS  
122 E. 5th CA 4-9440

**QUALITY YOU CAN MEASURE**

**"BY YOUR CAR'S PERFORMANCE"**

**WEST TEXANS SAY OF P-A-G MAN...**  
**that's sorghum!**

The way P. A. G. Sorghums look in the field makes everybody who sees them exclaim "Man, That's Sorghum!"

P. A. G. has earned the confidence which farmers have in this sorghum. Each exclusive variety is researched, tested, and proved before it is offered for sale. Then when you plant P. A. G. you can be confident that not only will it look good in the field, but it will provide top yields. Careful quality control through triple isolation on seed production pays off in your field when you plant P. A. G. Sorghums. Hundreds of tests have proved it.

Now is the time to book your P. A. G. seed.

Distributed in the Plains Area by  
DORMAN & CO. Lubbock, Texas

**SANDERS-PARIS**  
**CO., INC.**  
OLTON

## MEXICAN FIESTA

The following individuals and merchants contributed toward a free barbecue during the observance of Mexico's

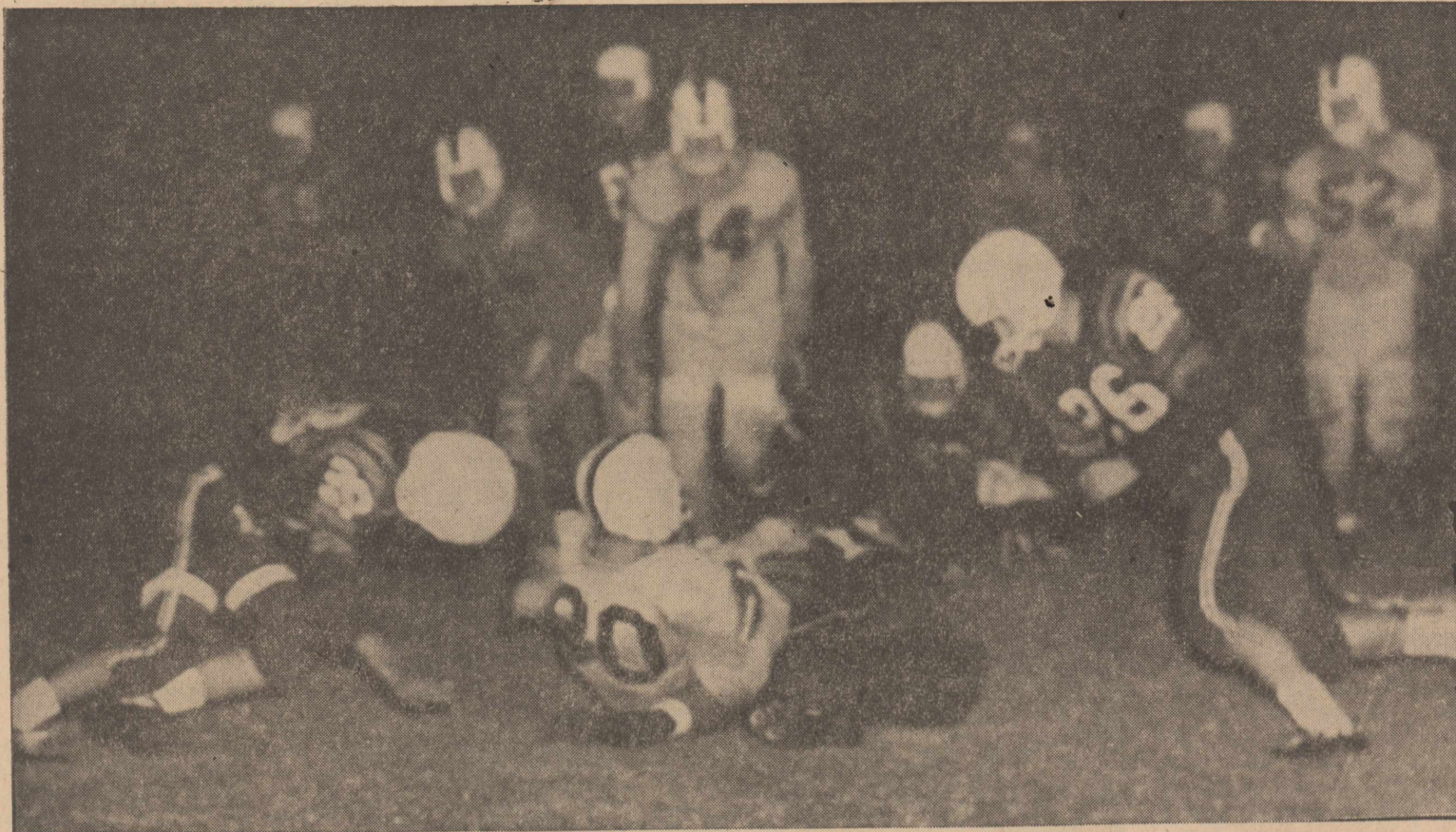
### INDEPENDENCE DAY

In Olton Sept. 16

Sherman Food	V. L. Smith
Kelley's	White Auto Store
Cashway Grocery	Whittington's, Inc.
Olton Recreation Club	Olton Co-op Gin
Duncan 5c & 10c Store	Roberson-Givens
Olton Enterprise	Thompson Chev. Co.
Pollard's Cleaners	Gray Grocery
Smith & Struve	Olton Butane Co.
J. C. Jones Co.	Hilway Service Station
Roy Granbery	Olton Coop. Producers
Superior Cleaners	Hall-Sides Motor
Parsons Furniture	Adams Tractor Co.
Olton Drug	Olton Farm Supply
Thomas Furniture	Tri-County Coop. Gin
Howard L. Hall	Farmers Butane
Higginbotham-Bartlett Co	Ed Thompson
Olton Bakery	G. H. Bley
Botkin Food	Farmers Gin, Inc.
Olton State Bank	L. A. Blackwell Service
Lester's Cleaners	J. L. McGowan Grocery
Community Clinic	Jeffery Lumber Co.
Rex E. Chitwood	K Dept. Store
Fred Schaefer	Steve Boruk

All Latin American People are invited to the Barbecue at the Latin American Recreation Center at 5 p.m. September 16.

# Priest, Buchenau Lead Attack



**SAMMY MATTHEWS**, Buffalo back, is swarmed under by Olton tacklers after running to the Mustang 45-yard line in the third period of Friday night's ball game. Already on his way down, Matthews is about to be hit by two more Olton tacklers.

Olton's Miller got 21 yards in two carries to give Olton the ball on the Buff 20. HB Jones gained five and Miller carried it four more to the Buff 11 as the third quarter ended.

Olton's Burrus cracked down to the Buff eight, but the Ponies fumbled on the next play, Petersburg recovering.

The Buffs' Matthews fumbled on the next play, but managed to recover the ball himself on the Buff four-yard marker.

Then Pony End Scribner crashed through to nail Haney with a 3-yard loss on the Buff one. After a Stevens pass went awry, Matthews punted out-of-bounds on the Olton 31.

Burrus gained seven for the Ponies to the Buff 24, but a penalty on the next play set the Mustangs back to the 29. Burrus moved the ball to the 26, Jones gained three more and Gary DeBerry picked

### Snowed Under

up two to the 23. On fourth down, Jones got the new series with a four-yard pickup to the Petersburg 19. After Jones made four to the 15, DeBerry fumbled and Petersburg took over at that point.

The Buffs' Mahagan ripped off 11 yards to the Buff 26 and Haney got two more to the 28. Matthews picked up a pair and Haney got four more to the 34 before DeBerry moved in for the tackle.

QB Stevens then gambled on fourth down, attempting a pass which was intercepted at the 35 by Olton's Frankie Miller. Miller had clear sailing as he scampered all the way for the score.

Burrus tried the extra point, but failed, leaving the score at 44-20 with 4:24 left in the ball game.

Petersburg, with Mahagan, Pegram and Haney doing the leg work, got back to the Olton 49 after the kick-off. From there Matthews ripped off a gain of 10 and Mahagan got 10 more to the Olton 29. The Buffs got to the Olton 22, where they ran out of downs.

### GAME AT A GLANCE

Olton	12	13	13	6	—	44
Petersburg	0	14	6	0	—	20
STATISTICS						
	O	P				
First Downs	21	16				
Yards Rushing	433	144				
Yards Passing	35	134				
Total yards net	468	278				
Passes Attempted	2	21				
Passes Completed	2	7				
Passes Int. By	1	0				
Fumbles Lost	3	1				
Penalties	8-50	0-0				
Punts-Average	0-0	5-17				

### SCORING SUMMARY

**OLTON**  
 Touchdowns: Randeé Buchenau 4 (21-yard pass from Johnny Schenck, 14-yard pass from Schenck, 7-yard run, 3-yard run); Robert Priest (17-yard run, 55-yard run); Frankie Miller (35-yard return of pass interception).  
 Extra Points: Priest 1 (kick); Buchenau 1 (kick).

**PETERSBURG**  
 Touchdowns: Hollis Mahagan 1 (1-yard run); Tommy Haney 2 (10-yard pass from Ken Stevens, 11-yard run).  
 Extra Points: Sammy Matthews 2 (by running).



### A Few Minutes' Rest

OLTON TRI-CAPTAINS, from left, Kenneth Hooper, Bobby Brown, and Robert Priest take the pause that refreshes on the bench during the last half of Olton's 44-20 victory over Petersburg here Friday night.

### Phi Delta Kappa Accepts Waldrip

Donald Ray Waldrip, a graduate student majoring in educational administration at Colorado State College, Greeley, was accepted into Phi Delta Kappa, national professional education fraternity for men, in ceremonies in Greeley during the summer quarter, 1960.

Waldrip, former Olton High School principal, is the son of J. H. Waldrip, Wichita Falls. He has taught in the Archer City, Chillicothe and Olton school systems. He has a fellowship at Colorado State College.

### South Plains Fair Leaders Listed

Community leaders from throughout the South Plains area will head the livestock and agriculture divisions at the 43rd annual Panhandle South Plains fair in Lubbock, Sept. 26 through Oct. 1.

Heading the list of South Plains leaders who are department superintendents is George Sampson, general agriculture; and W. B. Griffin, Tahoka, who is general livestock department superintendent.

Other Fair officials include Paul E. Gross, Seminole, in charge of Angus cattle; Ollie F. Liner, Plainview, in charge of Hereford cattle; W. G. Rodgers, Tulla, who heads up the dairy cattle division.

An Amherst farmer, V. M. Peterman, will be superintendent of the dual-purpose cattle department; Lee Roy Colgan, of Lamesa, will direct the swine division.

An Akin man, Bob Gibson, will head up the junior agriculture department.

**VISIT FRIENDS HERE**  
 Visiting friends and relatives in Olton over the weekend were Mr. and Mrs. Wendell Cavett of Fritch. Mrs. Cavett is the former Miss Yvonne Peterson.

### Fieldton Man's Herd Selected Breed Type

The herd of registered Jerseys owned by Glenn Blackmon, Fieldton, has been classified for breed type by an official classifier of The American Jersey Cattle Club, Columbus, Ohio.

The Blackmon herd now has 30 "very good" animals and 24 "good plus" making a total of 54 animals with an average score of 85.28.

### GOVERNMENT SURPLUS SALES

NOW anyone can buy DIRECT from US GOVERNMENT SURPLUS DEPOTS by mail for yourself or for resale. Cameras, binoculars, cars, jeeps, trucks, boats, hardware, office machines and equipment, tents, tools and tens-of-thousands of their original cost. Many items brand new. For list of hundreds of US Government surplus Depots, located in every State and overseas with pamphlet "How Government Can Ship Direct To You," plus procedures, HOW TO BUY VICES, P.O. Box No. 1818, and how to get FREE SURPLUS, mail \$2.00 to SURPLUS SALES INFORMATION SERVICE, Washington 5, D.C.

### PICTURES! PICTURES!

Copies of Photos  
 Appearing In The Enterprise

May Be Purchased

At The Following Prices:

5 x 7 ..... \$1.50

8 x 10 ..... \$2.00

THE OLTON ENTERPRISE

## THERE IS A REASON WHY...



...More farmers, like Witt Lacewell, plant DeKalb than any other brand of hybrid sorghum - perhaps it's the large open head like the one Witt is admiring in the photo above - or it's excellent standability - or the extra yield they get year after year with DeKalb Hybrid Sorghums.



Witt Lacewell is mighty proud of this field of DeKalb F-63 he planted May 5th. Mr. Lacewell pre-fertilized with 60 lbs. Anhydrous Ammonia, later side-dressed with another 60 lbs. Anhydrous. The crop received 3 waterings.



Yes There Are Many Reasons Why—  
 MORE FARMERS PLANT DE KALB  
 THAN ANY OTHER BRAND

# Olton Farm Supply

Phone 2261 DON SPAIN, OWNER Olton, Texas

Satisfaction Guaranteed  
 or Your Money Back

**GENERAL ELECTRIC**  
**Power Shower**  
**MOBILE MAID®**  
**DISHWASHER**

Exclusive Power Shower and Flushaway Drain provide top-and-bottom washing action... eliminates hand rinsing and scraping

- Needs no installation
- Rolls everywhere, stores easily
- Push-button control—3 washing cycles
- Holds NEMA place settings for 13

Was there ever a more fair offer? Purchase your Power Shower Mobile Maid under your dealer's written 60-Day Money Back Guarantee. If experience in your own home doesn't prove Power Shower Mobile Maid outwashes all other dishwashers, including people—the purchase price will be refunded. See any General Electric dealer listed below today.

POWER SHOWER MOBILE MAID PRICES  
 START AS LOW AS

**\$189<sup>95</sup>**

**Thomas Furniture**  
 "Your GE Dealer in Olton"

Phone 4631 East Side Of Square

JOLINE WARREN
Society Editor

News Of Interest To Women

PHONE 5791

Wedding Vows Are Recited Here
By Miss Sydney Hair, G. B. Smith

Olton First Methodist Church was the scene Sunday, Sept. 4, for the wedding of Miss Sydney Pauline Hair, daughter of Mr. and Mrs. Louis Hair of Olton, and Gary Bridges Smith, son of Mr. and Mrs. Leland Smith of Paris, Texas.

The Rev. Wilbur Gaede, pastor of First Methodist Church, performed the double ring ceremony as the couple stood before an archway decorated with white gladioli and mums. White candelabras flanked each side of the archway.

Organist Mrs. Delmer Givens provided nuptial music and accompanied Mrs. Joe Harper, soloist, as she sang "Through the Years" and "Whither Thou Goest".

Escorted and given in marriage by her father, the bride wore a white formal gown of Peau de Soie fashioned with long sleeves which were accented with tiny French buttons. The princess bodice was styled with a portrait neckline appliqued with lace and tiny seed pearls. Each panel of the skirt was sprinkled with bouquets of re-embroidered hand run Alencon lace and seed pearls motifs that cascaded to outline the full cathedral train.

Her fingertip length veil of imported illusion was caught to a sweetheart queen's crown of lace pearl drops enhanced by a touch of sequins. The bridal bouquet of white orchids encircled by stephanotis was carried atop a white Bible.

To complete her ensemble, the bride chose something old, something new, something borrowed and blue. Something old and borrowed was the Bible belonging to her sister, Miss Pam Hair. Her gown was new and she wore a blue bridal garter. She wore a penny in her shoe for good luck. It was given to her by her aunt, Mrs. LaVale Jones of Las Animas, Colo.

Miss Mary Etta Enloe, the bride's roommate at Texas Tech, attended the bride as maid of honor. Bridesmaids were Misses



MRS. GARY BRIDGES SMITH

Lana, Phyllis and Pam Hair, sisters of the bride. Identical ballerina length dresses of Peau satin in fall colors of romance blue, mint green, French violet and ice gold, designed with V necklines and capped sleeves, were worn by the attendants. The attendants' pill-box style veils, which matched their dresses, were adorned with tiny rose petals. They wore white wrist length gloves and their satin

25th Anniversary Reception Planned For Higgins Couple

Friends of Mr. and Mrs. Elvin R. Higgins are invited to attend a reception Sunday, Sept. 11, in honor of their 25th wedding anniversary. The reception will be given at their home, which is located at 5510 22nd Street on the LCC campus at Lubbock.

Calling hours are from 2 until 5 p.m. and also from 7:30 until 10 p.m.

Higgins is a former minister of Main Street Church of Christ at Olton and his wife was an English teacher at Olton High School.

dy of Paris and Kenneth Prestridge.

For her daughter's wedding, Mrs. Hair selected a Dior blue silk lace dress over taffeta with matching accessories. A mauve silk lace dress over taffeta was worn by Mrs. Smith, the bridegroom's mother, and she chose matching accessories. Their corsages were of white gladioli.

Following the wedding, a reception was held at the home of the bride's parents, Mr. and Mrs. Louis Hair, A linen and lace Army-Navy cloth, made in Hong Kong, and belonging to Mrs. A. L. Amundsen, covered the bride's table. The tiered wedding cake centered the table, which was decorated all in white.

Miss Molly Beddo of Lubbock presided at the milk glass punch bowl and cake was served by Miss Joyce Wingo of Sudan. Other members of the houseparty were Mmes. H. C. Armstrong, Fieldton; A. J. Givens, Plainview; Leon George, Cleo Smith and Joe Harper, all of Olton.

For the wedding trip to Colorado Springs, Colo., the bride wore a beige silk dress with matching accessories. The orchids from her bridal bouquet was her corsage.

The newly married couple will make their home at Lubbock where they will attend Texas Tech. A 1958 graduate of Paris High School, the bridegroom will be classified as a junior and his wife will be a sophomore student. Mrs. Smith was graduated in 1959 from Olton High School.

Miss Judy Ogletree of Lubbock, registered the wedding guests. Out-of-town guests included Mrs. Gene Norman and Dale, Odessa; Mrs. Fred Cornelius, Texico, NM, Mrs. LaVale Jones, Las Animas, Colo., Mr. and Mrs. Budd Dennis and children of Albuquerque, NM, Mr. and Mrs. Roger Duke of Corsicana, Mr. and Mrs. Harold Doyle and Mrs. Travis King of Commerce, Mrs. Bill Windham of Odessa, Plug Clem of Paris, Mr. and Mrs. James E. Knight and Barry of Dahart.

LOUISA DENNIS CIRCLE ELECTS NEW OFFICERS

New officers were elected at last Thursday afternoon's meeting of the Louisa Dennis Circle. The meeting was held at the First Methodist Church.

Mrs. Garland De Prang was chosen as the new president and vice-president is Mrs. Percy Parsons. Other officers are Mrs. Don Spain, secretary - treasurer; Mrs. Dan Quigley, devotional chairman; Mrs. Dwayne Wilks, social chairman and Mrs. Walter Bryan, reporter.

The out-going president, Mrs. Jeff Smart, gave an account of the year's activities. Mrs. E. R. Spain presented the devotional.

Mrs. Tom Billy Hankins was a guest at the meeting. Members present were Mmes. Marion Green, Alva J. Spain, James Caley, Smart, Wilbur Gaede, J. L. Snider, E. R. Spain, Bob Coen, Earl McClain, Bennie Doggett, Charles Tussey, Don Spain, Quigley, Wilks, Bryan and De Prang.

Refreshments were served following the meeting.

The Louisa Dennis Circle will meet the second and fourth Tuesday of each month at the church. Time for the meetings will be 2:30 p.m.

BROWNIE TROOP ELECTS OFFICERS

Election of officers for Brownie Troop 59 was held Monday afternoon. The officers will serve for the next six weeks.

Marlana May is the new president and Brenda Thurman was elected vice-president. Others holding offices are Sandee Coleman, scribe; Renee Hysinger, reporter; Susan Nicholas, song leader; and Judy Meadows, parliamentarian.

A new member, Judy Green, was added to the troop at the meeting. Scene for the meeting was the scout house.

Barbara White, Milton Ruebush Are Wed In Littlefield Church

Miss Barbara White, niece of Mr. and Mrs. K. W. Mahaffey of Littlefield, became the bride of Milton Ruebush, son of Mr. and Mrs. D. C. Ruebush of Deming, NM, Aug. 27 at 8 p.m. in the Lovelland Highway Church of Christ, Littlefield.

She is a 1960 graduate of Olton High School.

The Rev. Ford Copeland of Boulder, Colo., read the double ring ceremony as the couple stood before an archway of greenery flanked on either side by a basket of white gladioli and tapering white candles in white candelabras. Pink ribbons decorated the baskets of gladioli.

Presenting the musical program was a quartet composed of Mr. and Mrs. George Borden of Denver, Colo., and Mr. and Mrs. James Copeland of Boulder, Colo. Selections sung by the quartet included "Blessed Be the Tie", "The Wedding March" and "We Need the Prayers of Those We Love". Mrs. Copeland also sang the solo "Because".

An original gown of white silk organza and Chantilly lace over satin was worn by the bride when she was escorted and given in marriage by her uncle, K. W. Mahaffey. Featuring a Sabrina neckline and long scalloped sleeves, the floor-length skirt of the gown was paneled on each side with Chantilly lace ruffles. The fingertip veil of French silk illusion was caught up in a crown of iridescent seed pearls. She carried a bridal bouquet of pink carnations and stephanotis atop a white Bible.

The matron of honor was the bride's sister, Mrs. J. A. Calloway of Albuquerque, NM. Miss Janith Gregg of Plainview and Miss Juanita Patterson, the brides' cousin of Deming, NM were bridesmaids.

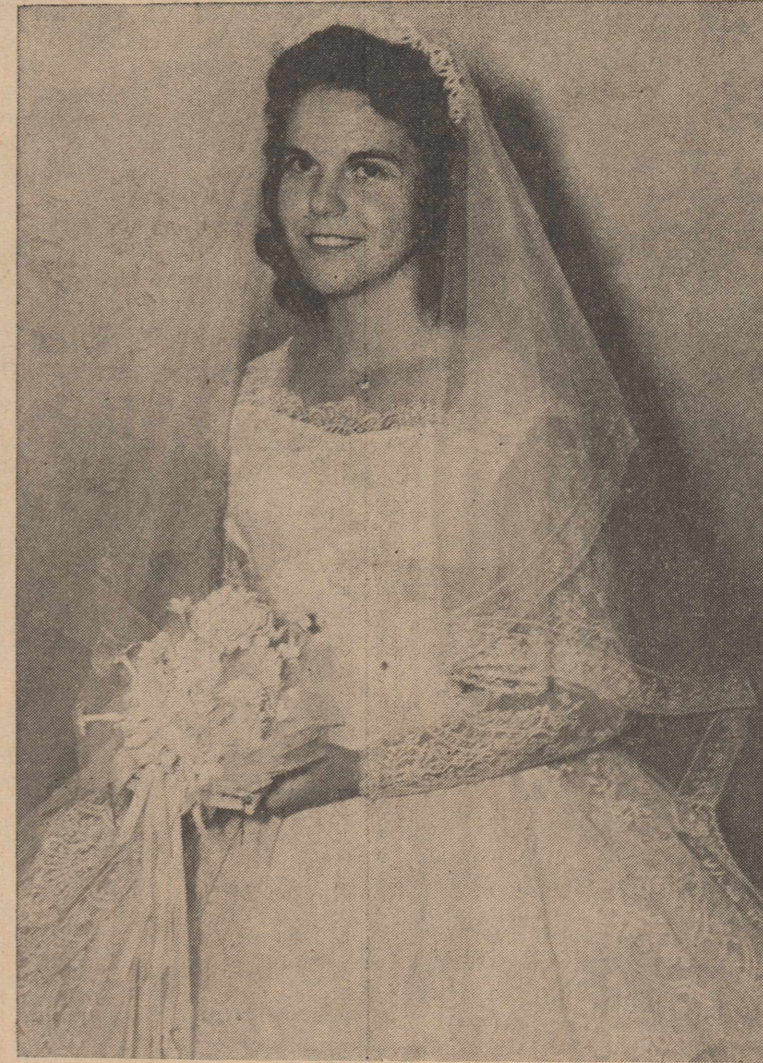
Attired in a street-length dress of pink and white checked silk organza over white polished cotton, the matron of honor carried a colonial bouquet of white mums.

The bridesmaids' street length dresses were made of pink and white checked silk organza over pink polished cotton and their bouquets were composed of pink mums. Styled with fitted bodices, the attendants' dresses had full gathered skirts.

One of the candlelighters, Miss Lynn Short of Stamford, cousin of the bride, and the flower girl, Miss Becky Mahaffey, bride's cousin of Lubbock, wore dresses designed identically to the bridesmaids' dresses.

Danny Calloway, the bride's nephew of Albuquerque, NM, was the other candlelighter and ring bearer was the bride's cousin, Rodney Mahaffey of Littlefield.

Attending the bridegroom as best man was his brother Vernell Ruebush of Lubbock. Ushers were the bridegroom's brother-in-law, F. T. Black of Las Cruces, NM and



MRS. MILTON RUEBUSH

Sammy Ruebush, cousin of the bridegroom, of Deming, NM.

Mrs. Mahaffey selected a pale blue linen eyelash dress for her niece's wedding. Her accessories were white and she had a pink carnation corsage. The groom's mother wore a powder-blue polished cotton dress with pink accessories and her corsage also was of pink carnations.

Baskets of white gladioli with pink satin bows decorated the reception rooms for the houseparty. The house party was given at the home of the bride's uncle and aunt, Mr. and Mrs. K. W. Mahaffey.

The table was laid with pink linen underneath a white lace cloth. Adorning the table was a 10-tiered wedding cake shaped similar to a large pink and white wedding bell. The top tier of the cake was decorated with a miniature wedding party and a heart-shaped

Social Tuesday Night

Group No. 1 of the Esther Class of First Baptist Church will host a joint social of the Esther and Dorcas classes Tuesday night, Sept. 13, at the fellowship hall of the church. The social will begin at 7:30 p.m.

A film, "An Arctic Adventure" will be shown. All members and associate members are invited to attend.

Mrs. Clurry Phillips Leads Bible Lesson At Baptist Church

"The Ministry of Healing", a Bible study, was taught by Mrs. Clurry Phillips at Monday afternoon's meeting of the Women's Missionary Union, First Baptist Church was the scene for the meeting.

Giving the call to prayer was Mrs. C. W. Leathers and Mrs. Robert Edwards led the dismissal prayer.

A new member, Mrs. Carlton Whittle, was present. Other members present were Mmes. A. E. Cade, Phillips, Joe Miller, Leathers, W. C. Gunter Jr, Edwards, Bob Hipp and Roy Thurman.

Next Monday, the WMU will meet at 3 p.m. at the church for a royal service meeting.

Goal Reachers, Lamp Lighters Have Joint Meeting Here

The A. C. Light Jr. home was the scene Tuesday afternoon for a combined meeting of the Goal Reachers' and Lamp Lighters' classes of First Baptist Church.

Mrs. C. S. Silcott presented the study, which was the second section of "The Book of Books".

A committee formed of Mrs. W. D. Holley, Mrs. John Paul Jones and Mrs. A. C. Light Jr. were placed in charge of plans for a chicken barbecue. The chicken barbecue will be given at 8 p.m., Thursday, Sept. 15, at the C. S. Silcott home.

Mrs. C. L. Lowe, a guest, and a new member, Mrs. John Paul Jones, were present. Others attending were Mmes. Don Franks, Holley, Lenville Hines, Floyd Light, Elmer Lewis, Mack McGill, Max Malone, Joe Edd Carson, W. B. Dickenson Jr., Silcott and the hostess, Mrs. Light.

Mrs. Rolls Gives Lesson At WMA

Mrs. A. P. Rolls gave the lesson, "The Prodigal Son", last Wednesday at a meeting of the Women's Missionary Auxiliary. The group met at Hopewell Baptist Church.

The opening prayer was led by Mrs. Charlie Riffin and the dismissal prayer was given by Mrs. Will Russell.

Members present were Mmes. W. P. Winn, Rolls, Riffin, Russell and Robert Akin.



The following optometrists have been approved for membership in the South Plains Optometric Society and the Texas Optometric Association. They are voluntarily pledged to a rigid Code of Ethics and to the protection of the Visual Welfare of their patients.

This seal will identify them.

- LITTLEFIELD: Dr. B. W. Armistead, Dr. Glenn S. Burk
PLAINVIEW: Dr. John Andrews, Dr. Clovis Clough, Jr.

Advertisement for Olton Meat Co. featuring 'Choice MEATS AT BIG SAVINGS' and 'SPECIALS GOOD WEEKEND ONLY!' with prices for items like PORK STEAK, LIVER, BOLOGNA, and CLUB STEAK.

Advertisement for the Texas Optometric Association titled 'A MESSAGE TO PARENTS on Children's Eyesight...'. It includes a photo of a child and lists optometrists in Littlefield and Plainview.

**MEETING SET FOR LEADERS OF GIRL SCOUTS**

Attending a neighborhood meeting Tuesday morning for adult leaders of Olton Girl Scouts was Mrs. Skeet Anderson of Lubbock. Mrs. Anderson is a district director of the Girl Scouts.

Mrs. Billy Langford presided at the meeting, which was held at the scout house. Old and new business was discussed and plans were made for an Indian Pow-Wow in October.

An adult membership nominating committee, composed of Mrs. Paul Burrus, Mrs. Leo Ross Bryant and Mrs. M. G. Brown, will select a new neighborhood chairman.

Those present were Mmes. Harry Thomas, Joe Hall, Wayne Carson, Buster Nicholas, George Brown Jr., Billy Langford, Burrus and Anderson.

**RAINBOW GIRLS HAVE MEETING**

Olton Assembly No. 141, Order of the Rainbow for Girls, met Monday night at Masonic Lodge Hall.

A guest, Miss Barbara Irvin, recently moved here from Hobbs, was present. Four board members present were Mrs. Alton Cure, Mrs. E. E. Burrows and Mr. and Mrs. T. B. Cox of Hart.

Members of the Order of the Rainbow for Girls attending were Misses Mary Roper, Renee Givens, Hazel Smith, Georgeanne Redinger, Lila McFadden, Jan Gallaway, Judy Dennis, Wanda Arrington, Carmen Bley, Deanna Thompson and Sharon Lowe.

**Luncheon Planned**

The WMU will have a covered dish luncheon Tuesday to highlight the Day of Prayer for state missions. Each lady is asked to bring a covered dish.

Mrs. C. W. Leathers will be in charge of the program, which will have "Look on the Field" as its theme.

The event, which will be held at First Baptist Church, will begin at 10 a.m. Nursery facilities will be available.



MRS. DICK SCRUGGS

**SHERRY-SCRUGGS VOWS ARE READ IN ANDREWS**

Miss Glenda Sherry and Dick Scruggs were united in marriage Aug. 29 by H. L. Matheny, Church of Christ minister. The ceremony was read at Andrews in the minister's home.

Parents of the bride are Mr. and Mrs. Rex Sherry of Olton. Another Olton couple, Mr. and Mrs. J. C. Scruggs, are parents of the bridegroom.

The bride and bridegroom both attended Olton schools. They will make their home at Andrews, where Scruggs is employed by Superior Welders.

**CHOATE-SPAIN VOWS ARE READ**

A single-ring ceremony uniting in marriage Mrs. Pat Choate and Paul Ray Spain, both of Olton, was read Wednesday night at First Methodist Church by the Rev. Russell McAnally of Lockney.

Mrs. Owen Norfleet attended the bride as matron of honor. Best man was her husband, Owen Norfleet.

The bride's parents are Mr. and Mrs. Jack Slatten of Olton. Parents of the bridegroom are another Olton couple, Mr. and Mrs. E. R. Spain.

**Bridal Shower Given At Hart Camp Tuesday For Miss Barbara Worley**

Miss Barbara Worley, who will wed Claude Roper Jr. Friday night, was honored with a bridal shower Tuesday afternoon in the home of Mrs. M. W. Wheeler south of Hart Camp.

Yellow roses with greenery formed the centerpiece on the table which was laid with a lace cloth over yellow. Refreshments of punch and miniature sandwiches were served to the guests.

Hostesses for the affair were Mmes. H. V. Lynch, Dewey Parkery, Ivy Thompson, Edwin Oliver, M. W. Wheeler, Dick Cade, Blanton Martin, Junior Muller, L. W. Sullivan, Lee Holden, C. E. Timmins and Ray Johnson. The hostess gift was a set of stainless steel cookware.

Out-of-town guests included Mrs. W. R. Bean and Mrs. Arthur Nafzger, both of Olton; Miss Ruth Cory and Mrs. H. E. Field, both of Littlefield; Mrs. Rodrigue Juain, Mrs. Grover Sageser, Mrs. Leslie King, Mrs. Floyd Millican, Mrs. Frank Moore, all of Cotton Center; and Mrs. Claude Roper Sr. and Linda of Wilson.

Miss Worley is the daughter of Mr. and Mrs. Homer Worley of Olton.

**Olton Study Club Hears Discussion On Bond Election**

Presenting a discussion about the paving bond issue at Monday night's meeting of Olton Study Club were Dr. Basil Jons, D.O., and Dick Whitely, manager of the Olton Chamber of Commerce and Agriculture.

Yearbooks were distributed and plans for the year were discussed. Twelve members attended the meeting which was held at the C. S. Silcott home. They were Mmes. Roye Aikman, Brent Burrow, Paul Burrus, H. B. Carson, Raiford Daniel, D. M. Granberry, I. B. Holt, Carl Hooper, Glen Singletery, Marshall Stone, Bill Yates, Jack Allcorn and the hostess, Mrs. Silcott.

**Housewarming Set For Harry Thomases**

Mr. and Mrs. Harry Thomas will be honored Saturday, Sept. 17, with a housewarming at their home. The event will begin at 8 p.m. Friends of the couple are invited to attend.

**After-Game Coffee Given By Mrs. Maxey**

Mrs. David Maxey was hostess Friday night after the football game for a coffee.

Sixty-eight persons attended the coffee which was given at Era Mae's Dining Room.

**Olton Bykota Club Sets Coffee Tuesday**

Methodist Fellowship Hall will be the scene Tuesday, Sept. 13, for a coffee given by the Bykota Study Club. Time for the coffee is 9 a.m.

Guest speaker will be Mrs. A. E. Boyd of Plainview. Other special guests will be members of Olton Study Club and New Century Study Club.

**Salad Supper Held For WSG, WSCS**

A salad supper will be given at 7:30 p.m., Tuesday, Sept. 13, by the Women's Society of Christian Service and Wesleyan Service Guild. The supper will be given at Fellowship Hall at First Methodist Church.

All women of the church are invited to attend. Each lady is asked to bring a salad.

**VISIT NORFLEETS**

Sunday visitors in the Owen Norfleet home were Mr. and Mrs. Sam Ghison of Muleshoe.

**VISITORS FROM BURNET**

Mrs. W. I. Boyd of Burnet, visited in the home of Mr. and Mrs. Mac Keating last week.

**MILLERS HAVE GUESTS**

Visiting Wednesday and Thursday in the Henry Miller home were Mrs. Edna Clark, Greenville; Miss Erma Clark, Jock, Frank and Bob Clark of Halfway.

**VISIT IN MILLER HOME**

Visiting in the Henry Miller home over the weekend were the Rev. and Mrs. Bob Miller and family of Gueydon, La. Sunday visitors were Mr. and Mrs. Vernon Bleeker and family, Muleshoe, and Mr. and Mrs. Grady Shull and family of Plainview.

**ABERNATHY VISITORS**

Visiting Monday in the Ivan Wozencraft and Floyd Coleman homes were Mr. and Mrs. Hilburn Barrick of Abernathy.

**BEST-FOOD-BUYS**  
ever cooked up!!

White Swan Whole **NEW POTATOES** 303 Can **2 for 27c**

Diamond **SWEET PEAS** 303 Can **2 for 25c**

Hi-C 46 Oz. Can **ORANGE DRINK** 29c | Van Camp **VIENNA SAUSAGE** 19c

Mountain Pass **TOMATO SAUCE** 3 for 23c

Frozen—Underwood 14 Oz. **BAR-B-Q BEEF** 79c

Frozen—Eatmore 12 Oz. **BEEF STEAK** 59c

Del Monte **SPINACH** 303 Can **2 for 33c** | Van Camp **TUNA FISH** 2 for 39c | Kounty Kist 12 Oz. **CORN** 2 for 29c

Cured **PICNIC SHOULDER** Lb. **33c**

White **POTATOES** 10 LBS. 69c | New Mexico **APPLES** Lb... 15c

**Del Monte Fruit Cocktail**

**2 1/2 Cans 39c**

**Ranch Style BEANS**

303 Can **2 for 29c**

**Giant Size OXYDOL 69c**

Del Monte **Catsup** 14 Oz. **2 for 39c**

**Harvest Time BACON**

2 Lb. Pkg. **89c**

**GRAY GROCERY**

Every Day Low Prices Low Prices Every Day

We Give Western Bonus And Frontier Stamps  
Double Stamps On Tuesday With \$2.50 or More Purchase

**FREE DELIVERY**

Phone 4551

OLTON

Hi-Way 70

**RUTH FRANCES**

THE COSMETICS YOU HAVE BEEN SEARCHING FOR



RUTH FRANCES

**FREE Skin Consultations MONDAY—TUESDAY WEDNESDAY**

Miss Frances will be in our salon all day **MONDAY, TUESDAY**

and **WEDNESDAY**

to help you with your skin problems. She is a specialist on

- \* SPECIAL SKIN PROBLEMS
- \* PROPER MAKEUP FOR DAY-TIME AND EVENING

Be ready for the fall season ahead. Don't miss this opportunity.

**"A LOVELY SKIN IS ADMIRIED BY ALL"**

**COLONIAL BEAUTY SALON**

PHONE 2021

OLTON, TEXAS

**ATTENTION FARMERS**

**We're Ready For Your Grain!**

- \* MODERN FACILITIES
- \* PROMPT, COURTEOUS SERVICE
- \* WE ARE IN THE MARKET FOR YOUR GRAIN — FOR CASH OR GOVERNMENT LOAN

**CONGRATULATIONS R. W. HUCKABEE on the first load of grain**

**We're Proud To Have Handled It!**

We also wish to take this opportunity to express our appreciation to our customers for the past two years that we have been in business here. We hope we may continue to serve you in the future.

**Olton Grain Co. Inc.**



# Let's Go Mustangs!

## FOOTBALL

WEEKLY PRIZES!

### CONTEST RULES

Winners selected in each ad must be circled in ink or pencil. Tie-breaker winners must be circled and scores printed in the spaces made available for them.

Each week's entry must be turned in to one of the merchants sponsoring the contest. Contestants are given a week to prepare and turn in their entries. When they receive their paper on Friday, they have until the next Friday at 4 p. m. to turn in their entries.

Sponsoring merchants may accept mailed entries, but none mailed directly to the Enterprise will be accepted. All late entries will be discarded.

In case of ties, a coin will be flipped to determine the winners.

Anyone may enter except employes of the Enterprise or their families.

### LAST WEEK'S WINNERS

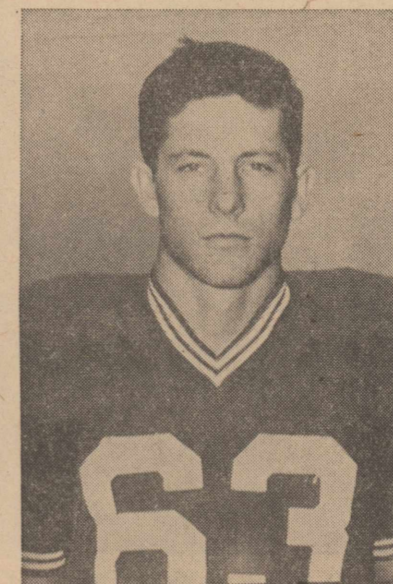
- 1st W. G. Finney, Rt. 1, Olton  
13 right — 5 wrong
- 2nd Wayne Hair, Box 651, Olton  
13 right — 5 wrong
- 3rd L. H. McAdams, Box 622, Edcouch, Texas  
12 right — 6 wrong

Name .....

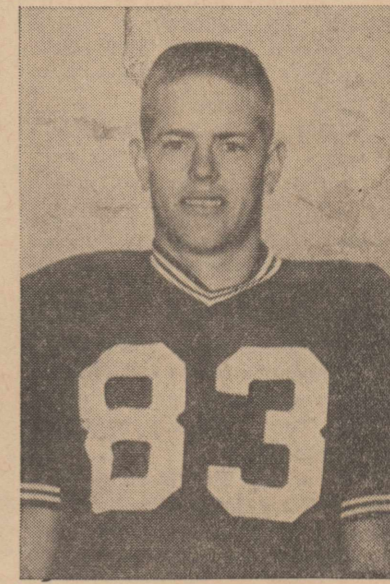
Address .....



WENDELL SCRIBNER



FRED RINEY



JIMMY LAWSON

Olton 44      Season's Record      Petersburg 20

### 1960 FOOTBALL SCHEDULE

#### NON CONFERENCE

SEPT. 9 McCAMEY	THERE
SEPT. 16 SPRINGLAKE	THERE
SEPT. 23 HALE CENTER	HERE
SEPT. 30 HEREFORD	HERE
OCT. 7 OPEN DATE	

#### CONFERENCE GAMES

OCT. 14 MULESHOE	THERE
OCT. 21 MORTON	THERE
OCT. 28 LOCKNEY	HERE
NOV. 4 ABERNATHY	HERE
NOV. 11 FLOYDADA	THERE

Game Time 8 PM.

### WEEKLY PRIZES

Weekly prizes will be awarded in the following manner:

FIRST PRIZE. **\$15.** SECOND PRIZE.... **\$10.** THIRD PRIZE. **\$5.**

TIE BREAKER      Olton ..... Hart ..... West Texas State .....  
 Springlake ..... New Deal ..... Texas Tech .....

#### HALL-SIDES MOTORS, INC.

"YOUR FRIENDLY FORD DEALER"  
 PHONE 4711      OLTON, TEXAS  
 RIDE TO THE GAME IN A NEW FORD  
 OKLA. STATE AT ARKANSAS

#### HIGGINBOTHAM-BARTLETT CO.

"GOOD LUMBER"  
 ALL KINDS OF BUILDING MATERIALS — PRESSURE WATER SYSTEMS —  
 PLUMBING FIXTURES  
 PHONE 3511      OLTON, TEXAS  
 HARDIN-SIMMONS AT CINCINNATI

#### HOWARD HALL INSURANCE

PHONE 3601      OLTON, TEXAS  
 MISSISSIPPI AT HOUSTON



#### ED THOMPSON IMPLEMENT

"YOUR JOHN DEERE DEALER"  
 PHONE 2211      OLTON, TEXAS  
 TEXAS CHRISTIAN AT KANSAS

#### OLTON GRAIN, INC.

READY TO RECEIVE YOUR GRAIN  
 NEBRASKA AT TEXAS

#### THOMPSON CHEVROLET CO.

"A GOOD PLACE TO BUY A CAR"  
 PHONE 5551      OLTON, TEXAS  
 SMU AT MISSOURI

#### MOORE'S SHAMROCK FARM SUPPLY

PHONE 2301      OLTON  
 TEXAS A & M AT LSU



#### Parsons Furniture      Parsons Funeral Home

"Where A House Becomes A Home"      Ambulance Service  
 PHONE 5951      PHONE 5211  
 SPUR AT POST

#### OLTON CO-OP GIN

PHONE 3091  
 OLTON      TEXAS  
 SEMINOLE AT LITTLEFIELD

#### FARMERS GIN

TANDEM MOSS LINT CLEANERS — DOUBLE DRYING  
 PHONE 3191      OLTON, TEXAS  
 TULLA AT LOCKNEY

#### OLTON DRUG

PHONE 2251  
 ABERNATHY AT HALE CENTER

#### SMITH & STRUVE

PHONE 2761      OLTON, TEXAS  
 RALLS AT FLOYDADA

#### OLTON BOWLING CENTER, INC.

COME BY AND BOWL A LINE ON YOUR WAY TO THE GAME  
 DIMMITT AT HEREFORD

#### JACK STRAW GIN CO.

YOUR FUTURE GINNER  
 PERRYTON AT CANYON



#### G. H. BLEY

"YOUR PHILLIPS 66 DEALER"  
 PHONE 2721      OLTON, TEXAS  
 NAVY AT BOSTON COLLEGE



**Spoutin' Off—**

(Continued From Page 1)

gasoline last year?  
 Superintendent: I can't react to that question; my secretary-clerk, junior grade, misplaced my 1959 copy of manual of superintendent's stock answers to inquisitive board members.

**CITIZEN:** As chairman of the local campaign for foot corn research, may I have permission to solicit funds from pupils?

**SUPERINTENDENT:** This is election year; White House directive of January 4 forbids any solicitation of funds from pupils enrolled in public schools, (on school time) for other than party campaign chest.

Parent: My child can't eat that lousy food served in the cafeteria!

Superintendent: Why tell me? Write the secretary of agriculture.

Parent: The discipline in this school is too lax.

Superintendent: This is an election year; White House directive of January 4 forbids school officials from alienating any registered voters.

Parent: My little Everett is so smart for his age; why can't you make an exception for him to start first grade even if he won't be six until December?

Superintendent: Is he Republican or Democrat?

**JACK ROYE STRAWS HAVE TWIN SONS, BORN SEPTEMBER 4**

Twin sons were born to Mr. and Mrs. Jack Roye Straw, Canyon, Sunday, Sept. 4, in the Canyon Hospital and Clinic.

The twins, who were born at 10:58 and 11 p.m., were named Roy Lin and Rod Ken. Roy Lin weighed 5 lbs. 11 ozs., and Rod Ken weighed 5 lbs. 12 ozs.

Maternal grandparents are Mr. and Mrs. Sam Clark, Olton. Paternal grandparents are Mr. and Mrs. Jack Straw, also of Olton.

**TOO LATE TO CLASSIFY**

**FOR SALE:** 160 acres clean red soil land. No Johnson grass, no pre-annual weeds. 43 acre cotton allotment. Eight inch well. Three bedroom house and out-buildings. \$265.00 per acre, 1/4 balance down on 15 year terms. 5 miles north, 3 west, 3/4 north of Olton. Arch Cooper. 32-1fc

**LOST:** Black purse at Econo-wash laundry. Reward for return of papers, partial plate and picture. Phone 537L James Caldwell. 31-1c



**New Cub Dens Organize**

NEW DEN MOTHERS for newly organized cub scout dens established Monday night at the Cub Scout House pose here with their sons, who will be among the new Cub Scouts. From left are Mrs. Bob Mills and sons, Rickey and Mickey; Mrs. Earl McClain and Gale; and Mrs. Dale Chitwood and Joe Dale. Not pictured is another new den mother, Mrs. H. C. Crowder.

**Rev. Doyle Ragle Is Next Speaker For Methodist Homecoming Series**

The Rev. Doyle Ragle, who will be the third speaker of the First Methodist Church's homecoming event, will conduct services Sunday at 7 p.m.

He will speak and show pictures concerning a recent trip to "Lands of the Bible." The public is invited to attend this worship service.

Now serving as pastor of First Methodist Church at Vernon, the Rev. Ragle was previously pastor of First Methodist Church at Munday. Prior to that he was director of religious life and professor of religion at McMurry College for five years. During World War II, he served as a chaplain in the Navy.

The Rev. Ragle received his divinity degree from Perkins School of Theology at SMU, and took graduate work at Columbia University at New York, Garrett Biblical Institute in Chicago and Pacific School of Religion at San Francisco. He attended the second assembly of World Council of Churches.

Beginning homecoming services Sunday was the Rev. Robert R. Miller, who preached at both the morning and evening services.

**Sheep Breeders Organize, Elect May President**

Olton Sheep Breeders Association was formed here Tuesday night with Archie May as president.

Organization of the association and election of officers came at a meeting in the school vocational agriculture building.

W. B. Dickenson Jr. was elected vice-president and Carroll Moss was named secretary-treasurer.

The club plans to hold a club lamb sale in June of next year. Also planned were future meetings to which persons from outside the Olton area will be invited.

The fourth speaker will be the Rev. Carroll Jones, pastor of First Methodist Church at Paducah. He will lead services Wednesday night, Sept. 14, at 7:30.

A 1926 graduate of Olton High School, the Rev. Jones was licensed to preach in 1925. He attended Wayland College two years and was graduated from SMU in 1930. In 1938, he received his MA degree from North Texas State College.

**BIG BUYS WILL SAVE YOU MONEY**



GLADIOLA

**FLOUR**

25 LBS.

**\$1.98**

**CAKE MIX**

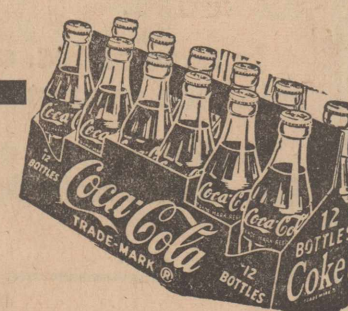
GLADIOLA **3 for 89¢**

Kimbell **SHORTENING**

3 LB. CAN

**59¢**

**COCA-COLA**



**12 BOTTLE CARTON 49¢**

Spare Time — Frozen — Chicken

**POT PIES**

**2 for 39¢**

White Swan

303 Can

**PORK & BEANS**

**8 for \$1**

KIMBELLS

PINKNEY

ALL BRANDS

**OLEO FRANKS**

**BISCUITS**

LB.

3 LB. BAG

**15¢**

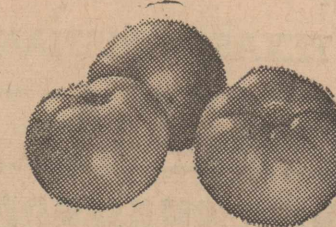
**99¢**

**10¢ can**

LARGE

**Hershey Bars**

**2 for 39¢**



FRESH VINE RIPE

FIRM HEADS **LETTUCE**

**12 1/2¢ lb.**

**TOMATOES**

**15¢ lb.**

SPECIALS START FRIDAY, SEPTEMBER 9

**BOTKIN FOOD STORE**

WE GIVE BIG CHIEF STAMPS

Double On Tuesday With Purchase Of \$2.50 Or More

Phone 3591

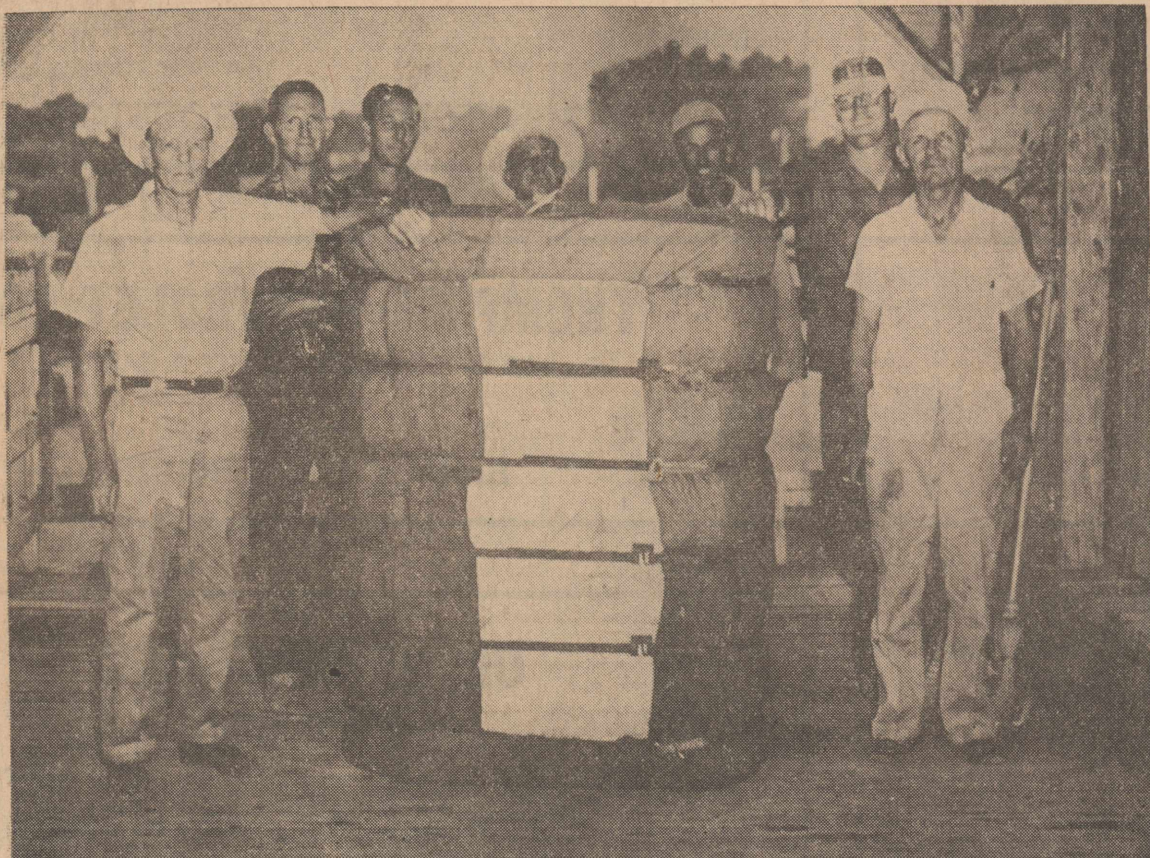
We Deliver

Louis Botkin, Owner

Olton



**Congratulations**



...to Royce McFadden on his **FIRST BALE**

Once again Northern Star has proven itself to be the best. This is a time tested seed farmers know they can depend on. It PAYS to use NORTHERN STAR.

**Northern Star**

O'Brien

SEED FARMS

Texas



# THE OLTON ENTERPRISE

## September Is Proclaimed PTA Membership Month

M. T. James Jr., mayor of Olton has proclaimed the month of September as "P-T-A Membership Month."

The goal of the P-T-A this year is 300 members. To try and reach this goal, a coffee will be given for parents and teachers of each grade.

A prize will be given to the room having the most parents enrolled in the organization by Oct. 1, 1960.

The P-T-A is an organization of parents, teachers and other adults who are interested in the welfare of children and youth. It is a non-partisan, non-secretarian and non-commercial organization.

Membership dues are \$1.25 per person. This includes a subscription to the state magazine, "Parents and Teachers".

The objectives of the P-T-A are:

1. To promote the welfare of children and youth in home, school, church and community.
2. To raise the standards of home life.
3. To secure adequate laws for the care and protection of school children.
4. To bring into closer relation the home and school so that parents and teachers may co-operate intelligently in the training of the child.

5. To develop between educators and the general public united efforts which will secure for every child the highest advantages in physical, mental, social and spiritual education.

Officers of the P-T-A are president, Mrs. Garland Long; first vice-president, Mrs. H. L. Robertson; second vice president, Mrs. S. K. Flatt; third vice-president, Mrs. K. Y. Givens; fourth vice-president, Buddy Hedges; Secretary, Mrs. J. L. Snider; treasurer, Mrs. Melvin Hines; reporter, Mrs. Roye Aikman; parliamentarian, Mrs. J. M. Williams; historian, Mrs. Archie May and song leader, Dick Bentz.

**AIRMEN ARE GUESTS**  
Guests Sunday in the Aubrey Oursborn home were John Owens of New Orleans, La., and Jack Ross of Massachusetts. Both are stationed at Reese Air Force Base at Lubbock.

**DAUGHTER HOME**  
Miss Joyce Gray, daughter of Mr. and Mrs. Virgle Gray, was home from Lubbock over the weekend. She is attending Isabelle's School of Beauty Culture.

**ATTEND RODEO**  
Mr. and Mrs. Arthur Nafzger of Olton and the Stanford Sjogren family of Kress attended the Boys' Ranch rodeo Sunday at Tascosa.

**HOME FROM SCHOOL**  
A student at Draughon's Business College, Miss Charlene Taylor, visited with her parents, Mr. and Mrs. M. E. Taylor, over the weekend.



P-T-A Officers Model Titles

P-T-A OFFICERS and committee chairmen are shown here at last Thursday night's meeting. The hats, which are being modeled, were worn to designate the office or position their owner holds in the organization. Those standing are from the left, Mrs. F. B. Coleman, room representative; Mrs. Lacy Armstrong, hospitality chairman; Mrs. K. Y. Givens, 3rd vice president; Mrs. J. L. Snider, secretary; Mrs. Roye Aikman, re-

porter; Mrs. J. W. Dale, citizenship chairman, and David Howton, publicity chairman. From the left, those seated are Dick Bentz, song leader; Buddy Hedges, 4th vice president and budget-finance chairman; Mrs. Melvin Hines, treasurer; Mrs. Joe Harper, music chairman; Mrs. Wilbur Gaede, character and spiritual education chairman; and Mrs. Garland Long, president.



## NO MATTER HOW YOU VOTE

You're SURE to win with OUR PLATFORM of VALUES at the



FOR THE CLEANEST CAMPAIGN AGAINST THE DIRTIEST CLOTHES



GIANT SIZE

73c



FAVORITE IN THE LOW SUDS PRECINCT

10 LB. SIZE

\$2.13



National Biscuit Co. 1 Lb. Box  
**GRAHAM CRACKERS 35c**

American, Pimento or Swiss—Sliced 1/2 lb. pkg.  
**KRAFT CHEESE... 29c**

No. 1 Tall Can  
**SALMON 49c**

Campbells Large Can  
**TOMATO SOUP... 10c**

Libby—FROZEN 10 Oz. Box  
**CUT OKRA... 17c**

Banquet—FROZEN 8 Oz.  
**MEAT PIES... 19c**

Patio—FROZEN BEEF 12 Oz.  
**ENCHILADA DINNERS... 49c**

Pillsbury or Ballard 8 Oz.  
**BISCUITS... 3 cans 27c**



CO-CHAIRMEN OF THE WAYS-TO-CLEAN COMMITTEE

QUART  
**59c**

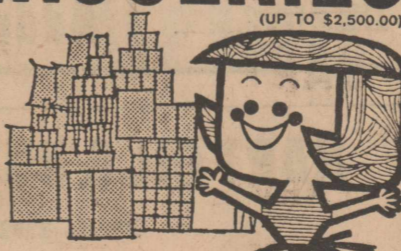
GIANT SIZE  
**59c**

- \* USDA MEATS \* QUALITY FROZEN FOODS
- \* NATIONAL BRANDS \* CRISP PRODUCE
- \* EVERY DAY LOW PRICES \* COURTEOUS SERVICE

## 2 YEARS SUPPLY OF GROCERIES

Just write the name and address of this store on your "Presidential Party" entry blank. If you are one of the 1st or 2nd prize winners we will give you 2 Years Supply of Groceries up to \$2,500.00 in addition to your prize from Procter & Gamble. If you prefer you may take \$2,500 in cash.

A Presidential Party EXTRA compliments of Sherman Food  
GET ENTRY BLANKS HERE FOR PROCTER & GAMBLE'S \$80,000 PRESIDENTIAL PARTY CONTEST



## SHERMAN FOOD

Double Gunn Bros. Stamps Wednesday With \$2.50 Purchase  
FREE DELIVERY QUALITY MEATS PHONE 3701



3 Lb. Can  
**CRISCO... 73c**

Shurfine Pint  
**SALAD DRESSING... 25c**

Folgers 1 Lb. Can  
**COFFEE 69c**

BAYER 100's  
**ASPIRIN... 59c**

**PORK STEAK... Lb. 45c**

**PORK LIVER... Lb. 15c**

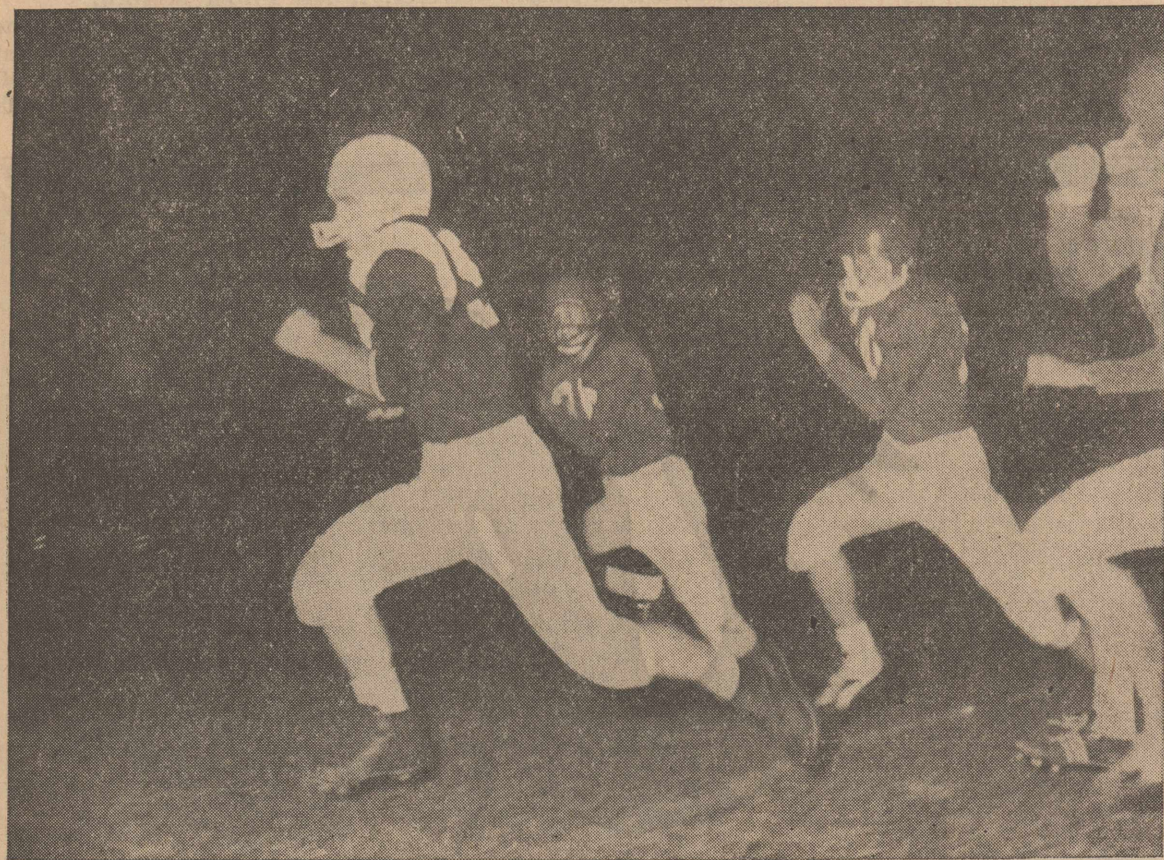
**LETTUCE... Lb. 15c**

Sunkist Lb.  
**ORANGES... 15c**

Cello 1/2 Gal.  
**GARROTS... 2 for 25c**  
**GLACIER CLUB ICE CREAM 59c**

# THE HART BEAT

## Hart Takes On Amherst; New Home Beaten 16-8



Longhorn Touchdown

HERE'S HART'S Connard Riddles as he broke away on a 56-yard touchdown run that sent the Longhorns into a lead against New Home. Hart won the game, 16-8, last Friday night at New Home.

Hart's Longhorns, fresh from a 16-8 victory over New Home last week at New Home in the season's opener, will travel to Amherst Friday night for a non-conference tilt with the Bulldogs.

Amherst rapped New Deal in its first game last Friday night. The Longhorn-Amherst game will start at 8 p.m.

The Hart team, which gave Coach Blocker a victory in his debut as Longhorn mentor, scored early to defeat New Home.

It was a 56-yard dash by Senior Halfback Connard Riddles which sent the 'Horns into a lead they never lost. Co-Captain Larry Lee hit the line for two extra points, making it 8-0, Hart.

Later in the first half, Lee and Quarterback Joe Rubalcaba contributed most of the yardage in a 75-yard drive to pay dirt.

J. T. Stanton scored the Longhorn touchdown on a 16-yard scamper, making the score 16-0.

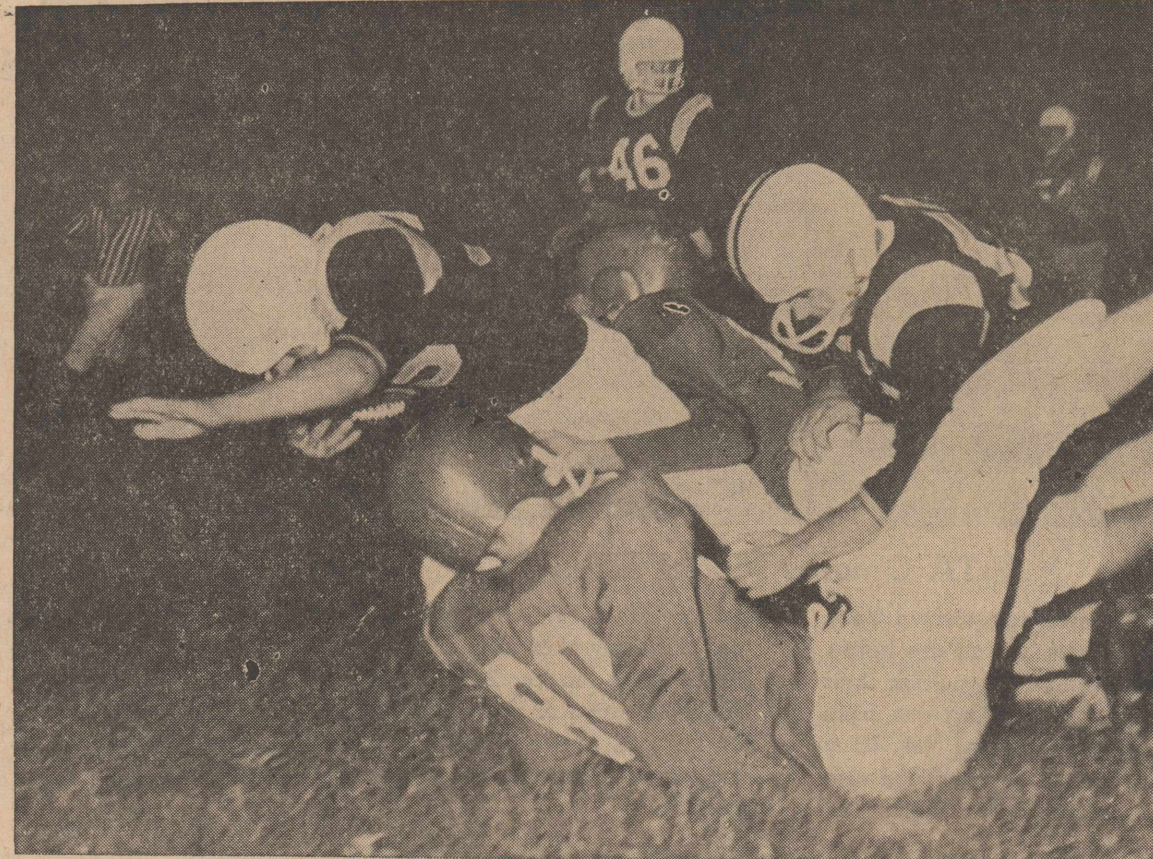
In the second half, New Home scored the first time it had the ball after a reverse from James Crook to Robert White. White galloped 45 yards to the Hart two-yard line on the play.

White then carried over for the score and Crook converted the extra points.

Outstanding players for Hart were Riddles, Joe Rubalcaba, Lee and David Irons. Standing out for New Home were White, Cook and Ed Brown.

Hart had 16 first downs to New Home's eight. The game was marred by numerous penalties and fumbles.

had been left open, became over-balanced and fell.



Rough And Tumble

A HART ballcarrier went for yardage on this carry, and it took two New Home men to bring him down. Other Hart players coming up for assistance are shown in the background.

### Hart Boy Has Two Accidents

Lyle Shives, young son of Mr. and Mrs. Eldon Shives of Hart, last week fell from a stool while eating lunch. A glass broke and cut the palm of his hand. Several stitches were required to close the wound.

Two days after that accident, Lyle fell into a lawn mower, running his hand into the blade and severely injuring the first two fin-

### 37 Persons Join Gun Club In Hart

Thirty-seven persons have joined a gun club which was organized recently in Hart.

President of the club is Bill Rich. Lloyd Davis is vice-president and Bob Reed is secretary-treasurer.

First business meeting is scheduled Thursday night.

A trap shoot, to be held at Co-Op Gin has been planned. Dates

for the shoot will be announced later.

**HART VARIETY STORE**

**SLACKS—WESKITS**  
**School Shoes & Clothes**  
**SCHOOL SUPPLIES**

Phone 2712 Hart, Texas

### RED CROSS COURSE MAY BE OFFERED

The Zealot Club of Hart has proposed the presentation in Hart of a Red Cross procedure course in five sessions.

Those interested may suggest dates for the course by contacting Mrs. Bob Bennett at 2561, or by seeing Mrs. Dwight Miller, Kress Star Route.

### PERCY HART RECUPERATING

Percy Hart is recuperating nicely in his home and the following relatives and friends visited him last week: Messrs. and Mmes. V. E. Bearden, Lee Harris, C. R. Jones, T. R. Davis, Buster Aven, Fred Hamm, John Bridges of Springlake; Howard Bridges of Sunnyside; Ray Jones of Plainview; and N. W. Livesay and Mrs. Pat Livesay and family of Lubbock.

### PARSONS Funeral Home

"AS NEAR AS YOUR NEAREST TELEPHONE"  
Oxygen equipped ambulance Service.  
We accept any funeral home burial policy.  
Phone 5211 Olton



**Bob Hoover**  
Evangelist  
Lubbock, Tex.

**PREACHING IN  
GOSPEL MEETING  
AT  
HART CHURCH OF CHRIST**

**8:00 P.M. Each Evening**  
**Sept. 12 Through Sept. 18**  
**! WELCOME !**

### School Nurse Named For Hart

Mrs. Dorothy Cave, who resides west of Hart, has been employed as school nurse in Hart.

she will work in Nazareth schools. Mrs. Cave says she is anxious to meet parents in Hart and discuss any health problems of school children.

**YOUNGSTER BREAKS LEG**  
Bob Crick, young son of Mr. and Mrs. Verle Crick, fell while playing on a yard fence and broke his leg last week. He has returned to school.

### Mrs. Pyeatt Hurt In Fall At Church

Mrs. Roy Pyeatt of Hart fell at the Baptist Church last week, receiving a cracked rib and numerous bruises.

Mrs. Pyeatt had been making out church reports as acting secretary for the Training Union. She

# FOOTBALL

## CONTEST

**WEEKLY PRIZES!**

### CONTEST RULES

Winners selected in each ad must be circled in ink or pencil. Tie-breaker winners must be circled and scores printed in the spaces made available for them.

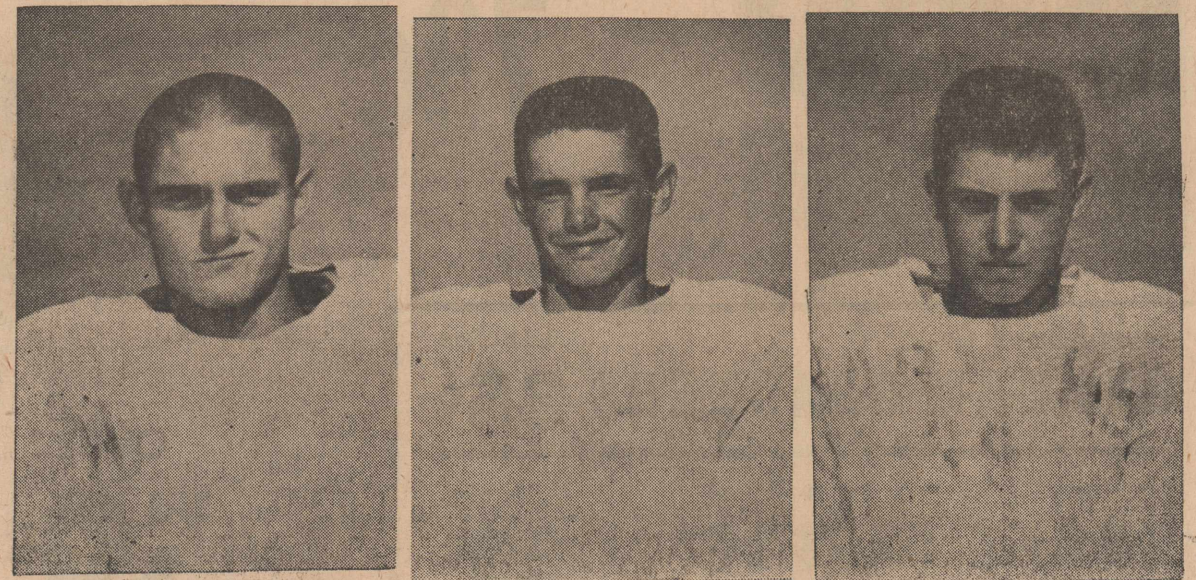
Each week's entry must be turned in to one of the merchants sponsoring the contest. Contestants are given a week to prepare and turn in their entries. When they receive their paper on Friday, they have until the next Friday at 4 p.m. to turn in their entries.

Sponsoring merchants may accept mailed entries, but none mailed directly to the Enterprise will be accepted. All late entries will be discarded.

In case of ties, a coin will be flipped to determine the winners. Anyone may enter except employees of the Enterprise or their families.

### LAST WEEK'S WINNERS

Top three winners each week will be listed here. See how often your name can be listed.



CONNARD RIDDLES

BILLY FARRIS

RALPH MYRICK

Hart 16

Season's Record

New Home 8

### HART LONGHORNS 1960 SCHEDULE

Sept. 9 AMHERST	There
Sept. 16 NEW DEAL	Here
Sept. 23 KRESS	Here
Sept. 30 ANTON	There
Oct. 7 WHITHARRAL	Here
Oct. 14 BOVINA	Here
Oct. 21 OPEN DATE	
Oct. 28 HAPPY	There
Nov. 4 LAZBUDDIE	There
Nov. 11 VEGA	Here

Weekly Prizes Will Be Awarded In The Following Manner:

**FIRST PRIZE \$4 SECOND PRIZE \$2 THIRD PRIZE \$1**

<b>TIE BREAKERS</b>	OLTON.....	HART.....	Name .....
	SPRINGLAKE.....	NEW DEAL.....	Address .....

**FARMERS STATE BANK**  
MEMBER FDIC  
PETERSBURG AT KRESS

**HART OIL & BUTANE CO.**  
Phone 2382  
FARWELL AT LAZBUDDIE

**FARMERS GRAIN CO**  
PHONE 2271  
West Texas State AT Texas Tech

**Cox Butane — Cox Auto Parts**  
PHONE 2231 or 2322  
TEXAS A & M AT LSU

**HART GIN**  
Tandem Moss Lint Cleaners — Double Drying  
ROLAND Phone 2451 ROSA  
TULIA AT LOCKNEY

# LET'S GO LONGHORNS!

**HI-POINT FERTILIZER, INC**  
FERTILIZER — BUTANE — GRAIN  
Phone 2771  
DIMMITT AT HEREFORD



# YOU ARE INVITED

TO THE FOURTH ANNUAL

## FIELD DAY

OF THE HIGH PLAINS RESEARCH FOUNDATION

### WEDNESDAY AFTERNOON

SEPTEMBER 14

The foundation is located 10 miles east of Olton and 15 miles west of Plainview on Highway 70.

# DON'T MISS IT!

- See Research Underway On
- Fertilizer Usage
  - Irrigation
  - Crop Varieties
  - Cultural Tests

#### CROPS INCLUDED ARE:

- \* COTTON
- \* SOYBEANS
- \* SAFFLOWER
- \* CASTOR BEANS
- \* CORN
- \* GRAIN SORGHUMS
- \* SESAME

THIS YEAR THE AGRICULTURAL MACHINERY EXHIBIT WILL INCLUDE AVIATION EQUIPMENT

#### —SPECIAL INTEREST—

- Water Recharging
- Flame Cultivation
- The New Plant Breeding Program With Soybeans & Sesame.

GUIDED TOURS FROM 1:30 to 5 P.M.

BARBECUE SUPPER AT 6 P.M.

OLTON CO-OP GIN  
OLTON

FARMERS GIN, INC.  
OLTON

PAYMASTER GIN  
HALFWAY

HART CAMP CO-OP GIN  
HART CAMP

THOMPSON GIN  
5 Miles North Of Circle

OLTON CHAMBER OF COMMERCE & AGRICULTURE  
OLTON

MAYFIELD CO-OP GIN  
MAYFIELD COMMUNITY

A. A. LINDSEY GIN & GRAIN  
HART

HART PRODUCERS CO-OP GIN  
HART

HART GIN  
HART

HALFWAY CO-OP  
HALFWAY

JACK STRAW GIN CO.  
OLTON

GANNAWAY GIN  
MAYFIELD COMMUNITY

TRI-COUNTY CO-OP GIN  
OLTON

THE OLTON ENTERPRISE  
OLTON