



# Voters Name Chief Tuesday



Spoutin' Off

## Short Story

By Bill Turner

THOSE of you who would like to see the Enterprise support the Democratic party and its nominees may stop reading now. Neither do we offer support to the Republican party and its standard-bearers.

This is written for those who are as yet undecided, and others who may lean one way or the other, but who have no strong support for either candidate.

You might say it is also for those who feel they will be choosing between the "the lesser of two evils" when they go to the polls next Tuesday.

The Enterprise, at this point, feels sort of like Tom Anderson, editor of "Farm and Ranch," who wrote once, without tongue in cheek, that the Socialists have won every election since 1932.

### Less Government Control Should Be Aim

IT HAS BEEN apparent for some time that the real winner in 1960 again will be Socialism, in one degree or another.

Both major parties have given in the past, and are promising for the future, what the people have asked—pie-in-the-sky, giveaway programs, "something-for-nothing."

The American people, all of us, are to blame. Many of us who are most violently opposed to Socialism have unwittingly aided and abetted those whose objective is to bring about its adoption in this country.

We do it by demanding from the government more and more benefits and services which we could and should provide for ourselves.

We do it by asking the Federal government to do things for us which can be done better and cheaper by local or state government.

We do it by voting for candidates who promise the most without considering who is going to pay the bill.

THE ENTERPRISE, while it may be in the minority, believes it is high time this country returned to the principles on which the United States was founded.

### Return To Constitution Is Biggest Need

DURING the hubbub of the current campaign, almost all attention has been focused on the Democratic and Republican nominees for the presidency.

Meanwhile, a third party has been working, away from the TV spotlights and newspaper headlines. Its name is the Constitution Party.

A mention of the name usually draws smiles. Sometimes they laugh. After all, new parties come along often, but they get nowhere. People's loyalty remains with the major parties.

Nevertheless, a third party is America's crying need. The major parties are guided by people who no longer have the benefit of the country at heart.

THEY SIMPLY WANT TO WIN THE ELECTION, BY HOOK OR CROOK, BY PITCHES AND PROMISES, BABY-KISSING, HANDSHAKES, FREE SPENDING, MUD-SLINGING . . . WHATEVER IT TAKES.

In short, the voters are wooed by politicians, not statesmen.

### Third Party Vote Does Not Go To Waste

THE CONSTITUTION guarantees, in the 10th amendment, that powers not delegated to the United States by the Constitution, nor prohibited by it to the states are reserved to the states respectively, or to the people.

Application of the 10th amendment is one of the major planks in the Constitution Party's platform.

The platform is a document of basic principles. If adopted it would create the kind of government advocated by conservative citizens who want to decentralize government and bolster the free enterprise system.

One of two things must happen if we are to return to the principles on which this country was founded. The Democratic or Republican party, or both, must sometime — soon — begin the effort to get the government out of private enterprise. Or, a third party must do it.

### Biggest Vote Not Always The Real Winner

A VOTE in the House of Representatives this year is not an impossibility.

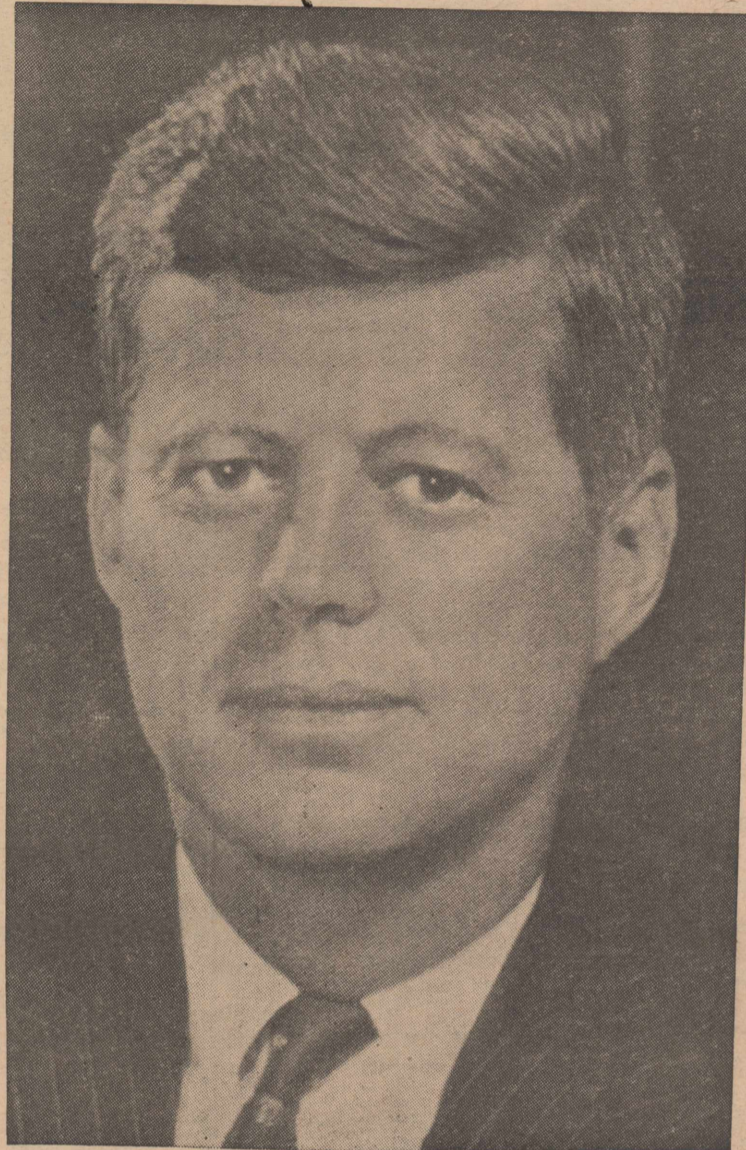
Even if this does not happen in 1960, a vote for the Constitution Party is not a vote thrown away.

Norman Thomas, the long-time Socialist Party candidate, was asked recently on TV why the Socialists are not in the running this year.

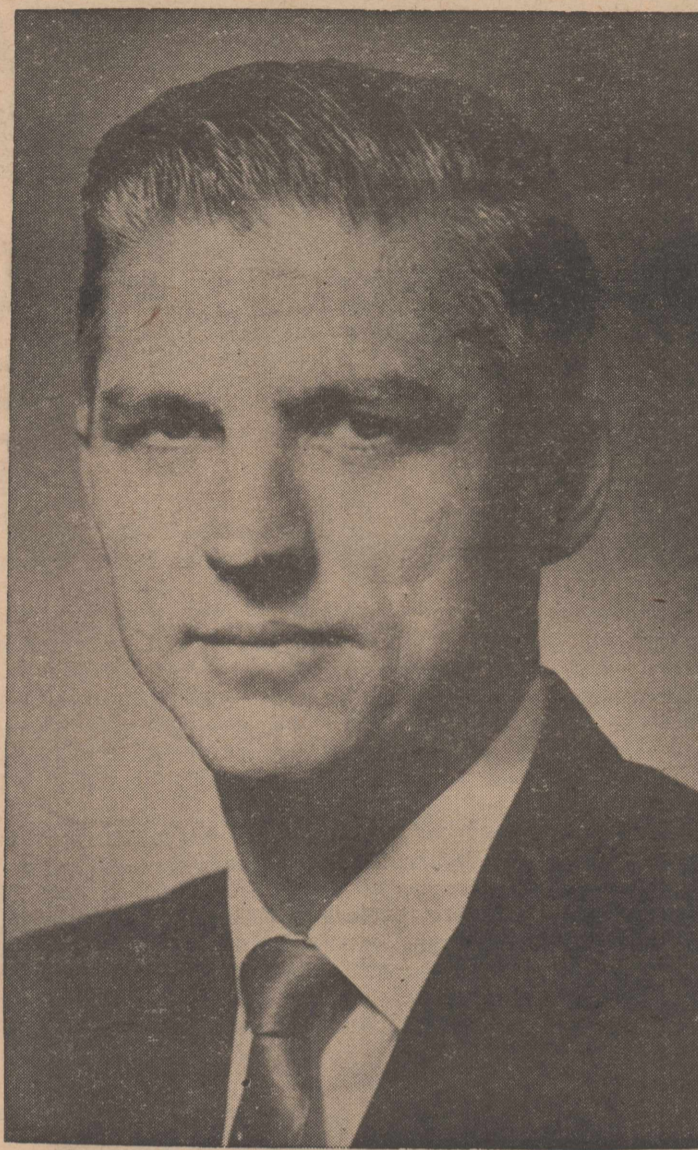
Thomas replied that the Democratic and Republican parties, between them, have adopted almost all the ideas advocated by the Socialist Party through the years, and that the Socialists no longer have any need to seek the presidency.

Perhaps the Constitution Party, then, can be a winner in the future even though it may not win any elections.

If its principles were adopted by either major party, the real winner would be the American people.



JOHN KENNEDY  
Democratic Party



CHARLES SULLIVAN  
Constitution Party



RICHARD NIXON  
Republican Party

## Improved Abernathy 11 Invades Mustang Corral

Olton's Mustangs take on a tremendously improved Abernathy team here Friday night in a District 2-AA game that neither team can afford to lose.

Abernathy comes into the battle with a 2-1-0 district record. A loss to Olton would knock the Antelopes out of contention.

Olton, with an 8-0-0 record for the season and a 3-0-0 record in district play, must win or face the possibility of being an also-ran.

A loss by the Mustangs would throw them into a second place tie with Abernathy. Floydada, which is expected to win handily over Morton Friday night, would be in the lead with a 4-0-0 mark.

Abernathy has an extra incentive to win the Olton tilt. The Mustangs humiliated the Antelopes

33-8 last year at Abernathy.

The Antelopes, after losing four and tying Hale Center, 12-12, have come on strong. They slammed Lockney, 34-6, then racked up Mor-

ton, 37-6, before losing to powerful Floydada, 13-8.

Olton whipped Lockney 30-8 last week and Morton, 38-22, the week before. The Mustangs also hold a 35-22 victory over Muleshoe.

To Mustang Coach Walter Bryan's dismay, the Antelopes are strong on passing. Aerial defense has been Olton's Achilles' heel all season long.

John Brown, a 160-pound signal-caller, handles the throwing for Abernathy. Brown threw three touchdown passes against Lockney, two of them to End Jack Waters. Three of the Antelopes' five touchdowns against Morton came via the passing route.

Brown threw to Waters for the only Abernathy touchdown against Floydada.

### GINNINGS TOP 4,000 BALES

Cotton ginnings at the four Olton gins last week totaled more than 1,700 bales, bringing the total for the year to 4,255.

It was the best week of the fall from the ginnings standpoint. Clear weather prevailed during the week. The Olton area again narrowly missed a hard freeze, as a cold front moved in milder than expected.

First machined cotton of the season was reported during the week.

## Record Voting Seen In County

Olton, Lamb County, Texas and the rest of the nation will name a new President of the United States Tuesday.

As of mid-week, the campaigns are so close even some pollsters, who normally have courage, won't name their choices.

Here in Lamb County, ordinarily a Democratic stronghold, observers are predicting a Democratic lead—but not much of one.

And in Olton, many forecast a Democratic majority here, but no one is predicting a landslide for

either party. Polls in Olton will be at the high school and will be open from 8 a.m. to 7 p.m. Eldon Franks is presiding judge, with D. Y. Ray, G. T. Sides and Louis Schreier assisting.

At Hart Camp, voters will ballot at the Baptist Church, with H. V. Lynch as presiding judge and Faye Moore assisting.

Springlake voters will cast their ballots at the Community Center. Election officials are Jack Hinson, presiding judge, L. W. Watson, and A. A. Parish.

Across the nation, pollsters find opinion running so close that a marked move by the "undecideds" could make the election go either way.

The standard-bearers for the two major parties, as no one needs to be told, are John Kennedy and Lyndon Johnson, Democrats; and Richard Nixon and Henry Cabot Lodge, Republicans. A third party, the Constitution, lists Charles Sullivan and Merritt Curtis as its candidates.

Participation in absentee balloting points to a new record of voting in Lamb County, where more than 6,000 persons are eligible to cast ballots.

Through Wednesday at 5 p.m., 153 voters had cast absentee ballots, and County Clerk Charles Jones said he expected the figure to go over 200 prior to the absentee deadline Friday at 5 p.m.

In 1956, the total absentee vote was 171.

Four years ago, Lamb County went for Adlai Stevenson, the Demo standard-bearer, by a near 2-1 margin. The Olton community voted 573 for Stevenson and 365 for President Eisenhower, as 972 voters turned out. This was figured at the time to be 97.9 per cent of the community's eligible voters.

In addition to the top races, Texas voters will elect a long list of other candidates. A sample ballot showing all races and the four proposed amendments to the state constitution can be found on page one, section two.

## Second Annual Weaning Pig Sale Tops \$4,000; 146 Pigs Are Sold

More than \$4,000 worth of pigs went to market Saturday as Olton Swine Breeders' Association held its second annual Weaning Pig Sale at the FFA Show Barn.

The sale attracted buyers from throughout the state. W. T. Hall Jr., secretary of the FFA project pigs were sold for \$4,220, an average of \$28.90 per head.

Harlingen buyers led the purchases with 19 pigs. Friona rep-

resentatives bought 18 and Petersburg buyers purchased 13.

One pig, a Duroc sold by Don Blades, was purchased by Petersburg FFA for \$80. The same FFA chapter bought two pigs from Dick Cade for \$57.50 and \$50. One other pig, sold by Leslie Kennedy, was purchased by Springlake FFA for \$52.50.

Eleven pigs sold for \$40 or better, while 42 sold for \$30 or more. W. B. Dickenson Jr. was auctioneer.

Pigs on sale were farrowed in August.

At the first sale last year, 185 pigs were sold for about \$3,000, an average of \$17 per head.

The association plans a meeting Monday to hand out checks and elect new officers.

## Annual Meeting, Banquet Dates Set By C-CA Directors

Two important annual dates for the Olton Chamber of Commerce and Agriculture were set Tuesday morning at a regular meeting of the C-CA board.

Annual meeting of the C-CA membership will be held Friday, Dec. 2, in the auditorium of the high school. Seven new directors will be elected, including one to replace Sidney Allen, who resigned this week.

Feb. 3, 1961, was set as the date for the annual C-CA banquet. Leon Hill, Amarillo Baptist minister, will be the speaker.

In other activity at the board meeting, the directors endorsed the presentation of a citizenship program here by Lubbock Christian College. The program is scheduled tentatively for January.

### RELEASED FROM CLINIC

H. V. Gray has been released from the Porter Clinic in Lubbock and is reported in good condition by relatives.

### Annual Vets' Day Breakfast Slated

The annual American Legion "Veterans Day" breakfast will be held at 6:30 the morning of Nov. 11 at the Legion Hut, Russell Grimes, post commander, announced this week.

All veterans are urged to attend, Grimes said. There is no charge for the breakfast. New officers of the local post also will be elected at the breakfast.

### STORE CLOSING, 'MUSTANG DAY' OBSERVANCE SLATED HERE NOV. 11

The retail trades committee of the Olton Chamber of Commerce and Agriculture and the city of Olton have scheduled a town-wide observance to honor Olton's Mustangs Nov. 11.

The committee asks all businessmen to close at noon that day for the Floydada-Olton football game that afternoon at Floydada. Mayor M. T. James Jr. Thursday issued a proclamation declaring Nov. 11 as "Mustang Day."



Halloween King And Queen

CROWNED AS ROYALTY of the annual Olton High School Halloween Carnival Monday night were Gaines Stanley and Barbara Fancher, freshmen. The two were elected by vote of the student body. Selection of the king and queen came as the climax to the annual carnival.

# Cleo Smith Home Features Spaciousness, Comfort

BY JOLINE WARREN

Knock on any door — or ring any doorbell and it will be a hard task to find a home as attractive and well planned as the Cleo Smith home.

Spaciousness and color harmony in the rooms and furnishings are some of the secrets which make the home an ideal one for the family to live in and entertain friends.

Cleo now is working in Alaska, but he will be home in several months. Eva and their three children, Diane, Donna and Mark, are anxiously awaiting the return of the head of the household.

The all-electric, rock-faced brick home is approximately a half-mile's drive west of town on Highway 70. It has central heating and air-conditioning, silent light switches and two master lighting panels as some of its special features. Also, the home has a patio with a built-in barbecue pit, a double garage and a large basement.

Attractive shrubbery and plants, plus a well-kept lawn add to the exterior beauty of the home.

Two large closets with sliding doors for guests' coats are located in the entry hall. The floor of the hall is laid with suntan colored tile and the walls are beige, scenic print wall paper. Beige is one of the key colors used in the decoration of the home.

Other added attractions include a large utility room near the family, dining and kitchen area. The utility room has a washer, dryer, an extra sink and a built-in sewing machine and table. A half-bath with shower is located in the utility room.

"A homemaker's dream come true" could easily be the words used to describe Eva's kitchen. Highlights of the kitchen are stainless steel appliances which include a dishwasher, double ovens, cab-



The Living Room

COMFORTABLE and attractive furnishings enhance the living room and make it ideal for informal entertaining. Sliding glass doors in this room open on to the patio, which is equipped with a built-in barbecue pit.

inet top burners, combination deep-freeze and refrigerator, all built-ins. Stainless steel is used above the burners and also to one side to provide a place to set hot pans and skillets.

One of the family's favorite spots in the home is the coral and brown formica counter shaped similar to a musical staff. Brown and beige striped chairs with brown chrome trim are used at the counter.

Coral and beige formica also is used on and above the working space of the kitchen cabinets. The

cabinets are made of mahogany and stained with legacy finish. Matching lattice shutters and half drapes decorate the windows above the double sink.

A drinking fountain near the kitchen area is handy for children and grownups alike and cuts down on the washing of glasses. Another handy feature is a beige phone near the snack counter.

Eva says that one of the things the family enjoys most about the home is a FM-stereophonic system which plays music continually with little or no advertising

Through this system, music can be piped into every room of the home. The music center, which has ample space for a stereophonic record player and records, is in the kitchen, family and dining area.

The family and dining area is made comfortable and cheery by Early American furnishings which include a divan made of beige and brown fabric, maple end tables and coffee table, attractive lamps, chairs and a maple dining table and chairs.

One of the walls of the family

and dining area area is made of Tennessee stone and the other walls in this area are made of mahogany. Double sliding glass doors curtained with coral and beige drapes, open onto the patio.

Step down from this area into the pleasant living room—and it will be a room that you will not want to leave. This room, which has a stone fireplace and attractive furnishings, serves many purposes and can be used for both formal and informal entertaining. Bright colored pillows and cushions decorate the mantle of the fireplace, which also can be used as seating space. Beige tile is used on the floor in front of the fireplace for easy keep and cleaning. The rest of the floor in this area is laid with beige carpet.

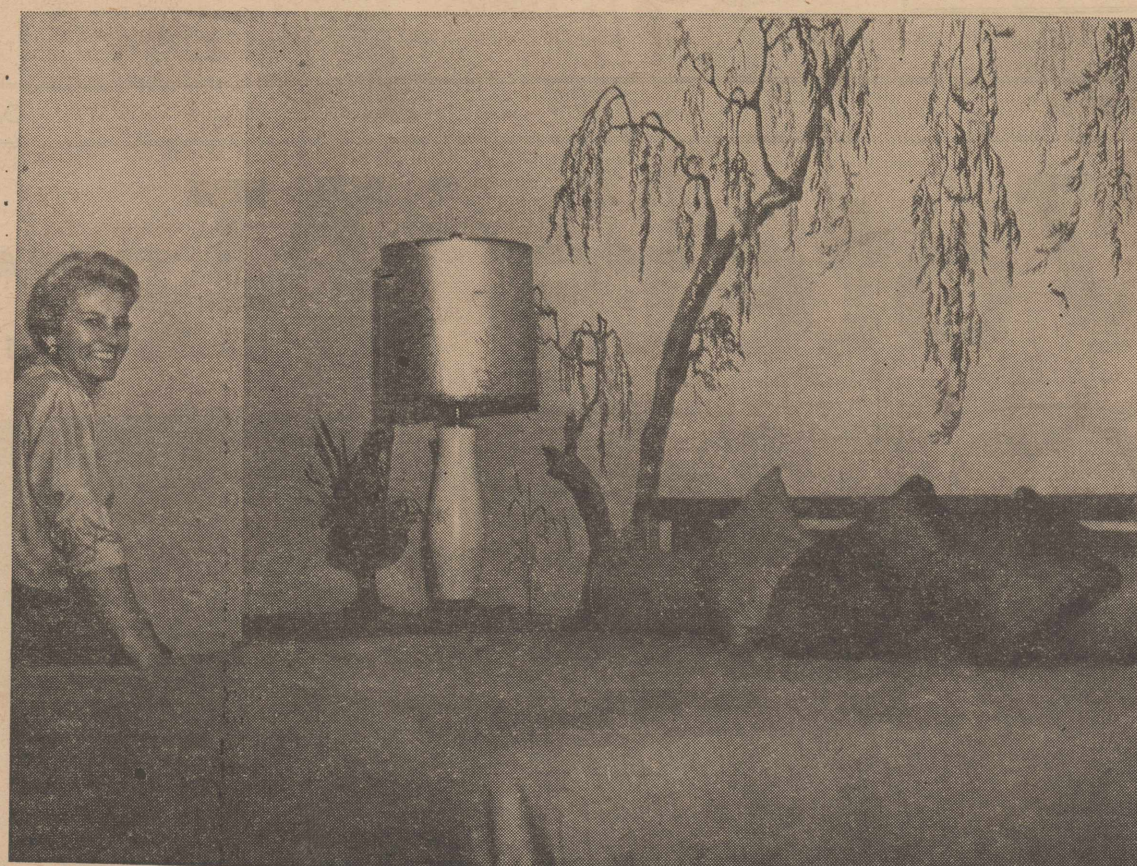
Beams of mahogany create an impression of height to the ceiling of this room. Grass cloth is used between the beams of the ceiling.

A long divan made of wheat-colored fabric and two benches with black cushions are arranged near the fireplace for comfortable seating. Other furnishings in the room include two turquoise chairs, tables and a piano for Donna and Diane, the musical members of the family.

Built-in shelves and a bookcase occupy one wall in the living room. Another wall is formed by sliding glass doors opening onto the patio. The glass doors are adorned with gold and beige printed drapes and matching valance. Legacy panelling forms another wall of the room.

Glass globe-shaped lights hang over the stone planter to furnish needed light for plants. The planter also serves as a room divider between the main hallway and the living room.

A large mural painting of a Japanese flowering tree above the



The Master Bedroom

THE CHARMING LADY of the house, Eva, is shown here in in the master bedroom of the Smith home. Graceful lamps plus a large mural painting of a Japanese Flowering Tree give the bedroom a Far East atmosphere.

king-sized bed gives the master bedroom a Far East air. Colors in this mural are brown and pumpkin on pueblo, the colors of the walls in this room. The bed is covered with a pumpkin-colored spread. Two large tables made of a matching finish are placed at either side of the bed.

The windows in this bedroom are specially treated with black shutters and pumpkin-colored drapes. Two large closets, a closet for Eva's clothes and a closet for Cleo's clothes are in the bedroom.

Black shutters and pumpkin drapes also are used in the com-

ination bath and dressing room adjoining the master bedroom. Special features of the bathroom are Persian beige fixtures and matching tile, a built-in dressing table and sink with a three-way mirror.

The feminine bedroom shared by Donna and Diane has pastel blue and green walls and the two four-poster beds are covered with matching white spreads. Curtains made of blue and green material on a white background decorate the large, sliding glass doors which open onto the patio.

A large mirror is placed above the built-in desk and study area. The girls have a large collection of stuffed animals decorating the room. A long closet which extends from one end of the bedroom wall to the other has ample room for both girls' clothes and a built-in chest.

Turquoise, gold and white are the colors used in the other bath-

room, which has a built-in dressing table with two sinks, a dressing table and also a towel closet. The tile on the floor is white.

Mark's bedroom which has pebble-colored walls and curtains made of topax and turquoise navigational print on a brown background, is very suitable for the little man of the house. The bed is covered with a topax-colored spread. A bookcase in his room is used to display toy boats and ships. He also has a built-in desk with a formica top suitable for studying or any kind of paper work that an eight-year-old might do. Other furniture in his room include tables and a portable TV set.

The home is designed for all-year around comfort and liveability — a charming home planned for family activities and fun, as well as for the entertaining of guests.



The Girls' Bedroom

DONNA, seated, and Diane, are shown here in the feminine bedroom that is shared by the two girls. Donna is 11 years old and a sixth grade student. A freshman in high school, Diane is 14 years old.



The Boy's Bedroom

MARK is seven years old and a second grade student. One of his many interests is a collection of toy ships and boats. The theme is carried out by the navigational print bedspread and curtains.

LET US SAY  
THANK YOU

for the wonderful cooperation we have received while we have lived in Olton. We have sold our laundry, Douglas Econo-Wash, to Mrs. Pauline Jones, and we are moving from Olton to Portales, NM, because of sickness in the family.

Mr. and Mrs. A. J. Douglas

"It Is Profitable To Patronize Your Co-Op Gin"

OLTON CO-OP GIN



# HARVEST of VALUES

**JELL-O**  
All Flavors  
2 Reg. Size 15¢  
**OLEO**  
Blue Seal 15¢  
lb.

**CORN** Libby Golden cream style or whole kernel 303 Can ..... 6 for \$1.00

**PEARS** Libby—Halves 303 Can ..... 4 for \$1.00

**CATSUP** Libby 14 Oz. Bottle ..... 5 for \$1.00

**PINEAPPLE** Libby—Crushed No. 2 Can ..... 29¢

**TOMATO JUICE** Libby 46 Oz. Can ... 3 for 88¢

**PEACHES** Libby 303 Can ..... 5 FOR \$1.00  
SLICED or HALVES

**FRUIT COCKTAIL** Libby 303 Can ..... 5 FOR \$1.00

**KIMBELL COFFEE** 1 Lb. Can ..... 59¢

**FLOUR** Lightcrust 25 Lb. Bag ..... \$1.89 | **FAB** Giant Box ..... 65¢

**WILSON'S BAKE-RITE SHORTENING** 3 Lb. Can ..... 59¢

**BAKERS ANGEL FLAKE COCOANUT** 3 1/2 Oz. Can ..... 2 FOR 39¢

**Chewing Gum** All 5c Pkgs. .... 3 for 10c

**BACON** Sunrany 2 Lb. Pkg. .... \$1.09

**NICE LEAN PORK CHOPS** LB. .... 57¢

**STEAK** Choice Pen Fed Beef CLUB Lb. .... 59¢

**HORMEL SAUSAGE** 3 1Lb. Pkgs. \$1.00

**CHUCK or ARM ROAST** Choice Pen Fed Beef Lb. .... 49¢

**HI-HO CRACKERS** 1 Lb. Box 35¢

**EATMORE—FROZEN VEAL OR PORK CUTLETS** 18 Oz. Pkg. 79

**FROZEN—CHOPPED BROCCOLI** 10 Oz. Pkg. 17¢

**ORANGES** Texas 5 Lb. Bag 59¢

Medium Size **YELLOW ONIONS** Lb. 5¢

**RED POTATOES** 10 Lb. Cello Bag 49¢

**APPLES** Extra Fancy Delicious Lb. .... 15¢

**DOUBLE GUNN BROS STAMPS EVERY WEDNESDAY** Phone 3581

**CASH WAY FOOD STORE** Free Delivery SPECIALS EVERY DAY  
Where Friends Meet and Prices Talk



JOLINE WARREN  
Society Editor

# News Of Interest To Women

PHONE 5791

## Pre-Nuptial Shower Held For Miss Sherry Stafford

### Dennis Circle, WSG, WSCS Hold Joint Meeting

The Bonnie Brown home was the scene Saturday afternoon for a pre-nuptial shower honoring Miss Sherry Stafford of Odessa. She is the bride-elect of Donald Wood, son of Mr. and Mrs. A. W. Wood of Olton.

Hostesses received approximately 50 guests who attended the "come-and-go" event. The guests were registered by Miss Charlotte Wood, sister of the prospective bridegroom.

A centerpiece of white chrysanthemums and silver appointments decorated the serving table which was laid with a white cloth. Refreshments of spiced tea, coffee, cake, mints and nuts were served by Mrs. Arthur Couch and Mrs. George Kidd. Miniature pastel wedding bells decorated the slices of white cake.

The hostess gift, cooking ware, sheets and pillow cases, were presented to the honoree by Mrs. Couch. White carnation corsages also were presented to the honoree and to Mrs. Wood, prospective mother-in-law of the honoree.

Ladies sharing hostess duties were Meses. Couch, Sydney Allen, Glenn Exter, Willie Gene Green, Clovis Poteet, George Kidd, O. Z. Findley, M. G. Brown, Ed Thompson, Elmo Bryant, V. J. Carlisle, Henry Mathis and Brown, all of Olton, and Mrs. Harmon White and Mrs. Weldon Lee, both of Cotton Center and Mrs. Kit McDaniels of Hale Center.

Program leader for the combined meeting was Mrs. Gerald Bizzell. Mrs. Henry Miller led in scripture reading and meditation. A talk about the Wesley Community Center in San Antonio was presented by Mrs. Raiford Daniel. Mrs. Rex Chitwood spoke about Missionary Service and Foreign Fields.

Two hymns, "Eternal God, Whose Power Upholds" and "O Brother Man, Fold to Thy Heart Thy Brother" were sung by the group. Song-leader was Mrs. Leo Ross Bryant and Mrs. Delmer Givens served as organist.

Twenty-six persons, including the Rev. W. F. Gaede, attended the meeting.

### Shower Will Honor Miss Pat LaFrance

A bridal shower honoring Miss Patricia LaFrance, bride-elect of Dewey Hukill, will be given Monday at the Clifton Hines residence.

Calling hours for the "come-and-go" occasion are from 2 until 5 p.m.

The public is invited to attend.

### Crucifixion Studied By Hopewell WMA

"The Crucifixion of Christ" was studied at last Wednesday night's meeting of the Women's Missionary Auxiliary. Hopewell Baptist Church was the scene of the meeting.

Those present were Mrs. D. D. Brown, Mrs. Annette Winn, Mrs. Will Russell, Mrs. Thomas Lively, Mrs. Raymond Durham and Mrs. Virgle Gray.

### 20 ATTEND MEET OF LADIES CLASS

Twenty persons attended a meeting Wednesday morning of the Ladies Bible Class. The meeting was held at the Main Street Church of Christ.

A lesson on "The Beatitudes" was taught by G. B. Stanley, minister of the church.

A guest, Mrs. Myrtle Conroy of Altus, Okla. was present. Members attending were Meses. Paul Burrus, Bill Bennett, Jack Capehart, Marshall Cavett, T. Combest, Fred Hicks, E. C. Jones, G. W. Locke, C. M. Owen, Julia Hulsey, Lee Poteet, D. Y. Ray, Walter Rose, J. C. Scruggs, M. L. Armstrong, N. L. Walker and J. A. Boverie.

The Esther and Dorcas Classes of First Baptist Church will have a combined social Tuesday night at the church fellowship hall. Time for the event is 7.

Serving as hostesses for the event will be Group 1 members of the Dorcas Class.

Meeting of Olton Study Club Held In Burrus Home

Mrs. Paul Burrus was hostess Monday night for a meeting of the Olton Study Club. The meeting was given at the Burrus home.

The program included talks: "Music of American Indians" by Mrs. Basil Sherman and "The Art of Dress and Some Famous Designers" by Mrs. Bailey Hair.

Members present other than the hostess and those appearing on the program were Meses. R. A. Aikman, Brent Burrow, H. B. Carson, Jim Fuller, D. M. Granbery, L. B. Holt, Carl Hooper, G. T. Sides, C. S. Silcott, Marshall Stone, Jack Straw, Jim Williams and Bill Yates.

The next meeting will be held Nov. 14 at the D. M. Granbery residence.

Esther-Dorcas Units Plan Combined Social

Serving as hostesses for the event will be Group 1 members of the Dorcas Class.

Meeting of Olton Study Club Held In Burrus Home

Mrs. Paul Burrus was hostess Monday night for a meeting of the Olton Study Club. The meeting was given at the Burrus home.

Meeting of Olton Study Club Held In Burrus Home

Mrs. Paul Burrus was hostess Monday night for a meeting of the Olton Study Club. The meeting was given at the Burrus home.

Meeting of Olton Study Club Held In Burrus Home

Mrs. Paul Burrus was hostess Monday night for a meeting of the Olton Study Club. The meeting was given at the Burrus home.

Meeting of Olton Study Club Held In Burrus Home



ENGAGED

MISS SHERRY STAFFORD of Odessa is the bride-elect of Donald R. Wood, son of Mr. and Mrs. A. W. Wood of Olton. Wedding vows will be solemnized November 23 at the First Methodist Church, Odessa.

Mr. and Mrs. Franks Parents Of New Son

A boy, Mark Gordon, was born Saturday, Oct. 29, at 6:30 a.m. to Mr. and Mrs. Don Franks. Mark weighed 7 lbs. 5 1/2 ozs. at birth in the Methodist Hospital in Lubbock.

Maternal grandparents are Mr. and Mrs. J. F. Miller of Olton. Paternal grandparents are Mr. and Mrs. Eldon Franks, also of Olton.

OHS Grads Home For Weekend Are Listed

OHS graduates home for the weekend included:

From Texas Tech—Carol Ann Bostick, daughter of Mr. and Mrs. Vernon Bostick; Judy Laceywell, daughter of Mr. and Mrs. Witt Laceywell; Joyce Curtis, daughter of Mr. and Mrs. H. R. Curtis; Ken Prestridge, son of Mr. and Mrs. Barton Prestridge; Paul Ray Montgomery, son of Mr. and Mrs. Ray Montgomery; James Ray Hyatt, son of Mr. and Mrs. Jim Hyatt; and Jerry Moore, son of Mr. and Mrs. Elmer Moore.

From West Texas State—Terry Gail Hooper, daughter of Mr. and Mrs. Elbert Hooper; Peggy Sluder, daughter of Mr. and Mrs. Tom Sluder; Judy Moore, daughter of Mr. and Mrs. Elmer Moore; Nell Smith, daughter of Mr. and Mrs. K. F. Smith; David Morrison, son of Mr. and Mrs. Bob Fisher; John Lynn Burrow, son of Mr. and Mrs. Brent Burrow; Hayden Hankins, son of Mr. and Mrs. W. T. Hankins; and Charlie Giles, son of Mr. and Mrs. Doug Giles.

From South Plains Junior College—Martha Hyman, daughter of Mr. and Mrs. Elbert Hyman; Gary Lawson, son of Mr. and Mrs. Drexel Lawson; Roy Neal Jones, son of Mrs. Pauline Jones; Jimmy Moss, son of Mr. and Mrs. K. L. Moss; Freddie Gordon, son of Mr. and Mrs. Fred Gordon; James Hukill, son of Mr. and Mrs. T. H. Hukill; Jerry Mathis, son of Mr. and Mrs. Henry Mathis.

From Panhandle A & M—Winfred Hair, son of Mr. and Mrs. Bailey Hair and Ronnie Dennis, son of Mrs. Ineta Dennis.

From Tarleton State—Elza Miller, son of Mr. and Mrs. W. E. Miller.

From Wayland Baptist College—Joe Miller, son of Mr. and Mrs. J. F. Miller.

From Eastern New Mexico—Marty Singletary, daughter of Mr. and Mrs. Glenn Singletary.

Daughter Is Born To Roy Flournoys

Mr. and Mrs. Roy Flournoy became the parents of a girl, Pamela Denise, Tuesday, Nov. 1, in Baird, Texas. Pamela weighed 6 lbs. 5 ozs. at birth.

Maternal grandparents are Mr. and Mrs. Barton Prestridge of Olton. Paternal grandparents are Mr. and Mrs. J. C. Flournoy of Breckenridge.

First Child Is Born To Jim Harrison

Mr. and Mrs. Jim Harrison of Waco announce the arrival of their first child, Sharla Sue, who was born at 1:22 p.m. Oct. 28 at Providence Hospital, Waco.

The young lady weighed 8 pounds and 11 1/2 pounds at birth. Mrs. Harrison is the former Miss Avis Jefferies. She was an honor student of the 1954 graduating class of OHS.

Maternal grandparents are Mr. and Mrs. V. Y. Jefferies of Olton and Mr. and Mrs. John D. Harrison of Sanderson are the paternal grandparents. Mrs. B. F. Shipley of Olton is the maternal great-grandmother.

New Son Is Born To Vasquez Family

A new son, Lee, was born to Mr. and Mrs. Tomas Vasquez of Uvalde at Community Hospital and Clinic.

Lee, who was born Oct. 30, weighed 5 pounds and 15 ounces. There are three other children in the Vasquez family.

20 Olton Baptists Attend General Meet

Approximately 20 members of the First Baptist Church, Olton, were among the large number of persons from almost every city in the state who attended the 75th anniversary meeting of the Baptist General Convention. The convention was held Monday through Wednesday at Lubbock.

Theme for the convention was "Found Faithful".

\$90 Collected In CROP Drive

Thirty young people of the First Methodist Church and the First Baptist Church rang doorbells and knocked on doors here Sunday night, collecting money for CROP, (Christian Rural Overseas Program). A total of \$90.86 was collected to help needy persons overseas.

Gary Bizzell was chairman of the group. After the young people had finished collecting money for the program, they returned to the First Methodist Church, where they were served cokes and cookies by the youth of that church.

The young people of both churches expressed their appreciation to the people of Olton for opening their doors and contributing to CROP.

IN METHODIST HOSPITAL

Leamon Bryant, who underwent major surgery in the Methodist Hospital Tuesday, Oct. 25, will return home Thursday, Nov. 3.

IN LITTLEFIELD HOSPITAL

Mrs. Robert Don Bryant is in the Littlefield Hospital this week for observation.

## 'Psychology Tips' To Be Next Topic For Bykota Club

A speech, "Character Training at Home", will be presented by Mrs. Jerry Dennis at the next meeting of the 1956 Bykota Study Club. Members will answer the roll-call with "Tips on Psychology".

The meeting will be Tuesday at the James Martin home with Mrs. Martin serving as hostess. Time for the meeting is 7:30 p.m.

A bake sale is planned for Nov. 22 as one of the club's projects. Proceeds will go to the fund to help the needy children of Olton.

Another club project is the sale of canned chocolate covered pecan candy for the approaching holidays. Candy may now be purchased from any member of the club. The proceeds of this project will help finance the yearly Bykota Study Club Scholarship.

Pre-Nuptial Event Set For Miss Yates

Miss Oneta Yates, bride-elect of David Cole, will be honored with a pre-nuptial shower Wednesday, Nov. 9, at the fellowship hall of the First Methodist Church.

Calling hours for the "come-and-go" event will be from 3 to 5 p.m. The public is invited to attend.

WSCS Holds Regular Business Meeting

A regular monthly business meeting of the Women's Society of Christian Service was held Wednesday morning at fellowship hall of the First Methodist Church.

The devotional was presented by Mrs. W. T. Hall Jr.

Members attending were Meses. Paul Spain, Hall, J. B. Williams, Lee Green, Henry Miller, Delmer Givens, Owen Norfleet, Bob Daugherty, Bill Collins, W. F. Gaede, Jim Gregory, J. C. Brown and Leo Ross Bryant.

MRS. GRANBERY REPORTS ON TRIP TO ORPHANAGE

Mrs. D. M. Granbery this week gave a report about a visit of the Young Ladies Bible Class to the Lubbock Christian Children's Home. Approximately 10 members visited there last Wednesday.

The report was given Wednesday morning at a class meeting at the Main Street Church of Christ.

"Naomi, a Woman of the Old Testament" was the lesson taught by Mrs. I. B. Holt at the meeting.

Members present were Miss Helen Locke and Meses. Jim Johnson, Bud Huckabee, Bub Holt, Jack Thomas, Tom Carlisle, Jim Evans, Howard Phares, Don Williams, Robert Williams, Granbery and the teacher.

Mrs. Lacy Armstrong Leads WMU Program

The Women's Missionary Union met Monday afternoon at the First Baptist Church for a Royal Service program based on mission work in South America. Mrs. Lacy Armstrong was in charge of the program.

"Jesus Still Reigns" was sung by the group to open the meeting. Mrs. Bob Hipp led the opening prayer and the prayer calendar was given by Mrs. C. W. Leathers.

Those appearing on the program were Meses. Jack Estes, Hipp, Joe Miller and Garner Ball.

Other ladies attending the meeting were Meses. C. B. Turner, A. C. Brigance, Milford Lambright, Duward Price, R. A. Burgess, W. C. Gunter Jr., Clury Phillips, Owen Jones, Bob Duncan, W. E. Andrew and Gene Cade.

The meeting was closed in prayer.

Pink-Blue Shower To Fete Mrs. Motley

A "pink-and-blue" shower will honor Mrs. Weldon Motley, Thursday, Nov. 10, at the Tom Billy Hankins home. Time for the "come-and-go" shower is 2:30 until 4:30 p.m.

The public is invited to attend.

OLTON SCHOOL LUNCH MENU

(Subject to Change)

MONDAY—Steak and gravy, tomato catsup, steamed rice, green beans, apricots, hot rolls and milk.

TUESDAY—Weiner on bun with chili sauce and mustard, potato soup, cheese and crackers, 1/2 apple and milk.

WEDNESDAY—Chicken pie, lettuce wedge, cookies, bread and milk.

THURSDAY—Italian spaghetti, brown beans, mixed greens, cherry cobbler, cornbread and butter and milk.

FRIDAY—Deep sea doodle and lemon, baked sweet potato and butter, pineapple and cheese salad, chocolate cake, bread and milk.

VISIT H. V. GRAY

Mr. and Mrs. V. J. Carlisle visited H. V. Gray in the Porter Clinic in Lubbock Sunday.

VISIT JEFFRIES

Mrs. T. C. Dyer and Mrs. Applewhite of Hale Center visited in the V. Y. Jeffries home Sunday.

GUESTS IN GAEDE HOME

Betty Seljos, a West Texas State College student, visited over the weekend with Nita Gaede.

TOO LATE TO CLASSIFY

FOR RENT: 3-room modern house on East 8th. Phone 4503. 39-4tc

BARGAIN: I had too much hail. Will sell one four-row stalk shredder. \$187.50 off. Never been used. Call 2751 or ask at Adams Tractor Co. 39-4tc

FOR SALE: One extra clean 850 Ford Butane tractor; one 1949 Farmall with four row equipment; one 1953 "60" John Deere—new head, block and crank shaft; one 1949 "G" John Deere; one Moline Wheatland tractor. Adams Tractor Co. 39-4tc

LOST: School pictures belonging to Lonnie Yandell. Phone 5706. 39-1tc

FOR SALE: Four registered Hampshire sows, two sows subject to register and one registered boar. Frank Farrar. Phone 3961. 39-1tc

FOR SALE

3-Bedroom Home At 1407 W. 9th In Hillcrest Addition Of Olton

With wall-to-wall carpet in livingroom dining room and hall, central heat, lots of storage space, back yard completely enclosed with redwood fence. —

Will Sell Equity Or Trade For Late Model Automobile.

PHONE 2351

## Golden Age Social Hour Sponsored By Garden Club

Last Friday's Golden Age Social Hour was sponsored by the Olton Garden Club. Members of the garden club who attended were Mrs. A. D. Melton, Mrs. Jack Alcorn and Mrs. Roy Hooper.

The social was given at the American Legion Hut.

A film, "Seven Years of Wax Fat", was shown to the group by Joe Price. Arrangements for the film were made by Mrs. Hooper.

Plans were made by the Golden Agers for a Thanksgiving luncheon on Nov. 17 at the American Legion Hut.

"Happy Birthday" was sung by the group to Mrs. T. Combest and Mrs. Joe Chester. Mrs. Combest recently celebrated her 81st birthday.

A "get-well" card signed by members of the Golden Agers was sent to H. V. Gray, who has recently been hospitalized at Lubbock.

The serving table, laid with a white cloth, was decorated with an arrangement of chrysanthemums. Mrs. Alcorn furnished the arrangement for the table. Coffee and doughnuts were served to the group.

Another table, decorated by Mrs. Melton, also was used. Miniature pumpkins with arrangements of chrysanthemums adorned the table and carried out the Halloween theme.

Out-of-town guests were Mrs. A. T. Smith of Wellington; Mrs. Opal Hardin and Mrs. Irene Oden, both of Plainview; and Mrs. Ruth Roebuck, of Circle.

Mr. and Mrs. T. O. Langley of Olton are new members. Other members attending were L. S. Kennedy, Mr. and Mrs. F. L. Knox, Mr. and Mrs. F. M. Holland, Mr. and Mrs. J. A. Wheeler, Mr. and Mrs. C. C. Griffith, Mrs. Bessie Cowart, Mrs. Nellie Turner, Mrs. M. A. McCraw, Mrs. R. A. Lewis, Mrs. Ann Pavelka, Mrs. A. C. Brigance, C. T. Mason and Mrs. Jodie Morris.

Mrs. Joe Chester and Mrs. Tom Smith, regular sponsors of the social hour, also attended the meeting.

WMS Leadership Course Is Scheduled

A Women's Missionary Study Leadership Course will be taught next Thursday at the First Baptist Church by Mrs. J. C. Alford of Petersburg. The course, which begins at 9 a.m., will last seven and a half hours.

One of the highlights of the day will be a covered dish luncheon. The leadership course is for the officers of the WMS, the circle chairmen, committee chairmen and representatives of the auxiliary. An invitation is also extended to other interested persons.

Nursery facilities will be provided throughout the day.

New Son Is Born To Bobby Bryants

Mr. and Mrs. Bobby Bryant of Portales, NM, became the parents of a boy, Don Odie, at 10 p.m. Monday, Oct. 24 in the Portales Hospital. Don weighed 5 lbs. 13 1/2 ozs. at birth.

Maternal grandparent is Mrs. Faye Lusk of Plains. Paternal grandparents are Mr. and Mrs. Leamon Bryant of Olton. Paternal great-grandparents are Mr. and Mrs. Don Bryant, and Mr. and Mrs. M. T. Bagley of Olton.

WMS Leadership Course Is Scheduled

A Women's Missionary Study Leadership Course will be taught next Thursday at the First Baptist Church by Mrs. J. C. Alford of Petersburg. The course, which begins at 9 a.m., will last seven and a half hours.

One of the highlights of the day will be a covered dish luncheon. The leadership course is for the officers of the WMS, the circle chairmen, committee chairmen and representatives of the auxiliary. An invitation is also extended to other interested persons.

Nursery facilities will be provided throughout the day.

New Son Is Born To Bobby Bryants

Mr. and Mrs. Bobby Bryant of Portales, NM, became the parents of a boy, Don Odie, at 10 p.m. Monday, Oct. 24 in the Portales Hospital. Don weighed 5 lbs. 13 1/2 ozs. at birth.

Maternal grandparent is Mrs. Faye Lusk of Plains. Paternal grandparents are Mr. and Mrs. Leamon Bryant of Olton. Paternal great-grandparents are Mr. and Mrs. Don Bryant, and Mr. and Mrs. M. T. Bagley of Olton.

WMS Leadership Course Is Scheduled

A Women's Missionary Study Leadership Course will be taught next Thursday at the First Baptist Church by Mrs. J. C. Alford of Petersburg. The course, which begins at 9 a.m., will last seven and a half hours.

One of the highlights of the day will be a covered dish luncheon. The leadership course is for the officers of the WMS, the circle chairmen, committee chairmen and representatives of the auxiliary. An invitation is also extended to other interested persons.

Nursery facilities will be provided throughout the day.

New Son Is Born To Bobby Bryants

Mr. and Mrs. Bobby Bryant of Portales, NM, became the parents of a boy, Don Odie, at 10 p.m. Monday, Oct. 24 in the Portales Hospital. Don weighed 5 lbs. 13 1/2 ozs. at birth.

Maternal grandparent is Mrs. Faye Lusk of Plains. Paternal grandparents are Mr. and Mrs. Leamon Bryant of Olton. Paternal great-grandparents are Mr. and Mrs. Don Bryant, and Mr. and Mrs. M. T. Bagley of Olton.

WMS Leadership Course Is Scheduled

A Women's Missionary Study Leadership Course will be taught next Thursday at the First Baptist Church by Mrs. J. C. Alford of Petersburg. The course, which begins at 9 a.m., will last seven and a half hours.

One of the highlights of the day will be a covered dish luncheon. The leadership course is for the officers of the WMS, the circle chairmen, committee chairmen and representatives of the auxiliary. An invitation is also extended to other interested persons.

Nursery facilities will be provided throughout the day.

New Son Is Born To Bobby Bryants

Mr. and Mrs. Bobby Bryant of Portales, NM, became the parents of a boy, Don Odie, at 10 p.m. Monday, Oct. 24 in the Portales Hospital. Don weighed 5 lbs. 13 1/2 ozs. at birth.

Maternal grandparent is Mrs. Faye Lusk of Plains. Paternal grandparents are Mr. and Mrs. Leamon Bryant of Olton. Paternal great-grandparents are Mr. and Mrs. Don Bryant, and Mr. and Mrs. M. T. Bagley of Olton.

WMS Leadership Course Is Scheduled

A Women's Missionary Study Leadership Course will be taught next Thursday at the First Baptist Church by Mrs. J. C. Alford of Petersburg. The course, which begins at 9 a.m., will last seven and a half hours.

One of the highlights of the day will be a covered dish luncheon. The leadership course is for the officers of the WMS, the circle chairmen, committee chairmen and representatives of the auxiliary. An invitation is also extended to other interested persons.

Nursery facilities will be provided throughout the day.

New Son Is Born To Bobby Bryants

Mr. and Mrs. Bobby Bryant of Portales, NM, became the parents of a boy, Don Odie, at 10 p.m. Monday, Oct. 24 in the Portales Hospital. Don weighed 5 lbs. 13 1/2 ozs. at birth.

Maternal grandparent is Mrs. Faye Lusk of Plains. Paternal grandparents are Mr. and Mrs. Leamon Bryant of Olton. Paternal great-grandparents are Mr. and Mrs. Don Bryant, and Mr. and Mrs. M. T. Bagley of Olton.

WMS Leadership Course Is Scheduled

A Women's Missionary Study Leadership Course will be taught next Thursday at the First Baptist Church by Mrs. J. C. Alford of Petersburg. The course, which begins at 9 a.m., will last seven and a half hours.

One of the highlights of the day will be a covered dish luncheon. The leadership course is for the officers of the WMS, the circle chairmen, committee chairmen and representatives of the auxiliary. An invitation is also extended to other interested persons.

Nursery facilities will be provided throughout the day.

New Son Is Born To Bobby Bryants

Mr. and Mrs. Bobby Bryant of Portales, NM, became the parents of a boy, Don Odie, at 10 p.m. Monday, Oct. 24 in the Portales Hospital. Don weighed 5 lbs. 13 1/2 ozs. at birth.

Maternal grandparent is Mrs. Faye Lusk of Plains. Paternal grandparents are Mr. and Mrs. Leamon Bryant of Olton. Paternal great-grandparents are Mr. and Mrs. Don Bryant, and Mr. and Mrs. M. T. Bagley of Olton.

WMS Leadership Course Is Scheduled

A Women's Missionary Study Leadership Course will be taught next Thursday at the First Baptist Church by Mrs. J. C. Alford of Petersburg. The course, which begins at 9 a.m., will last seven and a half hours.

One of the highlights of the day will be a covered dish luncheon. The leadership course is for the officers of the WMS, the circle chairmen, committee chairmen and representatives of the auxiliary. An invitation is also extended to other interested persons.

Nursery facilities will be provided throughout the day.

New Son Is Born To Bobby Bryants

Mr. and Mrs. Bobby Bryant of Portales, NM, became the parents of a boy, Don Odie, at 10 p.m. Monday, Oct. 24 in the Portales Hospital. Don weighed 5 lbs. 13 1/2 ozs. at birth.

Maternal grandparent is Mrs. Faye Lusk of Plains. Paternal grandparents are Mr. and Mrs. Leamon Bryant of Olton. Paternal great-grandparents are Mr. and Mrs. Don Bryant, and Mr. and Mrs. M. T. Bagley of Olton.

WMS Leadership Course Is Scheduled

A Women's Missionary Study Leadership Course will be taught next Thursday at the First Baptist Church by Mrs. J. C. Alford of Petersburg. The course, which begins at 9 a.m., will last seven and a half hours.

One of the highlights of the day will be a covered dish luncheon. The leadership course is for the officers of the WMS, the circle chairmen, committee chairmen and representatives of the auxiliary. An invitation is also extended to other interested persons.

Nursery facilities will be provided throughout the day.

**TOM SAWYER**

## Hooded Coats For Boys

- Zip off Hood
- Guaranteed Machine Washable

Sizes 6-12—\$11.95  
Sizes 14-20—\$12.95

— Other Tom Sawyer Items —

- Sport Coats
- Sport Shirts
- Pajamas
- Jackets
- Trousers

Complete Shopping Headquarters for Him at

# KELLEY'S

"CLOTHIERS for MEN and BOYS"

Phone 4561 Olton

# \$ SAVE \$

(SPECIALS GOOD SAT. & MON. ONLY)

## Ladies' High Heel SHOES PLUS 1c

# 2 FOR THE PRICE OF ONE PAIR

# PLUS 1c

# Jeans

Boys' Sizes thru 11 \$2.49 value . . . Close out at—

# \$1.75 pair

# Blankets

\$5.95 Value—Now Only—

# \$4.25

with Casserole

# Smith & Struve

"We Have Nationally Advertised Brands"



WTSC Homecoming

SATURDAY will be Homecoming for West Texas State exes and the afternoon football game in Buffalo Bowl (above) will be the big attraction. Coach Joe Kerbel's battling Buffaloes will meet Trinity University in the handsome 20,000 seat stadium and a crowd of 15,000 has been predicted. Kick-

off time is 2 p.m. Other Homecoming features include a morning parade, an outdoor barbecue at noon, an intra-squad basketball game at 6:30 p.m., and a dance in the fieldhouse at 8 p.m.

SLUDERS HAVE GUESTS

Visitors Sunday in the Tom Sluder home were Mr. and Mrs. Orville Finch Jr. and Essie Dianna Sluder of Dalhart; Peggy Sluder of Canyon; Jo Auther of Gruver; Mr. and Mrs. Bunt Jester, Mrs.

George Flint, and Mr. and Mrs. W. T. Wozencraft, Sharon and Carol of Lubbock; Mr. and Mrs. Ivin Wozencraft and Patsy, Mr. and Mrs. Ivin L. Wozencraft Jr., Mrs. Cora Wozencraft, and Mr. and Mrs. James Martin, Rhonda and James Keith of Olton.

LETTERS TO THE EDITOR

Dear Editor:

I could not vote for Mr. Kennedy because he is a Catholic. That alone is good enough reason not to vote for him. We may not endorse either man's religion, but the Quakers have never tried to rule the world or force their religion upon people as has the Catholic. Mr. Kennedy says he does not believe in mixing state and religion. He may not intend to, but the Pope may have other ideas. If someone told you if you lit a fuse it might cause a big explosion and hurt a lot of people, some very dear to you, would you still light the fuse? You will be lighting that fuse if you help elect Mr. Kennedy.

Some of the farmers are afraid of what Mr. Nixon will do to their farm program. Judging from what I read in the papers and hear on TV, Mr. Kennedy is not going to help it. Besides what is a few dollars compared to the thousands of souls that will be lost to Catholicism if Kennedy is elected? You may not feel the power of Catholicism yourself but your young children and grandchildren most surely will.

Read history and see the terrible sins that can come upon people through Catholicism. If you should help to elect Mr. Kennedy, you are helping to impose that religion on your grandchildren; maybe on your own children. Mr. Kennedy is only the fuse to the big explosion. You surely do not love money that much. The love of money is the root of all evil. Let us think of some one else besides ourselves. Matthew 10:28, "And fear not them which kill the body, but are not able to kill the soul; but rather fear him which is able to destroy both soul and body in hell."

Our freedom is too precious to

1,000 Turn Out To Hear Traveling Science Teacher

Approximately 1000 persons turned out for the series of lectures by Wendall Spreadbury, traveling science teacher, here Friday through Wednesday.

In addition to a schedule at the school, Spreadbury spoke to members of the Lions Club, P-T-A, and other school and civic groups.

OHS Carnival Proceeds Total Almost \$500

Proceeds of the annual Olton High School Halloween Carnival amounted to approximately \$475, it was reported this week.

Several hundred persons turned out for the annual event, which was staged in the high school building.

By booths, here were the proceeds:

Senior Class Talent and Style Show, \$120; Junior Class Beatnik House, \$55; Sophomore Class Horror House, \$65; Freshman Class Ball Throw, \$50; Senior FHA Pie Walk, \$85; Junior FHA Fishing Pond, \$45; FTA Cake Walk, \$40; Spanish Club Fortune Teller, \$10; and Science Club Take-Home Pictures, \$5.

throw away. May we always be free to worship as we please.

Some think under Mr. Nixon we will have a terrible recession. I had rather have that to Catholicism.

A freedom loving, God fearing American.

Name Withheld By Request

University Traveling Science Teacher Program.

The program is supported by the National Science Foundation and operates over a 10-state area.

Spreadbury touched on various phases of science and math during his lecture series here. Programs included topics of "Space", "Conservation of Energy", "Binary Systems", "Science and the Schools", "Atomic Radiation and Structure," and others.

The science teacher presented a program touching on most of his subjects Tuesday at noon for members of the Lions Club.

He said the aim of the traveling science teacher program is to build interest in science and mathematics among students and townspeople alike.

"Almost everywhere," said Spreadbury, "athletes have prestige. We are working to see that 'good students' enjoy the same respect."

Using practical, simple equipment in his lectures, Spreadbury showed rocketry principles by throwing a heavy bag while standing on a ear mechanic's cart. As he threw, the cart moved in the opposite direction.

At one point in his lectures, Spreadbury proved that girls are stronger than boys. He gave a roll of the same size and weight to a boy and to a girl, then asked them to hold the rods in the center and move them as rapidly as possible.

The girl's rod moved much faster, much to the embarrassment of the boy.

Spreadbury later explained that, although the weight of the rods was the same, it was distributed differently. Weight of the boy's rod was placed at the ends of the stick, while the weight of the other was placed in the center, thus enabling the girl to move hers much faster.

Last Rites For Mrs. Margaret Hair, Long-Time Olton Resident, Are Held

Mrs. Margaret Hair, 80, a resident of Olton for 27 years, died last Friday at Dallas in the home of her daughter, Mrs. Lee Walton. She had been in poor health for the past two years and her fatal illness was discovered last January.

Funeral services were conducted Monday afternoon at the Main Street Church of Christ with G. B. Stanley, minister of the church, officiating at the services.

Pallbearers were Roy McAfee, Rufus DeBerry, I. D. Grimsley, Melvin Hines, Odie Hair and Henry Mathis.

Dudley-Hughes Funeral Home in Dallas was in charge of the arrangements with the co-operation of Parsons Funeral Home, Olton. Burial was in the Olton Cemetery.

Mrs. Hair was a life-time member of the Church of Christ. At the time of her fatal illness, she was a member of the Main Street Church of Christ, Olton.

Margaret Kelly was born March 20, 1880 at Elora, Tennessee. In 1901, she and Toney B. Martin were married in Eric, Okla. Three children were born to the couple. Martin died in 1918.

She and Arthur Hair were married in 1926 at Clarendon

Mr. and Mrs. Hair came to the Olton area in 1933 and settled northwest of town, where she lived until the time of her death.

Survivors include Mrs. Walton and one other daughter, Mrs. C. B. Scott, Sallisaw, Okla.; two sons, Lenial B. Martin, Waco; and Leon Hair, New Hall, Calif.; one brother, C. W. Kelly, New Castle, Calif.; and two sisters, Mrs. Tom C. Lewis, Frederick, Okla.; and Mrs. Bob Hinton, Stockton, Calif.; seven grandchildren and 10 great-grandchildren. She was preceded in death by one son, Chester Martin.

Last Rites Read For Glenn Mills, 6-Year-Old Victim Of Long Illness

Glenn Mills, son of Mr. and Mrs. Harold Mills, Olton, died Saturday

in Baylor Hospital at Dallas. The 6-year-old boy suffered a long illness.

The Rev. Russell McAnally, pastor of Lockney Methodist Church, and the Rev. Marvin Bledsoe, Coleman, officiated at the final services. Services were conducted Monday in the First Methodist Church, Coleman.

Pallbearers were E. M. Hasha, Elmer McGill, Bill Collins, Royce Collins, Willie Gene Green, Clifford Carlisle and Gerald Allcorn, all of Olton.

Interment was in the Santa Anna Cemetery under the direction of Stevens Funeral Home.

Survivors include the parents; a sister, Gayla Jo, of the home; paternal grandparents, Mr. and Mrs. C. G. Mills, Coleman; and the maternal grandmother, Mrs. C. A. Crump of Coleman.

Friends from Olton who attended the services included Mr. and Mrs. Royce Collins, Mr. and Mrs. Bill Collins, Mr. and Mrs. Gerald Allcorn, Mrs. Owen Norfleet, Mrs. Leo Ross Bryant, Mr. and Mrs. Tom McGill, Mr. and Mrs. Louis Botkin, Mr. and Mrs. Elmer McGill and Mr. and Mrs. E. E. Hasha and Mr. and Mrs. Allcorn.

Governor Daniel Says Primary Vote Is Not Binding In General Election

AUSTIN, Texas — Gov. Price Daniel said Thursday that voting in the Democratic primary does not obligate anyone "legally or morally" to vote for the Democratic presidential nominee in the general election.

Daniel, who supported President Eisenhower in 1952, was asked for his views on that matter after a statement quoting him was issued by the State Democratic Executive Committee.

"More than 1,500,000 Texans affiliated themselves with the Democratic Party this poll tax year, under provisions of state law," the SDEC quoted Daniel. "It is the responsibility of all affiliated Democrats to carry their great strength into the general election in support of the party nominees."

Daniel said he did not mean to imply that participation in the

party's presidential and vice-presidential nominee in the general election.

The pledge on the primary ballot applies only to nominees selected in that primary for state, district and local offices, the Governor noted.

CORRECTION

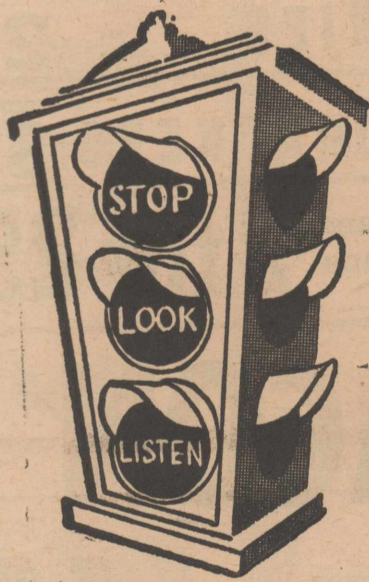
The following paragraph of a letter to the editor from Mrs. Jethro Pinkerton last week was garbled by a typographical error. This is the correct wording: "My information tells me no other country has so large a proportion of its young people in school to the age of eighteen. Because we have the largest proportion of our youth in schools than any other country in the world does not mean we have all our youth in schools and as Mr. Kennedy says we must talent we have available."

**LONG on LOOKS and WEAR**

MEN and BOYS' **CREW SOCKS**  
Reg. \$1.00—NOW ..... **75¢**

ALSO Complete Selection of Men's New Fall Clothing at—  
**SUPERIOR CLEANERS**  
"WE CLEAN CLEAN" Olton  
Phone 4196

Americans!



**STOP** TAKING FREEDOM FOR GRANTED  
**LOOK** AT THE ISSUES, QUALIFICATIONS and EXPERIENCE  
**LISTEN** TO THE CANDIDATES  
THEN YOU MUST

**VO** **TE**

for

**NIXON LODGE**

Sponsored By Arthur Nafzger—Lamb County Republican Chairman

1200 Lb. CAPACITY  
**COTTON TRAILERS**

Choice of:  
● Coby Chassis  
● Ranger Chassis  
● Lubbock Chassis

GET 'EM WHILE THEY LAST AT:  
**\$320.00**

Complete with:  
● Big Tires  
● New Tubes  
● Heavy Duty Wheels

**JOHNSON-POOL**  
Phone 7370 Tire & Appliance Muleshoe

**WHOLESALE INVENTORY SALE**

ON GENERAL ELECTRIC APPLIANCES  
**OUT THEY GO**  
to make room for the 1961 models  
**BIG SAVINGS**  
your chance to save on this  
**ONCE-A-YEAR SALE**

PORTABLE **DISHWASHERS**  
Outwashes all other dish washers including ... people! **\$179<sup>95</sup> UP**

**REFRIGERATORS**  
No wasted space—Easy to clean—A bargain for only ..... **\$199<sup>00</sup> UP**

COMBINATION FREEZER-REFRIGERATOR AND **FREEZERS**  
Save on your food bill. See these now! **\$199 to \$349**

**RANGES**  
30 in. width with 23 in oven—completely automatic—goes at only **\$149<sup>95</sup>**

**NEW 1961 TV**  
**\$179 to \$449** With new daylight blue screen. Special only

**General Electric 5 CYCLE FILTER-FLO Washer**

... an Automatic to give you just-right care for any washable  
WASH BY NUMBER! Choose the cycle for the clothes load, touch one key and turn the dial to the matching number. You get the correct washing conditions for your clothes!  
PLUS:  
● FILTER-FLO WASHING SYSTEM  
● AUTOMATIC RINSE DISPENSER  
● BIG 10 POUND-CAPACITY and many other features  
BUY NOW FOR EXTRA VALUE

**\$269**

**THOMAS FURNITURE**  
"YOUR GE DEALER IN OLTON"  
Phone 4631 East Side Of Square

**FIELDTON NEWS**

By MRS. JOE HARRELL  
Phone AN 2-4343

Mrs. Henry Montgomery of Johnson City was a weekend guest of the Forest Durhams. Mrs. Montgomery is a former resident of Fieldton.  
Mr. and Mrs. Gene Williams, Gene and Beth of Littlefield spent Sunday afternoon with Mrs. Williams' parents, Mr. and Mrs. R. A. Reed.  
A daughter was born to Mr. and Mrs. Ronald Bowers at the Methodist Hospital in Lubbock. Mr. and Mrs. Truman McCain of near Fieldton are the maternal grandparents. Mr. and Mrs. Hill Rogers of Littlefield are the paternal grandparents.

Mr. and Mrs. J. C. Muller ate Sunday dinner with Mr. and Mrs. Don Muller and family. John Muller also ate with them.  
Mr. and Mrs. Ray Muller and family visited with the Don Mullers Sunday afternoon.

Mr. and Mrs. Jackie Rivers of Amarillo and Douglas Owens of Canyon spent the weekend here with their parents, Mr. and Mrs. J. E. Owens.

Mr. and Mrs. Homer Hukill returned home Saturday night after a week in Albuquerque with their daughter, Mrs. Jeff Birkett, who was ill.

Mrs. Ray Buck fixed Sunday dinner for Carl and Latain Buck and four of their guests from Pampa.

Mrs. Charlie Jarmon, Miss Clara Jarmon, Mrs. Calvin Pigg, Mrs. Pearl Chapman and Mrs. T. W. Chapman of Littlefield visited Mrs. H. C. Pickrell Monday afternoon. Mr. and Mrs. O. L. Bundick of

Ulyssis, Kansas, and their children, Mr. and Mrs. Billy Bundick and Mr. and Mrs. Johnny Bundick, all of Odessa, were weekend visitors of Mr. and Mrs. Alva Pearson.

**LETTERS to the EDITOR**

Dear Editor:

This is the final week before the election and I would like to point out to you some of the things the Republican party has done for America.

This party has always favored big business.

Advertising is one of the largest businesses in the United States.

Advertising has sold the American public on foreign products to the extent our markets are flooded.

Consider the Ford Motor Company. That company operates a plant in England that sells thousands of English Fords in this country. Who does the labor for this production? Not the American worker.

Consider the Franciscan China Company. They are one of the most highly advertised China companies in America. The most popular casual China on the market today is a Japanese import made by the Franciscan Company in Japan. Who does the labor for that production? We blame Labor for demanding higher wages and causing prices to go higher. They know they are being sold out. Big business has done this to America. I could point out to you the many things that advertising has done to flood our markets.

So many people say Mr. Kennedy's platform does not make sense. It is just plain common sense. This country was built on common sense. The Republican Party has always thought they could handle the people's money better than the common man could; thus higher taxes, big business and hush-hush campaigns. Mr. Nixon says it is beneath the dignity of a man campaigning for the presidency to get in there and give Mr. Kennedy a hard driving debate. Some of his own party advised him to do so. He did not accept this advice.

Mr. Krushchev has no dignity but do not think for one moment he has no brains. We are faced with an enemy that is a master of deceit.

Mr. Kennedy is called a radical Liberal. The simple definition is: Radical means basic, essential, fundamental, pertaining to the foundation. Liberal means possessing a free and generous nature. How many of us that call ourselves Christian and Americans can say we do not believe in these two words?

Common sense has been defined as the art of keeping your ego under control, a relaxed good nature and a simple practice of your religion. Mr. Kennedy has shown all these qualities to me.

Sincerely,  
Mrs. Jethro Pinkerton

**LUBBOCK VISITOR**  
Rose Lefwich of Lubbock visited in the Jim Hyatt home over the weekend.

**WAYNE'S**

— OFFICE SUPPLIES —  
PRINTING And LITHOGRAPHING

Phone 2561 Olton, Texas

Fri. - Sat. - Mon. - Nov. 4th, 5th and 7th

**DOLLAR DAYS**

J. C. JONES CO. Olton, Texas  
Come Early — A Store Full of Bargains!

**BIG RUMMAGE SALE**

60 sq. ft.

Odds and Ends—low prices

Viernes - Sabado - Domingo  
Nov. 4th, 5th y 7th

**Dia De Dollar**

J. C. JONES CO. Olton, Texas

Venga Temprano

Una Tienda Llena de Especiales

Ropas Surtidas

a Precios Locos

**Welcome—**

to the NEW Republican Party

of Texas

The Young Guard of Democracy

The NEW Republican Party of Texas believes in the principles of Thomas Jefferson, Andrew Jackson and Woodrow Wilson now abandoned by the leaders of the Democratic Party. The Democratic Party has buried those principles in its efforts to please the various and well organized pressure groups and others to whom those principles mean little or nothing.

We address this message to the rank and file of Texans who bear the brunt of all give-away programs through their tax load—the forgotten people of America and Texas, those who own a home, a business, a bond, a share of stock, a savings account, a pension—an earned share in America's future—and who would like to conserve what they own or hope to own.

In leaving the Democratic Party to vote the Texas way—as the majority of Texans voted in 1952 and again in 1956—Democrats are not deserting the party of Jefferson, Jackson and Wilson. The principles on which the Democratic Party was founded are still on the label

but the Democratic donkey of old is now a horse of a different color.

The time has come for Texans to see the two parties as they are today—not as they were 50 years ago.

The Republican Party embodies those principles upon which this country was built and on which Texans fought for and won independence—self reliance, individual initiative, limitation of governmental power, government which makes it possible for most citizens to do most for themselves—and then assists those who cannot provide the basic necessities for themselves.

Republican candidates need not apologize for their party's platform nor hide its intent from Texans as Texas Democratic leaders have attempted.

We, the Republicans of Texas, with your help will preserve the principles of sound, responsible and enduring government in America and Texas. We ask your help in electing Nixon and Lodge and in establishing a long-past-due two party system of government in Texas.

(Paid Political Adv.)

**IT'S TWINS\* NOW DURING THE Shurfine Carnival of 1960**

FOR MR. & MRS. SHURFINE SAM

\*DOUBLE VALUES ON EVERYTHING UNTIL NOV. 5th

Specials Below Start Friday, November 4, 1960

Shurfresh 1 lb. MARGARINE	6 for \$1.
Evaporated Tall Can MILK	8 for \$1.
303 Can FRUIT COCKTAIL	5 for \$1.
Sliced or Halves YC 2½ Can PEACHES	4 for \$1.
WK or CS Golden 303 Can CORN	6 for \$1.
Reg. or Drip 5 cents Off Label W—Free Hostess Apron COFFEE	\$.63
Paper Bag 5 lb. FLOUR	\$.29
Chunk Style 6½ oz. TUNA	4 for \$1.
Fancy 303 Can BEANS and POTATOES	6 for \$1.
3 lb. Can SHORTENING	\$.65
Shurfresh Qt. SALAD OIL	\$.49
Print or Cotton bag 25 lb. FLOUR	\$.169
Halves Unpeeled 303 Can APRICOTS	5 for \$1.
RSP 303 Can CHERRIES	4 for \$1.
Strained 300 Can CRANBERRY SAUCE	5 for \$1.
Halves Bartlett 303 Can PEARS	4 for \$1.
303 Can Early Harvest PEAS	5 for \$1.
ROXEY Tall Can DOG FOOD	12 for \$1.
Whole Irish 303 Can POTATOES	8 for \$1.
Fancy 46 oz. TOMATO JUICE	2 for \$.59
2½ Can PUMPKIN	2 for \$.39
10 oz. GRAPE JELLY	2 for \$.45
All Green Cut Spears 300 can ASPARAGUS	4 for \$1.
300 Can PORK and BEANS	9 for \$1.
4 Sv Blue Lake 303 can GREEN BEANS	5 for \$1.
303 Can SLICED BEETS	7 for \$1.
303 Can SPINACH	7 for \$1.
303 Can HOMINY	10 for \$1.
Fresh Shelled 300 Can BLACKEYES	for \$1.
Crushed No. 2 PINEAPPLE	2 for \$.59
Small Whole No. 2 Can SWEET POTATOES	4 for \$1.
303 Can SAUER KRAUT	6 for \$1.
303 Can TOMATOES	5 for \$1.
8 oz. TOMATO SAUCE	12 for \$1.
28 oz. APPLE BUTTER	4 for \$1.
Strawberry 12 oz. PRESERVES	3 for \$1.
Qt. WAFFLE SYRUP	\$.43
Stuffed Thrown Manz 7½ oz. OLIVES	\$.43
Fresh Pack 16 oz. PICKLE CHIPS	4 for \$1.
14 oz. CATSUP	5 for \$1.
Qt. SALAD DRESSING	\$.39
Specials Above Fri. & Sat. Only	

PRESTONE ANTI-FREEZE  
Gallon \$1.75

Fresh Dressed HENS  
4½ Lb. Average . . . Lb. 35c

**SHURFRESH BISCUITS 3 for 25c**

**COCA-COLA 49c**

12 Bottle Carton Plus Deposit

**48 LIPTON FLO-THRU TEA BAGS 59c**

**ICE CREAM 69c**

All Flavors ½ Gallon

**STEAK ROAST 69c**

CLUB LB. . . . .

**CHUCK ROAST 49c**

LB. . . . .

**CRACKERS 27c**

Sunshine KRISPY CRACKERS 1 Lb. Box

**COFFEE 69c**

1 Pound Can

**TIDE 69c**

5-Off Label

**WEINERS 99c**

SUNRAY 3 Pounds

**BLOCK CHILI 89c**

Home-Made Pound

**CRANBERRIES 29c**

New Crop Extra Nice Lb.

**GRAHAM CRACKERS 35c**

Supreme Bakers 1 Pound Box

**Macaroni or Spaghetti 2 for 25c**

7 ounce box

**SALMON 49c**

TUXEDO Number 1 Tall Can

**BACON 49c**

WILSON CRISPRITE 1 Pound Cello Pkg.

**BROWNIE MIX 2 for 59c**

Pillsbury

**SHURFINE SALT 7½c**

26 Ounce Box

**HERSHEY COCOA 29c**

½ Pound Can

**Potatoes \$1.19**

RED—25 Pound Mesh Bag

**Apples Per Pound 23c**

Washington State Extra Fancy Delicious

**SHERMAN FOOD**

Double Gunn Bros. Stamps Wednesday With \$2.50 Purchase

FREE DELIVERY QUALITY MEATS PHONE 3701

**CARMELS 39c**

Kraft 1 Lb. Bag

**LEGAL NOTICE**

**NOTICE TO BIDDERS**

Sealed proposals addressed to the City Council of the City of Olton will be received at the office of the City Secretary, Olton, Texas, until 1:30 o'clock p.m., on November 22, 1960, and then publicly opened, read and considered by the City Council of said City for the furnishing of all necessary materials, machinery, equipment, labor, superintendence, and all other services and things required for the construction of certain street improvements in the City of Olton.

Alternative bids will be received for the construction work. Under Alternative No. 1 the bidder shall submit a bid based on his bearing certain expenses incurred in connection with the assessment program and based on his accepting a portion of his payment for the work in paying certificates. Under Alternative No. 2, the bidder shall submit a bid based on his

being paid in cash by a Fiscal Agent to be employed by the City for all construction work, which Fiscal Agent shall also be obligated to bear certain expenses incurred in connection with the assessment program. The details of these alternatives are set forth in the Special Provisions of the Agreement and the other Contractual Documents.

The City reserves the right to award the contract on the basis of the alternative which appears most advantageous to the City, to reject any and/or all bids, to waive objections based on failure to comply with formalities, and to allow the correction of obvious or patent errors.

Bidders for the construction work must submit a satisfactory cashier's or certified check, or a bidder's bond, payable without recourse to the order of MAJOR T. JAMES JR., MAYOR, in an amount not less than five (5%) per cent of the total bid based on Alternative Proposal No. 1 or Alternative Proposal No. 2, depending on which of said alternative proposals results in the highest total bid at the prices shown by the bidders on the estimated quantities upon which the bid is based, which check or bond shall be submitted as a guaranty that the bidder will enter into a contract and execute a performance bond within fifteen (15) days after notice of award of contract to him. Bids without required check or bond will not be considered.

The successful bidder for the construction work must furnish a satisfactory performance bond in the amount of 100 per cent of the total contract price, and a satisfactory payment bond in such amount, both duly executed by such bidder as principal and by a corporate surety duly authorized so to act under the laws of the State of Texas as surety.

All lump sum and unit prices must be stated in both script and figures.

Bidders are expected to inspect the site of the work and to inform themselves regarding all local conditions.

Wages paid on this program must be not less than the general prevailing rates of wages. A detailed wage scale is included in the Contractual Documents.

Instructions to Bidders, proposal forms, specifications, plans and other contractual documents may

**LETTERS TO THE EDITOR**

Dear Editor:

I believe that John Fitzgerald Kennedy, a combat veteran of World War II, distinguished Senator from the State of Massachusetts, deserves the same right to run for the Presidency of the United States as any other candidate, on the basis of his qualifications, his record in office, and the principles enunciated by the platform of his party. Whether John Kennedy is an Episcopalian or a Methodist, a Baptist or a Quaker, a Lutheran or a Roman Catholic, he should have a right to seek the presidency of the United States. The First Amendment to the Constitution guarantees that "Congress shall make no law respecting the establishment of religion, or prohibiting the free exercise thereof." We may not agree with certain tenets of the Roman Catholic religion, but the First Amendment makes it our duty to tolerate the free exercise of Roman Catholicism in the United States—without imposing any restraints by force or smear.

It is my belief that when we go to church we should hear the Bible and not politics. If I want to hear a political speech, I can

be obtained from the office of the City Secretary.

MAJOR T. JAMES JR.  
Mayor  
City of Olton, Texas

go to a political rally or listen to the radio or TV, but I do not want to hear a political speech from the pulpit. As of today, I have never heard my pastor mention politics in the pulpit, and I pray that the time never comes to pass that I do. My church is to preach the Gospel and save souls and not to condemn other religions in America.

We whose living depends strictly on agriculture have a great deal at stake in this election. Nixon has said: "I predict that the verdict of history will be that Secretary Benson has been one of the best secretaries of agriculture in our history." I certainly cannot agree with this. According to the scales of decrease in prices during the past few years, we have had the following: Farm prices down 17 per cent Farm income down 24 per cent farm parity ratio down 21 per cent purchasing power down 29 per cent public ridicule of farm programs—and packer, processor domination of the U.S. Department of Agriculture. It appears that we definitely need a change in our farm program to maintain a hope of survival.

It is my belief that according to our Texas Election Code, Art. 5:14, when a person has his or her Poll Tax stamped according to party affiliation—either Democrat, Republican, or Independent—that such person should stay with such party throughout the year, including candidates, platform, election, and conventions. Article 5:14 of our Texas Election Code in prescribing the form for each poll tax receipt contains the following: "the taxpayer being duly sworn by me, says that—"

This form also provides a place to show party affiliation. It would thus appear that there are many who take this oath lightly and do not take this law seriously. I plead with the ones that had their poll tax stamped, "Democrat" to stay with the party through this election.

Signed, P. A. Nafzger  
Poll Tax stamped "Democrat"

**GUESTS IN LIVELY HOME**

Guests this week in the J. D. Lively home are Mr. Lively's sister and brother-in-law, Mr. and Mrs. C. E. Huggins and their children, Harmon and Elizabeth of Lufkin. Mrs. Lively and Mrs. Huggins visited Sunday at Hale Center in the Otto Zeiss home. Mr. and Mrs. Zeiss are Mrs. Lively's parents.

**CARD OF THANKS**

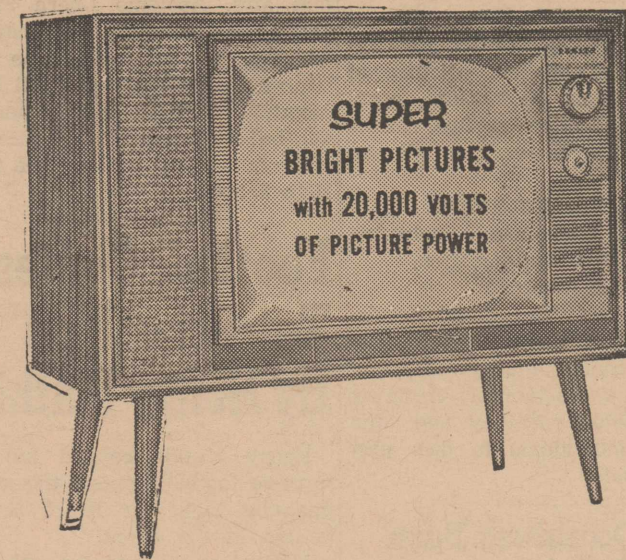
We wish to thank our many friends for their acts of kindness during the long illness and passing of our loved one. The lovely cards, floral tributes, food and our expression of sympathy and friendship in many ways will always be remembered and sincerely appreciated.

The family of H. J. Gabehart

**CARD OF THANKS**

We wish to express our gratitude to our friends for their many, many kindnesses, words of sympathy, flowers and food in the death of our mother and sister, Mrs. Margaret Hair. May God's richest blessings be with you.

The Lee Walton family  
The Lenal Martin family  
The C. B. Scott family  
The Leon Hair family



23-INCH ZENITH LIMED OAK

**Console TV**

Reg. \$339.95 — Now Only

**\$250**

WITH TRADE

23-inch Zenith Console Mahogany  
Reg. \$339.95 — now with trade-in..... **\$250**

**COFFEE MAKERS** each..... **\$6.50**

**RECLINERS** as low as..... **\$49.50**

**Spot Chairs, Platform Rockers** **\$10.95 up**

**12 Ft. Vinyl Accolon by Armstrong**

Reg. \$1.69 sq. yd — Now sq. yd..... **99¢**

9 X 12 — PLASTICIZED  
**LINOLEUM RUGS**..... **\$5.95**

**LANE CEDAR CHESTS**..... **1/4 OFF**

SCREENS—ANDIRONS—FIRESETS  
**ALL FIREPLACE EQUIPMENT**..... **1/3 OFF**

**LAMPS**..... **1/2 PRICE**

**TOSS PILLOWS**..... **80¢**

NEW 1/2 SIZE AND FULL SIZE  
**COTTON PICKER'S MATTRESS** **\$14.95**

40" FRIGIDAIRE <b>Electric Range</b> Fully automatic. Pull and clean oven. Reg. \$269.50 Your old range and only— <b>\$200</b>	16 cu. ft.—Frost-Proof <b>FREEZER</b> FRIGIDAIRE Reg. 499.95—Now with trade <b>\$300</b>	Englanders <b>SLEEPER</b> Nylon cover—foam cushions 54 inch mattress Reg. \$239.50—Now— <b>\$139.50</b> With Old Suite
--	--	--

<b>BEDROOM SUITES</b> 3-PIECE white and gold French Provincial. Reg. 239.50 <b>\$175</b>	<b>Dining Room Suite</b> SLEEPERETTE 48-inch. Reg. \$149.50 WITH TRADE <b>\$85</b>
7-PIECE Daniel modern solid walnut. Reg. 504.45 <b>\$370</b>	<b>Foam Cushion Sofa</b> 96-inch—Brown Brocade Reg. \$259.50 (with trade) <b>\$189.50</b>
2-PIECE solid walnut suite—double dresser with mirror and bed. Reg. 149.50 <b>\$99.50</b>	

**COLONY ARTS SOLID HARDROCK MAPLE**

- TRIPLE DRESSER AND MIRROR  
Reg. \$229.50 — NOW..... **\$179.50**
- SPOOL BED  
Reg. \$77.50 — NOW..... **\$ 57.50**
- BOOKCASE BED  
Reg. \$89.50 — NOW..... **\$ 67.50**
- BIG 54-INCH HUTCH  
Reg. \$239.50 — NOW..... **\$150.00**
- BOOK TABLE  
Reg. \$69.50 — NOW..... **\$ 49.50**
- COMMODOE END TABLES  
Reg. \$49.50 — NOW..... **\$ 32.50**
- DOUBLE DRESSER AND MIRROR  
Reg. \$197.50 — NOW..... **\$147.50**
- BUNK BEDS—Only..... **\$129.50**

Solid Rock Maple Dining Room Suites with Drop Leaf Table

**PARSONS FURNITURE**

PHONE 5951

OLTON

NORTH SIDE OF SQUARE

**PARSON FURNITURE CO.**  
OLTON, TEXAS

**OUR CHRISTMAS BABY CONTEST**

Will Have A Photographer Taking Pictures  
**FRIDAY, NOVEMBER 4th.....10:00 A. M. to 5:00 P. M.**  
Bring Your Child to be Photographed FREE OF CHARGE for the contest. Parents must personally select the photo to be entered in the contest. Each contestant will get a free picture.  
**NO CARD NECESSARY**

**ONLY ONE CONTESTANT TO THE FAMILY  
COME IN EARLY AND AVOID THE RUSH!**

Ages To Qualify: 1 Month to 5 Years  
FIRST PRIZE — 11 x 14 Oil Color  
SECOND PRIZE — 8 x 10 Oil Color  
THIRD PRIZE — 8 x 10 Copper-tone

Other persons may be Photographed for Pictures with a \$2.00 Deposit at this time.

All Prizes Mounted in Salon Mounts  
TAYLOR'S STUDIO

\* EVERYONE INVITED \*  
Littlefield, Texas

**Weekend Specials**

BIG DOLLAR SAVINGS FOR YOU!

Robest Wash and Wear

**PRINTS**

AND

**Pampered Cottons**

yd. **79¢**

Printed or Plain

**BATES MATERIAL**

yd. **\$1**

**BLOUSE MATERIAL**

**QUILTED COTTONS**... yd. **\$1.49**

to match..... yd. **79¢**

PRINTED

**CORDUROY**

yd. **\$1**

Minuet

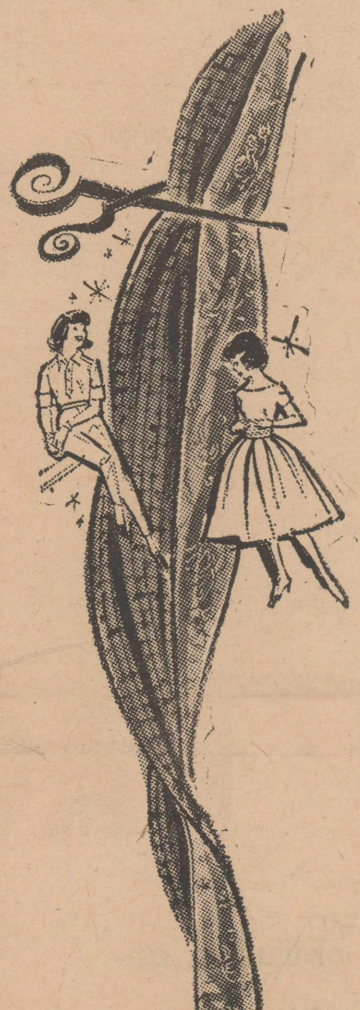
**BEDSPREADS**

**\$14.95**

Pepperell—Boxed

**BLANKETS**

72 x 90  
Reg. \$9.95—NOW ONLY..... **\$6.95**



MEN'S WASH and WEAR  
**CORD PANTS** **\$2.98**  
Reg. \$4.95—ONLY

MEN'S DENIM and CORDUROY  
**SHIRTS** **\$2.79**  
Special only

MEN'S  
**WESTERN PANTS** **\$2.98**  
Reg. \$4.95—ONLY

**WHITTINGTON'S INC.**

Olton

Phone 2331

S H O R B Y  
S H O P

**Pre-Inventory Sale**  
50% DISCOUNT ON ALL STOCK — Everything Goes — Sale starts Friday, November 4

S H O R B Y  
S H O P

## Constitution Party's Candidates, Platform Are Listed For Voters

The Constitution Party's candidate for president of the United States is continuing to campaign Southern states and working for the strongest third party possibility the nation has seen. He is Charles L. Sullivan.

His running mate for vice-president is General Merritt Barton Curtis of Washington, D. C.

The Mississippi lawyer said he hopes to capture enough electoral votes in November to prevent either the Republican or Democrat nominee from receiving a majority.

He is a 35-year-old Clarkedale, Miss. lawyer, the father of four children.

He was elected Mississippi's "Man of the Year" in a 1959 United Press International poll.

The Constitution Party's goal is to get enough electoral votes to prevent either the Democratic or Republican parties from receiving a majority in November—thus throwing the election into the House of Representatives.

The Texas presidential electors of the Constitution Party will not be pledged. Their election strategy is tailored to conform with that of several other states, including Mississippi. The plans call for independent electors to the electoral college not pledged to any candidate.

Texas law requires that the name of a candidate appear on the ballot. In several states only electors appear on the ballot.

The object of such a plan is to express dissatisfaction with the candidates of both major parties, with the hope that enough electoral votes can be withheld to keep either major candidate from receiving a majority of the electoral votes.

In 1948, the States Right candidate, Strom Thurman carried four states — Alabama, Mississippi, Georgia and South Carolina. Had Republican Thomas E. Dewey polled 18,000 more votes in California and 7,000 more votes in Ohio, the 1948 election would have gone to the House of Representatives.

In the anticipated close election, such an independent elector plan could be a deciding factor.

### PLATFORM OF THE CONSTITUTION PARTY

WE, THE CONSTITUTION PARTY OF THE UNITED STATES in the tradition of our Founding Fathers, require our representatives, at all levels of government, to utilize every means to restore to us the full range of vigor of that spirit of American freedom intended by the Constitution.

#### I. STATES RIGHTS

Recognize and exercise the basic constitutional principle that each state is an independent and Sovereign Republic with full jurisdiction over all things, persons and activities within the boundaries including the reorganized powers of the state over health, safety, education, morals, and general well being of the people.

#### II. POWER OF THE PEOPLE

Apply the 9th and 10th amendments of the Constitution — "The enumeration in the Constitution of certain rights shall not be construed to deny or disparage others retained by the people."

"The powers not delegated to the United States by the Constitution, nor prohibited by it to the states, are reserved to the states respectively, or to the people."

#### III. TAXING AND SPENDING

Adopt suitable legislation to compel an annually balanced budget and retirement of the national debt. Repeal all Federal Income Tax laws and the 16 Amendment.

#### IV. NATIONAL INDEPENDENCE

Protect property rights of American Constitution and internal economy from Treaties and or executive agreements.

#### V. ECONOMIC LIBERTY

Protect property right of American citizens by removing all statutory obstacles to individual enterprise and by eliminating government ownership or operation of any business, professional, commercial, financial or industrial enterprise not specified in the Constitution.

#### VI. CHECKS AND BALANCES

Apply the Constitutional checks and balances among the three branches of the Federal Government and positively prevent alteration of the Constitution of its intents and purposes by judicial fiat or interpretation.

#### VII. FOREIGN POLICY

That we immediately suspend all relations with Communist Russia and all Communist Nations and Satellites; withdraw the United Nations and its agencies, immediately; restore the protection of our Flag and Constitution to all members of our armed forces serving abroad; discontinue all economic aid to foreign nations; return foreign trade to the control of Congress.

#### VIII. JUSTICE UNDER LAW

Allow agriculture to resume its place in the free market without government regulations; protect

contractual rights of management and labor. Apply laws equally against all monopolies, whether of business, labor, agriculture, corporations, or other groups, insuring the right to work to all our people.

#### IX. IMMIGRATION

Preserve and enforce selective and protective immigration.

#### X. MONEY

Apply the Constitutional provision whereby Congress has the sole power of issuing money and regulating the value thereof; restoring a redeemable currency and the right of individuals to own precious metals.

## New Daughter Born To L. A. Johnsons

The arrival of a new daughter, Darla Jane, has been announced by her parents, Mr. and Mrs. L. A. Johnson, Olton.

Darla Jane was born at 9:40 p.m., Oct. 30, in the Amherst Hospital. She weighed 6 pounds and 1 ounce at birth.

Sandra, Larry and Allen are the other children in the Johnson family.

Mr. and Mrs. Marshall Cavett are maternal grandparents and the paternal grandparents are Mr. and Mrs. J. A. Johnson, all residents of the Olton area.

## Hall Scores Two As Olton Exes Rap Springlake

Arno Hall scored two touchdowns on quarterback sneaks and Tackle James Martin recovered a fumble in the end zone for a score as the Olton Exes won over the Springlake Exes Saturday night at Springlake.

Springlake's only threat in the 20-0 ball game came in the last 15 seconds of play, when the Wolverine team advanced to the Olton 5. Time ran out before Springlake could score.

Proceeds of the game, which amounted to about \$800, went to a building fund for a fieldhouse at Springlake.

## Halloween Here Turns Out Calm

Halloween in Olton was observed "pretty calmly," Police Chief Emmett Burrows said this week.

The chief said he had only one report of any consequence. An out-house was placed in the street between the high school and the Olton Enterprise building. It later was burned and officers found the remains near the front of the Enterprise office Tuesday morning.

Burrows said a few cotton trailers were pulled out into streets. Officers pushed them aside.

## City Council OK's Plans, Specs Of Paving Project

The City Council Tuesday night approved plans and specifications for Olton's paving program and set the date for opening of bids on the project.

Bids will be opened at 1:30 p.m. on Nov. 22.

Paving plans and specifications approved by the council were drawn up by McMorries and Associates, Amarillo, city engineer. The engineer firm will receive, by contract, seven per cent of money spent on the work that is completed.

## Smiths' Son-In-Law Dies In California

The son-in-law of Mr. and Mrs. Norman Smith of Olton, Ray Dunningan, died Oct. 16 at his home in Fresno, Calif. He was 37.

Last rites were conducted Oct. 21 at a chapel in Turlock, Calif. Survivors include the wife, Mae, a former resident of Olton; two sisters, three brothers, and his mother.

#### WEEKEND VISITORS

Visitors over the weekend in the J. A. Johnson home were Mr. and Mrs. Henry Wesley and daughter of Graham and Mr. and Mrs. Virgle Wesley and family of Hobbs, NM.

## Latin Man Beaten With Hammer, Robbed Of \$300 In Attack Here

A 32-year-old citizen of Mexico who crossed the border illegally is in a Lubbock hospital following a beating apparently administered to him by three other "wetbacks" here last Saturday night.

The man, George Lopez, was described as still in serious condition Thursday. He suffered two skull fractures in a beating applied with a hammer.

## Munos Completes Lackland Training

David Munos, grandson of Mr. and Mrs. Apolonio Luera Sr. of Olton, has completed training at Antonio. She has been home on a two-week's furlough and will leave Monday for Odis, Mass., where he will be stationed.

He is a 1960 graduate of Olton High School.

## Football Contest Top Prize Won By Henry Mathis

Henry Mathis copped the Enterprise football contest this week, guessing right on 16 of the 18 games in the event.

Mathis' entry was the only one in the contest to have two misses. Seven entries had 15-3 records.

Second place went to A. A. Smith, a third place winner the week before. Third place was won by Garner Ball.

Weekly prizes are \$15 for first, \$10 for second and \$5 for third.

Contestants still have time to enter the latest contest. Entries should be taken from the Oct. 27 Enterprise, marked, and turned in to any of the sponsoring merchants prior to 4 p.m. Friday.

## Buchenau Selected OHS Pep Squad King

Randee Buchenau, son of Mr. and Mrs. G. H. Buchenau, was crowned OHS Pep Squad King during a pep rally last Friday.

The king was chosen by the pep squad and crowned by Head Cheerleader Nancy Critchfield. Other nominees were Bobby Brown, Robert Priest and Fred Riney. Honorary nominees were Billy Bryant and Robert Diaz, team managers.

## Trustees Approve Routine Business

Olton school board members met Tuesday night and approved bills and monthly reports at a regular session.

The board also looked over a new Student Handbook for OHS which will be distributed to students next week.

In other action, the trustees authorized the board president, Owen Jones, and school business manager, Dorman Thomas, to borrow money in the event it is needed while the schools are awaiting the arrival of state funds.

Present for the board meeting were Gilbert Roberson, Ed Thompson, Roy Roberts, Fred Hicks, board members; and Joe Harper, superintendent, and Thomas, business manager. Absent were Jones, Lloyd Graham and J. C. Muller Jr.

## Wayland Honors Youths Following Family Tradition

Recognition of students following in the family tradition of attending Wayland Baptist College will be given at the Proud Heirs' Dinner scheduled for November 4 at Wayland.

Eighty-six students whose mothers, fathers, sisters or brothers have previously attended Wayland have been invited to the dinner given by the Board of Directors and officers of the Association of Former Students of Wayland Baptist College.

Invitations have been issued to Judith Rae Price, daughter of Mr. and Mrs. D. S. Price of Olton and Buddy Sam Harmel, son of Mr. and Mrs. Oliver Harmel of Halfway. Miss Price was preceded at Wayland by her father, and Harmel was preceded at Wayland by his father and sister, Mrs. Joel Culp.

The annual affair will be held in Heritage Room of Van Howling Memorial Library at 6 p.m.

#### VISIT PARENTS

Mrs. Virgle Gray and Mrs. Johnny Durham of Dimmitt visited Mrs. Gray's parents in Levelland Sunday.

#### VISIT KENNEDY'S

O. V. Kay of Plainview visited in the Leslie Kennedy home Tuesday.

NOTICE OUR GOOD MANNERS

Newspaper advertising never interrupts, obtrudes, annoys. It gets the VOLUNTARY Attention of its readers (like this ad.) They turn to it, at their convenience, for information that they want and need in order to buy at their best advantage . . . .

THE OLTON ENTERPRISE





Please Don't Hit Me!

MICK MCGILL seems to be at the mercy of his wife, Jo, at the Halloween Carnival here Monday night. This booth, sponsored by the Science Club, featured false fronts designed for both men and women. A photographer equipped with Polaroid camera took pictures according to the desires of customers.



Shadowy Characters

SHADOWS from candlelight fall on the faces of four Beatniks at the "Beatnik Booth" of the Halloween Carnival here Monday night. The booth, one of the most popular at the Carnival, was sponsored by the junior class. Clarinets and flutes moaned high and low for background as beatniks sat on pads and drank their special coffee.

## Fudge Cake Is Recipe Of Week

What is your favorite kind of cake? Is it yellow, spice, coconut or chocolate? If it is chocolate, then this week's recipe will be one that you will want to add to your collection of recipes.

The recipes for chocolate fudge cake and minute fudge icing were submitted by Mrs. W. D. Holley, one of Olton's many busy and young homemakers.

### FUDGE CAKE

Sift these ingredients together:  
2 cups cake flour  
2 cups sugar  
2 teaspoons baking powder  
¼ teaspoon soda  
1 teaspoon salt

Add:  
¼ cup shortening

Pour in one-half of this mixture:  
1½ cups milk  
1 teaspoon vanilla

Beat mixture for two minutes, then add:  
Remaining milk  
2 Eggs  
4 squares of melted chocolate

Beat mixture for two more minutes, then pour batter into two 9 inch greased and floured cake pans. Bake for 30 minutes in 350 degree oven.

### MINUTE FUDGE ICING

Melt ½ cup butter in saucepan. Add 1 cup cocoa, ½ cup milk, 2 cups sugar, a dash of salt and 1 teaspoon of vanilla. Stir over low heat until sugar is dissolved. Bring mixture to a boil and boil for one minute. Remove from fire and beat until icing is creamy enough to spread. A little milk can be added to the icing if it should become too hard.

### ATTEND FROSH GAME

Lana Hair, Ken Prestridge and Paul Ray Montgomery attended the Texas Tech-Air Force Academy frosh football game Saturday in Lubbock.

### VISIT IN ABILENE

Mr. and Mrs. Dub Granbery and Mrs. E. C. Jones were in Abilene over the weekend visiting Charla Granbery and Ellen Jones, students at ACC.

### SINGLETERY GUESTS

Mr. and Mrs. Neal Pock, Carey Lynn, Paul Phillip and Anne of Noroan, Okla. visited in the Glenn Singleterry home over the weekend. Mrs. Pock is the daughter of Mr. and Mrs. Singleterry.

### DEER HUNTING TRIP

Mr. and Mrs. W. A. DeBerry, Don and Darrel are deer hunting in Clayton, NM, this week.

### VISIT IN DUMAS

Mr. and Mrs. Russell Grimes, G. A., Jerry Ann and Allen visited in Dumas over the weekend with the H. B. Grimes family.

# SAMPLE BALLOT

General Election—Lamb County, Texas—November 8, 1960

Vote for the candidate of your choice in each race by scratching or marking out all other names in that race. You may vote for all the candidates of a party by running a line through every other party column.

Democratic Party	Republican Party	Constitution Party	Prohibition Party	Independent	Write-In
For President and Vice President: JOHN F. KENNEDY LYNDON B. JOHNSON  For Governor: PRICE DANIEL  For Lieutenant Governor: BEN RAMSEY  For Attorney General: WILL WILSON  For United States Senator: LYNDON B. JOHNSON  For Chief Justice of the Supreme Court: ROBERT W. CALVERT  For Associate Justice of the Supreme Court, Place 1: CLYDE E. SMITH  For Associate Justice of the Supreme Court, Place 2: JOE GREENHILL  For Judge of Court of Supreme Court, Place 2: W. T. McDONALD  For Railroad Commissioner: ERNEST O. THOMPSON  For Comptroller of Public Accounts: ROBERT S. CALVERT  For Commissioner of General Land Office: JERRY SADLER  For State Treasurer: JESSE JAMES  For State Commissioner of Agriculture: JOHN C. WHITE  For Chief Justice, Court of Civil Appeals, 7th Supreme Judicial District: JAMES G. DENTON OF LUBBOCK COUNTY  For Congressman, 19th Congressional District: GEORGE MAHON OF LUBBOCK COUNTY  For District Attorney, 15th Judicial District: JACK YOUNG OF BAILEY COUNTY  For County Attorney: CURTIS R. WILKINSON  For County Sheriff: DICK DYER  For County Surveyor: LINDSEY D. WILLIAMS  For County Tax Assessor-Collector: HERBERT DUNN  For County Commissioner, Precinct No. 1: A. J. SPAIN  For County Commissioner, Precinct No. 2: (Unexpired Term) HENRY LEWIS  For County Commissioner, Precinct No. 3: J. L. (ROY) YEAGER  For Justice of Peace, Precinct No. 2, (Unexpired Term): L. A. GLASSCOCK  For Constable, Precinct No. 4: J. L. DRAKE	For President and Vice President: RICHARD M. NIXON HENRY CABOT LODGE  For Governor: WILLIAM M. STEGER  For Lieutenant Governor: GILBERT N. HARRISON  For United States Senator: JOHN G. TOWER  For Chief Justice of the Supreme Court:  For Associate Justice of the Supreme Court, Place 1:  For Judge of Court of Supreme Court, Place 2:  For Judge of Court of Criminal Appeals:  For Railroad Commissioner: G. W. EWING JR.  For Comptroller of Public Accounts: MRS. HARGROVE (ALEENE) SMITH  For Commissioner of General Land Office: AXTELL BYLES  For State Treasurer: ALLEN LACY  For State Commissioner of Agriculture: CLARENCE DANKLEFS	For President and Vice President: CHARLES L. SULLIVAN MERRITT B. CURTIS  For Governor:  For Lieutenant Governor: PHILIP LEE EUBANK  For Attorney General: MUCKLEROY McDONNOLD  For United States Senator: BARD A. LOGAN  For Chief Justice of the Supreme Court:  For Associate Justice of the Supreme Court, Place 1:  For Associate Justice of the Supreme Court, Place 2:  For Judge of Court of Criminal Appeals: RUBEN R. LOZANO  For Railroad Commissioner: I. C. JARMAN  For Comptroller of Public Accounts: JOSEPH M. RUMMLER  For Commissioner of General Land Office: W. C. "DOC" MILLER  For State Treasurer: BERT ELLIS  For State Commissioner of Agriculture: R. L. PETERS  For Chief Justice, Court of Civil Appeals, 7th Supreme Judicial District:  For Congressman, 19th Congressional District: JOHN R. ANDERSON	For President and Vice President: RUTHERDOR L. DECKER E. HAROLD MUNN	<p style="text-align: center;">No Candidates Listed</p>	<p style="text-align: center;">No Candidates Listed</p>
<p><b>THESE CONSTITUTIONAL AMENDMENTS WILL APPEAR AT THE BOTTOM OF THE OFFICIAL BALLOT</b></p> <p>FOR or AGAINST—No. 1 The Constitutional Amendment authorizing the Legislature to create a hospital district co-extensive with Lamar and Hildog Counties, and co-extensive with County Commissioners Precinct No. 4 of Comanche County.</p> <p>FOR or AGAINST—No. 2 The Amendment to Section 49-B of Article III of the Constitution of Texas by adding thereto a provision authorizing the Veterans' Land Board to issue the bonds authorized under such section to bear interest at a rate or rates not to exceed three and one-half percent (3½%) per annum.</p> <p>FOR or AGAINST—No. 3 The Constitutional Amendment allowing an annual salary of not not to exceed four thousand, eight hundred dollars (\$4,800) per year and a per diem allowance of not to exceed twelve dollars (\$12) per day for the first one hundred and twenty (120) days only of each session of the Legislature as the maximum compensation for members of the Legislature and limit the regular session to one hundred and forty (140) days.</p> <p>FOR or AGAINST—No. 4 The Constitutional Amendment giving the Legislature authority to classify loans and lenders, license and regulate lenders, define interest and fix maximum rates of interest; and providing for a maximum rate of interest of ten percent (10%) per annum in the absence of legislation fixing maximum rates of interest.</p>					

THIS SAMPLE BALLOT PRINTED FOR YOUR CONVENIENCE

— Courtesy Of —

## Higginbotham-Bartlett Co.

## OLTON STATE BANK

## Texas Tech Frosh, West Texas "B" Will Tangle In Plainview Nov. 10

College football moves to Plainview Thursday, Nov. 10, when the West Texas State College B Team and Tech's freshmen tangle in a 7:30 p.m. contest.

The game, sponsored by the Plainview Kiwanis Club, was arranged for Plainview by Frank Kimbrough, WT athletic director.

**For Sale**  
All Gold  
Sweet Potatoes  
IRA BRIDGES  
2 blocks north John Deere house or—  
PHONE 3316

**MOTHERS**  
Start your Christmas fund now by earning the easy Avon way. Avon Cosmetics has openings for qualified ambitious women. We will train.  
WRITE Dist. Sales Manager  
Box 2017, Plainview, Texas

Proceeds will go into Kiwanis civic projects.  
A number of high school stars will be playing on the two teams, but probably no pair recalls fonder memories for local fans than do Robert Foster and David McInturff, both members of the championship Sundown team of last season.

Foster, the quarterback, is playing with Tech while McInturff, a halfback, is with WTSC.

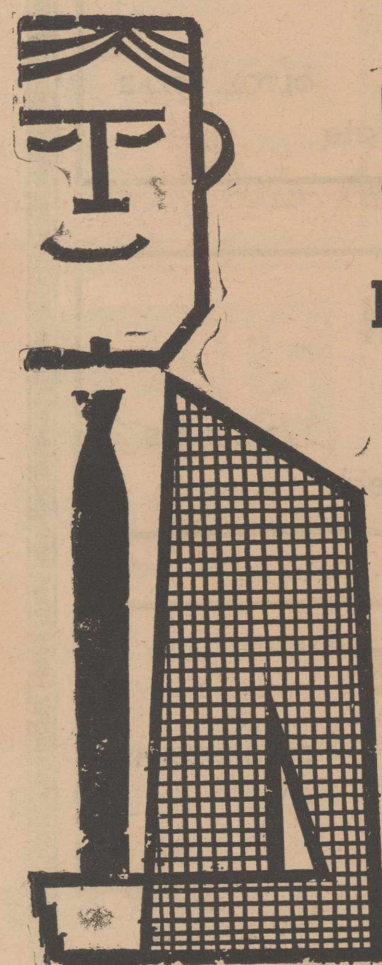
Other top area players include with Tech, Doug Cannon, Guy Davis and Don Burch of Levelland; Ronnie McWilliams of Littlefield; Winston Watkins, Petersburg; and Lanis Roscoe of Brownfield.

WTSC will have Terry Hodges of Hereford, Bill Gilliland of Floydada; Dan Smith of Lockney, and Stephen Qualls of Idalou.

Tickets for the game will be \$1 for adults and 50 cents for students. The contest will be played in Plainview's Bulldog Stadium.

**VISIT DAUGHTER**  
Mr. and Mrs. J. C. Hamby spent the weekend visiting their daughter, Sandra, in Denver, Colo.

**VISIT IN MOSS HOME**  
Mr. and Mrs. Clyde Moss, Martha, Molly, Kathy and Clare of Levelland visited in the K. L. Moss home Sunday.



Clothes make the man and POLLARD'S SANITONE keeps a man's suits looking best longer!



Let us prove it to you. Call for service today!

POLLARD'S CLEANERS

PICKUP & DELIVERY SERVICE ANYTIME

PHONE 5241

OLTON, TEXAS

# Let's Go Mustangs!

## FOOTBALL

**WEEKLY PRIZES!**

### CONTEST RULES

Winners selected in each ad must be circled in ink or pencil. Tie-breaker winners must be circled and scores printed in the spaces made available for them.

Each week's entry must be turned in to one of the merchants sponsoring the contest. Contestants are given a week to prepare and turn in their entries. When they receive their paper on Friday, they have until the next Friday at 4 p. m. to turn in their entries.

Sponsoring merchants may accept mailed entries, but none mailed directly to the Enterprise will be accepted. All late entries will be discarded.

In case of ties, a coin will be flipped to determine the winners.

Anyone may enter except employees of the Enterprise or their families.

### LAST WEEK'S WINNERS

- 1st Henry Mathis, Box 152, Olton  
16 Right — 2 Wrong
- 2nd A. A. Smith, Olton  
15 Right — 3 Wrong
- 3rd Garner Ball, Box 891, Olton  
15 Right — 3 Wrong

Name .....

Address .....



### Season's Record

Olton 44	Petersburg 20
Olton 12	McCamey 8
Olton 32	Springlake 13
Olton 26	Hale Center 6
Olton 8	Hereford 0
Olton 35	Muleshoe 22
Olton 38	Morton 22
Olton 30	Lockney 8
Olton 225	<b>TOTALS</b> Opponents 99

### 1960 FOOTBALL SCHEDULE

#### CONFERENCE GAMES

NOV. 4 ABERNATHY	HERE
NOV. 11 FLOYDADA	THERE

Game Time 8 P.M.

### WEEKLY PRIZES

Weekly prizes will be awarded in the following manner:

**FIRST PRIZE \$15. SECOND PRIZE \$10. THIRD PRIZE \$5.**

<b>TIE BREAKER</b>	Olton .....	Hereford .....	Hart .....
	Floydada .....	Littlefield .....	Vega .....

#### HALL-SIDES MOTORS, INC.

"YOUR FRIENDLY FORD DEALER"

PHONE 4711 OLTON, TEXAS  
RIDE TO THE GAME IN A NEW FORD  
Lockney AT Morton

#### HIGGINBOTHAM-BARTLETT CO.

"GOOD LUMBER"

ALL KINDS OF BUILDING MATERIALS — PRESSURE WATER SYSTEMS — PLUMBING FIXTURES  
PHONE 3511 OLTON, TEXAS  
Muleshoe AT Abernathy

#### HOWARD HALL INSURANCE

PHONE 3601 OLTON, TEXAS  
SMU AT Arkansas



#### ED THOMPSON IMPLEMENT

"YOUR JOHN DEERE DEALER"

PHONE 2211 OLTON, TEXAS  
Southern Cal AT Baylor

#### OLTON GRAIN, INC.

READY TO RECEIVE YOUR GRAIN

Hardin-Simmons AT Trinity

#### THOMPSON CHEVROLET CO.

"A GOOD PLACE TO BUY A CAR"

PHONE 5551 OLTON, TEXAS  
Houston AT Florida State

#### MOORE'S SHAMROCK FARM SUPPLY

PHONE 2301 OLTON



Rice AT Texas A&M

#### Parsons Furniture Parsons Funeral Home

"Where A House Becomes A Home" Ambulance Service  
PHONE 5951 PHONE 5211

Texas AT TCU

#### OLTON CO-OP GIN

PHONE 3091

OLTON TEXAS  
Wyoming AT Texas Tech

#### FARMERS GIN

TANDEM MOSS LINT CLEANERS — DOUBLE DRYING

PHONE 3191 OLTON, TEXAS  
Air Force AT UCLA

#### OLTON DRUG

PHONE 2251

Arizona AT Texas Western

#### SMITH & STRUVE

PHONE 2761 OLTON, TEXAS  
Army AT Pitt

#### OLTON BOWLING CENTER, INC.

COME BY AND BOWL A LINE ON YOUR WAY TO THE GAME

Virginia AT Navy

#### JACK STRAW GIN CO.

YOUR FUTURE GINNER

Colorado State AT New Mexico



#### G. H. BLEY

"YOUR PHILLIPS 66 DEALER"

PHONE 2721 OLTON, TEXAS  
New Mexico State AT West Texas State



**SELL · BUY · TRADE · HIRE · SERVICE · HELP WANTED · EMPLOYMENT · WANT ADS!**

**The Olton Enterprise**

Published each Thursday at Olton, Texas. Entered as second class matter at the post office at Olton, Texas, under the act of Congress, March 3, 1897.

Any erroneous reflection upon the character of firm or corporation which may appear in the columns of The Olton Enterprise, will be gladly corrected upon being brought to the attention of the publisher.

Subscription rates: \$3.00 per year in Lamb and neighboring counties; \$5.00 per year elsewhere.

ALL PHOTOS APPEARING WITHIN THE COLUMNS OF THE OLTON ENTERPRISE ARE STAFF PHOTOS UNLESS OTHERWISE ACCREDITED.



**EDITORIAL DEPARTMENT**  
 BILL TURNER . . . . . PUBLISHER  
 LANA HAIR . . . . . REPORTER  
 JOLINE WARREN . . . . . SOCIETY EDITOR  
 AMY TURNER . . . . . BOOKKEEPER  
**ADVERTISING DEPARTMENT**  
 AMY TURNER — RUSSELL L. GRIMES  
**MECHANICAL DEPARTMENT**  
 RUSSELL L. GRIMES . . . SUPERINTENDENT  
 PAT LAFRANCE . . . . . TTS OPERATOR  
 HERMAN HARRISON . . . . . APPRENTICE  
 G. A. GRIMES . . . . . APPRENTICE

**Classified Ads**

**Rates**  
 Rates on classified advertising are: 6 cents per word first insertion; 3 cents per word second insertion, and each additional consecutive insertion. Minimum 40 cents first insertion, 25 cents additional insertions. The Enterprise is not responsible for mistakes after first insertion. Please read your ad.  
 All classified accounts are due and payable 10th of month following insertion. A flat rebilling fee of \$1.00 will be charged for all accounts 30 days past due and for all successive rebillings.

REGISTERED  
**Polled Herefords**  
 Quality Calves  
**MITCHELL HADDAD**  
 Box 156 Olton, Texas

HAVE IN STOCK 400 NEW RADIATORS. OLD MODELS CLOSING OUT AT 50 TO 75% DISCOUNT.

**Stovall-Booher**  
 RADIATOR SALES & SERVICE  
 1019-25 N Broadway CA 4-2865  
 Plainview, Texas

"We need your head in our business."

**HUBERT'S BARBER SHOP**  
 Hubert - Duward - Charles

**Water Well Drilling**  
 NO MONEY DOWN 3 YEARS TO PAY  
 Pressure Pump Service  
**CALVIN COOK**  
 CA-4 4498 2519 Gladney (Seth Ward) PLAINVIEW, TEXAS

**LEVI'S**  
**Smith & Struve**  
 OLTON, TEXAS

FOR ALL GEAR HEAD Service and Repair SEE **W. M. Whitesides**  
 207 East 5th Street PLAINVIEW, TEXAS

**PIONEER DRILLING & MACHINE CO.**  
 SALES & SERVICE  
 —Nebraska Western Pumps—Irrigation Well Drilling—  
 411 Broadway Phone CA 4-7595 Plainview, Tex.

**FOR SALE**

FOR SALE—3-Bedroom house in Hillcrest addition, livingroom, dining room and hall carpeted with all wool carpet, fenced back yard, phone 2351. dh

TRASH BARRELS delivered, \$3. Price Wrecking. Phone 5371 23-tfc

FOR SALE: 160 acres clean red catclaw land. No Johnson grass, no pre-annual weeds, 43 acre cotton allotment. Eight inch well. Three bedroom house and out buildings. \$265.00 per acre. 1/4 down balance on 15 year terms. 5 miles north, 3 west, 1/4 north of Olton, Arch Cooper. 32-tfc

FOR SALE: 181 acre farm, 6 miles from Lockney. 4 room modern home with out buildings, good 8 inch well. All in cultivation but four acres. \$250 acre, \$12,000 down. Easy terms on balance. Ezra Whittington. 36-tfc

FOR SALE: Universal electric blanket, double bed size, two-year guarantee. Any defective blanket will be exchanged by us at no cost to purchaser. Olton Drug 36-tfc

FOR SALE: Electric shavers, No-relo Standard, reg. price, \$24.95, special price—\$13.95. Norelco Floating head, reg. price, \$29.95, special price—\$18.95. Remington Roll-Amatic, reg. price, \$29.95, special price—\$16.95. Remington Home-Auto, reg. price, \$32.50, special price—\$19.95. Remington Princess, reg. price, \$18.50, special price—\$15.95. Remington Electronic, reg. price, \$35.95, special price—\$23.95. Olton Drug 36-tfc

FOR SALE: Luggage, 3 piece set, beautiful gray or blue. Reg. price, \$39.95, only \$24.95. A small deposit will hold in lay-away until Dec. 15. Olton Drug 36-tfc

FOR SALE: Three room modern house to be moved. Phone 2201. 38-2tc

**AUTO INSURANCE**  
 PAY MONTHLY. THE EASY WAY!  
 Budget All Your Insurance Home — Auto — Business  
**Roy Granbery**  
 INSURANCE AGENCY  
 For More Than 30 Years  
 Olton, Texas Call 2921

**PARLEY'S Barber Shop**  
 LOCATED NEXT DOOR TO LESTER'S  
 — PARLEY and JOHN —  
 Olton, Texas

**Ye Olde Time Barbecue Pit**  
 Open 9 a. m. Close 8 p. m.  
 Seven Days A Week  
 BARBECUE TO GO BY THE POUND  
 LUNCHES & SANDWICHES  
 Proprietor  
 JUST OLD . . .  
**Max Garrett**  
 . . . THAT'S ALL

**For Sale**

FOR SALE: 150 bushels Early Triumph wheat seed, \$2.25 per bushel. Deryl Clevering, Hart. 35-tfc

FOR SALE: Five room house, furnished or unfurnished at a bargain on Main Street. S. E. Whittington. 36-tfc

FOR SALE: Five room and bath house 4 miles north of Olton. To be moved. Three rooms with wool carpet and two rooms and bath have Goodyear rubber floors. James Cowart, phone 4372. 36-tfc

FOR SALE: 1956 Dodge 2-ton truck, 16 foot Hobbs bed. 1106 Main. 39-4tp

INTERNATIONAL Stripper, 1955 model. Phone 3923. 39-1tp

**Notice**

SEE BILL BENNETT for Humphrey Tension 100 per cent wool sealed aluminum silicone treated storm windows and doors, custom made. 20 tfe

NOTICE: Custom Spraying, airplanes, ground machines. Mac's Spraying Service. Phone 4096. 21-tfc

FOR SALE: Small upright piano. Good condition. Mrs. J. W. Dale. Phone 2687. 38-3tc

FOR SALE: All kinds of plastic flowers, plants for Christmas and all occasions. Mrs. G. R. Smith, Phone 2803. 38-4tc

\$100.00 de recompensu por informacion que ilene a el arresto y conviccion de cualquier persona que distrulla o'h remueva algo en la propiedad de las barraacas de el Tri-County Co-Op Gin. 38tfc

\$100.00 REWARD for information leading to the arrest and conviction of anybody destroying or removing property from the Tri-County Co-Op Gin barracks. 38-tfc

**FALL SPECIALS**

**HUNTING COATS**  
 Heavy tan duck with rubberized game pocket, shell loops and large pockets. Also vest—and game bags.  
 British Enfield \$15.95  
 303 Rifle . . . . . \$15.95

New Army denim jackets, Many Styles. Coats \$2.49  
 Jackets & Parkas . . . \$2.49

2 Piece Suit \$7.95  
 Insulated Underwear . . . \$7.95

\$100 will hold on Lay-away 30 days

Large selection Foam Rubber including large foam sponges . . . **3 for 25c**

Close Out on Many Sleeping Bags—up to 33 1/3 off.  
 12 Gauge Shotgun \$2.35  
 Shells . . . . . \$2.35

**ARMY & NAVY STORE**  
 PLAINVIEW, TEXAS  
 122 E. 5th CA 4-9440

**GOVERNMENT SURPLUS SALES**

NOW anyone can buy DIRECT from US GOVERNMENT SURPLUS DEPOTS by mail for yourself or for resale. Cameras, binoculars, cars, jeeps, trucks, boats, hardware, office machines and equipment, tents, tools and tens-of-thousands of their original cost. Many items brand new. For list of hundreds of US Government surplus Depots, located in every State and overseas with pamphlet "How Government Can Ship Direct To You," plus procedures, HOW TO BUY and how to get FREE SURPLUS, mail \$2.00 to SURPLUS SALES INFORMATION SERVICES, P.O. Box No. 1818, Washington 5, D.C.

**For Rent**

FOR RENT: 2-bedroom house in Olton, nice 12 x 28 garage, on pavement, East 6th street. Phone TU 9-3775, Plainview. 18-tfc

**Wanted**

WE BUY scrap iron, metal and batteries. Price Wrecking. Phone 5371. 23-tfc

WANTED: To make buttons, button holes, buckles, belts, children's garments. Dress making Willena Gordon. Ph. 3081. 27-tfc

WANTED: Sewing, custom made drapes and western shirts. Phone 3391. 1020 Main, Charlotte Morris. 18-tfc

TOP LAND WANTED: We have buyers for your farm land. Irrigated and dry land. Call, write or come to see us. Phone 5221, Box 127, Turner Brothers Land Co., Hale Center. 36-12tp

**OLTON LODGE NO. 1257**  
 A. F. & A. M.  
 Stated Meetings 3rd Thursdays  
**DOYLE PINSON, W. M.**  
**W. G. FINNEY, secretary**  
 Visitors Are Welcome  
 Members Urged To Attend.

**HICKS ART & FRAME SHOP**  
 1304 Milwaukee  
 Plainview, Texas  
 "The Home Of Quality Frames and Art Supplies"  
 Grumbacher & Craftint-Devee Oils, Tempra, Poster, Casine, Watercolor, Textile paints and enamel.  
 Pencils, Pastels, Papers, Board & Canvases to Support Any Medium.

**HOFFMAN TELEVISION**  
 at  
**RILEY'S TV SERVICE**  
 Phone 5131  
 For Expert Repair Service

**MAKE A CAREFUL COMPARISON OF PRODUCTS AND YOU WILL BUY SEAL-TITE CONCRETE PIPE STANDARD CONCRETE PIPE CO.**  
**G. A. BODKIN**  
 REPRESENTATIVE  
 Phone 3776

**asgrow**  
**Red Raider A**  
 GRAIN SORGHUM HYBRID  
 Short plant, resistant to lodging. Dry head stem. Intermediate maturity. Produces high yields in all important sorghum-growing areas.  
**Asgrow Seed Company of Texas**  
 San Antonio 11, Farwell, Robstown, Weslaco

**Bowling Scores**

**PIONEER MIXED CLASSICS**  
 Tuesday, 9 p.m.

TEAM	W	L
Botkin Food	16	16
Cashway	15	17
Jack Straw Gin	12 1/2	19 1/2
Bodkin & Nixon	17	15
Sherman Food	19	13
Parsons	20	12
Whittington's	9 1/2	22 1/2
G. H. Eley	19	13

High men's game, Leslie King, 209; high men's series, Leslie King, 533 — Jim Brown, 533; high women's series, Maxine Struve, 418; high women's game, Maxine Struve, 162; high team game, Bodkin & Nixon, 599; high team series, Cashway, 1767.

**TEN SOLDIERS**  
 Tuesday 7 p.m.

TEAM	W	L
Thompson Chev.	18	14
City Barber Shop	11	21
Olton Paint & Body	23	9
Moore's Shamrock	10	22
Adams Tractor	20	12
Plainsmen	9	23
Mac's Spraying	15	17
Jeffrey Lumber	22	10

High men's game, A. N. McDonald, 223; high men's series, A. N. McDonald, 577; high team game, Mac's Spraying, 718; high team series, 1945.

**LADIES LEISURE**  
 Thursday, 9 a.m.

TEAMS	W	L
Gray Grocery	24	8
Jeffrey Lumber	22	10
Bizzells	11	21
Tasty Cream	10	22
Smith & Struve	14	18
Olton Drug	19	13
White Auto	8	24
Botkin Food	19	13

High game, Prudy Jeffrey, 191; high series, Pat Harral, 480; high team game, Jeffrey Lumber, 604; high team series, Jeffrey Lumber, 1674.

**MEN'S CLASSICS**  
 Thursday, 9 p.m.

TEAMS	W	L
Olton Delinting	12	20
Ed Thompson Imp.	18 1/2	13 1/2
Fitts & Townsend	26	6
Hatley & Machen	15	17
Olton Co-Op Gin	16 1/2	15 1/2
Higginbotham-Bart.	7	25
Olton Grain	12 1/2	19 1/2
Olton Lions Club	20 1/2	11 1/2

High game, Gene Don Harrel, 221; high series, Gene Don Harrel, 590; high team game, Fitts & Townsend, 883; high team series, 2605.

**TEN PIN BOWLERS**  
 Wednesday, 9 p.m.

TEAM	W	L
Thomas Speed Wash	20	12
Chitwood Insurance	17	15
Campbells Texaco	12	20
Sanders Paris	9	23
Williams Insurance	14	18
Roberson-Givens	27	6
Olton State Bank	18	14
Whittington	12	20

High men's game, K. Y. Givens, 212; high men's series, James Hall, 516; high women's game, Yvonne Williams, 169; high women's series, Yvonne Williams, 479; high team game, Roberson & Givens, 704; high team series, Roberson & Givens, 1820. Sub.—James Gallagher, high game, 263; John Montgomery, high series, 555.

**SPRINGLAKE LADIES**  
 Tuesday, 1 p.m.

TEAM	W	L
1	11	13
2	11	13
3	14	10
4	15	9
5	21	3
6	1	23
7	7	17
8	10	14

High game, Dot Parish 151; high series, Betty Watson, 405; high team game, Team 1, 273.

**high team series, Team 5, 736.**

**SPRINGLAKE COUPLES**  
 Monday, 9 p.m.

TEAM	W	L
Thompson Imp.	24 1/2	11 1/2
Circle Gin	20	16
Springlake Beauty	21	15
Watson Bro. Butane	16	20
Springlake Elevator	17	19
Mac's Hardware	10	26
Perkins Tractor	16	20
Olton State Bank	19 1/2	16 1/2

High men's game, Foy Cook, 195; high men's series, Sam Borden, 555; high women's game, Rosa Loftis, 192; high women's series, Dorothy Williams, 461; high team game, Thompson Imp., 610; high team series, Mac's Hardware, 1723.

**OLTON ETTES PLUS**

TEAM	W	L
Hart Camp Gro.	25	7
Consumers Butane	23	9

Farmers Gin 17 15  
 Dorris Machinery 16 16  
 HC Co-Op Gin 16 16  
 Williams Potato Shed 13 19  
 Olton Trade Lot 11 21  
 Olton Motor Co. 8 24  
 High game, Louis Ball, 218; high series, Wesley Neinast, 509; high team game, Hart Camp Grocery, 708; high team series, Hart Camp Grocery, 1870; high women game, Juanita Cole, 176; high series women, Mae Neinast, 471.

...you can see that I made the

**Big CHANGE**

to modern, clean ELECTRIC COOKING!

Yes, I made the big change to electric cooking and it's easy to see why! Now my pots and pans stay shiny bright even after my meals have been cooked. And the cleanliness is just one of the advantages of cooking electrically, it's fast and economical too! So, why don't you see your Reddy Kilowatt Electric Appliance Dealer today and make the big change to modern cooking — electric cooking.



**CAST YOUR VOTE**

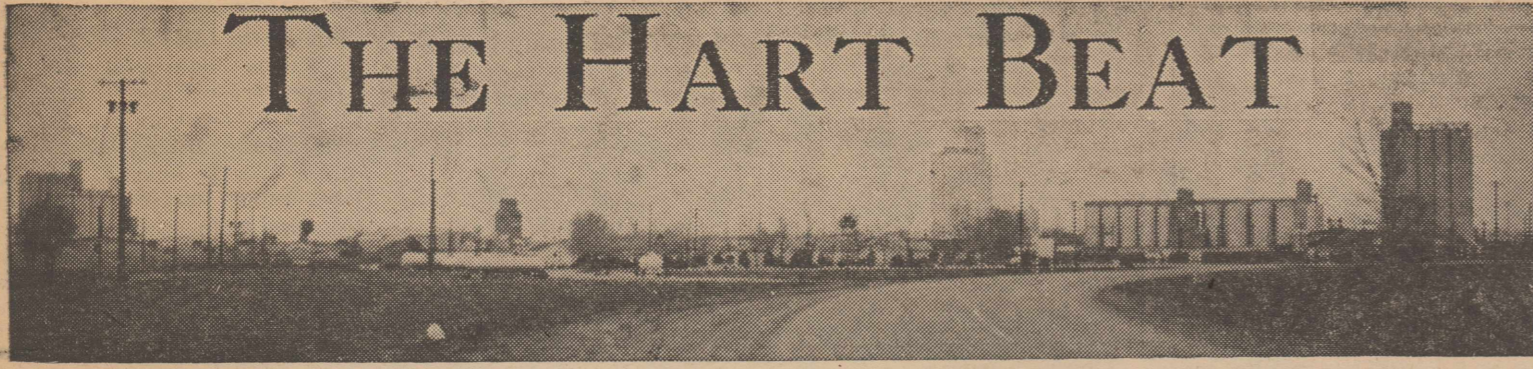
FOR THE South Plains No. 1 Candidate "KING COTTON" the area's most important product



KING COTTON HAS A PLATFORM THAT HELPS EVERYONE WHO LIVES ON THE PLAINS — BUY COTTON — YOU HELP YOURSELF AND YOUR NEIGHBORS WHEN YOU CHOOSE PRODUCTS MADE WITH COTTON.

**PLAINVIEW CO-OP COMPRESS**

2 1/2 Miles East Of Plainview



# THE HART BEAT

## Big Crowd Attends Hart Carnival; Royalty Named

One of the largest crowds ever to gather in Hart witnessed the coronation of the high school and grade school Halloween king and queen Monday night. Joann Lacy and Johnny Mouser, seniors, were high school queen and king.

Grade school royalty who reigned Monday night were Sharon Sue Aven and Ricky Farris, who are

both in Mrs. Paul Kennedy's second grade class.

Princesses and Princes were Beverly Hill and Kirk Hansen, Dee Ann Clevenger and David Bass, first grade; Joan Dudley and Mark Porter, second grade; Barbara Hansen and Billy Frank Sanders, Rhonda Sharp and Randy Crouch, third grade; Laura Mc-

Lain and Jack Bailey, Kathy Sharp and Jim Kendrick, fourth grade; Amanda Rogers and Danny Rice, fifth grade, Martha Sharp and Jerry Smith, sixth grade; Marilyn Jones and David Smith, seventh grade; Carol Nivens and Gene Gobble, eighth grade; Betty Gaylon and David Jones, freshman class; Connie Sue Popejoy and Don Sharp, sophomore class; and Vivian Shive and Royce Talley, junior class.

## Mary Benight, Jerry Davis Wed; Couple Now Residing In Leonard

Mr. and Mrs. L. W. Benight announce the marriage of their daughter, Mary, to Jerry Davis, son of Oren Davis of Leonard, Texas.

Mrs. John Harold Davis, cousin of the groom.

Mrs. Davis was a member of the 1959 graduating class of Hart High School and finished stewardess training from Weaver Air Lines of Kansas City. She later was employed at the University Hospital in Oklahoma City.

## PARSONS Funeral Home

"AS NEAR AS YOUR NEAREST TELEPHONE"

Oxygen equipped ambulance Service.

We accept any funeral home burial policy.

Phone 5211 Olton



Mr. and Mrs. Jerry Davis

## Auctioneer Dean Sanders

Phone WE 8-4557—Hart, Tex.

## New Son Is Born To Jones Family

Parents of a son born Oct. 30 are Mr. and Mrs. Weldon Jones of Hart.

The young man weighed 8 pounds and 2 ounces at birth and has been named Kelly. He was born in Medical Center in Plainview.

Mr. and Mrs. Jones are engaged in farming southwest of Hart. He is a graduate of Hart High School, while she is a graduate of Dimmitt High.

Grandparents are John Aldredge of Dimmitt and Mr. and Mrs. Worth Jones of Hart.

## Rickey Bennett Honored On Birthday

Mrs. Bob Bennett was hostess for a birthday party Friday, Oct. 21, for her son, Rickey.

Gary Rambo, Tommy McLain, Jack Bailey and Donnie Burruss had supper with Rickey, attended a show in Dimmitt and spent the night with Rickey.

The interest shown in the community project: "I appreciate the interest shown by students and parents. It takes these things to stimulate a school and provide incentives to accomplish and achieve."

## Football Game, Queen Coronation, Supper To Feature Hart Homecoming

Highlights of the Hart Homecoming Friday, Nov. 11, will be a football game, coronation of the high school football queen, a homecoming supper and a meeting of the ex-students.

Zealot Club members will serve the supper from 6 until 8 p.m. at the school cafeteria. The menu will be baked ham, baked beans potato salad, cranberries, fruit salad, coffee and pop.

## CLASSIFIED ADS

LISTINGS wanted. Hart Real Estate Agency. Norlan Dudley. 25-4c insurance Agency. Norlan Dudley. 32-4c



Ready For Opening

SHOWN HERE in a new office, part of a new Hart Oil and Butane warehouse, are Myrtle Bradley, right, and Houston Hamby, bookkeeper. Formal opening of the new warehouse and office is scheduled Saturday.

## Formal Opening Of New Warehouse, Office Set Saturday By Hart Oil

Formal opening of a new warehouse and office for Hart Oil and Butane is scheduled Saturday.

Free coffee and donuts will be given throughout the day and visitors may register for six door prizes.

The new warehouse is a 40 by 60-foot cinderblock structure.

The firm is under the management of Myrtle Bradley. Houston Hamby is bookkeeper. Eleven persons are employed by the firm, which was purchased four years ago from Johnny Thompson.

## WCS-WSG Meet Social Honors Held Jointly Kenneth Warren

A joint session of the Women's Society of Christian Service and the Wesleyan Service Guild of Hart Methodist Church was held last Wednesday night. The session was in observance of "Week of Prayer and Self-Denial".

Mr. and Mrs. Bill Rich, Mr. and Mrs. Bob Reed and Mr. and Mrs. Norlan Dudley were hosts in the Dudley home Tuesday night, Oct. 25, for a social honoring Kenneth Warren.

Mrs. Worth Jones was in charge of the meeting. Those appearing on the program were Mrs. Lee Crouch, Mrs. Willis Hawkins, Mrs. Lena Maples, Mrs. R. C. Bailey and Mrs. T. U. Smith.

Kenneth is an employe of the Farmers State Bank and is to leave soon for the armed forces.

Prayers were offered and a free will offering was given. Mrs. Paul Kennedy gave the closing prayer.

Refreshments of spiced tea, coffee and cake were served to the 15 members attending.

## Degrees Discussed At Hart FHA Meet

Junior, state and chapter degrees were discussed at last Monday afternoon's meeting of the Hart Future Homemakers of America. Plans also were discussed for "Twirp Week", one of the projects of the organization.

Those attending were Misses Jo Sanders, Patsy Curry, Lois Futrell, Rosalea Bostick, Verjé Hollman, Janice Pierce, Treva Pigg, Joann Clark, Estela Rubalacaba, Connie Popejoy, Joy Talley, Betty Gaylon, Freda Davis, Lynda Cole, Freddie Popejoy, Janet Bostick, Beth Hugh, Connie Bowden and Mrs. J. V. Wescott, sponsor.

## Zealot Club Meets In Dudley Home

The Zealot Club met last Tuesday afternoon at the Norlan Dudley home. Assisting Mrs. Dudley as co-hostesses were Mrs. Willis Hawkins Jr. and Mrs. Joe Newman.

Appearing on the program was Mrs. Clyde Witten, who spoke about "Why We Should Vote".

Tickets for the Hart Homecoming supper may be purchased from any Zealot Club member.

Those present were Mmes. Ed Bennett, Daryl Clevenger, Ralph Futrell, Owen Hankins, Paul Armstrong, Glyn Reed, Claude Ray, Eldon Shives, B. R. Bennett, H. H. Parker, Theron Morrison, B. H. Rogers, Warren Lemons and Walt Hansen.

## Birthday Supper Fetes Ray Bennett

Ray Bennett was honored with a birthday supper Oct. 27 in his home. Guests for the evening were Mr. and Mrs. Owen Harris, Mr. and Mrs. Bob Suttle, Mr. and Mrs. Oscar Stansell, Mr. and Mrs. Ollie Richardson and Mrs. John Lackey, all of Plainview; Mr. and Mrs. Avery Adams, Mr. and Mrs. Melvin Walters and Mr. and Mrs. T. R. Davis all of Hart.

## Two Injured In Explosion At Gin-Elevator

The Hart Fire Department was called out last Friday at 1 a.m. when there was an explosion at Lindsey Gin and Elevator about a mile east of Hart.

A. R. Townsen, 50, and Johnny Martinez, 19, were injured. One of the men lifted a lid to the boot pit where a small fire was found. An explosion hurled the men about 30 or 35 feet.

Townsen was rushed by Dennis Ambulance to Methodist Hospital in Lubbock. He reportedly was badly bruised and he may have some broken ribs.

Martinez was taken by private car to Castro County Hospital in Dimmitt, where he was released Saturday. He suffered severe burns about the head and shoulders.

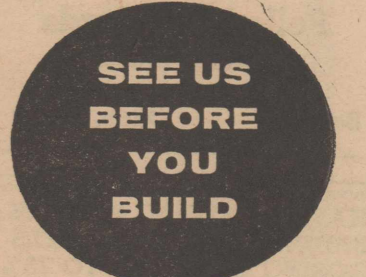
There was no damage to the elevator.

## Meeting Of Hart Senior HD Is Held In Swindle Home

Mrs. Bill Swindle was hostess Thursday afternoon for a meeting of the Hart Senior Home Demonstration Club.

Plans for the club's activities were discussed and yearly reports were filled out by the members attending. They were Mmes. Percy Hart, W. A. Hawkins, Paul Brooks, Fred Hamm, Howe Parker, Buster Aven, J. D. Murray, T. B. Cox, A. L. Aven, E. E. Foster and the hostess.

We have the plans, directions, and wide selection of West Coast lumber to make your project better.



We Finance Home Improvement SEE

Ed Harris Lumber Co.

## Henderson TV

Repair Service At Night In Hart

Phone MI 7-3636 in Dimmitt

# FOOTBALL WEEKLY PRIZES!

## CONTEST RULES

Winners selected in each ad must be circled in ink or pencil. Tie-breaker winners must be circled and scores printed in the spaces made available for them.

Each week's entry must be turned in to one of the merchants sponsoring the contest. Contestants are given a week to prepare and turn in their entries. When they receive their paper on Friday, they have until the next Friday at 4 p.m. to turn in their entries.

Sponsoring merchants may accept mailed entries, but none mailed directly to the Enterprise will be accepted. All late entries will be discarded.

In case of ties, a coin will be flipped to determine the winners. Anyone may enter except employes of the Enterprise or their families.

## LAST WEEK'S WINNERS

Winners each week will be listed here. See how often your name can be listed.

1st Harvey Sullivan—Hart—7-1 . . . \$4

Tie For Second and Third . . . \$1.50 each

Connard Riddles, Hart

Newlon Rowland, Box 451, Hart



## Season's Record

Hart 16	New Home 8
Hart 14	Amherst 14
Hart 6	New Deal 16
Hart 16	Kress 8
Hart 8	Anton 28
Hart 12	Whitharral 14
Hart 20	Bovina 6
Hart 8	Happy 14

## HART LONGHORNS 1960 SCHEDULE

Nov. 4 LAZBUDDIE  
Nov. 11 VEGA

There  
Here

TIE BREAKERS	OLTON..... Hart.....	Name .....
	Floydada..... Vega.....	Address .....

## FARMERS STATE BANK

MEMBER FDIC  
Rice AT Texas A&M

## HART OIL & BUTANE CO.

Phone 2382  
New Mexico State AT West Texas State

## FARMERS GRAIN CO

PHONE 2271  
Wyoming AT Texas Tech

## Cox Butane — Cox Auto Parts

PHONE 2231 or 2322  
Army AT Pitt

## HART GIN

Tandem Moss Lint Cleaners — Double Drying  
ROLAND Phone 2451 ROSA  
Air Force AT UCLA

# LET'S GO LONGHORNS!

## HI-POINT FERTILIZER, INC

FERTILIZER — BUTANE — GRAIN  
Phone 2771  
Virginia AT NAVY



Goes For First Down

HART'S Connard Riddles goes down after racking up yardage for a first down against Happy. The Longhorns lost the ball game, 14-8, to even their record at 1-1 in District 2-B.

## Powerful Lazbuddie Is Next Opponent For Hart

Mighty Lazbuddie, a team which has rolled unmercifully over opponents this year, will visit Hart Friday night bent on slaughtering the Longhorns.

Hart probably will be on the rebound from its 14-8 loss to Happy last Friday night, but the Longhorns are expected to be no match for powerful Lazbuddie, which barely worked up a sweat in beating Bovina last Friday night.

The defeat by Happy gave Hart a 3-5-1 record for the season and a 1-1-0 record in District 2-B play.

Happy took an early first quarter lead, with the initial Cowboy score coming on a two-yard plunge by Ronnie Middleton after Darrell

Bowe's interception and 65-yard return set it up.

M. L. McGehee booted the extra point for a 7-0 lead.

The Cowboys went out front by 14-0 in the second period when

### Hart School Lunchroom Menu

Nov. 7-11

MONDAY — Bar-B-Q weiners, buttered potatoes, asparagus with cheese sauce, pineapple cake, milk, bread and butter.

TUESDAY — Braised beef, mashed potatoes, carrot and date salad,

Bowe's pass to Jerry Stevens was good for eight yards and a touchdown. McGehee again split the uprights on the conversion try.

Hart's long touchdown came in the fourth period when Larry Lee smashed over center for five yards and a tally. Lee hit the middle again for the extra points.

French bread, pure fruit jam, butter and milk.

WEDNESDAY — Chili con carne with beans, tossed salad with raw spinach, corn bread, canned apricots with date brownies, butter and milk.

THURSDAY — Chicken pie, English pea salad with cheese, cranberry sauce, celery sticks, lime jello with pear halves, milk, bread and butter.

FRIDAY — Fish sticks, baked beans, lettuce and tomato wedges, buttered corn, coconut macaroons, bread and butter.

### HART to HART

Dates to Remember: Nov. 4—Hart Longhorns play football at Lazbuddie; Nov. 6—Attend church of your choice; Nov. 7—P-TA; Fire Drill; Nov. 8—Go to the polls and VOTE.

Ray Warren was admitted to Medical Center in Plainview Wednesday of last week and dismissed Saturday.

Mrs. J. J. Newsom spent last week in Lubbock with her daughter, Mrs. Frank Wiley and family. The Wiley's have a new baby boy.

Mrs. Wamon Hinson of Albuquerque, NM, recently visited her niece, Mrs. Joe Newman and family.

Attending the district Scout meeting in Plainview last week were Mr. and Mrs. Roy Pyeatt, Mr. and Mrs. Dwight Miller, Mr. and Mrs. Paul Armstrong and Mr. and Mrs. Boots Rogers.

Pyeatt received the 15-year Veteran Award.

The Elmer McKay family has moved into a house owned by D. D. Myrick. Elmer is barber at the Longhorn Barber Shop.

Mr. and Mrs. Pete Steiret presented the Hart Baptist Church with a piano last week. Mr. and Mrs. Paul Brooks were in Lamesa Thursday to see his father, H. C. Brooks, who is ill in a hospital.

J. W. Welty was admitted to Castro County Hospital in Dimmitt Wednesday of last week. He suffered a heart attack recently.

Mrs. Malcom Atwood, first grade teacher was absent from school some last week, suffering from a virus.

Lanny Tucker was in Oklahoma on business last weekend.

(Additional Hart News On Back Page)

### Tip-Top Cafe

Private Light Meters

Phone WE 8-3583

# FORMAL OPENING

of our new warehouse and office

## Saturday Nov. 5

### FREE COFFEE & DONUTS



### REGISTER FOR THESE DOOR PRIZES!

1. Four Phillips Super Active Tread WSW Nylon Tires
2. Two Phillips Mud-Snow Tires
3. One Phillips TA Battery
4. One Cast Phillips Trop-Artic Motor Oil
5. One Case Phillips 66 Motor Oil
6. One Wash-Lubrication Job

Hart Oil & Butane and its 11 employees want the public to see our new 40x60-foot cinder-block warehouse and new office — All day Saturday, Nov. 5.

# Hart Oil And Butane

HART, TEXAS

### THIS & THAT \* by Myrt Loman \*

There have been so many things happen of late concerning our youth of today. I feel they deserve a pat on the back. Our girls in FHA worked to earn money to go to Dallas, and they did it.

Our FFA boys did so well in Dallas competing with the whole state. I am doubly proud of them.

Sincere thanks go to Mrs. J. V. Wescott, teacher in FHA, and to Mrs. W. T. Sanders, who made the trip with the girls.

A sincere THANK YOU to Lanny Tucker, teacher in FFA and to Mr. and Mrs. W. A. Hawkins Sr. and Mr. and Mrs. Milton Sharp, who went with the boys.

Have heard of so many of the little children say, while voting for the King and Queen of their room in school that if a particular child was elected last year, he or she would not accept the honor this year.

How many of us grown-ups would show that kind of sportsmanship? Probably your child or grandchild did not tell you of the incident, but the teachers know of the love and honor the children have for each other.

Nov. 8 is a day we all may exercise the privilege of voting. Not all nations have that right.

I am sure it is a difficult task to choose between Nixon and Kennedy for president, but if you do not vote, you are helping to elect the man you think less capable of being the leader of our nation.

There are only six states in the union whose citizens must pay a poll tax and they are Alabama, Arkansas, Mississippi, Texas, Virginia and New Hampshire.

It might be well for us to re-read and study our "The American Creed", by William Tyler Page.

"I believe in the United States of America as a government of the people, by the people, for the people, whose just powers are derived from consent of the governed, a democracy in a republic; a sovereign nation of many sovereign states, a perfect union, one and inseparable; established upon those principles of freedom, equality, justice, and humanity, for which American patriots sacrificed their lives and fortunes."

"I therefore believe it is my duty to my country to love it; to

YOUR JOB IS NEXT... WHEN YOU CALL

# Gifford-Hill-Western

WE CAN GIVE YOU IMMEDIATE DELIVERY ON IRRIGATION PIPE!



Introducing...  
**MARVIN MADISON**  
G-H-W SALES REPRESENTATIVE IN  
CASTRO COUNTY.

CALL MARVIN MADISON AT:

## GIFFORD-HILL-WESTERN

Office: Dimmitt MI 7-3656 Hereford EM 4-1266

Home Phone: EM 4-2817

HEREFORD, TEXAS

### Farmers Insurance Co.

Real Estate  
and  
Notary Public  
Mr. and Mrs. Joe Newman  
Phone WE 8-3218

# Last-Half Surge Wins For Olton

Something happened at the half superior football team in a game of the Olton-Lockney football game which, for the first 24 minutes, here last Friday night. Olton suddenly became a vastly looked like it might go either way. The Mustangs won, 30-8, rack-

ing up their third straight District 2-AA victory and their eighth consecutive win of the season.

The score itself doesn't tell the true story of the game — or maybe it's more correct to say two games.

The first half pitted a pair of evenly matched ball clubs against each other. The second half saw Olton jump to three touchdowns while Lockney was getting one against the Mustangs' second unit.

Once again, it was barreling Robert Priest, 190-pound fullback who led the Mustang ground attack. Priest scored twice, racked up two extra points and ground out 127 yards in 24 carries.

Frankie Miller joined the scoring party, getting one touchdown and two extra points while running for 41 yards in 10 tries. The Mustangs' other touchdown was made by Johnny Schenck on a one-yard sneak. Rande Buchenau rounded out the scoring with a pair of extra point kicks.

The Mustangs put together their first eight points with 56 seconds remaining in the first half, taking advantage of a fumble recovery by Quarterback Schenck at the Lockney 31.

Up to that point, Olton had been outplayed by a hard-charging, fast-wheeling Longhorn team. Lockney had racked up seven first downs and 89 yards rushing before the fumble. Olton, before the touchdown drive just prior to half-time, had only three first downs and 71 yards rushing.

The Mustangs' "Seven Wonders", however, had been tough in the clutch. Lockney roamed pretty well at will around mid-field, but Olton's line rose up to stop a threat that carried to the Mustang 26 midway in the second period.

Olton moved 31 yards the first time it had the ball, getting to the Lockney 33. There a fumble by Fullback Priest was recovered by Lockney's Joe Allard.

Lockney came storming right back, with Halfback Bill Mangold doing much of the work. Mangold ripped off runs of 7, 10, 11, 4, 3 and 2 yards, the last jaunt giving Lockney a first down at the Olton 29.

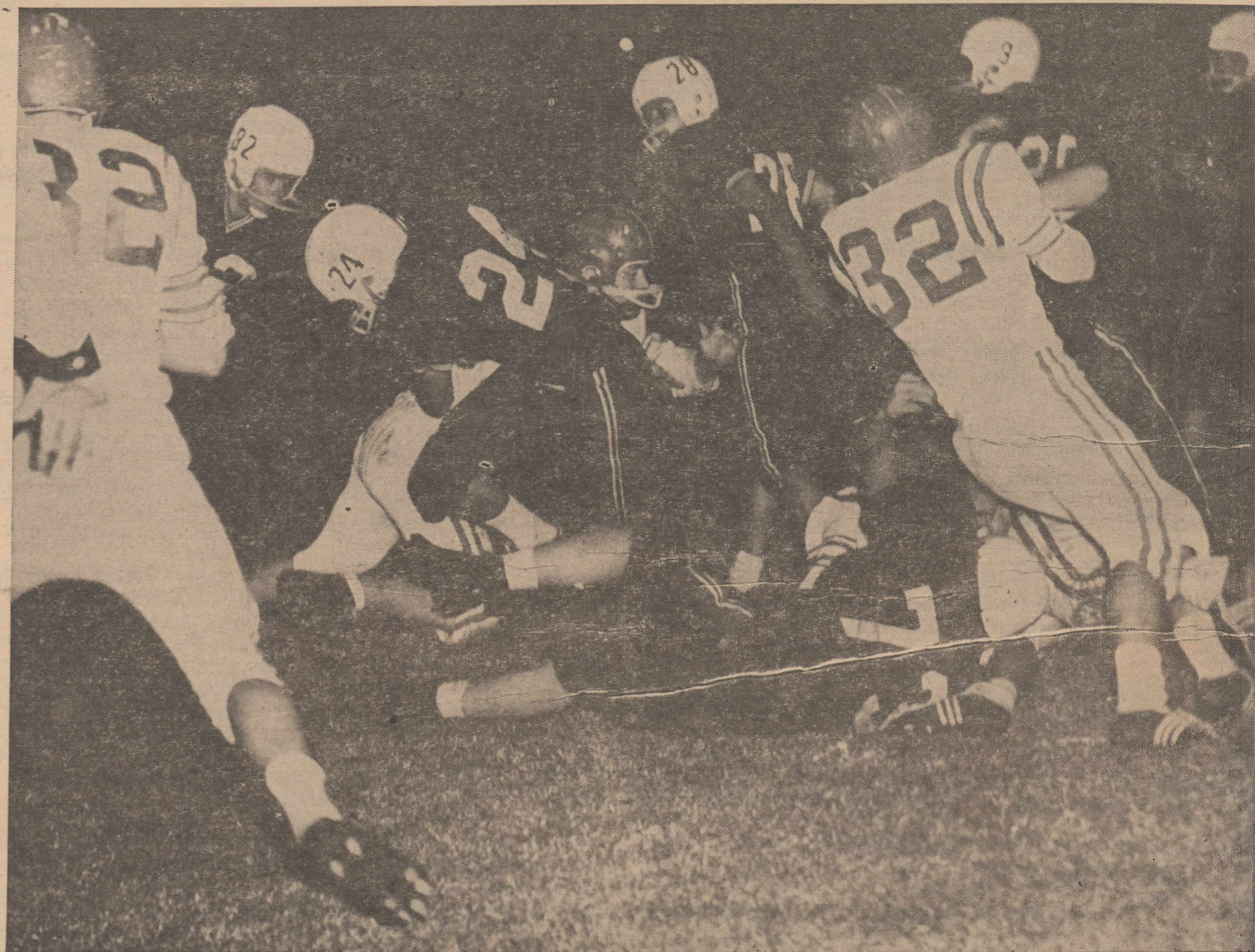
On first down, Fullback Fred Gant plunged down to the 26. There, the Mustangs' front line rose to the occasion. Mangold tried to sweep right end, but End Jimmy Lawson and Tackle Bobby Brown pounded him into the turf for a five-yard loss.

Mustang Halfback Buchenau knocked down a third down pass try. Longhorn Quarterback Johnny Belt made the mistake of trying the right side on fourth down. He made two yards before Lawson and Brown clobbered him, ending Lockney's biggest threat of the first half.

Olton's move back upfield was spoiled by a 15-yard penalty and on fourth down Buchenau punted 33 yards to the Lockney 43.

Lockney appeared to be on the way to another threat when Belt passed 13 yards to End Dan Rolling, but Rolling was hit at the Olton 33 and fumbled. Priest fell on the ball.

After an exchange of punts, Olton ran into more penalties and faced a third and 20 situation at the Mustang 31. Quarterback Schenck called a play that may



Mustang Goes Across

HERE'S THE PLAY which scored Olton's third TD against Lockney last Friday night as the Mustangs won their third straight District 2-AA game. Shoving across is Frankie Miller (24). Olton halfback. Other Mustangs in the picture are End Jimmy Lawson (82), Quarterback Johnny Schenck (28), Tackle Kenneth Hooper (73) and Fullback Robert Priest (38).

have been the point on which the Mustangs' first touchdown turned.

Priest quick-kicked 57 yards to the Lockney 12, putting the Longhorns in dangerous territory.

Lockney moved out to the 39, with Mangold, Gant and Belt sharing the running honors. There Belt dropped back to pass. He was rushed hard by the left side of the Mustang line and fumbled. Schenck rushed up from the defensive secondary and recovered for Olton at the Lockney 31.

Big Bob Priest shouldered the running attack on the first three

plays, gaining 6, 3 and 5 for a first down at the Lockney 17.

Buchenau raced to the 12, but a penalty rubbed out the gain and the Mustangs faced first and 15 from the 22.

Schenck then picked up 12 on two carries and Priest ripped off nine yards to the Longhorn one.

The big fullback then plunged for the first Olton touchdown. Priest ran the extra points and Olton led, 8-0 with 56 seconds left in the first half.

After Olton kicked off to start the second half, Lockney got nowhere and Mangold quick-kicked

to Longhorn 47.

The Mustangs began a drive that netted their second score of the night, with Miller ripping off a gain of five on the first play.

Buchenau got three and then Priest added four to give the Ponies a first down at the Lockney 35.

Miller gained 4, Schenck 3 and then Priest got a new first down at the 22.

The same trio worked the ball to the Lockney 8 on the next series, Miller getting 4, Schenck 2 and Priest 8.

Then Buchenau came up with a

key gainer, running six yards to the two. Then Priest cracked to

## FOR SALE

Good Business Property

With Long Term Lease

Nice Income

Write Box 240, Canyon, Texas

**College Football In Plainview**  
WEST TEXAS STATE B TEAM  
Vs.  
TEXAS TECH FRESHMEN  
THURSDAY, Nov. 10 7:30 p. m.  
AT BULLDOG STADIUM  
All seats general admission. Adults \$1. Students 50 Cents  
Sponsored By Plainview Kiwanis Club

## Vote as a Free American!

Vote the Ticket that is BEST FOR TEXAS  
HERE'S HOW TO DO IT

OFFICIAL BALLOT

Look for these names at the top of one of the columns:

For President and Vice President  
**RICHARD M. NIXON and HENRY CABOT LODGE**

1. Find the names of RICHARD M. NIXON and HENRY CABOT LODGE at the top of your ballot.
2. Leave the names NIXON and LODGE unmarked on the ballot; scratch all other names for President and Vice President.
3. To complete your ballot, leave the name of the candidate for whom you wish to vote for each office and scratch the rest.

### WARNING!

You may be told that you cannot vote for Nixon and Lodge if (1) you voted in the Democratic Primary or (2) your poll tax receipt or exemption certificate is stamped "Democrat." THIS IS NOT TRUE. You CAN vote for any candidate you wish, no matter how you have voted, or not voted, in any previous primary or election. THIS IS YOUR RIGHT AS A FREE AMERICAN.

Vote November 8 for NIXON and LODGE

Texas Democrats for NIXON & LODGE, Allan Shivers, Chairman (Pd. Pol. Adv.)

Are you smoking more now but enjoying it less?



GIANT AMONG GIANTS. That's Dick Nolan, defensive backfield star of the N. Y. Giants. Nolan is a Camel smoker. He says he's borrowed other brands. But Camel is the cigarette he buys for complete smoking satisfaction.

**HAVE A REAL CIGARETTE - HAVE A CAMEL**

*Dick Nolan*  
ENJOYS A CAMEL AFTER A GAME  
You'll enjoy a Camel anytime and every time. So, if you're smoking more these days, but enjoying it less... change to Camels.

The best tobacco makes the best smoke!

## Ready For Your Cotton



WE ARE IN THE HAILED OUT AREA AND WOULD APPRECIATE YOUR BUSINESS!

- Efficient
- Equipment in Top Condition
- Highest Market Price
- Good Turnout
- Friendly

We write Government Purchase Plan Loans  
... Also write Loans, buy or contract "B" cotton.

—A MURRAY GIN—

## Thompson Gin

GEORGE THOMPSON, manager

"Service That Satisfies" 5 Miles North of Circle Phone 5390

# Mustangs Race By Lockney 30-8

the goal line, but a five-yard penalty set the Mustangs back to the seven.

Again Priest hit the middle, plunging down to the three. Miller ran inside the one-yard strip on third down and Schenck sneaked over from there.

After Schenck passed to Miller for the extra points, it was 16-0. Olton, with 5:36 remaining in the third quarter.

Olton got another chance late in the third quarter when the Mustangs intercepted a Belt pass at the Olton 42.

The Mustangs used 12 plays to drive the 58 yards, with Miller scoring on the first play of the fourth quarter.

Buchenau started the drive with a two-yard pick-up and then Schenck passed to Buck for 11 yards and a first down at the Lockney 45.

Miller ripped off 11 yards to the Lockney 34 for a new first down and then Priest got 3 and 12 on runs that carries to the 19.

Miller picked up three yards and Priest added four but on third down Schenck was nailed for no gain. Priest came through on the fourth down try with a four-yard gain to the Lockney 8.

Then the Mustang fullback raced to the one. The teams changed ends of the field and Miller scored on the first play. Buchenau kicked the extra point and Olton led, 23-0.

The next Olton touchdown was almost a gift. After the kick-off, Lockney got seven yards in three plays, the ball sitting at the Longhorn 28.

Lockney quarterback Belt elected to try for the first down but he shouldn't have. Mustang Guard Larry Timmins and End Lawson rushed hard and threw Halfback Mangold for a two-yard loss.

Olton took over at the 26 and got a fourth touchdown in five plays. Buchenau ran to the 18 and Schenck got a new first down at the 12. Miller picked up four to the Longhorn 8. Schenck's second down pass went incomplete, but Priest barreled into the end zone on the next play.

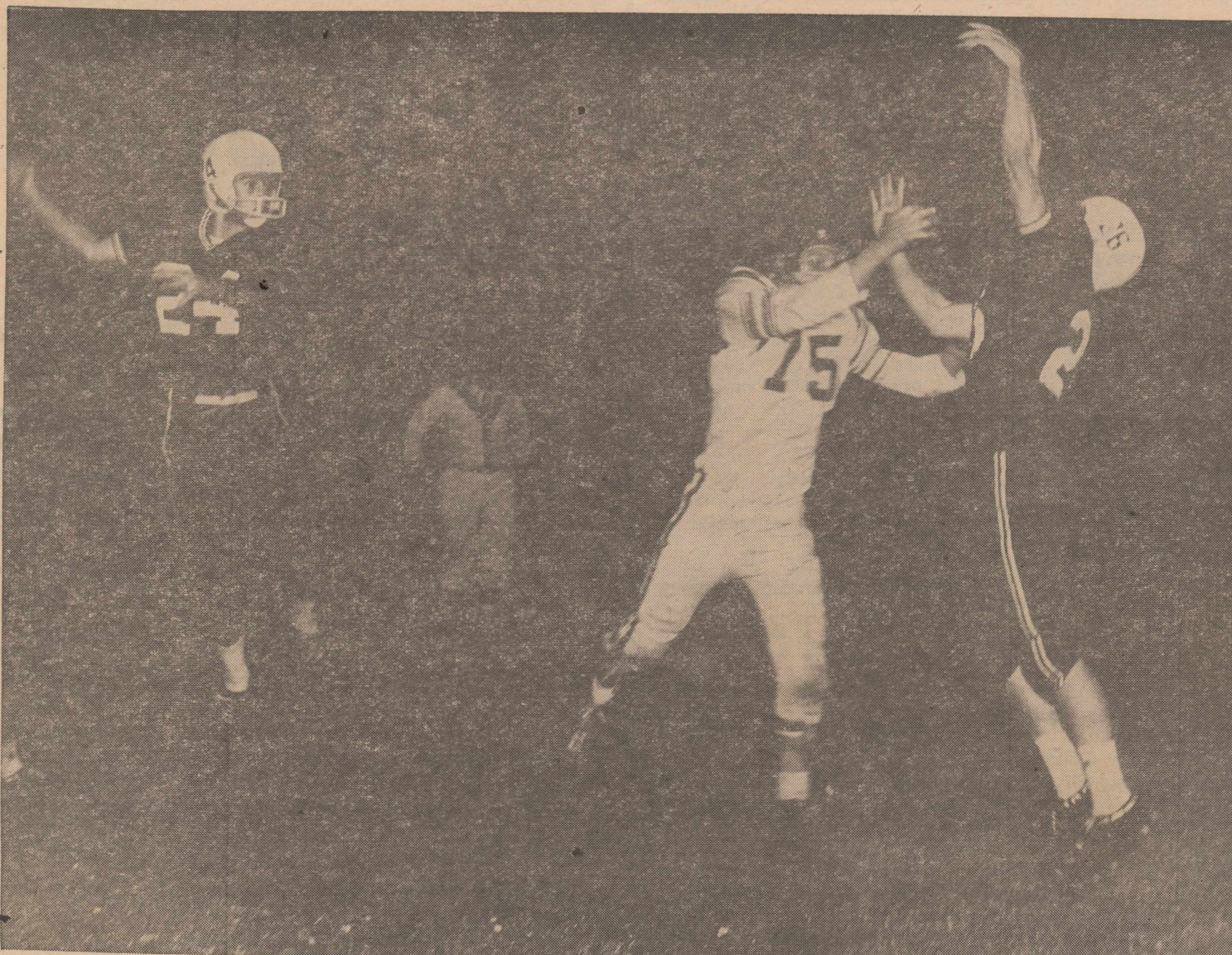
Buchenau kicked the point and it was 30-0, Olton.

Coach Walter Bryan sent in his second unit with a little less than nine minutes remaining.

Rolling ran the kick-off back to the Lockney 37 and the Longhorns launched a 10-play, 67-yard touchdown drive which was aided by a 15-yard penalty against the Mustangs.

The penalty came after Lockney got nowhere in three plays. It gave the Longhorns a first down at the Olton 47.

Belt passed to Mangold for a first down at the 37 and then Alard ran nine yards to the 23.

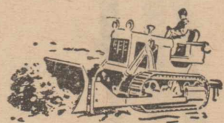


With The Greatest Of Ease

OLTON HALFBACK RANDEE BUCHENAU goes up to bat down a pass intended for Lockney's Ricky Collis (75). Up in the air over the elusive pigskin is Olton's Frankie Miller (24).

Buchenau's stab of the ball helped prevent a Lockney score early in the game when the Longhorns advanced to the Olton 26-yard line.

**HOUSE MOVING  
and  
MAINTAINER and  
BULLDOZER WORK**



— ALL TYPES OF WORK —  
Phone CA 4-7652

**Austin Mallow**  
3102 West 5th  
Plainview, Texas

**NOTICE!**

To all our friends and customers in Olton and in Lamb County. We certainly do appreciate the business you have given us in the past at our little service station across the road from Olton Grain Co. Now we hope you will keep on coming to see us. We have opened a little grocery store which we hope will be a help to you as our service station has been. Thanks and best wishes to everyone.

L. H. Marshall and Wife  
Beatrice Marshall

Mangold got a new first down with a five-yard gain to the 23. Then the stocky Longhorn halfback raced 16 yards, the longest run of the night, to the Olton 7.

Two plays later, Belt scored from the three. Mangold carried for the extra points to make the score 30-8, Olton, with five minutes left in the game.

The Mustang second unit then got a drive going in the fading minutes, moving well under the direction of Quarterback Gary DeBerry.

The Mustangs drove from their own five to the mid-field stripe before three five-yard penalties ruined the march.

Key gainer in the drive was Full-

**STANDINGS**

**RESULTS**  
Olton 30, Lockney 8  
Floydada 13, Abernathy 8  
Muleshoe 56, Morton 8

**SEASON STANDINGS**

Team	W	L	T	P	OP
Olton	8	0	0	225	99
Floydada	8	0	0	145	42
Lockney	3	4	1	102	126
Muleshoe	2	4	2	145	163
Abernathy	2	5	1	116	159
Morton	1	7	0	109	238

**DISTRICT 2-AA**

Olton	3	0	0	103	52
Floydada	3	0	0	47	29
Abernathy	2	1	0	79	25
Muleshoe	1	2	0	85	57
Lockney	0	3	0	28	84
Morton	0	3	0	36	131

**SCHEDULE**  
Abernathy at Olton; Floydada at Morton; Muleshoe at Lockney.

**VISIT IN ABILENE**  
Mr. and Mrs. Barton Prestridge visited in the home of their daughter and her family, Mr. and Mrs. Roy Flournoy, in Abilene over the weekend of Oct. 15-16.

**KENNEDY VISITORS**  
Mr. and Mrs. C. T. "Doc" Woods of Littlefield visited recently in the home of their daughter and her family, Mr. and Mrs. T. C. Kennedy.

**SUNNYSIDE VISIT**  
Mrs. A. G. Walling and Mrs. D. A. Barnett visited Oct. 16 in the John Gilbreath home in the Sunnyside community.

**VISIT WITH COUSIN**  
Gayle Clark spent the weekend recently with her cousin, Carol McGaughey, at McMurry College in Abilene.

**Game At A Glance**

SCORE BY QUARTERS	STATISTICS
Olton 0 8 8 14 — 30	Yards Gained Rushing 285 138
Lockney 0 0 0 8 — 8	Yards Gained Passing 14 14
<b>SCORING SUMMARY</b>	
OLTON — Robert Priest 2 (1-yard run, 8-yard run); Johnny Schenck 1 (1-yard run); Frankie Miller (1-yard run); extra points, Priest 2 (run); Miller 2 (pass from Schenck); Rande Buchenau 2 (by kicking).	First Downs 17 11
LOCKNEY — Johnny Belt 1 (3-yard run); extra points, Bill Mangold 2 (run).	Total Yards Gained 295 152
	Yards Gained Passing 14 14
	Total Yards Gained 295 152
	Passes Attempted 4 11
	Passes Completed 2 3
	Passes Intercepted By 1 0
	Punts, Average 3-43 2-33
	Fumbles Lost 1 2
	Penalties 11-75 0-0

**172 Bushels Of Corn Is Top Yield On HPRF Variety Tests At Halfway**

One hundred seventy-two bushels of corn per acre was the top yield in the 1960 Corn Variety Test at the High Plains Research Foundation. The low yield in the 16 variety test was 138 bushels per acre, Dr. Earl H. Collister, chief agronomist, announced.

These 16 varieties were planted April 21 and were sidedressed with 120 pounds of actual nitrogen (Uran) on May 23. They were harvested September 21. The corn was irrigated three times plus a preplant irrigation totaling 14½ inches, with far above average rainfall during the growing season.

The percent of stalk breakage (lodging) ranged from 1.84 to 15.94 percent in the 16 varieties. Most varieties stood well until harvest with no root lodging. Early vigor ranged from good to poor. There was no significant difference between yields of the first seven varieties in the test.

All grain yields were calculated at a uniform moisture level of 14 percent. The yields in order were PAG 485 - 172.01 bushels; Funks G711AA 171.30; Texas 28-167.52; Asgrow XP 2867-166.20; Watson 124-A-165.49; PAG 454-161.47; Texas 30 - 159.55; PAG 633W - 155.63; Texas 36 - 155.28; Asgrow 105W - 155.21; Asgrow XP 2890-146.54; Texas 17W - 145.31; Watson 111 - 143.94; PAG 434-140.31; Texas 25 - 138.62; and Texas 34-138.09.

**BUNDICKS HAVE GUESTS**  
Mr. and Mrs. Tommy O'Neal and Sharon of Anton visited recently in the Travis Bundick home. Mrs. O'Neal is the former Roylene Bundick.

**BRING US — MAIL US  
Your Prescription!**

Fast mail service . . . you mail your prescription one day . . . get it back the next.

Drugs • Toiletries • Sundries  
Owned and Managed by Registered Pharmacists

**BRITAIN PHARMACY**  
Phone 385-5114 Littlefield, Texas

"We Stand Today On The Edge Of A New Frontier"



**KEEP THE VOICE OF TEXAS STRONG**

Texas' dominant position in the Democratic Party has been a major factor in the amazing growth and prosperity of our State during the past 50 years.

Count our blessings that have come because TEXANS were in the RIGHT party at the RIGHT time.

Count the jobs . . . educational opportunities . . . military installations . . . defense projects . . . water and soil projects . . . rural electricity and telephone systems. Count our ultimate potentials for development.

Now the Democratic Party has selected a TEXAN for one of the two top offices our Nation has to offer. As Vice President, Lyndon B. Johnson will be in a position to render the greatest service any Texan has ever been able to give his State, his Party, his Nation.

Our Nation needs the dynamic leadership of John F. Kennedy and Lyndon B. Johnson. And Texas needs to be counted in the Democratic column November 8 to keep its voice STRONG in the party that has honored its sons and nurtured its growth. Texas has no such stake in any other party or any other candidate.

Texas' future — and America's — lies in your response November 8.



Vote Democratic — Vote The Texan's Ticket

**JOHN F. KENNEDY / LYNDON B. JOHNSON**

(Pol. Adv.—Paid for by Kennedy-Johnson Texas Newspaper - TV - Radio Committee, Gerald Mann, Chairman.)

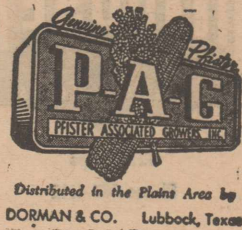
**P-A-G Corn  
Tops Them All!**

P-A-G- 485 Corn was the top yielder at the High Plains Research Foundation this year with a yield of

**172.01 BUSHELS PER ACRE**

This P-A-G Corn was planted along with 15 other varieties April 21 and was sidedressed with 120 pounds of actual nitrogen on May 23. They were harvested September 21. The corn was irrigated three times plus a preplant irrigation totaling 14½ inches, with far above average rainfall during the growing season.

SEE US FOR YOUR P-A-G SORGHUM SEED **MAN... that's sorghum!**



**Sanders-Paris, Co. Inc.**

Phone 4441

Olton, Texas

**Hart To Hart Continued**  
 Mrs. Elmer Gray spent Thursday at the bedside of her father-in-law in hospital at Lubbock.  
 Mr. and Mrs. Melvin Aven and children were Sunday dinner guests in the home of her parents, Mr. and Mrs. Dwight Lewis of near Edmonson.  
 James Holloway, son of Mr. and Mrs. John Holloway is home from Lubbock and is helping out in the Hart Cleaners.  
 Mrs. Tyline Perry and Linton of Plainview were Sunday guests of Mr. and Mrs. O. D. Dinwiddie.  
 Miss Virginia Rice was dismissed from Castro County Hospital last Friday after spending the week there for observation and treatment.  
 Green Henderson spent Sunday in Canyon with his daughter, Mrs. Hershey Williams and family.  
 Mrs. Hattie Taylor of Okmulgee, Okla., returned home on Saturday after spending several weeks in the home of her niece, Mrs. George Hendrix.  
 Mr. and Mrs. Carl Rambo and children were Sunday dinner guests of Mr. and Mrs. Joe Newman.  
 Mr. and Mrs. Jimmy Bitner and

Shelly spent Saturday night in Anton with her parents, Mr. and Mrs. Bill Weaver.  
 Mr. and Mrs. L. L. Swindle visited Mr. and Mrs. J. E. Montgomery in Crosbyton Sunday.  
 Gene Ward lost the thumb nail on his right hand last Saturday while working on a combine. He was taken to Dimmitt for medical aid.  
 Mrs. C. B. Landers returned Saturday from a week's visit with relatives in San Angelo, Austin and Los Fresnos.  
 Mr. and Mrs. Bill Swindle and children were in Crosbyton to visit a brother-in-law, J. E. Montgomery, who suffered a heart attack recently.  
 Mr. and Mrs. Jack Hankins have moved east of Hart on the Stevens Farm.  
 Mr. and Mrs. Harry White of Kress and Mr. and Mrs. Hubert McLain of Hart visited Mr. and Mrs. Harry Young in Tulia on Sunday and also visited in the home of Mr. and Mrs. Bill Sharp of Hart.  
 Mrs. Earl Hacker and daughter, Mrs. Joe Hicks were in Plain-

view Wednesday of last week on business.  
 Margaret Swindle and her grandparents, Mr. and Mrs. L. L. Swindle, visited relatives in Amherst Thursday night.  
 Mr. and Mrs. Bob Ed Brooks and family of Dimmitt and Mr. and Mrs. Ernest Lee Brooks and family were Sunday dinner guests of Mr. and Mrs. Robert Brooks.  
 Mr. and Mrs. Alvin Piland and son of Borger spent Saturday night and Sunday with Mr. and Mrs. O. D. Hindman.  
 Mr. and Mrs. Elmer Gray spent Saturday night and Sunday at the bedside of his father in a Lubbock hospital.  
 Mike Bailey and Mike Morrison were Sunday dinner guests in the home of Mrs. Ena Bowden. The occasion was the birthdays of two of her children, Bob and Mrs. Larry Johnson of Lubbock.  
 Mr. and Mrs. A. C. Myers have purchased the home of Mrs. W. C. Dinwiddie and moved Sunday.  
 Claude Cox was dismissed from a Lubbock hospital Wednesday of last week after having back surgery. He is home making a speedy recovery.  
 Mr. and Mrs. Jack Ford of the Silverthorn farm have moved to farm near the Hub community.  
 J. J. Newsom spent Sunday in Lubbock with his daughter, Mrs. Frank Wiley and family.  
 Mrs. Billy Gallion spent Friday with her parents, Mr. and Mrs. L. W. Howard of Olton.  
 Mr. and Mrs. Roy Chambers of Maples are new residents in Hart, living in a house owned by Jimmy Davis. Chambers is ginner at the Hart Gin.  
 H. B. Pyeatt of Tulia spent Wed-

nesday night of last week in the home of his son, Mr. and Mrs. Roy Pyeatt.  
 Charlie Holt of Silverton was a Sunday dinner guest in the home of his daughter, Mrs. Norlan Dudley and family.  
 Mrs. Mabel Aven has returned from a short visit to Salida, Colo., where she visited her daughter, Mr. and Mrs. Bernard Brown. Mrs. Aven made the trip with her son, Hillory Aven of Hereford.  
 Visitors in the home of Mrs. Della Davis and Mrs. Virgie White Wednesday and Thursday of last week were daughter of Mrs. White, Mrs. Jess Johnson of Merceda, Calif., and a daughter-in-law, Mrs. Raymond White of Rancho Santa Fe, Calif.  
 J. R. Riley remains in critical condition in Castro County Hospital in Dimmitt.  
 Mr. and Mrs. W. H. Graham and boys of Farwell visited Sunday afternoon in the home of her brother, Norlan Dudley and family.  
 Mrs. Dudley Aven and children and her sister, Betty Galyon spent Sunday in Muleshoe with the ladies' brother, Ennis Galyon and family.

**"TIME For BOOKS"**  
**Mauldin's Book Shop**  
 See our Books and Bibles before you buy!  
 717 Broadway  
 PLAINVIEW, TEXAS

**LETTERS to the EDITOR**

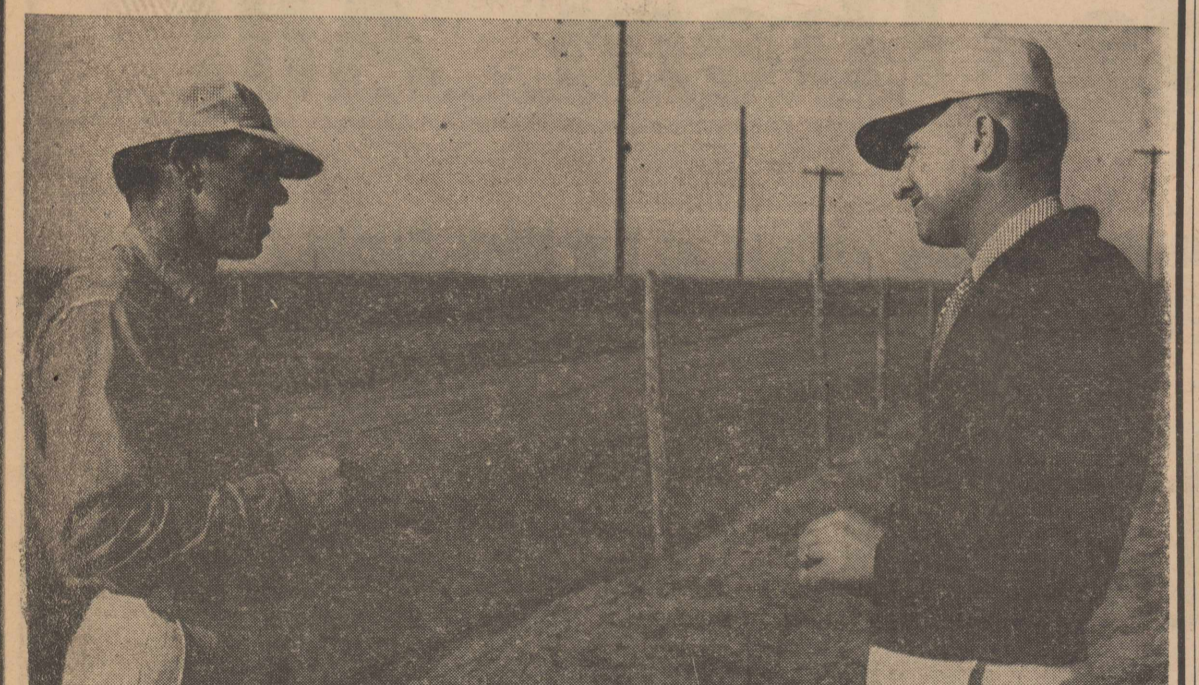
Dear Editor:  
 I would like to make this comment on the farm policies of the candidates. Vice-President Nixon says that if the Kennedy proposals were carried out, food would cost the consumer twenty-five per cent more than it does now.  
 If that is the case, the farmer should get that twenty-five per cent. Labor, capital and interest have gone up twenty-five per cent or more during the last eight years. Food produced by us farmers has not gone up. Now it is our turn. Let's take that twenty-five per cent.  
 Charlie Bowers

**DEKALB HYBRID SORGHUM**

**EVEN HAIL COULDN'T KEEP MY DE KALB FROM MAKING OVER 6,000 LBS. PER ACRE**



**SAYS**  
**VERNON VENABLE,**  
**who farms just east**  
**of Olton.**



I am really sold on DeKalb F-63. I intend to plant DeKalb again next year. Vernon Venable tells Don Spain of Olton Farm Supply. I received hail on my feed a while back but it still cut over 6,000 lbs. per acre. Hail on mature sorghum is going to shatter some of it regardless of what kind of sorghum you have, but looks to me like DeKalb has a better chance because the loose open head has some give to it that the compact varieties do not have.

Why don't you come in and let us show you how to make more with DeKalb Hybrid Grain Sorghums?— There is a variety that will fit your particular need. All DeKalb Sorghum seed booked now carries a \$1.00 per cwt. early order discount, get your variety and early order discount by ordering now!

**Olton Farm Supply**  
 Phone 2261 Don Spain, Owner Olton, Texas

**HOBBY HOUSE**  
 Littlefield, Texas  
 427 Phelps  
 Phone 385-4142

**We Want To Gin Your COTTON**

We have the most modern ginning equipment available. Our cleaners are equipped with grid bars. We believe this insures better ginning. We want to see our customers make as much money as possible and will work toward that end on every bale.

**Quality Ginning PAYS Big Dividends**

You've GOT to be satisfied!

We have resolved to give you efficient and satisfactory service from the time your bale is weighed in until it is sold. Complete insurance coverage is in effect on your cotton and trailers from the time they leave your field until the cotton is sold! — We have hands and trailers available for you.  
 Old Straw Will Accomodate you, too!

**Jack Straw Gin**  
 YOUR FUTURE GINNER  
 Olton, Texas