

# Hey Kids..Santa's Coming To Olton Saturday

See Story Col. 3

## THE OLTON ENTERPRISE

"The Golden Gate To The Golden Road"



Phone 3971  
CONSUMERS  
BUTANE, INC.  
OLTON, TEXAS

VOLUME 34

OLTON, LAMB COUNTY, TEXAS, THURSDAY, DECEMBER 8, 1960

NUMBER 44

### 18% Per Farm

## Acreage Up On Cotton

Olton area farmers will get a per-farm increase of about 18 per cent in their cotton acreage allotments for 1961, L. D. Aten Jr., Lamb County ASC office manager, announced this week.

This news came on the heels of an area-wide announcement of 1961 cotton allotments last week.

Lamb County's share of the 1961 acreage will be 211,406 acres, an increase of 30,657 acres.

The county's allotment totals 7,844 acres more for 1961 than there were for both the "A" and "B" plans in 1960, Aten said.

The Olton area--called "B community" by the ASC--will have an allotment of 32,984 acres in 1961, up from the 28,204 acres in 1960.

## Olton Area Ginnings At 32,000

Despite chilling, icy weather, the Olton area's cotton crop went through gins at a fast pace this week.

More than 32,000 bales had been ginned by Wednesday at 4 p. m. at the six firms serving Olton and nearby area.

This compared with about 26,800 bales which had been ginned at this time a week ago.

The Olton area's total cotton production in 1959 slightly exceeded 33,000 bales. The 1960 crop apparently will beat that by several thousand bales.

## Mrs. Culwell Dies; Services In Hedley

Final services for Mrs. Ela Rama Culwell, 82, a resident of Olton the past two years, were conducted Wednesday afternoon at the Methodist Church, Hedley.

She suffered a fatal heart attack Sunday at Dallas in the home of a daughter, Mrs. C.O. Adams. Mrs. Culwell had been in ill health for about a year. She was the mother of Mrs. Ira Foster and Ray Culwell, both of Olton. She was the widow of the late Oscar R. Culwell. Interment was in the Hedley Cemetery with the Lamar-Smith Funeral Home in charge of the arrangements.

Survivors are four other daughters, Mrs. W. L. Hilton, Mercedes; Mrs. I. J. Armstrong, Long Beach, Calif.; Mrs. Alton Hawkins, Bethany, Okla.; and Mrs. J. R. Laurence, Wilcox, Ariz.; two other sons, P. W., Littleton, Colo.; and Edgar, Venezuela; two sisters, Mrs. Ray Storseth, Amarillo; and Mrs. George Tomberlin, Huntington Park, Calif.; a brother, Robert Adamson, Laramie, Wyo.; 18 grandchildren and six great-grandchildren.

## Baptist Choir Cantata Set

The First Baptist Church choir will present its Christmas cantata Sunday night. The program will begin at 7:30 p. m. at the church.

"Dawn of the Redeeming Grace" is the name of the cantata. The Rev. John E. Lewis, pastor of the church, will serve as narrator.

Harold Carson will serve as organist and the choir will be directed by Jerry Parker.

Community A--the Earth-Springlake area--will have a 1961 allotment of 41,507 acres, up from 35,491 acres in 1960.

Community C--Hart Camp--will have acreage of 14,140 in 1961, compared with 12,090 in 1960.

Castro County's allotment for 1961 will be 58,558, compared with 51,760 base acres last year. This is an increase of about 15 per cent. Last year, Castro had 58,652 acres under both the "A" and "B" plans, which will not be in effect in 1961.

Over a 23-county area of the South Plains, the increase was 16.7 per cent over the regular allotment of 1960.

Lamb County's 1961 cotton acreage, assuming that it all will be planted, will be the largest since 1953, the last year that cotton allotments were not in effect.

The county is third on the Plains in amount of acreage for 1961, ranking behind Lubbock's 246,701 acres and Dawson's 221,638. Hale County has 177,344 acres for 1961, compared with 153,266 base acres in 1960.

A cotton referendum scheduled next Tuesday must approve marketing controls for the allotments to be effective.

## Former Olton Resident Dies

Timothy D. Pearson, 65, a former longtime Olton resident and building contractor, died Sunday morning at his home near Gainesville. He had been in ill health for two months.

Pearson was born Aug. 4, 1895, in Tennessee. He came to Texas when he was a small boy and grew up in Hunt County.

He and Miss Cora Harrison were married Dec. 5, 1917 at McKinney. The Pearson family moved to Olton in 1929 and lived here until 1955, the time of his retirement.

Following his retirement, Mr. and Mrs. Pearson moved (Continued on page 6.)

## Olton Cagers To Play Friday

Olton's boys' basketball team, fresh from winning the consolation championship of their own tournament last weekend, will play host to the Littlefield Wildcats here Friday night.

Both A and B games are scheduled, with the B game due to start at 7 p. m.

Olton's girls' team also will see action Friday night. They will seek revenge against Springlake, a team that whipped them in the local tournament.

As with the boys, both A and B games are scheduled at Springlake, with the B game to start at 6 p. m.

In last weekend's tournament play, Olton's boys opened with a 48-36 loss to Floydada, but came back to whip Springlake, 41-39, and Hale Center, 48-45. The girls lost to Floydada, 35-28, and to Springlake, 40-39.

Tournament winner in the boys' division was Lockney, which beat Sudan in the finals, 60-47.

The strong Sudan girls won their division, beating Lockney, 61-48. Muleshoe won the girls' consolation with a 41-16 victory



A HARD JOB--Suzanne Holley, 4-year-old daughter of Mr. and Mrs. W.D. Holley, finds it a long stretch to put her letter to Santa Claus in the mail slot at the post office. So there to give her a boost is Alan Carson, 5-year-old son of Mr. and Mrs. Wayne Carson. Postmaster Doc Holt took care of this situation for small fry this week putting up a special, shorter mail box for letters to Santa.

## Santa's Arrival 3 P. M. Saturday

Kids, here's a reminder of something you don't want to forget.

Santa's coming to Olton Saturday. He'll be here to hear all about the things you want for Christmas and to give out loads of candy.

Santa will arrive about 3 p. m. Saturday on the north side of the square. He's scheduled to be there about two hours, if the weather is good.

He's using modern transportation this year--an Olton fire truck.

St. Nick will make return visits to Olton Saturday, Dec. 17, and Saturday, Dec. 24. On both occasions he will roam from store to store in the business district, passing out goodies to the children.

## Final Census Shows 1,917

### Olton Gain Tops County

Final official 1960 census figures show Olton gained more people in the 1950's than any other community in Lamb County.

A U. S. Department of Commerce publication places Olton's official population at 1,917--a gain of 716 over the 1950 mark of 1,201.

Littlefield, the county seat, picked up 696 additional persons over 1950 and shows a

1960 population of 7,236. The 1950 figure was 6,540.

The county as a whole has a population of 21,896, compared with 20,015 in 1950.

Other final figures for communities in Lamb County included:

Springlake -- 245, compared with 1957 estimate of 400 (Springlake not in 1950 census).

Earth -- 1,104, compared with 539 in 1950, a gain of 565 persons.

Sudan -- 1,235, compared with 1,348 in 1950, a loss of 113 persons.

Amherst -- 883, compared with 922 in 1950, a loss of 39 persons.

In Castro County, Hart showed a healthy growth with a final figure of 577 persons. This is compared with a 1957 estimate of 400. Hart was not included in the 1950 census.

Percentage-wise, Earth is Lamb County's fastest growing town. The community's population more than doubled during the 10-year span.

Olton is next with a percentage growth of 60 per cent. The Littlefield gain was just a hair over 10 per cent.

While the gain in population here showed a healthy growth, the final figure of 1,917 was a disappointment to many.

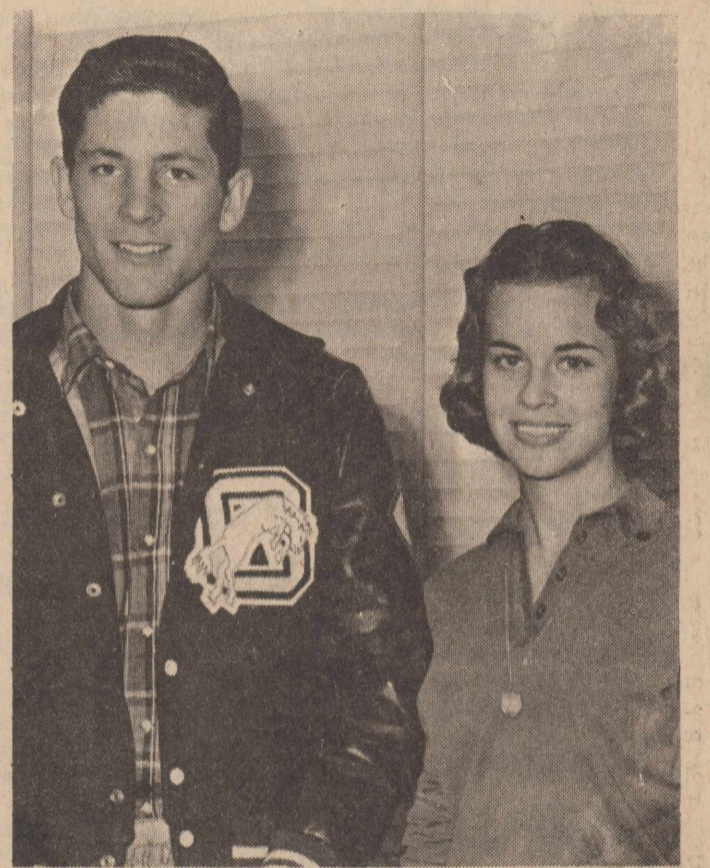
Olton's population has been estimated variously at 2,000 to 2,500 in the past two years.

Olton has, however, plenty of company. Final figures for cities across the South Plains failed to live up to expectations.

Lubbock had hoped for 150,000 and wound up with about 125,000. Littlefield expected about 9,000.

### COLD WEATHER

Temperatures dropped to 15 degrees here early Wednesday but rose to the 20's during the afternoon. Roads were hazardous, but officers reported no accidents in the Olton vicinity through Wednesday at 5 p. m.



BEST CITIZENS--Selected by the faculty as Olton High School's "best citizens" for the second six weeks of school were Fred Riney, son of Mr. and Mrs. J. B. Riney, and Sylvia Nicholas, daughter of Mr. and Mrs. N. B. Nicholas. Sylvia, a sophomore, and Fred, a junior, were selected on the basis of their service and participation in school activities, their attitudes and scholastic achievements. Best citizens the first six weeks were Kenneth Blades and Becky Hall.

## Annual Yule Concert Set

An annual Christmas concert will be presented by the Olton Schools' Music department Monday night at 7:30 at the high school auditorium.

Three selections, "Proudly We Play," "Yuletide Sketches" and "Holiday in Spain," will be played by the 75 piece Cadet Band.

The high school mixed chorus will sing "O Holy Night" and "I wish you a Merry Christmas."

The school's state band, "The Blue Notes" will be on hand to perform for the event. Selections to be played by the stage band are "Basin Street

Blues," "Little Brown Jug," "Sixteen Tons" and "Sentimental Journey."

"Silver Bells" and "Deck the Halls" will be sung by the high school sextet. The sextet is composed of Nancy Brown, Linda Thompson, Linda Pickrell, Lavon Estes, Nancy Critchfield and Joanna Lewis.

To conclude the program, the Mustang Band will play "Michigan State March," "Hopak," "Carol of the Drum" and "Gypsy Love Song."

The band will be directed by Dick Bentz, school band director. Mrs. Joe Harper will direct the choir.

## Olton High Approved For "Accreditation"

Olton High School has been endorsed for "accreditation" by the Southern Association of Colleges and Secondary Schools, Memphis, Tenn.

Approval by the association means that the school is performing at standards acceptable to the organization, Joe Harper, superintendent, said.

The high school was a member of the organization about 10 years ago, said Supt. Harper, but the school was dropped from Southern Association rolls in 1942.

Membership in the association and following of its

high standards assures students that their credits at OHS will be accepted at other schools, should they transfer, and at colleges across the nation, should they decide to attend college.

Members of the school board were told of the accreditation at a regular meeting here Tuesday night.

In other activity at the meeting, the board discussed overcrowded conditions on buses, approved a textbook committee, an audit report and other reports, and employed a teacher for the sixth grade.

Supt. Harper pointed out that several buses are carrying more students than capacity, including one which is carrying about 70 in a 48-passenger bus.

He told the board that alleviation of the problem would have to be worked out with the Texas Education Agency, which controls the number of buses and routes which a school of Olton's size may have.

Harper said he and Jerry Lumsden, county school superintendent, have discussed the problem and have agreed to contact the state to see if another bus can be put into use, or if routes can be changed.

Eighteen persons were named to the textbook committee, which will examine all books adopted by the state board and select those for use in schools here.

Committee members are Joe Turner, E. J. McKnight, Fred (Continued on page 6.)

## Vaccinations Given At School

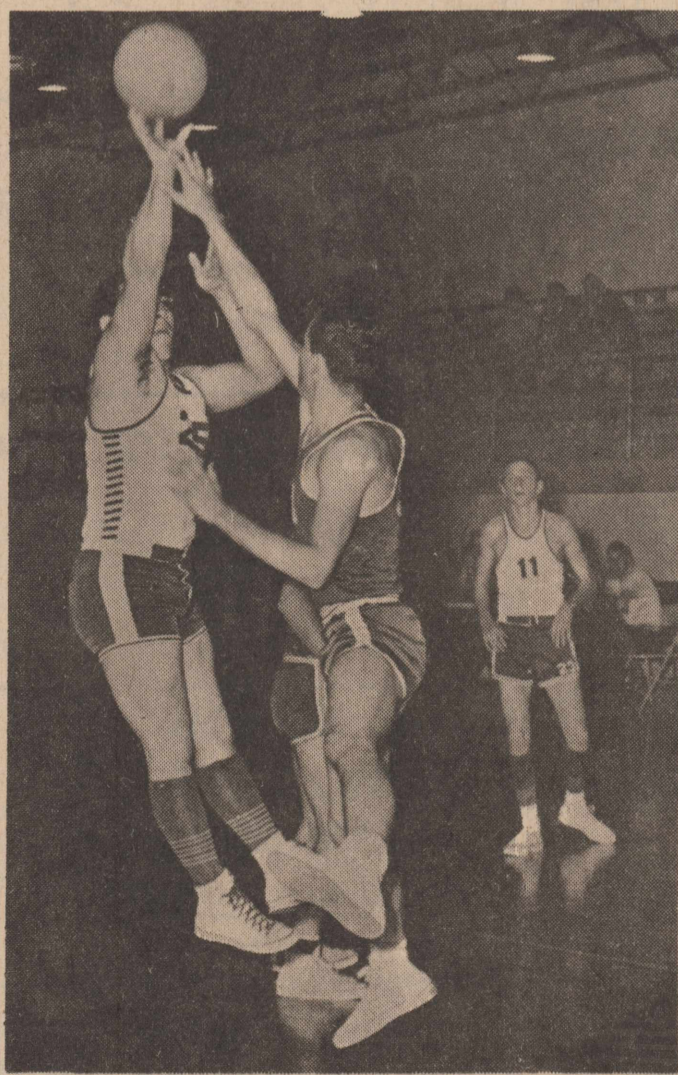
Thirty-two smallpox vaccinations were given Nov. 22 at the H. P. Webb Elementary School.

Dr. Basil Johns and Dr. Lynn Fite gave the vaccinations to elementary students and to Bohner School pupils.

## Tickets On Sale For College Game

Olton basketball fans will get an opportunity to see college basketball at the high school gym Thursday night, Dec. 15.

The Wayland Freshmen and the Lubbock Christian College Varsity team will tangle at 8 that night. Tickets can be purchased from coaches or Lions Club members. Adult tickets are \$1.00.



PRIEST SHOTS--Guarded closely by Springlake players, Olton's Robert Priest gets off a shot while Gary Johnson (11) watches. Priest led Olton scorers in the local tournament last weekend and Johnson was named to the all-tournament team.



# THE HART BEAT

## Hart Firms Burglarized

Two Hart business houses were burglarized recently. Lilly's Cafe was entered last week, with the burglars cutting a screen at an open window. Money was taken from the juke box.

The Green Frog Cafe was burglarized last Friday night. Burglars took several packages of meat from the deep freeze along with canned goods and candy. A hole was chopped in the back door to gain entry. Both places were entered after the nightwatchman went off duty. Deputy Granville Martin is investigating the cases.

Mr. and Mrs. Buster Hacker and family have recently moved to Hart from Carlsbad, N. M.

Little Miss Paula Hankins, daughter of Mr. and Mrs. Ted Hankins, has returned home after spending 10 days with her grandparents, Mr. and Mrs. Leon Phillips, of Childress.

Mrs. John Blocker is presently employed at the Panhandle Compress and Warehouse.

Mr. and Mrs. Bill Swindle and family spent Sunday in Crosbyton with his sister, Mr. and Mrs. J. E. Montgomery, and family.

Mrs. Lloyd Davis and Lonny visited her mother, Mrs. Alene Lilly in Amarillo last week.

**PARSONS Funeral Home**  
 "AS NEAR AS YOUR NEAREST TELEPHONE"  
 Oxygen equipped ambulance Service.  
 We accept any funeral home burial policy.  
 Phone 5211 Olton

## Santa Claus Due Dec. 17

Santa Claus has accepted the invitation of the Ladies Auxiliary of The Hart Fire Department to visit in Hart Dec. 17th. He will arrive on Broadway about 2 p.m.

Due to uncertainty of weather conditions, it is not known what means of transportation he will use.

All children are invited to be in town and visit with him. They will receive sacks of fruit and candy, provided by the Ladies Auxiliary.

This is the first time in several years that Santa has been in Hart in the day time.

## Mary Louise Taack Honored At Shower

Miss Mary Louise Taack, bride-elect of Melvin Malone of Wolfe City, was honored last Friday afternoon with a bridal tea. Scene for the event was the Clyde Witten home.

Approximately 30 guests were registered by Mrs. Terry Hardy of Edmonson. A number of gifts also were registered.

Laid with a beige lace cloth, the reception table was centered with a miniature red net tree decorated with white wedding bells. Streamers with "Mary" and "Melvin" written in red

letters flanked the centerpiece. Punch and slices of red and white cake were served to the guests by Miss Mona Kennedy.

Miss Taack chose a corsage of white carnations. She also was presented with a white bedspread from the hostesses by Mrs. Witten.

Hostesses were Mmes. Jim Brooks, Floyd Farris, L.W. Bennight, Judd Davis, O.C. Kittrell, Ralph Roper, Milton Sharp, Howard Sharp, Terry Hardy, J.F. Clark, Paul Brooks, Roland Shepard, Paul Johnson, Witten and Miss Mona Kennedy.

## PTA Sees Yule Program

A Christmas program was presented Monday night at a meeting of the Hart PTA. Members of Mrs. Paul Kennedy's and Mrs. Vernon Mapp's second grade classes appeared on the program.

Loye C. Ruckman, minister of the Hart Church of Christ, was guest speaker. He chose "Material Values" as the topic for his speech.

A large number of people attended the meeting which was held at the high school building.

Mr. and Mrs. Hubert Moses of Olton were Sunday visitors with Mr. and Mrs. Oliver Jackson.

Mr. and Mrs. Calvin Alexander were shopping in Amarillo on Monday.

Mr. and Mrs. L. L. Swindle spent Sunday in Amherst visiting her mother, Mrs. W. E. Grisham, and sister, Mrs. W. P. Holland, and other relatives.

Mr. and Mrs. Jack Hankins left Monday morning for Dallas to get their grandson, Johnny Smith.

## Zealot Club Members Hear Book Report

Mrs. Clyde Witten presented a book report, "Parents on the Run," Nov. 29 at a meeting of the Zealot Club. The club met at the home of Mrs. O.D. Dinwiddie, Hart.

A luncheon was another highlight of the meeting.

Guests attending other than Mrs. Witten were Mmes. Carl Rambo, Ed Harris, C.B. Martin Jr., Lee Crouch, Denzil Leonard, Polly Sanders and Rodney Smith.

Members present were Mmes. Paul Armstrong, Bill Bell, Bob Bennett, Ed Bennett, J.H. Davis, Ralph Futrell, Owen Hankins, Walt Hansen, Theron Morrison, Joe Newman, Claude Ray, Glyn Reed, B.H. Rogers, Norlan Dudley and Dwight Miller.

Assisting Mrs. Dinwiddie as hostesses were Mrs. Olen Burt, Mrs. Willis Hawkins Sr. and Mrs. H.E. Loman.

## Special Radio For Emergency Set Up At Hart

Castro County sheriff's department has installed a police short wave radio here in the home of Deputy Sheriff Granville Martin. The station call letters are KCU 579. The radio is operated by Mrs. Granville Martin.

The radio is used only for emergency calls and police calls. In case Mrs. Martin or Willie Martin cannot be located at Webster 8-3728. Then Norlan Dudley will accept and operate the set.

Mrs. Carol Davis and son are visiting her parents, Mr. and Mrs. Milton Dudley, in Silverton.



RETURN FROM GERMANY--Chief Warrant Officer Billy Mousner and his family have just returned from a three-year tour with the U. S. Air Force in Germany. Billy, who has been in the Air Force 14 years, is presently stationed at Shepherd Air Force Base in Wichita Falls. They spent a week in Hart with his father, T. G. Mousner, his brother Johnny and sisters Nanette and Carol.

## Hart Girls Win Two Tilts At Kress Meet

Hart's boys basketball team lost two games and the Hart girls won two of three for the consolation title in the Kress tournament last weekend.

The girls beat Adrian in the consolation finals, 28-25, with Jo Sanders high with 10 points.

Earlier, the girls lost their first round game to Kress, 55-27, with Miss Sanders scoring 14.

The Hart girls beat Petersburg in the second round, 65-63. Miss Sanders again was high with 36 points.

Hart boys lost to Kress, 58-32, in the first round and to Vega in the second round, 45-37. Ralph Myrick led Hart scorers in the first game with 15, while Bill Farris was high in the second with 12.

Mrs. Bob Bennett, Rickey and Sandy spent the weekend in Plainview with her grandmother, Mrs. Emma Ritter.

The Mousner family moved in the Brick renthouse of Harold Smith and formerly occupied by Mr. and Mrs. Lee Harris.

Mr. and Mrs. John Holloway were in Plainview Monday on business.

Parents of Cub Scouts are invited to attend a meeting at the Legion December 12 at 8 p.m.

Mr. and Mrs. Robert Brooks spent the weekend in Hereford with their daughter, Mr. and Mrs. Deward Armstrong, and family.

## Church Class Gives Party For Mrs. Jones

A farewell party honored Mrs. Casey Jones Nov. 30 when the Eve Sunday School class of Hart Baptist Church met at the Lloyd Davis home.

Members brought gifts to Mrs. Jones, who was teacher of the class. Several persons who did not attend also sent gifts.

A business meeting and social also were included on the agenda. The devotional was given by Mrs. Roy Wilburn. Refreshments were served by Mrs. Lloyd Davis, Mrs. Jack George and Mrs. Jimmy Bitner.

Those attending were Mmes. Bud Hill, Weldon Davis, Wilburn, Bitner, Roy Clark, Randall Roper, Jack George, Euna Mae McAfee, the honoree and hostess.

Mr. and Mrs. Norman Olsen and family of Fredericksburg have returned home after spending several days with relatives.

Mr. and Mrs. Roy Pyeatt spent the weekend in Chillicothe visiting her mother, Mrs. G. B. Oliver. Roy also went quail hunting.

## Greenhand FFA Boys Win First

Greenhand FFA boys of Hart placed first in chapter conducting at a recent area meet held at Muleshoe.

Members of the first place team were Billy Joe Farris, James Mitchell, David Gardner, Louis Valadez, Joe Rubalcaba, Gilbert Guzman and Jerry Mekay.

Third place in chapter conducting was won by the Hart FFA senior group. Those on the team were Jerry Felder, Johnny Kittrell, Ralph Myrick, Wilburn Brooks, Eufemio Rubalcaba, Larry Lee, Jack Witten, Mike Morrison, Mike Reed and John Smith.

## Shower Fetes Mrs. Whitson

A layette shower complimented Mrs. Travis Whitson last Thursday afternoon at the home of Mr. and Mrs. Bobby Reed.

Guests were received by Miss Kaylyn Porter. They were registered by Mrs. Bobby Reed.

The reception table was covered with a lace cloth over green. An arrangement of yellow roses formed the centerpiece. Mrs. Branch Sheets presided at the serving table.

A diaper bag was presented to the honoree from the hostesses. Hostesses were Mrs. Freddie Lilly, Miss Porter, Mrs. Reed and Mrs. Sheets.

**LIONS SELLING TREES**  
 The local Lions Club are again selling Christmas trees. They are bought at a wholesale price and sold at a reasonable profit for the club.

**Henderson TV**  
 Repair Service At Night In Hart  
 Phone MI 7-3636 in Dimmitt  
 Hart WE-8 3234

# SANTA'S COMING TO HART . . .

## DEC. 17

Be Sure  
 And  
 See Him!

He Will Be On  
 Broadway From  
 2 To 5 P.M.

<b>HART TRACTOR CO.</b> Quality Work At A Price You Can Afford To Pay.	<b>LILLY'S CAFE</b> Where Friends Meet	<b>HART OIL CO.</b> We Serve The Farmer Gas, Oil And Tires	<b>HANSEN GRO.</b> Let Us Serve You Better. Double Green Stamps Wednesday	<b>LAND A DRESS SHOP</b> For The Best Buy Give Us A Try	
<b>HART LAUNDRY</b> Wringer Type And Automatic Washers--3 Dryers	<b>HART CLEANERS</b> See Us For Alterations We Pick Up And Deliver	<b>BAILEY MOTOR SERVICE</b> We Appreciate Your Business	<b>ED HARRIS LUMBER CO.</b> Every Thing For The Builder	<b>SOILA BEAUTY SHOP</b> Try Our Shampoo And Set Courteous Service	
<b>NEWSOM GRO.</b> Register Now For Doll And Gun Set Drawing 4:00 P. M., Dec. 17	<b>HOLT GEAR HEAD SHOP</b> For Gear Head Repair See D Holt	<b>B AND K GRO.</b> Fresh Meats, Fruits And Vegetables	<b>HI - WAY GARAGE</b> Fast Service--Guaranteed Work Reasonable Prices	<b>NORLAN DUDLEY REAL ESTATE</b> Farms, Acreage, Residential, and Business	
<b>BAUMAN AND WARREN GARAGE</b> Come In And See Us	<b>COX BUTANE</b> We Strive To Please	<b>HI - POINT FERTILIZER CO.</b> We Appreciate Your Business	<b>PANHANDLE COMPRESS &amp; WAREHOUSE</b> Give Cotton Products For Gifts	<b>PRODUCERS CO - OP GIN</b> We Try To Please	
<b>See Santa Dec. 17</b>	<b>HART GRAIN CO.</b> We Appreciate Your Business	<b>FARMERS INS. AGENCY</b> We Sell Ins. Of All Kinds	<b>CASEY JONES DRUG</b> Reduced Prices On Gifts	<b>LONGHORN BARBER SHOP</b> We Appreciate Your Business	
				<b>FLOWERS</b> For Any Occasion Call Myrt Loman	
				<b>See Santa Dec. 17</b>	



**This & That**

By MYRT LOMAN

This is most certainly not the time of year for gripes, but our telephones are evidently related to the cat family because they die so many times and for sure each Sunday morning and any number of times between the Sundays. We were promised so much better service even as early as last spring and until yet, you dial a number and it frequently will not ring. Often you can't even get the operator. In the last 10 days there was an emergency here and the party could not get the operator in Dimmitt. They drove to Edmondson for telephone service. We had our telephones installed to use, and it is very aggravating when the telephones are dead or an operator will not or does not answer. This is not only my gripe, but also that of a lot of the telephone customers.

To make someone happy is especially nice at this time of year as we are thinking of Christmas. The gifts need never be expensive. Most folks appreciate something a friend has made, such as hand work. Or what is better than a dish of homemade candy, cookies, cake, pie, jelly or a salad from a new recipe you have found? The most inexpensive gifts of all are love, a smile, a pat on the back, or better, just tell some one you love them.

Not only will they feel better, but so will YOU. Try it. This is a season to express our love.

It has been some time since we had a bouquet of the week, but believe we will give our bouquet this week to Mrs. Mark Cave. Mrs. Cave is our school nurse and a very capable one too. If you have not met her, make her acquaintance. You will profit greatly from knowing her. This is the way a friend of hers thinks of her: "She is an Angel of Mercy, very soft spoken, paints our scratches, looks at our tonsils, helps and cooperates with teachers and discusses with parents the health of children (her first concern). She even checks our ears and takes a sick child home." She is present at our school on Monday, Wednesday and Friday of each week. She is in Nazareth on Tuesday and Thursday. Again if you have not met her, make a special trip to school and meet her. She is one of the busiest persons on duty.

**Hart Man Has Leg Infection**

Earl Hacker of Hart was hospitalized recently in Plainview with a leg infection. His leg was injured when he was blinded by an oncoming car and he drove his car into the back of a cotton trailer. The accident happened west of Hart three weeks ago.

**Hart To Hart**

Dates to Remember:  
December 9 - Basketball game here with Ropesville;  
December 11 - Attend church of your choice;  
December 12 - Meeting of Lions Club and Producers Co-op Gin.

Mrs. Freddy Scott of Stinnett spent Friday night in the home of Mr. and Mrs. W. T. Sanders and girls.

Mr. and Mrs. Homer Inscore and family of Flag Community were Sunday dinner guest in the home of Mr. and Mrs. Harold Smith and family.

Mr. and Mrs. R. J. Wall have returned from a short visit in Burlington, Colo. with their son, Neal, and family.

Rev. H. L. Morrison and family of Roosevelt, Okla were visitors in the home of Bro. Royce D. Hutson and family.

Mrs. Jimmy Sharp and Mrs. Jerry Kitrell of Tulia visited Mrs. Thomas Lee Brooks Sunday afternoon.

Mrs. Nora Ray and daughter, Miss Opal Ray, spent the weekend in Amarillo with Mr. and Mrs. Pancho Lacy and girls.

Rev. Dodd Goodwin of Tulia spoke Thursday night at the Assembly of God Church.

Mr. and Mrs. Earl Ellis and family of Tucson Ariz. spent Saturday night in the home of his sister, Mrs. Harold Smith and family.

Mr. and Mrs. Roy Wall recently visited her sister, Mrs. Dewey Smith, in Stinnett and daughter-in-law, Mrs. Claude Cooper, and family in Canyon.

Visitors in the home of Mr. and Mrs. O. C. Kitrell Sunday were Mr. and Mrs. M. A. Davis and son, Deryl Lee, of Lubbock; Mr. and Mrs. Bud Roberson and Tonya of Littlefield; Mr. and Mrs. Jerry Kitrell of Tulia and of Hart were Mr. and Mrs. C. B. Landers and Mrs. H. H. Sullivan.

Mr. and Mrs. L. A. Divilier of Paducah spent Friday with their daughter, Mrs. Granville Martin, and family.

The Assembly of God Church

**Post Office Announces Hours**

Hart's post office is now locked each night from 9 p.m. until 6 a.m. Patrons should bear in mind that they must get their mail between 6 a.m. and 9 p.m. each day, according to Mrs. Robert Brooks, postmaster.

will have their Christmas program December 22 at 7:30 p.m. The public is invited to attend.

Mr. and Mrs. John Grimes and children have moved to Hart from Liberal Kan. and will live on the farm of Roy Pyeatt.

Mrs. Charlie Huff and family spent the weekend with her father, Green Henderson.

Mr. and Mrs. J. V. Wescott were in Seminole Monday a week ago to be at the bedside of his mother, Mrs. C. H. Wescott, who had major surgery.

Having supper in the home of Mr. and Mrs. H. E. Loman Thursday night of last week were Mr. and Mrs. Hubert Maples, Mr. and Mrs. Elmer Gray and Jimmy Ferguson. The occasion was the birthdays of Pappy and Elmer.

Mr. and Mrs. Tommy Cook and son visited Mr. and Mrs. M. R. Earwood of Lubbock Sunday.

Mr. and Mrs. Bill Sharp and family of Rankin spent the week end in the homes of Mr. and Mrs. H. E. Newman and Mr. and Mrs. Marion Holland. The ladies are sisters.

Mr. and Mrs. James Rushing and family spent the weekend in Lubbock.

Visitors in the home of Mr. and Mrs. Davis Nelson and family Sunday were her parents, Mr. and Mrs. C. N. Simms, and family, her brother, Kenneth, and family of Tulia and neighbors, the Deryl Lee family.

Mr. and Mrs. Edgar Varner and daughter, Mrs. Dayton Hacker, and children have returned from a visit with relatives in Hillsboro and Corsicana. Mrs. Barner attended a class reunion of 1935. All former graduates were present except two.

Buy your Christmas trees from your local Lions Club.

Mr. and Mrs. Bill Gallion were in Plainview Sunday afternoon to visit their daughter-in-law, Mrs. Billy Gallion, and their new granddaughter, Roxanne.

Miss Ann Shepard of Hereford spent the weekend in the T. G. Mousner home.

Sunday dinner guests in the home of Mr. and Mrs. Lloyd Davis were Mmes. Dora Lilly of Abilene; Alene Lilly of Amarillo and Mr. and Mrs. Truman Swopes of Hart.

Mr. and Mrs. Zemry Boozer and Mr. and Mrs. Paul Holcomb and son of Bovina visited in the Lester Lancaster home Sunday night.

Mr. and Mrs. O. L. Beavers visited Mr. and Mrs. Tommy Hall of Olton Sunday afternoon.

Dinner guest Sunday in the home of Mr. and Mrs. Ray Warren were Mr. and Mrs. Joe Warren and family of Lubbock; Mr. and Mrs. B. E. Shepard of Plainview; Mr. and Mrs. Charlie Warren and family of Floyada; Mr. and Mrs. Lyndal Warren and family, T. R. and son; and John Holloway of Hart.

Mrs. Sam Davis was admitted to Plainview hospital on Tuesday morning for major surgery. Blood donors are needed. Her type is O-RH-Positive. Either contact a member of the family or Myrt Loman, if you have that type.

Mrs. Branch Sheets, Don and Kay spent Saturday in Littlefield with her parents, Mr. and Mrs. W. J. Carter.

Living in the lap of luxury isn't bad except that you never know when luxury is going to stand up!

**Auctioneer**  
**Dean Sanders**  
Phone WE 8-4557  
Hart, Tex.

**SALE**

**Sherwin Williams Introductory Paint Sale**  
Come In And Register For Several Gallons Of Kemtone Wall Paint To Be Given Away

FREE Your Choice Of Color!

**KEMTONE**

Any Color Gal. \$5.89

**Free Pan And Roller Set**

With The Purchase Of 4 Gallons Or More Kemtone.

**Sherwin Williams Outside**

White Reg. \$7.65 Gal. \$6.95

**Sherwin Williams A-100 Latex House Paint**

Reg. \$7.95 . . . gal. \$6.95

**FREE COLOR CARDS**

**FREE ESTIMATES**

**Pittsburg Paint Close Out Sale**

Prices Slashed

**30% To 70%**

Come Early For Best Selection Of Colors

**PAINT THINNER**

\$1 Gal.

**CALKING COMPOUND**

Reg. 50¢

Tube **29¢**

**PERFATAPE**

Roll **79¢**

**USG All Purpose Cement**

25 lb. Bag

**\$2.25**

**USG Topping Cement**

25 lb. Bag

**\$2.75**

**Roller & Pan Set**

\$1.79

6 Ft. Step Ladder

\$5.90

12-z

**Romex**

5¢ Ft.

4 Ft. Step Ladder

\$4.95

Bed Room

**Light Fixtures**

Each \$1.98

Ray-O-Vac

**Flashlight Battery**

15¢ Each

16 oz.

**Plumb Hammer**

\$1.79

**Hack Saws**

89¢ Each

C.T.

**Pliers**

59¢ Each

30 Gal 10 Year

**Water Heater**

\$69.50

**White Square Tab**

Roofing

Sq. \$6.95

12 Gauge

**Shotgun Shells**

Box

\$2.49 And \$2.99

Sandran Floor Covering

**- FREE COFFEE -**

**HART LUMBER CO**

Phone WE 8-3720

Jimmy Bitner, Mgr.

Sale Friday And Saturday, Dec. 9 And 10

Drawing Saturday At 4 P. M.

Above Prices

Good Friday And Saturday Only

**Income Tax Returns**

Claude Cox

Hart, Texas

Phone WE - 83231

**Come In And Register For Our Christmas Gift Drawing At**

5 P. M. Dec. 23

Use Our Lay - A - WAY PLAN  
**HART VARIETY STORE**

**Aluminum Engine in New Rambler Six**



A handsomely restyled grille and new hood lines distinguish the 1961 Rambler Classic station wagons, available in three-seat and two-seat models. Fresh sculptured side styling accents the compact Rambler's new front-end design. Engines in the Classic series include the new lightweight aluminum six-cylinder engine rated at 127-horsepower and the V-8 engine developing 200 horsepower. Also available are four-door sedans. A ceramic-armored muffler and tail pipe are standard.

**1961 Rambler American Unveiled**



A four-door station wagon has been added to the newly styled Rambler American line for 1961, along with a two-door convertible. Other models are two-door station wagons and two-door and four-door sedans. All are built on a wheelbase of 100 inches. Although the 1961 offerings look longer than past models they actually are 5.2 inches shorter and three inches narrower. Styling of the Rambler American will be unchanged for several years to protect the owner's investment.

See Them Now At

**RAY KEELING**

**BUICK - RAMBLER**

800 E. 4th

LITTLEFIELD, TEXAS

Phone 385-4833



# News Of Interest To Women

## Odessa Rites Unite Miss Stafford, Wood

The chapel of First Methodist Church, Odessa, was the scene Nov. 23 for the wedding of Miss Sherry Gay Stafford, daughter of Mr. and Mrs. Jack W. Stafford of Odessa, and Donald Ray Wood, son of Mr. and Mrs. A. W. Wood of Olton.

Decorations of the church included baskets of white chrysanthemums adorned with aqua bows. Miss Sherry Hobbs of Odessa, soloist, was accompanied by an organist as she sang "I Love You Truly" and "Wedding Prayer."

Given in marriage by her father, the bride was attired in a waltz length gown of white lace over satin. The molded bodice, featuring a decollete neckline and three-quarter length sleeves, was joined to a skirt enhanced with shirred fullness.

To complete her costume, the bride wore a tiny jeweled caplet with an elbow length veil. She also wore a strand of pearls, a gift of the bridegroom. An arrangement of white gladioli carried upon a white Bible formed her bridal bouquet.

Mrs. Billy Bryant, the groom's sister of Olton, and Miss Betty Adams of Midland, were bridesmaids. Turquoise organza street-length dresses were worn by the bridesmaids and they wore matching hats and shoes.

Best man was Bill Sparks of Odessa. Serving as groomsman was Jack Stafford Jr., the bride's brother, also of Odessa.

The bride's mother, Mrs. Stafford, wore a rose beige lace dress with a matching hat and black shoes and purse. Her corsage was formed by copper carnations.

Mrs. Wood, the bridegroom's mother, chose a royal blue wool suit for the occasion with matching accessories and white hat and gloves. She wore a white carnation corsage.

Following the wedding, the church parlor was the scene of a reception honoring the bride and groom. Arrangements of white chrysanthemums centered the reception table, which was laid with a white cloth. Also decorating the table was the white wedding cake, trimmed in aqua.

Misses Sherry Hobbs and Betty Adams presided at the reception table and Mrs. Billy Bryant registered the guests. Out-of-town guests from Olton, Midland and Crosbyton were registered.

The bride chose a three-piece royal blue wool suit for the



MRS. DONALD R. WOOD

wedding trip to Santa Fe, N.M. Her accessories were black and she wore a blue feather hat.

A graduate of Odessa High School, Mrs. Wood also attended Texas Tech and the University of Texas.

The bridegroom attended Olton schools and was graduated from Cotton Center High School. He attended Frank Phillips Junior College, Borger, and Texas Tech.

Mr. and Mrs. Wood have made their home in Midland, where the groom is employed by Cactus Petroleum Co. The bride is employed with Shell Oil Co. there.

## Paschals Honored On Anniversary

A Golden Wedding Anniversary celebration honored Mr. and Mrs. Hoyt Paschal Sunday afternoon. The Paschal home was the scene for the event.

Mrs. L. L. McElhansy, the couple's niece of Lubbock, received and registered the 65 guests.

Congratulatory telephone calls to the honored couple from Mangum, Oklahoma, were received during the afternoon. The calls were from friends the Paschals hadn't seen in almost 50 years.

Laid with an ecru lace cloth, the table was centered with a white cake. Golden leaves and yellow mums decorated the cake which was placed upon a white stand. Other decorations of the receiving rooms were arrangements of golden flowers.

Those presiding at the reception table were Mrs. Fred Paschal and Mrs. Bill Paschal, nieces of the honored couple, and Mrs. Clovis Poteet.

Hostesses were Mrs. Poteet and the Paschal's daughter, Mrs. Tom Ross, Copper Center, Alaska.

Out-of-town guests were Mr. and Mrs. O. F. Cummings, Floydada; Mrs. Fred Paschal, Mrs. McElhansy and Roxie, all of Lubbock; Mr. and Mrs. Bill Paschal and children, Plainview; Mrs. C. C. Mason, Mr. and Mrs. Leo Mason, all of Albuquerque. Mr. and Mrs. Judson Miller, Plainview, and Mr. and Mrs. W. T. Ross, Flomont.

## GA's Take Imaginary Mexico Trip

An imaginary trip to Mexico was made last Friday night by the Intermediate Girls' Auxiliary of the First Baptist Church. The girls met at the Carlton Whittle home.

Shortly after entering Mexico, the girls were treated to a Mexican dinner. Miniature gray donkeys carrying baskets of fruit and flowers formed the centerpiece for the table.

Miss Deena DeBerry showed some slides that her parents, Mr. and Mrs. William DeBerry, had taken in Mexico.

The girls had a Lottie Moon Christmas program Monday afternoon at the Weldon Green home with Mrs. Green and her daughter, Judy, serving as hostesses.

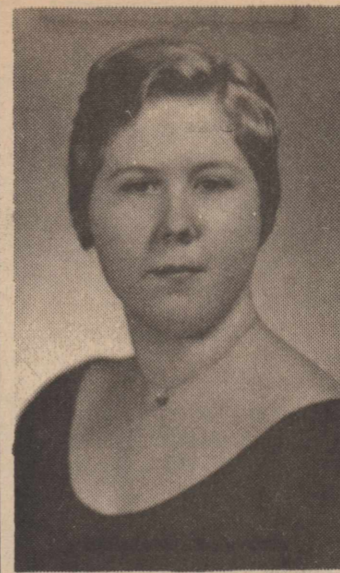
Persons attending all or part of the activities were Misses Sharon Miller, Elaine Lewis, Nancy Brigrance, Brenda Hyatt, Deena DeBerry, Terri Miller, Barbara Johnson, Cindy Cross, Mrs. Green, Judy, Mrs. Whittle and JoJuana.

## Methodist Group Plans Bazaar

Women of the First Methodist Church will sponsor a bazaar at Granbery Insurance Saturday. Foods and handiwork will be sold all day.

Proceeds will go to finance church activities.

IN LOCKNEY HOSPITAL  
Mrs. Jake Mitchell was in the Lockney Hospital last week.



MARLENE POWELL

## Marlene Powell To Wed Jan. 22

Mr. and Mrs. Andy Powell of Olton announce the engagement and approaching marriage of their daughter, Marlene, to Melvin Hall, son of Mr. and Mrs. Floyd Hall of Springlake. Wedding vows will be exchanged Jan. 22 at the Main Street Church of Christ.

Miss Powell is a graduate of Olton High School. She is now employed at Olton Bowling Center. Her fiancé attended Springlake Schools and is now working at Odessa.

## GUESTS OF LEWISES

Visitors Sunday in the Walter Lewis home were Mr. and Mrs. J. W. Stone, Mary Lee, Joann and Linda of Dimmitt.

## Olton P-TA Has Meet; 50 Attend

Raymond Carson, guest speaker Dec. 1 at an Olton P-TA meeting, chose "Material Values--Controlled or Controlling" as the topic for his speech. The school cafeteria was the scene for the meeting.

Program leader was Mrs. Raymond Carson.

Mrs. Garland Long, president, was in charge of the meeting. Reports of the P-TA convention in Austin were given by Mrs. Bob Worley, Mrs. Lacy Armstrong, Mrs. Melvin Hines and Mrs. Long.

Dick Whiteley, manager of the Olton Chamber of Commerce and Agriculture, reported about a citizenship course which will begin Jan. 9.

Piano duets were played by Karen Hipp and Linda Waldrop and by Harold Carson and Irene Flatt. Mrs. Owen Jones sang. Approximately 50 persons attended.

## New Son Born To Juan Matas

Eddie R. Mata was born Dec. 1 at Community Hospital and Clinic. His parents are Mr. and Mrs. Juan Mata of Olton.

The young man weighed 6 pounds and 9 ounces at birth. There are two other children in the family.

FACTS AND FIGURES  
The average man is 42 around the waist, 42 around the chest, 96 around the golf course--and a blasted nuisance around the house.

... Santa Fe Magazine

Hattie Carnegie  
COLOGNE



## CARNEGIE PINK

Luxurious Cologne Rich in Perfume Fragrance. Gift-wrapped: Satin pink.  
two oz. \$2.00  
four oz. \$3.50  
six oz. (with 24K. gold-plated atomizer) 5.00  
All prices plus tax.

In Olton It's BIZZELL'S

**Johnson Jewelry**  
recommends  
Pant INTERLOCKING DIAMOND RINGS

A wonderful value!  
1/2 CARAT \$126.50  
TOTAL WEIGHT EASY CREDIT

An exquisite beauty!  
3/4 CARAT \$278.50  
TOTAL WEIGHT EASY CREDIT

Amazing low price  
1 CARAT \$358.75  
TOTAL WEIGHT EASY CREDIT

JOHNSON JEWELRY  
620 Broadway  
Plainview, Texas

the ladies love  
nylons  
for  
Christmas

Mary Grey's  
"fashion tints"

Hemlines are up and legs in the headlines this Fall! Show them off handsomely in heavenly Mary Grey nylons. Fashion-Tinted in 12 lovely shades. Topaz, coffee, redwood, grey, black... you're sure to find one that's just right to complete every costume!  
With seams or seamless, 1.35 to 1.65

Haydon & Winkels  
Shoes

PLAINVIEW-LITTLEFIELD

## Dennis Circle Meeting Held At Parsons'

The Percy Parsons home was the setting Tuesday morning for a meeting of the Louisa Dennis Circle of First Methodist Church.

Mrs. Wilbur Gaede presented a review about the book, "Gabriel." Members brought gifts to be sent to the hospital at Wichita Falls.

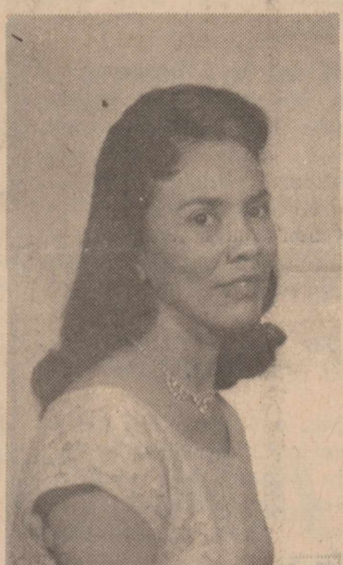
Soft Christmas music was played during the hours of the meeting. Refreshments were served by Mrs. Parson.

The members who attended were Mmes. Bill Walden, A. C. Truelock, Dwayne Wilks, Dorman Thomas, J. L. Snider, C. L. Lowe, Garland de Prang, Bob Coen, Earl McClain, Jeff Smart, Don Spain, Gaede and the hostess.

## RAINBOW GIRLS

Olton Rainbow Girls have been invited to a salad supper honoring Miss Mary Walden and Mrs. Martha Marie Whitfield in Lockney Dec. 12, at 6:30 p.m.

All Rainbow Girls who wish to attend are to meet at the Masonic Hall by 5:30 p.m.



DELIA LUERA

## Wedding Plans Are Revealed

The engagement and approaching marriage of Miss Delia Luera and Florentino Balderamos, both of Olton, has been announced by her parents, Mr. and Mrs. Apolonio Luera, of Olton.

Sunday has been selected as the wedding date. The couple will be married at the home of the bride's parents.

Miss Luera is working at Smith and Struve General Merchandise store, Olton, where she has been employed the past two years.

## New Son Is Born To M.A. Davises

Mr. and Mrs. M. A. Davises of Hart are the parents of a baby boy, born Nov. 30 at 5:35 p. m. in St. Mary's Hospital in Lubbock.

The young man weighed 5 pounds and 8 1/2 ounces at birth. He has been named Deryl Lee.

Grandparents are Mr. and Mrs. O. C. Kitrell of Hart and Mr. and Mrs. A. D. Davises of Panama City Fla. Mrs. M. A. Davises is the former Peggy Kitrell.

BRING US — MAIL US  
Your Prescription!

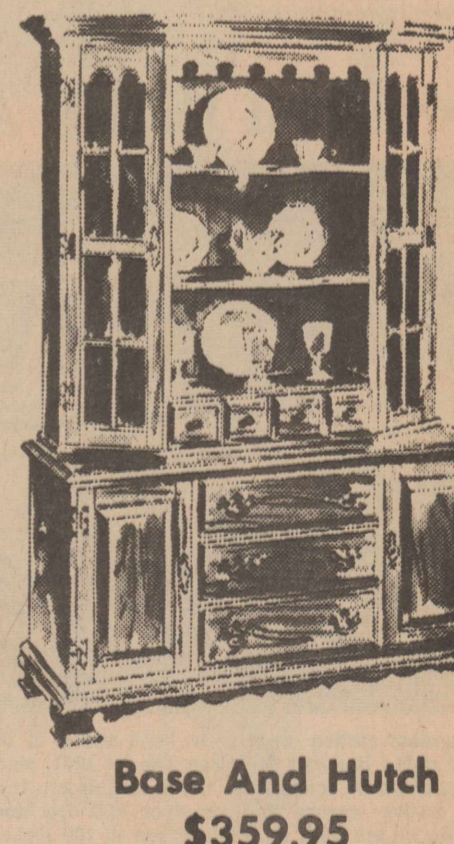
Fast mail service... you mail your prescription one day... get it back the next.  
Drugs • Toiletries • Sundries  
Owned and Managed by Registered Pharmacists

BRITAIN PHARMACY

Phone 385-5114

Littlefield, Texas

## A Gift For The Whole Family Sprague & Carleton SOLID ROCK MAPLE



Wide Selection Of Gifts  
Free Gift Wrapping - Plenty Of Parking Space  
**MEINECKE BROS.**  
205-11 WEST 5th PLAINVIEW Phone CA 4-7558



Fund Drive Under Way

Girl Scouts' Growth Seen By Mrs. Burrus

BY JOLINE WARREN

"And there's 10,000 of them--," exclaimed a young man to his companion as they witnessed a large restaurant in St. Louis, Mo. become filled with ladies dressed in distinctive green uniforms and wearing matching beanies.

This comment was overheard by Mrs. Paul Burrus of Olton, one of the great number of delegates and guests who recently attended the 35th convention of the Girl Scout National Council at St. Louis.

The convention, the 8th largest in the United States, was held Nov. 14-18 at the Kiel Auditorium. Representatives were present from all 50 states. Visitors from some foreign countries also attended. Many changes have been made since April, 1926, the last time a national convention met at St. Louis. At that time, 141 delegates gathered to devise plans for the organization which had 137,000 members.

Today, the national girl scout membership is estimated at approximately three and one half million. Almost 50 years of service has been rendered to the American communities through its program for American girls as the organization nears the half-century mark. Guests and delegates were

welcomed to the convention by Mrs. Charles U. Culmer of Libertyville, Ill., national president, who also made the announcements and introduced the new president, Miss Louise Wood of Chicago, Ill. Miss Wood's appointment will become effective March, 1961. Theme for the birthday-year convention was "Honor the Past" and "Serve the Future."

The highest ideal of girl scouting, a topic of discussion at the convention, is for the leaders to have a program which appeals to every girl from 7 through 17 years of age. Another interesting point brought out at the convention was that a good leader makes the girls in her troop feel two inches taller.

Mrs. Burrus said that the most impressive part of the convention to her was a ceremony when gold medals were pinned on various girl scout leaders.

A veteran of 13 years work with the girl scouts in this community, Mrs. Burrus began this work when their daughter, Naomi (Mrs. Deryl Machen of Olton), became a Brownie. Mrs. Burrus has continued her girl scout work since that time and now is serving as vice-president of the Caprock Girl Scout Council which is formed by members in 11 1/2 counties. Mr. and Mrs. Burrus, long-time residents of Olton, have two other children, Ed Lynn, a 1950 graduate of Olton High School, and Charlie T., who is a sophomore student this year. Ed Lynn is living at Pecos at the present time.

The Olton girl scouts had a modest beginning in 1947 with one Brownie and one Intermediate troop. There now are 16 troops and a total membership of 121 girls in this community. At the present time, there are three divisions for girl scouts in this community. Brownies, Intermediates and Senior Girl Scouts. Girls, 2-9 years old, are eligible for Brownies, while Intermediate Girl Scout troops are formed of girls who are 9 years old

to high school age. High school girls through age 17 compose the Senior Girl Scout troop.

Olton Study Club sponsors girl-scouting in this community as one of its youth preserving programs. Members of the study club's girl scout committee are Mrs. D. M. Granbery, Mrs. Carl Hooper and Mrs. Burrus.

One of the projects of the Study Club was the painting of the Girl Scout house this spring. Although the Study Club pays for the upkeep of the scout house, a fund-raising campaign to finance the local girl scouts' quota of the budget is now underway. Quota set for the group is \$1,210.

Mrs. Burrus commented, "Any and all money given to aid the girl scout program will go toward the future of our girls. The program is very democratic and it teaches a way of life which every girl can use if she lives up to the ethics taught in this program."

Olton School Lunch Menu

Dec. 12-16, 1960 Subject to Change MONDAY -- Pork chop and gravy, buttered potatoes, apricots, tomato catsup, cinnamon roll, bread and milk.

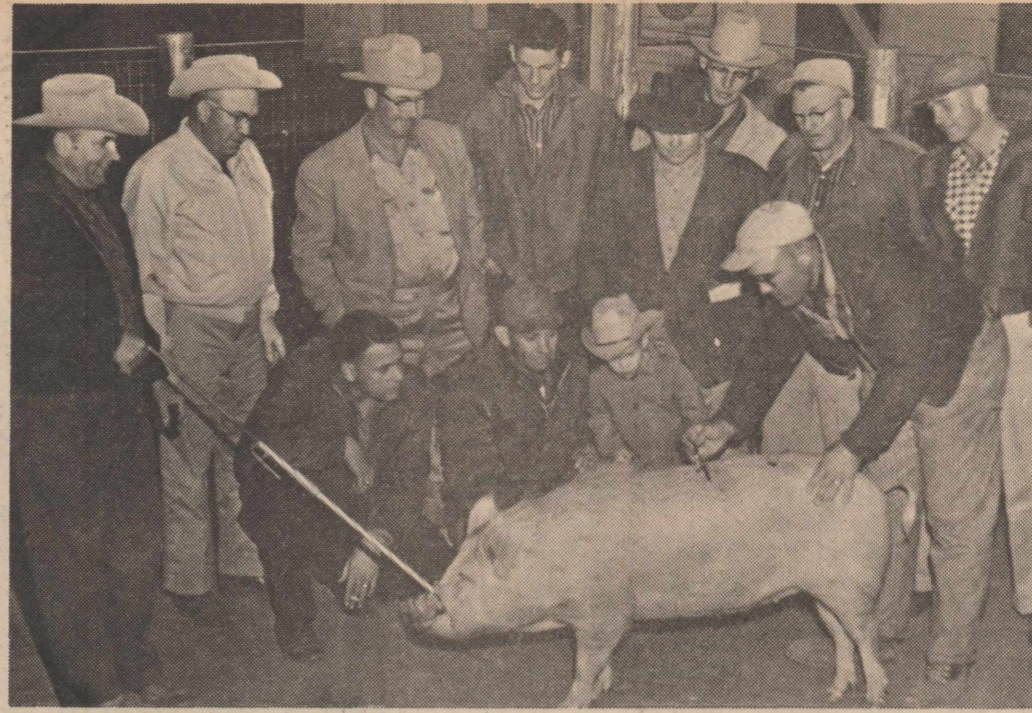
TUESDAY -- Ham and cheese on toast, candied sweet potatoes, pickled beets, green beans, strawberry shortcake and milk.

WEDNESDAY -- Hamburger, vegetable beef soup, peanut butter and crackers, half peach in jello and milk.

THURSDAY -- Brown beans, vienna sausage, potato salad, apple pie, corn bread and butter and milk.

FRIDAY -- Turkey pie, buttered mixed vegetables, mashed potatoes, fruit salad, bread and milk.

The School Lunch Staff wishes all a Merry Christmas and a Happy New Year.



Course On Swine Completed

A swine short course completed here last week drew an average attendance of 12 for the five sessions.

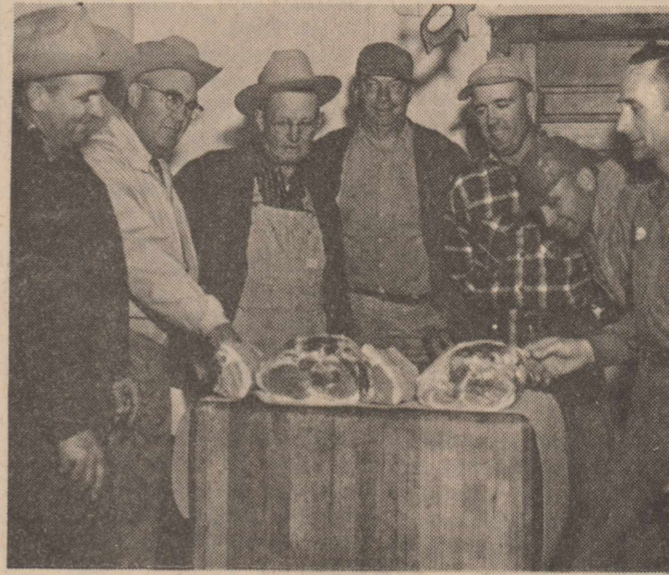
Those taking the course are shown in pictures above and at right.

Above, Gene Cade is shown determining the amount of back fat, via live probing, on this barrow.

Others pictured above are, back row from left, are Cliff Laywell, course instructor from Texas A&M, Calvin Horn, J. B. Riney, Fred Riney, Wilber Galloway, Vernon Britton, Less Kennedy, and Leslie Kennedy. In front, from left, are Max Malone, W. T. Hall Jr., Stevie Kennedy and Cade.

In picture at right, the best loins and hams of two animals which were butchered during the course are shown. Left to right are Laywell, Horn, Less Kennedy, Frank Struve, Cade, Hall and Vernon Brockman, Olton Meat Co., which handled the butchering free of charge.

"Where have you been?" "Having my hair cut." "On company time?" "Well, it grew on company time, didn't it?" "Not all of it." "I didn't have it all cut."



TOO LATE TO CLASSIFY

LOST -- Tool box wrenches stamped C. R. H. and L. W. H. Reward, L. W. Howard, 44-1tc

THROUGH WITH IT? Sell it to Price Wrecking, Phone 5371. 44-1tc

FOR SALE--Seven registered Duroc sows with papers. Phone 4503. 44-3tc

GIVE HER African Violets for Christmas. Fine assortments for gifts and hobbies. See Mrs. I. V. Fent, south of Olton. 44-2tc

WONDERFUL WEARABLE WELCOME

GIFTS for MEN

To Hear Him Cheer, Choose Here!

\*Sweaters, Shirts And Underwear By Manhattan

\*Socks By Esquire

\*Slacks

\*Ties

Free Gift Wrapping

Get Your Party Clothes Ready With An Expert Cleaning Job Here. "We Clean Clean"

Superior Cleaners

Pickup And Delivery Service

Gin Worker Is Injured

Pete Rivera, a Springlake resident, was injured early Wednesday Nov. 30, in an accident at the Thompson Gin. One of his feet was caught in a seed auger when he was loading the seed.

He is employed as a trucker by John Bridges and Earl McNeal.

Taken to the Community Hospital, Rivera was treated by Dr. Basil Johns. Rivera was then rushed to the Methodist Hospital, Lubbock, by Parsons Ambulance of Olton.



SPLENDOUR! SHIMMER! CHIC! TRICOTS ALL... FASHIONED WITH THE TIMELESS BEAUTY OF ARTEMIS

... lingerie luxury... fabulously carefree



a. tricot satinette of Du Pont nylon... Waltz gown and peignoir lend luxury to your sweetest dreams in new sumptuous tricot satinette. Twice loved by Artemis with treasured Alconon lace... launders in less time than it takes for a pretty yawn. Alluring in white, ivory duet, aqua-elle, and peach blush. Gown, sizes 32-38, \$12.95. Matching peignoir, sizes S,M,L, \$16.95.

b. tone-on-tone tricot of Du Pont nylon... For ladies who love all things feminine! Grecian Galaxie waltz gown and peignoir by Artemis in misty layers of tone-on-tone nylon tricot... gracefully touched with applied lace rosettes. Breathtaking in white mist, black ambrosia, ivory mist, sandalwood, nectarine, royal sapphire, paradise poppy, turquoise mist and aqua-elle. Gown, sizes 32-38, \$8.95. Peignoir, sizes S,M,L, \$14.95.

c. traditional tricot of Du Pont nylon... Smooth sheath styling plus a molded bodice underscore your silhouette with perfect chic in this length-proportioned Grecian Galaxie slip by Artemis. Floral lace appliques add a touch of special splendour. Alabaster white, onyx black, ivory duet and sandalwood duet in sizes 32-36 short; 32-40 average and tall. Laurel duet, nectarine duet and red poppy in sizes 32-40 average, \$6.00.

Top Quality Low Prices MEATS

Home Made

SAUSAGE 4 lb \$1

PORK CHOPS Center Cuts 2 lb \$1

PORK STEAK 3 lb \$1

PORK ROAST lb 29c

BOLOGNA lb 29c

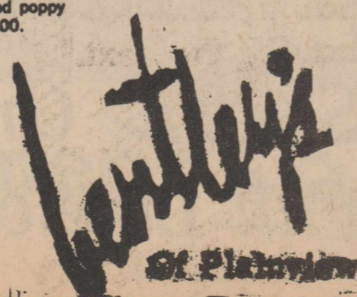
BACON Fresh Side lb 39c

Olton Meat Co.

FOR THE FREEZER Whole Beef 48c Lb. Half Beef 48c Lb. Hind Qtr. 58c Lb. Cut-Wrapped-Frozen

Complete Locker-Freezer Service Phone 3741

MEAT PROCESSING 5c Lb. Custom Slaughtering Tuesday & Friday



Bentley's, Of Plainview please send me the following Artemis styles: table with columns for item, 1st color, 2nd color, size, quantity, price. Includes checkboxes for charge, check, and money order, and a note to please add sales tax where applicable.



### Bowlers Place At Amarillo

Mrs. Jake Mitchell placed second and fifth in a singles bowling tournament in Amarillo Nov. 5 and Mrs. Prudy Jeffrey placed 4th. The ladies represented the Olton Bowling Center.

Bowling enthusiasts of various areas were represented in a tournament Nov. 19 at Odessa. Mrs. Mitchell copped first place, a prize of \$60 and a trophy, while eighth place was won by Mrs. Jeffrey.

Other members of the team sponsored by the Olton Bowling Center were Mrs. Wiona Boone and Mrs. Beedie Welch of Springlake and Mrs. Odessa Mitchell, Mrs. Laverne George and Mrs. Prudy Jeffrey. Mrs. Vera Young of Springlake substituted for Mrs. Wiona Boone in the tournament at Odessa.

### Golden Agers Social Planned

A Christmas social for Golden Agers will be given Thursday, Dec. 15, at the American Legion Hut. Time for the social is 2:30 p. m.

Each member is invited to attend. They also are asked to bring a gift, which does not cost more than \$1, for an exchange of gifts among members.

### Olton Catholics Slate Observance

The Immaculate Conception of Saint Mary will be observed Thursday by Catholics in the United States. It is one of six days besides Sundays when all Catholics attend Holy Mass. Catholics in Olton will have mass at 6:30 p. m. in Saint Peter the Apostle Chapel.

#### NOTICE I

During December  
We Pay \$15.00  
For Scrap Iron

#### PRICE WRECKING

Phone 5371

### Former Resident--

to Gainesville. Funeral services were conducted Tuesday at the Mt. Leabon Baptist Church near Gainesville. Officiating were the Rev. Tom Ratcliff and the Rev. L. R. Moore.

Burial was in the Nelson Grove Cemetery. Pearson is survived by his wife, one daughter, Mrs. Claudia Brewer, one son W. R. "Peck" Pearson, and six grandchildren, all of Gainesville; and a brother, the Rev. G. M. Pearson, Gallup, N. M.

### Minister Leads Class Meeting

Main Street Church of Christ was the scene last Wednesday morning for a Ladies Bible Class meeting.

The lesson about the Sermon on the Mount was taught by G. B. Stanley, minister of the church. Stanley also led in the opening and closing prayers. Ten members were present. They were Mmes. Sidney Allen, Jack Capehart, T. Combast, R. A. Lewis, G. W. Locke, H. A. Locke, C. M. Owen, J. C. Scruggs, W. L. Thomas, N. L. Walker and N. L. Armstrong.

### Charlie McAfees Have New Son

A son was born Nov. 28 to Mr. and Mrs. Charlie McAfee of 459 Helen Drive, Milbrae, Calif.

The young man weighed 5 pounds at birth in a hospital at Milbrae. He is the first child in the McAfee family.

Mr. and Mrs. Roy McAfee of Olton are paternal grandparents.

### New Daughter Born To Motleys

A baby girl Donna Annette, was born Dec. 2, to Mr. and Mrs. Weldon Motley of Olton. Donna Annette, the Motley's first child, weighed 8 pounds and 6 ounces at birth in the Medical Center in Plainview.

Maternal grandparents are Mr. and Mrs. Myrtle Bradley of Hart. Paternal grandparents are Mr. and Mrs. Raymond Motley of Olton.

### Young Ladies Class Meets

A discussion about Ruth and Lot's wife, two women of the Old Testament, was completed at last Wednesday's meeting of the Young Ladies Bible Class. The lesson was taught by Mrs. I. B. Holt.

Mrs. Jim Steele was a guest at the meeting, which was held at Main Street Church of Christ. Members present were Miss Helen Locke and Mmes. Glen Exter, Tom Carlisle, Bob Williams, Elmer McGill, Jack Thomas, Dick Whiteley, Bub Holt, Don Williams, Jay Rainey, Joe Clark, Howard Phares, Tom Moore, D. M. Granbery, Billy Smith and Arthur Wood.

### Olton High--

Gordon, Mrs. Ruth Franks, Mrs. LeaBelle Hooper, Mrs. LaNelle Waldrop, Mrs. Juanita Adams, Mrs. Vivian Williams, Mrs. Ethel Gordon, Elmer Moore, Mrs. Austa Fisher, Mrs. Jewell Campbell, Mrs. Essie Wozencraft, Mrs. Jayne Harper, Clifford Curry, David Howton and Mrs. Calvin Horn. Reports heard included those on gate receipts for Abernathy, Floydada, Dimmitt and Denver City football games. Olton's share of the receipts included: Abernathy, \$416; Floydada, \$1,208; Dimmitt, \$1,564; and Denver City, \$2,528.

New teacher employed for the sixth grade was Charisey Ann Scribner, who has a number of years of teaching experience in Tahoka schools and others in that area.

### Juniors End Magazine Sales

Olton Junior Class has ended the annual magazine sales with a total of \$1,423.77 for subscriptions. The class will receive \$544.41 for its Junior-Senior Banquet fund.

High salesman was Janice Galloway with \$181.71. She will receive a gift of her choice. High salesman for the boys was Robert Duncan with \$127.44. Sandra Cox will receive a transistor radio for having sold five subscriptions to Look magazine in one weekend.

HOME PERMANENTS: Wash in hot suds immediately because chemicals may harm dyes.

### Oltonite's Aunt Dies In Abilene

Mrs. Corrine Jefferies of Abilene died Nov. 29 in that city. She is the aunt of V. Y. Jefferies of Olton.

Funeral services were conducted last Tuesday afternoon at Abilene. Interment was in an Abilene cemetery. Mrs. Jefferies also is survived by a son, R. A. Jefferies, president of the Hale Center Bank.

Mr. and Mrs. V. Y. Jefferies and Doris attended the services.

### Golden Circle Class Meets

The Golden Circle Class of First Baptist Church met Friday afternoon at the Gene Reynolds home. Mrs. Reynolds was hostess for the event.

Mrs. John Paul Jones, guest speaker, gave a book review, "In His Steps."

Each member brought a gift she had made and gifts were exchanged at the meeting. Those attending other than the hostess and the guest speaker were Mmes. Denver Offield, W. D. Holley, James Ellis and B. J. Mills.

### Hopewell WMA Has Meeting

The WMA of Hopewell Church met Nov. 29 at the Bill Winn home for the regular monthly mission meeting. Mrs. D. D. Brown presented the mission study.

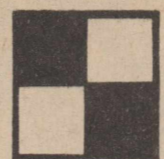
Mrs. A. P. Rolls led in the opening prayer and the closing prayer was given by Mrs. Virgie Gray.

A luncheon was served to the group. Those present were Mmes. Robert Alken, Thomas Lively, Ernest Elichman, Raymond Durham, Gray, Brown, the hostess Terry and Teresa Lively.

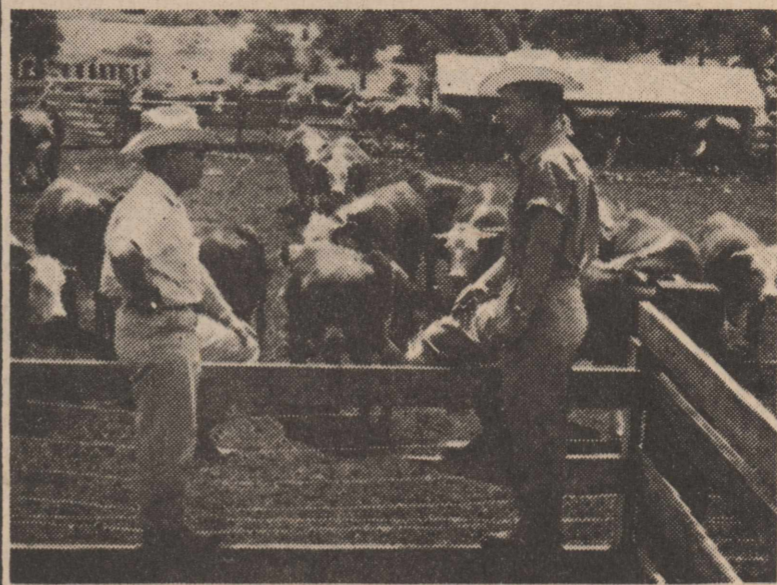
### Club Meeting Held

The Jack Allcorn residence will be the scene Monday night for a Christmas party honoring Olton Study Club members and their husbands.

Time for the party, which is given annually, will be 7:30. Mrs. Allcorn, hostess, will be assisted by Mrs. H. B. Carson as co-hostess.



## MORE PROOF... it pays to feed PURINA



**Public Feeding Demonstrations furnish feeders facts...not "chin music"**


A SELF-FEEDER operation similar to the one pictured here produced big cattle gains at a Levelland Purina demonstration recently. The facts show the dollar-and-cents value of Purina's steer feeding program. The self-feeder operation fits naturally into farming situations, allowing the farmer to carry on his cattle-feeding program with a minimum of time consumed.

**Levelland Demonstration Proves---**

**Costs Come Down , Profits Go Up When Cattle Are Purina-Fed**

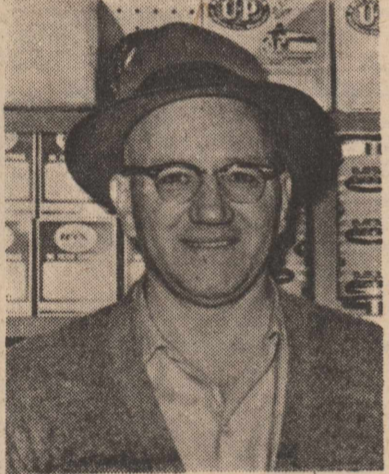
Pen No. 1 - Purina 25 Steers	Pen No. 2 - Other 25 Steers
Fed full feed Purina Check-R-Mix Ration--12% Roughage (Hulls)--Special Steer Fatena 55 --Ground Milo.	Fed full feed cottonseed meal ration--30% roughage (Hulls)--Ground Milo.
Average daily gain . . . . . 2.72 lbs.	Average daily gain . . . . . 2.55 lbs.
Lbs. Feed per Lb. Gain . . . . . 7.72 lbs.	Lbs. Feed per Lb. Gain . . . . . 9.92 lbs.
Yardage cost per Lb. Gain . . . . . 2.58¢	Yardage cost per Lb. Gain . . . . . 2.75¢
Total Cost per Lb. Gain . . . . . 19.45¢	Total Cost per Lb. Gain . . . . . 22.85¢
If cattle sold at \$24.50 CWT, net profit per head would be . . . . . \$11.35	If cattle sold at \$24.50 CWT, net profit per head would be . . . . . 27¢

Purina's Low-Roughage Combination Does the Job. We would like to talk with you about the Purina Way to profitable cattle-feeding operations. Investigate starting a self-feeder operation of your own.

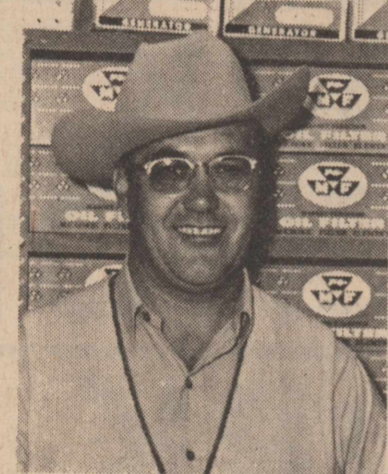


# Olton Farm Supply


Phone 2261 Don Spain, Owner Olton, Texas

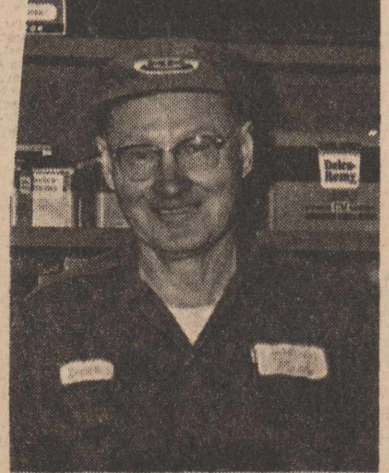


**C. J. DORRIS**  
Owner

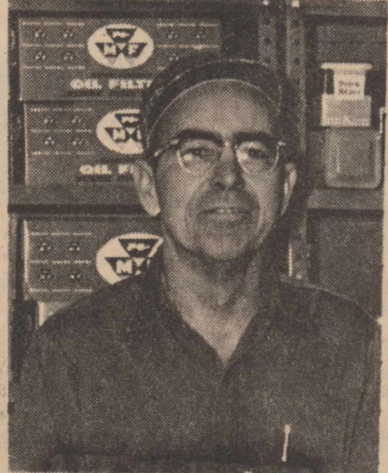


**MURPHY WHITE**  
Sales Mgr.





**HOMER HOOD**  
Shop Foreman



**WELDON PRIEST**  
Ferguson Mechanic

## DORRIS MACHINERY

Of Olton, Texas Phone 4201

Is Pleased To Announce The Addition Of  
A New Line . . .

# MASSEY-FERGUSON

We will carry the full line of world-famous Massey-Ferguson farm equipment—including the only tractors in the world with the amazing Ferguson System and the world-renowned Massey-Harris Combines.

For the finest machines and implements in modern mechanized farming . . . for fast, dependable servicing and repairs . . . for top trade-in values and repayment terms see your new Massey-Ferguson dealer.

—Special Introductory Offer—  
During The Month Of December

## 20% Off

On All Sweeps,  
And Chisels!

Purchase Your Year's Supply At This Big Saving!

Come In and get acquainted . . .

See The Great New Massey-Ferguson  
Full Line of Farm Equipment Today!





## Honor Students Named At OHS

Olton High School honor roll for the second six weeks was announced this week by Joe Turner, principal. It includes: Senior -- "A" -- Gayle Parsons and Barbara Hamm -- "B" -- Bobbie Campbell, Nancy Critchfield, Cecilia Gallaway,

Kay Gregory, Hazel Smith, Becky Hall, Beth Stansell, Barbara Williams, Nita Gaede, Ronald Fancher, Harold Featheringill, Kenneth Hooper, Harvie Jordan, Sammie Kendall, Robert Priest, Nicky Redinger, Fred Riney, Ron Rogers and Wendell Scribner.

Junior -- "A" -- Alice Ross Bryant, Sandra Cox and Marilyn Jones -- "B" -- Pat Bowen, Geneva Curry, Lana Hair, Jean Harper, Rea Horn, Joanna Lewis, Judy Pinson, Ann Stansell, Patsy Wozencraft, John Allen Douglas, Dan Long, Roy Moss and Don Oursbourn.

Sophomore -- "A" -- Elaine Averitt, Tanya Bryant, Sammie Clark, Joy Cole, Barbara Irvin, Sue Mitchell, Janice Moses, Linda Price, Carolyn Rogers, Nelda Rucker, Dana Speer, Ilona Tanner, Gladys Thomas, Bobby Tollett, Tommy Witten, Ralph Hamm, George Phillips, Barry Prestridge, Bennett Worley and Phyllis Hair.

Freshman -- "A" -- Diane Smith and George Jones -- "B" -- Carmen Bley, Carolyn Carson, Sharon Miller, Carolyn Osthus, Margaret Schaefer, Marilyn Thomas, Pat Thompson, Billy Cox, Darwin Cox, Clyde Gallaway, Rusty Sherman, Gaines Stanley and Bobby Whittle.

**THANKSGIVING GUESTS**  
Guests Thanksgiving day in the L. E. "Jack" Silcott home were their daughters and families, Mr. and Mrs. Earl Smith, Terry and Leslie of Lubbock and Mr. and Mrs. Bill Irby, Karen and Ricky of Clovis, New Mexico; Roy Granbery, Mr. and Mrs. D. M. Granbery, and Mr. and Mrs. C. S. Silcott, all of Olton.

## Parker In New Group At Wayland

Jerry Parker, son of Mrs. F.F. Parker, Olton, is to be a charter member of the newly created Iota Upsilon Chapter of Phi Mu Alpha Sinfonia at Wayland Baptist College.

Formal initiation of the new members will take place Friday, Jan. 6, under Dr. Gene Hemmle, head of the music department at Texas Technological College and province governor for Phi Mu Alpha Sinfonia. Initiating chapter will be Zeta Sigma from Texas Technological College.

Phi Mu Alpha Sinfonia is made up of men who take part in musical activities of their college, who demonstrate particular interest in some phase of music, and who meet the scholastic standards set up by their college.

Parker, a junior, is vice president of the famous Wayland International Choir. He is majoring in music and plans to enter the field of church music following his graduation. At present he is director of music at the First Baptist Church at Olton.



FFA PRESIDENT VISITS--Joe Dan Penn of Lufkin, left, state FFA president, visited the Olton FFA Chapter last week. He's shown here with Jimmy Lawson, secretary of the Olton unit. Penn attended a district FFA banquet at Littlefield while in the area.

## Kirk McAdams Gains 'Who's Who' Honors

Kirk McAdams, Olton senior at Panhandle A&M College, Goodland, Okla. was one of 18 seniors selected for inclusion in the current edition of "Who's Who Among Students in American Universities and Colleges," Miss Helen Muller, dean of students, stated this week.

McAdams is a major in business administration and is a member of the Panhandle Business Students Association, International Relations Club and O Club. He lettered in track,

and was editor of "The Plainsman" (student yearbook) last year. McAdams is currently correspondent for the Guyton Daily News on the Aggie campus.

**ATTEND HAYRIDE**  
Peggy, Hazel and Herman Harrison attended a hay-ride in their honor last Friday, in Hereford. Peggy and Hazel attend Olton schools and Herman is employed at the Olton Enterprise.

# GOOD BUYS *in good food*

Folger's  
**COFFEE**  
2 lb Can  
**\$1.29**

Shurfresh  
**BISCUITS**  
3 Cans For  
**25¢**

Swansdown  
**CAKE MIX**  
Large Box  
**2 For 49¢**



Pinkney Sunray  
**HAMS**  
12 To 14 lb  
Whole Only  
**49¢**  
lb

Gladiola  
**FLOUR** 5 Lb Bag **39¢**

Plastic Bottle  
**JOY** Giant Size **59¢**

Golden Brand  
**OLEO** 2 Lbs. **35¢**

Large Box  
**CHEER** **29¢**

Shurfine Cut  
**ASPARAGUS** 303 Can **25¢**

Wrigleys All Flavors

**GUM**  
Box Of 20 Pkgs. **63¢**

Hershey  
**DAINTIES**  
6 Oz. Pkg. **19¢**



Hersheys, Plain And Almond  
Krackel Goodbars  
**CANDY BARS**  
Reg. 5¢ Candy  
**10 39¢**

Morton's Apple Or Cherry  
**PIES** Family Size **29¢**

**SOFLIN** 4 ROLLS **1¢**  
TOILET TISSUE

with purchase of  
**6 SYLVANIA** Light Bulbs  
ASSORTED AS YOU WISH



Real Nice  
1 lb Carton **25¢**

Large Firm Heads  
**LETTUCE**  
Lb. **15¢**

Shurfine Crushed  
**PINEAPPLE**  
No 2 Can **27¢**

12 Bottle Carton  
**COCA COLA** **49¢**



White Swan  
**COFFEE**  
1 Lb Can  
**63¢**

## SHERMAN FOOD

Double Gunn Bros. Stamps Wednesday With \$2.50 Purchase

FREE DELIVERY

QUALITY MEATS

PHONE 370

## Here's what John Deere's NEW CONCEPT of POWER means to you

### More Usable Power Than Ever Before

Brand-new, fully field proved, and with a host of exclusive features, modern John Deere-built 4- and 6-cylinder variable-speed engines offer you faster, smoother, more efficient power tailored to your job; provide better performance with economy on both light and heavy loads. Combined with new transmissions, these engines enable you to match power and ground speed exactly to any given job with a full measure of John Deere dependability.

### Greater Range of Usable Speeds

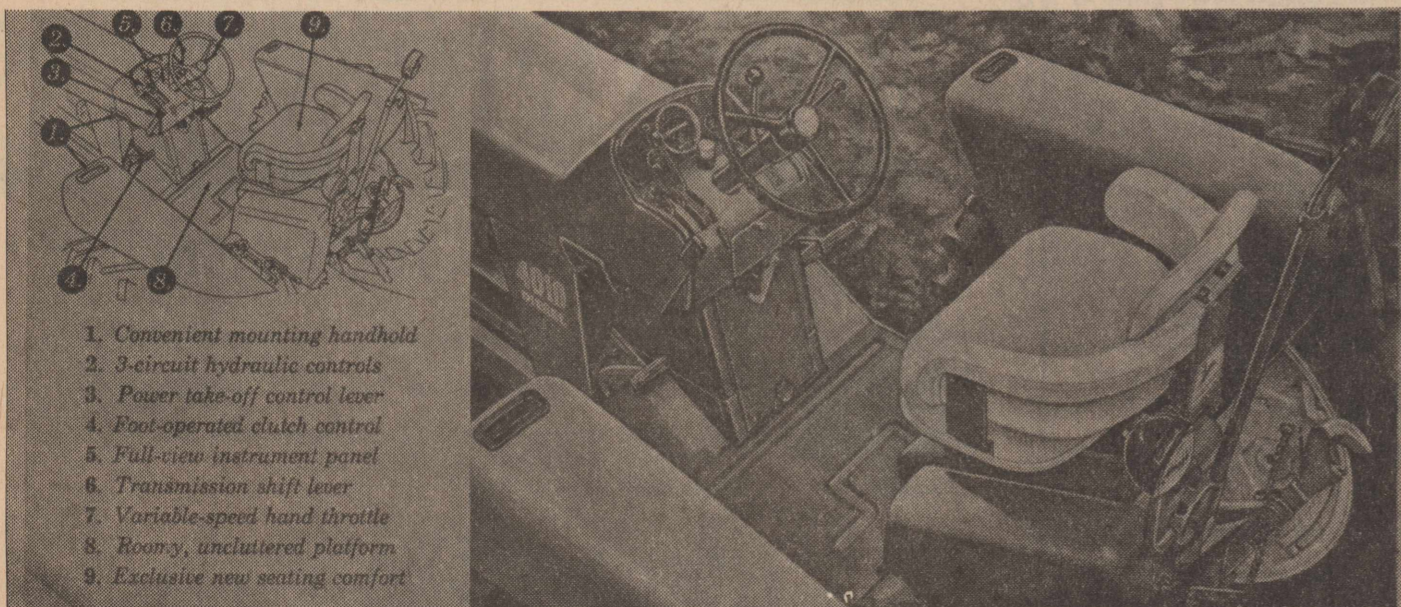
From a "creeper" speed of 1-1/2 mph to a brisk transport pace of nearly 20 mph, new multi-speed Syncro-Range Transmissions combine with lively variable-speed engines for new efficiency, economy and zip. On light loads, you can throttle down and shift up; the engine leisurely handles the job with utmost economy. Three convenient reverse positions are provided. Constant-mesh gears and handy lever make speed selection extra easy.

### Revolutionary Hydraulic System

Pioneering John Deere offers versatile new hydraulic power on demand to magnify working ability manyfold. Here is abundant force to raise, lower, and precisely control equipment with front or rear rockshaft, double-action remote cylinders, or 3-point hitch. On "3010" and "4010" Tractors, a revolutionary new pump supplies power for individual or simultaneous operation of working equipment, power steering, and power brakes.

### Most Widely Adaptable PTO'S Ever

New and forward-looking power take-off design enables you to handle 540 and 1000 rpm equipment as you prefer; changing speeds is quick and easy. A new front-mounted 1000 rpm PTO, available on some models, prepares you for new equipment and applications of the future. Engine power is delivered independently of other tractor functions. Equipment clogging is practically eliminated; you handle heavy crops more efficiently.



## Ed Thompson Implement Co.

Phone 2211

"Your John Deere Dealer"

Olton, Texas



**SELL · BUY · TRADE · HIRE · SERVICE · HELP WANTED · EMPLOYMENT OPPORTUNITIES**  
**WANT ADS!**

**CLASSIFIED ADS**

**Rates**  
 Rates on classified advertising are: 6 cents per word first insertion; 3 cents per word second insertion, and each additional consecutive insertion. Minimum 50 cents first insertion, 25 cents additional insertions. The Enterprise is not responsible for mistakes after first insertion. Please read your ad.  
 All classified accounts are due and payable 10th of month following insertion. A flat rebilling fee of \$1.00 will be charged for all accounts 30 days past due and for all successive rebillings.

**FOR SALE**

FOR SALE -- 1959 Ford Galaxie, Cruiseomatic, factory air conditioning, power steering, power brakes. Local, one owner, low mileage. Phone 2226 43-3tc

FOR SALE: Hegari bundles. Winston Bley, Phone 3431. 43-2tp

FOR SALE: Five room house, furnished or unfurnished at a bargain on Main Street. S. E. Whittington. 36-tfc

FOR SALE: 1956 Ford Station Wagon. Contact Bill Walden Phone 2181 41-tfc

FOR SALE--Motor scooter in good condition. Phone 4281. 43-tfc

FOR SALE--Bargain for quick sale. Laundry, Maytag-operated gross \$5,000. 3 Bedroom house, corner lots Furniture included. Terms. Call Earth 6-2536, R. L. Roach, Springlake Laundry, Springlake, Texas. 43-2tp

FOR SALE--320 acre farm Hereford \$80,000.00 2 good wells--good improvements see A. J. Smyth-Co-Op Gin, Olton 43-2tp

FOR SALE: Remington Rand electric adding machine. Late model, extra nice, Bargain. Winston Bley, Phone 3431. 43-2tp

**MAKE A CAREFUL COMPARISON OF PRODUCTS AND YOU WILL BUY SEAL-TITE CONCRETE PIPE STANDARD CONCRETE PIPE CO.**

**G. A. BODKIN**  
 REPRESENTATIVE  
 Phone 3776

**PARLEY'S Barber Shop**  
 LOCATED NEXT DOOR TO LESTER'S  
 Olton, Texas

**LEVI'S**  
**Smith & Struve**  
 OLTON, TEXAS

**PIONEER DRILLING & MACHINE CO. SALES & SERVICE**  
 --Nebraska Western Pumps--Irrigation Well Drilling--  
 411 Broadway Phone CA 4-7595 Plainview, Tex.

**The Olton Enterprise**

Published each Thursday at Olton, Texas.

Entered as second class matter at the post office at Olton, Texas, under the act of Congress, March 3, 1897.

Any erroneous reflection upon the character, firm or corporation which may appear in the columns of The Olton Enterprise, will be gladly corrected upon being brought to the attention of the publisher.

Subscription rates: \$3.00 per year in Lamb and neighboring counties; \$5.00 per year elsewhere.



BILL TURNER . . . . . PUBLISHER  
 LANA HAIR . . . . . REPORTER  
 JOLINE WARREN . . . . . SOCIETY EDITOR  
 AMY TURNER . . . . . ADVERTISING  
 HERMAN HARRISON . . . . . APPRENTICE

**For Sale**

FOR SALE: 181 acre farm, 6 miles from Lockney. 4 room modern home with out buildings, good 8 inch well. All in cultivation but four acres. \$250 acre, \$12,000 down. Easy terms on balance. Ezra Whittington. 36-tfc

TRASH BARRELS delivered. \$3. Price Wrecking. Phone 5371 23-tfc

FOR SALE: 150 bushels Early Triumph wheat seed, \$2.25 per bushel. Deryl Clevenger, Hart. 35-tfc

FOR SALE: Red and white potatoes, J. B. Williams, Phone 4981. 40-tfc

**Notice**

SEE BILL BENNETT for Humphrey Tension 100 per cent wool sealed aluminum silicone treated storm windows and doors, custom made. 20-tfc

\$100.00 de recompeso por informacion que illene a el arresto y conviccion de quaiquier persona que distrulla o'h remueva algo en la propiedad de las barracas de el Tri-County Co-Op Gin. 38-tfc

\$100.00 REWARD for information leading to the arrest and conviction of anybody destroying or removing property from the Tri-County Co-Op Gin barracks. 38-tfc

**Wanted**

WATER WELLS DRILLED, old wells deepened, guaranteed no sand. If I fail to shut off sand, will install sand trap free of charge. I sell and install all kinds submergible pumps. O. N. Ramsower, 108 South East 6th Street, Plainview, Texas. Phone Capitol 453-65. 41-4tc

WANTED: To make buttons, button holes, buckles, belts, children's garments. Dress making Willena Gordon, Ph. 3081. 27-tfc

WANTED: Sewing, custom made drapes and western shirts. Phone 3391. 1020 Main. Charlotte Morris. 18-tfc

**Wanted**

TOP LAND WANTED: We have buyers for your farm land. Irrigated and dry land. Call, write or come to see us. Phone 5221, Box 127, Turner Brothers Land Co., Hale Center. 36-12tp

WANTED: Farm hand wanted for next year. Winston Bley, Phone 3431. 43-2tp

WANTED -- Cash lease 160 acres near Springlake or Olton. L. W. Howard Phone 4993. 43-2tp

WANTED--To rent a farm near Olton. Contact Bill Walden, Phone 2181. 41-tfc

**HOBBY HOUSE**  
 Littlefield, Texas  
 427 Phelps  
 Phone 385-4142

**HICKS ART & FRAME SHOP**

1304 Milwaukee  
 Plainview, Texas  
 "The Home Of Quality Frames and Art Supplies"  
 Grumbacher & Craftint-Devee Oils, Tempra, Poster, Casine, Watercolor, Textile paints and enamel.  
 Pencils, Pastels, Papers, Board & Canvases to Support Any Medium.

"We need your head in our business."

**HUBERT'S BARBER SHOP**  
 Hubert - Duward - Charles

**Water Well Drilling**  
 NO MONEY DOWN 3 YEARS TO PAY  
**Pressure Pump Service**  
**CALVIN COOK**  
 CA-4 4498 2519 Gladney (Seth Ward)  
 PLAINVIEW, TEXAS

OLTON LODGE NO. 1257  
 A. F. & A. M.  
 Stated Meetings 3rd Thursdays  
 DOYLE PINSON, W. M.  
 W. G. FINNEY, secretary  
 Visitors Are Welcome  
 Members Urged To Attend.

**WAYNE'S**  
 -- OFFICE SUPPLIES --  
 PRINTING And LITHOGRAPHING  
 Phone 2561 Olton, Texas

**HOFFMAN TELEVISION**  
 at  
**RILEY'S TV SERVICE**  
 Phone 5131  
 For Expert Repair Service

**AUTO INSURANCE**  
 PAY MONTHLY.  
 THE EASY WAY!  
 Budget All Your Insurance Home - Auto - Business  
**Roy Granbery**  
 INSURANCE AGENCY  
 For More Than 30 Years  
 Olton, Texas Call 2921

**FOR ALL GEAR HEAD**  
 Service and Repair  
 SEE  
**W. M. Whitesides**  
 207 East 5th Street  
 PLAINVIEW, TEXAS

**REGISTERED Polled Herefords**  
 Quality Calves  
**MITCHELL HADDAD**  
 Box 156 Olton, Texas

HAVE IN STOCK 400 NEW RADIATORS. OLD MODELS CLOSING OUT AT 50 TO 75% DISCOUNT.  
**Stovall-Booher**  
 Radiator Sales & Service  
 1019-25 N. Broadway  
 CA 4-2865  
 Plainview, Texas

**Recipes Of The Week**

**Chinese Or Mexican Food ?**

Mrs. Luis Hair this week contributed one of the recipes of the week, one for chow mein. This recipe is something different, something-out-of-the-ordinary and it is a favorite with the Hair family. Try this Far East dish when you want to please your family in a special way.

**CHOW MEIN**  
 Slice into fine strips, keeping each separate:  
 2 cups onions (sliced lengthwise)  
 3 cups celery  
 1 can bamboo shoots, drained  
 1 pound pork, beef, shrimp or chicken  
 In 1 tablespoon oil, fry meat until done, then remove from fire. Slightly saute onions in 1 tablespoon oil and add to meat.  
 Saute bamboo shoots and three-fourths cup mushrooms (canned or fresh) in 1 tablespoon oil and add to meat mixture.

Add to the above mixture 1 can bean sprouts (1 pound drained or 3 cups fresh, sauted), 1 tablespoon fresh ginger, chopped, and a mixture of 1 tablespoon sugar, 3 tablespoons cornstarch, 3 tablespoons soy sauce and three-fourths cup soup stock.  
 Heat thoroughly, stirring slowly. Serve hot with boiled noodles, fried noodles or rice.

**LIKE MEXICAN FOOD?**  
 The other recipe of the week, for tacos and enchiladas, was submitted by Richard Bentz. Simple and easy to prepare, it will be a choice recipe with those persons who like Mexican food.

**TACOS**  
 (Serves four)  
 Chop fine to make a tossed salad:  
 2 tomatoes  
 1 small head lettuce  
 Fry 1 1/2 pound hamburger meat in skillet until well done. Season heavily with garlic, onions, salt and pepper. Add 1/2 pound of the hamburger meat to the salad.  
 Then fry semi-folded tortillas in deep fat (450 degrees) for one minute or until crisp. Add the salad to tortillas.

**ENCHILADAS**  
 (Serves four)  
 Grate 1/2 pound of longhorn cheese. Heat 1 large can of enchilada sauce to boiling point. Dip tortillas in and out of hot grease, repeat this procedure until tortillas are thoroughly heated. Place tortillas in a flat position on a plate, add remaining pound of hamburger meat (left over from tacos recipe) to the tortillas. To the meat, add 3 tablespoons of enchilada sauce.  
 Roll filled tortillas in a circle and stick with a toothpick. Add enchilada sauce (to one's own taste) and grated cheese. Put plate into oven and let it remain there until the cheese is melted.

**Thanksgiving Union Service**

The First Methodist Church, Olton, was the setting Tuesday night Nov. 22, for the community's Thanksgiving service. Other churches participating were the Assembly of God, the First Baptist, the Church of God, the Church of the Nazarene and the Cumberland Presbyterian.

Approximately 200 attended the service.

The Rev. Wilbur F. Gaede, pastor of the First Methodist Church, gave the invocation and a responsive reading was presented by the Rev. Gerald Thomas, pastor of the Cumberland Presbyterian Church.

Announcements and an offertory prayer were given by the Rev. J. W. Douglas, pastor of the Church of the Nazarene. The Rev. J. R. Palser, pastor of the Assembly of God, gave the scripture lesson and the Thanksgiving message was presented by the Rev. J. E. Lewis, pastor of the First Baptist Church.

Benediction was led by the Rev. R. T. Cannon, pastor of the Church of God.

The effort to keep up with living costs today gives a man a run for his money.

**FOR SALE**  
 ONE MODEL D MOLINE  
 CORN SHELTER WITH  
 18 FEET OF CONVEYOR,  
 IN GOOD SHAPE  
**GLEN BEARD**  
 400 Ash Street  
 Plainview, Texas

**COMPANY COMING... STOCK UP ON COKE!**

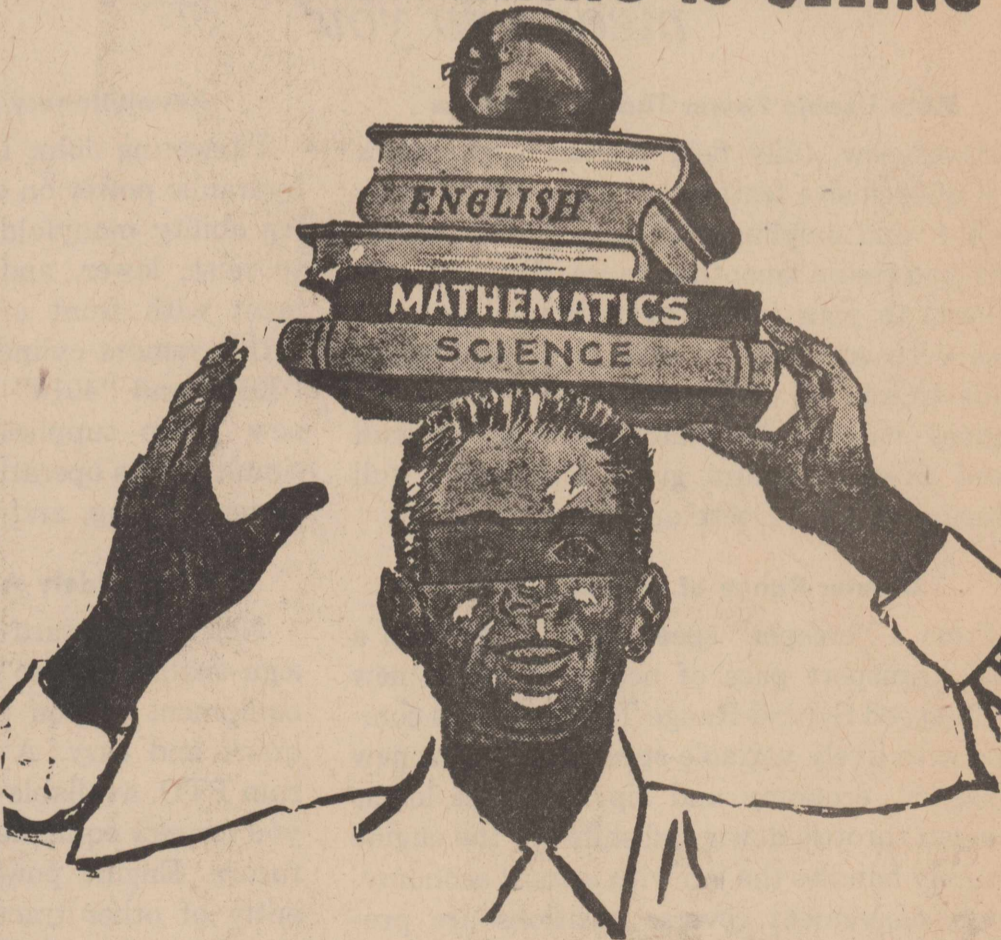


**BE REALLY REFRESHED!** There's a friendly fire and warm hospitality waiting at home... and people waiting for Coca-Cola! Coke... with that cold crisp taste that's bright and bracing as the winter air. Ride through the Holidays refreshed and relaxed... welcome your friends with the real refreshment... plenty of ice-cold Coca-Cola!



Bottled under authority of The Coca-Cola Company by  
**PLAINVIEW COCA-COLA BOTTLING CO.**  
 Plainview, Texas

**80% OF LEARNING IS SEEING**



**MOST DOCTORS RECOMMEND YEARLY VISION EXAMS FOR SCHOOL CHILDREN**  
**SOUTH PLAINS OPTOMETRIC SOCIETY**



Presented as a public service in the interest of Better Vision by the South Plains Optometric Society Members listed below, who are affiliated with the Texas Optometric Association.

**Dr. B. W. Armistead**  
 LITTLEFIELD, TEXAS  
**Dr. Glenn S. Burk**  
 LITTLEFIELD, TEXAS  
**Dr. John Andrews**  
 PLAINVIEW, TEXAS



## Army's Audio School Completed By Hamm

Pvt. James F. Hamm, son of Mr. and Mrs. Ralph F. Hamm, route 2, Springlake, completed the 13-week audio specialist course Nov. 23 at the Army

### OKLAHOMA TRIP

Mr. and Mrs. Calvin Horn, Rose Marie and Terry visited recently in Pauls Valley, Okla., with their daughter and her family Mr. and Mrs. DuralHall and with Mr. and Mrs. B. O. Boyer.

### VISIT IN AMARILLO

Mr. and Mrs. Norman Smith and their daughter, Mrs. Ray Dunagan, all of Olton, visited Sunday at Amarillo in the home of his cousin, and family, Mr. and Mrs. Cecil Smith.

### GUESTS OF CURRYS

Visiting in the C. C. Curry home recently were the Currys' daughter, Mrs. W. J. Wagner and family of Corpus Christi, and son, Archie Curry and family of Portales, N.M. They were guests Thanksgiving Day along with Mr. and Mrs. James Hulsey and son of Socorro, N.M. Guests in the Curry home for lunch Sunday were the Wagners, his mother, Mrs. R. L. Wagner of Amherst, Mr. and Mrs. Robert Smith of Floydada, Mr. and Mrs. Homer Curry and Jimmy and Mr. and Mrs. Clifford Curry, all of Olton. The W. J. Wagners returned Nov. 28 to Corpus Christi.

## Farmers Union State Meeting Starts Friday

County organizations of Texas Farmers Union from throughout the state are flooding the state office at Denton with resolutions to be considered, and possibly adopted, by the convention delegates at the 57th Annual Convention of Texas Farmers Union at Abilene beginning Friday at 9 a.m.

President Alex Dickie Jr. has indicated that these resolutions encompass dozens of questions including all phases of government price supports and acreage control programs and many other matters affected or controlled by Federal, State, and County government. Lists of delegates which are being received in the state office now indicate that the official delegation will exceed 300 delegates and additional hundreds of Farmers Union members are expected to attend one or more of the convention sessions which will be held at the Windsor Hotel in Abilene. One of the main speakers will be the National Farmers Union president, James G. Patton.

## Honor Group Has Meeting

Eleven members were present for an OHS National Honor Society meeting Tuesday, Nov. 29, in the room of Mrs. Clyde Smith, sponsor. Members placed orders for chapter pins and pendants, and two students were inducted. They were Marilyn Jones and Patricia Bowen.

Present were Sharon Smith, Nancy Critchfield, Janice Galaway, Joanna Lewis, Alice Bryant, Lana Hair, Pat Bowen, Marilyn Jones, Ronald Fancher, Harvie Jordan, Sammy Kendall, and Mrs. Clyde Smith, sponsor.

### County Organizations of Texas Farmers Union

County organizations of Texas Farmers Union from throughout the state are flooding the state office at Denton with resolutions to be considered, and possibly adopted, by the convention delegates at the 57th Annual Convention of Texas Farmers Union at Abilene beginning Friday at 9 a.m.

President Alex Dickie Jr. has indicated that these resolutions encompass dozens of questions including all phases of government price supports and acreage control programs and many other matters affected or controlled by Federal, State, and County government. Lists of delegates which are being received in the state office now indicate that the official delegation will exceed 300 delegates and additional hundreds of Farmers Union members are expected to attend one or more of the convention sessions which will be held at the Windsor Hotel in Abilene. One of the main speakers will be the National Farmers Union president, James G. Patton.

### VISIT IN CLOVIS

Mr. and Mrs. Howard Buchenau and children spent Thanksgiving at Clovis, N.M., in the home of her parents, Mr. and Mrs. A. D. Miller. Jack Miller of Albuquerque, N. M., also was present.

# Bowling Scores

### SPRINGLAKE COUPLES

Monday, 9 p.m.

TEAM	W	L
Springlake Elevator	33	23
Thompson Implement	32 1/2	23 1/2
Circle Gin	31	25
Springlake Beauty	30	26

High men's game, Andy Andrew, 202; High men's series, Andy Andrew, 528; High women's series, Lou Non King, 408; High women's game, Francine Andrew, 166; High team game, Bodkin-Nixon, 639; High team series, G. H. Bley, 1772.

### TEN SOLDIERS

Tuesday, 7:00 p.m.

TEAM	W	L
Olton Paint & Body Shop	36 1/2	15 1/2
Adams Tractor	35	17
Thompson Chevrolet	30 1/2	21 1/2
Jeffrey Lumber	29	33
McDonald Spraying Service	20 1/2	31 1/2
City Barber Shop	19 1/2	32 1/2
Moore's Shamrock	19	33
Merrills	18	34

High men's game, Tom Carlisle, 213; High men's series, Tom Carlisle, 576; High team series, Olton Paint & Body, 1892; High team game Mac's Spraying, 692.

### PIONEER MIXED CLASSICS

Tuesday, 9 p.m.

TEAM	W	L
Parsons	34	18
Bodkin & Nixon	32	30
G. H. Bley	31	21
Bodkin Food	29	23
Sherman Food	23	29
Cashway	22	30
Jack Straw Gin	19 1/2	32 1/2
Whittington	17 1/2	34 1/2

High men's game, Andy Andrew, 202; High men's series, Andy Andrew, 528; High women's series, Lou Non King, 408; High women's game, Francine Andrew, 166; High team game, Bodkin-Nixon, 639; High team series, G. H. Bley, 1772.

### TEN PEN BOWLERS

Wednesday, 9:00 p.m.

TEAM	W	L
Roberson-Givens	35	17
Williams Insurance	31	21
Olton State Bank	29	23
Thomas Speed Wash	27	25
Whittington	26	26
Chitwood Insurance	24	29
Sanders Paris	21	31
Campbell's Texaco	15	37

High men's game, David Maxey, 175; High men's series Wayne Hair, 468; High women's game, Jane Wilks, 173; High women's series, Yvonne Williams, 448; High team game, Whittington, 595; High team series, Williams Ins. 1647.

### MEN'S CLASSICS

Thursday, 9 p.m.

TEAMS	W	L
Fitts & Townsend	42	10
Olton Lions Club	35 1/2	16 1/2
Ed Thompson Imp.	29 1/2	22 1/2
Olton Co-op Gin	27 1/2	24 1/2
Olton Grain	23 1/2	28 1/2
Olton Delinting	18	34
Hatley & Machen	17	35
Higginbotham-Bartlett	15	37

High game, Royce Bearden, 232; High series, W. E. Andrew, 550; High team game, Thompson Implement, 855; High team series, Thompson Implement, 2476.

### OLTONETTES PLUS

TEAM	W	L
Hart Camp Gro.	38	10
Consumers	32	16
Farmers Gin	28	20
Doris Machinery	22	26
Hart Camp Coop Gin	22	26
William Potato Shed	20	28
Olton Motor Co.	17	31
Olton Trade Lot	14	34

High game, Speck Cole and Elmer Phillips, 219; High series, C. J. Doris, 581; High team game, Farmers Gin, 641; High team series, Doris Machinery, 1830; Ladies high game, Vera Young, 189; Ladies high series, Vera Young, 469.

### CHANNELETTE

TEAM	W	L
Olton Meat Co.	32	15
Spot Lite Cafe	29	19
Dennis Builder	25	23
Supply Phillips Plumbing & Ditching	24 1/2	23 1/2
Grant Insurance Agency	23	25
Lois Beauty Shop	20 1/2	27 1/2
Lesters Cleaners	19	29
Lo-Balls	19	29

### WEEKEND GUESTS

Recent guests in the Jack Silcott home were Miss Kay Granbery of Boston, Mr. and Mrs. Jess Watson and Mrs. Tommy Baggett, all of Phoenix, Arizona, Mr. and Mrs. Guy Willis of Littlefield, Bill Smith of Olton, and his mother, Mrs. A. J. Smith of Stockton, Calif.

## Fertilizer Ups Grain Yields For Busbys

ATTEND WEDDING  
Miss Frankie Campbell of Amarillo attended the wedding of Patricia LaFrance and Dewey Hukill here Nov. 26. She was a house guest over the weekend in the home of Mr. and Mrs. Clovis Poteet.

LaFRANCE GUESTS  
Guests Nov. 27 in the Ernest LaFrance home were Miss Frankie Campbell of Amarillo, Mr. and Mrs. Clovis Poteet, Mr. and Mrs. O. B. LaFrance, and Jerry Fancher, all of Olton and Miss Carol Bostick of Lubbock.

SAN ANTONIO GUESTS  
Mr. and Mrs. Johnny Boverie, Diane, Steve and Kathy, of San Antonio, were guests in the J. A. Boverie home Thanksgiving Day.

VISIT IN ODESSA  
Mr. and Mrs. Weldon Green, Peggy, Judy, and Tommy Green and Miss Donna May spent Thanksgiving Day in Odessa. They were guests in the homes of Mr. and Mrs. Don Presley, and Mr. and Mrs. John R. Byers.

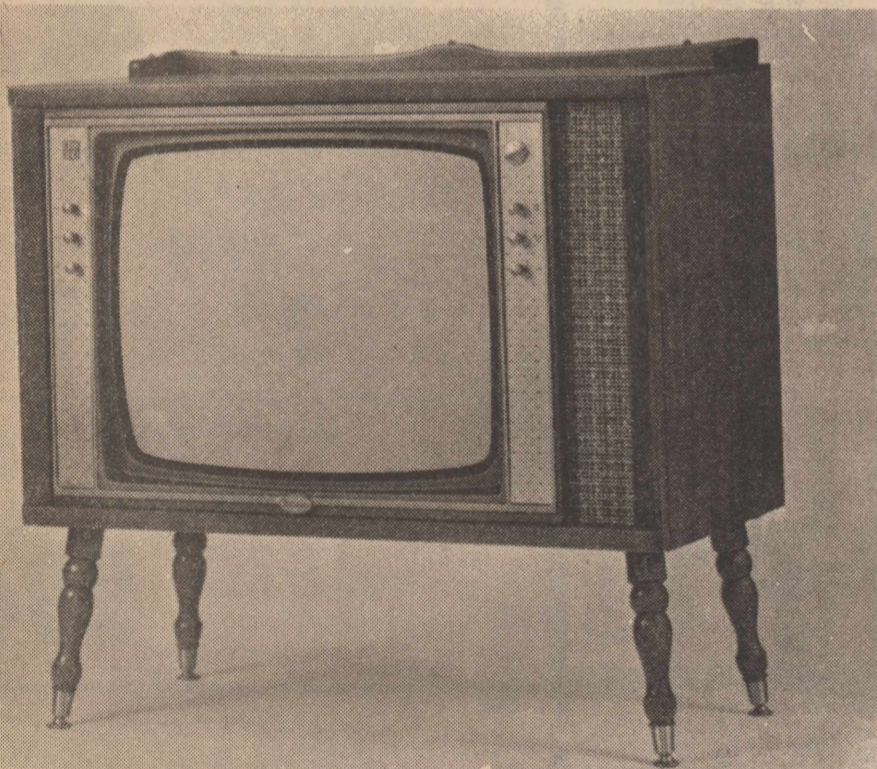
The Busby brothers, Springlake, have found that proper fertilization of grain sorghum pays big dividends in increased yields. Bill Kimbrough, county agent, says the Busbys obtained a soil test and applied the recommended 120-40-0 per acre at a cost of \$10.80 for the fertilizer.

This field produced 5,333 pounds of grain sorghum while an unfertilized check plot produced 3,058 pounds per acre. The Busbys fertilized about 100 acres of grain sorghum with 80-0-0 to the acre which yielded 4247 pounds to the acre at a cost of 4.80.

FACTS AND FIGURES  
The average man is 42 around the waist, 42 around the chest, 96 around the golf course—and a blasted nuisance around the house.

... Santa Fe Magazine

Santa Knows



## A HOFFMAN TV Is The Happy Christmas Gift

- \*23" Square-Cornered Aluminized Picture Tube.
- \*Hand-Wired, Horizontal
- \*Deluxe Mark 5 Chassis
- \*Lifetime Metal Knobs
- \*Transformer Powered

In Beautiful Maple, Walnut, Mahogany Or Limed Oak.

Reg. \$359.95

SPECIAL CHRISTMAS PRICE . . .

**\$250**

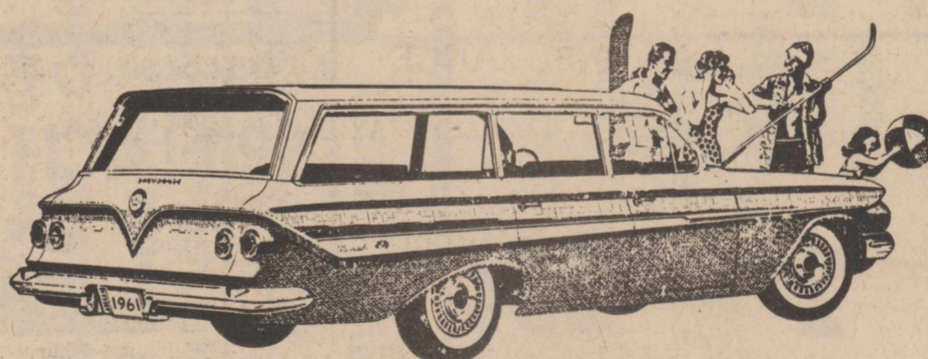
WITH OPERATING TRADE

SEE THEM TODAY!  
**RILEY'S TV**

PHONE 5131

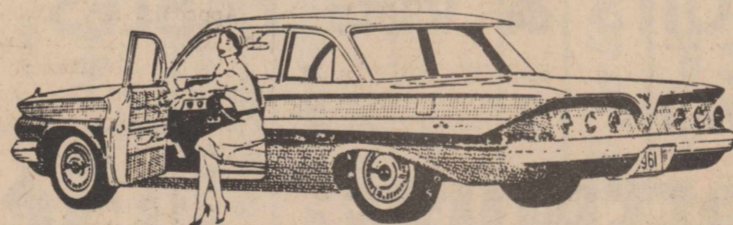
# ONE-STOP SHOPPING FOR A NEW CAR at your Chevrolet dealer's!

Now you can make your car-shopping rounds the easy way—all under one roof! For '61 your Chevrolet dealer offers nearly any type of car you could want—at the kind of price that'll make you want it all the more. There's a whole new crop of Chevy Corvairs with lower priced sedans and coupes and four wonderful new wagons unlike any ever built before in the land. There are new Chevy Biscaynes—the lowest priced full-size Chevrolets, beautiful Bel Airs, elegant Impalas, six easier loading Chevy wagons, including three 9-passenger models. Come in and pick and choose to your heart's content!



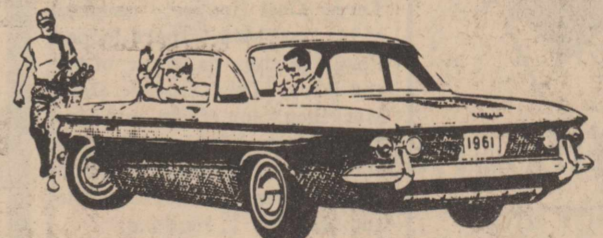
### New '61 Chevrolet NOMAD 9-PASSENGER STATION WAGON

There are six easier loading Chevrolet wagons for '61—ranging from budget-pleasing Brookwoods to luxurious Nomads. Each has a cave-sized cargo opening measuring almost five feet across and a concealed compartment for stowing valuables (with an optional extra-cost lock).



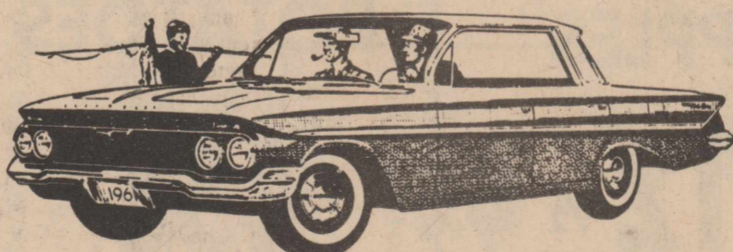
### New '61 Chevrolet IMPALA 2-DOOR SEDAN

Here's a new measure of elegance from the most elegant Chevrolets of all. There's a full line of five Impalas—each with sensible new dimensions right back to an easier-to-pack trunk that loads down at bumper level and lets you pile baggage 15% higher.



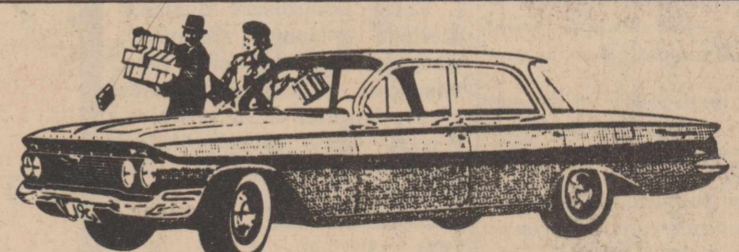
### New lower priced '61 CORVAIRE 700 CLUB COUPE

There's a whole crew of new Chevy Corvairs for '61—polished and perfected to bring you spunk, space and savings. Lower priced sedans and coupes offer nearly 12% more room under the hood for your luggage—and you can also choose from four new family-lovin' wagons.



### New '61 Chevrolet BEL AIR SPORT SEDAN

Beautiful Bel Airs, priced just above the thricest full-size Chevies, bring you newness you use: larger door openings, higher easy-chair seats, more leg room in front, more foot room in the rear, all wrapped up in parkable new outside dimensions.



### New '61 Chevrolet 4-DOOR BISCAYNE 6

NOW—BIG-CAR COMFORT AT SMALL-CAR PRICES—Chevy's new Biscaynes, 6 or V8, are built to save in a big way. They offer a full measure of Chevrolet quality, roominess and proved performance, yet they are priced right down with many cars that give you a lot less.

See the new Chevrolet cars, Chevy Corvairs and the new Corvette at your local authorized Chevrolet dealer's

**THOMPSON CHEVROLET CO.**

PHONE 5551

OLTON, TEXAS



## Junior Play Set Saturday

"If Mother Only Knew", a comedy in three acts will be presented Saturday at 7:30 p.m. in the High School Auditorium by the Olton Junior Class. Tickets may be purchased from any member of the class. Prices are \$1.00 for adults, 50 cents for students and 25 cents for preschool children.

### Two Initiated Into Rainbow Chapter 141

Sandra Thomas and Nancee Buchenau were initiated into the Rainbow Chapter 141 in a regular meeting at the Masonic Hall after a dinner at the Ideal Cafe recently.

Mrs. Bessie May Cox and Mrs. Lenora Smith were visitors from the Hart Eastern Star.

Those present were Mary Roper, Worthy Advisor; Georgeanne Redinger; Lana George, Sharon Lowe, Janice Gallaway, Hazel Beth Smith, Wanda Arrington, Doris Jeffries, Renee Givens, Judy Dennis, Sandra Thomas, Nancee Buchenau and Mrs. Fred George-Mother Advisor.

### Daughter Born To Bill Gallions

Roxanne Gallion was born Friday night, Dec. 2, at 11:57 p. m. in Plainview hospital. The little miss weighed 7 pounds and 11 ounces.

She is daughter of Mr. and Mrs. Billy Gallion of Hart. Maternal grandparents are Mr. and Mrs. L. W. Howard of Olton. Paternal grand parents are Mr. and Mrs. Bill Gallion of Hart.

### Olton 4-H Meet Slated Tonight

Olton 4-H Club will have a meeting Thursday at 7:30 p.m. in the Legion Hut. Refreshments will be served by the Beef Cattle group.

All members are urged to be present.

## SWEATERS



LOOK and FEEL and FIT like NEW after Sanitone Dry Cleaning

Our modern Sanitone cleaning fluids penetrate the fibres and whisk away every trace of soil. Colors sparkle like new.

Our exclusive Soft-Set finish restores the look of newness. Sweaters feel soft and luxurious as new.

We block them to size for like-new fit; there's no danger of stretching, shrinking or sagging.

Your fine sweaters deserve our expert Sanitone care. Call on us today for service.



**Pollard's Cleaners**

Pickup & Delivery Service Anytime

Phone 5241

The play will be presented Friday at 12:45 p.m. for the Elementary and Junior High students and those who will be unable to attend Saturday night.

### HART CAMP NEWS

BY MRS. BLANTON MARTIN

Mr. and Mrs. Ivy Thompson and Mikey entertained a number of relatives and friends with a Thanksgiving dinner in their home. Present were their son and his family, James Ball of Arizona; Mr. and Mrs. Ed Thompson, Knox City; Mr. and Mrs. Gene Thompson and family, Munday; Mr. and Mrs. Bob Thompson, and family, Abilene; Mr. and Mrs. Richard Thompson, Sudan; Mr. and Mrs. Lester English and son, Hereford; Mr. and Mrs. Curtis McKinney and family Borger; Mr. and Mrs. Blanton Martin and Suzanne.

Attending funeral services for Ed Langford at Whitharral recently were Mr. and Mrs. J.C. Muller, Mr. and Mrs. Don Muller, and Mr. and Mrs. Junior Muller. Mr. Langford of Artesia, N.M.

Mr. and Mrs. Blanton Martin and Suzanne visited in the South Texas Children's Home near Beeville recently.

Mr. and Mrs. E.P. Oliver went to Albuquerque over the weekend of Nov. 28 to be with Oliver's mother who is critically ill.

Members of Girls' Auxiliary and their guests were honored with a banquet at the Baptist Church Nov. 22. A Latin American theme was carried out in the decorations and program. The menu consisted of enchiladas, beans, potato salad, rolls, hot punch, and cherry cobbler.

Verley Smith of Wayland College was the speaker. Smith is a native of Jamaica and is studying for the ministry.

Attending the banquet were George Gong, also from Wayland, Jerolyn Timmins, Bobby Jones, Judy Morton, Larry Morton, Kathy Moore, Lajuana Burleson, Suzanne Martin, Shirley Leonard, Sue Moore, Larry Timmins, Sherry Jones, Steven Burleson, Mr. and Mrs. H.V. Lynch, Mr. and Mrs. Elma Burleson, Mr. and Mrs. Blanton Martin, Rev. and Mrs. Jack Moore, and Nancy Briganca and Peggy Green, both of Olton.

### Visiting OHS Grads Listed

OHS graduates home for the weekend included:

From Texas Tech--Kenneth Prestridge, son of Mr. and Mrs. Barton Prestridge; Paul Ray Montgomery, son of Mr. and Mrs. Ray Montgomery; James Ray Hyatt, son of Mr. and Mrs. Jim Hyatt; Jerry Moore, son of Mr. and Mrs. Elmer Moore.

From West Texas State--Terry Gail Hooper, daughter of Mr. and Mrs. Elbert Hooper; Peggy Sluder, daughter of Mr. and Mrs. Tom Sluder; David Morrison, son of Mr. and Mrs. Bob Fisher; John Lynn Burrow, son of Mr. and Mrs. Brent Burrow; Hayden Hankins, son of Mr. and Mrs. W. T. Hankins.

From South Plains Junior College--Roy Neal Jones, son of Mrs. Pauline Jones; Jimmy Moss, son of Mr. and Mrs. Kenneth Moss; Freddie Gordon, son of Mr. and Mrs. Fred Gordon; Jerry Mathis son of Mr. and Mrs. Henry Mathis.

From Draughton's Business College -- Janice Campbell, daughter of Mr. and Mrs. Marshall Campbell; Joyce Gray, daughter of Mr. and Mrs. Virgil Gray; Glenda Miller, daughter of Mr. and Mrs. Glen Miller.

### Students Attend Skating Party

Mrs. R. C. Bailey and her Junior Sunday School class of the Hart Methodist Church enjoyed a skating party in Plainview Friday night. Class members and guests present were Sherry Morrison, Joe Bob Sanders, Larry Parker, Jim Swindle, Robbie and Danny Rice, W. A. Hawkins III, Bob Crick, Margaret and Jerry Swindle. Mr. and Mrs. Bill Swindle and Mrs. H. H. Parker were guests.

BETTER FOODS

BETTER BUYS

BETTER MEALS

Maxwell House

# COFFEE

2 Lb. Can

## \$ 1.17

<p>Duncan Hines DeLuxe</p> <h2 style="font-size: 2em;">CAKE MIXES</h2> <p>2 For 69¢</p>	<p>Blue Seal</p> <h2 style="font-size: 2em;">OLEO</h2> <p>1 lb. Carton 15¢</p>	<p>Kimbell</p> <h2 style="font-size: 2em;">Shortening</h2> <p>3 lb. Can 59¢</p>
---	--	---

<p>Kimbell</p> <h2 style="font-size: 2em;">BISCUITS</h2> <p>2 Cans 15¢</p>	<p>12 Bottle Carton</p> <h2 style="font-size: 2em;">COCA COLA</h2> <p>49¢ Plus Deposit</p>	<p>Our Value Whole</p> <h2 style="font-size: 2em;">APRICOTS</h2> <p>2 2½ Can For 49¢</p>
--	--	--

<p>Kimbell</p> <h2 style="font-size: 2em;">Green Beans And New Potatoes</h2> <p>303 Can 15¢</p>	<h2 style="font-size: 2em;">MEATS</h2> <p>Wilson Corn King</p> <h2 style="font-size: 2em;">BACON</h2> <p>1 Lb. Pkg. 49¢</p>	<p>Quart Bottle</p> <h2 style="font-size: 2em;">CLOROX</h2> <p>19¢</p>
<p>Shedd's</p> <h2 style="font-size: 2em;">Salad Dressing</h2> <p>Qt. Bottle 39¢</p>	<p>Good Lean</p> <h2 style="font-size: 2em;">PORK ROAST</h2> <p>Lb. 45¢</p>	<p>Kimbell</p> <h2 style="font-size: 2em;">ORANGE JUICE</h2> <p>46 oz. Can 33¢</p>
<p>Giant Box</p> <h2 style="font-size: 2em;">FAB</h2> <p>69¢</p>	<p>Fresh Ground</p> <h2 style="font-size: 2em;">HAMBURGER</h2> <p>3 Lbs. For \$1</p>	<p>Diamond Cream Style Yellow</p> <h2 style="font-size: 2em;">CORN</h2> <p>303 Can 2 for 29¢</p>
<p>Gladiola</p> <h2 style="font-size: 2em;">FLOUR</h2> <p>25 lb. Bag \$1.89</p>	<p>Fresh Cut</p> <h2 style="font-size: 2em;">PORK STEAK</h2> <p>Lb. 49¢</p>	<p>Mrs. Winston</p> <h2 style="font-size: 2em;">GRAPE JAM</h2> <p>20 oz. Glass 29¢</p>

<p>Woodbury</p> <h2 style="font-size: 2em;">SOAP</h2> <p>Bath Size</p> <p>2 Bars 25¢</p>	<p>Hunt's</p> <h2 style="font-size: 2em;">SPINACH</h2> <p>303 Can</p> <p>2 for 29¢</p>	<p>Hunt's 303 Can</p> <h2 style="font-size: 2em;">FRUIT COCKTAIL</h2> <p>2 For 45¢</p>
--	--	--

<h2 style="font-size: 2em;">FRUITS &amp; VEGETABLES</h2>		<p>Swift</p> <h2 style="font-size: 2em;">VIENNA SAUSAGE</h2> <p>4 Oz. Can 17¢</p>
<p>Texas Ruby Red</p> <h2 style="font-size: 2em;">GRAPEFRUIT</h2> <p>Each 5¢</p>	<p>Kimbell Sliced</p> <h2 style="font-size: 2em;">APPLES</h2> <p>303 Can 19¢</p>	
<p>Fancy Red Rome</p> <h2 style="font-size: 2em;">APPLES</h2> <p>Lb. 12 ½ ¢</p>	<p>Red</p> <h2 style="font-size: 2em;">POTATOES</h2> <p>10 lb. Bag 45¢</p>	

Texas

# CABBAGE

Lb. 3¢

DOUBLE GUNN BROS STAMPS EVERY WEDNESDAY

Phone 3581

**CASH WAY**

Where Friends Meet and Prices Talk

Free Delivery

**FOOD STORE**

SPECIALS EVERY DAY



# SELLING OUT SALE

## Just In Time For Christmas



We are selling our entire stock of new furniture and gifts. Everything goes, nothing held back. Here is the opportunity of a lifetime to buy nationally known brand merchandise at 30 to 50% discount. This sale starts Dec. 7 and will continue until everything is sold. Come in while you have a selection!



### Living Room Furniture

- Sleeper.** Foam Rubber Cushions 252 Spring Innerspring Mattress. Reg. \$299. Now. **\$169.**
- 2 Piece Couch And Chair** Polyfoam cushions Toast Color. Reg. \$229. Now. **\$149.**
- 2 Piece Couch And Chair** Foam Rubber Cushions Life Time Guarantee Construction. Reg. \$279.95 Sale **\$179.**
- 2 Piece Couch And Chair** All Foam Cushions And Molded Rubber Back Acetate Cover. Reg. \$279.95 Sale **\$199.95**
- Maple Tables** Set Of Three, Two Step And One Coffee Sale **\$36.50**
- Walnut, Maple, Limed Oak Tables All At Close Out Prices

### Bed Room Suites

- Bassett **Bed Room Suite** Golden Bisque New Style Dresser Reg. \$199.95 Sale **\$139.** And Trade.
- Two Piece **Bed Room Suite** Antique White Solid Wood Reg. \$159.95 Sale **\$109.95** and Trade
- Two Piece **Bed Room Suite** Solid Walnut Reg. \$159.95 Sale **\$119.95** And Trade.
- Walnut **Bed Room Suite** Three Piece Sale **\$129.** Two Piece Bed Room Suite Sale **\$99.**
- Two Piece **Bed Room Suite** Special Close Out **\$88.50** Chest To Match **\$34.50**
- Maple **Bed Room Suites** Two Piece **\$109.** Chest To Match **\$34.50**

### Chairs

- Lounging Chairs** Two Postitions. Reg. \$89.95 Sale Price **\$59.95**
- Large **Swivel Rocker** Foam Rubber Cushion. Reg. \$89.95 Sale **\$59.95**
- Swivel Chair** Reg. \$79.00 Sale **\$44.50**
- We Have Many Colors And Styles In Chairs At Prices You Can Afford.
- Childs **Lounging Chair** In Asfera Plastic. Reg. \$29.95 Close Out **\$22.50**
- Childrens Small **Rockers** And Chairs **\$3.** Up.

### L.D. Bookcases Glass Doors

- Reg. \$39.95 Now Only **\$29**
- Rock Maple Desk** Reg. \$79.95 Sale Only **\$54.50**
- Limed Oak Desk** Reg. \$89.50 Only **\$49.**
- Toss Pillows** **88¢** each
- Lamps** **30 To 50%** off
- Viscose Rug And Pad** 9x12 Reg. \$59.95 Sale **\$44.50**
- Sofa Bed And Chair** Aqua, Sale **\$139** With Trade
- Maple **Sofa Bed And Chair** **Ottoman** Only **\$149**

### GE Appliances

- Mobile Maid Dishwasher** **\$179. \$199. \$209.**
- Home Freezers** 18 Ft. Close Out **\$350.** 11 Ft. Close Out **\$189.**
- Combination 13 Ft. **Freezer-Refrigerator** Frost Free **\$389.** And Trade.
- Refrigerator** 11 Ft. Frost Free Close Out **\$248.** And Trade.
- Refrigerator** 11 Ft. (Pink Color) Close Out **\$209.**
- Refrigerator** 11 Ft. (White) Close Out **\$199.**
- Range** 30 In. Automatic 24 In. Oven Close Out. **\$149.**

### Mirrors

- MIRRORS** Bevel Edge and Backed.
- 30x40** Reg. 14.95 Sale **12.00**
- 28x36** Reg. 13.50 Sale **10.00**
- 18x36** Reg. 7.95 Sale **6.50**
- Gold Antique Framed **Mirror** Reg. \$8.95 Sale **6.95** Reg. \$12.50 Sale **8.50**
- Pictures** With White, Maple, Gold and Antique Gold Frames From **5.95** To **8.50**
- For Door 20x68 Plate Glass Bevel Edge **Mirror** **16.50**



### Sunray Gas Range

30" Has Electric Clock And Robert Shaw Oven Control. 24 inch oven **\$139.95**

### Summary Gas Range

36" Robert Shaw Oven Control. Only **\$119.95**

# THOMAS FURNITURE

East Side Of Square

Olton

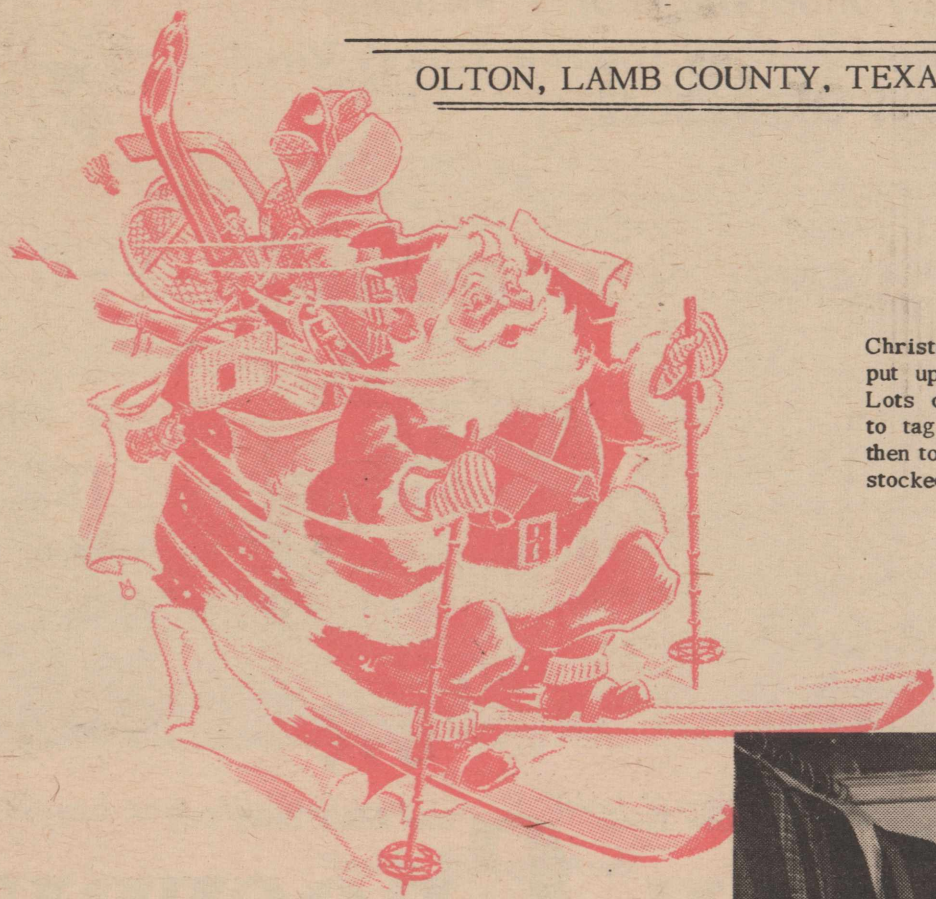
Phone 4631

**MANY GIFT ITEMS TOO NUMEROUS TO MENTION.**



# THE OLTON ENTERPRISE

OLTON, LAMB COUNTY, TEXAS, THURSDAY, DECEMBER 8, 1960 SPECIAL SECTION



## A Christmas Tour

Christmas shopping in Olton went into full swing this week as merchants began to put up their Christmas decorations and make special displays for their many wares. Lots of shoppers were out and among them was the Don Spain family. So we decided to tag along with a camera. We invite you to join the Spains on their shopping tour and then to make your own and see for yourself all of these things that Olton merchants have stocked for YOU for CHRISTMAS.

**SANTA IS COMING TO OLTON DEC. 10**

## "Say Dad.."

"I Kinda Like This," Steve Hinted About This Sport Coat And Matching Trousers By Tom Sawyer. Don Might Have Been Hinting Just A Little Bit Too When He Admired The Handsome Stylemart Suit He's Modeling.



### FOR MEN

- \*STYLEMART SUITS, TOPCOATS, SPORT COATS
- \* STETSON HATS \* CRESCO JACKETS
- \* FREEMAN SHOES \* EVANS HOUSE SLIPPERS
- \* JAYSON DRESS AND SPORT SHIRTS
- \* Mc GREGOR SPORT SHIRTS AND JACKETS
- \* JOCKEY UNDERWEAR AND SOX
- \* HOLEPROOF SOX AND JIFFIES
- \* BELTS \* TIES \* JEWELRY

### FOR BOYS

#### TOM SAWYER DEPARTMENT

- \* JACKETS \* SPORT SHIRTS \* SPORT COATS
- \* SLACKS \* SOX \* TIES
- \* BROADCLOTH PAJAMAS \* WHITE SHIRTS
- \* KNIT SHIRTS

#### CLASSMATE SHOES.

for Boys

Sizes  
3-9

Widths  
A-B-C-D

#### BLUE JEANS

By

Lee Riders And  
Farah "Gold Strike"

**A GIFT CERTIFICATE FROM KELLEY'S MAKES AN IDEAL GIFT!**



# KELLEY'S

**Clothiers For Men and Boys**







A Stop By Gray Grocery Is A Must On Any Shopping Tour. Even Janet Is Impressed By The Fine Turkey Virgil Gray Shows Susie.



Shelled <b>PECANS</b> 8 oz. <b>83¢</b>	Bakerite <b>SHORTENING</b> 3 lbs. <b>59¢</b>	White Swan <b>COFFEE</b> 1 lb. <b>69¢</b>
Pet or Carnation <b>MILK</b> 2 Tall Cans <b>29¢</b>	<b>GIVE A HALF A BEEF</b> This Christmas	Giant Size <b>TIDE</b> <b>79¢</b>
<b>SUGAR</b> 5 lbs. <b>49¢</b>	Choice Round <b>STEAK</b> lb. <b>89¢</b>	Choice Chuck <b>ROAST</b> lb. <b>49¢</b>

Every Day Low Prices Low Prices Every Day  
**GRAY GROCERY**

We Give Western Bonus and Frontier Stamps  
Double Stamps On Wed. With \$2.50 or More Purchase

Phone 4551 Olton FREE DELIVERY Hi-Way 70

**ORANGES**

5 lb. Bag

**43¢**

White Swan

**BISCUITS**

3 Cans

**25¢**

Look For Santa Dec. 10

**THE WONDERFUL WORLD OF TOYS...**

Its Hard To Say Who Enjoyed The Visit To Duncans More, Janet and Little Robin or Susie. Or Maybe It Was Bob Duncan Who Had As Much Fun As Anybody. Shop Duncan's First.

One Group

**DOLLS**

**1/2 Price**

**TOY TEA SETS**

Reg. \$2.98

**\$1.98**

One Group

**YONKA TOYS**

Reg. \$12.95

**\$6.95**

**ERECTOR SET**

Reg.

\$17.95 **\$9.95**

**TOY TEA SETS,**

Reg.

\$3.98 **\$2.98**

**WONDER HORSE**

Reg.

\$24.95 **\$15.95**

Reg.

\$14.95 **\$8.95**

Reg.

\$10.95 **\$8.95**

Electric

**BASKET BALL SET**

Reg. 6.95

**\$4.95**

**WE HAVE MANY MORE BARGAINS!**



**DUNCAN'S 5¢ & 10¢ STORE**

**Big Selection Of Christmas Gifts**

**HOCKEY GAME**

Reg. \$9.95

**\$6.95**



**"Put 'em Up Mister..."**



As The Photographer Prepared His Shot, Little Robin Decided He'd Do Some Shooting On His Own While Janet Decided She Believed She'd Just Keep This Doll Shown Her By Mabel Carothers— Why Wait Until Christmas?

**TOYS - TOYS - TOYS**

And More Toys Are What You'll Find At Whites. Toys Of Every Kind, Shape And Fashion.

Also Many Other Gift Items Such As

\*Electric Blankets

\*Cameras

\*Radios

\*Small Appliances

\*Large Appliances

Everything For Christmas



M. T. James, Owner



Santa Will Be

In Olton Dec. 10

**A MOST IMPORTANT STOP...**

Is By G.H. Bley Service Station. As Dwain Walker Filled The Gas Tank, The Spains Stopped For A Chat With Garrett Bley And He Reminded Them...

**"IF YOU'RE PLANNING A CHRISTMAS TRIP LET US MAKE SURE YOUR CAR IS IN TOP SHAPE"**

**Your Phillips**

**66**

Dealer In Olton.

"We Give Big Chief Stamps"

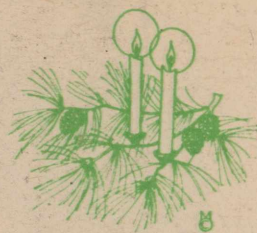
**G. H. BLEY**







## Has Santa Been Here Already?



JoEllen wanted to know, when Herman Meyer showed the Spains his Christmas display. And indeed it looked as though he had. A visit to this store is not only a saving to your pocketbook but a pleasant experience.

Double Stamps On Wed.

Santa Will Come To Olton Dec. 10

- \*Nuts
- \*Fruitcake Mixes
- \*Boxed And Bagged Candy
- \*Everything To Fill That Stocking

Order Your Turkeys And Hams For Christmas Here.

Phone 3581

Free Delivery

**CASH WAY** **FOOD STORE**

Where Friends Meet and Prices Talk

SPECIALS EVERY DAY



## GIFT HEADQUARTERS

There's something for everyone on your list at Smith & Struve as Susie Spain found out. Susie tried on this attractive carcoat with an appealing price of only \$11.95 while JoEllen and Janet modeled their choice. The girl's coats were priced at \$8.95 each.

- \*All Types Of Childrens Clothes
- \*Ladies And Girls Housecoats
- \*Ladies Sweaters
- \*Men's Hats
- \*Blankets
- \*Luggage
- \*Billfolds
- \*Purses
- \*Gloves
- \*Costume Jewelry
- \*Belts
- \*Boots For Daddy Or For The Wee Tot



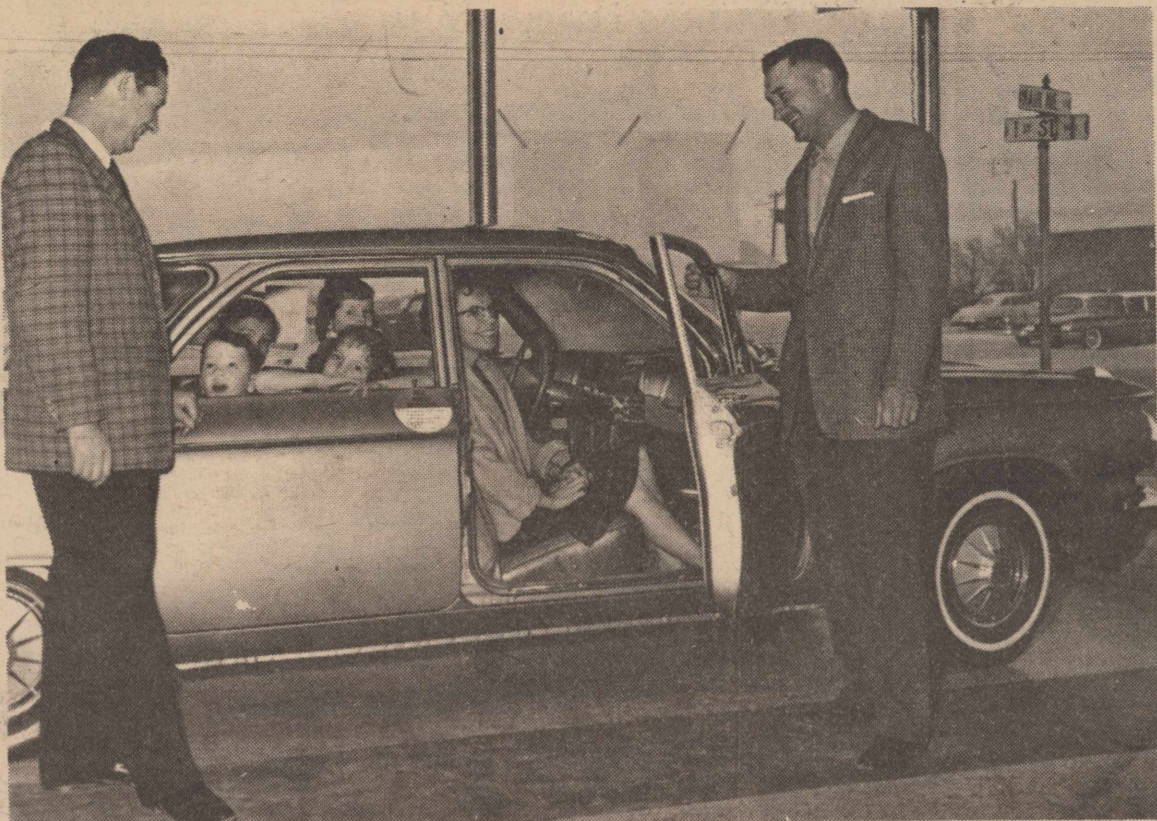
You Can Find It At

**SMITH & STRUVE**

We Handle Nationally Advertised Brands







## Room For The Whole Family



And the Don Spains proved it when they stopped by to see Fred Thompson and have a look at the new Corvair. "What a wonderful Christmas present this would make," Susie commented.

## THE CHRISTMAS PRESENT THAT LASTS!

- \*Proved Low Maintenance
- \*Ideal Weight Distribution
- \*Inside Storage Area
- \*Upfront Trunk
- \*Remarkable Ride
- \*4-Wheel Independent Suspension

**Corvair - Still The Newest Car In America!**

# THOMPSON CHEVROLET

Santa Is Coming To Olton Dec. 10



## Oh, So Nice . . . .

Oh, so nice and warm thinks Mama Susie and just plain nice to JoEllen and Janet are these 100% nylon pile coats and matching hats by Facho. In her up-to-date shop Mabel Bizzell is ready for Christmas shoppers with such items as . . . .



- \*Henson Lingerie
- \*Smartee Sports Wear
- \*Eunice Ann Custom Made Blouses
- \*Graff Sports Wear
- \*Trim Sports Wear
- \*Hattie Carnegie Perfume And Cologne
- \*White Stag \*Minx Makes \* Kabro \*Candy Jrs.

Mabel showed us beautiful dresses, blouses, skirts, sweaters, sportswear, lingerie, costume jewelry, hats, purses -- everything for Christmas. Then we went to the Children's department. . . . .

- \*Dotty Danfor boys from 1-6
- \*Essky for boys from 6-16
- \*White Stag for girls
- \*Gem-way dresses
- \*Carrcraft coats
- \*Children's Lingerie of Texas

**Complete Line Of Infants Wear**

In Olton It's

# BIZZELL'S







### "... And For Mommy ..."

Don and Robin closely inspect some of the lovely sweaters at Whittington's while JoEllen and Janet find it difficult to make a decision -- so many pretty things for the ladies on the Christmas list.

### Bobbie Brooks - Jantzen

- \*Sweaters
- \*Skirts
- \*Blouses
- \*Slim Jims

In Co-ordinated Colors



### Lovely, Indeed

is this solid cherry bedroom suite. Percy Parsons shows the Spains. Made by B.F. Huntley, it's French Provincial with a butternut finish. Also available in Antique white.

#### SEE OUR

- \*Lamps
- \*Mirrors
- \*Pictures
- \*Hassocks
- \*Throw Pillows
- \*Fireplace Accessories
- \*Lane Cedar Chests

- \*Living Room Furniture By Davis, Dulaney, Covey & Permalux
- \*Carpet In All Colors And Types - Expert Installation
- \*Appliances By Frigidaire

Gifts To Remember From

## Parsons Furniture

SANTA IS COMING TO OLTON DEC. 10

### For The Handy Man

On her list Susie stopped by Higginbotham Bartlett where Bob Gullett showed her the latest thing in power tools by

### Black And Decker

### "The Choice Of Experts!"



If you have a gift problem, stop by and let Bob or Carroll Cox show you some of their many gift items including mirrors and any type of tool, electric or not, that you might be interested in.

### Higginbotham Bartlett

- \*Billfolds
- \*Blankets
- \*Hosiery
- \*Buster Brown Wear
- \*Sport Shirts
- \*Bates Bedspreads
- \*Boxed Towel Sets
- \*Luncheon Cloths
- \*Men's Pajamas
- \*Sweaters For Grandma And Grandad
- \*Men's Dress Gloves
- \*Lingerie
- \*Carcoats
- \*Men's Jackets
- \*Pure Silk Yard Goods

LAY-A-WAY OR CHARGE IT

## Whittington's, Inc.

SANTA IS COMING TO OLTON DEC. 10

### A Sure Hit . . .

For the bowler on Christmas morning would be a gift from Olton Bowling Center. The Spains took time out for a little refreshment at the snack bar and to look over some of the fine bowling equipment Tom Car features. Such as bowling balls and bags, shirts, sox, gloves, hand conditioner and shoes.

You Can Still Enter The Men's Handicap Tournament. Deadline Is Midnite Dec. 8

#### FREE

Bowling lessons to be given on Mondays at 2 p.m. and Fridays at 6 p.m.

Ask About Them

### Olton Bowling Center Inc.

