

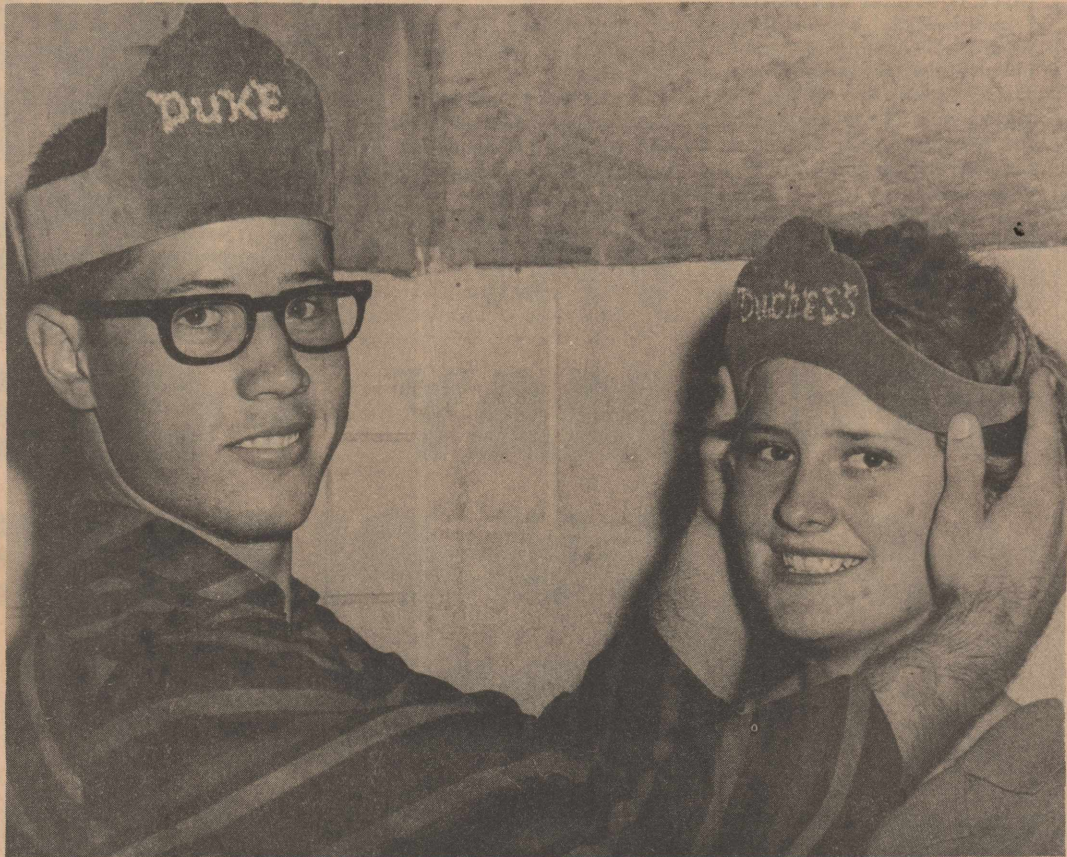


"The Golden Gate To The Golden Road"

OLTON, LAMB COUNTY, TEXAS, THURSDAY, NOVEMBER 1, 1962

VOLUME 36

NUMBER 39



BAND DUKE AND DUCHESS--Named by Olton High School band members are duke and duchess last Friday at a school pep rally were Barry Prestridge, son of Mr. and Mrs. Barton Prestridge, and Bobby Tollett, daughter of Mr. and Mrs. Thurston Tollett. The two also are drum major and majorette of the Mustang band.

## 2-Party Showdown Scheduled Tuesday

### 2,600 Out For Second SOS Clinic

Over 2,600 persons turned out here Sunday afternoon for Olton's second Sabin oral polio clinic.

Type II vaccine was given at the clinic.

A make-up clinic, for those who missed last Sunday's clinic, will be held from 2 to 5 p.m. in the school lunchroom this Sunday.

Approximately \$665 in donations was contributed. No charge is made for the vaccine but all donations are accepted.

Workers at the clinic included Laus Hair, Gene Trotter, Ed Thompson, Fred Shaw, Theo Hackler, Dr. Basil Johns, Jim Huggins, Marquita Mendoza, Nancy Nafzger, Naomi Machen, Betty Jo Hall, Gayle Allcorn, Glenda Tussy and Jackie Johns.

Melvin McReynolds, Chamber of Commerce and Agriculture manager, expressed appreciation to all those who helped at the clinic and furnished materials.

The clinics are being sponsored here by the CC-A.



PARSONS' NEW HOME--Colonial architecture is featured on the exterior of the new Parsons Funeral Home, which will be shown to the public at an open house Sunday afternoon.

### Key Races Highlight Election

Texas' traditional one-party system faces a challenge from the state's top office down to the county level Tuesday as Democrat and Republican candidates square off in the general election.

The GOP, launching its first major bid for a two-party system, has Jack Cox of Breckenridge as its standard bearer.

John Connally of Fort Worth, winner over Houston's Don Yarborough in a June run-off, heads the Demo ticket.

The Cox-Connally race for the governorship, along with battles for this district's state representative and county judge, have captured voter interest in this area. People will be watching all three races closely.

Polls in Olton--at the junction high gymnasium--will open at 8 a.m. and close at 7 p.m. Eldon Franks is election judge.

In addition to a full slate of candidates, this year's long ballot carries 14 constitutional amendments. These are explained in detail on pages 4 and 5 of section two.

Olton, known for its conservative leanings, will pick between two conservatives in the state representative race.

Billy Wayne Clayton of Springlake made it into the general election with a run-off victory over B.M. Nelson of Dimmitt.

His opponent, Frank Ford of Hereford, faced no opposition in the GOP primaries.

Ray Keeling of Littlefield got through the GOP primaries in the same fashion to earn the nomination for county judge. He's opposed by J.B. Davis of Rocky Ford, who slipped past Olton's Truitt Sides in the first Demo primary.

Another race of local interest is that for county school superintendent. C. Roy Stevens, now serving in the post, will face Mrs. Doris Eaton, who campaigned on a platform of wanting to do away with the job. State Senator Andy Rogers of Childress faces opposition this year. His opponent is Dennis Taylor of Crosby County.

GOP candidate Desmond Barry of Galveston is pitted against Joe Pool of Dallas in the congressman-at-large race.

Lubbock's Preston Smith, the Demo nominee for lieutenant governor, is opposed by Billy Hayes, Temple Republican.

Waggoner Car of Lubbock has a GOP opponent--T. Kennerly of Houston--in his bid for the attorney general's post.

Both Smith and Carr should win handily, observers say, but Pool will have a battle on his hands in the congressman-at-large race.

#### C-CA BOARD MEET

The Olton Chamber of Commerce and Agriculture board of directors will meet Tuesday Nov. 6 at 6:30 a.m. at Ideal Cafe. All board members are urged to be present.

CONTINUED ON PAGE 4

## Parsons' Open House Scheduled Here Sunday

Parsons Funeral Home, which has served the Olton-Hart - Springlake - Earth area the past four years, will hold open house in a new building Sunday from 2 to 6 p.m.

"We want to extend a special invitation to our friends throughout the area to visit with us and tour our new facilities," Percy Parsons, owner, said this week.

The new building, located at 715 W. 9th in Olton, was com-

pleted last week by Higginbotham-Bartlett Lumber Co. of Olton.

The firm's new home offers greatly expanded facilities for its services.

Outside, a colonial exterior features the all-new building. Gas lights in front of the building illuminate a spacious driveway and parking area.

Interior decoration is early American.

A 10 by 23-foot reception

room stretches across most of the front of the funeral home. Adjacent to the reception area is an office.

Behind the reception area are four other rooms, including two 13 by 15-foot repos-

ing rooms, a casket display room and a preparation room. A long hall, running from front to back separates the repos-

ing area from the display and preparation rooms. The new building also has two restrooms and a coffee bar.

The funeral home has neutral wool tweed carpet throughout, except for a small area near the entrance. Walls in the reception and repos-

ing areas are done in a colonial style paper. The office has walnut paneling on two walls.

Color scheme in the reception area incorporates hues of green and brown. Bone white drapes with beige stripes and gold flecks add to the quiet,

### P-TA TO HEAR AMARILLO MAN

Herbert O. Wilburn of Wilburn Tank Co., Amarillo, will speak to the Olton PTA next Thursday night in the school lunchroom.

Title of his talk will be "How To Improve Our Schools."

Wilburn is a member of the state school board.

A question and answer period will be held after his address.

## Mustangs, Mules Meet Friday Night

Muleshoe's Mules, rolling along unbeaten in District 3-AA action, will play host to Olton's Mustangs at Muleshoe Friday night at 7:30.

Both teams could retain a chance for part of the district title with a victory, but Muleshoe is in the driver's seat.

The Mules won their only conference start, a 7-0 nudging of Morton two weeks ago. The Mules were idle last week.

Olton can stay in contention with a win, the Mustangs owning a 1-1 record after meeting Dimmitt and Morton. The Ponies topped Morton, 13-9, last Friday night at Morton.

A loss would knock the Mustangs out completely. A victory would give them a chance for a district title tie, in the event Dimmitt (2-0) fell victim to either Muleshoe or Morton in later games.

The Mules will enter the contest a slight favorite. They outgained Morton 167-83 on the ground two weeks ago and played tough defensively.

It took a 55-yard scoring aerial from quarterback, Kenny Heathington to end Larry Allen to notch the only TD of the night, however. Heathing-

ton, Jimmy Cabrera and Jerry Gilbreath are the two Mule offensive stars.

Muleshoe's light but tough line is led by tackles Mike Miller and Alvin Reasoner.

For the season, the Mules are 2-4-1. The victories were over Morton and Hereford, 13-6 and the tie was with Clovis, 14-14. Losses were to Tullia 21-0; Littlefield, 35-0; Dumas, 60-6; and Seagraves, 18-14.

Injuries have slowed the Mustangs in recent weeks, but they were able to topple Morton with a clutch defensive effort.

The Muleshoe crew has been a strong second-half outfit all year, coming from behind in both the Hereford and Clovis games.

They put up a terrific second half battle against Seagraves, ranked no. 1 in Class A at the time. Strong point for the Mules has been their running attack.

Olton, on the other hand, has had its second half troubles all year. The Mustangs led Abernathy, but lost 8-7; fell to a last-quarter Floydada surge, 27-12; and led 21-6 over Tullia until the Hornets came roaring back with late TD's.



SUCCESSFUL SALE--The action is intense during Olton Swine Breeders' annual weaning pig sale held here last Saturday at the FFA show barns. About 300 pigs were sold for a total of approximately \$7,000. High priced pig was sold by L.B. Kennedy to ag student Paul Hernandez for \$73. It was a Berkshire. Buyers were here from throughout the area and from several faraway points.

Kennedy to ag student Paul Hernandez for \$73. It was a Berkshire. Buyers were here from throughout the area and from several faraway points.



### SPOOTIN' OFF Sure Things On Election

THE OLD SAYING--"Only two things are sure: Death and Taxes"...isn't always true.

When election time rolls around, you can pretty well count on three other things. Art Nafzger is a Republican. Paul Nafzger is a Democrat. And Bill Turner is a split-ticket voter.

One other thing is sure, too: All three think they're right.

I TALKED SOME with both Paul and Art this week. Nothing they said made me change my mind. I don't think I changed theirs, either.

Might add that I talked to them separately...you're not going to get me caught in that sort of crossfire.

In one way, I sort of envy the Nafzgers. They can walk up to the polls next Tuesday without even worrying about who's running against who.

In my case, I'm having some trouble making up my mind, especially in the state representative race.

THAT'S A RACE where nobody except one of the candidates loses. I think either man would make us a fine, honest representative in Austin.

Bill Clayton is highly respected in these parts and he's a clinch to run strong in Lamb County. Frank Ford rates tops with people who know him in Hereford and Deaf Smith County.

I get a kick out of watching the developments at Bovina, where Dolph Moten is the publisher.

Dolph is a dyed-in-the-wool Democrat and I sometimes worry that he would vote that way regardless of the candidate. Dolph and Frank are old Texas A&M grads and personal friends. Yet, Moten says he is a Clayton man when it comes to the election. There isn't a way in the world, he says, that he could feel right about voting for a Republican.

Dolph said as much in his column one week and told Frank the same thing to his face. Frank took it good naturedly and last week Ford even bought a little space with Dolph, carrying this message: "Let's Fool Ol' Dolph, Let's Elect Frank Ford."

THE WIFE AND I have debated that race and it may turn out that we'll cancel each other's vote.

But that's the American way.

I think it's also the American way for people to vote as they please, for the candidate of their choice, regardless of party, or party pledges.

Legally, and morally, too, people have a right to disregard party at election time.

I'VE MADE UP my mind on some of the other races, and these choices ought to irritate both Paul and Art Nafzger:

I'm strong for Jack Cox for governor. John Connally can smooth-talk all he wants to about Lyndon just being a good friend. That's excuse enough for me to vote for Cox.

I like Preston Smith for lieutenant governor and Waggoner Carr for attorney general. And George Mahon, I think, will be and should be a solid choice to keep his seat in Congress.

Des Barry, in my opinion, stands head and shoulders above Joe Pool in the Congressman-at-Large race.

On the county level, I feel Ray Keeling has the background and qualifications to make us a fine county judge.

I knew Ray when he was mayor of Littlefield. At time, he found himself in tough situations and he wasn't the kind to try to please everybody. But he had the respect of both friend and foe.

That's the way I see 'em. Like I told a friend over coffee this week, I hope my saying so doesn't get 'em defeated.

YOU'VE GOT to take your hat off to Percy and Margaret Parsons.

They came here four years ago and put in Olton's first funeral home.

Sunday, they'll hold open house in a new building. It's as fine an establishment as you'll find in lots of big cities.

Percy has been a fine community worker since he came here and has gained respect for both himself and his place of business.

His new building is a real credit to the community and the area.

Elsewhere in this issue, pages 4 and 5, section two, you'll find "The Pro and Con of the 14 Proposed Amendments," along with a sample ballot.

It would be a good idea for every voter to prepare himself before he goes to the polls next Tuesday.

Go ahead and vote, even if you don't vote the way I think you ought to!

### Youths Raise Money For CROP

Approximately 38 youths from the Baptist, Nazarene and Methodist Churches raised \$192 here Sunday night during a trick or treat for CROP, Christian Rural Overseas Program.

The group met at the Meth-

odist Church at 8:30 p.m. Willie Gene Green, general chairman, organized groups and assigned areas.

Refreshments were served by the Methodist youths after the canvass.



## The Olton Enterprise

Published each Thursday at Olton, Texas.

Entered as second class matter at the post office at Olton, Texas, under the act of Congress, March 3, 1897.

Any erroneous reflection upon the character, firm or corporation which may appear in the columns of The Olton Enterprise, will be gladly corrected upon being brought to the attention of the publisher.

Subscription rates: \$3.00 per year in Lamb and neighboring counties; \$5.00 per year elsewhere.



BILL TURNER . . . . . PUBLISHER  
 AMY TURNER . . . . . NEWS EDITOR  
 DOROTHY HOLT . . . . . SOCIETY EDITOR  
 RUDY HARRELL . . . . . ADVERTISING  
 CHARLOTTE MORRIS . . . . . COMPOSITOR  
 TORCHIE CURRY . . . . . OPERATOR  
 ELAINE AVERITT . . . . . PASTE-UP  
 BOBBYE TOLLETT . . . . . SCHOOL NEWS

## EDITORIAL The Amendments

When voters go to the polls next Tuesday, they will have to consider 14 proposed amendments to the Texas State Constitution. These amendments are listed at the end of the general election ballot.

The pros and cons of each amendment may be found on pages four and five of the second section in this paper.

They may be divided into three groups, with one group concerned with social welfare, another with specific counties or cities and the third with administrative problems of the state government.

One of the amendments, No. 14 or the "Trial de Novo" amendment, has probably kicked up more controversy than the others put together.

It would not only render all administrative boards, commissions and councils incapable of making firm decisions, but would transfer their burdens to the already overburdened court system.

We consider this piece of legislation, not only irresponsible, but, quite possibly dangerous.

Others in the administrative group are numbers 4, 11, 7 and 10.

Amendment No. 4 is a pet of Governor Price Daniel's. It would authorize the state Water Development Board to use bond funds already authorized for the purpose of acquiring reservoirs for water storage. The amendment carries a \$200 million price tag, this being the limit placed on total bond issue.

Number 11 would permit the State to sell any land acquired under its Veterans Land Pro-

gram to non-veterans, provided veterans don't want it.

Amendment number 7, probably a wise move, would let the legislature make emergency provision for continuity in state and local governmental operations in event an all-out enemy attack suddenly rendered all elected officials non-operational.

Amendment number 10 would permit state employees to serve in advisory (non-salaried) capacity with other agencies of the state or political subdivisions, provided there is no conflict of interest. We think there should be plenty of other capable people to serve in these positions.

Amendments No. 1, 2, 6 and 8 are in the social welfare group.

Number 1 would extend to other political subdivisions of the state the same authority already given counties and cities to provide workmen's compensation insurance for employees. This would include school districts.

Numbers 2 and 8 both propose to raise the ceiling on state contributions to funds for the needy aged, blind and children (No. 2) and for totally and permanently disabled (No. 8).

Number 6 would permit counties or other political subdivision to set up retirement and disability funds for elected officials. We see little benefit to this added expense.

Number 13 applies to Dallas county and number 12 to counties in the Gulf Coast. Numbers 3 and 9 concern the creation of hospital districts in Ochiltree, Castro, Hansford, Hopkins,

Brazoria and Titus counties.

Amendment number 5 is of statewide interest. It gives the Legislature the authority to approve creation of hospital districts, subject to vote of the citizens in the affected areas, without the necessity of any more special Constitutional Amendments. A good idea since it ought to eliminate some of this sort of thing.

## LETTER TO THE EDITOR

Dear Editor:

The Plainview Optimist Club stated that they supported the President on his stand on the Cuban decision. They also stated that "They were making every effort to make Plainview citizens more conscious of their country's freedom and unity, and hope to increase the spirit of Americanism."

I hope that all Americans will be awakened to that spirit. The new Republican party has long advocated that our administration take a firm stand against Communism and has tried to arouse our citizens to true Americanism. The Republican party has been against the appeasement policy of our present administration and also against "one worldism" over our country. Let us proudly display our U.S.A. flag.

I believe our Constitution, as written by our forefathers, is not out-moded as some would lead us to believe. Private enterprise and freedom of the individual under the blessings of

God, is what has made our country great! Why should we surrender this to the federal government under a one-man dynasty, advised by Fabian Socialists?

If we will study the platform, we will find that Jack Cox, the Republican nominee for governor of Texas, who is free from Washington control, as well as the other Republican candidates, believe in the above, and if elected will uphold our Constitution.

I would urge all voters, who want our country to remain under Constitutional government, to vote Republican in the November 6th general election.

Incidentally, even though a voter voted in the Democratic primary, he can vote Republican in the November 6th general election. Don't be misled by desperate Democrat forces who are trying to confuse and bewilder voters by passing the word that anyone who voted in the "Democrat" primary is required to vote "Democrat" in the November 6th general election. You may also vote a split ticket.

Mrs. Ralph Nafzger  
 102 S. Juanita  
 Plainview, Texas

## Farm Bureau Convention Is Planned

SAN ANTONIA--(Spl)--Delegates to the 29th Texas Farm Bureau convention at the Granada Hotel here Nov. 11-14 will adopt state policies for the coming year and make recommendations on national policies.

As many as 2,000 Farm Bureau members and their families, which would make this the largest convention in TFB history, are expected to attend. The 200 organized county Farm Bureaus are eligible to send more than 750 officials voting delegates.

The 39-member state resolutions for consideration by voting delegates on the last two days of the convention, Nov. 13-14. Hundreds of recommendations on scores of issues have been received at the TFB state office in Waco from county Farm Bureau conventions.

Adopted resolutions on state-level issues will become the policies of the Texas Farm Bureau next year. Approved resolutions dealing with national matters will be forwarded to the American Farm Bureau Federation convention which will be held Dec. 9-13 in Atlanta.



J.B. DAVIS

## Davis Makes Statement

### To Voters

Statement to Voters of Lamb County

I would like to express my appreciation to the voters of Lamb County for the confidence you placed in me at the Democratic Primary on May 5, and named me your Democratic nominee. I would appreciate your vote on Nov. 6, then I shall be your County Judge.

I am 48 years old, a grain and cotton farmer in the Rocky Ford Community near the center of Lamb County. I have lived here for 27 years. I married Joy Winters, a Lamb county girl that was reared in this

county. We reared our two children in Lamb County, Diane Hatla of Dimmitt, Texas and Tommy Davis, who is serving in the United States Army stationed at Milwaukee, Wisconsin.

I finished high school at Vernon and attended Arlington State College at Arlington, Texas.

I am a member of the First Methodist Church, and have served on the official board and was M.Y.F. Counselor. I belong to the Masonic Lodge, I served on the Lamb County Water Board for six years, three of which I was chairman. I was awarded honors in National 4-H Alumni Program. I have been active in Lamb County Stock Shows, 4-H Clubs, FFA and sponsor of educational tours for 4-H and FFA, worked with the boy scouts and Lions Clubs and others.

In working with these various organizations in some instances on a County wide level, I have become familiar with the needs of each area and feel

that I can work in cooperation with the other elected county officials to see that these needs are met.

I hope you voters will vote, because the man that gets the most votes in this election will be your County Judge for four years.

Should you place your confidence in me and go to the polls, and vote for Democrat J.B. Davis on Tuesday, Nov. 6, then I shall be your County Judge. I will try the courts on your county giving justice to all.

I will carry on the business of your county in a business-like manner, using good common sense.

I will work with your commissioners court as chairman, and we will get the things done that should be done for your county.

I will get along with your young people, because I know young people.

I will represent and serve all the people of Lamb County,

and not just a few.

I realize the importance of this office and, if elected, I promise to give my full time efforts to making you a good County Judge.

Your confidence and support in this election will be deeply appreciated.

Thanks,  
 J.B. Davis  
 Democratic Candidate for County Judge of Lamb County (Paid Political Adv.)

**POOL**  
 Your Votes For  
**POOL**  
 for  
**CONGRESSMAN**  
 AT LARGE  
 (Pol. Ad.—Pd for by Joe Pool)

# YOU MAY VOTE AS YOU PLEASE ON NOVEMBER 6TH!

*There is no legal requirement—no moral obligation*

Regardless of how you have ever voted . . .

Or in which primary you voted . . .

Or whether or not you voted . . .

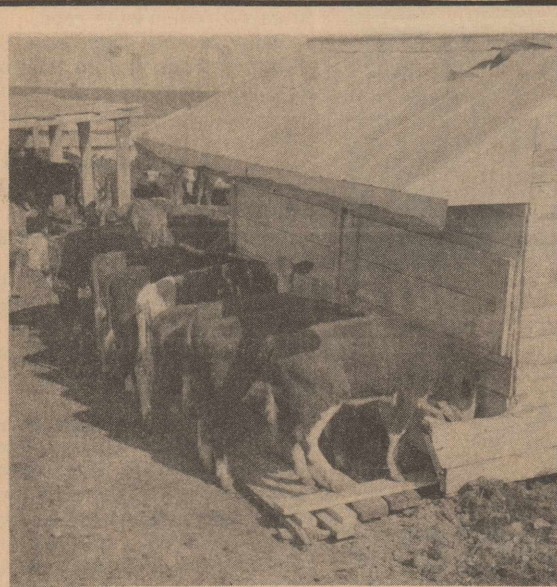
Or how your poll tax receipt was stamped . . .

**YOU CAN VOTE FOR ANY CANDIDATE**

**OF ANY PARTY**

**ON THE NOVEMBER 6TH BALLOT**

Pd. Pol. Adv.



## YOU'LL GET THE ANSWERS TO THESE QUESTIONS

- ✓ What does it cost to produce a hundred pounds of beef on local pasture supplemented with Purina?
- ✓ How does a balanced ration compare with a single source supplement?
- ✓ How many pounds of feed does it take to produce a pound of beef?
- ✓ What can a feeder do to widen the gap between market price and feed cost?

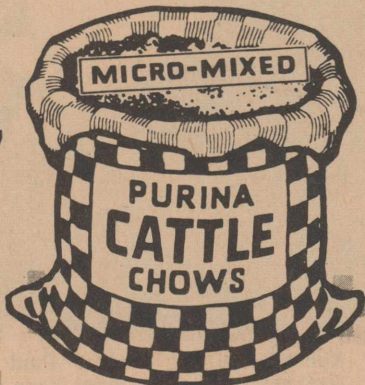
These are just some of the questions that will be answered during the course of

## OLTON FARM SUPPLY'S SELF FEEDER CATTLE DEMONSTRATION

Olton Farm Supply has begun a new effort to help farmers and ranchers realize more from their cattle feeding operations. Owner Don Spain moved in 40 head of crossbreed heifers last week to begin a self-feeder cattle demonstration.

The cattle, now in a lot behind Olton Farm Supply, will be moved to a local pasture, where they will have a ration built around Purina Steer Fatina.

The project is designed to give feeders facts and figures on rate of gain and costs. It is sponsored by Olton Farm Supply and The Ralston Purina Co.



**OLTON FARM \$UPPLY**

Phone 285-2404

Don Spain, Owner

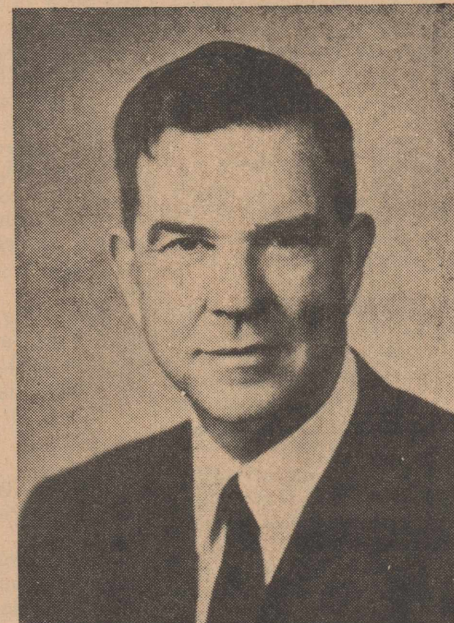
Olton, Texas

## West Texas Has An Influential Voice In Congress

In

# GEORGE MAHON

DEMOCRAT



He is recognized and listened to, at all levels in Washington. He has proven his ability to give maximum service to the people of our District and the Nation —

WE NEED TO KEEP HIM ON THE JOB!

VOTE FOR **GEORGE MAHON** ON NOV. 6  
 For Congress

(Pol. Adv. paid for by George Mahon Committee)



"Mindful of  
Every Detail"

Parsons Funeral Home  
OLTON • TEXAS



Phone 285-2621

# Invites You To Attend Open House Sunday, 2 p.m. To 6 p.m.



"Mindful of  
Every Detail"

Parsons Funeral Home  
OLTON • TEXAS



Phone 285-2621

November 1, 1962

Dear Friends:

As we begin our fifth year in Olton, we want to express our sincere appreciation to the community for the way we have been accepted as a part of the community. Your confidence in us these past four years has shown us your appreciation. For this, we are pleased to announce the completion of our new building, and extend to each of you a special invitation to attend open house to be held Sunday, Nov. 4th, from 2 P.M. until 6 P.M.

With our new facilities we are equipped to offer each and every family the utmost in dignity, reverence and privacy.

Through our constant efforts to improve our services for your convenience, we offer these new facilities.

Sincerely yours,  
Parsons Funeral Home

*Percy Parsons*  
Percy Parsons

## A Special Invitation To You, Your Family And Friends...

The personal cars of our staff will be available to transport anyone from the Open House to and us for a car and we will come and get you.

We offer to our friends of this area one of the finest

**COMPLETE FUNERAL SERVICE  
Insurance Plans**

We also honor all other funeral home burial policies.

Ambulance  
Service

# Parsons Funeral Home

Funeral  
Directors



**IN MULESHOE**

Mrs. A.E. Hudgens and Kay went to Friona Tuesday night to see the seventh and eighth grade play football. They stopped in Muleshoe to see Mrs. Hudgen's father, Willie Daffron.

**TECH HOMECOMING**

Mr. and Mrs. Don Franks, Mr. and Mrs. Deryl Machen and Mr. and Mrs. Bobby Copeland attended the Tech homecoming in Lubbock Saturday.

**VISITS IN OLTON**

Ronnie Dennis, son of Mrs. Ineta Dennis, visited in Olton over the weekend. Ronnie is attending Panhandle A&M College, Goodwell, Okla.

**IN POST**

Mr. and Mrs. Dwain Dodson and Lisa visited their parents, Mr. and Mrs. W.C. Sullivan and Mr. and Mrs. B. Matthews and Mr. and Mrs. Jay Green in Post.

**DRAG RACES**

Mrs. A.E. Hudgens, Kay, Butch, Mike Gullett and Linda Ray went to the drag races at Amarillo Sunday. Mrs. Hudgen's brother, Norman Daffron, raced.

**Ladies Bible Class Meets**

The Ladies Class of the Main Street Church of Christ, taught by J. D. Lancaster, met Wednesday Oct. 31. Attending were Meses. Sidney Allen, M. B. Lobaugh, J. C. Dear, M. R. Cavett, D. Y. Ray, J. H. Capehart, C. M. Owen, Lee Poteet, L. D. Smith, G. W. Locke, Fred Hicks, Paul Burrus, W. L. Thomas, Jim Johnson, J. D. Lancaster, David Howton, W. H. Leathers, W. B. Rose, C. E. Hysinger, J. C. Schruggs, Elmo Bryant, Arthur Couch, R. L. Chitwood, J. A. Stiles, Jack Edwards, T. Combest and R. A. Lewis. They studied Acts 20.

**PTA Will Hear State School Board Member**

Thirty members attended the Oct. 24 meeting of the Campbell F.T.A. Raymond Hernandez gave the invocation. Joyce Howard passed out the club yearbooks. The club decided to sell Mustang stationery. The district convention will be held in Lubbock Dec. 8. Johnny Clark was guest speaker at the club.

**Recipe Of The Week**

BY MARGIE SLATTEN  
1,000 SERVINGS  
**PUMPKIN PIE**  
30 qts. pumpkin (mashed)  
1/2 qt. Grandma's molasses  
4 c. sugar  
4 c. flour  
10 doz. eggs  
15 qts. evaporated milk  
4 lbs. melted butter  
1 cup cinnamon  
1/2 cup ginger  
6 tablespoons cloves  
1 cup salt  
Mix all ingredients and pour into partially baked (17" x 26") pie crust. Bake at 425 for 10 minutes, lower temperature to 350 and bake 45 minutes or until custard is set. Top with whipped cream and serve warm.

**Methodist Men Meet Oct. 29**

Olton Methodist men went to Hart, Oct. 29 for a quarterly meeting. With 13 members attending from Olton. "There will always be a tomorrow, this is God's World," Calvin Froehner the guest speaker, said. Next meeting will be at Dimmitt, Jan. 3. Five churches attended the meeting: Cotton Center, Olton, Earth, Dimmitt and Hart host.

**VISIT HUDGENS**

Henry Honea visited in the A.E. Hudgens home Friday. He is from Tulla.

**FOOT INJURY**

Mrs. A.E. Hudgens received a foot injury in an accident at her home last week.

**WHO'S NEW**

1 pink, 2 blue



A boy, Richard Charles, was born in Muleshoe to Mr. and Mrs. Paul Ellis, Oct. 17. He weighed seven pounds and eight ounces. They have one other child, Tawana 18 months old. Their paternal grandparents are Mr. and Mrs. R.V. Ellis of Olton and Mr. and Mrs. Charles Gatlin of Muleshoe, visit in post.

A daughter was born to Mr. and Mrs. J.C. Graham Oct. 26, Littlefield Hospital. She weighed 7 lbs. and her name is Esther Diana. Her sisters are Linda, Rita, Debra and Jimmie Kay.

Mr. and Mrs. Luis Luera of Olton are the parents of a baby boy born Oct. 31, in the Community Clinic. Luera's have six other children.

**IN NEW MEXICO**

Mrs. Roy Granbery and her mother, Mrs. Carie Brackeen, visited friends in Truth or Consequences, N.M., and relatives in Alburquerque, Thursday through Sunday.

**Parsons Funeral Open House**

CONTINUED FROM PAGE 1

distinctive atmosphere of the reception area.

The firm, in addition to funeral arrangements, offers funeral service insurance, monument sales, and day-night service by air-conditioned, oxygen-equipped ambulances.

Parsons has been in the funeral home business for the past 14 years. For 10 years prior to coming to Olton, he was a partner with Victor and Marvin Hudman in Post. He was born and raised in the same town, graduating from high school there in 1946.

He entered the Dallas Institute of Mortuary Science after high school and served two years internship at El Paso and Post.

Percy and his wife, Margaret, who serves as receptionist, have two sons, Mike, 9, and Dale, 7, and a daughter, Rhonda, 3.

They are members of the First Methodist Church. Percy is a member of Olton Lions Club, serving as its secretary, and is a past president of the Olton Chamber of Commerce and Agriculture. He also is a member of the Olton Volunteer Fire Dept.

**Former Resident Buried in Arizona**

Funeral service for James Edgar King, 44, former Olton resident, were held at Pinetop, Ariz., last Friday afternoon. King, who resided in this area from 1926 to 1957, died Monday, Oct. 22, in a Showlow, Ariz., hospital.

The former resident, who was in the TV business here, is survived by his mother, Mrs. J.M. King of Lubbock; his wife and four sons, James, Dale, Freddie Bob and Tommy, all of the home; three sisters and one brother. Relatives said cause of death was pneumonia.

**VISIT SILCOTTS**

Mr. and Mrs. Earl Smith of Lubbock visited last weekend in her parents home, Mr. and Mrs. L. E. Silcott.

**POOL**  
Your Votes For  
**POOL**  
for  
**CONGRESSMAN**  
AT LARGE  
(Pol. Ad—Pd for by Joe Pool)

**VOTE FOR**

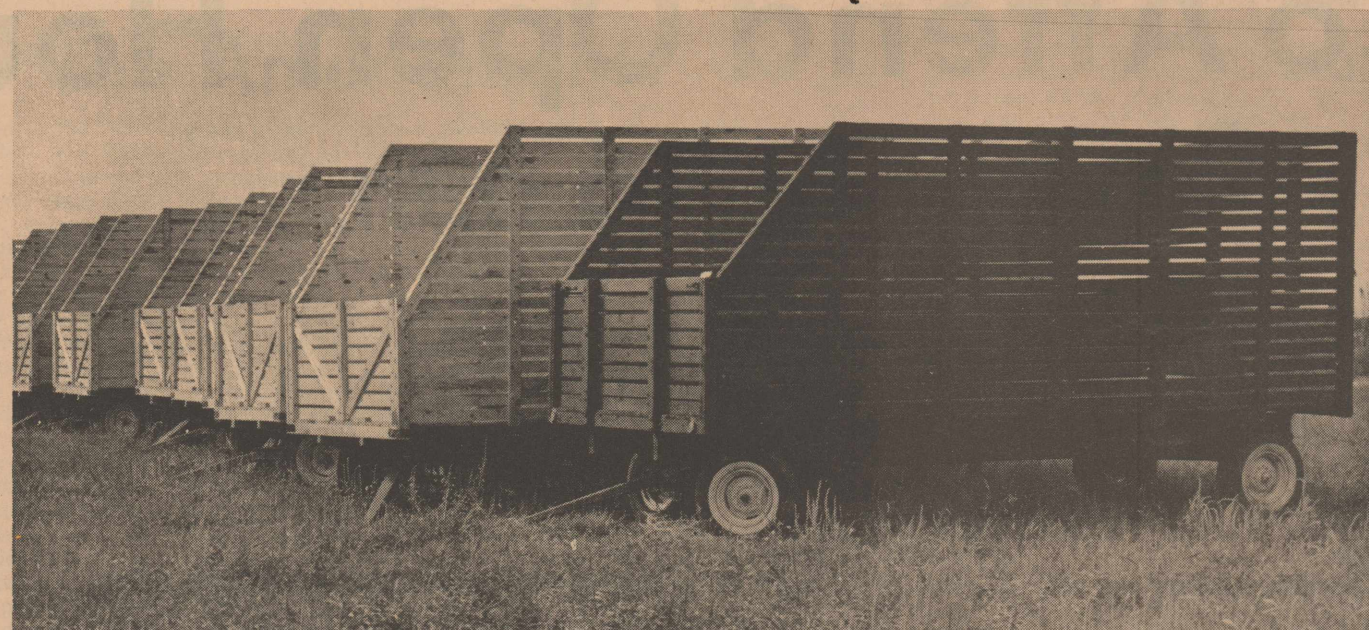
**C. Roy Stevens**

For  
County School  
Superintendent  
Honest - Capable  
Courteous

If I have failed to solicit your vote, it is purely unintentional, or an oversight on my part. Please give me an opportunity to serve you.

THANKS

**WE CAN SUPPLY YOU WITH COTTON TRAILERS THROUGHOUT THE HARVEST**



**Trailers Are Available On A First-Come, First-Serve Basis At Olton Co-Op Gin.**

YOU MAY SIGN FOR THEM AS YOU TAKE THEM OUT.

These trailers are being made available on the following basis:  
A farmer using the trailers agrees to transfer the dividend on each load of cotton to me.

If you have tire trouble while using the trailers, I will supply service. Tire service is as close as your telephone --- just call Givens Texaco (285-2969) or Roberson Mobil (285-2131).

**A.C. Light Jr.**

For Further Information, Call Me At 285-2087 or Phone Olton Co-Op Gin (285-2525).

**? WHY TAKE A CHANCE ?**

**IF YOU BELIEVE :**

- \*Good Government begins at home
- \*That strong and effective local and state government is the best answer for less Federal control.

ANDY has employed every practical means (often at his own expense) to keep his record and that of your legislature open and available to the public for inspection and judgement.

Yet there has never been any large or responsible group or element who could claim that Andy Rogers has not represented, with vigor and integrity, the principles, ideals and interests of our Senate district, State and Nation.

- \*37 Years Old - Democrat
- \*Wife, 2 daughters, 1 son
- \*Stock Farming & Businessman
- \*7 Years College
- \*14 Years Seniority (4 years in House of Representatives, 10 Years as your State Senator).
- \*WW II Veteran, Baptist, Rotarian, Farm Bureau and several Fraternal Org., etc.

INDEPENDENT IN THOUGHT AND ACTION-THE COURAGE TO DIFFER WITH FRIEND OR FOE WHERE PRINCIPLE IS CONCERNED.



Andy Rogers - Your State Senator receiving oath of office as President Pro-Tempore of our Texas Senate. Oath administered by Lt. Gov. Ben Ramsey sey.

This is the highest office, honor and recognition that can be bestowed upon a Senator by his Colleagues. The duties of the office include presiding over the Senate and acting as Lt. Governor and Governor, when one or both are absent from their office or state.

Andy had the honor of serving in each of these capacities.

**ANDY has ACTED and REPRESENTED YOU FOR :**

- \*Right to work law.
- \*Private ownership and control of underground water
- \*Bill that outlawed Jimmy Hoffa's operations in Texas.
- \*Resolution to PREVENT Red China's admission to U.N.
- \*More Representation for West Texas.
- \*More competitive free enterprise.

**AGAINST :**

- \*80% of new State taxing and spending of last 14 years.
- \*More government and monopoly controls.
- \*Income taxes in Texas.
- \*Deficit spending

In 1951 Andy (then a member of the House of Representatives) and others achieved the impossible . . . a 50% increase for our area in representation in the Senate. The entire South Plains Panhandle Area had only 2 Senate seats. The South Plains Panhandle area gained this seat - "Our 30th Senatorial District".

**RE-ELECT**

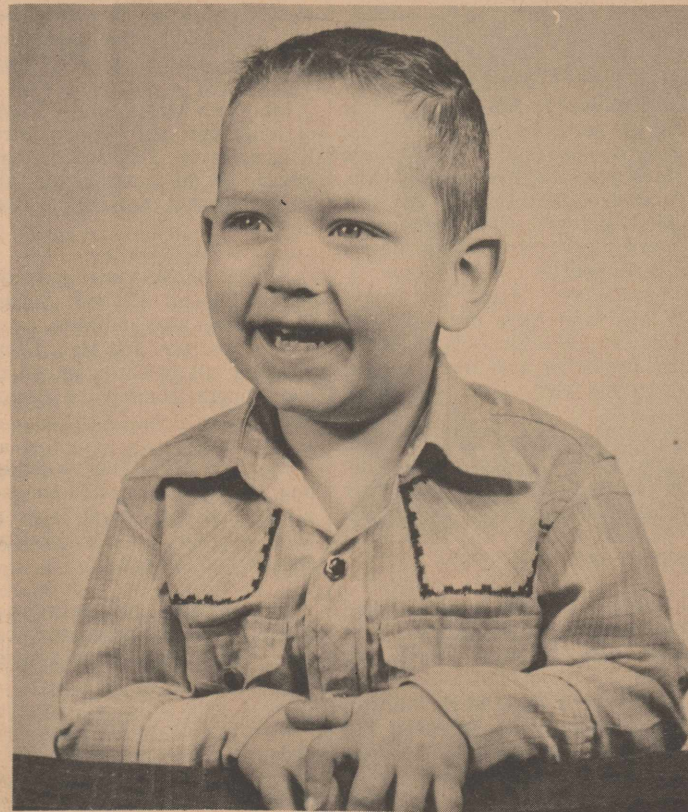
**ANDY ROGERS**

**STATE SENATOR**

(Paid Political Adv.)



# News Of Interest To Women



OLTON PRESENTS Duane Harrod Jr., three-year-old son of Mr. and Mrs. Duane Harrod. His grandparents are Mr. and Mrs. C.B. Parker of Dallas and Mr. and Mrs. V.O. Harrod of Olton.

## Geneva Smith Is Honored

Eloise Smith had a birthday coffee honoring Geneva Smith, Oct. 29. Refreshments of coffee, tea, donuts, blue berry muffins and sausage were served to Mmes. Max Malone, Joe Hall, Jackie Johns, Deryl Machen, Willie Gene Green, Arno Hall and Lonnie Smith.

### IN OLTON

Maude E. Cure returned to Riverside, Calif. after spending the summer with her children, Mr. and Mrs. W. A. Cure, Mr. and Mrs. Bert Stewart, and Mr. and Mrs. Everett Loveless. She also visited with other relatives in and around Olton.

## Brides-To Be

### Homemakers:

We would like to help you with your selections for your showers or an addition to your present stock of

CHINA CRYSTAL  
SILVER POTTERY

If we do not have your choice in stock we can order it for you on short notice.

COMPLETE WEDDING  
SERVICE

House Of Flowers

Charles and Sue Polk  
Phone 285-2388

## Mrs. Light Hosts WMU

The young married W.M.U. met Thursday Oct. 25 in the home of Mrs. A.C. Light Jr. Mrs. Larry Witten opened the meeting, then turned it over to Mrs. R.L. Hipp, who brought the program on Mission Study. A preview also was given on "New Frontier in an Old World" which will be studied by the group.

Refreshments of cake and punch were served to Mmes. A.C. Light, Jr., John Hayes, Charles Lewis, Don Huguley, Dwain Dodson, Don Franks, Bobby Hodges, W.D. Holley, Larry Witten, Elmo Hasha and Mrs. R.L. Hipp.

The next meeting will be held in the home of Mrs. R.V. Allcorn, Nov. 8 at 2:30 p.m.

## Garden Club Meet Planned

Olton Garden Club will meet Thursday, Nov. 8 in the home of Mrs. L.E. Silcott.

Demonstration on holiday arrangements will be given by Mrs. A.D. Melton and Mrs. George Bohner.

## Bible Class Meet Held

The Ladies Bible Class No. 2 met Oct. 31, in the Church of Christ. Program subject was

## Golden Ager Meeting Held

The New Century Study Club were sponsors to the Golden Age social Thursday. The Halloween theme was carried out in refreshments and decorations.

"My Savior's Face" and "How Great Though Art" were sung by Don Spain, accompanied on the piano by Mrs. Delmer Givens.

Happy Birthday was sung by the group to Bee Sherman, Mrs. Dora Walthall, Mrs. T. Combest, and the regular sponsor, Mrs. Joe Chester.

Plans were made for the annual Thanksgiving Dinner, Nov. 15 at 11 a.m. at the American Legion Hall. Price Holland of Plainview will show movie pictures that afternoon.

Punch and muffins were served to Mrs. Jodie Morris, Mrs. J.E. Jones, Mr. and Mrs. J.A. Wheeler, Mrs. Nellie Turner, Mr. and Mrs. F.M. Holland, Mrs. Bessie Cowart, Mr. and Mrs. Lee Sherman, Mrs. Anna Martin, Mrs. Dora Wathall, Mrs. R.A. Lewis, Mr. C.T. Mason, Mrs. T. Combest, Mrs. Ann Pavelka, A.J. Malone, L.S. Kennedy, a new member, Mrs. E. Sorley and regular sponsors, Mrs. Joe Chester and Mrs. Tom Smith.

The hostesses present were Mrs. Birdie Brown, Mrs. Ruth Dorris, Mrs. Enid Givens, Mrs. Wilton Bodkin, and Mrs. Forrest Latimer.

## Miss Murray Will Marry John Jefferies

Mr. and Mrs. Thomas Murray, Anson, announce the engagement and approaching marriage of their daughter, Carolyn Kay, to John A. Jefferies, son of Mr. and Mrs. V.Y. Jefferies of Olton.

The ceremony is set Nov. 22 in the First Baptist Church, Anson, with the Rev. Dennis Richardson of Abilene officiating.

Miss Murray is a 1959 graduate of Anson High School and is a senior at Hardin-Simmons. Jefferies is a 1956 graduate of Olton High School and a 1960 graduate of H-SU. He is presently teaching at Trent High School.

oneness in marriage. The teacher was Mrs. I. B. Holt.

Mmes. present were Bud Huckabee, Harold Cartwright, George Kidd, Bill Smith, F. A. Roberson, Helen Locke, D. M. Granbery, Melvin Hines, Jack Phares, Willie Green, Jack Thomas, Lonnie Smith, Luke Nicholson, Frank Condren, Bob Williams, Elmer McGill and Billie Smith.



FULFER REUNION--Above is a scene from the Fulfer reunion held Saturday and Sunday in the American Legion Hut. More than 50 members of the family attended.

## Fulfer Reunion Is Held Here

The Fulfer reunion was held Saturday and Sunday Oct. 27 and 28 at the American Legion Hut.

Attending were 53 members of the family.

Covered dish luncheon was served, with instrumental music for entertainment.

The reunion brought members of the family from 350 to 400 miles away. The dismissed at 3 p.m. Sunday.

Attending were Mr. and Mrs. Troy Crain, Mrs. Grace Migell, Mrs. Nath Fulfer, all of Abilene; Mrs. May Crain, Mrs. Betty Yarbrough, Mr. and Mrs. Ennis Crain, all of Seymour; Mr. and Mrs. Andy Luttrell of Stephenville; Mr. and Mrs. Bailey Bridge, Mr. and Mrs. Joe Bridge, Mr. and Mrs. Gerald Leslie, Gerri and Karla, Mr. and Mrs. Archie Souter and Jeff, all of Lubbock; Mr. and Mrs. Ernest Mathews, Mrs. Lillie Anglin, Mrs. C.N. Fulfer and son, all of Mountainair, N.M.; Mrs. Bernice Decker, Mrs. Hagie Herring from Albuquerque, N.M.; Mr. and Mrs. Luther Fulfer, Mrs. Lovoda Blue, Mrs. Tess Fulfer and Willie Nathan, of Mingus; Mrs. Velma Fulfer, of Matador; Mr. and Mrs. Earley Fulfer, McAdoo; Mr. and Mrs. J.L. Newbury and sons, Ackerly; Mr. and Mrs. Clem Fulfer, Idalou; Mr. Garland Kooztz, Fred and Dave,

### VISIT FISHERS

Visiting in the L. P. Fisher home last weekend were their sons, Bob and Luther of Lubbock, and their daughter, Mr. and Mrs. Lee Haynes of Littlefield.

## Beautiful, Handsome Choices Made

The OHS student body elected candidates for "Most Beautiful" and "Most Handsome" Wednesday. For the "Most Beautiful" honor, they chose Jonelta Moss, Phyllis Hair, Tommy Witten, Cheryl Poteet and Tanya Bryant.

Boys nominated for "Most Handsome" were Larry Fancher, Johnny Moses, Ronnie Parsons, Barry Prestridge and Sam Roden.

All the students are seniors. Their pictures will be sent to Doris Day, actress, who will make the final selection.

### AMBULANCE CALL

Mr. Herndon was brought from Midland to Littlefield by Parsons Ambulance last week.

## Graham Child To Be Honored

A pink and blue shower will be given in honor of little Esther Diana Graham, daughter of Mr. and Mrs. Calvin Graham in the home of Mrs. Ira Limboker, 200 Avenue E and Second Street, Thursday, Nov. 8, 2-4 p.m. The public is invited.

## Parsons Furniture

"WHERE A HOUSE BECOMES A HOME"

in olton it's Bizzells

Ship'n Shore®  
"dandy dude" shirt  
5.00



Prettily ruffled, edged in color! Has tapered tails too! In 65% Dacron® polyester, 35% cotton.

WHITE, WITH RED AND BLACK TRIM.  
28-38

**KELLEY'S**

# We Are Supporting BILL CLAYTON

## FARMERS ARE SUPPORTING BILL CLAYTON

Because he is a successful farmer and knows the problems of farm people. He has a degree from Texas A&M in Agriculture Economics.

## BUSINESS MEN AND WOMEN ARE SUPPORTING BILL CLAYTON

Because he has been a part of the business world and closely associated with business people of this area.

## WORKING PEOPLE ARE SUPPORTING BILL CLAYTON

Because he believes in good working conditions, good employer-employee relations, good pay based on experience and production.

## PROFESSIONAL PEOPLE ARE SUPPORTING BILL CLAYTON

Because he is well versed in Texas law and Legislative procedure, a staunch supporter of good schools and has a thorough knowledge of the economics of finance.

## OFFICEHOLDERS ARE SUPPORTING BILL CLAYTON

Because they know they can work together harmoniously for the benefit of this District and our State.

WE HOPE YOU WILL JOIN HIS HOSTS OF FRIENDS AND CAST YOUR VOTE IN THE NOVEMBER 6 GENERAL ELECTION FOR THE DEMOCRATIC NOMINEE FOR STATE REPRESENTATIVE OF THE 91st. DISTRICT, BILL CLAYTON.

paid for by

**LAMB COUNTY  
FRIENDS OF BILL CLAYTON**

On Nov. 6th

# DON'T FORGET

To Vote For All

# DEMOCRAT NOMINEES

TO KEEP TEXAS PROGRESS GOING  
**VOTE DEMOCRAT**

Pd. Pol. Adv. By Democrats of 30th District



# EVERYDAY LOWEST FOOD PRICES

## PEACHES

HUNTS 2 1/2 CAN SLICED OR HALVES **2 FOR 49¢**

## GRAPEFRUIT JUICE

LIBBY 46 OZ. CAN **25¢**

## ORANGES

MANDARIN 11 OZ. CAN **23¢**

## PRESERVES

ZESTEE 18 OZ. GLASS APRICOT OR PEACH **33¢**

## POP CORN

POPS-RITE (YELLOW) 10 OZ. CAN **15¢**

## BREEZE

GIANT BOX **73¢**

## PINEAPPLE

DEL MONTE CRUSHED CHUNK 211 CAN TIDBIT **2 FOR 45¢**

## PORK & BEANS

KIMBELL 300 CAN **9¢**

## CHILI

GEBHARDT'S (NO BEANS) 30 OZ. CAN **59¢**

## COFFEE

KIMBELL 1 LB. CAN **59¢**

## ASPARAGUS

DEL MONTE SPEARS 300 CAN **37¢**

## BACON

PINKNEY SUNRAY 2 LB. PKG. **99¢**

## HAMBURGER

CHOICE HEAVY PEN FEED BEEF 3 LB. **98¢**

## HAMS

SWIFT PREMIUM 9 LB. CAN **\$6.89**

## STEAKS

CLUB CHOICE HEAVY PEN FEED BEEF LB. **69¢**

## ROAST

CHUCK CHOICE HEAVY PEN FEED BEEF LB. **49¢**

## HENS

HEART O TEXAS U.S.D.A. GRADE A LB. **39¢**

## CRISCO

3 LB. CAN **69¢**

## FLOUR

GLADIOLA 25 LB. BAG **\$1.89**

## OLEO

GOLDEN KORN 1 LB. CARTON **2 FOR 49¢**

## FACIAL TISSUE

KIM 400 COUNT **3 FOR 49¢**

## BEANS

LIBBY CUT GREEN 303 CAN **2 FOR 39¢**

## SPINACH

LIBBY 303 CAN **2 FOR 29¢**

## CRACKERS

SUNSHINE KRISPY 2 LB. BOX **49¢**

## OKRA

ROSE DALE WHOLE 10 OZ. PKG. **19¢**

## ORANGE JUICE

WHOLE SUN 12 OZ. CAN **29¢**

## TOMATOES

LARGE BEEF STEAK LB. **15¢**

## CAULIFLOWER

FANCY HEAD **25¢**

## GRAPES

TOKAY LB. **15¢**

## SPUDS

10 LB. BAG COLORADO RED **39¢**

## CHOICE HEAVY PEN FED BEEF

Cut And Wrapped For Your Home Freezer. UNCONDITIONALLY GUARANTEED To Your SATISFACTION!

**FRESH WATER CATFISH EVERY TUESDAY**

SPECIALS BEGIN FRIDAY, November 2, 1962

**DOUBLE GUNN BROS. STAMPS EVERY WEDNESDAY**

Phone 285-2250

Free Delivery

**CASH WAY**

Where Friends Meet and Prices Talk

**FOOD STORE**

SPECIALS EVERY DAY

## Springlake News

Miss Ronald Cleavinger was crowned exes homecoming queen during halftime activities at the Kress-Springlake football game Friday night. She was a candidate from the graduating class of 1952. Other candidates vying for the honor were Mrs. Bonnie Green from honor class 1932; Mrs. Russell Haberer, class of 1942; and Miss Joan Gover, 1962. Dwane Jones crowned the queen. He is president of the Ex Student's and Teachers Association. Also assisting with the coronation was Kelly Haydon, daughter of the Eddie Haydon's and Johnny Cleavinger, son of the Ronald Cleavingers.

Steve Holt underwent knee surgery recently at St. Mary's Hospital in Lubbock. He was released last week and is able to be about with the aid of crutches. Steve, a co-captain for the Springlake Wolverines, suffered a torn cartilage in the left knee Aug. 28 and has been held to limited action until a few weeks ago, when the condition became acute.

Mr. and Mrs. Jerry Barden attended the Scout Pow Wow at LCC last Saturday at Lubbock.

"Grandma" Smith underwent hip surgery Wednesday in a Plainview hospital. She suffered a broken hip in a fall at her daughter's home in Plainview early Monday morning.

Mr. and Mrs. Robert Bridge and Mark were dinner guests of Mr. and Mrs. Stump Washington Tuesday.

Mrs. Evelyn Bridges, Mrs. Charlene Riley and Mrs. Elaine Herring went to Plainview Tuesday and then on to Lubbock to visit Mr. and Mrs. Jim Baldwin and son, Jimmy.

Mr. and Mrs. James Busby were in Dallas last week on business.

Kenneth Davis, Antlers, Okla. arrived Saturday morning to spend a few weeks in the home of Mr. and Mrs. Wayne Davis and family.

Mrs. Alice Huckabee lead in a secretary's conference at the G.A. Workshop in Bovina Saturday morning. Others going were Mrs. Frances Watson, G. A. Director, Jenna and Jimma Banks, Nadine Jarsh, Paula Kay Nunn, Kathy and Donna Anderson.

A Young People's and Intermediates Fellowship was held in Fellowship Hall Sunday night after services at the Baptist Church. Sponsors were Mr. and Mrs. Leslie Watson and Mr. and Mrs. John Bridges and Rev. M.B. Baldwin. Cakes and candy were served to approximately 20 persons.

Mr. and Mrs. Weldon Reed and family of Floyd, N.M., spent the weekend with her parents, Mr. and Mrs. A.M. McGowan.

Mr. and Mrs. Jim Winder, Charles and Renay spent the weekend in Morton with their parents, Mr. and Mrs. C.F. Winder and Mr. and Mrs. E.G. Gardner.

Mr. and Mrs. Ernest Baker spent Sunday in Childress with her mother, Mrs. A.H. Jones.

Rev. and Mrs. M.B. Baldwin left Monday morning for the Brotherhood and WMU Convention and general convention in Fort Worth.

Mr. and Mrs. Jim Baldwin and baby spent Saturday with Mr. and Mrs. Robert Riley. They also visited over the weekend with their parents, Mr. and Mrs. Price Hamilton of Earth and Rev. and Mrs. M.B. Baldwin.

Mr. and Mrs. Robert Bridge, Terry, Janis and Mark attended a reunion at Olton Sunday.

Mrs. Ann Kelley, Donita, Anita and Connie Jo, spent the week with her mother, Mrs. Myrtle Clayton while Donald is deer hunting.

Mr. and Mrs. Wayne Davis, Del and Tammy spent Sunday afternoon with her parents, Mr. and Mrs. D.F. Byerly of Lockney.

Mr. and Mrs. Hershel Sanders and Jerry spent last weekend with his brother and family.

Mr. and Mrs. Shot Sanders on Slaughter Ranch near Morton.

Henry Conner was dismissed from a Plainview hospital last week.

Mrs. Vernie Bearden and Ann visited in Plainview Saturday and with her parents, Mr. and Mrs. J.B. Latimer in Lockney.

Mr. and Mrs. Ashley Davis of Muleshoe and Mr. and Mrs. Wayne Davis, Del and Tammy visited in the home of Mr. and Mrs. Hershel Sanders Sunday night.

Among those visiting in the First Baptist Church Sunday night were Mr. and Mrs. Ancil Miller and Mr. and Mrs. Cloys Fancher all of Olton and Linda and Ronnie Blanton, of Sunny-side.

Mr. and Mrs. Bailey Bridge and Mr. and Mrs. Joe Bridge, all of Lubbock, spent Saturday night with Mr. and Mrs. Robery Bridge and family.

Mr. and Mrs. Nat Bearden of Earth visited Sunday afternoon with Mr. and Mrs. George Choate.

Mancil Choate left last Saturday for his home in California after spending a couple of weeks here with his parents, Mr. and Mrs. George Choate.

Mrs. Charlie Smith of Olton visited Monday with Mr. and Mrs. George Choate.

### VISIT EBYS

Mr. and Mrs. L.R. Johnson, Mrs. R.B. Hall, Mrs. Jim Hendrix, Mr. and Mrs. Gerald Cross and Gary and Beverly Eby visited in the home of Mr. and Mrs. D.C. Eby.

### CARD OF THANKS

I wish to thank every one from the bottom of my heart for their attention and consideration during my stay in the hospital. I appreciate the gifts, the flowers, the cards, the visits, the prayers, and every word and deed done on my behalf. Your many kindnesses encouraged both me and my family in a time of distress  
Mrs. Leslie Armstrong

CAST YOUR

# VOTE

For The South Plain's No. 1 Candidate

## King Cotton!



The Area's Most Important Product!

King Cotton has a platform that helps everyone who lives on the Plains. Buy cotton - you help yourself and your neighbor when you choose products made from cotton.

## Plainview Co-op Compress

2 1/2 Miles East of Plainview



## Homemaking Teacher Chose Field Early In Her Life

BY BOBBYE TOLLETT

"I have wanted to be in this field ever since I was a freshman in high school," Mrs. E.J. McKnight, homemaking teacher at Olton High School, said this week.

She noted that she is "very proud" to be a teacher in the homemaking field and that her "greatest inspiration" was her high school teacher.

Mrs. McKnight, teacher with 18 years experience, graduated from Lakeview High School in Lakeview and from Texas Tech.

"I believe that if each girl would enroll in the homemaking courses offered," she said, "it would help prepare them for a career or the ever important job of being a homemaker."

She added that she believes that the school system, as well as the homes of the future, would be improved if home economics were stressed more.

As for Olton, Mrs. McKnight says she "loves it."

"The people here are just a pleasure to work and live with," she said.

In her leisure time, Mrs. McKnight enjoys singing, lis-



tening to records and playing Bridge.

Her only complaint is that "there just isn't enough time in 24 hours to do all I want to."

Her husband, E.J. McKnight, is principal of the junior high school here. They have two children, Joe, a senior, and Deanna, a sophomore.

"I believe that the youth of today have a much better opportunity to realize their dreams and goals," Mrs. McKnight noted.

"They should take every opportunity to better themselves so they can be an asset to their community and not a liability."

## Senior Play Tryouts Held

Senior play tryouts were held Monday night.

Those taking the parts in "Take Your Medicine" are Barry Prestridge, a bank president; his niece, Elaine Averitt; and her fiancé, Bennett Worley. Ruth Howard is head nurse over Joneita Moss, Dana Spear, Tanya Bryant, and an undergraduate nurse, Sharon Brigrance.

Ronnie Parsons portrays a hospital orderly and his patient is Charlie Burrus. Two old maids in the play are Sue Mitchell, Charlie's sister, and Lavana Long, an 'old maid' of about fifty. Others in the play are Bobbye Tollett, Iona Tanner, Ralph Hamm, Nelda Rucker, Betty Harrod, Joyce Howard and Raymond Hernandez.

The student directors are Phyllis Hair and Billie Beasley.

### Junior Play

Taking the lead in the Junior play is Rusty Sherman. Other actors are George Jones, Bill Cox, and Clyde Gallaway.

The girls in the play are Carmen Bley, Elaine Lewis, Linda Frazier, Carolyn Osthus, Carolyn Bley, Doris Jefferies and Margaret Schaefer. The date of the play will be announced later.

### HOME FROM ARMY

Harold Eby, son of Mr. and Mrs. D.C. Eby, is now home after his discharge from the army. Eby has been stationed in Germany.

**POOL**  
Your Votes For  
**POOL**  
for  
**CONGRESSMAN**  
AT LARGE  
(Pol. Ad—Pd for by Joe Pool)

## Accident Reported

A 1957 Ford, driven by Manuel Hernandez, and a 1959 Chevrolet, driven by Dan Sanchez, collided Sunday about 12:30 p.m. at the intersection of Avenue A and 15th Street.

The Hernandez auto was traveling north and the Sanchez car was going east at the time of the accident.

Damages were estimated to each at approximately \$600.

### VISIT PARENTS

Phyllis Snider, who is attending Draughts Business College in Amarillo, spent the weekend with her parents, Mr. and Mrs. Jack Snider.

### IN COLO.

Mrs. I. D. Grimsley has returned from Denver, Colo., where she has been visiting her son, Jack, for the past three weeks.

### VISITS IN OLTON

Mrs. Lizzie Harper of Santa Anna, Calif. is visiting in the home of her son, Mr. and Mrs. Emmett Harper. She is also visiting Mr. and Mrs. Doyle Pinson.

### VISIT HARRODS

Mr. and Mrs. J. F. Davidson of Santa Cruz, Calif., former residents of Olton, were the week-end guests of Mr. and Mrs. V. O. Harrod and girls.

### IMPROVED

David Howton, commercial teacher in high school, is reported to be improving satisfactorily after a recent heart attack and is able to receive visitors.

Bowling  
John Montgomery, Tracy Critchfield, and Elmo Hasha bowled 179 average at Plains Bowl in Levelland, Sunday.

# OUR SINCERE CONGRATULATIONS



## TO PERCY & MARGARET PARSONS

We are indeed proud to have built and furnished the materials for the new Parsons Funeral Home

It is a credit to the community and a valuable asset to Olton .



# HIGGINBOTHAM-BARTLETT CO.

Phone 285-2939

Olton, Texas

## THINK, IRRIGATION FARMER!

WATER is a commodity so precious that no tyrant has ever dared deny it to his people.

The earliest records of our civilization are linked to the spring and the waterhole, the river and the well.

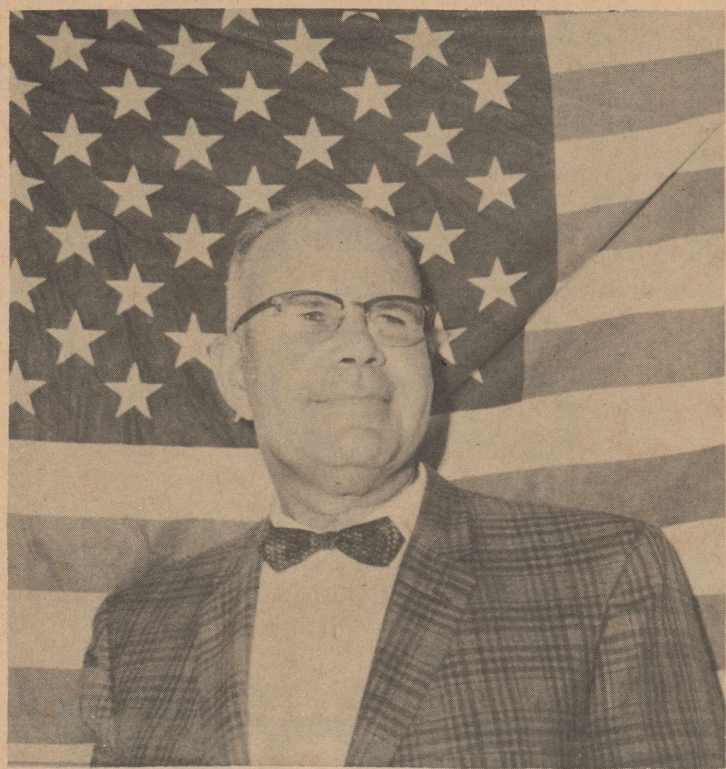
The Children of Israel faltered in the wasteland and were ready to revolt until Moses struck the rock and brought forth a spring

Wars have been fought over water rights and mighty nations have vanished because their water resources failed.

*In view of these facts, can you afford the luxury of irrigation "TAILWATER"??*

High Plains Underground Water Conservation District





# RAY KEELING For COUNTY JUDGE

## 5 POINT PROGRAM OF ACTION

1. UNBIASED LEADERSHIP & equal representation for the entire county.
2. Enforcement & supervision of school attendance law, and encouragement of the use of the County Library and other educational facilities.
3. Active enforcement of all laws, especially Driver Qualification & Licensing Laws.
4. Highly interested in developing Civil Defense program.
5. Dedicated supervision of all county funds and efficient administration of Public welfare.

(Paid Pol. Adv.)



Pictured here (l to r) Jack, Jr., Callan, wife Joyce, and the candidate, Jack Cox.

Let's Elect

# JACK COX

CONSERVATIVE FOR GOVERNOR

★ Let's Elect A Business Man  
★ A Man Independent Of  
Washington Control

### JACK COX IS FOR

Full Legal rights for the women of Texas and Constitutional Revision • States Rights • Local Self Government • Right to Work • Industrial Development through full use of all our resources • Continued Improvement of Texas Educational Facilities • By Texans! • Water Conservation as the key to success of Agriculture and Industry.

### JACK COX IS AGAINST

Federal "Aid" (and control) of education in Texas • Socialized medicine in any form whatsoever • Federal Usurpation of any rightful state authority • Continuation of One Party rule through "Loyalty" pledges, coercion, intimidation, reprisals, or any other method.

(PAID POLITICAL ADV.)



### Argentians Visit Jack Straw Gin

VISITORS from Argentina and the Dominican Republic are shown as they toured Jack Straw Gin Co. here Tuesday to look over new Hardwicke-Etter equipment. Left to right above are Joe Garcia, Hardwicke-Etter export manager; Pedro Lasota, Argentina ginner and merchant; Jack Hunt, of Lubbock the company's area representative; Jose Miguel Nova of the Dominican Republic; Jack Straw, Jorge Morosi, with Hardwicke-Etter in Argentina; Asen Monoff, ginner and cotton merchant of Argentina; and W.C. Gunter of Olton. Pictured below are Straw, Garcia, Monoff and Lasota as they look over ginned cotton. The party toured throughout the area. The cotton season in Argentina is just now getting started, with plants just now up to a good stand.



### Vote Pledge Carries No Obligation

Every person who voted in the Democrat Primary has a legal right to vote republican on Nov. 6, according to W.H. Carter, Republican County Chairman of Lamb County.

Carter said that the law was quite clear. "In the cases of *Westerman v. Mims*, 227 S.W. 178 (Sup. Ct. 1921), and *Weatherly v. Fulgham*, 271 S.W. 2d 938 (Sup. Ct. 1954), the Texas Supreme Court held that there was no legal obligation binding the voter in the Democrat primary to support the nominee of the Primary."

"Governor Price Daniel, while Attorney General, wrote an opinion on the question of party loyalty in which he said, 'The courts of Texas have answered this question by holding that the pledge taken at the time of voting in the primary election does not create a legal obligation.'"

"Recently Governor Daniel repeated that opinion by saying that the pledge on the primary

ballot does not obligate anyone "legally or morally" whether he voted in the democrat primary or not."

"This has always been the law," said Carter. "It is the cornerstone of our American freedom that a citizen's secret ballot is sacred and that he is free to vote as he chooses . . . free to split his ticket, if he wishes . . . free to

change his mind . . . free to change his party, when he chooses. . ."

The Bandparents Club has announced the last chance for listings on band calendar. Calendars sell for \$1 and listings for 25 cents. Family charge for calendar and listings is \$2 Mrs. Robert Duncan is in charge.

IT PAYS TO ADVERTISE  
IN  
THE OLTON ENTERPRISE

GENERAL DENTISTRY

Tues., Thur., Sat. 9 a.m. - 5 p.m.  
C.W. Jennings B.Sc., D.D.S.  
412 Main St. Olton, Texas  
Phone 285-2929

850-14

# COTTON TRAILER TIRES

Priced Right!

OLTON BUTANE CO

### VISIT HATLEYS

Pete Wood, owner of the B.F. Phillips racing ranch in Dallas, was week-end guest of Mr. and Mrs. Elvis Hatley.

### VISIT SNIDERS

Sunday dinner guests of Mr. and Mrs. J.L. Snider and family were Mrs. Ethel Snider, Apache, Okla., Mrs. Pauline Bird, Mr. and Mrs. Dale Sharber and Kin, Miss Phyllis Snider of Amarillo and Mr. and Mrs. Jack Snider.

### ATTEND FUNERAL

Drs. Lynn and Jim Fite attended the funeral of their sister, Bessie Lee Earnest of Beaumont.

## VOTE FOR PROGRESS ON NOVEMBER 6TH

FOR CONSERVING OUR AMERICAN FREEDOM.

OPPORTUNITY FOR ALL CITIZENS TO CREATE & ACHIEVE.

RESPONSIVE, RESPONSIBLE TWO-PARTY SYSTEM.

DYNAMIC GROWTH FOR THE TOWNS OF THIS AREA.

VOTE FOR FRANK FORD FOR STATE REPRESENTATIVE

(Paid Political Adv.)



## Hart Camp Happenings

Mrs. Sam Martin, Southland, is visiting this week with her son and family, Mr. and Mrs. Blanton Martin and Suzanne.

Mr. and Mrs. Gene Loman and Mr. and Mrs. Wayne Loman were in Canyon last weekend where they attended a football game at West Texas State College.

Mrs. Harvey Jones visited Monday in Anton with her parents, Mr. and Mrs. Harold Robinson.

Mrs. Lee Holden visited in Tahoka over the weekend with her parents, Mr. and Mrs. O. L. Kidwell. Her sister, Miss Dorothy Kidwell, accompanied her home and spent a couple of days this week.

Mr. and Mrs. Ray Johnson entertained a large group of relatives and friends in their home Sunday. Among those present were Mr. and Mrs. Jud Walker and children, Littlefield, Mr. and Mrs. Romie Cannon and girls, Hale Center, Mr. and Mrs. Kruger Johnson and girls, Amarillo, Mr. and Mrs. John Melina, Jr. and daughter, Aransas Pass, John Melina, Sr., Aransas Pass, Mr. and Mrs. G.W. Vann, Spade, Mr. and Mrs. H.A. Johnson and family, Austin and Mr. and Mrs. Jack Fowler from California.

Mr. and Mrs. D.R. Leonard and family made a trip to Six Flags Over Texas over the weekend.

Mr. and Mrs. Harley Martin, Southland, visited in the Blanton Martin home Monday. Harley is a brother of Blanton Martin.

Mrs. Clyde Gallagher of Plainview visited her daughter and son-in-law, Mr. and Mrs. Gene Loman, Sunday. She attended church services at the Baptist Church Sunday morning.

Billie Frank Johnson accompanied his sister and family, Mr. and Mrs. John Melina to their home in Aransas Pass Monday where he will spend a few days.

Mr. and Mrs. Sherrod Fielden, Littlefield, were supper guests Saturday night of Mr. and Mrs. Gene Loman.

The Baptist WMU met Monday afternoon for Mission Study.

Mrs. Jack Moore, president, presided at the meeting. Following a short business meeting, Mrs. Blanton Martin reviewed a chapter in the current study "New Frontiers in the Old World" by Winston Crawley. Members present for the meeting were Mrs. Elma Burleson, Jack Moore, H.V. Lynch, Blanton Martin, Dewey Parkey, L.W. Sullivan and Harvey Jones.

Steve Burleson, son of Mr. and Mrs. Elma Burleson, injured his foot in a fall at school Tuesday and will be on crutches for awhile.

Members of the local Baptist Church attending the association meeting at the Springlake Baptist Church recently were Mr. and Mrs. D.R. Leonard, Mrs. R.S. Moore and J. Fay Moore.

Mrs. Elma Burleson, Junior G.A. counselor, took a group of G.A.'s to Bovina Saturday where they attended a workshop at the First Baptist Church. Girls making the trip were Kathy Moore, Lajuana Burleson and Sherri Jones.

Mrs. C.E. Timmins, former resident of this community, received her nurses cap in a special Candlelight Capping Service at South Plains College in Levelland Thursday night.

Mr. and Mrs. Aubrey Neinst received word Tuesday of the death of her mother, Mrs. Henry Smith of Jacksonville, Florida. Mr. and Mrs. Neinst left Wednesday morning by plane to attend the funeral. Mr. and Mrs. W.P. Neinst of Littlefield are staying with Ramona, Andy and Jeff while their parents are away.

Mr. and Mrs. Bill Nicholas and Mr. and Mrs. T.S. Tyler were in Lubbock recently to attend a flower show and also to attend the opening of the new library.

James Hukill, Canyon, spent Friday night here with his parents, Mr. and Mrs. Homer Hukill.

Mr. and Mrs. Dewey Hukill, Lubbock, visited his parents, Mr. and Mrs. Paul Hukill, Friday afternoon as they were on their way to attend the Homecoming activities at Olton.

Mr. and Mrs. Bruce Porcher, Littlefield, were dinner guests Sunday of their daughter and family, Mr. and Mrs. Don Muller, Donna and Bryan.

Mrs. Elsie Durall, Lowell, Ark., is visiting here with her daughter and family, Mr. and Mrs. Floyd Prentice and children.

Approximately 30 children of the local Baptist Church met at the Church Tuesday night and went trick or treating for "Kans for Kids" as they do each Halloween. The food they gathered will be sent to one of the Baptist Children's homes. After the children returned to the Church, they played games and were served refreshments of punch and cookies by the ladies of the WMU.

## Ford Tractors On Display Now At Adams Tractor Co.

New styling, new color combinations, and more than 120 advancements and improvements distinguish the new line of Ford Tractors which are being displayed by Adams Tractor Company of Olton, the Ford tractor dealer in this area.

A. D. Adams, owner, said that a number of so-called "traditions" were broken by Ford in developing the new tractor line. "Traditionally, Ford tractors have been red and gray or red and buff. Now blue, a symbol of quality and integrity, replaces red. Traditionally, each specific model came from the factory with specific equipment installed. Henceforth, customers will be able to select a basic model, and can order this tractor 'custom-built' with exactly the special equipment they want for their specialized needs. Traditionally, Ford tractors of U.S. and British origin have carried separate names. In the new line, all Ford tractors will adhere to a common numerical system to designate their power classification.

"One tradition, however, remains unchanged—to provide quality-built tractors which can bear the Ford name proudly at the lowest possible price," Adams said.

The new Ford tractors are offered in four series—"2000", "4000", "5000", and "6000".

The 2000 series, rated as two-three plow tractors with 30 to 38 PTO horse-power, provides farmers with two all-purpose (four-wheel) models, one row-crop (tricycle) model, and one offset-design model. Two 2000 series models in the same power range are specially designed for industrial use and include all-purpose tractor and a low-center-of-gravity tractor for maximum safety in hillside operations.

In the 4000 series, which are rated as three-four plow tractors of 40 to 50 PTO horse-power, there are row-crop and all-purpose models for agricultural use, and four industrial models, including a heavy-duty fork lift tractor.

In the 5000 series, with over 50 belt horsepower, an all-purpose tractor for agricultural or industrial use is available.

The 6000 series, with over 60 PTO horsepower, provides farmers with a row-crop tractor for dependable, economical performance in big-capacity farming.

All agricultural models are distinguishable by various combinations of blue and gray colors. The industrial units are blue and buff.

In addition to the distinctive color styling, each of the new tractors carries its series designation on the sides of its hood, "2000" and "4000" series tractors of U.S. origin have the Ford name spelled out vertically in bold chrome letters on the grilles, while "6000" tractors present the name horizontally. Another distinctive styling note is an air scoop atop the hood which helps dissipate engine heat.

Adams said that Ford had

made more than 120 advancements and improvements as "running" changes since the company's last major model change. Many of these advances have now been extended to the whole line. In the optional "Select-O-Speed" transmission, for example, a direct-drive internal clutch has been added to eliminate free-sheeling and provide engine braking in all ten forward gear ratios. Two instruments, the Proofmeter and temperature gauge, formerly available only in particular models, now are standard. In addition, a number of mechanical improvements and comfort items make their debut with the new line. New, more efficient are cleaner for diesel engines, large "inching" pedal for precise control of the "Select-O-Speed" transmission-equipped tractors, cushion pan seat in 4000 series models, and an improved mechanism as an option for power-adjusting the rear wheels are among the new features.

### TOO LATE TO CLASSIFY

FOR SALE: Iron-Rite Ironer in excellent condition. Call 285-2340, 30-tfc.

REPOSSESSED HOUSE FOR SALE: 3 bedrooms, Nice location. \$10 down. 12 year loan. Call PO 2-0334. Lubbock, 39-1tp.

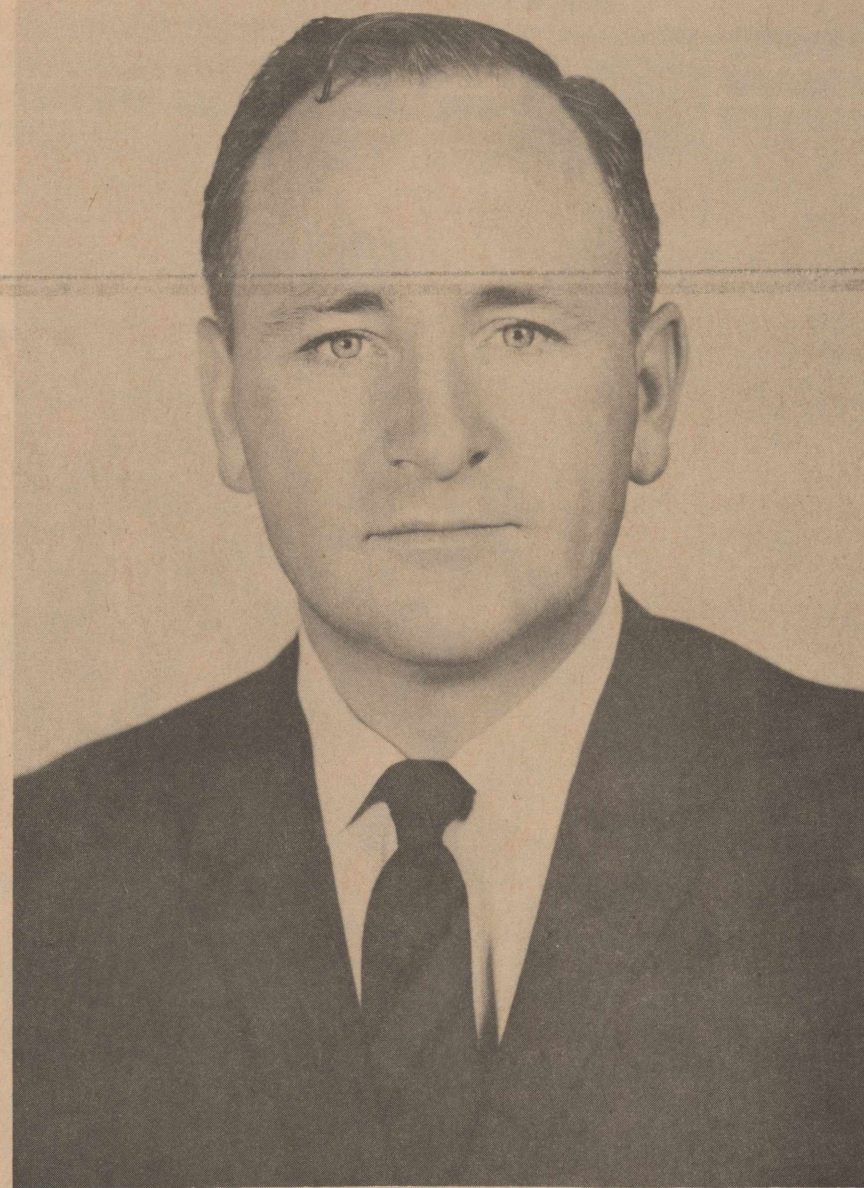


BONE WHITE drapes in the reception room of the new Parsons Funeral Home lend an air of warmth and dignity. The

new building is carpeted throughout with neutral wool tweed. The public is invited to open house Sunday from 2-6 p.m.

## VOTE FOR

# BILL CLAYTON



## DEMOCRATIC NOMINEE FOR STATE REPRESENTATIVE

- B. S. Degree in Agriculture Economics
- Successful Farmer and Business Man
- Resident of this district for 31 years
- Active in Civic, Community, Church and School Activities
- High Moral and Spiritual Attributes

A man who has the ability, honesty and integrity to do the best job of representing you in Austin. Vote for BILL CLAYTON for State Representative . . . . .

(Paid Political Adv.)

## YOUR VOICE IN STATE GOVERNMENT

**Idle Money**  
Profits You Nothing!  
**SIDES & YATES INVESTMENTS**  
614 Main

• LOW COST •

# Quality MEATS

THURSDAY	FRIDAY	SATURDAY
PORK <b>STEAK</b> LB. <b>39¢</b>	CHUCK <b>ROAST</b> LB. <b>49¢</b>	
HORMEL <b>BACON</b> LB. <b>59¢</b>	SIRLOIN <b>STEAK</b> LB. <b>79¢</b>	

**We Will Process Your Deer**

**CUSTOM SLAUGHTERING DAILY**

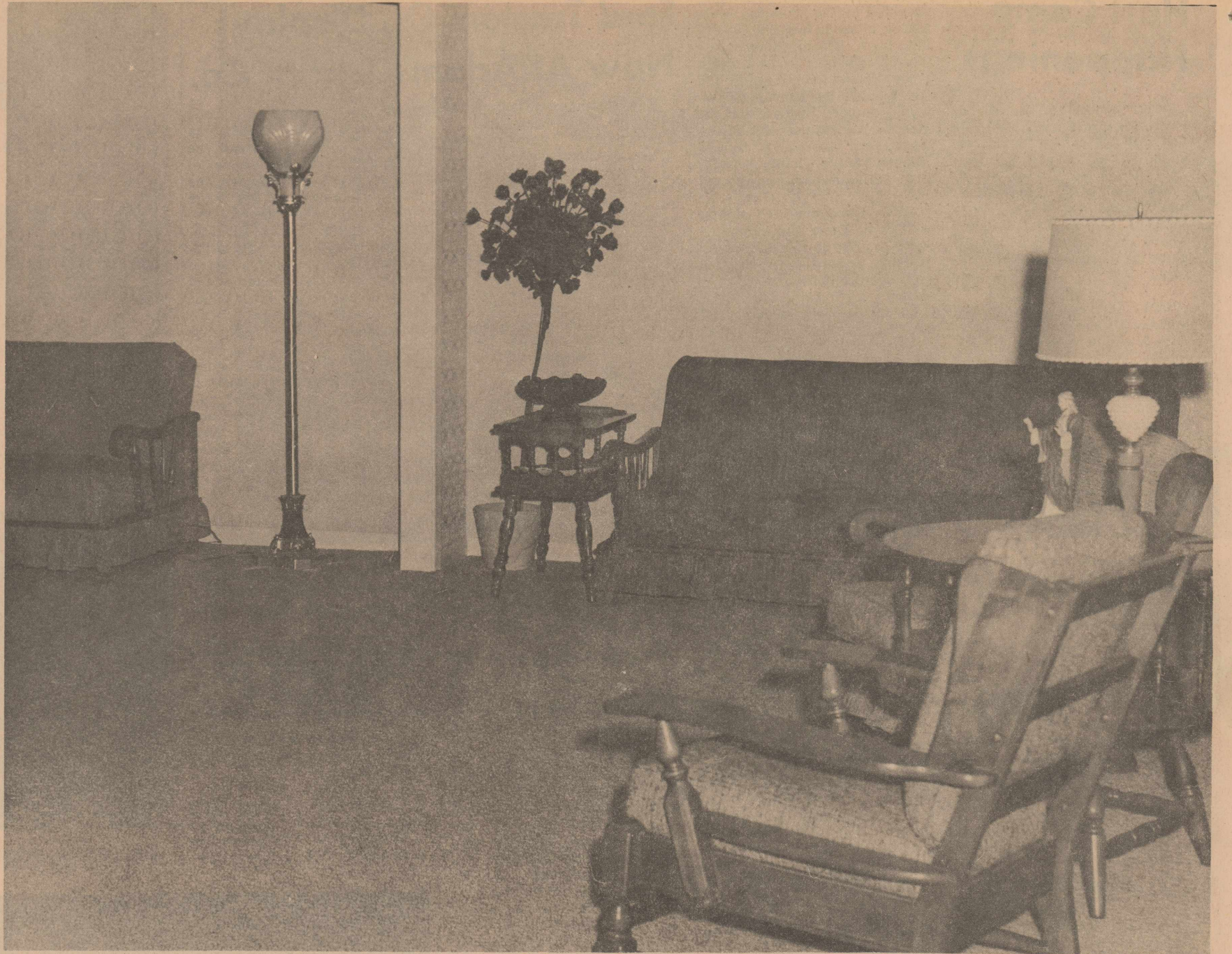
## OLTON MEAT CO.

MAIN STREET OLTON





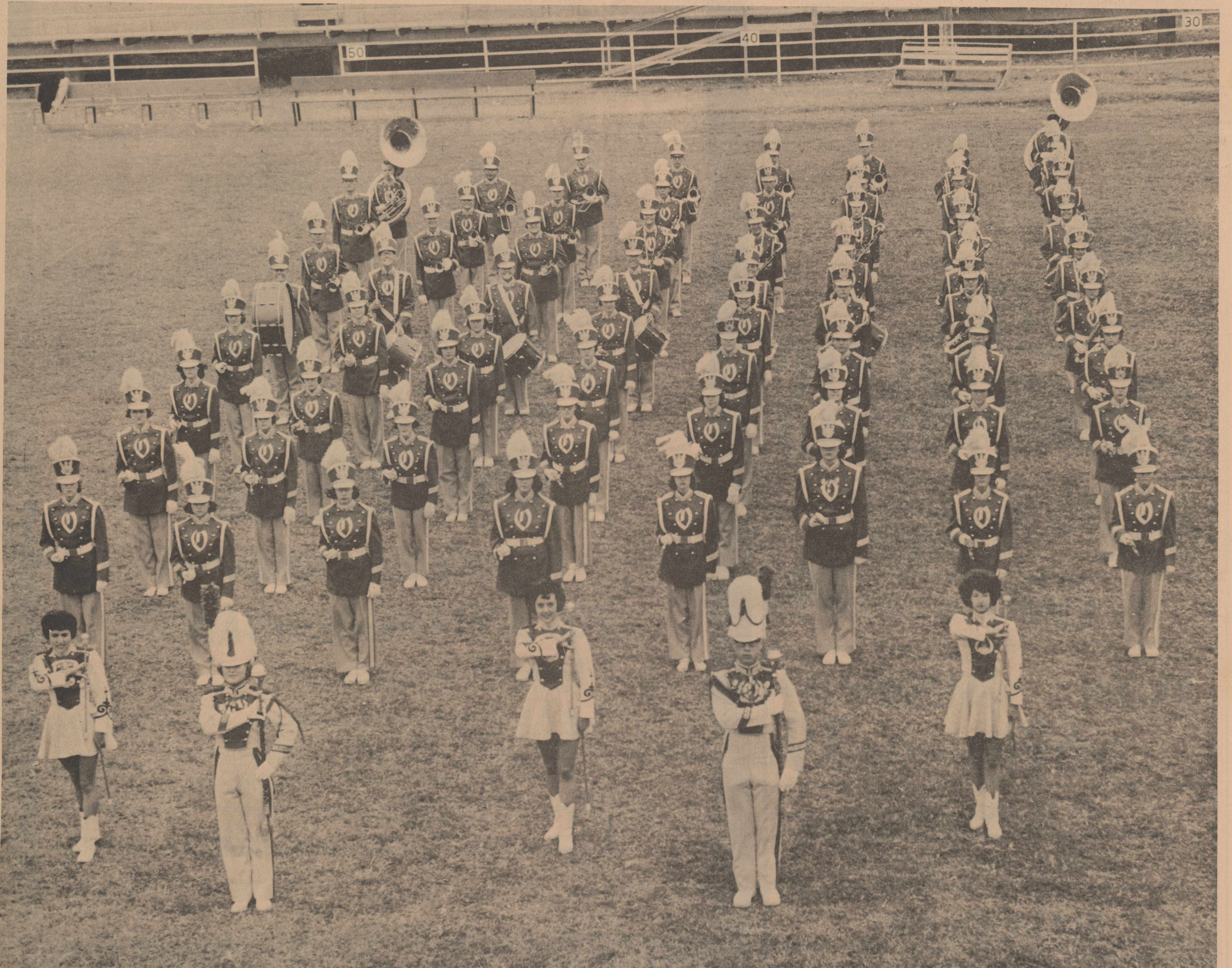
THIS VIEW for the reception room of the new Parsons Funeral Home shows the office in the background. Colonial style wallpaper features the reception area.



ANOTHER PHOTO of the reception area of Parsons Funeral Home shows how early American furniture is used through-

out. At left is a portion of one of two 13 by 15 foot reposing rooms.

## Presenting The Olton Mustang Band







PARSONS GAINS---Mustang halfback Ronnie Parsons picks up three yards against Morton late in the game at Morton last Friday night. Mustangs are down all around after

trying to clear Parsons' way. Ronnie scored one of Olton's two TD's on a 15-yard pass from Joe Priest.

JONES GOES DOWN---Olton's George Jones (11) is dropped after a short gain in the first half against Morton's Indians last Friday night. Taking a hard fall in the fore-

ground is Joe Priest (34), Olton quarterback. The Mustangs held off a closing rush by Morton for a 13-9 victory in District 3-AA play.

## Mustangs Hold Off Rush By Morton Indians, 13-9

If Custer had been there, he'd have danced with joy. For at last he would have seen the marauding Indians beaten off.

The Redskins, Morton variety, used everything at their command Friday night in an attempt to repeat the "last stand" on Olton's Mustangs. But the Ponies, their backs to the wall, simply outfought the Indians when they had to, surviving at 1-1 in the District 3-AA football wars.

The score was 13-9, Olton, although it looked at times as though the Mustangs would fall victim to a fearsome, piercing Indian running attack.

A loss would have knocked the Mustangs out of the 3-AA chase, as it did the Indians, who now have an 0-2 mark.

Now the Ponies must have consecutive victories over Muleshoe and Friona if they're to retain a whisper of a chance. And they must have some help from either Muleshoe or Morton in their games with Dimmitt, the front-runner with a 2-0 record.

Twice the Indians backed the Mustangs up to their goal line. And twice the Ponies threw back the attack.

Olton's two touchdowns and Morton's lone TD were scored in the first 14 1/4 minutes of the fray.

After that, the game was strictly a defensive battle for Olton.

With Olton in the lead at 13-7, the Indians recovered an Olton fumble at the Mustang 42 and drove to the Olton 12. A five-yard penalty against the Mustangs, their only penalty of the game, moved the ball down to the seven.

There the Indians stabbed four times at the Olton goal. The first slash was good for four yards and the second nicked the Mustangs down to the two-yard-line.

The third and fourth down tries missed completely as the drive ended at the two. The defensive work of Leon Kendall, George Jones, Robert Struve and Billy Carson led the way for the Ponies.

Olton had time to run one play before the half ended.

The other Indian thrust came in the fourth period as Morton drove 62 yards in 15 plays to the Olton three. The march featured the running of Lester Dupler and Bobby Dodson and it was Dupler who picked up a first down at the Olton three.

On first down, however, the hard-charging Carson racked up the snapback with such force that the ball went astray. Carson jumped on the fumble and Olton had possession with less than seven minutes left in the game.

Working from the Olton one, the Mustangs got nowhere in two plays and Quarterback Joe Priest went back to punt, as he kicked he accidentally stuck a foot out of the end zone. Officials ruled it a safety and that cut the Olton lead to 13-9.

From there on out, it was a matter of Olton's defense outlasting the Indians.

It was some terrific defensive work that set up the first Olton touchdown just four minutes after the game started.

After the kick-off, Morton gained one first down, but failed on the second series. The Indians' Sammy Edwards went back to punt at his 36-yard line.

Olton's Struve broke through and plowed into the punting attempt, the ball going like a shot back to the Morton 12. Edwards got back to the ball but he was downed by Struve at the 14.

It took the Mustangs just four plays to score.

Johnny Moses drove for four to the 10, then Priest rolled to the five. George Jones picked up a yard for the first down, and then Moses went in for the touchdown. Charlie Burrus' extra point try was blocked.

Morton came rumbling back, taking the kick-off and moving 71 yards in 11 plays to go into a 7-6 lead with 2:21 left in the first quarter.

The Indians completed only one pass all night, but it was a key one. After two running plays gained only three yards, QB Clem Kuhler pitched to End Charles Laws for 17 yards giving the Indians a first down at midfield.

That set the TD drive in

motion, with Edwards and Dupler sharing the running chores. Dupler drove in for the touchdown from the Olton 11. Laws' kick was good and Morton was in the lead, 7-6.

The Mustangs returned the favor in a hurry. George Phillips returned the kick-off 10 yards to the Olton 41.

Ronnie Parsons picked up seven and then Moses racked up an eight-yard gainer. Johnny carried twice more for eight and Priest got a new first down at the Morton 34.

Jones and Moses combined on the next series, with George getting seven in two trips and Moses six.

With a first down at the Morton 21, the drive seemed to bog down. Two plays found the Mustangs back at the 24, but there Priest hit Darrell Glover with a nine-yard toss.

The Mustangs faced fourth down with four to go.

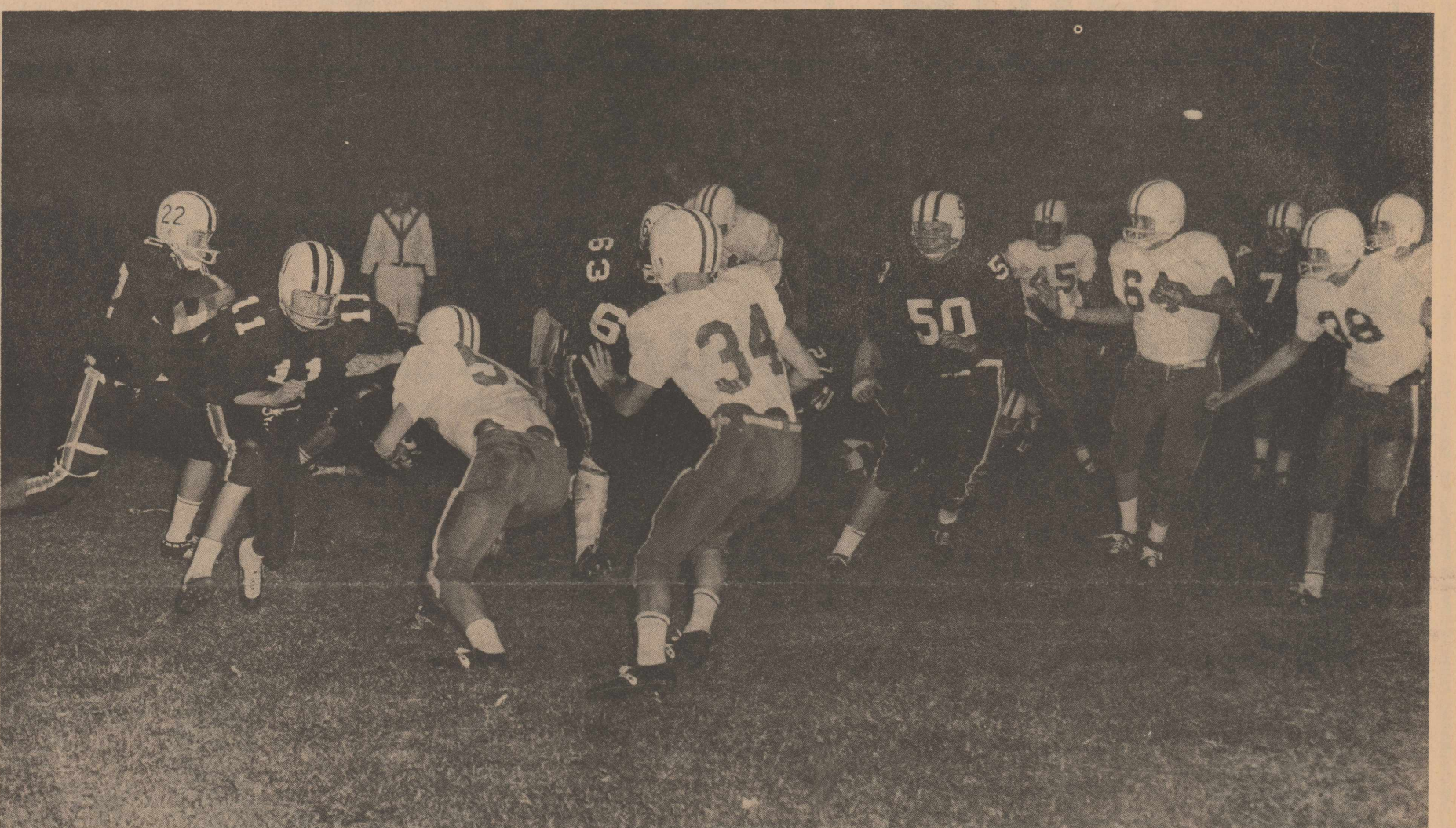
Priest called the right play, for he found Parsons open on the left side and completed a pass to Ronnie for the TD. Burrus kicked the point and Olton led 13-7 with 9:24 still left in the half.

Before the half ended Morton moved to the Olton 24, where a 15-yard penalty stopped that sortie, and later to the Olton two, where the Mustangs' fine goal line stand did the trick.

In the third quarter, the Indians rolled once to the Olton 16, where Jones came up with a key tackle that cost Morton six yards. Two incomplete passes ended that Indian effort. Shortly thereafter, Olton's

CONTINUED ON PAGE 6

GAME AT GLANCE			
	O	M	
First Downs	8	18	
Yards Rushing	128	205	
Yards Passing	42	17	
Total Yds. Gained	170	222	
Pass Attempts	7	8	
Pass Completions	4	1	
Intercepted By	0	1	
Fumbles Lost	2	2	
Punts, Avg.	2-22	2-35	
Penalties, Yds.	1-5	2-20	
Olton	6	7	0 0 ---13
Morton	7	0	0 2 ---9



INDIANS THREATEN---Morton's Lester Dupler (22) gains to the Olton three just before the first half before he was stopped by Leon Kendall (55). The four-yard pick-up left the Indians with three more plays to strike

paydirt, but the Mustangs held on the two-yard line to thwart the uprising. Other Mustangs pictured are Joe Priest (34), Joe Costello (45), Billy Carson (64), and Johnny Moses (38).

an offer worth crowing about!!!



and SATISFACTION GUARANTEED

In 1958 1,200 customers bought electric ranges under the same offer and NOT A SINGLE RANGE WAS RETURNED, proof enough of the delightfulness of electric cooking. NOW, in 1962 the offer is again made. See your participating Reddy Kilowatt dealer. Ask him to show you the GUARANTEE THAT'S IN WRITING.



SOUTHWESTERN PUBLIC SERVICE COMPANY

FREE WIRING Offer Good Until Nov. 30 At---

PARSONS FURNITURE  
THOMAS FURNITURE

LOVELESS APPLIANCE  
WHITE AUTO

Dollar-Wise it's

## Dearborn

Dearborn Crest Models From \$21.95

Other Models Priced As Low As \$17.95.

Crest MODELS

See Them At Consumers

Consumers BUTANE inc

2 WAY RADIO SERVICE

Butane PRESTRIDGE High

Phone 285-2240

BUTANE GAS CARBURETION IGNITION PARTS

OLTON, TEXAS





## STATE CAPITAL Highlights AND Sidelights by Vern Sanford TEXAS PRESS ASSOCIATION

"Sure scared hell out of that train engineer."  
It doesn't pay to take chances on your car servicing either. Lubrication with us is a specialized service. We check the battery at the same time. Get the HABIT of driving in. **Byrd & Roper Oil Co.**  
YOUR SHAMROCK DEALER  
"Where Customers Send Their Friends"  
First & Ave. G 285-2602

### OPTOMETRY

The Art and Science of Visual Care

**B.W. ARMISTEAD, O.D.**

**GLENN S. BURK, O.D.**

Visual Analysis-Visual Training

Contact lenses

Developmental Vision-Speed Reading

406 LFD DRIVE

PH 385-5147

LITTLEFIELD, TEXAS

doors. **DEFICIT RISES**--Deficit in the State's General Revenue Fund increased by almost \$13,000,000 during mid-October, according to a report from State Treasurer Jesse James.

On October 9, the State was in the red to the tune of \$41,250,349. By October 24, the deficit was \$54,074,283.

**MAP PROJECT PUSHED**---Absence of topographic maps of the entire state may be holding us back in the nationwide race for new industries.

At the meeting of the Texas Mapping Advisory Committee, Harry Clark, director of the Texas Industrial Commission, said that topographic maps are very necessary to industries considering sites here. Chairman John J. Vandertulip said the maps are essential to industrial and agricultural planning.

Topographic maps are those that show the physical features of a region in minute detail. When a mapping program of 73 counties is completed, Texas will be half-mapped.

**ATTRACTIVE NUISANCE**---State Health Department officials issued a warning against the use of arsenic acid containers for water bottles.

Field engineers recently found about 40 of the one-gallon size containers along the highway in Collin County. One had about one and one-half ounces of arsenic left in it--enough to kill more than 100 people.

Death of three members of a Josephine farm family was attributed to accidental poisoning caused by drinking water out of a container which had been used for cotton defoliation.

"These plastic bottles are

an attractive nuisance.. and deadly", an official said.

**RADIATION DETECTION PLAIN**---An officer of the Texas Department of Public Safety soon should be able to help out at the scene of a radiation accident or incident anywhere in the State in about 30 minutes, Col. Homer Garrison Jr. announced.

A stepped-up training program in radiation detection which began on October 29 is expected to provide enough trained men to handle any emergency.

Officers who have completed the course already are driving vehicles equipped with a Geiger Counter to measure very low amounts of radiation, a mid-range survey meter, and a high-range meter.

Men also carry personal "Dosimeters" on their persons so they periodically can determine the amount of radiation they have been subjected to during the survey of an area in which radio-active spillage has occurred.

Department's also helping to train members of city police departments, sheriffs' departments, rescue squads and other groups.

**HIGHWAY HOME HELP**---Property owners and tenants who become displaced by Interstate Highway right-of-way acquisition now are entitled to help from district engineers of the State Highway Department.

Acquisition now are entitled to help from district engineers of the State Highway Department.

In compliance with the 1962 Federal Aid Highway Act, people who must give up their homes or property because of right-of-way acquisition can get

relocation assistance.

Assistance will include listings of available rental and sale properties, referrals to services such as local housing bureaus and chambers of commerce, and similar advisory aid.

**MOST SCENIC**---Two Texas highways are finalists in Parade Magazine's Scenic Highway Award contest, and rank among the 20 "most scenic" in the U.S.

One is Interstate Highway 45 "The Way of the Pines," which runs through a wooded area southeast of Huntsville. The other is a section of F.M. Road 170, "El Camino Del Rio," which traverses rough country along the Rio Grande between Lajitas and Redford.

**A-G RULINGS**---Sen. Louis Crump of San Saba asked the attorney general whether newspaper publication of a new State Constitution would be required before one could be adopted. "It would not," says Wilson. A male juvenile, between 10 and 17, or a female juvenile, between 10 and 18, cannot be tried in a county court for negligent homicide in the second degree, Wellington County Attorney R. L. Templeton was informed.

A county court cannot commit a person to a mental hospital for temporary hospitalization for any longer than 90 days. A school district which does not teach high school grades cannot cancel or annul the transfer of one of its resident scholastics to a school district which provides high school grades.

**JOB TRAINING OFFERED**---A plan to discourage high school "drop-outs" and retrain adult workers was implemented

when the Texas Employment Commission and the Texas Education Agency appointed an advisory committee to assist in carrying out the terms of the 1962 Manpower Development and Training Act.

Act, which became effective on August 1, was designed to provide occupational training in skills which can be learned in 52 weeks. Adult students who show satisfactory progress may be entitled to unemployment compensation while attending classes.

State Vocational Agency will arrange for facilities and instructors for local schools, but training will be under the complete direction of local educational systems.

Training programs for household appliance repairmen and for auto mechanics already are in operation, the former in Corpus Christi and the latter in El Paso.

**CODE REVISIONS**---Texas State Bar officers and directors have selected revisions in the Code of Criminal Procedure as number one on its 12-point legislative program for 1963.

Bar president Leon Jaworski said "There is particular need for criminal procedure reforms in our State."

Other proposals will include a statute regulating the execution of bail bonds in Texas, a Uniform Commercial Code, a Uniform Arbitration Act, and amendments to the Texas Securities Act.

Bar also will propose a constitutional amendment calling for the local option abolition of justice of the peace courts and replacing them with courts and record.

Legislature also will be asked to repeal acts of its last regular session making jury findings conclusive in custody cases.

**ENFORCEMENT FUND**---Railroad Commissioner Bill Murray says an enforcement tax of 1¢ per barrel of oil is not needed. According to Murray there would be enough money for oil and gas law enforcement if the Legislature would allocate all the funds collected for the purpose.

His comments were inspired by the enforcement tax of 1¢ per barrel of oil recommended by the Gregg County grand jury. Legislature authorized the commission to take \$300,000 a year from the gas utilities fund to supplement oil enforcement tax income.

Chairman Murray feels that the commission's main need is for 15 more inspectors, to supplement its staff recently bolstered by 15 men.

**PLEDGE "NOT BINDING"**---A party primary pledge is not binding on a voter at the general election.

That is an opinion handed down by Gov. Price Daniel when he was attorney general of Texas.

State Republican chairman Tad Smith of El Paso, and other Republican leaders, are using the "Democratic" decision as grounds to urge voters to vote however they please on November 6, regardless of party primary pledge...does not create a legal obligation.

Daniel's opinion noted that the courts of Texas have answered this question by holding "that the pledge...does not create a legal obligation."

**MILITARY DUTY RULING**---State employees requesting another year of active duty with the 49th Armored Division can have their jobs back when they get out.

So says Attorney General Will Wilson. He held that those staying on for another year "are entitled to restoration of state employment."

Many members of the 49th Division were recalled to active duty when the Berlin situation became tense last year. Most of the men were released in Aug-

ust. Some requested and were assigned another year of active duty.

**LONG BALLOT**---Texas' general election ballot will be about as long as a newspaper.

November 6 ballot will contain not only the lists of party nominees for congressional, state, legislative, district, county and precinct offices, but also "for" and "against" questions about 14 proposed constitutional amendments.

**NO WAITING**---There is no longer a waiting list of applicants for land purchase under the veterans' land program, says Land Commissioner Jerry Sadler.

Sadler said that 70,000 veterans were given land-buying opportunities the past 21 months. Commissioner reported a backlog of 40,672 veterans on January 1, 1961. Many of them had been waiting their turn for three years.

A total of 116,885 applications have been received since the program began operation in 1949.

**IN PLAINVIEW**

Mrs. C. J. Dorris and Cherri were in Plainview Saturday visiting.

**VISIT CHITWOODS**

Mrs. Abernathy of Leonard visited in the home of her daughter, Mrs. Rex Chitwood and family, recently.

**METHODIST YOUTH**

The District Youth meeting will be Saturday Nov. 10 at 6 p.m. in Lockney. Glenn O'Neal has been selected as the speaker.

**METHODIST HYMN SING**

Methodist Annual District Hymn Sing will be held at the First Methodist Church, Plainview, Nov. 4. This is commemorating the anniversary of the birth of Charles Wesley.

**IN MULESHOE**

Mrs. E. L. Fancher, visited last weekend with Mr. and Mrs. A. E. Perkins and Mr. and Mrs. Glen Williams, all of Muleshoe. Mrs. Fancher also visited in Needmore with Mr. and Mrs. Lawrence Quesberry.

**IN CANYON**

Mr. and Mrs. James Ellis visited in the home of Mr. and Mrs. Richard Ellis of Canyon this weekend.

Distributed from:

BOSTON LOS ANGELES  
LONDON CHICAGO



Interesting  
Accurate  
Complete

International News Coverage

The Christian Science Monitor, One Norway St., Boston 15, Mass.

Send your newspaper for the time checked. Enclosed find my check or money order.  1 year \$22.  6 months \$11  3 months \$5.50

Name \_\_\_\_\_  
Address \_\_\_\_\_  
City \_\_\_\_\_ Zone \_\_\_\_\_  
State \_\_\_\_\_

PB-16

# "Big Doings Brewing at Gifford-Hill-Western"

YOU'RE INVITED TO

## OUR OPEN HOUSE • NOV. 10, 1962

ALL DAY SATURDAY • 24<sup>TH</sup> & COLUMBIA • PLAINVIEW, TEXAS

See our new **LOCK-SEAL** machine make  
the best irrigation pipe on the market today!

THERE WILL BE...

- ★ **PLANT TOURS** - Educational and Entertaining!
- ★ **REFRESHMENTS** for All!
- ★ **A PRIZE** for Each Person Who Attends!
- ★ **FREE RIDES** for the Kids!

SOME **LUCKY** IRRIGATION FARMER WILL WIN A **\$1000.00** **LOCK-SEAL** Concrete Irrigation Pipeline **INSTALLED ON HIS FARM**

Don't Miss It!



## YOU HAVE A BIG STAKE IN TUESDAY'S ELECTION!

make sure Texas does not fall into the hands of an irresponsible, militant minority.

### DEMOCRAT JOHN CONNALLY

- ★ Has a specific 71-point program for progress for all our people
- ★ Has a distinguished record of success in private life and public service

### HIS REPUBLICAN OPPONENT

- Was twice defeated as a Democrat before switching parties
- Has spent his time attacking the President and Vice President of the U.S.
- Voted against increased pensions and farm-to-market roads, but campaigned for a pay raise for himself by pitching a pup tent on the Capitol lawn!

VOTE FOR PROGRESS. VOTE TO KEEP THE LOWEST TAXES OF THE 10 BIGGEST STATES IN THE NATION. VOTE DEMOCRATIC!

VOTE FOR JOHN

**CONNALLY**

FOR GOVERNOR!



pol. ad paid for by Connally for Governor Campaign, Gene Leck, Chairman



**SELL • BUY • TRADE • HIRE • SERVICE • HELP WANTED • EMPLOYMENT OPPORTUNITIES**

**CLASSIFIED ADS**

**Rates**  
Rates on classified advertising are: 6 cents per word first insertion; 3 cents per word second insertion, and each additional consecutive insertion. Minimum 50 cents first insertion, 25 cents additional insertions. The Enterprise is not responsible for mistakes after first insertion. Please read your ad.  
All classified accounts are due and payable 10th of month following insertion. A flat rebilling fee of \$1.00 will be charged for all accounts 30 days past due and for all successive rebillings.

**For Rent**

**FOR RENT:** Two bedroom house. Mrs. Ann Pavelka. 35-tfc.  
**FOR RENT:** Furnished apartment. 1103 Ave. E. Phone 285-2207, 37-tfc.  
**FOR RENT:** One 2 bedroom house and one three room modern house. Phone 285-2810, Claude Carothers. 29-tfc.  
**FOR RENT:** Five room house. East 5th. Phone 285-2377. Paul Burrus. 30-tfc.

**Notice**

**REWARD** for information leading to recovery of any of seven head of 400 pound steers. Mixed breed and color. Wearing white ear tags or flying-C brand. Strayed from F.F. Calhoun farm southwest of Plainview. Call CA4-6613 or CA4-2134 Plainview collect. 27-tfc.

**NOTICE:** Expert painter, interior and exterior. Roy Whittington. Inquire Whittington's, Inc. 25-tfc.

**VISIT GOLDENS**  
Mrs. W.E. McCrory of Plainview is visiting this week in the home of her daughter, Mr. and Mrs. C.F. Golden.

**Monuments**  
Winnboro Blue Granite  
White Georgia Marble  
and others  
See Percy or Connor  
Parsons  
Phone 285-2621 or 285-2767

**EXPERT FRAMING**  
at reasonable prices  
**QUALITY ART SUPPLIES**  
Grumbacher-Craftint  
**HICKS ART & FRAME SHOP**  
1304 MILWAUKEE STREET  
PLAINVIEW, TEXAS

**FOR ALL GEAR HEAD Service and Repair**  
SEE  
**W.M. Whitesides**  
277 East 5th Street  
PLAINVIEW, TEXAS

**Farm For Sale???**  
Do you want a larger place? More Water? Income property? Or just Money? We can sell or trade your farm or grass land. List with West Texas' largest, most active farm broker. We offer: Hale Co. 1/2; Hockley Co. 1/2 Sec. choice; Gaines Co. 160 A; Terry Co. 135 A. raw; others in most every county.  
**J.W. Chapman & Sons**  
3212-34th Street  
Lubbock  
Phone SW9-4321  
Hear: Sat. Night weather. Ch. 11, 10:10 PM

**WAYNE'S**  
— OFFICE SUPPLIES —  
PRINTING And LITHOGRAPHING  
PHONE 285-2225 Olton, Texas

**For Sale**

**FARMS FOR SALE:** 160 A with 7 room brick home, 80 A with 3 bedroom house in Hale Center area. Tri-County Land Co. Howard Hall-G.T. Sides. Phone 285-2974. Olton. 34-tfc.  
**FOR SALE:** CAR PORTS, any size or color. All steel. See at Roberson Mobile or call 285-2131. 27-tfc.  
**FARM FOR SALE:** 200 A near Olton. 2 well-2 sets imp. \$600 per acre. Tri-County Land Co. 614 Main St. Howard Hall-G.T. Sides. Phone 285-2924. 34-tfc.  
**FOR SALE:** Beautiful A.K.C. registered Chihuahua puppies and grown dogs, all colors. Call Richard Roberson, 285-2131 or 285-2097. 1-tfc.

**FOR SALE:** 1/2 ton, 6 cylinder 4 speed Ford pickup. Jimmy Bitner. Phone 938-3720, Hart, Texas. 37-3tc.

**FOR SALE:** 2 hydraulic dump burr trailers. Call 285-2074, Royce McFadden. 36-tfc.

**FOR SALE:** 169-acre farm, 4 miles north of Circle, priced right. C.F. Williams. Phone 285-2276. 37-tfc.

**BETTER HOMES FOR SALE:** I. 3 bedroom brick. Utility room. Double garage. Extra nice. II. 3 bedroom frame, cellar, large lot. Priced Below Market. III. 3 bedroom brick near church, school and post office. Tri-County Land Co. 614 Main. Phone 285-2924. Olton. 34-tfc.

**FOR SALE:** 1/2 ton, 6 cylinder, 4 speed Ford pickup. Jimmy Bitner. Ph. 938-3720, Hart, Texas 37-3tc

**FOR SALE:** Oliver mounted cotton stripper. Phone TU-93570 Halfway

**FOR SALE** - Electric portable sewing machine. New - never been used. Would make a nice Christmas present. Mrs. M.R. Cavett. Phone 285-2194.

**FOR SALE** - Turkey toms and hens, \$4 each. Roy Long. 39-2tp

**IT PAYS TO ADVERTISE**  
**GENERAL DENTISTRY**  
Tues., Thur., Sat. 9 a.m. - 5 p.m.  
C.W. Jennings B.Sc., D.D.S.  
412 Main St. Olton, Texas  
Phone 285-2929

**GEARHEAD REPAIRS**  
**MACHINE WORK**  
OF ALL KINDS  
**Edwards Machine Shop**

**Water Well Drilling**  
**NO MONEY DOWN 3 YEARS TO PAY**  
**Pressure Pump Service**

**CALVIN COOK**  
CA-4 4498 2519 Gladney

**Thomas Speed Wash & Drycleaners**  
Coin-Operated Drycleaner  
open 8 A.M. - 6 P.M.  
Six Days A Week.  
Speed Wash Open  
24 Hrs. A Day  
Seven Days A Week

**WAYNE'S**  
— OFFICE SUPPLIES —  
PRINTING And LITHOGRAPHING  
PHONE 285-2225 Olton, Texas

**Wanted**

**WANTED:** To make buttons, button holes, buckles, belts, children's garments. Dress making. Willena Gordon. Phone 285-2401. 27-tfc.  
**WANTED:** Ironing wanted, Mrs. Bob Starritt. Phone 285-2476. 38-2tc.  
**WANTED** - Farm job of any kind. Well experienced, J.R. Green. 1310 Hillcrest addition. Phone 285-2849. 39-1tp  
**WANTED** - Ironing and Babysitting in my home. Mrs. Bill Alexander. 39-2tc

**Flying Queen Basketball Clinic Set**

Plans have been completed for the sixth annual Flying Queens Basketball Clinic to be held in Plainview Nov. 10. This girls basketball clinic, which started six years ago as a small local affair, has expanded so that last year it was attended by 60 coaches and over 500 players from high school girls' teams all over Texas and in neighboring states. The program followed at the instructional workshop consists of short periods during which outstanding coaches using their teams or the Flying Queens to give demonstrations of their ideas, techniques, and methods. Coach Harley Redin and the Flying Queens will be featured in the clinic. The team has won six national AAU championships in the last nine years, has been runner-up twice, and holds the all-time consecutive victory record with 131 straight wins. The Queens and Queen Bees, the freshman team, will demonstrate fundamentals, ball handling, and actual game play in their own winning style. Following the all-day instruction, four regulation basketball games will be played, featuring a game between two of last year's state champions, Sundown and Claude. 4:00 PM Claude vs Sundown 5:30 PM Tulia vs Rosston, Ok. 7:00 PM Floydada vs Friona 8:30 PM Olton vs Happy. The clinic begins at 9 AM Nov. 10, with match games starting at 4 in the afternoon. Tuition for the clinic is \$10 per school. All coaches and players registered for the clinic will be admitted to the games free. Admission for others will be \$1 for the complete four game program. All coaches interested are invited to contact Coach Harley Redin at Wayland College.

**Carson At Oklahoma U**  
STILLWATER -- James D. Carson of Olton is among 13,716 students enrolled at Oklahoma State University this fall. The total includes 11,795 on the Stillwater campus, 384 in the Oklahoma City Technical Institute and 1,537 at the Okmulgee branch. The on-campus figure includes 3,160 freshmen, 2,464 sophomores, 2,296 juniors, 2,253 seniors, 1,502 graduate students and 120 special and unclassified students. The ratio of men to women is just over two-to-one-- 8,236 men and 3,559 women.

**H.D. Eby Gets Medal**

**WORMS, GERMANY (AHTNC)**  
--Army Specialist Four Harold D. Eby, 24, son of Mr. and Mrs. Duane C. Eby, recently was awarded the Good Conduct Medal while serving with the 48th Infantry in Germany. Specialist Eby was awarded the medal in recognition of his exemplary conduct, efficiency and fidelity as a soldier in the active Federal military service. Eby was graduated from Olton High School in 1956 and was employed by Elmer Phillips Plumbing before entering the Army.

**VISITED DANIELS**  
Mr. and Mrs. Raiford Daniel, Jr. and family of Colvis, N.M. visited in the home of his parents, Mr. and Mrs. Raiford Daniel, Sr.

**VISIT BROWNS**  
Mr. and Mrs. Ron Rogers of Plainview visited in the home of their parents, Mr. and Mrs. Coy Rogers and Mr. and Mrs. J.C. Brown.

**ONE OF The Plainsmen**  
Sez: "HOUSEWORK is something you do that nobody notices unless you didn't do it."

**Shed-A-Leaf Penta Acid**  
**The Plainsmen**  
FARM & RANCH  
Phone 285-2255 Hwy. 70

**Services Held For Mother Of Olton Man**

Funeral services for Mrs. Mabel Buchenau, 78, mother of Howard Buchenau of Olton, were held Thursday at 2:30 p.m. in the First Methodist Church, Tulia.  
Mrs. Buchenau died Tuesday Oct. 23 in Swisher County Hospital following an illness of several weeks.  
Burial was in Rose Hill under direction of Wallace Funeral Home.  
She was a member of the First Methodist Church.  
Mrs. Buchenau was born Aug. 4, 1884 in Logansville, Pa. She had been a resident of Tulia since 1929, moving there from Amarillo.  
She was married Feb. 11, 1908 in Abilene, Kan. to George Buchenau. He died in 1957.  
Other survivors include a daughter, Mrs. John R. Sander-son of Amarillo; one other son, Bernie Buchenau of Roswell, N.M.; seven grandchildren and two great-grandchildren.

**Lunch Menu**

Nov. 5-9, 1962  
(Subject to change)  
**MONDAY**- Pork cutlet and gravy, mashed potatoes, tomato catsup, apple pie, rolls and milk.  
**TUESDAY**- Tuna sandwich, vegetable beef soup, peanut butter and crackers, potato chips, purple plums, doughnut and milk.  
**WEDNESDAY**- Meat balls and spaghetti, diced potatoes, pear salad on lettuce, cookie, rolls and butter, milk.  
**THURSDAY**- Fried chicken and gravy, steamed rice, tossed green salad, apple sauce, gingerbread, rolls and milk.  
**FRIDAY**- Chili beans, potato boats, spinach, peach halves, filled crackers, corn bread and butter, milk.

**Carson At Oklahoma U**  
STILLWATER -- James D. Carson of Olton is among 13,716 students enrolled at Oklahoma State University this fall. The total includes 11,795 on the Stillwater campus, 384 in the Oklahoma City Technical Institute and 1,537 at the Okmulgee branch. The on-campus figure includes 3,160 freshmen, 2,464 sophomores, 2,296 juniors, 2,253 seniors, 1,502 graduate students and 120 special and unclassified students. The ratio of men to women is just over two-to-one-- 8,236 men and 3,559 women.

**VISIT DEARS**  
Mr. and Mrs. B. F. Mason of Arizona are visiting in the home of Mr. and Mrs. J. W. Dear's parents, Monday they visited in the home of J. C. Dear.

**DEER HUNTING**  
Mr. and Mrs. R. G. Deberry, Mr. and Mrs. Bud Andres, Mr. and Mrs. Leroy Botkin, Mr. and Mrs. George Brown, Jr. and William Deberry returned home last Wednesday from deer hunting in Glenn Wood Springs, Colo.

**VISIT GIPSONS**  
Judge and Mrs. D.W. Bartlett of Waco were visiting his sister, Mr. and Mrs. J.T. Gipson, Ann Blythe, Mrs. Bert Thomas and Delia Fuller recently.

**VISIT GIPSON**  
Mr. and Mrs. Joe A. Gipson, who is superintendent of schools at Canyon visited in the home of Mr. and Mrs. J.T. Gipson, last weekend. Mrs. Joe A. Gipson's mother, Mrs. Meim, also accompanied them to Olton.

**BLAST OFF TO SAVINGS!**  
**Shurfine Carnival of '62**  
**CAKE MIX 35c**  
BETTY CROCKER  
WHITE OR DEVILS FOOD

**MILK 79c**  
CARNATION  
POWDER  
14 QT. SIZE

**CRACKERS 29c**  
NABISCO  
PREMIUM  
1 LB. BOX

**SOUP MIX 29c**  
LIPTON  
TOMATO OR  
CHICKEN NOODLE

**CHEESE 49c**  
CLOVERLAKE  
COTTAGE

**CHILI 45c**  
WOLF BRAND  
NO. 303 SIZE

**COCA COLA 59c**  
12 BOTTLE CARTON  
PLUS DEPOSIT

**the years greatest Countdown Carnival of '62 of VALUES!**  
**SPECIALS THRU NOV. 3**

Shurfine Apple Butter 28 oz. . . . . 4/\$1.90	Shurfine Orange Juice 6 oz. Frozen . . . . . 6/\$1.00
Shurfine Apple Sauce 303 . . . . . 7/\$1.00	Shurfine Peaches YC 5 1/2 or Hlvs. 2 1/2 . . . . . 4/\$1.00
Shurfine Asparagus Spears-All Gr. Cut-300 . . . . . 4/\$1.00	Shurfine Peanut Butter 18 oz. . . . . 2/\$1.00
Shurfine Beans & Potatoes 303 . . . . . 6/\$1.00	Shurfine Pears Bartlett Halves 303 . . . . . 5/\$1.00
Shurfresh Biscuits Sweet-Buttermilk-8 oz. . . . . 13/\$1.00	Shurfine Peas Early Harvest 303 . . . . . 5/\$1.00
Shurfine Blackeyes Fresh Shelled 300 . . . . . 7/\$1.00	Shurfine Pickles Sour-Dill 22 oz. . . . . 3/\$1.00
Shurfine Catsup 14 oz. . . . . 5/\$1.00	Shurfine Pineapple Crushed No. 2 . . . . . 3/\$.89
Shurfresh Cheese Spread 2 lb. . . . . \$ .69	Shurfine Pork and Beans 300 . . . . . 9/\$1.00
Shurfine Cherries RSP 303 . . . . . 5/\$1.00	Shurfine Potatoes Irish Whole 303 . . . . . 8/\$1.00
Shurfine Chili with Beans 15 oz. . . . . 4/\$1.00	Shurfine Potatoes Sweet Whole No. 3 . . . . . 4/\$1.00
Shurfine Coffee Reg-Drip 1 lb. . . . . \$ .49	Shurfine Preserves Strawberry 18 oz. . . . . 2/\$1.00
Shurfine Corn WK-CS Golden 303 . . . . . 6/\$1.00	Shurfine Pumpkin 300 . . . . . 4/\$.49
Shurfine Cranberry Sauce Str. 300 . . . . . 5/\$1.00	Shurfine Salad Dressing Quart . . . . . \$ .39
Shurfine Cucumber Chips Fresh 16 oz. . . . . 4/\$1.00	Shurfresh Salad Oil Quart . . . . . 2/\$1.00
Roxey Dog Food Tall Can . . . . . 13/\$1.00	Shurfine Salmon Red Alaska No. 1 . . . . . \$ .89
Shurfine Flour 25 lb. Print Bag-free dust pan. . . . . \$1.79	Shurfine Sauer Kraut 303 . . . . . 7/\$1.00
Shurfine Flour 10 lb. Paper Bag . . . . . \$ .79	Shurfine Spinach 303 . . . . . 8/\$1.00
Shurfine Fruit Cocktail 303 . . . . . 5 \$1.00	Shurfine Shortening 3 lb. . . . . \$ .59
Shurfine Grape Juice 24 oz. . . . . 3/\$1.00	Shurfine Tomatoes 303 . . . . . 5/\$1.00
Shurfine Green Beans Cut B.L. 303 . . . . . 5/\$1.00	Shurfine Tomato Juice 46 oz. . . . . 4/\$1.00
Shurfresh Margarine 1 lb. . . . . 6/\$1.00	Shurfine Tomato Sauce 8 oz. . . . . 11/\$1.00
Shurfine Milk Tall Can . . . . . 8/\$1.00	Shurfine Tuna Chunk Style 6 1/2 oz. . . . . 3/\$.89
Shurfine Olive Stuffed Throw Manz-4 1/2 oz. . . . . 3/\$1.00	Shurfine Vienna Sausage 4 oz. . . . . 5/\$1.00
	Shurfine Waffle Syrup Quart . . . . . 2/\$.89

**PRODUCE**

**POTATOES 49c**  
WHITE OR RED  
10 LB. BAG

**BANANAS 12 1/2c**  
LB.

**BACON 49c**  
CORN KING  
LB.

**PORK ROAST 39c**  
FRESH  
LB.

**SHERMAN FOOD**  
Double Gunn Bros. Stamps: Wednesday With \$2.50 Purchase  
Free Delivery Quality Meats Phone 285-2787



# THE PRO & CON OF 14 PROPOSED AMENDMENTS

## 1. WORKMAN'S COMPENSATION INSURANCE

This amendment would authorize all counties and other political subdivisions of this state to provide insurance for all employees.

**Those who are FOR say:** Since, under Sections 59 and 16 of Article III, the State and municipalities are allowed to provide Workman's Compensation Insurance for their employees, and under the present Section 60 of Article III the counties may also do so, it seems only fair to extend this privilege to all the other political subdivisions of the state so that their employees may have this benefit.

This amendment merely adds the words, "and other political subdivisions," so it can be assumed that present policies will be continued.

**Those who are AGAINST say:** The phrase "and other political subdivisions" is too vague. There are so many political subdivisions, such as water control and improvement districts, conservation districts, mosquito control districts, justice precincts, etc., that it seems unwise to extend this privilege so broadly.

Since the present Section 60, Article III, permits the Legislature to provide the structure for the handling of the insurance and the amendment sets no limit on this power, it would be possible for the Legislature to make the coverage mandatory and so perhaps bankrupt many of the "political subdivisions."

## 2. RAISING STATE FUNDS FOR ASSISTANCE TO NEEDY AGED, NEEDY BLIND AND NEEDY CHILDREN

This amendment would raise the limit on use of state funds for financial assistance to the needy aged, needy blind and needy children from \$47,000,000 a year to \$52,000,000 a year.

**Those who are FOR say:** This additional permissive \$5,000,000 would make it possible for the Legislature, should the occasion arise, and should it be deemed expedient, to increase the annual appropriation for any one or all three of the programs covered. Average payments under each program are well below the national average now. Texas ranks 41st and 42nd with 72% of the funds coming from the Federal Government. The proposed increase of \$5,000,000 will still leave Texas far behind in its responsibility.

This increase will mean about \$5.00 per month more for welfare recipients, whose top grants are now around \$68.00 per month — the additional amount might permit them to "live" rather than just exist.

Public assistance programs should solve the critical problems of individuals that they cannot solve for themselves, either from their own resources or those of responsible relatives. For both humanitarian and economic reasons, the objective of public assistance programs should be to help the beneficiary overcome his problems — not just to live with them through financial subsidies.

**Those who are AGAINST say:** With the old age assistance rolls decreasing as more and more persons are covered by Social Security, any increases in total appropriations will not go to aid more persons, but merely to increase the size of the grant of those who remain on the rolls. Actually, this is already possible with the present limitation, since the total number of OAA recipients declines each year.

Beginning in January, 1962, OAA recipients in effect had their grants raised by being provided a special medical program in the form of Blue Cross/Blue Shield coverage, plus benefits to cover costs of nursing home services. The total outlay for this program is \$33,600,000 annually, of which \$8,200,000 is in state funds and the rest, \$25,400,000 is in Federal funds. Thus, recipients who had been allowed medical costs in figuring their monthly Public Assistance check now have room in their budget for other items which the State welfare program will allow.

Responsible adults with a given net income should be made liable for the support of close relatives who would otherwise qualify for public assistance grants; otherwise Texas will have a steadily mounting spiral of welfare spending which encourages dependency and which fails to resolve the human ills which are the very reason for its existence.

## 3. HOSPITAL DISTRICTS IN OCHILTREE, CASTRO, HANSFORD AND HOPKINS COUNTIES

This amendment would permit the Legislature to authorize the creation of hospital districts in Ochiltree, Castro, Hansford and Hopkins Counties, each district to be co-extensive with the limits of such county.

If any such district is created, it may be authorized to levy a tax not to exceed \$0.75 per \$100 valuation of taxable property within the district, provided, however, that no tax may be levied until approved by a majority of qualified property-taxpaying voters who have duly rendered their property for taxation. The maximum rate of tax may be changed at subsequent elections not to exceed the maximum limit of \$0.75 per \$100 valuation.

If such tax is authorized, no political subdivision or municipality within or having the same boundaries as the district may levy a tax for medical or hospital care for needy individuals, nor shall they maintain or erect hospital facilities, but the district shall by resolution assume all such responsibilities and obligations of such subdivisions or municipalities. The maximum tax rate submitted shall be sufficient to discharge these responsibilities and to maintain and operate the hospital system. The Legislature may authorize the district to issue tax bonds for the purpose of purchase, construction, acquisition, repair or renovation of improvements and initially equipping the same and such bonds shall be payable from the \$0.75 tax.

**Those who are FOR say:** This will create a hospital district so that it can be financed from its primary area rather than merely being financed by a single city. The considerable number of charity cases from out of the city cause a drain on the city funds — by the use of hospital districts, the area from which these out-of-city charity cases come also contributes to the hospital upkeep.

This is permissive legislation. Passage of this amendment would affect only the people living in the areas involved. Citizens of these counties should be allowed to determine for themselves whether or not such a district is necessary to meet their needs and to tax themselves for such purposes if they so desire.

The initiation and passage by the Legislature indicates that interest in the formation of hospital districts exists in the designated areas, and since hospital districts have been created in other areas, it would be discriminatory to deny the privileges of election to citizens of those areas. In many small counties, there appears to be no other way to provide such facilities except by the creation of such districts supported by a special tax levy.

**Those who are AGAINST say:** The creation of these districts should not require a Constitutional Amendment each time they are proposed, as this is the business of the area involved and not of the state as a whole. Such details of local government spelled out in the Constitution creates the unwarranted financial burden of a state-wide election and delay each time an area wishes to create such a hospital district.

People should not be called on to set up another taxing agency for these small hospitals. Some have not been successful and have actually been closed after the capital expenditures have been made. Some counties simply do not have the population to support this type of institution.

Taxation is not the proper financial method for hospital construction. Hospitals financed and operated with taxation dollars very often tend to operate at a greater loss than those dependent on revenue for their operation.

## 4. CONSERVATION STORAGE FACILITIES IN RESERVOIRS

This amendment would authorize the Texas Water Development Board to acquire and develop storage facilities in reservoirs and to dispose of such storage facilities and water under terms to be prescribed by the State Legislature, providing for the use of funds received from the disposition of these facilities and water.

**Those who are FOR say:** Passage of the amendment will encourage the optimum development of the limited number of feasible reservoir sites available in Texas. Although Congress has authorized Federal agencies engaged in planning multi-purpose reservoirs to provide conservation storage space for use by local interests, the law requires that the cost must be borne by non-Federal agencies.

This amendment will provide state financing to local political subdivisions wanting to buy water-catchment space for future needs, at a possible lower rate of interest than local bonds would require.

In most cases, it is cheaper to include conservation storage in the original construction of a reservoir than to add it later. This amendment will provide funds at the time of construction and save money.

**Those who are AGAINST say:** This amendment can put the Texas Water Development Board in the water supply business, if authorized legislation is passed. Local governments should take care of local needs without the state being a "middleman."

River authorities and other water districts can already borrow money from the Federal Government to pay for conservation storage capacity in reservoirs. The interest rate is usually 2½ to 3%, somewhat cheaper than most of the loans made by the Texas Water Development Board under its present authorization, which allows the Board to lend local groups up to \$15 million for water resource development.

Storage facilities could be acquired and sold or leased for the benefit of some particular portion of the State at the expense of an adjoining portion.

## 5. AUTHORIZING THE LEGISLATURE TO CREATE HOSPITAL DISTRICTS

This amendment would permit the Legislature to authorize the creation of hospital districts composed of all or part of one or more counties; the assumption by the district of any included city, town or county hospital indebtedness and the transfer of all hospital facilities thereof to the district; the issuance of bonds for hospital purposes and the levy of taxes to pay the district's bonds, assumed indebtedness, and for operating and maintaining the district; providing other terms and conditions for accomplishing the purpose of this amendment. Such a district could be created only after 30 days' public notice to the district affected and only with the affirmative vote of a majority of the taxpaying voters in the district concerned.

**Those who are FOR say:** The passage of this one Constitutional Amendment would hereafter remove the necessity for constitutional amendments in order to create a hospital district. This would save considerable time, a great deal of expense and further encumbering of our Constitution.

Passage of this one Constitutional Amendment would be the "cure" for future amendments similar to those proposed in S.J.R. 22 and H.J.R. 70.

Individual counties will no longer be required to wait two years for the submission of their hospital district issue to the voters of the entire State of Texas, but may create their own districts by local elections.

**Those who are AGAINST say:** The Texas Constitution is already much too detailed, cumbersome and too many times amended.

County supported hospital districts in small cities and counties with small population and without substantial contributions from industry would mean an increase in the tax burden, not as good care as in privately operated hospitals and another step toward socialized medicine.

Taxation is not the proper financial method for hospital construction. Hospitals financed and operated with taxation dollars very often tend to operate at a greater loss than those dependent on revenue for their operation.

## 6. RETIREMENT, DISABILITY, DEATH BENEFITS FOR OFFICERS AND EMPLOYEES OF ALL POLITICAL SUBDIVISIONS

This amendment would permit extension of participation in a county's retirement, disability and death compensation fund to appointive and elected officers and employees of each county and any other political subdivision of this state. The ceiling on matching contributions made to the funds by county and other political subdivisions and by officers and employees of same would remain at 5% of salary, but the present \$180 per person limitation would be removed. No officer or employee would qualify for benefits until he had served at least 12 years.

**Those who are FOR say:** Elective officers and employees of the county and all other political subdivisions should be allowed to participate in a retirement, disability and death compensation fund.

One of the greatest attractions offered by business and industry is the fringe benefit of a good retirement plan. A better retirement plan will help secure and retain well qualified personnel for office and employment in the county and other political subdivisions of the state.

The removal of the \$180 ceiling is desirable to provide a more adequate real realistic pension for these employees and officials.

This is a permissive amendment. No county or other political subdivision would be required to adopt the plan unless the majority of its voters approved. If the people of a county or other political subdivision wish to adopt such a plan they should be permitted to do so.

Removal of the restrictions on investments will permit greater flexibility, and probably better paying investments and an increase in the value of the assets of the fund would be the result.

**Those who are AGAINST say:** With no limitation as to amount other than 5% of the salary paid by the county or other political subdivision, those persons receiving large salaries, generally elected officers, would cost the county or political subdivision a disproportionate amount.

The new plan will inevitably cost the county more money than the present plan, while the cost of this amendment to the various political subdivisions has not even been estimated and could be so great it might bankrupt them.

Social Security, now permitted under county option for all employees and officials, would provide adequate retirement and disability funds without this added tax burden.

Removal of all restrictions on investments is unwise. This gives too much latitude to the officers who would administer the funds and could lead to a loss of the funds through speculative investments.

The 12 year limitation for receiving benefits is too long, since the elected officers would have to be returned to office a minimum of 4 times for those elected for 4 year terms and 7 times for those elected for 2 year terms before they could qualify for any benefits. This could lead to the perpetuation in office of elected officials for an indefinite time.

## 7. CONTINUITY OF GOVERNMENTAL OPERATIONS IN PERIODS OF EMERGENCY

This amendment would extend the authority of the Legislature to provide emergency succession to all public offices on both the state and local level, whether the offices are filled regularly by election or appointment, in the event that the incumbents were unavailable due to emergency resulting from disaster caused by enemy attack. This does not include members of the Legislature.

**Those who are FOR say:** Some legal arrangement should be set up ahead of time to provide for the continuation of orderly government in the event of a disaster, including provision for the appointment of county judges, mayors and all other public offices until elections could be held.

Enactment of legislation by the states is essential to authorize actions necessary to assure the preservation of effective civil government during war emergency and would be indispensable to the post-attack restoration of state and local communities.

Thirty-one state legislatures have approved continuity of government amendments to their Constitutions similar to S.J.R. 13. In the 18 states where ratification action has been taken to date, the amendments have been approved by overwhelming majorities.

S.J.R. 13 is an outgrowth of the suggested constitutional amendment developed in response to the Conference of Governors, the National Association of County Officials, the American Municipal Association and the U.S. Conference of Mayors, who, recognizing the existing and increasing possibility of the occurrence of disasters of unprecedented size and destructiveness resulting from enemy action in a nuclear war, requested that model legislation be prepared.

**Those who are AGAINST say:** In time of emergency caused by nuclear war, it might be impossible to assemble a quorum of the Legislature in order to provide for the filling of vacancies in public office.

This bill is not needed. The present legislation provides for adequate succession to public office — all that would be required in a post-disaster period. This bill would only increase the power of the legislature, having no real purpose.

It is possible to misuse power, and even in time of emergency, this is too much power to give the Legislature. Better, perhaps, would be a bill providing for County or regional appointment bodies, to function in the event of emergency resulting from enemy attack.

The bill itself is too broad. By covering every office on state and local level, this involves too many detailed appointments for a body as busy and involved as the Legislature. Also, by not providing for appointment of Legislators, themselves, the bill lacks a most important facet.

## 8. ASSISTANCE PAYMENTS TO TOTALLY AND PERMANENTLY DISABLED

This amendment would raise to \$2,500,000 the present \$1,500,000 per year ceiling for assistance payments to needy individuals over 14 years of age who are permanently and totally disabled by reason of mental or physical handicaps.

**Those who are FOR say:** Currently all available funds for this category of assistance are being utilized and should the rolls continue to increase, it may not be possible, under the present Constitutional maximum, to continue assistance at the level now being granted. The statute governing the incapacity eligibility factor of this program is to the effect that one must be chairfast, bedfast, or able to move about only with considerable assistance. In essence, the individual must be so incapacitated as to be unable to meet his personal needs, such as dressing, meal preparation, etc., or have a mental and/or physical condition such as to require close and constant supervision. Should this factor of eligibility ever be liberalized to more nearly encompass those individuals who though able to wait upon themselves, are utterly and completely unemployable, the present Constitutional maximum on funds would not be adequate to make payments of any significance to those potentially eligible.

Raising the appropriation enables the State to take advantage of matching Federal Funds.

**Those who are AGAINST say:** The number of "Aid to Permanently and Totally Disabled" recipients is determined primarily by how strict the Department of Public Welfare adheres to the eligibility requirements; the program was designed to aid the most severely disabled persons who were not rehabilitable. There are two other tax supported programs for disabled persons: vocational rehabilitation for those who show some promise of being employed through special training and the disability features of the Federally administered Social Security program. State provisions for workmen's compensation also assist those persons disabled in industries covered by disability insurance. Yet despite these other programs for disabled persons, the number of severely disabled persons qualifying for the APTD program has increased at about the rate of 1,000 per year for the last two years. It would appear that if there were some administrative rule changes made in the Welfare Department — if there were provisions for a lien, stiffer penalties for fraudulent statements to the Welfare Departments, public access to the welfare rolls, and the distribution of money for true need and not according to the number on the rolls — the waste of money in these programs would be prevented and legitimate recipient permitted more mercy without increasing the total dollars spent. An increase of State tax funds must be found in order to provide appropriations for this increase.

## 9. HOSPITAL DISTRICTS IN BRAZORIA COUNTY AND HOME FOR THE AGED IN TITUS COUNTY

This amendment would permit the Legislature to authorize the creation of two hospital districts in Brazoria County, one to include all or part of West Columbia, Brazoria and Damon Independent School Districts, and the other coterminous with the Sweeny Independent School District, providing for a possible consolidation of the two, providing a mode of funding and also authorizing construction, equipping, maintaining, and financing a home for the aged in Titus County.

Such districts could tax — the tax to be approved by a majority of the resident qualified property-taxpaying voters — up to a maximum of \$0.25 per \$100 valuation to discharge any assumed indebtedness and to acquire, construct, maintain and operate the hospital system. The maximum tax could be lowered at subsequent elections, providing existing obligations were not impaired. Such districts could also be authorized by the Legislature to issue tax bonds to buy, build, initially equip, repair or renovate hospital facilities, said bonds to be payable from the \$0.25 tax.

Titus County could tax up to \$0.25 per \$100 valuation of the taxable property in said county in any one year for the purpose of paying the principal and interest on bonds issued by said county to construct, equip, maintain and operate a home or homes for the aged persons in that county, provided bonds and tax had been authorized by a majority of the qualified property-taxpaying voters of Titus County.

This amendment itself would not authorize any taxation nor would any be authorized under the special legislative act until the taxing district had been approved by the citizens of the district.

**Those who are FOR say:** This will allow the creation of hospital districts that can be financed from their primary areas rather than merely being financed by a single city. The considerable number of charity cases from out of the city cause a drain on the city, and by the use of hospital districts the area from which these out of the city charity cases come also contributes to the hospital upkeep.

This is permissive legislation. Passage of this amendment would affect only the people living in the areas involved. Since this is essentially a "local" amendment, the citizens of these counties should be allowed to determine for themselves whether or not such a district is necessary to meet their needs and to tax themselves for such purpose if they so desire.

The initiation and passage by the Legislature indicates that interest in the formation of hospital districts and operation of a home for the aged exists in the designated areas, and since hospital districts have been created in other areas, it would be discriminatory to deny the privilege of election to other citizens of these areas. In many small counties there appears to be no other way to provide such facilities except by the creation of such districts supported by a special tax levy.

**Those who are AGAINST say:** The creation of these districts should not require a Constitutional Amendment each time they are proposed, as this is the business of the area involved and not of the State as a whole. Such details of local government spelled out in the Constitution creates an unwarranted financial burden of a state-wide election and delay each time an area wishes to create such a district.

Taxation is not the proper financial method for hospital or home for the aged construction. Hospitals and such homes financed and operated with taxation dollars very often tend to operate at a greater loss than those dependent on revenue for their operation.

People should not be called on to set up another taxing agency for these small hospitals and homes. Some have not been successful and have actually been closed after the capital expenditures have been made. Some counties simply do not have the population to support this type of institution.

## 10. PERMITTING STATE EMPLOYEES TO SERVE AS CONSULTANTS OR ADVISERS

This amendment would permit state employees to serve as consultants or on advisory committees or as members of Public School Boards (provided they are not members of the teaching profession) or with other agencies of this state or its political subdivisions or the Federal government, if approved by their administrative heads and provided there is no conflict of interest.

**Those who are FOR say:** The writers of the original bill did not anticipate the broadening of the word "office" into the wide use which it enjoys today. This has caused many qualified persons to be barred from another civil office even though this disbarment was not contemplated in the original law.

The state officials most familiar with the problems under consideration by various committees are barred from participating on these committees by law. Many experienced men who could be of great service in study or formulation of ideas are not being utilized to the greatest degree.

A number of nationwide boards have the major responsibility for making grants for the advancement of science and medicine throughout the country. Passage of this bill will permit Texas professional persons who receive state funds from various sources to participate on these committees, thereby enhancing Texas' opportunities to share in such projects.

Local communities in the state are being deprived of much knowledgeable advice from their own people, as the law states that state employees are not allowed to serve on School Boards, even though this job may not be in conflict with the duties of the prior office. This amendment will remove this restriction.

**Those who are AGAINST say:** This amendment sets a bad precedent. The matter involved should be handled as a statutory law and not as a Constitutional Amendment. Once this amendment is included in the Constitution, in order to modify and change it, future legislators will be involved in state-wide voting again.

Passage of this amendment would allow the opening of possible conflict between the individual and his service to the state. It is felt that some would regard their obligation to themselves as higher than that to the state.

Such legislation paves the way to too much authority lying within the hands of state employees. It is merely another trend toward centralization in our government power, and it is believed that the state would reap a greater benefit from using the average citizen than from using employees.

Any committee should have the right to choose its own adviser or consultant, thereby gaining valuable information.

## 11. SALE OF LANDS REMAINING IN VETERANS LAND FUND

This amendment would permit the resale of lands of the Veterans Land Fund remaining unsold after having been first offered for sale to veterans. Such sales would be governed by existing laws regarding terms.

**Those who are FOR say:** This amendment relates to the sale of small parcels of land which have already been purchased by veterans under the present plan. Such parcels or tracts remain in the program through default on the part of the purchaser, and as such, have reverted to the Board. This places the Board in the position of disposing of them and they cannot always do this as they are confined by law to selling only to veterans. Thus the lands remain inactive and a burden to the Board.

The Veterans Land Board cannot place itself in a position of maintaining defaulted parcels of land, and it cannot go into the business of farming or ranching itself, from an operational standpoint, if nothing else. This contingency would not foreseen when the law was written, and the only solution to the problem is to offer these lands for sale to outside parties.

**Those who are AGAINST say:** The Veterans Land Board was set up to aid veterans of World War II in purchasing lands with which to build up a satisfactory small business. It was not intended to provide lands for any other than veterans.

The perils of this type amendment can readily be seen. Land which the Land Board has acquired in any manner can be sold to anyone, any corporation, or any corporation formed for the purpose of buying these lands. This could lead to worse scandals than previous ones, and more widespread abuse of the spirit of the original plan. This amendment will make the Board become a long-term project, subject to operational improvements, change and near-permanency. This was not the intention of the program.

## 12. DELEGATION OF ZONING POWERS TO BEACH COUNTIES

This amendment would authorize each local county or governing agency which controls the surrounding land of the beaches of the Gulf to regulate and restrict the speed, parking and travel of motor vehicles on these beaches, and also control littering.

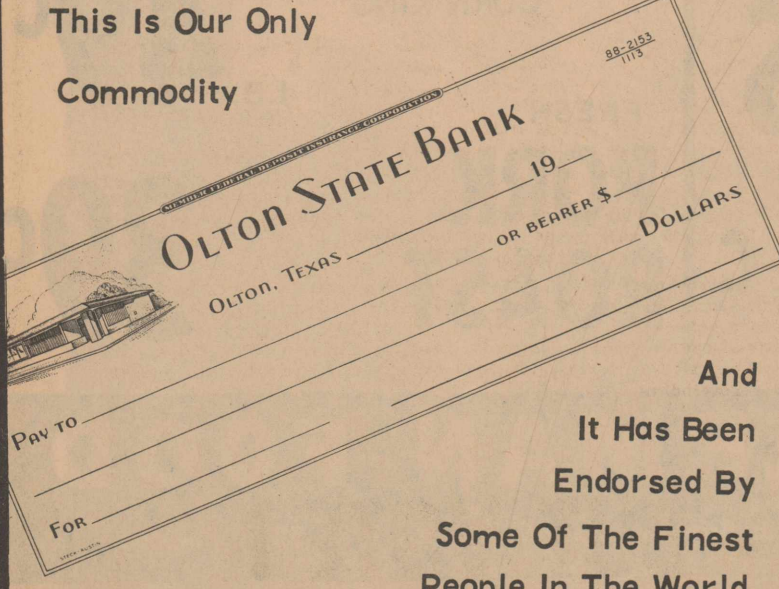
**Those who are FOR say:** This amendment is necessary to delegate the power to enforce laws and control beach areas adjacent to local counties. In the past, state courts have no right to intercede as regards travel, speed, parking, littering, etc., since this jurisdiction had theoretically belonged to the state. Such a situation is dangerous and unsatisfactory to these local areas.

Maximum enjoyment of the beach areas can only be secured if they are safe and well-maintained. In the past, any arrests made by local authorities would not hold up in court. This amendment will give the Commissioner's Courts of the counties involved

THIS INFORMATION TAKEN FROM THE VOTER'S GUIDE PUBLISHED BY THE LEAGUE

This Information & Sample Ballot Sponsored As A Public Service By The Firms Below

This Is Our Only  
Commodity




OLTON STATE BANK  
OLTON, TEXAS

And  
It Has Been  
Endorsed By  
Some Of The Finest  
People In The World.

ED THOMPSON  
IMPLEMENT



Your John Deere  
Dealer



Phone 285-2636

G. H. BLEY

Your  
Phillips  
66  
Jobber

Harrison Mills Co.

★ Grain  
★ Feed  
★ Beans



# SAMPLE BALLOT

No. 5119

SAMPLE BALLOT  
**OFFICIAL BALLOT**

No. 5119

General Election - - Lamb County, Texas - - November 6, 1962

Vote for the candidate of your choice in each race by scratching or marking out all other names in that race. You may vote for all the candidates of a party by running a line through every other party column.

LAMB COUNTY  
November 6, 1962  
**GENERAL ELECTION**  
Note: Voter's Signature to be Affixed on the Reverse Side.

DEMOCRATIC PARTY	REPUBLICAN PARTY	CONSTITUTION PARTY	WRITE-IN
For Governor: JOHN CONNALLY	For Governor: JACK COX	For Governor: JACK CARSWELL	For Governor:
For Lieutenant Governor: PRESTON SMITH	For Lieutenant Governor: BILL HAYES	For Lieutenant Governor:	For Lieutenant Governor:
For Attorney General: WAGGONER CARR	For Attorney General: T. EVERTON KENNERLY	For Attorney General:	For Attorney General:
For Congressman-At-Large: JOE POOL	For Congressman-At-Large: DES BARRY	For Congressman-At-Large:	For Congressman-At-Large:
For Associate Justice of Supreme Court, Place 1: MEADE F. GRIFFIN	For Associate Justice of Supreme Court, Place 1:	For Associate Justice of Supreme Court, Place 1:	For Associate Justice of Supreme Court, Place 1:
For Associate Justice of Supreme Court, Place 2: JAMES R. NORVELL	For Associate Justice of Supreme Court, Place 2:	For Associate Justice of Supreme Court, Place 2:	For Associate Justice of Supreme Court, Place 2:
For Associate Justice of Supreme Court, Place 3: ZOLLIE STEAKLEY	For Associate Justice of Supreme Court, Place 3:	For Associate Justice of Supreme Court, Place 3:	For Associate Justice of Supreme Court, Place 3:
For Judge of the Court of Criminal Appeals: W. A. MORRISON	For Judge of the Court of Criminal Appeals:	For Judge of the Court of Criminal Appeals:	For Judge of the Court of Criminal Appeals:
For Railroad Commissioner: WILLIAM J. MURRAY, JR.	For Railroad Commissioner:	For Railroad Commissioner:	For Railroad Commissioner:
For Railroad Commissioner (Unexpired Term): BEN RAMSEY	For Railroad Commissioner (Unexpired Term): BERNOLD M. HANSON	For Railroad Commissioner (Unexpired Term):	For Railroad Commissioner (Unexpired Term):
For Comptroller of Public Accounts: ROBERT S. CALVERT	For Comptroller of Public Accounts: MRS. HARGROVE SMITH	For Comptroller of Public Accounts: JOSEPH M. RUMMLER	For Comptroller of Public Accounts:
For State Treasurer: JESSE JAMES	For State Treasurer:	For State Treasurer:	For State Treasurer:
For Commissioner of General Land Office: JERRY SADLER	For Commissioner of General Land Office: ALBERT B. FAY	For Commissioner of General Land Office:	For Commissioner of General Land Office:
For Commissioner of Agriculture: JOHN C. WHITE	For Commissioner of Agriculture: HARRY HUBBARD	For Commissioner of Agriculture:	For Commissioner of Agriculture:
For Associate Justice, Court of Civil Appeals, 7th Supreme Judicial District: ALTON B. CHAPMAN	For Associate Justice, Court of Civil Appeals, 7th Supreme Judicial District:	For Associate Justice, Court of Civil Appeals, 7th Supreme Judicial District:	For Associate Justice, Court of Civil Appeals, 7th Supreme Judicial District:
For Congressman, 19th Congressional District: GEORGE MAHON	For Congressman, 19th Congressional District: DENNIS TAYLOR	For Congressman, 19th Congressional District:	For Congressman, 19th Congressional District:
For Member, State Board of Education, 19th District: WM. H. EVANS	For Member, State Board of Education, 19th District:	For Member, State Board of Education, 19th District:	For Member, State Board of Education, 19th District:
For Senator, 30th Senatorial District: ANDY ROGERS	For Senator, 30th Senatorial District: JOHN ZAHN	For Senator, 30th Senatorial District:	For Senator, 30th Senatorial District:
For District Judge, 154th Judicial District: PAT BOONE, JR.	For District Judge, 154th Judicial District:	For District Judge, 154th Judicial District:	For District Judge, 154th Judicial District:
For State Representative, 91st District: BILL CLAYTON	For State Representative, 91st District: FRANK FORD	For State Representative, 91st District:	For State Representative, 91st District:
For District Clerk: ERNEST L. OWENS	For District Clerk:	For District Clerk:	For District Clerk:
For County Judge: J. B. DAVIS	For County Judge: RAY KEELING	For County Judge:	For County Judge:
For County Clerk: CHARLES D. JONES	For County Clerk:	For County Clerk:	For County Clerk:
For County School Superintendent: C. ROY STEVENS	For County School Superintendent: MRS. D. F. EATON	For County School Superintendent:	For County School Superintendent:
For County Treasurer: MRS. LUCY MORELAND	For County Treasurer:	For County Treasurer:	For County Treasurer:
For County Commissioner, Precinct 2: HENRY W. LEWIS	For County Commissioner, Precinct 2:	For County Commissioner, Precinct 2:	For County Commissioner, Precinct 2:
For County Commissioner, Precinct 4: HUBERT DYKES	For County Commissioner, Precinct 4:	For County Commissioner, Precinct 4:	For County Commissioner, Precinct 4:
For Justice of Peace, Precinct 1: DAVID B. MAXEY	For Justice of Peace, Precinct 1:	For Justice of Peace, Precinct 1:	For Justice of Peace, Precinct 1:
For Justice of Peace, Precinct 2: L. A. GLASSCOCK	For Justice of Peace, Precinct 2:	For Justice of Peace, Precinct 2:	For Justice of Peace, Precinct 2:
For Justice of Peace, Precinct 4: J. N. BOWEN	For Justice of Peace, Precinct 4:	For Justice of Peace, Precinct 4:	For Justice of Peace, Precinct 4:
For Justice of Peace, Precinct 5: J. M. SHUTTLESWORTH	For Justice of Peace, Precinct 5:	For Justice of Peace, Precinct 5:	For Justice of Peace, Precinct 5:

SCRATCH OR MARK OUT ONE STATEMENT SO THAT THE ONE REMAINING SHALL INDICATE THE WAY YOU WISH TO VOTE.

<p><b>NO. 1</b></p> <p><b>FOR:</b> The Constitutional Amendment providing Workman's Compensation Insurance for all employees of all political subdivisions.</p> <p><b>AGAINST:</b> The Constitutional Amendment providing Workman's Compensation Insurance for all employees of all political subdivisions.</p>	<p><b>NO. 9</b></p> <p><b>FOR:</b> The Constitutional Amendment authorizing the construction, equipping, maintenance and financing of a home for the aged in Titus County and for permitting the Legislature to authorize the creation of two (2) hospital districts in Brazoria County, one of which is to include all or part of the West Columbia, Brazoria and Damon Independent School Districts, and the other coterminous with the Sweeney Independent School Districts, also providing for a possible consolidation of the two by qualified voters of such districts, and providing for all necessary construction, equipping, maintaining and financing if authorized.</p>
<p><b>NO. 2</b></p> <p><b>FOR:</b> The Constitutional Amendment raising the limit on use of state funds to assist needy aged, needy blind and needy children from Forty-seven Million Dollars (\$47,000,000) to Fifty-two Million Dollars (\$52,000,000).</p> <p><b>AGAINST:</b> The Constitutional Amendment raising the limit on use of state funds to assist needy aged, needy blind and needy children from Forty-seven Million Dollars (\$47,000,000) to Fifty-two Million Dollars (\$52,000,000).</p>	<p><b>NO. 10</b></p> <p><b>FOR:</b> The Constitutional Amendment permitting state employees to serve as a consultant or on an advisory committee, or as a member of a Public School Board provided they are not members of the teaching profession, with a state agency, or any political subdivision thereof, or the Federal Government, if approved by administrative head or governing board of such employee and there is no conflict of interest.</p>
<p><b>NO. 3</b></p> <p><b>FOR:</b> The Amendment to Article IX of the Constitution permitting the creation of hospital districts in Ochiltree, Castro, Hansford and Hopkins Counties, each district to be coterminous with the limits of such county.</p> <p><b>AGAINST:</b> The Amendment to Article IX of the Constitution permitting the creation of hospital districts in Ochiltree, Castro, Hansford and Hopkins Counties, each district to be coterminous with the limits of such county.</p>	<p><b>NO. 11</b></p> <p><b>FOR:</b> The Amendment to Section 49-b of Article III of the Constitution of Texas by adding thereto a provision authorizing the resale of lands of the Veterans Land Fund remaining unsold after having been first offered for sale to veterans, to such purchasers, in such quantities, and on such terms, and at such prices and rates of interest, and under such rules and regulations as are now provided by law, or as may hereafter be provided by law.</p>
<p><b>NO. 4</b></p> <p><b>FOR:</b> The Amendment to Article III of the Constitution of Texas by adding a new Section to be known as Section 49-d, providing for a State program of acquiring conservation storage facilities in reservoirs.</p> <p><b>AGAINST:</b> The Amendment to Article III of the Constitution of Texas by adding a new Section to be known as Section 49-d, providing for a State program of acquiring conservation storage facilities in reservoirs.</p>	<p><b>NO. 12</b></p> <p><b>FOR:</b> The Constitutional Amendment authorizing the Legislature to delegate limited zoning powers to any county bordering on the Gulf of Mexico or the tidewater limits thereof.</p> <p><b>AGAINST:</b> The Constitutional Amendment authorizing the Legislature to delegate limited zoning powers to any county bordering on the Gulf of Mexico or the tidewater limits thereof.</p>
<p><b>NO. 5</b></p> <p><b>FOR:</b> The Constitutional Amendment authorizing the Legislature to create hospital districts and prescribing limitations upon the powers of such districts.</p> <p><b>AGAINST:</b> The Constitutional Amendment authorizing the Legislature to create hospital districts and prescribing limitations upon the powers of such districts.</p>	<p><b>NO. 13</b></p> <p><b>FOR:</b> The Amendment to Article VII of the Constitution of Texas, by adding thereto Section 3-b providing that taxes or bonds previously voted in any Independent School District, the major portion of which is in Dallas County, shall not be abrogated, canceled or invalidated by any change in boundaries and authorizing the continuance of the levy of taxes after such change without further election.</p> <p><b>AGAINST:</b> The Amendment to Article VII of the Constitution of Texas, by adding thereto Section 3-b providing that taxes or bonds previously voted in any Independent School District, the major portion of which is in Dallas County, shall not be abrogated, canceled or invalidated by any change in boundaries and authorizing the continuance of the levy of taxes after such change without further election.</p>
<p><b>NO. 6</b></p> <p><b>FOR:</b> The Constitutional Amendment authorizing retirement, disability, and death benefits for elected and appointive officers and employees of counties and political subdivisions who have served in such capacity for twelve (12) years or more.</p> <p><b>AGAINST:</b> The Constitutional Amendment authorizing retirement, disability, and death benefits for elected and appointive officers and employees of counties and political subdivisions who have served in such capacity for twelve (12) years or more.</p>	<p><b>NO. 14</b></p> <p><b>FOR:</b> The Constitutional Amendment granting the Legislature power to provide for trials de novo on all appeals from actions, rulings, or decisions of administrative or executive agencies of government.</p> <p><b>AGAINST:</b> The Constitutional Amendment granting the Legislature power to provide for trials de novo on all appeals from actions, rulings, or decisions of administrative or executive agencies of government.</p>
<p><b>NO. 7</b></p> <p><b>FOR:</b> The Constitutional Amendment empowering the Legislature to insure continuity of state and local governmental operations in periods of emergency resulting from disasters caused by enemy attack by providing for the prompt and temporary succession to the powers and duties of public office, except members of the Legislature, the incumbents of which may become unavailable.</p> <p><b>AGAINST:</b> The Constitutional Amendment empowering the Legislature to insure continuity of state and local governmental operations in periods of emergency resulting from disasters caused by enemy attack by providing for the prompt and temporary succession to the powers and duties of public office, except members of the Legislature, the incumbents of which may become unavailable.</p>	
<p><b>NO. 8</b></p> <p><b>FOR:</b> The Constitutional Amendment to establish a ceiling of Two Million, Five Hundred Thousand Dollars (\$2,500,000) per year on the amount that may be paid out of state funds for assistance payments to the totally and permanently disabled.</p> <p><b>AGAINST:</b> The Constitutional Amendment to establish a ceiling of Two Million, Five Hundred Thousand Dollars (\$2,500,000) per year on the amount that may be paid out of state funds for assistance payments to the totally and permanently disabled.</p>	

AGAINST says: The creation of these districts is the business of the area involved as a whole. Such details of local government Constitution creates an unwarranted financial e-side election and delay each time an area such a district.

not the proper financial method for hospital or ged construction. Hospitals and such homes rated with taxation dollars very often tend to ater loss than those dependent on revenue for d not be called on to set up another taxing small hospitals and homes. Some have not been ive actually been closed after the capital ex- been made. Some counties simply do not have support this type of institution.

### ING STATE EMPLOYEES TO IS CONSULTANTS OR ADVISERS

ndment would permit state em- serve as consultants or on advisory es or as members of Public School provided they are not members of ing profession) or with other agen- is state or its political subdivisions ederal government, if approved by inistrative heads and provided there flict of interest.

re FOR says: The writers of the original bill to the broadening of the word "office" into the enjoys today. This has caused many qualified red from another civil office even though this of contemplated in the original law.

officials most familiar with the problems under various committees are barred from participating es by law. Many experienced men who could e in study or formulation of ideas are not being ated degree.

ationwide boards have the major responsibility ; for the advancement of science and medicine untry. Passage of this bill will permit Texas as who receive state funds from various sources these committees, thereby enhancing Texas have in such projects.

ities in the state are being deprived of much vice from their own people, as the law states es are not allowed to serve on School Boards, job may not be in conflict with the duties of his amendment will remove this restriction.

re AGAINST says: This amendment sets a bad ater involved should be handled as a statutory i Constitutional Amendment. Once this amend- the Constitution, in order to modify and change rs will be involved in state-wide voting again. his amendment would allow the opening of etween the individual and his service to the at some would regard their obligation to them- an that to the state.

lands-remaining in VETER- ID FUND

ndment would permit the resale of he Veterans Land Fund remaining er having been first offered for sale s. Such sales would be governed by aws regarding terms.

re FOR says: This amendment relates to the is of land which have already been purchased the present plan. Such parcels or tracts remain ough default on the part of the purchaser, and ted to the Board. This places the Board in the ng of them and they cannot always do this ed by law to selling only to veterans. Thus ractive and a burden to the Board.

Land Board cannot place itself in a position ulted parcels of land, and it cannot go into the ) or ranching itself, from an operational stand- e. This contingency was not foreseen when the and the only solution to the problem is to r sale to outside parties.

re AGAINST says: The Veterans Land Board arterns of World War II in purchasing lands lid up in a satisfactory small business. It was ide lands for any other than veterans. his type amendment can readily be seen. Land ard has acquired in any manner can be sold rporation, or any corporation formed for just ying these lands. This could lead to worse ous ones, and more widespread abuse of the l plan. This amendment will make the Board r project, subject to operational improvements, rmanency. This was not the intention of the

### ION OF ZONING POWERS TO ONTIES

ndment would authorize each local governing agency which controls nding land of the beaches of the gulate and restrict the speed, park- vel of motor vehicles on these id also control littering.

FOR says: This amendment is necessary to enforce laws and control beach areas ad- ies. In the past, such counties have no right to ; travel, speed, parking, littering, etc., since e theoretically belonged to the state. Such a as and unsatisfactory to these local areas. ment of the beach areas can only be secured d well-maintained. In the past, any arrests- ities would not hold up in court. This amend- ommissioner's Courts of the counties involved

the long-needed authority to enforce their own ordinances. The rapid growth of our beach areas requires a more detailed policing and it is only through this delegation to the local authorities that this can be accomplished.

Those who are AGAINST says: The beaches of the coasts are the property of all the citizens of the state as the state parks are. The control of these areas should lie within the state's control, rather than in that of local authorities. In this manner alone can the citizens be assured that a uniform, well-regulated code of laws will be in effect throughout the entire beach area.

The maintenance of these public areas and the regulations that are passed controlling them should be kept free of any local pressures and prejudices. The Legislature elected by all the people of the state should retain the control of the beaches, as they are provided and maintained for the enjoyment of all the people of the state.

More enabling legislation will have to be passed if this amendment is adopted, as the wording says "the Legislature may authorize. . ." This necessitates further time-consuming legislation.

### 13. INDEPENDENT SCHOOL DISTRICT TAXES IN DALLAS COUNTY

This amendment would authorize independent school districts in Dallas County to continue the levy of previously-authorized taxes and the sale of previously-authorized bonds without the necessity of an additional election following a change in their boundaries.

Those who are FOR says: Because of the election requirement described above, school boards are reluctant to allow any changes in school district boundary lines, even when such changes are desired by all the parties directly concerned. This reluctance is justified: a negative vote on the tax authorization would disrupt the operation of the schools and, where bonds have been previously authorized for a long-term building program, a negative vote on the bond issue would disrupt the school building program. In 1960, voters in the Dallas Independent School District authorized \$70 million in bonds for a building program which will not be completed until 1966 or later. Dallas school officials are unlikely to consent to changes in district boundary lines until all bonds for this program have been issued. Several other districts in Dallas County are engaged in long-term building programs, and their boards are similarly hesitant to approve boundary changes.

Consequently, residents and property-owners desiring annexation to such school districts are refused, not on the merits of the question of annexation, but because of the requirement for a subsequent election jeopardizing financial support for the schools. The proposed amendment would remedy this situation without making any changes in the actual annexation, or disannexation, procedures. School boards of all Dallas County school districts support this amendment.

Those who are AGAINST says: The present requirement for re-authorization of taxes and bonds following district boundary changes discourages such changes and thus makes for stability in school district lines. The necessity for subsequent elections assures that school boards will not approve changes to which there is any considerable opposition in either of the districts affected. This, in effect, gives all residents of both districts a more direct check on the actions of their boards. (The state statutes governing annexations in Dallas County require only the approval of the majority of the school board members in each district affected, the majority of the county school board members, and majority of the voters in the district or portion of a district being annexed.)

A second consideration in opposition to this amendment is that it applies only to Dallas County. Ideally, constitutional provisions should be uniform for all counties. Therefore, such a change should not be made until it is desired by and for all counties in the state.

### 14. TRIAL DE NOVO

This amendment would authorize the Legislature to provide for trial de novo on all appeals to the courts from actions, rulings or decisions of administrative agencies and executive departments of the State of Texas or any of its political subdivisions. It would permit a complete new trial on all the evidence and details of an administrative or regulatory order, regardless of previous rulings on similar cases.

Those who are FOR says: While present conditions allow a form of judicial relief from decisions of administrative agencies, this is not uniform, but instead, is regulated and limited by the statutes creating administrative agencies and the decisions of courts when such relief has previously been sought. This amendment would provide for trial "de novo" in all cases.

The judicial should be separate and apart from an administrative ruling, and if a person is going to be allowed an avenue of judicial relief, it should be, in truth, a new beginning. At present, rulings already made are used, and in cases of similar appeals, there is no recourse to the courts if previous ruling is negative. The argument of those in favor of this resolution is that no two cases are ever exactly alike. Since administrative agencies are under the executive division of the government, and since one of the basic foundations of Texas law is the right of the citizen to "his day in court," each citizen should have the right to a fresh trial of his case against an administrative agency just as he has the right to sue another individual. Each matter should be considered separate and apart from any deposition that has already been made of it.

This amendment is another attempt to make the laws of the State of Texas uniform.

Those who are AGAINST says: No one test of an administrative ruling settles all cases affected by it; under "de novo," hundreds of cases could be filed against the same order, each requiring a complete court trial and burdening the courts with administrative duties which would impair, if not destroy, their ability to perform their basic judicial function.

This amendment would empower the Legislature (1) to destroy all semblance of coordination and uniformity in established, proven and necessary administrative functions by rendering specified administrative actions meaningless and placing the ultimate power of decision in the courts to be decided by one judge or jury today and another judge or jury tomorrow and (2) to neutralize the effectiveness of the courts and even deny the right of trial by jury by enactments which could make the fact-finding of administrative agencies binding upon the courts and (3) to destroy the delicate balance of powers between executive, legislative and judicial branches of government in Texas.

This amendment is such a broad proposal that years of litigation would undoubtedly ensue before it could ever be adequately construed.

GUIDE PUBLISHED BY THE LEAGUE OF WOMEN VOTERS OF TEXAS

ms Below

Mills Co.

# THE OLTON ENTERPRISE

"The Only Paper In The World That Cares About Olton"

Beans

## VOTE AS YOU PLEASE - BUT VOTE!



**VISIT GLENN**

Lt. and Mrs. Paul Williams, of Toccoa, Georgia visited this weekend in the home of Mr. and Mrs. L. S. Glenn. The Williams are on their way to Japan for three years. Williams is in the Navy.

**IN LEVELLAND**

Mr. and Mrs. W.L. Gardner and family were visiting with Mr. and Mrs. W.G. Knight and Mr. and Mrs. Lugh Strickland in Levelland Sunday.

**VISIT ELKINS**

Mr. and Mrs. Bob Anderson, Tucson, Ariz.; Mr. and Mrs. J.W. StClair, Muleshoe; Mrs. M.K. Fisher, Hale Center; visited, last weekend in the home of Mr. and Mrs. L.G. Elkins.

**VISIT ESTES**

Lavon Estes visited last weekend in the home of her parents, Mr. and Mrs. G.V. Estes. Lavon is going to college at Hardin-Simmons.

# RESOLUTION..

Be it resolved that the Democratic Executive Committee of Lamb County, Texas, realizing the importance of the General Election on November 6, 1962, do hereby urge and respectfully recommend that the citizens of Lamb County, Texas, exercise the privileges and obligations of citizenship by voting in the General Election November 6, 1962, for the Democratic nominees.

The State of Texas, being traditionally a Democratic State, can best be served by the Democratic candidates whose outstanding qualifications are familiar to everyone.

Therefore, we, members of the Lamb County Democratic Executive Committee, do hereby pledge our efforts and support of the nominees of the Democratic Party of Texas.

LAMB COUNTY DEMOCRATIC EXECUTIVE COMMITTEE

BY: /S/ JEROME W. KIRBY, Temporary Chairman

**ATTEST:**

/S/ SHERIA EVANS, Secretary

**MEMBERS OF THE COMMITTEE**

Howard Hall  
James A. Littleton, Jr.  
N. N. Frey  
W. H. Cunningham  
R. D. Nix  
W. A. Hardin  
R. L. Masten  
W. P. Holland, Sr.

Pat Boone, Chairman

Vernon Qualls  
Jim Melton  
Robert Dysart  
Otto Jones  
Vic Diersing  
Blanton Martin  
Orville Cleavinger  
Jerome W. Kirby

Glenn Batson, State Democratic Committeeman of the 30th Senatorial District

## Connally Air Trip Underway

AUSTIN--Planning for John Connally's "campaignathon"--another "first" in the Democratic nominee's pace-setting race--was in progress today.

Traveling all over the state in two days by air--making numerous stops in 48 hours--this project was being laid out by the headquarters staff.

The candidate for governor will ride a relay of airplanes in his "over the state in 48" operation.

Other "firsts" in Connally's campaign have included his morning TV "coffee" with Connally, his Texas-spanning train trip from Texarkana to El Paso, and his enlistment of Mrs. Connally as a fellow campaigner. She has traveled thousands of miles, following her own itinerary, and is now on the campaign trail.

The fast-flying trip will begin today and end Saturday, Nov. 3. It was described by Connally's headquarters as the most rigorous campaign trip ever seen in Texas.

It will enable Connally to visit many cities and towns that he would otherwise have had to by-pass because of the brevity of time and the vastness of Texas.

Some of the appearances will be at airports; others will be in the communities.

The air trip is designed as a climax to the Connally campaign, which has featured the candidate's ability to maintain a fast pace over long hours. Because of earlier primary dates now in effect, and a December start on the vote-seeking trail, Connally, by Nov. 6 will have completed the longest campaign in Texas history.

## Plainview Downs Olton Frosh Team

Olton freshmen went down 19-6 to the Coronado freshmen Bulldogs here last Thursday night.

Plainview led 6-0 at the half-time after Steve Johnson scored in the first period from one yard out. Kick for extra point was wide.

After a scoreless third period, Jackie Burkhalter, Olton, tied up the score 6-6 early in the fourth period. Point try failed.

On the kickoff, Raymond Barton took the ball on his own ten and ran 90 yards through the Olton team to put Plainview ahead 12-6. Pass for points was incomplete.

Before the period ended, Johnson climaxed a drive by crashing over from the seven. This time Stan Rigler's kick was good, for the final score.

## Sanitation Courses Are Planned

Thousands of years ago, the cave dwellers had a simple solution to the sanitation problem--when conditions became unbearable they simply moved to another cave. But, this presented problems. There were only so many caves to go around.

As urban complexes developed, the citizens realized that dumping trash in the streets and hoping that it would rain and wash away soon turned the city into a huge dump.

Today the problem is still with us. Cities pay out a major part of their annual budgets to pick up trash and dispose of it in a sanitary manner.

To better cope with this problem the Texas State Department of Health conducts a series of demonstration short-courses on the proper disposal of refuse.

This year nine such one-day demonstrations are being conducted--one within easy traveling distance of every community in Texas.

Sponsored with the cooper-

## Flu Epidemic Is Predicted

There are strong indications that an epidemic of Asian flu will occur in the United States in the winter of 1962-63. A large number of cases of the disease appeared in Asia last January and has been slowly making its way around the globe.

Just how serious the outbreak will be no one can predict. But at any rate we are well braced. Physicians have been alerted, public health programs outlined and stocks of anti-influenza vaccine built up. In fact, because of the vaccine, American Medical Association leaders think the disease may not be as widespread or devastating this winter as the epidemic of 1957-58.

In the average healthy person Asian flu means four or five days of weakness and misery, just like any other type of flu. But in older people and those with certain chronic disease the flu virus can be deadly. In the five years since Asian flu first appeared in America it has contributed to the deaths of 90,000 Americans. The flu itself usually is not a killer but it weakens the body's defenses against other diseases.

Those with diabetes and with chronic heart, circulatory and kidney diseases are particularly vulnerable. More than half the deaths in previous epidemics were in people with these conditions. Pneumonia also moves in on the heels of influenza frequently.

Those with pulmonary tuberculosis, chronic asthma, chronic bronchitis and other ailments of the lungs and air passages also are particularly endangered by Asian flu.

Garbage, rubbish, and ashes are disposed without nuisance, fire or public health hazards.

## MUSTANGS--

CONTINUED FROM PAGE 1

Joe Costello got off the game's longest jaunt, a 46-yard run which saw the Mustang almost go all the way. He was hauled down from behind at the Morton 24.

Morton stopped the Mustangs at the Indian 22. The teams traded punts until early in the fourth quarter, when Morton began a drive to the Olton three. Carson came up with his key fumble recover to end the threat.

After Morton was awarded its safety, the Indians took Priest's free kick at the Olton 44. They drove to the Olton 28, where Edwards fumbled and Parsons claimed the ball for the Mustangs.

Later, Morton intercepted a Priest pass and moved to the Olton 42. There, some fine defensive work by Jimmy Bennett and Kendall stalled the Indian attack.

As the game ended, Bennett stopped a Morton runner for a nine-yard loss to the Morton eight and the Mustang pass defenders weathered three more aerial tries.

Mr. and Mrs. Eldon Milstead and family, visited in the home of her sister, Mrs. K.Y. Givens and family, last weekend.

Mr. and Mrs. G. T. Gallaway and son, Wilber, visited this past weekend with Mr. and Mrs. R.E. Womack of Midland.

**BAPTIZED**

Sunday morning, Mr. and Mrs. Dan Cure presented their three month old daughter, Susan Dawn, for Christian consecration at the altar of the First Methodist Church.

**VISIT GIVENS**

Mr. and Mrs. Eldon Milstead and family, visited in the home of her sister, Mrs. K.Y. Givens and family, last weekend.

**IN MIDLAND**

Mr. and Mrs. G. T. Gallaway and son, Wilber, visited this past weekend with Mr. and Mrs. R.E. Womack of Midland.



Mort Meanswell owned a parking lot. It was enclosed by an eight foot fence and had one entrance and one exit. Mort kept at least one attendant on duty at all times to park and watch after his customers' cars. Patrons were requested to leave their keys in the car to enable the attendants to park the cars as well as move them when necessary.

Hotrod Harry parked his car in Mort's lot and was given a claim check. He promptly put it into his pocket without paying any attention to it. Upon the back of the claim check was written "The person accepting this ticket assumes all risk of accident, and expressly agrees that the management shall not be liable, under any circumstances, for any injury to person, loss or damage."

A couple of hours later Harry returned. His car had been stolen.

Mort Meanswell said that he was sorry, but pointed to the statement on the back of the claim check. Mort refused to pay for the stolen car. Harry sued him.

Must Mort pay for the stolen car?

Mort probably would have to pay. Most courts have held that a statement on the back of a parking claim check is only effective if called to the car owner's attention. Mort had not done this. Also, Harry had a right to believe from the fact that Mort maintained an enclosed space for parking, with attendants on duty, that he was paying the parking fee in consideration of care and watchfulness to prevent injury or loss.

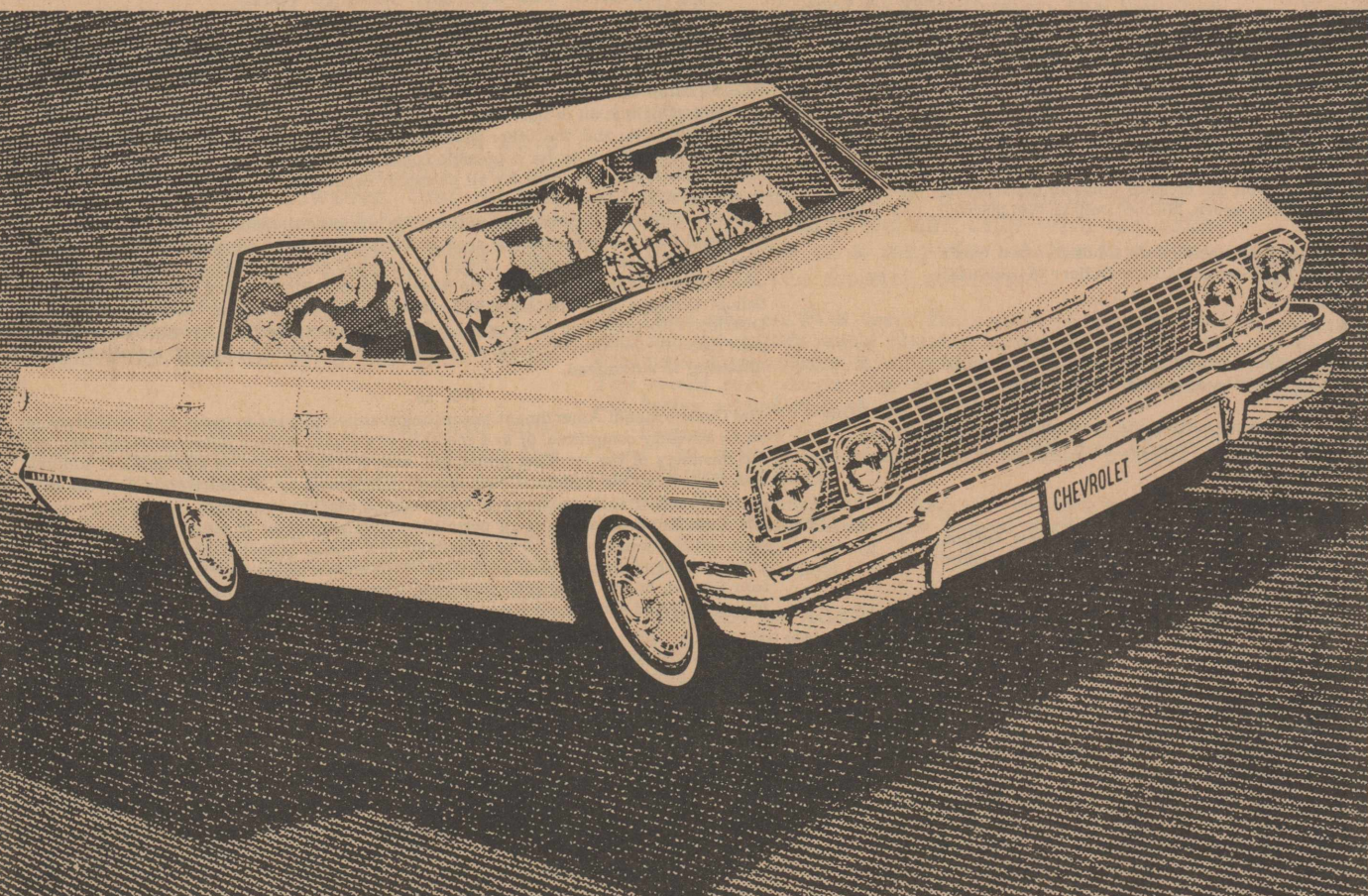
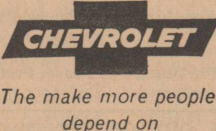
Parking lot operators may attempt to escape responsibility by a notice of limitation of liability posted on the lot or printed on the claim check given the owner of the car. But with few exceptions the courts have not upheld such limitations where the loss or injury was due to the negligence of the operator of the lot, and where the stipulations were not specifically called to the attention of the car owner.

(This newsfeature, prepared by the State Bar of Texas, is written to inform--not to advise. No person should ever apply or interpret any law without the aid of an attorney who is fully advised concerning the facts involved, because a slight variance in facts may change the application of the law.)

IN KNOX CITY  
Mr. and Mrs. L.S. Glenn attended the 50th anniversary of Mr. and Mrs. B. M. Farmer of Knox City, last weekend.

Comfort, silence and luxury to challenge any car from anywhere

There's a lot underneath the beauty of the '63 Chevrolet. Its roomy, comfortable Body by Fisher screens out noise and shock. There's instant response in a choice of 6- or 8-cylinder engines, a host of refinements to make it run and look like new longer, and plenty more that make it hard to believe it's a low-priced car. But your Chevrolet dealer can prove it!



**GO Jet-smooth '63 CHEVROLET--IT'S EXCITING!**

1963 Chevrolet Impala Sport Sedan shares its carefree Jet-smoothness with the new Bel Airs and Biscaynes!

Ask about "Go with the Greats," a special record album of top artists and hits and see four entirely different kinds of cars at your Chevrolet dealer's--'63 Chevrolet, Chevy II, Corvair and Corvette

**THOMPSON CHEVROLET CO.**

Phone 285-2646

Olton, Texas

**DIP INTO REAL DRIVING CONFIDENCE**

... the kind that results when you give your car adequate protection. It's as simple as regular use of Shamrock Motor Oil. Shamrock Motor Oils come in different categories as engines do. Your Shamrock dealer will recommend the right one for your car. You'll notice a strong family resemblance in Shamrock's new motor oil cans! There's an even stronger one in their quality... quality you can measure by your car's performance.

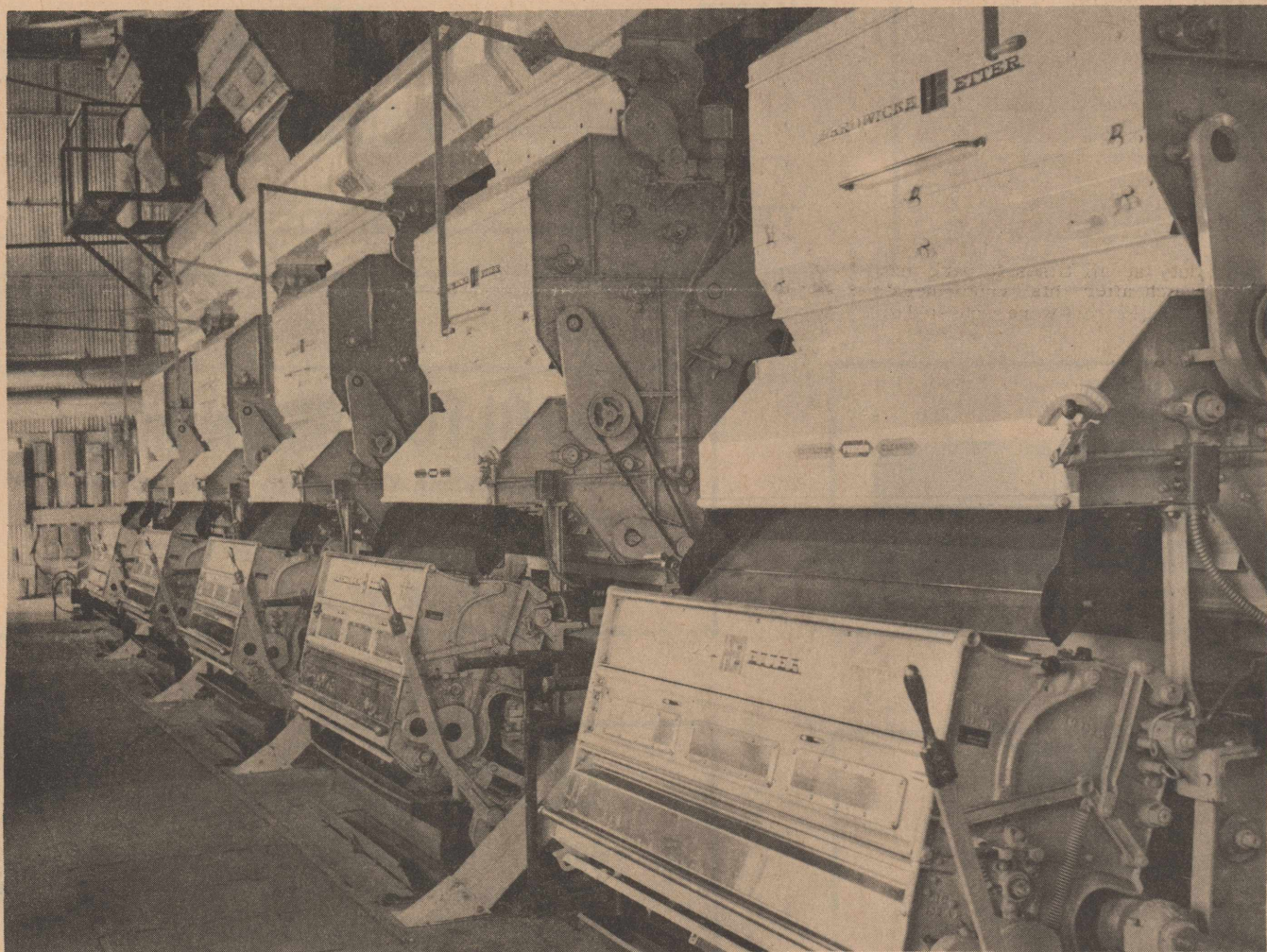
**VOTE BILL CLAYTON---YOUR VOICE IN STATE GOVERNMENT**  
FOR STATE REPRESENTATIVE, 91st DISTRICT



# OUR GIN IS IN TOP SHAPE



## 'It's Your Gin If You Use It.'



**WE ARE NOW GINNING.....**

**Our gin is staffed by a capable crew of ginmen.  
We will give you the kind of service you want !**

# HART CAMP CO-OP GIN

**Elma Burleson, Mgr.**

**Phone AN 2-4441**

**BOARD MEMBERS**

Mr. O. J. Neeley, Pres.

Mr. E. P. Oliver, Vice-Pres.

Mr. Don Muller

Mr. Blanton Martin, Sec.

Mr. Paul Teal

Mr. J. P. Hukill

Mr. J. W. Johnson, Jr.

**The Hart Camp Co-operative Gin Has**

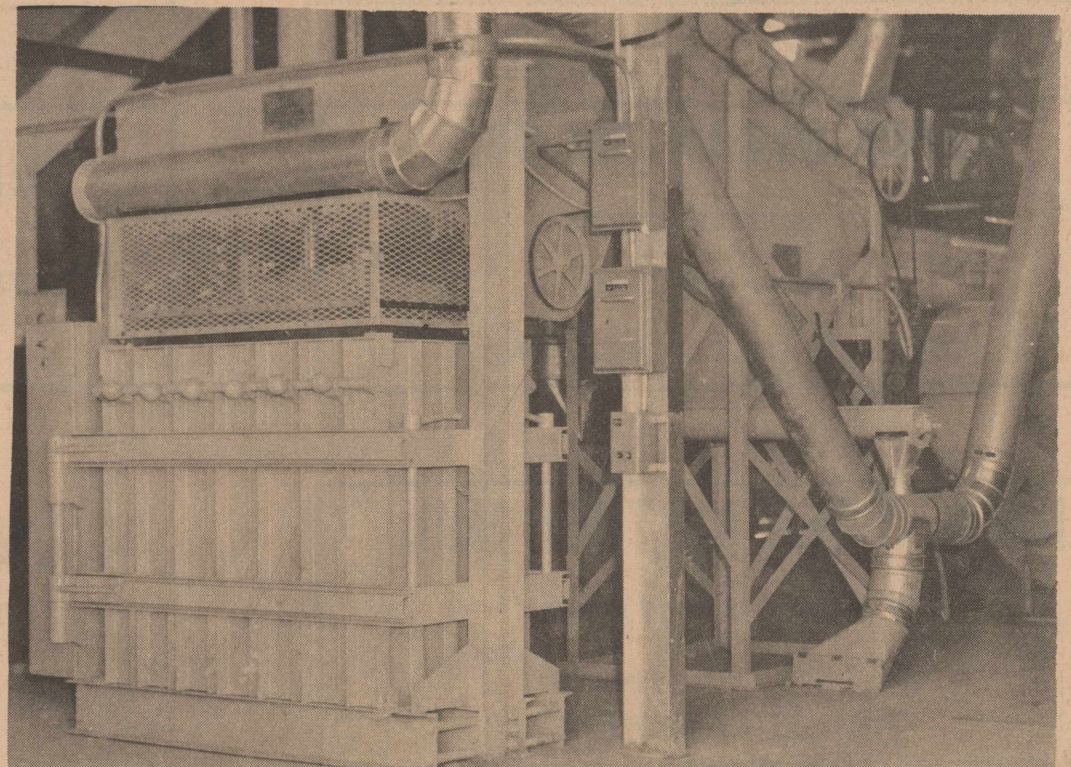
**One Of The Best Equipped Gins In This Area.**

**Through Hart Camp Co-operative Gin, These**

**Additional Services Are Available To Our Patrons**

1. COTTONSEED crushed and products marketed through PLAINS CO-OPERATIVE OIL MILL.
2. COTTON handled and stored with FARMERS CO-OPERATIVE COMPRESS.
3. COTTON MARKETING SERVICE available through PLAINS COTTON CO-OPERATIVE ASSN.
4. Savings made from all these farmer-owned, farmer-controlled operations are returned to farmers who produce the cotton as cooperative refunds.

**Use These Services And Save**





# LET'S GO MUSTANGS-BEAT MULESHOE

THIS WEEK WE SALUTE . . .

## FOOTBALL

**WEEKLY PRIZES!**

### CONTEST RULES

Winners selected in each ad must be circled in ink or pencil. Tie-breaker winners must be circled and scores printed in the spaces made available for them.

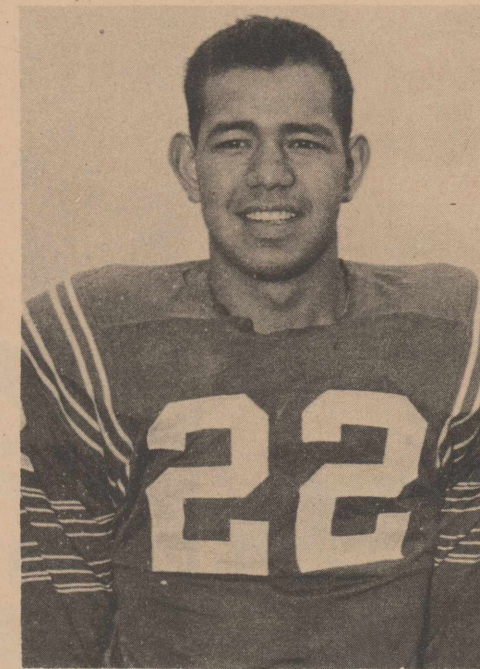
Each week's entry must be turned in to one of the merchants sponsoring the contest. Contestants are given a week to prepare and turn in their entries. When they receive their paper on Friday, they have until the next Friday at

4 p. m. to turn in their entries.

Sponsoring merchants may accept mailed entries, but none mailed directly to the Enterprise will be accepted. All late entries will be discarded.

In case of ties, a coin will be flipped to determine the winners.

Anyone may enter except employes of the Enterprise or their families.



Junior Cordero



Paul Hernandez

### 1962 FOOTBALL SCHEDULE

SEPT. 7	OLTON 7 VS.	ABERNATHY 8 (H)
SEPT. 14	OLTON 12 VS.	FLOYDADA 28 (T)
SEPT. 21	OLTON 14 VS.	SPRINGLAKE 7 (T)
SEPT. 28	OLTON 31 VS.	HALE CENTER 8 (H)
OCT. 5	OLTON 6 VS.	LOCKNEY 22 (T)
OCT. 12	OLTON 21 VS.	TULIA 20 (H)
OCT. 19	OLTON 2 VS.	DIMMITT 22 (H)
OCT. 26	OLTON 13 VS.	MORTON 9 (T)
NOV. 2	OLTON VS.	MULESHOE (T)
NOV. 9	OPEN DATE	
NOV. 16	OLTON VS.	FRIONA (H)

### WEEKLY PRIZES

Weekly prizes will be awarded in the following manner:

**FIRST PRIZE \$10**    **SECOND PRIZE \$6**    **THIRD PRIZE \$4**

### WEEK'S WINNERS

Top Three Winners Each Week Will be Listed Here

See How Often Your Name Can Be Listed

1.            LOIS SMITH
2.            W.L. JONES
3.            HOWARD HALL

NAME \_\_\_\_\_ ADDRESS \_\_\_\_\_

\_\_\_\_\_ Tie Breaker \_\_\_\_\_

TEXAS TECH \_\_\_\_\_ VS. BOSTON COLLEGE \_\_\_\_\_

**HIGGINBOTHAM-BARTLETT CO.**  
 "Good Lumber"  
 All Kinds of Building Materials- Pressure Water Systems  
 Plumbing Fixtures  
 Phone 285-2939  
 WEST TEXAS STATE AT NORTH TEXAS STATE

**OLTON DRUG**  
 GIFTS FOR ALL OCCASIONS  
 FREE GIFT WRAPPING  
 ABERNATHY AT TULIA

**OLTON GRAIN INC.**  
 We Want To Handle Your Grain  
 Phone 285-2313  
 RICE AT ARKANSAS

**FARMERS GIN**  
 TANDEM MOSS LINT CLEANERS — DOUBLE DRYING  
 Improved to Give You Faster, Better Service  
 Phone 285-2075  
 TEXAS A&M AT SMU

**OLTON STATE BANK**  
 Member FDIC  
 Phone 285-2653  
 MONTEREY AT PLAINVIEW

**OLTON BUTANE CO. INC.**  
 Butane-Diesel-Gasoline-Oils-Greases  
 Anhydrous-Flame Cultivation Equipment  
 Try Our Service  
 DUMAS AT HEREFORD

**BODKIN-NIXON IMPLEMENT**  
 Your Oliver Dealer  
 Phone 285-2888  
 TEXAS AT BAYLOR

*Harrison Mills Co.*  
 GRAIN-SEED-BEANS  
 Olton, Texas  
 FLOYDADA AT CANYON

**ED THOMPSON IMPLEMENT**  
 "YOUR JOHN DEERE DEALER"  
 Phone 285-2636  
 HALE CENTER AT KRESS

**JACK STRAW GIN CO.**  
 YOUR FUTURE GINNER  
 Phone 285-2343  
 LITTLEFIELD AT LEVELLAND

**CONSUMERS BUTANE INC.**  
 Butane-Motoreils-Oilfilters  
 Ignition Parts-Batteries  
 BEST OF SERVICE PHONE 285-2240  
 FARWELL AT SUDAN

**OLTON CO-OP GIN**  
 It's Profitable to Patronize your Co-Op Gin  
 Phone 285-2525  
 WINK AT PLAINS

**HALL-SIDES MOTORS INC.**  
 "Your Friendly Ford Dealer"  
 Phone 285-2627 Olton  
 -Ride To The Game In A New Ford-  
 HART AT LAZBUDDIE

**THE OLTON ENTERPRISE**  
 "The Only Paper In The World That  
 Cares About Olton"

**G. H. BLEY**  
 "YOUR PHILLIPS 66 DEALER"  
 Phone 285-2515  
 TCU AT LSU

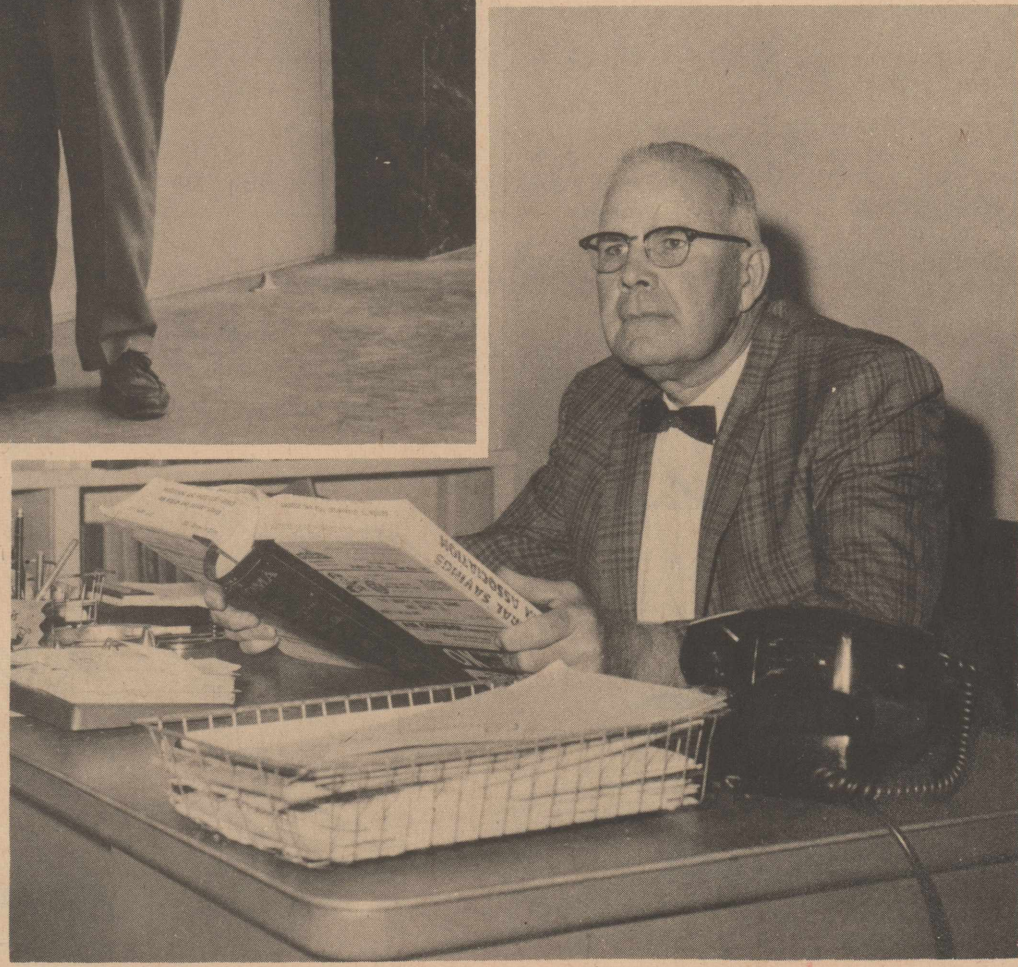
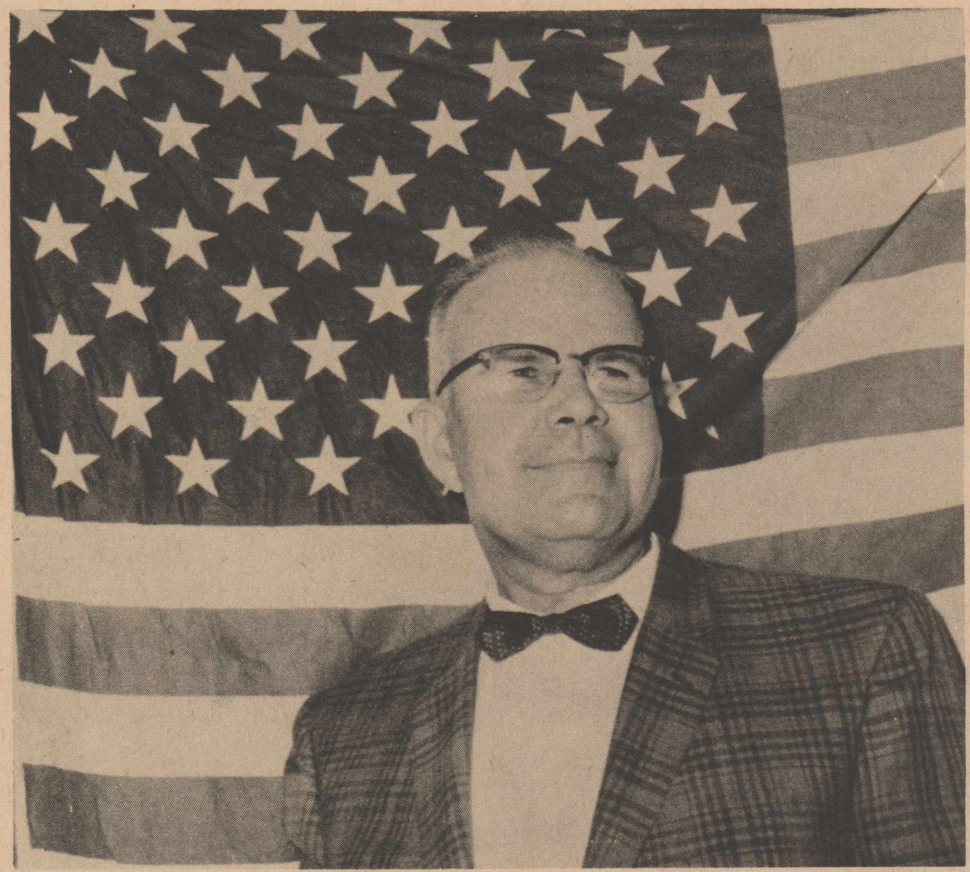


QUALIFIED

RAY

QUALIFIED

# KEELING



# COUNTY JUDGE

QUALIFIED

QUALIFIED



# RAY KEELING FOR COUNTY JUDGE

We, the friends of Ray Keeling, feel that he has proven his leadership ability and has qualified himself to render valuable public service as our next County Judge. By the time Ray was forty he had served six years as mayor of Muleshoe and Littlefield. He had received honorable mention for All-American tackle while playing with the Longhorns of the University of Texas, where he majored in Business Administration. He had attained rank of Captain before being discharged from the Army with the Meritorious Service Award.

Ray further proved that he was willing to serve, and had the ability to do so, by making outstanding contributions while serving as the Charter President of the Muleshoe Rotary Club, as Commander of the American Legion, and as Chairman of the Board of Stewards of the Littlefield Methodist Church.

He is currently serving his second term as Vice President of the Littlefield Chamber of Commerce and as a member of the Finance Committee of the Caprock Girl Scout Council.

There is no doubt that Ray has dedicated himself to those about him and is more interested in doing what is right than he is in perpetuating himself in public office.

We are sure that you will find, as we have, that Ray Keeling deserves your complete confidence and support.

Lynn Barden

J. W. Dear

Arthur Metzger

Oscar Allison

W. J. J. J.

J. D. Barden

H. C. Newlin, JR.

Harold Allison

Paul P. Foster

Pat Downs

W. E. (Bice) Thomas

Howard H. Harne

J. Randall Farn, MD

W. H. (Bill) Carter

Buddy Hedge

H. H. Patten

Dan Stapp

John P. Pickett

B. L. Murphy

Paul Manley