

FREAK ACCIDENTS can and do happen.

Like the other day, when I was chasing my Beagle hound. The hound got a grass burr in his foot about the same time I stepped on a nail.

Then there was the time, recently, when Truitt Sides opened a car door and almost got it carried off by a passing vehicle. And it wasn't too long ago that Bob Duncan was limping around after a bull kicked him on the leg.

One of her friends told me that Mrs. Johnny Clark accidentally fell "up the steps" not long ago. She suffered a badly skinned leg but her horse didn't even get a run.

Some of those incidents came to mind the other day while I was reading the National Safety Council's annual roundup of unusual accidents. Here are a few:

WATER started a fire in Laramie, Wyo. The water was in a gollon jug in a station wagon, and the sun shining through it ignited a sleeping bag. Heat from the fire caused a gasoline lantern to over flow, adding fuel to the fire.

Mail carrier Buck Henson of Greer, S.C., was trying to shoo away a barking dog when a small boy ran from a nearby house and bit the postman on the arm.

And John Hohnson got two bites for one when he hooked a catfish in Chestee Creek near Cleveland, Tenn. The 20-pound fish bit him when he landed it.

In Olympia, Wash., a Saint Bernard dog leaped playfully from a pickup truck onto a small auto driven by Marvin Morger. Repairs necessary to the dented hood and smashed windshield were estimated at \$150.

THE YEAR'S most unusual snack was not enjoyed by a Marietta, Ga., housewife. While eating watermelon, she swallowed a yellow jacket wasp which flew into her mouth. It stung her throat on the way down.

Policemen--and women--had their troubles too. George R. Mischner was directing traffic in New York City when he stepped backwards into an open manhole. He managed to grab the edge of the hole to keep from falling 15 feet to the bottom. And Police Matron Albina Jenko in Milwaukee, Wis., dislocated her jaw when she yawned at 3:30 one morning.

Seventeen-year-old Leland Larioso of Hilmar, Calif., shot himself in the right foot with a 20-gauge shotgun as he demonstrated to friends how he had shot himself a few weeks before in the right foot with a 20-gauge shotgun.

IN GLOBE, ARIZ., Mrs. Lena Berry broke her leg when she slipped and fell while walking down a hill. She was hurrying to a first aid class.

And 14-year-old Steven Hardina announced he was giving up baton twirling after he shook up Ventura, Calif. With a mighty toss, Steve sent his baton so high that it struck two 4,000-volt power lines. This blocked out a 10-block area for an hour, started a grass fire, and knocked a radio station off the air.



ROBERT DUNCAN, shown with his lightweight Berkshire which won reserve grand champion at the Lamb County Stock Show at Littlefield last weekend.

Two Elections Set For April

Two local elections are scheduled for the first week in April in Olton.

Terms of three city councilmen and two school board members will expire.

With filing deadline for the city council race set March 3, no candidates were known this week, according to Mayor James, mayor.

Terms of Lynn Fite, Clovis Poteet and C.A. Cox will expire.

Two school board members, Fred Hicks and Roy Roberts, will both seek re-election to the board. No other candidates had filed for the school board Wednesday. Deadline for filing is March 8.

The city election is set April 3 at the city hall with Eldon Franks as presiding judge and

Howard Hall as assistant judge. Fay Stone is clerk.

School board election date is April 7 at H.P. Webb Elementary School. Eldon Franks is presiding judge.



COUNTY TEACHER MEET--Shown at the Lamb County Teachers Association meeting here Monday night are, left to right, Cecil Slover of Springlake, new president, Delbert Downing, Midland Chamber of Commerce manager, and Mrs. Hazel Ward of Littlefield, past president.

Delbert Downing Speaks At Teachers Meet Here Monday

BY DAVID PENN

"It is time that all classroom teachers take the open doors of learning more seriously than ever," because these doors are the answer to keeping the peace and making America stronger," Delbert Downing, manager of the Midland Chamber of Commerce, told the Lamb County Teachers Association in Olton Monday night.

"We have something that will stop all threats of war and that is truth," Downing said, "And the pages of history show where our enemies have thought we were not strong enough to fight, but our people will always band together not only to save this nation but other nations."

"Teachers must be strong," he stated. "The time has come when you should tell your students they are coming into an age where adults mistrust each other. It is almost impossible to say what you think anymore

Olton's 17th annual stock show gets underway here today with show barns open for the weighing of livestock.

The grand opening of the FFA, 4-H and FHA event is set Friday morning at 10 a.m. Lunch will be served at 12 noon Friday and Saturday by members of the Future Home-making Chapter.

The show will come to a close Saturday with an auction sale at 2 p.m.

Judging from the number of prizes exhibitors took at the county show at Littlefield last weekend, quality of animals to be shown should be high.

Approximately 32 head of steers, 80 head of swine and 48 lambs are expected for the show.

All animals must be entered by 5 p.m. today with sifting starting at 5:30 p.m.

All animals must be in correct pens by 8 a.m. Friday. Judging of swine will begin at 1 p.m. Friday and sheep judging will start at 4 p.m.

Saturday's events will begin with livestock judging at 8 a.m.

FHA awards will be presented and a cake sale will be held at 11 a.m. Fat steers will be judged at 1 p.m.

Board of directors for the show includes Frank Struve, president; Ed Thompson, general superintendent; Fred Smith, Delmer Givens, L.R. Bryant and K.A. Blades, swine superintendents; George Caddel and Lee Simmons, sheep superintendents; Roy Roberts, Mick McGill and Fred George, beef superintendents.

Last year Jimmy Tollett walked away with the top prize of the show. He exhibited the grand champion steer. Reserve grand champion calf was shown by Larry King. Grand champion barrow was exhibited by Robert Struve and reserve grand champion by Don Blades, for his brother, Kenneth.

Grand champion lamb was exhibited by Jarold Simmons with Carl Motley exhibiting the reserve. Grand champion heifer was shown by Gary DeBerry.

Showmanship honors went to Carl Motley, Rea Horn and Larry King.

17th Annual Stock Show Opens Friday Morning

Auction Sale Set 2 P.M. Saturday



GRAND CHAMPION STEER--Sharon Brigance is shown above with the Black Angus steer which was named the grand champion of the Lamb County Stock Show at Littlefield last weekend. She received a check for \$200 in premium money.

Olton Youth Take Top Prizes For Stock In County Show

Students in Olton FFA, 4-H and FHA warmed up for the Olton show this weekend by walking off with all the prizes in the sheep and Shetland Pony divisions, the reserve grand champion swine and the grand champion steer at the annual Lamb County Junior Livestock Show at Littlefield last Saturday.

The youngsters also won clean pen and showmanship awards.

Springlake youngsters showed the grand champion swine and the reserve champion steer.

A black Angus steer shown by Sharon Brigance was named the grand champion of the show. The steer was also named the champion of the breed.

In the sheep division, it was Steve Moss with a heavyweight lamb as champion of the breed. Robert Duncan won the reserve champion fine wool with a lightweight.

Steve Moss also showed the champion medium wool lamb with a heavyweight and Marlana May had the reserve champion with a heavyweight. Robert Duncan took the championship of the Southdowns with a heavyweight lamb and Neil Andrews was the reserve champion with a light weight.

In the swine division, Robert Duncan placed his lightweight Berkshire as the reserve grand champion and a lightweight Poland China as reserve.

The champion Chester White was shown by Gerald Duncan with a heavyweight and the reserve going to Paul Hernandez with a lightweight and the reserve was shown by Jimmy Lawson, also a lightweight. Champion Berkshire was shown by Robert Duncan with a lightweight and the reserve champion was a heavyweight, owned by Randolph Schaeffer.

Marlos May showed the Shetland Pony that was chosen as the grand champion of the pony show. Second place was shown by Mary Bess Smith.

Complete results of the show are as follows:
 SHELTLAND PONY SHOW
 Reserve champion was shown by Tim Tapley of Amherst. Tim Tapley also showed the first place pony in the class 1 Horse and Filly Colts foaled in 1961.

Second place in this group was shown by Mary Bess Smith of Olton, third place went to Judy Tapley of Amherst.

Other places in this class and the order they placed are: Laura Akins, Olton; Tony George, Olton; Helen Ruth Smith, Olton; Marlana May, Olton, and Jerry Dickenson, Olton.

In the class 2, Mares under 42", Marlos May ponies placed first and second. The first place pony was shown by Mickey Parsons. In third place was Tommy Lewis of Olton.

Other places in this class and the order they placed are: Marlana May, Mary Bess Smith, Helen Ruth Smith and Ben Akin.

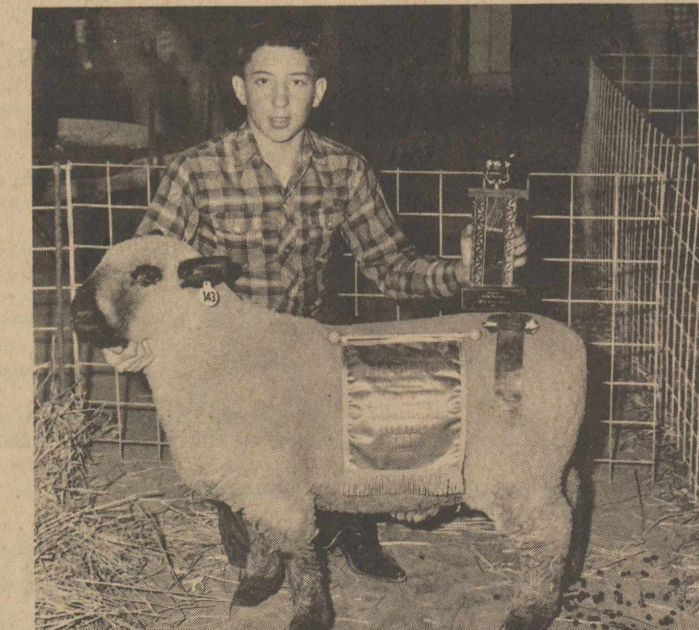
In the class 3, Mares over 42" and under 46", Kevin May's pony of Sudan took the first place honors. In second place was Karen Lewis of Olton, third place went to Judy Tapley of Amherst.

Fourth and fifth places went to Gary Dickenson and Ben Akin, both of Olton.

CONTINUED ON PAGE 7



TOP SHETLAND PONY, shown by Marlos May, Olton Pony Club



CHAMPION MEDIUM WOOL, shown by Steve Moss.



CHAMPION FINE WOOL, shown by Steve Moss.



CHAMPION SOUTHDOWN, shown by Robert Duncan.

The Olton Enterprise

Published each Thursday at Olton, Texas.

Subscription rates: \$3.00 per year in Lamb and neighboring counties; \$5.00 per year elsewhere.



BILL TURNER PUBLISHER
AMY TURNER NEWS EDITOR
KAY CHERRY SOCIETY EDITOR
MAENETTE HOUSTON OPERATOR
DUANE WHITELEY COMPOSITOR
LANA HAIR PASTE-UP
GENEVA CURRY PASTE-UP

Entered as second class matter at the post office at Olton, Texas, under the act of Congress, March 3, 1897.

Any erroneous reflection upon the character, firm or corporation which may appear in the columns of The Olton Enterprise, will be gladly corrected upon being brought to the attention of the publisher.

EDITORIALS Back To Textbooks

Robert Kennedy gave Texans a titillating conversation piece with his remarks in Indonesia that the annexation of Texas and the subsequent United States-Mexican war were "not a very bright spot" in American history. . . . not one to be very proud of." The attorney general's observation, possibly intended for local Indonesian consumption, seems to have set a lot of Texans to digging in their history books. Some dug back as far as 1692, to accounts of the burning of women at the stake as witches in Kennedy's native state of Massachusetts. Many were puzzled and wondered whether they teach the same Texas history at Harvard as in schools of the Lone Star State. Texans probably agreed more unanimously on Gov. Price Daniel's statement setting Kennedy straight on the facts, than on any previous utterance by the governor. He said the President's brother must have been "completely misinformed." He pointed out that the annexation of Texas "was by treaty between the Republic of Texas and the United States, and was approved by Congress and the people; and the war between the United States and Mexico was in defense of the solemn obligations of this treaty."

with the historic sentiments of his home state. Massachusetts was the spearhead of opposition to Texas statehood from the start. Daniel Webster, Boston's illustrious orator-statesman, fought it tooth and nail. So did John Quincy Adams, the Bay State's other political paragon. One day in April, 1844, Adams noted in his diary that the annexation treaty had just been sent to the Senate, "and with it went the freedom of the human race." The Senate, however, rejected that Congress adopted the annexation resolution.

Massachusetts and its statesmen opposed Texas annexation frankly because it would add another slave state to the Union—not for any consideration of fundamental merits or demerits. Their opposition to the Mexican war was linked with the slavery issue. Ironically, the United States victory in this was added territory to the Union from which were carved the states of California, Nevada and Utah, and parts of Colorado, Arizona, New Mexico and Wyoming; states in which slavery was not a major issue. Isn't Bobby Kennedy proud of the acquisition of these states?

Had Texas not been annexed to the United States, his brother Jack would not have received the 1,168,230 votes given him in the 1960 presidential election, which amounted to more than his total majority. It might be asked whether Bobby considers these votes a bright or dark spot in American history.

Well, it is not likely that Macbeth's command, "Out, damned spot," will be carried out by the de-annexation of Texas in the foreseeable future. But you might be surprised to know how many Texas would look with favor upon such a move. The Houston Post.

Technically the governor's statement about the "treaty" was slightly incorrect. The annexation measure was not a treaty but a joint resolution of Congress, which was ratified by a Texas convention and an election. However, Texans share Daniel's amazement at Kennedy's implied disapproval of the heroic fight for freedom made by our pioneers in 1836 against the tyrant Santa Anna, in which many men of Mexican descent valiantly joined. It may be said for Bobby Kennedy that his views on annexation were consistent

W. T. Millen Announces For State Representative

W. T. "Bill" Millen announced to the Enterprise this week his candidacy for Representative of the 91st District of Texas on the Democratic ticket.

Millen was raised in the Mulshoe area, graduated from Clovis High School and has been a Bailey County farmer since 1934. He is active in many local farm organizations and has actively participated in such controversial issues as the defense of the bracer program by the Plains Cotton Growers. He now serves as legislative director of this association and has made several trips to Washington, California, Kansas City and across Texas in this capacity.

Millen's statement reads as follows: To the people of the 91st District:

"I am soliciting your vote for State Representative of the District as I feel that it would be an honor and a privilege to represent the people of the area with the purpose in mind to work for honest, integrity and economy in government."

"For many years I have spent much time and money working with various farm groups for a better agricultural climate for our area and have cultivated a wide circle of friends over the great state of Texas; many of whom would a great deal of influence in area affairs."

"Having served in many capacities in these farm groups, I feel, qualified to me to represent you as a man of the people. Among the area organizations that I have had a part in promoting are: The High Plains Water Conservation District, the Hi-Plains Research Foundation at Halfway, the Plains Cotton Growers, the West Texas Agricultural Employer's Group and I now serve as director of the Plains Cotton Co-operative Association, the South Plains Soil Fertility Committee, and the Bailey County Farm Bureau. Along with others, I have spent much time and money promoting legislation at Austin for the Plains Irrigation Gas Users Association and I am a member of the founders committee of the Cotton Producer's Institute."

"My years of experience as a farm leader have seen into being such programs for the good of Bailey County as the Good Neighbor Cotton Seed Program in which irrigation farmers gave cotton seed to dry land farmers who had been hard hit by drought."

"I have fought for the farmers on numerous occasions for a better FHA program with lower interest rates and have



W. T. (BILL) MILLEN

fought much bad legislation in Austin.

"In listing these activities, I hope I have not seemed boastful. It seemed to me in each case that a job needed to be done with few people to take the time to do it. I have accepted these duties, usually resulting in much loss of personal time and money."

"To represent you in Austin, would probably again mean financial losses to me, personally. But I feel a dedication to the proposition that we must have men in government that will vote for what is right and good for our country, with the interest of future generations at heart, instead of political expedience to further their own selfish ambitions and moral degeneration. . . . a condition I see so often in our country, state, and national affairs."

"Some have asked me what platform I am running on. Standing on the side lines looking on, here are just a few of the things that occur to me:

- 1. Correction of the irregularities in the new sales tax law.
- 2. I believe that the Advalorem Tax should be abolished or turned over to the towns or commissioners courts.
- 3. Work for a fair deal for the farmer Irrigation Natural Gas Users (In which they would have the same privilege as the towns and villages.)
- 4. A small loan regulation bill.
- 5. Prohibition of obscene movies, as well as obscene books, in our school libraries.
- 6. Stronger lobbyist regulation.
- 7. Continued improvement in our public schools and colleges.

James Turman Campaigns For Lieutenant Governor

James A. (Jimmy) Turman of Fanning County, Speaker of the Texas House of Representatives, has begun his campaign for Lieutenant Governor.

Speaker Turman said his decision to run for Lieutenant Governor was "based on the sincere belief that my record as a legislator and as presiding officer of the House qualifies me for the duties required of the Lieutenant Governor—to preside over the State Senate in a fair, effective and democratic manner and to help preserve the God-given personal and political rights and liberties of all our citizens."

"I will announce my platform in the very near future. Let me say at this time, however, I believe that the only legitimate forces in State government are the wills and rights

of all our citizens deciding the issues through their elected state officials, and not through the 'Big Lobbyists' in Austin."

"I want the support of all Texas citizens in establishing fiscal responsibility in State government, and, at the same time, support in providing the protection and services our people have a right to expect from our prosperous State with an ever-expanding economy."

"I want and need every Texan's support—from business and industry, labor, education, the professions, government, farming and ranching, and all other segments of our social

Arrests Reported

Olton police reported a busy weekend with eight arrests made.

Five were arrested for drunkenness, one for disturbance of the peace, one for speeding and one for failure to stop at a stop sign.

and economic life."

Speaker Turman added, "I will meet and visit personally with as many people as time, between now and the primary, will permit. I pledge diligence to duty, integrity of purpose, and honorable service with fairness to all if elected Lieutenant Governor."

ONE OF The Plainsmen
Sez: "I'd sure like to find another VICE-President."
Bulk Fertilizer
4-Ton Spreader Available
The Plainsmen
FARM & RANCH
Phone 285-2255 Hwy. 70

Want To Own A Home Of Your Own?
In the City or Country
No Down Payment
No Closing Cost
Low Monthly Payments
You May Own Your Own Home In 12 Years.
"FINANCED 100%"
Send Your Name, Address, City, State and Phone No.
To
BILL'S BETTER HOUSING
300 South Columbia
Plainview, Texas

Postal Costs Rising To \$27,330 In City

For business firms and individuals in Olton, the use of the mails will cost an estimated \$27,330 in the next fiscal year. The amount is based on an increase in rates asked for by President Kennedy and already approved by the House. Similar action, with possible minor adjustments, is also expected to be taken shortly by the Senate. It calls for increases in first, second and third class mails totaling \$701 million a year. The \$4,360 share of this hike that local residents will have to assume represents an increase of some 19 percent over their expenditures last year. In fiscal 1961, according to the official Post Office Department

figures, mail costs locally amounted to \$22,970. They will rise to an estimated \$27,330 under the new bill. The principal change, as far as most individuals are concerned, is that it will cost a nickel instead of four cents to mail a letter. Post cards and air mail will also go up one cent. The total increase in these first class categories comes to \$455 million. Newspapers, magazines and other business enterprises that use the mails are also vitally concerned. The increase of over \$53 million in second class rates that is scheduled will add a heavy burden to many of them, they contend.

Third class mail, which covers bulk mailings, is in for a \$161 million boost, much more than the administration asked for. There will be no rise in fourth class. In urging the revision in mail rates, the government held that the postal service is a business and should be operated as such, with revenues sufficient to cover expenses. Opponents to the increases argue that it is a public service and that any additional funds needed for its operation should come from general revenues, just as do the expenses of other government agencies. Those who are protesting the increase in letter mail to five cents point out that the Post Office Department is at least breaking even in this category right now and that the proposed rise would yield a 25 percent profit for first class.



ROBERT DUNCAN wins champion of the breed with a Southdown.

PLAN NOW
To Attend The Olton
STOCK SHOW
Thursday Friday Saturday

Congratulations on your winnings in Littlefield!

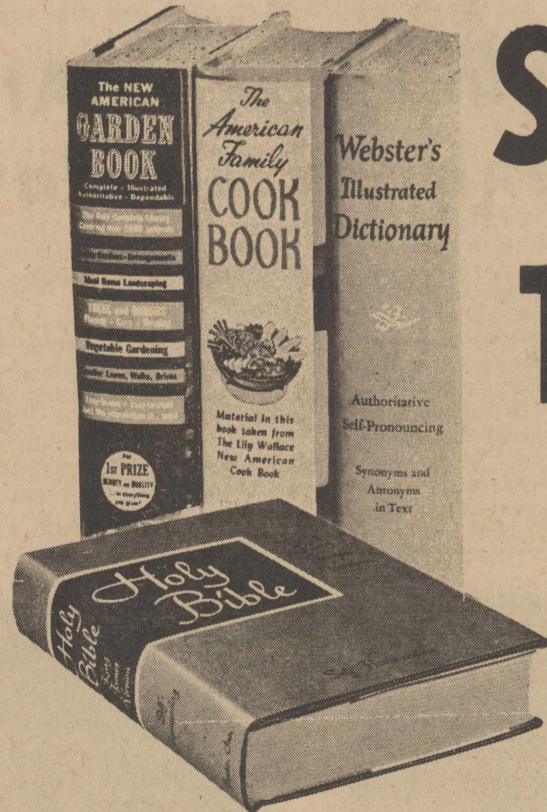
HALL-SIDES MOTERS, INC.

FREE

Offer Ends March 1st

...WITH YOUR

SUBSCRIPTION TO THE OLTON ENTERPRISE



Any one of these

\$3.98 books

There are no strings attached to this offer. Any one of these books is absolutely free with a new subscription or a two-year renewal to this newspaper.

Each of these books is one of the most popular books written on the subject covered. Each contains over 800 pages and many illustrations. Well-printed, durable—they are books you will use for reference for years to come.

To get your book, simply fill in the coupon, check your choice of books, and mail coupon with your check for \$3.00 plus 6 cents state tax for a new subscription or \$6.00 plus 12 cents tax for a two-year renewal.* Or better yet—come in to the newspaper office and see the books to make your choice.

If you want more than one book, you may get as many as you wish by extending your subscription for an additional year.

Your choice of volumes is absolutely free with a new subscription or two-year renewal to the Olton Enterprise. Additional volumes may be bought for \$2.00.

Why not stop in the newspaper office today and make your selection. Or, if you prefer, simply mail the coupon, tell us which book or books you want and enclose your check for \$3.06 for a new subscription or \$6.12 for a two-year renewal.

*These prices apply to subscriptions in Lamb and adjoining counties only. In other parts of Texas, new subscriptions are \$5.00 plus 10 cents tax and two-year renewals are \$10.00 plus 20 cents tax. These prices also apply to out-of-state subscriptions, less state tax.

SEE SAMPLES AT THE OLTON ENTERPRISE

News Of Interest To Women

J. M. Taylor Has Birthday

J.M. Taylor celebrated his 86 birthday Sunday with a buffet luncheon at the Legion Hut. Present were Mr. and Mrs. E.W. Mitchell and girls, Mr. and Mrs. Ancil Miller and family, Mr. and Mrs. Bob Ball, Mr. and Mrs. Rob Caviness, Mr. and Mrs. M.E. Taylor, Mr. and Mrs. Garner Ball and family, Mr. and Mrs. Don Taylor and family, Mr. and Mrs. Clifton Hines, Mrs. Ed Vaughn, Miss Elaine Lewis, Rev. John Lewis, Duward Price, C.T. Mason, Johnny Lewis, James Loveless, Roy Moss, Wauline Little, Patty Little, Mr. and Mrs. Guy Vaughn and Mr. and Mrs. WittLacewell, all of Olton.

Also present were Mr. and Mrs. O.B. Palmer, Tucumcari, N.M.; Mr. and Mrs. L.L. Barnard, Sunray; Mr. and Mrs. Eddie Vaughn, Grand Prairie; Mr. and Mrs. Royce Morgan, Sunray; Mr. and Mrs. Troy Blackburn and family, Mr. and Mrs. J. Paul Waggoner and family and Clayborn Stewart, all of Sunnyside; Mr. and Mrs. Euel Mitchell and family of Lazbuddie.

HD Meet Set Feb. 28

Mrs. Lady Clare Phillips, county home demonstration agent, announces a meeting Feb. 28 at 2:30 p.m. in the women's jury room, second floor of the courthouse in Littlefield.

Plans will be made at the meeting for a workshop on making pleated drapes.

Anyone interested in making drapes is invited to the meeting.

in olton it's Bizzella



MISS WILMA MEASLES

Miss Measles Engagement Is Announced

The forthcoming marriage of Miss Wilma Measles and Wendell "Bud" Hogan is announced by her parents, Mr. and Mrs. J.G. Measles, 111 South West 8th Street, Plainview.

Hogan is the son of Mr. and Mrs. M.H. Hogan, Winters. He is a graduate of Winters High School and Texas A&M College with a BS Degree in agriculture education. He is presently employed as sales engineer with Gifford Hill Western, Inc., Plainview.

Miss Measles is a graduate of Tulia High School and is secretary at the Plainview Chamber of Commerce.

Wedding vows will be exchanged Saturday, March 17, 6:30 p.m., in the Chapel of the First Methodist Church, Plainview.

IN MULESHOE HOSPITAL
Mr. and Mrs. Archie Curry were admitted to the West Plains Hospital in Muleshoe Sunday. They are undergoing treatments.

Mrs. Rainey Is Honored

Mrs. J.W. Rainey and infant daughter, Wendy Gale, were honored with a baby shower Tuesday morning, Feb. 13. The G.H. Bley home was the scene for the shower.

A Valentine theme was used in the decoration of the serving table. The centerpiece was composed of a cupid, holding a heart and arrow, standing on a larger heart. The larger heart was covered in roses. China and silver appointments were used. Mrs. Bub Holt served the guests coffee and sweet breads.

Mrs. Elmer McGill registered the guests. The registering table was adorned with a Valentine motif.

Hostess gifts were a baby blanket, a lace blanket, a dress, shoes and a sweater.

Hostesses were Mmes. Bud Huckabee, Tom Carlisle, Paul Burrus, W.G. Green, G.H. Bley, Lonnie Smith and Elmer McGill.

HD Club Meet Held Tuesday

The Olton HD club met Tuesday afternoon at 2 in the home of Mrs. Lloyd Blackwell. Roll call was answered with the name of famous people.

Mrs. Tom Smith taught the group on smock pillows and aprons.

Refreshments of cokes and cookies were served to Mmes. Fred Shaw, Z.D. Miller, Jack Edwards, Dan Adair, Nell Crawford, Harry Thomas, Harold Jordan, Tom Smith and Miss Ann Warren. One guest, Mrs. L.O. Langley, was present.

The next meeting will be March 6 at 2 p.m. in the home of Mrs. Tom Smith. Mrs. Nell Smith were serve as hostess. The program will be on yard improvement.

Bible Class Meeting Held

Ladies Bible Class No. 1 met Wednesday morning in the Main Street Church of Christ with Brother Alfred White as teacher.

The group is studying the first chapter of Acts.

Present were Mmes. J.C. Dear, Sidney Allen, C.T. Hulsey, C.M. Owen, Elmo Bryant, W.H. Leathers, J.H. Capehart, W.B. Rose, W.L. Thomas, M.L. Armstrong, Iva Lobaugh, M.R. Cavett, Fred Hicks, Lee Poteet, Sally Copeland, T. Combest, A.T. Couch, A.C. McKinzie, O.B. LaFrance, C.E. Hysinger, J.C. Scruggs, E.A. Hestand, Jack Edwards, Paul Burrus, R.L. Chitwood, Doyle Davis, G.W. Locke, F.L. Hall, L.D. Smith and Cecil Keasler.

CANYON VISITORS

Mr. and Mrs. Jimmy Curry of Canyon visited over the weekend in the home of their parents, Mr. and Mrs. Elmer Phillips and Mr. and Mrs. Homer Curry.

Ladies Bible Class Meets

Ladies Bible Class No. 2 met Wednesday morning at the Main Street Church of Christ with Mrs. D.M. Granbery as substitute teacher. The subject was royal robes for the heart.

Those present were Mmes. Jack Burkhalter, John Clark, Melvin Hines, Robert Nickerson, Jimmie Priest, Jack Chares, Ed Thompson, Tom Carlisle, Bud Huckabee, Alfred White, Bill Smith, George Kidd, Billy G. Thomas, Willie Green, Howard Phares, Lem Roberson, Bob Williams, Arno Hall, Elmer McGill and Miss Helen Locke.

VISIT GREENS

Mr. and Mrs. Jerry Caldwell of Plainview visited the Willie Gene Greens over the weekend. The Caldwells are former residents of Olton.

D. F. Roberts Have Baby Boy

Mr. and Mrs. D.F. Roberts are the parents of a baby boy, James Monroe, born Feb. 19 at the Community Hospital and Clinic.

The infant weighed eight pounds, six ounces at birth.

Sunday School Class Meets

The Ester and Darcos Sunday school class of the First Baptist Church met in their regular joint monthly meeting Tuesday night in Fellowship

Elkins Host Get-Together

A family get-together was held in the L.G. Elkins home Sunday.

Those present were Mrs. D.W. Stockham Jr., Twyla and Drew of Tucson, Ariz., Mr. and Mrs. J.W. St. Clair of Muleshoe, Mr. and Mrs. M.K. Fisher, Mrs. M.K. Fisher Jr. and Vanessa, Mr. and Mrs. Don Fisher and Miss Sherral Light of Hale Center, Mr. and Mrs. Harry Henderson of Amarillo, Mr. and Mrs. Johnny St. Clair, Johnny Lee and Janna of Texico, Mr. and Mrs. I.V. Pierce and Darleta of Spearman, Mr. and Mrs. Gerlad Elkins and Cynthia and Chris of Hart, Mrs. Lavelle Elkins and Mr. and Mrs. L.G. Elkins.

VISIT IN ABILENE

Barton Prestridge, Barry Prestridge and Lana Hair of Olton and Kenneth Prestridge of Lubbock visited in Abilene over the weekend in the home of Mr. and Mrs. Roy Flournoy. Mr. Barton Prestridge returned to Olton with them after having visited for the past two weeks with the Flournoys and their family.

Hall.

Mrs. Jim Hyatt was chairman and Mrs. Bob Worley, hostess, opened the devotional period with prayer. Mrs. Lloyd Cowart gave the devotional entitled, "Peace By The River," by Vance Harver.

A reading entitled "Use What You Have" was given by Mrs. L.G. Elkins. Mrs. Rufus DeBerry gave the closing prayer.

Refreshments of coffee, tea and cookies were served to Mmes. Bob Worley, Lloyd Cowart, Doyle Pinson, W.B. Smith, Paul Feathergill, Ina Burgess, Pearl Schreier, R.W. Malone, H.B. Carson, Frank Adams, Rufus DeBerry, Witt Lacewell, Paul Burrus, Lavelle Elkins, L.G. Elkins, Jim Hyatt and

Church Class Has Party

The fourth and fifth grades class of the Main Street Church of Christ was entertained with a skating party last Friday night.

Each member of the class, taught by Mrs. Elmer McGill, brought a guest. Forty young people attended.

Parents furnishing transportation were Mmes. Elmer McGill, Willie Gene Green, Ed Thompson, Louis Botkin, J.C. Scruggs, Bub Holt, Dick Whiteley, Marcus Breland and Tom Carlisle.

WSCS Meeting Held Monday

The WSCS met Monday at 9:30 a.m. in the First Methodist Church with a program subject on "Meaning of Suffering."

Appearing on the program were Mrs. Glenn Leggett, Mrs. J.C. Brown and Mrs. Delmer Givens.

Present were Mmes. Glenn Leggett, J.B. Williams, Bill Collins, Delmer Givens, J.C. Brown, Jack Straw, Jim Gregory, Owen Norfleet, H.C. Walker, Dub Hall and Rev. W.F. Gaede.

The next meeting will be Monday Feb. 26 at 9:30 a.m.

Mrs. Clark Is Honored

A coffee was held at 9:30 a.m. Friday honoring Mrs. George Clark for hitting a hole in one at Olton ORC golf course last week. Scene for the occasion was the ORC Lounge. Several gifts and a hole in one trophy was presented to the honoree. Coffee and doughnuts were served to 35 ladies present. Ladies of the ORC were hostesses.

VISITS MRS. DENNIS

Darryl Dennis, who is stationed at Fort Hood, visited in the home of his mother, Mrs. Ineta Dennis, over the weekend.

CARD OF THANKS

I want to thank everyone for the cards, flowers and good deeds done for me during my illness.
Mrs. J.A. Stiles

Oltonites Attend State FTA Meeting

Attending the state FTA convention in Austin Feb. 16 and 17 from Olton were Alice Ross Bryant, Tanya Bryant, Bobby Lynn Tollett, Janice Galloway, Mr. and Mrs. John Campbell and Mr. and Mrs. L.R. Bryant. Mrs. Campbell is sponsor of Campbell FTA.

ORC Party Set Friday

A bridge and forty-two party is scheduled at the Olton Recreation Center Friday night at 7:30 p.m. in the ORC lounge. All ORC members are invited to attend.

IN HOSPITAL
I.D. Grimsley is in the hospital at Littlefield this week.

Alfred White Is Honored

Alfred White, minister of the Main Street Church of Christ, was honored by his wife with a surprise birthday party Sunday night in their home.

Cake, punch and coffee were served to the 80 guests present.

ORC Ladies Meet Tuesday

The ladies of the ORC met Tuesday at the ORC lounge for their regular luncheon and business meeting.

Forty-six persons, including several visitors, were present.

FISH AT FALCON DAM

Dr. Lynn Fite, T.J. Roberson, Percy Parsons and Basil Sherman have returned from fishing at Falcon Dam recently.

ATTEND OPEN HOUSE

Mr. and Mrs. Charles Polk and daughters attended an open house at the home of Mr. and Mrs. Harold Gene Franklin in Tahoka Sunday. Franklin is the brother of Mrs. Polk.

TO EVERY PRESCRIPTION WE ADD...

SKILL

Proper compounding of drugs is most important in filling prescriptions — you can depend on our pharmacists.



OLTON DRUG

Ray Culwell and Ira Foster

OPTOMETRY
The Art and Science of Visual Care

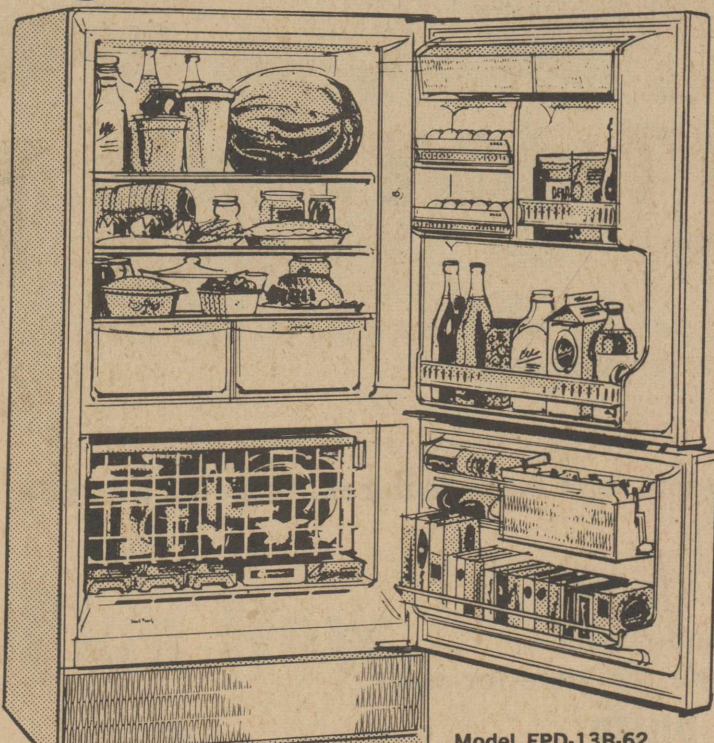
B.W. ARMISTEAD, O.D.
GLENN S. BURK, O.D.

Visual Analysis- Visual Training
Contact Lenses
Development Vision- Speed Reading

406 LFD DRIVE PH. 385-5147
LITTLEFIELD, TEXAS

NEVER NEEDS DEFROSTING!

1962 Frigidaire Frost-Proof Refrigerator



Model FPD-13B-62
13.33 cu. ft.
net capacity



EXCLUSIVE FRIGIDAIRE Frost-Proof system stops freezer frost. You never, no NEVER need to defrost!

STORE MORE in refrigerator storage door, 2 dozen eggs in twin Egg Servers. Butter Conditioner with serving dish. Utility compartment for cheese and snacks. Deep door shelf for 1/2 gallon milk bottles!

FAMED FRIGIDAIRE DEPENDABILITY!

ENORMOUS BOTTOM FREEZER stores 152 pounds of frozen foods in safe zero zone cold. Roll-To-You basket puts everything at your fingertips.

ONLY **\$519.95** easy terms

Qualified Personnel For Servicing

PARSONS FURNITURE

Phone 285-2767

"Where A House Becomes A Home"

Olton

DOWNTOWN T.V. LAB
704 BROADWAY

C M
CURTIS MATHES

SAYS... WE'RE MOVING!

CURTIS MATHES 3-WAY COMBINATION
23" HI-FI TV 4-SPEAKER STEREO AM/FM RADIO

ALSO AVAILABLE IN EARLY AMERICAN MAPLE AT **\$389.95** WITH TRADE
6 SPEAKER
LOWEST PRICE

ALSO AVAILABLE IN DANISH MODERN WALNUT AT **\$349.95** WITH TRADE
6 SPEAKER
EVER OFFERED

FLASH! IN THREE SHORT WEEKS THIS IS AMERICA'S FASTEST SELLING FRENCH PROVINCIAL ENTERTAINMENT CENTER!

HAND WIRED, POWER TRANSFORMER CHASSIS
HIGH FIDELITY AM, & FULL FIDELITY FM RADIO
SIX HIGH FIDELITY SPEAKERS--2-12" AND 4-5" SPEAKERS WITH CROSSOVER NETWORK

GENUINE MOUNTAIN FRUITWOOD
4-SPEED HIGH FIDELITY AND STEREO RECORD PLAYER WITH DIAMOND STYLUS

\$399.95 WITH TRADE

C M The Williamsburg
CURTIS MATHES

"The Business That Service Built"

DOWNTOWN T.V. Lab
704 Broadway

DOWNTOWN
Phone CA4-2776

THE HART BEAT

A SUPPLEMENT TO THE OLTON ENTERPRISE

Thursday

Feb. 22, 1962

Banquet Honors Buyers At Castro County Show

Jack Thompkin, Channel 10 farm director at Amarillo, spoke at the second annual Castro County Fair Stock Show buyer's banquet at Hart Saturday night emphasizing the need to have faith in this country. "You youngsters should remember that people like you have built this nation," he said. "We have a great nation. Though we may be criticized, we have never had a famine," he added.

HHS Athletes To Be Honored

The Hart Mothers Club will honor the athletes of Hart High School at a banquet March 6 at 7:30 p.m. in the Hart cafeteria. The public is invited. Tickets are \$1.50.

PARSONS Funeral Home
 "AS NEAR AS YOUR NEAREST TELEPHONE"
 Oxygen equipped ambulance Service.
 We accept any funeral home burial policy.
 Phone 285-2621 Olton

WANTED-Custom Fertilizing
 1 mi. west of Hart cemetery
Cliff Henderson
 Phone at Night 938-3234

MADE GOOD SINCE 1850
MOUND CITY
 PAINTS * VARNISHES * ENAMEL
ED HARRIS LUMBER CO.
 BUILDING MATERIALS
 CAPABLE-DEPENDABLE
 Phone 938-3281 Hart, Texas

WHAT? BUILD A PICKUP TRUCK SPECIALLY FOR TEXAS?



YES SIR—THE '62 FORD!

IT STARTED IN TEXAS—when Ford engineers drove Texas roads and ranches, talked to Texas truck owners. And it wound up with lots of fine things for you in the '62 Ford!

The wheelbase is long—114 easy-riding inches (122 for 8-foot bodies). There's less front overhang, more road stability. The ride is smooth. Easier springing makes the ride as soft as a Texas drawl! The frame is strong—to beat twisting of high-crowned Texas roads.

The savings are BIG. You save now with the lowest prices of any leading make. Save on gas with Ford's modern engines, Six and V-8. Save on oil—go 4,000 miles between changes. Save on tires with Ford's I-beam suspension that keeps front tires tracking true.

Come try the '62 Ford—the pickup built for Texas, built in Texas!

FORD TRUCKS COST LESS TO OWN AND OPERATE

HALL-SIDES MOTORS, INC.
 Box 466 Olton Phone 285-2627

HART TO HART

Boy Scout Banquet will be held at the Hart School Cafeteria Feb. 27 at 7:30 p.m.

Castro County teachers meeting will be held Feb. 28 at 7 p.m. at Hart.

School Assembly program will be held Feb. 27 at 8:30 a.m. The program will be on The National Marionette Circus. Price is 15 cents.

Kathryn Ann Howell, niece of Dr. and Mrs. Jack Harris, arrived Friday from the Philippine Islands. She will make her home with the Harris's.

Seniors will take their college entrance examinations Feb. 24 in Canyon.

Total enrollment for the first six grades in the Hart school is 291 for the second semester.

Mrs. Johnnie Davis and son, Junior, have moved to Hart from Dimmitt.

B.M. Nelson will be in Hart Monday and will be guest of the Hart Lions Club at dinner.

Mrs. Roland Shepard is in the hospital in Houston. Her condition is not known.

Mrs. Percy Hart received word her son is seriously ill.

Mr. and Mrs. Everette Cole and family visited last week in Waco with their daughter, Mr. and Mrs. Nathan Pevehouse, and family.

Mr. and Mrs. Edgar Varner spent last week in Corsicana visiting her parents.

Visiting in the O.C. Kittrell home Sunday were Mr. and Mrs. Bud Roberson of Amherst, Mr. and Mrs. Jerry Kittrell and daughter, Mr. and Mrs. C.B. Landers, Mrs. Peggy Davis and daughter of Lubbock are spending this week with her parents, the O.C. Kittrell's.

Mr. and Mrs. Kenneth Cox and son of Lazbuddie visited Sunday with the Paul Brooks family.

Mrs. Carl Godfrey was in Plainview Sunday visiting her son and daughter, Mr. and Mrs. Jack Godfrey.

Worth Jones is in the Plainview hospital following surgery.

Mrs. O.L. Beavers was in Plainview Sunday visiting her aunt, Mrs. U.S. Grant.

Hart boys are now practicing for interscholastic league golf.

Services Held For Former Hart Resident

Funeral services for Mrs. E.S. Copeland, 60, of Wellington, were conducted at 2:30 p.m. Saturday at the First Baptist Church in Wellington. Mrs. Copeland was grade school principal of Hart during the years 1958 and 1960.

Mrs. Copeland died Thursday in Harmon County Memorial Hospital in Hollis, Okla. Services were conducted by the Rev. Glenn Hickey, pastor, assisted by the Rev. Robert Carrill, pastor of the First Baptist Church of Hollis, Okla. Burial was in the North Wellington Cemetery under direction of Nelson Funeral Home.

Mrs. Copeland was born May 13, 1901 at Marshall. She was Sidney M. Seay before her marriage to Copeland Jan. 2, 1918 at Paris.

She was a member of the Baptist Church. Surviving are her husband; one son, Bob of Wellington; and two daughters, Mrs. C.B. Cartier and Mrs. Sam Crow, both of Hollis, Okla.

Community Meet Is Set

A community program will be held at Hart High School Monday at 7:30 p.m., according to Mrs. Paul Brooks, PTA chairman of civil defense.

Mrs. Eual Robinson of Dimmitt will be guest speaker. She will demonstrate testing radiation and talk on civil defense.

R.C. Bailey attended the tax meeting held in Amarillo last Thursday. The program was on appraisal of rural land.

Hart Lions Club members will attend the Chamber of Commerce breakfast in Plainview Saturday morning.

Miss Opal Ray attended the Delta Kappa Gamma meeting at Bovina Saturday afternoon.

Mrs. Conard Riddles and daughter, Belinda Ann, left Saturday to live at Wichita Falls. Conard is stationed at Shepard Air Force Base.

Mrs. John Lacy, Mrs. Curry, Wayne Curry and Mrs. W.C. Lacy were visiting John Lacy at Ft. Carson, Colo., over the weekend. He will be home March 2 and will then be transferred to Huntsville, Ala.

Mr. and Mrs. Lee Harris were in Wellington this weekend to visit with her mother, Mrs. W.V. Huffman.

Mrs. W.H. Felder was called to Plainview to the bed side of her daughter, Mrs. Jack Godfrey, who underwent emergency surgery Thursday.

Mrs. Allene Lilly is in Venita visiting with her daughters, Mrs. Lloyd Davis and Mrs. Truman Swopes.

Tax Collector Kent Birdwell will be at Farmer State Bank to sell license plates Feb. 27 and 28 and March 1 and 2.

FHA Cookbooks went on sale Monday for \$3 each.

The senior play will be presented March 2 at Hart High School.

Science Fair judging will be March 8.

Promote —
 Speaker Of The House
JAMES A. "Jimmy" TURMAN
 DEMOCRATIC PRIMARY
 Fight The Big Lobby In Austin!
 write
 "TEXANS FOR TURMAN"
 BOX 366 AUSTIN
 PAID POL. ADV.

Alexanders Are Honored

Mr. and Mrs. Calvin Alexander were honored with a housewarming Feb. 18 at 8 p.m. at their home.

Approximately 20 guests were registered with 40 gifts. Mrs. Aubrey Myers registered the guests.

Red carnations were used to carry out the Valentine theme. Hostess gift was a braided rug.

Special guests were Mr. and Mrs. Dan Higgins of Amarillo, grandparents.

Punch, sandwiches and coffee were served.

Out-of-town guests were Mr. and Mrs. Montie Phillips of Littlefield, Mr. and Mrs. Bill Phillips of Plainview and Mr. and Mrs. Olan Taack and Katherine of Dimmitt.

Hostesses were Mmes. Jimmy Davis, Robert Brooks, Curtis Malone, Tommy Cook, Frank Bauman, Cleve McLain, Jack George, Joe Hart, Roland Shepard, Harold Smith, Dudley Aven, C.W. Seago, Joseph Bauman, Aubrey Myers, H.E. Loman and Miss Soila Reyna.

School Menu

Feb. 26 to March 2
 MONDAY - Bar-B-Q on bun, french fried potatoes, celery and carrot stick, apple cobbler, butter, milk.

TUESDAY - Weiners and beans, whole kernel corn, jelly lime, pineapple-celery and cheese stick, cornbread, butter, milk, dixie cup.

WEDNESDAY - Sandwich, potato salad, tomato wedge, butter, milk, fudge cake.

THURSDAY - Pork roast, combination salad, carrots and peas, lemon pudding, butter, milk, bread.

FRIDAY - Salmon loaf, seasoned spinach, grapefruit sections, hot rolls, butter, apricots.

Classified Ads

FOR SALE: 1960 Ford Ranchero pickup. See Joe Newman. 2-tfc.

FOR SALE: 2 bedroom house. Ideal location on pavement. Phone 938-4664. 2-tfc.

FOR SALE: Two 2 bedroom houses. Ideal location on pavement. Phone 938-3218. 2-tfc.

WCS Meeting Held Monday

The Wesleyan Service Guild of Hart met Monday, Feb. 5 at 7:30 p.m. in the home of Mrs. Ed Harris for a study on "The Meaning of Suffering." Mrs. Ena Bowden conducted the study.

The devotional was given by Mrs. Lanny Tucker.

Mrs. R.C. Bailey spoke on "The Will of God." Mrs. Lee Crouch spoke on different religious beliefs and Mrs. G.C. Graves spoke on the problems of evil. Mrs. Lenora Smith read a poem, "Let Me Remember."

Guests present were Mrs. R.C. Bailey and Mrs. Lenora Smith.

Members present were Mmes. Robert Brooks, G.C. Graves, Lanny Tucker, Wamon Foster, Ed Harris, Ed Bennett, John Blocker, Buster Aven, Worth Jones, J.V. Westcott, Lee Crouch, Ena Bowden and Polly Sanders.

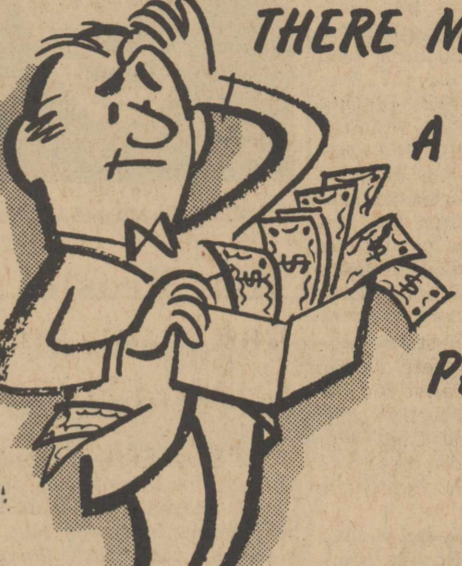
Henderson TV
 Repair Service At Night in Hart
 Phone MI 7-3636 in Dimmitt
 Hart 938-3234

VISIT POLKS
 Mr. and Mrs. H.L. McMillan of Plainview visited Friday night with the Charles Polks. The McMillans assisted the Polks in their store opening Saturday.

WEEKEND VISITOR
 Jim Moss visited last weekend with his mother and sister, Mrs. K.L. Moss and Joneta. Jim is attending Abilene Christian College, Abilene.

SEE
HOLT'S GEARHEAD SHOP
 FOR
 COOLING JACKETS FOR UNDERGROUND PIPE
 ALL TYPES OF COOLING COILS
 DRIVE SHAFT GUARDS FOR IRRIGATION WELLS
 PHONE 938-3737 HART, TEXAS


THERE MUST BE A BETTER WAY TO PAY BILLS



You're right... there is! You can pay by CHECK. This way, you can let the mailman do your footwork, and avoid the risk of loss involved in carrying large sums of money around with you. Come in now and open a checking account here!

FARMERS STATE BANK
 Hart, Texas

IT'S A FACT



THIS IS THE WORLD'S LARGEST SELLING DEEP WELL TURBINE PUMP

It's a well-known fact, Peerless deep-well pumps have been the leading choice of farmers and ranchers for over 20 years. The reasons: Peerless makes a better pump. Peerless gives you better service, both before and after the sale.

PEERLESS Deepwell Turbine Pumps...

ARE HIGHEST IN EFFICIENCY
 You can save as much as \$2.00 per day, when operating on Natural Gas, or get 20% more water with the same power.

LAST LONGER
 Most modern manufacturing plants, and these features, make PEERLESS bowls more sand resistant:

1. Enameled bowl castings
2. Dual bearings - bronze and rubber
3. Lateral seal to compensate for impeller wear.

PEERLESS BOWLS FIT ANY PUMP
 Any pump performance can be improved by installing a Peerless bowl assembly.

PEERLESS PUMPS COST NO MORE
 Why pay more and get less in a "cheap" pump?

ASK ABOUT OUR USED PUMPS
 See us before you buy
PEERLESS PUMP
 FMC Corporation

2211 N. Columbia (Amarillo Highway) Plainview

THE STATE OF TEXAS

County of Lamb

On this the 6th day of February, 1962, the Board of Trustees of Olton Independent School District convened in regular session with the following members present to-wit:

Gilbert Roberson, President; Fred Hicks, Roy Roberts, Winston Bley, O. J. Neeley and Owen Jones and the following absent; Ed Thompson, constituting a quorum and among other proceedings had by said Board of Trustees was the following:

Whereas the term of office of Fred Hicks and Roy Roberts, members of the Board of Trustees of this School District will expire on the first Saturday in April, 1962, said first Saturday being April 7th, 1962, and on said date a trustee election will be held in said School District.

Whereas it is necessary for this Board to pass an order establishing the procedure for filing for and conducting said trustee election

THEREFORE, BE IT ORDERED BY THE BOARD OF TRUSTEES OF OLTON INDEPENDENT SCHOOL DISTRICT:

1. That an election be held in said School District on April 7th, 1962, for the purpose of electing 2 members of the Board of Trustees of said School District.

2. That all requests by candidates to have their names placed upon the ballot for the above mentioned election shall be in writing and filed with Mrs. Rex Chitwood at the School Business Office, not later than March 8th, 1962 at 4 p.m.

3. That said election shall be held at the following place and the following named persons are hereby appointed officers for said election:

At H.P. Webb Elementary Building in Olton, Texas, in said School District, with Eldon Franks as Presiding Judge.

4. The manner of holding said election shall be governed as near as may be by the Election Code of this State and this Board of Trustees will furnish all necessary ballots and other election supplies requisite to said election.

5. Immediately after said election has been held the officers holding the same shall make returns of the results thereof to the Board of Trustees of said School District, and return the ballot box to the Secretary of said Board for safekeeping.

6. The secretary of this Board of Trustees shall forthwith issue a notice of said election by posting copies of this order at three different places within the boundaries of said School District, which posting shall be done not less than ten days

prior to the date for said election.

The above order being read, it was moved and seconded that the same do pass. Thereupon, the question being called for, the following members of the Board voted AYE: Gilbert Roberson, Fred Hicks, Roy Roberts, Owen Jones, Winston Bley, O. J. Neeley.

Gilbert Roberson
President, Board of Trustees
ATTEST:
Roy Roberts
Secretary

Gospel Meeting Starts Feb. 26

A gospel meeting will be held at the Main Street Church of Christ Feb. 26 through March 4. Mardell Lynch, Hobbs, N.M., will conduct the services.

Services will be held daily at 10 a.m. and 7:30 p.m. with the exception of Monday, when services will start at 7 p.m.

Lynch has been preaching for approximately 25 years and has been at Hobbs three years. Previously, he served at the Tenth and Pyle Church at Clovis, N.M. The public is invited to the services.

Chemicals Good Control For Sorghum Midge

COLLEGE STATION, Feb. 22--During the past year, tests were conducted by the Texas Agricultural Experiment Station to find a practical chemical control for the sorghum midge. Since grain sorghum planted early in the season usually does not become infested with sorghum midge, the plants used in the tests were planted during the last season.

Paper bags were used to cover the terminal of each plant one day before the heads emerged to regulate midge-laying activities. Bags were removed for 24 hours from 10 plants for 10 consecutive days to expose each head to midge oviposition. It was determined that egg laying by midge occurs most frequently on the third day following head emergence. By the end of the fourth day after emergence, approximately 90 percent of the egg laying is complete.

From this information, it was determined that insecticides should be applied to sorghum heads 1 to 4 days after emergence. In the tests, plants that were treated soon after emergence showed much greater

County Residents Are Well Insured

According to the latest figures, Lamb County families have been increasing their life insurance holdings in the last few years.

Their coverage has climbed to an estimated \$64,265,000, an all-time high.

One reason given for the rise is the fact that it has become easier than it once was to qualify for life insurance. Another is that incomes have been going up, making it possible for people to expand their protection in this direction.

Investing more money in security of this sort is but one of several defensive measures that have been taken by local residents to safeguard their future. They have also been adding to their cash savings and to their investments.

The developments are detailed, for the nation at large and for each of the states, in the 1961 Life Insurance Fact Book.

They show that families in the United States have built up a huge financial bulwark for themselves in the form of life insurance. It amounts to more than \$586 billion, with some \$28,271,000,000 of it in force in the State of Texas.

How much does it boil down to in terms of the individual family? In Texas as a whole, the average household has an amount of insurance that is equal to its net earnings, after taxes, over a period of 20.0 months.

Applied to Lamb County, with its after-tax income per month of \$526 per household, as shown in the latest annual Sales Management report, the average family's ownership of life insurance is approximately \$10,535.

It compares favorably with the amount in force in the United States, \$10,200 per family, and yields than those treated when the heads were in the partial bloom or full bloom stage.

Several insecticides were tested, and most gave good results. Of those tested, however, only Dibrom, endrin and toxaphene have been approved for use on grain sorghum.

Complete results of these tests are contained in Experiment Station publication PR-2206, "Control of the Sorghum Midge on Grain Sorghum". A copy of this publication may be obtained from the Agricultural Information Office, College Station, Texas. Ask for it by name and number.

with the West South Central States \$7,800.

All told, for the entire local population, it comes to \$64,265,000.

Much of the increase in life insurance coverage is attributed in the report to the spectacular growth of group insurance, which now represents nearly a third of all life insurance. Since 1950, it has increased 50 percent.

The spotlight is still held, however, by ordinary life insurance, which has 58 percent of the total.

Bond Sales Reported In County

January Savings Bonds sales in Lamb County totaled \$6,093, according to C. O. Stone, Chairman of the Lamb County Savings Bonds Committee. This figure represents 1.6% of the 1962 sales goal of \$370,000.

Total January sales in Texas were \$15,310,631, which is 9.3% of the 1962 state goal of \$165,100,000.

"The highlight of our 1962 sales activities will be the Freedom Bond Drive held in May and June, Chairman Stone reported.

"The Freedom Bond Drive will be the first nation wide Savings Bonds campaign held since the Korean War. This campaign was personally inaugurated by President Kennedy at a meeting in Washington Jan. 19th. I feel confident that the citizens of this County will respond to the Freedom Bond Drive and our 1962 Savings Bonds goals will be met", Stone concluded.

TOO LATE TO CLASSIFY

FOR RENT: House on west 5th. R.H. Thomas, 3-tfc.

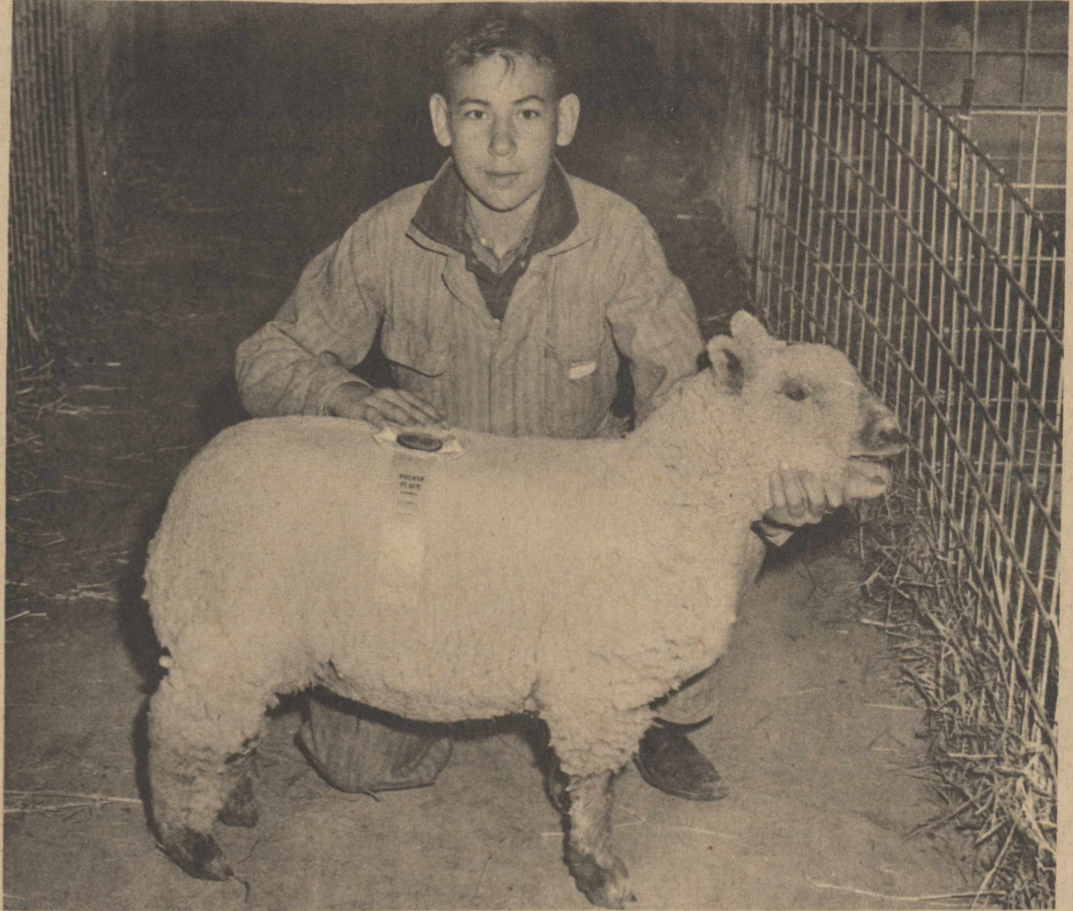
For custom application of anhydrous ammonia see Garner Ball or call 285-2594. 3-tfc.

I will baby sit with children of working mothers in my home. Hot lunches, naps and fenced play area. Reliable services, reasonable rates. Inspection invited. Call 285-2134. 3-tfc.



BUILDING

WITH THE YOUTH OF OUR COMMUNITY
FFA 4H FHA

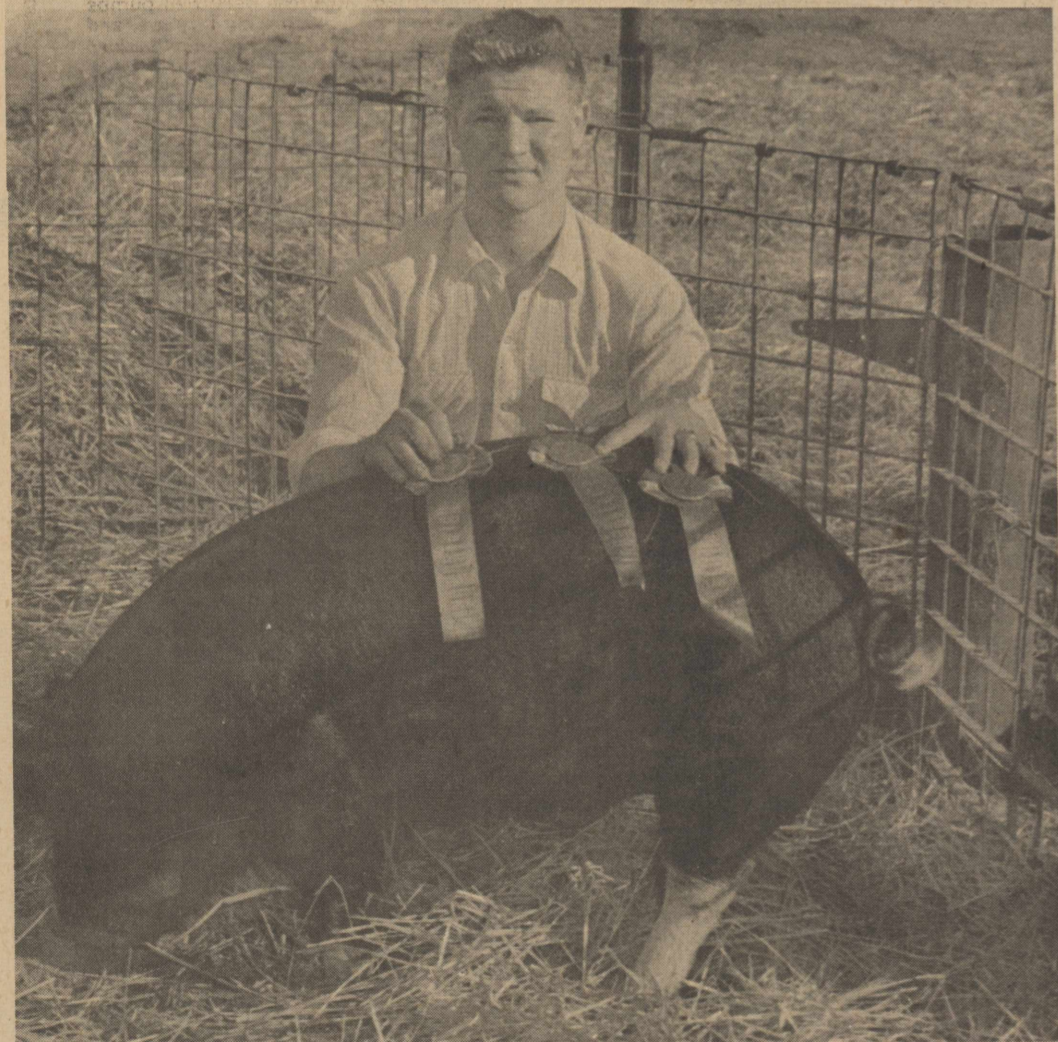


AARON ROBERTSON, son of Mr. and Mrs. Earl Robertson, -Fourth place lightweight in the Southdown division.

HIGGINBOTHAM-BARTLETT
"GOOD LUMBER"

Phone 285-2937

Olton



RANDOLPH SCHAEFFER-Reserve champion Berkshire.

We're behind you 100 %



these boys and girls in the

FFA - 4H - FHA

have worked hard for the honors they have won. We offer our congratulations and our continued support on a

Congratulations
On
Your Winnings
At
Littlefield

JOB WELL DONE!



Plan Now To Attend The OLTON STOCK SHOW Thursday-Friday-Saturday

OLTON CO-OP GIN

Lloyd Graham
Mgr.

SELL · BUY · TRADE · HIRE · SERVICE · WANTED ADS!
LOST and FOUND · SERVICE · T
HELP WANTED · EMPLOYME

CLASSIFIED ADS

Rates
 Rates on classified advertising are: 6 cents per word first insertion; 3 cents per word second insertion, and each additional consecutive insertion. Minimum 50 cents first insertion, 25 cents additional insertions. The Enterprise is not responsible for mistakes after first insertion. Please read your ad.
 All classified accounts are due and payable 10th of month following insertion. A flat rebilling fee of \$1.00 will be charged for all accounts 30 days past due and for all successive rebillings.

NOTICE
 DON'T TAKE OLD PAINT off your furniture, kitchen cabinets, T.V. Refinish in wood-grain or antique with Old Masters. Easy. Just paint it on. Hobby House, Littlefield. 37-tfc.

IRRIGATION WELL SERVICE
 PULLING AND SETTING
 PERFORATING CASING IN WELL
 CLEAN OUTS
 DIGGING DEEPER
JACK MCFARLAND
 PH CAPITOL 46554
 PLAINVIEW, TEXAS

LEVI'S
Smith & Struve
 OLTON, TEXAS

FOR ALL GEAR HEAD
 Service and Repair
 SEE
W.M. Whitesides
 207 East 5th Street
 PLAINVIEW, TEXAS

PARLEY'S
Barber Shop
 LOCATED NEXT DOOR TO LESTER'S
 Olton, Texas

Water Well Drilling
 NO MONEY DOWN 3 YEARS TO PAY
 Pressure Pump Service
CALVIN COOK
 CA-4 4498 2519 Gladney
 (Seth Ward)
 PLAINVIEW, TEXAS

I. E. FISH
CESS POOL DRILLING
 STARTED 1950
 Ph. CA. 3-2115 Concrete Tops and Outside Plumbing
 Plainview, Texas
 REMEMBER ME!

WAYNE'S
 — OFFICE SUPPLIES —
 PRINTING And LITHOGRAPHING
 PHONE 285-2225 Olton, Texas

For Sale

FOR SALE: We have several good used TV's, Riley T.V. Phone 285-2285. 50-tfc.

FOR SALE: CAR PORTS any size or color. All steel. See at Roberson Mobile or call 285-2131. 27-tfc.

FOR SALE: 5 room house and 2 acres joining city limits of Olton. Two cage layer buildings - 24 x 30 and 24 x 60. Priced to sell. A.A. Smith, City Real Estate, c/o City Barber Shop, Olton. 48-tfc.

FOR SALE: House in Hillcrest Addition, 3-bedroom. Electric kitchen, dishwasher, garbage disposal, carpet, drapes. Recently painted throughout. Concrete storm cellar. Detached office, with refrigerated air. Waporative cooler in house. Fenced back yard. FHA or GI. For inspection, call at Lester's Cleaners. Key Don Williams, Fleetwood 5-1303, Amarillo, collect. 50-tfc.

FOR SALE: 43 ft. x 8 ft. 1957 Twilite trailer house with awning. Russell Hughes, 1012 Ave. I. Phone 285-2090. 51-tfc.

FOR SALE: Used Kelvinator electric refrigerator. Good condition. Cedar-lined clothes closet. 1302-9th. Phone 285-2729. 52-tfc.

FOR SALE: Beautiful A.K.C. registered Chihuahua puppies and grown dogs, all colors. Call Richard Roberson, 285-2131 or 285-2079. 1-tfc.

FOR SALE: To be moved. House, 24 by 32, bath. 1202 W. 8th. 3-1tp.

FOR SALE: 1959 Chevrolet Impala. 30,000 actual miles. See Ruth Hudgens at Thompson Chevrolet. 51-tfc.

FOR SALE: Wolf Gold Medallion Pecan trees. 4 foot and 8 foot. Also apple, plum and peach trees. Olton Farm Supply.

FOR SALE OR TRADE: Three bedroom, corner lot, central heating, air-conditioned, carport, carpeted. 1302-9th Street. Phone 285-2729. 52-tfc.

FOR SALE: Pure Pork sausage. 49¢ a pound. Call 285-2436. C.L. Curry. 52-tfc.

FOR SALE: Purina Check-R-Mix, Laying Chow. \$3.25 per cwt. Olton Farm Supply. 3-tfc.

FOR SALE: Singer automatic zig zag automatically without attachments; button holes; sews on buttons; fashion designs; etc.; new machine guarantee on both machine and cabinet; \$95 cash or \$5 monthly. Also machine left in for repairs; patches; darns; monograms; etc.; one year guarantee \$17. Remington Sewing Center, 7th & College, Lubbock, Texas. 3-2tc.

GEARHEAD REPAIRS
 MACHINE WORK OF ALL KINDS
Edwards Machine Shop

"THE BEST OF SERVICE TO YOU"
AUCTIONEER
W.B. Dickenson, Jr.
 ALL TYPES OF AUCTION SALES
 PHONE 285-2309
 P. O. Box 291
 OLTON, TEXAS

RILEY TV
 Ask About The New Zenith Color TV
 Phone 285-2285

Best Planting Season: MAY, JUNE, JULY AND AUGUST
A. D. Moses Midland Bermuda Gardens
 MIDLAND BERMUDA GRASS SPRIGS
 PLANTER FOR LEASE • CONTRACT PLANTING
 FROM OLTON, TEXAS; 5 MILES WEST, 2 MILES SOUTH.
 FROM CIRCLE, TEXAS; 2 MILES SOUTH
 PHONE 285-2215 OLTON, TEXAS

For Rent

FOR RENT: Furnished apartment. 1103 Ave. E. Call 285-2207. 47-tfc.

FOR RENT: Unfurnished house. Call Mrs. W.C. Dennis. 50-tfc.

FOR RENT: One three room house and bath and one four room house and bath. Call 285-2518. 1-tfc.

FOR RENT: House, 5 rooms and bath in the country N.W. of Olton. Phone 285-2126. 3-3tc.

FOR RENT OR SALE: Three room house on East 5th. Phone 285-2719. 51-tfc.

FOR RENT: Two bedroom house on pavement, wall heated. Phone 285-2810. 2-tfc.

FOR RENT: Two bedroom modern house on south main. Call or see Len Irvin. 3-2tp.

Wanted

WANTED TO BUY One small house for hand. Call 285-2342. Vernon Britton. 52-tfc.

WANTED: To make buttons, button holes, buckles, belts, children's garments. Dress making. Wilena Gordon. Phone 285-2401. 27-tfc.

WANTED: Carrier for the Lubbock Avalanche-Journal. Must have transportation. Call or write circulation department at Lubbock Avalanche-Journal. 2-tfc.

WANTED: Ironing in my home. 310 Ave. D. \$1.20 mixed dozen. 2-3tp.

WANTED: Furnished apartment to rent. Call 285-2165. 2-2tc.

WANTED: Experienced woman would like general office work. Phone 285-2231. 3-tfc.

Notice

NOTICE Clean barrels. \$4.00. Snap ringtop barrels \$4.50. Trash barrels \$3.00. Price Wrecking. Phone 285-2235. 1-tfc.

LOST: Three links of six inch pipe. Believed lost near Circle. Call Bill Goynes, CA 4-7536, Plainview. 2-2tp.

NOTICE: THROUGH WITH IT? Call Price Wrecking, 285-2235. 49-tfc.

CALL BILL BENNETT for window and doors. Easy terms. 2-tfc.

Mrs. Foster, Mrs. Polzado Win Prizes
 Winners in the drawings held at the opening of the House of Flowers were announced this week by Mr. and Mrs. Charles Polk, owners.
 Mrs. Faye Foster of Olton was awarded a bouquet of yellow roses and Mrs. T.M. Polzado of Springlake, a pot plant.
 A pink carnation was presented everyone visiting the store.

Monuments
 Winsboro Blue Granite
 White Georgia Marble
 and others
 See Percy or Connor Parsons
 Phone 285-2621 or 285-2767

Services Held For Brother Of Olton Man
 Funeral services for Roy Breland of Houston were held Thursday Feb. 15 in the First Baptist Church at Seymour.
 Breland died Tuesday, Feb. 13.
 He was the brother of S.M. Breland of Olton and uncle of Mr. and Mrs. Joe Newman of Hart.
 He is survived by three brothers, one sister, two children and four grandchildren.

Services Held For Relative Of Olton Man
 Funeral services for Mrs. Roy Breland of Houston were held Monday, Feb. 12 in the First Baptist Church at Seymour.
 Mrs. Breland died Saturday, Feb. 10.
 She was the sister-in-law of S.M. Breland of Olton and aunt of Mr. and Mrs. Joe Newman of Hart.
 She is survived by two children and four grandchildren.

VISITS IN FIELDTOWN
 Pam Hair, daughter of Mr. and Mrs. Luis Hair, visited over the weekend with Roxy Armstrong in Fieldtown.

Band Students Attend Festival

Approximately 50 members of the Olton Junior High Band plus six students from the beginners band attended the Hale Center Festival in Hale Center last Saturday.

The group played as a band and received criticism in the "practice contest". They played "Allegro, Adagio and Alleluia" by Akres and "Air and March" by Purcell.

Sixteen junior high bands from over the area were entered in the contest.

March 17 is the date for the Interscholastic League Solo and Ensemble Contest for both the high school and junior high bands. Junior High Concert contest will be April 14 and March 30 is the high school concert contest.

Jim Priest is the director of both the junior high and high school bands. The High School Choir is also under the direction of Priest. Interscholastic League Contest for the choir is March 10.

County Has 12 Accidents In January

The Highway Patrol investigated 12 rural accidents in Lamb County during the month of January according to Sgt. D.S. Lawson, Patrol supervisor of this area.

These wrecks accounted for eleven persons injured, and an estimate property damage of \$7,130.00.

The Highway Patrol supervisor pointed out that rural motor vehicle traffic accidents in the 29 county North Texas district have declined slightly during January, 1962, as compared with the same month last year. Nine deaths were chalked up last month as compared to ten that were recorded in January, 1961. 147 injuries were reported this January which is higher than the 105 for the same period last year. A total of 217 rural traffic accidents were investigated as compared to 225 for January, 1961. "The slight decrease in the total number of accidents is encouraging to us, but the increase in the number of persons injured points out the need for compliance with the speed regulations by all motorists to reduce severity of these accidents," the Sergeant stated.

The Highway Patrol Sergeant reminded motorists that Texas law requires all registered motor vehicles to have valid inspection stickers displayed by midnight April 15 and the best way to avoid the long line expected in the last minute rush is to have your vehicle inspected now.

Services Held For Brother Of Olton Man
 Funeral services for Roy Breland of Houston were held Thursday Feb. 15 in the First Baptist Church at Seymour.
 Breland died Tuesday, Feb. 13.
 He was the brother of S.M. Breland of Olton and uncle of Mr. and Mrs. Joe Newman of Hart.
 He is survived by three brothers, one sister, two children and four grandchildren.

Services Held For Relative Of Olton Man
 Funeral services for Mrs. Roy Breland of Houston were held Monday, Feb. 12 in the First Baptist Church at Seymour.
 Mrs. Breland died Saturday, Feb. 10.
 She was the sister-in-law of S.M. Breland of Olton and aunt of Mr. and Mrs. Joe Newman of Hart.
 She is survived by two children and four grandchildren.

VISITS IN FIELDTOWN
 Pam Hair, daughter of Mr. and Mrs. Luis Hair, visited over the weekend with Roxy Armstrong in Fieldtown.

TOO LATE TO CLASSIFY

FOR SALE: Three room house and bath. Will sell house and lot or house alone. Call Ernest Jones TU9-3570. 1-tfc.

Cotton Institute Plans Told

LUBBOCK- (Special) - High Plains cotton growers are moving to wind up first-year sign-up for the Cotton Producers Institute and to launch plans to further expand the voluntary plan during the 1962-63 crop year.

This action was announced today by Roy Forkner of Lubbock, chairman of the Institute's Steering Committee in the Plains area.

Mr. Forkner said organizational committees in Plains counties now are scheduling meetings aimed at completing sign-up and collection on last year's crop. Plans also will be made for carrying the Institute forward this year.

"We have a solid base to build on," Forkner said. "The Institute program has really caught on here on the Plains, and funds—as well as additional agreements—are coming in every day."

Grower commitments in the western areas to participate in the Institute total \$2,007,100 to date. This is more than double the first-year minimum requirement of one million dollars, he stated.

"As was pointed out recently, this above everything else speaks for the effective job done by the thousands of voluntary workers for the Institute cause, both in this and other areas in the West," Forkner said. "Growers have demonstrated they want this program and will pay the cost."

The Institute's aim is to expand markets, acreages, and profits through research and promotion. The importance of this aim, Forkner said, is pointed up by several recent developments.

During the past year cotton suffered serious competitive market losses to rayon and other synthetics. At the same time, cotton production in some foreign countries is beginning to show a stronger upward tendency, he noted.

"This makes the need for the program of the Cotton Producers Institute even more urgent now than when it was first initiated," Forkner said.

ATTENDS CONVENTION
 Johnny Clark, superintendent of Olton Public Schools is attending the National Superintendents Convention in Atlantic City, N.J. Clark left for the convention last Wednesday and will return Saturday.

Masonic Dinner

The annual Masonic OES dinner has been set Saturday, Feb. 24 at 7:30 p.m. in the Masonic

Hall.

All Masons and OES members are urged to attend. Each is asked to bring a salad and a pie.

VISITS PARENTS

Koenia Schenck of Clovis, N.M., visited over the weekend with her parents, Mr. and Mrs. John Schenck.

AMERICAN FOUNDERS LIFE
 Don Williams, Agent

WANT A TV YOU CAN DEPEND ON?
FREE SERVICE FOR ONE FULL YEAR 1
 With The New 1962 **MOTOROLA TV**
 All Labor and Parts Guaranteed In Writing For One Year.
COMPLETELY HAND WIRED.
 The Only TV Set Made So Reliable That You Can't Spend One Cent For A Full Year On Repairs.

RELAX!

- Turns TV on or off
- Changes channels
- Mutes sound . . . retains picture
- Adjusts volume to 4 levels

NEW MOTOROLA REMOTE CONTROL Portable TV

Model A1978
\$239⁹⁵
 \$12.95 Stand Free

LANNING RADIO & TV
 Olton Phone 285-2835 Texas

What size Chevrolet do you want to save money on?

CHEVROLET IMPALA Room, refinement and riding comfort. Fore-ground, the Impala Sport Sedan.

CORVAIRE MONZA Sports Car spice without a sports car price. At rear is the Monza Club Coupe.

CHEVY II NOVA The frisky family-sized Chevrolet with a low, low price tag. Above right, Nova Sport Coupe.

Like your driving sporty, with quicksilver steering, flat-as-a-pancake cornering, sure-footed traction? Then a Corvaire Monza's for you.

Or maybe the new-size Chevy II is more to your liking. Built for big families and still slips neatly into small parking places. And, with this, the kind of ingenious engineering (new easy-riding Mono-Plate rear springs, for example) that won this year's coveted Car Life Magazine Award for Engineering Excellence.

But say you want to go all out—to get the full treatment in space, spirit and splendor. Then there's nothing like a Jet-smooth Chevrolet. Makes paying more pointless.

So size 'em up—then save it up—at your Chevrolet dealer's.

See the new Chevrolet, new Chevy II and new Corvaire at your local authorized Chevrolet dealer's

THOMPSON CHEVROLET CO.
 Phone 285-2646 Olton, Texas

STOCK SHOW

CONTINUED FROM PAGE 1

SWINE DIVISION

Berkshire
 Champion of Breed- Robert Duncan of Olton.
 Reserve Champion of Breed- Randolph Schaeffer of Olton.
Lightweight Division-1, Duncan, 2, Robert Struve of Olton, 3, Daniel Ray of Olton, 4, Jimmy Clark of Olton, 5, Don Curtis of Olton, 6, Ronald Hill of Littlefield, 7, Hill, 8, Don Curtis of Olton, 9, Ty Jones of Littlefield.
Heavyweight Division: 1, Schaeffer, 2, Schaeffer, 3, Ronnie Smith of Olton, 4, Smith, 5, Don Curtis of Olton.
Crossbreeds
 Champion of Breed- David Carlisle of Olton.
 Reserve Champion of Breed- Jimmy Lawson of Olton.
Lightweight Division: 1, Carlisle, 2, Lawson, 3, Carlisle, 4, Kenneth Carr of Littlefield, 5, Stacey Carr, 6, Kenneth Blades of Olton, 7, William Hill of Littlefield.
Heavyweight Division: 1, Kenneth Carr of Littlefield, 2, Kevin Brittain of Olton, 3, Daniel Ray of Olton, 4, Roy Moss of Olton, 5, Kenneth Dawson of Springlake, 6, Raymond Hernandez of Olton, 7, Nancy Williams of Sudan, 8, Williams, Chester White
Champion of Breed- Gearl Duncan of Olton.
 Reserve Champion of Breed- Paul Hernandez of Olton.
Lightweight Division: 1, Hernandez, 2, Ty Jones of Littlefield, 3, Charles McClain of Olton, 4, Gene Riney of Olton, 5, Riney.
Heavyweight Division: Duncan (only entry).
Poland China
 Champion of Breed- Carroll Cole of Springlake.
 Reserve Champion of Breed- Robert Duncan of Olton.
Lightweight Division: 1, Cole, 2, Duncan, 3, Bill Chaney of Springlake, 4, Lamar Polard of Littlefield, 5, Johnny Lewis of Olton, 6, Kenneth Blades of Olton, 7, Monico Rodriguez of Springlake, 8, Kenneth Blades of Olton, 9, Ronnie Smith of Olton, 10, Johnny Lewis of Olton, 11, Bill Gover of Springlake, 12, J. Curtis Hall of Olton.
Heavyweight Division: 1, Raymond Hernandez of Olton, 2, Robert Struve of Olton, 3, Bill Gover of Springlake, 4, Gearl Duncan of Olton, 5, Ronnie Smith of Olton, 6, Paul Hernandez of Olton, 7, J. Curtis Hall of Olton, 8, David Britton of Olton.
Grand Champion Swine- Jerry Jones of Springlake with a Hampshire.
 Reserve Grand Champion Swine- Robert Duncan of Olton with a Berkshire.

Durocs
 Champion of Breed- Steve Lewis of Amherst.
 Reserve Champion of Breed- Richard Kimbrough of Littlefield.
Lightweight Division: 1, Ronald Hill of Littlefield, 2, Richard Kimbrough of Littlefield, 3, Kimbrough, 4, William Hill of Littlefield, 5, Dalton Reese of Littlefield, 6, Billy Carson of Olton, 7, Gene McKinney of Littlefield, 8, Tommy Taylor of Littlefield, 9, Dennis Mote of Littlefield, 10, Tommy Taylor of Littlefield, 11, Ray McKinney of Littlefield, 12, Ronald Hill of Littlefield.
Heavyweight Division: 1, Lewis, 2, Kimbrough, 3, Johnny Clark of Olton, 4, Robert Struve of Olton, 5, Kimbrough, 6, Paul Holland of Amherst, 7, Danny Sides of Olton, 8, Steve Spain of Olton, 9, Danny Cade of Olton, 1, Marilyn Cade of Olton, 11, Ralph Ogerly of Littlefield, 12, Gene McKinney of Littlefield.
Hampshires
 Champion of Breed- Jerry Jones of Springlake.
 Reserve Champion of Breed- Jones.
Lightweight Division: 1, Jones, 2, Jones, 3, Richard Hall of Olton, 4, Don Birklebach of Littlefield, 5, Billy Carson of Olton, 6, Eddie Smith of Olton, 7, Ralph Ogerly of Littlefield, 8, Richard Hall of Olton, 9, Duayne Nelson of Littlefield, 10, Wenedell Ogerly of Littlefield, 11, Wiley Kimbell of Springlake.
Heavyweight Division: 1, Dennis Givens of Olton, 2, Don Birklebach of Littlefield, 3, David Foreman of Olton, 4, Charles A. McClain of Olton, 5, Lonnie Alair of Springlake.

LAMB DIVISION
Fine Wools
 Champion of Breed- Steve Moss of Olton.
 Reserve Champion of Breed- Robert Duncan of Olton.
Lightweight Division: 1, Duncan, 2, Rea Horn of Olton, 3, Jerry Meyers of Olton, 4, Harold Powell of Springlake, 5, Powell, 6, Victor Coker of Springlake, 7, Dewayne Parrish of Springlake.
Heavyweight Division: 1, Moss, 2, Wayne Huggins of Olton, 3, Neil Andrew of Olton, 4, Gary Dickinson of Olton, 5, Bobby Williams of Littlefield, 6, Jerry Meyers of Olton, 7, Victor Coker of Springlake.
Medium Wools
 Champion of Breed- Steve Moss of Olton.
 Reserve Champion of Breed- Marlana May of Olton.
Lightweight Division: 1, Gary Bizzell of Olton, 2, Marsha Moss of Olton, 3, Benny Akins of Olton, 4, Randy Pope of Olton, 5, Bobby Williams of Littlefield, 6, Isidro Minjares, 7, Rhonda Robertson of Olton, 8, Rocky Farrar of Olton, 9, Dennis Mandrell of Olton, 10, Randy Pope of Olton, 11, Aaron Robertson of Olton, 12, Gary Schovajsa of Littlefield, 13, Schovajsa, 14, Douglass Berry of Amherst.
Heavyweight Division: 1, Moss, 2, May, 3, Ronnie Redinger of Olton, 4, Billy Carson of Olton, 5, Kenzell May of Sudan, 6, Rhonda Robertson of Olton, 7, Sherry Moss of Olton, 8, Steve Moss of Olton, 9, Isidro Minjares of Olton, 10, Jerry LaFrance of Olton, 11, Pete Gipson of Olton, 12, Gary Dickinson of Olton, 13, Joe Leyva of Olton, 14, Jerry LaFrance of Olton.
Southdowns
 Champion of Breed- Robert Duncan of Olton.
 Reserve Champion of Breed- Neil Andrew of Olton.
Lightweight Division: 1, Andrew, 2, Charlie Burrus of Olton, 3, Rea Horn of Olton, 4, Aaron Robertson of Olton,

Tickets On Sale

Tickets for the Teacher Appreciation Banquet, March 5, are now on sale here.
 Tickets sell for \$1.50 each. They may be purchased at Cashway Food, Sherman Food, Botkin Food, Kelley's Clothiers and Olton Drug.
 The general public is invited to the affair.

ELECTION ORDER
 NOTICE OF ELECTION OF CITY OFFICERS OF THE CITY OF OLTON, TEXAS AT A MEETING OF THE CITY COUNCIL OF THE CITY OF OLTON, TEXAS HELD ON THE 13TH DAY OF FEBRUARY, 1962 AT WHICH MEETING THE FOLLOWING ORDER WAS PASSED, TO WIT:

ELECTION ORDER
 BE IT ORDAINED BY THE CITY COUNCIL OF OLTON, TEXAS

That an election be held at the City Hall in the City of Olton on the first Tuesday in April, the same being the third day of April, 1962, for the election of the following officers for said city, to wit:
 Three councilmen for a term of two years to take the place of Lynn Fite, Clovis Poteet and C.A. Cox.
 Eldon Franks is named presiding judge in said election and Howard Hall is named assistant judge of said election and Fay Stone is named clerk of said election.
 A copy of this order signed by the mayor and attested by the city clerk shall serve as notice of said election and shall be posted and published in the manner required by law.
 Passed and adopted this 13th day of February, 1962.

Major T. James Jr.
 Mayor of the City of Olton

ATTEST:
 Berniece Smith
 City Clerk

VISITS PARENTS

Charla Granbery of Abilene Christian College, Abilene, visited with her parents, Mr. and Mrs. D.M. Granbery, over the weekend.

HOME FOR WEEKEND

Ellen Jones of Abilene Christian College visited with her parents, Mr. and Mrs. E.C. Jones, over the weekend.

5. Kenzell May of Sudan, 6. Laura Akin of Olton, 7. Billy Carson of Olton, 8. Kenzell May of Sudan, 9. Richard Hall of Olton, 10. Dewayne Parish of Olton.
Heavyweight Division: 1, Duncan, 2, Duncan, 3, Marlana May of Olton, 4, Butch Hudgens of Olton, 5, Kay Hudgens of Olton, 6, Danny Robertson of Olton, 7, Mickey Parsons of Olton, 8, Danny Robertson of Olton, 9, Harold Powell of Springlake, 10, Rocky Farrar of Olton.

STEER DIVISION

Hereford
 Champion of Breed- Rocky Cain of Springlake.
 Reserve Champion of Breed- Sue Noles of Amherst.
Lightweight Division: 1, Kay Hudgens of Olton, 2, Sherry Turner of Pleasant Valley, 3, Sherry Turner, 4, Jimmy Lawson of Olton, 5, Dennis Givens of Olton, 6, Robert Duncan of Olton, 8, Darrell Breland of Olton.
Heavyweight Division: 1, Cain, 2, Noles, 3, Richard Kimbrough of Littlefield, 4, Billy Bennett of Amherst, 5, Rocky Cain, 6, Billy Carson of Olton, 7, Darrell Breland of Olton, 8, Sue Noles, 9, Gary Gradley of Amherst.

Angus and Shorthorns
 Champion of Breed- Sharon Brigance of Olton.
 Reserve Champion of Breed- Rodney Bowling of Sudan.
Lightweight Division: 1, Brigance, 2, Dennis Givens of Olton, 3, Charlotte Brigance of Olton, 4, Nancy Brigance of Olton, 5, Dennis Givens of Olton, 6, Cecil Osborne of Olton, 7, Eddie Carson of Olton, 8, Jimmy Lawson of Olton, 9, Robert Duncan of Olton, 10, Eugene Roden of Olton, 11, Tim Tapley of Amherst.
Heavyweight Division: 1, Bowling, 2, Jerry Jones of Springlake, 3, Jimmy Lawson of Olton, 4, Gary Bizzell of Olton, 5, Pete Gipson of Olton, 6, Paula Gipson of Olton, 7, Ronald Osborne of Olton, 8, Donald Osborne of Olton, 9, Ted Wheeler of Olton, 10, Eddie Carson of Olton, 11, Eddie Carson of Olton, 12, Gary Osborne of Olton.

Grand Champion Steer - Sharon Brigance of Olton with a Black Angus lightweight.
 Reserve Grand Champion Steer- Rocky Cain of Springlake with a Hereford heavyweight.

Grand Champion Steer - Sharon Brigance of Olton with a Black Angus lightweight.
 Reserve Grand Champion Steer- Rocky Cain of Springlake with a Hereford heavyweight.

Grand Champion Steer - Sharon Brigance of Olton with a Black Angus lightweight.
 Reserve Grand Champion Steer- Rocky Cain of Springlake with a Hereford heavyweight.

Sentenced

Jose Perez of Dimmitt was sentenced Thursday to nine months in jail and fined \$150 and costs on a driving while intoxicated charge.
 Perez was taken to the Littlefield jail after he was involved in an auto accident here Feb. 11.
 Injured in the accident was Mrs. James Fajardo of Floydada, who was a passenger in an auto driven by her husband.

Emblems To Remember

- FOR—
- PROGRESS
- ACHIEVEMENT
- BETTER LIVING



ROBERT DUNCAN—Champion Berkshire and reserve grand champion.



G. H. BLEY

Your Phillips 66 Jobber

Hwy. 70 Olton

WELCOME TO THE OLTON STOCK SHOW

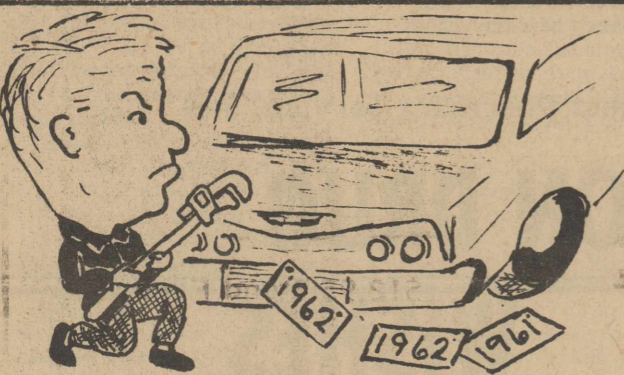


SHARON BRIGANCE, daughter of Mr. and Mrs. Merrill Brigance—grand champion calf.

We believe in the great work carried on by the FFA, 4-H and FHA Chapters. We wish every success for each boy and girl participating in the Olton Stock Show this weekend.

UNITED Elevators

DAN GREGORY, mgr., Olton Elevator



NO NEED TO GET ANGRY...

Just bring those license plates down to Thompson Chevrolet and we'll install them...

FREE OF CHARGE
THOMPSON CHEVROLET CO.

Phone 285-2646

For the Best Livestock Visit "The Olton Stock Show"



NEIL ANDREW—Reserve Champion Southdown

We want to wish success to every participant in the Olton Stock Show. Visit them Thursday, Friday, and Saturday.

For the Best FARM EQUIPMENT
 Visit

Bryant & Giles Implement

Olton, Texas

Performance Of Cotton Varieties Is Summarized

PERFORMANCE OF COTTON COLLEGE STATION, Jan. 25—Several dozen named cotton varieties are offered for sale in Texas, and the cotton producer's success may be greatly influenced by the variety he selects.

To provide the producer with information that will help him make the best choice, the Texas Agricultural Experiment Station has been actively engaged in the testing of cotton varieties for the past 60 years. A recently released bulletin, the fourth in a series of 3-year summaries, summarizes the data obtained from tests conducted during 1957-59.

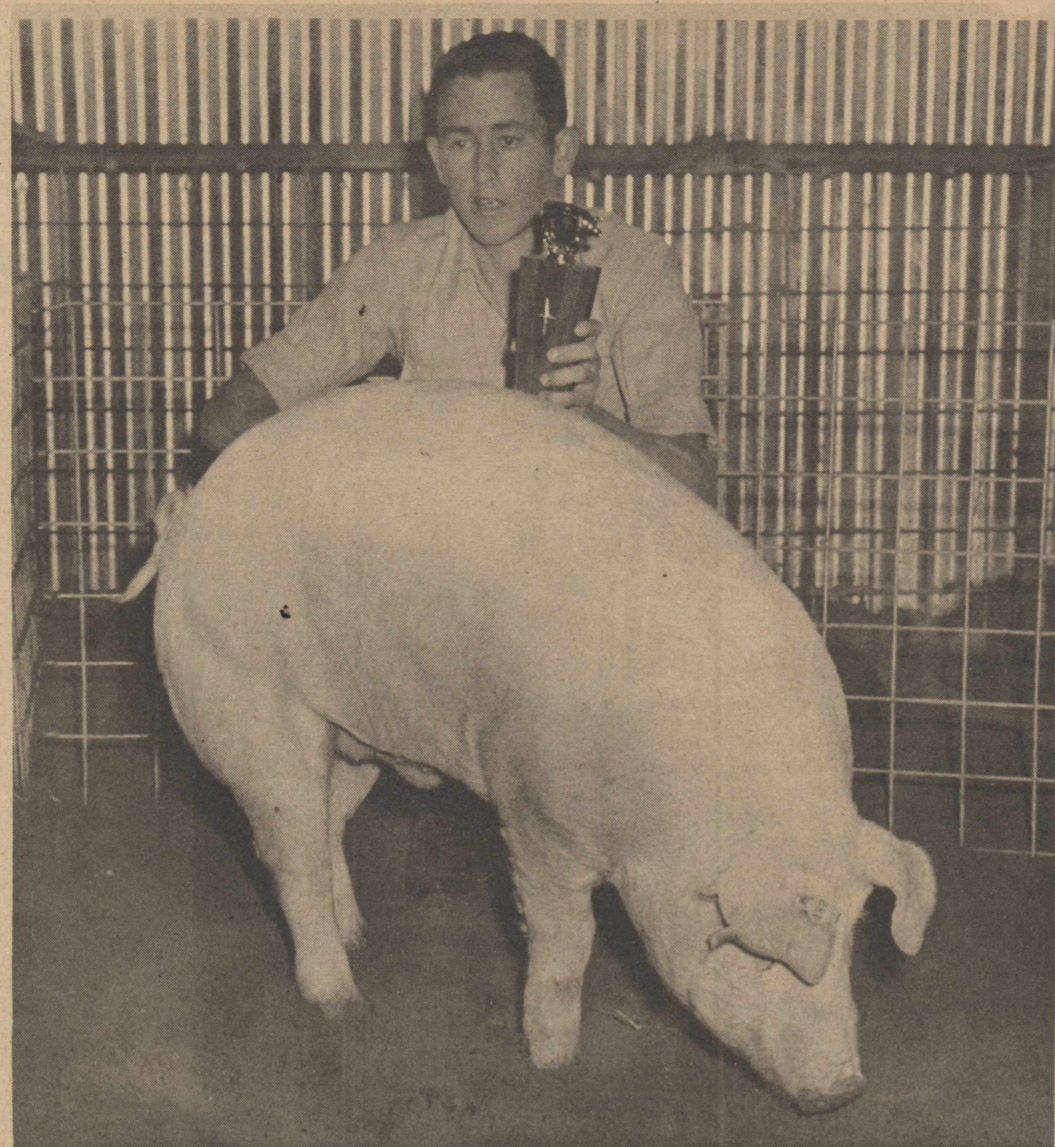
Because of the great diversity of soil types, climate and production practices in Texas, variety test sites have been established in practically all land resource areas of the state. The entries included in the various tests differed from year to year, although certain designated varieties

were included in all years to provide a consistent basis for comparison.

Data reported in the new bulletin, B-983 "Performance of Cotton Varieties in Texas," include yield of lint per acre, lint percentage, boll size, staple length and fiber fineness.

In order to present a comprehensive summary of varietal performance, the data have been summarized for various cotton production areas in Texas. These areas are closely related to the land resource areas of the state, although certain production areas have been combined. The area summaries given include only those varieties which were grown at all locations.

For a complete report on these tests, see your local county agent and request a copy of this bulletin. It is also available from the Agricultural Information Office, College Station, Texas.



CHAMPION CHESTER WHITE, shown by Gearl Duncan at the Lamb County Stock Show at Littlefield last weekend.

New Management Pittman Fina Service

Hwy. 70

J.W. Parker

-Manager-

APPLIANCE SERVICE

Any Brand, Make or Model

Washer - Dryer

Refrigerator - Freezer

Range - Dishwasher

Transistor Radio

Television

Color-Black & White

Record Players

"The Business That Service Built"

T.V. LAB

708 W. 5th

CA 4-2776

704 Broadway

New Finishing Process

NEW FINISHING PROCESS COLLEGE STATION, Dec. 7—

A new chemical finishing process, devised by USDA scientists to give cotton improved wash-wear characteristics, is currently under evaluation by the textile finishing industry. Experiments conducted by four firms indicate commercial application of the process is feasible, and one of the firms is conducting limited marketing to determine consumer acceptability.

The new process, which uses formaldehyde to bind together cotton's cellulose molecules, appears to impart a finish more durable than many other types of wash-wear finishes now in use. Also, formaldehyde treated fabrics show no tendency toward yellowing or other discoloration when subjected to chloride bleach.

Fabrics given the finish in pilot-plant tests rated high on the standard wash-wear rating scale. Garments made from the treated fabric can be either line or machine dried.

Although the chemical cost is about the same, the formaldehyde treatment takes longer and requires more equipment than does most of the wash-wear treatments now in use. Consequently, overall costs of the new finishing process are higher than those of most other processes. Most cotton textile finishing plants already have the equipment needed for the formaldehyde process, but

some modification in present operations will be required.

There have been many attempts to make use of the advantages offered by formaldehyde, but the reaction of cotton with this chemical is diffi-

cult to control. In the earlier trials loss of fabric strength was excessive. In the process, however, fabric strength losses can be kept low enough to allow experimental garments to last as long as those given other types of wash-wear treatment.

BOWLING SCORES

TEN PEN BOWLING LEAGUE February 14

TEAM	W	L
Williams Ins.	3	1
Sanders-Paris	1	3
Thomas Speed	2	2
Campbell Tex.	2	2
Givens Texaco	3	1
Chitwood Ins.	4	0
Olton Butane	1	3
Olton State Bank	0	4

Men's high game, K.Y. Givens, 191; men's high series, K.Y. Givens, 546; women's high game, Frankie Carlisle, 165; women's high series, Jolene Givens, 429; high team game, Williams Ins., 631; high team series, Williams Ins., 1803.

MAJORETTES LEAGUE February 11

TEAM	W	L
Lester's	3	1
Phillips P&D	3	1
Spotlite Cafe	1	3
A.C. Light	3	1
Stoll Agency	3	1
Dennis Bldrs.	1	3
Grant Ins.	1	3
Lois' Shop	1	3

High game, Ruth Dorris, 208; high series, Ruth Dorris, 487; high team game, Lester's, 640; high team series, Lester's, 1732.

MAJORETTES February 5

TEAM	W	L
Lester's	4	0
Phillips P&D	3	1
Spotlite Cafe	0	4
A.C. Light	2	2
Stoll Agency	4	0
Dennis Bldrs.	1	3
Grant Ins.	2	2
Lois' Shop	0	4

High game, Laverne George, 201; high series, Laverne George, 522; high team game, Lester's, 645; high team series, Lester's, 1822.

SPSC Begins Construction At Plant X

A.R. Watson, president of Southwestern Public Service Company, has announced that the Missouri Valley Constructors, Inc., of Amarillo, has been awarded the contract to build a 210,000 kilowatt turbine-generator unit at the company's Plant X, located 7 miles north of Amherst. Construction will begin this

week, with completion scheduled for June 1964.

The new unit, manufactured by the General Electric Company, is the largest single turbine-generator ever installed in the area served by Southwestern Public Service Company.

In making the announcement, Watson stated that the new addition represents an investment of \$15,000,000 and is dramatic evidence that this region continues to be one of the fastest growing sections of the country.

This will be the fourth generating unit at Plant X, and

will bring the capability up to 487,500 kilowatts, and the total for all 12 of Southwestern's plants, to more than 1,200,000 kilowatts.

The electrical construction will be handled by Service Electric Company, Carlsbad, N.M.

Mr. and Mrs. Earl Parish left Friday for Sherman to bring his parents home. They were involved in a car wreck at Sherman.

Marie Fultz, daughter of Mr. and Mrs. Roy Fultz, suffered a broken leg Wednesday night after her mother tripped and fell on her leg.

The Best of Everything



JAROLD SIMMONS—Champion Crossbreed owned by David Carlisle.

Wherever you go and whatever you do in the future, we always wish the very best for you.

For the Very Best Pharmacy Service, See

OLTON DRUG

OUR BEST WISHES

OLTON'S 17th ANNUAL

STOCK SHOW

THURSDAY
FRIDAY
SATURDAY

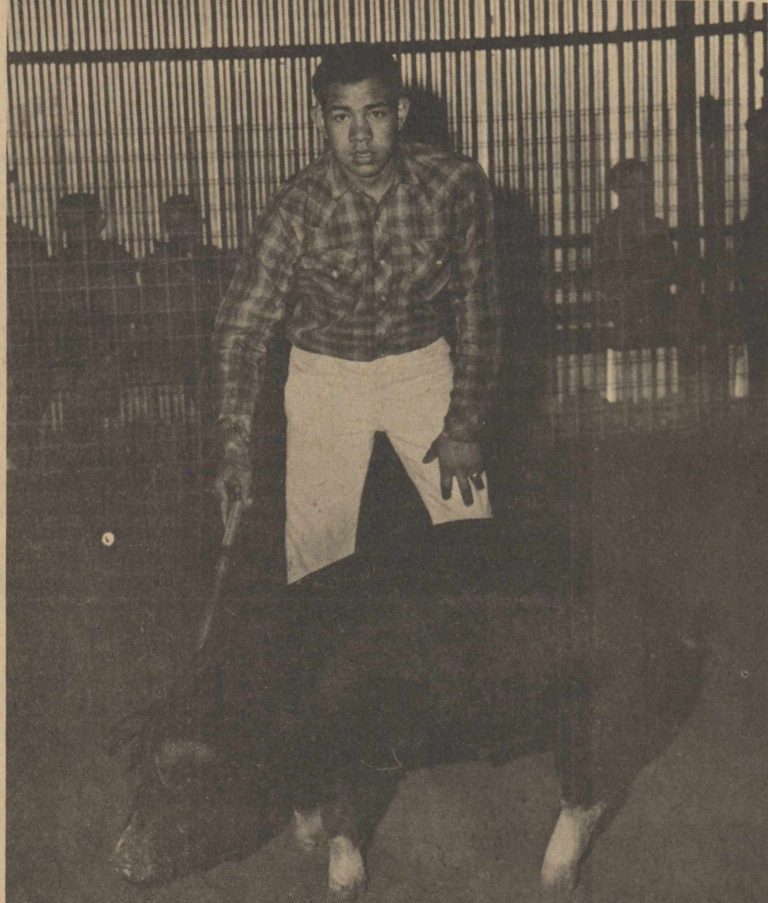
PLAN NOW TO ATTEND!

TO
FFA
4H
FHA

Congratulations
On
Your Showings
In
Littlefield!

The Plainsmen
FARM & RANCH
'Your Caprock Fertilizer Dealer In Olton'

OUR BEST WISHES . . .



PAUL HERNANDEZ—First Place, Heavyweight, Poland China.

FFA - 4H - FHA

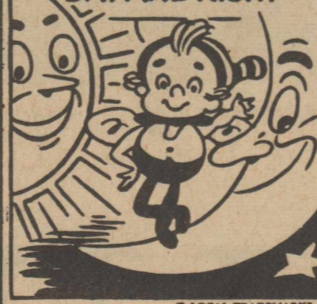
On your success at Littlefield we say congratulations and urge everyone to attend the Olton Show this weekend.

For the Best in Equipment
See

Bodkin & Nixon
Implement Co.

BEE GEE'S
Butane Gas

WITH THIS GAS, YOU
'TO YOUR DELIGHT,
CAN HAVE HOT WATER,
DAY AND NIGHT



Consumers
BUTANE inc.
2 WAY RADIO SERVICE
BUTANE GAS
CARBURETION
IGNITION PARTS
285-2240
OLTON, TEXAS

Cleo Elkins Takes City Bowling Singles Title

Cleo Elkins, who has been bowling less than a year, swept the ladies' City Bowling Singles title from under the veterans Sunday afternoon at the Olton Bowling Center with a 529 handicap series. Runner-up to Cleo in the event, which is the only one completed in the tourney, was Odessa Mitchell who was just four pins behind. Cleo, who entered the tournament with a 108 average, rolled games of 147-118-140 for 405 scratch, and the trophy. The other events will be completed this weekend.

Leading in the doubles are LaVerne George and Bonnie Bucheneau with 968 scratch and 1045 handicap. This was also the highest scratch series rolled in doubles last week. In second place and tied are Jane Bitner and Faye Smith of Hart and Odessa Mitchell and Ruth Dorris of Olton. Their series 1011. Bonnie Bucheneau rolled the highest scratch series thus far in doubles, a 509. Wiona Boone rolled the highest scratch in singles, 490.

A last minute entry rolling on the 4 p.m. shift Saturday set the high mark for teams and remained in first place throughout the weekend. The team, jointly sponsored by the Chamber of Commerce and Agriculture and Dorris Machinery, set the high mark of 2518 with Laveta Phillips setting the pace with 528, assisted by Jolene Givens* 476, Mary Dennis 464, Sandra Smith 378 and Beverly Taylor's 372. With a 300 pin handicap this set them 37 pins above the nearest contender, the Spotlite Cafe team who had 2481.

The meet winds up this weekend with Grant Insurance, Tasty Creme, Botkin Food and Olton Drug, Sherman Food and Pollard's Cleaners teams rolling at 6:30 p.m. Saturday. Olton Bowling Center, Phillips Plumbing & Ditching, Olton Delinting Plant and White's Auto Store's teams will roll at 9 p.m. Saturday. Doubles will be completed at 1:30 p.m. Sunday.

TEACHERS

CONTINUED FROM PAGE 1

years later in 1945 when the world came face to face with a situation of using an awesome power for either good or destruction.

"But we are a nation of integrity and character," Downing said, "but too often the good men hold back while the evil comes out. Good men do nothing but talk and say they are helpless to stop the evil, but they are just weak."

"It is time the teachers have the courage to step out and say we have an enemy who has no God... an enemy that proposes to fight us with war materials," he continued, "Today students have been taught that we are on the right side and will win, but this may not be correct."

"It is an open secret that slaves driven hard enough can produce enormous things and the Sputnik is a good example," Downing concluded, "and we must continue in our fight to do away with slavery throughout the world."

At a business meeting of the association following the speaker, Cecil Slover of Springlake was elected president for 1962-63, succeeding Mrs. Hazel Ward of Littlefield.

Other officers elected were Mrs. Linnie Campbell of Olton, first vice-president; Johnnie Willson of Amherst, second vice-president; and Mrs. Beulah Tullis of Littlefield, secretary-treasurer.

Delegates to the district House of Delegates were also selected. They include Mrs. Ward, Mrs. Mary Davis and alternate James Pirkey of Littlefield, Fred Gordon, Elmer Moore and alternates, Joe Turner and E.J. McKnight of Olton; Lamar Kelly and alternate Christine Simms of Amherst; Mrs. Ila Lewis and alternate Ralph W. Steward of Sudan; Joe Bailey and alternate J.S. Bridges of Spade; and Clarence Hamilton of Springlake.

Don Ham of Sudan gave the invocation with the welcome by Joe Turner, high school principal at Olton. The response was given by Forrest Martin, junior high principal at Littlefield.

Mrs. Ward introduced special guests which included Rep. and Mrs. Jess Osborn of Muleshoe and several members of the county school board. Bill Mann, superintendent of schools at Springlake, introduced the speaker. The benediction was given by Mrs. F. Blessing of Amherst. About 300 persons attended the banquet in the Olton School cafeteria.

The meet winds up this weekend with Grant Insurance, Tasty Creme, Botkin Food and Olton Drug, Sherman Food and Pollard's Cleaners teams rolling at 6:30 p.m. Saturday. Olton Bowling Center, Phillips Plumbing & Ditching, Olton Delinting Plant and White's Auto Store's teams will roll at 9 p.m. Saturday. Doubles will be completed at 1:30 p.m. Sunday.

School Out At 2 Friday

School will be dismissed at 2 p.m. Friday, according to Joe Turner, high school principal. Buses will run at that time. Classes will otherwise be conducted as usual.

Veterinarian To Be In Olton

A Littlefield veterinarian will be in Olton March 2 to vaccinate dogs for rabies. He will be at the Olton Fire Station from 3 to 5 p.m. There is a \$2 charge for the vaccination which is good for one year.

Tournament

Teams entering the annual Olton High School senior volleyball tournament were announced this week by Robert Nickerson, senior sponsor and tournament chairman.

They are Botkin Food, White Auto, Consumers Butane, United Elevators, Thompson Chevrolet, Lively Shamrock, Phillips 66, The Plainsmen, Dorris Machinery, Thompson Implement, Tasty Creme, Olton Drug, K.Y. Givens Texaco, Bizzell's, Duncan 5 and 10 cent store, Parsons Furniture, Whittington's, Olton State Bank, Olton Co-Op Gin and Farmers Gin.

Out of town entries are The Rainbow Women's Team from Littlefield, Minors Insurance Women's Team from Lockney, Honey Bees from Springlake and Spade Hardware from Spade.

The single elimination consolation tournament will be held in the Olton High School gym Feb. 26 through March 3.

Entry deadline is Saturday. Fee for entering is \$10 per team. Players will be available for anyone wishing to sponsor a team with a limit of 12 players per team.

Practice night will be Monday, Feb. 26 from 4 p.m. to 8 p.m. Trophies will be awarded to first, second and consolation winners in both the men's and women's brackets. Admission will be 50 cents for adults and 25 cents for students.

WELCOME TO THE 17th ANNUAL OLTON STOCK SHOW

Congratulations to all the winners at the Littlefield Show.		COFFEE 1 LB. CAN KIMBELL WITH PURCHASE OF ANY 5 OR MORE LIGHT BULBS 19¢
CRACKERS SUNSHINE KRISPY 1 LB. BOX 27¢	PEANUT BUTTER SHEDD 24 OZ. 53¢	
CRISCO 3 LB. CAN 79¢	TUNA DEL MONTE FLAT CAN 29¢	TIDE GIANT BOX 69¢

FLOUR GLADIOLA 25 LB. BAG \$1 89	TOMATOES LIBBY STEWED 303 CAN 19¢
METRECAL (CHOC. OR VANILLA) QUART CAN 79¢	OLEO GOLDEN BRAND 1 LB. CTN. 17¢
NOTE BOOK PAPER BIG K \$2.00 SIZE \$1	
BARBECUE SAUCE 15 OZ. BOTTLE CUE 29¢	KIMBELL LIMA BEANS & HAM 300 CAN 29¢
COCA COLA KING SIZE 6 BOTTLE CARTON (PLUS DEPOSIT) 29¢	
PORK & BEANS 303 CAN KIMBELL 2 FOR 17¢	

GREEN BEANS 303 CAN HUNT'S 17¢	STRAWBERRIES 10 OZ. CAN 17¢
FRUIT COCKTAIL 19¢	MEXICAN DINNERS PATIO 16 OZ. 39¢
PINEAPPLE 303 CAN DIAMOND CHUNK 21¢	FRYERS HEART-O-Texas U.S.D.A. GRADED A WHOLE ONLY LB. 29¢
APPLESAUCE KIMBELL 303 CAN 15¢	BOLOGNA FRANKS PINKNEY SUNRAY ALL MEAT 1 LB. PKG. 49¢

SWEET POTATOES NEW MEXICO LB. 12 1/2¢	BACON SUNRAY SLICED 2 LB. PKG. 98¢
TOMATOES FANCY NO. 1 LB. 19¢	FRANKS PINKNEY SUNRAY 3 LB. BAG 99¢

CAULIFLOWER LARGE HEADS SNOW BALL EACH 29¢	APPLES EXTRA FANCY RED YORK LB. 15¢
---	--

SPECIALS BEGIN FRIDAY, FEBRUARY 23

DOUBLE GUNN BROS. STAMPS EVERY WEDNESDAY

Phone 285-2250 Free Delivery

CASH WAY FOOD STORE
 Where Friends Meet and Prices Talk

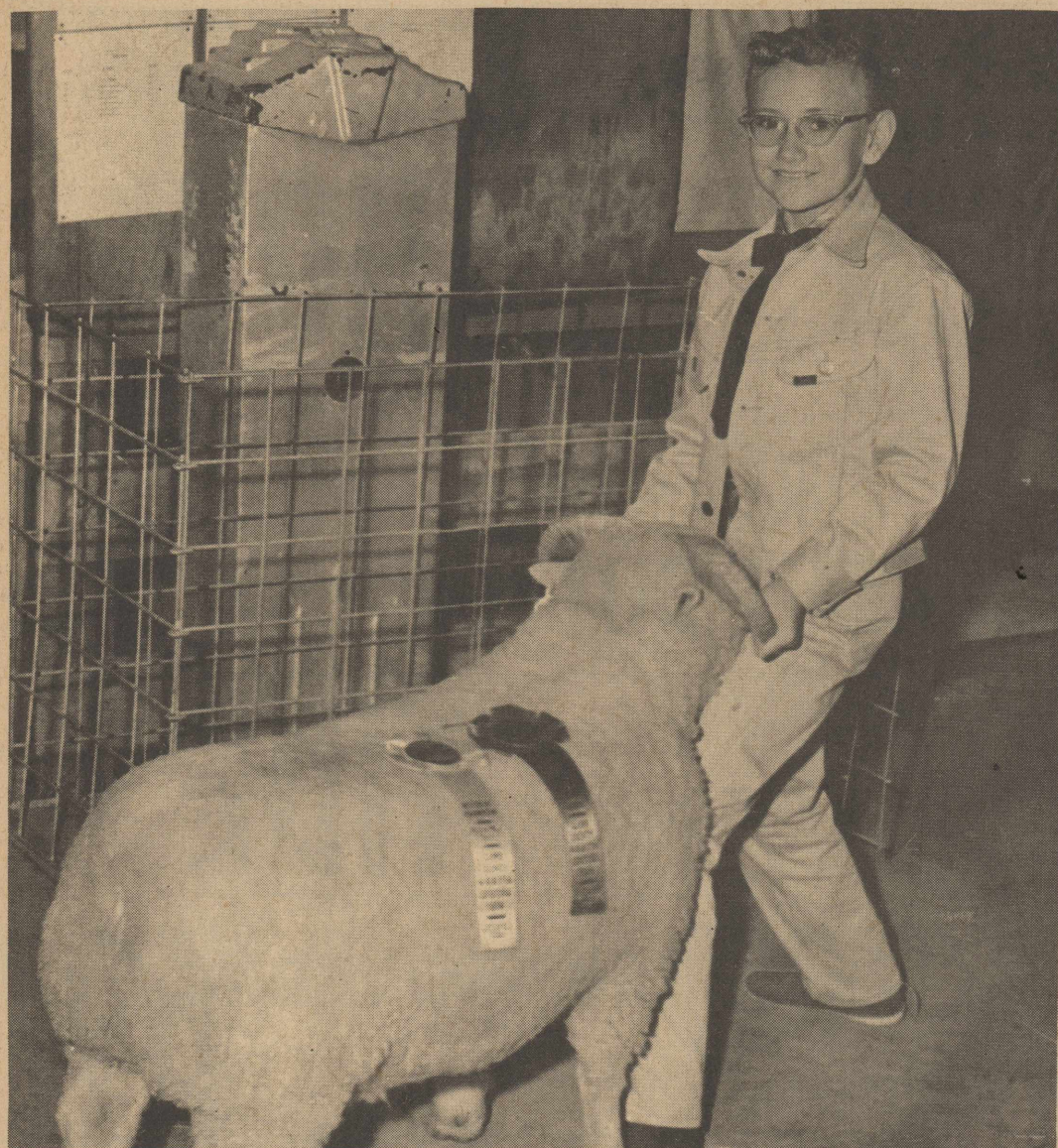
Let our Sanitone Dry Cleaning put this Spring's look in last Spring's clothes



- Colors glow again because all the dirt's out!
- Droop vanishes because "body" is restored to fabric.
- Original drape and fit put back by our professional press.

Yes, we can give last spring's clothes this year's look! Call on us today—be ready for spring.

POLLARD'S CLEANERS
 Pick-Up & Delivery
 Phone 285-2363 Olton, Texas



MARLANA MAY, with reserve champion medium wool, shown at the Lamb County Stock Show at Littlefield last weekend.

Social Security Representative To Be In Olton

"April 16 is an important deadline for many of us, but especially for ministers who want social security credit for their earnings," said John G. Hutton, Manager of the Lubbock Social Security Office. "Ministers who have not yet taken action and who do wish to participate in the social security program must indicate so by filing a waiver certificate with the local Internal Revenue Service office before April 16."

Mr. Hutton emphasized that the decision to participate in the social security program is up to the minister, but that his office will be glad to answer any questions for furnish information which may be helpful in making this decision. A leaflet which explains how ministers can obtain social security coverage is available from the social security office located at 1616-19th Street, Lubbock, or may be obtained by calling the office at PO 3-0456 or writing and asking for leaflet 33j.

"As of early last year, about seventy percent of the full-time ministers who are eligible for social security coverage have elected to have their earnings credited toward future old-age, survivors, and disability insurance benefits," said Hutton, quoting from a report of the Social Security Administration.

"Ministers who let the April 16 deadline go by without filing," Mr. Hutton said, "will not have a chance to participate in the social security program."

A representative of the Lubbock Social Security Administration will be in Olton Wednesday, Feb. 28, at 9 a.m. in the City Hall and will be glad to assist in all matters pertaining to social security.

bock visited Sunday afternoon with Mr. and Mrs. Robert Bridge and family.

Mr. and Mrs. Loyd Skinner of Dumas visited in the Starkey home Sunday afternoon. Also Mr. and Mrs. David Starkey visited with his father before going to Lubbock to make their home.

CARD OF THANKS

We would like to express our heartfelt thanks for the cards, flowers, love offerings and prayers during our illness. May God bless each of you in our prayer.

Johnny, Betty Durham and family

Springlake News

Mr. and Mrs. Almon Whitford and Mrs. Jimmy Banks and children visited in Amarillo with Mr. and Mrs. E.W. Johnson Sunday.

Mr. and Mrs. Otis Haynes, Ruth Ann and Glenda of Lubbock visited Sunday afternoon with Mr. and Mrs. Robert Bridge and family.

Mr. and Mrs. Almon Whitford and Mrs. Jimmy Banks and children visited in Amarillo with Mr. and Mrs. E.W. Johnson Sunday.

Mr. and Mrs. Otis Haynes, Ruth Ann and Glenda of Lubbock visited Sunday afternoon with Mr. and Mrs. Robert Bridge and family.

4-H Week Set March 3-10

COLLEGE STATION, Feb. 22—March 3-10 has been designated as 4-H Club Week in Texas. The same week will be observed across the nation as National 4-H Club Week.

In his official proclamation covering the weeklong observance, Governor Price Daniel said, "The development of citizens and leaders for America is a high purpose in 4-H Club work."

"The 4-H program stresses the development of head, heart, hands and health as well as teaching the latest practices in agriculture and home economics."

"Since the 4-H program was inaugurated by the United States government in 1914, the movement has spread across our nation and established bridges

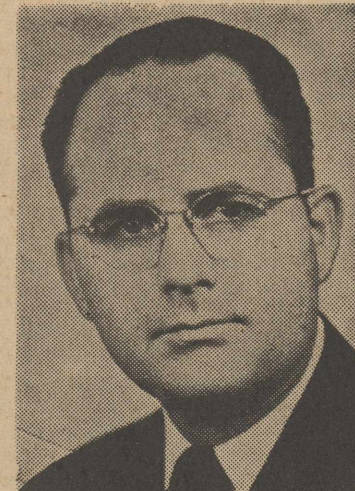
of understanding to more than 50 foreign countries. 4-H Club members learn by conducting result demonstrations and participating in 4-H activities. By putting into action what they learn, club members improve their homes and communities.

"Voluntary adult leaders working with the club members provide a key to the success of 4-H. Parents and friends of 4-H give support and encouragement to club members. The Agricultural Extension Service of the A&M College of Texas, through county extension agents, directs the 4-H Club program."

"Any boy or girl from ages nine to twenty-one can take part in 4-H Club work. The opportunities offered to 4-H members to grow in citizenship, leadership, and practical skills are especially valuable to them, to the State and Nation. 4-H Clubs are a proving ground for the training of fu-

GOSPEL MEETING

MARDELL LYNCH
Hobbs, New Mexico



Mardell Lynch
Hobbs, New Mexico

SERVICES DAILY 10:00 A.M.

7:30 P.M.

MONDAY ONLY 7:00 P.M.

Main Street Church of Christ

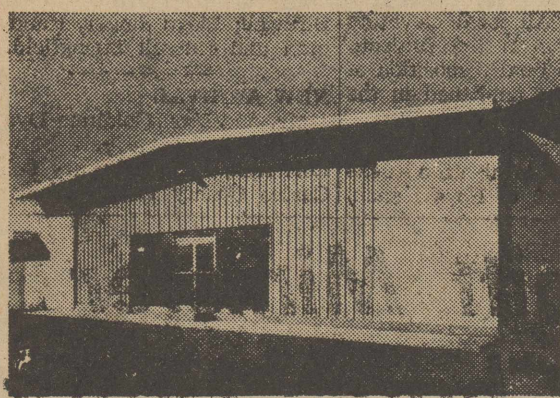
February 26-March 4th

Hear All Services On Radio-1100KC

EVERYONE CORDIALLY INVITED TO COME

A NEW CONCEPT IN DESIGN FOR COMMERCIAL AND FARM BUILDING

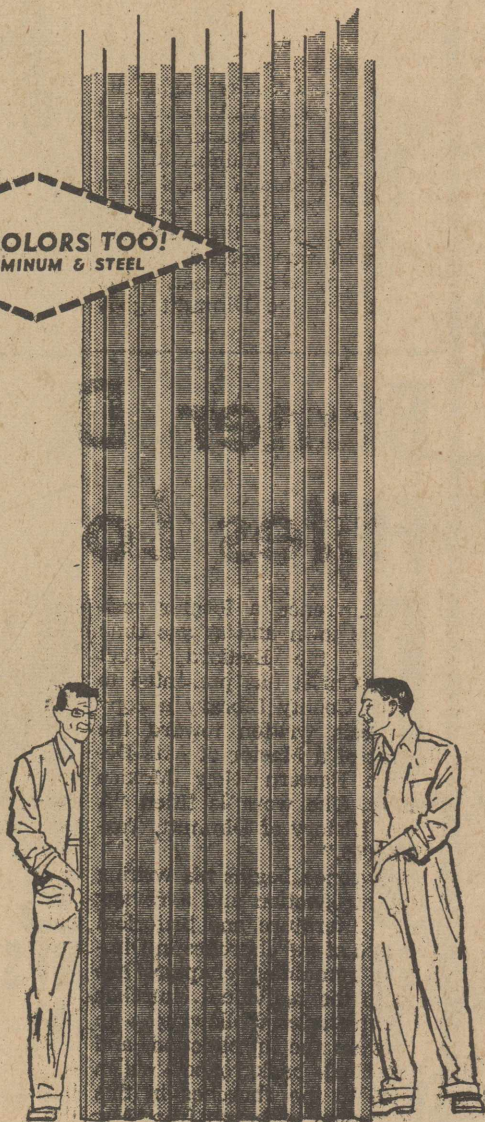
The MESCO Line combines beauty, versatility, unequalled efficiency.



IN COLORS TOO! ALUMINUM & STEEL

In ease and economy of erection, in efficiency of use, in handsomeness of appearance, in versatility or adaptability, Mesco steel buildings are the stand-out buy in America today. The handsome effect of Multi-Rib panels gives depth and texture to your building . . . assures you perfectly fitting parts and gives you leakproof weather protection. See these husky, free-span buildings today. We'll show you the building which will exactly fit your needs.

This sidewall sheet goes foundation to top plate in one leakproof span.

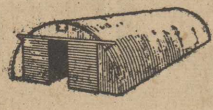


MR. FARMER! WE HAVE

EVERY TYPE OF STEEL BUILDING YOU COULD POSSIBLY WANT!

Guaranteed Grain and Utility Building

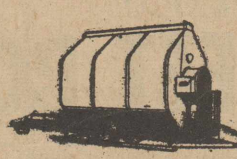
SEE US FOR A SPECIAL PRE-SEASON DISCOUNT ON STEEL FARM PRODUCTS



CURVED



STRAIGHTWALL



GRAIN DRYER



GRAIN STORAGE TANK



NATURAL AIR DRYING TANK



CORN CRIB



HOPPER-BOTTOM BULK FEED WAGON



FARM GATE

Drop by our office in Tulia on highway 87 North for a free estimate on your farm building needs. We give Prompt, Skilled service and can have your new steel building ready to use within several weeks after ordering. Financing Available.

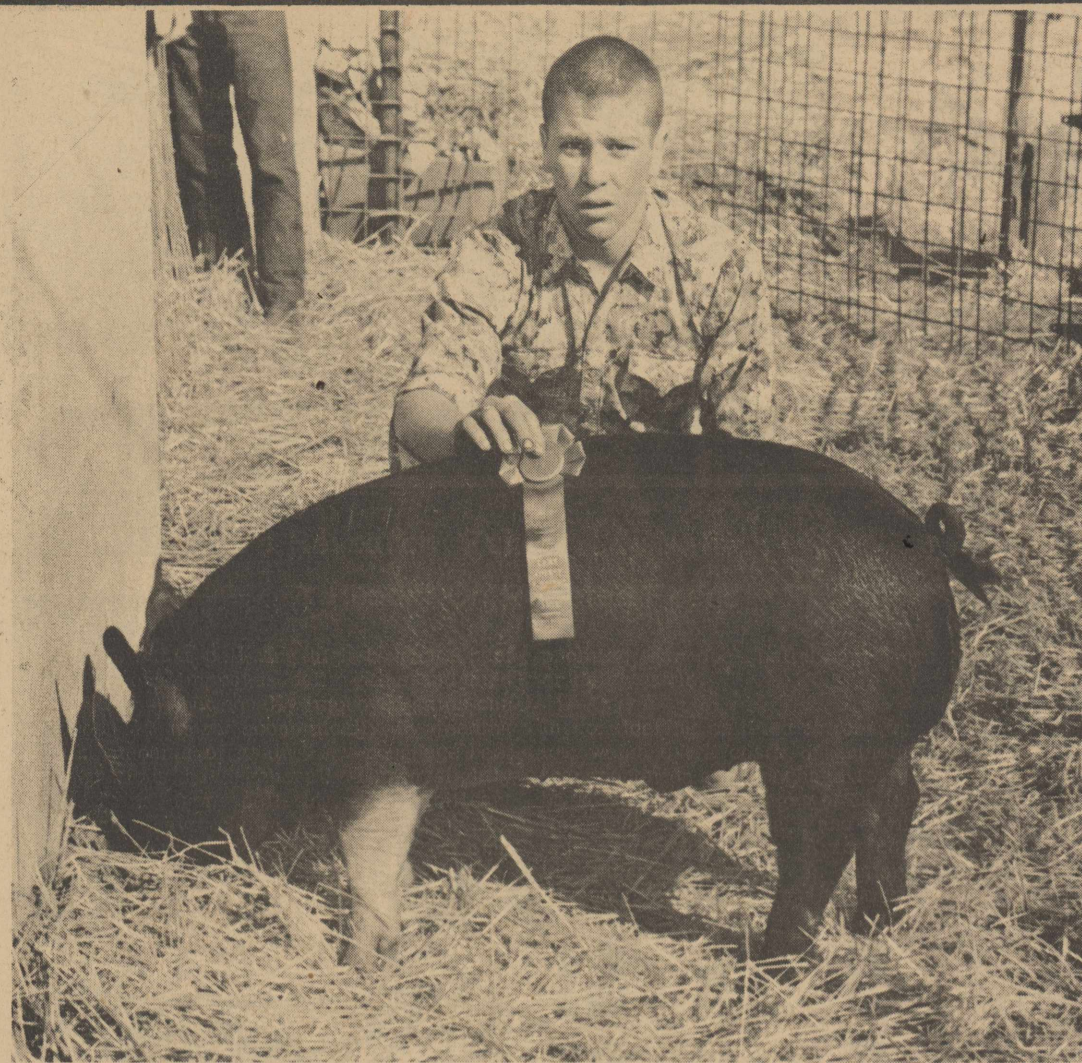
Call Us Collect for further information.

Phone WY 5-3149

TULIA, TEXAS

Box 772

STOUT STEEL BUILDERS



DENNIS GIVENS, with first place winner in the Hampshire heavyweight division at the Lamb County Stock Show at Littlefield last weekend.

Hart Camp Happenings

Mr. and Mrs. Elma Burleson and family visited Burleson's sister and family, Mr. and Mrs. Kenneth Smith, in Hurlwood, Sunday afternoon.

Mr. and Mrs. Ray Johnson and Bill are visiting in Port Aransas this week with Mr. and Mrs. John Melina Jr. and daughter, Mrs. Melina is a daughter of the Johnsons.

Shirley Leonard returned to school this week after being out of school five weeks recuperating from hepatitis.

The Gene Cade family of Morton visited the L.A. Smith family Sunday afternoon.

Mr. and Mrs. Glenn Leggett visited in Shallowater Sunday with Leggett's nephew and family, Mr. and Mrs. James Lott. They also visited in Lubbock with a cousin of Mrs. Leggett, Mr. and Mrs. J.R. Ellsworth.

Mrs. L.A. Smith attended a 4-H Club leadership meeting at Olton Monday afternoon. The Home Demonstration Agent met with them and taught them methods of leading their individual groups of 4-H girls.

Visiting in the J.W. Wells home Sunday afternoon were Mr. and Mrs. David Metcalf and Mr. and Mrs. Aubrey Neinst and family.

Mr. and Mrs. C.E. Timmins and Jerolyn visited in the community Sunday with Mr. and Mrs. Blanton Martin and Suzanne and Rev. and Mrs. Jack Moore and family.

Visiting in parts of New Mexico this week with relatives is the family of Paul Teal.

Mr. and Mrs. R.D. Oliver of Hale Center visited in the home of Mr. and Mrs. Edwin Oliver Sunday afternoon. Also visiting in the Oliver home was a nephew and family, Mr. and Mrs. Arvin Don Oliver, Kelly Don and Toni of Lubbock.

The Intermediate G.A.'s of the Baptist Church had as their guests Wednesday night the Intermediate G.A.'s and their counselors from the First Baptist Church in Olton. Mrs. Edwin Oliver had charge of the program. She reviewed a chapter of the Mission study book, "Victors of the Land", by Lila Hopkins. Following the program refreshments of small heart shaped cakes and red punch were served and games were played. Those present were Mrs. Fred Long, Mrs. E.W. Johnson, Cindy Cross, Bennie Long, Valda Jones, Linda Waldrop, Lea Miller, Charlotte Wells and Deena DeBerry, all of Olton and Mrs. Edwin Oliver, Suzanne Martin and Sue Moore of Hart Camp.

Mr. and Mrs. W.T. Kidwell of Tahoka spent Monday night with Mrs. Lee Holden and Lee Edward. Kidwell is a brother of Mrs. Holden.

Bill Johnson and Jack Guthrie returned Saturday from a trip to parts of Old Mexico and Arizona. They fished in Old Mexico and brought back 100 pounds of dressed fish.

Mr. and Mrs. L.A. Smith spent Tuesday in Tulsa visiting Mr. and Mrs. L.W. Smith.

Olton students from Hart Camp who had entries in the Stock Show at Littlefield Friday and Saturday were Gene Riney, Helen Ruth and Mary Bess Smith. Gene entered a lamb and Mary Bess and Helen Ruth entered Shetland Ponies. Mary Bess won a second and a fifth place and Helen Ruth won two sixth places.

Mr. and Mrs. Harvey Jones and family visited in Hereford Sunday with Mr. and Mrs. Wayland Hukill and family.

Mrs. Dewey Parkey, Mrs. Blanton Martin and Mrs. Elma Burleson entertained the Sunbeams and Junior G.A.'s and Junior R.A.'s with a Valentine party at the Baptist Church Thursday night. Games were played and valentines were exchanged. Refreshments were served to approximately thirty children and leaders.

The ladies of the W.M.U. met Monday afternoon for their Mission program. Mrs. Dewey Parkey reviewed a chapter of the Mission book, "Glimpses of Glory," by C.C. Warren. Present for the meeting were Mrs. Dewey Parkey, Mrs. Blanton Martin, Mrs. Junior Muller, Von and Rickey Parkey.

A group of men left Wednesday night for a fishing trip on the Rio Grande River. Men making the trip include Dewey Parkey, Elma Burleson, J.W. Johnson Sr., Edwin Oliver, Martia Wheeler and Claude Williams.

Average Low For Heart Trouble

How much progress has been made in Lamb County toward a reduction of its heart disease rate? How does the rate compare with that in other parts of the country?

Answers to these questions are of particular importance just now because February is National Heart Month.

Additional interest stems from the fact that the government is planning a mammoth test, involving as many as 50,000 people, to determine whether changes in diet can help prevent heart attacks.

A recent report by the U.S. Public Health Service shows that diseases of the heart and the blood vessels, commonly lumped together under the name heart disease, continue to outrank all others as the principal cause of death in the United States.

In Lamb County, according to the official figures, heart disease is responsible for 45.5 percent of all local deaths.

The ratio is lower, however, than that reported for the United States as a whole, 54.9 percent of the total.

It is also below the ratio in the West South Central States, 49.9 percent.

One way to control the incidence of heart disease, many doctors have come to believe, is by proper diet.

According to Dr. Herbert Pollack of the American Heart Association, it has been clearly established that there is at least a statistical relationship between heart disease and the amount of cholesterol and other fats in the blood.

Typhoid Fever Cases Declining

There was a time in Texas when one of the ravaging diseases was typhoid fever. Whole communities were struck and many victims died.

With the advent of chlorination for public water supplies, increased education efforts on the construction of private wells of water supplies plus modern epidemiological techniques, typhoid fever has steadily declined.

However, 1961 saw a slight rise, over the previous year according to the weekly Texas Morbidity distributed by the Texas State Department of Health.

The number of typhoid fever cases last year rose eight percent over 1960—from 78 reported cases to 84.

Deaths from typhoid fever run lower than any other disease except typhus and malaria which are no longer public health problems in Texas.

Morbidity figures are not yet complete for 1961, however, there were four deaths during each of the three previous years. (Totals of statistical figures on deaths usually take several months because of the thousand of records that must be scanned before accurate figures may be compiled.)

Typhoid fever is still endemic to some rural areas of the United States, but in Texas cases are usually sporadic, with an occasional small cluster traceable to a single source or carrier.

Transmission can be by direct or indirect contact with a patient or carrier. Ingestion of contaminated food and water can spread the typhoid organism over a wide area. Contamination is often spread from the hands of a carrier or missed case.

The administration of typhoid vaccine to persons subject to unusual exposure through occupation or travel, those living in areas of high endemic incidence, and institutional populations in which maintenance of sanitation is difficult, is generally recommended.

The discovery and supervision of typhoid carriers is still an important part in the control of the disease. Certain occupations are restricted until laboratory tests demonstrate the carrier to be non-infectious.

VISIT HERE
Mrs. D.W. Stockham Jr., Twyla and Drew flew to Texas to spend a week but were called back to Tucson, Ariz., Monday as D.W. Stockham, her husband, was seriously ill.

Mr. and Mrs. Sam Martin of Southland are visiting their son and family this week, the Blanton Martins.

Mr. and Mrs. Ivy Thompson and Mike visited in Leveland Sunday afternoon with Mrs. Thompson's brother and family, Mr. and Mrs. W.O. Hendricks Jr.

Your Child-- Taxpayer, Dependent

Even though your child earned \$600 or more last year, you as a parent, may be able to claim him as a dependent on that 1961 federal income tax return.

This good news came today from John J. Sloan, Administrative Officer, Internal Revenue Service, Lubbock.

"If you have supplied more than half of his support, you may claim an exemption for him regardless of the amount he earned, providing he hadn't reached his 19th birthday by January 1, 1962.

"When the child is 19 or over, you still may claim an exemption for him if he was a full-time student during some part of each of five calendar

months in 1961, and if you furnish his chief support. A full-time student is one who is enrolled for the number of hours which is considered to be full-time attendance."

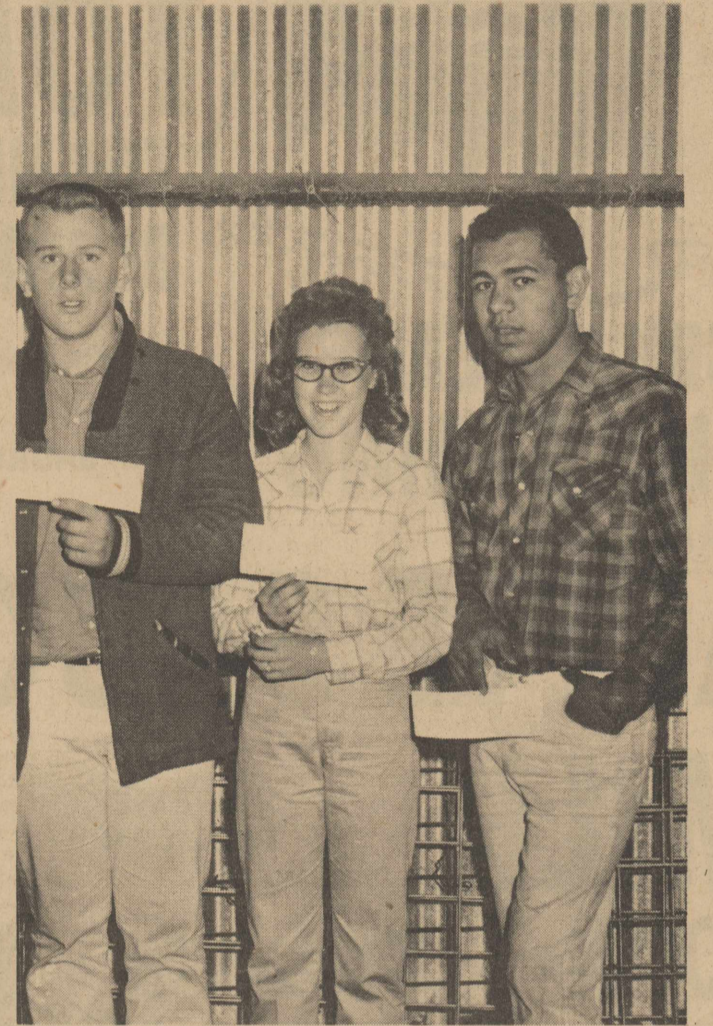
Frequently, taxpayers can save time by telephoning Internal Revenue for answers to their tax problems.

Mrs. G.R. Smith, Mrs. Joyce Goodman and Twila of Lubbock and Mrs. Melvin Johnson of Lubbock, visited Saturday with Mrs. Myrtle Clayton.

Dinner guests of Mrs. Thelma McClanahan Sunday were Mmes. Edna McClure, Myrtle McNamara, Elma Criswell, Martha Smith, Mattie Boone, Myrtle Clayton, Marvel Caruthers and Illa Stinson of Littlefield.

Mrs. Ester Bomar spent Sunday with Mrs. Dez Stafford of Muleshoe.

Best Wishes To Our FFA FHA and 4H Boys and Girls!

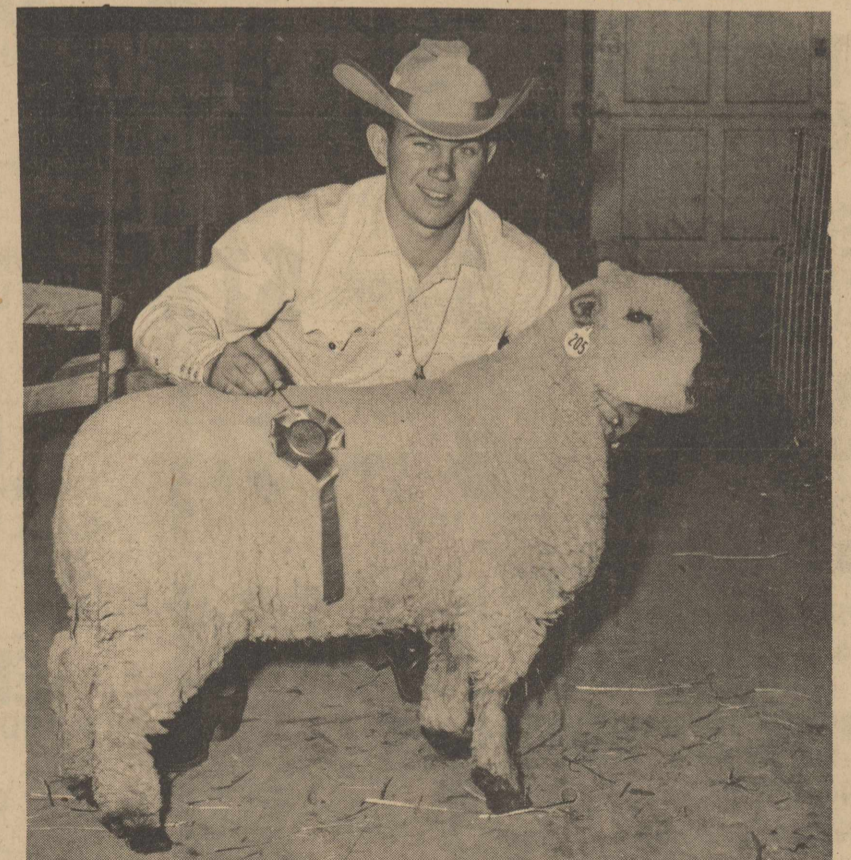


AWARDS—J. Curtis Hall, left, accepts a clean pen award for the Olton 4-H, Mickie Parsons, center, accepts showmanship award for Shetland ponies and Paul Hernandez, right, accepts showmanship award for hogs.

For The Best In Insurance See

Howard Hall
Insurance Agency

ALL SHINED AND POLISHED FOR THE ANNUAL OLTON STOCK SHOW



GARY BIZZELL—Reserve champion lamb, medium wool.

A Good Paint Job Is The Basis For A Good Shine And Polish. We Also Do All Kinds Of Auto Repair.

"We meet by accident"
OLTON PAINT & BODY

service bulletin

HAVE YOU ORDERED YOUR CHICKS—

Now is the time to order your baby chicks. We offer you first generation chicks bred by some of the country's best breeders.

You can depend on us to help you get your chicks off to a strong and vigorous start and here's what we have to offer:

1. Purina Chick Starters, the nation's favorite chick starter, fortified with two special health and growth boosters to give your chicks extra high livability.
2. Purina Health Aids - developed through years of Purina Research to help prevent diseases among your chicks.
3. Service - reliable and friendly advice on feeding and management.

Come in or call to book your chicks real soon, and depend on us to help you make your poultry operation successful.

From Purina's Research Farm... A Report On Pelleted Feeds

Tests show that pelleting high-roughage beef cattle rations improves daily gains and feed conversion — but equally improved gains can be produced more economically by feeding limited amounts of grain. Low-roughage beef cattle rations have generally shown slightly lower gains from pelleting. No significant advantages have shown up in pelleting the grain concentrate portion of dairy rations. Pelleting of lamb rations seems to hold more promise than does pelleting rations for beef or dairy cattle.

In considering pelleted rations for your feedlot, weigh extra costs of grinding, pelleting, transportation of roughage to feed mill and back, against advantages of easier bulk handling, less storage space and savings you may make in feed wastage. Extra costs of pelleting must be charged as material handling advantages rather than as nutritional advantages.

CUT CRD IN DAY-OLD CHICKS

Knock out CRD with new Purina Tylan Soluble in chick drinking water.

Now...you can help knock out costly CRD infection in day-old chicks with Purina Tylan Soluble. Tylan Soluble contains tylosin, a new, fact-acting antibiotic that cuts down the most common cause of CRD in baby chicks.

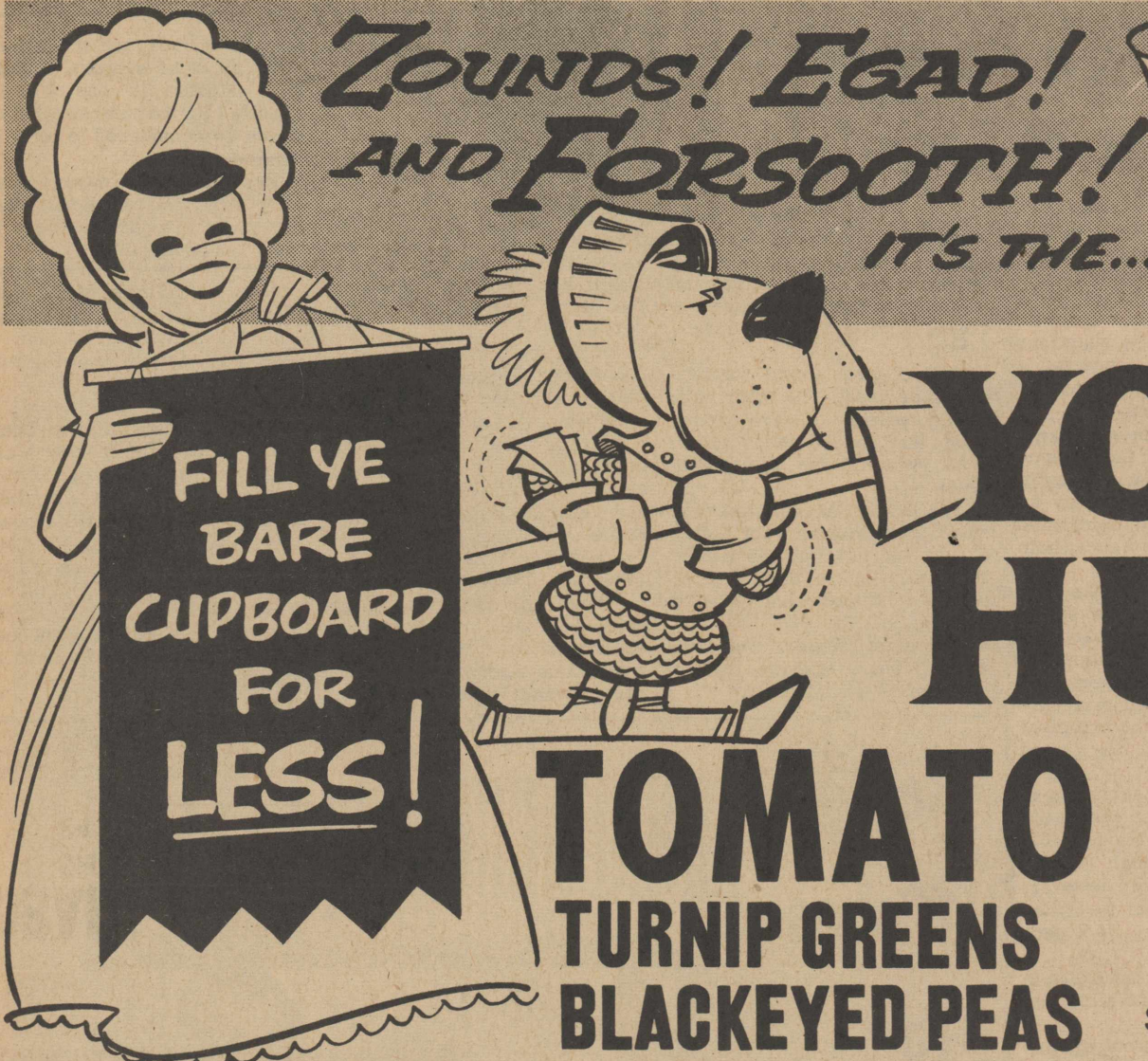
When your chicks first arrive, add this powerful Health Aid to their drinking water. We can supply you with Purina Tylan Soluble in economical 100-gram or 2-gram packets.

OLTON FARM SUPPLY

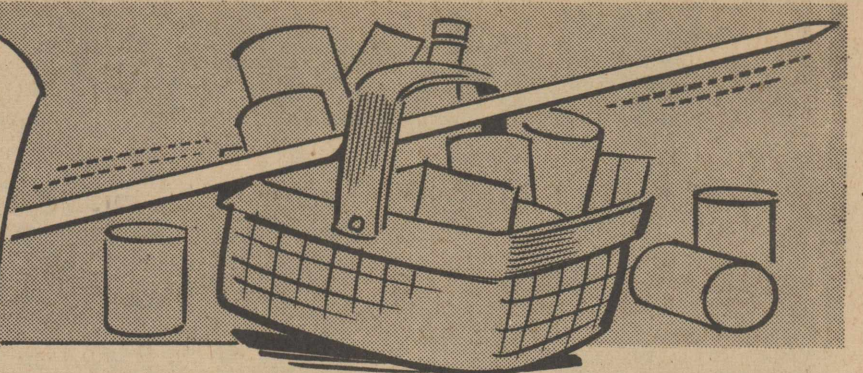
Phone 285-2404 Don Spain, Owner Olton, Texas

VOTE BILL CLAYTON---YOUR VOICE IN STATE GOVERNMENT

FOR STATE REPRESENTATIVE 91st DISTRICT



Shurfine



YOUNG MOTHER HUBBARD SALE

TOMATO SAUCE	SHURFINE 8 OZ. CAN	10	FOR	\$1
TURNIP GREENS	SHURFINE CHOPPED 303 CAN	9	FOR	\$1
BLACKEYED PEAS	SHURFINE 300 CAN FRESH SHELLED	7	FOR	\$1
PORK & BEANS	SHURFINE 300 CAN	9	FOR	\$1
SHORTENING	SHURFINE 3 LB. CAN	69¢		
APPLE SAUCE	SHURFINE 303 CAN	7	FOR	\$1
MILK	SHURFINE TALL CAN	7	FOR	\$1
CORN	WHOLE KERNAL OR CREAM STYLE SHURFINE 303 CAN	6	FOR	\$1
APPLE BUTTER	SHURFINE 28 OZ.	4	FOR	\$1
CATSUP	SHURFINE 14 OZ. BTL.	5	FOR	\$1
CHILI WITH BEANS	SHURFINE 300 CAN	4	FOR	\$1
CUCUMBER CHIPS	SHURFINE FRESH 16 OZ.	4	FOR	\$1
FRUIT COCKTAIL	SHURFINE 303 CAN	5	FOR	\$1
GREEN BEANS	SHURFINE CUT BLUE LAKE 303 CAN	5	FOR	\$1
GRAPE JUICE	SHURFINE 24 OZ. CAN	3	FOR	\$1
GRAPEFRUIT JUICE	SHURFINE NATURAL 46 OZ. CAN	2	FOR	59¢
GRAPEFRUIT SECTIONS	SHURFINE 303 CAN	5	FOR	\$1
MUSTARD GREENS	SHURFINE CHOPPED 303 CAN	9	FOR	\$1
ORANGE JUICE	SHURFINE 46 OZ. CAN UNSWEETENED	2	FOR	79¢
CHEESE	SHURFRESH SPREAD 2 LB. BOX	69¢		

Special COFFEE
SHURFINE 1 LB.
19¢
WITH PURCHASE OF ANY 2 PEPSODENT TOOTH BRUSHES

ZOUNDS!
WHAT SAVINGS!

- WAFFLE SYRUP** SHURFINE 32 OZ. BTL. **39¢**
- VIENNA SAUSAGE** SHURFINE 4 OZ. CAN **5 FOR \$1**
- SALMON** SHURFINE RED ALASKA NO. 1 **89¢**
- SALAD OIL** SHURFRESH QT. **55¢**
- TUNA** SHURFINE CHUNK STYLE 6 1/2 OZ. **3 FOR 89¢**
- PEAS** SHURFINE 303 CAN EARLY HARVEST **5 FOR \$1**
- ENERGY LIQUID DETERGENT** 22 OZ. **39¢**
- DOG FOOD** ROXEY NO. 1 **13 FOR \$1**
- BROOMS** ELMDALE **\$1.19**

Ye Olde
SAVING LIST!

CHERRIES	SHURFINE 303 CAN	4	FOR	\$1
BISCUITS	SHURFRESH 8 OZ. SWEET OR BUTTERMILK	13	FOR	\$1
PEARS	SHURFINE 303 CAN BARTLETT HALVES	4	FOR	\$1
PEACHES	SHURFINE YELLOW CLING SLICED OR HALVES NO. 2 1/2 CAN	4	FOR	\$1
NAPKINS	SOFLIN WHITE 80 CTN. BOX	2	FOR	25¢
PEANUT BUTTER	SHURFINE 18 OZ.	2	FOR	\$1
PRESERVES	SHURFINE APRICOT, PEACH, AND RED PLUM	3	FOR	\$1
SWEET POTATOES	SHURFINE SMALL WHOLE	4	FOR	\$1
SALAD DRESSING	SHURFINE QT.			39¢
SAUER KRAUT	SHURFINE 303 CAN	7	FOR	\$1
BACON	FARM PACK RANCH STYLE 2 LB.			98¢
FRESH PICNICS	WHOLE			29¢ LB.
BOLOGNA	PINKNEY SUNRAY 1 LB. PKG.			39¢
TOMATOES	CELLO PKG.			19¢
POTATOES	COLORADO NO 1 10 LB. CELLO BAG			49¢

AVACADOS
EACH **10¢**

Phone us your special orders for BAR-B-Q -- Parties or company.

SHERMAN FOOD
Double Gunn Bros. Stamps Wednesday With \$2.50 Purchase

Free Delivery Quality Meats Phone 285-2787