

## All Around The Town

By Mary Ann Sarchet

The menu for Tri-County Meals for next week includes:

Monday, August 22-Roast, Gravy, Creamed Potatoes, Green Beans, Lime Jello Salad, Roll

Wednesday, August 24-Oven-Baked Chicken, Dutch Mix Vegetables, Greens, Fruit & Cookies

Friday, August 26-Steak Fingers, Gravy, Oven-Fried Potatoes, Carrots, Pie, Milk

Menu subject to change without notice.

The telephone number for Tri-County Meals at the Hope Center is 455-1053.

Gifts to Tri-County Meals can be sent to Box 421, Quitaque, TX 79255.

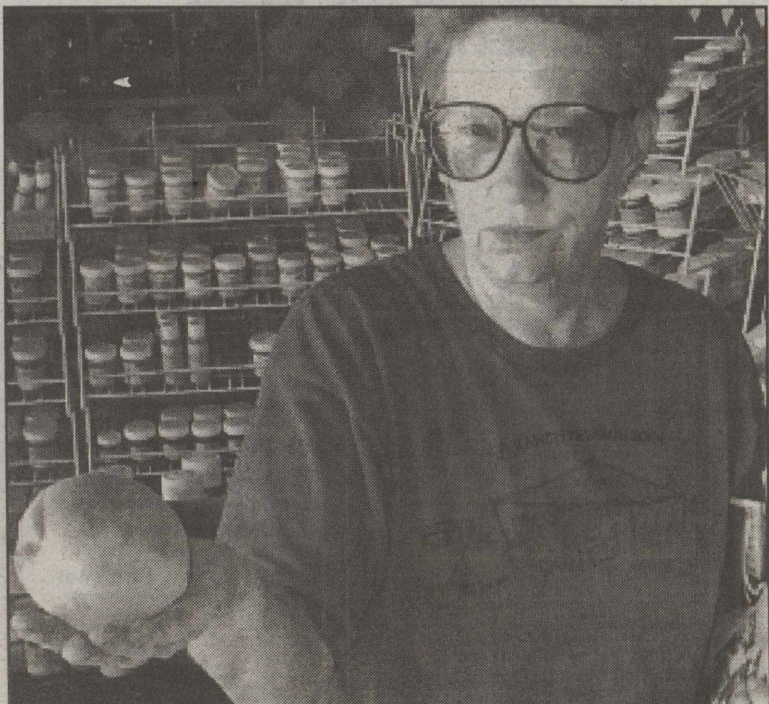
If your children need immunizations for school, you can get them at school August 25 from 12:30 until 2:00 p.m., according to an announcement by School Nurse Lana Burson.

Do you have a free hour or two that you would like to fill? Come volunteer at the school.

Silverton School has a need for volunteers to help out in the library, and to copy papers, laminate, etc. for the teachers. No experience is necessary. The school will be glad to train you.

Call Sheryl Weaver at 823-2476 for more information or to volunteer.

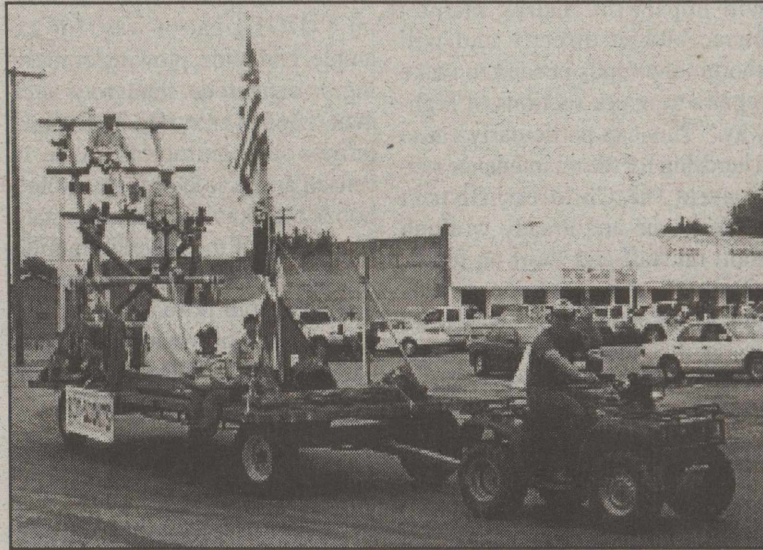
Yes, it did shower on our barbecue Saturday during the Briscoe County 113th birthday celebration. Did I hear anyone complain? No.



Jo Ann McFall shows off a peach she and her husband, Jack, raised at their home here.



THURSDAY, AUGUST 18, 2005



Silverton Scouts had a nice presentation of their activities in the parade through downtown Silverton Saturday morning. The parade was better than it has been some years.

Briscoe County News Photo

## Silverton EMS Has Meeting

Silverton EMS held its monthly meeting August 2. Topic of discussion included work schedules for the BCAA Rodeo. Peer Review with David Hughes representing SPEMS in Lubbock was also conducted.

Those present included Connie Smith, Fay Perkins, Kristi Wadlow, Vicky Tiffin, Tammy and Yopee Smith, JoDee Robison, Dale

## EMS Needs Help From Citizens Of Silverton Area

During the monthly meeting of Silverton EMS, a need for help from the citizens was presented to the volunteers for discussion.

Everyone who lives in and around Silverton is urged to write all of your current medications, dosage, and amount per day on an index card. You are asked to include all allergies on the back of the card and clip it to your refrigerator for easy access in case of an emergency. This is very beneficial when every minute counts.

## August Rainfall Totals 5.02 Inches

August rainfall in Silverton measured 5.02 inches. This fell in a shower of .19 of an inch on August 8; 2.30 inches on August 13; 2.51 inches on August 14, and .02 of an inch on August 15.

This rainfall was badly needed on crops and pasture land, and is appreciated very much.

*A man is not finished when he is defeated. He is finished when he quits.*

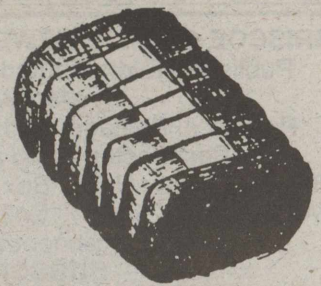
Richard Nixon

McWaters, Rhonda Smith and Jeannine West.

A special person stopped by the EMS building to thank the crew for helping out in a time of need.

# Briscoe County News

VOLUME 97 NUMBER 33



## Boy Scouts Win First Place in Parade

Troop 262 Boy Scouts won first place in the Briscoe County Birthday Celebration parade through downtown Silverton Saturday morning. They received \$100 donated by City Bank-Silverton.

The Parrot Heads won second place and a \$75 prize donated by Johnson's Gin. They donated half their prize money to the Boy Scouts and half to the Cub Scouts.

The Cub Scouts won the \$50

third place prize donated by Silverton Oil Company.

In the category for antique cars, Terry Grimland, driving a red and white two-door hardtop, won the plaque donated by H & H Fertilizer.

In the category for antique tractors, Don Brown's McCormick A, driven by Stanley Gamble, won the plaque donated by H & H Fertilizer.

## Kids In Christ Resumes Sept. 12

Kids In Christ will resume Monday, September 12, with a kick-off party at the First Baptist Church for children in grades Pre-K through fifth, from 3:00 until 5:00 p.m.

Come join in for food and fun as another great year of KIC gets started.

## Lawnmower Events a Success

The Silverton lawnmower races and pull went very well in spite of the muggy weather.

The pulls were won by Alvin Martin of Matador. Second place went to Able Asebedo of Silverton. Other participants were Odell Edwards, Gary McMullen and James McMorries, of Silverton, and Ray Martin of Matador.

A crowd pleaser was a lawn tractor with a motorcycle engine brought in by Travis and Justin Jameson of Matador as an exhibi-

## Booster Club to Have Hamburger Supper

Silverton Booster Club will have a hamburger supper and membership drive beginning at 7:00 p.m. Tuesday, August 23, at the football field.

Everyone is invited to attend.

*It is possible to store the mind with a million facts and still be entirely uneducated.*

Alec Bourne



Able Asebedo won second place in the lawn tractor pull here Saturday afternoon. A large number of competitors were on hand to take part, and other locals may already be planning to compete next year.

Briscoe County News Photo

BRISCOE COUNTY NEWS (SECD-065280) Published Every Thursday at Silverton, TX 79257 by Mary Ann Sarchet Periodical Postage Paid at Silverton, Texas 79257 Postmaster: Send Address Changes to Briscoe County News, Box 130, Silverton, Texas 79257 FAX 806-823-2528 Cell 847-7076 806-823-2333 E-MAIL briscoenews@midplains.coop SUBSCRIPTIONS

Briscoe and Adjoining Counties.....\$18.00 Elsewhere in Texas.....\$19.00 Elsewhere in Continental United States.....\$25.00 Classified Advertising, 12c per word, minimum charge....\$ 4.00 Cards of Thanks.....\$ 4.00 Mary Ann Sarchet.....Editor & Publisher

# Herbicide Use on TxDOT Right-of-Way Not Allowed

In the last few years, the Texas Department of Transportation (TxDOT), Childress District has seen an increase in private citizens/landowners making herbicide applications on state maintained

right-of-ways. Vegetation is maintained on the right-of-way for a reason. If the vegetation is killed by herbicide or plowing, sediment will wash in the ditch, reducing the carrying capac-

ity or completely blocking the drainage. This excess water collects on the roadway, creating a roadway safety hazard.

In addition to causing water problems, it can cause severe erosion, forcing the maintenance forces to go out and make repairs to the ditch. "A typical ditch repair can cost Texas taxpayers up to \$5,000," says Dennis Markwardt, TxDOT Vegetation Management Section Director in Austin. "This will impact the district maintenance budget directly and will shorten the funds needed to make repairs to major sections of highway." This can particularly cause a hardship for the maintenance sections in the Childress District where some are already working short on staff and short on funds. "TxDOT maintenance forces should not have to go out and fix things that should not have to be repaired in the first place," contin-

ued Markwardt. Not only does this pose a problem for TxDOT, but it can be very costly for the individual(s) making the herbicide application. A stiff penalty can be handed down by the Texas Department of Agriculture. If a product is not used strictly by the label instructions and is not labeled "to be used on the highway right-of-way," a fine up to \$4000 per incident can be assessed. Performing any types of work on TxDOT right-of-way, for example: herbicide, plowing or mowing, is dangerous, numerous accidents happen annually. TxDOT requires our contractors to be licensed and bonded for the protection of the individuals and the state. The safety of the traveling public, private citizens and our TxDOT workers is our primary concern.

For more information, call Barbara Seal, TxDOT Public Information Officer at 940-937-7145.

# Ten Free Colorado Blue Spruce Trees

Ten free Colorado blue spruce trees will be given to each person who joins The National Arbor Day Foundation during August 2005.

"Colorado blue spruces were selected for this campaign because of their many uses in the home landscape," John Rosenow, the Foundation's president, said. "They lend beauty to their surroundings with their silver blue-green color and compact conical shape. They can be used as individual ornamentals, an energy-saving windbreak, a privacy screen, or as living Christmas trees."

The trees will be shipped post-paid at the right time for planting between October 15 and December 10 with enclosed planting instructions. The six- to twelve-inch trees are guaranteed to grow, or they will be replaced free of charge.

Send a \$10 membership contribution to Ten Blue Spruces, National Arbor Day Foundation, 100 Arbor Avenue, Nebraska City, NE 68410 by August 31, 2005.

and \$4.00 for those twelve and younger.

Arts and crafts sales, raffle and bingo will take place there too.

Livestock donated by ranchers and parishioners of Holy Family Church, and goods donated by area businesses will be auctioned, beginning at 2:00 p.m.

A hamburger supper will be served from 5:00 until 8:00 p.m. in the Community Hall.

Festivities end with a Community Hall benefit dance to be held in the Community Hall from 9:00 p.m. until 1:00 a.m. Music will be provided by "Agave Posse". Admission is \$5.00.

# Picnic, Parish Fund-Raiser Set At Nazareth

Holy Family Parish in Nazareth will have its annual Labor Day Weekend Picnic and Parish Fund-Raiser on Sunday, September 4, 2005.

The event will kick off with a parade at 10:00 a.m.

Children's games and rides begin after the parade and continue until 5:00 p.m.

A roast beef dinner with all the trimmings will be served from 11:00 a.m. until 2:00 p.m. in the Community Hall at 104 First Street. Prices are \$7.00 for adults

**AUCTION**

Saturday, August 27, 2005 — Sale Time: 10:00 a.m.

LOCATED: From Silverton, Texas, 4 Miles West On Hwy. 86, Then 2½ Miles South On Hwy. 284, Or From Tulia, Texas 24 Miles East On Hwy. 86, Then 2½ Miles South On Hwy. 284.

**GERALD SMITH — Owner**

Telephone: Mr. Smith (806) 292-0197 Or Five Star Auctioneers: Jim Summers (806) 864-3611, Or Jimmy Reeves (806) 864-3362.

I Am Retiring From Farming & The Following Will Be Sold At Public Auction:

LUNCH WILL BE AVAILABLE • Winch Truck, Day of Sale Only

**COTTON STRIPPER, BOLL BUGGY, COMBINE —**

- 1—2000 John Deere 7455 8 Row 40" Diesel Cotton Stripper, Cab, A/C, Htr., Radio, John Deere Guidance System, Electronic Height Sensor, 856 Extractor Hrs., 1005 Eng. Hrs., Shedded & Nice, S.N. 6202, Vane Compactor, Field Ready
- 1—2000 Sam Stevens Double Dump, S.A. Boll Buggy, Swing Hitch
- 1—1981 John Deere 6620 Diesel Combine, Cab, A/C, Htr., Radio, 224" Header, New Belts & Rasp Bars (Shedded & Good)
- 1—Nearly New 30" Air Reel
- 1—24" Hume Reel

**TRACTORS, LOADER —**

- 1—1982 John Deere 4040 Diesel Tractor, Cab, A/C, Htr., Radio, Q/R Trans., 3-pt., 2 Hyd., O.H., 18.4x38 Rubber W/John Deere 740 Hyd. Front End Loader W/8' Bucket (5,365 Actual Hrs.) S.N. 12003, Shedded & Good
- 1—Set John Deere Forklift Attach. For 740 Loader
- 1—Set John Deere Hay Spear For 740 Loader
- 1—1978 John Deere 4440 Diesel Tractor, Cab, A/C, Htr., Radio, Q/R Trans., 3-pt., 3-Hyd., Wts., O.H., 18.4x38 Rubber W/10' Hole Axle Duals (10,000 Total Hrs., 5,000 Hrs. On New Engine O.H.) S.N. 5133, Shedded & Good

**HAY EQUIPMENT, HAY —**

- 1—2001 John Deere 567 Round Baler, Mega Wide, Cover Edge, Auto Wrap, Monitor (9,300 Bales) Shedded & Good
- 1—1995 John Deere 3430 Diesel Self-Propelled Swath, Cab, A/C, W/John Deere 300 A Twin Knife, 16' Header (1,850 Hrs.) S.N. 985018
- 1—2001 John Deere 705 Hyd. Twin Hay Rake (Nice)
- 1—Hay Van 5 Bale Bumper Pull T.A. Hay Trailer
- 189-2004 BMR "Brown Mid Rib" Big Round Bales

**FARM EQUIPMENT —**

- 2—John Deere 750 D.T. 24" 7" No-Till Grain Drills W/Houck 2-15 HH Double Drill Hitch & Progressive Hyd. Markers
- 1—1997 Great Plains 20' No Till Grain Drill W/Center Pivot Hitch, 7½ Spacing
- 1—John Deere 9300 D.T. 4 Section 40 Hole, 12' Space Hoe Grain Drill W/John Deere Transport Wheels W/Hitch, Big Press Wheels, C.C. (4 Drill Hitch)
- 1—HC 7100 42' Hoe Grain Drill, 12' Spaced End Transport
- 2—John Deere LZB 14x10 Deep Furrow Grain Drills, Metal Press Wheels
- 1—John Deere 8300 D.T. 16-10" Grain Drill, S.D., C.C.
- 1—John Deere 400, 3-pt. 30" Rotary Hoe
- 1—Hamby 3-pt. 21' Chisel/Sweep Plow, T.S.B., L.T.M., D.G.W. W/No-tilt Lift Mulch Harrow Units
- 1—Roll-A-Cone 3-pt. 7 Shank (22') Stubble Mulch Plow, 4"x4" Rear Bar, L.T.M., D.G.W. (Nice)
- 1—John Deere 3-pt. 15 Shank (14') Chisel/Sweep Plow, D.T.B., G.W. (John Deere Orchard Shanks)
- 1—International 480 D.T. 21' F.W. Tandem Disk
- 1—Bush Hog 727, 3-pt. 7' Shredder
- 1—Terra Mender D.T. 10' Dirt Scraper
- 1—Bush Hog P.H.D. 3-pt. P.T.O. Posthole Digger, 9" Auger (Nice)
- 1—Servis Big Rhino 3-pt. 7' Blade
- 1—Independent 3-pt. 8' Box Blade Scraper W/Scarifiers
- 1—New John Deere Double Drill Hitch
- 1—John Deere 3-pt. Quick Hitch

**RANCH HORSES, LIVESTOCK EQUIPMENT —**

- 1—Reg. AQHA 11 Year Old Brown Ranch Gelding, Well Broke, Tiny's Gay Breeding
- 1—Appendix AQHA 17 Year Old Sorrel Ranch Gelding (Used As Pony Horse On Feed Lot & Ranch)
- 1—Grade Smooth Mouth Bay Ranch Gelding
- 3—Ranch Saddles
- 1—Billy Cook 16" Roping Saddle
- 1—Factory 6'x20' G/N T.A. Stock Trailer
- 1—Ranch King 6'x20' G/N Stock Trailer, Good Floor & Tires
- 1—Portable Powder River Cattle Squeeze Chute
- 1—Call Cradle
- 30—Factory 10' Metal Cattle Panels W/4 Gates On 2 Wheel Panel Trailer
- 6—Factory 12'x12' Metal Horse Stalls, 7' Tall
- 1—Shop Made Horse Stock
- 1—Shop Made 6 Horse Walker W/Elec. Motor
- 6—Hang On Feeders
- 2—8' Horse Hay Feeders
- 1—12' Hay Feeder
- 1—12' Horse Trough
- 1—6' Oblong Water Trough
- 6—Hay Rings
- 1—24" Wheel Hay Feeder
- 1—Steel 7'x16' Round Granary
- 1—Lot Barb Wire
- 1—Lot Electric Fence Posts, Insulators
- 1—Lot Fence Chargers
- 1—Lot Blankets
- 6—Bridles
- 1—Lot Halters, Lead Ropes
- 4—Saddle Racks
- 1—Lot Tack
- 1—Lot Feed Buckets
- 1—Lot Vet Supplies
- 1—Lot New Switch & R.R. Cross Ties
- 1—Shop Made 3-pt. Hay Fork (Good)
- 1—Shop Made D.T. Hay Fork Trailer (Hand Winch)
- 1—Shop Made 3-pt. Wire Roller (Needs Repairs)

**4-WHEELER, SHOP EQUIPMENT, NON-CLASSIFIED —**

- 1—Polaris 250 Trail Boss 4-Wheeler
- 1—Set Aluminum 4 Wheeler Loading Ramps
- 1—Hyd. Press Frame (No Jack)
- 1—6" Metal Shop Table W/2 Drawers
- 1—Buffalo 5" Shop Vise
- 1—Skill 10" Table Saw
- 1—Craftsman 10" Radial Arm Saw
- 1—Craftsman 150 Drill Press
- 1—Acme D/A Grinder W/Stand
- 1—Portable Electric Air Compressor
- 1—Robinair Refrigerant Recovery Unit
- 1—TSL Portable Airless Paint Sprayer
- 1—Snap-On ¼" Air Impact Wrench Set W/Case
- 1—Snap-On Air Chisel
- 1—X" Drive Socket Set
- 1—Antique Vermont Tap & Tie Set W/Wood Box
- 1—King Cutter Pole Vise
- 1—Acetylene Cutting Torch
- 1—Wheel Barrow
- 1—Lot Hand Tools
- 14—20" Jis. 4" Oil Field Pipe
- 2—20" Metal Pallet Racks
- 3—Metal Pallet Racks (1-8', 2-10')
- 1—Lot Metal Storage & Pallet Racks
- 1—Sears 5 H.P. Tiller
- 1—Shop Vac
- 1—16' Lift Boom
- 1—Lot Oil, Grease, Anti-Freeze
- 1—12" Forklift Platform
- 2—Aluminum Crossover Toolboxes (1 For Ford Super Duty)
- 1—G.E. Central Heating & Cooling Unit
- 1—42" Steel Door W/Frame
- 1—Lot Peg Board
- 1—Lot Tires & Wheels
- 1—4" Roll About Cart
- 1—Lot Chains & Boomers
- 1—Aluminum Extension Ladder
- 1—Lot Extension Cords
- 1—Stainless Steel Sink
- 1—Lot Hoes, Rakes, Shovels, Scoops
- 1—Lot Scrap Metal, Angle & Tubing
- 1—Coke Machine (Bottles Only)
- 1—Lot Too Numerous To Mention

NOTE: Any Announcement Sale Day Takes Precedence

**Five Star Auctioneers**  
Answering Service: (806) 296-0379  
Box 1030 — Plainview, Texas 79073-1030  
Web Site: www.farmauctionguide.com/fivestars

**JIM SUMMERS**.....(806) 864-3611  
(10006).....(HOME)

**JIMMY REEVES**.....(806) 864-3362  
(Clark).....(HOME)

**DONNA NOEL**.....(806) 293-1124  
(Secretary).....(HOME)

Terms: Cash, Personal or Business Check, Cashier's Check  
All Accounts Settled Day of Sale

OSWALD — Plainview

## KORNERSTONE FUNERAL DIRECTORS

Joel Culp—Matthew Gregory—Gabriel Gonzales—Steven Pond



**Same People, Same Faces, Same Superior Service**

<b>201 W. Broadway St. Tulia, Texas 79088</b>	<b>201 W. 4th Street Plainview, Texas 79072</b>
<b>806.995.1701 806.995.1704 (fax)</b>	<b>806.296.0055 806.296.0004(fax)</b>
<b>Family Owned and Operated</b>	

## LOOKING BACK

through the files of the  
Briscoe County News

**July 25, 1996**-Ty and Drew Reed were inspecting the cotton crop of their grandfather, George Reed, a few days ago. The hot days and warm nights and rain showers are bringing good cotton prospects for many Briscoe County farmers . . . Two-a-Day workouts to begin here soon . . . Johnny and Kayla Lindley are proud to announce the arrival of their daughter, Kortni Kay, who was born July 14, 1996, at High Plains Baptist Hospital in Amarillo. Among grandparents are Gary and Nena Hunt of Clarendon, and great-grandparents include Ashel and Mildred McDaniel and Wilma Hunt, all of Silverton . . . Wendy Davis, bride-elect of Michael Hill, was honored at a wedding shower on Saturday morning, July 20, in the Pioneer Room at First State Bank . . .

**August 7, 1986**-Russ Hubbard is the new associate pastor at the First Baptist Church in Silverton . . . A total of 1.35 inches of rain fell on Silverton Sunday and Monday mornings, as recorded by Fred Strange . . . Harris Gin is purchased by Rex Johnson of Quitaque. He will be operating the gin with the assistance of his son, Derrell, and his daughter-in-law, Dixie . . . Mr. and Mrs. Gene Whitfill, Michelle, Jonathan and Patrick moved to Plainview last week . . . Miss Tracy Gill, who is to wed Herbert Baird in the near future, was honored with a miscellaneous shower and coffee in the Pioneer Room Saturday . . . John and Maebelle Francis have recently attended a reunion of the Sanders family at Fort Cobb Lake in Oklahoma . . . Mr. and Mrs. Ewing Vaughan have returned from a visit with their son and family, Mr. and Mrs. Ronald Vaughan and Douglas at Arlington, following a silver wedding anniversary reception given in honor of Ronald and Annette in the Silver Room at Parker Square in Wichita Falls . . .

**August 5, 1976**-An Amarillo man who had brought his family to Lake Mackenzie for the weekend holds the doubtful distinction of being one of the first to be injured on lake property . . . Oner Cornett was scheduled to undergo a knee replacement Wednesday at Methodist Hospital in Lubbock . . . Girls participating in Lighthouse Electric Cooperative's grooming course, "Pigtails to Powder Puffs," were Dena Green, Tandy McJimsey, Katy Francis, Annette Kingery, Shelli Hester, Cynthia Edwards, Sara Lain, Mary Patino

and Amy Perkins . . . Silverton received an inch of rain in a hard shower early Monday evening and intermittent showers Tuesday morning dropped another .25 of an inch on the town section . . .

**August 11, 1966**-Rodeo Queen candidates are Roy Ann Bomar, Ruth Ann Minyard, LaQuita Bomar, Venita Teeple, Diana Strange, Lexie Younger and Juannah Nance . . . Miss Jackie Durham of Lockney visited Mr. and Mrs. Bill Durham and Kirk Monday . . . Mrs. Harold Edwards was a patient in Swisher Memorial Hospital Friday and Saturday of last week . . . The work on the drive-in is progressing and the opening is expected in the next two or three weeks. Perry Thomas has been overhauling the projectors. Kenneth Tate has been doing the wiring. Virgil Henson did the survey work for the ramps and drainage system and Rhode Pipe Company laid the water lines. Frank Hunt drilled the water well. Pat Northcutt has been in charge of getting the caliche hauling done. George Seaney has been overseeing the project, with Fred Brannon, J. W. Brannon, Richard Hill and Edwin May doing the painting and carpentry work . . . Mr. and Mrs. Randall Eddleman, Mr. and Mrs. Bill Durham and Mr. and Mrs. Charles Sarchet spent a long weekend in Ruidoso, New Mexico . . . Paula Turner, Arnold Turner and Mrs. S. R. Turner were in Tulia Friday . . . Mrs. Ronald Kitchens has recently had minor throat surgery in an Amarillo hospital . . . Mr. and Mrs. William E. Jowell, Phil and Debbie spent the weekend with Mrs. J. E. Jowell. They will be moving to Rochester soon and he will be teaching vocational agriculture . . . Scott Whitfill of Rockport is spending a visit with his grandparents, Mr. and Mrs. Ben Whitfill and Mr. and Mrs. L. E. Paige . . . Clyde Mercer has been a patient in Swisher Memorial Hospital this week . . . Mrs. Hugh Nance was a patient in the Plainview Hospital over the weekend . . . Mr. and Mrs. Allen Kellum and David and a boy from the childrens' home in Lubbock vacationed in Ruidoso, New Mexico from Friday through Wednesday . . . Mr. and Mrs. L. B. Garvin, jr., Lane and Danna are vacationing in Ruidoso, New Mexico . . . Mr. and Mrs. Rex Tiffin, Jackie and Cheryl are attending a Jehovah's Witnesses Convention in San Francisco, California . . .

**August 8, 1956**-Mrs. Douglas Coleman, nee Valetria Ann Weaver, was honored guest at a miscellaneous shower in the home of Mrs. Clyde Lightsey Saturday . . . Mr. and Mrs. Fred Strange and son visited her parents, Mr. and Mrs. J. T. Poole, in Floydada on Sunday . . . Mr. and Mrs. Dock Wallace and family moved into their home in the east part of town last week. They recently purchased the house from Mr. and Mrs. Robert Tolliver . . . Donnie Leon Perkins, son of Mr. and Mrs. Arthur M. Perkins, was enlisted in the United States Army August 6 for a period of three years. Marion Watters Perkins, son of Mr. William M. Perkins, was enlisted with Donnie for a period of three years. Both will be forwarded to Fort Bliss, Texas . . . Berle Wayne Monk, 22, was killed instantly about 1:30 p.m. Friday when the State Highway Department station wagon in which he was riding was struck by a vehicle that ran a stop sign 11 miles east of Kress . . . Mr. and Mrs. L. K. Gilkeyson are announcing the engagement and approaching marriage of their daughter, Sharon, to H. B. Simpson, son of Mr. and Mrs. O. V. Simpson of Amarillo . . . Friends have learned that Frank Havran of Cortez, Colorado, a former Silverton resident, has been seriously injured in a car wreck . . . Gwenlyn Paige was hostess at a kitchen shower for Miss Gail Word, bride-elect of Billy Satterfield, Saturday . . . Misses Helen and Roxanna McJimsey went to Amarillo Monday where they plan to attend business college . . . Miss Inette Shelton, who underwent an emergency appendectomy recently, has returned home and was able to attend church Sunday morning . . . Misses Karla Weaver, Susan Anderson, Mary Jane West, Vaughnell Rowell, Carol Elkins and Shirley Fitzgerald are attending a West Texas Music Camp at WTSC in Canyon . . .

**August 13, 1936**-Womans Society will have a party Monday at the home of Mrs. Homer Sanders . . . During last week and continuing this week a Vacation Bible School is being held at the Presbyterian Church under the able direction of Rev. John C. and Mrs. Thrans, with the assistance of Wilma Dickerson . . . Mrs. G. W. Sweat and Mrs. A. G. Stevenson were pleasing and cordial hostesses when they entertained the Floral Club at the home of Mrs. Stevenson last Friday afternoon . . . Red Diviney further improved his modern laundry this week with the addition of a steam boiler . . . Those who will receive degrees at West Texas State Teachers College on August 20 are Anna Lee Anderson, Mrs. A. L. Redin, Sadie Summers, Orville P. Cowart

and Marcus Joel Graham . . . Honoring Misses Katherine Douglas, Lampasas, and Gaynelle Douglas, Silverton, Mr. and Mrs. Watson Douglas entertained Thursday night with a chicken barbecue and watermelon feast at the beautiful Whiteley home nine miles south of Silverton. They were assisted by Mrs. Orlin Stark and Mrs. Irene Ayres, sisters of Mrs. Douglas . . . Editor Roy Hahn wrote: "Old Sol has really been bearing down for the past week or so. Twenty-three drops of what had been rain hit here Monday afternoon, which were more than offset by a dark dry substance known in Western Kansas as dust . . . They tell me that cotton is a dry weather plant. Briscoe County, and for that matter most of the country hereabouts, should reap a bumper crop. If I had a cotton crop though, I believe I'd take a chance and ask the good Lord for just about enough rain to make cotton picking a little cooler work" . . . Joe Mercer and J. R. Steele were in Plainview Tuesday on business . . . Caroline Schott entertained with a picnic in honor of Mrs. Virgil Ballard of Dallas Tuesday evening. Present were Gwendolyn Cloyd, Josephine Daniel, Geraldine Biffle and Aurelia Sanders . . .

## Silverton School Lunch Menu

Thursday, August 18-Steak Fingers, Gravy, Mashed Potatoes, Green Beans, Jelly, Bread, Butter, Milk

Friday, August 19-Hamburger, Cheese, Chips, Salad, Fruit, Milk

Monday, August 22-Beef & Cheese Taco, Salad, Fruit, Milk

Tuesday, August 23-Corn Dog, Macaroni & Cheese, Fruit, Milk

Wednesday, August 24-Spaghetti, Corn, Fruit, Milk

Thursday, August 25-Steak, Gravy, Mashed Potatoes, Green Beans, Bread, Fruit, Milk

Friday, August 26-Ham & Cheese Sandwich, Salad, Chips, Fruit, Milk

## Silverton School Activities

Thursday, August 18-First Day of School

Friday, August 19-Owls Scrimmage with Trinity Fellowship, there, 5:00

Tuesday, August 23-Booster Club Hamburger Supper, 6:30, football field

Friday, August 26-Owls scrimmage with Patton Springs, here, 5:00

## Auto Home Life INSURANCE

For your insurance needs...

Whether you need Auto, Home or Life Insurance, you can be sure we will work hard to provide you the best coverage for your money. That's why Americans from all walks of life depend on Farm Bureau Insurance.



David True



Sandy Forhand



Auto • Home • Life

Helping You is what we do best.

sfbli.com • txfbins.com

806-983-3777  
Floydada, Texas

Texas Farm Bureau Mutual Insurance Co.  
Texas Farm Bureau Underwriters  
Southern Farm Bureau Casualty Insurance Co.  
Southern Farm Bureau Life Insurance Co.  
Farm Bureau County Mutual Insurance Company of Texas

### Happy Birthday- Happy Anniversary- Make Mornings Easier

August 18-Edwin May, Lanis McWilliams, Jennifer Conder, Brennen Cole George

August 19-Maria Castillo, Casey Frizzell, Jeff Tiffin

August 20-Bill Durham, Opal McClure, Lindsey Weaks, Scotty Harris

August 21-Palmira Ramirez Womack, Ty Copeland

August 22-LaRue Garvin, Max Davis, Mandy Rampley, Cody Bridges, Susan Pool, Tommy Bitner, Bradley Harrison

August 23-Shannon Bingham, Pat Fitzgerald, Tammi Stafford, Kirk Couch, Levi Hutsell, Amanda Kennedy, Brooke Lynn Daily

August 24-Dorothy Johnson, Tonya Perkins, Louis Grabbe, Gary Whitfill

August 18-Mr. and Mrs. Gordon Lowrey

August 20-Mr. and Mrs. Jeffrey Grimland, Mr. and Mrs. Max Garrison, Mr. and Mrs. Gary Younger

August 21-Mr. and Mrs. Gene Whitfill

August 22-Mr. and Mrs. Martin Smith

August 23-Mr. and Mrs. Gary Chandler

August 24-Mr. and Mrs. Ron Nistler, Mr. and Mrs. Walter Hill

*A successful man is one who can lay a firm foundation with the bricks that others throw at him.*

Sidney Greenberg

*As one person I cannot change the world, but I can change the world of one person.*

Paul Shane Spear

NAPS--Weekday mornings in a household with children and working adults may never be peaceful, but they can be easier, promises Barbara Anderson, Ed.D., vice president of education for KinderCare Learning Centers,

which operates more than 1,250 early childhood education and child care centers nationwide.

Plan ahead. Schedule after-school activities. Lay out school clothes, pack lunches, plan breakfasts, be sure homework is done before bedtime.

Involve children in some decisions. Let them choose the red shirt or the blue, Cheerios or Chex.

Experienced moms swear by stickers or gold stars, even an occasional piece of candy as a reward for getting out the door on time.

Be sure everyone gets enough sleep.

## Silverton ISD Announces Policy For Free, Reduced-Price Meals

Silverton ISD has announced its policy for providing free and reduced-price meals for children served under the *National School Lunch Program*. Each school or the central office has a copy of the policy, which may be reviewed by any interested party.

The household size and income criteria identified below will be used to determine eligibility for free and reduced-price benefits. Children from households whose income is at or below the levels shown are eligible for free or reduced-price meals. Foster children who are the legal responsibility of a welfare agency or court may also be eligible for benefits regardless of the income of the household with whom they reside. Eligibility for the foster child is based on the child's income.

Application forms will be distributed to all households with a letter informing households of the availability of free and reduced-price meals for their children on the first day of school. Applications also are available at the principal's office in each school. To apply for free and reduced-price meals, households must fill out the application and return it to the school. Applications may be submitted anytime during the school year.

The information households provide on the application will be used for the purpose of determining eligibility and verification of data. Applications may be verified by the school officials at any time during the school year.

For school officials to determine eligibility for free and reduced-price benefits, households receiving food stamps or Temporary Assistance for Needy Families (TANF) only have to list their child's name and food stamp or TANF case number. An adult household member must sign the application.

Households that do not list a food stamp or TANF case number must list the names of all household members, the amount and source of the income received by each household member, and the Social Security number of the adult household member who signs the application. If the adult who signs the application does not have a Social Security number, the household member must indicate that a Social Security number is not available by writing the word "None," "No Number," or some indication that the person does not have a Social Security number. The application must be signed by an adult household member.

Under the provisions of the free and reduced-price meal policy, Missy Forbes will review applications and determine eligibility. Parents or guardians dissatisfied with the ruling of the official may wish to discuss the decision with the reviewing official on an informal basis. Parents wishing to make a formal appeal for a hearing on the decision may make a request either orally or in writing to Superintendent Jerry Birdsong @ 823-2476.


If a household member becomes unemployed or if the household size increases, the household should contact the school. Such changes may make the children of the household eligible for benefits if the household's income falls at or below the levels shown.

In accordance with federal law and U. S. Department of Agriculture policy, this institution is prohibited from discriminating on the basis of race, color, national origin, sex, age or disability.

To file a complaint of discrimination, write USDA, Director, Office of Civil Rights, Room 326-W, Whitten Building, 1400 Independence Avenue, Southwest, Washington, D. C. 20250-9410 or call (202) 720-5964 (voice and TTY). USDA is an equal opportunity provider and employer.

### NATIONAL SCHOOL LUNCH AND CHILD NUTRITION PROGRAMS 2005-06 INCOME ELIGIBILITY GUIDELINES

FAMILY SIZE	ANNUALLY		MONTHLY		TWICE PER MONTH		EVERY TWO WEEKS		WEEKLY	
	FREE	REDUCED	FREE	REDUCED	FREE	REDUCED	FREE	REDUCED	FREE	REDUCED
1	\$12,441	\$17,705	\$1,037	\$1,476	\$519	\$738	\$479	\$681	\$240	\$341
2	\$16,679	\$23,736	\$1,390	\$1,978	\$695	\$989	\$642	\$913	\$321	\$457
3	\$20,917	\$29,767	\$1,744	\$2,481	\$872	\$1,241	\$805	\$1,145	\$403	\$573
4	\$25,155	\$35,798	\$2,097	\$2,984	\$1,049	\$1,492	\$968	\$1,377	\$484	\$689
5	\$29,393	\$41,829	\$2,450	\$3,486	\$1,225	\$1,743	\$1,131	\$1,609	\$566	\$805
6	\$33,631	\$47,860	\$2,803	\$3,989	\$1,402	\$1,995	\$1,294	\$1,841	\$647	\$921
7	\$37,869	\$53,891	\$3,156	\$4,491	\$1,578	\$2,246	\$1,457	\$2,073	\$729	\$1,037
8	\$42,107	\$59,922	\$3,509	\$4,994	\$1,755	\$2,497	\$1,620	\$2,305	\$810	\$1,153
9	\$46,345	\$65,953	\$3,863	\$5,497	\$1,932	\$2,749	\$1,783	\$2,537	\$892	\$1,269
10	\$50,583	\$71,984	\$4,217	\$6,000	\$2,109	\$3,001	\$1,946	\$2,769	\$974	\$1,385
11	\$54,821	\$78,015	\$4,571	\$6,503	\$2,286	\$3,253	\$2,109	\$3,001	\$1,056	\$1,501
12	\$59,059	\$84,046	\$4,925	\$7,006	\$2,463	\$3,505	\$2,272	\$3,233	\$1,138	\$1,617
For each additional family member add:										
	\$4,238	\$6,031	\$354	\$503	\$177	\$252	\$163	\$232	\$82	\$116



**Don't get caught out in the weather with your investment this year!!!**  
call  
**The Altman Group Inc.**  
Byron Brock  
Office:823-2189 Cell:847-7345  
Protect your investment with our competitive **Crop Hail** policy

**Myers - Chancellor**  
Funeral Homes  
Now Locally Owned & Operated  
*Providing Dignified Funeral Services*  
in  
*Silverton, Quitaque & Turkey*  
**823-2121 or 423-1313**  
"Let us care for your family, like we would want ours cared for!"

**GOEN FOR INSURANCE**  
*When you need to know you made the right decision.*  
**GOEN & GOEN**  
102 E. California, Floydada TX 79235  
806-983-3524  
[www.goen-goen.com](http://www.goen-goen.com)

We appreciate your business  
and support your  
community activities!



**378**

**Liquor, Wine & Beer**

301 FM 378 847-2600 Silverton

Open Monday - Saturday 10:00 a.m. - 9:00 p.m.

Closed Sunday

**Notice to Contractors  
of Proposed Texas  
Department of  
Transportation (TxDOT)  
Contracts**

Sealed proposals for contracts listed below will be received by TxDOT until the date(s) shown below, and then publicly read.

**CONSTRUCTION/  
MAINTENANCE/BUILDING  
FACILITIES CONTRACT(S)**

Dist/Div: Childress

Contract 0925-00-053 for Crack Cleaning & Sealing in Childress County, etc. will be opened on September 8, 2005 at 1:00 p.m. at the State Office.

Plans and specifications are available for inspection, along with bidding proposals, and applications for the TxDOT Prequalified Contractor's list, at the applicable State and/or Dist/Div Offices listed below. If applicable bidders must submit prequalification information to TxDOT at least 10 days prior to the bid date to be eligible to bid on a project. Prequalification materials may be requested from the State Office listed below. Plans for the above contract(s) are available from TxDOT's website at [www.dot.state.tx.us](http://www.dot.state.tx.us) and from the reproduction companies at the expense of the contractor.

NPO: 17411

**STATE OFFICE**

Constr./Maint. Division  
200 E. Riverside Dr.  
Austin, Texas 78704  
Phone: 512-416-2540

**DIST/DIV OFFICE(S)**

Childress District  
District Engineer  
7599 U. S. 287  
Childress, Texas 79201-9705  
Phone: 940-937-2571

Minimum wage rates are set out in bidding documents and the rates will be part of the contract. TxDOT ensures that bidders will not be discriminated against on the grounds of race, color, sex, or national origin.

33-2tc

**Notice to Contractors  
of Proposed Texas  
Department of  
Transportation (TxDOT)  
Contracts**

Sealed proposals for contracts listed below will be received by TxDOT until the date(s) shown below, and then publicly read.

**CONSTRUCTION/  
MAINTENANCE/  
BUILDING FACILITIES  
CONTRACT(S)**

Dist/Div: Childress

Contract 0311-02-027 for Rehabilitation in Hall County, etc. will be opened on September 8, 2005 at 1:00 p.m. at the State Office.

Plans and specifications are available for inspection, along with bidding proposals, and applications for the TxDOT Prequalified Contractor's list, at the applicable State and/or Dist/Div Offices listed below. If applicable, bidders must submit prequalification information to TxDOT at least 10 days prior to the bid date to be eligible to bid on a project. Prequalification materials may be requested from the State Office listed below. Plans for the above contract(s) are available from TxDOT's website at

[www.dot.state.tx.us](http://www.dot.state.tx.us) and from reproduction companies at the expense of the contractor.

NPO: 17492

**STATE OFFICE**

Constr./Maint. Division  
200 E. Riverside Dr.  
Austin, Texas 78704  
Phone: 512-416-2540

**DIST/DIV OFFICE(S)**

Childress District  
District Engineer  
7599 U. S. 287  
Childress, Texas 79201-9705  
Phone: 940-937-2571

Minimum wage rates are set out in bidding documents and the rates will be part of the contract. TxDOT ensures that bidders will not be discriminated against on the grounds of race, color, sex, or national origin.

33-2tc

**2005 PROPERTY TAX RATES  
IN THE  
BRISCOE COUNTY**

This notice concerns 2005 property tax rates for Briscoe County. It presents information about three tax rates. Last year's tax rate is the actual rate the taxing unit used to determine property taxes last year. This year's "Effective" Tax rate would impose the same total taxes as last year if you compare properties taxed in both years. This year's "Rollback" rate is the highest tax rate the taxing unit can set before taxpayers can start tax rollback procedures. In each case these rates are found by dividing the total amount of taxes by the tax base (the total value of taxable property) with adjustments as required by state law. The rates are given per \$100 of property value.

**LAST YEAR'S TAX RATE:**

Last year's operating taxes	\$	567,901
Last year's debt taxes	\$	-0-
Last year's total taxes	\$	567,901
Last year's tax base	\$	83,563,073
Last year's total tax rate		<u>.6796/\$100</u>

**THIS YEAR'S EFFECTIVE TAX RATE:**

Last year's adjusted taxes (after subtracting taxes on lost property)	\$	567,397
This year's adjusted tax base (after subtracting value of new property)	\$	87,869,818

**= This year's effective tax rate \$ 0.64570/\$100**

**THIS YEAR'S ROLLBACK RATE:**

Last year's adjusted operating taxes (after subtracting taxes on lost property)	\$	567,397
This year's adjusted tax base	\$	87,869,818
This year's effective operating rate	\$	0.6457/\$100
x 1.08 = This year's maximum operating rate	\$	0.697356/\$100
+ This year's debt rate	\$	-0- /\$100

**= Rollback Tax Rate 0.697356/\$100**

**STATEMENT OF INCREASE/DECREASE**

If Briscoe County adopts a 2005 tax rate equal to the effective tax rate of \$0.64570 per \$100 of value taxes would increase compared to 2004 taxes by \$2,578.

**SCHEDULE A**

**UNENCUMBERED FUND BALANCES:**

The following estimated balances will be left in the unit's property tax accounts at the end of the fiscal year. These balances are not encumbered by a corresponding debt obligation.

<u>Type of Property Tax Fund</u>	<u>Balance</u>
----------------------------------	----------------

General Administration & Road & Bridge	\$703,246.42
--	--------------

**SCHEDULE B**

2005 DEBT SERVICE: None

**SCHEDULE D**

The Briscoe County Treasurer certifies that Briscoe County has spent \$0 in the previous 12 months beginning July 1, 2004, for the maintenance and operations cost of keeping inmates sentenced to the Texas Department of Criminal Justice. Briscoe County Sheriff has provided information on these costs, minus state revenues received for reimbursement of such costs.

This notice contains a summary of actual effective and rollback tax rates' calculations. You can inspect a copy of the full calculations at the Briscoe County Tax Appraisal District, 415 Main (Courthouse), Silverton, Texas.

The person providing the above information is:

Pat McWaters  
Signature

Chief Appraiser  
Position

August 5, 2005  
Date

**2005 PROPERTY TAX RATES  
IN THE  
CITY OF SILVERTON**

This notice concerns 2005 property tax rates for the City of Silverton. It presents information about three tax rates. Last year's tax rate is the actual rate the taxing unit used to determine property taxes last year. This year's "Effective" Tax rate would impose the same total taxes as last year if you compare properties taxed in both years. This year's "Rollback" rate is the highest tax rate the taxing unit can set before taxpayers can start tax rollback procedures. In each case these rates are found by dividing the total amount of taxes by the tax base (the total value of taxable property) with adjustments as required by state law. The rates are given per \$100 of property value.

**LAST YEAR'S TAX RATE:**

Last year's operating taxes	\$	73,102
Last year's debt taxes	\$	-0-
Last year's total taxes	\$	73,102
Last year's tax base	\$	13,689,538
Last year's total tax rate	\$	<u>0.5340/\$100</u>

**THIS YEAR'S EFFECTIVE TAX RATE:**

Last year's adjusted taxes (after subtracting taxes on lost property)	\$	72,974
/ This year's adjusted tax base (after subtracting value of new property)	\$	13,975,472
= This year's effective tax rate	\$	<u>0.5222/\$100</u>

**THIS YEAR'S ROLLBACK RATE:**

Last year's adjusted operating taxes (after subtracting taxes on lost property)	\$	72,974
/ This year's adjusted tax base	\$	13,975,472
= This year's effective operating rate	\$	0.5222/\$100
x 1.08 = This year's maximum operating rate	\$	0.56397/\$100
+ This year's debt rate	\$	-0- /\$100
= Rollback Tax Rate	\$	<u>0.56397/\$100</u>

**STATEMENT OF INCREASE/DECREASE**

If the City of Silverton adopts a 2005 tax rate equal to the effective tax rate of \$.5222 per \$100 of value, taxes would increase compared to 2004 taxes by \$726.

**SCHEDULE A**

**UNENCUMBERED FUND BALANCES:**

The following estimated balances will be left in the unit's property tax accounts at the end of the fiscal year. These balances are not encumbered by a corresponding debt obligation.

<u>Type of Property Tax Fund</u>	<u>Balance</u>
General Fund	\$39,588.62

**SCHEDULE B**

2004 DEBT SERVICE: None

This notice contains a summary of actual effective and rollback tax rates' calculations. You can inspect a copy of the full calculations at the Briscoe County Tax Appraisal District, 415 Main (Courthouse), Silverton, Texas.

The person providing the above information is:

<u>Pat McWaters</u>	<u>Chief Appraiser</u>	<u>August 05, 2004</u>
Signature	Position	Date

# WEATHER

Recorded at 6:00 a.m.  
During August 2005

	High	Low	Precip.
1	91	61	
2	94	60	
3	93	61	
4	93	62	
5	90	64	
6	80	60	
7	86	60	
8	83	63	.19
9	88	62	
10	89	62	
11	88	63	
12	91	62	
13	91	63	2.30
14	83	64	2.51
15	67	62	.02
16	76	62	
Total August Precipitation			5.02
Normal August Precip.			2.64
Normal Precip. to date			20.42
Precip. Rec'd. to date			15.87

**Letter to the Editor**

In reference to the statement by the chairman of the National Cotton Council, Mr. Wood Eastland, about CAFTA being such a good thing. I think time will tell that it is a very bad bill. I watched the U. S. House of Representatives proceedings that night and they held the vote open for two hours. It finally passed by two votes.

I think we will see more factories and industries closing their doors in the months ahead. One of the worst aspects is the open borders which will allow more and more illegal drugs to come into our country.

It is 1300 pages long and who knows what is in it? It's a stepping stone to the Free Trade Area of the Americas (FTAA) agreement. This would wipe out all borders in our hemisphere and is patterned after the European Union (EU). This is truly something that cannot be allowed to happen.

Thank you,  
Glenna Lee By  
3516 N. Ridgewood Dr.  
Midwest City, OK 73110

**Fall Garden**

Texas Cooperative Extension  
Briscoe County  
David Hawkins, CEA-Ag

It's time to start planting fall gardens. Warm season vegetables, like beans and tomatoes, need to be planted as soon as possible. Cool season crops, like broccoli and cabbage, can wait until September. A simple calendar equation can help determine planting dates for any crop. Take the length of time it takes for the crop to mature, and count back from the first frost date. This is when you should plant. Due to recent rains across the state,

some gardens may need an application of nitrogen. If so, Extension recommends one pound of nitrogen per ten square feet of garden space.

New uses for reclaimed waste water are being researched. It may be used someday for irrigating crops. However, there's still some concern about safety. Research using reclaimed water was performed on spinach. The goal was to see how viruses move in sandy and clayey soil. The results showed that although no viruses were found on the spinach leaves, it was found on the crusty surfaces of both types of soil.

**Notice to Contractors of  
Proposed Texas  
Department of  
Transportation (TxDOT)  
Contracts**

Sealed proposals for contracts listed below will be received by TxDOT until the date(s) shown below, and then publicly read.

**CONSTRUCTION/  
MAINTENANCE/  
BUILDING FACILITIES  
CONTRACT(S)**

Dist/Div: Childress  
Contract 0032-03-036 for Districtwide Seal Coat in Cottle County, etc. will be opened on September 8, 2005, at 1:00 p.m. at the State Office.

Plans and specifications are available for inspection, along with bidding proposals, and applications for the TxDOT Prequalified Contractor's list, at the applicable State and/or Dist/Div offices listed below. If applicable, bidders must submit prequalification information to TxDOT at least 10 days prior to the bid date to be eligible to bid on a project. Prequalification materials may be requested from the State Office listed below. Plans for the above contract(s) are available from TxDOT's website at www.dot.state.tx.us and from reproduction companies at the expense of the contractor.  
NPO: 17350

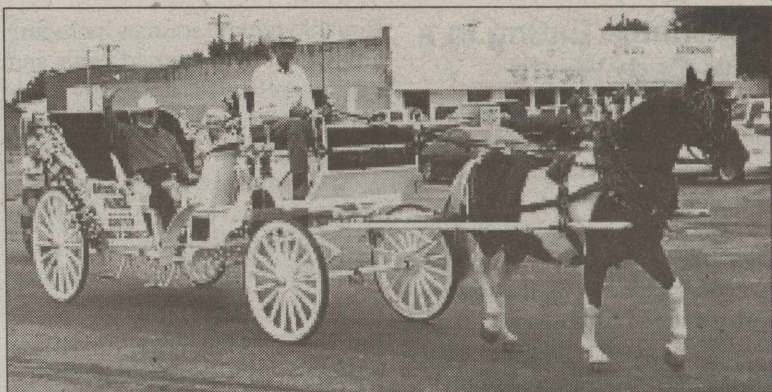
**STATE OFFICE**

Constr./Maint. Division  
200 E. Riverside Dr.  
Austin, Texas 78704  
Phone: 512-416-2540

**DIST/DIV OFFICE(S)**

Childress District  
District Engineer  
7599 U. S. 287  
Childress, Texas 79201-9705  
Phone: 940-937-2571

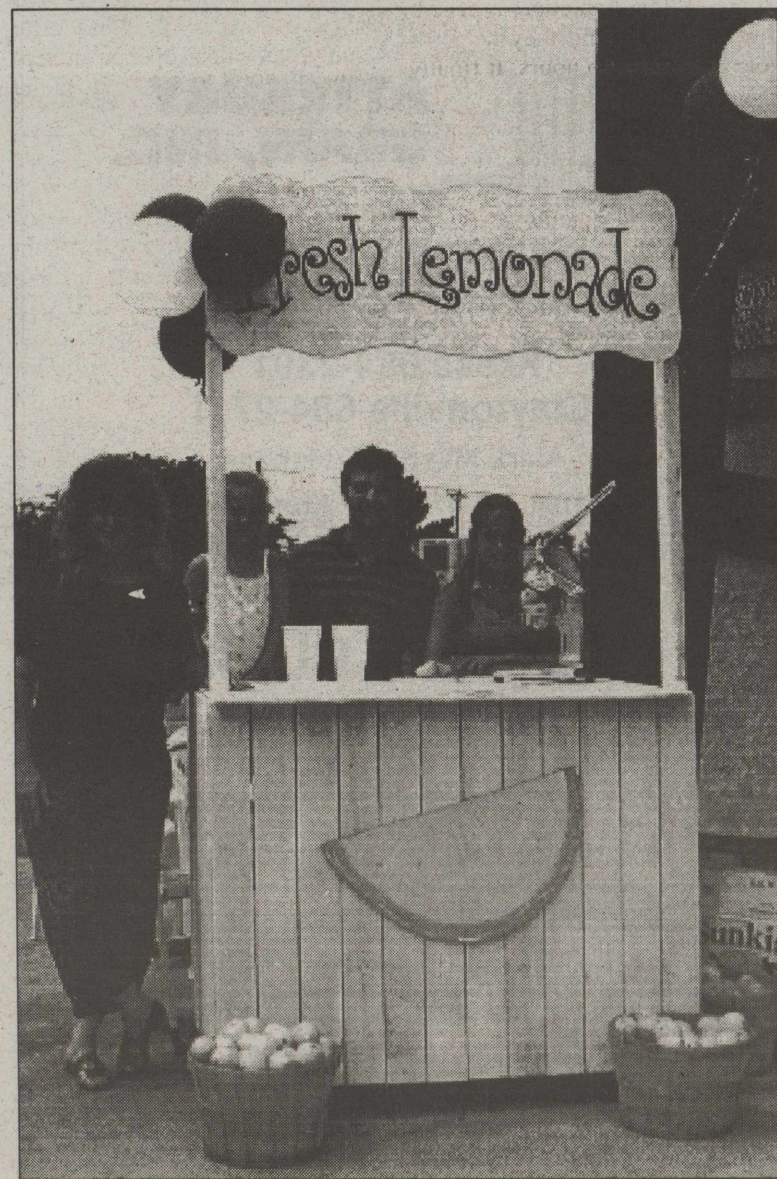
Minimum wage rates are set out in bidding documents and the rates will be part of the contract. TxDOT ensures that bidders will not be discriminated against on the grounds of race, color, sex, or national origin.  
32-2tc



Jake and Jo Mae Merrell were presented as the Pioneer Couple of the Day in the Briscoe County Birthday Parade Saturday morning.  
Briscoe County News Photo



Silverton's football players and cheerleaders appeared on a float in the Celebration parade Saturday morning. The Owls will be scrimmaging at Trinity School in Amarillo Friday beginning at 5:00 p.m.  
Briscoe County News Photo



Lisa, Kaitlin, and Sheridan Reagan and Clay Strange were serving lemonade in front of Silver City Mercantile Saturday.  
Photo by Tina Nance

## Caprock SWCD Taking Orders For Fall Trees

Caprock Soil and Water Conservation District is currently taking orders for its fall tree sale. Fruit and shade trees, as well as a variety of shrubs, will be available for order. Orders will be taken until Wednesday, August 10. Trees will then be placed on order. NO extras will be ordered.

Fall is the perfect time to plant bare root stock. These trees will be shipped in time for fall planting. Caprock SWCD also sells drip supplies for optimum care of your trees.

For more information, call 806-823-2341, Extension 101, or go by the Natural Resources Conservation Service (NRCS) office in Silverton located at 410 Lone Star.



Gene Smith and his son, Koree, rode in the parade Saturday morning in the "little fire truck" Gene designed and built.

Briscoe County News Photo

*It's hard to be humble, when you're as great as I am.*

Muhammad Ali

*Some people get lost in thought because it is such unfamiliar territory.*

G. Behn

*Man learns little from success, but much from failure.*

Arabic Proverb

*Treat yourself as if you were already the person you want to become.*

Wayne W. Dyer

(Rev. 4-00/1)

### NOTICE OF PUBLIC MEETING TO DISCUSS BUDGET AND PROPOSED TAX RATE

The Silverton Independent School District will hold a public meeting at 8:00 PM, August 30, 2005 in Room 1 Silverton High School

Silverton, Texas. The purpose of this meeting is to discuss the school district's budget that will determine the tax rate that will be adopted. Public participation in the discussion is invited.

The tax rate that is ultimately adopted at this meeting or at a separate meeting at a later date may not exceed the proposed rate shown below unless the district publishes a revised notice containing the same information and comparisons set out below and holds another public meeting to discuss the revised notice.

#### Comparison of Proposed Rates with Last Year's Rates

	Maintenance & Operations	Interest & Sinking Fund*	Total	Local Revenue Per Student	State Revenue Per Student
Last Year's Rate	\$ 1.34	\$ *	\$ 1.34	\$3422	\$4488
Rate to Maintain Same Level of Maintenance & Operations Revenue & Pay Debt Service	1.1415		1.1415	3141	4768
Proposed Rate	\$ 1.36	\$ *	\$ 1.36	\$3806	\$5122

\* The Interest & Sinking Fund tax revenue is used to pay for bonded indebtedness on construction, equipment, or both. The bonds, and the tax rate necessary to pay those bonds, were approved by the voters of this district.

#### Comparison of Proposed Levy with Last Year's Levy on Average Residence

	Last Year	This Year
Average Market Value of Residences	\$35,000	\$35,000
Average Taxable Value of Residences	\$20,000	\$20,000
Last Year's Rate Versus Proposed Rate per \$100 Value	\$1.34	\$1.36
Taxes Due on Average Residence	\$268	\$272
Increase (Decrease) in Taxes		\$4

Under state law, the dollar amount of school taxes imposed on the residence homestead of a person 65 years of age or older or of the surviving spouse of such a person, if the surviving spouse was 55 years of age or older when the person died, may not be increased above the amount paid in the first year after the person turned 65, regardless of changes in tax rate or property value.

Notice of Rollback Rate: The highest tax rate the district can adopt before requiring voter approval at an election is 1.393. This election will be automatically held if the district adopts a rate in excess of the rollback rate of 1.393.

#### Fund Balances

The following estimated balances will remain at the end of the current fiscal year and are not encumbered with or by a corresponding debt obligation, less estimated funds necessary for operating the district before receipt of the first state aid payment:

Maintenance and Operations Fund Balance(s)	\$ 68,383.00
Interest & Sinking Fund Balance(s)	\$ -0-

# Classifieds

GET THE JOB DONE!  
Buy • Sell • Trade • Rent • Hire

## FOR SALE

**Call For Your Personal and Business Cellular Phone needs.** Free Phone on new activations. Call if you need a Rate Plan Change. 800-687-9910. Tom Burson or 847-7070 Bryan Burson. CellularONE-Silverton-Quitauque-Turkey.

33-tfc

**Feed and VIGORTONE Minerals.** Call 847-7070 or 800-687-9910.

33-tfc

**Driveway material for sale:** Norman and Bill Strange, 823-2571 or 847-2273.

8-tfc

**Long's Pecans For Sale.** This year's crop. \$5.50 per pound. One pound or three-pound bags available. 847-2617.

15-tfc

**For Sale:** 1430 gal. Butane Tanks; will take bids. Silverton Fire Department.

10-tfnc

**Thank-You Notes** at the Briscoe County News office.

**Need a gift for someone special in your life?** How about "Footprints of Time in Briscoe County, Vol. II, 1992?" Only \$35.00. Available from any Briscoe County Historical Society member or at the Courthouse.

46-2tnc

**Terry Grimland Welding Shop - Portable - Aluminum Welding - Small Engine Repair - Dealer for Nichols Sweeps & Tillage Tools**  
806-823-2214

**Karol's Kountry Korner**  
Quitauque, Texas  
Call toll free  
877-455-1174  
for all your  
Gift & Floral Needs  
We will deliver

## HOE MASTER SERVICES

BACKHOE SERVICES  
IRRIGATION REPAIR

SEPTIC SYSTEMS  
TRENCHING

GORDON LOWREY  
Box 795  
Silverton, TX 79257



Mobile (806) 847-7560  
Home (806) 823-2255

**Scotswifie. New Jams:** High Dearie Dumpsy, Romance-Passion Fruit & Hint Grape; Caramel Apple Jam; Pecan Jam; Orchard Jelly; Lemon Curd; Red Hot Candy Jelly, and more. Sweetsies: Fours-Pecan, Caramel Covered in Chocolate; Strawberry-Brandy Truffles; Rum Truffles; Peppermint Creams. Call 823-2508 or come by and visit Shirlieann.

25-tfc

**Get your Watkins Products** at Briscoe County News in Silverton. We have pepper, vanilla, cinnamon, others. 823-2333.

**Boxed get-well, sympathy, birthday, all occasion, thinking of you cards** at the Briscoe County News.

**Gift Bags for all occasions** at the Briscoe County News.

## THE HANDYMAN

Plumbing, Yard Work,  
Drywall, Flooring,  
Lighting, Painting,  
Odds & Ends

Give us a call  
Jeff & Vicky Tiffin

806-823-2062 or 847-7173  
*One less thing for you to do*

**For Sale:** Smoker on two-wheel trailer. \$1200.00. Good for tailgating. 806-744-4457.

## TO GIVE AWAY

We have kitties to give away. Janinne Brooks.

33-1tc

## AUTOMOTIVE SALES

'02 Olds Aurora, \$11,400. Extra clean, good gas mileage; '92 Olds Bravada, \$2,450. 823-2150 or 983-0281.

32-tfc

## WANTED

Want to purchase minerals and other oil/gas interests. Send details to: P. O. Box 13557, Denver, CO 80201.

1-52tp

## SERVICES

**CAKES!** I will still be baking cakes but will have them at my house. If you need a cake or to place an order, please call and leave a message and your phone number and I will return your call. Juannah, 823-2370.

4-tfnc

**Cuts & Curls--Now open all day Monday, Tuesday and Saturday until noon.** to make an appointment with Amy, call 823-2297 or 823-2123.

30-4tc

Will do carpentry, general house repair, painting, fencing. Call Vic Hartman, Cell 847-7507 or Home 633-4374.

29-tfc

**Computer/Electronics Problems?** Call 292-4313 or 847-2273.

17-tfnc

**SILVERTON AA and Al-Anon Meetings.** Wednesdays at 8:00 p.m. Call 806-823-2020 or 806-455-1258.

23-tfnc

**AA-Al-Anon Meetings Mondays** at 8:00 p.m. at Quitauque. Call 806-823-2020 or 806-455-1258.

4-tfnc

## GARAGE SALE

**Garage Sale** across highway from Rock Creek Church of Christ Saturday, August 20, 8:00 a.m. until everything is gone. Refrigerator, Propane Stove, Computer Desk, Clothes, and lots more. 847-2271.

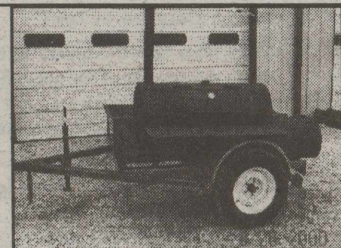
33-1tp

*An essayist is a lucky person who has found a way to discourse without being interrupted.*

Charles Poore

*There is no sincerer love than the love of food.*

George Bernard Shaw



**OUTLAW SMOKER TRAILER**  
2'X6' SMOKER GRILL #3500 AXLE  
22" X 4' SMOKE AREA  
16" X 2' FIRE BOX WITH GRILL  
2'X 6' WOOD BOX

Phone 806-744-4457  
806-543-4457

## Affordable Eating in a Low-Carb World

**NAPS--Low-carb diets** are all the rage, with many people sharing stories of successful weight loss and healthier lives.

According to a recent Opinion Dynamics Corp. poll, 26 million Americans are on a hard-core, low-carb diet and 70 million more limit their carb intake without formally dieting. Recent research found that three out of five low-carb eaters say that they plan to limit carb intake for life.

With its emphasis on lean meats, fish, fruit and vegetables, low-carb diets can cost \$85 to \$100 per week for one person. Multiply this by additional family members and maintaining a low-carb lifestyle can be expensive. Fortunately, there are ways families can save money. BJ's Wholesale Club offers some tips to help balance your weight and your wallet.

- Consider shopping at a wholesale club for up to 30% savings on groceries. Choice meats, poultry, fish, fruits, vegetables, beverages and pre-packaged low-carb products are at a significant discount.
- Shop for a variety of more af-

fordable protein sources including chicken, pork, canned tuna and eggs as well as heart healthy alternatives such as chicken sausage or turkey bacon.

- Buy multipacks (two or three items per) or buy bulk sizes to minimize your cost per unit.

- Fresh produce is an important part of any healthy diet, and frozen vegetables and fruit are an affordable, high quality alternative.

- Purchase a vacuum sealer to optimize and preserve food's freshness during storage or stock up on resealable storage bags, plastic wrap and aluminum foil.

- Think about space in your refrigerator, freezer and pantry, and buy quantities of food that can be accommodated.

For a list of more than 150 BJ's Wholesale Clubs, visit [www.bjs.com](http://www.bjs.com)

For All Your  
**Mary Kay Cosmetics**  
Contact  
**SARA MARTIN**  
Independent Beauty Consultant  
823-2558



## ATTEBURY GRAIN, INC.

**Silverton 823-2080**

Harold Edwards, Manager

**Kress 684-2391**  
**Claytonville 684-2711**

Mark Maynard, Manager

P. O. Box 1144

Kress, Texas 79052

P. O. Box 771

806-823 2074

## ZIEGLER PUMP

SILVERTON, TEXAS

DOMESTIC, IRRIGATION AND WINDMILL

JERRY MILLER, 806-823-2167

Your Business and Friendship Appreciated!

Buy USA Grown & Made--It Matters!

## JOHNSON GIN COMPANY

1-800-338-3960

Rex Johnson Family

P.O. Box 717

Phone 806-823-2224

Silverton, Texas 79257

or 823-2223

