

Serving the Pheasant Capitol of Texas

The Stratford Star

NUMBER 46

USPS 523-108 Publishing for 90 years in Stratford, Sherman County, Texas 79084

NOV. 14, 1991

35 CENTS



Notices

Crimestoppers Telephone Number
396-2600

Report Child Abuse
Weekdays 8 a.m. to 5 p.m.
935-5838
Dept. of Human Services, Dumas
After 5 p.m. & on weekends
396-5551
Ask for DHS worker on Call

PTA Update

November 19th is a very important day to taxpayers and school children. The case to determine the constitutionality of creating the CED school districts comes before the Texas Supreme Court on this day. Please keep this in your thoughts.

Elks to Play Wellington

The Stratford Elks will play Wellington in a Bi-District playoff at 7:30 p.m. Friday November 15th at Randall High School in Amarillo.

Girls Cross Country To Go To State

Girls Cross Country will compete for State on Saturday, November 16th in Georgetown at Southwestern University. They will begin at 10:50 a.m.

New Depot Museum Hours

Starting November 1st, Depot Museum Hours will be 2:00 to 4:00 p.m. Monday thru Friday.

Museum Christmas Ornaments On Sale

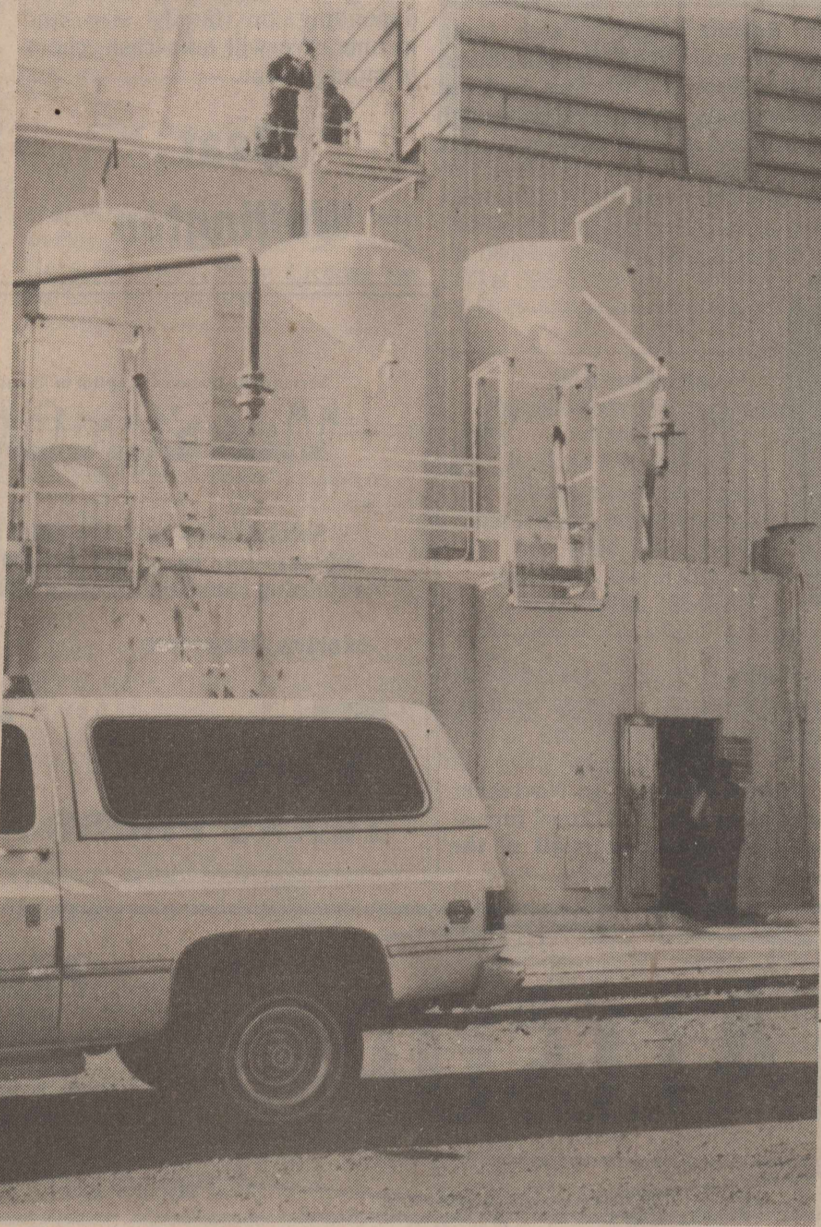
MUSEUM CHRISTMAS ORNAMENTS are available at the Appraisal District Office. 1991 and any previous years you might need. \$10.00 donation for these collector's items.

Royalty Pictures Are On Display

Pictures taken of the Royalty at the Fall Festival will be on display on the bulletin board across from Mr. Haynes office in the High School. They will be left there for one week, for anyone interested in getting reprints.

Time To Give Blood

Give blood on Wednesday November 20th from 9 until 3 p.m. at the Stratford High School in the Old Gym. This is sponsored by Student Council. Coffee Memorial Blood Center from Amarillo, Texas will be on hand to take your donations.



Fatal Accident At Cargill

Billy Thurman, age 55 of Stratford was killed in an Industrial Accident last Wednesday Morning, November 6th at Cargill in Stratford. Shown above is Dee Brannan and Eddie Williams working diligently trying to rescue Mr. Thurman.



The Womens Division of the Stratford Chamber of Commerce recently decorated main street for Fall. Shown above is Melody Valesquez, Natacha Dyess and Arnita Lane.

Great American Smoke Out

Thursday, Nov. 21, will be the American Cancer Society Great American Smoke out. How many of you smokers and smokeless tobacco users would be willing to stop smoking for one day? Perhaps for the rest of your life? How many of you readers are swayed by magazine ads on cigarettes?

The tobacco industry might contend that it is only targeting women because women comprise an increasingly larger segment of the smoking population today than in the past.

Many health professionals and others have suggested that the poor coverage of the health hazards of smoking in most women's magazines is explained by their acceptance of cigarette advertising and attendant fear of offending their financial patrons. Although cigarette ads represent a smaller proportion of total advertising revenues in women's magazines than was true a decade ago, they are still sizable in absolute dollars.

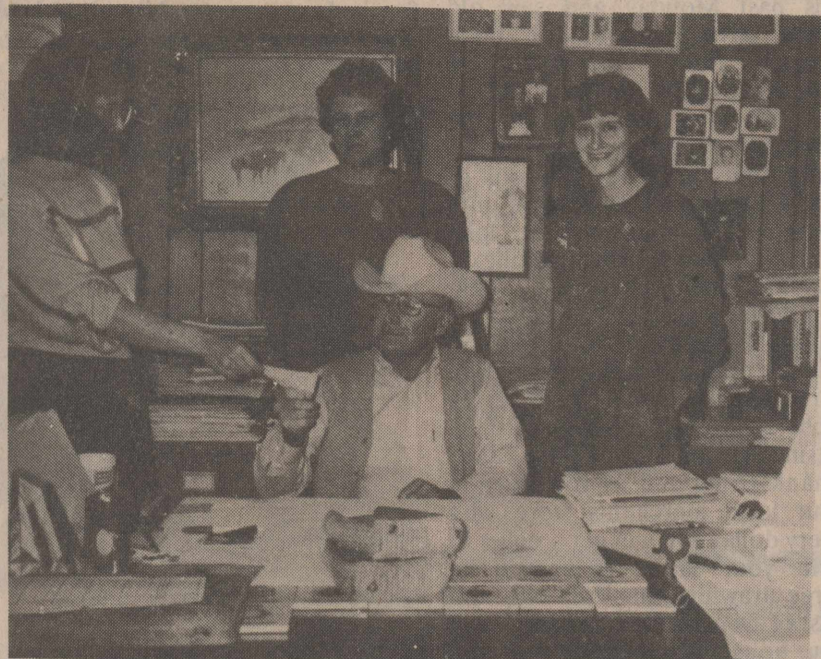
Good Housekeeping magazine (of which a number of people in Sherman County know Johnny Mack Carter Editor in Chief-He married here in Stratford) does not accept cigarette advertising, and has the best track record of

publishing major articles on the dangers of smoking, whereas most magazines that accept cigarette advertising, with the notable exception of Vogue-have published few, if any, articles on the subject.

Other magazines acknowledged for excellent articles on women and smoking is Mirabella Magazine. Hadassah magazine also deserves mention for its public announcement to no longer accept cigarette ads. There may be more to follow.

Tobacco Company sponsorship of Womens's sports, arts, and politics, however tempting it might seem in these days of funding difficulties, must be seen for what it-a distribution of profits earned at the expense of Women's lives. We should let the editors of Women's magazines know that we do not want publications in our homes that advertise a product that now accounts for one in four cancer deaths among American women.

A quote from a young seven year old girl, "They wanna Make you think that cigarettes will make you beautiful, but really they just wanna make money. Those ads are dumb because cigarettes make you die."



Flores Wins Groceries

Joe Flores was presented a Gift Certificate for a \$100 worth of Groceries at Thriftway. Standing behind Mr. Flores is Keri Knight, who sold him the winning ticket. Also is Tammie Helmuth and Jolene Skaggs, co-chairmans of the Fund Raising Committee. Proceeds go to Nu Beta Scholarship Fund.

Area Economic Developers Attend Meat Trade Show

Ten area economic developers attended the 1991 International Meat Industry Convention and Exposition Oct. 17-20 in Chicago, identifying potential prospects and promoting northwest Texas and eastern New Mexico to meat processors, according to attendee Tim Pierce, director of economic development for the South Plains Association of Governments.

The economic developers, who were sponsored in part by Southwestern Public Service Company, set up the SPS exhibit that explains the benefits of relocating to northwest Texas and eastern New Mexico and talked with senior executives of meat processing companies.

"This show provided us with a first-hand opportunity to visit representatives of this industry," said participant Michael Carr, executive vice president of the Deaf Smith County Chamber of Commerce.

"It allowed the attendees to tell our story about New Mexico and the South Plains and Panhandle of Texas," Pierce said.

"It's an effort to bring industry in to enhance existing businesses," said participant Dottie Hoxie, executive director of the Clovis Chamber of Commerce.

While the attendees said no companies they talked to have definitely committed to relocating to the region, they did develop some potential prospects from the 12,000 people who were at the show.

"We did generate some leads that are being followed up on," said Carr. "There is one in particular that would be great for the area."

"It's going to take a while to see if we're going to see any benefit

from it," Hoxie said.

Besides identifying potential prospects, the area attendees said the exhibition provided the chance to establish the reputation that this region supports meat processing, said Pierce.

This long-term public relations effort will pay off, according to Carr she said, "We have to plant the seeds."

"I feel the utilization of these trade shows in our overall marketing effort is a viable strategy in trying to identify prospects," Pierce said. "I feel this particular trade show was in keeping with the kinds of businesses and companies that would be a natural match for our area."

"I thought overall, the AMI show was very worthwhile," Carr said. "It certainly added some visibility for this area to the meat packing industry."

While the participants were in Chicago, some also met with businesses there who had responded to the direct mailing of the High Ground of Texas coalition sent out a month earlier.

Others attending were: Greg Boggs, agriculture marketing consultant for Southwestern Public Service Company Kim Puzey, executive director of the Roosevelt County Board of Economic Development; Kirk Folkner, assistant for the Amarillo Economic Development Corporation; John Castro, assistant vice president of the Lubbock Board of City Economic Development; Cheryl Pink, economic development manager for Southwestern Public Service Company and Alan Adcock, chairman of the Economic Development council in Clovis.

Summerour Recently Hired At Texas A & M

Berry Summerour has recently been hired by Texas A & M University with the Texas Agriculture Extension Service as an Extension assistant in International Marketing. He will serve as the Project Coordinator for the GEMS (Global Entrepreneurship Management Support) Project.

He was involved in the formation of the International Agribusiness Management Association and attended the Inaugural Symposium which was held in Boston, Massachusetts, March 3-5 of this year. Berry was appointed to serve on the

International Chapters Committee as well as the Student chapter Committee of the IAMA.

Berry will be traveling to Nashville, Tenn. in January, 1992 to present a paper at the Economics and Marketing Conference of the 1992 United States Beltwide Conferences.

He will also be traveling to Oxford, England, in May of 1992 to present two to three papers on the Globalization of Agribusiness.

Berry is the son of Buzz and Nell Summerour of Conlcn, Texas and a graduate of Stratford High School.

Trails West To Host Area Artist Sat. Nov. 16th

Saturday, November 16th, TRAILS WEST will be hosting an artist reception and open house featuring the Southwest Art of Manuel S. Franco.

Manuel Franco paints photo-realistic watercolors and has considered himself an artist since the age of five. Inspired by his mother's artistic work in glass, he has been painting ever since.

What keeps Franco on a straight and true path is the legacy left him by his father. "My father had a great deal of influence on my life. He was tough but gentle, an honest man who wasn't working just for dollars, a man who loved his land and his family. I learned a lot from him," says Franco. The same character shows in Franco: He confronts life directly and honestly in a no-frills approach. What you see is what you get.

Originally from a small town in the state of Chihuahua, Mexico, Mr. Franco recieved a degree from the University of Chihuahua as a mining engineer. After several years of mining, Franco decided to dedicate himself to his first love-his art. Franco ended up in Dumas, where his little brother worked for a packing plant. "I landed a job in the same place, found a family that was willing to 'adopt' me, and enrolled in the local art center," he says.

Franco's first public showing was at the Dumas Annual Art Bazaar and from there he just kept going, gradually moving up the ladder to the Colorado and Texas Indian markets, the native arts festival in Calgary, and other major shows. An article in the May/June Art of the West magazine gave him national recognition.

Although his subject matter includes cowboys, indians and still lifes, Franco is concentrating more and more on Southwestern scenes. He wants to be known as a Southwest artist because his Indian/Mexican background leads him in that direction. Franco's great great grandmother on his fathers side was a full blooded apache.

Manuel S. Franco will be at TRAILS WEST in Stratford, Saturday, November 16th from 1 until 8 in the evening. Plan to come by and enjoy some refreshments and a visit with this fascinating and talented artist. A professional artist since 1978, Franco has come a long way. With a blockbuster talent, the Sky's the limit for him!!

Swinford & Chisholm To Speak at PTA Meeting

State Representative David Swinford and Area Representative Warren Chisholm will be speaking at the Parent, Teachers meeting Thursday, Nov. 14, 1991 at 7:30 p.m. at the Mary Allen Cafitorium. The program will be "How to Best Influence Legislation" and an update on the CED.

Child care will be provided. Students work will be on display. The public is invited and urged to attend. Refreshments will be

Fund Established For Lillian Valenzuela

A fund has been set up for Lillian Valenzuela at the First State Bank. Lillian has a tumor and has no medical insurance. She is presently employed at Headquarters restaurant.



Obits

Mary E. Dietrich

Mary E. Dietrich, 87, died Tuesday, Nov. 5, 1991.

Services were held at 11 a.m. Friday, in the First Christian Church at Stratford and at 3 p.m. in Boxwell Brothers Funeral Home Chapel at Perryton with the Rev. David Harker, pastor of First Christian Church of Stratford, officiating. Burial was in Ochiltree Cemetery in Perryton.

Mrs. Dietrich, born in Boonville, Mo., moved to Stratford in 1976 from Perryton. She married George Dietrich in 1923 at Perryton. He died in 1965. She was a member of the First Christian Church at Perryton, where she was Sunday School superintendent for 30 years. She was a Red Cross Volunteer at Senior Village. She had taken painting under Dord Fitz.

Survivors include a daughter, Elaine Gurley of Stratford; a son, Don Dietrich of Stratford; a sister, Anna Cooper of Gruver; a brother, Leonard Barlow of Perryton; four grandchildren; and five great grandchildren.

The family requests memorials be to Coldwater Manor, Box 1189, Stratford, Texas 79084 or a favorite charity.

Billy Thurman

Billy "Red" Thurman, 55 died Wednesday, Nov. 6, 1991.

Services were held at 11 a.m. Saturday Nov. 9th in First Assembly of God Church with the Rev. Michael K. Leonard, pastor, officiating. Burial was in Stratford Cemetery by Morrison Funeral Directors.

Mr. Thurman, born in Oklahoma, had been a resident of Stratford since 1978. He was a U.S. Army Veteran of the Korean War. He was a member of the First Assembly of God Church.

Survivors include three sons, Tod Thurman of Sterling City, Billy Thurman Jr. of Kingsland and Gary Thurman of Glendale,

Ariz.; a daughter, Melissa Stroud of Austin; his parents, Mr. and Mrs. E.T. Thurman of Indio, Calif.; two brothers, Willis Thurman of Indio and Lynn Doyle Thurman of Oklahoma City; three sisters, Doris Cunningham of Aurora, Colo., Winnie Bolding of Carlsbad and Penny Paul of Glendale, Calif.; and four grandchildren.

The family requests memorials be to the First Assembly of God Church in Stratford.

Wesley Winston Miller

Texhoma-Wesley Winston Miller, 83, died Wednesday, Nov. 6, 1991.

Services were held at 2 p.m. Monday, Nov. 11th in Bunch-Roberts Funeral Home Chapel with the Rev. Oscar Elliott officiating. Burial was in the Texhoma Cemetery by Bunch-Roberts Funeral Home of Guymon.

Mr. Miller was a longtime resident of the Texhoma community. He was born in Custer City, Okla. He married Lena May Boyce in 1941 at Cimarron County, Okla. He moved to the Texhoma area from Custer City as a child. He was a farmer until retiring in 1976, was a member of

the Odd Fellows and attended the Texhoma Revival Center.

Survivors include his wife; five children, Wesley Miller of Alameda, Calif., Barbara Lake of Ardmore, Okla., Patricia Miller of Mustang, Okla., Charles Miller of Amarillo and Marie Fladby of Mustang; seven grandchildren and two great grand children. The family requests memorials be to a favorite charity. Contributions will be accepted at Bunch-Roberts Funeral Home, P.O. Box 1112, Guymon, Okla. 73942.



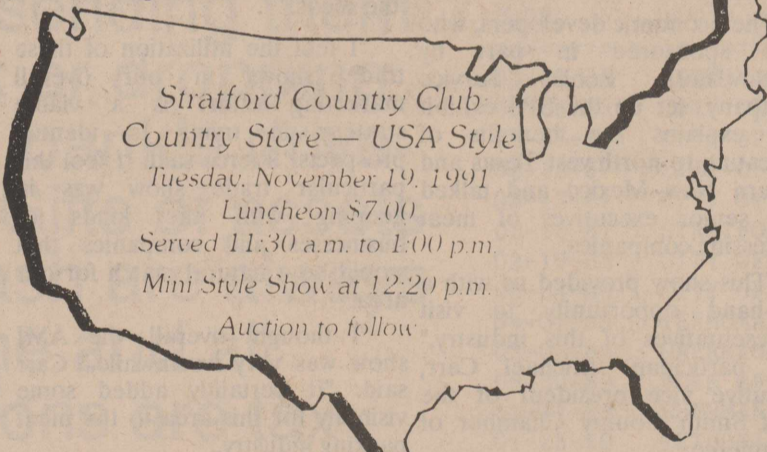
Chamber Chatter

by J. A. Lasley

"Of the land of the free and the home of the brave" that is how and what I felt when I arrived at work this past Monday and saw old Glory waving proudly on main street. For whomever is responsible-many thanks. And to the Women's Division of the Chamber thanks for dressing up mainstreet and giving it a look of fall. With only 43 more days until Christmas it shall not be long before mainstreet will be taking on a look of "Merry Christmas." Santa will be in town the 7th we will be having 2 drawings for Tip Top Bucks, one a \$500.00 shopping spree and the other for \$105.00. Tubs will be placed in the businesses on the Friday after Thanksgiving and as you shop in your local merchants store with every dollar you will get a ticket to write your name. There will be three drawings: the 7th, 14th and 21st of December. Incidentally have you bought your ticket for the \$500.00 shopping spree? There were only 250 tickets printed. I have a few at the Chamber office. Lets keep our tax monies in Stratford this season.

Congratulations to the big blue marching band. You are no. 1 with this community. Congratulations to the Elk football team-ditto and to the cross country girls who brought home the Gold, congratulations and good luck at State. Congratulations to the seniors on a very successful Fall Festival. I truly believe "Our Pride is really showing". This ought to be the year.

In closing, when you learn to say "Thanks for Everything," you are on the way to being a healthy, happy, well organized person. When you think only about your adversities, you bring more adversity to yourself. Stop thinking about YOUR Problems; instead, thank God for his wonderful gift of life. Look around you and cherish all your blessings.



Stratford Country Club
Country Store — USA Style
Tuesday, November 19, 1991
Luncheon \$7.00
Served 11:30 a.m. to 1:00 p.m.
Mini Style Show at 12:20 p.m.
Auction to follow



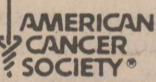
April Watley, Stephanie Reinart, Barrett Shafer, Caleb Lunt, showing their art work featured in the ARTS and CRAFTS book offered by CASA, 69, Inc. (CASA, Court Appointed Special Advocates, look out for the best interest of the child brought into the court system through abuse or neglect.) Craft books may be purchased at local businesses, Elk Pharmacy, Ellies and Trails West.



Alma Lee McMahan was on hand at the Christmas In November held Thursday, November 9th at the County Barn. A good crowd turned out for the demonstrations, delicious turkey dinner with all of the trimmings and several booths set up. Alma Lee has Creations.

"I'll Smoke Until the Day I Die!"

More people die from smoking than from car accidents, AIDS, drugs, and violent crime combined.
The time to quit is now, and we can help you.
Just call us.



1-800-ACS-2345

PUBLIC NOTICE

On April 16, 1991, GTE Corporation ("GTE") and Contel Corporation ("Contel") filed a joint petition for declaratory relief with respect to the obligations or requirements of GTE or Contel and/or any of its subsidiaries relating to the merger of GTE and Contel. GTE and Contel have requested a ruling from the Public Utility Commission of Texas that neither GTE nor Contel is required to report the merger of GTE and Contel pursuant to Section 63 of the Public Utility Regulatory Act ("PURA"), TEX. REV. CIV. STAT. ANN. art. 1446c (Vernon Supp. 1991), that no investigation of the merger by the Commission is required. In the alternative, GTE and Contel seek a determination that the merger is consistent with the public interest.

The Commission is investigating the merger between GTE and Contel Corporations to determine whether the merger is consistent with the public interest. In reaching its determination, the Commission shall take into consideration the reasonable value of the property, facilities or securities to be acquired, disposed of, merged or consolidated. If the Commission finds that the merger is not in the public interest, the Commission shall take the effect of the transaction into consideration in GTE Southwest Incorporated's and Contel of Texas, Inc.'s next rate-making proceeding and disallow the effect of such transaction if it will unreasonably affect rates or services.

This filing has been assigned Docket No. 10212. Persons who wish to intervene or otherwise participate in these proceedings should notify the Commission. A request to intervene, participate, or for further information, should be mailed by 3 p.m., December 31, 1991, to the Public Utility Commission of Texas, 7800 Shoal Creek Blvd., Suite 400N, Austin, TX, 78757. Further information may also be obtained by calling the Public Information Division of the Public Utility Commission at (512) 458-0256, or (512) 458-0221 teletypewriter for the deaf.

THE GENERAL STORE
806-396-5308

519 N. Poplar
Authorized Dealer
SALES & SERVICE



Immunization Clinic To Be Held

The Texas Department of Health will offer an immunization clinic on Wednesday, Nov. 13th from 1:00 p.m. until 3:00 p.m. at the Sherman County Barn, 501 S. Maple. Immunizations against the diseases of influenza, haemophilus influenza, polio, tetanus, diphtheria, pertussis, pneumococci, measles, mumps, and rubella will be available at this clinic. Parents planning to attend are encouraged to bring their child's shot records with them so that immunizations are not duplicated. The Health Department is assessing a nominal fee for this service. It is on a sliding scale from \$0.00 to \$15.00 depending on family size and income. We will take cash, check or money order.



Your Right To Know

There was a difficult situation that arose out of an accident last week. The ambulance was paged to the scene of an accident. The Fire Dept. was also paged. There was a man in trouble. There was also the possibility of trouble with the response teams. In the event of an explosion, for example, most of the response personnel could have been hurt. Who would be around to take over? Where would equipment come from to replace what is destroyed? There were a lot of spectators at the scene. Is it worth their life to see what is going on? The next Functional Exercise, to be held in 1992, will cover some of these problems. If you would like to be advised of the date so you can take part, give us a call and we will put your name on the list to be contacted.

Beat Wellington

Serving the Pheasant Capital of Texas

Second class postage paid at Stratford, Texas, 79084. Subscription rates are \$13.00 per year in Sherman & adjoining counties; all other \$20.00 per year.

Martha Robertson Editor & Publisher

MEMBER 1991

TEXAS PRESS ASSOCIATION

ALLSUP'S

PRICES GOOD AT ALLSUP'S #52 STRATFORD TEXAS

PRICES EFFECTIVE THRU NOV. 16, 1991

PEPSI

ALL TYPES PEPSI-COLA

12 PACK 12 OZ. CANS

\$3.39

ALLSUP'S MONEY ORDERS EACH **29¢**

HAM, EGG & BISCUIT EACH **89¢**

ALLSUP'S ICE CREAM 1/2 Gal. **\$1.89**

MIRACLE WHIP SALAD DRESSING qt. **\$1.59**

RUSSET POTATOES 10 Lb. Bag **69¢**

HOT, TABASCO, BACON & CHEDDAR

TOM'S FRIES REG. \$1.29 **99¢**

HAMBURGERS OR CHILI DOGS 2/\$1.00

DECKER **COOKED HAM** 10 OZ. ZIPLOCK PKG. **\$1.99**

ALLSUP'S MILK Gal. **\$2.49**

ALLSUP'S SANDWICH BREAD 1 1/2 Lb. Loaf **2/\$1.09**

HOT FOODS MENU		AVAILABLE AT ALL ALLSUP'S LOCATIONS
BARBECUE BEEF SANDWICH	99¢	9 PIECE BOX CHICKEN \$4.99
BARBECUE PORK RIBS (LB.)	\$3.99	BEEF & CHEESE CHIMICHANGA (MEAD)
BARBECUE WHOLE CHICKEN	\$3.99	CORN DOG
ALLSUP'S BURRITO	79¢	DELICIOUS HAMBURGER
BREAKFAST BURRITO	99¢	WILSON HOT LINKS
BURRITO BEEF & SALSA	\$1.19	SAUSAGE ON A STICK
DELICIOUS CHEESEBURGER	79¢	SAUSAGE & BISCUIT
CHICKEN FRIED STEAK	\$1.59	SAUSAGE, EGG & BISCUIT
3 COUNT CHICKEN STRIPS w/POTATO WEDGES/CHICKEN (2 PCS) BISCUIT	\$1.99	SAUTEY SAUSAGE
		4 COUNT STEAK FINGERS

CALL-IN ORDERS WELCOME CHECK OUR WEEKLY SPECIALS

Sponsor of the Week

CHAMBER OF COMMERCE

Stratford

PHOENIX CAPITAL OF TEXAS

Chamber of Commerce 806-396-2260

Service, Quality & Fair Value

FEATURED ON YOUR WHITE & GREEN PHONE BOOK COVER



Scot Notes

by Timmie Brown

Happy Veterans Day to you Sherman County Older Texans, Friends, Neighbors Scotters this overcast Monday a.m. Nov. 11, 1991. Temperature in Stratford is 40 degrees F; wind SSE at 9 mph and humidity is high. A little moisture has fallen this a.m. reminding O.T.s that snow CAN begin falling in November and the ground remain invisible until March or April. In case of snow falling on Saturday, Nov. 30, 1991. Beans and Corn bread at Scot Depression Supper would taste super! Mark the date!!

Any Scot Calendar underline in red ink Nov. 15, 1991 Friday, it is game night for Scotters and guests. Continue to red ink Thurs. Nov. 21 at 12 noon. That is Prospectus Study Club Thanksgiving dinner for Scotters. It is served at Scot Hall, of course, and Scotters match with their best salads, vegetables, desserts the turkey, dressing and gravy provided by the Club. THEN on Sat. Nov. 23 Scotters are to have food for sale at Thriftway Grocery, the Bake Sale to entice busy women and men to buy items for their Thanksgiving dinners! And maybe we should use Black and Red ink to mark Saturday, Nov. 30, 1991 at 5 p.m. because THAT date is the Depression Supper time. Scot's yearly fund raiser. We'll be SO glad not to keep mentioning these dates after Nov. 30. Are you talking about and selling and buying tickets for the Depression Supper? Good girls and boys if you are!

Friday, Nov. 8, birthday girl, Rowena Williams was present at Scot Hall to receive Best wishes from Opal Bryant, who brought the cake. Dicy and Max Stephenson, Clarence Willmott, Corda Pleyer, Elsie Pickens, Alda Mitts, Cecil Williams, Irene Butler, Geneva Bell.

The R.J. Hills, the Baskin Browns, the Lew Brunis, the Kenneth Pembertons attended the Guymon Sr. Citizens dance Sat. night.

Cleva Garrison's guest lately were her sister in law Oleta Leonard, son Gary and wife Carol Leonard. They were enroute to Florida.

Welcome home from Dumas Memorial Hospital, Dumas to Nancy Oakley, post mistress. Nancy fell on ice on the Court house walk last week, injuring her back. Best wishes for a speedy recovery. We the community miss you at the P.O.

Nellie Johnson Ingham visited her mother, Louella Johnson Friday and Saturday Nov. 8 and 9, the special occasion was to attend the wedding of Tamara Johnson

and Ron Oquin. The wedding was at grandmother Myrtle (Oquin) Starkers. home, Tamara is the daughter of Lola and James Johnson and granddaughter of Louella and the late J.S. Johnson. Ron is the son of Harry and Connie Garrison Oquin and great grandson of Cleva and the late G.R. Garrison. Ron is also the great grandson of Bertha Oquin and the late Ed Oquin. Great grandson of the late Dr. and Mrs. G.W. Dawson of Dalhart.

Lillie Galloway and brother Cecil, Page, Colo. are visiting relatives in Okla.

The quartet from Pampa which performed at the First Baptist Church Sunday (Nov. 10) evening was under the direction of Eddie Haggard a former Stratfordite,

Eddie's wife is the former Melissa Ellison, daughter of Alice and Clifford Ellison and Lavell Haggard is his mother. We listened on T.V. Eddie.

Hilma B. Cleveland, Longview, Texas was the house guest of Timmie B. Brown her sister in law this past week. Hilma's and relatives enjoyed a full week of visiting and feasting. The week was high lighted by a Birthday get together honoring Hilma at Maurine Plunk house on Friday. Calling was Mattie Baskin, Betty Brown, Pauline Martin, Dwight and Joy Hester, Audrey Gamble, Cynthia Gamble Reed, Calif., Katie Allen, Kathy Allen McDaniels, Sasha and Lynz Browning, Stacy Wyatt, Diedra Tarver, Sue Hudson, Lorelyn Powers, hosts Maurine Plunk and Timmie Brown. Hilma spent Wed. with nephew, Jim Tom Brown, then on Saturday at Timmie Browns house a number of relatives including little Merilee

Cont. On Page 9



Kerrick News

by Marylou McDaniel

Kerrick's Thanksgiving Supper is Friday, Nov. 22, 7 p.m. at the Community Center. If you have not been asked to bring a certain dish, bring a dish of your choice. There will be a donation box for those who wish to help Santa pay for the sack of treats he has ordered.

Cleaning time is Wednesday, Nov. 20, 10 a.m. Those cleaning and their spouses will have a covered dish luncheon at noon.

Little Shelby Lane McDaniel, daughter of John and Terri McDaniel and granddaughter of

Kayo & Jo June McDaniel, is still in Dumas Hospital. She has jaundice but is improving. See birth announcement.

George & Barbara Avent had a fish fry Saturday noon for the Bevin Avents and Lavert Avents.

Among those at Christmas in November in Stratford were Hank & Mabel Rogers, Jo June McDaniel, Nita Taylor, Barbara Schoonover and Joyce Irlbeck.

The Ben Tom James family attended the Fall Festival at Stratford School Saturday night.

Visiting Nov. 5th with Marylou McDaniel was Thelma Smith of Dumas. They went to Stratford to "play" with Merilee McDaniel. Merilee was an overnight visitor with her grandparents Friday.

Ron & Liz Rogers of Buffalo, OL., spent Sunday with Bill and Pat Boren.

Congratulations, Donnie Woolsey, for running in and finishing the New York City Marathon on Nov. 3!



Honor Roll

Texhoma Public School District No. 61 Honor Roll.

Principals Honor Roll is 9th grade, Jared Clark, Brad Cornelsen, Jerod McDaniel.

10th grade is Jennifer Baber, Levi Berry, Daphne Coffey, Jayson Cole, Mark Freeman, Brady Mithcell, Jana Skelton, Gary Wallace.

11th grade is Andrea Bolin, Tonia Burd, and Nathan Ross.

12th grade is Shawna Hale, Erik Jones, Tracy Winfrey.

Supt.s Honor roll is 12th grade Jason Hardaway.

Don't get the ax!

At XIT CELLULAR, you get quality "MOTOROLA" phones for the lowest prices!!!

\$279 2600 Permanent Mount - Installed with BASIC ANTENNA!

8000H Portable with Charger & \$50 Savings Bond from Motorola! **\$349**

Prices good at both XIT Cellular's Dumas & Dalhart locations... or with ALL AUTHORIZED AGENTS!

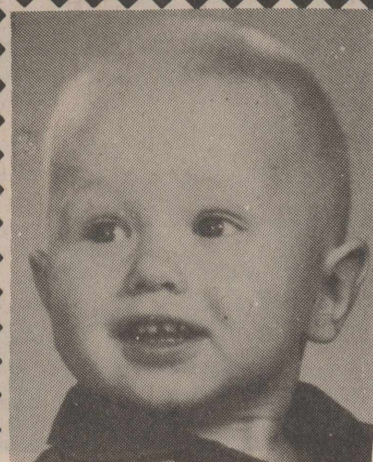
Get on over to XIT Cellular... before it's toooo late!!!



Call 384-3333 or 935-8777!

Activation with XIT CELLULAR required.

Good Luck Elks



Lordy, Lordy
LAVAKE'S
40
Happy Birthday Dad,
Brandie, Marcus & Cara

First Christian Church

Anthem "Praise Him!"

Adult Choir

Scripture Colossians 2:20-34

Susie Harlow

Sermon "Where to Focus: Earth, or Heaven?"

Women's Health Center

Normal and high risk pregnancies
Gynecologic cancer screening
Breast cancer screening
Infertility and family planning
Menopause and hormone problems



Dr. Turhan I. Baykan M.D.

Specializing in

OBSTETRICS-GYNECOLOGY

Monday-Friday 9 a.m. - 6 p.m.

Appointments 935-6599
Emergency 935-7171

Attend Services

The Churches of Stratford Welcome Your Family

ASSEMBLY OF GOD
Rev. Mike Leonard

Sunday School 9:45
Super Church 9:45
Morning Worship 10:45 a.m.
Evening Worship 6 p.m.
Wednesday-Youth Service 6:30 p.m.
Wednesday Bible Study 7 p.m.

CHURCH OF CHRIST
David Stites

N. 3rd & Chestnut St.
Sunday School 10:00 am
Morning Worship 11:00 am
Evening Worship 6:00 pm
Wednesday Bible Study 7:30 pm

CALVARY BAPTIST
Tony Roe

302 S. Main St.
Sunday School 10:00 a.m.
Morning Worship 11:00 a.m.
Evening Worship 6:00 p.m.
Wednesday Prayer Service & Bible Study 7:30 p.m.

FIRST BAPTIST

Dr. Derrel Lewis
702 North 3rd
Sunday School 9:45 am
Morning Worship 10:50 am
Church Training 6:00 pm
Evening Worship 7:00 pm
Wednesday Bible Study 7:30 pm

FIRST CHRISTIAN

Rev. David Harker
5th & N. Main St.
Sunday Coffee Fellowship 9:00 am
Sunday School 9:45 am
Morning Worship 10:45 am
Evening Worship 6:00 pm
Wednesday, Adult Choir 8:00 pm

FIRST UNITED METHODIST

Rev. John Wagoner
520 N. Main
Sunday School 9:40 am
Morning Worship 10:50 am
Junior High UMY 5:30 pm
Senior High UMY 6:00 pm
Evening Worship 6:00 pm

ST. JOSEPH CATHOLIC

Father Arturo Meza
Phone: 396-2119
Mass 9:00 a.m. Sunday



YOU'RE INVITED

TO

OPEN HOUSE

AT

FIRST STATE BANK

FRIDAY, NOVEMBER 22, 1991

REFRESHMENTS AND FELLOWSHIP
ART DISPLAY BY JAMES HANEY
FREE TURKEY TO BE GIVEN AWAY

OUR WAY OF SAYING THANK YOU!!

MEMBER FEDERAL DEPOSIT INSURANCE CORPORATION

Stratford Grain Co. 396-5541
Lautz 769-4485
Thriftway 396-5586
Ellie M's 396-2092

Stratford Star 396-5885

North Plains Savings & Loan 396-5534
Walter Lasley & Sons, Inc. 753-4411
Smith & Smith Well Co. Inc. 396-2111

Society

Go Elks



Mr. and Mrs. Tim Munson

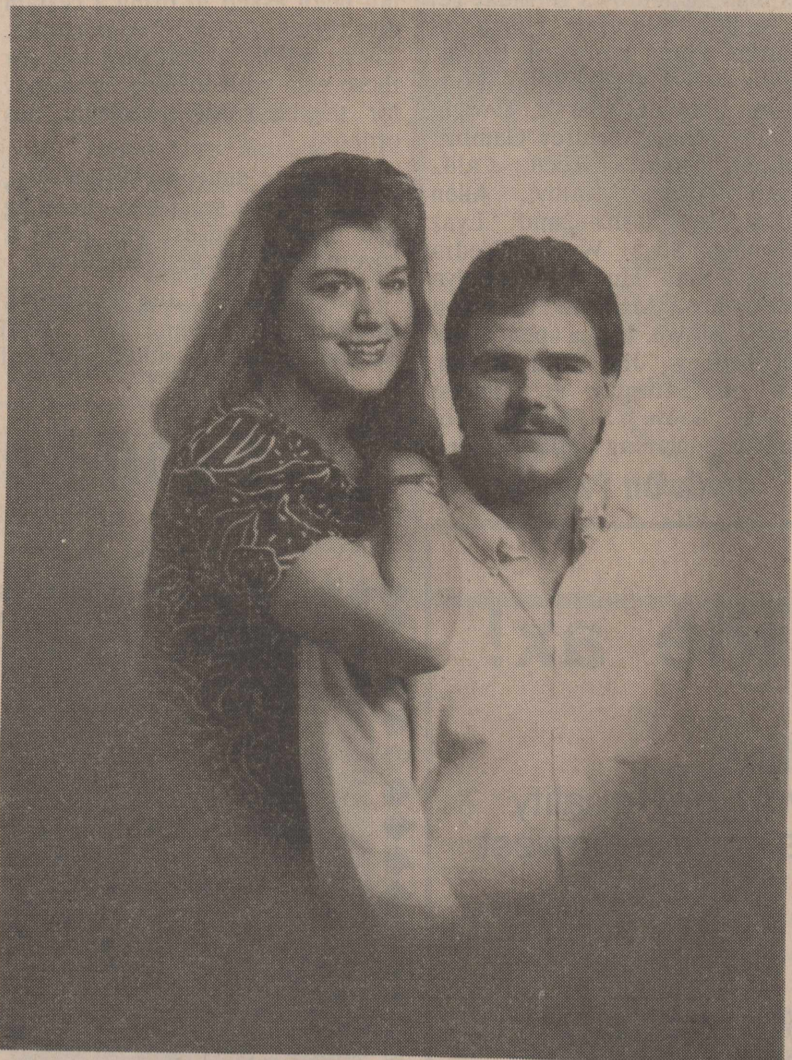
Natalie Engelbrecht and Tim Munson were married Saturday morning at Sacred Heart Catholic Church in Canadian. Father Gary Sides officiated. The bride is the daughter of Doreen Hambrick and Alvin Paul Engelbrecht of Amarillo. Parents of the groom are Mr. and Mrs. Raymond L. Munson of Canadian.

Bridal Attendants were Jeanne Bell of Stratford and Valerie Engelbrecht of Oklahoma City, sisters of the bride. Groomsman were Paul McShan of Wichita

Falls and Jeff Flowers of Amarillo.

The bride graduated from West Texas State University with a BBA degree in accounting. She is employed as a certified public accountant with Van Wieren and Jones, Inc., CPA's in Oklahoma City. The groom received a BS and MS degrees in Geology from West Texas State University. He is employed as a geologist for Cabot Oil and Gas, Inc. in Oklahoma City.

The couple reside in Edmond, Okla.



Mr. and Mrs. Ron Oquin

Tamara Johnson and Ron Oquin were united in marriage Saturday, November 9th at 10:00 a.m. in the home of Myrtle Starker, grandmother of the bride. The couple will reside in Stratford. Tamara is the daughter of James and Lola Johnson, and granddaughter of Mrs. J.S. Johnson and Mr. and Mrs. Bernie Starker of Stratford. She is employed by Thriftway. Ron is the son of Harry and Connie Oquin and grandson of Cleve Garrison of Stratford and Mr. and Mrs. George Oquir of Dallas. Ron is employed by Texaco.



Julie Martin and Craig Kendrick were honored with a couples shower Saturday evening in the home of Mr. and Mrs. Rex Christian. Shown above is Craig, Julie and Craigs parents Sonja and Cagle Kendrick.



These ladies are working very hard trying to get ready for the Country Store-USA Style, to be held at the Stratford Country Club on Tuesday, November 19, 1991 from 11:30 a.m. to 1:00 p.m. There will be a Mini Style Show at 12:20 p.m. and an auction to follow. Shown above is Linda Spurlock, seated. Standing left to right is Cathy Taylor, Elaine Lundberg, Barbara Dettle, Patti Vincent, Bernice Christian and Barbara Chumley.

REWARD

IF YOU DON'T SMOKE

Farmers can insure your life, home and auto for less money

CLAIM YOUR REWARD AT THE OFFICE BELOW

Carolyn A. Tarver-Agent
Allies Insurance Agency
First State Bank Bldg.
806-396-5513



Farmers New World Life Insurance Company
Mercer Island, WA

Texhoma Family Clinic

Dr. Chris Slater Dr. Rita Slater

Offering: Gynecological & Cardiovascular Services
X-Ray and Lab on Premises

School Physicals for a Reduced Fee

Open Monday, Tuesday, Thursday & Friday 9-5

Wed. 9 until noon
201 N. 2nd

Texhoma, Oklahoma

Phone: 405-423-7551

24 Hr. Phone-Call 405-338-6506

Appointments Only

"A Family Practice"



Lisa White, bride elect of Russell Edigar was honored with a bridal shower in the home of Pat Johnson, Saturday morning from 10 to 11:30. Shown above is Mrs. John Ediger, Fay White, Lisa, Carolyn White and Lula Caldwell.



Births



Mr. and Mrs. John McDaniel of Dalhart are the proud parents of Shelby Lane born Nov. 3, 1991. Shelby weighed 7 lbs. 9 ozs. She is welcomed into the world by a big brother Nicholas and Grandparents Kayo and Jo June McDaniel of Kerrick, Texas, Stan and Marlyn DeHaven of Scottsbluff, Neb. Great Grandmother Mary Siegrist, Hay Springs, Neb. and Marie Hallsted, Dalhart, Texas.



Pantomime performers in ancient Rome wore masks with three compartments. Each compartment had a different face.

FESTIVE

FREE DEMONSTRATION



FOODS '91

- ☆ New appliances
- ☆ New recipes
- ☆ Party ideas

Thursday, November 14
12:00 noon

Sherman County Extension Office

Meeting Room — 701 N. 3rd St.

Stratford

Reservations required — call 396-2122

Electricity — efficient use makes for a wise choice!



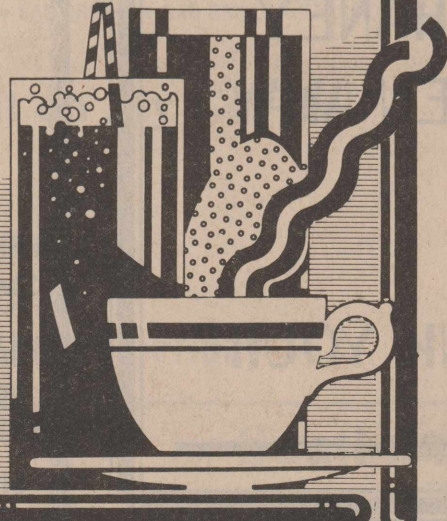
SOUTHWESTERN PUBLIC SERVICE COMPANY

P2010-10-91-930.1

Presented by:



CHRISTYE FROST
SPS Home Economist
and Sherman County
Extension Service



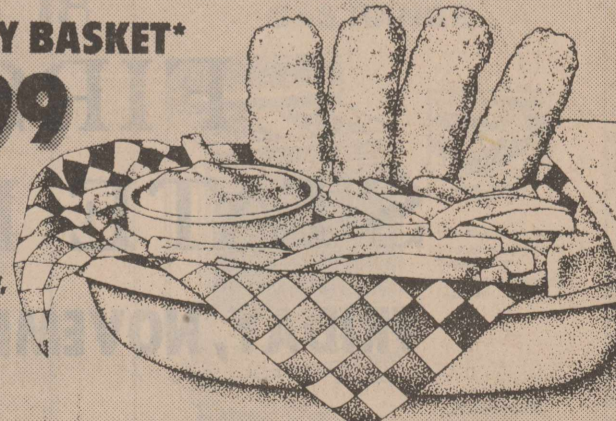
DQ BASKET VALUES!

ON SALE AT DAIRY QUEEN NOV. 11 - 24, 1991

COUNTRY BASKET*

\$1.99

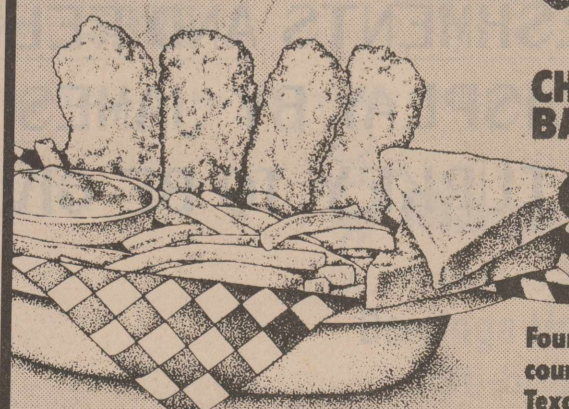
Four beef steak fingers, country gravy, fries, Texas toast



CHICKEN FILLET BASKET

\$2.99

Four chicken fillet strips, country gravy, fries, Texas toast

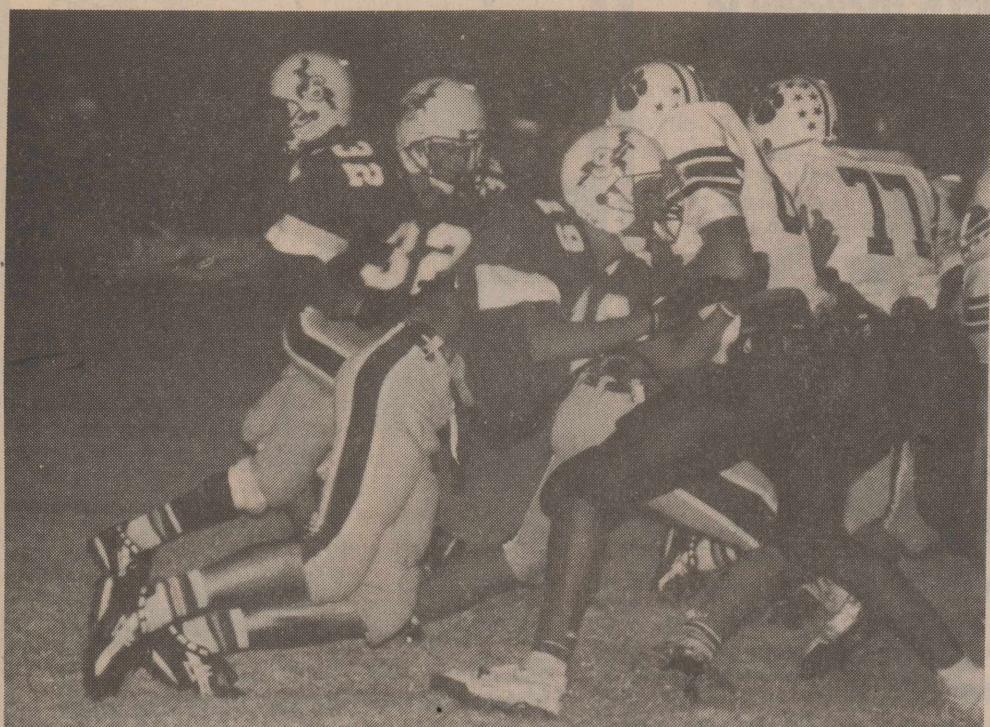


DQ IS VALUE/COUNTRY

At participating Dairy Queen stores. © Reg. U.S. Pat. & Tm. Off. Am. D.Q. Corp. *TM Reg. U.S. Pat. & Tm. D.Q. Op. Coun. © Tx. D.Q. Op. Coun.

Football

Elks Fall To Lynx



13 Donnie Gray, #32 Toby Diamond and #19 Alan Gore. Photo By Becky Asher

Spearman captured the 1-2A Championship Friday night by beating the Elks 35 to 7.

Stratford, 8-2 overall and 3-1 in 1-2A, will play ninth-ranked Wellington in a bi-district playoff at 7:30 p.m. Friday, November 15, 1991 at Randall High School in Amarillo.

Stratford had 16 first downs, 218 net yards rushing, 21 net yards passing for a total of 239 yards gained. 12 passes attempted and 3 completed. Stratford had 4 punts for an average of 30.2 yards. 4 opp. Fumbles recovered. Elks had 5 penalties for total of 40 yards.

Spearman had 19 first downs, 272 yards rushing, 193 net yards passing, for a total of 465 yards gained. 14 passes attempted and 6 completed. 4 punts for an average of 28 yards. 5 opp. fumbles recovered. 13 penalties, for a total of 105 yards.

Junior Gomez gained 142 yards on 32 carries, 1 touchdown and 1 extra point.

Greg Vandiver had 20 tackles and 1 interception. Junior Gomez had 14 tackles, Jeb Brotherton had 12 tackles and Albert Aquilera had 11.

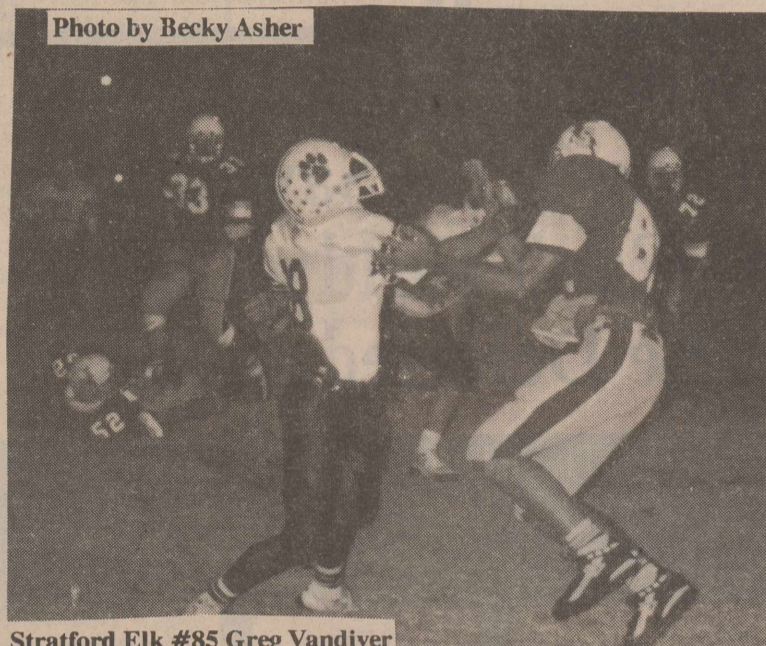
Good Luck Elks on Friday night against Wellington.



Go Elks

If you know about something that needs to be in the paper, please call & let us know about it. We can't publish it, if we are not aware of it. We also have cameras we loan out for you to take pictures when we can't make it. Please come by & check one out. This helps you and it helps us.

Thank You
The Stratford Star
396-5885



Stratford Elk #85 Greg Vandiver

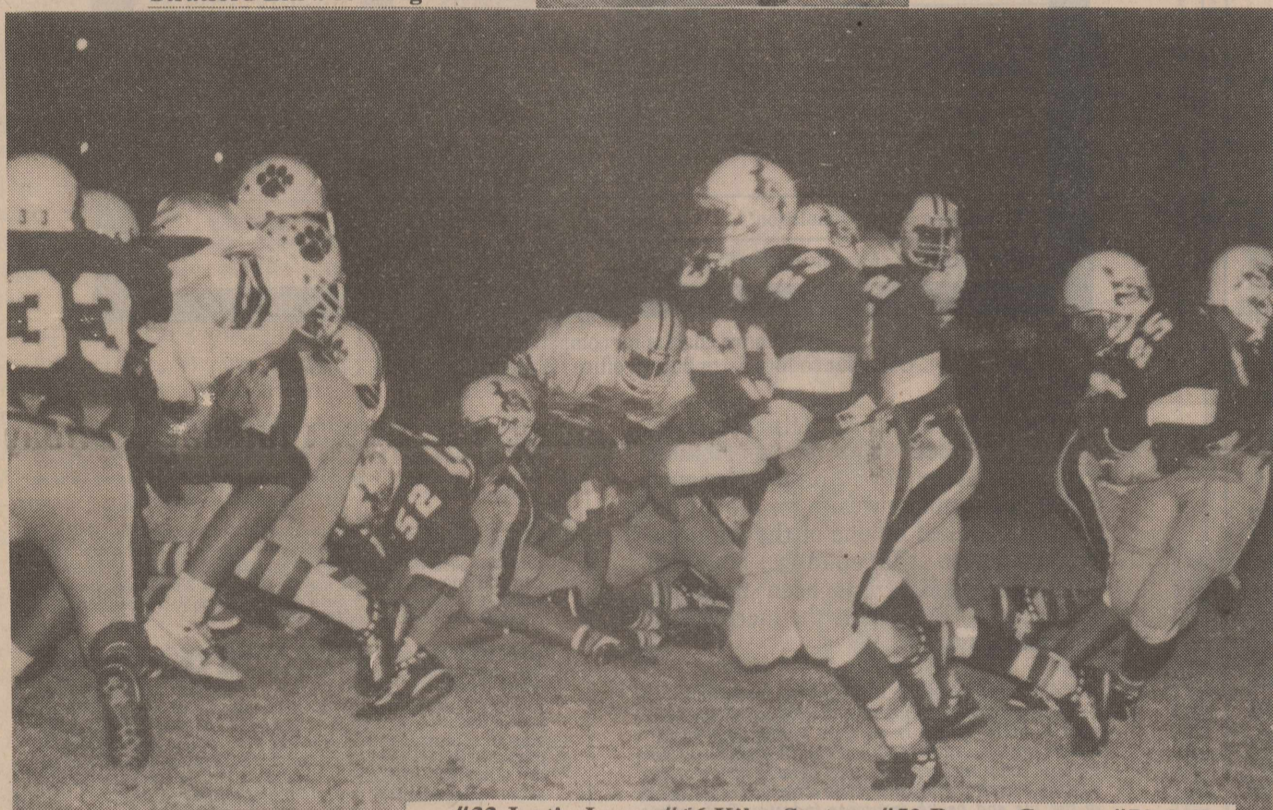


Photo by Becky Asher

#33 Justin Long, #66 Kiley Seaton, #52 Ramey Cozart, #72 Colby Wheeler, #23 Paul Davis, #32 Toby Diamond, #25 Junior Gomez, #13 Donnie Gray.

Beat Wellington



November 18 thru 22

Monday-Fish, corn, english peas, salad, rolled oat cake.

Tuesday-Frito Pies, cole slaw, spinach, corn bread and fruit.

Wednesday-Hamburger pizza, tossed salad, blackeyed peas, jello.

Thursday-Chalupas, mixed vegetables, lettuce, tomatoes, rolls and cowboy bread.

Friday-Hamburger, lettuce, tomatoes, onion, pickle slices, tator tots and peach cobbler.

The Stratford Elks will play Wellington in a Bi-district playoff at 7:30 p.m. Friday, November 15th at Randall High School in Amarillo.

Girls Cross Country will compete for State on Saturday November 16th in Georgetown at Southwestern University. They will begin at 10:50 a.m.

Girls Cross Country

Stratford Cross Country girls won First in Regionals at Lubbock on Saturday, November 9, 1991. Stratford had a total of 70 points, second was Springlake-Earth total of 91 points, Sundown-3rd, 104 points, Eldorado-4th with 118 points, Wall 5th with 131 points, Abernathy-6th 162 points, Spearman had 176, Winters had 203, Bangs had 220 pts., Anson had 220, Panhandle had 226, Coleman had 281, Idalou had 323 and Clarendon had 380.

Stratford girls will be competing for State at Georgetown Saturday, November 16th at Southwestern University at 10:50 a.m.

Sunny Lasley came in 2nd with a time of 0:12:54.9; Jolina Garoutte came in 6th with a time of 0:13:11.4; Elly Rhoades came in 19th with a time of 0:13:28.5; Wendy Palmer came in 24th, time of 0:13:35.9; Amber Woolsey came in 27th time of 0:13:37.6; Sarah Ortega came in 29th, time of 0:13:45.0; Ashley Parsons came in 77, time of 0:14:51.1.

Coach Mike Brownlee said "He was so proud of the girls, as they competed Saturday as a team effort which enabled them to snare first place".



Girls Cross Country Regional Champs at Lubbock are front row left to right Jennifer Haynes, Wendy Palmer, Sarah Ortega, Ashley Parsons, and Amber Woolsey. Back is Coach Mike Brownlee, Sunny Jo Lasley, Jolina Garoutte, Sasha Browning, Elly Rhoades, Kaci Wight and Lea Shuping.

Editors Note: In Last weeks story about Cross Country it should have mentioned that Kelli Wight won District in JV Cross Country.

Our apologies Kelli and Congratulations.

We're Proud of You Girls

Good Luck At State

Business Directory

This Page Sponsored by The Following Business

Thanks for your support.

J's Cut & Curl

Full Service Salon

Juanice Harbour

Shop - 396-2520 Res. 396-2139

THRIFTWAY

Big Town Selection ★ Small Town Friendliness
Wide Selection Frozen Food
Quality Foods Fresh Produce

Hwy 54 East 396-5586

Stratford Grain Co.

Stratford 396-5541

Lantz 769-4485

4 North Main

Brown's Meat Locker

Custom Wholesale & Retail Meat

Federally Inspected

Hwy 287 South 396-2513

Ellie's

and M's Meet & Eat

For all your gift and floral needs

Baby & Bridal Registry

209 S. Main 396-2092

BROOKS MOTOR COMPANY



396-2470

802 S. 1st



North Plains

Savings & Loan

Stratford - 396-5534

Dumas 935-4184

401 N. 3rd

Dalhart 249-5513

COUNTRY CUTS

301 N. Main
396-2424

Leah Capshaw



Moorman Mfg. Co.

Tommy R. Ames

Sales Representative

Will be in Stratford every Wednesday.

Phone: 806-249-4796 BOX 204
DALHART, TX 79022

WALTER LASLEY & SONS INC.

THE Feedyard

Since 1953

753-4411

ELK PHARMACY

317 N. Main
Stratford, TX 79084
806-396-5505

We Honor . . . P.C.S. P.A.I.D. BC/BS Texas Medicaid
Gifts & Decorative Accessories ● Helium Balloons
● UPS Shipping Center ● Bridal Registry
● One-Day Photo Processing ● Baby Shower Registry
Visa and MasterCard Welcomed ● Toys

SPECIAL OCCASION

Cakes

by Janis Tillery

"New Phone Number"

396-5675

THIS SPACE AVAILABLE
Call 396-5885

Stratford Printing & Office Supply

● PRINTING
● OFFICE SUPPLIES & FURNITURE
● COMPUTER SUPPLIES

Swintec
Copiers & Fax Machines
Typewriters & Calculators

806-396-5371

208-211 N. MAIN ST.
STRATFORD, TEXAS 79084



Legal Notice

LEGAL NOTICE

Estate of Frances L. Watson, deceased, in the County Court of Sherman County, Texas.

NOTICE TO ALL PERSONS HAVING CLAIMS AGAINST THE ESTATE OF FRANCES L. WATSON, DECEASED

Notice is hereby given that original Letters Testamentary for the Estate of FRANCES L. WATSON were issued on October 30, 1991 in Cause No. 1858, in the County Court of Sherman County, Texas, to the FIRST STATE BANK OF STRATFORD, TEXAS.

The address of such Executor is P.O. Box 48, Stratford, Texas 79084.

All persons having claims against this Estate which is currently being administered are required, to present them within the time and in the manner prescribed by law.

Dated this 30th day of October, 1991.

Louis T. Dubuque
P.O. Box 1085
Stratford, Texas 79029
806-935-6451

Attorney for Applicant
State Bar No. 06154000

Published in The Stratford Star, Thursday, November 14, 1991.

Cards of Thanks

Sherman County Extension Homemakers Council wish to thank Susie Spurlock, Jana Pronger, all the local craftsman that had booths "The Sisters", our out of town visitors and local citizens that purchased luncheon tickets, Shirley Durham & all the Extension Homemakers Club Members for another successful Christmas In November. We appreciate all of you and your support. Thank you.

The Senior Class would like to give a hearty thank you to everyone who so graciously supported their Fall Festival. To the businesses who donated prizes, Ellison's who donated the flowers for the Royalty, and to all who bought tickets to the Mexican Pile-On Supper. And of course, to all who attended, bought slaves and supported the Carnival. We truly have a wonderful community and we thank you all. Last, but not least we want to thank all the parents and teachers, who helped make it possible. And to our sponsors, Mrs. Carter and Mr. Kendrick we can't thank you enough. Also, Mr. Haynes and Mr. Howard who helped make everything run smoothly. It was a fun evening, and we hope everyone enjoyed it.

Words cannot express our many thanks for your cards, telephone calls and visits they mean a lot to us, just knowing you care in the death of our Dear Son and Brother Donnie.

Dolores Bunch
Carmen Bunch Family
Norman Bunch Family
Arnetta Morris Family
Lura McClellan Family

We would like to express our appreciation for all the concern shown us at the death of our mother and grandmother. Thank you so much for the memorials, flowers, cards, phone calls, visits and food. A special thank you to the staff of Coldwater Manor who so lovingly cared for Mom for so many years.

The family of Mary Dietrich
Don & Elaine Gurley
Don & Lore Dietrich
Randy & Lana Gurley & family
Bob & Cathy Rapp & family
Gary & Patty Stokes & family
Frank Dietrich

Thank you to everyone who helped with the Concession Stand at the Senior Fall Festival. Thank you to those who donated items, cooked and baked, worked and thank you to our community for supporting our Senior class. Thank you to the class sponsors and teachers.

Thank you.

Connie Reinart
Andy Bolf
Senior Class '92

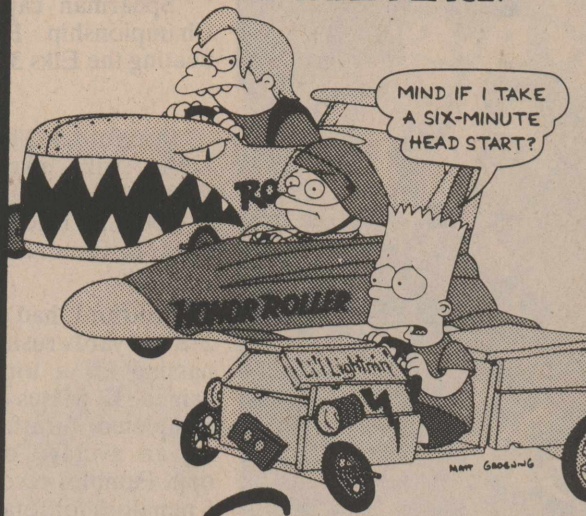
Thank you to everyone who helped with our Mexican Pile-On supper, donations, baking, cooking, working. Thank you for all the community support. Thank you to the Senior Class sponsors and teachers who helped.

Thank you

Andy Bolf, Connie Reinart
and Senior Class '92

The senior class of Stratford High School wishes to thank the following businesses for their help with fund-raising activities: Allsup's, Top Hat, Bonnie Bee's, Duncan Chevrolet, Bain Tire, Ellie M's, Queen O'Creame, Thriftway, Country Cuts, Stratford Feedyard, A & I Parts, Stratford Auto Electric, Sladek's Boot Shop, G & W Industrial, M & G Distributing, Stratford Grain, Farm Bureau, Elk Pharmacy, Family and Friends, Dairy Queen, Cowboy Hall of Fame, Gophers, the General Store, Brooks Video, Trails West, Conlen Grain, Moore Implement, Chamber of Commerce, Olson Automotive, Brown's Meat Locker, Ellie M's, Monograms A-Z and the First State Bank. You helped make our fundraisers successful. The class would like to extend a special thanks to Becky Asher, Andy Bolf and Connie Reinart for the hard work they put into planning and supervising the Fall Festival.

TONIGHT, THE GREATEST RACE IN SPRINGFIELD HISTORY IS ABOUT TO TAKE PLACE.



THE SIMPSONS

7:00PM

Tonight, Brandon finds out about drugs—and Emily—the hard way.



90210

CABLE CH. 8 STRATFORD

8:00PM

When It Comes To Long Term Savings a CD Can't Hold a Candle To The Deferred Annuity

Consider These Dramatic Differences Between a CD and an Annuity

	Southern Farm Bureau Life's FLEX II	Bank CD
Current Interest Rate*	7.75%	6.5%
Interest Earnings	Tax-Deferred	Currently Taxable
Surrender Charges Limited To 8 Years**	Yes	No
Partial Free Withdrawals**	Yes	No
Safety	Reserves Established by Insurance company	FDIC
30 Year After-Tax Accumulation***	\$332,868	\$197,188
30 Year After-Tax Monthly Income***	\$3,028	\$1,629

The above chart is for comparative purposes only. Call your county Farm Bureau office for your personal FLEX II Profile!

Southern Farm Bureau Life Insurance Company offers Flex II, a Flexible Premium Retirement Annuity designed to help accumulate wealth for the future. And, it's backed by one of the strongest companies in the country. Southern Farm Bureau Life has been rated A+ (Superior) by Best, since the inception of this rating system.

The A.M. Best Company is an independent commercial insurance company rating organization and information used is based primarily on each insurance company's annual financial statement. Best assigns its highest rating to those companies which in their opinion have achieved superior overall performance when compared to the norms of the life and health insurance industry. Best ratings, however, are not a warranty of an insurer's ability to meet its contractual obligations.

*FLEX II current rate is not guaranteed, subject to change periodically. Once the annuity is established, current rate is guaranteed for one year. The guaranteed rate is 4% for the life of the policy. CDs offer no long term guarantees beyond CD maturity. Bank CD rate above is a hypothetical interest rate. Call your bank for a current rate.

**Up to 10% of accumulation value on contracts with value of \$5,000 or more is available each year with no company surrender charge after first year. Such withdrawals of interest are taxable and withdrawals occurring prior to age 59 1/2 may be subject to IRS penalty. Bank CD withdrawals may occur without penalty only after CD maturity. CD penalties renew with each CD renewal.

***30 year accumulation assumes a \$50,000 single premium, interest rates shown above, and 28% tax bracket. The 31% tax bracket is used for the FLEX II accumulation. Monthly income from FLEX II based on company's current payment option rates for a male, age 65, 10 years certain and life, and are not guaranteed. Once policy is annuitized, monthly income is guaranteed for life. CD monthly income based on company's current immediate annuity rates, 10 certain and life and are not guaranteed. Payments received directly from bank CD are not guaranteed as to amount or length of time received.



Form No. 6102

Helping You Is What We Do Best.

LEONDA FEDRIC, LUTCF

AGENT

Southern Farm Bureau Life Insurance Company
Jackson, Mississippi

396-5538, office

396-5992, home

DUMAS OVERHEAD GARAGE DOORS

Sales and Service

Call Toll Free 1-800-336-4476
Free "Quality Service Not Far From Home"

201 S. Dumas Ave. — Dumas, Tx.
Residential and Commercial
935-9461

Holiday Open House

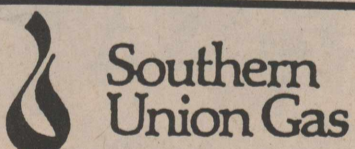
at

Ellie M's

Monday, November 18

4:30 to 8:30

Style Show 7:30



...now selling and servicing efficient and affordable appliances

20 LB. CAPACITY NEW GENERATION WASHER

- Heavy-duty 3-4 hp motor
- 4-position water saver selector
- 4-position water saver temp control
- Cottons, linens, delicates, and permanent press cycles
- Unbalanced load compensator
- Automatic self-cleaning lint system

Now only **\$449**

20 LB. CAPACITY NEW GENERATION GAS DRYER

- 7.0 cu. ft. dryer drum
- Cottons and linens cycle
- Puff cycle
- Permanent press cycle
- Up-front lint filter
- Electronic pilotless ignition
- Timed dry cycle
- Air-foal drying system

Now only **\$399**

30" ENERGY-SAVING GAS RANGE

- Low heat oven control
- Exclusive cooktop "Unburners"
- Plus, many standard features

Now only **\$399**

• WASHING MACHINES • GAS LIGHTS • GAS DRYERS • GAS GRILLS • THERMOSTATS • GAS WATER HEATERS • GAS LOGS • GAS FURNACES • GAS RANGES • GAS HEATERS

Just Say, "Put it on My Gas Bill."

VISIT OUR SHOWROOM...

307 N. Main
Stratford

Open 8-5 Monday through Friday

OR...



CALL OUR SALES REPRESENTATIVE...

Dominga Hernandez
396-5681 or

Toll-Free: 1-800-725-6351

CREDIT TERMS AVAILABLE

Southern Union Gas
STRATFORD

SE HABLA ESPANOL

1991 Fall Festival Royalty

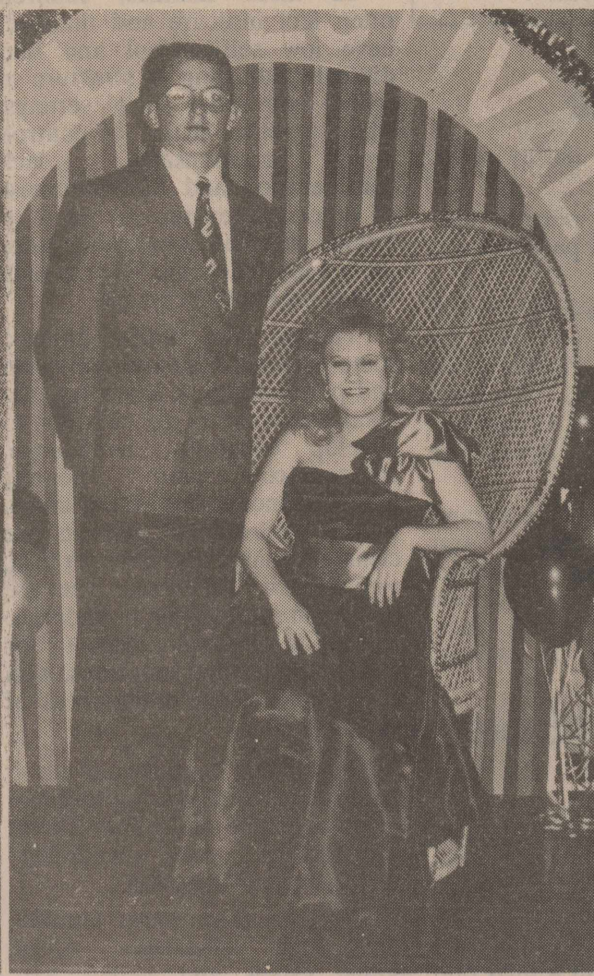
King & Queen



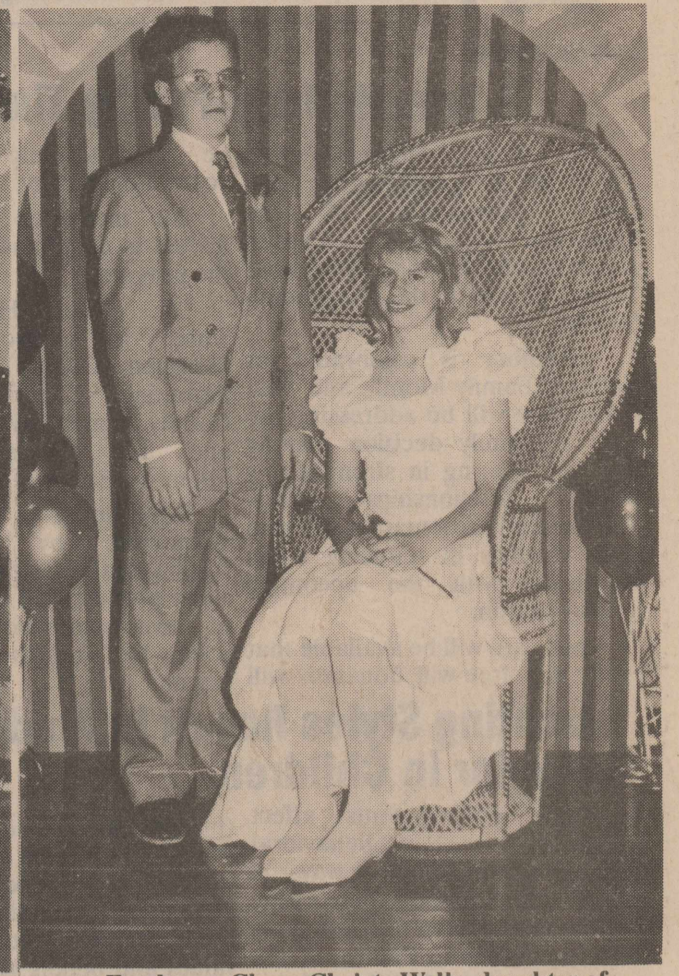
Senior Class: Melissa Asher, daughter of Mike and Beverly Asher and Scott Asher, son of Tommy and Becky Asher.



Junior Class: Wendy Allison, daughter of Mr. and Mrs. Jim Allison and Kendell Bonds, son of Mr. and Mrs. George Bonds.



Sophomore Class: Tiffany Reinart, daughter of Mr. and Mrs. Rick Reinart and Kyle McAdams, son of Mr. and Mrs. Steve McAdams.



Freshman Class: Christy Wells, daughter of Ann and Terry Wells and Rhea Chumley, son of Mr. and Mrs. Dick Chumley.

Prince & Princess



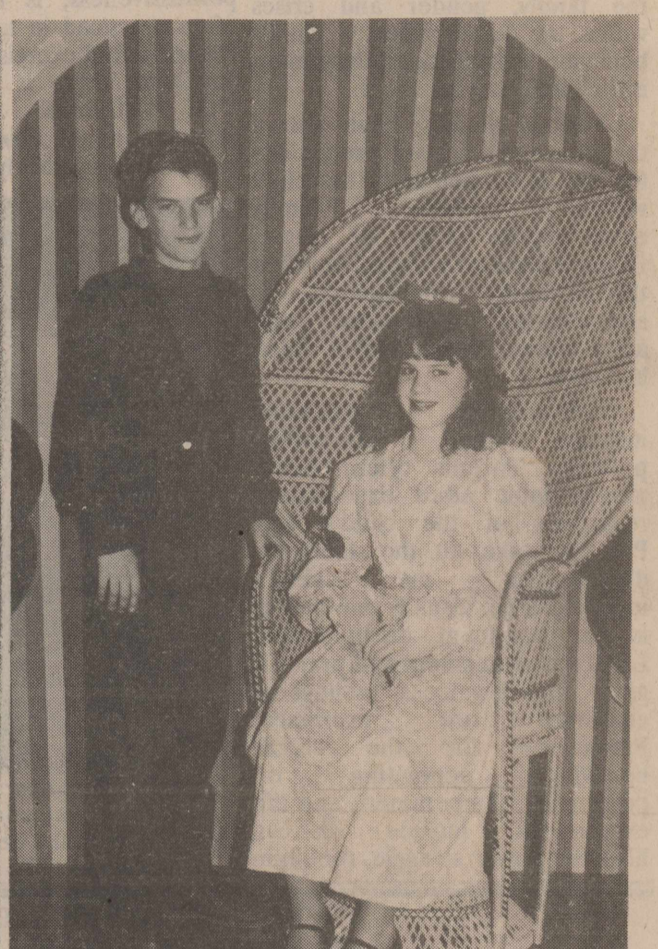
Eighth Grade: Sabrina Bonds, daughter of Mr. and Mrs. George Bonds and T.D. Baskin, son of Mr. and Mrs. Steve Baskin.



Seventh Grade: Hillary Jackson, daughter of David and Marie Jackson and Richardo Chabolla, son of Mr. and Mrs. Richardo Chabolla.



Sixth Grade: Ashley Stoy, daughter of Mr. and Mrs. Tommy Stoy, and Oscar Aguilera, son of Mr. and Mrs. Jose Aguilera.



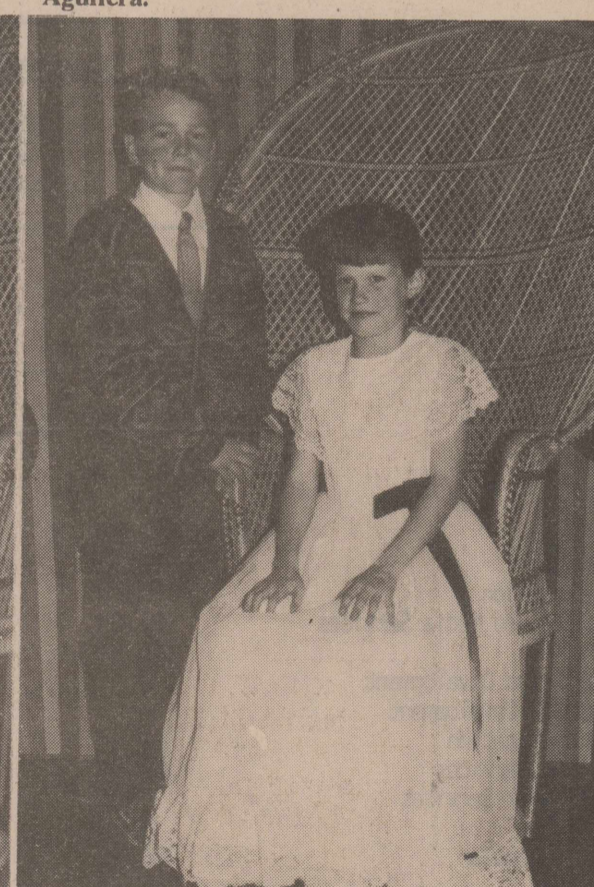
Fifth Grade: Ginger Daniels, daughter of Mr. and Mrs. Phillip Daniels, Stephen Husmann, son of John and Lois Hussman.



Fourth Grade: Jennifer Oakley, daughter of Leah Capshaw and Kaleb Lunt, son of Harry and Suzanne Lunt.



Third Grade: Kellie Hayman, daughter of Bill and Mary Kay Hayman, and Corey Naugle, son of Howard and Valarie Naugle.



Second Grade: Mandy Helmuth, daughter of Jimmy and Tammy Helmuth and Adam Bell, son of Billy and Jeanne Bell.



First Grade: Tiffany Duke, daughter of Don and Tina Duke and Matthew Taliaferro, son of Jim and Shannon Taliaferro.



Kindergarten: Amber Larence, daughter of W.R. and Cindy Larence and Thomas Martines, son of Ramona Vasquez.

Photos By Debbi Vandiver

This page sponsored by the following businesses

STRATFORD AUTO ELECTRIC 396-5941	BROWN'S MEAT LOCKER 396-2513	BROOKS MOTOR CO. 396-2470	FIRST STATE BANK 396-5521
ELK PHARMACY 396-5505	STRATFORD FEEDYARD 396-5507	THRIFTWAY 396-5586	STRATFORD GRAIN 396-5541
STRATFORD STAR 396-5885	WALTER LASLEY & SONS INC. 753-4411	A & I Parts 396-5592	ELLIE M'S 396-2092

Tips & Topics

by Susie Spurlock - County Extension Agent

A True Holiday-Family Time

"A True Holiday-Family Time" will be presented by Mrs. Diane Martindale of the Samaritan Counseling Center, Amarillo, on Thursday, November 14, at 7:00 p.m. in the Imagination Station.

November is celebrated as National Family Month, and Mrs. Martindale will be addressing the topic of family decision making and task sharing in strengthening family relationships. Mrs. Martindale's presentation will also assist families in reducing stress associated with the upcoming holiday season.

Child care will be available that evening; a free-will donation will

be asked to help defray utility costs of the facility.

All interested persons are invited to come and participate in the program.

"A True Holiday-Family Time" is sponsored by the Sherman County Partners for Parenting Coalition, Sherman County Family Living Committee and the Texas Agriculture Extension Service.

Educational programs conducted by the Texas Agricultural Extension service serve people of all ages regardless of socio-economic level, race, color, sex, religion or national origin.

Parenting Styles Result in Predictable Behavior in Children

Family environments affect childhood behavioral development in different ways. A child's temperament, personality and life experiences are just some of the determinants that cause him or her to respond differently to particular parenting styles. Though factors such as position in the family, gender and crises within the family affect a child's behavior, a significant determinant is the family environment.

Various studies have shown that there are certain predictions for the development of the child within various family environments. One of these, Diana Baumrind's study, identified three family atmospheres as authoritarian, permissive and authoritative which affect child behavior.

Authoritarian parenting includes rigid, controlling practices. Parents often convey unreasonable adult expectations regardless of the child's age. Parents make all the decisions, discouraging the child's independence. Usually one parent is the dominant disciplinarian. Little encouragement and praise is given, and few ideas, feelings or emotions are expressed. Predictions for the child's behavior, depending on personality, temperament and life experiences, include distrust, hostility, power struggle, rebellion

(by the strong-willed child, timidity (by the complacent child), low self-esteem, dependency, fearfulness, difficulty establishing close relationships, rejection of parental values and beliefs and a high rate of antisocial behavior.

The other extreme, permissiveness, is the style too often practiced in today's society. Parents avoid exercising control of any kind, there is inconsistency, little structure and few expectations set. Few demands for responsibility, orderly behavior or

social rules exist. There is high nurturing and communication, with the parent acting more as a resource (friend) than as a shaper.

In these families, children often feel insecure and unloved, have low self-concept and find difficulty adjusting to structure in school and other social settings. They practice little self-control, are irresponsible, lack consideration and thoughtfulness of others. They see no need to follow parental standards (there are none). They too have a high rate of antisocial behavior.

Though most families practice some of each of the authoritarian and permissiveness parenting, the ideal atmosphere for children to develop capability, confidence, competence and healthy independence is the authoritative. In this environment, parents are clearly in charge and have set firm, well-defined guidelines, yet are flexible in establishing boundaries. There is mutual respect for feelings, ideas and emotions, with acceptance of the uniqueness of each individual.

Reasonable expectations allow for mistakes and give appropriate encouragement and praise. There is healthy role modeling, nurturance and affection.

Children from these families have high self-esteem, adopt family values and beliefs and exhibit lower rates of antisocial behavior. They tend to be cooperative, friendly and are good decision makers. They are achievement-oriented, creative and secure.

Cont. On Page 9



Trails West had a special showing of American Indian Jewelry last Friday and Saturday. Shown above is Sharon McCarver showing Robbie Hicks the beautiful jewelry from the Judy Crosby's Americana Arts Collection.



4-H Food Show

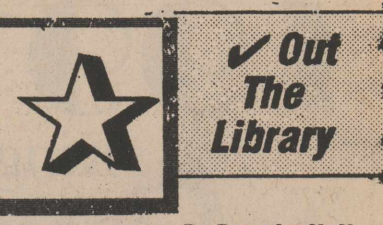
4H Food Show was held Saturday, November 9th at the County Barn. Winners were back row, Ryan Swain, Kyle Ellison, Janell Pronger and Kimberly Boudlin, Front is Missy Sikora, Brock Swain and Jessica Sikora.



4H Food Show Alternates are Kyla Helmuth and Amy Sladek.



Buffy Ellison-4H Food Show Winner.



By Dorothy Halle

Story Time for 3 and 4 year old children will meet for the last time on November 20th. This completes the fall session. The program will begin for the spring in late January.

Forty four children have been enrolled. The highest attendance was 37 on October 23rd. We encourage parents to continue to bring their children to the library so that they may continue to get new reading materials after the planned programs are over.

We continue to be indebted to the volunteers who come each week to provide direction and work with the children.

A new book in the library is Scarlett, which is the sequel to Gone With The Wind. Other fiction is Paradise by McNaught, Pastime by Robert Parker, Sum of All Fears-Tom Clancy, and Texas Sage-Sandra Brown.

Two humorous books are: When You Look Like Your Passport Its Time To Go Home written by Erma Bombeck and Robert Fulghum's Uh Oh, Some Observations From The Other Side of the Refrigerator Door. If you need a good laugh, these two books will provide one.

AUCTION

Saturday, Nov. 23, 1991 10:00 am
Boston's Building Hwy 54 & 287

You are qualified to bring items
if you are a G.F.A. ★

KEITH WATERS
Auctioneer
P. O. Box 1185
STRATFORD, TX 79084

806-396-5801 396-5391

★ Garage Fillers of America

STRATFORD INDEPENDENT SCHOOL DISTRICT
COMBINED STATEMENT OF REVENUES, EXPENDITURES, AND CHANGES IN FUND BALANCES
ALL GOVERNMENTAL FUND TYPES AND SIMILAR TRUST FUNDS
YEAR ENDED AUGUST 31, 1991

EXHIBIT A-2

Data Control Codes	Governmental Fund Types			Similar Trust Funds		Totals (Memorandum Only)	
	10 General Fund	20/30/40 Special Revenue Fund	50 Debt Service Fund	82 Nongovernmental Expendable	83 Governmental Expendable	98 August 31, 1991	97 August 31, 1990
REVENUES:							
5700	Local, Intermediate, and Out-of-State	\$ 1,984,332	\$ -	\$ -	\$ -	\$ 1,984,332	\$ 1,857,978
5800	State Program Revenues	554,706	-	-	-	554,706	674,300
5900	Federal Program Revenues	57,076	36,703	-	-	93,779	83,324
5030	Total Revenues	\$ 2,596,114	\$ 36,703	\$ -	\$ -	\$ 2,632,817	\$ 2,615,602
EXPENDITURES:							
0011	Instruction	\$ 1,374,359	\$ 33,025	\$ -	\$ -	\$ 1,407,384	\$ 1,413,094
0012	Instructional Computing	22,531	343	-	-	22,874	22,641
0021	Instructional Administration	5,634	3,335	-	-	8,969	8,229
0022	Instructional Resources and Media Services	60,412	-	-	-	60,412	68,175
0023	School Administration	163,137	-	-	-	163,137	158,576
0024	Instructional Research and Development	-	-	-	-	-	-
0025	Curriculum and Personnel Development	-	-	-	-	-	-
0026	Communication and Dissemination	-	-	-	-	-	-
0031	Guidance and Counseling Services	24,412	-	-	-	24,412	28,868
0032	Attendance and Social Work Services	9,010	-	-	-	9,010	9,600
0033	Health Services	8,733	-	-	-	8,733	10,169
0034	Pupil Transportation - Regular	206,881	-	-	-	206,881	186,999
0036	Co-curricular Activities	160,536	-	-	-	160,536	143,048
0037	Food Services	139,912	-	-	-	139,912	139,906
0041	General Administration	216,357	-	-	-	216,357	202,629
0042	Debt Service	-	-	-	-	-	-
0051	Plant Maintenance and Operations	416,867	-	-	-	416,867	292,980
0052	Facilities Acquisition and Construction	-	-	-	-	-	-
0071	Data Processing - Management	-	-	-	-	-	-
0072	Computer Processing	-	-	-	-	-	-
0073	Data Processing - Development	-	-	-	-	-	-
0074	Data Processing - Interfacing (Tech. Asst.)	-	-	-	-	-	-
0081	Community Service	-	-	-	-	-	-
6050	Total Expenditures	\$ 2,808,781	\$ 36,703	\$ -	\$ -	\$ 2,845,484	\$ 2,684,914
OTHER RESOURCES AND USES:							
5060	Other Resources	\$ 20,252	\$ -	\$ -	\$ -	\$ 20,252	\$ 18,930
6060	Other (Uses)	-	-	-	-	-	-
7000	Total Other Resources and (Uses)	\$ 20,252	\$ -	\$ -	\$ -	\$ 20,252	\$ 18,930
1200	Excess (Deficiency) of Revenues and Other Resources Over Expenditures and Other Uses	\$ (192,415)	\$ -	\$ -	\$ -	\$ (192,415)	\$ (50,382)
0100	Fund Balance - September 1 (Beginning)	709,723	-	-	-	709,723	760,105
1300	Increase (Decrease) in Fund Balance	-	-	-	-	-	-
3000	Fund Balance - August 31 (Ending)	\$ 517,308	\$ -	\$ -	\$ -	\$ 517,308	\$ 709,723



It Pays To Look In The



Star Classifieds

PHONE 396-5885

....The Best Salesperson Around

- ★ FOR SALE**
- ★ Services**
- ★ Services**
- ★ Homes For Sale**
- ★ Miscellaneous**
- ★ Help Wanted**

HEGARI Seed \$10.50 per bag. Call 806-249-6531, 8 to 5 Monday thru Friday, ask for Jim. 6-13-tfn

For Sale: 5 lots with all hookups for mobile home. Good quiet neighborhood. Call 806-396-2483. 11-21-p

HIGH QUALITY OATS
\$6.00 PER CWT
STRATFORD GRAIN CO.
396-5541

9-12-TFN

For Sale: 1-HC 800 MM completely overhauled by Jim Payne. 1-605 MM good condition 806-396-5388. Jack Vincent. 9-19-tfn

For Sale: 1976 Suburban, Slide in pickup camper, refrigerator, stove, ice box. Call 396-5806. 10-17-tfn

Surprise someone special with a cellular phone for Christmas. Call 396-5958. Joan Bell. 11-28-c

For Sale: JD 4440 ps, 1521 hours, malsom terracer, 44 ft. Richardson mulch treader, flex king KM 52, 4970 Krause disc, 1940 JD Land plane, like new, 8 x 30 Littleston cultivator. 806-435-3968. 11-28-c

"November Special"
Motorola Cellular Phone
\$350.00 with Battery
at
THE General Store

11-21-c

For Sale: 14 x 72 mobile home, 2 bed., 2 bath, front kitchen & good carpet. \$5,500. 8 x 32 mobile home, some furn. \$2,500. 5529 or 5988 after six. 10-24-tfn

What a nice surprise a cellular phone would be for someone's Christmas! Call Joan Bell at 396-5958. 11-14-c

Scot Notes
Cont. From Page 3

McDaniel's Kathys daughter and friend Dorothy Haile came by. Sunday Betty, Baskin and Timmie accompanied Hilma to the Longview-bound plane in Amarillo. At the terminal our party encountered Newt Foster, and wife Pauline, son Jay and wife of Dalhart, who were enroute to Gregg Fosters the older son's wedding in Austin. Later the Browns had lunch at the Olive Garden with Blair Brown and Patty Sherill.

Lewis Higginbottom has sent word thru J.A. Lasley that he is now grandfather to a grandson. We apologize that we misplaced the note bearing the baby's name. Lew also sent word that his sister Mary Helene will spend the winter with her daughter, Paula, in Gainsville, Texas.

Bob Lovelace, Wheatridge, Colo. died Oct. 22, 1991. Victim of short term cancer. Bob is the son

Call your Local Used Cow Dealer for 7 day a week dead Stock removal. Call Toll Free 1 (800) 692-4043. 20 years of service to the Texas Panhandle. 9-22-tfn

For Termite Control
Call Leo Russell

at 1-383-7075 Amarillo. Have been working Stratford for 28 years. Have City and State License for the City of Stratford. 4-24-tfn

DUMAS TRAVEL CENTER
For your convenience we now have a new 800 number, 1 (800) 635-8415. Call Toni or call Jack Vincent at 396-5388 1-19-tfn

Cruises, golf trips, vacation plans, resorts, airline tickets, hotels and cars. We are a full service travel agency. Call Pat Johnson 396-2243 or Joan Bell 396-5958 or 1-800-658-6332. 12-5-c

Let Us Make All Your Travel Plans at No Cost To You
All Points Travel
Joan 5958 Pat 2243
10-25-tfn

Dalhart Travel Center
For your convenience call our 800 number. 1-800-866-5156. Or Call 806-249-8666. Wendolyn Vincent, owner, Res. Phone 806-396-5388

I will do ironing. Call 396-5398. 8-22-tfn

Come to "Susanah's The Mini Mall at Kerrick Beer-wine to Go Gifts and Lunch Antiques Starting Sept. Hours will be Monday - Saturday 10 a.m. to 7 p.m. 9-29-tfn

of former Stratfordites Vera and Ernest Lovelace, Sun City, Ariz. His parents, his brothers Glenn, Japan and Bill and wife, Va. attended the funeral.

Bernie Starkers grandson, James E. Lamb was killed in a car accident Thurs. Nov. 7th. James was the son of the late Myrna Loy Starker Lamb, Bernie's eldest daughter. Stratford Community is saddened by the foregoing mention deaths and those of Ray Fry and Wesley Miller, Texhoma, Mary Dietrich and Bill Thurman, Stratford. May our Heavenly Father look down upon in love and extend his mercy to all of us; especially the sorrowing families. Amen. Be sweet folks, pass out pats and luv to all.

Tips
Cont. From Page 8

All parents want to be good parents. Though few families achieve all the goals they would like in the area of childhood behavior, these parenting style guidelines can help families achieve that goal. Many factors other than parenting style affect how children will turn out, but it is determined to be the most significant.

Member American Optometric Association
Hours: Mon.-Thur. - 9:00 - 5:30 Fri. 9:00 - 12:00 Noon Sat. 9:00 - 1:00 Dumas 935-6491 396-5516 10:30 to 4:00

Family Vision Care Specialists
Dr. J.W. McCormick
Dr. David Riddlespurger
OPTOMETRISTS
Please call the Dumas office for appointment

Ed's Appliance & VCR Service
Service & Repair on Washers, Dryers, Dishwashers, Garbage Disposals, Refrigerators, Freezers, Air Conditioners, Microwaves & VCR's
Reasonable Rates
ALL WORK GUARANTEED
806-827-7716 or 405-423-7082

I Will Do Your Ironing
Call Shari
At 396-5398

VETERANS-You can still qualify for low interest loans on homes and land. For assistance in applying for these & other VA benefits, contact Max Stephenson, CSO at 396-5348. 12-26-p

45th Anniversary
National Farm Life Insurance Company
Rate A (Excellent)
Life Insurance, Mortgage, Cancellation, Retirement Income, Annuities, IRA's, Youth Insurance, Burial Insurance
Molly Griffin 396-5612

Free Estimates, carpet laying and repairs of all types, remodeling and tiatwork. Call Randy Godsey, 396-2332. Local References. 12-5-c

WANTED
Expert cement work, slabs, sidewalks, driveways, patios. Free estimates, no job too large or small. Call day or night. 396-2293. Ask for John 3-30-tfn

For Decorated Cakes
call Janis at
New Number
396-5675

House for Sale: Small 2 bedroom home w/detached double garage. Contact First State Bank Trust Dept. 396-5521. 2-28-tfn

ALCOHOLICS ANONYMOUS & AL-ANON
meet each Thursday at 8:00 p.m. in the Old County Barn

Wanted
Wanted: I will do ironing. Call Shari at 396-5398. 8-22-tfn

Try The Classifieds They Work

FOR RENT
House For Rent: 519 N. Fulton, Call 753-4430 after 6 p.m. 10-31-tfn

House for Rent: recently refinished. Close to school. 396-5658. 11-14-c

1 and 2 bedroom apartments for rent, water and gas paid. No children please. 101 N. Main Gillis Apartments. 396-2386 ask for Joan Palmer or come by Apt. #2. 8-6-tfn

Apartment for Rent, 2 bedroom, unfurnished, all electric. Contact Mike: O'Brien at 396-2261 or 396-5656. 1-3-tfn

Beat Wellington

SAFE PLACE, INC.

24 Hour Crisis Hot Line
For Battered Women

YOU ARE NOT ALONE

935-2828

Duncan Chevrolet Co. Inc.

A High Country Chevy Dealer

THE Heartbeat OF AMERICA TODAY'S CHEVROLET™

Division of General Motors Corporation GM

Looking for a New or Used Auto?
Check with us FIRST.

1991 Metro \$6,250.00

Shop with Friends who care

Day 396-5557 After Hours 396-2862
Highway 287 S. Stratford, Texas

Free Kittens, Call 2241. 10-17-tfn

Have CRP Buyers, Call Elza Pallard Broker. 806-249-2122 11-21-c

Would like to rent wheat pasture or burned up maize field. Rent by HWT or by the acre. Call 806-396-5388. Jack Vincent. 9-19-tfn

Get out your boots "n" spurs, cause here's your chance to have a hoopin, hollerin time at the Old Western Dance. Saturday November 16th at the Stratford Country Club. \$10.00 single and \$20.00 couple. 8 p.m. until midnight. 11-14-c

Classified Ad Rate
16 cents per word after 25 words
\$4.00 minimum up to 25 words
16 cents each additional word first week
8 cents per word on subsequent insertions
\$1.00 discount if paid in advance

Deadline Noon Mondays

PASTURE — CATTLE — STORM INSURANCE
See Us For **NO DEDUCTIBLE**

FARM BUREAU INSURANCE
JOE FLORES
396-5538 Nights 396-5389

Support Our Elks
Stratford Elk T Shirts
T - Shirt \$12.00 Sweat Shirt \$15.00

Order by 2:00 pm Thursday for Friday delivery in time for play off game

M & G Distributing
396-2541 396-5907

Catherine D. Taylor
Certified Public Accountant
North Plains Building
401 N. 3rd 396-2435
Monday - Friday 9 a.m. - 5 p.m.

Ad Rem Land Co.
710 S. Dumas Ave. 935-7364

Prime business location Hwy 54 and Hwy 287 intersection. If you need location with large showroom and storage-work rooms--and high number traffic--This is It! Call for details.

Great 4 bedroom 3 bath-house-fireplace, double Anderson windows-ref. air/cent. heat with steel bldg. 96 x 60 with all utilities and 1/2 bath. All on lot 401 x 150. 1.420 acres.

Need a place for your horse or 4-H stock? 5 acres with barn, stalls, water and electricity-edge of town \$20,000.

Beautiful brick, 3 bedroom, 3 bath, 2 car garage, fireplace. Central heat and air conditioning, on corner. \$68,000.

Nice Stucco, 3 bedroom, 1 1/2 bath. Nice neighborhood. \$15,000.

Marty Bain 396-2053 Tom Ferguson, Broker Pat Johnson 396-2243



**STRATFORD AREA
FOUNDATION, INC.**

Box 48
Stratford, Texas 79084
Phone (806) 396-5521

As the Stratford Area Foundation approaches its 13th anniversary, it's Directors and Board members wish to thank those contributors who have made it possible to distribute \$155,000 to a wide variety of worthwhile projects in our community.

Your continued support will make it possible to assist in the future needs of the area and no gift is too small. Contributions can be made in any amount as memorials by bringing or sending them to the bank or dropping them by the bank's drive-up window. Gifts of assets instead of cash are always welcome and all contributions are tax deductible.

Help us make it a Lucky 13th Anniversary!

This is a list of distributions made since the Foundation was formed.

DATE	DISTRIBUTIONS	AMOUNT	TOTAL	
12-01-80	E.M.T. ASSOCIATION	EQUIPMENT	\$2,500.00	\$2,500.00
03-20-81	E.M.T. ASSOCIATION	EQUIPMENT	\$1,500.00	\$4,000.00
10-08-81	PORTABLE BLEACHERS		\$2,451.61	\$6,451.61
12-03-81	STRATFORD FIRE DEPARTMENT	EQUIPMENT	\$2,373.60	\$8,825.21
02-25-82	CITY OF TEXHOMA	CIVIL DEF SIREN	\$3,500.00	\$12,325.21
01-26-83	SHERMAN CO LIBRARY	BUILDING	\$15,000.00	\$27,325.21
06-02-83	SHERMAN CO LIBRARY	BUILDING	\$6,000.00	\$33,325.21
07-11-83	SHERMAN CO LIBRARY	BUILDING	\$500.00	\$33,825.21
04-26-84	SCOT	BUILDING	\$8,000.00	\$41,825.21
07-05-84	CITY OF STRATFORD		\$3,602.30	\$45,427.51
08-15-84	STRATFORD CEMETERY ASSOCIATION		\$280.00	\$45,707.51
08-16-84	SHERMAN CO DEPOT MUSEUM	IMPROVEMENTS	\$5,000.00	\$50,707.51
11-06-84	SHERMAN CO HISTORICAL SOCIETY		\$5,000.00	\$55,707.51
11-06-84	STRATFORD FIRE DEPARTMENT		\$1,000.00	\$56,707.51
01-03-85	STRATFORD CHAMBER OF COMMERCE		\$1,000.00	\$57,707.51
04-04-85	KERRICK COMMUNITY CENTER	IMPROVEMENTS	\$1,500.00	\$59,207.51
04-04-85	E.M.T. ASSOCIATION		\$3,200.00	\$62,407.51
09-06-85	STRATFORD AMBULANCE SERVICE		\$1,400.00	\$63,807.51
09-06-85	SHERMAN CO DEPOT MUSEUM		\$3,000.00	\$66,807.51
10-02-85	SHERMAN CO LIBRARY		\$2,000.00	\$68,807.51
02-04-86	STRATFORD ISD	TV EQUIPMENT	\$3,200.00	\$72,007.51
02-14-86	STRATFORD CRIME WATCH		\$1,200.00	\$73,207.51
07-07-86	KERRICK COMMUNITY CENTER	ROOF	\$3,500.00	\$76,707.51
09-15-86	SHERMAN CO DEPOT MUSEUM		\$6,000.00	\$82,707.51
12-15-86	STRATFORD FIRE DEPARTMENT		\$2,799.00	\$85,506.51
03-16-87	STRATFORD CEMETERY ASSOCIATION		\$3,100.00	\$88,606.51
04-16-87	BOY SCOUT TROOP 38	CAMPING EQUIPMENT	\$1,300.00	\$89,906.51
06-04-87	SHERMAN CO YOUTH ARENA FUND	CONCESSION STAND	\$6,000.00	\$95,906.51
09-27-87	E.M.T. ASSOCIATION		\$391.87	\$96,298.38
03-30-88	STRATFORD CHAMBER OF COMMERCE	COPY MACHINE	\$1,395.00	\$97,693.38
05-19-88	STRATFORD LITTLE LEAGUE	LIGHTS	\$4,005.00	\$101,698.38
06-22-88	CITY OF STRATFORD	RAMPS	\$1,001.00	\$102,699.38
06-24-88	STRATFORD CHAMBER OF COMMERCE	PA SYSTEM	\$1,700.00	\$104,399.38
07-08-88	CITY OF STRATFORD	PARK RESTROOMS	\$3,400.00	\$107,799.38
03-01-89	SHERMAN CO LIBRARY	IMPROVEMENTS	\$1,404.98	\$109,204.36
04-28-89	SHERMAN CO LIBRARY	IMPROVEMENTS	\$3,097.70	\$112,302.06
05-02-89	CITY OF STRATFORD	CROSSARMS	\$2,000.00	\$114,302.06
05-30-89	STRATFORD CHAMBER OF COMMERCE	GAZEBO	\$5,000.00	\$119,302.06
06-06-89	STRATFORD LITTLE LEAGUE	CONCESSION STAND	\$1,495.00	\$120,797.06
09-12-89	STRATFORD CHAMBER OF COMMERCE	GAZEBO	\$2,790.26	\$123,587.32
10-02-89	SHERMAN CO PUBLIC LIBRARY	IMPROVEMENTS	\$1,497.32	\$125,084.64
11-17-89	SHERMAN CO PUBLIC LIBRARY	IMPROVEMENTS	\$250.00	\$125,334.64
08-23-90	SHERMAN CO YOUTH ARENA	RETURN ALLEY	\$1,850.00	\$127,184.64
11-08-90	STRATFORD ISD	RESURFACE TRACK	\$10,000.00	\$137,184.64
07-16-91	SHERMAN COUNTY DEPOT MUSEUM	SIGN	\$1,680.00	\$138,864.64
10-02-91	CITY OF STRATFORD	WATER TOWER	\$15,425.00	\$154,289.64
TOTALS		46		

COMMITMENTS

10-18-91	STRATFORD CHAMBER OF COMMERCE	SIGN	\$1,125.00
----------	-------------------------------	------	------------

J.B. RIFFE ENDOWMENT F/B/O SHERMAN COUNTY

DATE	DISTRIBUTIONS	AMOUNT	TOTAL	
03-29-85	TEXHOMA AMBULANCE SERVICE		\$2,500.00	\$2,500.00
09-06-85	CITY OF TEXHOMA, TEXAS		\$2,475.00	\$4,975.00
07-07-86	CITY OF TEXHOMA		\$1,130.00	\$6,105.00
03-13-87	CITY OF TEXHOMA	AMBULANCE SERVICE	\$128.00	\$6,233.00
03-13-87	CITY OF TEXHOMA	CLINIC	\$1,200.00	\$7,433.00
03-16-87	STRATFORD CEMETERY ASSOCIATION		\$6,000.00	\$13,433.00
02-19-88	CITY OF TEXHOMA, TEXAS		\$2,460.00	\$15,893.00
05-04-88	CITY OF TEXHOMA, TEXAS		\$2,170.00	\$18,063.00
04-07-89	TEXHOMA FIRE DEPARTMENT	FIRE HOSE	\$500.00	\$18,563.00
05-02-89	SHERMAN CO WATER DISTRICT	ULTRASONIC WATER METER	\$2,112.00	\$20,675.00
05-30-89	TOWN OF TEXHOMA	SWIMMING POOL	\$1,184.50	\$21,859.50
11-17-89	SHERMAN CO CENTENNIAL PARK	BRICKS	\$400.00	\$22,259.50
01-25-90	TEXHOMA CEMETERY	FENCE	\$1,000.00	\$23,259.50
04-11-90	TEXHOMA CO-ED SOFTBALL LEAGUE	LIGHTS FOR FIELD	\$1,500.00	\$24,759.50
07-24-90	SHERMAN CO EMERGENCY EQUIP	EQUIPMENT	\$1,500.00	\$26,259.50
10-02-91	CITY OF STRATFORD	WATER TOWER	\$4,575.00	\$30,834.50
10-18-91	TEXHOMA MIDDLE SCHOOL	ELECT ENCYCLOPEDIA	\$2,000.00	\$32,834.50
TOTALS		17		

COMMITMENTS

J.B. RIFFE ENDOWMENT F/B/O TEXAS COUNTY

DATE	DISTRIBUTIONS	AMOUNT	TOTAL	
03-29-85	TEXHOMA CLINIC	EQUIPMENT	\$2,500.00	\$2,500.00
04-04-85	TRI COUNTY BIG BROTHERS/BIG SISTERS		\$225.00	\$2,725.00
08-15-85	IRIS FLOWER & GARDEN CLUB		\$1,000.00	\$3,725.00
09-06-85	TEXHOMA CLINIC	EQUIPMENT	\$1,245.00	\$4,970.00
02-14-86	TEXHOMA ISD	SOUND SYSTEM	\$2,450.00	\$7,420.00
03-13-87	GOODWELL FIRE FIGHTERS		\$5,500.00	\$12,920.00
03-13-87	CITY OF TEXHOMA	AMBULANCE	\$672.00	\$13,592.00
03-13-87	TEXHOMA YOUTH CENTER		\$300.00	\$13,892.00
05-04-88	CITY OF TEXHOMA	COMMUNITY BUILDING	\$3,750.00	\$17,642.00
11-25-88	YUCCA GIRL SCOUT COUNCIL	COPIER	\$1,458.46	\$19,100.46
12-09-88	TEXHOMA CLINIC	EQUIPMENT	\$1,975.00	\$21,075.46
04-07-89	TEXHOMA FIRE DEPT.	FIRE HOSE	\$500.00	\$21,575.46
05-30-89	TEXHOMA CO. RED CROSS	CPR ANNIE	\$600.00	\$22,175.46
08-11-89	CENTENNIAL PARK PROJECT	BRICKS	\$350.00	\$22,525.46
11-17-89	CITY OF TEXHOMA	SWIMMING POOL	\$1,184.50	\$23,709.96
01-25-90	TEXHOMA CEMETERY	FENCE	\$2,000.00	\$25,709.96
03-30-90	CITY OF TEXHOMA	SWIMMING POOL	\$1,225.00	\$26,934.96
12-18-90	TEXHOMA CO-ED SOFTBALL	LIGHTS FOR FIELD	\$1,500.00	\$28,434.96
12-18-90	GOODWELL EMERGENCY MED SERVICE	RADIO	\$1,500.00	\$29,934.96
04-11-91	IRIS GARDEN FLOWER CLUB	PARK REPAIRS-CONSTRUC	\$400.00	\$30,334.96
07-24-91	GOODWELL POLICE DEPT	RADIOS	\$700.00	\$31,034.96
10-18-91	TOWN OF TEXHOMA, OK	SWIMMING POOL REPAIRS	\$1,000.00	\$32,034.96
TOTALS		22		

COMMITMENTS

02-04-91	HOOVER VOLUNTEER AMBULANCE SERV	AMBULANCE	\$500.00
----------	---------------------------------	-----------	----------