

ROUND 'EM UP - The Double U Ranch team from Post turns three cows into a pen in record time during the team branding event at the ninth annual Texas Ranch Roundup in Wichita Falls.

Double U Hands Compete in Texas Ranch Roundup

Cowboys from the Double U Ranch, Rooster Swartz, Sam Whitley, Joe Pennell, Joe Marts and Dusty Dupree; carpenter, Jeff Scott; and ranch wife Della Swartz were all contestants in the recent Texas Ranch Roundup, which is held in Wichita Falls.

Della Swartz was entered in the crafts division of the talent contest and the Double U men were entered in one or all of the following events: saddle bronc riding, team roping, team branding, wild cow milking, team penning and the wild horse race.

The Double U team was in good form as they placed second in the team penning; fifth in the team roping; and seventh in the wild cow milking.

The annual event takes Old West fans back to the late 1800's and the cattle industry's inception

on the Texas frontier. During this time, entire ranch families would get together at the end of Spring roundup to let off steam, swap stories around the campfire, and watch dads, brothers, cousins and hired hands compete against other outfits at working cattle.

This year the seasoned cowboy of the W.T. Waggoner Estate (Vernon) roped, rode and fiddled their way to a second straight victory in the competition.

Waggoner's victory marks the first time in the roundup's nine-year history that a ranch has claimed the "braggin' rights" as Best Ranch in Texas for two consecutive years.

Waggoner also galloped away with the first place in the music division of the ranch roundup talent competition, thanks to some real down-home fiddle playing and singing by the ranch's all-cowboy band.

Placing second in the overall competition was the R.A. Brown Ranch (Throckmorton) and Randerbrook-Spade (Colorado City) placed third.

Order your subscription today!
ONLY \$15 in Garza and adjacent counties!
Call
495-2816

J.E. Birdwell New Appointee to Commission

Governor Bill Clements has announced the appointment of J.E. Birdwell, II of Lubbock to the Texas Water Commission. He will replace Paul Hopkins of La Marque, whose term expires August 31.

Birdwell, a former resident of Post, was born in Ralls and is a graduate of Texas Tech. He has served as a member and Chairman of the Board of Regents for Texas Tech and as a member of the board of the Brazos River Authority. He is a long-time member of the Texas and Southwestern Cattle Raisers Association.

Two-for-One Night on Bingo's 2nd Birthday

Bingo in Post is celebrating its second anniversary, and in honor of the occasion the Chamber of Commerce will celebrate with a special bingo night, Tuesday, September 5 at 7:30 p.m. in the Post Community Center, 113 W. Main. Doors will open at 6:30 p.m.

On anniversary night, players will be able to get two packets for the price of one. A \$20 value for only \$10. For more information, contact the Chamber of Commerce at 495-3461.



MEET THE ANTELOPES - Coach Dewayne Osborne introduced a hefty group of athletes to an enthusiastic stadium of Antelope football fans during the annual "Meet The Antelopes Night" last week. Antelope Booster Club's Charles Adams (left) was master of ceremonies for the event.

Garza 4-H's Honored

Thirty-one Garza County 4-H's and parents attended the annual Mesquite Country 4-H Horse Association awards banquet in Snyder Tuesday, August 22 honoring 4-H members who participated in the association's five show held this summer.

Seventeen 4-H's from Garza County took part in the shows which were held in Snyder, June 10; Jayton, June 17; Sweetwater, June 24; Post, July 8; and Roby, June 15.

Receiving overall annual awards at the banquet were: Willie Mesa, high point registered mare exhibitor; Kim Reiter, second high point registered mare exhibitor, second place in pole bending (tie), third place in judged horsemanship, third in flag racing and third in total judged events; and Miranda Palmer, third in western horsemanship.

Other participants in the summer shows were Emily Smith, Wendy McNeely, Robbie Palmer, Heather Dickson, Stephanie Palmer, Daniel Redman, Bronc Davis, Bobbie Joe Davis, Lori Hudman, Christy Reiter and LaBeth Jones.

Parents attending the banquet were Steve and Jamie Cooper, Darrell and Ruby Jones, Alex and Beatrice Mesa, Chris and Glenna Reiter, Darla Davis, Julie Hudman, and Lil, Alex and Syd Conner.

NEWS BRIEFS

Rotary Club Golf Tourney

The Post Rotary Club will sponsor a golf tournament at the Caprock Golf Course, Saturday and Sunday, September 23 and 24. The fee to enter the two-man scramble is \$45 per person.

Interested players can sign up at the golf course or register by calling Charles Hardin at 495-2804 or Victor Ashley at 495-2801.

1988-89 Yearbooks Arrive

The Post High School 1988-89 yearbooks are now in and may be picked up in the high school Learning Center from 8:00-11:45 a.m. and 12:30-4:15 p.m., Monday through Friday.

Fall Art Classes at Algeria

Fall art classes, sponsored by the Post Art Guild, will begin Monday, September 4 and Tuesday, September 5 at the Algeria Art Center with Marie Neff as instructor for the month of September. Classes will meet weekly on Monday and Tuesday at 3:30 p.m.

To register, or for more information, call 495-4000. If you are already registered for classes, come on your regular day at your regular time.

First Baptist School Bake Sale

The First Baptist Church Christian School will hold a Labor Day Weekend fund-raising bake sale at United Supermarket, Saturday, September 2 from 9 a.m. to 3 p.m. Any donated baked goods for the sale will be appreciated.

Martinez Benefit at Holy Cross

A benefit to help with hospital expenses for Cecil Martinez will be held at Holy Cross Catholic Church all day Saturday, September 2. Dinner plates with rice, beans, salad, taco and carne quisada or gorditas, rice, beans and salad will be available for \$3.50. Cakes and cokes will also be available.

Revival Continues

The revival now in progress at the Church of God of Prophecy, 602 W. 14th, will continue through Friday, September 1 with Mike Tomlinson as evangelist. Services will be at 7:30 p.m. and everyone is invited to attend.

Founder's Day Booths

Sponsors for food and drink concession booths are needed for the 1989 C.W. Post Founder's Day Celebration in October. With an expected attendance of over 6,000, including students from West Texas area high school bands, help is needed to feed the visitors. If you, your group or organization are interested in a space during the activities, call the Main Street office at 495-4157 or Barbara Hardin at 495-3987.

Commodity Distribution

Commodities will be distributed Tuesday, September 19 from 9:30 a.m. to 12 noon and 1 p.m. to 3:30 p.m. at the 4-H Barn on the Lubbock Highway. Unless notice is received of a change, commodity distribution will continue on the third Tuesday of each month.

The Post Dispatch

USPS 439-620

If it's news to you...it's news to us!

Sixtythird Year Number 14

Newsstand Price 50 cents

Wednesday, August 30, 1989

Commissioners, City Council in Joint Meeting on County Fire Calls, Landfill

by Lonnie Welborn

A joint meeting between the city council and county commissioners was on the agenda for the Monday, August 28 regular meeting of commissioners' court when city council representatives Dan Lamb, Jack Alexander and Bob Turner met with the commissioners to discuss the fire department and area landfill.

The council asked the commissioners cooperation in an increase on the amount paid for county fire calls from \$225 per call to \$350 per call, or a budgeted amount of \$13,000.

Commissioner Herbert Walls proposed that the county continue paying \$225 per call and also pay an additional \$100 per call in a yearly payment to be used for fire-fighting equipment. The commissioners unanimously accepted this proposal.

The city also requested a one-time county assistance of \$8,400 for projected landfill expense, including engineer's fees, surveying and soil investigation. The amount requested does not include possible

land acquisition.

The Texas Department of Health has strongly suggested to a representative of Parkhill, Smith & Cooper, Lubbock engineering firm for the City of Post, that the city consider closing the existing landfill now, in order to avoid stricter regulations which will be in effect if the landfill is closed at a later date.

On a motion made by Commissioner Sammy Ellis and seconded by Commissioner John Valdez, the court voted its unanimous approval of the landfill assistance.

The commissioners also took action on a statewide ordinance which goes into effect September 1, 1989 stating that no cesspools can be dug after that date and that septic tanks must be dug instead. The state will also require an inspection of all existing cesspools with an approximate cost that could run as high as \$250 per inspection if done by the state. If the county handles the inspections, the cost would be less and the money would stay in Garza County.

At the request of the commissioners, Constable Lonnie Gene Peel talked with Joe Bragg of the Department of Environmental Health who told Peel that he could be licensed to do the inspections after attending a two-day, 16-hour licensing school in Lubbock. The commissioners voted their approval for Peel to attend the school.

Peel also informed the court that Bragg, or someone from his office, would meet with the commissioners on September 11 to discuss the situation and go over the inspection forms.

The county budget was under discussion again at Monday's meeting as the commissioners turned down budget requests by County Clerk Sonny Gossett for another full-time employee or a personal computer and software program for the clerk's office to help with that office's heavy workload. A similar budget request by County Treasurer Voda Beth Gradine for a personal computer and program for the treasurer's office was also voted down by the court.

In other action the commissioners:

- Voted unanimously to support Proposition 3, which will appear on the November 7, 1989 ballot as

follows: "The Constitutional amendment authorizing the legislature to provide for the recovery and further development of the state's economy, with goals of increasing job opportunities and other benefits for Texas residents, through state financing of the development and production of Texas products and businesses."

In May of 1989, the Texas legislature passed House Joint Resolution 51 allowing for issuance of \$75 million in General Obligation Bonds. These are designed to stimulate growth of new agricultural industries and small businesses in Texas.

- Re-appointed Giles Dalby as a director for the Garza County Appraisal District.

- Signed a resolution regarding economic growth, diversification of the local economy and abatement of real estate taxes for encouraging investments, according to guidelines and criteria for property tax abatement as presented to the court by Lewis Earl under the Enterprise Zone Program.

The court will begin work to draft a county ordinance supporting the property tax abatement with a three year incremental tax abate-

(Continued on Page 2)

Side-Splitting Comedy Opens Tomorrow at Garza Theatre

The hilarious hit comedy, "A Shot In The Dark," opens tomorrow evening at the Garza Theatre, with actors and actresses who have spent a lot of drive-time during rehearsals the past few weeks.

Leading the list of travelers is Sweetwater's Greg Wortham, who also has made the rehearsals all the way from Austin. Wortham, known for his support of the Garza Theatre, is employed by the Midwest Rural Electric Cooperative.

Other travelers in the cast include Lubbock's Laura Mack, Patrick Conner, Matthew Thomas, Troy Timms and Slaton's Christy Cade and Mandy Swafford.

"Well, when Matthew and I share a ride, we practice our lines," Laura explained, "and really, the trip down here and back isn't so bad..." She is morning co-host for Lubbock's KZII-FM radio.

Garza Theatre fans will appreciate the courtroom comedy, an adaptation by Harry Kurnitz of the French play, "L'Idiot" by Marcel Achard, which opened on Broadway in October 1961, starring Julie Harris, William Shatner and Walter Matthau.

Four years later it was made into a side-splitting film of the same name, starring Peter Sellers in his first appearance as "Inspector Cluzot".

The Garza Theatre production will be offered Thursday, Friday and Saturday evenings at 7:45 p.m. and on Sunday at 2 p.m.

Tickets are \$6 for adults and \$3 for children 12 years or younger and may be reserved at the Box Office by calling 495-4005 Monday through Saturday from 10 a.m. to 4 p.m.

Special People Get United Way Help

by Wesley W. Burnett

You may not realize it, but many of the organizations who depend on your donation to the United Way campaign could not provide adequate services without help...federal, state and local governments just don't have enough money to meet all the demands.

That's why it is so important for every citizen to give something...because Garza County United Way money goes directly to help people in Garza County, including those who are served by the Mental Health organization.

Perhaps you don't know anyone served in this way, but chances are your neighbor, or someone in your church or a member of your extended family knows about the needs. Although the Mental Health goal of \$400 doesn't sound like a lot, that \$400 goes a long way toward providing critical equipment to help the people who need help the most.

Do your part...even it is only a few dollars, so many people in Garza County need you.

If every Garza County resident gave as little as \$3 this year's goal of \$17,375 would be easily achieved.

(Continued on Page 2)

Dispatch to Publish Sunday Edition Sept. 3

A special Sunday edition of The Post Dispatch will be published September 3 celebrating Labor Day.

Advertising and news deadline for the special edition will be Thursday, August 31 at 5 p.m.

The Dispatch will be closed Monday, September 4 to observe Labor Day, and will open Tuesday morning, September 5 to accept news and advertising until 5 p.m. for the Thursday, September 7 edition.

Advertisers will find this Sunday edition an excellent opportunity to begin promotion of fall sales.

The Sunday Dispatch will be delivered city-wide in Post and mailed to rural route customers, providing advertisers a total circulation of 2,600.

Labor Day Holiday Schedule

Thursday, August 31, 5 p.m.

Deadline for Sunday, September 2 Edition

Monday, September 4

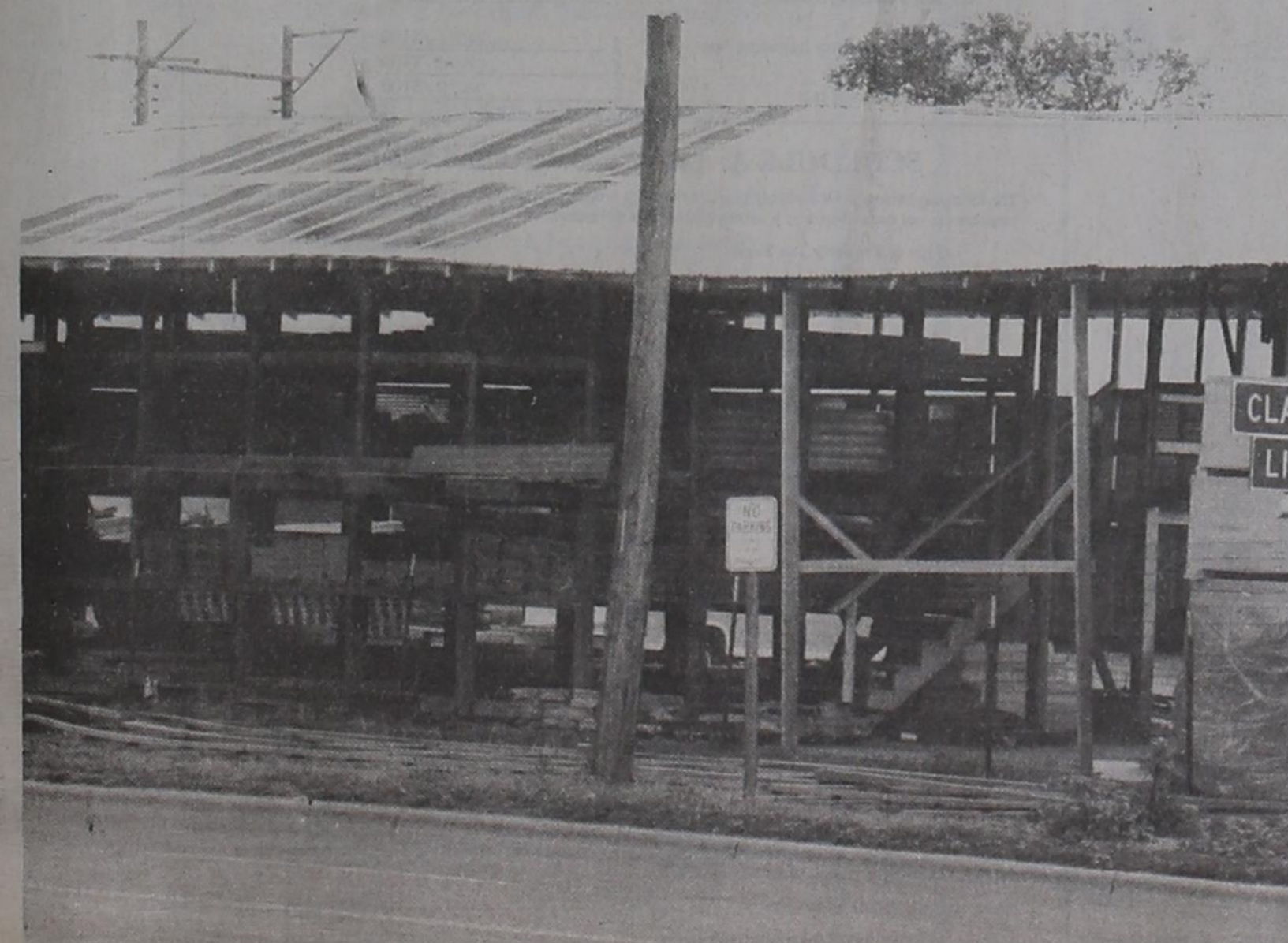
Office Closed

Tuesday, September 5, 5 p.m.

Deadline for Thursday, September 7 Edition

Monday, September 11

Return to regular schedule



HIGH WINDS HIT AGAIN - Lighting may not strike twice in the same place, but high West Texas winds do at Higginbotham-Bartlett Company. With construction barely completed to repair wind damage done in a June 1 storm, the local lumber company sustained more damage when the front of the building was hit by high winds that blew in with a recent rainstorm.

Some Texas Counties Accepting Credit Cards

No decision has been made to accept credit card payments for taxes in Garza County, according to Tax Assessor-Collector Chita Hataway, but paying motor vehicle sales tax in some counties is now as easy as using your credit card, State Comptroller Bob Bullock has announced.

A state law passed this year allows county tax assessor-collectors to accept credit card payments beginning Monday, August 28 for the state's motor vehicle sales tax, but the option to accept credit cards and which credit cards to accept will be determined individually by county tax assessor-collectors.

The law also permits credit card payment of motor vehicle title transfers and registration fees; property taxes; alcohol license and permit fees; and occupation taxes.

The new law allows tax assessor-collectors to charge up to five percent on top of the motor vehicle sales tax for banking costs associated with accepting credit card payments.

Taxpayers will not be able to use credit cards to pay state taxes to the Comptroller's office or field offices.

The motor vehicle sales tax rate is six percent. County tax assessor-collectors forward 95 percent of the motor vehicle tax to the state, and keep five percent as a collection fee.

In 1988, the motor vehicle sales tax generated \$896 million in revenue for the state.



RIBBON CUTTING FOR BLUEBONNET - Present for the ribbon cutting at the newly renamed Bluebonnet Savings Bank were (front row, left to right) Monty McDaniels, Bluebonnet vice president; Howard Neff, CEO; Nancy Norman; Renae Boren; and Terry Moore; (second row, left to right) Gail Lehman, Trina Wood, Joy Fluitt and Bryan Williams; and (third row, left to right) Joe Harris, Joe Williams and Bob Turner.

Animal Health Office for Area Moves to New Location in Childress Sept 1

On Friday, September 1, 1989, the Area 2 office of the Texas Animal Health Commission (TAHC), which includes Garza County, will be moved 30 miles north, from Paducah to Childress and will be located at 204 Avenue B NW, Old Bank Building, Childress, Texas 79201. The telephone number for the office is 817-937-6125.

In addition to checking health certificates, tagging livestock, issuing permits and keeping records on animals sold and transported, the Area 2 inspectors also fulfill duties

for the agency's most widely known effort, the brucellosis program.

Jimmy Dusek, DVM, Area 2 director, said, "The move to Childress reflects the success of the brucellosis eradication program in our area. Because Area 2 has only five herds under quarantine, we can focus our efforts at preventing disease from being brought in to our counties."

Dusek said the move will enable him to work more closely with the three TAHC transportation enforcement officers in the area who check shipments of livestock to see that they meet health requirements for entering the state.

As additional protection against the spread of disease, Dusek said inspectors travel to farms, dairies and ranches to draw blood samples or collect milk samples from cattle that are or may be infected with brucellosis. Dusek also works with private veterinarians who are certified to conduct brucellosis testing work.

Girl Scouts to Register on Thursday

Girl Scout registration for the current school year will be held Thursday, August 31 at the Girl Scout House, 506 W. 7th, between the hours of 3:30 p.m. and 6 p.m.

Any girl or adult who would like to be a part of the activities planned for the year is urged to register on Thursday.

The Area 2 staff also processes and follows up on permits and health certificates for interstate and intrastate shipments of animals, and inspects and permits swine production facilities to ensure that they meet health and cleanliness standards.

Wildlife Packets Available from Local SWCD

Overhead cover, an important habitat component for many wildlife species, is being overlooked in much of the cropland currently being planted to grass in Texas.

Upland game birds such as quail and pheasant need this type of cover of evading predators and loafing during the day.

When developing habitat on these grass areas, the use of wildlife packets from the Texas Forest Service is very important for learning to create overhead cover. There are four different packets available, each specifically designed for certain wildlife species. The four groups of species are (1) quail and dove; (2) turkey and deer; (3) pheasant and (4) squirrel. Each packet contains 100 plants of four different species, instructions for planting them, planting designs for maximum effectiveness and suggested locations for plantings.

Local Soil and Water Conservation Districts that sell trees are able to obtain these packets and landowners can contact the local SWCD for information on wildlife packets.

Remember that the Soil Conservation Service personnel at 201 W. Main in Post can assist landowners and operators through the Garza County SWCD in planning all aspects of wildlife habitat development. For their assistance, call the local office at 495-2056.

Special People...United Way

(Continued from Page 1)

If you're not sure where or how to donate, just drop your check or money order in the mail to Garza County United Way, P.O. Box 425, Post, Texas 79356.

The purpose of the United Way campaign is to provide adequate funding for participating organizations and eliminate duplication of fund raising and allow contributors to give one gift for all.

Donations to United Way are tax deductible.

Participating organizations and budgeted goals are:

Summer Baseball	4,760
Mental Health	400
Boy Scouts	3,600
Girl Scouts	3,600
Child Welfare	1,000
Red Cross	340
Salvation Army	750
Girls' Basketball	425
Trailblazers	500
Satellite School	250
Meals on Wheels	1,250
United Way	500

County, City Joint Meeting

(Continued from Page 1)

ment program to begin after notification that an Enterprise Zone has been designated. By this action the entire county will be declared a Reinvestment Zone for encouraging investments.

The court was recessed at 12 noon and reconvened Monday afternoon for further budget discussions.

Present at the meeting were County Judge E.A. Howard, Jr.; Commissioners Walls, Valdez, Ellis; Ted Aten; Sonny Gossett; Voda Gradine; and Dee Justice.

Order your subscription today!
ONLY \$15 in Garza and adjacent counties!
Call 495-2816

"Call us and compare"
Tom Power INSURANCE
Home, Business, Auto, Life
Independent Insurance Agent
Allstate® TheTravelers
204 E. Main - Post, Tx. 79356
Call 495-3050, 3051 for All forms of insurance

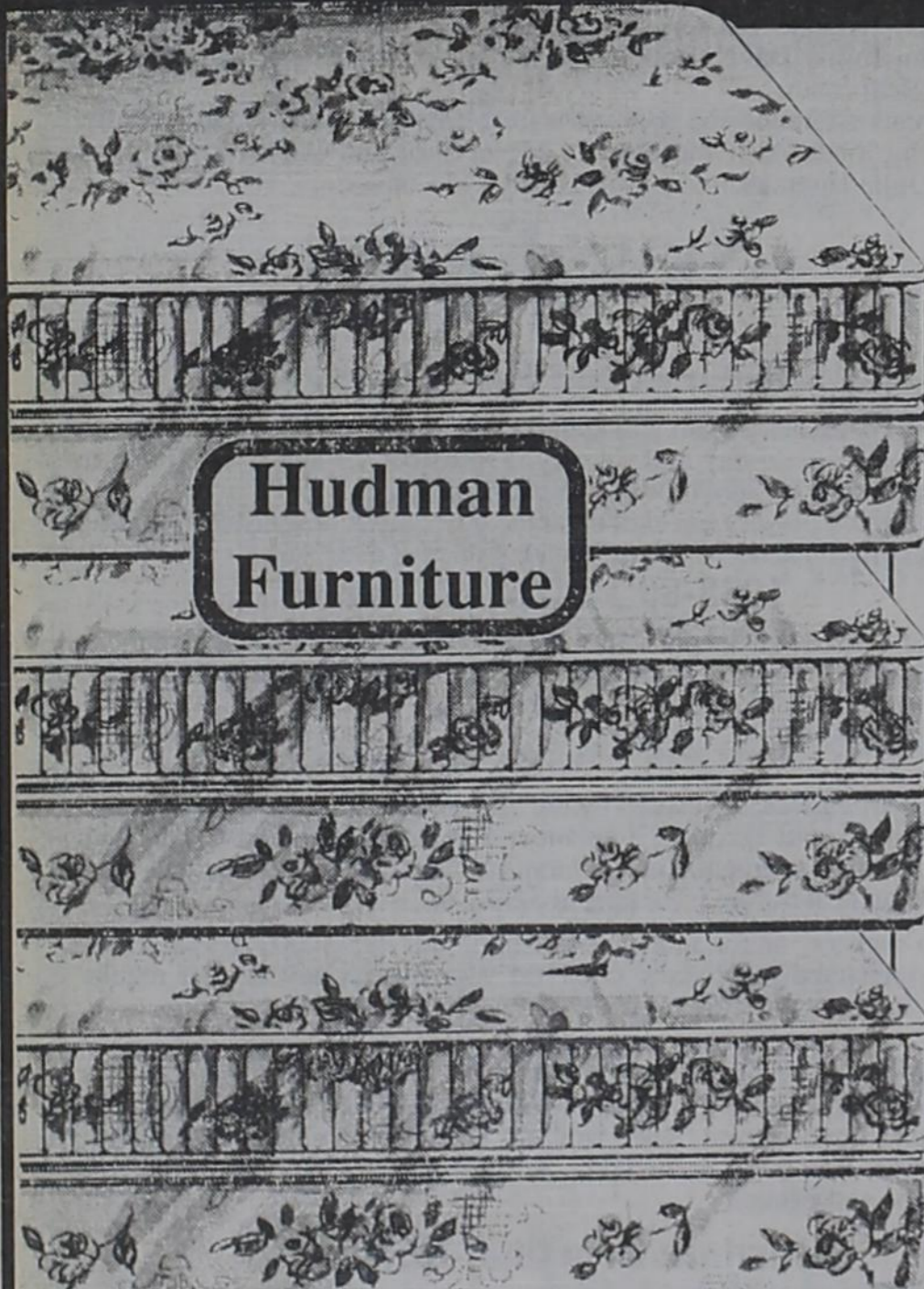
WHO'S THE LOWEST PRICED VIDEO RENTAL IN POST?
POST MOVIE MAGIC
Your ONLY home owned Video Store
Back-to-School Special!
New Releases & Spanish **1.75** or 3 for 5.00
All others **ONLY .75 each!**
Specials good thru the Month of September
• We are receiving new movies weekly •
Watch for our Video Club coming Soon!
POST MOVIE MAGIC
109 W. Main 495-2345

Entered at U.S. Post Office, Post, Texas for transmission through the mails as Second Class matter, according to an Act of Congress, March 3, 1879.

Subscription Rates:
Garza, Lynn, Borden, Lubbock, Crosby, Kent and Scurry County: \$15 per year
All others - \$26 per year

Wesley W. Burnett
Publisher
Lonnie Welborn
Editor
Gail Burnett
Advertising Sales
Deadline:
Mondays at 5 p.m.
P.O. Box 10
Post, Texas 79356
806-495-2816
Member
Texas Press Association
West Texas Press Association

SPECIAL PURCHASE



Hudman Furniture

SAVE \$40.00 to \$200.00

CHOOSE FROM 3 FIRMNESSES

All quality sleep sets

Southland Orthopedic 432		Simmons Beauty Rest Supreme	
Twin Set Reg. 269.95	199.95	Full Set Reg. 499.95	439.95
Full Set Reg. 398.50	299.95	Queen Set Reg. 599.95	499.95
Queen Set Reg. 535.50	399.95	King Set Reg. 799.95	699.95
King Set Reg. 699.95	499.95		

Simmons Maxipedic	
Full Set Reg. 399.95	349.95
Queen Set Reg. 429.95	369.95
King Set Reg. 599.95	499.95

Hudman Furniture Co.

Hours: 9 a.m. to 6 p.m. 301 E. Main, Post, Tx 495-2615

Notice of Effective Tax Rate 19 89 Property Tax Rates in City of Post

This notice concerns 19 89 property tax rates for City of Post. It presents information about three tax rates. Last year's tax rate is the actual rate the taxing unit used to determine property taxes last year. This year's effective tax rate would impose the same total taxes as last year if you compare properties taxed in both years. Compare it to the tax rate the taxing unit proposes for this year. This year's rollback tax rate is the highest tax rate the taxing unit can set before taxpayers can start tax rollback procedures. In each case these rates are found by dividing the total amount of taxes by the tax base (the total value of taxable property) with adjustments as required by state law. The rates are given per \$100 of property value.

Last year's tax rate:	\$ 213,214
+ Last year's operating taxes	\$ 33,991
+ Last year's debt taxes	\$ 247,205
= Last year's total taxes	\$ 88,287,242
+ Last year's tax base	\$.28 /\$100
= Last year's total tax rate	\$.28 /\$100

This year's effective tax rate:	\$ 246,373
Last year's adjusted taxes (after subtracting taxes on lost property and taxes to correct appraisal roll errors)	\$ 79,551,925
+ This year's adjusted tax base (after subtracting taxes on new property)	\$.3097 /\$100
= This year's effective tax rate	\$.31899 /\$100
x 1.03	
= Maximum rate unless unit publishes notices and holds hearings	\$.31899 /\$100

This year's rollback tax rate:	\$ 212,497
Last year's adjusted operating taxes (after subtracting taxes on lost property and taxes to correct appraisal roll errors and adding taxes lost in court suits)	\$ 79,551,925
+ This year's adjusted tax base (after subtracting taxes on new property)	\$.2671 /\$100
= This year's effective operating rate	\$.2884 /\$100
x 1.08	
= This year's maximum operating rate	\$.2884 /\$100
+ This year's debt rate	\$.0694 /\$100
= This year's rollback rate	\$.3578 /\$100

SCHEDULE A: Unencumbered Fund Balances

The following balances will probably be left in the unit's property tax accounts at the end of the fiscal year. These balances are not encumbered by a corresponding debt obligation.

Type of Property Tax Fund	Balance
General Funds	\$200,000

SCHEDULE B: 19 89 Debts Service

The unit plans to pay the following amounts for long-term debts that are secured by property taxes. These amounts will be paid from property tax revenues (or additional sales tax revenues, if applicable).

Description of Debt	Principal or Contract Payment to be Paid	Interest to be Paid	Other Amounts to be Paid	Total Payment
Bulldozer				\$22,926
Street Work				\$30,000
Total required for 19 89 debt service			52,926	
- Amount (if any) paid from funds listed in Schedule A			-0-	
- Excess collections last year			-0-	
= Total to be paid from taxes in 19 89			52,926	
+ Amount added in anticipation that the unit will collect only .95% of its taxes in 19 89			2,786	
= Total Debt Service Levy			55,712	

This notice contains a summary of actual effective and rollback tax rate calculations. You can inspect a copy of the full calculations at the Garza County Appraisal District
Name of person preparing this notice: Jean M. Westfall
Title: Chief Appraiser
Date prepared: 08/23/89

Weston, Cowdrey Will Marry November 18 In Lubbock Ceremony

Mrs. Beverly Weston announces the engagement of her daughter, Donna Marie, to Curtis Delmer Cowdrey, son of Mr. and Mrs. Robert P. Cowdrey.

The couple will be married November 18, 1989 at South Plains Church of Christ in Lubbock.

The bride-elect is a graduate of Lubbock Christian High School and is a student at Lubbock Christian University. The prospective groom is a graduate of Post High School and is a student at LCU. He is employed by Payless Cashways in Lubbock.



Curt Cowdrey and Donna Weston

66th Anniversary for Virgil and Esker Stone

Virgil M. Stone and Esker L. Stone celebrated their 66th Wedding Anniversary at a family reunion hosted by their children and grandchildren the weekend of July 21-23 at the Days Inn in San Angelo.

A total of 31 family members, including the honored couple, were able to join in the celebration.

All the family members met at the Days Inn on Friday, and at noon on Saturday a big meal was served at the Baptist Camp cabin on Lake Nasworthy. A beautiful blue and white anniversary cake was presented to Virgil and Esker, along with cards and gifts.

Virgil and Esker were married July 22, 1923. They had four children: Marjorie M. Stone Smith,

who died July 21, 1988; Bill Stone of Adkins; Anita Stone Bilberry of San Angelo; and A.J. Stone of Otto. They also have six granddaughters, three grandsons and 14 great-grandchildren.

Dr. Lewis Moore
OPTOMETRIST
Announces New Office
Hours for 1989
Complete Visual Care
Thursday 9:30 a.m. to 5 p.m.
206 West Main 95-3687

In the Neighborhood

by Lonnie Welborn

Claborn Family Gathers

The Claborn family once again invaded Post for the yearly reunion - and this time they gathered at the home of Irene Claborn.

Those attending the reunion were: Elton, Prissy, Glen and Chris Mayfair of Ft. Hood, Missouri; Agnes Hamilton and Ebbie Hamilton of Palo Verde, California; Marie and Vicki Anderson of Roswell, New Mexico, J.R. Williams of Nichiel, Arkansas; David, Darlene, Missy and Mitch Edmondson, of Lewisville; Tommy, Penny, Amber and Jessica Williams also of Lewisville; Paula Black of Roundrock; Tommy and Nina Baker of Kaufman; Ebbie Hamilton of Odessa; Jay Claborn, Eunice Faye Claborn, Oscar and Lisa Elmendorf, all of Lubbock; Lorane Gerner of Grassland; Gene, Mary Lee and Lance Claborn, Ruby Claborn, Renee Claborn, Melinda, Misty and B.J. Baker, all of Post.

Nurses' Graduation

Diane Browning Conrad was among the 58 students who were pinned at the graduation ceremonies of Grayson County College School of Nursing in Denison, Thursday evening, August 17.

Ms. Conrad, who attended high school in Post, is the daughter of former Post residents, Mr. and Mrs. Gordon Anderson, now of Denison. She lives in Sherman with her daughter and will be employed by Texoma Medical Center of Sherman.

She was an honor graduate and served as vice president of the student council.

Mrs. Frances Conrad of Post attended the graduation exercises.

S&L

Those S&L people are at it again with their auctions and their pre-auction press conferences, etc.

This time the invitations are to attend auctions in Midland and in Dallas - and they're just as good as the first auction in Houston - that's the one that impressed me with its Bentley and its carved elephant.

This time, in Midland, things are a little more practical. For instance, you can bid on drilling rigs or airplanes or a 1988 Lotus Esprit (isn't that what Agent 007 drives when he isn't driving an Aston-Martin?).

But when you move on over to Dallas for the auction there, things get a little more high class. In the Dallas auction, you won't want to miss a custom made Bohlin saddle from Hollywood, California, or 17th, 18th and 19th Century antiques, or my favorite, a 17th Century castle door. Amazing.

New Chamber Secretary

Ann Stelzer has joined the staff of the Post Chamber of Commerce and is now serving as secretary for that organization.

Thanks from the Band

The Pride of Post Band says "Thank You" to the parents who made the second annual ice cream and swim party a success by bringing ice cream and/or sponsoring the event. Thanks go out to Mr. and Mrs. Bagby, Mrs. Bell, Mrs. Gomez, Mrs. Harp, Mrs. Hatfield, Mrs. McReynolds, Mrs. Morris,

Mrs. Wood and Mr. and Mrs. Norman.

An Apple a Day

The Dispatch got an apple through the U.S. mail the other day - an actual, shiny, red apple. And as surprising as receiving an apple through the mail was the fact that the apple came from an orchard near Idalou.

Hi Plains Orchards is located three miles east of Idalou on Highway 82 and is filled with 5,000 trees and 15 different varieties of apples.

The popular Red and Golden Delicious apples make up over 50 percent of the orchard. Picking period for Red Delicious begins approximately August 28, while prime picking for the Golden Delicious begins about September 5. The orchard is active for picking from mid-July to early October, with the various varieties maturing at different times.

If you go to Hi Plains to pick - you don't even have to take sacks

or baskets with you - the orchard furnishes all you need. And they wash and sack your apples before you leave.

Along with the apples you can buy apple cider in gallon jugs. Natural cider with just the juice of tree-ripened apples - no sugar or preservatives.

When the trees are in bloom, bees are brought in for pollination. The bees are hired from commercial as well as private keepers who are happy to lease their bees to the orchard in return for apple blossom honey.

Hi Plains Orchards is open seven days a week from 8 a.m. to 7:30 p.m. Take Highway 82, three miles east of Idalou and follow the signs to Hi Plains. If you plan on stocking up for the winter, orchard workers can even show you how to store your apples year round.

I've talked with some people who made the trip and according to them, it's well worth the drive and the picking.

Lending Policies Reflect Changes for Agriculture

The days of farmers walking into their banker's office and borrowing thousands of dollars on their signatures alone are becoming a thing of the past.

Fewer bankers are basing their loan decisions solely on their knowledge of the borrower's past repayment record, financial position and the adequacy of collateral, said Dr. Danny A. Klinefelter and Dr. Gerald C. Cornforth, management economists with the Texas Agricultural Extension Service.

In the past, the formal loan policies of lending institutions were often much tougher than those actually followed in practice. Recent experience and stricter regulation are accelerating the movement toward commercial business standards, the two economists said.

For example, as the trend in agriculture moves toward many part-time farming operations and a few large-scale commercial farms, agricultural lending policies reflect these changes.

"Farms relying primarily on off-farm income for repayment ability will have loan request treated like consumer loans with a standard set of rules based on percent of income devoted to debt servicing, overall debt-to-asset ratios and specific collateral margins," Klinefelter said.

Commercial farms will be treated like agribusinesses and will be subject to more information and documentation requirements with increased emphasis on repayment ability, longer-run economic outlook and specific enterprise analysis.

Lending is becoming more complex as the commercial operations become vertically integrated, Cornforth said.

"A premium will be placed on risk management by both lender and borrower with more controls and performance monitoring re-

quired after the loans are made," he added.

The two economists point to another, more subtle shift in lending practices that has occurred in response to legislation providing for more borrowers' rights.

Post School Menu

Tuesday, September 5
Breakfast - Asst. cereal, fresh fruit, milk.

Lunch - Frito pie, lettuce salad, french fries, brownies, corn bread, milk.

Wednesday, September 6
Breakfast - Malt-o-meal, sausage, toast, orange juice, milk.

Lunch - Burrito w/sauce, cabbage slaw, fried okra, fruit cocktail, milk.

Thursday, September 7
Breakfast - Asst. cereal, fresh fruit, milk.

Lunch - Chicken fry patty, gravy, whipped potatoes, green beans, jello, cheese rolls, milk.

Friday, September 8
Breakfast - Muffins, sliced peaches, milk.

Lunch - Bar-B-Q on homemade bun, pinto beans, mixed greens, cookies, milk.

Southland School Menu

Tuesday, September 5
Breakfast - Donut, 1/2 banana, juice, milk.

Lunch - Chili-cheese dogs, carrot salad, chips, cake, milk.

Wednesday, September 6
Breakfast - Biscuits, sausage, gravy, juice, milk.

Lunch - Tacos, lettuce/tomatoes, ranch style beans, pecan pie, milk.

Thursday, September 7
Breakfast - Scrambled eggs, toast, bacon, juice, milk.

Lunch - Macaroni & Beef, blackeyed peas, mixed veggies, hot rolls, fruit, milk.

Friday, September 8
Breakfast - Muffins, fruit, juice, milk.

Lunch - Pizza, green beans, corn, ice cream, milk.



DOWE MAYFIELD, C.L.U.

The TAX-MAN is coming!
See us for your IRA or Keough!
3305-81st, Suite F, Lubbock
806-797-8089

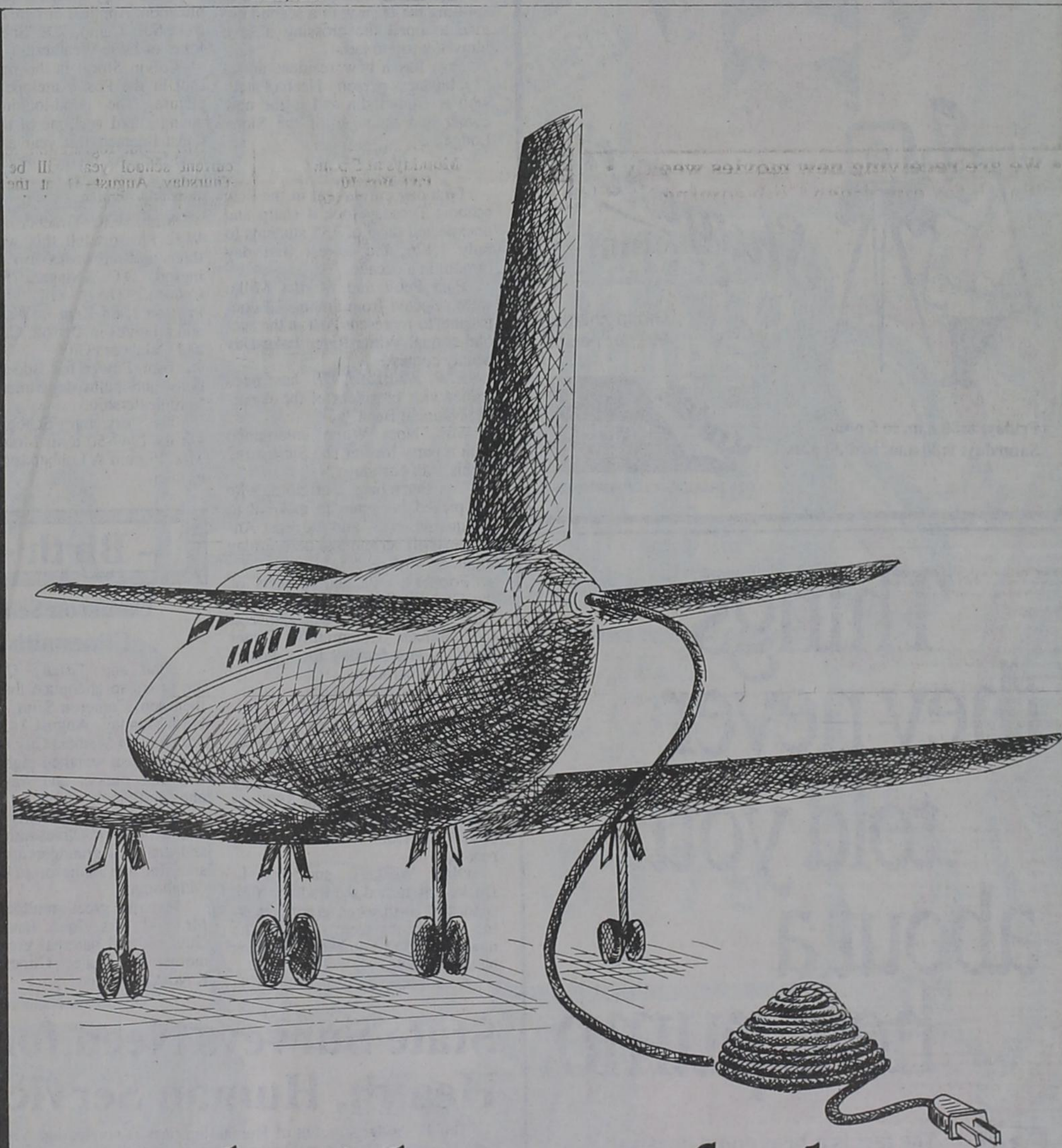
NOW OPEN Showcase Video

Free membership includes
Monday thru Friday:
New Releases 1.99
Others 99¢
Saturday Only (2 day rental):
New Releases 2.49
Others 1.49

COUPON

Rent 2
Get 1 FREE!!
...including
New Releases...
with this coupon
Expires 9-15-89

Showcase Video
202 E. Main Mon.-Sat. 495-3809
10 a.m. - 9 p.m.



Use the right energy for the right job.

Can you imagine how long the extension cord would have to be to fly this plane anywhere? Electricity just can't do the job when you want to run a jet engine.

An electric heat pump can't cool your home as well as a high-efficiency electric air conditioner. And it can't warm your home as well as a natural gas furnace.

Think of winter this summer. Nothing heats your home like Energas, West Texas' best energy value.



ENERGAS

Don't mess with your furnace.
Energas Company

* Lunch Specials *

Monday

Chicken fried steak or meatloaf, mashed potatoes, red beans, squash, blackeyed peas.

Tuesday

Smothered steak or fish sticks, macaroni and cheese, mixed greens, red beans, mashed potatoes.

Wednesday

Chicken and dumplings or chicken fried steak, fresh carrots, Au gratin potatoes, red beans, green beans.

Thursday

Hamburger steak or chicken nuggets, mashed potatoes, red beans, fried okra, corn.

Friday

Chopped BBQ beef or fish sticks, potato salad, cole slaw, red beans, green beans.

Saturday

Fried chicken or meat loaf, macaroni and tomato, mashed potatoes, red beans, mixed greens.

Sunday

Roast beef or chicken and dressing, mashed potatoes, red beans, green beans, corn.

Each Special

ONLY 3⁹⁵

JACKSON'S CAFE

212 N. Broadway

495-2970

Tiffany Clinesmith is Honoree at Baby Shower

Tiffany Clinesmith was honored recently with a baby shower at the Fellowship Hall of Calvary Baptist Church. The refreshment table, where cookies, punch and nuts were served to the guests, was covered with a lace cloth and was accented with a baby planter filled with ivy. Thirty guests called or sent gifts during the shower. The hostesses for the event, who presented the honoree with a swing, were Marie Odom, Doylene Shumard, Betty Curry, Debbie Line, Mary Nelson, Diane Collier, Lana Benton, Carolyn Williams, Linda Davis, Joyce Overton and Marcella Hair.

\$100 Gift Certificate to be given away Friday, Sept. 1
 Check with us for great Back-to-School Specials!
BIRD'S NEST
 New Hours: Mon-Fri 9 a.m. to 6 p.m.
 Sat. 10 a.m. to 5:30 p.m.
 213 E. Main 495-3872

1- 10x13 (Wall Photo) 30 Color Photos 99¢ Deposit \$10.00 Due at Pick up (plus tax)
 1- 8x10
 2- 5x7
 2- 3x5
 16- King Size Wallets
 8- Regular Size Wallets
\$10.99 WE USE KODAK PAPER

AT
Handy Hardware & Gifts
 231 E. Main
 Friday and Saturday
 September 1-2



Shugart's inc.

Group charge 99¢ per person

Friday: 8:30 a.m. to 5 p.m.
 Saturday: 9:30 a.m. to 4:30 p.m.



Things they never told you about a heat pump.

Fact #17

The fact is a heat pump doesn't cool as well as an air conditioner, and it doesn't heat as well as a natural gas furnace.

But it sure does use a lot of electricity.

ENERGAS

Energy Company



AT CORPUS CHRISTI MEETING - At the state meeting of the Texas County Agricultural Agents' Association meeting in Corpus Christi, Garza County Extension Agent, Syd Conner (left), out-going past-president of the T.C.A.A.A., presented a plaque to out-going president Duery Menzies of Fredricksburg, starting the second 50 years of the organization. Conner was the 50th president and filled the last name plate on the original plaque started in 1939. The plaque will hang in the Extension floor lobby of the Systems Administration Building on the Texas A&M University campus in College Station while the new plaque will rotate with the immediate past-president of the T.C.A.A.A. each year.

Yesteryears

by Lonnie Welborn
 As gleaned from the files of The Post Dispatch. Copies available on microfilm at the Post Public Library.

10 Years Ago August 30, 1979
 Twenty-five new teachers for Post schools were introduced in The Post Dispatch. Kay Lamb is tournament director for a Scrambler Tennis Tournament here Saturday.

Presidents for the four Post High School classes are: Brent Mason, senior class; Holly Giddens, junior class; Mario Luna, sophomore class; and Will Kirkpatrick, freshman class.

Sam Ellis of Southland received a report from Baird that his 1978 pickup had been found, before Sam knew it had been stolen.

Sheriff Jim Pippin almost gave a Santa Fe freight train engineer a ticket and a trip to jail here Tuesday afternoon for obstructing traffic while the engineer waited well over an hour for a repairman to work on his engine. He finally succeeded in splitting the train with a second engine to open the crossing a save himself a trip to jail.

Post has a new resident and a new business person - Neena Patel - who is from India and is the new owner and manager of the Sioux Lodge.

20 Years Ago August 28, 1969
 First day enrollment in the Post schools Tuesday took a sharp and unexpected drop of 135 students to only 1,126, the lowest first day turnout in a decade.

Pam Petty and Martha Miller were selected from among 13 contestants to represent Post in the second annual White River Lake Day beauty contest.

E.W. Williams, Jr. has been named vice president of the Amarillo National Bank.

Mrs. Noel White entertained with a party for her son Steven Jay on his 10th birthday.

The Petersburg Buffaloes, who are picked by some to make it to the quarterfinals, and the Post Antelopes will scrimmage here Friday night.

Former pupils and teachers of the Graham Chapel School, which was started in 1904, will gather at the Graham Community Center Saturday and Sunday for a homecoming celebration.

30 Years Ago August 27, 1959
 Texas Rangers and local law enforcement officers were continuing an investigation of a break-in over the weekend at Forrest Lumber Company in which about \$50 was stolen and considerable damage done to doors and the firm's records.

Ollie Weakley and Ira L. Duckworth turned the tradition first spades of earth when groundbreaking ceremonies were held for the new \$140,000 home of the First National Bank.

A mail box has been installed at

the depot "just for mail that can't be posted at the post office before 6:30 p.m."

Bryan Williams and Son will hold an open house August 29 and 30 in Sunset Homes where a model home will be open for viewing.

J.D. McCampbell was elected to the board of directors of the Tahoka-Post National Farm Loan Association.

Dr. John E. Carter and Dr. James R. Matthews are moving to the Garza Medical and Surgical Clinic on West Eighth Street, across from the junior high school.

40 Years Ago September 1, 1949

The rebuilt and newly equipped Planters Gin opened its 1949 season by ginning two bales of cotton from the area northeast of Post. The first bale belonged to W.S. Copeland and the second bale belonged to Horace Wood.

All World War II veterans who carried the National Service Insurance policy for as long as three months are entitled to a dividend for which they must fill out an application. Applications are available from S.E. Camp, R.E. Shedd, T.L. Jones or Jackie Weathers.

Calvin Storie is the one bright spot in the Post Antelope football picture. The good-looking, 172-pound guard was one of the area's finest linemen last year and Antelope boosters predict another great year for him. He is the squad's only returning regular.

Mrs. W.R. Graeber and Mrs. W.F. Presson left this week on a three or four weeks trip to Washington, D.C., Niagara Falls and Canada. They will visit Mrs. Presson's son Kent in Washington, and relatives in Detroit, Carbondale and Oklahoma City.

Tom Power has added a new body and paint department to his Ford dealership.

The Justiceburg School will begin its 1949-50 term Monday with Mrs. Vernon A Lobban returning as teacher.

- Birth -

Cameron Scott Clinesmith

Scott and Tiffany Clinesmith are proud to announce the birth of their son, Cameron Scott, who was born Monday, August 14, 1989 at 5:02 p.m. at Medical City in Dallas.

Cameron weighed eight pounds and four ounces and was 21 and one-fourth inches long.

Paternal grandparents are Mr. and Mrs. Jack Clinesmith of Post and maternal grandparents are Mr. and Mrs. Jim Jamieson of Guymon, Oklahoma.

Maternal great-grandparents are Mr. and Mrs. John Jamieson of Guymon and paternal great-grandmother is Analee Clinesmith of Kayenta, Arizona.

State Surveys Need for Health, Human Services

The Texas Department of Human Services is conducting a survey to help identify the health and human service needs of Texas residents.

The survey, known as the 1989 Special Texas Census, is being conducted by mail and involves more than 38,000 households, including more than 11,000 Spanish surname households. In addition to basic demographic data such as age, sex and race, the survey collects information on each respondent's income, health insurance coverage, employment status, child-care needs and disabilities. The results will be used to support the department's budget and planning process and ensure more efficient use of tax dollars.

Households to be surveyed received letters from Governor Bill Clements the week of August 21, announcing the survey and requesting prompt return of questionnaires. Follow-up efforts by the department's Budget and Data Analysis Division will also encourage households to complete and return their questionnaires to ensure a representative sample. The sample is designed to provide valid data statewide, regionally and in selected metropolitan areas.

Data collection will continue through October. A toll-free number is provided for respondents to get further information of help with filling out their questionnaires.

The survey is similar to one conducted in 1985. The information gathered then was widely used for department budget and planning purposes, including preparing a legislative appropriation request and supporting the need for health and human services. The data was also used by many other state agencies and legislative task forces.

Photography Club Enjoys Light and Color Program

Caprock Photographers met August 1 in the Reddy Room of Southwestern Public Service with members Bill Mueller, Ed Neff, Judy Weaver, Louella Bilberry, Joe Miller, Marie Neff and Ray Mason present.

In the absence of the club president, Bill Mueller presided. He announced the mailout of the fall show would be ready to be fold, stamped and mailed at the next meeting.

A new award ribbon for the Garza County division will be ordered. Judy Weaver had announcements of the fall show put in the Lubbock Avalanche-Journal, Texas Monthly, Texas Highways and area newspapers.

Marie Neff and Ray Mason will be contacting local merchants and citizens for purchase award contributions.

Ray Mason presented the program, an audio/visual Kodak slide presentation entitled "Light and Color."

Pure white light is composed of red, blue and green light - the three additive primary colors. Additive means that when blended in equal amounts, white light is produced.

Color negative film has layers for recording each of these colors, but images appear in their complementary (or opposite) colors. In a color wheel, the three additive primaries (red, green and blue) are directly opposite their complementary colors, red/cyan (blue-green), blue/yellow and green/magenta. The complementary colors are called subtractive primaries. In printing color negative film, the interaction of the primary additives in projected light with the subtractive primaries in filters gives the control needed. The subtractive primary filters block or subtract their complementary additive primary from the light. A cyan filter blocks the red in light, the magenta blocks the green in light and yellow blocks the blue. When all the additive primaries or all three subtractive primaries, or any two complementary are mixed together, the result is no color at all, but white, black or shades of grey called neutral density.

The next time you pick up a package of prints you dropped off at the corner drugstore, stop and give some thought to the genius it took to develop photography.



Gruyere is a variation of Swiss cheese with a slightly sweeter flavor due to natural flavoring enzymes. No coloring or bleached milk is used, as may be the case with some Swiss cheeses.

NOW OPEN Showcase Video

Free membership includes Monday thru Friday:
 New Releases 1.99
 Others 99¢
 Saturday Only (2 day rental):
 New Releases 2.49
 Others 1.49

COUPON

Rent 2
 Get 1 FREE!!
 ...including
 New Releases...
 with this coupon
 Expires 9-15-89

Showcase Video
 202 E. Main Mon.-Sat. 495-3809
 10 a.m. - 9 p.m.

Just in... Original Coyote Country T-Shirts



Balloon Bokays for Birthdays Get well, New Baby, Holidays Special Occasions or any decorating need.

The Balloon Post

#5 Manna Square - Post, Tx
 495-2121
 Mon-Sat 9-5 Free Delivery

\$100 Gift Certificate to be given away Friday, Sept. 1

Check with us for great Back-to-School Specials!

LA POSTA
 412 N. Broadway 495-2648

DANISH IMPORTS
 GIFTS & COLLECTABLES

Sale!
 75% Off
 Collector Plates
 Now's the time to complete your collection!

201 E. Main Mon-Sat 9:30 - 5:30 495-2314



LABOR DAY

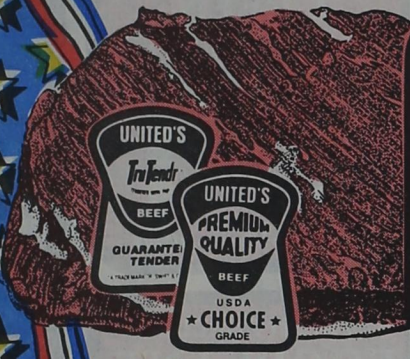
An American Tradition



THAT STARTS WITH GOOD FOOD!

WE GIVE S&H GREEN SEALS EVERYDAY
DOUBLE SEALS ON WEDNESDAY

NO SALES TO DEALERS • QUANTITY RIGHTS RESERVED
PRICES GOOD THRU SEPT. 2ND IN
LUBBOCK, SLATON, POST, BROWNFIELD,
LEVELLAND, LITTLEFIELD, PLAINVIEW, & LAMESA



UNITED TRU TENDR OR
USDA CHOICE
MARKET TRIMMED
**BONELESS
BRISKETS**
\$1.78
LB



UNITED PREMIUM QUALITY
BACON
REG. OR MESQUITE
1 LB. PKG.
.98



WILSON
**MEAT
FRANKS**
12 OZ. PKG.
.49



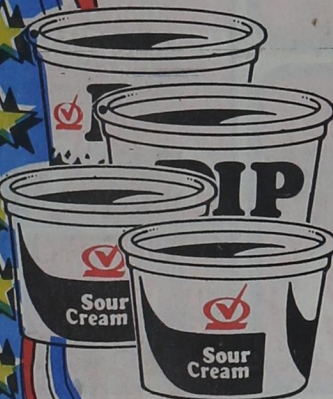
UNITED
**HAMBURGER
BUNS OR CONEYS**
3 \$1
FOR



CAMPBELL'S
PORK & BEANS
16 OZ.
OR **RANCHERO
BEANS** 15 OZ.
3 \$1
FOR



LAY'S
**POTATO
CHIPS**
ASST.
6.5-7
OZ.
.79



BELL
**SOUR CREAM
OR
DIPS**
2 \$1
8 OZ.
FOR



BELL
ICE CREAM
RED RING
1/2
GAL.
\$1.79



BOUNTY
TOWELS
ASST.
JUMBO ROLL
.79



THOMPSON
OR RED
**SEEDLESS
GRAPES**
LB. **.68**

UNITED
★ Supermarket ★

Produce



THOMPSON
OR RED
**SEEDLESS
GRAPES**

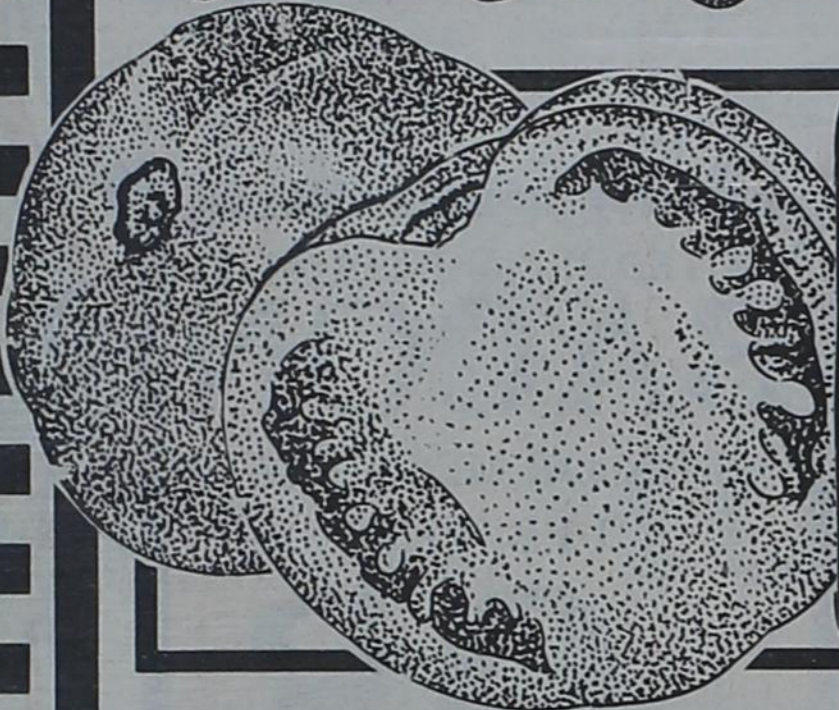
LB. **.68**



CRISP
**ICEBURG
LETTUCE**
UNTRIMMED

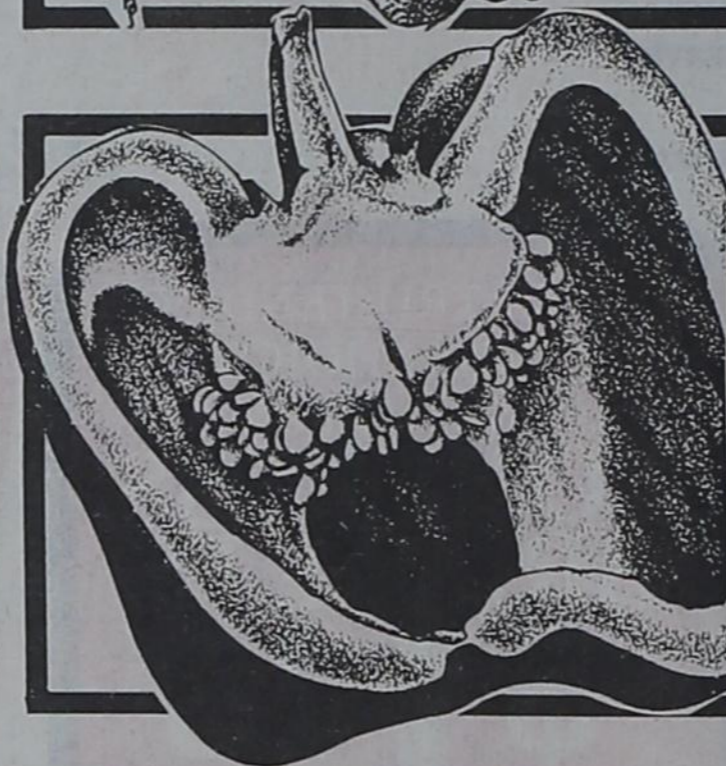
LB. **.39**

TRIMMED
2 \$1
LBS.



RED RIPE
**ROMA
TOMATOES**

LB. **.58**



LOCALLY GROWN
**GREEN
BELL
PEPPERS**

5 FOR **\$1**

BUNNY LUV
CRISP
CARROTS
1 LB. BAG

3 FOR **\$1**

SNOWHITE
MUSHROOMS
8 OZ. CELLO

EA. **.88**

HOT
PEPPERS
JALAPENO OR ANAHEIM

2 LBS. **\$1**

FRESH PURPLE
EGGPLANT

2 LBS. **\$1**

Dairy



BLUE
BONNET
MARGARINE
3 LB. TUB

\$1.19

FINE FARE TEXAS STYLE
**FLAKY
BISCUITS**

2 12 OZ. FOR **\$1**

BELL
**SOUR CREAM OR
DIPS** 8 OZ.

2 FOR **\$1**

BELL
CHOC-O-RIFFIC
GAL. JUG.

\$1.29



UNITED
**HOMO
MILK**

1/2 GAL. **.89**

Frozen



BELL
**ICE
CREAM**
RED RING

1/2 GAL **\$1.79**

ORE IDA
**CORN ON
THE
COB**
4 CT.

.99



**COOL
WHIP**
REG. OR EXTRA CREAMY
12 OZ.

.99

JIMI'S
BURRITOS
ASST.

4 5 OZ. FOR **\$1**

PET RITZ
DEEP DISH
**PIE
SHELLS**
12 OZ.

\$1.19



JENO'S
PIZZAS
ASST.
8 OZ.

.89

SARA LEE
GERMAN
**CHOCOLATE
CAKE**
19 OZ.

\$1.89

QUANTITY RIGHTS RESERVED • NO SALES TO DEALERS

the personal touch

Grocery

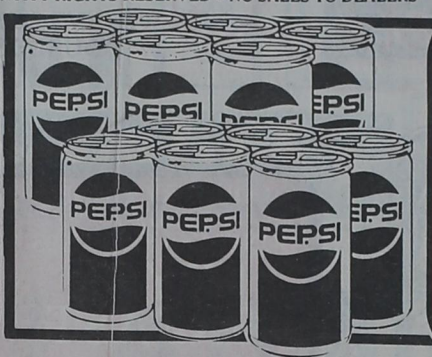


UNITED
HAMBURGER
BUNS OR
CONEYS
3 \$1
FOR



SPAM
LUNCHEON
MEAT
ASST.
\$1.49
12 OZ.

FINE FARE
SHOESTRING
POTATOES
1.63 OZ.
3 FOR .89



PEPSI
•DIET PEPSI •MOUNTAIN DEW
•SLICE
6-12 OZ. CANS ASST.
\$1.29

QUANTITY RIGHTS RESERVED • NO SALES TO DEALERS



HELLMANN'S
MAYONNAISE
•REG.
•LITE
•CHOLESTEROL
FREE
\$1.69
32 OZ.

RANCH STYLE
CHILI
NO BEANS
\$1.19
19 OZ.

DEL MONTE
KETCHUP
.99
32 OZ.



CAMPBELL'S
•PORK & BEANS 16 OZ.
•RANCHERO BEANS 15 OZ.
3 \$1
FOR

HONEYCOMB
CEREAL
\$2.19
14 OZ.

RAINBO
CHOCOLATE
SYRUP
.99
24 OZ.



KOOL
AID
REG.
2 QT.
6 \$1
FOR

KOOL
AID
SUGAR SWEET
8 QT.
\$1.99



LAY'S
POTATO
CHIPS
ASST.
.79
6.5-7 OZ.

KRAFT
BBQ SAUCE
ASST.
18 OZ.
.89



PETER PAN
PEANUT
BUTTER
SMOOTH OR CRUNCHY
\$1.59
18 OZ.

HUNT'S
SNACK
PAK
ASST.
4 PAK
.99



CRISCO
OIL
REG.
48 OZ.
\$1.99

FINE FARE
BROWNIE
MIX
21.5 OZ.
.99

FRENCH'S
SQUEEZE
MUSTARD
.89
16 OZ.

CHEF-BOY-AR-DEE
MICROWAVE MEATS
•BEEF RAVIOLI
•SPAGHETTI & MEATBALLS
•LASAGNA
•ABC WITH MEATBALLS
•TUTTI LENI WITH MEATBALLS
ASST.
7.5 OZ.
.69

BESTMAID
PICKLES
•WHOLE DILL •HAMB.
DILL SLICE
\$1.69
48 OZ.

DEL MONTE
SWEET
RELISH
\$1.69
22 OZ.

FINE FARE
TOMATO
JUICE
.89
46 OZ.

JOLLY TIME
MICROWAVE
POPCORN
ASST.
\$1.39
10.5 OZ.

BOUNTY
TOWELS
JUMBO ROLL
ASST.
.79

WHITE CLOUD
BATH
TISSUE
ASST.
4 ROLL
\$1.09

JOY
LIQUID
DISH SOAP
22 OZ.
.99



LABOR DAY

An American Tradition



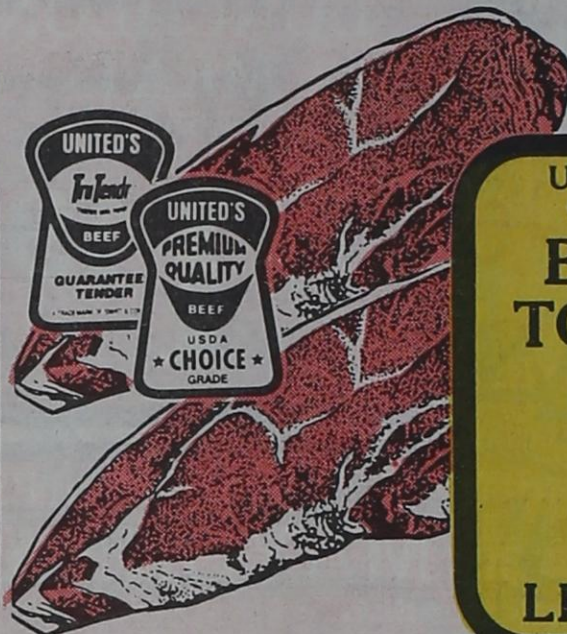
THAT STARTS WITH GOOD FOOD!

WE GIVE S&H GREEN SEALS EVERYDAY
DOUBLE SEALS ON WEDNESDAY

PRICES GOOD THRU SEPT. 2ND
IN LUBBOCK, SLATON, POST,
BROWNFIELD, LEVELLAND,
LITTLEFIELD, PLAINVIEW
& LAMESA.



COUNTRY PRIDE
GRADE A
BONELESS SKINLESS
FRYER
BREAST
\$2.98
LB.



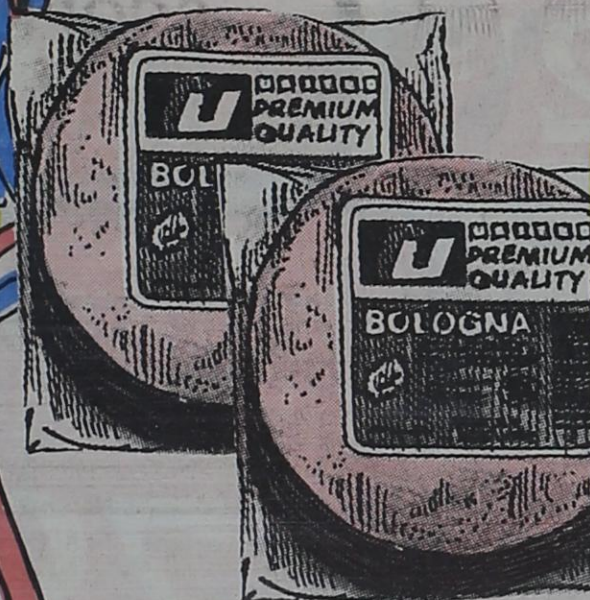
UNITED TRU TENDR
OR USDA CHOICE
BONELESS
TOP SIRLOIN
STEAK
\$2.78
LB.



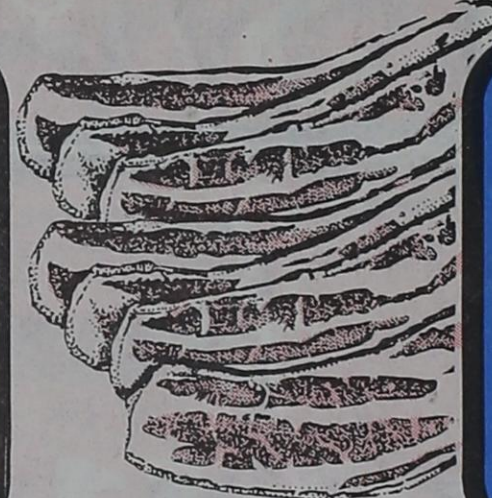
FARMLAND
PORK
STEAK
\$1.48
LB.



UNITED
PREMIUM QUALITY
93% FAT FREE
BONELESS
HALF HAM
BUFFET STYLE
\$1.98
LB.



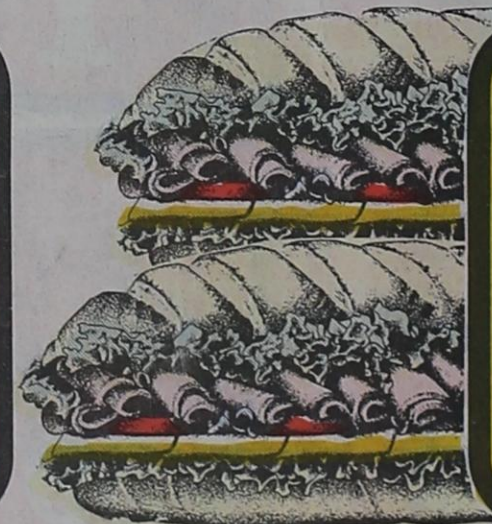
UNITED
PREMIUM QUALITY
BOLOGNA
MEAT OR BEEF
1 LB. PKG.
\$1.48



FARMLAND
BONELESS
PORK STRIPS
EXCELLENT FOR COOKOUTS
\$1.88
LB.



FINE FARE
HALF MOON
CHEESE
CHEDDAR OR COLBY
8 OZ.
PKG.
\$1.18



UNITED
PREMIUM QUALITY
COOKED
HAM
\$2.98
1 LB.
PKG.

FINE FARE
AMERICAN
SINGLES
12 OZ.
PKG.
\$1.48

SUPER VALU PAK
LEAN
GROUND
BEEF
\$1.58
LB. **\$1.68**
REG. PAK LB.



EXTRA LEAN
STEAK
FINGERS
EXCELLENT FOR CHICKEN FRY
\$2.98
LB.

NO SALES TO DEALERS • QUANTITY RIGHTS RESERVED



AT SOUTHWESTERN - Melanie Reece (back row, left) was amount the 145 high school seniors who spent August 18 at the fourth and final Southwestern Oklahoma State University freshman orientation clinic. Attending the clinic along with Melanie were (back row, left to right) Alodie Nimie of Athens and Kathi Dickerson of Plano; and (front row, left to right) Matthew Hughes of DeSoto, Galen Mayes of Amarillo and Andrew Conway of Brownsville.

Producers Will Study Impacts of Bill

A statewide beef cattle policy symposium whose theme is "Potential Impacts of the 1990 Farm Bill" has been set for October 9 at the College Station Hilton.

Dr. Ernest E. Davis, economist in livestock marketing with the Texas Agricultural Extension Service, said the symposium will feature a wide array of speakers who will present policy viewpoints and express opinions on how the 1990 Farm Bill will impact cattlemen and consumers.

"The program is designed for beef cattle producers, consumers, agricultural lenders and other associated agribusiness groups," Davis said.

U.S. Representative Charles

Stenholm of Stamford, chairman of the Agriculture Subcommittee for Livestock, Dairy and Poultry, will present a politician's view on the direction the 1990 Farm Bill is taking.

Mrs. JoAnn Smith, Assistant Secretary of Agriculture, Marketing and Inspection Service with the U.S. Department of Agriculture, will discuss an administrator's viewpoint on proposed policies.

Subjects to be addressed by key speakers will include mandatory meat price reporting, animal welfare and patents, food safety and feed grain and dairy policy.

Wrapping up the policy presentations will be an industry viewpoint by Bob Josseland, president

of the National Cattlemen's Association headquartered in Denver.

Dr. O.D. Butler, associate deputy chancellor for agriculture emeritus with the Texas A&M University System, will moderate the second part of the program which gets underway at 11:15 a.m. and continues through the afternoon.

The program is being coordinated by the South Central Texas Beef Herd Improvement Association in cooperation with the Texas Agricultural Extension Service, A&M's Department of Agricultural Economics and Texas A&M University.

For more information, contact Davis at Room 5, Agriculture Building, A&M University.

WE GIVE S&H GREEN SEALS EVERYDAY



UNITED ★ Supermarket ★

DOUBLE SEALS ON WEDNESDAY

IT TAKES 24 SEALS TO FILL A SAVER FOLDER ONE SEAL ISSUED FOR EVERY \$5 EXCLUDING BEER, WINE AND TOBACCO PRODUCTS



STOCK UP FOR LABOR DAY

PRICES GOOD THRU SEPT. 2ND IN LUBBOCK SLATON, POST, BROWNFIELD, LEVELLAND, LITTLEFIELD & PLAINVIEW

<p>BOUNTY TOWELS ASST. JUMBO ROLL</p> <p>.79</p>	<p>REYNOLDS FOIL REG. 25 FT. .59</p> <p>GLAD SANDWICH BAGS 150 CT. .99</p> <p>VIVA ACCENT NAPKINS 300 CT. \$1.49</p>	<p>SCHICK DISPOSABLE RAZORS 5 + 1</p> <p>.79</p>	<p>PERT SHAMPOO 15 OZ.</p> <p>\$2.99</p>	<p>PERT SHAMPOO 15 OZ.</p> <p>\$2.99</p>
<p>WHITE CLOUD BATH TISSUE ASST.</p> <p>\$1.09</p> <p>4 ROLL</p>	<p>CALGON FOAM MILK BATH</p> <p>\$1.69</p> <p>7 OZ.</p>	<p>SCOPE MOUTHWASH REG. OR PEPPERMINT 18 OZ.</p> <p>\$2.69</p>	<p>SCOPE MOUTHWASH REG. OR PEPPERMINT 18 OZ.</p> <p>\$2.69</p>	<p>SCOPE MOUTHWASH REG. OR PEPPERMINT 18 OZ.</p> <p>\$2.69</p>
<p>JOY LIQUID DISH 22 OZ.</p> <p>.99</p>	<p>RISE SHAVE CREAM</p> <p>\$1.79</p> <p>11 OZ.</p>	<p>SURE SPRAY DEODORANT 4 OZ.</p> <p>\$1.99</p>	<p>SURE SPRAY DEODORANT 4 OZ.</p> <p>\$1.99</p>	<p>SURE SPRAY DEODORANT 4 OZ.</p> <p>\$1.99</p>
<p>PEPTO BISMOL</p> <p>\$2.99</p> <p>12 OZ.</p>	<p>• JUNIOR MINTS • SUGAR DADDY'S • SUGAR BABIES • POM POMS</p> <p>4 FOR \$1</p>	<p>HEAD & SHOULDERS SHAMPOO</p> <p>2.69</p> <p>11 OZ.</p>	<p>HEAD & SHOULDERS SHAMPOO</p> <p>2.69</p> <p>11 OZ.</p>	<p>HEAD & SHOULDERS SHAMPOO</p> <p>2.69</p> <p>11 OZ.</p>



the personal touch

QUALITY
VALUE
SELECTION

Classified Advertising

Private Party Classified Rates

PAYABLE IN ADVANCE

All private party classified ads must be paid in advance. Eulogies and card of thanks for a death in the family, up to 50 words free, limit one insertion per family death. Card of thanks for hospitalization or illness, first 50 words free. A 30 percent discount is allowed for all private party, non-commercial, non-profit paid in advance classified ads.

DEADLINE FOR COPY AND PAYMENT IS Mondays at 5 p.m.

Classified Rates	
Number of Times	Rate Per Word Per Time
1	.25
2	.20
3	.15
4	.125

Legal Notices

TO ALL INTERESTED PERSONS: Notice is hereby given that the City Council of Post will hold a hearing on the annual city budget. Said hearing is to be held September 11, 1989, 7:30 P.M., in City Hall, at which time the 1989 - 1990 budget will be considered. All objections and exceptions thereto will be heard by the City Council.
G. C. McCrary, Mayor
Attest: Wanda Wilkerson, City Secretary

NOTICE OF INTENTION TO BECOME INCORPORATED
THE CONNELL ESTATE, located at 130 E. Main, Post, Texas 79356, is incorporating, and will continue its business under the same management, as two separate corporations with the names "CONNELL ESTATE NORTH, INC." and "CONNELL ESTATE SOUTH, INC."

Wanted to Buy

WANTED LIVE - ALL SNAKES: Rattlesnakes, \$5 per lb. Bull Snakes, \$1.50 per ft. - (NO Water Snakes or Coach Whips). Dryland Turtles, \$1.50 ea. - Mountain Boomers, \$2.00 ea. CALL 806-495-2738 or 806-495-2774.

Card of Thanks

The family of J. L. "Bud" Green would like to thank the friends and neighbors for expressing their love and sympathy with their calls, cards, visits, flowers and food brought to the home during the loss of our loved one. Special thanks to Bro. Steve Long for his words of comfort, and Terry Don Thomason for the beautiful music. Thanks to Dee and Janet Justice for the way the services were conducted and to the men who served as pall bearers. Friends mean so much during these times.
Bless you all,
Bobby, Linda & Jay Green
Vicki & Derek Walls

I would like to thank everyone who had a part in making my retirement reception so nice. It was great seeing so many old friends and co-workers. Thanks to all of you who worked many long hours making the "scrap book". Thanks for the wonderful gifts, plaques, cards and wishes for a

Special Cakes

Birthday, anniversary or weddings.
Call Jimella Simpson at 495-3318 after 5 p.m.

Follis Heating & Air Conditioning

Sales, Installation & Service
TRANE EQUIPMENT
FREE Estimates
Dial 628-6371
Insured and Licensed

Taylor Appliances

495-3330

201 S. Broadway
Southland - 996-5404
Servicing GE, Maytag and other brands.

Farm House Vegetables
Now Open in Southland
(Just off Hwy 84)
All types of fresh vegetables

happy retirement.
May God Bless You All,
Lil and Syd Conner

Personals

City County Drug and Alcohol Abuse
Glenda Baker - Director
Lynette Massey - Asst. Director
We Care
495-2818 495-3788

Post Group of Alcoholics Anonymous meets every Thursday night at the First Presbyterian Church, 910 W. 10th at 8 p.m. Closed meetings are held except on the last Thursday night of the month, which is an open meeting. We have supper at 7 p.m. and the speaking starts at 8 p.m. Anyone who wishes to talk or ask about an alcohol problem, call 495-3377 or 495-4173.

FOUND BRACELET AT COURT-HOUSE. CALL 495-3518.

Services and Repairs

Fall piano lessons will begin the week of August 28, high school students may receive credit for their piano studies. Georgie Willson, 908 W. 12th, 495-2320.

Clean alleys, light hauling, lawn work, clean flower beds, other odd jobs. Free estimates. Call Roger 495-3013.

Help Wanted

GOVERNMENT JOBS: Now hiring in your area, both skilled and unskilled. For a current list of jobs and application, call 1-615-383-2627 Ext. P903.

Jobs Wanted

Typing done - reasonably priced - call 495-3319. Ask for Becky or leave message.

Homes for Rent

(1) large one bedroom house, unfurnished. Call 495-3229.

3 bedroom, 2 bath house for rent or sale. \$300 month rent, reference required. 495-3057.

2 bedroom, 1 bath house. 116 N. Ave. S. Call 495-2883.

Apartments for Rent

PLEASANT LODGE APARTMENTS:
109 N. Ave. N.

All furnished:
(2) 3 room apartment for rent.
(1) 2 room apartment for rent.
(1) 1 bedroom apartment for rent.
Call days 495-4061 or nights 495-2520.

Apartment coming up for rent. Tom Power, 495-3051.

Mobile Homes for Sale

Attention first time homebuyers, two and three bedroom mobile homes. No credit? No problem. Call 806-894-7212.

1978 Lancer mobile home. 3 bedroom/2 bath. Joe Mason. Call 495-2285.

"The Star Spangled Banner," when it was first published, bore the title "The Defense of Fort McHenry."

Hoover

Bookkeeping and Tax Service
• Payroll, sales tax
Quarterly reports, P&L
• Income Tax Returns
495-2894
122 E. Main

Seals Furniture Sales and Service

720 N. Broadway
495-3190

We now have in stock television antennas made by WineGard - also t.v. wire - poles - guide wire.

Rebuilt Washers
90 day guarantee
start at \$169.95

Dryers start at \$89.95

Refrigerators start at \$159.95

New Glass Top
Dinette Set - \$169.95

Rebuilt gas and electric
Ranges start at \$169.95

Assume \$240 payments on extra nice 2 bedroom, 2 bath home with \$1,000 equity, 1984 model in excellent condition. Travis Ellis, Realtor. 495-2480.

Homes for Sale

Two bedroom - 1 bath. 1 1/2 lots. 910 W. 6th. \$16,000. Barbara Hardin, Realtor. 495-3987.

Two bedroom with dining room and utility room. GREAT BUY. Call 495-4015.

FOR SALE: 3 bedroom - 1 bath at 801 W. 13th St. Call 495-3676 or 495-2346.

Three bedroom, one bath, best offer. Call 495-4018.

3 bedroom, 1 bath house with 3 room rent house and 2 car garage. For appointment call Johnie. 495-3031.

2 bedroom. 1 bath house. 116 N. Ave. S. Call 915-573-6409.

House for sale: 107 E. 12th, \$22,000. For more information call #495-3833 days - Wayne

615 N. Ave. P. Call 495-3208.

3 br. 2 bath, large den, fireplace. Util. room. Brick with siding trim - large shop. 114 South Ave. Q. Call 495-2687.

4 bedroom, reduced \$4,000. \$3500 down with second note by owner.

NEW LISTING: 3 - bedroom brick; beautiful, roomy home. \$55,000. ALSO: Wide lot in great location with small house needing repairs. \$6500, or make offer. Travis Ellis, Realtor. 495-2480.

Miscellaneous for Sale

SEASON CLOSE OUT...
30 inch heavy duty - 3 hole sweeps. Pattern #502. \$20.00 each. ADAMS FARM EQUIPMENT. IDALOU HWY., LUBBOCK, TEXAS. CALL 762-1876.

FOR SALE: SWINGSET \$25. Call 495-3056.

Garage Sales

Friday and Saturday. 115 W. 6th St. From 8 a. m. til ? Kodak camera, typewriter and misc.

Saturday 8:30 a. m. til ? 5 families. 611 W. 12th. Lots of everything.

Saturday only. 8 a. m. til ? On S. Broadway north of the Sno Cone stand by Taylor's Appliance Service. Mult. family - misc. items.

310 West 10th, Saturday, 9 a.m. - ? Clothing, shoes, what-nots and etc.

Pets and Supplies

LOST DOG. Small Bassett Hound. Approx. 4 mos. old. Female, light brown w/white. Call 495-2163 or take to 601 E. Main. Reward.

Feed and Seed

Clean hay for sale. W. C. Graves. 629-4239.

Vehicles for Sale

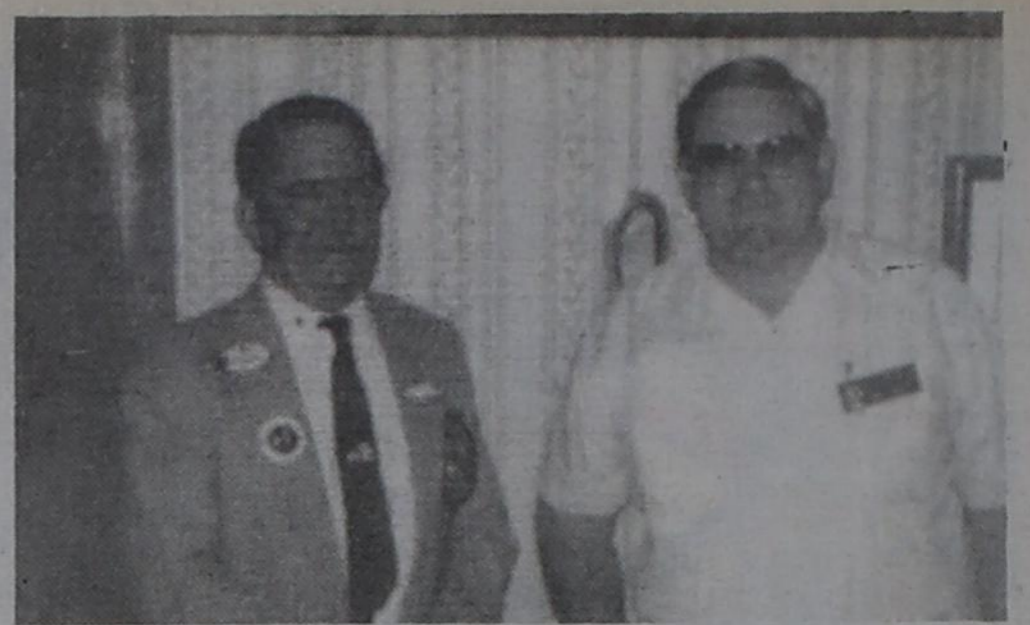
1984 Silverado. Loaded. \$3500. Call Elmo Bush 327-5613.

FOUR WHEELER. \$600. Call 327-5613. Elmo Bush.

Business Opportunities

Wanted: private investor. 20% or better. 30 day return, collateral greater than investment. P.O. Box 384, Slaton, Tx 79364.

Business For sale.
Dodson's Jewelry Store. \$35,000. Owner carry 25% down. Lynn Cox, Century 21 Big State 1. Call 797-6641 or 797-4381.



LIONS CLUB GUEST - Paul Jones of the Post Lions Club welcomed Wayne Ward of Levelland, special guest speaker, at the club's regular meeting Thursday, August 10. Ward is the District Governor for District 2T-2 of Texas for 1989-90. He emphasized the importance of continued drug awareness and diabetes awareness programs by the Lions Clubs, along with the continuing sight conservation programs. The Post Lions have just completed two community projects - a successful blood drive, collecting 44 pints of blood and a local golf tourney with proceeds to help sponsor various community service projects. The Lions would like to thank all those who participated in these two projects.

TRL Reports Garza County ISD's Budget Over \$4,000 Per Student

School budgets have been increased by 50 percent since the school reform HB 72 was enacted five years ago. A total of \$13.5 billion was approved by school trustees in 1,055 Texas school districts last year. To pay for it, officials levied local property taxes totaling \$5.6 billion. The state provided \$4.9 billion. The remainder came from school lunch and other fees, federal aid, bond sales, interest and other revenue.

The figures come from the latest issue of *Bench Marks 1988-89 School District Budgets in Texas*, an annual publication of the Texas Research League, an Austin-based educational corporation engaged in governmental research.

An average of \$3,384 per student for current operations was budgeted last year, plus \$288 for repayment of debt and \$464 per student for capital outlay.

Post ISD's budget provided \$4,421.70 per student for current operations and \$203.51 per student for capital outlay based on the 1066 students enrolled in the fall semester of 1988.

Southland ISD's budget provided \$4,669.30 per student for current operations, \$364.16 for debt service, and \$89.91 per student for capital outlay based on a 1988 fall semester enrollment of 171.

The average salary for classroom teachers paid by Post ISD in 1987-88 was \$23,548 and in Southland the average salary was \$20,199, plus supplements for the career ladder.

In Post the average salary for administrators was \$42,599, and \$26,613 for other professional support employees (librarians, counselors, nurses, supervisors, etc.). Average salary for Southland administrators was \$35,149, with \$24,875 for professional support employees.

Four dollars in five were spent for salaries. Statewide payroll expense averaged \$2,757 per student, as compared to \$3,157.57 in Post ISD and \$3,465.17 in Southland ISD. Payroll expense is a combination of salary levels and staffing patterns.

Taxpayers provided one teacher for 13.8 students in Post and one teacher for 9.4 students in Southland, while the statewide pupil-teacher ratio was 17.1 to one. Because of the existence of small classes, especially at the high-school level, and abbreviated teaching schedules, many other classes have more than the average number of students.

To fund higher school budgets with a declining tax base, school trustees in most districts have raised tax rates. The average school district imposed a property tax at the rate of 91.2 cents per \$100 of appraised value, which value averaged 96.5 percent of market value (selling price). The "true tax rate" was 88.1 cents (91.2 times 96.5 percent) statewide. Locally, the Post ISD imposed a rate of .750 while property was appraised at 124.8 percent of its market value making the true rate .936 per \$100 of market value. Southland imposed a rate of \$1.120 while property was appraised at 135.8 percent of its market value making the true rate \$1.521 per \$100 of market value.

The report points out that the calculation of a true tax rate based on market value rather than on appraised value enables a valid comparison of tax levels with other

schools. In 1988, the true tax rate exceeded \$1 in 336 school districts in Texas.

The tax on a house that would sell for \$80,000 would have been \$590 in Post and \$843 in Southland. If the homeowner were eligible for homestead exemptions, the tax would be \$553 in Post and \$787 in Southland, and if owned by a person 65 years or older, the tax on an \$80,000 house would have average \$478 in Post and \$675 in Southland, or less if subject to a tax freeze. That compares with statewide average tax bills of \$723, \$638 and \$544 respectively for an \$80,000 house.

Last year revenue from property taxes increased by 4.5 percent in Post and decreased by .5 percent in Southland for 1988-89 as compared to a 6.8 percent increase statewide.

Local property taxes plus state aid was \$4013 per student in Post ISD and \$4322 per student in Southland ISD as compared to \$3,221 statewide. The primary purpose of state aid is to equalize state and local tax resources among schools. In 1988-89 tax resources ranged from less than \$2,500 per student in 12 districts to more than \$10,000 in five districts.

Order your subscription today!
ONLY \$15 in Garza and adjacent counties!
Call 495-2816

HUDMAN FUNERAL HOME
615 West Main 495-2821

• Windshields • Residential Glass
• Industrial • Equipment Glass
• Insurance Rebates • Mobile Service

CIRCLE 7 GLASS

132B W. Main
495-4117 495-3069 495-2702

New Listing
Three bedroom, 2 bath, brick, central heat and air.

Great Family Home
Three bedroom, two full baths, swimming pool, 2 car garage on corner lot.

Horseman's Dream
Large brick home on three acres. Located in Lynn County and in the Wilson School District. Additional acreage available.

First Home
We have several small homes for sale including a mobile home. Call for details.

Silk Stocking
Three bedroom, two bath, basement, 2 car garage, central heat and air.

Mitchell Real Estate

Kim 495-3719	Travis 495-2480
Mike and Wanda 495-3104 or 828-5878	Barbara 495-3987

Post Insurance
Serving Post Since 1911

- All Your Insurance Needs
Auto - Home - Commercial - Bonds
- Quotes available by phone

122 E. Main 495-2894

G.H. (Jerry) Conoly
Heating and Air Conditioning Co.
Sales-Service-Installation

Home Owned Authorized Heat Pump Contractor
Free Estimates

Licensed by the State of Texas - Fully Insured
495-2950 or 495-2332

WHEAT SEED

Supply is short! We have limited quantities of high quality wheat seed of popular varieties available.

We are now taking bookings for wheat seed on a first come, first served basis.

Contact Ken Evans at
Oilseed Systems, Inc.
Crosbyston, Texas
806-675-7351

Report Failed Acreages to ASCS Office

Victor Ashley, executive director of the Garza County ASCS office, advises farmers that program crop acreages that fail due to natural causes must be reported to the ASCS office prior to mechanical destruction of the area.

If the acreage has already been certified as planted, then only an application for failed acreage credit (ASCS-574) must be filed.

If you have an outstanding measurement service request and you need to fail some acres, be prepared to cancel the measurement service and certify the acreage as planted before you file the ASCS-574.

With the prospect of a 1989 disaster program, farmers should be careful that all paperwork has been taken care of with ASCS and insurance agents before plowing under any failed program crops.

Acreages carried to harvest must be farmed in a workmanlike manner so that no reduction in program benefits will apply.

Ashley also reminds area farmers that, as soon as the sky clears, the plane which takes aerial compliance slides will begin flying the first couple of mile strips on the west side of Garza County.

If you applied for aerial measurement service, now is the time to clean up turnrows and plow strips between similar crops, such as cotton and peas.

If your fields are "picture perfect," the ASCS office has an easier time determining your actual crop acres. Acreage adjustments made after the slides are taken do not count.

Farming is Dangerous Work TAES Reports

Looking ahead to September 17-23 and Farm and Ranch Safety Week in Texas, the Texas Agricultural Extension Service has released a report stating that, "Farming is America's most dangerous profession, according to statistics released recently."

Agriculture's accidental death rate is five times the national average for all injuries, said Thomas D. Valco, agricultural engineer for safety and mechanization with the Texas Agricultural Extension Service.

Valco said the Texas safety picture parallels the national scene. "The summer and fall months typically are the worst for farm and ranch fatalities," he said.

A total of 82 fatalities occurred on Texas farms and ranches in 1988, Valco said. Records of fatalities were obtained from death certificates and newspaper clippings.

"Most fatalities took place as a result of farm/ranch activities, but several deaths were a result of recreational activities such as hunting, swimming and horseback riding."

Valco said the highest number of fatalities took place in July, with 13 deaths; while September followed with 12 and October with 11.

The age group between 20 and 29 recorded the highest fatalities with 15 deaths. About 47 percent of these were from gunshot wounds.

Next highest age category was between 60 and 69 years, with 12 deaths recorded. This group was followed by those 70 years or older, with 11 deaths.

"Eight children under age 10 died as a result of farming accidents. Many resulted from youngsters riding on farm tractors that hit a bump causing the child to fall under the equipment. Tractors have only one seat, and extra riders should not be permitted," Valco said.

He said tractors and associated machinery were the cause of 28 of all the recorded fatalities. Forty-eight percent of the machinery accidents were the result of people being run over by the tractors and equipment. Another 40 percent of the fatalities occurred from tractor overturns.

"Simple rollover structures could have prevented most of these deaths," Valco said.

Fatalities involving firearms were the next most frequent killer with 14 deaths. Most happened while hunting, being shot by another hunter or mishandling their firearms.

"Many of these victims lived in urban areas. Ranch owners need to insure that visitors follow safe hunting rules and require them to take firearm safety training," Valco said.

Fires and explosions were also high frequency accident categories, with seven fatalities, three of which occurred during grass fires.

Other farm vehicles, including pick-up trucks and all-terrain vehicles, and highway accidents resulted in seven deaths.

Three deaths occurred from falls, five involved animals, four resulted from drownings, five from being struck by objects, four from electric current, three from lightning and two from exposure and insect bites.

He said that National Farm Safety Week, as well as Farm and Ranch Safety Week in Texas, will be observed September 17 through 23.



THROWING ON TARGET - Antelope quarterback Matt Holly drops back to complete a pass during Friday afternoon's scrimmage at Floydada.



OFF TO THE RACES - Antelope varsity quarterback Rance Sappington heads for the corner during the scrimmage at Floydada last Friday afternoon.



JUNIOR VARSITY IN ACTION - Willie Barbosa (43) gets set to slam Floydada's quarterback to the ground during Junior Varsity scrimmage action there last Friday.



HIRAM GUTIERREZ takes the football from Junior Varsity quarterback Michael Radle during action at Floydada last Friday afternoon.

Scrimmages Give Coaches, Team Good Look for Future

by Wes Burnett

"We basically were trying to get some new things done, like our short passes, which we feel we accomplished," Post Antelope football coach Dewayne Osborne commented concerning last Friday's scrimmage at Floydada. Antelope quarterbacks completed 10 of 17 passes for 17 yards and the offense collected 250 total yards offense, while the defense allowed Floydada approximately 220 yards.

Osborne also praised the efforts of "our inexperienced linemen," who performed well on both sides.

Bobby Blair intercepted a pass and returned it for a touchdown for the lone Antelope touchdown.

"The only time Floydada scored was on a counter play that we just overran," the coach commented.

Offensively, the Antelopes drove the ball well, but a couple of miscues inside the 30 yard line and a couple of dropped passes stopped the advances.

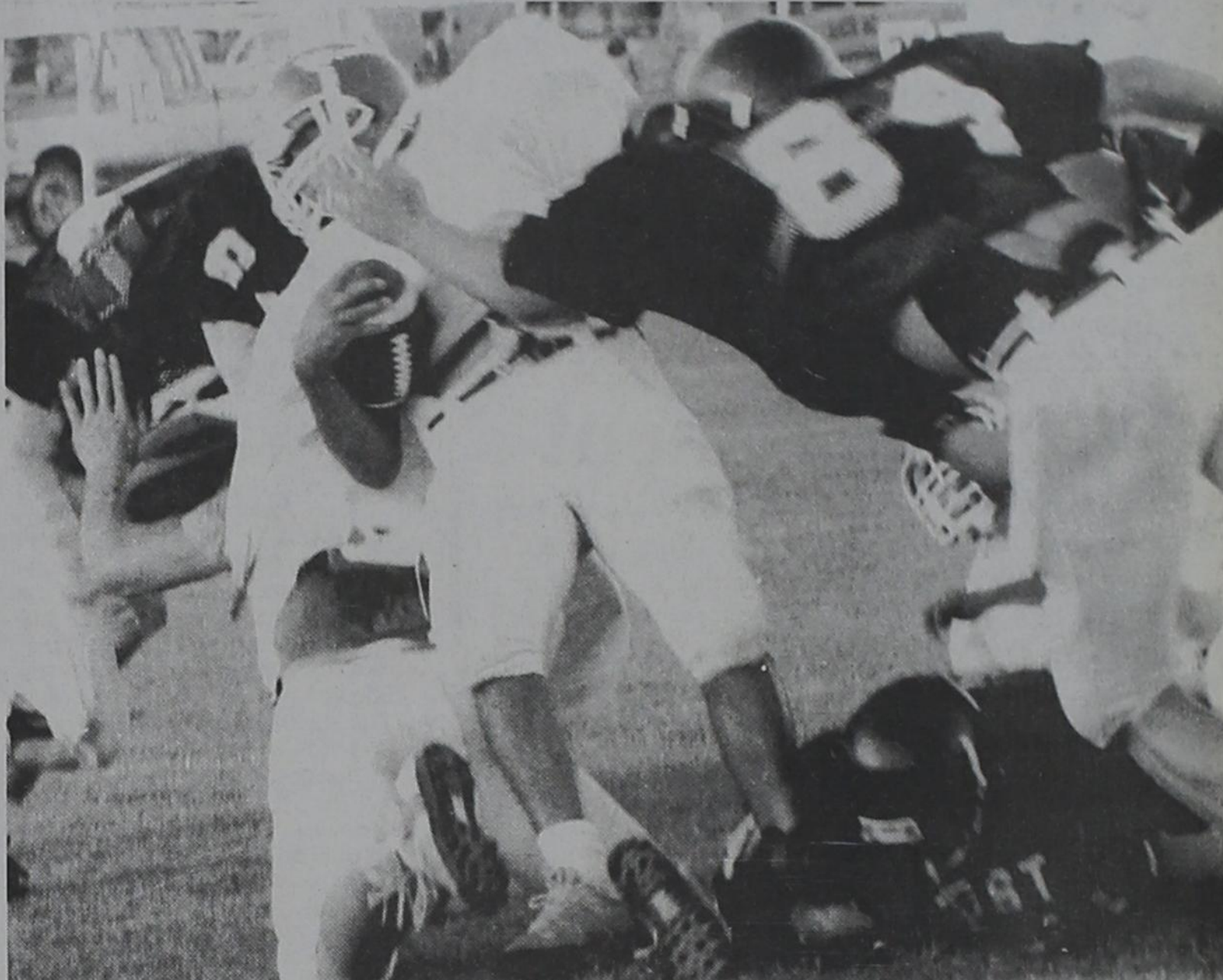
"A scrimmage is really a chance to look at our players, give them an opportunity to play against a real opponent, and try out our plays," Osborne added.

"We're pleased, and I know that each week the offense and defense are getting better. They are playing and practicing with a lot of intensity, that makes us feel good," the coach said.

The team leaves Post Thursday afternoon at 3:15 for Haskell, where the Junior Varsity will square off against Henrietta at 6 p.m. The varsity scrimmage is expected to begin at 7:30 p.m.

The J.V. scrimmage will consist of 20 offensive and defensive plays.

The varsity will match 20 plays, then 15 and 15 for the second team and conclude with a first team 15 and 15 series. The Antelopes open the 1989 football season Friday, September 8 at Abernathy with an 8 p.m. kickoff time.



VARSITY DEFENSE - Bill Rankin (84) moves in to put the finishing touches on a defensive move against Floydada during the varsity scrimmage there last Friday. Helping out is Trey Jones (64) and an unidentified Antelope (center).



THAT'S THE WAY YOU DO IT - Lance Bagby (50) lowers the boom on a Floydada runner during action at the scrimmage there last Friday as Floyd Slay (30) moves in to help out.



LOOK, MEN - Coach Dewayne Osborne (left, kneeling) explains offensive strategy to Antelope varsity players (left to right) Rance Sappington, Kelly Crispin, Jamie Perez (21), Bobby Blair and Bill Rankin (84).



the protests of affected producers, to correct what appears to be a glaring inequity. And it's already known that at least some of the early information released on the law wasn't quite correct.

In error were statements that producers with multi-peril crop insurance could substitute their insurance yield for their program yield in proving eligibility for payments and the amount of those payments. That option is in the law, but it's a discretionary authority given to the Secretary of Agriculture, not a mandate. And since substitution would increase the government's cost, it's most likely that all loss eligibility and payments will be based on established farm yields.

Another misconception has surfaced involving the \$897 million widely quoted in news releases. Early on it was presumed by many that the figure was a dollar cap on total disaster expenditures. But PCG is now told that it is only a cost estimate agreed to by the Agriculture Committees and the Congressional Budget Office; that no dollar amount appears in the law, and that there's no provision for earned payments to be pro-rated as occurred under the 1986 disaster program.

The provision of the law under protest concerns producers who planted and will harvest alternative crops after the total loss of cotton or other primary crop.

A release from the House Agriculture Committee says the law "directs the Secretary to reduce disaster payments by an amount that reflects the value of any crop planted to replace the crop for which disaster payments are received."

And therein lies the inequity, says Donald Johnson, Executive Vice President of Plains Cotton Growers, Inc., Lubbock. With no allowance made for the cost of producing and harvesting the alternative crop, he explains, farmers who followed cotton with soybeans, grain sorghum, sunflowers or other short-season crop will be severely penalized.

"They'll be out the early expense of trying to produce a cotton crop and all the production and harvest expense of an alternative crop, show only a meager profit or actually lose money when the alternative crop is sold, and for their trouble they'll be denied most or all their disaster payments."

That provision should never have been a part of the law, Johnson contends, "but since it's there the next best thing to do, and what the Secretary is being urged to do if the language of the law will permit, is for the Secretary to rule that only the value of alternative crops in excess of production and harvesting costs will be deducted from disaster payments."



RIBBON CUTTING - Assisting Greg Pollard (second from right) with ribbon cutting ceremonies at the new Post Fashion Cleaners are (left to right) Joe Harris, Bob Turner, Bryan Williams, Joy Fluit, Hildegard Marlin, Susan Pennell, Pollard and Charles Hardin.

Regulations that will reflect the ultimate interpretation of the 1989 Disaster Assistance Act won't be written until sometime in September. But already there's a budding effort on Capitol Hill, sparked by



BINGO!

Thursday and Saturday 8 p.m.

Starting September 7

we will be playing twice a week at
St. Jude's Church Hall
Tahoka
Every Night Giveaway \$2500
Counting Breakopens

Lic. 3-00093-9012-8

St. Jude's Church Hall

Manuel Garcia
Bingo Operator

1829 S. 4th St. Tahoka

Announcement

The Staff of St. Thomas Clinic in Slaton welcomes Barry Gordon, Licensed Vocational Nurse (LVN). Barry will be in charge of Nursing and Minor Surgery.

Staff includes:

- R. Rocha, NA, Technician
- J. Sadler, NA, Insurance Clerk
- D. Carlton, Secretary-Receptionist
- R. Carlton, NA

Janet Winters, A.R.T. & Ernesto Maldia, M.D.

General Surgery
with

Family Practice

Hours: Monday through Thursday 9 a.m. - 5 p.m.

Friday & Saturday 9 a.m. to Noon

Evening Clinic (Express Care) open from 5-9 p.m. every night.

Clinic telephone # 828-6253

Evening telephone # 828-4139

Stenholm's FunDay is September 9

Top leaders of the House Democratic leadership will be in West Texas Saturday, September 9 to join Congressman Charles Stenholm and his wife, Cindy, for their annual FunDay in Stamford.

House Speaker Tom Foley, Majority Leader Richard Gephardt, Congresswoman Barbara Kennelly and Congressmen Mike Parker and Bill Sarpalius will all be in Stamford to enjoy the Stenholms' picnic and meet the constituents of the 17th District.

Foley, of Spokane, Washington, was the Agriculture Committee Chairman from 1975 to 1981 and actively worked on the 1985 farm bill.

Gephardt, of St. Louis, Missouri, is a former Presidential candidate and former Democratic Caucus Chairman.

Kennelly, from Hartford, Connecticut, serves on the House Ways and Means Committee and the Democratic Steering and Policy Committee.

Parker is a freshman lawmaker from Brookhaven, Mississippi. He serves on the Veteran's Affairs Committee and the Public Works and Transportation Committee.

Sarpalius, who is a freshman lawmaker from Amarillo, traded in his seat in the Texas Senate to run for Congress and currently serves on the House Agriculture Committee and Small Business Committee.

Stenholm, who is in his 11th year of service in the U.S. Congress, said, "I am honored to have the top House Democratic leaders as well as my fellow colleagues come to our FunDay. Not only will they be sharing their friendship with us, they will also have an opportunity to meet my constituents of the 17th District. I think this helps them better understand our part of the country."

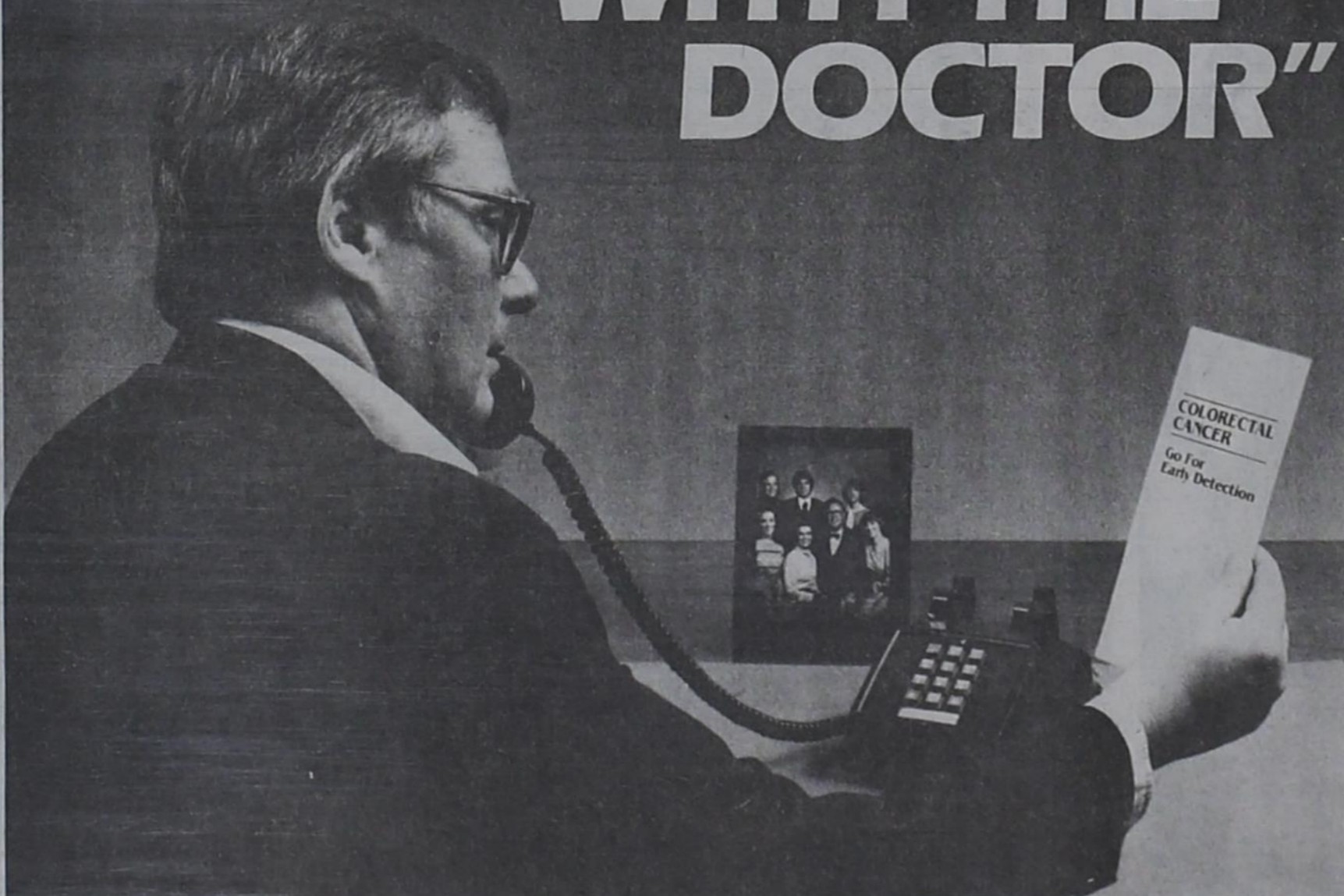
Everyone is invited to the picnic on Saturday, September 9, 1989 at the Ericksdahl picnic grounds, east of Stamford. The food line opens at 4:30 p.m. and will be topped off with the annual treat of Comanche County watermelon.

The cost of the Saturday picnic is \$10 per person. More details can be obtained by calling the Stenholm campaign office in Stamford at 915-773-5521.



STENHOLM FUNDAY PREPARATION - Workers in the office of Congressman Charles Stenholm, along with numerous volunteers are hard at work preparing to mail letters to more than 7,000 longtime supporters of the annual fundraiser. Fund-day this year will be Saturday, September 9 at Stamford's Ericksdahl Picnic Grounds.

"I'D LIKE TO MAKE AN APPOINTMENT WITH THE DOCTOR"



Be prepared, Doctor. More patients will be asking about colorectal cancer. According to a survey* conducted by the American Cancer Society, many people would like to receive more information about colorectal cancer, and 83% said they would want to be checked for it. Further, they are learning that this cancer can be detected before symptoms appear. The present cure rate is 44%. The cure rate could be as high as 75%, with early detection and appropriate management.

For asymptomatic persons the Society recommends annual digital rectal examination at age 40 and over; at age 50 and over, an annual stool blood test, as well as sigmoidoscopy every three to five years,

following two initial annual negative sigmoidoscopies.

We're here to help. You can reach us at your local American Cancer Society office or write to our Professional Education Department at National Headquarters, 90 Park Avenue, New York, N.Y. 10016. Ask about the Society's Colorectal Check program of professional and public education for the early detection of colorectal cancer.



*"Cancer of the Colon and Rectum. Summary of Public Attitude Survey," Ga 33-359-365, 1983 (Nov-Dec.)

This space contributed as a public service.

Post Chamber of Commerce BINGO

Two Year Anniversary
Tuesday, September 5
7:30 p.m.
Community Center
113 W. Main

Get Two Packets for the Price of One!!
a \$20.00 value for ONLY \$10!!

For more information contact the
Chamber of Commerce at 495-3461

Lic. 1-75-0786 720-2

Doors Open at 6:30 p.m.
No One Under 12 admitted

OWNER: GLENDA MORROW		WELCOME TO THE POST CITY DINER 127 E. MAIN		FREE DELIVERY 495-4045 SPECIAL EVENTS	
*****DAILY SPECIAL*****					
SANDWICH & SOUP OF THE DAY CHOICE OF SALAD & DRINK \$3.75 (TAX INCLUDED)					
SPECIALTIES					
PASTRAMI & SWISS ON RYE.....3.25					
HAM SALAD ON FRENCH ROLL.....3.25					
CORNED BEEF & MOZZARELLA ON ONION ROLL...3.25					
PATTY MELT-BURGER W/AMERICAN ON RYE...3.25					
CLUB-W/HAM, TURKEY, AMER., MOZZ., ON TOAST...3.25					
CHICKEN SALAD ON CROISSANT.....3.00					
TUNA ON CROISSANT.....3.00					
ALL SANDWICHES SERVED W/LETTUCE & TOMATO					
SALAD PLATE: POTATO, TUNA, CHICKEN, HAM SERVED WITH HOMEMADE CRACKERS & RELISH...4.25					
SALAD-ONE SERVING W/CRACKERS & RELISH...1.25					
SANDWICHES					
YOUR CHOICE * MIX * N* MATCH					
MEATS	CHEESES	BREADS			
HAM	AMERICAN	BUTTERMILK WHITE			
TURKEY	CHEDDAR	WHEAT			
ROAST	SWISS	RYE			
CHOPPED HAM	MOZZARELLA	POPPYSEED ROLL			
	PIMENTO	ONION ROLL			
		CROISSANT			
DRESSINGS: MUSTARD, MAYO, HORSE RADISH, RANCH SERVED WITH ASSORTED RELISHES.....2.50					

CHEF'S CHOICE SOUP					
SMALL .75 LARGE 1.00					

DESSERTS					
CAKE.....75					DRINKS.....40
PIE.....1.00					TEA.....
COOKIES 3/.50					COKE, DIET COKE
MUFFINS.....50					SPRITE, DR. PEPPER
				60.....