

Obituaries

Nora Gutierrez Perez

Mass was celebrated for Nora Gutierrez Perez, 26, Saturday, January 30, 1988 in Holy Cross Catholic Church with Rev. Jim McCarty officiating.

Burial was in Terrace Cemetery under the direction of Justice-Mason Funeral Home.

A rosary was held Friday at 7:30 at the church.

She died at 2:30 a.m. Thursday, January 28, 1988 in Golden Plains Care Center from injuries suffered in a February 15, 1987 automobile accident in Post.

Justice of the Peace Dee Justice is withholding a ruling pending completion of autopsy reports.

She was born April 7, 1961 in Ira, Texas and moved to Post in 1977.

She married Freddy Perez on January 1, 1977 in Post. She was a homemaker and a member of Holy Cross Catholic Church.

Survivors include her husband; two sons, John Paul Perez of the home and Michael Lee McLeads of Phoenix, Arizona; two daughters, Amy Dawn Perez and Linda Joann Perez, both of the home; and her mother Nancy Gutierrez of Colorado City.

Also two brothers, Louis Gutierrez of Post and Fernando Gutierrez of Colorado City; two half-brothers, Thomas Gutierrez of Snyder and Alex Rocha of Midland; three sisters, Janie Rocha of Chicago, Illinois, Mary Ruiz of Colorado City and Roseann Flores of Southland;

Four half-sisters, Lori Martinez of Wichita Falls, Rosa Luna of Lockney, Angie Hodges of Indio,

California and Romana McLeads of Phoenix, Arizona.

Pallbearers were Louis Gutierrez, Fernando Gutierrez, Jake Bustoz, Anthony Perez, Johnair Perez and Vernon Quintana.

Catherine Payne

Services were held for Catherine Francis Payne Monday, February 1, 1988 at 10 a.m. at the Steed-Todd Chapel in Clovis, New Mexico, with Rev. William McReynolds, officiating.

Burial was at 3 p.m. on February 1, 1988 in Terrace Cemetery under the direction of Steed-Todd Funeral Home.

Mrs Payne died Friday, January 29, 1988 in Clovis, New Mexico.

She was born November 22, 1904 in Bowie. She married Gene Payne in 1929 in Post. She had been a resident of Clovis for 17 years.

She attended Hardin-Simmons and was a member of the New Mexico Cowbells, Women's Study Club in Santa Rosa and was a member of the First United Methodist Church.

Survivors include her husband, Gene of Clovis; two daughters, Helen Fourtenberry of Waco and Francis Braden of Vernon; one son, Tom Payne of Santa Rosa; nine grandchildren and five great-grandchildren; and one sister, Helen Cross of Snyder.

New Officers Installed by Needlecraft Club

The Needlecraft Club met Friday afternoon, January 29 in the home of Joyce Strubhart, with Marcy Lee Demming as co-hostess.

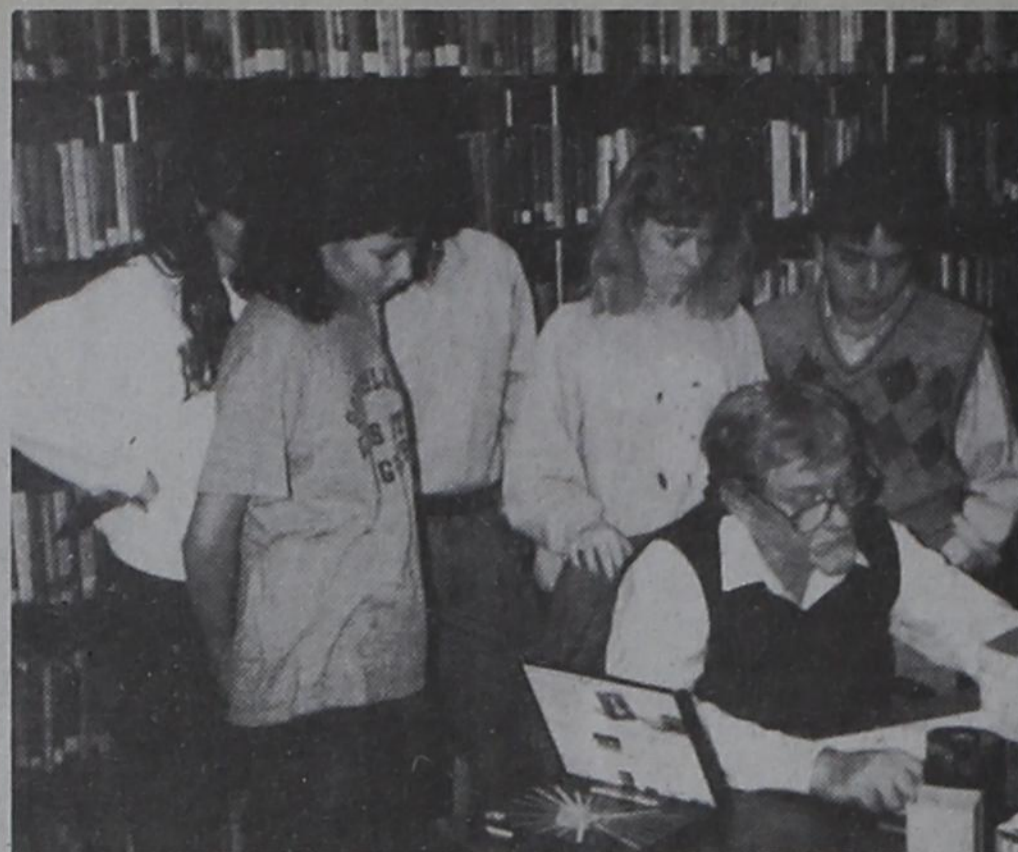
Officers installed for the new year were: Joyce Strubhart, president; Katherine Johnson, secretary-treasurer; and Katherine Cathcart, reporter.

"The Inside Story" of the Groundhog," an article by Melvin R. Ellis, was reviewed by Mrs. Cathcart.

Mr. Ellis' article explained how naturalist-photographer Charles Phillip Fox made a scientific research study of the groundhog and its annual habit of hibernation.

Mr. Fox used a refrigerator in his basement for this study, thereby keeping constant watch on the little "weather forecaster."

Refreshments were served to Opal Williams, Esther Crider, Johnson, Cathcart, Demming and Strubhart.



ARTIST-IN-RESIDENCE-James Rice, artist and writer, sponsored by the Caprock Cultural Association, was in Post and Southland schools during the month of January as art instructor for area students.

Book Review at Culture Club

The Woman's Culture Club met Wednesday, January 27, in the home of Inez Hartel with Glenda Morrow as co-hostess.

Maxine Earl conducted the business meeting, reminding members of the election to be held at the next meeting.

Joyce Strubhart reviewed "Wife of a Southern Unionist" a book about Mary Jane Bowen Hamilton. She was reared on a southern plantation with all the gracious comforts implied, but, like so many of her time, she went with her politically ambitious husband to the land of opportunity ---Texas.

They settled in La Grange and later moved to Fair Oaks, a plantation near Austin, where she ran their ran and reared their six children while he pursued his political career.

Hamilton became Attorney General of Texas; was elected to the U.S. Congress, and, as we was a unionist, President Lincoln appointed him Military Governor of Texas during the Civil War, with headquarters in Brownsville.

President Andrew Jackson made him Provisional Governor of Texas following the war, with headquarters being returned to Austin.

Mary Jane and the children were ostracized for being Unionist in a Secessionist area, but managed to survive.

They later took up their usual life at Fair Oaks and she will always be remembered as a gracious and generous hostess who provided well for her family and friends.

Carol Newby demonstrated her Omnichord and played selections for the group.

Mrs. Hartel took the guests on a tour of her beautiful home and showed them her art work, which included a variety of subjects done in several mediums.

Post Menu

February 8 - 12
Monday, February 8

Breakfast - Rice, sausage, toast, orange juice, milk.

Lunch - Burrito with sauce, cabbage slaw, fried okra, apple-sauce, milk.

Tuesday, February 9
Breakfast - Assorted cereal, toast, jelly, fruit, milk.

Lunch - Corn dog, french fries, mixed greens, cherry cobbler, milk.

Wednesday, February 10
Breakfast - Oatmeal, bacon, toast, fruit, milk.

Lunch - Fried chicken, gravy, green beans, whipped potatoes, mixed fruit, cheese rolls, milk.

Thursday, February 11
Breakfast - Cowboy bread, fruit, milk.

Lunch - Frito pie, lettuce salad, pinto beans, fudge cookies, corn bread, milk.

Friday, February 12
Breakfast - Assorted cereal, toast, peanut butter, honey, fruit, milk.

Lunch - Fish, mac & cheese, carrot salad, sweet peas, sliced peaches, corn bread, milk.

Rice and CCA Get Praise for Art Classes

Artist James Rice, who recently spent the month of January as resident artist-in-education in Post and Southland schools as part of a program sponsored by the Caprock Cultural Association, has received praise from the participating schools and the students involved in the program.

In a letter to the Caprock Cultural Association, Peggy Wheeler, Southland Elementary School Principal, said, "We can't thank you enough for giving us the opportunity to take part in the Artist in Residence Program."

"All the comments from the teachers not only have been positive but laudatory."

"The students are 'singing praises' about James Rice also. Students that have been reluctant to draw are now drawing and feeling good about their efforts."

"At this time we see all of the following benefits: motivation for students in the areas of art and writing; the development of skills in these areas; and awareness of art and writing as a profession."

"We appreciate your efforts...in bringing to our school this exciting and valuable program."

Lynn Wilke, Southland teacher, wrote the CCA, "...Mr. Rice has created a warm and comfortable atmosphere for our students. The activities he is using with the children are both enjoyable and informative."

"His calm manner and sincere encouragement led the students to a better appreciation and understanding of art as well as writing."

"I feel that he has increased the visual perception of each and every student in my classroom."

W.F. Shiver, Post School Superintendent, was pleased with the response to the program and

said, "...this letter is to inform you about the fine response that we have had regarding the Artist-in-Residence, Mr. James Rice. Both the students and Mr. Rankin have been impressed with his efforts."

"We would like to continue with this program for the 1988-1989 year."

Rice was honored at the Southland School Library on Wednesday, January 27 with a reception and autograph session.

A reception honoring Rice was also held in Post Elementary School on Thursday, January 28.

The Caprock Cultural Association along with local school boards sponsored the program which was partly funded by a grant from the Texas Commission on the Arts.

Southland Menu

February 8 - 12
Monday, February 8
Breakfast - Donut, bacon, juice.

Lunch - Macaroni & weiners, tossed salad, green beans, roll, reese bar.

Tuesday, February 9
Breakfast - Cream-o-wheat, sausage, juice.

Lunch - Baked chicken, broccoli, corn, roll, fruit.

Wednesday, February 10
Breakfast - Cinnamon toast, fruit, juice.

Lunch - Tuna patties, peas, coleslaw, corn bread, cookie.

Thursday, February 11
Breakfast - Oatmeal, toast, juice.

Lunch - Turkey with dressing, candied jams, green beans, roll, fruit mix.

Friday, February 12
Breakfast - Cereal, toast, juice.

Lunch - Cheeseburger, hamburger salad, fries, ice cream.



Post Chamber of Commerce Past President Jay Pollard presents a special plaque of recognition to former Post Chamber of Commerce Manager Lewis Earl at Chamber Banquet.

Congratulations

Roger McCurrin
1987 Garza Theatre
Best Actor

from
Neff Western Auto
212 E. Main 495-2455

The Post Economic Development Corp.

We are pleased to announce that the State of Texas has funded a grant to the PEDC for fire prevention and fire safety training.

The grant provides for free distribution of smoke detectors, and on Feb. 18 and 19, 1988 from 5:30 p.m. until 8 p.m. 200 smoke detectors will be given away free at the Post Volunteer Fire Department, East 8th St and Ave. H.

Eligibility:

1. Must be 60 years old or older.
2. Must be a Garza County area resident.
3. Must own and reside in house that smoke detector will be installed in.
4. Only one smoke detector per residence.
5. Project administrator reserves the right to accept or reject any applicants.
6. The Project Administrators will not be responsible for installation, maintenance or upkeep of any smoke detector.

We're Just a Phone Call Away*

Mozelle Rogers 495-2159
Betty Curry 495-2761
Carol Peppers 495-3191
Gladys Blair 495-2360

Lubbock 794-5808

YOUR LOCAL UNIT OF THE AMERICAN CANCER SOCIETY OFFERS THESE AND OTHER PROGRAMS AT NO CHARGE. PROGRAMS MAY BE LIMITED TO VOLUNTEERS. FEASIBILITY IN SOME AREAS.

AMERICAN CANCER SOCIETY

Home, Business, Auto & Life

Tom Power INSURANCE
Your Every Day
All Year Insurance Friend

204 E. Main St 806-495-3050 or 3051
Post, Texas 79356

Travelers Allstate

Thank You

I would like to thank Mike & Lance Bland for helping Shawn and me with our lambs. I would also like to thank Kenneth Marts, Gale Shobe & Double U Ranch for purchasing my lamb.

Seth Pennell

January Sale!!!

So many General Motors discounts and rebates... we cannot list them all! So come by and make your best deal!

"We have the LOWEST prices! Come down and look at us!"

"We Will Not Be Under Sold!"

Vyas Motors, Inc.

Where we respect our customers
"Buy a domestic car your job may depend on it"

111 So. Bdwy 495-2825

Mr. Goodwrench

The Post Dispatch
Published Wednesdays
123 East Main Street
Post, Texas 79356

Entered at U.S. Post Office, Post, Texas for transmission through the mails as Second Class matter, according to an Act of Congress, March 3, 1879.

Subscription Rates:
Garza, Lynn, Borden, Lubbock, Crosby, Kent and Scurry County: - \$13 per year
All others: - \$26 per year

Wesley W. Burnett
Publisher
Rodney K. Marshall
General Manager
Becky Warren Lonnie Welborn
Sales, Production News - Features

Deadline:
Mondays at 5 p.m.
P.O. Box 10
Post, Texas 79356
806-495-2816
Member
Texas Press Association
West Texas Press Association



Tender & TRIMMED

THESE PRICES GOOD THRU FEB. 6 IN POST



February is National Meat Month!



CENTER CUT SIRLOIN STEAK

\$1.98
LB.

★WE FEATURE UNITED TRU TENDR AND USDA CHOICE BEEF

★ALL OF OUR BEEF IS GUARANTEED TENDER

★ALL OF OUR BEEF IS TRIMMED TO A QUARTER INCH STANDARD SO THAT YOU GET VERY LITTLE WASTE.

★WE GLADLY MAKE SPECIAL CUTS

COUNTRY PRIDE
GRADE A
WHOLE
FRYERS

LB.

.39

LIMIT 4 PLEASE

UNITED TRU TENDR
OR USDA CHOICE

CHUCK
ROAST
BLADE CUT

LB.

.98

SEE LAST PAGE FOR MORE TERRIFIC MEAT BUYS!



WE GIVE S&H GREEN SEALS EVERY DAY
 DOUBLE SEALS ON WEDNESDAY
 One S&H Green Seal is issued for every \$5. Excluding Beer, Wine and Tobacco Products

It takes 24
 Seals to fill a
 Saver Folder



UNITED
 ★ Supermarket

QUANTITY RIGHTS RESERVED • NO SALES TO DEALERS

GROCERY



COKES
 6-16 OZ.
 NON RETURNABLE
\$1.59

COKE
 6-32 OZ.
\$2.19
 PLUS DEPOSIT



FINE FARE GOLDEN CORN
 WHOLE KERNAL OR CREAM
 17 OZ.
3 FOR 3.89

FINE FARE APPLE SAUCE
 25 OZ. **.69**



KRISPY CRACKERS
 REG. OR NO SALT
 16 OZ.
.59

CAMPBELL'S CHICKEN NOODLE SOUP
 10.75 OZ. **.39**



FINE FARE CUT GREEN BEANS
 16 OZ.
3 FOR 3.89

FINE FARE TOMATO SAUCE
 8 OZ. **5 FOR \$1**



KELLOGG'S CORN FLAKES
 18 OZ.
\$1.29

FINE FARE ELBO MACARONI
 2 LB. **.69**



FINE FARE APPLE JUICE
 64 OZ.
\$1.09

SUN VALLEY COOKIES ASST.
 20 OZ. **.98**

FRANCO AMERICAN SPAGHETTI'S
 15 OZ. **2 FOR 2.89**

FINE FARE HOMINY
 WHITE OR GOLDEN 14.5 OZ.
4 FOR \$1

RANCH STYLE REFRIED BEANS
 16 OZ. **3 FOR \$1**

FINE FARE EVAPORATED MILK
 12 OZ. **.39**

LAFAMOUS TORTILLA CHIPS
 16 OZ. **.98**

FIDDLE FADDLE ASST.
 5 OZ. **.77**



KRAFT MIRACLE WHIP
 REG. OR LIGHT
 32 OZ.
\$1.49

FINE FARE MUSTARD
 24 OZ. **.59**



CAMPBELL'S PORK & BEANS
 OR RANCHERO BEANS
 16 OZ. / 15.5 OZ.
3 FOR \$1



MAZOLA CORN OIL
 48 OZ. **\$2.49**



3 MINUTE OATS
 OLD FASHION QUICK WITH BRAN
 18 OZ. **.89**



FINE FARE PEANUT BUTTER
 SMOOTH OR CRUNCHY
 18 OZ. **\$1.09**

NON-FOODS

CLOROX 2 24 OZ.	\$1.09
ZEST SOAP 3 BAR PACK 15 OZ.	\$1.69
FINE FARE FACIAL TISSUES 175 CT.	2 FOR \$1
CHINET LUNCHEON PLATE 40 CT.	\$1.99
ALLEY CAT FOOD 3.5 LB. BAG	\$1.49

TIDE DETERGENT
 POWDER \$1.50 OFF LABEL
 REG. OR UNSCENTED
 147 OZ. **\$5.69**

TIDE LIQUID
 \$1.50 OFF LABEL
 128 OZ. **\$5.69**

BOUNTY TOWELS
 ASST. JUMBO ROLL
.69

VICKS VAPOR RUB
 1.5 OZ. **\$1.59**

TYLENOL EXTRA STRENGTH CAPLETS
 50 CT. **\$3.99**

COTYLENOL COLD MEDICINE TABLETS OR CAPLETS
 24 CT. **\$3.69**

SINE-AID TABLETS
 REG. STRENGTH
 24 CT. **\$2.99**

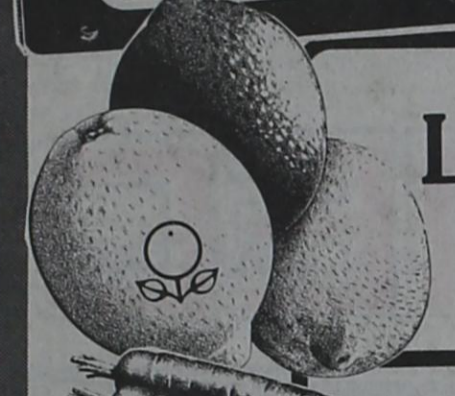
TYLENOL CHILDRENS CHEWABLE
 30 CT. **\$2.29**

JERGENS LOTION
 REG. OR DRY
 15 OZ. + 5 OZ. FREE **\$1.99**

HEALTH & BEAUTY

WE GIVE S&H GREEN SEALS EVERY DAY
DOUBLE SEALS ON WEDNESDAY

One S&H Green Seal is issued for every \$5 -
 Excluding Beer, Wine and Tobacco Products
 It takes 24 Seals to fill a Saver Folder



SUNKIST LEMONS
 LARGE SIZE
4 FOR \$1



FRESH CRISP CARROTS
3 1 LB. BAG \$1



D'ANJOU PEARS
2 LBS. \$1



TEXAS RUBY RED GRAPEFRUIT
3 LBS. \$1

FRESH ALFALFA SPROUTS
2 4 OZ. PACKS \$1



SNOWBALL CAULIFLOWER
 LARGE HEAD
EACH .98



WHITE ONIONS
 MED. SIZE
3 LBS. \$1



NEW CROP NECTARINES
 IMPORTED FROM CHILE
LB. .69

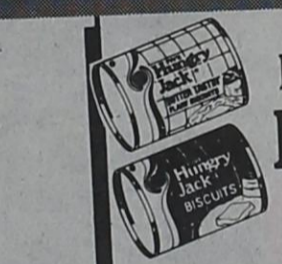
PRODUCE

QUANTITY RIGHTS RESERVED

DAIRY



BELL HOMO MILK
\$1.09
 1/2 GAL.



HUNGRY JACK BISCUITS
 ASST. 5 OZ. **.39**



PILLSBURY SOFT BREAD STICKS
 11 OZ. **.99**



BELL BUTTERMILK
 QUART **2 \$1** FOR



FINE FARE LIGHT SPREAD OLEO
\$1.09
 3 LB. TUB.

NO SALES TO DEALERS



BIRDSEYE CORN ON THE COB
.99
 4 CT.



EL CHARRITO BURRITOS
 ASST. 4 OZ. **4 \$1** FOR



SWANSON BREAKFAST ENTREES
 ASST. **\$1.19**



SENECA APPLE OR GRAPE JUICE
 12 OZ. **.79**



SARA LEE SNACK CAKES
 ASST. **\$1.69**



BELL ICE CREAM
 RED OR GOLD RING
\$1.79
 1/2 GAL.

FROZEN



Tender

& TRIMMED

THESE PRICES GOOD THRU
FEB. 6TH IN
POST,



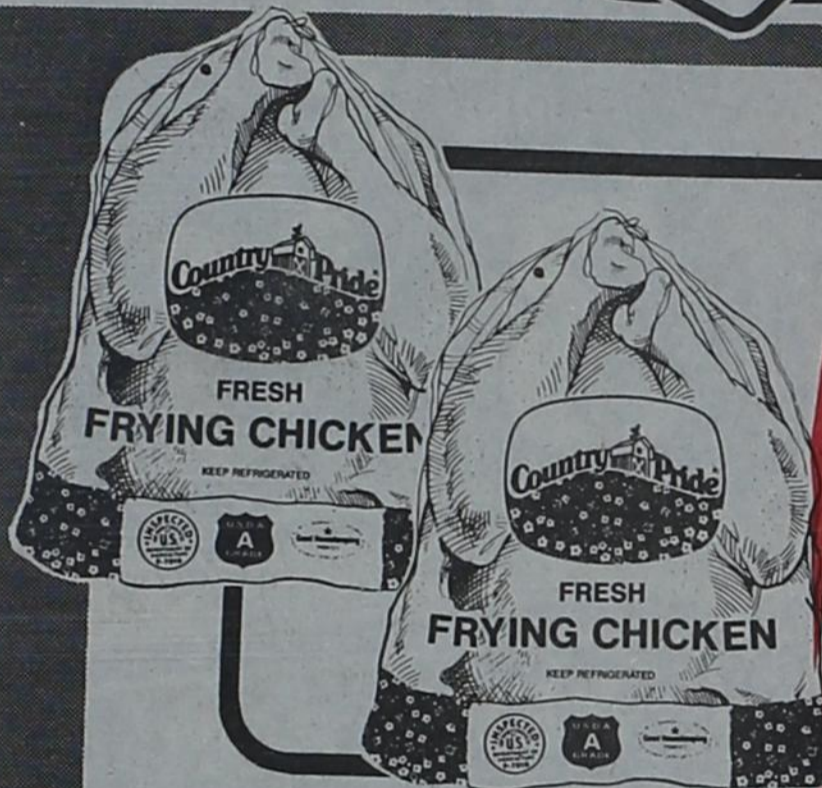
WE GIVE S&H GREEN SEALS EVERY DAY
DOUBLE SEALS ON WEDNESDAY

One S&H Green Seal is issued for every \$5 - Excluding Beer, Wine and Tobacco Products
It takes 24 Seals to fill a Saver Folder



QUANTITY RIGHTS RESERVED • NO SALES TO DEALERS

QUALITY MEATS



COUNTRY PRIDE
GRADE A
WHOLE FRYERS
LB. **.39**
LIMIT 4 PLEASE



UNITED TRU TENDR
SIRLOIN STEAK
CENTER CUT
LB. **\$1.98**



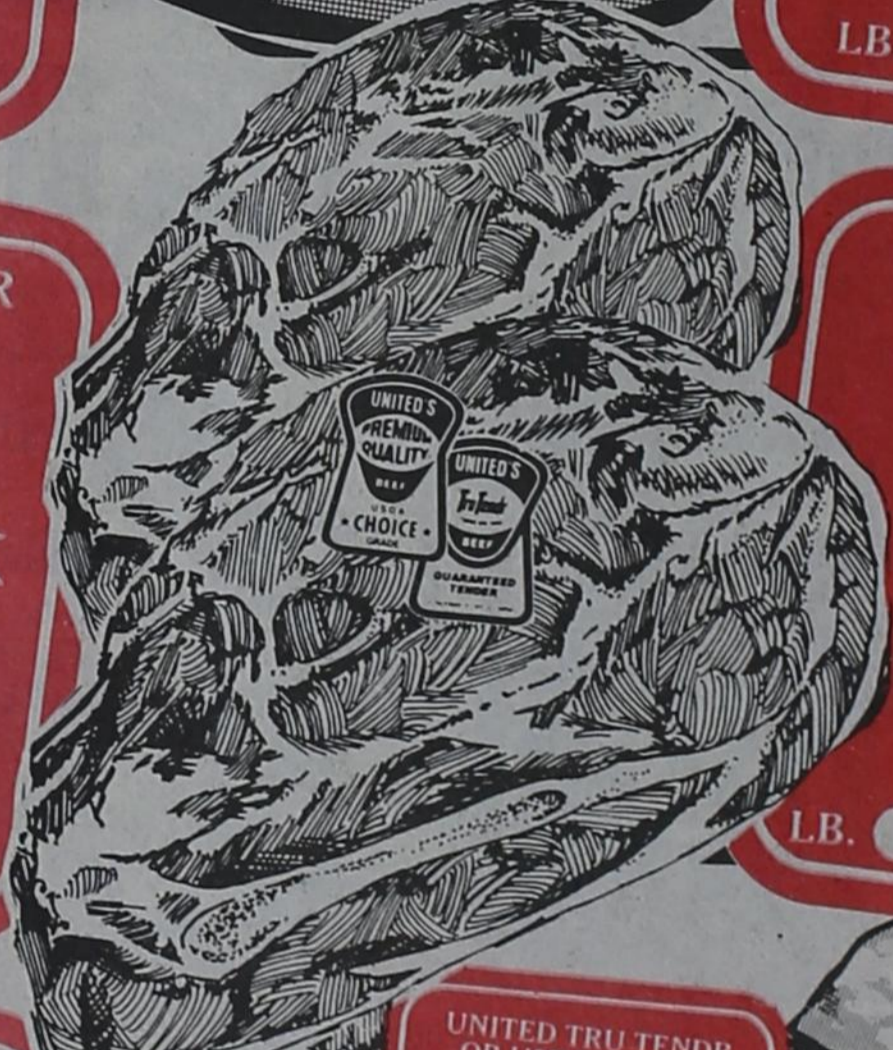
UNITED TRU TENDR
T-BONE STEAK
LB. **\$2.98**



UNITED TRU TENDR
OR USDA CHOICE
ROUND STEAK
CENTER CUT
LB. **\$1.68**



UNITED TRU TENDR
OR USDA CHOICE
BONELESS RIB EYE STEAK
LB. **\$3.98**



UNITED TRU TENDR
OR USDA CHOICE
CHUCK ROAST
BLADE CUT
LB. **.98**



UNITED TRU TENDR
OR USDA CHOICE
RUMP ROAST
BONE IN
LB. **\$1.58**



UNITED TRU TENDR
OR USDA CHOICE
BONELESS FAMILY STEAK
LB. **\$1.68**



UNITED TRU TENDR
PRIME RIB ROAST
LARGE END
LB. **\$1.98**

SMALL END
LB. **\$2.78**



UNITED TRU TENDR
OR USDA CHOICE
BONELESS SIRLOIN TIP ROAST
LB. **\$2.48**



UNITED TRU TENDR
PORTERHOUSE STEAK
LB. **\$3.18**

UNITED TRU TENDR OR USDA CHOICE
BONELESS SHOULDER ROAST LB. **\$1.68**
LEAN GROUND BEEF LB. **\$1.48**

UNITED TRU TENDR OR USDA CHOICE
ROUND STEAK
•BONELESS •TENDERIZED LB. **\$1.88**
UNITED TRU TENDR OR USDA CHOICE
RANCH STEAK
7-CUT LB. **\$1.48**

UNITED TRU TENDR
DELUXE BEEF RIBS LB. **\$1.28**
UNITED TRU TENDR OR USDA CHOICE
ARM ROAST
ROUND BONE CUT LB. **\$1.58**

SHOP UNITED FOR EVERYDAY SPECIALS!!

Tiffany Jamieson and Scotty Clinesmith Celebrate Double Ring Ceremony

Tiffany Roesha Jamieson and Scotty Lynn Clinesmith were united in marriage in a double ring ceremony Saturday, January 16, 1988, at the First United Methodist Church in Post. Rev. Jim Goodwin, pastor of the Calvary Baptist Church, performed the 4:00 p.m. ceremony.

Tiffany is the daughter of Rev and Mrs Jim Jamieson of Guymon, Ok.. Scotty is the son of Mr and Mrs Jack Clinesmith of Post.

Presented in marriage by her father, the bride wore a candlelight satin gown created by Alfred Angelo. The fitted bodice featured embellished appliques and seed pearls with a sweetheart neckline. Pleated ruffling fully outlined the short bishop sleeves. The cathedral train of satin was cover shaped, and

outlined in Chantilly lace, matching that in the bodice.

Her veil of illusion net held a circlet of looped pearl strands around the forehead. The back featured a net pouf accented with strands of lily of the valley.

She carried a bouquet of fuschia roses, candlelight carnations, and English ivy. Fuschia ribbon and ivory lace inserts complimented the arrangement.

Tina Lee, of Plano, sister of the bride, served as Matron of Honor and Chani Moore of Guymon, Okla., served as bridesmaid. Each wore a two piece dress of fuschia taffeta and carried lighted brass hurricane lamps decorated with fuschia and ivory carnations surrounded with fuschia net.

Amy and April Line of Post, served as flower girls. They wore ivory crepe dresses accented with ivory lace. Each had ivory and fuschia flowers french braided into their hair and carried a lace basket decorated with fuschia flowers.

The bride's mother wore a fuschia crepe dress and carnation corsage. The groom's mother wore a dusty rose dress with an ivory lace collar and a fuschia rose corsage.

The altar held two brass candelabras adorned with fuschia columbine vines and ivory satin bows. Ivory tapers and English ivy outlined the altar railing. Each window held English ivy and votive cups, and each door held a braided wreath made of moire taffeta and satin.

The groom wore a black tuxedo, with ivory shirt, tie and cummerbund. He wore a boutonniere of flowers taken from the bride's bouquet.

Curtis Clinesmith of Denton, brother of the groom, served as best man. Todd Jamieson of Guymon, Ok., brother of the bride, served as groomsman. Each wore black tuxedos with white shirts, fuschia ties and cummerbunds.

Tina Lee, sister of the bride, sang, "You Took My Heart B Y

Surprise". Mary Margaret Norman of Post, performed several wedding selections, on the organ, including "Bless This Home" while the couple lit their unity candle.

Curtis Clinesmith, brother of the groom, escorted in their mother and grandmother. Todd Jamieson, brother of the bride, escorted their mother. Ushers for the guests were Sam Hardin of Levelland, Donald Crenshaw of Post and Ricky Benton of Post.

A reception followed immediately in the fellowship hall. The bride's table was covered with ivory lace. Centerpiece for the table was a four-tier wedding cake decorated with fuschia rosebuds and topped with a Precious Moments bride and groom figurine. Punch, mints, and nuts were all served from brass appointments. Serving at the bride's table were Lana Benton of Post and Stephanie Miller of Guymon, Ok.

The groom's table was covered with an ivory lace cloth and a brass coffee service. His cake was decorated with light chocolate rosebuds and the Footlocker logo in royal blue and white, with the couple's names written on the top. Centerpiece for the table was a pair of Footlocker tennis shoes, surrounded with English ivy. Serving at this table were DiAnne Collier of Post and Pam Hardin of Levelland.

Vicki Durham, of Carrollton, registered the guests. Out of town guests were registered from Denton, Denison, San Antonio, Guymon, Ok., Plano, Littlefield, Slaton, Levelland, Lockney and Carrollton.

The couple will reside in Dallas, where the groom is employed by Footlocker and the bride is employed by State Farm Insurance.

Members of the house party were Betty Curry, Marion Wheatley, Agnes Welch, Marie Odom, Debbie Line and Thessa Harp.



Ronnie L. Morris, Jr. and Gina Kathryn Sellers

Engagement Announced

Mr. and Mrs. Robert J. Sellers of Clovis announce the engagement and approaching marriage of their daughter, Gina Kathryn Sellers of Clovis, to Ronnie Lee Morris Jr., son of Mr. and Mrs. Ronnie L. Morris Sr. of Clovis, formerly of Post, and the grandson of Mrs. Vera Gossett and Mr. and Mrs. Chester Morris of Post.

The couple will exchange vows on Sunday, February 14, 1988 at 8 p.m. at the Advent Christian Church.

A reception will be held in the church fellowship hall following the ceremony.

The bride-elect is a 1981 graduate of Clovis High School and is currently self-employed.

The prospective groom is a 1984 graduate of Texas Tech University. He is currently employed at Wardlaw Claim Service.

The ceremony and reception are open to friends and relatives.

- Birth -

Jill Dawn & Benjamin Philip Rodgers

Kevin Rodgers is proud to announce the arrival of his new twin sister and brother, born January 28, 1988 in Austin.

Jill Dawn arrived at 3:09 p.m. weighing four pounds and three and one-half ounces and was 17 3/4 inches long. Benjamin Philip arrived at 3:11 p.m. weighing seven pounds and 15 1/2 ounces and was 19 3/4 inches long.

The proud parents are Toni and Rick Rodgers of Bergstrom AFB, Austin.

Grandparents are Naomi Matsler of Post, Lou Rodgers of Las Vegas,

Nevada and Charlie Rodgers of Houston.

Great grandparents are Martin and Dale Nichols of Post and Warner Rodgers of Borger.



The booming sound of a plane passing the sound barrier cannot be heard by the pilot.

HAVE A HAPPY HEART'S DAY
Sunday, February 14.

WHERE'S MY CARD, SWEETIE?

Hallmark
Happiness Is...
128 E. Main 495-2438
© 1958, 1965 United Feature Syndicate, Inc.
© 1988 Hallmark Cards, Inc.



Mr. and Mrs. Scotty Lynn Clinesmith

FTD Valentine Bouquet



\$25⁰⁰

order early

Also Available:

- Roses
- Mixed Flowers
- Blooming Plants

THE PRAIRIE FLOWER SHOP

232 E. Main

495-2658

In The Neighborhood

by Lonnie Welborn

The Willy Awards have already been covered in another article in today's paper - but I would like to add one final note.

For those who missed the awards, for one reason or another, you missed a great evening of good entertainment.

The dinner, the awards presentations, the dance and the auction all made for a fun evening that was enjoyed by everyone who attended.

The price was certainly reasonable and despite what you might have heard, there was no dress code - people were dressed in everything from jeans and boots to furs, feathers and sequins.

The Willy Awards evening was open to everyone who wanted to get together to have a good time.

Next January when the third annual awards evening takes place, make plans to attend. There's something for everybody and you're guaranteed a good time.

Addy Winner

Richard Kirkpatrick, son of Mr. and Mrs. K.W. Kirkpatrick was present at another award presentation Saturday night when the Lubbock Advertising Federation presented its 22nd annual Addy Awards program in Lubbock's Memorial Civic Center.

Richard is art director for Holland Merriman and Christian who won several advertising awards during the evening, including Best of Show for its Methodist Hospital Birthing Center entry.

Back at Work

All of us at the Dispatch and Ammons Printing are glad to have Donna Ammons back with us. She was off for a short while when she had eye surgery in Lubbock, but is at her job again and doing well.

Visits from New York

David Morrow, son of Charles and Glenda Morrow, was in Post recently for a short visit.

David is currently a student at New York's National Shakespeare Conservatory where he will be studying all phases of drama for the next two years.

He is also a member of the Goodman Chamber Choir, a small ensemble which presents three concerts a year.

David was tenor soloist in a recent Vivaldi concert and will join the group in presenting a February concert of all Russian music

Happy Birthday

I realize this is taking advantage of this column for my own personal use - but something important is coming up soon and I'd like to take this opportunity to say Happy Birthday on February 5 to an extra-special person -- Mary Welborn -- who is not only my mother, she's also one of the nicest people around.

Community Calendar

February 4

Basketball Meeting, 6:30 p.m. First National Bank Community Room Revival Post Nazarene Church 7 p.m. (Through Sunday Feb. 7) "Room Service" Garza Theatre, 7:30 p.m.-continuing through Feb. 7, Sunday matinee 2 p.m.

February 5

"It's A Small World" 3rd grade musical-Elementary School Aud. 10 a.m. and 2 p.m.

February 8

Tax Counseling for the Elderly (TCE) Library 9 a.m.- 1 p.m.

February 12

Friday-9 a.m. Registration College Art Course-Algerita Art Center

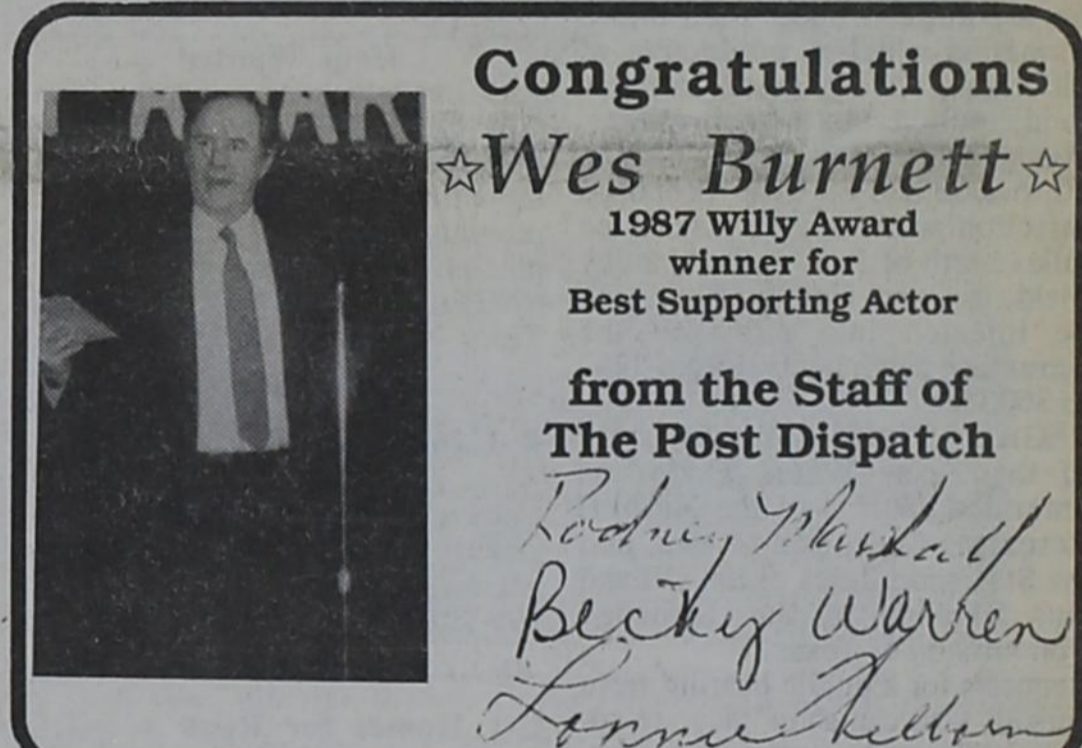
Congratulations

☆Wes Burnett☆

1987 Willy Award winner for Best Supporting Actor

from the Staff of The Post Dispatch

*Rodney Marshall
Becky Warren
Lonnie Welborn*



Valentine Potpourri
Cinnamon Candy or
for the chocolate lover
Chocolate Potpourri



Spring Bouquet

Mixture of

Holland Flowers!

\$18.00

Roses by the Stem
(arranged in bud vase)
by half-dozen or dozen
arranged & delivered

Potted tulips & daffodils

Valentine gift sacks and heart-shaped cards for that special person!
Only 69 cents each

Place Orders Early

For Valentine's Day!!!

495-2544

The Olive Branch

Located 2nd Floor
Chaparral Restaurant
Hwy 84 West



Hudman Furniture

CLEARANCE SALE

Market Orders of Carpet Have Arrived. Hurry While Selection is the Greatest!

Anso V
You must see this to believe it. Allied's answer to DuPont's Stainmaster
9⁹⁵ Sq. Yd.

Heavy Nylon
High-Low **7⁹⁵** Sq. Yd.

Our Starting Nylon
High-Low **6⁹⁵** Sq. Yd.

Heavy Nylon
Plush **5⁹⁵** Sq. Yd.

Large Selection of Colors Available

Hudman Furniture Co.

301 E. Main

Post, Texas

495-2615

Premium Buyers Spend \$51,762.26 On 164 Animals

Brandon Bird, Grand Champion Steer, First National Bank and Double U, \$900; Lance Bland, Grand Champion Lamb, J Bar Ranch and Gemco Pre-Feeders, \$500; Brian Gibbs, Grand Champion Hog, Case Power & Equipment, \$550; Russ Bird, Reserve Champion Steer, West Texas Equipment, Wilson Motors, American Equipment & Trailer, Melco Services, \$550; Clay Johnson, Reserve Champion Lamb, Robbie King and Mason McClellan, \$300; Dana Morris, Reserve Champion Hog, Hackberry Coop Gin, \$325; Steven Payton, Steer, Brothers Production Company, \$425; Labeth Jones, Lamb, Jackpot, \$300; Brad McDonald, Hog, Graham Coop Gin, \$325; Jimmy Holleman, Steer, C-Bar Ranch and David Stelzer, \$400; Keith Peel, Lamb, G.C.J.L.A. Directors, \$300; Dana Morris, Hog, Post Volunteer Fire Department, \$300; Dana Morris, Steer, Double U, \$375; Brian Gibbs, Lamb, Caprock Golf Course, \$325; Brent McDonald, Hog, Parkinson Electronics, \$300; Nancy Morris, Steer, Mr & Mrs Dillard Morris, \$400;

Janell Jones, Lamb, Close City Coop Gin, \$300; Mike Bartlett, Hog, Jackpot, \$300; Trevah Bush, Steer, J Martin Basinger & Dickens County Electric, \$400; Clay Johnson, Lamb, First National Bank, \$300; Jill Stelzer, Hog, Mr & Mrs J.C. Stelzer, \$1,500; Kim Reiter, Steer, Carter Tool & Palmer Butane, \$375; Krista Kemp, Lamb, Mr & Mrs J.C. Stelzer, \$350; Karl Gerner, Hog, Jackpot, \$300; Angela Graves, Steer, Floydada Livestock, \$400; Bobby Blair, Lamb, Giles McCrary, \$350; Neal Gibbs, Hog, Jackpot, \$300; Justin Conner, Steer, First National Bank of Post, \$325; Janell Jones, Lamb, First National Bank of Post, \$325; Kelly Edwards, Hog, Jackpot, \$300; Traci Bush, Steer, G.C.J.L.A. Directors, \$325; Matt Holly, Lamb, Jackson Brothers Meat Packers & KPOS Radio, \$325; Joel Basinger, Hog, Palmer Well Service, \$350; Keitha White, Steer, First National Bank of Post, \$300; Randy McKee, Lamb, Mr and Mrs Wayne Carpenter, \$325; Mike Bartlett, Hog, Double U, \$375; Shane Bevers, Steer, Jackpot, \$300;

Labeth Jones, Lamb, David Tyler & Permian Wire Rope, \$300; Misty Bartlett, Hog, Close City Coop Gin, \$325; Korren Payton, Steer, Quick Lay Pipe & Mason Brothers, \$325; Krista Kemp, Lamb, Post Volunteer Fire Dept & Terry Tire Company, \$350; Jerry Hodges, Lamb, Jackpot, \$300; Jeremy King, Hog, Bobby Dickson Acid, \$425; Keith Peel, Lamb, Advanced Chemical Company, \$400; Clint Melton, Hog, Mr & Mrs Dillard Morris, \$400; Bill Rankin, Lamb, First National Bank of Post, \$325; Casey Hart, Hog, Mac Olds, GMC, Slaton, \$325; Jerry Hodges, Lamb, Jackpot, \$300; Bret Ellis, Hog, Citizens Bank, Slaton, \$300; Blair Didway, Lamb, First National Bank of Post, \$300; Jason Haire, Hog, Palmer Oilfield Construction, \$300; Mark Tyler, Lamb, La Posta, Quick Lay Pipe, \$375; Robert Elliott, Hog, Slaton Stockshow, \$300; Carol Gass, Lamb, Jackpot, \$300; Karl Gerner, Hog, Jackson Brothers Meat Packers & KPOS, \$300; Lance Bagby, Lamb, Mayor Giles McCrary, \$350; Brent McDonald, Hog, Caprock Glass, \$300; Jimmy Holleman, Steer, Jackpot, \$300; Willie Mesa, Lamb, Ray Diekemper Oil, \$325; Jimmy Moreno, Hog, Jackpot, \$300; Shawn Bevers, Lamb, Hackberry Coop Gin, \$300; David Beatty, Hog, First National Bank of Post, \$400; Justin Johnson, Hog, Directors, \$300; Seth Pennell, Lamb, Double U Ranch, \$600; Corey Turley, Hog, David Stelzer, \$375; Regina Basquez, Lamb, E & B Service & Supply Slip Service Company, \$300; Michelle McGehee, Hog, La Posta, Bird & Beach Ranches, \$425; Angela Graves, Lamb, J.B. Equipment & Palmer Well Service, \$300; Ryan Hart, Hog, Post Stampede Rodeo Association, \$325; Blair Didway, Lamb, Citizens Bank, Slaton;

Kevin Cornett, Hog, Jackpot, \$300; Dustin Massey, Lamb, Jackpot, \$300; Brandon Wilson, Hog, Jackpot, \$300; Brad Byrd, Lamb, Jackpot, \$300; Lance Bland, Hog, First National Bank of Post & Double U, \$325; Lance Bagby, Lamb, Ezell Key, Snyder & Jana Middleton, \$325; John Beatty, Hog, Gemco Pre-Feeders, \$400; Rance Sappington, Lamb, Cal-Maine, \$350; Misty Bartlett, Hog, First National Bank of Post, \$350.

Add - Ons

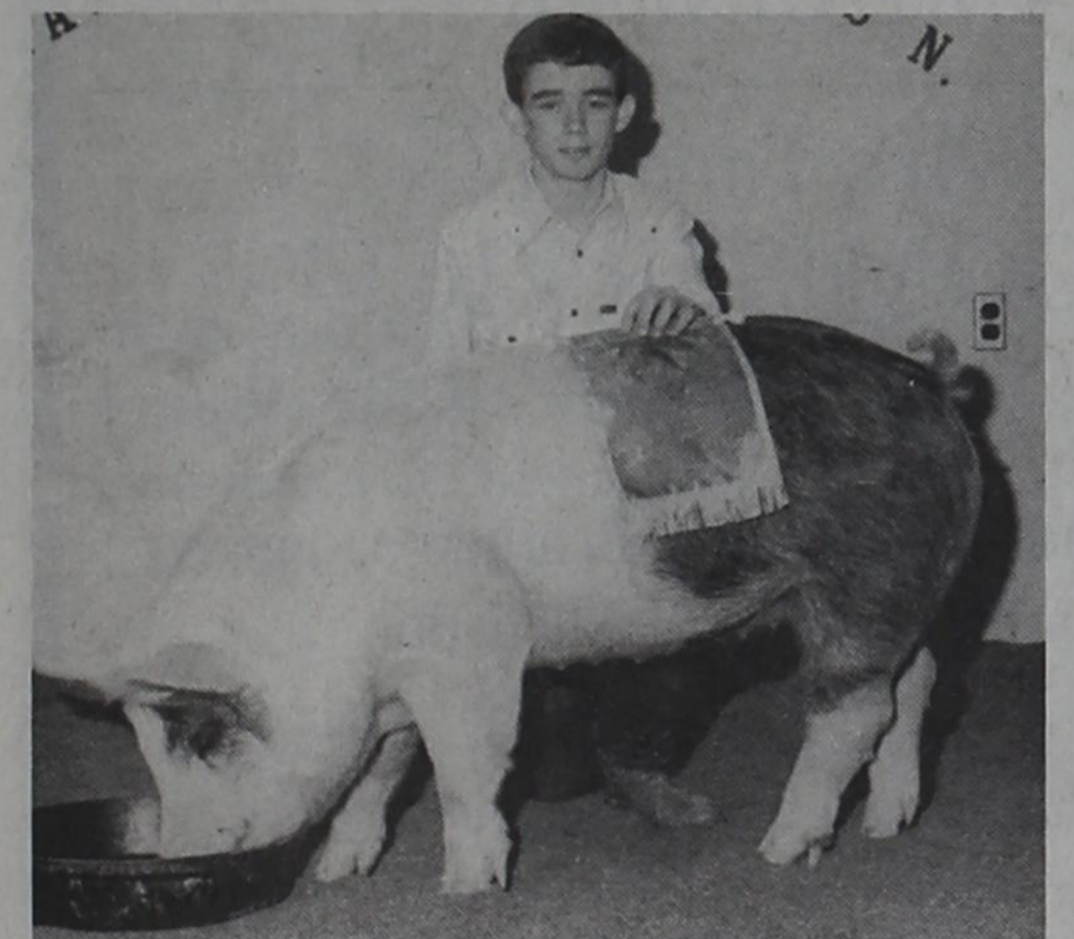
Rynn Sappington, Peel's Conoco, \$50; Keith Peel, L.H. Peel - \$100 and Quick Lay Pipe - \$50; Traci Bush, J.D. & Vada McCampbell - \$100, 7 C's - \$25, Peel's Conoco - \$25; Trevah Bush, J.D. & Vada McCampbell - \$100, 7 C's - \$25, Peel's Conoco - \$25; Rance Sappington, Peel's Conoco, \$50; Dana Morris, D.I. & Doris Dunn - \$25, 7 C's - \$25, Hackberry Coop - \$25; Nancy Morris, 7 C's, \$25; Misty Bartlett, D.I. & Doris Dunn - \$25, D & T Swine - \$20, Peel's Conoco - \$25; Mike Bartlett, D & T Swine - \$20, Peel's Conoco - \$25; Korren Payton, Faye Payton - \$100, Brothers Production - \$75, TKS Partnership - \$25; Steven Payton, TKS Partnership - \$25, Faye Payton - \$100; Brent McDonald, D & T Swine - \$20, Dennis & Nancy McDonald - \$50, Mr & Mrs B.R. McDonald - \$200; Brad McDonald, Mr & Mrs B.R. McDonald - \$100; Jeremy King, D & T Swine - \$20; Casey Hart, D & T Swine - \$20; Justin Johnson, D & T Swine - \$20, A.E. Redman - \$50; Ryan Hart, D & T Swain - \$20; Keitha White, 7 C's - \$25, Quannah & Sue Maxey - \$25; Michael McClellan, Anonymous - \$50; Kim Reiter, Mr & Mrs Sam Bevers - \$100, A.E. Redman - \$50; Justin Conner, Mr & Mrs W.S. Bevers - \$100, Southland Supporters - \$50; Shawn Bevers, Mr & Mrs W.S. Bevers - \$100; Shane Bevers, Mr & Mrs W.S. Bevers - \$100; Bobby Blair, BJB Construction - \$200; Brandon Bird, Hackberry Coop - \$25, 7 C's - \$50; Russ Bird, 7 C's - \$50; Lance Bland, Hackberry - \$25; Shawn Pennell, Donny Fumagalli - \$50; Angela Graves, Cal-Maine Farms - \$100, Quannah & Sue Maxey - \$25; Dustin Massey, A.E. Redman - \$25; Carol Gass, A.E. Redman - \$25, Peel's Conoco - \$25; Clay Johnson, A.E. Redman - \$25; Bret Ellis, Dennis & Libby McGehee - \$50, Southland Supporters - \$50; Joel Basinger, Southland Supporters - \$50; Kelly Edwards, Southland Supporters - \$50; Jason Haire, Southland Supporters - \$50; David Beatty, Southland Supporters - \$50; Jimmy Moreno, Southland Supporters - \$50; Michelle McGehee, Southland Supporters - \$50; John Beatty, Southland Supporters - \$50; Corey Turley, Southland Supporters - \$50; Robert Elliott, Southland Supporters - \$50; Bill Rankin, Peel's Conoco - \$25; Labeth Jones, Peel's Conoco - \$25; Janell Jones, Peel's Conoco - \$25; Neal Gibbs, Peel's Conoco - \$25; Krista Kemp, Peel's Conoco - \$25; Mary Tyler, Peel's Conoco - \$25; Jimmy Holleman, Quick Lay Pipe - \$50; Jarett Dickson, Dickson Chemical - \$200; Heather Dickson, R.T. Dickson - \$200.



GRAND CHAMPION HOG - Brian Gibbs (left) holds his trophy and his Hampshire hog that won the Grand Champion title. Pictured with him is his father, Leon Gibbs.



RESERVE GRAND CHAMPION - Dana Morris is pictured with her hog that took the Reserve Grand Champion title.



CHAMPION CROSS BREED HOG - Brent McDonald won the Cross Breed Hog class at the Stock Show Thursday evening.



CHAMPION DUROC BREED HOG - Brad McDonald is shown with his Duroc hog that won it's division at the Livestock Show.



SHOWMANSHIP - CATTLE DIVISION - Angela Graves

Show Results

(Continued on Page 8)

Heifer Show

Grand Champion - Michael McClellan
Steer Show
Grand Champion Steer - Brandon Bird
Reserve Champion Steer - Russ Bird
Rate of Gain Trophy - Steven Payton
Showmanship Belt Buckle - Angela Graves

Light Weights
850 - 950 lbs.
1st - Jimmy Holleman - 950
2nd - Kim Reiter - 915
3rd - Keitha White - 905
4th - Jimmy Holleman - 890

Medium-Light Weights
955 - 1050 lbs.
1st - Steven Payton - 1050
2nd - Trevah Bush - 1040
3rd - Traci Bush - 975
4th - Korren Payton - 955

Medium - Heavy Weights
1065 - 1185 lbs.
1st - Russ Bird - 1185
2nd - Nancy Morris - 1175
3rd - Justin Conner - 1085
4th - Shane Bevers - 1065

Heavy Weights
1215 - 1330 lbs.
1st - Brandon Bird - 1215
2nd - Dana Morris - 1330
3rd - Angela Graves - 1230
Overall Sportsmanship Buckle - Chad Davis.

Stock Show

(Continued from Page 1)

per pound, Ken Cook of San Angelo with \$.8075 per pound on lambs, and Shepherd Feed Yard of Hale Center with \$.69 per pounds on steers.

Overseeing the 1988 show were the Garza County Junior Livestock Association officers with Jack Morris as president, Ronnie Dunn as vice-president, Leon Gibbs as recording secretary, and Diane Graves as corresponding secretary.

Throughout the shows and sale, the Garza County Extension Homemakers assisted by 4-H'ers and 4-H Adult Leaders, operated the concession stand.

Middle School Student Council Attends Convention

Post Middle School Student Council attended the South Plains Association of Student Councils, District V Convention held in Lubbock, Wednesday, January 27 on the Texas Tech campus.

"Dare to Succeed" was the theme for the convention, attended by 480 students representing 29 schools.

Candidate schools for 1988-89 presented skits in the political rally, with the following schools elected officers for '88-'89:

President-Muleshoe, Vice President-Denver City, Secretary-Brownfield and Parliamentarian, Abernathy.

Attending from Post were: Misty Bartlett, Jay Mitchell, Trudy Woods, Laura Norman, Sandy Allen, Josh Bush and Damon Curtis;

Krishna Bush, Lou Ann Ammons, Kyle Glidewell, Radley Nichols, Cara Cash, Labeth Jones, and Angela Norman.

Dedra Adams is the advisor for the group.

Photos by Rodney Marshall



SHOWMANSHIP - LAMB DIVISION - Janell Jones



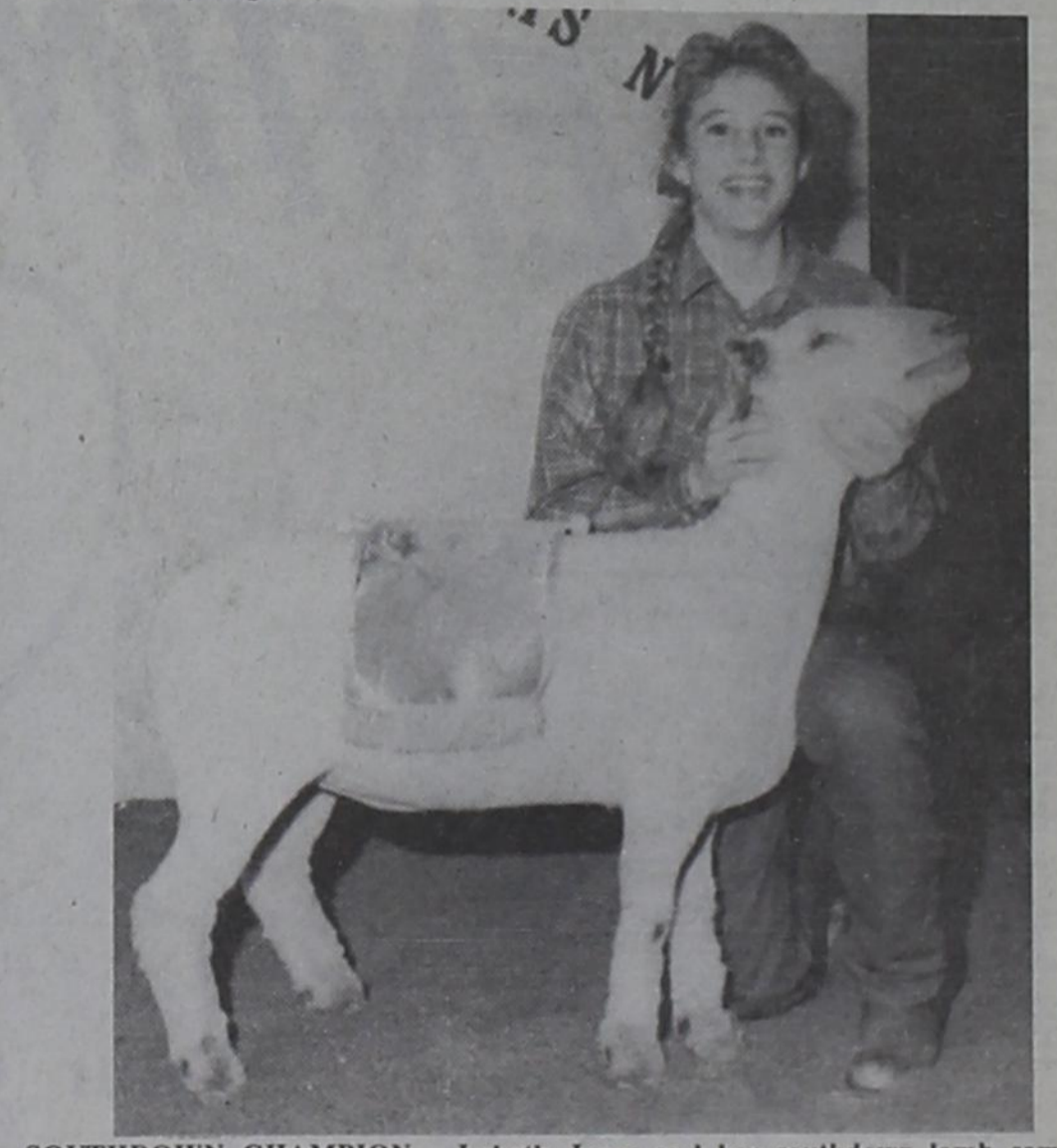
SHOWMANSHIP - HOG DIVISION - Brent McDonald



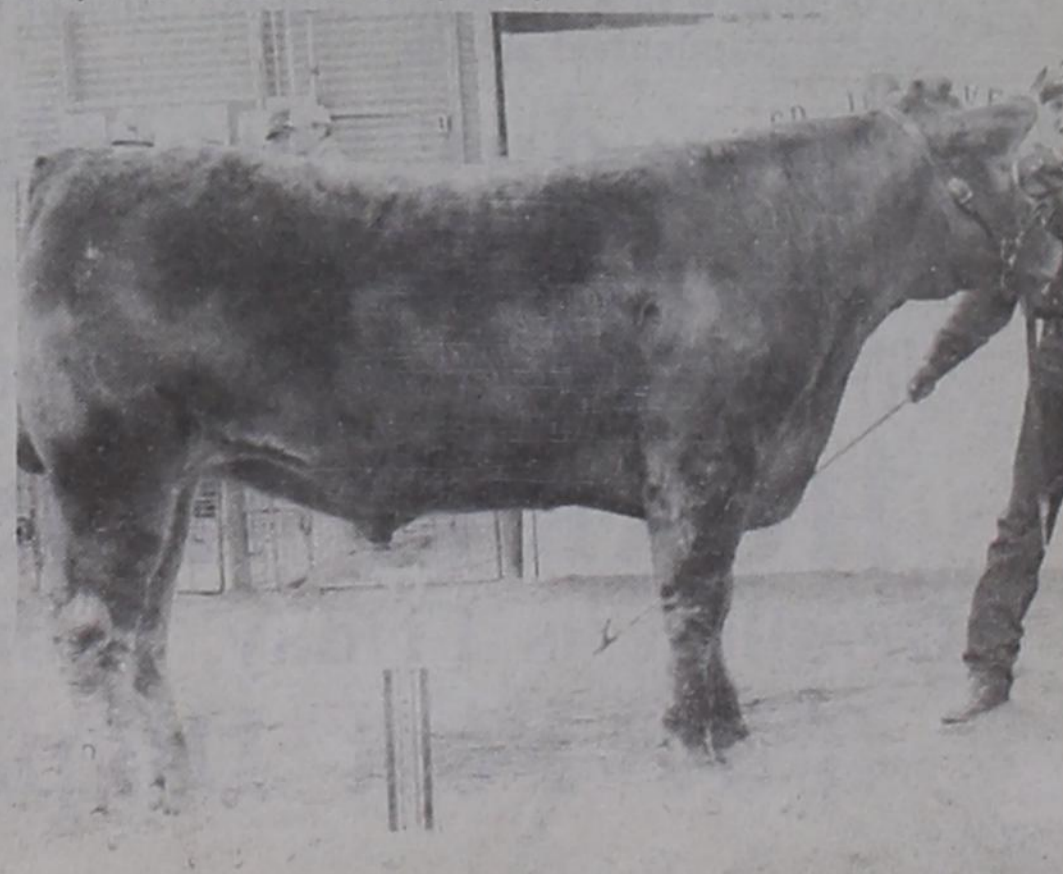
GRAND CHAMPION LAMB - Lance Bland poses with his trophy and medium wool lamb that was awarded the Grand Champion title. Bland also walked away with the championship in the Fine Wool division and the Fine Wool Cross division.



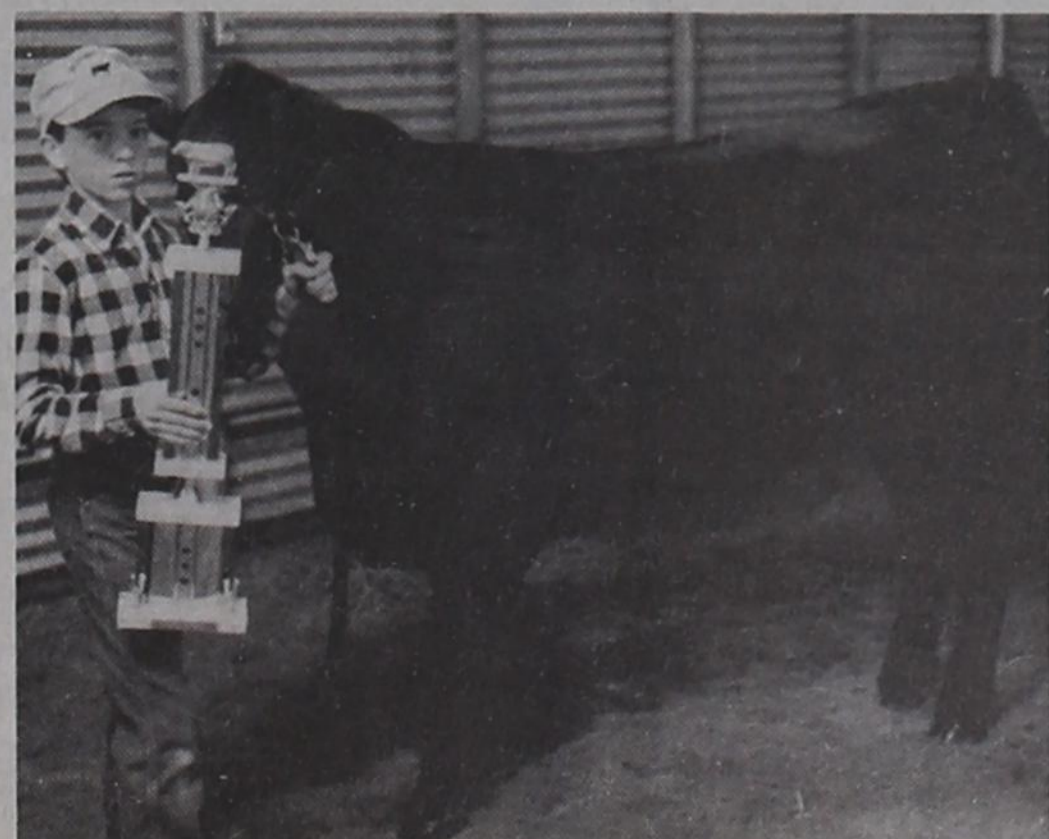
RESERVE GRAND CHAMPION LAMB - Clay Johnson and his fine wool lamb came away with the Reserve Grand Champion trophy at the Stock Show Friday night.



SOUTHDOWN CHAMPION - Labeth Jones and her southdown lamb came away with the division championship in her class.



RESERVE GRAND CHAMPION STEER - Russ Bird stands with his Reserve Grand Champion steer that he was awarded at the Garza County Livestock Show Saturday morning.



GRAND CHAMPION HEIFER - Michael McClellan won the Grand Champion Heifer Saturday morning at the Stock Show.

Willy Awards Highlighted by Special Recognition

(Continued from Page 1)
 with girls, but was determined to get the one he wanted.
 In his acceptance speech, McCurrin dedicated his award to the memory of Sexton Huntly - who was a close and valued friend of McCurrin's since first moving to Post.
 Linda Ellis was in the spotlight again when she received the award as Best Actress for her outstanding performance as the wife who kills her would-be murderer, in self defense, and is sent to prison to await her death by hanging - much to the delight of her husband, who planned the whole thing.
 Broadway show tunes were the musical entertainment throughout the evening, provided by vocalists

Mildred Stewart, accompanied by Georgie Willson, and Rodney Marshall and Gloria Freeman, both accompanied by Boo Olson - who was also Awards Accompanist for the evening.
 The Willy Awards for 1987 were again designed by Billye Hackney who this year created a standing ceramic plaque with an attached star for each winner.
 Silver and black souvenir programs were through the courtesy of Ammons Printing and Will McCrary.
 Awards Chairperson for the event was Arleta Gary with Randall Laurence as dance and auction organizer.
 The awards dance was held immediately following the cere-

monies with music provided by Tommy Reed and The Texas Class.
 Randall Laurence deserves a special pat on the back for the great work he did in organizing and conducting the auction which took place during intermissions at the dance.
 His efforts in securing merchandise from local merchants for auction not only covered the cost of the band, but also raised enough for a sizeable donation to the theatre fund.
 Thanks to the efforts of Laurence, merchandise and services were donated by the following contributors: Chapparral, Ronco Fire Extinguishers (Ronnie Metzgar), B&B Liquor, Collier Drug, Danish Imports, Caprock

Liquor (Dena Martin), Wallace Lumber and Garza Auto;
 Garza Exxon (Johnie Johnson), Western Auto, LaPosta, Hudman Furniture, Vyas Motors, ABC Welding, Cash & Carry Saddlery (Max Chaffin), Higginbotham-Bartlett, Handy Hardware, Caprock Golf Course, D&W Auto Parts, United Supermarket and Corner Grocery.
 The buyers for the evening included Jerry and Maxine Conoly,

Roger McCurrin, Weldon Reed, Sammie Palmer, Buddy Skinner and D.H. Bartlett;
 Ken Young, Charles Hardin, Larry Waldrip, Nathan Little, Neal Francis, Rex Cash, Roger Blair, John Strubhart and Bob Palmer.

Woody Allen's "Don't Drink the Water" was chosen Best Play for 1987 and the award was accepted by Anne Leake, stage manager for the popular production.

When the last number was played by Texas Class, the Willy Awards were over for another year...but the third annual event is already in the planning stages and the first possible entry in the 1988 race will open February 4 when the Garza Theatre presents "Room Service."



ANNE LEAKE
Stage Manager, Best Play



CHERYL THOMPSON
Best Cameo Actress



LETA PIERCE
Best Supporting Actress



MUSIC MAKERS
Linda Ellis, Pat Bilbo, Zoe Kirkpatrick, Rodney Marshall



LINDA ELLIS
Best One Act Play Actress



NONA LUSK
Director's Award for Distinguished Service



RONNIE GRADINE
Best Cameo Actor



TROY TIMMS
Director's Award for Youth Achievement



WES BURNETT
Best Supporting Actor



EARL AND DANIELLE CHAPMAN-Theater Board of Director's Award



AMY WALLACE
Accepting Cultural Awareness Award for Charles Wallace

Announcing

Now you can get copies of your favorite Post Dispatch photos!

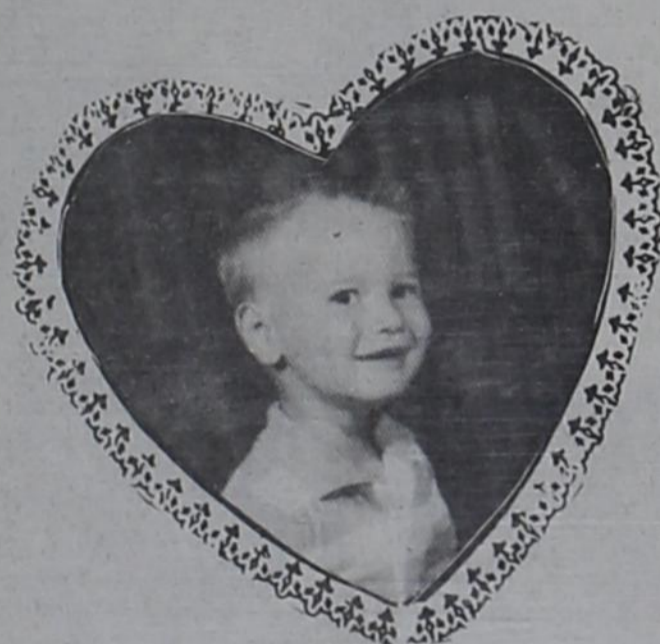
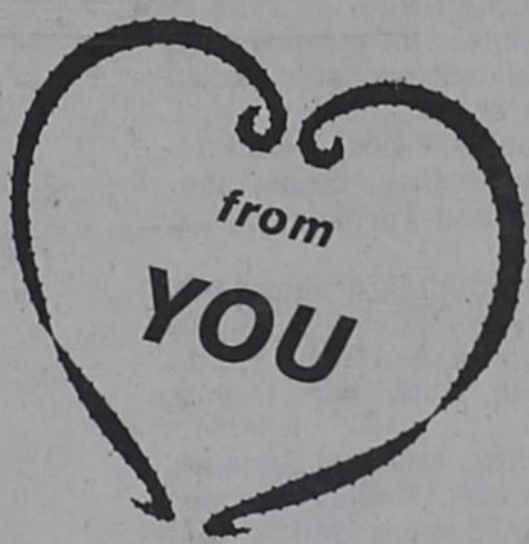
Glossy Black and White		
8" X 10"	5" X 7"	All orders payable when placing the order.
\$5.25	\$2.75	
Plus Tax		

Grandparents:

Here's a chance to make your children and your grandchildren happy!

A Big

VALENTINE



Send or bring us a cute photo of

Your Grandchild

We'll place it in a heart including the name of the child and the grandparent and on

Wednesday, February 10

Just in time for Valentine's Day - February 14

The cost remains the same \$5 per heart.
 (Please, payment in advance at this low rate.)

HURRY! HURRY!

Deadline is Friday, February 5

The Post Dispatch

123 E. Main

495-2816

JUST A REMINDER . . .

It's Time for
"ROOM SERVICE"
 at the Garza Theatre - Feb. 4-7

A Fast and Funny Marx Brothers Comedy
 By John Murray & Allen Boretz

Designed & Directed By
 West Texas Favorite Showman, Will McCrary

FEATURING A CAST OF AREA
 COMIC FAVORITES—

★ Danielle & Earl Chapman, Roger McCurrin, Wes Burnett, Lonnie Welborn, Cheryl Thompson, Ronnie Gradine, Robert Flores, Randall Laurence, Robert Wall, Mike Wells, and Introducing Mike Bartlett as Leo Davis

- Box Office Open Mon.-Sat. 10:00 a.m. - 4:00 p.m.
- Tickets — Adults \$6.00, Children 12 & Under \$3.00
- Performances Begin — 7:30 p.m. Sunday Matinee 2:00 p.m.
- Garza Theatre - 226 E. Main, Post, Tx. 79356 (806) 495-4005
- Mail & Telephone Reservations Accepted

WE BELIEVE IN **PROGRESS** FOR POST.....

Just look what we have going for us!

1. Texas Main Street City.

2. Post Economic Development Corp. and its industrial development.

3. Healthy Petroleum Industry.

4. Agressive Chamber of Commerce.

5. Heavy highway traffic with travelers spending money here.

6. Dependable and hard working farmers and ranchers.

7. Two major lake developments within 15 miles of city.

8. Businesses investing in the future.

9. Fantastic On-Stage Theatre.



Garza Theatre Director Will McCrary receives congratulations from Dr Mary Louise Brewer on behalf of the West Texas Museum Association. She was the special guest presenter at this year's Willy Awards. The Garza Theatre was recognized by the Museum Association for its outstanding contributions to cultural affairs.



The Post Dispatch building was the first official Post Main Street Project Renovation - financed through our special low interest loan program.

Cotton is still king...and we are fortunate to have had a good crop and a massive cotton warehouse with Postex Cotton Warehouses Inc.



**We join the enthusiasm for the future
with more than 78 years of
continuous service to Garza County!**



**THE FIRST
NATIONAL BANK**



**495-2804
216 W Main**

Idalou Runs Past Antelopes, 79-37

The Post Antelopes ran into big trouble when they traveled to Idalou as the Wildcats ran up a 37-79 score in defeating Post Friday, January 29, in Idalou.

Post fell behind quickly in the first quarter as Idalou held a 6-24 advantage after the first quarter.

The Wildcats then poured in 24 more points in the second period as the Antelopes managed 10.

The score at halftime was 16-48 in favor of Idalou.

Post showed a little more in the second half scoring 21 points but Idalou added 31 to increase their lead.

Junior Amendariz led the scoring for Post with seven points followed by Dustin Ammons with six.

Bill Rankin and Michael McClain each had five points, Jamie Perez and Alfredo Soria connected with four points each, Rance Sappington added three while Curtis Williams had two.

Idalou J.V. Girls Trip J.V. Lady Lopes, 35-29

The Post junior varsity girls basketball team traveled to Idalou and were sent home with a 29-35 loss last Friday, January 29.

The ladies from Idalou jumped out to a quick 6-3 lead by the end of the first quarter but the Lady Lopes came back in the second period to come within two, 11-13, at halftime.

Both teams scored six points in the third quarter but Idalou added 16 in the fourth quarter while Post could only manage nine.

Reshea Hair popped in eight points to lead the scoring for Post followed by Arlene Price with six.

Dusti Cash collected five while Tina Brumalaw and Kenda Williams each added four and Barbara Price had two.



OFF BALANCE SHOT - Bill Rankin (42) gets off a shot against the Seminole Indians. The shot may look funny but it still counted for two when it went through the hoop.

Lady Lopes Find Tough Times In 38-58 Loss To Idalou Friday, Jan. 29

The Post Lady Lopes traveled to Idalou Friday, January 29, and were sent home with a 38-58 loss by the ladies from Idalou.

Post held on tight in the first quarter to find themselves trailing by only two, 13-15.

But the Lady Wildcats added coal to the fire as they poured in 17 points while Post could only manage 8 as Post found themselves in a hole, 21-32, at halftime.

The third quarter nemesis that has been haunting the Lady Lopes for most of the season returned Friday as the Lopes could only manage four points while Idalou col-

lected 15 more to improve their lead to 25-47.


The girls from Post tried to come back out scoring Idalou 13-11 in the final quarter but the distance was just too great to overcome.

Keitha White scored 11 points in leading the Lady Lopes while Megan Bush added another eight.

Christina Martinez popped in seven while Traci Tannehill, Kim Wulfjen, Margaret Wynne, Angela Graves, Rolanda Brown and Dana Morris all had two points each.



ON THE MOVE - Keitha White (23) steals the ball and moves down court on a fast break against Seminole. Angela Graves (55) trails the play.



DOWE MAYFIELD
Jefferson Standard Life
7204 Joliet #3, Lubbock
806-797-8089
Life, Health, Mutual Funds

Matthies Auto & Truck Repair
Rt. 3 Post, Tx. 79356 495-2784

February Special

Replace brake pads and shoes on all four wheels. **\$76⁵⁰**

Turn rotors, pack wheel bearings fill master cylinder. parts & labor incl.

American made cars and light duty pick ups Only.

Thank You

I would like to thank Mike & Lance Bland for helping Shawn and me with our lambs. I would also like to thank Kenneth Marts, Gale Shobe & Double U Ranch for purchasing my lamb.

Seth Pennell

Congratulations to the Garza County Jr. Livestock Show on another successful Show & Sale

Lynn & Garza Farm Bureau

Pat Green
Leon Gibbs
Bobby Stone
Danny Preston
Wayne Carpenter
H.G. Franklin
Dahlin Handcock
Harold Sanders
R.L. Smith
Billy Weaver

Jimmy Bragg
Keith Wied
Milton Edwards
Leland White
Danny Brewer
Ronnie Dulin
Wayne Tekell

Texas Bank Failures Didn't Cost Taxpayers

Texas State Treasurer Ann W. Richards reported recently that taxpayers "didn't lose one red cent" from the 50 bank failures in Texas last year, even though those banks held almost \$15 million in state funds.

"I am pleased to report to the people of Texas that their money is fully accounted for and is safe, even though our collateral system was tested as never before in recent history," Treasurer Richards said.

State law requires that all state funds invested by the State Treasury be fully collateralized at all times. This means a bank must put up collateral with the State Treasury before the bank can have state deposits.

For example, if a bank has \$500,000 in state deposits, the State Treasury requires \$100,000 in federal deposit insurance and \$400,000 in collateral before it releases the deposit to the bank. This collateral is usually in the form of municipal bonds and US Government securities.

Should that bank fail, the State Treasury, which has actual possession of the bank's collateral, simply converts that collateral into cash.

This collateral is checked every day by Treasury staff to make sure all 1,700 state depositories have sufficient collateral to cover their state deposits.

"This system was called upon 40

times in 1987 and passed the test each time," Richards said.

"Unfortunately, bank failures have almost become a way of life in the last few years and experts say there may be as many bank failures in 1988 as last year," Treasurer Richards said.

"The fact that the Treasury staff has kept on top of the situation is testimony that our system works."

In total, 40 of the 50 state banks that failed in 1987 held \$14.8 million in state funds.

Richards said she also wanted to remind Texans that their personal money is safe in Texas financial institutions with federal insurance coverage as long as their total deposits at any single institution do not exceed \$100,000.

"The best way to make sure your money is safe is to make sure your bank or savings and loan is covered by the Federal Deposit Insurance Corp. (FDIC) for banks or the Federal Savings and Loan Insurance Corp. (FSLIC) for savings and loan associations," she said.

The Post Dispatch Political Advertising Column

The following candidates have filed for election in these offices on the Democratic and Republican Party primary to be held March 8, 1988.

Democratic Party
U.S. Representative
Charles Stenholm

State Representative District 78
Steven A. Carriker

County Judge
E.A. Howard, Jr.
Wanda Mitchell

County Sheriff
Billy Timms
Lawrence E. (Gene) Claborn
Freddy Cockrell
Marcial Salinas

County Tax Assessor-Collector
Laura "Chita" Hataway

County Commissioner-Precinct 1
Jerry Osborn
Sammy Ellis
Darrell Jones
Lee Norman

Constable Precinct 1 & 3
Lonnie Gene Peel

Republican Party
County Judge
James A. (Buddy) Skinner
David Stelzer

County Sheriff
Mike Harper

Paid Political Advertising paid for by the candidates or their campaign treasurers.

Post Main Street
and the
Post Merchants' Association

COUNT THE ♥ CONTEST!

Win FREE dinner For TWO!!

Pick up an entry form at any of the following participating Post Main Street Merchants and guess the total number of hearts displayed in the windows of the Main Street Merchants. Entries must be returned to any of the participating stores by 5 p.m., February 12. The winner will be determined by the guess nearest the actual number of hearts displayed by all participating stores.

Collier Drug Post Community Center Corner Grocery Danish Imports Dodson's Jewelry & Gifts Fashion Cleaners Foster's Furniture First National Bank Happiness Is ... Handy Gifts Handy Hardware Higginbotham-Bartlett Hudman's Furniture Jan's	Outpost LaPosta Prairie Flowers S & H Green Stamps Tom Power Ins. Agency Trends for Men Twins Fashions United Vyas Motors Wallace Lumber Western Auto Winn's The Sandwiche Shoppe Post Ins. Agency
---	---

Thank You

Advance Chemical and the Directors of the Garza County Jr. Livestock Association for buying my lambs.

Your financial support encourages, and enables, me to continue participating in our show year after year.

Keith Peel

Thank you Grandpa and Grandma Stelzer for buying my hog. Thank you Papa Dye for all your help. To all the people who helped with the Livestock Show - Thank You. Your support was greatly appreciated.

Jill Stelzer

Tomlinson
Down Home Service

- Small and Major Appliances
- A/C - Heating
- Plumbing & Electrical
- Carpet - Installed - Stretched - Repaired
- Sprayed Acoustic Walls & Ceilings
- Ceramic Tile Resetting and Grouting
- Glass Replacement - Rescreening
- Sheetrock Repairs - Painting
- Door Replacement - Realigning
- Motorhome - RV Service

FREE ESTIMATES
Senior Citizen Discounts

629-4486

1987 Was a Banner Year for Agriculture in Texas

1987 was a banner year for the production of many agricultural commodities in Texas despite some extremes in the weather.

The year started on a good note as winter conditions were generally mild.

However, a late spring freeze devastated fruit and berry crops and also damaged the state's pecan and wheat crops. Wheat losses averaged 30 to 40 percent in some locations.

Dry weather blanketed much of the state in April and early May and then the rains came, heavy rains that brought on flooding in some locations.

But the late May and June rains also gave a boost to young crops and pastures and ranges that sustained plant growth much of the summer.

Dr. Lewis Moore
OPTOMETRIST
Announces New Office Hours for 1987
Complete Visual Care
Thursday 9:30 a.m. to 5 p.m.
206 West Main 495-3687

Dry Weather Returns
Farmers and ranchers again had to contend with dry weather in the fall. That allowed for excellent harvest conditions, but soil moisture was too short for small grain planting. Many small grains weren't planted until late October and early November, and thus got off to a slow start.

Mild weather prevailed through the fall until a cold front brought more than a foot of snow to some western areas about mid-December.

Soil moisture remained short over parts of southern and western Texas as 1987 drew to a close.

Despite the vagaries of the weather, many farmers got excellent yields from crops to boost profits, noted Dr. Zerle L. Carpenter, director of the Texas Agricultural Extension Service, The Texas A&M University System.

Record cotton yields helped crop profits. Market prices for some commodities were fairly good due to tighter supplies brought on by increased exports of about 15 percent over 1986.

A Look At Commodity Prices
Most livestock prices averaged higher in 1987 than the previous years, Carpenter said.

Feeder prices remained strong throughout the year, and favorable

slaughter prices and low grain prices boosted profits from livestock.

Beef cattle prices averaged \$61.98 per hundredweight compared to \$53.32 in 1986. Calves averaged \$76.40 per hundredweight compared to \$59.63 the year before.

Hog prices averaged \$50.26 per 100 pounds compared to \$49.17 for 1986, while sheep averaged \$33.09 per hundredweight in '87 compared to the '86 average of \$27.63.

Lambs averaged \$83.95 in '87 and \$71.56 in '86. Wool prices were up 16 cents at 98.6 cents per pound, while mohair prices increased slightly to just over three cents per pound.

Broiler prices, however, dropped more than six cents per pound in 1987 due to large supplies.

On the crop front, cotton was the kingpin in 1987 with its record-setting average of more than 490 pounds per acre.

A lot of dryland cotton in the plains and western areas averaged one to one-and-a-half bales per acre.

Cotton sold for more than 60 cents a pound at times, while averaging 54 cents compared to about 49 cents in 1986.

However, most crop prices for 1987 averaged lower (1986 prices in parentheses): corn, \$1.91 per bushel (\$2.34); wheat, \$2.34 per bushel (\$2.51); grain sorghum, \$2.82 per bushel (\$3.43); peanuts, 26.5 cents per pound (27.2 cents); rice, \$4.08 per 100 pounds (\$5.36); and soybeans, \$4.74 per bushel (\$4.66).

Total Receipts Up
Cash receipts from agricultural production should total about \$10 billion for 1987, up about one-and-a-half billion dollars from 1986, Carpenter estimated.

That total would put cash receipts back at the level they were two years ago. So, essentially, farmers and ranchers were able to recoup some of the losses they experienced in 1986.

Cash receipts from livestock should surpass \$6 billion for 1987 while crop receipts should exceed \$3.6 billion.

Adding significantly to the state's agricultural receipts was the citrus crop. Grapefruit and orange production continued to increase following the devastating freeze in 1983. The 1987 crop was estimated at more than 60 percent above 1986 production.

Even the Texas Christmas tree industry did a booming business in 1987 with sales of about half-a-million trees totaling an estimated \$8 million.

Another bumper hay crop was harvested in many areas in 1987 following an excellent harvest the year before.

Many producers harvested three cuttings; however, dry conditions limited hay making in some southern counties.

So, combined with considerable carryover from the previous year due to the mild winter, hay supplies were abundant in most areas.

However, hay feeding started early this past fall as dry weather reduced grazing and delayed small grain plantings.

The 1988 Outlook
As far as 1988 is concerned, farmers and ranchers, in general, should fare well once again barring extreme weather conditions and other factors beyond their control that could jeopardize both production and market prices.

Carpenter noted that an expansion in meat supplies could keep the lid on consumer prices as well as returns to producers.

But generally tight supplies of most other commodities as well as improving export markets bode well for farmers in 1988.

Lower prices for pork, poultry and cotton will likely be offset by slightly higher prices for beef, wheat, soybeans, corn and rice.

Farm exports should increase some due to competitive prices, and the weak dollar abroad also should make the U.S. farm commodities more attractive price-wise and lead to additional sales.

Productions sales should remain fairly stable, with perhaps a slight

increase, and government payments in commodity programs will likely be slightly less than in 1987 due to federal budget reductions.

The decline in farmland prices should slow in 1988. In fact, prices may even turn slightly higher in the top dryland farming and ranching regions.

Farmers Spending Less
Farmers and ranchers will continue to spend less on inputs in the year ahead as they continue to be more frugal in their spending habits.

Most are continuing to "make do with what they have" in the way of equipment and machinery, Carpenter said.

Many are paying off debts as fast as they can to keep interest costs down—and borrowing is declining as cash flow improves.

An attitude of less spending is pervasive throughout the agricul-

tural communities of the nation, and that is a major factor in the improved financial condition of many farmers and ranchers.

In turn, that type of attitude is having a marked effect on small town businesses that have long depended on producer spending.

- Local News
- Local Pictures

Taylor Appliances

996-5404

Will be Servicing GE, Maytag and other brands

"No trip charge to Post"

This is to announce that I have moved my office to Lubbock, Texas

The new address:
8200 C Nashville Ave
Lubbock, Texas 79423

Mitchell Williams 794-2633
Attorney at Law

Post Pastry Shop

107 North Ave. I 495-2250

Tuesday through Friday

7 a.m. to 5 p.m.

Saturday and Sunday - 6:30 a.m. to 2 p.m.

DONUTS made FRESH every morning!

from the Martinez Family

Please Make A Note
That the GTE Southwest Incorporated Local Service Agency in Post is located at 232 E. Main

General Telephone's Local Service Agency in Post is located at Prairie Flower Shop, 232 E. Main, telephone 495-2030.

You can shop for telephones, apply for new or additional service, pay your GTE phone bill, and initiate any needed repairs at the Prairie Flower Shop in Post. Hours are 9 a.m. to 5 p.m., Monday through Friday.

We are confident this Local Service Agency will allow GTE to better serve your individual needs and we invite you to come and do business with us.

Please note...VISIT THE PRAIRIE FLOWER SHOP at 232 E. Main FOR ALL OF YOUR TELEPHONE NEEDS. CALL 495-2030.

GTE General Telephone of the Southwest

NOW THRU **Winn's** FEB. 14th

VALENTINE SALE



BOXED VALENTINE CARDS.

Boxed assortment of cards with non-mailable envelopes. Each set includes teacher card. Garfield, Sesame Street and other assortments.

99¢

217 E. Main

495-2869



VALENTINE PARTY SUPPLIES.

The finishing touch for your party. Brightly colored cups, plates, and napkins with a special Valentine design.

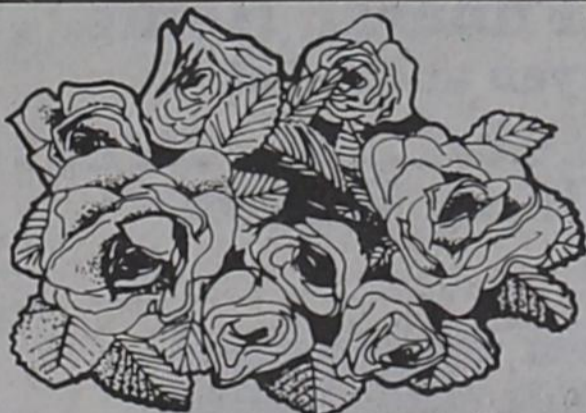
Your Choice!
99¢



BORDEN'S SPECIAL DELUXE HEART.

You'll leave an impression with this richly decorated Valentine Heart Box. 28 ounces of assorted cremes covered in dark and milk chocolate.

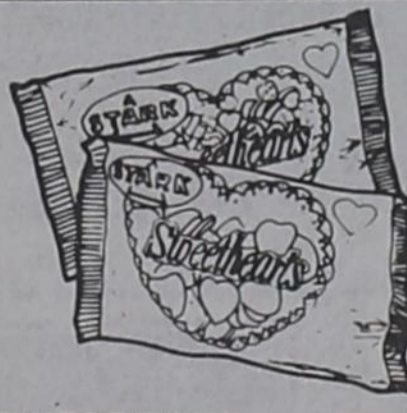
798



RED SILK ROSES.

The perfect rose for your Valentine. Choose from red open rose or red rosebud.

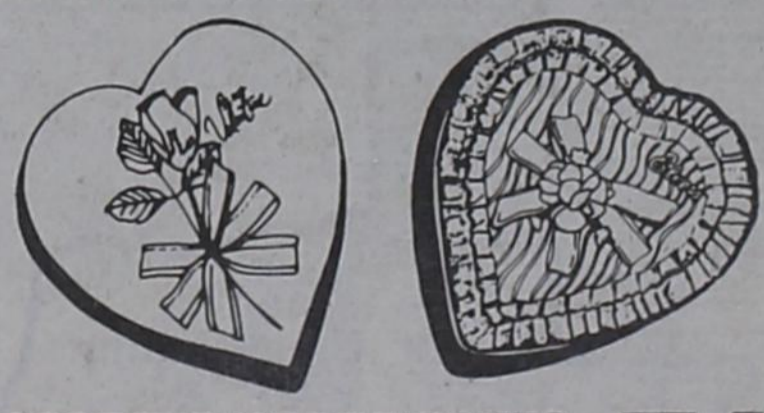
3/\$1



DEAR HEART AND CUTE HEART.

9 ounce bag. Candy hearts with Valentine sentiments.

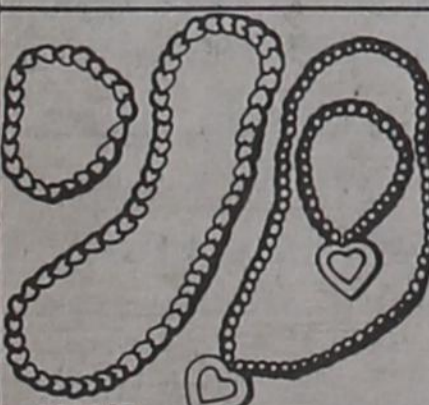
77¢



ASSORTED HEART BOXES.

Say "Be My Valentine" with a 1 lb. box of Elmer's assorted chocolates trimmed with flowers and lace.

544



GIRL'S FASHION JEWELRY.

A wide assortment of heart, bow, star, beaded necklace and bracelet sets.

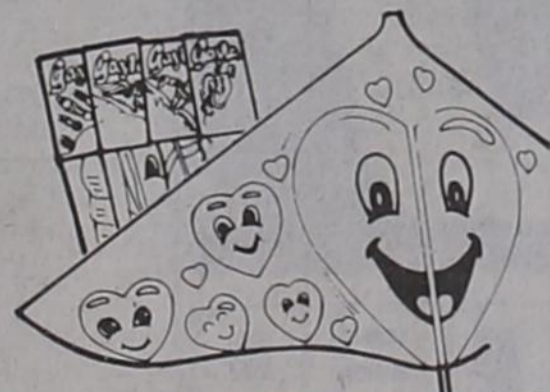
99¢



VHS PRO SERIES VIDEO TAPE.

Record your TV movies and shows on this Memorex VHS cassette.

599



KEEL KITE ASSORTMENT OR KITE TWINE WITH WINDER.

From camouflage Invader to Happy Hearts. 42" wing span Also 400 ft. kite twine.

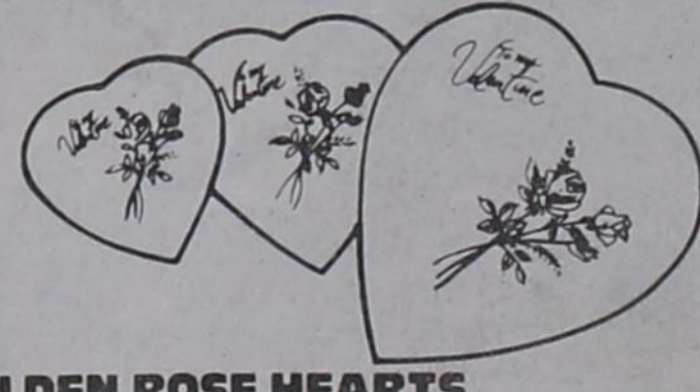
KITES 1.99 TWINE 1.59



VALENTINE MASCOT.

Adorable thumb sucking gorilla in soft plush pile. Red plush with vinyl face, feet and hands.

299



GOLDEN ROSE HEARTS.

Pretty heart-shaped gift boxes of fancy chocolate candies. Assorted dark and milk chocolate. In 3 sizes.

3 OUNCE .99 6 OUNCE 1.99 14 OUNCE 2.99

Congratulations to These Students for their Academic Achievements

Post Elementary School

Third Six Weeks
 "A" Honor Roll
Kindergarten
 Marcus Lopez
 Matthew Lopez
 Ashley Newdiger
 Erica Schooler
 Priscilla Bustoz
 Jason Curtis
 Michelle Curtis
 Rocky Gomez
 Adrian Gonzales
 Selicia Hernandez
 Tuwana Foster
 Scotty Gaydos
 Leos Luis
 Jessica Lopez
 Paula Maddox
 Christopher Metzgar
 Consuelo Perez
 Joe Perez
 Candus Reed
 Kimberly Rodriguez
 Robert Ryan
 Luke Williams
 Jason Birdsall
 Courtney Bratcher
 Brandon Conner
 Raymond Jefferson
 Amy Line
 Randy Moore
 Matthew Norman
 Christopher Saldivar
 Michael Stelzer
 Angelica Trevino
 April Abraham
 Kelli Collier
 Shelly Cornett
 Erin Gregory
 Kelci Hart
 Matthew McCallister
 Wacey Moore
 Camie Payne
 Billy Crawford
 Courtney Carden
 Jason Fields
 Timothy Freeman
 Joshua Fumagalli
 Auburn Hammond
 Kelsha Holly
 Kayla Huff
 Amanda Leary
 Tiffany Phillips
First Grade
 Rachel DelaRosa
 Carmela Garcia
 Flora Gomez
 Rebecca Hubble
 Rachelle Jones
 Bobby Relter
 Rachel Relter
 Jeremy Abraham
 Wendy McNeely
 Daniel Fluit
 Terry Foster
 Colt McCook
 Christy Swain
 Steven Aguilar
 Rebecca Benham
 Erika Chapa
 Latonya Collazo
 Mikey Collazo
 Timothy Gaydos
 Cody Gray
 Leana Lopez
 Andy Martinez
 Jeremy Aguilar
 Torrie Foster
 Kendy Jefferson
 Jennifer Josey
 Loretta Ortiz
Second Grade
 Derek Guthrie
 Russ Moore
 Megan Moreman
 Joyce Weidt
 Jennifer Hubble
 Macee Mills
 Natalie Pollard
 Kathy Gerner
 Slade Bevers
 Misty Bryan
 Christopher Guerrero
 Jamie Hernandez
 April Leary
 Marcus Villa
 Sharla Cruse
 Arlmy Gradine
 Ryan Kirkland
 Veronica Rivera

Third Grade

Roland Basquez
 Jennifer Derrick
 Wayne Line
 Alisha Nelson
 Freddie Pena
 Joshua Purdy
 Chad Williams
 Nicole Cruse
 Christlane Pass
 Nikki Pollard
 Jorge Villa
 Briann Wilson
 Renee Flores
 Denise Freeman
 Brandon McDonald
 Angelina Quinonez
 Amy Mason
 Jay Childers
 Beverly Francis
 Jeremy Josey
 Carly Rudd
Fourth Grade
 Tony Ayala
 Josh Derreck
 Bryan Justice
 Tracy Shumard
 Bodie Simpson
 Christina Soto
 Jeremy Steel
 Andrea Wallace
 DeLynn Wood
 Larry Haynes
 David Perez
 Lori Hudman
 Ami Raben
 Donnie Walton
 Mandy Briethaupt
 David Brumblow
 Todd Gildewell
 Erin Gregory
 Sonja Gosselt
 B.J. Hart
 Jill Stelzer
 Riley Feagin
Fifth Grade
 Melanie Marshall
 Amanda Bush
 Jeremy Derrick
 Chanda Moreman
 Kenneth Schronk
 Natosha Newdiger
 Jenifer Fumagalli
 Holly Hardin
 Tonya Harp
 Chad Hart
 Britt Sims
 Brant Windham

Post Middle School

Third Six Weeks
 "A" Honor Roll
6th Grade
 Cara Cash
 Cody Collier
 Chris Cornett
 Marie Garcia
 Shelly Haney
 Sara Hodges
 Labeth Jones
 Lane Jones
 Kelly Line
 Amber Little
 Crystal Michel
 Alissa Mitchell
 Brody Moore
 Radley Nichols
 Angela Norman
 Shawn Pennell
 Lori Robinson
 Richey Thompson
 Mario Tobias
 Mikki Wilks
7th Grade
 Robert Baldree
 Cindy Burch
 Kyle Gildewell
 Brad McDonald
 Diana Ramirez
8th Grade
 Sandy Allen
 Realine Bagby
 Cathi Cash
 Ty Hill
 Sara Hudman
 Crossvette Lopez
 Jay Mitchell
 Isidor Morales
 Laura Norman
 Jon Olson
 Tray Payne
 Rubie Perez
 Shawna Poe
 Mike Robertson

Lucie Rodriguez

Mike Self
 Becky Shumard
 Kristin Titsworth
 Shelley Wells
 "B" Honor Roll
6th Grade
 Vernice Armendariz
 Dani Brogden
 Kim Cole
 Courtney Francis
 Stormy Gass
 Lance Gill
 Isela Gomez
 Cynthia Haynes
 Clint Melton
 Janie Norman
 Kim Reiter
 Danny Reyna
 Amanda Richardson
 Rynn Sappington
 Jim Riley Simpson
 Mandi Sims
 Valerie Soto
 Johnny Titsworth
7th Grade
 Amanda Alaniz
 Louann Ammons
 Rene Armendariz
 Dora Basquez
 Josh Bush
 Stephanie Cox
 Valerie Criado
 Yanetta Cruse
 Sonja Curtis
 Jamie Feagin
 Sonia Guerrero
 Lisa Gutierrez
 Angel Hammond
 Amber Harp
 Penny Haworth
 Amanda Holly
 Cole LeBlanc
 Rene Martinez
 Laura Norman
 Adale Saldivar
 Jennifer Swain
 Craig Taylor
 Bridget Williams
 Darren Wood
8th Grade
 Sara Alexander
 Dianne Ammons
 Wesley Anderson
 Misty Bartlett
 Willie Ann Brown
 Wendy Clay
 John Fields
 Tamra Gerner
 Mike Harper
 Shane Horton
 Sandra Matthies
 Angela Perez
 Gabriel Perez
 Dawna Poe
 Daniel Redman
 Aaron Reyes
 Angela Wallace
 Trudy Woods
 "A" Honor Roll
6th Grade
 Cara Cash
 Cody Collier
 Chris Cornett
 Marie Garcia
 Shelly Haney
 Sara Hodges
 Labeth Jones
 Lane Jones
 Kelly Line
 Amber Little
 Crystal Michel
 Alissa Mitchell
 Brody Moore
 Radley Nichols
 Angela Norman
 Shawn Pennell
 Lori Robinson
 Rynn Sappington
 Richey Thompson
 Mario Tobias
 Mikki Wilks
7th Grade
 Robert Baldree
 Cindy Burch
 Kyle Gildewell
 Brad McDonald
 Diana Ramirez
8th Grade
 Sandy Allen
 Realine Bagby
 Cathi Cash
 Ty Hill
 Sara Hudman
 Crossvette Lopez
 Jay Mitchell
 Isidor Morales
 Laura Norman
 Jon Olson
 Tray Payne
 Rubie Perez
 Shawna Poe
 Mike Robertson

Ty Hill

Sara Hudman
 Jay Mitchell
 Laura Norman
 Jon Olson
 Tray Payne
 Mike Robertson
 Lucie Rodriguez
 Kristin Titsworth
 Shelley Wells
 "B" Honor Roll
6th Grade
 Vernice Armendariz
 Dani Brogden
 Kim Cole
 Courtney Francis
 Stormy Gass
 Lance Gill
 Isela Gomez
 Cynthia Haynes
 Clint Melton
 Janie Norman
 Kim Reiter
 Danny Reyna
 Amanda Richardson
 Rynn Sappington
 Jim Riley Simpson
 Mandi Sims
 Valerie Soto
 Johnny Titsworth
7th Grade
 Amanda Alaniz
 Louann Ammons
 Rene Armendariz
 Dora Basquez
 Josh Bush
 Stephanie Cox
 Valerie Criado
 Yanetta Cruse
 Sonja Curtis
 Jamie Feagin
 Sonia Guerrero
 Lisa Gutierrez
 Angel Hammond
 Amber Harp
 Penny Haworth
 Amanda Holly
 Cole LeBlanc
 Rene Martinez
 Laura Norman
 Adale Saldivar
 Jennifer Swain
 Craig Taylor
 Bridget Williams
 Darren Wood
8th Grade
 Sara Alexander
 Dianne Ammons
 Wesley Anderson
 Misty Bartlett
 Willie Ann Brown
 Wendy Clay
 John Fields
 Tamra Gerner
 Mike Harper
 Shane Horton
 Sandra Matthies
 Angela Perez
 Gabriel Perez
 Dawna Poe
 Daniel Redman
 Aaron Reyes
 Angela Wallace
 Trudy Woods
 "A" Honor Roll
6th Grade
 Cara Cash
 Cody Collier
 Chris Cornett
 Marie Garcia
 Shelly Haney
 Sara Hodges
 Labeth Jones
 Lane Jones
 Kelly Line
 Amber Little
 Crystal Michel
 Alissa Mitchell
 Brody Moore
 Radley Nichols
 Angela Norman
 Shawn Pennell
 Lori Robinson
 Rynn Sappington
 Richey Thompson
 Mario Tobias
 Mikki Wilks
7th Grade
 Robert Baldree
 Cindy Burch
 Kyle Gildewell
 Brad McDonald
 Diana Ramirez
8th Grade
 Sandy Allen
 Realine Bagby
 Cathi Cash
 Ty Hill
 Sara Hudman
 Crossvette Lopez
 Jay Mitchell
 Isidor Morales
 Laura Norman
 Jon Olson
 Tray Payne
 Rubie Perez
 Shawna Poe
 Mike Robertson

Mike Wells

Keltha White
 "A-B" Honor Roll
9th Grade
 Misty Banks
 Marla Clay
 Daniel Freeman
 Joe Garcia
 Damlan Hampton
 Lisa Haynes
 Elizabeth Martinez
 Dustin Massey
 Vickie Perez
 Joey Quintana
 Ernie Saldivar
 Floyd Slay
 Hilary Williams
10th Grade
 Tina Brumbalaw
 Tabitha Camacho
 Victor Chapa
 Lee Ann Criado
 Reshea Hair
 Jimmy Holleman
 Dana Morris
 Bill Rankin
 Melissa Ray
 Shal Sneed
 Lori Taylor
 Rance Thompson
 Tanu Vyas
 Kevin Williams
11th Grade
 Mike Bryan
 Rene Craig
 Amber Crenshaw
 Melinda Curry
 Janell Jones
 Gilbert Valdez
 Kim Wulfsen
12th Grade
 Trevah Bush
 Brad Byrd
 Daryl Foster
 Brian Gibbs
 Teresa Lofton
 Christina Martinez
 Eloise Martinez
 Roger Martinez
 LaDonna Scott
 Mark Tyler
 Curtis Williams
 Greg Windham

Dusti Cash

Victor Chapa
 Lee Ann Criado
 Betsy Ethridge
 Alvaro Gutierrez
 Reshea Hair
 Jimmy Holleman
 Oliver McDougle
 Dana Morris
 Bill Rankin
 Melissa Ray
 Rance Sappington
 Lana Scott
 Shal Sneed
 Lori Taylor
 Rance Thompson
 Tanu Vyas
 Kenda Williams
11th Grade
 Dustin Ammons
 Mike Bryan
 Traci Bush
 Rene Craig
 Amber Crenshaw
 Melinda Curry
 Janell Jones
 Heather Freeman
 Angela Graves
 Richard Hudman
 Janell Jones
 Matt Pennell
 Lupe Perez
 Melanie Reece
 Lisa Shults
 Gilbert Valdez
 Kim Wulfsen
12th Grade
 Trevah Bush
 Brad Byrd
 Daryl Foster
 Brian Gibbs
 Teresa Lofton
 Christina Martinez
 Eloise Martinez
 Roger Martinez
 LaDonna Scott
 Mark Tyler
 Curtis Williams
 Greg Windham

Southland Schools

"A" Honor Roll
First Grade
 Sarah Outlaw
 Ashley Oldfather
 Steven Johnston
 J.J. Jones
 Caleb Basinger
Second Grade
 Michael Johnston
 Veronica Valadez
 Haley Hutchins
 Richard Saldivar
Third Grade
 Candl Aguilar
 Margaret Albright
 Stephanie Siler
Fourth Grade
 Amber Basinger
 Ashley Basinger
Fifth Grade
 Brandy Cristwell
 Laura Liefeste
 "B" Honor Roll
First Grade
 Jarrett Dickson
 Eric Garza
 Chris Parras
 Holly Patterson
 Joey Valadez
Second Grade
 Marcus Sapp
 Crispin Martinez
 Billy Salone
Third Grade
 Adrian Macias
Fourth Grade
 Georlie Caballero
 Yvonne Nino
Fifth Grade
 Lucy Collazo
Sixth Grade
 Linda Carter
 Jason Haire
 Justin Haire
 James Johnston
 Renee Saenz
 Matt Valadez
Southland Jr - High School
 "A" Honor Roll
7th Grade
 Joel Basinger
 Karla Lefeste
8th Grade
 Jessie Collazo
 Cori Weaver
9th Grade
 John Beatty
 Jenni Gist
11th Grade
 Veronica Arguello
12th Grade
 David Beatty
 Michelle McGehee
 Tammy Weaver
First Baptist Church Christian School
 Pastor's Honor Roll
 (All A's)
First Grade
 Novella Foreman
 Brent Justice
 Cody Leake
Second Grade
 Marcia Halford
 Starla Halford
 Frederick Leano
 Monica Olson
 Brian Riedel
Third Grade
 Maggie Flanigan
 Mandy Little
Fifth Grade
 Doug Flanigan
 Deacon's Honor Roll
 (A-B)
First Grade
 Tasha Gilbert
 Troy Gilbert
Second Grade
 Danny Bilbo
 Tammy Lewis
Fourth Grade
 Blythe Wilson
Fifth Grade
 Jenny Lewis

Post High School

Third Six Weeks
 "A" Honor Roll
9th Grade
 Marlynn Bell
 Joanna Binford
 Crystal Clay
 Tyra Hart
 Jana Hudman
 Krista Kemp
 Matt McCook
 Michael Radle
 Angela Tobias
 Sarah Williams
10th Grade
 Roger Adams
 Megan Bush
 Brent McDonald
 Tina Self
11th Grade
 Rosa Gonzales
 Tyge Payne
 Teresa Shults
 Cheryl Thompson
 Trevor Thuet
12th Grade
 Gilbert Valdez
 Eric Reece
 Jill Richardson

Putman Hodges Repair Service
 Truck and Auto Repair
 Clairemont Hwy - 495-3646

Wallace Lumber Co. Inc.
 119 N. Ave H - 495-2835

South Plains Answering Service
 808 w. 11th - 495-3069

State Heating and Air Conditioning
 601 S. Broadway Post
 495-2591
 Jim Voss

THE FIRST NATIONAL BANK
 FDIC
 495-2804

South Plains Welding
 808 W. 11th - 495-2065

Higginbotham-Bartlett
 110 S. Broadway - 495-2080

Justice-Mason Funeral Home
 Dee, Janet, Bryan and Brent

Dr and Mrs W.C. Wilson

UNITED Supermarket

Handy Hardware & Oilfield Supplies & Gifts
 231 E. Main - 495-3516

Dickson Acid Co. Inc and Dickson Chemical
 Lubbock Hwy - 495-3016

Southland Butane
 15th and Ralls Rd - 495-2159

Southland Gin
 Jay Gray - 996-5381

Hudman Funeral Home
 615 W. Main - 495-2821

Sentry Savings
 104 N. Broadway 495-3696