

# The O'Donnell Index

The best advertising medium in Lynn County. Read in 1,500 homes each week.

O'DONNELL, LYNN COUNTY, TEXAS, FRIDAY, MAY 31, 1929

NUMBER 36

Farmer who diversifies has to worry about his bank.

ME SIX

ERS MARRIED IN HARMING CEREMONY SUNDAY

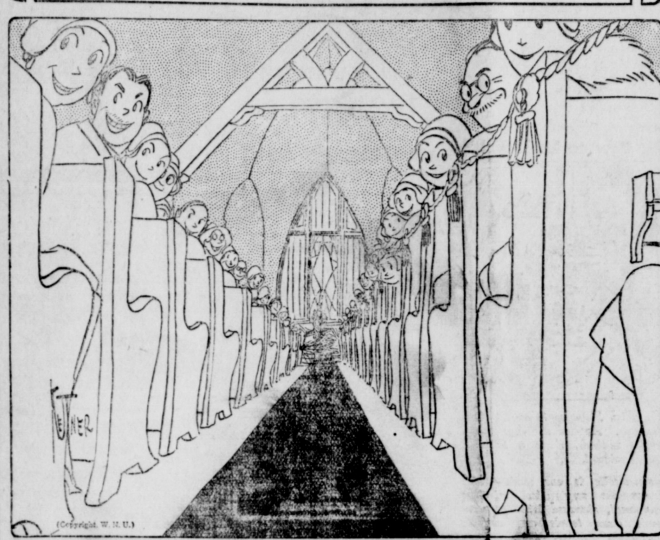
Annual and effective event wedding at 8:00 o'clock Sunday when Misses Alta and Rogers, daughters of Mr. and L. Rodgers, were married to Harvey Line and Claude M. setting of roses and larkspur the home of the brides' parents.

Scheme of pink and orchid out in all the decorations, sets of roses and larkspur forming the altar where the ceremony was held.

Misses Milwee, accompanied at by Miss Sue Gates, sang "You Truly." Little Misses Wyatt, of Tahoka, and Lee Rodgers, of Los Angeles, of the brides, stood at each side of the altar as she sang. At the close of the song the music immediately into the strains of the wedding march, and Ruth Wyatt, clad in pink led the way for the entering rose petals from a basket in their pathway. Op was Master Weldon Street, the rings on a pink satin.

Misses entered together and at the altar by the groom. The brides were in delicate white gowns with delicate ruffles on the collar caught on the with a cluster of flowers. Miss Gates softly played the piano. Rev. W. K. K. the impressive ring ceremony. Ladies have spent practicing their life here. Miss Left from the academy department in 1922, and spent the year in college there. Teacher in O'Donnell Public where she added to her friends. She spent her college work at Simmons at Abilene, where she was a student activities.

## Here She Comes



## Chamber of Commerce To Employ Full Time Secretary

### Storms Are Real Screen Villains

Discovered—something new in screen villains. In "The Wind", Lillian Gish's new Metro-Goldwyn-Mayer picture, which will come to the Lynn Theatre, June 6th and 7th, there is a human villain—but he is really an assistant villain, for the real menace is a natural element—the incessant windstorms of the southwest desert country.

The entire plot hinges on the blowing sandstorms on the soul of the heroine of the play, gradually wrecks her morale, as it destroys her beauty, and almost drives her mad. How its steady monotonous reduces everything within it, men and women, even animals, to the most primitive passions, is the central theme of the strange story, adapted to the screen from Dorothy Scarborough's famous novel and directed by Victor Seastrom.

In the play Miss Gish appears as a delicately reared Southern girl who, through misfortune, is compelled to seek a refuge with relatives in the wind country of the southwest. She arrives, fragile and beautiful as a rose. Gradually the wind and the ever-harder hardships, the wind changes blowing sandstorms eat into her very soul, in a strange and dramatic sequence of incidents.

### Officers and directors of the O'Donnell Chamber of Commerce held their regular Tuesday noon luncheon at the McClung Hotel this week.

Rev. Sheppard of Tahoka, and Mr. McEachen of Dixie, were guests of honor and both made short talks in the interest of the organization, which was enjoyed by all present. Both offered helpful suggestions. The main topic of discussion was that of employing a full time paid secretary. The board of directors will meet in a called session at 9:00 o'clock today (Thursday) for the purpose of considering applications of a full time paid secretary. Definite action is expected to be taken at today's meeting. The applicant accepting the position will in all probability begin his duties about June 1st. This step is expected to be the beginning of an organization that will cover O'Donnell and trade territory that will eventually build a bigger and better O'Donnell and trade territory, at the same time assist in doing things that will help develop the South Plains.

### Wells Good Will Trip Much Enjoyed

In spite of the rain which seems fated to accompany any projects of the Chamber of Commerce, the good will trip to Wells Tuesday evening was a great success. The threatening clouds caused many who were already at the building to return in haste to their homes to see about open windows etc., but those who remained were more than responsive to the spirit of the evening.

A humorous program was opened by a male quartet singing the "Punch and Judy Quartet," followed by "You Can't Make a Monkey Outta Me." Messrs C. H. Mansell, Orville Lawler, W. E. Guye and C. O. Lawler were the members of the highly popular quartet. With this snappy song-and-dance, the evening was well under way. Travis Everett added himself with his saxophone numbers, and his novelty stunts introducing O'Donnell merchants was amusing. Vocal numbers by Wray Guye, readings by Misses Morene Huff and Mary V. Shook, and Walter Gaston with a series of magic stunts were other features of the program. The main address of the evening was made by Mr. McEachen, of Dixie, and was entertaining and highly appreciated. Such trips will do much toward cementing friendships between O'Donnell and her trade territory, as well as getting us all better acquainted with each other. Let's have some more of them.

### Boy Scout Court of Honor Held at Lamesa

LAMESA.—A Boy Scout Court of Honor was held at Lamesa on Tuesday evening of this week under the direction of Philip Yonge of this City. J. D. Dyer Postmaster presented the Merit Badges; K. K. N. Klapp of Lubbock, presented the Star Scout Awards and Wm. A. Wilson, Secretary of the Lamesa C. of C. presented the Second Class Awards. The following is a list of the Awards:

- Tenderfoot**  
Troop 22—Guy Aldredge; William Aldredge.
- Second Class**  
Troop 22—Robert Koger, Stanley Wilks, Cecil Stuart.
- Merit Badges**  
Troop 22—J. C. Higway, Pathfinding, Personal Health, Carpentry and Woodcrafting, James Smith Firmanship, Civics, Pathfinding, Horsemanship, and Personal Health. Herman Hefferman, Automobile and Firmanship, Joe Medlin, Firmanship and Horsemanship, Azil McClintock, Firmanship and Handicraft, Walter Crawley, Conservation Troop 23—Jonnie Marr, First Aid and Physical Development, Joe Tweed First Aid and Athletics Earl Alsobrook, Pathfinding, L. J. Dugger, Personal Health, Altom Middleton, Poultry Keeping and Pathfinding, Travis Simpson, Plumbing, James Manning, Personal Health, Buck Bennett, Chemistry, Jake Salsler, Physical Development, Safety First, Plumbing, Pioneering, Pathfinding, Athletics, Business Dairying and Gardening, Sylvan Salsler, Firmanship, Physical Development, Swimming, and Bird Study, Morris Shepherd, Firmanship.
- Star Scouts**  
Troop 22—Walter Crawley; J. C. Ridgeway, James Smith, Troop 23—Travis Simpson.

### Vacationing in Mountains in New Mexico

Mr. and Mrs. Ben S. Coin and daughter Shirley Mae, Mrs. Rose Merritt, Mrs. Phillip Dieberman and daughters Dorothy and Estelle, of Robstown, Texas, are spending the week in the mountains of New Mexico, around Roswell, Ruidoso and Carlsbad. They will visit the famous Carlsbad Cavern before returning home, last of the week.

Mr. and Mrs. M. J. Whitsett had as week-end guests Mr. and Mrs. Raymond Johnson of Wichita Falls.

### Find Oil and Gas Showing on Test

Ash Syndicate Continues Drilling On Test; Find Creates Little Excitement

A small amount of oil and gas was encountered in the Ash Syndicate well five miles west of Tahoka Sunday, according to well authenticated sources, but the showing was not regarded as of any special significance. The showing was sufficient to be easily detected by an onlooker, and rumors that considerable oil and gas had been found spread rapidly over town Monday morning and created quite a lively interest but little excitement. As usual in such cases, the amount of oil and gas discovered was considerably magnified by some but most of our citizens remembered the excitement had been created by unreliable reports as to oil encountered in other wells in this section and hence heard these reports Monday morning with more equanimity.

The drillers are going on down with the well, and it is hoped that a real flow of oil or gas will yet be struck.—Lynn County News.

### PROGRAM FOR WORKER'S PREFERENCE OF BROWNFIELD

Conference Will Meet at O'Donnell June 4th, 1929

Subject—Evangelism.  
10:00 a. m.; Devotional—Brother Dozier.

10:30 a. m. The Sunday and Evangelism—E. V. May.  
11:00 a. m. W. M. S. and Evangelism—Mrs. Lumsden.  
11:30 a. m.; Sermon—W. H. Hughes.

Lunch  
1:30 p. m.; Executive Board Meeting.  
2:00 p. m.; W. M. S. Hour Arranged by Mrs. Lumsden.  
3:00 p. m.; The B. Y. P. U. and Evangelism—Philip McGahey.

### Naymon Everett Captures Armadillo Here

Besides being a good barber, Mr. Naymon Everett of the Everett Barber Shop, has proven his ability as a capturer of wild animals in this section. On Monday of this week Mr. Everett was motoring southeast of town and to his surprise discovered an armadillo roaming the prairies. He immediately gave chase and soon had the little animal in captivity. The animal was brought to town and at present is being exhibited in a cage in front of the Everett Barber Shop.

### CITY GROCERY INSTALLS SOME MODERN MACHINERY

Messrs Holman and Holman of the City Grocery believe in keeping modern up-to-date fixtures and have demonstrated this fact by adding a Lane Vegetable Spray to their equipment which has been operating since the first of the week.

The purpose of the machine is to keep that original crispness and freshness to their always complete stock of fresh vegetables. It is the only machine of its kind on the South Plains south of Lubbock.

### ACCEPTS POSITION WITH MILES BARBER SHOP

Mr. J. C. Duck of Itasca, Texas, has accepted a position with the Miles Barber Shop, beginning his duties on Wednesday of this week. Mr. Duck comes to O'Donnell highly recommended as a first class barber.

### CHANGE IN FAIRLEY AND HAYNES INSURANCE AGENCY

In a deal closed latter part of last week, Mr. B. M. Haynes, senior member in the Fairley & Haynes Insurance Agency, assumes complete ownership in the firm. The firm will be known in the future as B. M. Haynes Insurance Agency.

## A. & W. SERVICE STATION OPEN FOR BUSINESS THIS WEEK

The A. & W. Service Station is the newest of automobile service stations to be opened in O'Donnell, having opened for business last of the week in the building recently completed on the corner opposite the Highway Garage by C. H. Doak. They are planning a normal opening of the place at an early date, announcements will be made as soon as arrangements can be completed.

Mr. J. P. Aylor who was formerly manager of the Carlisle Dry Goods Co., is the new manager, and has adopted as his slogan, "Our service is the best—why try the rest." Mr. Aylor announces that he has just installed a new H. B. Constant Potential Outfit which charges automobile and radio batteries in 1-3 the time heretofore required. Constant Potential is not new, having been used for years in charging railway car lighting batteries. By this method each battery draws in just what current it needs and each battery is absolutely independent of every other battery on the line.

## More Modern Improvements Added

In accordance with the usual forward-looking policy of the store, W. E. Guye Dry Goods Store is constantly adding new improvements. This week a sky-light has been installed, and when finished will add a great amount of light and cheer to the interior of the building.

A new supply of prints, in both silk and wash goods is expected within the next few weeks. Be sure and see them before completing your summer sewing.

## Seniors Celebrate With Trip to Cavern

Celebrating their release from scholastic duties, a number of the seniors left early Sunday morning for Carlsbad Cavern. The entire party of fifteen were packed in and on three cars, with a vast plenty of food and bedding packed around. They secured their fishing license before leaving and plan to live on the country. Mrs. W. L. Palmer is the official chaperon. They planned to make the trip and return home by Wednesday. Those making the trip were Misses Nannie Belle Smith, Beulah Estes, Era Harris, Pauline Wheeler, Eva Tune, Irma D. Palmer, Mr. and Mrs. Slim Edgerton, and Mrs. W. L. Palmer, Messrs. Dick Tune, Joe Chandler, Kendrick Gaston, J. A. Duncan, Truett Hednett and Calvin Fritz.

## Much Interest in Summer School

Several pupils are taking advantage of the summer session in High Seventh and High Sixth grade work which is being conducted by Miss Christine Millwee. Three subjects will be taught each term, thus enabling those who desire to make up work to be ready to take up full term work at the beginning of school in the fall. More than a dozen students are enrolled.

## GOOD-WILL TRIP TO WELLS RAINED OUT FRIDAY NITE

The good-will trip scheduled for Wells school house Friday night of last week was rained out just before the hour set for the trip arrived. Heavy rains fell in the Wells community and adjacent territory. The trip was made on Tuesday night of this week and an account appears elsewhere in this paper.

**Two Ft. Worth Fliers Establish New Record**

The world's newest heroes are Reg. L. Robbins and James Kelley, both of Fort Worth, Texas, who established a world's record in endurance flying, remaining aloft 172 1-2 hours, bettering the "Question Mark's" record by approximately 22 hours.

The feat was accomplished in a single-motored Ryan Monoplane, equipped with Wright Whirlwind motor which had previously been driven better than fifty thousand miles before starting on the world record-breaking flight from the Fort Worth Municipal Airport on Sunday, May 19 at 11:35 a. m. The fliers landed at the port from which they took off a little more than one week later, coming down Sunday, May 26th at 4:05 p. m.

The plane landed because of cracked propeller blades which was due to the rain-storms and heavy winds on Friday night. The motor when landed Sunday afternoon shortly after four o'clock was apparently in perfect condition. The physical condition of the fliers was considered good despite the fact that they were both grimy and covered with oil wearing a week's growth of beard. Twenty thousand persons were at the Fort Worth Municipal Airport to greet the fliers when they landed. Hundreds of policemen were unable to control the crowds that crashed the ropes as the fliers came down.

Fort Worth is over-joyed because of the new world's record established by the two Fort Worth boys in the good ship named "Port Worth" over their magnificent Municipal Airport. All of Texas, the United States and ever nation of the world join in extending congratulations to Reg. L. Robbins and James Kelley and all who assisted in any way in establishing the new world's record that will be hard to beat.

gram of all the ages would not have been Man is not as strange as the ass the ox or the lion, but he has supplemented it with the club or the slung shot—Hence, master of all creation—Thought, and puller himself out of the jungle, climbed the mountains, hewed down the forest, sailed the seas, The Earth is his, he possesses it, dominates it just simply because he is more powerful than the other animals. Man is the only animal in the world that has hands, and the only animal in existence that stands on his hinder legs. The Eagle has wings, the elephant has a snout and the lion has a paw, weapons of defense, and though they could think, yet, they could not build, for the reason they have no hands to execute orders. The load was too heavy, locomotion was too slow, up there in the brain pan the machine was designed, and human hands fashioned and built it, and Lordy, look at our freight wagons, iron monsters on steel rails, rubber tire vehicles, gasoline tractors ocean gray hounds, and lastly, the winged steeds of the air—The Aristocracy of the Brain—The Democracy of Muscle—Again we say, they coalesce—In ancient times, it was royal blood, the tradesman or the man who labored had no place in the royal temple—He was barred, but thank the god of democracy in this glorious Republic, it's brain and brain, and we honor and idealize the man who has come up out of the hell of toil and made good—And lest we forget, down there in the pit, where men struggle, where the forces are hot and the digging is hard, blistered hands, sore shins, tired bodies and worried brains, that's the charge at the toll gate you must pay, ere the gods pass you a crown—Genius does not dwell in the palaces of ease or lounge at the tables or luxury, but she puts her crown upon the head that thinks, and sceptre of authority in the hands

that struggle—Hence, the Aristocracy of Brain—The Democracy of Muscle. The states greatest man—A committee of selection was chosen to pick the foremost citizen of a state to represent them at a national exposition—Of course they had learned judges, famous lawyers, statesmen, diplomats, pulpit orators and Napoleons of finance, but they were not chosen—In a little work shop, in the rear of an humble cottage, Uncle John Brashear, the grinder of lens for telescopes, in that the human vision might be lengthened out to scan and study and learn more of the planetary system, get a better, concept of the wonders of Creation—The God Mind—So Uncle John was declared to be Pennsylvania's greatest citizen and represented them at the Panama Exposition—A trained mind, cunning hands—Coalescence of brain and muscle.

**"It Pays to Look Well"**



The Fitch Shampoo is more than a shampoo. Applied with our super-service methods, it is a scientific scalp treatment.

Super-service is our motto—which means the very latest scientific equipment, standard toilet preparations, clean towels and absolute sanitation.

Tonsor Barber Shop  
NAYMON EVERETT, Prop.

**CAMEL CIGARETTES**

**WHY CAMELS ARE THE BETTER CIGARETTE**

Camels contain such tobaccos and such blending as have never been offered in any other cigarette.

They are made of the choicest Turkish and American tobaccos grown.

Camels are always smooth and mild.

Camel quality is jealously maintained... by the world's largest organization of expert tobacco men... it never varies.

Smoke Camels as liberally as you choose... they will never tire your taste.

Nor do they ever leave an unpleasant after-taste.



© 1925 S. J. Remond...  
Company, Winston-Salem, N.C.

**ARISTOCRACY OF BRAIN—  
DEMOCRACY OF MUSCLE**

(By Richard H. McCarthy—Albany News.)

Brain is the orderly of all human actions—Muscle is the servant of Brain—In a Democracy like ours, brain and muscle coalesce, in co-partnership. If the animal man had been void of hands, this vast building pat-

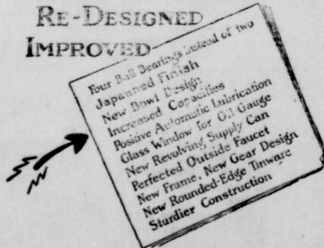
PHONE 30702  
DAW-LYNN  
DAIRY  
C. L. TOMLINSON  
Owner  
O'Donnell, Texas

**CICERO-SMITH LUMBER CO.**

"Where Quality Counts"  
GOOD LUMBER—GOOD SERVICE  
Lumber, Builders' Hardware, Wind Mills,  
Wire, Post, Paint and Nigger Head Coal.  
DON EDWARDS, Manager

**Cream Separator  
News!  
McCORMICK-DEERING  
BALL-BEARING SEPARATORS**

RE-DESIGNED  
IMPROVED



We now have these machines in our store. Opportunity will be given every farmer interested in bigger dairy proceeds to study the new McCormick-Deering in detail and to handle it in operation. We will bring it to your farm and demonstrate fully, or you are welcome to see this beautiful black-japaned machine here at any time. To make the new Ball-Bearing McCormick-Deering available at once for any farm, we will continue the "12 months payment plan." Six sizes—capacities 150 to 1,000 pounds of milk per hour.



For the next thirty days we will give  
**\$10.00 OFF**  
on purchase price of any model separator.

**Palmer Implement Co.**  
"Quality Implements"

**TEXANS LET'S TALK TEXAS**  
and **now**  
**CARNATION comes to Texas.**

TEXANS have talked Texas again with splendid results. The Carnation Milk Products Company, after a tour of intensive investigation of the possibilities of dairy development in Texas, is now building a \$300,000 milk condensery at Schulenburg.

At the time of making the announcement of the location of the Schulenburg condensery, the Carnation Milk Products Company also announced the purchase of a building site at Sulphur Springs. This action is indicative of the sound faith which this great company has in the possibilities of milk production in Texas.

The coming of Carnation to Texas, right on the heels of the coming of Borden, brings to this state the world's largest buyers of whole milk. These and other milk and milk products plants will pay millions of dollars to Texas farmers each year. There is probably no other type of

manufacturing plant which would sustain a payroll of such economic significance.

As Carnation and other great organizations extend their activities in Texas, our Texas farmers will gain a new appreciation of the solid value of the dairy cow as a source of daily income; and business will gain a new respect for the economic importance of manufacturers who use farm products as raw material.

The Texas Electric Service Company takes this occasion to commend the foresight of the Carnation Milk Products Company in coming to Texas. This Company also expresses its commendation of the efforts of those Texans who worked so diligently in helping the Carnation executives in making their decision to come to Texas.

It is this sort of "talking Texas" which means much to the rapid and sound development of Texas. Texans, let's talk Texas!

The Silent Partner of Progress

**Texas Electric Service Company**

**ORDER AND NOTICE OF ELECTION**  
**CITY OF TEXAS,**  
**CITY OF LYNN, CITY OF O'DONNELL:**

This 6th day of May, A. D. 1929, the City Council of O'Donnell was convened in special session in the City of O'Donnell, Texas, with all of its members present, to-wit: E. M. Wilder, Mayor, Carroll, W. E. Singleton, G. A. Haney, C. L. Davis, and J. H. Frayer, Aldermen, and W. A. Tredway, Secretary.

WHEREAS, application having been made by certain citizens of said City of O'Donnell, requesting the passage of a law prohibiting the keeping of hogs within the corporate limits of said City of O'Donnell, for the purpose of maintaining a menace to public health, and WHEREAS, it was moved by G. A. Haney, and seconded by R. C. Carroll, that there be called upon said question that there be submitted to the qualified voters of said City of O'Donnell, the following proposition: That the City Council by Ordinance prohibit the keeping of hogs within the corporate limits of said City of O'Donnell, Texas.

AND WHEREAS, the election to be held at the City of O'Donnell, Texas, on the 11th day of June, A. D. 1929, the motion was carried by the vote: AYES, G. A. Haney, R. C. Carroll, C. L. Davis, R. C. Singleton, and W. E. Singleton. NOES, none.

BEFORE, be it ordered by the City Council of O'Donnell, Texas, that an election be held at the City of O'Donnell, Texas, on the 11th day of June, A. D. 1929, at the hour of 10 o'clock in the forenoon, at the following proposition: That the City Council by Ordinance prohibit the keeping of hogs within the corporate limits of said City of O'Donnell, Texas.

And it is further ordered that the election shall be held in the City of O'Donnell, Texas, at the following named place, to-wit: The City Building in said City of O'Donnell, Texas, and that the following named persons be appointed as Clerks respectively of

**Lamesa Has Vitaphone and Talks**

LAMESA.—Lamesa now has a Vitaphone and Talkie Phone. Its recent installation has placed Lamesa in a class with larger cities in the matter of this form of entertainment. The shows in which the Vitaphone and Talks entertain are conducted in the Palace Theatre here each Sunday, Monday and Tuesday according to Aubrey Cox, owner and operator.

**ALDINE SCHOOL CLOSES**

LAMESA.—The Aldine School of Lamesa will close a successful year by presenting a play to be given at the Majestic Theatre of this city on Wednesday evening, May 29th.

Mrs. F. Kutch is the instructor of these little folks and states that the program will be the best of its kind in the history of the school.

**MANY CATTLE BEING VACCINATED HERE**

There has been reported several cases of hemorrhagic septicaemia of cattle in Dawson County. This disease is a highly contagious disease being about 95 per cent fatal but can be readily prevented by simple vaccination.

Mrs. F. Kutch is the instructor of these little folks and states that the program will be the best of its kind in the history of the school.

Sixteen registered Jersey Calves were distributed to members of the 4-H Clubs of Howard County at Big Springs recently.

**BROWNFIELD IS VICTIM OF O'DONNELL SUN. AFTERNOON**

O'Donnell won another ball game Sunday afternoon on the local field. This time Brownfield was the victim, the score ending 8 to 4 in favor of the locals. The game was well played and witnessed by a fairly good sized crowd.

Texas ranks second in value of exports with raw cotton first in value of its exports.

**ROUND TREE RETURNS FROM SESSION OF LEGISLATURE**

LAMESA.—Hon. Carl Roundtree, Representative of the 119th District has just returned from Austin where he has served as a member of the first Call Session of the past Legislature. Roundtree states that he will be back in Austin for the second Call Session June the Third. Roundtree has been very active in Legislative measures especially for West Texas and for his district the past session and during the call session.

Special attention has been given to Highway matters and to pensioning legislation so states Roundtree.

## BARGAINS

FOR SATURDAY ONLY

3 lb. Pkg. Blue Goose Coffee, with an ice tea Pitcher, all for	\$1.40
4 lb. Pkg. Raisins	31c
5 lb. Bucket Peanut Butter	89c
Crepe Paper, Per Roll	4c
Quart Jar Mustard	23c
Matches, good and cheap, carton of 6	18c
Hersheys Cocoa, 1 lb. can	37c
Hersheys Cocoa, 1-2 lb can	19c
Dry Salt Shoulders good for boiling, lb	14c

In J. P. Bowlin Building. Cleaner, Cheaper and Better Merchandise. Your trade appreciated.


**O'DONNELL CASH AND CARRY GROCERY**  
 OPERATED BY W. M. MASK  
 "The Farmer's Friend"

### MOTOR SERVICE THAT SATISFIES

the fact that a large proportion of the motorists whose cars are serviced at the Highway Garage are old customers proves the high quality of the service rendered. Only the best petroleum products are used and all work is done by skilled mechanics.

## HIGHWAY GARAGE

John Earls, Prop.




And in a sense it is new! For our Cleaning Process actually restores life to the texture of any garment, as well as bringing back the brightness of new colors, and the beauty of fresh, clean apparel. The sample applies to curtains, drapes, and bed spreads. Just call 66 for pick-up service.

**C. E. RAY**

## THE FIRST NATIONAL BANK

"Security—Reliability—Courtesy"

**For Good Cultivating in Wide or Narrow Rows—**



### JOHN DEERE NF CULTIVATOR

Because it is simpler to operate; because it does a more thorough job of cultivating, this John Deere Two-Row is the popular favorite among general farmers. The John Deere NF will do good work in your cotton, corn, potato, or cabbage fields, whether you have planted with a one-row or two-row planter.


Some of the advantages that make the NF such an overwhelming favorite are:

1. The easily-operated, conveniently-located spacing lever, which enables you to instantly space gangs in or out as you drive, keeping shovels the desired distance from rows, in all the varying conditions.
2. The tilting lever, which permits changing set and suck of shovels without stopping team.
3. One master lever, which raises or lowers all rigs—no stop necessary at end of rows.

You can get the NF with three-horse or with four-horse hitch with tongue truck. Any style of rigs you require.

Come in and ask to see this famous cultivator.

MANSELL BROTHERS  
 HARDWARE COMPANY  
 O'Donnell, Texas



At this Store You Get **QUALITY AND SERVICE**



One Piece of COMMUNITY

## Silverware

WILL BE GIVEN FREE

To each lady purchasing adult ticket on Tuesday night of each week.

## Lynn Theatre

## Have you?

Taken advantage of our Low Prices on

# Goodrich Tires

## Wholesale Prices

Lots of motorists have saved money by buying from us.

WHY NOT YOU?

## Hunt's Station

**The O'Donnell Index**

Published every Friday at  
O'Donnell, Texas  
By Roberts Printing Company

J. W. Roberts Editor

**Subscription Rates**  
In first zone **\$1.50**  
Beyond first zone **\$2.00**

Advertising rates on application.  
Entered as second class matter  
September 28, 1923, at the post office  
of O'Donnell, Texas, under the  
Act of March 3, 1879.



**MINIATURE AVIATION CITY AT SNYDER, TEXAS**

(By George F. Smith)  
Snyder, Texas, May 2, 1929.—It remained for a small city of 5,000 inhabitants in the Southwest to provide the most modern and unique airport ever conceived for any town or city under 100,000 population.

D. P. Yoder, an engineer and business man of long standing and widely known in the Southwest, originated the idea of providing an airport at Snyder sufficiently large to take care of great air fleets, together with a series of modern cabin inns to handle the road tourist traffic that come to this city, which is a junction point of the famous Dal-Paso Cavern Highway, shortest route from Dallas to the west coast, and State Highway No. 7, principal outlet to Amarillo, Lubbock, Abilene and South Texas.

Located between two state designated highways, Nos. 7 and 101, and across the road from the Santa Fe depot, more than 300 feet of landing area will be provided with clear approaches in all directions. Plans for the air center were drawn up after visits to many fields in this and adjacent states. The field proper includes the iron hangar already completed and large enough to house six planes, and electric service re-fueling pump, one of the few outside an army field in Texas; together with administration offices and plane supply room attached to the hangar with complete machine shop facilities available for visiting planes. The landing field is said to be one of the finest in the country, and is already covered with grass, providing landing in any kind of weather. A Curtiss-Robin monoplane is provided at the port for commercial work, flying school and cross-country jumps, with a government licensed pilot to be in charge. A mark is that can be seen for fifteen miles are located at the center of the field with arrow pointing north and "wind-sow" will be located atop the hangar. An airport designation sign is also located down town.

Within 100 yards of the hangar is located the first of a series of Cabin Inns where every service a modern hotel provides is given, with shower baths, lavatories, telephone, telegraph, gas, water, electricity with radio hook-ups provided in each cabin. Of the ten cabins already completed each is an individual unit constructed of stucco with interiors of wall board trimmed in green and ivory. Exteriors are green tinted with all wood work in green and cream white. Twenty-five cabins will be the goal of the builder. A waiting room that also provides showers and lavatories is provided with a main depot containing a first class restaurant, grocery, sundries and field superintendent's residence. The Santa Fe depot is directly opposite the main office, while at the north end of the field is the Snyder Golf and Country Club and swimming pool. The course of nine holes is open free of all fees to visiting planes and their passengers.

The park adjoining the cabin inns is now being beautified with flowers, shrubbery and trees.

Aviation magazines and pilots who have been here declare that Snyder has the most model airport in the United States of any city under 100,000 population, as every requirement is fulfilled, and location could not be improved, being but one mile north of the public square with taxi service available at the port as "two-bits" down town. Since the first announcement was made by the temporary opening of the field, planes have been dropping down from all points of the compass whose pilots and passengers are enthusiastic over the "air-mindedness" of such a small city and the wisdom of its owner and founder, D. P. Yoder, who originated out of Goshen, Ind. Secury County and Snyder were first introduced to aviation in 1926 when Paul Schattell of near Hernaligh constructed and flew his first plane, a Curtiss "Jenny" and which is still be-

ing used by his brother, Eugene, who has lately installed a new motor.

Plans are now in the making for one of the greatest airport dedications ever held in the West and hopes are being expressed by the Lions Club and the Secury County Chamber of Commerce to have 100 planes here for an old-fashioned West Texas barbecue with all the trimmings.

To the uninitiated who live north and east, West Texas has long been misunderstood as regards longhorn cattle and six-shooters, and let it be known that none such prevail there now, as diversification in all lines of agriculture has taken hold with a recent record of \$4,110.30 being paid by one produce house here for eggs, poultry and cream in one day. A county farm agent and county home demonstration agent are employed by the county. Not only is West Texas "air-minded," but likewise sold on diversification of their agricultural products.

**Acts Like It Was Just Made For Her**

**Lubbock Housewife Says She Feels One Hundred Per-Cent Better Since Taking Orgatone**

"This Orgatone acts just like it was made especially to fit my case," said Mrs. C. A. Walters of 1410 Texas Avenue, Lubbock, Texas.  
"The fact is, I haven't seen a well day for the past two years" she continued, "and almost as soon as I started taking Orgatone it seemed to go right to the seat of my trouble, and anyone could see that I was getting better. My stomach gave me lots of trouble and everything I would eat would sour and cause bloating spells, I didn't have any appetite and I was weak, nervous and run-down."

"I saw Orgatone so highly advertised that I decided to try it and it has certainly been the right medicine for me. I eat anything I want and it does not bother me at all. I'm not weak and run-down as I was and am stronger in every way. I'm not bothered with constipation anymore, and in fact, I feel one hundred percent better than I did before taking Orgatone. Orgatone has saved me from a lot of suffering that no other medicine or treatment was able to do and I am glad to give this statement and recommend it to my many friends."

Genuine Orgatone may be obtained in O'Donnell, Texas, at the Whitsett Drug Company.

**G. A. HOLDS ALL-DAY SESSION**

The newly organized G. A. of the Baptist Church is beginning a brilliant career. At least, that is our belief after hearing reports of their meetings. They met at the church last Tuesday morning at 9 o'clock each girl bringing her lunch. The entire morning was spent in making baskets, and after a bountiful lunch, the work was resumed until each had completed her basket.

An interesting business meeting followed, during which plans were discussed for serving the guests who will attend the Worker's Conference

next week. The green and white uniform will be worn by the girls, who will assemble at the church at 11:00 Tuesday morning, ready to help with the meal. The next business meeting will be held at the church Tuesday afternoon, June 11, at 3:00.

They were very glad to have with them as a visitor Miss Alice Busby, of Levelland.

Sheep and lambs will produce more wool and mutton than free from stomach worms and other worm parasites. Begin to treat your sheep and lambs now for parasites, and keep up the treatments every three weeks until freezing weather, advises the U. S. Department of Agriculture. On heavily stocked, short, dense southern pastures it may be necessary to treat the animals very two weeks. Sheep probably suffer more from parasites than do any other kind of livestock. A copper-sulphate solution is good treatment to rid the sheep of stomach worms. If hook-worms and tapeworms are present, a copper-sulphate and tobacco solution should be given. Farmer's Bulletin 1330-F on Parasites and Parasitic Diseases of Sheep, contains more information on this subject and can be obtained free from the Department of Agriculture, Washington, D. C.

Second-year sweet-clover pasture should be grazed heavily enough to keep down the growth. If not enough stock are turned on sweet clover, it will blossom, get woody, go to seed, and die.

Mr. and Mrs. Jerry Bowlin, Mr. and Mrs. Edgar Ellis, Mrs. John Earls, and Mr. and Mrs. Archibald House spent a very pleasant evening in the home of Mr. and Mrs. Luther Sorrels on Saturday, May 25. Most of those present were reminiscent of ranch days in the west, fruit season any where, fishing, fried chicken and strawberries on the vine and with cream. A few games of 84 was indulged in, which resulted in Mr. Jerry Bowlin and his three assistants being defeated. Delicious strawberry shortcake was served by the hostess. The happy guests all departed at a late hour.

We note that Dr. J. F. Campbell is adding to the attractiveness of his already lovely home by putting in walks and curbing. This will make the place one of the most attractive in this section of the country.

**Gas Forces Woman To Slep in Chair**

"Nights I sat up in a chair, I had stomach gas so bad. I took Adlerika and nothing I eat hurts me now. I sleep fine."—Mrs. Glenn Butler.

Even the FIRST spoonful of Adlerika relieves gas on the stomach and removes astonishing amounts of old waste matter from the system. Makes you enjoy your meals and sleep better. No matter what you have tried for your stomach and bowels, Adlerika will surprise you. Corner Drug Store.

Miss Marie Dobenport arrived on Monday from Marshall to spend the summer with her parents, Mr. and Mrs. Bob Dobenport.

Mr. and Mrs. J. R. Sanders, of White Deer, former citizens of O'Donnell, were here on business for a short time Tuesday.

J. A. Cornet is adding another room to his home in the central part of town, adding greatly to the appearance as well as to the convenience.

Although relatively a new crop, Texas now ranks third in citrus fruit production in quantity and first in quality.

Index Ads Get Results—Try Them

**WANT ADS**

WILL HAVE plenty of Sweet Potato slips, Chill and Sweet Pepper and Tomato plants about the first of June. See me for your plants, J. W. Nichols, Box 87, O'Donnell, Texas. 35-4tp

Both the Dallas Semi-Weekly Farm News and O'Donnell Index one whole year for only \$2.25.

Plumbing of all kinds done on short notice. Phone 144, Eaton & Street. Satisfaction guaranteed. tfc

tors give satisfaction, ask any one Avery ball bearing cream separator who owns one. Singleton Hardware and Grocery Co.

Let Eaton & Street do that plumbing job. They know how. Satisfaction guaranteed. tfc

Milk, the National Drink. Daw-Lynn Dairy.

SEE ME for farm and city loans. City loans on monthly plan. Low rate of interest. C. J. (Dock) Beach.

Phone 144 for Plumbing of all kinds. Eaton & Street. tfc

You can own an Avery Cream Separator, ball bearing, self balancing, on our terms. Singleton Hardware and Grocery Co.

Eaton & Street, licensed plumbers and gas fitters. Prompt service with guaranteed satisfaction. tfc

FOR SALE—Small gas range, practically new. Call at Index office.

Avery Cream Separators double the amount of your cream check. Singleton Hardware and Grocery Co.

FOR SALE—We now have a full line of Men's, Women's and children shoes. If we can't fix your old shoes we will sell you a new pair. Electric Shoe Shop, S. A. Billington, Proprietor. 21-tfc

Avery Cream Separator, ball bearing, self balancing and Groceries Co. Milk, the National Drink. Daw-Lynn Dairy.

Both the Dallas Semi-Weekly Farm News and O'Donnell Index one year for only \$2.25.

**NOTICE**

I am again located at the Drug Store prepared to do all of watch repairing. Office are from 10 a. m. to 4 p. m. appreciate any work entrusted and guarantee satisfaction. John R. Burkett

WINDMILL AND TANK, in good condition, for sale at a bargain. R. O. Miles at Miles Barber St.

Three room apartment, furnished or unfurnished, lights, water. Edgar Ellis

At Lynn Theater George Bancroft "The Wolf of Wall Street"

**IN APPRECIATION**

We were unable to express our appreciation for the splendid business received during the Contest Sale last week owing to a business call out of town.

Were we to fail to thank our friends and customers for their liberal patronage during the sale, we would prove ourselves unworthy of the important part each customer had in making this sale a wonderful success.

We are indeed grateful to each and every customer for their co-operation and confidence exemplified by their liberal buying for present and future needs during this sale. The great saving realized during this sale did not end with the close of the sale for "Bargain Days" are every day at this store for our slogan is "To save for those we serve."



**Summer Wear For Men**

For summer-long wear a two-piece suit is indispensable. You will particularly appreciate these Tropical Worsteds because they combine swank and style with their breeziness and lightness. Get your suit while these prices are going at these low prices. Sizes 33 to 44. \$19.75 to go at \$12.95 while they last.

**The New Felts**

have arrived, in all the newest styles and colors. Very chic and new are the lovely styles featured in these new creations. Prices, \$2.95—\$3.95—\$4.95.



**W. E. Guye Dry Goods Co.**

PHONE 65

**MAKE YOUR ADVERTISING HIT THE MARK**

**WITH THE MAY STANTON NEWSPAPER ADVERTISERS SERVICE SEE IT AT**

**Index Office**

**ECT FEEDING OF HOGS WILL MAKE MORE MONEY**

time ago there appeared in the project story of L. J. member of the Vocational Ag class. This project with hogs was completed with 13, 1928, with two grade 6 months of age and 64 pounds 90 pounds of ground corn 1.2 pound sale. The tank fed for only about thirty ter which one gallon of milk was substituted to cut feed cost. In the first pigs made a daily 198 pounds. The pigs weighed were fed 132 days with an daily gain of 1.03 pounds. gain of 134 and 137 pounds. fed actually fed was 194 pound corn and milo, 11 lbs. 4 pounds lime, 1 pound of 75 gallons of skim milk, 2 cents of feed including milo at 1 cent per pound, and at 2 cents per gallon, was the total labor on the pro- the farm at 12 cents per total expenses were the pigs brought \$40.48, net profit of \$32.61. will notice the pigs were the beginning and were but the ration was balance- can be fed at a profit we expect from better hogs. of success in raising the market is correct feed.

**ES WILL BE PLANT. YEAR TO SUNFLOWER**

A—J. R. Weaver, farmer man of this section and the new sunflower crop south Plains states that he some 1500 acres to sun- year. Other farmers in will likely plant this a- acreage it is thought mak- sunflower acreage for nity of approximately 2. Weaver states that Lub- will plant about 500 new crop while adjacent ill plant small acreages. and this new crop profita- year and the year be- and around \$5 to seven and six cents per pound. minimum labor and the dired to produce this crop profitable Weaver states, al type of seed planted is and Russian. The flower day is being plann- year according to Mr. anas. Weaver is today choicest planting seed and it is said that the specially adapted to this South Plains, for as high ver ton.

**TO BUILD TEXAS**

nds seventh in automo- ions with 1,214,297 mot- licensed to use its roads. first with 2,083,942 and Ohio, Pennsylvania, Illi- gan follow in order a- as. Oklahoma with the nearest to Texas in Southwest, and North 494,376 leads in the

wallow by rooting a mud hole in the lot or pasture. Such a place is a nuisance and unsightly. Provide a wallow made of concrete, and locate in a convenient, shady place in the lot. Clean it and refill with fresh water frequently. Crude oil, enough to form a thin layer on the water, if poured into the wallow about every 10 days, will help to control lice.

One of the largest gas pipe lines in the country is to be built by the Lone Star Gas Co.—135 miles from Petrolia, Clay County, to Fort Worth. Twenty inches in diameter, the line will handle 100,000,000 cubic feet of gas daily, according additional service to the many cities and towns served by the Lone Star. This will give the company four lines into Dallas and Fort Worth, two of the others being 10-inch and one 16-inch.

"Texas has but started in its development—Demands for money month by month for villages that become towns almost overnight, towns that become cities between visits, and smelters, manufactories, mills, gins, oil wells, pipe lines, refineries, mines, farms, and ranches that are fast filling its open places are concrete evidence of its wonderful future development."—Martin J. Inull, president of the Middle West Utilities Co., having extensive interests in Texas.

The Censorship Committee of the Gainsville Retail Merchants Association last year saved Gainsville merchants \$5,500 by "turning down" worthless or fraudulent advertising schemes. A \$5 fine is levied against members patronizing schemes not sanctioned by the censors. Of 31 advertising "schemes" submitted, only three were recommended to members.

The first shipment of Wise County cream ever sent North was the carload recently shipped by the Tennessee Dairies from Decatur to Philadelphia. The cream tested 40 per cent butterfat and it was shipped in a refrigerated express car. Skim milk is being processed into powdered and condensed products at the Decatur plant, which is handling 35,000 pounds of milk daily.

Preparations are under way to open a travertine quarry near Leander, Williamson County, following discovery of that stone in large quantities. The stone is said to be found at present only in Italy.

For boiling down fruit juice and sugar in jelly making, use a large, flat-bottomed pan, to hasten rapid evaporation.

Bull calves in the dairy herd can be fed and handled much the same as the heifers, except that it is better to delay weaning until 8 or 10 months of age. If raised on skim milk, bull calves over 3 months old should have a little more grain than heifers. Good-sized bulls are always preferred, and this method of feeding lets them get their best size and development.

Young pullets are very sensitive to strange conditions and objects, and should not be disturbed or moved around from place to place. Pullets

At Lynn Theatre  
George Bancroft in  
"The Wolf of Wall Street"

intended for laying should be kept by themselves and so handled that they will grow well and be in good laying condition by the middle of the fall. Free range on clean soil and plenty of green feed and shade are essential to good growth.

Pasturing out-over land keeps the brush down, causing timber roots to die, and ultimately reduces the cost of stump removal. Goats, sheep, or cattle will do this work for nothing. Goats are natural growers and will eat twigs and grass in preference to anything else. Sheep must be more closely pastured than goats, so that they will be forced to eat the bushes. On large areas it is necessary to fence the land into small sections, and keep the stock on one section until it has been browsed clean.

Although oats rank next to corn and wheat in acreage and value, less attention is given to the production of oats than to any other important grain crop in the country, says the U. S. Department of Agriculture. The fundamentals for successful oat production may be summed up as follows: well-prepared land that retains moisture and is fairly fertile; good seed of suitable varieties, thoroughly cleaned, graded, and treated for smut early seeding with a grain drill; harvesting the crop at the right time, when it is in the hard dough stage; careful shocking and stacking to keep the crop from injury by weathering; and clean thrashing.

When pigs are five or six weeks old they need some protein feed. Shorts or middlings are fine for this purpose. They should be fed separately from the feeder and not mixed with corn. Tankage or fish meal or old-process linseed meal may be used as a substitute for shorts or middlings.

**LAMESA MAN ACQUITTED ON MINOR CHARGE**

LAMESA.—A case of considerable interest to Dawson County was decided on this week, when R. C. Hill, an employee of the city of Lamesa, was charged with violation of the Sunday Law before Judge A. B. Cooper, Justice of the peace for operating a drag or grader on the streets of Lamesa. The defendant was acquitted.

If depulping mites and lice infest the poultry flocks at the same time, a treatment with the following dip will destroy both kinds of parasites. Make a solution of 3-4 ounces of sodium Fluoride, 2 ounces of sulphur, 1-2 ounce of laundry soap, and 1 gallon of water, and dip the fowls. The dip should be kept stirred so as to keep the sulphur in suspension.

The time to destroy grasshoppers infesting fields of alfalfa or other crops is while the pests are young, when the injury is slight and the "hoppers" are wingless and more easily killed. A poison-bran mixture such as the following can be used. 25 pounds of wheat bran, 1 pound of Paris green or crude arsenic, 2 qts of low-grade, strong-smelling molasses, 3 gallons of water. In dry regions more water may be needed. Ten pounds of bait wet weight should be broadcast to an acre. In California and other semi-arid regions the bait should be distributed in late afternoon or evening. In moister regions it is best applied in the morning. Eggs usually hatch in the North in May or June.

Buckwheat is useful for something else besides furnishing the wherewithal for griddle cakes. It is a great help in fighting quackgrass, and on land rich enough to produce

a good crop of buckwheat, it will smother out most of the quackgrass, in addition to producing a good crop of grain. Land to be cleared of quackgrass should be cropped a year to get rid of sod, and then plowed in fall or early spring. All quackgrass plants must be kept down until buckwheat-sowing time in early summer, by sufficient workings with a spring-tooth or disk harrow, or by plowing again if necessary. If the land is poor, some manure and fertilizer

should be added. Sow four or five pecks of buckwheat to an acre.

Do not allow grown-up rabbits to eat too much—unless they are intended to grace the family table. Overfat rabbits often will not breed and may die from excessive heat. Young growing rabbits, however, may be fed all they will clean up in 30 minutes for two meals a day.

TIRES UNCANCELED at Foster's.

## NOTICE

I have 2 Jacks for Servcie in Tahoka. \$5 for first service, balance due when colt comes. Bull Pups for sale.

**Dr. G. W. Williams**  
Tahoka, Texas  
Box 722 Phone 139

We have just installed a Lane Vegetable Spray that enables us to keep our stock of

# VEGETABLES

FRESH AND CRISP MUCH LONGER THAN THE OLD WAY

In fact it is the only way to preserve that original freshness. Come in and examine this new piece of machinery. It is the only one of its kind on the South Plains south of Lubbock.

**WE HAVE SPECIAL PRICES EVERY SATURDAY**

**WATCH FOR OUR AD NEXT WEEK. IT WILL BE A SENSATION TO BUYERS OF QUALITY GROCERIES**

## CITY GROCERY

Holman & Holman, Props.

# LINDSEY

LUBBOCK

**5 DAYS 5**

Starting Sunday

## CLARA BOW in

# "The Wild Party"

Her First All Talking Picture

---

Hear the gay hey-hey—The Wild Whoopee  
—Clara's Throbbing, pulsing voice when she says aye-aye. She does everything—  
Say everything—The Clara Bow way.

---

Also  
VITAPHONE VODVIL ACTS  
And  
PATHE SOUND NEWS

**\$50.00 Free** GIVEN AWAY ABSOLUTELY FREE **\$50.00 Free**  
Something New, Folks, It's Different

# TAHOKA TRADES DAY

EVERY FOURTH SATURDAY, BEGINNING THE 4TH SATURDAY IN JUNE.

All merchants belonging to Tahoka Chamber of Commerce will give tickets away absolutely free with each \$1.00 purchase, not exceeding \$25.00 cash purchase or 25 tickets with each single purchase.

**TAHOKA CHAMBER OF COMMERCE**

---

**\$50.00 WILL BE GIVEN AWAY IN FOUR PREMIUMS:**  
\$20.00 1st Premium; \$15.00 2nd Premium; \$10.00 3rd Premium; \$5.00 4th Premium.  
ASK THE MERCHANTS FOR TICKETS AND FOR PARTICULARS

**Lower South Plains Now in Fine Shape**

LAMESA—Dawson County and the Lower South Plains country was never in better agricultural condition so state oldtimers here. Recent rains amounting to more than two inches over the section has placed the soil in tip top condition and prospects were never brighter for an abundant crop harvest here this fall. It is estimated that about ten per cent of the present tillable acreage in cultivation is being placed under the plow as new lands this spring. It is further estimated that the county of Dawson will plant an acreage of about 200,000 acres to cotton, while the farmers will plant approximately 100,000 acres to feeds and grains sorghums. Farmers are busy every hour at this time planting both cotton seed and feeds. On every farm one can see teamsters busy with double row outfits and even tractors putting the seed in the ground while yet there is moisture to bring the seed to a stand. It is estimated that the next ten days will find most all planting finished and crops growing off to a fine start here. With the fine underground season now has here only a few more rains are necessary to produce a bumper crop in Dawson County.

**FINAL PLANS FOR MEMORIAL GATEWAY TO CAMPUS OF UNIVERSITY OF TEXAS**

Austin, Texas, May 23.—Final plans for the \$250,000 memorial gateway to the campus of the University of Texas will be considered by the committee in charge, consisting of H. A. Wroe, of Austin, President H. Y. Benedict and Dr. W. J. Battie, on June 3, when Pompeo Coppini, Italian sculptor who has designed the statuary for the monument, visits Austin. Coppini will be accompanied by a member of the firm of Walker & Morrison of Chicago, architects in whose hands the execution of the masonry designs has been placed.

The fund by which the monument is to be constructed was left to the University by the late Major George W. Littlefield of Austin, former University regent. General plans for the statuary were given Coppini some eight years ago. Heroic figures of ten Southern patriots have already been completed by him and now stand in the state Capitol, awaiting the completion of the other details of the monument.

**MASON AND DIXON'S LINE**

Few Southern People Know the Details Surrounding This Survey Which Later Became the Most Frequent mentioned imaginary Line in the World.

Nearly two centuries after the trouble began, which caused this survey to be made, Louis F. Hart recently visited the border line between Maryland and Pennsylvania, in a pilgrimage to the original Mason and Dixon's Line. Mr. Hart not only visited the actual spot where Charles Mason and Jeremiah Dixon started

their famous survey but spent a great deal of time gathering data and illustrations around which to build the story of their famous piece of engineering.

Using HOLLAND'S, The Magazine of the South, as his vehicle, Mr. Hart says: "Times changes all things. Old hatreds die and new loyalties are born, but the demarcation between peoples—especially when it goes back, as this one does, to the Roundheads and Cavaliers of Cromwell's day—cannot be wiped out in an hour. Customs and modes of thinking remain when material landmarks have crumbled and vanished. Thus it is that in setting out to relocate Mason and Dixon's Line after so many years, we must take into account not only the bench marks which took from the estate of Charles, Lord Baltimore, three thousand square miles or so, but also those which give double unity to some forty million people living in the South today.

"Opinion may differ as to where the line should run, but no one can deny that it is there. Nor would anyone go so far as to say that on one side dwells the practical, and on the other the ideal. Humanity is too imperfect to achieve the absolute in either direction, were that result desired. The fact remains that the home of romance is the South, her threshold guarded with uncompromising loyalty by her sons."

**MANY FOOTBALL GAMES ALREADY SCHEDULED FOR UNIVERSITY OF TEXAS**

Austin, Texas, May 23.—Of the nine football games already scheduled for the University of Texas next year, six are with member schools of the Southwestern Conference, according to Dr. H. J. Ettlinger, director of athletics. The program is as follows: September 28, St. Edward's University in Austin; October 5, Centenary in Austin; October 12, University of Arkansas in Fayetteville; October 19, Oklahoma University at Dallas; October 26, Rice Institute at Austin; November 2, Southern Methodist University at Dallas; November 9, Baylor University at Austin; November 16, Texas Christian University at Austin, and November 28, A. & M. College at College Station.

USE THE  
**Telephone**  
TO TALK TO  
**MOTHER**  
INSTEAD OF  
WRITING  
O'DONNELL  
TELEPHONE CO.

**Dawson Co. Farmers Going Dairy Route**

LAMESA.—In Dawson County the farmers are going the Dairy Route and a majority have become dairy minded. Recent surveys show that in Dawson County there are now more than six thousand good milk cows. Of this number 95 per cent to 100 per cent are of the Jersey type. Of this number better than 350 are registered and pedigreed. In the county there are thirty registered Jersey bulls and all are in circles. The survey shows better than 3,000 head of heifer stock that will be added to the cow population in the next twelve months. The milk production in Dawson County is now estimated to pass the 40,000 pound mark per day. If this amount of milk could be concentrated at some Milk Plant it would more than start its production at a profit the first day. With such an industry at Lamesa an area of better than 40 miles every direction could be served and this production would appreciable increased to say nothing of the increase that would be made by Dawson County farmers alone. The local Chamber of Commerce has for one of its major projects this year the location of such an industry here it is said and therefore along with this industry a decided increase in the dairy cow population of the county and immediate section. It is further pointed out that Dawson County and the Lower South Plains is indeed "The Land of Feed" and this agricultural product can be produced here at a much lower cost than in any other section of the United States. Feeds

**BUSINESS AND PROFESSIONAL DIRECTORY**

V. O. KEY  
Abstracts, Loans And Insurance  
Key Building  
Lamesa, Texas

GIBSON AND MABY  
O'DONNELL AND LUBBOCK  
FRUIT LINE  
General Hauling  
Phone 21 or Phone 48  
O'Donnell, Texas

I. O. O. F.  
Meets Every Monday Night at Odd Fellows Hall  
O'Donnell Texas  
Visiting Brothers Welcome

J. S. FRITZ  
Undertaking and Embalming  
Funeral Supplies  
Funerals Conducted Anywhere  
PHONE 104B  
O'DONNELL, TEXAS

**LYNN THEATRE**

Thurs. & Fri.  
Marion Davies and William Haines in "Show People"

Friday  
"Tarzan the Mighty"

Saturday  
Ken Maynard in the Royal Rider and Tarzan the Mighty.

Sunday & Monday  
George Bancroft in "The Wolf of Wall Street"

Tues. & Wed.  
William Powell in Canary Murder Case  
Tuesday is Silver Nite  
Each lady gets 1 piece of Silverware FREE.

Thursday & Friday  
Lillian Gish in "The Wind"

Friday is Family Nite

Saturday  
"Wild Horn"

Uncle Tom's Cabin  
June 9th & 10th

in car load lots, more than 1800 cars in all, have been shipped from the Lamesa Station in the last twelve months, to all section of the country where they have been ground into balanced rations for cows, hogs and poultry. These getting the feeds produced here are paying from six to eight dollars per ton to have same delivered and then a decided cost is added to grind these feeds into balanced rations. According to W. W. Evans, County agent here a balanced ration for a milk cow can be had of Dawson County feed prices at present Dawson County grown feeds at the small cost of 75 cents per 100 pounds of milk. It is said by experts that this small cost will insure not only the successful operation of some sort of milk factory here but the successful maintenance of dairy cows in this section even for home and creamery

**FAIRLEY & HAYMES**

INSURANCE AND REAL ESTATE OF ALL KINDS  
O'DONNELL, TEXAS

**DEMPSTER**  
NO. 12. BACK GEARED  
ANN-OILED WINDMILL

**GUARANTEED**

The Dempster No. 12 is guaranteed against defective workmanship and materials. You are assured a mill that will serve for years without constant trouble or expense. Has Tunkon Tapered Bearings, Positive Brake, Machine Cut Gears, Oil-It-Once-a-Year feature. Come in and a competent window pump-man will show you a sample.

HIGGINBOTHAM-BARTLETT CO.  
O'Donnell, Texas

Also carrying a complete stock of Dempster water supplies.

**GALLOPING GUS THE HOTFOOT CUSS**

Watch Your Step!

The boy stood on the burning deck,  
The flames grew mad and madder;  
But he didn't fall and break his neck  
On an old wornout step-ladder!

A MAN fell ten stories from the railroad building in Denver and lived many years. The same day, a four-foot step-ladder gave way and broke a man's neck! A rickety old step-ladder is dangerous. Galloping Gus declares, and should be replaced by a new one.

**SINGLETON**  
Hardware Co.

Galloping Gus, the Hotfooted Cuss. Comes when you call without flury or Fuss!

consumptions. A plan is now being launched by the Local Chamber of Commerce to locate a Milk Plant here. Committees are now at work compiling data that will be valuable in determining the type of plant that will be indorsed for this section. If present plans materialize the next ten days will reveal a new and needed industry in this connection for Lamesa and Dawson County as well as the Lower South Plains of Texas.

**LAMESA CHAMBER OF COMMERCE PLANS MUCH**

LAMESA.—The local Chamber of Commerce has before it a Major Program according to Arnett, president. It will for the year the following so states the officials: Lamesa milk plant, a public library, Streets and Highways. And more tree planting this


**SORRELS LUMBER CO**  
Dependable Service and Materials  
Phone 53  
O'Donnell, Texas

**OK**  
and Running Like a Top!

With brakes serviced, chain greased, valves ground and timing adjusted, the car limped in like a leaky barge flashed away like the mail—good for a mighty stretch of hard running.

**And the Good News**  
Is that our prices are the best in the community. Ask service man about our combination service offer.

**RAYBURN CHEVROLET COMPANY**



**MAKE YOUR ADVERTISING HIT**

THE MARK

WITH THE MAY STANTON NEWSPAPER ADVERTISERS' SERVICE

SEE IT AT

**Index Office**

**Specials**

FOR SATURDAY ONLY

Bananas, per dozen 2

3 lb. Votan High Grade Coffee \$1

3 lb. All Gold Coffee \$1

100 lb. Sack Cane Sugar \$6

10 lb. Sack Cane Sugar 6

Gallon Peaches 5

Gallon Plums 5

Gallon Blackberries 5

No. 1 Idaho Spuds, per lb.

WESTEX SYRUP, gallon 8

**CHANDLER**  
**Cash Groce**

**Doing in West Texas**

ELL has recently invested approximately \$100,000 in thirty residences. This brings the expanded on building more than a quarter of a million. The City Council has recently finished its improvement on the roads at

women are working to establish a community center to be both a social and a center, with club rooms, films and playgrounds. A city with large grounds surrounding is their ambition.

has started work on the Oak Street which is to be 40 feet wide and boulevard. Ornamental lights design as now in use in district are to be placed at intersections and boulevard intersections.

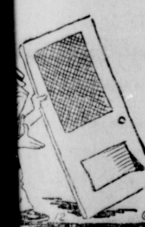
NG 4-H boys are the rear lot of pure bred from North Central Texas. The calves were purchased through the cooperation of the First National Bank who boy who desired to be one of the calves. It has produced some yearling that brought \$60.00 a highest price ever brought in county. The animals belong to A. and T. M. Corbett, high grade cattle for there were 750 head in they brought \$35,000.

GELLO to Sonora will be a new rail line of the Mexico & Orient. Work on by permission of the Commerce Commission. Loads of rails are on their way. Angelo and engineer are trying the route for de-

sent a representative to "Bossy." County Agent purchased a Pure Blood which was given away at Day observance on May. It is the capital prize in exhibition, other prizes being a trio of chickens. receiving wool from adults and approximately 100 lbs are in the warehouse. cars have been shipped one of the largest wool

FARRINGTON Dentist  
Ray Diagnosis  
Phone No. 39  
Donnell, Texas  
First National Bank Building

*Der Sany's*



**ABOUT YOUR SCREENS?**

are not long off now warm days come the you looked over your law screens? Perhaps new ones—perhaps need repairing. Don't peek over your screens come in and tell us what we have a complete line

BOOTHAM-TT COMPANY  
ING TO BUILD  
FITTING"  
WELLS, Mr.  
Texas

handling concerns in the world, and five or ten cars will be shipped later. OCTOBER 24, 25 and 26 has been set for the dates of the eleventh annual convention of the West Texas Chamber of Commerce at El Paso. The Seventy-Fifth anniversary of the Gadsden purchase will be celebrated, and the establishment of the Butterfield mail route commemorated. President Gil of Mexico has promised to meet President Hoover there at that time.

**WEST TEXAS TODAY**, which will be in the mails this week contains detailed accounts of two recent district conventions of the West Texas Chamber of Commerce, those being the South Plains meet at Tahoka and the Greenbelt Lower Panhandle meet at Seymour.

**QUITIQUE** has delivered the first order for material from the new sand and gravel pit on the Llanish River in the northeast portion of Floyd County. The shipment was made to the Fulton Lumber Company of Plainview. Loads were made to the newly completed spur of the Fort Worth & Denver.

**LITTLEFIELD'S** Chamber of Commerce has expanded the services of Monte Barzon, an experienced band director to direct their Chamber of Commerce band of forty-five pieces. Several trips into the trade territory are planned soon, and the band will go to the WTCC convention at El Paso.

**TWO STUDENTS OF UNIVERSITY OF TEXAS RECEIVE PHILOSOPHY DEGREE**

Austin, Texas, May 23.—Two University of Texas students, W. T. Reid of Roby and J. H. Roberts of Austin, each 22 years of age, have

completed the requirements for the doctor of philosophy degree and have been awarded National Research Fellowships for the next year. Both have majored in mathematics. Reid will spend next year in research at the University of Chicago, while Roberts will study at the University of Pennsylvania. Each will receive his Ph. D. degree at the regular University commencement on June 3.

**Shows the Way to Dairy Profits**

Madisonville.—By multiplying his sales of dairy products more than six times in one year, J. N. Raney, a farmer near here, has established farm dairying on a profitable basis. It has come about by shifting to good cows, planting pasture crops, feeding a balanced ration and keeping careful accounts as a demonstrator working with W. H. DuPay, the county agent.

During May a year ago Mr. Raney sold \$30 worth of dairy products, but in April this year his sales of milk and sweet and sour cream amounted to \$202.41 from nine cows, four of which are pure-breds. Feedings at

**CITY TRANSFER CO.**

J. W. Kirkpatrick, Owner  
**O'Donnell, Texas**  
Drayage and Heavy Hauling

O. H. SHEPPARD, M. D.  
General Practice and Electro-Therapeutic. Piles cured without detention from work or business.  
Office half block Southeast Index Building, O'Donnell, Texas.

the rate of one pound of feed for every three and one-half pounds of milk, the cost of feed for the month was \$57.30. At the same time his flock of 106 hens had all the skim milk they could consume and produced \$32 worth of fresh, infertile eggs at a grain feed cost of \$13.35. Mr. Raney keeps a milk and feed record nailed to his barn door and weighs each cow's milk night and morning, enabling him to feed each cow according to production. He supplements his native pasture of Bermuda grass and bar flature with Su-

dan grass drilled in 18-inch rows, and last winter sowed one acre each of alfalfa, sweet clover, crimson clover, hairy vetch and Austrian field peas with oats as a nurse crop.

Oats should be rolled or ground before feeding them to very young horses.

**C. N. WOODS**  
Watchmaker and Jeweler  
Tahoka, Texas

**C. E. CAMERON**  
is the representative of the Texas Electric Service Company in O'Donnell.  
For any information about your electric light service call Mr. C. E. Cameron at Texas Electric Service Company, Lamesa, Phone No. L. D. 11 or at Lamesa Texas, Phone 237

If You Want To  
**BUY, SELL OR TRADE**  
Anything, Anywhere, See  
**M. A. Scott Real Estate Co.**  
PHONE 157  
At Rear of Old First Nat'l Bank Bldg.  
O'Donnell, Texas

**Years of service in MODEL T FORDS**

THE Model T was so strongly and sturdily built that it is still rendering reliable, economical service to motorists in every section of the country. Millions of these cars can be put in shape for two, three and five more years of use at very small cost.

So that you may have this work done economically and satisfactorily, the Ford Motor Company is still devoting a considerable section of its plants to the manufacture of Model T parts. It will continue to do so as long as they are needed by Model T owners. The following list gives the approximate labor charges for reconditioning the Model T Ford:—

Engine	
Tune motor (including replacement of commutator case, brush and vibrator points if necessary)	\$1.00
Grind valves and clean carbon	\$3.75 to 4.00
Overhaul carburetor	1.50
Reline detachable car transmission bands	1.50
Install new pistons or connecting rods	6.00
Tighten all main bearings	6.00
Overhaul motor and transmission	\$20.00 to 25.00
Rear System	
Replace rear axle assembly	2.50
Install universal joint	3.00
Reline brake shoes	1.50
Replace rear axle shaft, drive shaft pinion, or drive gear	5.00
Replace rear axle shaft assembly	\$5.75 to 7.00
Rebush spring and perches	1.75
Oil and graphite springs	3.00
Front System	
Overhaul front axle	\$4.00 to 5.00
Rebush spindle bodies and arms (both sides)	2.50
Replace or straighten spindle connecting rod	.75
Reline radius rod or steering knap	.60
Tighten all sockets and joints of front end	1.50
Replace front spring tie bolt or new leaf	2.50
Straighten front axle	3.00
Chassis	
Replace rear fender	1.75
Overhaul steering gear	3.50
Repair muffler	1.00
Overhaul radiator	2.50
Repaint Coupe	25.00
Repaint Sedan	20.00
Repaint Touring Car	8.00
Reupholster Runabout	15.00
Reupholster Touring Car	4.00
Replace top deck (Coupe or Sedan)	3.00
Overhaul starting motor	2.60
Overhaul generator	2.60

These prices are approximate and are for labor only, because the need and number of new parts depend on the condition of each car. The charge for these parts is low, however, because of the established Ford policy of manufacturing and selling at a small margin of profit.

**FORD MOTOR COMPANY**  
Ford

**kills flies mosquitoes bed-bugs, moths roaches and other insects at all good dealers**

**GULF Venom**  
GULF REFINING COMPANY

**"HURRY WITH THE SERVICE CAR THE OIL BROKE DOWN DON'T LET THIS HAPPEN TO YOU"**

STRANDED five miles from nowhere because the oil wouldn't do its job! Has that happened to you? If it has, the chances are that you were not particular the last time you had the crankcase drained—or perhaps you ran too long without changing the oil. This will be a slack summer for service cars if motorists will remember two things: first, to change oil regularly, and secondly, to use only a brand of oil which they know from their own experience or the experience of others will stand up under the most trying conditions of motor operation.

You can depend upon any oil which has the backing of the Continental Oil Company. These are the brands which have been tried and tested—in the laboratory and on the road. They lubricate thoroughly, protect every moving part and stand up under intense heat.

Ask for these brands at leading service stations and garages.

**CONOCO MOTOR OIL**  
Ash for the grade made especially for your car

**CONOCO AMALIE**  
Pennsylvania Oil—refined from premium crudes by a special process. Universally recommended by automotive engineers and lubrication experts. Through exhaustive laboratory and road tests it has demonstrated its ability to lubricate properly under the most trying conditions of motor operation.

**CONTINENTAL OIL COMPANY**  
Producers, Refiners and Marketers of high grade petroleum products in Arizona, Arkansas, Colorado, Idaho, Kansas, Missouri, Montana, Nebraska, New Mexico, Oklahoma, Oregon, South Dakota, Texas, Utah, Washington, Wyoming

**EXTRA LIFE for your car**

# Work Day Bargains

AT THE

## Popular Store

<p><b>OVERALLS</b> Heavy Blue Overall, (not cheap grade) <b>\$1.29</b></p>	<p><b>WORK SHIRTS</b> Men's Triple Stitched good wearing work shirts— <b>69c</b></p>
<p><b>SHOES</b> Men's Friedman Shelby Work Shoes— <b>\$1.95</b></p>	<p><b>COVERALLS</b> Children's Hickory Stripe Coveralls, sizes 3 to 8— <b>69c</b></p>
<p><b>GLOVES</b> Genuine Horsehide Work Gloves, with and without cuff— <b>\$1.00</b></p>	<p><b>KHAKI PANTS</b> Good grade work pants, sand color, brown, Hong Kong, Powder Blue— <b>\$1.39</b></p>

## Popular Dry Goods Store

O'DONNELL, TEXAS

### Good Attendance at Luncheon Club Meet

LAMESA.—In Lamesa there is but one so-called service club. This is styled the Lamesa Luncheon Club. Each Tuesday at noon the business and professional men of the City gather for a social and fellowship meeting hour. The average attendance is between twenty and forty at these meetings. But there is one unique and different feature to this club to what one finds in the average service club. It is that any one in Lamesa or Dawson county may become a member and come as he desires. There is no restrictions thrown about the club and all are free to attend when they feel like it and any person in Lamesa on Tuesday of each week may feel free to eat with the fellows. This club has sponsored good will and fellowship in the community. It has co-operated with the local Chamber of Commerce in all its projects and work. It has entertained many service organizations in the community. It has served as the mouth piece of the community and has created and maintained the best of business relations between the business men of the city. This club has been organized two and one half years the first day of this June and has not missed a single meeting during this time, an unusual record for such clubs. This club has sponsored a dozen rural community programs in the trade territory of Lamesa each year of its existence and has done what it could to create a better relation between the farmers and business men of Lamesa. At this time the officers of this club are, Wm. A. Wilson, president, Rev. W. P. Garwin Vice President, O. B. Norman and J. L. Teal secretary and treasurer. Officers will be elected Tuesday, May 28th, as announced by the present officers of the club. Officers for this club are elected each two months and a special program committee which is responsible for the weekly program is appointed by the president each Tuesday. A hot contest will be waged for officials at the next meeting of the club with G. A. Thomas bringing one official ticket for election and W. B. Collins bringing another. At these meetings a total membership is generally present and all have a knock down and drag out time so to speak. This club is revered in Lamesa and no other service club has yet been able to get organized or to take this clubs place.

### "The Randall News"

Quite a few of the farmers are making use of the rain which they got a few days ago. Some of them are through planting and are just starting. Mr. and Mrs. Campbell visited Mr. and Mrs. Howard Stephens, Sunday. Arnold Davis spent Sunday evening with Rubin Meares. A few of the Randall gang visited the O'Donnell Theatre Saturday night. The couples were: Rubin Meares, Esther Davis, Haskell Davis and Bessie Mae Harris, Jessie Glispie, Bernice Meares, Carl Smith, Lillian Snow and poor little lonely Lois. Lillian Snow who has been ill for the past few months is up and spent the week-end with Bernice and Lois Meares. They enjoyed their selves very much. And if it hadn't been for their little sister Irma Ruth telling their friends what they did, they could have had more fun. Miss Gary who is teaching the primary room spent the week end with her parents in O'Donnell. Three young men of this community went on a lark Monday night. We wonder who they were. Frank Shoemake made the fourth one. We wonder if he could tell us who they were. Mr. and Mrs. Robert Meadows visited her parents last Wednesday night, Mr. and Mrs. A. A. Smith. Doyle Bingham spent last Thursday night with Irene Smith. They had a nice time, but fell out of the swing and Irene was unable to come to school Friday. Esther Davis spent Monday morning with Grandmother Snow. Little Juanita O'Conner is visiting her Grand parents, Mr. and Mrs. Davis. Reporter.

### DAWSON HAS VERY LARGE FRUIT CROP IN SIGHT

LAMESA.—Dawson county has the largest fruit crop in sight in her history it is believed. This crop consists of peaches, plums, cherries, plums, and berries of all descriptions. All trees are at this time heavily loaded and unless some damages is done. At this time according to W. W. Evans county agent there is no insect or pest damage among the fruits. The fruit crop promises to be of highest quality as well as abundant.

### FINDS SWEET CLOVER A GOOD PASTURE CROP

OLTON (Lamb County)—One and three-fourths acres of sweet clover is worth more than forty acres of native pasture for grazing alone, not counting the soil improvement qualities of the clove, according to Geo. Bohner who sowed this crop last August for the first time. Planting it as a demonstration in co-operation with D. A. Adam, county agent, Mr. Bohner got a perfect stand and six weeks after sowing grazed two cows on it for forty-five days. They increased steadily in production and when taken off dropped 13 pounds in milk in one day. Turning them into the clover again in February the cows gradually increased in milk flow until by April they had gained 22 lbs. in milk production daily. In addition he has pastured four of his neighbors' cows, and two horses.

### HAY-SCENTED FERN

The eastern farmer who is troubled with hay-scented fern or bracken in his pasture will do well to follow the advice of a certain Mr. Tusser, who in 1857, in a book on "good husbandrie," wrote, "In June and in August, as well doth appear, is best to mow Brakes of all times of the year." Cutting off the tops of the soil surface twice a year for two years will kill nearly all the ferns, and the best times to make the cuttings are in June and again in August, just previous to the formation of seed spores. Most pasture lands in the East where ferns grow, are too steep and rocky for cultivation, and ferns, unlike most other pasture weeds, can not be reduced in number by increasing the vigor and thickening the stand of the pasture grasses.

As we go to press we are sorry to hear that Mr. Paul Gooch, one of our most enterprising farmers, is suffering from a slight paralysis of the facial muscles. He was seized with the attack shortly after noon Tuesday, and was taken immediately to the hospital at Lubbock where he was examined. At the present writing we are unable to say just how serious the case may be, as he is undergoing treatment. However we sincerely hope that he will soon be entirely recovered.

TIRES Vulcanized at Foster's.

### "SHOW PEOPLE" HAS MANY NOVEL FEATURES IN FILM LIFE FUN

If you've never visited a motion picture studio, don't fail to go to the Lynn Theatre and see Metro-Goldwyn-Mayer's "Show People," which opens May 30th. The picture co-stars Marion Davies and William Haines and offers the most interesting picture of a motion picture studio ever drawn.

Not that "Show People" hasn't other attractions to offer—it has. It will probably rank as the best and most unusual comedy of the year. Marion Davies is easily America's leading comedienne and William Haines tops his own particular field. The story is entirely new, unusual, and full of a million laughs. King Vidor has taken the story of a little Southern girl who comes to Hollywood, enters motion pictures, and eventually rises to stardom, and with this material has made use of all the funny incidents of life in the film capital that have occurred in the last years. The result is a masterpiece.

### INDEX EXPECTS A FISH STORY FOR NEXT WEEK

Messrs Claude Tucker and Oran Davis left first of the week for a few days fishing on the Rio Grande in South Texas. The boys left with plenty of equipment and lots of ambition which we hope will land the big one. We will let them tell their own story next week.

Mrs. Philip Lieberman and daughters Dorothy and Estelle of Robstown, Texas, are visiting the former's sister, Mrs. Ben S. Cain and family this week. They made the trip by motor without any difficulty except a little mud which made driving a little treacherous in spots. This is Mrs. Lieberman's first visit to the Plains of Texas.

Mrs. Ben Moore, leader of Circle 3, Womans Missionary Society reports that the sum of \$15.50 was realized from the bake sale on last Saturday. Thanks are extended to all who helped in any way. This circle has already raised more than a hundred dollars, all of which will be applied on the new church building.

The Joe Bailey 4-H Club Girls are putting on a program at the Joe Bailey School House, Friday Night, June 7th. This entertainment consists of two comedy plays. All characters are acted by the club girls. Come and enjoy a good laugh. Reporter.

Mr. and Mrs. Harvey Everett and little daughter, Harvey Ann, of Wink were visiting friends and relatives last week end. They were accompanied on their return by Miss Ina D. Everett and "little" J. Y., who will spend the summer with their parents.

Mr. and Mrs. Major H. Rodgers and children, Doris and Charles, of Levelland, spent the week end with their parents. Mrs. Rodgers and the children remained over this week.

Messrs and Mesdames E. T. Wells, Guy Bradley, accompanied by Mrs. Bradley's sister, Mrs. McVickers, left early Sunday for Carlsbad Cavern.

W. M. Mask of the Cash and Carry Grocery spent the week-end in Haskell, Texas, with home folks, returning Monday night.

Mr. and Mrs. N. M. Wyatt and family of Tahoka, spent Sunday with Mrs. Wyatt's parents, Mr. and Mrs. W. L. Rodgers.

Mr. and Mrs. S. T. Price and children spent the week-end with home folks in Rotan, Texas, returning on Monday night.

Miss Jessie Cary is finishing out the school term at Randall school, the teacher having resigned before the end of the term.

Miss Lulu Rice left last Saturday for Austin, where we understand, she plans to do special work this summer.

Mrs. Johnnie Rodgers and little daughter Johnnie Lee left Monday for their home in Los Angeles, Cal.

Martin Line, of Brownfield, spent the week-end with his parents, Mr. and Mrs. J. N. Line.

Mr. and Mrs. B. B. Street and family of Tahoka, spent Sunday with Mr. and Mrs. W. L. Rodgers.

Rev. and Mrs. W. K. Horn, of Cloze City, were guests in O'Donnell a short while Sunday.

C. J. Beach made a business trip to Lubbock Tuesday.

Few dairymen with medium or small sized dairy herds can afford to own a first-class purebred bull, but every dairymen can afford to own a share in one. A co-operative dairy-bull association is the best and the cheapest way for the small dairymen to obtain the use of a purebred bull to improve his herd. Farmer's Bulletin 1432-F, obtainable from the U. S. Department of Agriculture, gives information on dairy-herd improvement through co-operative bull associations.

TIRES VUNCANIZED at Foster's.

At Lynn Theatre  
George Bancroft in  
"The Wolf of Wall Street"

### LAMESA PASTOR WILL RECEIVE D. D. DEGREE

LAMESA.—Rev. W. P. G. Pastor of the First Methodist of this city will receive his D. D. degree from McMurry College, June 6th. Garvin is pastor of the church here since November 1928, coming here from Hart.

TIRES VUNCANIZED at Foster's.

W. W. WILLIAMS DAIRY

Sweet milk, 40 cent gallon, delivered and morning.

Phone 128

## Keep Your CAR LOOKING NEW

Let us wash it—the new quick way—our modern HB Hydraulic Car Wash System—While you wait.

### Save Time and Money

Come in and see how gently we dissolve and flush off the mud and dirt before ever touch it with the sponge. No scrapers used under the fenders. Hot clean water do the work right.

We add thousands of miles to the life of your car's original finish—retaining original color and luster far longer than is possible when washing by other methods.

GET OUR LOW PRICES

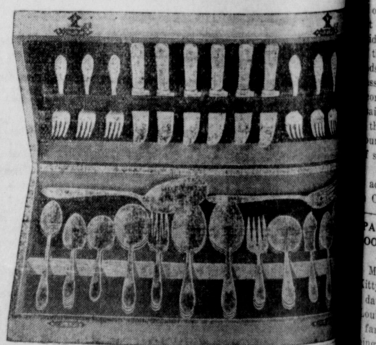
Phone 14

For "While-You-Wait" Appointment

## A. & W. Service Station

J. P. AYLOR, Mgr.

Watch for Our Formal Opening Day



One Piece of COMMUNITY

## Silverware

WILL BE GIVEN

FREE

To each lady purchasing adult tickets Tuesday night of each week.

## Lynn Theatre