

BE A VOTER THIS YEAR
PAY YOUR POLL TAX BY JAN 31

Extra! Extra!
HERE NOW
The All New Chevy II
The Economy Car for You



Chevy II Nova 400 Station Wagon



Chevy II Nova 400 Sport Coupe

There's A Chevy II For You

★ ★ ★
COME IN TODAY FOR A ---
DEMONSTRATION RIDE

BUY TODAY! --- SAVE TODAY!
CHEVROLET... AMERICA'S SALES LEADER

ELLIS CHEVROLET CO.

O'DONNELL, TEZ. Box 306 Phone 8-3315

FEDERAL AND STATE GRANTS...
HELP BUILD HOSPITALS

Austin — Over 12,000 general hospital beds, 550 beds for mental patients and 350 nursing home beds have been made available to ailing Texans by virtue of a financial partnership in which the state has participated since 1947.

The opening of a cerebral palsy treatment center in Houston in mid 1961 brought to nearly 200 the number of projects completed in Texas under the Hill-Burton hospital and medical facilities survey and construction program.

Established by the Hill-Burton Act of 1947 the program is a unified local-state-federal effort to provide financial assistance to areas with the greatest need for supplementary hospital and medical facilities.

Fund grants up to 50 percent of total construction cost for general, mental, tuberculosis and chronic disease hospitals, public health centers, diagnostic and treatment facilities, rehabilitation units and nursing homes may be made under the program.

BIRDS CARRY SLEEPING SICKNESS

The fact that birds are a reservoir of some diseases transmissible to man has been known for a long time. However, the mounting store of knowledge concerning the arboviruses (literally bird borne) is a comparatively new item of public health research.

Some of the more common diseases caused by these viruses occur in Texas. These are the St. Louis encephalitis (mistakenly called sleeping sickness) and the Western and Eastern equine types.

The names signify where a particular virus was first identified.

Puzzling transmission cycles are the hallmark of these viruses. Encephalitis is borne by birds. However transmission of the virus from birds to horses or from birds to man is thru mosquitoes. There apparently is no direct transmission from horse to man or from man to man. The responsible culprit is a family of mosquitoes called Culexine. These include the common household mosquito and a mosquito common to rural areas. There are others but these two cause the most trouble in Texas.

In late summer and fall of 1961 several cases of encephalitis were confirmed by the State Health Department. Most of the cases were reported from counties of south and west Texas in the Hi-Plains area.

BABY BORN TODAY OWES \$1,603 DEBT — AT INTEREST

Washington — Resolutions for the New Year: Balance the federal budget.

Reasons: The first child born in 1962 will owe \$1,603. So will every other child born during the year. That figure is the per capita share of the public debt. Let's not make it bigger. The dollar, 100 cents purchasing power in 1909, has 28 cents today (the two bit dollar is almost at hand). If inflation continues at the rate since the Korean War, the dollar will rot to 16.2 cents by the year 2,000. The federal debt and guaranteed obligations of the federal government, \$295 billion, surpass by \$42 billion all the debts of all the other countries in the world. Uncle Sam's load is really our load.

Soup Snack After Bowling



ACCORDING TO THE STATISTICIANS, any six Americans will include one bowling fan. Yes, over 12 million women and 20 million men deliver the ball down the lanes in quest of the ultimate "300." After an exciting session of converting difficult spares or trying to string some hard-to-hit strikes, it is time for a refreshing break. A soup and cracker pick-up is just right as a conversation stimulator for discussion of the evening's score. After your next bowling spree try a jumbo mug of piping hot tomato and green pea soups combined with a fragrant touch of curry, crisply accompanied by junior-sized shredded wheat biscuits, potato crackers and pretzel sticks. A variety of crackers is more appealing in separate bowls than jumbled together on one platter. Olives, pickles and tiny button mushrooms add to the flavor interest.

"300" SOUP

Blend one can condensed green pea soup, one can condensed tomato soup and a dash of curry powder; stir in one cup water and one cup milk. Serve from a pitcher in jumbo mugs. Makes 4 generous servings.

Farm Sale
Friday, Jan. 26

G. E. 'Eli' Vickers,
Owner

7 1-2 Miles East of O'Donnell on Farm Road 2053 then 1 mile north
Terms: cash, Lunch Will Be Served Time: 10:30 A. M.

TRACTORS

- 1 - 1951 IHC Model M Farmall with complete 4 row equipment no. 11 tool bar and planter
- 1 - 1948 IHC Model M Farmall Tractor with center mount butane, and complete 4 row Equipment no. 15 John Deere boll puller mounted
- 1 - 1947 IHC Model M Farmall Tractor on Butane with 4 row equipment.
- 1 - M-M Tractor Model UTU on butane with complete 4 row equipment
- 1 - Single wheel camp trailer complete with tarp
- 1 - 1947 Ford Truck with Grain Bed.
- 1 - 1 in. Centrifugal pump
- 2 - IHC Power boxes for M-Farmall

FARM MACHINERY

- 1 - 6 bale cotton trailer on truck chassis, good rubber
- 2 - 4 wheel Shelby Cotton Trailers with grain beds
- 1 - IHC Model 20 boll puller, good
- 2-A. C. 2 row combines
- 1-John Deere Tandem Disc
- 1- 4 wheel trailer for butane tank
- 2 - IHC Front end 3 row listers
- 2 - 4 row all steel sleds pick-up type
- 1 - Iron wheel wagon, greased
- 1 - 2 Disc Phillips, 3 point reversible breaking plow
- 1 - 3 point Disc Harrow
- 2 - 3 row bed knifer drag type
- 1 - 5 row bed knifer on Tool Bar, good
- 1 - 5 Row All Steel Stalk Cutter Drag type
- 1 - 7 row all steel stalk cutter, drag type
- 1 - 4 row all steel Stalk Cutter, Drag Type
- 1 - 2 row all steel Stalk Cutter, Drag Type
- 1 - 3 row bed knifer, pick-up type
- 1 - Feed Mill
- 2 - M M Markers
- 1 - Shop Cart
- 2 - 9 row Sand Fighters
- 1 - Grasshopper poisoner
- 1 Cattle Power Sprayer
- 1-2 wheel Trailer
- 1 - 4 row Pharris and Wilkins

- Tumble Type Stalk Shredder, power take-off
 - 320 ft. of 4 in. Aluminum flow line pipe
 - 40 ft. of 4in. gated pipe
 - 1 - 16 x 22 ft. Sheet Iron building good, framed
 - 2 - 4 wheel trailers on truck chassis
 - 1 - 8 row Comfort Cotton Sprayer
 - 1 - IHC Comfort
 - 1 - Puller Blower
 - 1 - 2 Row, IHC Row Binder
 - 300 lbs Delinted Cottonseed
 - 1 Feed Mill Belt
 - 2 - Tractor rear tires
 - 1 - 3 disc IHC Breaking Plow
 - 1 - 4 Disc M M Breaking Plow
 - 1 - 4 section Harrow
 - 1 - Rotary Hoe Plow on Tool Bar
- HOUSEHOLD GOODS
- Iron Beds
 - Kitchen Sink
 - Kerosene Heater
 - 2 Burner Kerosene Stove
 - Vacuum Cleaner
 - Some Comodes and used plumbing
 - 4-Bachelor Heaters
 - 1 - 5 pc. Chrome Dinnett
 - 3 - 6 ft. Venetian Blinds
- MISCELLANEOUS
- 2 - Large Tractor Shades Shop Made
 - 2 - Buggy Top Shades
 - 1 - Apartment Size Electric Refrigerator
 - 1 - Butane Bottle
 - 2 - 8 row cotton sprayers
 - Belt Pulleys
 - Power grease gun
 - 5 Knifing Heads
 - IHC Planter Boxes
 - 1 - Air tank
 - 1 - Garden plow
 - Screw Jack
 - M - Farmall Gas Tanks
 - 1 - Air conditioner, Essicks, at most new
 - 1 - Speed Queen Ironer
 - Wash pot
 - Busters
 - Planter Drags
 - Cotton scales
 - Weeders
 - 2 - Hen Nests
 - Hydraulic jacks
 - Grease gun
 - 1 set of rotary hoes

NOW...
LIVELINESS
AND LUXURY
IN A FULL
LINE OF
LOW-PRICED
CARS
CHEVY II

Eleven new-size models make
One-Stop Shopping easier than
ever at your Chevrolet dealer's

Nothing fair to middling about the spacious and spunky new lineup of low-priced cars from Chevrolet! From the looks of these nifty top-of-the-line Novas (unmistakably new), you'd never guess they're so easy to own. Even some bigger cars wonder how we got so much full-size family room into such a parkable package—and such hustle out of a 6 that sips gas so sparingly. Your dealer will point out more reasons why luxury and a low price have never been more beautifully blended!



Chevy II Nova 400 2-Door Sedan



Chevy II Nova 400 Sport Coupe



Chevy II Nova 400 4-Door Station Wagon



Chevy II Nova 400 4-Door Sedan



Chevy II Nova 400 Convertible

See the new Chevy II, new Chevrolet and new Corvair at your local authorized Chevrolet dealer's

Forbes Motor Co
O'Donnell, Texas

ATTENTION, FARMERS

Clean, low sulphur content Diesel FUEL - AND - Motor Oil Designed for your diesel and L.P.G.



MOBIL OIL CO., W. J. Shook, Consignee Phone 428-3252, O'Donnell

TRACTOR TIRES

12x38 -- \$90.00 13x38 -- \$100.00

EXIDE BATTERIES

DEEP BREAKING -- 8 to 12 inches \$4.00 per acre NEW and USED 4-row Shredders Bring Your Tractor in For Overhaul Earl Wingfield, Mechanic

Edwards Implement

Phone 428-3414 O'Donnell, Texas

Moore Insurance Complete Insurance Service

Phone 428-3335 O'Donnell, Tex.

BOSS MUST ISSUE FORM W-2

BY JAN. 31 Employers, Internal Revenue Service has a reminder for you -- Employees should receive two copies of a withholding statement Form W-2 on or before Wednesday, January 31, 1962.

John J. Sloan, Administrative officer of the Internal Revenue Service at Lubbock said "This statement shows the total wages paid and the income tax and social security tax withheld if any, during the calendar year 1961."

Total wages shown on an employees W-2 must include amounts received as sick pay from his employer, even though no tax has been withheld on such sick pay. Sick pay is not required to be shown separately. If it becomes necessary to correct a W-2 after it has been given to an employee, a revised statement must be issued and marked "corrected by employer."

BABY BORN TODAY OWES \$1,603 DEBT -- AT INTEREST

Washington, -- Resolutions for the New Year: Balance the federal budget. Reasons:

The first child born in 1962 will owe \$1,603. So will every other child born during the year. That figure is the per capita share of the public debt. Let's not make it bigger. The dollar, 100 cents purchasing power in 1909, has 23 cents today (the two bit dollar is almost at hand). If inflation continues at the rate since the Korean War, the dollar will rot to 16.2 cents by the year 2000. The federal debt and guaranteed obligations of the federal government, \$295 billion, surpass by \$42 billion all the debts of all the other countries in the world. Uncle Sam's load is really our load.

O'DONNELL INDEX - PRESS

Established in 1923 Box 546, O'Donnell, Texas Published Every Wednesday O. G. SMITH, JR., Owner Advertising Rate: 40c col. in. SUBSCRIPTION RATES

In Lynn, Dawson and Borden Counties \$2 per year. Elsewhere in U. S. \$2.50 per year.

Card of Thanks \$1.00. Classified advertising 4c per word, with minimum charge of 50c.

Your label at top of paper tells date your subscription expires.

Second class postage paid at O'Donnell, Texas.

ASSEMBLY OF GOD CHURCH

A welcome and service for all Sunday School 9:45 a. m. Morning Worship 11 a. m. Evangelistic service 7:30 p. m. Midweek Service 7:30 p. m. Young people service 6:30 p. m. Large enough to know you -- small enough to serve you.

CHURCH OF THE NAZARENE

A friendly Church serving a friendly community in a needy world invites you, Sunday school at 10 a. m. Morning Worship at 11:00 a. m. Evening Worship at 7:30 p. m. Prayer meeting each Wednesday at 8 p. m.

Egg production in 1962 is expected to slightly exceed that for 1961 due to a higher rate of lay per bird. The increase is largely accounted for because of the increased number of pullets in 1962 laying flocks. The trend toward larger flocks will continue and competition between producing areas will be strong. Texas producers will have to use every known method of efficient production and marketing to meet this competition.

THE O'DONNELL INDEX-PRESS RENEW YOUR SUBSCRIPTION

CLAUDE'S



All Kinds Cowboy and Wellington BOOTS -- WESTERN SHIRTS MOCCASINS -- LOAFERS -- ALL KINDS FINE LEATHER GOODS KIPERT REPAIR ON ALL SHOES AND BOOTS Phone 428 - 3416

Your Lynn County Tax Collector will be at

MOORE INSURANCE AGENCY, O'Donnell

Thursday and Friday Jan. 25 and 26

To collect state and county taxes and sell poll taxes. The 1946 Study club will write poll taxes

Jan. 27 at Lott Pharmacy

GEORGE D. McCracken

Lynn County Tax Assessor - Collector

BASKETBALL SCHEDULE

- Jan. 19, Plains there
Jan. 23, Sundown here, A. B. boys, A Girls 5:30 p. m.
Jan. 26, Seagraves there
Jan. 30, Frenship there
Feb. 2, Wilson there
Feb. 6, Plains here 7 p. m.
A and B boys
Feb. 9, Sundown there
Feb. 13, Seagraves here
A, and B boys, 7 p. m.
conf. games

SCHOOL EVENTS

- 17 -- Assembly
18 -- FHA Parents Banquet
20 -- Football banquet -- Joe Kerble of WTS, former coach at Breckenridge, assistant coach at Tech., speaker.
31 -- Assembly
Feb. 5 -- Teachers In Service meeting
12 -- FHA, FFA Meetings
14 -- Assembly
15 -- Sweetheart Party
23, 24 -- O'Donnell Stock show
28 -- Assembly

For sale -- in southwest Lynn County, section of land with 100 acres in cultivation, County cotton allotment. Also three G. I. tractors, not in cultivation. Priced to sell. Clint Walker Agency, Tahoka Ph. 998-4244. --- Feb. 1 6tc

See me before you sell your cotton. Highest price C. N. Hoffman 9-20c

For sale -- one 4 in. and one 5 in. pump turbine sprinkler type, A C Motors, 500 gal. butane tanks Pete Hale at Hale Variety 9-27 Also a complete water well drilling rig.

BUY, SELL OR TRADE -- GUNS AND PISTOLS WATCHES CLEANED \$2.95 All Work Guaranteed Hale Variety

BUY YOUR DAILY PAPERS AT INDEX OFFICE -- LUBBOCK AVALANCHE Morning and Sunday -- \$14.95 Morning without Sunday \$13.00

Noble L. Rumbo, M. D.

Medicine and Surgery RUMBO CLINIC OFFICE PHONE 8-3224 Home Phone 8-3376

For T V and Radio Repairs call Jim Burkett at Aten 2366 5-10

Saleh And Saleh ATTORNEYS AT LAW GENERAL PRACTICE IN ALL COURTS Phone 2171 502 N. 1st St. LAMESA, TEXAS

O'Donnell Barber Shop NOW AT NEW LOCATION JUST EAST OF REX THEATRE LATEST STYLES CUT BY BEST METHOD Specialize In Flat Tops Prompt Service

Dr. O. H. NANCE Optometrist 528 N. 1st Lamesa ph. 554

POLITICAL COLUMN

The Index has been authorized to enter the following names in the Political Column subject to action of the voters in the Democratic Primary, May 5, 1962

JUSTICE OF PEACE, PCT. 4 HORACE BRUNETT (Re-election)

COUNTY CLERK; C. W. ROBERTS (Re-election)

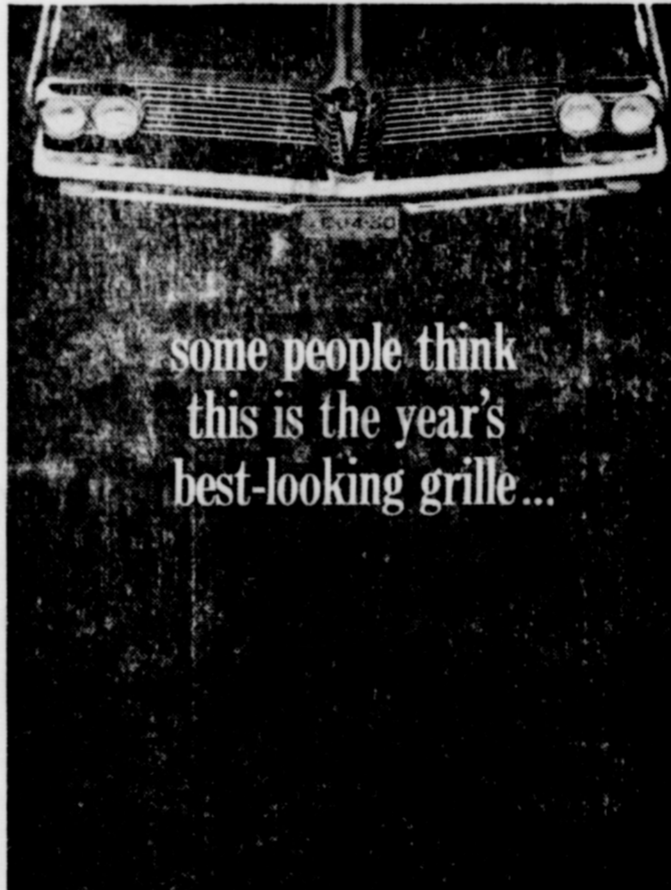
DAWSON COUNTY COMMISSIONER, PCT. 2 A. B. FURLOW Re-Election

Have you paid your 1961 CITY TAXES? 1961 Taxes will be delinquent Feb. 1st 1962. Pay now and avoid the penalty. MOODY EVERETT, City Tax Collector.

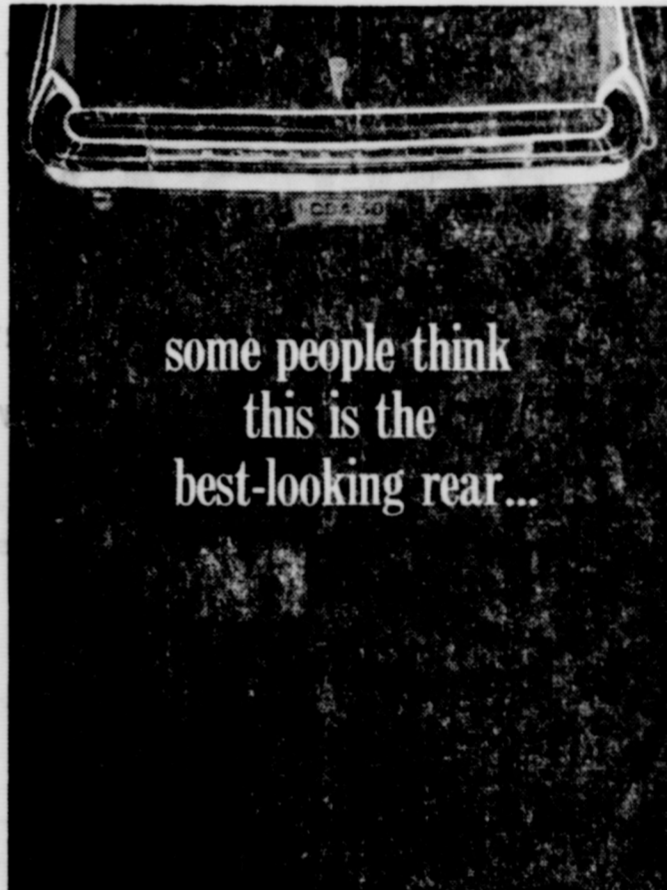
For sale -- 1 clean divan (couch) makes a bed. Mrs. H. L. Wood 2tp

The U. S. Department of Agriculture announced on Dec. 28th that there will be no restrictions for the second consecutive year on acreage of 1962 sugar beet acreage.

Though Texas grain sorghum producers set an all time high of 45 bushels or 2,520 lbs an acre in 1961, they still have a long ways to go to match the 9,383.9 lbs an acre produced by Bill Cole, a Deaf Smith County 4-H boy. His yield made with irrigation topped all participants in the 1961 Texas Hybrid Grain Sorghum Production Program. He planted RS 610.



some people think this is the year's best-looking grille...



some people think this is the best-looking rear...

Isn't it nice that you can get them both in one car? Wide-Track Pontiac

SEE YOUR PONTIAC DEALER FOR A WIDE CHOICE OF WIDE-TRACKS AND GOOD USED CARS, TOO

Veach Pontiac Co.

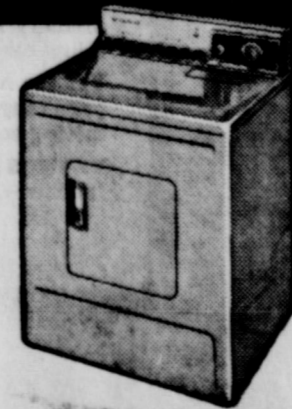
9th and Hohn St. O'Donnell, Texas

Like to Save Money?



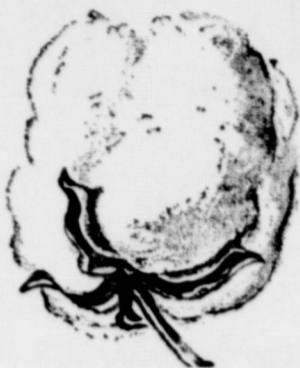
Clothes Drying can add as much as \$24.96 a year to your piggy bank!

Or, it can keep you supplied with Chanel No. 5, for free (unless you bathe in it, of course!). But no matter whether you spend it or save it, you'll have nearly \$25 that you wouldn't have, using anything but economical Gas for clothes drying! See a Gas appliance dealer and start your "perfume account," right away.



fuel for a growing empire Pioneer Natural Gas Company

The Best Delinting Service Anywhere



- Modern Equipment
- Experienced
- Culled, Treated and Sacked

Plant Acid Delinted Seed

★ \$35.00 Per Ton

Cottonseed Delinters, Inc.

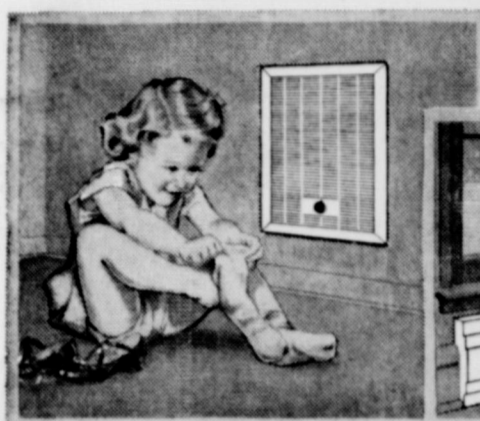
On Post Highway, East Tahoka Ph. 998-4115

before you buy heating... check these facts about

ELECTRIC home heating!

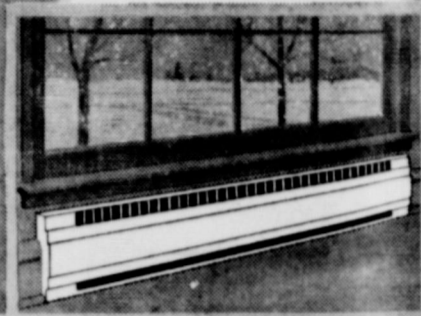
If you're buying heating for a new home or for an added room, consider the advantages of electric heating. Electric heat is FLAMELESS... completely safe, even in tightly closed rooms. Electric heat is clean... as clean as

summer sunshine. And modern electric heat is automatic. For a new experience in comfort, find out about fast, efficient, FLAMELESS electric heat now. See your dealer or electrical contractor, or call us for information.



ELECTRIC WALL HEATERS

Take up no floor space, are unmatched for safety. Provide instant heat at the flip of a switch, and are equipped with automatic temperature control.



ELECTRIC BASEBOARD HEATERS

Install neatly out of the way, permitting freedom of furniture arrangement. Temperature is controlled by individual room thermostat. Compact, efficient!



ALL-ELECTRIC HEAT PUMP

This one wonderful unit both heats and cools efficiently and automatically, using only electricity. Available in central system or single room sizes.

TEXAS ELECTRIC SERVICE COMPANY

W. B. MITCHEL, Manager 428-3322



DO NOT FORGET TO PAY YOUR ----

POLL TAX

DURING THE MONTH OF JANUARY

You may pay them at the Lynn County Tax Office or at ----

MOORE INSURANCE AGENCY, O'Donnell
GEORGE McCracken

TAX ASSESSOR AND COLLECTOR
Lynn County, Texas

STANLEY FUNERAL HOME

AND BURIAL ASSOCIATION

Day or Nite Call WY 84433 At Tahoka

"Thoughtful, Courteous Service"

We Accept Burial Policies Of All Companies

FEDERAL AND STATE GRANTS... HELP BUILD HOSPITALS

Austin — Over 12,000 general hospital beds, 550 beds for mental patients and 350 nursing home beds have been made available to alling Texans by virtue of a financial partnership in which the state has participated since 1947.

The opening of a cerebral palsy treatment center in Houston in mid 1961 brought to nearly 200 the number of projects completed in Texas under the Hill-Burton hospital and medical facilities survey and construction program.

Established by the Hill Burton Act of 1947 the program is a unified local-state-federal effort to provide financial assistance to areas with the greatest need for supplementary hospital and medical facilities.

Fund grants up to 50 percent of total construction costs for general, mental, tuberculosis and chronic disease hospitals, public health centers, diagnostic and treatment

facilities, rehabilitation units and nursing homes may be made under the program.

BIRDS CARRY SLEEPING SICKNESS

The fact that birds are a reservoir of some diseases transmissible man has been known for a long time. However, the mounting stream of knowledge concerning the arboviruses (literally bird-borne) is comparatively new item of public health research.

Some of the more common diseases caused by these viruses occur in Texas. These are the Louis encephalitis (mistake called sleeping sickness) and Western and Eastern equine encephalomyelitis.

The names signify where a particular virus was first identified. Puzzling transmission cycles of the hallmark of these viruses, encephalitis is borne by birds. However transmission of the virus from birds to horses or from birds to man is thru mosquitoes. There parently is no direct transmission from horse to man or from man to man. The responsible culprit is family of mosquitoes called Culix. These include the common household mosquito and a mosquito common to rural areas. There others but these two cause the trouble in Texas.

In late summer and fall of 1959 several cases of encephalitis were confirmed by the State Health Department. Most of the cases were reported from counties of south and west Texas in the Hi-Plains area.

1962 MERCURY MONTEREY



The best-looking buy for the big-car man



Delivers the extra room, luxury, and power you want—at a price you'll like!

There's a wonderful feeling about owning a Mercury Monterey. It's Mercury's most luxurious car—the very top of the line.

Yet the Monterey is still within the popular price range. No other car near its price makes driving so enjoyable in so many ways.

THERE'S EXTRA ROOM for long legs and big families—a spaciousness that helps take the

tension out of traffic, makes long trips less tiring. More trunk space, too—30.7 cu. ft. big.

THERE'S A SMOOTHER, QUIETER RIDE. Cushion-Link Suspension absorbs bumps you still feel in other cars. And the Monterey uses more soundproofing—260 square feet of it.

FINER ENGINE CHOICE. You can have exactly the power and economy combination

you wish. Just specify the Economy "6", 292 V-8, 352 V-8, or 390 V-8.

MORE MONEY-SAVERS. The Monterey has 9 service-saving features—needs routine attention only twice a year... or at 6,000- to 30,000-mile intervals.

See your Mercury dealer soon for a demonstration. Sample that wonderful Monterey feeling.

LINCOLN-MERCURY DIVISION • 1962 MERCURYS • PRODUCTS OF Ford MOTOR COMPANY

SEE THE BEST-LOOKING BUY FOR THE BIG-CAR MAN—NOW AT MERCURY QUALITY HEADQUARTERS

Forbes Motor Co.

O'Donnell, Texas



SHEER GLAMOR — A dazzling mist green velveteen top and avocado gold and white brocade skirt. The gown has Talon's 2" Magic Zip neckline zipper at back—a sewing "must" with how-to-apply details in the package. Make it with Vogue Pattern No. 4265.

Teen-Agers Add Lively Lift To New March of Dimes Drive

Slave auctions in this Civil War Centennial Year? It can—and does—happen here, with the flower of American youth on the block.

But in this century, there's a difference. Now it's all in a good cause. Members of the New March of Dimes Teen Age Program (TAP) auction their services to the highest bidder among local merchants. The money goes to support The National Foundation - March of Dimes attack on birth defects, arthritis and polio.

It's all part of TAP members' lively approach to volunteer community service. They also sponsor walkathons (shades of the Thirties) in which teams from rival schools move toward the finish line as dimes are contributed. They dance for dimes at casual sock hops and formal balls, man concessions at school sports events, and hold community car washes.

Through such ingenious fun-for-funds projects, TAPs raised nearly three-quarters of a million dollars during the 1961 March of Dimes.

For the 1962 New March of Dimes in January, tens of thousands of the youthful volunteers are literally "on TAP." In more than 75 per cent of The National Foundation's 3,100 local county chapters, active TAP committees are determined to hit new highs in fund-raising as well as funds.

Adult advisors who work with TAPs point out that underlying the outward frivolity of the teenagers' projects is a deep awareness of the need for increased research and progress in the fight against crippling birth defects, arthritis and polio. During the year, many youngsters assist in local patient services by reading to disabled children, writing letters for severely crippled arthritics or working as hospital aides.

A prime year-round responsibility of TAP members is distribution of information about National Foundation Health Scholarships to students in high schools and colleges. Each year, more than 500 four-year scholarships with a full value of \$2,000 apiece are offered for study in medicine, nursing, physical therapy, occupational therapy and medical social work. TAP members know the desperate need to reduce the shortage of manpower in the health professions by encour-



TOP TEEN—Katherine Anne (Katie) Keith, 18, of Columbia, Mo., has her hands full as newly-appointed chairman of the 1962 New March of Dimes Teen Age Program (TAP).

aging students to undertake careers in these fields.

Leader of the Teen Age Program for the 1962 New March of Dimes is national chairman Katherine Anne Keith, 18, of Columbia, Mo. Blonde, brainy and born to be busy, Katie will handle her major responsibilities as top TAP while she pursues an ambitious freshman schedule at the University of Missouri.

On the basis of past performance, juggling scholarship and volunteer service won't intimidate Katie. She was 1961 Missouri state TAP chairman during her strenuous senior year in high school. Under her leadership, Missouri TAPs showed record gains in membership, services to chapters and funds raised for the March of Dimes.

At the same time, Katie maintained grades that ranked her third in her graduating class of almost 300 students. She was a National Merit Scholarship finalist and received the Kiwanis Good Citizenship

award. She was business manager—and occasional sports-writer—for the school paper, treasurer of the National Honor Society, queen of the major social function of the school year, had a lead role in the school play, "Teahouse of the August Moon," and actively participated in math, history, English and French clubs.

She also teaches a Sunday School class at Missouri Methodist Church in Columbia. After a summer in Europe, including study at the Sorbonne in Paris, the energetic Katie began to plan for a banner year of TAP activity for the March of Dimes.

"Teenagers who are looking for a sense of satisfaction along with fun and friendship are missing a bet if they don't check TAP activities in their local March of Dimes chapters," she said. "A TAP committee isn't just another youth organization—it's not merely a club to serve youth. Instead, it gives us an opportunity to serve our communities."

IT'S THE LAW IN TEXAS ... THE CASE OF THE MESSY TENANT

Joe Dogood and his wife rented their home to Joe's cousin, John Messmaker. The Dogoods were planning to be out of town for several months and since Mr. Messmaker was temporarily out of work and in need of a place to house his family, Joe rented their home at a very reasonable figure. The Messmakers were very grateful and promised someday to pay back Joe and his wife.

When the Messmakers finally moved out they left the house in a shambles. There were holes in the walls, the furniture was torn and broken, windows were broken, doors were off of their hinges and the house looked as if it had never been cleaned.

The Dogoods asked the Messmakers to clean and repair the house and furniture but they refused. They said that they were only tenants and such repairs were the responsibility of the property owners.

Can the Messmakers be made to pay for the damage they caused? The courts have generally held that the tenants can be made to pay for damages in such a case. A tenant, even though bound by no express agreement as to the condition in which he is to leave the premises at the end of his tenancy, is nevertheless under a certain implied obligation. He is impliedly obligated to so use the rented premises that it will be returned to the landlord in the same general condition in which it was rented, subject to such general deterioration as is caused by a reasonable amount of use and lapse of time.

If, by the negligence of a tenant, the rented property is materially injured, he is liable to the landlord for the resulting damages. An implied contract binds the tenant to make good any loss that results from the want of reasonable care. However he is not liable for depreciation resulting from normal use of the property.

The 1962 edition of the Longhorn Recreation and Leadership Laboratory will be held Feb. 18-24 at the Glen Lake Camp, Glen Rose, Texas. Local county extension agents can supply details.

See me before you sell your cotton. Highest price C. N. Hoffman 9-20c

For sale — one 4 in. and one 5 in. pump carbine sprayers type, A C Motors, 500 gal. butane tanks Pete Hale at Hale Variety 9-27 Also a complete water well drilling rig.

BUY, SELL OR TRADE — GUNS AND PISTOLS WATCHES (CLEANED \$2.95 All Work Guaranteed ★ Hale Variety

BUY YOUR DAILY PAPERS AT INDEX OFFICE LUBBOCK AVALANCHE Morning and Sunday — \$14.95 Morning without Sunday \$13.00

The U. S. Department of Agriculture announced on Dec. 28th that there will be no restrictions for the second consecutive year on acreage of 1962 sugar beet acreage.

BE A VOTER THIS YEAR PAY YOUR POLL TAX BY JAN 31

THE O'DONNELL INDEX-PRESS RENEW YOUR SUBSCRIPTION

★ Wheat, Oats, Barley, Rye For Fall Planting Paymaster Feeds, Seeds and Poultry Supplies and Equipment Range Cubes In Truck Lots. Get Our Price Cattle, Hog and Poultry Supplements To Be Mixed With Home Grown Grains

O'DONNELL FARM & RANCH STORE

Paymaster FORMULA FEEDS L.G. CLARK, OWNER PHONE

PHONE 428-3442 in O'Donnell

JUST ARRIVED ---

★ A COMPLETE LINE OF SPRING JEWELRY

★ PRESCRIPTIONS ★

Lott Pharmacy

Hugh Lott, Registered Pharmacist



HIGGINBOTHAM FUNERAL HOME

"Dedicated To Helpfulness" Phone 4585 408 N. Austin St. Lamesa 24 Hour Ambulance Service Burial Insurance "Bonded Protection"

BOSS MUST ISSUE FORM W-2

BY JAN. 31

Employers. Internal Revenue Service has a reminder for you — Employees should receive two copies of a withholding statement Form W-2 on or before Wednesday, January 31, 1962.

John J. Sloan, Administrative officer of the Internal Revenue Service at Lubbock said "This statement shows the total wages paid and the income tax and social security tax withheld if any, during the calendar year 1961."

Total wages shown on an employee's W-2 must include amounts received as sick pay from his employer, even though no tax has been

withheld on such sick pay. Sick pay is not required to be shown separately. If it becomes necessary to correct a W-2 after it has been given to an employee, a revised statement must be issued and marked "corrected by employer."

Though Texas grain sorghum producers set an all time high of 45 bushels or 2,520 lbs an acre in 1961, they still have a long way to go to match the 9,383.9 lbs an acre produced by Bill Cole, a Deaf Smith County 4-H boy. His yield made with irrigation topped all participants in the 1961 Texas Hybrid Grain Sorghum Production Program. He planted RS 610.

CHANNEL 13, KDUB-TV SUNDAY

- 10:45 Sign on
- 10:50 Church service
- 12:00 Industry On Parade
- 12:15 Baseball Lead-off
- 12:25 Baseball Game
- 3:00 This is the Life
- 4:30 Lawrence Welk
- 5:00 Doug Edwards
- 5:30 20th Century
- 6:00 Lassie
- 6:30 Dennis the Menace
- 7:00 The Ed Sullivan Show
- 8:00 GE Theatre
- 9:00 (to be announced)
- 9:30 U. S. Marshall
- 10:00 What's My Line
- 10:30 Sunday Night News
- 10:45 Sunday Weather
- 10:50 Movie Time
- 12:30 Sign Off
- 7:45 Sign On
- 8:00 News
- 8:00 Richard Hottelet News
- 8:15 Captain Kangaroo
- 9:00 December Bride
- 9:30 Video Village
- 10:00 I Love Lucy
- 10:30 Clear Horizons
- 11:00 Love Of Life
- 11:30 Home Fair
- 12:00 CBS News
- (7:45-9:00 same as Monday)
- 5:20 Huckleberry
- 6:00 News
- 6:15 Doug Edwards
- 6:30 Whirlybirds
- 7:00 Playhouse of Stars
- 7:30 Johnny Ringo
- 8:00 Zane Grey Theatre
- 8:30 Markham
- 9:30 So This is Hollywood
- 10:00 News and Weather
- 10:30 Star Performance
- 11:00 Life Of Riley
- 11:30 Playhouse of Stars
- 12:00 Sign Off
- (7:45-9:00 same as Monday)
- 5:30 Bugs Bunny
- 6:00 News
- 6:15 Doug Edwards
- 6:30 Rawhide
- 7:30 Hotel de Paree
- 8:00 Video Village
- 8:30 December Bride
- 9:00 Tombstone Territory
- 10:00 News and Weather
- 10:30 Adventures in Paradise
- 11:30 Life Of Riley
- 12:00 Sign Off

SATURDAY

- 7:45 Sign Off
- 7:50 News
- 8:00 Captain Kangaroo
- 9:00 Heckle and Jeckle
- 9:30 Mighty Mouse
- 10:00 Lone Ranger
- 10:30 Saturday News
- 11:00 Sky King
- 12:05 News and Weather
- 12:20 Names in the News
- 12:30 As The World Turns
- 1:30 Houseparty

Double sink, 18x32 reg. \$19.95 on sale \$811.50. 6x24 sink reg. \$6.95 now on sale at \$4.88 at Singleton's Appliance



Ship and travel Santa Fe

... always on the move toward a better way.



MOR — A dozen velveteen top gold and white t. The gown has Magic Zip neck-back—a sewing how-to-apply de-ckage. Make if Pattern No. 4285.



'62 Galaxie by Ford

New Thunderbird Power! Thunderbird pow—and how—and how—Ford's own new 390-cubic-inch V-8 (optional at extra cost).

New Thunderbird Flair! Elegant Thunderbird-type roofline ... luxurious new interiors ... distinctive new colors!

Beautifully Built to be More Service-Free! Routine maintenance is cut to the minimum ... only twice a year on most items!

New Lower Galaxie Price for '62! With all the above advantages ... plus a quiet new ride that whispers "quality" ... the '62 Galaxie actually costs less than last year! Hundreds less than other cars with far less to offer. See the new Galaxie ... and the Galaxie/500 (shown here) ... at your Ford Dealer's today.

BUY NOW—AND BE A FULL YEAR AHEAD!



ELLIS CHEVROLET CO.

Box 124, O'Donnell, Texas

BLOCKER GROCERY

Your S. & H. GREEN STAMP store

SPECIALS For Friday and Saturday

Beef Roast lb 49c

choice chuck

Beef Steak lb 69c

choice clubs

Hams \$ 1.98

Fully cooked 3 lb cans boneless

CHILI 1 lb brick 29c

Vanilla Waffers 29c

1 Lb. CELLO BAG

Tomato Juice 29c

46 oz can "Del Monte"

TIDE 69c

Giant Size

COFFEE 1 Lb 59c

Blocker's Special Blend Ground Fresh While You wait

PEAS 2 for 25c

303 can Diamond

STRAWBERRIES 6 for \$1

10 oz. sliced, frozen

ORANGE JUICE . 2 for 35c

6 oz "Donald Duck" Frozen

TRADE WHERE MA SAVES MONEY FOR PA

Weekend Specials

SPECIALS FOR FRIDAY AND SATURDAY

OPEN ON SUNDAYS

Kounty Kist Bacon 2 lb 79c

- | | |
|--|---|
| Neuhoff Sausage 2 Lb Sack 69c | Vanilla Waffers 1 Lb bag 19c |
| BEEF ROAST Lb 59c | Strawberry and Blackberry |
| Uncle Williams Sourkraut | Jam, Best Ma'd 32c |
| no. 2 1-2 cans 2 for 38c | Apricot and Peach Preserves |
| Fritos Chili large can 59c | Best Maid 27c |
| Ranch Style Spaghetti 19c | Bartley Pears no. 2 1-2 can 3 for 89c |
| Green Onions bunch 5c | |

Jackson Grocery & Market

WE GIVE DOUBLE THRIFT STAMPS
FREE DELIVERY SERVICE ANYTIME
AT NORTH Y PHONE 428-3424

ANTI-FREEZE \$2.25 gal. put in

Introducing New Gates Tires. Life Time Guarantee against anything with no adjustment charge

Jackson Station

See me before you sell your cotton. Highest price C. N. Hoffman 9-20c

For sale — one 4 in. and one 5 in. pump turbine sprinkler type, 3 C Motors, 500 gal. butane tanks Pete Hale at Hale Variety 9-27
Also a complete water well drilling rig.

BUY YOUR DAILY PAPERS AT INDEX OFFICE —

LUBBOCK AVALANCHE Morning and Sunday — \$14.95
Morning without Sunday \$13.00

For sale — 1 clean divan (couch) makes a bed. Mrs. H. L. Wood 2tp

For sale — in southwest Lynn County, section of land with 100 acres in cultivation, County cotton allotment. Also three G. I. tracts, not in cultivation. Priced to sell. Clint Walker Agency, Tahoka Ph. 998-1244. — Feb. 1 6tc

REX THEATRE

O'DONNELL, TEXAS

Sun. - Mon.

Sun.: 1:30 p. m. Monday
7 p. m.

In the tradition of "2,000 Leagues Under The Sea" and "Around The World In 80 Days" now the fabulous

Jules Verne's MASTER OF THE WORLD with Vincent Price and in color

SPECIALS FOR FRIDAY AND SATURDAY



- 1 Lb Sunshine Crackers 2
- 5 Lb pure cane Sugar 4
- 3 Lb White Swan Shortening 3
- 1 1-2 lb Ellis Chili with beans 3
- 29 oz Bama Apple Butter 2
- 303 can Libby's Fruit Cocktail 2
- 303 can Libby's Garden Peas 2
- Armour Vienna Sausage 2
- Honey Boy Salmon 1
- Red Heart Dog Food per can 1
- Chuck Roast Lb 4
- Beef Ribs Lb 2
- RIB STEAK Lb 4
- Alvicoda medium 2 for 2
- Cello bag carrots 1
- cello bag celery 2

LINE GROCERY & MARKET

LINE UP WITH LINE

WE GIVE FRONTIER STAMPS

Wednesdays — Double Stamps

O'Donnell, Tex. Phone 428-3841

Money Savers

Coffee 39c

1 Lb. Vac. can Luzianne

Sugar 29c

5 Lb. With \$5 purchase

Breeze 28c

Large Box

Shortening 59c

3 Lb. can Flair

Vanilla waffers 25c

1 full Lb Box

Crackers 26c

1 Lb Supreme

Juice 19c

Frozen Orange, 6 oz Holsun

Mexican dinner 39c

Pat'o

Juice 15c

Tomato, Ashley's 29 oz. can

Pineapple 19c

Crushed in heavy syrup 303 Diamond

Fruit Cocktail 5 for \$1

Hunt's 303 can

Finest Quality MEATS

Liver 29c

Fresh pork

Sausage 2 lbs \$1.19

Neuhoff's Tennessee Farm
Whole hog 2 lb bag

Bacon lb 59c

Armour Star

Sirloin Steak 89c

Visit Our Record Rack

★ 50 Top Hit Records

Come By and Get your Free TV

Guide

\$\$\$\$\$\$\$\$\$\$\$\$\$
SILVER DOLLAR
THRIFT STAMPS



\$\$\$\$\$\$\$\$\$\$\$\$\$

★ ★ WE GIVE DOUBLE SILVER
DOLLAR THRIFT STAMPS ON
EVERY WEDNESDAY

MANSELL BROS

SPECIALS FOR FRIDAY And SATURDAY
Phone 428-3413 FREE DELIVERY

Phone 428-3413

TO THE
ABUTTI
BELOW
OF STRI
NUES, A
ALL OTH
The g
of O'Don
ordered
of streets
and along
City of C
ed by r
and inst
gutters a
and drai
streets. I
inafter d
found an
of impro
of said
ways a
respecti
covering
cribed, a
foot in
be asses
against
the own
of said
ways fo
perfront
ments e
is \$3.21
and is \$
3-61, is
carb, an
said pro
being as
Fast
line of E
ty line
designati
the esti
is \$7,902
Third
line of E
of Bald
nated a
the esti
is \$3,806
Third
line of
line of S
ignated
the esti
is \$4,311
Seven
line of
line of
nated as
estimate
\$3,534.11
Seven
line of
of Small
Sub-Uni
cost of I
Seven
line of S
of Stan
nated as
estimate
\$4,461.7
Seven
line of
line of
nated as
estimate
\$3,662.3
Tenth
line of
line of
nated as
estimate
\$4,742.8
Tenth
line of
line of
ignated
the esti
\$3,813.8
Hohn
line of
line of
nated as
estimate
\$6,043.1
Small
line of
line of
nated as
estimate
\$10,812
Baldi
ty line
line of
nated as
estimate
\$2,739
Small
line of
line of
as Sub
mated
\$6,078.1
Nass
line of
properi
design:
141, t
ments
Thir
line of
line of
nated
estimate
\$1,412
Baldi
ty line
line of
ignated
the es
is \$739
Eigh
line of
line of
nated
estima
\$3,499
Eigh
line of
line of
ignate
estima
\$4,668
Nim
line o
perly
design
61: th
ments
Stan
perly
perly
design
61: th
ments
US
P&SP
Ninth
Sub-U
cost of
Nint
P&SP
Alley,
design
4-61: t
ments
Doal
line of
line of
ignate
the es
the es
Doal
line of
line of
nated
the
contia