

INDEX--PRESS WANT ADS HAVE FARMER'S INTEREST COSTS BUT TWO CENTS A WORD

LYNN COUNTY FARM BUREAU
Office at Tahoka Co-op gin on Post Highway; P. O. Box 297
Phone No. 528
We Attend to Your Insurance Needs Gas Exemption Forms Filled Out for any Farmer FREE!
Office hours: 1 to 5 P. M. and Saturday Mornings

TRUCK BED MATERIAL ON HAND
We now have a good stock of material for truck and trailer beds and a large stock of hardware for same.
You will find a complete stock of all kinds of building material at reasonable prices.
Plenty of sheetrock, paint and paper and many other items.

Cicero Smith

LUMBER COMPANY
Don Edwards, Mgr.

GENERAL CONTRACTING MODERN HOMES
No job too small for a free estimate
BENNY MOORE
Box 498 O'Donnell Ph. 111

Prompt Attention GIVEN TO ALL Prescriptions
ARVIL CRAVEN, Registered Pharmacist
We solicit your Prescriptions
Corner Drug

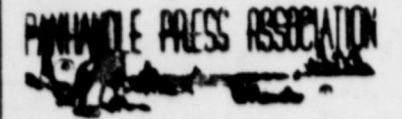
CALL OR COME BY
Moore Insurance
"For All Your Insurance Needs"
Phone 220

HIGGINBOTHAM FUNERAL HOME
"Dedicated to Helpfulness"
Phone 223 408 N. Austin St. Lamesa
24 Hour Ambulance Service
Burial INSURANCE "Bonded Protection"
L. T. Brewer, Local Representative

Vernon Cook
EXPERT RADIO REPAIRS

NEED A ...
ELECTRICIAN?
CALL
W. D. REESE
Ph. 223 O'Donnell

O'Donnell Index Press
Published Every Thursday by
O. G. SMITH, OWNER
Box B, O'Donnell, Texas
Entered as second-class matter
Sept. 25, 1923 at post office at O'Donnell, Texas, under the Act of



NATIONAL 45C
ADV. RATES: 40C LOCAL
Subscription Rates
In first zone (Dawson, Lynn, and Borden counties) \$1.50
Beyond first zone \$2.00

Higher Production Is Goal of U.S. Farmers

Again American farmers are being called on to turn out high yields of food, feeds and fibers. The production goals recently announced by the Department of Agriculture for 1952 anticipate a total production of 4 per cent higher than the record production of 1951 and 50 per cent more than the prewar average from 1935 to 1939.

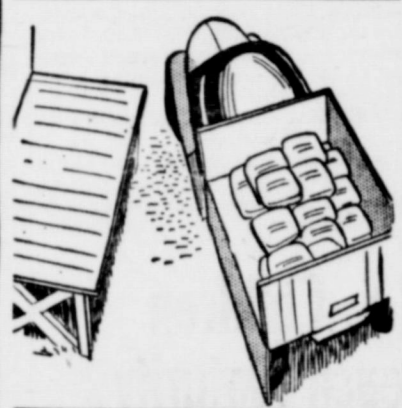
This production is being asked although farmers will have about 200,000 fewer farm workers available in 1952. During 1951, 400,000 workers left the farms. About 80 per cent went to work in other industries. Armed forces took the other 20 per cent.

Production at the goal level will require increased yields per acre in all major crops, and selective acreage expansion in those most needed to insure our economic stability in these pressing times.

The task for farmers is made more difficult because their need for fertilizers will be far greater than the supply. At the same time farm machinery production in 1952 will be considerably less than farmers desire.

The Department of Agriculture will do all it can to offset these shortages, but such scarcities are a warning signal to the American farmer.

Easier Loading



A farmer handy with tools can make a drop-side to his wagon or truck as illustrated above with a few pieces of scrap iron and a length of pipe. It will save considerable trouble loading and unloading, especially when the truck is pulled close to a loading platform.

Essentials for Ideal Farm Life Are Listed

An Oregon rural life committee, after a statewide survey, came up with the following nine essentials for the "ideal" farm home: (1) Adequate income, (2) time to enjoy life, (3) a family goal, (4) family love and understanding, (5) Religious education and spiritual values, (6) parental recognition of opportunity, (7) ability to build character in children, (8) evaluation of ideals, and (8) belief in family.

Dr. O. H. NANCE
Optometrist
528 N. 1st Lamesa; ph 554

FLOWERS
FOR ANY OCCASION
Come and see us or order from our local agent: **CORNER Drug THE HOUSE OF FLOWERS**
Mr. and Mrs. J. B. BILLMAN
Phone 330 - Tahoka

CHAS. CATHEY
LIFE INSURANCE
REPRESENTING THE
AMICABLE LIFE INS. CO.

Joe M. Lehman, M. D.
Medicine and Surgery
Hours 8 a m to 6 p m daily
Sunday: 9 a m to 11 a m
Office phone 134; Home 209

Ways to Control Farm Pond Fish Loss Outlined

Wild life specialists warn farm owners they should be on the lookout for possible death of fish in their ponds during spring and summer and outlined methods to control this loss.

Only a few ponds show a partial kill of fish each year, and in practically all cases the cause can not be determined. In some instances, however, the loss of fish has been directly connected with a deficiency of phosphorus, a high concentration of carbon dioxide, and a lack of oxygen, specialists report.

Should a pond owner see a number of bluegills and bass swimming close to the surface of the water, he should distribute 50 to 100 pounds of 18 per cent superphosphate per acre over the pond in the early morning, specialists suggest.

Then, between three and four o'clock in the afternoon he should stir the water thoroughly by use of an outboard motor attached to a boat. Several motors on boats should be used if available.

Stirring the water with motors helps to distribute oxygen in the upper water level throughout the pond.

TOM GARRARD
ATTORNEY
Tahoka, Texas
Practice All State and Federal Courts, Land Title a specialty

Real Estate
- FARMS - RANCHES - CITY PROPERTY
Leases and Royalties
J. B. M. Haymes

Gibson's
CLEANERS
CLEANING
PRESSING
Alterations

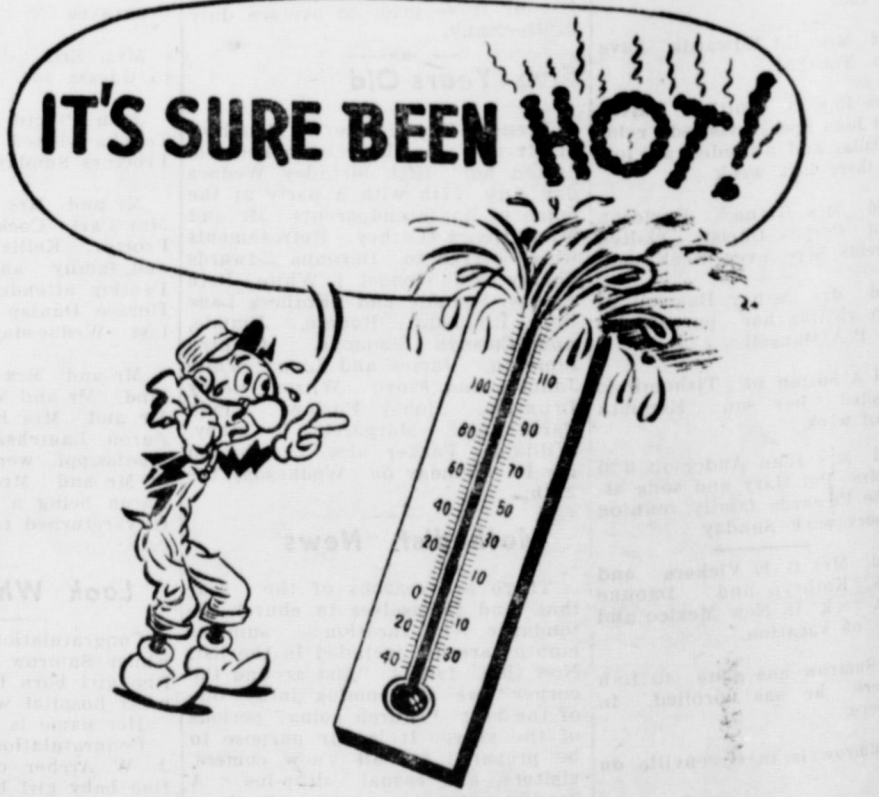
REAL ESTATE BARGAINS in irrigated district at Hereford, Texas: 820 and 640 acre tracts. Perfectly level land all in cultivation \$125 per acre, good terms. See J. G. Weir or J. G. Evans. Mailing address 109 N. Main St., Office phone 200. Res. Phones 802 and 1163, Hereford, Texas

BOGGAN TRACTOR CO.
FERGUSON TRACTORS and Ferguson System Implements
1015 North Lynn
Paul Boggan, Owner

Stanley - Jones
Funeral Home
And Burial Association
phone 233 Bx 185 Tahoka
Elvin R. Moore
Representing The
Southwestern Life
Insurance Co.

VAN'S
SOFT WATER
Laundry
WET WASH
RUFF DRY
FREE Pickup And Delivery

FILM MENU
LYNN REX
DRIVE IN
ADMISSION
Adults 50c Child 9c
Wed, Thursday, Sept. 3, 4th
Maureen O'Hara and Peter Lawford in
Kangaroo
Fri. and Sat. Sept. 5, 6th
Robert Preston in
TULSA
In Technicolor
Sun. Sept. 7th
John Calvert and Ann Cornell
Gold Fever
Show Starts 7:00 p.m.
Box Office Opens 6:45
Fri. nite - Sat. Mat.
Sept. 5, and 6th
Allan Rocky Lane in
Desert of Lost Men
Sat. nite Sept. 6th
Fred MacMurray and Ann Baxter in
Smoky
Sun. and Mon. Sept. 7th
and 8th
Spencer Tracy and Katharine Hepburn in
Pat and Mike
Tues. Sept. 9th
Gig Young in
Holiday for Sinners
Wed. and Thurs. Sept. 10 and 11th
Jean Peters and David Wayne in
Wait Till The Sun Shines, Nellie



"This summer, I have put in a great many extra hours of work for my customers every day.
"Air conditioners, attic fans, evaporative coolers, and portable fans have been going full blast around the clock—24 hours a day practically every day. High temperatures and lack of rainfall have combined to make it an exceptionally hot summer. Electric refrigerators have had to call on their reserve power to keep food fresh and wholesome at constant temperatures under 40 degrees and to maintain ready supplies of ice cubes and cooling beverages.
"Some electric bills may be higher during such extreme hot weather because of this extra work, but now—when you're able to stay cool and comfortable in spite of the heat—is when your electric service really proves to be the biggest bargain in your home."

Reddy Kilowatt

TEXAS ELECTRIC SERVICE COMPANY

Calvary Baptist Church
 Sunday school 10:00 a. m.
 Morning service at 11:00
 P. C. 7:00 p. m.
 Evening worship hour 7:30 p. m.
 Wednesday, prayer meeting 7 p. m.

Assembly of God
 R. T. Peck, pastor
 Sunday School 10 a. m.
 Morning worship 11:00 a. m.
 Evening worship 7:30 p. m.

FIRST BAPTIST CHURCH
 Preaching Service 11 a. m.
 Morning Union 7 p. m.
 Evening worship 7:30 p. m.
 Wednesday night
 Teachers meeting 7 p. m.
 Prayer Meeting 7:30 p. m.

CHURCH OF THE NAZARENE
 Sunday School at 9:45 a.
 Morning Worship 11:00 a. m.
 Young people service 7:15 p. m.
 Evening worship 7:30 p. m.
 For Water well drilling, windmill and well work see Bud Pugh 41

METHODIST NEWS

Rev. H. A. Longino, pastor
 Sunday school 10:00 a. m.
 Morning worship 11:00 a. m.
 Evening worship 7:30 p. m.
 W. S. C. S. Faith Circle Mondays at 9:30 a. m. and Martha Martha Circle Tuesday 9:30 a. m.

Sick Soils Can Be Nursed Back to Health

Sick soils can be nursed back to health by means of soil tests which tell the farmer what plant foods and management methods are needed to restore run down fields to high crop yields. In Missouri alone, 69 county soil clinics are diagnosing soil ailments and prescribing treatments. The laboratories are operated under sponsorship of the extension service of the College of Agriculture and the county agents.

For sale: A MirrorMatic small size 5 pint pressure cooker, very reasonable, see Index

FOR RENT 2 very nicely furnished apartments, summer rates, air conditioned. Smith Apts., see Index

Yoicks, Tallyho Are Threatened By Hi-Yi-Yippy

PHILADELPHIA — Philadelphia's suburban outposts in southeastern Pennsylvania are praying for rain to break the drought which is now in its third year deep in the south of Texas.
 Called the worst dry spell in the 99-year history of the fabulous King Ranch, it will next autumn deprive hounds and pink-coated riders of fields they are accustomed to roam in the historic Brandywine county. "Hi Yi Yippy" will, in effect, banish "Yoicks" and "Tallyho" from parts of a traditional fox-hunting realm in southern Chester county, Pa.

Fatten Near Market
 For six summers, King Ranch steers approaching market age have been shipped by rail from south Texas rangeland to meadows 30 miles southwest of Philadelphia beside Buck and Doe Run, a tributary of Brandywine Creek.
 There, burying their noses in grass, they have gained as much as 300 pounds per calf in 150 days, May to October. Then, shipped to market, they leave the autumn meadows to the huntsman.

The three-year drought, however, has caused King Ranch cattle population to dwindle from 85,000 to less than 60,000. The Buck and Doe Run farms have this spring received their first shipment of calves less than a year old—a full year younger than usual. They will be grazed for more than a year instead of for five months, putting a large part of 10,000 fox-hunting acres on a year-around cattle grazing basis.

Uninitiated travelers rolling through the countryside near Unionville, Pa., do a "double take" on seeing green pastures where cherry-red beef steers are herded by Texas-style cowboys complete with lariats, chaps, fancy boots, and spurs.
 Actually, "Hi Yi Yippy" is not part of the lingo of these eastern cowpokes any more than it is on the 900,000-acre King Ranch itself. The Buck and Doe Run hands are mostly eastern Pennsylvania farm natives newly trained to ranch work, riding Texas quarter horses and wearing western ranch clothes because they are practical for the purpose. Spanish-speaking vaqueros drive the herds in south Texas, but do not take kindly to transplanting.

Hardy Breed
 Buck and Doe Run Farms at present handle about 5,000 cattle. Texas rangeland outside the drought area has been leased for current King Ranch emergency use. Farms on Long Island, in Illinois, Oklahoma, and elsewhere near major-stockyard cities, have for years been fattening skinny steers close to the market for King and other cattle-raisers.
 Nine-tenths of the King Ranch producing Shorthorns and fever-resistant cattle are of the handsome red Santa Gertrudis breed, developed by that ranch since 1923.

County Has Trouble Paying the Preacher

ATLANTA, Ga.—Fulton county, like a lot of country folk, has a little trouble paying the preacher.
 The preacher is the Rev. Bill Allison, who ministers to the spiritual needs of convicts, open meetings of county administrators with prayer, and is largely responsible for the reform of many Georgia badmen.
 Fulton County couldn't get along without its dynamic chaplain—but, just now, dwindled county departments are practically passing the hat to make up his \$375 monthly paycheck.

Before a plan of improvement lopped Fulton County's five prison work camps to two, the Fulton department of public Works paid Mr. Allison.
 Now that the chaplain's incarcerated flock has shrunk from 700 to the 400 men at Bellwood and Ben Hill work camps, with a corresponding decrease in the budget of the Fulton county public works department, that department assumes only 40 per cent of the minister's salary.

Fulton County Manager A. E. Fuller, like any good deacon or elder in a country church concerned about the parson, has been "stirring up the congregation to get together the preacher's money."
 At recent meetings of various county departments, Mr. Fuller's letters were spread on the minutes. The letters tactfully suggested that the remaining 60 per cent of Mr. Allison's salary be juggled by four other departments.
 The Fulton jail was asked to pay 35 per cent; the alms house, 10 per cent; the welfare department, 10 per cent, and the county dairy, 5 per cent.

Keokuk Motorists Are Honest Moneychangers

KEOKUK, Iowa—When parking meters were recently installed a bank filled a fish bowl with nickels and pennies and placed it on a convenient counter, inviting motorist customers to help themselves in making change. At the end of the week a check on the money showed not a penny missing.

Mrs. H. L. Wood

Makes Belts, Buckles, Buttons, Buttonholes and Draperys. See me on South 12th St.

Helicopter 'Buses' Are Predicted for Australia

The possibility of helicopters, carrying eight to twenty passengers, replacing buses on outlying routes in Melbourne and Sydney, was referred to recently, by Ian Holyman, son of the managing director of Australian National Airways who has recently returned from an extensive world tour.
 Holyman, who was trained under A.N.A.'s cadetship scheme, studied airline operation in Malaya, Siam, Indo-China, most of the countries of Europe, Britain and the United States.
 Cadet executives join A.N.A. at 18 and after a six-year course they spend a year learning procedure in various departments of the company and conclude their training with a tour of overseas airlines.

Community Holds Dance To Raise Marriage Rate

BUCKSPORT, Me.—Bucksport's "Bachelor Ball" was a success, but how many couples it will speed to the altar nobody could tell yet.
 More than 200 bachelors, bachelor girls, and married couples, too, attended the ball recently in the high-school gymnasium, decorated with hearts and arrows and cut-out cupid.
 The civic groups that sponsored the affair had announced its purpose was to help young men and women get together to help push up the marriage rate.



Yours . . . To Hold

The furnishings in your home represent a lot of money, time and hard work. Money that you paid for these treasures. Hard work to earn that money. And time to save it.

If disaster strikes, will you be forced to start all over. Not if you have adequate Household Contents Insurance! Ask us about this BIG low cost protection . . .

CLAYTON INSURANCE AGENCY
 — LOANS —
 PHONE 148

Specialists Predict Egg Prices to Remain High

Poultry specialists predict egg prices will remain high during the winter of 1952 and outline a few pointers for increased production.
 They urged use of an all-pullet flock. Pullets lay more eggs than old hens and a good pullet flock coming into production this fall will give you the advantage of usual good fall egg prices.

WANT ADS

For sale: 2 room house, garage, 403 Standifer St., consider small down payment or trade for Lamesa property. J W Blackstock, Phone 909 - J Lamesa xc

SEE Index for all rubber stamps

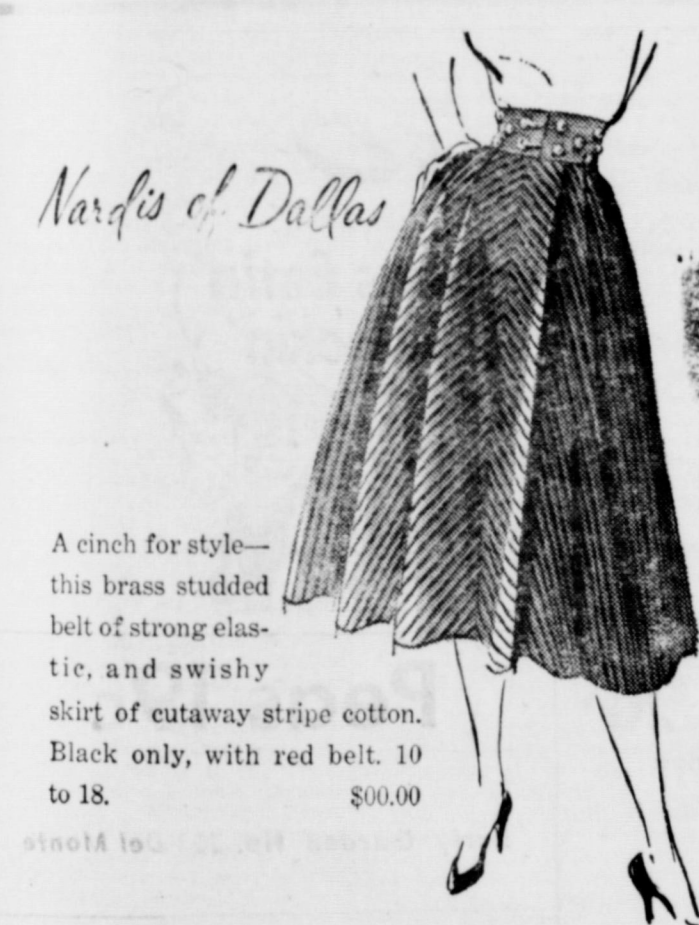
Your Paper Expired ??

EVERYTHING FOR THE FARM, RANCH or HOME

We invite you to use our Catalogue service
 "One Of The Most Complete Appliance Stores in West Texas"



HAL SINGLETON, 3rd



Nardis of Dallas

A cinch for style—this brass studded belt of strong elastic, and swishy skirt of cutaway stripe cotton. Black only, with red belt. 10 to 18. \$00.00

Thompson's Toggery

Always . . .
 A Complete Stock of
AUTO parts
 WE ALWAYS APPRECIATE YOUR TRADE
O'Donnell Auto Supply
 BOYD SMITH, OWNER

DON'T BE A LAST-MINUTE FIXER!



Delays in the field are costly! Think of the time, toil, and tempers you'll save by giving your John Deere Equipment a thorough going over now.
 If parts are worn beyond dependable service, be sure they're replaced with genuine John Deere Parts; they fit right, last longer.
 If complete service is necessary, our skilled mechanics, trained in factory-approved servicing methods, will do only the work that is necessary . . . do it quickly, efficiently, and at the lowest possible cost to you.
 Take advantage of the complete John Deere service we offer you. See us the next time you're in town.

Have you checked your . . .
Cotton Harvester
 Now is a good time to check it and be sure it's ready
 A Complete Line of John Deere Cotton Harvesters.
 See this money saver today.

Remember ONLY GENUINE JOHN DEERE PARTS FIT AND WEAR LIKE THE ORIGINALS

Kidwell-Rogers
 John Deere Sales & Service, O'Donnell
 Turner Rogers W. T. Kidwell

BLOCKER GROCERY

"Trade Goes Where Invited, Stays Where Treated Best"
SPECIALS For Friday and Saturday

Tomatoes 3 for 42c
 No. 2 can "Diamond"

Peas 2 for 29c
 Blackeye, No. 2 can, "Kimbell, Fresh"

Tissue 4 for 35c
 Charmin

Peaches 27c
 No. 2 1/2 can, Del Monte, Sliced or Halves

grapefruit juice 19c
 46 oz. can "Kimbell's"

Milk 4 for 25c
 Small can "Carnation" or "Pet"

Sugar 45c
 5 lb Bag pure cane

beef roast 69c
 choice cuts chuck lb

Fresh dressed battery
FRYERS

beef ribs 41c
 PLATE

Hams lb 44c
 Picnic, whole or half

TRADE WHERE MA SAVES MONEY FOR PA
 We Reserve The Right to Limit. Nothing Sold to Merchants to be re-sold

TO THE PEOPLE OF
 LYNN COUNTY

I deeply appreciate the consideration you gave me in my race for Sheriff, and I want to thank each of those who worked for me or who even gave my candidacy the slightest consideration. Though I was not elected, I hold no grudges and wish Mr. Redwine every success in the office. In spite of the expense, I feel the race was of profit to me in that I made many new friends and renewed old acquaintances... which friends will ever be treasured. Again, I thank each of you.

B. M. (Ben) JAMES



Here is the answer for a walk through gate for a barbed wire fence. Three extra posts, a few boards and two hours of your time are the essentials. The 2x4 nailed across the top takes the place of two braces. Located at convenient points on your farm this type of gate will save time and prevent that business of getting down on the ground and rolling under barbed wire.

We have ready for delivery the HM-20 International Cotton Stripper. The Supply is limited again this year.

We have ready for delivery a new Super "M" on Gasoline and a new Super "M" on gas with equipment.

See the Electric Wheel Trailer; the best wagon for the price on today's market.

COTTON SPRAYS AND DUSTS

We have 6 lb Toxephine, also 2-1, and 25 per cent D.D.T. See us for your Dust: we have a large Supply: in stock now 3-5-40, 2-10-40, and 10-40. Check our prices on Cotton Poison before you buy. See us for Airplane Dusting Service labor for this Service is only 4c a lb

Ready for Delivery: used 4 row cultivator Listers, and planters; also several 4 row Tractors.

New listers, planters, and cultivators.

Again this year we have the . . .

JOHNSON DUSTER only \$295

Also the Speedy Front or Rear Tractor Mount Sprayer; also the Comfort Sprayer. See the Aven Tow Type Sprayer. We have a good price on this.

If you need a refrigerator . . . we have new and used ones C H E A P

O'Donnell Implement Co

For rent: 4 room house, new linoleum on bath and kitchen. M E Herman or get key from Mrs. Clyde Edwards in O'Donnell St

Good alfalfa hay W E Tredway

Mrs. Ben Moore is in a Lamesa hospital.

G. T. Reed is in a Lamesa hospital.

Mr and Mrs. Charles Pickens of Ft Bliss at El Paso spent week end with their parents Sunday. The group visited in Brownfield and Lubbock.

Mr and Mrs Rex Portward of Lubbock visited Mr and Mrs Charles Pickens Monday

Homemakers are reminded that some 400 varieties of cheese are available in the United States. Cheese is a nutritious, vitamin and mineral rich food product.

Stay out of deep water, if you can't swim and know the swimming pool. Drownings in the state are now taking almost as many lives as traffic accidents.

Church People Defend Custodian, Former Red

McALESTER, Okla.—Church people here have taken up the cudgels on behalf of a church custodian—a former Communist—and his wife who have been ordered deported to their native Belgium by immigration authorities.

The couple, Mr. and Mrs. Paul Roelants, came to the United States in 1948 to live with their daughter, Mrs. Harry Lay, the Belgian war bride of a McAlester postal clerk. Roelants, 54, is custodian of the Grand Avenue Methodist church here.

Roelants admits he was a member of the Communist party for a short time after World War II but said he renounced his membership when he realized what the party stood for. He said his declaration to immigration officials that he belonged to no political party at the time of his arrival in the U.S. was true, since he had quit the Communist party more than a year previously.

Members of the Grand Avenue Methodist church and of the Church of Christ, where the Roelants are members, have joined in sending a stream of letters to congressmen and other officials in Washington, asking that the deportation order be revoked.

Specials For Friday and Saturday

- 10 lbs No. 1 Red Spuds 69c
- 10 oz. Can Fresh Frozen Strawberries 29c
- Large Golden Yellow Bananas lb 15c
- Soffex Tissue 1,000 sheet 10c
- Gerbers Baby Food 3 for 25c
- 3 lb Carton Pure Lard 54c
- 2 lb Ginger Snaps 49c
- 11 oz. pkg. Sunbeam Vanilla Wafer 19c
- 25 lb Our Baker Flour with premium \$1.98
- 13 1/2 oz. White Swan Tomato juice 10c
- Powdered Sugar 2 for 25c
- Longhorn Cheese lb 50c
- Cooked Salima lb 43c

Line Cash Grocery And Market

Plenty of parking behind the store; come in and shop with us WE DELIVER PHONE 118

ANNOUNCING . . .

The Purchase Of
BOYDSTUN'S VARIETY STORE

BY

Mr. and Mrs. J. P. Hale

Formerly of Spur

We are anxious to meet you of the Community and assure you that your continued patronage will be appreciated.

Come To See Us.



Grapefruit Juice 19c
46 oz can....

Peaches 4 for 96c
 No. 2 1/2 can Great Value

FAB 27c
 Large Size

Gum 3 for 10c

Crackers 19c
 1 lb Sunshine

Tea 31c
 1-4th lb Lipton's

OLEO 21c
 Azelo per lb

Peas 19c
 Early Garden No. 303 Del Monte

Ice Cream 13c
 Pint size

Bacon lb 53c
 BANNER per lb

Beef ribs lb 52c

Beef liver lb 59c

MANSELL BROS

PHONE 50 SPECIALS FOR FRIDAY AND SATURDAY FREE DELIVERY

PHONE 50