

INDEX-PRESS WANT ADS HAVE FARMER'S INTEREST
COSTS BUT TWO CENTS A WORD

CALL OR COME BY
Moore Insurance
"For All Your Insurance Needs"
Phone 220

Vernon Cook
EXPERT RADIO REPAIRS

Prompt Attention
IS GIVEN TO ALL
Prescriptions
Always A Line of Elizabeth Arden Products
Lott Pharmacy
Hugh Lott, Registered Pharmacist

FIRST BAPTIST CHURCH
Preaching Service 11 a. m.
Training Union 7 p. m.
Evening worship 7:30 p. m.
Wednesday night
Teachers meeting 7 p. m.
Prayer Meeting 7:30 p. m.

Church of Christ
Bible Study 10 a. m.
Preaching 11 a. m.
Communion 11:50 a. m.
Ladies Bible Study
Tuesday 3 p. m.
Mid week worship
Wednesday 7 p. m.

FLOWERS
FOR ANY OCCASION
Come and see us or order from
our local agent: CORNER Drug
THE HOUSE OF FLOWERS
Mr. and Mrs. J. B. BILLMAN
Phone 330 - Tahoka

VAN'S
SOFT WATER
Laundry
WET WASH
RUFF DRY
FREE Pickup And
Delivery

Joe M. Lehman, M. D.
Medicine and Surgery
Hours 8 a. m. to 6 p. m. daily
Sunday: 9 a. m. to 11 a. m.
Office phone 134; Home
209
Elvin R. Moore
Representing The
Southwestern Life
Insurance Co.

NOISY CELEBRATION
**Harmonica's
Home Town Is
500 Years Old**

TROSSINGEN, Germany — The harmonica, usually associated with the ear-assaulting first musical attempts of children was an honored instrument recently as this south German town celebrated its 500th anniversary.
The honor comes naturally, because Trossingen, in the French-zone province of Wurttemberg-Hohenzollern, owes much to the harmonica. One of the world's largest and best known makers of mouth organs is located there, and the factory provides much of the town's employment.
The harmonica, or, more correctly the mouth harmonica, is much younger than Trossingen itself. It was invented by Friedrich Buschmann in Berlin in 1821 and employs an originally oriental system of producing music by passing air over "free" reeds—vibrating metal reeds that fit exactly the wind aperture.

Some 14 Feet Long
There were oriental mouth organs long before Buschmann produced his "Mundharmonika." The Chinese and Japanese models were made with a gourd, or a gourd-shaped piece of carved wood, as an air reservoir. 13 or more slender canes were inserted into this windchest, each cane producing a note form a different free reed. Some Chinese mouth organs use bamboo pipes, or canes, 14 feet long.

Grand View Baptist Church
(11 miles West of O'Donnell)
Rev. Neil R. Baird, pastor
Sunday School 10 a. m.
Morning worship 11 a. m.
Mexican Mission Service 3 p. m.
BTU 7 p. m.
Evening Service 8 p. m.
Prayer Meeting Wed. 7 p. m.
Mrs. H. L. Wood
Makes Belts, Buckles, Buttons,
Buttonholes and Drapery. See me

**Nutrition Expert Sees
No More 'Three Meals'**

AUBURN, Ala.—The usual American custom of three meals a day is not necessarily the best eating schedule.
Mary Hulsey, API extension nutritionist, explains that some people, often the elderly, feel better if they eat more frequently, but less at a time. They may prefer to divide their daily fare into four or five meals instead of three. Or some food may be saved out for snacks between meals or at bedtime.
"However," warns Miss Hulsey, "older people who eat frequently need to guard against two hazards. First, don't spoil the appetite for milk, fruit, vegetables, and other needed food by filling up on toast and tea or cake and coffee. Second, don't overeat and become overweight."
The specialist adds that growing children, active workers, and underweights also may benefit by between-meal snacks. Non-appetite spoliators that give children nourishment for active play are a glass of milk, a sandwich, fruit, or a hard-cooked egg.

For sale: 6,000 Higar bundles good grain. Ike Barnes, Wells Community 21c

Lost: 8 mo. old English Shepherd ring neck, tan colored dog, reward, Matt Farmer.

REX

Show Starts 7:00 p. m.
Box Office Opens 6:45

Fri. Nite - Sat. Mat.
Jan. 16, and 17th
Richard Conte and
Vivica Lindfors in
RAIDERS
In Technicolor

Sat. Nite Jan. 17
Janet Leigh and Keenan
Wynn in

Fearless Fagan

Sun. Mon. and Tues. Jan.
18, 19, 20
John Payne and Arlene
Dahl in

Caribbean
In Technicolor

Wed. and Thurs. Jan. 21
and 22nd
Judy Canova in

**The WAC From
Walla Walla**

O'Donnell Index Press
Published Every Thursday by

O. G. SMITH, OWNER
Entered as second-class matter
Sept. 28, 1923 at post office at O'
Donnell, Texas, under the Act of
NATIONAL 45C
ADV. RATES: 40C LOCAL

PANHANDLE PRESS ASSOCIATION

Subscription Rates
In first zone (Dawson, Lynn, and
Jordan counties) \$1.00
In other first zone \$2.00

Calvary Baptist Church
Sunday school 10:00 a. m.
Morning service at 11:00
B. T. C. 7:00 p. m.
Evening worship hour 7:30 p. m.
Wednesday, prayer meeting 7 p. m.

TOM GARRARD
ATTORNEY
Tahoka, Texas
Practice All State and Federal
Courts; Land Titles a Speciality

Gibson's
CLEANERS

CLEANING
PRESSING

Alterations

Dr. O. H. NANCE
Optometrist
528 N. 1st Lamesa; ph 554
Stanley - Jones
Funeral Home
And Burial Association
phone 233 Bx 185 Tahoka

LYNN COUNTY FARM BUREAU
Office at Tahoka Co-op gin on Post Highway; P. O. Box 297
Phone No. 528
We Attend to Your Insurance Needs
Gas Exemption Forms Filled Out for any
Farmer FREE!
Office hours: 1 to 5 P. M. and Saturday Mornings

HIGGINBOTHAM FUNERAL HOME
"Dedicated to Helpfulness"
Phone 223 408 N. Austin St. Lamesa
24 Hour Ambulance Service
Burial INSURANCE "Boned Protection"
L. T. Brewer, Local Representative

We Are Your Best Bet For ...
VETERINARY SUPPLIES
A full and complete line of Dr. LeGear's and Dr. Salsbury's Medicines; also Veterinary Vaccines And Supplies
ARVIL CRAVEN, Registered Pharmacist
We solicit your Prescriptions
Corner Drug

Now—see the cars that all the excitement's about!
**CHEVROLET'S 3 GREAT NEW
SERIES FOR 1953**

Wonderfully different!
THE BEL AIR SERIES
to be compared only with higher-priced cars!
The glamorous Bel Air Series for 1953 is truly a new kind of Chevrolet. Four new Bel Air models—4-Door Sedan, 2-Door Sedan, Convertible, Sport Coupe—create a wonderful new class of cars.



An entirely new kind of Chevrolet in an entirely new field all its own

Startlingly NEW!
THE "TWO-TEN" SERIES
sensational advances from bumper to bumper!
The "Two-Ten" Series offers: two new station wagons—the Townsman and "Two-Ten" Handyman—the 4-Door, 2-Door, Convertible, Club Coupe and Sport Coupe.



Amazingly economical!
THE "ONE-FIFTY" SERIES
lowest priced of all quality cars!
Smart new Chevrolet styling and advanced features! Five models include the 4-Door and 2-Door Sedans, Club Coupe, Business Coupe, "One-Fifty" Handyman.



(Continuation of standard equipment and trim illustrated is dependent on availability of material.)



MORE PEOPLE BUY CHEVROLETS
THAN ANY OTHER CAR!

The great new Chevrolet line for 1953 brings you a car for any purpose. Choose high-compression power with the new 115-h.p. "Blue-Flame" engine teamed with new Powerglide* for the finest automatic driving. Or choose the high-compression 108-h.p. "Thrifty" King" engine for finest standard driving. Choose the improved standard steering, or new Power Steering, optional at extra cost.
Come in and see the most wonderful selection in the low-price field—and it's yours at lowest cost!

*Combination of Powerglide automatic transmission and 115-h.p. "Blue-Flame" engine optional on "Two-Ten" and Bel Air models at extra cost.

Entirely NEW through and through!

Ellis Chevrolet Co.
Chevrolet Sales and Service: O'Donnell, Texas

Del
Is
DE
neig
speci
south
Delti
lion
is tri
De
enter
in thi
tle ri
Ab
trave
yon
row
strali
famo
Thi
rose
tain
plet
rocks
water
pahr
water
Be
ist st
road
silver
meta
lion
Thi
rang
not
towe
come
after
Nor
more
now
ducin
Dur
town
Park
dians
sheer
Ok
Cro
CHI
battle
are c
P.M.
on th
clover
States
The
small
a pou
lars a
plant
on th
will b
of sw
One
to ge
this y
got in
falfa
and
with
consi
doubt
subsid
A
R. T.
Sund
worn
Even
ME
R
Sun
Mor
Eye
W. S.
at 9:1
Circle
S.
Inc
Striki
often
far r
Rich
Car,
Aru
pro
quate
make
IN

Delta, Colo., Scenery Is Tourist Paradise

DELTA, Col.—This and several neighboring towns sell scenery of spectacular proportions. The road south from Grand Junction through Delta, Montrose and over the "million dollar highway" to Durango is traveled daily by many tourists.

Despite the new boom in tourist entertainment, the main industries in this community are mining, cattle raising, and fruit growing.

About 20 miles out of Montrose traveling south is the Black Canyon of the Gunnison river, a narrow gorge which rises almost straight up from the banks of this famous trout fishing stream.

Thirty-six miles south of Montrose you come to the little mountain town of Ouray, almost completely hemmed in by towering rocks. Box Canyon at Ouray, headwaters for the rushing Uncompahgre River, houses a roaring waterfall.

Beginning at Ouray, the motorist starts south over a spectacular road built of ore containing gold, silver, copper and other precious metals. That's where it gets its million dollar name.

This road crossing the San Juan range, provides scenic splendors not matched in the west. One towering peak after the other comes to view and there are more after you leave Silverton.

None of the mining towns is more picturesque than Silverton, now a center of uranium producing.

Durango is a sort of headquarters town for the Mesa Verde National Park where a long lost race of Indians built their dwellings in the sheer canyon walls.

Oklahoma Farmers Are Crowding PMA Office

CHICKASHA, Okla.—The embattled farmers of Grady county are crowding the counters at the P.M.A. office these days to get in on the alfalfa, vetch and sweet clover subsidy which the United States is paying this year.

The subsidy this year will be the smallest ever paid. Only 20 cents a pound on 3,000 pounds, or 60 dollars a farm will be paid for alfalfa planting and only ten cents a pound on three thousand pounds of vetch will be paid for the same amount of sweet clover.

One farmer said he sure wanted to get in on the alfalfa planting this year for he was afraid if Ike got in they wouldn't give away alfalfa money next year. The vetch and sweet clover subsidy meets with general farm approval but a considerable number of farmers doubt the wisdom of the alfalfa subsidy.

Assembly of God

ft. T. Peek, pastor
 Sunday School 10 a. m.
 Morning worship 11:00 a. m.
 Evening worship 7:30 p. m.

METHODIST NEWS

Rev. H. A. Longino, pastor
 Sunday school 10:00 a. m.
 Morning worship 11:00 a. m.
 Evening worship 7:30 p. m.
 W. S. C. S. Faith Circle Mondays at 9:30 a. m. and Martha Mar. ha Circle Tuesday 9:30 a. m.

Real Estate

— FARMS — RANCHES —
 CITY PROPERTY
 Leases and Royalties

B. M. Haymes

S. M. CLAYTON, JR.
 Income Tax Service



Striking It Rich . . .

doesn't happen too often. But many of us are far richer than we think Rich in possessions. . . Car, home, furniture, etc. Are you guarding your property dollars with adequate insurance? Better make sure NOW.

CLAYTON

INSURANCE AGENCY

— LOANS —
 PHONE 148



The **MAN-SIZED** car that **WOMEN** love to drive

- No wonder! . . . it's a perfect sanctuary of steel. Big. Sturdy. Safe.
- No wonder! . . . it gives you the feeling all Chrysler owners feel: that of complete car control!
- No wonder! . . . its famous Spitfire engine will pull you out of any "tight spot" in a hurry!
- . . . its new-type shock absorbers swallow up the worst road bumps. Wouldn't waken a baby!
- . . . it gives you the option of Full-time Power Steering that turns and parks your car with the merest touch. Eliminating all "wheel fight"!
- No wonder! . . . it's so beautifully styled. A delight to look at, parked at your front door!
- Give your wife the fun of driving this new Chrysler. Don't deprive her any longer. Or yourself, either!

The beautiful **CHRYSLER WINDSOR**—one of America's first family of fine cars!

O'Donnell Motor Co.

CHRYSLER AND PLYMOUTH SALES and Sales And Service

hallicrafters

Best Engineered Set In America. See It; Also

Philco T. V.

"One Of The Most Complete Appliance Stores In West Texas"



HAL SINGLETON, 3rd

CHURCH OF THE NAZARENE

Rev. L. M. Seay, pastor
 Sunday School 10 a. m.
 E. C. Pace, Supt.
 Morning Worship 11 a. m.
 N. Y. P. S. Service 7 p. m.
 Evangelistic Service 7:45 p. m.
 Mid Week Prayer Meeting
 Wednesday 8 p. m.

For rent: 320 or 480 acres of choice land near Seagraves with sale of equipment at present prices. For details phone 195 W, Box 1044 Seagraves 2tp

SUBSCRIBED TO YOUR FAVORITE DAILY PAPER AT INDEX OFFICE For BARGAIN RATES FT WORTH STAR TELEGRAM

Daily and Sunday \$13.95 (You Save \$4.05)
 Daily Except Sunday (6 days) \$12.60 (save \$2.40)

LUBBOCK MORNING AVALANCHE

Daily and Sunday \$12.95
 Daily Withott Sunday \$ 11.00

ABILENE REPORTER - NEWS

Daily and Sunday \$10.95 ; Daily only \$9.95

Charter No. 12831 Reserve District No. 11

REPORT OF CONDITION OF THE FIRST NATIONAL BANK OF O'DONNELL

IN THE STATE OF TEXAS AT THE CLOSE OF BUSINESS ON DECEMBER 31, 1952. PUBLISHED IN RESPONSE TO CALL MADE BY COMPTROLLER OF THE CURRENCY, UNDER SECTION 5211, U. S. REVISED STATUTES.

ASSETS

1. Cash, balance with other banks, including reserve balance, and cash items in process of collection	\$ 799,859.34
2. United States Government obligations, direct and guaranteed	900,000.00
3. Obligations of States and political subdivisions	34,144.00
5. Corporate stocks (including \$3,600.00 stock of Federal Reserve Bank)	3,600.00
6. Loans and discounts (including \$ none overdrafts)	467,625.78
7. Bank premises owned \$22,499.00, furniture and fixtures \$10,827.90	33,326.90
12. TOTAL ASSETS	\$ 2,238,556.02

LIABILITIES

13. Demand deposits of individuals, partnerships, and corporations	\$1,989,104.46
14. Time deposits of individuals, partnerships and corporations	85,000.00
15. Deposits of United States Government (including postal savings)	1,998.48
16. Deposits of States and political subdivisions	20,397.29
18. Other deposits (certified and cashier's checks, etc.)	19,955.79
19. TOTAL DEPOSITS	\$2,116,456.02
24. TOTAL LIABILITIES	\$2,116,456.02

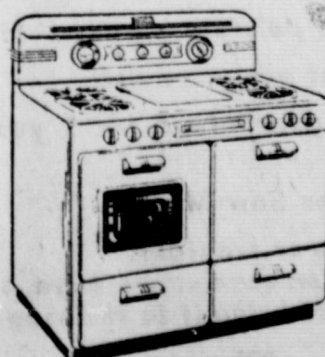
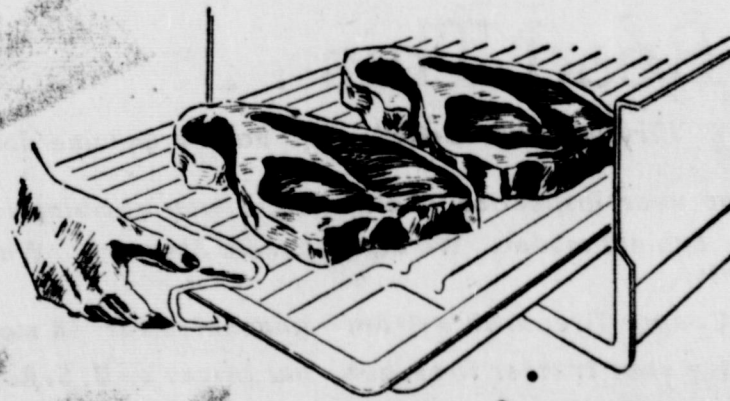
CAPITAL ACCOUNTS

25. Capital Stock: (c.) Common stock total par \$50,000	\$50,000.00
26. Surplus	70,000.00
27. Undivided profits	2,100.00
29. TOTAL CAPITAL ACCOUNTS	125,100.00
30. TOTAL LIABILITIES and CAPITAL ACCOUNTS	\$2,238,556.02

STATE OF TEXAS, COUNTY OF LYNN, ss: I. W. G. Waldrip, cashier of the above named bank, do solemnly swear that the above statement is true to the best of my knowledge and belief. W. G. Waldrip, Cashier. (SEAL) Sworn to and subscribed before me this 6th day of January, 1953. L. T. Brewer, Notary Public

Correct-Attest: J. L. Shoemaker, Jr., Chas. Cathey, J. M. Noble, Jr. Directors.

Only Gas Gives You Flame-Kissed Flavor . . .
Smokeless Broiling



Only a clean, blue gas flame can sear a steak to give it that "just-right" flavor. And when you broil in a modern gas range . . . your kitchen remains smokeless. The gas flame consumes smoke and food vapors. See the modern automatic gas ranges at your dealer's. Buy an automatic gas range and enjoy finer cooking.

West Texas Gas Company

HELPING BUILD WEST TEXAS SINCE 1927

BLOCKER GROCERY

"Trade Goes Where Invited, Stays Where Treated Best"

SPECIALS For Friday and Saturday

- Joy 25c**
Liquid Suds, large Bottle
- VEL 2 for 35c**
Beauty Bar
- Pineapple Juice 2 for 25c**
No. 2 can "Del Monte"
- COFFEE 79c**
Folgers, 1 lb can reg. or drip
- Catsup 2 for 35c**
"Del Monte" 14 oz. bottle
- Beans 3 for 25c**
"Diamond" Pinto No. 300 can

- CHILI 59c**
No. 2 can "Wolf"
- Hams lb 39c**
Picnic, whole or half
- beef roast 59c**
choice cuts ' lb
- Sausage lb 49c**
Pure pork, Home Made
- sliced bacon 49c**
lb Crisprite

TRADE WHERE MA SAVES MONEY FOR PA
We Reserve The Right to Limit. Nothing Sold to Merchants to be re-sold

Specials For Friday and Saturday

- Good Firm Cabbage lb 6c
- Golden Yellow Bananas lb 13c
- Good Fresh Egg Plant lb 12c
- 1 lb White Swan Coffee None Better 79c
- Del Monte Tomato Sauce 3 cans for only 25c
- Jello any flavor 2 for 15c
- 2 lb Red Plum Jam 49c
- 3 lb Carton Armour Pure Lard 49c
- 2 lbs Ginger Snaps 49c
- No. 2 1/2 can Libbys Fruit Cocktail 39c
- 1 lb Armour Crescent Sliced Bacon lb 39c
- 1 lb All Meat Franks 49c

Line Cash Grocery And Market

Plenty of parking behind the store; come in and shop with us WE DELIVER PHONE 118

CHURCH OF THE NAZARENE

Rev. L. M. Seay, pastor
Sunday School 10 a m
E. C. Pace, Supt.
Morning Worship 11 a m
N. Y. P. S. Service 7 p. m.
Evangelistic Service 7:45 p m.
Mid Week Prayer Meeting
Wednesday 8 p m

The law requires that you have a reason before you can get a divorce. Why not require one to get married?

The good woman cannot tell a lie-unless it's ours.

Symptoms of Distress Arising from **STOMACH ULCERS DUE TO EXCESS ACID QUICK RELIEF OR NO COST**
Ask About 15-Day Trial Offer!

Over four million bottles of the WILLARD TREATMENT have been sold for relief of symptoms of distress arising from Stomach and Duodenal Ulcers due to Excess Acid—Poor Digestion, Sour or Upset Stomach, Gasiness, Heartburn, Sleeplessness, etc., due to Excess Acid. Ask for "Willard's Message" which fully explains this remarkable home treatment—free—at

CORNER DRUG

Don't Read This . .

Unless you have "Dry Weather Colic" and have a genuine desire to save \$\$\$\$

We have For your inspection Tele-King 3 way combination T V Sets available in table or cabinet models. We also handle Stewart Warner; Fada and Sentinel TV Sets

Dealers For Cooper Tires with written guarantee for 18 months. Before you buy your tractor tires, get our prices on U. S. Royal form tires. We have lister ridge and other front tires.

We have a good stock of John Deere and Moline parts. See our new Farmall tractor mount disc plow and John Deere. Also a Moline drag type; also 2 and 3 bottom John Deere plows; 3 point hitches for Moline John Deere and Farmall. See our Phillips Two disc 2 way plow

A very fine line of used Moline, John Deere, Ford and Farmall Tractors. Our plow points are priced RIGHT! We have the Servis Eq. 3 point ditcher; O'Donnell Dealer for all Red Chain Feeds; get our price list

We have a good stock of Red Giant and Moline Sow Markers. Valtic batteries in the cheaper line. Batteries guaranteed for 3 years; also

We have a line of Hudson Automatic and Moline tractor heaters for all makes of tractors. For your next repair job try our excellent mechanic; we have a wrench on a trailer so we can pick up your tractor and bring it to the shop

Edwards Imp.

NOTICE FARMERS

Beginning January 10th and continuing thru the **BABY CHICK SEASON**
We Will Buy Live Poultry On **SATURDAY'S ONLY**

This is a sanitation measure to prevent spread of disease to the baby chicks. The live fowl will be received at another building. Arrange for coops for hauling at our store.

We also buy CREAM on SATURDAYS ONLY
DALE THUREN FARM STORE
TAHOKA

Man Is Restrained From Marrying Again

DETROIT — Some repeat performances can be avoided by the use of a little foresight. A Detroit man found a way out. On obtaining his second divorce he made a special request.
"Your Honor," he pleaded, "there are just too many good-looking women around. Can't you fix it so I'll be safe for just a while?"
The court then ordered a special rider on his decree restraining him from another marriage for two years.

See that your news gets to your home town paper!

STOCK Reduction SALE

Everything in the Store goes including Jewelry, Cosmetics, Notions, Anything you see or that we have goes at a Flat . .

1-4TH OFF

EXCEPT Tobacco and the Prescription Drugs

Now is a good time to fill your medicine cabinet with needed drugs at 1-4th off. ALL SALES MUST BE FINAL and all sales CASH, please
Tell Your Friends. Sale Begins Friday Morning. Plenty of Clerks

Corner DRUG

We're Inaugurating a Week of **BIGGER SAVINGS**

TIDE Giant Size 69c

Bleach 15c
Qt. Clorox

Tissue 3 for 29c
Toilet, CHARMIN

Shortening 59c
Kimbells 3 lbs

Tuna 31c
Star Kist Blue Label

Flour 98c
10 lbs Gladiola

Chili 59c
No. 2 can Wolf Brand

Gum 3 for 9c

Cheer 27c
Large Box

Baby food 3 for 25

Cheese 59c
Longhorn, lb

Pineapple Juice 29c
46 oz can

Bacon lb 49c
Banner, lb

pork chops 59c
Fresh, per lb

MANSELL BROS

PHONE 50 SPECIALS FOR FRIDAY AND SATURDAY FREE DELIVERY PHONE 50