

8/7/97

MRS. LITA WATSON
520 W. CLARA
IOWA PARK TX 76367
112

IOWA PARK LEADER 50¢

Vol. 28 No. 48

IOWA PARK, WICHITA COUNTY, TEXAS 76367

Thursday, August 7, 1997



INVITINGLY COOL - Iowa Park's Bicentennial Swimming Pool continues to be a major attraction for everyone wishing to escape the summer heat. Beginning Monday and continuing through Aug. 29, pool hours for weekdays will be 4-6 p.m. Saturdays hours will continue being 12-8 p.m., and Sundays 1-7 p.m. The pool will close following the Labor Day holiday.

Iowa Park school district earns 'recognized' rating

School personnel were excited last week when they were notified that, for the first time, Iowa Park High School has received the "Recognized" rating from the Texas Education Agency.

The Junior High School, Bradford Elementary, and Kidwell Elementary each received an "Acceptable" rating, but the base TAAS scores from these schools were so high, that the entire school district was given a "Recognized" rating.

The ratings are based on student performance on the Texas Assessment of Academic Skills test, as well as school's annual dropout and attendance rates.

In the state's accountability ratings, "Recognized" is second only to "Exemplary," which requires at least 90 percent passing each subject area, one percent dropout rate, and a 94 percent attendance rate.

To be "Recognized," districts and campuses have met the "Recognized" level performance standards for all base indicators and have demonstrated required improvement, where applicable, on TAAS. All campuses in "Recognized" districts must be rated "Acceptable" or higher.

A district cannot be rated "Exemplary" or "Recognized" if it has one or more "low-performing" campuses.

A campus gets a recognized rating if at least 75 percent of the students pass all sections of the TAAS, the 1995-96 dropout rate is 3.5 percent or lower, and the attendance rate is at least 94 percent.

To receive the "Acceptable"

rating a campus must have at least 35 percent of the students passing each subject area, 6.0 percent or less dropout rate for 1995-96, and an attendance rate of at least 94 percent.

High school principal, Richard Davis said he credits the teachers and students for all the hard work they did to prepare for the tests.

Supt. Mike Caplinger said, "I'm just elated with this accomplishment of our students and entire district team, and I think it is just the start of more exciting things ahead." "I'm proud of our students, administrators, teachers, and board of trustees for focusing on goals to make this school district outstanding," he said.

Henderson new Cryovac manager

Mike Henderson was named plant manager of Cryovac's facility here, effective Aug. 1, according to former manager Ray Youngblood.

Henderson succeeds Frank Terlizzi, who served as manager until he was assigned as general operations manager of the Simpsonville, SC manufacturing facility.

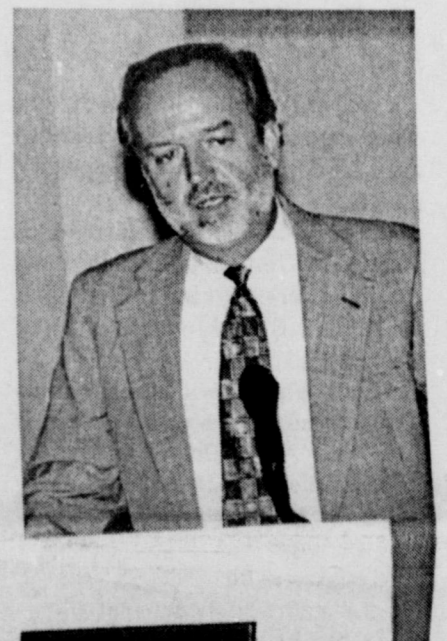
Henderson has been manager of the company's Cedar Rapids, Iowa plant since March of 1994.

Prior to being promoted to manager at Cedar Rapids, he was director of quality assurance in Duncan, SC.

"Mike has worked in a number of other quality and production positions during his career with Cryovac, which began in 1963," Youngblood said.

Henderson, who holds a business degree from Furman Univ., and his wife are currently looking at purchasing a residence in the area.

The original manager of the Iowa Park plant, Charley Lee, also came



MIKE HENDERSON

here from Cedar Rapids, and moved back to that area after retiring to be near their sons.

UPS strike not having major effect locally

Although Iowa Park businesses and individuals have heavily relied on United Parcel Service (UPS) for outgoing and incoming shipments, the recent strike by teamsters hasn't hit as hard here as in other areas.

Despite UPS giving what it's calling it's "last, best and final" contract offer to the International Brotherhood of Teamsters over the weekend, the Teamster union refused to agree to the company proposal and members went on strike at 12:01 a.m. Monday.

UPS continues to operate on a contingency bases, relying on management and other non-Teamster employees to deliver.

The management teams have been working to clear all packages that were moving through the system at the time the strike began. They will continue to move high priority packages including medical and pharmaceutical shipments, domestic air express packages and international letters and parcels in and out of the United States.

Hughes Pharmacy, Iowa Park's shipping point for UPS, said before the strike began, they had been shipping out anywhere from five to 12 packages a day for local residents. An employee for Hughes said they will still accept packages to be shipped, but they won't go out until the strike ends.

Greig Moers, personnel manager

at Cryovac, said the company uses several means for shipping and feels that things will go smoothly for them. "We anticipated this event," Moers said. "We're confident that there will be no disruption in our business."

City and school offices also have experienced little disruption because of the strike.

School Superintendent Mike Caplinger said because of the budget

crunch the school district is facing this year, they have ordered supplies in smaller quantities than in the past. That, coupled with the fact that companies are shipping using alternative methods, haven't made the strike a factor in the start of the school year.

Janice Newman, Iowa Park City Secretary, said that although they receive UPS shipments almost every day, it hasn't caused any problems with city business.

Police holding lost 'C-note'

Lost any money lately? The police department might have it stored in the evidence room.

A young boy, accompanied by his mother, went to the police station Thursday morning and reported the youth's find.

He has a \$100 bill, which he had spotted in the grassy area in front of Kidwell Elementary, between the circle drive and flag pole.

School personnel were questioned, but none responded as having lost any money.

In such cases, items turned into police and not properly claimed by the owner are returned to whomever turned them in.

The youth's mother explained that the experience was teaching her son, "honesty is the best policy."

Four thefts reported during the past week are being investigated by police.

The owner of a vehicle told police \$500 worth of costume jewelry and other items were missing, apparently taken while it was parked at a local business following an accident.

A spare tire reportedly was missing from a pickup normally parked at a residence in the 400 block of Louisa. The owner reported the tire missing last Wednesday, but said she had seen it last on July 15.

A compact CD player, valued at \$270, reportedly was taken Friday evening from an unlocked vehicle while parked in the 100 block of Hope.

Tuesday, police received a report that a ski rope and water ski innertube had been taken from the bed of a pickup while parked in the 700 block of West Magnolia.

Three cases of criminal mischief were reported during the week.

Police were called to an unoccupied residence in the 400 block of Valley Drive, where it was determined someone had apparently kicked holes in the walls. Damage was estimated at \$300.

Two of the cases were reported Tuesday.

A resident in the 1100 block of West Louisa said two large tent poles had been jammed into an air condi-

tioner, causing the motor to burn up.

The other complaint was from a resident in the 100 block of Wood Circle, who said various items, including toothpaste, flour and catsup, had been spread out on the front porch.

Two arrests were included in the week's police report.

Debra Sue Pesterfield, 42, was taken into custody Wednesday of last week in the 700 block of West Highway, on a charge of criminal mischief. She was transported to the county jail.

Friday evening, Rickey Leotha Shaffer, 41, was arrested in the 400

Continued on page 4

Budget on council agenda

The city council possibly will adopt its 1997-98 budget Monday night, and will consider two rezoning requests.

Action on the budget has been delayed until the county appraisal district's release the certified values, which has been done. Those figures were necessary in order that a tax rate could be set.

Rezoning from general residential to automotive and recreational commercial have been requested for three lots of the Crawford Subdivi-

sion and the entire block 21 of the Texas Addition.

If approved, ordinances will be passed on both requests.

Administrator Mike Price could be authorized to seek bids for construction of a water main replacement and extension on Ruby, and also to purchase a pickup for the fire department.

Aldermen are to discuss and consider approving a policy involving requests for water service requests from outside the city limits.

Does Your Subscription to the Leader Expire this Month?
Check the list on page 4.

NEWS BRIEFS

Amendment election Saturday

Iowa Parkans will join voters over the state Saturday to decide the outcome of a constitutional amendment which, if approved, would give homeowners an additional \$10,000 tax deduction on their homesteads.

The deduction, however, is for school taxes only.

Polls will be open from 7 a.m. until 7 p.m. at two locations here.

Voters in Precinct 32 will cast their ballots at Kidwell Elementary, while those in Precinct 33 will vote at Bradford Elementary.

Early voting on the amendment concluded Tuesday evening.

Leader presented two awards

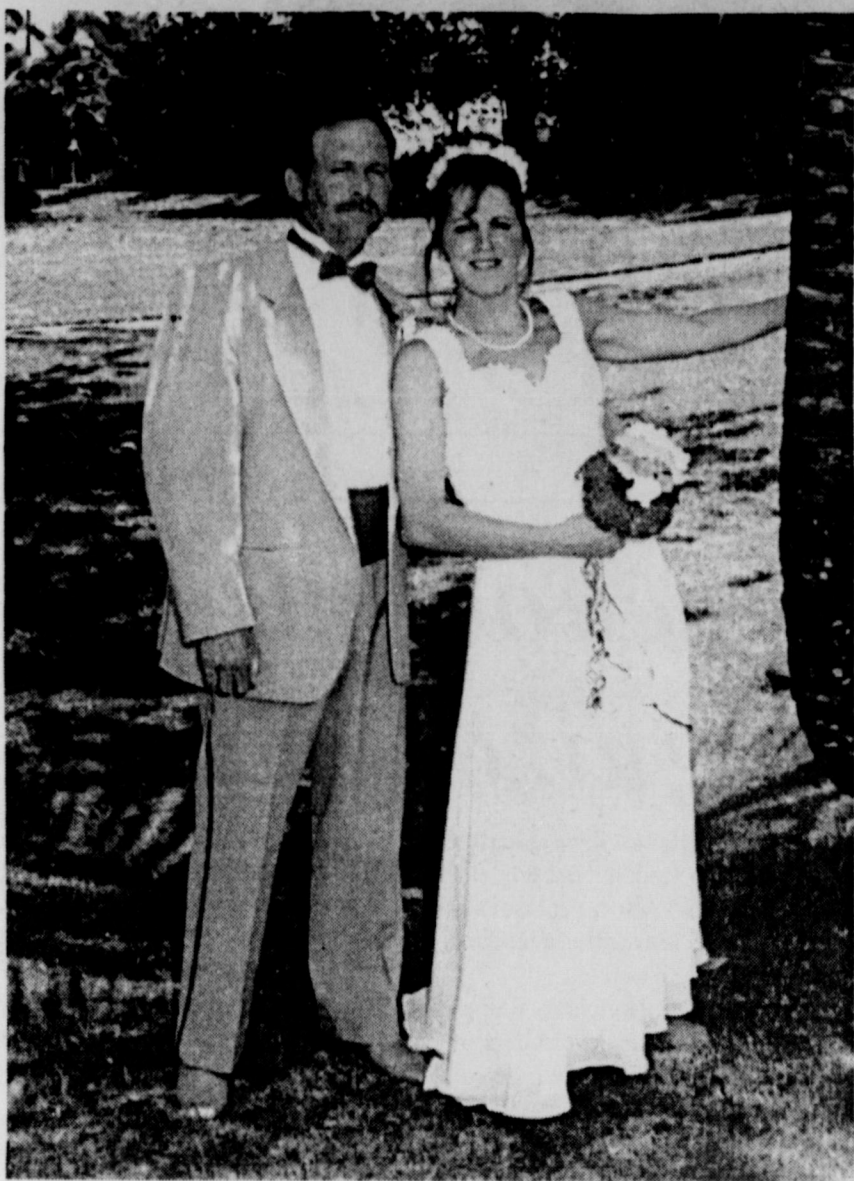
The Iowa Park Leader was presented two awards during the annual convention of the West Texas Press Association, held in Lubbock last week.

The Leader earned second place in two categories, General Excellence and Advertising Composition, among all weekly newspapers with circulation of 1,801 and above.

First place in those categories

went to the Burnett Bulletin. Third place in General Excellence was awarded to the Monahans News, while the Fredericksburg Standard/Radio/Post placed third in Advertising composition.

Kari Collins, advertising director of the Leader, was named to chair the contest next year, which will be her fourth year as a director of the association.



Mr. and Mrs. Paul Barham
(Jolynn Wheeler)

Wheeler, Barham wed July 23 in Jamaica

Jolynn Wheeler and Paul Barham were wed in a morning ceremony July 23 on the beach of Negril, Jamaica.

The bride is the daughter of Linda and Kenny Gilmore of Iowa Park and Joel Wheeler of Arkansas. Barham is the son of J.B. and Joyce Barham of Wichita Falls.

Miss Wheeler wore a white gown with a fitted bodice and sweetheart neckline. White flower appliques covered the bodice and shoulder straps. The long skirt of the gown was made of sheer silk organza with a satin edging at the hem.

A wreath of delicate white flowers in her hair added the finishing touch.

She carried a tropical mix bouquet of fuschia, white and bright yellow flowers with fuschia streamers.

The groom wore a platinum tuxedo with a fuschia cummerbund and bowtie, complemented with a boutonniere of tropical yellow and white flowers.

Upon the couple's August 2 re-

turn home from Jamaica, a reception was held in their honor at the Log Cabin in Lucy Park.

Miss Whitney Barham, daughter of the groom, offered special music during the reception. She sang "Daddy's Hands" and "Unchained Melody."

The bride's three-tiered cake was iced in white and separated with Grecian posts. Strands of pearls were swagged on the sides of each layer. A small bouquet of white silk roses centered the first two layers, and the cake was topped with a Precious Moments bride and groom.

Melanie Parker of Houston, cousin of the bride, presided at the bride's table.

Miss Wheeler is a graduate of Iowa Park High School and Vernon Regional Junior College. She is employed as a nurse at the Clinics of North Texas. The bridegroom is a graduate of Rider High School, and is self-employed at Color Tech.

The couple are at home in Wichita Falls.

Cook of the Week



Jo Ann Crawford,
Nicki and Chase

Our featured cook this week is Jo Ann Crawford, a lifelong resident of Iowa Park. She is a 1982 graduate of Iowa Park High School and is employed at City Cafe.

JoAnn's husband Jerry is a 1978 graduate of Wichita Falls High School. He works as a field mechanic for Clarklift. They are celebrating their wedding anniversary today.

The Crawfords have five children: Chase, 7 months old, Nicki, 6, Jeri, 9, Heather, 11, and Cody 12. Two of them, Chase and Nicki, are pictured with their mother.

Jo Ann said the family likes to go camping, fishing, and jet skiing.

JoAnn said she uses a recipe book, compiled of family recipes. All of the recipes this week were used by her great-grandmother. They offer a variety, ranging from a party dip to desserts.

Mexican Meat Dip

1 lb. sausage
2 lbs. hamburger meat
1 large onion, chopped
2 lbs. Velveeta cheese
1 lb. Cheddar cheese
2 cans Ro-tel tomatoes
Jalapenos or green chilies
Brown meats and onion; season like for tacos. Melt cheeses together and add tomatoes and peppers. Mix meat and cheese mixtures together. Makes a big amount. Can be frozen, or recipe may be cut in half.

Brisket

Mixture for 8 to 9 lb. brisket:
3 tsps. garlic salt
2 tsps. onion salt
3 tsps. celery salt
6 Tbsps. Worcestershire sauce
6 Tbsps. liquid smoke
9 lb. brisket
Mix ingredients. Pour over brisket and let marinate overnight. Put in baking dish; cover with foil or lid and cook at 225 degrees 5 to 6 hours. Can use barbecue sauce.

Ice Box Chocolate Candy

Melt 12 ounces chocolate chips (milk chocolate). Add 1 can Eagle Brand milk. Blend until smooth and add 2 cups pecans.
Stir in 15 ounces miniature marshmallows when mixture cools. Drop by tablespoonsful onto foil and refrigerate.
Can pour in loaf pan lined with foil. Slice when cold. Keep refrigerated.

Chocolate Delight

1 cup flour
1/2 cup margarine
1 cup chopped pecans
1 large ctn. Cool Whip
1 cup powdered sugar, sifted
3 cups milk
1 pkg. chocolate instant pudding
1 pkg. vanilla instant pudding
1 (8 oz.) pkg. cream cheese
Mix flour, margarine, and pecans, then press into 9x13 inch pan. Bake at 350 degrees 20 minutes; cool. Mix 1 cup Cool Whip, powdered sugar and cream cheese. Spread over crust. Mix both puddings and milk until thickened, then spread over cream cheese layer. Top with rest of Cool Whip and chill 2-3 hours before serving. Keep refrigerated.

Chicken Enchiladas

1 chicken, cooked and boned
1 can cream of mushroom soup
1 can cream of chicken soup
1 can chopped green chilies
1 small chopped onion
1 lb. grated cheese
1 pkg. corn tortillas
Put soups and green chilies in saucepan and warm. Put tortillas in soup mixture to soften. Fill each tortilla with chicken, cheese, and onion. Roll and place in baking dish, seal side down. Pour remaining soup mixture over enchiladas and top with cheese. Cover and bake 30 minutes at 350 degrees.

Scalloped Potato Casserole

1 (2 lb.) sack frozen hash brown potatoes, thawed
1 tsp. salt
1/4 tsp. pepper
1/2 cup chopped onions
1 (10 3/4 oz.) can cream of chicken soup
1 pt. sour cream
2 cups grated Cheddar cheese
1/4 to 1/2 cup melted margarine
2 cups crushed corn flakes
Combine all ingredients except margarine and corn flakes. Place in 2-quart casserole dish. Pour butter over top and sprinkle corn flakes over all. Bake 45 minutes at 350 degrees.

Bicycle Rodeo set next week

A Bicycle Rodeo will be held Saturday, Aug. 16, co-sponsored by Cornerstone Pentecostal Church of God, Wal-Mart and the Iowa Park Police Department.

Features of the event will be registration of bicycles with the Police Dept. for identification purposes, a bicycle safety program, refreshments, all of which will be free for participants, as well as numerous prizes, including a bicycle.

LIBRARY NEWS

Reminder

All patrons are invited to register for our Reader of the Month program. On Sept. 2, we will draw two ballots for a winner in the adult and children's category. The winners will receive a tote bag and a button stating that they were the Reader of the Month.

Storytime

For our pre-schoolers, we have a class on Friday mornings, from 9-9:30, for children 2-4 years old. Subjects for this month are Turtles, Farm Animals, School, and Manners.

Beginning Tuesday, Aug. 19, we will have a class at 9:30 for the same age group.

If you are new in the area and need additional information, please call 592-4981.

Special Program

On Thursday, Aug. 14, at 10 a.m., we will have the privilege of hearing Trooper Bud along with his partner DPS Officer Joe Clement present a program on "Back to School Safety."

Custom engraved
Wedding Invitations &
Baby Announcements
Plus
Wedding Accessories:
Napkins
Bookmarks
Toasting Glasses
Garters
Ring Bearer Pillows
Call today for a
consultation
438-2369
592-4431
ideas
unlimited
Kari Collins

20% OFF
Selected Items
August 11 - 23
Featured Every Week - Different Claire Burke
Potpourri, Candle & Spray Fragrance ~ 10% off
Sincerely Yours
309 N. Wall 592-2493

Bring this ad to the Gun Show this weekend at the MPEC and receive 10% off all purchases at my booth

THE RESTORATION STATION
ANTIQUE FURNITURE REFINISHING FREE ESTIMATES
FURNITURE REPAIR VISAMASTERCARD
UPHOLSTERY NEEDS
ANTIQUE REPLICAS PICKUP & DELIVERY
CUSTOM FURNITURE DESIGNS 592-4422

Bring this ad to the Gun Show this weekend at the MPEC and receive 10% off all purchases at my booth

New Car?
Ask me about a State Farm Family Insurance Checkup to measure your insurance needs and coverages.
See Agent:
Philip Welch
118 W. Park
592-4155
State Farm Insurance Companies • Home Offices, Bloomington, Illinois

Schram & Cluley
FURNITURE & MATTRESS CO.
Randall Schram 592-4186
Eddie Cluley IOWA PARK 204 W. Bank
All Major Credit Cards Accepted
In-store financing ~ 3 months-No Interest

Health Notes
Herbal Therapy for Depression
by Joe Hughes, R.P.H.
The British Medical Journal evaluated 23 studies involving 1,757 patients with mild to moderate depression who were treated with the herbal product hypericum, also known as St. John's wort. Several studies showed that St. John's wort was as effective as prescription antidepressants and more effective than placebo, while 19.8% of patients receiving St. John's wort and 52.8% of patients receiving antidepressants reported adverse effects. However, no one should discontinue any prescription antidepressant or add this herbal preparation without first consulting their physician. Taking hypericum and prescription antidepressants together could cause serious problems. When this BMJ meta-analysis was conducted in 1994, the authors did not find a single clinical study of St. John's wort published in the English language. This typical lack of information is a major barrier against English speaking health professionals becoming more informed about herbal products.
Hughes Pharmacy
120 W. Park
592-4191
Toll Free
1-800-585-4191
If you are looking for fast, friendly service...come see us!

One Week Only!
101 Portraits
ONLY \$4.95 Plus \$5.95 Per Subject
2-8x10s
20 Wallets
68 Keepsakes
6-3 1/2x5 1/2
4-5x7s
Plus FREE!
Portrait Identification Card
Sealed in Durable Plastic
Includes Fingerprint and Important Information
Credit Card Size
Additional IDs May Be Purchased At Photography For \$7 Each
All New **WAL-MART** Portrait Studio
Subject fee of \$5.95 per person photographed, payable when portraits are taken. Pose for advertised portraits our selection. Your favorite props welcome. No limit on the number of advertised collections per family, but only one advertised collection per subject, please. Additional poses taken for optional collection with no obligation to purchase. All ages welcome. Minors under 18 must be accompanied by a parent. Groups limited to six or fewer. Sorry, no pets. Portrait sizes approximate.
Hurry, Last Chance! One Week Only! \$4.95 Plus FREE ID!
THURSDAY THRU SUNDAY, AUGUST 7 - 11
Daily 10 a.m. - 7 p.m.
Sunday 10 a.m. (or store opening, if later) - 7 p.m. (or store closing, if earlier)
IOWA PARK (North Pacific Ave.)
Studios Operated by PDA
AMPA products give you better portraits.

RAC News

By JO LYNN COCKRUM

Summer Program

This is the last week of the summer program. We will wrap up our summer with the annual Teddy Bear Picnic, to be held tomorrow from 10:30 a.m. to noon. Cost for the event will be \$1 per child. Please remember to bring your lunch.

Bears may be entered into categories for judging which include largest bear, smallest bear, and best dressed bear. Prizes will be awarded for 1st, 2nd, and 3rd place in each category. Everyone is invited to bring their lunches and join us for this fun event.

CPR/First Aid

CPR and First Aid courses are scheduled for Aug. 9, at 9 a.m., and Aug. 13, at 6 p.m. The class is open to first time certifiers and those who need to renew their certification. Cost will be \$30 and should be paid in advance at the RAC office, 806 N. Third. For more information, call 592-4471.

Bridge Results

Helen Casey had the high score of 5600 at bridge last Wednesday. Amy Conley had the second high of 5300. There were three tables in play. On Monday, Faye Anderson had the high score of 5140. Virgil Woodfin had the second high of 5000. There were three tables in play.

Non-Profit Meetings

We will begin scheduling meeting space for non-profit groups for the school year within the next couple of weeks. Group leaders are reminded that a new schedule will be established. Please do not assume that

you still have last year's meeting space and time.

Non-profit groups may utilize the RAC free of charge after posting a \$50 security deposit, and paying a \$20 RAC membership fee. Membership fees are due in October.

Martin presented 20-year tenure award

George Martin, Vocational Agriculture teacher at Iowa Park High School, was recently honored for reaching a milestone in his career.

Martin was awarded the Vocational Agriculture Teachers Association of Texas 20 Year Tenure Award.

The award was presented during the organization's program Wednesday of last week in Corpus Christi.



Robertson

Rowdy and Amy Robertson are the parents of a daughter, Miami Dawn, born July 31, at Wichita General Hospital. She weighed eight pounds, six ounces, and was 20 inches long. She has a brother, Utah, three years old.

Grandparents are Jerry and Peggy Robertson of Iowa Park and Randall and Kathryn Hallenbeck of Chico.

Great-grandparents are Fred and Mary Toler and Lois Robertson, all of Iowa Park.

Newlyweds honored with reception

A reception to honor newlyweds, Ann and Dewayne Gruber, was held recently at in the Fellowship Hall of the Church of God. The event was hosted by the groom's parents, Tommy and Debbie Gruber.

The former Ann Glass, of Summerville, Ga., and Dewayne Gruber, of Iowa Park, were united in marriage July 5, at Hopewell Church of God in Cleveland, Tenn. Rev. Leon Goforth, pastor, officiated the exchange of vows.

Parents of the couple are David and Sherrie Glass of Summerville, and Tommy and Debbie Gruber of Iowa Park.

The bride graduated high school in Summerville, and the groom is a 1994 graduate of Iowa Park High School. They are both students at Lee College in Cleveland, where Dewayne is studying to be a minister, and Ann is studying to be a youth minister.

The cake and finger food tables at the reception were covered with

white satin cloths with a gathered white satin table skirt, edged around the top with fresh English ivy and white daisies.

The cake was composed of three heart-shaped layers, each on a pedestal. Iced in white, the layers were decorated with white frosting daisies, pale pink roses and seed pearls, forming a scallop around the edges.

A silver candelabra, intertwined with English ivy, white daisies and pink roses, and holding white tapers, along with the crystal punch service, completed the table decorations.

Behind the cake table, a white lattice screen was decorated with a heart-shaped wreath and sprays of English ivy.

Dee Lynn Herder and Paulette Frank served refreshments to the guests.

A white lace parasol, with daisies attached to the top and handle with yellow satin ribbon, served as a centerpiece for the gift table. The table was covered with a white cloth, edged in lace.

The registry table was also draped with a white lace cloth. It held the bridal book, which was made by the groom's mother, and the feather pen that had been used by the groom's mother in her wedding.

Salena Gruber, sister of the groom, presided over registering of the guests.

Special guests included Mr. and Mrs. P.L. Wright of Bowie, great-



Mr. and Mrs. Dewayne Gruber (Ann Glass)

grandparents of the groom, and Mr. and Mrs. Aubrey Bohannon of Iowa Park and Mrs. Mildred Toups of Chico, the groom's grandparents.

Graham hires Michael Bean

Michael Bean was recently hired as the assistant principal at Graham Junior High School.

He has been the principal of the elementary school at Paradise the past two years.

A long-time Iowa Park resident and graduate of Iowa Park High School, he was a teacher at Bradford Elementary from 1988 to 1995.

During his tenure here, Bean was voted Elementary Educator of the Year for both 1994 and 1995. He also was the 1995 Region Nine Elementary Teacher of the Year in 1995, the same year he was a semi-finalist for Texas Teacher of the Year.

He and his wife Lisa have a three-year-old son, Caleb. They plan to move to Graham as soon as they sell their home at Paradise, Mrs. Bean said.



BRENT PATTERSON
DVM
SMALL ANIMAL
HOUSECALLS
592-VETS
(8387)

"Make it a perfect wedding beginning with your invitation!"

Select yours from Regency's fine collection of Wedding Invitations and Accessories

Jack's Park Pharmacy
113 WEST PARK
IOWA PARK
592-2731

STATE NATIONAL BANK Presents

TEXAS CROSSWORD

by Charley & Guy Orbison

Copyright 1997 by Orbison Bros.

ACROSS

1 Dallas TV hit ('60s): "Bang Theater"

5 TX Roy Orbison's 1st hit: "Dooby"

6 TXism: "nary a ___" (no one)

7 Lt. Gov. Bullock got through TX Tech on this bill

8 TXism: "___ as a fiddle"

9 TX Van Cliburn won piano competition in ___ at age 23

15 TXism: "___ cut the mustard" (unable)

16 Coleman Museum has planes from this conflict (2 wds.)

19 TXism: "playful as ___ clover"

21 state of TX Bush's summer home

22 home of Dyess AFB

27 this Gardner was an honorary TX Ranger

28 small horses

29 LBJ's defense sec. Robert Mc___

30 TXism: "so ___ couldn't stir 'em with a stick"

32 panhandle rancher: ___ Waggoner

33 it never happens in Astrodome (2 wds.)

36 TX Bluebonnet is called ___ flower

37 Charley's relationship to Guy (abbr.)

38 this Rob directed Reba McEntire as Ma Tex in "North"

DOWN

1 distress signal

2 Austin was 1st called Water___

3 TXism: "snug as ___ rug"

4 TV series of TX Gale Storm

8 TXism: "plain as the nose on your ___"

9 TXism: "put your ___ mouth is"

10 TXism: "got knocked down a peg ___ two"

11 direction to Dallas from Denton

12 hunter's clothing

13 TXism: "fits like ugly ___ ape"

14 TX Audie Murphy was most decorated of this war

15 seat of Hemphill Co.

16 pottery oven

17 TXism: "he'd complain if they hung him with ___"

18 what Coleman Warbird Museum does to vintage planes

20 brawl or fracas

22 TXism: "plain as the top line on ___ eye chart"

31 TXism: "get ___ ducks in a row"

34 TXism: "the tail ___"

35 this Lin was cut from Cowboys in '93 (init.)

37 ex "Miss Texas" director ___ Magness

40 mythical god of love

43 TXism: "call ___ day" (quit)

44 LBJ won in '37 with ghost town ___

50 old Harlingen home of CAF: ___ Field

51 TXism: "strike while the iron ___ hot"

MODERNIZE YOUR HOME!

Home improvement loans* to add a bath, repair the roof, redo the wiring, improve the plumbing...from the attic to the basement, we can help! Competitive rates and terms are favorable. Call today for more details.

Let's talk, it's the first step.

Last Puzzle Solution

STATE NATIONAL BANK

104 W. PARK

592-4131

Equal Housing Lender

FDIC

SALE

COCA-COLA & SPRITE

6 PACK 12 OZ. CANS - ALL TYPES

\$1.29

3 LITER BOTTLE - ALL TYPES

\$1.69

64 OZ.

POWER AIDE

2/\$3

BLUE BELL ICE CREAM

ALL 1/2 GALLON ROUND CARTONS

2/\$6

B&R THRIFTWAY

401 WEST PARK 592-9831

August 7 - 13, 1997

PRICES EFFECTIVE



BARGAIN HUNTERS by the hundreds converged on Iowa Park Saturday, for the annual city-wide back-to-school garage sale, which is coordinated by the Iowa Park Chamber of Commerce. Officials reported the largest number of sales participants since the activity was begun.

GARDENING HINTS

By MARK TERNING, COUNTY AGENT - HORTICULTURE

Q. We live on the northern side of Wichita Falls. Our two year old trees are turning brown at the edges of the leaves. Is this a disease problem or insects?

A. Leaf browning or scorching at the edge or margins of the leaf are usually indications of moisture stress. Triple digit temperatures of July and August with minimal rainfall levels will always tend to cause marginal leaf scorching symptoms as you have described. Regular, deep watering at the dripline area of trees will certainly help reduce the moisture stress and resulting foliage damage. Some parts of town received an inch or so of rain this week, however, don't put the garden hoses up. We will all have to pay attention to watering during the hottest part of the season.

Q. How can I control sandburs in a Bermuda lawn area? We are having terrible problems with this weed. We live at Lake Arrowhead Estates.

A. Sandburs are a tough weed to combat. To effectively control sandburs you will have to use pre-emergent herbicides, regular fertilizations and watering of the Bermuda, and use of a post-emerge herbicide. Applications of Durlan, or Betasan (pre-emergent herbicides) put down in spring and again in summer and fall will help prevent weed seed germination. This is referred to as a split application. The spring and summer applications are critical. Regular fertilization of the Bermuda with a quality 3-1-2 ratio lawn food and regular deep watering will keep the

Bermuda in healthy condition enabling the turn to better out compete the sandburs. You can also spot treat the existing sandburs with a post-emergent herbicide called MSMA. This product will yellow treated areas for a few weeks, but will recover if used according to the label.

Obituaries

National Roosevelt King

Services for National Roosevelt King, 63, of Waco were held Monday afternoon at Burk Burnett Cemetery with Rev. John Besse, pastor of First United Methodist Church in Iowa Park, officiating.

He died Saturday in Waco. Mr. King was born Nov. 21, 1934, in Burk Burnett. He was a Baptist.

Survivors include three sisters, Claudine Johnston and Marie Boren, both of Iowa Park, and Veda Schofield of Humble; and a brother, Kenneth King of Wichita Falls.

Memorials may be made to the Association of Retarded Citizens.

Lloyd E. McGarraugh

Services for Lloyd E. McGarraugh, 81, of Perryton were held Saturday morning at Full Gospel Church in Perryton with Rev. Michael Davis officiating. Burial was in Ochiltree Cemetery.

Mr. McGarraugh, who was the father of Linda Manry of Iowa Park, died July 30.

Mr. McGarraugh was born Dec. 27, 1915, in Corwin, Kan. He and Marie Wing were married July 4, 1939, in Liberal, Kan. He was a rancher and a member of the Church of the Nazarene in Perryton.

Survivors include his wife; two sons, Duane of Perryton and Ronald

of Bethany, Okla.; a daughter, Linda Manry of Iowa Park; three sisters, Ruby Frohlic of Indiana and Della Fiechter and Lola Wallace, both of Hot Springs, Ark.; 10 grandchildren; and four great-grandchildren.

Memorials may be made to Church of the Nazarene, 502 S. Amherst, Perryton, Texas 79070.

Lorriane Rambo

Graveside services for Lorriane Stansbury Rambo, 75, will be at 10 a.m. today in Highland Cemetery with Gene Browder officiating.

She died Aug. 3 in a Wichita Falls nursing home.

Mrs. Rambo was born July 22, 1922, in Duncan, Okla. She was a homemaker, and had been a resident of this area since 1965.

Survivors include a daughter, Connie Rambo Patterson of Iowa Park; two sons, Gary Rambo of Dallas and Larry Gough of Oklahoma; three sisters, Hazel Brumfield of Bowie, Faye Burgett of Houston and Pat Kieren of Fort Worth; two brothers, Jimmy and Jerry Stansbury, both of Wichita Falls; and three grandchildren.

Gift and Resale Shop
Lots of Gifts
Open Afternoons
302 S. Colorado
592-5012

Card of Thanks

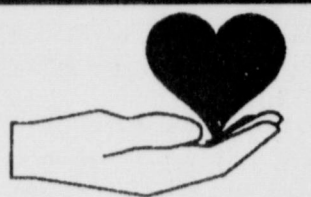
The residents and staff of IHS Nursing Home would like to thank their friends, families and members of the community for donating to our fundraiser yard sale. We would especially like to thank the Friendship Class of First Baptist Church for their special contribution. God bless you all! Come visit with us anytime - we can always use the extra volunteers.

PJ Berry, Activity Director and the residents at IHS

EXPRESS YOURSELF

with a letter to the editor

Iowa Park Leader
P.O. Box 430
Iowa Park, TX 76367



Cyndi Swedberg
Swedish Massage
Therapy

By Appointment Only
592-2120
438-9110
In-Home Sessions
Available

'Experience
The Healing Touch'

RICHARD C. CARVER, D.D.S.

GENERAL DENTISTRY

TELEPHONE 315 NORTH WALL
817-592-5141 IOWA PARK, TEXAS 76367



Park Home Health

"It's Good To Be Home"

Quality Nursing Care At Home

Providing Home Care Since 1987

Medicare & Medicaid Approved
Licenced by the State of Texas

117 W. Park - Iowa Park
Phone Answered 24 hours a day

940-592-2753

Owned and Operated by Orpha (Cookie) Sidlauskas
Residing in Iowa Park since 1969
Asst. Administrator: Natalie Morton, L.A.N.



Introducing ROTOBRUSH™ DUCT CLEANING

The intricate maze of air ducts, vents and heating and cooling systems designed to make your home comfortable, may in fact, be making you uncomfortable or maybe even sick.

Your air system plays host to a variety of air pollutants such as mold, mildew and dust mites, which commonly cause allergic reactions, breathing difficulties, infections and disease.

What is the answer to this problem?

The Rotobrush™ Duct Cleaning System.

This advanced cleaning method thoroughly scrubs and vacuums your ducts, vents and heating and cooling systems.

We offer the best prices in the area....

Call today for details.



Your authorized Iowa
Park Trane Dealer

It's Hard To Stop A Trane.™

Locally owned and operated for 26 years
TACLB010194E



DUTTON
FUNERAL HOME

"FUNERAL DIRECTORS SINCE 1908"

Larry Dutton

Providing Funeral Services and
Pre-Arranged Funeral Plans

Honoring all insurance policies
and major credit cards

Funeral Financing available

592-4151

300 E. Cash Street

Iowa Park

PHOTOGRAPHY

by Dixie

761-5111



'98 SENIORS

Your senior portraits shouldn't be left to just anybody - They're much too important.

- Cap and Gown
- Customized portrait sessions to fit your personality and style!
- Outdoor photography at the falls or park, or we have a fully-equipped studio with great props.
- Bring your car, blue jeans, band instrument, pet - Whatever makes you - you!

Book your
Senior Portrait
session by **Aug. 18**
and receive
25% OFF and
24 Free wallets

2302 Brook • Brook Village • Wichita Falls

Join the Club All Day
Every Day!!!!
Special
CORN DOGS 3/\$1

Coke & Dr. Pepper
Products
20 Ounce
79¢

Marlboro
\$215
Basics
\$186

All Cigarettes
Buy first pack
at regular price,
get 25¢ off
second pack.

Scabee's Mini Mart

322 W. Highway 592-5961



**Leonard and Judith Ward
Revival starts Sunday
at Assembly of God**

A revival will begin Sunday morning at the First Assembly of God, 200 S. Yosemite.

Leonard and Judith Ward, evangelists from Crockett, will be conducting the services.

The revival is scheduled to continue through Friday evening. Sunday services will be at 11 a.m. and 6 p.m., and weeknights they will begin at 7 p.m.

Judith Ward, a certified teacher on the subject, will conduct a seminar on abuse at 3 p.m. on Sunday. This session is only for women.

Church minister, Rickey Rasco, says the public is welcome to attend the services.

Helpful Facts

Property owners working on their plumbing and needing the water cut off at the meter should contact city hall for assistance.

Helpful Facts

Regular meetings of the Iowa Park city council is at 7 p.m. on second and fourth Mondays, in council chambers at 103 N. Wall. All meetings are open to the public.

IN THE MILITARY

Houston aboard ship

Fireman Jayson L. Houston, son of Jeffrey J. Houston of Iowa Park, is half way through a six-month deployment in the Mediterranean Sea aboard the guided missile cruiser USS Hue City.

More than 350 Sailors are aboard his ship, which departed its home port of Mayport, Fla., as part of the USS John F. Kennedy Battle Group.

He is a 1994 graduate of Iowa Park High School, and joined the Navy in January 1995.

Houston also was recently awarded the Battle "E" Ribbon, which denotes service with a unit which has won a battle efficiency competition. His ship has earned the award for the third consecutive time.

Cheesman enlists

Todd B. Cheesman has joined the U.S. Army under the Delayed Entry Program at the recruiting station in Wichita Falls.

The program gives young men and women the opportunity to delay enlistment into the Army for up to one year before reporting to basic military training.

Cheesman, a 1997 graduate of Iowa Park High School, will report Aug. 14 for basic training at Fort Sill, Lawton.

He is the son of Mr. and Mrs. Jeff Cheesman of Iowa Park.

**FRIENDLY DOOR
MENU**

Friday, Aug. 8

Oven fried catfish, tartar sauce, French fries, creamy slaw, cornbread, strawberry jello, fruit and topping.

Monday, Aug. 11

Oven fried steak, cream gravy, mashed potatoes, carrots, hot rolls, banana.

Tuesday, Aug. 12

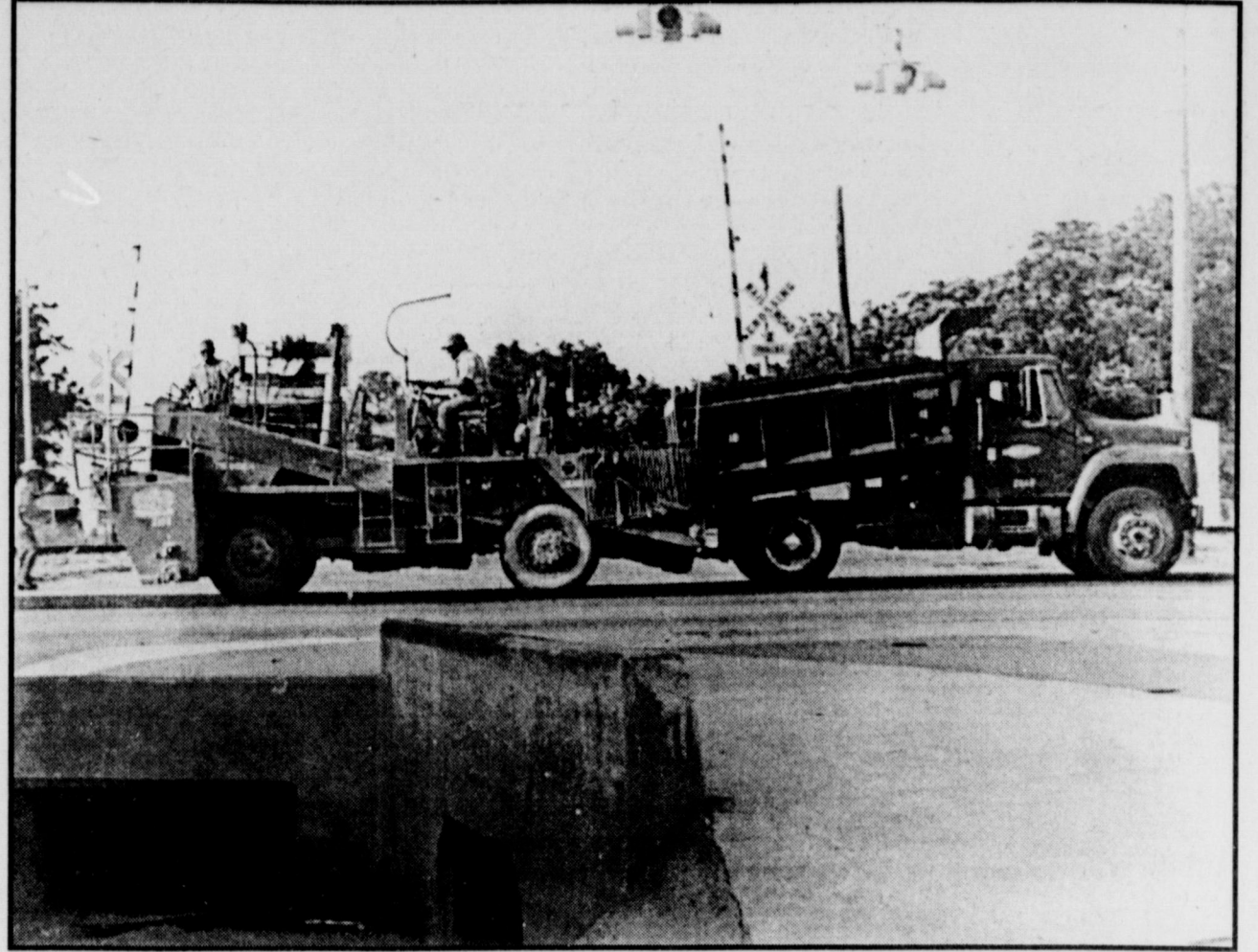
Roast beef, brown gravy, mashed potatoes, mixed vegetables, wheat bread, peach cobbler.

Wednesday, Aug. 13

Cheese enchiladas, pinto beans, spanish rice, cornbread, lemon bisque.

Thursday, Aug. 14

Golden chicken bake, buttered sliced potatoes, English peas, orange garnish, whole wheat roll, pudding.



NEEDED REPAIRS MADE - Workers moved into Iowa Park Monday to resurface East and West Highway, and continued until the project was completed, despite high temperatures and a brief shower Wednesday.

SHOP IOWA PARK FIRST!

**Kamay Road
Church of Christ**

Corner of Colorado & Emerald

Sunday Services
9:30 a.m.
6:00 p.m.

For Information Call:
592-2082
592-5076

**Good Shepherd
Lutheran Church**

Corner of 1st & W. Magnolia
592-5605

Sunday School
9 a.m.
Worship Service
10 a.m.

Rev. Orville Horn, pastor
569-4085

**NORTHSIDE
BAPTIST CHURCH**

800 N. WALL

SERVICES

SUNDAY
10 A.M. AND 6:30 P.M.
WEDNESDAY
7:30 P.M.

PASTOR EARL CORRELL
592-2200

First Assembly of God

200 South Yosemite

Rev. Rickey Rasco, Pastor
592-5087

Sunday School 9:45	Wednesday Worship 7:00
Sunday Worship 10:45	Royal Rangers 7:00
Sunday Evening 6:00	Missionettes 7:00

Come experience the Power of God

**ATTEND the
CHURCH of your
CHOICE**

Country Chapel on the Hill
"An Evangelical Bible Church Open to all People"
A GREAT BIG TEXAS WELCOME AWAITS YOU
Sunday Worship 10:30 a.m. Ph. 855-9367
Dr. John Ward, Pastor (Chaplain USAF-Ret) 287N at Wellington

**CHRIST THE KING
CATHOLIC CHURCH**
1008 N. First 592-2802
Rev. Patrick Burke, Pastor

Sunday Schedule	Wednesday Schedule
8:45 Children's Religious Formation	7:00 p.m. Adult Inquiry Sessions
10:00 a.m. Sunday Eucharist (Mass)	Thursdays - Communion Service & Rosary
- Reconciliation (Confession) before Mass	7:00 p.m. Chapel

**IOWA PARK
CHURCH OF CHRIST**
301 E. PARK + 592-5415

Sunday Morning	Sunday	Wednesday Evening
Bible Study	Worship	Worship
9:30 a.m.	10:30 a.m. & 6 p.m.	7:00 p.m.

MINISTER - JEFF RATLIFF

**CHURCH OF GOD
of Iowa Park**
601 E. Cash
"Where Love is More Than Just A Word"

SUNDAY

Sunday School	8:45 a.m.
Sunday Morning	10:45 a.m.
Children's Church	10:45 a.m.
Evening Worship	6:00 p.m.
Wed. Family Training	7:30 p.m.

Church 582-4848 Parsonage 582-5818 Bus & Nursery Available

**Our Mission
is to Make Disciples
for Jesus Christ**

First United Methodist Church
201 East Bank Street (592-4116)

Worship at 8:30 and 10:40 a.m.
Sunday School at 9:30 a.m.

John Besse, Pastor
Parsonage 592-4969

Be a part of the Family at First Church

**Lakeview
Church of God**
N. Victoria and Expressway

Opportunities for Services

Children's Church	Ladies Ministry
Choir (youth & adult)	Men's Fellowship
Nursing Home	Boys' Club, ages 6 - 17
Visitation	Girls' Club, ages 6 - 17
Puppet Ministry	Nursery Provided

Sunday School.....9:45 a.m.	Wednesday Family
Morning Worship...10:45 a.m.	Training Hour...7:30 p.m.
Sunday Night.....6:00 p.m.	(Classes for all ages)

Phone - Church: 592-2776, Parsonage: 592-9555
Pastor Ole Olds
Discover The Joy

*First
Presbyterian Church*

Rev. Carol Phillips, Pastor

*We welcome all to our friendly, family atmosphere
at the First Presbyterian Church*

Sunday School 9:30
Worship 11:00

211 S. Yosemite 592-4220

FAITH BAPTIST CHURCH

"The presence of God is our greatest asset"

411 S. Wall 592-2716

SUNDAY		WEDNESDAY	
Sunday School	9-15 a.m.	Adult Bible Study	6-30 p.m.
Morning Worship	10-30 a.m.	Children's Mission Programs	6-30 p.m.
Discipleship Training	6:00 p.m.	Youth "The Edge."	6-30 p.m.
Evening Worship	7:00 p.m.	Choir Rehearsal	7-30 p.m.

Nursery provided for all activities

Dr. Greg Ammons, Pastor
A Southern Baptist Church

First Baptist Church

A Place to Worship - A Place to Grow

SUNDAY WORSHIP	
9:30 a.m.	Bible Study
10:45 a.m.	Morning Worship
5:00 p.m.	Discipleship Training
6:00 p.m.	Evening Worship
WEDNESDAY ACTIVITIES	
6:00 p.m.	Acteens
A Missions Learning and Doing Organization for Girls 7th-12th Grades	
7:00 p.m.	G.A.s & R.A.s
Missions Learning and Doing Organizations for Girls 1st-6th Grades and Boys 1st-6th Grades	
7:00 p.m.	Jam
Youth Jesus and Me Praise Service & Bible Study	
7:00 p.m.	Church Prayer Meeting
7:45 p.m.	Sanctuary Choir Rehearsal

300 N. Yosemite - Iowa Park, Texas - 592-2151

NURSERY PROVIDED FOR ALL SERVICES

**THE WEEKLY
OIL AND GAS REPORT**

PREPARED BY OIL & GAS REPORTING SERVICE, INC.
P. O. BOX 2645, CORPUS CHRISTI, TX 78403 512/883-6533
RRC DISTRICT 9 - WICHITA FALLS

WICHITA COUNTY

BTO VENTURE, INC. of Iowa Park, TX has filed for a permit to DRILL a 1999' depth Wichita County Regular Field well 1.5 miles N of Kamay. The BURNS "B" SHALLOW Well No. 6 is located in the Sec. 4, Blk. 27, Kemp's W.V.F.L. S/D on a 76 acre lease.

JOE B. HOOD of Wichita Falls, TX has reported a NEW OIL WELL COMPLETION in the Wichita County Regular Field, 6 miles N of Holliday. The PEARL BOYD Well No. 1, located in the Blk. 13, B. N. Ferguson S/D on a 94 acre lease, tested 5 BO/D, no gas, no water, 20 BW/D on pump from perfs 730'-734' after frac treatment.

BURK ROYALTY CO. of Wichita Falls, TX has reported a DRY HOLE in the K M A Field, 8 miles SW of Iowa Park. The SUE MITCHELL-HAWKINS Well No. 1-R, in the P. Castleman Survey, A-36, was plugged and abandoned at a depth of 3890'.

CHARLES D. NEWBERRY, INC. of Holliday, TX has reported a NEW OIL WELL COMPLETION in the Wichita County Regular Field, 4 miles S of Iowa Park. The NORWOOD "A" Well No. 9-A, located in the Blk. 35, Palo Pinto CSL Survey, A-241 on a 342 acre lease, tested 10 BO/D, no gas, 40 BW/D on pump from perfs 735'-750'.

J. FRANK HOOD, JR. of Wichita Falls, TX has filed for a permit to DRILL a 2000' depth Wichita County Regular Field well 3 miles SE of Electra. The CATO "T&O" Well No. 1 is located in the HT&B RR Co. Survey #7, A-134 on a 108 acre lease.

J. FRANK HOOD, JR. of Wichita Falls, TX has filed for a permit to DRILL a 1500' depth Wichita County Regular Field well 2 miles S of Electra. The FLUSCHE L & L Well No. 1 is located in the Sec. 32, Blk. 5, H&TC RR Co. Survey, A-504 on a 200 acre lease.

J. FRANK HOOD, JR. of Wichita Falls, TX has filed for a permit to DRILL a 2000' depth Wichita County Regular Field well 2 miles S of Electra. The GENE FLUSCHE Well No. 1 is located in the Sec. 29, Blk. 5, H&TC RR Co. Survey, A-104 on a 80 acre lease.

JOE B. HOOD of Wichita Falls, TX has filed for a permit to DRILL a 1900' depth Wichita County Regular Field well 6 miles N of Holliday. The PEARL BOYD Well No. 2 is located in the Blk. 13, B. N. Ferguson S/D on a 94 acre lease.

L & S DRILLING, INC. of Kamay, TX has filed for a permit to DRILL a 2000' depth Wichita County Regular Field well 3 miles S of Electra. The WAG-GONER "MMM" Well No. 9 is located in the Sec. 148, Blk. 14, H&TC RR Co. Survey, A-784 on a 235.86 acre lease.

ARCHER COUNTY

BARNETT ENERGY, INC. of Carrollton, TX has filed for a permit to RE-ENTER a 5600' depth Wildcat well 7 miles SW of Windthorst. The DYE Well No. 3 is located in the TE&L Co. Survey #1847, A-530 on a 320 acre lease.

TRINITY MARC CORP. of Olney, TX has filed for a permit to RE-ENTER a 805' depth Archer County Regular Field well 8 miles SW of Windthorst. The EATON Well No. 1 is located in the J. Saunders Survey, A-644 on a 160 acre lease.

CHOLLA PETROLEUM, INC. of Dallas, TX has filed for a permit to DRILL a 1900' depth Davidson Field well 18 miles NNE of Archer City. The FOUR CORNER Well No. 5 is located in the Green Reynolds Survey, A-363 on a 171 acre lease.

GEONATURAL RESOURCES, INC. of Dallas, TX has reported a NEW OIL DISCOVERY in a Wildcat well, 8 miles SW of Archer City. The ABERNATHY Well No. 201, located in the SP RR Co. Survey #2, A-1281 on a 45 acre lease, tested 50 BO/D, trace of gas, 15 BW/D on pump from perfs 5229-32' & 5242-48' after acid treatment.

THRESHOLD DEVELOPMENT CO. of Fort Worth, TX has filed for a permit to DRILL a 5300' depth Archer County Regular Field well 13 miles N of Olney. The KEY Well No. 1 is located in the A. J. Richardson Survey, A-356 on a 200 acre lease.

THRESHOLD DEVELOPMENT CO. of Fort Worth, TX has filed for a permit to DRILL a 5300' depth Archer County Regular Field well 7 miles N of Olney. The SCOTT-CAMPBELL Well No. 1 is located in the Thomas McCoy #15, A-269 on a 40 acre unit.

3-T EXPLORATION, INC. of Wichita Falls, TX has reported a NEW OIL WELL COMPLETION in the Sadie Tom [Vogtsberger] Field, 0.50 miles E of Scotland. The KRAHL UNIT Well No. 2, located in the Lot 19, Blk. 3, Clark & Plumb S/D on a 40 acre unit, tested 95 BO/D, no gas, 20 BW/D on pump from perfs 4652-57' after acid and frac treatment.

**Specializing in personal service
for your insurance needs.**

- Life
- Health
- Disability
- Annuities
- Medicare Supplement
- Long Term Care

For a friendly quote, call
Sheryl Smith

(940) 592-4385 or (940) 322-2124



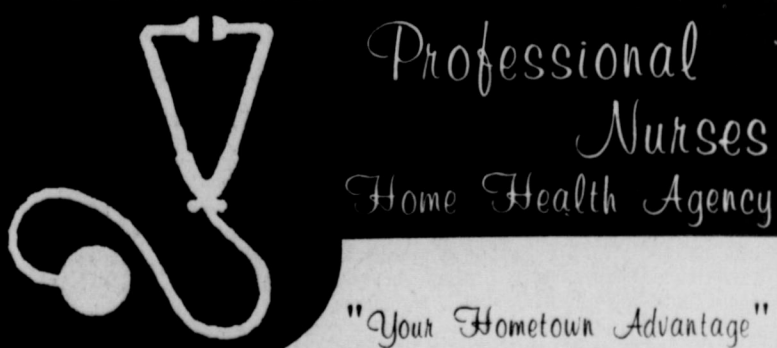
Health and disability benefit insurance underwritten by Mutual of Omaha Insurance Company. Life insurance and annuities underwritten by United of Omaha Life Insurance Company.

**VRJC TEXAS YOUTH COMMISSION
JUVENILE CORRECTIONS
PRE-SERVICE TRAINING**

Class: M-F 6-10 p.m. Register Daily 8:00 a.m. - 4:00 p.m.
Begins: August 11 in Continuing Education on the
Ends: September 5 VRJC campus. Classes are held in Vernon.

Persons completing the training are preferred applicants at the Texas Youth Commission Victory Field Military Academy. Women and minorities are encouraged to enroll.

FOR MORE INFORMATION, CALL: VERNON REGIONAL JUNIOR COLLEGE
CONTINUING EDUCATION (940) 552-6291



**Professional
Nurses
Home Health Agency**

"Your Hometown Advantage"

We offer the services of the finest professionals in the health care community:

- Registered Nurses
- Licensed Vocational Nurses
- Home Health Aides
- Medical Social Workers
- Physical Therapy
- Occupational Therapy
- Speech Therapy

**THE CHOICE
IS YOURS:**

If you have any questions about your health care needs, please give us a call today.

817-592-7035

811 W. Highway • P.O. Box 40
Iowa Park, Texas 76367

Licensed by the State of Texas
Darlene Schroeder, LVN Adm./Owner

50-212 (Rev. 5-94/3)

1997

Property Tax Rates in CITY OF IOWA PARK

This notice concerns 1997 property tax rates for CITY OF IOWA PARK. It presents information about three tax rates. Last year's tax rate is the actual rate the taxing unit used to determine property taxes last year. This year's effective tax rate would impose the same total taxes as last year if you compare properties taxed in both years. This year's rollback tax rate is the highest tax rate the taxing unit can set before taxpayers can start tax rollback procedures. In each case these rates are found by dividing the total amount of taxes by the tax base (the total value of taxable property) with adjustments as required by state law. The rates are given per \$100 of property value.

Last year's tax rate:

Last year's operating taxes	\$ 730,340
Last year's debt taxes	\$ 96,850
Last year's total taxes	\$ 827,190
Last year's tax base	\$ 117,332,040
Last year's total tax rate	\$.0750 /\$100

This year's effective tax rate:

Last year's adjusted taxes (after subtracting taxes on lost property)	\$ 824,450
+ This year's adjusted tax base (after subtracting value of new property)	\$ 119,487,140
= This year's effective tax rate	\$.68999 /\$100

In the first year a hospital district or city collects the additional sales tax to reduce property taxes, it must insert the following lines unless its first adjustment was made last year:

- Sales tax adjustment rate	\$ -0- /\$100
= Effective tax rate	\$ -0- /\$100

x 1.03 = maximum rate unless unit publishes notices and holds hearing	\$.71068 /\$100
---	------------------

This year's rollback tax rate:

Last year's adjusted operating taxes (after subtracting taxes on lost property and adjusting for transferred function)	\$ 727,925
+ This year's adjusted tax base	\$ 119,487,140
= This year's effective operating rate	\$.60921 /\$100
x 1.08 = this year's maximum operating rate	\$.65794 /\$100
+ This year's debt rate	\$.07794 /\$100
= This year's rollback rate	\$.73589 /\$100

A hospital district or city that collects the additional sales tax to reduce property taxes, including one that collects the tax for the first time this year, must insert the following lines:

- Sales tax adjustment rate	\$ -0- /\$100
= Rollback tax rate	\$.73589 /\$100

For a taxing unit with additional rollback rate for pollution control, insert the following lines:

+ Additional rate for pollution control	\$ -0- /\$100
= Rollback tax rate	\$.73589 /\$100

50-179 (Rev. 6-97/6)

Schedule A

CITY OF IOWA PARK

Unencumbered Fund Balances

The following estimated balances will be left in the unit's property tax accounts at the end of the fiscal year. These balances are not encumbered by a corresponding debt obligation.

Type of Property Tax Fund Balance

Schedule B

1997 Debt Service

The unit plans to pay the following amounts for long-term debts that are secured by property taxes. These amounts will be paid from property tax revenues (or additional sales tax revenues, if applicable).

Description of Debt	Principal or Contract Payment to be Paid from Property Taxes	Interest to be Paid from Property Taxes	Other Amounts to be Paid	Total Payment
	\$ 80,000	\$ 15,450	\$ -0-	\$ 95,450

(expand as needed)

Total required for 1997 debt service	\$ 95,450
- Amount (if any) paid from funds listed in Schedule A	\$ -0-
- Excess collections last year	\$ -0-
= Total to be paid from taxes in 1997	\$ 95,450
- State aid for facilities	\$ -0-
+ Amount added in anticipation that the unit will collect only _____ % of its taxes in 1997	\$ -0-
= Total Debt Levy	\$ 95,450

Schedule C

Expected Revenue from Additional Sales Tax

(For hospital districts, cities and counties with additional sales tax to reduce property taxes)

In calculating its effective and rollback tax rates, the unit estimated that it will receive \$ -0- in additional sales and use tax revenues. For County: The county has excluded any amount that is or will be distributed for economic development grants from this amount of expected sales tax revenue.

Schedule D

State Criminal Justice Mandate (For Counties)

The _____ County Auditor certifies that _____ County has spent \$ _____ in the previous 12 months beginning _____, 19____, for the maintenance and operations cost of keeping inmates sentenced to the Texas Department of Criminal Justice. _____ County Sheriff has provided information on these costs, minus the state revenues received for reimbursement of such costs.

Schedule E

Transfer of Department, Function or Activity

The _____ spent \$ _____ from _____ to _____ on the _____. The _____ operates this function in all or a majority of the _____. [Second Year of Transfer: Modify schedule to show comparison of amount this year and preceding year by unit receiving the function.]

This notice contains a summary of actual effective and rollback tax rates' calculations. You can inspect a copy of the full calculations at IOWA PARK CITY & SCHOOL TAX OFFICE, 1303 N. 4TH STREET

Name of person preparing this notice ALLEN T. SHEWMAKE, RTA
Title TAX ASSESSOR/COLLECTOR
Date prepared JULY 29, 1997

School supply lists released

Parents have less than two weeks to take advantage of sales on their children's school needs. Iowa Park students return to school on Aug. 18. Following are lists of school supplies for grades Pre-K through junior high school.

Kidwell Elementary
Pre-K
1 pair scissors (child size)
1 bottle dab-type (liquid) glue
1 - 8 count box crayons
1 - 24 count box crayons
1 box facial tissue (A.M. only)
1 box resealable bags - gallon size (P.M. only)
1 pkg. 100 white paper plates (A.M. only)
1 pkg. brown paper bags (lunch size 100 count) (P.M. only)
1 backpack with zipper
1 pkg. 3x5 index cards
2 - 4 oz. bottles white glue
1 change of clothes - pants, shirts, and underwear - in case of accident
Bring supplies to Pre-K orientation. Please put child's name on all items.

Kindergarten
6 - No. 2 pencils
1 box facial tissue - boys
2 boxes facial tissue - girls
2 boxes 8-count crayons. No jumbo, fluorescent, metallic, pastel, or scented.
2 26-count boxes crayons
1 plastic school box 8 1/2 x 5 1/2 - No handles
1 plastic folding rest mat
1 large eraser
4 glue sticks
1 - 8 oz. bottle white school glue
1 box gallon-size resealable bags
1 package white paper plates - 100 count boys only
1 backpack or book bag
1 - 8 count box large washable markers (classic colors)
2 pocket folders - no metal fasteners
1 pair scissors - metal blades/plastic handles

First Grade
1 large pencil eraser
1 pair pointed scissors
12 - No. 2 pencils regular size
2 boxes regular crayons - 8 count. No gemtones, glitter, magic scent, fluorescent, my world colors, cosmic colors, multicultural, etc.
2 boxes regular crayons, 1 - 16 count, 1 - 24 count
Water colors
1 school box - no larger than 8 1/2 x 5 1/2 x 2 1/2
2 boxes facial tissue - 200 count
1 book bag or satchel
1 box resealable freezer bags - boys - quart size, girls - gallon size. No pleated bags
3 plastic bottles white school glue (4 oz. size) No colors, no gel, no glue sticks
1 - 12" - 30 cm ruler - wooden
4 folders with pockets - no metal fasteners, no side pocket folders
1 - 70 page spiral notebook - wide ruled
Supplies will need to be replenished throughout the year. Please put your child's name on each item.

Second Grade
8 - No. 2 pencils (soft lead) - replace

as needed
1 large eraser - replace as needed
1 - 8 oz. bottle white school glue
2 glue sticks - replace as needed
1 small zipper bag for pencils and erasers
1 box regular crayons (24 count) replace as needed
1 pair pointed, good, sharp scissors (no plastic, no large sewing scissors)
2 boxes facial tissue (200 count)
1 school box - No larger than 8 1/2 x 5 1/2 x 2 1/2
1 box of 12 coloring pencils
1 package notebook paper wide ruled only
3 pocket folders - replace as needed
1 wide ruled spiral notebook (120 sheets) to be replaced as needed
1 tote bag or back pack
Boys - 1 box gallon size gripper zipping freezer bags
Girls - 1 box quart size gripper zipping freezer bags
Do not send loose leaf notebook binders, trapper keepers or clip boards.
Permanent identification must be on all items - supplies, coats, lunch boxes.

Bradford Elementary
Third Grade
1 box quart-size resealable freezer bags
2 red grading pens - ballpoint
6 No. 2 pencils - wood only
1 pkg. looseleaf notebook paper (wide ruled only)
1 box regular crayons - 24 count
1 pair pointed scissors
6 folders with pockets and brads (each folder should be a different color)
1 slicker 3-ring plastic folder with metal binders
2 boxes facial tissues (200 count)
1 ruler - wood not plastic - with inches and metrics
1 large eraser
1 - 4 oz. bottle white school glue
1 small zipper bag for pencils and erasers
1 school box (5 1/2 x 8 1/2 maximum)
1 pkg. of 8 large washable markers in classic colors
1 cursive writing tablet

Advanced primary tablet for Third Grade
1 box map colors (12 or larger)
1 glue stick
1 set watercolors
1 spiral notebook (60-100 pages)
A Hawk zipper bag will be available at the beginning of school for \$3.00 (11" x 7")
The above list is for all third grade classes. Individual teachers may request additional supplies after school begins.

Please do not send large looseleaf notebook binders, trapper keepers or clip boards.
Please have permanent identification on all items.

Fourth Grade
4 - No. 2 pencils (sharpened if possible - not mechanical)
1 red pen
1 WOOD ruler (inch & centimeter)
1 box map colors
1 box crayons (24 count)
1 box markers (8 primary colors)
1 - 4 oz. bottle of white school glue
1 pair scissors - pointed
2 pkgs. 200 count notebook paper
3 folders with pockets & brads - solid color, no designs or pictures
2 large boxes of facial tissues
1 spiral notebook (70 sheets)
1 "make-up" type bag for pencils. Cloth is preferable
1 - 1 1/2 inch, 3-ring notebook (NO TRAPPERS)
1 pkg. dividers
1 set water colors
1 big pink eraser

A Hawk zipper bag will be available at the beginning of school for \$3.00 (11" x 7")

Absolutely no supply boxes of any kind or supplies in larger amounts than listed. These will be returned home.

Please keep up with your student's supplies. They need to be replenished. We have school supplies available at our Bradford Store each morning.

Fifth Grade
2 - No. 2 pencils - WOOD
1 large plastic bottle white school

glue
1 ruler - 12 in. (cm. and in.)
2 Pkgs. looseleaf notebook paper - WIDE RULED - NO COLORED PAPER
1 box map colors (12 count or larger)
1 pair pointed scissors
1 - 1" binder (to be used for math)
1 - 2" binder (for English, spelling, and reading) binders need to be different colors
4 folders with brads and pockets (red, yellow, blue, and green)
2 Pkgs. of dividers (5 in each Pkg.)
2 boxes facial tissues (200 count)
2 red grading ink pens
1 plastic zippered pencil bag (NOT BOX) cosmetic bag or quart-size plastic resealable freezer bag is more sturdy for pencils
1 tote bag (optional)
1 box crayons (24 count)
1 box washable markers
1 box quart-size freezer bags
NO TRAPPERS - They do not fit inside desks

PLEASE LABEL EACH ITEM FOR OWNERSHIP (except facial tissues)

Please check on and replenish your child's supplies frequently.
A Hawk zipper bag will be available at the beginning of school for \$3.00 (11" x 7")

Junior High School
2 boxes of facial tissue
No. 2 pencils
Pens
Notebook paper (wide ruled)
5 folders with pockets & brads
1 package of 8 1/2 x 11 white copy

paper (500 sheets)

Other supplies will be determined by individual classroom teachers. Backpacks will be allowed provided they can be folded or hung inside a locker. Backpacks will not be allowed in the classroom.

Athletic students will be issued a sport bag for athletic use only (purchased with fundraiser money).

Yard of the Month

The "lovely front garden" at the home of Charles and Kelly Hickey, 1309 Mary Drive, caught the judges' eyes and given the Yard of the Month award for August.

A committee of the Iowa Park Garden Club selects a yard each month to receive this honor.

BEVERLY & 10TH ST.
LAUNDRY
DRY CLEANING & BUNDLE LAUNDRY
OPEN 7 DAYS A WEEK, 8 A.M. TO 8 P.M.
ATTENDANT ON DUTY
OWNER - DON EHLERT

JC's Automotive
104 North Alcott ~ 592-9588
"We Take Pride In Your Ride"
Hours: Monday - Friday 8 a.m. - 6 p.m.
We accept Visa, MasterCard, Discover & American Express

VERNON REGIONAL JUNIOR COLLEGE
FALL SEMESTER 1997
WICHITA FALLS SCHEDULE
Includes Century City and Skills Training Center
Call (940) 696-8752 for more information

August 18-19 - Wichita Falls Regular Registration
4105 Maplewood 10:30 a.m. - 5:30 p.m.
Classes Begin August 25
End November 10

Other classes and labs available that are not listed, see fall schedule.
N before a time slot denotes night class.

CENTURY CITY LOCATION	SKILLS TRAINING CENTER
CHILD DEVELOPMENT CHID 1301.60 Orientation to Child Care Env. N 5:30-8:25 M LAB Orientation to Child Care Environment TBA CHID 2321.60 Studies in Child Guidance N 5:30-8:25 W LAB Studies in Child Guidance TBA	ELECTRONICS ELTE 1303 Semiconductors I ELTE 1404 Semiconductors II ELTE 1309 Troubleshooting ELTE 1352 Opto-Electronics ELTE 1401 DC Circuits ELTE 1402 AC Circuits ELTE 1405 Advanced Electronics ELTE 1407 Digital Fundamentals ELTE 1408 Digital Applications ELTE 2340 Electronic Device Maintenance ELTE 2350 Microprocessor Architecture ELTE 2351 Computer Operations ELTE 2352 Interfacing Devices ELTE 2353 Interfacing Techniques ELTE 2354 Industrial Electronics I ELTE 2355 Industrial Electronics II ELTE 2358 Laser Technology Contact Skills Training Center for times, (940) 766-3369.
COSMETOLOGY Contact Kathleen Beavers, ext. 242 for more information.	COMPUTER AIDED GRAPHICS CAGR 1402.70 Com. Aided Design-ACAD-2D N 5:30-8:10 MW LAB Computer Aided Design-ACAD-2D N 8:10-9:20 MW CAGR 1402.71 Computer Aided Design - ACAD-2D 8:30-11:10TTh LAB Computer Aided Design-ACAD-2D 11:10-12:20TTh CAGR 1417.70 Customizing AutoCAD 8:30-11:10MW LAB Customizing AutoCAD 11:10-12:20MW CAGR 2405.70 Computer Aided Design-ACAD-3D N 5:30-8:10 TTh LAB Computer Aided Design - ACAD-3D 8:10-9:10 TTh
CRIMINAL JUSTICE CRIJ 1306.60 The Courts and Criminal Procedure 5:25-9:50 T CRIJ 2351.85 Community Resources in Corrections 5:25-9:50Th	INDUSTRIAL ELECTRONICS ELTE 1361.70 Process Industrial Con. I (PLCs) N 5:00-9:35 M ELTE 1362.70 Process Industrial Con. II (Heat Tmp) N 5:00-9:25 W
FIREFIGHTER TECHNOLOGY FIRE 1311.60 Principles of Firefighting 5:25-10:00 M FIRE 2320.60 Fire Protection Systems 5:25-9:50 T	MACHINING TECHNOLOGY MACH 1302.70 Machine Tool Practice I 3:00-4:00 MW LAB Machine Tool Practice I 4:00-5:00 MW MACH 1302.71 Machine Tool Practice I N 5:30-6:30 TTh LAB Machine Tool Practice I 6:30-9:10 TTh MACH 2405.70 Introduction to CNC 8:30-9:30 MWF LAB Introduction to CNC 9:30-12:40 MWF MACH 2405.71 Introduction to CNC N 5:15-6:15 MWF LAB Introduction to CNC 6:15-9:05 MWF
HEALTH INFORMATION SPECIALIST HEIN 1302.60 Medical Coding II N 5:30-7:00MW LAB Medical Coding II N 7:00-8:25MW HEIN 1304.60 Health Records Science I N 5:30-7:00 TTh LAB Health Records Science I N 7:00-8:25TTh	MANUFACTURING TECHNOLOGY MANU 1102.70 Industrial Safety 8:30-11:45 M MANU 1102.71 Industrial Safety N 5:30-8:45 M MANU 1104.70 Precision Tools & Measurements 8:30-11:45 M MANU 1104.71 Precision Tools & Measurements N 5:30-8:45 M MANU 1201.70 Technical Math 8:30-11:25 F MANU 1201.71 Technical Math N 5:30-8:25 T MANU 1203.70 Blueprint Reading 8:30-11:25 Th MANU 1203.71 Blueprint Reading N 5:30-8:25 W
LEGAL ASSISTING LEGA 1310.60 Family Law N 7:40-9:55MW LEGA 2306.60 Law of Business Organizations N 5:25-7:40 MW	WELDING TECHNOLOGY WELD 1301.70 Welding Fundamentals 8:30-9:30 TTh LAB Welding Fundamentals 9:30-12:10 TTh WELD 1301.71 Welding Fundamentals 1:00-2:00 MW LAB Welding Fundamentals 2:00-4:50 MW WELD 1301.72 Welding Fundamentals N 5:30-6:30 TTh LAB Welding Fundamentals 6:30-9:10 TTh WELD 2504.70 Metallic Inert Gas Welding N 5:30-6:30 MWF LAB Metallic Inert Gas Welding 6:30-9:40 MWF WELD 2404.71 Metallic Inert Gas Welding 8:30-9:30 MWF LAB Metallic Inert Gas Welding 9:30-12:40 MWF WELD 2405.70 Basic TIG Welding N 5:30-6:30 MWF LAB Basic TIG Welding 6:30-9:40 MWF WELD 2405.71 Basic TIG Welding 8:30-9:30 MWF LAB Basic TIG Welding 9:30-12:40 MWF
MATHEMATICS - PSI MATH 0300.60 Basic Mathematics 10:30-12:45 MW MATH 0300.61 Basic Mathematics 10:30-12:45 TTh MATH 0300.62 Basic Mathematics N 5:00-7:15 TTh MATH 0301.60 Elementary Algebra 10:30-12:45 MW MATH 0301.61 Elementary Algebra 10:30-12:45 TTh MATH 0301.62 Elementary Algebra N 5:00-7:15 TTh MATH 0302.60 Intermediate Algebra 10:30-12:45 MW MATH 0302.61 Intermediate Algebra 10:30-12:45 TTh MATH 0302.62 Intermediate Algebra 5:00-7:15 TTh For each Mathematics PSI class selected above, select the corresponding time slot below.	SHEPPARD LEARNING CENTER See ads in the Sheppard Senator for more information, call (940) 855-2203.
MATHEMATICS - PSI TIME SLOTS MATH 0000.60 Mathematics PSI Time Slot 10:30-12:45 MW MATH 0000.61 Mathematics PSI Time Slot 10:30-12:45 TTh MATH 0000.62 Mathematics PSI Time Slot N 5:00-7:15 TTh	COLLEGE CREDIT COURSES TAUGHT OVER THE INTERNET COSC 1301 Introduction to Computers CAGR 1402 Computer Aided Design - ACAD-2D CAGR 1415 Graphics Programs MCOT 1104 Introduction to Internet MCOT 1105 Intermediate Internet (Web Page Development) Students must have a computer with a modem, an e-mail account, and an internet provider. Contact VRJC-Vernon (940) 552-6291 for more information. http://www.vrjc.cc.tx.us
NURSING - VOCATIONAL Contact Betty Duncan, ext. 222 for more information.	
OFFICE TECHNOLOGY OFFT 1301.61 Keyboarding 8:00-9:05 MTWTh LAB Keyboarding 9:05-10:10 MTWTh OFFT 1301.63 Keyboarding N 5:40-7:50 TTh LAB Keyboarding 3:30-5:40 TTh OFFT 1402.61 Electronic Typing I 8:00-9:05 MTWTh LAB Electronic Typing I 9:05-10:10 MTWTh OFFT 1402.63 Electronic Typing I N 5:40-7:50 TTh LAB Electronic Typing 3:30-5:40 TTh OFFT 1403.61 Document Processing 8:00-9:05 MTWTh LAB Document Processing 9:05-10:10 TTh OFFT 1403.63 Document Processing 5:40-7:50 TTh LAB Document Processing 3:30-5:40 TTh OFFT 1405.60 Business English/Comm. 1:00-2:05 MTWTh LAB Business English/Comm. 2:05-3:10 MTWTh OFFT 1410.60 Introduction to Microcomputers 1:00-2:05 MTWTh LAB Introduction to Microcomputers 2:05-3:10 MTWTh OFFT 1414.62 Principles of Word Processing 10:10-11:15 MTWTh LAB Principles of Word Processing 11:15-12:20MTWTh OFFT 1414.63 Principles of Word Processing N 5:40-7:40 TTh LAB Principles of Word Processing 3:30-5:40 TTh OFFT 1441.62 Medical Terminology 10:10-11:15MTWTh LAB Medical Terminology 11:15-12:20 MTWTh OFFT 1441.63 Medical Terminology 5:40-7:50 TTh LAB Medical Terminology 3:30-5:40 TTh OFFT 1444.63 Medical Office Applications N 5:40-7:50 TTh LAB Medical Office Applications 3:30-5:40 TTh OFFT 1445.63 Medical Transcription I N 5:40-7:50 TTh LAB Medical Transcription I 3:30-5:40 TTh OFFT 1446.63 Medical Transcription II N 5:40-7:50 TTh LAB Medical Transcription II 3:30-5:40 TTh OFFT 2418.62 Advanced Word Processing 10:10-11:15 MTWTh LAB Advanced Word Processing/Desktop Publishing 11:15-12:20 MTWTh	

For each Office Technology class selected above (except section 61), select the corresponding time slot below.

OFFICE TECHNOLOGY TIME SLOTS
OFFT 0000.61 Office Technology Time Slots 8:00-10:10 MTWTh
OFFT 0000.62 Office Technology Time Slots 10:10-12:20MTWTh
OFFT 0000.63 Office Technology Time Slots 3:30-7:50 TTh

Computer Related
Your Laser Printer Specialist
Ted Berry
Recycled Toner Cartridges
Laser Printer Service
(817) 691-0304 (888) 851-6137
Email: comrel@cyberstation.net

SHIRLEY'S ONE STOP
5676 FM 1206 438-9909
MONDAY, TUESDAY, THURSDAY 6:30 AM. - 6:30 P.M.
WEDNESDAY OPEN TILL 7:30 P.M. (1/2 PRICE BURGER NIGHT)
FRIDAYS OPEN LATE TILL 9 P.M.
SERVING RIBS - RIBEYES - FISH AND SHRIMP
WITH ALL THE TRIMMINGS.
We also do flats, brake jobs, oil changes and small auto repairs. Call 438-9909 for all your needs!!!

ATTENTION IOWA PARK PARENTS
SHARP LINES RURAL PUBLIC TRANSPORTATION CAN HELP YOU WITH YOUR BUSY SCHEDULE MONDAY THROUGH FRIDAY
LET US PROVIDE SAFE, DEPENDABLE TRANSPORTATION FOR YOUR SCHOOL AGE CHILDREN.
SLRPT CAN PROVIDE TRANSPORTATION EACH MORNING AND AFTERNOON AT A VERY AFFORDABLE PRICE. \$1.00 PER DAY OR \$20.00 PER MONTH (RATES ARE ADJUSTED IF MORE THAN ONE CHILD PER FAMILY RIDES)
JUST CALL 24 HOURS IN ADVANCE TO SET UP TRANSPORTATION FOR YOUR CHILDREN.
1-800-633-0852 OR 592-2104
TRY US, YOU WILL LIKE THE WAY WE MOVE OUR BUSES FOR YOU!!!

The Classifieds

DEADLINES

12-NOON WEDNESDAY (WORK ADS ONLY)
4 P.M. TUESDAY, DISPLAY ADS

SAVE 10¢ PER WORD FIRST
INSERTION BY PAYING
WITH COPY AT OFFICE

RATES:

30¢ PER WORD FIRST INSERTION
20¢ PER WORD EACH REPEAT

Wallpaper Lacquer Acoustic Ceiling
GENE A. WILLIAMS
Paint • Tape & Bed
(817) 592-5494
121 S. Wall Iowa Park, Texas 76367

All Seasons Tree Spraying
Termite & Pest Control Roaches • Fleas
Ticks • Rodent Control
Danny Frazier • 817-592-0239
800 E. Pasadena • Iowa Park, Texas 76367

TEXOMA REALTY INC.
723-7471 592-9622
Wichita Falls Sales Associates
Edwina Wight and Randle Forcher 723-7471
Thomas Johnson, GRI 592-2399
Patty McEmore, GRI 592-9622

FOR RENT

2 BEDROOM extra clean, 1-car garage, new carpet & tile. Ice box and stove furnished, central H/A. \$475 mo. plus deposit. 592-2830. 8-7-1tp

1 BEDROOM mobile home, 10x50. 592-4685. 8-7-1tp


3 BEDROOM, 1 1/2 bath on W. Garden. Deposit and rent. \$450. 766-6791. 8-7-1tp

AT YOUR SERVICE!
Copy Machine and Fax
Jack's PARK PHARMACY
115 W. Park 592-2731

OPEN HOUSE - Sunday, 2:00 to 4:00 p.m.
NOW COMPLETE! DON'T MISS! #14 CHEROKEE- 4 BR, 2 bath, fireplace, over 1,900'. 2-car garage, privacy fence. HOSTESS: PATTY McEMORE.
652 COLEMAN PARK RD. - 4 BR, 2 bath Stucco home on 12.5 acres., 4-car carport, HMS warranty, 2 living areas, 2 fireplaces, \$91,900. Call Patty.
405 E. MAGNOLIA - Super building for storage or hobby. \$17,500.
OFFICE SPACE AVAILABLE - 208 N. Yosemite - See Patty
COMMERCIAL - 504 E. Highway - 2-Story, \$67,500. Call Thomas.
PRIME LAND
5.9+ Acres at 369 and Seymour Highway. Call Thomas
*** 7 Residential Lots on 600 Block of Magnolia. 50 X 150 each. Make offer. ***
**WE NEED HOMES TO SELL
PLEASE CALL US!
"WE WORK FOR YOU"**

TEXAS REALTY
Selling Iowa Park®
Polly Spruiell Res. 592-4756 Mobile Ph. 781-6155
109 W. Cash 592-2728
Tommy & Glenda Key Res. 592-4660 Mobile Ph. 781-1996
20's
610 E. Lafayette SOLD
30's
115 E. Garden Nice 3-BR home with large utility/storage room.
40's
500 W. Washington 2-BR house on cornerlot has privacy-fenced yard, central heat/air, and fresh paint.
708 W. Texas Well-kept 3-BR home has storm windows and doors and an attached two-car garage.
1209 N. Pacific 3-BR townhome offers total electric living, a small fenced yard, fireplace, storage/sun room, and utility room.
60's
920 Van Horn SOLD
109 N. Bell Road 3-BR home on one (1) acre is outside the city limits and features two living areas, formal dining, storm windows and doors, trees, carports and motor home storage.
70's
612 W. Coleman Charming 4-BR home includes 3 baths, 2-car cedar carport, ample storage, covered patio and much, much more!
513 W. Coleman 3 BR home with lovely designer ceilings, distinctive master bath, and picture frame paneling and fireplace in the living room.
80's
817 N. Park SOLD
90's
710 W. Aldine Court Lovely, 4-BR contemporary home in nice area was built in 1994 and features designer ceilings, white-wash cabinets, and many extras.
409 N. Park 3-BR home features large rooms, spacious and beautiful kitchen/dining area, large utility, ample storage, corner lot and more.
909 E. Texas Custom-built 3-BR has office, designer ceilings, separated master, walk-in closets, energy-efficiency, and much more.
Suburban IN CONTRACT
1452 BUS 287 J
NEW LISTINGS - RESIDENTIAL
611 W. COLEMAN
Attractive, well-kept 3-bedroom home has 21'X15' shop building with garage door; 2 storage buildings, shaded back yard, and lots of storage in garage.
710 S. COLORADO
Immaculate and comfortable home on 1.3 acres of land has recently been painted inside and outside. Includes several outbuildings and space for garden. Inside the city limits. Won't last long.

KEY REALTY
900 W. Highway 592-2718
Brenda Featherston 592-5524
Cindy Gray 592-4583
AREA HOMES
POPULAR AREA
One and a half story 3 bedroom home on W. Rebecca has 2 baths, double garage. Split master bedroom plan. Custom painted walls. Lots of trees. Above ground pool. Mid-Seventies. #1-365.
COUNTRY ATMOSPHERE
Serene area on Mourning Dove is setting for 3-2-2 home with 2 living areas. Pretty ceiling features, inviting open porch. Fireplace this winter. Three outbuildings. #1-453.
CITY VIEW LEASE/PURCHASE
Creative stenciling gives 4 bedroom, 1.5 bath home its own unique identity. Formal living and dining area. Den has fireplace. Extra room could be used as a sunroom. Double carport and large patio. #1-510.
CONVENIENT LOCATION
Brick 3-2-2 on N. Fourth has 2 living areas and separate dining. Lots of storage. Great backyard. Close to school. #1-548.
AMENITIES GALORE!
Three bedroom home on S. Wall has room y living room and formal dining room.. Second fabulous 11'X21 bath has cultured marble features, sauna, garden tub. You Will Enjoy! #1-549
*****LAND*****
GET READY, GET SET AND GO
Choose your site for your new home on Callie Lane. Perfect choice for only \$7,200 a lot. Call for area plan. #1-423.

OPEN HOUSE
Sunday, Aug. 10
2:00 - 4:00 p.m.
507 W. Coleman

Motivated seller will pay 1% of buyer's closing cost! Bay windows highlight one of two family areas in 2045 sq. ft. home on W. Coleman. Tiled entry leads to 3 bedroom home with 2 baths and double garage. Two patios. Hostesses: Cindy and Brenda.
FEATURE HOME
2610 Bell Road S.
MOTIVATED SELLER!
Large 3-2-2 on 4.73 acres is updated throughout. You will appreciate the separate dining room as well as the 3 bedrooms, 2 baths and 2-car garage plus carport. Bring all reasonable offers.

Don't Just Dream...Live the Dream! Don't Just Dream...Live the Dream! Don't Just Dream...Live the Dream...Live
Out in front
Regency One REALTORS
Residential • Commercial • Farm • Ranch
592-2133 • 1-800-870-2133
Don't Just Dream...Live the Dream!
Julie Ressel 766-5191
Darrell Jolly 592-4926
Winnie Holmes 592-5730
610 N. BELL RD., IOWA PARK
Custom bld. home, 3 possibly 4 BR, 2 1/2 bth, formal living, dining, breakfast, great kitchen with Islander. Manicured yard, 2 patios, small horse barn. Many amenities, 2598 sq. ft. Was \$167,000. NOW \$159,500. Will look at offers.
2600 HORSESHOE BEND, W.F.
Price reduced off Speedway. Absolutely a little doll house. Neat, clean and maintained, siding, storm windows. Immaculate yard. Must see. Call Julie, 766-5919.
1129 W. LOUISA, IOWA PARK
Clean and ready to move into 3 or 4 BR, 1 1/2 bath, 1 car garage, large workshop, fenced yard. Nice neighborhood. \$57,000.
2002 AVONDALE, WICHITA FALLS
Sprawling Country Club home on huge lot. Peaceful, quiet and private. 3 living areas, formal dining, breakfast room. 4 BR, study, 3 1/2 baths, Hardwood floors and inground pool with jacuzzi. \$287,000.
COMMERCIAL LOCATION AT 509 FRONT ST., ELECTRA
Many possibilities. Main building has approx. 2100 sq. ft. of showroom area, plus a 16-unit mini storage bldg. with a monthly income. Lot size is approx. 23,100 sq. ft. Priced at \$49,500.
314 E. BANK, IOWA PARK
Neat and clean, carpeted, 2 BR, 1 bath. Could possibly be 3 bedroom. C/fans, storm cellar, plenty of storage. Freestanding Franklin stove. \$22,500.
411 W. LOUISA, IOWA PARK
4 BR, 2 bath, 2-car carport, large storage bldg., Nice size laundry rm., corner lot. \$42,500.
1804 JOHNSON ROAD
Great customuilt 3 BR, 2 bath, 2-car garage, plush carpet, Hunter Green accents. White-washed cab's, many extras. Loads of storage, large lot. \$112,500.
1605 E. FM 367, IOWA PARK
To settle estate
Desirable location, park-like backyard with Gunite pool. 3300 sq. ft., hay barn, approx. 14X30 workshop, garden room. Dog kennels, 3 ponds, 3 BR, 2 bath, 2car garage. 2 living, 2 dining, large mud rm. Plenty of storage. A must see. \$152,000.
2 HOUSES FOR THE PRICE OF 1
In the country on 6.43 acres. Pipe welded fence, 2 bedroom, 2 bath mobile home plus approx. 2000 sq. ft. in wood frame home. 16X80 storage building, carport, main home has unfinished addition. \$72,500. Call Winnie.
4604 STANFORD, WICHITA FALLS
Updated and adorable. Pretty colors, big covered patio, storage building, 3 bedroom, 2 bth., Was \$64,900. NOW \$62,500.
3124 MANCHESTER
Wichita Gardens, main house plus rental (mobile home) large lot. Quiet street. Was \$52,500. NOW \$49,500.
1623 HAWES AVE., WICHITA FALLS
Absolute cream puff. Great for beginning couple or retired or single, or married, or just anyone. Has welding hook-ups in detached garage. Covered patio, was \$24,500, NOW \$22,500.
1124 W. LOUISA, IOWA PARK
Approx. 1996 sq. ft. 4 bd. 2 bths. Large backyard, updated completely. Workshop or apt. A mut see! Was \$82,500. NOW \$71,900.
1640 KEELER, WICHITA FALLS
Charming property. Hardwood floors, 480 sq. ft. Detached garage and workshop area. 24X12 camper shelter, Great backyard. Curb appeal. Stand-up storage in attic. \$47,900.
3504 CUMBERLAND, WICHITA FALLS
Established quiet neighborhood, 3 bd., 2 bth, 2 living. Gunite pool, huge lot, with many new amenities. All priced slightly above assessed value. Call Julie, 766-5919.
7702 W. SH 258, KAMAY
Want to enjoy the country life? Minutes from Wichita Falls. 3 BR, 1 bath, 1-car carport. New metal roof - 1996. Bilt-in range/oven. Lot size 142X175. \$27,500.
GREAT BUILDING SITES
13 tracts of land - Coleman Park Road, Iowa Park. Has city water and electricity. Ranges from 6.36 acres to 11.7 acres. Restricted. Call for information.
LOTS AND ACREAGE
3 LOTS, IOWA PARK
US Exp. access. \$7,500 each.
HIGHWAY 369
15.34 acres. Will divide.
1118 S. FM 368
7 1/2 acres in Iowa Park. Make offer, \$19,500.
508 W. CORNELIA
Lot - \$7,000.
HIGHWAY 82, HOLLIDAY
4 acres. \$16,000.
2408 MCKINNEY ROAD, WICHITA FALLS
3.96 acres. East of Wichita Falls. \$12,000.
514 MANES
4 lots. Iowa Park. Make offer.
22 BUILDING LOTS
located in Iowa Park (New Home construction)
6.3 ACRES
W. Smith, Iowa Park Make offer. \$17,000.