

HANSFORD COUNTY L.B.A.
120 MAIN, TEXAS 79081
SPEARMAN, TEXAS 79081

24 hour prayer
service 659-2911

Gruver PTA Says;
What do spooks have for breakfast?
Answer; Ghost Toasties, of course.



THE GRUYER STATESMAN

Volume 16 No 2 The Gruver Statesman, Gruver, Texas 79040 Thursday October 16, 1986

Hounds lose to White Deer 34-6, play at Spearman



Spearman is "that way" men!



The Gruver Greyhounds just didn't have a good night against the hard charging White Deer Bucks at Greyhound stadium Friday night. Played under rather damp conditions, the Gruver passing game was held to 53 yards and the wet ball was just impossible to hold, even when it was on target.

Loyd Cator excited the crowd with an 81 yard run in the 4th quarter.

Of course injuries played a great part in the loss to the Bucks from White Deer, but the Hounds played well.

Gruver is now 3-3 for the season, and 0-2 in district play.

Spearman is planning the biggest game of the year this Friday night, when they host the Gruver Greyhounds at Homecoming! Needless to say, everyone in the county is invited to the game, and a special invitation is extended to everyone in Gruver.

It will be claw vs. paw, East of the Draw on Friday night! The game will begin at 7:30 p.m.

The FFA in Spearman will have a barbecue supper open to the public beginning at 5 p.m. Friday. Everyone in Gruver is invited to the FFA supper.

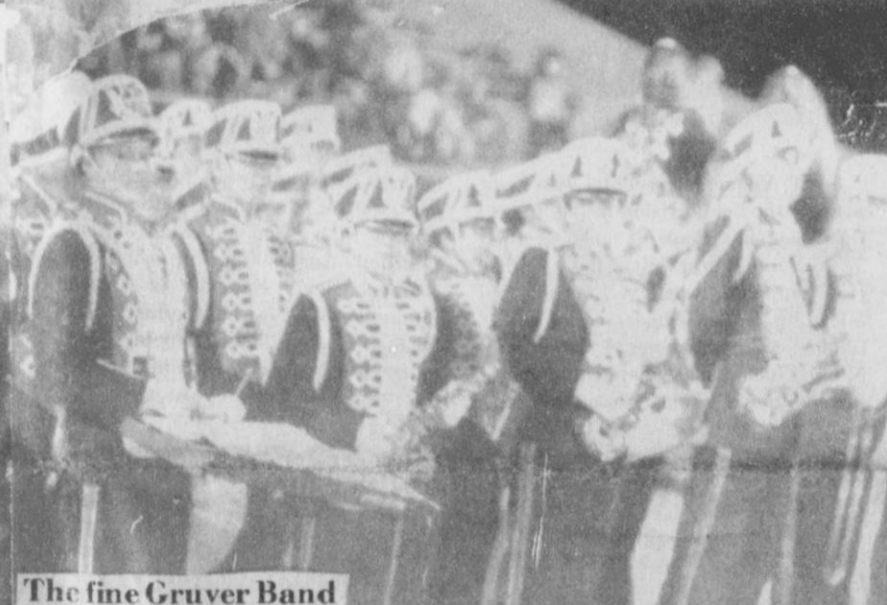
Remember, "Home-coming" time is also "Eat more Beef" time.



Coach Steele



Ball Boy dries wet ball

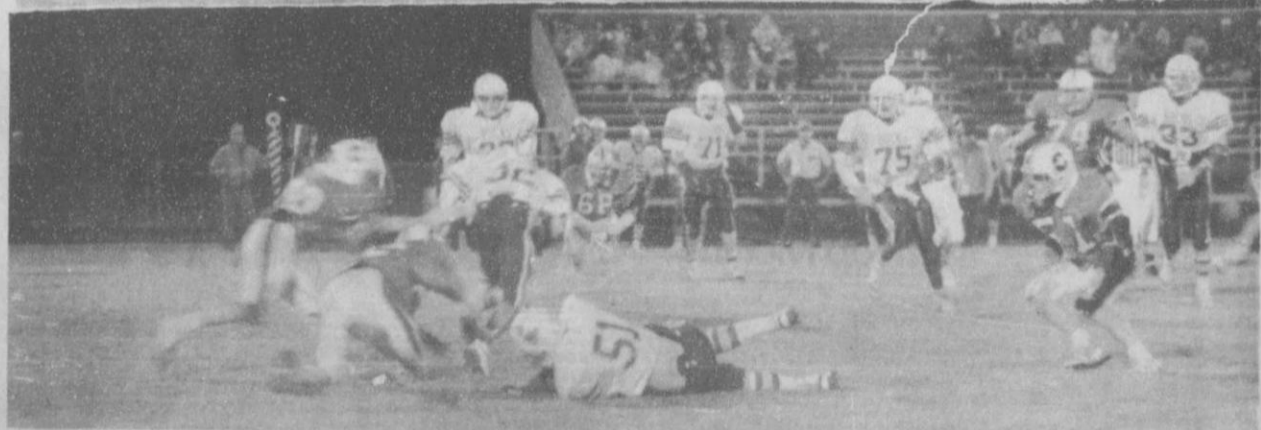


The fine Gruver Band

White Deer	7	7	7	13	34
Gruver	0	0	0	6	6

- W - Lane Cross to run (Lance Cross kick)
- W - Byron Thurmond 2 run (Cross kick)
- W - Mark Greene 1 run (Cross kick)
- W - Bart Thomas 8 run (kick failed)
- C - Loyd Cator 81 run (pass failed)
- W - Jason Malor 3 run (Cross kick)

	Gruver	White Deer
First Downs	9	22
Yards Rushing	146	159
Yards Passing	53	23
Total Yards Gained	199	382
Passes Attempted	22	7
Passes Completed	4	3
Passes Intercepted By	0	1
Number of Punts		
Punt Average		
Opp. Fumbles Recovered	0	0
Number of Penalties	4	5
Yards Penalized	60	55



Gruver Greyhounds in action against White Deer Friday night

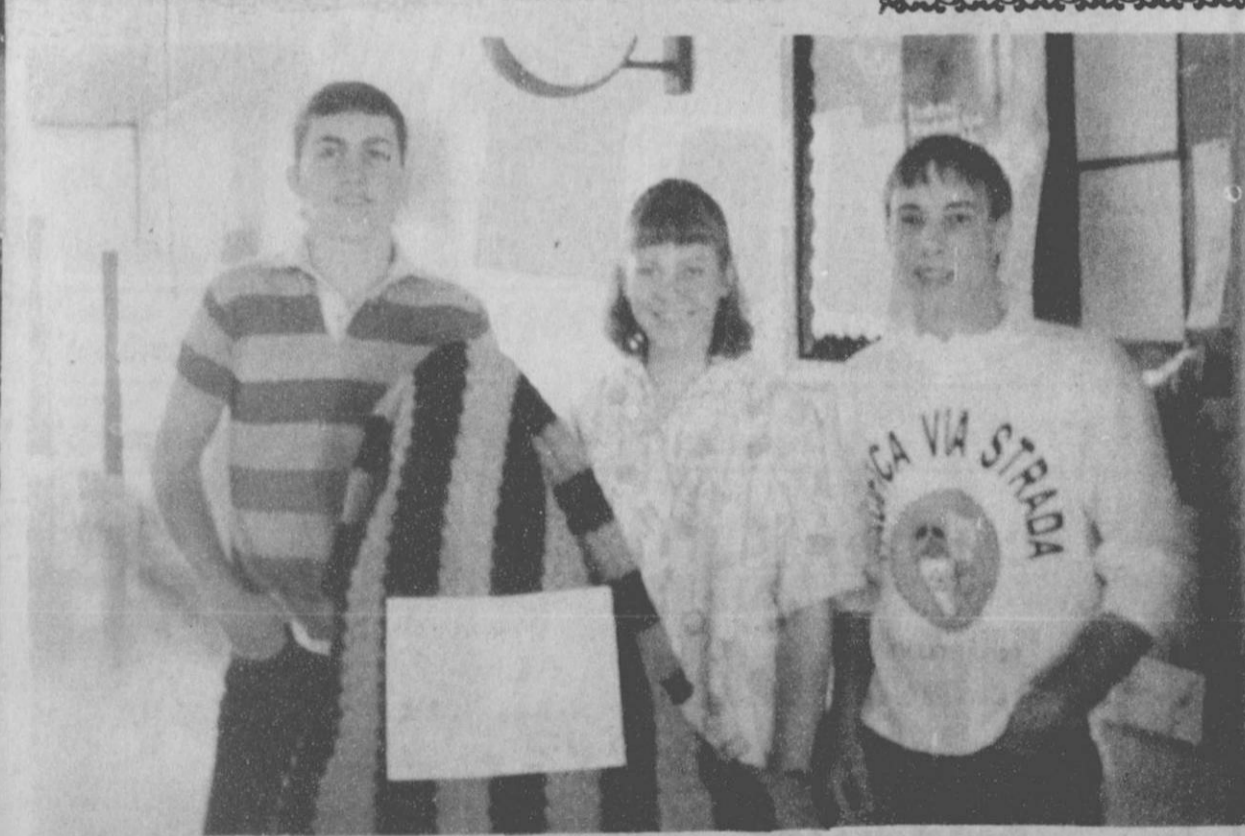
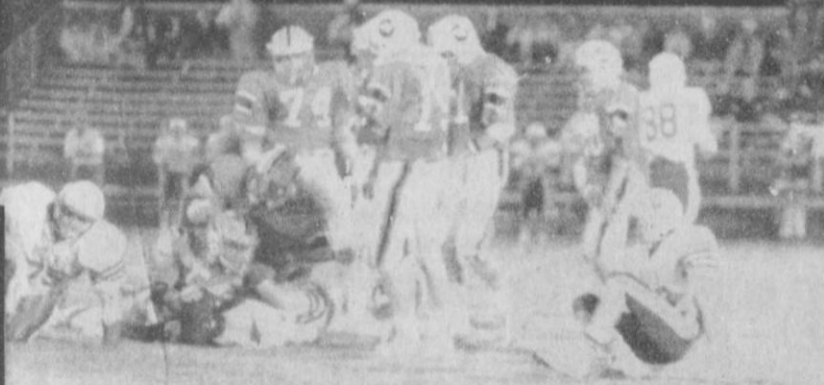
Obituary

Mattie Belle Dyer
GRUVER - Mattie Belle Dyer, 93, died Wednesday.

Services were pending with Boxwell Brothers Funeral Directors.

Mrs. Dyer was born in Throckmorton County. She was married to Jess Soapes in 1910 at Elbert. He died in 1930. She was married to Sam O. Dyer in 1943 at Olney. He died in 1978. She moved to Gruver in 1977 from Olney. She was a member of the First Baptist Church of Olney.

Survivors include a daughter, Othella Hankins of Rowland Heights, Calif.; a son, Clyde Soapes Sr. of Gruver; a sister, Ella Timmons of Olney; 10 grandchildren; 25 great-grandchildren; and several great-great-grandchildren.



Pictured are the Senior Class Officers, Tim Stedje - Vice President; Kathryn Gumfory - Secretary-Treasurer; Steve Duncan - President; with a

handmade afghan, made by Mrs. Vivian Green. The afghan will be given away Friday, Oct. 31 at halftime of Gruver-Stinnett football game. See

any member of the Senior Class to buy a ticket. Tickets are a \$1.00. Your donation is appreciated.

Texas Air Control

October 10, 1986 - The Texas Air Control Board has received applications for permits for four major construction projects with a total estimated capital cost of nearly \$1.4 billion.

The applications are for an electronics assembly plant at Corinth, Den-

ton County; a waste-to-energy plant at Austin; and two electric power generating plants, one at Calvert, Robertson County, and one at Gruver, Hansford County.

The Valley View Energy Corp., Dallas, has applied for a permit to construct a smaller (49 megawatt)

electric power generating plant at Gruver which also will use a circulating fluidized bed boiler, but will be fueled with cow manure. The TACB granted the company a permit last year for a plant near Hereford, Deaf Smith County, which will burn cow manure as fuel.

The Texas-New Mexico plant, in addition to using limestone in the boiler, proposes to install a baghouse and other equipment to minimize

PARENT MEETING
for
Girls Basketball
Oct. 20, 1986
7:30
in new
activity gym

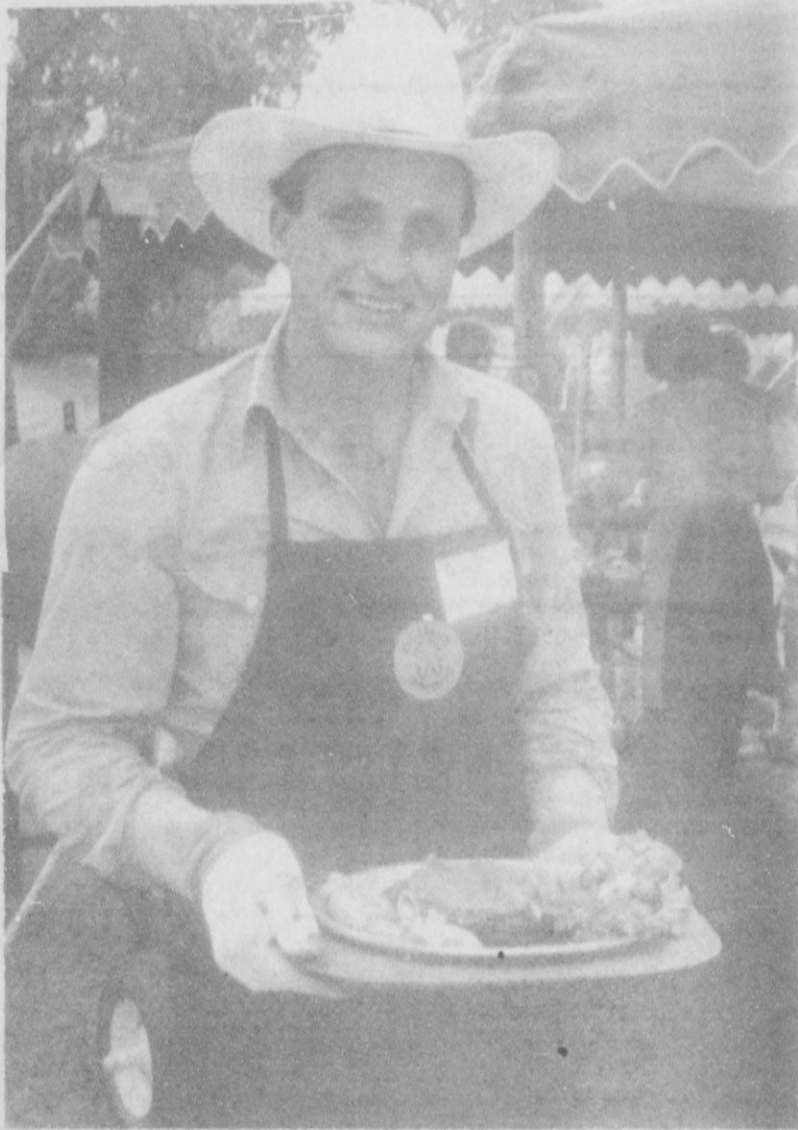
GRUVER MENU

- OCTOBER 20 - 24
MONDAY
 CHEESE SANDWICHES
 FRENCH FRIES
 FRUIT COCKTAIL
 COOKIES
 MILK
- TUESDAY**
 PIZZA
 TOSSED SALAD
 CORN
 JELLO
 MILK
- WEDNESDAY**
 STEAK FINGERS
 MASHED POTATOES W/GRAVY
 GREEN BEANS
 CHOCOLATE CAKE
 HOT ROLLS
 MILK
- THURSDAY**
 WESTERN BURGERS
 CARROTS
 APPLE COBBLER
 MILK
- FRIDAY**
 SLOPPY JOES
 FRENCH FRIES
 TOSSED SALAD
 OATMEAL COOKIES
 MILK

Apology

We want to apologize to SACK'S THIRD AVE. for leaving their name off of the Moonlight Madness Adv. in the Spearman and Gruver papers. Even tho, we did get it on the front page story, we regret very much that we did not put it in the advertisement. The Editor

Venneman wins Beef Cook-off



Joe T. Venneman

Joe T. Venneman recently won first place in the beef division at the Texas Championship Cook-off held at the Texas State Fair in Dallas on Oct. 4th. He competed with his recipe of Mesquite Grilled Steaks with Green Chilies. With the help of Dean and Monte Cluck, the excellent cut of meat was obtained from National Beef

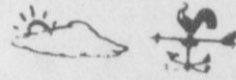
Packers in Liberal who buys a large per cent of the Cluck cattle. The rib eye slab was a USDA Prime Certified Angus Cut furnished by National Beef. National is known throughout the feeding industry for the quality of cattle that they buy. The following is the prize-winning recipe: 6 (1 1/2 inch thick) rib eye steaks

1/2 tsp. salt-free herb & spice seasoning (Ms. Dash)
 1 1/4 cup teriyaki sauce
 2 Tbs. browning & seasoning (Kitchen Bouquet)
 2 (4 oz.) cans whole green chilies, sliced in strips

If possible, use mesquite coals from wood fire; otherwise soak mesquite wood chips 1-2 hours. Place steak in shallow dish; sprinkle one side of each steak with herb & spice seasoning. Combine next 3 ingredients and pour over meat. Marinate 1 hour. Prepare charcoal fire in grill; let burn 15 to 20 minutes. Cover coals with soaked mesquite chips. Remove steaks from marinade and grill over medium-hot coals 6-8 minutes; turn, placing 3 strips of green chilies on each steak. Grill an additional 6-8 minutes or until desired degree of doneness.

Richard Wagner from Hitchland was also a finalist in the poultry division. Even though only one prize was brought home, it took the team work of both men to compete in the Dallas cook-off.

THE Know Weather



Does the weather affect wildlife and hunting to an appreciable degree?

Yes. The weather is a most important influence on our hunting. First, enough rain and the right conditions are required to populate our woods and fields with wildlife, by giving them vegetation and insect and animal food.

Second, weather often determines when and where birds migrate. It can determine where native animals and birds are to be found during the hunting season—in heavy, protected areas, or out in the open, so to speak.

What some people don't realize is that severe weather kills game, as well as people. A severe winter following a dry summer is hardest on many forms of wildlife.

Homecoming B-B-Q F.F.A.

The Spearman F.F.A. Chapter will sponsor its annual barbeque on Friday, October 17th. This barbeque will be held prior to the homecoming football game with Gruver.

The barbeque will be served from 5:00 p.m. until 7:00 p.m. in the high school cafeteria. Tickets may be purchased ahead of time from any F.F.A. member or may be purchased at the door. Take out orders will be

available, also, if this more convenient for you. Prices are Adults \$5.00 and children under 10 years \$2.50.

The barbeque beef is being prepared by F.F.A. members and will be cooked underground in a pit. We wish to express our appreciation to the following feedlots in our area who made donations toward the purchase of the beef we are preparing: Spearman Cattle Feeders, Frontier Feed Yard, Palo Duro Feeders, Inc., Dean Cluck Feed Lot

On the Go with Joy

Several years ago, there was a song in the Country Music Category called "Mothers, don't let your sons Grow up to Be Cowboys." Well, I am writing a sequel called "Or If You Do, Teach Them to be Repairmen Too." "Now, what is wrong?" you ask, "Just the usual things." I reply it seems that I am not too fond of Fridays and Mondays because instead of "Thank Goodness it's Friday", I go around uttering "Oh No! What will go wrong today" and at 5:31 p.m. I am either trying to get ahead of a doctor or a repairman. It is always just after the shop or office closes and everyone has left town for the weekend.

But this last week-end I lucked out and got everything taken care of on a Saturday morning (by the way, I can dial the repairman's number in the dark without looking it up - kind of automaticly). However Monday morning after a week-end of cold weather and getting the dust smell out of the furnace, we woke up to a cold-cold-house, the furnace had quit working and I spent an hour or two rolled up in a ball under the covers. Anyhow I could hardly get out of bed and was trying to cook breakfast; but since I was so late no one was there but me well my coffee pot wouldn't work and while I was standing there staring and muttering about a ticket to Australia, it dawned on me that the water shouldn't be clear in the glass pot, it should have been poured in the well and then it could make the coffee.

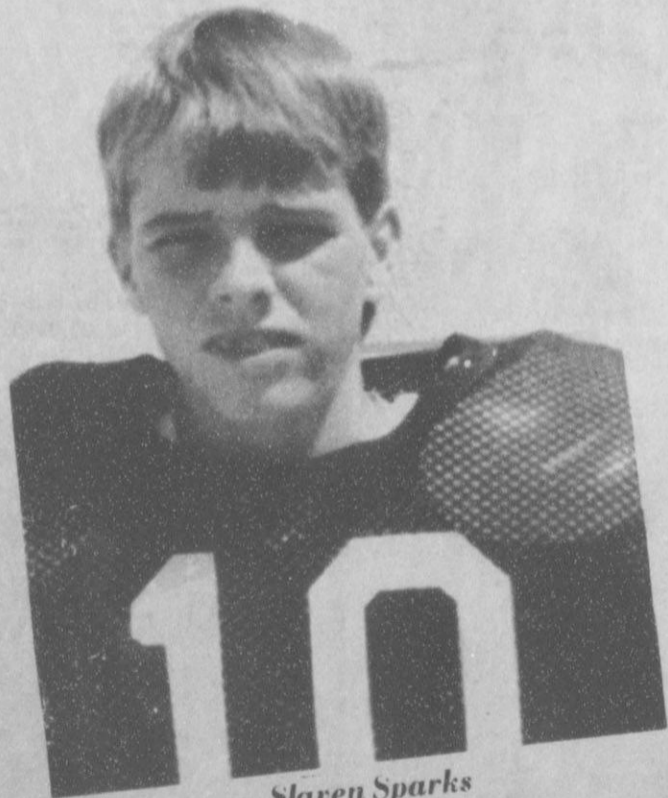
Smart huh? On to the eggs. I like lots of black pepper on my scrambled eggs so I reached for the can of black pepper from the table and gave it a vigorous shake only to discover the can that I had picked up was a band-aid can. (They are very similar, you know) While I was digging the band-aids from my eggs, I contemplated about whether to fly to Australia or take a slow boat. I finished my breakfast and since I had a temper in 'high gear, I loaded the dishwasher, and shifted my energy on to vacuuming. I was nearly finished when I accidental ran into a sack of wheat and tore a hole in it. You're right a mound of wheat kernels scattered all over the kitchen. About that time, I decided I'd better have a talk with my Doctor. You know what he told me? Well, you were needing to find something to write in you column-so now you have it. What are you complaining about now?

Happy Birthday to all those who have birthdays in October. Especially, Dad, Mom and Alicia.

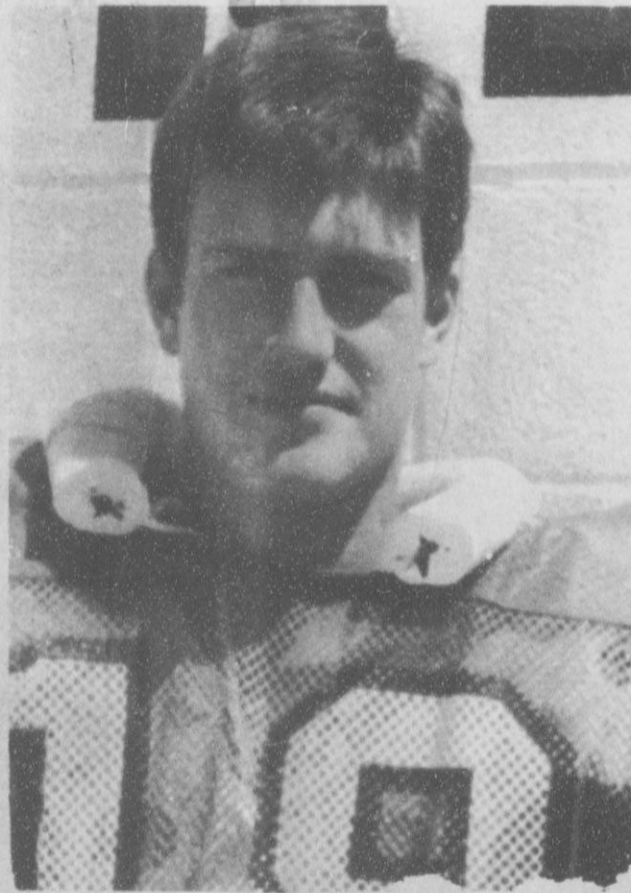
Weather

DATE	HI	LO
10	61	50
11	55	40
12	39	29
13	66	29

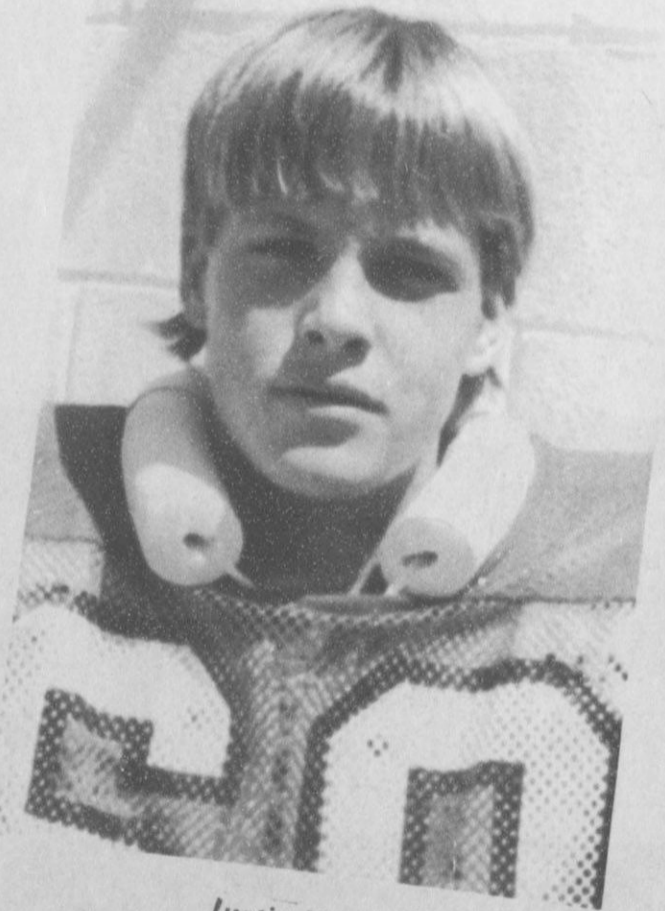
Date 11, Prec. .19



Slaven Sparks



Ross Renner

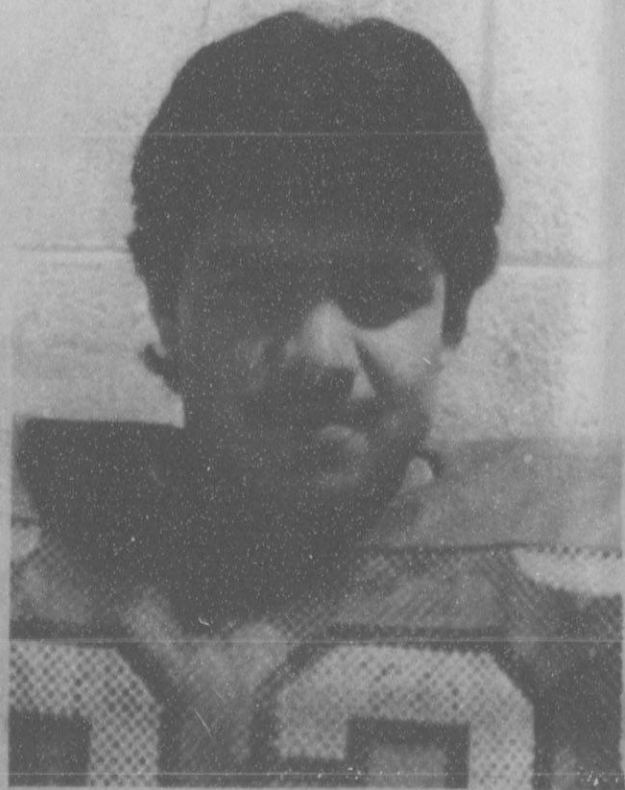


Justin Harris

October is
4-H Month

Friday is
Homecoming

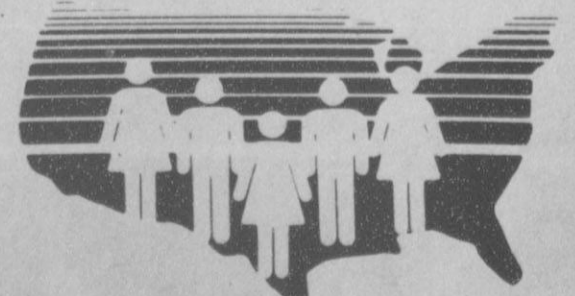
Gruver at
Spearman



Jacob Moreno

October is Co-op Month.

COOPERATIVES



WORK!

Your Harvest
Headquarters

Consumers Sales Co.

421 W. Kenneth Av.

659-2012

Spearman, Texas

WANT ADS

CLASSIFIED RATES

Regular.....Per Word-\$0.13
 Display.....Per Col. Inch-\$4.20
 Double rate for blind ads
 Minimum charges
 Cash.....\$4.00
 Charge.....\$4.50

CASH IN ADVANCE ADS
 Work Wanted*Trailers For Sale*
 Business Opportunities*No Longer
 Responsible*Political Advertising*
 Child Care* Babysitting*
 Garage Sales*Out-Of-County Ads-
 unless advertiser has
 established credit with
 The Gruver Statesman

DEADLINES
 To place or cancel ads
 Fri., 12:00 p.m.....Sun. edition
 Tues., 12:00 p.m.....Thurs. edition

The Gruver Statesman reserves the right to reject, edit, revise and properly classify all advertising submitted for publication. The Gruver Statesman also reserves the right to cancel any advertisement at any time.

The Gruver Statesman,
 Box 796
 Gruver, Texas 79040

Hansford County
 Planned Parenthood
 412 Davis
 659-2483
 Spearman
 Mon. - Fri.
 8:30 - 12:30

Situations Wanted

WANTED: Cake baking & decorating done. I now have the "Ele-roo pan." Also sewing and alterations. Call Joy at 733-2517.

Sewing wanted, alterations etc. Baking and decorating cakes. I now have the Wuzzles cake pan "EleRo". Call Joy at 733-2517.
 52-rtn-nc

OSGOOD MONUMENT CO.

Amarillo, Texas
 Dealers of Rock of Ages Granite, as well as all colored granites, marble and bronze memorials.

represented by
BOXWELL BROS. FUNERAL HOME

519 S. EVANS
 659-3802

NOTICE

Wallace Monument Co.
 Monuments, Curbing,
 Grave Covers
 Local Representative
LEONARD JAMESON
 Spearman, Texas
 40-rtn

Real Estate

WHY PAY RENT! Move into a beautiful home for less than you are paying in rent.

Alliance Homes of Amarillo
 Qualify by Phone
 806-381-1352
 Call Collect

TAKE UP PAYMENTS ON TWO AND THREE BEDROOM HOMES.

Alliance Homes of Amarillo
 Qualify by Phone
 806-381-1352
 Call Collect

Farm Items

Hay Swathing and Baling done
 German Millet, Alfalfa, Wheat, Hay
 Grazer(Cow Kandy) - Call 733-2517

For Sale

FOR SALE: Fertile eggs pullet size 50 cents per dozen hen size 75 cents per dozen. Call Joy at 733-2517.
 NC

FOR SALE: 1981 Olds \$3150.00 very clean - 733-2817

FOR SALE: 1978 Buddy 14x70 3 bedroom 1 1/2 bathrooms low assumable loan equity or trade 733-2144 2-1tp

FOR SALE: Repossessed Piano-Can Assume Low Monthly Payments - Will Show Locally - Call Brier & Hale Music at 316-624-8422 for complete details.
 1-2tc

FOR SALE: Hogs ready to be butchered. Call 733-2517.

For Sale: ACFA Registered Smoke Persian Kittens. \$135.00 Call 659-5163 1-2tp

FOR SALE: 357 Colt Python 6" nickel, 357 SW model 686, 6" Stainless. Also Dillon RL450B Progressive Reloader For more details call 659-5189 After 5:00 p.m.
 2-2tp

GRASS SEED

Blue Grama Sand Dropseed
 Side Oats Morpa Lovegrass
 Plains Bluestem Ermelo Lovegrass
 Spar Bluestem
 Mixes Available

Wateley Seed Company
 Hwy 15 Spearman, Tx.
 659-3838 day or night
 2-rtn

FOR SALE: 1985 Silverado Suburban 4 wheel-drive, loaded, like new, low-mileage, \$13,800. Call after 5 P.M. 659-2619. 2-1tp

FOR SALE: 16 head of reg thoroughbred and 1/4 horses. Contact Scotty Arnold, FDIC, Lubbock, Tex. 806-794-2008 ext. 313.
 2-1tc

Help Wanted

HELP WANTED AT HOME - SPARE TIME. Paint lovely homemade molds and toys which we provide. No experience necessary; our unique dipping method allows you to paint quickly. We pay \$20 for each dozen molds/novelty items sent us according to our instructions and we pay the shipping. No selling, no placing ads, no stuffing envelopes, no phone calls to make; your only job is painting the products which we distribute through our own outlets. Have the entire family help you; this kind of work is very educational for children. For more information, please call us at (213) 856-2233.
 1-3tp

Special Item

Just Arrived - 1986 Tri-Chem Christmas catalogue. See the new Sun-glo, Sticker Art & Liquid Embroidery items. Get a head start on your gift list or craft projects. Call Joy at 733-2517.

WANTED: Custom work get a jump on your 1987 crop by working your ground this fall. Will Do! Chisel Plowing, Discing, Listing, Rodweeding, NH3 Application, Combining of Corn and Milo, for less than you are Now paying. Work Guaranteed Fully Insured. 806-384-2086.
 2-4tn

POLITICAL ANNOUNCEMENT

This newspaper is authorized to announce the candidacy of the following candidates for public office subject to the action of the voters in the MAY PRIMARY ELECTIONS:

DEMOCRAT FOR COUNTY TREASURER
 Jean ...
 Norma Jean Mackie
FOR COUNTY AND DISTRICT CLERK
 Amelia C. Johnson
FOR STATE REPRESENTATIVE
 J.W. Buchanan
REPUBLICAN FOR COUNTY TREASURER
 Eschol Blankenship
FOR STATE REPRESENTATIVE
 Dick Waterfield

Check your children's Halloween costumes. If they aren't flameproof, discard them and buy or make others.

For easier clean-up, line your barbecue grill with foil, soil or gravel.

Early fall is a good time to prepare new flower beds. Spade 3 to 10 inches deep n-w and again in spring before planting.

Markets

WHEAT	\$2.08
CORN	\$1.75
MILK	\$2.85

The Gruver Statesman

PUBLICATION (USPS 9598-0000)
 GRUVER, TEXAS 79040
 BOX 796
 659-3434

OWNED-PUBLISHER
 William M. Miller
EDITOR
 Joy Henderson
 Gruver, Tx.

Second Class postage paid at Gruver, Texas 79040.

Any erroneous reflection upon the character of any person or firm appearing in these columns will be gladly and promptly corrected upon being brought to the attention of the management.

POSTMASTER: Send address changes to the Gruver Statesman, Box 796, Gruver, Texas 79040.

SUBSCRIPTION RATE: The Gruver Statesman, adjoining counties, \$20.00 per year.



CONVENIENCE STORES

30 YEARS OF SERVING YOU

1956 1986

Prices Good OCT 15, 16, 18, 1986

While Supplies Last!

KRAFT 7 1/4 oz. boxes
Macaroni Cheese Dinners 4 for \$1.00 *Honey Orders* **19¢**

LIBBY'S (5oz. cans)
Vienna Sausage 3 for \$1.00 *DELICIOUS & FAST DELIVERS* **99¢**

WESSON 38 oz. bottle **\$1.59** *ALLSUP'S FRESH & CRISPY* **French Fries** **49¢**

Heinz (32oz. bottle) **\$1.09** **Tomato Ketchup** **DEL MONTE** 2 for \$1.00 **Pineapple** (15 1/2 oz. cans)

Lay's **Potato Chips** **99¢**
 REGULAR/BARBECUE/SOUR CREAM & ONION/NO SALT LAY'S ASSORTED
 REG. \$1.39 ON SALE FOR ONLY

DECKER 8oz. pkg **79¢** **Gold Lunch Meats** **DECKER** 6oz. pkg. **\$1.29** **Danish Ham**

BORDEN'S **Chocolate Milk** QT. **69¢** **DECKER** (6oz. pkg) **\$1.09** **Chopped Ham**

BORDEN'S HUTTY BUNNIES! **Ice Cream Sandwich** 4 CT. **\$1.09** **DECKER** (1lb. pkg.) **\$1.89** **Sliced Bacon**

BORDEN'S **Cottage Cheese** 12 OZ. CTN. **69¢** **DECKER** (12oz. pkg.) **\$1.09** **Bologna**

BORDEN'S **Homo Milk** 1/2 GAL. CTN. **99¢** **DECKER** (12oz. pkg.) **89¢** **Franks**

Your #1 With Us!!!

ALLSUP'S

CONVENIENCE STORES

Del Monte Vegetables
 16 oz. Cut Green Beans
 15 oz. Spinach
 17 oz. Sweet Peas
 17oz. Whole Kernel Golden Corn
 4 for \$1.00



Caffeine Free Coke, Cherry Coke, Coca-Cola Classic or Diet Coke
 12 oz. cans 6 pak. **\$1.69**

FESTIVE FOODS FREE DEMONSTRATION

Festive Foods Books - Microwave Cooking - Holiday Ideas

MONDAY, OCTOBER 20
 7:00 P.M.

GRUVER STATE BANK
 Gruver, Texas

Please Call 733-2333 For Reservations

Electricity - Efficient use makes for a wise choice.

Presented By:



KAY CREWS
 SPS Home Economist



A159-9-86-930.1

Little Miss Cinderella



Little Miss Prissie Scales winner of the Cinderella Beauty Pageant held in Pampa on Oct. 4th. She is pictured holding her trophy and wearing her sash and tiara.

Prissie Scales won first place and was the overall beauty winner in the fourth annual Lake Greenbelt Baby Pageant held in Pampa, Oct. 4. She's eligible to enter the state pageant held in Denton next June. Prissie is the

daughter of Brad & Mary Scales of Borger and the granddaughter of Jim & Bonnie Bonham of Gruver, and Bill & Loretta Riddle of Borger and Perry Scales of Wilburton, Ok.

Bridal Shower

Miss Beth Holt, bride elect of Phil Tripp of Guymon, Oklahoma, was honored with a bridal shower at 2:00 in the afternoon of October 11, 1986, in the lovely home of Mr. and Mrs. Del Cluck. Bouquets of fresh fall-colored garden flowers were placed throughout the home and were enjoyed by the many guests who also enjoyed a time of visiting, viewing the gifts and watching Beth open several gifts.

The hostesses presented the honoree with a beautiful corsage of deep red roses and pink carnations trimmed with white babies' breath and burgundy and pink ribbon. Corsages of white mums also trimmed with the bride's colors were presented to Mrs. Pat Holt, mother of the bride, and to Mrs. Wilbur Tripp of Guymon, Oklahoma, mother of the groom.

Refreshments of cake, punch, spiced tea, coffee, mints and nuts were served by Mrs. Tanya Atkins, Mrs. Clara Thompson, and Mrs. Nanette Haines. The refreshment table, laid with a white cloth embroidered with floral cascades, was centered with a beautiful floral arrangement of white and burgundy mums, pink carnations, pink, white and dark red roses with highlights of stephanotis and stems of white berries. The centerpiece was arranged by Fran Maupin. Completing the table setting were a crystal punch bowl, trimmed with a silver band, and a silver coffee service.

The many lovely and useful gifts, displayed in the sun porch and the bedrooms, were the focus of much of the afternoon's conversation.

Out-of-town guests who attended the afternoon's festivities were Dorothy Buzzard, Lois Shieldknight, Marcia Shieldknight, Brenda and Clara Shieldknight and Leann Gillaspie of Spearman, Judy Buzzard of Perryton, Mary Long of Guymon, Nanette Haines of Roswell, New Mexico, Clara Thompson of Carrollton and Jeanette Henry of Brainerd, Minnesota.

Hostesses for the miscellaneous shower were Tanya Atkins, June Barkley, Charlotte Bergin, Tracy Bevil, Beulah Bort, Diane Brown, Barbara Cluck, Georgia Davidson, Gerry Davis, Ann Dorman, Geneva Eddleman, Delphine Eling, Louise Evans, Nelle Evans, Charlotie Gilbreath and Rosalie Grotegut.

Also serving as hostesses were Vivian Harris, Kelly Hart, Mavis Hart, Mary Hart, Carolyn Hicks, Jean Holland, Janet Irwin, Mary Rae Lamb, Juanita Logsdon, Kathy Logsdon,

Wedding Vows Exchanged



Mrs. Corbet Brain Gomoke

Teresa Ann Miesner and Corbet Brian Gomoke exchanged wedding vows Friday, Oct. 10, at 6 p.m. in the Union Church in Spearman.

The bride is the daughter of Mr. and Mrs. Louis Miesner, Spearman.

The groom is the son of Mr. and Mrs. Charles Gomoke, Fritch.

Officiating at the wedding was Steve Rogers, pastor of Spearman Union Church.

Organist was Eddie Gail Martin of Spearman. Soloists were the Bride and Eddie Joe Janeway, Borger.

Maid of honor was Kaye Lyn Dillow of Goodwell, Okla., and bridesmaid was Cindy Hendrick of Canyon.

Best man was Jeff Gomoke, Lubbock, brother of the groom and groomsmen was James Cunningham of Fritch.

Flower girl was Lacey Miesner, niece of the bride, and ringbearer, Marty Miesner, nephew of the bride, both of Spearman.

Candlelighters were Mandi Porter,

niece of the bride, Spearman, and Judd Moller, Fritch.

Ushers were Greg Miesner, brother of the bride, and Chuck Smith, both of Spearman; and Don Dillow of Goodwell, Okla.

Becky Porter, niece of the bride, passed out rice bags.

A reception was held at the church and assisting were Makala Weakly, Debbie Rogers, Rowena Trusler, Terry Porter, Lesa Miesner, and Wanda Burke.

Following a wedding trip the couple will live in Gruver where the groom is employed by Phillips Petroleum Company.

Among The Neighbors

The pace of the activities has quickened considerably in the home of Mr. and Mrs. Roy Harbour with the arrival of Macy Christine. She was born at Northwest Texas hospital in Amarillo on October 4 at 12:43 p.m. weighing 6lb 10oz.

Her maternal grandparents are Mr.

and Mrs. Buddy Benton of Spearman. Great grandmother, Mrs. Viola Benton, Sayre, and great grandfather, Sam Gossett, Pampa. Mr. and Mrs. Monty Harbour are Roy's parents, and Mrs. Pauline Winger, of Gruver great grandmother. Macy Christine is the first child of the Harbours.

Calico Country Extension Homemakers

The Calico Country members met Monday October 13th with Beth Swink as hostess. The regular business session was postponed in order to discuss and make plans for the city-wide Halloween Carnival on November 1st. This will be in conjunction with the annual Trick or Treat night.

Our next meeting will be October 27th at the home of Nelle Evans and we need everyone interested to attend in order to give assignments for our booth. This will be a fund raising project for our club so that we will be able to have funds for our programs this coming year.

Also there was a schedule of Arts and Craft Shows coming up in

The schedule of Arts and Craft Shows coming up in November:

The schedule of Arts and Craft Shows coming up in November for those wishing to attend. Those mentioned are:

- Guymon - Nov. 1 & 2
- Spearman, Nov. - 8 & 9
- Perryton, Nov. 22 & 23
- Dumas - Nov. 22-23
- Stinnett - Dec. 14 & 15.

Trick or Treat meals on wheels


Alpha Mu Psi members will be trick or treating for meals on wheels, October 21st, at 6:00 p.m. This is an annual event and the money collected will support the meals on wheels for a whole year.

We're asking for everyone's help so we may continue bringing meals to those in our community who need it. Again, it's Oct. 21, at 6:00 P.M. Please leave your porch light on.

The Handy Economist:
We think there will be a pickup in the first half of the year. We are waiting to see signs the trade sector is coming around."

The Forgetful:
Perhaps if we could forget our troubles as easily as our blessings we would live better.

Robbie, Oklahoma, La.



**With Texas
In Turmoil . . .
We Need
Effective
Experience**

**Re-Elect J.W. 'Buck' Buchanan
To The Texas House Of Representatives**

Five-term conservative who is committed to spending your tax dollars wisely. A recognized water authority, he serves as chairman of the County Affairs committee and on two other important committees.

Political Advertising Paid For By J. W. "Buck" Buchanan Campaign, Ken Morrison, Treasurer, Box 635, Dumas, Texas 79029

A hardworking woman needs a hardworking investment plan.

Your career keeps you busy. That's why you've gained in responsibilities and income. And it's why you now need sound investment counsel to help make more of all you make.

Chances are you have neither the time nor the special skills necessary to develop a financial program in these uncertain economic times. We can help with a wide range of capital appreciation opportunities from real estate to cable television, leasing to oil and gas, from \$1000 up. For every working woman who wants to put her money to work. Call or write us soon.


Shieldknight, Wilson, Stupper Wood & Associates, Inc.
3014 W. 26th, #4000
AMARILLO, TX 79109; 358-7131
P.O. BOX 516
SPEARMAN, TX 79081; 659-3880

IR Integrated Resources
Equity Corporation


*Marcia Shieldknight
Debra Stupper*

Member SIPC

VOTE



Dick Waterfield



For State Representative District 88
TIME FOR A CHANGE

Paid Pol Ad The Dick Waterfield Campaign, Malouf Abraham, Treasurer
P.O. Box 36, Canadian, Texas 79014

Local Student Receives Scholarship

Scott Eugene Duncan of Gruver was among the more than 210 Southwest Texas State University students who have received scholarships of \$200 and above for the 1986-87 school year.

With funds coming from a variety of sources, SWT's scholarship program is growing.

Scholarships awarded this fall range from the long established University Scholars program, funded from student service fees after a student referendum vote, to the State Scholarships for Ethnic Recruitment, funded by the state to encourage enrollment of minority students.

Some of the larger scholarships in terms of amount of award have been created from funds contributed by major university donors. The LBJ Achievement Scholarships for Minority Students and the Louise Lindsey Merrick Scholarship are two of the newer scholarship programs.

For scholarship information, contact the Scholarship Coordinator, Office of Student Financial Aid, (512) 245-2315.

Duncan, son of Gene and Francis Duncan, whose address is listed as Box 635, received a \$1,000 Louise Lindsey Merrick Scholarship.

ABOUT YOUR



By April Rhodes

Check your children's Halloween costumes. If they aren't flameproof, discard them and buy or make others.

For easier clean-up, line your barbecue grill with foil, soil or gravel.

Get your heating system checked before cold weather sets in. To get the maximum amount of heat from your heating system put in new filters.

Insects and disease organisms flourish in weeds and vegetable refuse allowed to stay in the garden over the fall and winter. Be sure to clean your garden as carefully as you would your home for this reason.

The Hound's Tale

PTA NEWS

District meeting. Attending the district meeting today in Amarillo are Nelle Evans, Harletta Carthel, Jan Stedje, Jo Alice Clawson, and D'Ann Thompson.

New committee heads. New executive board committee heads include Barbara Stavlo, cultural arts, and Rhonda Hicks and D'Ann Thompson, publicity.

Treat your teacher. Treats for the teachers in all three buildings will be provided by PTA members one Tuesday each month. If you would like to help, call Mary Jo Cluck at 2207.

TRICK-OR-TREAT NIGHT WILL BE NOV. 1st. City Manager, Jim Ratliff, has set Nov. 1st, as the night for trick-or-treating. Due to a home game on Friday, October 31st, Saturday appears to be the safest night for little spooks and goblins.

Have you had your soup today? Save that Campbell's label. Swanson and Franco-American labels are needed also. Leave them in the box by the elementary secretary's office.

Reading for pizza. Grades 1-8 are participating in Pizza Hut's program to encourage reading. The program recognizes and rewards children at three levels of reading. Rewards include individual pan pizzas and class parties. The program continues until Feb. 28th.

Boo news. Halloween parties for grades K-4 will be 2:30 to 3:30 Friday, October 31st.

Dotting i's and crossing t's. The third grade has begun the study of cursive writing.

Report cards. Grade cards will be sent home Thursday, Oct. 16th.

Spotlight. New teacher of the month is Hayley Hatton Hailing from Sharon Springs, Kansas. Hayley graduated from Panhandle State University in 1986. She enjoys playing the piano and athletics, especially volleyball. Welcome to our community, Hayley!

Halloween dance. The Student Council will be hosting a dance for high school students. Probable date is Nov. 1st.

Welcome back. Greetings are extended to Cherrie Thompson, a senior at G.H.S.

Fond Farewell. The Kurt Gilbert's are moving to Shamrock this weekend. Debbie has served as a teacher's aide, VIPS volunteer, room mother, and PTA chairman. Students David and Jeff will be missed also.

Tornado drill. A successful drill was held Sept. 22nd. in the high school.

Chicken pox is once again in our area. Numerous cases have been reported, especially in the elementary. The beginning band will be featured in the Nov. 3rd PTA program. Tim Stedje will give the devotional.

What do spooks have for breakfast? Ghost toasties, of course.

LOUISA'S LETTER

Dear Louisa,

I am a young girl of 10 years. I have no real close friends, I am alone during the day as mother works.

I would like to have some pen pals, boys and girls from different states to write to. That would be fun and educational to me. Could you help me find some?

Lonely Marie-Lowa,

Answer:

Perhaps your teacher could help you by contacting another teacher or someone she knows in another state. He or she could suggest young people they thought would be interested in writing and in that way you

would know that they're not "crack pots" as other people who were undesirable, it is always wise to have a pen pal recommended by some friend or organization.

If you are a member of a church your minister could probably give you some names of people he knows. There are many young people who would like to write to other youngsters so there is no need to feel embarrassed by asking help in such a situation.

Good luck,

Louisa
Address: Louisa, Box 532,
Orangeburg, S.C. 29115

March of Dimes launch National Campaign

to prevent Substance Abuse during pregnancy

The March of Dimes Birth Defects Foundation is launching a national campaign to prevent birth defects caused by substance abuse during pregnancy.

"The physical and mental damage done to babies in the womb by mothers who use illicit drugs is devastating," said Charles L. Massey, March of Dimes President. "No less tragic are the birth defects caused by alcohol, tobacco and even over-the-counter drugs taken by pregnant women with the knowledge of their physicians."

The prenatal care campaign's title, "Mommy...Don't," reflects the preventive actions—don't take unprescribed drugs, don't drink, don't smoke—that the March of Dimes wants all pregnant women to take for their own health and their babies' health. The yearlong campaign will begin November 12th with a national day of awareness in Houston, Los Angeles, San Francisco, Chicago, Washington, D.C., and other major cities.

In its first phase, the campaign will focus on the use of drugs during pregnancy. Later phases will concentrate on the harmful effects of alcohol

and tobacco used by pregnant women and the need for early and regular prenatal care.

"People are greatly concerned today with the damage drugs do to our communities in general," Massey said. "But what many people don't realize is how serious the consequences can be for the baby in the womb of a mother who uses drugs."

Massey continued, "Our messages are simple. If you're pregnant, don't take unprescribed drugs. In addition, get early and regular prenatal care. There are many causes of birth defects that are beyond an individual's control. Birth defects caused by substance abuse can, to a great degree, be controlled by a pregnant woman."

Broadcast and print public service announcements, video news releases, and celebrity public service announcements will carry the campaign's message, in an effort to reach all prospective parents.

"As a voluntary health organization dedicated to preventing birth defects, we are making a special effort to reach the men and women who are, or will be, parents," Massey said. "Our aim

is to make them fully aware of how they can prevent damage to their babies simply by avoiding tobacco, alcohol and medications not recommended for use during pregnancy."

The March of Dimes conducts programs of research, medical services and education to prevent birth defects, the nation's number one child health problem.

Xi Psi Kappa

Xi Psi Kappa met on Oct. 7th at the First Christian Church with Peggy Barkley serving as hostess. After a short business meeting the group then ventured down to the Dahl House for an enlightening program on fall arrangements. A pretty fall arrangement was the hostess gift which was won by Kathy Stedje. Mary Jo Cluck passed the candy to announce a new baby due in May! Members present were Kathy Stedje, Judy Park, Mary Jo Cluck, Fran Duncan, Sally Jones, Kathy Logsdon, Debby Odom, Marian Shapley and Alexa Thoreson.

JUAN F. VIOLA, M.D., P.A.

General Practice

Announces the Incorporation of the Following Services

ALLERGY TESTING / TREATMENT

MEDICAL ACUPUNCTURE / ACUPRESSURE

for

PAIN CONTROL

SMOKING CESSATION

Gruver

733-5011

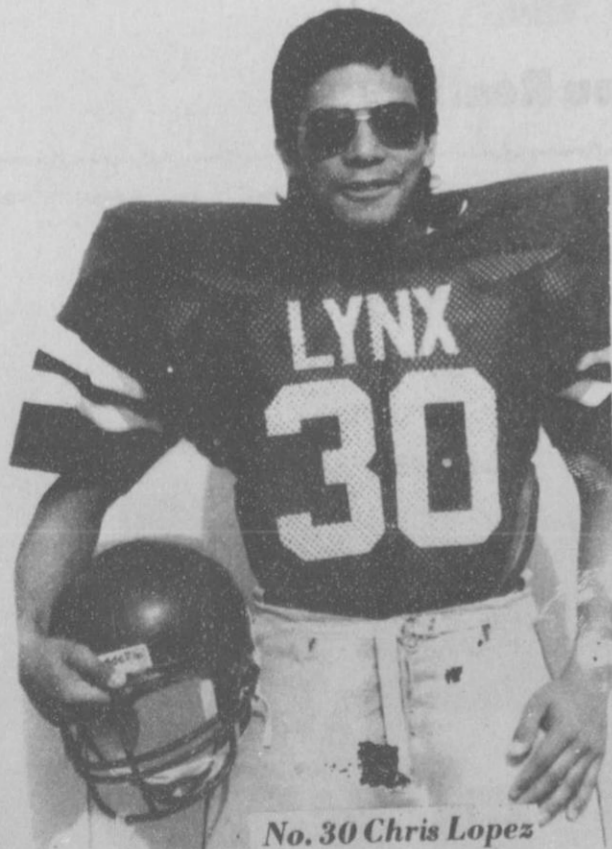
Spearman

Call:

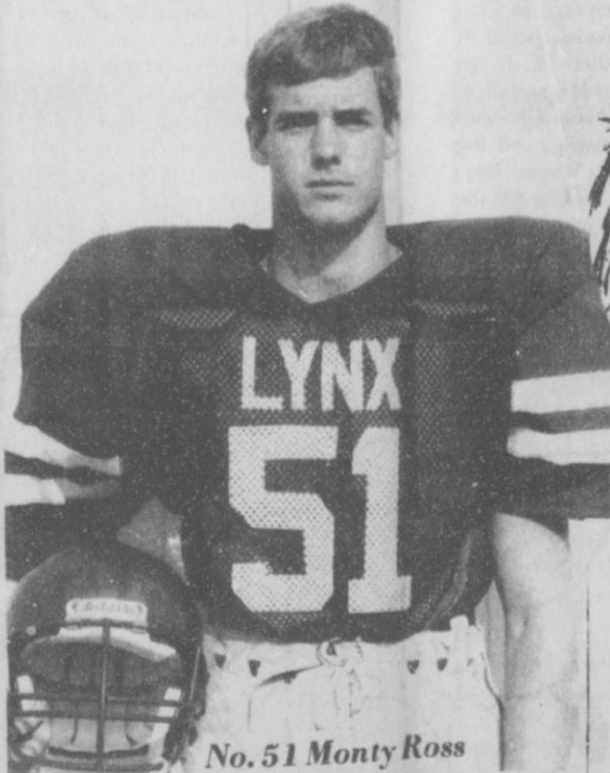
659-3733

Homecoming- Spearman Vs. Gruver

at Lynx Stadium - Friday October 17, 1986



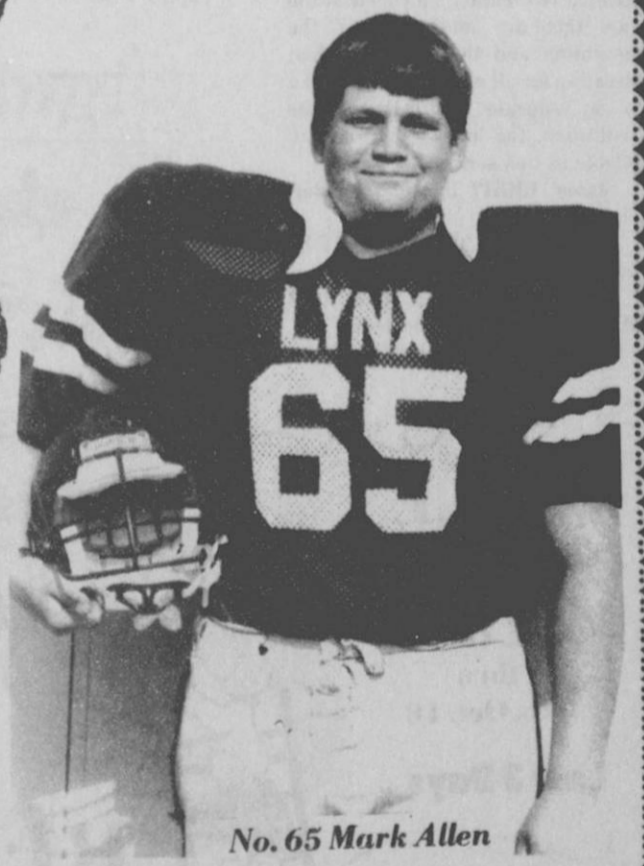
No. 30 Chris Lopez



No. 51 Monty Ross



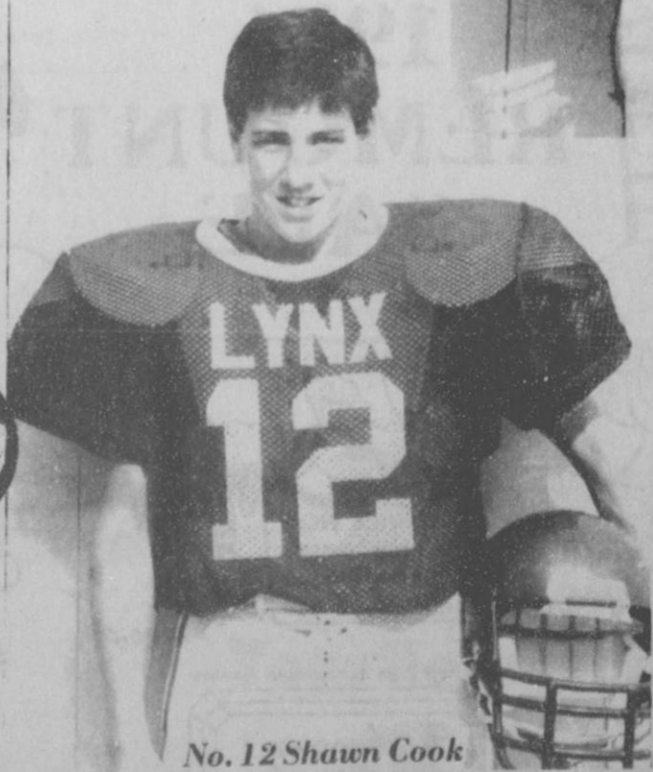
Lynx



No. 65 Mark Allen



No. 84 Keith Slaton



No. 12 Shawn Cook

F.F.A.

B-B-Q

5:00 - 7:00

p.m.

High School
Cafeteria.

Game
Starts

at 7:30 p.m.

Spearman Cattle Feeders

659-2577

Spearman, Texas

Gruver City Library

While at the Constitutional Convention in Philadelphia during the summer of 1787, George Washington, the elected president of the group, realizing he might not get to his beloved Mount Vernon for the fall harvest, wrote home, "God only knows how long it will be after." Also he requested that his "Blue coat with the crimson collar and his umbrella" be sent to him. He added that the honeysuckle against the house should be nailed up.

Washington's correspondence reminds us that the fifty-five delegates who attended the Constitutional Convention were not semidivine beings, but men. Truly they were the most talented men in American, but men nevertheless. Washington missed his home. At one point he had been away for six years leading the Continental Army through the successful American Revolution. Before Washington came to the Convention, his favorite brother had died and he suffered from an attack of rheumatism that was extremely painful.

After the war, the national government had failed under the Articles of Confederation because of, among other things, the intense bickerings and jealousies among the states and the lack of corrective power to overcome both the domestic and international problems facing our young country. Ironically, the Philadelphia assemblage, although it was meeting to resolve some of the defects of the new government, continued to elect these differences and rivalries.

During the seventeen long summer weeks and in the close confines of Independence Hall, the temperature outside many times matched the heated and fiery debates going on inside. Many delegates, because of illnesses in the family or extreme differences of opinions on various issues, departed the meeting and went home, never to return. About thirty of the fifty-five men representing twelve of the thirteen states (Rhode Island refused to participate) met daily and produced America's major document—the Constitution.

In worrying about the fall harvest, little could George Washington have envisioned what he and his fellow delegates had sown that memorable summer of 1787. We are still today the receivers of this special harvest—two hundred years later.

The year 1987 is just around the corner, and we will be celebrating the 200th birthday of our country's Constitution, the individuals who were present at its creation, and some of the issues that are addressed in the Constitution and the Bill of Rights. Interesting for all reading levels and a way to educate yourself on the Constitution, the following books are available in this series:

- States' RIGHT by John E. Batchelor
- YOUR RIGHT TO PRIVACY by Dorothy and Thomas Hoobler
- SEPARATION OF CHURCH AND STATE by Irene Kleeberg
- GEORGE WASHINGTON by

Tom McGowen
BENJAMIN FRANKLIN by Cass Sandak
 ...THIS CONSTITUTION by Peter Sgroi
YOUR RIGHT TO BEAR ARMS by Geraldine Woods
GRUVER CITY LIBRARY
 2:00 - 6:00 P.M.
 MONDAY through FRIDAY

City

STATE OF TEXAS
 COUNTY OF HANSFORD
 CITY OF GRUVER
 REGULAR MEETING OF
 GRUVER CITY COMMISSION
 OCTOBER 9, 1986

The Gruver City Commission met in regular session at 2:00 P.M. at the City Hall with the following members present:

J.C. Harris
 Mayor

Roy Byrd
 Commissioner

Ia Jo Hart
 Commissioner

A.J. Ratliff
 City Manager

Mayor Harris opened the meeting with prayer.

The minutes of the last meeting held on September 11, 1986 were read. Ia Jo Hart made the motion that the minutes be approved as read. Roy Byrd seconded the motion; motion carried.

Roy Byrd made the motion that the bills for the month of September, 1986 be approved as presented. Ia Jo Hart seconded the motion; motion carried.

Ia Jo Hart made a motion that we award a bid to Plexco Pipe for 12,000 feet of 4" PE pipe for \$1.31 per foot payable in 45 days after delivery and that the city lay the line and take 1/4 of the gas from TXO and at least 1/4 from Panhandle Eastern Pipeline. Roy Byrd seconded the motion; motion carried.

The Library Board was not present to present their budget to the City. This item was tabled.

With no further business to come before the Commission, the meeting was adjourned.

A.J. Ratliff
 City Manager

J.C. Harris
 Mayor

Fall Foliage Festival

Canadian's annual Fall Foliage Festival is being expanded this year to two full weekends, in celebration of Texas' Sesquicentennial year. Varied activities are being planned for the weekend of October 11 and 12 and for the following weekend, October 18 and 19.

Saturday and Sunday, October 11 and 12, the first annual Fall Festival Car Show will be held in the show barn of the Hemphill County Exhibition Building. The show will feature antique and classic cars and trucks, and street rods. Dash plaques will be awarded to all entries and trophies to the winners in three categories. Saturday's show will be from 11 a.m. to 7 p.m. and Sunday's show from 11 a.m. to 5 p.m. Admission for spectators will be \$1.

On the same day and during the same hours a Collector's Showcase will be held in the meeting area of the Exhibition Building. Collections of all kinds will be on exhibit and trophies will be awarded in three categories.

Those planning exhibits should pre-register with the Canadian Chamber of Commerce, 323-6234, designating the amount of space needed for the collection.

Chamber Manager Diane Black says that 24-hour security will be provided for both the Car Show and Collectors' Showcase.

Saturday night at 7 and again Sunday afternoon at 2 o'clock the second River City Revue will be held at the Middle School auditorium. The revue will feature all home-town talent and will be directed by Jim Hughes of Guyton, Oklahoma. Admission will be \$5 for adults and \$2.50 for children.

The next weekend's festivities will begin on Saturday morning, October 18 with a Chili Cook-Off starting at 10 o'clock at the City Park on Highway 60-83 North.

At one o'clock at the Rodeo Arena across the highway the Northeast Panhandle Team Roping Championship will be held. Ropers will be limited to residents of Hemphill, Lipscomb, Ochiltree, Gray, Roberts and Wheeler counties in Texas and Ellis and Roger Mills Counties in Oklahoma. Those interested in participating may contact Donnie Johnston at 806-323-6439.

From 1 to 5 that afternoon, October 18, a City Park Concert, free to the public, will feature the music of Frankie McWhorter and Ridgeway. There will be food and game booths sponsored by local organizations. Lawn chairs or blankets to spread on the ground are recommended for those attending.

On Sunday, October 19, the annual Tour of Homes, featuring three of Canadian's homes will be held. The homes which are included in this year's tour are the Citadel, home of Dr. and Mrs. Malouf Abraham, Jr., at 520 Nelson; the home of Mr. and Mrs. Dick Waterfield at 406 North 6th (both of which are period homes); and the home of Mr. and Mrs. Wayne Haygood, at 923 Hillside. Tickets for the Tour of Homes will be on sale at the

City Auditorium from 1 to 4 at \$5.00 for adults. Children under 12 years of age who are accompanied by an adult will be admitted free.

Also at the City Auditorium there will be a Kountry Kitchen sponsored by the Women's Service League, starting at 11 in the morning, and a Hobby Show and Sale, featuring handcrafted goods.

Tourists will be encouraged to take the unescorted drive to Lake Marvin to view the fall foliage and to take a marked nature trail. Information will be available at the City Auditorium at 6 Main Street.

Also on Sunday afternoon from 2 to 4 o'clock there will be a free bluegrass concert at the Gazebo Park at 6th and Purcell.

High Plains Food Bank

The High Plains Food Bank will try to "Shut the Door on Hunger" during the annual Can Hunger canned food drive Oct. 11-18.

With the annual drive, volunteers hope to collect 100,000 pounds of canned food from the Texas, Oklahoma and New Mexico region served by the Food Bank.

Michael Martin Murphey, a country artist known for his songs "Wildfire" and "Doesn't Anybody Ever Stay Together Anymore?", will appear in televised public service announcements as spokesman for the drive. In addition, he will perform at a benefit concert at 8:00 p.m. Oct. 18 in Pioneer Amphitheatre in Palo Duro State Park near Canyon with proceeds going to the Food Bank and the Panhandle-Plains Historical Society.

Other food drive activities will include live remote broadcasts via KAMR Channel 4 on the 6:00 p.m. newscast from the Food King parking lot at 2827 Western in Amarillo.

A trailer will be parked in the lot throughout the food drive as a central collection point. On Oct. 15, radio personalities will challenge each other to a shopping cart relay sponsored by the Venture Club to draw attention to the drive.

Churches, schools and corporations are encouraged to sponsor individual drives. This week, Shelly Marmaduke is coordinating for the activities.

On Oct. 18, Dr. Jim Kemp will lead a 10 K walk sponsored by the World Service at the City Auditorium lot at 2000 N. Polk. The annual Crop Walk will be sponsored by the world hunger project of the food bank.

The High Plains Food Bank is a nonprofit clearinghouse for donated food which serves more than 150 nonprofit agencies and churches in the Panhandle to eliminate hunger in the Tri-State region.

Luke Pittman Chosen



Luke Pittman of Gruver, Tx has been selected as a member of the Business Team at York College. The 5-member team will compete with other business teams from different colleges. The team will travel to Searcy, Arkansas on Friday, November 21, to compete in the Invitational Business Games at Harding University.

York College is a Christian liberal arts junior college located in York, Nebraska. Founded in 1890, the College offers 29 different majors in five academic divisions. More than 50 percent of full-time faculty and administration have a doctoral degree, and the school also has a 15 to 1 student/faculty ratio.

Luke is the son of Frank Pittman of Gruver. Luke is a sophomore majoring in business.

ONE of the irritating things about the commercial networks is how they force sports fans to wait until nine p.m. to see a pro football game, or a program attracting school children.

THE recent George Washington series should have begun at 7:30, not nine p.m. The network scheduling moguls know millions of school children must be asleep by 10 or 11—yet this series ran from 9 to 11 p.m.

GENERAL MOTORS, the sponsor, might have thought of this also. ABC which does Monday Night Football, begins games at 9, and they last until midnight. The reason? So they can run the regular, daily prime-time hash until nine.

C-SPAN, which this year televised the Senate's business for the first time, is here to stay. Much of interest occurred in the upper legislative chamber this year, the

highlight being the Senate Judiciary Committee's hearings on two Supreme Court nominees.

LAURANCE Fish, biggest CBS stockholder, now involved with William S. Paley in directing the network's operations, says that in the future CBS news will not have profit as its first motivation, but good news presentation. Many will wait and see—it's a fine principle and one the commercial networks once accepted, then abandoned.

THE World Series is late this year, beginning on the 14th; the series could encounter cold weather if played in Boston or New York.

Best of Press



Even a child can have his share of success. It's not that he's a genius, it's that he's a kid.

By W. J. Higgins

The trouble with being a good sport is that you have to lose to prove it.

By King K. Kingsville

Mexican Dinner


The Sacred Catholic Church is hosting a Mexican Dinner on October 26, 1986. Everyone is invited to come and savor this wonderful spanish meal. We will have a enchilada plate with rice, beans, salad, sopapillas, nachos and hot sauce and to top it off you have a choice of desserts. Tea and coffee is also served. Come on and join us and listen to some easy listening spanish music and savor our spanish cooking. Remember that's October 26, 1986.

Admission at our take up time. Please bring in our lives to a realization that it's one of those that you sell deals.

By W. J. Higgins

The trouble with being a good sport is that you have to lose to prove it.

By King K. Kingsville



Happy Birthday Toby

37!!

Are you Really!

11 x 14 Wall Portrait in Living Color

Never before offered at this Price!

AT **99¢**
Plus 75¢ for handling

This very special offer is presented as an expression of our thanks for your patronage.

Compare at \$25.00!

- FREE to all Senior Citizens
- NO EXTRA CHARGE for groups
- LIMITED OFFER one per subject, one per family

Golden Age Center
E. Broadway Gruver, TX

Wed, Oct. 22nd 11-2 and 3-6 p.m.

SALE STARTS

Mon., Oct. 13 thru Sat., Oct. 18

Last 3 Days



Hickerson Jeweler's 1986 REMOUNT SALE

There WILL NOT be a labor charge on the first 3 stones to be set!

We Want To Be Your Personal Jeweler



All Mountings & Diamonds SALE PRICED!!!

721 W. 7th • Spearman
 806-659-3566



Lynx host Greyhounds in Homecoming game, 7:30

Homecoming activities for Spearman High School were highlighted this week beginning Monday with Kick 'Em Day.

Tuesday students appeared adorned in shades of all different shapes, colors, and sizes. Wednesday will be Tourist Day; students will wear Hawaiian print shirts and cameras. Thursday will be Jams Day and Friday will be Spirit Day, students will be seen wearing everything PURPLE.

The Homecoming Bonfire will follow the JV game which will be played Thursday at 5:00 p.m. It will start with a snake dance at 8:00 p.m. in the High School's west parking lot.

The weeks activities will climax Friday with the crowning of the Homecoming Queen and King before the game Friday.

Candidates for Homecoming Queen are Jill McLain, Anne Marie Jarvis, and Sherry Vernon. Candidates for King are Jesse Lozano, Dusty Hill, and Mike Pearson.

Attendants for the 1986 Homecoming are: Junior - Kim Jenkins

Sophomore - Carly Shieldknight

Freshman - Mitzi Pearson

The King and Queen will be crowned at pre-game ceremonies at 7:00 p.m. at Lynx Stadium, where the Lynx will meet the Gruver Greyhounds at 7:30 p.m. The traditional Homecoming dance will follow the game.

Hospital

Patients who were admitted in the Hansford Hospital are:

Bill Russell Myrna Biggers
Randal Kirk S.W. Robertson
Elizabeth Cemiceros & Son

Alpha Mu Psi

Hart, Pam Harris, Ginny Grotegut, Angela Grotegut, Gail Exheredge, Debbie Breland, Tracey Bevell, and Kelly Armes.

Members met in the lovely home of Gail Etheredge on October 7. The meeting got under way with a discussion about our annual "Trick or Treat for Meals on Wheels" on October 21st. Also brought to our attention, was the tentative plans for a city-wide Halloween Carnival. After discussing several possibilities for booths, it was decided to send some members to the city-wide meeting on October 14. The meeting was adjourned and Tracy Bevell introduced some very special guests. We are proud to announce our new pledges for this year: Cindi Ferguson, Nancy Norris and Jean Prouty.

Marsha Lowe gave the program by introducing her guests; Sandra Kizziar and Rhonda Ails. They are two of the owners of "Lambs and Ivy," located in Dalhart. These ladies told us how they started their business from scratch and the hard work it took. They also brought a nice assortment of the items they carry.

Such as: Jewelry, Clothing, Antiques, Quilted collars, Hand painted items, County Items, and small quilts. All the members enjoyed looking at and purchasing these items.

Cynthia Henson was the winner of the hostess gift. Members present were; Tonya Yank, Teresa Weldon, Amy TeBeest, Marsha Lowe, Nancy Koons, Kristy Johnson, Jody Irwin, Phyllis Hoel, Aynthia Henson, Kelly

FARM PROBLEMS

Congressional investigators said recently that the \$64 billion government-regulated Farm Credit System, the nation's largest farm lender, probably will exhaust its financial reserves early next year and have to ask Congress for a bailout.

SPACE STATION

NASA Administrator James Fletcher outlined revised plans for a 500-foot-

wide space station recently, saying it is a key part of the effort to recover from the Challenger disaster and regain leadership in space.

ONE MINUTE SPORTS QUIZ

1. Wade Boggs plays pro baseball for which team?
2. Identify Mary Lou Retton.
3. Name the all-time NBA leading scorer.

4. In what year was Beth Daniels first women's U.S. amateur golf champion?
5. How many years was George Blanda an active football player?

Answers to Sports Quiz

1. Boston Red Sox.
2. She was a 1984 Olympic gold medalist in gymnastics.
3. Kareem Abdul-Jabbar.
4. 1975.
5. 26 years.

At SPS, our vehicles go that extra mile, too.

Careful vehicle maintenance is one of the many ways we save money and keep electric costs down. We also use by-products like coal ash as a gravel substitute and treated sewage water in our cooling towers.

SPS people are doing everything they can to keep the cost of electricity as low as possible.



Claw meets Paw East of the draw Fri!

October Is Co-Op Month-4-H Month

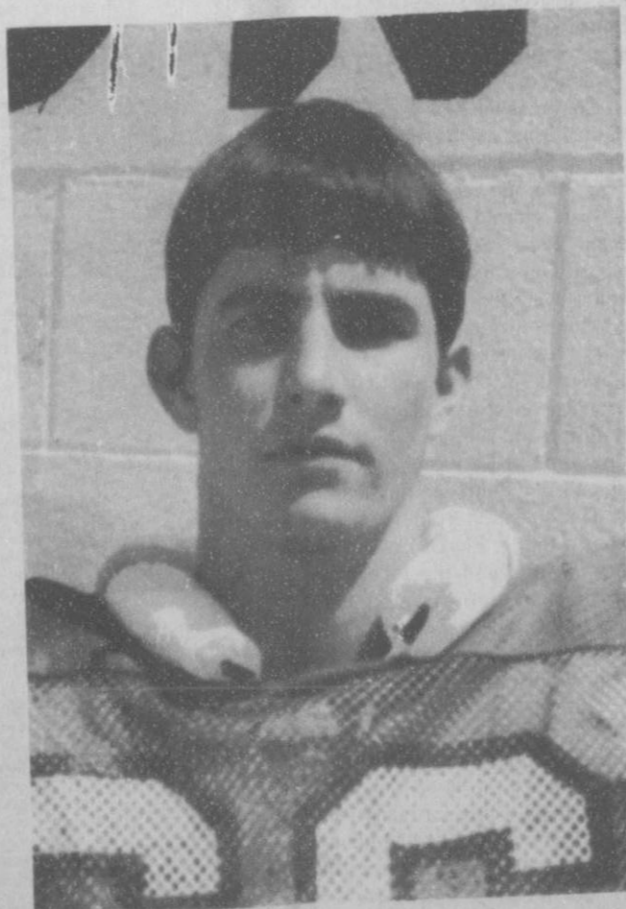
Maize Harvest Time-And Homecoming!

Spearman Lynx Vs. Gruver Greyhounds

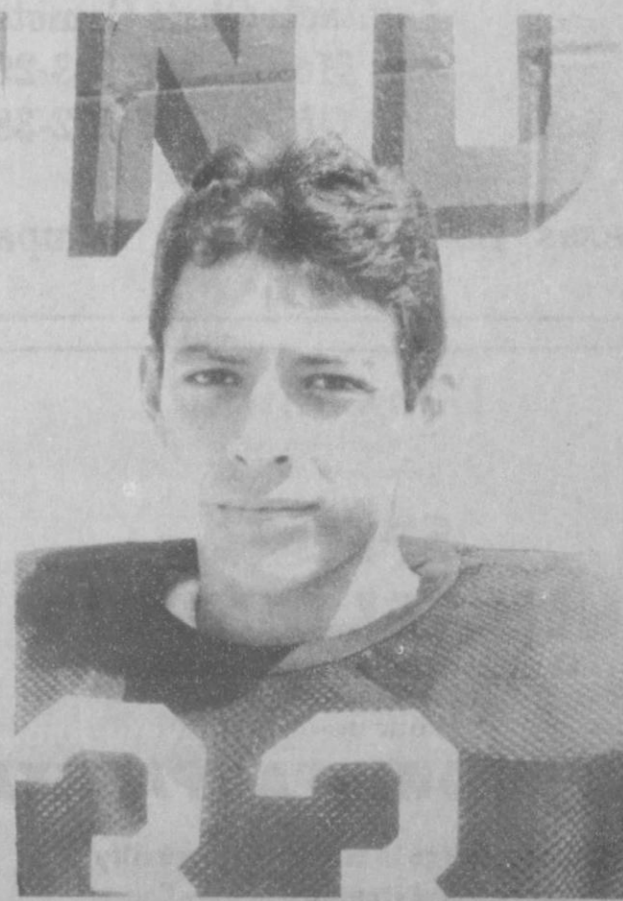
at Lynx Stadium - Friday October 17th



Todd Shaplin



Clay Smith



Hector DeSantiago

Your Harvest Headquarters

COOPERATIVES



WORK!

October
Is Co-op Month.

4-H

EQUITY

Hansford County Farm Bureau ANNUAL MEETING

Golden Age Center Gruver, Texas

October 13, 1986 • 7:00 p.m.

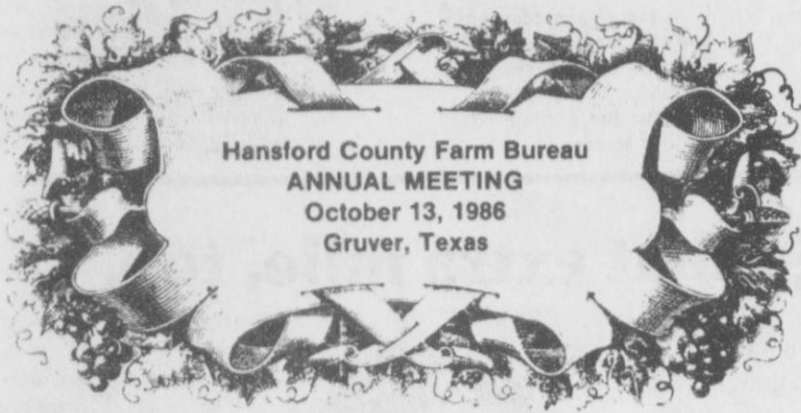
Farm Bureau Women's Accomplishments

The Hansford County Farm Bureau Women's Committee has been active in the Youth Work of our county. Some of the accomplishments were as follows:

- 1984 Kim Nelson, State Queen
- 1984 Julie Deakin, Finalist in top 6 at State in Free Enterprise
- 1984 Holly Holt, Runner-up at District in Free Enterprise
- 1985 Carrie Hart, Runner-up for State Queen Contest

- 1985 Pam Doty, Runner-up in District in Free Enterprise
- 1986 Carrie Hart, District Winner in Miss Texas Farm Bureau
- 1986 Ty Seagler, District Talent Find Winner
- 1986 Ann Potts, Entrant in Free Enterprise Speech Contest
- 1986 Cami Shapley, Entrant in Free Enterprise Speech Contest

Hansford County Farm Bureau sponsors 2 or 3 young people to go to the Citizenship Seminar at Angelo State. Also, sponsors a Volunteer Fireman to State Fire School.



Hansford County Farm Bureau

BOARD OF DIRECTORS

- | | |
|--|--|
| <p>Deibert McCloy President of the Board of Directors. He lives North of Morse, Texas and is involved in Farming and Ranching.</p> <p>Mike Stedje Vice President of the Board of Directors. He resides Northwest of Gruver, Texas and is involved in Farming and Ranching.</p> <p>Carl Kunselman Secretary of the Board of Directors. He resides in Spearman, Texas and farms Southeast of Spearman.</p> <p>Robert Novak Treasurer of the Board of Directors. He resides East of Spearman, Texas and is involved in Farming.</p> <p>Elmo Dahl State Affairs Chairman. Resides Northwest of Gruver, Texas and is involved in Farming and Ranching.</p> <p>Joel Lackey National Affairs Chairman. Resides South of Gruver, Texas and is involved in Farming and Ranching.</p> <p>Willard McCloy Livestock Chairman. Resides Southwest of Gruver, Texas and is involved in Farming and Ranching.</p> | <p>Irvin Boyd Feed Grain Chairman. Irvin resides Northeast of Gruver, Texas and is involved in Farming and Ranching.</p> <p>Jim Davis Wheat Chairman. Resides in Spearman, Texas. Farms and Ranches Southeast of Spearman.</p> <p>Randy Reid Young Farmers & Ranchers Chairman. Resides Southeast of Morse, Texas. He farms and ranches.</p> <p>Bill Cator He resides West of Gruver, Texas and is involved in Trucking and Cattle.</p> <p>David Thomas Youth Committee Chairman. Resides in Spearman, Texas. Farms and Ranches North of Spearman.</p> <p>Aubrey Rasor Policy Development Chairman. Resides in Gruver, Texas and is involved in Farming and Ranching.</p> <p>Melvin Bradley Insurance Agency Manager</p> <p>David Boyd Career Agent</p> <p>Kelly Mahaney Career Agent</p> <p>Carole Watts Office Secretary</p> <p>Brenda Pierson Assistant Office Secretary</p> |
|--|--|

"Our Heritage The Land"

cello. Theodore and Franklin D. Roosevelt's last name means "field of roses."

The popularity of the rose is also attested to by the fact that over 4,000 songs have been written extolling it. Poets as well as lovers since civilization began have made it their favorite subject. As early as 4,000 B.C., the Greek poetess Sappho named the rose the "Queen of Flowers," a title it still bears. It has played an important part in human culture all down through the ages. It is well known in religion, art, literature, and heraldry.

David Ninomiya, president of roses, Inc., the national trade association of American greenhouse rose growers said, "The rose makes a very positive addition to our other national symbols. The eagle, the flag, and the Statue of Liberty tell the story of our strengths, freedoms, and willingness to fight for liberty as well as the unity we have as a nation. The rose helps to tell the full story about the loving, caring, charitable aspects of the American people."



MIDDLEWELL CATTLE COMPANY Wheat Pasture Needed

MWC needs wheat pasture in your area for a large number of straightened out stocker cattle. We also need good care takers and will pay competitive rates.

Additional opportunities for joint ventures and buy backs.

Contact: **Chris Comstock**
Home: 806-383-2940
Office: 806-372-3877

A Texas Beef Producer's Company

National Floral Emblem

On Tuesday, September 23, 1986, the U.S. House of Representatives named the rose as our official national floral emblem. A presidential signing ceremony is expected before Congress adjourns.

Initially introduced in 1985 by Senator J. Bennett Johnston (D-LA), the bill successfully passed last fall in the Senate. In the House of Representatives, Congresswoman Lindy Boggs (D-LA-2) spearheaded the effort. With the House's unanimous voice vote, almost a century of controversy was finally silenced.

"Its Congressional recognition is especially fitting as the rose can be grown in all 50 states and is known to many as the flower of love and peace," said Harold Goldstein of the American Rose Society (ARS) in Shreveport, Louisiana. The ARS group represents over 28,000 amateur gardeners who grow roses as a hobby for their own pleasure.

The rose is without question the most readily recognized and widely grown flower in the United States. Time and time again it has proven to be the public's number one favorite flower. Three separate public opinion polls conducted by Florist Transworld Delivery (FTD) found the rose to be the favorite choice of over 85 percent of those individuals surveyed.

"No other flower offers such beauty, elegance, charm, and fragrance both in the landscape and as a fresh-cut flower. Plus, there are roses in practically every garden. Of course, the most famous one is on the White House grounds, where for many years our presidents have entertained and held official state functions, standing as a symbol of peace," reported Mike Novovesky, president of All-America Rose selections (AARS). This is a trade association representing the companies that produce the rose plants for our gardens, which comes to about 50 million each year. It is known that roses grew natively in America 35 million years ago, as fossilized rose petals of that ancient time have been found in Montana and Oregon. Sailors

on Columbus' ship the "Santa Maria" in 1492 sighted and picked up a rose bush floating in the sea, and it was so recorded in the ship's log on October 11 of that year.

Our first President, George Washington, grew roses at Mount Vernon, as did Thomas Jefferson at Monticello.

Bob Conway

is pleased to announce the corporate move of

SPECK'S CHEMICAL COMPANY & INDUSTRIAL WEED CONTROL

to our new location

317 E. BROWN, PAMPA, TEXAS

We pledge to continue our quality service and standard of excellence!

All correspondence:

SPECK'S CHEMICAL COMPANY
P.O. BOX 2431, PAMPA, TEXAS, 79066-2431
(806) 665-5544

Friends-Creditors-Customers-Debtors-EVERYONE is invited to stop by for a Cup of COFFEE and Intelligent, Intelligent, Intelligent Brilliant Conversation

Bob Conway, Owner

PUBLICATION COPY
FDIC 8040 (5-1985) (STATE) (332)

CONSOLIDATED REPORT OF CONDITION (Including Domestic and Foreign Subsidiaries)
(Dollar Amounts in Thousands)

LEGAL TITLE OF BANK	COUNTY	STATE	ZIP CODE	CLOSE OF BUSINESS DATE		
				DI	MI	THOU
Gruver State Bank Box 978 Gruver, Texas 79040	Hansford	Texas	79040			
ASSETS						
1. Cash and balances due from depository institutions:						
a. Noninterest-bearing balances and currency and coin				1,060		1a
b. Interest-bearing balances				699		1b
2. Securities				4,701		2
3. Federal funds sold and securities purchased under agreements to resell in domestic offices of the bank and of its Edge and Agreement subsidiaries, and in IBFs				800		3
4. Loans and lease financing receivables:						
a. Loans and leases, net of unearned income				15,624		4a
b. LESS: Allowance for loan and lease losses				249		4b
c. LESS: Allocated transfer risk reserve				0		4c
d. Loans and leases, net of unearned income, allowance, and reserve (item 4 a minus 4 b and 4 c)				15,375		4d
5. Assets held in trading accounts				0		5
6. Premises and fixed assets (including capitalized losses)				202		6
7. Other real estate owned				11		7
8. Investments in unconsolidated subsidiaries and associated companies				0		8
9. Customers' liability to this bank on acceptances outstanding				0		9
10. Intangible assets				503		10
11. Other assets				0		11
12. Total assets (sum of items 1 through 11)				26,351		12
LIABILITIES						
13. Deposits:						
a. In domestic offices:						
(1) Noninterest-bearing				4,183		13a(1)
(2) Interest-bearing				18,802		13a(2)
b. In foreign offices, Edge and Agreement subsidiaries, and IBFs:						
(1) Noninterest-bearing				0		13b(1)
(2) Interest-bearing				0		13b(2)
14. Federal funds purchased and securities sold under agreement to repurchase in domestic offices of the bank and of its Edge and Agreement subsidiaries, and in IBFs				0		14
15. Demand notes issued to the U.S. Treasury				0		15
16. Other borrowed money				0		16
17. Mortgage indebtedness and obligations under capitalized leases				0		17
18. Bank's liability on acceptances executed and outstanding				0		18
19. Notes and debentures subordinated to deposits				556		19
20. Other liabilities				2,541		20
21. Total liabilities (sum of items 13 through 20)				23,541		21
22. Limited-life preferred stock				0		22
EQUITY CAPITAL						
23. Perpetual preferred stock (No. of shares outstanding)				0		23
24. Common stock (No. of shares: a. Authorized				6,000		24
b. Outstanding				6,000		24
25. Surplus				1,610		25
26. Undivided profits and capital reserves				0		26
27. Cumulative foreign currency translation adjustments				0		27
28. Total equity capital (sum of items 23 through 27)				2,810		28
29. Total liabilities, limited-life preferred stock, and equity capital (sum of items 21, 22, and 28)				26,351		29
MEMORANDA: Amounts outstanding as of Report Date						
1. Standby letters of credit, Total				0		1a
2. Amount of Standby letters of credit in memo 1 a conveyed to others through participations				0		1b
NOTE: This report must be signed by an authorized officer(s) and attested by not less than three directors other than the officer(s) signing the report.						
I, We, the undersigned officer(s), do hereby declare that this Report of Condition has been prepared in conformance with official instructions and is true to the best of my knowledge and belief.						
SIGNATURE OF OFFICER(S) AUTHORIZED TO SIGN REPORT				DATE SIGNED		
NAME AND TITLE OF OFFICER(S) AUTHORIZED TO SIGN REPORT				AREA CODE/PHONE NO.		
We, the undersigned directors, attest the correctness of this Report of Condition and declare that it has been examined by us and to the best of our knowledge and belief has been prepared in conformance with official instructions and is true and correct.						
SIGNATURE OF DIRECTOR				SIGNATURE OF DIRECTOR	SIGNATURE OF DIRECTOR	
State of Texas				County of Hansford		
I MAKE MARK FOR Sworn to and subscribed before me this 14th day of October, 1986						
NOTARIAL PUBLIC My Commission expires July 28, 1988						
Signature Notary Public						