

# THE GRUYER STATESMAN

Volume 15 No 41

The Gruver Statesman, Gruver, Texas 79040

Thursday July 17, 1986

## Gruver All-Stars Win Stratford Tournament

1986 Gruver Little League All-Star Baseball team gave local fans quite a thrill this past week. With only two days practice as a team they competed in the Second Annual Stratford Tournament July 7-11, and emerged victorious with a 4-0 record. They blasted Texhoma, Stratford, Dalhart Silver and Dalhart Blue by a combined 59-9 count - truly a remarkable accomplishment.

The Gruver All-Stars will be competing in the Dalhart Tourney July 14-17. Coaches Dave Barkley (A's), Mack Hoel (Pirates), and Brad Johnson (Giants) have done an outstanding job with these boys, especially in teaching them hitting skills - these boys all stand up to the plate and make contact! Dalhart Silver and Dalhart Blue are the host teams, with teams from Stratford, Texhoma, Clayton and Gruver also

entered. These boys truly deserve acknowledgement for their fine play. They are the first Gruver Team to win an All-Star tournament in quite a few years.

The All-Star team was announced on July 3rd. Picked from the Giants were Lee Bort and Jeff Price; from the A's, Chad Brown and Chad Stork; from the Pirates, Garrett Gumfory, Matthew Hoel, Luke Miller, and Trevor Shipley; from the Braves, Richard DeSantiago and Matt Etheredge; and from the Cubs, Brady Pool, Shannon Pool, and Crockett Tidwell. Honorable-mention All Stars were Chris Stork from the A's, and Cody Barkley from the Braves. Bat-boys chosen were Aaron Frick from the A's, and Jace Dawson from the Giants.

Good Luck in Dalhart!

### by Robert Bort

The game was still in doubt that day,  
"We can win," Texhoma crowed.  
Our pitcher's name was Shannon Pool,  
And to the mound he strode.

He spat a spat of Big League Chew  
And took a breath, and then  
He rocked and fired, and rocked and fired,  
And rocked and fired again.

Texhoma's batters sighed a sigh-  
They knew they weren't that bad.  
Seven had whiffed and two had tapped-  
They knew that they'd been had.

Behind eight - nothing after three -  
We made them look that bad.

Our bats were singing, to be sure,  
The rain was falling down.  
A new pitcher was their breath of hope,  
Changed quickly to a frown.

Richard DeSantiago threw,  
And they heard that awful shout.  
Six more had stood, and dropped their bats  
When the umpire cried, "You're Out!"

They got one run on only two hits,  
Not nearly enough to win,  
Eight in the second, eleven in the sixth  
Made the Final Score a sin.

Nineteen runs and nineteen hits-  
On Monday, a big, big win.

Our next opponent, Stratford,  
Was our toughest of them all.  
They'd beaten Keyes 14 to zip,  
And hoped we, too, would fall.

Matt Etheredge was our catcher,  
Inconsiderate to the hosts,  
But our team was down three runs to none,  
And their fans were shouting boasts.

They scored three that second inning,  
But who could guess our fate,  
Had not our fearless catcher  
Put two out at the plate?

In the top half of the second,  
He saved us from that fate.

The Stratford pitcher who hurled that day  
Was fearful, to be sure.  
In the first, three up and three sent down-  
We had to find the cure.

In the bottom of the second,  
Our first baseman at the plate,  
But their pitcher on the mound  
Had our batters swinging late.

He smoked the ball, our batter swung-  
From their fans came not a word,  
As the ball soared high and deep,  
And our man was safe at third.

Matthew Hoel slammed our first base hit,  
And now was safe at third.

The pitcher was shook, as all could see  
And when the dust had cleared,  
We'd scored three runs to match their three,  
No longer was Stratford feared.

Now in the third, Chad Brown came up-  
He lined to right and sped,  
One run scored, he stopped at third,  
He scored, five-three we led.

And in the fourth, once more he swung-  
He lined to left and sped,  
Two runs scored, he stopped at third,  
He scored, eight-three we led.

Our center fielder was a hero,  
And eight to three we led.

The final score was nine to five  
In Stratford's own backyard.  
Now the silver team from Dalhart  
Was the next foe on the card.

They'd pasted Guyton Blue on Tuesday,  
And next made Spearman blue.  
Their coach was Ronnie Laxson-  
An ex-found through and through

Now Saturday was very hot,  
And for the loser of this game-  
a rough road to the finals,  
And they'd surely pull up lame.

For the loser two more games to play  
To reach the final game.

We have this wily shortstop,  
On the basepaths he can fly.  
He scored ten runs to lead the team,  
"He's going!" was the opponents cry.

He scored the first run in the first-  
We had four when we were done  
But the Silver got a run of their own-  
After one, we led four to one.

With two outs in the second,  
And Lee Bort on first alone,  
The pitch was called a ball;  
"He's going!" and the ball was thrown.

And now the score stood five to one.  
And the catcher was sorry he'd thrown.

Two more in the third, and three in the fourth,  
Made the score ten to one, a rout.  
But we know well, who follow this game-  
Don't leave until the last out.

In the last of the fourth, their first man on-  
Was a rally in the making?  
A hot smash to third, the force at second-  
Dalhart's heads were shaking.

But this third sacker wasn't through,  
'Cause Gruver scored early and often.  
In the fifth he singled to left and scored,  
And drove the nail in the coffin.

The final score was eleven to one-  
Crockett Tidwell nailed the coffin.

At eight that night, the final game,  
Against the Federals, or Dalhart Blue.  
They'd just bounced Stratford six to two,  
And they wanted to bounce Gruver too.

But in the first, with one run in,  
The sacks were loaded for Price.  
Well, two were out and the count two-one-  
A situation for men, not mice.

The pitcher threw, and he knew he'd erred,  
For the crack of the bat was heard.  
Three runners had raced across the plate,  
And Jeffrey a-huggin' third.

The ball was crushed, and split the gap,  
And the batter was safe at third.

We led six-two in the top of the third,  
But two were out, with none on.  
Now what was to follow is hard to believe,  
Before our last batter was gone

For all of you doubters who choose to believe  
A situation is hopeless, take heed.  
Our second sacker walked to the plate-  
He knew a base hit was our need.

To the left side he hit, and safe at first,  
He started a very strange rout.  
For Luke Miller and the thirteen who'd follow,  
Not wanting to make the third out.

Twelve runners had scored, and two were left on,  
Before we had made the third out.

Now our right fielder, too, was hot that night-  
In the second he had doubled and scored.  
In the third he singled and tallied again,  
But in the field he was just plain bored.

Dalhart batters got only one hit,  
And of all of their outs in this game-  
Not one of them was to the outfield-  
No chance there for glory or fame.

So Brady Pool took it all in stride-  
At the plate he had his days,  
But in the field his thoughts would turn,  
And he'd dream of catching like Mays.

After three we led eighteen to two-  
This was not one of Dalhart's days.

That twelve-run third, after two were out,  
Will long give us hope in a pinch.  
Seventeen batters came up to the plate.  
The third out is never a cinch.

Garrett Gumfory was up and singled and scored  
With two outs in that inning.  
He drove the ball to center field-  
You'd have thought we were losing, not winning.

Chad Stork drilled a double to right-  
He didn't want to feel left out.  
He scored the eleventh of those twelve runs-  
Was this game ever really in doubt?

Our players had shared in the glory this day,  
And the game was never in doubt.

We scored two more runs in the fourth,  
And, for Dalhart, one last try,  
The score was now twenty to two,  
But "Never give up!" was their cry.

Two were on base by walk-  
But remember Spahn and Sain;  
Two were out on strikes-  
There was always the chance of rain.

Our pitcher checked the runners-  
The pitch was straight and true,  
But the batter hit solidly to the right,  
And it looked to be going through.

They'd score and score and score some more,  
If only that ball would go through.

We'd faced the Silver and the Blue,  
Two chances for us to fall  
But there is no joy in Dalhart;  
Trevor Shipley snatched the ball.

## Groundbreaking for new Manor July 24th!

The Groundbreaking for the new addition to the Hansford Manor will be held Thursday July 24th.

In other business this week, Board President Jack Oakes stated that they would open bids and select a contractor this Thursday night.

Hansford Hospital Board Members are: Jack Oakes - President, Alton Ellsworth - Vice President and Les Barkley - Sec. and Tres.

Board Members are Jerry Hunt, Dewight Hutchison, and John Trindle. The hospital manager is Der.ais Robertson

The Gruver Ind. School will have an auction in the old pool bldg. Saturday, July 26, 1986, at 10:00 a.m. Used school equipment and miscellaneous items. Details of the auction will follow next week.

The Gruver Little League All-Stars are having a great season. The All-Stars won top honors in their first play off Tournament in Stratford.

The Gruver results of the tournament are as follows.

1. Gruver/Texhoma 19-1  
2. Gruver/Stratford 9-5  
3. Gruver/Dalhart Solver 11-1  
Championship Game Gruver/Dalhart

Blue 20-2  
The Gruver Little League All-Star played in their second tournament on Monday at 7:00.



# WANT ADS

# First National Bank, tourney

## The Gruver Statesman

PUBLICATION (USPS 9598-0000)  
GRUVER, TEXAS 79040  
BOX 796  
659-3434

OWNER-PUBLISHER  
William M. Miller  
EDITOR  
Joy Henderson  
Gruver, Tx.

Second Class postage paid at  
Gruver, Texas 79040.

Any erroneous reflection  
upon the character of any  
person or firm appearing in  
these columns will be gladly  
and promptly corrected upon  
being brought to the attention  
of the management.

POSTMASTER: Send address  
changes to the Gruver States-  
man, Box 796, Gruver, Texas  
79040.

SUBSCRIPTION RATE: The  
Gruver Statesman, adjoining  
counties, \$20.00 per year.

KILLED AT BERLIN WALL  
HAMBURG, WEST GERMANY  
--Twelve east German army reservists tried  
to blast their way through a subway tunnel  
wall to West Berlin, but communist guards  
killed at least six and the others were ex-  
ecuted.

### Real Estate

**OLDER** 3 bedroom Permā  
Stone Home. All re-decorated, 2 car  
garage. Nicel  
**DELANO REALTY**  
733-5000

for Sale: 3 bedroom, 2 bath frame  
home with inclosed patio. Real  
Nice! We have other selections  
also.

Delano Realty  
733-5000

**WHY PAY RENT!** Move into a beautiful  
home for less than you are paying in  
rent.

**Alliance Homes of Amarillo**  
Qualify by Phone  
806-381-1352  
Call Collect

**TAKE UP PAYMENTS ON TWO AND  
THREE BEDROOM HOMES.**

**Alliance Homes of Amarillo**  
Qualify by Phone  
806-381-1352  
Call Collect



FIRST NATIONAL BANK, SPEARMAN, President, Don Townsen is pictured with some of the trophies for the bank sponsored tennis tournament coming up in the near future in Spearman. Money from the tourney will go to the Y, in Spearman!

Don Townsen, President of the First National Bank announced today the dates for the Second Annual First National Bank Junior and Open Tennis Tournament. The Juniors Tournament will be Thursday and Friday July 31st and August 1st. The Open Tournament will follow on Saturday and Sunday August 2nd and 3rd.

Don said that last years' tournament was a lot of fun and big success. The tournament net income and concessions are donated by the First National Bank to the Hansford County Y. Last year the Y made over \$1,000 from the tournament. In addition to helping the Y, a large group of tennis enthusiast from out of town came to Spearman to enjoy Spearman hospitality and provided some business for our local motels, restaurants and stores.

The juniors tournament will be broken down in four age groups; 10 and under, 12 and under, 14 and under and 16 and under. Each age group will have boys and girls singles and doubles. The open tournament will offer A,B, and C divisions in mens' and womens' singles and doubles. Mixed doubles will also be offered in the A,B, and C divisions. First and second place winners in the juniors tournament will receive trophies and the open winners will receive merchandise.

Entry deadline will be at noon Wednesday July 30th. Entry fees are \$7.00 per person per juniors event and \$8.00 per person per open event. Juniors are limited to 3 juniors events per person and the open is limited to two events per person. Starting time will be 9:00 a.m. each morning of the tournament.

The directors and staff of the First National Bank invite everyone to come out to the tournament, either as a participant in the sport or as a spectator. There is a division for any tennis player no matter what level of skill to have a good time, and the A division will certainly provide good quality tennis that will be fun to watch. Don and his staff invite anyone interested in the tournament to call or drop by the Bank for more information.

### BUSINESS

OWN YOUR OWN JEAN-SPORTS-WEAR, LADIES APPAREL, CHILDRENS/MATERNITY, LARGE SIZES, PETITE, DANCEWEAR, ACCESSORIES OR BRIDAL SHOP. JORDACHE, CHIC, LEE, LEVI, EZOD, GITANO, GUESS, CALVIN KLEIN, SERGIO VALENTE, EVAN PICONE, LIZ CLAIBORNE, MEMBERS ONLY, GASOLINE, HEALTHTEX OVER 1000 OTHERS. \$14,900 TO \$25,900 INVENTORY, TRAINING, FIXTURES, GRAND OPENING ETC. CAN OPEN 15 DAYS. MR. KEENAN (305)678-3639.

House for Sale: Morse, Texas approx. 3,000 sq. ft. large 3 bedroom, 2 baths, 2 room basement, den with fireplace, central air and heat, double garage. Call 733-2701 40-2tp

**GRUVER:** Charming 3 bedroom, brick home. Built-in bookcase, china cabinet, kitchen appliances. Spacious rooms, closets and cabinets. New CH/A, carpet, water conditioner. Big fenced yard. Lots of Trees. ~~\$49,950.00~~ now priced \$37,950.00. Choice of new Microwave or 19" Color TV with purchase of house. Call 405-338-1065 evenings. 41-rtn

### Situations Wanted

**HOUSE PAINTING:** Interior or exterior. Experienced and dependable-reasonable rates. References available. 659-2787. 41-1tc

**DESIGN AND INSTALLATION:** Underground line for Irrigation. Repair all Types of Irrigation line. Welding and Straightening of Aluminum Pipe. Oscar Rojas Jr. 659-2158 41-1tp

**FOR SALE:** Repossessed Medium Brown Piano - Can Assume Low Monthly Payments - Will Show Locally - Ask for Piano Credit Manager - Ph. 316-624-8422 - Brier & Hale Music Co. - Liberal, Ks. 41-3tc

1980 SEARAY 17 fiberglass ski/pleasure boat. V-hull. Walk-thru windshield. 170 HP Mercruiser. 135 hours use. San Angelo tandem trailer. Custom tarp. Excellent condition. Always kept in dry storage. \$7950.00. See at Beedy Furniture or call 659-3701 days or 659-2605 after 5:30. 41-1tc

**PIANO FOR SALE:** Wanted: Responsible party to assume small monthly payments on piano. See locally. Call Credit Manager 1-800-447-4266. 41-4tp

**GUYMON LIVESTOCK AUCTION**

Box 875  
Guymon, Oklahoma 73342

Home Owned and Home Operated

SALE EVERY THURSDAY  
BEGINNING AT 12:00pm

Out of State 1-800-338-5871      Office 1-405-338-3378

**CLASSIFIED RATES**  
Regular.....Per Word-\$0.13  
Display.....Per Col. Inch-\$4.20  
Double rate for blind ads  
Minimum charges  
Cash.....\$4.00  
Charge.....\$4.50

**CASH IN ADVANCE ADS**  
Work Wanted\*Trailers For Sale\*  
Business Opportunities\*No Longer  
Responsible\*Political Advertis-  
ing\*Child Care\* Babysitting\*  
Garage Sales\*Out-Of-County Ads-  
unless advertiser has  
established credit with  
The Gruver Statesman

**DEADLINES**  
To place or cancel ads  
Fri., 12:00 p.m.....Sun. edition  
Tues., 12:00 p.m.....Thurs. edition

The Gruver Statesman reserves the right to reject, edit, revise and properly classify all advertising submitted for publication. The Gruver Statesman also reserves the right to cancel any advertisement at any time.  
The Gruver Statesman,  
Box 796  
Gruver, Texas 79040

**NOTICE**  
Wallace Monument Co.  
Monuments, Curbing,  
Grave Covers  
Local Representative  
**LEONARD JAMESON**  
Spearman, Texas  
40-rtn

Hansford County  
Planned Parenthood  
412 Davis  
659-2483  
Spearman  
Mon. - Fri.  
8:30 - 12:30

**OSGOOD MONUMENT CO.**  
Amarillo, Texas  
Dealers of Rock of Ages  
Granite, as well as all  
colored granites, marble  
and bronze memorials.  
represented by  
**BOXWELL BROS.**  
**FUNERAL HOME**  
519 S. EVANS  
659-3802

Hay Swathing and Baling done -  
Call 733-2517 or Dennis at 733-5214  
31-rtn-nc

Sewing wanted, alterations etc.  
Baking and decorating cakes. I now  
have the He-Man Pan for birthday  
cakes. Call Joy at 733-2517.  
52-rtn-nc

For information and supplies for  
Tri Chem Liquid Embroidery, Contact  
Joy Henderson at 733-2517 in  
Gruver.  
8-rtn-nc

**Announcements**

**POLITICAL ANNOUNCEMENT**

This newspaper is authorized to  
announce the candidacy of the following  
candidates for public office subject to  
the action of the voters in the MAY  
PRIMARY ELECTIONS:

**DEMOCRAT FOR COUNTY TREASURER**  
Je  
Norma Jean Mackie  
**FOR COUNTY AND DISTRICT CLERK**  
Amelia C. Johnson  
**FOR STATE REPRESENTATIVE**  
J.W. Buchanan  
**REPUBLICAN FOR COUNTY TREASURER**  
Eschol Blankenship  
**FOR STATE REPRESENTATIVE**  
Dick Waterfield

# USDA Announces Signup For 87 Reserve Program

July 1—Secretary of Agriculture Richard E. Lyng today announced that signup for the 1987 Conservation Reserve Program will take place Aug. 4-15 at Agricultural Stabilization and Conservation Service county offices.

According to Lyng, farmers may volunteer highly erodible cropland for entry into the Conservation Reserve Program, under a provision of the Food Security Act of 1985.

"We are pleased with the response from farmers during the 1986 signup," said Lyng. "Now that producers are aware of the other provisions of the Act, such as sodbuster and conservation compliance, we expect even more interest by producers in the Conservation Reserve Program this year."

Producers wishing to put land into the program are eligible for cost-share payments of up to 50 percent of the eligible costs of establish a cover crop. The annual rental payments are for 10 years.

The total amount of rental payments for any fiscal year may not exceed \$50,000, or its equivalent if in-kind payments are made.

Lyng said producers will be allowed to harvest their 1986 crop before the contract becomes effective, if necessary.

Land that is designated may not be grazed after the Commodity Credit Corporation approves the contract.

## In Fashion

Layered separates can become uncomfortable during the hot months of summer. For office wear, the shirtdress or the coat-dress, in cool cotton, will be more comfortable.

Designed with wide shoulders and crisp tailoring, this shirtdress or coat-dress is perfect for office wear.

Hemlines vary from well above the knee to the ankle. For business, well below the knee or mid-calf lengths are most impressive.

# USDA Announces Additional 1987 Wheat Program Provisions

June 30—Secretary of Agriculture Richard E. Lyng today set the national average loan and purchase level for the 1987 wheat crop at \$2.28 per bushel, down from \$2.40 per bushel for the current year.

Lyng also announced the following additional provisions for next year's wheat crop:

—A marketing loan program will not be implemented;

—Offsetting compliance requirements will not apply, meaning that eligibility for a program payment and loan for a commodity on a farm will not be affected by actions taken with respect to that commodity on another farm;

The upper limits on the farmer-owned reserve quantity will be no more than 17 percent of the estimated domestic and export use for the 1987/88 marketing year. If reserve quantities exceed the upper limit at the time that 1987-crop wheat loans mature, no entry into the reserve will be permitted;

—Actual crop yields for 1987 and subsequent years will not be used to establish 1988 and future farm program payment yields.

Lyng said he will reserve the right to initiate cost reduction options as outlined in Section 1009 of the Food Security Act of 1985. These options may include reopening and changing a contract entered into by a producer under a program if the producer voluntarily agrees to the change.

The enrollment period for the 1987 wheat program will begin Oct. 1, 1986, and end March 30, 1987.

Based on provisions announced for the 1987 wheat program, the following example provides a simple format for determining how the program would operate for a farm with a 100-acre wheat base. The market prices, harvested yield and production estimates in this example do not reflect official USDA projections. Individuals can substitute their own acreages, price projections, yield estimates and variable costs of production to determine how the program might fit their operations. "#" denotes item number.

## Markets

Wheat	\$2.10
Corn	\$2.40
Milo	\$3.70

A little gleam of time between two eternities; no second chance to us forever more!  
—Thomas Carlyle.

Thou canst not judge the life of man until death hath ended it.  
—Sophocles.

## Items

1. Target price (\$/bu) .....	4.38
2. National Average Loan Level (\$/bu) .....	2.28
3. Acreage Reduction Percentage .....	.275
4. Permitted Acreage Percentage (1.0 - #3) .....	.725
5. Acreage Conservation Reserve (ACR) Percentage (#3/#4) .....	.3793
6. Farm Price (\$/bu) .....	2.28
7. Deficiency Payment Rate (\$/bu) [(#1 - #6) 1/2] .....	2.10
8. Program Payment Yield (bu/ac) .....	33.0
9. Harvested Yield (bu/ac) .....	37.0
10. Base Acreage (ac) .....	100.0
11. Permitted Acreage (#10 x #4) .....	72.5
12. Harvested Program Acreage (ac) .....	72.5
13. ACR Requirement (ac) [(#12 x #5)] .....	27.5
14. Production (bu) [(#12 x #9)] .....	2,603
15. Income Factors:	
a. Production Value (\$) [(#14 x #6)] .....	6,117
b. Deficiency Payment (\$) [(#12 x #7)] .....	5,024
c. Total Income (\$) [(#15a + #15b)] .....	11,141
16. Variable Costs of Production:	
a. Harvested Acreage (\$) [(#12 x #45)] .....	3,263
b. Maintenance of ACR (\$) [(#13 x #15)] .....	413
c. Total Variable Costs .....	3,676
17. Net Income (\$) [(#15c - #16c)] .....	7,465

1/ Deficiency payment rates are determined in two phases. First: Based on difference (maximum level-\$1.53/bu) between target price (\$4.38/bu) and higher of: (1) Basic loan level (\$2.85/bu) or (2) weighted average farm price during first 5 months (June-October) of marketing year. Payments earned under this phase are limited to \$50,000 per person and would be paid after

December 1, 1987. Second: Based on different (maximum level-\$0.57/bu) between basic loan level (\$2.85/bu) and higher of (1) announced loan level (\$2.28/bu) or (2) season average farm price (June 1987-May 1988). Payments earned under this phase are not subject to \$50,000 payment limitation and would be paid after July 1, 1988.

## ON FARM PRICES

WASHINGTON — Prices farmers get for raw products dropped 1.6 percent in June, falling to 6.2 percent below the level of a year ago, the Agriculture Department said recently.

## OVER HALF ILLEGITIMATE

WASHINGTON — More than half of all black babies born in the United States arrive to out-of-wedlock mothers, according to a new Census Bureau study that found unmarried women accounted for nearly 13 percent of all births.

## RECIPE

By Sarah Ann Sheridan

### Cherry Lemonade

- 2 c. sweetened cherry juice
- 1 c. lemon juice
- 1 c. sugar

Make a syrup of the sugar by adding 1/2 cup of water and boil 3 minutes. Combine ingredients and pour over cracked ice.

### Banana Tarts

- Baked Tart Shells
- Sliced Bananas
- Soft custard cold
- Cocoa nut
- Whipped cream

Fill tart shells with sliced bananas. Pour over cold custard. Sprinkle with cocoa nut. Cover with whipped cream.

## Definition

A bore is one who is here today and here tomorrow.

—Count Down, L.A.

## Growing Up

You are only young once, but you can stay immature indefinitely.

—Chronicle, Odebolt, Ia.



view from terrace

COX/CROSLIN and ASSOCIATES  
ARCHITECTURE AND PLANNING  
ONE CAPITAL OF TEXAS BLDG. NORTH, AUSTIN, TX 78701

## HANSFORD MANOR

Hansford Manor expansion project is moving right along. Above you see the "View from the Terrace" drawing as designed by Cox/Croslin & Associates from Austin. What you are seeing is the south terrace looking into the large day room with fireplace and cathedral ceilings. To the right and left of the day room you can see the two smaller quiet areas. One of the areas will have french doors and can be closed for private visits with family and friends if residents desire.

Other construction will consist of a new and greatly enlarged dining room with doors opening to a large terrace for spring and summer dining as well as cookouts. In the residential section there will be eight suites which are much like large and compatibly equipped hotel suite, there is also a small refrigerator in the rooms. Nine private rooms and eight semi-private rooms, new nurses stations and support areas complete the expected 2.2 million dollar expansion and renovation project.

Pictured above is an overall view of the existing facility and the proposed expansion.

The new building will contain 15,312 square feet and 2,171 square feet in the remodeling of the existing facility.

It will take approximately one year to complete the project. At the completion, we feel that Hansford Manor will be an outstanding asset to our community and to the residents of Hansford County.

In many ways our facility will be a pace setter for this area. We will be capable of offering "suites" to our residents who request such. The suites are designed primarily to accommodate residents that need only minimal supervision, assistance with medications or diets, or only the assurance that licensed medical personnel is available, if needed, 24 hours per day.

May Be  
He who laughs last may be trying to be polite to the person who told the story.

Blade, Toledo.

Vladimir F. Petrovsky,  
Soviet deputy foreign minister, on summit plans:  
"Dates have no consequence. What is important is the content of the meeting."

Reserve  
Believing all you hear is matched only by telling all you know.  
—Globe, Mason City, Ia.

## 24 hr. prayer service

659-2911

# "Daddy, can I have \$40,000 for college?"

What will your answer be...  
The time to start planning is now!



If you are looking for ways to finance your child's college education, then you need to talk to the Integrated Resources Equity Corporation specialists. We have the knowledge and expertise to help you choose the most suitable investments toward achieving your financial goals.

Integrated Resources Equity Corporation offers a wide range of income-producing opportunities in real estate, equipment leasing, and cable television, as well as a complete portfolio of stocks and bonds, money market and mutual funds.

Stop by or call:  
Integrated Resources Equity Corporation  
MARCIA SHIELDKNIGHT & DEBBIE STOPPER  
P. O. BOX 516  
SPEARMAN, TEXAS 79081  
(806) 659-3880 OR  
(806) 358-7433  
Member SIPC

Integrated Resources

## We worked hard to keep electricity costs down... and, WE DID IT!

In the last three years, while national electric costs went up 12.7%, we held the line. Most SPS residential customers pay about the same for electricity as they did in 1983... some even less.

At SPS, we will continue to do everything we can to keep the cost of electricity as low as possible.

SPS SOUTHWESTERN PUBLIC SERVICE COMPANY

Bert Ballengee  
Chairman and CEO



## SESQUICENTENNIAL HAPPENINGS

Saturday, July 26, 1986

MORSE, TEXAS

- Parade 10:00 a.m.
- Pioneer Visiting & Program - City Park 11:00 a.m.
- Hamburger Cookout Adults - \$2, under 12 - \$1 12 Noon
- Games for Young & Old 1:00 p.m.
- Watermelon Feed 3:00 p.m.



# VOTE "YES"

Texas Farmers Union Urges Texas Farmers to Send a Loud and Clear Message to Washington

Waco, Tx. - July 8, 1986. Texas wheat farmers and landowners can send a loud and clear message to Congress and the Administration by voting "Yes" in the USDA Wheat Poll, Texas Farmers Union President Joe Rankin declared.

Rankin said, "A 'yes' vote will indicate that farmers are ready and willing to assume the responsibility of reducing production - in return for an adequate and fair price in the market place. 'A 'yes' vote says to Washington, this new farm program is headed in the wrong direction. The 1985 Farm Bill has 'legislated poverty for farmers by driving down the price of American exports.' It is unbelievable that we sell our grain on the world market at less

than the cost of production. Despite lower and lower prices, for the first time in 20 years the United States actually imported more farm goods than it exported in May."

With the announced loan level being reduced from \$2.40 per bushel in 1986 to \$2.25 per bushel in 1987, the direction and results are apparent - more bankrupt farmers.

Rankin urges Texas Farmers and spouses to answer all questions on the ballots and mail their ballots to the County ASCS office no later than Monday, July 14, 1986.

"An overwhelming 'YES' vote by wheat producers is the only hope, and perhaps the last chance, we have of changing the present 'legislated poverty for farmers' into a cost effective supply management program in return for a fair price," Rankin said.

## Higher Budget Deficit

State Comptroller Bob Bullock Monday said Texas lawmakers should expect the state's budget deficit to go higher.

"A skyrocketing unemployment rate will be one key factor moving the state's budget deficit well above the current \$2.3 billion. Workers without jobs and paychecks reduce economic activity and taxes," Bullock said.

He said the 10.5 percent jobless rate announced last week is not the only economic indicator that will push the budget deficit higher.

"We expect to finish a new revenue estimate before August 1, and, frankly, none of the indicators contain an ounce of good news."

Bullock said losses in the oil and gas industry are having a detrimental effect on most other areas of the Texas economy as well as other industries.

"I'm not going to second guess the exact number we'll be facing at the end of the month, but with deteriorating conditions in the Texas economy it will be substantially higher than the current estimate."

Bullock said besides oil, construction and unemployment there are other factors affecting the state's revenue picture.

Federal energy rulings, court cases, Gramm-Rudman, loss of state income interest, to name a few, pose potential losses in the hundreds of millions, Bullock said.

He said analysts working with the latest tax and economic data have preliminary findings that indicate the state's budget crisis has not leveled out.

## Scholarship Foundation appoints Native Resident

Judy Fletcher of Amarillo has been appointed Local Coordinator for the Panhandle area by the American Institute for Foreign Study (AIFS) Scholarship Foundation. Established in 1968, by the President's Council for International Youth Exchange, to promote worldwide understanding through cross-cultural exchange. The AIFS Scholarship Foundation sponsors international learning experiences for young people from all parts of the world.

"Among Mrs. Fletcher's responsibilities will be encouraging a sense of internationalism in the community," said Paul A. Cook, Executive Director of the Foundation. "Mrs. Fletcher will be working with families and with schools in the area to find families to host English-speaking foreign students, who wish to learn more about American. We at the Foundation are confident that the community will work closely with us on this important project."

Mrs. Fletcher, a native of Gruver, has lived and worked in several Panhandle cities. Judy and her husband Robert, now reside at Lake Tanglewood.

"I am gratified by this appointment," said Mrs. Fletcher. "I welcome question from the public about the Founda-

tion's work." For more information contact Judy Fletcher at 806-622-1703 or write to Rt. 8, Box 39-3, Amarillo, Texas 79118. Or the AIFS Scholarship Foundation, 3661 Buchanan Street, San Francisco, California 94123.

## Bride-Elect is Honored

Miss Jana Spivey, bride-elect of Christopher Wright, was honored with a lovely bridal shower in the Country home of Mrs. Val Winger.

Adorning the registration table was a brass bud vase of pink and periwinkle blue roses, a musical porcelain precious moments cake topped with bride and groom, a feather pen, and an engraved invitation to the wedding.

The dining room table was laid with a hand crocheted cloth and centered with a beautiful arrangement of colorful garden flowers in a crystal bowl. Silver punch bowl, silver coffee service and napkins with the names Jana and Chris imprinted with the brides chosen color of periwinkle blue completed the table decoration.

Punch, coffee, nuts, mints decorated with miniature rose buds and cake squares topped with dainty pink rose buds and blue bows were served by Cheryl Evans and Julie Williams to the honoree and guests who enjoyed an afternoon of visiting and viewing the many lovely gifts.

The hostesses presented the honoree a lovely corsage of white roses, her mother, Mrs. Hix Spivey, the groom's elects mother, Mrs. Jo. Wright, the honorees grandmother, Mrs. Jessie Spivey and the grooms elect aunt, Mrs. Pendley, were each presented a corsage of white daisies.

Hostessing the delightful shower were Sharon Seagler, Opal Wallin, Ann Dorman, Rosemary McKee, Joyce Sparks, Georgia Davidson, Farene Williams, Rita Williams, Marie Bell, Judy Stedje, Delores Beville, Jo Alice Clawson, Evi Meyer, Phylis Rasor, Kathy Logsdon, Jil Fletcher, Sharon Barkley, Kay Robinson, Glenda Steed, Nancy Barber, Judy Virden, Mary TeBeest, Janet Irwin, Alma Gruver, Pat Burnam, Joy Henderson, Reaetta Gammon, Glenda Renner, Alma Ross, Deana Williams, Helens' Gifts, Aline Henderson, Carolyn Fletcher, Norma Red, Sandy TeBeest, Christine Brandvik, Melba Rasor, Marquerite Nelson, Pat Barkley, Fran Duncan, Julie Williams, Shirley Lowe, Fran Maupin, Doris Arnes, Marva Burnam, and Marlene Winger.

## FFA Convention

The Future Farmers of America announces four members of the Gruver Chapter of the Future Farmers of America will attend the 55th Annual Texas FFA Convention in Amarillo, July 15-18, 1986 at the Amarillo Civic Center.

Tim Stedje President of the FFA Chapter, along with Ross Renner, Michael Booth, and Trey Roberts will attend the three day meeting of representatives of over 940 Chapters from throughout the State which will include the awarding of advanced degrees, scholarships, and the awards to outstanding members of the Texas Future Farmers of America.

Ross Renner and Tim Stedje will serve as voting delegates at the convention.

One of the highlights of the Convent-

ion will be the awarding of 1602 Lone Star Farmer Degrees. Tim Stedje will receive this degree on Thursday morning.

Aaron Alejandro, Boy Ranch, State FFA President will preside. He will be assisted by Vice Presidents: Greg Bates, Clint; David Knight, Kingwood; Misty Hicks, Iowa Park; Jay Hays, Wolfe City; Brad Carlow, Maud; Scott Syamken, Canyon; Nancy Tollett, Jonesboro; Jerry Cole, Madisonville; John Steelhammer, Mathis.

Convention registration will begin at 3:00 p.m. Tuesday, July 15th, in the Civic Center. The State officers will conduct a Vesper Service at 6:30 p.m. that evening.

Dr. Lowell B. Catlett of New Mexico State University will be one of the keynote speakers bringing motivational remarks. Other speakers include, Senator Bill Sarpius, State Senator from District 31 Amarillo; Coby Shorter, III, National FFA Executive Secretary, Western Region; Tom Anderson, De-

puty Commissioner of Finance and Compliance at the Texas Education Agency; Victoria Bergin, Deputy Commissioner of Curriculum and Program Development for TEA and Robert Patterson, Director Vocational Education Programs TEA. Fun night and Talent Contest will be at 7:00 p.m. Wednesday.

Scholarships and awards will be presented on Thursday Stars of Texas awards program will be the highlight of the Thursday evening program. On Friday the New State FFA President will be elected and the 1985-86 State FFA Sweetheart will be crowned. The convention will adjourn at noon on Friday.

### COPS & BEARS

MORGAN HILL, CALIF. - Criminals take note: Police here will soon have some new equipment in their arsenal - 50 cuddly teddy bears to help calm children in trouble and maybe even soften up some hard-core crooks.



## Karen's Kozy Korner

### Check Out Hospital Bills

It's no secret that hospital care is expensive. Patients complain about the high price of medical care and pay the bill. But they should also check the bill carefully before paying.

Although all efforts are made for accuracy, mistakes in hospital bills can occur. For example, one woman whose operation was canceled, later received a bill for anesthesia, and such examples are not isolated.

Equifax Services, an Atlanta company that checks hospital bills for insurance companies, reported that 97 percent of 13,000 bills they audited had

errors. Because of figures like these, some insurance companies offer incentives to people who spot faulty bills.

Here are four errors to check for:  
 \*That the length of the hospital stay as shown on the bill and the type of room are correct.  
 \*That services are not listed twice.  
 \*That the price of a service is correct.  
 \*That the services listed on the bill were actually performed.

Educational programs conducted by the Texas Agricultural Extension Service serve people of all ages. Regardless of socio-economic level, race, color, sex, Religion, Handicap or national origin.

# FIRST NATIONAL BANK

## SPEARMAN, TEXAS

### JUNIOR AND OPEN TENNIS TOURNAMENT

DATE: Junior - July 31st and Aug. 1st  
 Open - Aug. 2nd and Aug. 3rd

PLACE: Spearman High School's Omni Courts

BENEFACTOR: Tournament Proceeds and Concessions to Benefit Spearman YMCA

ENTRY DEADLINE: Noon, Wednesday, July 30th

ENTRY FORM: Junior Tournament

\$7.00 per single event \$14.00 per doubles team.  
 Limit 3 events per person. Starting time 9:00 a.m.  
 July 31st.

	BOYS		GIRLS	
	Singles	Doubles	Singles	Doubles
10 and under	_____	_____	_____	_____
12 and under	_____	_____	_____	_____
14 and under	_____	_____	_____	_____
16 and under	_____	_____	_____	_____

NAME: \_\_\_\_\_ DOUBLES PARTNER: \_\_\_\_\_  
 ADDRESS: \_\_\_\_\_

TELEPHONE: \_\_\_\_\_

### SEEDING INFORMATION:

#### Open Tournament

\$8.00 per single event, \$16.00 per doubles team.  
 Limit 2 events per person. Starting time 9:00 a.m.  
 August 2nd.

	A	B	C
	Women's singles	_____	_____
Women's doubles	_____	_____	_____
Men's singles	_____	_____	_____
Men's doubles	_____	_____	_____
Mixed doubles	_____	_____	_____

NAME: \_\_\_\_\_ DOUBLES PARTNER: \_\_\_\_\_  
 ADDRESS: \_\_\_\_\_

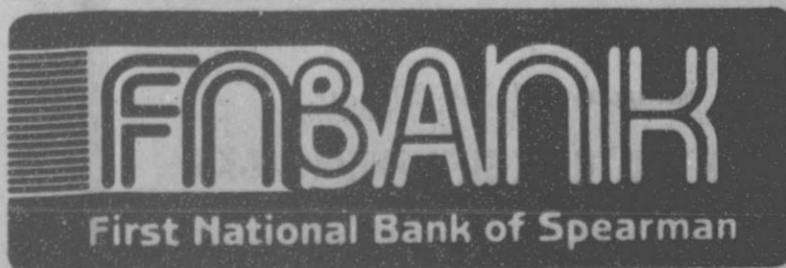
TELEPHONE: \_\_\_\_\_

### SEEDING INFORMATION:

Send entries to: First National Bank, P.O. Box 337, Spearman, Texas 79081.  
 Phone: (806) 659-5544.

Tournament Directors: Don and Barbara Townsen, (806) 659-2735

We LOVE to SERVE you



729 W. 7th St.

Spearman, Texas

Phone 659-5544

# Amateur Rodeo



Stacey Cook

Gruver will be having an amateur rodeo this Friday & Saturday July 18 & 19. The performances will start at 7:30 each night at the Gruver Rodeo Arena 1 1/2 miles East of town. Admission prices are: Adults \$3.00, Children \$1.50 (under 6-free)

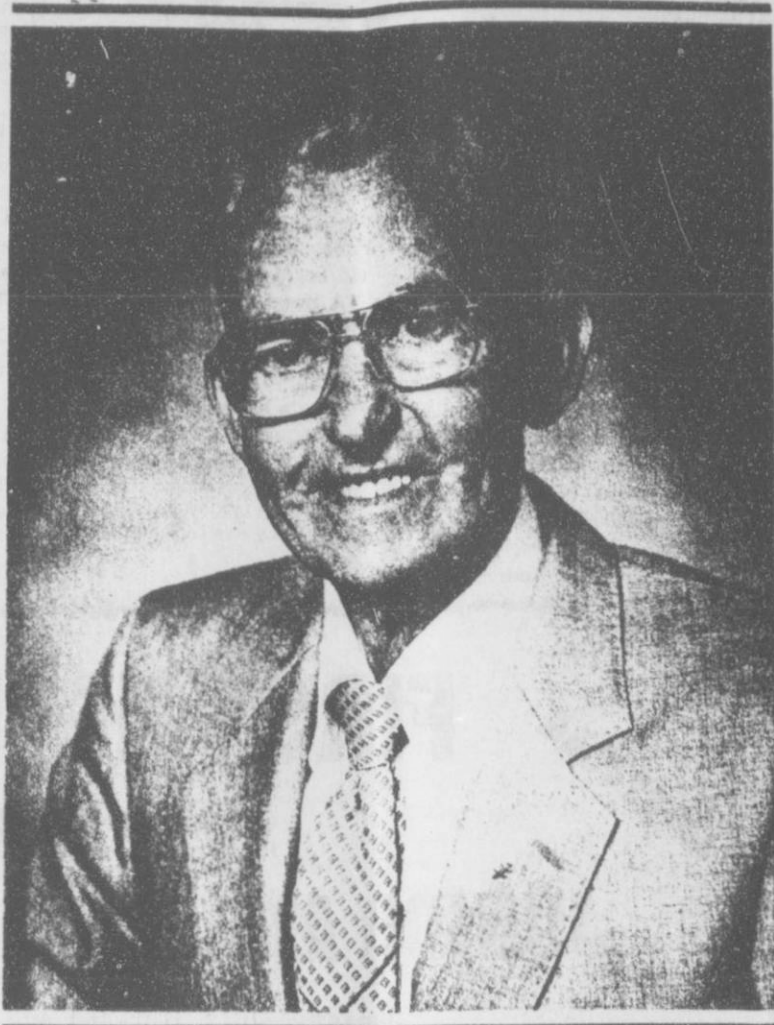
The Rocking & Rolling N Rodeo Company of Hooker, Oklahoma will be performing the rodeo. The rodeo is

TCRA approved and should draw top contestants in each of the standard events. A calf scramble for the youngsters is planned each night.

An added attraction will be an appearance by Miss Rodeo Texas, Stacy Cook of Spearman.

A concession stand will be provided by the Gruver Little League.

# Masonic Installation



Perry M. Parker

Perry M. Parker Grand Master of the Most Worshipful Grand Lodge of Texas AF & AM. will be the installing Officer of the Officers of Hansford Masonic Lodge #1040, Gruver Lodge #1326 and Stratford Lodge #874, for the ensuing year of 1986-87. The joint Installation will be held Sat. night July 19th at the Hansford Lodge 406 East 11th.

W.L. Stevens will be installed as Worshipful Master of Hansford Lodge #1040, Bill Bean will be installed as Worshipful Master of Gruver Lodge #1326 and Richard L. Decker will be installed as Worshipful Master of Stratford Lodge #874. Members and their families and friends will be served dinner at 6:30 P.M. by the Spearman Eastern Star. Installation will begin at 7:30 P.M.

Most Worshipful Perry M. Parker and his wife, Ada reside in Port Author Texas. They have one son, Brady L. Parker and three daughters, Mrs. Dorothy Worl, of Bartlesville Ohio, Linda Nell Parker and Mrs. Gay McCauley of Port Author. They have a close and devoted marriage and share in the love of six grand children.

Most Worshipful Perry M. Parker is a

member in good standing in Cosmopolitan Lodge # 872 where he is a Post Master. He served Grand Lodge as District Deputy Grand Master of Masonic District 26-A in 1968. He was elected to the Committee on work in 1969 and continued to serve on this Committee until his election as Grand Junior Warden in 1983.

The Grand Master is also a member of the following appendant orders of Free Masonry: Port Author Chapter #25 RAM, Port Author Council #185 R & SM; Port Author Commandry #73, K.T.; and a charter member of York Rite College #90 of Port Arthur. He is member of the Galveston Scottish Rite Bodies and was Coronated a 33rd Degree, Inspector General Honorary on November 22, 1983. He is a member of Elnina Shrine in Galveston, Casbin Grotto of Port Arthur; Waco Chapter #7 of the order of the Eastern Star; Royal Order of Scotland; Most Worshipful Parker has been awarded the Legion of Honor of the DeMolay and currently serves as Eminent Viceroy of San Felipe Conclave of the Red Cross of Constantine at Galveston.

# On the Go with Joy

This is the time of year beginning just before harvest that finds our tempers soaring just as the temperature soars and then I noticed the similarity of the two words. So, I decided to check it out from a dictionary point of view. But before I finished my research, I came across a Cattleman's dictionary that James Ritchie, a farm journalist, wrote. Seems he thinks Mr. Webster's unabridged dictionary serves fairly well, but since Mr. Webster never raised Cattle for a living, there are some terms and definitions that need to be added from a Cattleman's viewpoint.

Here is a short glossary of words and phrases commonly used in Cattle Country.

**Alfalfa, (N)** a high-quality legume forage grown in regions far distant from where most Cattle are raised (now that we have alfalfa closer to home, no one wants to buy it-J.H. Editor).

**Auction, (N)** a marketing system where buyers and sellers exchange livestock ownership under the direction of an auctioneer who can be understood by neither buyers nor sellers.

**Banker, (N)** The manager of a financial institution that lends money to stockman who are well off and calls the loans of stockman who are broke (no comment as to which category I'm in-J.H. Editor)

**Broker, (IN)** an intermediary agent for buying and selling securities and marketing instruments such as futures contracts and options. (2ad) a condition that sometimes afflicts Cattleman after dealing with number 1 above. (Where do the "bears" and "bulls" enter in?-J.H. Editor).

**Brucellosis, (N)** an infectious disease of bovine animals that creates trouble and expense for cattlemen and jobs for their veterinarians. (any research being done to develop a shop for this? J.H. Editor).

**Bull, (N)** a sexually intact male bovine that stands in the shade for eight months and then gets sick on the opening day of breeding season. (Does he suffer from too much inactivity? J.H. Editor)

**Chute, (N)** a device which is designed for handling cattle and mangling cattlemen's fingers.

**Cowboy (N)** Term once used to describe men hired to tend or herd bovine animals. Now refers to stockbrokers and other city dwellers who wear designer jeans and ride mechanical bulls at Country-western nightclubs.

**Crossbreeding, (N)** a process where by a 600 lb half-Jersey bull can jump three fences and mate with all the cows in a registered herd before a registered herd

**Crossbreeding, (N)** a process where by a 600 lb. half-Jersey bull can jump three fences and mate with all the cows in a registered herd before a registered herds sire can walk the length of the breeding pasture.

**Exotics, (N)** Breeds of cattle that recently arrived in North America with salt water in their faces and high price tags on their backs.

**Feedlot, (n)** a highly specialized agricultural facility built for the purpose of making cattle grow rapidly and

cattlemen grow nervous.

**Graze, (1n)** A sward or acreage of forage that produces optimum economical returns when seeded to live oil well pumpers. (2v) The act of bovine animals consuming large quantities of expensive forage and producing a few ounces of weight gain.

**Heterosis, (N)** a gain in the average of genetic traits that occurs when animals of divergent bloodlines are mated; also called "hybrid vigor." E.G., if a bull with the ability to jump a 6' fence is mated to a cow of semilar genetic ability, they will produce offspring capable of jumping 8' fences.

**Marketing specialist, (n)** An expert with a doctorate in economics who explains why is market forecasts are generally wrong.

**Middleman, (n)** a shadowy figure at large in the territory between ranch and retail market, who extracts exorbitant profits at the expense of both cattlemen and consumers. (I've never met this guy, but I'd sure like to know what he looks like. J.H. Editor)

**Optimist, (n)** a cattlemen who has enough faith in the market forecasts to place cattle on feed.

**Pessimist, (N)** and optimist who has read his monthly feedlot statement.

**Roundup, (n)** The process of gathering and counting cattle, as at the end of a grazing season, and trying to figure out what happened to the 20 percent that are not there.

**Rustler, (n)** a person who fraudulently obtains possession of livestock. Should not be confused with the term "cattle buyer". (Maybe he knows what happened to the 20 percent missing at the roundup. J.H. Editor).

**Shipping Fever, (n)** Respiratory ailment that afflicts apparently healthy calves the instant they step from the market loading chute onto a truck.

**Steer, (n)** a sexually altered male bovine that would have made a dandy bull.

The process of immunizing calves against shipping fever. Properly vaccinated calves do not contract shipping fever until they step off the truck onto the order buyer's unloading chute.

# Hansford Manor News



Recently, the Manor has acquired a kitten for the residents to enjoy. The kitten was donated and will live and play in the patio area of the Manor. The residents have really received the kitten with open arms.

Mrs. Wilma Beck loved the kitten on the first day and when the kitty fell asleep so did Mrs. Beck.

We now have a full house of residents at Hansford Manor. Our two new residents are Mrs. Evelyn Hale, Mother of Mrs. Ida Edwards, from Gruver and Mrs. Melba Williams, mother of Mrs. Rosemary McKee, also of Gruver.

Tuesday, July 8th, the Golden Spread Senior Citizen Center invited us to enjoy ice cream and play cards. Mrs. Mildred Daily, Mrs. Grace Bennet, Mrs. Nina Evans, Mrs. Mabel Edwards, Mrs. Ruth Garner, and I attended.

We appreciate the good time, fun and fellowship, and hope to get out there more often.

Carol Hergert  
Director of Nursing

## NOTICE OF MEETING OF THE GOVERNING BODY OF

City of Gruver  
Notice is hereby given that a regular meeting of the governing body of the above named City or Town will be held on the 10th day of July, 1986, at 2:00 p.m., in the City Hall at 108 E. Broadway, Gruver, Hansford County, Texas, at which time the following subjects will be discussed, to-wit:

1. Open Meeting
2. Read and approve minutes
3. Approve bills for month of July
4. Hire an auditor for FY 1985-86
5. Approve the Budget of Hnsford County Appraisal District

Dated this 7th day of July, 1986.  
City of Gruver  
By City Manager

I, the undersigned authority, do hereby certify that the above Notice of Meeting of the governing body of the above named City or Town of Gruver is a true and correct copy of said Notice and that I posted a true and correct copy of said Notice on the bulletin board, in the City Hall of said City or Town in Gruver, Texas, a place convenient and readily accessible to the general public at all times, and said Notice was posted on July 7, 1986, at 3:00 o'clock p.m., and remained so posted continuously for at least 72 hours preceding the scheduled time of said Meeting.

Dated this 7th day of July, 1986.  
City of Gruver  
By City Clerk

## Police Report

The Spearman Police Department received a report Saturday afternoon that a new water heater and air conditioner had been stolen from the James White home within the past 2 or 3 weeks. The stolen water heater and air conditioner were valued at \$750.

The report was made by Jim Ivey, stepson of White.

The chosen colors of rose and grey were carried out in the corsage presented to Kay and her mother Linda Janeway, Borger, and Dons' mother, Peggy Dillow. The serving table appointments also had accents of rose in the napkins, Cookies and Cranberry Punch. The centerpiece featured a duck shaped ceramic planter containing ivy.

Other out-of-town guests introduced were Mrs. O.L. Janeway and Mrs. Clarence Hull, Kay's grandmother and her great-aunt, Mary Reed all of Borger. Dons' aunt, Mrs. Velma Sanders attended from Spearman.

# Bridal Shower

Hostesses for the delightful afternoon were: Connie Burgoon, Dixie Karlin, Glenda Renner, Josephine Ayers, Thelma Sneed, Marie Bell, Elene Green, Fran Duncan, Rhonda DeCamp, Kay Robinson, Joy Henderson, Pat Burnam, Vivian Green, Aline Henderson, Lucy Pittman.

## Kim's Catfish Farm

4 miles East of  
Perryton on Hwy 377

**HOURS**  
Mon. Closed  
Tues.-Fri. 1-9 p.m.  
Sat. 9 a.m.-9 p.m.  
Sun. 1-9 p.m.



Refreshment stand  
1200 ft. Sundeck  
Fishing Equip. Rental  
Cleaning facilities (or)  
We will clean

# Thank You to All of Our Customers:

We have closed our flower shop in Gruver, and wish to take this opportunity to THANK all of you for past patronage, visits and just stopping by for a friendly chat.

We have enjoyed serving you and the community.

We feel, however that Gruver and the area need the services of a Flora! Shop, so we have leased the store, and it will be opened up very shortly under new management.

The Upholstery Shop will continue to offer Quality Work, using the rear entrance of the building. The new Phone Number is 733-5235.

# TeBeest Floral

Stan, Mary, Dwayne

**SALE!**

Three Days Only

Thursday, July 17-40% off

Friday, July 18-30% off

Saturday, July 19-20% off

WHEN YOU THINK GIFT, THINK SACKS

**SACKS THIRD AVE**

203 Main Open 8-5:30 during sale

## Carrie Travels to Hawaii



Carrie Hart

Miss Carrie Hart, Gruver High School Homecoming Queen, 1985, daughter of Mr. and Mrs. Don Hart, and a recent graduate of Gruver High School will be leaving Wednesday, July 23 to travel to Honolulu, Hawaii to represent Texas in the National Finals of Americans Homecoming Queen Pageant. She received the week long trip after winning the state contest in Dallas in April. Each state winner will receive a scholarship, the

size dependent upon her ranking in the finals. Carrie will give a short speech on why people should visit our state and will exchange souvenirs with each of the 49 other state representatives. Tours have been arranged for the girls and their families traveling with them. Enjoying the trip with her will be her mother, Mary Hart, and sister, Tracy Bevell. Carrie would like to again thank her sponsors who helped her go to the state contest.

### BUSINESS OUTLOOK

By Edward Thorland

Investors at this time are buying mutual funds but in recent weeks more money has been going into bond funds than common stock funds.

Investors are obviously wondering whether stock market can continue its rise and are also seeking the safety of funds, which are diversified investments.

Mutual bond fund investing in recent days has been two or three times that of mutual stock fund investing. Many are looking to tax free bonds, rates for which have been declining for some time.

If interest rates dip further, yesterday's bond rates might look very good. There's no danger, now that both the House and Senate tax bills have been passed, that tax-exempt status for municipals will be changed. Conferees must draft the compromise bill from the two versions passed.

The trend into funds began before this year; it was in progress before the 1986 stock rally.

There are no-load funds, and they save one money. Brokers won't promote them - they get no commission. But business magazines and newspapers often list them.

## Health Care

State Comptroller Bob Bullock Tuesday released guidelines to county governments in Texas to simplify accounting for the state's new indigent Health Care (IHC) Act.

"It is our responsibility to provide a system that will make the paperwork easier for the Texas counties while they give health care to the areas that need it most," Bullock said.

The IHC law, passed in 1985, requires county governments to provide medical assistance to the county's residents who can not support them-

## Guarding Against Heat Stress

Almost any person is a candidate for heat stress, since heat places a burden on the heart and blood vessels. Infants under one year of age are particularly susceptible, according to Dr. Robert Hubbard, assistant professor of pediatrics, "because their temperature control systems are not fully developed." In addition, anyone with a history of rheumatic fever should be careful.

Here's how to keep cool during the dog days of summer:

**Baths and showers:** Make the water temperature around 75 degrees F. This provides great relief from the heat. Cool water removes extra body heat 25 times faster than cool air.

**Fans:** If you do not have access to an air conditioner, fans can draw cool air into your home at night or help to provide good indoor air circulation

during the day. Caution: If the weather is extremely hot, a fan might cause you to gain heat by blowing very hot air over your body.

**Wet yourself down:** Wet your hair or wear a wet t-shirt. As the water evaporates, it will cool your skin.

**Drink Water Often:** Drink reasonable amounts, but don't wait until you are thirsty, because your body needs more fluid than thirst will indicate. By the time you feel thirsty, you already might be dehydrated.

**Avoid Alcohol:** Alcohol interferes with your body's fight against heat stress and can put a strain on your heart.

**Watch Salt Use:** check with your doctor before you increase the amount of salt or potassium in your diet. Do not take salt tablets without your doctor's advice.

selves. The IHC act will affect 70,000 Texans who do not qualify for other federal or state health care programs.

Texas counties are likely to spend as much as \$20 million in the 1986-87 biennium on medical services as a result of the IHC act, Bullock estimates. The Indigent Health Care Accounting Systems Manual is a step-by-step approach to deal with these funds.

The over 200 page manual can be used independently or integrated into the Standard Financial Management System for Texas Counties, also produced by Bullock's office. The Comptroller's Financial Management System for counties and the system designed for cities are both highly praised for effectively helping local governments in Texas with their accounting functions.

The IHC manual includes sections on budgeting for IHC, accounting procedures and financial management procedures. Also included in the manual is a section on internal auditing. In each of these sections comprehensive examples are given to show transactions that relate to the IHC program.

A copy of the Indigent Health Care Act is also included in the manual along with a glossary of accounting terms that are commonly used.

The IHC accounting manual was produced by employee Glenna Hastings during her internship with the Comptroller's office this past spring. Hastings was one of the first nine college students to participate in the Comptroller's Honors Internship Program.

## Sodomy

A controversy has erupted over the Supreme Court's recent upholding of a Georgia law barring homosexual activity. Laws of this kind, agreeing with the Bible, go back to old English common law. All the states at one time had such laws. Twenty-four and the District still do.

Half the states which abolished them felt they were almost impossible to defend and/or that they violated either individual rights or rights of privacy.

Four of nine members of the Supreme Court also felt that way.

The result of the recent decision will not be to cause many, if any, arrests. That has seldom been done in any state.

If the court had struck down the Georgia law, however, that would have been taken as a green light for homosexual activity. One suspects that this, and the threat of diseases like AIDS, might have played a part in consideration of the public welfare in the minds of the majority. Some members also feel state legislatures have the right

for so little money??. Beside that, it is almost worthy cause and can be used for an income tax deduction. Keep your money at home and support your Museum. It is a County project.

The Texas Sesquicentennial Winchester Carbine is on display at the Museum. It is the first ever made in this caliber and barrel length although the 38-55 was one of the original 94 calibers. Come by the museum and see for yourself how beautiful it really is and remember no more will ever be produced. It will be a collector's item. Raffle donations may be purchased from any member of the Board for the small sum of \$5.00 each or 3 for \$10.00. After you see the gun you will agree it is a bargain.

Those present at the meeting were: Irwin and Helen Boyd, J.D. and Rubyjo Wilbanks, Jaunita Pierce and Clementine Renner.

## Foreign Student in Your Home

Are you fascinated by other languages and cultures? By hosting a Foreign Exchange student, you can meet the world in your own home!

We are seeking families to host students from Brazil, Mexico, Japan, England, Spain, and Germany.

One of these Boys or Girls, individually selected for you, will live as a member of your family while He or She attends the local High School. These excellent Students are very carefully screened, covered by Medical Insurance, and provide their own spending money. They are eager to experience our American way of life while sharing their culture, but they can only do so if you are willing to open your hearts and homes to them.

If you would like to participate in this unique learning experience, please contact international student exchange, P.O. Box 58, Fort Jones, California 96032 or 1-800-233-Host, or 1-916-468-2264 in California.

### IRELAND & DIVORCE

DUBLIN, IRELAND -- The Republic of Ireland signaled its intention to remain a traditionally Catholic country with a 2-1 defeat of a nationwide referendum to end the constitutional ban on divorce. The Irish voted after a six-week campaign that had all the marks of an Irish election dominated by the church.

STATE OF TEXAS  
COUNTY OF HANSFORD  
CITY OF GRUVER

REGULAR MEETING OF  
GRUVER CITY COMMISSION  
JULY 10, 1986

The Gruver City Commission met in regular session at 2:00 p.m. at the City Hall with the following members present:

J.C. Harris, Mayor  
A.J. Ratliff, City Manager  
Ila Jo Hart, Commissioner  
Roy Byrd, Commissioner

Ila Jo Hart opened the meeting with prayer.

The minutes of the last meetings held on June 12, 1986 and June 16, 1986 were read. Ila Jo Hart made the motion that the minutes be approved as read. Roy Byrd seconded the motion; motion carried.

Roy Byrd made the motion that the bills for the month of June, 1986 be approved as presented. Ila Jo Hart seconded the motion; motion carried.

Ila Jo Hart made a motion to hire Mack Hoel to audit the books of the city for fiscal year 1985-1986. He will do one half of the work in July and the remaining part in October. The cost will be about the same as last year. Roy Byrd seconded the motion; motion carried.

Ila Jo Hart made a motion that the City Commission no approve the budget of the Tax Appraisal District. Roy Byrd seconded the motion; motion carried.

With no further business to come before the Commission, the meeting was adjourned.

A.J. Ratliff, City Manager  
J.C. Harris, Mayor

## WEATHER

Date	Hi	Lo
11	65	94
12	74	96
13	69	96
14	71	91

## Hospital

Patients in Hansford Hospital are; Bobby Jones.

Dismissed were; Mildred Daily, Froye Close, Harvey Johnson and Maria Garcia.

Annual  
SUMMER  
**CLEARANCE SALE**

**SALE SALE**

**Continues**

up to  
**60%** off

STORE HOURS:  
Monday  
Thru Saturday  
8:30 a.m. -  
5:30 p.m.

**Boody FURNITURE CO.**

659-3701  
723 W. 7th  
Spearman, Texas

plains shopping center

No Approvals, Returns, or Exchanges.  
All Items Subject to Prior Sale  
Every Item in Store Sale Priced

TERMS: 30-60 Day Open Account  
90 Days Same As Cash  
24 Months Bank Rate Financing  
Mastercard & Visa Accepted  
All Terms Subject to Credit Approval  
No Phone Orders Please

### Memorial Hospital of Dumas Proudly Announces

the Following Additions to its Medical Staff

**Steven W. Plocach, M.D.**

**Pediatrics**

202 S. Meredith  
Dumas, TX 79029  
806-935-2166

**Lyle E. Hutto, M.D.**

**Internal Medicine**

202 S. Meredith  
Dumas, TX 79029  
806-935-2166

**Thomas Essex, D.D.**

**Family Practice**

(Beginning July 21, 1986)  
205 E. Second Street  
Dumas, TX 79029  
806-935-9517

**Store**  
HOURS: Open 9 a.m. 'til 9 p.m.  
Monday through Saturday

# TGMY

**Family Centers**

# CLEARANCE SALE

**16 inch Oscillating Fan**

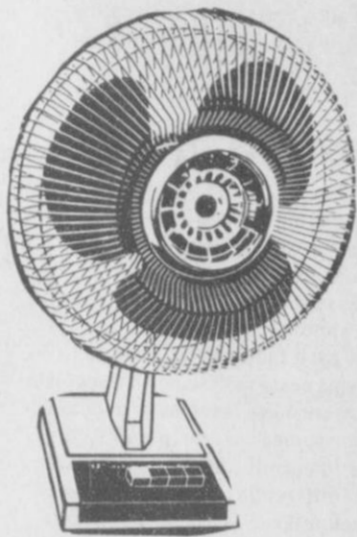
Reg. 29.99

**22.00**

**12 inch Oscillating Fan**

Reg. 24.99

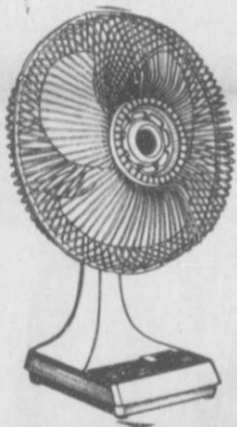
**18.00**



**6 inch Oscillating Fan**

Reg. 7.99

**6.00**



**6 inch Clip on Fan**

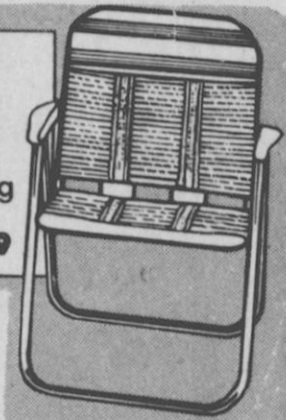
Reg. 10.99

**8.00**

**Lawn  
Chairs**

**3.00**

Lawn Chair, PVC strapping on tubular steel frame. Assorted colors. Orig. 7.99



**Loungers**

Reg. 8.99 now

**4.00**



**Chair  
Umbrellas**

**2/5.00**

Ceiling Fan

**Light Kits**

**50% OFF**

McCalls and Simplicity

**Patterns**

**4/1.00**

*Entire Stock of*

*Records*

*and*

*Albums*

**75% Off**

Large Assortment

**Car Wax**

**50% Off**

Auto

**Spark Plugs**

**75% Off**

**Lee**

**Auto**

**Air**

**Filter**

**75% Off**

Conair

1200 wts

**Hair**

**Dryer**

Reg. 17.99

**9.00**

Large Assortment

**Baby**

**Furniture**

**50%**

**Sewing**

**Notions**

Select Group

Buttons

Zippers

Lace

**75% OFF**

521 HWY. 207 S.

Spearman, Texas

659-3741

