



The Valley Tribune

VOLUME 27 ISSUE 36

6 PAGES

QUITAQUE, BRISCOE COUNTY, TEXAS 79255

THURSDAY, FEBRUARY 19, 1987

Photo Winner

This picture "Height of the City" by Jeannita Stephens of Silverton, won 1st place in January 1987 Caprock Camera Club contest. Jeannita is a high school senior at Silverton.

The picture was taken atop the World Trade Center in New York in 1985. Other photos which placed in the January contest may be seen inside this issue of the Tribune.



District Governor Speaks At Lions Banquet

District Governor Jimmy Ross was the speaker and special guest at the Turkey Lions Club sweetheart banquet Monday night, February 9th. Boss Lion Melvin Clinton opened the banquet with a prayer and a delicious meal of sliced ham and all the trimmings served by Lion cook Wilma Wedge.

Each Lion introduced his sweetheart and then Boss Lion Melvin Clinton introduced the special guest. Special guest were D. G. Jimmy Ross and his wife Velda, cabinet secretary Earl Honaker and his wife Linda, zone chairman Jimmy Davidson and his wife Clara Ruth, Sam Ross and his granddaughter Julie Ross, Cathryn Setliff and Sabra Setliff.

D. G. Jimmy Ross gave a very inspiring speech and presented special recognition awards. He gave a special award to Lion

George Setliff for the inspiring work that he has done in Lions Club both at district and local levels. He presented a special award to Cathryn Setliff for the hard work David Setliff had done for the Turkey Lions Club as secretary and treasure and local leadership for many years. He also presented a special award to Lion Leroy Stone for his many years of Lions work and leadership.

The door prize which was a very pretty center piece pot plant was won by Mrs. Clinton.

The meeting then closed by Boss Lion Melvin Clinton.



JIMMY ROSS

Briscoe County Appraisal Board Holds Meeting

The Briscoe County Appraisal District board met in regular session February 5, 1987. Members present included L. B. Garvin, Jr., Joe Mercer, and Ray Teeple. Carlye Fleming, accountant, was also present.

Meeting was called to order by chairman Garvin, and minutes were read by Ray Teeple, secretary. The board approved both the reading of the January 8 and January 22 minutes.

Ms. Fleming was unable to complete a financial statement for the meeting, due to the books out for audit; the March meeting will include the February financial statement.

She stated that the State Property Tax Board lawyers had related that the nepotism law must apply in the matter of Gerald Smith serving on

the Board, since he is the nephew of one of the directors, and he cannot be asked to serve.

George Reed was appointed to the Review Board for 1987-88.

Ms. Fleming advised that now is not a practical time for such a major expense as a computer for the district. Although receipts, reports, appraisal cards, etc., could be

completed more quickly, Ms. Fleming said she felt it would benefit the taxpayers much more to continue keeping money at home by hiring extra clerks when necessary. The matter was tabled until further notice.

Current bills were approved for payment.

Liability insurance was renewed with Verlin B. Towe Agency, Inc.

Valley Moves On To Bi-District Play

The Valley boys and girls teams played Panhandle boys and girls in Groom last week. The Valley girls played a very tough team from Panhandle. Panhandle won this game by a score of Pahnhandle 60, Valley 36. The high scorers for Valley were Renette Brittain with 11 points and Melissa Maupin had 9 points. Panhandle is ranked in the top ten in class 2A. Valley had defeated them earlier this year.

On Friday of last week the Valley boys played Sanford Fritch at River Road school in Amarillo. The Patriots had an off night and could not buy a bucket. Sanford Fritch won by a score of Sanford Fritch 72, Valley 49. Kirk Saul scored 16 points with Gary Brannon and Martin tossing in 8 points each.

The Valley girls will play Happy for bi-district on

Tuesday February 17, at

Olton. On Friday February 20, the Valley boys will play their last practice game against Stratford at White Deer before their bi-district begins with Farwell. The bi-district game will be the second game of a double header to be played in Plainview beginning at 8:00 p.m.

Quitaque Sr. Citizens Meet

The Quitaque Senior Citizens met Thursday February 5 for their business meeting. Monday February 23 is the date set for their stew supper. Being a tax exempt organization, the Senior Citizens are not allowed to charge for this meal but can accept donations. Serving will begin at 5:30 and end at 8:30. Everyone is invited to come for the meal and play games afterwards.

The senior Citizens held the monthly luncheon on Thursday, February 12, with 29 members present. Dorothy May and Yolann Roberson served the meal. Dianne Brunson was present to take blood pressure afterwards.

The Valley boys beat Panhandle by a score of Valley 58, Panhandle 44. Kirk Saul scored 22 points and Kirk Martin had 13 points.

School Board Sets Election April 4

The regular school trustee election will be held Saturday, April 4, to elect four members to serve on the Board of Trustees of the Turkey and Quitaque ISD. Polling places will be located in Turkey and Quitaque at the city offices. The election will be conducted along with city voting. Absentee balloting by personal appearance will be available at the school business office during school hours. Dead line for voting absentee is March 31.

Three positions on the Board are open for a full three year term of office and one position for a two year term.

Anyone wishing to become a candidate may file for either two or three terms of office. Applications are available at the school business office. Deadline for filing is March 4.



Attending were l. to r. David Brunson of Quitaque, Briscoe County, Precinct 1; Lillian Fariss of Sundown, Hockley County, Precinct 2; and B. J. Robinson of Turkey, Hall County, Precinct 4.

Local Justices Of Peace Attend Training Seminar

Ninety-four justices of the peace attended a 40-hour seminar Jan. 25-30 in Austin conducted by the Texas Justice Court Training Center headquartered at Southwest Texas State University in San Marcos. The seminars are held in compliance with Article 5972, Section B, of the Texas Revised Civil Statutes. Topics covered include a review of the newly published revision of the Justice Court Deskbook, Civil Law, Code of

Judicial Conduct, Attorney General's Opinions, the Texas Property Code, Disposition of Stolen Property, the Penal Code, Probable Cause, the new Criminal Rules of Evidence and Bond Setting. Attending were, left to right, David Brunson of Quitaque, Briscoe County, Precinct 2; Lillian Fariss of Sundown, Hockley County, Precinct 2; and B. J. Robinson of Turkey, Hall County, Precinct 4.

Local Youth In Show

The Hall County Jr. Livestock Show will be held in Memphis on Saturday, February 21. FFA and 4-H members from Valley Lakeview and Memphis school will participate in this annual event. Thirteen Valley FFA members will exhibit four lambs and fifteen hogs in the show. This year's show judge is Mr. Bob Robinson of Lubbock. Mr. Robinson is the District Ag. Extension Agent for Lubbock and Amarillo. The show begins at 9:00 a.m. followed by the Premium Sale at 1:00. Everyone is invited to attend and support Valley FFA members at Memphis this Saturday.

Union News

There will be a very important meeting Saturday February 21, at 6:00 p.m. at the Bob Wills Cafeteria. Some late news about changes in the farm program and type of cotton grown in this area will be discussed. Free chili will be served and all farmers are urged to attend.

"The Collector"

Note: The Tribune hopefully will run an article each week about historical things in the area by Curtis Tunnell. Mr. Tunnell is the father of Curtis Dale Tunnell who is Executive Director of Texas Historical Commission at Austin.

Most people like to collect and have a choice of several hundred items, for instance, you may choose the different kinds of barb wire. The first patent on wire was in the year 1854 at New Braunfels Texas, and since that time there has been several hundred patented.

The standard strip to collect is 18 inches long. One kind had a block of wood every 12 inches so the stock could see it, for they were not used to fences and would run into the fence.

The wood was later replaced with an iron block, it would stay longer and was not affected by the weather. Then there was the one half inch wide ribbon wire, but it did not prove successful in this part of the country for the wind would cause it to whip until it came apart. It was later made with a twist but this was not successful either. Another interesting wire was one with a spur rowel and it did not have barbs as the rowels acted as barbs. There were over 260 different kinds of wire patented and this included a large buffalo wire. It was a single strand wire almost as large as a pencil. The buffalo would run through and tear down the barb wire fences, they had no fear for the barbs, but could not break the large round wire.

Another good collection is rocks, minerals, and fossils. There is the selenite "Rose Rocks" one of the most beautiful formed rocks in the world. It contains a mixture of selenite and fine red sand. Then there is the white rose formed with white sand and selenite. Several kinds of petrified wood such as Palm wood, Cedar, Oak, and many others. These can be cut and polished then made into beautiful sets for rings and broaches.

Then there are fossils such as shark teeth, ammonites, trilobites, and many others. One of the most beautiful fossils is the ammonite. These can be found in sizes from as large as your thumb nail, to as large as six feet across. These can be petrified or replaced with rock formation which is called the mold.

You just name it and some one is collecting it.

MEMBER 1987
TEXAS PRESS ASSOCIATION

THE VALLEY TRIBUNE
 Successor to The Quitaque Tribune, Established at Quitaque in 1960
 Published Every Thursday at Quitaque, Texas 79255
 Frank and Patty Adams, Publishers
 Barbara Mayfield, Editor
 SUBSCRIPTION RATES PER YEAR

BRISCOE, HALL, MOTLEY, FLOYD COUNTIES (TAX INC.) \$10.09
 ELSEWHERE IN TEXAS (TAX INC.) \$12.22
 OUTSIDE OF TEXAS (NOT TAXABLE) \$11.50

Advertising rates upon request. Classified advertising 10 cents per word, minimum charge is \$2.00 per week for 20 words or less.
 Any erroneous reflection upon the character, standing or reputation of any person, firm or corporation which may appear in the columns of The Valley Tribune will be gladly corrected upon its being brought to the attention of the publisher. The publisher has the right to accept or refuse any article brought to the newspaper for publication. Publisher reserves right to cancel any advertisement at any time.

POSTMASTER: SEND ADDRESS CHANGES TO

THE VALLEY TRIBUNE, BOX 478, QUITAQUE, TEXAS 79255



By Nadine Baisden

Success is progression from frayed cuff to frayed nerves.

There's nothing wrong with the younger generation that becoming tax payers won't cure.

Well, a truckload of fixtures out of Fort Worth arrived for the Bob Wells Museum this past week.

The Bob Wells Official Committee are accepting bids for adding the room presently occupied by the Public Library to the Bob Wells Museum. The Library will be moved across the hall in the City Hall Building into the room just east of the City Office on the northeast side of the building. I presume all this work will need to be completed by Bob Wells Day, the last of April, so there is going to be a big need for help to move books, when the room across the hall is ready for the Library.

Poverty: Out of sight, out of mind. The "rich" and "affluent" are always thought to be someone else.

The man on top rarely favors change.

There is that maketh himself rich, yet hath nothing; there is that maketh himself poor, yet hath great riches. Proverbs 13:7.



Don Turner

Don Turner Speaks to Nuevo Club

The Turkey Nuevo Study Club met Thursday Feb. 12 in the fellowship hall of the Turkey United Methodist Church at 3 p.m.

Guest speaker for the occasion was Don Turner, a native of Turkey, and now of Tarzan, Texas. He was introduced by his Aunt, Nadine Baisden, club president.

Turner had on display more than a dozen of his bronze creations from desk pen and pencil sets and spurs to a cowboy scene weighing some fifty pounds.

Photographs showing each step of the process at the foundry were on display on a bulletin board.

Turner said he does a drawing the size he wants the bronze to be - takes pictures, and uses models for his work. He stated that he enjoyed his work as a cowboy, and creating the bronze pieces, that he feels like he hasn't really worked in a long time.

Refreshments were served from a table featuring a western motif, by the social committee - Dessie Robertson and Lurline Walker who were assisted by club members.

Guests attending were the speaker's mother Ila Turner, Pete Meyer, Mary Jo Barnhill, Fredia Fuston, Dollie and Reddell Irby, Vernell Russell, Gladys Hanna, Marjorie Bell, Pauline Lane, Dovie Wheeler, Colleen Stone, Helen Fowler, Otho and Dora Stubbs, Stella Davis, Jimmie Hunter, Ginger Morgan and Arlowene Williams.

Members present were Sabra Sethiff, Virginia Degan, Ella Colvin, Wilma Wedge, Marjorie Bain, Marcella Patterson, and those previously named.

Social Security News

By Terry J. Clements

Today I would like to discuss a late development that concerns the effect that Conservation Reserve Program (CRP) payments have on social security benefits. The decision was recently made that CRP payments will not count as earnings in applying the annual earnings test. In other words, CRP income will not prevent a beneficiary from receiving social security benefits. This latest interpretation is drastically different than previous policy that considered these payments as countable for the annual earnings in most cases.

The annual earnings test requires that social security benefits will be reduced one dollar for every two dollars that a person's earnings exceed the exempt amount. The exempt amount for 1987 is \$6000 for persons under age 65 and \$8160 who are age 65 or will be come age 65 during the year.

It has been determined that the payments made under CRP are based solely on a person's participation in a conservation program and that there are no significant services rendered by the participant. Therefore, these payments are not considered earned income for the annual earnings test and are treated like rental income, annuities, interest and other "non-earned" income.

Social Security tax still must be paid on income received under the CRP program.

Individuals who are receiving social security benefits or are approaching retirement age and are deciding whether to participate in the CRP program should note this change. You may wish to recontact the Social Security office for clarification even if you have already received an explanation that the CRP payments will affect social security checks.

If you have additional questions in these or other social security matters, call 293-9623. The Plainview office is located at 1401 B. West Fifth, Plainview, Texas, 79072. Appointments can be arranged if desired.

Superintendent's Corner

By Wilbur L. Cooper

How far is far? If the distance for which children are transported to Valley School each year is considered, then "far" is quite a distance. Put into another perspective: if the total miles which school buses transport children to Valley School were combined for one year, it would be sufficient to circle the earth three times!

According to an annual transportation report, school buses will travel a total of 76,510 miles this year. The longest daily bus route for the school is almost 110 miles long while the shortest is only 33. The route with the most mileage travels to southeast of Turkey, to bring children to school. The shortest route travels to Quitaque, picking up children along the way. Another long route winds its way north of Turkey almost to the district boundary about 100 miles daily in order to bring children to school. Other bus routes include distances of 55 miles, 65 miles, and 74 miles. The total six bus routes travel a total of 437 miles each day if it is necessary to journey the full length of the routes.

The State of Texas funds the transportation program with an allocation based upon the length of the bus routes and the number of children transported. The school district is required to take a one-day accounting each month for six months, beginning in September, and ending in February. The average number of children transported each accounting period help determine the funding process necessary to pay transportation costs.

Through an intricate formula process used by the state, the mileage plus the number of students transported, the school district is placed into a group of schools which will receive \$.88 per mile allocation. According to an application submitted to the state, Valley School should receive something over \$70 thousand this year with which to operate the transportation program. From the allocation the school district is expected to purchase necessary buses, pay bus driver salaries, maintain buses, or any other costs which may arise in the operation of transportation.

Valley School has been assigned to District 4-A for Spring Meet UIL competition. The newly formed district combines two basketball districts into one for a total of eight schools. Schools

assigned to the new district for spring competition in sports and literary include: Valley, Hedley, Lakeview, Silvertown, Paducah, Guthrie, Motley County, and Patton Springs.

The Spring Meet calendar has been set for the various literary and sporting events. On March 19,

the One Act Play will be held at Paducah. On March 24, the high school literary events will be conducted at Motley County, and the elementary/jr. high literary contest will take place on March 31 at Hedley.

Track meets will get started for district competition with the junior high meet scheduled for April 9 at Jayton. The High school meet will be held at Jayton on April 15.

There are no track facilities located within District 4-A suitable to qualify tracksters to the Regional meet.

Jr. high and high school tennis meet is scheduled to be held at Valley on April 13-14.

March 10 and April 9 are scheduled to be abbreviated school days at Valley and school will dismiss at 1:30 p.m.

February 23-24 are scheduled student holidays. These days were originally placed on the school calendar to coincide with the Houston Stock Show. The stock show dates have been changed and now Valley students will receive a holiday gift.

UMW Meets For Study On Faith

The Turkey United Methodist Women met in the church chapel for their study for Christian Faithfulness in a Technological World, led by Fredia Fuston.

Mrs. Marcella Patterson, the president, opened the program by reading from the prayer calendar of different places in need of our prayers.

Mrs. Kathleen Green gave the treasurers report and Mrs. Patterson gave a report of the minutes, as secretary, Mrs. Wilma Wedge, was absent.

Following the business session, Mrs. Baisden gave the prayer. Mrs. Fuston introduced the study from the book, "The Speed of Love" by Dr. David P. Young. The part Mrs. Fuston presented was an introduction and first chapter about the great change technology

has brought to our world. Changes through science have altered our values dramatically. It seems that we bank on technological things to solve our problems. Our values challenge us to say "if good, more will be better." Our industrial society is out of hand; example - we have created a complex and costly hospital system. In the long run we must redefine our progress. There is more to being hungry than not having enough food. There is more than one hunger.

Jill Flaughter closed the program with prayer. Six members were present.

Bates Shoe Store
 must close out over 2,000 pairs of shoes
Women's & Children's
 3 pair for the price of 1 pair
 - Selected Styles Men & Boy's -
Shoes & Boots 1/2 price
 All Children's Western Boots B&D width
1/2 price **Tulia Only**
Plainview & Tulia
12 Day Sale Both Locations

You are cordially invited to an exclusive showing of a collection of our finest jewelry recently assembled for THE INTERNATIONAL JEWELRY SHOW in New York City. This collection will be on display in Roaring Springs Thursday, Friday, & Saturday February 19, 20, & 21 10:00am-5:30pm. If you've been thinking of buying something special, come in today to see this unique collection.

THACKER JEWELRY
 348-7546 DOWNTOWN ROARING SPRINGS (800) 692-4249

Gafford Beef & Pork Center
 Turkey, Texas
 806-423-1017

GEORGE'S Grade A Large FRESH EGGS 78c doz.	HANDY SLICED SLAB BACON \$1.53 LB.
CHOICE 1/2 BEEF \$1.32 LB.	GAFFORD'S PORK SAUSAGE \$3.78 2 LB. BAG
CHOICE 1/2 HindQuarter \$1.49 LB. CUT & WRAPPED	ALL MEAT BOLOGNA \$1.58 LB.
Gafford's Choice Beef* Beef You Can Serve With Pride	Sliced Boiled HAM \$2.98 LB.

DO YOU WANT TO RETIRE SOMEDAY

IF YOU ARE NOT COVERED BY A PENSION PLAN AT THE PRESENT TIME YOU ARE ELIGIBLE TO HAVE AN INDIVIDUAL RETIREMENT ACCOUNT AND HAVE IT DEDUCTED FROM YOUR 1986 INCOME.

COME IN AND SEE US TODAY ABOUT YOUR IRA

FIRST NATIONAL BANK QUITAQUE

FDIC

Dependable Services Since 1920

Caprock
 By Cochum

The weather seems stuck in same rut it has been in since September and seems hell-bent to prevent the finish of the cotton crop. If we had had a good crop, it would probably be the 4th of July before it could be complete. They say it never rains too much in Texas and one oldtimer once me that the only time he ever it rain too much was in 1941 he made a bale-to-the-acre year!

Caprock Pete says he hopes standard of living doesn't get higher. Says the one now is higher than he can afford!

"Why are you wearing juan spur?" an old cowhand was asked. "Wal, the way I figure it, if get one side of the horse run the other side will, too!"

Life's heaviest burden is to be when you are not able to anything!

The other day a guy was looking for a job and asked, "don't know nobody that would hire nobody to do nuthin', do you?"

Notice where one church drive-in church and do confessional... sort of a do tell!

One old pot-bellied guy was tried one of those waist-rever exercises by bending over grabbing his feet, and in one he went from a size 8 to a size and 1/2 shoe!

A yawn is said to be a way of letting married men their mouth!

And then there was this who spent \$3000 on a cure for tosis and then found out nobody liked him anyhow!

A vacation is known as where you drive 3000 miles have your picture taken by your car!

One trouble with these bus seats is that everybody don't the same size bucket!

health hints

One of the easiest ways to improve health and prolong life is to diagnose an unhealthy condition early. Though over fifty-five million Americans suffer from high blood pressure, many of them do not know it since it's often a symptomless condition. An easy way to determine whether you have it is to have your doctor test your blood pressure. A reading of over 140 is considered, by the American Heart Association, to be a level that merits treatment.

It's no same old same old. In 1987, quality cottonseed will be in supply. There isn't any over to fall back on. Even though your ginner tries hard, he may be able to stock every seed variety every customer. But our cotton still has a happy ending. More than a hard breeder Grows Brand GSC and GSA 71. This year, plant the best. Anything less and you'll be at a profit. Don't trust your raft foot. Shake a leg. Quick as get in touch with your local dealer. Reserve all the GSC GSA 71 you'll need this Spring. Grows Brand seed means a ending to your cotton tale. GSC 25* - NEW dollar maker! GSC 25 is a high yielding maturing cotton. It will with adverse fall weather very well due to

Gro SEED
 P. O. Box 165

Caprock Comments

By Cochum

The weather seems stuck in the same rut it has been in since last September and seems hell-bent to prevent the finish of the short cotton crop. If we had made a good crop, it would probably be the 4th of July before harvest could be complete. They say that it never rains too much in West Texas and one oldtimer once told me that the only time he ever saw it rain too much was in 1941, and he made a bale-to-the-acre that year!

Caprock Pete says he hopes the standard of living doesn't get any higher. Says the one now is more than he can afford!

"Why are you wearing just one spur?" an old cowhand was asked. "Wal, the way I figure it, if I can get one side of the horse running, the other side will, too!"

Life's heaviest burden is said to be when you are not able to carry anything!

The other day a guy came in looking for a job and asked, "You don't know nobody that wants to hire nobody to do nuthin', do you?"

Notice where one church had a drive-in church and drive-in confessional... sort of a toot-&-tell!

One old pot-bellied guy said he tried one of those waist-reducing exercises by bending over and grabbing his feet, and in one week he went from a size 8 to a size 15 and 1/2 shoe!

A yawn is said to be a polite way of letting married men open their mouth!

And then there was this guy who spent \$3000 on a cure for halitosis and then found out that nobody liked him anyhow!

A vacation is known as a trip where you drive 3000 miles to have your picture taken beside your car!

One trouble with these bucket-seats is that everybody don't have the same size bucket!

"I'm sorry, he can't come to the phone," said the wife, "He's outside shoveling about ten inches of partly cloudy!"

Said the little boy to a little girl, "Am I the opposite sex or is it you?"

Speaker to the audience, "I've practiced this speech all week and feel pretty good about it, so if everybody will try to look a little more like a bathroom mirror, we'll begin!"

They say that opposites attract, you know, like narrow minds and wide mouths!

You've reached middle age when you've learned to take care of yourself and you intend to start doing it just any day now!

A Neurotic builds air castles, a Psychotic lives in them and a Psychoanalyst collect the rent!

Looks can be very deceiving... a dollar bill still looks just like it did twenty years ago!

That's -30- for this time, remember, a theory is a hunch with a college education!

Valley SCHOOL MENU

Feb. 25:
BBQ Little Smokies
Boiled New Potatoes
Chopped Mustard Greens
Chocolate Cream Cake
Fresh Baked Cheese Rolls

Feb. 26
Salmon Croquettes
Cole Slaw Salad
Catsup
Fried Squash
Peach Cobbler
Corn Bread

Feb. 27
Ham & Cheese on Bun
Lettuce
Tomatoes
Potato Chips
Fresh Fruit



New Arrivals

Ron and Martha Yorston of Eules, Texas are the proud parents of a son born January 31, 1987. Nicholas Reed Yorston weighed 7 pounds 14 and 1/2 ounces and was 20 and 1/2 inches long.

Maternal grandparents are E. G. and Barbara Reed of Quitaque. Paternal grandparents are Ronnie and Lillie Yorston of Dallas. Maternal great-grandmother is Elva (Ma) Reed of Quitaque and paternal great-grandmother is Mrs. Marie (Mama Rea) Prince from Memphis, Tennessee.

health hints

One of the easiest ways to improve health and prolong life is to diagnose an unhealthy condition early. Though over fifty-five million Americans suffer from high blood pressure, many of them don't know it since it's often a symptomless condition. An easy way to determine whether you have it is to have your doctor test your blood pressure. A reading of over 140/90 is considered by the American Heart Association, to be a level that merits treatment.

A COTTON TALE

It's not the same old story.

In 1987, quality cottonseed will be in short supply. There isn't any carry over to fall back on. Even though your ginner tries hard, he may not be able to stock every seed variety for every customer. But our cotton tale still has a happy ending.

More than a hare better: Growers Brand GSC 25 and GSA 71.

This year, plant the best. Anything less and you'll be nibbling at profits. Don't trust your rabbit's foot. Shake a leg. Quick as a bunny, get in touch with your local GroAgri dealer. Reserve all the GSC 25 and GSA 71 you'll need this Spring. Growers Brand seed means a happy ending to your cotton tale.

GSC 25* - NEW top dollar maker!

GSC 25 is a high yielding, early maturing cotton. It will withstand adverse fall weather very well due to

its excellent storm-proofness. GSC 25 produces quality lint that is ideal for open end spinning. Outstanding resistance to Verticillium Wilt. Also shows excellent tolerance to seedling diseases including Ascochyta Blight. Excellent quality seed is available in both certified and non-certified.

GSA 71** Certified Cottonseed - #1 planted variety on the High Plains for 9 years!

GSA 71 is a proven top yielder with wide adaptation. GSA 71 is an early, prolific fruiting cotton that is tolerant to Verticillium Wilt. A stripper type cotton that picks well, it was bred specifically for short season areas. Staple length of 32-33. Very high tolerance to triazine herbicides. GSA 71 is a great cotton!

*Unauthorized propagation prohibited. U.S. protected variety.

**Unauthorized propagation prohibited. To be sold by variety name only as a class of certified. U.S. protected variety.

Hop on over to your local GroAgri dealer today!

GroAgri SEED COMPANY

growers BRAND

P. O. Box 1656 Lubbock, Texas 79408 (806)747-6225

Congressman Beau Boulter Reports from Washington



ABUSING THE SYSTEM

My opinion of the way business is done in the nation's capitol has never really been too high. Billions of dollars of the taxpayers' money is either wasted, or thrown at problems. Political games, and high-handed partisanship tie up vital issues that need to be decided promptly and with a great deal of wisdom.

This past week, however, my personal opinion of the political games being played with this nation's future dipped to an all-time low. While millions of Americans are struggling to make ends meet and feed their families, the leadership in the House of Representatives stalled action on a piece of legislation, and allowed a \$12,000 raise for Members of Congress to slip through the cracks and into the pockets of legislators who hadn't really earned what they were already making.

The law that allowed this underhanded act to take place dates back to 1967, and provides for the appointment of a High-level Commission to study the differences between government pay scales, and those of the private sector. This Commission is required to make recommendations to the President every four years on these differences. The President, in turn, makes his own recommendations (based on those of the Commission) in his yearly budget proposal. These pay recommendations unfortunately, go into effect automatically unless Congress, within 30 days, passes a joint resolution disapproving them.

This past year, the Commission recommended a \$60,000 dollar a year raise for Congress, which the President cut to just about \$12,000. The Senate adopted a resolution disapproving this pay raise two weeks

ago, and attached it to a House-passed measure to provide \$50 million in emergency aid to the homeless. Despite assurances from the House Leadership that the pay issue would come up for a vote before the midnight, February 4 deadline, the House adjourned on February 3 without voting on the resolution, and this latest raid on the national treasury is now a fact.

At least that's what the leadership in Congress would like us to believe. I don't believe the American public is going to sit still for this one. I know I'm not going to.

On the day after this latest injustice, I became party to a lawsuit filed in a United States District court which challenges the constitutionality of the 1967 law. The suit specifically challenges the law's requirement of Congressional action to disapprove the salary increases as an unconstitutional delegation of authority from the Congress to the President.

I will also be active in legislative attempts to rescind the pay raise. Unfortunately, a bill of this type would be killed in House Committees by the House leadership, so the only chance we have is for Members of the U.S. Senate to attach it to legislation upon which the House must act. A number of Senators have indicated to me that they will pursue this option.

Sen. Bentsen Promises Ag Support

Senator Lloyd Bentsen has pledged to use his powerful position as chairman of the U.S. Senate Finance Committee to restore equity to American agricultural trade. Speaking to members and delegates attending the Texas Farmers Union convention, Bentsen said a first step is to tighten up procedures for trade grievances under the international General Agreement on Trade and Tariffs.

"Today, if you file a motion before GATT on an unfair trade practice, it's like dropping a rose petal in the Grand Canyon and waiting for the echo. What I'd like to see us have is legislation that will see that these things get resolved while we still have an industry."

Bentsen said he expects Reagan administration support for a bipartisan bill. A reluctance to deal forcefully with the issue in the past has been based on foreign policy interests instead of a realistic look at competition, he said.

"Texas farmers and ranchers are on the firing line on trade, since agriculture is more dependent on trade than any other industry."

The fact remains, however, that the House leadership prevented a vote on the pay raise issue, and to me, this is proof positive that the politicians in Washington want to avoid accountability to the people by hiding behind a law passed in 1967. In my mind, this whole procedure has been an abuse of the democratic process of the worst kind.

David Landry Promoted To Specialist 4

David L. Landry, son of Jerry and Shirley Landry of Turkey, was promoted to Specialist 4 on January 1, 1987. He is stationed in Schweinfurt, West Germany. David says to tell everyone that he's really enjoyed all the cards and letters from home. He just recently returned from a week's stay out in the field taking extensive training in recovery. He reported temperatures dropped well below zero at night.

His new address is:
Spec. 4 David L. Landry
452-49-8996
HHC, 1st BN, 30th Inf.
Box 737
APO New York, 09033

Lines from Lynda

Farmers, ranchers, homemakers, high school seniors, and other interested persons are invited to the Job Preparation Training at the First State Bank Pioneer Room in Silverton February 19, from 9 a.m. to 4 p.m. sponsored by the Extension Program Council and First State Bank.

The day-long event will be conducted by Panhandle Community Services job training representatives as well as TSTI and South Plains College. Cost is \$10 per individual or couple. There is not charge to seniors in Silverton and Valley High Schools.

AGENDA

9 a.m. to 9:15 a.m. - Jimmy Burson, Chairman - Extension Program Council. Johnny Raymond, PCS Executive Director; Welcome and Introduction.

9:15 to 9:30 a.m. - South Plains College Representatives: Bobby James and Stephen Beck.

9:30 - 9:45 a.m. - Texas State Technical Institute Representative: Jim Lutes.

9:45 - 10 a.m. - David Duncan, Director of PCS Division of Counseling and Human Resource Development.

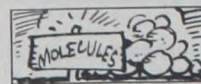
10 - 10:15 a.m. - BREAK
10:15 - 10:30 a.m. - Phyllis Cook, PCS Director of Training and Employment and Helen Pryor, JTPA Coordinator.

11 - 11:30 a.m. Lynda Fogerson and King Hill PCS Training Coordinator - JOB PREP INTRODUCTION
11:30 - 1:00 p.m. - LUNCH BREAK
1 p.m. - 4 p.m. - Job Prep Training with two breaks scheduled when needed.

The Job Preparation Training portion from 1 to 4 p.m. will include applications, resumes, data sheets, interviews, job search and job leads, employer expectations, and other job-related skills.

Participants are asked to call the Extension Office at 823-2343 to register.

Educational programs of the Texas Agricultural Extension Service serve people of all ages regardless of socioeconomic level, race, color, sex, religion, handicap or national origin.



If a glass of water were magnified to the size of the earth, the molecules comprising it would be about as big as a large orange.

Turkey Automotive Supply

806 423-1366 Turkey, Texas 79261 P. O. Box 157

Peoples State

Bank of Turkey, U.S.A.

Box 158 • Phone (806) 423-1321 • Turkey, Texas 79261
Member F.D.I.C.

NEED A COPIER?

Canon PC-24

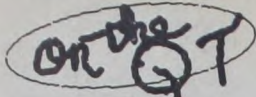
MAKES COPIES FROM BUSINESS CARD TO LEGAL SIZE
ENLARGES TO 120%- REDUCES TO 67%

\$ 120000

PLUS TAX AND TONER CARTRIDGE
DELIVERED WITH FULL FACTORY WARRANTY

THE VALLEY TRIBUNE

PHONE 455-1101



Do You Remember?

Feb. 20, 1947
Traci Ham was honored on her sixth birthday Monday, Feb. 9, with a Rainbow Brite party at her home. Helping Traci celebrate were Hollie McKay, Mindy Proctor, Randi Brooke Powell, Amy and Amber Stark, and Chase Ham. Refreshments and games were enjoyed by the honoree and her guests as well as her grandmother Patsy Herrington and her parents Max and Anne-Marie Ham.

Jim Beeson's car was stolen Wednesday night of last week, and was located the same evening on a downtown street in Hollis, Okla., according to Sheriff Earl Hill.
Miss Peggy Jean Edgar, bride-elect of Robert Nixon of Fort Worth, was honored with a shower at the Methodist Church Friday night.
The valentine motif was carried out in the decoration of the church, and refreshment table.

Grundy, son of Mr. and Mrs. Jee Grundy of Quitaque was married Sunday Feb. 16 at Lubbock. The vows were read by Rev. D. Welch, pastor of Central Baptist Church in his home.
The only attendants were the bride's sister and her husband, Mr. and Mrs. Carl Patrick of Lubbock.

Mr. and Mrs. Eugne Randall and family of Amarillo were recent visitors in the home of his parents, Mr. and Mrs. Marvin Randall of Turkey.

Miss Snow Chandler, daughter of Mr. and Mrs. W. V. Chandler of Kent Community, and Charlie Randall of Turkey.

Mrs. Joyce Duck became the bride of H. G. Boyles of Quitaque Saturday evening at 7 o'clock. Rev. Elrod, Baptist pastor of Silvertown, reading the vows in his home. The bride and groom were accompanied by Mr. and Mrs. A. B. Ramsey, Jr., Miss Roberta Duck, Miss Elizabeth Richmond and L. B. Monk.

Curtis Tunnell wishes to announce that there will be a Rock Show this coming weekend 21 and 22nd at the National Guard Building at the Plainview Airport.

Former Resident Saves Life

Tom Loper, a former resident of Quitaque, revived a 15 month old Tulia boy found floating in a water filled hole. Mr. Loper used CPR which he learned while working for the Texas Parks and Wildlife Department.

W. B. Mullin, city of Turkey Mayor, announced and election to be held in Turkey, April 1, 1947, for purpose of electing a water commissioner.

Buddy Colvin of Big Spring spent the weekend visiting with his mother Mrs. Ella Colvin.

Mrs. Foy Lane was in Floydada Saturday to attend the Fat Stock Show where her granddaughter Gwen Lane was showing her sheep.

Mrs. Laura Campbell and Mrs. Tom Salem attended the last rites in Wellington, for an aunt, Mrs. Rillia Campbell, 99 years old, of Fort Worth.

Virgil Blakney returned home Friday from Calif., where he had been at the bedside of his sister, Mrs. Reba Smith, for a week. Reba died Tuesday Feb. 10.

Chad Puckett and his mother Nita Puckett of Memphis visited in Turkey Sunday with Mrs. Foy Lane and the Spittler family.

Miss Lula Pinkerton attended the wedding of Miss Earline Marshall and James Henderson in Plainview Monday.

Brody Lynn Davis, son of Mr. and Mrs. Joe Mark Davis of Levelland has been visiting in Turkey in the home of his grandparents Mr. and Mrs. Layn Davis the past week.

Aaron Camp has been visiting in Stratford in the home of his aunt Mrs. Gail Rhodes for a week.

Mr. and Mrs. Hoyt Cowart and family of McFarland, Calif. visited with Mr. and Mrs. Robert Lee Young Tuesday while passing through Turkey. The Youngs have an apartment with the Cowarts while Robert Lee was stationed in California during his army days.

Mr. and Mrs. Paul Spittler of Jamestown, Ohio, have been visiting in Turkey with her brothers and their families, Bill, Boyd and Leon Lane and with a sister-in-law Mrs. Foy Lane. The Spittlers were dinner guests in the Boyd Lane home Sunday, were Mr. and Mrs. Bert Lane of Plainview visited with the Spittlers and also his parents Mr. and Mrs. Leon Lane.

Estelline Lane, who has been a patient in the Bivins Rehab Center in Amarillo for the past seven months, was able to come home with her husband, Tink Lane, Saturday morning and stay over until Sunday afternoon, when she returned to the hospital by 6 p.m.

The Wesleyan Guild met with Mrs. Bert Degan Wednesday night Feb. 12. Mrs. C. A. Russell presided, and during the business hour, pledges were made. The Lions Club menu was reported by the chairman, Mrs. Tom Salem. Mrs. Laura Campbell gave the devotional.
A number was presented by a quartet composed of Mrs. Howard Castleberry, Mrs. Ollie Meacham, Miss Amy Davis and Miss Katherine Russell, accompanied by Mrs. Salem.
Mrs. Joe Degan and Miss Martha Coker were guests and Mrs. George Ray Colvin was a new member.

GET READY FOR A GREAT SUMMER WITH OUR TANNING BED!
\$5.00 per session
\$40.00 for 10 sessions
Your Business Appreciated
B.J.'s Beauty Shop
105 Main
455-1305(Shop) 455-1370(Home)

BUY, SELL, TRADE OR RENT THROUGH THE CLASSIFIED ADS

<p>FOR SALE OR RENT</p> <p>FOR SALE: House for sale, Phone 423-1061. 33-4tc</p> <p>WANTED</p> <p>\$\$\$ Ambitious Sales lady needed for telemarketing of "Treasured Recipes of Texas" cookbooks. Work from your home. We are hiring only one sales lady in your area. Earn up to \$350 a week. Call 744-7900 for further information. 36-1tc</p> <p>CRP GRASS DRILLING and native grass seed mixtures to your specifications now available. We will work a package deal on your drilling and grass seeds. Please contact Horizon Seeds, Inc., P.O. Box 886, Hereford. 79045 or call 806/258-7288. 36-4tc</p> <p>SEE US FOR LOW PRICES on carpet [\$5.95 per yard plus installation], vinyl linoleum [\$3.95 per yard plus installation]. A & B Carpet & Builders Supply, 1605 Ave. F NW, Childress, Texas [817] 437-6305. 41-tfc</p> <p>FOR MONUMENT SALES and service, call Schooler-Gordon, Quitaque, 455-1313, Turkey 423-1313, and Silvertown, 823-9121 12-tfc</p>	<p>SERVICES</p> <p>SINGER SEWING MACHINES Vacuum Cleaners, Smith Corona Typewriters, Adding Machines, Kirby Sales and Service. Buy here, service here. Call in Quitaque, 455-1101, or call 423-1155 in Turkey. Call 259-2716 in Memphis. Office located at 620 Noel in Memphis. Here every two weeks on Thursdays. 28-tfc</p> <p>NORMAN JONES IS DOING Upholstery of all types at 308 South Broadway, Plainview, Texas. 33 years experience. Fabric or vinyl selections. Pick up and delivery. Phone [806] 296-5187. 26-tfc</p> <p>COMMERCIAL PRINTING of all kinds: Letterheads, envelopes and business cards, newsletters, invitations, etc. We will get you a cost estimate on any job. None too large or too small. The Valley Tribune, Ph. 455-1101. 34-tfnc</p>	<p>MISCELLANEOUS FOR SALE</p> <p>FOR SALE: 24 ft. flatbed gooseneck trailer. Call S & H (h) 455-1133 or 455-1388. 36-tfc</p> <p>FOR SALE: Phoenix Pontiac 4-cylinder, 80 model; Can be seen at Merrell's Food, Turkey. Marie Purcell, 469-5393. 361tc</p> <p>FOR SALE: 7/8 Chow puppies. All colors. Only females left, \$30. each. 455-1464 (day) 455-1331 (night.) 36-tfc</p> <p>FOR SALE: 20 ft. Chest Type Freezer. Phone 423-1286. 35-2tc</p>
--	---	---



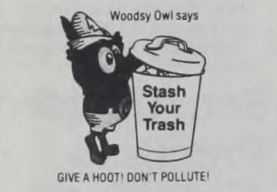
CARDS OF THANKS

Let us take this opportunity to thank our friends and neighbors of Quitaque and surrounding area for your prayers and every act of kindness during our stay in hospital, and since our return home. A special thanks to those who came to be with Charlie and our daughters and families during the surgery. It is our prayer that God will bless each of you as He has blessed us.
Bud and Charlie Bailey 36-1tp

Just a note to say how much we appreciate your thoughtfulness to us in the loss of our sister Reba Smith. For those who sent flowers, cards and made memorials, came by to visit with us and most of all for your prayers - thank you.
Virgil and Edna Blakney 36-1tr

Orb and I would like to say "thanks" to everyone who was so kind to us during Orb's surgery and stay in the hospital. You can never know how much your visits, calls, cards, flowers, and prayers meant to us. Thanks again to all you wonderful friends, God bless you all.
Orb and Flo 36-1tc

We wish to express our sincere appreciation to all of you for the love and kind deeds shown to Ellen in the past years and to thank you for all expressions of sympathy for us during her sickness and death.
The family of Ellen Smith 36-1tc



Rick's Muffler
For All your Exhaust Needs, Including Customizing
(806) 823-2015 Silvertown, Texas

"H&R Block's TAX FORECASTER" will tell you what the most sweeping tax changes in history mean to you.
- Henry Block
At H&R Block we know you're concerned how tax reform will affect you. Our new Tax Forecaster™ service provides a written analysis of how you'd come out under the new laws so you'll know whether your tax would go up or down.
H&R BLOCK
THE INCOME TAX PEOPLE
106 West Missouri
Floydada, Texas
983-5233
Wkdays 9-6 Sat. 9-5

CANDY, NUTS, GIFTS, GREETING CARDS & SILK FLOWERS
BROWNING PEANUT PATCH
423-1436 TURKEY, TEXAS

VALLEY CLEAN LAUNDRY
Main Street in Quitaque
Coin Operated
Rayford Hewett, Owner-Manager
Quitaque, Texas

HEWETT ELECTRIC
455-1324
For Current Problems
HEWETT CAN DO --ET
Box 97
Quitaque, Texas 79255

QUITAQUE PRODUCERS' COOP
Standing Together Standing Strong
Joe Edd Smith, Manager
Fuel & Supplies
Phone 455-1388
Quitaque, Texas

NEW CONSTRUCTION - REMODELING - ADDITIONS
CONCRETE - PAINTING
THOMAS HINOJOSA
CARPENTER

SHIRLEY HAWKINS
IS PREPARING
Income Tax Returns
HAWKINS FURNITURE
455-1464 Office 455-1130 Home

Brown-McMurtry Implement
Sales and Service
Phone 806- 823-2441
Box 777
Silvertown, Texas
Don Brown Home Ph. 823-2292
Clarence Ward Home Ph. 823-2083

WE WANT TO BUY YOUR COTTON
Please ask your ginner to check prices with us before you sell.
CONSOLIDATED COTTON CO.
Arville Setliff, Agent
Claudia Hawkins, Buyer
Phone: 423-1221
P.O. Box 372
Turkey, Texas

OFFICE SUPPLIES
WE NOW HAVE MANY OFFICE SUPPLIES IN STOCK
"IF WE DON'T HAVE IT WE WILL GET IT"

CALCULATOR PAPER	TYPEWRITER RIBBONS
COPY PAPER	CORRECTION FLUID
FILE FOLDERS	STAPLERS
STAPLES	COLUMNAR PADS
ENVELOPES	INK PADS
SCOTCH TAPE	TAPE DISPENSERS
LEGAL PADS	TACKY FINGER
COMPUTER DISKETTES	LEDGER SHEETS
PENS & PENCILS	SCRATCH PADS
PAPER CLIPS	CLIP HOLDERS
STATEMENT PADS	RECEIPT BOOKS

WE ALSO HAVE MANY OTHER ITEMS IN STOCK

THE VALLEY TRIBUNE
PHONE 455-1101 QUITAQUE, TEXAS

LEGAL NOTICE
LOCAL INVITATION TO BID ON HIGHWAY MOWING MARCH 5, 1987

Scaled proposals for four separate contracts in moving Childress/Hall, Childress/Hardeman, Childress/Kirkland, and Childress/Kirkland Counties will be received at the State Department of Highways and Public Transportation District Office at 1700 Ave. F, NW, Childress, Texas 79201, March 5, 1987 at the time indicated below for each Contract.

CONTRACT NO. 257XXM1002
Donley/Briscoe Counties will be received until 9:00 am, March 5, 1987.

Tract 1 - FM 1260 from 10 mi north of Jet.US 287, south and east 18.60 mi.

Tract 2 - FM 1754 from Jet.US 287 at Lella Lake, south 2.64 mi.

Tract 3 - FM 1755 from Jet.US 287 at Lella Lake, north to Jet.FM 2471.

Tract 4 - FM 1932 from Jet.SH 203 in Hedley west and north to Jet.FM 2471.

Tract 5 - FM 2162 from Jet.US 287 in Clarendon south 5.97 mi.

Tract 6 - FM 2362 from Jet.US 287 at Ashitola south and east to Jet.FM 2162 in Clarendon.

Tract 7 - FM 2471 from Jet.FM 1260 east of Clarendon, east to Jet.FM 2695.

Tract 8 - FM 2695 from Gray CL, south to Jet.SH 203 near Hedley.

Tract 9 - FM 2944 from Jet.FM 2695, east and south to Jet.SH 203 at McKnight.

Tract 10 - FM 3257 from Jet.US 287 west of Clarendon, north to Greenbelt Lake, 3.19 mi.

Tract 11 - FM 145 from Swisher CL east to Jet. of SH 86.

Tract 12 - FM 284 from Jet.SH 86 and SH 207 south 9.01 mi.

Tract 13 - FM 378 from Jet.SH 86 south to Floyd CL.

Tract 14 - FM 599 from Jet.SH 86 east of Quitaque, south to Motley CL.

Tract 15 - FM 1065 from north of Quitaque south to Floyd CL.

Tract 16 - FM 2464 from Jet.SH 86 east of Silvertown south to Jet.FM 145.

Tract 17 - FM 2733 from Jet.SH 86 near the Valley School, south to Jet.FM 599.

Tract 18 - FM 3030 from Jet.SH 86 west of Silvertown, north and east 3.94 mi.

Tract 19 - FM 3065 from Jet.SH 86 east of Silvertown, north 4.88 mi. Length: 157.12 mile. Approximate area: Type I: 2116.26 acres (Strip); Type II: 1523.0 acres (Full Width).

CONTRACT NO. 257XXM1003
Childress/Hall/Hardeman/Childress counties will be received until 10:00 am, March 5, 1987

Tract 1 - FM 94 from Childress CL west and south to Cottle CL.

Tract 2 - FM 94 from Cottle Co from Hall CL, south and west to Motley CL.

Tract 3 - FM 657 from Jet.SH 256 west Lakeview, south to Jet.FM 1041.

Tract 4 - FM 658 from Jet.US 287 east Estelline south to Jet.FM 94.

Tract 5 - FM 1041 from Jet.SH 256 in Memphis south and west to Jet.FM 657.

Tract 6 - FM 1282 from Jet.FM 658 west of Tell, east to Childress CL.

Tract 7 - FM 1282 Childress Co from Hall CL east to Jet.FM 2042.

Tract 8 - FM 1619 Jet.US 287 near Memphis east to Childress CL then west to Jet.US 287 at Newlin.

Tract 9 - FM 1619 Childress Co from Hall CL, east and south and west to Hall CL.

Tract 10 - FM 2472 from Jet.SH 256 east Lakeview south to Jet.FM 1041.

Tract 11 - FM 3032 from Jet.SH 256 east Memphis south to Jet.FM 1619.

Tract 12 - FM 94 from Jet.US 62 south Childress west to Hall CL.

Tract 13 - FM 268 from Jet.US 287 in Childress east to Hardeman CL.

Tract 14 - FM 268 in Hardeman Co., from the Childress CL east and south 8.69 mi.

Tract 15 - FM 1038 from 9.8 mi north of Jet.US 287 south to Cottle CL.

Tract 16 - FM 1033 in Cottle Co from Childress CL south to Jet.FM 104.

Tract 17 - FM 2042 from Jet.FM 13.86 mi.

Tract 18 - FM 2103 from Jet.US 62 south Childress west 6.77 mi.

Tract 19 - FM 2638 from Jet.US 287 west Kirkland south 4.88 mi.

Tract 20 - FM 2875 from Jet.US 287 east Kirkland south 3.71 mi.

Tract 21 - FM 2884 from Jet.FM 268 north Childress north 3.55 mi.

Tract 22 - FM 1440 from Jet.US 62 south Childress west and north to Jet.FM 94. Length: 163.68 miles; Approximate area: Type I: 2475.54 acres (Strip); Type II: 1473.52 acres (Full Width).

CONTRACT NO. 257XXM1004
Hardeman/Forri Counties will be received until 11:00 am, March 5, 1987.

LEGAL NOTICE

LOCAL INVITATION TO BID ON HIGHWAY MOWING MARCH 5, 1987

Sealed proposals for four separate contracts in Donley/Briscoe, Childress/Hall/Hardeman/Cottle, Hardeman/Foard/King, and Knox/King Counties will be received at the State Department of Highways and Public Transportation District Office at 1700 Ave. F, NW, Childress, Texas 79201, March 5, 1987 at the time indicated below for each Contract.

CONTRACT NO. 257XXM1002 Donley/Briscoe Counties will be received until 9:00 am, March 5, 1987.

Tract 1 - FM 1260 from 10 mi. north of Jct. US 287, south and east 18.60 mi.

Tract 2 - FM 1754 from Jct. US 287 at Lelia Lake, south 2.64 mi.

Tract 3 - FM 1755 from Jct. US 287 at Lelia Lake, north to Jct. FM 2471.

Tract 4 - FM 1932 from Jct. SH 203 in Hedley west and north to Jct. FM 2471.

Tract 5 - FM 2162 from Jct. US 287 in Clarendon south 5.97 mi.

Tract 6 - FM 2362 from Jct. US 287 at Ashtola south and east to Jct. FM 2162 in Clarendon.

Tract 7 - FM 2471 from Jct. FM 1260 east of Clarendon, east to Jct. FM 2695.

Tract 8 - FM 2695 from Gray C/L, south to Jct. SH 203 near Hedley.

Tract 9 - FM 2944 from Jct. FM 2695, east and south to Jct. SH 203 at McKnight.

Tract 10 - FM 3257 from Jct. US 287 west of Clarendon, north to Greenbelt Lake, 3.19 mi.

Tract 11 - FM 145 from Swisher C/L east to Jct. SH 86.

Tract 12 - FM 284 from Jct. SH 86 and SH 207 south 9.01 mi.

Tract 13 - FM 378 from Jct. SH 86 south to Floyd C/L.

Tract 14 - FM 599 from Jct. SH 86 east of Quitaque, south to Motley C/L.

Tract 15 - FM 1065 from north of Quitaque south to Floyd C/L.

Tract 16 - FM 2464 from Jct. SH 86 east of Silvertown south to Jct. FM 145.

Tract 17 - FM 2733 from Jct. SH 86 near the Valley School, south to Jct. FM 599.

Tract 18 - FM 3030 from Jct. SH 86 west of Silvertown, north and east 3.94 mi.

Tract 19 - FM 3365 from Jct. SH 86 east of Silvertown, north 4.88 mi.

Length: 157.12 miles; Approximate area: Type I: 2116.28 acres (Strip); Type II: 1523.01 acres (Full Width).

CONTRACT NO. 257XXM1003 Childress/Hall/Hardeman/Cottle counties will be received until 10:00 am, March 5, 1987.

Tract 1 - FM 94 from Childress C/L west and south to Cottle C/L.

Tract 2 - FM 94 from Cottle Co. from Hall C/L, south and west to Motley C/L.

Tract 3 - FM 657 from Jct. SH 256 west Lakeview, south to Jct. FM 1041.

Tract 4 - FM 658 from Jct. US 287 east Estelline south to Jct. FM 94.

Tract 5 - FM 1041 from Jct. SH 256 in Memphis south and west to Jct. FM 657.

Tract 6 - FM 1282 from Jct. FM 658 west of Tell, east to Childress C/L.

Tract 7 - FM 1282 Childress Co. from Hall C/L east to Jct. FM 2042.

Tract 8 - FM 1619 Jct. US 287 near Memphis east to Childress C/L then west to Jct. US 287 at Newlin.

Tract 9 - FM 1619 Childress Co. from Hall C/L, east and south and west to Hall C/L.

Tract 10 - FM 2472 from Jct. SH 256 east Lakeview south to Jct. FM 1041.

Tract 11 - FM 3032 from Jct. SH 256 east Memphis south to Jct. FM 1619.

Tract 12 - FM 94 from Jct. US 62 south Childress west to Hall C/L.

Tract 13 - FM 268 from Jct. US 287 in Childress east to Hardeman C/L.

Tract 14 - FM 268 in Hardeman Co., from the Childress C/L east and south 8.69 mi.

Tract 15 - FM 1033 from 9.8 mi. north of Jct. US 287 south to Cottle C/L.

Tract 16 - FM 1033 in Cottle Co. from Childress C/L south to Jct. FM 104.

Tract 17 - FM 2042 from Jct. FM 164 west Childress, west thru Tell 13.86 mi.

Tract 18 - FM 2103 from Jct. US 62 south Childress west 6.77 mi.

Tract 19 - FM 2638 from Jct. US 287 west Kirkland south 4.68 mi.

Tract 20 - FM 2875 from Jct. US 287 east Kirkland south 3.71 mi.

Tract 21 - FM 2884 from Jct. FM 268 north Childress north 3.59 mi.

Tract 22 - FM 1440 from Jct. US 62 south Childress west and north to Jct. FM 94.

Length: 163.68 miles; Approximate area: Type I: 2475.54 acres (Strip); Type II: 1473.52 acres (Full Width).

CONTRACT NO. 257XXM1004 Hardeman/Foard Counties will be received until 11:00 am, March 5, 1987.

Tract 1 - FM 91 from Wilbarger C/L south thru Chillicothe to Jct. FM 1167 in Medicine Mound - include Spur 91.

Tract 2 - FM 392 from Jct. FM 91 south to Jct. FM 1167.

Tract 3 - FM 680 from Jct. US 287 at Goodlet north 16.86 mi.

Tract 4 - FM 924 from Wilbarger C/L west to Jct. FM 91.

Tract 5 - FM 925 from Jct. US 287 south to Wilbarger C/L.

Tract 6 - FM 1166 from Jct. US 287 near Acme north and east to Jct. SH 06.

Tract 7 - FM 1167 from Jct. US 287 south thru Medicine Mound and east to Wilbarger C/L.

Tract 8 - FM 2006 from Jct. US 287 north, east, and south to Jct. FM 91 at Chillicothe.

Tract 9 - FM 3295 from Jct. FM 1167 near Medicine Mound, west 3.73 mi.

Tract 10 - FM 98 from Jct. SH 06 south Crowell north and east to Wilbarger C/L.

Tract 11 - FM 262 from Jct. FM 98 north Thalia south thru Thalia 4.16 mi.

Tract 12 - FM 267 from Jct. US 70 east Crowell south to Knox C/L.

Tract 13 - FM 1594 from Jct. US 70 east Crowell south and west to Jct. SH 06.

Tract 14 - FM 1919 from Jct. FM 267, south and east to Baylor C/L.

Tract 15 - FM 2003 from Jct. SH 06 south Crowell west 9.32 mi.

Tract 16 - FM 2877 from Jct. FM 1594 south Crowell east to Jct. FM 267.

Tract 17 - FM 3103 from Jct. SH 06 north Crowell east to Jct. FM 98 in Margaret.

Length: 163.78 miles; Approximate area: Type I: 2618.62 acres (Strip); Type II: 1679.91 acres (Full Width).

CONTRACT NO. 257XXM1005 Knox/King Counties will be received until 1:00 pm, March 5, 1987.

Tract 1 - FM 266 from Jct. US 82, south thru Goree to Haskell C/L.

Tract 2 - FM 267 from Foard C/L south thru Rhineland to Jct. SH 222 in Munday.

Tract 3 - FM 1292 from Jct. SH 06 north of Knox City west to Jct. FM 143.

Tract 4 - FM 1608 from Jct. FM 266, east to Baylor C/L.

Tract 5 - FM 1608 in Baylor Co. from Know C/L east 4.530 mi.

Tract 6 - FM 1756 from Jct. FM 267 west thru Gilliland and Truscott 12.310 mi.

Tract 7 - FM 2279 from Jct. FM 143 west of Knox City south to Haskell C/L.

Tract 8 - FM 2534 from Jct. SH 06 east thru Rhineland to Jct. FM 266.

Tract 9 - FM 2701 from Jct. SH 222 south to Haskell C/L.

Tract 10 - FM 2811 from Munday north to Jct. FM 2534.

Tract 11 - FM 3202 from Jct. SH 222 west of Munday, north to Jct. FM 2534.

Length: 107.67 miles; Approximate area: Type I: 1898.00 acres (Strip); Type II: 1098.00 acres (Full Width).

CONTRACT NO. 257XXM1002 thru 257XXM1005 as listed above will be two (2) year contracts.

Proposals, plans and specifications for the above contracts may be obtained at the Department Office of the following Roadway Maintenance Supervisors: Donald E. Eads, Clarendon; John W. Rothwell, Jr., Childress; Maurice Farris, Quanah; Carl L. Bruce, Munday; or the District Office in Childress.

LEGAL NOTICE

Tract 13 - FM 3104 from Jct. SH 152 near Mobeetie, south to Jct. FM 2473.

Tract 14 - FM 3182 from Jct. SH 152 near Mobeetie, north to Jct. FM 1046.

Tract 15 - FM 3303 from Jct. FM 1046 near Briscoe, north to Hemphill C/L.

Length: 134.96 miles; Approximate area: Type I: 1643.22 acres (Strip); Type II: 1196.82 acres (Full Width).

CONTRACT NO. 257XXM1007 Collingsworth/Childress/Donley/Counties will be received until 10:00 am, March 6, 1987.

Tract 1 - FM 1034 in Childress Co. from Jct. FM 1642 south of Dodson.

Tract 2 - FM 1036 from Jct. US 83 north Lutie west and north to Dozier.

Tract 3 - FM 1438 in Childress Co. from Jct. US 62 north thru Loco.

Tract 4 - FM 1439 from Jct. US 83 in Lutie east 9.22 mi.

Tract 5 - FM 1547 from Wheeler C/L south thru Dozier and Quail to Hall C/L.

Tract 6 - FM 1548 from Jct. FM 1036 west of Samnorwood, south 2.50 mi.

Tract 7 - FM 1642 from Jct. FM 338 east Wellington east and south thru Dodson to Childress C/L.

Tract 8 - FM 1642 in Childress Co. from Collingsworth C/L south to Jct. US 62.

Tract 9 - FM 2467 from Jct. FM 1439 east Lutie north 2.03 mi.

Tract 10 - FM 2531 from Jct. FM 338 east Wellington south 2.71 mi.

Tract 11 - FM 3143 from Donley C/L, east and south to Jct. FM 1547 west Dozier.

Tract 12 - FM 3143 in Donley Co. from Gray C/L to Collingsworth C/L.

Tract 13 - FM 3446 from Jct. US 83 south Lutie, east and south 3.99 mi.

Length: 111.61 miles; Approximate area: Type I: 1499.02 acres (Strip); Type II: 1094.12 acres (Full Width).

CONTRACT NO. 257XXM1008 Hall and Motley Counties will be received until 11:00 am, March 6, 1987.

Tract 1 - FM 656 in Hall Co. from Turkey south to Motley C/L.

Tract 2 - FM 657 in Hall Co. from Jct. FM 1041 south of Lakeview south to Jct. SH 86.

Tract 3 - FM 2639 in Hall Co. from Jct. SH 86 north and west 3.390 mi.

Tract 4 - FM 94 in Motley Co. from Cottle C/L south to Matador.

Tract 5 - FM 97 in Motley Co. from Jct. SH 70 west to Floyd C/L.

Tract 6 - FM 599 in Motley Co. from Briscoe C/L east to Jct. FM 97 in Flomot.

Tract 7 - FM 656 in Motley Co. from Hall C/L east to Jct. FM 94 in Northfield.

Tract 8 - FM 684W in Motley Co. from Roaring Springs, south to Floyd C/L.

Tract 9 - FM 684E in Motley Co. from Roaring Springs, east 5.530 mi.

Tract 10 - FM 1045 in Motley Co. from Jct. SH 70 near Roaring Springs, east 6.910 mi.

Tract 11 - FM 1380 in Motley Co. from Jct. FM 94 south thru Jct. US 62, 2.100 mi.

Tract 12 - FM 2009 in Motley Co. from Jct. FM 97 near Flomot south to Jct. SH 70.

Tract 13 - FM 3203 in Motley Co. from Jct. FM 684 in Roaring Springs south to Jct. SH 70.

Length: 120.21 miles; Approximate area: Type I: 1494.24 acres (Strip); Type II: 1106.72 acres (Full Width).

CONTRACT NO. 257XXM1009 Dickens County will be received until 1:00 pm, March 6, 1987.

Tract 1 - FM 193 from Crosby C/L south and east thru MeAdoo and Afton to King C/L.

Tract 2 - FM 261 from LP 21 in Spur South and west to Crosby C/L.

Tract 3 - FM 264 from Jct. US 82 north to Jct. FM 193 in McAdoo.

Tract 4 - FM 265 from Jct. US 82 east Dickens north to Jct. FM 193 in east Afton.

Tract 5 - FM 836 from LP 21 in Spur west and north to Crosby C/L.

Tract 6 - FM 1081 from Jct. FM 261 south of Spur south to Kent C/L.

Tract 7 - FM 1302 from Jct. FM 1868 north of Spur west 1.10 mi.

Tract 8 - FM 1868 from Jct. SH 70 north of Spur west and north and east to Jct. SH 70 near Dickens.

Tract 9 - FM 2470 from Jct. FM 265 at Croton east of Dickens east 2.99 mi.

Tract 10 - FM 2565 from Jct. FM 836 west of Spur east to Jct. FM 1868.

Tract 11 - FM 2794 from Jct. FM 836 in Spur west to Crosby C/L.

Length: 113.74 miles; Approximate area: Type I: 1531.00 acres (Strip); Type II: 1071.90 acres (Full Width).

CONTRACT NO. 257XXM1010 Cottle/King Counties will be received until 2:00 pm, March 6, 1987.

Tract 1 - FM 104 from Jct. US 70 east of Paducah north and east to Hardeman C/L.

Tract 2 - FM 452 from Jct. US 83 south of Paducah west and south thru Delwin.

Tract 3 - FM 1038 from Jct. US 83 in Paducah south and east 17.27 mi.

Tract 4 - FM 1168 from Jct. FM 1038 south of Paducah south to King C/L.

Tract 5 - FM 1168 in King Co. from Cottle C/L thru Grow to Jct. of US 83.

Tract 6 - FM 1278 from Jct. FM 1038 south thru Chalk and west to Jct. FM 1168.

Tract 7 - FM 2278 from Jct. US 83 south Paducah west and south to Jct. FM 452 in Delwin.

Tract 8 - FM 2532 from Jct. FM 104 east of Paducah east 7.63 mi.

Tract 9 - FM 2564 from Jct. US 70 east of Paducah north to Jct. FM 2532.

Tract 10 - FM 3102 from Jct. FM 1038 west of Hackberry south and west to Jct. FM 1278 at Chalk.

Tract 11 - FM 193 in King Co. from Jct. US 83 west thru Dumont to Dickens C/L.

Tract 12 - FM 2569 from Jct. FM 193 in Dumont, north to Cottle C/L.

Tract 13 - FM 3416 from Jct. FM 1168 near Cottle C/L east 3.00 mi.

Length: 112.64 miles; Approximate area: Type I: 1580.00 acres (Strip); Type II: 995.42 acres (Full Width).

Contract no. 257XXM1006 thru 257XXM1010 will be one (1) year contracts. Proposals, plans and specifications for the above contracts may be obtained at the Department Office of the following Roadway Maintenance Supervisors: Joe B. Hall, Shamrock; Donald R. Fowler, Wellington; Clay R. Jameson, Matador; Brice P. Lindsey, Dickens; Kenneth W. Young, Paducah; or the District Office in Childress.

Proposals will not be considered for bidding purposes. Bidders must submit individual bids for any of the above separate highway mowing contracts.

A PRE-BID CONFERENCE WILL BE HELD WITH MR. LEWIS H. WHITE, DISTRICT ENGINEER, AT THE DISTRICT OFFICE IN CHILDRESS, TEXAS AT 10:00 A.M., FEBRUARY 27, 1987. PERSONS INTERESTED IN BIDDING ON ANY OF THE CONTRACTS SHOULD ATTEND THIS PRE-BID CONFERENCE.

THE STATE DEPARTMENT OF HIGHWAYS AND PUBLIC TRANSPORTATION, IN ACCORDANCE WITH THE PROVISIONS OF TITLE VI OF THE CIVIL RIGHTS ACT OF 1964 (78 STAT 252) AND THE REGULATIONS OF THE U.S. DEPARTMENT OF TRANSPORTATION (15C.F.R., PART 8), ISSUED PURSUANT TO SUCH ACT, HEREBY NOTIFIES ALL BIDDERS THAT IT WILL AFFIRMATIVELY INSURE THAT THE CONTRACT ENTERED INTO PURSUANT TO THIS ADVERTISEMENT WILL BE AWARDED TO THE LOWEST RESPONSIBLE BIDDER WITHOUT DISCRIMINATION ON THE GROUND OF RACE, COLOR, OR NATIONAL ORIGIN.

LEGAL NOTICE

Tract 13 - FM 3104 from Jct. SH 152 near Mobeetie, south to Jct. FM 2473.

Tract 14 - FM 3182 from Jct. SH 152 near Mobeetie, north to Jct. FM 1046.

Tract 15 - FM 3303 from Jct. FM 1046 near Briscoe, north to Hemphill C/L.

Length: 134.96 miles; Approximate area: Type I: 1643.22 acres (Strip); Type II: 1196.82 acres (Full Width).

CONTRACT NO. 257XXM1007 Collingsworth/Childress/Donley/Counties will be received until 10:00 am, March 6, 1987.

Tract 1 - FM 1034 in Childress Co. from Jct. FM 1642 south of Dodson.

Tract 2 - FM 1036 from Jct. US 83 north Lutie west and north to Dozier.

Tract 3 - FM 1438 in Childress Co. from Jct. US 62 north thru Loco.

Tract 4 - FM 1439 from Jct. US 83 in Lutie east 9.22 mi.

Tract 5 - FM 1547 from Wheeler C/L south thru Dozier and Quail to Hall C/L.

Tract 6 - FM 1548 from Jct. FM 1036 west of Samnorwood, south 2.50 mi.

Tract 7 - FM 1642 from Jct. FM 338 east Wellington east and south thru Dodson to Childress C/L.

Tract 8 - FM 1642 in Childress Co. from Collingsworth C/L south to Jct. US 62.

Tract 9 - FM 2467 from Jct. FM 1439 east Lutie north 2.03 mi.

Tract 10 - FM 2531 from Jct. FM 338 east Wellington south 2.71 mi.

Tract 11 - FM 3143 from Donley C/L, east and south to Jct. FM 1547 west Dozier.

Tract 12 - FM 3143 in Donley Co. from Gray C/L to Collingsworth C/L.

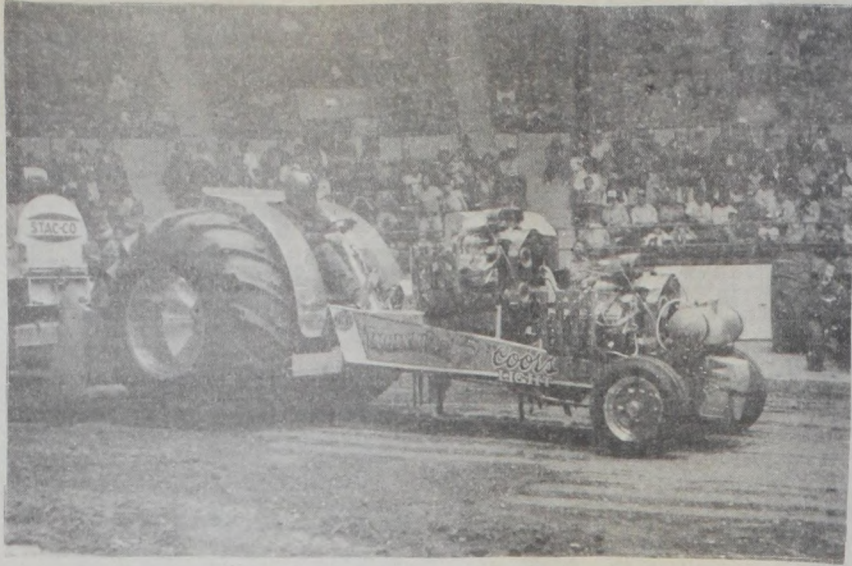
Tract 13 - FM 3446 from Jct. US 83 south Lutie, east and south 3.99 mi.

Length: 111.61 miles; Approximate area: Type I: 1499.02 acres (Strip); Type II: 1094.12 acres (Full Width).

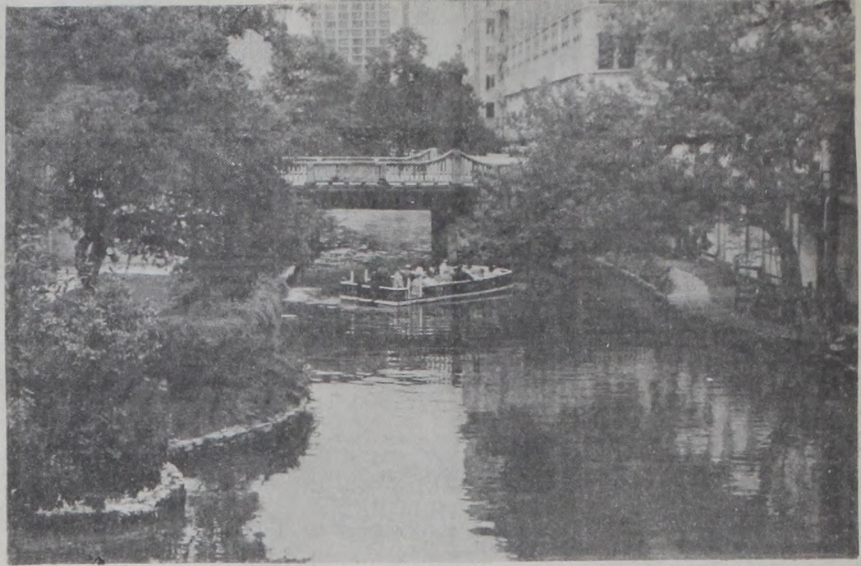
CONTRACT NO. 257XXM1008 Hall and Motley Counties will be received until 11:00 am, March 6, 1987.

Tract 1 - FM 656 in Hall Co. from Turkey south to Motley C/L.

Tract 2 - FM 657 in Hall Co. from Jct. FM 1041 south of Lakeview south to Jct



2nd - Dale Ramsey, Quitaque, "Tense Moments."



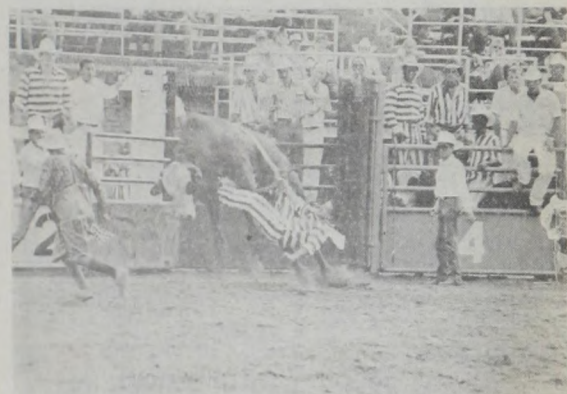
3rd - Rickey Minyard, Silverton, "On The River."



Honorable Mention - Elton Cantwell, Silverton, "Heading South."



Honorable Mention - James Cathey, Quitaque, "Damaged."



Honorable Mention - Rickey Minyard, Silverton, "Hang On."

"Grief can take care of itself, but to get the full value of a joy you must have somebody to divide it with."
Mark Twain

 January 1987
 Photo Contest Winners
 Caprock Camera Club
 Quitaque, Texas

Box 278
 Turkey, Texas 79261
 Phone: 423-1459

Box 418
 Quitaque, Texas 79255
 Phone: 455-1100

**CONNER INSURANCE
 AGENCY**
 Elgin, Ruth Ann, Jana & Brenda
 AUTO, PROPERTY, LIFE & HEALTH
 "Striving to Serve You Better"

<p>PRICE SAVER PRICE SAVER Pure Sugar 5 LB. BAG \$1.29</p>	<p>DEL MONTE Tomato Catsup 32 OZ. BTL. 89¢</p>	<p>DISH DETERGENT Palmolive Liquid 22 OZ. BTL. 88¢</p>	<p>SHURFINE Bath Tissue 4 ROLL PKG. 68¢</p>
<p>COCA-COLA DIET COKE 6-PACK CANS \$1.89</p>	<p>CONTADINA TOMATO Sauce 6 8 OZ. CANS \$1</p>	<p>YOUR HOME OWNED FOOD STORE</p>	<p>DIAPERS 32 LGE./66 SM./48 MED. Pampers \$8.99 BOX</p>
<p>PLAY THE BIG & WHEEL of FORTUNE</p> <p>CEREAL Honey Nut Cheerios 14 OZ. BOX \$1.99 BREAKFAST OF CHAMPIONS Wheaties Cereal 18 OZ. BOX \$1.99 W/MARSHMALLOW Lucky Charms Cereal 14 OZ. BOX \$1.99</p>	<p>This Country's Best</p> <p>YOU CAN DEPEND ON FRESHNESS FROM YOUR AFFILIATED FOODS MEMBER STORE. IT'S JUST A PART OF GIVING YOU THIS COUNTRY'S BEST GROCERY VALUES.</p>	<p>KELOGG'S ASTO Pop Tarts 11 OZ. BOX \$1.09 CORNSTOCK REG. OR LITE 31 OZ. CAN \$1.49 Cherry Pie Filling 18 OZ. PKG. 49¢ ELBO BONE/SHELL BONE THIN OR LONG SPAGHETTI 16 OZ. PKG. \$1.49 SUNSHINE HONEY OR CINNAMON Graham Crackers 14 OZ. BOX \$1.49 SUNSHINE Hi-Ho Crackers 12 OZ. BOX \$1.49 FARMY SIZE Lipton Tea Bags 24 CT. PKG. \$2.29</p>	<p>MARGARINE 1 LB. BOX 89¢ PANCAKE STRIP Golden Griddle 34 OZ. BTL. \$2.19 MAZOLA PURE Corn Oil 48 OZ. BTL. \$2.49 MARGARA Spray Starch 33 OZ. CAN 99¢ FABRIC FINISH Niagara Sizing 70 OZ. CAN 99¢ 400 LABEL Karo Syrup PINT BTL. 99¢</p>
<p>VALLEY FARM STORE MAIN ST.- QUITAQUE, TX.</p> <p>TIME TO KILL RYE IN YARDS WITH ROUNDUP, GET READY TO FERTILIZE</p> <p>COMPLETE LINE OF LAWN & GARDEN SUPPLIES</p> <p>SPRINKLERS HOES HOSE SPADES SEED CHEMICALS FERTILIZER HOUSE PLANTS WEEDKILLER ETC.</p> <p>HYDRAULIC HOSE VET MD PET PRODUCTS BARRINGS RANCH SUPPLIES SWEEPS AND CHISELS FENCE SUPPLIES</p>	<p>GUAR. 73% LEAN FRESH Ground Beef \$1.09 LB.</p> <p>HEAVY GRAIN FED BEEF BONELESS Chuck Roast \$1.39 LB.</p> <p>ARM SWISS STEAK 1 LB. \$1.89 CHUCK STEAK 1 LB. \$1.69 STEW CUBES 1 LB. \$1.89</p> <p>LI'L SIZZLERS 12 OZ. PKG. \$1.19 MEAT WIENERS 1 LB. PKG. \$1.89 COTTO SALAMI 8 OZ. PKG. \$1.19 BEEF LIVER 1 LB. 89¢</p>	<p>RED RIPE SLICING Tomatoes 49¢ LB.</p> <p>BELL PEPPERS 1 LB. 59¢ CUCUMBERS 1 LB. 49¢ ICEBERG LETTUCE EACH 59¢ FRESH BROCCOLI LB. 59¢</p>	<p>FROZEN FOODS</p> <p>Kraft Velveeta 1 LB. LOAF \$1.99</p> <p>PIZZABOY CINNAMON ROLLS 7 1/2 OZ. CAN \$1.19 PIZZABOY DINNER ROLLS 8 OZ. CAN \$1.19</p> <p>HEALTH</p> <p>Crest TOOTHPASTE PUMP ASSTD. 6.4 OZ. PUMP \$1.99</p> <p>30 OZ. LABEL ASSTD. Flex Shampoo 11 OZ. BTL. \$1.99 30 OZ. LABEL ASSTD. Flex Conditioner 11 OZ. BTL. \$1.99</p> <p>SHelf SPECIALS</p> <p>DEL MONTE Spinach 2 11 OZ. CANS 79¢ DEL MONTE Fruit Cocktail 12 OZ. CAN 79¢ DEL MONTE Pear Halves 17 OZ. CAN 79¢ DEL MONTE Pudding Cups 4 CT. PAK \$1.19 DEL MONTE Pineapple 11 OZ. CAN 69¢</p>
<p>VENTURE FOODS the price fighter PRICES EFFECTIVE FEBRUARY 20-21, 1987 WE RESERVE THE RIGHT TO LIMIT</p>			