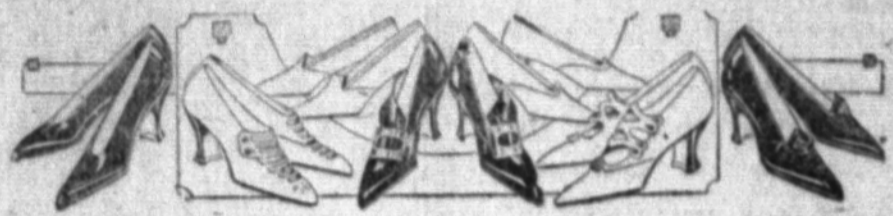


HOT WEATHER MESSAGE

for you

"SUMMER NEEDS"



Men

Palm Beach Suits
Tight Trousers
Patent Shoes
Press Shirts
Underwear
Handkerchiefs
Hats

Boys

Black and Brown
Hats
Shirts
Underwear
Suits and Trousers

For Women

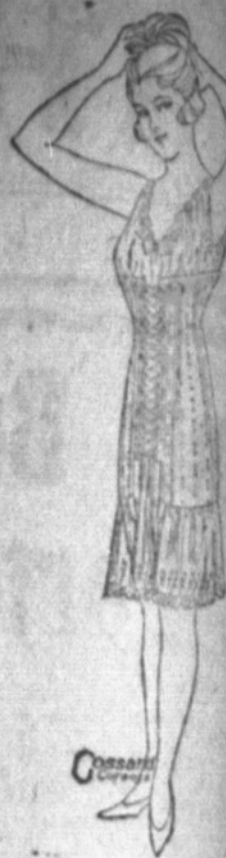
Voile and Organdy Dresses
Crepe and Voile Waists
Summer Skirts
Pretty Voiles and Batistes
Muslin and Crepe Underwear
White Pumps and Oxfords
Ladies' Small Toggeries
CORSETS

For Girls

Pumps and Oxfords
Voile and Organdy Dresses
Sun Shades
Beads and Novelties

Investigate Our Extensive Store--Where Quality Counts

Higginbotham Bros. & Company



DO NOT CHILDS' WELL

well north of town is to
2800 to 4000 feet. at
a good showing of
The well is 4005
feet deep. It is said
that the well is in
the New South Vesp
about 1800.
Saunders south of

WHO CAN BEAT IT?

Mrs. J. C. C. Evans
requests just twenty-four of
children and grandchildren
Saturday and Sunday.
Evans, baby and
daughter, and Henry Evans
and eight children of
Mrs. Y. E. Holly and
Rochester, Albert Evans
and Mrs. W. H. Whit-
and three children of
R. P. Evans and daught-
Cross Cut, constituted
parent, which was all but
of their posterity. Mr.
J. C. C. Evans have
married fifty years the first
They have two great-
children and two children
not married. Brother
says that in another fifty
years it will be hard to com-
number of their prog-

Ford Car Wanted
a party who wants a
one as new. See
L. P. Henslee.

TENNIS SHOES
all kinds, at the old
B. L. BOYDSTUN.

FOR SALE.

Albany County Maps, white
on paper fifty cents each,
prints on paper thirty-five
each, scale 4,000 varas to the

Jackson Abstract Company,
Baird, Texas.

a party who wants to buy
stock in Beaver Valley, Cis-
sanger, Comanche Northern,
South or Southland at the
price.
L. P. Henslee.

Esther Terrell of Ranger is
her parents, Mr. and Mrs.
McCord. The famous Emma
well in the Ranger field be-
Mrs. Esther's husband's
estate.

your money in W. S. S. and
dependent. Save while you can.

lieutenant Robert F. Placke of
Lee County, who has been
brother, W. L. Placke
place, left for Houston and
points on the coast on Wed-
nesday morning. He was in the
Division, and was made a lieu-
tenant in France.

Mr. and Mrs. Bob Cunningham
D. C. Steward returned on
from a trip to Harrington.
Bob bought 40 acres of ir-
rigated land at only \$250 per
acred away with the country.
Steward has found the land
with--well, everything a
man needs, anyway. He will leave
by Dec. 1 to make South Tex-
as home.

For any kind of INSUR-
See
L. P. HENSLIE

Estray Notice
Taken up by the unders-
sorrel mare mule 14
about 18 years old, brand
S on left thigh; also one
mouse colored mare mule
12 years old, unbranded
E. H. Eddleyn, Jas.

The Review for less in a club.

farm and ranch three years
Holland's Magazine three
for \$2. Either one with the
Easy terms. See
L. P. HENSLIE

A 201-acre fine sandy
for sale. An exceptional
improved place at \$50
per acre for \$2. Either one with the
Easy terms. See
L. P. HENSLIE

\$3-20

FIGHT FLIES; SAVE LIVES

It is said the American military
records show that the common fly
causes more deaths than the ene-
my.

Kill every fly you can and burn
his body; but better still, stop his
breeding by keeping your premises
clean. See that your neighbors
keep their premises clear of filth.

Flies will not go where there is
nothing to eat, and their main diet
is too filthy to mention.

The fly has no equal as a germ
carrier; as many as five hundred
million germs have been found on
and in the body of a single fly.

It is definitely known that the
fly is the "carrier" of the germs of
typhoid fever; it is widely believed
that it is also the carrier of other
diseases, including possibly infan-
tile paralysis.

The very presence of a fly is a
signal and notification that a house-
keeper is uncleanly and inefficient.

The foregoing is taken from a
bulletin issued by the Merchants'
Association of New York.

To The Public

As other public weighers have
increased the price for weighing to
15c and 20c, and everything else
having gone up, and being re-
quested by most of my customers
to raise the price for weighing,
after August 1st, I charge 15c a
load.

J. W. Payne, Public Weigher.

Kill the Blue Bugs.

And all Blood Sucking Insects
by feeding Martin's Wonderful
Blue Bug Killer to your chickens.
Your money back if not absolutely
satisfied. Ask your dealer.
5-16-6mo.

Lloyd Butler, who three weeks
ago arrived at his home at Putnam
on a discharge from the 36th, came
in on Monday the guest of his
brother, W. E. He was quar-
antined at New York for some time
on account of one boy in his com-
pany having the small pox.

Born to Mr. and Mrs. Luke Ed-
dington of Cross Cut on Sunday,
the 27th, a boy. This is the first
boy in the family, and needless to
say Luke is overjoyed. He has
been short on thresher hands, and
says he is growing him one now.

What Do You Think About It?

What?...THE BUSY BEE CAFE

Why, it is the best place to eat in the town. The next
time you want to eat and get something good, just go
to the Busy Bee Cafe--A trial will convince you.

MR. FARMER, when you come to town
go to the Busy Bee Cafe for a dinner.

Meal Tickets For Sale Here

THE BUSY BEE CAFE

SEE SIPES FOR

Galvanized Tanks
Guttering, Ridge Roll
and Cresting
Galvanized Graineries, Pipe
and Pipe Fittings

Before you cover your barn or shed of any
kind let me figure with you on

Galvanized or Painted Roofing

S. C. SIPES

For the Best of Pure Food Products

Phone 120

Your order will be given prompt
and careful attention

It is a pleasure to serve you with
the best to be had

W. E. BUTLER

THE NORTHERN STATES HAVE OFFICIALLY ADOPTED THE 56" AUTO TRACK WAGON

Neither too Wide nor too Narrow but Standard 56-Inch Auto-track

WEBER

Bought by Farmers Because of Its Known Qualities

REGARDLESS of all other considerations--the 60-inch
wagon does not fit the road. Any advantages it might
possess are offset by the fact that it is a stranger on its own
roads. It rides the ridges, which causes broken axles,
wheels and other parts, and the tongue whips about which is hard
on the team.

The justly famous Weber wagon is built only in 56" auto-track because
this is the standard approved tread of automobiles--and the automobile
makes the ruts in mud or soft roads. If the farm wagon is not made to follow
the same path it is out of date for road service. Automobiles are increasing
among farmers because they are a time-saving necessity, and every farmer
who hasn't an automobile intends to procure one at the earliest opportunity.

The Weber 56" auto-track wagon will do everything that the old 60"
wagon would do. It will haul cotton bales as easily as the wide track wagon
and the team can draw the load without having to pull every inch of the way.
It lends itself just as readily to all kinds of farm work and in addition it fits
the prevailing road tracks.

Besides the auto-track feature the new Weber has the patented Fifth
Wheel and the "Safety First" Swivel Reach Coupling--two advantages that
are worth \$20 apiece to the user during the life of the wagon.

By all means see our Weber wagons before you buy. We can offer you
something that will save you money and give you service.

HIGGINBOTHAM BROS. & CO., Cross Plains, Tex.

THE SOUTHERN STATES HAVE OFFICIALLY ADOPTED THE 56" AUTO TRACK WAGON



Every Farm Needs a Good Truck

After you have be-
gun using one of our
John Deere Farm
Trucks, you will won-
der why you ever tried
to get along without it.

You will find that it
comes in handy on
many occasions, meet-
ing the requirements
better than any other
hauling vehicle you

could buy, and saving
the higher-priced farm
wagon many hard
knocks.

In price, finish,
strength and draft our
farm trucks are excep-
tionally satisfactory to
the user.

We can furnish them
equipped with either
wood wheels or steel
wheels.

Come in and look over the trucks at our store.

HIGGINBOTHAM BROS. & CO.

Building Material and PAINTS

We now have a most complete stock
of building material, such as lumber,
paints, varnishes and wall paper--in
fact everything needed in building
and beautifying your home.

Come around, inspect our stock, get
our prices and you will readily see
that we make it to your interest to
buy your building material from us.

Sherwin-Williams Paints Are Best

W. W. PRYOR

Cream! Cream!

WE TEST CREAM

Monday
Tuesday
Wednesday
Thursday
Friday
and
Saturday

Chickens, Eggs and Butter the Same Days

Wilson Produce Co.

The house fly spreads
Typhoid Fever, the most
common disease we have,
and dangerous also. Clean
up your place and fight
flies. Eat nothing you
see a fly on.

There is more Catarrh in this section of
the country than all other diseases put
together, and until the last five years
was supposed to be incurable. For a great
many years doctors pronounced it a local
disease and prescribed local remedies, and
by constantly failing to cure with local
treatments, produced general weakness,
depression, loss of appetite, and nervous
prostration. Catarrh is now a constitutional
disease, and therefore requires
constitutional treatment. Hall's Catarrh
Cure, manufactured by Dr. J. C. Cheney &
Co., Toledo, Ohio, is the only constitu-
tional cure on the market. It is taken in-
ternally in doses from 10 drops to a tea-
spoonful. It acts directly on the blood
and mucous surfaces of the system. They
offer one hundred dollars for any case
that fails to cure. Send for circulars and
testimonials.
Address: F. J. CHENEY & CO., Toledo, O.
Sold by Druggists, etc.
Take Hall's Family Pills for constipation.

