

If a red check appears by your name, your paper has expired. Subscription rates for Donley County are \$9.00 and outside of County \$12.00. Mail to Box 1110, Clarendon, Texas 79226.

# The Clarendon Press

Supporting



Volume XI Dedicated To Fair And Impartial Representation

25¢

The Bronchos

LAKE TEMP: 79 LAKE DEPTH: 48.51

Thursday, September 16, 1982

Number 37



LACY LEE NOBLE and W.R. Christal signs the Farm Proclamation  
Johnny Gerner looks on as and Ranch Safety Week

## Farm & Ranch Safety Week

County Judge W.R. Christal has proclaimed September 19-25, 1982, as FARM AND RANCH WEEK in Donley County, at the request of Lacy Lee Noble, Donley County Farm Bureau President.

This marks the 39th Annual National Farm Safety Week, co-sponsored by the National Safety Council and the U.S. Department of Agriculture.

The theme of the 1982 observation of Farm Safety Week is "MAKE IT A SAFE HARVEST".

In the proclamation, Judge Christal said, "There is a basic set of safety practices that apply to the operation of all harvesting equipment." These include:

- Read and heed the operator's manual for each machine in your harvesting operation.
- Make sure all workers are trained and competent to do their jobs safely.
- Keep all shields in place. Stay away from unshielded, moving parts.
- Adjust ground speed to field and crop conditions. Watch out for obstacles, ditches, steep slopes, overhead powerlines and such.
- Always disengage the PTO or drive, then turn off the engine before unclogging, servicing or fixing a harvest machine. Failing to do so is a major cause of harvest-time amputation accidents.
- Keep children and non-workers off and away from equipment.

- Wear appropriate personal protective equipment when the job or job conditions call for it. Wear well-fitting clothing that gives ample skin protection and has no loose ends to be caught by moving parts.
- Take work breaks with refreshments (non-alcoholic) to reduce fatigue and restore alertness.

Joe Smetana, Texas Farm Bureau Safety Director, Waco, said, "There is a slogan that all harvest machine operators should learn to live-LOCK IT BLOCK IT-OR DON'T GET UNDER IT". According to Smetana, this means before crawling under the header, double check that its safety latch or jack stands are locked into place,

or that it is solidly blocked. The heavy header can fall if the hydraulic force holding it up is relaxed because of system failure or someone (or something) activating the control. Such a mishap can mean serious injury. Clear obstructions or work on the header only when the engine is turned off.

### Geneva Mays speaks at HIEFSS meet

Geneva Mays was the guest speaker Thursday, September 9 in Amarillo for the District I HIEFSS (Hospital Institutional Educational Food Service Society) and for the Dietetic Association.

This honor was conferred upon Mrs. Mays by Mrs. Welch, the Food Service Supervisor at the Clarendon Medical Center and also President of the HIEFSS.

Geneva was given a topic, "Diabetes Mellitus", a month prior to the scheduled presentation. She had to research the topic and prepare herself with only the one month's time. Before Mrs. Mays could even give her prepared speech, however, her credentials were reviewed by the National headquarters for approval.

Geneva Mays graduated from Northwest Texas Hospital school of nursing in 1978, she received her pre-nursing certification from Clarendon College school of nursing. After this, Mrs. Mays worked six months at the Groom hospital, 8 months as direct-



GENEVA MAYS

or of nursing at the Memphis Convalescent Center and has worked two years with Dr. Carl Hudson at the Medical Center in Clarendon.

Twenty-three members attended the lecture and submitted a written evaluation of Mrs. Mays' speech. The delivery and content were evaluated and rated as "excellent".

Geneva is married to Gary Mays and has two children, Wayne and Logan

## Broncos Edge Kress

It was a must-win situation for both teams last Friday night at Broncho Stadium. The visiting Kress Kangaroos had been rated highly in pre-season polls but had been blown away 37-0 by New Deal in their first game.

The Clarendon Broncos, also highly rated (fifth in the state AA pre-season poll), had lost their first game to Canadian, 21-19.

So both teams entered the regular season's second week hoping to prove that their early laurels weren't completely out of line and that they could play winning football.

When the smoke cleared following a tough struggle, the Broncos came out A-head, barely. It was 7-6.

Clarendon was hardly awesome, as some fans have come to expect them to be, but they did win the game. And the win came against a huge and much-improved Kress team that at least atoned for their New Deal embarrassment.

The teams were evenly matched. Kress led in first downs, 10 to 8; Clarendon in rushing offense, 165 to 113 yards; Kress in passing, 40 yards to 32; and they were even in penalty yards at 35 apiece.

It was a defensive struggle in which field position and turnovers eventually spelled the difference.

Clarendon received the opening kickoff and moved the ball out to midfield before facing a fourth-and-four situation. Coach Ted Allen, never one to be shy of a risk, elected to try a fake punt.

The snap went not to deep punter Arlis Thomas but to junior Quarterback Dyrone Howell, standing about 4 yards deep. Howell then lofted a pass to senior Strong End Ray Crump, who was racing wide open downfield. Kress had been fooled, but the ball fell agonizingly from Crump's outstretched fingertips and the Kangaroos found themselves in excellent field position at the 50

yard line. The visitors moved the football steadily down to the Broncho 15 yard line, where the defense stiffened. A Kress field goal attempt was wide to the left, ending the game's first scoring threat.

Clarendon again took the ball at their own 20 yard line and proceeded to fumble it away to Kress. So the Kangaroos accepted this second turnover in even better field position, at the Clarendon 25-yard line.

But the mighty maroon defense held again, and a Kress field goal from the 30 was blocked by junior Broncho Safety Richard Gaines.

Taking the ball at their own 35, the Broncos, perhaps inspired by Gaines' big play, shifted the sluggish offense into high gear.

Senior Fullback David Weatherton broke a trap play for 15 yards to midfield. Then he exploded on another play for 45 big yards, finally being tackled on the Kress 5-yard line.

But from there things went sour. One dive play, one fumbled snap, and one quick pitch netted only one yard, so on fourth-and-goal from the 4 yard line, Arlis Thomas attempted a field goal.

It was just a chip shot for the strong-legged Broncho kicker, but he topped the ball and it went low and wide to the right, leaving the game scoreless.

Kress then took the ball on their 20-yard line and drove to the Broncho 30, aided by one 20-yard pass into the middle of the Broncho secondary, as the first quarter ended.

The Kangaroos then punched the ball down to the home team's 10-yard line. But two penalties moved the ball back to the 21-yard line, and a sack by senior Nose-guard Ken Dorris put the ball back at the 30.

So Kress lined up to try their third field goal attempt of the game. But Dorris again broke through the Kangaroo line, this time tackling the holder at the 36-yard line.

The Clarendon offense, however, was not making the big plays as the defense was.

Trying to throw on first down, Howell was sacked for a big loss, and then a delay-of-game penalty moved the ball back further. On third-and-very long, Howell hit Crump for a 20-yard gain, but it was not enough for a first down and Thomas was forced to punt.

The Kress punt receiver fumbled his catch but quickly recovered it, robbing Clarendon of a big opportunity. But the Broncho defense held again, and when sophomore Tailback Rodney Smith caught the punt back at his own 20, it looked like the Broncos had a perfect wall

of blockers set up for speedy No. 22 near the right sideline. Unfortunately, a Kangaroo tackler bounded from out of nowhere to trip Smith before he reached the wall and an almost certain escort to the goalline.

Dyrone Howell then ran for a Clarendon first down on a keeper, but the Broncos were forced to punt again from their own 40. Smith blazed downfield to tackle the Kress receiver on the Kangaroo 28-yard line, returning the favor of the previous punt exchange.

### Comptroller in town

A representative of State Comptroller Bob Bullock will be in Clarendon on September 15, 1982, to assist area taxpayers and answer tax questions.

According to Claudia Stravato, manager of the Comptroller's Amarillo Office, J. D. Caproni, Enforcement Officer will meet with Donley County taxpayers in Clarendon at the County Court House from 2:00-4:00 p.m.

Questions about taxes, the filing of tax returns or assistance on returns can be answered quickly and efficiently in these face-to-face meetings, Bullock said.

Taxpayers who are not able to meet with the Comptroller's representative on September 15, 1982, can still get their tax questions answered quickly by calling, from anywhere in Texas toll-free 1-800-252-5555.

## Broncos travel to Sunray

The mere fact of playing with more intensity and the kicking game made the difference in the game with Kress.

As the fans saw, Kress was a very physical team and showed a vast improvement after their defeat also in the opening game a 37-0 loss to New Deal who tied Hale Center 14-14.

The Broncos improvement and the home crowd were the difference in the game. No one could walk away without saying the game was not exciting.

The Sunray Bobcats are 0-2 and have not scored in both outings. They were defeated by Boys Ranch 21-0 and Vega 24-0. They are small, quick and execute their offense and defense very well. The Bobcats are well coached and are a traditional winner which will keep them in a game for a long period of time. They

run the I-pro and slot on offense and throw quite a bit with the running attack. On defense, it is a 5-2 and well technique front. The Bobcats are very aggressive and do a good job of tackling.

### City manager resigns

Mayor Shirley Clifford announced that the city regretfully has accepted the resignation of city manager William T. Weatherly last week. Bill Weatherly has served the community for many years, and will remain on the job until the first of the month.

The city alderman and city commission will be accepting applications for the position. Mrs. Donna Edwards will be in the office a usual.

### 1983 cars off the line

New cars are off of the line, and ready to look at and dream about. Chamberlain Motor Company will have its grand extravaganza Friday and Saturday Sept. 24-25 all day. There will be music, food and, most important of all, plenty of beautiful new cars.

Alderson Chevrolet will also be featuring new cars to be on display and he invites you to come view the 1983 Chevrolet line of vehicles for comfortable transportation in 1983.

## West Texas Utilities files for rate hike

West Texas Utilities Company has filed for a general increase in its rates for retail customers.

The official application was filed Monday in Clarendon by local Manager Jerry Chambliss.

The manager said the application is a systemwide request for higher rates. Simultaneous filings were made in other incorporated towns for retail customers within their jurisdiction and with the Public Utility Commission of Texas for an increase in rural areas, unincorporated towns and in 13 incorporated towns which have ceded jurisdiction over electric rates.

The principal reasons cited for the request were the cost of WTU's construction program, high interest rates and the effects of general inflation on the cost of providing service.

The proposed rates would produce an increase in total retail revenue of \$20,404,166. This amounts to 9.4 per cent.

No major changes in rate structure are proposed except for some adjustments of allocations among customer classes. For residential customers, the average electric bill, including fuel costs, would go up by about 10 per cent, although the actual increase would vary with the amount of usage.

WTU's last rate case was filed in the fall of 1981 and settled early in 1982 without a hearing and for an amount considerably less than had been requested. WTU had asked for 15.2 per cent but received 8.3 per cent. Company officials said at that time that another increase probably would be necessary within the year.

The Company had to

spend over \$55 million this past year on new construction and must spend even more in the years immediately ahead to assure a continued reliable supply of electricity. The construction program includes a new coal-fired power plant at Oklahoma, as well as new transmission lines and distribution facilities over the system.

WTU built its last power plant in 1977 and since then has been able to lag behind most other utility companies in new construction and in rate increases. A recent survey by the Public Utility Commission of Texas shows that WTU's customer bills are lower than the state and national averages.

### Homecoming mums on sale

Once again, the Clarendon High School Senior Class is selling mums. The money will go to the Senior Class so that they can pay for the Homecoming Dance.

Four different mums will be offered this year. They are: Booster mums, the Superstar mum, the Glitter mum and the Velvet and lace mum. Also, a miniature mum and garters will be on sale for the men and children.

If anyone would like to purchase a mum, contact a senior or call and place your order in the high school.

Compiled by Tommie Saye  
Cooperative Observer for  
National Weather Service,  
Clarendon

DATE	HIGH	LOW	PERCI
TUESDAY	7	94	60
WEDNESDAY	8	89	60
THURSDAY	9	94	63
FRIDAY	10	95	61
SATURDAY	11	95	69
SUNDAY	12	87	58
MONDAY	13	93	58
TUESDAY	14	92	64

TOTAL FOR MONTH .00  
TOTAL FOR YEAR 20.20

★★★★★★★★★★★★★★★★



## Train derailed Sunday

Burlington's 100-plus coal car train experienced a derailment Sunday morning at 1:30 a.m. Fourteen cars derailed as a result of what was believed to be a faulty

switch box. A crew of 40 men and 2 front loaders with 2 side boomer catpillars had the track fixed by 8:30 p.m. Sunday. A spokesman for the

railroad said that no trains were delayed because of the wreck that they had been routed around the old depot. Monday semi-trucks were

loading the coal spilled by the train wreck. An official stated that no one had permission to pick up any of the coal without consent from Burlington railroad.



# Winter time gardening

As plants play-out their prime bearing season, gardeners must face the reality that they are not quite finished with the long season of hard work in their little garden spot. You must pull up those spent plants because if they are left alone, they will harbor insects and diseases throughout the winter and be a welcomed winter home for them until your little plants come up in spring.

The best plan is to shred or mulch in a compost these plants or to till them under. Till under those dead or finished plants and make the best of the time left by planting radishes, carrots, and lettuce as well as other cool weather vegetables.

County Agent Gooch said that planting cereal rye over the winter is both a good soil erosion preventive measure

and it also helps bind up the nematodes. "If you plant the rye while the nematodes are

still active," Gooch adds, "the nematodes will become bound up in the rye roots and die when the plant dies in the early spring to help clear up the nematode problem later on." Till under the rye enough for it to decay before you plant your spring gardens. The rye is carefree and pretty during the winter when all else is dead and barren and it can keep your soil in excellent shape and in your own yard.

Gooch also warns that "black walnut leaves have a toxin that will kill some plant roots." Gooch adds that there aren't many black walnut trees around here to be concerned about. If you use leaves as a garden cover, you should shred them, mulch them, compost them or till

them under, but don't just spread them on top of the ground because the first fall wind will blow them away leaving the barren ground.

To winter over root crops,

Gooch suggests that you might cover them with mulch because it gets pretty cold here in December and they will need the protection.

Gardening is a never-ending process. From seed to bottle to compost, the gardener has no real vacation from the garden plot.

## Chamberlain Community supper

Mr. and Mrs. Frank Corder, Mr. and Mrs. Richard Dingler will be hosts and hostesses for the Chamberlain Community Center supper Friday, September 17th at 7:30 p.m. There will be a covered dish supper and 42. Everyone come and enjoy the good times.

## US Farmland disappears while need for food increases

It takes 1000 years for one inch of topsoil to form under natural conditions. And it takes less than four years for erosion to destroy that inch.

Considering those facts, you don't have to be a mathematician to figure out that high rates of erosion can do devastating and practically irreversible damage to topsoil, the dark, rich layer of earth that can transform ordinary land into productive farmland.

Today, erosion is one of two major factors contributing to the disappearance of farmland across the United States. The second factor is development—the conversion of farmland to non-farm use.

Thousands of acres of farmland are being lost at a time when the need for food around the world is on a sharp increase. "It's a vanishing act of such proportions that it's a wonder we as a nation haven't shown

more concern," says the National Wildlife Federation.

If erosion throughout the United States were confined to one region, all of the size of the State of Rhode Island would be gone in less than three months, says National Wildlife. According to the US Department of Agriculture, one third of the nation's cropland is currently eroding at an unacceptable rate.

Losses range from one to more than 40 tons per acre per year. In the Corn Belt, Delta states and the Appalachian states, more than a third of the cropland is eroding at rates exceeding 5 tons annually—well beyond the rates that can be replaced by mechanical, chemical and natural forces.

Ironically, technological advances have masked erosion's adverse impacts on farmland. As erosion diminishes the productivity of land farmers boost yields with new technology, such as hybrid seeds, pesticides, more efficient equipment, chemical fertilizers and intensive tilling practices. The innovations hide the losses that would have resulted had the stripped soil been left on its own.

Complicating the effect of erosion is development, which takes its own bite out of the nation's farmland. Unfortunately, pressures for farmland conversion are most intense in regions with the most productive cropland—the Corn Belt and Sunshine states. Development in the country's 100 best agricultural counties is twice the national rate. Farmland losses caused by development and erosion will total 3.2 million acres by the year 2000 in Iowa, Illinois, Indiana, Ohio and Missouri if current trends continue.

Solutions to farmland losses—such as innovative land planning and an end to government support for policies and projects that erode away topsoil—are available, says National Wildlife. But because farmers are a

small and financially pressed group (they make up less than four percent of the US population) the public will have to be the driving force behind reforms.

## State taps Texas wind

A snappy gust of wind in a turbulent spring sky put Texas state government in the energy-production business this May when a wind-powered generator came on line in the Wichita Falls district of the State Department of Highways and Public Transportation (DHT). The generator, manufactured by Carter Wind Systems of Burkburnett, operates in winds as low as 7 1/2 mph and produces a maximum of 30 kw per hour. The machine has a design life of 20 years and should pay off its installation costs within 12 years, if utility rates remain at current levels.

"These things aren't just play pretties," stated DHT research engineer Ken Hankins. "They're viable sources of power."

A 32 foot down-draft propeller drives a three-phase generator to produce 25 kilowatts in a 26 mph wind. The system is expected to generate from 35 to 40 megawatts of power each year. Electricity in excess of the DHT district office needs is put back into the regional electric co-op which pays back two cents per kilowatt hour.

The wind-energy system is relatively maintenance free, requiring attention only every six months; then the 80-foot supporting pole is lowered and lubrication levels checked. But the main chore is usually to remove an accumulation of bugs from the propeller.

The demonstration project was funded by Department of Energy monies through the Federal Highway Administration. DOE requires careful monitoring of such energy systems so it can compile

data concerning efficiency of alternative energy producers in various US regions.

DHT also utilized federal demonstration grants to erect solar-powered asphalt heaters in its San Antonio and Lubbock districts last year. A third solar-powered asphalt heater with a new passive design is under construction in DHT's Odessa district and is expected to come on line soon.

## Secretary of State report

At the request of Governor Clements, the Secretary of State's Office will undertake a comprehensive analysis of the election systems employed by other states. Governor Clements, noting the dissatisfaction of Texas voters with their election process as set forth in the survey for the Secretary of State's May 1 primary election analysis, commissioned the study of the various election systems nationwide for the purpose of developing solutions to offset Texas' low voter turnout and increased election cost trends. Findings of the analysis will be made available to the Governor, State Leaders and members of the 68th Texas Legislature prior to commencement of the 1983 legislative session.

On July 23, 1982, the Secretary of State was joined in Austin by state and federal law enforcement officials and prosecutorial officials for the purpose of announcing the formation and objectives of a State/Federal Voter Fraud Task Force. Since assuming the Office of the Secretary of State, numerous incidents of voting irregularities have been brought to the attention of this Office which could very well involve violations of federal and state law. Ongoing investigations of alleged election law violations are being conducted by the Texas Rangers in Duval, Jim Hogg, Starr, Webb and Zapata counties. Alleged violations of election laws will be turned over to the

appropriate authorities for investigation by the Texas Rangers. It is the goal of the Voter Fraud Task Force to put election law offenders on notice that elections in Texas will be conducted honestly and those who violate those laws will be prosecuted to the fullest extent of the law.

In an effort to inform the citizens of Texas of the crime of election fraud and in addition to offer state rewards for those who provide information leading to arrest and indictment of election law offenders, the Crime Stoppers Advisory Council, October, 1982 public service announcement will feature election fraud as its topic. Any citizen observing instances of election irregularities is encouraged to call the Crime Stoppers Advisory Council's toll free number at 1-800-252-TIPS.

All Texans not currently registered to vote must do so by October 3, 1982, in order to vote in the November 2nd general election. To be eligible to vote, potential voters must be a citizen of the United States, at least 18 years of age on the day of the election, a resident of the county of political subdivision conducting the election, and registered to vote. Young Texans may register to vote if they are at least 18 years and 10 months of age, but may not vote until they reach 18 years of age. To register to vote, Texans should complete a postage-paid voter registration application and mail it or present the card in person to the voter registrar in their county.



For a penny-wise sweet treat, combine a half-cup each honey, crunchy peanut butter and non-fat dry milk. Mix well and shape into a long narrow roll. Wrap in wax paper, chill and slice when firm into one-inch pieces.

**EMMETT O. SIMMONS Insurance**

**The Insurance Store**

**874-3506**

CLARENDON PRESS and the Donley County Leader, published every Thursday, at Clarendon, Texas 79226, Box 1110, 316 B South Kearney, and entered as Second Class Mail at the post office at Clarendon, Texas.

J.C. and Helen Woody, publishers and Editor. Subscription rates: \$12.00 a year outside Donley County and \$9.00 a year in Donley County.

Any erroneous reflection upon the character of any person or firm appearing in these columns will be gladly and promptly corrected upon being brought to the attention of the management.

# WE'RE HOLDING DOWN HIGH PRICES



PRICES EFFECTIVE SEPTEMBER 16-18, 1982 - WHILE SUPPLIES LAST

**CRISPY LIGHT DORITOS OR FRITO-LAY DORITOS** REG. \$1.29 PKG. **\$1.09**

**HOME FOR THE HOLIDAYS** BORDEN'S BUTTERMILK 1/2 GAL. CTN. **\$1.09**

**HOME FOR THE HOLIDAYS** BORDEN'S PREMIUM ICE CREAM VANILLA 1/2 GAL. 80. CTN. **\$1.69**

**WAREHOUSE SALE** DETERGENT FRESH START 70 OZ. BOX **\$5.69** PILLSBURY SWEETENED BUTTERFLY BISCUITS 7 1/2 OZ. CANS **\$1**

Sunshine 11 oz VANILLA WAFERS box **99c**

**SUPER SUDS** 40 oz box **99c**

**HOME FOR THE HOLIDAYS** BORDEN'S HI-PROTEIN MILK 1 GAL. **\$1.99**

**ALLSUP'S FRESH COOKED BURRITOS** 2 FOR **99c**

**JOIN THE ALLSUP'S MARATHON** OCTOBER 9, 1982 - 7:00 A.M. - M.D.T. CLOVIS, NEW MEXICO

THERE WILL BE MANY WELL KNOWN RUNNERS THROUGHOUT MANY STATES. FOR MORE INFORMATION CONTACT ROYCE JONES, 3532 BRYNHURST CT., CLOVIS, NEW MEXICO 88101 OR PHONE 505/762-5010.

**PRESTONE ANTI-FREEZE** 1 GAL. JUG **\$4.19**

WINTERIZE YOUR CAR WITH PRESTONE! AVAILABLE AT ALLSUP'S CONVENIENCE STORES!

**ALLSUP'S CONVENIENCE STORES**

"THERE'S ONE NEAR YOU"

# LaRUE'S RESTAURANT

## Friday Night Special

### CATFISH

All You Can Eat!

Served with Huspuppies

### SALAD BAR

Tea or Coffee

Children Under 12

**\$4.95**

**\$3.25**



Also Serving

## STEAKS - SEAFOOD

## MEXICAN FOOD

We appreciate your business!

**Bob & Danney Kaye LaRue**





## 7th graders tie Wellington

Coach Sam Haynes and Ted Riley's 7th grade Colts took on the Wellington 7th grade Rockets Thursday afternoon in Broncho stadium for the first game of the season, battling the Wellington team to a 0-0 tie.

The Colts took the first kick off, Danial Ford grabbed the ball on the 20, making 10 yards on the play. The Skyrockets were all over Wes Hatley on the next play, as he attempted to pass.

On a quick pass from Hatley to Ford, the Colts carried the ball up to the 45 yard line. Two plays later, the Colts made a first down.

Hatley took the snap, hopping to pass, but was sacked behind the line of scrimmage, losing about a yard. Brad Shadle taking a quick pass made a good gain, but the yellow penalty flag fell, the result was a 15 yard loss

for the Colts.

Shadle gained about 4 yards on the next play. Ford managed to hang on to a bad snap, nearly going over his head, gaining another first down for the Colts. The Colts were unable to move and gave up the ball to Wellington, who managed to get in only one play before the end of the quarter.

On the next series of plays, the Rockets were unable to move the ball, and the Colts regained possession of the ball again. The Colts were unable to get a drive together, and had to kick the ball away. Wellington took the ball, but ran into a solid wall of red shirted Colts, down where the ball was snapped.

On a bad snap, the ball going over the head of the Quarterback, Colt's T. Phillips came in to recover the fumble for the Colts.

The Colts quickly stalled again, turning the ball back to Wellington. In a desperate drive for pay dirt, before the half, Wellington made two attempted long passes, but both fell incomplete thus ending the half, with a no score for either side.

Starting the second half, the Colts kicked to Wellington, T. Phillips and J. Mills were right behind the ball to down the ball carrier on Wellington's own 37 yard line. Once again the Rockets were unable to move, turning the ball back to the Colts.

A few minutes into the fourth quarter Wellington went over for a TD, but a flag on the play nullled the score, instead of 6 points, they received a 5 yard penalty for off sides.

With only 32 seconds left in the game and a 4th down situation the Rockets gambled on a long pass, which fell incomplete.

The Colts wanting a win, after two plays, giving them a first down, out with only 7 seconds left they fumbled and the ball game ended in a 0-0 tie.

## Horse show in Childress

The third time for anything has to be a charm. Hopefully this saying will hold true for the Open Youth Horse Show to be held in Childress on Saturday, September 18th. Twice this summer the show had to be canceled because of too much rain and sloppy arena conditions.

All area youth are encouraged to attend the show which is sponsored by the Childress County 4-H Horse Club. Weather conditions should be ideal for a horse show if it does not rain it out.

Competition will be divided into three age groups: 14 thru 18 years of age, 9 thru 13 years of age and 8 years and under. The high point individual in the two older age groups will be presented belt buckles. Tack will be presented to the first place winners and each class. In addition to these awards trophies will be presented through fifth place in each class.

Activities will begin at 10:00 a.m. in the Old Settlers Arena in Childress. Bill Smith of Vernon will serve as judge for the show. Judging of halter classes will be first. There will be one class each of registered mares, grade mares, registered geldings and grade geldings.

The eight years and under age group events will include western pleasure, and flag race. The following performance classes for the two older age groups will include: showmanship, western pleasure, western horsemanship, western riding, pole bending, barrel race and stakes race.

Entry fees will be \$4.00 per class. The Texas 4-H Horse Show rules will be followed. Entries close 30 minutes before each class begins. All contestants ages will be determined as of September 18, 1982. A contestant does not have to be a 4-H member to be eligible to compete.

**PUBLIC NOTICE**  
Correction in financial statement of Donley County State Bank, Clarendon, Texas for June 30, 1982.  
Line #18 (State Funds \$205) 1,238.



## Bronco Buster

Hi Bronco fans and welcome back to Bronco Land. School has finally got into full swing.

Monday, August 31, FHA sponsored a watermelon party in which the Seniors "welcomed" the freshman into CHS.

Class officers for this year have been elected. Seniors are: Shalane C. president; Ken D. VP; Cara C. sec/treas; Dorothy B. reporter; Brad M. and Kim W. student council.

Juniors are: Steve S. president; Kristen W. VP; Tamy W. sec/treas; Dondra H. reporter; Gina S. and Doug W. student council.

Sophomores are: Tim C. president; Gayla C. VP; Rod K. Sec; Annette W. reporter; Lynn A. and Shea G. student council.

Freshmen are: Lee S. pres; Janet R. VP; Jill W. sec; Rachel B. treas; Kandy F. and Leland H. student council.

The first game of the Broncos was at Canadian where we were edged two points with the final score being 21-19. However, the tables were turned when we defeated the Kress Kangaroos in our first home game. This Friday, the Broncos will travel to Sunray to play the Bobcats. Everyone come and cheer our team to victory.

This Friday the football guys will be enlightened to the identity of their guardian angels. The guardian angels are members of FHA who have kept a secret watch over a Bronco for the opening of the season.

This year the Bronco Band has brand new uniforms. Everyone really looks sharp.

Senior pictures were taken Tuesday and Mum sales began also. If you would like a Mum, contact any CHS Senior.

Now for a little CHS gossip:

Cara C.-are you still sexy? Lee S.-Strawberries and cream or was it fish? Wayne C.-Gag me with Amy's preppiness.

Krystal H.-Does the Big Texan provide showers before dinner?

Mrs. Hayes has once again broke out everyone's favorite The Lively Art of Writing books.

CHS Band-How did so many people get tonsillitis? by playing your horns? Sounds kind of fishy or is it strawberry? Ken D.-Are you into prep. Earline B.-were you really mad because someone bought Ray a flower?

Kim W.-How did your doctor's appointment go? Patrice S.-Did Jack D. say that he wanted to go 'coon' humping with you? Gary L.-Who's Jeany

Coach Kelm-Did your mother buy you some clothes that fit?

## Blue ribbon bakers

Katrina Leathers and Deniece Richardson were first place blue ribbon winners in the 4-H Bake Show held Saturday, September 11.

Junior red ribbon winners were Audra Hoggard, Michelle Chambliss, Christina Leathers and Shonda Phillips.

Judges for the event were Viola Bones and Priscilla Green.

Both first place winners will compete in the district contest scheduled for September 25 during the Tri-State fair in Amarillo.

### Local

Jimmy Goodman from Springfield, Mass. visited last week with his mother, Mrs. Dewey Goodman and with his brother Billy and Lynn Goodman and sister Allie Mae Maxey and other relatives.

## Wellington downs 8th grade 16-8

Marcus Smith caught the first kick, taking it down to about the 46 yard line. On the next series of plays, Marcus took off like lightning for pay dirt, but a clipping penalty brought the play back to the 25.

On the very next play, the 8th grade Colts fumbled, but recovered. With 3:29 into the ball game, the Colts put 6 points on the scoreboard, with Marcus Smith going over the goal line. Behind some fancy blocking, two points were added to the score. 8-0 Colts.

On a short punt, Wellington took the ball back to the 25, but a penalty brought the ball back to the 10. D. Tolbert made the tackle keeping Wellington from scoring. The next play took Wellington down to the 2, and that's where the ball was at the end of the first quarter.

On a third down situation, minutes into the second quarter, Wellington hit pay dirt, and after running the ball across for 2 extra points, made it an 8-8 tie.

Neither side was able to mope the ball very well, but with 3:43 left of the second quarter Wellington made another TD, running the ball over for 2 points, making a 16-8 game.

When the whistle blew starting the second half, Marcus Smith took the kick for the Colts going to about the 37. On the next play Marcus took a quick pass, going down the side line to about the 43 before being pushed out of bounds, making a first down. But the Colts just couldn't get a drive going. They had to give the ball back to the Rockets. The Colt's defense with J. LaGrone, C. Johnson, and T. Phillips and M. Smith piled on the Wellington ball carrier, stopping him at the line of scrimmage. The Colts were unable to hold the Rockets, and the game became a 22-8 Wellington ball game.

The Colts were still unable to move the ball and gave up

the ball again. It looked like another Rocket TD as they rushed down the sideline, but Smith came across the field and knocked the Rockets out of bounds at the 43 yard line. After a penalty and a fumble Wellington had to kick the ball back to the Colts.

The kick off had to be rekick because of a penalty called on the play. On this series of plays, the Colts were able to make a first down before the half stopped their drive.

Three minutes and fifty seconds into the third quarter, Wellington was back in Colt territory. A quick tackle by Bellah stopped the Rockets from a TD. The second down brought the Rockets within 4 yards to touchdown, but a 5 yard penalty returned the ball to the 9. The next series of plays saw a tight

Colt defense knock the Rockets fire out as the Colts took the ball near their own goal line. A good team effort saw the Colts for a first down, it took 5 Rockets to stop Smith. But time was against the Colts and the game ended in a 22-8 win for Wellington.

## School Menu

September 20-24

**Monday**-Teachers insert vice, student holiday

**Tuesday**-Bake fish with catsup, buttered potatoes, cole slaw, cornbread, fruit and milk.

**Wednesday**-Spaghetti with meat sauce, green rolls, peanut butter and jelly, and milk.

**Thursday**-Chip-O-pie with cheese, lettuce and tomatoes Ranch Style beans, cookies and milk.

**Friday**-Sloppy Joe on bun, lettuce and tomato salad, french fries, cherry cobbler, and milk.

Boiled ham can be more tender if allowed to cool in the water in which it has been boiled.

## THE GINGERBREAD HOUSE

Custom Costumes & Novelty Sewing  
See us for your Halloween costumes & Christmas decorating needs.  
Call 874-3642 or 874-2660

## PUBLIC NOTICE

In compliance with Sec. 43(a) of Art. 1446c, V.A.C.S., West Texas Utilities Company hereby publishes NOTICE that it has filed, on September 13, 1982, its Statement of Intent to make changes in its retail rates charged for electricity and services sold and rendered inside and outside municipal jurisdictions; such proposed changes to be effective October 19, 1982. Such Statement of Intent includes the proposed revisions of tariffs and schedules and a statement specifying in detail each proposed change, the effect the proposed change is expected to have on the revenues of the Company and the classes and numbers of utility customers affected. Systemwide retail adjusted annual revenues are expected to be increased 9.4 per cent by the new rates. Statements of Intent were filed with the Public Utility Commission of Texas and with the following municipalities:

Ablene	Haskell	Quanah
Alpine	Hawley	Quitaque
Anson	Hedley	Rankin
Aspermont	Impact	Rising Star
Baird	Iraan	Rochester
Ballinger	Jayton	San Angelo
Balmorhea	Junction	Santa Anna
Benjamin	Knox City	Shamrock
Big Lake	Lawn	Sonora
Blackwell	Lueders	Spur
Bronte	Marfa	Stamford
Buffalo Gap	McCamey	Sterling City
Childress	Melvin	Throckmorton
Cisco	Memphis	Trent
Clarendon	Menard	Turkey
Clyde	Merkel	Tuscola
Cross Plains	Miles	Tye
Crowell	Munday	Valentine
Dodson	O'Brien	Weinert
Eden	Paducah	Wellington
Estelline	Paint Rock	Winters
Goree	Presidio	Woodson
Hamlin	Putnam	

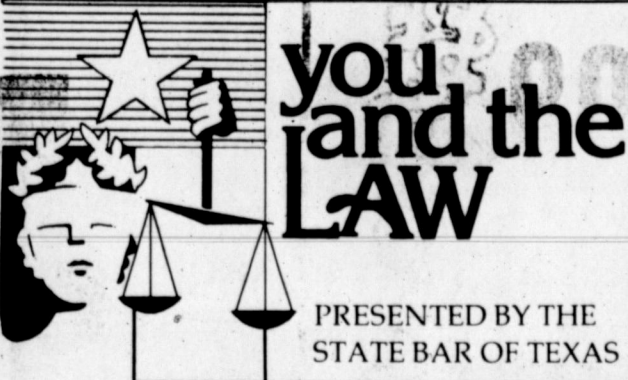
Areas affected by the filing with the Public Utility Commission of Texas are in the following:

### Municipalities

Albany	Lakeview	Robert Lee
Chillicothe	Mataador	Roby
Dickens	Merzon	Rotan
Eldorado	Moran	Rule
	Roaring Springs	

### Counties

Baylor	Fisher	Pecos
Brewster	Foard	Presidio
Briscoe	Gillespie	Reagan
Brown	Hall	Reeves
Callahan	Hardeman	Runnels
Childress	Haskell	Schleicher
Coke	Irion	Shackelford
Coleman	Jeff Davis	Stephens
Collingsworth	Jones	Sterling
Concho	Kent	Stonewall
Cottle	Kimble	Sutton
Crane	King	Taylor
Crockett	Knox	Throckmorton
Dickens	Mason	Tom Green
Donley	McCulloch	Upton
Eastland	Menard	Wheeler
Edwards	Motley	Wilbarger
	Nolan	



**Q: My husband and I are planning on a divorce but he refuses to leave our home and rent an apartment. Can he be forced to leave? What procedure should I take?**

**A:** Once the divorce is final, the court will hear the party dispute concerning occupancy of the residence and will award temporary possession of the home to one spouse. The court can then, upon motion filed by your attorney, enjoin your husband from occupying or coming about your home during divorce proceedings.

Your rights and the specific procedures in divorce should be discussed with an attorney. There are many remedies available to you once a divorce is begun.

**Q: Last year I gave birth to a son. I was not married and put the child up for adoption. Now I have married the father of the child. We both want our son back. What can we do?**

**A:** If the child has not yet been officially adopted, you have the right to withdraw your consent to adoption. You will then want to ask your lawyer to complete the birth registration procedures to insure that you and your husband are both named as parents on the birth certificate.

You have a much harder task if the child has been formally adopted. You should consult an attorney to see whether any grounds at all exist for setting aside the adoption, but as you probably suspect, the Court will be most reluctant to re-open a final adoption.

**Q: I am due to inherit an estate. The problem is that debts from the estate far outweigh the assets. Will I be responsible for these debts? Who will pay the debts if I don't?**

**A:** As a named beneficiary in someone's will, you do not automatically assume the debts unless you were the spouse and the debts were community debts.

As a first step, all debts will be classified according to the Texas Probate Code and the non-exempt assets will be sold.

Using all available cash, debts enjoying priority will first be paid, either entirely or so many cents on the dollar, until the funds are exhausted. Lower priority debts will lapse and simply not be paid.

**Q: I am unable to contact my married daughter by mail or phone because her husband withholds my letters and has an unlisted phone number which he won't let her give to me. My son-in-law has actually threatened to sue me for harassment if I continue to try to contact my daughter. What can I do?**

**A:** If you fear for your daughter's health or safety, or if she is incompetent and cannot protect herself, you may ask the probate court to declare you temporary guardian of an incompetent adult. Otherwise, your daughter has the choice of whether to reach you, and if she elects to stay away, there is very little you can do.

Send your questions to "You and the Law," State Bar of Texas, P.O. Box 12487, Austin, 78711. Answers may appear in columns in hypothetical terms; personal answers not possible.

## What Can You Get For Your Money? High Yields.

91-day CD \$7500 Minimum 8.161 %

6 Month Money Market CD \$10,000 Minimum 9.954 %

30 Month CD \$1000 Minimum 11.80 %

IRA 18 Month fixed rate (based on 30 month CD rate) 11.80

18 Month floating rate (based on 6 month CD rate) (rate changes monthly) 10.123 %

All-Savers Tax-Free CD 8.15 %

Insured to \$100,000 by FDIC and your money stays in Clarendon.

Call us at: 874-3556

Member FDIC



\*Federal regulations require a penalty for early withdrawal.



## Florence Baker honored

Nephews and nieces of Florence Baker declared September 4, 1982 as Aunt Florence Day.

Fifty-one relatives met at Clarendon to pay tribute to their dear friend and aunt. Having no children of her own she has taken a special interest in all her "Kids" as she likes to call her many nephews and nieces. The special day was their way of saying "Thank You" to a

lovely person, Florence Baker.

Everyone enjoyed visiting and looking at old pictures of family members. A memory tree was made up of cards written by each person as they came to the celebration. Family members were asked to jot down something that stands out in their mind about Florence. Lots of good times were brought back to life in this activity.

The register table was graced by a lovely photo of Florence taken during her college years. Refreshments were served from a table centered by a watermelon basket filled with melon balls and white grapes. Punch and cookies were served from crystal appointments.

An engraved silver tray was presented to Florence by her "Kids". Her sisters and sister-in-laws gave her a silk flower arrangement for her home.

Five generations who

came to Clarendon to honor Florence Baker on her day were: Ruby Brooks, Escondido, Calif.; Wayne Naylor, Brady; Eileen 'Naylor' Stuart, and Kathleen Smith, both from Abilene; Mr. and Mrs. Cliff Arnold, Hereford; Mr. and Mrs. Calvin Naylor, Carolyn Isles, Mike and Joe and Wayne Todd all of Amarillo; Mr. and Mrs. Mervin Hall and Pam of Cactus; Mr. and Mrs. Melvin Vick, Panhandle; Mr. and Mrs. Don Baker, Alvarado; Mr. and Mrs. Carl Hall, Dumas; Mr. and Mrs. Doyle Hall, Las Cruces, New Mexico; Mr. and Mrs. Wayne Hamilton, and Carrie Cannon, Tay and Matthew all of Tulsa; Penny James, Kevin and Amber, Plainview; Mr. and Mrs. Lannie Arnold, Sally and Jess, Quannah; Mr. and Mrs. Earl Hammer, Helena, Missouri; Glenna Wilson, Canyon; Carroll Garrison, Hassie Arnold, Charlie Arnold, Walter Arnold, Mr. and Mrs. Fred Arnold, Mr. and Mrs. Roy Mack Walker and Mr. and Mrs. Buck Hardin all of Silverton; Dana Naylor and Ann and Lana Fay Payne all of Clarendon.



FLORENCE BAKER

space for the nominal fee of \$7.00. COME ONE, COME ALL with your foods, antiques, primitives, and crafts. We shall appreciate your participation in this venture. You will have a good time and hopefully make some money from your displays. The monies received by the sponsoring club will be used for community and charity projects.

For further or to reserve a space, phone or write Mrs. Bill Wood, 806-259-2918 or 714 Main, Memphis, Texas 79245. Or Mrs. F.W. Foxhall 615 Elm, Memphis.

### 1913 Study Club to hold fair

By VIRGINIA BROWDER

The 1913 Study Club of Memphis is making preparations for their second annual "Arts & Crafts Fair" which this year we are calling our CIRCUS BAZAAR. The scheduled date for this community and (hopefully) area affair is October 23 at the Community Center from 9:30 a.m. to 6 p.m.

Local and area clubs, groups, and/or individuals are cordially invited to reserve display table and

Major Charlotte Paul, her husband, Robert Paul, and their two children, Peter and Lauraine from El Paso, visited through the holidays with her mother, Sybil Rattan, brother and wife, Ricky and Pat Rattan, her Aunt, Lois Percival and grandmother Roeda Rattan.

Johnny Rattan, his wife Sue and four daughters, Lynn, Kimberly, Becky and Susan from New Orleans visited his mother Roeda Rattan and other relatives through the holidays.

## Toll-free AA number

Area residents who need confidential help with an alcoholism problem can now call toll-free 1-800-692-4165 from anywhere in the Panhandle and get referral information. The new service offered by the Amarillo Council on Alcoholism is made possible by a grant from the Texas Commission on Alcoholism.

The 24-hour service is linked to a corps of volunteers who are available to give information on treatment and rehabilitation programs. A volunteer coordinator has been selected by the Council and training of the volunteers is under way.

"This service is for anyone who has a problem with alcohol", said Don Pipes, Executive Director of the ACA. "When we hear about someone having an alcohol problem, we usually think of a person who drinks too much and needs to stop. We're certainly going to be dealing with those kind of people but, we're also going to be helping the families of those abusers, employers who are trying to find help for a worker and people who need more information about alcohol treatment and rehabilitation".

"A major problem the abuser has," Pipes continued, "is in making that first

call for help. If he or she is somewhere outside Amarillo, it takes considerable effort to make a long distance call. We feel the toll-free number will make that first step easier to take."

Figures assembled by the Regional Alcoholism Authority show the volunteers will be busy. About 7% of the area population, or just over 21,000 people, are directly affected by the disease of alcoholism.

### Senior Citizens dance

Donely County Senior Citizens will sponsor a dance featuring live music at the Lions Hall Tuesday evening, September 21. Everyone is invited to come.

**Make your money work as hard as you.**

10,000 Minimum  
**Money Market Certificates**  
**9.954**

\$7,500.00 Minimum  
**91-DAY CERTIFICATES**  
**8.161**

**ALL SAVERS CERTIFICATES**  
**8.15**

**IRA**  
**11%**

## VERNON SAVINGS

Home Office:  
1725 Wilbarger Street • Vernon, Texas 76384 • (817) 553-3362

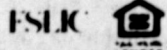
Branch Offices:

113 N. Main  
Friederick, Oklahoma 73542  
(405) 335-5549

10th & East Street  
Paducah, Texas 72446  
(806) 492-3687

119 South 6th Street  
Memphis, Texas 79245  
(806) 259-3364

423 North Main  
Childress, Texas 79201  
(817) 937-8886



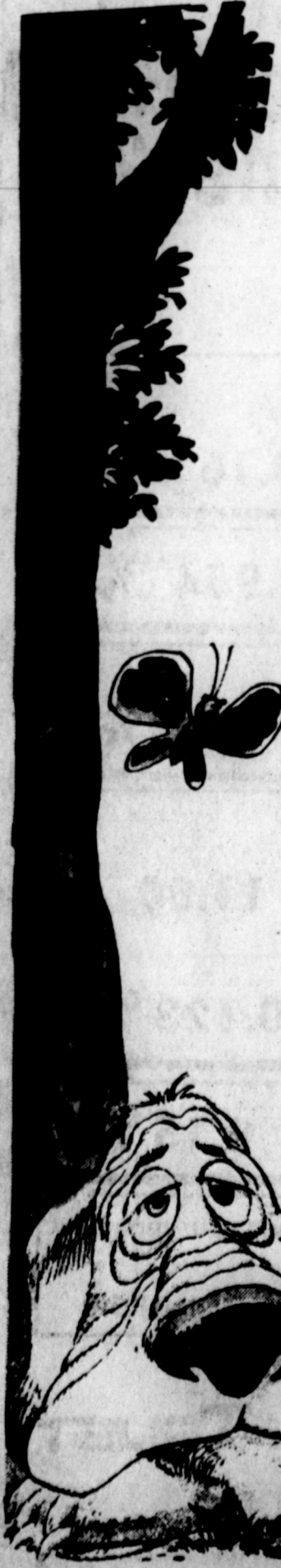
## ALL SUMMER MERCHANDISE

**1/2 OF**

**1/2 PRICE**

**Sale**

**THE TUMBLEWEED**

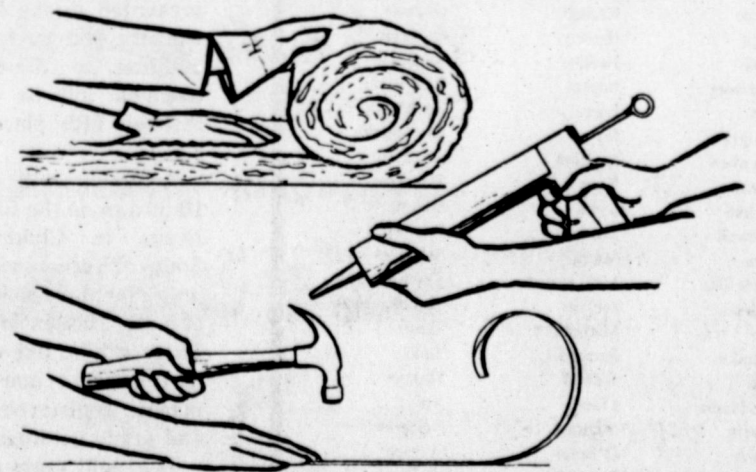


Annual Fall Open Stock Sale  
on all Franciscan Earthenware  
Save 20% - 30%

**HENSONS**

**GIFT DEPT.**

**Use Your ENERGY To Save Electrical Energy...**



By using some of your energy you can save electrical energy. Simply by adding insulation, caulking around windows and doors, and adding weatherstripping you can help stop heat loss in your home. Stopping heat loss will help your home to operate more efficiently. Also, consider installing a 200% efficient heat pump cooling and heating system in your home. If you want more information pick up our FREE Home Energy Conservation Guide at any WTU office.

### HOW A TYPICAL HOME LOSES HEAT

THROUGH CRACKS IN WALLS AROUND DOORS, WINDOWS, ETC.	<b>39.6%</b>
WINDOWS AND DOORS	<b>27.0%</b>
WALLS	<b>15.2%</b>
CILING AND ROOF	<b>12.8%</b>
FLOORS	<b>5.4%</b>



Remember... Supplies the energy - but only YOU can use it wisely!



## Senator Bill Sarpalius Reports



### THEY CONTROL YOUR MONEY

AUSTIN - We all like to think we control our own money, and to some extent, we do. But there are some state agencies in Texas that also have a great deal of say over what happens to our funds, particularly when we deposit those funds in a financial institution.

Several of these agencies are up for Sunset review this year. The Finance Commission, which controls the Banking Department and the Savings and Loan Department, as well as the Office of Consumer Credit, is one of them. Review by the Sunset Commission, of course, will decide whether these agencies are worth continuing as they are or whether they should be changed or abolished.

The Finance Commission appoints the commissioners for the Banking and Savings and Loan Departments, and the commissioner for the Office of Consumer Credit. It also reports to the Legislature on legislation concerning banking and related topics.

The Banking Department examines all state-chartered banks and monitors banks that may be getting into financial trouble. It enforces the banking laws, which prevent unsafe and/or unsound banking practices.

For some reason, the Banking Department also regulates sellers of pre-paid funeral contracts and regulates perpetual-care cemeteries. We doubt these functions are related to

## The Lions Tale

GENE ALDERSON

The Clarendon Lions Club held its regular meeting at noon on Tuesday at the Lions Hall. There were 25 members, a new member,

banking, and we probably will transfer these functions to a more appropriate agency.

Bank charters are approved by the Banking Board. The Board also can close state banks, on the motion of the Banking Commissioner. Of course, the Banking Commissioner is on the board of the Banking Department and the State Banking Board, so the two agencies are closely related.

The Savings and Loan Department charters and monitors savings and loan associations much like the Banking Board and the Banking Department do with banks. This is a very important function these days because of the hardships many traditional savings and loan associations have seen recently.

The Office of Consumer Credit licenses finance companies, pawn shops and pawn shop employees. They also examine the licensees and enforce the consumer credit code.

So although we all have some control over our own money, so does the state. That's why these agencies under review are so important. We are fortunate to have a seat on the Sunset Commission, but only if we use it. We hope you will send us your complaints and suggestions about these agencies so we can improve them. Please write Senator Bill Sarpalius, P. O. Box 12068, Austin, Texas 78711.

Lion Sweetheart Jessie Adams and three guests present. Following the regular opening ceremony, Boss Lion Bivens called on Liantamer Messer who introduced Paul Smith of Clarendon who is an income developer and the guest of Lion J.C. Woody. Max Brown of Stinnett who is retired and

the guest of Lion Fred Carter and James A. McAnear, Jr. of Clarendon who is a rancher/farmer and the guest of Lion Ronald Gooch.

Fredd Clifford of Clarendon, a salesman, was unanimously voted in as a new member. He was sponsored by Lion Don Smith. Following several announcements by the Boss Lion, Lion Frank White brought the program on an agricultural trip which he made to Russia several years ago.

## Sheriff's report

31 AUG-one arrested for public drunk.

1 SEP-1 arrested for assault.

3 Sep-1 arrested for disorderly conduct.

4 Sep-1 arrested for transporting alcohol.

4 SEP-1 arrested for public drunk.

5 SEP-1 arrested for public drunk.

5 SEP-1 arrested for destruction of property.

5 SEP-1 arrested for disorderly conduct.

6-SEP-1 arrested for public drunk.

6 SEP-1 arrested for DWI.

9 SEP-1 arrested for passing forged inst.

9 SEP-1 arrested for passing forged inst.

9 SEP-1 arrested for passing forged inst.

9 SEP-1 arrested for passing forged inst.

11 SEP-1 arrested for disorderly conduct.

11 SEP-1 arrested for disorderly conduct.

10 SEP-1 arrested for non-support of children.

13 SEP-1 arrested for public drunk.

### REPORTS

Last week we worked five accidents.

One report of four people passing forged inst. cleared by arrest.

### OFFENSE

9-11-one report of items stolen from a pick-up parked behind Buddy Wooten's house.

9-3-one report of a set of speakers stolen from a car parked at the high school parking lot.

Clarendon Press, Thursday, Sept. 16, 1982

## Christmas in December

Clarendon's Christmas traditions are expanding with the years and with the need to bring people closer together as the economy brings pocketbooks out less frequently. One of the best schemes is the late night shopping party. Another "new" tradition about to spring upon us is the "Christmas in October" sponsored by the county extension homemakers clubs.

The idea is that all of the area clubs or individuals interested in selling items ranging from homebaked, homemade or specialty items may purchase a "booth" at the Clarendon Community

Center and sell their goods October 9. Booths cost \$10 and will be open from 10 a.m. until 5 p.m. that Saturday. This is also the weekend of the Hedley Cotton Festival, so plan on "catching" some of the traffic headed over there.

Karen Burgess with WTU will give a program on microwave Christmas candy and Sherri Hardin, Home Economist for Arrowhead Mills will give a program on Nutritious Holiday Cookery. There will be other afternoon Christmas programs for visitors to see.

There will be a great variety of things to see and

buy while there at the "Christmas in October" bazaar, so schedule your club and plan on attending.

Contact Cherri Brown the Donley County Extension homemaking officer at 874-2141 to reserve your space today.

## Nancy Selvidge and Mary Washburn

Now associated

with

### Judy's Hair Design

welcomes old and new customers.

Will take early or late appointments  
Manicures and walk-ins welcome



Tuesday  
Thru  
Fridays  
Phone  
874-2445

## Golden Wedding Anniversary

Mr. and Mrs. C.A. Pitts will be celebrating their Golden Wedding Anniversary Sunday, September 19, 1982 from 3:00 to 5:00 p.m. in the First Methodist Church Fellowship Hall in Clarendon. They wish to invite everyone to come and help celebrate this time with them. Your friendship is their most treasured gift, and they respectfully request no other.

**DOOD CORNELL**  
has purchased

## THE CAR WASH

behind the Post Office.

He would appreciate

your patronage.



# CHARLIE'S GROCERY & MARKET

HOME OWNED & OPERATED

**Chuck Roast** \$1.69  
HEAVY GRAIN FED BEEF BONELESS

**Sizzlean** 12 OZ. PKG. \$1.59  
BREAKFAST STRIPS REG. BEEF 50% LEANER THAN BACON

**MEAT SPECIALS**

BONELESS HEAVY GRAIN FED BEEF **Chuck Steak** LB. \$1.99  
EXTRA LEAN HEAVY GRAIN FED BEEF **Stew Cubes** LB. \$1.99  
BONELESS ARM HEAVY GRAIN FED BEEF **Swiss Steak** LB. \$1.99

HORNEL'S PORK LINK SAUSAGE **Little Sizzlers** 12 OZ. PKG. \$1.39  
ARMOUR'S STAR BREADED PRE-COOKED **Beef Patties** LB. \$1.69  
WRANGLER COARBER GROUND HORNEL'S WITH SMOKER FLAVOR **Franks** 1 LB. PKG. \$1.99

**Krispy Crackers** 16 OZ. BOX **59¢**

**Coca-Cola** 6 PACK 12 OZ. CANS **\$1.59**

**Green Beans** 16 OZ. CANS **79¢**

**Biscuits** 7 1/2 OZ. CANS **7¢**

**Detergent** FAMILY SIZE **\$5.69**

**Eggs** Grade "A" Large Dozen **69¢**

**Bar-B-Q Sauce** Kraft 18 Oz Btl **59¢**

**GROCERY SPECIALS**

UNDERWOOD DEVILED **Ham Spread** 2 1/2 PKGS. **89¢**

Double S&H Green Stamps Wednesday with purchase of \$2.50 or more

DEL MONTE PICKLES **Tiny Dills** 15 OZ. JAR **99¢**

14 OZ. HONEY NUT OR **Cheerios** 15 OZ. BOX **1.59**

BETTY CROCKER ASSTD. **Snackin' Cake** 14 OZ. BOX **1.29**

HOLSUM SALAD **Olives** 4 1/2 OZ. JAR **79¢**

SCHILLING PURE **Black Pepper** 4 OZ. CAN **79¢**

**Nestea** INSTANT TEA 3 OZ. JAR **\$2.39**

**DAIRY SPECIALS**

SHURFRESH **Buttermilk** 1/2 GAL. CTR. **\$1.19**

MARGARINE **Soft Parkay** 24 OZ. CUPE **89¢**

PILLSBURY CINNAMON **Rolls** 8 CT. CAN **99¢**

BATHROOM WHITE-ASSTD. **Northern Tissue** 4 ROLL PKG. **99¢**

**HEALTH & BEAUTY AIDS**

EX. PROTECTION-EX. MOIST **Soft Sense** LOTION 6 OZ. BTL. **\$1.29**

**Disposable Razors** **Good News** 3 CT. PAK **77¢**

**FABRIC SOFTENER 50% OFF LABEL** **Downy** 96 OZ. BTL. **\$2.99**

**SHelf SPECIALS**

FOR DISHES 27% OFF LABEL **Ajax** 32 OZ. BTL. **\$1.69**

LIQUID CLEANER 25% OFF LABEL **Mr. Clean** 28 OZ. BTL. **\$1.79**

CALIFORNIA RED DELICIOUS **Apples** LB. **39¢**

**PRODUCE SPECIALS**

Thompson Seedless Lb **Grapes** **39¢**

Red Ripe Lb **Tomatoes** **69¢**

Large Head **Lettuce** **39¢**

ASSTD. FLAVORS GELATIN **Jell-o** 3 1 OZ. BOXES **\$1.00**

HUNT'S SNACK PACK ASSTD. **Puddings** 4 CT. PAK **99¢**

**Downy** 96 OZ. BTL. **\$2.99**

**Tide** 10 Lbs 11 Oz 70c Off **\$7.59**

We're proud to give you more!

**Venture FOODS**

PRICES EFFECTIVE Sept. 15-18, WE RESERVE THE RIGHT TO LIMIT QUANTITIES

DOUBLE S&H GREEN STAMPS ON WEDNESDAY 12¢ or more

with purchase of

# GOLDEN NUGGET ARCADE & SANDWICH SHOPPE

(Formerly Peanuts Drive Inn)

## NOW OPEN PAC-MAN CONTEST

Saturday Night 8:00 p.m.

Entry Fee \$2.00 includes 2 free games of Pac-Man - Highest score counts - one prize per person Registration deadline 8:00 p.m. Saturday night.

1st place \$15.00  
2nd place \$7.00  
3rd place \$3.00

Based on 10 entries or more

**HAMBURGERS 95¢**  
**PIZZAS \$1.19**  
**DRINKS 33¢**

PAC-MAN - CENTIPEDE  
DEFENDER - TEMPEST

And Many More

COME JOIN THE FUN !!

### HOURS

M-F 4-10 p.m.  
Sat. 12-10  
Sun. 1-9





**Official Memorandum**

By  
**WILLIAM P. CLEMENTS, JR.**  
Governor of Texas

**GREETINGS:**

**AUSTIN, TEXAS**

*Agriculture is at the center of our Nation's economy, providing an abundance of food not only for Americans, but for millions of others around the world.*

*Farmers and ranchers face many risks to produce the food and fiber which has enriched our lives. They must not only face risks associated with weather and economic conditions but those of accidents and occupational illness as well.*

*This year, nearly 400,000 farmers and ranchers, almost one of every five, will suffer a serious accident at work, at home, during recreation, or on the road. According to national statistics, agriculture is now number one in terms of occupational fatal accidents.*

*Each farmer or rancher must recognize his or her responsibility to educate themselves and their family in safe work practices. General industry employs thousands of safety specialists to design and promote a safe workplace. However, agricultural safety specialists are few and must reach their agricultural audiences largely through indirect mass media methods and printed publications. Farmers and ranchers are urged to read available materials and keep a safety file.*

*To encourage renewed emphasis to make Texas farms and ranches a safer place to live and work, the State of Texas joins the entire Nation in the recognition of 1982 National Farm Safety Week.*

*A week-long, statewide campaign to inform Texas rural residents about farm and ranch accident prevention will be conducted by the Texas Safety Association, The Texas Agricultural Extension Service of the Texas A&M University System, the Texas Farm Bureau, Future Farmers and Future Homemakers and the Young Farmers of Texas.*

THEFORE, I, as Governor of Texas, do hereby designate the week of September 19-25, 1982, as

**TEXAS FARM AND RANCH SAFETY WEEK**

*and urge all who live and work on Texas farms and ranches to make accident prevention a part of all activities. Further, I urge persons, organizations and suppliers who work with or serve agricultural producers to assist in this effort with every possible means to reduce the deaths and injuries resulting from farm and ranch accidents.*



In official recognition whereof, I hereby affix my signature this 6th day of Aug., 1982

*W. P. Clements, Jr.*  
Governor of Texas

**commissioner speaks**

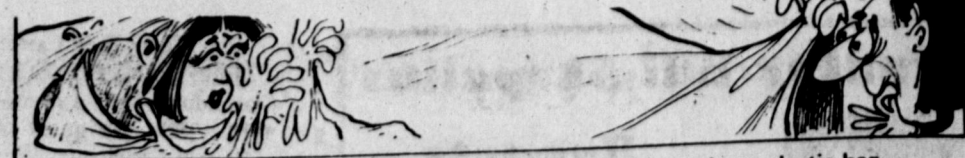
Jim Hightower, Democratic nominee for Agriculture Commissioner, Friday urged voters to "take one little step that will help our family farmers and ranchers in a big way-vote for Proposition 3 on November 2."

Proposition 3 is the proposed constitutional amendment that would exempt farm and ranch equipment from ad valorem taxes.

"The taxes currently collected on agricultural tools and machinery amount to only one-eighth of one percent of all tax revenues, but the collection of the tax from the individual farmer can be enough to put a depressing red blotch on the debit side of his balance sheet," Hightower said. "In other words, government is not getting enough from the tax to do them any good, but the tax taken from the individual farmer can do them real harm."

"Texas farmers and ranchers already are at the breaking point financially-the Farmers Home Administration reports that 55 percent of its Texas borrowers are so strapped this year that they can't make their operating loan payments-it makes no sense to continue taxing the tools that hard-hit people like these must have to stay in business," Hightower said.

"It is tremendously expensive to try to farm these days-a standard tractor costs about \$40,000, a combine will run you around \$85,000, a round baler will cost you \$9,500, and you'll put down \$5,500 for a planter. These are no simple "implements of husbandry" as the tax code calls them, and application of this tax to a modern incorporated farm family could take as much as \$3,000 a year out of the family's pocket," Hightower said.



Dough won't stick to your hands if it is kneaded inside a large plastic bag.

**'82 CHEVY CLEARANCE**

'83's will be here Sept. 23rd

**Factory - Dealer Incentives**

**Up to \$900 on Some Models \***

**\$2000 Reduction \***

off Factory suggested price (including incentive)

on '82 Cavalier Demonstrator

**ALDERSON CHEVROLET**

\* When you take retail delivery by Sept. 22, 1982



**DISCOUNT CENTER CLARENDON**

**\$23<sup>97</sup>**

16-1659 Natural roughout moc toe 8" boot brass hexagon eyelets and hooks, cushioned insole with cookie, injection moulded PVC oil resistant outsole and heel.



**\$29<sup>97</sup>**

16-1657 Cactus rangehide moc toe 8" boot brass hexagon eyelets and hooks, cushioned insole with cookie, injection moulded PVC oil resistant outsole and heel.



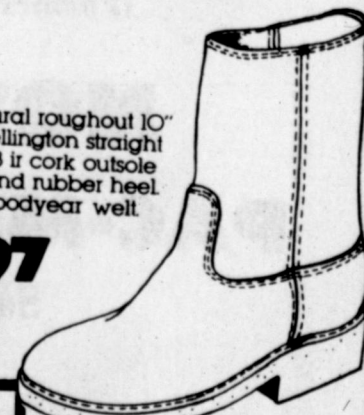
**\$29<sup>97</sup>**

16-1406 Black plain toe 8" logger boot outside backstitch with loop, 18 ir black cord outsole with black neoprene heavy duty logger heel Goodyear welt.



**\$26<sup>97</sup>**

16-1853 Natural roughout 10" work wellington straight topline, with 18 ir cork outsole and rubber heel Goodyear welt.



**No. 2503 \$43<sup>97</sup>**



**\$29<sup>97</sup>**

16-1554 Redwood 8" plain toe boot Goodyear welt with storm welt and 18 ir black cord outsole and black oil resistant heel.

**\$39<sup>97</sup>**

16-1647 Oiled rawhide 10" work wellington with amber tygum outsole and cowboy heel Goodyear welt.



**\$59<sup>97</sup>**

28-2708 Brown roper full grain cowhide foot and top. Fully leather lined, leather outsole, round toe, flat walking heel.

**ALL OTHER WORK BOOTS ON SALE ALSO**

**"SEEK YE FIRST THE KINGDOM OF GOD"**

<p><b>CLARENDON LUTHERAN MISSION</b> Clarendon Lutherans now attend services at Zion Lutheran Church in Pampa, Texas. Rev. Charles Paulson <b>INFORMATION</b> Mrs. Drager 874-2087</p>	<p><b>CALVARY BAPTIST CHURCH</b> Hwy. 287 &amp; Jackson 874-3479 R. W. Sullivan, Pastor Sunday School 10:00 a.m. Sunday Worship 11:00 a.m. Training Union 6:30 p.m. Evening Worship 7:30 p.m. Wednesday Night Service 7:30 p.m.</p>	<p><b>ASSEMBLY OF GOD</b> 5th &amp; McClelland Roger Gray, Pastor Sunday School 9:45 a.m. Sunday Worship 11:00 a.m. Evening Worship 6:30 p.m. Tuesday Women's Ministry 1:00 p.m. Wednesday Night Service 7:30 p.m.</p>
<p><b>ST. MARY'S CATHOLIC CHURCH</b> McClelland &amp; Montgomery Rev. J. Arnold Carlson Sunday Morning Mass 9:30 a.m.</p>	<p><b>FIRST BAPTIST CHURCH</b> Bugbee &amp; Third Streets 874-3833 Paul Hill, Pastor Sunday School 9:45 a.m. Morning Worship 11:00 a.m. Training Union 6:00 p.m. Evening Worship 7:00 p.m. Wednesday Night Service 7:00 p.m.</p>	<p><b>CHURCH OF THE NAZARENE</b> 3rd &amp; Hawley 874-2321 Bill Hodges, Pastor Sunday School 9:45 a.m. Morning Worship 11:00 a.m. Evening Worship 6:00 p.m. Wednesday Night Service 7:30 p.m.</p>
<p><b>FIRST CHRISTIAN CHURCH</b> Wilbert Bernabe, Pastor 3rd &amp; Gorst Sunday School 9:30 a.m. Morning Worship 10:30 a.m. Evening Worship 6:00 p.m. Wednesday Night Service 6:00 p.m. Night Service 7:30 p.m.</p>	<p><b>ST. MARK BAPTIST CHURCH</b> Jefferson &amp; Martindale Albert Yarborough, Pastor Sunday School 9:45 a.m. Preaching 11:00 a.m. Night Service 8:30 p.m. Prayer Service 7:30 p.m. Woman's Mission 8:00 p.m.</p>	<p><b>PRESBYTERIAN CHURCH</b> 4th &amp; Parks Dr. E. L. Manning, Pastor Sunday School 10:00 a.m. Morning Worship 11:00 a.m. Youth Program 6:00 p.m. Evening Worship 7:00 p.m. Tuesday Bible Study 2:30 p.m.</p>
<p><b>CHURCH OF CHRIST</b> 4th &amp; Carhart 874-2495 Tom Hargness, Minister Sunday School 9:30 a.m. Morning Worship 10:30 a.m. Evening Worship 6:00 p.m. Wednesday Night Service 7:30 p.m.</p>	<p><b>MARTIN BAPTIST CHURCH</b> Randy Daniels, Pastor Sunday School 10:00 a.m. Church Service 11:00 a.m. Evening Service 6:00 p.m. Wednesday Night Service 7:00 p.m.</p>	<p><b>ST. JOHN THE BAPTIST EPISCOPAL CHURCH</b> 3rd &amp; Parks 874-2231 Rev. J. Scott Turner, Vicar Sunday School 9:45 a.m. Holy Communion 11:00 a.m.</p>
<p><b>UNITED PENTECOSTAL CHURCH</b> Norman Thompson Montgomery &amp; Faker St. 874-3756 Sunday School 10:00 a.m. Morning Worship 11:00 a.m. Evening Worship 6:00 p.m. Wednesday Night Service 7:00 p.m.</p>	<p><b>FIRST BAPTIST CHURCH</b> Howardwick SBC Bro. O. C. Edwards Sunday School 10:00 a.m. Worship Service 11:00 a.m. Evening Service 6:00 p.m. Wednesday Prayer Meeting 6:00 p.m.</p>	<p><b>CHURCH OF JESUS CHRIST OF LATTER DAY SAINTS</b> Call Katie Dvorak at 874-3639</p>

**CORONADO MOTEL**

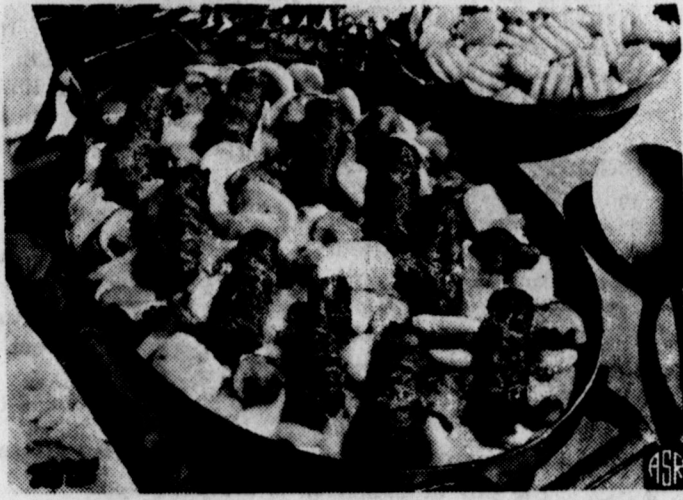
**BYLOW GROCERY**  
**EDDIE FLOYD SHOP**  
**THE TUMBLEWEED**  
**ALDERSON CHEVROLET**  
**OSBURN FURNITURE, APPLIANCE, INC.**



# Heat's On

By KATIE DVORAK

## Easy On The Budget



The traditional German recipes have been passed down through families for generations. Now, with your microwave oven, these delicious family favorites can be quick and easy. Black Forest Torte, an elegant chocolate cake, and Wiener Schnitzel are two recipes from a Whirlpool microwave oven cookbook that combine traditional dishes and modern cooking convenience.

### BLACK FOREST TORTE (shown)

- Total cooking time: 19 minutes**
- 1 16-ounce can pitted dark sweet cherries
  - 1/2 cup kirsch
  - 1 2-layer-size package chocolate cake mix
  - 4 teaspoons cornstarch
  - 1 cup butter or margarine
  - 1 pound sifted powdered sugar (4 1/2 cups)
  - 3 egg yolks

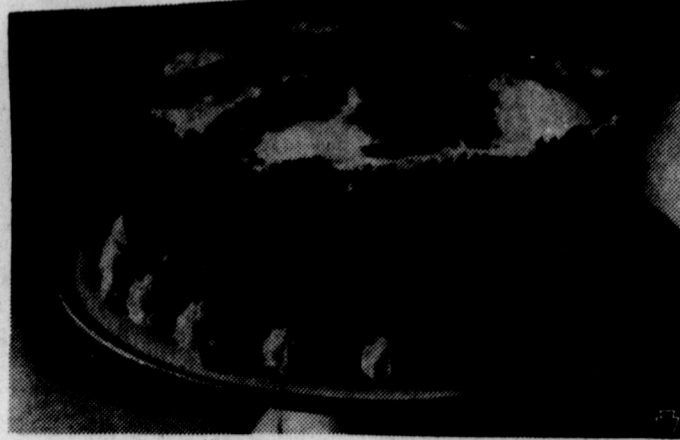
- Chocolate shot
- 1 1-ounce square semisweet chocolate, finely shaved
- Maraschino cherries
- Chocolate curls

Drain cherries, reserving 3/4 cup syrup. Halve the cherries and pour kirsch over; let stand at least 2 hours.

Prepare cake mix according to package directions. Line bottom of two 8 x 1 1/2-inch round cake dishes with waxed paper. Pour 2 cups batter into each dish. (Use remainder for cupcakes.) Cook one layer at a time, at MEDIUM for 6 to 7 minutes, giving dish half turn once. Cook at HIGH for 1 minute or till done. Cool 10 minutes in baking dishes. Remove cakes from pan and cook on rack.

Place cornstarch in 4-cup glass measure. Gradually blend in the reserved cherry syrup; add cherry-kirsch mixture. Cook at HIGH for 4 to 5 minutes or till thickened and bubbly, stirring 4 times. Cool, then chill.

In small mixer bowl, soften butter at LOW for 1 minute. Beat butter and powdered sugar till smooth. Beat in egg yolks and continue beating till light and fluffy.



Place one layer cake on serving plate. From 1 cup butter mixture, make a 1/2-inch border (1 1/2 inches high) around top of cake. Use 1/2 cup butter mixture to make a solid circle in center of cake about 2 1/2 inches in diameter and 1 1/2 inches high (same height as border).

Spread chilled cherry filling between border and center of butter mixture. Place second cake layer on top; press down just enough to make layers stick together.

Cover top and sides of both layers with remaining butter mixture. Sprinkle sides with chocolate shot. Top with shaved chocolate, maraschino cherries, and chocolate curls. Chill. Let stand at room temperature about 20 minutes before serving.

### WIENER SCHNITZEL

**Total cooking time: 16 minutes**

- 1 pound veal round, 3/4 inch thick, cut in 4 portions
- 1/2 cup all-purpose flour
- 1 teaspoon salt
- 1/2 teaspoon pepper
- 1 beaten egg
- 1 tablespoon milk
- 1 cup fine dry bread crumbs
- 2 tablespoons cooking oil
- Lemon wedges

Pound veal till about 1/4 inch thick. Cut small slits along edges of meat to prevent curling. Stir together thoroughly flour, salt, and pepper. Combine egg and milk. Coat veal with flour mixture; dip in egg mixture, then coat with crumbs.

Preheat Meal Browner browning dish at HIGH for 5 minutes. Add 1 tablespoon oil to browning dish. Swirl half the veal in oil in browning dish. Cook at HIGH for 2 minutes. Turn and cook at HIGH for 2 minutes. Remove veal and keep warm.

Preheat browning dish at HIGH for 3 minutes. Add 1 tablespoon oil to browning dish. Swirl remaining veal in oil. Cook at HIGH for 2 minutes. Turn and cook at HIGH for 2 minutes. Serve with lemon wedges. Makes 4 servings.

**MICRO TIP:** Freshen up those stale snacks by placing about 2 cups snack chips (corn chips, potato chips, or whatever) in a shallow baking dish. Heat, uncovered, at HIGH for one minute. Let stand one to two minutes before serving.

Remember that this is the weekend to submit your goods to the Tri-State Fair. Canned goods must be turned in either Thursday or Friday from 10 a.m. until 5

p.m. Baked goods can only be turned in Saturday morning to insure freshness. Take them to the arts building from 8:30 until noon. Good luck Donley County chefs!

Recipes in the "budget" category usually focus on money savings. Yet another resource — time — needs budgeting, too. This Quick 'N Easy Sausage Casserole is fast to fix and economical, so the dish qualifies for the "budget" title on all counts.

Convenience comes from using brown 'n serve sausages that are fully cooked and merely need reheating before serving. The sausage links are arranged atop sliced, cooked potatoes that have been sauced with a mushroom soup-cheese mixture. Sliced celery adds a little crunch to the dish.

### Quick 'N Easy Sausage Casserole

**Yield: 4 to 5 servings**

- 8 ounce package Swift Premium Brown 'N Serve Sausage Links
- 2 cans (16-ounces each) sliced (or 4 cups cooked sliced potatoes)
- 4 ounce can mushrooms, drained
- 1/3 cup sliced celery
- 10-3/4 ounce can condensed cream of mushroom soup
- 1 cup shredded Cheddar cheese

Combine potatoes, mushrooms, celery, soup and 1/2 cup shredded cheese. Spoon into buttered 1-1/2 quart casserole. Arrange brown 'n serve sausage atop casserole. Sprinkle remaining 1/2 cup cheese over top. Bake in 350°F oven for 35 to 40 minutes. For crispier sausage, broil casserole 4 inches from heat source for 5 minutes before serving.

## SYD BLUES TAVERN

### College Night

Wednesday, Sept. 15

7:00-12:00

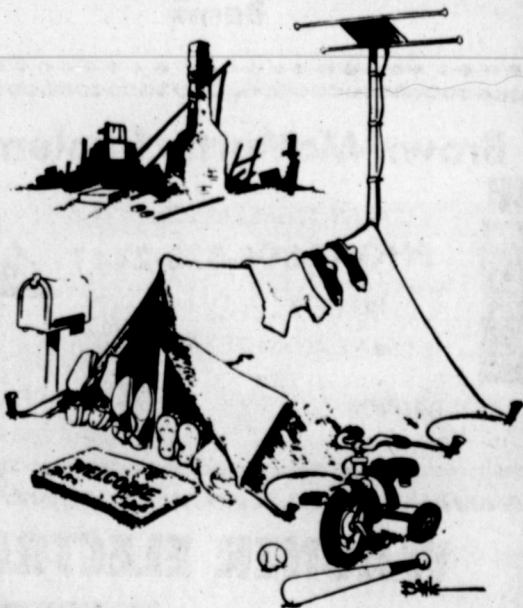
### Free Barbecue

### 25¢ Draft Beer

with College ID

## INSURANCE

"Getting the right amount of coverage"



"So our home was a little underinsured. We'll adjust."

What about you? If your home burned down today, would your insurance cover the cost of replacing it? Have your home inspected and your insurance updated annually. Take it from an independent agent: It's easier to adjust your insurance now than it is to adjust your lifestyle later.



**KNORPP**

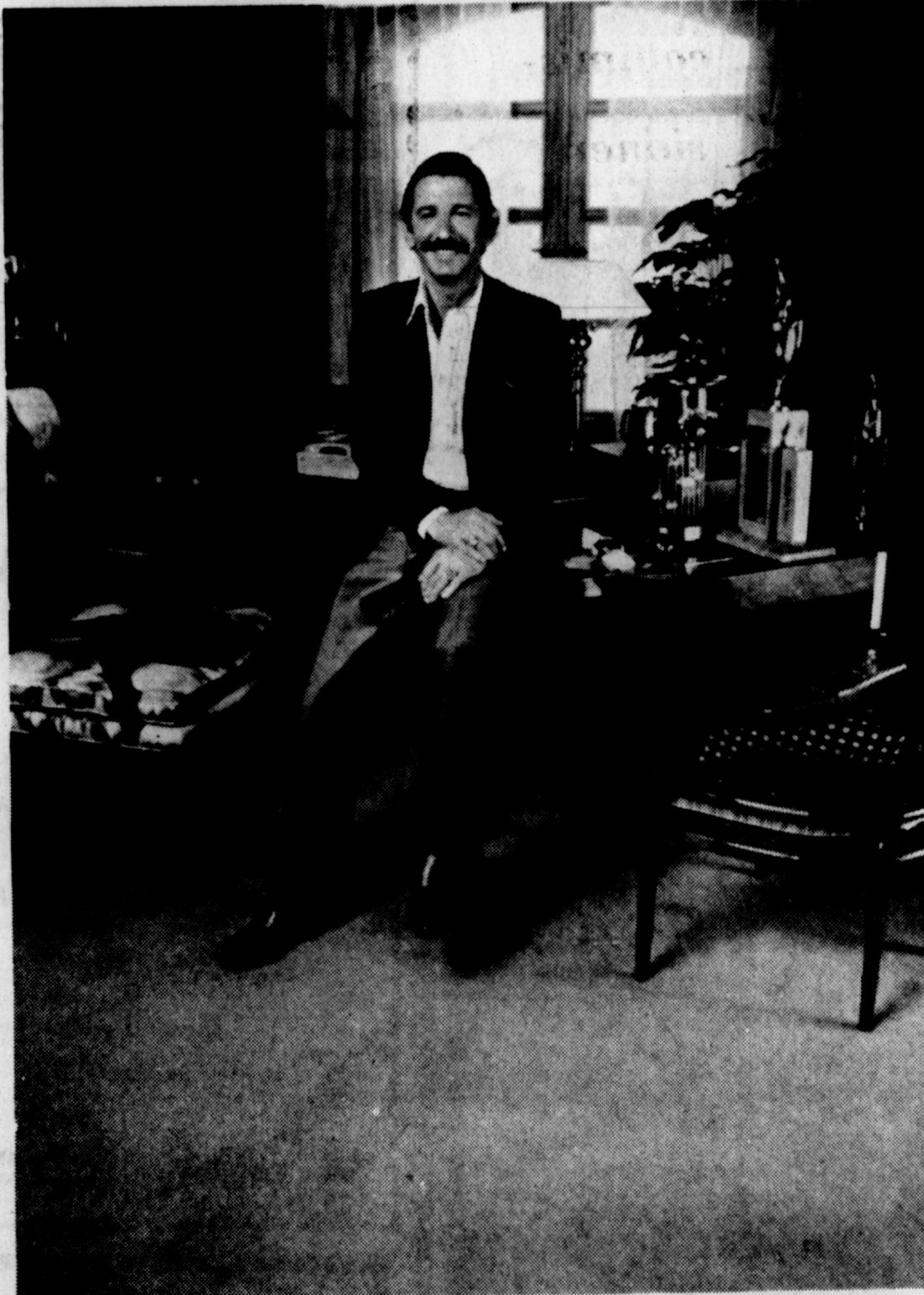
Insurance Agency, Inc.

806-874-3521

Drawer A

Clarendon, Texas 79226

# STAVENHAGEN FURNITURE APPLIANCES & CARPET



**BILLY MARTIN KNOWS A WINNER.**

**ENKALON<sup>®</sup> NYLON WITH BUILT-IN SCOTCHGARD<sup>®</sup> PROTECTION.**

- Super soil-resistant.
- Most spills clean easily.
- Reduces static shock.
- Full Five-Year Wear Warranty.

Super Saxony

Save **\$2<sup>00</sup>**

Yard installed with padding.

Sculptured Pattern

Save **\$3<sup>00</sup>**

Yard installed with padding.

Plush Velvet

Save **\$4<sup>00</sup>**

Yard installed with padding.

**STAVENHAGEN FURNITURE APPLIANCES & CARPET**





874-2259

WHAT'S HAPPENING IN THE...

CLASSIFIED SECTION

CABLE TV "There's More to See on Cable TV". We have 2, 3, 4, 5, 6, 7, 9, 10, 12, 13. Call 874-3570.

FOR SALE: Storm windows, complete window units. CLARENDON GLASS CO. 874-3826 10-tfc

Trailer space for rent. Coronado Motel 874-2087 28-tfc

For Sale: 14 wide, dealer repo. Assume payments of \$224.97; \$1351.08 due; furnished and carpeted, setup included. Call 1-353-1280. 28-tfc

MAKE EXTRA MONEY Avon already has Christmas items for you to sell. Insurance, complete, flexible hours. Part or full time. Call collect 806-665-8507. 35-9tp

MEMPHIS SINGER SEWING MACHINE SALES SERVICE For contacts call Stavenhagen Furniture I am in Clarendon every two weeks on Thursday 1-tfc

ALTERNATIVE Alternative to an abortion for an untimely pregnancy Call THE EDNA GLADNEY HOME Texas Toll-Free 1-800-772-2740. 1-tfc

STEVE'S Automotive & Industrial Engines For tune-ups, muffler or a major overhaul, on the farm service calls. 874-3446

TIRED OF TASTING BAD WATER: Get a water filter, get a lift by drinking a glass of purified water. Call D. James 874-3384 for information. 35-tfc

LAMPS, LAMP PARTS, all light bulbs HOUSE OF SHADES and LAMP REPAIR Wolffin Village Wolffin Avenue Amarillo, Tex. 79109

FOR SALE Houses in Clarendon and Hedley. Call us we need listings 874-2533.

SANDERS REAL ESTATE 720 S. McClelland 874-2533

ARE YOU RETIRED? Too much leisure time? How about few hours of work and extra dollars. Call collect 806-665-8507 Avon. 35-9tp

Clarendon Lodge 700 AF/AM Stated Meeting: Second Monday, 8:00 p.m. each month. Practice: 1st & 4th Mondays

Robert McCombs, W.M. Billy Ray Johnston, Sec.

I AM NOW DISTRIBUTOR for Amway Home Care Products. Come by and let me demonstrate how you save time and money the Amway way.

MAE PEARL FABRICS 720 S. Allen 874-2056 Clarendon, Texas

M & L Cesspool & Septic tank Pumping Also mud pits & grease traps NO travel charge. Reasonable rates 883-3741 White Deer, TX 33-tfc

COMMERCIAL PRINTING Business and Personal Stationery & Cards Business Forms and Statements Window Cards Whatever your printing needs, check with us. CLARENDON OFFICE SUPPLY & PRINTING Mr. & Mrs. G.W. Estlack Phone 874-2043 Clarendon, TX 79226

FOR SALE BY OWNER: 3 br. and study (or 4 br) brick, central heat and air, fire-place, attached 2 car garage and storage, cellar, built-ins, 2 baths. See Darrell Harper or call 874-2677 after 6 p.m. 26-tfc

FOR SALE: 3 bedroom house in Hedley, large garden, producing trees and shrubs, close to school and churches, Call Lyman Benson Company Realtors, Shamrock, Texas 806-256-3541. 34-4tc

FOR SALE: 19 cu. ft. freezer and clarinet. Call after 6 874-2705. 36-2tc

FOR SALE: Panasonic home stero, 8 track, turntable, AM/FM receiver and four speakers 874-9984 or 874-2286. 36-2tc

Butler Locker Custom Slaughtering & Processing Tuesdays & Fridays No Appointment Necessary Call Anytime 806-447-9660 One Price Covers All

I am now selling RAWLEIGH PRODUCTS. Call me for your spices, ointments, pet care products and cleanser needs. Denise Bertrand 874-2846. 36-4tc

PUBLIC NOTICE The Commissioners' Court of Donley County will accept bids on the construction of a four wire fence on September 20, 1982, at 9 o'clock a.m. in the courthouse annex. Fence will have at least 4 wires and post will be 20 feet apart. If the property owner desires to build the fence, he will furnish all material and labor. The county will pay for the labor according to each contract mile. The county will pay for the labor on all fence and the land owner will furnish the supplies. There will be approximately 4 miles of old fence to be moved. The county will furnish the labor on this. 36-2tc

FOR SALE: light weight pre-conditioned stocker cattle, ideal for sudan and grain grazing. If you desire, I will contract cattle back, for later delivery, buyer-seller all classes of cattle, highest market dollars paid for cattle see or call Bill Porter 874-3314. 36-tfc

CUSTOM BUTCHER DAVENPORT MEAT COMPANY Clarendon 874-2701 Beef sold by the half

DEPENDABLE REASONABLE JR PUMP SERVICE SEPTIC TANKS PUMPED CESSPOOLS MUD PITS Pampa 669-9302 Clarendon 874-2318

NEOMA'S CERAMIC SHOP will give lessons 2 days a week Tuesday and Thursday at 6:30 p.m. Howardwick 874-2345

ALLEN ESTLACK Electrical and Appliance Repair Call 874-3683 Bonded & Licensed

RESIDENTIAL/COMMERCIAL REAL ESTATE Offered by: James F. Hayes & Co. CLARENDON, TEXAS 79226 Carol Bryant Off: (806) 874-3546 Res: (806) 874-3649

CANTRELL LP GAS DIESEL DIESEL DIESEL Day 874-2725 Bill C. Night 874-3942 Hill Hedley 856-3331 Sales & Complete Service New Propane Tanks

WANT TO BUY house to be moved. FOR SALE: blackeye peas, corn, purple hull peas and okra. Ben Burrow 874-2005. 36-2tc

HELP WANTED at Groom KOA 18 miles north of Clarendon on Hwy 70 call 248-5631. 36-2tc

LVN weekend shift, excellent wages and benefits, full time salary, all shifts available. Contact Debbie or Bobby United Convalescent, Post, Texas 1-495-2848. 37-1tc

FOR SALE: 56 acres sandy land farm near Clarendon. \$12,000 will handle, balance 10 percent interest. John Garner 874-2330. 37-2tc

Without advertising a terrible thing happens Nothing.

FOR SALE: Elbon Rye, sacked, recleaned, treated, \$12 per hundred. Clarendon Hatchery. 36-2tc

MAKE OFFER on 4 rolls soft electric fence wire; 3-6 ft. steel corner posts; 400 new concrete blocks; antique TV and wheel chair. Jim Smith 874-2422. 37-1tp

THANK YOU I wish to express my thanks to the many friends who showed their concern during my stay in the hospital. Words cannot express my appreciation to you. Cheryl Thomas 37-1tp

THANK YOU Quata Phillips wants to thank all of the wonderful people for the food, visits, phone calls, flowers, sympathy cards and prayers after the death of her brother, George Curley Drake. God bless each and everyone. 37-1tp

LOVEGRASS HAY FOR SALE 8 miles SE of Clarendon \$1.25 per bale in the field. Call after 5 p.m. 874-3381. 37-1tp

GARAGE SALE: Friday at 8:30 Childrens clothes, luggage, hairdryer and misc. Bailey Estes house 287 east. 37-1tp

GARAGE SALE: Saturday and Sunday 9-18 and 9-19 at 8 a.m.-5 p.m. both days. Drapes, curtains, stuffed toys, bedspreads, table and lots of misc. 2 blks south and 1/2 blk west of Broncho Drive Inn on corner of wood and Faker. Lovie Taylor. 37-1tp

FOR SALE: Brand new couch and mini bike. 856-4811 37-1tp

FOR SALE: Property Sherwood Shores, Lot 157 and 158 Billy Drive Call 405-526-3617 36-1tp

FOR LEASE OR SALE: 3 bedroom mobile home Howardwick, double lot, small down and assume payments, view, circle drive, fenced yard call Bert or Bev 874-2160 after 5 p.m. 36-1tp

YARD SALE: Thursday and Friday 604 E. 4th (corner of Hawley and 4th). 36-1tp

MAN WANTS WEEKEND WORK. Will do odd jobs. 217 S. Park. YARD SALE: Saturday Sept. 18 starting at 8 a.m. 406 S. Koogle. Childrens, mens and Ladies clothes, toys and misc. 37-1tp

ICE CAPADES ALL NEW! PRESENTS LIGHT UP THE ICE Thur., Sept. 23 thru Sun., Sept. 26 Amarillo Civic Center

PROFESSIONAL PHOTOGRAPHY Ron's 874-2829

BAILEY ESTES AND SON Welding Fabricating Enameled Steel Buildings Custom Portable Buildings Barns

Brown-McMurtry Implement SALES AND SERVICE PHONE 806-823-2441 BOX 777 SILVERTON, TEXAS 79257

WAGNER ELECTRIC All Types Wiring Commercial & Residential Bonded & Insured 24 Hr. Service Check on our ceiling fans 6 different styles Office 248-2911 Home after 4 p.m. 248-6911 248-3602 Leave message, call will be returned

TERMITE PROBLEMS Call for the best termite control Over 20 years experience Call Collect 383-7075 3608 N. E. 23rd Amarillo, Texas 79107 State Lic. No. 1178 Owner Operator

LEO RUSSELL (806) 226-4402 Rex's Body Shop PAINT BODY & GLASS WORK 10% Discount REX BAGWELL 404 GOODNIGHT CLAUDE TEXAS 79019

WATSON ELECTRIC Residential - Commercial New Home Wiring Wiring Of Additions And Remodels Range And Air Conditioner Wiring Ceiling Fans Mobile Homes Ditching Underground Wiring F. W. WATSON 874-3770

VACUUM CLEANER SERVICE We will repair any make VACUUM CLEANER but we specialize in KIRBY HOME RENOVATION SYSTEMS. We are as near as your telephone, so call us anytime (874-3403). Be sure and let the telephone ring at least six times, we will be out in the garden and can't answer immediately. We pick up and deliver as well as loan you one of our rebuilt vacuum cleaners while we repair yours. We also have several models of KIRBYS FOR SALE that we have rebuilt and guarantee for a year. MCVICKERS' KIRBY SERVICE JOHN D. and LOIS McVICKER 119 Walloye Street Howardwick, Texas (806) 874-3403

CHAMBERLAIN MOTOR COMPANY BUICK CHAMBERLAIN MOTOR CO. You are invited to see our new 1983 Model Sept. 24 & 25 \*GMC \*PONTIAC \*BUICK \*Oldsmobile \*Cadillac \*LIGHT TRUCKS Chamberlain MOTOR COMPANY HIGHWAY 287 CLARENDON TEXAS FRED CLIFFORD Home 874-2415 Toll Free Texas 800-692-4388

MORROW'S REDI-MIX Ready Mixed Concrete Backhoe (Storm Cellars) Cash on Delivery All Types Concrete Work Earl Morrow - Owner 874-2571

Call your local used cow dealer for dead stock removal 1-800-692-4043 toll free

RAY'S APPLIANCE SERVICE Franchise For Kitchen Aid Dishwashers Sales and Service General Electric Franchise Dealer Heating and Air Conditioning We service all makes of Air Conditioners Freezer & Refrigeration Service & Repairs

STEEL BUILDINGS \*Give us your specifications for your Steel Buildings and we will build to suit you. \*QUICK AND EXPERIENCED ERECTION \*Compare our designs and prices with other buildings.

PHILLIPS GIN SERVICE Barry Phillips 874-2236

CORNELL & BRADDOCK SHELL Service Costless Naturally



**APPLICATION PACKAGE STORE PERMIT**

The undersigned is an applicant for a Package Store Permit from the Texas Alcoholic Beverage Commission and hereby gives notice by publication in accordance with provisions of Section 10, House Bill No. 77, Acts of the Second Called Session of the 44th Legislature designated as the Texas Liquor Controls Acts.

The Package Store Permit applied for will be used to conduct a business at 108 Circle Drive, Howardwick. Name of Store: Syd Blues Discount Liquor. Owner, William E. Britten.

**OWN YOUR OWN** Jean-Sportswear, Infant-Preteen or Ladies Apparel Store offering all nationally known brands such as Jordache, Chic, Lee, Levi, Vanderbilt, Calvin Klein, Wrangler over 200 other brands. \$7,900 to \$16,500 includes beginning inventory, airfare for one to Fashion Center, training, fixtures, grand opening promotions. Call Mr. Loughlin 612-835-1304.

38-1tp

**FOR SALE BY OWNER:** Newly remodeled home, 3 bedrooms, 1 3/4 baths, living room and den. Central air and heat, dishwasher, free standing base oven, eye level oven and cook top. Finished basement, could be 4th bedroom, partially covered patio 2 car detached garage, and large playhouse/storage building. Two blocks from high school. Call 874-3554 or after 5 p.m. 874-3829.

37-tfc



Two men were college Presidents before they became Presidents of the United States — Woodrow Wilson and Dwight Eisenhower.

**NOTICE OF PUBLIC HEARINGS CLARENDON CONSOLIDATED INDEPENDENT SCHOOL DISTRICT**

The Board of Trustees of Clarendon Consolidated Independent School District will hold a special hearing to adopt the 1982 tax rate at 7:30 p.m., September 28, 1982 at the Public School Administration Office.

37-2tc



**Lifestyle Tips**

Risk Of Fire Lower In Mobile/Manufactured Homes

By Lisa Drake  
Consumer Affairs Advisor  
Manufactured Housing Institute

The risk of fire is greater in a site-built house than in a mobile/manufactured home, according to a national study entitled "Comparison of Fire Risk in Mobile Homes and Site-Built Houses" by independent researcher Dr. Howard Gates.

The lower rate of fire incidence for mobile/manufactured homes, according to the study commissioned by the Manufactured Housing Institute, is due in large measure to the stringent fire safety features required by the Department of Housing and Urban Development (HUD) Manufactured Home Construction and Safety Standards.

Among the fire safety provisions HUD requires for every mobile/manufactured home built in America are:

- At least two easily accessible exits.

- Restrictive flame-spread requirements for all walls and ceilings, and for the interior finishes adjacent to cooking ranges, water heater and furnace enclosures.

- Smoke alarms and "emergency egress" windows that can be quickly "popped out" in case of fire, in all sleeping areas.

- Aluminum electrical wiring is strictly prohibited.

The Manufactured Housing Institute points out that, in many states, local building codes are far less demanding than these federal codes which all mobile/manufactured homes must meet. In fact, says MHI Chairman Wallace J. Conner, the manufactured housing industry pioneered the use of smoke detectors in residential dwellings!

**HEALTHY ADVICE**

by Fred Lucas, M.D.

**Exercise Pays Dividends**

Many of us feel guilty about not doing exercise. We continue to put it off although we know a regular schedule of exercise is one of the keys to a healthy, productive life.

Exercise to some sounds boring although just about everyone who jogs or runs claims to eat better, sleep better and feel better. And most of them do look better. But, somehow, exercise just doesn't seem much fun.

But with a large dose of willpower and patience, a faithfully kept schedule of exercise will pay dividends in good health. The first month or two of activity may tax your willpower because the benefits don't develop overnight. It will be a few weeks before you get that bounce in your step that suggests you're hooked on exercise and physical fitness.



Then, you may find it easier to cope with everyday stresses and cut down on cigarettes, coffee and alcohol. But the most important thing is to stay with the commitment.

Find a program that delights and captivates you and suits your lifestyle.

Search for activities that challenge you physically. As your endurance increases, your circulation and breathing will improve. Your heart and lungs will function better and become stronger as your body muscles become firm and supple.

A note of caution: While weak stomach or leg muscles can make you less attractive or cause discomfort, you can overdo the exercises—particularly in the beginning. Overtaxing a heart that is weak from lack of exercise can be fatal.

The best exercise for your heart involves rhythmic, repetitive motions. You should be able to sustain the exercise for two or more minutes without huffing and puffing for maximum benefit and to indicate you are becoming more physically fit.

Once you discover the joy of stimulating activity, you are likely to continue it for the rest of your life. Eventually, you'll look forward to exercising. You may even feel vaguely uncomfortable if you skip the exercises.

Remember, you're never too old to start, and you're never too much out of shape to change.

**TIRED OF TASTING BAD WATER?**

Get a water filter, get a lift by drinking a glass of purified water. Call D. James 874-3384 for information.

35-tfc

**FOR SALE**

1 block from High School - Mostly remodeled 4 bedroom, 2 bath home. New central heat and air system, new roof, fenced back yard, landscaped with nice large trees. Owner moving and must sell. Price lowered to \$38,000.00. Choice location.

JOE T. LOVELL

874-3556 or

226-3801.

**J & J**

**AUTO SALES**

Highway 287 West

874-3176

JACK CLIFFORD

JAMES MCKINNEY

**Announcing Bright Newhouse**

as a 1982 member of

**Texas Leaders Round Table**

An honor organization recognizing professional life insurance agents demonstrating marketing activity and unselfish service to policyholders.



**PUBLIC NOTICE**

BRIEF EXPLANATORY STATEMENTS OF PROPOSED

**CONSTITUTIONAL AMENDMENTS**

GENERAL ELECTION  
NOVEMBER 2, 1982

**PROPOSITION NO. 1 ON THE BALLOT**

House Joint Resolution 1 proposes a constitutional amendment that prohibits any state ad valorem tax. Receipts from previously authorized state ad valorem taxes that are collected after the effective date of the proposed amendment shall be deposited to the credit of the general fund of the county collecting the taxes and may be expended for county purposes. Taxes collected before that date shall be distributed by the legislature among educational institutions eligible to receive those funds under prior law. The proposed amendment also repeals a section of the Constitution levying an ad valorem tax for 17 state colleges and universities.

The proposed amendment will appear on the ballot as follows:

"The constitutional amendment repealing the state property tax."

**PROPOSITION NO. 2 ON THE BALLOT**

House Joint Resolution 62 as amended by Senate Joint Resolution 10 proposes a constitutional amendment that would eliminate the \$80,000,000 ceiling on state welfare aid during any fiscal year.

The amendment would set the state welfare spending limit at \$160,000,000 for the 1982-1983 biennium.

The amendment further provides that, for each subsequent biennium, the maximum amount spent for state welfare shall not exceed one percent of the state budget.

The proposed amendment will appear on the ballot as follows:

"The constitutional amendment to authorize the legislature to provide assistance through the appropriations process to needy persons and to place a ceiling on payments for dependent children at one percent of the state budget."

**PROPOSITION NO. 3 ON THE BALLOT**

Senate Joint Resolution 8 proposes a constitutional amendment that would exempt machinery and equipment used in the production of farm and ranch products from taxation. No dollar limits would be imposed and the exemption would apply to corporations and partnerships as well as to families and individuals.

The proposed amendment will appear on the ballot as follows:

"The constitutional amendment exempting implements of husbandry (agricultural machinery and equipment) from ad valorem taxation."

**PROPOSITION NO. 4 ON THE BALLOT**

House Joint Resolution 77 proposes a constitutional amendment that would authorize the Legislature to set a four year maximum term of office for board members of certain water districts and conservation and reclamation districts.

The proposed amendment will appear on the ballot as follows:

"The constitutional amendment authorizing the Legislature to provide terms not to exceed four years for members of governing boards of certain water districts and conservation and reclamation districts."

**PROPOSITION NO. 5 ON THE BALLOT**

House Joint Resolution 119 proposes a constitutional amendment that would authorize Tarrant and Bee counties to hold county-wide elections to abolish the county treasurer's office by majority vote.

Should the county treasurer's office be abolished, the duties, powers, and functions of that office would be transferred to the county auditor or the successor to the auditor's functions.

The proposed amendment will appear on the ballot as follows:

"The constitutional amendment to abolish the office of county treasurer in Tarrant and Bee counties."

**PROPOSITION NO. 6 ON THE BALLOT**

Senate Joint Resolution 6 proposes a constitutional amendment that would raise the constitutional interest rate limit on state general obligation bonds from 8% to 12%. The new 12% ceiling does not, however, apply to bonds issued by the Veterans' Land Board.

The proposed amendment will appear on the ballot as follows:

"The constitutional amendment increasing the maximum interest rate allowed on state general obligation bonds to a weighted average annual interest rate of 12%."

**MEDICAL JOURNAL**



A recent broadcast sponsored by the Columbia-Presbyterian Medical Center and The Prudential Insurance Company discussed several options for correcting vision following cataract surgery.

Dr. James Aquavella, professor of ophthalmology at the University of Rochester, reports that drawbacks associated with using heavy spectacles, the traditional post-surgical therapy, have made doctors consider alternatives for the nearly 500,000 men and women who have their clouded lenses surgically removed each year.

"Extended wear" contact lenses have proven to be a popular alternative to heavy spectacles. The extended wear lens permits the passage of fluid and oxygen to keep the eye healthy, and offers the prospect of increased convenience for active individuals.

The "intra-ocular" lens is usually implanted in the eye at the same time the clouded lens is removed during cataract surgery. Dr. Aquavella cautions that consideration should be given to the added risk factor in the surgery. "Although the risk is manageable, it is still greater than the risk associated with the contact lens," he says.

**MIKE'S**



**PHARMACY**

874-3554

Limited Rights Reserved

Mail Orders Receive Prompt Service

Senior Citizens Receive 15% Discount on Prescriptions

**ARTHRITIS-AIDS**

Approximately 20 million people in the United States are afflicted with some form of arthritis. Although the disease is generally not life-threatening, it is progressive and can lead to substantial crippling. Many drugs are available for treatment. They offer symptomatic relief and vary greatly in their individual effectiveness.

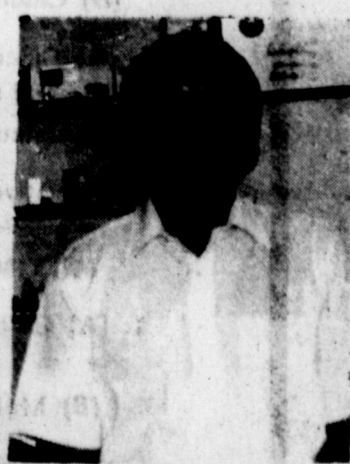
Two new drugs, piroxicam and benoxoprofen, have stirred some excitement in recent months. Both drugs belong to the general class known as non-steroidal anti-inflammatory agents. They differ from previous drugs because they stay in the body longer and need to be taken only once daily. Most arthritis drugs must be taken two or more times daily.

These new drugs are reported to have few side effects, but, like other non-steroidal agents, may cause stomach irritation. Taking the medications with food or milk usually reduces this effect. In a few instances, benoxoprofen has been found to cause slight separation of the finger and nail, as well as skin rash on exposure to sunlight. Both drugs are expected to be well tolerated and may offer convenience and relief to many arthritis sufferers.



FERRY HODGE

**WE WANT TO BE YOUR**



MIKE BUTTS

**PHARMACISTS!**



DONLEY COUNTY QUARTERLY REPORT  
April, May, June 1982

Table with columns: FUND, BALANCE 4-1-82, RECEIPTS, EXPENDITURES, BALANCE 6-30-82, CERTIFICATE OF DEPOSIT. Rows include General, Lateral Road, Farm To Market, Road Bond Sinking, Revenue Sharing Demand & Trust, Jail Construction, Jail Bond Sinking, Time Deposit Open Account, Donley County Old Courthouse, and TOTALS.

THE STATE OF TEXAS  
COUNTY OF DONLEY

We, The Commissioners Court of Donley County, Texas, hereby certify the requirements of Art. 1636 of Vernon's Ann. Civil Statutes, have fully complied with each of us at the ... term, A. D., 1982 of The Commissioners Court and the cash and other assets mentioned in the above proceedings, County Treasurers report, made and held by her for the County have been fully inspected and counted by us and that the said amount of said money and other assets as shown above are true and correct to the best of our knowledge.

J. R. Graham  
Commissioner, Pct. 1

W. R. Christal, County Judge

Buford Holland  
Commissioner, Pct. 3

Claude Moore  
Commissioner, Pct. 2

Freida Gray, County Treasurer

William Chamberlain  
Commissioner, Pct. 4

Attest: P. C. Messer  
County Clerk

Arts & Crafts Bazaar in Childress

The Alpha Delta Omega chapter of Beta Sigma Phi of Childress would like to inform your community of our annual Arts and Crafts Bazaar. It will be held in the Childress City Auditorium on September 25 from 10:00 until 5:00. Watercolors, acrylics, pottery and hand-made items by area artists will be featured. The proceeds collected by Alpha Delta Omega will go toward a scholarship fund and community projects.

LION news and notes

MEETING TOMORROW'S CHALLENGES  
Service clubs have often taken the lead in providing leadership training and opportunities for young people in their communities. Programs such as youth exchanges, student speaker contests, youth camps and scholarships are offered by many organizations as a way of encouraging today's youth to prepare for tomorrow's challenges. At the same time, they enjoy the fellowship and sense of belonging shared by fellow Leos in 91 countries around the world. Like their adult counterparts, Leo Clubs raise funds in their community in order to carry out much-needed programs. Often they join their sponsoring Lions Club to carry out joint projects, such as collecting used eyeglasses to be sorted and shipped to places in the world where they are badly needed. Through these activities, Leos experience first-hand the trials and rewards of leadership. They learn to set priorities, establish objectives and develop the group or organizational skills needed to reach their goals.



NOTICE OF CALCULATION OF EFFECTIVE TAX RATE AND PUBLICATION OF ESTIMATED UNENCUMBERED FUND BALANCES

I, Charles SoRelle, Acting Tax Assessor Collector, for the County of Donley, in accordance with the provisions of Sec. 26.04 of the Property Tax Code, have calculated the tax rate which may not be exceeded by more than three percent by the governing body of the County of Donley without holding a public hearing as required by the code. That rate is as follows: \$ .21466 per \$100 of value.

The estimated unencumbered balances for Maintenance & Operation fund: \$ 0.00  
The estimated unencumbered balances for Interest Sinking fund: \$ 2,000.00  
Charles SoRelle, Acting Tax Assessor Collector 9-13-82

Wanda Smith, Tax Assessor Collector

Calculation of the Effective Tax Rate By Counties

Table with columns: MAINTENANCE AND OPERATION (M&O) TAX RATE FOR 1982, MAINTENANCE OPERATION (av), BONDED DEBT (jb), FM ROAD (special). Rows include 1. (A) 1982 Total Taxable Value of All Property, (B) Subtract 1982 Taxable Value of New Improvements Added, (C) Subtract 1982 Taxable Value of Property Added by Annexation, (D) Adjusted 1982 Taxable Value for Calculation, 2. (A) 1981 Total Tax Levy from the 1981 Tax Roll, (B) Subtract 1981 Taxes Levied for Maintenance and Operation (M&O) on Property in Territory that Has Ceased to be a Part of the Unit in 1982, (C) Subtract 1981 Debt Service (I&S) Levy, (D) Subtract 1981 Taxes Levied for Maintenance and Operation (M&O) on Taxable Value of Property Becoming Exempt in 1982, (E) Subtract 1981 Taxes Levied for Maintenance and Operation (M&O) on Taxable Value of Property Lost Because Property is Required to be Appraised in 1982 at Less than Market Value, (F) Adjusted 1981 Tax Levy for Calculation, 3. (A) Adjusted 1981 Tax Levy for Calculation (2F above), (B) Divided by Adjusted 1982 Taxable Value for Calculation (1D above) Multiplied by \$100 Valuation, (C) Calculated Maintenance and Operation (M&O) Rate for 1982.

INTEREST AND SINKING RATE FOR 1982

Table with columns: 4. (A) 1982 Tax Levy Needed to Satisfy Bonded Indebtedness or Debt Service (I&S), (B) 1982 Total Taxable Value of All Property, (C) Divide the 1982 Tax Levy for Debt Service (I&S) (4A above) by the 1982 Taxable Value for I&S (4B above) Multiplied by \$100 Valuation, (D) Calculated Interest and Sinking (I&S) Rate for 1982, 5. (A) Calculated Maintenance and Operation (M&O) Rate for 1982 (3C above), (B) Add Calculated Interest and Sinking (I&S) Rate for 1982 (4D above), (C) Calculated 1982 Effective Tax Rate for This Tax.

1982 Effective Tax Rate is the tax rate published by the tax assessor, as required by Sec. 26.04 of the Property Tax Code.

MAXIMUM TAX RATE (After Calculation of All Parts and Adding Together)

Table with columns: 1. (A) Calculated 1982 Effective Tax Rate (5c above), (B) Multiplied by Three Percent (3%) Equals Amount of Increase Allowed by Code, (C) 1982 Maximum Tax Rate.

1982 MAXIMUM TAX RATE is the tax rate which, if exceeded, triggers the public notice and public hearing requirements of Sec. 26.06 of the Property Tax Code.



# Martin-Ashtola News

By NAOMI GREEN

Carline Hollar made a business trip to Amarillo Thursday and visited with her mother, Mrs. Carl Taylor.

Kathrine Green took Clint to the doctor in Amarillo Thursday. She was back with Lindsey's ears and to have her cast off on Friday.

Hazel, J.R. and W.D. Brandon along with Oscar Thomas celebrated W.D. and Hazel's birthday at the home of Jimmy Lee and Don Matherson in Claude Sunday.

Mr. and Mrs. Doyce Graham attended the funeral of Ruth Adcox in Groom Tuesday morning.

Hazel Brandon, Edgar Mae and Mable Mongole and several others from Clarendon attended the district of Donley, Hall, Childress Collingsworth counties Delta Kappa Gamma brunch at the Goodnight Community Center Saturday morning.

Jimmy Goodman of Springfield, Mass. visited his cousin Viola Graham Thursday.

Horace and Naomi Green and Donald White attended an appreciation dinner for Jack Hightower at the Hilton Inn in Amarillo last week sponsored by Electric Associations Rural Friends Acre.

Ruby Jewel Hardin went to Silvertown Saturday to a baby shower for Paula Garvin.

Helen Crawford from Grandprairie spent Friday with Viola Graham.

Robert Tolbert Jr. and his wife Barbara have moved back to Martin and are remodeling a home there. We want to congratulate them on the arrival of new son, Robert Lee III.

Naomi and Horace Green and Don Robinson were voters from Donley County at the annual Federal Land Bank meeting at Paducah last week.

Kay Talley and boys of Hedley visited with the Jerry Green family Monday.

Kathryn and Steve Scott of Amarillo visited with the Dane Perdue family this weekend.

Maxine Orcutt and Wayne Cheek were weekend visitors in the Clifford Jewett home. Hubert Rhoades came for lunch and the ball game Sunday.

Mrs. Haskell Talley of Memphis visited with her daughter and family the Jerry Greens Wednesday.

Veda Mahaffey has been back in St. Anthony's hospital last week. She hopes to come home Monday.

## Xi Lambda

## Xi met

There were dishes of salad, piles of crackers and some wonderful casseroles stacked high on Pat McCombs table Monday evening as the first regular meeting of Xi Lambda Xi chapter of Beta Sigma Phi convened. Food flowed as freely as did the conversation and visiting as sisters met again after the long summer break.

After a very complex and chattered business meeting, Gloria Gage presented to us the forthcoming years' programs which will involve types of communications. The meeting was then dismissed and everyone took their empty dishes home.

Those attending were: Peggy Anderson, Pat Archuleta, Maurine Butts, Carol Bryant, Katie Dvorak, Genella Eads, Gloria Gage, Dona Goss, Frankie Henson, Susan Henson, Becky Hill from Hedley, Pat McCombs, Sandra Mooring, Betty Veach and Beth Walker attend for a brief stay, we were so glad to see her up and about and looking her cheerful self.

The next meeting will be "out in the country" so wear jeans or slacks that won't snag, bring a light jacket and plan on a high adventure at Katie Dvorak's home.

Mr. and Mrs. Clifford Jewett made a business trip to Amarillo Saturday to get Clifford's new horse, Susie Qu.

Mary Green was in Amarillo Tuesday to take Christel to the doctor.

Geneva and Burl Johnson visited with the James Tolberts Sunday afternoon.

The Martin Baptist Church Revival started Sunday evening and will finish with "dinner on the ground" next Sunday.

Reba and Carl McDaniel from Ft. Worth visited with Mary Land and Pat Scroggins last week.

Brad Shadle spent the night with Brad Uppergrove Saturday.

Horace Green made a business trip to Canyon Sunday. He and his father, Joe went to Umberger to see the Billy Jack Green family.

## Chamberlain Community news

Chamberlain Community Center had a nice crowd for their last meeting, and the next regular meeting will be Friday night September 17th. Mr. Clarence Ayres' daughter was a guest at the last meeting.

Dennis and Loretta Harrison had a wonderful time in Austin, Labor Day weekend. They visited Bill and Martha Dolman and Rachael, attended the wedding anniversary celebration for Susi and Paul Guyton, and birthday party for Ron Dolman, and visited with Debbie and Aaron Morris and family. They took a tour of Historical Places in and around Austin.

Carmen Wright returned home Thursday from a visit with Mr. and Mrs. John Sommers, Scotty and Nicholas in Dallas.

Ernest and Roxie Barbee spent the weekend in Ruidosa, New Mexico with Mr. and Mrs. Dave Cox.

Janice Barbee, Beth and Tommy spent the weekend in Booker with Mr. and Mrs. Norman Fay.

Mrs. Minnie Cannon had supper Friday night with Mr. and Mrs. Jack Leeper, Bryan and Charla.

Fred Molesworth visited Dennis Harrison Friday night.

Mr. and Mrs. Dalton James were luncheon guests of Bud and Carmen Wright Saturday.

Red and Louise Carter spent Saturday night with Mrs. Clara Mae Carter.

Mr. and Mrs. J.D. Crawford of Grand Prairie visited Bud and Carmen Wright Saturday afternoon.

Red and Louise Carter and Mrs. Clara Mae Carter were dinner guests of Henry and Eunice Mann Sunday.

Dennis and Loretta Harrison helped Anna celebrate her birthday with supper and a show Saturday night.

Eddie Taylor had breakfast with Mrs. Minnie Cannon Saturday morning.

Bradis Ballew visited Mrs. Clara Mae Carter Sunday afternoon and they visited Ruth and Nell Corbin.

Richard and Ethel Dingler visited Jiggs and Evelyn Mann Sunday afternoon.

Nathan Helms spent Monday with his grandparents Mr. and Mrs. Delmar Kootz.

**SAFETY CHECK**  
**FARM EQUIPMENT**



## Robert Lee Tolbert III

Robert Lee Tolbert III was born September 2nd at Hall County Hospital. He weighed 6 lbs. 8 oz.. Proud parents are Robert and Barbara Sue Tolbert of the Martin Community.

Proud grandparents are Robert and Betty Tolbert of Clarendon, Tommy Scott of Dumas and C.A. Scott of Prescott, Arizona.

## Ontiveros baby girl

Ava and Cecilio Ontiveros, Jr. of Springlake would like to announce the arrival of their first daughter, born August 31 in Plainview hospital. The little lady weighed 8 lbs and 3 oz. and was 21 inches long.

Proud grandparents are Mr. and Mrs. Cecilio Ontivero, Sr. of Springlake and Irene Vinson of Clarendon.

## New Car List

### Purchased from Chamberlain Motor Co.

1982 GMC PU by Willie Torres, Jr., Memphis.  
1982 Buick by Bill McElduff, Amarillo.

1982 Buick by T.J. Campbell, Clarendon.  
1982 GMC Suburban by Arvel Wilson, Pampa.

1982 Olds by Lanny Tucker, Estelline.  
1982 GMC Caballero by Merlie Courson, Pampa.

1982 Olds by Colleen L. Weeks, Amarillo.  
1982 Cadillac by T.M. Caldwell, Jr., Clarendon.

1982 Cadillac by Fred Haiduk, Groom.  
1982 GMC PU by Hugh Sanders, Clarendon.

1982 GMC PU by Bob Mullican, Amarillo.  
1982 GMC PU by Faylon Watson, Clarendon.

1982 Cadillac by Helen Hogan, Pampa.  
1982 GMC PU by Billy D. Bowman, Estelline.

1982 Olds by Mrs. E. Ray Jones, Pampa.  
1982 Buick by Rheua Kile, Amarillo.

1982 Buick by Bob Mullican,

Amarillo.  
1982 Buick by Charlotte Ann Clark, Amarillo.  
1982 Buick by Carroll Knorpp, Clarendon.

The Star Spangled Banner was sung for the time in Baltimore on October 19, 1814.

**REPORT FROM SECRETARY OF STATE DAVID A. DEAN**

*Elections Update*

The Secretary of State's Office will undertake vote tabulation in primary and general elections beginning with the November 2 general election. The Texas Election Bureau (TEB) has unanimously voted not to tabulate results for the upcoming general election and instead supports a merger of experience, and expertise with the Secretary of State's Office.

The TEB, a non-profit corporation formed in 1934, is to be commended for filling a major void left by the State, however, the time has clearly come for the State to take on the statewide vote tabulation process. The proposal is supported by Governor Clements, Lt. Governor Hobby, Speaker Clayton, and State Representative Gib Lewis. In addition, Representative Lewis has agreed to be the House sponsor of legislation to institutionalize the vote tabulation process in the Secretary of State's Office.

As the Chief Election Officer of the State, responsibility for ensuring uniform administration of Texas' elections and election laws is vested with the Secretary of State's Office, and to that end, prompt statewide election returns in a quasi-official manner will reduce the opportunity for election fraud and post-election electioneering. I am confident that with the support of the Texas news media, the support of the Texas Election Bureau's Board of Directors, and the state's

county clerks, the state-sponsored vote tabulation project beginning with the November 2 general election will be a successful undertaking and serve to ensure that opportunities for election fraud are minimized while information flow to the voters, candidates, and news media is maximized. Clearly, Texas voters and candidates must have full confidence that their votes will be properly counted and officially reported in the most timely manner possible.

The current membership of the Board of Directors of the Texas Election Bureau and three additional representatives of the news media have been asked to serve in an advisory capacity to the Secretary of State's Office in this project with particular emphasis on developing the format of the election returns to be reported on November 2, 1982. The expertise and experience of the TEB Board members will ensure that the needs of the Texas media are well served and represented. Considerations for expanded and specialized services to the news media such as coverage of Texas House and Senate races and regional breakdowns of statewide races are being fully assessed and analyzed for implementation. The Task Force will be convened in Austin on September 8, 1982 to review and take action on a Secretary of State Election Central operation manual.

The County Clerks of Texas have also been asked to assist the Secretary of State's Office by reporting county vote totals to the Secretary of State's Office on election night. Clearly, the support of these officials is essential to the success of the project. In addition, volunteers from the Secretary of State's Volunteer Inspector program will be utilized to report vote totals to the Secretary of State Election Central.

All Texans not currently registered to vote are encouraged to do so by October 3, 1982, in order to vote in the November 2 general election. To obtain a voter registration card, contact your county Voter Registrar or call the Secretary of State's Office toll-free at 1-800-252-9602.

**BIVENS PHARMACY**  
ELMONETTE and PAUL BIVENS  
Two Registered Pharmacists To Serve You

**PRELL** 11 oz **\$1.79**

**SCOPE** 24 oz **\$1.99**

**HEAD & SHOULDERS**  
**\$1.19**  
4 oz Tube

**FLEX CARE** 12 oz **\$2.49**

**REXALL SINUREX**  
SINUS TABLETS **\$1.99**  
For fast relief of sinus headache pain and nasal congestion.  
30's  
Same as Sinutab

**VASELINE**  
15 oz  
The Best Skin Softener Made  
**\$2.69**

**Daytime Extra Absorbant PAMPERS**  
24  
**\$3.19**

**QUIET-NITE**  
**\$2.49**  
Same as Ny-Quil

100 Rexall  
**NO-ASPIRIN**  
**\$1.99**  
Same as Tylenol

**BOUNTY**  
**79¢**  
The Best



### Obituaries Debra Mae Heckman

Funeral services for Miss Debbie Mae Heckman, age 30, were held at 2:00 p.m. on Wednesday, September 15, 1982 in Robertson Chapel of Memories with Bright Newhouse, Church of Christ minister and Don Stone, Pastor of the Hedley Church of Christ, officiating. Interment was in Citizens Cemetery with the arrangements under the direction of Robertson Funeral Directors.

Miss Heckman died on Sunday, September 5, 1982 at her residence in Bullhead City, Arizona where she had resided for the past eight years. She was born October 23, 1951 in Panna. She was

previously a resident of Clarendon and attended Clarendon Schools. She attended college at Denton, Texas and the Northwest Texas School of Nursing in Amarillo. She was a member of the Church of Christ.

Survivors include her father, Ray Heckman of Amarillo; her adopted parents, Mr. and Mrs. Bill Moore of Clarendon; her grandmother, Mrs. George Heckman of Clarendon; her grandfather, Jess L. Moore of Vallejo, California; three half-sisters, Audrey of Minden, Nevada, Pat Arnold of Silberton, Sherri Heckman of Amarillo; and one half-brother, Randy Heckman of Amarillo.

Casket bearers were Frankie Ellis, Jerry Green, Willie Craft, Ike O'Neal, Steve Allen, and Jimmy Jackson

### Amarillo SS office moved

Because of structural damage to the building which housed the Amarillo Social Security Office at 3119 SW 27th, the office has temporarily relocated to Room 112 of the Marvin Jones Federal Building, 205 East 5th Street.

The office will be at this location until permanent space can be located. The staff can provide the same range of services as they did at the former location. General inquiries can be answered by calling 376-2241 and claims can be filed by telephone by calling 376-2231.

### A&M researching cotton gin trash as new energy source

**COLLEGE STATION** — An agricultural engineer says Texas A&M University researchers are developing the nearest thing to a perpetual energy machine in a cotton gin that is powered by the trash it creates.

The implication of gin trash research, as well as other research presently under way at Texas A&M, would allow farmers to be more energy independent, said Dr. Calvin Farnell, a member of the research team. Much of the research being conducted cooperatively by Texas A&M's Center for Energy and Mineral Resources and the Texas Agricultural Experiment Station, part of the Texas A&M University System.

study by a Texas A&M University energy research group, and those that have programs maintain them whether or not they are beneficial.

Since patrol cars constitute an estimated 68 percent of the total fleet in American police departments — amounting to at least 217,000 vehicles which average less than 10 miles per gallon and burn at least a billion gallons of gasoline annually — the issue of conserving fuel is not a small one, says Dr. Ben Crouch, the author of the report.

port. Savings of one mile per gallon could conserve as much as 100 million gallons of fuel each year.

utilizes developing alternative fuels derived from plants, such as cotton, sorghum, wheat, corn and rice, or plant residues.

"Utilizing cotton gin trash as an alternative fuel seems most promising and the potential will become even greater as the cost of electricity, natural gas and propane increases," said Farnell.

**Police officers unconcerned about fuel conservation**

**COLLEGE STATION** — When it comes to saving gasoline, most police officers operating a patrol care are DWI — driving without interest.

Many municipal police departments have failed to establish systematic programs to conserve fuel, according to a

## CLARENDON GRAIN ELEVATOR

**874-3172**  
Call Collect Amarillo 373-5711

For all type For All Types Of Grain

**Reserve and Cash**

#### NOTICE OF CALCULATION OF EFFECTIVE TAX RATE AND PUBLICATION OF ESTIMATED UNENCUMBERED FUND BALANCES

*Charles SoRelle 9 13 82*

I, Charles SoRelle, Tax Assessor Collector, for the City of Clarendon, in accordance with the provisions of Sec. 26.04 of the Property Tax Code, have calculated the tax rate which may not be exceeded by more than three percent by the governing body of the City of Clarendon without holding a public hearing as required by the code. That rate is as follows:

**\$.34664 per \$100 of value.**

The estimated unencumbered balances for Maintenance & Operation fund: **\$ 23,835.66**  
The estimated unencumbered balances for Interest Sinking fund: **\$ 0**

I, Charles SoRelle, Tax Assessor Collector, for City of Hedley, in accordance with the provisions of Sec. 26.04 of the Property Tax Code, have calculated the tax rate which may not be exceeded by more than three percent by the governing body of the City of Hedley without holding a public hearing as required by the code. The rate is as follows:

**\$.18995 per \$100 of value.**

The estimated unencumbered balances for Maintenance & Operation fund: **\$**  
The estimated unencumbered balances for Interest Sinking fund: **\$ 0**

I, Charles SoRelle, Tax Assessor Collector, for Donley County Hospital District in accordance with the provisions of Sec. 26.04 of the Property Tax Code, have calculated the tax rate which may not be exceeded by more than three percent by the governing body of the Donley County Hospital District without holding a public hearing as required by the code. The rate is as follows:

**\$.16090 per \$100 of value.**

The estimated unencumbered balances for Maintenance & Operation fund: **\$ 5,909.66**  
The estimated unencumbered balances for Interest Sinking fund: **\$ 94.60**

I, Charles SoRelle, Tax Assessor Collector, for Clarendon Junior College in accordance with the provisions of Sec. 26.04 of the Property Tax Code, have calculated the tax rate which may not be exceeded by more than three percent by the governing body of the Clarendon Junior College District without holding a public hearing as required by the code. The rate is as follows:

**\$.16127 per \$100 of value.**

The estimated unencumbered balances for Maintenance & Operation fund: **\$ 1,679.26**  
The estimated unencumbered balances for Interest Sinking fund: **\$ 0**

#### CALCULATION MAINTENANCE AND OPERATION (M&O) TAX RATE FOR 1982

	CLARENDON	HEDLEY	HOSPITAL	COLLEGE
1. (A) 1982 Total Taxable Value of All Property (Assumption No. 8)	\$ 32,360,905	\$ 4,171,545	\$ 104,878,180	\$ 104,878,180
(B) Subtract 1982 Taxable Value of New Improvements Added (Assumption No. 9)	— \$ 238,070	\$ 64,440	\$ 502,440	\$ 502,440
(C) Subtract 1982 Taxable Value of Property Added by Annexation (Assumption No. 10)	— \$ - 0 -	\$ - 0 -	\$ - 0 -	\$ - 0 -
(D) Adjusted 1982 Taxable Value for Calculation	\$ 32,122,835	\$ 4,107,105	\$ 104,375,740	\$ 104,375,740
2. (A) 1981 Total Tax Levy from the 1981 Tax Roll (Assumption No. 1)	\$ 111,659	\$ 7,864	\$ 172,274	\$ 170,317
(B) Subtract 1981 Taxes Levied for Maintenance and Operation (M&O) on Property in Territory that Has Ceased to be a Part of the Unit in 1982 (Assumption No. 5)	— \$ - 0 -	\$ - 0 -	\$ - 0 -	\$ - 0 -
(C) Subtract 1981 Debt Service (I&S) Levy (Assumption No. 3)	— \$ - 0 -	\$ - 0 -	\$ 68,910	\$ 15,329
(D) Subtract 1981 Taxes Levied for Maintenance and Operation (M&O) on Taxable Value of Property Becoming Exempt in 1982 (Assumption No. 8)	— \$ 97	\$ - 0 -	\$ 40	\$ 60
(E) Subtract 1981 Taxes Levied for Maintenance and Operation (M&O) on Taxable Value of Property Lost Because Property is Required to be Appraised in 1982 at Less than Market Value (Assumption No. 7)	— \$ 210	\$ 63	\$ 3,958	\$ 6,002
(F) Adjusted 1981 Tax Levy for Calculation	\$	\$ 7,802	\$ 99,366	\$ 148,926
3. (A) Adjusted 1981 Tax Levy for Calculation (2F above)	\$ 111,351	\$ 7,802	\$ 99,366	\$ 148,926
(B) Divided by Adjusted 1982 Taxable Value for Calculation (1D above)	÷ \$ .0034664	\$ 4,107,105	\$ 104,375,740	\$ 104,375,740
Multiplied by \$100 Valuation	X \$100	.0018995 X \$100	X \$100	X \$100
(C) Calculated Maintenance and Operation (M&O) Rate For 1982	\$ .34664 / \$100	\$ .18995 / \$100	\$ .09520 / \$100	\$ .14268 / \$100

#### INTEREST AND SINKING RATE FOR 1982

4. (A) 1982 Tax Levy Needed to Satisfy Bonded Indebtedness or Debt Service (I&S) (Assumption No. 11)	\$ - 0 -	\$ - 0 -	\$ 68,910	\$ 19,500
(B) 1982 Total Taxable Value of All Property (Assumption No. 8)	\$ 32,360,905	\$ 4,171,545	\$ 104,878,180	\$ 104,878,180
(C) Divide the Adjusted 1982 Tax Levy for Debt Service (I&S) (4A above) by the Adjusted 1982 Taxable Value for I&S (4B above)	\$ - 0 -	\$ - 0 -	\$	\$
( \$ - 0 - ÷ \$ 0.00 )	\$ - 0 -	\$ - 0 -	\$	\$
Multiplied by \$100 Valuation	X \$100	X \$100	X \$100	X \$100
(D) Calculated Interest and Sinking (I&S) Rate for 1982	\$ - 0 - / \$100	\$ - 0 - / \$100	\$ .06570 / \$100	\$ .01859 / \$100
5. (A) Calculated Maintenance and Operation (M&O) Rate for 1982 (3C above)	\$ .34664 / \$100	\$ .18995 / \$100	\$ .09520 / \$100	\$ .14268 / \$100
(B) Add Calculated Interest and Sinking (I&S) Rate for 1982 (4H above)	÷ \$ - 0 - / \$100	\$ - 0 - / \$100	\$ .06570 / \$100	\$ .01859 / \$100
(C) Calculated 1982 Effective Tax Rate	\$ .34664	\$ .18995	\$ .16090 / \$100	\$ .16127

#### MAXIMUM TAX RATE

1982 MAXIMUM TAX RATE is the tax rate which, if exceeded, triggers the public notice and public hearing requirements of Sec. 26.06 of the Property Tax Code.

1. (A) Calculated 1982 Effective Tax Rate (5C above)	\$ .34664 / \$100	\$ .18995 / \$100	\$ .16090 / \$100	\$ .16127 / \$100
(B) Multiplied by Three Percent (3%)	X .03	X .03	X .03	X .03
(C) Equals Amount of Increase Allowed by Code	\$ .01047	\$ .00570	\$ .00483	\$ .00484
(D) 1982 Maximum Tax Rate (1A + 1C, above)	\$ .35711 / \$100	\$ .19565 / \$100	\$ .16573 / \$100	\$ .16611 / \$100



# IN AND AROUND HEDLEY

## SENIOR CITIZENS CALENDAR

### CHURCH CALENDAR

**UNITED METHODIST CHURCH**  
Hedley, Texas  
Wm. H. [BML] Watson  
874-3879  
Sunday School 10:30 a.m.  
Morning Worship 9:30 a.m.  
Wednesday Bible Study 7:00 p.m.

**FIRST BAPTIST CHURCH**  
Hedley  
856-2921  
Bryan Knowles, Pastor  
Sunday School 10:00 a.m.  
Worship 11:00 a.m.  
Evening 6:00 p.m.  
Wednesday Night Service 6:30 p.m.

**CHURCH OF CHRIST**  
Hedley  
Don Stone 874-2594  
Connie DeBord 856-2581  
Sunday School 10:00 a.m.  
Worship 11:00 a.m.  
Evening 6:00 p.m.  
Wednesday Night Service 8:00 p.m.

## Messer presides at Gama Kappa

The September meeting of Gamma Kappa Chapter of Delta Kappa Gamma Society was held at the Community Center in Goodnight, Sept. 11, 1982 for a 10 a.m. brunch. The delicious brunch was catered by Brenda Ward of Amarillo.

Evelyn Messer, incoming president, called the meeting to order. Maudie Coffee of Wellington gave the invocation. The minutes of the last meeting were read by Boneta Myers and Inez Blankenship gave the report of the treasurer.

Evelyn Messer gave high lights of the State Convention held in June in Austin. During the business session detailed plans were made for the Area Workshop to be in Childress, Sept. 18, 1982.

The meeting closed with the group singing the Delta Kappa Gamma song.

Members attending from Donley County were: Evelyn Messer, Hazel Brandon, Iva Dee Hinkle, Mabel Mongole, Zola Donald, Inez Blankenship and Edgar Mae Mongole.

## Hedley News

Audrey Hoggard is in the hospital in Amarillo, St. Anthony's. Audrey was trampled by a horse, she is the grand-daughter of Mr. and Mrs. Clyde Hoggard.

The Balls had company Thursday. Friday and Saturday from Prescott, AZ, Mr. and Mrs. Chewning.

Mr. L.D. Ball went to the VA hospital Sunday and is scheduled for surgery.

Mr. and Mrs. Bobby Wiggins and family have gone on vacation to Colorado.

Cliff Parks from Alvin, TX and Mrs. Ailene Smith from Amarillo are visiting Lila Wiggins and brother Robert Parks.

## Cheese for Hedley eligible

Government cheese will be available to those individuals who are eligible to receive it from the Hedley Senior Citizens Hall Thursday, Sept. 16 from 1:30 until 4 p.m.

Those eligible are: food stamp recipients, Medicare recipients, those on SSI and

receiving aid to dependent children and those who have children in the free school lunch program, 60 or older and financially in need and with social security as the only income, unemployed or those on workers compensation and rental subsidy.



by Dr. Richard Ryan, Consultant to the Nutrition Industry

## Youth Diet Needs Supplements Too

It's a common human failing to ignore our state of health until we are ill. Likewise, we are more concerned about supplementing our diets when we are more aware of our mortality, say in our 30's or 40's, rather than in the more "immortal" period of our preteens.

But I feel it's important, especially with today's nutritionally threadbare foods, to

supplement our children's diets. Unfortunately there are not too many formulations I can recommend, as most contain too much sugar, unsuitable vitamin dosages, high toxicity levels or a total absence of the latest scientific discovery, trace elements.

One new formula has come to my attention that appears to comprise such essentials. Called Grow 'N Up, it's formulated for children aged 3-13, and the dosage is based on their weights rather than their ages.

For example, the product is the only child supplement to contain the trace minerals selenium, GTF chromium, and carotene. It also contains the optimum amounts of magnesium, zinc, iron and manganese.

Its formula also deletes or replaces those nutrients that are already plentiful in the diets of most children or that have low toxicity levels. Hence it does not contain calcium, phosphorus or vitamin D. In addition, it is formulated with carotene rather than preformed vitamin A.

The child supplement is available only through the distributor, Paradise Marketing, 1461 North Daly, Anaheim, CA 92806. 714/635-1423.



Every time you smile, you use thirteen muscles. When you frown, you use fifty muscles.



The nearest relative of the hippopotamus is the common pig.

Exercise 10:30 a.m.  
Quilting 8:00-4:00  
Games 8:00-4:00  
Lunch 12:00 Noon

Exercise 10:30 a.m.  
Quilting 8:00-4:00  
Games 8:00-4:00  
Lunch 12:00 Noon  
Games 7:00-10:00

Exercise 10:30 a.m.  
Staff Meeting  
Quilting 8:00-4:00  
Games 8:00-4:00  
Lunch 12:00 Noon  
Games 7:00-10:00

Exercise 10:30 a.m.  
Nutrition Lessons  
Quilting 8:00-4:00  
Games 8:00-4:00  
Lunch 12:00 Noon  
Do Your Own Thing Club 2:00-4:00

Exercise 10:30 a.m.  
Quilting 8:00-4:00  
Games 8:00-4:00  
Lunch 12:00 Noon

I, Charles SoRelle, Tax Assessor Collector, for Clarendon Consolidated Independent School District, in accordance with the provisions of Sec. 26.04 of the Property Tax Code, have calculated the tax rate which may not be exceeded by more than three percent by the governing body of the Clarendon Consolidated Independent School District without holding a public hearing as required by the code. The rate is as follows: **\$.49724** per \$100 of value.

### NOTICE OF CALCULATION OF EFFECTIVE TAX RATE AND PUBLICATION OF ESTIMATED UNENCUMBERED FUND BALANCES

The estimated unencumbered balances for Maintenance & Operation fund: **\$98,762.00**  
The estimated unencumbered balances for Interest Sinking fund: **\$10,733.00** 9-13-82

*Charles SoRelle*  
Charles SoRelle, Tax Assessor Collector, Clarendon School

The estimated unencumbered balances for Maintenance & Operation fund: **\$22,508.00**  
The estimated unencumbered balances for Interest Sinking fund: **\$886.00** 9-13-82

*Charles SoRelle*  
Charles SoRelle, Tax Assessor Collector, Hedley School

I, Charles SoRelle, Tax Assessor Collector, for Hedley Consolidated Independent School District in accordance with the provisions of Sec. 26.04 of the Property Tax Code, have calculated the tax rate which may not be exceeded by more than three percent by the governing body of the Hedley Consolidated Independent School District without holding a public hearing as required by the code. The rate is as follows: **\$.62516** per \$100 of value.

### CALCULATION

#### MAINTENANCE AND OPERATION (M&O) TAX RATE FOR 1982

1. (A) 1982 Total Taxable Value of All Property (Assumption No. 8)	\$ 81,805,280	\$ 17,601,629
(B) Subtract 1982 Taxable Value of New Improvements Added (Assumption No. 9)	\$ 437,080	\$ 68,440
(C) Subtract 1982 Taxable Value of Property Added by Annexation (Assumption No. 10)	\$ -0-	\$ -0-
(D) Subtract 1982 Taxable Value of Over-65 Homesteads with Frozen Taxes (Assumption No. 12)	\$ 1,646,400	\$ 246,050
(E) Adjusted 1982 Taxable Value for Calculation	\$ 79,721,800	\$ 17,287,139
2. (A) 1981 Total Tax Levy from the 1981 Tax Roll (Assumption No. 1)	\$ 422,269	\$ 120,544
(B) Subtract 1981 Taxes Levied for Maintenance and Operation (M&O) on Property in Territory that Has Ceased to be a Part of the Unit in 1982 (Assumption No. 5)	\$ -0-	\$ -0-
(C) Subtract 1981 Debt Service (I&S) Levy (Assumption No. 3)	\$ 49,406	\$ 22,905
(D) Subtract 1981 Taxes Levied for Maintenance and Operation (M&O) on Taxable Value of Property Becoming Exempt in 1982 (Assumption No. 6)	\$ 97	\$ 3,191
(E) Subtract 1981 Taxes Levied for Maintenance and Operation (M&O) on Taxable Value of Property Lost Because Property is Required to be Appraised in 1982 at Less than Market Value (Assumption No. 7)	\$ 12,420	\$ 6,566
(F) Subtract Frozen Maintenance and Operation (M&O) Tax Levy of Over-65 Homesteads with Frozen Taxes (Assumption No. 13)	\$ 11,630	\$ 1,402
(G) Adjusted 1981 Tax Levy for Calculation	\$ 348,813	\$ 86,480
3. (A) Adjusted 1981 Tax Levy for Calculation (2G above)	\$ 348,813	\$ 86,480
(B) Divided by Adjusted 1982 Taxable Value for Calculation (1E above)	\$ 79,721,800	\$ 17,287,139
Multiplied by \$100 valuation	\$ X \$100	\$ X \$100
(C) Calculated Maintenance and Operation (M&O) Rate for 1982	\$ .43753 / \$100	\$ .50025 / \$100

#### INTEREST AND SINKING RATE FOR 1982

4. (A) 1982 Tax Levy Needed to Satisfy Bonded Indebtedness or Debt Service (I&S) (Assumption No. 11)	\$ 49,405	\$ 22,000
(B) Subtract Frozen Interest and Sinking (I&S) Tax Levy of Over-65 Homesteads with Frozen Taxes (Assumption No. 14)	\$ 1,541	\$ 320
(C) Adjusted 1982 Tax Levy for Debt Service (I&S)	\$ 47,864	\$ 21,680
(D) 1982 Total Taxable Value of All Property (Assumption No. 8)	\$ 81,805,280	\$ 17,601,629
(E) Subtract 1982 Taxable Value of Over-65 Homesteads with Frozen Taxes (Assumption No. 12)	\$ 1,646,400	\$ 246,050
(F) Adjusted 1982 Taxable Value for I&S	\$ 80,158,880	\$ 17,355,579
(G) Divide the Adjusted 1982 Tax Levy for Debt Service (I&S) (4C above) by the Adjusted 1982 Taxable Value for I&S (4F above)	\$ 47,864	\$ 21,680
(\$ _____ ÷ \$ _____)	\$ 80,158,880	\$ 17,355,579
Multiplied by \$100 Valuation	\$ X \$100	\$ X \$100
(H) Calculated Interest and Sinking (I&S) Rate for 1982	\$ .05971 / \$100	\$ .12491 / \$100

5. (A) Calculated Maintenance and Operation (M&O) Rate for 1982 (3C above)	\$ .43753 / \$100	\$ .50025 / \$100
(B) Add Calculated Interest and Sinking Rate (I&S) for 1982 (4H above)	\$ .05971 / \$100	\$ .12491 / \$100
(C) Calculated 1982 Effective Tax Rate	\$ .49724	\$ .62516

1982 MAXIMUM TAX RATE is the tax rate which, if exceeded, triggers the public notice and public hearing requirements of Sec. 26.06 of the Property Tax Code.

#### III. MAXIMUM TAX RATE

1. (A) Calculated 1982 Effective Tax Rate (5C above)	\$ .49724 / \$100	\$ .62516 / \$100
(B) Multiplied by Three Percent (3%)	\$ X .03	\$ X .03
(C) Equals Amount of Increase Allowed by Code	\$ .01492	\$ .01875
(D) 1982 Maximum Tax Rate (1A + 1C, above)	\$ .51216 / \$100	\$ .64391 / \$100



**YOU ARE  
 INVITED  
 TO SEE OUR 1983 MODEL  
 AUTOMOBILES AND PICKUPS  
 FRIDAY AND SATURDAY  
 SEPTEMBER 24th & 25th**



**MUSIC AND REFRESHMENTS**

**UNTIL 8 P.M.**

**CHAMBERLAIN MOTOR CO.**

**CLARENDON, TEXAS**

**DON'T MISS THE PARTY**





★ CLARENDON ★ CLAUDE  
★ MEMPHIS ★ SPUR  
★ STRATFORD ★ SUNRAY

# BYLOW FOOD STORE

## GROUND BEEF

**\$1<sup>29</sup>**  
lb

## PORK CHOPS

**\$1<sup>99</sup>** Center Cut  
lb

**ARM ROAST** **\$1<sup>69</sup>**  
lb

Boneless

**ARM ROAST** **\$1<sup>99</sup>**  
lb

Deckers 12 oz

**FRANKS** **98¢**  
White Swan Sliced American

**CHEESE** **\$1<sup>39</sup>**  
12 oz

## Good German SAUSAGE

**\$1<sup>59</sup>**  
12 oz

## ROUND STEAK

**\$1<sup>99</sup>**  
lb

**Super Savings**  
Qt. Jar **MIRACLE WHIP**  
**69¢**  
With 1 Booklet

**Super Savings**  
2 Liter **COCA COLA**  
**69¢**  
With 1 Booklet

**Super Savings**  
White Swan **CATSUP**  
32 oz  
**69¢**  
With 1 Booklet

**Super Savings**  
Chicken of the Sea **CHUNK TUNA**  
**69¢**  
With 1 Booklet

**Super Savings**  
**Krispy CRACKERS**  
1 lb  
**69¢**  
With 1 Booklet

**Super Savings**  
**Charmin TISSUE**  
4 roll pkg  
**69¢**  
With 1 Booklet

### GET YOUR Super Savings 1.

Collect Gold Bond Stamps every time you shop our store. One "Golden Ten" stamp is issued for every dollar you spend (except on products excluded by law).

2. Save your Golden Ten stamps (no singles please) in handy "Super Savings" booklets, available free at the checkstands. Each booklet holds 30 Golden Tens.

3. Redeem your filled Super Savings booklets toward the Super Savings specials of your choice. There are six new specials every week. Watch our ads!

4. You can also redeem your stamps for beautiful gifts from the Gold Bond catalog. Save your stamps in handy Gift Savers Books, available free at our store.

**Mrs. Tuckers** **SHORTENING** **\$1<sup>29</sup>**  
42 oz

**Sunbeam COOKIES** **79¢**  
18 oz

**Ranch Style CHILI** **89¢**  
15 oz



**White Swan Luncheon Meat 12 oz SPAM** **\$1<sup>49</sup>**

**White Swan PORK & BEANS** **3/\$1<sup>00</sup>**  
15 oz

**FAB** **\$1<sup>79</sup>**  
Giant

**HOMINY** **4/\$1<sup>00</sup>**  
15 oz Bush

**Nice & Soft TISSUE** **\$1<sup>49</sup>**  
6 roll pkg  
**Bounty Paper TOWELS** **89¢**  
Giant Roll



**White Swan TOMATOES** **2/\$1<sup>00</sup>**  
16 oz

**Maryland Club COFFEE** **\$2<sup>19</sup>**  
1 lb



**Generic POTATO CHIPS** **79¢**  
9 oz pkg



## FROZEN FOOD

**Borden's ICE CREAM** **\$1<sup>69</sup>**  
½ gal



### Farm Fresh Produce

**US No. 1 White POTATOES** **79¢**  
5 lb sack

**Stalk CELERY** **49¢** each  
1 lb pkg

**CARROTS** **2/49¢**

**CUCUMBERS** **2 for 25¢**

**Thompson Seedless GRAPES** **69¢**  
lb



**COCA COLA** **99¢**  
10 oz bottle  
**6 pack**



**White Swan ORANGE JUICE** **89¢**  
12 oz

**Stillwell 2 lb pkg COBBLERS** **\$1<sup>69</sup>**

**Morton HONEY BUNS** **69¢**  
9 oz





COLT CHEERLEADERS and Sponsors.

## Meet the Colt cheerleaders

Cheerleaders are always little, petite blondes with big bouncy curls, twinkling eyes and springs in their legs. They never have any brains and can only giggle when talked to. Right? Nope, not for Clarendon Jr. High any way.

Tanya Bell is 12 and the daughter of Paul and Linda Bell. Her goal is to be a computer technologist and her hobbies include riding horseback, playing basketball, tennis and yelling her head off. Could that be why she decided to be a cheerleader? Possibly because Tanya said she chose to become a Colt Cheerleader because: "I wanted to get people to yell for the Colts as much as I like to yell for the Colts. So I had to be a cheerleader." This is Tanya's first year at yelling, so let's see if we can't yell harder to out-do this spunky cheerleader.

Shanna Cole is 13 and the daughter of Mr. and Mrs. Bobby Cole. She is a two-year veteran at jumping, yelling and boosting spirit at games. "I like to boost school spirit so I became a

cheerleader," Shanna said. She wants to become involved in some type of children's counseling when she graduates from college.

Pam Harguess is also 13 and is the daughter of Tom and Carol Harguess. "I thought cheerleading would be a fun and exciting experience," Pam said. This is her first year to flap the pom-poms but Pam doesn't hesitate to accept the challenges. She plans on becoming a teacher in which case her experience yelling might just come in handy.

Selena Kennedy is 12 and the daughter of Carol Kennedy and Sara Chapman. This is Selena's first year and she said that "I thought cheerleading would be fun and I've always wanted to be a cheerleader." Selena likes to ride horses, swim and play basketball. She wants to become a beautician.

Christi Knorpp, the 12 year old daughter of Todd and Donna Knorpp, is beginning her first year as a Colt cheerleader. "I am very excited about being a cheerleader," Christi said, "The reason I tried out for cheer-

leader is because I have always wanted to be one and I thought it would be fun." Christi likes to ride bicycles, swim, read and play basketball and baseball. Her ambitions are lofty since she plans on becoming a successful doctor. Maybe she will specialize in cheerleaders syndrome?

Renee Kuhn is the 13 year old daughter of Mr. and Mrs. James Kuhn. She is the other veteran two-year old Colt cheerleader. "I am a cheerleader because I think it's fun and a good experience," Renee said with her best cheerleading voice. Renee wants to become a legal secretary.

This is the exciting lineup of Colt cheerleaders this year. They are there to boost spirit, lead cheers, encourage vocal support of the teams and to keep the crowds together in excitement for the forthcoming Colt season. Give them your undivided attention.....that is everyone except the team members, you fellows keep your eyes on the game!

erton was called for pass interference, even though the game film later showed the Kress receiver apparently to have fallen down. The ball was moved to the Broncho one-yard line, and from there the Kangaroo quarterback scored on a sneak. It was 7-6 and nail-biting time.

There was still 6:37 left in the third quarter, but all the game's points had been scored. When Kress lined up to kick the tying extra point, senior captain and Lineback John Smith bulldozed his way through the Kress guard and blocked the kick.

This was the third blocked kick by Broncho defenders. Any of the three could be called game-winners. Thanks Richard, Ken and John.

There was still plenty of suspense left, however. For example, on fourth-and-three at the Broncho 29,

## FFA elects officers for 1982-1983 school year

The Clarendon Chapter of Future Farmers of America met Thursday evening, September 2 at 7:15. The first thing to be done was the nomination of chapter sweethearts. Those nominated were Shea Green, Mykie Patterson, and Lori Robinson, of which all are FFA members.

These nominees will be voted upon at our next meeting. We then discussed what our dues should be set at. We finally decided upon \$4.50.

The next thing was the selection of chapter officers for the year 1982 and '83. They are as follows: President-Ray Lindley, vice-president-Steve Shaller, secretary-Mykie Patterson, treasurer-Tim Cole, reporter-Mitch Johnson and sentinel-Arlis Thomas.

We then discussed the purchasing of a chapter trailer. There was discussions for a gooseneck and bumper type, but discussion leaned towards a bumper type. The idea of fixing up the old trailer was also brought up.

The final decision on the trailer will be made by the chapter officers.

The meeting was adjourned and watermelon and cokes were served afterwards.

Coach Allen again called for a fake punt. But Howell was hit as he attempted to throw the ball and the pass fell incomplete.

This gave Kress his best chance to win the game. But on a third-and-seven play from the 25, a Kress receiver dropped a catchable pass on the goalline. Then Kress lined up for its fourth field goal attempt, but it fell short from the 33.

In the fourth quarter the teams traded punts until Coach Allen decided to try his third fourth-down gamble for the night. On a fourth-and-two situation from the Broncho 36, Howell attempted a quarterback sneak. No gain. The ball went over to Kress in excellent scoring position.

But the unperturbable Broncho defense rose to the occasion again. End Ray Crump and Noseguard Ken Dorris stormed in to sack the Kress quarterback back at the 41, and the Kangaroos were forced to punt.

Clarendon took the ball on its own 15 and moved to the 24. Then Arlis Thomas made one of the most spectacular plays that area fans are likely ever to see. He boomed a punt out of the end zone at the opposite end of the field! Officially, it was a 76-yard kick. From the spot where Arlis stood to the spot where the ball stopped rolling, it was over 100 yards!

Finally, the Bronchos enjoyed good field position in the second half. Kress was forced to punt from its own 20, but elected to try a gamble of their own. A fake-punt run fooled the Bronchos and gave Kress a 25-yard-gain, but an illegal motion penalty nullified the big Kangaroo play.

Then a Broncho error gave Kress another chance. Rodney Smith tried to down the short Kress punt by merely touching it, as if he were an offensive player. A Kress player alertly fell on the live ball and Kress took over on the Broncho 45-yard line.

Again, however, the big-play Broncho defense did what it had to do. This time, Cornerback Glenn Weather-ton intercepted a pass at the Broncho 30 and returned it 15 yards.

There was only 2:05 left in the game. The Clarendon offense controlled the ball for the remainder of the contest, and the Broncho players and fans were relieved and overjoyed following the game. The Broncho streak of consecutive home victories moved up to nine games.

Overall, David Weather-ton led the game's rushers with 129 yards on 22 carries. The entire Broncho defense played well, but the two standout players were probably Ken Dorris (8 tackles, 2 assists, 2 sacks, and 1 blocked FG),



FFA OFFICERS FOR 1982-1983 Pres.-Ray Lindley,

v-pres.-Steve Shaller, sec.-Mykie Patterson, treas.-Tim

Cole, rep.-Mitch Johnson and sen.-Arlis Thomas.

and Glenn Weather-ton (5 tackles, 3 assists, 1 interception, 1 blocked FG, and 1 fumble recovery). And in the "defensive" category, Arlis Thomas punted 5 times for a 46 yard average. Way to go, fellas.

## FHA has meeting

As everyone knows, school is back in full swing, and with it, all the clubs and activities. FHA GOT UNDER WAY ON Monday, August 23, 1982. We had a meeting and elected officers.

They are: President-Dorothy Braddock; Program Chairman-Dalyn Croslyn; Projects Chairman-Kim Wilson; Encounter Chairman Charla Crump; Publicity-Susan Thompson; Secretary-Cara; Treasurer-Krystal Havworth; Historian-

Dena Green, and Gayla Clifford. We also decided that meetings will be held on the 1st and 3rd Mondays of every month at 6:30 PM. Dues are five dollars and must be paid before six weeks tests.

To get the freshman into the swing of things we planned initiation. It was held on Monday, August 30, 1982 at the City Park at 7:00 PM. By the way, the freshman wanted to express how much fun they had. Everyone had a good time and the freshman took all the action very well. Melody Moreman, Dena Green, and Patrice Shields had a major improvement in their appearance, but you would have had to be there to know what really went on.

FHA has started out on a great note and we hope, with your support, to make it a great year.

With all that out of the way, we had another meeting, Tuesday, September 7. We decided on some fund raisers and planned socials that will take place through-

out the year. Our next meeting will be postponed until Oct. 4, 6:30 PM. because of the Tri-State Fair.

## Colts Corral

By SHERI CHAMBERLAIN

Hi Colts! Whats burning down your alley? The mighty Colts have been working hard for their first football game this year. They all did great for their first game.

The 7th graders did a great job at not letting Wellington score. They came out in the end tied 0 to 0. The 8th graders did a great job too. However, they were defeated 6-22. We are very proud of each and every one of these boys.

The boy's next game is against Memphis. We wish them all good luck. We also hope you will all come and watch the mighty Colts beat the whirlwinds! We would also like to recognize our Jr. High Cheerleaders

for 1982-1983: for the 8th graders we have Shanna Cole, Pam Harguess, and Renee Kuhn (head), and for the 7th graders we have Tanya Bell, Christi Knorpp, and Selena Kennedy. Congratulations girls! We'd like to welcome our new coaches and teachers for the Jr. High. History teacher and 7th grade girls basketball coach is Mrs. Wiley, and for Language Arts, we have Mrs. Thornberry. These teachers are both very nice, and we feel we'll all learn a lot this year. Thank you Mrs. Wiley for helping us get a pep squad together. Also we'd like to welcome all of the new students here this year. We hope they'll enjoy this year with us.

Also we'd like to ask the 6th and 7th grade reporters to turn in their news to either Trisha Clifford or Sheri Chamberlain by Thursday so that they can include it in their write-up. Thank you! Now for the gossip!!!!!!

Neal B. "Herman" Sheri C. and Renee K. Runt Trisha C. Gingerele Sand-wich!! Kami M. Momma's Make Up!! Shawna S. Whitney! Kynde L. Jack!

Can't firm, page 1 First Section Varsity fans sensed touchdown.

But an illegal block on the interception return moved the ball back to the Kress 41-yard line. Undeterred, Weather-ton ran for 9 yards on the next play and Howell passed to Crump for 22 more on the next. Then another penalty flag.

This time, though, it was against Kress, moving the ball to the 5-yard line. From there it took only one well-executed play to score. With only 20 seconds left in the first half, Howell ran the option to his left and pitched perfectly to junior Tailback Glenn Weather-ton, who streaked around two defenders to the flag. Arlis Thomas kicked the extra point to put Clarendon ahead 7-0 as the half ended.

Kress received in the

second half, but was forced to punt on their first possession. Clarendon took the ball on the 30-yard line and fumbled it to the visitors at the 27.

Kress was determined not to let this opportunity slip away. A quarterback-keep earned 17 yards to the Broncho 10-yard line, and another keeper gained 3 more yards. Then Defensive End Ray Crump made another big play for the maroon, tackling the Kress quarterback back at the 10-yard line on a roll-out play.

The Kangaroos were forced to pass on fourth-and-goal at the 10. A throw to the deep corner of the Broncho end zone fell harmlessly to the ground. But a dreaded yellow flag was seen, and Broncho ecstasy turned to agony.

Cornerback Glenn Weath-

**FREE FRIES**  
with purchase of a Hungr-buster

This Monday, Sept. 20 thru Sunday, Sept. 26 only.

Only at participating stores.

Dairy Queen

We treat you like a Texan.



Every Hungr-buster is made to your order with a quarter-pound\* of 100% pure lean beef.

IT'S NEW! IT'S GREAT! IT'S FUN! WE KNOW YOU'VE NEVER SEEN THIS SHOW BEFORE!

ICE CAPADES PRESENTS "LIGHT UP THE ICE"

SEE A STAR STUDDED CAST!

ALL NEW!

ICE CAPADES

THE ICE CAPETTES AND ICE CADETS, THE BEST PRECISION SKATERS IN THE WORLD!

193 MINUTES OF HEART-STOPPING ENTERTAINMENT!

YOU'LL KNOW US BY NAME BUT THE SHOW'S NOT THE SAME!

OPENS THURSDAY, SEPT. 23 THRU SUNDAY, SEPT. 26 AMARILLO CIVIC CENTER

6 BIG SHOWS THURS, FRI, SAT.....7:30 PM  
3 EVES SATURDAY..... 2:00 PM  
3 MATS SUNDAY.....2:00 & 6:00 PM

TICKET PRICES- \$8.50 - \$7.50 - \$6.50 All Seats Reserved

\$2.00 Off Youths (16 & under) and Senior Citizens for two Shows! Saturday 2:00 pm and Sunday 6:00 pm

KAMR-TV FAMILY NIGHT IS THURSDAY! ALL TICKETS ARE 1/2 PRICE!

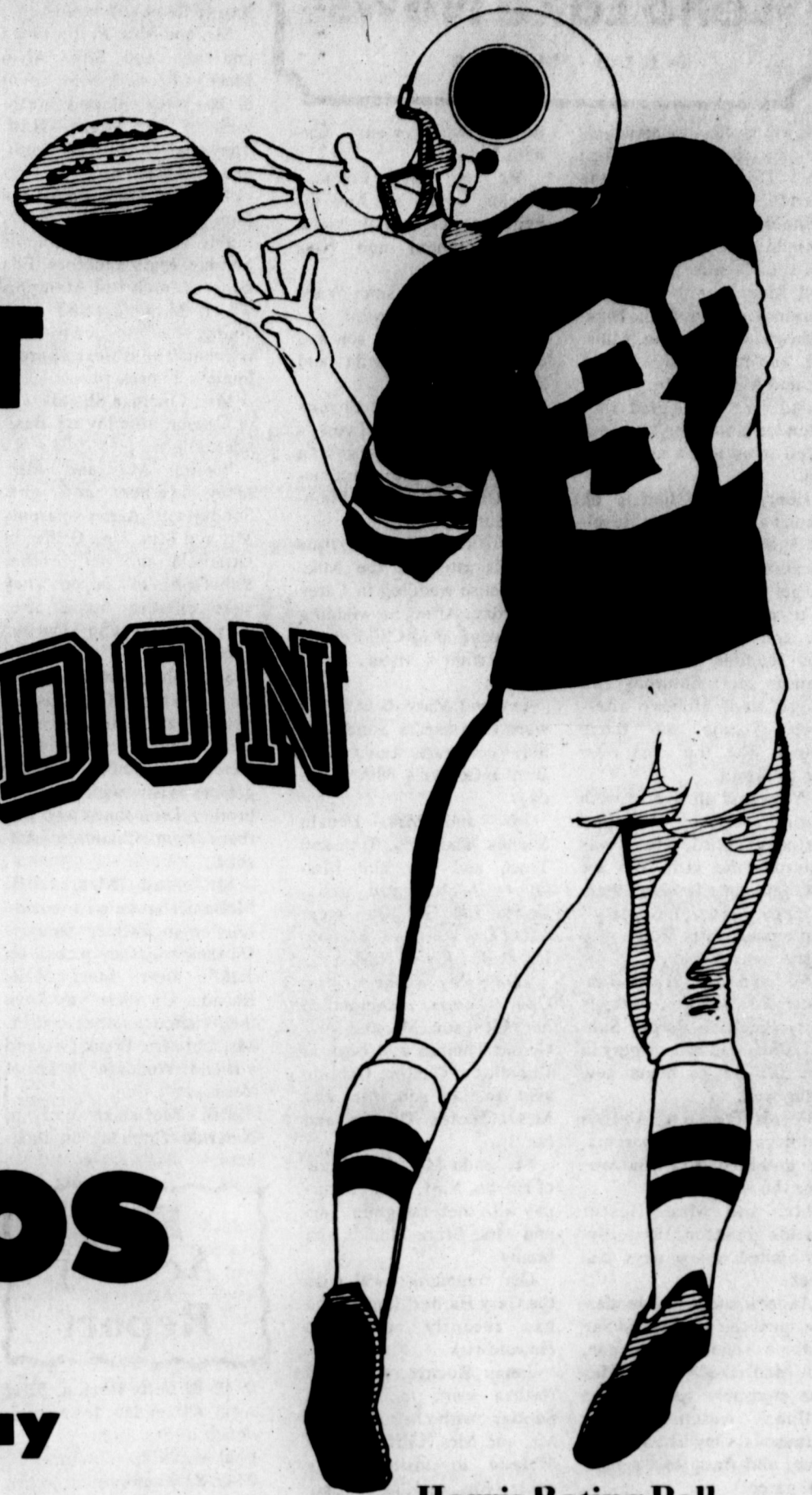
TICKETS NOW ON SALE AT CIVIC CENTER BOX OFFICE (12-5:30) AND SEARS (reg. bus. hours). Personal checks for tickets accepted thru Thursday, September 16.

CHARGE TICKETS BY PHONE! USE VISA OR MASTERCARD CALL 378-3096 (\$1.00 mailing charge per phone order)

FOR GROUP AND TICKET INFO CALL: 378-3096 Buy a ticket to Ice Capades and get a FREE admission to the Tri-State Fair!

Mercury whizzes around the sun at the speed of 30 miles per second, completing one circuit in 88 days.





# WE SUPPORT THE CLARENDON BRONCHOS

## Clarendon at Sunray

Clarendon High School 1982-83 Bronco Schedule			
Sept. 3	Canadian	T	8:00
10	Kress	H	8:00
17	Sunray	T	8:00
24	Boys Ranch	T	8:00
Oct. 1	*Childress	H	8:00
8	Shamrock	H	7:30
15	Panhandle	T	7:30
22	Quanah	T	7:30
29	Wellington	H	7:30
Nov. 5	Memphis	H	7:30
*Homecoming			

Clarendon Jr. Varsity and Jr. High Football Schedule			
September 2	Open		
September 9	Wellington	H	
September 16	Memphis	H	
September 23	Shamrock	H	
September 30	Canadian	H	
October 7	Shamrock	T	
October 14	Panhandle	H	
October 21	Quanah	H	
October 28	Wellington	T	
November 4	Memphis	T	



### Compliments of:

**KNORPP**  
*Insurance Agency, Inc.*

*Bivens Pharmacy*

*Janie's Beauty Shop*

*Greene Dry Goods Co.*

*Gibsons Meat Market*

*Mooring Bait & Tackle*

### Harris Rating Poll

1. Eastland	156
2. Pilot Point	156
3. Anna	155
4. East Bernard	153
5. Tidehaven	150
6. Panhandle	150
7. Groveton	149
8. Hale Center	148
9. New Deal	148
10. Pottsboro	147
34. Memphis	135
37. Wellington	134
51. Quanah	130
59. Clarendon	128
185. Shamrock	103
Memphis vs. Sanford-Fritch	(15)
Stinnett vs. Shamrock	(15)
Stratford opp not rated	
Clarendon vs. Sunray	[13]
White Deer vs. Wheeler	(28)
Quanah vs. Paducah	(6)

*Clarendon Auto Supply*

*Greenbelt Water Authority*

*Mutts Restaurant*

*The Tumbleweed*

*Guys & Dolls Salon*

*Bylow Food Store*

*La Rues Restaurant*

*Harlans Flowers Shop*

*Clarendon Manufacturing*

*Bailey Estes & Son Welding*

*Pauline Morris Income Tax & Bookkeeping Service*

*Hensons*

*Rattan TV*

*Clarendon Press*

*Eddie Floyd Shop*

*James F. Hayes & Co.*

*Mary's Country Kitchen*

*Cornell-Braddock Shell*

*Charlie's Grocery & Market*

*Mrs. Bromley*

*Alderson Chevrolet*

*Automotive Supply*

*Wallace Monument*

*Reynolds Machine & Supply*

*Greenbelt Ford/Mercury*

*Mikes Gibson Pharmacy*

*Osburn Furniture & Appliance, Inc.*



# Lelia Lake News

By JEANIE LAUDERDALE

I would like to apologize for my forgetfulness last week. I failed to mention the friends who attended the Castner reunion and singing. Yvonne Belle McDaniel from Lelia Lake was there, Lacy and Mary Lee Noble from Clarendon, and from Howardwick was Sharon Mills, Mr. and Mrs. John McVicker, and Mr. and Mrs. Henry Bland. We were glad they attended and hope they enjoyed it as much as we all did.

Henry Hastey had to be taken to the Memphis Hospital late Thursday afternoon because of a heart flare-up. He got to come home Friday. Take care of yourself, Henry. Mr. and Mrs. Ronnie Hastey and Jennifer from Elkhart, Kansas came Saturday and stayed until Monday afternoon. Ronnie and Barry helped with the work over the weekend.

We would all like to wish Nadine Hastey "Happy Birthday" a little late. It was Saturday the 11th. We are not late in wishing them "Happy 32nd Anniversary" September 16th. Hope you enjoy many more.

Mr. and Mrs. Hollis Bannister visited their daughter, Patty Black, in Borger Sunday. Patty had had surgery in Amarillo but is home now doing well.

Phyllis Foster of Abilene and boys visited her parents, Mr. and Mrs. Nolan Barrow, over the weekend.

Mr. and Mrs. Hester Shields grandson, Brian Myers visited a few days last week.

Andrew and Avos Henderson spent the weekend in San Antonio visiting their son, Jim and family. Saturday was enjoyably spent at the ballpark watching their grandsons. Clay had a soccer game and Andy had a football game.

Lacy and Mary Lee Noble visited the Lacy Lee Noble family Sunday afternoon.

Miss Lindy Helms spent

Monday with her aunt, Barbara Helms.

Mr. and Mrs. Coleman Shields went to Amarillo Sunday to see her daughters, Lisa Knighton and Nina Carroll.

Mr. and Mrs. Omer Wade of Abernathy spent the weekend with their son and family, Larry, Sheila and Roger Wade.

Phil, Jeannie and Shauna Lauderdale visited Jeanie's aunts, Opal Clayton and Chiel Brown, and grandmother, Ollie Kirkland in Memphis Sunday.

Mr. and Mrs. Arthur Shields attended the Mike Newhouse wedding in Carey Saturday. After the wedding they went on to Childress to visit Arthur's sister, Ethel Henson.

Leo and Mary Jane Smith went to Amarillo Sunday to help celebrate Leo's aunt Bertha Gerner's 88th birthday.

Mr. and Mrs. Donald Shields and girls, Tina and Traci, and Mr. and Mrs. Gary Shields and girls, Carrie and Heather, spent Labor Day weekend vacationing at Red River, N.M.

Labor Day weekend Mrs. Opal Thomas accompanied her oldest son, Mr. and Mrs. Gerald Thomas and boys of Dimmitt, to Clinton, Okla. to visit another son, Mr. and Mrs. Charles Thomas and family.

Mr. and Mrs. R.V. Plato of Hobbs, N.M. spent Saturday with their daughter, Mr. and Mrs. Bruce Shields and family.

Our community will miss the Gary Harbert family who has recently moved to Howardwick.

Janan Koontz, Amy and Nathan went to Amhurst Sunday with her parents, Mr. and Mrs. Cliff Jones of McLean to visit Janan's sister, Mr. and Mrs. Dale McKibben and Shea, and her great great aunt, Gerdie Kelsey.

Mr. and Mrs. Leon Riley of

Amarillo spent Wednesday with her sister, Mr. and Mrs. Ray Holland and family.

Mr. and Mrs. Ferrel Floyd and Mr. and Mrs. Alvin Mace of Farwell, N.M. spent all last week camping northwest of Las Vegas, N.M. They enjoyed the cool weather and relaxation.

Troy and Mary Davis and family attended the Byars family reunion in Memphis Sunday. Mary's mother, Ella Byars Kennard of Memphis who is 92 going on 93 years young was honored at the reunion. There were approximately 75 present.

Mrs. Coleman Shields was in Canyon Monday on Business.

Visiting Mr. and Mrs. Leroy Leathers and girls Sunday were Alene's parents Mr. and Mrs. Lige Griffin of Littlefield and her brother Billy Griffin of Canyon. They were enroute home after visiting relatives in Seymour and Haskell.

Susie Shields and her cousin Jo Carson of Quail visited Sunday and Monday with Susie's mother, Mrs. R.E. Jones, in Beulah. They also got to visit with Susie's brother, Leon Jones who was there from Chandler, Arizona.

Mr. and Mrs. J.B. McDaniel attended a cousin reunion in Farmer Sunday. On their way they picked up J.B.'s aunt, Mrs. M.B. Rhoads. On their way back they visited another cousin, Mr. and Mrs. Frank Cox and a friend, Woodrow Tacker of Vernon.

J.B. McDaniel was in Amarillo Thursday on business.

Nearly five million young people, aged nine to 19, participate in 4-H through organized clubs, special interest groups, nutrition education programs, television series, short-term activities and camping. Your county Extension office can provide more information on 4-H in this area.

09-08-82 Betty Hooten, 52 of rural Clarendon from residence to St. Anthonys Hospital, Amarillo. Trauma.

09-08-82 Standby at structure fire at Gary Cockerham residence, Clarendon. No transport.

09-08-82 Henry Hastey, 56 of

rural Clarendon from residence to Hall County Hospital, Memphis. Medical.

09-09-82 Leland Howell, 14 of Clarendon from High School Football Stadium. Clarendon to Amarillo Emergency Receiving Center. Amarillo. Trauma.

09-10-82 Orpha Swinney, 86 of Clarendon from High Plains Baptist Hospital. Amarillo to Medical Center Nursing Home, Clarendon. Medical.

09-10-82 Mary Jaramillo, 18 of Clarendon, no transport from Hwy 287 at Koogle, Clarendon. Trauma.

09-10-82 Jackie Shuessler, 26 of Clarendon treated at Donley County Jail, Clarendon and transported by Sheriff's Dept. Deputies. Trauma.

09-10-82 Standby at High School football game. No transport.

09-11-82 Peggy Hudson, 62 of Clarendon from St. Anthonys Hospital, Amarillo to Hall County Hospital, Memphis. Medical.

09-11-82 Audra Hoggard, 9 of Clarendon, from Clarendon Rodeo Arena to Hall County Hospital, Memphis. Trauma.

09-11-82 Frank Johnson, 67 of Clarendon from residence to Amarillo Emergency Receiving Center, Amarillo. Medical.

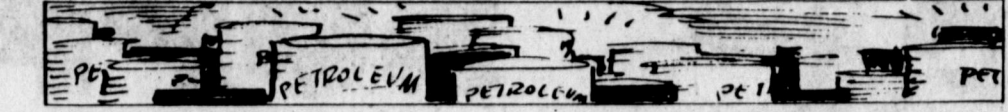
09-13-82 C. A. Pitts, 77 of Clarendon, no transport from residence. Medical.

186 responses handled in 1982 to date.

## EMS Activity Report



CLARENDON FIRE DEPT. responded to a call last week in the home of David Cockerham. Only damage was contained in the kitchen of the home.



The U.S. imported 42.4 percent of our total petroleum supplied for domestic use from the first six months of 1980 as compared to only 35 percent at the beginning of the Arab oil embargo in 1973.

## Farm Bureau to have Chili Supper

All members of Farm Bureau bring your families to the Donley County Farm Bureau annual chili supper. This year it will be on October 16, at 7:00 p.m. in the Lelia Lake Community Center. Ladies, bring your favorite pies. All other food will be furnished by the Donley County Farm Bureau.

### FREE SPIRIT

## 42 Oz. Sculptured Carpet

### 100% Continuous Filament Nylon

Reg. \$18<sup>95</sup>

# \$14<sup>95</sup> Installed

Includes Pad & Labor

**TWO YEARS FREE SERVICE ON APPLIANCES**

# OSBURN

## FURNITURE & APPLIANCE INC.

**GIBSON'S DISCOUNT CENTER**

Reserve rights to limit quantity. Some items not exactly as illustrated. Some items in limited quantity.

**NEW WINTER HOURS**  
Monday-Saturday 8 a.m. - 7 p.m.  
Sunday 9 a.m. - 7 p.m.

<p><b>CHEESE</b> Singles 12 Oz <b>\$1.48</b></p>	<p><b>SAUSAGE</b> 1 Lb <b>\$1.89</b> 2 Lb <b>\$3.77</b></p>	<p><b>ROAST</b> 2 Lb Box <b>\$3.59</b></p>
<p><b>CATFISH</b> Grain Fed Whole <b>\$1.89</b> Lb</p>	<p><b>BOLOGNA</b> 12 Oz Pkg <b>88c</b></p>	<p><b>LIVER</b> <b>88c</b> Lb</p>
<p><b>POTATOES</b> <b>\$1.17</b></p>	<p><b>GRAPES</b> 49c Lb</p>	<p><b>GRAPES</b> 49c Lb</p>
<p><b>SPROUTS</b> 2 Ctns <b>\$1.00</b></p>	<p><b>CORN</b> <b>3/89c</b></p>	<p><b>FLOUR</b> <b>\$1.09</b></p>
<p><b>MILK</b> Tall Cans <b>2/79c</b></p>	<p><b>PEPPER</b> <b>79c</b></p>	<p><b>MUSTARD</b> <b>43c</b></p>
<p><b>ICE CREAM</b> <b>\$1.58</b></p>	<p><b>NACHIPS</b> 7 1/2 Oz <b>83c</b></p>	<p><b>Flour</b> 5 Lb Bag <b>87c</b></p>
<p><b>BUTTER</b> <b>\$1.89</b></p>	<p><b>GREEN BEANS</b> <b>3/89c</b></p>	<p><b>COKES</b> <b>97c</b></p>
<p><b>COTTAGE CHEESE</b> <b>\$1.29</b></p>	<p><b>COFFEE</b> <b>\$1.93</b></p>	<p><b>BORAX</b> <b>97c</b></p>
<p><b>OLEO</b> <b>69c</b></p>	<p><b>FAB</b> Detergent <b>\$2.39</b></p>	<p><b>Fab</b> <b>97c</b></p>