



# BAILEY COUNTY JOURNAL

'The Community Of Opportunity-Where Water Makes the Difference'

## WEATHER

February 12	27	10
February 13	28	10
February 14	57	10
February 15	58	30

Vol. 24 No. 7

8 Pages Today

Published Every Sunday at Muleshoe, Bailey County, Texas 79347

Sunday, February 16, 1986

# Muleshoe Jail Escapees Are Captured After Month Of Freedom

\*\*\*

## GTE Survey Helping Combat Service Calls

General Telephone's Brownfield Operations Manager O.D. Hearn announced the implementation of a new customer



Pauletta Crawford from the business office for the Muleshoe Independent School District, announced that Delton Wilhite had filed as a candidate for one of the three spots open on the MSID Board of Trustees.

The only other announced candidate at presstime was incumbent and current board president, Julie Cage.

\*\*\*

Ted Treider of Lazbuddie attended a seed sales advisory council meeting in Lincoln, Neb. last week. The meeting was sponsored by NC-plus Hybrids, a farmer owned production-marketing organization headquartered in Lincoln.

Treider was elected to the council by his fellow sales agents in the Texas High Plains area. The 25-member council included delegates from nine states.

\*\*\*

Winners of the three major prizes during the open house hosted by Dent & Co., at their new building on Thursday were Wylene Cleavinger, Earth, who won the riding lawn tractor; Betty Jo, Carpenter, Muleshoe, winner of the gas grill and Candace Travis, Farwell, who took home the child's toy tractor.

\*\*\*

Navy Seaman Recruit Clifford L. Sanders, son of Tom and Edna L. Sanders of Earth, has now completed recruit training at Recruit Training Command, Great Lakes, Ill.

During Sanders' eight-week training cycle, he studied general military subjects designed to prepare him for further academic and on-the-job training in one of the Navy's 85 basic fields.

Sanders' studies included seamanship, close order drill, Naval history and first aid.

He joined the Navy in October 1985.

\*\*\*

Muleshoe Fine Arts Boosters will meet at 7 p.m. Tuesday, Feb. 18 in the band hall and all boosters and teachers are encouraged to attend. Plans will be made for the upcoming Dinner Theater.

## Pheasant Hunts Are Successful In This Area

Surveys by the Texas Parks and Wildlife Department indicate the 1985 Pheasant hunting season in the Panhandle was more successful than 1984, but pheasant populations remained below the long-term average.

During the first weekend of the 16-day season during December, 23,495 hunters harvested an estimated 23,260 birds, for an average of one pheasant per hunter.

This compared to 1984 totals of 20,000 hunters taking 13,600 birds for an average of .66 birds per hunter.

"The 1985 season reflected better pheasant numbers following a very good nesting season," said Phil Evans, pheasant program leader. "However, the birds need another good nesting season this spring to get populations back to levels of three or four years ago."

Evans said lower pheasant number of hunters probably are the result of a number of environmental factors, including weather and agricultural land practices.

service survey in Muleshoe.

The new survey will be used to assist local management in continuing to improve customer service. One management measurement for quality of service in the Company is the number of service calls the Company received per 100 telephone lines. In the past year this count has dropped dramatically, Hearn noted.

Reflecting on this marked improvement, Hearn stated, "Most of the credit goes to the dedication of our employee group to provide better customer service coupled with a tremendous service improvement program in all GTE exchanges in the Panhandle area of Texas. We want to stay on top of our customers' ever-changing needs. One way to do this, and at the same time provide a vehicle for customer comments, is through the Customer Service Questionnaire."

"The mailing began last month and has been very successful and helpful to us in identifying not only potential service concerns but also positive contacts. The return rate has been very good, averaging 20 percent returned with a very low percentage of negative comments on those returned."

"Although it is generally understood that a 'no return' questionnaire indicates the customer was satisfied, we would like to encourage customers to actively participate by filling out the short questionnaire and returning it as quickly as possible. We've found that written comment forms are one of the most favorable measures."

Con't Page 3, Col. 1

## Gerald K. Reid Named Chairman Of Democrats

During a meeting Thursday night of the Bailey County Democratic Executive Committee, Chuck Smith, current Democratic County Chairman, submitted his resignation, effective immediately. This was followed by the Executive Committee appointing Gerald K. Reid to be interim county chairman.

All questions and matters relating to the Bailey County Democratic Party should be directed to Reid at 406 East Austin, telephone 272-5437.

The Executive Committee passed the following resolution: "BE IT RESOLVED that the Democratic Executive Committee of Bailey County acknowledges with deep appreciation the dedication and fine work of Charles L. (Chuck) Smith as Chairman of this said Committee."

"DONE AND ORDERED this 13th day of February A.D., 1986" It was signed by Gerald K. Reid Chairman, Democratic Executive Committee, Bailey County, Texas and by Nelda Merriott, Secretary, Democratic Executive Committee, Bailey County, Texas.

Appointed to precinct chairmanships were Jerrell Ottwell, Precinct One; Earnest 'Butch' Tucker, Precinct Three; Chuck Smith, Precinct Four and Jerry Damron, Precinct Six.

A reminder was issued that as no filing applications were received from any county party officers, their names will appear on the May Primary ballot. They will all be write-in candidates.

Members of the Bailey County Democratic Executive Committee now include Gerald K. Reid, chairman; Nelda Merriott, secretary; Jerrell Ottwell, Precinct One; Jim Crawford, Precinct Two; Ernest 'Butch' Tucker, Precinct Three; Chuck Smith, Precinct Four; Bob Newton, Precinct Five; Jerry Damron, Precinct Six; Precinct Seven, vacant and Harvey Bass, Precinct Chairman-At-Large.



**BEST OF SHOW**--The Texas Tech University meat judging team finished fourth out of nine teams entered in the Southwestern Meat Judging Contest in Fort Worth Feb. 1. Team members included, from left, Susan George of Abernathy, who took high individual honors; Alan Pettit, also of Abernathy, who took eighth place individual honors; and team Coach Tommy Wheeler, of Muleshoe.

## Wildlife Refuge Holds Open House

There's still time to visit the Muleshoe National Wildlife Refuge, today, Sunday, 1-6 p.m., during the celebration of their 50th Anniversary.

Muleshoe National Wildlife Refuge was officially established when President Roosevelt signed Executive Order No. 7214 on October 24, 1935.

The refuge quietly celebrated the 50th anniversary of this occasion on Thursday, October 24, 1985. A formal celebration was delayed in order to have peak numbers of waterfowl, especially sandhill cranes, in residence during the celebration.

The oldest wildlife refuge in Texas was originally established as a protected wintering area for waterfowl, primarily ducks

## Radio Auction Is Highlight Of Heart Month

Nearly one million Americans died last year from heart diseases and stroke. And 200,000 of them die before retirement age, according to Janie Moynihan, publicity officer for this year's American Heart Association fund raising campaign.

"This number of deaths is especially significant because it affects men and women between the ages of 35 and 64-the age bracket of industry's most productive work force," Moynihan said. The American Heart Association wants to take heart attack and stroke out of the workplace-from offices and executives suites to factories and assembly lines.

February has been proclaimed as American Heart Month and the Muleshoe area volunteers join the nationwide fund raising effort. In Muleshoe, the major fund raising event was conducted yesterday, Saturday, with a Radio auction of donated items over KMUL Radio.

Area businesses have been asked to make a contribution in support of continuing research, public education and community service programs of the Bailey County division of the American Heart Association, Texas affiliate. These contributions will help in the mission of reducing early death and disability from heart disease and stroke.

As Moynihan explained, "Heart volunteers will be asking you to 'Put your money where your heart is.'"

## Joe Carrion Returned Here; Lackey Under Arrest In South Carolina

After exactly one month of freedom, two escapees from the Bailey County jail are back in custody, and one has already been returned to Muleshoe from New Mexico.

Following an anonymous tip to the Clovis, New Mexico, City Police Department, Joe Carrion, one of the escapees, was captured in Clovis on Sunday night. Officers reported he had been 'hiding out' in Clovis since

## City Gets A Rebate On Drinks

State Comptroller Bob Bullock last week sent checks totaling \$11.7 million to the 220 counties and 417 cities as their share of the state's 12 percent mixed drink tax collected during the fourth quarter of 1985.

The Texas Legislature raised the tax from 10 percent to 12 percent in 1984.

Bullock said the state collected \$48.7 million in mixed drink taxes for the fourth quarter at the increased rate, compared to \$46.5 million collected during fourth quarter 1984 at the old 10 percent rate.

Bullock said the state collected \$48.7 million in mixed drink taxes for the fourth quarter at the increased rate, compared to \$46.5 million collected during fourth quarter 1984 at the old 10 percent rate.

Of the total \$48.7 million in state collections, counties received \$6 million, down from the \$6.9 million received in the fourth quarter in 1984. Cities received \$5.6 million compared to \$6.4 million collected during the same period last year. The state's general revenue fund received the balance.

Bailey County's mixed drink tax remittance was \$1,002.92, while the city of Muleshoe received \$554.29.

Although the city of Morton did not receive a mixed drink check, Cochran County received a check in the amount of \$107.15.

In Lamb County, Littlefield's check was for \$1,024.15, while p.m., the bike show will be held.

Parmer County's check was for \$24.91.

Bullock said \$37 million was deposited in the state's general revenue fund from fourth quarter collections compared to \$33 million collected at the 10 percent rate for the same period in 1984.

The mixed drink tax is collected by the Alcoholic Beverage Commission and city-county rebates are sent out quarterly by Bullock's office.

the day of the escape. Carrion, along with Randy Mack Lackey, overpowered former Bailey County Sheriff's office jailer, Connie Bynum, at 5:55 on Tuesday morning, January 15.

After taking Mrs. Bynum's keys, the duo locked her in the men's cellblock, and escaped through a side door. Mrs. Bynum was discovered some 35 minutes later when a DPS officer went by the sheriff's office.

Carrion signed a waiver of extradition and was returned to the Bailey County jail on Tuesday, February 11.

Bailey County authorities were notified early Friday morning February 14, that escapee Randy Mack Lackey had been apprehended in Spartanburg, SC as he allegedly was attempting to steal a car, according to South Carolina authorities.

Brenda Paschal, reporter for the Greenville (SC) Piedmont, told the Journal Friday morning, that Lackey had landed a plane, later determined to have been stolen from Clovis, on Thursday night near Greenville.

Ms. Paschal said officers questioned Lackey shortly after he landed the plane in a former industrial park instead of at an airport, but released him. They

Con't Page 3, Col. 4

## Farmer, Rancher Seminar Slated On Estate Plans

"A properly drawn estate plan may save many farm and ranch families up to \$200,000 in estate taxes," according to Wayne A. Hayenga, Texas Extension economist and attorney. He said the statement assumes a lot of information: a married couple who "like each other" and want to care for each other, who have a farm or ranch worth \$1 million or more, and want to pass it on to their children.

This is an eye opening fact for many farmers and ranchers. In fact, many people only worried about estate planning if they hear of a friend's "problem" in settling an estate or paying estate taxes. "But," Hayenga continued, "for many families the estate tax savings are not as large-if they have smaller operations. In fact, for many farm/ranch families, the income tax savings of a properly prepared estate plan can be greater than the estate tax savings."

A two-day seminar talking about these complicated tax topics will be held in Lubbock, March 11-13, 1986. The program is structured to help farmers and ranchers learn how

Con't Page 3, Col. 3



**SPECIAL AWARD PRESENTED**--Several John Deere dignitaries from the Dallas/Fort Worth area were in Muleshoe Thursday for the open house and grand opening of Dent & Co. During the visit, they made a special presentation to Tuffy and Ronnie Dent. The Dents were presented a 'one of a kind' marble etching, mounted on wood. The etching depicts some of the history of John Deere. Several hundred people attended the all-day open house and formal grand opening of the new facility.





**Charmin**  
BATHROOM TISSUE ASST.

**99¢**

4 ROLL  
PKG.



**Crackers**  
KEEBLERS ZESTA

**79¢**

16 OZ.  
PKG.



**Chips**  
LAYS® ASSORTED

**89¢**

REG  
\$1.39



**Del Monte**

REG / NO SALT  
16 OZ. CUT GREEN BEANS  
17 OZ. WK/CS GOLDEN CORN  
15 OZ. SPINACH/17 OZ. EG BLEND SWEET PEAS

**2 79¢**

CANS

**GET THE BEST..EVERYDAY!**

**Coca-Cola**  
REFRESHING



**\$1 49**

32 OZ.  
6 BTL.  
CTN. PLUS DEPOSIT



**Sauce**  
RAGU SPAGHETTI ASST.

**97¢**

15 OZ.  
JAR



**Bounty**  
PAPER TOWELS 10¢ OFF LABEL

**79¢**

JUMBO  
ROLL

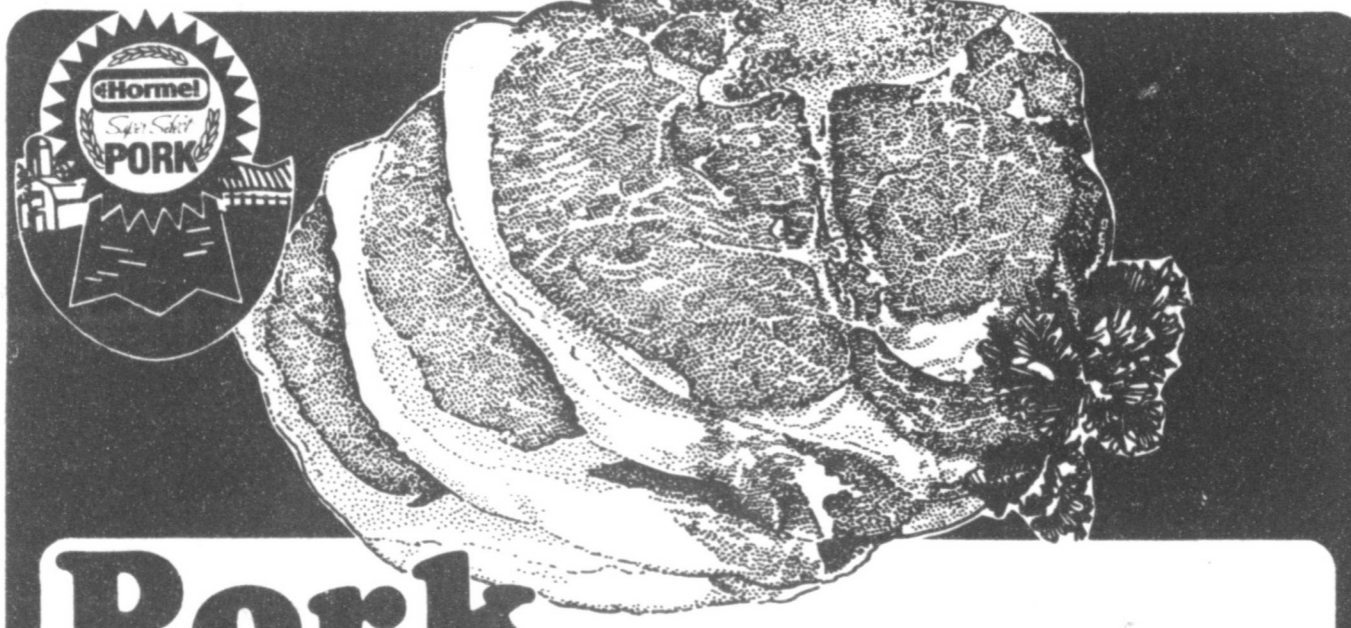
**Hellmann's**  
MAYONNAISE



**\$1 79**

32 OZ.  
JAR

DEL MONTE PINEAPPLE JUICE	46 OZ. CAN	\$1 09
DEL MONTE ASSTD. PINEAPPLE DRINKS	44 OZ. CAN	\$1 09
DEL MONTE DRY APRICOTS	5 OZ. PKG.	\$1 79
DEL MONTE DRY PEACHES	8 OZ. PKG.	\$1 49
LIQUID 50¢ OFF LABEL		
IVORY LAUNDRY DETERGENT 25¢ OFF LABEL	32 OZ. BTL.	\$1 49
TIDE LAUNDRY DETERGENT 25¢ OFF LABEL	42 OZ. BOX	\$1 99
LIQUID 75¢ OFF LABEL		
TIDE LAUNDRY DETERGENT 75¢ OFF LABEL	96 OZ. BTL.	\$4 99
GLAD HANDLE-TIE 30 GAL. TRASH BAGS	10 CT. BOX	\$1 29
GLAD HANDLE-TIE KITCHEN BAGS	10 CT. BOX	79¢



**Pork Chops \$1 59**  
HORMEL SUPER SELECT LEAN TRIM QUARTER PORK LOIN OR FAMILY PACK (9-11 ASSORTED CHOPS) LB.



**Pork Chops \$1 59**  
COUNTRY STYLE-LOTS OF MEAT LB.

SUPER SELECT LEAN TRIM CENTER CUT PORK CHOPS	LB.	\$1 99
WAFER THIN CENTER CUT BREAKFAST PORK CHOPS	LB.	\$2 09
LEAN TRIM CENTER CUT BONELESS BUTTERFLY PORK CHOPS	LB.	\$2 99
SUPER SELECT LEAN TRIM PORK STEAK	LB.	\$1 69
SUPER SELECT LEAN TRIM FRESH BUTT PORK ROAST	LB.	\$1 59
OSCAR MAYER MEAT WIENERS	1 LB. PKG.	\$1 79
OSCAR MAYER ALL BEEF FRANKS	1 LB. PKG.	\$1 89

PURINA 100 ASSORTED CAT FOOD	3 6 OZ. CAN	79¢
MICROWAVE GLAD WRAP	100 FT. ROLL	\$1 79
ALWAYS MAXI THINS / DEODORANT MAXI THINS		
MAXI PADS	30 CT. BOX	\$3 29
ALWAYS MINI PADS	30 CT. BOX	\$2 49
ALWAYS PANTYLINERS	26 CT. BOX	\$1 69
BORDEN'S ASST. FLAVORS ICE CREAM	1/2 GAL. SOL. CTN.	\$1 49
BORDEN'S BUTTERMILK	1/2 GAL. CTN.	95¢
BORDEN'S SKIM MILK	1/2 GAL. CTN.	87¢
HUNGRY JACK ASSORTED BISCUITS	5 OZ. CAN	39¢
FLEISCHMANN'S CORN OIL MARGARINE	1 LB. QTRS.	89¢
PET RITZ ASST. FRUIT COBBLERS	26 OZ. BOX	\$1 69
ORE IDA POTATOES HASH BROWNS	2 LB. BAG	\$1 09
ORE IDA POTATO O'BRIEN	24 OZ. BAG	\$1 09
PATIO ASSORTED MEXICAN DINNERS	12 OZ. BOX	99¢
SINAREST NASAL SPRAY 1/2 OZ. BTL.		\$1 79
SINAREST TABLETS	20 CT. BTL.	\$1 79

ZIPLOC MICRO FREEZER BAGS 15 FT. BAGS **89¢**

ZIPLOC MICRO FREEZER BAGS 12 QT. BAGS **89¢**

DOW SARAN WRAP 100 FT. **\$1 89**

DOW BATHROOM CLEANER 17 OZ. CAN **\$1 19**

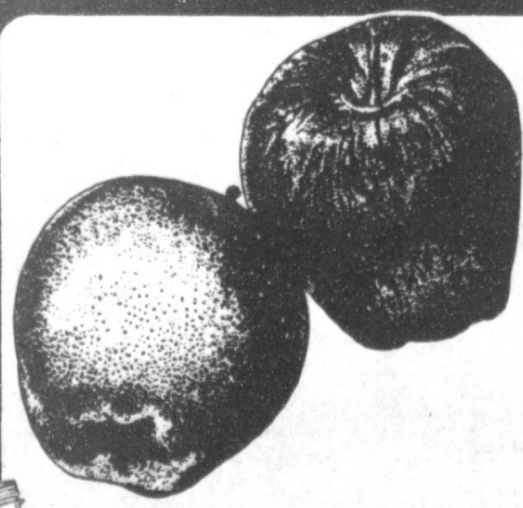
KRAFT VELVEETA SLICES 12 OZ. PKG. **\$1 69**

CONTEMPORARY **Chateau** Hand Painted Stoneware

CHOICE OF SIBERIA AND COCOA BROWN BANDS OR CORAL BLUE AND COCOA BROWN BANDS

**SALAD PLATE 49¢** WITH EACH \$5.00 PURCHASE

FEATURE OF THE WEEK



**Apples**  
IDAHO EXTRA FANCY RED ROME

**3 99¢** LBS.

MINEOLA **TANGERINES**

**49¢** LB.

CALIFORNIA GREEN BROCCOLI **49¢** LB.

CALIFORNIA CRISP TURNIPS **2 79¢** LBS.



**Coca-Cola SPRITE OR TAB \$1 59**  
3-Liter

PRICES EFFECTIVE FEBRUARY 17-22, 1986  
WE RESERVE THE RIGHT TO LIMIT QUANTITIES.





**RIBBON CUTTING CEREMONIES CONDUCTED**—Thursday morning, an estimated 200 persons watched at the Dent & Co. while the Muleshoe Chamber of Commerce and Agriculture conducted a ribbon cutting ceremony. Several John Deere Co. officials were also on hand for the ceremonies. Muleshoe Mayor Darrell Turner conducted the ribbon cutting duty, with several members of the Muleshoe Chamber of Commerce also standing in.

## Wildlife Refuge

Cont. From Page 1

When completed, wayside exhibits will be placed at Paul's Lake and along the entrance road, White Lake, headquarters entrance road, and at the State Highway 214 picnic area just north of the refuge.

Exhibits will interpret subjects, including geology, wildlife, and refuge management practices. In addition to these wayside exhibits, additional exhibits will be placed at the headquarters and in the office visitor center.

When the exhibits are completed, it will give the people of Muleshoe and Bailey County something to be proud of, said Rodney Krey, manager of the wildlife refuge.

"We invite everyone to come out and have an enjoyable day," said Krey. "The Muleshoe Jennyslippers are providing refreshments during the celebration."

Krey furnished the following information about the refuge:

### MULESHOE REFUGE HISTORY

The acquisition of land progressed quickly after President Roosevelt signed the Executive Order establishing the refuge. The first tract purchased was 738 acres from George and Mattie Robinson and Annie Robinson on August 17, 1936. This land includes the area where the refuge headquarters is located. The second tract of 1,416.8 acres was purchased from F.A. and Mattie Paul and

### GTE...

Cont. From Page 1

ment tools available to provide us with the customers' actual viewpoint," Hearn explained.

"The survey, which originated in Dallas, was found to be quite successful in measuring quality of service, repair, and service installation. The postcard is postage paid with a short selection of yes/no responses aimed at isolating positive or negative feedback with comment space allowing the customer direct input. The Customer Survey will help us modify our present service as needed and help determine future service needs," Hearn added.

"The customer is number one to us and we want to have as many avenues open as possible for communication. This survey is one more way to show our customers that GTE is working hard to fulfill their communication needs," concluded Hearn.

J.H. Paul on December 23, 1936. This is all the refuge land located east of highway 214 and includes the lake referred to as Paul's Lake. The third tract of land containing 2,214 acres was purchased from Henry and Vivian Wilson on February 6, 1937 and included Goose Lake. The last tract of land of 1,440 acres was purchased from Isaac and Crawford Enochs in 1938.

The refuge lands were placed under the protection of a caretaker in May, 1937 and the first manager Walton arrived on August 24, 1937. A Work Progress Administration (WPA) Project was established February 1, 1938 and work was started on the headquarters building and the residents diversion canal. By May 1, there were 77 WPA workers on the payroll and this increased to 112 workers by June 1. Work was frequently hampered with problems getting WPA workers to the refuge from Muleshoe and Morton due to wet, slippery road condition. All of the buildings and major improvements on dikes and roads were completed between May 1, 1938 and May 24, 1942 when the WPA Project was terminated due to a lack of manpower. The number of WPA workers dropped rapidly after 1939 and only about 10-15 worked in 1942.

During the early years water was present in nearly all lakes every year and the number of ducks using the refuge during the winter frequently exceeded 300,000. Geese were never present in large numbers like ducks but several thousand usually used the lakes. The number of waterfowl in recent years has been drastically reduced to less than 30,000 ducks and a few thousand geese. This can be attributed to the nationwide decline in waterfowl numbers, less water available, and the abundant available food supply near other Panhandle lakes due to increased farming and irrigation.

One interesting item found while reviewing the records is the small number of sandhill cranes that used the refuge. Today Muleshoe refuge is well known for the huge concentrations of 100,000 to 250,000 sandhill cranes that visit the refuge each year. During the early refuge history the number of cranes present were commonly reported at 3,000-15,000.

The sharp increase in sandhill cranes present is probably the result of the reduced water in the lakes leaving large open expanses for the cranes to roost on and the abundant food

supply due to irrigation.

In January 1945 Muleshoe Refuge recorded the first documented case of avian cholera among wild free flying water fowl. It is believed this first outbreak was the result of infected domestic chickens being disposed of in roadside ditches near the refuge. Outbreaks of this disease killed tens of thousands of waterfowl during 1945-1960 period. When water and waterfowl are plentiful outbreaks still occur on the refuge and cholera outbreaks occur nearly every year somewhere in the Panhandles killing thousands of birds.

The refuge has changed very little since the "early" days. Wildlife is still abundant during winter months only now it is sandhill cranes instead of ducks which attract visitors to this winter haven. Only two new buildings, an office and a shop in 1982, have been added in the 50 years since the WPA days. The future of Muleshoe is secure and hopefully in 50 years our children and grandchildren will be able to visit and observe or listen to the calls of the sandhill cranes.

### Estate...

Cont. From Page 1

to lower their tax burden and ease administrative burdens that affect passing their estates to their loved ones. In addition to discussing estate planning systems, tax savings possibilities will be discussed from corporations, partnerships and trusts when family members are involved in the business. Making gifts to avoid estate taxes will be discussed also. "There are two problems with making excessive gifts—the first is dying poor; the second is the adverse income tax consequences the gift can cause the recipient. A properly planned estate can save money, many dollars, in income taxes for their heirs."

Two problems that affect family operations—planning for inflation and growth of the business will be discussed. Another topic, how to be fair among all children when one child is interested in the family business and others are not will be addressed.

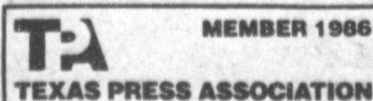
This seminar has been conducted 33 times and attended by over 1400 people in the state. At the last three seminars, over 40 percent of the participants were there for the second time to increase understanding of this complicated but crucial subject for their families. Registration fee is \$60 and registration information is available at your County Agricultural Extension Office, or from Wayne A. Hayenga, Ag Economics Dept., Texas A&M University, College Station, TX 77843. Phone (409) 845-2226.

### POT-CASH CROP

The value of U.S.-grown marijuana rose 12 percent last year to \$18.6 billion in the face of the Reagan administration's highly publicized eradication campaign, the National Organization for the Reform of Marijuana Laws said recently.

### Bailey County Journal

Established March 31, 1963. Published by Muleshoe Publishing Co., Inc. Every Sunday at 304 W. Second, Box 449, Muleshoe, Texas, 79347. Second Class Postage paid at Muleshoe, Texas 79347.



L.R. Hall—President & Publisher  
Sammye Hall—Vice President & Controller  
Cleta Williams—News  
Faylene Harris—Service  
Holly Milligan—Advertising  
Lillie Nims—Bookkeeping

**SUBSCRIPTIONS:**  
Muleshoe Journal and Bailey County Journal  
Bailey and surrounding counties \$13.45  
Muleshoe Journal and Bailey County Journal  
Elsewhere in Texas \$13.45  
Muleshoe Journal and Bailey County Journal  
Outside of Texas \$14.75  
Yearly by Carrier \$12.50  
Advertising rate card on application.

## Escapees...

Cont. From Page 1

later had second thoughts, she said, and after some additional checking, initiated a search for him. When officers located Lackey, Ms. Paschal said he was found to be attempting to steal a car.

Additionally, Clovis officers are continuing their investigation into the theft of an \$80,000 T-10 Cessna, reported to be stolen between Jan. 15-27 from a locked hangar at an airport near Clovis.

According to Martin Shafer, owner of the plane, the plane had a range of some 1000 miles, and was locked in a hangar full of fuel. He said a lock had been cut from the hangar door.

Officers reported to Bailey County and New Mexico officers, that the T-10 Cessna reported stolen in Clovis was the same plane Lackey landed in South Carolina.

According to Lt. Tommy Smith of the Greenville sheriff's office, Lackey landed a Cessna 210 turboprop airplane late Thursday night at Donaldson Center, an industrial park and former Air Force base site about five miles south of Greenville.

## City Police Report

During the past week, police reports at the Muleshoe City Police Department reflect the following actions:

One arrest for the issuance of checks, with the subject paying a fine and making restitution; two arrests for resisting arrest; one arrest for assault, injury to a child and escape; one arrest for theft, public intoxication and capias pro fine for Hereford authorities; one investigation of criminal mischief involving a broken door at the Texas Migrant Council and a criminal mischief involving shots fired into a window and wall at the Boy Scout Hut.

Officers also investigated three accidents, with no injuries reported.



## NEWS VIEWS

**Paul R. Huard, Business analyst, on possible tax increase:**

"The conventional wisdom that you can't pass a tax increase during an election year is no longer valid."

**Mikhail Gorbachev, Soviet leader:**

"We are against weapons in space. Our material and intellectual capabilities make it possible for the Soviet Union to develop any weapon if we are compelled to do this."

American Medical Association wants smoke free society.

Deputies questioned Lackey about the unusual landing but had to release him because they lacked evidence to charge him with a crime. Smith said. Lackey was traveling with identification indicating he was from Raleigh, N.C.

The Greenville officer said a deputy gave Lackey a ride to a restaurant in Greenville, and during conversation with Lackey it was learned that the suspect would meet a woman in town.

At this time, the deputy alerted fellow officers to the make of auto, and the vehicle was stopped by authorities at a grocery store near the restaurant.

On questioning the female driver, who was released without charges, she admitted she was trying to help Lackey and said he was a jail escapee from Muleshoe.

A stolen pickup was found later near Spartanburg, about 30 miles from Greenville.

Lackey was spotted by a sheriff's deputy from Spartanburg hiding among autos at an

Oldsmobile dealership. After a brief chase, Lackey was subdued by two deputies and placed under arrest.

Bailey County officers plan to extradite Lackey to Bailey County to face the original charges here.

Lackey, 34, was arrested in western Bailey County in November, and was being held in the Bailey County jail on charges of operating an illegal drug manufacturing laboratory, possession of illegal drugs, and possession of illegal drugs for sale.

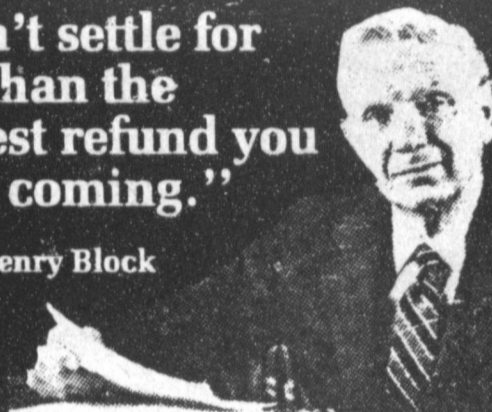
At the time he was arrested, officers also recovered three trailers reported to be stolen from the Dallas area.

Carroll, 18, was being held for trial on charges of sexual assault on an adult female.

At presstime, it had not been determined if Lackey would sign a waiver of extradition to be returned to this county. There are also other state, as well as federal charges pending on Lackey, according to local officials.

"Don't settle for less than the biggest refund you have coming."

— Henry Block



At H&R Block, we guarantee you the biggest refund you have coming, or your return is FREE. Get back all you're entitled to — come to H&R Block. 224 w. 2nd 272-3332 wk days 9-6 Sat. 9-5

**H&R BLOCK**

THE INCOME TAX PEOPLE

## Paying Too Much For Major Medical Insurance?

Not Sure? Get A Quote.

\$1,000,000 Major Medical Protection From Golden Rule

Does your present Medical Insurance do this?

- Provide up to \$1,000,000 maximum benefit?
- Let you choose the deductible to keep the cost down?
- Pay your claims promptly?

**Ronnie Holt**  
272-4581

**Henry Insurance**

Muleshoe

111 W. Ave. B.

## MULESHOE STATE BANK

and

*Today's Women*

WILL PRESENT

MONEY, MONEY, MONEY<sup>c</sup>

AN EDUCATIONAL OPPORTUNITY FOR THE ENTIRE COMMUNITY

Presented in this Seminar

- March 3 ..... Wills and Estate Planning
- March 10 ..... Financial Planning and Investments
- March 17 ..... Taxes
- March 24 ..... Bank Services

CALL 272-4561 FOR YOUR PLACE IN THIS EDUCATIONAL ADVENTURE

ONLY AT

MULESHOE STATE BANK  
101 West American Blvd.

MEMBER F.D.I.C.



Wiedebush and Company is having another Truckload Oil Sale.

You can buy quality Amalie Products at 10% off regular prices. Buy 10 cases, drums or 5-gallon cans and get ONE UNIT FREE.

The way our oil prices are going up, this program could very easily save you as much as 25% in the coming months.

This offer has been extended thru Feb. 28, 1986.

**Wiedebush & Co.**

1620 W. Amer. Blvd.

272-4281





**ENGAGEMENT ANNOUNCED**--J.O. and Leavelle Parker announce the engagement and approaching marriage of their daughter, Brenda Jo to John Allen Stephens, son of J.A. Stephens of Clovis, N.M. and Mrs. Salomon Chavez of Chicago. Vows will be exchanged at 7 p.m. Friday, March 21 in the Muleshoe First Assembly of God Church.

**New Arrivals**



**Julie Celeste Swart**

Mr. and Mrs. Roger Swart of Abilene are the proud parents of a daughter, Julie Celeste, who was born Monday, Jan. 27.

Julie Celeste weighed seven pounds and five ounces and was 20 1/2 inches long. She has a brother, Dustin.

Grandparents are Mr. and Mrs. Wayne Swart of Sudan and great grandparents are Mr. and Mrs. Bud DeLoach of Sudan, Ruth Swart of Littlefield and Margie White of Brownwood.

**James Wesley Graves**

Mr. and Mrs. James Graves

of Lubbock are the proud parents of a son born Jan. 28 at 2:11 a.m. in the Methodist Hospital.

The young man weighed eight pounds and five ounces and was 20 1/2 inches long. He has been named James Wesley.

Grandparents are Mr. and Mrs. Roy Graves of Sudan and Mr. and Mrs. Gerald Bourdreau of Lubbock.

Great grandmother is Mrs. Annie Glasscock of Tipton, Okla., formerly of Sudan.

**Rebekah Lodge**

Muleshoe Rebekah Lodge No. 114 met at 7:30 p.m. Tuesday, Feb. 11 at the lodge hall. Following a salad supper, the meeting was called to order by Mary Franklin, Noble Grand.

Carolyn Harris presented the American Flag followed by roll call and the reading of the previous meeting minutes by Patsy Chance.

Mrs. Linda Tosh and Mrs. Lori Tosh were initiated into the lodge.

Following initiation a short business meeting was held and the closing prayer was given by Terrie Snell.

**Creative Living**

with Sheryl Borden

Information on customized skirt patterns, making puff pastry and doing fancy machine quilting will be presented on "Creative Living" on February 18 and 22. Laura Varney is founder of Clothing Design Concepts, Inc. in Manhattan, KS and she uses a computer to draft bodice, pant and skirt patterns to each person's individual measurements. She will talk about the basic skirt pattern and also show some variations, such as pleats and pockets.

Puff pastry is one way to make lots of foods seem extra special. Barbara Gonsor of Pepperidge Farm in Norwalk, CT will explain how puff pastry

is made and share some recipes for hor d'oeuvres and give tips about preparation of this unusual pastry.

Virginia Walton, an instructor at The Quilt Works in Albuquerque will demonstrate some fancy machine quilting. The process does take practice, but the results are well worth the effort.

Decorating children's cakes and making a quilted sweater will be demonstrated on the show on February 20. Zella Junkin represents Wilton Enterprises of Woodridge, IL and she will demonstrate some basic techniques for decorating cakes. She'll concentrate on cakes for children, and show a Cabbage Patch cake, a He-Man cake and one decorated like Bumble Lion. Another technique she will demonstrate is called "Color Flow" and it, too, lends itself to children's cakes. Zella will show a collection of cake pans to make any child's eyes light up!

Another guest will be Shirley Brabson, co-owner of The Quilt Works in Albuquerque. She will show how to combine knitting and quilting skills to make a quilted sweater. The sleeves and neck ribbing are knitted, but the front and back are quilted. She will show different combinations and talk about quilt patterns that work well for this technique.

"Creative Living" is produced and hosted by Sheryl Borden. The show airs on KENW-TV, Channel 3 in Portales on Tuesday and Thursday at 12 noon and at 2:00 pm on Saturday. (All times are Mountain Standard).

What is puff pastry? Who does it seem so special and why is it so hard to prepare? Puff pastry is a deliciously flaky dough that, when baked, swells to six or seven times its original height into a light, delicate pastry. When you look at the baked dough you see many thin layers separated by air spaces. These air spaces are the only riser -- no leavening is used. To create them, a flour and water dough is rolled with shortening, then folded and rolled again and again, making many thin layers of dough separated by layers of shortening. Between each folding and rolling, the dough must be chilled, usually for 20 to 40 minutes until it is firm but not hard. During the baking the shortening melts creating steam and puffing the layers of dough into tender, crispy pastry.

**INDIVIDUAL NAPOLEONS**  
1 sheet Puff Pastry  
1 pkg. (4 1/2 oz.) instant chocolate pudding  
1 cup sour cream  
1 cup milk  
1 cup confectioners' sugar  
1 tablespoon milk  
2 squares (1 oz. each) semi-sweet chocolate, melted

Thaw pastry sheet about 20 minutes and unfold. Cut sheet into 4 strips (2 1/2 inches) wide. Cut each strip crosswise into 2 inch rectangles. Bake strips on ungreased baking sheet in preheated 350 degree oven for 18 to 20 minutes. Prepare instant pudding according to package directions, substituting sour cream for one cup milk. Cut pastry rectangles in half making a top and a bottom. Generously spoon pudding on bottom half and top with the

other half. Blend sugar and 1 tablespoon milk. Spread on top and drizzle with chocolate. Makes 20 Napoleons.

**PUFFED WALNUT TWISTS**  
1 package Puff Sheets  
1 egg, beaten with 1 tsp. water  
1/4 cup granulated sugar  
1/2 cup ground walnuts or almonds

Thaw pastry 20 minutes, then unfold. Brush each pastry sheet with egg mixture and sprinkle

evenly with sugar and walnuts. Cut each sheet lengthwise into two rectangles. Cut rectangles crosswise into one-half inch wide strips. Twist strips to make a spiral and place on ungreased baking sheet. Bake in a preheated 400 degree oven for 15 to 18 minutes until puffed and golden brown. Transfer to wire racks to cool completely before serving. Makes about 80 twists.



**CROWNED KING AND QUEEN**--D.J. Gage and Lois Ethridge, residents of the Muleshoe Nursing Home, were crowned King and Queen of the home Friday morning during a Valentine party hosted by the Lazbuddie Young Homemakers. Residents and employees of the nursing home cast votes for the residents of their choice to be crowned during the party. Gage and Mrs. Ethridge received the most votes and were presented gifts from the Young Homemakers, who also served refreshments.

**Sudan CofC Plans Annual Banquet**

The Sudan Chamber of Commerce met Tuesday, Feb. 4 at 7 p.m. in the community room of the Sudan First National Bank. Jerry Ray, president, presided over the business meeting.

Minutes of the previous meeting were read and approved. It was reported that Sen. Bill Sarpius, D. Hereford will be the featured speaker of the annual Chamber of Commerce banquet on March 15. The banquet will be in the Sudan High School cafeteria at 7 p.m. Advance tickets are available from any chamber member and are \$7.50 each.

Nominations are needed from the public for the man, woman and farm family of the year and

the citizen through the years, awards will be announced at the banquet. Deadline for the ballots to be received is Feb. 20. Blanks are available for the nominations at the bank and Pudd's Shamrock.

Completed blanks may be left at the bank or mailed to the Chamber of Commerce, Box 224, Sudan. The blanks do not need to be signed if you prefer not to sign but please--nominate someone you think should have this honor.

There are a few men in public life who retire at the right time voluntarily.

**The Children, Grandchildren & Great-Grandchildren**

of **Mr. and Mrs. Hugh Gore**

Request The Honor Of Your Presence At The Celebration Of Their 25th Wedding Anniversary Sunday, February 23rd, 2-4 p.m.

In Their Home At Circle Back, Texas

Your Friendship Is Gift Enough And They Respectfully Request No Other.

There are so many things a farmer needs today....

- |                  |                        |
|------------------|------------------------|
| CROP INSURANCE   | AUTO INSURANCE         |
| WORKERS COMP     | LIFE INSURANCE         |
| LIABILITY        | ANIMAL MORTALITY       |
| HEALTH INSURANCE | DWELLINGS & BLDG. INS. |
|                  | RETIREMENT INCOME      |

Now Professional Farmers may buy complete insurance protection from one Agency and at a Big Savings.



**Henry Insurance Agency**  
111 W. Ave. B - Muleshoe  
806/272-4581

**VOTE!**  
Parmer County Political Calendar  
County Commissioner  
Precinct 4  
Raymond McGehee  
County Treasurer  
Anne Norton

**Notice Of Annual Meeting Of Members of Bailey County Electric Cooperative Association**  
Will Be Held Saturday, February 22, 1986, 1 p.m.  
**Community Activities Building Morton, Texas**  
Free Noon Meal For Members & Families  
Registration Begins At 11:30 a.m.  
You Must Register To Get Meal Tickets  
There Will Be A Business Meeting & An Election Of Directors From Districts, 4, 5 & 7.  
**Make Your Plans Now To Attend!**





**JENNYSLIPPER SPEAKER**--Thursie Reid, president of Jennyslippers, woman's division of the Muleshoe Chamber of Commerce, introduced Rodney Krey, manager of the Muleshoe Wildlife Refuge, at the noon meeting of Jennyslippers Tuesday. Krey spoke to the group about the open house being held at the refuge this weekend. He asked the group to serve refreshments during the openhouse. Approximately 10-12 members agreed to help.

### TOPS CLUB

Muleshoe TOPS club chapter No. 34 met at 6:30 p.m. Thursday, Feb. 6 in the meeting room of Bailey County Electric. Ernestine Steinbock, co-leader, called the meeting to order. The TOPS pledge was recited and the fellowship song sung. Evelene Harris called the roll with ten members present. One new member, Thesia Davis, was welcomed to the club. Evelene Harris, secretary, read the minutes of the previous meeting and they were approved as read. Mabel Wolfe was named best loser for the week. Runners up were Rose Sain, first, and Ruth Clements, second. Best loser for the month was Inez McWilliams. Mabel Wolfe was first runner up and Laverne James was second runner up. Nan Gatlin was named KOPS Queen for the month. The meeting was closed with the singing of the goodnight song.



**BROWNIE SCOUT TROOP 326**---Thursday afternoon Brownie Scout troop 326 and their leaders, Vicki Villarreal and Lillie Ham, joined Brownie Scout troop 328 at the Scout Hut for a Valentine party. They were served pizza and cold drinks. Brownies pictured (L-R) Back Row: Teri Martin, Stephanie Perez, Rhonda Crawford and Violet Mendoza; Front Row: Sarah Villarreal, Jennifer Taylor Welch, Kesha TorBit, and (Terri Gutierrez) not pictured.



**VALENTINE PARTY FOR BROWNIES**--Sharon Williams and Tawna Stewart, leaders of Brownie Troop 328 and Vickie Villarreal and Lillie Ham, leaders of Brownie Troop 326, treated the Brownies to a Valentine party Tuesday afternoon at the Scout Hut. Pictured along with their leaders, Mrs. Williams and Ms. Stewart are: (L-R.) Back Row: Kimberly Vaughn, Michelle Williams, Dacia Stewart and Tosha Ronek; second row: Sharon Johnson, Sarah Watson, Julie Williams and Mandy Seales; front row: Summer Gibbons and Samantha Loughlin. Not pictured Heather Bunch.

### Gordon Martin In This Week's Senior Spotlight

By Kim Crowson  
Gordon Martin is the son of Shirley Martin. He is 18 years old, has light brown hair, blue eyes and is six feet tall. He was born in Seminole on Sept. 8, 1967. He has one brother, Joe, and Gordon says Joe happens to be his favorite person. Gordon is very active in sports with football being his favorite. It is no surprise with his athletic ability that his hobbies are water skiing, snow skiing and riding motorcycles. He is on the football team and golf teams in Sudan High. He is an active member of FFA, FCA and the Industrial Arts Club. He is a member of the First United Methodist Church. Some of his other favorite things are color-blue; food-steak; song-Money for Nothing; singer-Merle Haggard; group-38

Special: movie-Up the Creek; T.V. show - "A-Team;" actor Michael J. Fox; and actress Heather Thomas. As for his comments of SHS, "I think SHS is a good school. It has been good to me."

## Who Will Care For Your Aging Parents?

**There Is An Alternative**

Visit Us  
At  
611 Main  
Amherst, Tx.

**South Plains  
Retirement  
Center, Inc.**

Call Today  
806 -  
246-7714

**AND DON'T YOU FORGET IT...**

According to the Chinese Zodiac, 1986 is the year of the tiger.

## Ben Franklin

*Better quality for less*

2104 W. Amer. Blvd. 272-3855

Sunday Feb. 16-Saturday 22

### Assorted Fabrics

2yds \$1<sup>00</sup>

**STORE HOURS**  
8a.m.-8p.m.  
Sun. 12-5

**BEST OF PRESS**

*It Is*  
A youthful figure is something you get when you ask an older woman her age.  
-U.S. Naval Depot.

*Working Hard*  
A congressman naturally spends lots of time fixing his fences, because that's where he sits most of the time.  
-Southern Lumberman.

\*\*\*\*\*

**MEET THE CANDIDATES  
Bailey County  
County Clerk  
Barbara McCamish**

**District Clerk  
Nelda Merriott**

**287th District Judge  
Jack Young**

**Justice Of The Peace  
Precinct 1  
Jack Bates**

**County Treasurer  
Dorothy Turner**

**County  
Commissioner  
Precinct 2  
Roy Whitt  
Bill C. Vinson  
Don Seales  
Precinct 4  
Rudolph Moraw**

\*\*\*\*\*

## ONE AGENT IS REALLY ALL YOU NEED

A professional insurance agent who cares about your family.

One agent to handle your total insurance program: property protection, medical coverage, education fund, disability income, survivor benefits, retirement income, estate planning.

Call your National Farmers Union Insurance agent.

### Roy Whitt Insurance

201 Main  
272-3611

## Anthony's® New Disposable Diapers are the BEST!

**Anthony's® NEW Disposable Diapers:  
No Limit...Purchase as Many as You Need!**

# 7<sup>99</sup>

Bag 2 Baga \$15 48-Ct. Medium or 32-Ct. Large

Made with the all same great features as the higher-priced brands:

- A Baby-Tailored™ fit...no-sag contouring and soft covered elastic around legs for leak-proof comfort.
- A Moisture-Minder™ double thick crotch...carries wetness through inner liner and retains it in a super-absorbent pad away from skin, without extra bulk.
- Extra-long re-lastenable tapes.
- Stay-dry outer covering.

Choose the 48-count bag in medium (12 to 22 pounds), or the 32-count bag in large (over 21 pounds), both for day or night use.

Quality is part of the bargain!

# ANTHONY'S®

Coming soon to all stores!

Welcome

321 Main Mon.-Sat. 8 a.m.-6 p.m. Sun. 1-5 p.m. 272-3478



# Bailey County Journal

# Classified

Call 272-4536

**CLASSIFIED RATES**  
 First Insertion Per Word.....\$15  
 Minimum Charge \$2.30  
 Consecutive Insertions Per Word.....\$13  
 Minimum Charge \$2.00

**CLASSIFIED DISPLAY RATES**  
 \$1.70 Per Column Inch

**BLIND AD RATES**  
 50% More

**DEADLINES**  
 12 noon Tues. For Thursday Paper  
 12 Noon Fri. For Sunday Paper

*We reserve the right to classify, revise, or reject any ad. Not responsible for any error after ad has run once.*

**1. Personals**

**LATHE & STUCCO** work do jobs or patch work professionals, free estimates, call 965-2871. s1-6s-4tsc

**Kenneth Evins' Handyman Service**  
 Painting Remodeling Repairing And more  
 Call: 965-2759  
 Muleshoe, Texas 79347

Coral Reef #3 Give your Valentine a pet. Give your pet a Valentine. All breed dog grooming -Tropical fish-Supplies. 272-5709

**STORAGE** Rooms Available For Storage \$25.00 - \$30.00 per month Ted Barnhill 272-4903 b1-42s-stfc

Will Do Custom Sewing or Planting with J.D. drill. Call 965-2417. 12-1 or after 8 p.m.

All natural, Good Basic Nutrition, Weight Control, Program. Safe. Betty Steinbock 965-2866.

**CONCERNED** About Someone's Drinking? **HELP IS AVAILABLE** through Al-Anon Call 227-2350 or 965-2870 or call 227-2350 or come to visit Tuesday nights, 8:00 p.m. or Saturday mornings at 10:30 a.m. at 1116 W. American Blvd., Muleshoe.

**2. Lost & Found**  
**LOST FROM** truck in Muleshoe: one Kerney brand compression tool. Metal jaws, yellow fiberglass handles. Reward offered. Bruce Inc. 272-5114. b2-6s-4tc

**1. Personals**

**HOME REPAIRS** F.M. Saldana Construction, licensed and bonded plumber. Specialized in cement, carpenter work, remodeling, painting, acoustical ceilings. 272-4955. s1-16s-tfc

**FURNITURE** Upholstering & repairs. Burrows Upholstery Shop 209 W. 2nd Phone 272-4255 Home Phone 272-5722. b1-41t-tfc

**AVON REPRESENTATIVES** usually earn \$6 to \$10 per hour. For information call Nettie Long 272-3208 or Tommie Graham 505-762-4174. L1-3t-10tc

**SPECIALIZED** in welding, hard surfacing, abrading and aluminum. David Killough 272-5307. k1-7s-2tc

**CERTIFIED INCOME TAX PREPARER** with reasonable rates. Come by 121 W. Ave. H. after 6 p.m. n1-7s-1tp

**MARY KAY COSMETICS** Josie Flowers 272-3865 1-40s-tfc

**8. Real Estate For Sale**

**JAMES F. HAYES & CO.**  
 Vic Coker - Agent  
 (806) 965-2468

\*\*\*  
**320 ACRES** Northwestern Lamb County. Very good water and soils, 3 irrigation wells, 1 domestic well, steel cattle pens, \$600/acre.

\*\*\*  
**160 ACRES** 4 miles Northwest of Earth. 2 wells, very good sprinkler, seller financed note may be assumed. Make offer.

\*\*\*  
**1275 ACRES** north of Lazbuddie on Running Water Draw. 370 acres central pivot irrigated, 250 acres row irrigated, balance is good of buffalo grass and gramma grass. All improved. 2 houses, barn, small feed lot, excellent fences and other improvements. \$325 per acre.

\*\*\*  
**160 ACRES** West & South of Lazbuddie many improvements, Very Good water, ideal for combination of farming & cattle.

\*\*\*  
**1280 ACRES.** Western Deaf Smith County, North of Friona. 960 acres of excellent grass. 2 windmills, 1 submersible pump. 320 acres of cultivation. Very good fences. Other land available for lease to buyer of this property. \$210/acre.

\*\*\*  
**162 ACRES** North of Pleasant Valley Gin. 2 wells, excellent water, new sprinkler. Seller will finance. \$900/acre.

\*\*\*  
*Contact Vic for information on other ranch, hunting and recreational properties.*

**8. Real Estate For Sale**

**3. Help Wanted**

**EASY ASSEMBLY WORK!** \$600.00 per 100. Guaranteed Payment. No Experience /No Sales. Details send self-addressed stamped envelope: ELAN VITAL - 6469 3418 Enterprise Rd. Ft. Pierce, FL 33482. e3-5s-9tpts

**4. Houses For Rent**

**RUIDOSO CHALET:** 4 bedroom for rent by day, weekend, or weekly. Call 505-257-2622 or 915-943-4261. Owner Dr. Albertson. a4-49t-tfc

**5. Apts. For Rent**

**ONE** furnished apt. for rent. Water paid. Call 272-3901 or come by 202 W. 8th after 5 p.m. Betty Jo Carpenter. c5-cs-tfc

**8. Real Estate For Sale**

**COUNTRY LIVING HOMES**

3-1-1 home on 1 acre, close to town, nice workshop-storage bldg. & attached shed. \$30's....

\*\*\*

**JUST LISTED** 3-1-1 home on pavement close to town on approx. 6/10 acre, storage bldg., workshop, unfinished basement.

\*\*\*

3-1 3/4-2 carport (Brick Home) on 1 acre, close to town, built-ins, Cent. A&H, fireplace, approx. 24' x 70' bldg. for storage, workshop, etc., fruit trees, & more!!!!

\*\*\*

**RICHLAND HILLS**

**JUST LISTED** 3-2-2 Brick, Cent. A&H, built-ins, fireplace, utility, fenced yard, corner lot. \$50's!!!!

\*\*\*

**JUST LISTED**-Nice, large 3-2-2 Brick Home, Cent. A&H, built-ins, utility, approx. 2700 sq. ft. of lv. area, nice covered patio, storage bldg., playhouse, fenced yard, & more!!!!

\*\*\*

4-2 1/2-2 Brick, Cent. A&H, built-ins, fireplace, study, basement, fenced yard & more. \$60's!!!!

\*\*\*

3-3-1 carport Brick, Cent. A&H, built-ins, fireplace, nice large den with built-in bar & gun cabinets, loads of storage, large utility, covered patio, gas grill, & storage bldgs.!!!

\*\*\*

3-1 1/2-2 Brick, Cent. heat, Evap. air, built-ins, nice earth tone carpets, new vinyl flooring, fenced yard & lots more!!! \$60's

\*\*\*

**NICE** 3-2-2 Brick, (energy Efficient-Total Electric), Cent. A&H, built-ins, fireplace, storm windows & doors, utility, nice patio & more!!!!

**8. Real Estate For Sale**

**LENAU ADD.**

3-1-1 home corner lot, Cent. heat, Evap. air fenced yard. \$30's....

\*\*\*

**NICE** 2-1-1 home, wall furnace, evap. air storm windows & doors, utility, fenced yard & storage bldg. \$30's!!!!

\*\*\*

3-1 1/2-1 carport home, nice carpet, fenced yard, neat. \$30's!!!!

\*\*\*

2-1-1 Home, Cent. heat, DW, utility, storm windows, well insulated, fenced yard. \$20's!!!!

\*\*\*

2-1-1 Brick, Cent. A&H, built-ins, fireplace, Comb. den-office, fenced yard with 2 nice pecan trees, corner lot!!!!

\*\*\*

**JUST LISTED** 3-1 1/2-1 home, Cent. heat, evap. air, storm windows & doors, well insulated, water softener, fenced yard, storage. Let's look at this one!!!

**HIGH SCHOOL AREA**

**IMMACULATE** 3-1 3/4-1 Brick home, built-ins, Cent. A&H, 2 fireplaces, nice finished basement, earthtone carpets, undergrd. sprinkler, & much more. \$60's!!!!

\*\*\*  
 "WE APPRECIATE YOUR BUSINESS"  
 GEORGE NIEMAN, BROKER  
 DIANNE NIEMAN, BROKER

**5. Apts. For Rent**

**FOR RENT:** Nice 1-2 bedroom apartments. Some bills paid. Call 272-4969 or 272-4754 after 5 p.m. s5-4s-tfc

**7. Wanted To Rent**

**WANT** to rent farm land. Call 505-276-8339. k7-5s-3tsc

**8. Real Estate For Sale**

**FOR SALE BY OWNER:** 3 bdr. - 2 Bath, brick home in Country Club Addition. Fireplace, sunken den, nice fenced yard, central A&H, 906 Juniper, 272-5421. m8-2s-tfc

**FOR SALE:** 1971 Mobile Home, 3 Bedroom, 1 1/2 Bath, \$7,500. Call 272-5268 after 5:00 p.m. g8-37s-tfc

**FOR SALE** by owner. 3 bedroom on corner lot, clean, newly painted. 522 W. 8th. 965-2864. \$29,500. h8-7s-tfc

**8. Real Estate For Sale**

**BINGHAM & NIEMAN REALTY**  
 116 E. Ave. C  
 272-5285--272-5286

**JUST LISTED**--Nice 3-1+1 Carport Home on corner lot. Nice carpets, wall furnace heat, evap. air, fenced yard and storage bldg. \$30's!!!!

\*\*\*

3-1 1/4 Brick Home, with approx. 2750 sq. ft. of lv. area, Cent. A&H, built-ins, beamed ceiling in living room, nice den with ash paneling, large utility, fenced yard, storage bldg., & more!!!!

\*\*\*

3-1-1 home, corner lot, Cent. heat, Evap. air, fenced yard. \$30's!!!!

\*\*\*

3-1 1/4-1 home, corner lot, Cent. A&H, 1800+ sq. ft. of lv. area, sprinkler sys., & also has a nice 2 room & bath rental unit. \$40's!!!! 10% Owner financing.

\*\*\*

2-1 home on 20 acres, 20 hp. sub. pump, domestic well, large barn & corrals, 1/4 mile sprinkler pipe, & more. \$42,500...

\*\*\*

**JUST LISTED** 3-2-1 detached garage home on corner lot, floor & wall furnace heat, evap. air, built-ins, ceiling fans, fenced yard, storage, approx. 2450 sq. ft. of lv. area. \$47,500!!!!

\*\*\*

**JUST LISTED** 3-1-1 car detached garage home on corner lot, wall furnace, evap. air, utility, fenced yard, storage, cellar, & also has a nice one bedroom rental unit. \$39,000!!!!

\*\*\*

**GOOD RENTAL PROPERTY**-2 houses (2 bdrm., 1 bath, unfurnished & a 1 bdrm., 1 bath furnished) all on one lot. \$25,000 Sales Price with a \$400 per month income!!!!

\*\*\*

**JUST LISTED** 3-1-1 carport home, wall furnace heat, evap. air, gas log fireplace. 2 storage areas, fenced yard. \$30's!!!!

\*\*\*

**NICE** Mobile Home lot, hookups, fenced yard & storage bldg.!!!!

\*\*\*

**BUILDING ON 2 LOTS,** approx. 2350 sq. ft., paved parking...

\*\*\*

**NICE FASHION & FABRIC** shop. Very good business with good potential. Priced to Sell.

\*\*\*

**PRICE REDUCED**-Nice brick office bldg. Approx. 4,000 sq. ft. Very nice offices and reception area, central A&H paved parking.

\*\*\*

**YL**-Approx. 400 acres, 4 wells, underground tile, 3-1 1/4-2 home, 2 large barns, 2-1 tenant house. \$750.00 per acre.

\*\*\*

**BAILEYBORO**-2 Labors, 4 elect. wells, 3 bdrm., 2 bath home, barns, corrals, approx. 55 acres of pasture land, on pavement....

\*\*\*

**FAIRVIEW AREA**-2 good dryland labors on pavement. Priced to Sell!!!!

\*\*\*

**JUST LISTED** 3-1 1/2-1 carport home on corner lot, wall furnace heat, evap. air, nice location, close to school. \$29,900!!!!

\*\*\*

We have numerous farms, commercial property, & lots listed. Contact us for details on these and other listings.

\*\*\*

**8. Real Estate For Sale**

**ATTENTION RANCHERS:** 14 and 16 wide preowned mobile homes for sale. Professionally clean and reconditioned. Call toll free for details 1-800-792-0032. Mustang Mobile Home Brokers. m8-7s-4tcts

**FOR SALE:** by owner 3 bdrm, 1 bath, garage, Country Club Addition, \$35,000.00 272-5414. j8-6s-stfc

**LAMAR KELLY**  
 REAL ESTATE BROKER

**BRICK**-3 br., 2 bath, 2 car garage, storage, 2.8 acres, 1 1/2 miles East of Amherst, TX, HWY 37.

**3 BR. 1 BATH,** all insulated. 500 Main, Amherst, TX

Home Ph. 246-3357 Office Ph. 246-3226 Box 259 Amherst, TX 79312 k8-4s-8tscs

**8. Real Estate For Sale**

**8. Real Estate For Sale**

**8. Real Estate For Sale**

**8. Real Estate For Sale**

**8. Real Estate For Sale**

**REDUCED PRICE**  
**OWNER SELLS:** 3 bdrm., 2 bath, brick, with fireplace, cent. A&H. Covered patio with nice yard. 1806 W. Ave. E. 272-3230. n8-7t-tfc

**DON'T GIVE** it away Let us appraise it 272-3191 Krebbs Real Estate k8-7s-tfc

**9. Automobiles For Sale**

**CARS, JEEPS & TRUCKS** under \$100.00. Now available at local sales. Call (refundable) 1-518-459-3535 for your directory to purchase. 24 HRS. w9-7t-3tpts

**FOR SALE:** 1978 Oldsmobile Regency. 4 door excellent condition. One owner. Call 925-6420. d9-7s-2tc

**How About You.** Too many people itch for what they want without scratching for it.

**8. Real Estate For Sale**

**8. Real Estate For Sale**

**8. Real Estate For Sale**

**8. Real Estate For Sale**

**10. Farm Equip.**

**GOOD SELECTION** of used center pivot for sale or lease. Contact Irrigation Pumps & Power, Muleshoe, Earth or Dimmitt. 110-46s-tfc

**8. Real Estate For Sale**

**IN AMHERST** Completely remodeled, loan appraised. 2 Bdrm, 1 Bath, large living room, fireplace, kitchen, built-ins, lots of cabinets, utility, fully carpeted, central heat, ref. air call 246-3454. b8-49s-stfc

**8. Real Estate For Sale**

**JIMMIE CRAWFORD** Real Estate & Ins. 1725 W. Ave. E Muleshoe, Texas Phone 272-3666

2-1 3/4-2 brick house 1/2 Mi. west of town on 10 acres. 3" well on natural gas. Ideal for truck farm or a small cattle operation.

4-1 house on 18 acres 9 Mi. N.E. of town. Has 4 barns & other improvements

2-1 house with vinyl siding new wiring & plumbing. Near downtown area.

**COMMERCIAL PROPERTY**-3 lots on highway 84 with 125 ft. frontage. Good location.

2 labors dryland in Longview area. One in wheat. Lets look.

Have other dryland & irrigated farm listings. Call for more details.

**8. Real Estate For Sale**

**8. Real Estate For Sale**

**8. Real Estate For Sale**

**8. Real Estate For Sale**

**10. Farm Equip.**

**FOR SALE:** Surge valves irrigation pipe, hydrants, gaskets, gates, and pivot sprinkler systems. Call Mike. 806-293-4164 or 293-1431. 10-6s-4tsp

**8. Real Estate For Sale**

**8. Real Estate For Sale**

**8. Real Estate For Sale**

**8. Real Estate For Sale**

**8. Real Estate For Sale**

**8. Real Estate For Sale**

**8. Real Estate For Sale**

**8. Real Estate For Sale**

**8. Real Estate For Sale**

**8. Real Estate For Sale**

**8. Real Estate For Sale**

**8. Real Estate For Sale**

**8. Real Estate For Sale**

**8. Real Estate For Sale**

**J. Sudderth Realty, Inc.**  
 Drawer 887  
 Farwell, Tx 79325  
 Ph. 806-481-3288

177 acres irrigated with zimmatic sprinkler near Lazbuddie. Good water area, Owner says sell.

\*\*\*

Excellent existing agri-Business. Ideal family operation. Located on highway in the heart of farming area in the Farwell-Bovina-Oklahoma Lane area. Would trade for home or land as part down payment

\*\*\*

160 Acres irrigated, 3 wells, near West Camp.

\*\*\*

160 Acres irrigated, 3 wells, circle sprinkler, nice home with extra large barn on highway North of Muleshoe.

\*\*\*

City home with country view very nice brick 3 bdrm, 2 bath, 2 car garage, fireplace, central heat & refrigerated air, underground sprinkler system, must be to appreciate owner says sell.

\*\*\*

100 acres irrigated with circle sprinkler, excellent water area with nice 3 bedroom, 2 bath home with 2 car garage, North East of Muleshoe.

\*\*\*

**Jo Ann Chester Realty**  
**REAL ESTATE BROKER-APPRAISER**  
**806-227-2368**  
 FARMS FOR SALE  
**BAILEY COUNTY**  
 Dryland

6 adjoining labors near Circleback with 1/2 of 100% minerals

\*\*\*

**LAMB COUNTY**  
 Dryland

177 ac. - 3 mi. N.W. of Sudan on pvmt. with 2 bdrm. home

\*\*\*

179 ac - 1 mi. S.E. of Sudan on pvmt.

\*\*\*

80 ac. - 3 mi. S.W. of Sudan on pvmt.

\*\*\*

177 ac. - S.E. of Lfd. near Bainer Switch

\*\*\*

**Irrigated Land**

240 ac. - 7 mi. N.W. of Sudan on Hwy. 84 with 177 ac. alfalfa under spr. & 80 ac. grass & wheat

\*\*\*

448 ac. - alfalfa with siderell sprkls. 10 mi. N. of Sudan

\*\*\*

177 ac. - W. of Amherst with 2 wells

\*\*\*

366 ac. W. of Sudan with 3 wells, Towable Bpl.

\*\*\*

**PARMER COUNTY**  
 320 ac. - Near Lazbuddie with 3 - 8" wells. Very Good.



### Ella Lindley Local Woman's Mother Dies

Funeral services for Ella Lindley, 88, of Littlefield were held at 2 p.m. Friday, Feb. 14 in the First Baptist Church of Littlefield with the Rev. Charles Broadhurst, pastor, officiating.

Interment was in the Littlefield Memorial Park under the direction of Hammons Funeral Home. Mrs. Lindley died at 1:40 p.m. Tuesday at Methodist Hospital in Lubbock following a lengthy illness.

A native of Tashioh Parish, La., Mrs. Lindley had lived in Littlefield since 1938. She married D.C. Lindley on Nov. 29, 1942, in Littlefield. He died in 1960. She was a retired registered nurse and was past president of the American Association of Retired Persons and a member of the Roundtable XYZ Club, the Women's Club and the First Baptist Church.

Survivors include five daughters, Evelyn Curb of Albuquerque, N.M., Eloise Wilson of Muleshoe, Dorothy Kesey and Maxine McCartie, both of Plainview, and Freda Poe of Rio Vista; two sons, D.C., Jr. of Fritch and Otho of Plainview; 18 grandchildren; and 34 great grandchildren.



WERE FIGHTING FOR YOUR LIFE

American Heart Association

### West Plains Hospital Report

PATIENTS IN WEST PLAINS MEDICAL CENTER, INC.

February 11 - Christopher Vela, Betty Claybrook, Laura Toscano, Trina Wilson, Charles

### Courthouse News

#### MARRIAGE LICENSE

Roberto Jaso Aguiar, Springlake and Beatriz Garcia, Earth Joey Keith Chancey and Shonda Kaye Pruitt, Muleshoe

#### WARRANTY DEEDS

Javier Cruz and wife, Eva Cruz to Joe R. Gonzales--All of Lot Number (25), in Block Number (3) Lenau Subdivision to the City of Muleshoe, Bailey County, Texas.

Martha Gallegos to Roberto Guerrero and wife, Josie Guerrero--All of Lots Number (16), (17) and (18), in Block Number (39), Original Town of Muleshoe, Bailey County, Texas.

Juan Rodriguez, Jr. and wife, Rosemary Rodriguez--The Northwesterly 70 feet of Lots Nos. 9 and 10, in Block No. 1, Lakeside Addition No. 2, to the Town of Muleshoe, Bailey County, Texas.

#### COUNTY COURT

Joe Ortega Gutierrez--Order Discharging Defendant from Probation

Ray Castorena--Order discharging Defendant from Probation

#### DISTRICT COURT

Dr. Jerry Gleason d/b/a/ Muleshoe Animal Clinic VS Wyle Bullock \$1,023.00 Judgment

Three Way - Independent School District, ET AL VS Billy R. Wells Order of Dismissal William Myron Pool, II and Mary Frances Pool DV

(Owen) Jones, Callie Brown, Joseph Goforth all of Muleshoe, Melissa & Elizabeth Rodriguez, Josia Jessica Vidana, Farwell, Elva Teague, Bovina

February 12 - Christopher Vela, Laura Toscano, Trina Wilson, Julie Hawkins, Joseph Goforth all of Muleshoe and Melissa & Elizabeth Rodriguez, Farwell

February 13 - Christopher Vela, Laura Toscano, Trina Wilson, Inez Allgood, Joseph Goforth all of Muleshoe and Melissa & Elizabeth Rodriguez, Farwell

### Enochs News

by

Mrs. J.D. Bayless

Mrs. Edward Crume spent Tuesday with her sister, Mrs. Juanita Snow, at Muleshoe.

Visiting Mrs. Dean McBee Wednesday was a niece, Joyce Crouch, of Levelland.

Guests in the home of Rev. and Mrs. Mike Heady Thursday till Sunday was a brother, Mr. and Mrs. Rick Heady, of Ft. Worth and a sister, Mr. and Mrs. Jerry Luckett, of Dallas.

Dale Beasley 61 of Hereford died 12:56 Thursday of a sudden illness, we express our sympathy to his family and other relatives.

Mrs. J.D. Bayless celebrated her 77 birthday Saturday Feb. 8, with phone calls and a beautiful snow on the ground which she enjoys very much.

Frank Layton of Midland died Thursday he had fell and hit his head, his services were 3:30 Friday at the funeral home in Midland, grave side services were Saturday at 1:30 at Possum Kingdom he was the last of the Layton children living. Our sympathy goes out to his family, relatives and friends.

### Muleshoe School Menu

#### BREAKFAST

MONDAY Milk, Cereal, Toast, Fruit

TUESDAY Milk, Honey Buns, Juice

WEDNESDAY Milk, Toast, Jelly, Fruit

THURSDAY Milk, Pancakes, Syrup, Sausage, Fruit

FRIDAY NO SCHOOL TEACHERS IN-SERVICE

#### LUNCH

MONDAY Milk, Bar-B-Queed Franks, Diced Potatoes, Blackeyed Peas, Corn Bread, Fruit

TUESDAY Milk, Hamburgers, Lettuce & Tomato, Pickles & Onions, Tater Tots, Cobbler

WEDNESDAY Milk, Spaghetti With Meat Sauce, Corn, Tossed Salad, Hot Rolls, Fruit

THURSDAY Milk, Corn Dogs, Veg. Beef Soup, Crackers, Cinnamon Rolls, Fruit

COMBO LINE

MONDAY Milk or Tea, Meat Loaf, Diced Potatoes, Blackeyed Peas, Corn Bread, Fruit

TUESDAY Milk or Tea, Hamburgers, Lettuce & Tomato, Pickles & Onions, Tater Tots, Cobbler

WEDNESDAY Milk or Tea, Burritos, Corn, Cheese Stick, Fried Okra, Crackers, Fruit

THURSDAY Milk or Tea, Veg. Beef Soup, Cinnamon Rolls, Fruit

FRIDAY NO SCHOOL TEACHERS IN-SERVICE

-30-

#### Honest Opinion

Yawning may be bad manners, but it's an honest opinion.

#### "COMING THROUGH"



Hummingbirds are the only birds that can fly backwards.

17. Seed & Feed

17. Seed & Feed

#### ATTENTION RANCHERS AND CATTLE FEEDERS

The American Fructose Plant at Dimmitt, Texas, has wet-milled corn bran available for immediate pick up or shipment. This is a good opportunity to supplement your range or wheat pasture grazing and realize improved performance at a minimal cost. For more details contact the American Fructose Plant 806-647-4141, a17-7t-3tpts

8. Real Estate For Sale

8. Real Estate For Sale

HENRY REALTY  
111 W. Ave. B  
Muleshoe, Texas  
272-4581

COUNTRY living, close to town. A 3-Bedroom, 2-bath, large den with fireplace, central air/heat, located on one-acre tract. Carpet throughout, many built-in appliances in kitchen. TV-Cable. See to appreciate.

4 BR, 2 BATH, 2 car garage, central heat/air, large utility, carpet, near downtown. Excellent condition.

150 ACRES with 6 inch well and 4 inch well. On highway close to Muleshoe. Underground line connects both wells.

ONE ACRE sites for home construction. 3 miles East of Muleshoe on HWY. 3 lots remain.

JUST COMPLETED 3 bedroom, 2 bath, large living room, kitchen and dining. Excellent condition, near high school. Priced to sell.

COMPLETELY remodeled 2 bedroom home. Ideal for investment, must see to appreciate. Location with F.H.A. loan.

APARTMENT complex, mobile home park, vacant land for expansion. Terms available.

2 BR on 2 acres near Lazbuddie. Large kitchen cabinets, carpet thru out, carport, fruit trees.

COMMERCIAL PROPERTY on Main Street, over 4,000 sq. ft., income producing property.

COMMERCIAL PROPERTY - Excellent rental income from 4 separate offices. Lease agreements in force.

3 BR, 2 BATH, spacious home outside city limits, near city on highway. 29'x40' metal building. Lot 85'x602'

3 BR, 1 BATH, completely remodeled, edge of city on highway.

### Children's Food Program Offered

AUSTIN--The Summer Food Service Program for Children will be offered again this year by the Texas Department of Human Services.

The program provides services to children from needy areas when schools are closed for vacation.

Organizations eligible to sponsor the food service program include public or non-profit private schools, residential summer camps, and local, municipal, or county governments.

For more information, interested organizations and food service management companies may contact Jean Ryan, Food Services Program 520-W, Texas Department of Human Services, P.O. Box 2960, Austin, Texas 78769, (512) 450-3139.

### ONE MINUTE SPORTS QUIZ

1. Who was named AP Female Athlete of the year?
2. Name the AP Male Athlete of the Year.
3. Who won the Bob Hope Chrysler Classic?
4. Name the winner of the Nabisco Masters Tennis Tournament.
5. Who won the North Carolina-Marquette clash.

#### Answers to Sports Quiz

1. Golfer Nancy Lopez.
2. Dwight Gooden, pitcher, New York Mets.
3. Donnie Hammond.
4. Ivan Lendl over Boris Becker.
5. North Carolina 66 Marquette 64.

### Ellis Funeral Home

Pre-Need Funeral Plans

Supervised By Texas Department of Banking

Price Frozen At Time Of Purchase

Words cannot express our appreciation to all who were so kind in expressing sympathy in our recent sorrow for our mother and grandmother, Minnie Redwine. For the food, flowers, cards, visits and prayers, we are deeply grateful.

The Family Of Minnie Redwine

15. Misc.

15. Misc.

### The Professionals AUCTION

19 Years of Serving You...

J.P.P. JAMES H. PERKINS AND ASSOCIATES AUCTIONEERS

Call: 806-249-6366

### ROBERT D. GREEN MULESHOE TEXAS

\$500 Cash Back

On Any GM Car Or Truck Leased.

### Robert Green Inc.

will pay for the following:

1. Your Tax!
2. Your License!
3. Your Registration!
4. Your First Payment!
5. Your Security Deposit!
6. 48 month unlimited mileage warranty!
7. Plus, pay you \$500.00 Cash Back Upon Delivery
8. Drive a new car or truck with no initial investment! (With GMAC Approved Credit)

For More Information Call

Toll Free 762-2772

#### Salemen

Ken James

Jeff Steelman

Al Nuttall

Larry Roubison



Muleshoe 272-4588

GENERAL MOTOR CORPORATION 2400 W. American Blvd. Muleshoe, Texas

Clovis 762-2772

THINK CLASSIFIED

15. Misc.

15. Misc.

SHOP AROUND FOR THE BEST PRICE THEN SEE OUR PRICES 60% OFF 14K GOLD & DIAMONDS EVERY DAY  
**Bi-Wize Health Mart**  
902 Main Friona, Texas  
247-3010

18. Legals

18. Legals

#### NOTICE TO BIDDERS

Missouri Valley, Inc. will be accepting bids on 3 metal covered shop bldgs. and 2 metal covered toilet bldgs. located at Tolk Station. These bldgs. must be dismantled and moved out by purchaser.

FAB SHOP - 18' x 80'

SAW SHOP - 34' x 30'

MECHANIC SHOP - 27' x 36'

TOILET BUILDINGS

1 - 10' x 28'

1 - 10' x 15'

Bids must be turned in to Missouri Valley, Inc. office at Tolk Station no later than 4:00 p.m. Friday, February 21, 1986. For more information call 965-2111. m18-7t-2tc

8. Real Estate For Sale

8. Real Estate For Sale

### Whitt-Reid

Real Estate & Insurance  
201 Main - Ph. 272-3611

Homes Farms Ranches Commercial

160A, or 320A or 480A Bailey County irrigated land-450-500 g.p.m. well on each 80A block- lots of underground tile. Water at 98 ft. approx. Red bed 200 approx. Many more improvements-on highway-reduced to \$415.00 per acre.

10A Ranchette- located on all weather road, 3 inch irrigation and domestic well-5 Hp motor 30x50 work shop- 2 horse barn- Sprinkler System- Orchard- beautiful 4 bedroom brick home. (1) full bath, (1) 1/2 bath, (1/2) bath- Double garage-Television satellite reduced.

2-2 bedroom houses on 1 lot, good for rent property. 1 house has furniture, central heat & carport 25-H23.

3-2-2 carport, brick 2 fireplaces, huge patio, dishwasher, range oven, disposal, large house in nice location 50-H4

Let us help find you a house!

"If You Want It Sold - See Us"

H.C. Reid Broker

Roy Whitt 272-3058

Thursie Reid 272-5318

Joy Whitt 272-3058

Lucille Harp 272-4693



### 12. Household Goods

WANT TO buy used washers and dryers. 272-5023. d12-6s-4tc

15. Misc.

SAVE 60 to 70 percent on your heating and cooling bill with Earth/coupled heat pump call Southwestern Geothermal 806-272-5557 s15-6t10tc

16. Livestock

CALL YOUR LOCAL Used Cow Dealer for 7-day a week free dead stock removal. 806-965-2903 collect 1-800-692-4435. h16-33t-1fc