





### BROWNWOOD AVIATOR LEADS IN SEARCHING FOR MISSING MAN

A leader in the search for M. M. Cooke, Dallas civil engineer who became lost in the marsh near Beaumont December 4 while duck hunting was Lieutenant Churchill L. Scott, Jr., formerly of Brownwood and one of three Backsdale

Field flyers who were instrumental in finding the body of Mr. Cooke. Cooke was found dead December 7 after four days and night of cold, exposure, exhaustion and lack of food.

The flyers were in the air about 14 hours during their two days of searching. The missing hunter was sighted late Monday afternoon, December 6, but as the planes were almost out of gas the flyers could not lead the ground party until Tuesday afternoon.

Lieutenant Scott, son of Mr. and Mrs. C. L. Scott, 411 Sixth Street, Brownwood, described the search as follows:

"We were back over the marshlands Tuesday after our Monday flight, as soon as the sun was up enough to enable us to have clear visibility to the ground. We circled back and forth until we located the man for whom we were searching. One of the flyers flew to Beaumont to direct the ground search, and at the same time I dropped a note to a searching party of CCC men telling them where the body was. The ground parties soon recovered the body."

Lieutenant Scott is a graduate of Brownwood High School and

was a senior in Howard Payne College when he received his appointment to Kelly Field. At Kelly Field he was graduated with second honors in a class of 100 men. He was the first Brownwood youth to graduate from that training base.

### 4-H Club Activities

**Indian Creek Club**  
The Indian Creek Home Demonstration Club held a social meeting in the club house December 9. Mrs. J. W. Martin led the group in singing Christmas carols.

Mrs. D. C. Bullion gave a report of the council meeting and the club rally held in Brownwood December 4.

Three 4-H Club girls were presented with prizes they won in the Ball jar exhibit.

Christmas gifts were exchanged by the club members.

Refreshments of hot chocolate, cake and cookies were served to the following members and visitors: Mrs. Bullion, Mrs. C. B. McBride, Mrs. Lee Norman, Mrs. W. T. So-

well, Mrs. C. C. DeHay, Mrs. Martin, Eula Belle Lambert, Gladys Grinnel, Zeola Martin.—Mrs. J. W. Martin, reporter.

### Indian Creek 4-H Club

"Jars should be filled to the top with fruit or vegetables, then water added. They need not be fancy packed," said Mrs. C. B. McBride who spoke to the 4-H Club girls at their meeting December 9.

The girls had a Ball Jar exhibit. There were twelve jars entered in the exhibit. Those winning prizes were:

Gladys Griffin, first prize in fruit; Zeola Martin, second prize in fruit; Zeola Martin, first prize in vegetables; and Marann Roberts, second prize in vegetables.

Those present at the meeting were: Zeola Martin, Geneva Parker, Maida Andrews, Gladys Griffin, Helen Richardson, Eva Mae McClung, Corlene Parker, Mary Blanche Lovelace, Marann Roberts, Mella Mae Reynolds, La Verne Perkins, eVrta Roberts, Marie Smith, Mrs. J. W. Martin, and Mrs. McBride.

**Sale of 75 Coats and Suits for Ladies at Garner-Alvis Co.**

### Oratory School Has Homecoming Day

Dr. Morris Horn of Fort Worth was main speaker on the program Friday night of the annual homecoming observance of Central Texas School of Oratory.

Of 18 classes that have been graduated from the school, 12 were represented by the following graduates: Mrs. J. Fred McGaughey, Dr. Horn, Willie Keith, Bernice Gumm, Mrs. Bob Hutchinson, Dorothy McIntosh, Robert Holt, Betty Jo Sanderson, Iris Scales, Hal Cherry, Ina Guthrie, Willie Fae McElroy, and Robert Allman, a representative of the class which will finish work in the spring of 1938.

Present class members who took part in the program were Ernest Rains, Billie Marie Barnes, Harold Lockwood, Mildred Page, Virginia Snyder, Ann Null, and Stewart Reagan.

A seal signifying the degree of excellence in the National Forensic League was awarded Hal Cherry. The degree is the highest awarded by the association. Miss Bernice Gumm was awarded the key of membership in the same organization. Bob Holt was awarded the annual Loyalty C. T. S. O. loving cup for the past year.

Dorothy McIntosh, president of the Alumni Association of the school, and Betty Jo Sanderson, secretary, were in charge of the meeting. Helen Harbour, guest number.

### Judge Requested To List County's Blind

County Judge A. E. Nabors has received a request from James A. Boddeker, chairman and Hazel H. Beckham, executive secretary, of the State Commission for the Blind, for a list of all blind people in Brown county.

"We are compiling as nearly accurate a list as possible of the blind in Texas, so that we may ascertain the number of blind who may be applicants for the pension, the blind who would probably like to have a Talking Book Machine loaned to them, and the blind who may be eligible for a position in a vending stand in a Federal build-

### Opposition—

(Continued from Page 1) county; H. J. Kent, Navarro county; J. P. Batchelor, Concho county; C. T. Kasper, Fayette county; F. F. Hurt, Delta county; Fritz Struve, Hale county; and Paul Haines, College Station, organization specialist of A. & M.

New directors of the association are W. M. Deck, Perryton; J. G. Kennedy, Muleshoe; T. F. Falls, Throckmorton; H. J. Kent, Corsicana; J. P. Maxwell, Roston; W. R. Stark, Doole; J. Walter Hammond, Tye; Mrs. C. A. Morris, McGregor; L. A. Runnels, Choice; Romeo Korth, Ecleto; Edwin Hawes, Jr., Wharton; J. H. West, Robstown.

Association directors voted to maintain headquarters office in Brownwood. The office is located in Hotel Brownwood. Mrs. Gladys Carter, Brownwood, was re-elected assistant secretary of the organization.

### County—

(Continued from Page 1) held during the month of November.

Three communities have been organized on a "one-variety basis" and two more are in process of organization.

Farmers in Brown county are beginning to realize that unless they plant a better quality staple cotton than has been produced during the past they will be forced out of the cotton business.

### Terraces Constructed

Terrace lines were run on six farms comprising 217 acres. The terraces on these farms are in process of construction.

Contour lines on 123 acres of pasture land were surveyed during the past month. Dams were checked. A good deal of interest on the part of farmers and ranchmen in the range program for 1938 is in evidence daily.

### 4-H Club Activities

The 167 active 4-H Club boys in Brown county are busy completing their projects for the year. The 47

ing or any other assistance that we may be able to give," the letter from the commission states.

### Puzzle—Find the Winner



You might not think so at first glance, but one of these heavyweight rassing behemoths reposing on the mat quite oblivious to everything, actually was the winner of their match at Los Angeles. El Pulpo, the Tortilla Twister, left, was the first to be revived by his trainer, and staggered upright to claim the verdict over Nick Lutze.

boys who carried on projects in the Cotton Improvement Program produced 103 bales of cotton on 227 acres. The length of staple produced ran from 15-16 inch to one inch and was middling and better in grade. Most of this cotton was put in the government loan. Only 27 bales were sold on the open market. The seed is being saved for planting next spring. Twenty-five boys who are feeding out 33 baby heaves are making splendid progress.

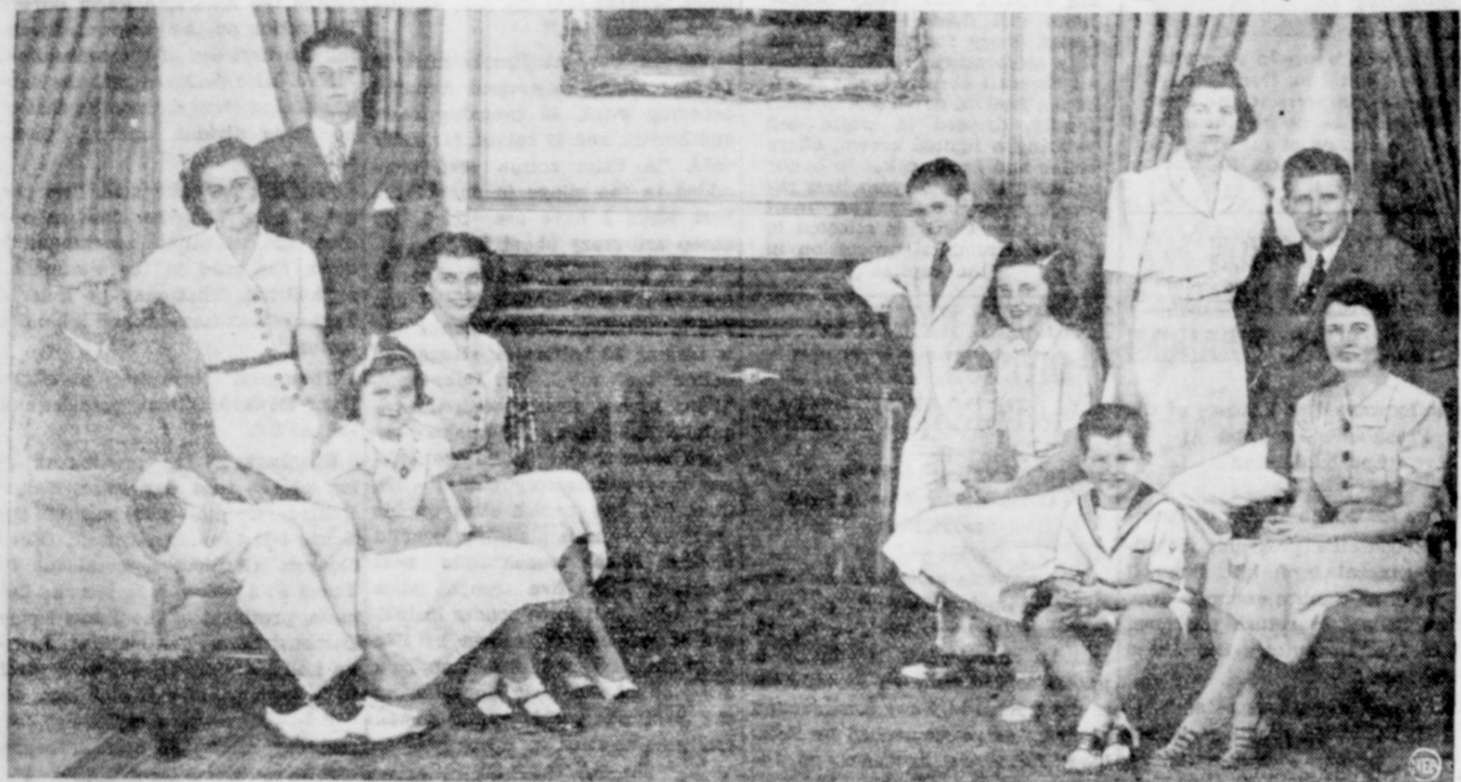
Howard Kesler, 4-H Club member at Blanket, who fed two Hereford bulls out of the Largent and Stevens herd, sold them during the Hereford sale November 17, for \$400. He has two more baby heaves on feed which will be shown during the spring show in February. Talmadge McClatchey's calf, out of the same herd, gained 2.9 pounds per day during the month of No-

vember. All of the 4-H Club boys who carried projects in the field crop division have finished their work and are completing their records now.



**SEWING BUCKET**  
Novelty wooden bucket with picture 1.25 front.  
Garner-Alvis Co.

### Next U. S. Ambassador to Britain and His Smiling Family



(Portrait by Bachrach)

If Joseph P. Kennedy, chairman of the Maritime Commission, were to take his family to London after he is appointed U. S. Ambassador to Great Britain, as authoritative reports have indicated, America would have quite a diplomatic delegation at the Court of St. James. He is pictured, above, with Mrs. Kennedy, seated at right, in their Washington home. By their father's chair are Patricia, 13; John F., 20; Jean, 9, and Eunice, 16. Grouped about their mother are Rosemary, 19; Joseph, Jr., 22; Robert, 12, leans on the mantel; Kathleen, 17, seated, and Edward, 6.

## Here's 1938's Biggest RADIO Value

Be Sure to See the New Truetone "Challenger"

- 7-TUBE TONE, POWER AND DISTANCE (Six super-power tubes, one dual-purpose)
- 8-BAND LONG AND SHORT WAVE
- QUALITY, BEAUTY AND PERFORMANCE EXCELLING OTHER WELL-KNOWN RADIOS AT \$55 AND MORE!

Don't Let Low Price Confuse You!

It's a quality radio in every way! Cabinet is beautiful, selected, matched-grain walnut, ruggedly strong, an attractive addition to any home. 38 inches tall—full console size. Our price is low simply because our huge co-operative buying and other operating economies enable us to give you more for your money.

### These New TRUETONES

REQUIRE NO "B" OR "C" BATTERIES

Most economical 6-tube battery radios on the market. Operate as long as 125 hours on one battery recharge.

- American and Foreign Reception.
- Large Permanent Dynamic Speaker.
- Automatic Volume Stabilizer.
- Full-Range Tone Control.
- Automatic Aerial Tuning.
- Cabinets Among the World's Finest.



### Western Flyer Bicycle with Balloon Tires



LOOK AT THESE FEATURES

- Super Strength Frames
- Rigid Forks
- Balloon Tires
- Coaster Brake
- Genuine "Troxel" or "Lobdell" Saddles

Single Bar \$23.45 Double Bar \$26.45

**Easy Payments**  
Terms to Suit You



## Western Auto Associate Store

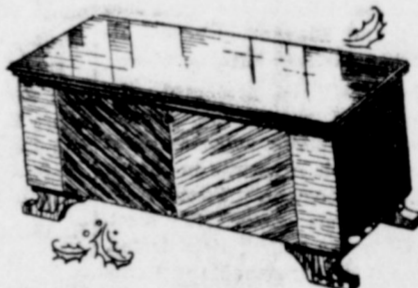
### FURNITURE for GIFTS

Furniture can be enjoyed by the whole family—The New Furniture that we are receiving daily makes your selection at this store the most modern and tasteful Gift for Christmas. You are cordially invited to come in and see the many items we have.

### GIVE FURNITURE

FOR HER  
A CEDAR CHEST

A Gift she will always find useful.

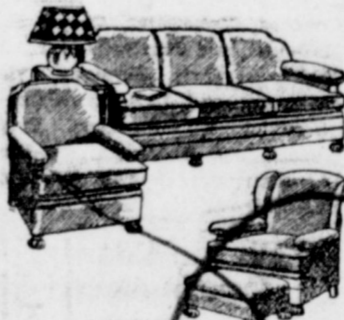


FOR THE FAMILY

A LIVING ROOM SUITE

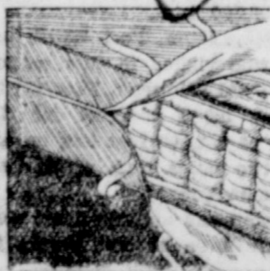
FOR DAD

A Big Roomy Chair and Ottoman



STUDIO COUCHES

In the latest covering of Tapestry and Velour.



Many are Selecting a New

"BEAUTY REST"

Mattress for Christmas

See our Complete Stock of Estate Ranges, and Gas Heaters, Electrolux, G. E. and Zenith Radios, Rugs, Odd Chairs—and many other items.

### New Empire Furniture Co.

Next Safeway Store

## PEERLESS DRUG CO.

201 West Broadway Phones 535 or 536

### Walgreen Agency Drug Store

 Action, Wind-Up CARNIVAL Safe but Thrilling \$1	 BINGO MOVIE JECKTOR Like Popular Theatre Game 2 Protects the numbers onto a screen. No transformer necessary.	 "Raggeely Ann" RAG DOLL 9-inch \$1 Colorful flowered cloth—sturdily made.
 "Playbird" BADMINTON SET For Indoor and Outdoor Play 98c	 Tea Wagon TEA WAGON AND SERVICE Tea for Three 98c Colorful enameled finish; all smooth edges.	 Postal Telegraph SENDING AND RECEIVING SET Fun With An Education 1.69
<b>COME IN AND SEE OUR COMPLETE LINE</b>		
 Electric Double SANDWICH TOASTER Has Self-Locking Grease Cup 2.29 Chromium plated quick heating; long life element.	 Mastercraft 3-Way ELECTRIC HEAT PAD Unsurpassed! 2.39 Has two twin thermostats; five four-fold controls.	 8-Day KITCHEN CLOCK Practical! 2.49 Green, Ivory or Red case; two—silver dial.
 Detective Bath Room SCALE Guaranteed 5 years 2.19 Weighs up to 25 lbs. yet is easily stored in a small space.	 6 1/2 Inch Chrome Plated MEAT INDICATOR ELECTRIC IRON Complete With Cord 2.39 Visible heat indicator; beveled edges; improved heel plate.	 The Ritz COCKTAIL SHAKER Since 1.39 Chromium plated outer case and heavy glass lining; colorful bakelite top.
 Leon Laraine TRIPLE COMPACT Lipstick, Rouge and Powder 2.50 Thin enough to fit her smallest bag without "bulging"	 L'Adonna GIFT ENSEMBLE 3-Piece Set 1.50	 GARDENIA PERFUME 5 It lingers like an invisible corsage of fresh Gardenias.
 Coty BATH SET 5-Piece Set 2.25 Large box of soft Dusting Powder and water-softening bath salts.	 Leon Laraine GIFT BOX 3-Piece Set 3.50 This beautiful gift box holds Face Powder, Lipstick, Rouge, Eyelash Darkener and Eye Shadow.	 Leon Laraine MANICURE KIT 2.85 Leather Zipper case is more fully equipped than ordinary ones at this price.



### 1938 Crop Outlook Weak, Say Experts

A resume of the Bureau of Agricultural Economics' outlook for 1938, adapted to Texas conditions by W. E. Morgan, economist of the Extension Service Department of Texas A. and M. College, finds



**BATH SET**  
floral scented dusting powder, toilet water. 100  
Garner-Alvis Co.

the situation weak as concerned with crops, but fair for livestock. "The prospect is that the economic position of American agriculture will be fairly well maintained during 1938, although the outlook for Texas agriculture is not as bright as that for the United States as a whole," he said.

In general, ranchmen and farmers engaged in livestock production, such as beef cattle, swine, sheep, and goats, will be better off than those producing crops.

The outlook for the cotton states, and for Texas in particular, is a matter of concern, according to Morgan. "Following the largest cotton crop ever grown, the world has its largest supply of cotton on record," he stated. "Use of this cotton has increased but the situation for Texas cotton producers is critical because they apparently cannot profitably produce such large cotton crops, and, on the other hand, alternate uses they have for their land generally return less income than cotton."

Including truck and wheat, apparently is for lowered prices. A favorable feed supply will help livestock men, and will result in heavier hogs, although the number of hogs offered for market will be smaller than in the past year.

"Cattle numbers at the beginning of the next year are expected to be slightly smaller than a year earlier and will probably represent the low point in the present cycle of production," Morgan pointed out. "Any large increase in cattle numbers during the next few years is likely to lead to lower prices over a period of several years."

### Basketball Hopes At DBC Optimistic

Although the Hill Billy basketball squad this year is built around only one returning member of the Texas Conference championship team of last year, Billy Stewart, Coach Gene Taylor is by no means pessimistic regarding his team's chances at the crown this year. His hopes are bolstered by the fact

that many capable players have reported although they lack experience in college basketball.

The Daniel Baker schedule follows:

- Dec. 20—San Angelo Junior College, here.
- Jan. 5 and 6—Stephen F. Austin, at Nacogdoches.
- Jan. 7—East Texas State, at Commerce.
- Jan. 10 and 11—West Texas State, at Canyon.
- Jan. 15—San Marcos Teachers here.
- Jan. 17—Hardin Simmons, at Abilene.
- Jan. 19—St. Mary's University, here.
- Jan. 21—Texas Wesleyan, here.
- Jan. 24—Hardin-Simmons, here.
- Jan. 31—McMurry, here.
- Feb. 3—Trinity, at Waxahatchie.
- Feb. 4 and 5—Austin College, at Sherman.
- Feb. 7—Abilene Christian, at Abilene.
- Feb. 8—McMurry, at Abilene.
- Feb. 10—Trinity, here.
- Feb. 12—Texas Wesleyan, at

Fort Worth.  
Feb. 14 and 15—St. Edward's here.  
Feb. 17—Southwestern, at Georgetown.  
Feb. 18—San Marcos Teachers, at San Marcos.  
Feb. 19—St. Mary's, at San Antonio.  
Feb. 21—Abilene Christian, here.  
Feb. 24—Southwestern, here.  
Efforts are being made to arrange for two games with John Tarleton College.

### Brownwood, Abilene Share Debate Honor

Sharing first honors in the annual Oil Belt District debate tournament held at Brownwood High School Saturday, Abilene boys' teams and Brownwood girls' teams advanced to semi-finals. The tournament was sponsored by Brownwood High School and Central Texas School of Oratory.

Question for the debate was: "Resolved, that Texas Should Adopt the Unicameral System of Legislation."

In the semi-finals of the boys' division of the debates, Abilene placed two teams and Ranger placed one team. One of the Abilene teams won over Ranger in the semi-finals, but the final debate between the two Abilene teams will be held at a later date. Members of the two Abilene teams were George Washington and Homer Montgomery, Lewis Kelly and H. L. Hays.

Cisco placed one team and Brownwood placed two teams in semi-finals of the girls' division of the debates. The two Brownwood teams met in the semi-finals and the winner defeated the Cisco team in the finals. Dorothy Schneider and Ann Null were the debaters on the winning Brownwood team. Emma Jane Hazelwood and Lillian Armstrong were the Cisco team debaters.

Judges for the debates were Daniel Baker College students and other Brownwood residents: Hal Cherry, Bob Holt, Betty Jo Sanderson, Mrs. Robert Henry, Miss Willie Mae Guiley, Miss Cora Foxles and C. M. Sutton.

The Oil Belt District Debate Tournament last year was won by the Coleman girls' team and the Abilene boys' team.

Plans are being made for a Heart of Texas Speech Tournament to be held here the latter part of January. The Brownwood teams have been invited to take part in the tournament with teams from Abilene, San Angelo and Waco.

### Divisional Kiwanis Meeting Being Held

Paul Pearson, Wichita Falls, is in charge of a Kiwanis divisional conference and training school being conducted here today and tonight. The division is a part of District No. 4 of the Texas-Oklahoma Kiwanis clubs. Mr. Pearson, lieutenant-governor of the district succeeds J. Edward Johnson, of Brownwood, to the post.

Main speaker at the conference and special Ladies' Night Banquet to be held tonight following completion of the training school is Dr. Gordon Singleton, president of Mary Hardin-Baylor College at Belton. Before coming to Texas, Dr. Singleton was a prominent Kiwanian in Georgia. He was president of the Atlanta Kiwanis Club in 1934, and was governor of the Georgia District Kiwanis International in 1935.

Air at greater than three atmospheres of pressure has a narcotic effect, retards the higher mental processes.



**COMB, BRUSH, MIRROR**  
colored enamel and chrome. 298  
Garner-Alvis Co.

Get a winter coat and save at Garner-Alvis' pre-Christmas sale of Ladies' Coats and Suits!

### Sore Throat Tonsillitis

Mop your throat with Anesthesia-Mop, our new sore throat remedy and if not entirely relieved in 24 hours, your money will be cheerfully refunded. RENPRO DRUG STORES. 13c

### When Snow Stacked 10 Feet Deep Over North, East



Frigid blasts piled deep drifts of snow, as pictured above, over most of eastern and northern United States, blocked streets and highways, stalled motor vehicles, isolated whole villages and painted trees and landscape with the virgin white beauty of winter. Residents of many areas dug through drifts 10 feet deep. Intense suffering and privation followed in the wake of the storm and a number of deaths were attributed to the bitter cold. The above scene is a snow-bound street in Buffalo, N. Y., where drifts were so deep that the Red Cross mobilized snow-shove crews to carry food and medicine.

### First American Tourists

The first tourists to leave America and travel about Europe were considered the most intelligent and progressive men of their age, and included Emerson, Poe, Fenimore Cooper, Washington Irving, Bayard Taylor, Longfellow, Oliver Wendell Holmes, and Horace Greeley.

### Paterson, Brownwood; and Mrs. Pat Bowman, Brownwood, Twelve grandchildren and 12 great-grandchildren also survive.

Paterson, Brownwood; and Mrs. Pat Bowman, Brownwood, Twelve grandchildren and 12 great-grandchildren also survive. Mrs. Patterson is survived by the following children: Mrs. Eva Pace, Haskeil; T. A. Van Neff, Cleburne; Dr. J. M. Van Neff, San Marcos; Charlie Patterson, Dallas; Bob Wilson.

### Mortuary

PATTERSON—Funeral services for Mrs. Fannie C. Patterson, 87, were held Wednesday morning at 10 o'clock in White & London Funeral Chapel, with Rev. C. P. Owen, pastor of First Presbyterian church officiating, assisted by Rev. A. W. Hall. Burial was in Greenleaf cemetery. Mrs. Patterson died in her home, 1308 Brady Avenue, Tuesday mor-

**BIG DEMAND FOR ALL KINDS OF SECOND HAND JUNK PIPE**  
Before you sell, see  
**CHARLIE**  
BROWNWOOD'S INDEPENDENT JUNK DEALER  
He Guarantees You a Better Price!

THE H & H FOOD STORE

# H&H STORE

GETS ANOTHER TON of Folger's Coffee 2,000 lbs.

2<sup>lb</sup> Vacuum Packed **49<sup>c</sup>** 1<sup>lb</sup> Packed Vacuum TIN **25<sup>c</sup>**

**MEAL**  
20 Pound Sack 43c  
10 Pound Sack 27c  
5 Pound Sack 17c  
10 Pounds Pinto Beans **49<sup>c</sup>**

**OXYDOL** 18<sup>c</sup>

Qt. Salad Dressing or Spread **19c**  
Baking Powder  
25c Size **15c**  
K. C. **15c**  
50c Size **29c**  
K. C. **29c**

Qt. Jar Peanut Butter **25c**  
Qt. Jar Sour Pickles **12c**  
Pure East Texas Ribbon Cane Syrup gallon... **59c**

2 pound box **CRACKERS** 15<sup>c</sup>

White Crest or Hill Billy Flour  
48lb sack \$1.69 24lb sack 89<sup>c</sup>

JELL-O all Flavors **4c**  
3 No. 2 Cans CORN SPINACH CUT BEANS for **25c**  
7 bars **PG SOAP** 25<sup>c</sup>  
Hams, Half or Whole, Lb. **19c**  
Center Cuts, Lb. **35c**

Mother's Cup and Saucer or Plate Oats **25c**  
7 Rolls TOILET PAPER 25c | 10 Pounds SPUDS 17c

Pure Cane Sugar Cloth Bag 25 Pound Sack \$1.31  
10 Pound Sack 53c

Pork & Beans 5c | 2 No. 2 Cans Tamales 25c | Gallon Salad Oil 79c

Shortening 8lb **75<sup>c</sup>** 4lb **45<sup>c</sup>**

## --MEATS--

Fresh Water Catfish 29c | Fresh Oysters, pint 29c  
Oleomargarine, 2 lbs. for 25c | Round or Loin Steak, lb. 17c  
Ground Veal, lb. 10c | Pork Chops, lb. 19c  
Pork Roast, lb. 19c | Sliced Bacon, lb. 25c  
Cheese, Longhorn, lb. 21c | Bologna, lb. 10c  
No. 1 Salt Pork, lb. 17c | Beef Roast, lb. 13c  
Sausage, Pork, lb. 15c | Salt Jowls, lb. 15c

THE H & H FOOD STORE

# For Christmas

**Buy Early!**

Hundreds of other articles will make Christmas shopping easier.

Bags in patent leather, calf and genuine buffalo. All shapes, colors. \$1.00 to \$5.00

**Hosiery**  
Clausner and Vanette and Kayser. 59c to \$1.35

**Barbizon Gowns-Pajamas**  
Tailored and lace trimmed. A beautiful assortment in beautiful colors. \$3.98 to \$4.98

**Barbizon Slips**  
The best slip that is made. Satin and Crepe in all sizes. Colors, white, flesh, ivory and black. \$1.69 to \$2.95

**Scarfs**  
A beautiful collection of scarfs in all colors and designs. Woolens, sheer woolens, silks, chiffons, etc. For sports, street or formal wear. \$1.00 to \$2.95

**Handkerchiefs**  
Pure linen imported handkerchiefs, in prints and white. 25c - 35c & 50c

# THE VOGUE

206 Center Phone 1280



BROWNWOOD BANNER

Established 1875. Published every Thursday by Brownwood Publishing Co., Inc. 112 East Lee Street. Telephone 112. Mail Address, P. O. Box 419, Brownwood, Texas. Subscription price in Brown and adjoining counties, \$1 per year; elsewhere, \$1.50. Entered at the Postoffice at Brownwood, Texas, as second class mail matter.

WENDELL MAYES, Editor

JOHN BLAKE, Business Mgr.

Any error made in advertisements will be corrected upon being brought to the attention of the publishers, and the liability of this paper is limited to the amount of space consumed by the error in the advertisement.

Any erroneous reflection upon the character, standing or reputation of any person, firm or corporation which may appear in this newspaper will be promptly corrected when brought to the attention of the publishers.

The MARCH OF TIME

A New BANNER Feature by the Editors of TIME, The Weekly Newsmagazine

Increasing Rail Rates

More serious consideration of the needs of the railroads for increased freight rates should follow the forceful statement this week of Jesse H. Jones, Texas financier who is chairman of the Reconstruction Finance Corporation.

Mr. Jones, whose experiences in private business and his later and larger experiences in the matter of assisting many gigantic enterprises through periods of depression, is entitled to serious consideration when he speaks on such a vital matter as the way out of the wilderness for the railroads.

None of us want government ownership of the railroads. Granted the government would operate them as efficiently as would their present managers under private ownership—and this question is subject to debate—government ownership would mean a staggering loss of tax revenues which sorely pressed school districts, city and county governments, water districts and other governmental agencies could not afford at this time.

From the standpoint of the railroads, our understanding of their request is that they wish to continue in business. They say that they cannot unless some measure of relief is offered. Why is it important to us whether they survive? Well, the railroads buy and consume 23 per cent of all the bituminous coal mined in this country; 19 per cent of our entire production of fuel oil; 17 per cent of all the iron and steel produced, and 20 per cent of all the timber cut in the United States.

Why are the railroads not prosperous today? Because since 1932 the cost of commodities the railroads must buy has gone up approximately 40 per cent. Taxes are approximately 25 per cent higher, and wages have risen about 18 per cent.

Granting of the 15 per cent increase in rail rates will not work an undue hardship on shippers or agriculture, and will guarantee the continuation of a system of transportation that under private ownership has become the most efficient in the world.

School Hours

"We have never heard anybody offer a plausible excuse for the extraordinarily early opening hours now observed here, except that the teachers want to leave their jobs in the afternoon, and that is not important," says The Bulletin in furthering its campaign to delay opening the grammar schools each morning until 9 o'clock.

So far as we are concerned, we think the present schedule much to be preferred to the 9 o'clock opening hour, and while we do not feel that opening at 8:30 o'clock needs any "plausible excuse" we offer as a justification of the action of the school board in setting the earlier hour that it is more sensible, more practical, and greatly to be preferred by patrons of the schools.

Most school children come from families where at least one member has regular working hours, and quite a sizeable number of fathers or mothers bring their children to school while they are en route to work. The 8:30 o'clock schedule, is much more convenient for them than is the 9 o'clock hour. It causes less confusion in the home around breakfast time to get the workers and students fed and away at the same time, and we are convinced that many housewives feel the earlier this is done the better.

But more important, the earlier hour permits earlier dismissal in the afternoon. Children need to be out of the classroom into the open air as early as possible. This, of course, is of greater value in the fall and spring months, but here in Brownwood we don't have such long winter, and many a winter day is ideal for play and outdoor exercise in the afternoon. This time, as essential as the hours in the classroom are, is cut too short when children are held indoors until 4 o'clock, the hour necessary with 9 o'clock opening schedule.

Then there is that group of parents, large enough to be given some consideration, who have children in both the grammar and the high schools. It is a matter of convenience, so mothers inform us, to have both schools dismiss at the same hour.

For generations, children have been trudging to school at hours much earlier than 8:30 o'clock, and the sturdy stock that has come from these children and their children has not suffered greatly from the experience. Don't worry about the children, they won't suffer any ill effects from early rising. It might be, though, that parents are getting soft.

We don't always agree with the school board in the policies it adopts for operation of the schools; few patrons do agree with all regulations, and each regulation will find opposition from some. But in this matter of new hours for the schools, we think they did the best thing. We are for starting school at 8:30 o'clock.

Newspaper headline writers are rumored preparing a stiff note of protest to the Grecian government. That country has decided to change the name of the city of Saloniki to Thessaloniki.—Atlanta Constitution.

A two year old girl in California can name all the justices of the United States Supreme Court. It is reported that a certain President wishes he could.—Troy Record. Josh says, "It ain't no disgrace for a man to fall down but to lay there and grunt is."—Whitsitt Impress.

Lion Meets Lamb...

WASHINGTON—Out of the elevator in Washington's Hotel Willard last week stepped President William Green of the American Federation of Labor and George McGreggor Harrison, head of A. F. of L.'s three main committee now trying to reunite the divided House of Labor.

Mr. Harrison, who has experience in private business and his later and larger experiences in the matter of assisting many gigantic enterprises through periods of depression, is entitled to serious consideration when he speaks on such a vital matter as the way out of the wilderness for the railroads.

None of us want government ownership of the railroads. Granted the government would operate them as efficiently as would their present managers under private ownership—and this question is subject to debate—government ownership would mean a staggering loss of tax revenues which sorely pressed school districts, city and county governments, water districts and other governmental agencies could not afford at this time.

From the standpoint of the railroads, our understanding of their request is that they wish to continue in business. They say that they cannot unless some measure of relief is offered. Why is it important to us whether they survive? Well, the railroads buy and consume 23 per cent of all the bituminous coal mined in this country; 19 per cent of our entire production of fuel oil; 17 per cent of all the iron and steel produced, and 20 per cent of all the timber cut in the United States.

Why are the railroads not prosperous today? Because since 1932 the cost of commodities the railroads must buy has gone up approximately 40 per cent. Taxes are approximately 25 per cent higher, and wages have risen about 18 per cent.

Granting of the 15 per cent increase in rail rates will not work an undue hardship on shippers or agriculture, and will guarantee the continuation of a system of transportation that under private ownership has become the most efficient in the world.

"We have never heard anybody offer a plausible excuse for the extraordinarily early opening hours now observed here, except that the teachers want to leave their jobs in the afternoon, and that is not important," says The Bulletin in furthering its campaign to delay opening the grammar schools each morning until 9 o'clock.

School Hours

"We have never heard anybody offer a plausible excuse for the extraordinarily early opening hours now observed here, except that the teachers want to leave their jobs in the afternoon, and that is not important," says The Bulletin in furthering its campaign to delay opening the grammar schools each morning until 9 o'clock.

So far as we are concerned, we think the present schedule much to be preferred to the 9 o'clock opening hour, and while we do not feel that opening at 8:30 o'clock needs any "plausible excuse" we offer as a justification of the action of the school board in setting the earlier hour that it is more sensible, more practical, and greatly to be preferred by patrons of the schools.

Most school children come from families where at least one member has regular working hours, and quite a sizeable number of fathers or mothers bring their children to school while they are en route to work. The 8:30 o'clock schedule, is much more convenient for them than is the 9 o'clock hour. It causes less confusion in the home around breakfast time to get the workers and students fed and away at the same time, and we are convinced that many housewives feel the earlier this is done the better.

But more important, the earlier hour permits earlier dismissal in the afternoon. Children need to be out of the classroom into the open air as early as possible. This, of course, is of greater value in the fall and spring months, but here in Brownwood we don't have such long winter, and many a winter day is ideal for play and outdoor exercise in the afternoon. This time, as essential as the hours in the classroom are, is cut too short when children are held indoors until 4 o'clock, the hour necessary with 9 o'clock opening schedule.

Then there is that group of parents, large enough to be given some consideration, who have children in both the grammar and the high schools. It is a matter of convenience, so mothers inform us, to have both schools dismiss at the same hour.

For generations, children have been trudging to school at hours much earlier than 8:30 o'clock, and the sturdy stock that has come from these children and their children has not suffered greatly from the experience. Don't worry about the children, they won't suffer any ill effects from early rising. It might be, though, that parents are getting soft.

We don't always agree with the school board in the policies it adopts for operation of the schools; few patrons do agree with all regulations, and each regulation will find opposition from some. But in this matter of new hours for the schools, we think they did the best thing. We are for starting school at 8:30 o'clock.

Newspaper headline writers are rumored preparing a stiff note of protest to the Grecian government. That country has decided to change the name of the city of Saloniki to Thessaloniki.—Atlanta Constitution.

A two year old girl in California can name all the justices of the United States Supreme Court. It is reported that a certain President wishes he could.—Troy Record. Josh says, "It ain't no disgrace for a man to fall down but to lay there and grunt is."—Whitsitt Impress.

celebrate the first installment in "Liberty" of his latest work: "Rosevelt — A Study in Fortune and Power". Biographer Ludwig revealed that in the course of a recent conversation at the White House, he had asked his subject: "When you have to fight a whole day against Congress and the Supreme Court, in the evening are you not jealous of the dictators who can simply order what they want?" Replied the President: "No, I would hate to be a dictator. I would be bored without opposition."

WASHINGTON—Arizona's Senator Henry Fountain Ashurst, Chairman of the Senate Jurisdiction Committee who has publicly referred to himself as the "Dean Emeritus of Inconsistency," last week said to reporters: "If any President so far forgot himself as to appoint me to the Supreme Court, I would never take my place on the bench—because I would die of surprise." Next day the Senator told an autograph-beggar to write to his office, added: "I'll not only send you my autograph, but the greatest thing for insomnia you ever had—a set of my speeches."

NEW YORK—Settling in Manhattan after their honeymoon, Mr. and Mrs. John King Rousso, Jr., Republican, learned that their telephone number (Rhinecland 4-7428) had once belonged to the town house of Franklin Delano Roosevelt. Soon calls came for the Roosevelts, their servants and secretaries. James Roosevelt rang up; a friend of Mrs. Roosevelt telephoned to apologize for being late because she had left theatre tickets at home. After Manhattan newspapers publicized the number, harassed Mrs. Rousso last week ordered the telephone disconnected, went on a trip.

SHANGHAI, China—Many Japanese civilians lighered up heavily in Shanghai last week, shovled and tripped Chinese into gutters as Japanese military forces staged a blatant "Victory Parade" of such length that it took half-an-hour to pass a given point. Leading the victorious troops were Japanese officers in motor cars or on horses so shockingly thin and ill-cared for as to make many spectators gasp. Well fed, clean-uniformed Japanese infantry came next, the middle-aged troops of the Son of Heaven, who are invading China while better, harder and younger soldiers guard Manchukuo against Soviet Russia.

After the infantry came machine guns, then mountain guns dismantled and packed on skinny horses; finally rumbling heavy artillery, munitions wagons and field artillery corps.

What happened just as the Victory Parade passed the corner of Nanking Road was later described by John McPhee, Scottish inspector of Shanghai police: "I saw a figure across the street throw something. I watched a blur coming toward me. The object hit the ground and rolled between my feet. I pushed a Japanese civilian away and turned around just as the object exploded. A piece of shrapnel cut through my coat and hit my police card. I'm pretty lucky. I thought I was a goner."

"I saw three Japanese soldiers struck by fragments and stumble haltingly," said Shanghai Publisher George Bruce. "There was a burst of blue-black smoke. The Parade broke for a distance of 100 yards. For a moment everything was quiet. Then the Japanese soldiers began scattering to both sides of the street."

Nobody had been killed, but there was a short, yelling chase down an alley and a Chinese policeman shot dead a man who was, according to the police marksman, the man who threw the grenade. Before the parade could reform there occurred another, equally fatalistic demonstration. A Chinese patriot, who had watched the bomb explode, shrilly cried: "Long live the Kuomintang!" (Government Party), committed suicide by leaping off the top of a tall building.

When Japanese patrols, quickly occupying 39 square blocks in the vicinity of the bombing, blocked traffic in the International Settlement and overlapped these blocks into the Shanghai section under U. S. Guard, Commanding U. S. Marine General Beaton, sent Colonel Charles F. B. Price to visit the Japanese commander and tell him to get his men out. "You are practically INVADING the United States defense sector!" yelled Leatherneck Price. "You must withdraw immediately." Claiming he had not known any Japanese troops were trespassing on U. S.-guarded ground, the Japanese commander promptly ordered their withdrawal.

NEW YORK—Insurance Broker Jacques Achardine Raffray last week married Mrs. Constance Edna de Bower in Manhattan's city court. Broker Raffray's former wife last month married Captain Ernest Aldrich Simpson, whose former wife six months ago married the Duke of Windsor. Thus, the six people now bearing the names Raffray, Simpson, and Windsor have married and intermarried 13 times and only one of them—the Duke of Windsor—has not been divorced.

LONDON—Humorist A. P. Herbert, a member of Parliament, uprose last week in the House of Commons to make fun of the Population Bill introduced by Minister of Health Sir Kingsley Wood, who says the United Kingdom is ceasing at such an alarming rate to bear children that its population will have dropped from 44,000,000 to 5,000,000 in 100 years.

"I think I have ceased to breed" announced Humorist Herbert, 47, father of four. "But no one is going to ask me about that. The question which census agents are to ask from door to door under this Nosey Parker Bill are an insult to the nation's women!" The best way to stimulate a British husband and wife to breed, Humorist Herbert gravely advised, is for his Majesty's Government to provide likely couples with free holidays at the seaside. This drew suffrage; but dapper, dynamic Sir Kingsley Wood easily shoved his bill through second reading, and within a few weeks British housewives will either be slamming their doors against Nosey Parkers or taking these Ministry of Health bell-pushers into their parlors and their confidence.

British editors, rallying to potent Sir Kingsley Wood rebuked Humorist Herbert for "misrepresentations," "distortion" and "questionable levity." But Herbert replied with a letter to the London Times: "If more plain language were used

Side Glances - - - - - By George Clark



"Except for that good looking fellow at the soda fountain this whole resort is a failure."

there would be less bad legislation. It shocks no one to (have the Government census taker) say, 'Other issue and marriage condition of father and mother where the father of the child is a person other than present or former spouse?' But what this means in plain language is: (1) 'Have you had any other illegitimate children?' (2) 'Are you married—that is, have you committed adultery?' (3) 'Has the father committed adultery?'"

"I am sir your servant, but respectfully not so obedient as usual."

HOLLYWOOD—A one-day poll conducted throughout the U. S. and Canada by 53 newspapers of the Chicago Tribune—New York News Syndicate (combined circulation approximately 20,000,000) reveals the comparative popularity of current cinema stars:

- 1. Clark Gable; Myrna Loy. 2. Robert Taylor; Loretta Young. 3. Tyrone Power; Jeannette MacDonald. 4. William Powell; Barbara Stanwyck. 5. Spencer Tracy; Sonja Henie. 6. Nelson Eddy; Shirley Temple. 7. Paul Muni; Janet Gaynor. 8. Don Ameche; Ginger Rogers. 9. Ronald Coleman; Claudette Colbert. 10. Errol Flynn; Joan Crawford.

CHICAGO, Illinois—Dean Ralph Dennis of Northwestern University's School of Speech last week awarded to Charlie McCarthy, No. 1 U. S. dummy, the honorary degree of Master of Innuendo and Snappy Comeback. The citation: "He is a prince of parasites, violent in company, churlish in behavior, acid in conversation, wooden-faced in all relationships, and in all other aspects a typical product of higher learning in America."

ST. LOUIS, Missouri—Capital of the State of Illinois, just after it was admitted to the Union in 1818 was the town of Kaskaskia, picturesquely perched on an island in the Mississippi River, which divides Illinois from Missouri, Kaskaskia had lost its chief distinction long before 1881, when the meandering Mississippi changed its channel from the west of Kaskaskia Island to the east, washing away part of the town and leaving a willowy, uninhabited slough which now stretches west between Kaskaskia's 107 inhabitants and the old Missouri shore. Kaskaskia proper still belongs to Illinois. Whether the slough, known as Kaskaskia Commons, belongs to Illinois or Missouri is a question which neither State has troubled to settle, but which last week came to the puzzled attention of Judge George Moore in U. S. District Court in St. Louis.

Four years ago Farmers Archie Clark and Oliver Lankford of Kaskaskia, involved with a group of Missouri farmers in a title dispute over a pasture in the Commons, were arrested for trespassing by Sheriff Henry Drury of Ste. Genevieve, Mo., clapped into his jail for

seven days. Farmers Clark and Lankford, charging the complainants and Sheriff Drury with false arrest on the ground that they were arrested in Illinois and jailed in Missouri, last week got their \$200,000 damage suit before Judge Moore. The defendants produced some witnesses old enough to recall how the river had changed its course, an Army map which assigned the Commons to Missouri. The plaintiffs countered with a map made by the U. S. Geological Survey in 1915 assigning the Commons to Illinois. After three days of testimony Judge Moore ruled that there was insufficient evidence to show that the Commons belong to Illinois, tacitly awarded it to Missouri by dismissing the suit.

KIWANIANS TO PLAY SANTA TO 350 UNDER-PRIVILEGED CHILDREN

Brownwood Kiwanis Club will give approximately 350 children what perhaps will be their only taste of Christmas this year at a luncheon December 23 in Memorial Hall. Underprivileged children between the ages of 6 and 12 will be honored.

The Lions Club is cooperating with the Kiwanians this year in sponsoring the banquet. Children selected to attend will be excused from school in time to attend, and club officials plan to furnish transportation to and from school for the children.

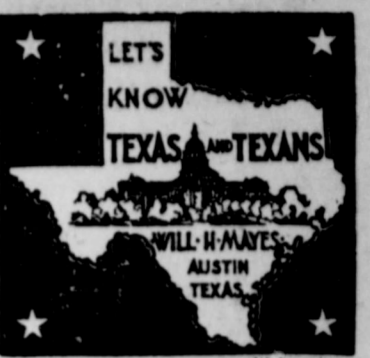
School teachers and welfare workers will aid the club members in selecting the children who will be invited. A traditional Christmas feast of turkey, dressing, cranberry sauce, vegetables and fruit will be served at the banquet.

The banquet is given annually by local civic clubs in honor of children whose Christmas might otherwise be meager. Three hundred twenty-five children were present at the luncheon last year.

There is a light visible in southern latitudes called the Aurora Australis.



NOVEL BELT SET Horsehide leather belt, initial buckle. Gift boxed. 200 Garner-Alvis Co.



In this column answers will be given to inquiries as to Texas history and other matters pertaining to the State and its people. Address inquiries to Will H. Mayes, Austin, Texas.

Q. When did Texas fix the Rio Grande as the boundary between it and Mexico?

A. When the Velasco Treaty was made with Santa Anna after the Battle of San Jacinto, his agreement to withdraw the Mexican army beyond the Rio Grande was considered as a tacit understanding that the river was regarded as the boundary, which had been a more or less controversial subject during the period of Mexican supremacy from 1821 to 1836. The first congress of the Republic in 1836 passed an act making the Rio Grande the boundary in accordance with the Velasco treaty.

Q. What territory did Texas set to the United States in 1850 and for what purpose?

A. All the territory outside its present boundaries was sold by Texas to the United States in 1850 for \$10,000,000, with which its debts were paid and \$5,000,000 left in the public treasury. This sale embraced about 65,000 square miles in the present states of New Mexico, 19,000 in Colorado, 4,000 in Wyoming, 7,700 in Kansas, and 5,000 in Oklahoma.

Q. What territory, now in Oklahoma, was in controversy between the United States from 1850 to 1896 and to what was this due?

A. The area formerly known as Greer county, Texas, and now comprising Greer, Jackson, Harmon, and that portion of Beckham County, Oklahoma, lying south of the North Fork of Red River. The loss of this territory of 1,571,575 acres was due to the fact that the Meish map of 1818 was the agreed line between Texas and the Indian Territory, and that Meish miscalculated the 100th Meridian, according to the decision of the United States Supreme Court.

Q. For what purpose are dehydrated citrus fruits now used?

A. After being ground into a meal the dehydrated rinds are used for stock food. Until recently they were disposed of as waste products of the citrus industry.

Q. What Texas city has the only grapefruit winery in the world?

A. McAllen, where grapefruit wine of excellent quality is produced and marketed in commercial quantities.

Q. What disposition is now made of unmarketable Texas citrus?

A. Until four years ago the fruit that was not of merchantable grade was hauled from the orchards and buried in pits. Canneries are now converting this into grapefruit and orange juices, for which there is a large demand. A citrus marmalade base and oil concentrates are also being marketed. There are now more than 50 citrus processing plants in Texas.

Q. What Texas city has: (a) the largest municipally owned power and light plant in the world; (b) the largest municipal airport in the United States; (c) the largest municipal abattoir in the United States?

A. Austin claims each of these distinctions.

Q. What is the Big Bend Juniper?

A. It is a recently discovered tree of the juniper species, believed to be restricted to the Big Bend section of Texas, with beautiful flowers that hang down, instead of standing up as on other junipers. When in bloom it is unusually attractive.

All rights reserved.

Songs Texans Sing

Know the songs that Texans sing—songs of the Texas ranches, the Texas Trails, the Texas fireside, the state song, the University song, the song "Will You Come to the Bower?" that inspired the heroes of San Jacinto, negro spirituals.

The TEXAS SONG BOOK contains 32 pages of specially selected songs for Texas people, Texas homes, Texas schools, all chosen by a committee of Texas musicians, a popular song of the state that all should know. Mailed postpaid for only 25 cents. Will H. Mayes, 2610 Salado Street, Austin, Texas. I enclose 25 cents in coin securely wrapped, for a copy of the "Centennial Song Book."

Name \_\_\_\_\_ Address \_\_\_\_\_

THE NEW FANGLES



By COWAN





### BIG RUSH IS NOW ON FOR BANNER'S FREE CHRISTMAS PRESENT

Hundreds of Sets Have Already Gone Out, Demand Becomes Great As Christmas Nears

#### Supply Grows Short

Pen Company Advises Doing Best To Meet Situation but Faced With Unprecedented Calls for Sets

With many more calls for sets than we had actually estimated, the Banner has been forced to frantically wire reorders to the pen company in an effort to keep up with the demand. We have been frantically wire reorders to the pen successful so far but the supply firm says it cannot guarantee to fill all the late orders owing to the unprecedented demands everywhere for sets as the holiday season buying reaches its peak. We are still hopeful of being able to secure sufficient sets but are not at all certain.

#### Get Your Sets Now

The obvious thing to do is to call immediately at the Banner office and obtain your free gift or gifts while there is still a supply. In the opening announcement we agreed as long as we had them to let each reader have as many sets as he or she desired, one set with each \$1.00 paid on subscription. We are going to keep that promise as long as we are able to obtain sets. Therefore, at this particular time the opportunity is still open to secure all the sets you may desire even though it is quite possible no sets will be obtainable the last week or so before Christmas.

#### Beautiful Sets in Gift Boxes

These are truly beautiful sets in most attractive gift boxes with two color holiday labels for delivery or mailing purposes. Their attractiveness along with their

The very latest styles in new pianos, at moderate prices. We challenge comparison and guarantee to save you money when quality is considered. We have unusual bargains in used pianos. Livestock and grain taken in trade. It will pay you to investigate before you buy. Denman Music Co., 113 East Baker St., Brownwood, Texas.

proven writing quality and most liberal replacement guarantee accounts for so many of our readers obtaining one or more sets. In fact, practically everyone who has called at the Banner office and viewed the display have taken advantage of our remarkable offer.

#### Banner Will Mail Them

As a service along with our gift to subscribers we are offering to wrap, address and mail a set to any address in the United States for ten cents additional. Many have taken advantage of this service and you are invited to do likewise.

#### Now Is The Time

With Christmas rapidly approaching this is the logical time to obtain your set or sets. These are the Banner's gifts to its many subscribers and we most certainly desire that you obtain yours.

### YONGUE BROTHERS BUY WESTERN AUTO STORE

H. W. and T. J. Younge of Gatesville, have purchased the interest of T. T. Mimms in the Western Auto Associate Store of Brownwood and will operate the store in the future. Younge Brothers have had considerable experience in this line and are planning many improvements in the local store.

First action of the new owners was to complete arrangements to move the store from its present location to the corner of Center Avenue and Lee Streets, the building formerly occupied by Smith Sandwich Shop. The store is being remodeled and redecorated and will be ready for occupancy Monday, December 20.

The Western Auto Associate Store has a complete stock of automobile accessories, bicycles, and supplies, and home appliances, such as radios, heaters, etc.

### Farm Families May Be Included in New Housing Legislation

Steps will be taken to bring farmers within scope of the new housing program proposed by President Roosevelt, according to a declaration by Secretary of Agriculture Henry A. Wallace.

Wallace was requested to draft an amendment to the pending Senate housing bill, which does not include farm housing, after he told the Senate banking and currency committee that farmers would spend more than \$346,000,000 annually for renovation purposes

### Seeking a Haven Before Japanese Juggernaut



Fleeing before the steady, destructive advance of Japan's devastating war machine, thousands of Chinese non-combatants and soldiers sought the safety of the International Settlement as the conquerors captured Shanghai. With her remaining few possessions in her bundles, a sad-faced Chinese woman is shown, at left above, as she begged admittance to the French Concession, while stern guards looked on. Soldiers, too, fled from battle. Right above two Chinese fighting men run to a helmeted French guard to surrender their arms. Shell marked buildings and scattered debris show how close to the Settlement boundaries the battle raged.

alone. The Secretary declared that more than three-fourths of the nation's farmers would increase the purchasing power of industrial workers and the consumption of farm products.

Wallace will confer with officials of the Federal Housing Administration in order to draft a proposal which would circumvent difficulties in financing farm housing.



Gerald C. Mann, of Dallas, former Secretary of State and former Assistant Attorney General of Texas, who is expected to be a candidate for Attorney General in the 1938 campaign, was a visitor in Brownwood this week. Mr. Mann, well known through his prowess as a football player some 10 years ago when he was a student at Southern Methodist University, has been prominent in politics since leaving school. He has been a member of the Democratic Executive Committee since 1935, and served for a time as Washington representative of the Texas Planning Board.

### Conflicting Road Signs Are Removed

In compliance with a recent order of the State Highway Commission, road signs on state highways that coincide with U. S. routes are being removed.

The traveling public is in the habit of following the U. S. highway markers, and to avoid confusion of so many national and state markers on some routes the state signs were removed.

Routes in division 23, which includes Brown county, on which state road signs are being removed have been named by Division Engineer Leo Ehlinger, as follows: U. S. 67 on state highway 10; U. S. 84 on highway 7; U. S. 190 on highway 74; U. S. 283 on highway 23; U. S. 80 on highway 1; U. S. 80A on highway 15; U. S. 281 on highway 66; U. S. 87 on highway 9.

These routes were designated as U. S. and national highways on recommendation of the Association of American Highway Officials and were so designated because they are the most feasible routes for continuous travel between certain points, according to Ehlinger. Part of a U. S. route may be over a federal highway and part over a state highway.

### Local Post Office To Remain Open All Day December 18th

The Brownwood postoffice will be open all day Saturday, December 18, up to 6 o'clock, it was an-

nounced this week by George Kidd, postmaster, in order to accommodate those wishing to mail Christmas packages as early as possible. Packages, letters and cards. The postoffice customarily is not open on Saturday afternoon.

### Judges Association To Convene Here on March 24, 25 and 26

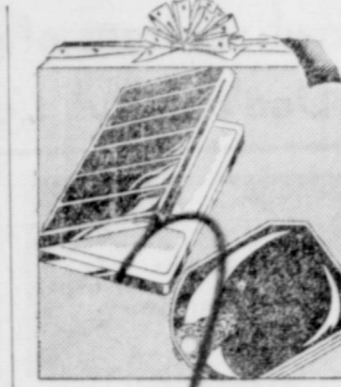
March 24, 25 and 26 were set as dates for the spring convention of the West Texas County Judges and Commissioners association, which is to be held in Brownwood. Hotel Brownwood will be convention headquarters. Dates were set and preliminary program arrangements made at a conference in Brownwood last week, attended by Judge Onar T. Burleson of Anson, president of the association; County Judge A. E. Nabors, of Brown county; Chester Harrison, secretary of the Brownwood chamber of commerce, and Wendell Mayes, editor of County Progress, monthly publication of the state association.

Petrarch is often honored as the writer of the first sonnet, but France also honors him as her first tourist. He came on a pleasure trip to Provence from Italy on April 26, 1336, over six hundred years ago.

#### More Intelligent Listeners

The verger who guides the tourists through Winchester Cathedral in England, was recently asked, "Who are your most intelligent listeners?" He replied instantly, "American women over forty."

Visitors to Portugal report that the pillows at the inns where they slept are rather hard. They are stuffed with birdseed, this being considered the best pillow for a hot night in the summer.



**GIFT VANITIES**  
Fine cloisonne and enamel or gold com- pacts. . . . 1.00  
Garner-Alvis Co.

### RESULTS OF AIR MAIL TESTS UNANNOUNCED

Brownwood will be a designated stop on a daily air mail feeder line if a test conducted here last week is considered successful by post office officials. Letters picked up here by a special plane totaled 968. Results of the test will be announced at an early date. Forty Texas cities were included in the test.

Scheduled for last Friday, the plane was delayed in reaching here until Saturday noon by unfavorable weather conditions.

The test plane was piloted by R. G. Lockwood, assistant director, division of the Gulf Oil Corporation at Pittsburgh, Pennsylvania. Lockwood stayed overnight in Brownwood and took off for Temple Sunday morning. From Temple he flew to Houston, home city of the test. Included in the letters dispatched here was one from John Blake, president of the Chamber of Commerce, to President Franklin D. Roosevelt, and another from local Postmaster George Kidd to Postmaster General James A. Farley.

**USE YOUR Credit**  
TIRES • BATTERIES  
RADIOS • ON EASY TERMS  
NO RED TAPE OR DELAY..

**Safety Tire & Battery Company**  
D. C. Pratt, Mgr. Phone 913  
BROWNWOOD, TEXAS

## Give Him Shirts He Can't Get to Many

And these will more than satisfy. We have assembled the most complete selection of Shirts, New Styles and Desirable Patterns.

500 Shirts to choose from \$1.00

1000 Shirts  
You can make a beautiful selection.  
\$1.49

500 SHIRTS  
"Blossom Crepe" and Woven Madras Savoy Plaza by Aetna  
\$1.98

This group of shirts can not be duplicated at these prices.

## Ties

To Match These Beautiful Shirts  
29¢ - 49¢ - 79¢

## The BOSTON Store

BROWNWOOD, TEXAS  
Banner Ads for Results.

## FURNITURE For A Happy Christmas

"Useful and Ornamental" — an overworked phrase, yet exactly describing the charm of the many articles in our complete stock that you can buy on Easy Terms.

COME IN AND SEE THESE GIFT SUGGESTIONS.

**Studio Couches**  
Help solve that "Extra Bed Problem", and add to the charm of your Living Room.  
Reading Lamps, Coffee Tables.

**OCCASIONAL CHAIRS**  
in Tapestry and Velour Covering.  
Lounge Chair and Ottoman

**BED ROOM SUITS**  
A New Bed Room Suite will make a constant reminder of your thoughtfulness.

You must see these handsome Bed Room Suites.

**We Heartily Recommend These Gifts**

- A Lane Cedar Chest
- A New 1938 Electrolux
- Estate Ranges
- Beauty Rest Mattresses
- Dining Room Suites
- Zenith Radios
- Wilton Rugs
- Axminster Rugs
- Desks
- End Tables

**TEXAS FURNITURE AND RUG COMPANY**  
105 West Broadway Brownwood

**RED CHAIN EGG NUGGETS**

**MORE EGGS**

**Free!**  
The big, helpful guide to extra profits... *Poultry and Livestock Manual!*

You cannot get profitable egg-production without feeding a properly balanced egg-making feed. Poor egg masses are responsible for most failures. Red Chain Egg Nuggets or Mash contains all its essential ingredients and is worth double its cost in comparison with so-called "cheaper" mashes.

**MORE PROFITS!!!**

Our Incubator is now in full operation. See us for your Baby Chicks

## LOGAN FEED & HATCHERY

206 East Broadway Phone 193

## "You Will Find The Finest Toys I Have Ever Made At The B & L Variety Store"

**TRAINS**  
Wind 'Em Up, Away they go. Crack Line Passenger and freight train. THE BOYS' GIFT \$1.00

**DOLLS**  
Every kind of Doll for Every Little Girl, priced to sell from 5c up

**Games**  
Bingo, Horse Racing, Table Tennis, Toy Sets, Chemistry Sets, Ring Toss, Bazookas.

Toy manufacturers are growing more ingenious every year with trains, automobiles and things for the doll house that are almost the real thing! You'll marvel at the selection we've gathered in our Toyland—everything imaginable in fascinating new toys that will make Christmas morning a joyous event for the children. Here are some of the values that make it possible for you to fulfill every wish.

Play Furniture, Doll Dishes, Wind-up Autos, Tops, Books, Footballs, Singing Tops, Toy Animals, Cap Pistols, Etc. Gift Boxes for Men and Women that are sure to please.

Steel Frame Coaster Wagons, 25c to \$2.98.  
Scooters—Pedal Bikes, Auto and Trailer Sets.

## B & L VARIETY STORE

"On the Square"



# GIVE MORE SPEND LESS! BUY ALL YOUR GIFTS AT PENNEY'S

## Penney's GIFT BARGAINS!

Only 8 days before Christmas! Shopping days are very few . . . at Penney's you'll find excitement running high. Gifts for all and prices as always, Jolly well low! Dozens of gift suggestions for Mother, Father, Sister, Brother. Don't delay! Let us help you.

### GIFTS for MOTHER



Light, Yet Warm!  
Rayon Taffeta  
**QUILTED ROBES**  
**2.98**

A lot of value for very little money! They're good looking, the styles are sure to please! Many colors, both light and dark.

FOR MOTHER  
Cozy, Warm  
Outing  
Gowns  
**98c**

Mother will appreciate a lovely lace trimmed  
Satin Slip  
**\$1.98**

AN IDEAL GIFT  
Brushed All  
Wool  
Sweater  
Coat Styles  
**\$2.98**

Mother might need a  
New Purse  
Lovely Calfskins  
in a variety of  
Styles.  
**\$1.98**

Mother will like these lovely  
Bath Towels  
Reversible in  
modern colors  
**39c**

She'll Like  
Gaymode  
Hose  
Chiffon Service  
**79c**

Rayon  
Bedsread  
60x105  
**\$1.49**  
Mother Will  
Appreciate It.

### GIFTS for SISTER



Lavishly Trimmed  
Gowns & Pajamas  
Exquisite  
Satin!  
**3.98**

She'll Appreciate  
Beautiful  
Lingerie  
Tailored or lace  
trimmed  
**25c**

### GIFTS for BROTHER

BIG BROTHER  
will like our  
Traveling Sets  
Genuine Leather  
Cases, handsome  
fittings.  
**\$2.98**

Boys' Belt  
**25c**  
Top Grain Cow-  
hide, Nickel  
Steel Buckles.



Glamorously Sheer!  
Silk Hosiery  
Gaymode  
Chiffons!  
**98¢ PR.**  
Genuine crepes! First quality  
2-threads—full fashioned and  
ringless. In exquisite colors!

She will like our  
Rayon Taffeta  
House Coats  
at  
**\$3.98**

Toilet Sets  
Three lovely  
pieces  
**\$2.98**  
An exquisite gift  
that is sure to  
please her.

Manicure  
Sets  
Gift Boxed  
**98c**  
Complete seven-  
piece outfit

### GIFTS for FATHER

Silk  
Mufflers  
**98c**  
Smart looking  
Silk Mufflers in  
Gay Patterns

SUSPENDER SETS  
**98¢**  
Clip end style  
of colorful elastic. In gift box  
with key chain  
or collar clip  
and tie chain.

Gifts for Boys!  
Dress Shirts  
Holiday  
Boxed!  
**98¢**  
Well made, button-down collar  
shirts in a great array of colors  
and pre-shrunk fabrics!

Socks for  
Dad  
Gay designs and  
Solids  
**25c**

Warm Lined  
Gloves  
For Dad's Xmas  
Pig Grained  
Capeskins  
**98c**

### Black Legionnaire Weeps in Court



Tears of self-pity streamed down the cheeks of 220-pound Virgil Herbert Effinger, reputed Black Legion chieftain, as pictured above, when a Lima, O., judge ordered him extradited to Wayne county, Mich., to face criminal syndicalism charges. The tears dried when the judge allowed defense attorneys to take the habeas corpus case to the court of appeals, giving Effinger another two months of freedom under \$2000 bond. Effinger, whose daughter, Betty, 16, has her arm around him, recently surrendered after being a fugitive for 15 months.

### NPS Spends Third of Million in Big Bend Improvement

Work the Civilian Conservation Corps has been carrying on for more than three years in carving roads and trails through the mountain wilderness of areas to be included in the proposed Big Bend National Park in Texas, will be completed Wednesday, December 15, and the camp closed, it was announced at Southwestern Regional headquarters of the National Park Service, Santa Fe, New Mexico. The work has been confined to the Big Bend State Park, and cannot be carried further until additional land is acquired by the state and deeded to the federal government for establishment of the National Park.

Approximately one-third of a million dollars, or more than \$100,000 per year, has been expended by the Federal government since the work program was started in August, 1934. The development has consisted mainly in constructing roads, trails, and bridges, to provide accessibility into the State Park. This area, already owned by the State, will be merged into the National Park, whose establishment has been authorized by Congress when the entire 788,000 acres have been turned over to the government. A campaign to raise \$1,000,000 for purchase of this additional land is being carried on by civic, commercial and other organizations throughout Texas.

"The work completed by the CCC," it was said by Acting Regional Director Herbert Maier, of the National Park Service, "has paved the way for extensive development that will be undertaken after the National Park has been established. One of the first steps contemplated under that program is the construction of administration buildings in the Basin of the Chisos Mountains, where the CCC Camp is located. This will be followed by provision of the thousands of visitors who will come into the park annually, just as soon as hotel and other accommodations are available."

Establishment of the Big Bend National Park, it is estimated, will bring in the neighborhood of \$4,000,000 into Texas each year, including annual expenditures of \$225,000 by the Federal Government for development, maintenance and protection of the park. The balance would come from tourists. These would exceed more than 100,000 each year, based on present travel statistics of other National Parks.

For the travel year ended last September 30, over 7,000,000 people had registered at the twenty-six National Parks—an average of nearly 270,000 for each park.

### Christmas Postal—

(Continued from Page 1)

Special Items

Articles easily broken or crushed must be securely packed and crated or boxed. Glassware fragile toys, or crochery must be packed so as to prevent the escape of particles or pieces broken in transit. All articles easily broken or damaged must be plainly marked "fragile."

Parcels containing perishable articles shall be marked "perishable" and packed in suitable container, according to contents. Articles likely to spoil within the time reasonably required for transportation and delivery will not be accepted. Use special delivery to expedite delivery on perishable items.

Addresses should be complete, with house number and name of street, post office box or rural route number, and typed or plainly written in ink. A return card should be placed in the upper left corner of every piece of mail. Do not mail Christmas greeting cards or packages in red, green or dark colored envelopes or in very small envelopes. Postage must be fully prepaid on all mail. No parcels may be longer or wider than 100 inches or weigh more than 70 pounds.

Air Mail and Insurance  
The new combined air mail and delivery stamp provides immediate delivery at destination at all times and is particularly desirable for use on mail which will arrive at destination on Saturdays, Sundays and holidays. The special delivery service will assure delivery on Christmas Day if mailed at the proper time.

Written matter in the nature of personal correspondence cannot be enclosed in parcels. All parcels

\$9.88 buys a Fine \$16.95 ladies coat at Garner-Alvis!

### Good Night Golf



Horion Smith sinks the putt that won low medal in a nine-hole Owl tournament at Coral Gables, Fla. Many of the more famous professionals participated with the aid of miners' lamps.

containing such matter as coin, currency, jewelry, precious stones and articles of similar nature, as well as any valuable merchandise or matter for which the greatest protection available in the mails is desired should be insured according to value.

### Christmas Cards

Printed greeting cards mailed under cover of unsealed envelopes are chargeable with postage at the third-class rate of 1½ cents for each ounce, regardless of whether addressed for delivery through post office boxes, general delivery or by city or rural carriers. Printed Christmas and other greeting cards in unsealed envelopes may bear a simple written inscription not in the nature of personal correspondence. Cards other than the above mentioned, bearing written messages other than simple inscriptions, are chargeable at the first class rate of 3 cents per ounce.

### Patent Is Granted Wife of Physician

A patent on a hospital accessory known as the "Tottenham End Mattress" was received last week by Mrs. J. W. Tottenham, wife of a local physician.

Designed primarily for use of hospital patients, the mattress is attached to the foot of the bed by means of linen tapes and has metal eyelets to support hot water bottles when needed.

The mattress is designed for the comfort of patients who are compelled to remain on their backs, where all weight must be kept from feet or legs. In cases of spinal injury, burns, fractures, gall bladder drainage, etc.

A large number of Texas hospitals already are using the device.

### Resident of May Injured in Wreck

Injuries including a broken leg, loss of front teeth, and body cuts and bruises were sustained by Minter Raspberry, May, when the car which he was driving ran into the rear of the May school bus between Brownwood and May late Friday night.

Luther Redwine and Julian Steele, other occupants of the automobile, received only minor injuries.

None of the children in the bus were injured. The accident occurred as the Raspberry car came over a hill and ran onto the school bus, which was stopped on the highway.

According to an old travel book, the first tourists were Moses, Abraham, Jonah, Ulysses, Plato, Strabo, Cleopatra, the Queen of Sheba, Marc Antony, Julius Caesar, Daedalus, Herodotus, Aeneas of Troy, and Alexander the Great.

AWAITING YOU! We have waiting for you a beautiful Christmas gift of a fountain pen and pencil set. Glad to have you call at the Banner office today for your gift.



FINE JEWELRY  
Novel charm bracelet, crystal ball pendant, rhinestone clip. Each **1.98**



EVENING BAGS  
of exquisite brocade or seed pearl. Elegant! **2.98**  
Garner-Alvis Co.

### 20 lb. Turkey Given Away - FREE!

Spend Your Money With Us Saturday and see how much cents your dollar really has

- CHUCK STEAK, 2 Pounds **25c**
- BEEF, ROUND OR LOIN STEAK Per Pound **16c**
- PLATE OR RIB ROAST Per Pound **12c**
- RICE 3 Pounds **17c**
- PURE CANE SUGAR 10 Pounds **54c**
- CRYSTAL WEDDING OATS Large Package **19c**
- MILLER CORN FLAKES Large Package **9c**
- DINNER BELL COFFEE One Pound **15c**
- POWDERED OR BROWN SUGAR Two Packages **15c**
- MARSHMALLOWS Two Ten Cent Packages **15c**
- HOUSEHOLD TOWELS Three for **25c**
- SIX LARGE OR 12 SMALL MILK FOR TOMATOES TWO NO. TWO TEN POUNDS OF SPUDS FOR **18c**
- 5 POUND PACKAGE SOAP CHIPS **35c**
- 2 PACKAGES POST BRAN **15c**
- 10 POUNDS PINTO BEANS **48c**
- 2 POUNDS COCOA **15c**
- CRANBERRIES Per Pound **18c**
- 3 MACARONI OR SPAGHETTI **10c**
- 48 POUNDS GUARANTEED FLOUR **\$1.33**

We buy your produce. See us before you sell your Butter and Eggs.

### Adams Cash Grocery and Market

We Deliver Purchases of \$1.00 and up.  
Phone 678 510 Center Ave.

# J. C. Penney Co. Inc.



## You Came to Me

By Helen Welshimer

YOU came to me at dusk when you were weary—  
So many times brief hurts the long day gave  
Were mine to comfort in the quiet evening;  
When you were weak I coaxed you to be brave.

YOU have forgotten—now that tall hills beckon,  
Somewhere you march to beat of rhythmic drums;  
And sunlight falls across the fields you journey—  
Will you be lonely when the evening comes?



### COLLEGES PARTIALLY COMPLETE SCHEDULES FOR 1938 SEASON

Partial football schedules for 19-38 were set by Daniel Baker and Howard Payne Colleges at the annual Texas Conference meeting Saturday in Dallas.

According to present arrangements, the schedules are as follows:

Howard Payne—Sept. 16—North Texas States Teachers, here; Sept. 23—San Marcos Teachers, at San Marcos; Sept. 30—Trinity, here; Oct. 7—Texas Wesleyan, at Fort Worth; Oct. 14—Austin College, at Sherman; Oct. 21—McMurry, at Abilene; Oct. 28—Abilene Christian, here; Nov. 3 or 4—Arkansas State Teachers in Arkansas (tentative); Nov. 11—St. Edward's here; Nov. 24 (Thanksgiving)—Southwestern here; Dec. 3—Hardin-Simmons, here (tentative).

Daniel Baker—Sept. 16—open; Sept. 23—West Texas State, at Canyon; Sept. 30—open; Oct. 7—Austin College, here; Oct. 14—Texas Wesleyan, at Fort Worth; Oct. 21—St. Edward's, at Austin; Oct. 28—Trinity, at Waxahachie; Nov. 4—McMurry, here; Nov. 11—Abilene Christian, at Abilene; Nov. 18—Southwestern, at Georgetown; Nov. 24—open.

### HIGH SCHOOL CAGERS REPORT FOR PRACTICE

Four regulars from last year's team are included in the 32 candidates for the 1938 basketball team of Brownwood High School, coached by Mac Miller. Regulars reporting are Dal Fish and Reeves Sellers, forwards; Jimmie McHorse and Dally McLean, guards. James Thomason, center, is the only regular of last season missing from the list of candidates. Thomason is attending Texas A. and M. College this year.

Since Millar began coaching the Lions, his cage teams have won 294 games, lost 31 and have competed in the state finals at Austin three years. Brownwood was runner-up to Evant in the district race last year.

Candidates this year are Dal Fish, Dally McLean, Winsted, Dedman, Raymond Young, L. D. Byrd, J. W. Snider, Billy Alcorn, Gene Wilmet, John Milligan, Arva Master, Arcene Clayton, Temple Dunn, Bill Bucy, Hall Coleman, Raymond Blake, Charles Rice, Jack Collie, Grady Rice, Jimmie McHorse, Reeves Sellers, Del Ray Thomas, Bascom Wood, Dan Darrock, Billy London, Roland Graves, Del Eaton, Jimmie Eldson, Aubrey Ferguson, Malcom Johnson, Robert Burly, Willie Godwin, Edward Stephenson.

Outstanding candidates in this group include the four regulars of last season and Young, Byrd, Snyder, Dunn, Blagg, Rice, Godwin, Dedman, Clayton, Collie, London and Burly.

### Shelton Re-Elected Head of Conference

Now serving his tenth year as president of the Texas Conference, J. H. Shelton of Howard Payne college was re-elected to head the association at the annual meeting of the body Saturday in Dallas.

Also re-elected were J. T. Simms of Trinity University, vice-president, and J. C. Goodbey of Southwestern, treasurer.

At the conference, a rule was adopted which permits transfers from other schools to participate in varsity athletics after completing two semesters' work, providing the transfer has not taken part in varsity athletics at another school.

Your Choice of 75 Coats and Suits at greatly reduced prices at Garner Alvis!

**Buy CHRISTMAS CARDS Now!**



Give a Globe 98c  
18 inch size

Christmas Tree Lights  
8 lights on each set  
29c :: 49c :: 69c



Bar Sets 98c  
8 pieces



Sparklet Syphons  
Enamel \$5.95  
Chrome \$6.95



Cocktail Shakers \$1.49 up  
Assorted Colors



Bath Room Scales \$6.19 up



Gift LUGGAGE  
Luggage! The Gift every one wants.

## REDFRO'S Shop in our Stores EVENINGS

# AMAZING Gift VALUES

**Electric Clocks**  
Give one this year \$1.49 up  
Alarm Clocks 98c up

### A Gift for all the Family

**Clinton 'All Star' Radio**  
Model 240  
7-tube AC-DC, 3 band super-heterodyne, standard broadcast, American and foreign short wave, amateur, police, ships at sea, and aviation. This set has the electric eye for tuning \$19.95  
Guaranteed by Redfro's Others \$9.95 up  
Cash or Terms

**A KODAK Baby Brownie \$1**  
Jiffy Kodak Vest Pocket Size \$5 up  
Others to \$50.00

**Of Course, a Cutex Set**  
A gift that will be remembered. This Cutex Manicure Set is available in black or brown pin morocco leather and in a smart nub damask. Contains all the implements necessary for proper hand care—including a tricky finger rest that simplifies applying polish. In addition, there's Cutex Nail Polish, Oily Polish Remover, and Cuticle Oil \$3.75  
OTHER SETS FROM 50c UP

**Heating Pads \$1.49**

### For Him... For Her... For Everybody! Another Coty Christmas!

This year, Coty has remembered everybody on your Christmas list and has planned for every gift allowance! Both in variety and sheer beauty... these Gift Ensembles are amazing, thrilling! A gay French design covers the luxurious-looking gift boxes. There are Compact Ensembles, Face Powder Ensembles, Bath Ensembles, and of course, those tremendously popular Ensembles of Coty Perfumes. Come early—get first choice! Prices range from \$19.75 to \$22.25.

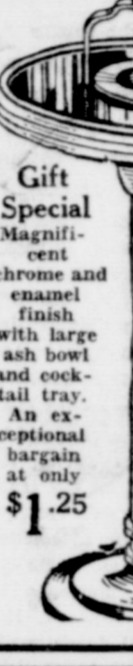


Mail Orders Filled  
Add 10% for postage

Free City-wide Delivery

REDFRO'S "Turkey King" Enamel

**Roasters**  
18 inches long  
Single wall 98c  
Double Wall \$1.29  
Get one for your Xmas turkey



Gift Special Magnificence chrome and enamel finish with large ash bowl and cocktail tray. An exceptional bargain at only \$1.25



Wrap your packages in our beautiful Gift Wrappings—Paper, Tinsel, Cellophane and Tags

**3 piece Range Set**  
Assorted colors 69c

**Flash Lights**  
Complete with batteries 49c up

**Bed Lamps**  
Several styles and colors to choose from 98c up

**Silux and Cory Glass Coffee Makers** \$1.95 up

**Beautiful Evening Bags**  
\$3.75 to \$15.00

**Men's Shaving Sets**  
from 49c to \$15.00

**Compacts**  
Loose and Cake Powder. A wonderful selection

### MEN Want Gifts Like These!

**Cigars Xmas Wrapped**  
Pipes up to \$3.50  
Tobacco Pouches 19c up

**Camels, Lucky Strikes, Chesterfields, Old Golds**  
\$1.55 Carton

**Silver King Golf Balls**  
Gift Boxed

**AIR-MATE Cravats**  
\$1.00  
Socks 35c to 50c

**Wrist Watch \$2.69**

**SCHICK Gift of Years**  
● A Schick Dry Shaver will last him for years, a constant memento of your thoughtfulness. Schick can promise you that, for only Schick, of all electric shavers, has the experience to know. No blades or creams or lotions to buy, Schick means priceless shaving. Also means a clean close shave, without irritation, no matter how tender the skin or tough the beard \$15  
**SCHICK SHAVERS**  
NO BLADES - NO LATHER  
AC and DC

## TOYS

**Doll Dishes 49c**  
**TRACTORS 49c up**  
Bring the kiddies to our store!

## Christmas CANDIES

Whitman's, Gales', Kings', Pangburns' Martha Washington  
5 lb. Box Assorted Chocolates 99c

**Evening in Paris Gift Sets** See this attractive array of sets The most popular in America  
This attractive star package will be very popular. Lipstick, Sachet, Face Powder, Double Vanity, Perfume and Cologne \$6.50  
Combination of Perfume, Talcum Face Powder and Rouge \$2.95  
Talcum and Cologne, attractively boxed \$1.25  
Face Powder and Toilet Water in combination box \$2.45  
Toilet Water \$1.25  
Face Powder \$1.10  
Combination of Talcum Cologne with Atomizer and glass jar Talcum \$4.00  
Perfume and Vanity, silk-lined box, a real present for any woman \$1.75  
A beautiful set of Perfume, Face Powder, Talcum, Lipstick and Loose Powder Vanity for \$5.00

### Stationery

Is Personal... and It's Distinctive!  
A Gift In Good Taste!  
Give stationery of quality, personalized by a distinctive monogram or letterhead. It will be a pleasant reminder long after.

**Five Year Diary**  
Leather back with zipper  
Renfro's Price \$1.19

# REDFRO'S

## DUTTON'S



Distinctive Gifts From All Over the World

In Crystal CANDLE STICKS CANDELABRAS CENTERPIECES EPERGNES AND ETC.

CRYSTAL FLOWERS and Other New Table Decorations.

Exclusive Lines of Pottery in TABLE WARE FANCY VASES BOWLS CANDLESTICKS, ETC.

PUNCH BOWLS AND COCKTAIL SHAKERS LIQUOR SETS

Unusual Lamps in CRYSTAL, BRASS, POTTERY, ETC.

Novel Gifts, personal and for the Home.

Smoker Sets... Ash Trays, and Etc.

You'll find an endless profusion of lovely things for everyone on your shopping list awaiting your selection.

Dutton's Gift Shop in Armstrong's Jewelry Store

Your Gifts Wrapped and Carefully Packed Without Extra Charge



**THE REST OF THE RECORD**

BY JAMES V. ALLRED  
Governor of Texas

BY JAMES V. ALLRED  
Governor of Texas

Jim Ferguson has resumed publication of the Forum, which he stopped immediately after my nomination in the first primary last year. Charging both the National and State governments with insincerity, ignorance and inexperience, Old Jim has a six-point platform; but says that he hasn't, as yet, selected a candidate.

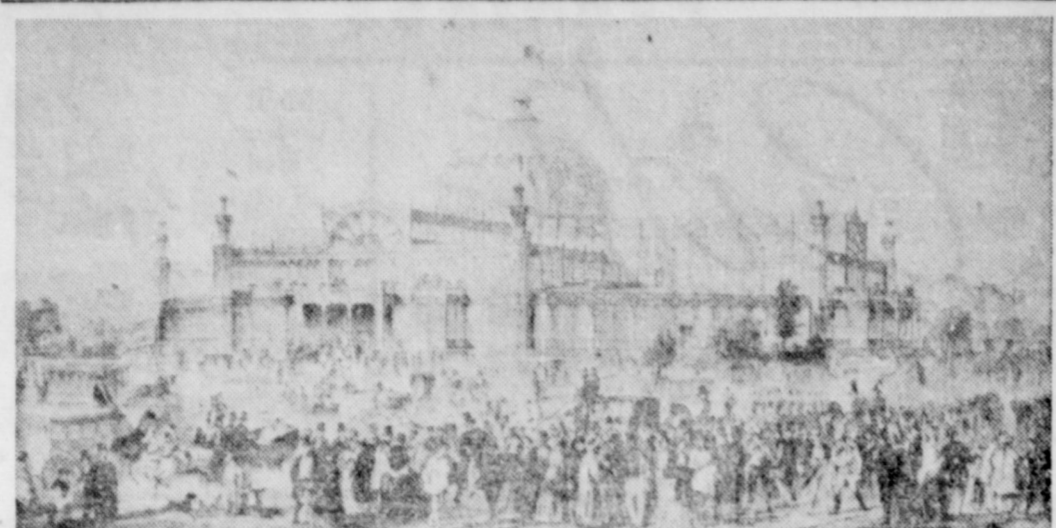
It is, however, perfectly obvious that Ferguson is going to make another proxy campaign for Governor. Ferguson plans have been brewing for several months. All the talk is that Mrs. Ferguson probably will run but one or two other known candidates for Governor have been flirting with Old Jim to get the Ferguson support. It is regrettably apparent that Texas is in for another ordeal and we had just as well get ready for it.

The Ferguson platform is typical of his audacity. It has about 57 varieties of promises one to appeal to every class of voters. He is going to economize twenty million dollars by increasing expenditures sixty million! He is going to help the poor by taxing them! A little sop for everybody.

Ferguson is for paying a pension of \$30 a month to everybody over 65 whether they need it or not; yet he proposes to take away from the needy old people who are now receiving aid from the state the cigarette, liquor and other taxes now going into that fund. He says to abolish the State ad valorem taxes. That would relieve from taxation the oil companies now paying on their wells and leases; the insurance and loan companies now paying on their skyscraper buildings; and it would make tax free all of the vast acres of land now owned by non-resident individuals and foreign corporations.

Ferguson's platform is silent on some other issues in which the people are interested. Of course he couldn't discuss the question of adequately taxing oil and sulphur because he is against that. He doesn't say anything about race track gambling because every gambler and racketeer in the country knows how the race track law got on the statute books under the Ferguson administration; and every every racketeer and gambler, even those who have been driven out of the State under this administration would welcome the return of Fer-

**Scene at First and Only New York Fair 1853**



NEW YORK (Special)—For the first time since the Crystal Palace Exposition of 1853, New York State and City are hosts to the remainder of the world in a genuinely international fair. The accompanying reproduction of a fine lithograph, published 84 years ago, shows in a wealth of detail the englassed Palace dedicated at that time to "the Exhibition of the Industry of all Nations." The site of the exposition, then known as "Reservoir Square," is today Bryant Park and the location of the Public Library, at Fifth Avenue and 42nd Street. In 1853 that was "way out in the country." To-day it is mid-town Manhattan, and about 20 minutes rapid-transit time from the 1216 1/2-acre site of 1939.

In the years since her own outstanding exposition, New York has been a prominent participant in the 13 major expositions held in the United States—State legislative appropriations alone amounting to \$2,730,000 in behalf of "creditable appearance" at such fairs. The Empire State erected her own building for 11 out of 12 great expositions held without her boundaries. At the Century of Progress she created an exhibition in that fair's Hall of States.

New York's 1939 Fair, according to estimates, will represent an expenditure of \$125,000,000 or more. The exposition is already well along in the construction period. Thirty-seven nations have already signified intentions of participating, and more than a score of state legislatures are considering bills providing for cooperative part in the nation's international fair of 1939.

I repeat, regrettable as it is, we are in for another ordeal of Fergusonism, and we had just as well get ready to meet it.

BETTER HURRY! The Banner free fountain pen and pencil sets are going so fast the supply is like to run short. Get yours today!

**FOR LEASE: 80-acre Farm, 60 acres in cultivation. \$125 Cash. Phone 8510F13. Mrs. W. D. Alexander.**



**FITTED CASE**  
top grain cowhide, moire lined. Black, 1095 brown.  
**Garner-Alvis Co.**

**SECOND TRIAL FOR BECKHAM POSTPONED**

Scheduled to open in 35th district court Monday morning, second trial of G. Beckham, charged with murder in connection with the fatal shooting of Raymond Thompson at Zephyr in June last year, has been postponed until the next term and set for February 9.

The defense asked for postponement because of absence of two witnesses.

In his first trial last December, Beckham was found guilty and sentenced to 29 years in the penitentiary. The Court of Criminal Appeals reversed and remanded the case.

Berle E. Keener, charged with forgery in five cases, was found guilty by a 35th district court jury Friday morning and sentenced to two years in each case, the sentences to run concurrently.

L. S. Baker, charged with forgery and passing, was found guilty by a jury and sentenced to two years in the penitentiary. A. E. Arthur, charged with removing mortgaged property from the county, was found guilty and given a two years' suspended sentence.

**HONOR ROLLS**

**HOWARD PAYNE COLLEGE**

Seventy students are listed on the second six weeks' honor roll for the first semester at Howard Payne College, it was announced today. Juniors lead the list with 25 members of the class making 39 points or more. Seniors were second with 26, freshmen 17 and sophomores, S. Alene Ripley leads the list with 39 honor points, four A's, and an A minus.

The complete honor roll follows:  
**39 Honor Points**  
Alene Ripley, junior.  
**38 Honor Points**  
Gertrude Cain, senior; Theresa Fielder, junior.

**37 Honor Points**  
Morris Brooks, freshman; Mayo Cleveland, senior; George Edwards, junior; Frances M. Frederickson, junior; Lorena Janeway, senior; Anita Joyce Lindsey, sophomore; Edwin Moore, senior; George Nunn, freshman; Marvel B. Rhymers.

**36 Honor Points**  
Ursula Curb, senior; Mrs. J. M. Dunn, senior; Eloise Johnson, senior; La Vada Macon, senior; Mrs. Sherrill Robertson, junior; Eleanor Tucker, senior.

**35 Honor Points**  
Mrs. Glenn Bridges, junior; Jane Yeager, senior.

**34 Honor Points**  
Sam Bays, senior; Evelyn Coble, sophomore; Pearl Marie Ladua, sophomore; Etta Lee Martin, freshman; Ruth Morgan, junior; Aileen Stephens, junior; Geneva Shaw, sophomore.

**33 Honor Points**  
J. W. Bradshaw, junior; Mrs. Elizabeth Fisher, freshman; Eunice Holmes, sophomore; Vernelle Hornsby, freshman; Erma Lee Keeney, junior; Cecil Jo Kuykendall, junior; Irma Lee Rutherford, junior; Theda Smith, senior; Elizabeth Stone, senior; Mearle Wilson, junior.

**32 Honor Points**  
Verna Frizzell, freshman; Robert Havins, senior; Doris McIntosh, freshman; Charles Myers, senior; Nell Reeder, freshman; Clifton Tension, freshman; Lila Timmons, junior; Mrs. Miller Wright, junior.

**31 Honor Points**  
Mrs. Boyd Commander, junior;



**MEN'S TRAVEL KIT**  
of seal grain cowhide. 495  
**Garner-Alvis Co.**

Annie Mae Cox, senior; Marian Foley, junior; Rita Garvin, junior; O. E. McGaw, junior; Clifford Nelson, senior; R. L. Patillo, sophomore; Jack Powell, junior; Guy Self, junior; Inez Smith, sophomore; Leona Smith, freshman; Ella V. Trout, junior; Roy Watson, senior.

**30 Honor Points**  
Harry High Brandon, senior; Sarah Burrus, freshman; Ruth Cobb, junior; Clyde Connor, freshman; Marguerite Cooper, freshman; Audra Mae Franklin, sophomore; Walter Kluge, freshman; Edward Larson, freshman; Dorothy McIntosh, freshman; Willie C. Revel, junior; Weldon Robinson, freshman; Jack Ross, junior.

**Christmas Holidays For Schools Will Begin December 23**

Thursday, December 23 will mark the beginning of Christmas vacation for all students of Brownwood public schools at the conclusion of classes. Howard Payne College and Daniel Baker College will dismiss classes for the vacation Wednesday, December 22.

Rural schools in the county will be dismissed Wednesday, December 22 with the exception of a few schools which will hold Christmas tree ceremonies Thursday or Friday of this week.

Class work will be resumed in all schools Monday, January 3, 1938.

Chinese, believing devils travel only in straight lines, built the streets of Shanghai crooked.  
**30 Coats and Suits reduced from \$20.50 to \$19.88 at Garner-Alvis!**

**HOLIDAY BARGAINS**

**Shoes and Hose the Gift for All the Family**

**100 PAIRS**  
Women's Dress Shoes from our stock of New Fall Footwear.  
Values to \$4.95  
Sizes 5 to 9.

**\$2.98**

---

**200 PAIRS**  
Every pair in this group a real bargain. Values you can't afford to miss.  
Sizes 4 1/2 to 9.

**\$1.49**

---

**Give Hosiery**  
**\$1.00**  
3 Pairs \$2.75  
In Gift Boxes. The one gift that is sure to please every woman!

**GIVE HIM HOSE**  
2 Pairs in Gift Box  
**50c**  
35c Hose  
3 Pairs in Gift Box  
**\$1.00**

---

**Men's Dress Oxfords**  
Black and Brown Calfskin.  
Sizes 6 to 12  
**\$3.44**

**House Slippers**  
Men, Women and Children  
**49c to \$2.49**

---

**LEVERIDGE**  
**BROWNbilt SHOE STORE**

**It's Easy to find a Gift for a Man at a Man's Store**

In this Exclusive Man's Store you will find a large assortment of Ties, Robes, Socks, Shirts, Belts, Accessories, and hundreds of other items for every male on your list.

<p><b>TIES</b> HAND TAILORED SILK LINED Quality Silk <b>49c</b></p>	<p><b>SHIRTS</b> WOVEN FABRICS Tribenized Collars New Colors <b>\$1.49</b></p>
<p><b>GLOVES</b> BLACK OR BROWN CAPE SKINS Lined or Unlined <b>\$1.00</b></p>	<p><b>House Shoes</b> HAND TURNED LEATHER SOLES Kid Leathers All Colors <b>\$1.98</b></p>
<p><b>ROBES</b> BEAUTIFUL SILK ROBES IN SKINNERS Satin Collars All Colors <b>\$4.95</b></p>	<p><b>Belt Sets</b> BELT, BUCKLE, AND TIE RACK in a Gift Box, Special <b>\$1.00</b></p>

**SPECIAL SUIT SALE**

We have marked our suits down to sell before inventory. Buy at JANUARY PRICES NOW!

**GUS J Rosenberg's**  
MEN AND BOYS STORE

Surely You Can't Visit Them All Christmas

**BUT** . . . . You can bring them so close to home with your telephone.

AROUND THE WORLD

From far and near—heart giving messages of Yuletide joy to loved ones that can't be home or with their friends this Christmas, will find their telephone a quick solution, not to forget home folks or friends—Bring them into your home with a telephone visit.

**THE SOUTHWESTERN STATES TELEPHONE CO.**



WHOOPIING IT UP FOR DIXIE



These peppy young cheer leaders won't hold anything when the Florida scholastic All-Stars play a team selected from 350 Ohio high schools at St. Petersburg, Christmas week, in the first north-south inter-sectional football game of its kind ever staged. Off the ground in their pleas for more hoopla are: left to right, Helen Childs, Bebe Dabbs, Margaret Parsley, and Alice Slayton, all of St. Petersburg.

JUST SKIP IT



It's work, work and more work for Max Schmeling at Summit, N. J., as the German ex-heavyweight champion trains faithfully for his bout with Harry Thomas, Dec. 13, in Madison Square Garden. Nor is his rope-skipping just a stunt for the newspaper photographers. When Max skips rope he means it.

Prince Marries Son's Mother



Beautiful Nora Gregor, above, actress who became the toast of Austria through the influence of Prince Ernst von Starhemberg became his bride in an almost private ceremony at Vienna, thus legitimizing the claims of their four-year-old son to the von Starhemberg estates.

A SANDE SIZE-UP



Earl Sande, former king of American jockeys, makes a critical inspection of The Chief, as some of the best thoroughbreds in the country prepare for the rich Santa Anita meeting on the west coast. The Earl is doing right well as an owner and trainer.

DECEMBER BROADCAST TOPICS OF INTEREST TO FARMERS LISTED

Unusually interesting and constructive discussions of various phases of farm life are scheduled to be broadcast through programs sponsored by the A. & M. Extension Service in December.

The programs go on the air at 11 a. m. each week day over stations WTAW, WBAP, WFAA, KPCC, and WOAI. Outline of the programs has been given as follows:

December 3: Results of Agricultural Experiments, A. D. Jackson, Editor, Experiment Station; Horticultural Notes, Dr. Guy W. Adriance, head, Horticultural Department.

December 4: How Has 4-H Club Work Helped Us to Achieve Judging Honors? N. C. Fay, and M. S. Jones, Members of Honor Dairy Team, National Dairy Show; Roy W. Snyder, Extension Supervisor-Specialist's Work, in charge; Book Review, Mrs. F. L. Thomas, College Station.

December 6: Farm Security Administration, L. A. Machemehl, Supervisor, Farm Security Administration; Dairy Husbandry Notes, C. N. Shepardson, Head, Dairy Husbandry Department.

December 7: Fruit Cakes at Farm Homemakers' Markets, Mrs. Isla Mae Chapman, Extension Specialist in Home Industries; Agronomic Notes, Dr. Ide P. Trotter, Head, Agronomy Department.

December 8: Poultry Notes, D. H. Reid, Head, Poultry Husbandry Department; Rural Education, W. E. Driskill, Deputy State Superintendent.

December 9: What Are the Citrus Producers Doing in the Valley? (10 min.) O. G. Tumlison, Extension District Agent; Geo. E. Adams, Assistant Extension State Agent; C. E. Bowles, Extension Cooperative Marketing Specialist.

December 10: Results of Agricultural Experiments, A. D. Jackson, Editor, Experiment Station; Animal Husbandry Notes, D. W. Williams, Head, Animal Husbandry Department.

December 11: Book Review, Mrs. F. L. Thomas, College Station; Christmas Parties at School and Home, Miss Mae Belle Smith, Extension District Agent.

December 12: The Christmas Story in Literature, Miss Ruth Thompson, Extension District Agent; Agronomic Notes, Dr. Ide P. Trotter, Head, Agronomy Department.

December 13: A True Story about West Texas Ranges, E. C. Martin, Extension District Agent, and A. L. Smith, Extension Animal Husbandman.

December 14: Results of Agricultural Experiments, A. D. Jackson, Editor, Experiment Station.

December 15: Short Christmas Sermon, Rev. James F. Carlin, pastor, First Methodist Church, College Station.

December 16: Farm Security Administration, L. A. Machemehl, Supervisor, Farm Security Administration.

December 17: Farmers' Opinions About the One-Variety Cotton Program, M. T. Payne, Extension District Agent; Agricultural Economics Notes, J. W. Barger, Head, Agricultural Economics Department.

December 18: Poultry Notes, D. H. Reid, Head, Poultry Husbandry Department; Rural Education, W. E. Driskill, Deputy State Superintendent.

December 19: Need for Farm Organization, Paul Haines, Extension Economist in Organization Work.

December 20: Rural Sociology Notes, Daniel Russell, Head, Rural Sociology Department; Results of Agricultural Experiments, A. D. Jackson, Editor, Experiment Station.

A great deal depends upon a man's courage when he is stammered and traduced. Weak men are crushed by detraction, but the brave hold on and succeed.

December 13: Farm Security Administration, L. A. Machemehl, Supervisor, Farm Security Administration; Future Farmers of America, E. R. Alexander, Head, Agricultural Education Department.

December 14: Peanut Growers Get Together, C. E. Bowles, Extension Cooperative Marketing Specialist; Agricultural Economics Notes, J. W. Barger, Head, Agricultural Economics Department.

December 15: Poultry Notes, D. H. Reid, Poultry Husbandry Department; Rural Education, W. E. Driskill, Deputy State Superintendent.

December 16: Successful Home Demonstration Club Women, Miss Zetha McInnis, Extension District Agent; Wildlife Conservation, Dr. W. P. Taylor, Head, Wild Game Department.

December 17: Results of Agricultural Experiments, A. D. Jackson, Editor, Experiment Station; Animal Husbandry Notes, D. W. Williams, Head, Animal Husbandry Department.

December 18: Book Review, Mrs. F. L. Thomas, College Station; 4-H Wild Life Rangers Are on Their Way, R. E. Callender, Extension Game Management Specialist.

December 19: Farm Security Administration, L. A. Machemehl, Supervisor, Farm Security Administration; Dairy Husbandry Notes, C. N. Shepardson, Head, Dairy Husbandry Department.

December 20: The Christmas Story in Literature, Miss Ruth Thompson, Extension District Agent; Agronomic Notes, Dr. Ide P. Trotter, Head, Agronomy Department.

December 21: Poultry Notes, D. H. Reid, Head, Poultry Husbandry Department; Rural Education, W. E. Driskill, Deputy State Superintendent.

December 22: A True Story about West Texas Ranges, E. C. Martin, Extension District Agent, and A. L. Smith, Extension Animal Husbandman.

December 23: Results of Agricultural Experiments, A. D. Jackson, Editor, Experiment Station.

December 24: Short Christmas Sermon, Rev. James F. Carlin, pastor, First Methodist Church, College Station.

December 25: Farm Security Administration, L. A. Machemehl, Supervisor, Farm Security Administration.

December 26: Farmers' Opinions About the One-Variety Cotton Program, M. T. Payne, Extension District Agent; Agricultural Economics Notes, J. W. Barger, Head, Agricultural Economics Department.

December 27: Poultry Notes, D. H. Reid, Head, Poultry Husbandry Department; Rural Education, W. E. Driskill, Deputy State Superintendent.

Providing Foster Mothers for "Economic Orphans" Is Task Undertaken in Day Nurseries

BY MARIAN YOUNG NEW YORK—Pinch-hitting for America's working mothers is no mere child's play. Anybody who thinks that the rapidly developing day nursery movement in this country is simply a way of letting grown up rich women play dollies with living toys is badly mistaken.

So declared dynamic, enthusiastic Mrs. Paul Bessal Welles, national president of the Federation of Day Nurseries, when she came in to New York from Plainfield, N. J.—where she has four children of her own—to the federation's convention.

"It's no hobby," Mrs. Welles asserted, and she emphasized her words with a flash of sparkling eyes and a toss of her perfectly groomed head.

"To dispel any notion that day nurseries are run by women who think that babies are too-too-cute-and-isn't-it-amusing-to-take-care-of-them-while-their-mothers-work," Mrs. Welles said. "I think people ought to know that the high standards set by Youth organizations (Boy Scouts, for example) are largely responsible for the growth of our nurseries."

Organizations Like Nursery Graduates Mrs. Welles points out that the various Youth groups unanimously clamor for more members with backgrounds comparable to those of children who have attended day nurseries.

vides the main meal of the underprivileged child's day. Then comes rest period, and a glass of milk afterward. The older child's day is much the same, except that he goes to classes right after health inspection in the morning.

Awakening to Child Needs Speaking before the Child-Conscious World Convention at the Hotel Commodore, Mrs. Welles said that the increasing interest in Day Nurseries is further proof that the world is becoming child-conscious.

"There have been Youth organizations as long as most of us can remember, but Child organizations are fairly new. We no longer think of education as belonging solely to the classroom. The strides which have been taken in the last decade regarding the pre-school child have emphasized the significant place of the home in the establishment of early attitudes that are so dominant through life. The Day Nursery, in acting as a part-time substitute for the home assumes these responsibilities."

In addition to the office she holds with the Federation, Mrs. Welles is president of Plainfield's Y.W.C.A., chairman of the local Community Chest, serves on the National's Women's Committee of Community Chests, up until last year was the president of the Junior League.

"I am not a club woman, however," Mrs. Welles smilingly insists. "With four children of my own, you know, I don't have much time to be a clubwoman in the sense that the term implies."

Increase Poultry Shipments Out Of Texas Territory Poultry shipments from Texas to out-of-state points during October totaled 43 cars, including 32 cars of chickens and eleven cars of turkeys, according to the University of Texas Bureau of Business Research. These shipments compare with only six cars during October last year, of which four cars were chickens and two cars turkeys. Interstate egg shipments totaled 21 cars, compared with 18 cars during October a year ago.

Only six cars of eggs were brought in from out of State points during the month—one came from Kansas and five from Missouri. During October last year 29 cars were brought in—seven from Kansas, twelve from Missouri, two from Oklahoma, six from Nebraska, and two from California.

Stock Shipments In Texas Show Steady Gain In October Livestock shipments from Texas to out-of-state points continued at a high rate during October, the University of Texas Bureau of Business Research has reported. Shipments of all classes of livestock totaled 9,017 cars, compared with 5,789 cars in October last year, an increase of 56 per cent.

Cattle shipments totaled 5,534 cars compared with 3,653 cars in October last year, an increase of 51 per cent; calves, 1,945 as compared with 1,255 cars, up 55 per cent;

hogs 591 as compared with 388, a gain of 50 per cent; and sheep 1,937 as compared with 493 cars, an increase of 198 per cent.

During the first ten months of the year shipments aggregated 77,421 cars, compared with 48,595 during the corresponding period last year, an increase of 56 per cent.

Since the computed average October cash income during the base period, 1928-1932, is approximately \$101,000,000, the October index, or the percentage of this year's October income to the average October income during the five years 1928-1932, is 79.2. This compares with 88.4 for September and 79.7 for October last year. Thus the decline in farm cash income from October, 1936, is about 12 per cent. Total farm cash income for the first ten months of this year, \$439,724,000, is, however, still 33 per cent above the \$329,016,000 during the corresponding period last year.

Steamship lines report that Americans are now taking bicycles to Europe for their tours. It is estimated that five million cyclists tour Europe every year.

This Year's Farm Cash Income Above That of Last Year

The computed farm cash income for Texas during October, representing about 90 per cent of the actual cash income, was \$71,178,000, according to Dr. F. A. Buechel, assistant director of the University of Texas Bureau of Business Research. This compared with \$101,957,000 for September and \$80,783,000 for October last year.

Since the computed average October cash income during the base period, 1928-1932, is approximately \$101,000,000, the October index, or the percentage of this year's October income to the average October income during the five years 1928-1932, is 79.2. This compares with 88.4 for September and 79.7 for October last year. Thus the decline in farm cash income from October, 1936, is about 12 per cent. Total farm cash income for the first ten months of this year, \$439,724,000, is, however, still 33 per cent above the \$329,016,000 during the corresponding period last year.

Steamship lines report that Americans are now taking bicycles to Europe for their tours. It is estimated that five million cyclists tour Europe every year.

Indian Creek Girl Elected to A. C. C. Greek Study Club

Lucille Wilmet, daughter of Mr. and Mrs. J. R. Wilmet of Ebony, is listed as a charter member of Philkoine, newly organized Greek club of Abilene Christian College.

ACC has long been noted for a strong Greek department with some of the largest Greek classes in the state. Charles H. Roberson is head of the department and sponsor of Philkoine. Organized on a caste plan of membership, only students who have completed one year of Greek with a 90 per cent average, are admitted as full-fledged.

Following a theme of "Study to Show Thyself Approved," club motto, neophytes or "new converts" are active members who have not completed the first year's requirements. Disciples and senators are ranks bestowed upon advanced Greek students.

HEAR YE! HEAR YE!

At Christmas time Brownwood is the host to thousands of shoppers from a hundred miles around.

Brownwood is no longer the small town it once was, but is now one of the larger towns of West Texas. The Gospel of Brownwood Merchandise has spread—Women have discovered that Brownwood is, in fact, the best place to buy the very smartest apparel at moderate prices.

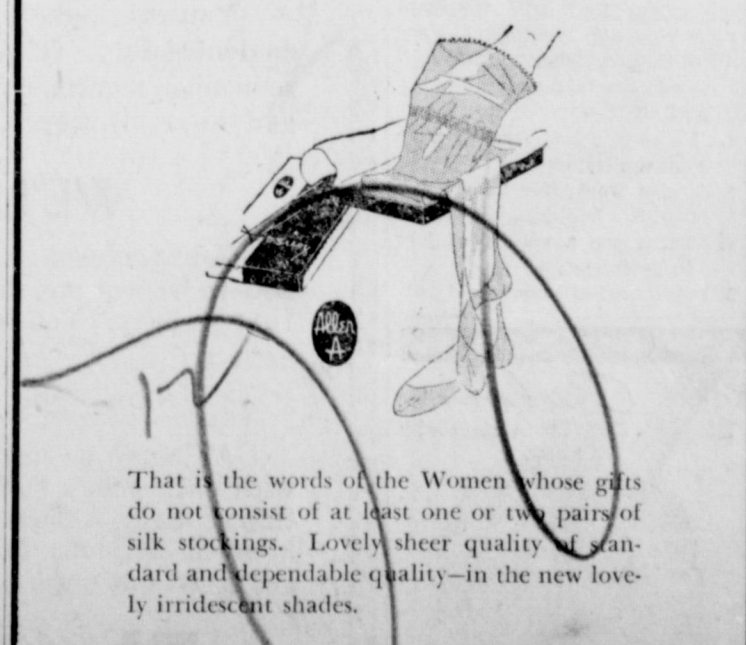
This Holiday Season the stocks are greater than ever before. Striking Sports Clothes, Glamorous evening apparel, no matter what type of Women's Apparel may be wanted—Brownwood has it at its Best.

In Brownwood you find BETTIS & GIBBS, Inc., one of the largest Ladies Stores in all of West Texas. This store has grown as Brownwood has grown. This store is no longer the small store it once was. . . . but as you know grew until a few years ago was compelled to move into its present location, a large corner building fifty foot front and one hundred and fifty feet deep and loaded with everything that a lady can wear from head to foot. The name of BETTIS & GIBBS STORE means good merchandise, honesty, integrity, dependability, all this has gone far to put BETTIS & GIBBS where it is today.

Of course, when you select a Gift for the Wife, Mother, Cousin, or Lady Friend, you want to be sure you are getting something dependable—stylerite and where your selection will be wide enough to be convincingly assuring.

Remember you are always welcome to come and see whether you wish to purchase or not—it will be a pleasure to show you all of this lovely new merchandise.

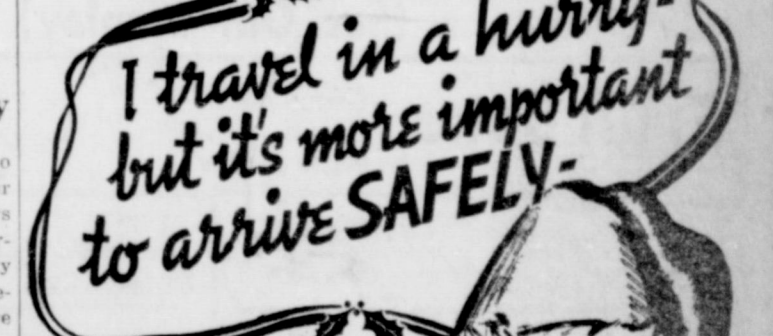
What's CHRISTMAS Without Allen A Hosiery?



That is the words of the Women whose gifts do not consist of at least one or two pairs of silk stockings. Lovely sheer quality of standard and dependable quality—in the new lovely iridescent shades.

Bettis & Gibbs THE LADIES' STORE Smart Styles, Popular Prices

the World's foremost traveler says:



I travel in a hurry—but it's more important to arrive SAFELY.

this great travel expert knows the importance of swift travel and safe arrival at a time when winter weather is at its peak.

HOLIDAY TRIP

LOW Holiday Fares now on sale daily to ALL POINTS—here are a few examples from Brownwood: Coach Fare in Pullman To One Way Rd. Tr. Rd. Tr. Fort Worth \$ 2.84 \$ 5.12 \$ 6.40 Dallas 3.48 6.27 7.80 Houston 6.11 11.90 13.75 Galveston 7.10 12.78 15.95 Okla. City 7.45 13.41 16.85 Kansas City 13.24 23.84 29.10 Denver 18.41 33.29 41.45 Chicago 22.42 40.38 50.10 \*Fares shown good in Pullman—berth extra.

Fine-swift Santa Fe trains provide the utmost in modern travel comfort and convenience, for the fewest possible dollars. FREE Pillows for Chair Car and Coach passengers. Daily thru Sleeper Service to important points. For TICKETS and Complete Information CALL Santa Fe J. OSBURN C.P.A. Santa Fe Ry. Phone 25 Brownwood, Texas



Scotland, where the Empire Exhibition opens in May, is spending twenty million dollars—a heap of silver for Scotland—to build and reconstruct a thousand miles of highways for tourists to the north.

**FOR SALE**  
1936 Ford Coupe, V-8  
1933 Ford Coupe Model B  
1934 Chevrolet Coupe  
1934 Ford V-8 Truck  
1934 Dodge Pickup  
For Sale, Cash or Terms, or will trade for Livestock worth the money.

T. E. STEVENS  
1801 Sixth Phone 1753R

AS LITTLE AS \$1.98 PER WEEK

**FOR A FLEETWOOD BICYCLE**

USE OUR

**BUDGET PLAN**  
NO MONEY DOWN

FIRESTONE AUTO SUPPLY AND SERVICE STORE

411 Center Ave. Phone 118

Listen to the Voice of Firestone, Monday evenings over N. B. C. Red Network

## Shall I Be A Farmer?

By Paul W. Chapman  
Dean, Georgia College of Agriculture

In selecting an occupation, the first question that a farm boy must answer is: Shall I be a farmer? The answer, in my opinion, ought to be based upon the interest which the boy has in farming. Do you like to farm? Have you farming plans which you are anxious to carry out? Do you want to breed better livestock? Do you want to make larger acre yields? Are you interested in such things? If so, you will make a good farmer, maybe a Master Farmer. If not, you would do better to select some other work. Interest in what you are doing is the greatest factor in success.

The most valuable asset that a farm boy has, which may influence his decision, is experience in farming. This may be his only capital. But if the experience has been gained on a good farm it is valuable. Experience is almost essential in getting a job.

**Financial Rewards Compared**  
Suppose you like farming, but are inclined to say: "Farming is such a sorry business: the earning power of the people in this occupation is low compared with the work-

ers in city occupations." Let's consider this a moment! It is a fact that the grass looks greener when viewed from a distance. Of course, the average city worker makes more dollars than the farmer; he has to in order to live. Every time he turns there is a call for cash. His rent is often a larger sum than all the necessary expenses of a farm family. Then there are bills for coal, light, every item of food—even water. These and other items absorb every cent the average city worker is able to make.

It would be helpful in our thinking, I believe, if we could realize that the vast majority of people work for a living—and a living is about all the average person ever gets. Too many people work to get rich, and consequently reap a harvest of disappointment.

But how much do farmers actually make? In Florida, California, Massachusetts, New Jersey, and two or three other states farmers make more than non-farm workers. In other states farmers make less than urban workers. In Georgia, city workers average making three times as much as the average farmer. The same ratio is true in a number of other Southern States. This does

## WIDOWS' WINNER



Mrs. Densmore Shute, above, won a Golf Widows' tournament at the Miami Biltmore Country Club, Coral Gables, Fla., with a score of 53 for the nine-hole affair. Wives of pros preparing for the \$10,000 Miami Biltmore Open, Dec. 10-13, participated.

not mean there are no high-income farmers in the South; in fact some of our farmers—mainly those dealing in specialized farming—are among those with the largest incomes in the nation.

The income of any group where the worker is also the proprietor varies greatly. This is true, for instance, of persons engaging in merchandising. It is true of farming, as shown in the following table, which gives the value of products sold from the farms of the country during a recent year:—

Value in Dollars	Number of Farms	Per cent of total
Under 250	397,517	6
250-399	518,932	9
400-599	766,118	13
600-999	1,545,684	26
1,000-1,499	927,910	16
1,500-2,499	981,163	16
2,500-3,999	628,006	11
4,000-5,999	291,112	6
6,000-9,999	147,753	2
10,000-19,999	61,606	1
20,000 up	24,981	1
Total	5,999,882	100

From the above table we learn that 6 percent of the farms of the United States sell less than \$250 worth of products annually, and that 1 per cent of our farms have a gross income of \$20,000 or more. As a matter of record, 35 per cent of the farmers of the nation earn 85 per cent of the income. If you were one of the 35 per cent, your income would be better than that of 90 per cent of the American people. You would have an income far greater than that of the majority of city workers.

**Farmers Own More Property**  
It is also a fact that the average farm family has more property than the average city family. The average value of property owned by the farm family of America is \$9,663, contrasted with \$8,769 for those living in towns and cities.

In considering any occupational field it is desirable to list its advantages and disadvantages. These will vary with circumstances. To some extent they will represent personal opinion. The following are some of those which might be studied in relation to farming:—

- ADVANTAGES—**
1. Farming offers security from unemployment.
  2. A man works for himself.
  3. There is a healthy outdoor life.
  4. There are a variety of jobs to be done.
  5. Personal and household ex-

- penses are small.
6. A farmer may be at home with his family.
  7. There will be no danger of losing the job on account of age.
  8. It is a mode of life that makes saving possible.
  9. Farmers live well compared with city workers with the same income.
  10. Farming provides the opportunity for stimulating experiences in the improvements of livestock, fruits, and crops.
- DISADVANTAGES—**

1. Capital is required to get established.
2. Income is uncertain due to weather.
3. There is an overproduction of farm products.
4. The farmer cannot set a price on his products.
5. There is no weekly or monthly pay check.
6. Schools and churches are not as good as those in cities.
7. A man is working in competition with untrained workers.
8. There is outdoor work to be done in bad weather.
9. It is hard to get away from the farm for vacations.
10. The achievements of farmers are not recognized to the same extent as accomplishments in other vocations.

Many of the farm disadvantages of farming no longer exist. Improved machinery is removing drudgery; better highways and automobiles have wiped out isolation. Rural electrification lines are being extended. Most of the problems of farming today are econo-

mic ones that must be solved through group action, which in many instances require legislation. The outlook in this respect is uncertain, but brighter than it has ever been before.

For young men interested in farming, the greatest disadvantage is the capital required to start. While not solved as yet, progress is being made in helping worthy boys. Federal land banks are making more liberal terms. The farm security program, started as the result of a recent appropriation by Congress, will ultimately be extended to include farm boys with the right personal qualifications and preparation. Other aids are also available.

What the conditions of farming will be 25 years from today we do not know. We may be reasonably certain, however, that progress toward greater efficiency will be made. Today it requires no more farmers to supply the needs of 120 million people than it did when the population of the United States was 75 million. This progress will continue, probably at a faster rate than before. This means for those who enter farming now a more complete and thorough preparation than was necessary a generation ago. And it should mean an income in keeping with an increased capacity to produce the necessities of life.

Vacation time in the Kona District schools in Hawaii comes in the fall, because the children are needed to pick coffee.

**NOTICE OF SALE OF REAL ESTATE**  
Whereas, by virtue of Alias Execution issued out of the County Court of Callahan County, Texas, on

a judgment rendered in said court on the 3rd day of October, 1934, in cause No. 1065, in favor of The Farmers & Merchants National Bank, of Abilene, Texas, a private corporation, against J. B. Conlee, defendant, I did on the 1st day of December, A. D. 1937, at 9 o'clock A. M., levy upon the following described real estate, situated in Brown county, Texas, the same being all of the interest of J. B. Conlee in and to 400 acres of land, more or less, being all that portion of tract 533-1/3 acres, more or less, out of and a part of the James Simpson Survey No. 779, patented to Paschal B. Harpelin on August 6, 1861, by patent No. 319, Vol. 7, which 533-1/3 acre tract lies partly in Brown county, Texas, and abstracted under Abstract No. 825, and partly in Callahan county, Texas, and abstracted under Abstract No. 642, and this levy is to cover and does cover all of the interest of the defendant, J. B. Conlee in and to all of said land as lying in Brown county, Texas, as fully described by field notes in my return on said execution to which reference is here made, and located about 3 miles South of Cross Plains, Texas, and generally known as the old Conlee Homestead; and on the 4th day of January, A. D. 1938, being the first Tuesday in said month, between the

hours of 10 o'clock A. M. and four o'clock P. M. on said day, at the Court House door of said county, I will offer for sale and sell at public auction to the highest bidder, for cash, all the right title and interest of the said J. B. Conlee in and to said property.

W. E. HALLMARK,  
Sheriff, Brown county, Texas.  
By Chester Avinger, Deputy

**LONE STAR**  
Sale Sure  
NUGGETS  
CATTLE SHEEP  
for "ROUGHING"  
PRIME  
FINISH

Logan Feed & Hatchery  
206 E. Broad way Phone 193

**FIRE WORKS**  
Wholesale and Retail

**ARCADIA NEWS CO.**

## THIS IS THE WEEK TO CALL AT THE BANNER OFFICE

**Season's Greetings**

From \_\_\_\_\_

To \_\_\_\_\_

No black and white illustration can do justice to these handsome sets. They come in a wide range of sparkling colors. Be sure to see the display at our office.

### There's A Beautiful Writing Set Here for You!

Hundreds of our readers have already called and obtained one or more sets absolutely free. Hundreds more will call within the next few days. Better be one of them for you, too, will be charmed and delighted with these handsome sets and will find them ideal for your own writing use or for a Christmas remembrance to a dear relative or friend.

### MAKE THIS A MEMORABLE CHRISTMAS

One way to accomplish this is to use the Banner and these sets as an economical method to remember more of your loved ones than ever before.

You can make your Christmas money do double duty. Of course, it is very nice to remember someone with both the Banner and the set. However, you can send the Ban-

ner to one party and the set to another and both receivers will be delighted with their remembrances.

Each gift will give duty for a year or more. The Banner a weekly remembrance, the writing set giving every day service for a long, long time.

### WE'LL MAIL SET ANYWHERE IN U. S.

Add ten cents extra and we will wrap and mail set to any address in the United States. Sets to be sent any distance should be mailed soon and we are ready with this service at any time you say. You supply the name and address and we'll do the rest.

### SUPPLY OF SETS LIMITED

Although we are continuing to offer each reader as many sets as he or she desires, one set with each year's subscription paid, we have no definite assurance that we will be able to obtain as many sets as will be required to fill the demand. The pen company has advised that there is much difficulty in filling heavy requirements at this time. Better play safe and get your set or sets at once.

## The Brownwood Banner

SETS ON DISPLAY AT THIS OFFICE . . . MAKE YOUR SELECTION TODAY

**PIGGLY WIGGLY**  
CHRISTMAS foods

Everything for the Christmas feast and Holiday entertaining, a tremendous variety of fine foods at low prices. Yes, we prepare Gift Baskets — from \$2.50 up, to order. Come in and let our smiling shelves be a reminder of the things you need for Christmas. You'll find you'll have more to spend on other things if you buy your foods at Piggly Wiggly.

**Christmas Candies** See our Candy Island Several Assortments **2 lbs. for 25c**

### FRUIT CAKE TIME

We have all the ingredients and at prices that will not make the Fruit Cake expensive.

(See Our Display)

**Fruit Cake** Grandma Brand 4 lbs. \$1.15  
None Better 2 lbs. 60c  
1 lb. 30c

**Cocoanut** 2 Pounds Bulk **22c** **Minced Meat** 3 10c Pkgs. **25c**

**Dates** 2lb. box **28c** **2 lb. Black Layer FIGS** **28c**

**2 Pounds CHOCOLATE DROPS** **25c** **1 Pound Chocolate Covered CHERRIES, Box** **25c**

**Pumpkin** No. 2 1/2 Size Can, 2 for **25c** **YAMS** No. 2 Size Can 3 Cans **25c**

**FILBERTS** lb. **30c** **CHESTNUTS** lb. **30c**

**WALNUTS** Pound **19c** **ALMONDS** Pound **27c**

**Fruit Cake COLORING, Bottle** **10c** **25c Bottle EXTRACTS, Each** **18c**

**FLOUR** 48 Pounds Bewley Per Sack **\$1.69** Cake Flour None Better, sack **\$1.55**

**MEAL** large sack Fresh Ground in Brownwood by Austin Mill and Grain Company, sack **39c**

### Christmas Fruits

The best price in years. Ask for price in box lots.

**Bulova**  
THE GIFT OF A LIFETIME!

AUDREY  
17 Jewels  
20 Diamonds  
14K Solid Gold  
\$75

Brown's Jewelry Store  
222 Center Ave. Phone 464



## Something New

Every Used Car Priced Above \$100  
GUARANTEED!

R & G Cars With a "Money Back"  
Guarantee.

All Others with a 30-Day Guarantee.

COME IN TODAY!

Weatherby Motor Co. Inc.,

V-8

V-8

Sales-Service Phone 208 "Watch the Fords Go By" Fisk at Adams

### Expert Lists Three Major Problems of Beauty Routines

By Alice Hart

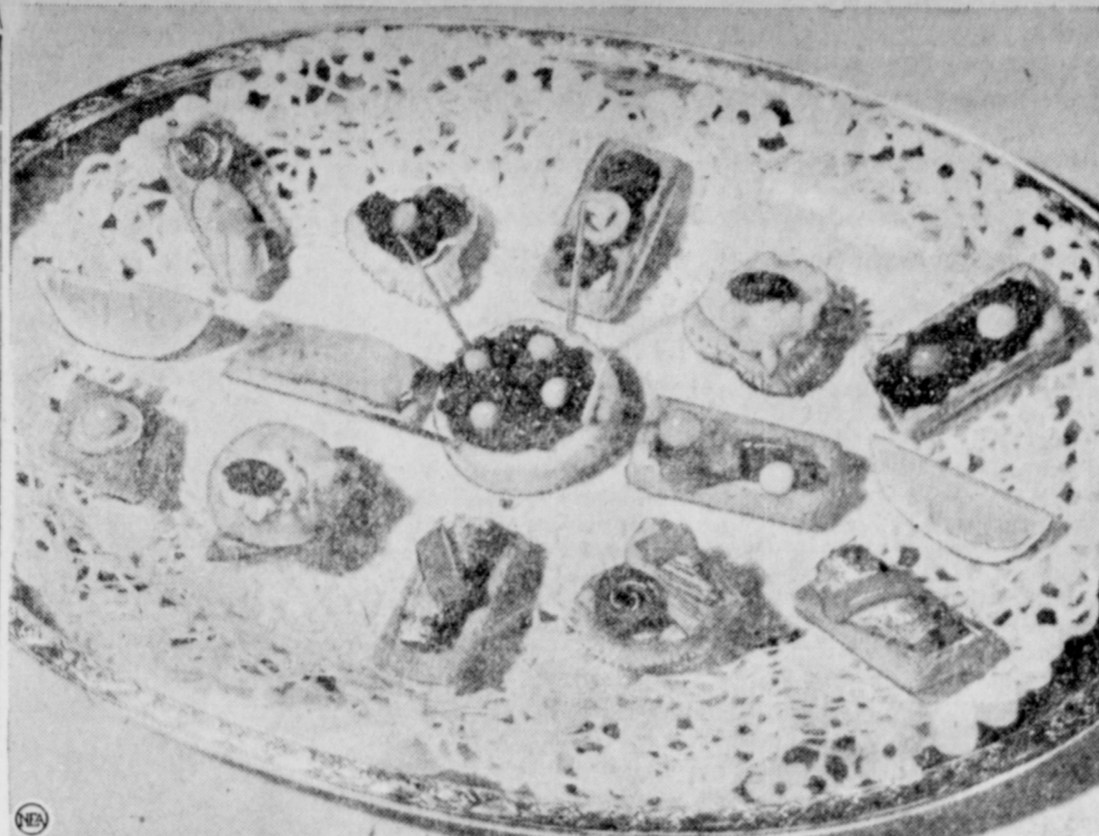
Letters from readers indicate that dry, brittle nails, hard-to-manage hair and excess weight are major problems of beauty-minded women. All are interested in various new preparations, a few have complexion worries, but the majority want to know about cuticle creams, care of hair and ways to lose a few pounds.

The condition of nails depends a good deal of your general health. If you eat sensibly, exercise regularly and get adequate sleep and rest, you are not likely to be troubled with brittleness or little white spots. Cuticle should never be cut. Push it back with the towel every time you dry your hands. Use a special cuticle cream or lotion several times a week.

File nails with an emery board instead of a steel file. Never push the cuticle back with a steel instrument, and don't let your manicurist use one.

Absolute cleanliness and regular brushing routines are the first requisites of healthy, attractive hair. Experts agree that the woman who uses a hair brush correctly night after night isn't likely to have hair and scalp problems. And don't let anyone tell you that a weekly shampoo will make your hair excessively oily or too dry for anything else. Unless you are ill, or have some other good reason for not doing it, wash your hair every seven days. Rinsing is important, of course.

If you want to lose weight, you must exercise, and you must watch your calories. Unless there is something physically wrong with you, less food and more exercise is bound to take off a few pounds. There is no royal road to weight reduction, and wishing won't make you slender. Substitute vegetables and salads for desserts, consume small portions of every thing served, do exercises weather you like them or not, and you will lose weight.



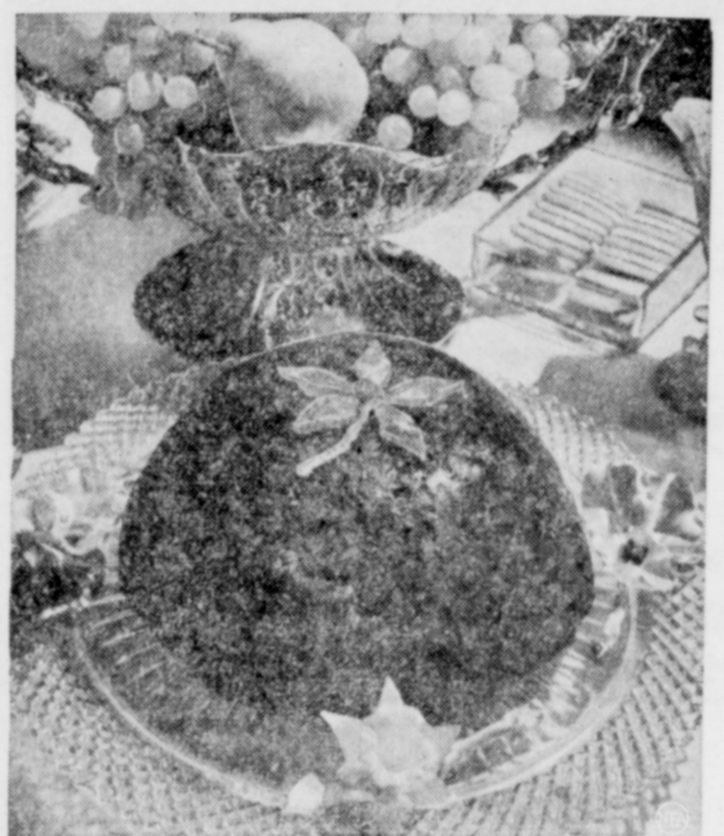
Canapés may be small but they play a large part at the afternoon wedding reception. They combine tiny shrimp, onions, caviar, pimientos and such things with great delicacy. (From Park & Tilford, New York)

### Fish Provide Good Protein Diet Items

Fish is high in protein and makes a first class substitute for much more expensive meat. If you live far from the sea, then let the sea send its protein and iodine treasures to your kitchen in cans.

Nationally known canners of fish are just careful of their products as you are of your family's health. So, if any old-fashioned superstition about canned fish being dangerous lingers in your mind, dismiss it. If you live far inland, are not certain of your fish dealers refrigeration, or if he does not carry modern quick frozen foods, then the fish in cans is your safest way to economy through crab, salmon and tuna.

One-half cup of crab, salmon or tuna fish furnishes about the same amount of protein as one-fourth pound of cross rib of beef. However, fish is leaner than meat. Due to the fat in the beef the calories furnished by it are about one hundred more than the fish. Any loss of calories in a fish meal are easily



Buy your rich plum pudding from your baker or grocer and serve it steaming hot with a home-made brandy sauce or else a special Christmas hard sauce, if you like to keep Christmas traditions.

made up by adding a little more butter or sugar to some dish.

All three fish mentioned make delicious salads combined with celery and mayonnaise. Salmon or tuna may be used for a loaf, croquettes, souffle or a scalloped dish or timbales. Crab makes a delicious appetizer with the addition of some cocktail sauce, and of course, can be used scalloped, plain or au gratin.

**Tuna Fish Timbales**  
(4 to 6 servings)  
One cup of hot milk, 1 tablespoon butter, 1-4 cup bread crumbs, 1-4 teaspoon paprika, 1-2 teaspoon salt, 1-2 onion, 2 eggs, 2 cups tuna fish. Scald milk, add melted butter, sifted crumbs, seasoning, grated

hot water, bake in a slow oven (325 degrees F.) about three fourths hour. Serve with cheese sauce.

**Cheese Sauce**  
Two tablespoons butter, 3 tablespoons flour, 2 cups milk, 2-3 cup grated cheese, 1 teaspoon salt, 1-2 teaspoon mustard, 1-2 teaspoon paprika.

Melt butter, add flour and blend, add milk and stir until thick, add seasoning and cheese.

**Dutch Salmon**  
(4 to 6 servings)

Two and one-half tablespoons bacon fat, 4 cups chopped cabbage, 1-4 cup boiling water, 1 teaspoon salt, 1-4 teaspoon pepper, 1 can red salmon.

Heat bacon fat in a frying pan, add chopped cabbage and cook five minutes, add water and seasonings, cook fifteen minutes. Separate salmon into flakes and add to cabbage. Heat thoroughly.

### HONOR ROLLS

#### Senior High School

Students making a general average of 90 to 100: Seniors: Quillian Hutton, Adalee Lacy, Margaret Sebik, Marion Watson, Gene Wilmet, Juniors: Marie Copeland, Jean Dawson, Emily McGhee, John McGhee, Marcell Williams. Sophomores: Ernestine Davis, Gene Marie Shelton.

Students making a general average of 90 to 94: Seniors: Annett Allen, Ruth Barrington, Lillian Duncan, Maxine Faulkenberry, Virginia Gregory, Madeline Healer, Bill Lehmborg, Betty McKay, Annis Miller, Gene Mattox, Virgil Paul, Emma Lee Stapp, Billie Ruth Thompson. Juniors: Harold Austin, Jeanne Boettcher, Bill Bucy, Vernon Breazeale, Mary Adelle Brooks, Maurine Davidson, Winstead Dedman, June Drake, Mary Jo Emison, Roland Graves, Nelda Jones, Bettie Morris, Jimmie Sligar, Bobbie Snider, Elizabeth Woods, Della Woodridge. Sophomores: Preston Bishop, Raymond Blagg, Doris Blair, L. M. Bushy, Norma Byrd, Pauline Carter, Mary Elizabeth Dyer, Jane Hardin, Dortha Harp, Dorothy Keese, Laura King, Frances Long, Martha Oxford, Constance Plexco, June Schneider, Marita Shaw, Joe Stalcup, Viola Thompson, Maxine Yeager.

#### 85-89 Average

Students making a general average of 85 to 89: Seniors, Betty Arvin, Oleta Ashburn, Billie Ray Bruce, Joel Burt, Marion Bynum, Robert Cleveland, W. H. Dunsworth,

Vera Everitt, Euda Mae Foreman, Dorris Harris, Geraldine Harris, Louise Harris, Helen Faye Heyser, Margaret Jackson, Lillie B. Landua, Vannoy Moore, Sammie Morris, Fred Mullins, Elizabeth Nunn, Elaine Parker, Jack Pittman, Marshall Robinson, Sonny Smith, Mary Katherine Stalcup, Rayoma Tomlinson, Adalee Ward, Nadine Weatherman, Eva Wells, Oleta Woodward, Juniors, Sammie Allen, Joe Beckham, Elmer Champion, Myra Lee Duffer, Tom Epley, Ruby Lee Field, Mayme Fowler, Olive Heatherly, Dan Holland, Falon Keith, Harold Lockwood, C. A. Low, R. B. Maddux, Darold Marshall, Wanda Morrison, Kathleen Nixon, Ann Null, Joe Owen, Bobbie Rothe, Dorothy Rushing, Margaret Sims, Fay Stephenson, Floyd Watson, Lorene Wilcox, Tom Yantis, Sophomores, Betty Jo Bailey, Mabel Benson, George Byers, Yvonne Carter, LaVerne Chadwick, Boyd Commander, Carolyn Conlisk, Jean Conlisk, Myra Bell Emfinger, Henry Evans, Frances Galloway, Mary Graham, Charles Hendricks, Betty Jo Langford, Robert Lykins, Mary McClelland, Betty McIntosh, Jessie Julia Mayo, Jennie Lou Moore, James Nance, Helen Pittman, J. D.

Defeat is a school in which we always grows strong.

**New LYRIC**  
BROWNWOOD, TEXAS  
Friday and Saturday  
**NAVY BLUE AND GO**  
Robert YOUNG  
James STEWART  
Saturday Midnight  
Sunday, Monday, Tuesday  
Wednesday, Thursday  
KAY FRANCIS  
"FIRST LADY"  
with  
PRESTON FOSTER

### Let Us Help You Play Santa Claus



### MOTOROLA and GOODYEAR

AUTO AND HOME RADIOS are also sold to you on our BUY ON TIME PLAN.

### Safety Tire & Battery Co.

D. C. PRATT, Mgr. 301 West Broadway Phone 913

**Suggestions Sure to Please Your Family!**

**New Ideas in Giving From the Store of a Thousand Gifts!**

Every Gift Beautifully Wrapped... Every Gift A Perfect Gift!

- We Suggest:
- FOR HER—**  
Diamond Ring... Wrist Watch... Locket and Chain... Vanity... Cigarette Case... Cross and Chain... Fancy Stone Set Ring... Gold Bracelet... Pearls... Jewel Box... Perfume Set... Mirror... and etc....
- FOR HIM—**  
Wrist or Pocket Watch... Tiger or Cameo Ring... Masonic Ring... Watch Chain... Military Set or Comb and Brush Set... Bill Fold... Tie Sets... Belt Buckle... Desk Lamp... and etc....
- FOR THE BOY—**  
Wrist Watch... Tie Clasp... Initial Ring... Lamp... Cigarette Case... and etc....
- FOR THE GIRL—**  
Fancy Diamond Ring... Wrist Watch... Birth Stone Ring... Fancy Bracelet... Gold Beads... Boudoir Lamp... Comb, Brush, Mirror, and etc....
- FOR THE BABY—**  
Ring... Bracelet... Necklace... Gold Beads... Silver Spoon... Silver Knife, Fork and Spoon Set... Silver Cups... "My Own Set" and etc....
- FOR THE HOME—**  
Dinner Sets China... Set of Silver... Knives, Forks, and etc... Silver Tea Service... Silver Center Piece... Carving Set... Lamps... Crystal... and etc....

Come to the House of a Thousand Gifts... Select your Gifts... A small deposit will reserve them for you.

GIFTS FOR EVERYONE ON YOUR CHRISTMAS LIST

Beginning Monday, December 20th, our store will be open every evening until Christmas.

**Armstrong Jewelry Store**  
"Your Jewelers For 45 Years"

**RED CHAIN WAMO**  
PLUS YOUR GRAIN Means BIGGER PROFITS get WA-MQ at Logan Feed & Hatchery 206 E. Broad way Phone 193

## SPECIAL GIFTS for Yourself and Others

- |                         |                           |
|-------------------------|---------------------------|
| PARIS FASHION SHOES     | MILLINERY HAND BAGS       |
| for EVENING and DAYTIME | EVENING BAGS NEW CORSAGES |
| HOUSE SLIPPERS          | HOSE by ROLLINS           |

These items marked down to prices you CAN afford to pay and CAN'T afford to miss.

We Wrap Your Christmas Package  
**SULLIVAN'S**  
314 Center Phone 517

**Gifts**  
A Man Would Select for Himself

Give Him his choice of Tobaccos—a gift that is sure to please the Smoker! And an inexpensive gift in good taste.

FOR SWEETHEART, DAD OR BROTHER

All favorite brands of Cigars and Cigarettes in attractive Christmas Wrappings.

PIPES—All prices, sizes and makes.

The Gift of Gifts  
A Drinkless  
KAYWOODIE  
**Gilmore's**

**"Put us down for a year's supply of CAKE FLOUR"**

And Santa enthusiastically replies: "That's the best Christmas present you could give yourselves and family, Mr. and Mrs. Texas! You will have health from using a rightly produced product and will save money by buying merchandise of proven high quality. You could pay more but you couldn't find any better flour than CAKE FLOUR produced by Austin Mill & Grain Company."

If you are not a steady user take Santa's advice by starting now to using this superior grade of flour. Use it for all your baking needs. It is truly an "All Purpose Family Flour."

Produced for 43 years from Texas Wheat for Texas People by

**Austin Mill & Grain Co.**  
Corner Fisk and Lee Streets Brownwood  
If your grocer cannot supply you, telephone 14 for your nearest dealer.



**GOOD SOUP REDUCES HUNGER, MEAT BILL**

A little meat goes a long way in a rich soup. Dried beans and peas also spread their valuable proteins generously over the soup plate. And there is no good reason why such soup should not be made the main course for a nutritious family dinner. How do these dinner menus sound to the woman who is determined to cut her meat costs without cutting the family protein nourishment.

1. Lentil soup, toasted saltines with grated cheese, salad bowl of chickory, endive, tomatoes, cucumber and hard cooked eggs, rye bread butter, pumpkin pie with whipped cream, coffee or milk.

2. Italian vegetable soup (Ministrone), Waldorf salad, popovers, floating island, cup cakes, coffee or milk.

**Cream of Lima Bean Soup**

(4 to 6 servings)  
Two cups dried lima beans, 6 cups clear meat stock or cold water, 1 small bay leaf, 1 sprig parsley, 1 medium onion, 5 tablespoons butter, 3 tablespoons flour, 2 cups milk, 1 cup cream, salt, and pepper to taste.

Soak beans over night in enough

water to cover. To cook, add onion, bay leaf and parsley. Simmer until beans are tender. Then mash through sieve. Melt butter, then add flour and blend. Add cream and milk and stir until thick. Combine bean pulp and thickened sauce. Heat through. A little bacon drippings can be substituted for some of the butter. A few shakes of paprika improve both the color and flavor.

**Italian Vegetable Soup**  
(Ministrone)  
(4 to 6 servings)

Four potatoes, 1-4" small head firm cabbage, 2 cups string beans, 1 cup dried pea beans, 3-4 cup fresh peas, 1-4 pound noodles, 1-4 pound spaghetti, 4 1-2 quarts water, 3-4 tablespoon salt, 1-2 teaspoon pepper.

Soak dried peas over night. Slice string beans into 1-2 inch pieces. Dice potatoes and shred cabbage. Add salt to water and bring to boil. Add pea beans and boil 20 minutes. Then add all the other ingredients, about 25 minutes. Just before serving add these extras which are really very important to the fine flavor of the soup: 3 tablespoons butter, 3 tablespoons olive oil, 4 tablespoons grated parmesan cheese, 1 tablespoon chopped parsley and a little finely minced garlic. Stand soup for a minute or two, then

serve in large dishes. There's nothing dainty about this affair—it needs elbow room. Pass a bowl of grated parmesan cheese and encourage each member of the family to spread a large portion of it over the top of the hot and fragrant soup.

Lentils are important in the low budget diet. In Europe, they constitute a large part of the peasant's food and should be used more in this country. Try this very simple soup to learn to like the humble lentil.

**Lentil Soup**

(4 to 6 servings)  
Three cups dried lentils, 2 large onions, 2 tablespoons bacon drippings, 4 stalks celery, 1 large carrot, 1 large bunch celery tops and parsley tied with white string, salt and pepper to taste, 2 quarts water, 1 cup of cream.

Wash lentils very thoroughly. Soak in water overnight. Rinse in cold water. Then in large pot place lentils and all the other ingredients except the cream. Simmer until lentils are tender. Then mash through sieve. To lentil pulp, add cream. Serve with slices of cooked frankfurter or with small squares of toasted bread.

**Friday's Menu**

BREAKFAST: Sliced oranges,

wheat cereal, raw brown sugar and cream, scrambled eggs, toast, coffee, milk.

LUNCHEON: Tomato juice, French toast, bacon, eating apples, tea, milk.

DINNER: Cream of lima bean soup, salad bowl of lettuce, diced oranges, sliced bananas and grapes, French dressing, toasted rolls, peanut butter, rich chocolate cake, coffee, milk.

**GOING FAST!** Just about everybody is rushing to the Banner office to get a free gift of a fountain pen and pencil set. Better Hurry in for yours. Supply limited.

**Now It Can Be Told**

Good cooks come from the south of France, good foods come from the north of France. They meet in Paris, hence that city entertains more Americans annually than probably any other city in Europe.

**On the Mineral Water Wagon**

Mineral spring water is costly everywhere except at Altheide in the Hauptmann region of Germany where visitors report that the streets are irrigated with the thousands of gallons of surplus after the daily bottling.

**FULL '38 POLITICAL CALENDAR EXPECTED**

The year 1938 is studded with many important political dates. The subjoined calendar, compiled by Vann M. Kennedy, Secretary of the State Democratic Executive Committee, lists the most important dates and events.

The time for holding the next state democratic convention is uncertain because of conflicting election laws, Kennedy explained.

The calendar:  
Jan. 31st—Last day for obtaining poll tax receipts.

June 6th—Last day upon which state office candidates and district office candidates (in districts containing more than one county) may file applications to have their names listed on the Democratic Primary ballot.

June 12th—State Democratic Executive Committee meets to make up ballot for Primary Election. Committee also designates place where State Democratic convention will meet in September.

June 18th—Last day upon which county and precinct office candidates, and district office candidates (in Districts composed of only one

**Flyer's Widow Weds Chicagoan**



Marriage of the former Lady Kingsford-Smith, widow of the famous Australian flyer, and Aln Tully of Chicago in Sidney, Australia, where they are pictured above, has been announced by Tully's parents at Riverside, Ill. Sir Charles Kingsford-Smith disappeared over the Bay of Bengal two years ago during a London-to-Australia flight. Tully represents an American gasoline company in Australia.

Executive Committee holds session in the city selected for the meeting of the State Democratic Convention, canvasses returns of the Second Primary Election; prescribes the order of business for the Convention, and prepares list of convention delegates.

Nov. 8th—General Election Day.

**Howard Payne Coach Letters 26 Players**

McAdeo Keaton, coach of the championship Howard Payne Yellow-Jackets, recently announced names of 26 members of the squad as lettermen.

The honored group is composed of five seniors, six juniors, ten sophomores, and five freshmen. Twenty-one lettermen and a large group of squadmen will return for the team next year. Of the lettermen, 16 earned their first stripe, seven received their second award, and three earned their third letter.

Lettermen and the number of letters earned by each follow:

- Seniors—J. D. Rogers, 3; Theodore McDonald, 3; Earl Sunderman, 3; Robin Galaway, 2; and Uless Shaw, 1. Juniors—Joe Westfield, 2; Otho Barbee, 2; Glenn Kaudson, 2; Melvin Boedecker, 1, and Joe Hext, 1. Sophomores—Bob Dendy, 2; Waymon Wilson, 2; Jack Price, 2; James Minor, 1; Hubert Foster, 1; Sid Russell, 1; Orville Etheridge, 1; Felix Susen, 1; Roy Stephens, 1 and Leonard Beckold, 1. Freshmen—Garland Terrell, 1; Chris Sun-

derman, 1; Clyde Conner, 1; Jack Hardaway, 1; and Roland Michol, 1.

The lettermen and coaches were honored by Dr. and Mrs. Karl H. Moore at a banquet last week at First Baptist church and at a banquet in Hotel Brownwood Monday evening by the Howard Payne College Pep Squad.

Get your guitar or any string instrument at Dezman Music Co. We have a very complete stock to select from. Dezman Music Co. For everything Musical.

... a 17 JEWEL BULOVA 29.75 AMERICAN CLIPPER America's greatest value in a man's 17 Jewel watch!

Brown's Jewelry Store  
222 Center Ave. Phone 464

**HUNDREDS!!**

Of Thrifty Shoppers Have Attended Our Sale During The Past Week -- Attesting To The Fact That We Gave Baragins In Our

**PRE Christmas SALE**

Going Into Our Second Week - - - With Continued Good Gift Values

FRIDAY, BEGINNING 9 A. M.  
36-Inch Guaranteed Fast Color Genuine 80 Square Superb Prints  
In a wide range of pretty patterns (over 1,000 yards) Our regular 22c quality  
**15c Yard**  
All good patterns.

A Real Linen Value Genuine Garza  
**SHEETS**  
Sixx90 Size  
\$1.25 Value  
**89c**  
9/4 GARZA SHEETING Embleached  
**29c**

SATURDAY-BEGINNING 9 A. M.  
36-Inch Guaranteed Vat Dyed  
**HOUSE COAT and SMOCK LINENE**  
Beautiful large floral and figured designs. Strong color combination, regular 22c yard quality  
4 Yards  
**59c**  
See them in our windows

One of the Most Beautiful Gifts in Our Store  
WOMEN'S BROCADED SATIN PAJAMAS  
Beautiful, striking color combinations of Gold and Brown, Gold and Black, Green and Black, Rich Blues, Rose and Red—Two Special Reduced Groups—at **\$479 and \$569**

**GIFTS**

Wool Knit Scarfs FOR MEN... Colorful Plaid Designs, Fringed Borders  
**\$1.00**  
HAND WOVEN WOOL SCARFS  
**\$1.50**

BUY GIFT HOSIERY She Would Select Herself  
... MUNSING ... Is The Name

One Special Group. All New Fall Shades, \$1.00 Value.  
JUST RECEIVED Hundreds of New Christmas TIES In Beautiful Patterns. Regular \$1.00 Value.  
**79c**

**COLD WEATHER AHEAD!**  
and we can keep you warm in an all wool OVERCOAT at an exceptionally low price. One special lot bought from a manufacturer at a close out, similar to illustration, \$12.50 Value  
**6.95**  
Other Coat Values \$8-\$16.45 to \$22.50

WE HAVE FEATURED IN OUR Ready-to-Wear DEPARTMENT  
Two groups of new Fall silk and Wool  
**Dresses**  
Solid colors with newest attractive trims—wanted shades of Black, Wine, Rust, Navy and Greens. One lot—Values to \$8.95  
**\$3.95**  
Another Lot—Values to \$12.45  
**\$4.95**  
Come in and see these dresses to Appreciate Their Value

MEN'S GENUINE ALL-LEATHER HOUSE SHOES  
Soft leather top, leather sole and Rubber Heel...  
Brown Only, Regular \$2.25 Value  
**\$1.88**

WOMEN'S Plush and Satin Combination HOUSE SHOES In Wine and Black  
**\$1.15**

Men's Novelty SWEATERS  
Wanted Shades of Blue, Wine Brown  
From 20% to 25% Reduction

**Hemphill-Fain's**  
THE STORE FOR ALL THE PEOPLE

county) may file applications to have their names listed on the primary election ballot.

June 29th — County Democratic executive committees meet to determine, by lot, the order of names listed on the ballot; to estimate expenses of the Primary Election; to assess costs against candidates.

First Primary  
July 23rd—First Primary Election Day. In counties of 150,000 and more population, polls open from 7:00 a. m. to 7:00 p. m. In counties of less population, polls open from 8:00 a. m. to 7:00 p. m.; Precinct conventions meet and elect delegates to county conventions.

July 20th — Democratic county executive committees meet to canvass results of First Primary Election. Democratic county conventions meet to select delegates to district and state conventions.

August 6th — State Democratic Executive Committee meets at Austin to canvass results of First Primary Election in all state and district office races. Committee lists names to go on official ballot for Second Primary Election. Certification of Democratic candidates nominated in First Primary made for General Election ballot.

August 27th — Second Primary Election Day.

Sept. 6th (Sept. 13th) Meeting of State Democratic Convention to adopt a platform of principles, to declare nominations for state offices, to elect State Chairman and new State Democratic Executive Committee of 31 men and 31 women.

Note: Because of an error in a bill enacted by the 45th Legislature, the convention date was fixed one week in advance of the time when the State Democratic Executive Committee can meet to canvass election returns. Unless this date is changed, the convention, presumably, will be unable to announce official nominations for state offices. Properly, the State Convention should meet on September 13th.

Sept. 12th—State Democratic Ex-

**EQUIP NOW!**  
WITH  
**Firestone**  
GROUND GRIP TIRES  
for Safe Traction in any Weather!  
Buy the tire that will give you traction in any weather. Look at the deep, rugged bars of rubber and you'll understand why this tire will dig in and pull you through. Save time, money and worry this winter—Come in Today and see this amazing traction tire. Remember—If it isn't a Firestone, it isn't a Ground Grip.

SAVE ON AUTO RADIOS \$1.87  
CAR HEATERS 83c  
DEFROSTER FANS \$1.93  
DRIVING GLOVES \$1.69  
GRILLE COVERS 89c  
MANIFOLD HEATERS 98c

USE OUR LAYAWAY PLAN and HAVE A NEW RADIO FOR CHRISTMAS

All-wave — 3 band Tuning, Photo-Eye Indicator, Precision Station Selector and Automatic Band Indicator.  
**\$44.95**  
International reception at moderate cost; style that will match finest home furnishings.  
**\$34.95**

Don't miss this opportunity to see just how much can be built into a radio that sells for so little.  
**\$24.95**

The best small radio value on the market. Covers American, Police, Airplane, Ship and Amateur Reception.  
**\$14.95**

Firestone Auto Supply & Service Store  
414 Center Ave. Balie Griffith, Mgr. Phone 148



Classified Advertisements

Business Services

McHorse & Peck

PLUMBING AND SHEET METAL WORK

Heaters, Gas Fittings, 115 Mayes St.

Drugs

Don't Scratch

We guarantee Paracel Ointment will cure any form of Itch...

Ruptured?



WHY ORDER YOUR TRUSS WHEN WE CAN GUARANTEE A FIT AND SATISFACTION...

Renfro-McMinn Drug Co. CENTER AT BAKER ST. BROWNWOOD, TEXAS

"Leto's" for the Gums

Do your gums itch, burn or cause you discomfort...

666 COLD AND FEVER first day HEADACHE Liquid Tablets 30 minutes

Employment

WANTED—Man with car to take over profitable Bay Leigh Route...

WANTED—Men to cut trees for the wood. Close to town...

For Sale

LOUNGE CHAIR—A big, roomy, restful, good looking chair...

BUTCHERS SUPPLIES—Excellent assortment of knives...

THE FORT WORTH STAR-TELEGRAM Morning, Evening - Sunday 6 Daily Papers for 10c per week

FOR SALE—Late model 4-Door Sedan. Will accept in trade livestock or feed...

Picture framing, expert workmanship, large selection of patterns...

SAVE MONEY -- BUY AND SELL Through These Columns

For Sale

BED ROOM SUITE—Big, massive dresser, dressing table, and bed. Wonderfully built...

THE FACT THAT THOUSANDS

are using LEACH TRAILERS is conclusive proof that they properly meet the demand for all classes of transportation...

LEACH BROS. 200 E. Broadway

YOUR NEW DINING ROOM SUITE is here. Beautiful new, 8-piece suites in the latest finishes...

FOR SALE: Second hand lumber. Windows and doors...

ELECTROLUX Factory Guaranteed. Texas Furniture Co.

2-PIECE LIVING ROOM SUITE. Rich upholstery, carved wood trim. Removable cushions...

KITCHEN CABINETS—Every convenience provided. Compact, yet roomy...

FOR SALE 12 Good Young Registered Hereford Bulls, Bred Heifers, and 6 Yearling Heifers...

WE HAVE A NUMBER of fine bargains in used furniture...

JUST ARRIVED—Car load meat and Stock Salt...

ELECTROLUX Factory Guaranteed. Texas Furniture Co.

A WONDERFUL RANGE at low price. We want you to inspect the new Dixie range...

FOR SALE OR TRADE Good five passenger auto for sale or trade...

CEDAR CHESTS—Perfect protection for your garments...

POCKET KNIVES—Attractive display—many unusual values...

DINING ROOM SUITE—Buffet, table, six chairs, one with side arms...

FOR SALE OR TRADE 100-Acre Farm 5 miles from Brownwood...

STUDIO COUCH—The piece of furniture which solves the extra-bed problem...

MANLEY'S PLACE—We buy, sell or trade any used useful article...

COASTER WAGONS—Strongly built, easy handling with rubber tires...

For Sale

ELECTROLUX Factory Guaranteed. Texas Furniture Co.

Garage—Auto Tires Repair Service

WE GIVE RELIABLE REPAIR SERVICE on any make of car. Personal interest taken in every job...

Don't Buy Any Tire At any price until you have seen ours...

FEDERAL'S JOHN PARKER PARKER & DUNCUM PHONE 267

FOR SALE OR TRADE — 167 1/2 acre farm, Mitchell county, 5-room house in good condition...

Hardware

Window and Auto Glass, priced right. Renfro-McMinn Drug Co. Phone 11.

Auto and Window GLASS CUT ANY SIZE and INSTALLED

WE CAN SAVE YOU MONEY. HIGGINSBOTHAM Bros. & Co. 408 E. Lee Phone 215

Insurance

NO MATTER HOW CAREFUL you are, you need Auto Insurance. The other fellow isn't always careful...

V. E. WOOD, Agt. 235 Brown St

JAS. C. TIMMINS INSURANCE 207 E. Lee St. Phone 92

CAN WE BE OF SERVICE TO YOU in any way in your insurance problems?...

Money to Loan DO YOU NEED MONEY to tide you over until payday?...

AUTO LOANS FIRE INSURANCE LIFE INSURANCE REAL ESTATE Dan L. Garrett 321 Brown St. Brownwood

Personals

PERSONAL CHRISTMAS CARDS Orders accepted for handsome engraved Christmas cards with your name printed on them...

TRAVEL BUREAU — Phone 362 Will help you passengers or get rides for passengers. Share expenses...

READ THE CLASSIFIED

PERSONAL CHRISTMAS CARDS Orders accepted for handsome engraved Christmas cards with your name printed on them...

ROLLINS HOSIERY has built a reputation for itself in Brownwood. We have the new shades — 79c to \$1.50...

STAR SULPHUROUS COMPOUND For Healthy Fowl Make More Money off your Chickens...

DON'T BLAME THE HENS for not laying. They're willing but they must have a balanced diet...

STAR SULPHUROUS COMPOUND Successful Poultry Raising made easy by using this concentrated compound...

PEERLESS DRUG CO. 201 W. Broadway

Southwestern Poultry Association 216 Pean Street Brownwood, Texas

Get MORE EGGS by feed mg PURINA!

THE BARGAIN TRAIL LEADS to Classified PAGE

Professional Dr. Mollie W. Armstrong DENTIST 401 Center Ave.

COURTNEY GRAY Attorney at Law General Practice 406 First National Bank Bldg. Brownwood, Texas

X-RAY RADIUM DIAGNOSIS AND TREATMENT Glasses fitted C. W. DRAKE, M. D. 3rd Floor Citizens Bank Bldg.

Used Cars USED CARS — Reasonably priced and financed...

Wanted To Buy WANTED—Yellow Ear or Shelled Corn. Highest prices paid...

FILLING STATION—Nobody likes to wait at a filling station for service...

Wild With Anger



All nature is at war, the philosophers say, and it sure looks like it with these wild geese emulating the Chinese and Japanese armies...

PURCHASING BOARD OF U. S. ARMY TO BUY HORSES DEC. 22ND

A large number of Brown county horse breeders plan to exhibit their horses before an Army purchasing board of the Fort Worth Remount Area December 22...

Riding Horses—Age 4 to 8 years; height 15 hands or better; breeding half thoroughbred or better...

Artillery Horses, Heavy Riding Type—Age, 4 to 8 years; height, 15.2 to 16 hands; weight, 1,150 to 1,299 pounds...

Young Horses—Age, 3 years old; height, 15.1 or better. Top price, \$150. Must be well grown, of good quality and conformation...

"Pride," said Hi Ho, the sage of Chinatown, "becomes a great man, since it must be inspired by a respect for the opinions of others."

SORE THROAT

GARGLES REACH ONLY ABOUT 1/3 THOXINE SOOTHES ALL THE WAY DOWN

For Sore Throat and Cough due to colds, don't depend on gargles that reach only about the upper 1/3 of throat irritation...

Peerless Drug Co.

Office Location of Recruiting Station Is Changed Recently

Local recruiting office of the United States Army, opened here several weeks ago by Lieut. E. O. Turner, has been moved from the old Parisian Cafe building to a space in Hotel Brownwood...

Texas Population Growth Bolsters Bid for Industry

Census figures showing Texas retaining its hold on fifth rank in population among the states against the challenge of California—which has narrowed the gap decidedly since the 1930 tabulation—bolster the Lone Star state's bid for greater industrial development...

Since upward population trends were universally regarded as bases for expanding markets, establishing new or branch industrial plants and concentrating sales and advertising activity...

However, the contrast with Texas' own progress in other decades shown by the gain of only 347,285 for the seven years since 1930 indicates a disquieting down-turn that should be reversed if the state is to maintain its reputation for solid growth...

Opportunity for Texas to resume her earlier pace, to forestall the probable loss of fifth place to California in the 1940 reckonings, and at the same time get the surge of new industries her natural advantages warrant, largely depends on "official state attitude" and state

DEPENDABLE Used Cars

Bargains

See Us Before You Buy.

- 1936 Plymouth Coach
1936 Plymouth Coupe
1935 Chevrolet Coupe
1934 Plymouth Coach
1933 Chevrolet Coach
1934 DeSoto Sedan
1933 Dodge Sedan
1931 Ford Coach
1931 Ford Coupe
1931 Chevrolet Coupe
1929 Ford Sedan
1929 Ford Coupe
1929 Ford Tudor
1933 Chevrolet Truck

Livestock accepted in trade.

Patterson MOTOR COMPANY DeSoto—Plymouth Distributors

CORONA—THE IDEAL CHRISTMAS GIFT

Five models of portable typewriters, priced to fit your purse. Greatest values ever offered. Easy payments if desired. Call at our store or phone for free trial.



J. A. COLLINS Typewriter Exchange 211 East Baker Street Phone 1623 Ring One



Your Future Happiness DEPENDS ON THE Safety of Your Investments

Shares in the Brownwood Federal Savings and Loan Association are fully insured up to \$5,000.00 in the Federal Savings and Loan Insurance Corporation...

Both the Association and the Insurance Corporation are instrumentalities of the United States Government.

Start the New Year right with an investment which will pay a good return, and is insured against principal loss.

Our second dividend for 1937 will be paid December 31st

Brownwood Federal Savings and Loan Association

G. D. CRABTREE, Secretary and Treasurer CITIZENS NATIONAL BANK BUILDING

WHITE & LONDON FUNERAL HOME And Ambulance Service PHONE 48



### EXPERIMENT STATION CONDUCTS SURVEY OF PEACH GROWING HERE

The Texas Experiment Station has recently made a peach survey of the West Cross Timber country in cooperation with the Texas Extension Service. The survey included an investigation of the adaptability of the soils of this area for peaches, varieties being grown, cultural methods in use, and the marketing possibilities.

The area covered includes Brown, Comanche, Eastland, Erath, and Parker, and parts of adjacent counties. The soil and climate provide two natural assets for peach growing and one important hazard. Taken as a whole, the region is surprisingly free from the pests that commonly afflict the peach orchard.

The climate which frowns on the development and spread of pests unfortunately sometimes frowns on the trees as well. In the summer drought the orchardist in this territory recognizes his most important annual hazard. The amazing adaptability of Windthorst fine sandy loam to peach growing does much to minimize this difficulty.

**Sandy Loam**  
This soil type provides a sandy loam surface layer from 6 inches to a foot in depth for the development of feeder roots. Below this develops while soil moisture condi-

is an invaluable layer of clay which in most cases is mixed with enough sand to permit the percolation of water and the growth of roots through it. This layer acts as a water reservoir to tide the trees over the annual summer drought.

Successful peach growing requires a lot of special information. The site is selected with soil type, and both air and water drainage in mind. The summer drought is fought by selecting the proper kind of soil, by terracing to save both water and surface soil, by cover cropping, and by a number of other cultural practices that develop the vigor of the tree. Among these might be mentioned sufficient planting distance, the use of commercial fertilizers, thinning of the fruit, proper training and pruning, summer cultivation and such things as avoiding tool injury and the protection of the young trees from rodents.

Interest is increasing in early varieties that are yellow-fleshed freestones. This is sound on three counts. In the first place, a yellow freestone is more popular in most markets than a white-fleshed cling. In the second place the best price is obtained if competition with the mid-season heavy Elberta production of other regions can be avoided. This can be done by growing either early or late varieties, but the early variety has the edge on the late because its fruit crop develops while soil moisture condi-

tions are still favorable. Some of these, such as Golden Jubilee, Hale Haven, and Yellow Hiley have not as yet been sufficiently tried to determine their value under these conditions. New varieties are being developed by the Experiment Station outside of the commercial peach area, that should prove of value within it.

**Crop Share**  
A large share of the crop is now handled by truckers, although peaches have also been shipped in car lots. There is at present no growers' marketing organization. With the increased production that will result from the large recent plantings, such an organization may be expected to provide means of larger shipments of both types, particularly those by rail.

The report, which will include considerable general information, is being mimeographed for distribution to growers in the West Cross Timber area, although others who may be interested can get a copy by writing to the Experiment Station at College Station.

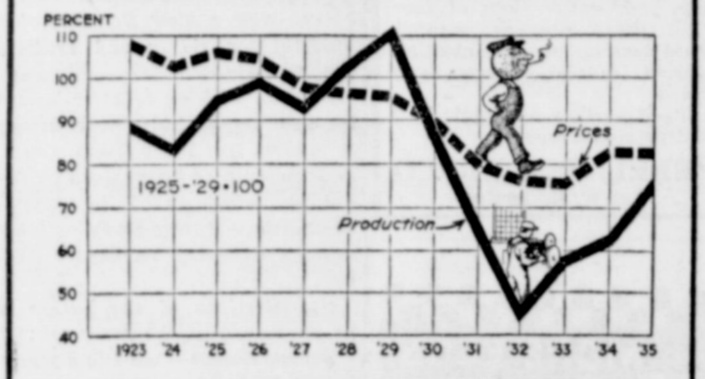
The many successful peach orchards in Texas demonstrate that, with intelligent planning and care, peaches can be grown in this State at a profit. With the present agricultural situation that means to us that the Texas peach industry is coming back.



Ernest Simpson and Bride Duke of Windsor and Bride

The romance of ex-King Edward of England not only rocked him off the throne but has reshuffled the lives of at least three other couples with a matrimonial new deal that started when Wallis Warfield divorced Ernest Simpson and whose latest development is the marriage of Jacques Raffray, pictured at top with his new bride, Mrs. Connie de Bower, in New York. In the interim, Mrs. Simpson married the Duke of Windsor, and Mrs. de Bower cut her marriage ties in a trip to Reno.

### PRODUCTION AND PRICES OF MANUFACTURED PRODUCTS



### 4-H Club Activities

**Early 4-H Club**  
The Early 4-H club met last Wednesday with Mrs. Burt Wright. Thirty girls attended the meeting. The girls drew names for the Christmas party which will be held at Billie Joyce Lightsey's home at one-thirty o'clock the twenty-third day of this month.

The girls discussed the decorating of Christmas trees.

The next meeting will be with Miss Mayesie Malone.

Reporter,—Inez Graham

**Owens**  
The Owens 4-H club met Tuesday December 7, with sponsor Mrs. John Ehrke. Plans were discussed for making Christmas toys and candies.

The club girls also drew names for the Christmas tree. We had one new member. Meeting adjourned to meet again the next two weeks.

Bettie Jo Nelson, Reporter

**Anchovy Sauce**  
Twelve skinned and boned anchovies, 3 tablespoons butter, pinch salt, 1-4 teaspoon pepper, dash cayenne pepper, 1 tablespoon flour, 1 cup clear veal stock made from trimmings of roast.

Mash anchovies. Heat butter, add mashed anchovies, salt, pepper and cayenne. Simmer very gently for 2 minutes. Stir in sifted flour, and continuing to stir add the veal stock. Simmer another 5 minutes then serve on roast shoulder of veal.

**CHRISTMAS GIFT!** The Banner has one for you and suggests that you come in today. A beautiful pen and pencil set in attractive gift box.

**LADY BULOVA**

A NEW 17 JEWEL BULOVA set with DIAMONDS for only \$42.50

**Brown's Jewelry Store**  
222 Center Ave. Phone 464

### GEBHARDT COMPANY GIVES RECIPE FOR DELICIOUS CHILI

The Gebhardt Chili Powder Company of San Antonio offers a very simple recipe to make delicious chili at home. Here is all you have to do:

Ingredients: Two pounds of beef,

2 tablespoons Gebhardt's Chili powder, 3 tablespoons of flour, 4 tablespoons shortening, 2 teaspoons salt, 3½ quarts hot water, one can Gebhardt's Spiced Beans (if desired).

Chop or cut the meat in small chunks. Sear well in shortening, add Gebhardt's Chili Powder, salt and water. Simmer until tender. Add flour to thicken gravy a few minutes before serving. Serve very hot.

This recipe may disappoint you unless you use Gebhardt's Chili Powder. Gebhardt's Chili Powder is a complete flavoring, containing the necessary spices, etc., in combination with a blend of imported and domestic chili peppers, to give you the perfect Mexican flavor for chili.

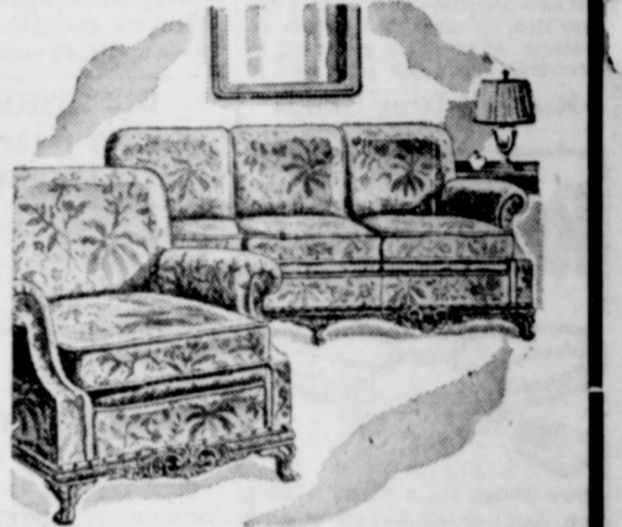
The Gebhardt Chili Powder Company has been a Texas institution for 41 years.

# The New Arrivals in FURNITURE

The most commonsense gift of all is Furniture... It is usable for all the family... It is bound to give joy and happiness for many a Christmas to come.

## Living Room

Make this the happiest Christmas ever, with this gorgeous New Living Room Suite, consisting of big luxurious Davenport and comfortable Lounging Chair to match.



Only **\$69.50**

## Mirrors

Many shapes and styles at reasonable prices.



Real gift specials... priced up from **\$1.50**

## Occasional Tables

Coffee Tables... End Tables... Book Tables... Lamp Tables... In fact, anything in tables will be found here... priced up from **\$1.75**



## Other Specials

- Bedroom Suites, 3 pieces — \$49.50 up
- Simmons Beds — \$6.95
- Simmons Springs — \$4.95
- Cotton Mattress — \$6.95
- Simmons Spring Filled Mattress — \$19.50
- Feather Pillows, 17x24, pr. — \$1.90
- Ironing Boards — \$2.00
- Cane and Maple Bedroom Rockers — \$2.50
- Card Tables — \$2.00
- Baby Beds — \$4.50
- Child's Rockers — \$1.50
- Hi-Chairs — \$2.75
- Baby Baskets — \$1.50

## CHAIRS

- Odd Chairs, and Ottoman to Match up from — \$17.50
- Large Reading Chair, fine tapestry covering, Ottoman to match — \$62.50
- Hi-Back Rockers, covered in tapestry, or velour — \$12.50

SEE AUSTIN-MORRIS FIRST FOR YOUR CHRISTMAS GIFTS!

# AUSTIN-MORRIS Co.

Complete Home Furnishers & Funeral Directors  
BROWNWOOD, TEXAS

# Silken Luxury for HER

- This Christmas give her the exquisite undies she loves... Choose from our large groups of the famous KICKER-NICK and KAYSER Underwear in creamy Satins, pure dye crepe figured satins! Tailored, embroidered or lavishly lacy. At just the prices you want to pay.
- SLIPS **\$1.00** AND UP
  - PAJAMAS **\$2.98** AND UP
  - GOWNS **\$2.98** AND UP
  - NEGLIGEEES **\$1.98** AND UP
  - HOUSE COATS **\$1.98** AND UP

## HOUSE SHOES

- Here you will find a varied choice of Smart New Patterns that will make Lovely Gifts.
- BLUE KID
  - BLUE SATIN
  - BLACK SATIN
  - BLACK PATENT
  - BLUE KID
  - WINE SATIN
  - WHITE SATIN
  - BLACK KID

Each Purchase Gift Wrapped Free

**May We Also Suggest...for Her**

- A lovely Fur Coat
- New Spring Coat, or Dress
- Beautiful Sheer Hosiery by Artercraft, and others
- Smart Style Sweaters
- Bags
- Scarfs
- Chas. of the Ritz Cosmetics

**KNOBLER'S STYLE SHOP**  
Where Style Predominates  
BROWNWOOD, TEXAS

# IF

The Annual Paint Volume of the PITTSBURGH PLATE GLASS COMPANY  
**World's Largest Manufacturer of Paint and Glass**  
Were Painted on a Band 1 Foot Wide It Would Stretch Around the Equator  
**70 TIMES—Food for Thought**  
This is something to think about—Products that are as outstanding as Pittsburgh Paint Products Are Universally Accepted.

**Waterspar Enamel - Florhide Enamel**  
**Sun Proof Paint - Walhide Wall Paint**

WE ALSO CARRY A GOOD SUPPLY OF WINDOW GLASS.  
See Us For Your Entire Needs—Your Complete Paint Store.

**Weakley-Watson-Miller Hardware Co.**  
Since 1876  
Brownwood