

## Local office axed in SPS merger plan

The Muleshoe office of Southwestern Public Service is one of 17 in Texas and New Mexico scheduled to be closed over the next 10 months as a result of a merger with Public Service Company of Colorado.

According to information from SPS headquarters in Amarillo, the Muleshoe office will be closed in August. Two electric service technicians and three substation technicians will be relocated to the local SPS warehouse on American Boulevard and be subject to call by fax, pager or printer from call centers in Amarillo and Denver, CO.

Local office manager Mike McDearmon and employees Dolores Garrett and Kim Neinast will lose their jobs. McDearmon, who began his career in the Amarillo corporate office, has 15 years with SPS, while Garrett has 28 years. Neinast, who transferred to Muleshoe when the Earth SPS office closed last March, has approximately 10 years with the company.

Other are employees who also may be affected are about 30 non-union employees at the Talk Station and Plant X. Union employees are not expected to be affected.

The local jobs are among approximately 418 SPS positions that will be eliminated as part of the merger. Total reductions in the PSCo area

Continued on page 2



### In decision

Adrianna Segura works in the computer lab at Dillman Elementary School Thursday. She is a student in Linda Latham's first grade class.

## Sheriff's Dept. investigating woman's death

The Bailey County Sheriff's Department is conducting a homicide investigation into the Jan. 18 death of a mentally handicapped county woman.

Ella Mae Osbend, 54, was found dead in her home about a mile and a half west of Muleshoe along U.S. Highway 84 after a neighbor called 911.

Osband's son-in-law and personal caregiver, Andrew Lee Shaw, 42, was arrested on a charge of injury to a disabled individual. He was arrested Jan. 23 and is being held on \$25,000 bail in the county jail.

Shaw is the only suspect in the investigation, according to Sheriff's department criminal investigator Benny Clifton.

Osband's body was "malnourished and dehydrated" Clifton said. He would not comment on other possible injuries.

The department is waiting for the results of an autopsy performed Jan. 20 in Lubbock.

As a primary caregiver, he's supposed to make sure things like this don't happen," Clifton said.

Also found in the home was Osband's brother, Bobbie Raybon. Raybon, 49, also mentally handicapped, was hospitalized with hypothermia, dehydration and malnourishment. Raybon has since been released from the University Medical Center in Lubbock, Clifton said.

Shaw, listed as an unemployed carpenter, has not been charged in connection with Raybon's injuries.

Osband's daughter, Evelon Grace, 38, who had also lived at the house and served as a caregiver, has been in jail in Kaufman County since September on an unrelated charge of probation violation.

Police interviewed Grace as

Continued on page 2

## Muleshoe native holds court on national TV

By RICK WHITE  
Managing Editor

DALLAS — His first experience dealing with the news media came as a teen-ager chucking newspapers for the Muleshoe Journal.

G. David "Dave" Smith no longer delivers the news, he is part of it.

The Dallas defense attorney and 1976 Muleshoe High School graduate landed on the front page of nearly every major newspaper in the country earlier this month when he decided to represent the Dallas woman who accused two Dallas Cowboys of rape.

Last week, he made appearances on The Today Show and CNN.

"I just did (the interviews) to get them off my back," Smith said in a phone interview Monday. "The local press has been knocking the door off the hinges."

He said he was busy getting the case ready and avoiding the press — "but (The Journal) have an inside connection."

Nina Shahnnavan, 23, accused Cowboys stars Michael Irvin, Erik Williams and a third man of raping her Dec. 29 in Williams' Dallas home.

Dallas police later said she recanted the story, something Smith vehemently denies.

The case was dropped and none of the three men were ever charged.

Shahnnavan has since been charged with perjury, an offense punishable by up to a year in jail and a \$4,000 fine.

"I sharply disagree that my client withdrew the charges," Smith said.

The case is still in the preliminary stages and no trial date has been set, Smith said.

"The crux of the defense is the way they investigated the case," Smith said. "I would certainly like to see a full police investigation."

Smith said Shahnnavan, an Iranian national, was referred to him by a previous client.

"At first, I didn't want to take the case because I don't take criminal cases anymore," Smith said. "But I liked her, and I liked her family."

"And they definitely needed help."

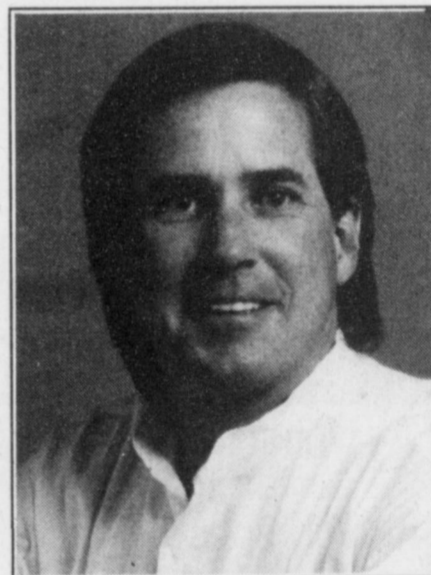
Chuck Smith, an engineering assistant with Bailey County Electric Co-op, remembers his younger brother as an "enterprising young fella."

He's not surprised Dave became a lawyer.

"Even in junior high school, he was always working and making money," Chuck Smith said.

Dave honed his skills as an orator on the high school debate team under Dr. Kerry Moore. To this day, he said one of his biggest disappointments was not winning a state title in debate like his older brother.

A recently divorced father of 7-year-old twins, Dave lives on a 275-acre ranch east of Dallas,



G. David "Dave" Smith

Continued on page 2

## IRS reverses ruling

WASHINGTON — Farmers received a large tax break when the Internal Revenue Service Tuesday agreed to delay the enforcement of a ruling that would stop farmers from using commodity contracts to defer income.

Farmers use deferred payment contracts to average income between good and poor harvest years. They sign contracts for their crops, but often elect to defer receiving income from that crop until the next year to prevent large swings in their tax bills.

The IRS ruled the income should be taxed in the year the crop is sold. Farm-state lawmakers requested the IRS delay the ruling last fall, but were refused.

The delay will allow Congress to rewrite the 1986 law on which the ruling was based.

"The IRS could see that we are not going to stand for a sudden change in tax policy," U.S. Rep. Larry Combest (R-Lubbock) said. "In effect, the IRS was planning to tax farmers for income they had not received."

Some 57 senators co-sponsored legislation to preserve the tax break. Similar legislation has drawn wide support in the House.

Combest co-sponsored legislation in the House that will direct IRS to use the cash basis for reporting income for family farms.

Continued on page 3

## MISD boss approves of property tax plan

By SAMUEL VILLARREAL  
Journal Staff Writer

The average Muleshoe homeowner could save about \$100 per year if proposed legislation becomes law.

Gov. George W. Bush last Tuesday presented his State of the State Address, where he unveiled his plans to cut school property taxes.

State Sen. Teel Bivins (R-Amarillo) will co-sponsor the Property Tax Cut Act of 1997, a plan to shift the major source of funding for education from the districts to the state.

"By relying to much on local property taxes, Texas is shirking its responsibility to our

children," Bush told the state legislature in his address.

The act, if passed, would force school districts across the state to cut their tax rates by 30 cents.

The property value of homes within the Muleshoe Independent School District averages around \$50,000, according to Kay Elliot, chief appraiser at the Bailey County Appraisal District. At the current tax rate of \$1.27 per \$100 of property value, the yearly tax bill would be \$635.

If the rate is cut by twenty cents, the bill would drop to

Continued on page 3



### Here comes the sun

The early morning sun gleams off cotton lint that was caught on a barb wire fence near the Pleasant Valley Gin north of Muleshoe.

A RECORD MULESHOE

### Heart Association planning local events

The Bailey County unit of the American Heart Association has planned two blood pressure screenings for the month of February.

The first screening will take place at Lowes Marketplace from 9 a.m. to closing. The second screening will be at the Muleshoe High School basketball games Feb. 7 at the Watson Junior High School gym.

Both screenings will be conducted free of charge. Educational literature will also be available.

### Home rehabilitation program in Muleshoe

The City of Muleshoe and South Plains Community Action Assn. Inc. will open a city wide homeowner-occupied rehabilitation program in Muleshoe. This program utilizes Texas Department of Housing and Community Affairs HOME funding to assist homeowners in moderate rehabilitation of their homes.

Applications may be obtained and accepted Monday through Friday from 8 a.m. - 5 p.m. at the Spartan Multi-Service Center, 804 American Blvd. in Muleshoe. Calls can be made to 272-7537.

HOME staff will be available Tuesdays and Thursdays Feb. 18 through March 14, from 9:30 a.m. through 4 p.m., to distribute and accept packets, and to provide information, and assistance.

### FSA training program in Muleshoe Feb. 14

"Top Quality Producer," the FSA approved production training program for Texas, presented by the Texas Farmer Coop, will be offering a session for FSA borrowers Feb. 14 from 2 - 7 p.m. at the Bailey County Coliseum.

The program consist of 5 parts, with each being 6 hours in length. Financial training is not required as a prerequisite. For those who have already taken the Bottom Line Farming financial training course, taking this production program will complete all FSA training requirements.

For more information and registration, please contact Bob Detlefsen (817) 772-2013 or Karen Harlan (806) 546-3200. Registration deadline for this session is Feb. 13.

### MASH hosting benefit lunch March 6

The Muleshoe Association to Serve the Hungry (MASH) will host serve a beans and cornbread lunch to the public on March 6 at noon in the First Baptist Church fellowship Hall. There is no charge for the meal, but donations will be accepted and will benefit MASH.

### Applicator training and testing Feb. 3

The Texas Agricultural Extension Service and the Texas Department of Agriculture will be offering Training and Testing for private applicator licenses Feb. 3 at the Littlefield Ag and Community Center.

Training will begin at 8:30 a.m. and will last for 3 hours. At 1 p.m. testing will begin and be provided by James Esty with TDA. Test time should be one hour.

### ENMR Education Scholarships Available

Application packets for the 1997 ENMR Telephone Cooperative Education Foundation Scholarships and the Evelyn Aeterson Memorial Scholarship are now available at local high school guidance offices.

To be considered, applications must be received at ENMR Telephone Cooperative, Scholarship Committee, PO Box 1947, Clovis, NM 88102-1947, no later than March 7. Scholarship winners will be announced at the ENMR Telephone Cooperative Annual Membership Meeting on April 19, in Clayton, NM.

### Music and comedy show in Dimmitt Feb. 8

A night of musical entertainment and comedy is in store for those attending the Feb. 8 performance of the Carlile Country Showcase at the Carlile Theatre in Dimmitt.

A new musical group from New Mexico, "Rozz Well and the Aliens" will be performing classic rock'n'roll, country, and original music. The show will also include spectacular lights, surprise guests, and unsurpassed fun from a group of veteran New Mexico and Texas performers.

Tickets are \$4 in advance and \$5 the day of the show. The box office will open at 6:30 p.m., with the show beginning at 7:30 p.m. Feb. 8. The Carlile Theatre is located at 116 S. Broadway in Dimmitt.

For more information, or to order tickets, call (806) 647-2091.

### LOCAL WEATHER AT A GLANCE

	HIGH	LOW	PRECIP
1/28	45	14	—
1/29	50	15	—
1/30	53	19	—
1/31	62	19	—

Source: R.G. Bennett, National Weather Service

## Court

Continued from page 1

operating a small cattle operation as a way of relaxing. He commutes to work.

"My friends in high school would never believe it," Dave said about raising cattle. "I wasn't a country boy, I was a town boy who threw newspapers."

A self-described "long hair" in high school who listened to rock music, he fondly recalls his small-town upbringing.

"Growing up in Muleshoe, you learned manners and learned to treat people with respect," said the son of Wilma and the late Charlie Smith.

During the half-hour interview, it was apparent that Dave Smith was a small-town success story, not a big city lawyer. He still talks with a West

Texas twang and his stories would do a cowboy proud. It's one of his biggest allies in the courtroom.

"They just think I'm a stupid, hick lawyer," Dave Smith said, "until we get in the courtroom."

Chuck said his brother inherited his dad's ability to spin a good yarn, and his genuine concern for people.

"When he gets involved in a case, it goes beyond dollars and cents," Chuck Smith said. "It's a genuine concern. And that was one of my dad's best qualities."

As far as his brother's courtroom country bumpkin routine, Chuck Smith said "I'm not sure he didn't watch a lot of Matlock."

The primary method used by the IRS in selecting returns for audits is a computer program that measures the probability of an error in each tax return.

### Bailey County Journal USPS 040-200

Established March 31, 1963. Published by Triple S Publishing, Inc. Every Sunday at 304 W. Second, Box 449, Muleshoe, TX 79347. Second Class Postage paid at Muleshoe, TX. POSTMASTER: Send address changes to the Bailey County Journal, P.O. Box 449, Muleshoe, TX 79347. We are qualified members of: Panhandle Press Association, National Newspaper Association, West Texas Press Association and Texas Press Association.

WEST TEXAS PRESS ASSOCIATION



PPA

Panhandle Press Association

Scot Stinnett, Publisher  
Lisa Stinnett, Vice-President/Comptroller  
Rick White, Editor  
Jessica Orozco, Classifieds  
Pat Durben, Advertising

© 1990

SUBSCRIPTIONS: Muleshoe Journal and Bailey County Journal By Carrier Yearly - \$22.00  
Bailey and surrounding counties: by mail - \$24.00  
Elsewhere - \$26.00  
Advertising Rate Cards on Application

\*Advertisers should check their ad the first day of insertion. The Journals will not be liable for failure to publish an ad or for a typographical error or errors in publications except to the extent of the cost of the ad for the first day of insertion. Adjustment for errors will be limited to the cost of that portion of the ad where the error occurred.

### 1996 CROP REPORT

AUSTIN—With the Texas 1996 crop season coming to an end, outstanding yields on the Plains offset some effects of the 1996 drought in other parts of the state, according to the final production estimates of spring-planted crops released by the Texas Agricultural Statistics Service.

The 1996 Texas Upland cotton crop is expected to total 4.35 million bales, 2 percent below 1995. Harvested acreage is estimated at 4.0 million acres, 30 percent less than last year as the earlier drought caused poor stands and resulted in greater than normal abandonment. The surviving acreage produced a record yield of 522 pounds per acre, compared with 372 pounds last year.

Corn production is estimated at 201.6 million bushels, down 7 percent from last year and 16 percent below the record set in 1994. State-wide yield is estimated at 112 bushels per acre, 2 bushels less than in 1995. Harvested acreage is estimated at 1.8 million compared with 1.9 million in 1995.

Sorghum production is estimated at 102.1 million hundredweight (cwt.), 41 percent above last year. Harvested acreage is estimated at 3.8 million acres, up 58 percent from 1995, as sorghum replaced some lost cotton acreage. Yield, at 2,688 pounds per acre, is 336 pounds below last year.

Production of all hay is estimated at 7.8 million tons, 4 percent less than in 1995. Acreage is up 16 percent, but yield is estimated at 1.8 tons, down .36 tons from last year.

### Federal Land Bank Association

316 Main St., Muleshoe  
806-272-3010

Long Term Financing for Farms, Ranches, Rural Housing, Operating and Improvements.

Current Variable Rate 7.95%.

Fixed rates are available. Call for quote.

A Property Rights Advocate and Equal Opportunity Lender.

### Investigation

Continued from page 1

part of the investigation, but she is not a suspect in the Bailey County case, Clifton said.

Shaw has been previously arrested twice in the county and convicted once of assault.

Injury to a disabled individual is punishable by up to 20 years in jail and a \$10,000 fine.

### CORRECTION

Some results were inadvertently left out of the story of the Cub Scout Pinewood Derby, which ran in the Jan. 30 edition of the Muleshoe Journal.

For the Bear Den, the results of the race were Jared Flores - 1st place, Cody Black - 2nd place, and Cody Clark - 3rd place.

The Journal regrets the error.



Have a nice day

### NEW ARRIVALS

- Air Uptempo • Air Max Tailwind • Air Max
- Airmax Triax • Air Talus • Air Skarn
- Air Volt Speed • Air Dente RW • Air Haze

### Socks - Socks - & More Socks

Men's, Women's, Boys & Girls



Like running on air but with much better traction.

Williams Athletics

322 Main 272-MULE (6853)

Home Folks Caring For Folks At Home.



## MULESHOE AREA HOME HEALTH

Agency

### Featured Patient

Rue Kimbrough, of Muleshoe, was married to the late Robert Kimbrough. She has two sons - Bob Kimbrough of San Antonio and Lee Kimbrough of Muleshoe. She has five grandchildren and eleven great grandchildren.

Mrs. Kimbrough is a charter member of the Richland Hills Baptist Church. She was a Pink Lady Volunteer for years at the hospital and nursing home. She taught Sunday School for just about 50 years.

The ladies at the Muleshoe Area Home Health Agency are perfect and she loves everyone of them.



Rue Kimbrough

To receive Home Health Services, talk with your physician or talk with hospital personnel when you are hospitalized.

24 Hour # 272-3346

Local Nurse on call 24 hours a day to offer prompt service.

We accept Medicare, Medicaid and Private Insurance

It Is Your Right To Choose The Home Health Agency You Prefer.

Affiliated with Lubbock Methodist Hospital Systems

We care for you at home

FREE Information on New Out Of Hospital Advance Directives will be available soon!

Watch this ad for further info as it comes available.

**SPS**

Continued from page 1

will be 1,039 jobs.

Once the merger is approved by the Texas Public Utilities Commission, a list of job descriptions will be made available to the terminated personnel. They will each be allowed to apply for up to four jobs on the list. If they are not chosen to be hired, they will be offered an involuntary severance package, which consists of one-and-a-half week's pay for each full year worked and other benefits, including job counseling and outplacement assistance. Some employees will be eligible for early retirement. The companies will also offer a voluntary severance package for merger-affected employees who choose not to apply for continued employment. The voluntary severance package benefits include one week's pay for each full year worked.

"There will be some good jobs available, but to get the numbers they are looking at cutting, someone has to go home," said McDearmon.

If the merger is approved by the Texas PUC as scheduled on Feb. 5, the re-staffing process could begin late next week and be completed by March 31.

In addition to the closure of the 17 offices, the rest of the 26 SPS offices will be converted to bases of operation for employees involved in providing electric service, engineering, sales and economic development. The majority of current office personnel in those locations will be terminated.

All payment functions will be eliminated from all SPS offices.

In a letter to community leaders in the cities served by SPS offices, SPS President and Chief Operating Officer David M. Wilks stated that all payment functions will be redirected to payment centers in each community, located in existing businesses, such as supermarkets.

Mailed payments will be processed by the Amarillo National Bank; a move Wilks' letter stated would save \$1 million over the first five years.

When the consolidation is complete, local customers will

be forced to call a central call center for information on billing, appliance repair, service and other subjects. The Amarillo call center will be staffed from 7 a.m. to 7 p.m. daily and will be serviced by an 800 number. After 7 p.m., calls will be directed to a call center in Denver.

The consolidation of payment functions is expected to save the new company \$1 million a year. Wilks' letter said the move would "make it easier than ever for customers to reach us and pay their bills in person. In addition, we will hold down electric rates by saving \$1 million a year."

McDearmon said the elimination of the local office would

**Tax plan**

Continued from page 1

\$535.

In addition to a tax cut, the proposed plan includes raising the homestead exemption, which reduces the property value subject to taxation. Gov. Bush proposed raising the exemption from \$5,000 to \$25,000.

MISD Superintendent Bill Moore, who attended the State of the State Address, He expressed support for the governor's proposal.

"It's a great idea, and it will receive broad based support," Moore said. "There will be a lot of discussion and compromise. I hope the basics stay in place."

MISD currently collects \$2.2 million in property taxes. Moore estimates MISD will receive \$5.3 million in state funds this year.

To fill the gap left with decreased local funding, Bush proposed replacing the state franchise tax with a new tax that would effect all businesses.

The Texas Business Tax would be a one and one-quarter percent tax on businesses that earn more than \$500,000 per year.

In addition to the new tax, Bush proposed a half-cent increase in the sales and motor vehicle tax.

Bush also proposed dedicating all proceeds from the state lottery to education, a

create problems for customers who now pay in cash at the local office.

"Many of our customers don't have checking accounts and are on fixed incomes," McDearmon said. "They don't bring their bills into the office and we look up what they owe. This will require a retraining of those customers."

Also gone will be the involvement in community affairs that SPS employees have been known for over the years. "It will be a different philosophy," McDearmon said.

Other offices on the closure list are: Tahoka, in May; Artesia, NM; Canyon, Denver City, Dumas, Littlefield, Perryton, Portales, NM; Ralls,

move that Moore does not support.

"Other states have done the same thing," Moore said. "They found that the revenue fluctuates and is unreliable."

Bivins hopes that the proposed changes will allow lawmakers to deal with the "Robin Hood" situation.

"If this doesn't get us out of Sherwood Forest, it will get us close to out," Bivins said.

Under the current education finance plan, districts that are property-rich are forced to

Seminole, Slaton and Tucumcari, NM in August. To be closed by November will be Hereford, Levelland, Pampa and Plainview.

Offices which will serve as bases of operation for service personnel will be Abernathy, Beaver, OK; Boise City, OK; Canadian, Dimmitt, Elkhart, KS; Eunice, NM; Floydada, Jal, NM; Morton, Olton, Panhandle, Post, Seagraves, Spearman, Stratford, Wheeler and Dalhart.

Offices which will continue to be staffed by sales and engineering personnel will be Amarillo, Borger, Carlsbad, NM; Clovis, NM; Guymon, OK; Hobbs, NM; Lubbock and Roswell, NM.

share parts of their revenue with districts that are property-poor to prevent inequities between districts.

By shifting the brunt of school finance away from property taxes, Bivins hopes that districts will no longer need to share revenue to prevent inequity.

House Speaker Pete Laney has formed a committee to look at revenues and state funding. The committee will be on the lookout for possible inequity

**IRS**

Continued from page 1

Sponsors are optimistic the pro-farmer legislation will pass.

"While the IRS has backed off their plains just in time for the March 1 tax deadline, producers can expect passage of legislation that will make it clear that cash basis is the correct method for farm income," Combest said.

Under the IRS ruling, a

farmer who makes \$100,000 in one year and nothing the next year will pay more taxes than someone who is paid \$50,000 annually.

Combest noted that with the harvest occurring so close to the end of the tax year, a late harvest could pile up two years worth of tax liability into a single calendar year.

IPC197

## FREE INTERNET PRIMER

Name: \_\_\_\_\_

Address: \_\_\_\_\_

Daytime or Evening Phone #: \_\_\_\_\_

How late in the evening may we call you to schedule a session? \_\_\_\_\_

If you cannot make a Tuesday or Thursday session, what evening would be convenient? \_\_\_\_\_

Mail to: CompuTeK 206 Main Street Muleshoe, TX 79347

Comments or other training interest: \_\_\_\_\_

**Primer Clinic will consist of evening sessions on Tuesday and Thursday nights of each week. Each session will consist of Basic Internet functions and navigation. Also a brief overview of how the Internet works in general. Every attempt will be made to hold class numbers down to 4 to 6 people per night.**

You may also use the above form to receive information on basic computer classes and software classes. Just write in what you are interested in receiving training for and we will contact you back or send you information about the classes. Our training courses start at \$25.00 for the initial 2 hour session and \$20.00 per hour after the first two hours of each session.

There is no charge for the Internet Primer.

**CompuTeK Discount Computers & Repair Service**  
206 Main  
Muleshoe, Texas 79347  
800-687-3816 or 272-5404

According to a relativity theory, if a spaceship accelerated to near the speed of light, a stationary observer off the ship might notice clocks on the ship would slow down and the ship would get smaller.

**Local news  
about  
local folks.**

**Muleshoe Journal**

To Subscribe, 272-4536

*Local news  
about  
local folks.*

**Muleshoe  
Journal**

To  
subscribe,  
call 272-4536

HEARTWARMING VALUES

## New Manager VALENTINE SPECIAL

Valentine, Keep Your  
Sweetheart Warm With  
Bailey County Propane

79.9¢

per gallon

Call Becky  
Talk to George  
Ask Fele

100 gallon  
minimum

— CASH ONLY — Hurry, While Supply Lasts —

Bailey County Propane Inc.

Friona Hwy. Muleshoe 272-4678

## MULESHOE AREA MEDICAL CENTER

welcomes

## DR. MIKE PRECURE

and announces the opening of

## PRECURE CHIROPRACTIC CLINIC

Now accepting appointments  
Located in Suite 4 of the hospital

For appointments, call  
**806-272-6784**

Subscribe today! Call 272-4536



### Smith, Bobcats foil Muleshoe upset bid

BY RICK WHITE  
Managing Editor

**DIMMITT** — A skilled frontrunner, Dimmitt rebuked every challenge from the upwardly mobile Muleshoe Mules in the second half of a 82-60 win Tuesday in a District 1-3A game at legendary Kenneth Cleveland Gym.

Muleshoe's hopes of upsetting the seventh-ranked Bobcats all but evaporated with a 13-0 Dimmitt run in the last two minutes of the first half.

The loss drops third-place Mules (17-10, 6-3 in district) two games back of Dimmitt (22-6, 8-1) in the race for the second district playoff spot. No. 2 Tulia (25-2) leads the district with a 9-0 record.

There are five games left in the district season.

Muleshoe coach Ralph Mason said the Mules' playoff chances are slim but still alive.

"We're still going to approach (the rest of the season) like we have a chance to make the playoffs," Mason said. "We still have to take care of business."

Muleshoe hosted Perryton (11-12, 4-5) Friday.

#### DISTRICT 1-3A

##### Boys

	District	Overall
Tulia	9-0	25-2
Dimmitt	8-1	22-6
Muleshoe	6-3	17-10
Perryton	4-5	11-12
Dalhart	3-6	14-11
Friena	3-6	6-8
River Road	2-7	11-15
Sanford-Fritch	1-8	10-17

**Tuesday's games** — Dimmitt 82, Muleshoe 60; Tulia 65, Friena 39; Perryton 55, Sanford-Fritch 44; Dalhart 64, Dalhart 58

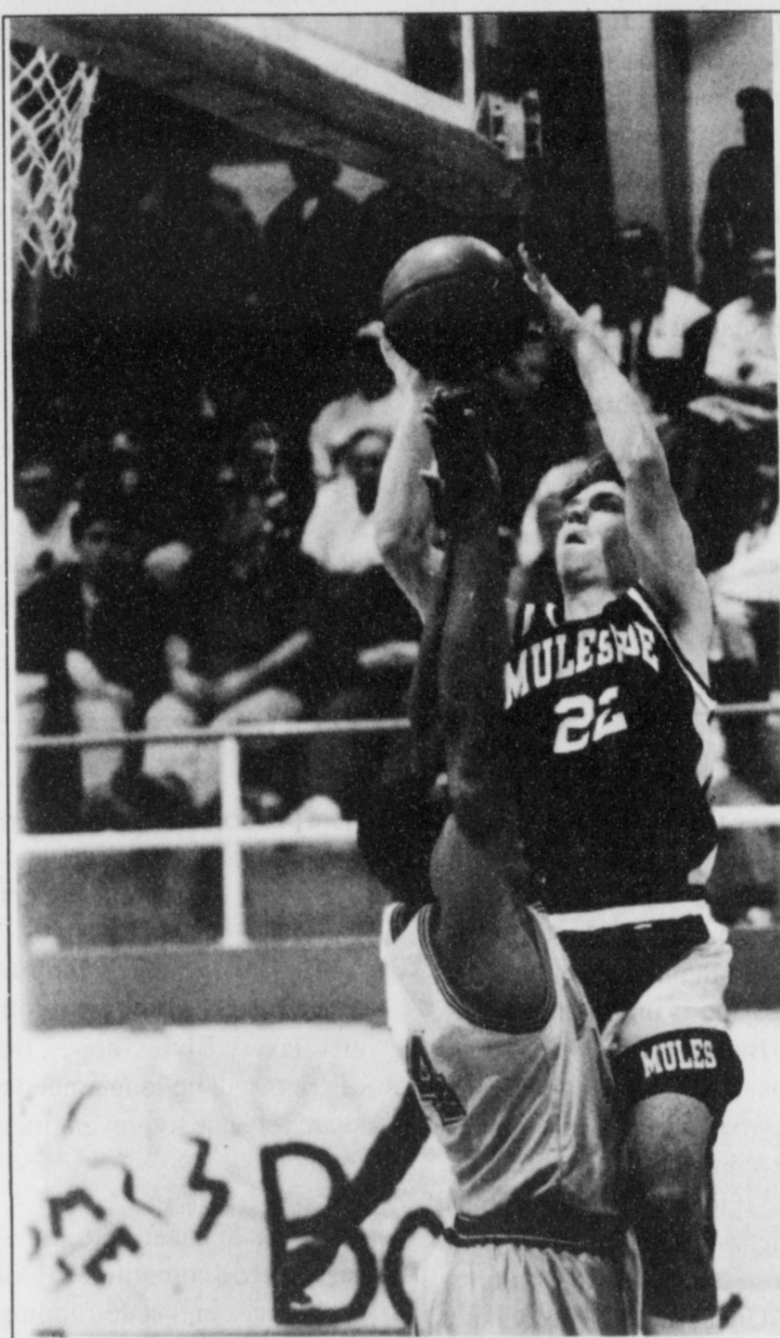
**Friday's games** — Perryton at Muleshoe, Tulia at Dalhart, Dimmitt at Sanford-Fritch, River Road at Friena

Brandon Smith, a sleek 6-0 senior, slithered through the Muleshoe defense for a game-high 26 points. Kalem Thomas added 16 points for Dimmitt, including four timely 3-pointers.

Sophomore post Dustin Cleavinger led Muleshoe with 20 points and senior wing Alfonso Mendoza added 13 points.

The game and the score got out of hand late when Muleshoe starting sending the Bob-

Continued on page 5



#### Rising to the challenge

Muleshoe junior Douglass Field shots over Albert Ewing during a District 1-3A game at Dimmitt Tuesday. Field finished with 10 points, but Dimmitt won the game 82-60. Muleshoe hosted Perryton Friday and plays at league-leading Tulia Tuesday.

### Laz gains split at Happy

**HAPPY** — Lazbuddie coach Carey Sudduth left Happy in a good mood after the Lady Longhorns played the District 3-1A co-leader Cowgirls tough for four quarter in a 57-39 loss.

It was a much better effort than last time, Sudduth said. Happy routed Lazbuddie 66-31 earlier this month.

"We played real well," Sudduth said. "The kids came out with a lot more energy. The first time, they destroyed us. They did whatever they wanted to."

In the boys game, Jason Thomas scored 25 points and Josh Morris added 13 as Lazbuddie trounced past Happy 61-49.

"We kind of slopped through it," Lazbuddie coach Gary Grahn said.

Lazbuddie (16-7, 3-2 in district) broke the game open in the third quarter, outscoring Happy 15-6.

Happy falls to 3-21 overall and 0-6 in district.

The Lady Longhorns (13-12, 0-5 in district) were still within 51-39 with two minutes before Happy's Jacy Cumby hit back-to-back 3-pointers.

Cumby, whose 3-pointer at the end of the first quarter put the Cowgirls (23-6, 5-1) up 15-7, finished with a game-high

#### DISTRICT 3-1A

##### Boys

	District	Overall
Nazareth	6-0	23-4
Farwell	4-1	20-4
Lazbuddie	3-2	17-6
Vega	1-5	10-15
Happy	0-6	3-21

**Tuesday's games** — Lazbuddie 61, Happy 49; Nazareth 93, Vega 33, Farwell, open

**Friday's games** — Farwell at Nazareth, Vega at Lazbuddie, Happy, open

19 points. Lazbuddie limited all-state post Leah Lair to six points.

Roxann Warren scored 15 points for the Lady Longhorns, who played their second-straight without starting point guard Holly Engelking. Mandy Magby added nine points for LHS and Rachel Rodriguez finished with seven points.

Engelking, Lazbuddie's second-leading scorer, sprained an ankle last week in practice. She's expected to return for Tuesday's game at Farwell.

"The step is learning how to compete," Sudduth said. "And this is the first time we were actually competitive."

Lazbuddie hosted Vega Friday and plays at Farwell Tuesday.

Continued on page 5

### Last-second shot ends MHS' playoff hopes

By RICK WHITE  
Managing Editor

**DIMMITT** — Kimberly Newland found the rim much kinder than Erin Wilhite.

Newland, a freshman post for Dimmitt, hit a short baseline jump shot with seven seconds left, lifting Bobbies to a 43-41 District 1-3A win Tuesday at Kenneth Cleveland Gym.

#### DISTRICT 1-3A

##### Girls

	District	Overall
River Road	10-1	21-6
Dimmitt	9-2	18-12
Perryton	7-4	13-16
Muleshoe	6-5	10-18
Friena	5-6	9-16
Tulia	4-7	15-9
Dalhart	3-8	10-15
Sanford-Fritch	0-11	1-24

**Tuesday's games** — Dimmitt 42, Muleshoe 41; Tulia 40, Friena 39; River Road 61, Dalhart 35; Perryton 65, Sanford-Fritch 43

**Friday's games** — Perryton at Muleshoe, Tulia at Dalhart, Dimmitt at Sanford-Fritch, River Road at Friena

After Muleshoe turned the ball over twice in a 12-second span, Newland capped a huge second-half performance by coaxing an 8-foot jumper that bounced on the rim three times before dropping through.

Following a timeout, Muleshoe pushed the ball past halfcourt, where Wilhite launched a 3-pointer from NBA range. The shot, which looked on target, bounced off the front rim despite plenty of body English by the coaching staff and the entire Muleshoe crowd.

The loss dropped Lady Mules (10-18 overall) three games out of a playoff spot at 6-5 with three games left.



#### Elbow room

Dimmitt's Heidi Weaver (32) clothes-lines Erin Wilhite while they battle for a rebound during a District 1-3A game at Dimmitt Tuesday

Jacy Buckley led Dimmitt (18-12, 9-2) with 17 points and Newland finished with 13 points, 11 in the second half.

"It was a real important win because it showed we could win a game without Carrie Bradley," Dimmitt coach Jan Newland said.

Bradley, Dimmitt's leading scorer, injured her knee Tuesday and is out for the season. She scored 31 points in the first game against Muleshoe. Brandi Harrison led Mule-

shoe with 17 points and Kristen Nichols finished with 14.

Nichols tied the game at 41 with 32 seconds with a pair of free throws.

The Lady Mules had missed five of six free throws before Nichols cashed in.

Muleshoe led 23-16 at half-time and still led 31-27 on Harrison's 3-pointer from the corner with 42 seconds left in the third quarter.

Continued on page 5

**ENTER NOW!**

The Muleshoe Journal's  
3rd Annual 1996  
**Cutest Baby Contest**

Enter any child that is special to you that was born  
in 1996 - children, grandchildren, nieces, nephews.

Winner Will Receive  
**\$50 SAVINGS BOND**  
For Being Selected  
1996 Cutest Baby!

This years edition will appear in the Sunday, Feb. 23 issue of the Muleshoe Journal. A panel of unbiased judges will pick the most attractive picture to be the 1996 Cutest Baby. All baby pictures will be printed. Babies need not be born in this area. Bring your favorite child's photo along with \$9.75 to the Muleshoe Journal, 304 W. 2nd, Monday-Friday between 9 a.m. and 5 p.m. or mail coupon below with photo and \$9.75 to the Muleshoe Journal, Box 449, Muleshoe, TX 79347. You may pick up your baby's picture during office hours after Monday, Feb. 24, 1997.

Please leave phone number or address (it will not be published) so we may contact you if we need additional information.

Baby's name \_\_\_\_\_

Date of birth \_\_\_\_\_

Weight at birth \_\_\_\_\_

Place of birth \_\_\_\_\_

Length at birth \_\_\_\_\_

Mom & Dad's name \_\_\_\_\_

Grandparent's name \_\_\_\_\_

**HURRY - DEADLINE IS FRIDAY, FEB. 14, 1997**



## School Menus

For the week of Feb. 3-7

### MULESHOE

Dillman & DeShazo

#### Breakfast

**Monday**— breakfast hot pocket, fruit or juice, milk. **Tuesday**—sausage biscuit, fruit or juice, milk. **Wednesday**—breakfast burrito, fruit or juice, milk. **Thursday**—scrambled egg, toast, fruit or juice, milk. **Friday**—cinnamon roll, fruit or juice, milk.

#### Lunch

**Monday**—burrito, chili, corn, peaches, milk. **Tuesday**—baked potato, ham & cheese, mixed fruit, brownie, milk. **Wednesday**—soft taco, lettuce, tomato, ranch beans, pineapple bits, milk. **Thursday**—pizza, tator tots, veggie stix, birthday cake, milk. **Friday**—steak fingers, mashed potatoes,

gravy, hot roll, sweat peas, milk.

**Jr. High and High School**

#### Breakfast

**Monday**— breakfast hot pocket, fruit or juice, milk. **Tuesday**—sausage biscuit, fruit or juice, milk. **Wednesday**—breakfast burrito, fruit or juice, milk. **Thursday**—scrambled egg, toast, fruit or juice, milk. **Friday**—cinnamon roll, fruit or juice, milk.

#### Lunch

**Monday**— burrito, chili, corn, peaches, milk. **Tuesday**— baked potato, broccoli & cheese, mixed fruit, brownie, milk. **Wednesday**— soft taco, lettuce, tomato, ranch beans, apple crisp, milk. **Thursday**—com dog, veggie soup, cinnamon roll, sliced pears, milk. **Friday**— chicken fried steak,

mashed potatoes, gravy, hot roll, sweat peas, milk.

**THREE WAY**

#### Breakfast

**Monday**—No School. **Tuesday**—breakfast burrito, juice, milk. **Wednesday**— Cream of Wheat, Frosted Cheerios, juice, toast, graham crackers, milk. **Thursday**—eggs, Canadian bacon, juice, milk. **Friday**— waffles, sausage, juice, milk.

#### Lunch

**Monday**—No School. **Tuesday**— chicken strips, broccoli w/ cheese, whipped potatoes, wheat rolls, apricots, milk. **Wednesday**— submarine sandwich, potato wedge, orange, milk. **Thursday**— taco salad, refried beans, crackers, banana pudding, milk. **Friday**— pizza, salad, corn, peaches, milk.

## MULESHOE KIWANIS CLUB

The Muleshoe Kiwanis Club held their weekly meeting Friday Jan. 24 at Tammy's Kitchen. The meeting was called to order by the President R.G. Bennett III. The prayer was given by Eddy Morris. The pledge was led by Hugh Young. The friendship coin is lost again and did not show up for the meeting. Maybe next week.

Guests attending this morning's meeting were Carolyn Johnson and Mark Washington.

Chuck Smith had the program this morning and introduced Carolyn Johnson. Carolyn is a teacher at Muleshoe High School. She also is the teacher and coordinator of the Teen Leadership program, a program that exists only at Amarillo River Road High School and Muleshoe High School here on the South Plains. The program was started last year but was not accredited at that time. It is now accredited and this is considered its first year. The approximately forty (40) students who are enrolled in this program are taught in the school by Mrs. Johnson but outside of the schoolroom, the students are assisted in their learning experiences by a group of individuals called the Teen Leadership Advisory group. These individuals are Keith Hicks, Lazbuddie; Chuck Smith, Bailey County Electric; Julie Cage, Muleshoe; Phil Kent, First Bank; Tisha Young, Muleshoe; Hubert Kidd, Five Area Telephone; Cindy Purdy, Muleshoe; Robert Montgomery, Muleshoe; James Fisher, Muleshoe City Manager; and Gayla Gear.

The program is not an honors course or anything similar. The course and program is for

all students from sophomores to seniors who want to learn to be leaders. They are taught discipline, standards and principles, self confidence, social skills, honesty, respect of others, integrity, loyalty and responsibility as well as how to succeed in life. This program sounds most interesting and when it involves the education of our kids, its of utmost importance to all of us.

Thanks, Carolyn, for an enjoyable program and we wish the Teen Leadership program a great success and a great year.

Members attending the morning meeting were Jim



Muleshoe Kiwanis Club member Chuck Smith with Carolyn Johnson.

Lutz, Hugh Young, Eddy Morris, Bruce Hartline, Mark Huddlestone, Sonny Bennett, Chuck Smith, R.G. Bennett III, Jerry Hutton and our sweetheart, Kristi Bennett.

## NURSING HOME NEWS

By Joy Stancell

Our Super Bowl Party Friday afternoon was a real winner. Coach David Wood and a group of its young men athletes were our keynote speaker and visitors. The Hinderlight young ladies entertained with several of their drill team choreographers as well as our very own Terri Brown and Ruth Kitchens and Shonia. Melvin and Wanda Griffin, Holly Ann Millsap, Donna Locker and Vivian White assisted us in serving pizza and soft drinks to those in the locker room (Day Room) and those sitting on the side lines. Leesa Gable and Jolene Espinosa also pitched in and helped.

## HOSPITAL ADMISSIONS

The Muleshoe Area Medical Center has reported the following admissions:

**Jan. 24**— Vera Engelking, Andrew Santibanez

**Jan. 25**— Vera Engelking, Andrew Santibanez

**Jan. 26**— Vera Engelking, Theta McCraw, Johnie Calvert, Jimmy Mills, Andrew Santibanez

**Jan. 27**— Walter Bartholf, Vera Engelking, Theta McCraw, Sinilda Reyes, Johnie Calvert, Juan Calderon, Jimmy Mills

**Jan. 28**— Walter Bartholf, Vera Engelking, Johnie Calvert, Juan Calderon, Jimmy Mills

**Jan. 29**— Gloria Guillen, Walter Bartholf, Vera Engelking, Johnie Calvert, Juan Calderon, Jimmy Mills

**Jan. 30**— Gloria Guillen, Walter Bartholf, Vera Engelking, Johnie Calvert, Juan Calderon Jimmy Mills

Tuesday afternoon Claudine Embry, Lanell Stancell, Beverly Wagnon, Mary Jo Burge, Skeet Bradshaw, came to shampoo and set the ladies hair and give nail care. Donna Locker also helped us. Ruby Garner came by to visit us. Holly Millsap helped in many different areas.

The 16th and Ave. D Church of Christ ladies baked and served homemade pies Tuesday afternoon. The pies were wonderful and we enjoyed the ladies visit too.

Glenda Jennings and Jonessa Brockman entertained us Wednesday afternoon with music and song and a puppet show.

Jane Reeder, Harold and Mary Jo Burge hosted coffee/donut time Wednesday morning. Tennie McCormick and Yaunda Martin also came to be with us. Following coffee time Loyce Killingsworth played the piano as we sang a long.

## Henderson member of state board

Muleshoe Area Medical Center employee Jim Henderson was recently installed as a member of the Board of Directors of the Texas Association of Healthcare Materials Management (TAHMM), at the group's annual meeting in Fort Worth. He will serve a two-year term in that capacity.

Henderson has been employed by Muleshoe Area Medical Center as Material Manager for five years, and a member of TAHMM for four years. He is a lifetime resident of Muleshoe.

TAHMM is an affiliated society of Healthshare/THA,

Naomi Blacks daughter visited her Wednesday afternoon.

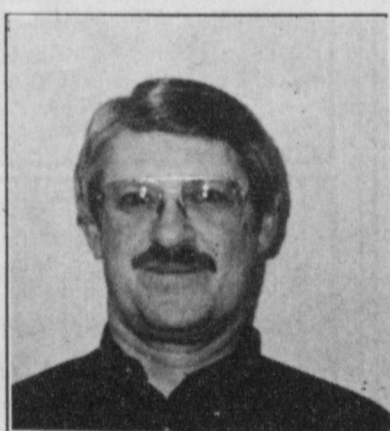
Lucy Faye Smith visited the Care Center Wednesday afternoon.

Thursday morning Pastor David McIntire, J.C. Shanks and Clara Lou Jones directed our Devotional/Reflection time.

Thursday afternoon Rev. and Mrs. Sinclair and Anna B. Lane entertained at our January Birthday Party Thursday.

Melvin and Wanda Griffin, Carrie Lue and Cleo, sister and brother-in-law from Lubbock attended the birthday party with Jeanetta Hukill Thursday. Melvin and Wanda helped with the serving and later with the clean up. Jeanetta was one of our birthday honorees.

T.R. and Vivian White celebrated their anniversary in the Day Room Friday morning. Vivian served cake and punch to the residents, residents families, the staff and friends, Congratulations T.R. and Vivian.



Jim Henderson

which is an affiliated organization of the Texas Hospital Association.

## Muleshoe Foot Center

Wouldn't it be nice... if your specialist came to your town!

## High Plains Podiatry Group

Mark Cettie, D.P.M.  
Brian Sicher, D.P.M.

- Ingrown Nails
- Bunions
- Heel Pains
- Corns/Calluses

Tuesday, February 4th  
1 p.m. - 5 p.m.

Muleshoe Area Medical Center, Suite 4  
For Appointment, Call 1-888-292-3668

708 South First Street 1-888-292-FOOT  
Muleshoe, Texas 79347 (3668)

## The children of NAOMI BLACK

would like to invite you to come celebrate her

## 80TH BIRTHDAY

Sunday, Feb. 2 2 p.m. - 4 p.m.

Bailey County Coliseum

No gifts please

# GIVE US A CALL!

We're Here To Serve You!

272-4984

LOCAL OFFICE PHONE NUMBER

1-800-999-8876

CUSTOMER SERVICE 24 HOURS A DAY



224 S. Main

Muleshoe, TX 79347

<http://www.classic-cable.com>

## What If the Very Best Story Is the One We're Living?

I'll be honest: I had to stop what I was doing a few moments ago in order to write this column, and I'm not terribly happy about it. One of my Christmas presents this year was a novel of the modern "techno-thriller" variety. As an English major, I feel qualified to assure you that the world has seen greater literature, most of it more uplifting, certainly longer-lasting and more of a

shot" by one terrorist driving a 747.

Red China has just shot down a civilian airliner and blamed Taiwan.

An Iranian ayatollah has just assassinated Saddam Hussein (few tears were shed) and is absorbing Iraq and forming a mighty big, mighty scary Middle Eastern nation bent on absorbing others. The ayatollah in question has just made an attempt on the life of the President's family in a gun battle that makes the "Gunfight at the OK Corral" look bland. He's managed to infiltrate the Secret Service and has a "sleeper" agent in place ready to plug the President whenever the word is given.

AND terrorists from the same sorry source have spread an airborne form of the terrifying Ebola virus at twenty or so major city convention centers. The epidemic is raging, and what will the President do?, and . . . and . . . and . . .

And I've got to put the whole thing on PAUSE to write a newspaper column and print a Sunday worship bulletin. And I really do need to find a point for this column. Well . . .

What if it turns out that even incurable, deadly Ebola virus is far less deadly than a plague of virulent human self-centeredness and sin left untreated?

What if it turns out that standing in the Oval Office directing the nation as President is less important than falling on your knees as a child of God in your own bedroom allowing the Father to direct your life?

Hmm.

Curtis Shelburne is minister of the 16th & D Church of Christ in Muleshoe.



## Focus On Faith

Curtis Shelburne

genuine blessing to humanity than the 850-page, small print but big action, heart-stopper I'm presently dying to finish. Literary issues aside, the book's got its hooks in me, and I'll probably be more or less worthless until it's done with me!

It's a busy book! A wonderful hero figure that I've followed now through a number of books and adventures around the world, under it, into palaces and submarines, through the halls of government and into the hidden heart of the CIA, is President of the United States.

But there's one low-down lout using every dirty political trick imaginable to depose him.

The former President, the lion's share of Congress, most of the Cabinet, the Supreme Court, etc., have been wiped out in a "skillet

## Mary Kay Cosmetics



Josie Flowers

272-3865

# BAILEY COUNTY DEVOTIONAL PAGE

**Risinger Plumbing**  
Serving Muleshoe Area  
All Plumbing Repairs  
**272-6772**

**El Jacalito**  
Tortilla Factory  
516 North First Muleshoe  
Mon.-Wed.-Thurs. Alfredo & Mariann Anzaldúa

**EASTER GRAIN, INC.**  
Easter 272-5255 Labuddie 965-2817

**Y-L CATTLE FEEDERS**  
COMPLETE CATTLE CARE  
Buy, Sell, Pre-Condition, Grow  
Bob Gable-Owner 965-2610  
Operators: L.D. Clark Mobil 946-8268, Cary Dasher H-965-2937

**ALEX'S TIRE SERVICE**  
302 E. American Blvd.  
272-5012 Muleshoe

**IRRIGATION PUMPS & POWER**  
ZIMMATIC CENTER-PIVOTS  
W. Hwy. 84 272-4483

**MAPLE COOP GIN**  
927-5501  
Maple, Texas

**Leal's Tortilla Factory, Inc.**  
"Serving West Texas since 1957"  
107 E. Ash 272-5772 Muleshoe, TX

**O & C OSONS**  
Erection Sprinkler Ser. Welding & Repair & Assemble Repair  
Lupe Olivarez 272-5018 909 W. American Blvd. 272-3475

**Discount Computer & Repair Service**  
**CompuTeK**  
206 Main 272-5404  
1-800-687-3816

**BOBO INSURANCE AGENCY**  
108 E. Ave. C 272-4264

**Shipman's Body Shop**  
Auto Painting • Wrecker Service • Free Estimates  
Tractor Glass & Windshields  
410 N. 1st Muleshoe, TX  
272-4408 FAX 272-3366

**SAIN IRRIGATION & MACHINES**  
Complete Pump Service  
W. American Blvd. 272-4397  
Walt Sain Muleshoe, TX 272-4148

**Bob STOVALL Printing**  
Quality -- Service  
221 E. AVE. B 272-3373  
C.R. & EVA NELL DALE MULESHOE

**TERRA INTERNATIONAL, INC.**  
272-4203  
Muleshoe, Texas

**RONNIE HOLT INSURANCE AGENCY**  
Specializing in Crop, Life & Health Insurance  
Western 66 Office Bldg.  
272-4271 Muleshoe, TX

**PACO FEED YARD, INC.**  
Commercial Cattle Feeders  
P.O. Box 956 265-3281  
Friona, TX  
Feller Hughs-Mgr.

**WESTERN '66' COMPANY**

**GOODYEAR JAMES CRANE TIRE CO., INC.**  
107 Main 272-4594  
Mike Hahn Muleshoe, TX

## Facts About The BIBLE BY JOHN LEHTI

### DID JESUS REALLY CURSE THE FIG TREE ?

IT IS RECORDED THAT JESUS, ON HIS WAY FROM BETHANY TO JERUSALEM, AND BEING HUNGRY, STOPPED TO PICK FRUIT FROM A FIG TREE (MARK 11:12-14). BUT, ALTHOUGH THE TREE WAS IN LEAF, THERE WERE NO FIGS AND JESUS SAID, HEREAFTER, NO MAN WOULD EVER EAT FRUIT FROM THAT TREE!  
SOME AUTHORITIES SAY JESUS, FOLLOWING THE ORIENTAL CUSTOM OF HOLY MEN, PUT A CURSE ON THE TREE, FROM DISAPPOINTMENT AT NOT FINDING FRUIT. OTHER AUTHORITIES STATE THAT, BECAUSE THE TREE WAS IN LEAF AND THEREFORE SHOULD HAVE HAD FIGS, JESUS WAS POINTING OUT THAT, WHEN ONE OUTWARDLY SHOWS A GOOD CHARACTER WITHOUT THE FRUITS THEREOF, HE IS A HYPOCRITE, OF NO VALUE TO THE KINGDOM OF GOD, BUT....

...STILL FURTHER AUTHORITIES MAINTAIN THAT, FOR JESUS TO CONDEMN A TREE, FOR NOT GIVING FRUIT, DOES NOT SEEM COMPATIBLE WITH HIS GENTLE LOVING NATURE AND, SINCE JESUS WAS AT JERUSALEM FOR THE PASSOVER, THIS PLACES THE TIME OF YEAR AT EARLY APRIL WHEN THE FIG TREE HAS JUST BEGUN TO LEAF AND GROW FIGS, WHICH THEN MATURE IN LATE JUNE... THUS, ALL JESUS MERELY DID, WAS REMARK THAT, BECAUSE THE TREE HAD ALREADY BEGUN GROWING LEAVES, BUT NO FRUIT, IT WAS BARREN, AND NO ONE WOULD HARVEST FIGS FROM IT WHEN THE FRUIT SEASON ARRIVED!

EACH OF THESE THEORIES SEEM TO HAVE VALID POINTS, SO IT REMAINS FOR THE STUDENT TO MAKE HIS OWN CHOICE — WHICH DO YOU THINK ?

**NEXT WEEK :**  
HOW ISRAEL REALLY MARCHED INTO THE PROMISED LAND !



29

SAVE THIS FOR YOUR SUNDAY SCHOOL SCRAP-BOOK.

**This devotional & directory is made possible by these businesses who encourage all of us to attend worship services.**

#### ASSEMBLY OF GOD

**FIRST ASSEMBLY OF GOD**  
521 South First Street • 272-3017  
Jack Stone, Min. • 272-3984  
S.S. 9:45 a.m., W.S. 11 a.m. & 6:30 p.m.,  
Wed. 7:30 p.m.

#### BAPTIST

**CALVARY BAPTIST**  
1733 W. Ave. C. Rev. Jeff Coffman  
**CIRCLE BACK BAPTIST**  
Intersection FM 3397 & FM 298  
Jessie Shaver, Min • 946-3676

**FIRST BAPTIST**  
220 West Ave. E.  
Stacey Conner, Min.  
**FIRST BAPTIST**  
Lazbuddie • 965-2126

**PRIMERA IGLESIA BAUTISTA**  
223 E. Ave. B Roy Martinez, Min.

**PRIMITIVE BAPTIST**  
621 South First  
Elder Cleveland Bass, Min.  
**PROGRESS BAPTIST**  
Progress, TX

**PROGRESS SECOND BAPTIST**  
Arthur Hays, Min.  
1st & 3rd Sundays

**RICHLAND HILLS BAPTIST**  
17th & West Ave. D  
Brad Gathright, Min.

**ST. MATTHEWS BAPTIST**  
Corner of W. Boston & W. Birch  
Floyd R. Monroe, Min.  
**TRINITY BAPTIST**  
314 E. Ave. B  
Robert Brown, Min.

#### CATHOLIC

**IMMACULATE CONCEPTION CATHOLIC**  
805 E. Hickory  
Joseph Augustine, Min.

**CHRISTIAN THE CHRISTIAN CENTER**  
Morton Hwy. • 272-5105  
Reyford Stanford, Min.

**CHURCH OF CHRIST LARIAT CHURCH OF CHRIST**  
Sam Billingsley, Min.  
S.S. 10 a.m.; W.S. 11 a.m. & 6 p.m., Wed. 7 p.m.

#### LAZBUDDIE CHURCH OF CHRIST

Nathan Crawford, Min.  
S.S. 9:30 a.m.; W.S. 10:20 a.m. & 5 p.m.;  
Wed. 7 p.m.

#### MULESHOE CHURCH OF CHRIST

22nd & W. American Blvd.  
John Knox, Min.  
S.S. 9:30 a.m.; W.S. 10:20 a.m. & 6 p.m.;  
Wed. 7:30 p.m.

#### SIXTEENTH & AVE. D CHURCH OF CHRIST

Curtis Shelburne, Min. • 272-4619  
W.S. 10:30 a.m. & 6 p.m.;  
Wed. 7:30 p.m.

#### LUTHERAN

**ST. JOHN LUTHERAN**  
Lariat, TX  
Richard Greenhaner, Min.  
S.S. 10:30 a.m.; W.S. 9:30 a.m.

#### METHODIST

**FIRST UNITED METHODIST HISPANIC MINISTRIES**  
E. 5th and E. Ave. D  
Pastor Benito Cavazos

**FIRST UNITED METHODIST**  
507 W. 2nd St.  
Pastor John Wagoner

**LAZBUDDIE METHODIST**  
965-2121  
**EL DEVINO SALVADOR**  
814 W. Ave. C, Muleshoe, TX  
Guadalupe Ballinas, Min.

#### NAZARENE

**NEW VISION CHURCH OF THE NAZARENE**  
814 W. Ave. C • 272-3622  
David R. McIntire

#### PENTECOSTAL

**IGLESIA PENTECOSTAL UNDA**  
207 East Ave. G • 272-3636  
Wencelado Trevino, Min.  
**INTER DENOMINATIONAL**

**NEW COVENANT**  
Plainview Hwy. Jimmy Low, Min.  
S.S. 9:30 a.m.; W.S. 10:15 a.m.;  
Wed. 7 p.m.

**WINKLES TRUCKS, INC.**  
Box 757 (806) 247-2724  
Friona, TX

**Lowe's MARKETPLACE**  
401 W. American Blvd.  
Muleshoe 272-4585

**Decorators Floral & Gifts**  
616 South First 272-4340  
Muleshoe, TX

**SHERLEY-ANDERSON LAZBUDDIE ELEVATOR**  
965-2922 Lazbuddie, TX

**MEMBER FDIC**  
202 South First 272-4515

**WES-TEX FEED YARDS, INC.**  
Custom Cattle Feeding  
272-7555 Muleshoe, TX

**AMERICAN VALLEY INC.**  
West Hwy 84 272-4266  
Muleshoe

**BAILEY GIN COMPANY, INC.**  
946-3397  
Sudan, TX  
Peanut Hawkins, MGR

**WESTERN DRUG**  
114 Main 272-3106 Muleshoe

**Delton E. Wilhite & Associates**  
Home, Auto, Crop, Life & Health Insurance  
1631 W. American Blvd., Muleshoe 272-3652

**HERITAGE HOUSE INN**  
2301 W. American Blvd. 272-7575  
Muleshoe, Texas  
Clint & Evelyn Peat - Resident Owners  
Reservations 1-800-253-5896

**BRUCE, INC. AIR CONDITIONING**  
Hwy. 214 North 272-5114  
Muleshoe, TX  
TAACL-B003350C, LP08638

**MULESHOE COOPERATIVE GINS**  
P.O. Box 569  
272-4794 Muleshoe, TX

**MULESHOE AREA HEALTHCARE Center**  
"Committed to Caring"  
106 W. Ave. H Muleshoe 272-7578

**MULESHOE MOTOR CO.**  
1225 W. American Blvd. 272-4251

**"THE FIVE AREA TELEPHONE COOPERATIVE ORGANIZATION"**  
West Plains Telecommunications Co.  
Five Area Systems, Inc., Plateau Cellular Network  
Five Area Long Distance - Five Area Internet  
302 Uvalde Muleshoe, USA (806)272-5533

**WANDA BROWND INSURANCE AGENCY**  
118 E. Ave. C Muleshoe 272-7548

Since 1957 - The Original  
**Leal's Mexican Restaurant**  
1010 W. American Blvd. 272-3294  
Muleshoe, TX Victor & Debbie Leal

**Triple S Publishing**  
304 W. 2nd 272-4536  
Publishers of the Muleshoe Journal and Bailey County Journals

**OBITUARIES**

**Ambrosio Pesina**

Funeral Services for Ambrosio Pesina, 85, of Muleshoe were held Jan. 30 at the Immaculate Conception Catholic Church with the Father Joseph Augustine officiating.

Burial followed in the Muleshoe Cemetery under the direction of Ellis Funeral Home, Muleshoe.

Mr. Pesina died Jan. 28 at St. Mary of the Plains Hospital, Lubbock. He was born Dec. 7, 1911 in San Luis, Mexico.

Mr. Pesina married Maria Avila Feb. 21, 1966 in Monterrey, Mexico.

Mr. Pesina was a farmer and moved to Muleshoe from the farm in the Enochs Community in 1956. He was a member of the Immaculate Conception Catholic Church of Muleshoe.

Pallbearers include Jose Reyes, Noe Anzulada, Pedro Pacheco, Elpido Pacheco, Martine Pacheco, and Fernando Ramos.

Survivors include his wife, Maria of Muleshoe; one son, Juan Manuel Pesina-Avila of Ft. Bragg, N.C.; three grandchildren, Chris Morris, Missy Stewart and Charlene Reyes.

**J.D. Evans**

LUBBOCK — Funeral services for J.D. Evans, 67, of Lubbock will be held Feb. 1 at Broadview Baptist Church with Rev. Truman Johnson, pastor, and Rev. Richard Grisham, pastor of Northside Baptist Church of Texas City, officiating.

Burial followed in the Peaceful Gardens Cemetery under the direction of Sanders Funeral Home.

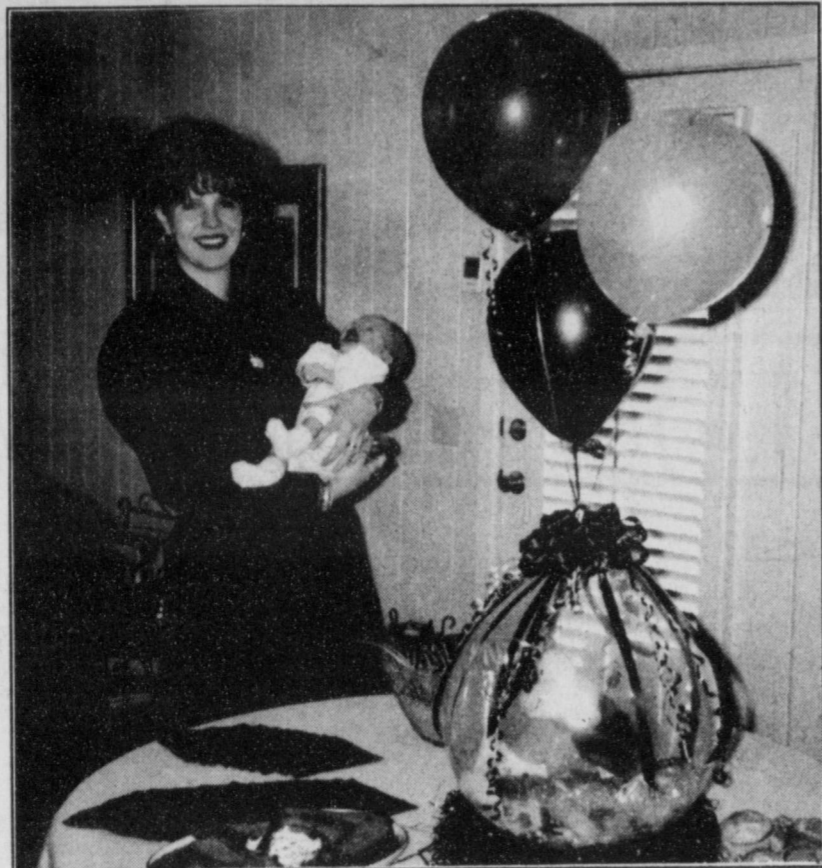
He died Jan. 29 in the Methodist Hospital, Lubbock. He was born April 1, 1929 in Sayre, Okla.

He married Leona Smith August 31, 1946 in Seminole.

He lived in Muleshoe where he owned and operated the Spudnut Shop. He moved to Huntsville, Ark. in 1976 where he operated a poultry farm. He retired to Lubbock in 1988. He was a member and deacon of Broadview Baptist Sunday School and Church. He was preceded in death by a brother, L.V. Evans.

Survivors include his wife, Leona; one son, Jimmy Dwayne Evans of Payson, Ariz.; two daughters, Patricia Estell Conduff of Lubbock and Velma Lou Grisham of Texas City, Texas; two brothers, Robert Evans of Wichita, Kan. and Donald Ray Evans of Napa, Calif.; two sisters, Lillie Mae Richards of Austin and Betty Joyce Dillanhaunty of Huntsville, Ark.; 11 grandchildren, 3 great-grandchildren.

The family suggest memorials to the Building Fund of Broadview Baptist Church.



**Baby shower**  
Pictured are Robin Welch and son, Garrett Welch who were honored with a baby shower Jan. 19 in the home of Mrs. Marshall Pool.

**ENOCHS NEWS**

By Mrs. J.D. Bayless

Congratulation to Jason Claunch who won Grand Champion on his market steer in the Bailey County Livestock show Saturday in Muleshoe.

I express my sympathy to the family of Mrs. Gertrude Fred who passed away Tuesday Jan. 21. Several people from our area attended her service.

Arven and Beverly Stroud from Lake Brownwood came Friday to visit his parents, also Morice and Georgia Todd from Hilton, Okla. Friday to visit her sister Mr. and Mrs. Goldman Stroud.

The children of Mr. and Mrs. Goldman Stroud honored them with a 60th Wedding Anniversary dinner at the Morton Activity Center in Morton Sunday, Jan. 26. All of the children were present. Harry and Lill Pollard of Enochs; Arven and Beverly Stroud of Lake Brownwood; Doris Trull of Bledsoe; Phil and Bonnie Bellevue of Lubbock; Glynn and Carlene Stroud of Muleshoe; Sandra Dickey of Woodrow; Gene and Ann Stroud of Dimmitt; Greg and Carolyn Kirby of Three Way; Mr. Morice Todd and Ellen Bayless also attended the celebration. There were 60 in attendance of grandchildren and great-grandchildren.

I was proud to hear Jim Claunch is home doing well since his hip surgery.

January 25th Dale and Rose Nichols attended the 50th Wedding Anniversary dinner of Rose's sister and brother-in-law, Mr. and Mrs. Ralph Pugh. The celebration was held at the

Christian Life Center in Midland and hosted by their children and grandchildren.

Mr. and Mrs. Bobby Adams also Mr. and Mrs. Bud Huff visited the ladies sister, Mr. and Mrs. Bill Key in Levelland, and their grandsons wife and son Mr. and Mrs. Louie Key from Washington were also visiting with them.

Mr. and Mrs. J.R. Austin visited in the home of her mother Mrs. Olive Cox in Muleshoe Saturday night.

Mr. and Mrs. J.C. Snitker attended the basketball game

**BABY SHOWER**

Sunday, Jan. 19 Garrett Welch, the son of Ron and Robin Welch, was honored with a "Welcome Baby Shower" held in the home of Mrs. Marshall Pool.

Special guest for the occasion were Garrett, his mother Robin, his paternal grandmother Mrs. La Trelle Welch, of Stanton, Texas and Heather Willouby of Corpus Christi, Texas.

The centerpiece on the serving table was a jumbo egg shaped balloon filled with a variety of infant toys and necessities for the new arrival. Three balloons and colored ribbons accented the large balloon as it sat on a large nest of red confetti. The primary colors used in the centerpiece car-

ried the theme of colors used in Garrett's nursery at home. Lemonade punch and a selection of fruit and nut breads were served to the guest.

Hostesses for the special occasion were Ann Faver, Donna Mason, Melody Lewis, Kristy Orr, Jo Ellen Cowart, Juana Shelburne, Christie Whitt, Laura Johnson, Melanie Gruhlkey, Suzanne Nichols, and Tonya Pool.

Garrett and his parents reside in Muleshoe and attend First Baptist Church. Ron is a member of the Muleshoe High School Coaching staff and Robin teaches at Watson Junior High.

1104

**RED WING SHOES**  
Made in U.S.A.

**The Fair Store**  
120 Main 272-3500

*We would like to thank all of the wonderful people of this community for your support after Annie's accident. Your prayers, thoughts and gifts were greatly appreciated. Annie's continued improvement is proof that all of your prayers are being answered. Kim and I are so happy that we decided to make our home in Muleshoe so that Annie has the opportunity to grow up in such a kind and caring community.*

Thanks again  
**Robert, Kim & Annie Shafer**

**REBEKAH NEWS**

On Tuesday Jan. 28 we draped the charter for Adele Tompkins. Her sister Ruby Hart was present for the ceremony. N.G. Mary Ann Ramirez opened lodge. Ina Wilemon is home from the hospital and would appreciate calls and visitors. Les Lambert is in St. Mary's Hospital, room 422. Thelma Howell is in Highland Hospital, room 143. They would both appreciate cards or calls. We missed all who weren't able to make it. We are going to Hereford Tuesday Feb. 4 to help install their new officers. There was 10 members present. We will have skating Feb. 7th.

Having a birthday party for your youngster? Experts say the best rule of thumb is to invite only a limited number of guests—at a rate of no more than 1 plus the child's birthday. That is two guests for a one year-old; three for a three year-old; four for a four year-old, and so on.

**We Have A Sweetheart of A Deal For You!**

Subscribe to basic cable with a premium service and receive your first month of basic service for ONLY \$14.

Call today for your **FREE** install!

**Classic CABLE**  
1-800-999-8876

Offer ends Feb. 14, 1997

<http://www.classiccable.com>

Commitment  
Community  
Customers  
Classic  
Cable

**Think Quick!**  
GM Goodwrench Quick Lube Plus oil change.  
It's fast — or it's free!

Bring your car or light truck to us for a GM Goodwrench Quick Lube Plus oil change. We'll complete all of these services in 29 minutes or less or your next oil change is free:

- Refill your engine with up to 5 quarts of GM Goodwrench® Motor Oil
- Install a new ACDelco Oil Filter
- Perform a complete chassis lube
- Check fluid levels: brake fluid, differential fluid, power steering fluid, transmission fluid, windshield washer fluid, transfer case fluid (4wd vehicles)
- Inspect: drive belts, hoses, air filter, tire pressure

**SPECIAL \$17.00**

**GM Goodwrench QUICK LUBE plus**

**DOC STEWART**  
CHEVROLET • GEO • BUICK

2500 Mabry Drive  
Clovis, NM  
505-763-4465  
1-800-530-8842

*Local news about local folks.*

**Muleshoe Journal**

To subscribe, call 272-4536





# SPECIAL WINTER SALE

ALL TYPES  
**Pepsi Cola**  
**1.29**  
 6 pack  
 12 oz. cans

## MEAT

Wilson Meat  
**Hot Dogs**  
 12 oz. pkg.  
**69¢**

Small Pack, Preferred Approx. 80% Lean, Chuck Quality  
**Ground Beef or Chili Meat**  
 lb.  
**\$1.39**

Great on the Grill, Beef Boneless  
**Short Ribs** ..... lb. **\$1.99**  
 Great for Swiss Beef Boneless  
**Arm Steak** ..... lb. **\$1.99**  
 Beef Boneless  
**Arm Roast** ..... lb. **\$1.79**  
 Decker, 1 lb. pkg.  
**Smoked Sausage** ..... **\$2.29**  
 Decker, 8 oz. pkg.  
**Beef Chorizo** ..... **\$1.19**  
 Small Pack  
**Pork Sirloins** ..... lb. **\$2.29**  
 Any Size Pack, Beef  
**Ribeye Steaks** ..... lb. **\$4.89**

Small Pack, Beef  
**Stew Meat**  
 lb.  
**\$1.69**

Tenderized, Small Pack  
 lb. **\$1.89**

Pilgrim's Pride, Boneless Skinless  
**Chicken Breast** ..... 3 lb. bag **\$7.99**  
 Pilgrim's Pride Boneless  
**Chicken Tenders** ..... 3 lb. bag **\$8.69**  
 Original or Beef State Fair  
**Corn Dogs** ..... 1 lb. pkg. **\$1.99**  
 NEW! Regular or Kielbasa Bar S  
**Smoked Sausage** ..... 12 oz. pkg. **\$1.19**  
 Home Browns  
**Hash Brown Patties** ..... 10 ct. pkg. **\$1.49**  
 Oscar Mayer Ham & Cheese or  
**Chopped Ham** ..... 8 oz. pkg. **\$1.59**  
 Oscar Mayer Regular or Thin Sliced  
**Meat Bologna** ..... 12 oz. pkg. **\$1.39**

## PRODUCE

Fresh  
**Tomatoes**  
 2 lbs. **\$1**

1 lb. pkgs., Crispy  
**Carrots**  
**3/\$1**

Yellow  
**Onions**  
 4 lbs. **\$1**

U.S. No. 1 Russet  
**Potatoes**  
 5 lb. bags  
**3/\$1**

Texas  
**Cabbage** ..... lbs. **3/\$1**  
 Garden Fresh  
**Zucchini or Yellow Squash** ..... lb. **69¢**

Chilean Red or White Seedless  
**Grapes**  
 lb.  
**\$1.29**

FREE GROUND BEEF - UP TO \$1.00 W/COUPON  
 Del Monte, 26-26.5 oz. can  
 Assorted D'Italia Pasta Sauce or  
**Spaghetti Sauce** ..... **89¢**

12 oz. Shurfine  
**Long Spaghetti** ..... **2/\$1**  
 Assorted Tucumcari Mountain  
**Cheese** ..... 10 oz. pkg. **\$1.99**  
 Shursaving Saltine  
**Crackers** ..... 1 lb. box **59¢**  
 Gebhardt  
**Chili Powder** ..... 3 oz. btl. **\$1.59**  
 Del Monte Diced, Pasta Style Chunk,  
 Tomato Wedges, or Stewed  
**Tomatoes** ..... 14.5 oz. can **69¢**

**FREE GROUND BEEF**  
 When you buy 2 Del Monte Spaghetti Sauces

## Marketing Specialists

SOFTY GENTLE WHITE OR ASSORTED  
**Bath Tissue**  
**79¢**  
 4 roll pkg.

REGULAR OR MEXICAN  
**Ranch Style Beans**  
**288¢**  
 15 oz. cans For

BRINGING VALUE TO YOUR HOME

POLAR ASSORTED BREADABLE FRUIT  
**All Fruit**  
**2\$3**  
 10 oz. jars For

TRAPPET'S ALABAMA  
**Pinto Beans w/Bacon**  
**2\$1**  
 15 oz. cans For

THREE TOP  
**Apple Juice or Apple Cider**  
**2\$5**  
 64 oz. btl. For

ZIPLOC  
**Sandwich or Snack Bags**  
**1.19**  
 50 ct. pkg.

TRAPPET'S ALABAMA  
**Chef Boyardee's Pasta**  
**99¢**  
 15 oz. can

APPLE, PEACH OR CHERRY  
**Pet Ritz Cobblers**  
**2.39**  
 26 oz. pkg.

AMERICAN BEAUTY  
**Egg Noodles**  
**69¢**  
 8 oz. pkg.

STOFFER'S ALABAMA  
**Hearty Portions**  
**2\$5**  
 15-18 oz. pkg. For

ZESTIES • FAST FRIES • COUNTRY STYLE POTATO WEDGES • COUNTRY STYLE STEAK FRIES  
**Ore-Ida Fries**  
**1.99**  
 22-32 oz. pkg.

VAN DE KAMP'S  
**Fish Fillets or Fish Sticks**  
**3.99**  
 20-21 oz. pkg.

MRS. PAUL'S  
**Breaded Fish Sticks**  
**3.69**  
 23.5 oz. pkg.

## LOWE'S WINTER WARMERS

MARDI GRAS  
**Paper Towels**  
**69¢**  
 Roll

NABISCO ORIGINAL, REDUCED FAT, LOW SALT, WHOLE WHEAT  
**Ritz Crackers**  
**1.99**  
 14.5-16 oz. pkg.

DOUBLESTUF, OR REGULAR/REDUCED FAT/THING PRINT  
**Oreo Cookies**  
**2.49**  
 20 oz. pkg.

QUAKER OLD FASHIONED OR QUICK  
**3-Minute Oats**  
**2\$3**  
 18 oz. box w/coupon

COCOA BLASTS • APPLE ZAPS • FRUIT O'S • SWEET CRUNCH • MARMALADON SAVORI • FROSTED FLAKERS • FROSTED OATS  
**Quaker Cereal** ..... 13-18 oz. **1.69**

LEMON LICK DEL. OR LEMON/REGULAR POWDER  
**Cascade**  
**2.39**  
 50 oz. box/btl.

DEL MONTE SQUEEZE  
**Tomato Ketchup** ..... NEW! 40 oz. **1.99**

HEALTH & BEAUTY  
**89¢**

Save \$1.00 on any 18 oz. 3 Minute Brand Oats  
 GOOD ONLY AT LOWE'S

ASSORTED  
**Patio Dinners**  
**88¢**  
 12-13 oz. pkg.

FROZEN & DAIRY  
**1.59**  
 12 oz. pkg.

ASSORTED CITRUS PUNCH  
**Sunny Delight**  
**1.19**  
 64 oz. btl.

ASSORTED  
**Tombstone Pizza**  
**2\$6**  
 12-13 oz. pkg. For

BUTTERMILK, SWEET MILK, OR BUTTER FLAVORED  
**Shurfine Biscuits** ..... 7.5 oz. can **6\$1**

PILLSBURY CARAMEL, ORIGINAL, OR CREAM CHEESE  
**Grands! Cinnamon Rolls** ..... 16.9-17.5 oz. can **2.39**

ASSORTED PILLSBURY  
**Grands! Biscuits** ..... 17.3 oz. can **1.19**

BIRDS EYE  
**Vegetables**  
**2.39**  
 12-16.5 oz. pkg. For

MINI, HOMESTYLE, OR BUTTERMILK  
**Eggo Waffles** ..... 12-16.5 oz. **2\$5**

GREEN GIANT HIBBLER  
**Corn on the Cob** ..... 12 ear **1.99**

WESTERN UNION MONEY TRANSFER™  
 "The fastest way to send money"

# Pay-n-Save

515 W. American Blvd.  
**401 W. American Blvd.**  
 Muleshoe 272-4585

WE RESERVE THE RIGHT TO LIMIT QUANTITIES IN TEXAS

515 W. American Blvd.  
 Muleshoe  
 272-4406

PRICES EFFECTIVE JAN. 29-FEB. 4, 1997  
 OPEN MONDAY-SATURDAY 7:30 A.M. - 8:00 P.M., SUNDAY 8:00 A.M. - 7:00 P.M.