

INSIDE	
Society Pages	3
Sports	6
Obituaries	8
Hansford Happenings	2
Want Ads	8

HANSFORD COUNTY LIBRARY
120 MAIN
SPEARMAN TX 79081-2064

The Hansford County
Reporter-Statesman
Serving Hansford County Since 1907 **8 PAGES**

WEATHER			
Day	Hi	Lo	Precip
Thu	--	--	.00
Fri	31	19	.00
Sat	61	28	.09
Sun	58	40	.00
Mon	40	21	.00
Tue	48	27	.00
Wed	--	25	.00
1993 Precip			.09

VOL. 85, NO. 11 213 Main Spearman, Texas 50¢ THURSDAY, JANUARY 7, 1993

Authorities search for suspects in Allsup's armed robbery

by Angela Jones
Editor
Spearman authorities continue their search for three suspects in connection with the Allsup's Convenience Store robbery that occurred Sunday in Spearman.
Spearman Police Chief Joe Raper said that the armed robbery occurred at 4 a.m. at the Allsup's Convenience Store on West Ken-

neth. The clerk reported that he had observed two suspects, but it is believed that three or four people were involved in the robbery, said Police Chief Raper.
According to authorities, the two suspects that entered the store had trash bags over their heads and one of them was armed. They emptied the cash register and the safe and then fled.

The Spearman Allsup's robbery is believed to be related to a similar robbery in Pampa. This robbery occurred at an Allsup's Convenience Store located on West Wilks at about 2:19 a.m., Sunday.
According to Police Chief Raper, Pampa and Spearman authorities are working closely together to try to solve the case.

Crop producers... to comply with 1990 farm bill

Crop producers should manage their corn and sorghum residues to conserve moisture and to comply with the 1990 Food, Agriculture, Conservation, and Trade Act. (FACTA)

The conservation compliance provision of FACTA discourages the production of crops on highly erodible cropland.

Producers developed conservation plans with the Soil Conservation Service personnel by January 1, 1990 to begin actively applying the conservation plan on the highly erodible cropland.

The highly erodible cropland acres in Hansford County will be protected from wind erosion by leaving crop residues on the soil surface during the peak wind erosion period. The actual crop residues required ranges from 650 pounds to 2500 pound per acre from sorghum

and 1400 pounds to 2600 pounds per acre from corn in Hansford County.
The conservation plan is developed with the producer on each highly erodible field. The soil type

determined from the soil map in each field determines the amount of crop residues, that is to be maintained on the soil surface. The

See Producers page 2

Spearman City Council... receives donation

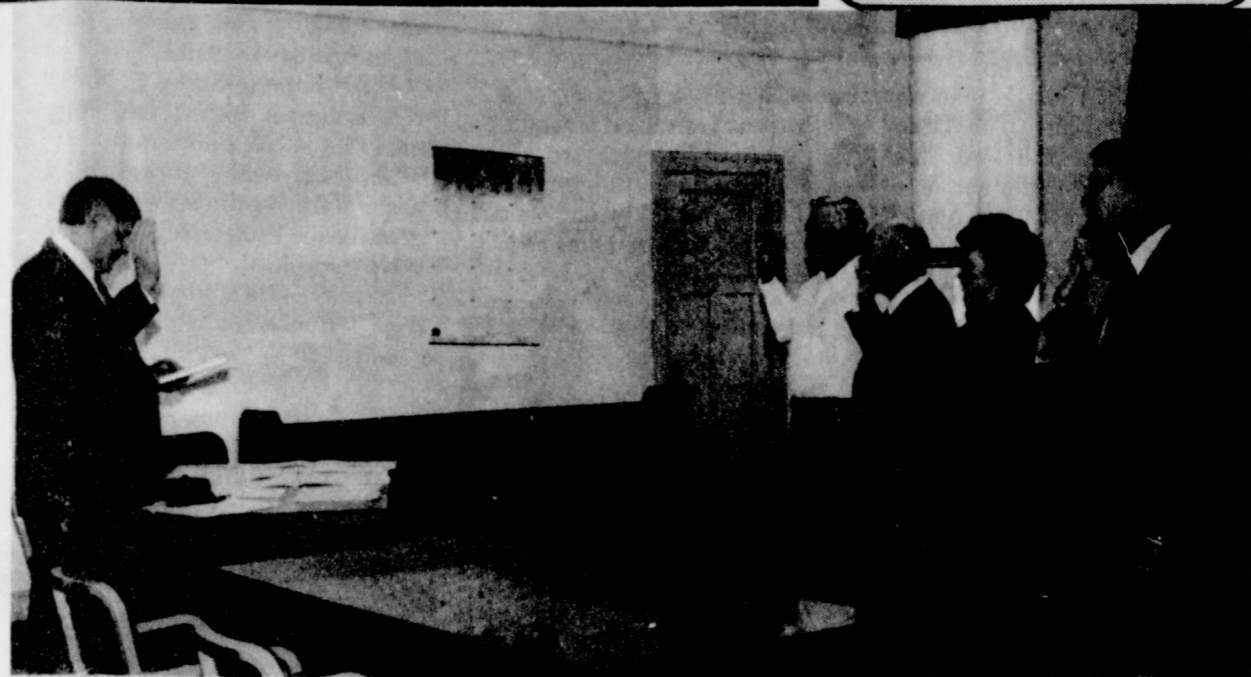
by Angela Jones
Editor
The Spearman City Council voted unanimously to accept a property donation from Mr. Richard Holton at the special meeting held Wednesday, Dec. 30.

The property donated consists of four lots. Two of the lots are located on Main Street. They are on each side of the GTE building. The other two lots are located at the corner of North Endicott and B. Ave. The le-

gal description of the property is Lots 5 & 7, Block 14, OT, and Lots 7-8, Block 26, OT, City of Spearman, Hansford County, Texas.

City Manager Kelvin Knauf showed a video of the properties to the council. He also gave ideas on the possible use and development of each property.

The council authorized Mayor Burl Buchanan and Knauf to complete all the necessary documents for the transaction.



The newly elected and reelected Hansford County officers were sworn in by County Judge Jim Brown Monday, Jan. 4. Being sworn in are (l-r) Kent Guthrie, newly elected County Commissioner Precinct 3; Worly Smith, newly elected County Commissioner Precinct 1; Helen Dry, reelected County Tax Assessor and Collector and John Hutchison, reelected County Attorney. R.L. McFarlin was reelected as County Sheriff but decline to be present for the swearing in ceremony.

January, February, March... a look back at the headlines

Editors note: *The Hansford County Reporter-Statesman* will be running a series of four stories to look back at 1992. Each segment will contain three months. The last articles will appear in the January 28, 1993 issue. Below is 1992, January, February and March.

JANUARY
"Investigation continues in juvenile case" Assistant juvenile probation officer was relieved of his duties temporarily, pending a complete investigation. The officer was alleged to have struck a Spearman youth with a baseball bat as the youth's father held him down.

"Pringle-Morse CISD reps travel to Austin" Tom Dortch, Allen or Mark McCloy and Jon Jarvis were joined by Bob Womble to travel to Austin. The trip was to meet with the Robin Hood Forum Committee about the school funding plan.

"P-M CISD superintendent Roy Harris resigns" According to Harris he resigned the position to take a position as field representative for the Texas Education Agency.

"Grand jury to investigate alleged beating of juvenile" A grand jury was to be selected.

"Area resident dies from exposure... Celebration ends in tragedy" A New Year's Eve celebration turned into tragedy for area resident, Richard Torres of Perryton and Spearman. Torres was found dead in a pasture south of Farnsworth. He had died from exposure with acute alcohol intoxication listed as a contributing factor, said Ochiltree County Sheriff Joe Hataway.

"13 Gruver players earn All-District honors" Coach Barry Haensch released the District 1-A All-District team selections. The thirteen Gruver players selected were: Carey Kauffman, Max Davis, Rex Ralston, Kevin Spivey, Crockett Tidwell, Shannon Pool, Matthew Hoel, Brady Pool, Ryan Mathews, Garret Gumfory, Robert Whitaker, and Marty McCloy.

"Tim Dooley chosen for All-State honors" Don Mullins, coach, announced that Tim Dooley was named to the All-State Honorable Mention Team at both the running back and linebacker positions.

"Authorities alerted in three states... Woman reports kidnapping at rest area" A reported kidnapping in Hansford County had authorities on the alert. The investigation revealed that no kidnapping actually took place—there was no baby. The 24-year-old Berger resident was taken before County Judge Jim Brown and then transported to an Amarillo hospital for evaluation.

"Gruver band students named to All-Region Band" Santos Rivera, Jr. and Sara Jones were selected to the All-Region Band for class 1A and 2A schools. Jones earned first chair saxophone and Rivera earned eighty chair in the cornet section.
"LaRochelle appointed to TDHS advisory panel" The Texas Board of Human Services appointed Albert LaRochelle to the Aged and Disabled Services Advisory Committee of the Texas Department of Human Services. LaRochelle, administrator for hospital and nursing home operations at Hansford County Hospital District, joined 240 involved Texans who serve on the department's 16 advisory committees.
"Wastewater plant contract awarded" A contract for construction of a temporary wastewater treatment plant was awarded by the Spearman City Council. The contract was awarded to Davco, upon recommendation of Dwight Brandt, city engineer.
"Special drug saves resident's life" The Hansford County Heart Association hosted its annual dinner and fund-raiser. Spearman resident, Jim Ivey, shared his story with the local organization and the newspaper about his 1991 attack. Dr. Behney, the physician in the emergency room, ordered the preparation and administration of a drug, streptokinase, for Jim. Once the patient was stabilized, streptokinase was given to him through his intravenous tube.

"Layman indicted on misdemeanor charge" Assistant juvenile probation officer Jim Layman was indicted by a Hansford County grand jury, on a charge of reckless conduct.

"GISD Superintendent Cathey submits resignation" Tom Cathey resigned his position as superintendent of Gruver Independent School District, effective June 30, 1992. The Board of Trustees accepted the resignation. Cathey said he would seek a similar position at another school.

"Lady Hounds capture district" The Gruver Lady Hounds clinched a district championship with a 50-32 victory over the Booker Lady Kowas at Booker.

"Greyhounds are district champs" For the fourth consecutive year, the Gruver Greyhounds were champions of District 1-A. The Greyhounds defeated the Booker Kiowas 52-39 at Booker for their 10th consecutive victory.

"Mr. and Miss Hansford Manor named" Richard Shedeck of Spearman was named Mr. Hansford Manor and Louise Beebe of Spearman was named Miss Hansford Manor. R.P. Stout of Stinnett and Sadie Sutton of Gruver were named runners-up.
"Gruver Lady Hounds win Area" The elated group of Gruver Lady Hounds were on their way to the Region I Class A Tournament following the 48-41 victory over Spur High School.
"Hansford Teen Court established" Teen Court was created to give Hansford County youth an alternative to the criminal court system. A teen, 10-18 years of age, before a court such as municipal, justice of the peace or county court, charged with a misdemeanor offense, could choose to enter a plea of guilty and be referred to Teen Court. The Teen Court Judge, appointed by the Teen Court Board Jurors, selected from a pool of previous offenders and volunteers.

Immunization shots available in Spearman today

The Spearman Department of Health Office at 720 Archer is offering immunizations Thursday, Jan. 7 from 9 to 12 a.m. and 1 to 4:30 p.m.

Immunization clinics offer vaccines that give protection against several childhood diseases, such as polio, diphtheria, lock jaw (tetanus), whooping cough (pertussis), measles, rubella, mumps and HIB (haemophilus influenzae type B).

The Texas Department of Health is charging money to help with the cost of keeping the clinic open. The amount of money charged will be based on family income and size, and the ability to pay.

If you are unable to take your child to the Spearman Clinic, the Perryton office will be open on Tuesday, Jan. 12, from 10 a.m. to noon. This office is located at the Ochiltree County Courthouse.

FEBRUARY

"Layman indicted on misdemeanor charge" Assistant juvenile probation officer Jim Layman was indicted by a Hansford County grand jury, on a charge of reckless conduct.

"GISD Superintendent Cathey submits resignation" Tom Cathey resigned his position as superintendent of Gruver Independent School District, effective June 30, 1992. The Board of Trustees accepted the resignation. Cathey said he would seek a similar position at another school.

"Lady Hounds capture district" The Gruver Lady Hounds clinched a district championship with a 50-32 victory over the Booker Lady Kowas at Booker.

"Greyhounds are district champs" For the fourth consecutive year, the Gruver Greyhounds were champions of District 1-A. The Greyhounds defeated the Booker Kiowas 52-39 at Booker for their 10th consecutive victory.

"Mr. and Miss Hansford Manor named" Richard Shedeck of Spearman was named Mr. Hansford Manor and Louise Beebe of Spearman was named Miss Hansford Manor. R.P. Stout of Stinnett and Sadie Sutton of Gruver were named runners-up.
"Gruver Lady Hounds win Area" The elated group of Gruver Lady Hounds were on their way to the Region I Class A Tournament following the 48-41 victory over Spur High School.
"Hansford Teen Court established" Teen Court was created to give Hansford County youth an alternative to the criminal court system. A teen, 10-18 years of age, before a court such as municipal, justice of the peace or county court, charged with a misdemeanor offense, could choose to enter a plea of guilty and be referred to Teen Court. The Teen Court Judge, appointed by the Teen Court Board Jurors, selected from a pool of previous offenders and volunteers.

MARCH

"All-District players selected" Spearman varsity basketball teams captured eight places on the two All-District 1-SA teams. The five Lynxettes included Joy Gafford, Tamri Townsen, Mendy Lasater, Jill Lusby and Laura Pearson. The three Lynx players named included Cody Pipken, also selected as co-winner of the district's Most Valuable Player award, Brian Beck and Russell Pipkin.
"Gruver Lady Hounds, Greyhounds selected to all-district teams" Holly Veneman was selected District 1-A MVP. Mika
See 1992 page 5

Second baby 1993 to win new car seat

The American Society of Safety Engineers-Texas Panhandle and The Hansford County Reporter-Statesman wish to invite the SECOND BABY born in 1993 from Hansford County to advise The Hansford County Reporter-Statesman. We want to give you and your parents a car seat for your protection to start your life in as safe a manner as possible.

If the Second child of 1993 or some one for you will come by The Hansford County Reporter-Statesman, 213 Main in Spearman, we will give you this gift from us to you.



Basil Walker, of Eagle Exploration, holds the car seat the American Society of Safety Engineers-Texas Panhandle will give to the parents of the second child born to a Hansford County family in the new year. To collect the seat come by the Reporter-Statesman's office with proof of birth.

Hansford County schools... starting 93-94 list

Elementary schools in Hansford County are getting ready to register the 1993-1994 kindergartners. In order to know who these students are, each school is starting a 93-94 kindergarten list.

It is important that next year's students be known now in order that they may be given information on the immunizations and other items necessary for enrollment, stressed school officials.

Children attending kindergarten in Spearman, Gruver or Pringle-Morse will be invited to visit the school in April. If you have a child or know of any child whose birthdate was prior to September 1, 1988, and who will be 5 years old on or before September 1, 1993, please complete the form and return it to the appropriate school office: **Spearman Elementary School**, 511 S. Townsend, Spearman Texas 79081; **Gruver Elementary School**, P.O. Box 1139, Gruver Texas 79040; or **Pringle-Morse C.I.S.D.**, P.O. Box 109, Morse Texas 79062. **This should be done prior to January 31, 1993.**

Registration Form for 1993-1994 Kindergarten
(Please Print)
Child's Name: _____
Last First Middle Initial
Parent's Name: _____
Mailing Address: _____
Phone Number: _____ Child's Social Security Number: _____
Birthdate: _____ Sex _____ Age as of Sept. 1, '93: _____
THESE DOCUMENTS WILL BE NECESSARY TO ENROLL YOUR CHILD IN SCHOOL.
Do you have a birth certificate for your child? If the answer is NO, please apply for one NOW.
Do you have immunizations up to date for your child?
If you do not have a social security number for your child, please apply for it NOW.
According to school officials parents will be notified about preschool screenings and the kindergarten roundup at a later date.

Spearman students... to compete in national bee

The first round of the 1993 National Geography Bee will be held at the Spearman Elementary and the Spearman Junior High during school on Tuesday, Jan. 12.

For the fifth year, the National Geographic Society is holding the National Geography Bee for students in the fourth through the eighth grades in more than 45,000 schools across the United States, the District of Columbia, and five U.S. territories, as well as Department of Defense Dependents Schools around the world. Sponsoring is being provided by National Geographic WORLD, the Society's magazine for children, and Amtrak®.

The winner of the Spearman Bee will advance to the next level of competition, a written examination. All school winners are eligible to win the national championship and its first prize, a \$25,000 college scholarship, at the national finals May 25 and 26 in Washington, D.C.

For more information contact Verlan Winegarner at 659-2565 or 659-3633.

Among the Neighbors

by Helen Fisher

Sybil and Billy Miller accompanied Sylvia and Ray Robertson to Nazareth to spend Christmas with the Robertson's daughter, Brenda and Claud Annen and family.

Eddie Gail Martin and his mother, Will Ella, spent 10 days of Christmas at Quitman, Arkansas. They were visiting his brother James Martin and family.

Henry and Mary Cornelius, feeling the best place to get a sock full for Christmas would be Reno, so they flew there December 21. They were gone nine days and had an interesting Christmas. They stayed at the Harrah right in the middle of all the activity, then flew out ahead of the cold weather. They had a good but short visit in Amarillo with Steve Rumley, the son of their daughter, Del.

Mary Alice Gibner is back from her Christmas holidays and ready to start back to school, she enjoyed her vacation in Houston with her son, Stinson and Thuy. They all spent Christmas with her aunt and cousin in Houston and combined an observance of the wedding anniversary of a relative the same week.

Stinson is enjoying his new position with the Enron Company which he finds most challenging.

Freda Sheets spent several days in Lakin, Kansas in the home of Nina and Del Taylor. Freda drove to Perryton and met her niece from Lawton and went on with them. All of the family of Del and Nina were there.

Marti and Mike Garnett with Michelle spent Christmas week in Riverside, California. Their son Jon and Kelly and three children live there, as do her parents and brother, his wife and five children so they had a family reunion. Their other sons, Mark a student at B.Y.P.U. at Provo, Utah and J, who is back in the states from Japan, joined them. In the dead of winter the Garnetts all enjoyed the balmy weather where they could have their meals out of doors.

Johnnie Lee returned several days ago from Kansas City and Christmas with all his family. He left Joan there to get better acquainted with their newest granddaughter—more about her later.

This was the first Christmas Johnnie and Joan have spent out of Spearman since their marriage. All of their children joined them in the home of their daughter Jonette and Larry Boyles. Jock Lee with Kara and Tyron came from Fritch; Jo Linda and Charlie Marshall with their three children came from Austin.

Now to the arrival of the 8th grandchild for Johnnie and Joan. Catherine Elizabeth, the daughter of Jonette and Larry Boyles was born the 22nd of December in Kansas City. She weighed 7 lbs. and was 19 inches long.

Her great grandmother is Mrs. Sada Hoskins of Spearman. Her other grand parents are Mr. and Mrs. Boyles of Wisconsin. She has two sisters—Kristen and Erica.

Beverly and Craig Vinson with

Heather, Nicholas and Dusty, had an enjoyable Christmas in Brownfield with her mother. On their return, they stopped in Amarillo where she underwent surgery on the 28 of December.

She had surgery at St. Anthony's Hospital to repair a torn rotocuff. She is recovering but will have the use of only her left arm for some time. However, she has returned to her duties at the Hansford Agency.

This is the third surgery this year for Beverly so she is looking forward to a new year free of surgery.

Late word from Dick Allison in High Plains Baptist hospital is that he is still in I.C.U. after complication of a double by-pass operation on the 30.

Their son, Don, of Vasser, Kansas took him to Amarillo on Monday before his surgery. Their other son, Paul, of Kingston, Oklahoma, near Lake Texhoma was also here for the surgery, but both have since returned to their homes.

Lois is in such poor health she is unable to be with him.

Jeff Gressett left to return to work with the Peace Corps in Egar, Hungary, after spending the Christmas holidays here with his parents, Carolyn and Ray Gressett.

Other guests were their daughters, Khristi and Kelly Jones and three children were here from Amarillo and Cindy and Tom Sinclair and two children came from Pine Bluff, Arkansas. Carolyn's sister, and husband, Mr. and Mrs. John Winters of San Antonio joined them.

Jess will return to the states in March when he will bring a group of students to Washington, D.C. for two weeks.

Pre-Christmas guests of Madga and Wesley Garnett were two of their grandchildren. Bonnie Garnett, daughter of Wesley Jr. and Cherry brought her roommate, Amy. They are students at North Texas State University at Denton.

The Garnetts were also delighted to have J Garnett who recently completed a two year mission to Japan. He has since gone to Colorado Springs where he is re-entering the U.S. Air Force Academy.

Hometown news

December 22 (FHTNC)—Navy Warrant Officer Robert G. Byrd, son of Preston H. and Jean E. Byrd of Spearman, recently arrived off the Coast of Somalia aboard the aircraft carrier USS Kitty Hawk, homeported in San Diego, CA in support of the relief effort, Operation Restore Hope.

Forward deployed to the Western Pacific and Indian Ocean since early November, the USS Kitty Hawk (CV 63) battle group relieved the USS Ranger (CV 61) battle group off Somalia. This is the Kitty Hawk's first deployment since completing a four-year overhaul in December 1991, extending its service life by 15 years.

During this deployment, Byrd has visited Hong Kong and Singapore.

The 1975 graduate of Spearman High School, Spearman joined the Navy in October 1975.

Sheila and Clay Fewell were pleased to have their son Randy and family during the holidays. They live in Fort Meade, Maryland. Other guests of the Fewells were Mr. and Mrs. Loyd Gooch and Mr. and Mrs. Jon Davis, all of Pampa.

T.D. Sansing enjoyed Christmas by spurts this year. Tynelle and David Jordan stopped for a couple of days enroute to Colorado from their home near Houston. They met their four children, spouses and grandchildren for a week of skiing. They also spent a day and night here on their return trip.

Martha and Perry Coursey came up from Lubbock on Saturday and Sunday after Christmas.

Sara Dossett enjoyed warm sunshine and beautiful flowers in all directions for two weeks for her Christmas. No, not in imagination but in the Rio Grande Valley.

She flew down to be with her son Buddy, and Vickie and daughter at San Benito. While there she had a good visit with W.R. and Eulalie Greever who spent Christmas in Harlingen.

Donna Sheets is remembering a wonderful Christmas shared with her three daughters and their families. Dr. Randy and Sue Felder with Jessica and Lauren; Wayne and Karen Woodward, all came from Amarillo. Sharon Sheets and son Jeffrey came from San Antonio. After Christmas day, all except Wayne and Karen went to Angel Fire, New Mexico for several days. The snow was deep which made excellent skiing and snowmobiling.

Former Spearman resident swims in international meet

Janna Brock, former Spearman resident, was selected to compete in the Kerr-McGee Elite International Swim Meet in Oklahoma City Dec. 17-20. Olympians Summer Sanders, Tom Jager, Jeff Rouse, and Joel Thomas swam at the meet. Janna made it to the finals in the 100 breast and was able to swim in the same heat as Summer Sanders. Janna placed 8th overall. She also made it to the finals in

Club news

Senior Citizens Meeting The senior citizens met for the last time in 1992 at the Golden Age Center for food, fellowship and games.

Those in attendance were: Vivian Green, James and Adu Joyce Stedje, Ida Hendrick, Leona Harris, Verna Finley, Pauline Winger, Jessie Spivey, Rebecca Westerfield, Anna Marie Stedje, Merle Arthur, Ralph and Beulah Bort, Jim Strawn and Adalyn Barnes of Spearman, Faye Cluck, Delphine Etling and Joe Bob Smith otherwise known as J.C. Harris. Special guests were Bob and Phyllis Anderson of Guymon.

I asked Verna Finley where she went Christmas—New York City? She said "No, I went to Ft. Worth to visit Mendy and family especially Mendy's baby."

On The Go With Joy

by Joy Henderson

Do remember last week when I wrote about a certain someone who was sneezing, wheezing, coughing and generally full of congestion? Well, this same person saw a sign on the I-35 exchange from I-40 in Oklahoma City. This sign said "Congestion—Be Prepared to Stop." This same person couldn't figure out why they would put a sign there about congestion and why would they need to stop. She hadn't been on that particular stretch of highway during the rush hour traffic, but anyhow she wasn't thinking of the right kind of congestion. Finally, her brother told her, the highway was sick. Oh! the joys of traveling with grandkids. These next two weeks, we will get more experience with the little grandkids while we try to handle them two at a time. Here it is the beginning of the third day and I'm fixing to holler calf rope.

Well, 1993 is just a continuation of 1992, we continue to have sick folks in the hospital. It has been my habit to just sit back and listen to the conversation of others who are inhabiting the "waiting rooms." The most often topic of conversation after exchanging the "how are you sick folks?" is the terrible cold and snows that we have had this year.

Forgive me for calling these guys a couple of "old codgers" (I mean no disrespect because I think "old codgers" are kind of cute) but they had some interesting stories of way back when there were really bad cold snow storms. Old Codger #1 said "When I grew up in Nebraska, winters were so cold that folks went to church just to hear about hell." He also said "In Nebraska, we have four different seasons: summer, get

ready for winter and get over winter. We also have a snow removal program. It's called July." Old Codger #2, not to be outdone, said "I think that was the winter we wore sandpaper underwear so the friction would keep us warm and it was so cold that our dog froze to one of the front tires of our car."

About that time Old Codger #3 walked in for a cup of coffee and he got in on the conversation about fierce winters back home. His worst problem was when they went out to the barn to do the milking. It was so cold that the milk froze before it hit the bottom of the bucket. We asked him how he dealt with that? Old Codger #3 said that they milked over their left arms until they had a big bundle of frozen squirts and they were tied with binder twine and put in the barn loft. Then when mom was cooking, she sent us out for however many squirts her recipe called for.

One of the volunteer attendants for the waiting room got to reminiscing about how one year it was so cold, her Dad balked at taking his family out to a nearby town to see "Little Orphan Annie" at the movie theater. But all the kids were going stir crazy and driving Mom up the wall so she "talked" Dad into driving the Tin Lizzie 16 miles to town. When the movie was over, they found the gears frozen in reverse. They ended up having to back the car the 16 miles to get home.

About this time, the Doctor came in for a chat after doing a test on B.H. and said he was ready to be taken back to his room. Since it was nearing the noon hour, we stopped for a snack and then went up to his room thinking we would find him having his lunch. Well, we looked in and there was no B.H. anywhere.

We asked the nurse about him and they hadn't seen him. "He hadn't returned from Day Surgery" said they! We run down to the elevators and back down to the waiting room. At the nurses station, they couldn't find him. "He was returned to his room," said they. "No, he isn't there," said we. "They haven't seen him," said we. Don't

you know those telephone wires sizzled as everyone was trying to locate B.H.

Seems he was safe and sound in the x-ray department. Personally, I'd like to see a little less of hospitals and waiting rooms this year.

Sunday was a red letter day for a lot of us who are acquainted with the Gary Blakeney family. They were residents of Gruver in the early 80's when he was minister for the Church of Christ. In addition to his wife Robin and children Laura and Joseph, they have added another son, Caleb John and daughter Sarah Ann. Everyone enjoyed catching up on old times especially the former teen-agers who are now either in college or establishing families of their own. Putting in appearances were Ross and Viva Renner, Luke and Julie Pittman and children, Frank and Lucy Pittman, Bo and Bee Green, children Rho, Tulle, Lynna and her friend, Teala Rena and Dustin Henderson who were brought to visit us by Scott. Other news of our Henderson family is that Dennis and Vicky Henderson made a quick trip to the Oklahoma City area to pick Summer up who was visiting relatives before school resumes. Hopefully, he was able to pay a visit to my mother who is in a nursing home in Norman. My dad was also a patient in the Purcell hospital.

Since it is nearly time for classes in college and other schools to begin the New Year, we had some last minute visitors this past weekend. Those were Dusty Cotter, Stephen Dorman with a friend Jacque Kilpatrick, Chad Brown, Kyle Irwin. Also visiting were Jody Holland with fiancée Renae Clark who are students at San Angelo State.

We have had several of our older ladies who have suffered falls and have had some injuries; Pat Dawson's mother Mae Farren and Jessie Spivey and Dave Karlin's mother Margaret Buchanan. We have had reports that Trixie Holt is doing good after having surgery on both of her knees.

Our sympathy is extended to Cynthia Henson whose father recently passed away.

The family of Mary Harmond wish to thank everyone for flowers, food, visits and prayers. Thank you all!

Bonita Ohlson • R.E. Harmond & Sylvia Flenor

The family of Bill Aduddell would like to thank the Employees at the Northern Natural gas plant, the ambulance crew, the hospital staff & Dr. Ridge. Also to all the friends and neighbors for their special care and support at this time of our loss of our loved one. Thank You All, Zola Mae Aduddell & Family

You are cordially invited to a BABY SHOWER honoring ROBBIE (McFarlin) Pulley & son ZANE Sunday, Jan. 10, 1993 2:30-4:30 PM First State Bank Hospitality Room Selections: Kid's Stuff

You are cordially invited to a Bridal Shower honoring Chris & Maranda (Loomis) Lopez Saturday, January 9, 1993 2-4 p.m. In the country home of Marilyn Cline Selections: Celebrate, Gordons

Hansford Happening

Money is needed for the Foster Children of Hansford County Fund. This fund was started in 1988. All the money donated goes to help the girls and boys from Hansford County at Girls Town and Boys Ranch to have a little happier Christmas or birthday. To make a donation, stop by First State Bank • Spearman and talk to Larry Trosper or Rhonda North.

Rainbow and Ranglers are having country and western and square dance lessons starting Tuesday, Jan. 5, at the county barn. The country and western lessons will be held from 7 - 8 p.m. with the square dance lessons following from 8 - 10 p.m.

Producers from page 1

amount specified in the plan and the date, when to leave it on the soil surface should be followed. Each plan includes agreed-upon dates which must be met. The plan is developed with the help of the SCS and must be fully implemented by

the end of 1994.

Programs and services of the Soil Conservation Service are offered on a nondiscriminatory basis without regard to race, color, national origin, age, sex, religion, marital status or handicap.

Nominate OUTSTANDING CITIZEN OF SPEARMAN

NOMINEE NAME: _____

ADDRESS: _____

Please attach nominee's qualifications to this form.

The following qualifications must apply to nominee:

- Someone who has made outstanding VOLUNTARY contributions for the benefit of others over the past year. Please remember, THIS IS NOT RELATED TO THEIR EMPLOYMENT!!!
- Nominee must live within the Spearman School District.
- Nominee may be of any race, age, sex and from any or no religious or political affiliation.
- Please keep in mind: Contribution to community welfare, leadership ability and participation in community affairs.

**NOMINATIONS MUST BE
TURNED INTO THE CHAMBER OFFICE
BY 5 PM, FRIDAY, JANUARY 15, 1993**

Additional forms are available at the Chamber office

School menu

Spearman School Menu January 11-January 15 LUNCH

Monday—Steak fingers, scalloped potatoes, sweet peas, hot rolls, fruit, milk.

Tuesday—Meat & cheese nachos, pinto beans, taco sauce, lettuce-tomato salad, spinach, pineapple upsidedown cake, milk.

Wednesday—Corndog, macaroni & cheese, cut broccoli, cinnamon roll, purple plums, milk.

Thursday—Hot turkey sandwich, mashed potatoes with gravy, green beans, extra bread slice, peach cobbler, milk.

Friday—Hamburger, french fries, lettuce-tomato, pickle-onion, cookie, milk.

Gruver School Menu January 7-January 15 LUNCH

Thursday (7th)—Chicken noodle soup, crackers, pickle spears, fruit, cinnamon rolls, milk.

Friday (8th)—Hamburgers, french fries, lettuce, pickles, cheese, rice crispie treats, milk.

Monday—Steak fingers, mashed potatoes with gravy, green beans, pudding, hot rolls, salad bar, milk.

Tuesday—Western burgers, corn, orange sherbert ice cream, salad bar, milk.

Wednesday—Fried chicken, mashed potatoes with gravy, carrots, jello, hot rolls, milk.

Thursday—Nachos with meat, beans, fruit, milk.

Friday—Chili cheese dogs, french fries, fruit, milk.

BREAKFAST

Thursday (7th)—Toast, peanut butter & jelly, fruit, milk.

Friday (8th)—Cinnamon rolls, fruit, milk.

Monday—Cereal, juice, muffins, milk.

Tuesday—Biscuits & sausage, fruit, milk.

Wednesday—Blueberry muffins, fruit, milk.

Thursday—Toast, peanut butter & jelly, fruit, milk.

Friday—Cinnamon rolls, fruit, milk.

Ruth DeCamp...

enters contest, wins new pickup

by Angela Jones
Editor

What would you do if you won a new pickup? Well, Ruth DeCamp of Hitchland found out the answer to that question on December 28, 1992, when she won a brand new Ford Ranger. "I grabbed the door and my chest. Then they asked me if I was going to faint," she said.

It all began when Ruth and her husband, Medford, were shopping at the Crazy House in Liberal, Kan. LS Radio, which is broadcast across Kansas, was holding a contest. In this contest you guessed how many miles a Ford Ranger and a Geo Tracker would travel before they ran out of gas, explained Ruth.

"My husband was picking up some things so I just signed up," she said. Ruth chose 635 miles. "It was a guess off the top of my head. I didn't even know what a Geo Tracker was," she exclaimed. She added that her husband kept saying, "You didn't put down enough miles." He guessed 700 miles. "Now it is a joke in the house," Ruth said.

Ruth and Becky Andrews of Coby, Kan., tied. Both had guessed 635 miles and the two vehicles travelled 641, just six miles farther. The two ladies then met at the radio station in Liberal. "They



Ruth DeCamp of Hitchland stands by the new Ford pickup she won in a contest in Kansas.

flipped a coin and I won," Ruth said. She continued, "I couldn't believe it. I was so excited." She added that she felt sorry for the other lady.

This is not the first contest that Ruth has entered. "I've entered contests before," she said. Then explaining she said that she had won a colored T.V. in Amarillo about

three years ago.

Although Ruth has won contests before she is very excited about the vehicle she picked up in Wichita, Kan., last Saturday, Jan. 2. "It is a once in a life time deal for me to win a vehicle," she stated.

Now everyone is teasing her that she is going to win the lottery. Who knows? Maybe she will.

Women's Leadership...

convention to be held Tuesday, Jan. 12

On Tuesday, Jan. 12, a leadership conference designed for women currently holding officer positions in organizations and those wishing to assume roles of leadership in groups is being sponsored by the Texas Agricultural Extension Service under auspices of the Family Community Leadership Program and the Texas Extension Homemakers Association.

Speakers for the special 1-day workshop will present a program geared toward women who want to advance within a leadership hierarchy and attain effective skills in managing organizational meetings,

change of mission and goal interpretation. Participants will learn practical techniques for delegating responsibility to others and for working with diverse groups and hard to reach audiences. Sessions on time and stress management will be featured in addition to presentations on effective ways to market any organization to target audiences and general public.

Registration and welcome reception will begin at 9:30 a.m. in the Heritage Room of the M.K. Brown Civic Auditorium at 1000 N. Summer. Dr. Barry B. Thompson, President of West Texas State Univer-

sity is the keynote speaker and will address managing change within organizations and institutions.

At 11 a.m. Dr. Martha Couch, noted Extension Youth Development Specialist from Lubbock will present a nuts and bolts segment on organizational management within small and large groups.

The afternoon program begins at 1 p.m. and will focus on the central conference theme "women are leaders" and already hold many positions of leadership in society. Concurrent sessions targeting leadership performance and quality will be conducted until 3:30 p.m. A question and answer wrap-up session with the presenters will end the day's program.

For more information, contact your county extension agent or call Dr. Judy Flynn, District Extension Director at 806-359-5401.

At the movies . . .

Showing at the Lyric Theatre in Spearman from Friday, Jan. 8, to Tuesday, Jan. 12, is "Bram Stoker's Dracula" on screen 1 at 7:45 p.m. and "A River Runs Through It" held over on screen 2 at 7:30 p.m.

"Bram Stoker's Dracula" stars Gary Oldman, Winona Ryder, Anthony Hopkins, Keanu Reeves, Richard E. Grant, Cary Elwes, Bill Campbell, Sadie Frost and Tom Waits. This drama-horror film is directed by Francis Ford Coppola.

Transylvania's Prince of Darkness (Oldman), Dracula, is back, but this Count is more than the historical bloodthirsty undead. He is also a brooding lover.

Four centuries ago the Count, a warrior, lost his wife Elizabeth be-

cause a maliciously inaccurate message of his death was sent to her and she committed suicide. But now he has found her reincarnated soul in Mina (Ryder), who is Jonathan Harker's (Reeves) fiancée.

Jonathan is a young law clerk who travels to Transylvania to help the Count with a business transaction. After Jonathan shows him a picture of Mina, Dracula goes back to London, where in a dark and stormy adventure he tries to reclaim her.

"Bram Stoker's Dracula" is a horror film, a drama and a gothic romance all rolled into one. See Dracula as you have never seen him.

"Bram Stoker's Dracula" is rated R.

"A River Runs Through It" is directed and narrated by Robert Redford. This drama stars Craig Sheffer, Brad Pitt, Tom Skerritt, Brenda Blethyn and Emily Lloyd.

It is based on Norman McLean's autobiographical story A River Runs Through It. McLean's story is one of a life lived in emotional silence and the way he deals with his mysterious and often unspoken relationships of those closest to him.

"A River Runs Through It" is rated PG-13.



A peeled, seeded and frozen orange section can be sweet and soothing for a teething baby.

The Hansford County Reporter-Statesman

"Serving All Of Hansford County"

USPS 509660
213 Main, Box 458, 659-3434
Spearman, TX 79081
Published Weekly at
213 Main, Spearman, Texas
Owned and Operated by:
Texas Independent Newspapers, Inc.
15915 Alsace
San Antonio, TX 78232
(512) 545-1739

Second Class postage paid at Spearman, Texas 79081.

Any erroneous reflection upon the character of any person or firm appearing in these pages will be gladly and promptly corrected upon being brought to the attention of the management.

Publisher - Robert M. Hulett
Editor - Angela Jones
Bookkeeper - Sheila LaRochelle

Subscription Rate: Hansford County, \$19.95; out of county, \$24.95 annually.

Postmaster: Send address changes to Hansford County Reporter-Statesman, Box 458, Spearman, TX 79081.

The publisher reserves the right to revise or reject at its option any advertisement which it deems objectionable, either in subject or phraseology, or which it may deem detrimental to its business.

Advertising and Story Deadlines:
Tuesday, 12:00 p.m.

MEMBER
TEXAS PRESS ASSOCIATION

★★★★★ FIVE STAR EQUIPMENT, INC.

WHAT: Winter Service Special
WHERE: Five Star Equipment—Spearman, Texas
WHEN: December through February

Details As Follows:

10% DISCOUNT when Parts & Labor exceed \$500

FREE HAULING one way

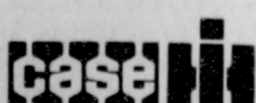
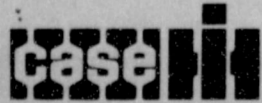
Call for **FREE** on the farm estimates
All of your farm equipment is included.
Work must be done in our shop.

Payment Schedule:

10th of the month following billing or defer until March 10th.
No discounts apply with deferred billing.
Prior approval must be obtained for deferred billing.

Special Prize:

All who participate are eligible for a drawing for a **Special Prize** to be awarded at the end of the program.



★★★★★ FIVE STAR EQUIPMENT, INC. ★★★★★
SPEARMAN, TEXAS
(806) 659-3743

At The Lyric Theatre . . .

Friday, Jan. 8 - Tuesday, Jan. 12
Bargain Nights Mon. & Tue. All Seats \$3
Closed Wednesday & Thursday

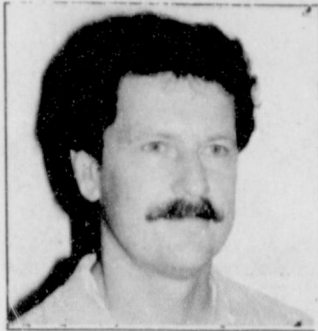
SCREEN 1 • 7:45 PM

SCREEN 2 • 7:30 PM

**Bram Stoker's
DRACULA**

**"A RIVER RUNS
THROUGH IT"**
directed and narrated
by Robert Redford

113 Main, Spearman



RADICAL LIVING

By Dan Carter, Pastor
Trinity Community Church

THE ART OF APOLOGY

Have you ever noticed how we human beings are so good at excusing ourselves? I mean, we get so tangled up in our own desires and our inability to ever be wrong, that our apologies sound something like this: "I'm so sorry for... but..." And again we walk away, superior to the other person because we were "spiritual" enough to apologize, even though we were right.

Actually, the basic meaning of the word, apology, is "a defense." Certainly that is the way we most often use it. We defend our weaknesses, our errors, our sin, etc. We always have a good excuse for blasting the kids (headaches, tiredness, etc.), giving the cold shoulder to neighbors or spouses, being disobedient to parents, speeding, etc.

However, God's Word says, "...you have no excuse, O man (or woman or child) whoever you are..." (Rom. 2:1). When we realize that God's power is made perfect in our weaknesses, we will gladly confess them, and even see the shortcomings of others as an opportunity for God to show His sufficiency in them.

From personal experience, I figure at any one time, about 50% of the drivers on any given highway are nodding off to sleep. But would I ever admit to Denise that I am in the 50% nodding off when she asks me if I am sleepy? She usually asks when I'm driving with my eyes shut, my chin on my chest, really relaxing and her inquiry wakes me up. Immediately my apology comes out, "of course not, I was just meditating and resting my eyes."

Why is it so hard to admit our weaknesses and errors? Because it deals a death blow to the idea of our own sufficiency. But that is what the gospel is all about, casting a vote of no confidence in ourselves, and living to, by and for Christ Jesus.

God found no excuse, no defense for our condition, that's why Jesus came and died. The price was paid for our error and weakness. So whenever you find yourself being defensive about your defects, confess your sin and failure instead. You'll find it to be a refreshing, life-giving experience.

Sponsored by: Trinity Community Church
717 W. 7th Ave.

1992 from page 1

McLain, Wynn Maupin, Anissa Ryan and Julie Meyer were others named all-district. The entire Greyhound starting five were selected to District 1-A all-district honors. Selectees included: Marty McCloy, Kevin Spivey, Shannon Pool, Trent Seagler, and Mathew Hoel.

"Fire truck total loss" The Spearman Volunteer Fire Department suffered the loss of one of its fire units during a CRP grass fire near Morse on Sunday, March 15, 1992. There were no deaths or injuries during the two-hour battle. The cause of the grass fire was not determined, but the cause of the fire truck loss was the result of grass trapped under the truck, ignited by the exhaust system, according to Fire Chief Ron Antalek. Two fire units from Gruver also caught fire under their chassis due to the tall grass, but the Gruver fire units were able to extinguish the flames because they had not lost their

pump capability.

"Auction ends livestock show" The Hansford County Junior Livestock Show at the country barn in Gruver ended two days of showing and judging. The auction ended with 145 animals selling for \$122,373.

"Jo Ann Morton replaced by Angela Jones" Changes in the staff of the Reporter-Statesman occurred the week of March 26, 1992. Jo Ann left to take a job with the Perryton Herald. Angela, a resident of Gruver, brought a degree in agricultural journalism from WTSU to her new job as Copy Editor.

"Ochiltree deputy hired as probation officer" Bill Guinn was chosen for Chief Juvenile Probation Officer for Ochiltree and Hansford counties. Twenty-one people applied for the job, but the Hansford-Ochiltree Juvenile Board felt that Bill was the best qualified.

USDA Commodities... recertification required

Those who wish to receive USDA Commodities in 1993 are requested to come in to the County Judge's Office during January, 1993 to certify or re-certify.

All families will be counted as a new family.

To recertify, client must bring: (1) I.D., Driver's License for identification (Social Security Card and Food Stamp Card are not acceptable). (2) Rent receipt, utility bill, medical bill, etc. to prove residency.

Love from page 4

memory of "Pops" Latham Ted & Wanda Widener in memory of "Pops" Latham Mary Fern Terry in memory of "Pops" Latham Wilson & Nan McCloy Helen Etter

If you would like more information concerning Hansford Hospice, please write Hansford Hospice, 707 S. Roland, Spearman, Texas 79081, or call 806-659-2535 Ext. 111.

Police Report

Spearman Police Report

During the reporting period running from Monday, Dec. 28, to Sunday, Jan. 3, the Spearman Police Department filed 34 reports.

It was reported that there were 10 miscellaneous calls, one report of lost property, one lockout and assisted on one ambulance call.

On Monday, Dec. 28, the department received a 911 call which was discovered to be false.

Also on Monday, a theft occurred in the 1100 Block of Walter Wilmeth. A \$30 Christmas decoration was reported stolen. According to Police Chief Joe Raper the incident is still under investigation.

At approximately 6:40 p.m. the following day, Tuesday, an accident was reported in the 100 Block of Collard. Larry Kyle Spence of Perryton was backing a 1989 Ford pickup from a parking space and backed into a pump, said Police Chief Raper. The damage to the pump was estimated at approximately \$500 and there was minor damage to the vehicle.

On Tuesday, an open door was reported. The building was checked and the door was secured, said Police Chief Raper.

Then on Wednesday, Dec. 30, the department received a report that a gas meter had been damaged in the 10 Block of South Hazelwood.

A theft was also reported in the 400 Block of S. Bernice. It was reported that a long horn skull had been stolen. The owner estimated the value at \$250. According to Police Chief Raper the incident is still under investigation.

Officers also did a follow-up investigation and responded to a false alarm.

On Thursday, Dec. 31, a follow-up investigation conducted on a harassing phone call complaint. It is still under investigation.

Then on Friday, Jan. 1, a loud party was reported in the 200 Block of N. James. The department also received a report of a dumpster fire in the 600 Block of E. Kenneth. The Spearman Volunteer Fire Department extinguished the fire.

Other calls received on Friday were a request to check on a persons welfare and suspicion call received from the 200 Block of N. James.

On Saturday, Jan. 2, a false alarm was reported.

On Sunday, Jan. 3, an armed robbery occurred at the Allsup's Convenience Store, 305 W. Kenneth. See story for details.

The department received a vandalism report from the 600 Block of Barkley. According to Police Chief Raper a 17-year-old male and juvenile male damaged a cinder block fence. An estimated \$100 worth of damage was done.

Two complaints were received on loud music in the 200 Block of N. James.

There were four animal control calls during the week.



Fellow business people, family and employees joined owner Steve Krug at the ribbon cutting for his new business CO's Tire Service.

Karen's Kozy Korner

by Karen Babitzke
Extension Agent

LEARNING WHAT HAPPINESS MEANS

Some of the most popular ideas about what makes people happy are incorrect.

Studies by psychologists have measured little difference in happiness between teenagers, males and females, the middle-aged and the elderly. Knowing whether someone is rich or poor, black or white, healthy or handicapped, does not make it possible to predict how happy that person is likely to be.

Generally, people are as happy today as their parents were 30 years ago. Researchers say that external circumstances have little effect on psychological well-being. They agree that the following four inner traits foster happiness:

• **Self-Esteem** — Those who are happy like themselves. They protect themselves from anxiety and depression by feeling good about themselves. Those who believe positive things about themselves suffer less from ulcers and insomnia and are less likely to abuse drugs. They tend to be more resistant to pressures to conform and are more persistent at difficult tasks.

• **Personal Control** — Americans who have a strong sense that they control their own lives and feel satisfied with themselves are twice as likely to be very happy as the national average. Those who agree with statements like what happens to me is my own doing or the average person can influence government decisions typically do better in school, cope better with stress and live more happily than those who lack that sense of personal control. Those given little control over their environment such as prisoners or even people in nursing homes suffer from lower morale, greater stress and worse health.

• **Optimism** — Optimistic

people tend to be healthier as well as happier. They suffer less from illnesses and tend to recover better. Positive thinkers get positive results, succeeding better in business than pessimists. However, unrealistic optimism can make people believe they are invulnerable and stop them from taking

sensible steps to avoid danger.

• **Socializing** — Those who are more sociable and outgoing tend to be happier and more satisfied with life than introverts. Extroverts are cheerful and high-spirited people who like themselves. When they meet strangers, they are confident the strangers will like them as well.

DQ Burger & Shake Sale!



Quarter-Pound[†]
Hungry-Buster* and
16-oz. Shake

Both For Only

\$2.29

On Sale
at Dairy Queen[®]
January 4-24, 1993



® Reg. U.S. Pat. & Tm. Off. Am. D.Q. Corp. *TM Reg. U.S. Pat. & Tm. †Tx. D.Q. Op. Coun. ‡Tx. D.Q. Op. Coun. †Pre-cooked weight.

THANK YOU TO OUR JANUARY SUBSCRIBERS

We would like to take this opportunity to thank these people for their continued support of the newspaper and to remind them that their subscription expires in January. If you would like to renew your subscription by mail, please cut out the coupon at the bottom of this thank you and return it with a check to the newspaper. Subscriptions cost \$19.95 for Hansford County residents and \$24.95 for residents outside of Hansford County.

Names of people who's subscriptions expire in January:

- | | | |
|---------------------|---------------------|-------------------------|
| Athena Energy, Inc. | Clay Fowell | Roy Mayhew |
| Irvin Boyd | Ernestine Gray | Main Street Barber Shop |
| Dan Barkley | Kristi Holt | Betty Lou Mays |
| Lena Beeson | Kenneth Hagan | Jerry Morris |
| T.J. Bergin | Dwight Hutchison | Bill Pool Spraying |
| Galen Coates | The Hansford Agency | Perryton Coca-Cola |
| Dr. Stan Cobb | Mary Harbour | Robert Queener |
| Jimmy Cooke | Herbert Kirk | Arnold Stork |
| R.M. Crawford | Clyde McCloy | Jessie Spivey |
| E.L. Collins | Carson McCloy | Dorsey Schad |
| Loren Dahl | Billy Mayhew | Wayne Shook |
| Mrs. W.A. Ellsworth | | Victor K. Taylor |
| Delphine Etling | | David Thomas |
| | | Jim Taylor |

Subscription renewal for:

Name: _____
Address: _____
City: _____ State: _____ Zip: _____

JO'S THIS 'N THAT

1993 Classes

- STATES SAMPLER - Hand PiecedJan. 7 1:00-4:00 PM
BOW TIEJan. 9, 9 AM
DIAMOND DOUBLE WEDDING RINGJan. 16, 9 AM
AMISH TREASUREFeb. 6, 9 AM
WOVEN HEARTSFeb. 13, 9 AM
ROAD TO OKLAHOMAFeb. 27, 9 AM
BLUE BONNETSMarch 13, 9 AM
BLUE BERRY TRELISMarch 27, 9 AM

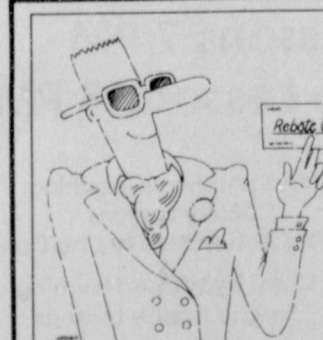
20% discount on all supplies

30% discount if you convince someone to take the class
216 MAIN STREET • SPEARMAN • 659-3999

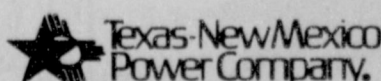
You can get up to a \$275 rebate when you choose a central heat pump to keep you cool in the summer and provide cozy warmth in the winter. Texas-New Mexico Power Company is offering rebates starting at \$200 for new heat pumps with a Seasonal Energy Efficiency Ratio (SEER) of 10.5 or higher. TNP will give you a rebate of \$275 for buying a heat pump with a SEER greater than 12.0.

Since a central heat pump is efficient at both heating and cooling your home, you'll also enjoy year-round comfort and year-round energy savings.

For more information, call or visit your local Texas-New Mexico Power Company office.



A heat pump gives you a cool way to save year-round



City Lites

by Kevin Knauf
Spearman City Manager

In October, 1992 the City government asked representatives of the Spearman business community to complete an economic development survey. This survey asked local businesspersons their opinions and ideas on how the City could promote economic development in Spearman. Due to the lack of time and problems in contacting some businessowners, not all Spearman businesses received a survey questionnaire. However, approximately 75 questionnaires were distributed to businesses engaged in different business activities. Of these 75 questionnaires, 48 were returned to the city manager.

The first question on the survey asked "In the next three years, what are your plans for your business?" The questionnaire gave three choices to answering this question: remaining at their current location in Spearman; moving outside of Spearman; or, quitting business. The survey returned showed that 45 of the 48 businesses (93.8%) intended on staying in Spearman for the next three years. One business person said that they are planning

on moving outside of Spearman during the next three years. Two businesspersons said they were planning on discontinuing business sometime in the next three years.

The second survey question asked the businessowner to identify the types of business and industries that the City should spend time and money recruiting to Spearman. The most common survey responses, along with the number of times the business/industry was mentioned, are as follows: flower and other grain mills (37), other (30), meat packing plant (29), restaurants (22), processing plant for human food (21), dog & cat food processing plant (20); boat dealers (20); shoe stores (20); farm machinery and equipment assembly plant (19); recreational vehicle park (16); bowling establishment (16); vocational-technical institute (16); leather tanning and finishing plant (14); other pet food processing plant (14); department stores (11); plastic pipe manufacturer (11); equipment rental and leasing (10); and radio and television repair (10).

Among the types of businesses

listed under "Other" were: grocery stores (10), prison (3), methanol plant (3), recycling industries (3), full-service gas station (3), and office supply (2).

The third question on the survey asked businesspersons to comment on the types of actions the City should take to attract new businesses to Spearman. The following actions were suggested: promote the lake; provide tax exemptions and abatements; build a community center; clean up the town; use consultants to help promote the community; need new ideas; promote agricultural industry; list vacant land and buildings; promote the community; offer incentives, deferments, recreation and jobs; adopt economic development sales tax; change electric companies; have an active industrial foundation; preserve small town community values; develop an economic development plan of attack; lower taxes and utilities; promote value added industries; attract retirees; and, develop a cooperative mood among businesspersons.

The fourth question asked for businesspersons to list five companies with which they conduct business. The companies listed are being catalogued for future reference.

The fifth question asked businesspersons to identify Spearman's strengths when it comes to attracting or keeping businesses. The following responses were given: good people, nearness to the lake, available land, first class airport, low priced land, local

agricultural businesses, school system, hospital and manor, climate, agricultural base, churches, community awareness, strong Chamber of Commerce, strong banks, available work force, financial stability of the community, availability of water supplies, low crime rate, and cheap natural gas.

The last question asked "In your opinion, what are Spearman's weaknesses when it comes to attracting or keeping businesses?" The responses are as follows: local citizens shop out of town; poor transportation—railroad, highway; resistance to growth/change; lack of a labor force; high rental rates; lack of willingness to compete; lack of activities for youth; high electric rates; high taxes; lack of an organized effort to attract businesses;

high local prices; lack of entertainment and recreation; lack of interest/support of the community's leaders; low population; high utility rates; lack of scheduled air transport; aging population; location/isolation; lack of meeting space; "Dry" county; too far from colleges/universities; high workers compensation rates; and lack of community pride.

The survey responses will help the City Council and the Economic Development Committee develop a targeted economic development plan which will not only promote our strengths as a community but also find ways to minimize our weaknesses. Within the next few months, we hope to have the plan developed and begin recruiting new businesses to Spearman.

Hospital Report

ADMISSIONS

December 30 - Henry Babitzke, Patsy Barrera and Nekisha Whitefield.

December 31 - Nellie McDonald
January 1 - Billy Miller, Mae Farren and Mildred Daily.

January 2 - Bertha Forester, Jessie Spivey and Beulah Burger.

January 3 - None
January 4 - E. J. Wade and Ina Martin

January 5 - Winnie Allen and Olizer Jarvis.

DISMISSALS

December 30 - None
December 31 - Henry Babitzke
January 1 - Nekisha Whitefield
January 2 - Patsy Barrera and Pearl Shapley.

January 3 - Lester Slaten.
January 4 - Billy Miller, NanaLee Brown and Mae Farren.

January 5 - E. J. Wade and Nellie McDonald.

Love of Lights receives \$5,305, '92

The beautiful red lights no longer adorn the LIGHTS OF LOVE TREE at First State Bank but the love that those lights represented lives on in the hearts of family and friends. Those who were honored and those who were remembered by the gifts of light given to Hansford Hospice were paid a high tribute, a tribute that lives and gives, touching many lives with "a special kind of caring" for the terminally ill and their families.

We express our appreciation to all those who have given and to these listed below. We are thrilled

to celebrate the total contributions of \$5,305.00!!

Earl & Bobbie Novak in memory of Bob Novak
M/M Perry Dixon in memory of Tommy Gumfory, Chip Martin and Frank Rogers
Hershel & Wanda Jones in memory of Elaine Floyd
Don Floyd & The Ronnie Lusby's in memory of Elaine Floyd
Keith & Jodie Hight in memory of Carter & Marie Crawford
Verna & Dude Brown in

memory of Douglas Maupin and Mary Brown
Allene Close in memory of Floyd Close
Gladiola Flower Club
M/M Raye Gibson in memory of Floyd Close
The Hickersons in memory of Bob Fanning
E.J. & Joe Copeland
David & Mary K. Harbour & Family in memory of Mrs. Robinson
Dwayne & Shawn Thompson in memory of Morgan Thompson
Marshall Cator in memory of Vina Hawpe
Nolan & Fay Holt
Winnie Vernon in memory of My Sister Floy
Irwin & Susan Delk
Sue Hartranft in memory of Don Hartranft
Eva Adkison
Lee & Dortha Keys
Orvil & Colene Brummett in memory of Bruce Sheets
Mavis Hart in memory of Mattie R. Martin
Mary Alice Gibner in memory of Floyd Close
M/M A.F. Cook
The Hansford Agency
M/M Ned Turner
Ganville & Muriel Boyd in memory of Bessie McCartney
Idella Randall in memory of Willis Randall, Gina Hoel, Lelan Close, Floyd Close, Faye Jackola, Frank Massad, Bruce Sheets, Mildred Martin, Mrs. Viola Graves, Mrs. Velma Beck, Mr. Luther Parish & Robert Lusby
G.W. & Fern Robinson in memory of W.A. Latham
Tammy Kiss in memory of Geoff Kiss
Esther Dahl in memory of Oscar Dahl
Frances Stumph in memory of Frank Rogers
Andy & Frances Rhodes in

See Love page 5

HENSON CHIROPRACTIC
410 S. Davis • Spearman, TX
Call for Appointment • 659-5603
Office Hours: Mon, Wed, Fri - 9:00 to 5:00
Tue, Thu - 9:00 to 11:30

Begin the Year Right

MELLO-CRISP SLICED BACON 1 LB. PKG. **99¢**

ALLSUP'S SANDWICH BREAD 1 1/2 LB. LOAF 69¢ EACH OR **2 FOR \$1**

BREAKFAST BURRITOS FOR ONLY **89¢**

SHURFINE KETCHUP 2 \$1.09 FOR 32 OZ. BOTTLE

ALLSUP'S SURF DETERGENT \$1.79 32 OZ. BOX

PRICES EFFECTIVE JAN. 3-9, 1993

305 W. KENNETH, SPEARMAN 659-3135
101 MAIN, GRUVER 733-2953

PEPSI 6 PACK 12 OZ. CANS **\$1.89**

COMBO OF THE MONTH TALLSUPS & HAMBURGER ONLY **\$1.09**

VALLEY FARE PAPER TOWELS **2 FOR \$1**

ASSORTED BASEBALL CARDS **4 FOR \$1**

SHURFINE EGGS **79¢ DOZEN**

ALLSUP'S CORN DOGS **2 FOR 99¢**

U.S. NO. 1 RUSSET POTATOES 10 LB. BAG **\$1.29**

HOT FOODS MENU

BARBECUE BEEF SANDWICH	99¢	9 PIECE BOX CHICKEN	\$5.99
BARBECUE PORK RIBS (LB.)	\$3.99	BEEF & CHEESE CHIMCHANGA	\$1.19
BARBECUE WHOLE CHICKEN	\$3.99	(MEAT) CORN DOG	69¢
ALLSUP'S BURRITO	79¢	DELICIOUS HAMBURGER	69¢
BREAKFAST BURRITO	99¢	WILSON HOT LINKS	99¢
BURRITO BEEF & SALSA	\$1.19	SAUSAGE ON A STEAK	\$1.29
DELICIOUS CHEESEBURGER	89¢	SAUSAGE & BISCUIT	79¢
CHICKEN FRIED STEAK	\$1.59	SAUSAGE EGG & BISCUIT	\$1.09
SCOUNT CHICKEN STRIPS	\$1.49	SAUTEYEA SAUSAGE	99¢
W/POTATO WEDGES CHICKEN (2 PC.) BISCUT	\$1.99	4 COUNT STEAK FINGERS	\$1.00

CALL IN ORDERS WELCOME CHECK OUR WEEKLY SPECIALS

LOSE ALL YOUR WEIGHT PAY ONLY A 10 POUND PRICE

Plus the cost of meals.

nutri/system 12

Get started on a new you for the New Year!

Georgia North Nutri/System client

nutri/system
Perryton — 435-3131
Hours Mon. 9 AM - 1 PM & 3 - 7 PM

Weight loss and maintenance vary by individual. Participating Centers Only. Cannot be combined with other offers. Offer expires Jan. 29, 1993.

GOING OUT OF BUSINESS SALE

25-50% OFF
*** everything in the store ***

All Tables & Fixtures for Sale

COUNTRY STITCHES

OPEN • MON. - SAT. 9:30 a.m. - 5:30 p.m.
715 W. 7th • Spearman

WANT ADS WORK WONDERS!

Cold weather doesn't freeze CLASSIFIED ADS ACTION



NOTICE

Deadline to place a cancel classified line ads is Tuesday noon for Thursday insertion.

CLASSIFIED RATE

\$4.00 first insertion
\$3.00 each additional insertion (30 words or less)
13¢ each word over 30
Legal Notices: 15¢ per word

Ads must be paid in full in cash before publication, unless advertiser has established credit with the Reporter-Statesman. Payment of out of state classifieds must be in the form of a money order or cashier's check. No leadsheets provided for classified ads. Tearsheets provided on request for legal notices.

REAL ESTATE

House and Barn for Sale
3 bedroom, 2 bath house - 2340 sq. ft. Plus 2500 sq. ft. barn on 3.4 acres. Located on Spearman-Gruver Highway. Asking \$85,000. Contact FNB Spearman - Brian Gillispie. 659-5544 S46-11c

4 BRM 1 1/2 bath home on large corner lot near school. Has detached garage, car port, basement, central heat. Price reduced. 659-3944 after 5 p.m. S11-11cRTN

Large House for Sale in Farnsworth - 2,579 square feet. 3 BRM 2 bath, double car garage. Priced to sell. Call 435-5505 after 5 p.m. for appointment. S11-11cRTN

3 bedroom house (2700 sq. ft.), 6 miles W. Spearman, TX. Cent. Air/Heat; Fireplace, 42.5 acres, barns, corrals, big arena \$137,500 (806)659-3445 or 525-4221, Jim Eakin. S03-11cRTN

Good Ranchland for Sale: 320 acres - Stinnett, TX 5 miles NE Lake Meredith \$200/acre; 151 acres - Stinnett, TX 1 mile W, 1/2 mile N, 2 miles W \$210/acre. (806)659-3445 or 638-6739, Jim Eakin. S03-11cRTN

AUTOMOBILES

For Sale: 1989 Ford Taurus GL Station Wagon. Been well taken care of. 84,000 miles. \$5,500. Call 659-3348. S11-2tp

HELP WANTED

PARK RANGERS
Game wardens, security, maintenance, etc. No exp. necessary. For info call (219)769-6649 EXT 9851, 8 A.M. to 8 P.M. S09-5tp

SERVICES

BICHSEL HOME BUILDERS
Remodel, repair, additions, cabinets-tops, and window replacements. 406 W. Brillhart, Perryton. 435-2364 or 435-0125. S37-11cRTN

HANDYMAN - You want it done and can't or don't want to do it yourself!!! Call Uncle Ed (Pearson), 659-3328 - Anytime - Anything!! House, yard, fence, car, garage, etc. (Cleanup, repair, paint, trim trees & bushes, etc.) S15-11cRTN

SERVICES

HANDY MAN: We do anything and everything Painting, tree trimming, mowing, yard work & clean up, landscaping, roofing, fence building (all types). You need it done, call David Pearson at 659-3352. S43-11cRTN

CALL YOUR LOCAL Used Cow Dealer for 7 days a week stock removal. 659-3544 or 1-800-692-4043. Serving Cattlemen for the past 20 years. G51-RTN

PUBLIC NOTICE

NOTICE TO CONTRACTORS OF PROPOSED TEXAS HIGHWAY MAINTENANCE WORK
Sealed proposals for: MOWING HIGHWAY RIGHT-OF-WAY ON VARIOUS HIGHWAYS IN THE NORTHERN SEVENTEEN (17) COUNTIES OF THE TEXAS PANHANDLE. Will be received by the Texas Department of Transportation located at: 5715 Canyon Drive, Amarillo, Texas Beginning at 9 A.M. on Wednesday, January 20, 1993 and at 9 A.M., Thursday, January 21, 1993. Then publicly read.

Reporter-Statesman CLASSIFIEDS 659-3434

PUBLIC NOTICE

All prospective bidders are encouraged to attend the Pre-Bidders' Conference which will be held at the Texas Department of Transportation's District Office at: 5715 Canyon Drive Amarillo, Texas

Time & Date: 2:30 P.M.; THURSDAY, JANUARY 14, 1993
Bidding proposals, plans and specifications will be available at the District Maintenance Engineer's Office at: 5715 Canyon Drive Amarillo, Texas Telephone (806) 356-3283
For information in regard to these proposals, please contact Jim Hays, 356-3283, or Chris Chambers, 356-3272. Usual rights reserved. S11-2tc

First State Bank, Spearman, now accepting written bids only on a 1968 Mustang Coupe. Car can be viewed at FSB. Bids will be accepted until the close of business on January 20, 1993. FSB has the right to accept or refuse any and all offers. Send bids to Larry Trosper, FSB, Box 247, Spearman, Texas 79081. S10-2tc

PUBLIC NOTICE

NOTICE TO ALL PERSONS HAVING CLAIMS AGAINST THE ESTATE OF J. C. STEFFEN, DECEASED

Notice is hereby given that original Letters Testamentary for the Estate of J. C. Steffen were issued on December 1, 1992, in Cause No. 2037 pending in the County Court of Hansford County, Texas, to: VIVIAN FLOWERS
The residence of such Executor is Ochiltree County, Texas. The address is: VIVIAN FLOWERS HCR 2, Box 48 Perryton, Texas 79070
All persons having claims against this Estate which is currently being administered are required to present them within the time and in the manner prescribed by law.
DATED the 4th of January, 1993. BILLY BRITT JARVIS State Bar #10585000 P.O. Box 515 Spearman, Texas 79081 (806) 659-2554 ATTORNEY FOR THE ESTATE OF J. C. STEFFEN S11-1tc

Oil & Gas Report

New location, completion & plugging report

Week Ending December 31, 1992
Intentions to Drill

CARSON (PANHANDLE)
W.B.D. Oil & Gas Co., Burnett-NRG-1 (320 ac) Sec. 132, 5, I&GN, 4 1/2 mi SE from Borger, PD 3500' (Box 2454, Pampa, TX 79066) for the following wells:

#1, 2000' from South and 2200' from East line of Sec.,
#2, 1100' from South & 2500' from East line of Sec.

HEMPHILL (WILDCAT & HEMPHILL Granite Wash) Enron Oil & Gas Co., #8 Flowers 40 (649 ac) 1410' from South & 467' from West line, D.P. Fearis Survey, 5 mi south from Canadian, PD 10900' (20 North Broadway, Suite 830, Okla. City, OK 73102)

LIPSCOMB (WILDCAT & BRADFORD) Cleveland Enron Oil & Gas Co., #4 Duke (320 ac) 190' from North & 1320' from West line, Sec. 71, 43, H&TC, 5.5 mi N-NE from Lipscomb, PD 7800'.

LIPSCOMB (WILDCAT & LIPSCOMB) Cleveland Enron Oil & Gas Co., #2 Kirk 339 (649 ac) 1320' from North & 2368' from West line, Sec. 339, 43, H&TC, 5.5 mi south from Lipscomb, PD 8500'.

LIPSCOMB (WILDCAT & NORTH MAMMOTH CREEK) Cleveland Enron Oil & Gas Co., #3 Joe Imke Unit 982 (644 ac) 2400' from North & 1700' from East line, Sec. 982, 43, H&TC, 7 mi S-SE from Darrouzett, PD 7800'.

LIPSCOMB (WILDCAT & NORTH MAMMOTH CREEK) Cleveland Enron Oil & Gas Co., Mabel Trenfield 'C' 788 (644 ac)

Sec. 788, 43, H&TC, 10 mi S-SE from Follett, PD 7800', for the following wells: #3, 2525' from South & 660' from West line of Sec., #4, 2550' from South & 660' from East line of Sec.

MOORE (PANHANDLE)
W.B.D. Oil & Gas Co., WBD Tract 1 (1270 ac) Sec. 155, 3-T, T&NO, 9 mi east from Sunray, PD 3500', for the following wells: #1 MI, 1648' from North & 330' from West line of Sec., #2 MI, 1647.5' from North & 991' from West line of Sec., #3 MI, 1648' from North & 2313' from West line of Sec.

MOORE (PANHANDLE Red Cave) Comstock Oil & Gas, Inc., #5-42 Bivins (54260 ac) 480' from North & 330' from West line, Sec. 42, 0-18, D&P, 8 mi westerly from Masterson, PD 2500' (5005 LBJ Freeway, Suite 1000, Dallas, TX 75244)

MOORE (PANHANDLE Red Cave) Comstock Oil & Gas, Inc., #12-14 Bivins (54260 ac) 740' from South & 330' from East line, Sec. 14, PMc, EL&RR, 8.5 mi westerly from Masterson, PD 2500'.

MOORE (PANHANDLE Red Cave) Comstock Oil & Gas, Inc., #4 Sneed-3 (137 ac) 3100' from South & 1050' from East line, Sec. 3, B-12, MEP&P, 11 mi SE from Dumas, PD 3400'.

POTTER (ERT Granite Wash) Horizon Oil & Gas Co., #3-3 Bivins Ranch (21656 ac) 2800' from South & 145' from West line, Sec. 3, 4, ACH&B, 15 mi northerly from Amarillo, PD 7600' (Box 7, Spearman, TX 79081)

Application to Plug-Back
SHERMAN (CARLANDER Marmaton) Phillips Petroleum Co., #1 Bush 'C' (160 ac) 1000' from South & 1800' from East line, Sec. 212, 1-T, T&NO, 3 mi SE from Stratford, PD 5020' (Box 358, Borger, TX 79008)

Amended Intentions to Drill
HEMPHILL (WILDCAT & HEMPHILL Granite Wash) Enron Oil & Gas Co., #4 Locke 35 (160 ac) 1625' from North & 2149' from East line, Sec. 35, A-2, H&GN, 16 mi S-SW from Canadian, PD 10700'. Amended to change well location.

ADVERTISING PROVISIONS

- Publisher reserves the right to reject, edit, revise and properly classify any advertisement of his sole discretion.
- Advertiser assumes all liability for advertisements printed pursuant to his instruction and shall indemnify and hold the publisher harmless from and against any and all claims and damages, including all costs incurred by publisher in connection therewith. Advertiser represents that all advertising copy is truthful and not misleading. Advertiser shall indemnify and hold publisher harmless from any claim against publisher arising out of or in connection with publication of advertising (except for modifications made by publisher without Advertiser's approval) including, but not limited to, claims for libel, invasion of privacy, commercial appropriation of one's name or likeness, copyright infringement, trademark, trade name or patent infringement, commercial defamation, false advertising, or any other claim whether based in tort or contract, or on account of any state or federal statute, including state and federal deceptive trade practices acts. If advertiser claims copyright ownership in any of the advertising published, advertiser must include proper notice of its copyright claim in the body of the advertisement, otherwise copyright ownership shall remain in the publisher.
- Advertiser agrees to check advertisement in the first issue in which it appears and report any error at once as publisher assumes no responsibility for errors after the first insertion. For any error which is the fault of the publisher and of which publisher has been timely notified, publisher will reprint the corrected advertisement for one extra insertion, or refund the proportionate cost of the advertisement containing the error. Publisher shall have no responsibility for errors appearing in the copy submitted by advertiser.

FOR RENT

House For Rent: 3 bedroom brick house with fenced back yard and carport. 1004 Townsend. Call 659-2245. S05-11c RTN

FOR RENT: 2 bedroom unfurnished house. Central heat and air, carpeted, built-in dishwasher and kitchen range. Fenced yard. Hookups for washer and dryer. \$250 per month. Deposit required. No inside pets. Call 659-2281 after 5 p.m., or leave message on answering machine. S11-11cRTN

TREVA COOK
659-2670/659-3781

COMPARE BEFORE YOU BUY

Fletcher's Monuments
MARBLE & GRANITE MONUMENTS & MARKERS
GRANITE, OK 73547

Stay in touch!
with
G & G ELECTRONICS
Cellphone USA
*2-way Radio - *Mobile Telephones \$35/month No Air Time
*Repeater Spaces
*Pagers
*Satellite Work
Call Bruce Duncan
(806)659-3673

OSGOOD MONUMENT CO.
Amarillo, Texas

Dealers of Rock of Ages Granite, as well as all colored granites, marble and bronze memorials.

Represented by BOXWELL BROS. FUNERAL HOME
519 S. EVANS
659-3802

NOTICE
Wallace Monument Co.
Monuments, Curbing, Grave Covers
1-800-999-9506
Local Representative
LEONARD JAMESON
Spearman, Texas

Century 21
GOLDEN SPREAD REALTY
Janye Helton Pointer, Broker Owner,
435-5444

621 Roland UNDER CONTRACT, pay \$1500 toward buyers closing cost!
207 James - Large bonus room with basement for play area!
501 Oklahoma - 3 1/1/2, beautiful hardwood floors!
206 Lonita - 2/1, Large kitchen, steel siding and cellar!
315 1/2 N. Bernice - Lot for sale!

GRUVER
102 Maupin - 3-1 3/4 large lot. Nice older home

AA Realty
Allen Alford-Broker-659-3034
Julie Martin-Sales-659-2425
Dennis Nelson-Sales-659-3608
Larry Trosper-Sales-3491

714 W UNDER CONTRACT garage
1108 S. Archer-3/2-2-Nice!
717 S. Steele-3-1 3/4-2, NICE!
703 E. 2nd-3-1 1/2
710 LEUNDER CONTRACT r garage
1115 S. Haney-3 Br-1 1/2 Bath, \$30,000
706 Collier-3-1 1/2-1. Nice shop!
717 Cotter-3-1/1. Very Cheap!!
1114 Barkley- 3 BR, 1 3/4 Bath

FOR QUALITY & SERVICE CALL US TODAY
We Need Your Listing.
Equal Housing Opportunity

MISC. FOR SALE

For Sale: 1/3 Interest in Motorola Communication Repeater with Phone Patch on a 300 Foot Tower located in Spearman, a 6 Row Double 40" spacing Cole Planter with Bed Shaper and a 21" Schaffer Offset Disk. Contact Jim Shirley at FSB, Spearman, Tele. #806-659-5565. S10-2tc, 11nc

JAN'S ETC. NEW & USED & ANTIQUES TOO
Everything for home and family.
Plains Shopping Center in Spearman.
Open Monday - Saturday
10 a.m. til 6:00 p.m.

Are You A Victim of Physical Abuse?
Call Toll Free 1(800)753-5308
We are in Spearman on the 1st, 3rd & 5th Wednesdays of each month at the 1st Presbyterian Church, 1021 Cotter. On the 2nd & 4th Wednesdays we are at the 1st Christian Church at 510 King-Gruver. We can come to Spearman & Gruver any time upon request. We operate a safe place for victims & their children to stay in times of crisis. Panhandle Crisis Center
Serving Hansford, Lipscomb & Ochiltree Counties
317 S. Main Perryton, TX.

Oil & Gas Reporting Service
Box 2052 • Pampa, TX 79065
Providing the Oil & Gas Report
for Hansford County Readers
Doris Harrison • Phone 665-5800

TexSCAN
Statewide Classified Advertising Network
Advertise in 297 Texas newspapers for only \$250.
Reach 3 MILLION Texans. Call this newspaper for details.

- SKI ANGEL FIRE!** Fun family resort in Northern New Mexico offers \$20.00 lift tickets January 1 - February 11. Angel Fire Chamber of Commerce. 1-800-446-8117.
- PIZZA INN SEEKING** qualified franchisees. "Carry-out/delivery & full-service restaurants." Easy to open & operate. *110 Franchises sold in the last 12 months. For information call 1-800-880-9565.
- WINDOW WORLD:** OFFERS the rewards of high volume, low inventory, recession proof business. Minimum investment \$20K. Possible financial assistance. Great opportunity! Call Mr. Dickenson, 1-800-583-2133.
- WOLFF TANNING BEDS** new commercial - home units from \$199. Lamps, lotions, accessories. Monthly payments low as \$18. Call today free new color catalog 1-800-228-6292.
- MUSICIANS WANTED:** UNKNOWN promising amateurs for possible recording contract. Solo/group. Voice/instruments. Call Tom, 1-800-944-6566. Free call. Day/night. Amazing recorded message. No obligation.
- DRIVERS:** (HARLINGEN, DALLAS, San Antonio) owner operators/ Houston. Husband/wife teams welcomed. West coast...good mileage, good pay...home often...class A CDL... Parkway 1-800-765-3362.
- DRIVERS:** EXPERIENCED OTR fatbed, benefit, assigned new conventional equipment, sign on bonus, flexible time off and more. Run 48 states. Call immediately, Roadrunner Trucking 1-800-876-7784.
- OTR DRIVERS TIRED** of the same old garbage? Want to drive a nice tractor? Work with good people and get good benefits? Call 1-800-888-7015 E.O.E.
- TRUCK DRIVERS:** \$1,000 sign-on bonus for safe, qual. drivers w/6 mo. OTR exp. Up to 30¢/mi + 2¢/mi. MFG bonus. New programs avail. for team drivers. COMTRANS Inc. Experienced drivers - 1-800-224-1553. Inexp. new drivers - 1-800-759-6980. Dapt. BC-79.
- HAROLD IVES TRUCKING** - Pay for sale driving experience. Start 25¢, with 1¢ per year up to 22¢. Assigned tractors, Motorola Communications, students welcome. 1-800-842-0853.
- COVENANT TRANSPORT** now hiring OTR drivers. The best team pay in the industry: *27¢ - 29¢ per mile plus mileage and longevity bonus * Motel/loyalty pay * Loading/unloading pay * Paid insurance * Requirements: * Age 23 with 1 yr. verifiable OTR - Class A CDL with Haz/Mei 1-800-441-4394 or 915-852-3357.
- TEXAS REFINERY CORP.** needs mature person now in your area. Regardless of experience, write C.R. Hopkins, P.O. Box 711, Fort Worth, TX 76101.
- HEALTH AND LIFE MANAGER** and agents: weekly commission advances 175% up, free leads, 20+ insurance products, free training, expanding now! If you are licensed, call today!! (Not an association.) Some expenses paid for managers. Call Tony McDougle, 1-800-989-0056.
- \$195/AC. 200 AC. ON** the Rio Grande, hunt and fish. Mule deer, javalina, blue quail. Spectacular views of river gorge. East of Big Bend. Terms 210-792-4432.
- GOT A CAMPGROUND** membership or timeshare? We'll take it. America's most successful resort resale clearinghouse. Call Resort Sales Information toll free hotline 1-800-423-5667.
- SWINE COMPANY** SEEKS dedicated/aggressive people. Expansion with outside confinement production. Nebraska, Iowa, Texas Panhandle, Georgia. Resumes, 301 N. Shackelford Road, Suite 201 - #154, Little Rock, AR 72211.
- LOSE 10 LBS. in 3 days.** Ask your local pharmacist about THE T-Lite Diet Plan and how people are losing up to 10 lbs. 1-800-234-0560.
- HAPPY JACK FLEA** Gard. Patented electronic device controls fleas in homes without pesticides. Results overnight. AT TSC Stores.
- LOSE WEIGHT IN 1993.** We will help. Need 100 people in Texas to lose weight in 1993. Call your independent NANCY Distributor, order today 1-800-460-9505.

Gruver teams sweep West Texas

by Bob Bort
It was a very good week for the Gruver Lady Hounds. First, the Gruver girls won the Stratford Tournament, their first tournament victory since the 1986-87 Lady Hounds, who also won the Stratford Tourney. Then the Gruver ladies capped the week this past Tuesday, Jan. 5, by defeating the West Texas Lady Comanches 42-31 at Stinnett.

Also victorious at Stinnett were the Hounds (66-54), the Lady Hounds JV (43-30), and the Hounds JV (39-37). The Hounds had taken third place in the Stratford Tournament, prior to beating West Texas.

In the Lady Hounds game, it was close until Gruver pulled away midway through the 3rd quarter. Julie Meyer hit a jumper to tie the game 20-20, that with 5:44 left in the quarter, then Cora Meyer sent home a three-pointer with 3:43 left to give the Gruver ladies the lead for good 23-20. Julie Meyer then had a steal and a lay-up (25-20). After a bucket by the Lady Comanches, Wynn Maupin hit a pair of jumpers, and Sara Jones hit a 3-pointer, and Gruver led 32-22, and broke open the game.

The Gruver girls are now 1-1 in district competition.

The Gruver boys won a game that was also tight for a couple of quarters. Kevin Spivey hit 14 of 18 free throws, including 11 of 13 in the second quarter alone, to pace the Hounds. He was 21-21 when Cody Barkley hit a jumper with 5:12 left in the quarter, and the Hounds never trailed again. Spivey scored the last 10 points of the 2nd quarter, all on free throws, and Gruver had upped to an 8-point lead, 33-25. The Hounds biggest

lead was 13 points, and they won by 12. But the Comanches cut it to 6, 52-46, midway through the fourth quarter, however, Will Etheredge hit a pair of free throws, and Spivey hit twice, on a 3-pointer and from under the basket, and Gruver led by 13, 59-46. The boys played well. They are 2-1 in district competition.

For the Lady Hounds, theirs is bad news mixed with the good. Mika McLain will have knee surgery this week to repair ligament damage done to the knee in the practice prior to the Panhandle game. Molly McLain and Shanna Jarvis have been called up to the varsity.

The varsity boys and girls will be trying to extend their winning streaks this week, playing Stratford in a home game Friday the 8th, then travelling to Highland Park Tuesday, the 12th.

BASKETBALL ROUNDUP

1-2-93

at Stratford Invitational

V. G. (6-7) vs Panhandle GRU 40 - PAN 36

3-pointer-Cora Meyer

GRU-Holly Venneman-22, Wynn Maupin-9, C. Meyer-5, Traci Crawford-2, Molly McLain-2.

V. G. (7-7) vs WT (Championship) GRU 38 - WT 21

3-pointer-Sara Jones

GRU-Maupin-20, J. Meyer-7, Venneman-4, Jones-3, Davis-2, C. Meyer-2.

V. B. (7-7) vs Texhoma TEX 64 - GRU 55

3-pointer-Jeffrey Price (3), Tek Ferguson, Kevin Spivey

GRU-Spivey-25, Price-15, Ferguson-6, Will Etheredge-3, Aaron Frick -2, Carey Kauffman-2, Kenton Odom-2.

V. B. (8-7) vs River Road GRU 58 - RR 48

3-pointer-Brady Pool, Jeffrey Price, Kevin Spivey

GRU-Spivey-18, Price-17, Jace Dawson-8, Pool-6, Aaron Frick-5, Kenton Odom-2, Matt Etheredge-1, Carey Kauffman-1.

1-5-93

at West Texas

JV Girls (6-5) vs West Texas GRU 43 - WT 30

3-pointer-Kiki Carthel

GRU-Carthel-13, Hailey Lamb-13, Kim Venneman-6, Kayce Haenisch-4, Jana McCloy-3, Josie Pool-2, Tara Shapley-2.

JV Boys (4-8) vs West Texas GRU 39 - WT 37

3-pointer-Roma Tomlinson

GRU-Wylee Maupin-17, Victor Lopez-6, Andy Jones-4, Kevin McNett-4, Tomlinson-3, Travis Ferguson-2, Jake McCullough-2, J.D. Christian-1.

V. G. (8-7) vs West Texas GRU 42 - WT 31

3-pointer-Jones (2), C. Meyer

GRU-J. Meyer-11, Maupin-10, Jones-6, C. Meyer-5, Ralston-4, Veneman-4, Jarvis-2.

V. B. (9-7) vs West Texas GRU 66 - WT 54

3-pointer-Pool, Spivey

GRU-Spivey-23, Pool-11, Price-10, Kauffman-8, Frick-6, Barkley-2, Dawson-2, W. Etheredge-2, M. Etheredge-1, McCloy-1.

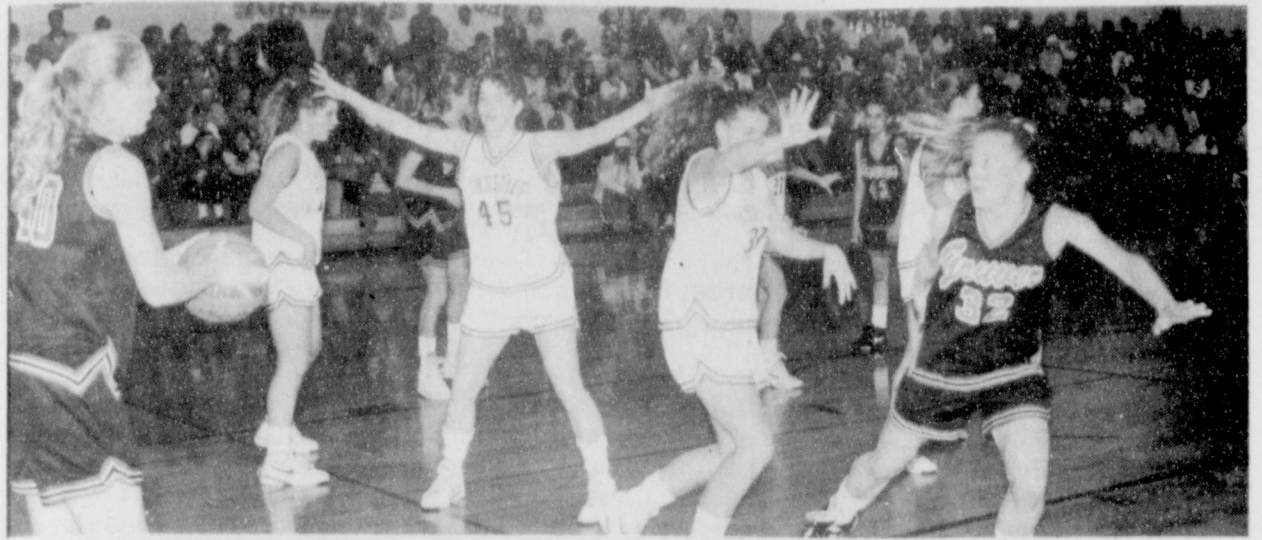
VARSITY LYNX

Canadian Tourney 12-31-92/1-2-93

Vs Alamo Catholic SPR 93 - A.C. 42

Toby Thompson-7, Chuck Cook-5, Cass Lasater-4, Wes Dyess-2, Brady Reed-6, Jason Varnon-12, Troy Law-16, Cody Pipkin-18, Russell Shaver-13, Justin Boyd-10

3-point-Law(2), Shaver, Boyd(2) vs Canadian



The Lynxettes and Lady Hounds squared off against each other for their district openers several weeks ago. In that one the Lynxettes were the winners. This week both teams were winners in tournament and district play.

SPR 67 - CAN 39

Thompson-6, Dyess-2, Reed-3, Varnon-8, Law-11, Pipkin-11, Hagar-2, Shaver-19, Boyd-5

3-point-Reed, Law(3), Shaver(2), Boyd

at Boys Ranch 1-5

SPR 59 - BR 32

Reed-11, Varnon-4, Law-7, Pipkin-10, Hagar-2, Shaver-16, Boyd-9

3-point-Reed(3), Law, Shaver(2), Boyd(2)

Record:12-5 (2-0)

JV LYNX

Vs Boys Ranch SPR 50 - BR 37

Schnell-13, Lasater-2, Wilkerson-13, Swink-2, Tucker-1, Cook-10, Archer-7, Schneider-2

VARSITY LYNXETTES

Canadian Tourney 12-31-92/1-2-93

Vs Alamo Catholic SPR 83 - AC 19

Ashly Shieldknight-9, Jill Lusby-2, Mary Cook-8, Michelle Garner-17, Kimbre Townsen-9, Kara Townsen-8, Holly Jarvis-6, Tracy Tiggert-2, Laura Pearson-22.

3-point-Cook(2), Garnett(2), Ki



In this picture Gruver and Spearman boys basketball players collide in a game against each other. This week both teams posted winning records in tournament and district games against other teams this week.

Townsen vs Canadian SPR 54 - CAN 30

Shieldknight-2, Lusby-3, Cook-4, Garnett-8, Ki Townsen-7, Ka Townsen-6, Sara Sanders-4, Jarvis-10, Tiggert-1, Pearson-9

3-point-Ki Townsen at Guymon 1-5 SPR 28 - GUY 34

Lusby-5, Garnett-4, Ki Townsen-9

See B-ball page 8

Southwest Outdoors

with Mel Phillips

MEXICAN BASS

Hope you enjoyed a great holiday season. I ended 1992 with a little family fishing trip down to magnificent Lake Guerrero near Ciudad Victoria in old Mexico.

This year's expedition included my father, MELVIN PHILLIPS, and my two brothers-in-law, DON "Spinning Rod" BENTSEN and RICK "Redfish" GARFIELD, both of McAllen. We stayed at the south end of the lake in a quaint village called Villas de Casas, where 300 locals live in thatch-roof adobe houses.

The ambitious young people in Villa de Casas can either leave town or become fishermen. There are two classes of fishermen, either commercial or English speaking bass guides. The commercial fishermen are experts at making and using the deadly monofilament gill nets. Contrary to official reports by Mexican authorities that gill nets are used only on tilapia, we personally witnessed the slaughter of hundreds of quality bass.

We were told that there is not a single fishing enforcement officer at this 28,000 acre lake. American catch-and-release fishermen can only dream about what would happen if Mexico decided to implement trophy bass restrictions similar to those at Lake Fork.

My group stayed at LEE'S AND MARIA'S MOTEL AND FISH CAMP (Villa de Casas, Tamaulipas, Mexico). The rooms

were clean but spartan. What the rooms lacked in size was more than made up for by the fine cooking and modern bass boats with excellent native guides. Maria Lara is famous for her hearty breakfasts, great fried chicken, and unsurpassed Mexican food.

Secret baits and magic lures are not necessary at Guerrero because the hungry bass will attack just about every lure that looks like a minnow. Any colored Rat-L-trap (chrome-blue) was deadly when tossed near stickups along old creek channels. Be sure to use at least 20 lb. line because even schooling two pound bass can find the submerged mesquite trees.

After wearing out our arms catching bass on crankbaits, a huge 10 inch black/chartreuse Berkley Powerworm was just the ticket for bigger bass. We used a 5/0 Owner hook on some 25 pounds Big Game line and wished that we had some 30 lb.

If an angler wants to learn how to catch bass on plastic worms, no place is better than Guerrero. Setting the hook on over 100 bass each day is a graduate level education in bass fishing. A white SlugGo lure worked like magic around lunch time.

BIGGEST BASS of this trip was a beautiful 8 1/2 pound large-mouth bass that my 82 year old father landed on our last day. It was the perfect end to a great fishing trip.

Rainbows & Ranglers

Dance Lessons TUESDAY NIGHTS

SPEARMAN COUNTY BARN
Country Lessons 7 PM
Square Dance Lessons 8 PM



Wanda Archer is teaching Country Lessons including Achey Breaky Line Dance

Murry Beasley is teaching Square Dance Lessons

TWO MORE FREE Lessons! Then \$5 couple / \$2.50 single (Pay only for the weeks you attend!)

Singles are encouraged to attend.

We're Holdin' on to LOW PRICES IN 1993

ON USED CARS

1988 MERCURY MARQUIS - Loaded & Extra Nice • 39,000 mi. • One Owner	\$8500
1989 MAZDA 626 - Auto Trans. • P.S. • P.B. • AC • approx. 66,000 mi.	\$7950
1989 - CHEVROLET ASTRO VAN - V6 Auto. Trans. • Cassette Player • Rear air & heat • Really Nice • 69,000 mi.	\$8950
1992 CORSICA - 11,000 mi. • Lots of Goodies	\$9995
1992 BUICK REGAL - Maroon • Lots of Extras • approx. 17,000 mi.	\$12,900
1992 BUICK REGAL - Gray • approx. 17,000 mi. • Lots of Extras	\$12,900
1992 PONTIAC GRAND PRIX LE - 4 dr. • Loaded • 17,400 mi.	\$11,900
1992 OLDSMOBILE CUTLASS CIERA - Red • 4dr. • Lots of Equipment • 12,400 mi.	\$11,700
1988 FORD F350 4X4 FLAT BED - A Real Cowboy Truck • 56,000 mi.	\$9200
1990 CHEVROLET SUBURBAN 2WDR. CONVERSION SPECIAL - Deluxe Front Bucket Seats • Fiber Glass Running Boards • White - w- Gray Stripes • Extra Nice & Loaded • Only 34,000 mi.	\$16,500

1992 ASTRO VAN
\$19,406

1992 BUICK ROADMASTER
\$20,464

1992 CHEVY EXT. CAB TRUCK
\$16,911

1992 1/2 TON PICK UP SPORT SIDE CONVERSION
\$16,357

1992 BUICK PARK AVENUE
\$23,285

1992 DODGE DIESEL TRUCK
\$17,813

GILLASPIE
AUTO & TRUCK CENTER, INC.
CHEVROLET • OLDS • PONTIAC • BUICK
CHRYSLER • PLYMOUTH • DODGE
Highway 207 South - P.O. Box 427 (806)659-2541
SPEARMAN, TEXAS 79061

6
t
2
n
5
w
2
s
3

714
110
717
703
710
111
706
717
111
FOR

For S
nicat
300 F
Row I
Bed S
Conta
#806-
S10-21

NEV
E
Plai

We
mor
4th
Gru
req
in ti
S4
317

Obituaries

C.V. MAY, SR.
C.V. May, Sr., 79, died Sunday, Jan. 3, 1993.

Rosary was recited at 7 p.m. Monday, Jan. 4, in St. Thomas Apostle Catholic Church.

Mass was said at 2 p.m. Tuesday, Jan. 5, in the St. Thomas Apostle Catholic Church with Bishop Leroy T. Matthiesen of Amarillo Diocese Chancery, the Rev. Peter Jaramillo, pastor of St. Joseph's Catholic Church, and Monsignor Francis A. Smyer, pastor of St. Mary's Catholic Church, officiating. Burial was in Llano Cemetery by Schooler-Gordon • Blackburn-Shaw Funeral Directors.

Mr. May was born in Magnum, Okla. In 1939 he moved to Amarillo from the Turkey Track Ranch. He was a cowboy employed by various ranches in Oklahoma, Mobeetie and Spearman. In 1944, Mr. May

became a rancher and he was a member of the Texas and Southwestern Cattle Raisers association, Knights of Columbus and St. Joseph's Catholic Church. He married Ethel L. Walker in 1938 at Borger. C.V. May, Sr. was a fifth-generation Texas cattleman.

Survivors include his wife; two sons, Jim May of Amarillo and Cyril May of Fairfax, Va.; brothers, Jewell F. May of Borger, R.P. May of Amarillo and Kenneth J. May of Bettendorf, Iowa; sisters, Nellie B. Fultz of Dumas, Mavis P. Ludwig of Corpus Christi and Dorothy J. Podzemny and Daisy L. Black, both of Amarillo; and six grandchildren.

The family requests that memorials be to St. Anthony's Hospice and Life Enrichment Center.

BILL ADUDELLE
Bill Aduddell, 66, died Thursday, Dec. 31, 1992. Mr. Aduddell lived southeast of Spearman.

Services were held at 2 p.m. on

Saturday, Jan. 2, at the First Christian Church of Stratford with the Rev. David Harker, pastor, officiating. Burial was in Stratford Cemetery by Morrison Funeral Directors.

Mr. Aduddell, born in Clarendon, had lived in Roberts County 13 years. He was a farmer and rancher and a Navy veteran of World War II. In 1948 he married Zola Mae King at Tucumcari, N.M.

Survivors include his wife; a daughter, Billie Knight of Stratford; his mother, Pearl Aduddell of Claude; four brothers, Bob Aduddell of Amarillo, Tex Aduddell of Matherson, Colo., Rex Aduddell and Dee Aduddell, both of Claude; seven sisters, Jerrie Brethauer of Amarillo, Cinda Shuping of Stratford, June Tucker of Midland, Glenda Chenault of Canyon, Nita Short of Parker, Colo., and Marie Shipley and Joyce Cagle, both of Strasburg, Colo.; five grandchildren; and one

great-grandson.

The family requests that memorials be to a favorite charity.

ROBERT C. SPIVEY
Robert C. Spivey, 83, died Friday, Jan. 1, 1993.

Graveside services were held Monday, Jan. 4, in Gruver Cemetery with Gary Gumfory officiating. Arrangements were by Boxwell Brothers Funeral Home of Spearman.

Mr. Spivey was born in Hansford County and moved from Gruver to Long Beach, Calif. He married Mildred Fish in 1977 at Long Beach. Mildred died in 1990. Mr. Spivey was a U.S. Navy veteran of World War II. He worked as an electronics technician at the Long Beach naval shipyards until retiring in 1974. He moved to Borger in 1978.

Survivors include three sisters, Anna Forrester of Long Beach, Jeffie Gainey and Luda Duncan, both of Borger.

MARY J. HARMOND SPEARMAN - Mary J. Harmond, 95, died Friday, Dec. 25, 1992, in Borger.

Services were held at 2 p.m. Monday, Dec. 28, in the Union Church with the Rev. Jeff Burress, pastor, officiating. Burial was in Hansford Cemetery by Boxwell Brothers Funeral Home.

Mrs. Harmond was born in Gray County. She moved from Ochiltree to Spearman where she had lived for 60 years. She moved to Stinnett in 1984. She married Earl Harmond in 1915 at Ochiltree. He died in 1950. She was a homemaker and a member of Union Church.

Survivors include two daughters, Sylvia Fleenor of Sunray and Bonita Ohlson of Colorado Springs, Colo.; a son, Rodney Harmond of Wharton; two sisters, Jewell Bursell of Bonham and Laura Mae Leonard of Dumas; two brothers, Arnold Stump of Texhoma, Okla., and

Frank Stump of Grove, Okla.; nine grandchildren; 15 great-grandchildren; and two great-great-grandchildren.

B-ball from page 6

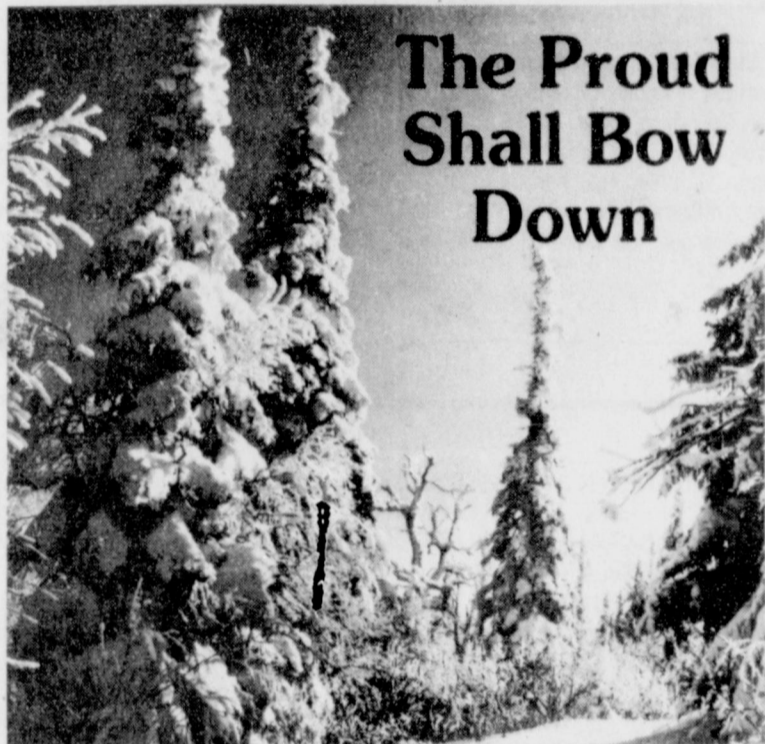
4, Ka Townsen-3, Jarvis-4, Pearson-8

3-point-Lusby
JV LYNKETTETS
at Guymon 1-5
SPR 21 - GUY 44

Telie OQuin-3, Nikki Strawn-4, Tiffany Bruning-10, Traci Martin-2, Kelly Shieldknight-2.



Around 45 percent of all people on earth now live in or near cities.



The Proud Shall Bow Down

The proud evergreen stands in defiance of winter. Unlike many trees, winter cannot ravage her lush emerald cloak. She reigns supreme, surveying God's creation from a lofty throne, arms spread wide, standing erect in regal majesty.

Yet, when the snow covers her domain, she, too, bows to the earth, in deference to the Creator, as her branches bend with the weight of winter... and she is even more beautiful.

Psalm 22:29 proclaims, "Yea, to Him shall all the proud of the earth bow down."

As we bow in worship to our Maker this Sabbath, may we be aware that we are ever more regal when wearing the stately cloak of humility.

Sunday Matthew 9:9-13	Monday Matthew 10:34-39	Tuesday Matthew 11:25-30	Wednesday Matthew 12:46-50	Thursday Matthew 16:21-29	Friday Matthew 19:16-30	Saturday Matthew 10:1-16
-----------------------------	-------------------------------	--------------------------------	----------------------------------	---------------------------------	-------------------------------	--------------------------------

Copyright 1993, Keister-Williams Newspaper Services, P.O. Box 9006, Charlottesville, VA 22906
Scriptures selected by the American Bible Society

LET US REPLENISH THE SEED OF FAITH THROUGH... REGULAR CHURCH ATTENDANCE, DAILY BIBLE READING AND PRAYER

Trinity Community Church
717 W. 7th Ave. 659-2671
Sunday School and Children's Church: 9:45 a.m.
Worship: 11:00 a.m.
Sunday Evening: 6:30 p.m.
Wednesday evening: 7 p.m.
Pastor Dan Carter

Faith Lutheran Church (ELCA)
1101 Bernice 659-2252
worships with
First Presbyterian Church
1021 Cotter 659-2033
Sunday School: 9:45 a.m. at Lutheran
Worship: 11 a.m. (alternates monthly between addresses above)
Pastor Beverly Cook

First United Methodist
407 S. Haney 659-5505
Sunday School: 9:45 a.m.
Worship: 11 a.m.
Jr. High Youth: 5 p.m. Sun.
High School: 6 p.m. Sun.
Pastor Todd Dyess

Union Church
31 S. Endicott 659-2644
Sunday School: 9:45 a.m.
Worship: 10:45 a.m.
Evening Worship: 6:30 p.m.
Bible Study: 7:30 p.m. Wed.
Youth: 7:30 p.m. Wed.
Pastor Jeff L. Burress

IN GRUVER

First Baptist Church
402 E. Broadway 733-2411
Sunday School: 9:45 a.m.
Worship: 10:50 a.m.
Disciple Training: 6 p.m. Sun.
Youth Happening: 6:30 p.m. Wed.
Prayer Meeting: 7:30 n. Wed.
Pastor Larry Miller

Church of Christ
209 King 733-2760
Sunday School: 9:30 a.m.
Worship: 10:20 a.m.
Evening Worship: 6 p.m.
Wed. Evening Worship: 7:30 p.m.
Minister Bob Setcliff

First Christian Church
510 King 733-2960
Sunday School: 9:45 a.m.
Worship: 11 a.m.
Wed. Bible Study: 7:30 p.m.
Youth: 6:30 Wed.
Pastor Gary Gumfory

Oslo Lutheran Church (ECLA)

West of Gruver
On Hwy 15 & N. FM 1162
339-7646
Sunday School: 9:45 a.m.
Worship: 11 a.m.
Morning Prayer: 9 a.m. Wed.
Pioneer Clubs (Grades 1-6):
4-5:30 p.m. Wed.
Pastor John R. Chandler

Community Bible Church (Interdenominational)
Hwy. 15 733-2443
Sunday School: 10 a.m.
Worship: 11 a.m.
Evening Worship: 7 p.m.
Wed. Prayer Meeting: 7 p.m.
Pastor Zane Gray

Gruver United Methodist
Broadway & Garrett 733-2651
Sunday School: 10:50 a.m.
Worship: 8:30 a.m. & 10:50 a.m.
Sunday Evening: 6 p.m.
UMY: 6 p.m.
Pastor Lewis Holland

This Feature is made possible through the Sponsorship of these Civic Minded Businesses.

IN SPEARMAN

Apostolic Faith Church
822 S. Dressen 659-2870
Sunday School: 10 a.m.
Worship: 11 a.m.
Evening Worship: 6 p.m. Sun.
Wed. Prayer Meeting: 7:30 p.m.
Pastor James Brown

First Assembly of God
401 N. Bernice 659-2295
Sunday School: 9:45 a.m.
Worship: 11 a.m.
Evening Worship: 7 p.m.
Wednesday Worship: 7:30 p.m.
Youth: 7:30 Wednesday
Pastor Ray Cook

First Christian Church (Disciples of Christ)
29 S. Bernice 659-2036
Sunday School: 9:45 a.m.
Worship: 10:50 a.m.
Women's Bible Study: 2 p.m. Wed.
Youth: Wed. 6 p.m. & Sun. 5 p.m.
Pastor LaVern Draper

Sacred Heart Catholic Church
901 Roland 659-2166
Sat. Night Mass: 7 p.m.
Sunday Mass: 9:30 a.m.
C.C.D.: 10:30 a.m. Sun.
Father Edward Kieran

Church of Christ
121 S. Haney 659-3244
Sunday Bible Class: 9:45 a.m.
Worship: 10:30 a.m.
Evening Worship: 6 p.m.
Bible Study Wed. 7:30 p.m.
KRDF Radio Program
Living With Christ 7:50 a.m. M-F
Minister Arnis Pape

Fellowship Baptist
1102 S. Archer 659-2783
Sunday School: 10 a.m.
Worship: 11 a.m.
Evening Worship: 6 p.m. Sun.
Youth & Adult Serv.: 7:30 Wed.
Pastor Ick Fincher

First Baptist Church
123 N. Bernice 659-5557
Sunday School: 9:45 a.m.
Worship: 11 a.m.
Evening Worship: 7 p.m.
Jr. High Youth: 6 p.m. Wed.
High School Youth: 7 p.m. Wed.
Youth Choir: 6 p.m. Sun.
Pastor Kyle Henderson

Primera Mission Bautista
502 E. 7th 659-3991
Sunday School: 9:45 a.m.
Worship: 11 a.m.
Pastor Guadalupe Carranza, Jr.

HI-PLAINS AUTO SUPPLY, INC.
NAPA
Mobile Oil For Irrigation & Industrial Purposes
118 Main • Spearman
659-2506 • (800)657-8742

Lemon, Shearer, Ehrlich, Phillips and Good
"Attorneys and counselors at Law"
Box 1066 • Perryton 79070
(806)435-6544

GSB GRUVER STATE BANK
FDIC
Gruver, Texas 79070
733-5061

J & G S
LADIES READY TO WEAR
306 Hancock • Spearman
659-3424

CO'S SUPPLY CO.
Plumbing & Tire Sales & Service
301 S. Davis • Spearman
659-3781

GILLASPIE
AUTO & TRUCK CENTER, INC.
CHEVROLET • OLDS • PONTIAC • BUICK
CHRYSLER • PLYMOUTH • DODGE
Highway 207 South • P.O. Box 427 • (800)809-2541
SPEARMAN, TEXAS 79081

Compliments of...
Texas-New Mexico Power Company.
300 Hancock • Spearman, TX.
79081
659-2336

"Compliments of..."
GOLDEN SPREAD CARPET CLEANING
Don & Mary Moore
659-3068
"Not Forsaking The Assembling of Ourselves Together"
HEBREWS 10:25

GRUVER CABLEVISION
Quality Family Entertainment With
"The Disney Channel"
308 Main • Gruver
733-5295

TRUE VALUE HARDWARE
B and B SALES
205 DILLON SPEARMAN, TX.
(806)659-2662
FARM AND HOME SUPPLIES
Attend The Church of Your Choice

BOXWELL BROS. FUNERAL HOME

SPEARTEX GRAIN COMPANY
405 Collard • Spearman
659-3711

GOLDEN SPREAD SALES CO.
Petroleum Products
Gasoline, Diesel, Propane, Farm Fertilizer
LPG Bottle Filling
414 S. Hwy. 207 • Spearman
659-3776
"Attend the Church of your Choice."

Compliments of
G & G FOOD LINER
516 MAIN • GRUVER
733-2471

Compliments of...
AGCO
of Spearman, Inc.
"See you in Church"
659-3751

GORDON DRUGS
Dependable Prescription Service
314 Main • Spearman
659-2140
Jim Evans

"WE SUPPORT OUR LOCAL CHURCHES"
CAPROCK #1
Richard Winter, Manager
(806)733-5043
CAPROCK #2
Jeff Rudolph, Manager
(806)733-5025
"Custom Cattle Feeding"

HENTON & COMPANY
P.C. Certified Public Accountants
221 Sanders • Spearman
659-2518

BERRY CLEANERS
DAY PERSONNEL SERVICE
Phone 659-3322 • 1700 S. Main St.
SPEARMAN, TEXAS 79081

GRUVER FORD
Ford FORD
531 Main • Gruver, TX.
(806)733-2431

Interstate Savings & Loan
322 Main • Spearman
659-2559

GRUVER PRINTING COMPANY
"We put our customers FIRST!"
434 MAIN • GRUVER
(806)733-2662

Nite & Day Beauty Shop
Open 8 a.m. - 5 p.m.
Walk - Ins are WELCOME
518 S. Main • Gruver
733-2640