

INSIDE

Education survey	3
U.I.L.	6, 7, 9
Weather watchers	11
Want ads	13
Obituaries	14

The Hansford County Reporter-Statesman

Serving All Of
Hansford County

14 pages

Vol. 83, No. 23

213 Main

Spearman, Hansford County, Texas

25°

Thursday, April 4, 1991

Ortega, Trindle honored at annual hospital meeting

by Jean Ann Behney

"The name of the game is to maintain and keep the hospital going through diversification, because the days of having 28 patients at a time in the facility are over," said Hansford Hospital Administrator Al LaRochelle in his address last Thursday evening at the hospital district's annual meeting.

The hospital's board of directors and the Hansford County Commissioners' Court members and their spouses met March 28 at Ivey's Hungry Cowboy to hear and approve the 1990 annual minutes, appoint and re-appoint the board directors, re-appoint the medical staff and hear LaRochelle's annual report.

The evening's events included special tributes to Hansford Hospital's 1990 Employee of the Year, Frances Ortega, who was present with her family, and to retiring board member John Trindle. Plaques were presented to both Ortega and Trindle.

The 1990 hospital happenings were reviewed by all through LaRochelle's month-by-month minutes summaries. Purchases made last year included a new computer system, which LaRochelle remarked "was one of the best decisions we've made in recent years." Other purchases included a new mower and copier, kitchen appliances, television units, and equipment for the new chemotherapy unit.

In other news for the 1990 year, Hansford Hospital appointed Pete Fisher to its board of directors and hired Dr. Charles Ridge, who began practicing in Spearman in September. Carol Hergert retired from her Director of Nurses position at Hansford Manor and Miles Mauney was hired for that job in October. Hergert recently agreed to head the newly-created Home Health and Hospice programs.

In new business, Bobby Hicks was appointed to the Hansford Hospital Board of Directors to replace retiring member John Trindle.

A Long-Range Planning Committee was established in June of 1990 and sub-divided into committees, which investigated several areas of possible hospital diversification and expansion. This group presented its report, "Access to Rural Health Care in Hansford County," in January of this year.

The Long-Range Planning Com-

mittee's recommendations included: 1) Study the feasibility of expanding the Manor and modernizing the physical plant of the hospital; 2) Establish an Adult Day Care and Sick Childcare Program; 3) Establish an ongoing Educational and Public Relations Program; 4) Develop and implement a chemotherapy and hospice program in Hansford County; and 5) Create a Home Health Care Agency in Hansford County.

Two of these recommendations have been authorized by the hospital board. Work is currently underway to create Hansford County-based hospice and home health programs. In addition, a new full-time hospital physical therapy program will be established by late May with Carol Dunnihoo in charge. Dunnihoo is a registered physical therapist.

Hansford Hospital's



A job well done! ... Hansford Hospital Administrator presents Frances Ortega with the 1990 Employee of the Year award. Ortega was recognized for outstanding service and job dedication at the March 28th Annual Meeting of the hospital district's board of directors and commissioners' court. Ortega's husband, Reginio, son Ray and daughter-in-law Julie Ortega were present at the ceremony.

Chemotherapy Program was begun in June of 1990 with training for the registered nursing staff at Harrington Cancer Center. Drs. Laurence Behney and Charles Ridge underwent physician training at Harrington in September and October. By the end of the year, several cancer patients had received treatment at Hansford Hospital, generating \$20,000 for the hospital district.

LaRochelle reminded his audience that the start-up costs for the

hospital's Chemotherapy Program were all covered by a government grant. "This (chemotherapy) is one of the better things we've done in the last year and hopefully the program will continue to expand as the years go by," LaRochelle commented.

In financial news, Hansford Hospital elected not to raise taxes for the 1990-91 fiscal year at a July 1990 budget session. The tax rate for the current fiscal year was set at 38.5 cents per \$100 valuation. The new

budget adopted in September of 1990 for the fiscal year was in the amount of \$4,830,500.

In his closing statement, Administrator LaRochelle thanked his staff and the hospital board for their dedication, saying "What we do, we do well!" He said Frances Ortega, 1990 Employee of the Year, and retiring board member John Trindle exemplify this dedication and outstanding service.

"Hansford Hospital generated over

two million dollars of payroll last year," he added. "You cannot overestimate what this hospital does for the community. That's a good reason for keeping the hospital in the best possible shape!"

Those who attended Thursday evening's dinner meeting were: Al LaRochelle, Drs. Ridge and Behney, with wives Judy and Jean Ann, board members Alton Ellsworth

See hospital page 14



During spring break, 19 Spearman 7th and 8th graders traveled to Washington, D.C., with their chaperones, Don and Wynette Mullins. The students said they found the trip stimulating and enjoyable. Some of the trip's highlights included the Washington Cathedral, the National Zoo, and the view of the city from atop the 555-foot tall Washington Monument. The group also was able to visit the Museum of Natural History, and Kennedy Center, where they saw the play "Shear Madness." The only complaints they had about the trip were that there was not

enough time to spend at the art gallery and at the zoo. The visitors to the nation's capital included (top to bottom) Summer Riggs, Jennifer Hughes, Nicole Burgess, Mark Parker, Amy Schoenhals, Phillip Sanders, Brent Collins, Regan Boxwell, Haley Farber, Don Mullins, Mayrne Morrow, Winnie Sherman, Josh Winegarner, Kristina Poole, Wendell Ralston, Bill Pittman, Clayton Hergert, Martin Sanders, Matt Gafford, Wynette Mullins and Congressman Bill Sarpaullius, who greeted the group.

January business slower than last year

by JoAnn Morton
Editor

January business in both Spearman and Gruver was slower than at the same time last year, according to information from the state comptroller's office.

In the March disbursement of city sales taxes collected on January business, Spearman received a check for \$10,708.35 and Gruver received a check for \$3,424.91. As compared with the checks received in March 1990, Spearman's was 14.26 percent less and Gruver's was 13.16 percent less.

In March of 1990, Spearman received \$12,489.96 and Gruver received \$3,944.04.

Sales tax rebates to Spearman this year total \$42,484.93, down 11.11 percent from 1990 payments to date, which totaled \$47,793.76. Total rebates to Gruver for 1991 have been \$11,442.68, which is 7.81 percent less

than 1990's payments through March, which totaled \$12,412.58.

For Hansford County as a whole, the March payment totaled \$14,133.26, down 14 percent from the March 1990 receipts of \$16,434.00. Sales tax rebates to Hansford County as a whole this year have totaled \$53,927.61, down 10.43 percent from the \$60,206.34 received through March of 1990.

Statewide, monthly checks to city and county governments totaled \$81.9 million, 6.2 percent more than last March's checks. The March payments to cities and counties reflect taxes collected by businesses in January.

State Comptroller John Sharp sent local sales tax rebate checks totaling \$73.4 million to 885 cities, an increase of 5.1 percent over last March's payments of \$69.8 million. City sales

tax rates range from 1 percent to 2 percent.

Businesses collect both the state's 6 1/4 percent sales tax and all local sales taxes and send them to the comptroller's office with their tax returns. The state then retains its share and rebates cities, counties and other taxing entities their local portion of the sales tax.

All local sales taxes must be approved by area voters. Most local governments deposit the money in their general fund and use it for services such as fire fighting, road maintenance and law enforcement. City sales taxes may also be dedicated for specific purposes, such as economic development and property tax reduction.

Unemployment rate down for February in Hansford County

Hansford County's unemployment rate for February was slightly less than that in January, according to the Texas Employment Commission.

The TEC announced a jobless rate of 3.4 percent during February, as compared with 3.7 percent in January. February labor force estimates for Hansford County showed that there was a total civilian labor force of 3,652 persons that month, of whom 3,529 were employed and 123 were jobless.

The statewide unemployment rate stood at 6.2 percent during February, according to TEC Commissioner Mary Scott Nabers, who said, "The war has ended; spring is here; and the Texas labor market looks a little healthier."

"The number of jobless workers decreased by about 60,000 between January and February," Nabers said, "and that caused the state's unemployment rate to drop from 6.9 percent to 6.2 percent."

Almost 8 million Texans were

employed during the month and the actual number of working individuals increased by 82,000.

"We're looking especially good if you consider the fact that on this date last year we posted a 7.0 percent jobless rate," Nabers said.

"Of interest also," Nabers pointed out, "is the fact that the state's total employment has increased by over 133,000 thus far in 1991."

WEATHER

Day	Hi	Lo	Precip
Thu	52	40	0.00
Fri	57	33	0.68
Sat	42	29	0.00
Sun	70	31	0.06
Mon	75	37	0.00
Tue	71	48	0.00



"A guiding voice" ... Hansford Hospital's Board of Directors President Alton Ellsworth (far right) so described John Trindle's (second from right) quiet wisdom during Trindle's many years of service on the hospital board. As Trindle's wife Virginia and Hansford County's Judge Jim Brown (far left) look on, Ellsworth presents the retiring Trindle with a plaque at the hospital's annual meeting, March 28.

Daylight time begins Sunday

Hansford County residents will lose an hour's sleep when daylight-saving time begins Sunday, April 7 at 2 a.m.

That morning, 2 a.m. will become 3 a.m. That's what happens officially, but most folks simply set their clocks and watches ahead one hour before going to sleep Saturday night, or wait until they awaken Sunday morning to advance their timepieces.

A federal law, administered by the Transportation Department, specifies that the time change applies from 2 a.m. on the first Sunday of April until 2 a.m. on the last Sunday of October. The schedule for

daylight-saving time results in the saying, "Spring forward, fall back."

Even though it's known as daylight-saving time, the change doesn't really save any daylight. It just moves an hour of it from morning to evening. By the clock, the sun will rise one hour later in the morning and will set one hour later in the evening. The later sunsets will provide more daylight for evening activities such as yard work, sports or barbecues.

The change also means less need for costly artificial lights and a possible reduction of evening crime.

Daylight-saving time was first us-

ed in Germany in 1916. Other countries adopted the policy during World War I, returned to standard time after the war, and resumed daylight time again during World War II.

The time system was adopted in the United States in 1966 for uniformity. Before 1966, local communities had been allowed to decide for or against daylight time, which resulted in time differences all across the nation.

Daylight-saving time is now used in all areas of the country except Arizona, Hawaii, Puerto Rico, the Virgin Islands, American Samoa and the part of Indiana in the Eastern time zone.



Spring forward

Hansford Happenings

A representative of the Pampa Social Security office will be in Spearman Thursday, April 11 from 10 to 11:30 a.m. at the Hansford County Courthouse. The representative will be glad to provide assistance with Social Security matters. Social Security has a toll-free number, 1-800-234-5772, available to persons wishing to make inquiries or appointments. Information on Medicare claims can be obtained by calling 1-800-442-2620 in Texas. No Social Security personnel visits are scheduled for May or June.

Jerry McClanagin will be preaching and singing in 11 a.m. services at Community Bible Church of Gruver on Sunday, April 7. The public is invited to attend.

Hansford Hospital Auxiliary will have a Spring Luncheon on Monday, April 8 at 11:30 a.m. at the Union Church. Each member should bring a salad. Election and installation of new officers will follow the luncheon. Anyone interested in joining the organization is welcome to attend.

Spearman First Baptist Church has established a "fire relief fund" for Judy Branstetter at First State Bank, Spearman. Branstetter's home at 1006 Trowland received extensive damage due to a kitchen fire Saturday, March 16. She had no renter's insurance to cover the contents of the residence, and her larger appliances such as refrigerator, stove, washer/dryer, microwave, etc. must be replaced. Contributions can be made payable to the Judy Branstetter Fund at First State Bank.

A general meeting of Music Boosters is set for Thursday, April 4 at 7:30 p.m. in the high school choir room, behind the lunch room. Committees will be organized and volunteers are needed to help with both the festival concession stands and the banquet. A nominating committee will be set up for the 1991-92 slate of officers. Those unable to attend the meeting but wishing to volunteer can call Carolyn Cummings at 659-2106 or Kathy Archer at 659-3186.

"Pump Boys and Dinettes," an Amarillo Little Theater musical revue, will be presented Saturday, April 6 at 8 p.m. in the Spearman High School auditorium. The Tony Award-nominated show is sponsored by First State Bank of Spearman. Proceeds from the production will benefit the Golden Spread Senior Citizens Center of Spearman. A hamburgers-with-fixin's meal will precede the production, from 6 to 7:30 p.m. in the high school cafeteria. Tickets are available by contacting the Golden Spread Center at 659-3521.

Spiritually Speaking

by Martin Gauby, pastor Waka Church of the Brethren

Easter is a time many of us enjoy a great deal. There are many events and activities leading up to Easter that make the time very meaningful. Now that Easter, the day of celebration with the risen Lord and Savior, is over, will we be better off for having had Easter in 1991? I trust that we will.

In our daily living there are times when we feel very close to God, times when we allow Him to cleanse us and refresh us, and we feel good. There are other times when we allow the cares and worries of daily responsibilities to rob us of the joy and energy of living.

We have all had the experience of getting that clean car dirty or that new car dented, for the first time. We know what it feels like to get a bad stain on a new dress or favorite tie. There are likewise, some of life's experiences, which make us feel stained and damaged. What do we do to restore our spirits, our energy and our enthusiasm when life brings us damaged spirits, bodies or minds?

Easter has reminded us that we can trust our God to make all things new and clean again. God's eternal love and power can restore our sinful nature to His eternal goodness. He can take our brokenness and mend all our hurts. We are reminded that God, who took the worst thing man could do, persecute and kill His son, Jesus, and turned it into a blessing that offers us wholeness and health,

can take anything we have ruined and restore us into His image.

What a blessing that after Easter is past, we can continue to experience the newness and victory of God's love and power in our lives. Some people speak of each Sunday as Resurrection day. This certainly has special meaning. However, every day of our lives can be lived in the light of the resurrection.

May God bless us all during this post Easter season. Our lives can be greatly blessed by the power of a risen Lord, as we are given hope and encouragement in the love and forgiveness of Jesus, our Savior. As someone has so beautifully worded it: "The disciples had seen the strong hand of God twist the crown of thorns into a crown of glory, and in hands as strong as that they knew themselves to be safe."

Certainly there are experiences in our lives that can bring heavy hours, moments of frustration and days of care. God did not promise any of His children an easy life here on earth. Yet in whatever comes to us, in the spirit of the risen Savior, remembering the words of the writer of Proverbs, "A joyful heart is good medicine," may we go forth to bless and be a blessing in the power of Jesus, Lord and Savior of the earth, whose Kingdom was ushered in on that first Easter morning, and in whose Kingdom we now live, blessed with cleansing, renewal and rejoicing, if we will but accept Him, as King in our life.



Members of Spearman Cub Scout Den 4, Troop 578 visited the office of the Hansford County Reporter-Statesman recently to gather information about news headlines on their dates of birth. The boys also toured the facilities and learned a little about the production of a newspaper.

Traffic deaths down

AUSTIN - Traffic deaths in Texas dropped to the lowest level in 14 years in 1990, according to statistics compiled by the Department of Public Safety.

"Not since 1976 have traffic fatalities been this low in Texas," said DPS Director Col. Joe Milner. "Last year, traffic deaths decreased from 3,361 to 3,243. This is a decline of 3.5 percent from 1989. In 1981, by way of comparison, 4,701 persons lost their lives in Texas traffic accidents."

Also, for the first time in Texas history, the traffic death rate dropped to an all-time low of 2 deaths per 100 million vehicle miles traveled in Texas. That is a 4.8 percent decrease from the 1989 death rate, Milner said.

The 1990 traffic death decrease was the fifth in the last six years, the DPS director said.

"I'd like to challenge all Texans to strive for another decrease this year," Milner said.

As in years past, the leading cause of traffic deaths in Texas was alcohol or other drug-related accidents. During 1990, Milner said, 1,402 persons lost their lives in accidents involving

intoxication. That amounts to 43 percent of all fatalities, he said.

"One of the factors in the 1990 decrease in traffic deaths is clearly the motorcycle helmet law," Milner said. "Motorcycle fatalities were down 19 percent, from 243 deaths in 1989 to 197 deaths in 1990. The Texas Transportation Institute observational study estimated that helmet use has reached 98 percent in Texas."

Another piece of legislation also is continuing to contribute to decreasing traffic deaths, Milner said.

"We believe that two out of three Texas drivers are wearing safety belts," Milner said, "and this is clearly saving lives."

Though traffic deaths were down in Texas, the number of persons injured in 1990 was up by 8 percent, from 243,030 to 262,576.

"We believe this increase is partially attributable to the increase in the number of drivers and the number of miles driven," Milner said. "But this increase in injuries makes us all the more grateful for the drop in traffic deaths, and show there is no room for complacency in traffic safety."

At the movies . . .

Coming to the Lyric Theatre in Spearman is a family movie from the Walt Disney studios. Theatre owner Alton Ellsworth says he is happy to present family entertainment, in the form of "White Fang."

"White Fang" is based on the classic novel written by Jack London. The story line follows a man who rescues a wild wolf dog of the North and brings him home to California. The dog repays the favor by repelling

an escaped convict.

"White Fang" is billed as an adventure film, with action centering on survival in the wilderness.

The movie is directed by Randal Kleiser, who is known for his work on "Big Top Pee-wee" and "Getting it Right."

Stars of "White Fang" are Klaus Maria Brandauer, Ethan Hawke, James Remar and Seymour Cassel.

"White Fang" is rated PG.



The first passenger railroad in America was the Baltimore & Ohio, with track laid in 1828.

Now Playing At The Lyric Theatre
 Friday, April 5-Tuesday, April 9
 Bargain Nights Mon. & Tue. All Seats \$3
 Screen 1 - 6:00 Screen 1 - 8:00

Jack London's **WHITE FANG**

Screen 2 - 7:00
HOME ALONE
 A FAMILY COMEDY WITHOUT THE FAMILY
 113 Main, Spearman

Attend the Church of YOUR Choice!

- In Spearman**
- Primera Mission Bautista**
502 E. 7th 659-3991
Sunday School 9:45 a.m.
Worship 11:00 a.m.
Pastor Jose Rauda Perez
 - First Assembly of God**
401 N. Bernice 659-2295
Sunday School 9:45 a.m.
Worship 10:45 a.m.
Evening Worship 7 p.m.
Wednesday Worship 7 p.m.
Pastor Ray Cook
 - Church of Christ**
1101 S. Bernice 659-2252
(Faith Lutheran Church)
Sunday Bible Class 9:45 a.m.
Worship 10:30 a.m.
Evening Worship 6:00 p.m.
Bible Study Wed. 7:30 p.m.
KRDF Radio Program
Living With Christ 7:50 a.m. M-F
Minister John Scott
 - First Baptist Church**
123 N. Bernice 659-5557
Sunday School 9:45 a.m.
Worship 11:00 a.m.
Evening Worship 7:00 p.m.
24 Hr. Prayer 659-2911
Pastor Russ Gibbs
 - Faith Lutheran Church**
1021 Cotter 659-2033
Sunday School 9:45 a.m.
Worship 11:00 a.m.
KRDF Program Sun. 9 a.m.
 - First Presbyterian Church**
1021 Cotter 659-2033
Sunday School 9:45 a.m.
Worship 11:00 a.m.
KRDF Program Sun. 9 a.m.
 - Word of Life Community Church (Interdenominational)**
1105 S. Roland
Sunday School 9:45 a.m.
Sun. Morning Service 10:45 a.m.
Sun. Eve. Service 6:30 p.m.
Wed. Eve. Service 7 p.m.
Interim Pastor Merle Davis
 - Union Church**
31 S. Endicott 659-2644
Sunday School 9:45 a.m.
Worship 10:45 a.m.
Sun. Evening 6:30 p.m.
Wed. Bible Study 7 p.m.
Pastor Jeff L. Burress

- Devotional**
- Lord, who shall abide in thy tabernacle? Who shall dwell in thy holy hill?
 He that walketh uprightly, and worketh righteousness, and speaketh the truth in his heart.
 He that backbiteth not with his tongue, nor doeth evil to his neighbor, nor taketh up a reproach against his neighbor.
 In whose eyes a vile person is contemned; but he honoreth them that fear the Lord. He that sweareth to his own hurt, and changeth not.
 He that putteth not out his money to usury, nor taketh reward against the innocent. He that doeth these things shall never be moved. *Psalms 15*
- In Morse**
- First Baptist Church of Morse**
Sunday School 9:45 a.m.
Worship 11 a.m.
Sunday Evening Worship 7 p.m.
Pastor Terry Austin

- In Gruver**
- Church of Christ**
209 King 733-2760
Sunday School 9:45 a.m.
Worship 10:20 a.m.
Sunday Evening 6:00 p.m.
Wed. Eve. 7:30 p.m.
Minister Harold Sneed
 - Community Bible Church (Interdenominational)**
Hwy. 15 733-2838
Sunday School 10 a.m.
Worship 11 a.m.
Sunday Evening 6:30
Wednesday 7 p.m.
Pastor Zane Gray
 - First Christian Church**
510 King 733-2960
Sunday School 10 a.m.
Worship 11 a.m.
Wed. Bible Study 7:30 p.m.
Youth Wed. 6:30 p.m.
Pastor Gary Gumfory
 - First Baptist Church**
402 E. Broadway 733-2411
Sunday School 9:45 a.m.
Worship 10:50 a.m.
Disciple Training Sunday 6 p.m.
Sunday Eve. 7 p.m.
Youth Happening Wed. 6:30 p.m.
Prayer Meeting Wed. 7 p.m.
Pastor Larry Miller
 - Oslo Lutheran Church (ELCA)**
West of Gruver
On Hwy 15 & N. FM 1162
339-7709
Sunday School 9:45 a.m.
Worship 11 a.m.
Pastor Nate Hanson
 - First United Methodist Church**
Broadway & Gartett 733-2651
Sunday School 9:45 a.m.
Worship 8:30 & 10:55 a.m.
Sun. Evening 6 p.m.
UMY 6 p.m.
Pastor Lewis Holland



Buckle Up Bundle Up
 Texas Coalition for Safety Belts

The Hansford County Reporter-Statesman
 "Serving All Of Hansford County"

USPS 509660
 213 Main, Box 458, 659-3434
 Spearman, TX 79081

Published Weekly at
 213 Main, Spearman, Texas

Owned and Operated by:
 Texas Independent Newspapers, Inc.
 15915 Alsace
 San Antonio, TX 78232
 (512) 545-1739

Second Class postage paid at Spearman, Texas 79081.

Any erroneous reflection upon the character of any person or firm appearing in these pages will be gladly and promptly corrected upon being brought to the attention of the management.

Publisher - Robert M. Hulett
 Copy Editor - JoAnn Morton
 Bookkeeper - Colleen Burkhammer

Subscription Rate: Hansford County, \$19.95; out of county, \$24.95 annually.

Postmaster: Send address changes to Hansford County Reporter-Statesman, Box 458, Spearman, TX 79081.

The publisher reserves the right to revise or reject at its option any advertisement which it deems objectionable, either in subject or phraseology, or which it may deem detrimental to its business.

Advertising and Story Deadlines: Tuesday, 12:00 p.m.

TEXAS PRESS ASSOCIATION MEMBER

Brought to you by these Fine Hansford Businesses

Boxwell Brothers Funeral Directors 519 Evans Spearman	Berry Cleaners DAN DESIMONE - OWNER P.O. Box 1017 • 207 Main St. Phone 659-3122 SPEARMAN, TEXAS 79081	Dr. Laurence Behney 702 S. Roland 659-2846 Dr. Charles Ridge 721 S. Archer 659-3395 After Hours 659-2535
Hagerman's Service 1213 Hwy. 15 659-5131	Kerry L. Henton	Stand Firm Christian Book Store 322 Main Gruver 733-5124
GRUBER STATE BANK 103 E. Broadway Gruver	The Gift Registry	Hansford County Reporter-Statesman

1991 Spearman Relays

Friday, April 5
Scratch Meeting - High School Cafeteria

Schedule of events

Varsity Running Preliminaries

3:45	400 M Relay	VB
4:00	100 M Low Hurdles	VG
4:15	110 M High Hurdles	JVB, VB
4:35	100 M Dash	JVB, VG, VB
5:00	400 M Dash	JVB, VG, VB
5:20	300 M Low Hurdles	VG
5:30	300 M Int. Hurdles	JVB, VB
5:50	200 M Dash	JVB, VG, VB
6:10	3200 M Run (finals)	JVB, VG, VB

Time: 4:00

Discus	southeast	7th Girls
High Jump	north pit	7th Girls
Shot	northwest	8th Girls
High Jump	east pit	8th Girls
Low Jump	south pit	8th Girls
Discus	northeast	7th Boys
Pole Vault	southeast	7th Boys

adult continuing education in the panhandle area.

Continuing education for adults can be a problem in some areas of the Texas panhandle, and the education committee of the Kellogg Project is seeking input from citizens regarding needs in different areas.

The committee, which includes representatives from Hansford, Lipscomb and Ochiltree Counties, has determined that there is a definite need for better adult educational services in the three counties.

Because of the distance to any junior college or four-year university, adults in the region who need training or additional education must travel long distances to attend classes. Some extension classes have been held in Perryton, but not enough are offered to meet the needs of the people in the region.

A survey questionnaire has been devised which residents can use to express opinions on the educational needs of Hansford County and the area. The committee requests that area residents complete the questionnaire and return it by Monday, April 15 to Spearman City Hall or Gruver City Hall. The survey can also be mailed to Education Survey, P.O. Box 580, Perryton, TX 79070.

The survey's purpose is to pinpoint needs and give the committee direction, in visiting with area colleges about bringing courses to the three-county area.

A committee member said that

DPS gives January stats

Capt. Rusty Davis, District Supervisor of the Amarillo Highway Patrol District comprising of 31 counties said, "For the month of January, our troopers investigated seven fatal accidents, 144 personal injury accidents, and 218 property damage accidents. There were nine persons killed and 245 persons injured in these accidents."

Sgt. Timothy Thompson of Borger stated, "In Hansford county, our troopers investigated no fatal accidents, one personal injury accident and two property damage accidents in the month of January. No persons were killed and one person was injured in these accidents."

Capt. Rusty Davis, District Supervisor of the Amarillo Highway Patrol District comprising of 31 counties said, "For the month of February, our troopers investigated six fatal accidents, 35 personal injury accidents, and 48 property damage accidents. There were seven persons killed and 47 persons injured in these accidents."

Sgt. Timothy Thompson of Borger stated, "In Hansford county, our troopers investigated no fatal accidents, one personal injury accident and one property damage accident in the month of February. No persons were killed and one person was injured in these accidents."

February named cozy Korner

Spearman High School's VIF the month of February are D Mitchell, teacher, and H Shieldknight and Jarret S students.

Each month SHS faculty and administration select two outstanding students and one outstanding teacher for the VIF honor.

Mitchell is a graduate of Emory State Teachers College. She taught Balko, Okla. one year, at Hugo, Kan. eight years, and has teaching here in Spearman for years.

She is mother of two daughters Paige and Shelley. Her hobbies include playing with her granddaughters and cross-stitch.

Shieldknight, 18, is a senior student at SHS. She is the daughter of Charles and Hazel Shieldknight.

Her interests include running, singing, art and swimming. Attend Texas A&M University is his among Shieldknight's future plans. Swan, 17, is also an SHS senior student. His parents are Ronald

seasonal vegetables. Bread can be bought at thrift stores for lower prices. Food made from scratch usually costs less than convenience foods. Shopping the sales, buying generic brands and using coupons can lower costs even further.

If done for short, specified lengths of time, these activities can be approached as fun family projects rather than deprivation. Meanwhile, make sure all savings are deposited to your savings account. You will be surprised how much it grows!

Yesterday and Today: Caring for Whites

On bright, sunny wash days, you could find Grandma spreading her white linens and white garments out on the lawn. The sun would beat down on them, and she hoped it would brighten them and help bleach out some of the more stubborn stains.

Today, many bright white linens and garments have been treated with optical brighteners. These are usually fluorescent dyes. If you follow in Grandma's footsteps and lay them out to dry in the sun, many of them would turn yellow.

Some people may share the following experience of washing a new, white cotton sweater. The instructions say to lay flat to dry. So being a city dweller, and not having the lawn Grandma had, the sweater is placed on a towel on a table or deck. After a couple of hours of drying, one side of the sweater is bright white and the other side has a yellowish cast. The side facing the sun has yellowed. Washing it again does not get the yellowish color out.

With the new fabrics and dyes out today, care instructions must be followed carefully. Dry a white garment in the shade or indoors to prevent discoloration or damage to an optical brightener.

items to a garage sale. Children and adults can make crafts and sell them on consignment at craft shops. Short-term jobs may be available through temporary employment agencies.

Reduce unnecessary expenses for a limited time. For example, go without soft drinks for two weeks, contributing the amount you normally would have spent to your savings account or cut back on entertainment costs, long-distance phone calls and hobbies for a specified time and contribute all savings to the account.

Plan menus for a "recession week" of meals. See how little you can spend on meals while keeping nutritional value high. Nutritious and filling meals can be made using low cost foods such as beans, rice and

Conference set for April 18 in Lubbock

Economic-development organizations that think they have the site for a new industry lined up need to be aware of the environmental restrictions that can surface and delay or cancel their projects.

That's the kind of disappointment a conference scheduled April 18 in Lubbock is designed to prevent.

The conference, "Environmental Issues and Economic Development," is sponsored by the Panhandle Regional Planning Commission, the South Plains Association of Governments and Southwestern Public Service Company. Economic-development professionals, chamber-of-commerce executives, government officials and community volunteers are invited.

"Soil contamination is just one of the issues every economic developer should be aware of," says Cheryl Pink, economic development specialist with SPS. "The U.S. Small Business Administration, bankers and others are increasingly strict in making sure any problem is identified and taken care of before permitting a project to proceed."

Recognizing environmental issues and responsibly dealing with them will be covered at the conference.

Topics and speakers will be: "Environmental Liability and Economic Development," George V. Basham III, attorney with Lloyd, Gosselink, Fowler, Blevins & Mathews of Austin, specialists in environmental law and active in Texas and New Mexico. "Performing an Environmental

Assessment," Aubrey Spear, manager of the Lubbock office of ENRECO, Inc., an environmental engineering and services firm.

"Case Study," a description of an area project involving several aspects of environmental regulation, Kirk Folkner of the Amarillo Economic Development Council.

"Impact of Environmental Legislation on Financing," Tim Pierce, manager of Caprock Certified Development Corporation of Lubbock; Barry Ballinger, vice president of Plains National Bank of Lubbock; and John Walz of the Lubbock district office of the Small Business Administration.

"Real Estate Transactions and Environmental Issues," Cliff Watt, industrial broker and owner of Westar Commercial Realty, Inc. of Lubbock.

Registration fee for the conference, to be held at the Lubbock Plaza Inn, is \$25. To register, or for more information, contact the Economic Development Department of SPS, (806) 378-2173.

Spearman Police Department The Spearman Police Department assisted with an ambulance call March 27. The call was answered about 10:30 a.m. at a residence on North Snider.

On March 28, police responded to a report of vandalism in the 1100 block of Dressen. A steel belted radial tire was vandalized, with \$120 in damage reported.

Spearman police answered a call March 29 in the 1000 block of South Bernice, where a domestic dispute was reported. According to the department's incident report, no action was required by officers.

Another ambulance call was received March 31 from a residence in the 1100 block of South Dressen.

A two-vehicle accident was investigated March 31 about 5:30 p.m., when a vehicle was struck while backing out of a driveway. According to an incident report provided by the SPD, a 1990 Chevrolet van driven by Ivan Vernon Allen of Spearman collided with a 1991 Oldsmobile occupied by Henry Babitzke and Christina Babitzke, as the Oldsmobile was backing out of a driveway in the 500 block of West 7th Street. No injuries were reported, and damage was listed as moderate.

An assault report was investigated by Spearman police April 1. Police responded to a call in the 900 block of Townsend shortly after midnight. According to an incident report, a 25 year old man was reported to have assaulted a 22 year old woman. A warrant has been issued for the arrest of the suspect, said police.

Gruver Fire Department The Gruver Volunteer Fire Department responded to four calls last week, according to Fire Chief Sam Gruver.

No dollar loss was listed after a grass fire on March 25. The fire department was called to a location just outside the Gruver city limits on the northwest edge of town, said Gruver.

A loss estimate of \$2,000 was the result of a fire involving hay and fence posts on March 26. The fire department's response was to a location near 10th and Cooper in Gruver.

The Gruver Volunteer Fire Department assisted the Spearman Volunteer Fire Department in combating a hay fire March 26. That fire was located 2 1/2 miles east of Spearman on Highway 15.

On March 27, the Gruver Fire Department was called to extinguish another grass fire, this time at the southeast corner of the Gruver city limits. Since the fire was put out before much of the area burned, there was no dollar loss listed.

Gruver Police Department On March 26, the Gruver Police Department received a report that animals had been released from the city pound without authorization, said Police Chief Steve Gaines. The report was received from the city's animal control officer.

On March 30, Gruver police received a report of a threatened suicide. Additional patrols were requested at the subject's residence, said Gaines.

Also on March 30, a report was

received of repossession of a local vehicle.

A report of a possible DWI was received April 1. Gruver police stopped the vehicle in question, which was traveling east on Highway 15, west of Gruver. Gaines said the driver was not intoxicated.

The police department was called to unlock a vehicle at the Gruver High School parking lot on April 1.

On April 1, Gruver police finished up an investigation of felony credit card abuse. According to Gaines, evidence gathered over the five-month investigation period was to be presented to the grand jury Thursday, April 4. He said local residents are involved in the case, and no further information could be released until the grand jury makes a determination in the matter.

Hansford County Sheriff's Department

The sheriff's office announced this week it has prepared three cases for the Grand Jury which will meet April 4. The Grand Jury will consider two cases of burglary and one case of forged prescription.

Other cases investigated by the sheriff's office included two auto thefts, theft by fraud of several thousand pounds of wheat, six theft by check and one driving with a suspended license.

In connection with the six theft by check crimes, R.L. McFarlin, sheriff, warns Hansford County merchants that this type of crime is on the rise.

McFarlin said that his office assisted Perryton with the arrest of an individual for the possession of two pounds of marijuana and a small amount of cocaine.

Pringle-Morse school menu

April 8 - April 12

Monday: Pizza, peas, salad, fruit, cookie, milk

Tuesday: Salisbury steak, potatoes, gravy, salad, corn, rolls, jello, milk

Wednesday: Sloppy Joes, tator tots, pinto beans, fruit, milk

Thursday: Mex-meatloaf, nachos and cheese, salad, mixed vegetables, chocolate cake, milk

Friday: Burrito, corn dogs, chili, salad, fruit, ice cream, milk

BREAKFAST

Monday: Toast, cereal, juice, milk

Tuesday: Waffles, sausage, juice, milk

Wednesday: Donuts, toast, juice, milk

Thursday: Biscuits, sausage, juice, milk

Friday: Muffins, toast, juice, milk



ONCE AGAIN growers are reaping benefits from their high yielding Pioneer® corn hybrids.

WATLEY SEED CO. Spearman, TX 1-800-338-2885 (806) 659-3838



All sales are subject to the terms of labeling and sale documents. Registered trademark of Pioneer Hi-Bred International, Inc., Des Moines, Iowa, U.S.A.

FmHA
FARMERS HOME ADMINISTRATION

Homes Priced to Sell

Now Available:

704 Wilbanks	\$31,000
515 S. Haney	\$21,300
701 Collier	\$27,000

Available Soon:

118 S. James	
417 S. Haney	
14 S. James	

Financing Available on Excellent Terms

To Qualified FmHA Program Applicants:
Nothing down, 33 yr. financing, 8.75% APR with interest subsidy available.

To Nonprogram Applicants:
10% down, 10 yr. term, 9.25% APR to nonoccupant/investors
5% down, 30 yr term, 9.25% APR to owner/occupants

All rates & terms are subject to change without notice. Contact your local FmHA office at 435-6859 or any real estate broker.

Hospital Notes

ADMISSIONS

Thursday, March 28 - Ora Sanders
Friday, March 29 - none
Saturday, March 30 - none
Sunday, March 31 - Carter Crawford, Ruth Hill, Lelan Close, Dora Olivarez
Monday, April 1 - Margaret Womble
Tuesday, April 2 - Lester McLain

DISMISSALS

Thursday, March 28 - none
Friday, March 29 - Ora Sanders
Saturday, March 30 - Rasela Vargas
Sunday, March 31 - none
Monday, April 1 - Lester Slaten, Carter Crawford
Tuesday, April 2 - Dora Olivarez

If you are considering an auction, or if you have any equipment that you would like to sell, contact

Reagan & Brown Auctioneers
and give us a chance to work for you.

REAGAN & BROWN AUCTIONEERS, INC.
806-249-6776

Farm Equipment, Real Estate, Business Liquidations & Estates

<p>BOB BROWN (806) 249-4038 TXS-058-007442</p>		<p>DALE REAGAN (806) 384-2066 TXS-058-007443</p>
---	--	---

THE BEST THING TO KEEP YOU SAFE AROUND DOWNED POWER LINES IS

DISTANCE. If you see a downed power line, you can jeopardize your safety by going near it. Just because a line is down doesn't mean that it's dead. Please report it to your local NP office or to local law enforcement officials. For more information, please call or visit your NP office and ask for the free brochure, "Straight Talk About Electrical Safety."

106190

Announcing New Ways To Hear Better

Finally, hearing technology that's affordable and effective. It's the Manhattan Circuit, a microscopic automatic signal processor, and it fits into your hearing aid to filter out background noise. This circuit filters out street noise, crowd noise — any annoying noises — to enhance rich, quality hearing. Call us or visit our office for information about the affordable Manhattan Circuit.

Manhattan™ Circuit
Automatic Signal Processor

High Plains Hearing Aid Center

Every 2nd & 4th Tuesday
2 p.m. to 4 p.m.
Golden Spread Senior Citizens Center
14 S. Haney
659-3521
1-800-333-4504

Among the Neighbors

by Helen Fisher

Cherry and Wesley Jarvis, with Ross, Holly and Lee, spent the Easter weekend in Dallas with her parents, Mr. and Mrs. Bollinger. Cherry's sister from Wichita, Kan., Linnae Bolin, and daughter, Treva, were also there. They enjoyed wandering through the huge exhibits of the "First Monday" weekend, a traditional sale, with almost every conceivable item.

Wesley joined Mike Pack, who lives in Dallas, in fishing on Lake Ford. Aware that there are two types of fisherman - those who fish for sport and those who catch something - Wesley was to go from the former to the latter. He caught a fine 20 3/4 inch bass-only to learn that any fish measuring less than 21 inches must be returned to the lake...his only catch.

Winnie Allen was quite pleased when her nephew, Dan Cacus, came by and took her with him to visit her sister, Della Dacus, in Portales last week.

Dan, who lives in Kansas City, has retired from a career with the Social Security Department. He now serves as a consultant part-time, which involves considerable travel.

Joy Kinser of Casper, Wyo. spent the weekend here with her sister, Gloria and Don Knox. Gloria met her at the airport in Amarillo and later they attended the homecoming of the Lakeview High school. It was the 45th for Joy and 47th for Gloria. The reunion lasted all day at the high school on Saturday and a dinner and dance followed at the Memphis County Club that night.

Don, although a graduate of Lakeview, joined son Danny of Midland for a weekend of fishing. Joy returned to Wyoming on Tuesday.

Mary and Buford Baker with the children spent the weekend in Clayton with her parents.

David Tucker, son of June Tucker, has resigned as a manager of the Equity Tire and Fuel effective April 1st. He has accepted a position with the Firestone Tire Company in Amarillo. David, a Spearman High School graduate, will be missed by his customers and friends. They wish him luck in his new situation.

Carol and Neal Pack and other relatives enjoyed having their son, Jay, here for the weekend. Jay is

employed by a plastic firm in Lubbock.

Lorene McGuire returned Sunday from a week with her brother, Jimmy Joe Bellows and family of Savoy, Tx. She accompanied her son, J.L. and family of Amarillo. On the return trip she spent some time with them in Amarillo.

Marjorie Curtis is well pleased with her recovery from a mild heart attack week before last. She was in the hospital in Pampa for two weeks. Her timing was indeed fortunate as she and an aunt had taken another aunt to the doctor's office in Pampa when she was stricken.

Her aunts, Mrs. Loyd Batson and Mrs. Estel Britnell, brought her home. She is able to look after herself now.

A note of appreciation is due Alton Ellsworth, owner of the Lyric Theater, for his consistent refusal to show X-rated movies. Although the code rating has been changed, Alton maintains his standard for which the community is grateful.

Freeman Barkley returned recently after spending two weeks at Sulphur Springs. He was a guest of his daughter, Mary Ellen, and Malcolm Kirkland and family.

Mrs. Sheila Fewell returned Sunday after spending two weeks in St. Anthony's Hospital in Amarillo. She has suffered a second heart attack, and is unable to undergo surgery.

The Fewell's son David and Jane from Six Lakes, Mich. were here for ten days during her illness. She is feeling fair though her activities are and will be extremely curtailed.

A casualty of the strong winds last week was the Curry Windmill - one of the antique mills of the J.B. Buchanan collection. He was surprised as the mill was securely anchored. It is not known if his poor health will allow him to again erect it.

An interesting feature of a Monday morning Amarillo newspaper was about Gruver. That indestructible 94 year old Ralph Bort was prominently interviewed.

Idella Randall and daughter, Cecilia, and grandson, Shannon Scroggs, drove down to Midland a week ago Friday to welcome back home another grandson, Norman Hill. He had just returned from Germany where he had been sent when his reserve unit was reactivated. They all made the acquaintance of his son, born after he left. Little Maxwell Wayne is Idella's fourth great grandson.

They were guests of Idella's daughter, Betty, and Larry Evans and daughter, Wendy Hill.

Recent visitors of Al and Juanita Tucker were their sons, Mike and Tina with sons Justin, Tyson and Daison came from San Angelo for a week.

Pat and Toby came from Arlington and visited her parents in Amarillo also. They were all in Amarillo for Toby's birthday party at her parents which she shared with three other family members who also had birthdays.

Joel Lee Lackey expressed the sentiment of practically everybody past the age of 20 regarding that modern noise - called music by some misguided folk. His letter, expressing ap-

preciation for a radio station carrying music, was in an Amarillo newspaper on Monday and written from an original angle.

Mr. and Mrs. Dan Pearson and Mr. and Mrs. Bob Pearson hosted some out of town relatives last week. Dan and Bob's aunt, Mrs. Doris Pearson of San Antonio, accompanied by her daughter and family, Mr. and Mrs. Jim Bettcher and two children of California were here.

A family hamburger cookout was held one evening at the home of the Dan Pearsons. Other family members attending were Mr. and Mrs. Kingle Pearson and family of Perryton, the Bob Pearsons with daughters including Ginger, on break from Tech. Her guest was a friend from Phoenix, Ariz., Tiffany Austin. Others there were Mark and Ann Marie Pearson and Mike, Sandy and Jerry Pearson, all of Spearman.

Guests for the weekend of Wanda and Hershel Jones were all their family. A busy weekend it was - with church attendance, Easter egg hunt and a picnic. Keeping the weekend lively were Roger and Diane Jones with Justin and Jill, Jim and Martha Jones with Jacob, from Dalhart; and Rhonda and Brent Wheeler with Clint and Kailee of Wellington.

Congratulations to the participants in the U.I.L. academic contests. Whether they won or not, they deserve recognition by qualifying. Last week the Reporter-Statesman carried their pictures and there will be many a picture clipped for scrapbooks or to be sent to grandparents.

This is the reason tax payers finance schools - not for life adjustment, sex education or whatever. There are more than 30 categories from the elementary through the seniors, and each will prove helpful to the student.

A pleasant weekend for Ray and Helen Gibson was spending Easter in Denver City with their daughter, Karen and Ken Cargill and family.

Adding to their pleasure was that their granddaughter, Rhonda Gibson and little Megan accompanied them. Megan made sure that they were entertained!

Monday afternoon marked the passing of a life-long resident of this community, Lelan Close, 85. He was the son of pioneers, Mr. and Mrs. Ed Close, and his obituary will appear elsewhere in this issue.

His death came as most would prefer - surrounded by one's family. They had gathered in his home Sunday for Easter when he was stricken by a massive heart attack from which he didn't recover. Sympathy is extended to all the Close family.

Those four sisters, Lucille Allen of Guymon, Edna Bassel, Louis Vaught and Virginia Cates of Amarillo were cavorting around Quartz Mountain Lodge over the Easter weekend. Riding herd on them with dignified decorum was the fifth sister, Helen Fisher.

Memories of by-gone days were revived for Margaret and Pope Gibner on Easter while they enjoyed watching their four year old great grandson, Jeremy, hunt Easter eggs in their yard.

Their guests for the weekend were their son Jerry, and Juanita Gibner, granddaughter, Barbara and Daniel Mallack with Jeremy. They left Monday to return to their home in Albuquerque.

Speaking

can take anything we have ruined and restore us into His image.

What a blessing that after Easter is past, we can continue to experience the newness and victory of God's love and power in our lives. Some people speak of each Sunday as Resurrection day. This certainly has special meaning. However, every day of our lives can be lived in the light of the resurrection.

May God bless us all during this post Easter season. Our lives can be greatly blessed by the power of a risen Lord, as we are given hope and encouragement in the love and forgiveness of Jesus, our Savior. As someone has so beautifully worded it: "The disciples had seen the strong hand of God twist the crown of thorns into a crown of glory, and in hands as strong as that they knew themselves to be safe."

Certainly there are experiences in our lives that can bring heavy hours, moments of frustration and days of care. God did not promise any of His children an easy life here on earth. Yet in whatever comes to us, in the



Members of Spearman Cub Scout Den 4, Troop 578 visited the office of the Hansford County Reporter-Statesman recently to gather information about news headlines on their dates of birth. The boys also toured the facilities and learned a little about the

Red Cross chapter to conduct course

PERRYTON - The Ochiltree County Chapter of the American Red Cross will conduct an Instructors Candidate course Thursday, April 18 from 6 to 10 p.m. at the Ochiltree County Courthouse, first floor. Recovery cost is \$12.50.

This course is a prerequisite course to anyone wishing to become an instructor in any of the Red Cross courses, such as Standard First Aid, Community CPR, Water Safety, or Lifeguarding instructor.

A Standard First Aid instructor course will be held April 22, 23 and 25, from 6 to 10 p.m. also at the courthouse. Recovery cost is \$13 for this course.

Persons wishing to attend these courses must bring proof of being at least 17 years old, current valid certificate for Standard First Aid and Adult CPR from the Standard First

Aid course to the first session. Anyone wishing to attend these courses are asked to call the Red Cross office at 435-8175 weekday mornings to sign up.

Persons wishing to attend the Standard First Aid instructor course who are not holding a current certificate in Standard First Aid and Adult CPR, may attend a Standard First Aid course on April 15 and 16 from 6 to 10 p.m. at the Ochiltree County Courthouse. Recovery cost is \$15.

A Basic Lifeguarding course has also been scheduled for April 22, 23 and 25, from 4:30 to 8:30 p.m. at the Perryton and Vicinity Activity Center, 1201 S.W. 15th. Participants must complete training in First Aid and Adult CPR prior to issuance of the Basic Lifeguarding certificate. Recovery cost is \$17.

Spearman school menu

SPEARMAN HIGH SCHOOL

April 8 - April 12

Monday-Pizza casserole, Italian blend vegetables, salad bar, bread slice, sweet potato pie, milk

Tuesday-Grilled cheese sandwich, beef stew, salad bar, applesauce, milk

Wednesday-Chili dogs, buttered corn, salad bar, cinnamon roll, milk

Thursday-Steak fingers or beef fritter, mashed potatoes/gravy,opt., salad bar, hot rolls, butter & jelly, milk

Friday-Hamburger, french fries, salad bar, cookie, milk

JR. HIGH/ELEMENTARY

April 8 - April 12

Monday-Pizza casserole, Italian blend vegetables, fruit, bread slice, sweet potato pie, milk

Tuesday-Grilled cheese sandwich, beef stew, dill spears, applesauce, milk

Wednesday-Chili dogs, buttered corn, baked beans, cinnamon rolls, milk

Thursday-Steak fingers, mashed potatoes/gravy,opt., green beans, hot rolls, butter & jelly, milk

Friday-Hamburger, french fries, lettuce, tomato, pickle, onion, cookie, milk

Hometown News

AMARILLO - Lloyd Laxton (Electronics Technology) and Sam Nitschke (Computer Science Technology), both of Spearman, were recently named to Texas State Technical Institute-Amarillo Dean of Instruction's Honor Roll with a 3.5 grade point average for the winter quarter.

Texas State Technical Institute-Amarillo is a non-profit technical college, created in 1970 by the Texas Legislature. The school offers 16 technical programs ranging from laser electro-optics to welding.

Army Spec. John P. Leinen has participated in Arctic Warrior 91, a

training exercise for the defense of Alaska.

It provided an arctic environment for a major land battle between two large conventional forces in the state's interior, air-to-ground operations in support of the land battle, and air intercept operations.

The exercise is conducted every other year to train Alaska-based forces to employ and sustain combat units.

The soldier is an artillery fire-support specialist at Fort Wainwright, Fairbanks, Alaska.

Leinen is the son of John T. and Effie L. Leinen of Stinnett. He graduated in 1966 from Stinnett High School.

Club News

DAHLIA FLOWER CLUB

The Dahlia Flower Club met April 1 in the home of Louise Archer, with Ruth Mary Whitson as hostess.

President Marjorie Curtis opened the meeting with the Pledge of Allegiance and Club Collect. A short business meeting was held. Minutes were read and corrected and a treasurer report was given.

In new business, Cleo Denman read a letter from several ladies in Amarillo, agreeing to give a program on Stroke Survival on July 1.

Flower arrangements were judged and Frances Williams won first place with her spring arrangement. Hollie Riley will host the next meeting April 15 at Ivey's Hungry Cowboy.

Refreshments were served to Marjorie Curtis, Karen Babitzke, Jewel Turner, Cleo Denman, Sada Hoskins, Francis Williams, Sammie Bishop, Wanda Smith, Louise Archer, Sara Dossett and hostess Ruth Mary Whitson.

Lookin' Back

5 YEARS AGO...

Thursday, April 3, 1986
Andrea L. Archer, a freshman business administration major from Spearman, has been named to the "Distinguished Students" list at Texas A&M University.

10 YEARS AGO...

Thursday, April 2, 1981
The Spearman Lynxettes won the first place trophy at the first 1981 track meet held in Sunray.

15 YEARS AGO...

Thursday, April 1, 1976
Raymie Porter, son of Mr. and Mrs. R. C. Porter, won second place in Class 2AA Mathematics Contest at WISU at Canyon. 13 students from Spearman participated in the contest sponsored by SHS mathematics teacher Mrs. Minnie Weaver.

20 YEARS AGO...

Thursday, April 1, 1971
David McClellan, son of Mr. and Mrs. R.L. McClellan, was honored recently at a Texas Interscholastic League Foundation dinner. He is a senior at the University of Texas at Austin majoring in chemistry.

Debra Jon Brock Brown, daughter of Mr. and Mrs. J.L. Brock, was named to the School of Communication honor roll recently at the University of Texas. She is a junior majoring in speech.

Miss Jacquelyn Hohertz, daughter of Mr. and Mrs. Bob Hohertz, has been named to the Dean's Honor List at Texas Tech. She is a freshman.

TEXAS

It's Like A Whole Other Country.

THANK YOU

I appreciate all the prayers, visits, flowers, gifts, phone calls and cards while I was in the hospital and at home.

John Trindle

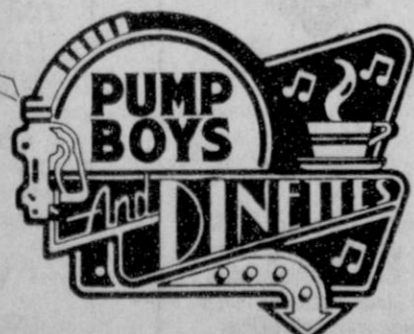
THANK YOU

I want to thank my friends for their prayers, cards, flowers, telephone calls, visits and food during my recent illness while in Pampa.

God bless you all. You are wonderful.

Marjorie Curtis

The Amarillo Little Theatre presents



Saturday, April 6
8 p.m.

Spearman High School Auditorium

Starring Spearman's Own Candy Boxwell
Hamburgers & All the Fixings
Cooked by First State Bank
Served 6 to 7:30 p.m. SHS Cafeteria

Tickets \$10 Adults, \$5 Students (Meal & Show)

\$8 Adults, \$4 Students (Show Only)

For Tickets, Call 659-3521

Proceeds benefit Golden Spread Center

Sponsored by: First State Bank, Spearman

1991 Spearman Relays

Friday, April 5
Scratch Meeting - High School Cafeteria

Schedule of events

Varsity Running Preliminaries

3:45	400 M Relay	VB
4:00	100 M Low Hurdles	VG
4:15	110 M High Hurdles	JVB, VB
4:35	100 M Dash	JVB, VG, VB
5:00	400 M Dash	JVB, VG, VB
5:20	300 M Low Hurdles	VG
5:30	300 M Int. Hurdles	JVB, VB
5:50	200 M Dash	JVB, VG, VB
6:10	3200 M Run (finals)	JVB, VG, VB

Junior High Field Events

Time: 4:00		
Discus	southeast	7th Girls
High Jump	north pit	7th Girls
Shot	northwest	8th Girls
High Jump	east pit	8th Girls
Low Jump	south pit	8th Girls
Discus	northeast	7th Boys
Pole Vault		7th Boys
Shot	southeast	8th Boys
Long Jump	east pit	8th Boys
Time: 5:00		
Shot	northwest	7th Girls
Long Jump	south pit	7th Girls
Discus	southeast	8th Girls
Shot	southeast	7th Boys
High Jump	north pit	7th Boys
Long Jump	east pit	7th Boys
Discus	northeast	8th Boys
High Jump	east pit	8th Boys
Pole Vault		8th Boys

(All junior high triple jump events will be held Saturday afternoon beginning at 1:00 p.m. The boys will be at the south pit and the girls will be at the east pit.)

Junior High Preliminaries

8:45	400 M Relay	All Divisions
9:00	100 M Low Hurdles	7th-8th Girls
9:00	110 M Int. Hurdles	7th-8th Boys
9:30	100 M Dash	All Divisions
9:45	800 M Relay	7th-8th Girls
9:50	400 M Dash	All Divisions
10:20	200 M Low Hurdles	All Divisions
11:05	200 M Dash	All Divisions

Junior Varsity and Varsity Field Events

Time: 9:00		
Pole Vault		VB
Shot Put	southeast ring	VB
High Jump	east pit	VB
Discus	northeast ring	VG
Shot Put	northwest ring	JVB
Triple Jump	east pit	VG
Triple Jump	south pit	VB
10:00		
Long Jump	east pit	VG
Discus	northeast ring	VB
Shot Put	southeast ring	VG
High Jump	north pit	JVG
Long Jump	south pit	JVB
11:00		
High Jump	east pit	VG
Long Jump	south pit	VB
Pole Vault		JVB
Discus	northeast ring	JVB
Triple Jump	east pit	JVB

Finals-Saturday, April 6

1:30-2:00	400 M Relay	All Divisions
2:00-2:15	800 M Run	All Divisions
2:15-2:45	100 M Low Hurdles	7th,8th, Var. Girls
2:15-2:45	110 M Int. Hurdles	7th, 8th Boys
2:15-2:45	110 M High Hurdles	JV, Var. Boys
2:45-3:00	100 M Dash	All Divisions
3:00-3:20	800 M Relay	7th, 8th, Var. Girls
3:20-3:40	400 M Dash	All Divisions
3:40-4:10	200 M Low Hurdles	All Junior High
3:40-4:10	300 M Low Hurdles	Var. Girls
3:40-4:10	300 M Int. Hurdles	JV & Var. Boys
4:10-4:25	200 M Dash	All Divisions
4:25-4:55	1200 M Run	All Junior High
4:55-5:25	1600 M Run	All High School
5:25-5:45	1600 M Relay	All Divisions

February, March VIPs named at high school

Spearman High School's VIPs for the month of February are Donnie Mitchell, teacher, and Haley Shieldknight and Jarret Swan, students.

Each month SHS faculty and administration select two outstanding students and one outstanding teacher for the VIP honor.

Mitchell is a graduate of Emporia State Teachers College. She taught at Balko, Okla. one year, at Hugoton, Kan. eight years, and has been teaching here in Spearman for 21 years.

She is mother of two daughters, Paige and Shelley. Her hobbies include playing with her grandbaby, reading and cross-stitch.

Shieldknight, 18, is a senior student at SHS. She is the daughter of Charles and Hazel Shieldknight.

Her interests include running, skiing, art and swimming. Attending Texas A&M University is listed among Shieldknight's future plans.

Swan, 17, is also an SHS senior student. His parents are Ronald and

Elaine Swan. Among his special interests are reading, rock music and writing short stories. He plans to attend college in the future.

Student VIPs for the month of March at Spearman High School are Kyla Nelson and James Macias.

Nelson, a senior at SHS, is 18 years of age. She is the daughter of Dennis and Judy Nelson.

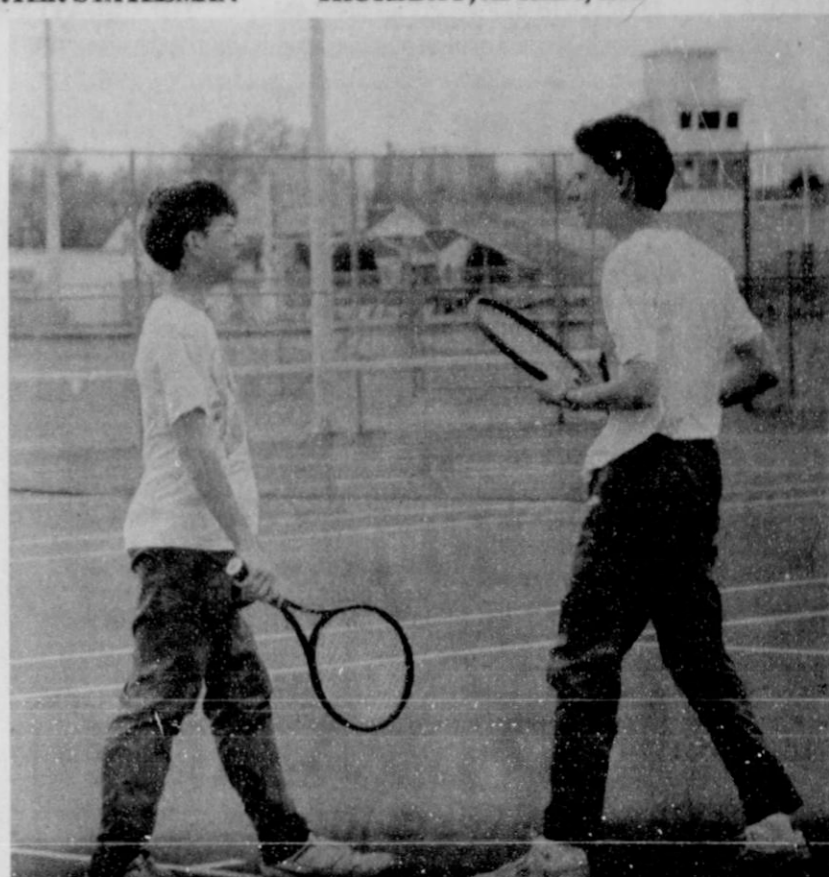
In her spare time, Nelson enjoys cooking, reading, exercising, and spending time with family and friends.

She says her future plans are to attend Texas Tech University.

Macias, age 16, is a junior student at SHS. He is the son of Mr. and Mrs. Guillermo Macias.

Sports-minded, Macias lists among his interests football, collecting sports cards, track and baseball.

His future plans are to attend college, but he has not yet chosen a career field.



Number one Spearman boys double team of Clint Townsen (l) and Mike Hagar (r) discuss strategy between points during a dual match against a Sunray team. They are preparing for the district tournament next Tuesday and Thursday. Teammates joining them in the tournament will be Wes Dyess and Sherman Jones (boys singles), Cam Butts and Tamri Townsen (girls No. 1 doubles), Carrie Pearson and Shea Crawford (girls No. 2 doubles) and Kimbre Townsen and Brandi Schnieder (girls singles).

Roundballers to play in All Star Games

On Thursday and Saturday nights, April 4 and 6, Spearman basketball players Kyla Nelson, Bonnie Thompson and Joel Shields will participate in the Golden Spread All Star Games at the Civic Center in Amarillo.

Kyla Nelson will be playing for the East team in the girls game starting at 8 p.m. Nelson will play again on Saturday afternoon.

At halftime of the girls game there will be a three point shooting contest.

Thompson will participate as a shooter in this contest.

Preceding the girls game on Thursday, Joel Shields will take the court with East all stars boys team. He will be playing a wing position. The boys game gets underway at 6 p.m. If the East team wins, they will play a second game at 1 p.m. on Saturday. If they lose, their second game will be at 6 p.m. Saturday.



Bonnie Thompson



Kyla Nelson



Joel Shields

Cold weather doesn't freeze
CLASSIFIED ADS ACTION



Most school children can tell you two negatives make a positive, but few can name the man who first said so. It's said to have been John Lowth who first laid down that rule of grammar in 1762.



There is a house in Massachusetts built entirely of newspaper. It is made of 215 thicknesses of newspaper and all the furniture is of newspaper, too.

Backing the Lynxettes

Run Fast
Suzanne

Swing Hard
Sara

Safety Glass Co.

316 W. Kenneth 659-2090

GOOD LUCK!

Lynx & Lynxettes!

case
Highway 15 West
Box 656
Spearman, Texas 79081

FIVE STAR EQUIPMENT, INC.
659-3743

We Back Lynxette Track!

...and Lisa Lillard

BUSTER'S AERIAL DUSTERS, INC.

902 Hwy 207 Spearman 659-3648

We're behind you all the way

Hi-Plains Conoco

415 Collard 659-3555



Hansford Family Medicine Clinic Office Manager Betty Pugh presents Dr. Laurence Behney with a red carnation to honor him on Doctor's Day, March 30. The red carnation has been a symbol of medical science throughout history. Its scent symbolizes man's preservation in both body and spirit.



(courtesy photo)

The Amarillo Little Theatre musical production "Pump Boys and Dinettes" will be presented Saturday, April 6 at 8 p.m. in the Spearman High School auditorium. Preceding the performance, a hamburger supper will be served by First State Bank of Spearman, from 6 to 7:30 p.m. in the school cafeteria. Proceeds from

the musical will benefit the Golden Spread Senior Citizen Center of Spearman. Cast members of "Pump Boys and Dinettes" include (front row, l-r) Liz Allen-Grabber, Janet Skidmore-Cason, Candy Boxwell, (back row, l-r) Stephen Hall, Loren Strickland, Shawn Walsh and Duane Grabber.



The U.S. receives more legal immigrants than any other country. Between 1820 and 1984, about 52 million people officially arrived on our shores.

Science program applications available

High school students who are interested in science are invited to apply for the 10th annual Summer Research Program for High School Students to run June 10 through Aug. 2 at The University of Texas Medical Branch (UTMB) at Galveston.

In conjunction with observance of the UTMB Centennial, the program this year will include closing ceremonies commemorating the program's 10-year history and featuring a reunion of past participants.

A summer job opportunity with career focus, the program is designed to encourage promising science students to continue their science

studies and to consider careers in the basic sciences.

Students are selected on the basis of past academic performance, school recommendations, interest and aptitude. They are placed on ongoing UTMB research teams, where they will work for eight weeks

under the guidance of faculty preceptors. They also will attend weekly seminars on various aspects of research. All students will give a talk or exhibit a poster on their research projects. A poster session will be part of the closing program.

Funds for the student salaries

(federal minimum wage of \$3.80 per hour) are provided through grants from the National Science Foundation's Young Scholars Program, the National Institutes of Health's Minority High School Student Research Apprentice Program, the American Chemical Society's

Area Eye Center

Dr. Billy Nowlin
Optometrist

206 Main 659-3109

Hours: Tuesday 9-12 & 1-5 Friday 9-12

Selection of Frames and contact lenses serving this area for 13 years.

PSU hosts scholastic contests

GOODWELL, Okla. - Panhandle State University will host its 68th annual Scholastic Excellence contests on Wednesday, April 10. The PSU Scholastic Contests of 1991 will offer high school students an opportunity to test their skills and knowledge in

Industrial Arts, Home Economics, Computer Science and Business.

In 1923, PSU was beginning to be recognized as a four-year college and began a program to attract area students by offering contests in the Fine Arts Department. A four-day event was planned and continued for several years. Since 1947, the In-

dustrial Arts, Business, and Home Economics Departments have annually provided this testing. The Math and Science Departments joined them in the 1970s.

Business contests will include first year typing, second year typing, word processing, general business, accounting and bookkeeping.

Two contests will be held in computer science. Computer programming and computer literacy are both scholarship contests.

The home economics department will have contests in food I, foods II, clothing I, clothing II and general home economics.

The Industrial Arts contest will include beginning hand woodworking, advanced hand working, wood turning, mechanical drawing, welding, and computer aided drafting.

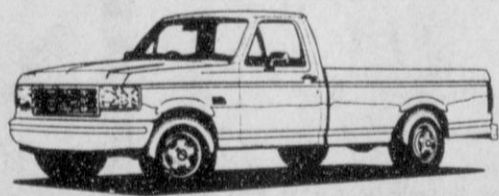
Departmental contest managers include Wayne Manning, department of Business; Diane Murphy, head of the CIS department; Joyce Johnson, department of Home Economics; and Larry Hough, head of the Industrial Arts department.

Contests will begin at 8:30 a.m. General registration will begin at 8 a.m. A lounge area for contest participants will be provided in the student union ballroom.

Dollar Sale



Price does not include tax, title or license.



Hergert Ford will sell all in-stock F-Series pickups at \$1 above dealer invoice.

If you need a new pickup, now is the time to buy.

Offer good until 4-10-91.



806-435-7676 1-800-722-3673

2322 S. Main

MOTORCRAFT PARTS

Perryton, TX

STARS & STRIPES

Mobil Oil Sale

APRIL 1st - APRIL 30th

Farmers...



Truckers...



Construction Companies...



30¢

per gallon discount on Delvac engine oils and Mobilfluid 423



NUSSER OIL COMPANY, INC.

570 BORDER AVE.

ELKHART, KS. 67950

1-800-232-2294 • (316) 697-4624

On The Go With Joy

by Joy Henderson

I've enjoyed the past few weeks and days so much that I'm still walking on air. I hope the rest of you are enjoying these beautiful warm days because our extremely windy days will probably be blowing again soon and we need the sunshine and then more rain to calm them down.

I am going to quote a few lines from our L.A.P. when she said, "Pray for rain! The dust is choking, wheat croaking, and we aren't joking. Pray fervently!"

Lots of visitors in Gruver this past weekend. All of Bob and Connie Burgoon's kids and grandkids (I think) were here for the annual Easter Bunny visit. I say "I think" because I'm not sure about Bill, Susan, Reece and Riley being here but I do know that Jim Bob, Betty and little Jared were here. Then I saw Amy, Andrew, and his friend Carol Massie here from W.T.

I hope there were plenty of eggs for hunting for the Dillows because there were several here, but probably for visiting with Granny and Grandpa, Peggy and Don Dillow. There were the Schiffners (Margaret) and children, Don and Kay with daughter and I think Becky and no telling who else.

Other festivities for grandchildren and all the Gammom clan were at Dell Roy and Raetta's home for some food and fellowship. Grandkids Heath and Ashley were here with parents Roy Don and Tamra, and others included Kenny, Mendy and family members Sue Smith, Cissy and Keith Gibson. It is good they could enjoy the day for Reatta, Sue, and Jimmy and Marie have had some worrisome days staying with Mom Verna Finley at the Perryton hospital. Verna has been diagnosed as having a bleeding ulcer. They hope to avoid surgery and treat her with medication.

Another family reunion type of holiday was with the different family members of Jean Holland.

Kristi King was home briefly for a visit with parents, and friends brought guest Bobby Medford from McMurry College in Abilene. Others seen from college included Laneida Burnam and Manda Winger.

Visiting with both sets of grandparents the Burnams and Wingers were Valerie and Molly along with parents from Friona. I always like to see the little kids but I especially enjoy seeing their cute outfits. Of course I'm always clothes conscious but I'm also the one who hasn't bought anything new for 10 years. I even forgot to shop for my one year old grandson.

Looking pretty sharp for church and visiting grandparents Hugh and Marie Bell was Kale Steed and his mom Glenda from Canadian. Flavil and Josephine Ayers also enjoyed a visit from son Glen and sons Scottie and Trevor. Glen is from Albuquerque. "Grandpa Henderson" enjoys taking these little guys out for a visit to the pig farm and chicken house for egg gathering.

Lucy and Frank Pittman have so many places to go and things to do that they have had to split up and go

in different directions to get this done. Lucy, Luke, Julie and Bond traveled to Tulsa for a workshop then for a visit with relatives. In the meantime, Frank, Kip, Melissa and Zane went to Texline in order for Kip to preach on Sunday morning. I guess next time, Frank and Lucy will need to swap kids and grandkids. I'll be glad when they get back - I haven't heard Lucy's laugh in three weeks, (I was gone one Sunday, she was gone two Sundays) and I need her laughter to boost me up.

Guest of Harold Sneed over the weekend was Marcia Cruise of the Celeste-Leonard area. They had been to the annual Sneed reunion at Cisco where Harold introduced her to the clan. Harold and Marcia are busy making plans for their wedding on April 20.

Other visitors seen lately were Saily Holt and friends Dominique Daigle and Lara Estopinal from TCU.

Those visiting in church Sunday with Grandmother Jessie Spivey were all the Hix Spivey family members. Out of town guests were Chris and Jana Wright and daughter Lindsey of Canyon.

Mozelle McClellan is enjoying the TLC of her sister May Johnson from Pennsylvania.

Dianne Sparks enjoyed the company of Rodney and Shelly (Sparks) Coppock and children Cody and Lauren of Darrouzette. Sister Amy Lewis and daughter also got in on the visit.

Several from Gruver are in Amarillo hospitals but will be back in Gruver by the end of the week.

Veta Alloway, daughter of Leo Frazier, has had surgery in St. Anthony's. She will be taking chemotherapy later.

Marie Harbour is in ICU at St. Anthony's with respiratory problems. Marie is the daughter of Pauline Winger and lives in the Morse area.

Norma Swink had surgery on her hand last week to repair some nerves. If I'm not mistaken, it was a "day surgery" thing and she was back in Gruver and church the next day.

Teddy Poole is having complications with developing blood clots in his lungs after having an accident involving a fall from a horse. Another cowboy is home after being treated for injuries to his collar bone and shoulder blade. Jon Hart also had a run-in with a horse.

Ann Cooper sustained a broken rib after having fallen recently. Anne Potts, who is a student at Texas Tech, will have knee surgery this week.

It was especially good to see the Damar Hollingsworths from Amarillo. He has had some health problems in the past, but is looking good now.



(photo by Joy Henderson)

Members of the Hansford Unit of the American Cancer Society pack kits for the annual Cancer Crusade. They include (back row, l-r) Betty Davis, Dolly McWhorter, Jolene Thompson, Amy Marshall, Doris Armes, (front row, l-r) Mary TeBeest, Clementine Renner and Virginia Taylor.

Hansford County ACS unit sets projects

By Joy Henderson

The Hansford County American Cancer Society Chapter Board members met March 28 in the hospitality room of B & B Farm Industries at Spearman.

The meeting began with a salad luncheon hosted by the Gruver members and with prayer by Mary TeBeest, who also gave the welcome and introduction of guests.

In the absence of Mozelle McClellan, Mary TeBeest presided over the meeting and asked Clementine Renner to read the minutes of the previous meeting. The minutes were approved after a deletion.

Committee reports were given by board members and dates for the upcoming Cancer Crusade, the Great American Food Fight, and open house for the new location of the ACS offices in Amarillo. Amy Marshall of Amarillo invites the public to this open house on April 14 from 2 to 4 p.m. at 3915 Bell St., near Amarillo High School.

The Great American Food Fight Against Cancer will be held April 18, by setting aside the day to emphasize good nutrition and eating smart. This

reporter will continue to feature some of the recipes from the American Cancer Society cookbook, authored by Anne Lindsay and reprinted by permission of William Morrow and Co.

The dates to conduct the fund raising and memorial contributions of the Cancer Crusade will take place during the last two weeks in April. Members will be contacting the residential and business areas of Hansford County, and the "Send A Mouse to College" program will be conducted for the youth to help raise funds to help fight cancer.

Memorials may be given anytime during the year and they may be mailed to Pat Morley, Box 96, Gruver, Tx. 79040 or to Arbeta Nobles, Box 337, Spearman, Tx. 79081.

After the business meeting was over, the board members packed kits to be used during the crusade. Members attending the luncheon and meeting were Mary TeBeest, Clementine Renner, Arbeta Nobles, Dolly McWhorter, Virginia Taylor, Betty Davis, Jolene Thompson, Joy Henderson, Pat Morley, Doris Armes and Amy Marshall, field representative of District 29.

Beneficiaries must report address change

by Virginia DeWitt
SSA branch manager

PAMPA - Social Security and Supplemental Security Income beneficiaries must report any change in mailing address or risk having their checks suspended.

This is especially true of those who use direct deposit because they are not using a mailing address to receive monthly checks. However, notices of changes and reminders of reporting requirements cannot be sent to a bank, so having a correct mailing address on file is extremely important.

In addition, in January of each year, Social Security sends each beneficiary a Form SSA-1099, the Social Security Benefit Statement. If the U.S. Postal Service returns a Form 1099 as undeliverable, that person's benefits may be suspended for lack of a good address, even if the beneficiary is using direct deposit.

First, however, Social Security will double check for a recent change of address. If none is found, and the benefit is paid by direct deposit,

Social Security will ask the financial institution for a correct address. The post office is asked to check its change of address records, and local telephone directory assistance is contacted.

Using the best available address, Social Security sends a first-class notice that benefits will be suspended unless the beneficiary contacts Social Security. If no response is made, benefits are suspended until the agency hears from the person.

Avoiding this procedure is very simple. A person should always be sure to let Social Security know whenever his or her mailing address changes. A simple phone call will get it done.

You may contact Social Security by the toll-free telephone number, 1-800-234-5772, to report any changes you may have. The local Social Security office is located at 125 South Gillespie in Pampa. Office hours are 9 a.m. until 4:30 p.m. Monday through Friday, except on national holidays.

Family reunion held

by Joy Henderson

The Easter weekend holiday was a joyous occasion for Jean Holland and her family.

All of them decided to get together for a family reunion during Easter, and some of the members compared it to the Thanksgiving time of year, when it is likely to snow. You see, this year March 30 was also an occasion for snow and even though it was blustery and cold for a few hours, it was over by noon. Then the rest of the weekend was enjoyable for the planned activities.

Those attending were Kathy

Carey, sister, from Sarasota, Fla. and niece April Carey from Austin. Visiting from Loveland, Ohio were a niece, Martha Schneider, and her husband Mike and children Phillip, Geoffrey and Amanda. From Pampa came a daughter, Pat Hudson, with husband Stan and children Logan, Cliff, Bryce and Tyler.

Another daughter, Glenna Conoley, came from Perryton with husband Brian and children Haley and Andrew. A nephew, Jim Meek, brought his new wife Suzanne from Oklahoma City. Children accompanying them were Audrey and Alex.

Club News

GRUVER MUSIC CLUB

The Gruver Music Club, a member of the State and National Federation of Music Clubs, held its regular meeting March 28 at the United Methodist Church.

The meeting was opened by president Frances Murrell and the Collect for Club Women was read, followed by the regular order of business.

Ada Joyce Stedje, vice president and program chairman, introduced the program given by Lewis Holland, Methodist minister, entitled "Singing in Prayer."

The meditation was given by Jean Zabel. Cookies and coffee were served by Frances Murrell and Ada Joyce Spivey.

GRUVER PTA

Gruver PTA recently acknowledged

the efforts of the VIPS (Volunteers in Public Service) of the Gruver schools, who have served for the 1990-91 school year.

These volunteers dedicate several hours of service each week to classes and libraries from kindergarten through high school.

VIPS included JoAlice Clawson and Carol Tolleson, kindergarten; Marguerite Nelson, Jessica Schad and Mavis Hart, first grade; and Angie Remmel, Toni Atwood and Linda Tidwell, second grade.

Others included Sue Fiel and Marsha Lowe, third grade; Nelle Evans, fourth grade; Rhonda Ward, Mary Jo Cluck, Nell Thoreson and Tracy Beville, junior high; and Barbara Stavlo, high school.

Anyone wishing to become a VIPS should contact Rhonda Ward, VIPS chairman, at 733-2925.

Gruver school menu

APRIL 8-12

LUNCH

Monday - Steak fingers/gravy, mashed potatoes, carrots, chocolate cake, hot rolls, milk

Tuesday - Burritos/chili/cheese, tossed salad, fruit, milk

Wednesday - Fried chicken, sweet potatoes, corn, jello, hot rolls, milk

Thursday - Pig-in-a-blanket, beans, fruit, peanut butter cookies, milk

Friday - Hamburgers, french fries, lettuce/pickles/cheese, cookies, milk

Salad bar Monday, Tuesday, Wednesday and Thursday. Potato bar Tuesday and Thursday on request only to teachers and high school students.

BREAKFAST

Monday - Cereal, fruit or juice, muffins, milk

Tuesday - French toast sticks, fruit, peanuts, milk

Wednesday - Cowboy bread, fruit, peanuts, milk

Thursday - Toast, peanut butter & jelly, fruit, milk

Friday - Cinnamon rolls, fruit, peanuts, milk

Menu subject to change.

Lookin' Back

5 YEARS AGO...

Thursday, April 3, 1986
Gruver Cub Scouts held a Kite Derby. The kite flying winners were David Gilbert, first; Raymond Lewallen, second; and Sammy Renteria, third.

Winners in appearance were Kevin Spivey, first; L.D. Peters, second; and Brian Boyd, third.

10 YEARS AGO...

Thursday, April 2, 1981
Gruver FFA and 4-H dominated at the Hansford judging event.

The High School choir presented "Gruver in Concert" with all types of music by local talent.

15 YEARS AGO...

Thursday, April 1, 1976
The Gruver Baptist Church held a dedication for their new activities building.

Public Notice

Southwestern Bell Telephone Company has filed two separate applications with the Public Utility Commission of Texas to introduce two new optional directory services. One service is Directory Assistance Call Completion (DACC) and the other service is Multiple List Directory Assistance (MLDA).

DACC is an optional service that provides customers the option of having their Directory Assistance call completed to the requested number (when they call Directory Assistance for a number) by either the Directory Assistance operator or a mechanized audio response system.

The proposed rates* for fully-automated DACC calls are: \$.30 if the call is sent paid or billed to a calling card, \$1.00 if the call is collect or billed to a third number and \$.25 from a coin telephone.

The proposed rates* for semi-automated (operator assisted) DACC calls are: \$.85 for calls that are sent paid or billed to a calling card, \$1.20 if the call is collect or billed to a third number and \$2.60 for a person-to-person call.

Multiple List Directory Assistance (MLDA) allows the customer to request more than two listing requests per call to Directory Assistance. Customers can either call on "demand" and receive up to 10 listings, or schedule an "appointment" and receive the assistance of a Directory Assistance operator for as long as required. The rates for "demand" MLDA are \$.30 per listing request (after applicable allowances), with a maximum of 10 listing requests per call. The rates for "appointment" MLDA are \$1.00 per minute, with a 15-minute minimum.

The optional services DACC and MLDA are intended for use by both residence and business customers. Those persons who qualify for exemption of Directory Assistance charges because of visual or physical handicaps will be able to use DACC and "demand" MLDA free of charge. If approved by the commission, DACC and MLDA will be available beginning May 13, 1991. First-year projected revenues for DACC are approximately \$9.6 million. First-year projected revenues for MLDA are approximately \$1.7 million.

Persons who wish to comment on these applications should notify the commission by May 3, 1991. Requests for further information should be mailed to the Public Utility Commission of Texas, 7800 Shoal Creek Boulevard, Suite 400N, Austin, Texas 78757, or you may call the Public Utility Commission Public Information Office at (512) 458-0256 or (512) 458-0221 teletypewriter for the deaf.

Southwestern Bell Telephone

*The charges for DACC are in addition to the charge for the Directory Assistance Listing (if applicable) and/or any local or intraLATA toll charges that would apply to the completed call.

EXPERTS AGREE!

When your old air conditioner wears out, switch to the

Dual Fuel Heat Pump



Benny Wilson
Wilson Electric
Gruver, TX

Heating and cooling specialists recommend replacing your old air conditioner with a Dual Fuel Heat Pump. It not only cools but works with your present gas furnace to more efficiently heat your home, too. A Dual Fuel Heat Pump is economical to operate, dependable and clean. When your old air conditioner has gasped its last, do what the experts recommend. Switch to the Dual Fuel Heat Pump!

Contact your nearest Dual Fuel Heat Pump dealer.

Southwestern Bell Telephone

Golfers headed to regionals

Spearman golfers wrapped up spots in the regional tournament Monday by finishing in first and second place in the last district tournament, played at North Plains CC of Dumas.

The boys A team brought home a first place district finish by posting a tournament-low 354 team score. This gave them a four-tournament score of 1434. This score was 27 points better

than second place finisher, West Texas.

The boys A team was led in scoring by Ron Whittington, who shot an 83 on Monday for a total of 294. Tying him for total score was Cass Lasater, who posted an 89 on Monday. Other members of the A team are Josh Neff (91-289), Justin Boyd (91-272) and Toby Thompson (96-268). The boys B team finished in fourth place with a total point score of 430. They were led in scoring by Darian Hawkins, who posted a 93-277. He was followed by Brady Reed (103-303), Dallas Trospen (11-312), Jason Swink (118-310) and Tim Kizziar (132-360).

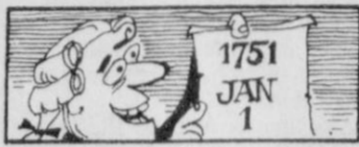
The girls team finished the district race tied with Stratford for the top spot. Both teams had total scores of 1714. The Spearman girls were leading the district race going into Monday's tournament, but lost their lead when they finished Monday with a 401 score to Stratford's 398.

The girls were led by Monica Blackman, who posted a 100-306. She was followed by Marci Womble (106-307), Cindy Melton (102-319), Rainey Whittington (93-317) and Lori Lieb (130-384).

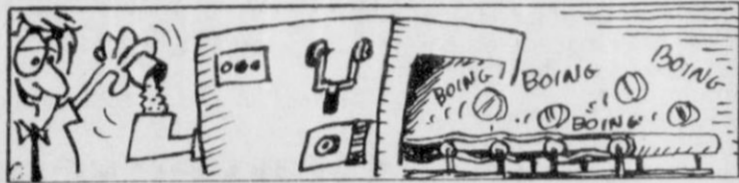
The Spearman golfers will keep their skills sharp before the Regional Tournament, April 24 and 25, by playing in several tournaments. The first of these tournaments is Thursday and Friday of this week at Shamrock. The girls play Thursday, and the boys Friday.



Cass Lasater



During the Middle Ages, the year began at various dates in different times and places. In England it was not until 1751 that January was restored to its place as first month, as it had been during the Roman era.



It wasn't until 1863 that Americans started to take drugs in commercially made pills. Jacob Dunton, a Philadelphia wholesale druggist, originated the machine. His entire production from 1869 until 1876 was less than that now made daily in U.S. laboratories.



Monica Blackman



Spearman Elementary students placing at the U.I.L. Meet held on Tuesday and Thursday of last week won first place for their school. Those placing were (back row l-r) Chelsea Nollner,

Chelsey Villines, Brian McLaughlin, Landon Miller, Lisa Swink, Leslie Hoiton, (bottom row, l-r) Audra Sanders, Amber Ramon, Kathryn Murphy, Grace Davis and Holly Pipkin.

Spearman U.I.L. students bring home district first place

Spearman elementary and junior high students competed in the U.I.L. District Academic Contest March 25-28, with both age groups bringing home first place honors. Spearman Elementary School has fielded either the first- or second-place district team for seven of the past nine years in U.I.L. competition.

Individual results follow:
SPEARMAN ELEMENTARY
U.I.L. RESULTS

Second Grade Story Telling
Chelsea Nollner - 2nd; Chelsey Villines - 3rd

Third Grade Story Telling
Amber Ramon - 1st; Kathryn Murphy - 4th; Audra Sanders - 5th
Third and Fourth Spelling
Grace Davis - 2nd; Holly Pipkin - 4th
Third and Fourth Writing
Kathryn Murphy - 4th
Fourth Picture Memory
Lisa Swink, Brian McLaughlin, Leslie Holton and Landon Miller - 4th
SPEARMAN JUNIOR HIGH
U.I.L. RESULTS

Eighth Grade Science
Molly Blackman - 2nd; Stuart Rig-

gins - 3rd; Josh Winegarner - 6th
Seventh Grade Science
Michael Covington - 1st; Phillip Sanders - 3rd
Fifth and Sixth Spelling
Samantha Beasley - 4th; Dillon Miller - 6th
Seventh and Eighth Modern Oratory
Alan Hutchison - 5th
Seventh and Eighth Expository Writing
Josh Howard - 1st; Molly Blackman - 2nd
Fifth and Sixth Expressive Writing
Candice Pipkin - 4th
Seventh and Eighth Impromptu Speaking
Jill Clement - 2nd; Ashley Shieldknight - 4th; Nora Nava - 6th
Seventh and Eighth Number Sense
Clayton Hergert - 1st; Christina Poole - 4th
Fifth and Sixth Listening Skills
Bruce Howell - 4th, Devin Delozier - 7th
Fifth and Sixth Number Sense
Britt Savage - 1st; Clint Faries - 6th
Fifth and Sixth Oral Reading
Amber LaRochelle - 2nd
Seventh and Eighth Calculator
Martin Sanders - 1st; Heather Reimer - 2nd; Brent Collins - 3rd
Seventh and Eighth Spelling
Mika Pipkin - 1st; Regan Boxwell - 4th; Haley Farber - 6th
Fourth and Fifth Picture Memory
Lindsay Smith, Jana Brock, Jocelyn Edwards, Brian Howell, Jennifer Neff - 3rd place
Seventh and Eighth Dictionary Skills
Darla Black - 5th



The following U.I.L. participants helped Spearman to its first place finish by placing in their events. They are (1st row, l-r) Michael Covington, Clint Faries, Britt Savage, Bruce Howell, Devin Delozier, Candice Pipkin, Haley Farber, (2nd row, l-r) Brian Howell, Victor Favela, Lindsey Smith, Jennifer Neff, Jocelyn Edwards, Janna Brock, (3rd row, l-r) Josh Howard, Amber

LaRochelle, Dillion Miller, Clayton Hergert, Kristina Poole, Mika Pipkin, Stuart Riggins, Nora Nava, Josh Winegarner, (4th row, l-r) Alan Hutchison, Molly Blackman, Ashley Shieldknight, Regan Boxwell, Phillip Sanders, Martin Sanders, Brent Collins, Heather Reimer, Jill Clement and Darla Black.



GOOD LUCK

Lynx & Lynxettes!

JG's

306 Hancock • Spearman, Texas
659-3424

Golf, Track or Tennis....

No matter the sport, we support our Lynx & Lynxettes

Kids' Stuff & Lady Fair 719 W. 7th. 659-2608	Berry Cleaners 207 Main 659-3122	Cates Men & Boys Wear 221 Main 659-3426	
Speartex Grain 405 Collard 659-3711	Wardrobe Cleaners 302 Main 659-2953	Charolette Ford Trunks 313 Main 659-3027	Sacks Third Ave. 203 Main 659-3350

Research saves lives.

American Heart Association

We "Love"
Spearman tennis!
... and Brandi Schneider

THE BUNKHOUSE

212 S. Main 659-2476

Congratulations
Lynxette golfers!
... and Monica Blackman

Scores 275 points...

Gruver U.I.L. team wins first

by Akiko Bort

Gruver High School students competed at the U.I.L. competition at Amarillo College March 25 and 26. Gruver came away with the first place trophy, scoring 275 points.

In Extemporaneous Informative Speaking, Amanda Hiller had a second place finish, advancing her to the Regionals. Clay Gillispie finished fourth in this event.

Gruver brought home the top two spots in Extemporaneous Persuasive Speaking. Benny McClenagan and Luke Miller placed first and second, respectively. Jennifer Baker took the fourth place honors.

Holly Venneman advanced to the Regionals as alternate in Poetry Interpretation with her third place finish. Anissa Ryan had a second place finish in 9th grade Prose.

Also advancing to Regionals with

their third place finish in Team Debate are Matthew Hoel and Marty McCloy.

Gruver has advanced four students to Regionals in the Journalism events. Gretchen Lowder garnered a second place finish in Editorial Writing. Clay Gillispie finished sixth in this event.

Amanda Hiller won the Headline Writing contest, and Akiko Bort won in Feature Writing. Also bringing home honors in Headline Writing were Luke Miller and Clay Gillispie, who placed third and sixth, respectively. Marci Roberts had a fifth place finish in Feature Writing.

In Accounting, Marci Roberts had a fourth place finish. Katie Williams finished in fifth place.

Kenny Slough made it to Regionals as the alternate in Calculator Applications. He placed third in that event.

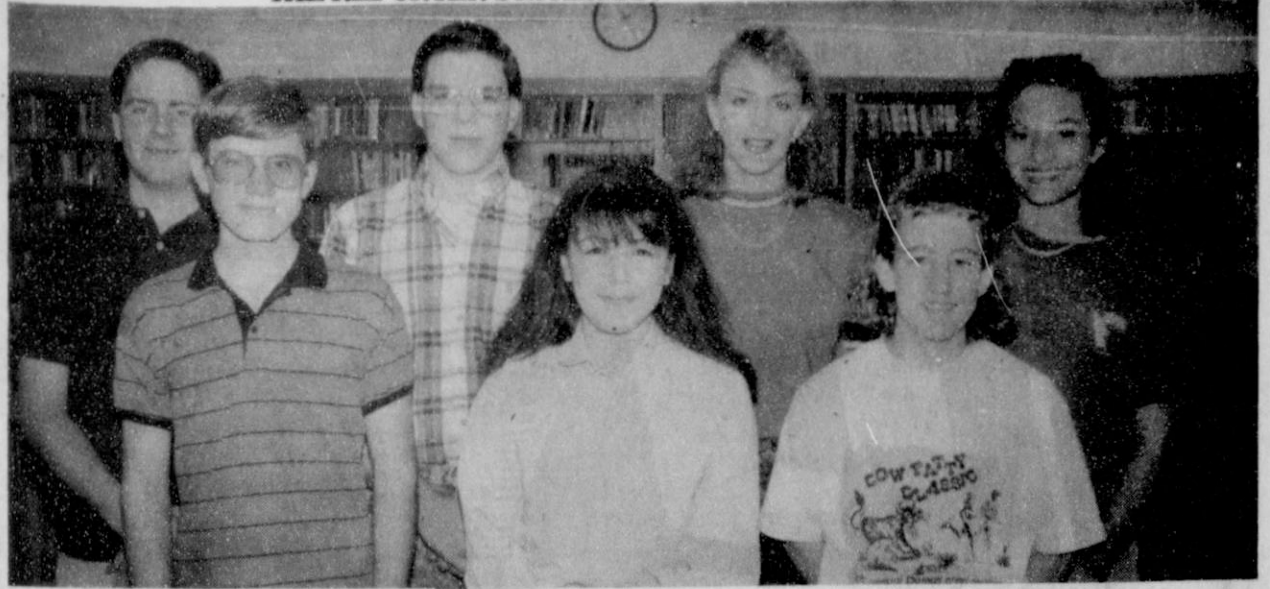
Gruver placed first as a team in Current Issues and Events, with Benny McClenagan placing second, Clay Gillispie finishing in fifth place, and Chris Kauffman finishing in seventh place. Gruver was also a team winner in Number Sense. Luke Miller had a third place finish in that event, and Jennifer Hart finished in fifth place.

Benny McClenagan advanced to Regionals in Literary Criticism, as he placed second. Gretchen Lowder finished in sixth place.

Will Evans had a sixth place effort in Keyboarding. Marci Roberts brought home the fourth place honors in Ready Writing.

Traci Crawford garnered a second place finish in Spelling. Gina Hoel placed sixth in this event.

All of the points were tabulated before the One-Act Play competition for the district title. Gruver's play, "Breaking Up is Hard to Do," finished third overall.



The following U.I.L. participants helped Gruver to its first place finish by placing in their events. They are (1st row, l-r) Kenny Slough, Akiko Bort, Tracy Crawford, (2nd row, l-r) Luke Miller, Chris Kauffman, Amanda Hiller and Holly Venneman.



The following U.I.L. participants helped Gruver to its first place finish by placing in their events. They are (1st row, l-r) Marci Roberts, Gretchen Lowder, Katie Williams, (2nd row, l-r) Clay Gillispie, Benny McClenagan and Matthew Hoel.



The One Act Play cast and crew are (1st row, l-r) Cathy Minter, Clay Gillispie, Benny McClenagan, Katie Williams, Gretchen Lowder, (2nd row, l-r) Chris Kauffman, Amanda Hiller, Kyle Haenisch, Kevin Babbs and Jennifer Baker.

Individual honors went to Benny McClenagan, Best Actor; Jennifer Baker, Best Actress; Amanda Hiller, All Star Cast; and Clay Gillispie, Honorable Mention ASC.



The following U.I.L. participants helped Gruver to its first place finish by placing in their events. They are (l-r) Jennifer Hart, Marty McCloy, Anissa Ryan and Will Evans.

Gruver track team results

GRUVER HIGH SCHOOL GIRLS

3200 Meter Run-Brendy Brown - 3rd, 13:23.13
 400 Meter Relay-Janelle Haefner, Gina Hoel, Shanna Jarvis, Wynn Maupin - 6th, 54.70
 Hurdles-Janelle Haefner - 4th, 13.36
 400 Meter Dash-Cora Meyer - 1st, 63.08
 800 Meter Relay-Janelle Haefner, Gina Hoel, Holly Venneman, Wynn Maupin - 2nd, 155.36
 Triple Jump-Wynn Maupin-2nd, 32' 3 3/4"
 Long Jump-Wynn Maupin - 1st, 15' 4 1/2"

Running High Jump-Wynn Maupin - 6th, 4'8"

Hurdles-Shannon Pool - 18.37
 800 Meter Run-Kyle Haenisch, Scott McCloy, Fabian Royval
 100 Meter Dash-Crockett Tidwell - 12.02; Garrett Gumfory - 12.26, Matt Etheredge - 12.66
 400 Meter Dash-Garrett Gumfory - 59.9
 300 Meter Hurdles-Felipe Dominquez

- 43.95; Shannon Pool - 44.74; Matt Etheredge - 46.76
 200 Meter Dash-Crockett Tidwell - 24.91; Dan McCloy - 23.80; Trent Seagler - 25.48

See track page 14

Tourneys announced

The Hansford County Golf Club announced this tentative schedule of tournaments.

APRIL 6: Cross Country Fun Tournament

APRIL 9: Tuesday Night Scramble Tournaments Start

APRIL 28-29: Two Man-Two Day Low Ball Tournament

MAY 19: Men's Individual Tournament

JUNE 1: Night Tournament

JULY 4: July 4th Scramble Tournament

AUGUST 10-11: L.M. Womble 2 man-2 day Lowball Memorial Tournament

APRIL SPECIAL

Feedlot Manure Prices

20¢ Per Ton Off On All Orders In April.

Even More From Some Feedlots.

Call For More Information.

REAGAN 659-3402 DENNIS 659-2834

CLOIS (BILLY) 659-3642

BAKER'S DOUBLE "C" FEED PEN SERVICE INC.

\$1.99

HUNGR-BUSTER® & 16-OZ. COKE®
 DELICIOUS QUARTER-POUND** BURGER AND A 16-OZ. COKE®



THIS WEEK'S
DQ VALUE

ON SALE AT
DAIRY QUEEN
 APRIL 1-14,
 1991

\$1.99

DUDE® & 16-OZ. COKE®
 CHICKEN FRIED STEAK SANDWICH AND A 16-OZ. COKE®



® Reg. U.S. Pat. & Tm. Off. Am. D.O. Corp. *TM Reg. U.S. Pat. & Tm. Tx. D.O. Corp. **TM Reg. U.S. Pat. & Tm. Off. Am. D.O. Corp. © 1991 Dairy Queen, Inc. All participating Dairy Queen stores. **Pre-cooked Weight

ALLSUP'S MILK 1/2 gal.
\$1.09

6 PACK/
12 OZ. CANS
\$2.39

FRESH DONUTS
"Buy one get one free"
Reg. 39¢

DORITOS "ALL FLAVORS"
Reg. \$1.99
\$1.59

BRAWNY PAPER TOWELS "Jumbo roll"
79¢

305 W. KENNETH SPEARMAN

101 MAIN, GRUVER

MARCH 31- APRIL 6 WHILE QUANTITIES LAST

BAKE-RITE SHORTENING 42oz. CAN
99¢

BEEF & CHEESE CHIMICHANGA
89¢

COOKED FRESH 24 HRS. A DAY	HOT FOODS MENU	AVAILABLE AT ALL ALLSUP'S LOCATIONS
BARBECUE BEEF SANDWICH	99¢	8 PIECE BOX CHICKEN \$4.99
BARBECUE PORK RIBS (L.B.)	\$3.99	BEEF & CHEESE CHIMICHANGA \$1.19
BARBECUE WHOLE CHICKEN	\$3.99	(BREAD) CORN DOG 69¢
ALLSUP'S BURRITO	79¢	DELICIOUS HAMBURGER 59¢
BREAKFAST BURRITO	99¢	WILSON HOT LINKS 99¢
BURRITO BEEF & SALSA	\$1.19	SAUSAGE ON A STICK \$1.59
DELICIOUS CHEESEBURGER CHICKEN	79¢	SAUSAGE & BISCUIT 79¢
FRIED STEAK	\$1.59	SAUSAGE, EGG & BISCUIT \$1.09
3 COUNT CHICKEN STRIPS	\$1.49	SAUTEETA SAUSAGE \$1.09
WIPOTATO WEDGES/ CHICKEN (2 PCS) BISCUIT	\$1.99	4 COUNT STEAK FINGERS \$1.00

Tomato Sauce Contadina DelMonte & Shurfine 8 oz. can **5/\$1.00**

Shur Fine Saltine Crackers 1 Lb. Box 59¢

Shur Fine Sugar 5 Lb. \$1.69

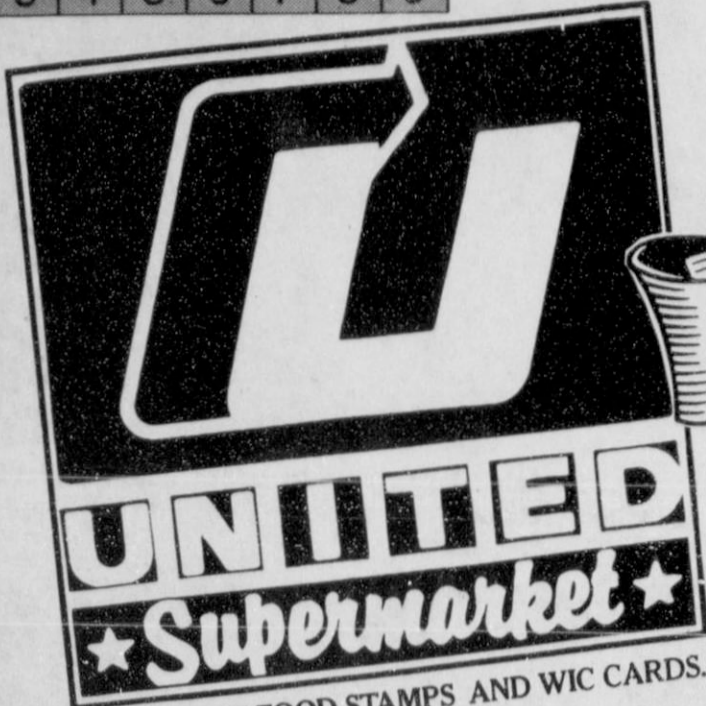
Gold Medal Flour 5 lb. bag **69¢**

SHOP AND SAVE AT ALLSUP'S

® Reg. U.S. Pat. & Tm. Off. Am. D.O. Corp. *TM Reg. U.S. Pat. & Tm. Tx. D.O. Corp. **TM Reg. U.S. Pat. & Tm. Off. Am. D.O. Corp. © 1991 Dairy Queen, Inc. All participating Dairy Queen stores. **Pre-cooked Weight

PRICES GOOD THRU TUES. APRIL 9TH

WED.	THUR.	FRI.	SAT.	SUN.	MON.	TUES.
3	4	5	6	7	8	9



PRIVATE Label SALE!



Value Quality



GOOD THRU APRIL 9 IN PERRYTON ONLY.

Fine Fare Vegetables

Whole Kernel or Cream Style Corn 17 oz.
Cut Green Beans 16 oz.



Dole Golden Ripe Bananas

lb. **.39**

3 for .99



Fine Fare Macaroni & Cheese

7 oz.

4 for \$1



Fine Fare Orange Juice

12 oz.

.69



United Premium Quality

Bacon

Regular or Mesquite
1 lb. pkg.

\$1.68



Fine Fare Flour

5 lb. bag

.69

Double Coupons

7 Days A Week!

United Extra Lean Super Valu Pak Round Steak

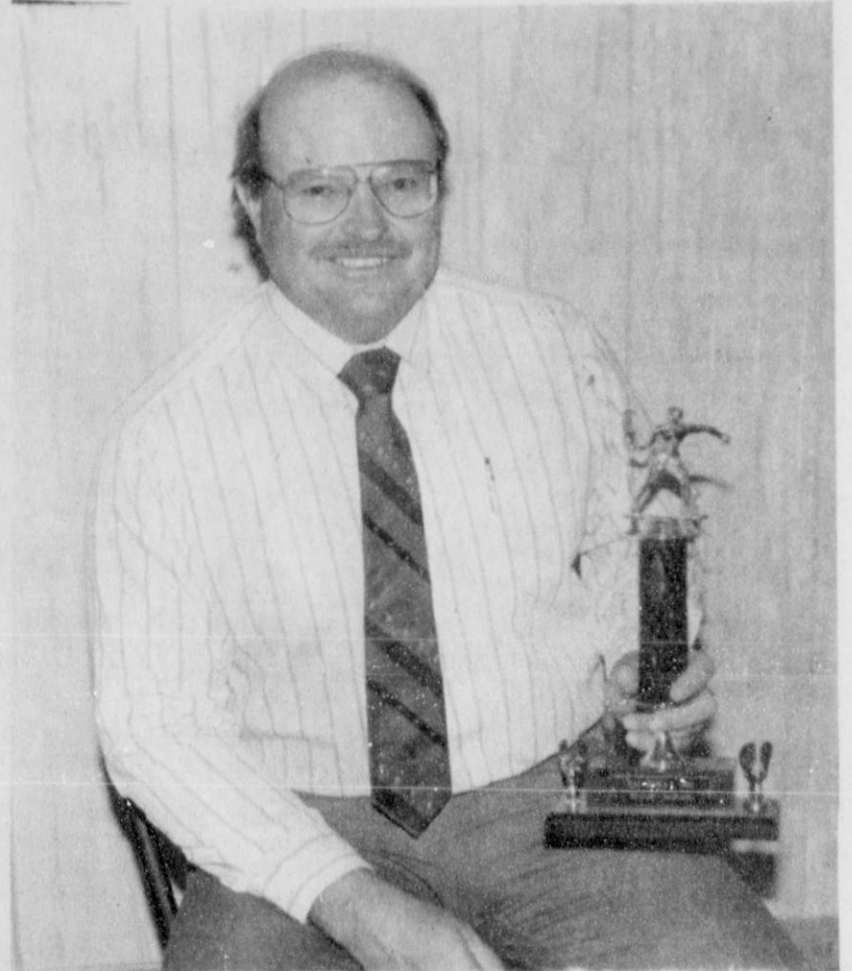
Center Cut

\$1.78



Single Pak lb. **\$1.98**

the personal touch



(photo by JoAnn Morton)
Racquetball enthusiast Troy James of Spearman recently competed in a tournament at Perryton. He received a first-place trophy as the winner of the A Division of the tournament, along with a "pretty nice" ice chest. On his way to the tournament win, James defeated four other racquetball players.



Dr. Charles Ridge is all smiles as his employee Teresa Brown honors him with a red carnation boutonniere on Doctor's Day. Doctor's Day is celebrated each March 30. On that date in 1842, ether was first used as an anesthetic agent during surgery, there by freeing mankind from pain and suffering.

BEHNE ELECTRIC & CONSTRUCTION

Electrical Repairs
& Handy Man Service
Reasonable Rates

CALL 659-3404



Dine in
or
Carry out
at

Casa Alvarez

A generous taste of old Mexico

Offering the finest in south of the border cuisine

Open 7 days a week

Mon.-Sat. 11am. - 9pm.
Sunday 11am. - 8pm.

Available for Parties

For carry out or reservations call 659-3422

Casa Alvarez

819 Hwy 207 S
Spearman, Texas

Smokeless tobacco use surveyed

Health officials warn that a rising popularity of smokeless tobacco among the youth may lead to a growing incidence of oral cancer at the end of the decade. Currently, oral cancer strikes 11 per 100,000 Americans.

A 1989 Texas Department of Health (TDH) survey of about 4,400 Texas students in grades 7, 8, 10 and 12 reveals that more than 49 percent of the male respondents had tried smokeless tobacco at least once.

Some 31 percent of the 7th grade boys and nearly 70 percent of male seniors had tried snuff or chewing tobacco at least once. Most (about 62 percent) male students who had tried smokeless tobacco did so before age 13.

Ron Todd, coordinator of the TDH Office of Smoking and Health, said, "A lot of younger kids start with snuff, the kind sold in convenient packets. And the risk of oral cancer may be 50 times higher for long-term snuff users than for tobacco non-users." He added that boys in Texas begin using smokeless tobacco earlier than do boys of other states.

He said that the percentage of 8th grade students who reported using smokeless tobacco in the previous 30 days was close to that found in a nationwide survey (8.8 percent Texas vs. 9.8 percent nationally). However, Texas 10th graders were more than twice as likely to be heavy users (20 times in the previous 30 days) than 10th graders nationally.

"We have the same problem with snuff and chewing tobacco that we have with cigarettes - children start using it, and by the time they realize their mistake, they are addicted to nicotine," Todd said.

"Tobacco use is not adult behavior - it is juvenile behavior. If children want to act like adults, then they should stop using tobacco. That's what most adults are doing," Todd added.

Dr. Robert Bernstein, Commissioner of Health, said that smokeless tobacco was advertised in the 1970s as an alternative to cigarettes, with slogans like "take a pinch, instead of

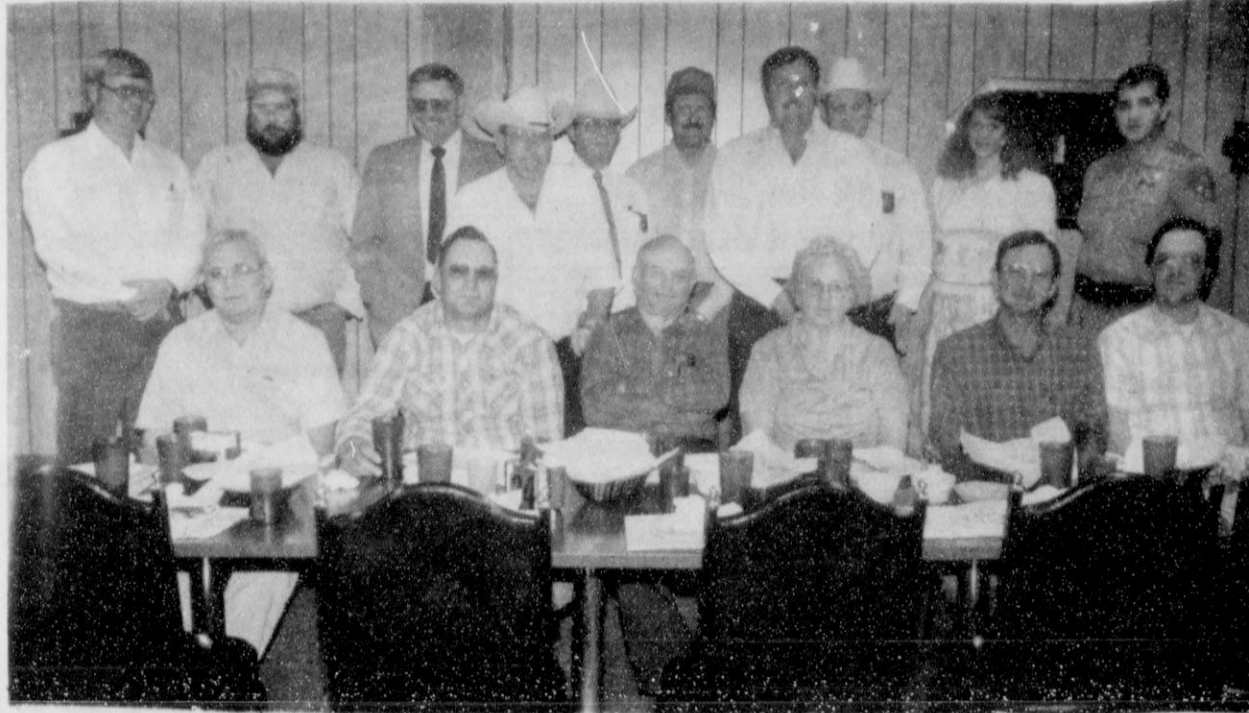
a puff." "Since both forms of tobacco use can result in nicotine addiction and cause cancer, the only real choice offered by such slogans is between the risks of lung cancer and oral cancer," Dr. Bernstein said.

He added that survival rates for persons with either lung cancer or oral cancer are two of the lowest among the major cancers.

Todd attributes increased teen

tobacco use to advertising. "The overwhelming majority (84 percent) of students surveyed in Texas knew that tobacco use was very harmful yet more than half had tried tobacco in some form. Knowledge of the harmful effects of tobacco seems to be quickly eroded by slick ads associating tobacco use with success, confidence and adventure," he said.

For more information on tobacco use, contact the Texas Office of Smoking and Health, toll free at 1-800-345-8647.



Hansford County severe weather watch personnel gathered at Casa Alvarez in Spearman for their annual dinner meeting. They include (front row, l-r) David Turner, Buck Tidwell, Bill Johnson, Joyce Johnson, Loyall Turner, Joe

Morris, (back row, l-r) Mike Davis, Scott Davis, Jim Brown, Don Evans, Gary Evans, Joe Vanderburg, Dennis Cline, R.L. McFarlin, Spy Hataway and Ed Longoria.

Tales from Burma

Helping The Family
by Charles Ridge, M.D.

During General Ne Win's reign as absolute dictator, he has become a billionaire. Most of his money is deposited in banks in cities outside the country, like Bangkok and Hong Kong. Much of his time is spent vacationing where his money is.

One of his virtues is that he takes good care of his family. He has been married several times and has many children. One of his daughters told him that she had seen a beautiful boutique in Rangoon which was just the kind she would like to own and operate someday. The following day, a group of soldiers informed the owner that her business was being "nationalized by the people of Burma."

The next day, Ne Win presented his girl the key to the front door and a deed giving her clear title to the boutique of her dreams.

One of his sons told Ne Win that he had seen a beautiful home in Rangoon which was just like what he hoped to own someday. The day after this, some soldiers informed the owner of the house that his home was being "nationalized by the people of Burma." He was given 24 hours to be off the premises. Naturally, he preferred acceptance of his loss to being shot. The General's son was given a deed and the key to the front door.

In third world countries, public office is a license to steal. We are, of course, skeptical of people who seek positions of power. In all honesty, though, our politicians are the most decent, upright, and compassionate politicians in the history of the world (with a few notable exceptions). Maybe that's not saying much.

Money and the Revolution
by Charles Ridge, M.D.

You really can't understand the revolution of 1988 without knowing something about their money. Their currency is called the Kyat (pronounced Chah), worthless outside Burma. It makes more sense to us if we think in terms of dollars and the effect their policies would have had on us if they had been in force in our country.

Suppose all banks were government-owned and very few people would trust them with their money. Suppose, also, that instead of having \$20 bills, \$50 bills, and \$100 bills we had \$5 bills and \$5 bills. Then one day in 1986, we get an announcement that in one week, the \$5's and \$5's will no longer be any good. When we turn them in, they will be exchanged for 75's and 25's. However, only the \$5's are exchanged. We're told to hang on to our 35's

for a later trade.

Then in September, 1987, we find out, just before the end of a business day that in one hour the 75's and 25's will no longer be valid money. However, exchange will be postponed. The new money will be 95's, 45's, and 15's. If we need money to operate our businesses, we must go to the bank to borrow it. Meanwhile, we're holding on to our life's savings in the now-worthless 25's, 35's, and 75's, hoping that our government will someday make them good.

Six months later, the government floats a rumor that \$10 bills may have to be replaced with 7's, 4's, and 3's. However, this never happens.

Another six months go by, and the boom is lowered. We're told that the 25's, 35's, and 75's we're holding will never be replaced and will always be worthless pieces of paper. After all, why should the government pay perfectly good money to purchase worthless pieces of paper? What do

you suppose would happen? I'm sure that everyone in the country would be running out into the streets screaming.

This is what happened in Burma when the government manipulated the value of the Kyat in just this fashion. The uproar was completely spontaneous and almost universal. The daily confrontation between soldiers and civilians resulted in thousands of deaths, but people still poured into the streets. After weeks of this, Ne Win tried a new approach.

He officially resigned his position, appointed one of his lackies to replace him, and announced that there would be a new constitution and free elections. The country settled down, and people returned to work. The lackey, still controlled by Ne Win, had power in name only. Nothing really changed. The people of Burma deserve better.



"Yea, but George Washington's daddy wasn't in that cherry tree."

Chop down your worries by opening a savings account today at FIRST STATE BANK. Then you will be prepared for any emergency and you will have financial security. It is a good feeling to know you are able to face any crisis.



Beltone 50 years CELEBRATING THE SOUNDS OF LIFE

Hearing Aid Care Center & Free Hearing Test!

Friday, April 5 10 a.m. to 12 Noon
Spearman Chamber of Commerce

For appointment, call - FREE -
1-800-766-4513

Genuine Beltone Batteries & Service For All Brands.
Home Service Available.

BELTONE HEARING AID CENTER
6040 S.W. 33rd, Amarillo
806-358-7674

Craig & Teresa Smith
Texas Panhandle's Only
Authorized Beltone Dispenser

FIVE STAR AUCTIONEERS

Tuesday, April 9, 1991 - Sale Time: 10:00 a.m.

LOCATED: From Sunray, Texas, 8 miles East on F.M. Highway 281 then 3.2 miles South (Sunray, Texas is located 16 miles Northeast of Dumas, Texas on Highway 119).

MORRIS CARTER & OTHERS - Owners
Telephone: Mr. Carter - (806) 948-4441 or Jim Summers - (806) 864-3611

Due to other business interests, Mr. Carter is quitting farming and the following will be sold at Public Auction:

TRACTORS, FRONT-END LOADER -

- 1-1985 International 5488 M.F.W.D. Diesel Tractor, Cab, A/C, Htr. Radio, W.F. 3pt. Triple Hyd. Weights, 18.4x28 Rubber With Axle Duals, 750 Hours On New Engine Overhaul, One Owner.
- 1-1985 John Deere 4850 M.F.W.D. Diesel Tractor, Cab, A/C, Htr. Radio, P/S Trans, W.F. 3pt. Triple Hyd. Wts. New 18.4x28 Rubber Axle Duals, 4795 Hours, One Owner, Shredder, For Information, Call (806) 435-6692
- 1-1981 John Deere 5640 Diesel 4 Wheel Drive Tractor, Cab, A/C, Htr. Radio, Quad-Range Trans, D.H. No 3pt., 18.4x28 Rubber With Duals, 1984 50 Series Upgraded
- 1-1981 John Deere 4840 Diesel Tractor, Cab, A/C, Htr. Radio, P/S Trans, W.F. 3pt. Triple Hyd. Weights, 18.4x28 Rubber With Axle Duals, 5189 Hours, One Owner, Shredder, For Information, Call (806) 435-6692
- 1-1980 International 1086 Diesel Tractor Cab, A/C, Htr. Radio, T.A. W.F. 3pt. D.H. 3 P.T.O. Hrs. 18.4x28 Rubber
- 1-1966 John Deere 4000 L.G. Tractor, Cab, W.F. 3pt. S.H. Weights, S/R Trans, 18.4x28 Rubber
- 1-1972 Farmall 1066 Diesel Tractor, Cab, A/C, Htr. Radio, Hdr. W.F. 3pt. D.H. 3 P.T.O., 18.4x28 Rubber With H.C. Quick Attach Hyd. Front-End Loader, 7 Buckets, (10 Be 50) Separates Then Complete
- 1-John Deere 158 Hydraulic Front-End Loader

COMBINE, CORNHED, ATTACHMENTS, GRAIN CARTS -

- 1-1980 International 1480 Axial Flow Diesel Combine, Cab, A/C, Htr. Radio, \$10-24 Header, Aluminum Hume Reel, 30.5x22 Rubber
- 1-Int. 874, 6 Row, Double Row Cornhead, W/Corn Saver
- 1-Massey Ferguson 9030, 30' Header, With New M.B.R. -Headed Head Hunter Row Unit
- 2-International Cornhead Row Units
- 1-Big 12, 400 Bushel Grain Cart
- 2-Pharis & Wilson 400 Bushel Grain Carts

TRUCK TRACTOR, GRAIN TRAILER, CATTLE TRAILER -

- 1-1978 International Cabover T.A. Twin Screw Truck Tractor, 350 Cummins Diesel Engine, 10 Speed Trans, 5th Wheel, 11,000/24.5 Rubber, 150,000 Miles On New In Frame Overhaul
- 1-1973 Chevrolet C60 T.A. Grain Truck, 350 Engine, 4 Sp., 22.50 Trans, 20' Grain Bed, Hdr. 10,000/20 Rubber
- 1-1978 American 47 Hopper Bottom T.A. Grain Trailer, Convertible, Rollover Top, 11,000/24.5 Rubber
- 1-1968 Wilson 40' T.A. Cattle Pot Trailer, Full Metal Cover, Metal Sides, Aluminum Floor, 11,000/22 Rubber

PICKUPS, GRAIN BED -

- 1-1986 Ford F250 XLT Lariat 4x4 Diesel Pickup, A/T, A/C, LWB
- 1-1988 Ford F250 1/2 Ton 4x4 Pickup, 480 Eng., 4 Sp., A/C, Htr. Radio, C/D Toolbox, Headache Rack, LWB
- 1-1982 Chevrolet 1/2 Ton Diesel Pickup, 6.2 Diesel Engine, A/T, A/C, Htr. Radio, LWB
- 1-1978 Chevrolet Custom Deluxe 4 Ton Pickup, 350 Engine, A/T, LWB, (Salvage)
- 1-1976 Chevrolet 1/2 Ton Pickup, V8 Engine, A/T, LWB, Needs Engine Repair
- 1-1974 Ford 1/2 Ton 4x4 Pickup, V8 Engine, A/T, LWB, Needs Transmission Repair
- 1-Michard 16 Grain Truck Bed With Metal Grain Boards, Top, Taps, Twin Cylinder Hnd

EQUIPMENT -

- 1-Morris 20' 3pt. Grain Drill 8" Spaced D.D. P.W.
- 1-Flex King 5.5 D.I. Hyd. F.W. Big Sweep P.W. Trainers
- 1-1985 International 596, 18' Hyd. Following Landem Disc, P.W. 27' Discs
- 1-Schaller 32' Offset Disc, P.W. Rigid
- 1-International 480, 21' Following Landem Disc, P.W.
- 1-All Cut 16' Double Offset Disc, P.W.
- 1-Massey Ferguson 16' Offset Disc, P.W.
- 1-Orthon 21' 5 Shank, 3pt. Ripper P.W. On 5'x7' Bar, Gauge Wheels
- 1-Eversman 4012 Camelback Land Leveler, Auto Unloading
- 1-International 500 Cycle, 6 Row Double Row, 3pt. Air Planter, With Early Row Planter Units, (Set Up For 20' Rows On 48" Bed), Double Discs
- 1-John Deere 8 Row Double Row Maxie Planter On John Deere 477' Bar With 10' Bed Roller, W.P.W. 3pt.
- 6-International 225 Ind. Planter Units, D.D.
- 1-Int. 500 Cycle Planter Units
- 1-Int. 185 Planter Unit Parts
- 1-John Deere 28A 40"8" Grain Drill, 3pt. Hitch, Cyl. Control, (2) J.D. 20x8 Tied Together
- 1-Sears 14' D.T. Shredder
- 1-John Deere 707 4 Row, D.T. Shredder
- 1-S&S 6 Row D.S.B. 3pt. Disc Bedder
- 1-Caldwell 11' Shank, 3pt. 1/2 Ripper P.W. G.W.
- 1-Lilliston 8 Row 40' 3pt. Rolling Cultivator, Big Bar, G.W.
- 1-Lilliston 25' 3pt. Rolling Cultivator, G.W. S.B.
- 1-John Deere 480, 28' 3pt. Rotary Hoe, G.W.
- 1-Hamby 28' S.S.B. 3pt. Cultivator, L.T.M.
- 1-SM 26' D.D.B. P.T.O. Rowweeder Rig, G.W. 3pt.
- 1-S&S 22' D.S.B. 3pt. AA. Fert. Rig, G.W. Flow Divider
- 1-SM 24' 3pt. Field Cultivator, G.W.
- 1-6 Row, 22' D.D.B. 3pt. Lister, Mcker, (Set On 48" Rows)
- 1-Big 12, 1/2 3pt. Cultivator
- 1-PMG 6 Row, 7 M. Rowwecker Applicator
- 1-Meyer 9' D.T. 10 Discer, C.C.

IRRIGATION -

- 1-Moline HD 800 In. Engine, W/Turbo Charger, (Good)
- 1-Chevrolet 292 In. Engine, (Needs Rebuilding)
- 1-Lot Ford In. Motors, (For Rebuilding)
- 1-Lot Moline HD 800 Parts
- 2-10 H.P. Vertical Hollowshaft Electric Motors With Panels, 3 Phase, 220-440
- 1-6 Turbine Lake Pumps, 20' Setting, Water Lube
- 2-8' Turbine Lake Pumps, 20' Setting, Water Lube
- 1-Ampulco 40 H.P. Gearhead, 1:1 Ratio
- 10-100's 8'x20' Gated Pipe, 32' Rows & 48' Rows
- 30-100's 8'x30' Gated Pipe, 40' Rows
- 13-100's 8'x20' & 30' Gated Pipe, 32' & 48' Rows
- 11-100's 8'x20' Gated Pipe, 40' Rows
- 25-100's 7'x24' Gated Pipe, 32' & 48' Rows
- 37-100's 7'x20' Gated Pipe, 32' Rows
- 6-100's 8'x30' Black Plastic Gated Pipe, 32' Rows
- 45-100's 8'x20' & 30' Gated Pipe, (Salvage)
- 1-Lot 7'x20' Gated Pipe, (Salvage)
- 124' 1/2" Hyd. Hdr. 4-12" In. Hydrants
- 1-Lot 7' & 8' In. Fittings, T's, L's, End Caps, Socks, Gaskets, Etc.
- 1-Lot Drive Shafts
- 1-Lot Drive Shaft Couers
- 5-Atilla Valves
- 1-2 Wheel Pipe Trailer
- 1-Lot 1" 1/4" 2" Aluminum Irrigation Tubes

A.A. TRAILER, TRAILERS, TANKS, SPRAY EQUIPMENT -

- 1-1,000 Gallon A.A. Nurse Trailer, Coil Link Axles, Top Load, High Clearance
- 1-1,000 Gallon F/G Liquid Fertilizer Nurse Trailer, Coil Link Axles
- 1-1,000 Gallon Water Nurse Trailer, With Gas Motor, Pump, Coil Link Axles
- 2-2 Wheel D.T. Chassis
- 1-Lot Trailer Chassis Parts
- 1-7,000 Gallon Upright Diesel Diesel Tank
- 1-500 Gallon Metal Diesel Tank
- 1-300 Gallon T.T. Fuel Tank
- 1-250 Gallon Dual A.A. Fertilizer Rig, Trailer Type
- 1-150 Gallon Metal Tank
- 1-Wave Twin 200 Gallon Tractor Mount Spray Rig
- 1-200 Gallon Spray Rig, Gas Engine, Pump
- 1-150 Gal. P.W. Spray Tank 2-150 Gal. Metal Spray Tanks
- 1-SM 56' 3pt. Hyd. F.W. Spray Booms, With Attachments
- 2-200 Gallon A.A. Saddle Tanks
- 1-Tank Cradle For Spray Rig
- 1-Squeeze Pumps
- 1-Fertilizer Pump

LIVESTOCK EQUIPMENT, AUGER -

- 1-Farm Tex 16' T.A. Cattle Self Feeder
- 4-Metal 18' Cattle Self Feeders, On Sacks
- 1-Powder Row Call Cradle
- 1-WW Cattle Squeeze Cradle
- 1-10' Cattle Feeder
- 1-8' Cattle Feeder
- 4-Stock Tank Heaters
- 14.5' 12' Metal Cattle Panels
- 1-Lot Electric Fence Posts, Wire, Insulators
- 1-Lot Electric Fence Chargers
- 1-Set 15' Wooden Cattle Tracks
- 1-4' 21' Portable Grain Auger

TRACTOR & TOOLBAR MAKEUPS -

- 1-Set 18.4x28 Axle Duals, (1086 Hubs)
- 1-Set 18.4x28 Axle Duals
- 1-24' Triple Diamond Bar Tool Carrier, 3pt., 7 Stabilizers
- 1-24' Double Diamond Bar Tool Carrier, 3pt., G.W.
- 1-23' Double Diamond Bar Tool Carrier, G.W.
- 1-Set Double Diamond Bar Tool Carrier, 3pt.
- 1-14' Double Diamond Bar Tool Carrier, 3pt.
- 4-Gandy Insecticide Booms, With Motor
- 1-Lot Hydraulic Lift Assist Wheels
- 6-Hamby 1'x3' Fertilizer Shafts, Clamps & Chisels
- 1-Lot Drive Shafts
- 5-Orthon Tractor Level Redder Units
- 4-John Deere Orchard Shanks
- 8-John Deere Rotary Spreaders
- 1-Set Hydraulic Lift Assist Wheels
- 1-Lot Lilliston Rolling Cultivator Gangs
- 1-Lot Shanks, Clamps, Spacers
- 12' 2 1/4' Triangle Spacers
- 2-3pt. To Diamond Bar Hitches
- 2-R&I P.T.O. Rowweeder
- 1-Row Two Disc Bedders
- 1-Set Disc Markers
- 1-Lilliston Fender Units
- 1-Lot Stabilizers
- 1-Lot H.C. Weights
- 1-Set Press Wheels For 1.0, 16-10' Grain Drill
- 1-Lot Lister Beams & Bottoms
- 6-Ripon Shafts
- 1-Lot Crown Drill Discs
- 1-Lot Hubs
- 1-H.C. Center Link
- 1-Lot Air & Electric Power Taps
- 4-16' Water Furrow Bullets
- 1-Lot Sweepers, Chisels, Busters

SHOP EQUIPMENT -

- 1-Lincoln 750 Amp. Total Arc AC/DC Electric Welder, (Less than 2 Years Old)
- 1-Sunex 3400 Lb. Capacity Roll-Over Cherry Picker
- 1-Roll-Over Motor Trailer Stand
- 1-Lot Air & Electric Power Taps
- 1-Lot Hand Tools
- 1-Lot Metal Band Saw
- 1-Lot Electric Drill Press & Stand
- 2-Double Motor Electric Grinders
- 1-Vector Cutting Torch
- 1-BAO Orbital Sander
- 1-Lot Welding Tools
- 1-Lot Welding Rod
- 2-4x16' Jacks
- 1-Lot Grease, Grease Guns
- 1-Lot Toolboxes
- 1-Lot Chisels
- 1-Shop Heater
- 1-Rewinding Roll Bin
- 1-Lot O-Cams
- 1-Lot Bolt, Wash, Nuts

MOBILE RADIOS, NON-CLASSIFIED -

- 10-Mobile 1 Way Radios, 8 Regency, 2 Johnson, 153 0005 Frequency
- 2-Johnson Fuel Transfer Pumps
- 1-Lot Tires & Wheels
- 5-Referrators, (For Storage)
- 1-20 Gal. Butane Bottle
- 1-Lot 55 Gallon Barrels
- 1-Lot Pipe Fittings
- 1-Lot Part Barrels Oil
- 1-Lot Gasoline
- 1-Lot Gas Regulators
- 2-Land Measuring Wheels
- 1-Lot Cases Motor Oil
- 1-Lot Farm Chemicals
- 3-Barrel Stands
- 1-Lot Barrel Pumps
- 1-Lot Bearings
- 1-Large Lot Scrap Iron
- 1-Lot Hoes, Rakes, Shovels, Scoops

NOTE: Any Announcement Sale Day Takes Precedence

James G. Cruce (806) 296-7252 (6704)
Mervin W. Evans (806) 293-8195 (6427)
Bennie Reagan (806) 469-5217 (7411)
Jim Summers (806) 864-3611 (8363)
Jimmy Reeves (806) 864-3362 (Clerk)

Terms of Sale: Cash - Lunch Will Be Available
All Accounts Settled Day of Sale
NOTE: Please Bring Your Own Check Book. If You Have Not Established Yourself With Our Company, Please Bring Bank Letter.

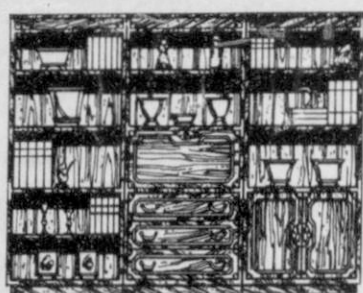
★★★★★
Five Star Auctioneers
P. O. BOX 1030 - PLAINVIEW, TEXAS 79073 1030

Spring
Fever

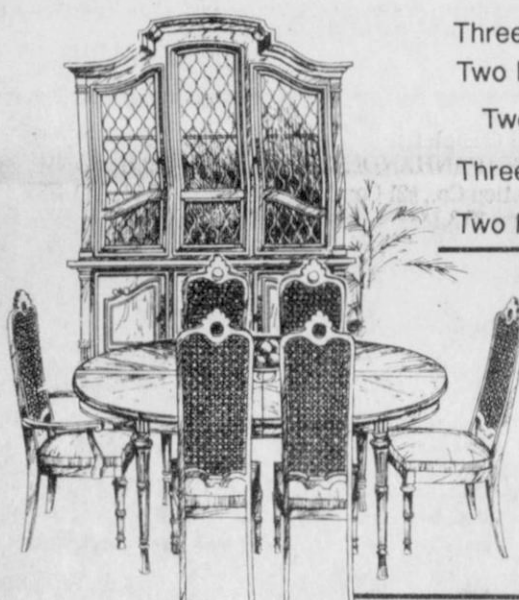
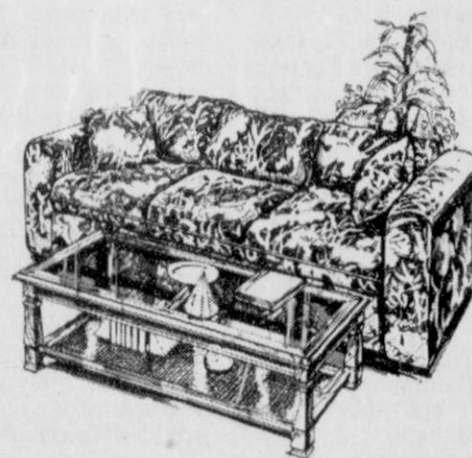
SALE

Entire Stock
15% — 50% Off

Sale Starts Thursday at 9:00 a.m.



	REG.	SALE
Solid Dark Oak Wall Units, 8 Pieces To Choose From		40% Off Each Piece
Solid Medium Oak Wall Unit With Leaded Glass Front	\$1,329.85	\$ 895.00
Large Group of Living Room Tables in Oak, Brass & Glass.....		50% off
Blue & Mauve Velvet, 2 Piece, La-Z-Boy Sectional Featuring One Endcliner And A Queen Size Sleeper.	\$1,995.00	\$1,595.00
Rust, Beige & Brown Herculon, 2 Piece, La-Z-Boy Sectional Featuring One Endcliner and a Queen Size Sleeper	\$1,995.00	\$1,595.00
Four Queen Size Sleepers.....	— Your Choice	\$ 695.00
Light Blue Southwest Herculon Sofa & Loveseat	\$1,498.00	\$ 995.00
Three Piece Sofa, Loveseat & Chair in Earthtones	\$2,085.00	\$1,395.00
Two Piece Pit Group in a Southwest Herculon Cover Featuring Two End Recliners	\$1,295.00	\$ 895.00
Three Brass & Glass Lighted Curios	\$ 995.00	\$ 795.00
Two Portable Bars		50% Off EA.



52 Inch, Two Piece Buffet & China in a Warm Maple Finish	\$1,695.00	\$ 995.00
Six Dining Room Chairs in a Warm Maple Finish — EACH	\$ 149.95	\$ 75.00
Four Only — Dining Room Chairs. Maple Finish. — EACH	\$ 169.95	\$ 85.00
Four Only — Dining Room Chairs. Maple Finish. — EACH	\$ 179.95	\$ 95.00
Seven Piece Oak Dinette Set Featuring Oval Table & 6 Chairs	\$1,895.00	\$1,395.00
Five Piece Oak Dinette Set Featuring Round Table & 4 Chairs	\$1,095.00	\$ 849.00

Baby Beds, Two to Choose From. One White, One Dark Walnut	— YOUR CHOICE	\$ 125.00
Four Piece Only Maple Bedroom Suite by Tell City. Dresser, Mirror, Chest & Night Stand.	\$2,585.00	50% off
Seven Piece Bedroom Suite in Almond Laquer Finish Trimmed in Brass	\$1,195.00	\$ 895.00
Seven Piece Bedroom Suite in Oil Stained Oak Finish	\$1,495.00	\$ 995.00
Seven Piece Bedroom Suite in Black Laquer Finish Trimmed in Red Cherry	\$1,095.00	\$ 895.00
Seven Piece Bedroom Suite in Bleached Oak Trimmed in Brass	\$1,149.00	\$ 895.00
Seven Piece Bedroom Suite in a Warm Oak Finish Trimmed in Brass	\$1,099.00	\$ 895.00



All La-Z-Boy Rocker Recliners on Sale Starting as Low As	\$ 296.00
Famous Brand Flex-A-Beds, All Sizes —	20% off
All In Stock Carpet	— SALE PRICED
All Southland Bedding With up to 25 Years Guarantee	15% off

**FREE
DELIVERY!**

If we do not have what you want, ask about our Rain Check Policy!

90 Day
Accounts
—
No
Interest

Perryton

Phone
435-5131

FURNITURE CO.
206 SO. MAIN • PERRYTON, TEXAS



Credit Terms
Available

WANT ADS Work Wonders!

NOTICE
Deadline to place or cancel classified line ads is Tuesday noon for Thursday insertion.
CLASSIFIED RATE
\$4.00 first insertion
\$3.00 each additional insertion (30 words or less)
13¢ each word over 30
Legal Notices: 15¢ per word
Ads must be paid in full in cash before publication, unless advertiser has established credit with the Reporter-Statesman.
Payment for out of state classifieds must be in the form of a money order or cashier's check.
No tearsheets provided for classified ads.
Tearsheets provided on request for legal notices.

REAL ESTATE

VERY NICE Two bedroom one bath house for sale. Remodeled kitchen with oak cabinets. 614 Womble, Gruver. Call 733-5095. Reasonably priced. S20-4tp

622 S. ENDICOTT - Cute 2 bdr, 1 bath, double car garage, corner lot. \$19,000 or pay equity and take up payments. Call Jerry, 659-3585, or Joy, 665-4425. S11-RTN

FOR SALE: 3 Bedroom, 2 bath home. Sunken living room, parquet floors, fireplace, covered patio, 2 car garage, sprinkler system, 2193 sq. ft. living space, excellent location. Call 659-3587 or 659-5022. S33-RTN

TWO LOTS for sale at 108 Wanda Drive in Spearman. Call 659-3445. S43-RTN

NICE THREE BEDROOM two bath home. Sunken living room, fireplace, fenced back yard, two car garage. Very nice location for children, 1120 Archer in Spearman. Call 659-2306. S21-9tc

IN GRUVER - Spacious Home For Sale - 311 Womble. 2348 Sq. Ft., 4 BR, 1 1/2 Baths, brick; large rooms, closets everywhere, 23' x 27' family room with fireplace; 2-car garage with openers, workbench, storage. Call 733-2989 or 733-2626. S23-3tp

MUST SELL - RETIRING. Motel plus two-story house on one acre. All in good condition. Everything goes! Any offer will be considered. Call 659-3357. S23-2tp

MOBILE HOMES

NICE 1986 14 x 60 Mobile home. Hard-board siding, central heat/air, partly furnished, almost new stove & refrigerator. 75 x 100 lot w/concrete driveway, patio, chain link fence around back yard, storage bldg. Asking \$15,000. Call 659-3062, if no answer 659-5044. *23-1tp

FOR SALE: 1979 8' x 40' Mayflower travel trailer. In good condition. Come by and see at 5th & Hazelwood in Spearman, or call 659-3049. S22-4tp

FOR RENT

FOR RENT: Nice 2 bedroom furnished trailer house within walking distance of downtown. Nice yard, carport, cement driveway. No pets. Deposit required. Call 659-3657, leave message. S19-RTN

FOR RENT: One bedroom house with fenced yard at 221 S. Endicott. Call Gus McLain at 659-2274. S23-RTN

Today's Best Buys

SHURSAVING BATHROOM TISSUE
4 roll pkg. 2/\$1
ALLSUP'S

SUNSHINE CHEEZ-IT SNACK CRACKERS
16 Oz. \$1.49
UNITED SUPERMARKET-PERRYTON

FINE FARE SHORTENING
42 Oz. \$1.19
UNITED SUPERMARKET-PERRYTON

WOLF BRAND CHILI
19 Oz. can 99¢
UNITED SUPERMARKET-PERRYTON

AUTOMOBILES

1977 CHEVY PICKUP - Good condition. 659-3858. S22-2tp

1981 CHEVROLET station wagon. Call 659-3802 or see at 519 Evans, Spearman. S21-4tcRTN

FOR SALE: 1972 Ford LTD. 81,000 miles. Call 659-3096. S23-3tc

FARM MACHINERY

FOR SALE: 478 GMC irrigation motor, good running condition; 110 horse Johnson gearhead, 5:4 ratio, good condition. Will sell together or separately. Call 659-3816 or 659-2786. S22-3tp

FARM PRODUCTS/LIVESTOCK

SUDAN GRASS HAY for sale. Round or square bales. Call V.B. or Chris Morris, 733-2203. S17-1tcRTN

MILK SEED \$28.00, Corn Seed \$55.00, Hay Grazer \$18.00 CWT. Prices include delivery. Call 1-800-725-0520. S23-1tcRTN

BOB HARDY REALTY
803 WILMETH DR.
659-3440

NEW LISTINGS
906 LINN DR. - Qualified buyers only. 4 BR, 2 1/2 Baths, Jacuzzi, 3 Car Garage, Landscaped, Fenced, Sprinkler System. Exceptional Quality. Colorado Property For Sale.

ROBERT HARDY - BROKER

OSGOOD MONUMENT CO.
Amarillo, Texas
Dealers of Rock of Ages Granite, as well as all colored granites, marble and bronze memorials.

represented by
BOXWELL BROS. FUNERAL HOME

519 S. Evans
659-3802

ADVERTISING PROVISIONS

1. Publisher reserves the right to reject, edit, revise and properly classify any advertisement at his sole discretion.
2. Advertiser assumes all liability for advertisements printed pursuant to his instruction and shall indemnify and hold the publisher harmless from and against any and all claims and damages, including all costs incurred by publisher in connection therewith. Advertiser represents that all advertising copy is truthful and not misleading. Advertiser shall indemnify and hold publisher harmless from any claim against publisher arising out of or in connection with publication of advertising (except for modifications made by publisher without Advertiser's approval) including, but not limited to, claims for libel, invasion of privacy, commercial appropriation of one's name or likeness, copyright infringement, trademark, trade name or patent infringement, commercial defamation, false advertising, or any other claim whether based in tort or contract, or on account of any state or federal statute, including state and federal deceptive trade practices acts. If advertiser claims copyright ownership in any of the advertising published, advertiser must include proper notice of its copyright claim in the body of the advertisement, otherwise copyright ownership shall remain in publisher.
3. Advertiser agrees to check advertisement in the first issue in which it appears and report any error at once as publisher assumes no responsibility for errors after the first insertion. For any error which is the fault of the publisher and of which publisher has been timely notified, publisher will reprint the corrected advertisement for one extra insertion or refund the proportionate cost of the advertisement containing the error. Publisher shall have no responsibility for errors appearing in the copy submitted by advertiser.

GARAGE SALES

315 S. BARKLEY Saturday, April 6 from 9 a.m. to 6 p.m. and Sunday, April 7 from 1 to 6 p.m. Toys, clothes, car radios, tools, love seat, cameras, bicycles, glassware, Beam bottles, etc. S23-1tp

PETS

FREE PUPPIES! Very cute and friendly. 702 S. Haney, Spearman. 659-3656. S23-1tpRTN

MISC. FOR SALE

REPO PIANO - Excellent Condition - Assume Low Payment Balance - Can Be Seen Locally - Ph. 316-624-8422 - Brier & Hale Music - Liberal, KS. S22-3tc

JAN'S ETC. NEW & USED & ANTIQUES TOO
Everything for home and family. Plains Shopping Center in Spearman. Open Monday - Saturday, 9:30 a.m. til 6:00 p.m. S16-RTN

SPECIAL NOTICE

IS A FRIEND'S or loved one's drinking affecting your life negatively? Come join us at **AI-ANON**. Tuesdays at 8:00 p.m., at 30 Hwy. 760 (three blocks south of the Moose). S20-5tp

SERVICES

HOME AND LAWN maintenance service available. Including mowing, trimming, cleaning and odd jobs. Call 659-5110. S21-4tp

CUSTOM CORN PLANTING wanted. New John Deere 7300 planters ready to go. Call V.B. Morris, 733-2203. S17-1tcRTN

CALL YOUR LOCAL Used Cow Dealer for 7 days a week dead stock removal. 659-3544 or 1-800-692-4043. Serving Cattlemen for the Past 20 Years. G51-RTN

Are You A Victim of Physical Abuse?
Call Toll Free
1-800-753-5308

Trained counselors can help you on the road to an abuse-free life. We also operate a safe place for victims and their children to stay in times of crisis.

Panhandle Crisis Center
Serving Lipscomb, Hansford and Ochiltree Counties
317 S. Main Perryton, TX.

Century 21
GOLDEN SPREAD REALTY
Janye Helton Pointer, Broker Owner, 435-5444
Jennifer Nollner, Sales Associate 659-5243

200 Airport Road - Steel building w/office, large overhead door & concrete slab!
Old Hansford - 1/2 acre lot, nice reduced!
821 Dresden - 5/2, lots of house for the money! Call today!
515 S. Bernice - 4/1 1/2, extra large lot & close to school!
18 S. James - 3/2, extras include basement and large building in back!
605 Archer - 3/2, large rooms plus deck and hot tub!
515 Evans - 3/2, two story with all the amenities!
101 E. 12th - 3/1 1/2, move-in condition. Great location!
701 Collier - 4/1 1/2, affordable 3 year old home!
704 Wilbanks - 3/1 1/2, call for details on this Farmers' Home property!
505 Haney - 3/1 1/2. New listing! Sell or rent!
515 S. Haney - 3/1. Don't miss this Farmer's Home house!
611 S. Evans - 3/1 1/2, affordable!
118 Townsend - 4/2, apartment included. Price slashed!
315 1/2 N. Bernice - Lot for sale!
Barn Off County Road - For sale!

SITUATION WANTED

WILL DO LAWN mowing jobs. Rick Howard, 659-2875. S22-2tp

HELP WANTED

PROFESSIONAL & CARING NURSES interested in quality patient care, pleasant working conditions, and competitive wages are now being interviewed at Golden Plains Community Hospital. Career Opportunities are now available in the following area: Obstetrics R.N. with labor & delivery experience. 3 days per week, 3 PM-11 PM; 1 day per week, 11 PM-7 AM. Join the leaders in rural health care. Call now to arrange for your personal interview with D.O.N., Bob Sahs. **GOLDEN PLAINS COMMUNITY HOSPITAL**, 200 McGee, Borger, Texas 79007, (806) 273-2851. We're Your Hospital. S23-2tc

CAREER SALES
We're looking for honest, hard-working reliable men and women who want to build sales careers. We will make a substantial investment to train you.
Excellent Income while you receive classroom and on the job training. for personal interview call or write stating qualifications.
Richard D. Lamberson, P.O. Box 602, Perryton, TX 79070, (806) 435-9448. Replies confidential.

PUBLIC NOTICES

NOTICE TO BIDDERS
Sealed proposals addressed to Mr. Keith Gibson, Mayor, City of Gruver, P.O. Box 947, Gruver, Texas, 79040 for:

AIRPORT IMPROVEMENTS
will be received by the City of Gruver at the City Hall in: Perryton, Texas

unbl: April 24, 1991 2:00 PM

Plans and Specifications may be obtained from the Engineer, Bandt Engineers, Inc., 4537 Canyon Drive, Amarillo, Texas 79110, phone 806-353-7233, in the following manner: Qualified bidders may obtain one copy upon payment of \$50.00, of which all will be refunded upon submission of a bid and return of the plans and specifications in good condition with the bid, or return of the plans BEFORE the bid opening. Additional copies may be obtained upon payment of \$50.00. NONREFUNDABLE.

Bid security in the amount of 5 percent of the total bid must be submitted. Bidders to submit cashier's check, certified check or bid bond payable to the Owner as guaranty the bidder will enter into contract and execute bonds on the forms provided.
Performance and Payment bonds shall be as set forth in the Contract Documents.
The Owner reserves the right to reject any or all bids and to waive any informalities. In case of ambiguity or lack of clearness in stating the prices in the bids, to adopt such interpretations as may be most advantageous to the Owner, or reject the bid. No bid may be withdrawn until the expiration of 60 days from the bid date.
KEITH GIBSON, MAYOR
CITY OF GRUVER
S23-2tc

Count on the Classifieds to Do the Job

NOTICE
Wallace Monument Co.
Monuments, Curbing, Grave Covers
1-800-999-9506
Local Representative
LEONARD JAMESON
Spearman, Texas
35s-rtm

MAIN ATTRACTION
FHA 8% LOANS AVAILABLE FOR QUALIFIED PERSONS AFTER MAY 1, 1991. MONEY WILL GO FAST DUE TO LIMITED AMOUNT RELEASED BY GOVERNMENT. CALL ONE OF OUR SALESPEOPLE TODAY FOR MORE INFORMATION.
WE ARE LOOKING FOR NEW LISTINGS TO GO WITH OUR PRESENT ONES. WE WANT TO BE YOUR REALTOR. BEST LISTINGS IN TOWN. CALL TODAY!

AA Realty
Allen Alford-Broker-659-3034
Hester Crawford-Sales-659-2074
Julie Martin-Sales-659-2425
Dennis Nelson-Sales-659-3608
Larry Troser-Sales-659-3491

Oil & gas report

WEEK ENDING MARCH 28

Intentions to Drill
CARSON (PANHANDLE & WEST PANHANDLE) XET, Inc., #3 J.C. McConnell (160 ac) 1925' from South & 330' from East line, Sec. 65,4,1&GN, 2 1/2 mi SE from Skellytown, PD 3600' (Box 1999, Pampa, TX 79065)
GRAY (PANHANDLE) Phillips Petroleum Co., #4 Joe Dan (80 ac) 887' from North & 1542' from East line, Sec. 88,2,H&GN, 7 mi SE from Pampa, PD 3210' (Box 358, Borger, TX 79008)

LIPSCOMB (WILDCAT & BRADFORD Tonkawa) Unit Petroleum Co., #1 Miles 'B' (649.8 ac) 2180' from South & 660' from West line, Sec. 55,2,4,H&TC, 9 mi west from Lipscomb, PD 6825' (Box 702500, Tulsa, OK 74170)
LIPSCOMB (WILDCAT & BRADFORD Tonkawa) Unit Petroleum Co., #3A Randall (646.5 ac) 1600' from North & 660' from East line, Sec. 640,43,H&TC, 8 mi west from Lipscomb, PD 6700'

MOORE (PANHANDLE) J.M. Huber Corp., #25 Otis Phillips 'A' (640 ac) 2310' from North & 990' from West line, Sec. 2,1,BBB&C, 10.5 mi east from Sunray, PD 3500' (7120 1-40 West, Suite 232, Amarillo, TX 79106)
MOORE (PANHANDLE) J.M. Huber Corp., Otis Phillips 'C' (640 ac) Sec. 1,1,BBB&C, 10 mi east from Sunray, PD 3500', for the following wells:

#4, 330' from South & 467' from East line of Sec.
#5, 330' from South & 1650' from East line of Sec.
#6, 1650' from South & 330' from East line of Sec.
OCHILTREE (WILDCAT) Hondo Oil & Gas Co., #2 Herndon 'H' (650 ac) 2173' from North & 1320' from East line, Sec. 480,43,H&TC, 14 mi SE from Perryton, PD 9700' (Box 2208, Roswell, NM 88202)
SHERMAN (CRAIG RANCH Morrow) Phillips Petroleum Co., #2 Craig 'E' (653.3 ac) 1000' from North & 467' from West line, Sec. 79,1-C,GH&H, 4 mi south from Texhoma, PD 7000' (Box 358, Borger, TX 79008)

Amended Intentions to Drill
SHERMAN (WILDCAT & COLDWATER K-Zone) Phillips Petroleum Co., #3 Coldwater 'D' (655 ac) 1500' from South & 1850' from West line, Sec. 35,3-B,GH&H, 16.5 mi south from Texhoma, PD 5700'

Amended to change Well Location Oil Well Completion
GRAY (PANHANDLE) American Exploration Co., #21 Combs & Worley 'A', Sec. 35,3,I&GN, elev. 2564 gr, spud 10-30-90, drlg. compl 11-9-90, tested 3-10-91, pumped 19 bbl. of 37.8 grav. oil + 36 bbls. water, GOR =, perforated - not shown, TD 3180', PBD 3180'

Gas Well Completions
HEMPHILL (S.E. CANADIAN Douglas) Maxus Exploration Co., #15 Charles E. Brown, et al 'D', Sec.

221,C,G&MMB&A, elev. 2632 kb, spud 9-29-90, drlg. compl 11-24-90, tested 2-7-91, potential 348 MCF, rock pressure 569, pay 7340-7356, TD 12300', PBD 11940'
SHERMAN (TEXAS HUGOTON) Bayou Oil Co., #2 Isabel Armstrong, Sec. 308,1-T,T&NO, elev. 3548 gr, spud 11-14-90, drlg. compl 11-29-90, tested 3-11-91, potential 142.48 MCF, rock pressure 51.2, pay 2864-3140, TD 3140' -

Plugged Wells
CARSON (PANHANDLE) B&R Oil & Gas, Ace, Sec. 88,5,I&GN (oil) - Form 1 filed in BRW Oil & Gas, for the following wells:
#1, spud unknown, plugged 12-1-90, TD 3217' -
#2, spud unknown, plugged 12-27-90, TD 3160' -
CARSON (PANHANDLE) B&R Oil & Gas, Burnett '100', Sec. 100,5,I&GN (oil) - Form 1 filed in B&W Oil & Gas, for the following wells:
#2, spud unknown, plugged 11-8-90, TD 3297' -
#3, spud unknown, plugged 11-6-90, TD 3283' -
#4, spud unknown, plugged 11-5-90, TD 3275' -
#5, spud unknown, plugged 11-2-90, TD 3250' -
CARSON (PANHANDLE) B&R Oil & Gas, Jackie, Sec. 67,5,I&GN (oil) - Form 1 filed in Blair Oil Co., for the following wells:
#1, spud unknown, plugged 1-3-91, TD 3203' -
#2, spud unknown, plugged 12-20-90, TD 3226' -
#5, spud unknown, plugged 12-31-90, TD 3175' -
CARSON (PANHANDLE) B&R Oil & Gas, Keith, Sec. 67 & 68,5,I&GN (oil) - Form 1 filed in Nigas, Inc., for the following wells:
#2, spud unknown, plugged 12-1-90, TD 3180' -
#3, spud unknown, plugged 11-30-90, TD 3257' -
CARSON (PANHANDLE) Turnbleweed Production Co., #6-41 Burnett, Sec. 41,5,I&GN, spud unknown, plugged 2-19-91, TD 3250' -
CARSON (PANHANDLE) Turnbleweed Production Co., Hess, Sec. 87 & 88,5,I&GN (oil) - for the following wells:
#1, spud 1-23-80, plugged 2-18-91, TD 3250' -
#3, spud unknown, plugged 2-8-91, TD 3250' -
CHILDRESS (WILDCAT) Kadane Oil Co., #1 Davenport, Sec. 503,H,W&NW, spud 2-21-91, plugged 3-2-91, TD 4735' (dry) -
GRAY (PANHANDLE) Omni Exploration, Inc., #40W T.B. Cobb, Sec. 165,3,I&GN, spud unknown, plugged 3-5-91, TD 3450' (oil) -

Tex SCAN
Statewide Classified Advertising Network
Advertise in 276 Texas newspapers for only \$250.
Reach 3 MILLION Texans. Call this newspaper for details.

COVENANT TRANSPORT hiring tractor trailer drivers *One yr. O.T.R. experience *Single 19-22e *East coast pay *Incentive pay *Benefits package *Minimum Age 23 *Teams 27-29e *1-800-458-1344.

SIGNATURE LOANS: AVAILABLE to \$15,000. High risk equity loans to \$100,000. Free, guaranteed application rushed. Call now 800-669-0075. Have helped thousands in need of money.

MAKE A FRIEND...FOR LIFE! Scandinavian, European, Yugoslavian, Australian high school exchange students...arriving August...**HOST FAMILIES NEEDED!** American Intercultural Student Exchange. Call tollfree 1-800-SIBLING.

LEARN BOOKKEEPING/ACCOUNTING. Special "user friendly" home study program. Over 80,000 students trained successfully. Two calculators included with course. Free career literature. 800-362-7070 Dept. AE/22.

NEED A BRIDGE? or just repair that old one? We can even LEASE new bridges. Call Steele Contractors, Inc., member AGC, State Qualified. 713-351-5588.

ADOPTION: OUR LIVES will be complete when we adopt a newborn to share our happy home and love. Legal/medical paid. Call collect 518-452-0726.

EXPERIENCED PHYSICIANS' assistant needed. Excellent salary, fringe benefits. Will work two family practitioners. Small rural hos-

Oil & Gas Reporting Service
Box 2052 Pampa, TX 79065
Providing the Oil & Gas Report for Hansford County Readers
Doris Harrison Phone 665-5800

Obituaries

Charles T. Renick
BORGER - Charles T. "Chuck" Renick, 67, died Monday, March 25. Mr. Renick, born in Trinidad, Colo., had been a Borger resident for 62 years. He was a retired salesman for Road Runners and Borger Tank Truck Co. He was a member of the First Christian Church, where he had been elected elder emeritus. He was

a U.S. Navy veteran of World War II and received the Purple Heart. He married Hester Ann Fowler in 1953 at Stinnett. Survivors include his wife; two sons, Bradley Renick of Gruver and Clay Renick of Irving; a daughter, Kathryn Phillips of Pampa; three sisters, Willa Hull and Hila Cochran, both of Borger, and Phyllis Jean

Roscoe of Fort Worth; and three grandchildren. Funeral services were conducted Thursday, March 28 in the First Christian Church with the Rev. Robert Smith, pastor, officiating. Burial was in Highland Park Cemetery. The family requests memorials be to the First Christian Church Memorial Fund or to St. Anthony's Hospice and Life Enrichment Center.

City. He had been a longtime employee of Santa Fe Railway and retired from the Oklahoma State Highway Department. Survivors include his wife; three daughters, Mozelle Mosier of Waka, Beulah Hill of Boise City and Iva Ruth Maggard of Pampa; two sons, Robert Maggard of Bloomfield, N.M. and Albert Maggard of Pampa; 26 grandchildren; 54 great-grandchildren; and three great-great-grandchildren.

Lelan S. Close
 Lelan S. Close, 83, of Spearman died Monday, April 1. Mr. Close was born in Hansford County and had been a lifelong resident of the Spearman area. He married Billie Bowlin in 1946 at Canadian. She preceded him in death in 1983. He was a retired farmer and truck driver. He was a member of the First Christian Church. Survivors include two sons, Mike Close of Spearman and Carl Close of Borger; three daughters, Carol Stumpf of Spearman, Joye Jackola of Reseda, Calif., and Lela Lewis of Canoga Park, Calif.; a step-daughter, Shirley Morris of San Antonio; a brother, Floyd Close of Spearman; a sister, Vivian Hurst of Stroud, Okla.; 10 grandchildren; and nine great-grandchildren. Funeral services were conducted Thursday, April 4 in First Christian Church with the Rev. LaVern Draper, pastor, officiating. Burial was in the Holt Cemetery.

Ruby O. McGuire
 LAS ANIMAS, Colo. - Ruby O. McGuire, sister of Spearman resident Bernard Byers, died March 28. She was preceded in death by her husband, Edward McGuire, in 1972, a son, Robert Byers; a daughter, LaVerna McGuire; and her parents, Joseph and Bertha Byers. Survivors include two sons, Joseph McGuire and his wife Norma of Simi Valley, Calif., and James McGuire and his wife Shirley of Shoreham, Vt.; a daughter, Carol Rackley and her husband Marvin of Simi Valley, Calif.; her brother Bernard Byers and his wife Ethel of Spearman; two sisters, Ruth Smith and her husband Albert, and Reita Faus and her husband Jack, all of Las Animas; 16 grandchildren; 18 great-grandchildren; and numerous nieces and nephews. Funeral services were conducted Monday, April 1 in George McCarthy Historic Chapel and committal service was in Las Animas Cemetery. Services were conducted by the Rev. David Smith, pastor of Calvary Temple Church of God. The family requests memorials be to hospice or to the American Cancer Society.

Logos
 Brochures
 Flyers
 Letterheads
 Business Cards
 Business Forms

photograph design print deliver

Mike Shiew
 316-227-7171
 316-225-5213 eves.
 Satisfied customers in your area.

TG&Y

STORE CLOSING

33% OFF

EVERYTHING IN THE STORE!

- Family Apparel
- Health and Beauty Aids
- Domestic
- Family Hosiery
- Housewares
- Candy and Snacks

SUPER SAVINGS ON SPRING SPECIALS!

ALL SALES FINAL! VISA, MASTERCARD, DISCOVER OR CASH. SORRY NO PERSONAL CHECKS. Available At

Plains Shopping Center

521 Hwy. 207S
 Spearman, Texas

Hospital from page 1
 (and wife Peggy), Leslie Barkley (and wife Sharon), Rosa Lee Butt, Jerry Hunt, Pete Fisher (and wife Alta), John Trindle (and wife Virginia) and Bobby Hicks (and wife Carolyn).

Also in attendance were Kaye McFarlin (director of nurses) and her husband, Sheriff R.L. McFarlin, and new Hospice and Home Health Agency Director Carol Hergert, and her husband, Donnie.

Anne Snow, hospital business manager, was present with her husband Tom, as well as Manor Director of Nurses Miles Mauney.

Hansford County Commissioners present were: Joe T. Venneman (and wife Linda), B.J. Renner (and wife Glenda), Dick Gillaspie (and wife Lee Ann) and Val Winger (and wife Marlene). County Judge Jim Brown and his wife Rosemary also attended.

Others in attendance were: Mike Hulett, Reginio and Frances Ortega, and Ray and Julie Ortega.

Track from page 9
 1600 Meter Run-Max Davis, Cody Barkley, Tracy Taylor
 1600 Meter Relay-Trent Seagler, Kyle Haenisch, Shannon Pool, Dan McCloy
 Shot Put-Brice Goldsmith, Tracy Taylor
 Discus Throw-Brice Goldsmith, Matt Etheredge, Chris Spivey
 Pole Vault-Shannon Pool
 Triple Jump-Shannon Pool
 Long Jump-Garret Gurnford

GRUVER JUNIOR HIGH GIRLS
 400 Meter Relay-Wendy Rodriguez, Tisha Ralston, Kimberley Wagner, Julie Meyer - 4th, 57.06
 400 Meter Dash-Julie Meyer - 1st, 67.5
 200 M. Hurdles-Tara Shapley - 2nd, 34.5
 200 M. Dash-Kimberley Wagner - 3rd, 31.4; Kayce Haenisch - 6th, 31.6
 1200 M. Run-Myriam Alvarez - 4th, 5:06; Joni Hart - 6th, 5:23
 800 M. Relay-Wendy Rodriguez, Tara Shapley, Kayce Haenisch, Tisha Ralston - 1st, 1:58.3
 Shot Put-Tisha Ralston - 3rd, 25'4"
 Discus-Tisha Ralston - 2nd, 74'4"
 Triple Jump-Julie Meyer - 1st, 31'5 1/4"; Tara Shapley - 3rd, 30' 1/4"
 Long Jump-Wendy Rodriguez - 1st, 14'8"; Tara Shapley - 2nd, 14'6"; Julie Meyer - 5th, 13'7"

Caison, McCloy, DeArmond compete

Three Hansford County residents are part of the Panhandle State University Rodeo Team, which is the current leader of the Central Plains Region of the National Intercollegiate Rodeo Association. Brian Caison of Spearman, along with Clint DeArmond, a 1990 Spearman High School graduate, and Kelly McCloy, a 1990 Gruver High school graduate, have helped the PSU Rodeo Team along the way to the top of the points list. The PSU Rodeo Team traveled to Manhattan, Kan. last weekend to compete in the Kansas State University College Rodeo and gathered more points toward a trip to the College National Finals Rodeo, which will be held later in the summer at Bozeman, Mont.

There are 17 colleges competing in the Central Plains Region, the largest region in the United States. The PSU team's point total is three times that of the second-place team, giving PSU a high national ranking and assuring competition at the CNFR. (information provided by Cynthia DeArmond)

