

INSIDE

At the Movies	2	Out at the Lake	2
Among the Neighbors	4	School Lunch Menus	2
Chamber Chatter	5	At the Buzzer	6
Extension News	2	Museum Musings	4

Obituaries

Page 7

Ezra Boys Club

Page 5

The Hansford County

Reporter-Statesman

Serving Hansford County Since 1907

Volume 88 • Issue 2

213 Main • Spearman, Texas 79081

Thursday, January 11, 1996

HANSFORD COUNTY LIBRARY
0120 MAIN ST. 79081-
SPEARMAN, TX
EXPIRES 04/01/1996 THANK YOU

Spearman Elementary to present "Mr. Wizzard's Science Challenges"

On January 16th, the mysteries of science will be explored at Spearman Elementary when ECA Educational Services, in conjunction with the Mr. Wizard Studios, presents Mr. Wizard's Science Challenges.

New guidelines set by the American Academy for the Advancement of Science as teachers to use hands-on projects in an effort to improve the science programs in our nation's schools. IN keeping with these guidelines, Mr. Wizard Science Assembly Programs demonstrate the science of everyday living using interactive teaching methods.

Don Herbert, better known as "Mr. Wizard" from NBC TV's Watch Mr. Wizard and Nickelodeon's Mr. Wizard's World, has produced a program to bring this hands-on style of science to Spearman at 2:30 p.m. Although Don Herbert himself will be busy exploring new ways to explain science using everyday items, Tim Angevine, his official assistant, will present this fast paced show guaranteed to educate and entertain.

To engage children in active learning, it is necessary to first arouse their curiosity. One of Mr. Wizard's proven techniques to arouse curiosity in children is to present them with a challenge. With the help of students selected from the audience, Don Herbert's official assistant will work through

a series of investigations and eventually discover answers to each of the show's challenges. This show combines Mr. Wizard's informal

style with stimulating science challenges designed to inspire creative thinking and enthusiasm for learning in young minds.

HPRCA to host grant writing seminar

Are you interested in learning how to secure funds for non-profit organizations? There are hundreds of foundations that give millions of dollars out each year to worthwhile projects. All that is required is that you must know what foundation gives to a project in your area, and how to apply.

To help anyone that is interested in Grant Writing, the High Plains Resource Conservation Area, Inc. will host Grant Writing Seminar. The seminar will be held January 15-17, 1996.

Dr. Don Udell of Norman, Oklahoma, will be the instructor for the three day seminar.

Dr. Udell will teach you all the basic steps in grant writing relating to where to look for funds and how to select a foundation.

During the last three years over three million dollars was brought into this area through foundations, and with the assistance of the High Plains R.C. & D. Area.

The seminar will be limited to

20 students and the location will depend upon where the greatest number of class members are coming from.

For more information, call (806)995-3035 during the day and (806)995-2131 after 5 p.m. Tom Davey is the person to contact. Or call the Spearman Chamber of Commerce at (806)659-5555.

Parkinson's group to meet

The Parkinson's Community Support Group of St. Mary of the Plains Hospital Neurology Research and Education Center (NREC) will meet Thursday, January 25, 1996 at 1:30 p.m., in the NREC (4102 24th Street, Suite 501).

The meeting will feature a presentation about "Hospital Stays and What Doctors and Nurses Expect" by Physicians Assistant and Surgical Assistant Holly Tyson. She will discuss what is expected of both patient and family during a stay in the hospital.

Participants in the Parkinson's Support Group, which includes individuals suffering from the disease as well as family members and caregivers, help each other cope with the various challenges of Parkinson's - educating each other about the disease and giving one another devotional support.



BEST OF THE HOUNDS - The Gruver Greyhounds were a team not to be messed with last football season. The awesome team lost only 3 games all year, and with that much talent it's easy to see how they managed so many All-District players this year. This year's team of Hounds' stars are Daniel Borf, Travis Ferguson, Wylee Maupin, Max Frick, Juan Arreola, Jason Ward, Andy Morris, Sammy Renteria, Bailey Barkley, and Ty Womble. Many of these athletes made it on both offense and defense, and some were chosen for 1st team nominations in both.

Muscular Dystrophy Association to host Kids are Cute Contest

The 1996 Kids are Cute Contest will be held Saturday, January 27th at Westgate Mall in Centercourt. The contest will be open to boys and girls between the ages of 6 months and 6 years. Judges from the Miss Amarillo Area Pageant will judge the contest and will score the children based on appearance, personality, and overall stage presence. There will be limited space available. A maximum of 250 participants will be accepted on a first come first serve basis. An optional fund raising contest is also available.

Prizes include trophies, gift certificates from J.C. Penny, free kids meals at Chick-fil-A, and more. Join Miss Amarillo Area, Darcey Rushing, KFPA's Kari King, and KLLR's Dan Shanahan for Kids Are Cute to benefit MDA. Registration is \$25.00 and entry forms can be picked up at JC Penney, Chick-fil-A, Westgate Mall office, Family Photo, or by calling the MDA office at 359-3141.

The Muscular Dystrophy Association, Panhandle Chapter, provides program services to over 250

individuals diagnosed with one of 40 neuromuscular diseases. Both patients and their families have access to monthly clinics, support groups, educational materials, referral services, and much, much more.

26 GHS students named to Honor Roll

The teachers, family, and students of Gruver High School sure has several reasons to be proud lately. A total of 26 academic students made the All A Honor Roll for the first semester of this school year. To qualify, a student must make an A in all classes with no exceptions.

This is a very difficult task, with all the state pressures, but the students of Gruver were up to it.

Those making the grade were (9th grade) Jennifer Duggan, Lucas Johnson, Holly McCloy, Lauren Miller, Wesley Miser, Jason TeBeest, and Matt Watlington. In the 10th grade were Wesley Maupin, Jill Odom, and Steffany Simon. Those making it in 11th grade are John Duncan, Amy Gillispie, Mary Henson, Tucker Henson, and Amber Murrell. The seniors of this elite group are Imelda Arzate, Bailey Barkley, Kiki Carthel, Joni Hart, Roxane Holt, Scott Jarvis, Venessa Klett, Sahala McCloy, Tara Shapley, Jason Ward, and Tye Womble.

Unfortunately, pictures were taken of these bright students, but they did not turn out. Look for their picture on a rescheduling date.

Hansford Happenings

PTA Meeting

Pringle-Morse PTA will meet January 15 at 7 p.m. at the Pringle-Morse School.

EMT Classes

The Spearman Voluntary Ambulance Service will be starting basic EMT classes approximately January 29, 1996. Pre-registration for the classes will be January 8 at 7:00 p.m. The pre-registration and the classes will both meet at 513 S. Hazelwood. Persons interested in more information about these classes need to contact Michelle Davis at 659-4165 or 659-3411 or Paul Moore at 659-5298.

Gruver Classroom Teachers' Association

The Gruver Classroom Teachers' Association will be awarding their annual college scholarship next August to an education major having completed 60 or more college hours. Applications are being taken now. To apply, contact Gruver I.S.D. Superintendent's Office, P.O. Box 747, Gruver, Texas 79040. Phone 733-2001. Application deadline is July 1.

Windbreak Trees

The Hansford Soil and Water Conservation District will have "Earth Mat" available for the 1996 plantings. Orders for these seedling trees will be taken from now through March 8, 1996. Contact HSWCD at 659-2330 for more information.

Chamber Meeting

The Spearman Chamber of Commerce Board of Directors will meet Thursday, January 11 at noon at the Palo Duro Cafe. For more information call 659-5555.

Lunch and Learn

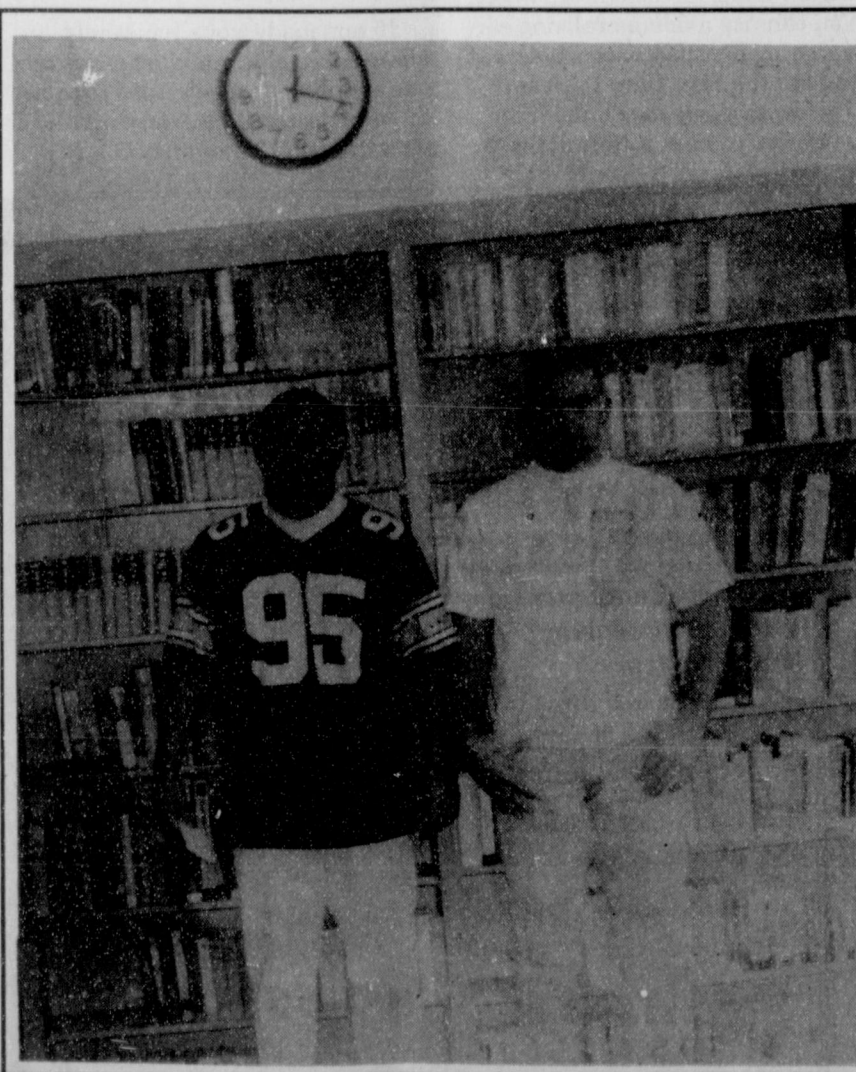
The Lunch and Learn Program will be January 23 at noon in the Fellowship Hall of Spearman Church of Christ. Cynthia Shattles, Ochiltree County Extension Agent, will present the program on Vest Ideas and Embellishments, demonstrating a variety of techniques using metallic or unusual threads, ruffling, fabric and ribbon flowers, etc. Light lunch served. Program open to everyone. Contact Peggy Winegarner at 659-4130 or 733-2901 for more information.

Hospice Meeting

Hansford Hospice will meet on January 15 at 7 p.m. at First State Bank of Spearman.

Volunteer Training Class

Hansford Hospice will begin a new volunteer training class on Monday, February 5. Thirty hours of classroom instruction are required to receive certification. The class will meet from 6 p.m. to 9 p.m. on Mondays and Thursdays for approximately 5 weeks. The class will be held in the Doctor's Lounge of Hansford Hospital. Deadline for registration will be Thursday, January 25. For more information, contact Cheryl Sherrill, 659-2535 or 733-2954, Ext. 107.



BEST OF THE BEST - Besides making the All-District team, Sammy Renteria (left) and Max Frick (right) made other top honors as well. Renteria, who had a fantastic season with the Hounds, made Honorable Mention All-State. Frick, who has been nothing but terrific this year, brought in the 2nd team linebacker spot for the Top of Texas Super Team. This was a huge honor, due to the fact that it was an all classification honor. In other words, Frick was the best in the state in all classifications.

Lifestyles

Faries and Womble set March wedding date

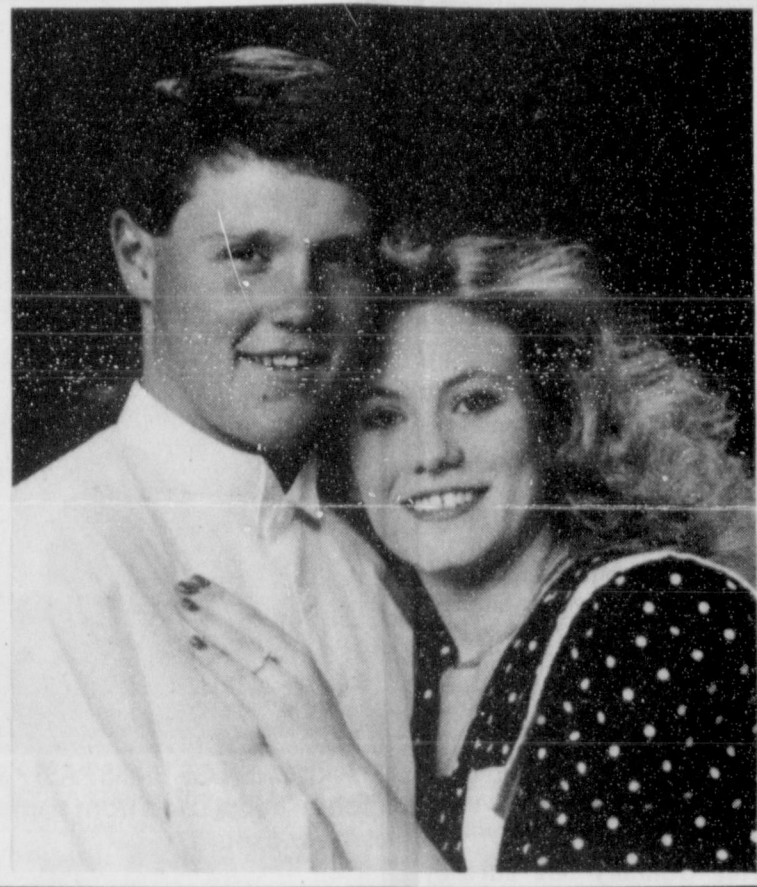
Mr. and Mrs. Gary Faries of Jackson, Missouri are pleased to announce the engagement of their daughter, Kara Kay Faries, of Spearman, to Robert Carson Womble, of Morse.

Kara is a 1994 graduate of Spearman High School. She attended West Texas A&M University in Canyon, and is currently employed by Interstate Savings and Loan in Spearman.

Robert is also a 1994 graduate of Spearman High. He attended Texas State Technical College in Amarillo, and is now currently farming near Morse. He is the son of Mr. and Mrs. Bob Womble of Morse.

Kara's grandparents are Mr. and Mrs. Dan Faries of Wappapello, Missouri, and Mr. and Mrs. Donnie Bybee of Lockney, Texas. Rob's grandparents are Mrs. Dora Womble of Spearman and Mrs. Marcy Hamilton of Breckenridge, Texas.

The couple plans on a March 16th, 1996 wedding at the First Baptist Church in Spearman, and they plan to reside in Spearman.



ROBERT WOMBLE and KARA FARIES

SOSU honor rolls

Honor rolls at Southwestern Oklahoma State University in Weatherford have been announced for the 1995 fall semester.

An undergraduate student earning all A's in 15 or more hours during a semester qualifies for the President's Honor Roll. There were 100 students named to the President's Honor Roll during the fall semester.

There were 568 students on the Dean's Honor Roll after completing 15 semester hours of undergraduate work with a grade point average of 3.0 (B) or higher with no grade lower than a C.

Monica B. Blackman of Spearman was the only student at Southwestern to earn this honor.

Scholarship deadline

Students enrolled in grades 9-12 can still submit entries to the Young Texas Writers Awards Program. Deadline for submissions has been extended to January 31.

Twelve scholarships, ranging from \$50 to \$150, will be presented for best work in four categories: poetry, short story, essay, and journalism. Single or multiple entries will be accepted in all categories for a one-time entry fee of \$5.

The program is sponsored by the Austin Writers' League with some funding provided by the Texas Commission on the Arts and Holt, Rinehart, and Winston. Awards will be presented in March at a reception in Austin.

For guidelines, call the Austin Writers' League, 512-499-8914.



ESSAY WINNERS - Gruver High School recently held an essay contest for all classes in the school. "Why Good Kids Get Into Trouble" was the theme of the contest, and four kids from each grade level were chosen for the excellence in writing. They are Luke Johnson (freshman), Memory Ross (senior), Mary Dawn Henson (junior), and Amber Weller (sophomore).

PSU releases students named to Dean's List

One hundred and sixty-seven students have been named to the Dean's Honor Roll for the 1995 fall semester at Oklahoma Panhandle State University in Goodwell, Oklahoma.

The Dean's Honor Roll contains the names of those students who have earned between a 3.30 and a 3.99 grade point average. To qualify, a student must carry at least 12 hours of university courses and have no "incompletes."

Four students from the Hansford County area are on the list. They are Randy Reid of Gruver, Robyn Rhoades of Spearman, John Venneman of Spearman, and Ofilia Zamora of Spearman.

Brock finishes 2nd in elite meet in Oklahoma

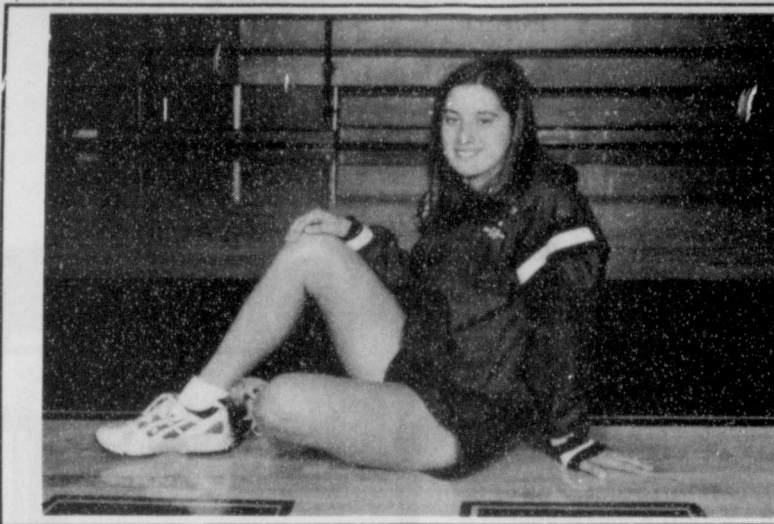
Former Spearman resident Janna Brock, was one of three members of the City of Plano Swimmers who recently competed against some of the country's best athletes at the Fourth Annual Kerr McGee Corporation Elite Meet in Oklahoma, earning the team a 13th-place overall finish with 85 points.

The Kerr McGee Elite Meet offers financial aid and monetary awards to its top finishers, which lures in the best swimmers in the United States for the meet every year. Some of this year's most recognized participants included Olympic gold medalist Summer Sanders, Angel Martino, Amy Van Dyken and Tom Jager.

Despite the incredibly strong field of 350 swimmers, the three Plano participants still managed to challenge all competitors in their respective events. Janna Brock turned in COPS' best performance of the meet, taking second place in the finals of the women's senior 200 breast with a time of 02:42.22.

Brock, 16, also reached the finals in the women's senior 100 breast, taking fifth place with a time of 01:16.66. In the bonus consolation round of the women's senior 200 fly, Brock placed 20th with a time of 02:34.76.

Janna is the daughter of Kim and Stephanie Brock of Allen, Texas; the granddaughter of J.L. and Mary Brock of Spearman and David and Nan Warren of Allen, Texas; and the great-granddaughter of L.S. McLain of Spearman.



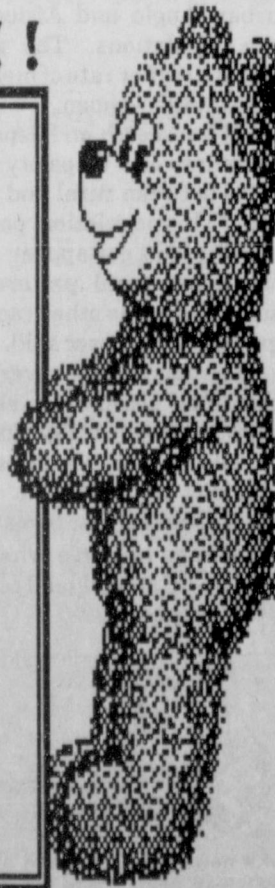
JANNA BROCK



The game of volleyball was invented in 1895 by William G. Morgan, a physical education instructor at the YMCA in Holyoke, Massachusetts.

YOU'RE INVITED !!!

It's a
Baby Shower
honoring
**BRETT COLTON
DAVIS**
son of
CHAD & TARA DAVIS
January 20, 1996
2 p.m. to 3 p.m.
1108 Archer
Selections at Kids' Stuff



Customer Notice

Pursuant to HB 2128 Section 3.455, GTE Southwest Incorporated and Contel of Texas, Inc. have filed tariffs with the Public Utility Commission of Texas to provide interim number portability to holders of certificates of convenience and necessity, certificates of operating authority, and service provider certificates of operating authority. These filings have been assigned Docket No. 14943 for GTE and Docket No. 14944 for Contel. Interim number portability will be provided utilizing remote call forwarding and DID at those services current tariff rates. Interim number portability is provided to allow customers to retain their telephone number if they change their provider of local telephone service within the same exchange.

Persons who wish to comment on these applications should notify the commission by March 22, 1996. Requests for further information should be mailed to the Public Utility Commission of Texas, 7800 Shoal Creek Boulevard, Suite 400N, Austin, Texas 78757, or you may call the Public Utility Commission Public Information Office at (512)458-0223 or (512)458-0227, or (512)458-0221 teletypewriter for the deaf.

GTE

Paschel named to Dean's Honor Roll at UCO

Sara Beth Paschel, of Spearman, is among 1,762 students named to the Dean's Honor Roll at the University of Central Oklahoma, Edmond, Oklahoma. Those who achieved the honor recorded a 3.25 grade-point average or better for the semester.

The university is the third largest in Oklahoma, and was the first to offer classes in the state, beginning in November, 1891.


Ball announced winner of grain/sorghum producers contest

Chuck Ball, of Spearman, has earned three national awards, 31 state awards and 33 county awards in this contest," says Ron Walberg, DEKALB Genetics Corporation sorghum product manager. "Our winners farm in all areas of the country and won their awards using fourteen different DEKALB hybrids. This clearly demonstrates the strength of the DEKALB grain sorghum product line."

Ball earned the title in the Irrigated division with a yield of 134.53 bushels per acre of DEKALB brand DK66 grain sorghum.

"In all, farmers planting DEKALB grain sorghum hybrids

HAPPY BIRTHDAY HONEY!



Those BAD Hair Days are still a must for your, huh.

TARA

Love, Chad

We want to
THANK YOU AGAIN
for the many many prayers, memorials and sympathy cards we have received in memory of Connie. She truly was loved by so many.
God Bless Each of You!

Doug, Abbe, and Nathan Steger
Jan and Larry Holt and Family
John and Virginia Trindle

Gordon's DRUG
Bridal Gift Registry

COME BY & LET US HELP YOU SET UP YOUR SPECIAL GIFT TABLE

Couples Currently Registered

Sally Donahue & Lance Swan
Clint & Emily DeArmond
Shawn Cook & Traci Peden

* Date of the Bridal Shower

314 MAIN PHONE 659-2141 **Gordon's DRUG** SPEARMAN TEXAS

School Lunch Menus

SPEARMAN ISD LUNCH MENU

Monday, January 15
Sausage pizza, combo salad, corn on the cob, peach cobbler, and milk.

Tuesday, January 16
Chili Dog, tator tots, pickle relish, diced onion, steamed yellow squash, oatmeal raisin cookies, and milk.

Wednesday, January 17
Meat and cheese nachos, pinto beans, spinach, fruit cocktail, and milk.

Thursday, January 18
Hot turkey sandwich, whipped potatoes, cranberry sauce, green beans, bread slice, sweet potato pie, and milk.

Friday, January 19
Hamburger, french fries, shredded lettuce, sliced tomato, pickle, onion, birthday cake, and milk.

BREAKFAST

Monday - Banana loaf, fruit, and milk.

Tuesday - Biscuit, sausage patti, fruit, and milk.

Wednesday - Cereal, toast, fruit juice, and milk.

Thursday - Toast, scrambled egg, fruit, and milk.

Friday - 2 cinnamon toast, fruit, and milk.

GRUVER ISD LUNCH MENU

Monday, January 15
Steak fingers, potatoes, gravy, carrots, pudding, roll, and milk.

Tuesday, January 16
Chili, crackers, carrot sticks, fruit, donut, and milk.

Wednesday, January 17
Roast beef, corn, potatoes, gravy, pudding, roll, and milk.

Thursday, January 18

Lasagna, salad, fruit, bread stick, and milk.

Friday, January 19

Hamburger, cheese, lettuce, pickle, rice krispie, and milk.

BREAKFAST

Monday - Cereal, toast, juice, and milk.

Tuesday - Biscuit, eggs, juice, and milk.

Wednesday - Breakfast burrit, juice, hot sauce, and milk.

Thursday - Donut, juice, and milk.

Friday - 2 cinnamon roll, juice, and milk.

PRINGLE-MORSE CISD LUNCH MENU

Monday, January 15
Steak fingers, potatoes, roll, gravy, salad, brownie, and milk.

Tuesday, January 16
Chicken, frito salad, cornbread, fruit, and milk.

Wednesday, January 17
Corn Dogs, tator tots, baked beans, cookie, and milk.

Thursday, January 18
Spaghetti, green beans, roll, dessert, and milk.

Friday, January 19
Grill cheese, noodle soup, salad, fruit, ice cream, and milk.

BREAKFAST

Monday - Cinnamon toast, muffins, juice, and milk.

Tuesday - Cereal, toast, juice, and milk.

Wednesday - Sausage, waffles, juice, and milk.

Thursday - French toast, raisins, juice, and milk.

Friday - Biscuits, gravy, juice, and milk.



Out at the Lake

By Dorothy Hudson
Lake Depth—January 8, 1996—25 feet and 4 inches

The picture of the porcupine in a tree was taken in the park north of the dam by Jim Derington. This was the fourth of these bizarre rodents that he has seen in the area since he started as assistant manager almost two and a half years ago. Two of the creatures were run over on the road across the dam, and the third was munching the bark in a tree.

Kenneth Harris who lives south of Gruver on the Palo Duro Creek is having a similar experience. After seeing numerous trees with the bark gone, he has seen two porcupines in the trees in the daylight this winter.

I have yet to see a live porcupine on the creek. My first encounter was not the close kind. Effie Pearl Cluck, a classmate of mine in the Gruver Grade School, brought some

quills to school one day. Some of her brothers had killed on of these rare creatures, and she had gotten some of the quills. I think at this time we all believed that they could shoot the quills at you if you got close enough. She gave me a quill, and I kept it for many years.

When three year old Holly Hart and her parents, Brad and Kelly and her baby sister, Jenny, lived on the Winder Place in the valley of the Palo Duro Creek, she came running to Kelly one day, proudly announcing, "Mama, a porkine, a porkine!"

Her mother said, "No, Holly, we don't have porcupines."

Holly went after her new *Baby Animal Book* and showed her mother the picture of the baby porcupine. That got Kelly's attention. They went to the front door, and then Kelly, too, saw the porcupine waddling across the front yard.

Extension News

By Peggy Winegarner
Hansford County Extension agent

You may welcome winter for various reasons, but one of the less enthralling aspects of cold weather is dry indoor air. Many people combat it with a humidifier of some kind. Do you need one? Perhaps. What will it do?

The following information is from the Berkley Wellness Letter.

* A room humidifier can probably make you feel more comfortable if you have a cold, sore throat, or cough, but it will not prevent colds or flu. A vaporizer, by the way, or any similar device that claims to reduce cold symptoms or deliver medication must get its claim approved by the FDA. Most humidifiers are not regulated, since they claim only to increase room comfort levels. Doctors do not always agree about the benefits of humidifiers for colds and other respiratory ailments.

* Any humidifier, if not kept very clean, can be a major source of indoor air pollution, microbes, and allergens. If any contaminants are present in your water (lead, for example), the humidifier may recycle them into the air. Very high humidity (over 60%) promotes the growth of bacteria, molds, and fungi, which can cause allergies in sensitive people. It may even provide a good environment for viruses.

* A moisture level of 30 to 50%, which you can achieve with a humidifier makes most people feel more comfortable and helps prevent or alleviate dry skin. It's also good for wooden furniture and plants. And you do feel warmer in warm humid air than in dry-thus you can keep your thermostat lower, which also helps prevent dry skin.

Many types and models, one problem: You can spend \$15 or \$20 on the least expensive table models or \$200 on a console that sits on the floor. But either way, the most important thing is to keep the humidifier clean so that it does not become a reservoir of bacteria and other microbes. This is true even if all you opt for is a pan of water on the radiator—it has to be cleaned and the water changed frequently. Of course, a mechanical humidifier will do a better job than a pan of water on the radiator. The types listed below are all portable.

* Evaporative humidifiers. These are by far the most common type and come as consoles (floor models) or table models. Water is absorbed by a wick filter and sent into the air by a fan. Some work by means of a moving belt in a reservoir of water. Price: around \$80. Less likely to contaminate the air

than other types, but only if kept very clean. Drawbacks: Often hard to clean. Can be noisy. Emit cold mist, which can feel uncomfortable.

* Steam humidifiers or vaporizers. These are often the cheapest (\$20 to \$50). They turn water into mist by heating or boiling it, thus killing microorganisms. Drawbacks: Usually small, noisy, and expensive to run; there's also a risk of fire and scalding. May emit dead microbes, causing allergic reactions.

* Cool-mist humidifiers or impellers. Inexpensive to buy, expensive to run. Water is pumped upward from a tank and "impelled" against fan blades, which disperse it in the air. Drawbacks: Can emit bacteria, molds, and white dust. Noisy.

* Ultrasonic humidifiers. Waning in popularity, these use high-frequency vibrations to turn water into mist. Price range: \$75 to \$500. Drawbacks: Emit fine mineral particles that show up as white dust. Can cause allergic reactions by emitting dead microbes. May emit contaminants present in tap water. You can use a demineralizing cartridge or distilled water, but that adds to the cost. Hard to clean.

How to clean your humidifier: Before you use your unit for the

first item, clean it. Afterward, never put it away without cleaning it. Follow manufacturer's instructions, but do follow the guidelines below:

Under 5 gallon capacity: Clean every day. That is, empty the tank, wipe dry, and refill. Sanitize every seven days, as follows: empty and refill with a solution of bleach (1 teaspoon of bleach to a gallon of water). Soak for 20 minutes and rinse. Brush away any mineral deposits and rinse again with a 50% solution of vinegar.

Larger than 5 gallon capacity: Empty every day and refill with clean water. Every third day clean surfaces with hydrogen peroxide or vinegar (to kill molds). Every two weeks, sanitize with bleach, following the instructions above.

Other Tips: Your humidifier will do a better job and your air will retain more moisture if your house is well insulated and has a vapor shield (that's an impermeable layer on the inner side of the insulation).

If somebody your household is allergic to molds and dust mites or has asthma, it's a good idea to talk to your doctor before buying and installing any humidifier.

At the movies...

Showing at The Lyric Theatre Friday, January 12 through Tuesday, January 16 on Screen 1 beginning at 7:30 p.m. is "Tom and Huck", and on Screen 2 beginning at 7:45 p.m. is "Ace Ventura: When Nature Calls".

In "Tom and Huck", Jonathan Taylor Thomas and Brad Renfro play the time-honored duo in this live action Disney film. Those who

have seen it are singing its praises. "Tom and Huck" is rated PG.

In "Ace Ventura: When Nature Calls", Ace (Jim Carrey), that most wily of pet detectives, goes to Africa to search for Shikaka, the missing sacred animal of the Wachati tribe.

"Ace Ventura: When Nature Calls" is rated PG-13.

At The Lyric Theatre...

Friday, January 12- Tuesday, January 16

**Bargain Nights Mon. & Tue. Adults - \$4
Fri., Sat., Sun., Adult \$5 - Child \$3 every night
Closed Wednesday & Thursday**

SCREEN 1 • 7:30 PM SCREEN 2 • 7:45 PM

Tom
and
Huck
(PG)

Ace Ventura:
When Nature
Calls
(PG-13)

113 Main • Spearman

COMING CLASSES

3rd in Log Cabin Series...

Cripple Creek • Jan. 20th
Fantastic Start • Feb. 3rd

4th in Log Cabin Series...

Ozark Log Cabin • Feb. 17th
Star Spin • March 9th

Summer Sampler will start June 4th

For more information call or come by

Jo's This N' That
216 Main • Spearman, TX 79081
(806) 659-3999

Bring this ad in and get an extra
10% OFF your class supplies.



50% Off

WINTER SIDEWALK SALE!

FRIDAY - JANUARY 12TH

75% Off

Cousins
322 Main
Gruver, TX 79040

You'll find lots of exciting values on selected Hallmark items!

- Puzzles
- Shoebox Gifts
- Stickers
- and more!

The Hansford County Reporter-Statesman

Serving all of Hansford County
Spearman • Gruver • Morse

USPS 509660 • 213 Main, Box 458 • Spearman, Tx. 79081
(806) 659-3434 • 1-800-395-9482 • FAX (806) 659-3368
Published weekly at 213 Main, Spearman, Texas

Owned & Operated by
Texas Independent Newspapers, Inc.
16607 Blanco Road #100 • San Antonio, Tx. 78232
(210) 492-8907

Second class postage paid at Spearman, Texas 79081
Any erroneous reflection upon the character of any person or firm will be gladly and promptly corrected upon being brought to the attention of the management.

Publisher - Deziree Torres
Editor/Advertising - Chad Davis
Gruver Correspondent - Bob Bort

The publisher reserves the right to revise or reject at its option any advertisement which it deems objectionable, either in subject or by deem detrimental to its business.

MEMBER
1996
TEXAS PRESS ASSOCIATION

Subscription Rate: Hansford County, \$19.95; out of county, \$24.95 annually.
Postmaster: Send address changes to Hansford County Reporter-Statesman, Box 458, Spearman, Tx. 79081.
Advertising & Story Deadlines
Monday, 5:00 p.m.

EnviroPanel INTERIOR WALL SYSTEMS

Announcing
FACTORY DIRECT SALES
A Single-Component,
Non-Load Bearing
Wall System

- Replaces Studs & Drywall
- Saves 10 - 20% In Costs
- Environmentally Friendly
- Easy To Install
- High Fire & Sound Ratings

\$18.99 per panel
Factory Seconds - \$10.00

stramit 1-800-687-3352
U.S.A. L.L.C. Loop Road 143 East • Box 885 • Poynton, TX 79070
1-800-687-3352 • (806) 435-9303 • Fax (806) 435-4111



We pay shipping on Truck Load (300 panels) orders or more!

REAGAN AND BROWN AUCTIONEERS 12TH Annual Spring Farm Equipment Consignment Auction

February 27th, 28th, and 29th

- FOR ANYONE WISHING TO CONSIGN -
Farm & Ranch Equipment, Tractors, Trucks, Trailers, Vehicles, Shop Equipment & Etc.

Please: Mail In, Call, or Come By the Office with your list.
Please Do Not: Bring anything out to the airport without listing it with Reagan & Brown FIRST.

- WE MUST HAVE YOUR CONSIGNMENTS IN BY JANUARY 20TH -

REAGAN & BROWN AUCTIONEERS, INC.
P.O. BOX 648
DALHART, TEXAS 79022
(806) 249-6776 FAX - (806) 249-4453

Fari Ma

Mr. an Jackson, l announce daughter, Spearman Womble, o Karais man High West Tex Canyon, a by Interst Spearman Robert Spearman State Tec

ESSA' essay C Get info from ec writing. (senior) (sopho

PSU na

One h students Dean's Hc semester State Uni homa.

The De the name have earr 3.99 gra

Bro elit

Form: Janna Br bers of th who rec some of t at the Fo Corporat homa, ei place ove

The K fers fins awards t lures in United S year. So ognized Olympic Sanders, Dyken a Despi field of

Pa na De Ho at

Sara is amon the Dea versity Edmond achieve grade-p the sem The i est in O to offer ning in

Gruver Ezra Boys Club - What is it?

The Gruver Ezra Boys Club is a Christian boys club for all boys in grades 1 through 6. Is there a need for a boys club? Beginning in the mid-1960's, there has been a severe change in family life, with a decline in the role of the father in the family. Entire generations have grown up without a single positive role model of a Christian man in their life. The impact on our society is an explosion of the use of drugs, crime, drive-by shootings, fatherless children, and unwed mothers. In the early 1990's, Coach Bill McCartney and others were led by God to begin to call men back to their responsibility as husbands and fathers through an organization called Promise Keepers (PK). There is a real need among men and this is evidenced by attendance at national meetings of over 725,000 men in 1995.

Yet, during this movement of God, no avenue exists to actually forge and strengthen bonds between fathers and sons. As far as I can determine, none of the present men/boys organizations are strictly based on evangelical Christian principles nor do they seem to be effective in providing Christian male role models (mentors). Furthermore, these organizations, although doing many good things, are clearly not sufficient to stem the rising crisis occurring in families and young men today. In addition, most current men/boys organizations have a theme (sports, outdoorsmanship, etc.) that applies to every unit (chapter, troop, club, etc.). However, not all boys love sports. Not all boys love camping. With an emphasis on a core of three basic areas, Ezra boys clubs can vary their format to relate to intercity, suburban, and rural boys. For example, the appeal of rabbit hunting may be great in Hansford County but of little interest in inter-city Dallas. Thus, the format or motif of each boys club may vary, even within a single town.

Ezra was a prophet who encouraged the rebuilding of the walls of the temple. In a like manner, Ezra boys clubs are encouraging the rebuilding of relationships with God and between boys and men.

Ezra boys clubs do not push young boys to make decisions about accepting Christ. Teachings about God's plan of redemption through Jesus will start in the 4th-6th grade level. If at all possible, the boy's parents should be present when a boy makes this type of decision. This is best done in their home. Although an Ezra boys club is generally sponsored by a local church, this does not assume that the boy attending the Club will become a member of that local church. This decision will be made by the boy and his parents.

An important facet of Ezra boys clubs is the bonding of mature Christian men as mentors with boys. In the case of single parent mothers, one of the Club leaders will likely become a life-long friend and mentor as the leader keeps in touch with the boy.

In general, traditional sports, such as football, basketball, baseball, etc. are not part of most Ezra boys clubs. There are plenty of these in our schools and extra-curricular civic clubs. The same boys who excel in sports in school would dominate these sports if held in Ezra boys clubs. In addition, because most school sports are spectator sports, the father sits in the grandstand. Ezra boys clubs focus on hands-on activities where the father and son work together as a team to set up a tent, make the best chili, build the fastest pinewood racer, etc.

The Gruver Ezra boys clubs have on three basic goals: Reach boys, change lives, and make real men (Godly men). The clubs consist of three facets:

1. **Weekly meetings.** The meetings are divided into three parts:

- a. Read a story & do a story recall game
- b. Learn a Bible verse
- c. Make a craft or play a game

2. **Motivational awards system.** Awards are earned by accumulating stamps. Stamps are awarded for:

- 1. Attendance
 - 2. Wearing their vest
 - 3. Bringing a friend
 - 4. Completing a story (or mission video)
 - 5. Learning Bible verse
 - 6. Completing a craft or missions game
 - 7. Participating in a missions project
 - 8. Bonus for as desired by leader (ex. best helper for the night, or for best mannered for the night, etc.).
- The boys may cash in their stamps for levels of awards: Level 1 (10 stamps) - globe key ring, fun air glider, pencil, spinning top, ball puzzle, and small yo-yo; Level 2 (25 stamps) - pocket kite, box puzzle, flying copter, large yo-yo, pinball game, world pencil sharpener; Level 3 (50 stamps) - neck sport safe, frisbee disk, tool box, pop-n-catch, flying saucer; Level 4 (75 stamps) - cap, book bag, travel mug, leather key chain; Level 5 (100 stamps) - sport bag, Bible, T-shirt, pocket knife.

3. **Monthly special events with fathers and sons.**

Special activities are planned each month to strengthen father-son relationships. Activities such as the Catamaran contest, campcraft competition, fishing tournament, father-son chili cookoff, father-son campout, delivery of food baskets to shut-ins, pine wood racers, pushmobile competition, whizzers contest, and the participation of fathers in the club meetings will bring together fathers and sons.

The keys to success for the Ezra boys club are for the leaders to: Watch to see where God is at work; Adjust to what God is doing; Join God in what He is doing; Give the Glory to God by sharing what he is doing in the boys clubs.

If you have questions about the clubs, call Bob Adams 733-5558 or 733-5553 home.

As a part of the community effort for the Gruver Ezra boys club will

sponsor a city wide free pinewood racer derby for all boys grades 1-6 in Gruver ISD! Boys and their dads should come to the Gruver County Ag Barn between 5:30 and 8:30

p.m. to get their free car kit. Band saws and sanders will be available at that time to cut out the cars. The races will be on Jan. 24 at 6:30 at the Gruver ISD Activity Center.

Chamber Chatter

by Cindy Blackman
Chamber Manager

There is still time to sign up for the grant writing seminar sponsored by the Resource Development and Conservation Area Inc.. The seminar is in two parts. The first part of the workshop will cover the foundations and what foundations give to a project in your area, and how to apply. Call the Chamber Office at 659-5555 to sign up. The workshop will be held on January 15, 16, and 17 from 8:30 a.m. to 4:00 p.m. Cost of the workshop is \$150.

Plans are underway for the annual Chamber Banquet. Remember, Citizen of the Year and Small Business of the Year will be awarded. Date to be announced in the next edition of the paper.

Spearman heritage Day meeting is scheduled for January 24, 5:00 p.m. at the Chamber Office,

211 Main St. All interested persons are encouraged to attend.

The Chamber is still taking orders for Heritage Throws.

Your Chamber does many things for the business and professional communities and the general public that they could not do alone. Your Chamber provides services and many benefits that completely overshadow your cost - that is, your membership investment - of hiring the Chamber. The Spearman Chamber of Commerce does together what no one business could do alone. Remember, it is not a contribution or a gift you're making...it's an investment. Say "YES" when a representative from the Spearman Chamber of Commerce calls on you!

Hansford Historical Commission meets

The Hansford County Historical Commission met January 8 at the Zulu Stockade at 2:00 p.m.

Joel Lee Lackey, chairman, asked for committee reports.

The Historical Marker Committee reported on the Fort Zulu Marker. A definite spot to put it will be decided on very soon. Jack Hart wants to show the committee the place he thinks would be good. Joel Lee Lackey plans to meet with him.

Rubyjo Wilbanks, of the Historical Preservation Committee "Museum" showed members the new fliers that had been printed for the Museum. They are brown-tone with several pictures of the Museum properties on them.

Cindy Blackman and J.D. Wilbanks made a trip to look at the parking lot lights that Ed Mills of Claude offered to give. They were too big for Museum use. Gruver plans to use them in their city park.

The Committee discussed ways to add to properties at the Museum. Cindy Blackman is working to find grant money for property purchases.

A letter was received from the state concerning Texas preservation of properties with state emblems on them.

Members present were Johnnie Lee, J.D. Wilbanks, Rubyjo Wilbanks, G.C. Brillhart, Clementine Renner, Gus Renner, Joel Lee Lackey, Helen Boyd, Cindy Blackman, Joanne Eaton and Jeff Lackey; and one visitor, Bonnie Cox, was present.

Another good reducing exercise consists in placing both hands against the table edge and pushing back.

—Robert Quillen



GOOD ENCOURAGEMENT - The EZRA Boys' Club of Gruver helps out boys from the town to learn many things they will use when they get older. Seen here, several of the boys are learning how to tie knots and shoot BB guns to help their coordination.



MEAT SALE

- 20 lb. Pork Pack • \$29⁵⁰
- 25 lb. Family Pack • \$32⁵⁰
- 25 lb. Beef Pack • \$39⁵⁰
- 50 lb. Freezer Pack • \$79⁵⁰

SUNRAY LOCKER • (806)948-4403

A Dream Come True

SALE

THIS WEEK'S Specials

AT ... **BILLASPIE**

AUTO & TRUCK CENTER, INC.
CHEVROLET, OLDS, BUICK, PONTIAC,
CHRYSLER, PLYMOUTH, DODGE
Highway 207 South • P.O. Box 430
Spearman, Texas 79081
(806) 659-2541

- 1995 BUICK REGAL** - FOUR to choose from, 4 dr., V6, automatic transmission, tilt/cruise, AM/FM cassette, A/C, power windows and locks. Factory Warranty Remaining ... **\$15,500**
- 1995 BUICK REGAL** - 2 door coupe, A/C, V6, automatic, tilt/cruise, AM/FM cassette, Factory Warranty Remaining ... **\$15,000**
- 1995 OLDSMOBILE ACHIEVA** - 4 dr., V6, automatic, A/C, tilt/cruise, AM/FM cassette ... **\$12,500**
- 1995 BUICK CENTURY** - 4 dr., V6, automatic, tilt/cruise, A/C, AM/FM cassette ... **\$12,900**
- 1995 PONTIAC GRAND AM** - Automatic, A/C, cruise, AM/FM cassette **\$12,500**
- 1995 OLDSMOBILE CUTLASS SUPREME** - TWO to choose from, 4 dr., V6, automatic, tilt/cruise, AM/FM cassette, power windows and locks **\$14,900**

ONLY TWO 1995 DODGE PICKUPS LEFT

1/2 Ton, 2 Wheel Drive Laramie SLT, Club Cab
3/4 Ton 4X4 Regular Cab, V10, Automatic, A/C

BOTH CLOSE-OUT PRICED !!

DRIVER EDUCATION CLASSES

Independent Driving School
814 S. Main • Perryton
(806)435-2579
Lanny Hargrove

CHRISTMAS SALE

DON'T MISS OUT ON THIS

- Dec. 21st thru Jan. 12th
- Stephen's Carpet & Upholstery Cleaning 659-2598
- Two rooms & a hall **\$49.95** under 500 sq. ft.
- Couch and recliner or chair **\$29.95**
- 1,000 sq. ft. or more save **20%**

Among the Neighbors

by Helen Fisher

Pearl Pierce enjoyed a Christmas vacation in California for several days. She flew to Los Angeles just before Christmas and met a friend, June Weant, at the air port. She had flown in from Tucson, Arizona. They drove to Pismo Beach where they were guests of Norma Jo Allen Peargin. During their stay they toured the fabulous Hearst Castle and other places of interest. They spent Christmas in San Francisco with Norma Jo's son and his family. Her daughter and family of Salinas, California were there also. She and June flew back and Pearl reached home on Friday.

Gwen and Tim Bryant proudly announce the arrival of a new daughter, Shay Ann. She arrived by way of Northwest Texas Hospital in Amarillo on January 2, 1996, weighing 7 pounds and 4 1/2 ounces.

To welcome her is her 2 1/2 year old sister, Haley. Grandparents are Nancy and Bill Smith, Lovington, New Mexico, and Judy and Alton Bryant of Tucumcari.

Great grandparents are Virginia and Alvie Bryant of Midland. Mrs. Smith has been with the Bryants here until Sunday when she returned to Lovington.

Over night guests of Martha and Orville Latham were former Spearman residents, Frankie and Troy Sloan. They drove up from Breckenridge on a brief business trip.

Two month old Richard Jarvis, son of Christi and Will Jarvis, is at home and much improved after a bout with RSV, a respiratory virus. He was a patient in Hansford Hospital where the virus was identified, then taken to Northwest Texas Hospital in Amarillo where more technical equipment was available.

The 5th floor of the hospital, used for very young children, was filled to capacity and fully one-half of the patients were being treated for RSV.

This was no surprise to the medical staff there as it occurs every winter, but usually in October. The nurses told the Jarvis family that they had taken their days off early in order to be prepared for the expected epidemic. For some reason, possibly weather related, it didn't occur until late December this year.

The symptoms are similar to that of the common cold, and older children have no severe difficulty with it. However, as in any respiratory condition, infants are more susceptible and can be seriously ill.

The staff at the hospital was puzzled by the intense and continued media coverage of this well known virus this year.

Little Richard will be kept away from other babies for at least a month for his own protection as well as for others.

Sympathy is extended to the family of Jack Hamilton who passed away on Monday morning after a lengthy illness.

His obituary appears elsewhere in this issue.

The Sheriff's department was kept busy during the recent icy weather conditions. The dangerous ice on Friday was the cause of four vehicles being over-turned.

Deputy Gary Evans, who worked the accidents, reports there were no injuries. All of them were on straight highways and the vehicles overturned as a result of driving too fast for the road conditions, though no excessive speed was apparent. One was three miles south of Spearman on Highway 760; the other three were all on 207, south, two miles, 10 miles and 11 miles. All drivers were non-residents.

The snow and icy conditions of last week brought out some good neighbor qualities which probably prevented some broken bones.

I.W. and Maylynn Ayres are grateful for their good neighbors. One morning I.W. heard a scraping noise and investigated outside his home. He was very pleased to find his young neighbor, Michael Cook, cleaning the snow from the driveway with a shovel.

I.W. had bought a large container for his trash and put two wheels under it so he could push it to the

dumpster in the alley. After the big snow, he was concerned about getting it to the alley, and while he was pondering, his neighbor to the east, Dannie Ellis, and with little effort took care of it for him.

I.W. says that he lived 77 years in the country and was told by his friends and some family that he would never adjust or enjoy living in town. He has lived in Spearman for three years and is quite content. He appreciates the city officials and the employees for furnishing water; emptying the trash, keeping the streets and alleys clear of weeds and snow and he is glad that he did move into Spearman. Also it gives him more time to devote to his hobby--clocks--for which he is well known.

There has been considerable comment regarding the law permitting the carrying of concealed weapons and the effect on crime. Officer Bruce Gehring, of the Spearman Police Department, is a staunch advocate of this law and noticed that in every state that has such a law, the crime rates are down.

A course of instruction is required of every applicant for a license and Officer Gehring has qualified as an instructor. This was not as an official in the police department, but as a private undertaking. He, as his own expense, took the training course in Austin and conducts the classes on his own time. He has had 46 applications or inquiries, and is now conducting a class of 15, including two women. Shortages in the personnel in Austin has delayed the issuances of the licenses statewide.

Commissioner Worley Smith, probably the first applicant for a license for a concealed gun, is presumed a closet animal-rights activist. Why

else would he pass the buck; never shoot the bull; never give a bum steer; though once he talked turkey and had to eat crow; and is considered mule-headed!!!!

As nearly as could be ascertained, all Federal employees in this county were not among those who did not report for work during the recent "show-down".

The appropriations for the Consolidated Farm Service Agency and the Natural Resources Conservation Service (known as A.S.C.S. and the Soil Conservation before government was re-invented) were handled under previous commitments. The post office doesn't admit to being government employees, and the status of federal involvement in the health and employment offices is a little fuzzy to most non-government people. The fact is that during the close-down-Hansford County folk were not inconvenienced.

Kathrine Gumfory left Tuesday morning to return to Bangkok, Thailand where she teaches in a Christian school. She was to meet her friend who teaches with her in Dallas and they would return by way of Vancouver.

Kathrine entertained the members of the Lions Club and the Rotary Club here with a description of the country, the city, and her work and activities. She had some pictures, but her account of some of her adventures, the traffic, fumes, lack of sanitation were vivid. Her school is on the outskirts, in a lush countryside, and her living quarters are comfortable. She will return home in July.

Kathrine is a graduate of Gruver High School, the daughter of Carla and the late Tommy Gumfory, and the granddaughter of Peggy and Carl Archer.

Girl Scout cookiefund raiser to kick-off

Little Brownie Bakers will supply cookies for the annual sale which begins January 12th. Girl Scouts will be knocking on doors and taking orders through January 29th.

Little Brownie provides eight kinds of cookies; Juliettes, a caramel pecan; Trefoils, a shortbread; Tagalongs, peanut butter patty; Dosidos, an oatmeal peanut butter cream; Thin Mints, a wafer coated with chocolate and peppermint; Samoas, a vanilla cookie covered with caramel and coconut, striped with a cocoa coating; Snaps, an iced oatmeal raisin cookie and Chalet Cremes, a lemon and vanilla assortment.

The cookie sale is a Girl Scout program, teaching girls many skills; how to set and achieve goals, planning, budgeting, record keeping, public relations, and customer service skills, marketing and distribution techniques.

The Girl Scout cookie sale has been going on for over half a century and has been a big part of raising funds for troop activities, council events, program resources, camping equipment and camping programs. Girls become self-reliant helping earn the fee of camp and council events.

Support Girl Scouts in your community with the cookie sale.

Urban/rural differences

More urban Texans get cancer and die from the disease than people living in rural areas of the state, according to a new study in the January issue of *Texas Medicine*.

The study, based on data from 1980 through 1985, indicates significantly higher cancer rates in urban areas for all race and sex groups, with the exception of Hispanic and Afro-American women. The study is the first to examine urban-rural differences in cancer incidence and mortality rates in Texas. It is also the first time researchers have examined those differences in the state's Hispanic population.

The study was conducted by David R. Risser, PhD, MPH, of the Texas Department of Health in Austin. He said the findings give rise to interesting speculation.

"Rural areas are more isolated from medical surveillance and medical treatment than urban areas," Dr. Risser said. "For this reason, cancer mortality should have been higher in rural areas than urban areas, but exactly the opposite was

found to be true."

Digestive system cancers, including colorectal, stomach, pancreas, and gallbladder, were significantly higher in the urban populations. The report also notes a higher incidence of lung cancer in urban Anglo females and a higher death rate from lung cancer in the urban Anglo and African-American populations. The study also found a higher rate of melanoma in rural Anglo women.

The research on Hispanics suggests less of a disparity in cancer rates between rural and urban areas. "This population, particularly females, did not appear to exhibit the urban-rural patterns at the same degree as other racial/ethnic groups," Dr. Risser said.

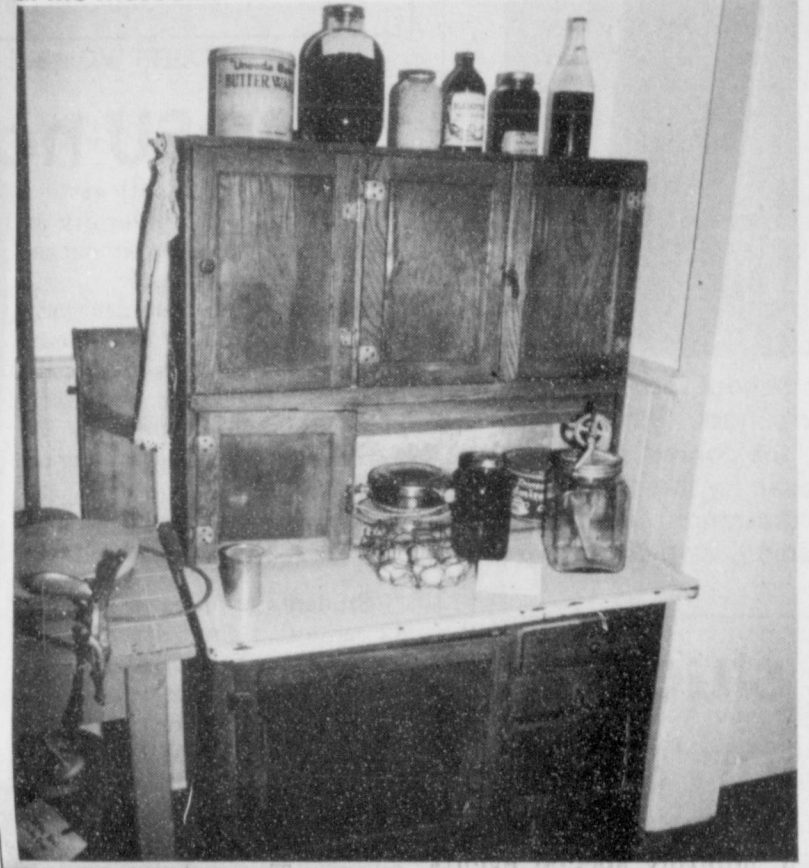
The study lists several factors that may account for study findings: urbanization, pollution, crowded living conditions, smoking, diet and life-style. But Dr. Risser says further investigation is necessary to prove whether those factors do indeed lead to more cancer in urban areas.



The most massive single issue of a newspaper has been of the Sunday *New York Times*, which weighed 12 pounds and contained 1,612 pages, on September 14, 1987.



A KITCHEN OF TIMES PAST - Seen here are several of the old kitchen items used from some time back that are on display at the museum.



Museum Musings

by Joanne Eaton

There are many kitchen items on display at the Museum that were used in the past. We ladies of today have a whole lot better deal as far as I'm concerned. If we waited at our house for me to churn butter, we'd be out of luck. In fact, my husband threatened to sell my stove. I told him to go ahead! My next house won't even have a kitchen.

The churn at the Museum was used by Bessie Faus while living at Old Hansford. The wooden butter mold was used by Mrs. Bruce Sheets.

Mrs. R.L. Uptergrove donated the can sealer. It was used to can beef when President Franklin D. Roosevelt requested reducing the number of cattle.

Several old can openers were given to J.D. Wilbanks by Kim and Tyler Rea. They are on display.

There is also jars of fruit that was canned by Mrs. Hix Wilbanks and Marena Martin.

Old tins, waffle irons, rolling pins, and other utensils complete the picture.


Since there was no winner during the holidays, we're going to run our contest again.

KIDS! KIDS! KIDS! Come to the Museum and find the mystery item!

Here's a contest for all elementary students. You must be accompanied to the Museum by an adult to win \$5.

Only one winner! The first person to correctly identify the mystery item will win the money. When you think you have found the item write your name, date, and the item on a piece of paper. Then seal it in an envelope and give it to Barbara. She will write the time on it. Good Hunting!

We're flavors four,
And oh so sweet.
To find us now,
Will be a treat.



By

CELLULARONE®

IPHONE

STARTING JANUARY 6 OF 96

FREE

AT&T

BAG PHONE

"no activation fee"

TOLL-FREE AMERICA

"for 3 months"

Call anywhere in the US from your home area free

COUNTRY CELLULAR COMMUNICATIONS
Jeff Beedy & Dick Gillaspie
(806)659-2541

The Gruver Christian boys grades 1 through 4, for a boys club mid-1960's, the change in family in the role of the family. Entire generation without a church life. The impact explosion of the drive-by shooting, and an early 1990's, and others were to call men by ability as husband through an Promise Keep real need am evidenced by meetings of 1995.

Yet, during God, no aver forge and stre fathers and determine, no boys organized on even principles nor do tive in prov role models more, these doing many, not sufficient crisis occur young men t current me have a outdoorsma to every uni etc.). Howe sports. Not With an em basic areas vary their f city, suburb example, t ing may County buter-city Da motif of es even withi Ezra w aged the r the temple boys clubs building o and betwe Ezra b young boy accepting God's plan Jesus will level. If a parents s boy make This is b Although erally spe this does attending member decision and his p An im clubs is th tian men the case one of th become s tor as tl with the

Obituaries

VILA NATHANIEL "BUD" KING

TUCSON, ARIZONA - Bud King, 82, went to be with the Lord on December 30, 1995.

Bud was the oldest child of Howard Jefferson and Roena Mae King, born in Snyder, OK, on December 11, 1913.

Bud was a former long time resident of Spearman. While living in Spearman, Bud was active in and a member of the First Baptist Church. He was a founding member of Kids Inc. Baseball teams, as well as a member of many civic organizations.

Bud retired to Tucson, Arizona, while there he participated in Senior Olympics, the Community Bank, Toys for Tots and the Homeless Ministry of Sabino Road Baptist Church.

Burial was held Tuesday, January 2, 1996, at Tucson's Eastlawn Palms Cemetery. The family requests donations be made to the Amarillo Area Muscular Dystrophy Association.

Survivors include his wife, Leona King; daughter, Roena (Jerry) Day of Tucson; son D.L. (Buddy) King of Cache, OK; grandchildren, Kari King of Amarillo, TX; Amanda Day of Nashville, TN; Mark Day of Tucson; Lori King of Newcastle, OK; great-grand daughter Mariah Kay Day of Tucson.

MINNIE CHESSE

GRUVER - Minnie Chesser, 95, died Wednesday, Jan. 3, 1996.

Services were held at 2 p.m. on Friday, January 5, 1996, in the Church of Christ with Flavil Ayers and Bob Setliff officiating. Burial was in the Gruver Cemetery by Boxwell Brothers Funeral Home Inc. of Spearman.

Mrs. Chesser was born in Wise County. She moved to the Gruver

area 74 years ago from Oklahoma. She married P.M. "Shorty" Chesser in 1917 at McQueen, Okla. He died in 1973. She also was preceded in death by two sons, Leon Chesser in 1971 and J.W. Chesser in 1973.

She was a homemaker and member of the Gruver Church of Christ. Survivors include a daughter, Ora Mae Heath of Gruver; a sister, Opal Archer of Perryton; eight grandchildren; and 14 great-grandchildren.

JACK A. HAMILTON

SPEARMAN - Jack A. Hamilton, 64, died Monday, January 8, 1996. Services were held at 11 a.m. on Wednesday, January 10 in First Christian Church with the Rev. Lavern Draper, pastor, officiating. Burial was in Hansford Cemetery by Boxwell Brothers Funeral Home Inc.

Mr. Hamilton was born in Stevens. He moved to the Spearman area 41 years ago from Texhoma, OK. He married Patricia Morse in 1954 at Clayton, NM. He was yard superintendent for Baker and Taylor Drilling Co. in Spearman until 1989. He was a member of First Christian Church.

He was preceded in death by a son, Jack Douglas Hamilton, in 1968.

Survivors include his wife; four daughters, Karen Baker of Oklahoma City, Sharon Archer of Mustang, OK; and Linda Stalcup and Cindy Sasser, both of Spearman; his mother, Hettie Hamilton of Guyton; three brothers, Bob Hamilton of Texhoma, Bill Hamilton of Splendora and David Hamilton of Denver; and 10 grandchildren.

The family suggests memorials be to Hansford Hospice, 707 Roland, Spearman, Texas 79081.

Let us replenish the seed of faith through... REGULAR CHURCH ATTENDANCE, DAILY BIBLE READING & PRAYER



Curtis' Hot Oilers
806-659-3432
"Taking Service to Perfection"
806-659-2912 P.O. Box 714
800-821-6714 Spearman, TX 79081

Palo Duro Supper Club
22 S. Archer
659-2232

C.O.'S SUPPLY CO.
Plumbing & Tire Sales & Service
421 W. Kenneth • Spearman
659-3781 or 659-3555

Bartlett's Ace Hardware
105 W. Broadway
733-2404

GILLASPIE
AUTO & TRUCK CENTER, INC.
CHEVROLET • OLDS • PONTIAC • BUICK
CHRYSLER • PLYMOUTH • DODGE
Hwy 207 South • P.O. Box 430 (800)659-2541
SPEARMAN, TEXAS 79081

THE HANSFORD COUNTY REPORTER-STATESMAN
Serving The Communities Of Spearman, Gruver & Morse
213 Main • 659-3434
1-800-395-9482

PORTER SATELLITE
TREY PORTER
806-659-3057
420 Davis
Spearman, Texas 79081

Gruver Cablevision
Quality Family Entertainment with
"the Disney Channel"
308 Main • 733-5295

Morse Implement Company
"Join us in church this week"

Boxwell Bros. Funeral Home

THE HANSFORD COUNTY REPORTER-STATESMAN
Serving The Communities Of Spearman, Gruver & Morse
213 Main • 659-3434
1-800-395-9482

CORONADO HOSPITAL
Pampa, Texas
(806)665-3721

Compliments of
G&G FOODLINER
516 Main • Gruver
733-2471

How Does Life Get So Tangled?

Interesting thing about a rope - it rarely becomes tangled when it's serving some useful purpose. It stretches firm and taut... reaching...holding.

But lay the rope aside...waiting without a purpose...and it becomes so tangled you can't even find the ends.

Life is like that! For some folks it seems an impossible tangle of conflicts, worries and disappointments. They haven't discovered how to devote their strand of years to a vital, constant purpose.

But for others life stretches firm and taut from birth to Eternity. The tangles disappear as men reach across time to hold certain truths by which God would have us live.

Life without tangles...life with purpose...discover it in God's House this week!

Scripture Selected by The American Bible Society
Copyright 1996, Mentor-Williams Newspaper Services, P.O. Box 6036, Charlottesville, VA 22906

Sunday Matthew 9:27-38
Monday Matthew 10:1-15
Tuesday Matthew 10:16-25
Wednesday Matthew 10:26-42
Thursday Matthew 11:1-19
Friday Matthew 11:20-30
Saturday Matthew 12:1-8

In Spearman...

Apostolic Faith Church
822 S. Dressen • 659-2870
Sunday School: 10 a.m.
Worship: 11 a.m.
Evening Worship: 6 p.m. Sun.
Wed. Prayer Meeting: 7:30 p.m.
Pastor James Brown

First Assembly of God
401 N. Bernice • 659-2295
Sunday School: 9:45 a.m.
Worship: 10:50 a.m.
Evening Worship: 7 p.m.
Wednesday Worship: 7:30 p.m.
Youth: 7:30 Wednesday
Pastor Walter Greaser, Jr.

First Christian Church (Disciples of Christ)
29 S. Bernice • 659-2036
Sunday School: 9:45 a.m.
Worship: 10:50 a.m.
Evening Bible Study Worship: 6:30 p.m. Sundays.
Pastor LaVern Draper

First Baptist Church
123 N. Bernice • 659-5557
Sunday School: 9:45 a.m.
Worship: 11 a.m.
Evening Worship: 7 p.m.
Jr. High Youth: 6 p.m. Wed.
High School Youth: 7 p.m. Wed.
Youth Choir: 6 p.m. Sun.
Pastor Kyle Henderson

Church of Christ
121 S. Haney • 659-3244
Sunday Bible Class: 9:45 a.m.
Worship: 10:30 a.m.
Evening Worship: 6 p.m.
Bible Study Wed. 7:30 p.m.
KRDF Radio Program
Living With Christ 7:50 a.m. M-F
Minister Arnis Pape

Fellowship Baptist
1102 S. Archer • 659-2783
Sunday School: 10 a.m.
Worship: 11 a.m.
Evening Worship: 6 p.m. Sunday
Youth & Adult Serv.: 7:30 Wed.
Pastor Tim Luttrall

Primera Mision Bautista
502 E. 7th • 659-3991
Sunday School: 9:45 a.m.
Worship: 11 a.m.; Evening: 6 p.m.
Wed. Prayer Meeting: 7 p.m.
Thurs. Visitation: 7 p.m.
Pastor Isaias Martinez.

"WE SUPPORT OUR LOCAL CHURCHES"
CAPROCK #1 & #2
Bill Park, Gen. Mgr.
(806)733-5043 or 733-5025
"Custom Cattle Feeding"

In Gruver...

First Baptist Church
402 E. Broadway • 733-2411
Sunday School: 9:45 a.m.
Worship: 10:50 a.m.
Disciple Training: 6 p.m. Sunday
Prayer Meeting: 7:30 p.m. Wednesday
Pastor Larry Miller

Church of Christ
209 King • 733-2760
Sunday School: 9:30 a.m.
Worship: 10:20 a.m.
Evening Worship: 6 p.m.
Wed. Evening Worship: 7:30 p.m.
Minister Bob Setliff

First Christian Church
510 King • 733-2960
Sunday School: 9:45 a.m.
Worship: 11 a.m.
Wed. Bible Study: 7:30 p.m.
Youth: 6:30 Wednesday
Pastor Gary Gumfory

Oslo Lutheran Church (ECLA)
West of Gruver on Hwy 15 & N. FM 1162
339-7646
Sunday School: 9:45 a.m.
Worship: 11 a.m.
Morning Prayer: 9 a.m. Wed.
Pioneer Clubs (Grades 1-6):
4-5:30 p.m. Wednesday
Pastor John R. Chandler

Community Bible Church (Interdenominational)
Hwy. 15 • 733-2443
Sunday School: 10 a.m.
Worship: 11 a.m.
Wed. Prayer Meeting: 7 p.m.

First United Methodist
Broadway & Garrett • 733-2651
Sunday School: 9:45 a.m.
Worship: 8:30 a.m. & 10:50 a.m.
Evening Worship: 6 p.m.
Pastor Lewis Holland

In Morse...

Morse Baptist Church
Pastor Mike Martin
733-2757

"Your Home Away From Home"
Nursanickel Motel
815 Hwy. 207 S.
Phone: (806)659-3737 P.O. Box 115
Spearman, Texas 79081

BERRY CLEANERS
DAN DESIMONE - OWNER
Phone 659-3122 • P.O. Box 1017
207 Main St. • Spearman, Tx. 79081

GRUVER FORD
531 Main • Gruver • 733-2431

Interstate Savings & Loan
322 Main • Spearman • 659-2559

Deakin ELECTRIC
OILFIELD • RESIDENTIAL • COMMERCIAL
321 S. Main
Spearman, Texas 79081
1-800-999-1506
(806) 659-5016
Chris Deakin
President

Gordon Drugs
Dependable Prescription Service
314 Main • Spearman
659-2141
Jim Evans

Compliments of...
AGCO of Spearman, Inc.
"See you in Church"
659-3751

A "Center" Piece

Although it is late, the members of the Golden Spread Senior Citizens at 502 Brandt St. hopes that everyone had good Christmas Holidays and that this New Year brings Happiness and Good Health to each of you and to each other.

Patti Butt was the recipient of the 1995 Christmas quilt. She presented it as a gift to her mother-in-law; making Roselee very happy.

Pearl is trying hard to find programs for Seniors of all ages and interesting crafts for the Thursday group.

If anyone in the public has any ideas of interest to you call Pearl at 659-3866 and let her know. Pearl and the crafters can use all the help available.

MAY GOD BLESS EACH ONE IN OUR COMMUNITY AND COUNTRY



The first frozen food individual packaged products were developed by Clarence Birdseye and put on sale at ten grocery stores in Springfield, Mass. on March 6, 1930.

NOTICE

The Spearman Housing Authority is now taking applications for residents. Eligible applicants will be placed on a community-wide waiting list. Families with the following incomes are especially needed for occupancy at the Housing Authority:

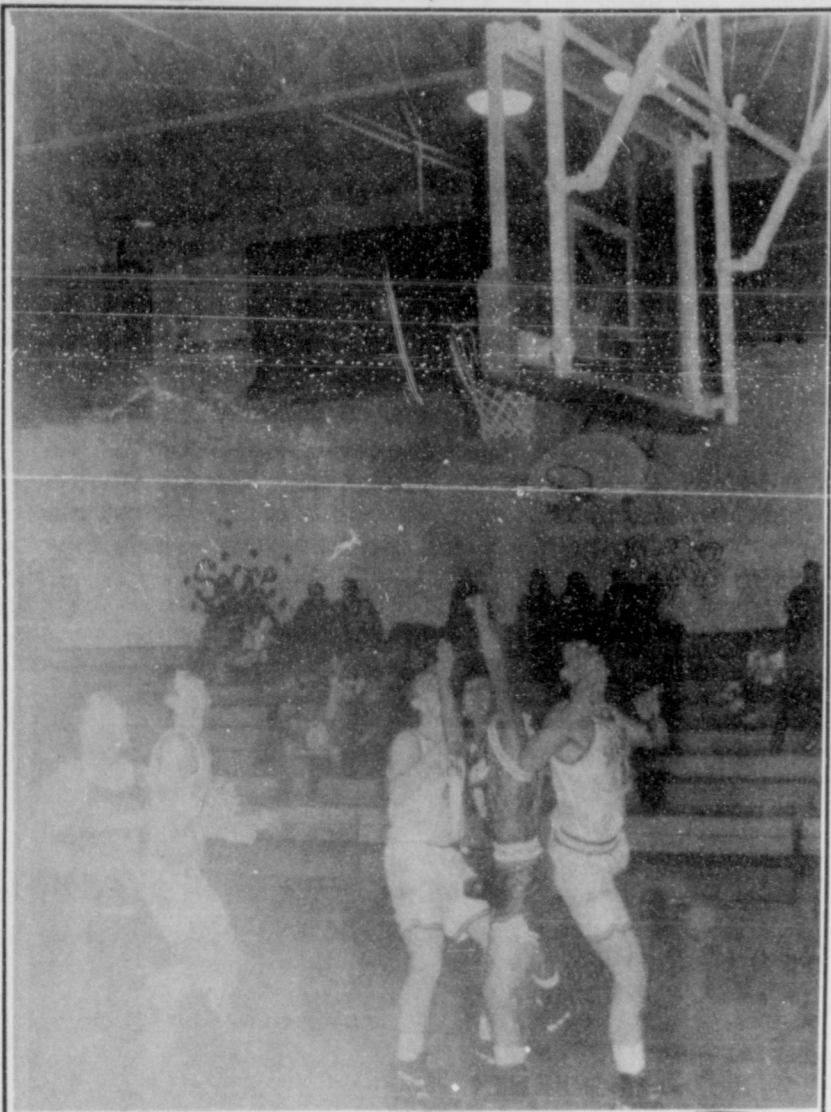
FAMILY SIZE	FAMILY INCOME	
	From	To
1 Person	\$11,800	\$18,850
2 Person	\$13,500	\$21,500
3 Person	\$15,150	\$24,250
4 Person	\$16,850	\$26,950
5 Person	\$18,200	\$29,100
6 Person	\$19,500	\$31,250
7 Person	\$20,900	\$33,450
8 Person	\$22,250	\$35,600

Rent is based on family income minus allowances for children and elderly occupants. For more information, contact Gary Elsworth at Spearman City Hall or call 659-2524 from 8:00 a.m. until 5:00 p.m. Mondays through Fridays. The Spearman Housing Authority does not discriminate based on race, religion, sex, age, disability, national origin or other classification protected by federal and state laws.

Don't Miss Another Issue!
SUBSCRIBE NOW
\$19.95 in county
\$24.95 out of county

Spearman Reporter-STATESMAN Gruver
213 Main • P.O. Box 458 • Spearman, Tx. 79081
(806)659-3434 • 1-800-395-9482

Sports



GET READY - The Spearman Lynx played host to the Sunray Bobcats last Saturday afternoon in their Homecoming game. Seen here, big point man, junior, Dillon Miller, is getting ready for a rebound, while Clay Neff is getting ready to help out.

Basketball . . .

the team is the best Lynx team right now, based on their record. Michael Lusby is still being a bright star for the group, as he brought in 10 points in this game. The real highlight of this one was that of Eric Varnon. His impressive performance brought in 12 points, including 6 in the second quarter. The big man on the team, Jamie Townsen, also did more than his share of point getting and he brought in another 10 points for Spearman. It should be interesting to see how well these guys do once district starts. Chances are they will be undefeated in district play, and if not, they should still be the sole champs of the district.

Lynx (9-8) vs. Sudan
Tuesday 1-2-96 at Vega
Spearman 14 27 41 62
Sudan 8 24 47 66
3-Pointers - Heath Archer - 2, Jake Howard.
Spm - Dillon Miller - 18, Jarod Huddleston - 13, Heath Archer - 10, Jake Howard - 7, Shan O'Quin - 4, Clay Neff - 2, Eric Cudd - 2, Shad O'Quin - 2, Coyt Tigrett - 2, Martin Sanders - 2.

Synopsis: Despite another fantastic game by Mr. December, Dillon Miller, and the 3-point kings, Jake Howard and Heath Archer, the Lynx came up just short in this one. Sudan is a very good team, and this loss should not be looked upon as bad, but more as a learning experience for the Lynx. Not to be too crucial on them, but the Spearman squad still has some maturing to do before it is playoff ready. A couple of things need to come together, and the Lynx will be ready for anybody, if they play as a team.

Spm - B. Lesty - 11, C. Smith - 10, H. Beasley - 8, A. Sanders - 6, K. Murphy - 1.

Lynx 8th A vs. Boys Ranch
Saturday 1-6-96 at Spearman
Spearman 12 22 35 44
Boys Ranch 7 10 13 19
Spm - Clayton Wilkerson - 20, Aaron Winegarner - 12, Jeremy Mackie - 6, Josh Schuman - 3, Dusty Barber - 2, Schoenhals - 1.

Synopsis: This set of Lynx has a real bright future, and it showed as they opened district play last Monday night. Clayton Wilkerson really shined again for the Lynx. Aaron Winegarner was hot stuff too, as brought in 12 points for the Lynx totals. Wilkerson and Winegarner together brought in 32 of the 44 Lynx's points.

Lynx 7th A vs. Gruver 7th
Spearman 9 16 31 37
Gruver 4 15 26 32
3-Pointers - Brady Wooley.
Spm - Dib Kirk - 11, Dusty Vinson - 7, Brady Wooley - 7, Clayton Vanderburg - 6, Griffin - 5.

Synopsis: Lynx basketball is like without at least one 3-pointer from the outside man, Heath Archer. In this game, Archer was accompanied by another 3-point man, Brent Collins. It seemed as though the Lynx were really starting to play like a team again, and that's what they need to be successful. At this moment, team work is what the Lynx really need to keep in mind. They already have the great coaching, the fan support, and the talent.

Lynx 8th A vs. Gruver 8th
Spearman 18 27 37 53
Gruver 10 17 24 38
3-Pointers - Dusyt Barber.
Spm - Aaron Winegarner - 16, Josh Schuman - 9, Clayton Wilkerson - 8, Dusty Barber - 8, Jeremy Mackie - 4, Schoenhals - 2, Landon Delozier - 2, Teddy Whitefield - 2.
Gru - Henson - 10, Grotegut - 9, Armes - 5, Rodriguez - 5, Hunt - 4, Barkley - 2, Odom - 1.

Lynxette 9th vs. Gruver
Thursday 1-4-96 at Gruver
Spearman 17 26 47 56
Gruver 8 13 13 24
Spm - Kristin Beedy - 13, Kristy Carbajal - 9, Leslie Holton - 8, Gina Davis - 6, Lisa Swink - 6, Gail Mayfield - 4, Mindy Vernon - 3, Stephanie Bowling - 2, Holly Pipkin - 1.

Synopsis: The Lynx JV is coming right along, and in all actuality,

Lynx JV (13-3) vs. Sudan
Tuesday 1-2-96 at Vega
Spearman 14 38 49 65
Sudan 6 8 18 30
3-Pointers - Britt Savage, Lance McMahan.
Spm - Eric Varnon - 12, Michael Lusby - 10, Jamie Townsen - 10, Blake Beedy - 9, Vinson - 8, Britt Savage - 8, Lance McMahan - 3, Frankie Dominguez - 2, Keith Winegarner - 2, Mike Butts - 1.

Synopsis: The Lynx JV is coming right along, and in all actuality,

Basketball . . .

Lynx (9-7) vs. Miami
Saturday 12-30-95 at Canadian Tourney
Spearman 15 26 46 62 74
Miami 11 28 42 62 79
3-Pointers - Heath Archer - 5, Jake Howard - 2.

Spm - Martin Sanders - 18, Heath Archer - 17, Jarod Huddleston - 11, Dillon Miller - 10, Coyt Tigrett - 10, Jake Howard - 8.

Synopsis: Martin Sanders was really hot that night. For the first time this season, Sanders led all point makers. What else can you say about Heath Archer, the man from the outside. Archer has knocked in 9 treys in his last 2 games. Also a bright spot in this one was Coyt Tigrett. Tigrett has been quite for the last couple of games, but he came out in this one more alive than ever and knocked in 10 points. Jake Howard shouldn't be left out either. He's been hitting some pretty good treys lately, as well as regular field goals.

Lynxette 7th A vs. Dalhart
Monday 1-8-96 at Spearman
Spearman 11 12 14 23
Dalhart 9 15 17 18
Spm - Audry Simpson - 8, Jennifer Schnell - 7, Nichole Lozano - 4, J. Whitefield - 4.

Lynxettes 7th B vs. Boys Ranch
Monday 1-8-96 at Spearman
Spearman 2 3 3 5
Boys Ranch 4 14 22 29
Spm - Chelsey Villines - 3, Jamie Kunselman - 2.

Lynx 7th A vs. Boys Ranch
Monday 1-5-96 at Spearman
Spearman 4 9 16 24
Boys Ranch 6 10 18 28
3-Pointers - Dusty Vinson - 2.
Spm - Dusty Vinson - 8, Kirk - 4, Clayton Vanderburg - 3, Jimmy Gaytan - 3, Brady Wooley - 2, Ty West - 2, Timmy Bynum - 2.

Lynx 7th B vs. Gruver
Gruver 6 17 26 36
Spearman 4 5 2 19
Spm - Jacobs - 4, Morino - 4, Rojas - 2, Cummings - 2, McCubbin - 2, Robledo - 2, Freeman - 2.

Lynx 8th B vs. Gruver
Spearman 10 0 19 29
Gruver 9 15 22 26
3-Pointers - Schmere.
Spm - Schmere - 9, Villines - 4, Lopez - 4, Davis - 4, Johnson - 4, Villareal - 2, Hernandez - 2.
Gru - Jarrod Christian - 9, Rick Arreola - 6, Josh Blount - 4.

Lynxettes 8th A vs. Dalhart
Monday 1-8-96 at Spearman
Spearman 13 23 30 36
Dalhart 4 9 18 30



The state capitol in Little Rock, Arkansas was built to look just like the U.S. Capitol in Washington, D.C.

At The Buzzer

By Chad Davis

It's been some time that this column has appeared, but there is some immediate business that I must take care of.

First of all, congratulations are in order. Way to go Lynx and Hounds. A total of 26 players from the county were selected as All-District. Last year, I wrote a little piece on these selections that was a little gripey. This year, it's pretty much the same. I still feel that, with all this talent, more pig skin players from Hansford County should have been selected.

Nevertheless, everyone here should really be proud of these hard working players.

More congratulations are due as well. This time they go out to Shad O'Quin and Carrie Burton. The couple was selected as the 1995-96 Spearman Basketball King and Queen last Saturday, after a rescheduling date from Friday.

O'Quin went on later to score 12 "kingly" points and bring Spearman to 62-33 win over Sunray.

ATB

On the more upsetting side of sports news, a featured columnist of this newspaper is ill. The legendary Bob Bort, writer of For the Short of It, is in the VA Hospital again in Big Spring. Bob is once again suffering from severe stomach pain, and the doctors are trying to give him the right medication to stop this repeat illness. I would consider it a personal favor, and I know Bob would appreciate it, if all the readers of this paper were to send letters or call Bob. The number for the VA is (915) 267-9117. The address is VAMC, 4th Floor West, 300 Veterans Blvd., Big Spring, Tx, 79720.

I would also like to apologize to Gruver for the lack of basketball coverage. Bob normally does this

kind of thing, and with so many other things going on, I didn't have the chance to get with the coaches for the stats.

So It goes...

Nothing is particularly hard if you divide it into small jobs.

—Henry Ford

American Heart Association
Fighting Heart Disease and Stroke
AMERICAN HEART ASSOCIATION
MEMORIALS & TRIBUTES
1-800-AHA-USA1
This space provided as a public service.
©1994, American Heart Association

EFFECTIVE JANUARY 7-13, 1996
STORE LOCATION

SAVE ON Pepsi-Cola PEPSI

ALLSUP'S
Welcome New Year 1996

ALLSUP'S 1.5 LB. LOAF Sandwich Bread 68¢ EACH OR 2 FOR \$2.19

Wilson Bologna 2 FOR 89¢

ALLSUP'S Canadian Bacon, Egg & Biscuit FOR ONLY 99¢

ALL VARIETIES Lay's® Potato Chips REGULAR \$2.99 SIZE \$1.99

SAVE ON Allsup's Chimichanga EACH 99¢

SAVE ON Wilson Meat Bologna 12 OZ. PKG. 79¢

STOCK UP ON Allsup's Motor Oil SAE 30 WT. QT. 89¢

HOMOGENIZED Allsup's Milk GALLON \$1.99

ALL PURPOSE Russet Potatoes 10 LB. BAG \$1.39

SHURFINE Grade A Large Eggs DOZEN 89¢

ALLSUP'S MONEY ORDERS "UP TO \$299.00" FOR ONLY 29¢

STORE SPECIAL
STORE SPECIAL
STORE SPECIAL
STORE SPECIAL

SUPER TALLSUP
FILLED WITH YOUR FAVORITE FOUNTAIN DRINK
\$1.09 64 OZ.

SOMETIMES YOU'D GIVE ANYTHING FOR A BLANKET, A BANDAGE, OR A WORD OF HOPE.



Wherever there's a need, The Salvation Army is there. Offering food, shelter, supplies — and hope. So please give generously. You'll not only help countless men, women, and children in need, but someday — when you least expect it — you may be using the very blanket you provided.

THE SALVATION ARMY.
Working Miracles Every Day.

VILA N

TUCSON 82, went to December 30 Bud was Howard Jeff King, born i cember 11, 1 Bud was dent of Spe Spearman, l member of th He was a fou Inc. Baseba member of tions.

Bud retir while there nior Olym Bank, Toys less Ministr tist Church.

Burial w ary 2, 1996 Palms Cer quests don; Amarillo Ar Association

Survivor King; daug of Tucson; s Cache, OK King of Am of Nashville son; Lori F great-gran Day of Tuc MI

GRUVE died Wedn Services Friday, Ja Church of (and Bob S was in the Boxwell B Inc. of Spe Mrs. Ch County. St

MI GRUVE died Wedn Services Friday, Ja Church of (and Bob S was in the Boxwell B Inc. of Spe Mrs. Ch County. St

MI GRUVE died Wedn Services Friday, Ja Church of (and Bob S was in the Boxwell B Inc. of Spe Mrs. Ch County. St

MI GRUVE died Wedn Services Friday, Ja Church of (and Bob S was in the Boxwell B Inc. of Spe Mrs. Ch County. St

MI GRUVE died Wedn Services Friday, Ja Church of (and Bob S was in the Boxwell B Inc. of Spe Mrs. Ch County. St

MI GRUVE died Wedn Services Friday, Ja Church of (and Bob S was in the Boxwell B Inc. of Spe Mrs. Ch County. St

MI GRUVE died Wedn Services Friday, Ja Church of (and Bob S was in the Boxwell B Inc. of Spe Mrs. Ch County. St

MI GRUVE died Wedn Services Friday, Ja Church of (and Bob S was in the Boxwell B Inc. of Spe Mrs. Ch County. St

MI GRUVE died Wedn Services Friday, Ja Church of (and Bob S was in the Boxwell B Inc. of Spe Mrs. Ch County. St

MI GRUVE died Wedn Services Friday, Ja Church of (and Bob S was in the Boxwell B Inc. of Spe Mrs. Ch County. St

MI GRUVE died Wedn Services Friday, Ja Church of (and Bob S was in the Boxwell B Inc. of Spe Mrs. Ch County. St

MI GRUVE died Wedn Services Friday, Ja Church of (and Bob S was in the Boxwell B Inc. of Spe Mrs. Ch County. St

MI GRUVE died Wedn Services Friday, Ja Church of (and Bob S was in the Boxwell B Inc. of Spe Mrs. Ch County. St

MI GRUVE died Wedn Services Friday, Ja Church of (and Bob S was in the Boxwell B Inc. of Spe Mrs. Ch County. St

"IT'S FOR YOU"...

The Classifieds Have Something For Everyone!

The Home Seiler...
The Car Buyer...
The Do-It-Yourselfer...
The Mother's Helper...
The Job Seeker...
The Bargain Reaper...

When you want results, turn to The Classifieds.

The Hansford County Reporter-Statesman

Serving Hansford County Since 1907

Telephone: 1-800-395-9482 or (806)659-3434

REAL ESTATE

AA Realty

Wishes you a **HAPPY NEW YEAR**

If you are thinking of buying or selling a home in 1996, put your trust in Spearman's **ONLY** locally owned and daily operated Realty. Serving you for 15 successful years.

Allen Alford, owner
659-3034
Julie Martin, broker
659-2425

REAL ESTATE

OFFICE & BUILDING FOR SALE: 2,600 sq. ft. office and 45x60 Morton Building setting on 2+ acres. Barn heated and fully insulated. Nice facility. Please call (806)659-2117 or 3762. Located in Spearman. S42, RTN

FOR SALE BY OWNER: Easy to buy nice brick 3 bedroom home for smaller family. Fenced, nice neighborhood. Assume loan at 6% interest \$2,000 to seller. \$320 payments, taxes and insurance included. Lease purchase option. Call (806)296-6727. S44, RTN

FOR SALE: 2,100 sq. ft. home in Gruver, 3 bedroom, 3 bath, 1/2 basement, central heat and air, large fenced corner lot. Call (806)256-2191. S53, 2tc

REAL ESTATE

AA Realty

Allen Alford - Broker - 659-3034
Julie Martin - Broker - 659-2425

1103 S. Townsend - 3 1/4 1, good loc.
613 Kenneth - 5 BR, 2 story, rock house
Good Hanger & Storage - Old Airport
REDUCED!!!

NEW LISTINGS

2 LOTS at 7th & Barkley - Bldrs. Dream
1010 Haney - 3/1/1
160 Acres - S.E. of county
Gruver - 400 - W01 - Front Street
FOR QUALITY & SERVICE CALL US TODAY

We Need Your Listing.

FOR SALE: 2,000 sq. ft. brick, 4 bedroom, 1 3/4 bath, double garage, central air/heat, lots if improvements, 18x27 Morton bldg in bak yard, new fence and gates. Call (home) 659-3071 or (work) 659-3027. S49, RTN

FOR SALE: Vacation at home: wet bar, golf course, swimming pool, hot tub, 3 bedroom, 3 baths. All this can be yours at an affordable price. Call to see today. Real Estate and Rental, (806)435-4623. S51, RTN

FOR SALE OR LEASE: Former Anthony Electric building. Call 659-2819. S51, RTN

FOR SALE: Lots 4 and 5, Unit 2, Tract 3, Crawford Addition - just north of Ag Farm - 10 feet tall chain linked outer fences, storage building, tack room, electric waters, sheds. Excellent facility for horses or any animals. Call (806)287-1538. S25, 3tp, RTN

FOR SALE OR RENT: 3 bedroom, 2 bath house in Gruver with den, dining room, 2 car garage, washer and dryer connections, dishwasher, garbage disposal, fenced back yard, electric garage door opener, ceiling fans throughout, carpeted throughout. Owner will carry with good down. Price below market, negotiable. Near school, lots of closet space. Call 659-2761 or (806)372-6409. S2, 2tp

FOR SALE: Three bedroom, two full baths, two large living areas, two fireplaces Brick country home on five acres. 2,700 sq. ft. Call 435-7279.

FOR RENT

FOR RENT: 1 bedroom efficiency apt. Call 659-3260. S49, RTN

FOR RENT: Furnished 2 bedroom apt. \$260/mo. and \$100 deposit. Also an efficiency apt. \$160/mo. and \$100 deposit for one person. 6 mo. lease, bills paid, located at 107 N. Endcott. Call 659-2404. S53, 2tp

FOR RENT: 3 bedroom, central air, 1 bath, fenced back yard, 1004 Townsend. \$350/mo., \$250 deposit. Call 659-2245. S2, RTN

SERVICES

APPS CLEANED: Drapery or Louder. Call LeeRoy Mitchell, 733-2384 or 733-2175. S47, 1tc/RTN.

J & M Service Center 24-Hour Service-415 Collard, Spearman 79081. 659-5519 or 659-3352. Tires, flats, oil & lube, wash, brakes, batteries and minor repairs. Now selling gas. S27, 1tc/RTN.

JAN'S ETC. NEW & USED & ANTIQUES TOO

Everything for home and family. Plains Shopping Center in Spearman

Open Monday - Saturday - 10 a.m. til 6 p.m.

NEW TRAMPOLINES

Mats & springs
Resew trampoline mats.
Make new boat covers.
Call (806)659-2109
Harry Stumpf
301 W. 12th
Spearman, Texas

JOB OPPORTUNITIES

OWN YOUR OWN APPAREL OR SHOE STORE, CHOOSE: Jean/sportswear, bridal, lingerie, westernwear, ladies, men's, large sizes, infant/preteen, petite, dancewear/aerobic, maternity, or accessories store. Over 2000 name brands. \$25,900 to \$37,900 - inventory, training, fixtures, grand opening, etc. Can open 15 days. Mr. Loughlin (612) 888-6555. S1, 3tp

HELP WANTED: Part-time dispatcher. Must have high school diploma and willing to work all shifts. Will train. Apply at Hansford County Sheriff's Department. S53, 3tc

LAUNDRY SERVICE:

Special - 60¢ a pound. Mon., Wed., and Fri. Family Laundry. S40, RTN

SERVICES: Kathy's Gift & Accessory featuring Home Interior Items. Call 882-4466 and leave message. S40, RTN

ROOF LEAKING?

We have the answer. Conklin Roofing Systems, 1-800-687-3102. S50, RTN

REDUCE:

Burn off fat while you sleep. Take UPAL. Available at Gordon's Drug, 314 Main, Spearman. S2, 5tp

FOR SALE

FOR SALE: Matua and Gala Brom. Call 659-3838. S49, 12tc

FOR SALE: A Mobile Air electric oxygen machine. Low hours. Call 659-3332 or 659-3580. S46, RTN

FOR SALE: Queen size waterbed, good condition. Has headboard, mattress, pad, heater, and 12 underneath drawers. \$100. Call 659-2875 after 6 p.m. or leave message. S48, RTN

FOR SALE: Darkroom equipment, Beseler 23CII enlarger with dual Dichro 23 colorhead, PM3L color analyzer, Beseler stabilizer power supply, Beseler color processing drums, 11X14 and 8X10, Beseler color motor base agitator, gray lab darkroom timer, tanks, developing trays, easels, film proofer and other misc. darkroom equipment. Call (806)659-3289. S2, 4tp

FOR SALE: Panasonic dot matrix color printer - \$200; Hellifron USA tanning canopy - \$200; Zenith camcorder - \$300; darkroom equipment color and BW - \$1800. Or best offers. Call (806)659-3289. S2, 4tp

FOR SALE

FOR SALE: 1992 Suburban 4x4 Silverado fully loaded. Below loan value. White with gray interior. 733-2375. S51, RTN

FOR SALE: Good dump truck for sale. If interested call after 6:00 p.m., (806)249-5827. S35, RTN

FOR SALE: 1984 Ford Truck with 20' van and lift. V-8 diesel engine. Excellent condition. For more information call 659-3432 or 659-2912. S52, RTN

FOR LEASE

FOR LEASE: 2 1/2 acres fenced in yard. 50x70 building with crane, office space on front of building, located at industrial area by old airport. \$500 per month. For more information call 316-626-8906 or 316-624-5358. S38, RTN

The first machines operated by remote control were radio-controlled motorboats used by the German Navy in the First World War.

HOUSE FOR SALE: Must see to appreciate, older victorian home, 2,800 sq. ft. and weight and suntan room and art room. Extra adjoining corner lot 3 bedroom, 3 baths, and basement. Call (806)659-2117 or 3762, 104 S. Barkley, (new roof), in Spearman. S42, RTN

FOR SALE: 5 acre vacant lot, agriculture zoned, N.E. side of Spearman. Call (806)659-2117 or 3762. S42, RTN

CLASSIFIED RATE

\$4.00 first insertion
\$3.00 each additional insertion (30 words or less)
13¢ each word over 30
Legal Notices: 15¢ per word

HELP WANTED:

Part-time dispatcher. Must have high school diploma and willing to work all shifts. Will train. Apply at Hansford County Sheriff's Department. S53, 3tc

Outreach Health Service needs a provider in Spearman. Call 1-800-800-0697. EOE. S53, 2tc

Semi truck drivers, CDL required. Must be 25 yrs. old. Conventional's new hopper bottom trailers. McCarty Trucking, 806/362-4807. S10, RTN

HELP WANTED:

Semi truck drivers, CDL required. Must be 25 yrs. old. Conventional's new hopper bottom trailers. McCarty Trucking, 806/362-4807. S10, RTN

HELP WANTED:

Semi truck drivers, CDL required. Must be 25 yrs. old. Conventional's new hopper bottom trailers. McCarty Trucking, 806/362-4807. S10, RTN

HELP WANTED:

Semi truck drivers, CDL required. Must be 25 yrs. old. Conventional's new hopper bottom trailers. McCarty Trucking, 806/362-4807. S10, RTN

1117 TOWNSEN: Price reduced to under \$50,000! New paint! New carpet! Affordable 3 bedroom, 1 3/4 bath, with game room and basement. Call Real Estate and Rental TODAY! 435-4623. S32, RTN

HOMETOWN REALTY

Selling Spearman!
List your home with the Real Estate Professionals that the BUYERS call!

Rex Hoover - Broker • 800-755-4291
Larry Trosper - Sales • 659-3491
Diana Hoover - Sales • 658-9113

711 Collier - 3 bedroom, 1 bath, garage, central heat, PRICED TO SELL!
6 1/2 Miles West of Spearman, 2,894 sq. ft., 3 bedrooms, fireplace, basement, 1 UNDER CONTRACT

4 Miles South of Spearman - 320 acres Irrigated Farm Land.

1013 Linn Drive - 2 1/2 acres, 3 bed, 2 1/2 bath, fireplace, screened porch, UNDER CONTRACT

730 Gibner - 1,900 sq. ft., 2 bath, large, beautiful fenced yard, storage building, UNDER CONTRACT

We need and appreciate your listings!

AUTOMOBILES

FOR SALE: 1992 Suburban 4x4 Silverado fully loaded. Below loan value. White with gray interior. 733-2375. S51, RTN

FOR SALE: Good dump truck for sale. If interested call after 6:00 p.m., (806)249-5827. S35, RTN

FOR SALE: 1984 Ford Truck with 20' van and lift. V-8 diesel engine. Excellent condition. For more information call 659-3432 or 659-2912. S52, RTN

FOR SALE

FOR SALE: 1992 Suburban 4x4 Silverado fully loaded. Below loan value. White with gray interior. 733-2375. S51, RTN

FOR SALE: Good dump truck for sale. If interested call after 6:00 p.m., (806)249-5827. S35, RTN

FOR SALE: 1984 Ford Truck with 20' van and lift. V-8 diesel engine. Excellent condition. For more information call 659-3432 or 659-2912. S52, RTN

FOR SALE

FOR SALE: 1992 Suburban 4x4 Silverado fully loaded. Below loan value. White with gray interior. 733-2375. S51, RTN

FOR SALE: Good dump truck for sale. If interested call after 6:00 p.m., (806)249-5827. S35, RTN

FOR SALE: 1984 Ford Truck with 20' van and lift. V-8 diesel engine. Excellent condition. For more information call 659-3432 or 659-2912. S52, RTN

FOR SALE

FOR SALE: 1992 Suburban 4x4 Silverado fully loaded. Below loan value. White with gray interior. 733-2375. S51, RTN

FOR SALE: Good dump truck for sale. If interested call after 6:00 p.m., (806)249-5827. S35, RTN

FOR SALE: 1984 Ford Truck with 20' van and lift. V-8 diesel engine. Excellent condition. For more information call 659-3432 or 659-2912. S52, RTN

Century 21 GOLDEN SPREAD REALTY
Janyne Helton Pointer, Broker Owner
435-5444

414 Hwy 760 - 2 ACRES UNDER CONTRACT
UNDER CONTRACT, large lot, roomy house & a pool!

205 Hazelwood - Great buy, excellent condition

315 1/2 N. Bernice: Lot for sale.

East 7th Street - Mobile homes, lots to lease!!

© and ™ trademarks of Century 21 Real Estate Corporation. Equal Housing Opportunity INDEPENDENTLY OWNED AND OPERATED

FOR SALE

UNBELIEVABLY AT BECKETT PRICE!

Michael Jordan Rookie Card and/or set. Call 659-3863 or 659-2912

PUBLIC NOTICE

NOTICE TO ALL PERSONS HAVING CLAIMS AGAINST THE ESTATE OF NINA FAY KLUTTS

Notice is hereby given that original Letters Testamentary for the Estate of Nina Fay Klutts were issued on December 18, 1995, in Cause No. 2146 pending in the County Court of Hansford County, Texas, to Jane Wilbanks Traylor, 1112 N.E. 2nd, Dumas, Texas 79029, Henry Allen Wilbanks, Box 166, Canyon, Texas 79015, and Floyd Creed Wilbanks, Box 442, Grandview, Texas 76050. All persons having claims against this estate, which is currently being administered are required to present them within the time and in the manner prescribed by law.

Dated the 18th day of December, 1995.
John L. Hutchison/Attorney for the Estate

ARE YOU A VICTIM OF DOMESTIC ABUSE...

Physical, Emotional or Sexual?
Call Toll Free 1-800-753-5308

We are in Spearman on the 1st, 3rd, & 5th Wednesdays of each month at the First Presbyterian Church, 1021 Cotter. On the 2nd & 4th Wednesdays we are at the First Christian Church at 510 King in Gruver. We can come to Spearman & Gruver any time upon request. We operate a safe place for victims & their children to stay in times of crisis.

Panhandle Crisis Center
Serving Hansford, Lipscomb & Ochiltree Counties
317 S. Main
Perryton, Tx.
Memorials Accepted

OSGOOD MONUMENT CO.

Amarillo, Texas

Dealers of Rock of Ages Granite, as well as all colored granites, marble and bronze memorials.

Represented by **Boxwell Bros. Funeral Home**
519 S. Evans
659-3802

TexSCAN

The Texas Statewide Classified Advertising Network
Advertise in more than 300 Texas newspapers for \$300. Call this newspaper for details.

DRIVERS WANTED
DRIVERS: CONCERNED ABOUT your future? We offer late model equipment, satellite communication, new rider policy, 1st day health coverage, 401(k), stock purchase plan. Nonmarried teams welcome. Werner Enterprises, 1-800-346-2818.

DRIVERS: FLATBED 48 state OTR. Assigned new conventionals, competitive pay, benefits. \$1,000 sign on bonus, rider program, flexible time off. Call Roadrunner Trucking 1-800-876-7784.

DRIVERS/OTR...\$1,000 sign-on bonus, new conventional equipment, great benefits, lease program. Earn up to 29 cents per mile. Students welcome. Cal-Ark International. 800-950-TEAM, 800-889-1030.

DRIVERS - SOLO/TEAMS, \$2,000.00 sign on. Top teams earn \$103,000+, major benefits. Motel/deadhead pay. Driving school grads welcome. Covenant Transport 1-800-441-4394. Students call 1-800-338-6428.

DRIVERS WANTED. E.L. Powell & Sons, Tulsa, OK. We offer late model equipment, good insurance. 22%. One year verifiable flat bed experience. 918-446-4447. 1-800-444-3777.

NEW IMPROVED PAY package offered by Beech Trucking for regional drivers. Home every weekend. Start at 26¢ with monthly bonuses & benefits. Call 1-800-521-0649. EOE.

RAPID FREIGHT OF TEXAS: a Texas based carrier seeking OTR teams & singles; 90% of fleet 95's or newer. Ask for Bob 1-800-299-7274.

EDUCATION
BECOME A MEDICAL TRANSCRIPTIONIST. Opportunity to work at home or in office typing for doctors. Home study. Free literature. P.C.D.I., Atlanta, Georgia. 1-800-362-7070 Dept. YVA722.

EMPLOYMENT
GOLDEN OPPORTUNITY-INSURANCE agents. Job satisfaction, financial security, training, benefits (401K & ESOP), income. Sports-minded and ready for a career opportunity? Then call 1-800-228-4252.

FIREFIGHTERS: TRAINEE PROGRAM. Limited openings. Must pass physical. 17-34 with high school diploma. Excellent pay/benefits. Paid training/college tuition/relocation expenses. Call 1-800-292-5547.

EXCHANGE STUDENTS
A WONDERFUL FAMILY experience. Scandinavian, European, South American, Asian, Russian high school exchange students arriving August. Become a host family/AISE. Call 1-800-SIBLING.

FINANCIAL SERVICES
NOTES, ANNUITIES, LOTTERIES. Receiving payments? Get cash now! Colonial Financial, the nationwide leader since 1984. 1-800-969-1200.

RECEIVING PAYMENTS ON property sold?

FOR SALE

By Owner

COUNTRY HOME

Available in July

3 Bedroom - 3 1/2 Bath
Sunken Living Room w/ Fireplace
Balcony & Cathedral Ceiling
Two Story - Formal Dining Room
Office - Basement - Utility
Fenced Back Yard - Lots of Storage
Garage - Patio - 2 Storage Bldgs.
Central Heat & Air

806-659-3289

By Appointment Only - Serious Inquiries Only

Century 21 GOLDEN SPREAD REALTY
Janyne Helton Pointer, Broker Owner
435-5444

414 Hwy 760 - 2 ACRES UNDER CONTRACT
UNDER CONTRACT, large lot, roomy house & a pool!

205 Hazelwood - Great buy, excellent condition

315 1/2 N. Bernice: Lot for sale.

East 7th Street - Mobile homes, lots to lease!!

© and ™ trademarks of Century 21 Real Estate Corporation. Equal Housing Opportunity INDEPENDENTLY OWNED AND OPERATED

HOMETOWN REALTY

Selling Spearman!
List your home with the Real Estate Professionals that the BUYERS call!

Rex Hoover - Broker • 800-755-4291
Larry Trosper - Sales • 659-3491
Diana Hoover - Sales • 658-9113

711 Collier - 3 bedroom, 1 bath, garage, central heat, PRICED TO SELL!
6 1/2 Miles West of Spearman, 2,894 sq. ft., 3 bedrooms, fireplace, basement, 1 UNDER CONTRACT

4 Miles South of Spearman - 320 acres Irrigated Farm Land.

1013 Linn Drive - 2 1/2 acres, 3 bed, 2 1/2 bath, fireplace, screened porch, UNDER CONTRACT

730 Gibner - 1,900 sq. ft., 2 bath, large, beautiful fenced yard, storage building, UNDER CONTRACT

We need and appreciate your listings!

FOR SALE

UNBELIEVABLY AT BECKETT PRICE!

Michael Jordan Rookie Card and/or set. Call 659-3863 or 659-2912

ARE YOU A VICTIM OF DOMESTIC ABUSE...

Physical, Emotional or Sexual?
Call Toll Free 1-800-753-5308

We are in Spearman on the 1st, 3rd, & 5th Wednesdays of each month at the First Presbyterian Church, 1021 Cotter. On the 2nd & 4th Wednesdays we are at the First Christian Church at 510 King in Gruver. We can come to Spearman & Gruver any time upon request. We operate a safe place for victims & their children to stay in times of crisis.

Panhandle Crisis Center
Serving Hansford, Lipscomb & Ochiltree Counties
317 S. Main
Perryton, Tx.
Memorials Accepted

OSGOOD MONUMENT CO.

Amarillo, Texas

Dealers of Rock of Ages Granite, as well as all colored granites, marble and bronze memorials.

Represented by **Boxwell Bros. Funeral Home**
519 S. Evans
659-3802

TexSCAN

The Texas Statewide Classified Advertising Network
Advertise in more than 300 Texas newspapers for \$300. Call this newspaper for details.

DRIVERS WANTED
DRIVERS: CONCERNED ABOUT your future? We offer late model equipment, satellite communication, new rider policy, 1st day health coverage, 401(k), stock purchase plan. Nonmarried teams welcome. Werner Enterprises, 1-800-346-2818.

DRIVERS: FLATBED 48 state OTR. Assigned new conventionals, competitive pay, benefits. \$1,000 sign on bonus, rider program, flexible time off. Call Roadrunner Trucking 1-800-876-7784.

DRIVERS/OTR...\$1,000 sign-on bonus, new conventional equipment, great benefits, lease program. Earn up to 29 cents per mile. Students welcome. Cal-Ark International. 800-950-TEAM, 800-889-1030.

DRIVERS - SOLO/TEAMS, \$2,000.00 sign on. Top teams earn \$103,000+, major benefits. Motel/deadhead pay. Driving school grads welcome. Covenant Transport 1-800-441-4394. Students call 1-800-338-6428.

DRIVERS WANTED. E.L. Powell & Sons, Tulsa, OK. We offer late model equipment, good insurance. 22%. One year verifiable flat bed experience. 918-446-4447. 1-800-444-3777.

NEW IMPROVED PAY package offered by Beech Trucking for regional drivers. Home every weekend. Start at 26¢ with monthly bonuses & benefits. Call 1-800-521-0649. EOE.

RAPID FREIGHT OF TEXAS: a Texas based carrier seeking OTR teams & singles; 90% of fleet 95's or newer. Ask for Bob 1-800-299-7274.

EDUCATION
BECOME A MEDICAL TRANSCRIPTIONIST. Opportunity to work at home or in office typing for doctors. Home study. Free literature. P.C.D.I., Atlanta, Georgia. 1-800-362-7070 Dept. YVA722.

EMPLOYMENT
GOLDEN OPPORTUNITY-INSURANCE agents. Job satisfaction, financial security, training, benefits (401K & ESOP), income. Sports-minded and ready for a career opportunity? Then call 1-800-228-4252.

FIREFIGHTERS: TRAINEE PROGRAM. Limited openings. Must pass physical. 17-34 with high school diploma. Excellent pay/benefits. Paid training/college tuition/relocation expenses. Call 1-800-292-5547.

EXCHANGE STUDENTS
A WONDERFUL FAMILY experience. Scandinavian, European, South American, Asian, Russian high school exchange students arriving August. Become a host family/AISE. Call 1-800-SIBLING.

FINANCIAL SERVICES
NOTES, ANNUITIES, LOTTERIES. Receiving payments? Get cash now! Colonial Financial, the nationwide leader since 1984. 1-800-969-1200.

RECEIVING PAYMENTS ON property sold?

HOUSE FOR SALE:

Must see to appreciate, older victorian home, 2,800 sq. ft. and weight and suntan room and art room. Extra adjoining corner lot 3 bedroom, 3 baths, and basement. Call (806)659-2117 or 3762, 104 S. Barkley, (new roof), in Spearman. S42, RTN

FOR SALE: 5 acre vacant lot, agriculture zoned, N.E. side of Spearman. Call (806)659-2117 or 3762. S42, RTN

CLASSIFIED RATE

\$4.00 first insertion
\$3.00 each additional insertion (30 words or less)
13¢ each word over 30
Legal Notices: 15¢ per word

FOR SALE

UNBELIEVABLY AT BECKETT PRICE!

Michael Jordan Rookie Card and/or set. Call 659-3863 or 659-2912

ARE YOU A VICTIM OF DOMESTIC ABUSE...

Physical, Emotional or Sexual?
Call Toll Free 1-800-753-5308

We are in Spearman on the 1st, 3rd, & 5th Wednesdays of each month at the First Presbyterian Church, 1021 Cotter. On the 2nd & 4th Wednesdays we are at the First Christian Church at 510 King in Gruver. We can come to Spearman & Gruver any time upon request. We operate a safe place for victims & their children to stay in times of crisis.

Panhandle Crisis Center
Serving Hansford, Lipscomb & Ochiltree Counties
317 S. Main
Perryton, Tx.
Memorials Accepted

OSGOOD MONUMENT CO.

Amarillo, Texas

Dealers of Rock of Ages Granite, as well as all colored granites, marble and bronze memorials.

Represented by **Boxwell Bros. Funeral Home**
519 S. Evans
659-3802

TexSCAN

The Texas Statewide Classified Advertising Network
Advertise in more than 300 Texas newspapers for \$300. Call this newspaper for details.

DRIVERS WANTED
DRIVERS: CONCERNED ABOUT your future? We offer late model equipment, satellite communication, new rider policy, 1st day health coverage, 401(k), stock purchase plan. Nonmarried teams welcome. Werner Enterprises, 1-800-346-2818.

DRIVERS: FLATBED 48 state OTR. Assigned new conventionals, competitive pay, benefits. \$1,000 sign on bonus, rider program, flexible time off. Call Roadrunner Trucking 1-800-876-7784.

DRIVERS/OTR...\$1,000 sign-on bonus, new conventional equipment, great benefits, lease program. Earn up to 29 cents per mile. Students welcome. Cal-Ark International. 800-950-TEAM, 800-889-1030.

DRIVERS - SOLO/TEAMS, \$2,000.00 sign on. Top teams earn \$103,000+, major benefits. Motel/deadhead pay. Driving school grads welcome. Covenant Transport 1-800-441-4394. Students call 1-800-338-6428.

DRIVERS WANTED. E.L. Powell & Sons, Tulsa, OK. We offer late model equipment, good insurance. 22%. One year verifiable flat bed experience. 918-446-4447. 1-800-444-3777.

NEW IMPROVED PAY package offered by Beech Trucking for regional drivers. Home every weekend. Start at 26¢ with monthly bonuses & benefits. Call 1-800-521-0649. EOE.

RAPID FREIGHT OF TEXAS: a Texas based carrier seeking OTR teams & singles; 90% of fleet 95's or newer. Ask for Bob 1-800-299-7274.

EDUCATION
BECOME A MEDICAL TRANSCRIPTIONIST. Opportunity to work at home or in office typing for doctors. Home study. Free literature. P.C.D.I., Atlanta, Georgia. 1-800-362-7070 Dept. YVA722.

EMPLOYMENT
GOLDEN OPPORTUNITY-INSURANCE agents. Job satisfaction, financial security, training, benefits (401K & ESOP), income. Sports-minded and ready for a career opportunity? Then call 1-800-228-4252.

FIREFIGHTERS: TRAINEE PROGRAM. Limited openings. Must pass physical. 17-34 with high school diploma. Excellent pay/benefits. Paid training/college tuition/relocation expenses. Call 1-800-292-5547.

EXCHANGE STUDENTS
A WONDERFUL FAMILY experience. Scandinavian, European, South American, Asian, Russian high school exchange students arriving August. Become a host family/AISE. Call 1-800-SIBLING.

FINANCIAL SERVICES
NOTES, ANNUITIES, LOTTERIES. Receiving payments? Get cash now! Colonial Financial, the nationwide leader since 1984. 1-800-969-1200.

RECEIVING PAYMENTS ON property sold?

HOUSE FOR SALE:

Must see to appreciate, older victorian home, 2,800 sq. ft. and weight and suntan room and art room. Extra adjoining corner lot 3 bedroom, 3 baths, and basement. Call (806)659-2117 or 3762, 104 S. Barkley, (new roof), in Spearman. S42, RTN

FOR SALE: 5 acre vacant lot, agriculture zoned, N.E. side of Spearman. Call (806)659-2117 or 3762. S42, RTN

CLASSIFIED RATE

\$4.00 first insertion
\$3.00 each additional insertion (30 words or less)
13¢ each word over 30
Legal Notices: 15¢ per word

FOR SALE

UNBELIEVABLY AT BECKETT PRICE!

Michael Jordan Rookie Card and/or set. Call 659-3863 or 659-2912

ARE YOU A VICTIM OF DOMESTIC ABUSE...

Physical, Emotional or Sexual?
Call Toll Free 1-800-753-5308

We are in Spearman on the 1st, 3rd, & 5th Wednesdays of each month at the First Presbyterian Church, 1021 Cotter. On the 2nd & 4th Wednesdays we are at the First Christian Church at 510 King in Gruver. We can come to Spearman & Gruver any time upon request. We operate a safe place for victims & their children to stay in times of crisis.

Panhandle Crisis Center
Serving Hansford, Lipscomb & Ochiltree Counties
317 S. Main
Perryton, Tx.
Memorials Accepted

OSGOOD MONUMENT CO.

Amarillo, Texas

Dealers of Rock of Ages Granite, as well as all colored granites, marble and bronze memorials.

Represented by **Boxwell Bros. Funeral Home**
519 S. Evans
659-3802

TexSCAN

The Texas Statewide Classified Advertising Network
Advertise in more than 300 Texas newspapers for \$300. Call this newspaper for details.

DRIVERS WANTED
DRIVERS: CONCERNED ABOUT your future? We offer late model equipment, satellite communication, new rider policy, 1st day health coverage, 401(k), stock purchase plan. Nonmarried teams welcome. Werner Enterprises, 1-800-346-2818.

DRIVERS: FLATBED 48 state OTR. Assigned new conventionals, competitive pay, benefits. \$1,000 sign on bonus, rider program, flexible time off. Call Roadrunner Trucking 1-800-876-7784.

DRIVERS/OTR...\$1,000 sign-on bonus, new conventional equipment, great benefits, lease program. Earn up to 29 cents per mile. Students welcome. Cal-Ark International. 800-950-TEAM, 800-889-1030.

DRIVERS -