



HANSFORD COUNTY

# THE REPORTER-STATESMAN

CELEBRATING 104 YEARS OF SERVICE TO HANSFORD COUNTY

HANSFORD COUNTY'S ONLY NEWSPAPER  
REPORTER@SPEARMANREPORTER.COM

75¢



HANSFORD COUNTY LIBRARY  
0122 MAIN ST  
SPEARMAN TX 79081-2064  
COMP  
SCR2

VOLUME 105 • ISSUE 30

THURSDAY, JULY 26, 2012

## Gruverite Killed in Grain Accident

Area emergency responders were called to Sunray Coop Gruver Branch around 1:45 p.m. on Monday, July 16, 2012 after Oscar Cruz fell into a pit of grain. The Gruver EMS, Gruver Volunteer Fire Department, H&S EMS, Spearman Volunteer Fire Department, and several local citizens worked very hard to get him out before he died, but were not successful.

Dave Reinders, manager of Sunray Coop, made the following statement, "We had a terrible tragedy at our Gruver location. There was a grain engulfment that took the life of one of our employees Oscar Cruz. The accident is under investigation and out of respect for the family we are refraining from making comments until that is complete."

## Area National Philanthropy Day Award Winners To Be Honored

The Texas Plains Chapter of the Association of Fundraising Professionals has announced the award winners for the 2012 celebration of National Philanthropy Day. Area philanthropists and businesses will be honored at the Texas Panhandle's 2012 National Philanthropy Day (NPD) Luncheon at 11:30 a.m. Thursday, November 15, 2012 in the Amarillo Civic Center's Heritage Room.

Honorees include: Bob and Jackie Pearson, Outstanding Philanthropists; B&W Pantex, Outstanding Business/Corporation; Suddenlink Communications, Outstanding Media Award; Lone Star Ballet Guild, Outstanding Community Service Organization; Dyron Howell, Outstanding Volunteer Fundraiser; Josephine Anderson Charitable Trust, Outstanding Foundation; Susie Akers, Outstanding Fundraising Professional; Junior Board - Amarillo Tri-State Exposition, Outstanding Youth in Philanthropy

The annual luncheon, which celebrates the contributions of these individuals and businesses, as well as the countless others who donate their time, talent, and financial resources to worthy causes, is hosted by the Texas Plains Chapter of the Association of Fundraising Professionals. Tickets are \$50 for individuals. Tables of eight are \$375 for nonprofit organizations and \$500 for all others. Additional sponsorships are available.

The purpose of National Philanthropy Day is to recognize the great contributions of philanthropy - and those people active in the philanthropic community - that enrich the world in general and the Texas Panhandle in particular. National Philanthropy Day provides non-profit organizations the unique opportunity to recognize the efforts of a variety of donors who make the charitable work they do every day possible.

The Association of Fundraising Professionals (AFP) represents 30,000 fundraisers in more than 200 chapters throughout the world, working to advance philanthropy through advocacy, research, education and certification programs. The AFP Texas Plains Chapter represents more than 50 nonprofit professionals from across the Texas Panhandle. For more information about attending this event, please contact Roxann Ball, Amarillo Area Foundation, at 376-4521 or roxann@aaf-hf.org.



Jackie and Bob Pearson



### Weekly Update

Texas, July 23 - Average retail gasoline prices in Texas have risen 8.3 cents per gallon in the past week, averaging \$3.32/g yesterday. This compares with the national average that has increased 4.9 cents per gallon in the last week to \$3.49/g, according to gasoline price website TexasGasPrices.com.

Including the change in gas prices in Texas during the past week, prices yesterday were 28.0 cents per gallon lower than the same day one year ago and are 11.1 cents per gallon higher than a month ago. The national average has increased 2.4 cents per gallon during the last month and stands 20.1 cents per gallon lower than this day one year ago.

"Gasoline prices continue to rise across much of the nation, which is precisely what we had forecast earlier this year, so it does not come as much of a shock," said GasBuddy.com Senior Petroleum Analyst Patrick DeHaan. "Either way, I don't expect the national average to break out of its mid-\$3/gal rut until mid-to-late September, then we may get some action to the downside," DeHaan said.

GasBuddy operates, TexasGasPrices.com, and over 225 other local gasoline pricetracking websites that follow prices at over 125,000 gasoline stations in the United States and Canada. GasBuddy also uses Facebook (facebook.com/gasbuddy) Twitter (twitter.com/gasbuddy), and phone apps to keep motorists ahead of changing gasoline prices.

### Weather Forecast

WEDNESDAY NIGHT - Mostly cloudy. Scattered showers and thunderstorms in the evening - then isolated showers and thunderstorms after midnight. Lows in the upper 60s. South winds 10 to 15 mph shifting to the west after midnight. Chance of precipitation 40 percent.

THURSDAY - Mostly cloudy with scattered showers and thunderstorms. Highs in the mid 90s. Northeast winds 10 to 15 mph. Chance of precipitation 30 percent.

THURSDAY NIGHT - Partly cloudy with isolated showers and thunderstorms. Lows in the upper 60s. East winds 5 to 10 mph. Chance of precipitation 20 percent.

FRIDAY - Mostly sunny. Highs in the upper 90s.

FRIDAY NIGHT - Mostly clear. Lows in the upper 60s.

SATURDAY - Mostly sunny. Highs in the upper 90s.

SATURDAY NIGHT - Mostly clear. Lows in the upper 60s.

SUNDAY - Mostly sunny. Highs around 101.

SUNDAY NIGHT - Mostly clear. Lows in the upper 60s.

MONDAY - Mostly sunny. Highs around 102.

MONDAY NIGHT - Mostly clear. Lows in the upper 60s.

TUESDAY - Mostly sunny. Highs around 102.

Read more: <http://www.city-data.com/forecast/w-Spearman-Texas.html#ixzz21agfkqtQ>

### Texas Crop & Weather

The following specific livestock, crop and weather conditions were reported by Panhandle Extension directors for July 17, 2012. Most of the region received from a trace to 2 inches of rain. Irrigators were active. Corn was in mostly fair to good condition. Hansford County reported some hail damage to corn and other summer crops. Sorghum, soybean and peanuts were in mostly fair to good condition. Cotton was in mostly fair to good condition. The wheat harvest was complete. Rangeland and pasture ratings continued to vary from very poor to excellent, with most counties reporting very poor to poor. Cattle were in fair to good condition. Insect activity on all crops was average, with a few flare-ups of spider mites in corn.

## Children Playing With Matches Ignite Fire in Perryton

By Russell Anglin, Amarillo Globe-News

Children playing with matches started a fire in Perryton that caused more than \$250,000 in damage, Fire Chief Paul Dutcher said.

At 6:38 p.m. Friday, July 20, 2012, firefighters were dispatched to a grass fire in the alley behind the 100 block of North Baylor St., and the fire had spread to houses at 102 and 106 N. Baylor St. by the time firefighters arrived, Dutcher said. The fire spread farther, destroying houses at 112 and 114 N. Baylor St., then gutting another mobile home at 116 N. Baylor St., he said.

A storage building on the 100 block of Amherst was also completely destroyed in the fire, Dutcher said. Firefighters and paramedics from Booker responded to the blaze, and one Booker firefighter was transported to a hospital for an anaphylactic reaction, Dutcher said. Several firefighters received treatment at the scene of the fire for heat and dehydration symptoms, he said.

Crews brought the fire under control by 9 p.m., Dutcher said.

Three families lost all of their possessions. The Perryton Ministerial Alliance is accepting donations for the families.

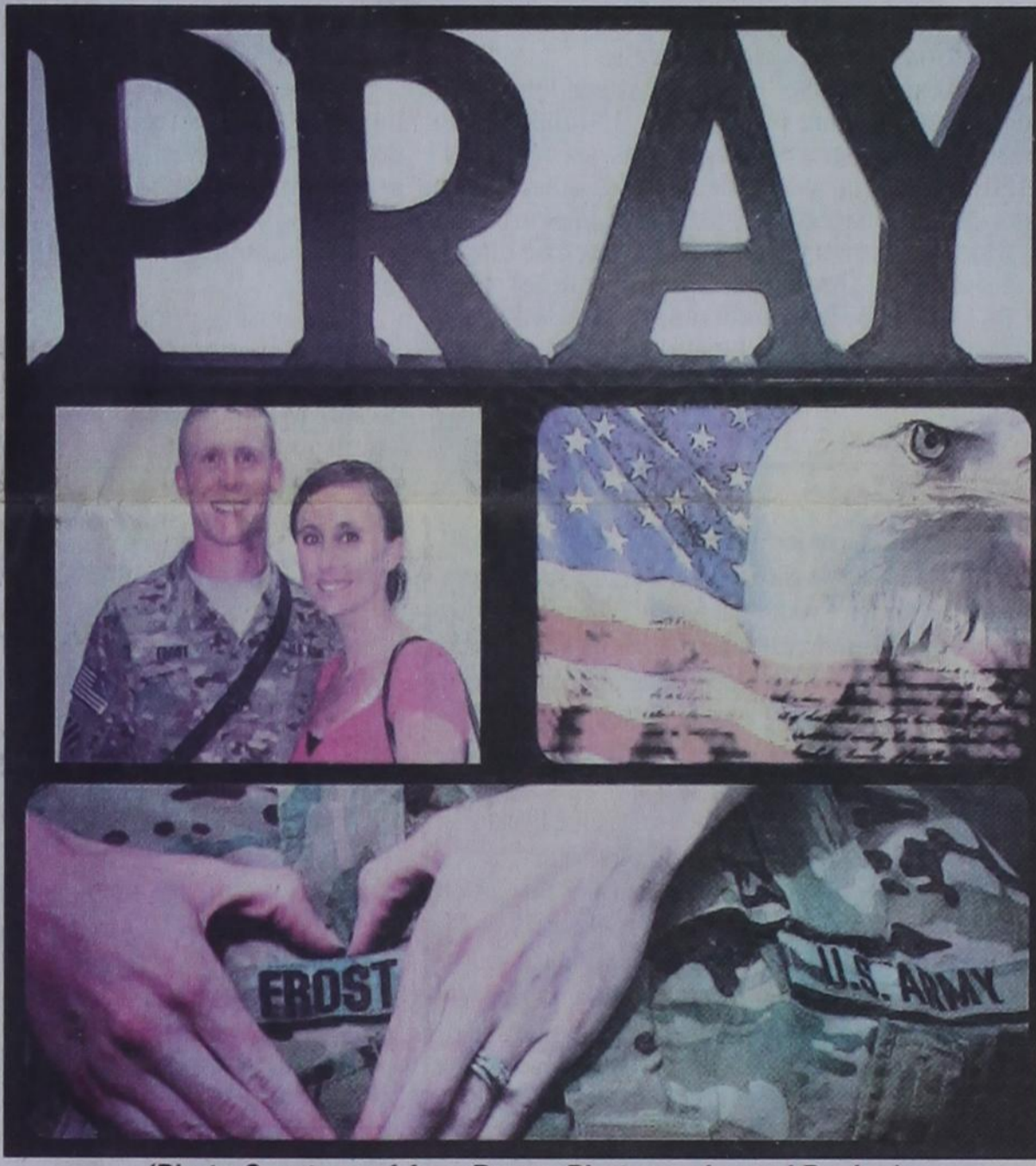
Clothes sizes are listed below:

-112 N. Baylor residence of Armando Gutierrez and Alma Magana: Armando: 24 M-- Shirt-XL, Pants- 36 x 32, Shoes- Men's 8 1/2; Alma: 31 F-- Shirt- M, Pants-women's 5, Shoes- Women's 7; Ada: 12 F-- Shirt- JR. Small, Pants- Junior/youth 12, Shoes- youth 2; Noemi: 6 F-- Shirt-children's 6, Pants- children's 6, Child 11; and Anai: 3 F-- Shirt- children's 3, Pants- children's 3, Shoes- children's 3

-114 N. Baylor residence of Rene and Laura Medrano: Rene: 29 M-- Shirt- M, Pants- 31 x 32, Shoes- Men's 8; Laura: 24 F-- Shirt- M, Pants- Women's 7 or 8, Shoes - Women's 7 1/2; Eimy: 2 F-- Shirt-Children's 2, Pants- Children's 2, Shoes - Children's 7; and Evelin: 9 months F-- Shirt- 9 months, Pants- 9 months, Shoes - Infant 3

-116 N. Baylor residence of Salvador and Maria Ontiveros: Salvador: 30 M -- Shirt-M, Pants- 31x32, Shoes- Men's 8; Maria: 28 F -- Shirt- Med, Pants-Women's 7, Shoes- Women's 6 1/2; and Celeste: 4 F -- Shirt - Children's 7, Pants- Children's 7, Shoes - Child 11.

For more information about making a donation of clothing, money or other items, call the First Baptist Church in Perryton at 806-435-3641.



(Photo Courtesy of Amy Brown Photography and Design)

## Update on Jeremy Frost

22-year-old Sgt. Jeremy Frost was injured when he stepped on an IED in Afghanistan on Friday, July 6, 2012. As a result he lost his left leg from just below the knee down, fractured a hip and his right leg, a ruptured left ear drum that will require surgery to try and restore hearing to that ear, and a mild traumatic brain injury.

On July 10th he was flown to Brooke Army Medical Center.

He had his first surgery at BAMC on July 12th (he had several in Afghanistan before arriving in the US). He was in surgery for 9 hours. The surgeons had intended to fix his broken left hip, but there was a large hematoma, so they had to remove a lot of blood clots instead.

Jeremy had a 10-hour surgery on Sunday, July 15, 2012 to repair some of the damage on his leg and hip.

The doctors put a titanium rod on his left femur and another on his lower right leg. The ball going on his left hip was cracked in half and they put a screw in to hold it together.

On July 20th Jeremy was taken in for an unexpected surgery to check the amputation sight. The doctors drained it, cleaned it and put in a wound VAC.

Jeremy had a pretty good day on the 21st. The day after surgery is usually pretty hard, but they were able to control the pain a little better. He also received 2 more units of blood.

On Monday July 23rd, Jeremy had another surgery to clean the infection in his stump. The doctors also had to take off the skin graft on his right leg because it didn't stick. They will try another graft on Thursday. He received 2 more units of blood.

On Tuesday, July 24th, Jeremy was finally getting some pain relief from his last surgery. He now has four wound VACs, so it is hard for him to move around. Jeremy has amazing upper body strength, though, and is able to slide and transfer from the

bed to the chair pretty much unassisted.

Jeremy has received 27 units of blood and lots of plasma and platelets, with more to come. His brain injury has resolved.

The family asks for prayers that the infection issue is resolved, the pain gets under control, that the skin graft works, and that he is able to begin his road to recovery without any more setbacks.

Jeremy is married to Kylee Howard Frost. He is the son of Stacie and Glenn Ruga of Spearman and Matthew Frost of Amarillo. He has three younger brothers, Dustin Frost who is also serving in the Army, and Patrick and Nathan Ruga. Kylee is the daughter of Jan and Rick Howard of Spearman.

For individuals who would like to honor this young man and his sacrifice, there is a fund set up for him at the First National Bank of Spearman under his name, Jeremy Frost. (The Army will cover Jeremy's medical expenses. This fund was established by friends of Jeremy and Kylee to help defray the costs incurred during his recovery, and to allow Kylee to spend as much time as possible with Jeremy while he is in the hospital and in physical therapy.)

A raffle will be held to benefit the Jeremy Frost Benefit Fund. Tickets will be sold for a chance to win \$250 gas from Spearman Farm Supply. The drawing will be August 4th.

Tickets are \$2 each or 3 for \$5. Contact Jan or Rick Howard to purchase tickets (330-0388 or 659-2875).

Jeremy's address is: SAMMC Roger Frost, 4th Floor Room 435, 3851 Roger Brooke Dr., Fort Sam Houston TX 78234. There is a policy of no flowers since he is in isolation.

Kylee's address is: Kylee Frost, c/o Powless Guest House, IHG Army Hotel, Bldg 3625, 3298 George Beach Avenue, Fort Sam Houston TX 78234.

AVAILABLE NOW! E-SUBSCRIPTION NEWS to the Hansford County Reporter-Statesman. Delivered to your e-mail each Thursday for only \$55/year. Purchase online at www.spearmanreporter.com. Call 806-659-3231 or e-mail reporter@hansfordcountynews.com for details.

**Wolf Creek Heritage Museum Notes**

by Virginia Scott

**MUSEUM HAPPENINGS**

A busy and HOT week, I journeyed to Waco for a Texas Historical Commission and Texas Museum Association workshop on Financial Management for Nonprofits. It was an excellent workshop and it will help us develop our budget process. However, the state is awfully large and going south from Lipscomb County always takes a long journey.

The board for the museum and our county historical commission met on Tuesday. This group develops the goals for the museum with the core team and also coordinates the historical preservation for the county. It was a productive meeting. Minutes are available at the museum for anyone who would like to review them.

I hope all of you will take time and come to the museum to get cool and to see the paintings of Anna and

Dallas Mayer. Their paintings are largely western in style - some current and some portraying our history. There is a very large painting of Billy Dixon in the Buffalo wallow battle. Dallas's husband presents a program about Billy Dixon and will portray him at the reception for them the last Sunday in August.

They were also students of Dort Fitz and participated in our show dedicated to Dort last year. This is one exhibit where there is a painting for everyone's preferences.

Time is getting short. Our afternoon history camp will be in a week. The camp is for children 4th thru 8th grade and will teach them how to research historical figures, develop a character, and participate with others in preparing a program for the community on the 11th. So call the museum TODAY and reserve your place.

**HISTORICAL MUSINGS**

On July 4, 1969, two official Texas Historical Markers were dedicated at the intersection of State Highway 15 and 23.

Mrs. Ralph Randel of Panhandle will dedicate the Jones & Plummer Trail marker with Mrs. Cora Rutledge, area pioneer and E. J. Tarbox, Lipscomb County Judge accepting the marker.

The official dedication of the "City of Booker" marker will be dedicated by the Honorable Malouf Abraham, State Representative, 79th Dist., state of Texas. Mrs. Hazel Lockhart, who was the first child born in Booker and Vernon Fronk, mayor of Booker will accept this marker. Gen. E. Lemon will act as master of ceremonies for the dedication.

One of the goals of the current Lipscomb County historical commission is to inventory, photograph, and evaluate the condition of all our markers. We have historical markers placed in the '30s, '60's and more recently.

Have a good week.."



**STATE CAPITAL HIGHLIGHTS**



by Ed Sterling

**Mansion restored in multi-year effort**

AUSTIN — The Texas Governor's Mansion is fully restored, Gov. and Mrs. Rick Perry announced last week.

According to a July 18 governor's office news release, the restoration was made possible by a \$21.5 million appropriation by the Texas Legislature and a private fundraising effort led by first lady Anita Perry that raised more than \$3.5 million from thousands of Texans.

Restoration included a new roof, repairs to the exterior masonry, restoration of columns and porches, renovations to the kitchen and installation of a "geoxchange" system to provide energy efficient heating and cooling. Private funds were used to pay for an addition to the west side, restoration of historical features, improved accessibility and the completion of landscaping and historical documentation, the governor's office stated.

On June 8, 2008, the front porch of the 156-year-old structure was fire bombed. Flames spread, causing catastrophic damages. Authorities still are hunting for a suspect who was caught on camera throwing a Molotov cocktail at the mansion.

**Time to get 'Water Smart'**

Texas Agriculture Commissioner Todd Staples on July 19, along with state and local leaders, asked Texans to conserve more water by following the Texas Water Smart program.

Recent rains may have eased some immediate drought concerns, but as the state's population continues to grow, conservation is key to ensuring Texans have sufficient water for decades to come, Staples said.

Texas Water Smart is a public-private coalition that encourages households and businesses to adopt everyday habits to curb wasteful water usage. The state water plan dictates nearly 25 percent of our future water needs will be met through water conservation.

For more information, visit [www.TexasWaterSmart.com](http://www.TexasWaterSmart.com).

**State of drought continues**

Gov. Perry on July 13 renewed the current drought disaster proclamation for another month.

The effects of last year's

historic drought continue to plague Texas residents and businesses. According to the U.S. Drought Monitor, 77 percent of the state is still suffering from some degree of drought and 96 percent of the state is considered abnormally dry, the Texas Department of Agriculture noted.

**Run-off voting begins**

Primary run-off elections are July 31. Early voting began July 23 and runs through July 27.

Early voters may vote at any polling place in their county of residence. Voters who participated in the May 29 primary elections must vote in the same party's run-off election. Voters who did not cast a ballot in the primary elections may vote in either party's run-off election. Secretary of State Hope Andrade said.

A valid voter registration card without additional photo identification as required in Senate Bill 14 will not be required in Early Voting or on Election Day.

Also, Andrade, the state's chief elections officer, announced July 17 that Texas has been named one of 15 states recognized as an all-star "for promoting and protecting the voting rights of America's military service members and their families, especially through legislative efforts to streamline the federal ballot application process."

The recognitions were made by the Military Voter Protection Project, an organization that tracks each state's:

- (a) use of electronic and web-based services to send election materials;
- (b) legislative efforts to eliminate

barriers to military voter participation; and (c) record of making sure absentee military ballots are sent out no later than 45 days before the election and efforts to resolve violations.

In other news, Lt. Gov. David Dewhurst and a former state Solicitor General Ted Cruz, who are vying to become the Republican nominee for the U.S. Senate seat to be open on the retirement of Sen. Kay Bailey Hutchison engaged in a televised debate July 17 and are scheduled for a third and final debate on July 23. Also competing in a run-off race for their party's nomination are Democrats Paul Sadler of Henderson Grady Yarbrough of Tyler. Sadler is a former state representative and Yarbrough is a retired educator.

**June jobs report arrives**

The Texas economy added 12,900 seasonally adjusted nonfarm jobs in June and has added 282,000 private sector jobs since last year, the Texas Workforce Commission announced June 20.

Texas' seasonally adjusted unemployment rate was 7.0 percent in June, slightly higher than the 6.9 percent reported for May, but down from 8.1 percent a year ago.

**Study gives Texas firsts**

The 2012 Top States for Business study conducted by CNBC ranked Texas first overall and showed Texas first among the states in the infrastructure and transportation categories for the second year in a row, the Texas Department of Transportation announced last week.

**Campus Corner**

**Allen Campus News and Information**

Start Here... Go Anywhere!

Greetings from the Northernmost Facility of Higher Education in the Great State of Texas! Summer Session 2 classes are well underway and registration for fall classes is as well. There is an official day and time to register (Thursday, July 19 from 11:00 am to 1:00 pm), but don't panic if you didn't come to the campus then.

Registration will continue until August 27th when classes begin.

So far this academic year (2011-2012), the Allen Campus has served 4,541 students and others from Perryton and the surrounding area. Academic classes account for 238 of these students, while Continuing Education classes have served 1,748 and Commu-

nity Service classes and events have served an additional 2,555 people.

Summer is half-way over but don't let that get you down! We have several great things happening in the Continuing Education/Community Service areas.

The Conservatory of the Plains is beginning a new Children's Choir Session, be sure to look for their programs in the future. What a great way to keep kids involved in music.

The Coffee Memorial Blood Center held a blood drive on June 20th with a great turnout. As you have seen in local news the Center is in need of several types of blood this summer. Mark your calendars for the next blood drive at Frank Phillips College on August 22nd, 11:00 am - 7:00 pm.

Several companies and organizations have held board meetings, training and safety meetings on campus. Rooms can be arranged to accommodate a variety of audience and technology needs. Contact Katy about holding your next meeting at the college.

Upcoming continuing education and community service courses on campus will include concealed handgun, cake decorating, meal in a bag (meal preparation) and basic computer skills. If you are interested in these or any other classes contact Katy Williams at 806-648-1450.

**Editors Note...**

Freedom of speech is one of the guarantees of the First Amendment of our Constitution, so we encourage readers to express themselves, even if we don't agree with what is said. However, freedom involves responsibility. Therefore, the only letters we will consider publishing are from individuals who are willing for their names to appear with the letter. Letters must contain the telephone number, address and a personal signature of the writer (for verification purposes only).

We will not knowingly publish any letter containing libelous or slanderous statements, or factually incorrect information. Letters containing language or content that we feel is inappropriate will not be published.

Examples of content that will cause letters to be rejected include the following: Confusing or unclear points; Crude language; Poor taste; Disrespectful comments regarding a group's or individual's ethnicity, gender, religion, culture, sexual orientation or race; Other incendiary language or remarks; Endorsements for or complaints about individually named commercial products or services.

"Letters To The Editor," like all materials submitted to this newspaper, are subject to editing for space and clarity. The publication of any letter or article is the decision of the Editor and Publisher.

We welcome your input. You may write to us by using the online form, e-mail - [reporter@spearmanreporter.com](mailto:reporter@spearmanreporter.com); fax - 806-398-9080; or regular mail - Letters to the Editor, c/o Hansford County Reporter-Statesman, 213 Main Street, Spearman TX 79081.

The Hansford County Reporter-Statesman

**The Hansford County Reporter-Statesman**

Mailing Address - 213 Main Street • Spearman TX 79081  
Physical Address - 310 Barkley Street • Spearman TX 79081  
Phone - (806) 659-3434 • Fax - (806) 398-9080  
[www.spearmanreporter.com](http://www.spearmanreporter.com) • [reporter@spearmanreporter.com](mailto:reporter@spearmanreporter.com)  
Mon.-Thurs. 9 a.m.-12 p.m., Mon.-Wed. & 1-5 p.m.  
Closed Thurs. afternoon and all day Fri., Sat. & Sun.

Gary Smith - Publisher, Catherine Smith - Editor  
Clayton Smith - Reporter, Jill Noel - Photographer  
Contributing Writers: Dorothy Hudson, Jim Derington, Cecil Biggers, Virginia Scott, Ed Sterling  
Contributing Photographers: Lisa Johnson, Tami Hargrove

**Subscription Rates**

In Hansford County - \$30.00 - Out of County - \$40.00  
E-Mail Subscription - \$35.00

The Hansford County Reporter-Statesman (USPS 529660) is published weekly in Spearman, TX. Periodical postage paid in Spearman, TX. POSTMASTER: Send address changes to: The Hansford County Reporter-Statesman, 213 Main Street, Spearman, TX 79081.

**Publication Policy**

The deadline to submit news and advertising to The Hansford County Reporter-Statesman is Monday at 5 p.m. Items submitted after the deadline will be published at a later date, as time and space permit. Publication of all items is at the discretion of the editor.

**Advertising**

Open Display rates are \$4.00 per column inch. Classified Ads are \$7 for the first 20 words and 15c per word for each additional word. (Additional charge for boxed classifieds.) There is a \$1 charge per week if billed.

Member of  
Gruver Chamber of Commerce  
Spearman Chamber of Commerce  
Texas Press Association and Panhandle Press Association



**SUMMER OLYMPICS**

**ACROSS**

- Like smell of burning rubber, e.g.
- Known for its brown trucks
- \*Given name of Russian Gymnast who competed in 1970s
- "The Red Badge of Courage" author
- Cul de \_
- Landowner
- It fits into a mortise
- Ostrich-like bird
- "Or else" in music
- "\_ \_ \_", Higher, Stronger
- \*Boxing weight class
- A great distance
- Suite cleaner
- Comes from pine tree
- Italian currency, pl.
- Type of deodorant
- William Simmons was a founder of this infamous group
- Piece of metal covered by leather and used for hitting
- Not a soul
- Hipbones
- On a cruise
- Dante's Beatrice, e.g.
- A mood disorder
- \*Sprinting and long jumping great
- Spawned
- \*Most-decorated gold medalist

**DOWN**

- Thick, messy substances
- Wilbur's home
- Connecting point
- \_ \_ \_been
- \*Ancient Olympia site
- \*Decathlon event
- One of Indian languages
- Pigeon call
- Fully informed
- "Dressed to the \_ \_ \_"
- Pooh's wise friend
- \*Medal holders
- Short for engineer
- Soak a fiber, e.g.
- Rendezvous

**ACROSS**

- On \_ \_ \_
- Stuffed in a bottle?
- Pinch to save
- Muslim God
- Founding Father Thomas
- Officer training program
- Bausch's partner
- Glowers or frowns
- Beginning of illness
- Always demanding attention
- Victim of nervous biting
- Villain's rival
- Central Pacific greeting
- Pause in breathing, pl.
- Socialist, abbr.
- Idiot \_ \_ \_
- Interior designer's concern
- Waste water pipe
- Smiley face

**DOWN**

- It represents a continent
- Looker or ogler
- Sudden impact
- Like a tatting product
- Irritates
- No kids or empty
- \*Bermuda and Iraq each previously won this many Olympic medals
- Be in debt

**SUDOKU**

dish DISH NETWORK  
Starting at \$19.99 for 12 mos.  
SAVE! Ask About SAME DAY Installation!  
PLUS 30 Premium Movie Channels FREE for 3 Months!  
CALL 1-888-903-6814

2	5		9					
	9		1					
	8	3		6	4			
	7	6				3		9
	4						7	
3		9				4	1	
			9	3		7	2	
					1		4	
				7				9
								6

Fill in the blank squares in the grid, making sure that every row, column and 3-by-3 box includes all digits 1 through 9.

These games are brought to you by the Hansford County Reporter-Statesman

- Parts of play
- \*a.k.a. rowing
- Hindu princess
- \_ \_ and out; on and \_ \_
- Relating to teeth
- Substance abuser
- \* \_ Shriner, gold medalist tennis star
- Aqua-lung
- Kiln for drying hops
- \*Gold medalist and WNBA star, \_ \_ Leslie
- Sinister
- Dental group
- \*2012 Olympics site
- "Fear of Flying" author Jong

**CROSSWORD**

1	2	3	4	5	6	7	8	9	10	11	12		
13					14			15					
16					17			18					
19				20			21	22					
	23				24								
25	26	27		28		29		30		31	32	33	34
35			36		37			38		39			
40				41				42		43			
44			45		46			47					
48				49		50		51		52			
			53		54			55		56			
57	58	59				60				61	62	63	
64					65	66				67			
68					69					70			
71					72					73			

**if you could save \$522 ... why wouldn't you?**

Call 1-866-929-9071 to get your fast, free car insurance quote.

esurance  
an Allstate company

# Happy Birthday!

**July 26**  
**Birthdays** - Raquel Matthews Whitehead, George P. Odom, Jolain Ball, Jerry Long, Nell Benton, Ronnie Bullard, Rubyjo Wilbanks, Tammi Holmes, Traci Lane, Misty Payne, Cayla Smith, Oscar Valdez, Mini Largent, DeeDee De-LaRosa, Jennifer Covington  
**Anniversary** - M/M Sergio Vaquera, M/M Danny Henson

**July 27**  
**Birthdays** - Tracy Beville, Misty Kauffman, Bobby Don Smith, Nancy McIntyre, Kay Beeson, Bob Dennis, Frank Salgado Jr., Olivia Renteria, Michael Wayne Ross, Carl Kizzar, Donny McMahan, Josh Lackey, Robin Capps, Ashley Swan, Ryan Phillips, Able Eaton, Valerie Burnum  
**Anniversary** - Bos & Sis Stator, Keith & Jodie Hight, Ed & Tanja Whitefield, Ronald & Elaine Swan, M/M Owen Montgomery, M/M Sonny Patterson, Tom & Beth Dortch, M/M Lonnie Clemmons

**July 28**  
**Birthdays** - Leticia Favela, Holly Hart, Jordan Hicks, Wendy Rodriguez, Ray Gibson, Jo Garcia Jr., Lee Shaver, Marlane Taylor, Maria Ochoa, Reagan Karlin, Wendy Rodriguez, Patsy Reddin, Verlin Winegarner  
**Anniversary** - Harry & Hazel Stumph, M/M Alfred Bayless, M/M Ted Vela

**July 29**  
**Birthdays** - Macee Casdorff, Rex Ralston, Brent Stedje, Scott Stedje, Martin Ochoa Jr., Kammy Goodheart, Robert Graham, Christi Close, Tracy Wilson, Kenny Red, Carol Rushing, Valorie Shields, Aaron Witten, Tanner Hand, Kristi Ramon, Jessica Montgomery, Richard Trantham, LoRee Booth, Mae Wolford, Dallas Trosper, Marlee Castillo, Tracy Burk, Pete Vera IV  
**Anniversary** - M/M Jack Sparks, Teddy & Mary Lou Vela, Betty & Ron Dunaway, Mr. and Mrs. Elmo Dahl, Richey & Karen Thompson

**July 30**  
**Birthdays** - John Reed, Pat Tucker, Jim Nicholson, Lynn Ann Sanders, Ronda Cook, Pamela Cates, Sandra Cummings, Kara Pipkin, Raquel Saldivar, Alec Cenicerros, Alice Cook, Katie Gibson, Johnny Bennett, Joanne Graves  
**Anniversary** - M/M Davin Winger, M/M Hoyle Holliday

**July 31**  
**Birthdays** - Mary Ruth Connelly, Bonnie Jones, Kathy Vanlandingham, Danna Close, Sherry Brand, Jessie Burke, Jody Harnish, Hector Nava, Mike Slater, Ronnie Lusby, Cary Collier, Cecil Biggers, Jennifer Marrs, Cody Reynolds, Nancy Garcia  
**Anniversary** - M/M Muri Pearson, M/M Rocky Sharp, M/M Tim Stedje, M/M Mack Hoel

**Anniversary** - Doug & Shannon Barnes, Jason & Amber TeBeest  
**August 1**  
**Birthdays** - Lisa Link, Kyle Irwin, Frankie Leatherman, Annie Mayhew, Gyene Spivey, Benjamin Williams, Johnnie Williams, Ronnie Williams, Tommy Lovett, Jo Brown, Leann Swan, Yvonda Stokes, Anita Clemmons, Kevin Kirk, Rob Barber, Kelli McWhirter, David Swan, Jim Scarborough, Kiki West, Hershey Martin, Joyce Crooks, Alfonso Cenicerros, Larry Trospen, Patricia Quillin, Gabriel Lopez, Sara Wright, Chance Swan  
**Anniversary** - M/M Mike Minter, M/M Tommy Cathey, Jr.

**August 2**  
**Birthdays** - Eadie Clemmons, Mary Brock, Frosty Hickerson, Dirk Umphress, Colby Griffin, Earl Griffin, Daniel Bort, Yuki Bort, Misty Vera, Roland Graeber, Neely Hicks, Ryan Wells, Hanna Bates  
**Anniversary** - M/M Billy Kelly, M/M Larry Hays, M/M Dan Ralston

**August 3**  
**Birthdays** - Clay Gillipsie, Tyson Sparks, Mary Wisinger, Laurie Swenn, Kent Guthrie, Kenneth Coates, Olivia Salgado, Sam Abston, Dibrell Kirk, Racheal Garza, Tencha Cazares, Olivia DeSantiago, Maxine Little  
**Anniversary** - M/M Don Schroder, M/M Shane Reagan

**August 4**  
**Birthdays** - Jim Derington, Marjorie Hendricks, Penny Gammil, Mrs. Dick Kilgore, Cindy McGhee, Jeanetta Montgomery, Billy Joe Rhea, Mike Riley, V.L. Williamson, Nikki Swenn, Misty Pointer, Shelly Rook, Ramon Rosales, Renee Allen, Joe Allen Bullard, Bond Grace Pittman, Lee Blevins, Lane Salmans, Rachel Abernathy, Ronnie Cogdill, Karen Hartgraves  
**Anniversary** - M/M Joe Vandenberg, M/M Joe Bravo, M/M E.A. Williams, M/M Ronnie E. Williams

**August 5**  
**Birthdays** - Chase Reagan, Beth Ann Holt, Tina Adams, Billy Miller, Shirley Stafford, Erin Boxwell, Stephen Poole, Emidia Borunda, Paul Winn, Maria A. Parra, Susan Renick, Rodney Sumner  
**Anniversary** - M/M J Garnett, M/M Roy Flowers, M/M Samuel Sanchez, Danny & Debby Herrington

**August 6**  
**Birthdays** - Paul Winn, Scott Pipkin, Ladd Gafford, Carolyn Hahn, Raymie Porter, Hoyt Biles, Kathy White, Sharon Swan, Eoldia Bravo, Monica Lara, Susan Rason, Heather Gallimore, Debra McNeely, Marlyn Pecha  
**Anniversary** - M/M Muri Pearson, M/M Rocky Sharp, M/M Tim Stedje, M/M Mack Hoel

## Words from Faith & Grace



by Cecil R. Biggers, Lutheran Lay Minister

In the ninth week of Pentecost we learn of God's nurturing of us as we study 2 Kings 4: 42-44, Psalm 145: 1--18, Ephesians 3: 14-21, and John 6: 1-21. We read of the fourth of the miracles performed by the prophet Elijah. A farmer has brought to Elijah the first-fruits of his crop which were twenty loaves of barley. The man was from Baal-shalishah, an area associated with the god, Baal. The god, Baal, was the deity of King Omri and his court. Elijah tells his servant to take the twenty loaves and feed one hundred people. The servant protests that there is not enough. Elijah then says, "Thus says the Lord, they shall eat and have some left". This is done to let the people know that it is God who provides and not Baal. God provides for our needs and meets our desires.

The Psalmist sings a song of praise which lists some attributes of God. God satisfies! God in just! God is kind! God is near! God's kingdom is everlasting! This song is reassuring to those who struggle to live (and regardless of our means, that means all of us).

We see Paul kneeling in prayer. Paul prays for the Christians at Ephesus. He prays that God will strengthen their inner being, that Christ may dwell in their hearts, that they may have the power to comprehend all that Christ's love has done for them, that they may be filled with the 'fullness' of God. And, Paul asks all of this to God's glory in the Church and in Christ Jesus to all generations. We are included in this prayer dear Christian and so are the generations onto whom we pass our faith.

John links two stories of Jesus to answer the question, "Who is this Jesus?" Jesus multiplies five barley loaves and two fish to feed a crowd of thousands. Remember Elijah? It is God who provides. Who is this Jesus? After feeding thousands, the disciples set sail to cross the lake, when they have rowed three or four miles, they see Jesus walking on the water towards them. Who is this Jesus? When Jesus approaches the boat he says "I am, be not afraid". Recall Moses at the burning bush, Moses asked who are you Lord? The answer was "I am that I am". Who is this Jesus?

May the Holy Spirit nurture you with the Word of God that you may understand, "Who is this Jesus?"

## Our Sympathy

**GERALD DAVID BECK**  
**AMARILLO** - Gerald David Beck, 71, of Amarillo, formerly of Spearman, TX died Tuesday, July 17, 2012. Graveside services will be at 2:00 p.m. Thursday, July 19, 2012 at Old Hansford Cemetery, with Rev. Jack Cornell officiating. Arrangements are by Boxwell Brothers Funeral Home of Spearman.

Gerald was born to Sid and Marie Beck in Royce City, TX. He is preceded in death by his parents, a brother Ronnie, and a sister, Marilyn, all of Spearman. He served in the U.S. Air Force from February, 1962 to February, 1968.

Survivors include his wife, Nelva, of Spearman, TX; three children, Stephanie, Jeff and Tina; five stepdaughters, Terri Dewberry of Breckenridge, TX, Tammi Holmes of Amarillo, TX; Traci White of Amarillo, TX; Toni Bryan of Canyon, TX; and Debbie Cox of Amarillo, TX. He is also survived by a brother, Robert Beck, and 3 sisters, Shirley Beggs, Barbara Gillum and Becky Beck, all of the Dallas area. He has 15 grandchildren, 5 great grandchildren and many nieces and nephews.

**STANLEY R. REISWIG**  
**PERRYTON** - Stanley R. Reiswig, 58, of Perryton died Thursday, July 19, 2012.

Services will be at 10 a.m. Monday in Immaculate Conception Catholic Church with the Rev. Lupe Mayorga officiating. Burial will be in Ochiltree Cemetery. Arrangements are by Boxwell Brothers Funeral Home of Perryton.

Mr. Reiswig was born Sept. 16, 1953, in Perryton to James and Carol Reiswig. He worked for Perryton Coca Cola Co. for 10 years, United Supermarket in Perryton and Lowe's Grocery in Spearman.

He was preceded in death by his parents; a sister, Joan Good; and a brother, James Reiswig.

Survivors include two daughters, Shauna Cowan and husband Kile and Michelle Reiswig, all of Perryton; four sisters, Eleanor Wright, Sandra Reiswig, Vicky Lilly and Nita Carter, all of Perryton; six grandchildren, Kilee Cowan, Ella Cowan, Hadlee Cowan, Addison Reiswig, Landon Reiswig and Jocelyn Medina; a special niece, Amber Hargues of Perryton; and many other nieces and nephews.

**Weatherford Construction**  
 Septic Systems  
 Kirk Weatherford (806) 336-2820  
 8126 FM 3395 Toll Free: 1-800-585-6047  
 Sanford, TX 79078 Email: kirk@weatherford-construction.com

**Red Carpet Center, Inc.**  
 Full Service Flooring  
 We strive for pride in our work.  
 Free Estimates • Satisfaction Guaranteed  
 920 N Cedar  
 Borger TX 79070  
 806-273-2728  
 Servicing the Panhandle and Beyond

**MONUMENTS**  
**Boxwell Brothers**  
**Funeral Home**  
 519 Evans • Spearman  
 659-3802  
 Dear friends,  
 When you buy a monument from us we make sure it is exactly what you want at a price you can afford. If it is not right, we will make it right. And you will not have to search the countryside to find us. We are here when you have a need.  
 Sincerely,  
 Bob Boxwell

**Visit... FAMILY POOL FUN.COM**  
 • Our pools create Generations of Memories everyday, vacations never end!  
 • Aboveground & Inground pools at WHOLESALE PRICING  
 • SIMPLE DIY Pool Kit Assembly  
 • SAVE MONEY on All Pool Supplies & Accessories. Ships Fast  
 Call Today! 800-950-2210

**real estate auctions**  
**15+ TX Properties**  
 July 24 - Aug 6  
 Nominal Opening Bids from \$1,000  
 For details, visit williamsauction.com  
 4511 W Hwy 280, Decatur, TX  
 WILLIAMS & WILLIAMS  
 worldwide real estate auction

**HOST AN EXCHANGE STUDENT TODAY!**  
 (for 3, 5 or 10 months)  
 Make this year the most exciting, enriching year ever for you and your family. Welcome a high school student, 15-18 years old, from Italy, France, Norway, Denmark, Spain, Germany, Brazil, Thailand or China as part of your family for a school year (or less) and make an overseas friend for life.  
 For more information or to select your own exchange student please call:  
**Marcy at 1-800-888-9040** (Toll Free) or e-mail us at [info@world-heritage.org](mailto:info@world-heritage.org)  
**www.whhosts.com**  
 World Heritage is a public benefit, non-profit organization based in Laguna Beach, CA.

### Replenish the seed of faith through . . . DAILY BIBLE READING, PRAYER & REGULAR CHURCH ATTENDANCE

**Spearman**  
**Apostolic Faith Church**  
 822 S. Dressen • 659-2870  
 Sunday School: 10 a.m.  
 Worship Service: 11 a.m.  
 Sun. Eve.: 6 p.m.  
 Wed. Prayer Mtg: 7 p.m.  
 Pastor - Jack Cornell  
**First Assembly of God**  
 401 N. Bernice • 659-2295  
 Sunday School: 9:30 a.m.  
 Worship: 10:40 a.m.  
 Evening Worship: 6 p.m.  
 Wed. Worship: 7 p.m.  
 Wed. Youth: 7  
 Pastor - Brad Smith  
**First Christian Church**  
 (Disciples of Christ)  
 29 S. Bernice • 659-2036  
 Sunday School: 9:45 a.m.  
 Worship: 10:50 a.m.  
 Minister -  
**First Baptist Church**  
 123 N. Bernice • 659-5557  
 Sunday School: 9:45 a.m.  
 Worship: 11 a.m.  
 Evening Worship: 7 p.m.  
 Men's Bible Study - Wed., 7 a.m.  
 Children's Choir - Wed., 6 p.m.  
 Adult Choir - Wed., 7 p.m.  
 Wed. Bible Study: 7 p.m.  
 Pastor - Jim Medley  
**Church of Christ**  
 121 S. Haney • 659-3244  
 Sunday Bible Class: 9:45 a.m.  
 Worship: 10:30 a.m.  
 Evening Worship: 6 p.m.  
 Bible Study Wed.: 7:30 p.m.  
**Sacred Heart Catholic Church**  
 901 Roland • 659-2166  
 Sat. Night Mass: 5:30 p.m.  
 Sun. Mass: 9 a.m. - English  
 Sun. Mass: 11:30 a.m. - Spanish  
 Rev. Gregory Bunyan  
**First United Methodist**  
 407 S. Haney • 659-5503  
 Sunday School: 9:45 a.m.  
 Worship: 8:30 & 11 a.m.  
 Jr. High Youth: 5 p.m. Sunday  
 High School: 6 p.m. Sunday  
 Kids Club: 3 p.m. Wed.  
 Pastor - Toni Bailey  
**Grace Presbyterian Church**  
 (Worships with Faith Lutheran Church)  
 1101 Bernice • 659-2033  
**Faith Lutheran Church (ELCA)**  
 1101 Bernice • 659-2252  
 Sunday School: 9:45 a.m.  
 Worship: 11 a.m.  
 (Worships with Grace Presbyterian Church)  
 Pastor - Cecil Biggers, PLM  
**Union Church**  
 31 S. Endicott • 659-2644  
 Sunday School: 10:00 a.m.  
 Worship & Kid's Church: 11:00 a.m.  
 Wednesday Evening Worship and Bible Study Service: 7 p.m. Wed.  
 Pastor - Steve Hinshaw  
 www.unionchurchonline.org  
**Fellowship Baptist**  
 1102 S. Archer • 659-2783  
 Sunday School: 10 a.m.  
 Worship: 11 a.m.  
 Sun. Evening Worship: 6 p.m.  
 Sun. Evening Spanish Worship: 7 p.m.  
 Youth/Adult Service: 7:30 Wed.  
 Pastor - Phillip Hudson  
**Primera Mision Bautista**  
 502 E. 7th • 659-3991  
 Sunday School: 9:45 a.m.  
 Worship: 11 a.m.  
 Evening: 6 p.m.  
 Wed. Prayer Meeting: 7 p.m.  
 Thurs. Visitation: 7 p.m.  
 Pastor Joe Garcia Jr.  
**El Aposento Alto U.P.C.I.**  
 1105 S. Roland  
 Domingos: Escuela-Dominical - 10 a.m.  
 Culto Evangelistico - 7 p.m.  
 Jueves: Oracion - 8 p.m.  
 Mier: Estudio Biblico - 7 p.m.  
 Pastor - A.G. Martell  
 (806) 659-2153  
**Gruver**  
**First Baptist Church**  
 402 E. Broadway • 733-2411  
 Sunday School: 9:45 a.m.  
 Worship: 10:50 a.m.  
 Disciple Training: 6 p.m. Sunday  
 Prayer Meeting: 7:30 p.m. Wednesday  
 Pastor - Scott Curry  
**Church of Christ**  
 209 King • 733-2760  
 Sunday School: 9:30 a.m.  
 Worship: 10:20 a.m.  
 Evening Worship: 6 p.m.  
 Wed. Worship: 7:00 p.m.  
 Minister - Gaylord Cook  
**First Christian Church**  
 510 King • 733-2960  
 Sunday School: 10:00 a.m.  
 Sunday Worship: 11 a.m.  
 Youth: 7:30, Sunday  
 Adult Bible Study: 7:30, Sun.  
 Wed. Bible Study: 8:00 p.m.  
 Pastor - Gary Gumfory  
**Gruver United Methodist**  
 Broadway & Garrett  
 733-2651  
 Sunday School: 9:45 a.m.  
 Worship: 8:30 & 10:50 a.m.  
 Eve. Worship & UMY: 6 p.m.  
 Pastor - George Price  
**Spanish Cristo Redentor Church**  
 Hwy 15 806-659-2166  
 Gruver, TX  
 Sun. Mass: 1:30 p.m. - Spanish  
 Rev. Gregory Bunyan  
**Oslo**  
**Oslo Lutheran Church (ELCA)**  
 6 Miles West & 12 Miles  
 North of Gruver  
 339-7646  
 Sunday School: 9:45 a.m.  
 Worship: 11 a.m.  
 Pastor - Arlen Lloyd  
**Morse**  
**Morse Baptist Church**  
 733-2757  
 Pastor - Gary Stevens  
**Waka**  
**Church of Christ**  
 300 Rogers Ave.  
 202-7126  
 Sunday School: 9:30 a.m.  
 Sunday Worship: 10:30 a.m. & 6 p.m.  
 Wednesday Bible Study: 7 p.m.  
 Preacher - Ed Jenkins

He has showed you, O man, what is good. And what does the LORD require of you? To act justly and to love mercy and to walk humbly with your God. Micah 6:8

This feature is made possible through the sponsorship of these civic minded businesses:

**Deakin ELECTRIC**  
 OILFIELD • RESIDENTIAL • COMMERCIAL  
 321 S. MAIN • SPEARMAN  
 1-800-999-1506 Chris Deakin  
 (806) 659-5016 President

**Bartlett's Lumber & Hardware**  
 105 W. Broadway • Gruver, TX  
 (806) 733-2404

**Money's**  
 Stan & Donna Zepp - Owners  
 Phone 435-3945  
 14 SW 3rd Ave, Perryton TX

**Morse Implement & Auto Supply**  
 "Join us in church"  
 Tom Dortch • Gary Urban  
 Box 89 • Morse, TX 79062  
 (806) 733-2668

**PRAIRIE MOTORS INC.**  
 Hwy. 207 South • P.O. Box 430  
 Spearman, TX 79081 • (806) 659-2541  
 www.prairiemotors.com

**MurMur's Cafe**  
 100 Roland St  
 Spearman, TX.  
 659-3580

**Hansford County Reporter-Statesman**  
 "Proudly Serving Hansford County Since 1907"  
 (806) 659-3434  
 310 Barkley • Spearman, TX

**INTERSTATE BANK, sss**  
 www.interstatebank.com  
 322 Main Street • Spearman, TX  
 (806) 659-2559

# HWYI

FOR YOUR INFORMATION

### Medical Fund Established for Jeremy Frost

A fund has been set up at First National Bank for Kylee and Jeremy Frost. To donate you can either call the bank at 659-5544 or mail it to Box 337, Spearman.

### Spearman Food Bank 1st Thursday

If you would like to help the Spearman Food Bank, they need help unloading the truck at 11:30 each 1st Thursday of each month. Contact Cecil Biggers for more information.

### Farmer's Market

The local Farmer's Market will begin July 11th and will be held every Wednesday afternoon. Anyone interested is asked to contact Linda Venneman at 806-898-0969. los.borunda@gruverisd.net.

### Child Care Providers Seminar

A Child Care Providers Seminar will be held Saturday, August 4, 2012 from 8:30am - 4:00pm at the Beaver County Fairgrounds, Beaver, Oklahoma. This seminar is open to the public, child care providers, parents, etc. Topics include: Safety Awareness; Dramatic Play; Using MyPlate for Nutrition Education; Positive Guidance; Importance of Reading and Language Skills; and Enhanced Learning Activities. Certificates will be presented for up to 6 hours of required formal training for licensing. A \$10.00 non-refundable fee will be charged which includes the noon meal and is due with registration form by Monday, July 30th. For more information and registration form please contact the Beaver County OSU Extension Service at 580-625-3464 or available at: <http://oces.okstate.edu/beaver/child-care-providers-seminar-1> Oklahoma Cooperative Extension Service offers its programs to all eligible persons regardless of race, color, national origin, religion, sex, age, disability or status as a veteran, and is an Equal Opportunity Employer.

### Timeless Treasures Quilt Meeting

Timeless Treasures Quilt meeting on Saturday July 28, 2012 at Christian Church, 9th & Quinn, Guymon OK. Coffee hour starts at 9:30, with the program at 10:00. The morning program will be given by Carol Miles from Kansas. In the afternoon she will have a teaching class on machine applique. In this class, she will show several machine applique techniques and samples. The actual teaching portion will be a basic blanket stitch applique including fusible choices, fusing, arrangement, and, of course, the stitching. Call 580-388-3677 if you want to take the class. New members are welcome. Bring a friend. Bring a salad for the noon lunch.

### Lynx Football Camp Set July 30th

Lynx Football Camp will be held July 30th-August 1st (3 days) for incoming 3rd-9th graders. It will be held at the football field from 8-10 a.m. The Lynx football staff is looking forward to working with all of our athletes and teaching them fundamentals of football. Registration will begin at 7:45 am and the cost is \$15 (includes t-shirt). Pre-registration is not required. Just show up and register on Monday, July 30th. A parent must sign the waiver form.

### SHS Class of 1981 Big Ol' Birthday Bash in Lieu of a Class Reunion - (Yikes - we are turning 50!)

The SHS Class of 1981 is holding a Big Ol' Birthday Bash in lieu of a Class Reunion on Saturday, October 13th. Festivities will be out at the River Breaks Ranch, [www.riverbreaks.com](http://www.riverbreaks.com), (just a few miles outside of Amarillo) beginning around 5-6ish. There will be fun, great food, and lots and lots of visiting. The cost will be around \$40ish per person. Sorry, we don't get the AARP discount yet! A block of rooms is reserved at the Drury Inn, Amarillo, TX (800-325-0720). More information to follow. Please send RSVPs, regrets, emails, phone numbers and old fashion addresses of classmates to Bonnie & Hunter Novak, [novakh@ptsi.net](mailto:novakh@ptsi.net), P.O. Box 403, Guymon, OK 73942. River Breaks Ranch - Amarillo, Texas [www.riverbreaks.com](http://www.riverbreaks.com)

### Gruver Gym Hours

The Gruver Gym will be open in June and July for the following hours: Monday - Girls Night (JH-HS Girls) 7-9 p.m.; Tuesday - Boys Night (JH-HS Boys) 7-9 p.m.; Wednesday - Adult Night (HS-"Old") 7-9 p.m.; Thursday - Elementary Night 6-8 p.m., 3-on-3 Tournaments, \$30/team (4 players max/team) will also be held on the following dates: July 13-14 - Elementary-JH Tourney Boys & Girls. Email entries to [wade.callaway@region16.net](mailto:wade.callaway@region16.net) with "3-on-3 Tourney" in the subject line. There will be 1 adult supervisor and 1-3 student workers each night (3 for elementary nights). All participants will need a signed release (students 17 or under will need parent/guardian signature). Out of town guests are welcome with signed release.

### Second (Indianhead) Division Association, Inc.

The Second (Indianhead) Division Association is searching for anyone who ever served in the 2nd Infantry Division at any time. For information about the national association and our annual reunion in Reno, Nevada from August 23-26, 2012, visit our website at [www.2ida.org](http://www.2ida.org) or contact the association's secretary-treasurer, Bob Haynes, at [2idahq@comcast.net](mailto:2idahq@comcast.net) or (224) 225-1202.

### Hansford Co. Library Thrift Shop Accepting Donations

Alley Katz (Library Thrift Shop) is accepting donations of quality items. You may ask for the key to the Thrift Shop at the library desk during regular hours (9:30 a.m.-5 p.m., Monday-Friday). Alley Katz is open from 10 a.m.-4 p.m. each Wednesday.

### Firefighters Wanted

The Spearman Volunteer Fire Department is actively recruiting new members. Both men and women age 18 and over are welcome. The number of volunteers has dropped to dangerously low levels and the roster needs to be increased. If you have an interest in helping to keep your community safe, the SVFD would like to talk to you. All new candidates will have access to the best training available. All interested parties should either come to the fire station located at 513 S Hazelwood or call Kimmi Rivera at 806-202-6374. The SVFD meets every Thursday night at 7 PM. Bring a friend and come join the team.

### Hansford Hospice

Volunteering for Hospice is very flexible and easy to work into your schedule. Our volunteers provide important services to the people we serve, whether it is: providing companionship to patients and their families; helping with clerical duties in the office; helping with special projects such as cooking food, baking, running or helping with community outreach. If you are interested in being a Hansford Hospice Volunteer, please contact us at 806-659-5811.

### Texas SNAP Benefits Assistance

Need help applying for SNAP benefits? We can help! High Plains Food Bank is providing application assistance for Texas SNAP benefits (Food Stamps) in your area. Telephone application assistance is available. If you need to apply for benefits, please call us today at 806374-8562 or 1-800-774-8564.

### Don't Text and Drive Decals

If you would like to purchase a lime green 'AMT 1994-2009 Don't Text and Drive' window decal in memory of Ali Tyler, please contact Stephanie Tyler at 806-736-0019. All proceeds go to the Ali Tyler Memorial Scholarship Fund. Decals are also available at Hansford County Floral Company on Main Street in Spearman.

### Help Available for Breast Cancer Survivors

Any woman who has had breast cancer surgery and cannot afford undergarments and prosthetics can get help from the American Cancer Society through a grant from Susan G. Komen for the Cure®. The Amarillo Area Breast Prosthesis and Lymphedema Accessory Program will provide financial help to women in need of breast forms or prostheses, mastectomy bras and accessories to help with lymphedema, which is swelling of the arm caused by a build-up of lymph fluid. For more information, call the American Cancer Society office in Amarillo at (806) 353-4307 or 1-877-227-2345.

### Friendship Quilter Quilt Guild

The Friendship Quilter Quilt Guild of Perryton, Texas would like to invite you to their meetings. The Day Guild meets the 2nd Wednesdays of each month at 9 a.m. in the Community Worship Center, 2210 SW 15th, Perryton. The Night Guild meets the 2nd Tuesday of each month at 6 p.m. in the Community Worship Center, 2210 SW 15th, Perryton. Annual dues are \$15. (To receive only the newsletter \$7.50/yr.) Visitors are welcome. For more information, contact Cynthia Shattles at 806-435-2765 or Marilyn Robins at 806-624-2691.

## PTCI Explains Email Conversion

Why did we move to Google Apps? Simply stated, the old email and anti-virus/anti-spam servers had reached capacity and the end of their life cycles, creating the need to make important decisions that could financially impact our customers. The massive investment in new servers and the requisite software licenses would have resulted in a rate increase to our customers. The alternative was to seek out an email service that allowed PTCI to offer an improved email program at the current monthly rate. As a result, PTCI's customers are now able to experience the benefits of Google Apps

and its powerful collaborative tools.  
 Google Apps Benefits include:  
 • 10GB of email storage space, with no need to worry about Inbox becoming FULL;  
 • Protection from lost email data;  
 • Access to Google Docs, making costly software such as Microsoft Word, Excel, and PowerPoint unnecessary;  
 • Easy connection to mobile devices, for "email on-the-go;"  
 • The ability to easily chat with family and friends;  
 • Peace of mind with secure access from any de-

vice;  
 • Individual control of spam settings by each customer, with the ability to control what goes to the PTCI Quarantine (Postini Spam Filter);  
 • Support line available 24 hours a day/7 days a week, PLUS  
 • All the advantages of using G-Mail, without the advertising that comes with "free" G-Mail.  
 PTCI is here to help! Some customers are still having difficulty with this email conversion, and PTCI encourages those customers to call the support line at 866-307-6857. Additionally, PTCI is offering ongoing workshops to help with any conversion issues you may still have.

Customers who access their email through an email program such as Outlook, Windows Mail, Thunderbird, etc. may continue to do so with a few simple settings changes. Instructions are available at [www.ptci.net/googleapps](http://www.ptci.net/googleapps) or by calling the support line at 866-307-6857.

Customers who receive an email that begins with "IMPORTANT: Action Required!" are asked to call the support line at 866-307-6857. The support staff will help you get the settings correct on all the devices that you receive email on.

In the near future, PTCI's old email server will be turned off. At that point, you will no longer be able to access your email through that server, making it extremely important for customers to get their settings updated as soon as possible. We want PTCI email customers to enjoy easy access to their email, and as always, we are available to assist you in any way we can.

## Frank Phillips College Welcomes Johnson as Agriculture Instructor

The Borger campus of Frank Phillips College welcomes Brad Johnson as the newly-appointed Agriculture Instructor/Livestock Judging Team Coach. Originally from Fostoria, Ohio, Johnson brings a wide range of experience to the position. Johnson holds a Bachelor's in Animal Science from the University of Nebraska, where he took honors as National Champion Sheep Judge and placed in the top 20 nationally in beef cattle. He then served as manager for a large seed stock cattle operation in Lincoln, Nebraska. His dream of teaching at the college level, though, sent him back to school. He earned his Master's in Animal Science from Purdue University, and during his graduate studies he served as the Livestock Judging Team Coach. Under his guidance, Purdue's team enjoyed the most successful livestock judging record in a decade.

Since that time, Johnson has worked as a Cooperative Extension Agent for Rowan County, North Carolina. His teams have received state championship honors and have subsequently represented North Carolina in several national events. He has bred, raised, shown, and fit numerous champion beef cattle, sheep, and hogs for all levels of competition.

Dr. Rodney Purswell, Director of the Frank Phillips College Agriculture Department, is extremely pleased to bring Mr. Johnson to Borger as a member of the FPC faculty. "He has managed large Angus herds, and that experience will really benefit our Beef Cattle Production Program here at

the college." Purswell noted. "His coaching experience is also extensive, and we're looking forward to a great year for our judging team."

"I have a very strong passion for teaching," said Johnson. "There are few things in the world that are better than seeing that light bulb flash above a student's head when they 'get' something. That feeling is so amazing! There's no doubt that the students make the job worth doing."

**AVAILABLE NOW!**

**E-SUBSCRIPTION**

to the

**Hansford County**

**Reporter-Statesman**

Delivered to your e-mail each  
Thursday for only \$35/year.

Purchase online at  
[www.spearmanreporter.com](http://www.spearmanreporter.com)

Call 806-659-3434 or e-mail [reporter@spearmanreporter.com](mailto:reporter@spearmanreporter.com) for details.

## Shame on Landtroop

It's upsetting that Jim Landtroop lies about Ken King and the record of the Canadian ISD school board.

Here are the facts: When Ken King was elected, the school's tax rate was \$1.29. Over the next three years, we lowered the tax rate to \$1.25, then to \$1.23, and then to \$1.16. Last year we raised the rate up to \$1.21. That's the one tax increase Landtroop wants to talk about. He doesn't want you to know that Ken King voted to reduce taxes three times and that the tax rate today is lower than it was when Ken came onto the board.

Landtroop also says, "King increased government spending by \$26 million in just four years." I don't know what planet Landtroop is living on, but the facts are that our budget today is about what it was five years ago! The state pretty much tells schools what they can spend anyway. Of course since Landtroop sends his own kids to a private school he doesn't need to bother to learn about what is happening in public education. Ken King understands the challenges rural schools face. He knows that rural schools don't get enough funding to offer the same vocational technology, fine arts, foreign language, or advanced courses that the big city schools offer.

Ken King understands how rural schools are being short-changed by the school funding formulas.

Maybe if Landtroop had kids in public school, he might pay more attention to funding formulas. Either way, I wish he wouldn't tell lies. Shame on him!

Salem Abraham  
 Canadian ISD Board Member  
*Political Endorsement paid for by Salem Abraham*

**MITCHELL THEATRES.COM**

GUYMON, OK • LIBERAL, KS • NEWTON, KS

---

**NORTHRIDGE 8**

Guymon, Oklahoma  
[www.northridge8.com](http://www.northridge8.com)  
 580-338-3281

---

**SOUTHGATE 6**

Liberal, Kansas  
[www.southgate6.com](http://www.southgate6.com)  
 620-624-5573

---

**SEQUOYAH 8**

Garden City, Kansas  
[www.sequoyah8.com](http://www.sequoyah8.com)  
 620-275-2760

---

**CHISHOLM TRAIL 8**

Newton, Kansas  
[www.chisholmtrail8.com](http://www.chisholmtrail8.com)  
 316-283-0555

**FRESH POPCORN EVERYDAY!**

**-PARTY ROOM & ARCADE-**

*Hoochy Poochy Parlor*

Don't forget your furry family members this summer!

Let us take care of your four-legged friends while you are on vacation!

For Boarding reservations and grooming appointments, call now!

**Hoochy Poochy Parlor**  
 421 E. 10th St.  
 Borger, TX 79007  
 806-273-2724  
[hoochypoochy@att.net](mailto:hoochypoochy@att.net)

Hours:  
 Mon.-Fri., 8 a.m. until done  
 Saturday by appointment only  
 Please visit us for a free estimate on your pet care needs.

*We put the Hoochy in your Poochy*

## Early Voting in the 2012 Primary Run-Off Elections Began Monday

Texas Secretary of State Hope Andrade is alerting Texas voters that Early Voting in the 2012 Primary Run-Off Elections began Monday July 23, 2012 and runs through Friday, July 27, 2012. The Primary Run-Off Election day is Tuesday, July 31, 2012.

"Every election is important and an opportunity for Texas voters to exercise their voice in setting the course for the future of our great state," said Secretary Andrade. "I urge voters to take full advantage of the ease and convenience of voting early by making it a part of your summer plans."

During Early Voting voters may vote at any polling place in their county of residence, choosing a time and place that is most convenient for their schedule. Voters who participated in the May 29, 2012 Primary Elections must vote in the same party's run-off election in which they voted in May. Voters who did not cast a ballot in the Primary Elections may vote in either party's run-off election.

Additionally, photo identification as required in Senate Bill 14 will not be required in Early Voting or on Election Day. To cast a ballot during Early Voting

or on Election Day, voters should present their voter registration card or in lieu of a voter registration card, at least one of the following:

- A driver's license or personal identification card issued to you by the Texas Department of Public Safety or a similar document issued to you by an agency of another state, even if the license or card has expired;

- A form of identification that contains your photograph and establishes your identity;

- A birth certificate or other document confirming birth that is admissible in a court of law and establishes the person's identity;

- Your United States citizenship papers;
- Your United States passport;

- (more)
- Official mail addressed to you by a governmental entity; or

- A copy of a current utility bill, bank statement, government check, paycheck, or other government document that shows your name and address.

For more information on the voting process in Texas, including where to vote, please visit [www.vote-texas.gov](http://www.vote-texas.gov).

## State Law Requires Private Sale Vehicle Buyers to Title in 30 Days or Face Penalties

Not transferring a vehicle in 30 days can cost Hansford County residents big money.

A new state law requires those who purchase vehicles in a private sale, whether it's in or out of state, to obtain a new title within 30 calendar days or face financial penalties.

"In some counties people are finding they owe hundreds of dollars in title penalties for failing to title within a month of purchasing their new car or truck," said Linda Cummings, the tax assessor-collector for Hansford County. "Please don't let this happen to you," Cummings added.

Failure to title within the 30 days results in an automatic \$25 penalty, plus another \$25 for each month the title is late. There are no waivers for these penalties, which means the Hansford county tax office and the Texas Department of Motor Vehicles cannot reduce or forgive what you may owe.

The law does grant an additional 30 days to active-duty military personnel,

which gives them 60 days to transfer the title before facing late title penalties.

While the penalties may seem harsh, it's important to remember this helps to protect you when you go to sell a vehicle. "When vehicle buyers don't put the title in their name when you sell them a car or truck, anything they may do with that vehicle is going to trace to your name," Cummings explained.

Sellers don't have to rely solely on the buyer to do the right thing.

Whenever you sell a vehicle yourself or even trade one in to a dealer, it is important to file the free Vehicle Transfer Notification on the TxDMV website, [www.TxDmv.gov](http://www.TxDmv.gov). "Sellers must file the Vehicle Transfer Notification within 30 days to receive the state-guaranteed protection from liability," Cummings said.

"This way you cannot be held responsible for anything the buyer does with your old vehicle."

Buyers need to realize that titling the vehicle in

their name also offers protection. "When a vehicle is titled in your name it gives you proof of ownership," Cummings said.

Cummings offers these tips for people planning to buy or sell a vehicle.

### Texas Buyers

- For your protection, never buy a vehicle in a private sale without receiving the title.

- Be sure the seller gives you the title. If the title is from Texas, you can go to Title Check at [www.TxDmv.gov](http://www.TxDmv.gov) to see if it's a clean title.

- The seller must sign, date and enter the odometer reading on the title back.

- Be sure the seller signs, dates and enters the sales price on Form 130-U. If you are purchasing the vehicle out of state, have the seller download the form from the Texas Department of Motor Vehicles website,

[www.TxDmv.gov](http://www.TxDmv.gov).

- Go to your local county tax office within 30 days to title the vehicle in your name.

### Texas Sellers

- Sign, date and enter the odometer reading on the back of the title.

- Fill out your section of the mandatory Form 130-U. The buyer needs this to title the vehicle out of your name.

- Take off the license plates and transfer them for free to the new vehicle you buy. (That plate number ties directly to your name.)

- File the Vehicle Transfer Notification online at [www.TxDmv.gov](http://www.TxDmv.gov) to remove your liability for the vehicle in the event the buyer does not transfer the title. You only have 30 days to file the Vehicle Transfer Notification to receive this state-guaranteed removal of liability.

## Ashmore: Talent level on teams impressive

By Ricky Treon, Amarillo Globe-News

The Texas Girls Coaches Association all-star basketball rosters were filled with recently graduated high school players.

But it was not a high school game. "There's a lot of talent in all-star games," said Spearman grad Morgan Ashmore. "It's on a whole other level than a regular high school game."

Ashmore and the Class 1A-2A-3A North all-stars took on the South at 6 p.m. Thursday, July 19, 2012 at Arlington Lamar High School as part of the annual TGCA Summer Clinic.

The Class 4A-5A North and South all-stars played at 8 p.m., and the TGCA track and cross country all-stars were also recognized Thursday at Arlington Lamar.

Ashmore, like most players, has been doing her college summer workout regimen sent by Tarleton State in the spring.

She said it's more intense than the training she did in the winter while leading the Lynxettes to the Region I-2A semifinals.

"Oh, yeah," Ashmore said. "The weights are a lot harder."

Ashmore, who had four assists in the Texas Association of Basketball Coaches all-star game in May, said she was looking forward to playing with girls who were on Division I teams next year — such as Brock's Kamy Cole (Texas Christian).

"You hear about these girls all over Texas," Ashmore said. "Now you get a chance to meet them and become friends with them."

Local cross country and track all-stars: The Texas Panhandle cross country all-stars who were honored between basketball games are: Gruver's Shelley Gibson, Spearman's Tylo Farrar and Hereford's Ana Lopez. None were honored in track and field.

## Home Horticulture Sessions

The Texas AgriLife Extension Service will conduct four "Hutchinson County Home Horticulture" sessions in July and August.

"Home horticultural education is in high demand right now because everyone wants a great looking landscape without having to break the bank," said Kristy Synatschk, AgriLife Extension agent for Hutchinson County.

The sessions, which are open and applicable to anyone in the High Plains, are scheduled July 26, Aug. 16 and Aug. 23, Synatschk said. They all will be held in the Monsanto Room of the Ag Building at Frank Phillips College, 1700 Carbon Road in Borger. Each session will begin at 7 p.m. and will run about an hour and a half, she said.

Session presenters and topics will be:

July 26 – Dr. Ed Bynum, AgriLife Extension entomologist in Amarillo, lawn pests; and Dr. James McAfee, AgriLife Extension turfgrass specialist at Dallas, basic lawn management.

Aug. 16 – Brian Scott, Texas Forest Service urban forester in Canyon, tree management.

Aug. 23 – Nathan Carr, AgriLife Extension agent in Briscoe County, and Synatschk will be discussing rainwater harvesting and building a basic rainwater collection barrel.

"I believe this information is not only timely for 2012, but will lay a strong foundation to help your lawn winter well and come out even better in the spring," Synatschk said.

For more information and registration details on any of the sessions, contact Synatschk at 806-878-4026 or [klsynatschk@ag.tamu.edu](mailto:klsynatschk@ag.tamu.edu).

## Thank You!

Gruver Volunteer Fire Dept. and Gruver Volunteer EMS would like to say THANK YOU to all the people from the community and Spearman emergency services that helped us in the unfortunate incident on July 16th at the Sunray Coop Elevator in Gruver. There were so many people who showed up to help and left before we could say Thank You. We know some of the ones who were there, but due to circumstances we did not know a lot of the ones that showed up to help. We just wanted to let everyone know that all the help was very deeply appreciated.

Sincerely

Gruver VFD & Gruver EMS

## Thank You!

Hotline for Priority Seating - 435-3945

# MONEY'S

## BBQ & STEAK HOUSE



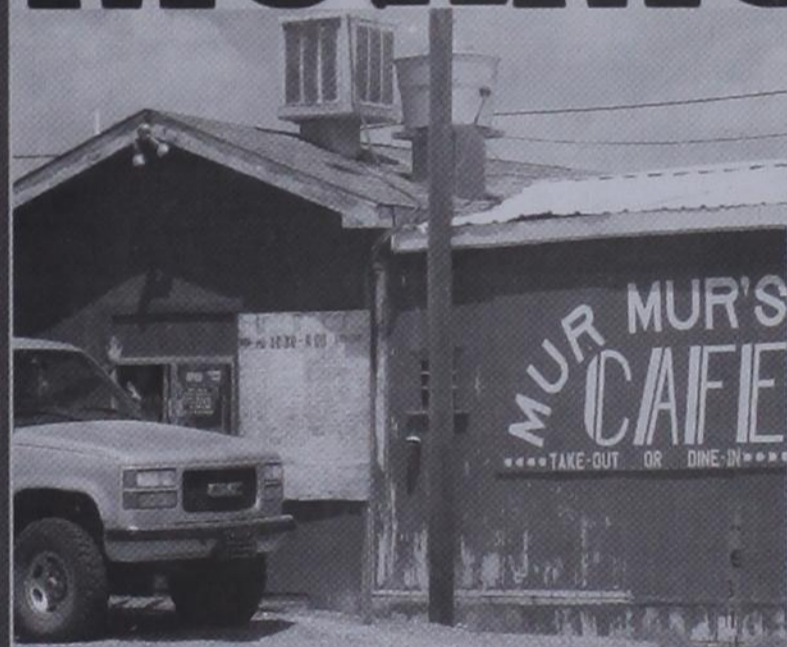
We Are THPLC-2-B

14 SE 3rd Ave. Perryton, TX

Stan and Donna Zepp

### New, Updated Menu Same Great Service

# MURMUR'S



**MurMur's Cafe**  
26 Archer St  
Spearman TX  
806-659-3580

**Snow Cone Stand**  
Monday-Friday  
2-8 p.m.

Are You A Victim of Domestic Violence, Sexual Abuse or Physical, Emotional or Sexual Assault?

Call Toll Free Hotline  
1-800-753-5308

Battering Intervention & Anger Management Available

Panhandle Crisis Center  
Serving Hansford, Lipscomb & Ochiltree Counties  
301 S. Ash - Perryton, TX

PTCI  
Communication & Broadband Solutions

## DIGITAL TV RULES

**\$29.99 mo**  
First 6 months\*

**FREE HD**  
for 6 months

**FREE Installation**  
first 4 set-top boxes

Watch **OVC** & Amarillo Channels in **HD**

**OH YEAH!**

f Like Follow

[ptci.net](http://ptci.net)  
721 W 7th - Spearman  
800-562-2556  
\*with 2-yr commitment

## Xcel Energy Warns Customers About Billing Scam

Xcel Energy is warning customers of an apparent national scam targeting utility customers that involves attempts to obtain Social Security numbers and bank routing numbers.

The scam claims that the federal government is providing credits or applying payments to utility bills. Customers are being told they can make a utility payment by using a bank routing number that is supplied by the scam artists. After the scammers obtain the victims' personal information, customers are given a phony bank routing number to pay their bills.

The scam is being spread via telephone, Twitter and texting. Customers in some states also have reported receiving fliers with similar information.

Customers should only use authorized methods and legitimate banking information to pay their bills. Credit card numbers and any personal information should not be provided to suspicious callers.

Affected customers should call Xcel Energy customer service at 1-800-895-4999 and report the incident to their local police departments.

Xcel Energy is also advising that if a customer has given credit card information over the phone to someone posing as an Xcel Energy employee, the customer should call his or her credit card company and follow the credit card company's recommendations.

Xcel Energy (NYSE: XEL) is a major U.S. electricity and natural gas company with regulated operations in eight Western and Midwestern states. Xcel Energy provides a comprehensive portfolio of energy-related products and services to 3.4 million electricity customers and 1.9 million natural gas customers through its regulated operating companies. Company headquarters are located in Minneapolis. More information is available at [www.xcelenergy.com](http://www.xcelenergy.com).

## SISD Announces Region Teacher of the Year Nominees



Mr. Belger, Elizabeth White, Mr. Montgomery



Mr. Hanna, Chad Wilkerson, Mr. Montgomery

The Spearman ISD Administration has announced their nominees for Region 16 Educational Service Center Elementary and Secondary Teacher of the Year. The Elementary nominee is Chad Wilkerson and the Secondary nominee is Elizabeth White.

Mr. Wilkerson has been the 5th grade Science teacher at Gus Birdwell Elementary since 2006. He was nominated by his principal, Mr. PJ Hannah, for his innovated teaching strategies and his energy he brings each and every day to his classroom. His students perform above the state average in the state assessments and maintain a very interactive and collaborative environment during the instructional period. Chad is married to Samantha Wilkerson who is a pharmacist for the Hansford County Hospital District. They have two children, and they all are very active in community projects.

Mrs. White has been the High School Art Teacher since 2009. She was nominated by her principal, Mr. Belger, for her creative abilities and academic motivation that is transferred to her students and her student's performances in regional, state, and national competitions. The Art Department has had the most

entries qualify for state competition in this region and for the past two years, and a student from Spearman has had one of their painting qualify for the national completion. Elizabeth is married to Josh White, who is the Head Boy's Basketball coach at Spearman High School and they have one son. Mrs. White is very talented on her own right and has several paintings and murals displayed in and around the school.

Texas Teacher of the Year is the highest honor that the State of Texas can bestow upon a teacher. Facilitated by the Texas Association of School Administrators, the Texas teacher of the Year program annually recognizes and rewards teachers who have demonstrated outstanding leadership and excellence in teaching. The winners will be announced on August 16th at the Service Center in Amarillo.

Candidates for Teacher of the Year should be exceptionally dedicated, knowledgeable, and skilled teachers, who plan to continue active teaching status. These qualities are exhibited and demonstrated each day by Mr. Wilkerson and Mrs. White and the Spearman ISD Board of Trustees and Educational Community are proud of these two teachers that exemplify all of Spearman's teaching staff and their dedication to our students in our community.

exceptionally dedicated, knowledgeable, and skilled teachers, who plan to continue active teaching status. These qualities are exhibited and demonstrated each day by Mr. Wilkerson and Mrs. White and the Spearman ISD Board of Trustees and Educational Community are proud of these two teachers that exemplify all of Spearman's teaching staff and their dedication to our students in our community.

## AVAILABLE NOW!

### E-SUBSCRIPTION



to the  
**Hansford County  
Reporter-Statesman**

Delivered to your e-mail each  
Thursday for only \$35/year.

Purchase online at

[www.spearmanreporter.com](http://www.spearmanreporter.com)

Call 806-659-3434 or e-mail [reporter@spearmanreporter.com](mailto:reporter@spearmanreporter.com) for details.

Owned & Operated by Linda & Charles Stephens

## Double XXL Steakhouse

(formerly Flying X Steakhouse)

We have expanded our seating capacity to 60! We welcome large and small groups and parties. Reservations suggested.

Open:  
Friday &  
Saturday  
Night

Open anytime  
for parties of  
8 or more

Reserve your holiday party now!

From Stinnett: Go West on Hwy. 152 17 miles -  
Turn Left at Big White Sign (2 miles on Gravel Road)

From Dumas: Go East on Hwy. 152 16 miles - Turn  
Right at Big White Sign (2 miles on Gravel Road)

(806) 93JESUS (935-3787) [www.doublexxlranch.bravehost.com](http://www.doublexxlranch.bravehost.com)

## NOTICE OF PUBLIC HEARING ON HANSFORD APPRAISAL DISTRICT BUDGET

The Hansford Appraisal District will hold a public hearing on a proposed budget for the 2012-2013 fiscal year.

The public hearing will be held on August 8, 2012 at 9:00 a.m. at the appraisal district office.

A summary of the appraisal district budget follows:

The total amount of the proposed budget:	\$358,495
The total amount of increase from the current year's budget	+ 11,781
The number of employees compensated under the proposed budget	3.5
The number of employees compensated under the current budget	3.5

The appraisal district is supported solely by payments from the local taxing units served by the appraisal district.

If approved by the appraisal district board of directors at the public hearing, this proposed budget will take effect automatically unless disapproved by the governing bodies of the county, school districts and cities served by the appraisal district.

A copy of the proposed budget is available for public inspection in the office of each of those governing bodies. A copy is also available for public inspection at the appraisal district office.

Hansford Appraisal District  
709 W 7th Ave  
Spearman, TX 79081-3407  
806-659-5575 or 800-372-5411

## Jim Landtroop

State Representative  
COURAGEOUS CONSERVATIVE

### KEY DATES:

Vote Early - July 23 - 27, 2012  
Election Day - July 31, 2012  
[JimLandtroop.com](http://JimLandtroop.com)

## JIM LANDTROOP

A CONSERVATIVE WE CAN TRUST



Do You Believe Government has a REVENUE Problem - that we Should TAX and SPEND More? NEITHER DO !!

### JIM LANDTROOP

Fact: Jim Landtroop believes government has a SPENDING problem, NOT a REVENUE problem.

Fact: Landtroop cut \$15 billion dollars of government spending and he cut \$60 million of your taxpayer dollars from abortion clinics.

Fact: Landtroop balanced the Texas budget WITHOUT raising your taxes earning him the "Taxpayer Champion Award."

Source: FBI; Texans for Fiscal Responsibility



### KEN KING

Fact: Ken King said, "revenue shortfall will be an issue."

Source: Spearman Candidate Forum, 2012

Fact: King increased government spending by \$26 million in just four years for a school district with 907 students.

Source: Empower Texans, It Comes Down To Leadership, July 2, 2012

Fact: King raised taxes to pay for the increased spending. He even said at a recent Candidate Forum, "I'm the Guy Who Raises Taxes."

Source: Canadian ISD Board Minutes, August 31, 2011; Spearman Candidate Forum, 2012

JIM LANDTROOP IS ENDORSED BY: TEXAS RIGHT TO LIFE, NRA, TEXAS FARM BUREAU, TEXANS FOR FISCAL RESPONSIBILITY, GOVERNOR RICK PERRY, ATTORNEY GENERAL GREG ABBOTT, COMPTROLLER SUSAN COMBS, TEXANS FOR LAWSUIT REFORM, YOUNG CONSERVATIVES OF TEXAS, STATE REPRESENTATIVE CHARLES PERRY AND AGRICULTURE COMMISSIONER TODD STAPLES.

**REAL ESTATE**

**FOR RENT IN SPEARMAN:** 2 Bedroom Apartment, \$450.00 month, \$450.00 Deposit, one year lease, no pets, Available July 1. Call Larry O'Neal at 405-285-8782 for application. TFN(6/21/12)

**FOR SALE IN GRUVER:** 1119 Townsend St.; approx. 2800 sqft; 4BR, 2 Bath; full, finished basement; large utility room; large family room; CH/A, fireplace; 1 car attached garage; brick with steel siding and rain gutters; large, covered patio; corner lot; great neighborhood; asking \$125,000. Call 806-659-5957 or 580-461-0732 for an appointment. TFN(5/31/12)B

**HELP WANTED**

**HELP WANTED:** Fulltime office personnel needed. Accounting, computer and secretarial skills are required. Send resume to PO Box 95, Spearman, TX 79081. TFN(5/10/12)

**HELP WANTED:** Wolf Creek Feedyard, located in Perryton, TX, is accepting applications for Feed Truck Driver and general labor. CDL not required. Experience is not required. We will train the right applicant. We offer a competitive wage, benefits including health insurance and a retirement plan. Please call 435-5697 or come by the office to fill out an application. TFN(06/14/12)B

**HELP WANTED:** Drivers - Regional. Fleet Expansion. \$1500 Sign-On! Bonuses & Full Benefits. Apply Now: www.heyl.net 1-800-973-9161 Heyl Truck Lines. 3/7/20(12)B

**HELP WANTED:** Five Star Equipment is looking for an experienced diesel mechanic and an ATV specialist. Salary plus commission including benefits such as retirement, vacation, uniforms and sick leave. Apply in person at five star equipment 10397 Highway 15 West or call 806-659-3743. Come grow with us, we have a lot to offer! TFN(6/14/12)

**HELP WANTED:** Drivers - Regional. Fleet Expansion. \$1500 Sign-On! Bonuses & Full Benefits. Apply Now: www.heyl.net 1-800-973-9161 Heyl Truck Lines. 3/7/20(12)B

**HELP WANTED:** Five Star Equipment is looking for an experienced diesel mechanic and an ATV specialist. Salary plus commission including benefits such as retirement, vacation, uniforms and sick leave. Apply in person at five star equipment 10397 Highway 15 West or call 806-659-3743. Come grow with us, we have a lot to offer! TFN(6/14/12)

**Check our websites for other properties.**

**COUNTRY CLUB VIEW** - 624.9 ac +/-, great development potential, located between Dumas & the Dumas Municipal Golf Course on Hwy. 2203 just south of Hwy. 119, 1/2 mile sprinkler, 4 irrigation wells.

**DUMAS FARMS II** - 1280 acres deeded, 320 ac. for lease with purchase of property, nice 2 bdrm. mobile home w/concrete foundation, mud room and patio, 2 all-steel barns w/concrete floors, 7 irrigation wells, UG pipe, on-pvmt. and all weather road.

**VALLEY VIEW RANCH** - Lipscomb Co., TX - 177 ac. w/extraordinary 5404 sq. ft. +/- home overlooking the property w/ beautiful views of live creek, trees, wildlife (deer, quail, & turkey), covered horse training facilities, stables, excellent cattle working facilities & pens, commercial dog kennels, employee housing. We can divide (10 ac. w/main residence or 167 ac. +/- w/other improvements)!

**SHERMAN CO., TX** - 627 acres, choice land, four 1/4 mile sprinklers, fully developed, one 1/4 mile off Hwy. 287 on paved CR - CC, 3 phase electricity, new irrigation well drilled in 2010.

**1200 SOW FARROW TO FINNISH OPERATION** - Moore Co., TX - New 5 yr. lease with major hog company. Two separate units, can be divided - Please contact broker for info package and price.

www.scotlandcompany.com  
www.texasrcp.com  
Shawn Gillispie 806/922-5532  
Ben G. Scott, Broker  
1-800-933-9698 day/eve  
TFN(5-24-12)

**ALL STATE REALTY**

806 435-SOLD (7653)

**All State Realty**  
Sherrie E. Rima  
806-435-SOLD (7653)  
Craig Cooper  
806-736-8235

**We NEED listings!**  
Call us now  
to help YOU sell  
your home for top dollar!

**1016 S Barkley - Spearman:** 4,081 sq ft, 4BR, 2B, 3 lvg areas, 2CG attached, fireplace, Corner Lot! REDUCED AGAIN! \$165,000

**12510 Hwy 207 - Spearman:** 1997 MH, 1,178 sq ft with 3BR, 2B, PLUS @ 21 acres! Water Well & Septic! REDUCED to \$110,000.

**18 Golden Circle - Spearman:** 3,151 sq ft, 3BR, 2B, 2CG, Basement, ACH, Circle Drive, fireplace, GREAT NEIGHBORHOOD!

**1119 S Townsend - Spearman:** 2,650 total sf - 4 bed, 1 3/4 bath, basement, cov patio, and much more! \$119,500!

**Shirley Howard, Broker/Owner**  
806-886-6536, Cell  
806-648-4444, Work  
**Melinda McCullough, Realtor**  
(806) 733-5678

**We would LOVE to sell your HOUSE!**  
CALL US!

**HELP WANTED:** Applications are being taken for a part-time custodian at Hansford County Courthouse, with thirty hour week with retirement benefits. Applications are to be picked up from Donna Farris, County Court Administrator, and dropped off with her. Benny D. Wilson, Hansford County Judge (TFN/7/19/12)

**SERVICES**

**HOOCHY POOCHY PARLOR**  
Call us for all your pet's grooming and boarding needs. Call now for reservations! 806-273-2724.  
TFN(11/2/07)B

**TIRED OF GARAGE SALE PRICES?** Let me buy your good used furniture! 2nd Chance Antiques & Furniture, Don 806-648-1480; 806-202-1391 cell. TFN(1/20/11)B

**FOR SALE**

**FOR SALE:** 2 - 200 hp electric irrigation motors & panels. 2-1:1 gear heads & 1 - 855 Cummings natural gas irrigation motor. 806-270-0191. 4/7/26(12)B

**WANTED**

**LOOKING FOR** dependable work truck. If you have one for sale, call 806-584-4793. 1/7(19/12)B

**PUBLIC NOTICE**

**CORRECTIONS OFFICER**

The qualified applicant must have no prior felony convictions, possess a High School diploma or GED, be at least 18 years of age, and be able to work on a rotating schedule of 12 hour shifts. Hiring will be contingent upon passing a Physical and Psychological exam. Current Starting Salary is \$2,700/Month, with increases annually up to \$3,100/Month. Medical insurance is provided for employee. Family medical coverage is available for \$180/Month. Send resume to: Ochiltree County Sheriff's Office, 21 SE 6th St., Perryton TX 79070 or email txsherrif@ptsi.net 1/7(19/12)B

**LEGAL NOTICE**  
**NOTICE OF PUBLIC HEARING**  
**SPEARMAN PLANNING AND ZONING COMMISSION**  
Date: August 15, 2012  
Time: 9:00 a.m.  
Place: City Council Chambers, 30 S. W. Court, Spearman, Texas

**Blankenship Real Estate**  
659-3052 - 670-3774

**LET US HELP YOU SELL YOUR HOME.**

**30 Haney** Completely remodeled building on 70x140 ft. lot. Ideal for office or small business.

**Brick 3BR, 2B** Separate dining room, has cont. single car garage, fence, storage building.

**NEW LISTINGS WANTED!**  
Eulalia Blankenship - Sales  
Eschol Blankenship - Broker



**We NEED listings!**  
Call us now  
to help YOU sell  
your home for top dollar!

**1016 S Barkley - Spearman:** 4,081 sq ft, 4BR, 2B, 3 lvg areas, 2CG attached, fireplace, Corner Lot! REDUCED AGAIN! \$165,000

**12510 Hwy 207 - Spearman:** 1997 MH, 1,178 sq ft with 3BR, 2B, PLUS @ 21 acres! Water Well & Septic! REDUCED to \$110,000.

**18 Golden Circle - Spearman:** 3,151 sq ft, 3BR, 2B, 2CG, Basement, ACH, Circle Drive, fireplace, GREAT NEIGHBORHOOD!

**1119 S Townsend - Spearman:** 2,650 total sf - 4 bed, 1 3/4 bath, basement, cov patio, and much more! \$119,500!

**Shirley Howard, Broker/Owner**  
806-886-6536, Cell  
806-648-4444, Work  
**Melinda McCullough, Realtor**  
(806) 733-5678

**We would LOVE to sell your HOUSE!**  
CALL US!

bers, 30 S. W. Court, Spearman, Texas  
Purpose: To consider in public hearing the rezoning of the property listed below plus one-half of all bounding streets, alleys and public ways from a Single-Family Residential District to a Mobile Home Residential District:  
A) a 444' x 475' portion of OL 22, addressed as 501 S. Brandt; and  
B) Lots 1-8, OL 18, being addressed as the even side of the 200 block of South Snider.

If the Planning and Zoning Commission favorably considers these requests the City Council will hold a public hearing to consider the amendments as follows:  
Date: August 21, 2012  
Time: 7:00 a.m.  
Place: City Council Chambers, 30 S. W. Court, Spearman, Texas  
For additional information call 659-2524.  
/s/ Cheryl Gibson-Salgado, City Secretary  
2(7/19/12)B

**TO WHOM IT MAY CONCERN**  
Special Education records held by Perryton Special Education SSA is hereby giving notice that Special Education records of students with disabilities (including speech) who graduated or were dismissed from Special Education between June 2004 and May 2005 will be destroyed. These records involve students who attended the following schools: Perryton ISD, Spearman ISD, Follett ISD, Booker ISD, and Darrouzett ISD. The records will be destroyed August 21, 2012. If you wish to obtain these records please contact Perryton SSA 806-435-4412, 402 Amherst, Perryton TX. 2(7/26/12)B

**CHILD FIND**  
Your school district is looking for children ages 3-21 years who may be slow in developing communication skills, social interactions, walking skills and/or have major physical disabilities. We want to give your child the chance to get the extra help he or she needs if the disability interferes with his or her education. Please call your elementary campus to get more information, or call Perryton SSA, 435-4412. Our staff will answer your questions about early intervention. 2(7/26/12)B

**PUBLIC NOTICE**  
The Board of Trustees of the Spearman Independent School District is accepting sealed bid proposals until 1 p.m., July 30, 2012 for "OIL ATHLETIC/STUDENT INSURANCE AND CATASTROPHE COVERAGE" for the 2012-2013 school year. Any proposals received after that time and date will not be read and returned unopened and not considered. Please mail or deliver bid proposals to Spearman ISD, Larry Murphy, 403 E 11th Avenue, Spearman TX 79081. The District reserves the right to reject any bid and/or bids, to award the bid as it may appear to be advantageous to the District and to waive all formalities in bidding. 1(7/26/12)B

**Subscribe to the Reporter-Statesman.**  
Call 659-3434 for details.

**Farm Land For Sale**  
(surface only)  
**270 acres, 2 miles south & 4 miles east of Spearman.**  
**Selden Hale**  
806-372-5711  
4(7/5/12)

**MARTIN & ASSOCIATES REALTY**  
Serving Hansford County Since 1990  
**908 S. Dresser** 3 bed, 1 bath, CH/CA, carport, corner lot  
**612 S. Evans:** Don't miss out! 3 bed, 1 3/4 bath, CH/CA, big closed porch, large yard. Includes lot and barn on south side, 614 S. Evans  
Julie Martin - Broker - 659-2425

**We'd Like Your Listing!**  
**FOR QUALITY & SERVICE CALL US TODAY!**  
Equal Housing Opportunity

**hchd**  
Hansford County Hospital District  
Dr. Mark Gamble, D.O. Dr. Heathman, M.D.  
Dr. Heath Cotter, M.D. Dr. Michelle Davis, D.O.  
707 S. Roland • Spearman, TX (806) 659-2535  
**OPENINGS AT HANSFORD HOSPITAL**  
**HIM Dir./PI/Risk/HIPAA Coordinator:** Administering health information for the hospital. Performance Improvement by measuring and interpreting of quality assurance standards. Developing and promoting risk management procedures and implementing organizational systems to protect health information. Must be a Registered Nurse.  
**Home Health/Hospice RN:** Provide nursing care, assessment, planning, implementation, and evaluation of each assigned patient in home, hospital and manor settings. One year of nursing experience preferred. ACLS preferred, CPR required. Must be licensed in the State of Texas.  
Great working environment and staff, quality facility providing opportunities for professional growth. Great Benefit package. Apply at 707 S Roland, Spearman, TX or contact Jackie Nelson, HR 806-659-5841. Download application at hchd.net EEOE (7/26/12)

records please contact Perryton SSA 806-435-4412, 402 Amherst, Perryton TX. 2(7/26/12)B

**CHILD FIND**  
Your school district is looking for children ages 3-21 years who may be slow in developing communication skills, social interactions, walking skills and/or have major physical disabilities. We want to give your child the chance to get the extra help he or she needs if the disability interferes with his or her education. Please call your elementary campus to get more information, or call Perryton SSA, 435-4412. Our staff will answer your questions about early intervention. 2(7/26/12)B

**PUBLIC NOTICE**  
The Board of Trustees of the Spearman Independent School District is accepting sealed bid proposals until 1 p.m., July 30, 2012 for "OIL ATHLETIC/STUDENT INSURANCE AND CATASTROPHE COVERAGE" for the 2012-2013 school year. Any proposals received after that time and date will not be read and returned unopened and not considered. Please mail or deliver bid proposals to Spearman ISD, Larry Murphy, 403 E 11th Avenue, Spearman TX 79081. The District reserves the right to reject any bid and/or bids, to award the bid as it may appear to be advantageous to the District and to waive all formalities in bidding. 1(7/26/12)B

**PUBLIC NOTICE**  
The Board of Trustees of the Spearman Independent School District is accepting sealed bid proposals until 1 p.m., July 30, 2012 for "OIL ATHLETIC/STUDENT INSURANCE AND CATASTROPHE COVERAGE" for the 2012-2013 school year. Any proposals received after that time and date will not be read and returned unopened and not considered. Please mail or deliver bid proposals to Spearman ISD, Larry Murphy, 403 E 11th Avenue, Spearman TX 79081. The District reserves the right to reject any bid and/or bids, to award the bid as it may appear to be advantageous to the District and to waive all formalities in bidding. 1(7/26/12)B

See us for:  
**AUTO • HOME • CROP HAIL • FARM & RANCH • MULTIPERIL • LIVESTOCK**  
**INSURANCE**  
**BORT AGENCY, INC.**  
510 Main St. • Gruver, TX  
(806) 733-2456

**COME SEE US !!**  
Right inside the front door at Country Market in Spearman.  
10am--6pm  
Open every Saturday.  
Very likely the largest selection of pocket knives in the Panhandle.  
3(7/12/12)

**TEXAS STATEWIDE CLASSIFIED ADVERTISING NETWORK**  
**TexSCAN Week of July 22, 2012**  
**ADOPTION**  
ADOPT: Happily married couple will provide love, hugs, happiness & religion to newborn. Stay home mom education background. Large extended family. Suburban neighborhood, excellent schools. Expenses paid. Lori/John. 1-888-818-6992.  
**CABLE/INTERNET**  
BUNDLE AND SAVE on your cable, internet, phone and more. High speed internet starting at less than \$20/month. Call now! 1-800-315-8254  
**DRIVERS**  
ATTENTION CDL-A DRIVERS: Avenir is hiring in your area. Great Benefits & Home Time. 4 Months T/T Experience Required - Apply Now! 1-888-362-8608; www.AVERTITTCareers.com EOE  
**CDL-A DRIVERS:** Texas regional drivers needed. Take home more. Be home more. Dedicated freight and modern equipment. Dallas terminal coming soon. 1-800-392-6109. www.goroch.com  
**DRIVERS-OWNER OPERATORS** and fleet drivers TX or OK/CDL. New pay package, sign on bonus, return to Texas every 6-8 days. Call 1-800-765-3952.  
**DRIVERS - HIRING** Experience/Inexperience Tanker drivers! Great Benefits and Pay! New Fleet Volvo Tractors! 1 Year OTR Experience required. Tanker Training Available. Call today: 1-877-882-6537 www.OakleyTransport.com  
**DRIVERS-REFRIGERATED & Dry Van** freight with plenty of miles. Annual salary \$45K-\$60K. Flexible home time. CDL-A. 3 months current OTR experience. 1-800-414-9569. www.drivevnight.com  
**DRIVERS- SOUTHERN REGIONAL** and National runs earn 32¢-45¢ per mile. \$1200 sign-on bonus. Assigned equipment, pet policy, deBoer Transportation 1-800-825-8511; O/D's welcome! www.deboertrans.com  
**DRIVERS- STUDENTS** 18 days from start to finish. Earn your CDL-A. No out-of-pocket tuition cost. Step up to a new career with FFE. www.drivevfe.com. 1-855-356-7122  
**DRIVERS- TEAMS AND SOLOS** Dedicated runs, recession proof freight. Class CDL-A and one year experience. Lease purchase program with down payment assistance. Call 1-866-904-9230. DriveForGreatwide.com

**EXPERIENCED FLATBED DRIVERS:** Regional opportunities now open with plenty of freight and great pay. 1-800-277-0212 or primeinc.com  
**OWNER OPERATORS** Dedicated runs, Class CDL-A and 1 year experience. Great price fuel/medical program. Greatcare plan options for major medical, retirement, wellness and business services. 1-866-904-9230 driveforgreatwide.com  
**YOU GOT THE DRIVE,** we have the direction. OTR drivers, APU Equipped, Pre-Pass, EZ-pass, pets/passenger policy. Newer equipment. 100% NO touch. 1-800-528-7825  
**EDUCATION**  
**AIRLINE CAREERS** begin here. Become an aviation maintenance tech. FAA approved training. Financial aid if qualified, housing available, job placement assistance. Call Aviation Institute of Maintenance, 1-877-523-4531  
**ATTEND COLLEGE ONLINE** from home. Medical, Business, Criminal Justice, Hospitality. Job placement assistance. Computer available. Financial aid if qualified. SCHEV certified. Call 1-888-205-8920. www.CenturaOnline.com  
**HIGH SCHOOL PROFICIENCY** Diploma 4 week program. free brochure and full information. Call now! 1-866-562-3650, ext. 55. www.southesternHS.com  
**HELP WANTED**  
**LOOMIX FEED** supplements is seeking dealers. Motivated individuals with cattle knowledge and community ties. Contact Bethany at 1-800-870-0356 or becomeadealer@adm.com to find out if there is a dealership opportunity in your area.  
**MANAGER NEEDED** for 20-room Riata Inn Motel in Rankin, Texas. (1 hour from Midland) Must live on site, apartment provided. Computer skills required. Contact: Chirag 1-254-498-2985.  
**GO SHOPPING, GET PAID** Join today and become a service evaluator in your area! To learn more visit www.second-to-none.com/join  
**MISCELLANEOUS**  
**SAWMILLS FROM ONLY \$3997.00.** Make and save money with your own bandmill. Cut lumber any dimension. In stock ready to ship. Free information/DVD. www.NorwoodSawmills.com 1-800-578-1363 Ext. 300N

**REAL ESTATE**  
**\$106 MONTH BUYS** land for RV, MH or cabin. Gated entry, \$690 down, (\$6900/10.91%/7yr) 90 days same as cash. Guaranteed financing. 1-936-377-3235  
**10.24 ACRES,** Duval County. Heavy brush cover, deer, hogs, turkey. Private road, locked gate. (\$1817 down, \$357/month, 11%, 20 years.) Toll-free, 1-866-286-0199. www.westernexasland.com  
**81.56 ACRES,** south of Sonora. End of road, large valley, whitetail, aoudad, axis, hogs, turkey. \$995/acre, low down, 9.9%, 20 years or TX vet financing. 1-830-257-5564. www.billcountryranches.com  
**ABSOLUTELY THE BEST VIEW** Lake Medina/Bandera, 1/4 acre tract, central W/SE, RV, MH or house OK only \$830 down, \$235 month (12.91%/10yr), Guaranteed financing, more information call 1-830-460-8354  
**AFFORDABLE RESORT LIVING** on Lake Fork, RV and manufactured housing OK! Guaranteed financing with 10% down. Lots starting as low as \$6900. Call Josh. 1-903-878-7265  
**STEEL BUILDINGS**  
**STEEL BUILDINGS** perfect for homes & garages. Lowest prices, make offer and low monthly payment on remaining cancelled orders. 20x24, 25x30, 30x44, 35x60 Call 1-800-991-9251 ask for Nicole.  
**VACATION PROPERTY**  
**WEEKEND GETAWAY** available on Lake Fork, Lake Livingston or Lake Medina. Rooms fully furnished! Gated community with clubhouse, swimming pool and boat ramps. Call for more information: 1-903-878-7265, 1-936-377-3235 or 1-830-460-8354  
**Run Your Ad In TexSCAN!**  
**Statewide Ad** .....\$500  
301 Newspapers, 942,418 Circulation  
**North Region Only** .....\$230  
98 Newspapers, 263,811 Circulation  
**South Region Only** .....\$230  
101 Newspapers, 366,726 Circulation  
**West Region Only** .....\$230  
102 Newspapers, 311,881 Circulation  
To Order: Call this Newspaper direct, or call Texas Press Service at 1-800-749-4793 Today!

A	C	R	I	D	U	P	S	O	L	G	A		
C	R	A	N	E	S	A	C	L	A	I	R	D	
T	E	N	O	N	E	M	U	O	S	S	I	A	
S	W	I	F	T	E	R	B	A	N	T	A	M	
S	A	P	F	A	R	M	A	I	D				
S	A	P	L	I	R	E	R	O	L	L	O	N	
K	L	A	N	C	O	S	H	N	O	O	N	E	
I	L	L	I	A	A	T	S	E	A	M	U	S	
M	A	N	I	A	C	A	R	L	B	R	E	D	
P	H	E	L	P	S	G	O	O	S	S	T	Y	
N	O	D	E	H	A	S							
G	R	E	E	C	E	J	A	V	E	L	I	N	
O	R	I	Y	A	C	O	O	A	W	A	R	E	
N	I	N	E	S	O	W	L	N	E	C	K	S	
E	N	G	R		R	E	T		T	R	Y	S	T

2	5	1	7	9	3
6	9	4	1	5	8
7	8	3	2	6	4
1	7	6	5	4	2
5	4	8	3	1	9
3	2	9	6	8	7
4	1	5	9	3	6
9	6	7	8	2	1
8	3	2	4	7	5

**Alva Monument Co.**  
Formerly Liberal Monument & Memorial Company  
**New Location:**  
**N. Tucker Road**  
**Liberal, Kansas**  
North of the New Wal-mart  
**Serving Kansas, Oklahoma & Texas for 93 years**  
(316) 624-4211 toll free # 888-654-9318

**"Yes"**  
**Dollar General** values a positive, friendly attitude. In fact, our rapidly growing company has become the nation's largest small-format retail discount store by improving lives through service. We also serve our employees by offering competitive compensation and advancement potential. We have the following opportunities available at our store in Spearman, TX:  
**• Store Manager**  
**• Sales Associates**  
Applicants interested in Store Management positions, send resume to cewicker@dollargeneral.com. All others may apply online or download a Sales Associate application at www.dollargeneral.com/careers.  
**DOLLAR GENERAL** **DCcareers**  
Serving others is our mission. Make it yours.

# Championship Celebration

Amarillo Venom LSFL Champions! Last Saturday Amarillo Venom traveled to San Angelo to take on the Rio Grande Magic for the LSFL Championship. Venom fell to Rio Grande two times during the regular season; however they were determined to come out with a win in San Angelo. The Venom conquered the Rio Grande Magic with a 62-40 win and achieved the title of LSFL Champions.

All of the Venom players, coaches, and staff are ecstatic about the win. This season could not have turned out better for the Venom. The last time the Venom won a championship was in 2004 with now Head Coach Julian Reese at Quarterback. Coach Reese won the Championship as a player

his first year to play and has now won a championship as Coach during his first Coaching year for the Venom.

Raymond Johnson was named MVP of the Championship game. Johnson played an outstanding game including a touchdown pass which he caught while tumbling over the end zone wall. Coach Julian Reese could not be happier with the performance of these athletes and is honored to have them as a part of the Amarillo Venom.

Amarillo Venom is happy to announce a Championship Celebration! The celebration will take place at Wonderland Park Thursday July 26th 7:00 p.m. to 10:00 p.m.

The Celebration will include the LSFL 2012 Championship Trophy,

Venom players and staff. All fans will be welcome to take pictures with the trophy, staff and players from 7-8 p.m.

Venom fans need to watch facebook and their e-mails for the special \$2 off coupon good for this celebration only.

Be sure to like Amarillo Venom Football Page on Facebook for event announcements, giveaways, game night promotions, and more for the 2013 Venom football season!

For further information regarding the Amarillo Venom please contact our office at 806-350-7277 or visit the official website of the Amarillo Venom at [www.govenom.com](http://www.govenom.com).

The AMARILLO VENOM is a proud member of the Lone Star Football League.



Nekisha Whitefield is pictured above with several members of the Amarillo Venom football team. Top Left: Darius Battles and Ricky Williams; Top Center: Donta Bright and Nekisha; Top Right: Nekisha on the Amarillo Venom bus; Bottom: Nekisha with Darius Battles. Nekisha started going to the games, met some of the players, and kept going back. She is a great Venom fan and wishes to congratulate them on their win. Fangs Up!!

by Dorothy Hudson

## Out at the Lake

Jim Derington  
Palo Duro River Authority  
P.O. Box 99  
Spearman, TX 79081  
806-882-4401  
[pdra@dishmail.net](mailto:pdra@dishmail.net)



This is the long-nosed snake.

Lake level-July 23, 2012--27.34 feet (-0.32)

The 100 degree days have been sucking water out of the lake at almost .05 foot each day. The last low point I could find in the column headings was 15.03 in April of 2010. Be careful when driving where the water has receded. Drivers are getting stuck because the dry areas are deceptive.

Sunday the Lutheran Church from Oslo had the Shelter for church and the noon meal.

In the column Jim Derington wrote last week, he speculated that we had a pair of nesting eagles. Ramon also had seen an eagle flying off with a fish that he thought was being taken to a nest. This exciting news sent me to a bird book for information. The usual incubation period for eagle eggs is 35 days. After hatching, it is usually 72--75 days until they fledge. If two chicks hatch, the weaker one is often killed by the stronger or starves.

Jim also wrote of seeing a long-nosed snake that he was unfamiliar with. Since Jim and I have been writing this column, that is the third

snake we have seen in Hansford County that I did not know. Jim has photographed the hog-nosed snake near the office.

My grandkids found a ring-necked snake on the Harris ranch.

Jim found the harmless

long-nosed snake near the washed-out bridge on the creek portion of the lake. This egg-laying snake is nocturnal and more often seen on highways at night. I liked the descriptive term of saddles rather than bands for the black blotches on these snakes. Copperheads and coral snakes have bands.

For you that are at the Lake enough to keep up with some of the deer, watch for a whitetail doe that is grayish instead of the usual reddish color this time of year. Her tail instead of being white is reddish. She has a fawn with her. I asked Jim if she could be the white fawn grown up. He replied the white fawn was a mule deer.

Dodder vines at the lake can be found by driving to the east end of the dam and taking the road down on the south side. There are at least 4 separate vines in that area. I am curious of how they blossom and set seed.

### WHEN DOES YOUR SUBSCRIPTION EXPIRE?

SCR1  
**07/12 EXPIRES**  
JOHN Q. PUBLIC  
PO BOX 123  
SPEARMAN TX 79081

Expiration dates are printed on the top of all mailing labels. Our readers can help keep the cost of subscriptions down by mailing in renewals in the appropriate month.

Thank you, Catherine Smith

THE HANSFORD COUNTY REPORTER-STATESMAN  
213 Main Street • Spearman, TX 79081

#### Annual Subscription Rates

In Hansford County - \$30

Out of County - \$40

E-Subscription - \$35 (sent through e-mail)

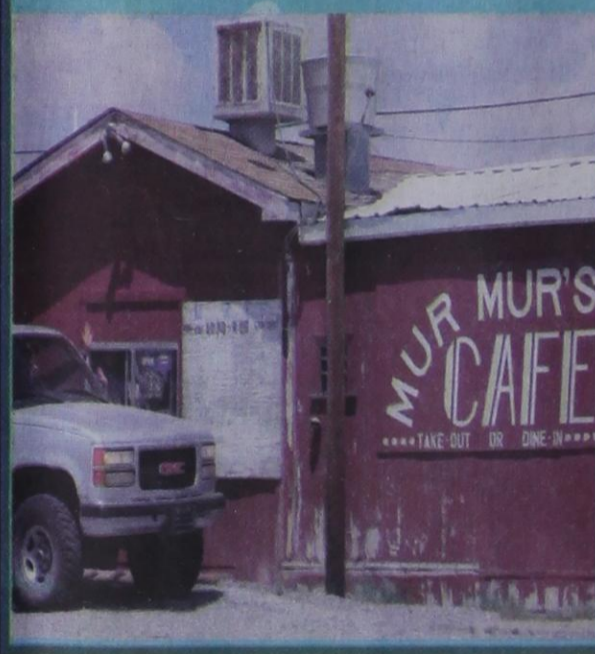


### When It's Hot, The Hot Go Swimming!

When the temperature rises to 100+, the Spearman and Gruver Swimming Pools are the place to be.

Photos by Jill Noel

# SUMMER VACATION!



We will close on Thursday, July 25th for Summer Vacation. We will re-open on Wednesday, August 1st for regular business.

### MurMur's Cafe

26 Archer St  
Spearman TX  
806-659-3500

## Tong's Chinese Restaurant

(806) 644-2838  
22 Archer Street • Spearman

### Daily Buffet

Lunch - 11 a.m.-2:30 p.m. • Dinner - 5:30-9 p.m.  
Open Wednesday-Monday - Closed Tuesday

### Sushi on Sunday Buffet

## COSTNER CONTRACTING

Jerry Costner

Carpenter/Concrete/Windows/Doors/Painting

217 S Endicott  
Spearman TX 79081  
806-330-0492  
[costnercrew3@yahoo.com](mailto:costnercrew3@yahoo.com)  
Insured

### Ask about our Summer Paint Specials