

THURSDAY
DECEMBER 18, 2003

VOL. 96 • ISSUE 51

THE HANSFORD COUNTY

REPORTER STATESMAN

75¢

COMP
HANSFORD COUNTY LIBRARY
0122 MAIN ST
SPEARMAN TX 79081-2064

213 MAIN ST • SPEARMAN, TX 79081

• NEWS • PICTURES • SPORTS •

PROUDLY SERVING HANSFORD COUNTY SINCE 1907

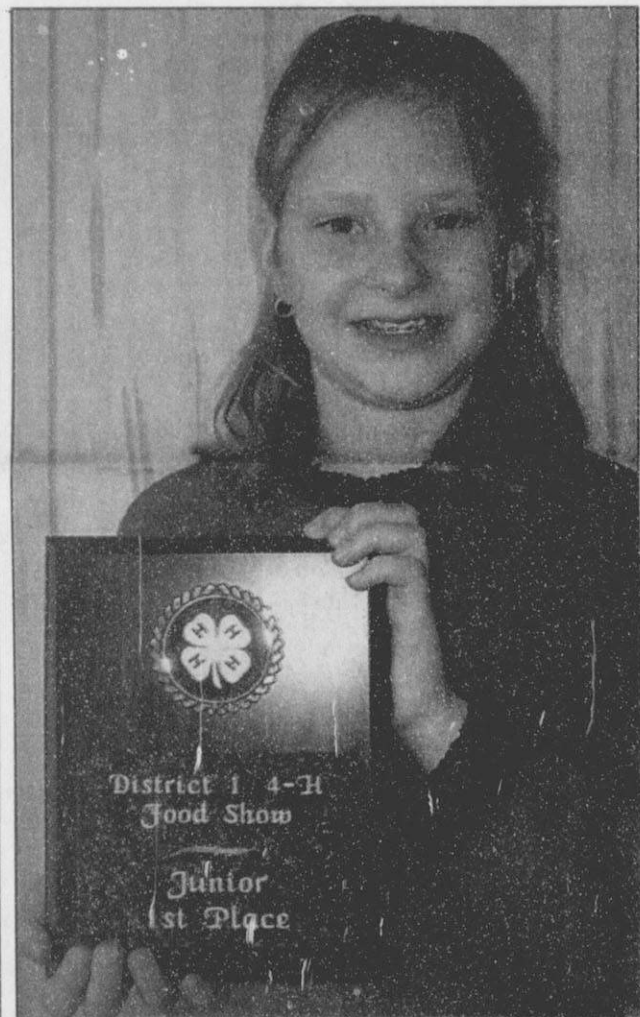


City Manager Robert Patrick (right) presents a clock to Harry Stumpf on behalf of Mayor Steve Benton and the City Council for his volunteer work. Harry has worked as a crossing guard at Gus Birdwell Elementary for several years as well as working with other volunteer organizations including the Boy Scouts, American Legion and the Lions Club, to name a few.



Santa's little helper Rayel Anerson places a gift for someone special under the Gruver Elementary Christmas tree.

Sowder Wins At District 4-H Food Show



Anna Sowder

Anna Sowder garnered first place in the District 4-H Food Show in Amarillo December 6. The ten-year old's Fresh Cranberry Salsa wowed the judges in the junior Nutritious Snack category.

Anna scored a perfect score on her knowledge, leadership, community service, and communications skills which were the criteria for the win.

FRESH CRANBERRY SALSA

- 1 green onion, cut into quarters
- 1 jalapeno pepper, seeded and cut into quarters
- 1 package (12 Oz) fresh or frozen cranberries
- 3/4 cup sugar
- 1/4 tsp. ground cumin
- 1 Tbsp. chopped fresh cilantro
- 2 tsp. lime juice
- Tortilla chips

Place onion and jalapeno in food processor. Cover and process until chopped. Add all remaining ingredients, plus 8-10 times or until cranberries are coarsely chopped, stopping to stir, once or twice. Store in refrigerator overnight to allow flavors to blend. Serve with tortilla chips.

Yield: 3 cups.

NOTICE

The Hansford County Reporter-Statesman office will be CLOSED December 22nd-26th. We will be open on Monday and Tuesday, December 29th and 30th, and will be closed again December 31st-January 2nd. We will resume regular business hours on Monday, January 5, 2004. For more information, please contact Catherine Smith at 659-3434 or CathyRSmit@aol.com.

Morris Receives American FFA Degree



Brittany Morris (second from left) is pictured above with Weston Born (left) and her parents, Nancy and Joe Morris at the National FFA Convention where she was presented with the American FFA Degree.

Brittany Morris, a member of the Gruver FFA Chapter, recently received the American FFA Degree. Earning the degree means Brittany is one of a select group of individuals to be recognized for years of academic and professional excellence. The honor was presented on November 1, 2003 at the 76th National FFA Convention, held in Louisville, KY.

Brittany, the daughter of Nancy and Joe Morris, is only the third Gruver student to receive the American Degree. previous recipients were Charlotte Slough and Scott Stedje.

The American FFA Degree recognizes demonstrated leadership ability and outstanding achievements in agricultural business, production, processing or service programs. To be eligible, members must have earned and productively invested \$7,500 through a supervised agricultural experience (SAE) program in which they start, own, or hold a professional position in an existing agricultural enterprise. Recipients must

also make it their mission to demonstrate outstanding leadership abilities and community involvement.

Each award recipient receives a gold American FFA Degree key, certificate and a wallet ID card. Of 464,267 FFA members nationwide, Brittany was one of only 2,789 to be recognized in 2003. The degree recognition program is sponsored by BASF, Case IH, The Farm Credit System and Pioneer Hi-Bred International, Inc. as a special project of the National FFA Foundation.

FFA is a national organization of 464,267 members preparing for leadership and careers in the science, business and technology of agriculture with 7,194 local chapters in all 50 states, Puerto Rico and the Virgin Islands. FFA strives to make a positive difference in the lives of students by developing their potential for premier leadership, personal growth and career success through agricultural education. Visit www.ffa.org for more information.

Thoreson Crowned Rodeo Queen



Tessa Dawn Thoreson

Tessa Dawn Thoreson, 16, is the newly-crowned 2003-2004 Colfax County Fair and Rodeo Queen and the 2003-2004 Maverick Club Rodeo Queen.

Thoreson's wins have garnered her a \$500 scholarship and the opportunity to compete at the New Mexico State Fair competition in September 2004 for the title of Miss Rodeo New Mexico, a preliminary of the Miss Rodeo America contest.

Thoreson is the daughter of Brian and Suzanne (Hart) Frazier of Cimarron, New Mexico and the granddaughter of Jon and Marilyn Hart of Gruver.



Spearman High School Junior Jessica Freeman, competed in the 2004 Miss Texas Teen USA Pageant, Sunday, November 30, 2003. Freeman vied with forty-five contestants from throughout Texas to represent the state at the Miss Teen USA pageant.

Live, Laugh & Love

by Catherine R. Smith
CathyRSmit@aol.com



My dear friend Deborah Jacops sent me the following prayer. I would like to share it with you this week. I pray that we all remember the true meaning and inspiration of Christmas - Christ!
Marry Christmas, and God bless you!

Dear Lord,

I thank You for this day.

I'm blessed because You are a forgiving God and an understanding God. You have done so much for me and You keep on blessing me. Forgive me this day for everything I have done, said or thought that was not pleasing to you.

Help me to start this day with a new attitude and plenty of gratitude. Let me make the best of each and every day and to clear my mind so that I can hear from You.

Please broaden my mind that I may accept all things.

Let me not whine and whimper over things I have no control over.

When this world closes in on me, let me remember Jesus' example - to slip away and find a quiet place to pray.

Continue to use me to do Your will.

Continue to bless me that I may be a blessing to others.

Keep me strong that I may help the weak. Keep me uplifted that I may have words of encouragement for others.

I pray for those that are lost and can't find their way. I pray for those that are misjudged and misunderstood. I pray for those who don't know You intimately. I pray for those that don't believe.

I pray for ALL my sisters and brothers. For each and every family member in their households. I pray for peace, love and joy in their homes.

May God bless and keep you;
May He make his face to shine upon you,
and be gracious to you; May the Lord lift up
is countenance upon you, and give you peace.

Numbers 6:24-26

Catherine :)

December What's Coming Up at Hansford Manor

December 18
9:15 a.m. - Kindergarten Kids Christmas Party
1:30 p.m. - Bingo
4 p.m. - 1:1

December 19
9 a.m. - Lost Hillbillies of Hansford Manor on the Radio
10 a.m. - Newscurrents
2:30 p.m. - Christmas Party for Residents

December 20
Visit with Friends & Family
Play Table Games
2:30 p.m. - Movie of the Week

December 21
3 p.m. - Church Service - First Assembly of God

December 22
10 a.m. - Exercise
2:30 p.m. - Manicures
6:30 p.m. - Bingo - Methodist Church

December 23
10 a.m. - Musercise
2:30 p.m. - Dominoes & Cards

December 24
10 a.m. - Donuts & Bible Study
2:30 p.m. - Movie - Mary & Joseph

December 25
Christmas - Ho, Ho, Ho!

December 26
10 a.m. - Newscurrents
2:30 p.m. - Show 'n Tell

December 27
Visit with Friends & Family
Play Table Games
2:30 p.m. - Movie of the Week

December 28
3 p.m. - Church Service - Spearman First Baptist Church

December 29
10 a.m. - Exercise
2:30 p.m. - Resident Council
6:30 p.m. - Bingo - Methodist Church

December 30
10 a.m. - Musercise
2:30 p.m. - Crazy Bunko

December 31
New Year's Eve
10 a.m. - Donuts & Bible Study
2:30 p.m. - Champagne & Resolutions

January 1
New Year's Day



Give the gift of Christmas Beauty

Poinsettias

now available in several colors at

D&C GREENHOUSE, INC.

Starting at just \$5⁰⁰

Ready now for pickup or delivery
659-5171

Open 9 a.m.-5 p.m., Mon.-Fri.

The Hansford County Reporter-Statesman

213 Main Street • Spearman, TX 79081
Phone - (806) 659-3434 • Fax - (806) 659-3368
CathyRSmit@aol.com
Mon.-Thurs. (Closed Fridays) 9 a.m.-12 p.m. & 1-5 p.m.

Gary Smith - Publisher • Catherine Smith - Editor
Harletta Carthel - Assist. Editor
Contributing Writers: Helen Fisher, Dorothy Hudson • Contrib. Photographer: Charlie Johnson

Subscription Rates
In Hansford Co. - \$25.00 • Out of County - \$30.00

The Hansford County Reporter-Statesman (USPS 529660) is published weekly in Spearman, TX. Periodical postage paid in Spearman, TX. POSTMASTER: Send address changes to The Hansford County Reporter-Statesman, 213 Main Street, Spearman, TX 79081.

Publication Policy
The deadline to submit news and advertising to The Hansford County Reporter-Statesman is Monday at 5:00 p.m. Items submitted after the deadline will be published at a later date, as time and space permit. Publication of all items is at the discretion of the editor.

Advertising
Open Display rates are \$4.50 per column inch. Classified Ads are \$5 for the first 25 words and 10c per word for each additional word. (Additional charge for boxed classifieds.) There is a \$1 charge per week if billed.

Member of
Texas Press Association and Panhandle Press Association

Classic Carpet Care

Carpet, Upholstery & Air Duct Cleaning

1111 S. Bernice Spearman, TX
P.O. Box 926 Lance Swan
(806) 659-5594

CORNER SERVICE STATION

We pay attention to Details!

Time to winterize your vehicle!
Oil & Filter Changes
Minor Repairs
Vehicle Details (by appointment)
Free pick up & delivery

101 Main Street • Spearman, Texas
(806) 659-2722 • Joe & Nita Bynum

HANSFORD HAPPENINGS

Red Hot Receipt Collectors Collecting Lowe's Receipts
The Red Hot Receipt Collectors of Spearman Jr. High are excited to announce that they are once again saving Lowe's register tapes. These register tapes will be turned into valuable educational equipment. You can help by saving all of your Lowe's register tapes and giving them to any SJH student. There are also boxes placed at the following businesses for you to place register tapes in: First State Bank, First National Bank, Dreamer's, Simple Simon's, and Celebrate. If you would like a box set up at your business or need someone to come and collect register tapes from you, please contact Mardell Strawn at SJH (659-2563). Thanks for your continued support.

"A Feast with Friends" Cookbook
"A Feast with Friends" cookbook, compiled by the Harrington Cancer Center Circle of Friends, is being sold by Jenna McElroy. Profits from the book will go to the Circle of Friends to assist cancer patients and their families in their time of need. The cost of the ring-bound recipe collection is \$15. Call Jenna at 659-2365 or 659-2617 for more information, or to place an order.

Register Tapes for Education - Birdwell Elementary
The Gus Birdwell Elementary PTO is proud to announce that they are saving register tapes for educational equipment. Register tapes can be collected from any Lowe's store and redeemed toward valuable educational equipment such as computers, science, band or sports equipment and more. The program kicked off on September 1, 2003 and register tapes can be collected until March 31, 2004. The students and faculty of Gus Birdwell Elementary would appreciate your support by saving your register tapes from Lowe's in order to help them receive their needed equipment. Register tapes may be taken to the Elementary Office.

Register Tapes for Education - Pringle-Morse CISD
Pringle-Morse CISD is proud to announce that they are saving register tapes for educational equipment. Register tapes can be collected from any Lowe's store and redeemed toward valuable educational equipment such as computers, science, band or sports equipment and more. The program kicked off on September 1, 2003 and register tapes can be collected until March 31, 2004. The students and faculty of Pringle-Morse CISD would appreciate your support by saving your register tapes from Lowe's in order to help them receive their needed equipment. Register tapes may be given to a Pringle-Morse CISD student or mailed to: Pringle-Morse CISD, PO Box 109, Morse, TX 79062.

Senior Citizen's Book Exchange
For those who are 55 or older and are tired of reading the same old book, come to the Golden Spread Center and exchange your book for something more exciting. Don't have a book to exchange? That's okay, come and get one any way. We have mysteries, biographies, romance, Christian books, you name it, we've got it! 9 a.m. - 4 p.m., Golden Spread Center, The O'Loughlin Center, 502 Brandt, 659-3030 Donations appreciated.

Medical Fund Established for Roney Clark
A fund has been established at First State Bank for Roney and Veann Clark to help with medical expenses.

Spearman Boy Scouts Meet
The Spearman Boy Scout Troop meets every Tuesday night from 7:30-8:30 p.m. in the Scout Hall, located at 5th and Hazelwood. Doug Cummings is the Scout Master. All boys age 11-18 are invited to attend and find out more about scouting. All Scouts are reminded to attend every meeting. For more information, call 659-3942 or 659-2378. Don't Forget - Boy Scouts are currently delivering and selling Trails End Popcorn. Buy yours today!

Post Office Open Saturdays for Holidays
The Spearman Post Office will be open on Saturday, December 20th from 10 a.m.-1 p.m. to help with holiday mailing.

Medical Fund Established for Wanda Townsend
The First Baptist Church of Spearman has started a Medical Assistance Fund at the First State Bank in Spearman for the family of Wanda Townsend. If you could be of financial help to this family at this critical time, any assistance would be greatly appreciated. You may make your contribution at the First State Bank in Spearman toward the Wanda Townsend Medical Assistance Fund.

Panhandle Community Services Utility Classes Set
Funding is now available from Panhandle Community Services for those who need help with their utility bills. Utility classes will be held for co-pay clients the second Friday of every month at the Expo Center in Perryton from 10-10:30 a.m. These classes are mandatory for clients who wish to continue receiving help in paying utility bills. For more information, call PCS at (806) 435-2478.

WHY WISH FOR SAVINGS?

Get them here

Christmas 2003

Sale Prices Good From December 11-24

Asst. Men's Western Shirts - \$24 ⁹⁵	Men's L/S Pullover Knit Shirts Polo, Tommy, Nautica, Pepe	Men's L/S Sport Shirts Polo, Tommy, Nautica, Falcon Bay
Men's Levis 550, 560 - \$29 ⁹⁵	20% OFF	
Asst. of Men's Wind Suits \$39 ⁹⁵	Boys Knit Shirts - Tommy, Pepe	Boys Twenty X Shirts
SPECIAL: Fossil Wallet & Money Clip in a Tin (Reg. Price - \$28 ⁹⁵) \$24 ⁹⁵	Boys 20 X Jeans - Carpenter	Boys 20 X Jeans - Relaxed
SPECIAL: Men's Lined Lamb-Skin Gloves	Boys Levis - Slim & Regular	Boys Riata's
Men's Nunn Bush Shoes	Boys Levis Dockers	Boys Fashion Jeans - Pepe
Men's Cinch Jeans	Men's Brighton Belts	20% OFF
Men's 20X Shirts	Nautica Sleep Wear Robes, Pajama Pants, Shirts, Shorts, Sleepshirts	Boys Cinch Jeans - \$24 ⁹⁵
20% OFF		Come See Our Carhart Insulated Line: Coats, Coveralls, Overall, Insulated Hoods & Caps
Dr Martens Shoes • Red Wing Boots • Adidas Shoes Arrow Shirts • Enro Shirts • Tony Lama Boots Wrangler Jeans • Stetson Hats • Riata's Dockers • Fossil Belts • Fossil Billfolds		

Cates Men & Boys
221 Main Street
Spearman, Texas
(806) 659-3426
Mon.-Sat., 9 a.m.-6 p.m.

Christmas Countdown Sale

Our Deepest Sympathy

ALTA ALEEN O'NEAL LOWDER



SPEARMAN - Alta Aleen O'Neal Lowder, 87, passed away early Thursday morning, December 11, 2003 in Hansford County Hospital.

Services were at 2 p.m. Saturday, December 13, 2003 in First United Methodist Church with the Rev. Ken Cole, pastor, officiating. Burial was in Goodwell Cemetery in Goodwell, OK, by Henson-Novak Funeral Directors of Guymon, OK.

The daughter of May (Traylor) and T.J. O'Neal, she was born June 6, 1916, in Bertrand, Cimarron County, OK. She graduated from Felt High School in 1933 and from Panhandle Agricultural and Mechanical College in Goodwell in 1939. While in college, she was active in athletics and the college choir and drama departments.

She was united in marriage to Orville Lowder on February 24, 1939, in Boise City, OK. A longtime educator, Mrs. Lowder taught elementary school for more than 44 years, teaching in Colorado and the panhandles of Oklahoma and Texas. She taught for several years in Dumas following World War II. With an obvious school-teacher shortage, Mrs. Lowder taught second grade with 44 morning students and 44 afternoon students. She was a member of Delta Kappa Gamma and Texas State Teachers Association. She was also a member of the 20th Century Study Club and First United Methodist Church of Spearman.

She was preceded in death by her husband on October 18, 1943; five sisters, Louie Fentress O'Neal, Erma Ikard, Jeffie May Hoy, Arilla Ingham and Imeta Dent; and three brothers, Francis O'Neal, Curtis O'Neal and Kendall O'Neal.

Survivors include two daughters, Marilynn Hart and husband, Jon, of Gruver and Sally Thomas and husband, Toby, of Spearman; a son, Byron Kendall Lowder of Hawley; six grandchildren, Quentin Hart and wife, Loree, of Cheyenne, WY, Suzanne Frazier and husband, Brian, of Cimarron, NM, Joni Hart of Dallas, Jason Sutterfield of College Station, and Jeremy Sutterfield and wife, Candice and Gretchen Yanez and husband, Jesus, all of San Antonio; and six great-grandchildren.

The family suggests memorials be to Hansford Hospice, Spearman United Methodist Church or Imeta Dent Scholarship at OPSU and may be sent to the funeral home, P.O. Box 1306, Guymon, OK 73942.

MYRA FERN DICKSON BERNER

SPEARMAN - Myra Fern Dickson Berner, 74, died Saturday, December 13, 2003.

Funeral services will be held Thursday, December 18, 2003 at 2 p.m. in the Union Church in Spearman. Interment will be in Holt Cemetery under the direction of Boxwell Brothers Funeral Home of Spearman. The Rev. Fred Huff of the Balko, OK Apostolic Faith Church will officiate. The Rev. Roland Haney of the Apostolic Faith Church of Spearman will assist. The family will receive guests at the Holt Community School following graveside services.

Mrs. Berner was born on October 6, 1929 in Magnolia, AR to Ermah Weldon and Cladyd Ward Dickson. She was raised in south-western Arkansas. She was a graduate of the Apostolic Faith Bible college. She married Wallace Berner on April 15, 1955 in Houston. She lived in Pasadena, TX for five years before moving to Spearman in 1957, where her family had a farming operation. In 1988, she and her husband retired to Mills, NM.

Mrs. Berner was the office manager for Jarvis Law Office for 14 years. In New Mexico, she worked for the Harding County Soil and Water Conservation District.

She was a member of the Mosquero Community Church in Mosquero, NM where she served as pianist and coordinated weekly Sunday church dinners. She was also a member of the Gladiola Flower Club and Holt Community Extension Club.

Mrs. Berner was preceded in death by her parents.

Survivors include her husband, Wallace Dean Berner of the home; two daughters and their husbands, Cindy and Ron Smith of Amarillo and Denise and David Kellum of Plainview; a son, Edwin Dean Berner of Plainview; a brother, Weldon Ward Dickson (Sonny) and wife, Peggy, of DeSoto; ten grandchildren, Desley Kellum and wife, Jennifer, of Tulsa, OK, Derek, Dean, D'Anna and D'Nae Kellum, all of Plainview, Keisha Dawson and husband, Brenning, of Amarillo, and Shea Smith and Brynn Smith of Amarillo.

The family suggests memorials be to the Mosquero Community Church, Box 126, Mosquero, NM 87733.

HENRIETTA ANDREWS

SPEARMAN - Henrietta Andrews, 94, died Wednesday, December 17, 2003 in Spearman.

Funeral services will be held at 2 p.m. on Saturday, December 20, 2003 at the Gruver United Methodist Church with the Rev. Gary Gumfory and Rev. George Price officiating. Interment will be at Gruver Cemetery.

Mrs. Andrews was a homemaker and a member of the Lutheran Church of Guymon, OK.

She married Loyd Andrews on February 27, 1931.

She preceded in death by her husband, an infant son, her parents, Henry and Etta (Meyers) Behne, five brothers, two ste-daughters, one daughter-in-law, a son-in-law, a grandson and a great-grandson.

Survivors include a son, Marvin L. Andrews of Guymon, OK; two daughters, Louetta McClellan of Gruver and Charlene and Butch Finley of Amarillo; ten grandchildren, Randy and Joanne Andrews of Guymon, Kenny and Nancy Andrews of Elkhart, KS, Karen and Richey Thompson of Spearman, Kathy Millett of Woodward, OK, Bobby Amason of Amarillo, Donna and Macky Medley of Stillwater, MN, Verlin and Audrey Behne of Spearman, Nancy and Jerry Tucker of Amarillo, Phyllis and Mark Haught of Saginaw, TX and Jimmy Walters of Missouri; 21 great-grandchildren; and 12 great-great-grandchildren.

The family suggests memorials be to Hansford Hospice, 707 S. Hospice, Spearman, TX 79081.

Happy Birthday!

Editor's Note: This Happy Birthday list is run as a public service by the Hansford County Reporter-Statesman. We apologize if any names are misspelled. If you know of a name that needs to be changed, added or deleted, please call 659-3434.

December 18

Birthday - Jimmy Faren, Ronnie Schaefer, Cassie Butt, Malory Martin, Ben Gruver, Monalisa Garcia, Juanita Vera

Anniversary - Tom & Rita Reed, Mr. & Mrs. Dwayne Hart, Mr. & Mrs. Dave Karlin

December 19

Birthday - Steve Bevell, Jim Norton, Steve Watkins, Fausto Ruiz, Betty Vernon, Georgia Gaither, Nan Nicholson, Irene Reed, Sara Dossett, Pat Dear, Gwen McLain, Ford McIntyre, Zachary Brelans, Billy Jo Miesner, Delphine Etling, Cindy Walton

Anniversary - Frank & Carol Lemons, Earl & June Spencer, Reagan & Beckee Baker, Mr. & Mrs. Ray Ethredge, Mr. & Mrs. True Leatherman, Mr. & Mrs. Roy Diaz, Kyle & Jennifer Nollner

December 20

Birthday - Harletta Cathel, Doug Garrett, Esmeralda Renteria, Bill Turner, Peggy Papay, Charles West, Quentin Hayes, Brittini Beedy Sanders, Alicia Nikolaz, Lexie Woodward, Bill Whitford, Mary Webster, Quentin Harper, Paul Henry Renteria, Brock Schroeder, Megan Evans

Anniversary - Mr. & Mrs. William Porter, Sam & Brenda Pierson, Gary and Cathy Smith, Mr. & Mrs. Steve Myatt, Mr. & Mrs. Dale Jones

December 21

Birthday - Cammie Steele, Anita Ruiz, Linda Garnett, Dallasene Reynolds, Eddy Rojas, Thomas Rodriguez, Johnny Kenny, Terry Womble, Chunky Blackburn, Betty Clifford, Nick Dettmann, Clyde Conley, Michael James Renteria, Robert Dahl, Cheryl Evans, Elaine Bain

Anniversary - Mr. & Mrs. Wayne Cummings, Doris & Danny Hendricks, Mr. & Mrs. Bob Tolleson, Mr. & Mrs. Kenneth Slough, Mr. & Mrs. Steve Duncan, Mr. & Mrs. Roy Kauffman, Toby & Sally Thomas

December 22

Birthday - Ted Evans,

Richie Fletcher, Molly Blackman, Danna Kay Willis, Tammy Jackson, Andy Watley, Mary Moore, Steve Womble, Temp Shepard, Deanna Kenney, Diane DeLaCruz, Shirley Molden, Solomon Tarenjo, Becky Beedy, Frank Dominquez

Anniversary - R.L. & Kay McFarlin, Mr. & Mrs. Lawrence Tindell

December 23

Birthday - Odiss Blount, Joel Lee Lackey, Joe Potts, Pat Morris, Sandy Brewer, Judith Jackson, Lloyd McWhirter, Nell Burke, Judy Tindell, Linda Maywell, Jimmy Duncan, Patti Evans, James Knoll, Rey Cook, Lavon Reid

Anniversary - Mr. & Mrs. Marty Rasor, Mr. & Mrs. Byron Paddy, Mr. & Mrs. Loren Dahl, Mr. & Mrs. Mack Beville

December 24

Birthday - Glendon Etling, Kay Hobbs, Benny Wilson, Ernie Vanderberg, Howard Heffey, Kenny Bratton, Melissa Thompson, Jocelyn Edwards, Sandee Smith, Mark Eisefeld, Gabby Bravo, Chris Bravo

Anniversary - Oscar & Rhonda Valdez, Mr. & Mrs. Charles Kruse, Mr. & Mrs. Eugene Sadler, Mr. & Mrs. Gary Davis

December 25

Birthday - Joni Hart, Ellen Norton, Melanie Hutton, Bill Miller, Noreen Sutton, Jeff Graves, Christy Freeman, John Cass, Gil Harnish, Jimmy Vanlandingham, Sharon Hamilton, Dean Womble

Anniversary - Mr. & Mrs. Red Byrd, Mr. & Mrs. Bart Baker, Mr. & Mrs. Wayne Shook

December 26

Birthday - Jennifer Dahl, Glenda Harvey, Rodney Schroder, Woody Fowler, Chris Perez

Anniversary - Mr. & Mrs. L.T. Wright, Mr. & Mrs. Jerry Womble, Eugene & Judy Yarbrough, Cari & Brandon Baker

December 27

Birthday - Lance Sparks, Sue Close, Jesse Renteria Sr., Shane Abel, Lynn Vernon, Ruth Skinner, Edna Grimmer, Judy McCloy, Julie Deakin, Nicole Burgess, Chad Knowlton

Anniversary - Mr. & Mrs. Jerry Younger, Mr. & Mrs. Ralph Blodgett, Mr. & Mrs. Gene Reynolds, Mr. & Mrs. Todd Parker

MONUMENTS

Boxwell Brothers Funeral Home
519 Evans • Spearman
659-3802

Dear friends,
When you buy a monument from us we make sure it is exactly what you want at a price you can afford. If it is not right, we will make it right. And you will not have to search the countryside to find us. We are here when you have a need.

Sincerely,
Bob Boxwell

Christmas Decorating Ideas

Poinsettias,
Christmas Arrangements,
Etc.



See Us Today!
All Occasion Flowers
202 N. Bernice (across from the Post Office)
659-5180

EMPRIZONE® FOR FIRST AID

Get Emprizone®, a revolutionary antiseptic and gel for minor burns, scratches, cuts, insect bites. To order, call Cindy Walton, your Mernatech™ Independent Associate, at (806) 659-3277.
www.mannapages.com/waltonsmannablessing

LYRIC Cinema

113 Main Spearman, Texas (806) 659-2812

On the Internet @: www.antden.com/newweek.asp

Children 3 thru 11 - \$5.00 Adults - \$7.00
Sr. Patrons (65 & older) - \$5.00

**** Movies at 7:00 - Nightly thru Holidays ****

Showing: December 19th thru December 25th

Screen 1

The Lord of the Rings: The Return of the King

Rated PG-13
For Intense Epic Battle Sequences & Frightening Images

Screen 2

The Missing

Starring:
Tommy Lee Jones
Cate Blanchett

Rated R
For Violence

Ratings Conscience Parents: www.screenit.com

Replenish the seed of faith through . . .

DAILY BIBLE READING, PRAYER & REGULAR CHURCH ATTENDANCE

<p>Spearman</p> <p>Apostolic Faith Church 822 S. Dressen • 659-2870 Sunday School: 10 a.m. Worship Service: 11 a.m. Sun. Evs.: 6 p.m. Wed. Prayer Mtg.: 7 p.m. Pastor - Roland Haney</p> <p>First United Methodist 401 N. Bernice • 659-2295 Sunday School: 9:30 a.m. Worship: 10:35 a.m. Kid's Church: 10:35 a.m. Evening Worship: 6 p.m. Wed. Worship: 7 p.m. Wed. Youth: 7 Pastor - Bob Elder</p> <p>First Christian Church (Disciples of Christ) 29 S. Bernice • 659-2036 Sunday School: 9:45 a.m. Worship: 10:50 a.m. Minister - Gary Smith</p> <p>First Baptist Church 123 N. Bernice • 659-5557 Sunday School: 9:45 a.m. Worship: 11 a.m. Evening Worship: 7 p.m. Wed. Fellowship Meal: 6 p.m. Wed. Disc. Time: 6:30 p.m. Wed. Youth Mtg.: 8 p.m. Pastor - Patrick Six</p> <p>Church of Christ 121 S. Haney • 659-3244 Sunday Bible Class: 9:45 a.m. Worship: 10:30 a.m. Evening Worship: 6 p.m. Bible Study Wed.: 7:30 p.m. KRDF Radio Program Living W/Christ: 7:50 a.m. Minister - Leonard Harper</p>	<p>Sacred Heart Catholic Church 901 Roland • 659-2792 Sat. Night Mass: 6:30 p.m. Sun. Mass: 9 a.m. - English (aired on KRDF-FM 98.3) Sun. Mass: 11:30 - Spanish 1:30 p.m. - Gruver - Cristo Rencentor Mass - Spanish Rev. Guillermo Morales</p> <p>First United Methodist 407 S. Haney • 659-5503 Sunday School: 9:45 a.m. Worship: 8:30 & 11 a.m. Jr. High Youth: 5 p.m. Sunday High School: 6 p.m. Sunday Kids Club: 3 p.m. Wed. Pastor - Ken Cole</p> <p>Grace Presbyterian Church (Worships with Faith Lutheran Church) 1101 Bernice • 659-2033 Pastor - Beverly Cook</p> <p>Faith Lutheran Church (ELCA) 1101 Bernice • 659-2252 Sunday School: 9:45 a.m. Worship: 11 a.m. (Worships with Grace Presbyterian Church) Pastor - Beverly Cook</p> <p>Union Church 31 S. Endicott • 659-2644 Sunday School: 9:45 a.m. Worship: 10:45 a.m. Evening Worship: 6 p.m. Bible Study: 7 p.m. Wed Pastor - Bill Sparks</p> <p>Fellowship Baptist 1102 S. Archer • 659-2783 Sunday School: 10 a.m. Worship: 11 a.m. Sun. Evening Worship: 6 p.m. Youth/Adult Serv.: 7:30 Wed. Pastor - Gene Foster</p>	<p>Primera Misión Bautista 502 E. 7th • 659-3991 Sunday School: 9:45 a.m. Worship: 11 a.m. Evening: 6 p.m. Wed. Prayer Meeting: 7 p.m. Thurs. Visitation: 7 p.m. Pastor Joe Garcia Jr.</p> <p>El Aposento Alto U.P.C.I. 1105 S. Roland Domingos: Escuela-Domical - 10 a.m. Culto Evangelistico - 7 p.m. Jueves: Oracion - 8 p.m. Mier: Estudio Biblico - 7 p.m. Pastor - A.G. Martell (806) 659-2153</p>	<p>Gruver United Methodist Broadway & Garrett 733-2651 Sunday School: 9:45 a.m. Worship: 8:30 & 10:50 a.m. Eve. Worship & UMY: 6 p.m. Pastor - George Price</p> <p>Spanish Cristo Redentor Church Sunday Mass: 1:30 p.m. Friday Evening Mass Summer - 8:00 p.m. Fall/Winter - 7:30 p.m.</p>
---	--	--	---

It's a Kinkadee Christmas.

Teleflora's Thomas Kinkadee Chapel Bouquet

The magic of Thomas Kinkadee's Sunday Evening Sleigh Ride is magnificently captured in this hand-painted chapel. Inside, a golden light shines to make the season bright. For nationwide hand-delivery of this artistically designed bouquet, call or visit our shop. Or log on to our website.



©2003 Thomas Kinkadee, Media Arts Group, Inc., Morgan Hill, CA 95037

Prairie Garden Flowers
209 Main Street • Spearman, TX
659-2212 • 659-3329

This feature is made possible through the sponsorship of these civic minded businesses.

<p style="text-align: center;">Compliments of . . . AGCO of Spearman, Inc. "See you in Church" 659-3751</p>	<p style="text-align: center;">Bartlett's Lumber & Hardware 105 W. Broadway • Gruver, Texas (806) 733-2404</p>	<p style="text-align: center;">BERRY CLEANERS Ann & Vernon Pipkin - Owners Phone 659-3122 • P.O. Box 1017 207 Main St. • Spearman, TX</p>	<p style="text-align: center;">Morse Implement & Auto Supply "Join us in church this week" Tom Dortch 733-2668 P.O. Box 89 • Morse, TX 79062</p>
<p style="text-align: center;">PRAIRIE MOTORS INC. Hwy. 207 South • P.O. Box 430 Spearman, TX 79081 • (806) 659-2541 www.prairiemotors.com</p>	<p style="text-align: center;">Gruver Cablevision 308 Main Gruver, TX 79040 733-5295</p>	<p style="text-align: center;">Hansford County Reporter-Statesman "Proudly Serving Hansford County Since 1907" (806) 659-3434 213 Main Street • Spearman, TX</p>	<p style="text-align: center;">Interstate Bank, ssb 322 Main • P.O. Box 146 Spearman, TX • 659-2559</p>

99 Cents

by Harietta Carthel

Trista and Ryan - it was billed as the Wedding of the Century with a four million dollar price tag.

It was to be the perfect made-for-television movie with no expense spared - diamond-covered shoes, designer wedding gowns (one was not enough), truckloads of roses.

But this wedding made in Hollywood fell short of an academy award nomination in many categories.

The actors in this love story were paid \$1,000,000 - a high price for characters who didn't even rehearse their lines but simply smiled as they stumbled through the script. At times, they went so far as to leave out parts of the script, like "for richer or poorer."

Even reading the script seemed a problem for the less-than-Shakespearean actors as together they slaughtered an Elizabeth Browning poem even though they held the cue cards in their hands. Memorizing their lines of the poem would have been a tasteful idea, but what do you expect for a million dollars?

One major character was even written out of the script. God, who plays a role in most weddings, had no part in the Wedding of the Century, not even a cameo appearance or in a supporting role. At one point, a quote from God's book was used, but even then, the author received no recognition.

Perhaps even more overpaid than the actors were the script writers.

Trista's endearment to her dad upon the start of their walk down the aisle was "Don't step on my dress!" followed by an wrestling repositioning of Dad's arm.

Her father, in turn, greeted the groom as he gave his daughter away with the beer commercial quote "We luv you man!"

The only category worthy of an academy nomination was the costume designer's work. The bridal couple looked virtually like a wedding cake topper, but the movie's budget evidently did not include a hair dresser, as Ryan came in his "I just woke up" hair.

The musical score by a quartet of helicopters overhead was somewhat less than impressive. I would have preferred Bach or Beethoven, but to each his own.

The special effects of the movie were vastly overdone with everything in the movie having a pinkish cast. The chairs were pink, the flowers were pink, the brides maids' dresses were pink, the groom's T-shirt was pink, the bride's gifts to friends were pink, the audience waved streamers that were pink, and I too toasted the whole affair with a drink of pink - Pepto Bismal.

Rotary Club Pheasant Hunt

The sixteenth annual Spearman Rotary Club pheasant hunt was held on opening weekend, December 13 and 14, 2003. A Friday morning snow concerned the hunters and Rotarians alike, but did not accumulate enough to be a problem. Saturday morning brought cold temperatures with fog, but

did not deter the excited hunters. The rest of the weekend was really nice. The hunting was fair to good for thirty-eight hunters, divided in two groups. One group made the two bird per man limit, on Saturday.

The guests were fed six meals, Friday night through Sunday at noon. Mike Schnell

and Justin Boyd cooked fish and chicken on Friday night. Steve Benton and Kim Brock teamed up to cook the beef tenderloin on Saturday night. Ginger Turner, Arbeta Nobles, and Maria Sibley, planned the menus, handled all groceries, supplies, and side dishes, and more. Bill Pittman brewed the coffee, transported and looked after all beverages, and delivered meals to the field. Other Rotarians assisting were Larry O'Neal and Rick Sander. The Sacred Heart Women's Guild, with the equipment and assistance of Harry Stumpf, cooked and cleaned.

Bill Pittman, Mike Schnell, Ginger Turner, and others found the acreage to hunt. John Hutchison and Jason Cantrell registered the hunters. Mike and Clay Schnell, with Justin Boyd, led one group of hunters. Jason Cantrell, Bill Jack Pittman, and Jim Derington led the other group. This is not a complete list

of people involved or tasks completed, to make our hunt a success. I apologize for that. Thank you to all involved.

The landowners and farmers who allow us to hunt are to be congratulated. With your generous contribution, the Rotary Club is able to bring thousands of out of town dollars to Spearman. These hunters also stay in our motels and bed & breakfasts, buy gas, and shop while in town.

Some of the projects supported by the Spearman Rotary Club are: The Spearman Scholarship Foundation, students to the World Affairs Seminar, Miss Hansford Pageant, Rotary Youth Leadership Camps (girls and boys), Boy Scouts, Project Graduation, Christmas in Action, Big Brothers Big Sisters, Students of the Month, Hansford Library, Employee of the Year, Christmas Welfare, and Youth Exchange.

Thank You

We want to thank all of the dear people of Hansford County for their love and support shown toward our family during the recent loss of our mother and grandmother, Fannie Venneman. Thank you for all of the prayers, cards, flowers, phone calls, food and the visits. Thank you to all of the women of the Catholic Church for the delicious meal. We want to especially thank all of the doctors, nurses and therapists of the HCHD for their love and care of Fannie throughout the past few years. We would not have had her with us this long had it not been for them. There is no place like home for our elderly when they become ill and need help. The care and familiarity from our local people is what keeps them going. May God bless everyone and may you have a wonderful Christmas!

Linda & Joe T. Venneman, Hattie Davis, Mary Venneman; Traci & Clint Venneman, Morgan & Kennedy; Holly & Justin Gifford & Gus; Kim & Clint Cooper, Mark Davis, Micah Davis, Kaley & Wiley Martens

Thank You

By this we express our appreciation for your prayers and concerns before, during and after my hip surgery.

May God bless each of you,
John & Virginia Trindle

FARMERS AG SUPPLY, LLC

is now selling tires & fixing flats
(light trucks, cars and trailers)

Hwy. 15 East • 703 Collard
(806) 659-5000 • Spearman, TX

We would like to take this opportunity to thank the people of Hansford County for your patronage.

MURMUR'S CAFE
100 S. Roland • 659-3580 • Spearman
Hours - Monday-Friday, 11 a.m. - 7 p.m.

We will close at 3 p.m. on Wednesday, December 24th and will re-open at 11 a.m. on Monday, December 29th.

Gift Certificates
"The Simple Holiday Gift"

Only \$5.00

It works like a check!
Available at Anita's Video Madness

Give the Gift of Movies!
Gift Certificates available at Anita's Video Madness

SIMPLE SIMON'S PIZZA
ANITA'S VIDEO MADNESS
312 Main Street • Spearman, TX • (806) 659-9991

STORE HOURS:
Sun.: 11:30 a.m.-9 p.m.; Mon.-Thur.: 11:00 a.m.-9 p.m.
Fri.: 11:00 a.m.-10:30 p.m.; Sat.: 11:30 a.m.-10:30 p.m.

Order Now

For School or Office Parties!
Hors d'oeuvres, Sweet Trays, Decorated Cookies
Bread, Cinnamon Rolls, Candy, Cakes, Pies
Large Selection of Party Favors

Jeanette's Sweet Creations
315 1/2 Main • 659-3328 • Spearman, TX

Yes, We Are Still In Business!
The telephone company didn't list our number in the phone book or information, but we're still here!

Ask us about shipping your cookie order!

Sacred Heart Catholic Church

New Years Eve Dinner & Dance

Wed., December 31, 2003
7 p.m. 'till 1 a.m.

O'Loughlin Center • 502 S. Brandt
\$50 per ticket

Meal prepared by Knights of Columbus

Dinner • Live Band
Prizes • BYOB

Tickets may be purchased from local parishioners

50th Wedding Anniversary

December 31, 1953
To
December 31, 2003

In honor of the 50th Wedding Anniversary of Jack and Gwen Reed their children and grandchildren request the pleasure of your company for cocktails and dancing on Saturday January 3, 2004 at 7:00 p.m. O'Loughlin Center 502 Brandt Street Spearman, Texas

Your presence is a treasured gift
We request no other

RSVP by December 20, 2003
(806) 622-9987

Bridal Registry

Grace (Davis) & Justin Calvert
KiKi Carthel & Dave Brabham
Shauna Poole & George Chinae
Holly Pipkin & Nick Kaluza
Ruth Shields & Blake Nelson
Angela Pipkin & Ethan Johnson
Shelly Hunt & Andy Etheredge

Celebrate
Gifts for all your celebrations!

203 Main St. • Spearman, TX
(806) 659-3350 1-800-663-8026

Merry Christmas and a safe and prosperous New Year!

From

North Plains Electric Cooperative

Please note that our office will be closed December 25 and 26 for Christmas and January 1st for New Year's Day. But if you need us we're only a phone call away.

1-800-272-5482
(806) 435-5482

For The Bride & Groom

Come by and let us help you set up your special gift table

Couples Currently Registered

Shelly Hunt & Andy Etheredge
Grace Davis & Justin Calvert
KiKi Carthel & Dave Brabham
Ruth Shields & Blake Nelson
Holly Pipkin & Nick Kaluza

Gordon's DRUG
314 Main 659-2141 Spearman, Texas

MANOR MATTERS

by Merry Sparks

Out At The Lake



Doug Barnes, a Palo Duro River Authority employee, recently took the above picture of a mule deer buck.

Jim Derington took the picture at right of a mule deer doe.



Lake Level--December 15, 2003--27.76 feet (-0.08 feet)

Since the level only dropped an inch this week, the little snows and cooler weather helped.

The only report on the animals in the Park was Doug Jones seeing a young bob cat at the bridge.

Trying to lend a holiday theme to the column, I thought a word about the turkey might be in order. We see the wild turkey in this area--the subspecies known as the Rio Grande Turkey. They are one of the largest of the game birds and can be quite pretty. Wild turkeys are the predecessor of the domestic bird we find on our tables this time of year. Wild turkeys were first taken to Europe about 1530 by the conquistadors returning to Spain. A decade later they had made their way to England where they picked up the name we know them by now. Turkeys were somehow confused with African guinea fowl which came to Europe through the Turkish empire, thus the bird was named after a location that really had no connection to them.

The domestic turkey is not a particularly smart bird, and unlike its wild cousin, just isn't wily enough to survive easily in the Panhandle. The turkeys my mother raised in the thirties were free range, roosting on the corral fence or sometimes on the roof of a shed. Sometimes one would provide a handsome meal for coyotes.

The excitement is building at the Manor as preparations for Christmas are ongoing.

Santa Claus and his elves will be coming to the Manor on Friday, the 19th at 2:30. The public is all invited to come and enjoy the Christmas celebration with our residents.

The Fellowship Baptist Church came on Sunday to bring the blessing of a worship service and message to the residents. Thank you so very much for sharing yourselves with us.

Monday morning started off by shaking off the cobwebs of the weekend with exercise. It makes me smile to see everyone snapping their fingers and tapping their feet to the music of Winter Wonderland and many other beautiful Christmas songs.

It may seem like a small thing to do but try it sometime. It will limber up your hands and feet. Of course many other movements are incorporated into the exercise program such as playing the piano, pretending to be an airplane, and picking cotton. Stomp dance is one of my favorites. All of them work together to keep our bodies limber.

That afternoon, Charles Brillhart played the piano for us as we played Name That Tune. We had several that got up and danced. Old Willie showed up and I danced a couple of rounds with him and a resident. At one time we had four couples on the floor.

Monday evening was filled with happiness and sadness. Hospice provided a program with the Methodist bell choir presenting music, the hospice volunteers provided refreshments and then they and residents went to the Hospice Lights of Love for a ceremony of lighting the tree in memory of loved ones past. Thank you to the hospice volunteers and the hospice program for a lovely evening.

Tuesday brought on merriment to cheerful Christmas carols.

That afternoon the annual Christmas bazaar was held in the activity room. Many resi-

dents, staff and the public came to shop. There were many articles on display. Something Special that provides adaptive clothing from Stratford was unable to come due to the icy roads and the weather. However, she did come to deliver orders on Wednesday and several people shopped with her on that day.

Wednesday morning was filled with the aroma of fresh, delicious donuts from Kountry Donuts and a worship service that all that attended thoroughly enjoyed.

That afternoon we had the special honor of hosting Brandea and Chelsea Hicks from Gruver to sing for the residents. The sisters have beautiful voices and spirits that touched each heart that heard them sing.

Thank you to the Hicks sisters for sharing your talent with the residents. Afterward, we were back in the activity room working furiously on the Christmas

ornaments that the residents plan to give to the kindergarten kids.

Thursday morning we had a rollicking kickball game in the living room with a background of music. The residents are very competitive and enjoy kickball very much. It is a great time of just frolicking, laughing and fellowship. That afternoon the auxillary braved the cold to host bingo.

That evening we had planned to take residents to Amarillo to see the Nutcracker ballet. Lone Star Ballet furnishes tickets for the residents and many volunteers had planned to go with us to help. We had a very good response to the invitation as thirty people total had planned to go. We really appreciate all of the volunteers being on stand-by however, the weather did not co-operate.

The high for the day was 21 degrees and we felt like it would not be wise to make the trip

especially with forecasts of snow looming over our heads so we cancelled our trip. Maybe next year will be better.

Friday morning was filled with the Newscurrents program. It was very interesting to the residents since it included much information on the new medicare bills that have been passed that will cover many prescription charges.

That afternoon we had the birthday party to honor December birthdays. Again, the weather foiled our plans. The snow forbid many volunteers from coming since some live in the country such as our music team. The auxillary ladies came through though. They sent their pies with first one and then the other. They saved the day!!! Thank you to the auxillary ladies. Afterwards, we watched a Christmas comedy named The Santa Claus.

- Liquid-cooled, 5-valve, 660cc, 4-stroke powerplant
- Full independent, long-travel suspension
- Exclusive 3-way On-Command™ 4WD choose 2WD, 4WD or 4WD differential lock with the push of a button
- Ultramatic™ dual range automatic transmission with 4-wheel engine braking

GRIZZLY® 660 AUTOMATIC 4X4 **YAMAHA**

FIVE STAR EQUIPMENT, INC.
 Hwy 15 West
 Spearman, TX 79081-0658
 (806) 659-3743

ATVs with engines 50cc or greater are recommended for use only by riders age 16 years and older. Yamaha recommends that all ATV riders take an approved training course. For safety and training information, see your dealer or call the ATV Safety Institute at 1-800-887-3887. ATVs can be hazardous to operate. For your safety, always avoid crowd surfing. Never ride on public roads. Always wear a helmet, eye protection and protective clothing. Never carry passengers. Never engage in stunt riding. Riding and alcohol drugs don't mix. Avoid excessive speed. And be particularly careful on difficult terrain. Shown with optional accessories.

Ralph Depee, D.D.S.
 Member American Association of Orthodontists
Orthodontics For Children and Adults

- Free exam and estimate of cost
- Free second opinion
- Insurance filed

821 S. Amherst Perryton, Texas
 1-800-521-0831
 (806) 435-2320

Bring Christmas to the table.

Teleflora's Holly Bowl Bouquet
 A sparkling red glass bowl, cradled by a golden base gleaming with enameled, hand-painted holly. Add flowers and warm candlelight and this magnificent centerpiece becomes pure magic. What a treat for family and friends. For nationwide hand-delivery, call or visit our shop. Or log on to our website.

Prairie Garden Flowers
 209 Main Street • Spearman, TX
 659-2212 • 659-3329

Christmas Open House

We're giving away three \$200 cash prizes on December 22nd at 11 a.m.!
 Winners will be drawn from all entries in the Spearman Chamber of Commerce "Stuff Your Stocking" campaign.
 (Need not be present to win)
 Refreshments served all day.

Come See Santa
 Have your picture taken with Santa from 10 a.m.-12 p.m. and 1-3 p.m.

Children through age 10 are invited to come in and guess how much money is in a jar filled with change. The child closest to the correct amount wins the money and a 6-foot stocking filled with toys and games. Only one guess per person, must enter in person.

FNBANK
 First National Bank
 Spearman, Texas 79081 Dumas, Texas 79029
 806-659-5544 806-934-8455
 800-583-4196 866-583-4196
 Member FDIC

Texas Residential Construction Commission Formed

During the 78th Legislative Session, lawmakers created the Texas Residential Construction Commission. The Commission provides homeowners and builders an opportunity to resolve differences through an administrative process prior to pursuing court action. The Commission will specifically be responsible for registering homes and homebuilders, overseeing the state-sponsored inspection and dispute resolution process, preparing and adopting limited warranties and building and performance standards, overseeing three task force groups, providing a voluntary certification of arbitrators, and providing for the filing of arbitration awards.

Starting January 1, 2004, all home builders in the State of Texas will be required to register new homes, material improvements to existing homes, and certain interior renovations exceeding \$20,000 with the Commission, as well as remit a \$30 fee for each registration. Once the transfer of title occurs, a builder will have up to 15 days following the end of the month to register the home and submit the required fee. If a

builder is involved in a transaction that does not involve a transfer of title, the registration and fee must be sent to the Commission within 15 days following the earlier date of when the agreement is signed or the work commences.

The registration of homes marks the first phase in establishing the state-sponsored inspection and dispute resolution process. This step will enable constructed homes to fall under warranty and building performance standards, currently under development by the Commission.

For additional information, please contact the Texas Residential Construction Commission at info@trcc.state.tx.us or (512) 305-TRCC for a packet of information regarding the home registration process. For more general information about the Commission or its specific activities, please visit our website at www.trcc.state.tx.us.

The Gruver Grapevine

by Harletta Carthel

City Prepares for Christmas

A Christmas Band Concert will be presented at 8:30 a.m. Friday, December 19, in the school auditorium.

A GHS Christmas play will follow the band concert.

A Candlelight service is planned at the United Methodist Church on December 24, at 6 and 10 p.m.

The annual Chamber of Commerce Christmas Lighting contest will be judged Monday, December 21 between the hours of 6 and 10 p.m.

One home and one business will be chosen by the judges. For home and business owners who do not wish to be considered in the judging, lights may be turned off during the judging period.

Gruver Schools will dismiss for the Christmas/New Years holiday at 12:20 p.m. Friday, December 19.

length. Her grandparents are Buddy and Marsha Lowe of Gruver and Mr. and Mrs. Chuck Cox of Fort Worth.

Great grandparents include Bud and Shirley Lowe and Opal Wallin, all of Gruver and Mr. and Mrs. Cliff Maxwell and Mrs. George Cox, all of Fort Worth.

Sympathy Extended
Aleen Lowder, the mother of Marilyn Hart, passed away last week. Her memorial service was held Saturday in Spearman with burial in Goodwell, OK.

Mrs. Lowder was a long-time educator, having taught for 44 years in schools in the Texas Panhandle, Colorado, and Oklahoma. She began her teaching career at a one-room school, Liberty School, in Cimarron County. She taught in

Sunray schools for 10 years and in Dumas for 20 years.

Poetry written by Mrs. Lowder were read at her memorial service.

Snowy Week Reported
Two back-to-back cold fronts last week dropped a total of 2 and 1/2 inches of snow in the Gruver area. One and 1/2 inches of snow was reported on December 10th, and one additional inch on December 13th. .19 inch of moisture was reported from the snows.

Community Care Concerns
Marie Bell is continuing her recovery from severe bronchitis at her home.

Agnes Hoel was admitted to the hospital in Amarillo on Monday, December 15.

Are You A Victim of Domestic Violence, Sexual Abuse or Assault . . . Physical, Emotional or Sexual?

Call Toll Free 1-800-753-5308

We can see individuals from Hansford County anytime upon request. Call 435-5008 or 1-800-753-5308 to set up an appointment in Hansford County. We operate a safe place for victims and their children to stay in times of crisis.

Panhandle Crisis Center
Serving Hansford, Lipscomb & Ochiltree Counties
317 S. Main • Perryton, TX
Memorials Accepted

The BEST
Just get **BETTER**
CFL announces industry leading pay increase!

Company Drivers earn up to 45¢ per mile
Company Teams earn up to 53¢ per mile
Owner Operators earn up to 92¢ per mile

800-CFI-DRIVE www.cfidrive.com

New Program!
O/O Leasing Program with purchase option

Now Hiring:
Company • O/O • Singles & Teams
800-CFI-DRIVE www.cfidrive.com

Need a Quick Loan for Christmas?

100-810
subject to our usual credit policy

SUN Loan Company & Tax Service

(806) 435-7242
106 S. Main • Perryton
Se Habla Espanol

HOT FAMILY ENTERTAINMENT GIFTS NOW AT RADIOSHACK

SHOP THE SHACK SAVE BIG

SALE 129⁹⁹ Low As \$10 Per Month
Home Theater System with Progressive-Scan DVD/CD Progressive-Scan DVD delivers outstanding picture quality with today's new digital TVs. #31-5023 Reg. Price \$149. Add 2 "AA" batteries for remote **SAVE \$30**

SALE 199⁹⁹ Low As \$10 Per Month
RCA 27" stereo color TV. On-screen program guide shows what's on up to 7 days in advance. Front A/V inputs. Features dbx stereo sound. #16-3417 Reg. Price \$229 **SAVE \$30**

SAVE \$30 AFTER REBATE
\$119.99 - Sale Price: \$20.00 RadioShack mail-in rebate* \$99.99
Upgrade to a DVD Without Losing Versatility of a VCR Watch a DVD while recording a TV show! Plays audio CD's, too. Built-in 4-head VCR. Remote controls both. #16-3268 Reg. 129.99 **Low As \$10 Per Month!**

SALE 44⁹⁹
DVD With Progressive Scan for a Great Low Price!
Compact DVD player includes zoom, slow motion, multi-angle and multispeed playback, and DTS outputs for awesome sound. S-Video output **25% Off**
#15-3274 Reg. \$59

NEW LOW PRICE 89⁹⁹
80-watt mini stereo system with remote, 5-CD changer, dual-cassette, digital-tuning AM/FM stereo. Up-front jacks to connect a DVD, VCR or MP3 player. CD-R/RW compatible. #13-1320 Was 99.99

SALE 99⁹⁹
Great Value! 61 full-size keys, 12-note polyphonic, 100 tones, 100 rhythms, MIDI. #42-4056 Reg. 129.99. Add 6 "AA" batteries or AC adapter #273-1770M.

*Offer good 11/20/03 through 12/24/03. Actual payments vary with your RadioShack AnswersPlus Card account balance; taxes not included.

7 a.m.-6 p.m., Mon.-Sat.

B and B
FARM AND HOME SUPPLIES

RadioShack
You've got questions. We've got answers.
205 Dillon Spearman 659-2662

Stuff Your Stocking Christmas Promotion

Congratulations to Luis Langriano December 3rd - \$200 Winner

\$10 Purchase	\$10 Purchase
\$10 Purchase	\$10 Purchase
\$10 Purchase	\$10 Purchase
\$10 Purchase	\$10 Purchase
\$10 Purchase	\$10 Purchase

Spend \$10 any of these participating merchant and have your stocking stamped. When you collect ten stamps, enter your stocking for the "Stuff Your Stocking" drawings to be held each Wednesday in December through the 24th.

Alco • Boxwell Brothers • Cates Men & Boys Wear • Celebrate • Corner Service Station • Country Cellular • Deakin Electric • Dollar General • Farmer's Ag Supply • First National Bank • First State Bank • Golden Spread Sales • Gordon's Drug • Grammy's Gifts & Goodies • Hansford Agency • Hansford County Reporter-Statesman • Hansford Vet Clinic • Hi-Plains Auto Supply • Interstate Bank • Jarvis Law Office • Jo's This 'n That • Kid's Stuff • KRDF-FM 98.6 • Lady Fair • Larry O'Neal Apartments • Lusby Cats • Nursanickle Motel • Panhandle Diner & Deli • Dr. James Pinkerton • Prairie Motors • Spartex Grain • Spearman Chamber of Commerce, Women's Division

Poinsettias Additional Shipment Has Arrived!

Santa will be at Knight's Sunday, Dec. 21, 1-4 p.m. Have your child's photo taken with Santa!

Unique Ornaments for your tree or to give as gifts!

IN OUR WIDE ARRAY OF ORNAMENTS WE EVEN HAVE ONES FOR NASCAR, SEVERAL STATES AND FOR A NUMBER OF COLLEGES

Select from our huge variety of theme trees

Retro Tree Includes: Pillsbury Doughboy, Hershey, Betty Boop, Elvis, Raggedy Ann, Coca Cola, M&Ms

Family & Friends Tree Includes: Ornaments for Baby sitter, Mom, Dad, Aunts, Grandparents, Caregiver, Volunteer, Brother, Sister and a large variety of others

Hobby & Sports Tree Includes: Golf, Bowling, Exercise, Quilting, Basketball, Skiing

Occupational Tree Includes: Fireman, Policeman, Teacher, Babysitter, Medical

Plus so many more we can't list them all!

Check out our Great Selection of Gift Ideas!
Stockings Cookie Jars Salt & Pepper Sets Candles Potpourri Giftware
We have Gifts for Teachers priced from \$2 to \$5!

Our Gigantic Last Chance Sale Continues!!
25% - 40% OFF All Artificial Christmas Trees
25% OFF All Artificial Wreaths, Garlands & Wall Trees
30% OFF All Fall Artificials 25% OFF Seasonal Fall Giftware

Hey LOOK! Visit Our All New Updated Web Site:
www.knights.hhtx.com

Knight's Nursery, Garden Center & Gift Shop
912 S. 2nd (Hwy. 60/83) Open Mon-Fri 8:30-6:30 Sat 10-5 Sun Dec. 21, 1-4 p.m.
Canadian (806)323-5577 Open Christmas Eve 8:30-Noon Closed Dec. 25-28
Open Dec. 29-30, 8:30-6:30 Dec. 31, 8:30-Noon

Cummings Announces Candidacy for Tax Assessor-Collector



Linda Cummings

My name is Linda Cummings and I am announcing my candidacy for the office of Tax Assessor-Collector. I have been serving you for 23 years and as chief deputy for the last six years. My duties include voter registration, maintaining the voter registra-

tion rolls in the County and with the Secretary of State's Office, preparing election lists, vehicle registration and titling, collection of property taxes, fee reports and monthly tax reports. I am also familiar with other reports and duties that are required of this position.

I have been married to Douglas Cummings for 26 years and we have been blessed with our two sons and their wives, Christopher and Laura, and Andrew and Denise.

I am a member of the First United Methodist Church, where I teach the Junior High Sunday School. I am a member of the Rushing Wind Emmaus Board, a member of the Boy Scouts of America Executive Board and the Boy Scouts of America Lone Wolf District Committee.

Paid for by the Linda Cummings Campaign

Amarillo College Names Fall Graduates

Amarillo College has named former Spearman residents among the 266 that will graduate in December.

Graduating from Spearman with an Associate in Applied Science degree in Nursing is Kenda Anise Boyd, and graduating with an Associate in Travel and Tourism is Maria Isabel Vargas.

These students will be recognized during Commencement ceremonies in May.

Last Minute Tax Tips Can Save Money Before December 31st

by Linda Anderson, lw-anderson@tam.u.edu

Santa Claus may be coming to town, but shortly afterward, so is the tax man. Dr. Joyce Cavanagh, Texas Cooperative Extension family economics specialist, said taxpayers still have time to give themselves a last-minute tax break before the end of the year.

Here are some of her suggestions:

- Zero out flexible spending accounts for health care that are based on the calendar year. "If people have a flexible spending account for health care, they need to spend any money left in that account or they are going to lose it," Cavanagh said.

While it may be too late to make appointments with the doctor or dentist before the end of the year, taxpayers can still use those funds for such items as new eyeglasses or contact lenses, prescription refills or other regular medical expenses.

In some cases, Cavanagh said, even over-the-counter drugs can be purchased using these funds; however, before making these purchases, taxpayers should visit the Internal

Revenue Service Web site (<http://www.irs.gov/>) or their employers' human resources department to find out which of these medications are eligible and which are not.

- Check financial records to determine which will be more practical for tax year 2003: itemizing deductions or taking the standard deduction. The standard deduction for a married couple filing jointly this year will be \$9,500, Cavanagh said.

"That's a sizable increase over past years. The standard deduction for singles is half that," she added. "Check the amount of your itemized deductions. If it's close to that \$9,500 threshold, look at what deductible expenses will put you over that threshold."

Remember, miscellaneous expenses are only deductible to the extent they exceed 2 percent of adjusted gross income, she added. For example, if professional fees are due the first part of the year, pay them early before the end of the year instead. Or consider pre-paying property tax or increasing charitable contributions. That way money that would ordinarily be spent the first part of next year

can be spent the last part of this year instead and help lower total tax paid.

- Teachers may be able to deduct up to \$250 spent for classroom supplies, Cavanagh said, but "that's just for the 2003 tax year. If you know you're going to need things at the first of the year, buy them before December 31. But don't spend just to save money on taxes; spend money you were going to spend later anyway."

This Educator Expenses Deduction is taken as an adjustment to income, she said, "so is available whether or not you itemize deductions." More information can be found on the IRS Web site (<http://www.irs.gov/>).

- Check with an accountant or tax professional on the advisability of making extra contributions to retirement accounts such as 401(k), 403(b) or deferred compensation plans, Cavanagh said.

"You could make additional contributions before the end of the year, up to the maximum (allowed)" and lower tax liability for 2003. "If you're making contributions to an IRA or a Roth IRA, you have until April

15 to make contributions for the 2003 tax year, but the earlier you make the contributions, the better off you'll be because interest will have more time to increase."

- Single people earning no more than \$25,000 and married couples earning no more than \$50,000 each year are advised to check into their eligibility for the savings tax credit, Cavanagh said. "It's a way for lower-income individuals and families to make contributions to a retirement plan" such as a 401(k) and receive a tax credit, up to a specific maximum amount. Some taxpayers, especially married ones filing jointly, might want to consider bundling their deductible expenses into one tax year to be itemized and then using the standard deduction the next year, Cavanagh advised.

And small business owners - especially those who are the sole owner - might want to consider deferring some expenses until 2004, or establishing a retirement account before the end of the year. But, Cavanagh advised, check with their accountant and/or financial advisor first.

Listen to
KRDF-FM - 98.3

Hot Country Stereo
24-Hours A Day

Alva Monument Co.
Formerly Liberal Monument
& Memorial Company

New Location:
111 Tucker Road
Liberal, Kansas

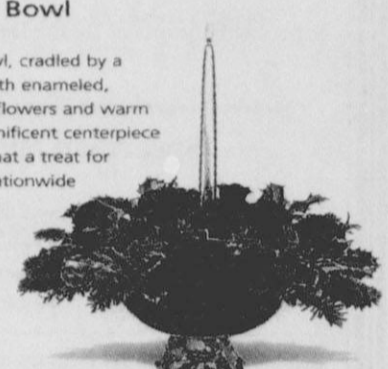
North of the New Wal-mart

Liberal Alva
1-888-654-9138 1-800-344-4605

Bring Christmas to the table.

Teleflora's Holly Bowl Bouquet

A sparkling red glass bowl, cradled by a golden base gleaming with enameled, hand-painted holly. Add flowers and warm candlelight and this magnificent centerpiece becomes pure magic. What a treat for family and friends. For nationwide hand-delivery, call or visit our shop. Or log on to our website.



Prairie
Garden Flowers
209 Main Street • Spearman, TX
659-2212 • 659-3329



Eat & Be Merry At

MONEY'S
BBQ & STEAK HOUSE

Hotline for Friday & Saturday Nights - 435-3945

We offer Priority Seating!
Give us a call before leaving, and we will save you a place in the seating line. When you arrive, check in with the hostess.

We Are THPLC-2-B

14 SE 3rd Ave. Perryton, TX

New Menu (10 new items)
Wed. Night - All-You-Can-Eat Catfish

As another year draws to a close, we thank you for your friendship and goodwill and sincerely wish you all the happiness that a prosperous and successful New Year can bring.

FSB
First State Bank

The Bank that has the Tradition of Strength and Service
One NE Court • Spearman, Texas • (806) 659-5565
We will close at 1 p.m. on Wednesday, December 24th, and will be closed on Thursday, December 25th.

member FDIC

Happy from
Holidays

Open 6 a.m. - 9 p.m.

Derryton's
LONE STAR
1501 S. Main • 648-1889

Specializing in Mexican Food, Steaks, Seafood & Sandwiches

Monday-Friday Lunch Buffet - 11 a.m. - 2 p.m. - \$5.99
Friday & Saturday Night Buffet - 5:30 - 9 p.m.
Sunday Buffet - 11 a.m. - 3 p.m.


We will be closed Monday, December 22nd-25th to allow our employees Christmas time with their families.

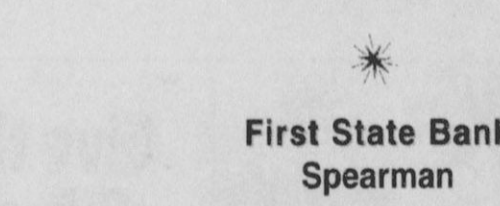
First State Bank

"Showing community support, dedication and service."

First State Bank Christmas Cash Loans up to \$500 "INTEREST FREE" for 12 Months*

Strength Is Our Tradition
SERVICE Our Goal
Serving Hansford County Since 1917

* Gruver 

* Morse 

Proceeds are issued in the form of
"First State Bank Christmas Cash Certificates"
redeemable at participating Hansford County Merchants

FSB *First State Bank*
1 NE Court • Spearman
(806) 659-5565
Call or stop by for details

Member FDIC

*\$500, 0% APR, 11 monthly payments of \$41.66 and one payment of \$41.74, with approved credit



Hansford County

A Winning Tradition!



Thanks to the fine sponsors below, you can keep up with sports and news featuring the Lynx, Lynxettes, Hounds, Lady Hounds and Cougars in 2003-2004!

SCHOOL NEWS

Pringle-Morse

A Christmas Concert is scheduled for December 18th at 7 p.m.
School will dismiss at 12 p.m., December 19.

Gus Birdwell Elementary

Pre K Christmas parties will be December 18th.
School will dismiss for the Christmas holidays at 1 p.m. December 19.

Spearman Jr. High

School will dismiss at 1 p.m., December 19, for the holidays

Spearman High School

December 17-19 - Final exams are scheduled.
December 18 the National Honor Society's Christmas Party will be from 6:30-8:30 in the library.
School will dismiss two hours early for the Christmas holidays.
The Junior Varsity and the Varsity Lynx will play Canyon there beginning at 6:30 p.m., December 19.
The Junior Varsity Purple and the Lynxettes will host Canadian with games beginning at 5 p.m., December 19.

Gruver Elementary

There will be a reception for school personnel staff December 18.
Third and fourth graders will take an online assessment test December 18.
Santa Claus will visit Gruver Schools December 18th.
December 19 will be Dairy Queen cone day for all classes meeting their Accelerated Reader goals.
School will dismiss at 12:20 for the Christmas Holidays.

Gruver High School

Gruver will host Borger in junior varsity and varsity games December 19 beginning at 4 p.m.
School will dismiss for the Christmas Holidays at 12:20 p.m. December 19.
Sarah Hiser and Garrett Miner will be the Lions Club guest January 7.

Hansford County Basketball Results

Gruver Greyhounds

The Hounds took home third place honors at the Sunray Tournament held December 11 and 12.
Cody Mac Been and Carlos Borunda were named to the all tournament team.
Sunray Tournament
Gruver 72, Spearman 45
Lance Williams 3, Carlos Borunda 25 (seven 3's), Matt Messer 15, Cass Cooper 17 (five 3's), Hutch Reed 2, Cody Mac Been 2, Reid Winger 5.

Gruver 45, WT High 47
Lance Williams 6, Carlos Borunda 12, Matt Messer 1, Cass Cooper 4, Hutch Reed 5, Cody Mac Been 11, and Reid Winger 4.

(playing for third place)
Brock Irwin 5, Lance Williams 6, Carlos Borunda 11, Matt Messer 14, Cass Cooper 6, Cody Mac Been 16, TJay Sherrill 2, Reid Winger 7.

Lady Hounds

The Lady Hounds took the sportsmanship award and the team free throw shooting award at the Hugoton, Kansas Invitational December 11-13.
Cassie Myatt was named to the all tournament team.
Hugoton Tournament
Lady Hounds 40, Sublette, Kansas 64
Lindsey Clift 10, Lauren

Urban 3, Samantha Myatt 2, Laina Grotegut 2, Laci Fitzgerald 2, Liz Lopez 2, Rachelle Holt 3, Cassie Myatt 12.

Lady Hounds, 32, Guymon 50
Lindsey Clift 1, Allison Reid 2, Lauren Urban 6, Samantha Myatt 1, Laina Grotegut 4, Laci Fitzgerald 3, Liz Lopez 5, Rachelle Holt 1, Cassie Myatt 9.

Hugoton Tournament
Lady Hounds 44, Ulysses 51
Lindsey Clift 2, Allison Reid 3, Lauren Urban 10, Laina Grotegut 4, Laci Fitzgerald 2, Kelly Jones 4, Rachelle Holt 2, Cassie Myatt 17 (three 3's).

JV Lynxettes - Purple

Gruver Tournament
Final Game
Lynxettes 37, Stratford 49
Tabatha Shields 10, Sonny Parker 2, Britta Vanderburg 7, Jordanna Lozano 3, Miranda Paul 4, Jenna McElroy 4, Britney Montgomery 7
Coach's Comments: We got off to a very good start but faltered shortly before halftime. Stratford's posts played well. The JV Purple team finished as Tournament Runner-Up.

Spearman Tournament
Lynxettes 34, Gruver 18
Tabatha Shields 3, Sonny

7th Grade Lynxettes

Lynxettes 43, Highland Park 9
Coach's Comments: We moved the ball well and ran the floor well - especially in the first half. Need to make more free throws.

Lynxettes 46, Perryton 36
Trudy Hart 1, Tabatha Shields 5, Sonny Parker 13, Britta Vanderburg 3, Jordanna Lozano 10, Miranda Paul 2, Jenna McElroy 12

Coach's Comments: We shot free throws much better. The girls competed down the stretch to win the game.

8th Grade Lynxettes

Lynxettes 42, Highland Park 2

Spearman Varsity Caprock Tourney Schedule

Dec. 29, 30 & 31
December 29th - Spearman vs. Monterey at 1:30 p.m.

Academic All-District

Seven Gruver High School seniors, four juniors, and two sophomores were named to the academic all district football list for the 2003 football season
Named to the roster were seniors Carlos Borunda, Chris Hillenbrand, Garrett Miner, David Puebla, Jose Rodriguez, TJay Sherrill, and Nick Slough.
Juniors selected were Cody Mac Been, Brock Irwin, Lance Williams, and Ryan Winger.
Sophomores named were Tyler Lane and Reid Winger.

GHS All-District

Sixteen members of the Hounds football team were named as All-District picks.
First Team Selections: Hutch Reed, senior, Offensive Line; Manuel Lopez, senior, Punter; Salvador Luciano, senior, Linebacker; Tyler Lane, sophomore, Defensive Back
Second Team Selections: Salvador Luciano, senior, Running Back; Cody Mac Been, junior, Tight End; Reid Winger, sophomore, Defensive Line; Hutch Reed, senior, Linebacker, Brock Irwin, senior, Defensive Back; David Puebla, senior, Defensive Back.
Honorable Mention List: Carlos Borunda, senior, Receiver; TJay Sherrill, senior, Center; Ryan Winger, junior, Defensive End; Colt Cluck, junior, Defensive End; Sergio Cruz, junior Defensive Line; Nick Slough, senior, Defensive Line.
Manuel Lopez, senior, Punter.

SHS All-District

The District 6-AA All-District Football teams have been announced.
Seven Spearman Lynx players were named. They were: Clete Vanderburg, junior, 2nd Team Runningback and 2nd Team Linebacker; Jeff Brock, junior, Honorable Mention Tight End and 2nd Team Offensive End; Wayne Gibson, junior, Honorable Mention Center and 2nd Team Defensive Down Lineman; Marshall Hearon, senior, 2nd Team Offensive Down Lineman; Eric Flores, junior, Honorable Mention Offensive Down Lineman; Ricky Garcia, senior, honorable Mention Wide Receiver; and Kylie McGaha, junior, Honorable Mention Defensive Down Lineman.

Troupe Performs For Gus Birdwell Elementary Students

On a beautiful, but chilly December morning, Gus Birdwell Elementary in Spearman was visited by The Center for Texas Culture Performing Troupe, who study with Neal Hess at Frank Phillips College in Borger. These amazing college students shared their talent in many areas on December 3rd as they danced and sang with professional polish unlike anything many of the students had ever experienced.

This one-hour performance was applauded loudly by all who were able to attend. When the students were asked if the troupe should return in May for an end-of-year performance, they responded with a resounding, "YES!"

Performances included a young man playing the guitar and singing, a poetic rendition of *One, Two Buckle My Shoe*, that was humorous and enthralling.

Following the performance, the troupe greeted each child. They then spoke with the Gifted and Talented students about what it took to be a performer/performing arts student.

For anyone interested in seeing a performance, or having a performance brought to your school, club or organization, contact The Center for Texas Culture in Borger at (806) 274-9050.

Listen to
KRDF-FM - 98.3
Hot Country Stereo
24-Hours A Day

Need a Gift?
How about a subscription to the Hansford County Reporter-Statesman?
Call 659-3434 for details.
Reporter-Statesman
213 Main St. • Spearman
(806) 659-3434

Show support for Hansford County Schools with a sponsorship ad. Pages will be dedicated to promoting sports and news featuring Gruver ISD, Spearman ISD and Pringle-Morse CISD students and teachers. Call the Reporter-Statesman at (806) 659-3434 for details!

SPEARMAN LYNX
Gruver Greyhounds

Pringle-Morse Cougars

All Occasion Flowers
202 N. Bernice • Spearman, TX
(806) 659-5180

MurMur's
100 S. Roland • Spearman, TX
659-3580

Interstate Bank, ssb
322 Main Street • Spearman, TX 79081
Phone - (806) 659-2559 • Fax - (806) 659-3276
FDIC Insured

Celebrate
Gifts for all your celebrations!
203 Main St. • Spearman, TX
(806) 659-3350 • 1-800-663-8026

PANHANDLE DINER & DELI
217 Main Street • (806) 659-3864 • Spearman, TX
Hours: Mon.-Wed., 8 a.m.-2 p.m.; Thurs. & Fri., 8 a.m.-6 p.m.; Saturday, 8 a.m.-2 p.m.; Sunday, 11 a.m.-2 p.m.

HANSFORD IMPLEMENT COMPANY
Mike Cudd - General Manager
Hwy. 207 S. • P.O. Box 518 • Spearman, Texas 79081
Nothing Runs Like a Deere
(806) 659-2568
1-800-753-1511
A full-service John Deere Dealership.

TEXAS PRESS ASSOCIATION AWARD WINNER
213 MAIN ST. SPEARMAN, TX 79081 (806) 659-3434
REPORTER STATESMAN
Published Thursdays

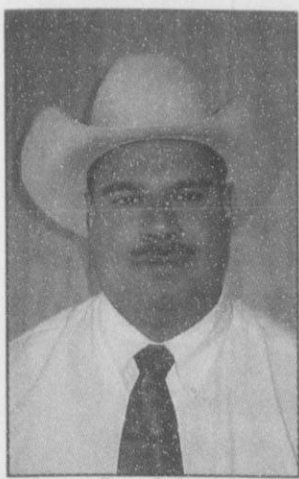
SIMPLE SIMON'S PIZZA & ANITA'S VIDEO MADNESS
312 Main St. • Spearman
(806) 659-5046 • Fax (806) 659-5196

Gift Certificates
"The Simple Holiday Gift"
Only \$5.00
It works like a check!
Available at Anita's Video Madness

Give the Gift of Movies!
Gift Certificates available at Anita's Video Madness

SIMPLE SIMON'S PIZZA
ANITA'S VIDEO MADNESS
312 Main Street • Spearman, TX • (806) 659-9991
STORE HOURS:
Sun.: 11:30 a.m.-9 p.m.; Mon.-Thur.: 11:00 a.m.-9 p.m.
Fri.: 11:00 a.m.-10:30 p.m.; Sat.: 11:30 a.m.-10:30 p.m.

Ochoa Announces Candidacy for Hansford County Sheriff



Pete Ochoa

Pete Ochoa officially announces his candidacy for Hansford County Sheriff in the

March 9, 2004 Republican Primary election.

Pete is a 1989 graduate of Spearman High School, and is currently serving as Chief Deputy for the Hansford County Sheriff's Office.

He served eight years in the United States Army Reserve, and has been employed with the Hansford County Sheriff's Office since August of 1998. Prior to his employment in Hansford County he served as a jailer for Ochiltree County and as a supervisor for Correctional Services Corporation where he was responsible for the weekly scheduling of staff and supervision of juveniles.

Officer Ochoa will receive an Associate's Degree in Criminal Justice in May of

2004 from Frank Phillips College.

He worked undercover for one year for the Panhandle Regional Drug Narcotics Trafficking Task Force in Amarillo.

When not on duty, Ochoa helps teach the youth group at the Sacred Heart Catholic Church, where he previously served as president of the Sacred Heart Parish Council. He has helped coach T-ball, Pee Wee football, and soccer.

Ochoa was recently selected to serve on the Spearman Chamber of Commerce Board of Directors.

"I would appreciate your vote," stated Ochoa. "I look forward to my continued service to the citizens of Hansford County."

Paid for by the Klint Vennema Treasurer

DPS Issues Christmas Wish List

The Department of Public Safety has composed a wish list for the holiday season. DPS is asking travelers for the following gifts:

- Slow down-speed is the number one killer on Texas roads.
- Don't drink and drive; get a designated driver.
- Buckle up everyone in the vehicle.
- Keep cell phone chatter to a minimum.
- Drive with courtesy; it's contagious.
- Slow down in bad weather, construction areas and heavy traffic.

"Following these tips will keep your family and everyone on Texas roads safer, and that will mean a merrier Christmas for all of us," said DPS Director Thomas Davis Jr. "The sad truth is that most fatal traffic crashes don't have to happen."

DPS will have all available

troopers patrolling Texas roadways from Wednesday, December 24 through Sunday, December 28. DPS is once again participating in Operation CARE (Combined Accident Reduction Effort)-a nationwide effort maximizing enforcement on major interstate highways to reduce fatalities commonly associated with holiday weekends.

Alcohol is always a concern

during the holidays, and DPS is supporting the statewide drunk driving campaign.

"We would prefer voluntary compliance with traffic laws," said Davis. "However, if you choose to drive without regard for the safety of others, increased enforcement means you are three times more likely to get a traffic citation or be arrested for DWI during the Christmas weekend."



HOW LONG AFTER THE ANNOUNCEMENT DO YOU REMEMBER THE STORY?

Listen to more than just a thirty-second sound bite. Read your newspaper and hear today's events speak out.



HANSFORD COUNTY REPORTER-STATESMAN
213 Main Street • Spearman, TX
(806) 659-3434

Expand your knowledge through reading, and watch your future unfold

Best wishes for a Happy Holiday season and our sincere thanks for your patronage throughout the year.

Gordon's
DRUG

314 Main
Spearman, Texas
659-2141

We will close at 3 p.m. on Wednesday, December 24th and will be closed on Thursday, December 25th. We will open at 7:30 a.m. for regular hours on Friday, December 26th.

We treasure the gift of your friendship more with each passing day. May the Peace and Joy of Christmas be yours through the New Year.

\$ Interstate Bank, ssb

A Full Service Bank - FDIC Insured
322 Main Street • Spearman, TX 79081
Phone - (806) 659-2559 • Fax - (806) 659-3276

We will close at noon on Wednesday, December 24th and will be closed on Thursday, December 25th.

sat Upholstery Shop
For All Your Upholstery Needs

Quality Work
Free Pickup & Delivery

Salvador Ramirez
318 W. Kenneth • Spearman, TX
(806) 659-5025

HO! HO! HO!

Call us today!
Grooming, Dipping & Clipping for your dog or cat for Christmas

The Mutt Hutt

207 S. James • Spearman, Texas
(806) 659-3354

Mon.-Sat., 6 a.m.-5 p.m., by appt. only
Serving Spearman & Surrounding Area

Give the gift of Christmas Beauty

Poinsettias
now available in several colors at

D&C GREENHOUSE, INC.

Starting at just \$5⁰⁰

Ready now for pickup or delivery
659-5171

Open 9 a.m.-5 p.m., Mon.-Fri.

ALLSUP'S

December 14, 2003 thru December 27, 2003

DIET COKE, SPRITE OR
COCA-COLA
3 LITER BTL.
\$1.69

6 PACK
\$1.89

REG. OR SUGAR FREE
ENERGY DRINK
RED BULL
3 FOR \$5

OR INDIVIDUAL CANS
\$1.99 EACH

8.3 OZ.

BUY 12 GALLONS OF FRESH ALLSUP'S MILK... GET ONE FREE!

Collect 12 Stamps "Moo" Stamps Today to Buy One Gallon of Milk For A Year!

305 W. Kenneth
Spearman • 659-3135

101 Main Ave.
Gruver • 733-2953

16 OZ. COFFEE OR CAPPUCCINO AND A 2.5 OZ. PACKAGE OF MRS. FRESHLEY'S GEM DONUTS (CHOCOLATE, SUGAR OR CRUNCH)

99¢

MICHIGAN SCOTCH PINE CHRISTMAS TREES **\$15.99** 5-7 FT.

SANTA FE FLOUR TORTILLAS 12 CT / \$1.59 REG.	99¢
BAR-S CHOPPED HAM 12 OZ. PKG. / \$2.29 REG.	\$1.49
ALLSUP'S WHITE BREAD 24 OZ. PKG. / 59¢ EACH OR	2 FOR \$1.09
ALLSUP'S WHEAT BREAD 24 OZ. PKG. / 69¢ EACH OR	2 FOR \$1.29
SHURFINE 9 INCH PAPER PLATES 40 CT / \$2.89 REG.	\$2.59
SOLO PLASTIC CUPS 16 OZ. / 20 CT	\$1.59
SHURFINE GRANULATED SUGAR 4 LB. BAG	\$1.99
SHURFINE BROWN OR POWDERED SUGAR 2 LB. BAG	\$1.29
SHURFINE FLOUR 5 LB. BAG	\$1.19
FOLGERS CLASSIC ROAST OR COLUMBIAN 11.5-13 OZ.	\$2.99
PLAINS EGG NOG QUART	\$2.09
TENDERCRUST BROWN N SERVE ROLLS 12 PACK	89¢
HOT POCKET CHICKEN POT PIE EACH	\$1.59
SHURFINE WHIPPING CREAM 1/2 PINT	89¢
SHURFINE DIPS FRENCH ONION OR GREEN CHILI 1/2 PINT	\$1.29

Allsup's
Your Holiday Battery & Film Stores

ALLSUP'S ICE CREAM 1/2 GALLON / REG. \$3.79
\$2.99

HORTENSIA OR MARDI GRAS PAPER NAPKINS FAMILY PACK **99¢**

27 EXP.

FUJI QUICK SNAP 400 CAMERA
REG. \$7.79
\$4.99 EA.

ALLSUP'S COMBO MEALS

COMBO NO. 1	2 CORN DOGS & 32 OZ. TALLSUP	\$1.99
COMBO NO. 2	2 HOT LINKS WITH BREAD & 32 OZ. TALLSUP	\$1.99
COMBO NO. 3	3 TAMALES, HOWLERS & 32 OZ. TALLSUP	\$1.99
COMBO NO. 4	SAUSAGE/EGG BISCUIT & 16 OZ. COFFEE OR 22 OZ. FOUNTAIN DRINK	\$1.29

SPC Welding Program Mushrooms

Can popular TV shows like *Monster Garage*, *Junkyard Wars* and *Orange County Choppers* spark a career in welding?

Pete Stracener, assistant professor of welding technology at South Plains College, thinks maybe they can help.

Something apparently struck the spark. The SPC two-year welding program mushroomed from 19 to 29 students this fall and tripled in instruction. The increase includes 17 freshmen.

Stracener gives a little credit to the unconventional TV programs, which often showcase welding skills.

"They are the only TV shows that have any welding on them, and we have had calls from people who say, 'My son watches *Monster Garage*' or that motorcycle show all the time; can you teach them how to do that?" I think that has to contribute to it a little bit," explained Stracener, a 24-year veteran of the faculty.

However, what really sparked interest in the program, Stracener believes, was the creation last fall of two one-year certificate options in welding titled *Advanced Processes and Fabrication and Structural and Pipe Welding*. The options are THEA-waived, meaning the students don't have to take the Texas Higher Education Assessment (THEA) prior to enrolling in college-level courses. "That seems to have boosted enrollment," Stracener noted. Students who want to earn an associate degree can complete selected academic courses and take the THEA.

The instructors will continue the certificates this fall with further revisions to make the curriculum even more attractive to students.

"We will offer Basic Welding Processes in the freshman year and Advanced Welding Processes in the sophomore year. We think it will make a better transition and also hold the students' interest more and make them ready to come back for a second year," explained Stracener. "The students will get an introduction to MIG and TIG welding and layout and fabrication in the first year. The two options build on each other," he added.

"Our students have been real excited about it. They want to get the certificates as quickly as they can." There is also no longer a graduation fee at SPC, and that is encouraging more students to receive their certificates and degrees.

The enrollment increase prompted the hiring of a second full-time instructor, Monty Parkinson, an SPC welding graduate, and a part-time instructor in the welding labs, Don Hill.

Stracener, a 24-year veteran of the faculty, teaches classes in the mornings, Parkinson teaches from 1-7 p.m., and Hill teaches 8 a.m. till noon Monday through Friday and two afternoons a week.

"We can get a whole lot more stuff done with that much help," said Parkinson. "Plus, it's a little safer having that many instructors," he added. "Students who aren't used to the equipment and how to use it properly need more direct instruction; therefore, the program really needs all of us," he said. The addition of Parkinson to the staff also allows the instructors to do more recruiting.

Parkinson graduated from SPC's welding program in 1997, worked in the welding industry for three years and then opened his own metal furniture business. He sells items directly to a store in Fredericksburg and has some SPC students working for him.

"I told Pete when I graduated that I wanted to own my own business in five years, and I did that. I never imagined I would be back here teaching. But Pete called one day and said, 'I need some help.' I always liked SPC, and I wanted to be part of it. I like the teaching aspect of it," said Parkinson.

Hill, who has an associate degree from SPC in drafting technology, has been in the welding business since 1977. Hill taught a night class one semester. "I do the hands-on lab work. I really enjoy it. It's challenging, makes me think about a lot of stuff. After that many years, you know how to do something, but you have to think about how to tell these guys how to do it. When a student is having problems, they may not get it right the first time but as they practice a little bit, all of a sudden a light turns on and they get it. It's kind of fun to see them master something."

The instructors are continually revising the curriculum to better meet the needs of industry. "I stay connected with industry as much as I can through people I know and advisory committee members. I listen to them to find out what students need to know when they get out there and go to work. You can't prepare them for everything, but you sure can give them the basics," said Stracener. The program received eight new welding machines last fall and has a new gas manifold system. "We continually upgrade what we have and try to have something new to demonstrate the latest technology," explained Stracener.

The end result is that graduates find jobs. Graduates are employed in firms like Worley Welding Works, BP Pipelines North America, Sunstar Electric, Beck Steel, Manchester Tank and many others. Pipeline welding is picking up, the oil field is busy, and companies like Worley Welders are hiring welders, the instructors noted.

"I like everything about it," says Drew Clyburn, 20, a sophomore welding major from Spearman, "from what we do in the classroom to all the technical stuff out in the shop and learning all the welding processes." His ag teacher at Spearman High School had recommended that Clyburn go into welding for his skills. "I began looking at colleges and found that SPC was the best around here. I would recommend that anyone thinking about a career in welding check out the college."

For more information about SPC's welding program, check out the college website at www.southplainscollege.edu or contact the welding program through Dec. 19 and beginning Jan. 5 at 806-894-9611, ext. 2284.

the Spirit of Christmas

7th Annual Community Christmas Dinner

Where: The O'Loughlin Center
When: December 25th • 12:00 - 1:30 p.m.
What: A free dinner will be provided for anyone in the community who would like to share in the Christmas spirit with food and fellowship.

Sponsored by Friends of Spearman.

Rides will be available to and from the O'Loughlin Center. Call 659-3550, 659-3584 or 659-3434 and leave message, if you need transportation.

Frank Phillips College

Spring 2004 Registration

Spearman High School • Distance Learning Room • Mon., Jan. 7, 5-7 p.m.

Courses Available in Spearman
HIST 2371 - Monday, 7-9:45 p.m.
BIOL 1407 - Monday-Wednesday, 5:30-6:45 p.m.
HIST 1302 - Thursday, 7-9:45 p.m.

For more information concerning these classes or registration, contact Cindy Blackman, Community Resource Coordinator, at 659-3233.

Start Here ... Go Anywhere!

Frank Phillips College
PO Box 5118 • Borger, TX 79008 • (806) 274-5311 • www.fpc.cc.tx.us
FPC is an equal opportunity community college.

30% OFF ALL FINE JEWELRY



Hickerson Jewelers

222 S. Main St.
(Corner of 3rd & Main)
Perryton 79070
(806) 435-2495

OVER 55 YEARS OF FINE JEWELRY & WATCH REPAIR SERVICE

Last-Minute Gift Ideas

Gift Baskets
We ship and deliver!

GRAMMY'S GIFTS & GOODIES AND GRAMMY'S GRINDER
224 Hancock • Spearman • (806) 659-5087

25% Off
All Christmas Decorations & Stocking Stuffers

Closing at 4 p.m. Dec. 24

Don't forget our delicious Peanut, Pecan, Almond Coconut Brittle, Grammy's Gold and Fudge for Holiday Gift Giving!

Join us for **Wassall & Homemade Egg Nog** Christmas Eve Grammy's Grinder

Now 'Til Christmas...

Buy any item from Fall & Winter Fashions & get a 2nd item of equal or lessor value for 1/2 PRICE

Buy 2 & Save!!!

Lady Fair
659-3215

Kid's Stuff
659-2608

719 W 7th St. • Spearman, TX

Free Gift Wrap - Discover, MC & VISA • Layaway
(Excludes Brighton, Estée Lauder, Jewelry, Candles & Dr. Martens)


20% Off on any one full-price boot or shoe purchase at Footprints, 116 Main Street, Perryton

Don't Be A Scrooge

1,000 anytime minutes from Cellular One.

\$40
month

- 1000 anytime minutes
- 1000 mobile-to-mobile minutes
- Unlimited nationwide long distance
- Unlimited nights and weekends



FREE
Kyocera K414 Phantom™ Phone

Check Out Our Selection of Phones, Accessories, Hands-Free Kits, Carrying Cases & Car Chargers

Authorized Dealer
CELLULAR ONE
Proven to be the next best way to say hello!

hello

COUNTRY CELLULAR COMMUNICATIONS
720 Highway 207 S. • Spearman, TX 79081
(806) 659-2541 • 1-800-692-4657
Clear Across America

REAL ESTATE FOR SALE

FOR SALE BY OWNER: 721 Wilbanks, Spearman - 3BR, 2B, 1940 sq. ft., fireplace, new carpet and tile, completely remodeled inside. Large backyard with new wood fence. Call 659-3426 daytime, or 659-3830 after 6.

I'M MAD... at banks who don't give home loans because of bad credit, problems or new employment. I do! Call L.D. Kirk, Homeland Mortgages, (254) 947-4475.

GET READY FOR THE HOLIDAYS! Detail and general cleaner. 20+ years experience. Construction and office cleans, as well as home. All work guaranteed. Excellent references. Call Carey at 1-806-733-2492.

Bidders are expected to inspect the site of the work and inform themselves regarding all local conditions. Contract Documents are on file and may be examined in the office of the City Manager.

Plans and Specifications may be obtained from Brandt Engineers, 4537 Canyon Drive, Amarillo, Texas 79110, telephone (806) 353-7233.

applications for the TxDOT Prequalified Contractor's list, at the applicable State and/or Dist/Div Offices listed below.

Amarillo District Engineer 5715 Canyon Dr. Amarillo, Texas 79105-2708 Phone: 806-356-3283

viding property casualty coverage. Copies of the "Request for Proposal" (RFP) will be available on and after December 11, 2003 from the offices of Randy Reid, whose address and phone numbers are listed elsewhere in this RFP.

Information provided in these specifications is to be used only for preparing a proposal detailing the coverages specified. It is further expected that each proposer will read these specifications with care, for failure to meet every one or a combination of specified conditions may invalidate the proposal.

Have a Christmas ball!



Teleflora's Holiday Ornament Bouquet

As merry as Santa himself, this charming gift delivers flowers in a large ceramic ornament jar glazed in the colours of Christmas.

Prairie Garden Flowers

209 Main Street • Spearman, TX 659-2212 • 659-4329

FOR RENT/LEASE

FOR RENT, SPEARMAN: 1BR apartment. Call 659-5519. TFN(8-8-02)B

HELP WANTED

HELP WANTED: Frontier Feedyard is accepting applications for office help. Experience with computers and accounting preferred. Call (806) 882-4251 or apply in person. EOE

LEGAL NOTICE

NOTICE TO BIDDERS Sealed proposals addressed to the Honorable Mayor and City commission of the City of Spearman and City of Gruver, Texas for the Sealcoating of approximately 165,000 square yards of streets entitled:

PUBLIC NOTICE

Board of Commissioners of Spearman Housing Authority is seeking an Executive Director to operate its 9-unit apartment complex. Required skills include property management, governmental reporting, and effective communication.

LEGAL NOTICE

The Pringle-Morse Cisd Board of Trustees, on behalf of Pringle-Morse Cisd, Hutchinson County, Hutchinson County Hospital District, and North Plains Ground Water District is accepting sealed bids or exchange for the following real property:

LEGAL NOTICE

Randy Reid Gruver ISD 600 Garrett PO Box 650 Gruver, TX 79040 Proposals (one copy) should be addressed and sent to:

SERVICES

TREE TRIMMING & REMOVAL. Fully insured. Bucket truck. Call 580-625-3490 or 580-922-5796, cell. 4(11-13-03)B

Century 21 Golden Spread Realty 200 S. Main • Perryton, TX (806) 435-5444

Blankenship Real Estate 659-3052 - 670-3774 LET US HELP YOU SELL YOUR HOME!

SPEARMAN Residential 218 Endicott - 2BR, 1B, new paint - \$20,000

MARTIN & ASSOCIATES REALTY Hansford County's ONLY locally owned and operated Realty.

J&J CONSTRUCTION Painting, Remodeling Tree & Stump Removal Yard Mowing & Cleaning

WAKA #1 Greever & Rodgers - 4BR, 1 3/4B, wall heater, 2 car carport - \$34,000

hchd Hansford County Hospital District Immediate opening for a Laboratory Director. Requires a Bachelor's Degree in Medical Technology, 2 years experience as Medical Technologist in area of hospital setting.

RIGHT UP! STEP The Gibner Fitness Center at the O'Loughlin Center is changing to winter hours. Monday-Thursday 6 a.m. - 8 p.m. Fridays 6 a.m. - 4 p.m. Saturdays 9 a.m. - 12 noon

MARTIN & ASSOCIATES REALTY 112 Townsend - SOLD 208 Lonita - 3/1/1 - New paint inside.

SHOP THIS FRI. & SAT. AT THE CLOTHES OUT! Open 9 a.m. to 5 p.m. Next to Alco All name-brand, first quality Clothing & Shoes at GARAGE SALE PRICES!

OCEANS OF WATER - 2,400 acres in two units one mile apart (2 sections & 1 1/2 sections). 14 sprinklers, large wells, minimal depletion/year, raise peanuts, alfalfa, potatoes, corn, milo, wheat and cotton, excellent isolation for seed production.

TEXSCAN TEXAS STATEWIDE CLASSIFIED ADVERTISING NETWORK REAL ESTATE NEW SOUTHERN COLORADO - 1 hour Taos, first time, 35 acres only \$35,900.

Real Estate & Rental Spearman Property

NEW MERCHANDISE, FOR WOMEN Many Items just "perfect" for Christmas Giving Many new items on our "\$8 or Less" Racks

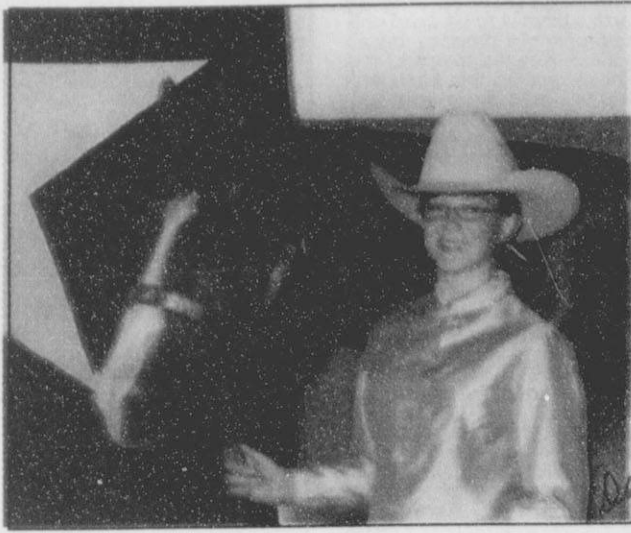
New Mattress Sets For Sale Queen mattress set, brand new, never used, with warranty - \$202

Real Estate & Rental for all your real estate needs! Melinda McCullough, Assoc. (806) 733-5678 Dawn Brown, Assoc. (806) 274-3568

Business Opportunity 1-800-VENDING, 90 MACHINES-\$8,670. The best locations. 1-800-836-3464, 24 hours.

Extend your advertising reach with TexSCAN, your Statewide Classified Ad Network

Jarvis Attends State 4-H Horse Show



Jessica Jarvis

Jessica Jarvis, the daughter of Will and Kristi Jarvis of Spearman, showed her two horses Glowing Impulsions, "Barkley" and Hard Rock Jazz, "Jazz" at the State 4-H Horse Show in Abilene, Texas this past summer.

She showed Barkley in Western Pleasure, Western Showmanship, Western Horsemanship, Trail, and Halter. Jessica placed 10th in Halter.

She showed Jazz in Hunter Showmanship, Hunter Under

Saddle, Hunter Hack, Hunt Seat Equitation.

Her grandparents, Britt and Linda Jarvis, have helped tremendously with showing and all the work that goes along with it.

Jessica is a freshman at Spearman High School.

Armes Leads McKinney Team

by Harletta Carthel



Former Lady Hound Team Armes might have thought a 1A basketball player couldn't

play at a 5A school, but that was before she donned a McKinney High uniform and led her team with 22 point and 22 rebounds.

"If you can play basketball, you can play. Period," said Trina Youree, McKinney girls basketball coach.

And that is what Armes is doing.

Averaging 12.9 points and 8.4 rebounds per game, Armes holds the team's high in both categories. A strong player with good ball-handling skills and jumping ability, Armes has been playing inside for the Lionettes, a change for the three-year Gruver point guard, who only played inside occasionally.

For a young lady who had no plans to play basketball when she and her family moved to McKinney this past summer,

Armes has found a home on the McKinney team and friendship as well.

"I was burned out," Armes said. "I thought a break from it would help. I knew I'd miss basketball, but I had made up my mind that I wasn't going to play, or at least I thought I had."

But after news leaked out at McKinney High that Armes had played in last year's state 1-A championship game, she became a glimmer in the eye of Coach Youree who lost seven seniors to graduation last year, including all five starters.

While the Lionettes have a 3/4 win/loss record, Armes has had a dramatic effect on the team and has brought leadership through her skill and senior status. Her impact has not gone unnoticed as she was featured in a write-up in the Dallas Morning News which called Gruver a "tiny" town.

McKinney might want to write that "tiny" town a thank you note.



Luis Ramirez (left) and Hutch Reed find a surprise in a Christmas package left on the desk of Gruver Superintendent's Secretary Amy Babbs.

Dr. Rick Sheppard, D.D.S.
FAMILY DENTAL
PRACTICE • BRACES
658-4569 or 1-800-687-2010
Pioneer in Booker
TEETH FOR A LIFETIME

Now Open
NEW TRADITIONS
 Located at 517 Hwy. 207
 Spearman Shopping Mall

Gift items, home decor, candles, purses, wallets, jewelry, body jewelry, porcelain dolls, baby dolls, remote controlled cars and other toys, electric scooters, gas scooters, tools, air compressors, etc.

Something For Everyone
 Ruth Hall, Owner and Manager

VISIT SANTA
 Santa is coming!
 Sat., Dec. 20th at 1 p.m.
 Don't forget to enter our drawing for an electric scooter!

Are You A Victim of Domestic Violence, Sexual Abuse or Assault . . . Physical, Emotional or Sexual?

Call Toll Free 1-800-753-5308

We can see individuals from Hansford County anytime upon request. Call 435-5008 or 1-800-753-5308 to set up an appointment in Hansford County. We operate a safe place for victims and their children to stay in times of crisis.

Panhandle Crisis Center
 Serving Hansford, Lipscomb & Ochiltree Counties
 317 S. Main • Perryton, TX
 Memorials Accepted

Auxiliary Heads Operation Christmas Greeting

The Hansford Hospital Auxiliary would like to thank the following for donating to "Operation Christmas Greeting" instead of mailing greeting cards. This money is used to purchase equipment and supplies that are not budgeted at the Hospital and Manor.

Merry Christmas
 from

Dennis and Judy Nelson
 Grace Simpson
 Ruth Crawford
 Mary Fern Terry
 Nolan and Helen Holt
 David and Mary K. Harbour
 Alva Garner
 Robert and Jackie Graham
 Verna Brown
 Granville and Muriel Boyd
 Rickey and Sandee Smith
 Norma Jean Mackie
 John and Loree Booth
 Irvin and Betty Davis
 Ralph and Johanne Blodgett
 Rosa Lee Butt
 Joe Copeland
 J.D. Rubyjo Wilbanks
 Olive "Babe" Pendergraft
 June O'Loughlin
 Dolly McWhirter
 Estelle Jackson
 Gwen Smith
 Thane and Sue McCloy
 Don and Gwen McLain
 Willie Clement
 Dortha Keys
 L.W. and Maylynn Ayres
 John and Virginia Trindle
 Roy and Ann Flowers
 L.F. Hand
 Burl and Nellie Buchanan
 Gary, Cathy & Clayton Smith

Donations may be mailed to Operation Christmas Greeting, 906 Bernice, Spearman, Texas 79081.

GREEN Christmas

EROL

Konnect Kit

EROL

Current Values

Hansford Implement, Inc.
 Hwy. 207 • Spearman
 (806) 659-2568

Check out your local John Deere dealership for the best selection of John Deere equipment priced as low as...
 Dealer selection may vary by availability. Visit our local John Deere dealership for more information.