

INSIDE

- Hansford Happenings.....2
- Sports ..... 6,7
- Classified Ads.....9
- Obituaries.....10

# The Hansford County Reporter-Statesman

Serving All of Hansford County

10 pages

WEATHER

Day	Hi	Lo	Precip
Thu	90	65	0.00
Fri	88	63	0.00
Sat	89	65	0.00
Sun	83	55	0.00
Mon	79	56	0.00
Tue	85	54	0.00
Precip to date			14.72

Vol. 83, No. 47

213 Main

Spearman, Hansford County, Texas

25¢

Thursday, September 19, 1991

## CROP Walk to help in hunger relief

The Spearman Ministerial Alliance will sponsor the Fall 1991 Spearman area CROP Walk for hunger relief, which is scheduled to begin at 2 p.m. Sunday, Sept. 22 at the Waka Church of the Brethren in Waka.

CROP Walk coordinator Martin Gauby, pastor of the Waka Church of the Brethren, said the six-mile walk is open to anyone interested in relieving hunger and illness throughout the world.

Walkers obtain pledges, which are paid after the walkers complete the six-mile trek for hunger relief. Gauby noted that the Spearman Ministerial Alliance has applied to CROP Offices in Austin for 20 percent of the money raised to be given to the Spearman Welfare Association, to help alleviate hunger in the local area.

Jean Scroggs of Waka, age 79, has walked in all the CROP Walks held for the past four years in Perryton, and will be the Queen of the Walk for this year's Spearman area Walk.

LaVern Draper, pastor of First Christian Church of Spearman, is serving as treasurer for the CROP Walk. It is anticipated that as many as five local church congregations will participate in the Walk. Gauby said that last year's Walk had around 50 participants, and he is hoping for a higher number this year.

More than 70 communities across Texas - from Spearman/Waka in the Panhandle to McAllen in the Valley, from Longview in the Piney Woods of East Texas to McCamey in the Permian Basin of West Texas - will be sponsoring CROP Hunger Walks. CROP Walks are a significant com-

munity event focusing on the needs of hungry people, both overseas and in the local community.

Local hunger-fighting agencies, including the Spearman Welfare Association, benefit from CROP Hunger Walks in their community. Up to 25 percent of funds raised can be returned locally. In 1990, \$110,083 was given to continue local hunger-fighting efforts.

CROP Walk dollars help the people-to-people efforts of Church World Service that strive toward plentiful food and self-sufficiency for all. Seeds, tools, and training are provided to help plant hope in more than 70 countries throughout the world.

Church World Service works through partner agencies in countries such as Sudan, where widespread food shortages due to war, floods, and drought jeopardize eight million people. Working through the Sudan Council of Churches, Church World Service is helping provide food, medicines, shelter, clothing, blankets, cooking utensils, seeds, and tools. The residents of the Spearman and Waka area can help in this effort, said Gauby.

Everyone wishing to participate in the CROP Hunger Walk is invited to meet at the Waka Church of the Brethren at 2 p.m. on Sunday, Sept. 22.

Those who cannot participate but who would like to make donations can contact Martin Gauby at Waka Church of the Brethren, 435-4598, or LaVern Draper at First Christian Church of Spearman, 659-2036.



The Gruver marching band will perform in front of the hometown folks for the first time at halftime of Gruver's first home football game Friday night. The band is made up of 42 students, 8th grade through 12th grade. Along with the instruments, the band will feature a flag team and, for the first time in six years, a baton twirler. Kristy Pittman (front-right) will

be twirling the baton for the Gruver band. Standing next to Pittman is Carman Moreno, Gruver band drum major. The goals that band members have set for themselves are to earn a Division I rating at District Marching Contest in Borger, and to represent Gruver at the Area contest in Lubbock.

**\$1.08 or \$1.10 likely...**

## Gruver school board discusses tax rate

by JoAnn Morton  
Editor

The Gruver Independent School District Board of Trustees discussed the district's probable 1991-92 tax rate at its Wednesday, Sept. 11 meeting.

GISD Superintendent Tom Cathey said the board would have a tax rate hearing and adopt the tax rate on Thursday, Sept. 19 at 9 a.m. He estimated that the rate would be around \$1.08 or \$1.10 per \$100 property value. The board has discussed rates ranging from \$1.04 to \$1.10, he said.

In other business, the board pre-approved travel to Lubbock for district competition and to Austin for state competition for the Gruver High School marching band. Cathey noted that if the band receives a Division I rating at the district marching contest, it will be eligible to compete at the regional level in Lubbock. And, if a Division I rating is received in regional competition, the band would then be eligible for state level competition.

He explained that only bands in classes 1A, 2A and 4A will have state contests this year. Next year, state contests will be conducted for bands in classes 3A and 5A. "It used to be that only the top two bands at the district level qualified for regional, no matter how many bands received a Division I rating," said Cathey. "Then, the top two bands at regional were the only ones able to go to state. But now, all bands receiving a Division I rating at district can advance to regional, and so forth."

He said 42 students participate in the high school marching band, with

total participation in the band program at about 100. That includes students from 5th grade through high school.

Board members discussed and approved campus goals for 1991-92. Cathey explained that campus goals are established in August by each school's principal and campus committee. Campus goals are on file at each campus and also in the superintendent's office, he said. They are available for review by interested persons.

Bob Burgoon, Bill Duncan, Barry Haenisch and Tommy Cathey were appointed as teacher appraisers, and the appraisal schedule was set. First appraisal period will be Sept. 9, 1991 through Jan. 9, 1992. Appraisal period 2 is set for Jan. 13, 1992 through May 5, 1992; and the final "short appraisal" will be May 6-20, 1992.

The board discussed and approved the 1991-92 list of substitute teachers. Cathey said there are about 25 people on the list of formally-approved substitutes. In addition, approval was given to the Language Proficiency Assessment Committee, which consists of Elvia Martinez, ESL (English as a second language) instructor, and Bob Burgoon, elementary principal. Cathey said the LPAC committee's function is to do a home language survey, primarily for incoming students.

A discussion of insurance rates resulted in the board deciding to change the district's bus insurance to the minimum required by the state, thereby reducing premium payments. Cathey said the board is

also looking at different deductibles for the district's property insurance to reduce premium payments. The school legal liability insurance will remain unchanged.

The board adopted TASB (Texas Association of School Boards) Policy DEC, which places every employee of the district on the state sick leave policy. Cathey said that previously, only professional employees were on state sick leave. The board had its first reading of TASB Policy DGBA, which is a grievance policy with two options. One option allows persons with grievances to use the superintendent as intermediary, and the second option allows the grievance to be taken directly to the board.

It was noted that Linda Venneman, Buddy Lowe and Kevin Holt, the three new school board members, will travel to Houston Sept. 27-30 for the Texas Association of School Boards convention. Cathey will also be going to the convention, and it is possible that one other board member will attend. Venneman will be GISD's voting delegate.

In his superintendent's report, Cathey gave the board information regarding average daily attendance, ESL and transportation.

He said Gruver schools averaged 511 students for the first few days of the year, down somewhat from the 528 recorded at the same time last year. Of that number 151 or 29.5 percent are Hispanic, and 360 or 70.5 percent are of other national origin. The ratio is the same as that noted for the past couple of years, he said.

In the ESL report, Cathey told the

board about ESL instructor Elvia Martinez' schedule, her students and their grade levels. He noted that as a new requirement, kindergarten students in the ESL program must be in the program two years. That effectively doubles Gruver's ESL enrollment, he said, placing a greater load on Martinez, who also teaches high school Spanish.

Because of the projected increase in ESL enrollment, the need may arise for an additional ESL instructor in the future, said Cathey.

In his transportation report, Cathey said that Gruver's school buses are picking up approximately 200 students, or 40 percent of the school population. He said that a total of 69,599 miles had been traveled in extracurricular activities, which include athletics, UIL, band, cheerleaders, gifted and talented, track and others.

Total mileage for the Gruver buses last year, which includes both regular routes and extracurricular activities, was 225,000 miles. Cost per mile to operate the buses was figured at 74 cents, said Cathey. He also gave the board a vehicle inventory list which included a list of school buses, their year model and mileage on each as of Sept. 1.

Regular business for the board included receiving the business manager's report and payment of bills in the amount of \$118,233.13. Cathey pointed out that bills in September and October are usually higher than bills for the rest of the school year because of supplies and materials ordered ahead of time.

## Palo Duro River Authority meets

by JoAnn Morton  
Editor

The Palo Duro River Authority board approved a lease agreement with Texas Parks and Wildlife Department at its Sept. 10 meeting.

Johnnie Lee, PDRA general manager, said the lease agreement is for a boat ramp, a boat dock and parking slab at the west boat ramp site. A grant in the amount of \$179,000 for the facilities could be received after all the paperwork is finished, Lee said.

In other business, the PDRA board voted to receive proposals for two water wells. Lee explained that one well is needed in the park area, and the other is needed where the PDRA gained right-of-way for the new access highway. The road cuts through a pasture, he said, and cut off one corner of the pasture. The well is needed to provide water for livestock in that area.

The board authorized the purchase of 1,000 railroad ties at a cost of \$4 each, delivered. The railroad ties will

come from the old railroad between Spearman and Morse, and will be used for landscaping and to designate parking areas.

Approval was given to a drainage easement for Morris Stock Farm in Sherman County. It was determined that runoff from the stock farm would have minimal effects on the lake's watershed area.

The audit for fiscal year 1990-91 was approved, as were minutes of the last meeting, the treasurer's report and payment of claims.

Board members scheduled a special meeting for Tuesday, Oct. 1 to choose a name for the lake which has been created by the Palo Duro Dam. The board invites suggestions for naming the lake, which can be sent to Palo Duro River Authority, P.O. Box 1046, Spearman, TX 79061.

Lee added that the lake level on Sunday, Sept. 8 was at 28 feet, 4 inches. He said the board is hoping for a substantial rain before the Oct. 5 dam dedication ceremony.



Kelvin Knauf came to Spearman with his wife Shirley and their daughter Brittany from Arlington. He began his new job as Spearman city manager on Monday, Sept. 16.

### Spearman city manager...

## Knauf begins job

Kelvin Knauf was born, raised and educated in Kansas, but all of his career experience was in the Dallas-Ft. Worth metroplex area.

In an interview on Monday, Knauf's first day as the Spearman city manager, he said that he and his wife, Shirley, were very impressed with the town of Spearman. "The people are friendly and outgoing and the community is stable and attractive," said Knauf.

Knauf earned a bachelor's degree in political science at the University of Kansas. He continued his education at that institution after completing a master's degree in public administration.

Knauf's last position before coming to Spearman was in Arlington, where he was budget manager. Before that he worked five years as assistant city

manager at Grapevine, Texas, a small town northeast of Dallas. "I ran the 14 departments of the city on a daily basis," said Knauf. Before that he was an administrative analyst for the city of Fort Worth.

The Knaufs have a 2 year old daughter named Brittany. They each belong to a different church. Kelvin belongs to the First Christian Church and Shirley belongs to the First Baptist Church. "We attended one service last Sunday and the other one the Sunday before, and enjoyed them both," said Knauf.

Knauf indicated he does not intend to make any changes in the day-to-day operation of city hall in the near future. "I am not the kind that comes in and makes a lot of changes. I'll talk to the council and get a feel for the community first," said Knauf.

## Tax rebates go up

In the September disbursement of city sales tax rebates from the state comptroller's office, Spearman received a check for \$11,610.09, while Gruver's check was in the amount of \$3,229.27.

Spearman's September check reflected an increase of 8.17 percent as compared with the rebate of \$10,733.01 received in September of 1990.

An increase of 14.95 percent over last September's rebate of \$2,809.25 was shown in this month's rebate to Gruver.

Spearman has received a total of \$119,658.73 in city sales tax rebates so far this year, which is down 8.38 percent over the total of \$130,604.02 which was received through September of last year.

This month's city sales tax rebate check brought Gruver's year-to-date

total to \$33,294.99, a decrease of 2.60 percent from the \$34,183.47 total received in the first nine months of 1990.

September's checks to cities, counties, hospital districts and city transit departments include taxes collected on July sales and reported in August by businesses filing monthly sales tax returns with the state. Businesses file either monthly, quarterly or annually depending on the amount of sales tax they collect.

Merchants collect the state's 6 1/4-percent state sales tax and any local sales taxes levied in the area and send them to the comptroller's office with their tax returns. The state retains its share and returns to cities, counties and other taxing entities their local portion of the sales tax.



# Hansford Happenings

Daisy Girl Scouts will meet Monday, Sept. 23 from 4 to 5 p.m. at the Girl Scout Little House, 22 S. Endicott.

Anyone who wishes to sell crafts at the Hansford County Fair on Friday and Saturday, Sept. 27 and 28, should call Fran Duncan at 806-733-2866 or 733-5215.

Spearman PTA's Fall Festival is scheduled for Saturday, Nov. 9. Any club or organization interested having in a booth should contact Debbie Clements at 659-2191 or Lyn Woolley at 659-3550. Both food booths and game booths are needed.

The Counseling Office at Gruver ISD is sponsoring a three-week Parenting Skills Workshop starting Tuesday, Sept. 24 and continuing on Oct. 1 and Oct. 8. The hour-long sessions will meet from 7 to 8 p.m. in the junior high library. John O'Nan from Perryton Family Services will lead the workshops. The sessions are for parents of tots to teens. Questions concerning the workshops can be directed to Cathy Potts at 733-5111 (work) or 733-2329 (home).

La Leche League of Spearman will meet Friday, Sept. 20 at 9:30 a.m. at 407 S. Haney, in the First United Methodist Church nursery room. All women interested in support and information about breastfeeding are invited, as are their babies. For more information, call 659-2962.

A representative of the Pampa Social Security office will visit Spearman on Thursday, Oct. 10 from 10 to 11:30 a.m. at the Hansford County Courthouse. No visits are scheduled for November or December.

Harvey Dean Leighnor, formerly of the Waka area and now living with his family at Pearl City, Hawaii, will be at the Waka Church of the Brethren on Sunday, Sept. 22 to speak on the subject of "Ministry to Families, in the Desert Storm Gulf War." Leighnor will speak during the morning worship service, beginning at 11 a.m. The public is welcome to be present for the service.

The kick-off of monthly support group meetings on Alzheimer's disease will be Sunday, Oct. 6 at 2 p.m. in the Hospitality Room of the First State Bank of Spearman. The public is invited to attend the support group and share with others. More information is available by calling Hansford Manor at 659-5535.

The Spearman area CROP Walk is scheduled for Sunday, Sept. 22 at 2 p.m. at Waka Church of the Brethren. According to Martin Gauby, pastor of the Waka Church of the Brethren and CROP Walk coordinator, the purpose of the CROP Walk is to raise money to help relieve hunger and illness throughout the world. The Walk is sponsored by the Spearman Ministerial Alliance. Treasurer for the Walk is LaVern Draper, pastor of the First Christian Church of Spearman. The Ministerial Alliance has applied to CROP offices in Austin for 20 percent of the funds raised for hunger relief to be given to the Spearman Welfare Association. The public is invited and encouraged to participate in the CROP Walk.

Spearman PTA will have its first meeting of the year on Monday, Sept. 23 in the Spearman High School auditorium from 7 to 8:30 p.m. Theme for the meeting is "Children and Teens ... Good Nutrition and Physical Fitness." A panel discussion will feature local professionals with experience in both areas. Also, Eddie Martin will direct the fifth graders in a choral performance. All interested persons are invited and encouraged to attend.

The Panhandle Relays, sponsored by the Spearman Chamber of Commerce, are scheduled for Saturday, Oct. 19 at 7:30 a.m. Information and entry forms can be obtained from the Spearman Chamber of Commerce office at 211 Main in Spearman, 659-5555.

The Activities Center will sponsor a two-person golf scrambles at the Hansford Golf Course on Sept. 22. Entry fee is \$40 per team. For more information contact the golf club.

Spearman Volunteer Fire Department has established a fund at First State Bank of Spearman to benefit Stanley Hudson, former Spearman resident. Hudson, now a Pampa resident, sustained numerous severe injuries in a Labor Day vehicle accident. Anyone wishing to contribute to the fund can contact the First State Bank.

## THE INFILTRATOR

**State of the Art Septic System Drain Field. Uses less yard area. And no gravel to get in your lawn.**

Available at  
**BOYD DITCHING**  
State Certified Installers - 11 yrs. experience  
New Septic Systems or Old Ones Repaired  
Other Services  
Utility Line Replacement & Repair  
Roto-Rooting • Septic Tank Pumping  
Backhoe & Ditching Services  
At A Price You Can Afford

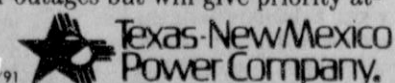
Call for an estimate  
**Daniel Boyd**  
Spearman 659-3304 Gruver 733-2812

### A few minutes now can mean security later if you rely on electricity for life-support equipment

A brief phone call now can help ensure quick restoration of electric service to your home during an outage later.

If you depend on electricity for life-support equipment, call your local Texas-New Mexico Power Company office today to make sure that your name is on a list of customers who need prompt attention during an outage.

Texas-New Mexico Power Company works to restore service to all customers as quickly as possible after outages but will give priority attention to customers with health considerations.



# Spiritually Speaking

by LaVern Draper  
First Christian Church, Spearman

We live from day to day by the good news. But there is good news and GOOD NEWS. The Christian life and the Christian movement are based upon the GOOD NEWS. The first four books of the New Testament are called gospels, stories of the GOOD NEWS of an unprecedented and crucial happening in human history. It is news about a new relationship between God and man. Into this world of uncertainty and confusion there came one who brought truth and integrity into human life and history. Into this world of guilt feelings and failures there came one who brought liberation and acceptance. Into this world of evil principalities and powers there came one who brought victory and triumph over all those forces that threaten to enslave and dehumanize us. Into this world with its life-distortion and falsehood there came one who restored the true model and image of humanity. Into this world of suffering and death there came one who participated in these evils and bore them redemptively and victoriously for all persons.

It is news about a new way of life. The New Testament resounds with the proclamation that new life is a possibility in and through Jesus Christ. From the beginning of his ministry to the end, he claims to restore persons to their rightful human nature.

Life in the Christian sense of unity is not simply belonging to an institution or accepting a theological creed or conforming to an ethical code of behavior. It is a living relationship with a living person.

It is news about a new community. In the Upper Room Jesus talked with his disciple-friends around the table. He commanded them to love one another as he had loved them. Jesus had loved them as the Father had loved him. To their astonishment he washed their feet, reminding them that if they called him Master and Lord, and he did this lowly service for them, they ought to serve one another in humility and love. His community was to be permeated by that spirit.

This is the essence of the church. It is a fellowship of reconciliation, a

community of friends who cohere in, and express the new covenant community of Jesus Christ.

Today we are greatly concerned about the unity of mankind. The GOOD NEWS proclaims what happened in Jesus Christ and what has been happening through persons and peoples and nations. Through his presence, purpose and power will someday come to fulfillment, when the kingdoms of this world shall become the kingdom of our Lord and of his son, Christ.

The Spearman Ministerial Alliance showed UNITY this past week in our Revivals. There are two certain facts that we know about people; we are all different, and we who are separate are also inseparable. "We who are many are one." Paul seeks to show this idea; that the church is a unity even in its diversity.

We as a Christian community are unified, not because we always agree on every matter, but because of our common commitment to Jesus Christ as Lord. Paul speaks of this commitment to Christ as leading us to give ourselves as a sacrifice to God. This sacrifice will involve a greater effort on our part to become aware of the will of God in our lives. Also our commitment to Christ as Lord unifies us as we become transformed by the renewing of our minds. The "mind" now focuses upon the good of all congregations and not just upon one.

The churches of Spearman see themselves as a unity, by making the best possible use of individual spiritual gifts for the good of all the congregations. Paul urges Christians to find their gifts, develop them, and then use them. To the people of Corinth, Paul says the greatest spiritual gift is LOVE.

We as Christians are unified because we are a body, the body of Christ. The word used here for body is always used to refer to a living organism. Among the mass of Christian persons in each congregation each person has his or her own function which is essential to the whole body and is used for the general welfare of the town of Spearman.

It is our possession of a common life through ONE SPIRIT that unites us as a body.

# Police Files

Spearman Police Department

The Spearman Police Department logged 30 calls for service during the week of Sept. 9-15. Included among those calls was one report of simple assault, one aggravated assault, one DUI, two violations of liquor laws and one report of drunkenness.

Also recorded by the SPD were two reports of disorderly conduct, one traffic violation and three reports of suspicious activity. One hit and run was recorded, along with one ambulance call, seven miscellaneous officer calls and three vehicle lockouts. Six calls for animal control were received.

Some of the above listed calls were detailed on police incident reports. One report stated that a 27 year old man was arrested and charged with a felony DUI. The incident occurred in the 400 block of South Bernice at 12:40 a.m. on Wednesday, Sept. 11.

According to another incident report, two men were involved in a fight on private premises in the 900 block of Haney. The incident occurred at 1:22 a.m. on Saturday, Sept. 14. No complaints were filed.

On Sunday, Sept. 15 at 4:35 a.m., police received a report of an aggravated assault with a firearm. According to the incident report, the case was referred to the Hansford County Sheriff's Department for investigation, because the alleged incident took place outside the Spearman city limits.

On Monday, Sept. 16 at 10:55 p.m., a 64 year old man was arrested and charged with public intoxication in the 500 block of South Hazelwood.

Gruver Police Department

On Monday, Sept. 9, the Gruver Police Department assisted in traffic control for a funeral procession from the 100 block of Cooper to the Gruver Cemetery.

On Tuesday, Sept. 10, police received a report that an 83 year old woman with memory loss had wandered away from her daughter's home in the 900 block of Womble. She was later found in a wash southwest of the home, suffering from minor injuries. The Gruver ambulance was summoned and she was transported to Hansford Hospital for evaluation.

On Wednesday, Sept. 11, Gruver police received a report that a truck was blocking traffic in the south-bound lane in the 200 block of Main Street. Upon investigation it was found the truck had broken down, and it was later towed away.

On Friday, Sept. 13, police assisted with traffic control at the scene of an accident just outside the Gruver city limits on FM 278. A vehicle struck some cattle, according to Police Chief Steve Gaines, and the accident was worked by the Texas Department of Public Safety.

On Saturday, Sept. 14, police were called to unlock a vehicle in the 300 block of Cluck, and investigated an open door at a residence in the Etling Addition. Nothing appeared to be disturbed, and the door was secured, said Gaines.

On Sunday, Sept. 15, an Amarillo resident came in to the police department to provide information to assist in locating her runaway daughter. The girl has been missing since Sept. 7, according to Gaines.

# Chamber Chatter

by Cindy Blackman

I want to thank everyone who came to the membership luncheon last Friday. Don Townsend gave an interesting talk about his trip to Russia. I also want to thank Five Star Equipment for sponsoring the luncheon. We had about 50 people there and the food was really good. Thanks also to the board members who helped me.

It's nice to know there are still people around town that you can call on for a favor. Don Maize from Enron came by the other day and got rid of

all the weeds that were behind the chamber office. They were as big as me! Thanks a lot Don, and also to Enron, for the ground spray. This week's article is starting to sound like a thank you note!

The chamber is putting out a new city brochure that is going to be really nice. If you want to come by to see a sample of what it will look like, I have one here at the office. The brochure will include a city map, a place for businesses to advertise, and a community profile, all on one side. On the other side will be a layout of our new lake and different facts about the lake. I'm really excited about them. They are going to be really nice. If you have any questions about them you can call me here at the office.

Remember the Hansford County Fair, Sept. 26-28 in Gruver. The chamber is going to set up a booth there. It's for all the "ole-timers" in Spearman and Gruver. Carl Archer has a picture of a booster club trip that was taken in front of the Amarillo Court House. There are several people from the county in this picture that you might not be able to point out. Come by the chamber of commerce booth at the fair to see this picture. You will be able to buy a chance and try to see who gets the most picks right. Some of the people in this picture are going to be hard to guess right because they have hair!

## The Hansford County Reporter-Statesman

"Serving All Of Hansford County"

USPS 509660  
213 Main, Box 458, 659-3434  
Spearman, TX 79081

Published Weekly at  
213 Main, Spearman, Texas

Owned and Operated by:  
Texas Independent Newspapers, Inc.  
15915 Alsace  
San Antonio, TX 78232  
(512) 545-1739

Second class postage paid at Spearman, Texas 79081.

Any erroneous reflection upon the character of any person or firm appearing in these pages will be gladly and promptly corrected upon being brought to the attention of the management.

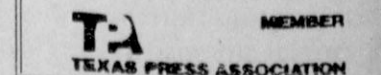
Publisher - Robert M. Hulet  
Editor - JoAnn Morton  
Bookkeeper - Sheila LaRochele

Subscription Rate: Hansford County, \$19.95; out of county, \$24.95 annually.

Postmaster: Send address changes to Hansford County Reporter-Statesman, Box 458, Spearman, TX 79081.

The publisher reserves the right to revise or reject at its option any advertisement which it deems objectionable, either in subject or phrasing, or which it may deem detrimental to its business.

Advertising and Story Deadlines: Tuesday, 12:00 p.m.



# Hospital Notes

**ADMISSIONS**  
Thursday, Sept. 12 - none  
Friday, Sept. 13 - none  
Saturday, Sept. 14 - Helen Cummings  
Sunday, Sept. 15 - none  
Monday, Sept. 16 - none  
Tuesday, Sept. 17 - none

**DISMISSALS**  
Thursday, Sept. 12 - J.W. Daves  
Friday, Sept. 13 - none  
Saturday, Sept. 14 - none  
Sunday, Sept. 15 - none  
Monday, Sept. 16 - Helen Cummings  
Tuesday, Sept. 17 - none

**PATIENT CENSUS**  
Wednesday, Sept. 18 - Silas Dozier

# Workshop board meets

BORGER - The Borger Workshop Center Advisory Board has elected its new officers.

Eck Spahich, local realtor and journalist, was re-elected president of the advisory board. Other officers are Murt Hubbard, vice president; Neva Maxwell, secretary; and Ed Eaton, treasurer.

Additional board members are Buck Formby of Stinnett, Ila Loyd, Gary Davenport, Don Fine, Ben Setliff, Jewel Malone, Dewayne Scott, Wanda Rittenhouse and Mike Francis, all of Borger.

The Borger Workshop, at 28 Pantex St. in Bunavista, is directed by Janis McWilliams. The facility is a sheltered workshop for mentally handicapped adults 16 years of age and older.

The center, a division of the Amarillo State Center, is supported by Hutchinson County's United Way.

# At the movies ...

Showing Friday, Sept. 20 through Tuesday, Sept. 24 on the Lyric Theatre's Screen 1 at 7:30 p.m. is the Disney classic "101 Dalmatians." Showing on Screen 2 at 7:15 p.m. is "Bill and Ted's Bogus Journey."

"101 Dalmatians" is a reissue of Disney's animated classic about a villainess named Cruella De Vil, who kidnaps a litter of puppies, setting off a wild "dog-hunt" across the English countryside.

Good family entertainment, "101 Dalmatians" is rated G.

"Bill and Ted's Bogus Journey," starring Keanu Reeves, Alex Winter, William Sadler, Joss Ackland and George Carlin, is a most triumphant sequel to the 1989 sleeper hit "Bill and Ted's Excellent Adventure."

In the first film, the two San Dimas teens timetravel back to catch up for a history lesson, but this journey begins in the future where Bill (Alex Winter) and Ted (Keanu Reeves) have been immortalized. At a university bearing their name, students can learn firsthand via the time machine (and through tutor George Carlin - back again for more fun) and in turn, be most excellent to their surr.

Fleshing out the idyllic surroundings is evil rebel leader De Nomolos (Joss Ackland), who appears on the campus and, a la Terminator, sends

Bill and Ted robots back in time to prevent the troublesome duo from performing at the Battle of the Bands, thus changing history.

In a brilliantly funny homage to Bergman's "The Seventh Seal," Bill and Ted confront William Sadler, dark-cloaked, white-faced and Czech-accented as Death the Grim Reaper (a fabulous performance) who they must beat for a chance to return to reality.

The characters' gleeful use of language gives them their charm. Far from the beaches or the San Fernando Valley, Bill and Ted's words are their own and the utterances from these unlikely linguists is fodder for even the most staid intellectual. In Bill and Ted'speak, Joan of Arc is Noah's wife and Builder's Emporium is known as The Repository of All Early Building Material.

What also makes these two ignoramuses so endearing is their apparent unconcern for appearances. Everyone is treated equally and fairly - a lesson we could all learn. And while their treatment of women as madonna is a bit prehistoric, it certainly beats the treatment that females get in most other cinema.

All in all, a most bodacious and entertaining time.

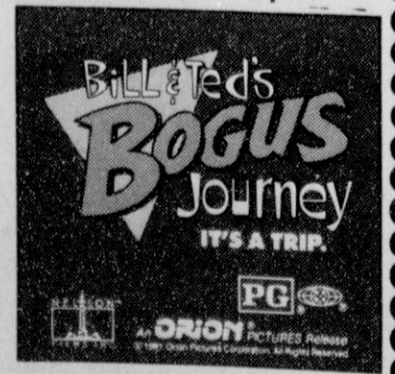
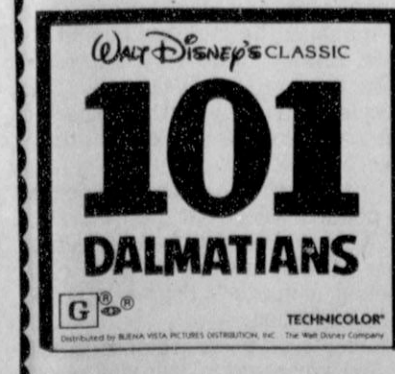
Rated PG for some sexual lingo.



The skeleton of the face is made up of 14 bones and 32 teeth.

# At The Lyric Theatre ...

Friday, September 20 - Tuesday, September 24  
Bargain Nights Mon. & Tue. All Seats \$3  
Closed Wednesday & Thursday  
Screen 1 - 7:30 p.m. Screen 2 - 7:15 p.m.



113 Main, Spearman



# Letter to the editor

Dear Letter to the Editor:  
On October 1st, the Palo Duro River Authority is going to vote on the name for the reservoir at the Palo Duro Dam site in Spearman.

The attached letter was submitted to the Board to express our position that the lake be named after Johnnie C. Lee.

Johnnie began his involvement toward the organization of the river authority in the early 1950's, being aware of the need for an alternate water resource for the region. Due to his knowledge and contacts in the State government, and years of dedication in completion of the project, residents of the Panhandle will enjoy its resources forever! Surely his efforts will not go unnoticed.

For individuals who agree, please express your support to the board members, before the October 1st meeting, at the following address: Palo Duro River Authority, P. O. Box 1046, Spearman, Texas 79081, phone (806) 659-3428.

Jolinda Lee Marshall  
Johnette Lee Boyle  
Jock Douglas Lee, DVM

Board of Directors,  
Palo Duro River Authority  
P. O. Box 1046  
Spearman, Texas 79081

RE: Naming of the Palo Duro Reservoir  
Dear Sirs:

I am writing to respectfully request the reservoir at the Palo Duro dam site be named after its current general manager, Johnnie C. Lee. You may already know that Johnnie was born in Stratford and grew up in Gruver. He entered the Marines at age 17 to fight in World War II in response to the bombing of Pearl Harbor and fought in the Pacific on the front line, including in the battle of Iwo Jima, and received two purple hearts, as well as other commendations.

After the war, he returned to Hansford County to serve as Veterans Service Officer, then assumed the office of County Judge at the age of 23, making him the youngest judge known to ever hold office in the State of Texas at that time, perhaps since. Johnnie served Hansford County as County Judge for 30 years. During this time, he also served as Civil Defense officer and Welfare officer.

He performed countless weddings, transported people to and from psychiatric hospitals, handed out canned goods during and after hours for families in need throughout the year, rounded up and handed out toys for under privileged children at Christmas-time. He placed historical markers throughout the county noting historical places. He was dedicated throughout his career as County Judge to serving the people of Hansford County and the Panhandle and acted on that dedication. During those years, he also served as Boy Scout leader, and was a member of the Lion's Club, Rotary Club.

Upon retiring from the office of County Judge, Johnnie was asked to assume the task of manager of the Palo Duro River Authority. The "Hansford Plainsman" has articles dating back into the 1960's accounting his involvement and support of the organization of the Palo Duro River Authority and the need for an alternative water source for the future of the region. Johnnie had a long and positive relationship with contacts in the State Legislature and State offices and a familiarity with the workings of State government because of his long, dedicated career as County Judge.

Johnnie accepted the job and challenge of the position of manager of the Palo Duro River Authority; to take a project that had been discussed for 25-plus years and help make it a reality. He has worked as manager of the Palo Duro River Authority for 13 years to make the building of the dam and the resulting reservoir a reality and he has succeeded in doing both.

He has worked on the front lines in Austin, convincing department heads, Texas Water Commissioners, Legislators, of the merits of the project to procure funding and permits for planning and construction of the dam. He has worked on the front lines at home convincing the townspeople and surrounding townships of the need of an alternate water source due to the dropping water table and gathering their support for the bond election to establish the taxbase.

He has overseen every aspect of construction of the dam itself. He has succeeded in his endeavor to build a dam and its resulting reservoir for the future of the county and the region. After 13 years of service as manager of the Palo Duro River Authority, he has done what he set out to do.

He has served the people of Hansford County and the area for 45 years with honest, dedicated, hands-on public service. I hope that, as you consider a namesake for the Palo Duro Reservoir, you carefully consider the gentleman in your midst.

You are familiar with his work as manager of the Palo Duro River Authority; by this letter I hope you have some idea of the work he has done over the years for the people of this area and of his accomplishments.

Respectfully, I thank you for your consideration.

Sincerely,  
Jolinda Lee Marshall

Dear Editor:

There are many factors that go into the survival of a small town! The merchants are at the mercy of the people! We know how important the survival of a small town is, that's why it's amazing to me how the people could possibly think that we would purposely try to rip the town off! We depend on you! Why would we jeopardize that for a few bucks? We depend on other merchants as well! I would think the businesses would realize that more than anyone!

It is so frustrating to a business that tries to become a part of the

community and do what they can to make it even more of a pleasant place to live! That's why I would think the merchants would bend over backwards to support the other merchants in order to keep a strong business district and give the people the variety they so desperately need!

Now then the people have got to support the businesses that are doing their best to give the people what they want! Let me shed some light on a couple of items! We the merchants can not compete with the likes of Sam's, Wal-Mart, and just the bigger cities in general! But we never claimed we could!

The reason prices are cheaper is because their volume and turnover of product is so much greater, they live in a more populated area, and they know they're going to get support from the smaller towns even though the money they spend out of town likely will never come back into Spearman! The merchants are not trying to rip you off! They just don't have the traffic or the turnover of product to sell it as cheap, but they do the absolute best they can do for the consumer and still make a profit!

It would be awful nice if we could give things away or sell it at cost, but we can't! We have to pay taxes and living expenses just like the rest of you and we need to make some kind of profit in order to do that!

I was always under the assumption that we pay taxes to provide and improve the community in which the taxes were paid! Is the town aware of where their taxes are going! The people and businesses are required to pay City, County, and School taxes, they have no choice! The businesses pay out thousands of dollars worth of taxes, yet the school takes our tax money out of town! I can't comment on the City and County, because I don't know if they do or not!

Something is wrong people! If we have no choice but to pay these taxes, I think we have the right to expect the school to support the town as best they can! There are certain items I'm sure they can't get locally, but they don't make much of an effort! I'm certain that Amarillo, Borger and these bigger cities don't pay taxes to the school, city, or county!

Spearman is a super clean town

with a very pleasant appearance and the school system is superior! The reason that is, is because we the people pay taxes for these kinds of facilities! Now then you've lost a perfectly good car dealership, jewelry store, grocery store, just to name a few, not to mention the other businesses that are struggling due to lack of support! So there are thousands of dollars worth of taxes that the school, city and county will no longer receive!

As a result of that, along with other factors I'm sure, the school has cut their band program because their

budget couldn't afford it! Their budget is made up of our taxes!! So until the school, along with the rest of the town, starts to support the local businesses, you can expect other cuts in this fine school system and other city facilities!

People, you complain how the town is drying up, yet you still go out of town! Wake up Spearman, the merchants are doing the best they can to serve you and fulfill your needs ... SHOW YOUR SUPPORT!!

Sincerely,  
Craig Downing  
ex-merchant ex-resident

**OWEN'S STEAMWAY**  
Call us TOLL-FREE  
**1-800-522-1813**

for the Best in Upholstery, Drapery and Carpet Cleaning

**Owen & Jean Stephens**  
Owners & Operators

1613 N. James  
Guymon, Oklahoma 73942

**PUBLIC NOTICE**  
BRIEF EXPLANATORY STATEMENTS  
OF PROPOSED  
**CONSTITUTIONAL AMENDMENTS**  
SPECIAL ELECTION  
NOVEMBER 5, 1991

**PROPOSITION NO. 1  
ON THE BALLOT**

House Joint Resolution 114 proposes a constitutional amendment that would authorize home rule cities having a population of 5,000 or fewer inhabitants to amend their city charters by a majority vote of a city's qualified voters at an election held for that purpose. The amendment makes clear that home rule cities that have declined in population below the population required to initially adopt a charter may nevertheless continue to amend their charters.

The proposed amendment will be described on the ballot as follows: "The constitutional amendment allowing home-rule cities with a population of 5,000 or less to amend their charters by popular vote."

**PROPOSITION NO. 2  
ON THE BALLOT**

House Joint Resolution 10 proposes a constitutional amendment that would allow the legislature to authorize the Texas Department of Transportation to expend money, from any source available, for the costs of the turnpikes, toll roads, or toll bridges of the Texas Turnpike Authority, provided that any monies expended from the state highway fund shall be repaid to the fund from tolls or other turnpike revenue.

The proposed amendment will be described on the ballot as follows: "The constitutional amendment mandating the repayment to the Department of Transportation of monies expended to assist the Texas Turnpike Authority in the construction, maintenance, and operation of turnpikes, toll roads and toll bridges."

**PROPOSITION NO. 3  
ON THE BALLOT**

Senate Joint Resolution 26 proposes a constitutional amendment that would authorize the Veterans' Land Board to invest, as authorized by law, moneys of the Veterans' Land Fund which are not immediately committed to the payment of principal and interest on bonds issued by the Veterans' Land Board, the purchase of lands, or the payment of expenses. Investment of such moneys would no longer be restricted to investments in bonds or obligations of the United States. The proposed amendment would also authorize the Veterans' Land Board to invest, as authorized by law, moneys of the Veterans' Housing Assistance Fund which are not immediately committed to the payment of principal and interest on general obligation bonds issued by the Veterans' Land Board for the benefit of the Veterans' Housing Assistance Fund, the making of home mortgage loans, or the payment of expenses. Investment of such moneys would no longer be restricted to investments in bonds or obligations of the United States. The proposed amendment gives the legislature power to implement the amendment and to delegate such duties and authority to the Veterans' Land Board as it deems necessary.

The proposed amendment will be described on the ballot as follows: "The constitutional amendment to further implement and enhance the administration of the veterans' housing assistance and land programs and to expand the investment authority of the Veterans' Land Board."

**PROPOSITION NO. 4  
ON THE BALLOT**

Senate Joint Resolution 4 proposes a constitutional amendment that would allow the legislature to authorize the issuance of a maximum of \$1.1 billion in general obligation bonds. The proceeds of the bonds are to be used to acquire, construct, or equip new prisons and substance abuse felony punishment facilities, mental health and mental retarda-

tion institutions, and youth corrections institutions, to repair and renovate existing facilities of those institutions and to acquire, repair, or renovate other facilities for use as state prisons or substance abuse felony punishment facilities. The \$1.1 billion is in addition to the \$900 million currently authorized by the constitution to be expended on bond issues for facilities of correctional and mental health and mental retardation institutions. The bonds would constitute a general obligation of the state. The bonds and interest on the bonds would be paid from the first money coming into the state treasury that is not otherwise appropriated by the constitution, less any amount in a sinking fund at the end of the preceding fiscal year that is pledged to payment of the bonds or interest.

The proposed amendment will be described on the ballot as follows: "The constitutional amendment authorizing the issuance of up to \$1.1 billion in general obligation bonds for acquiring, constructing, or equipping new prisons or other punishment facilities to confine criminals, mental health and mental retardation institutions, and youth corrections institutions, for major repair or renovation of existing facilities of those institutions, and for the acquisition of, major repair to, or renovation of other facilities for use as state prisons or other punishment facilities."

**PROPOSITION NO. 5  
ON THE BALLOT**

Senate Joint Resolution 39 proposes a constitutional amendment that would allow a county, junior college district, or municipality to exempt tangible personal property from ad valorem taxation if: (1) the property is acquired or brought into the state in an enterprise zone to be forwarded outside the state, (2) the property is assembled, stored, repaired, maintained, manufactured, processed, or fabricated in the enterprise zone, (3) the property is transported outside the state not later than 175 days after being acquired or brought into an enterprise zone, and (4) the person who acquired or brought the property into an enterprise zone is a qualified business. A county, junior college district, or municipality may exempt such property by entering into a written agreement with a qualified business that states the duration of the exemption and the terms on which the exemption is granted. Any action to exempt property must be taken before April 1 of the first year in which the property would otherwise be taxed. The term "enterprise zone" means an area that (1) has been designated as such by a state agency responsible for economic development, and (2) has pervasive poverty, unemployment, and economic distress. The term "qualified business" means a business that meets the qualification established by general law, and requires that the qualified business is actively engaged in a new business in the enterprise zone or is expanding a business that is already active in the enterprise zone. An enterprise zone is created to foster economic development in an area of pervasive poverty and unemployment.

The proposed amendment will be described on the ballot as follows: "The constitutional amendment authorizing the exemption for ad valorem taxes of certain property in an enterprise zone."

**PROPOSITION NO. 6  
ON THE BALLOT**

Senate Joint Resolution 8 proposes a constitutional amendment that would establish a Texas Ethics Commission with the powers and duties provided by law. The commission would consist of eight appointed members selected as follows: two members of different political parties appointed by the governor from a list of at least ten names submitted by the members of the house of representatives from each major political party; two

members of different political parties appointed by the governor from a list of at least ten names submitted by the members of the senate from each major political party; two members of different political parties appointed by the speaker of the house of representatives from a list of at least ten names submitted by the members of the house from each major political party; and two members of different political parties appointed by the lieutenant governor from a list of at least ten names submitted by the members of the senate from each major political party. A major political party is a political party required by law to hold a primary. With the exception of the initial appointees, commission members would serve for four-year terms. A member who has served for one term and any part of a second term would not be eligible for reappointment. The commission would be authorized to recommend the salary of the members of the legislature and may recommend that the salary of the speaker of the house of representatives and the lieutenant governor be set at an amount higher than that of other members. If the commission recommends a change in salary, the voters would be authorized to accept or reject the salary change at the next general election for state and county officers. If the voters approve the recommended salary, that salary would take effect January 1 of the next odd-numbered year; if the voters reject the recommended salary, no change in salary would occur. The commission would set the per diem of the members of the legislature and of the lieutenant governor. The per diem could be raised or lowered biennially as necessary to pay members' costs, but could not exceed the amount allowed as of January 1 that year as a federal income tax deduction for living expenses incurred in a legislative day in connection with a member's business as a legislator, disregarding any federal income tax exception for legislators residing near the Capitol. The commission would have other powers and duties provided by the commission's enabling act (Senate Bill 1, 72nd Legislature, Regular Session). The amendment would also provide that an increase in the emoluments of the office of Lieutenant Governor would not make a legislator ineligible to serve in the office of Lieutenant Governor.

**PROPOSITION NO. 7  
ON THE BALLOT**

The proposed amendment will be described on the ballot as follows: "The constitutional amendment creating the Texas Ethics Commission and authorizing the commission to recommend the salary for members of the legislature and the lieutenant governor, subject to voter approval, and to set the per diem for those officials, subject to a limit."

**PROPOSITION NO. 7  
ON THE BALLOT**

Senate Joint Resolution 6 proposes a constitutional amendment that would allow the board of trustees of each statewide public retirement system to invest the funds of the system in such manner as the board considers prudent. The board would no longer be limited to investing the funds of the system in securities.

The proposed amendment will be described on the ballot as follows:

"The constitutional amendment to allow the board of trustees of a statewide public retirement system to invest the funds of the system in a manner that the board considers prudent."

**PROPOSITION NO. 8  
ON THE BALLOT**

Senate Joint Resolution 21 proposes a constitutional amendment that would permit the legislature to create debt by or on behalf of the state if the legislature submitted the debt question to the voters of the state in the form of a proposition and a majority of those voting approved the proposition. The legislature may call the election, by joint resolution approved by at least two-thirds of the members of each house, during any regular session or during any special session if the subject of the proposition is included in the Governor's proclamation for that special session. A proposition must clearly describe the amount and purpose for which debt is to be created and must describe the source of payment for the debt. The amount of debt stated in the proposition may

not be exceeded and may not be renewed unless the right to exceed or renew is stated in the proposition. The legislature may enact laws necessary to implement the authority granted by a proposition. A law enacted in anticipation of the election on a proposition is valid if, by its terms, it is enacted subject to approval of the related proposition. State debt that is created following voter approval of a proposition and that is approved by the Attorney General is incontestable for any reason.

The proposed amendment will be described on the ballot as follows:

"The constitutional amendment authorizing the voters of this state to consider state debt questions in the form of ballot propositions that must clearly describe the amounts, purposes, and sources of payment of the debt only after approval of the propositions by a two-thirds vote of each house of the legislature."

**PROPOSITION NO. 9  
ON THE BALLOT**

Senate Joint Resolution 11 proposes a constitutional amendment that would authorize the commissioner of the General Land Office to issue patents for certain public free school fund land for which there is not a valid transfer of title from either the State or the Republic of Texas to a private party. A patent is a document of title issued by the state. On application to the School Land Board, a person is entitled to receive a patent if: (1) the land is surveyed public free school fund land, (2) the land was not patentable under the law before the adoption of this proposed amendment, (3) the person acquired the land without knowledge of the title defect out of the State of Texas or the Republic of Texas and held the land under color of title, the chain of which dates from at least January 1, 1941, (4) the person has a recorded deed on file in the county courthouse and, in conjunction with his predecessor in interest, has claimed the land for at least fifty years as of January 1, 1991, and (5) the person, in conjunction with his predecessor in interest, for at least 50 years has paid taxes on the land together with all interest and penalties associated with any delinquency. If the applicant is denied a patent, the applicant may file suit against the School Land Board in a district court in the county where the land is located within 60 days from the date of denial. The proposed amendment does not apply to beach land, submerged land, or islands, and may not be used to resolve a boundary dispute. The proposed amendment also does not apply to land found by a court to be state-owned or to land on which the state has given a mineral lease that is in effect when a patent is sought. A patent under this proposed amendment for land within five miles of mineral production shall reserve minerals to the state in the manner provided by law for reservations of minerals in sales to claimants of unsurveyed school land within five miles of production. An application for a patent under this proposed amendment must be filed with the School Land Board before January 1, 1993.

This proposed constitutional amendment is similar to the version of article VII, section 4A, that was in effect between 1981 and 1990. The main difference is that under the earlier version the applicant for a patent to land had to have a chain of title that dated back to at least as early as January 1, 1932.

The proposed amendment will be described on the ballot as follows:

"The constitutional amendment authorizing the commissioner of the General Land Office to issue patents for certain public free school fund land held in good faith under color of title for at least 50 years."

**PROPOSITION NO. 10  
ON THE BALLOT**

Senate Joint Resolution 15 proposes a constitutional amendment that would allow the legislature to pass general laws to exempt property owned by a nonprofit corporation organized to supply water or provide wastewater service from ad valorem taxation. A nonprofit corporation would be eligible for the exemption if its bylaws provide that

on dissolution, the assets remaining after the discharge of the corporation's indebtedness will be transferred to an entity providing water supply or wastewater service, or both, which is exempt from ad valorem taxation. The transferred assets must be property that is reasonably necessary for and used for water supply and wastewater services.

The proposed amendment will be described on the ballot as follows: "The constitutional amendment authorizing the legislature to exempt from ad valorem taxes certain property of a nonprofit corporation that supplies water or provides wastewater service."

**PROPOSITION NO. 11  
ON THE BALLOT**

House Joint Resolution 8 proposes a constitutional amendment that would allow the legislature to pass laws to authorize the State of Texas to operate lotteries and to enter into a contract with one or more legal entities that will operate lotteries on behalf of the State of Texas.

The proposed amendment will be described on the ballot as follows: "The constitutional amendment authorizing a state lottery."

**PROPOSITION NO. 12  
ON THE BALLOT**

Senate Joint Resolution 34 proposes a constitutional amendment that would increase the total amount of bonds that may be issued by the Texas Water Development Board to provide wholesale and retail water and wastewater facilities to economically distressed areas of the state. The proposed amendment increases the maximum principal amount of the bonds from 20 percent to 50 percent of the \$500 million amount authorized by article III, section 49-d-7, of the Texas Constitution. The proposed amendment would increase the maximum aggregate dollar amount of bonds that the Texas Water Development Board could issue from \$100 million to \$250 million.

The proposed amendment will be described on the ballot as follows:

"The constitutional amendment to increase from 20 percent to 50 percent the percentage of Texas water development bonds previously authorized by Texas voters that may be issued for economically distressed areas."

**PROPOSITION NO. 13  
ON THE BALLOT**

Senate Joint Resolution 2 proposes a constitutional amendment that would allow the legislature to pass general laws authorizing Texas Higher Education Coordinating Board or its successor to issue and sell up to \$300 million of general obligation bonds to finance education loans to students. The maximum net effective interest rate to be borne by the bonds would be set by law. The amendment would also authorize the legislature to provide for the investment of bond proceeds and to establish an interest and sinking fund to pay the bonds and provide for the investment of such fund. Bonds authorized under this amendment would be paid from the first money coming into the treasury in each fiscal year that is not otherwise appropriated by the constitution, less any amount in an interest and sinking fund established at the end of the preceding year that is pledged to the payment of the bonds or interests.

The proposed amendment will be described on the ballot as follows:

"The constitutional amendment providing for the issuance of general obligation bonds not to exceed \$300,000,000 to continue existing programs to provide educational loans to students, with repayments of student loans applied toward retirement of the bonds."

*Estos son los informes explana- torios sobre las enmiendas propu- estas a la constitucion que apar- ceran en la boleta el dia 5 de noviembre de 1991. Si usted no ha recibido una copia de los informes en español, podrá obtener una gratis por llamar al 1/800/252/8683 o por escribir al Secretario de Estado, P.O. Box 12060, Austin, Texas 78711.*

Published by the office of the Secretary of State of Texas



# Among the Neighbors

by Helen Fisher

Pete Ochoa, the handsome heart-throb of the girls, just returned from two weeks training in the Army Artillery Reserves. He attended the NCO Academy at Ft. Chaffee near Ft. Smith, Ark. Graduation was held Saturday morning, and Pete found the course to be tough but very interesting and valuable. It was his first trip to Arkansas and he was impressed by the beauty and numerous rivers and lakes.

Pete is employed at the Thriftway Grocery.

Ira and Loree Harbour are at home after three weeks in the Colorado Rockies. They visited their daughter, Ann and Russell Hindmarsh and children, Manda and Brandon Sloan. As Brandon has been away in the military, they had not seen him in a long time.

While in Durango they attended the wedding of their nephew, Clinton Johnson, to Carol Anna Bailey.

Later the Harbours visited friends and transacted business in the Chromo area. There had been a great deal of moisture in the high country and the pastures were lush. However down in the Montezuma valley, there has been a drought for the third straight year and the condition of the country was very depressing.

Guests of Pope and Margaret Gibner from Monday through Friday last week were her niece Joyce and Jim Scroggins of Dallas.

They toured the Palo Duro Dam and Margaret, in spite of a slow recovery from a broken rib received in a fall, was able to accompany them.

What would be the reaction of Hatie and Mode Maize if they could see the changes being made to their old home - the house they moved from Hansford back in about 1920 - now located at 120 South Haney.

The house has been occupied constantly since then - much of the time by some of the Maize family.

Jed and Lesa Miesner, current owners, are having it bricked and adding white columned porches.

It is most attractive but can't be recognized as the "Maize House." Neighbors join in wishing many happy years in the house to Jed, Lesa and children, Marty, Lace and Kaylee.

Christen Whitford, 4 year old daughter of Brenda Whitford, underwent a throat operation at High Plains Baptist Hospital in Amarillo on Sept. 10.

She is back at home and making rapid recovery. Her great-grandparents, the Bill Whitfords, are helping to care for her while Brenda attends her duties at school.

Sandra and Howell Ray Phelps visited his parents, Beth and Ray Phelps, three days last week. They live in Austin.

27 members of the choir of the First United Methodist Church under the direction of Betty Womble toured the area over the weekend. Saturday evening they sang at the service at Wheeler, then spent the night in Shamrock.

Sunday morning they sang at the Methodist church at McLean, then at the evening services at the First Methodist in Pampa.

Prior to the service, they called at the home of Mr. and Mrs. Stan Hudson, formerly of Spearman. Stan, who has been released from the hospital after treatment for serious injuries received in an accident, is at home temporarily bedfast with broken legs and other damages. His mother, Frances Hudson, Pampa, and mother-in-law Jean Holland, Gruver are assisting in his care. The choir sang several songs for

him and came away uplifted by his upbeat attitude.

The neighbors welcome Jim and Cathy Williams, new residents of Spearman.

They came here from Elkhart, Kan. and so far feel they will enjoy making Spearman their home.

Jim is the manager of the Cargill elevators, and when his work permits, he enjoys playing golf and spectator sports. Until recently Cargill sponsored a basketball team consisting of Jim and his five sons.

Cathy enjoys sewing and various crafts and is looking forward to some of the arts and crafts shows here.

The Williamses are the parents of seven children, although only two are still at home; Kristi, 17, is a senior in high school and Cody is in the 6th grade. Five grandchildren complete the family circle.

The Williamses are members of the Church of Latter Day Saints at Perryton and are living at 614 S. Roland.

For Billy Jarvis, 90, the last milestone on his long road of life was reached Saturday when his services were held at the Lieb cemetery in northern Hutchinson County. It is fitting that his last resting place would be the cemetery near-by where the setting sun is visible from his home. This area was his dwelling as a child, youth, and adult.

No doubt as a little boy he roamed the countryside as little boys do. And always, it was here he returned - from school, college, coaching and the far-away places of World War II - it was here he brought his bride and reared his sons.

From this place he could watch as fences were first built; roads paved; utility lines erected, railroad constructed and the town of Morse developed - all this came to the bare prairies of his boyhood. A part of history went with him.

Sympathy is expressed to his wife, Ollie, sons Brett and Jon and their families.

Friends report that Worley Smith, who underwent surgery at St. Anthony's Hospital in Amarillo early last week, was released on Saturday morning and making satisfactory recovery. He will be forced to curtail his hard labor and vigorous activities for a time. Worley, a firm believer in parental control, figured Mother Nature would be on his side, but unfortunately Father Time seems to have the upper hand.

There was a rumor that Worley was under the care of an Eye, Ear and Nose Specialist - since Worley had always kept his eyes peeled; his ear to the ground and nose to the grindstone.

Rubijo and J.D. Wilbanks flew to Dallas for the weekend. Rubijo was a delegate to the Southwest Region Round-up of the Reorganized Church of the Latter Day Saints. It was held in Arlington.

The Wilbanks had spent the previous weekend in Santa Fe where they enjoyed the Fiesta.

Paul and Betty Hazlewood were delighted to have Don and Dolores Gates with them overnight on Monday. They are from Keller, Texas, and he is the son of the late Daphne Gates. Lilly Palmer shared in the visit.

## Birth announcement

Terril and Liz Brummett of Duncan, Okla., announce the birth of a son, Evan Lee, born Thursday, Sept. 5 at 9:24 a.m. in Duncan.

He weighed 6 pounds, 15 1/2 ounces. Evan was also welcomed by a sister, Alexa, 3 1/2 years old. Paternal grandparents are Orvil and Colene Brummett of Spearman.

## THANK YOU!

A special Thanks to Dr. Behney, Kaye McFarlin, and all the emergency room personnel at Hansford Hospital on August 14, 1991, for their caring and expertise in giving me the most precious gift possible, the gift of life.

I would like to thank everyone for their calls, cards, flowers, and prayers during my recent illness.

Thank You,  
Jim Ivey

## THANK YOU

I wish to extend our thanks for all the kindness and food, calls or flowers of which I may not have had a record.

Friends are what keeps the world a good place to live in.

Each act of kindness will be long remembered.

The Family of James Sparks

Lometa, Larry, Ann, Lee Ann & Robert, Jerry, Abbie & James Alexander, Evan and Carole Sparks

# Church choirs join for special musical

The Sanctuary Choir of First Baptist Church, Spearman, will be joined by the adult choir of First Baptist Church, Panhandle, in presenting a special musical on Sunday, Sept. 22, at 7 p.m. in the sanctuary of the Spearman church.

"Bind Us Together," created by Steve and Annie Chapman with Dennis and Karla Worley, focuses on "the family" and issues a call to family commitment. In this day and age when families are pulled in many different directions by parents' jobs and children's school and extra-curricular activities, this musical speaks to the need for a conscious return to the unity and 'togetherness' that makes the family unit the strength (or weakness) of society. The musical challenge is for "families to be bound together in the love of Jesus Christ."

"Bind Us Together" will be presented in Panhandle on Sunday, Oct. 6 by this same group of singers.

The content of the musical speaks about "the family" in every season of its existence beginning with the marriage of the young bride and groom,

moving through the child-rearing years, and concluding with the death of a spouse. Many of the joys and problems that confront families today are addressed in the musical with honesty and warmth of understanding. The recurring theme is the call for family members to renew their commitment first to God and then to each other.

Several special solos and duets will occur in the musical. Those featured will be David Furlow, Bill and Kathy Howell, Marilyn Edwards, Randy Kirk, Wayne and Lucas Biggs, Dick Gillaspie, Becky Lusby, Bob Vinson, Kathy Archer, and Russ and Vicki Gibbs. The FBC youth choir will do a special segment of the musical, and an ensemble including Tina Baumgardner, Kiki Kelp and Traci Martin will have a recurring role. Randy Kirk will be doing the narration. The musical will be directed by Carol Pack.

The public is invited to this special presentation. There is no admission charge. A nursery will be provided for children 3 years of age and younger.

# Support group for Alzheimer's forms

First State Bank's hospitality room will be the site for the kick-off organization of monthly support group meetings on Alzheimer's disease.

These meetings are designed for people touched by the disease to come together in a non-judgmental, safe environment to vent their frustrations, to share coping techniques, to learn more about Alzheimer's and discover what resources are available to them.

Alzheimer's is a progressive, degenerative neurological disorder that results in severe mental deterioration and eventual physical decline. There is no cure. The disease has a gradual onset. Symptoms include difficulty with memory and loss of intellectual abilities severe enough to interfere with routine work or social activities. The Alzheimer's patient also may experience confusion, language problems, poor or decreased judgement, disorientation in place and time, and changes in behavior or personality.

Alzheimer's can strike people in their 40s or 50s, but most victims are older. Four million Americans have the disease and it is the most common form of irreversible dementia - a group of symptoms that characterize certain diseases and

conditions.

Alzheimer's also affects the family of the patient. The emotional, social, and financial costs of caring for an Alzheimer's patient are high. Family members also often risk their own health in order to care for the patient at home.

Taking note of the growing need for a support group in this community, Jody Harnish and Janie Kunselman will be starting the meetings on Sunday, October 6. The first meeting will be held in the Hospitality Room at the First State Bank.

The guest speaker will be Colene Carpenter, the Support Group Leader Chairperson for the Panhandle Area from Canyon. The meeting will begin at 2 p.m. and end at 3:30 p.m. This kick-off support group will provide an opportunity to share with others, who are going through similar experiences. "It is very important for caregivers and others touched by Alzheimer's Disease to have a support system. It is our hopes that this group will provide just that," said Harnish.

The public is invited to attend the support group and share with others. For more information call Hansford Manor at 659-5535.

# Spearman PTA seeks members this month

The Spearman PTA will have its first meeting of the year Monday, Sept. 23 at 7 p.m. at the high school auditorium. As in the past, the meeting will adjourn early enough for parents to get home for their children's bedtime.

The theme for this month is "Children and Teens...Good Nutrition and Physical Fitness." A panel discussion with local professionals who have expertise in both areas is planned. They will be speaking on issues of current interest involving Spearman's children.

Music teacher Eddie Gail Martin will be directing the 5th grade in a musical arrangement. President Marlene Miller will preside over the meeting. There will also be an election of Vice-president and Treasurer. The public is invited to attend.

September is also Spearman PTA's traditional month for Membership Drive. Parents and teachers who are interested in joining PTA may con-

tact Membership Chairperson Joan Brown at 659-3656 or Lisa Pipkin at 659-2810.

The cost of membership is \$5.00 per person or \$8.50 per family. PTA is another way to become actively involved with the children of our community.

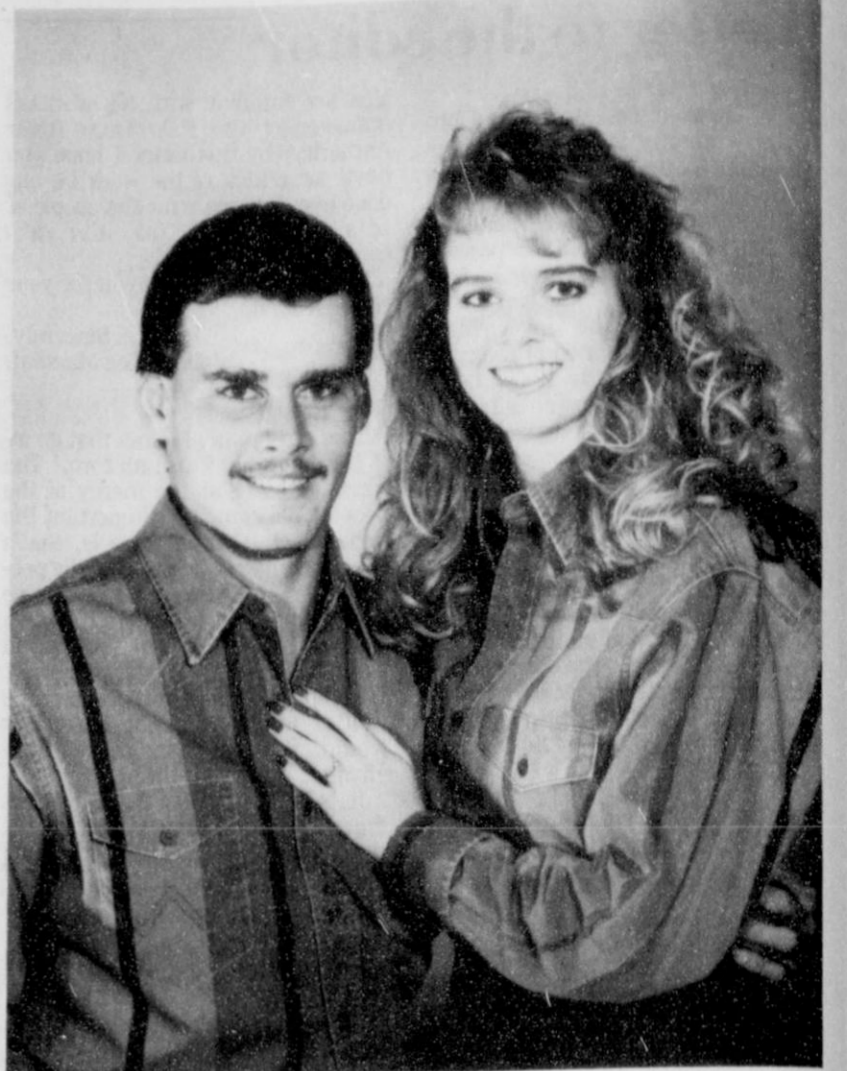
## Hometown News

AMARILLO - Lloyd Laxton of Spearman, an electronics technology student, graduated this summer quarter from Texas State Technical College-Amarillo with an associate of applied science degree.

Texas State Technical College-Amarillo is a non-profit technical college, created in 1970 by the Texas Legislature. The school offers 16 technical programs ranging from laser electro-optics to computer science.

CANYON - Laura A. Dear of Spearman is listed among degree candidates who completed academic requirements during the 1991 summer sessions at West Texas State University.

Dear received an interdisciplinary bachelor of science degree at the Aug. 22 commencement ceremony.



The engagement and approaching marriage of Anna Lee Hutchison of Borger and Lee Allen Blum of Memphis have been announced. The bride-elect is the daughter of Joe and Judy Hutchison of Spearman and Mike and Billye Viles of Borger. She is a graduate of Spearman High School and presently attends Frank Phillips College in Borger. She is employed by Clay L. Ballman, attorney at law, of Borger. The prospective groom is the son of Jackie R. and Kay Blum of Memphis. He is a graduate of Memphis High School and is presently employed as a mechanic with Womble Farm of Pringle. The couple plans to exchange wedding vows on Thursday, Sept. 26 at 7 p.m. in the First Church of the Nazarene in Borger. After the wedding, they plan to reside in Pringle.

# Hansford County Hospice to take part in seminar

Hansford County Hospice will participate in the seminar "Controversial Issues in the Helping Professions" from 7:30 a.m. to 4:45 p.m. on Friday, Sept. 27. The seminar will take place at Texas Tech University Health Science Center, 1400 Wallace Blvd. in Amarillo.

Minisignor William Broussard, executive director of the Texas Conference of Catholic Health Services, will discuss how the health care

system decides ethical principles as guides to forgoing medical treatment.

James Monahan, coordinator of the bereavement services at the Hospice of Central Florida, will discuss "The Forgotten Ones: Helping Children Deal with Grief."

Until Friday, tuition will be \$55. After Friday, tuition will be \$75. For more information call Brenda Wall at 733-2564, 659-2535 or 659-2663.

# Club News

## MASONIC LODGE

Dwayne L. Smith, worshipful master of Hansford Lodge No. 1040 AF&AM, and Ted Evans, worshipful master of Gruver Lodge No. 1326 AF&AM, invite the public to visit the Masonic Lodges in Spearman and Gruver during the open house on Sunday, Sept. 22 between 2 and 4 p.m.

Visitors will discover what Freemasonry in Texas is about and learn about the charities and hospitals supported by the Masonic Blue Lodges and the appendant bodies, such as York Rite, Scottish Rite, Eastern Star and Shriners.

Spearman Mayor Burl Buchanan has issued a proclamation declaring Sunday, Sept. 22 as "Masonic Awareness Day" in the City of Spearman. In his proclamation, Buchanan urged Spearman residents to attend the Masonic Awareness Open House on Sunday, Sept. 22 from 2 to 4 p.m. at 602 E. 11th Street in Spearman.

## DAHLIA FLOWER CLUB

The Dahlia Flower Club met in the home of Cleo Denman on Monday, Sept. 16.

Marjorie Curtis, president, called the meeting to order and roll call was answered with each member telling of her first day in school.

The report of the nominating committee was given, and the officers for the new year were elected. Elected as president was Wanda Smith, for vice president was Holli Riley, for secretary was Frances Williams, and for treasurer, Cleo Denman.

The program was given by Cleo Denman on "It's True - Coca Cola

Began as a Headache Cure."

Members attending were Ruth Mary Whitson, Wanda Smith, Sada Hoskins, Ethel Ellsworth, Holli Riley, Cleo Denman, Marjorie Curtis and Frances Williams.

The next meeting will be in the home of Marjorie Curtis on Monday, Oct. 7.

## LA LECHE LEAGUE

The newly organized Spearman Group of La Leche League will meet Friday, Sept. 20 at 9:30 a.m. at First United Methodist Church nursery room, 407 S. Haney.

The group informally discusses different phases of breastfeeding, and offers mother-to-mother help, including the latest medical research. The topic for this meeting is "Baby Arrives: The Family and the Breastfed Baby."

All women who are interested in breastfeeding are invited, as are their babies. For further information about the new Spearman La Leche League Group, call 659-2962.

## Lookin' back

5 YEARS AGO...

Thursday, July 24, 1986  
Three Spearman FFA members were awarded the Lone Star Farmer Degree at the State FFA Convention held in Amarillo. Receiving the degree were Anne Marie Jarvis, Mark Garnett and Kris York. This is the highest degree presented by the State FFA.

10 YEARS AGO...

Thursday, July 23, 1981  
D.J. Day Stubben has written a book entitled "655 Death Row" which is about Charles F. Rumbaugh who received the death penalty. She is the niece of Rubyjo and J.D. Wilbanks.

15 YEARS AGO...

Thursday, July 22, 1976  
William C. Porter, a student at Wheaton College, has been named to the dean's list. He is the son of Mr. and Mrs. R.C. Porter.

20 YEARS AGO...

Thursday, July 22, 1971  
Ninety two persons attended the 1971 Hansford County 4-H dress revue. As a senior winner Barbara Farr will compete in the district contest. Mary Kibler will be the alternate.

*Amera*

The first scientifically researched natural nail care system

Amera challenges anyone in Texas with these problems:

- splitting, peeling, weak nails
- dry, cracked cuticles
- manicures that don't last
- can't keep long or nicely shaped nails

Or are you just tired of the expense of artificial nails?

Call today to schedule your complimentary instructional manicure!

Julie Martin  
659-2425





Mr. and Mrs. Bernay Dusek of Cameron, Texas, announce the engagement and approaching marriage of their daughter, Katherine Renee Dusek, to Steve Eugene Duncan, son of Mr. and Mrs. Gene Duncan of Gruver and grandson of Joyce Duncan of Gruver and James and Mary Belle Wisinger of Dumas. The bride-elect graduated from Yoe High School in Cameron in 1987. She received a bachelor of science degree in psychology in December of 1989 from Southwest Texas State University in San Marcos, Texas, and is currently attending graduate school at Texas A&M University in College Station, working toward a doctorate in clinical psychology. The prospective groom is a 1987 graduate of Gruver High School. He attended Southwest Texas State University in San Marcos and is currently a senior at Texas A&M in civil engineering. He is involved in a cooperative education project in which he is currently employed as a project engineer with ARCO Chemical Co. in Channelview, Texas. The couple plans to be married Dec. 21 at 3 p.m. in the First Baptist Church of Cameron, Texas. They will reside at College Station.

## School phobia may affect students

by John O'Nan, director  
Perryton Family Services Center

Each September or with the start of a new school year, many children have adjustments in returning or beginning a school year. Technically, this phenomenon is coined "school phobia."

Functionally, it is usually a "fear" of school faced by students associated with anger of having to leave home and explore new situations. We all have some built-in separation anxiety when we change situations, even when the situation is new, exciting, and desired.

However, it is important for us to differentiate between true school phobia and a dislike for school. There can be many reasons that some children dislike going to school. A new teacher, class bully, a specific academic subject, undressing for gym, or fear of "looking stupid" are some of the typical shared concerns.

Children don't always voice their concerns and frequently act it out in behavior. Some children may fake illness and actually become physically sick. There is an endless list of excuses to avoid school.

A truly phobic individual has an irrational fear of school. As the frequency of avoiding school and the intensity of a child's reaction to the school increase, one comes to understand the true phobic reaction.

The reason is typically some situation, person, or event connected with the school. Effectively dealing with a school phobia requires awareness of the initial school-related issue as perceived by the child.

Intense aversion to going to school that stems from separation anxiety is usually based on an unrealistic worry that the family member may be harmed or a parent will be unable to handle a catastrophic event if the child is not there to help the parent.

Some children have nightmares and become physically sick as the aversion intensifies. Parents may see anxiety slowly building on a Sunday night, in anticipation of the coming

school day, and break out into a rage or panic as time to leave for school occurs.

Separation anxieties in children often are triggered by a death, serious illness, or divorce in the family. These events may make a child afraid of his parents deserting him while he is at school. Some fear the death of their parents.

At times, the cause may not be so clear. Young children, particularly those in kindergarten through third grade, just may not yet be secure enough without a nearby presence of one of their parents.

This over-dependent condition is hard on all family members. Parents become uneasy, frightened, sometimes shocked, and embarrassed.

They frequently are desperate in searching for a solution, and if in a moment of exhausted weakness the child is told he can stay home, "Just for this day," he is immediately calmed.

This is a short term and such delays lead to more bargaining and eventually the child controls the parent. The problem - non-attendance - becomes a premature solution.

Although difficult, one of the first things families need to do in treating the separation anxiety is make the child attend school as quickly as possible.

If the anxiety is not confronted, a vicious cycle of fear, acting out, and staying home becomes firmly established.

The whole family needs to be involved in dealing with this type of problem. It is often helpful to obtain assistance with this problem from an outsider.

Most schools have a school counselor, a psychological resource person, or referral suggestions that can help the family deal with the anxiety. In a few rare situations, medication may be needed if the anxiety is extreme.

A child needs to see the family play down fears and stress the benefits and joys of school. Conversations should be focused on the enjoyable experiences of learning and being with friends and peers. That is not to overlook school problems, but one needs the positive more than the negative.

The main goal is to help the child experience security of reality as opposed to the unrealistic fears of what he or she may think will happen.

As days pass, the child will come to see that the family is still there, that is, safe and sound - each day when he returns from school.

As a parent, if you are concerned about your child's development, it may be beneficial to you to be able to ventilate or discuss your concerns as they arise versus worrying for them for several days or weeks.

It is easier to counsel someone in a preventative effort than a corrective effort. Perryton Family Services is one resource for counseling of a student and their family. Their new location is 315 S. Main, Perryton, 435-3671.

### Hometown news

Navy Seaman Victor A. Taylor, son of Victor K. and Donna K. Taylor of Gruver, recently deployed to Subic Bay, Philippines, aboard the destroyer USS Merrill, homeported in San Diego.

Taylor assisted with the evacuation of more than 3,000 Navy and Marine Corps dependents from the island after the eruption of Mount Pinatubo.

The 1989 graduate of Gruver High School joined the Navy in September 1989.

## On The Go With Joy

by Joy Henderson

I guess school has been in session long enough. I overheard a college kid commenting to another that if postal rates get any higher, she wouldn't be able to write home for more money.

Boy! It is getting to where it is impossible for me to say anything without someone getting the wrong impression or misunderstanding my meaning. But, we all have had that problem at one time or another and there will be other times in the future. Here are some other examples of misunderstandings that may be amusing to you.

A father decided to tell his young son the facts of life and was stumped by the boy's first question, "How many are there?"

Three elderly men met on a street corner. One said, "Windy, isn't it?" Another said, "No, today is Thursday." The third one said, "So am I. Let's all go get something to drink."

This conversation was overheard in a store: "Do you have any four-watt bulbs?" The clerk asked, "For what?" The buyer replied, "No, two." "Two what?" asked the clerk. "Yes," replied the customer. The clerk answered, "No."

Some writers have trouble with misunderstandings also. If a sentence is worded incorrectly, the wrong meaning is sometimes conveyed to the reader. For example, here are some newspaper quotes that would make any editor pull his hair.

"Mrs. James of Cactus Creek let a can opener slip last week and cut herself in the pantry."

"A mischievous lad in Picketown threw a stone and struck Mr. Pike in the alley last Tuesday."

"John Doe climbed on the roof of his house last week looking for a leak and fell, striking himself on the back porch."

"While Harold Green was escort-

ing Miss Violet Wise from the church social last Saturday night, a savage dog attacked them and bit Mr. Green several times on the public square."

"Isaiah Trimmer of Running Creek was playing with a cat Friday when it scratched him on the veranda."

"Mr. Tuck, while harnessing a bronc last Saturday, was kicked just south of the corn crib."

M.H. and I took a quick trip over to Purcell, Okla., last Thursday to visit my parents. Mom has several complications resulting from several falls and her condition is very weak. While there, I got to see my brother, Stanley and a niece, Vickie Cathey, her husband Billy Bob, and daughter Arrie. They are from the Dallas area.

Bill and Sylvia Duncan made a trip to Amarillo to visit with Vic and Linda Kyler. The Kylers are from Lubbock but the couples have not been able to get together for a visit for two years.

Tony and LaNetta Shapley had not seen Cody Mac and Sydney since Cami's wedding and they felt it was time for TLC from all concerned. So, they went to Lubbock for a visit.

Making a quick fly-in visit with his brother Danny Carthel and family was Doug Carthel. He literally flies his plane out of Guymon for UPS.

Guests of Connie and Bob Burgoon are her mother and aunt Pauline Dosier from the Rhome area and Edna Ezell from Dallas. They will be traveling in a couple of days to meet up with Connie's sister Paula at Friona and spend some time with her. Paula's home is in Portales.

Something you residents may be interested in knowing is that Gruver's long ago telephone operator is now making her home back here in Gruver. Welcome back Ila Faye Dozier.

## Club News

### GRUVER MUSIC CLUB

Gruver Music Club met Tuesday, Sept. 8 for its annual Reassembly Dinner in the Methodist Church fellowship hall.

The hall was decorated by Hospitality Committee members Jean Zabel and Vireta Knight with mauve table cloths, silk ivy table runners and silk arrangements on each table, furnished by B.J.'s Petal Patch.

Janet Irwin, accompanied by pianist Barbara Cluck, sang the of-

ficial Music Club Federation invocation and benediction.

President Ada Joyce Stedje gave the official welcome and Vice President Trixie Holt presented a program consisting of Janice Caleb on the clarinet accompanied by Dr. Jess Hankla, head of the music department at Panhandle State University at Goodwell, Okla. They performed "Clarinet Concerto" by Mozart.

A drawing for a large silk arrangement at the head table was won by Delphine Etling.

## PCC reports on activities

by Mary Frances Ellzey

PERRYTON - You readers familiar with us may skip this paragraph, and start with the next one. The PCC offers services to men or women who are victims of domestic violence, whether verbal or physical. We give counseling, support, and information to these victims, plus a shelter to those who feel themselves to be in danger at home. These services are free of charge. If you want information only, call us at the office from 9 a.m. to 5 p.m. We are available for help at any time, 24 hours a day. Our number is 435-5008. For those of you who must call us long distance, we have a toll-free number: 1-800-753-5308.

Last Tuesday evening members of the Advisory Board had a blast, car hopping for Sonic! The regular "car hoppers" were very sweet and patient with us as we learned how to carry out the order trays, make change, and encourage customers to give a donation to the United Way. For each dollar they donated, they received a coupon entitling them to \$1 off the price of a \$5 purchase. There we were, sporting our "gimme" caps and whatever outlandish costume we'd managed to put together. If you weren't there, you should have been. You'd have seen Charles Van Tine in shorts, and some of the rest of us in our Crisis Center T-shirts. One T-shirt stated, "I'm not

nearly as calm as I look!" Besides, you'd have had fun laughing at us for our ineptness.

How come we did this? September is the month for raising funds for United Way. Since we too are recipients of their largess, we wanted to participate in the activities. So, if you missed that Sonic episode, watch for another one. Each of us recipients is putting on a stunt to help raise money. Looks like a fun month!

We've placed a Date Rape tape at the library, available to anyone who is willing to learn a little about this frequent ordeal. Be sure to check it out. Whether or not you're at the dating age, you might be able to help someone else avoid it.

Our Batterer's Program is just about ready for its initiation on Oct. 1. We're excited about it, for it has proved itself to be successful in other places, and we do indeed have the need for it here.

We've already enlarged our outreach programs in Lipscomb and Hansford Counties by putting a staff member in each county for face-to-face counseling. If you or someone you know has a situation calling for help, be sure to take advantage of this. Of course you always have access to the 800 number. (See the first paragraph.)

Word has come that the Meadows Foundation has granted the funds for the complete renovation of The

Shelter, including a new sewer line. This donation once again affirms that we are doing an excellent job of providing our services. Our annual grants from the Victims of Crime Act and The Department of Human Services have also been affirmed. What an accolade!

Mark your calendars for this year's Mystery Party at the Perryton Club - Oct. 19. Fifty dollars will admit any combination of two persons. Judging by last year's Mystery Party, you'll have a delightful evening!

### Panhandle Events

PERRYTON - Singles Together Around Christ will sponsor a campout Friday, Sept. 27 at Beaver State Park near Beaver, Okla.

Cost for the event is \$4 per night per tent, and \$10 per night for RV hookup.

More information is available by calling 435-4697 or 435-4283.



Mr. and Mrs. Don Hart  
request the honour of your presence  
at the marriage of his daughter  
Carrie Cathleen  
to  
Mr. Mark Kent Guthrie  
son of Mr. and Mrs. Kent Guthrie  
on Saturday, the twenty-first of September  
Nineteen hundred and ninety-one  
at seven o'clock in the evening  
United Methodist Church  
Gruver, Texas  
Reception following

Clarendon Band Boosters Invite You To A

## Mexican Pile-On

Friday, Sept. 27 1991  
5 p.m. to 7 p.m.  
Clarendon High School Cafeteria

Child/Student \$2.50  
Adults \$3.50

Quitting Business Sale!  
Last Business Day  
Friday, September 27th

Bath Rugs & Accessories  
Wooden Furniture  
Kitchen Linens, Etc.  
In-stock Dishes & Crystal  
Cards  
Towel Sets  
Potpourri  
Children's Gifts  
50% to 70% Off Everything!  
(Except Brides' Tables)

The Gift Registry  
103 E. Broadway  
Gruver



# New city map in the making

The Spearman Chamber of Commerce has commissioned A.I.D. Associates, Inc., regional publisher of high quality custom maps for over 30 years, to create a new map of the city as well as a detailed topographical map of the Palo Duro Reservoir.

The map will be updated to show points of interest, schools, parks and municipal buildings. An area map will show the city relative to Hansford County and outlying areas. Also, the topo map of the Palo Duro Reservoir will allow the visitor the recreational use of the new body of water.

The map/brochure will give

historical background on the past, the latest demographic data on the present, including population, housing, industries, schools and utilities, along with projections regarding the future.

The design of the map will provide space to feature area commerce. Every effort will be made to have the most complete representation of businesses possible.

The maps will be distributed by the chamber, the city, real estate offices and the participating businesses to visitors, tourists, prospective residents and businesses, commer-

cial planners and developers. The map/brochure format will be an effective tool to promote the area.

To "show our best," there will be a special provision available for individuals wishing to be part of the project.

A representative of A.I.D. Associates, acting on behalf of the chamber, will be contacting businesses to arrange for proper representation on the map.

The chamber and the publisher hope that through the participation of the entire community, this will be the best map ever.

At West Texas rodeo...

# McCloy wins All-Around title

Marty McCloy of Morse was named All-Around Cowboy at the Tri State High School Rodeo at West Texas High School last weekend.

On his way to the All-Around title, McCloy placed third in saddle broncs with a 58 score. In calf roping, McCloy took second place with a time of 12.830 seconds. He teamed with Randy McEntire of Wheeler for a time of 9.637 seconds in the team roping

event to take third place.

Mark Eakin, who also rides with the Spearman club, won the saddle bronc riding with a score of 64. Eakin's time of 14.615 seconds was good enough for a fifth place finish in the calf roping event.

Other cowboys and cowgirls representing Hansford County rodeo clubs included Leslie Morton, representing Gruver, with a second-place time of 21.456 seconds in pole bending and a third-place time of 4.263 seconds in breakaway roping; and Sage Britain and Chris Almond,

representing Spearman, with a second-place time of 8.364 seconds in team roping.

Adrian Maez, representing Gruver, teamed with Jake Monroe of Randall for a time of 9.728 seconds and a fourth-place finish in team roping. Chris Almond, along with Jay Sillero of Stratford, had a fifth place finish in the team roping with a time of 9.886 seconds.

Trinity Shearer, representing the Spearman club, took fourth place in breakaway roping with a time of 5.251 seconds.

# Spearman High wins safety certificate

AUSTIN - Spearman High School has been awarded a Certificate of Exceptional Effort from the Texas School Safety Honor Roll Program recognizing its support of safety education and accident prevention.

The Texas School Honor Roll Program, sponsored by Texas Safety Association in cooperation with the Texas Education Agency, is the only state recognition program that covers all aspects of school safety education and accident prevention.

The Honor Roll Program assists schools in meeting the intent of Texas accreditation standards relative to safety, promotes coordinated efforts

for safety throughout the school system, encourages programs for reducing or eliminating accidents involving students, and enables each school to objectively analyze its own safety activities.

During the 1990-91 school year 1,362 schools from 407 school districts across the state participated in the program.

Texas Safety Association is a non-profit, non-governmental, educational organization whose members work in government, private industry, and as individuals to prevent accidents and needless loss of life and property.

# Tips given for Farm Safety Week

Farm Safety Week provides an excellent opportunity each year for those involved in agriculture to evaluate their safety attitude and work habits and rededicate their efforts to make each day a safe day on the farm.

The following safety information is furnished by Deere & Company and the nearly 2,900 John Deere dealers worldwide who remind farmers and ranchers to protect agriculture's greatest resource - you, and those

who live and work with you.

### Safety Recommendations

1. Take the time to be safe. Farming puts a lot of demands on everyone's time. Sometimes, when time is tight, experienced equipment operators and farm workers take shortcuts. Those shortcuts can result in accidents that harm or kill. Saving a couple of minutes is not worth the chance of losing a lifetime. Don't be too busy to be safe.
2. Just say "no" to children. Many

accidents could be prevented by simply keeping kids away from farm equipment. Do not permit a child to do an adult's job. Even when young people become mature enough to operate equipment, it's vitally important that they be able to properly use all of the machine's controls and work safely. Be sure they receive thorough safety and operating instruction. Basic tractor and machinery safety courses are available from many schools and extension offices.

3. Accept no riders. Children often plead for rides on equipment. Busy farm parents may be tempted to give in to these requests so they can spend more time with their children. Never give in to requests for rides from

children - no matter how much they plead or how great the temptation.

4. Teach safety by good example. Actions often do speak louder than words. Parents need to make sure their daily safety behavior is consistent with the other safety information they provide to their children. Children will quickly notice when dad and mom don't practice what they preach.

5. Take a break. A high percentage of accidents occur after 5 p.m. One big reason is fatigue. Working long days and pushing to finish before weather conditions change take a toll in both physical and mental sharpness. If the job requires long hours or is done under stress, take extra breaks to remain physically and

mentally alert. A few minutes of rest can produce big returns in safety and productivity.

6. When working alone, keep others informed. If it's necessary to work alone, always tell someone where you'll be and when you'll return - just in case you have an accident and need help. A significant number of farmers and ranchers who were injured while working alone would be alive today if they had been found sooner.

7. Make sure equipment is in proper operating condition. Properly maintained and adjusted equipment is an important element in a safe and productive operation. Before the beginning of the use season and periodically during the season, inspect each machine thoroughly. Look for worn parts that may affect the smooth operation or reliability of the machine and replace or repair as required. Replace parts which are missing or cannot be properly repaired. This includes all shields, guards, and safety signs.

8. Carefully read the operator's manual. The single best source of safety information about a machine and instructions for servicing and adjusting it for proper operation is the operator's manual. Study it thoroughly before operating a machine and keep it handy. If the operator's manual cannot be found, order a new one from the equipment dealer.

9. Shut it off before getting off. Always disengage the power and shut off the engine before working on any part of a machine.

10. Maintain a strong safety attitude. Most experienced farm workers and operators know how to work safely, but sometimes the temptation to take shortcuts and ignore safety principles proves too great to resist. Unfortunately, this momentary lapse in safety consciousness can result in injury or death.



Memphis quarterback Jay Runnels (10), scrambles for extra yardage against the Spearman Lynx defense Friday night. Runnels scrambled his way to two first downs, one on a

third and 6 and one on fourth and 15, to keep Memphis's game-winning scoring drive alive in the fourth quarter. The Lynx lost, 26 - 27.

# Hansford Ladies Golf members have tourney

Hansford Ladies Golf members held a tournament at Hansford Golf Course on Thursday, Sept. 12. Participants noted that the course is in good condition and credited the work of Ned and Tammie Kygar.

Winners in the Championship Flight were first place, Barbara Cluck of Gruver; second place, Tammie Kygar of Spearman; and third place, Faye Cunningham of Spearman.


Winners in the First Flight were first place, Anne Sanders of Spearman; second place, Juanita Logsdon of Gruver; third place, Jennie Blankenship of Morse; and fourth place, Jean Holland of Gruver.



Lynx workhorse running back Tim Dooley (40) avoids a would-be Memphis tackler. Also carrying the ball for Spearman were Brian Beck and Brandon Vanderburg. Vanderburg scored on a 74 yard kickoff return.

**IT'S 99¢ TIME AT DAIRY QUEEN!**


**THESE ITEMS 99¢ EACH!**




**BANANA SPLIT**



**BREEZE® FROZEN YOGURT TREAT 12-OZ.**



**TWO TACOS**



**THIS IS COUNTRY**

**NEW! SEASONED CURLY FRIES**

ALL ON SALE SEPT. 9-29, 1991


**THIS WEEK'S DQ VALUE**

© Reg. U.S. Pat. & Tm. Off. Am. D.Q. Corp. \*TM Reg. U.S. Pat. & Tm. D.Q. Op. Coun. © Tx. D.Q. Op. Coun. At participating Dairy Queen stores.

**Tom Scullen's ICE CAPADES**

PRESENTED BY **Leggs SHEER ENERGY**

The World of **Hanna-Barbera®**



**LIVE ON ICE!**

**FEATURING:**

**Yogi Berra® THE FURBERNES® Scooby-Doo®**

© 1991 Hanna-Barbera Prod. Co. Licensed by Hanna-Barbera Prod. Co. The Professional Society, Inc. Reg. U.S. Pat. & Tm. Off. Hanna-Barbera Prod. Co. All Rights Reserved. A Division of International News Service Corp.

**SAVE \$3.00 on Admission with purchase of Leggs Sheer Energy® Pantyhose. See Leggs display at your local retailer for details.**

**TICKETS ON SALE NOW!!!**

**WED., SEPT. 18 THRU SUN., SEPT. 22**

Amarillo Civic Center

Wed., Sept. 18.....	7:30 pm!★	PRICES: \$11.00 and \$10.00
Thur., Sept. 19.....	7:30 pm!★	Ice Side Seats Available
Fri., Sept. 20.....	7:30 pm!★	<small>Not Subject to Discount</small>
Sat., Sept. 21...2:00 pm!★	7:30 pm!★	<b>3 WAYS TO GET TICKETS</b>
Sun., Sept. 22...2:00 pm!★	6:00 pm!★	In Person: Amarillo Civic Center Box Office

★ KFSA-TV Family Night  
All Seats Half-Price Courtesy of **KFSA**

!Kids 12 & Under and Seniors 62+ \$2.00 off Regular Priced Seats

★ Leggs Sheer Energy® Discount with coupon, redemption Except VIP Seats Group Sales - 378-3096

By Phone: 1-800-933-21CE  
**TELESEAT**  
VISA/MC/AMEX/DISCOVER (Service Charge Added)

**Back-to-School Special**

**For New Patients and our Current Patients, Too.**

**HENSON CHIROPRACTIC**

20% Off All Chiropractic Services

Including Spinal X-Rays

Coupon Good through Sept. 30, 1991

Bring coupon in to our office

**HENSON CHIROPRACTIC**

410 S. Davis Spearman, Texas

Call For Appointment 659-5603

Office Hours: Mon., Wed., Fri. 8:30-5:00  
Tue., Thu. 8:30-11:30

**BEHNE ELECTRIC & CONSTRUCTION**

Electrical Repairs & Handy Man Service Reasonable Rates

**CALL 659-3404**



# Kids' chemical makeup unknown

by Lynn Foltin

**HOUSTON** - Little boys are made of snips, snails and puppy dogs' tails, and little girls are made of sugar, spice and everything nice.

Mother Goose must have had inside information because no one really knows a child's precise chemical makeup.

A researcher at the Children's Nutrition Research Center (CNRC) in Houston hopes to change that story by evaluating the lean body and fat mass of more than 700 Houston children to establish body composition standards.

According to Dr. Kenneth Ellis, an associate professor of pediatrics at Baylor College of Medicine in Houston, information obtained in the study will provide a new dimension to traditional growth charts, which are based on height, weight, age and gender. The old growth charts were

derived from data on white U.S. children and do not reflect America's changing demography, Ellis said.

During the three-year study, Ellis plans to provide a more accurate picture of a child's development by noting the chemical makeup of a child by age, gender, race, height, and weight.

Ellis believes the new standards or guides will redefine traditional patterns of development and may serve as an early alert, helping doctors to estimate the nutrient needs of premature infants as well as identify children who suffer from malnutrition or diseases characterized by obesity, muscle weakness or growth deficiency.

To construct this body profile, Ellis will examine the potassium levels of children, birth through the teen years.

Potassium, a mineral found in lean

tissue, is essential to normal growth. It can be detected with special equipment called whole body counters. Volunteers lie on a bed surrounded by special detectors that are sensitive to the potassium emitted through the skin.

In the past, infants and young children have been difficult to measure because their body potassium content is so small.

"All the right things have come together. We now have the technology and the lab to determine the actual body composition of a child," he said.

With the use of growth charts and body composition standards, healthcare professionals will have a more accurate picture of overall growth and development. Armed with this information, they will be able to customize diets and treatments for a wide range of health and developmental problems.



The Spearman cross country team had a good start at the Perryton cross country meet at Wolf Creek Park on Saturday. They held on to finish sixth out of 12 teams. Spearman varsity runners and their finishing places are as follows: Joy Gafford, 19; Jill Lusby, 29; Sonya Nitschke, 39; Suzanne Sanders, 69; Kimbre Townsen, 34; Mary Cook, 42; and Mendy

Lasater, 48. JV finishers and their places are Ashley Shieldknight, 8; Michelle Garnett, 74; Molly Blackman, 23; Kelly Shieldknight, 58; Kara Townsen, 67; Amanda Nobles, 37; Sherri Smith, 45; Michelle Elliott, 52; Macy Shieldknight, 71; Laci Baker, 25; Marissa Rodriguez, 29; Kelli Goodman, 76; Lindee Cook, 35; and Pam Winters, 78.



The Gruver cross country team ran in the Perryton cross country meet on Saturday morning. Their finishing times were not made available at press time.

## PSU team in first

The Panhandle State University Men's Rodeo Team from Goodwell, Okla., was standing in first place in the Central Plains Regional official rankings after 10 rodeos, according to the National Intercollegiate Rodeo Association.

The team's ranking was reported in the July/August issue of the "NIRA News."

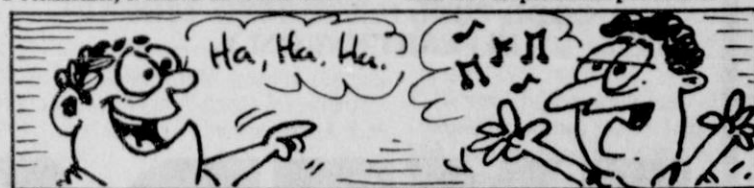
The PSU Men's Team, with a total of 2582.50 points, has almost doubled the point total of second-place Fort Scott Community College, which has 1385.

The PSU Women's Rodeo Team was ranked third in the Central Plains Region after 10 rodeos. The

PSU women have a total of 735 points, ranked just behind second-place Southeast Oklahoma State University, which has a total of 811.66.

Hansford County graduates who rodeo for Panhandle State University are Clint DeArmond, Brian Caison and Kelly McCloy.

The next three stops for the PSU Rodeo Teams will be Friday-Sunday, Sept. 20-22, at Pratt Community College, Pratt, Kan.; Oct. 17-19 at Murray State College, Ardmore, Okla.; and Nov. 7-9 at Northwest Oklahoma State University, Alva, Okla.



The word "comedy" comes from the ancient Greek word for "village song"

## Watson or Watson

Residential Roofing, etc.  
Box 730 (806) 733-2455  
Gruver, Texas 79040

### GRUVER LUNCH MENU

SEPT. 23-27

Monday - chicken patties, mashed potatoes, gravy, carrots, cake, hot rolls, milk  
Tuesday - cheese sandwiches, tater tots, fruit, milk  
Wednesday - ham and beans, corn, cobbler, corn bread, milk  
Thursday - pizza, tossed salad, fruit, milk  
Friday - chili cheese dogs, french fries, fruit, cookies, milk  
Salad bar Monday-Thursday. No

### salad bar on Friday.

BREAKFAST

Monday - cereal, cinnamon toast, juice, milk  
Tuesday - homemade toast, peanut butter, jelly, fruit, milk  
Wednesday - cowboy bread, peanuts, fruit, milk  
Thursday - blueberry muffins, fruit, peanuts, milk  
Friday - cinnamon roll, fruit, peanuts, milk  
Menu subject to change without notice.

### SPEARMAN LUNCH MENU

SEPT. 23-27

Monday - chicken patties, gravy, green beans w/new potatoes, harvard beets, sweet potato-prune squares, milk  
Tuesday - beef tamale pie, whole kernel corn, chili beans, jello w/fruit, milk  
Wednesday - submarine sandwich, lettuce, tomato, hash brown potato cake, dill spears, frozen fruit bars, milk  
Thursday - fish, macaroni & tomato, blackeyed peas, carrot sticks, biscuit, butter & jelly, banana pudding, milk  
Friday - hamburger, french fries, lettuce, tomato, pickle, onion, cookie, milk

### PRINGLE-MORSE SCHOOL

SEPT. 23-27

Monday - toast, cereal, grape juice, milk  
Tuesday - pancakes, sausage, apple juice, milk  
Wednesday - muffins, cinnamon toast, orange juice, milk  
Thursday - honey buns, cheese toast, apple juice, milk  
Friday - eggs, bacon, assorted juice, milk

### LUNCH

Monday - Mexican meat loaf, scalloped potatoes, green beans, biscuits, salad, cookie, milk  
Tuesday - roast, potatoes, gravy, broccoli & cheese, salad, fruit, milk  
Wednesday - hamburgers, trimmings, baked beans, fries, no-bake cookie, milk  
Thursday - chicken enchilada, salad, pot pie, wheat rolls, peas, milk  
Friday - sandwiches, chicken noodle soup, tomato soup, fruit, ice cream, milk

### REPORTER-STATESMAN CLASSIFIEDS WORK!

## SOUTHWEST OUTDOORS



Mel Phillips

Grandpa's Deer Sucker, developed by an old hunter in northern Michigan, is the talk of the hunting world. Jim Deitch (P.O. Box 6711 in San Antonio, 78209) claims this novel idea is legal in Texas. In fact, archery hunters can use the Deer Sucker-on-a-Stick as a yard marker and a delaying device. Camera hunters will love these things because during the time a deer licks on the sucker, focus and shutter speed can be adjusted for several terrific pictures. They cost \$5 and the animals love them.

Eva Terrell, a delightful lady from Moore County, caused quite a stir in the KGNC news department when she appeared in person asking for more information about deer suckers. Lady hunters are not all that rare.

**Fishing Tip-of-the-Week** - Using a toothpick to hold a worm weight in place works but it can also pinch or nick your fishing line. Thanks to fishing pro Tommy Biffle, here's an old trick that is quietly used by many of the touring professional anglers. A piece of rubberband can be inserted into a weight by looping a piece of monofilament line through the center of the worm weight and pulling the rubberband back through the weight. One should then have a worm weight with approximately a one inch piece of rubberband sticking out of both ends.

When ready to use these weights, simply pull both ends of the rubberband and thread your fishing line between the stretched rubber and the center hole. Trim off the excess at both ends.

This fishing trick is easy, and eliminates one more possibility of weakening your fishing line, which is the only thing between you and that trophy fish.

Archery season in 1991 opens Oct. 1. This early season is a first time event in Texas and most rifle hunters will be keeping a close eye on the results.

Sportsman Calendar: Sept. 19th, Thursday evening, Fun Tournament - Lake Meredith; Sept. 21st, Saturday morning, Team Tournament -

Greenbelt; Sept. 22nd, Sunday, Buddy Tournament Lake Foss; Sept. 28th, Saturday, Big Bass at Lake Baylor; Oct. 5th, Saturday, "Old Texas" State Championship Lake Meredith.

Bring a radio to the Greenbelt Team Tournament! Hourly on KGNC radio 710 am, I will announce a "Mel's Special Fish." If you are the first team to reach the scales with that 'described' fish, you will win a prize.

The people at Clarendon have put out the welcome mat. B-K G-eans, Chamber of Commerce, Greenbelt Water Authority, Kidd's Texico, White's Feed n Seed, and the Marina are all helping sponsor this Team Tournament. Frank Hommel of the Bar H Dude Ranch will serve us a special lunch at the weigh-in for only \$5.00.

## For All Your Plumbing Needs



Expert Customer Service

10% Off Retail

- ★ Delta Faucet Parts
- ★ PVC Plastic Pipe & Fittings
- ★ Steel Pipe & Fittings
- ★ Rain Bird, Toro & Hunter Sprinkler Parts
- ★ Supplies for Trailers

Fast Delivery On Special Orders!

## B & J Supply

707 E. Brillhart Perryton 435-7667

**ALLSUP'S**

ALL VARIETIES  
**COCA-COLA**  
6 PACK/12 OZ. CANS  
**\$2.39**

PRICES EFFECTIVE SEPT. 15-21, 1991

---

**SWEET & LOW SWEETENER**  
100-count Pkg. **\$1.99**

**OSCAR MEYER COOKED HAM**  
16 Oz. Pkg. **\$1.99**

**CARIBBEAN CRUISE WINNER:**  
KADY LOCKLIN, CLOVIS, N.M.  
**GAS-FOR-A-YEAR WINNERS:**  
ROCKY SMITH, PADUCAH, TX.  
JESUS MALDONADO, HEREFORD, TX.  
JOY HILL, JAL. N.M.  
SHANNON ROSS, SPRINGTOWN, TX.  
DEL FRED WAUNEKA, GALLUP, N.M.  
LISA CLARDY, QUITAQUE, TX.  
EVAN A. JARVIS, SACHSE, TX.  
PATSY FIERRO, CARLSBAD, N.M.  
EYVONNE GALLEGOS, DALHART, TX.  
**\$1,000<sup>000</sup> WINNERS:**  
WILLIAM HATCHER, ROSWELL, N.M.  
BRENDA SEYMOUR, TURKEY, TX.

**HUNT'S BARBECUE SAUCE**  
18 OZ. BTL. **69¢**

**HOMOGENIZED ALLSUP'S MILK**  
1/2 GALLON **99¢**

**ALL FLAVORS ALLSUP'S ICE CREAM**  
1/2 GALLON **\$1.49**

---

**DECKER CHOPPED HAM**  
10 OZ. ZIPLOCK PKG. **\$1.39**

**MALLO CUP, SMOOTHIE, PEANUT BUTTER CUP**  
**BOYER CANDY**  
**3 FOR \$1**

---

**BEEF, CHEESE & GREEN CHILI ALLSUP'S CHIMICHANGA**  
EACH **89¢**

**SAUSAGE & BISCUIT** .EACH **59¢**  
PENNY SMART BATHROOM **TISSUE** 4 ROLL PKG. **79¢**  
MARGARINE QUARTERS **PARKAY** 1 LB. PKG. **69¢**

---

**2nd ANNUAL**  
Old Lincoln County  
**COWBOY SYMPOSIUM**  
October 3 - 6  
Ruidoso Super Select Sales Pavilion  
Glencoe, New Mexico  
Located 12 miles east of Ruidoso Downs on Hwy 70  
For more information and a brochure, call  
**1-800-545-0402**

**FOLGER'S COFFEE**  
13 Oz. Can **\$1.99**

**SYLVANIA LIGHT BULBS**  
All Sizes, 2-pack **\$1.49**

**CRISCO VEGETABLE SHORTENING**  
3 Lb. Can **\$1.99**

**ALWAYS THE BEST PRODUCTS AT THE BEST PRICES! SHOP & SAVE!**

**305 W. KENNETH, SPEARMAN 101 MAIN, GRUVER**





Wed Thur Fri Sat Sun Mon Tues  
22 23 24



GOOD THRU SEPTEMBER 24th  
IN PERRYTON ONLY.

# EXTRA LEAN

In United Supermarkets Meat Department, you'll find a quality meat selection with our United Extra Lean label. If you enjoy steaks and roasts, we offer you this leaner USDA inspected grain-fed beef. Our Extra Lean beef cuts have the healthy alternative of being lower in fat. Enjoy United Extra Lean Beef today. And remember you have a choice at United. You will still find our quality USDA Choice Beef as well.

Quality.  
A United Standard.

*the personal touch*

## EASY!

United Extra Lean  
Super Valu Pak  
Round Steak

Center Cut  
**\$1.59**  
lb.

Single Pak lb. \$1.69



U.S. #1 Russet  
Baking  
Potatoes

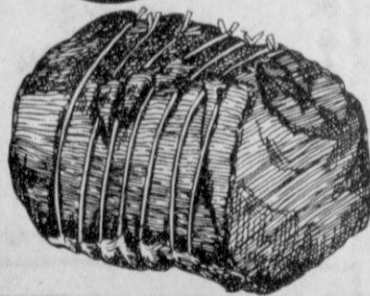
**\$1.29**  
10 lb. bag

California  
Sweet Juicy  
Nectarines  
Large

**\$1.29**  
2 lbs.



United Extra  
Lean Boneless  
Rump Roast



**\$1.69**  
lb.

Del Monte  
Ketchup

32 oz.  
**.99**

Pepsi  
Assorted  
2 Liter

**.79**  
12 / 12 oz. cans 2 for \$5

Eagle  
Potato  
Chips

Thins or BBQ Thins  
**\$1.29**  
10 oz.

Wright's  
Sliced Slab  
Bacon

Tray Pak  
**.99**  
lb.

# UNITED

DOUBLE COUPONS  
7 days a week See store for details



Gruber FFA officers for the 1991-1992 school year are (back row, l-r) Clay Montgomery, advisor; Rex Ralston, president; Hert Derrington, reporter; Justin Carthel, sentinel; Cody Barkley, treasurer; Marty McCloy, parliamentarian; (front row, l-r) Kasey Davis, historian; Sharlet Slough, secretary; Kenny Slough, vice president; and Max Davis, first vice president.

## Karen's Kozy Korner

by Karen Babitzke

Whether it's in a brown bag, a lunch box or a tote bag, many children will carry a school lunch every day. Often when kids come home with the stomach cramps, diarrhea or even vomiting, it's diagnosed or dismissed as "just a bug going around." And indeed it may be a "bug," but not the "flu bug" often suspected. The "bug" may be foodborne illness.

Packing a carried lunch does require some food safety precautions especially since the lunch may be standing at room temperatures for several hours before being eaten. Bacteria that cause foodborne illness live and grow at room temperatures. In fact, between temperatures of 40 degrees Fahrenheit and 140 degrees F., enough bacteria can grow in two hours to cause illness.

The key to packing a safe lunch is "keep hot foods hot, cold foods cold, and everything clean." Here's why and how:

- Some foods need to be kept either cold (below 40 degrees F.) or hot (above 140 degrees F.). These are the perishable foods like meats, poultry, seafood, eggs and milk products (including yogurt). In fact, any moist protein-containing foods are susceptible to bacterial growth because the bacteria that cause foodborne illness need a food source, protein in this case, and moisture to grow. Meat salads like ham, chicken or egg are especially susceptible to food germs because they are handled a lot during preparation and hands can spread germs. If cooked, ready-to-eat lunch meats are a sandwich choice, pay attention to "use-by" dates. These products may contain a special type of bacteria that can grow slowly at refrigerator temperatures.

- Ideally, you should store lunches in a refrigerator to keep them cold, but this often is not possible. Lunch boxes, especially insulated ones, will generally keep foods cold much better than paper bags. Cold devices such as a commercial freezing gel, a container filled with ice or a frozen drink will help keep lunch contents chilled. Advise children to place their lunch in as cool a place as possible,

never in the window ledge in the sun.

- To keep foods hot for several hours, a thermos designed for hot foods will work. Be sure the thermos has been adequately washed after each use. Before pouring a hot food in, rinse the thermos with boiling water. Bring the food to as high a temperature as possible before pouring it into the thermos. The food should be hot to touch when eaten.

- Keep everything clean when preparing lunches to avoid spreading bacteria that cause the illness. Be sure that utensils, hands and work areas are clean. Wash food containers, including the thermos and lunch box itself, after each use. Wrap foods in clean wrap. If using brown paper bags, use ones purchased only for that purpose. Bags which have carried groceries may already be contaminated from insects or food leakage.

Occasionally, foods that don't need to be kept hot or cold may be a desirable lunch choice. These foods include dry meats such as beef jerky, peanut butter, and some non-perishable cheeses and cheese spreads. Canned meat, poultry and seafood products that can be opened and eaten immediately are other options, as are fresh fruits and vegetables, breads and cereals and nuts. Some packaged ready-to-eat foods now on the market in individual size servings, such as canned fruits and puddings, make a nice addition to a carried lunch.

Remember that food can be contaminated with enough bacteria to make you sick without looking, smelling or tasting bad. Keep carried lunches safe:

- Keep everything clean when preparing and packing lunches.
- Plan a balanced menu of healthy foods that have been properly prepared. Be sure meats are thoroughly cooked. Avoid using leftovers that have been in the refrigerator for an extended time.
- Keep hot foods hot and cold foods cold. Don't allow these foods to remain at room temperatures for more than two hours.
- If perishable lunch foods aren't eaten, throw leftovers away.

## Public Notice

On June 28, 1991, Southwestern Bell Telephone Company (Southwestern Bell) filed an application with the Public Utility Commission of Texas (Commission) to add a new optional service offering for business Private Branch Exchange (PBX) Trunk customers called Digital Loop Service. The application has been assigned Docket No. 10461.

Digital Loop Service provides digital transmission of circuit switched voice and data communications between the customer's premises and the central office. This service allows the customer to use a 1.544 Mbps facility capable of delivering up to 24 line terminations. Southwestern Bell will provide Digital Loop Service within the customer's serving central office where facilities are available.

If approved by the Commission, the rates for the Digital Loop Service facilities will be \$445 per month for each digital transmission loop arrangement which provides a capacity of up to 24 line terminations, plus \$3 per month for each line termination and \$9 per month for each channel termination. The proposed rate for the unlimited use of the central office varies from \$12.25 up to \$18.90 per month for each line termination depending on the rate group classification, determined by the customer's location. Southwestern Bell estimates revenue of \$2.1 million from this offering during the first year.

As proposed by Southwestern Bell, customers who currently receive digital loop compatibility through facilities installed under a special construction agreement will have the option to receive their current digital loop arrangements pursuant to the Digital Loop Service Tariff or continue to pay their current charges until they make a change of location or account. Any increase in the number of line terminations to a customer's current digital transmission loop arrangement will be provided pursuant to the proposed Digital Loop Service Tariff; however, the customer will continue to have the option of paying current charges for the existing digital transmission loop capacity. Southwestern Bell's proposal to "grandfather" existing digital loop facility arrangements is subject to review and approval by the Commission.

Persons who wish to intervene or otherwise participate in these proceedings should notify the Commission as soon as possible, but not later than October 15, 1991. A request to intervene, participate, or for further information should be mailed to the Public Utility Commission of Texas, 7800 Shoal Creek Blvd., Suite 400N, Austin, Texas 78757. Further information may also be obtained by calling the Public Utility Commission Public Information Office at (512) 458-0256. The telecommunications device for the deaf (TDD) number is (512) 458-0221.



Southwestern Bell  
Telephone



# WANT ADS Work Wonders!

Reporter-Statesman  
CLASSIFIEDS  
659-3434

**NOTICE**  
Deadline to place or cancel classified line ads is Tuesday noon for Thursday insertion.  
**CLASSIFIED RATE**  
\$4.00 first insertion  
\$3.00 each additional insertion (30 words or less)  
13" each word over 30  
Legal Notices: 15¢ per word  
Ads must be paid in full in cash before publication, unless advertiser has established credit with the Reporter-Statesman.  
Payment for out of state classifieds must be in the form of a money order or cashier's check.  
No tearsheets provided for classified ads.  
Tearsheets provided on request for legal notices.

**NO DOWN PAYMENT**- New Homes. Two new loan programs. Gold Leaf Homes, 1-800-872-7412. S44-4tc

**REPORTER-STATESMAN CLASSIFIEDS WORK!**

**BOB HARDY REALTY**  
803 WILMETH DR.  
659-3440  
**NEW LISTINGS**  
526 S. TOWNSEND - 4 B/R, 2 Bath, Basement.  
Colorado Property For Sale.  
**ROBERT HARDY - BROKER**

**AA Realty**  
Allen Alford-Broker-659-3034  
Julie Martin-Sales-659-2425  
Dennis Nelson-Sales-659-3608  
Larry Trosper-Sales-659-3491  
605 S. Archer-Lot & Trailer-Great Buy!  
217 N. James-3/1 1/4-Dbl. Garage  
729 Cotter Dr.-3/1 1/4-Dbl. Garage  
1121 Drensen-Neat-3/1 1/4-garage  
221 S. Barkley-Good Investment-REDUCED  
515 Evans-3 BR-2 Bath  
416 W. 12th-3/2-Dbl. Garage  
Trailer Court-13 Hookups-4th & Roland  
Homes to Show Not Listed  
Just Call For Showings  
FOR QUALITY & SERVICE CALL US TODAY  
Equal Housing Opportunity

**Century 21**  
GOLDEN SPREAD REALTY  
Janey Helton Pointer, Broker Owner, 435-5444  
Jennifer Nollner, Sales Associate 659-5243  
821 Drensen - 5/2, lots of house for the money! Call today!  
207 James - Large bonus room with basement for play area!  
701 Wilbanks - 3/2, price slashed! Must see!  
700 Collier - 3/1 1/4, pool and game room add to the desirability of this home!  
407 W. 12th - 4/1 1/4, quiet street, carpet!  
605 Archer - 3/2, large rooms plus deck and hot tub!  
515 S. Bernice - 4/1 1/4, extra large lot & close to school!  
18 S. James - 3/2, extras include basement and large building in back!  
118 Townsend - 4/2, apartment included. Price slashed!  
505 Haney - 3/1 1/4, owner will sell or rent!  
703 E. Second - 3/1 1/4, great location!  
13 S. Brandt - 3/1 Farmhouse property, call for details  
**UNDER CONTRACT**  
116 Jarney - **UNDER CONTRACT**  
205 Lomita - 3/1, starter home!  
308 Hazelwood - 2/1, for the thrifty!  
611 S. Evans - 3/1 1/4, affordable!  
Barn Off County Road - For sale!  
315 1/2 N. Bernice - Lot for sale!  
Equal Housing Opportunity

**REPORTER-STATESMAN CLASSIFIEDS WORK!**

**ADVERTISING PROVISIONS**

- Publisher reserves the right to reject, edit, revise and properly classify any advertisement at his sole discretion.
- Advertiser assumes all liability for advertisements printed pursuant to his instruction and shall indemnify and hold the publisher harmless from and against any and all claims and damages, including all costs incurred by publisher in connection therewith. Advertiser represents that all advertising copy is truthful and not misleading. Advertiser shall indemnify and hold publisher harmless from any claim against publisher arising out of or in connection with publication of advertising (except for modifications made by publisher without Advertiser's approval) including, but not limited to, claims for libel, invasion of privacy, commercial appropriation of one's name or likeness, copyright infringement, trademark, trade name or patent infringement, commercial defamation, false advertising, or any other claim whether based in tort or contract, or on account of any state or federal statute, including state and federal deceptive trade practices acts. If advertiser claims copyright ownership in any of the advertising published, advertiser must include proper notice of its copyright claim in the body of the advertisement, otherwise copyright ownership shall remain in publisher.
- Advertiser agrees to check advertisement in the first issue in which it appears and report any error at once as publisher assumes no responsibility for errors after the first insertion. For any error which is the fault of the publisher and of which publisher has been timely notified, publisher will reprint the corrected advertisement for one extra insertion or refund the proportionate cost of the advertisement containing the error. Publisher shall have no responsibility for errors appearing in the copy submitted by advertiser.

**REAL ESTATE**

**WANT TO LIVE** in the country? Five acres of land, a mobile home and barn in the country. Call 659-5233. S45-4tc

**HOUSE FOR SALE** by owner. 4 bdr, 2 bath, central heat & air, ceiling fan in every room, two fireplaces, large yard with fruit trees, two storage sheds. 1006 S. Barkley, Spearman, 659-3112. S45-4tp

**HOUSE FOR SALE:** 110 South Brandt, Spearman. Two bedrooms, one bath, two corner lots, storm cellar, garage. Any serious offer considered, must sell. 733-2914 or 733-2097. S45-4tc

**HOUSE FOR SALE:** 709 Womble, Gruver. Four bedrooms, three baths, five lots. Lots of storage. 733-2914 or 733-2097. S45-4tc

**MUST SEE:** 3 bedroom, 2 bath, detached double garage with studio. Many extras including new tile and hardwood flooring. This is extra nice. Call Julie Marbin, AA Realty 659-2425. S47-3tp

**LAND FOR SALE** by owner. 320 acres of irrigated land with improvements. Two miles north of Waka. 435-5720. S47-1tn/c

**BUILDING FOR SALE:** Commercial/retail building for sale, located at 220 S. Main Street, Perryton, TX. All reasonable offers considered. Call 435-2338 after 6:00 for appointment to see. S47-1tp

**SUPER PRICE!** Nice 3 bedroom, 1 bath brick home, close to schools and parks, with garage, storage shed, fenced backyard. Call 659-2962. S37-RTN

**FOR SALE** - 2100 sq. ft. (living space) home, 3 large bedrooms, 2 1/2 baths, large kitchen, living room and den. Attached garage, fireplace, large yard with trees. 224 Barkley, call Bob Boxwell at 659-3802 for appointment to see. S37-RTN

**SMALL EQUITY** - Low interest assumable loan. Nice three bedroom, two bath home. Sunken living room, fireplace, fenced back yard, two car garage. Very nice location for children, 1120 Archer, Spearman. Call 659-2306. S32-RTN

**FOR SALE:** 3 Bedroom, 2 bath home. Sunken living room, parquet floors, fireplace, covered patio, 2 car garage, sprinkler system, 2193 sq. ft. living space, excellent location. Call 659-3587 or 659-5022. S33-RTN

**FOR RENT**

**APARTMENTS FOR RENT.** One and two bedrooms, furnished. Call J.P. at 659-2117. S25-2tpRTN

**FOR RENT:** large mobile home lot, storage bldg., sidewalk and 2-car parking slab. 6 ft. wood privacy fence. 1 block from swimming pool and close to schools. Call 659-2954, leave name and phone number. S35-RTN

**MOBILE HOME SPACES** in Spearman for rent, \$50 per month. Call Bill Bailey, 435-5080. S38-RTN

**REPORTER-STATESMAN CLASSIFIEDS WORK!**

**Today's Best Buys**

**OSCAR MEYER COOKED HAM** 16 Oz. Pkg. \$1.99  
ALL SUP'S CONVENIENCE STORE

**PEPSI COLA** 2 Liter 79¢  
UNITED SUPERMARKET-PERRYTON

**PLAIN'S MILK** Gallon \$1.89  
UNITED SUPERMARKET-PERRYTON

**CHARMIN BATHROOM TISSUE** Assorted, 6-roll pkg. \$1.69  
UNITED SUPERMARKET-PERRYTON

**MOBILE HOMES**

**TWO BEDROOM** Bella Vista mobile home. Will sell cheap and will finance. Call Sue, 733-2789. S46-2tp

**FOR SALE OR RENT:** two bedroom mobile home. Will finance. Low down payment. Low monthly rates. Call Sue, 733-2789. S46-2tp

**FOR SALE OR RENT:** Three bedroom trailer on three trailer lots. Located at 204 N. Hazelwood. For information call (405) 254-3888. S47-4tp

**AUTOMOBILES**

**1989 FORD XLT** Lariat pickup with camper, 4 X 4, very low mileage, super clean. Extended warranty in effect. Burgundy and silver. Call Perryton (806) 435-7516. S46-2tp

**FOR SALE-\$300** 1975 Cadillac 4-door. Runs great. No miles on rebuilt transmission. Needs battery, tags, inspection sticker. Call 659-2223. S47-1tp

**HELP WANTED**

**PART TIME OUTREACH** Worker needed for Hansford County. 14 hours per week at \$6 per hour. Will start 10/15/91. Call the Panhandle Crisis Center at 1-800-753-5308 for application and information. S47-2tc

**SERVICES**

**OWEN'S STEAMWAY** of Guymon, OK now has a toll-free number for your convenience. Call 1-800-522-1813 for all your carpet, upholstery, drapery and other cleaning needs. Owen & Jean Stephens, Owners/Operators. S43,45,47,49c

Stay in touch!  
with  
**G&G ELECTRONICS**  
Callfree USA  
\*2-way Radio  
\*Mobile Telephones  
\$35/month No Air Time  
\*Repeater Spaces  
\*Pagers  
\*Satellite Work  
Call Bruce Duncan (806) 659-3673

**JACK OF ALL TRADES!** We do anything and everything: Painting, tree trimming, mowing, yard work & clean up, landscaping, roofing, fence building (all types). You need it done, call David Pearson at 659-3352. S43-1tcRTN

**Bob Williams**  
435-4835  
Sweep Air Seeder  
\$6/A -200 Acres  
\$50/A -200 Acres

**Are You A Victim of Physical Abuse?**  
Call Toll Free 1-800-753-5308  
We are in Spearman on the 1st and 3rd Wednesdays of each month from 9:30 to 11:30 a.m. Call for an appointment. Also, we can come to Spearman at any time upon request. We also operate a safe place for victims and their children to stay in times of crisis.  
**Panhandle Crisis Center**  
Serving Hansford, Lipscomb and Ochiltree Counties  
317 S. Main Perryton, TX

**HOUSEHOLD GOODS**

**38 YARDS** of kitchen and utility carpet. Real good condition. 659-3236. S45-1tpRTN

**MISC. FOR SALE**

**BARGAIN BUY** on Baldwin piano. Excellent condition. Will sell below value. Will consider payments. Great Christmas gift! Call 659-2468. Leave message. S46-4tp

**JAN'S ETC. NEW & USED & ANTIQUES TOO**  
Everything for home and family. Plains Shopping Center in Spearman. Open Monday - Saturday, 9:30 a.m. til 6:00 p.m. S16-RTN

**PIANO FOR SALE:** Wanted responsible party to take on small monthly payments. See locally. Trade-ins accepted. Credit manager 1-800-233-8663. S47-3tp

**NEW TRAMPOLINES**  
Mats and springs. Resew trampoline mats. Make new boat covers. Call 806-659-2109  
Harry Stumpf  
301 W. 12th  
Spearman, Texas

**PIANO FOR SALE:** Wanted: Responsible party to take on small monthly payments on piano. See locally. Call Manager at 800-635-7611. S47-3tp

**WANT TO BUY**

**WANTED: GOOD USED** alto or tenor saxophone. Please call Pam Edwards in Sayre, OK at (405) 928-5104 or Jonell Grayson at 659-2122. S46-3tp

**SERVICES**

**CALL YOUR LOCAL** Used Cow Dealer for 7 days a week dead stock removal. 659-3544 or 1-800-692-4043. Serving Cattlemen for the past 20 years. G51-RTN

**FOR REASONABLE, QUALITY** guaranteed gearhead repair, call 806-435-4900, 8-12 Monday-Friday, 806-435-3939 after 6 p.m. and weekends. Loaner gearheads available in most cases. S37-RTN

**HANDYMAN** - YOU WANT it done and can't or don't want to do it yourself! Call Uncle Ed (Pearson) 659-3328 anytime! House, yard, fence, car, mower, bicycle, air conditioner, etc... Anything!! S37-RTN

**NOTICE**  
Wallace Monument Co.  
Monuments, Curbing,  
Grave Covers  
1-800-999-9506  
Local Representative  
**LEONARD JAMESON**  
Spearman, Texas  
35s-rtn

**OSGOOD MONUMENT CO.**  
Amarillo, Texas  
Dealers of Rock of Ages Granite, as well as all colored granites, marble and bronze memorials.  
represented by  
**BOXWELL BROS. FUNERAL HOME**  
519 S. Evans  
659-3802

**GARAGE SALES**

**GARAGE SALE** - Dining room table, microwave, Kirby vacuum, twin bed, toys, girls clothes. Saturday, Sept. 21, 8 a.m. to 5 p.m. 319 S. Hazelwood, Spearman. S47-1tp

**GARAGE SALE** Friday, Sept. 20 and Saturday, Sept. 21 from 9 a.m. to 6 p.m. Upright freezer, antiques, depression glass, clothes, fruit jars, lots of knick-knacks. Two miles west of Spearman on Gruver Highway. 659-2675. S47-1tp

**SPECIAL NOTICE**

**IS DRINKING AFFECTING** your life negatively? Join us at AA or Al-Anon. Tuesdays at 8 p.m., at 30 Hwy 760 (three blocks south of the Moose). S44-8tp

**RENT VCR's & MOVIES**  
Buy used movies, rent Nintendo & Genesis games. Blank tapes, candy, popcorn for parties, pickles, hot roasted nuts. NEW - Camcorder movie camera for rent - Tape Your Parties!  
**THE KNACK SHOPPE**  
A Video Specialty Store  
317 Main St.  
Spearman, Texas 79081  
(806) 659-5046  
S45-4tp

**Count on the Classifieds to Do the Job**

**Reach 3 million Texans for only \$250**  
Now you can run your classified ad in newspapers all across Texas for \$250.  
That's right—a 25 word ad costs only \$250 to run in 293 newspapers with a combined circulation of more than 1.8 million (that's more than 3 million readers) throughout the Lone Star State.  
One call to this newspaper, that's all. We'll place your ad in 293 newspapers. All you have to do is get ready for results.  
This new sales opportunity is brought to you by this newspaper and the Texas Press Association member newspapers.  
**Call this newspaper for details**  
Tex SCAN  
Statewide Classified Advertising Network

**Tex SCAN**  
Statewide Classified Advertising Network  
Advertise in 293 Texas newspapers for only \$250.  
Reach 3 MILLION Texans. Call this newspaper for details.

**DEER HUNTERS SPECIAL:** 50 acres, \$59/acre, wooded, excellent hunting, county road. Texas veteran or owner financing, prime acreage. Fox Real Estate, 500 Buchanan Dr., Burnet, Texas. 512-756-6066.  
**NOTICE-COUNTRY/WESTERN** songwriters: 6th Annual "Making Texas Music" Songwriting competition, Nov. 8-9. For application, write "Making Texas Music", Putnam, TX 76469.  
**PICK-UP PAYMENTS \$119.61** - Hardy, Arkansas - old home place, 5.3 wooded acres. Near Spring River - fishing, hunting, good road, water, electric. Beach Club Realty, 1-800-331-2164.  
**WOLFF TANNING BEDS:** New commercial-home units from \$199. Lamps, lotions, accessories. Monthly payments low as \$18. Call today. FREE new color catalog. 1-800-462-9197.  
**FRIENDLY HOME PARTIES** has openings for dealers. No cash investment. No service charge. Highest commission and hostess awards. Three catalogs, over 800 items. Call 1-800-488-4875.  
**HAPPY JACK FLEAGARD:** All metal patented device controls fleas in home without chemicals or exterminators. Results overnight! At farm feed drug & hardware stores.  
**DRIVERS:** KLLM INC., Dallas and Houston terminals are now hiring single drivers and teams with one year recent Tractor Trailer experience! Call 1-800-925-5556, Monday-Friday.  
**TIME EXTENDED ON TEXAS** repossessed land for country living or investment. 30-yr. term, zero down, \$92/mo., 10ac average. Call immediately. 1-800-275-REPO.  
**ENGINEER WITH ASME** and production equipment experience. Send resume and salary requirements to Box 28, c/o The Odessa American, P.O. Box 2952, Odessa, TX 79760.  
**CHIPPER/SHREDDERS:** Commercial-quality TROY/BILT chipper/shredders designed and priced for every sized property. For free catalog with models, specs, and special savings now in effect, call toll-free 1-800-441-2727, Dept. D.  
**AUTO FINANCE!!** Bad credit OK - no down payment. 1987-1991 models. Make low monthly payments on financially distressed vehicles. 1-800-274-8141 information 24 hrs.  
**PIONEER STEEL BUILDINGS** Fall Special 30X40X10 ... \$4,250; 30X50X12 ... \$5,295; 30X75X12 ... \$6,250; 40X75X12 ... \$8,695; 50X100X14 ... \$13,175; 80X100X14 ... \$19,995. ALL SIZES Mini-Storages Financing available. 1-800-637-5414.  
**BUSINESS OPPORTUNITY DEALERS NEEDED:** Revolutionary new mini satellite dish (excellent picture quality). Tremendous demand. Cost \$587, retail \$1,290. Big profits! No experience necessary. Serious inquires only. Sata-Link 1000, 303-694-1212. 8-5 p.m. (MST)  
**BAHAMAS VACATION:** Enjoy a 6-8hr. cruise to the Bahamas for 5 days and 4 nights. \$173.50 per person. Call 1-602-350-9014. "Licensed and bonded" "Restrictions apply"  
**OWNER/OPERATORS:** NOW leasing tractor trailer units. 48' flats or stretch flats. Must be able to scale 50,000#. Steel & pipe mostly. North to South and return. Warren Transport Inc., Waterloo, IA. 1-800-832-0555.  
**ADOPTION: HAPPY & LOVING** couple, financially secure, wishes to adopt your newborn. Will give love & all best things in life. Allowed medical expenses paid. Call Joyce/Gary collect or leave message 201-447-4461.  
**ADOPTION AVAILABLE: SECURE,** happily married couple searching for infant to love and adopt. Call Margaret & Pete collect anytime 914-965-1703. Allowed medical expenses paid.  
**ADOPTION: LET US HELP** you give your baby a lifetime of happiness and stability. Please call Audrey and Carsten collect anytime 212-750-8893. Thank You!

**PUBLIC NOTICES**

**NOTICE TO BIDDERS**

Sealed Proposals will be received until 4:00 p.m., Local Time, Tuesday, September 24, 1991, in the District Board Room of the Hansford Memorial Hospital, Spearman, Texas, for the construction of **KITCHEN HVAC IMPROVEMENTS, HANSFORD MEMORIAL HOSPITAL, SPEARMAN, TEXAS**, at which time they will be publicly opened and read aloud. Sealed proposals should be addressed to Mr. Al LaRochelle, District Administrator, Hansford County Hospital District, 707 South Roland, Spearman, Texas.

Bids will be received for the General Construction including the related Mechanical and Electrical Work. General Contractors, and Mechanical and Electrical Subcontractors, will be pre-qualified by the Owner.

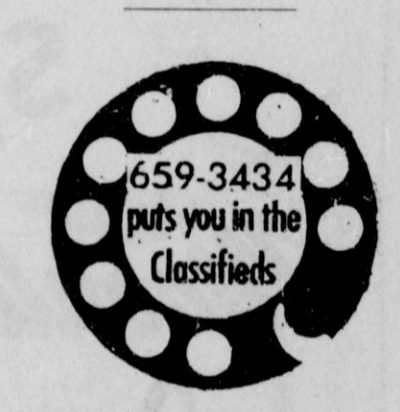
The Contract Documents may be examined at the offices of the Architects, Hannon, Daniel & Dickerson, AIA, Architects/Engineers, 1601 South Harrison Street, Amarillo, Texas 79102.

Plans, specifications and contract documents may be obtained from the office of Hannon, Daniel & Dickerson, AIA, Architects/Engineers, 1601 S. Harrison Street, Amarillo, Texas 79102, upon deposit of \$75.00 per set of plans and specifications. Two (2) sets of plans and specifications will be furnished to General Contractors. Deposits on the two sets of plans and specifications will be returned to the General Contractor upon receipt of a bona fide bid from the Contractor, and the return of the plans and specifications in good condition within ten (10) days after bid opening. If plans and specifications are not returned to the Architect within the time specified, or if no additional set(s) will be furnished General Contractors at cost of reproduction; such documents shall be returned to the architect in good condition. Subcontractors and Material Suppliers can obtain sets or partial sets of drawings and specifications requested; deposits will be returned upon receipt of the documents in good condition, but in no case will Subcontractors and Material Suppliers be reimbursed for the cost of reproduction. The cost of mailing of plans and specifications will be at Contractor's and/or Material Supplier's expense.

A certified check, cashiers check, or bidder's bond payable to the Owner, in an amount equal to five percent (5%) of the total bid must accompany each bid as a guarantee that the bidder will enter into contract and execute performance bond and payment bond within ten days after notice of awarding of contract.

In case of ambiguity or lack of clearness in stating prices in the proposal, the Owner reserves the right to adopt prices written in words, or to reject the Proposal.

The Owner reserves the right to reject any or all bids; to accept any bid deemed advantageous; and to waive all formalities. S46-2tc63.00





## Obituaries

**H.C. Brown Jr.**  
FARNSWORTH - H.C. "Buster" Brown Jr., 74, died Wednesday, Sept. 11.

Mr. Brown, born in Checotah, Okla., moved to Farnsworth in 1926. He graduated from Perryton High School in 1934, and attended Texas A&I for a year. He married Ruby Kelly in 1941 at Estelline. He was a farmer. He was the education chairman, finance chairman and taught Business Men's Class at the First United Methodist Church. He was a former school board member and former Perryton Activity Center board member. He was an avid golfer.

Survivors include his wife; a son, Kelly Brown of Perryton, a daughter, Barbara Brown of Amarillo; three sisters, Jewell Pearson and Joe Copeland, both of Spearman, and June Osborne of Perryton; and two grandchildren.

Funeral services were conducted Saturday, Sept. 14 in First United Methodist Church of Perryton with the Rev. Edward Allsup, pastor, officiating. Burial was in Ochiltree Cemetery.

The family requests memorials be to First United Methodist Church or to a favorite charity.

**Billy Jarvis**

Billy Jarvis, 90, died Wednesday, Sept. 11.

Mr. Jarvis was born in Denton County and moved to the Lieb community in 1904. He graduated from Amarillo High School in 1921. He was the captain of the Amarillo High basketball team from 1920-1921. He graduated from Texas A&M in 1925.

Mr. Jarvis was commissioned as an officer in the U.S. Army Reserve. He coached and taught at Spearman and Wellington from 1928-1935. His basketball team in Spearman won

the Panhandle regional in 1931. In 1941, he was transferred to the U.S. Army Air Corps. He served with the 19th heavy bombardment group and the 301st heavy bombardment group in the South Pacific.

He received numerous decorations and commendations, including one for his planning and coordination of the Wake Island staging for the 301st during the air attack on Midway Island. He was discharged as a lieutenant colonel in 1944 and retired from the U.S. Air Force in 1966.

He was a farmer and rancher in Hutchinson, Hansford and Hemphill Counties until his death. He was a member of the Hansford Masonic Lodge No. 1040 AF&AM, and was past Worshipful Master. He was preceded in death by a son, Robert Scott.

Survivors include his wife, Ollie Jarvis; two sons, Billy Britt Jarvis of Spearman and Jon Matheny Jarvis of Stinnett; a brother, Woodville Jarvis of Spearman; five grandchildren; and a great-granddaughter.

Graveside services were conducted Saturday, Sept. 14 in Lieb Cemetery. The family requests memorials be to the Lieb Cemetery Fund, Cal Farley's Boys Ranch or to a favorite charity.

**Vera Kelley Cole**

AMARILLO - Vera Kelley Cole, 85, of Amarillo died Friday, Sept. 13.

Mrs. Cole, born in Wilson, Okla., had lived in Amarillo since 1932, moving from Konawa, Okla. She was a 45-year member of the Veterans of Foreign Wars Post 1475 Auxillary. She also was a member of the Rebecas, the Blue Bonnet Mothers-in-law Club and the Pithian Sisters. She was preceded in death by her first husband, Wornie T. Kelley, in 1954 and her second husband, Hubert Cole, in 1973. Mrs. Cole was a member of Polk

**Street United Methodist Church.**

Survivors include a brother, W.E. Clark of Winston, Ore.; and two sisters, Ivan Verna Allen of Spearman and Florine Ford of Canyon.

Funeral services were conducted Saturday, Sept. 14 in Memorial Park Funeral Home Chapel of Memories with the Rev. James Preston, associate pastor of Polk Street United Methodist Church, officiating. Burial was in Memorial Park Cemetery.

**Grace Watkins**

Word had been received of the death of Grace Watkins, 90, of Perkins, Okla.

Burial was in Strode Cemetery at Stillwater, Okla., at 10 a.m. Wednesday, Sept. 18.

Mrs. Watkins was the mother of Mrs. Gordon (Rose) Cummings of Spearman.

**Larry David Smith**

Larry David Smith, 32, died suddenly from an unknown illness at 5:45 p.m. on Monday, Sept. 16 in San Joaquin County Hospital at Stockton, Calif.

Funeral arrangements were pending as of Tuesday, Sept. 17. No local services will be held.

Mr. Smith, born April 13, 1959, was the son of Richard D. Smith of 402 E. Kenneth in Spearman and Edna L. Gould Smith of Lathrop, Calif.

He was preceded in death by his mother, Maude Mathews, and his grandfather, Bill Gould of Spearman.

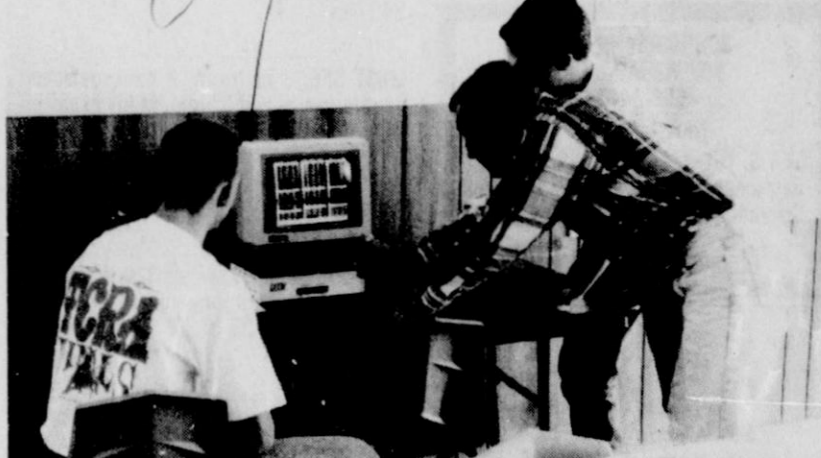
Survivors in addition to his parents are two brothers, Terry Lee of Stockton, Calif., and Charles Jerome of Las Vegas, Nev.; a sister, Mary Elizabeth of Lathrop, Calif.; and his grandmother, Alice Gould of Manteca, Calif.



Spearman FFA students Mark Eakin and Carla Greene work together to construct a wood duck nesting shelter. The whole class is constructing the shelters as part of their conservation project. The students will be putting the shelters out after they talk with the game warden to find the best locations for the shelters in Hansford County.



Gruver FFA members repainted and hung a new "Welcome" sign west of Gruver on Highway 15. FFA members showing off their handiwork are Juan Jaquez, Paul Renteria and Robert Whitaker.



Agri-business and marketing students of the Gruver agricultural science department are using the data transmission network that has just been set up at the Gruver agricultural building. This new system gives agricultural information, commodity quotes, stock market information, current cash prices for all livestock and grain, weather forecasts, and world news. Checking current prices are ag students Marty McCloy, Rex Ralston and Max Davis.

\*\*\*\*\*  
**GET GOING!**  
\*\*\*\*\*  
with Morning Aerobics at Hansford Activity Center  
beginning September 16, 1991  
Monday, Wednesday, Friday 6:15 - 7:00 A.M.  
Program Cost: \$10.00 per month  
led by Judith Logsdon YMCA Certified  
\*\*\*\*\*

### 'CattleLog' available

ARDMORE, Okla. - A 24-page listing of cattle for sale, cattle for contract grazing and pastures for contract grazing is now available

free of charge from the Samuel Roberts Noble Foundation's Agricultural Division.

The 1991-1992 "CattleLog" includes listings of more than 7,000 head of breeding and replacement cattle, approximately 6,000 head of stocker-feeder cattle, and roughly 60,000 acres of pasture available for contract grazing. Listings are alphabetized within each category by ranch (or rancher) name.

The list has already been mailed to more than 2,500 cattle producers in Oklahoma, Texas and elsewhere.

To receive a copy of the "CattleLog" for 1991-1992, contact Becky Kittrell at (405) 223-5810, or write: The Noble Foundation, Attn: Becky Kittrell, P.O. Box 2180, Ardmore, OK 73402.

## Gruver FFA Chapter sets pheasant hunt

Gruver FFA Chapter members will hold a pheasant hunt on Dec. 10 to raise funds for the chapter's activities.

The decision was made at the chapter's first regular meeting on Aug. 27.

Hunters will pay a fee of \$50 per gun, and \$100 for any additional guns. Lunch will be provided to participants on the day of the hunt. Hunters should pay a \$25 deposit before Nov. 25 in order to participate.

The pheasant hunt committee is now seeking land to use for the hunt. Cody Barkley, chapter treasurer, is chairman of the committee. Committee members include Robert Whitaker, Ryan Matthews, Chad Stark and Max Davis.

Discussions of other fund-raising activities resulted in the chapter voting not to sell turkeys or sausage this year, but to continue with fruit sales. Chapter members also voted to operate a Roll-o-Roper and a bucking barrel at the county fair to raise money. Marty McCloy, Felipe Dominguez and Brady Pool, chairman, were appointed to a committee to oversee the county fair operations.

In other business, three new officers were added to the team. They include Max Davis, first vice president; Marty McCloy, parliamentarian; and Kasey Davis, historian. Rex Ralston, chapter president, was elected to the sweetheart team.

It was announced that the chapter's pig sale will be held on Nov. 10. Members' work assignments will be discussed at a later meeting.

An FFA newsletter will be written by a committee composed of Paul Renteria, Max Davis, Cody Barkley, one other chapter member and Hart Derrington, chapter reporter.

Next regular meeting of the Gruver FFA Chapter will be on Tuesday, Sept. 24 at 7 p.m.



**It's  
Spearman's  
Moonlight Madness  
Backwards Day 1991**

**Tuesday, September 24  
5:30 p.m. - 9 p.m.**

**Come Check Out The  
Backwards Prices At These  
Spearman Merchants:**

The Bunkhouse	Cheryl's Gifts & More
Kids' Stuff	Celebrate Country Stitches
Lady Fair	ChaLor's LaKay's Merle Norman
Adela's	Attic Antiques Jo's This N' That
Cates Men & Boys Wear	Beedy Furniture
Hickerson Jewelers	Fuller's Jewelers

Complete  
FRATERNAL  
LIFE INSURANCE  
for the Entire Family


Omni-Plus Universal Life  
and  
Annuities and IRA's-Highly  
Competitive Interest Rates

For more information  
phone or write to our  
local representative

**MARILYNN HART**  
District Deputy  
P. O. Box 426  
Gruver, TX 79040

Phone: Home 806-733-2226  
Office 806-733-2066

**ROYAL NEIGHBORS OF AMERICA**  
230-16th St., Rock Island, Illinois 61201-8645  
Fraternal Life Insurance Since 1895





*Bring Your Own Tractor,  
Car or other Antiques*

**Saturday & Sunday  
September 21st & 22nd, 1991  
Donald Sell Farm  
Perryton, Texas 79070**

**Fourteenth Annual  
Golden Spread Antique  
Machinery Association Show**

Located 10 miles east of Perryton on FM 377 and 5 south on FM 2711; or 5 south of Booker, TX, on SH 23, 6 west on Fm 377 and 5 south on FM 2711.