

SCR2
COMP
HANSFORD COUNTY LIBRARY
0122 MAIN ST
SPEARMAN TX 79081-2064



★ HANSFORD COUNTY ★ THE REPORTER-STATESMAN

THURSDAY,
JUNE 23, 2011

CELEBRATING 104 YEARS OF SERVICE TO HANSFORD COUNTY
HANSFORD COUNTY'S ONLY NEWSPAPER

75¢

WWW.SPEARMANREPORTER.COM

VOLUME 104 • ISSUE 25

REPORTER@SPEARMANREPORTER.COM



Governor Extends Fireworks Ban for Hansford County

An EMERGENCY meeting of the Hansford Commissioners' Court was held on Tuesday, the 21st day of June, 2011, at 8:00 a.m., in the Law Library of the Hansford County Courthouse in Spearman, Texas to discuss an attachment to the Emergency Management Plan.

On June 13, 2011, the County Judge proclaimed a local state of disaster which banned the sale, use and discharge of all fireworks in Hansford County for the next sixty (60) hours. The Court sought an extension of the ban from the Governor of Texas. The extension by the Governor was timely entered and received, making it necessary to amend the Emergency Management Plan to include a criminal penalty for violations.

The Commissioner's Court approved an amendment of the Emergency Management Plan to include the creation of a misdemeanor offense for violation of the Emergency Management Plan of Hansford County, Texas. The penalty shall be a fine of up to \$500.00.

Emergency Management Plan to include a criminal penalty for violations; and, There exist an immediate threat to public health and safety; and,

WHEREAS, the Commissioners Court finds that the supplementation of such plans are now imperative;

BE IT ORDERED, ADJUDGED AND DECREED BY THE COMMISSIONERS COURT OF HANSFORD COUNTY, TEXAS THAT THE BASIC EMERGENCY PLAN BE HEREBY SUPPLEMENTED TO INCLUDE:

OFFENSES; PENALTIES

(a) It shall be unlawful for any person willfully to obstruct, hinder, or delay any member of the Emergency Management organization in the enforcement of any rule or regulation issued pursuant to this order.

(b) It shall likewise be unlawful for any person to wear, carry or display any emblem, insignia, or any other means of identification as a member of the Emergency Management organization of the County of Hansford, Texas, unless authority to do so has been granted to such person by the proper officials.

(c) It shall likewise be unlawful for any person to violate any ban on fireworks enacted pursuant to Section 418.108 of the Texas Government Code.

(d) Convictions for violations of the provisions of this order shall constitute a misdemeanor and be punishable by fine not to exceed five hundred dollars (\$ 500.00).

Section 11. Repealer

All orders, parts of orders, or resolutions in conflict herewith are expressly repealed. Otherwise all provisions of the Emergency Management Plan remain in full force and effect.

READ AND APPROVED AND ADOPTED on this the 21st day of June, 2011.

Benny D. Wilson, County Judge
Hansford County, Texas

ATTEST:

Kim V. Vera's signature on file and seal
Kim V. Vera, County Clerk
Hansford, Texas

ATTACHMENT HANSFORD COUNTY COMMISSIONERS COURT ORDER

ORDER NO. 06-212011

BY THE COMMISSIONERS COURT OF HANSFORD COUNTY, TEXAS, ESTABLISHED A PROGRAM OF COMPREHENSIVE EMERGENCY MANAGEMENT; HEREBY AMENDS THE PLAN AND MAKING VIOLATIONS A MISDEMEANOR PUNISHABLE BY FINE NOT TO EXCEED \$500.00.

WHEREAS, the County Judge of the County of Hansford, Texas On June 13, 2011 proclaimed a local state of disaster which banned the sale, use and discharge of all fireworks in Hansford County for the following sixty (60) hours; The Court sought an extension of the ban from the Governor of Texas; The extension by the Governor was timely entered and received.; It is necessary to supplement the

Farm Service Agency Announces Accepted CRP Contracts

Rick Hargrove, Executive Director for the Hansford County USDA Farm Service Agency (FSA), announced that contracts for the Conservation Reserve Program (CRP) for fiscal year (FY) 2012 have been awarded. In Hansford County, 3549 acres have been accepted into CRP.

During the 41st general CRP sign up conducted in the spring, more than 38,000 CRP offers were received on approximately 3.8 million acres nationwide. USDA accepted enrollment of 2.8 million acres bringing the total program enrollment to 29.9 million acres including 597,082 acres in Texas.

"These newly accepted CRP contracts perpetuate the past quarter century of program success by providing a low risk opportunity to implement a variety of conservation practices on environmentally sensitive land right here in Hansford County," said Hargrove. "CRP practices improve water and air quality, increase wildlife habitat and prevent soil erosion," he said.

How successful is CRP? According to Hargrove, since its inception 25 years ago, CRP acres have resulted in an eight billion ton reduction in soil erosion, restoration of two million acres of wetlands and adjacent buffers, vegetative protection of more than 200,000 stream bank buffers and significant increases in upland wildlife numbers which translates to recreational dollars for many rural economies.

Landowners enrolled in CRP receive annual rental payments and cost-share assistance to establish long-term, resource conserving covers on eligible farmland. Accepted contracts are effective October 1, 2011.

All CRP offers were evaluated and ranked using an Environmental Benefits Index (EBI) that indicates the environmental benefits of enrolling land in CRP. There are five environmental factors that make up the EBI: wildlife, water, soil, air, enduring benefits and cost.

For more information about the Conservation Reserve Program, please contact the Hansford County FSA Office at 806-659-3036, ext. 2 or visit <http://www.fsa.usda.gov/crp>.

by GasBuddy.com TexasGasPrices.com Weekly Update

Texas, June 20- Average retail gasoline prices in Texas have fallen 3.8 cents per gallon in the past week, averaging \$3.53/g yesterday. This compares with the national average that has fallen 4.8 cents per gallon in the last week to \$3.66/g, according to gasoline price website TexasGasPrices.com. 0

Including the change in gas prices in Texas during the past week, prices yesterday were 96.1 cents per gallon higher than the same day one year ago and are 22.4 cents per gallon lower than a month ago. The national average has decreased 19.0 cents per gallon during the last month and stands 92.7 cents per gallon higher than this day one year ago.

GasBuddy operates GasBuddy.com, TexasGasPrices.com, and over 225 other local gasoline price-tracking websites that follow prices at over 125,000 gasoline stations in the United States and Canada. GasBuddy also uses Facebook (facebook.com/gasbuddy), Twitter (twitter.com/gasbuddy), and phone apps to keep motorists ahead of changing gasoline prices.

Weather Forecast

THURSDAY NIGHT - Partly cloudy. Lows in the upper 60s. Southwest winds 10 to 15 mph.

FRIDAY - Partly cloudy. Highs around 106. Southwest winds 10 to 15 mph.

FRIDAY NIGHT - Partly cloudy. Lows in the upper 60s. Southwest winds 10 to 20 mph.

SATURDAY - Mostly sunny. Highs around 107. Southwest winds 10 to 20 mph.

SATURDAY NIGHT - Mostly clear. Lows in the upper 60s.

SUNDAY - Mostly sunny. Highs around 105.

SUNDAY NIGHT - Mostly clear. Lows around 70.

MONDAY - Partly cloudy. Highs around 101.

MONDAY NIGHT - Partly cloudy. Lows in the lower 70s.

TUESDAY - Partly cloudy. Highs around 103.

TUESDAY NIGHT - Partly cloudy. Lows in the lower 70s.

WEDNESDAY - Partly cloudy. Highs around 101.

Read more: <http://www.city-data.com/forecast/w-Spearman-Texas.html#ixzz1Q6k678dp>

Texas Crop & Weather

The following specific livestock, crop and weather conditions were reported by Panhandle Extension directors: The region remained extremely hot, dry and windy with wildfire danger high. Soil moisture was very short in most counties. Corn and cotton continued to struggle under high winds and 100-plus degree heat. Most counties reported corn to be in poor condition. Cotton was in fair to very poor condition, with most reporting poor. Producers were actively irrigating all summer crops. Rangeland and pasture conditions were mostly very poor. Ranchers continued supplemental feeding of cattle.

Hutchinson County Growing Farmers Market

The Hutchinson County Farmer's Market is hoping to grow in its second year to provide consumers with an option to buy their vegetables fresh, according to Sandra Duke, Texas AgriLife Extension Service agent for Hutchinson County.

The Farmers Market will open on July 1 and be set up every Friday through the summer. Vendors will be open from 7 a.m. to noon or sell out, whichever comes first, Duke said. The market will be located in the 500 block of Weatherly (1 block east of Main Street).

"We have plenty of space for vendors, so we encourage individuals with large gardens or farmers to join the Farmer's Market this year," she said.

The Hutchinson County Farmers Market Corporation was created to help introduce the market to potential producers and to customers, Duke said. The organization promotes healthy individual lifestyles through educational activities, fostering community well-being and pro-



PTCI was on hand to feed lunch to about 50 Spearman City and Hansford County employees on June 16 in appreciation for their business at PTCI and also for the work they do in our local communities. Those attending were all in exceptionally good moods as they enjoyed hamburgers with all the trimmings. Pictured are (L-R) Cindy Scribner, Hansford County Auditor; Wanda Wagner, Hansford County Treasurer; Bob Davis, Hansford County Justice of the Peace; Kim Vera, Hansford County and District Clerk; and Janet Torres, Clerk's Deputy.



moting sustainable agriculture in the Texas Panhandle.

"Area commercial producers and home gardeners will sell their home-grown fresh fruits and vegetables directly to citizens allowing them access to vine ripe, high quality produce," she said. "We also

expect to have available home-produced food items such as breads, jams and juices."

For more information contact George Howard, who will serve as the market manager, at 806-236-1570, or Duke at 806-878-4026.

WHEN DOES YOUR SUBSCRIPTION EXPIRE?

SCR1
06/11 EXPIRES
JOHN Q. PUBLIC
PO BOX 123
SPEARMAN TX 79081

Expiration dates are printed on the top of all mailing labels. Our readers can help keep the cost of subscriptions down by mailing in renewals in the appropriate month.

Thank you, Catherine Smith

THE HANSFORD COUNTY REPORTER-STATESMAN
213 Main Street • Spearman, TX 79081

Annual Subscription Rates

In Hansford County - \$30

Out of County - \$40

E-Subscription - \$35 (sent through e-mail)

Wolf Creek Heritage Museum Notes

by Virginia Scott
MUSEUM HAPPENINGS

Summer is always fun for the museum because we have visitors from all over the world and visitors who are old friends of the museum. Both have happened this year with visitors from Germany as well as old friends, Ed and Jan Wiley, who came by to see how we were doing. The Wileys have been supporters of the museum since Mildred first envisioned the project, so it is always good to see them and hear about their adventures.

It is also the time of the year for family reunions. We have had visits from the members of the Babitzke family and the Fiel family, who visited us on Saturday. (Thanks, Lovella, for opening the museum and hosting their visit.)

A reminder that the museum is available for events on Saturday, Sunday, or after hours. Just call us and book it. We love to host family gatherings!

We haven't had any one claim the pretty key chain. If no one calls or claims it by next Wednesday, it will be given to the person who found it on our parking lot. Again, it is a pretty animal.

A Reminder: The Akers Family exhibit is up! Please drop by and visit the wonderful art by Pam, Sharon, Melissa, and Larry about their mother's art. Monte will be present to sign his new book and his previous books. You will not be disappointed. The reception is June 26th at 2 p.m. The museum is nice and cool so come on by and enjoy the air conditioning and the cookies and punch. Most of all enjoy the fellowship and talents of this family.

Historical Musings
In remembering our history, we often think only of people and places. We forget that animals were responsible for a lot of our history!

One such animal was the Longhorn cattle. In an article by J.L. Beardsley entitled "Horns, Herds, and History," Mr. Beardsley traces the history of the Longhorn into Texas and the surrounding area.

He quotes the Spanish Archives at Madrid that records that Gregorio Villalobos brought the first cattle to North America when he was sent to New Spain from Santo Domingo, where Spain was following up Columbus' discoveries with colonizing efforts.

He also quotes sources that Coronado's expedition and Juan de Onate's expedition in 1595 brought big and little cattle. It is believed that "Coronado, Frey Marcos de Niza, Onate and several other conquistadores who explored the south western regions, undoubtedly took with them numbers of cattle and other domestic animals. These were the foundation stock of the cattle of the great southwest, including Old Mexico, Arizona, New Mexico and Texas, from which came the Longhorns of Texas, and ultimately the whole cattle industry of the west."

The Longhorn was not an ideal beef animal, but his ability to adapt himself in primitive conditions made him suited for the western ranges as the native buffaloes, and his instinct of self-preservation and "cow sense" were two of his re-

deeming traits. These original Spanish types were lanky and "leggy as an elk" with an irritable and vicious temperament. Some of the early ranchers who bred Longhorns with Herefords were Will C. Barnes, Arizona pioneer cattleman, John Rush, Oklahoma, and L.A. Schriener, Kerrville, TX.

Schriener bought a bull and some cows in the late 1920's in an effort to raise some calves that would show a high percentage of Longhorn blood and characteristics. It was his hope to preserve the fast vanishing breed. His rarest specimen and his star was "Old Blue" which he considered one of the last of the clean strain Longhorns. His horn spread was 89 inches with dark markings of a dirty dun color, with sides of "pied blue". His project failed, but he did bring attention to the Longhorn plight.

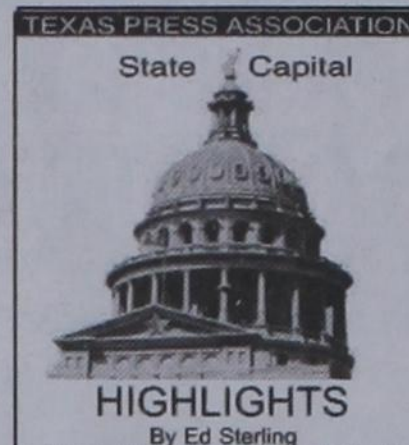
It is Will C. Barnes, however, that gets the true credit for preserving the Longhorn. Active in conservation policies under President Theodore Roosevelt, Barnes commented in his article, *On the Trail of the Vanishing Longhorn*, Saturday Evening Post, (Oct. 15, 1927), "...it was always my idea to gather a Longhorn herd, which I began working on soon after we had the buffalo safely located in the Wichita forest. We had the Indians there, too, and I felt that the Longhorn was the third of a historic trio that rightfully belonged there."

It took him years to convince Congress to preserve the Longhorn and they found it difficult to find a herd - finding only 10 cows and one old bull meeting their standards in the southern extremities of Texas, along the Rio Grande between San Antonio and Brownsville.

After searching other regions, they ended with a herd of 23 head after traveling almost 5,000 miles. The herd was placed in the Wichita National Park. He had realized his dream. The U.S. Fish & Wildlife Service nurtured the herd with tremendous success.

In 1964, The Texas Longhorn Breeders Association was formed by Texas ranchers, including J. Frank Dobie, who were breeding and raising Longhorns as a hobby. The association mission was to promote interest in the Longhorn as an important segment of our pioneer past and a distinct American breed.

Today, the legendary Longhorn has struggled back from near extinction and can be found roaming over the ranges of the Southwest in public and private herds to be enjoyed by us all.



STATE CAPITAL HIGHLIGHTS



by Ed Sterling

Governor releases list of decisions on legislation

AUSTIN — Will he or won't run? If Gov. Rick Perry's presidential candidacy intentions could have been symbolized by a green, yellow or red light last week, it was arguably yellow, even though he spoke at Republican gatherings in New Orleans and New York.

Regardless, Texas' chief executive had plenty of his desk, namely a heap of legislation awaiting his final decisions. June 19 was the last day for the governor to sign or veto bills passed during the Legislature's regular session, which ended May 30. He released his final-action list on June 17.

Perry signed the 2012-2013 state budget, a document \$20 billion lighter than the current 2010-2011 state budget. Perry praised the bill for not dipping into the so-called rainy day fund and not creating new taxes. As of June 20, Senate Bill 2, the fiscal matters legislation that makes the budget balance, had not reached the finish line in the still-in-progress special session of the 82nd Texas Legislature.

SB 9, the sanctuary cities bill that allows local police to question persons stopped for due cause about their immigration status, was approved by the Senate and has moved to the House for consideration. Lt. Gov. David Dewhurst praised the work of the body he presides over, saying: "Drug traffickers and transnational gangs should think twice before they step foot in Texas."

SB 4, the congressional redistricting bill, was heavily amended on its trip through the House. Now back in the Senate, upper chamber lawmakers must accept or reject the amendments. Following SB 4's approval by the House, Speaker Joe Straus, R-San Antonio, said, "I am particularly pleased that we have passed all four redistricting maps required this year. The members provided much input and direction on maps that reflect the population changes in our state. The redistricting map for the State Board of Education (HB 600) is now law. The House (HB 150) and Senate (SB 31) redistricting maps were simultaneously passed and now await the governor's signature."

Now, about those vetoes Perry, after reviewing the bills on his desk, said "there

were some bills that would have done more harm than good to Texans, and I have used my authority to veto them." He vetoed 23 bills.

One of the more attention-getting vetoes was of HB 242, legislation that would have made it a misdemeanor offense to send a text message while driving a motor vehicle.

Perry said the bill, by the dean of the House, Rep. Tom Craddick, R-Midland, "is a government effort to micromanage the behavior of adults. Current law already prohibits drivers under the age of 18 from texting or using a cell phone while driving. I believe there is a distinction between the overreach of House Bill 242 and the government's legitimate role in establishing laws for teenage drivers who are more easily distracted and laws providing further protection to children in school zones."

Here are a few more:

-- HB 992 by Joaquin Castro, D-San Antonio, relating to excess undergraduate credit hours at public institutions of higher education. Perry said the bill "would encourage students to waste time and money, along with taxpayer dollars, and would prevent students and community colleges from being held accountable for responsible academic planning and advising."

-- HB 1788 by Rep. Sergio Munoz Jr., D-Mission, which sought to regulate

roadside vendors in a county with a population of 450,000 or greater, also was vetoed. Perry said, "It would be unfortunate if, through regulation, we unintentionally prevented, for example, the owner of a peach orchard with baskets of fruit or a Girl Scout troop with cartons of cookies from reaching their consumers."

-- HB 1616 by Rep. Wayne Christian, R-Center, allowing the filer of a campaign finance report to correct without penalty any report within 14 days after a sworn complaint has been filed with the Texas Ethics Commission. Perry said the bill would have undermined the agency's enforcement authority.

No signature on some bills

The governor let 27 regular-session bills, most of them local district bills, pass without putting his signature on them, which is his prerogative.

Among the non-local unsigned bills are these:

-- HB 600 by Rep. Burt Solomons, R-Carrollton, defining new districts for the election of State Board of Education members.

-- HB 1541 by Rep. Ruth Jones McClendon, D-San Antonio, tightening requirements for the state's Automobile Burglary and Theft Prevention Authority.

-- HB 1788 by Rep. Joe Farias, D-San Antonio, relating to capturing reptiles and amphibians by non-lethal means.

Editors Note...

Freedom of speech is one of the guarantees of the First Amendment of our Constitution, so we encourage readers to express themselves, even if we don't agree with what is said. However, freedom involves responsibility. Therefore, the only letters we will consider publishing are from individuals who are willing for their names to appear with the letter. Letters must contain the telephone number, address and a personal signature of the writer (for verification purposes only).

We will not knowingly publish any letter containing libelous or slanderous statements, or factually incorrect information. Letters containing language or content that we feel is inappropriate will not be published.

Examples of content that will cause letters to be rejected include the following: Confusing or unclear points; Crude language; Poor taste; Disrespectful comments regarding a group's or individual's ethnicity, gender, religion, culture, sexual orientation or race; Other incendiary language or remarks; Endorsements for or complaints about individually named commercial products or services.

"Letters To The Editor," like all materials submitted to this newspaper, are subject to editing for space and clarity. The publication of any letter or article is the decision of the Editor and Publisher.

We welcome your input. You may write to us by using the online form, e-mail - reporter@spearmanreporter.com; fax - 806-398-9080; or regular mail - Letters to the Editor, c/o Hansford County Reporter-Statesman, 213 Main Street, Spearman TX 79081.

The Hansford County Reporter-Statesman

The Hansford County Reporter-Statesman

Mailing Address - 213 Main Street • Spearman TX 79081
Physical Address - 310 Barkley Street • Spearman TX 79081
Phone - (806) 659-3434 • Fax - (806) 398-9080
www.spearmanreporter.com • reporter@spearmanreporter.com
Mon.-Thurs. 9 a.m.-12 p.m., Mon.-Wed. & 1-5 p.m.
Closed Thurs. afternoon and all day Fri., Sat. & Sun.

Gary Smith - Publisher Catherine Smith - Editor

Contributing Writers: Dorothy Hudson, Jim Derington, Merry Sparks, Cecil Biggers

Contributing Photographers: Charlie Johnson, Lisa Johnson Tammy Batton, Bonnie Bergan

Subscription Rates

In Hansford County - \$30.00 • Out of County - \$40.00
E-Mail Subscription - \$35.00

The Hansford County Reporter-Statesman (USPS 529660) is published weekly in Spearman, TX. Periodical postage paid in Spearman, TX. **POSTMASTER:** Send address changes to: The Hansford County Reporter-Statesman, 213 Main Street, Spearman, TX 79081.

Publication Policy

The deadline to submit news and advertising to The Hansford County Reporter-Statesman is Monday at 5 p.m. Items submitted after the deadline will be published at a later date, as time and space permit. Publication of all items is at the discretion of the editor.

Advertising

Open Display rates are \$4.00 per column inch. Classified Ads are \$6 for the first 25 words and 10¢ per word for each additional word. (Additional charge for boxed classifieds.) There is a \$1 charge per week if billed.

Member of
Gruver Chamber of Commerce
Spearman Chamber of Commerce

Texas Press Association and Panhandle Press Association



SUMMER FUN

ACROSS

- Group of wives?
- Parabola, e.g.
- Designer Hugo
- Helen in Moscow
- Fan's discontent
- Type of salmon
- It has blips
- aka Common Market
- Liquorice flavor
- NASA flier
- *Type of pool
- *Ball holder
- Wish harm upon
- Tax preparer
- *Tire swing hangs from it
- *Often involves a basket
- Frees
- ___ of March
- Vital life, in Sanskrit
- ___ mater
- Empower
- Yemen port
- Spontaneous loss of consciousness
- In bed
- Spanish surrealist Juan (1893-1983)
- Arctic plain
- Ear-related
- *They did it at the BBQ
- Type of mountain goat
- Sin over tan
- *Played with mallets
- Heavyset

DOWN

- Of a female
- Having wings
- Do over
- Perform in a play
- *Farmer's ___
- Lend a hand
- ___ vs. Wade
- *Add this when making chocolate ice cream
- Moore in "Moonraker"
- Kent State state
- Average
- Palm reader, e.g.
- Cats' favorite herb
- Suggestive of the supernatural
- *Located behind the plate
- Strongbox
- Plane or boat
- Pilaff
- Short for administrator
- Dame ___, Aus-

tralian celeb

- Study all at once
- Gymnast Comaneci
- Unable to move
- *Water ride
- *Used to make castles
- Lard cousin
- Authoritative proclamation

45. Christian Trinity,

- e.g.
- Famous for being honest
- Barrel maker
- Formerly used as anesthetic
- Neutral middle vowel
- Actress Penelope
- ___ Descartes

59. Scraps of meal

- Give up
- Stuff hair
- Capital of Ukraine
- Ready and eager
- "Atonement" author
- McEwan

These games are brought to you by the Hansford County Reporter-Statesman

CROSSWORD

1	2	3	4	5	6	7	8	9	10	11	12		
13					14			15					
16					17			18					
19					20			21	22				
23					24								
25	26	27		28		29		30		31	32	33	34
35			36		37			38		39			
40					41			42		43			
44					45			46		47			
48					49			50		51		52	
53					54			55		56			
57	58	59	60					61				62	63
64					65	66		67					68
69					70			71					
72					73			74					

VolunteerMatch.org
Where volunteering begins.

Happy Birthday!

June 23
Birthday - Myriam Alvarez, Robert Blevins, Rob Murrell, Brad Spivey, Andres Benavides, Joan Brown, Shannon Groves, Kali Shields, Amanda Apodaca
Anniversary - M/M Mitch Fedrick, M/M T.J. Been, M/M Mike McLain

June 24
Birthday - Patricia Miner, Ellen Graham, Denise Holliday, Allen Davis, Lee Bob Harper, C.T. Collier, Ed West, Margie Davis, David Pipkin, Nathan Kirk, Patricia Miner
Anniversary - Mary & Julio Vasquez, M/M Bobbie Archer

June 25
Birthday - Betty Womble, Nita Bynum, Pete Stafford, Vickie Stewart, Jennifer Umphress, Joey Woolley, Curtis Wayne Porter, Candice Janzen, Lisa LaFarr, Billie Jo Moore Pierson, Oneida Bynum
Anniversary - M/M B.J. Renner, Mr. and Mrs. Ronnie Williams, M/M Dennis Quimby, Terry & Sherry Moore, M/M Richard Marrs

June 26
Birthday - Paula Kelly, Mike Blanton, Bill McClellan, Omar Sutton, Carla Harper, Doris Pinkerton, Teresa Bennett, Ann Vela, Ronnie Ring, Ashley Baker, Vanessa Cease, Paul Bynum, Joe Ruthlin, Chelsea Nollner, Trevor Shields
Anniversary - Will & Tiffany Crane, M/M Garry Hathaway, M/M Joe Lopez, M/M Verlin Beck

June 27
Birthday - Max Frick, Clint Irwin, Steve Baggerly, Elden Allen, Allen Cook, Tyler Scott, Charlie Lopez, Karen Johnson
Anniversary - M/M Bill Turner, M/M Randy Coombs, Judy & Darl Hergert

June 28
Birthday - Carson Womble, Linda Rowland, Don Allen, Ernie Vanderberg, Terril Brummet, Helen Hand, Mrs. A.F. Loftin, Trent England, Meghan Jade Snider
Anniversary - Harvey & Sandra Proffitt, M/M Cecil Biggers, M/M Jim Derington, M/M Bruce Knight

June 29
Birthday - Ira Gross, Hazel Taylor, Scott Strawn, Gary Johnson, Sandra Gumfory, Monica Blackman, Rajan Traften, June Tucker
Anniversary - M/M

Charles Bell, M/M Amadeo Cazares

June 30
Birthday - Mike Minter, Ricky Thompson, Esmeralda Vela, John Snider, Margarette Evans, Kyle Brock, Jeff Hohertz, Keri Lou Schneider, Willie Vera, Paige Burgin, Daniel Crug, Ed Cook, Austin Benton, Katelyn Villarreal, Shari (Smith) Githens
Anniversary - Ishmael & Anna Vela, M/M Claude Sheets Jr., M/M D.A. Cator, M/M Walter Murrell, M/M Paul Stavlo, M/M S.J. Wells, M/M Carl Kunselman, Joe & Elvia Avila

July 1
Birthday - Ida Hendrick, Pauline Lopez, Pauline Jackson, Rosa Rojas, James Cunningham, Manlene Cook, Maverick Keith Burch
Anniversary - M/M Dee Mayfield, M/M Jerry Hart, Kevin & Ronda Bynum, Clay & Pam Schnell

July 2
Birthday - Lou Chapman, Janet Irwin, Luis Hermosillo, Joe Hermosillo, Keri George, Channing Burgess, Gary Ellsworth
Anniversary - M/M Jimmy Valandingham, Burt & Lynell Williams, Ron & Loretta Cook, John & Debbie DeLaRosa

July 3
Birthday - Julie Gumfory, Randy Lowe, Todd Williams, Charlie Lopez, Audene Beck, Lynn Sheets, Trudie Gordon, Meredith Benton, Ronda Gibson, Gene Reynolds, Trevor Shipley, Debra Galimore, Verlin Behne, Bill Porter, Cheryl Salgado, Henniretta Andrews
Anniversary - Bill & Verna Strawn

July 4
Birthday - Barry Barkley, Donna Been, Gene Duncan, Mary Weldon, Farene Williams, Faye Cunningham, James Umphress, Ofelia Vela, June Patterson, Melvyn Bradley, Kim Swink
Anniversary - Mike & Kathy Peck, M/M Walter Postoak, M/M Jerald Ray Scribner

July 5
Birthday - Sydney Clawson, Kent Benton, Mrs. George Rook, Mack McLain, Linda Walker, Jamie Davis, Tom Dortch, Dawn Bridges, Connie Gibson Dixon, Blayne Schrader, Alfonso Martinez, Melanie Elliott
Anniversary - M/M Bill Been, Mike & Kathy Brown, M/M Anthony Wilkerson

Our Sympathy



ELMO DAHL

GRUVER - Elmo James Dahl, lifelong Oslo community farmer, passed away Tuesday, June 14, 2011 at the V.A. Community Living Center, Amarillo, TX.

Funeral services were Saturday morning, June 18, 2011, at 10:30 A.M. at Oslo Lutheran Church with Pastor Arlen Lloyd officiating. Military graveside rites followed in Oslo Cemetery.

The son of Florence Alvine (Jensen) and Peter Alfred Dahl, he was born April 18, 1928 on the family farm. Elmo graduated from Gruver High School with the Class of 1947. Elmo served in the United States Army, stationed in Germany from 1950-1952. After his time in the Service, he returned home to farm. In 1954, friends introduced him to Virginia Fay Stearman and they married at the Church of the Nazarene in Hooker, OK on July 29, 1955.

The Dahls made their home in Oslo where Elmo farmed and was involved in his church and community. He was a lifelong member of Oslo Lutheran Church where he was active in the church council and served as usher for many years. He served on the Hansford County Farm Bureau Board from 1953-2000 and was a longtime member of the Hansford County Soil and Water Conservation and the Gruver School Board. In 2000, he was honored as the Pioneer Farmer Award by the Texas State Farm Bureau.

Survivors include his wife of 56 years, Fay Dahl of Texhoma, Texas; three sons, Garland Dahl of Texhoma; Kenneth Dahl and wife Kim of Gatesville, TX; and Charles Dahl and wife Lindeana Dahl of Gruver; two sisters, Pauline Fischer of Optima, OK and Adeline Berkenkamp of Marietta, GA; seven grandchildren, Ole Dahl and wife Alyssa; and Pete Dahl, all of Canyon; Ryan Dahl of Texhoma; Mitch and Miles Dahl of Gatesville; Cody Dahl of Guymon and Carmen Dahl of Gruver. He is also survived by two sisters-in-law, Viola Niedens of Meade, OK and Juanita and Kenneth McClain of Salem, OR; and many cousins, nieces, nephews and a special niece that is considered a daughter, Adele and husband, Albert Waugh of Guymon.

He was preceded in death by his parents, two sisters, Alma Walker and Viola Monroe; and a brother, Fred Dahl.

In lieu of flowers, the family has asked that memorials be given to Oslo Lutheran Church, c/o Henson-Novak Funeral Directors, P.O. Box 1306, Guymon, OK 73942. www.hensonnovak.com

LARRY WAYNE ROBERTS

PERRYTON - Larry Wayne Roberts, 64, died on Thursday, June 16, 2011. Services were held Monday, June 20, 2011 at 10 a.m. in Boxwell Brothers Chapel with Mikel Petersen officiating. Interment was in Hansford Cemetery following the graveside service at 11:30 a.m. Arrangements were under the direction of Boxwell Brothers Funeral Home of Perryton.

Larry was born in Liberal, KS on October 26, 1946. He had lived in the area his entire life. He married Donna Gilley on March 2, 1991 in Perryton.

He was a mechanic for Exxon for 36 years, and retired in 2005. He was a 32nd Degree Mason and was very active with the Panhandle Crisis Center, Make-A-Wish and St. Jude's. He was a member of the Perryton Elks Lodge for 37 years.

Larry was a loving husband and father. He was always willing to help anyone.

Survivors include his wife, Donna Roberts, of Perryton; a daughter, Joann and Brade Nalley of Amarillo; a son, James Craig Roberts of Amarillo; a cousin, Harold Rickers of Plains, KS; and two nieces, Shannon Tinsley of Grapevine, TX and Stephanie Clarkson of Akron, CO. The family requests memorials be to Panhandle Crisis Center, PO Box 502, Perryton TX 79070 or the American Heart Assoc., 6605 I-40 W, Suite A6, Amarillo TX 79106.

JOHNY DALE WHITE



Johnny Dale White passed away at home on Saturday, June 18, 2011 after a 14 year struggle with Parkinson Disease. He was born on September 17, 1924 in Hunt County, Texas to Ida Lucinda Tucker White and William Patterson White. He was a devoted husband, father, and granddad.

He served in the Navy during World War II. He moved to Pampa, Texas in 1947 and worked for Cabot Carbon Company for 11 years. He married Virginia Kerr White in November, 1952 in Dallas and in 1958

they moved to Spearman, Texas where he began a 27 year career with Enron Corporation. After retiring from Enron, he continued to work 14 years for several oil and gas companies as an independent contract well operator.

After retiring in 1998, they moved to Denton. He was a member of Spearman Church of Christ for 40 years and has been a member of Singing Oaks Church of Christ since moving to Denton.

Johnny is survived by his wife, Virginia, of Denton. He is also survived by daughter, Kathy Peterson and her husband Randy of Sanger, Texas, and granddaughter, Erin Elizabeth Peterson of Richardson, Texas. He is survived by brother, William Patterson White of Denver, Colorado; granddaughter, Debbie Goodman Teltow; and grandson, Bill Goodman.

He is preceded in death by one daughter, Margaret Goodman; parents, Ida Lucinda Tucker White and William Patterson White; brother, James Herman White; and sisters, Alene Stokes and Maxine Stokes.

Visitation will be at 9:00 am on Wednesday, June 22, 2011 with the service starting at 10:00 am in the Chapel of DeBerry Funeral Directors. Burial will follow at 1:30 pm at the Dallas Fort Worth National Cemetery.

MONUMENTS

Boxwell Brothers Funeral Home

519 Evans • Spearman
659-3802

Dear friends,
When you buy a monument from us we make sure it is exactly what you want at a price you can afford. If it is not right, we will make it right. And you will not have to search the countryside to find us. We are here when you have a need.

Sincerely,
Bob Boxwell

Donate A Boat or Car Today!

Boat Angel

"2-Night Free Vacation!"

1-800-CAR-ANGEL

www.boatangel.com

VISIT COLORADO, GET A FREE HAT!

Order yours at COLORADO.COM/HATGIVEAWAY and pick it up when you visit any Official Colorado Welcome Center.

IN A LAND CALLED COLORADO

MAXIMUM CHOICES MINIMUM PRICES

Package Starting at

\$24

per month

EVERYDAY PRICE GUARANTEE UNTIL 2013

866-799-8039

FAMILY POOL FUN.COM

- Our pools create Generations of Memories everyday, vacations never end!
- Aboveground & Inground pools at WHOLESALE PRICING
- SIMPLE DIY Pool Kit Assembly
- SAVE MONEY on All Pool Supplies & Accessories. Ships Fast

Call Today! 800-950-2210

HOME PHONE SERVICE

NO Pre-Payment • NO Deposit Required!

Rates from \$6.99 per month*

(\$17/month including approximate taxes & fees)

FREE 1st Month of Service

Caller ID & Call Waiting included in Packages**

New-Talk 866.934.3448

Replenish the seed of faith through . . .

DAILY BIBLE READING, PRAYER & REGULAR CHURCH ATTENDANCE

<p>Spearman</p> <p>Apostolic Faith Church 822 S. Drexler • 659-2870 Sunday School: 10 a.m. Worship Service: 11 a.m. Sun. Eve.: 6 p.m. Wed. Prayer Mtg: 7 p.m. Pastor - Jack Cornell</p> <p>First Assembly of God 401 N. Bernice • 659-2295 Sunday School: 9:30 a.m. Worship: 10:40 a.m. Evening Worship: 6 p.m. Wed. Worship: 7 p.m. Pastor - Brad Smith</p> <p>First Christian Church (Disciples of Christ) 29 S. Bernice • 659-2036 Sunday School: 9:45 a.m. Worship: 10:50 a.m. Minister -</p> <p>First Baptist Church 123 N. Bernice • 659-5557 Sunday School: 9:45 a.m. Worship: 11 a.m. Evening Worship: 7 p.m. Men's Bible Study - Wed., 7 a.m. Children's Choir - Wed., 6 p.m. Adult Choir - Wed., 7 p.m. Wed. Bible Study: 7 p.m. Pastor - Jim Medley</p> <p>Church of Christ 121 S. Haney • 659-3244 Sunday Bible Class: 9:45 a.m. Worship: 10:30 a.m. Evening Worship: 6 p.m. Bible Study Wed.: 7:30 p.m.</p>	<p>Sacred Heart Catholic Church 901 Roland • 659-2166 Sat. Night Mass: 5:30 p.m. Sun. Mass: 9 a.m. - English Sun. Mass: 11:30 a.m. - Spanish Rev. Gregory Bunyan</p> <p>First United Methodist 407 S. Haney • 659-5503 Sunday School: 9:45 a.m. Worship: 8:30 & 11 a.m. Jr. High Youth: 5 p.m. Sunday High School: 6 p.m. Sunday Kids Club: 3 p.m. Wed. Pastor - Toni Bailey</p> <p>Grace Presbyterian Church (Worships with Faith Lutheran Church) 1101 Bernice • 659-2033</p> <p>Faith Lutheran Church (ELCA) 1101 Bernice • 659-2252 Sunday School: 9:45 a.m. Worship: 11 a.m. (Worships with Grace Presbyterian Church) Pastor - Cecil Biggers, PLM</p> <p>Union Church 31 S. Endicott • 659-2644 Sunday School: 10:00 a.m. Worship: 11:00 a.m. Bible Study: 7 p.m. Wed. Youth Service: 6 p.m. Wed. Pastor - Don Baltazor</p> <p>Fellowship Baptist 1102 S. Archer • 659-2783 Sunday School: 10 a.m. Worship: 11 a.m. Sun. Evening Worship: 6 p.m. Sun. Evening Spanish Worship: 7 p.m. Youth/Adult Service: 7:30 Wed. Pastor - Phillip Hudson</p>	<p>Primera Mision Bautista 502 E. 7th • 659-3931 Sunday School: 9:45 a.m. Worship: 11 a.m. Evening: 6 p.m. Wed. Prayer Meeting: 7 p.m. Thurs. Visitation: 7 p.m. Pastor Joe Garcia Jr.</p> <p>El Aposento Alto U.P.C.I. 1105 S. Roland Domingos: Escuela-Dominical - 10 a.m. Culto Evangelistico - 7 p.m. Jueves: Oracion - 8 p.m. Mier: Estudio Biblico - 7 p.m. Pastor - A.G. Martell (806) 659-2153</p> <p>Gruver</p> <p>First Baptist Church 402 E. Broadway • 733-2411 Sunday School: 9:45 a.m. Worship: 10:50 a.m. Disciple Training: 6 p.m. Sunday Prayer Meeting: 7:30 p.m. Wednesday Pastor - Scott Curry</p> <p>Church of Christ 209 King • 733-2760 Sunday School: 9:30 a.m. Worship: 10:20 a.m. Evening Worship: 6 p.m. Wed. Worship: 7:00 p.m. Minister - Gaylord Cook</p> <p>First Christian Church 510 King • 733-2960 Sunday School: 10:00 a.m. Sunday Worship: 11 a.m. Youth: 7:30, Sunday Adult Bible Study: 7:30, Sun. Wed. Bible Study: 8:00 p.m. Pastor - Gary Gumfory</p>	<p>Gruver United Methodist Broadway & Garrett 733-2651 Sunday School: 9:45 a.m. Worship: 8:30 & 10:50 a.m. Eve. Worship & UMY: 6 p.m. Pastor - George Price</p> <p>Spanish Cristo Redentor Church Hwy 15 806-659-2166 Gruver, TX Sun. Mass: 1:30 p.m. - Spanish Rev. Gregory Bunyan</p> <p>Oslo</p> <p>Oslo Lutheran Church (ELCA) 6 Miles West & 12 Miles North of Gruver 339-7646 Sunday School: 9:45 a.m. Worship: 11 a.m. Pastor - Arlen Lloyd</p> <p>Morse</p> <p>Morse Baptist Church 733-2757 Pastor - Gary Stevens</p> <p>Waka</p> <p>Church of Christ 300 Rogers Ave. 202-7126 Sunday School - 9:30 a.m. Sunday Worship - 10:30 a.m. & 6 p.m. Wednesday Bible Study: 7 p.m. Preacher - Ed Jenkins</p>
--	--	---	--

He has showed you, O man, what is good. And what does the LORD require of you? To act justly and to love mercy and to walk humbly with your God. Micah 6:8

This feature is made possible through the sponsorship of these civic minded businesses:

<p>Deakin ELECTRIC</p> <p>OILFIELD - RESIDENTIAL - COMMERCIAL 321 S. MAIN • SPEARMAN</p> <p>1-800-999-1506 Chris Deakin (806) 659-5016 President</p>	<p>Bartlett's Lumber & Hardware</p> <p>105 W. Broadway • Gruver, TX (806) 733-2404</p>	<p>BERRY CLEANERS</p> <p>Ann & Vernon Pipkin - Owners Phone 659-3122 • P.O. Box 1017 207 Main St. • Spearman, TX</p>	<p>Morse Implement & Auto Supply</p> <p>"Join us in church" Tom Dortch 733-2668 Box 89 • Morse, TX 79062</p>
<p>PRAIRIE MOTORS INC.</p> <p>Hwy. 207 South • P.O. Box 430 Spearman, TX 79081 • (806) 659-2541 www.prairiemotors.com</p>	<p>MurMur's Cafe</p> <p>100 Roland St Spearman, TX 659-3580</p>	<p>Hansford County Reporter-Statesman</p> <p>"Proudly Serving Hansford County Since 1907"</p> <p>(806) 659-3434 310 Barkley • Spearman, TX</p>	<p>INTERSTATE BANK, ssb</p> <p>www.interstatebank.net 322 Main • P.O. Box 146 Spearman, TX • 659-2559</p>

HYI

FOR YOUR INFORMATION

Medical Fund Established At First National Bank for Dynell Moore

Shawn and Dynell Moore, children of Johnny and Brenda Vera and Terry Moore of Spearman, have recently relocated their family to the Dallas-Fort Worth area. In March, Dynell was diagnosed with stomach cancer. She will be receiving treatments at MD Anderson in Houston and Baylor Medical Center in Fort Worth. After the birth of their second child, three tumors were discovered, two of which contained malignant cells. The tumors were safely removed at Mary Washington Hospital in Fredericksburg, VA. At which time, Dynell began oral oncology treatment to keep the cancer from spreading. The Moore's made the decision after consulting with their physician to continue an aggressive treatment program at MD Anderson Cancer Center in Houston as well as their sister facility in Fort Worth. There has been a Medical Fund established for the Moore family at First National Bank in Spearman to aid in treatment expenses. The Moore's feel extremely blessed with the early diagnoses of Dynell's condition and the support they have received from family and friends.

Hansford County Library Summer Reading Program

The Hansford County Library will begin their Summer Reading Program has picked "Dig Up A Good Book" as their theme for this year. The Reading Program will be held each Tuesday from 10-11 a.m. All programs are for children in kindergarten-2nd grade. June 28 - "Digging with Monster Machines" Willis Boyd will present the program and tell about digging in the dirt with a back hoe. The conclusion of the summer program will be highlighted with many gifts and incentives for children.

Tri-City Community Concert Association

Janie Kunselman is the representative for the Tri-City Community Concert Association of Borger and Liberal, and is selling memberships to attend concerts for the 2011-2012 season. Concerts are as follows: Borger - The Shangri-La Chinese Acrobats - September 22nd, 7:30 p.m.; Guy Penrod, February 13th, 7:30 p.m.; Shawn Belton-Miller - TBA. Season memberships are: Adults - \$40, Sr. Adult - \$35, Students - \$20, and Family - \$100. For information, call Janie Kunselman at 659-2631. Tickets purchased from Tri-City Concert Association admit members to concerts in Pampa and Plainview.

Liberal Community Concert Association

Janie Kunselman is the representative for the Liberal Community Concert Association of Liberal, KS. The Liberal Community Concert Association is selling memberships to attend five special concerts in the 2011-2012 season. Concerts are as follows: October 4th - Deborah Henson-Conant; November 8th - The Indigo Ensemble; January 30th - Mark Masri; February 16th - Guy Penrod; April 26th - Shangri-La Chinese Acrobats. Season memberships are: Adults - \$50, Students - \$25, and Family Pass - \$125. For information, call Janie Kunselman at 659-2631 or James Jackson at 620-624-5995.

Texas SNAP Benefits Assistance

Need help applying for SNAP benefits? We can help! High Plains Food Bank is providing application assistance for Texas SNAP benefits (Food Stamps) in your area. Telephone application assistance is available. If you need to apply for benefits, please call us today at 806374-8562 or 1-800-774-8564.

City of Spearman Seal Coating

The City of Spearman will be seal coating the following streets this week: 11th street from Bernice to Roland, 10th street from Barkley to Roland, 9th street from Barkley to Roland, 8th street from Barkley to Archer, Dressen from 7th to 11th, Townsend from 7th to 11th, Archer from 8th to 11th, and Evans from 8th to 11th. Citizens are asked to have the vehicles off the street while the seal coating is going on. In those work areas you will be able to park vehicles in yards only while work is going on. The project should be completed by Monday June 6, 2011.

Rushing Wind Emmaus Community

The Rushing Wind Emmaus Community will meet in the Trinity Faith Church, Liberal, Kansas, on Saturday, June 11 at 6 p.m. A potluck meal will be served followed by sponsors training and a praise and worship service. Friends and families are welcome.

Spearman Food Bank

If you would like to help the Spearman Food Bank, they need help unloading the truck at 11:30 each 1st Thursday of each month. Contact Cecil Biggers for more information.

Don't Text and Drive Decals

If you would like to purchase a lime green 'AMT 1994-2009 Don't Text and Drive' window decal in memory of Ali Tyler, please contact Stephanie Tyler at 806-736-0019. All proceeds go to the Ali Tyler Memorial Scholarship Fund. Decals are also available at Hansford County Floral Company on Main Street in Spearman.

Help Available for Breast Cancer Survivors

Any woman who has had breast cancer surgery and cannot afford undergarments and prosthetics can get help from the American Cancer Society through a grant from Susan G. Komen for the Cure®. The Amarillo Area Breast Prosthesis and Lymphedema Accessory Program will provide financial help to women in need of breast forms or prostheses, mastectomy bras and accessories to help with lymphedema, which is swelling of the arm caused by a build-up of lymph fluid. For more information, call the American Cancer Society office in Amarillo at (806) 353-4307 or 1-877-227-2345.

Spearman City Manager Ed Hansen Elected to Texas Municipal Utilities Association Board

The Texas Municipal Utilities Association (TMUA) recently announced the election of Edward M. Hansen, City Manager of the City of Spearman to a term as Region 1 Director to the TMUA Board of Directors.

Hansen was chosen by the membership for this distinguished position during the annual conference held earlier this year.

TMUA's principal emphasis is the management and the director of municipal utilities, including the special relationships with city manager, members of governing bodies and boards of directors related to municipal utilities.

Words from Faith & Grace

by Cecil R. Biggers, Lutheran Lay Minister



We begin the Season of Pentecost by studying Genesis 24: 1-14, Psalm 89: 1-4, 15-18, Romans 6: 13-23, and Matthew 10: 37-42.

In Genesis, Abraham's one compelling desire was to have an heir, a son. In this passage, known as "The Akedah", Abraham is instructed by God to go into the land of Moriah, there to offer his son, Isaac, as a burnt offering to the Lord. Child sacrifice was common in the nations surrounding Abraham and this request from God probably did not sound so strange to Abraham. Yes, this was a test of Abraham's faith, but at the time, Abraham did not know it was a test. As you recall the story, Abraham does as God requests, but when he is about to strike and kill his son, an angel stops him. Abraham finds a ram caught in a thicket and sacrifices the ram to the Lord. We can learn from this that we must sometimes choose between those things and those people that we love best and our loyalty to Jesus The Christ.

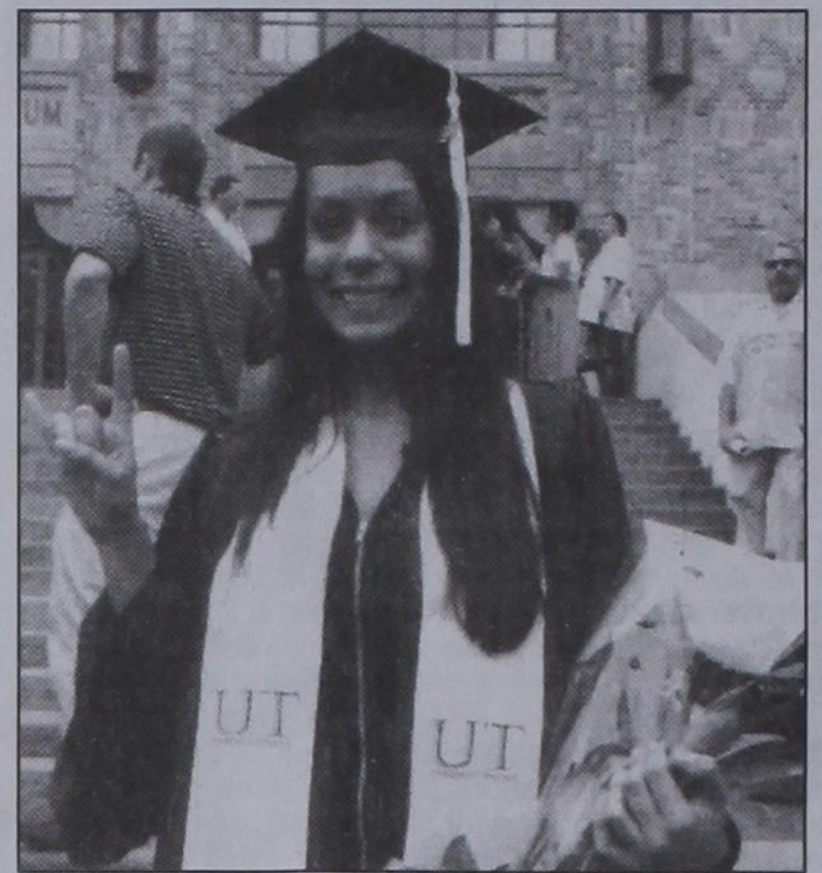
The Psalmist sings the steadfast love of God, the covenant of God with David to establish his throne for all generations. Happy are those who walk in the light of God's countenance and receive God's victory and protection. As God's love for us is steadfast, so should our love of God be steadfast.

Paul calls upon the Romans to accept being "slaves" to God after being freed from being "slaves" to sin. By being a 'slave' to God one gains sanctification and the end is eternal life. This was Paul's response to the idea that since we are saved by grace, we can do anything we want to do. Paul is saying that if we allow ourselves to live in sin, we are still 'slaves' to sin and that leads to death. Thanks be to God that through God's free gift, we have eternal life in Jesus The Christ.

When we read the passage in Matthew, it brings the question, "What does it mean to be sent?" In Jesus' day to receive a person's envoy or messenger was viewed the same as receiving the person himself. We as believers are "ambassadors" of Christ; if we are received, Christ is received. The opening verses of this passage again tell us that sometimes we must choose between the things or people we love the most and our loyalty to Jesus The Christ. Being a Christian is a way of life, it is not a one-time emotional experience.

May the Holy Spirit enable you to choose loyalty to Jesus The Christ over even those things and those people you love the most.

Pinon Walks Away With Honors



On May 21, 2011, Silvia A. Pinon, daughter of Rodrigo and Silvia Pinon of Spearman, TX, officially joined the Class of 2011. After five years at the University of Texas at Austin, Pinon walks away graduating with a diploma in Political Science, Economics and Ethic Studies, and receiving honors in all three. Pinon was Salutatorian at Spearman High School, Class of 2006.



Shaylyn Whiteley, Maren Garnett and Colby Wood

3rd & 5th Grade Reader's Ready to Ride

submitted by Jodie Hight
BP-Inc. donated four bicycles and helmets to the top Accelerated Reader's at the Gus Birdwell Elementary School Award Assembly. Winner's for the third grade are: Shaylyn Whiteley and Charles Pearson (absent). Fifth grade winners are: Maren Garnett and Colby Wood. Bicycles were awarded to the top two reader's with the most points in the Accelerated Reader Program in 2nd - 5th grade. Congratulations and thank you BP-Inc for your kind and generous donation. Please click on Gus Birdwell to see other winners.

You are invited to a
Bridal Shower
honoring
Jenna McElroy
(bride-elect of Chance Riggins)
Saturday, June 25, 2011
from 10:00-11:30 a.m. at the
home of Stephanie Brock
901 S. Barkley Spearman TX
Selections: Gordon's Drug, Taylor's in Perryton, and Bed, Bath and Beyond

TO ALL INTERESTED PERSONS AND PARTIES:

DCP Midstream, LP, has applied to the Texas Commission on Environmental Quality (TCEQ) for an amendment to Air Quality Permit No. 73394, which would authorize modifications to the permit that authorizes the Sherhan Gas Plant located at 15150 County Road 9, Gruver, Hansford County, Texas 79040. Additional information concerning this application is contained in the public notice section of this newspaper.

MITCHELL THEATRES.COM
GUYMON, OK • LIBERAL, KS • NEWTON, KS

NORTHRIDGE 8
Guymon, Oklahoma
www.northridge8.com
580-338-3281

SOUTHGATE 6
Liberal, Kansas
www.southgate6.com
620-624-5573

SEQUOYAH 8
Garden City, Kansas
www.sequoyah8.com
620-275-2760

CHISHOLM TRAIL 8
Newton, Kansas
www.chisholmtrail8.com
316-283-0555

FRESH POPCORN EVERYDAY!
-PARTY ROOM & ARCADE-

BlackBerry PlayBook.

Work Smarter.
Play Harder.

Introducing the world's first professional-grade tablet

Now at PTCI!

Ask about our 12-month payment plan and discounted prices!

1024 x 600 resolution display | 3 MP high-definition forward-facing camera | 5 MP high-definition rear-facing camera | 1080p HD video capture and HDMI video output

1280 x 800 HD resolution | 16:10 movie playback | 32 GB internal storage | Adobe® FLASH for PC-like viewing

www.ptci.net

Services not available in all areas. Some restrictions apply. www.ptci.net 721 W 7th in Spearman 800-562-2556

Spearman Police Blotter

by Chief Robert G. Baker

The heat of the summer is severely upon us right now, with 100 degree plus temperatures, no rain, and the Independence Day Holiday very near. Due to all this I will make note of some safety issues.

Recently Sergeant Kay and I put on a kid's camp bicycle safety class at the elementary. We were very happy to have almost one hundred kids of all ages show up. Our concern was that very few of those kids had bicycle helmets on. Parents, please buy your kids helmets. Those helmets are inexpensive and invaluable in preventing a head injury. Please reinforce basic bicycle safety with your kids, stopping at intersections, looking behind before making turns, not talking to strangers. Parents, please take it slow around the pool. I have watched our children ride or walk out onto 7th street without looking.

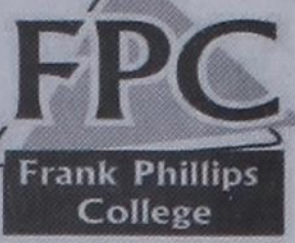
We have responded to complaints and seen many small children riding battery operated vehicles on the streets. Those types of toy vehicles are not allowed to be operated on the streets or alleys. Most of the children found riding these toys are very small and cannot see or be seen around parked cars. Make sure your children keep them in the yard or on the sidewalks, and put helmets on those kids!

All-Terrain Vehicles (4-wheelers) of any type, golf carts, and off-road motorcycles are illegal to drive on public streets and alleys. Should a person be caught joy riding on one of these types of vehicles the person or the parent of the child riding the vehicle will be issued a citation. Repeat offenders will have the vehicle impounded.

The current burn ban includes the use of fireworks, which have also been banned in all of Hansford County, including the city limits of Spearman. Citations will be issued to those caught popping fireworks.

One other note, a couple of scam phone calls have been reported to us this week. Do not fall for these phone calls, e-mails, or text messages wanting your banking or any personal information. You will not get the money you're offered or allegedly won.

Campus Corner



Allen Campus News and Information

Start Here... Go Anywhere!

Greetings from the Northernmost Facility of Higher Education in the Great State of Texas! To date during this academic year the Allen Campus has served 4,114 students and other residents of Perryton and the surrounding area. Academic classes account for 279 of these students,

while Continuing Education classes have served 1466 students and Community Service classes and events have served an additional 2369 people.

Summer Session 1 is well underway but it isn't too late to register for a class or two for Summer Session 2, which begin July 11th. If

you are interested please come by the campus and let us tell you everything you need to know. With classes at FPC guaranteed by law to transfer and about 1/3 the cost of the same class at a university; it just makes sense (and cents) to take classes at the Allen Campus.

This summer the Allen Campus continues to offer a wide variety of continuing education and community service classes as well as regular academic classes. Do you want to be a Certified Nursing Assistant? We will schedule the next class when six students have registered. The cost is \$400.00 and you can obtain an information packet at the front desk.

High School Equivalency (GED) and ESL classes have ended for the summer, but will start back up again in September. This fall students will have the opportunity to take GED

classes online if they prefer this over coming to the campus for classes. To add your name on the waiting list please come by or call the Allen Campus.

On Thursday nights from 6 to 8 PM starting June 30th and continuing through Aug 4th will be a Basic Computer class. The cost is \$100.00 and seating is limited so call to secure a seat for the class.

Other classes in the works for July include Dog Obedience Training, Adobe Photoshop, Bus Driver Certification (contact Ronnie Watson at 806-202-0280), and Cake Decorating.

If anyone is interested in volunteering some time to help conduct some fun Kid's College classes please contact the Allen Campus!

Classes we hope to have in the near future include CPR/First Aid, Intermediate Computers, Arts and Crafts, Workplace Spanish, General Nutrition, Cajun Cooking, Web Page Design, and Basic Crochet.

For more information on any of these classes or if you would like to teach a class please contact Jaci at the Allen campus (2314 S. Jefferson; 806-648-1450).

District Water Conservation Art Contest

North Plains Groundwater Conservation District invites you to participate in the annual "Water Conservation Art Contest". Fourth, fifth and sixth graders are invited to submit their best artwork on the subject of water conservation for a competition to select 13 winners to be included in next year's calendar produced by North Plains Groundwater Conservation District. Students are to draw a picture showing a way to conserve water, and be as creative as they like. The more colorful the artwork, the better! The artwork should be done in "landscape" mode on 8 1/2 x 11 paper, so it is longer than it is tall.

First place will be awarded a \$50.00 prize and the artwork will be featured on the cover of the calendar.

There will be 12 second place winners, and each winner will receive \$25 and their drawing will be featured on one month of the calendar.

All entries must include a completed entry form. Forms are available online at www.npwd.org/education. Click on the "Water Conservation Art Contest" button. Or you can pick them up at the District office at 603 E. 1st Street in Dumas. Deadline for turning in artwork for the competition is June 30, 2011. You can drop your entries by the District office or mail them to North Plains Groundwater Conservation District at P.O. Box 795, Dumas, TX 79029. Please place unfolded artwork in a 9x12 envelope to help prevent damage.

If you would like more information, please contact Kirk Welch at 806-935-6401, or at welchk@npwd.org



Weatherford Construction
Septic Systems

Kirk Weatherford (806) 336-2820
8125 FM 3305 Toll Free: 1-800-585-6047
Sanford, TX 79078 Email: kirk@weatherford-construction.com

JUBILEE RANCH AUCTION JUNE 24

2PM CDT 1,045 Acres Selling in Five Tracts w/Minerals - Clifton, TX

Auction will feature original 407± acre ranch tract with two homes plus additional parcels boasting rolling terrain, riding trails, a total of 17 ponds and all mineral rights. Raise animals, hunt, hike, fish or do whatever your heart desires.

United Country For auction:
W. Scott Swenson, CAI
Jones Swenson Auction Marketing 512-261-3838
W.S. Swenson TX #7809 • Broker #042552 • 10% BP

United Country For real estate:
Anna Marie Lindley
Bosque County Properties, LP 254-675-3818 or 254-386-6681

www.JubileeRanchAuction.com

Experienced Truck Driving Positions

Home More Than Weekly
Previous experience in the oil industry a plus

SCHNEIDER NATIONAL

Apply at schneiderjobs.com/newjobs
Call 1-800-44-PRIDE for more information

SPECTACULAR NORTHERN NEW MEXICO SPORTSMAN'S PARADISE MULTI-TRACT AUCTION

JULY 16 AT 1:00 PM MDT

TICONDEROGA RANCH, CHAMA, NEW MEXICO
22 Ranch Homesites TO SELL ABSOLUTE, plus One Home Creek, River, 9 Lakes • Surrounded by the Rockies • World-Class Recreation

United Country Auctioneer/Broker ARRB00 | 10% Buyer's Premium
800-223-4157 | www.BirdsongAuction.com

Birdsong Auction & Real Estate Group LLC

Returning this Summer to Lampasas, Texas

July 4th - 10th

Beauty Pageant • Kid Fish Fireworks • Arts & Crafts Fair • Carnival • Kids Day Activities • Dances • Bar-B-Q Cook-off • Water Sports • Parade & more.

www.springho.com

If workers are not exposed to

ASBESTOS

they won't get

MESOTHELIOMA

This is the simple truth. People who have mesothelioma, a rare, aggressive and fatal form of cancer, worked around asbestos or had second-hand asbestos exposure. If you or a loved one have been diagnosed with mesothelioma or lung cancer, maybe we can help. Please call us for professional insight.

CAPPOLINO | DODD | KREBS
1-888-MESO-FIRM
888-637-6347 | www.AsbestosLaw.com
NO FEE FOR FIRST VISIT | Cameron, TX

THANK YOU

Project Graduation 2011 was a great success!! The many businesses and individuals who gave their support through financial donations, merchandise donations and gifts, and fundraiser purchases deserve recognition and credit for making PG happen as it did. The Class of 2011 and their parents thank each of you for your outpouring of support, participation, and encouragement through the many weeks of work and preparation that went into making this event a never-to-be-forgotten experience for the graduates.

Many individuals and businesses demonstrated incredible generosity. Please accept our heartfelt thanks. The fundraisers were very successful, thanks to this community. All of the monies raised went back to the purchase of gifts for the "Prize Room" where most of the students were able to make 3 shopping trips. The success of the enchilada fundraiser proves that the moms who prepared the enchiladas are some of the best cooks in Texas! Over 270 dozen cheese and/or meat enchiladas were made! We hope you enjoyed the enchiladas and thank you for your generous orders. The two Schwan's fundraisers were huge successes also (even with the new Schwan's rules!) and to all you who made purchases at any of the fundraisers we are extremely grateful for support. We had so many orders that it took 3 trucks to bring it all! Those students who sold their required amount of Schwan's

Abnormal Sweets/Debbie & Sam Abston
Adobe Walls Gin LP
Agco
Alco
Dr. Zoel Allen
Amarillo Adv. Reconstructive Foot
Applebee's % Margaret Stine
Area Eye Center
Abuelos
Athena Energy
Auto Zone
B & B Sales
Todd & Krista Baird
Mrs. Baird's Bakery Outlet
Verlan & Audene Beck
Beedy Farms
Bed, Bath & Beyond
Bennigans
Bonnie Bergan
Bob & Karen Boxwell
Justin Boyd
Boxwell Brothers FH, Inc.
BP Fabric of America Fund
Brock Insurance
Stephanie Brock
Brown, Graham & Co, PC
Burl & Nellie Buchanan
Buck's Sporting Goods
Bunkhouse - Stephanie Crossland
C & R Petroleum
Sandra Carbajal
Cargill, Inc.
Casa Gladys
Cates Men & Boys, Inc.
Dr. Manon Childers
Church of Christ
City of Spearman
Cisco Foods
Dean Coates/Texas Alligator Farm
Conoco Phillips
Country Cellular Communications
Mike & Pat Cudd
Crop Chasers Mark Murray
Mr. & Mrs. James Cunningham
Dairy Queen
Wesley & Beth Daniel
Bob Davis
Irvin & Betty Davis
Deakin Electric
Sandra Drake
Helen Dry
Margaret Evans
Family Laundry % Darrell West
Farmer's Ag Supply, L.L.C.
Farm Supply & Service, Inc.
Fazolis Restaurant
First Christian Church
First National Bank
First State Bank
Five Star Equipment
Gigot Agra Products, Inc.
Dick Gillaspie
Gladiola Flower Club

Gordon's Drug
H & H Water Well
Mr. & Mrs. Doyle W. Hand
Hansford County Feeders
Hansford County Floral Company
Hansford County Hospital District
Hansford County Library
Hansford County TEEA Council
Hergert Ford
Hickerson Jewelry
High Plains Auto
High Plains Observer
Nolan & Helen Holt
Bill Hotchkiss
Hungry Cowboy
John L. Hutchinson Attorney at Law, P.C.
Gigot Agra Products, Inc.
Gordon Custom Cabinets
Green Country Equipment % Mike Cudd
Independent Driving School
Interstate Bank, sbb
Irwin Auto Co
J & S Signs & Engraving
J.T.s Diner
Roy & Aleta Jackson
Jarvis Law Office, P.C.
Jennifer Salon% Jennifer Brady
Johnny's Furniture Mart
Matt & Sherry Johnson
Junior Lusby Cats Inc.
Keith & Jodie Hight
Randy & Teresa Kirk
KXDJ - Chris Samples
La Familia Restaurant
Lasater & Company
Leal's Mexican Restaurant
Lemon, Shearer, Phillips & Good
Lions Club
Loves
Art & Teresa Maestas
Mark Sheets Truck, Inc.
Roy L. McClellan
Wilson & Joan McClellan
Delinda McLaughlin, Creative Memories
Mitchell Theaters
Motor Parts of Perryton
Mark Murray
Tim & Jackie Nelson
Northern Natural Gas
Nursannickle Motel
O'Loughlin Center
Mike & Teresa Pack
Panhandle Anchors, Inc.
Mr. & Mrs. Bob Pearson
Perryton Office Supply/Radio Shack
Phillip Renner Farms
Dr. James Pinkerton, D.D.S
Mr. & Mrs. Bill Pittman
Pizza Hut
Plains Chevy
Plains Dairy & Pokey the Clown

Prairie Gardens
Prairie Motors
Preceptor Epsilon Zeta
PTCI
PTO % Telle Crum
Butch & Debbie Reed
Renner Pearson, Inc
Reporter Statesman
Rotary Club
Michael & Patti Schnell
Schwans
Rudy's Country Store and BBQ
Rue OSanders
Seaboard
S & L Feed
Frank Salgado, Jr.
Frank & Cheryl Gibson - Salgado
Denise Schumann/Main Street Barber shop
Josh Schumann
Jerald Ray & Cindy Scribner
Serenity Massage
Servantez Estate Remodeling
Sharky's Burrito Company
S. B. Sheets
Verna L. Shirley
Silver Land
Gary & Cathy Smith
Sonic Drive In
Sparks Brothers Spraying, Inc.
Spearman Booster Club
Spearman Cattle Feeders
Spearman Volunteer Fire Department
Spearman Report Statesman
Spearman Rotary Club
Spearman Union Church
Speartex Grain Co.
Betty Stinson
Subway % Melissa Richey
Pat & John Sutterfield/Sutterfield Services
Omar Sutton
Texas Roadhouse
Tharin Company
The Hansford Agency
The Plaza
Toby & Brandi Thompson
Tongs Chinese Restaurant
Town & Country TEEA% R. Barrera
Trencor Enterprises
Twisted & Tangled/Mika Martinez
Mel & Bobbie Underwood
Allen & Peggy Varnon
Vaquera Painting
Watley Enterprises
Walmart
Western Photo Services
Willis Boyd Dirt Service
Verlan & Brenda Winegarner
Travis & Kandi Wolf
Womens Division SCC
Wonderland Park

orders were rewarded with the "3rd shopping trip" for gifts valued at \$100.00 a piece. We are so pleased that not one graduate went home early!

Bonnie Bergan, your organizational skills are unmatched! We couldn't have done it without you. Your input, insight, suggestions, and direction kept us on track when sometimes we couldn't even "see the track"! Thank you so much for all of your help and guidance. Thank you TXDOT for conceiving the idea for this wonderful function and then supporting it with guidance and money. Project Graduation is now a given event that helps keep the graduates of our community safe and sober on graduation night.

To the PG committee members, thank you for all of your hard work and then staying up all night with the kids. Thank you seems so trivial, but those are the only words that cover seem to cover what needs to be expressed. You are the best. To the parents and family members who came and worked shifts, helped with the games and activities, dressed up, brought food, set up the food area, supervised the gift area around the Prize Room, thank you. You did a great job and guess what? You survived!! You made it through the night! The success of Project Graduation is due to the hard work, cooperation, and participation of the students, their parents, and the generous and caring citizens of Spearman, Hansford and Ochiltree Counties, and the surrounding area (including Amarillo). We thank you all from the bottom of our hearts.

Sherry Boyd and Sharon Kern, co-chairpersons

Fifty-Seven - the Magic Number at this Year's WoodyFest!

Fifty-six FREE performances - including four concerts for children - are scheduled for the 14th Annual Woody Guthrie Folk Festival taking place in Okemah Thursday through Saturday, July 14-16.

The 2-hour hootenanny that traditionally closes out the festival on Sunday brings the total number of free performances to 57. You cannot afford to miss the magic!

As announced several weeks ago, David Crosby and Graham Nash will open the festival with a concert being held at the Cain's Ballroom in Tulsa on Wednesday, July 13. It is the only ticketed event of the festival. Although both the Gold Circle and Silver Circle seats are sold-out, some General Admission seats are still available at the venue's website: www.cainsballroom.com.

The 14th annual festival will continue July 14 - 17 (Thursday through Sunday) in Guthrie's hometown of Okemah, OK located 70 miles east of Oklahoma City. Founded in 1998 by the Woody Guthrie Coalition, the festival - which celebrates the life and musical legacy of one of America's greatest folk music songwriters and troubadours - includes indoor and outdoor concerts, special activities for children, open mics, poetry readings,

community outreach activities, food and craft booths, and, of course, the Sunday hootenanny! In the spirit of Woody Guthrie, the festival is a FREE 4-day family-friendly event. Please note that due to ongoing renovations at the Crystal Theater, the Okemah Middle School Auditorium will become the Crystal Theater Stage this year.

In addition to Crosby & Nash, artists scheduled to perform at this time include Stoney LaRue, Jimmy LaFave, Ellis Paul, Sam Baker, Slaid Cleaves, Don Conoscenti, John Fullbright, Ronny Cox, David Amram, John Wort Han-nam, Joel Rafael, The Red Dirt Rangers, Johnsmith, Butch Hancock, Kevin and Dustin Welch, Stonehoney, Lauren Lee & Liberty Road, Michael Fracasso, Mary Reynolds, Krishna Guthrie, the Annie Guthrie Band, plus many others. Karen Mal will host a tribute to Jack Hardy, well-known singer-songwriter, teacher, and mentor, who died earlier this year.

Making his festival debut is Shawn Mullins, whose 1998 single "Lullabye" was nominated for a Grammy Award. Also making her festival debut is Gretchen Peters, whose "Independence Day" was nominated for a Grammy Award and was the Country Music Association's 1995 Song of

the Year.

Art of the Song: Creativity Radio is a 1-hour weekly radio show airing on more than 100 radio stations across the U.S. and Canada. Join hosts John Dillon and Vivian Nesbitt at WoodyFest for the tapings of two upcoming shows when they talk to Sam Baker (Thursday) and Ronny Cox (Friday) about their creative process. Sam and Ronny will undoubtedly perform a song or two!

The Woody Guthrie Poets, chaired by Dorothy Alexander (Cheyenne, OK) and Nathan Brown (Norman, OK) will present a panel of 17 stellar and

award-winning poets from around the country during two 1-hour sessions on Saturday.

Woody Guthrie's youngest sister, Mary Jo Guthrie Edgmon, is the festival's perennial guest of honor.

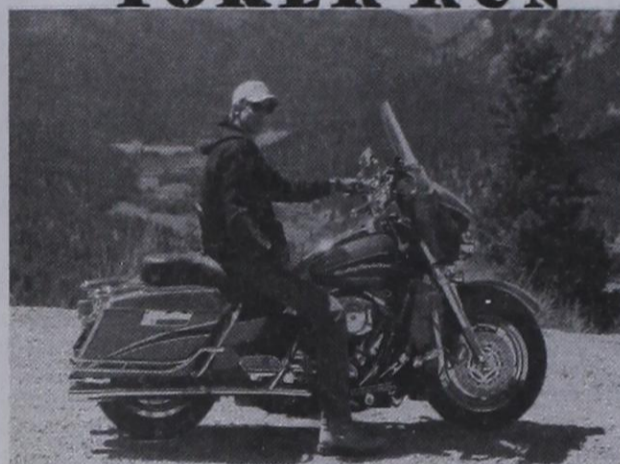
The Woody Guthrie Folk Festival, supported by a grant from the Oklahoma Arts Council, attracts attendees from around the world. For information about sponsorship and advertising opportunities, a complete schedule of events and performers, and other information, please visit the festival website at www.woodyguthrie.com.



5TH ANNUAL KURK ADAMS MEMORIAL POKER RUN

\$10 PER HAND
3 FOR \$25
(PER RIDER)

50/50 POT



DOOR PRIZES

HIGH HAND/LOW
HAND
WINNERS
ANNOUNCED
@ 4:00

SATURDAY, JUNE 25TH

SPEARMAN, TX

10:30 REGISTRATION @ CITY HALL

FIRST BIKE OUT @ 11 AM

LAST BIKE OUT @ 12:00 - LAST BIKE IN (PALO DURO LAKE) @ 4:00

FOR SHIRTS AND INFORMATION CALL AMANDA @ 806-662-3655 OR BRIANNE @ 806-231-7449

Steffan & Devin's Mowing Service

Steffan Werner (620) 482-0763
Devin Wells (806) 330-0752
References available upon request.

Are You A Victim of Domestic Violence, Sexual Abuse or Physical, Emotional or Sexual Assault?

Call Toll Free Hotline
1-800-753-5308

We can see individuals from Hansford County anytime upon request. Call 435-5008 or 1-800-753-5308 to set up an appointment in Hansford County. We operate a safe place for victims and their children to stay in times of crisis.

Battering Intervention & Anger Management Available

Panhandle Crisis Center
Serving Hansford, Lipscomb & Ochiltree Counties
301 S. Ash • Perryton, TX
Memorials Accepted

Sergio's Auto Sales

We appreciate your support!

Sergio Vargas

120 W Kenneth Ave • Spearman TX 79081

(806) 659-9971 - day • (806) 330-0173 - night

Canyon Location Phone Number: (806) 231-8388

SERGIO'S AUTO SALES



120 W. KENNETH AVE. SPEARMAN, TX 79081

806 659 9971 CEL. 806 330 0173

"The Need is Big The Time is Now!"

- David Humphreys
President - CEO of Tamko

The Joplin Schools have suffered a major loss. We need your donations! We need to be sure the schools are open on August 17th. We must start the work on opening our schools now.

Consider these facts:

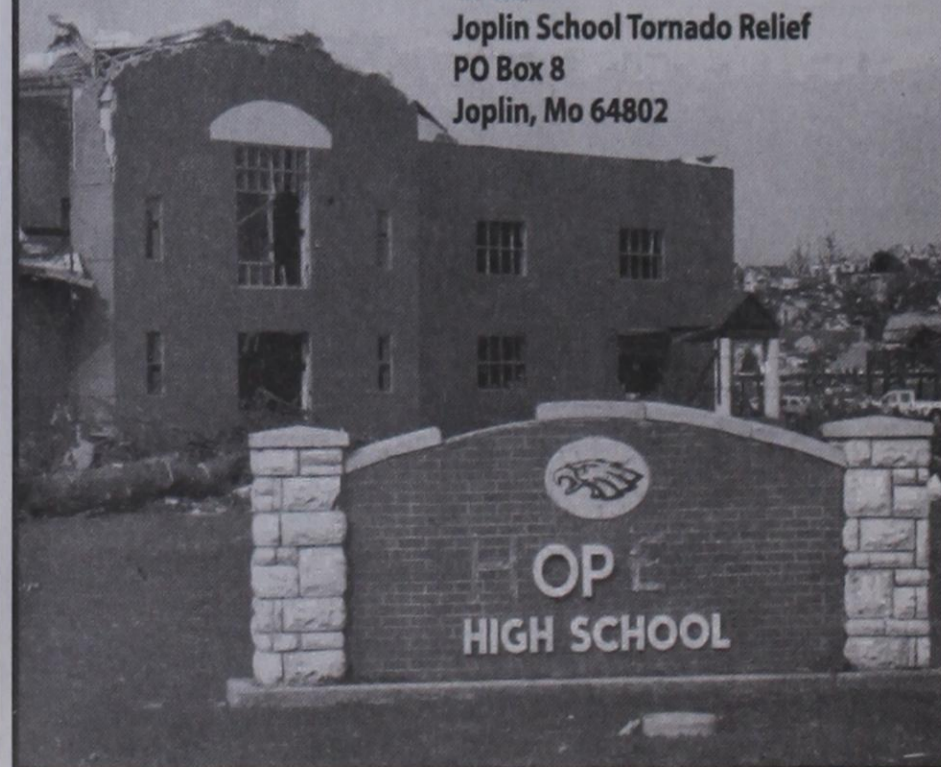
- 7 Students and One Teacher Died
- Joplin High School Destroyed
- Franklin Technology Center Destroyed
- Irving Elementary School Destroyed
- Five other elementary and middle schools damaged
- Damages over \$150 million dollars
- Over 4,000 Kids affected

"The future of our community depends on the education of our children!"

- Deborah Humphreys

If you want to help the kids who need it the most please send your donation to:

Joplin Schools Tornado Relief Fund
Attn: Joplin Globe
US Bank
Joplin School Tornado Relief
PO Box 8
Joplin, Mo 64802



Tong's Chinese Restaurant

(806) 644-2838

22 Archer Street • Spearman

Daily Buffet

Lunch Buffet 11 a.m.-2:30 p.m.

Dinner Buffet 5:30-9 p.m.

Open Wednesday-Monday - Closed Tuesday

REAL ESTATE

FOR RENT: 2 Bedroom apartment, 822 S. Roland, \$425.00 month, 12 month lease, Water paid, NO PETS. Call Larry O'Neal at 405-285-8782 for application and to view apartment.

HELP WANTED

HELP WANTED: Experienced automotive technician needed. Good working environment, holiday pay, health insurance. Also service department helper needed. Apply in person at Prairie Motors in Spearman. (806) 659-2541 or 1-800-692-4657.

HELP WANTED: Dean Cluck Feedyard, Inc. has immediate openings for the following positions: Shop Foreman/Mechanic; Mill Manager and Weekend Night Watchman. Benefits include health insurance, retirement plan and paid vacation. Please apply in person or fax resume to 806-733-2244 Attention: Chad Grimes.

HELP WANTED: Apply at West Texas Gas Office, 204 Main St, Spearman. (Will be in and out. If not there, please check back.) To make an appointment, call 806-570-8857 between 8 a.m-5 p.m.

HELP WANTED: Beautech is now hiring. Wireline experience preferred, but not required. Call 806-435-3301; 902 E Brillhart, Perryton TX 79070.

HELP WANTED: The Hansford County Soil & Water Conservation District has an immediate opening for a Secretary/Bookkeeper. The incumbent will provide administrative support for the District. Proficient in Microsoft Word, Excel and QuickBooks preferred. Qualified applicants should submit a resume in confidence to: The Hansford County Soil & Water Conservation District, 909 W. 9th Ave. Suite A, Spearman Texas 79081.

HELP WANTED: The Hansford County Soil & Water Conservation District is an equal opportunity employer, and does not discriminate against job applicants or employees on the basis of race, color, national origin, sex, religion, age, disability or veteran's status.

HELP WANTED: The Hansford County Soil & Water Conservation District is an equal opportunity employer, and does not discriminate against job applicants or employees on the basis of race, color, national origin, sex, religion, age, disability or veteran's status.

HELP WANTED: First State Bank, Spearman, has a full time positions open for a Teller and positions open in Book-keeping. Applicant must have a high school diploma or equivalent, typing and some ten-key skills required, customer relation and telephone skills are very important. Background in accounting, word processing and spreadsheets is helpful but not required. Benefit program includes group hospitalization insurance, retirement, vacation pay, sick leave pay and holiday pay. Apply with Ginger Turner at First State Bank, PO Box 247, Spearman, TX. 79081, telephone number (806) 659-5565. An Equal Opportunity Employer. TFN(6/21/11)B

HOOCHEE POOCHY PARLOR Call us for all your pet's grooming and boarding needs. Call now for reservations! 806-273-2724. TFN(11/2/07)B

TIRED OF GARAGE SALE PRICES? Let me buy your good used furniture! 2nd Chance Antiques & Furniture, Don 806-648-1480; 806-202-1391 cell. TFN(1/20/11)B

Sealed Proposals addressed to Ed Hansen, City Manager, City of Spearman, P.O. Box 37, Spearman, Texas, 79018-0037 for the reconstruction of approximately 9,000 square feet of sidewalk and all associated appurtenances entitled: Downtown Sidewalk Improvements; East Side of Main Street; From NW Court to Davis Street and Davis Street to Hancock Street

At this time and place the proposals will be publicly opened and read aloud. Any bid received after closing time will be returned unopened.

A cashier's check, certified check or acceptable bidder's bond, payable to the City of Spearman in an amount equal to not less than five percent of the bid submitted, must accompany each bid as guarantee that, if awarded the contract, the Bidder will, within fifteen days after receipt of Contract Documents, enter into a contract with the City of Spearman and will execute bonds on the forms provided in the Contract Documents.

Bidders are expected to inspect the site of the work and inform themselves regarding all local conditions.

Contract Documents are on file and may be examined in the City of Spearman, City Hall, 30 Southwest Court, Spearman, Texas, phone (806) 659-2524. Plans and Specifications may be obtained from the Engineer, Brandt Engineers, 4537 Canyon Drive, Amarillo, Texas 79110, phone (806) 353-7233 at a cost of seventy five dollars (\$75.00), non-refundable, for each set of plans and specifications.

Performance and Payment bonds shall be set forth in the Contract documents.

July 12, 2011 4:00 P.M.

At this time and place the proposals will be publicly opened and read aloud. Any bid received after closing time will be returned unopened.

A cashier's check, certified check or acceptable bidder's bond, payable to the City of Spearman in an amount equal to not less than five percent of the bid submitted, must accompany each bid as guarantee that, if awarded the contract, the Bidder will, within fifteen days after receipt of Contract Documents, enter into a contract with the City of Spearman and will execute bonds on the forms provided in the Contract Documents.

Bidders are expected to inspect the site of the work and inform themselves regarding all local conditions.

Contract Documents are on file and may be examined in the City of Spearman, City Hall, 30 Southwest Court, Spearman, Texas, phone (806) 659-2524. Plans and Specifications may be obtained from the Engineer, Brandt Engineers, 4537 Canyon Drive, Amarillo, Texas 79110, phone (806) 353-7233 at a cost of seventy five dollars (\$75.00), non-refundable, for each set of plans and specifications.

Performance and Payment bonds shall be set forth in the Contract documents.

July 12, 2011 4:00 P.M.

At this time and place the proposals will be publicly opened and read aloud. Any bid received after closing time will be returned unopened.

A cashier's check, certified check or acceptable bidder's bond, payable to the City of Spearman in an amount equal to not less than five percent of the bid submitted, must accompany each bid as guarantee that, if awarded the contract, the Bidder will, within fifteen days after receipt of Contract Documents, enter into a contract with the City of Spearman and will execute bonds on the forms provided in the Contract Documents.

Bidders are expected to inspect the site of the work and inform themselves regarding all local conditions.

Contract Documents are on file and may be examined in the City of Spearman, City Hall, 30 Southwest Court, Spearman, Texas, phone (806) 659-2524. Plans and Specifications may be obtained from the Engineer, Brandt Engineers, 4537 Canyon Drive, Amarillo, Texas 79110, phone (806) 353-7233 at a cost of seventy five dollars (\$75.00), non-refundable, for each set of plans and specifications.

Performance and Payment bonds shall be set forth in the Contract documents.

July 12, 2011 4:00 P.M.

At this time and place the proposals will be publicly opened and read aloud. Any bid received after closing time will be returned unopened.

A cashier's check, certified check or acceptable bidder's bond, payable to the City of Spearman in an amount equal to not less than five percent of the bid submitted, must accompany each bid as guarantee that, if awarded the contract, the Bidder will, within fifteen days after receipt of Contract Documents, enter into a contract with the City of Spearman and will execute bonds on the forms provided in the Contract Documents.

Bidders are expected to inspect the site of the work and inform themselves regarding all local conditions.

Contract Documents are on file and may be examined in the City of Spearman, City Hall, 30 Southwest Court, Spearman, Texas, phone (806) 659-2524. Plans and Specifications may be obtained from the Engineer, Brandt Engineers, 4537 Canyon Drive, Amarillo, Texas 79110, phone (806) 353-7233 at a cost of seventy five dollars (\$75.00), non-refundable, for each set of plans and specifications.

Performance and Payment bonds shall be set forth in the Contract documents.

July 12, 2011 4:00 P.M.

At this time and place the proposals will be publicly opened and read aloud. Any bid received after closing time will be returned unopened.

A cashier's check, certified check or acceptable bidder's bond, payable to the City of Spearman in an amount equal to not less than five percent of the bid submitted, must accompany each bid as guarantee that, if awarded the contract, the Bidder will, within fifteen days after receipt of Contract Documents, enter into a contract with the City of Spearman and will execute bonds on the forms provided in the Contract Documents.

Bidders are expected to inspect the site of the work and inform themselves regarding all local conditions.

Contract Documents are on file and may be examined in the City of Spearman, City Hall, 30 Southwest Court, Spearman, Texas, phone (806) 659-2524. Plans and Specifications may be obtained from the Engineer, Brandt Engineers, 4537 Canyon Drive, Amarillo, Texas 79110, phone (806) 353-7233 at a cost of seventy five dollars (\$75.00), non-refundable, for each set of plans and specifications.

Performance and Payment bonds shall be set forth in the Contract documents.

July 12, 2011 4:00 P.M.

At this time and place the proposals will be publicly opened and read aloud. Any bid received after closing time will be returned unopened.

A cashier's check, certified check or acceptable bidder's bond, payable to the City of Spearman in an amount equal to not less than five percent of the bid submitted, must accompany each bid as guarantee that, if awarded the contract, the Bidder will, within fifteen days after receipt of Contract Documents, enter into a contract with the City of Spearman and will execute bonds on the forms provided in the Contract Documents.

Bidders are expected to inspect the site of the work and inform themselves regarding all local conditions.

Contract Documents are on file and may be examined in the City of Spearman, City Hall, 30 Southwest Court, Spearman, Texas, phone (806) 659-2524. Plans and Specifications may be obtained from the Engineer, Brandt Engineers, 4537 Canyon Drive, Amarillo, Texas 79110, phone (806) 353-7233 at a cost of seventy five dollars (\$75.00), non-refundable, for each set of plans and specifications.

Performance and Payment bonds shall be set forth in the Contract documents.

July 12, 2011 4:00 P.M.

The Owner reserves the right to reject any or all bids and to waive any informalities in the bidding. In case of ambiguity or lack of clearness, the Owner reserves the right to adopt such interpretations as may be most advantageous or to reject the bid as informal. No bid may be withdrawn until the expiration of 30 days from the bid opening date.

Engineering Services PUBLIC NOTICE The City of Spearman has recently received notice of a Contract award from the Texas Department of Rural Affairs (TDRA) for an Urgent Need Program Grant.

A copy of the Request for Proposal for Services may be obtained from the Panhandle Regional Planning Commission, P.O. Box 9257, Amarillo, Texas 79105, ATTN: Tyler Estes, (806) 372-3381. A statement of qualifications for these proposed services will be required.

Please submit your proposal of services and a statement of qualifications for these proposed services to the address below:

Ed Hansen, City Manager City of Spearman PO Box 37 Spearman, TX 79081

Proposals must be received by the City no later than 5:00 p.m. on the 27th day of June, 2011 to be considered.

The City will hold a Council meeting at 7:00 a.m. on the 28th day of June, 2011 at City Hall and may award the contract at that time.

The City reserves the right to negotiate with any and all individuals, engineers or firms that submit proposals, as per the Texas Professional Services Procurement Act and the Uniform Grant and Contract Management Standards.

The City of Spearman is an Affirmative Action/Equal Opportunity Employer.

2/6/16/11)B

Notice of Initiation of the Section 106 Process: Panhandle Telecommunications Systems, Inc. proposes to construct a 180' (allow up to 190' for appurtenances) self support telecommunications tower and associated compound near FM 1261 & FM 3214, Hansford County, at Latitude N 36 28 30.2052 and Longitude W 101 13 49.5804.

The development addresses a 30' radius beyond the proposed development area which includes a proposed 100' x 100' lease area and associated existing access and utility easements.

Panhandle Telecommunications Systems, Inc. seeks comments from all interested persons on the impact of the tower on any districts, sites, buildings, structures, or objects significant in American history, architecture, archaeology, engineering or culture, that are listed or eligible for listing in the National Register of Historic Places.

Specific information about the project, including the historic preservation reviews that Panhandle Telecommunications Systems, Inc. has conducted pursuant to the rules of the FCC (47 CFR Sections 1.137(4) and the Advisory Council on Historic Preservation (35 CFR Part 800) can be viewed upon request.

All questions, comments and correspondence should be directed to: Environmentex Inc, 6066 N. Central Expwy. #560, Dallas, TX 75206, (voice) 214-793-7317 (fax) 214-6673861

2/6/16/11)B

LEGAL NOTICE NOTICE OF PUBLIC HEARING

SPEARMAN PLANNING AND ZONING COMMISSION Date: July 12, 2011 Time: 9:00 a.m.

Place: City Council Chambers, 30 S. W. Court, Spearman, Texas

Purpose: To consider in public hearing the rezoning of the property listed below plus one-half of all bounding streets, alleys and public ways from C-A/R, Automotive Commercial and Commercial Recreation District to C-R, Commercial Recreation District.

Legal An approximate 300' x 721.4' tract of land in the south end of Outlot 4, City of Spearman, County of Hansford, Texas; being addressed as 602 and 622 E. D Avenue.

If the Planning and Zoning Commission favorably considers the request the City Council will hold a public hearing to consider the amendment as follows:

Date: July 19, 2011 Time: 7:00 a.m.

Place: City Council Chambers, 30 S. W. Court, Spearman, Texas

For additional information call 659-2524.

Cheryl Gibson-Salgado City Secretary 2/6/23/11)B

NOTICE OF RECEIPT OF APPLICATION AND INTENT TO OBTAIN AIR PERMIT

AIR QUALITY PERMIT NUMBER 73394

APPLICANT DCP Midstream, LP, has applied to the Texas Commission on Environmental Quality (TCEQ) for an amendment to Air Quality Permit Number 73394, which would authorize modifications to the permit that authorizes the Sherhan Gas Plant located at 15150 County Road 9, Gruver, Hansford County, Texas 79040.

The amendment will authorize an increase in emissions of the following air contaminants:

organic compounds.

This application was submitted to the TCEQ on February 8, 2011. The application will be available for viewing and copying at the TCEQ central office, the TCEQ Amarillo regional office, and the Hansford County Library, 122 Main Street, Spearman, Hansford County, Texas, beginning the first day of publication of this notice.

The facility's compliance file, if any exists, is available for public review in the Amarillo regional office of the TCEQ.

The executive director has determined the application is administratively complete and will conduct a technical review of the application.

PUBLIC COMMENT/PUBLIC MEETING You may submit public comments, a request for a public meeting, or request a contested case hearing to the Office of the Chief Clerk at the address below.

The TCEQ will consider all public comments in developing a final decision on the application. The deadline to submit public comments is 30 days after newspaper notice is published.

The purpose of a public meeting is to provide the opportunity to submit comments or ask questions about the application. A public meeting will be held if

(1) your name (or for a group or association, an official representative), mailing address, daytime phone number, and fax number, if any;

(2) applicant's name and permit number;

(3) the statement "[I/we] request a contested case hearing";

(4) a specific description of how you would be adversely affected by the application and air emissions from the facility in a way not common to the general public;

(5) the location and distance of your property relative to the facility; and

(6) a description of how you use the property which may be impacted by the facility. If the request is

7 2 4 1 5 6 3 8 9

5 9 8 2 4 3 7 1 6

3 6 1 8 7 9 2 4 5

8 5 3 6 9 1 4 2 7

1 7 2 5 8 4 9 6 3

6 4 9 7 3 2 8 5 1

4 8 7 9 6 5 1 3 2

9 1 6 3 2 8 5 7 4

2 3 5 4 1 7 6 9 8

644-372-3381

644-372-3381

644-372-3381

644-372-3381

644-372-3381

644-372-3381

644-372-3381

644-372-3381

644-372-3381

the executive director determines that there is a significant degree of public interest in the application or if requested by a local legislator. A public meeting is not a contested case hearing.

If only comments are received on the application, the response to comments, along with notice of the executive director's action on the application, will be mailed to everyone who submitted comments or is on the mailing list for this application.

The executive director will complete the technical review, issue a preliminary decision on the application, and a Notice of Application and Preliminary Decision will be published and mailed to those who are on the mailing list for this application.

That notice will contain the final deadline for submitting public comments. If a hearing request is timely filed in Response to this Notice of Receipt of Application and Intent to Obtain Air Permit, the time period for requesting a contested case hearing will be extended to thirty days after the mailing of the executive director's response to comments.

After the final deadline for public comments following the Notice of Application and Preliminary Decision, the executive director will consider the comments and prepare a response to all relevant and material, or significant public comments. If comments are received, the response to comments, along with the executive director's decision on the application, will then be mailed to everyone who submitted public comments or is on a mailing list for this application.

OPPORTUNITY FOR A CONTESTED CASE HEARING You may request a contested case hearing. A contested case hearing is a legal proceeding similar to a civil trial in state district court.

Unless a written request for a contested case hearing is filed within 30 days from this notice, the executive director may approve the application.

A contested case hearing will only be granted based on disputed issues of fact that are relevant and material to the Commission's decisions on the application. Further, the Commission will only grant a hearing on issues raised by you or others during the public comment period and not withdrawn.

A person who may be affected by emissions of air contaminants from the facility is entitled to request a hearing. If requesting a contested case hearing, you must submit the following:

(1) your name (or for a group or association, an official representative), mailing address, daytime phone number, and fax number, if any;

(2) applicant's name and permit number;

(3) the statement "[I/we] request a contested case hearing";

(4) a specific description of how you would be adversely affected by the application and air emissions from the facility in a way not common to the general public;

(5) the location and distance of your property relative to the facility; and

(6) a description of how you use the property which may be impacted by the facility. If the request is

made by a group or an association, the one or more members who have standing to request a hearing and the interests which the group or association seeks to protect, must also be identified. You may also submit your proposed adjustments to the application/permit which would satisfy your concerns.

Following the close of all applicable comment and request periods, the executive director will forward the application and any requests for contested case hearing to the Commissioners for their consideration at a scheduled Commission meeting.

If a hearing is granted, the subject of a hearing will be limited to disputed issues of fact relating to relevant and material air quality concerns raised during the comment period.

Issues such as property values, noise, traffic safety, and zoning are outside of the Commission's jurisdiction to address in this proceeding.

MAILING LIST In addition to submitting public comments, you may ask to be placed on a mailing list to receive future public notices for this specific application mailed by the Office of the Chief Clerk by sending a written request to the Office of the Chief Clerk at the address below.

AGENCY CONTACTS AND INFORMATION All public comments and requests must be submitted either electronically at

www.tceq.texas.gov/about/commenits.html, or in writing to the Texas Commission on Environmental Quality, Office of the Chief Clerk, MC-105, P.O. Box 13087, Austin, Texas 78711-3087.

If you choose to communicate with the TCEQ electronically, please be aware that your email address, like your physical mailing address, will become part of the agency's public record.

For more information about this permit application or the permitting process, please call the Office of Public Assistance, Toll Free, at 18006874040. Si desea informacion en Espanol, puede llamar al 1-800-687-4040.

General information regarding the TCEQ can be found at www.tceq.texas.gov.

Further information may also be obtained from DCP Midstream, LP, 370 17th Street, Suite 2500, Denver, Colorado 80202-5604 or by calling Mr. Jay Handley, Principal Environmental Engineer at (303) 605-1714.

Notice Issuance Date: June 14, 2011

1/6/23/11)B

LEGAL NOTICE

The City of Gruver will be accepting sealed bids until 12:00pm Noon on July 13, 2011 for a 1994 Ford Ranger pickup with a minimum bid of \$500, a residential swimming pool slide with no minimum bid and a Woods Zero Turn Riding Lawn Mower with no minimum bid.

Please mail sealed bids to City of Gruver PO Box 947, Gruver, TX 79040 or drop sealed bid off at City Hall 201 East Broadway, Gruver, TX. The sealed bids will be opened July 13, 2011 at 6:00pm in the Council Chambers, Gruver City Hall 201 East Broadway, Gruver, TX. You do not have to be present.

2/6/23/11)B

Insured 6 Month CD

4.21% APY

Ask about our IRA & 401k Specials

1-800-371-9201

By appointment only

First Fidelity Financial Amarillo, LLC

1800 Washington, Suite 110

Amarillo TX

79009

www.firstfidelity.com

www.firstfidelity.com

www.firstfidelity.com

www.firstfidelity.com

www.firstfidelity.com

www.firstfidelity.com

www.firstfidelity.com

www.firstfidelity.com

www.firstfidelity.com

www.firstfidelity.com

www.firstfidelity.com

www.firstfidelity.com

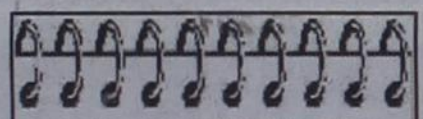
www.firstfidelity.com

www.firstfidelity.com

www.firstfidelity.com

www.firstfidelity.com

www.firstfidelity.com



We NEED listings! Call us now to help YOU sell your home for top dollar!

523 Barkley - Spearman: 2,074 sq. ft. 4 bdr, 2 1/2 BATH - Hardwood Floors!

1016 S Barkley - Spearman: 4,081 sq ft, 4 bed, 4 bath 3 lvg areas, 2 Att gar, Fireplace, Corner Lot! REDUCED!

Shirley Howard, Broker/Owner

806-886-6536, Cell

806-648-4444, Work

Melinda McCullough, Realtor

(806) 733-5678

We would LOVE to sell your HOUSE!

CALL US!

Check our websites for other properties.

SHERMAN CO., TX - 627 acres, choice land, four 1/4 mile sprinklers, fully developed, one 1/4 mile off Hwy 287 on paved CR - CC, 3 phase electricity, new irrigation well drilled in 2010.

AMARILLO, TX. - 4 MI. N. OF LOOP 335 - development potential (wind energy, comm., res.) 4872.8 ac +/- of beautiful ranch country, pvtm, on four sides. Deer, quail & dove. 50% MINERALS!

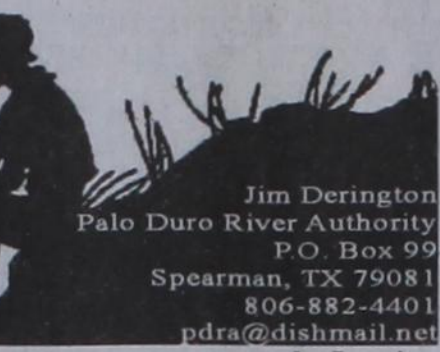
CASTRO CO, TX. - on pvtm, 1845.6 ac +/-, sprinklers, irr. wells, employee housing, barns, cattle pens w/covered working area, hydraulic chute & truck/cattle scale.

DEAF SMITH COUNTY SECTIONS - Three adjoining sections east of Hereford, Texas, dryland farm, stock water, good fence.

WEST

by Dorothy Hudson

Out at the Lake



Jim Derington
Palo Duro River Authority
P.O. Box 99
Spearman, TX 79081
806-882-4401
pdra@dishmail.net

Lake Level--June 20, 2911--39.26 feet (-0.43)

Jim and Mandy Derington had a mini-vacation this weekend. They left Thursday for Jim's annual family reunion at a Lake in eastern Oklahoma. Coming home on Sunday they drove through the 111 degree temperature near Childress.

Our hot temperature, although not that extreme, has been dropping the Lake level almost a half of a foot each week. It has been rather quiet at the Lake. However, this coming weekend is the big Fourth of July one. Jim is getting reservations for several activities.

One of the more unusual ones is a group that is planning to tent camp. If the weather cooperates, canoeing is to be one of the activities. The District Moose Club has made reservations

for their annual get-together. The Kirk Adams Memorial Poker Run ends at the Park.

The Buddy Dodson family are coming for their annual visit.

Life in Old Hansford
Sometimes Hansford County news pops up in unusual places. Last April 18, I found a new story in a column by David Horsley for the Amarillo Globe-News. He told of having a date with Louise Vaught, 98, at the Continental Retirement Center in Amarillo. While his Mom had lived at the Center Louise had lived next-door. He wrote of how Louise told of growing up in "Old Hansford" before the railroad came through, and how the town was jacked up, mounted on wheels, and moved 6 miles to the new Hansford County seat of Spearman. After the five-and-dime

store was moved, Louise and her sisters found they could comb the ground where the store had stood and find coins that had slipped through the floorboards over the years. Each time it rained, they would go back and find a few more.

If my research is correct, Louise Vaught is the only surviving child of J. H. and Mary Jane Buchanan. When they moved to Hansford in 1911, they had three sons, J. B., Wilson, and Monroe. Mr. Buchanan had bought the Hansford Headlight. Their family was to grow to ten children. The twins, Louise and Lucille (possibly Lucile), were the first to be born in Texas.

Horsley ended his article telling of a walk he and Louise made in Ellwood Park. He then wrote, "I only hope I'm doing as well as Louise when I'm 98."

White House Announces Establishment of Rural Council

The White House today announced the establishment of the first White House Rural Council. While rural communities face challenges, they also present economic potential. To address these challenges, build on the Administration's rural economic strategy, and improve the implementation of that strategy, the President signed an Executive Order establishing the White House Rural Council.

"Strong rural communities are key to a stronger America," said President Barack Obama. "That's why I've established the White House Rural Council to make sure we're working across government to strengthen rural communities and promote economic growth."

The White House Rural Council will coordinate programs across government to encourage public-private partnerships to promote further economic prosperity and quality of life in rural communities nationwide. Chaired by Secretary of Agriculture Tom Vilsack, the Council will be responsible for providing recommendations for investment in rural areas and will coordinate Federal engagement with a variety of rural stakeholders, including agricultural organizations, small businesses, and state, local, and tribal governments.

"Rural America makes significant contributions to the security, prosperity, and economic strength of our country," said Agriculture Secretary Tom Vilsack. "The Rural Council announced by President Obama shows his continued focus on promoting economic opportunity, creating jobs, and enhancing the quality of life for those who live in rural America."

Together with the rest of the Obama administration, USDA has worked to support families and businesses in rural communities so that their success will pay dividends for all Americans.

In the coming months, the White House Rural Council will focus on job creation and economic development by increasing the flow of capital to rural areas, promoting innovation, expanding digital and physical networks, and celebrating opportunity through America's natural resources. The Council will begin discussing key factors for growth, including:

Jobs: Improve job training and workforce development in rural America

Agriculture: Expand markets for agriculture, including regional food systems and exports

Access to Credit: Increase opportunity by expanding access to capital in rural communities and fostering local investment

Innovation: Promote the expansion of biofuels production capacity and community based renewable energy projects

Networks: Develop high-growth regional economies by capitalizing on inherent regional strengths

Health Care: Improve access to quality health care through expansion of health technology systems

Education: Increase post-secondary enrollment rates and completion for rural students

Broadband: Support the President's plan to increase broadband opportunities in rural America

Infrastructure: Coordinate investment in critical infrastructure

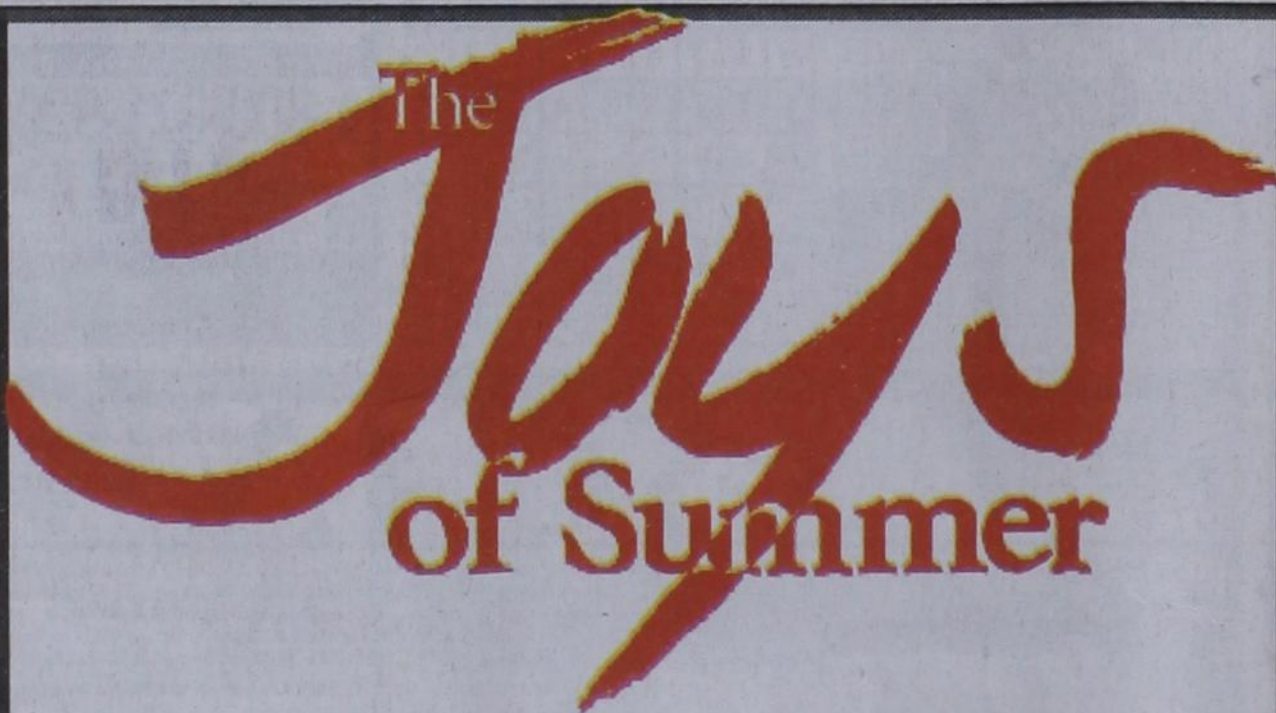
Ecosystem markets: Expanding opportunities for conservation, outdoor opportunities and economic growth on working lands and public lands

Since taking office, President Obama's Administration has taken significant steps to improve the lives of rural Americans and has provided broad support for rural communities. The Obama Administration has set goals of modernizing infrastructure by providing broadband access to 10 million Americans, expanding educational opportunities for students in rural areas, and providing affordable health care. In the long term, these unparalleled rural investments will help ensure that America's rural communities are repopulating, self-sustaining, and thriving economically.

First National Bank

is pleased to announce that their application to establish a branch at 2729 S. Main, Perryton has been approved by the Comptroller of the Currency. First National Bank currently has locations in Spearman and Dumas. The bank was established in 1985 by a group of investors and has grown to over \$150 million in Total Assets. Board Chairman Bill Pittman would like to thank Perryton and surrounding communities for their business and support through the years and looks forward to continuing those relationships.

Member FDIC



Available all year!

SNOW CONE STAND

Monday-Friday
2-8 p.m.

MURMUR'S CAFE

100 S. Roland • Spearman
659-3580



CHOICES. CHOICES. CHOICES!

ON KUBOTAS!

RTV1140

- 24.8 HP, 3-Cylinder Kubota Diesel Engine
- Variable Hydrostatic Transmission
- Quickly converts from 2 to 4-person seating configurations
- Orange or Realtree® Camouflage Models Available



L4400

- 45.3 HP, 4-Cylinder Kubota Diesel Engine
- Category I, 3-pt Hitch
- Gear or Hydrostatic Transmission
- Performance-Matched • 4WD



M135X

- 135 HP, 4-Cylinder, Turbo-Charged Direct Injection Kubota Diesel Engine
- Common Rail System Reduces Engine Noise And Emissions
- Intelli-Shift Transmission



B3200

- 32 HP, 4-Cylinder Kubota Diesel Engine
- Category I, 3-Point Hitch
- 3-Range Hydrostatic Transmission
- Performance-Matched Implements Available



\$0 DOWN, 0% A.P.R. FINANCING FOR UP TO 60* MONTHS ON SELECT NEW KUBOTAS!

PANHANDLE IMPLEMENT CO., INC.

710 NORTH MAIN STREET • PERRYTON, TX
806-435-6508

Kubota
EVERYTHING YOU VALUE



*See dealer for details. Financing for terms up to 60 months on purchase of select new Kubota equipment. Some restrictions apply. Down payment required. Example: \$0 down, 0% A.P.R. financing on a Kubota tractor with a list price of \$10,000. Example: A 60-month monthly installment payment plan of \$166.67 per month. Example: \$0 down, 0% A.P.R. financing is available on select Kubota equipment. See dealer for details. *See dealer for details. Financing is available through Kubota Credit Corporation, S.A., 3001 Red Bank Blvd., Torrance, CA 90503. Subject to credit approval. Some restrictions apply. Offer expires 6/30/2011. See us for details on how and other financing options or go to www.kubota.com for more information. #R2010 (LIMITED TO 50,000 UNITS)