



★ HANSFORD COUNTY ★  
**THE REPORTER-STATESMAN**

CELEBRATING 104 YEARS OF SERVICE TO HANSFORD COUNTY  
HANSFORD COUNTY'S ONLY NEWSPAPER  
REPORTER@SPEARMANREPORTER.COM

75¢



WWW.SPEARMANREPORTER.COM

VOLUME 105 • ISSUE 35

THURSDAY, AUGUST 30, 2012

**COME TO THE GAME**

**SPEARMAN vs. Booker**  
on 8/31 at 7:30 p.m.  
at Booker

**Gruver Greyhounds vs. West Texas**  
on 8/31 at 7:30 p.m.  
at Gruver

**Spearman Lynx**  
The 7th & 8th Grade Lynx will not play on August 30th, but the Spearman JV will play Shamrock in Spearman at 6 p.m. on 8/30.

**Gruver Greyhounds**  
The Gruver Jr. High will not play on August 30th, but the Gruver JV will play West Texas in Stinnett at 6 p.m. on 8/30.



The staff of Spearman ISD wore their Wounded Warrior t-shirts on Thursday, August 23rd in honor of Sgt. 1st Class Jeremy Frost.

**CROSS COUNTRY**

**Gruver Greyhounds/Lady Hounds**  
The Gruver Greyhounds/Lady Hounds HS Cross Country athletes will compete in Borger on Saturday, September 1st.

**Spearman Lynx/Lynxettes**  
The Spearman Varsity Lynxettes HS Cross Country athletes will compete in Borger on Saturday, September 1st.

**by GasBuddy.com**  
**TexasGasPrices.com**

**Weekly Update**

Texas, August 27 - Average retail gasoline prices in Texas have risen 1.9 cents per gallon in the past week, averaging \$3.55/g yesterday. This compares with the national average that has increased 3.0 cents per gallon in the last week to \$3.73/g, according to gasoline price website TexasGasPrices.com.

Including the change in gas prices in Texas during the past week, prices yesterday were 10.0 cents per gallon higher than the same day one year ago and are 21.8 cents per gallon higher than a month ago. The national average has increased 23.3 cents per gallon during the last month and stands 11.8 cents per gallon higher than this day one year ago.

"Well, for those that have noticed, the national average has perked up slightly in the last week as oil prices have advanced," said GasBuddy.com Senior Petroleum Analyst Patrick DeHaan. "While that may be notable, soon-to-be Hurricane Isaac will be the story this week. It's entirely within the realm of possibility that we see refinery outages, oil production losses, and gasoline supply issues- essentially all the things you don't want to happen. While this storm doesn't currently appear as powerful as other storms that have caused similar concern- we're continuing to watch the situation develop. One thing is for sure- I'm concerned that this storm will temporarily drive prices higher in the short term," DeHaan said.

GasBuddy operates, TexasGasPrices.com, and over 225 other local gasoline pricetracking websites that follow prices at over 125,000 gasoline stations in the United States and Canada. GasBuddy also uses Facebook (facebook.com/gasbuddy) Twitter (twitter.com/gasbuddy), and phone apps to keep motorists ahead of changing gasoline prices.

**Weather Forecast**

WEDNESDAY NIGHT - Clear. Lows in the upper 50s. South winds 5 to 10 mph.

THURSDAY - Mostly sunny. Highs in the mid 90s. Southwest winds 5 to 10 mph shifting to the southeast 10 to 15 mph in the afternoon.

THURSDAY NIGHT - Mostly clear. Lows in the mid 60s. Southeast winds 10 to 15 mph.

FRIDAY - Mostly sunny. Highs in the mid 90s.

FRIDAY NIGHT - Mostly clear. Lows in the lower 60s.

SATURDAY - Mostly sunny. Highs in the upper 90s.

SATURDAY NIGHT - Mostly clear. Lows in the mid 60s.

SUNDAY - Mostly sunny. Highs in the upper 90s.

SUNDAY NIGHT - Mostly clear. Lows in the mid 60s.

LABOR DAY - Mostly cloudy. Highs in the upper 90s.

MONDAY NIGHT - Mostly cloudy. Lows in the lower 60s.

TUESDAY - Partly cloudy. Highs in the mid 90s.

Read more: <http://www.city-data.com/forecast/w-Spearman-Texas.html#ixzz24FRtYU71>

**Spearman Community Continues to Support Wounded Hero - Sgt. 1st Class Jeremy Frost**

As a show of support, the people of Spearman have come together to support their hometown hero, Sgt. 1st Class Jeremy Frost.

The 22-year-old was injured when he stepped on an IED in Afghanistan on Friday, July 6, 2012. As a result he lost his left leg from just below the knee down, fractured his left hip and his right leg, suffered a ruptured left eardrum that will require surgery to try and restore hearing to that ear, and a mild traumatic brain injury.

Rick and Jan Howard, Jeremy's parents-in-law, are selling Wounded Warrior t-shirts to raise money for Jeremy and Kylee. Rick says that this was the community's idea and the response has included help from Perryton, Beaver, and Guymon to mention a few places.

The staff of Spearman ISD wore their Wounded Warrior t-shirts on Thursday, August 23rd in honor of Frost. His mother-in-law, Jan, is a Kindergarten teacher at



Gus Birdwell Elementary in Spearman. The t-shirts have Frost's dog tags on the front and the words "Wounded, Not Defeated" on the back as well as the Bible verse, Jeremiah 19:11. (Jeremiah is Jeremy's full first name.)

Frost was released from San Antonio Military Medical Center on Monday, August 13th. He and his wife, Kylee, are now staying in the family barracks at Fort Sam Houston while he goes to rehab.

Jeremy is the son of Stacie and Glenn Ruga of Spearman and Matthew Frost of Amarillo. He has three younger brothers, Dustin Frost who is also serving in the Army, and Patrick and Nathan Ruga. Kylee is the daughter of Jan and Rick Howard of Spearman.

For individuals who would like to honor this young man and his sacrifice, there is a fund set up for him at the First National Bank of Spearman under his name, Jeremy Frost. (The Army will cover Jeremy's medical expenses. This fund was established by friends of Jeremy and Kylee to help defray the costs incurred during his recovery, and to allow Kylee to spend as much time as possible with Jeremy while he is in the hospital and in physical therapy.)

Anyone interested in purchasing t-shirts may contact The SportZone at 806-644-9663 or Rick or Jan Howard at 806-330-

0388  
Jeremy and Kylee's new address is: Jeremiah J. and/or Kylee R. Frost, 3551 Roger Brooke Dr Dept 1000, Fort Sam Houston TX 78234-6200.

**Spearman Police Department News**

**Letter from Chief Baker Regarding the Incident at Spearman High School**



This morning (08/28/2012) Officers of the Spearman Police Dept. were called to the Spearman High School regarding an assault of a teacher. Officers arrived immediately, and were met by the principal. He explained that at the end of the second period class, a male student struck a male teacher with a text book on the left side of the face. Officers were then led to the school office where the accused student was seated.

Based on the information provided by school officials, officers made the decision to arrest the student for assault. At that time officers went to place the student into custody, he became uncooperative to the point of resisting and had to be taken down to the floor of the office. After several moments of actively resisting officers, the suspect was brought under control and restrained. The student was then transported to the Hansford County Jail and charged with Assault on a Public Servant, which is a felony. Once the investigation is fully completed the case will be sent the District Attorney for prosecution.

Other than the injury sustained by the teacher, the suspect nor any other student or school personnel were injured.

Due to certain federal privacy laws and other related issues, the name of the student or the teacher will not be furnished to the public by the police dept, however if anyone has any other questions regarding the incident and the investigation, please contact Chief Baker.

**Support Our Troops!**



Name: \_\_\_\_\_ Phone: \_\_\_\_\_

	XS	S	M	L	XL	XXL	XXXL	SUBTOTAL
\$15.00 RED T-Shirt								
\$15.00 ROYAL T-Shirt								
\$15.00 WHITE T-Shirt								
\$15.00 MILITARY GREEN T-Shirt								
\$15.00 PRAIRIE DUST T-Shirt								
\$15.00 SAND T-Shirt								
\$15.00 CHESNUT T-Shirt								

Add \$2.00 for 2X, \$3.00 for 3X, \$4.00 for 4X

**TOTAL:** \_\_\_\_\_

**Texas Crop & Weather**

The following specific livestock, crop and weather conditions were reported by Panhandle Extension directors for August 28, 2012: Scattered and spotty showers fell throughout the week, providing a little relief to drought conditions, but many of the storms were accompanied by hail and high winds. Irrigators were still watering in an effort to finish up the corn crop and prepare fields for early planted wheat. The silage harvest was in full swing in some areas and coming to an end in others. Corn-mite pressure continued to be high, and producers were spraying pesticides. Fall armyworms were feeding on corn ears in some areas. Irrigated sorghum was doing well, but dryland fields had not had enough moisture. Cotton was in mixed condition, from very good to very poor. Pastures have been overgrazed, leaving very little grass available.



**Wolf Creek Heritage Museum Notes**

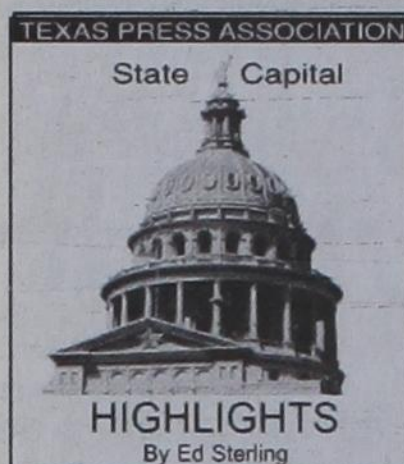
**MUSEUM HAPPENINGS**  
 Sunday was a great day to host our reception for Dallas and Anna Mayer. It also featured her husband as Billy Dixon and his friend as Kit Carson. Unfortunately, I was not able to attend because I was on the road returning from a week at Brownwood for my 47th wedding anniversary. The guest book tells me that over 30 people attended, which is a full house for us. I will get the details on Wednesday and give a full report next week.  
 This week is turnover week for us. Dallas took her exhibit home with her and Lew Hunnicutt will be setting his exhibit up this week. If you haven't experienced Lew's Photography of our local flora and

scenery, then you are in for a treat. It will be nice to view these great photographs during this dry spell we have been experiencing. The museum volunteers are still busy inventorying and organizing our collection and exhibits. We are also waiting on financing for the new addition. Stay tuned for further developments.

**HISTORICAL MUSINGS**

Here is a News Note from the Panhandle Interstate about chivalry.  
 "A lady from the country hailed up upon the streets one day last week and asked if we wanted 'a news item.' 'Yes'm' we replied; 'what is it?' "You may tell your readers that when a lady comes to Lipscomb

with a team she must look after unhitching, feeding and hitching up just the same as if there were not a man in town." It bluffed us clear off for a moment, but presently one broad grin covered our face and we determined to publish the "news item," as she called it. Here's another evidence that it never pays to cheat the printer. If that lady had been a reader of the INTERSTATE she would have been aware of the fact that a "lady's Man" could have been found at this office, who delights in doing these little shares for the fair sex. We hope the like may not occur again, and also that the INTERSTATE may soon find a regular reader way up towards the head of Sand Creek. Thanks for the item."  
 Till next week.



**STATE CAPITAL HIGHLIGHTS**



by Ed Sterling

**Court gives EPA thumbs down on pollution rule**

AUSTIN — A three-judge panel of the U.S. Court of Appeals for the D.C. Circuit on Aug. 21 declared illegal the U.S. Environmental Protection Agency's Cross-State Air Pollution Rule.

While environmental groups, health activists and "clean air" industries supported the rule — an emissions-trading program adopted by the EPA a year ago — it was contested by the state of Texas, 14 other states, local governments, industry groups and a list of non-governmental plaintiffs.

Following the 2-1 Circuit Court decision, the 60-page majority opinion by Judge Brett M. Kavanaugh said EPA exceeded its authority in using the rule's "good neighbor" provision "to impose massive emissions reduction requirements on upwind states without regard to the limits imposed by the statutory text."

Furthermore, Kavanaugh wrote, the EPA "did not allow the States the initial opportunity to implement the required reductions with respect to sources within their borders."

Gov. Rick Perry and Texas Attorney General Greg Abbott praised the Circuit Court's action. The Texas Commission on Environmental Quality, the state agency that regulates air pollution permits, said the ruling confirms the state's contention that the rule was legally and scientifically flawed and reiterates that the EPA must stay within the "boundaries that Congress has set" in the (U.S.) Clean Air Act.

However, Judge Judith Ann Wilson Rogers, in her 43-page dissent, asserted that her colleagues on the bench got it wrong on a number of points. For example, Rogers wrote, the Circuit Court itself "lacks jurisdiction to consider, without formal prompting, an objection to EPA's statutory authority not raised by petitioners within the 60 day period required under the Clean Air Act."

**Court lifts funding injunction**

In a unanimous ruling on Aug. 21, the U.S. Fifth Circuit Court of Appeals lifted an injunction that had temporarily stopped the State of Texas from cutting off funding to Planned Parenthood Inc.

The injunction, granted

by an Austin federal district court, put on hold a law passed by the Texas Legislature in 2011 that banned the state Women's Health Program from funding health care providers that offer abortion services or providers that are affiliated with abortion providers.

Exactly when or if the transfer of funds to Planned Parenthood will stop was not addressed. Planned Parenthood operates 60 clinics in the state that serve the needs of thousands of low-income women by providing family planning services and health screenings, but not abortions.

Gov. Perry said that while the ruling affirms the Women's Health Program has no obligation to fund organizations that promote abortion, the state would continue to provide "important health services for women." The Women's Health Program serves about 130,000 women.

**DPS increases surveillance**

The Texas Department of Public Safety announced plans to increase DWI patrols from Aug. 19 through Sept. 5, a period that includes the Labor Day holiday weekend.

Troopers will focus DWI patrols in high-risk locations at times when alcohol-related crashes are most frequent, the agency said.

During the Labor Day enforcement effort last year, the DPS reported, troopers made more than 2,000 DWI arrests, more than 25,000 speeding citations, 4,368 seat belt/child safety seat

citations and 4,057 no-insurance tickets. In addition, troopers made 1,409 fugitive arrests, 958 felony arrests and 882 drug arrests during routine patrol operations.

**Fatality counts to be posted**

Texas Department of Transportation announced the year-to-date number of traffic deaths in Texas will be posted on more than 700 message signs one week every month, typically the third week of each month.

According to TxDOT, the idea is "to remind drivers that driving deserves their full attention every time they get behind the wheel." Display of the fatality data began on Aug. 20.

**West Nile virus hits hard**

With aerial spraying under way in Dallas County, the federal Centers for Disease Control and Prevention in Atlanta on Aug. 21 reported that almost half of the 1,118 known cases of the mosquito-borne West Nile virus in the United States are in Texas.

Cities within Dallas County were allowed to opt in or opt out of aerial spraying.

Mosquitoes become infected when they feed on infected birds, then spread the virus to humans and other animals when they bite.

On Aug. 17, the state health department reported the number of deaths attributed to West Nile virus was more than 20.

**Chamber & Economic Development News**



by Tex Kopke, Spearman Chamber of Commerce Director

Golf sponsorships have begun trickling in, but don't wait any longer. We need your help now! A big thanks already to Speartex Grain Co., First State Bank, Brown Graham & Co., Bunkhouse Restaurant, Cates Men & Boys, Hansford County Reporter-Statesman and Tex Kopke for your support. They say you should put your money where your mouth is, so here I am supporting the golf tournament myself!

Now, how about you jumping on board and helping support it too. Remember it only costs \$50 per hole to be a sponsor and you get a nice big sponsor sign placed at the tee box of every hole you sponsor. You can also sponsor a gift, such as a gift certificate from a local business, to be given away to winners of special contests at each hole. You do not have to have a business to be a sponsor. Anyone can help sponsor the golf tournament, so please call the Chamber at 659-5555 and sign up today.

Sign up your 2-person teams now for the Saturday, September 15th Tournament. The tournament this year will be held on homecoming weekend, which will be great for homecoming visitors. You can call in your team at 659-5555, or come by the office to sign up. When you call, let me know if you want to start at

9 a.m. or 2 p.m. The cost will be \$40 per person and will include 2 mulligans. Even with 2 free mulligans you wouldn't want me playing on your team, but for any golfers this tournament will be a lot of fun. The first 9 holes will be low ball and the second 9 holes will be a scramble.

Notice the Spearman welcome sign next time you go by the traffic light. My cousin Ginger Turner donated more flowers and they are now happily residing in their new home in front of the sign. Moving from the quiet of the country into the city must have been a big shock, but the flowers seem to be adjusting well. We think they are some kind of Cosmos but whatever they are, they will help brighten up the sign and we hope brighten your day.

Thanks also to Lowe's for donating several bags of candy for the Perryton parade on Saturday. We had the limousine in the parade with new signs on the side of it from our local J & S Sign Shop. The sign advertises free limousine tours of Spearman for visitors and has the Chamber/Economic Development phone number on it. We got lots of cheers, waves and positive responses in the parade. I think everyone noticed our parade entry and will be talking about it. Next year when parade season rolls around we will be prepared with discount coupons from local Chamber businesses to throw out along with the candy.

Also from the sign shop we have received our huge new Grand Opening banner. The banner is 6' x 4', so it is really large with black lettering and a bright yellow background. This Grand Opening banner will be available free to any new business opening in town.

The Chamber wants to help celebrate any new business, so this will be a good way to bring attention to the next new business and save them the cost of buying a sign that they would only use one time. I can't wait to see it put to use!

Along with the Grand Opening Banner we ordered 2 large SALE banners which are red with white lettering. These banners are 6' long and about 2' high and are made of heavy duty material with brass grommets, so that they can be hung outdoors or used inside a window. These SALE banners are also free of use to any Chamber of Commerce member business for up to a week at a time. So if your business has a BIG sale coming up please come by and borrow one.

Along with putting on celebrations and other fun events, your Chamber wants to do things to actually help your business grow and prosper. So, we hope using the limousine in area parades to advertise Spearman and these new banners will be a good start towards this goal. Please remember to support your Chamber in the golf tournament so they can support you.

If you are not a Chamber member please call and get signed up now. New memberships are free for the rest of the year with renewal notices going out in November. You do not have to own a business to join. Memberships for individuals help support the Chamber and only cost \$40 a year.

Your Spearman PRIDE tip for the week is to take a plastic grocery bag along with you when you go for a walk. That way you can pick up litter along the way and be doing something to beautify Spearman while you exercise!

**The Hansford County Reporter-Statesman**  
 Mailing Address - 213 Main Street • Spearman TX 79081  
 Physical Address - 310 Barkley Street • Spearman TX 79081  
 Phone - (806) 659-3434 • Fax - (806) 398-9080  
 www.spearmanreporter.com • reporter@spearmanreporter.com  
**Mon.-Thurs. 9 a.m.-12 p.m., Mon.-Wed. & 1-5 p.m.**  
**Closed Thurs. afternoon and all day Fri., Sat. & Sun.**

**Gary Smith - Publisher, Catherine Smith - Editor**  
 Clayton Smith - Reporter, Jill Noel - Photographer  
 Contributing Writers: Dorothy Hudson, Jim Derington,  
 Cecil Biggers, Virginia Scott, Ed Sterling  
 Contributing Photographers: Lisa Johnson, Tami Hargrove

**Subscription Rates**  
 In Hansford County - \$30.00 • Out of County - \$40.00  
 E-Mail Subscription - \$35.00

The Hansford County Reporter-Statesman (USPS 529660) is published weekly in Spearman, TX. Periodical postage paid in Spearman, TX. **POSTMASTER:** Send address changes to: The Hansford County Reporter-Statesman, 213 Main Street, Spearman, TX 79081.

**Publication Policy**  
 The deadline to submit news and advertising to The Hansford County Reporter-Statesman is Monday at 5 p.m. Items submitted after the deadline will be published at a later date, as time and space permit. Publication of all items is at the discretion of the editor.

**Advertising**  
 Open Display rates are \$4.00 per column inch. Classified Ads are \$7 for the first 20 words and 15¢ per word for each additional word. (Additional charge for boxed classifieds.) There is a \$1 charge per week if billed.

Member of  
 Gruver Chamber of Commerce  
 Spearman Chamber of Commerce  
 Texas Press Association and Panhandle Press Association



**THE SIXTIES**

- ACROSS**
- Like a tasteless remark
  - Precedes Nov.
  - Wood file
  - Slow in music
  - Beta Kappa
  - Historic 66
  - One with a healthy appetite is often called a good \_\_\_\_
  - Even, to a poet
  - Relating to sight
  - \*Author of the "The Feminine Mystique"
  - \*Woodstock site
  - Mammoth excavation site, e.g.
  - Youngster
  - \* \_\_\_\_ and Dean
  - Opposite of talker?
  - Ultimate goal
  - \_\_\_\_ course, as in college
  - The Colosseum today, e.g.
  - Dispute
  - Canceled
  - Formed a curve
  - Bone in human forearm
  - Incompetent
  - Southern stew staple
  - Wild swine
  - Type of killer
  - Ness, e.g.
  - Like dry humor
  - \*Suzie Rotolo to Bob Dylan

- Accidental happening
- Light quality
- \*First man in space
- \* \_\_\_\_ dandy
- Parishoner's seat
- Tenth to sophomore
- City in Belgium
- \* \_\_\_\_ Which Way You Can"
- It's often changed in a car, pl.
- Lad's counterpart
- Short for Leonard
- \* \_\_\_\_ Park, CO

- DOWN**
- Beginning of musical staff
  - Back seat
  - Against, prefix
  - Often found under a knight
  - Dirty or sleazy
  - Welcoming sign
  - \*a.k.a. Ernesto Guevara
  - Metallic sounding, e.g.
  - Fibrous
  - On its own, prefix
  - Marley classic " \_\_\_\_ It Up"
  - Bird action
  - Given name sometimes shortened to Ro
  - Ancient Greeks' assembly spot
  - \_\_\_\_ out, as in a victory

These games are brought to you by the Hansford County Reporter-Statesman

- Drop by drop
- \*She was a major attraction at Woodstock
- Solitaire player, e.g.
- \*Newly independent
- West African republic
- Eurozone money
- Clobber
- Like a neon sign at night
- \*Neil Armstrong's landing
- \*He famously said, "Turn on, tune in, drop out"
- South African antelope
- Infamous Roman tyrant
- Medvedev's country house, e.g.
- Hot red candy
- Often done over price
- Flower part
- Paratroopers, for short
- \*German construction
- \*Si, mi chiamo Mimi" in La Boheme, e.g.
- Golf pegs
- Links to friends on Facebook, e.g.
- Nell \_\_\_\_ , mistress of King Charles II of England
- Goes with rave
- "Idea" to a Frenchman
- Loch \_\_\_\_
- Between NE and E

**CROSSWORD**

1	2	3	4	5	6	7	8	9	10	11	12
13											
14											
15											
16											
17											
18											
19											
20											
21											
22											
23											
24											
25											
26											
27											
28											
29											
30											
31											
32											
33											
34											
35											
36											
37											
38											
39											
40											
41											
42											
43											
44											
45											
46											
47											
48											
49											
50											
51											
52											
53											
54											
55											
56											
57											
58											
59											
60											
61											
62											
63											
64											
65											
66											
67											
68											
69											
70											
71											
72											
73											
74											

**if you could save \$522 ... why wouldn't you?**  
 Call 1-866-929-9071 to get your fast, free car insurance quote.  
**esurance**  
 an Allstate company



# Happy Birthday!

**August 30**  
**Birthday** - Joshua Blount, Roy Dale Karr, Van Lewis, Jeff Nicholson, Chelly Rigdon, Christa Urban

**August 31**  
**Birthday** - Jill Hoel, Roger Dean Close, Estella Arjona, Mildred Lewis, Chad Wilkerson, Justin Eslick, Lonnie Shields, Danny Herrington, Bob Boxwell, Dale Jones, Clay Neff

**Anniversary** - M/M Brian Pressley, M/M Kent Guthrie

**September 1**  
**Birthday** - Sahala (McCloy) Galliard, Kathy (Nelson) Dumbold, Mrs. Don Allen, Eugene Yarborough, Irma Arjona, Pete Vera Jr., Jessica Williams, Rita Lindley, Erin Wafford, Misty Bynum, Hugo Villa, Richard Shad, Jessica Shad, Laura Bridges, Jace Lang, Ann Pipkin, Dane Harbour, Sandra Blankenship

**Anniversary** - M/M Daniel Boyd

**September 2**  
**Birthday** - Kelly Sue Jones, Melyn Johnson, Archie Smith, Felipe Lomelli, Carlos Mendoza Jr., Larry Gallimore

**Anniversary** - M/M Ron Antalek

**September 3**  
**Birthday** - Josh Mayhew, Isabel Martinez, Ruth Lackey, Kory Brown, Sheryl Meek, Sandy Russell, Janet Sandavol, Jessie Moore, Brandon Baker, Michelle Evens, Elena Vargas, Jason Quillin, Coy Herrington

**Anniversary** - M/M John Booth, George & Virginia Young

**September 4**  
**Birthday** - Val Winger, Peggy Frick, Jimmy Haden, Kathy Bowen, Marty Karr, Laci Murray, Darlene Pierce, Rodney Pointer, Tina Cator, Lighthouse Torres, Alix Boyd, Halee Beasley, Kristi Vasquez, Jary Francis, Jerri Lane

**Anniversary** - M/M Ron Fox, Don & Wanda Reed

**September 5**  
**Birthday** - Kilee Ryan, Cathy Potts, Pat Minter, Dawn Brown, Mavis Floyd, David West, Mark Garcia, Betty Thomas, Mary Alice Gibner, Andy Riley, Sonya Tindell, Willie Wallis, Joyce Sharp, Lorenzo Sauz, Connor Odegaard, Daniel Swink, Stephen Lane

**Anniversary** - M/M Chuck Ball, Mr. and Mrs. Don Reed, M/M Bobby Hicks

**September 6**  
**Birthday** - Brad Hart, Mickey Nash, Ty Williams, Jennifer Profit, Josh Owens, Cheryl Green, Jonas Heath, Osbaldo Lomely, Alison Smith

**Anniversary** - George & Tina Rex, M/M Bill Wink, Judy & David Martin, M/M Kenneth Stewart

**September 7**  
**Birthday** - Alice Peddy, Kim Boone, Teal Armes, J.L. Brock, Richard Montgomery, Juanita Terceo, Melvin Willis, Kermit McKee, Jennifer Whitefield,

Mardell Strawn  
**Anniversary** - M/M Charlie West, M/M Jim Davis, M/M Ronnie Bullard

**September 8**  
**Birthday** - Kevin Hart, Vernon Edens, Teresa Byrd, Richard Davis, Cindy Scarborough, Macy Holton, Suzanne Sanders, Beronica Borounda, Wynette Mullins, Monica Cenicerros, Linda West, Justin Tucker, Bill Miller

**Anniversary** - M/M Roger Odegaard, M/M Clarence Zable

**September 9**  
**Birthday** - Jantzen Dahl, Brian Kaugman, Dora Salgado, Doug Hohertz, Daniela Arjona, Kitty Edwards, Krystal Lackey, Debbie Abston, Jeannie Swan, Brian Payne, Merle Arthur, Alvin Byers, Tina Baumgardner, Nikki Boyd, Kitty Edwards, Dynell Vera Moore, Andrew James Burch

**Anniversary** - M/M Kyle Williams, Brad & Dodie Beedy, Al & Jean Smith

**September 10**  
**Birthday** - Donnie Osborne, Michael Minter, Derek Kuehl, Lil Turner, Rosa Alexander, Don Moore, Jeff Hand, Makala Weakly, Scott Wilkerson, Rosa Rodriguez, Susan Harnish, Chris Lopez, Janett Trospier, Quentin Shieldknight, Jarick Howard, Brent Collins, Kami Hammonds

**Anniversary** - M/M Pedro Garza

**September 11**  
**Birthday** - Erika Stedje, Gary Lynn Evans, Ginger Pittman, DaVonna Dharsh, Jimmy Jackson, Jim Davis, Teresa Pipkin, Clarence Mitchell, Tony Pacheco Jr., Julia Wofford, Everette Layton, Angela Lomeli, Janice Watley, Jean Laughlin, Trey Duke

**Anniversary** - Rusty & Judy Tindell, Buck & Beatrice Self

**September 12**  
**Birthday** - Linda Haight, Evi Meyer, Carrie Ann Guthrie, Deanne Gilley, Connie Shields, Issabella Hermosello, Peggy Varon, Ty Martin, Quincy Graber, Roland Graber, Chasidy Thomas, Charles Elliott

**Anniversary** - M/M Wayne Kruse

**September 13**  
**Birthday** - Alice Alvarez, Mindy Davis, Aaron Frick, Pam Harris, Kevin Holt, B.J. Renner, Jimmy Beeson, Carol Hergert, Hadley Reed, Terry Cook, Jim Baker, Burt Williams, Charolette Jackson, Keri Holt, Kalib Nash, Zeke Meddock

**September 14**  
**Birthday** - Max Clawson, Justin Duncan, William O'Connell, Johnny Nunihoo, Allen Hart, Robin Snider, Ken Schneider, Gregg VanBuskirk, Clayton Williams, Velma Sanders, Doug Holmes, Steven Salazar, Joel Stark, Debbie Canto

# Our Sympathy

## LYNDA OWENS

STINNETT - Lynda Owens, 64, of Stinnett, passed away, Monday, August 27, 2012.

Lynda Annette (Batson) Owens was born Monday, February 16, 1948 in Borger, TX to James and Elnora (Close) Batson. She married James Owens on April 28, 1968 in Spearman, TX.

Mrs. Owens is preceded in death by her parents and her nephew, Thomas James Batson.

Survivors include her husband, James; her son, Mike Owens and wife Donna of Borger, TX; three brothers, David Batson and wife Helen of Dallas, TX, Charles Batson and wife Pam of Seattle, WA and Tommy Batson and wife Kathy of Stinnett, TX; two nieces, one nephew, five great nephews and two great nieces.

Funeral services will be held at 4:30PM, Wednesday, August 29, 2012 at Brown Chapel in Stinnett, TX with Dwight Kirksey officiating. Burial will follow at Holt Cemetery.

Mrs. Owens will lie in state at Brown Chapel in Stinnett, TX on Tuesday, August 28, 2012 from 8:00AM to 8:00PM and Wednesday, August 29, 2012 from 8:00AM to 4:00PM.

Send personal condolences to [www.brownfuneraldirectors.net](http://www.brownfuneraldirectors.net).



## MARY ELLEN SALTZMAN KAGEL

PAMPA - Mary Ellen Saltzman Kagel, 85, of Pampa died Sunday, Aug. 26, 2012.

Services will be at 1 p.m. Wednesday in Carmichael-Whately Colonial Chapel with the Rev. Richard Bartel, associate pastor of Calvary Baptist Church, officiating. Graveside services will follow at 4 p.m. in Gruver Cemetery with Paul Stavlo officiating. Arrangements are by Carmichael-Whately Funeral Directors of Pampa.

Mrs. Kagel was born Feb. 5, 1927. She was a member of Calvary Baptist Church.

Survivors include two sons, Alan W. Saltzman and Thomas H. Saltzman; three brothers, Al Sims, Jerry Sims and Larry Sims; three granddaughters; and three great-grandchildren.

### MONUMENTS

## Boxwell Brothers Funeral Home

519 Evans • Spearman  
659-3802

Dear friends,  
When you buy a monument from us we make sure it is exactly what you want at a price you can afford. If it is not right, we will make it right. And you will not have to search the countryside to find us. We are here when you have a need.

Sincerely,  
Bob Boxwell

## NAN MCCLOY

MORSE - Mary Nan McCloy, 86, passed away early Monday, August 27, 2012 at the Hansford Manor, Spearman, Texas.

The daughter of Mary Ann (Denman) and Walter Allen Gillispie, she was born May 29, 1926 in Goodwell, Oklahoma. Nan attended Morse schools. After a War pen pal romance began, Nan married the neighbor boy when he returned from World War II. Nan and Samuel Wilson McCloy were married April 7, 1946 in Morse. They made their home on a ranch near Nara Visa, NM and lived there for 13 years. They returned to Morse where Nan continued doing what she did best. She fed, kept clothes clean, loved and nurtured her husband and family. She was a wonderful "cowboy" cook and a 4-H leader. She later graduated from Panhandle State University, Goodwell and taught home economics at Gruver for a short time. Nan and Wilson "retired" at a smaller ranch in Cabool, Missouri. Nan was a member of Cabool First United Methodist Church.

She is survived by a daughter, Nanelle and husband, Charlie Kiser of Cabool, MO; four sons, Allen McCloy and wife, Janice of Morse; Bill McCloy and wife, Georgia of Licking, MO; Doug McCloy and wife, Judy of Ft. Sumner, NM; and Mark McCloy and wife, Annette of Jal, NM; thirteen grandchildren, Kelly and husband Murry West of Tatum, NM; Marty McCloy and wife Molly, of Spearman, TX; Cody McCloy of Atlanta, GA; Otey McCloy and wife, Kathy of Terra Haute, IN; Ben McCloy and wife, Brandy of Licking; Dan McCloy of Fort Sumner; Scott McCloy and wife, Nina of Santa Fe, NM; Jana and husband, Jake Mitchell of Borger, TX; Sahala and husband, Lance Gaillard of Morse; Holly and husband, Buster McLain of Gruver; Jenna Beth Kiser of Cabool; Josie Kiser of Morse; Jared Johnson and wife Kandi, of Lubbock, TX; nineteen great grandchildren, Kylie, K.D., Maddie Michael, Cooper, Grady, Nash, Cole, Jasper, Knox, Addie, Hollyn, Gus, Sage, Pratt, Halle, Miles, Kirbi and Harper. She is also survived by her two sisters, Nell Henderson and Sue and husband, Thane McCloy, all of Morse; brother and sister-in-law, Carson and Evelyn McCloy of LaJunta, CO and many nieces and nephews. She is also survived by her dear friend and caregiver who made her final days better, Esther Villalobos of Spearman.

She was preceded in death by her parents, husband, Wilson McCloy in 1997, three brothers, John, Ben and Jack Gillispie; a daughter-in-law, Karen McCloy; and a grandson, Kirby Johnson.

Visitation will be Wednesday evening from 6-8:00 PM at the Morse Baptist Church.

Funeral services will be Thursday morning, August 30th, 10:00 AM at the Morse Baptist Church with nephew, Rev. Wirt Davis, officiating. Interment will follow in Lieb Cemetery.

Memorials may be given to the Morse Community Building, Inc., P.O. Box 114, Morse, TX 79062.

Friends may sign the online guest book and send their condolences at [www.hensonnovak.com](http://www.hensonnovak.com).



**dish** AUTHORIZED RETAILER

FREE 30 movie channels to 5mo. **HBO CINEMAX SHOWTIME starz**

Provisional prices start at **\$19.99** a month for 12 mo. (plus one-time \$4.99 fee)

FREE **BLU-RAY/DVD HOME** (one per month)

FREE **Hopper** (with 3-month agreement, not eligible with Whole Home DVR)

FREE **WHOLE-HOME HD DVR** (with HD200 package or higher)

**1-800-283-6149** [WWW.INFINITYDISH.COM](http://WWW.INFINITYDISH.COM)

We are open 7 days a week • 8am - Midnight CST • Similar to com. • Microsoft, Intel, other only good for new DISH Network subscribers • See Table for details. All calls with Infrared are monitored and recorded for quality assurance. Offer ends 12/31. Restrictions apply. Call for details. Infrared/DISH changes a one-time \$49.95 non-refundable processing fee. Infrared LTR Reg. No. 15-1000.

## Replenish the seed of faith through . . .

### DAILY BIBLE READING, PRAYER & REGULAR CHURCH ATTENDANCE

<p><b>Spearman</b></p> <p><b>Apostolic Faith Church</b> 822 S. Dressen • 659-2870 Sunday School: 10 a.m. Worship Service: 11 a.m. Sun. Eve.: 6 p.m. Wed. Prayer Mtg: 7 p.m. Pastor - Jack Cornell</p> <p><b>First Assembly of God</b> 401 N. Bernice • 659-2295 Sunday School: 9:30 a.m. Worship: 10:40 a.m. Evening Worship: 6 p.m. Wed. Worship: 7 p.m. Wed. Youth: 7 Pastor - Brad Smith</p> <p><b>First Christian Church</b> (Disciples of Christ) 29 S. Bernice • 659-2036 Sunday School: 9:45 a.m. Worship: 10:50 a.m. Minister -</p> <p><b>First Baptist Church</b> 123 N. Bernice • 659-5557 Sunday School: 9:45 a.m. Worship: 11 a.m. Evening Worship: 7 p.m. Men's Bible Study - Wed, 7 a.m. Children's Choir - Wed, 6 p.m. Adult Choir - Wed, 7 p.m. Wed. Bible Study: 7 p.m. Pastor - Jim Medley</p> <p><b>Church of Christ</b> 121 S. Haney • 659-3244 Sunday Bible Class: 9:45 a.m. Worship: 10:30 a.m. Evening Worship: 6 p.m. Bible Study Wed.: 7:30 p.m.</p>	<p><b>Sacred Heart Catholic Church</b> 901 Roland • 659-2166 Sat. Night Mass: 5:30 p.m. Sun. Mass: 9 a.m. - English Sun. Mass: 11:30 a.m. - Spanish Rev. Gregory Bunyan</p> <p><b>First United Methodist</b> 407 S. Haney • 659-5503 Sunday School: 9:45 a.m. Worship: 8:30 &amp; 11 a.m. Jr. High Youth: 5 p.m. Sunday High School: 6 p.m. Sunday Kids Club: 3 p.m. Wed. Pastor - Toni Bailey</p> <p><b>Grace Presbyterian Church</b> (Worships with Faith Lutheran Church) 1101 Bernice • 659-2033</p> <p><b>Faith Lutheran Church (ELCA)</b> 1101 Bernice • 659-2252 Sunday School: 9:45 a.m. Worship: 11 a.m. (Worships with Grace Presbyterian Church) Pastor - Cecil Biggers, PLM</p> <p><b>Union Church</b> 31 S. Endicott • 659-2644 Sunday School: 10:00 a.m. Worship: 11 a.m. Sun. Evening Worship: 6 p.m. Sun. Evening Spanish Worship: 7 p.m. Youth/Adult Services: 7:30 Wed. Pastor - Philip Hudson</p> <p><b>Fellowship Baptist</b> 1102 S. Archer • 659-2783 Sunday School: 10 a.m. Worship: 11 a.m. Sun. Evening Worship: 6 p.m. Sun. Evening Spanish Worship: 7 p.m. Youth/Adult Services: 7:30 Wed. Pastor - Philip Hudson</p>	<p><b>Primera Mision Bautista</b> 502 E. 7th • 659-3991 Sunday School: 9:45 a.m. Worship: 11 a.m.; Evening: 6 p.m. Wed. Prayer Meeting: 7 p.m. Thurs. Visitation: 7 p.m. Pastor - Joe Garcia Jr.</p> <p><b>El Aposento Alto U.P.C.I.</b> 1105 S. Roland Domingos: Escuela-Domical - 10 a.m. Culto Evangelistico - 7 p.m. Jueves: Oracion - 8 p.m. Mier: Estudio Biblico - 7 p.m. Pastor - A.G. Martell (806) 659-2153</p>	<p><b>Gruver United Methodist</b> Broadway &amp; Garrett 733-2651 Sunday School: 9:45 a.m. Worship: 8:30 &amp; 10:50 a.m. Eve. Worship &amp; UMY: 6 p.m. Pastor - George Price</p> <p><b>Spanish Cristo Redentor Church</b> Hwy 15 806-659-2166 Gruver, TX Sun. Mass: 1:30 p.m. - Spanish Rev. Gregory Bunyan</p>
<p><b>Oslo</b></p> <p><b>Oslo Lutheran Church (ELCA)</b> 6 Miles West &amp; 12 Miles North of Gruver 733-7646 Sunday School: 9:45 a.m. Worship: 11 a.m. Pastor - Arlen Lloyd</p>	<p><b>Morse</b></p> <p><b>Morse Baptist Church</b> 733-2757 Pastor - Gary Stevens</p>	<p><b>Waka</b></p> <p><b>Church of Christ</b> 300 Rogers Ave. 202-7126 Sunday School - 9:30 a.m. Sunday Worship: 10:30 a.m. &amp; 6 p.m. Wednesday Bible Study: 7 p.m. Preacher - Ed Jenkins</p>	

He has showed you, O man, what is good. And what does the LORD require of you? To act justly and to love mercy and to walk humbly with your God. Micah 6:8

This feature is made possible through the sponsorship of these civic minded businesses:

<p><b>Deakin ELECTRIC</b></p> <p>OILFIELD • RESIDENTIAL • COMMERCIAL 321 S. MAIN • SPEARMAN</p> <p>1-800-999-1506 Chris Deakin 806) 659-5016 President</p>	<p><b>Bartlett's Lumber &amp; Hardware</b></p> <p>105 W. Broadway • Gruver, TX (806) 733-2404</p>	<p><b>Money's</b></p> <p>Stan &amp; Donna Zepp - Owners Phone 435-3945 14 SW 3rd Ave, Perryton TX</p>	<p><b>Morse Implement &amp; Auto Supply</b></p> <p>"Join us in church" Tom Dorch • Gary Urban Box 89 • Morse, TX 79062 (806) 733-2668</p>
<p><b>PRAIRIE MOTORS INC.</b></p> <p>Hwy. 207 South • P.O. Box 430 Spearman, TX 79081 • (806) 659-2541 <a href="http://www.prairiemotors.com">www.prairiemotors.com</a></p>	<p><b>MurMur's Cafe</b></p> <p>100 Roland St Spearman, TX 659-3580</p>	<p><b>Hansford County Reporter-Statesman</b></p> <p>"Proudly Serving Hansford County Since 1907"</p> <p>(806) 659-3434 310 Barkley • Spearman, TX</p>	<p><b>INTERSTATE BANK, ssb</b></p> <p><a href="http://www.interstatebank.com">www.interstatebank.com</a></p> <p>322 Main Street • Spearman, TX (806) 659-2559</p>

## Mesothelioma

EXPERIENCE COUNTS  
Lawyers with over 100 years combined expertise.

may occur 30 to 50 years after exposure to asbestos. Many workers were exposed from the 1940s through the 1970s. Industrial and construction workers, along with their families (second hand exposure) are among those at risk for mesothelioma, lung cancer or gastro cancer (throat, stomach, colon). Call us for professional insight.

Ryan A. Krebs, M.D., J.D.  
Doctor-Lawyer in Full-time Law Practice

Richard A. Dodd, L.C.  
Timothy R. Cappolino, P.C.

Board Certified Personal Injury Trial Law and Civil Trial Law by the Texas Board of Legal Specialization  
NO FEE FOR FIRST VISIT  
GAMERON, TEXAS

**1-888-MESO-FIRM**  
(1-888-637-6347)  
[www.MesoFirm.com](http://www.MesoFirm.com)

**We All Need Life Insurance For Final Expenses**

Easy Application Process with No Medical Exam; Just a few "yes / no" questions!

Call Curtis Drake today: (800) 657-7178

**Equitable** Equitable Life & Casualty Insurance Company  
3 Triad Center, SLC, UT 84180-1200

There is no obligation. This is a solicitation for insurance. An Equitable agent may contact you.



# H&M

FOR YOUR INFORMATION

## Medical Fund Established for Jeremy Frost

A fund has been set up at First National Bank for Kylee and Jeremy Frost. To donate you can either call the bank at 659-5544 or mail it to Box 337, Spearman.

## John DeLaRosa

A medical account has been opened for John & Deborah DeLaRosa at First National Bank. John has been diagnosed with oral cancer. He will be going through radiation and chemo treatment.

## Spearman Food Bank 1st Thursday

If you would like to help the Spearman Food Bank, they need help unloading the truck at 11:30 each 1st Thursday of each month. Contact Cecil Bigger at 659-5544 for more information.

## Farmer's Market

The local Farmer's Market is held every Wednesday afternoon. Anyone interested in participating is asked to contact Linda Venneman at 806-898-0969.

## Rushing Wind Emmaus Meeting

Rushing Wind Emmaus will meet Saturday, September 8 at the Waka Christian Center starting at 6 p.m. Friends and families are welcome to come to the potluck dinner followed with a praise and worship service. A nursery will be provided and training will be available for new sponsors.

## Gruver Freshman Parent's Meeting

A Gruver Freshman Parent meeting will be held in the Commons at 7:00 p.m. on September 4th.

## 4-H Clubs Enroll for New Year

4-H is a national organization which helps young people develop life-long knowledge and skills to become engaged citizens. Local clubs are enrolling now for the new year. Spearman 4-H Club will meet, Tuesday, September 4th, at 7:00 PM in the Family Life Center of First Baptist Church. Gruver 4-H Club will meet Tuesday, September 11th, at 7:00 PM in Golden Age Center. Morse 4-H Club will meet Tuesday, September 18 at 7:00 PM in the Morse Community Building. Youth wishing to enroll in 4-H must be 9 years old, or in 3rd grade or older. Come to the meeting and discover the many projects and activities available through 4-H. Chef's in Training projects will start soon, as well as Beef, Sheep, Swine, Livestock Judging, Horse, Dog Care & Training, and Share-the-Fun. 4-H has a participation cost of \$20.00. Call county Extension Agents Peggy Winegarner or Burt Williams (659-4130) for more information. All youth 3rd grade through age 19 may participate in 4-H regardless of their race, color, sex, disability or national origin.

## SHS Class of 1981 Reunion/50th Birthday Party

SHS Class of 1981 Reunion/50th Birthday Party at the River Breaks Ranch, Amarillo, TX on Saturday, October 13, 2012. Evening schedule: 6:00 PM arrive and cash bar is open; 6:30 PM - horse races - they swear everyone loves them! We get to gamble with fake money! 7:00 Dinner - Grilled rib eye or chicken breast with all the fixings \$40 per person; 11:00 PM - they close the ranch gates...and the bar... RSVP by October 5th! Please send your RSVP with a check and your dining selection to Hunter Novak, P.O. Box 403, Guymon, OK 73942. Bonnie's cell- 580-651-9377 and H- 580-651-4273 or no-vakh@ptsi.net

## Gruver Freshman Parent's Meeting

A Gruver Freshman Parent meeting will be held in the Commons at 7:00 p.m. on September 4th.

## Hansford Co. Library Thrift Shop Accepting Donations

Alley Katz (Library Thrift Shop) is accepting donations of quality items. You may ask for the key to the Thrift Shop at the library desk during regular hours (9:30 a.m.-5 p.m., Monday-Friday). Alley Katz is open from 10 a.m.-4 p.m., each Wednesday.

## Firefighters Wanted

The Spearman Volunteer Fire Department is actively recruiting new members. Both men and women age 18 and over are welcome. The number of volunteers has dropped to dangerously low levels and the roster needs to be increased. If you have an interest in helping to keep your community safe, the SVFD would like to talk to you. All new candidates will have access to the best training available. All interested parties should either come to the fire station located at 513 S Hazelwood or call Kimmi Rivera at 806-202-6374. The SVFD meets every Thursday night at 7 PM. Bring a friend and come join the team.

## Hansford Hospice

Volunteering for Hospice is very flexible and easy to work into your schedule. Our volunteers provide important services to the people we serve, whether it is: providing companionship to patients and their families; helping with clerical duties in the office; helping with special projects such as cooking food, baking, running or helping with community outreach. If you are interested in being a Hansford Hospice Volunteer, please contact us at 806-659-5811.

## Texas SNAP Benefits Assistance

Need help applying for SNAP benefits? We can help! High Plains Food Bank is providing application assistance for Texas SNAP benefits (Food Stamps) in your area. Telephone application assistance is available. If you need to apply for benefits, please call us today at 806374-8562 or 1-800-774-8564.

## Don't Text and Drive Decals

If you would like to purchase a lime green 'AMT 1994-2009 Don't Text and Drive' window decal in memory of Ali Tyler, please contact Stephanie Tyler at 806-736-0019. All proceeds go to the Ali Tyler Memorial Scholarship Fund. Decals are also available at Hansford County Floral Company on Main Street in Spearman.

## Help Available for Breast Cancer Survivors

Any woman who has had breast cancer surgery and cannot afford undergarments and prostheses can get help from the American Cancer Society through a grant from Susan G. Komen for the Cure®. The Amarillo Area Breast Prosthesis and Lymphedema Accessory Program will provide financial help to women in need of breast forms or prostheses, mastectomy bras and accessories to help with lymphedema, which is swelling of the arm caused by a build-up of lymph fluid. For more information, call the American Cancer Society office in Amarillo at (806) 353-4307 or 1-877-227-2345.

## Friendship Quilter Quilt Guild

The Friendship Quilter Guild of Perryton, Texas would like to invite you to their meetings. The Day Guild meets the 2nd Wednesdays of each month at 9 a.m. in the Community Worship Center, 2210 SW 15th, Perryton. The Night Guild meets the 2nd Tuesday of each month at 6 p.m. in the Community Worship Center, 2210 SW 15th, Perryton. Annual dues are \$15. (To receive only the newsletter \$7.50/yr.) Visitors are welcome. For more information, contact Cynthia Shattles at 806-435-2765 or Marilyn Robins at 806-624-2691.

## Fire Department Donations

Persons wishing to make donations to the Fire Departments in Hansford County may do so at the following addresses: Spearman Fire Dept., Box 37, Spearman TX 79081; Gruver Fire Dept., Box 947, Gruver TX 79040 or Morse Fire Dept., Box 28, Morse TX 79062. For more information, contact Marilyn Been at 806-733-2087.

## SPWA Seeks Volunteers

The Southwest Pioneer Windmill Association is seeking the next generation of volunteers to continue the work of restoring and maintaining the windmills of the SPWA. If you have an interest in windmills and their upkeep, and/or maintenance of the park, you are needed. For information, call Dwayne Mitchell, 270-0291 or Don Reed 330-0745.

## Timeless Treasures Quilt Guild

The Timeless Treasures Quilt Guild of Guymon, Oklahoma meets four times a year -- the last Saturday in the months of January, April, July and October. Registration begins at 9:30 a.m. in the First Christian Church Disciple Center located at 9th & Quinn streets. The meeting starts at 10 a.m. Members bring a carry-in luncheon, which is served at noon. The afternoon program begins at 1 p.m. Programs include trunk shows, demonstrations, workshops, door prizes and much more.

# Canyon Sweeps 6-Mile Relay

By **BARB AMRHEIN, Amarillo Globe-News**

Host Canyon swept the Class 3A-5A titles in the Canyon 6-mile Relay to open the high school cross country season Saturday.

Sunray won the girls class 1A-2A title, with Boys Ranch capturing the boys small school division.

"I really like the team aspect of this meet," Canyon coach Wes Kirton said in explaining the format that sees four runners each run a 1.5 mile route rather than a 5 kilometer (3.1 miles) distance. "It builds teams early."

Lady Eagle Arin Rice, the defending state 1,600 meter champion, needed to come from more than 150 yards behind to beat Randall for the girls title, and Mesa Allison, a four-year varsity runner, made up ground to lead the Eagles to the victory.

Boys Ranch, the 2011 Class 1A state champions, appears to be a strong contender to return to state in Class 2A and found strength from a newcomer.

"All our boys ran well, but I'm extremely proud of Trey Sedigas," Roughrider coach Kenneth Brown said. "He ran our fastest time and he's a senior who has never run before."

The Sunray girls, second at state in 2011, defeated Spearman, the four-time defending state champions for the small-school girls title with a winning time of 40:50. Spearman was second with at 41:50.

"We really ran well for our first race," Sunray coach Sid Whitely said of his team, ranked fourth in the state in the Cross Country Coaches Association preseason poll. "We had Mayra (Trejo) run No. 1 for us, and our freshman, Lindsey (Williams) ran well, too. It was a good mix of old and new."

## Canyon 6-Mile Relay At Canyon High School

**Boys Class 1A - 2A:** 1. Boys Ranch "A" (Jacob Myers, Trey Sedigas, Jorge Cruz, Andrew Pacino) 32:55; 2. Bovina "A" (Juan Pinela, Abel Rocha, Kristian Arroyo, l. Bovina Dominguez) 34:00; 3. Sunray (Jorge Artillo, Julio Loya, Fabian Galaviz, Isias Mendoza) 35:07; 4. Ascension Academy, 35:39; 5. Bovina "B", 37:12; 6. Sunray "C", 38:27; 7. Boys Ranch "B", 38:35; 8. Ascension Academy "A", 38:41; 9. Panhandle "A", 38:51; **10 Gruver 39:37**; 11. Sunray "B", DQ.

**Girls Class 1A-2A:** 1. Sunray, (Melissa Corbin, Samantha Corbin, Mayra Trejo, Lindsey Williams), 40:51; **2. Spearman, (Gena Hargrove, Itzel Meza, Slade Garnett, Cynthia Mendoza), 41:50**; 3. Boys Ranch, (Ariel Warrior, LeAnn Morgan, Deborah Malone, Katelyn Marshall), 42:44; 4. Bovina, 43:07; 5. Spearman A, 43:49; **6. Gruver "A", 44:26**; 7. Sunray "C", 44:32; 8. Wheeler "A", 44:45; **9. (tie) Gruver "B", Panhandle, 45:37**; 11. Claude, 45:45; 12. Ascension Academy, 47:32; 13. Wheeler "B", 48:24; 14. Sunray "B", 49:01.

## WHEN DOES YOUR SUBSCRIPTION EXPIRE?

SCR1

08/12 EXPIRES

JOHN Q. PUBLIC

PO BOX 123

SPEARMAN TX 79081

Ex -

piration dates are printed on the top of all mailing labels. Our readers can help keep the cost of subscriptions down by mailing in renewals in the appropriate month.

Thank you, Catherine Smith

THE HANSFORD COUNTY REPORTER-STATESMAN

213 Main Street • Spearman, TX 79081

## Annual Subscription Rates

In Hansford County - \$30

Out of County - \$40

E-Subscription - \$35 (sent through e-mail)

## Small Taxing Unit Notice

The City of Gruver will hold a meeting at 6:00 P.M. on September 12, 2012, at City Hall; 201 E. Broadway in Gruver, Texas, to consider adopting a proposed tax rate for tax year 2012. The proposed tax rate is \$0.3621 per \$100 of value.

The proposed tax rate would increase total taxes in City of Gruver by 0.44 percent.

## Notice of Public Hearing on Tax Increase

The City of Spearman will hold two public hearings on a proposal to increase total tax revenues from properties on the tax roll in the preceding tax year by 0.86 percent (percentage by which proposed tax rate exceeds lower of rollback tax rate or effective tax calculated under Chapter 26, Tax Code). Your individual taxes may increase at a greater or lesser rate, or even decrease, depending on the change in the taxable value of your property in relation to the change in taxable value of all other property and the tax rate that is adopted.

The first public hearing will be held on September 11, 2012 at 7:00 AM at Spearman City Hall.

The second public hearing will be held on September 18, 2012 at 7:00 AM at Spearman City Hall.

The members of the governing body voted on the proposal to consider the tax increase as follows:

**FOR:** Kathy Boyd Armando Martinez  
Tobe Shields Jon Garnett  
Mike Schnell

**AGAINST:**

**PRESENT** and not voting:

**ABSENT:**

The average taxable value of a residence homestead in City of Spearman last year was \$36,885. Based on last year's tax rate of \$0.531000 per \$100 of taxable value, the amount of taxes imposed last year on the average home was \$195.86.

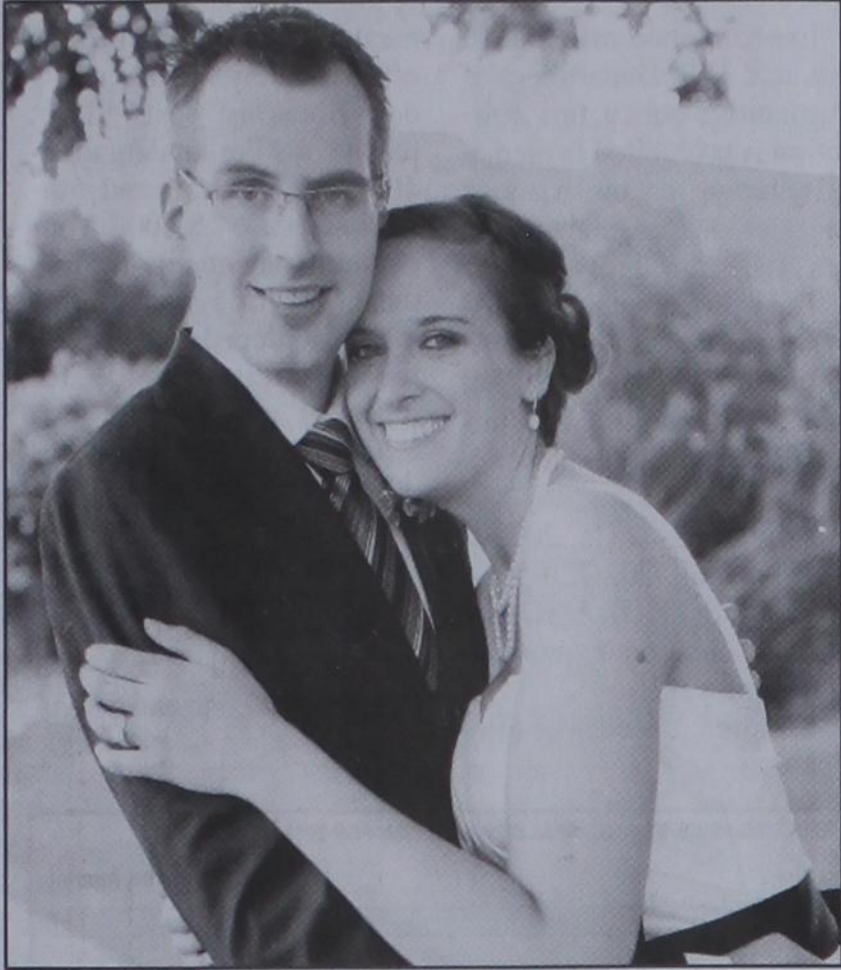
The average taxable value of a residence homestead in City of Spearman this year is \$37,001. If the governing body adopts the effective tax rate for this year of \$0.535392 per \$100 of taxable value, the amount of taxes imposed this year on the average home would be \$198.10.

If the governing body adopts the proposed tax rate of \$0.540000 per \$100 of taxable value, the amount of taxes imposed this year on the average home would be \$199.81.

Members of the public are encouraged to attend the hearings and express their views.



**Smith, de Vries Wed**



Kallie Smith, of Fort Worth, and Erik de Vries, of Delft, The Netherlands, were married July 10 at Aledo United Methodist Church in Aledo, TX. Reverend Jason Jones officiated.

Parents of the bride are Archie and Gayle Smith of Spearman, TX. Grandparent is Peggy Ellsworth.

Parents of the groom are Jan and Dineke de Vries of Termunten, The Netherlands.

Matron of Honor was Kacee Ivy, sister of the bride, of Spearman, TX. The best man was Martin de Vries, brother of the groom, of Delft, The Netherlands. The ring bearer was Gunner Ivy, nephew of the bride.

The bride is a graduate of Spearman High School and Texas Tech University with a Bachelor of Business Administration in International Business. She is employed as a global logistics coordinator at Lockheed Martin Aeronautics in Fort Worth.

The groom is a graduate of Technische Universiteit Delft with a Bachelor and Master of Science in Aerospace Engineering. He is employed as a design engineer at Atkins Global in Hoofddorp, The Netherlands.

A honeymoon to the Mediterranean is planned. The couple will reside in Fort Worth.

**Words from Faith & Grace**

by Cecil R. Biggers, Lutheran Lay Minister



In the fourteenth week of the Season of Pentecost we seek the answer to how to live the disciple life and what the source of evil is. We study Deuteronomy 4: 1-2, Psalm 15, James 1: 17-22, and Mark 7: 1-8(14-15)21-23.

Moses, who knows that he will not enter the Promised Land, charges the people to live according to God's commandments. The 'Statutes and Ordinances' teach worship. They establish norms for political, prophetic, and religious leadership. They mandate communal holidays, festivals, and times of rest. They place limits on the practice of war and blood vengeance. They ordain a just economy, communal care for the widow, orphan, and the poor and the protection of those who are vulnerable. These commandments, statutes and ordinances instruct the people of Israel how to live in God's love. Moses charges the people to teach their children and grand-children the ways of the Lord. How soon do they, and we, construct a "disciple life" of rules and regulations, without considering the loving intent of this Law and without considering that this "Law" must be lived.

The Psalmist sings a song of obedience to God's law. "O Lord who can abide in your tent?" His answer, "Those who walk blamelessly, and do what is right, and

...speak truth from their heart..." Please note that it is not enough to know the Lord or to know the "Law"; one must live the Lord's way.

James calls upon the early Christian community to be quick to listen, slow to speak, slow to anger. He exhorts them to be "doers of the word". The first chapter of James is an "index" of the topics to be covered in the following chapters. For James, "true religion" is "caring for orphans and widows in their distress, and to keep oneself unstained from the world." As we live the disciple life, we must listen to the Gospel and become aware of the needs of others. We must care for those who are vulnerable in our society. A local example of this is supporting our ministerial alliance Food Bank. True Christianity is expressed in action, in living the disciple life!

Jesus asks his disciples where does evil come from? He tells them, "There is nothing outside a person that by going in can defile, but the things that come out are what defile...for it is from within, from the human heart, that evil intentions come. Fornication, theft, murder, adultery, avarice, wickedness, deceit, licentiousness, envy, slander, pride, folly". If you do not see your favorite sin listed, please include it. Evil comes from within us! This is why we cannot free ourselves from sin; it is in our nature! It is through God's grace that we are enabled to have faith in Jesus Christ who frees us from the power of sin. It is the Holy Spirit who enables us to lead the disciple life and who leads us back to God when we stray.

May the Holy Spirit be a lamp unto your feet, that you may live the disciple life fully.

**PALO DURO RIVER AUTHORITY**

**NOTICE OF PUBLIC HEARING ON TAX RATE**

The Palo Duro River Authority will hold a public hearing on a proposed tax rate for the tax year 2012 on September 11, 2012 at 2:00 PM at the Palo Duro River Authority office. Your individual taxes may increase or decrease, depending on the change in the taxable value of your property in relation to the change in taxable value of all other property and the tax rate that is adopted.

**FOR** the proposal: Jack Lane, Les Taylor, Arthur Davidson, Rod Barkley, Jay Goodwin, Don Savage, Eddie Stallwitz and Roger Odegaard.

**AGAINST** the proposal: Paul Stavlo

**ABSENT:**

The following table compares taxes on an average residence homestead in this taxing unit last year to taxes proposed on the average residence homestead this year.

	Last Year	This Year
Total tax rate (per \$100 of value)	.083547 /\$100	.082072 /\$100
	Adopted	Proposed
Difference in rates per \$100 of value		-0.001475 /\$100
Percentage decrease in rates		-1.765 %
Average appraised value	\$55,268.00	\$51,114.00
General exemptions available (excluding senior citizen's or disabled person's exemptions)	\$5,000.00	\$5,000.00
Average taxable value	\$50,268.00	\$51,114.00
Tax on average residence homestead	\$42.00	\$41.95
Annual decrease in taxes if proposed tax rate is adopted		-\$0.04
Percentage of decrease		-0.10 %

**NOTICE OF TAXPAYERS' RIGHT TO ROLLBACK ELECTION**

If taxes on the average residence homestead increase by more than eight percent, the qualified voters of the district by petition may require that an election be held to determine whether to reduce the operation and maintenance tax rate to the rollback tax rate under Section 49.236(d), Water Code.

We will be closed on Monday, September 3rd, in observance of

**Labor Day**

**INTERSTATE BANK, sb**  
www.interstatebanksb.com  
322 Main Street • Spearman, TX  
(806) 659-2559

We will be closed on Monday, September 3rd, in observance of

**LABOR DAY**

**FSB First State Bank**

The Bank that has the Tradition of Strength & Service  
One NE Court • Spearman • (806) 659-5565  
member FDIC

**DIGITAL TV RULES**

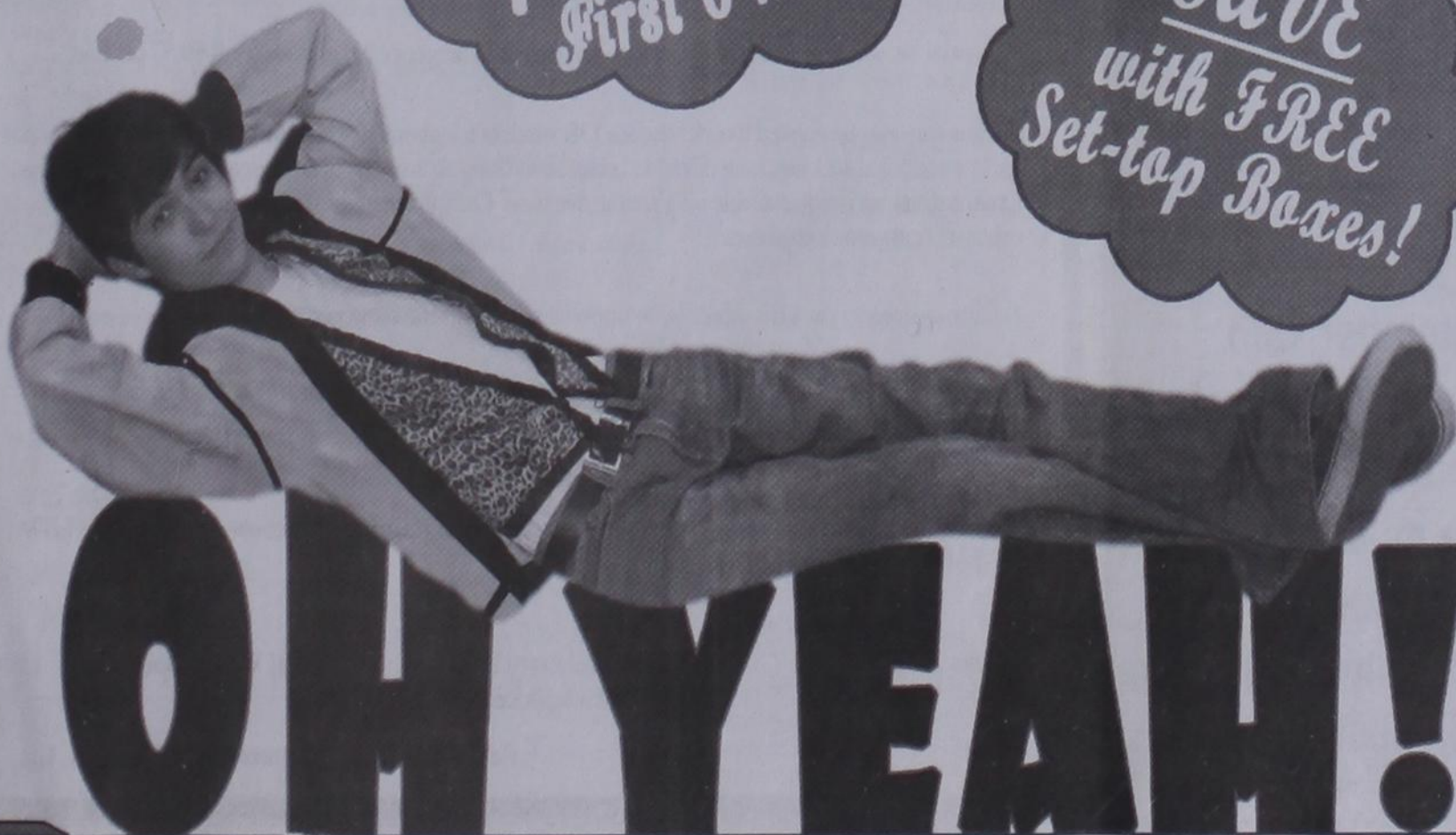
**\$29.99 mo**  
First 6 months\*

**SAVE**  
with **FREE**  
Set-top Boxes!

**FREE HD**  
for 6 months

**FREE Installation**  
first 4 set-top boxes

Watch **O.K.C. & Amarillo**  
Channels in **HD**



ptci.net  
721 W 7th - Spearman  
800-562-2556

Like Follow \*with 2-yr commitment



# Gruver ISD Policy For Free and Reduced-Priced Meals

Gruver Independent School District announces its policy for providing free and reduced-price meals for children served under the National School Lunch and Breakfast Program. Each school and/or the central office has a copy of the policy, which may be reviewed by any interested party.

The household size and income criteria identified below will be used to determine eligibility for free and reduced price benefits. Children from households whose income is at or below the levels shown are eligible for free or reduced meals. Foster children who are the legal responsibility of a welfare agency or court may also be eligible for benefits regardless of the income of the household with whom they reside. Eligibility for a foster child is based on the child's

income. Application forms are being distributed to all households with a letter informing households of the availability of free and reduced price meals for their children. Applications also are available at the Principal's office in each school. To apply for free and reduced-price meals, households must fill out the application and return it to the school. Applications may be submitted anytime during the school year. The information households provide on the application will be used for the purpose of determining eligibility and verification of data. Applications may be verified by the school officials at any time during the school year.

For school officials to determine eligibility for free and reduced price benefits, households receiving food

stamps or TANF only have to list their child's name, food stamp or TANF case number and an adult household member must sign the application.

Households who do not list food stamp or TANF case number must list the names of all household members, the amount and source of income received by each household member and the social security number of the adult household member who signs the application. If the adult who signs the application does not have a social security number, the household member must indicate that a social security number is not available by writing the word "NONE." The application must be signed by an adult household member.

Under the provision of the free and reduced price meal policy, the Food Service Director will review applica-

tions and determine eligibility. Parents wishing to make a formal appeal for a hearing on the decision may make a request either orally or in writing to Superintendent David Teal, 601 Garrett Street, Gruver, TX 79040, telephone (806) 733-2001.

If a household member becomes unemployed or if the household size increases, the household should contact the school. Such changes may make the children of the household eligible for benefits if the household's income falls at or below the levels shown above.

In accordance with federal law and U.S. Department of Agriculture policy, this institution is prohibited from discriminating on the basis of race, color, national origin, sex, age or disability.

To file a complaint of discrimination, write USDA, Director, Office of Civil Rights, Room 326-W, Whitten Building, 1400 Independence Avenue, SW Washington, D.C. 20250-9410 or call 202/720-5964 (voice and TDD). USDA is an equal opportunity provider and employer.

Children need healthy

meals to learn. **Gruver ISD** offers healthy meals every day. Breakfast costs \$1.00; lunch costs Pre-kindergarten-4th grade - \$1.50 and 5th-12th grade - \$2.00. Your children may qualify for free meals or for reduced-price meals. Reduced price is 30¢ for breakfast and 40¢ for lunch.

To apply for free or reduced-price meals, use the Free and Reduced-Price School Meals Application, which will be given to each child the first week of school.

There will be NO CHARGING - no exceptions.

Texas Department of Agriculture, Food & Nutrition Division Form H4504 April 2008

## INCOME ELIGIBILITY GUIDELINES FOR DETERMINING FREE & REDUCED PRICE BENEFITS JULY 1, 2008- JUNE 30, 2009

FAMILY SIZE	ANNUALLY		MONTHLY		TWICE PER MONTH		EVERY TWO WEEKS		WEEKLY	
	FREE	REDUCED	FREE	REDUCED	FREE	REDUCED	FREE	REDUCED	FREE	REDUCED
1	\$13,520	\$19,240	\$1,127	\$1,604	\$564	\$802	\$520	\$740	\$260	\$370
2	\$18,200	\$25,900	\$1,517	\$2,159	\$759	\$1,080	\$700	\$997	\$350	\$499
3	\$22,880	\$32,560	\$1,907	\$2,714	\$954	\$1,357	\$880	\$1,253	\$440	\$627
4	\$27,560	\$39,220	\$2,297	\$3,269	\$1,149	\$1,635	\$1,060	\$1,509	\$530	\$755
5	\$32,240	\$45,880	\$2,687	\$3,824	\$1,344	\$1,912	\$1,240	\$1,765	\$620	\$883
6	\$36,920	\$52,540	\$3,077	\$4,379	\$1,539	\$2,190	\$1,420	\$2,021	\$710	\$1,011
7	\$41,600	\$59,200	\$3,467	\$4,934	\$1,734	\$2,467	\$1,600	\$2,277	\$800	\$1,139
8	\$46,280	\$65,860	\$3,857	\$5,489	\$1,929	\$2,745	\$1,780	\$2,534	\$890	\$1,267
9	\$50,960	\$72,520	\$4,247	\$6,044	\$2,124	\$3,023	\$1,960	\$2,791	\$980	\$1,396
10	\$55,640	\$79,180	\$4,637	\$6,599	\$2,319	\$3,301	\$2,140	\$3,048	\$1,070	\$1,525
11	\$60,320	\$85,840	\$5,027	\$7,154	\$2,514	\$3,579	\$2,320	\$3,305	\$1,160	\$1,654
12	\$65,000	\$92,500	\$5,417	\$7,709	\$2,709	\$3,857	\$2,500	\$3,562	\$1,250	\$1,783
For each additional family member add:	\$4,680	\$6,660	\$390	\$555	\$195	\$278	\$180	\$257	\$90	\$129

**Are You A Victim of Domestic Violence, Sexual Abuse or Physical, Emotional or Sexual Assault?**

Call Toll Free Hotline  
**1-800-753-5308**

Battering Intervention & Anger Management Available

Panhandle Crisis Center  
Serving Hansford, Lipscomb & Ochiltree Counties  
301 S. Ash - Perryton, TX

**Red Carpet Center, Inc.**  
Full Service Flooring

*We strive for pride in our work.*  
**Free Estimates • Satisfaction Guaranteed**

920 N Cedar  
Borger TX 79070  
806-273-2728

Servicing the Panhandle and Beyond

Do you take **VIAGRA** or **CIALIS**?

**SAVE \$500!**

Get 40 100mg/20mg pills for only \$99.00

BUY THE BLUE PILL NOW!  
call **1-888-395-8456**

CALL NOW AND GET 4 BONUS PILLS FREE!

**SATISFACTION GUARANTEED**

**MITCHELL THEATRES.COM**  
GUYMON, OK • LIBERAL, KS • NEWTON, KS

**NORTHRIDGE 8**  
Guymon, Oklahoma  
www.northridge8.com  
580-338-3281

**SOUTHGATE 6**  
Liberal, Kansas  
www.southgate6.com  
620-624-5573

**SEQUOYAH 8**  
Garden City, Kansas  
www.sequoyah8.com  
620-275-2760

**CHISHOLM TRAIL 8**  
Newton, Kansas  
www.chisholmtrail8.com  
316-283-0555

FRESH POPCORN EVERYDAY!  
-PARTY ROOM & ARCADE-

**Spearman Chamber of Commerce**

**GOLF TOURNAMENT**

Saturday, September 15th  
2-Person Team Scramble & Lowball  
\$40/person - Includes 2 Mulligans  
Tee-Times - 9 a.m. & 2 p.m.  
Hansford Golf Course  
Call Tex at 659-5555 to enter or sponsor  
Lots of Prizes!  
Players under 18 must follow UIL rules & regulations.

MULTI-CHILD FREE AND REDUCED-PRICE SCHOOL MEALS APPLICATION FOR 2012-2013

CALHOUN COUNTY INDEPENDENT SCHOOL DISTRICT Local Education Agency

**Part 1. Children in School**  
Names of all children in school (Last, First, Middle Initial) School Name Last 4 digits of Social Security #, Student ID, or Date of Birth (OPTIONAL) Eligibility Group # for SNAP or TANF (if any)

Check box if a foster child (legal responsibility of welfare agency or court)

1.  2.  3.  4.  5.  6.

If you listed an Eligibility Group SNAP/TANF, skip to Part 4.

**Part 2. Homeless, Migrant or Runaway**  
If any child you are applying for is homeless, migrant or a runaway, check the appropriate box and call your school's administrative offices at ( ) Homeless  Migrant  Runaway

**Part 3. Household Members and Gross Income From Last Month (List each person in the household. For each person who receives income, write the amount received and how often it is received.)**

1. Name (List everyone in household, including students listed in Part 1.) 2. Income and how often it is received. How Often = Weekly (W), Every 2 Weeks (E), Twice a Month (T), Monthly (M) 3. Check if NO Income

	Earnings from work before deductions	How Often	Welfare, child support, alimony	How Often	Pensions, retirement, Social Security	How Often	Other	How Often	3. Check if NO Income
Example: Smith, Jane B.	\$200	W	\$50						<input type="checkbox"/>
1.									<input type="checkbox"/>
2.									<input type="checkbox"/>
3.									<input type="checkbox"/>
4.									<input type="checkbox"/>
5.									<input type="checkbox"/>
6.									<input type="checkbox"/>
7.									<input type="checkbox"/>

**Part 4. Signature and Social Security Number (Adult must sign)**  
An adult household member must sign the application. If Part 3 is completed, the adult signing the form must also list the last 4 digits of his or her Social Security Number or mark the "I do not have a Social Security Number" box. (See Privacy Act Statement on the "Instructions for Applying" page.)  
I certify (promise) that all information on this application is true and that all income is reported. I understand that the school will get federal funds based on the information I give. I understand that school officials may verify (check) the information. I understand that if I purposely give false information, my children may lose meal benefits, and I may be prosecuted.

Sign here: \_\_\_\_\_ Date: \_\_\_\_\_  
Social Security Number: XXX-XX-\_\_\_\_  I do not have a Social Security Number.  
Printed Name: \_\_\_\_\_ Home Phone: \_\_\_\_\_ Work Phone: \_\_\_\_\_  
Mailing Address: \_\_\_\_\_ City: \_\_\_\_\_ State: \_\_\_\_\_ Zip: \_\_\_\_\_

Do not fill out this part. For school use only.  
Multiple income frequencies must be converted to annual amounts and combined to determine household income. Do not convert if only one income frequency is provided by the household. If converting income to annual, round only the final number.  
Annual Income Conversion: Weekly x 52, Every 2 Weeks x 26, Twice a Month x 24, Monthly x 12

Household Income: \_\_\_\_\_ Household Size: \_\_\_\_\_ SNAP/TANF: \_\_\_\_\_ Date Withdrawn: \_\_\_\_\_  
Meal Eligibility: Free \_\_\_\_\_ Reduced \_\_\_\_\_ Denied \_\_\_\_\_ Reason: \_\_\_\_\_

Reviewing Official's Signature: \_\_\_\_\_ Date: \_\_\_\_\_  
Confirming Official's Signature: \_\_\_\_\_ Date: \_\_\_\_\_  
Follow-up Official's Signature: \_\_\_\_\_ Date: \_\_\_\_\_

Note: Temporary approval of an application is no longer applicable because of the year-long duration of eligibility.

**PTCI®**  
LIFELINE SERVICE PROGRAM AND UNIVERSAL SERVICES

The Federal Communications Commission and the Public Utility Commission of Texas have established a program to make basic telephone service more affordable to eligible customers.

**Lifeline Service** is a program designed to make basic telephone service available at reduced rates to eligible residential customers. Customers' eligibility to receive the discount must be renewed annually.

**Who Qualifies for Lifeline Service?**  
To be eligible for Lifeline, a customer's annual household income must be at or below 150% of the federal poverty guidelines, or a customer must receive benefits from or have a child in the household who receives benefits from at least one of the following programs:

- Federal Public Housing Assistance (FPHA) or Section 8
- Supplemental Nutrition Assistance Program (SNAP a/k/a Food Stamps)
- Low Income Home Energy Assistance Program (LIHEAP)
- Medicaid
- Children's Health Insurance Program (CHIP)
- National School Lunch Program (only applicant or customer who satisfies the income standard of the program for free meals)
- Supplemental Security Income (SSI)
- Temporary Assistance for Needy Families (TANF)

Universal Services available to all customers of PTCI® include:

- Voice grade access to the public switched network
- Local usage
- Dual tone multi-frequency signaling or its functional equivalent
- Single-party service or its functional equivalent
- Access to emergency services
- Access to operator services
- Access to interexchange services
- Access to directory assistance
- Toll limitation for qualifying low-income consumers

Unlimited local calling is \$19.50 for residential service. Emergency 911 service fee is \$0.50 per line.

Lifeline can only be applied to one wireline OR wireless telephone per household. The discount does not apply to optional services, long distance, connection charges, taxes, or other miscellaneous charges. The Lifeline discount is not available on a retroactive basis. Only the State of Texas or its vendors can approve a customer's eligibility.

Lifeline customers can also subscribe to optional services at the same rate offered to other customers.

**How do Telephone Customers and Applicants for Telephone Service Apply for Lifeline Programs?** If you live in the PTCI service area, you may request enrollment forms from the PTCI business office or you may call PTCI at 1-800-562-2556, and we will be glad to assist you.

Additional information may be obtained by contacting the Low-Income Discount Administrator (LIDA) at 1-866-454-8487 (1-866-4-LITE-UP)

1-800-562-2556 222 S. Amherst - Perryton www.ptci.net 721 W 7th - Spearman

PTCI® Panhandle Telecommunication Systems, Inc.



**REAL ESTATE**

**FOR SALE IN SPEARMAN:** 501 S. Barkley St.; Newly remodeled, 2300 sq. feet, 4BR, 2B, finished basement, 2 car garage, storage building; \$140,000. Call 806-270-0771. TFN(9/30/12)

**FOR SALE:** 3 Bedroom Single wide "like new" 2006 models most never lived in. Starting at 19,900, will deliver. Call A-1 homes 1-800-633-3955. RBL35824 4(9/30/12)

**FOR SALE:** Park Model Travel Trailer's. 32' Bumper pull. Sold at used prices. Most never lived in. Call A-1 Homes 1-800-633-3955. 4(9/30/12)

**HELP WANTED**

**HELP WANTED:** Full-time office personnel needed. Accounting, computer and secretarial skills are required. Send resume to Gigot Agra Products, PO Box 95, Spearman, TX 79081. TFN(5/10/12)

**HELP WANTED:** Wolf Creek Feedyard, located in Perryton, TX, is accepting applications for Feed Truck Driver and general labor. CDL not required. Experience is not required. We will train the right applicant. We offer a competitive wage, benefits including health insurance and a retirement plan. Please call 435-5697 or come by the office to fill out an application. TFN(06/14/12)

**HELP WANTED:** Five Star Equipment is looking for an experienced diesel mechanic and an ATV specialist. Salary plus commission including benefits such as retirement, vacation, uniforms and sick leave. Apply in person at five star equipment 10397 Highway 15 West or call 806-659-3743. Come grow with us, we have a lot to offer! TFN(6/14/12)

**HELP WANTED:** Drivers: Sign-On Bonus! Regional Runs. Great Miles. Benefits, Vacation, 401K, Expanding Fleet Wants You! Apply: www.heyl.net 800-973-9161 3(8/9/12)B

**HELP WANTED:** Frontier Feedyard is accepting applications until August 20, 2012 for an experienced Pen Rider. EOE. Contact Levi at 806-202-9029 or 806-882-4251. TFN(8/16/12)B

**HELP WANTED:** Part-Time Retail Merchandiser needed to service Hallmark products at Alco store in Spearman, TX. To apply please visit: www.hallmark.candidate-care.com. 3(8/9/12)B

**HELP WANTED:** First State Bank, Spearman, has full time positions open. Applicant must have a high school diploma or equivalent, typing and some ten-key skills required, customer relation and telephone skills are very important. Background in accounting, word processing and spreadsheets is helpful but not required. Benefit program includes group hospitalization insurance, retirement, vacation pay, sick leave pay and holiday pay. Apply with Ginger Turner at First State Bank, PO Box 247, Spearman, TX, 79081, telephone #(806) 659-5565. An Equal Opportunity Employer. TFN(8/9/12)B

**HELP WANTED:** Oilfield work, must have drivers license. Good pay and benefits. Call 806-659-3911 or come by at 1103 West 7th, Spearman. Trencor Enterprises, Inc. TFN(8/16/12)B

**FULL TIME ROAD HAND NEEDED:** for Hansford County, Precinct 4. Heavy equipment operator. CDL required. Applications can be picked up at the County Treasurer's Office and at the County Judge's Office at the Hansford County Courthouse, Spearman, Texas. 3(8/30/12)B

**HOCHY POCHY PARLOR** Call us for all your pet's grooming and boarding needs. Call now for reservations! 806-273-2724. TFN(11/2/07)B

**SERVICES**

**MOORE/HARTLEY CO. LINE 633 AC.** - Choice farm w/1/2 mile sprinkler w/some big pipe, 5 irr. wells, country road on two sides, one mile from pvt. COUNTRY CLUB VIEW - 624.9 ac. +/-, great development potential, located between Dumas & the Dumas Municipal Golf Course on Hwy. 2203 just south of Hwy. 119. 1/2 mile sprinkler, 4 irrigation wells. DUMAS FARMS II - 1280 acres deeded, 320 ac. for lease with purchase of property, nice 2 bdrm. mobile home w/concrete foundation, mud room and patio, 2 all-steel barns w/concrete floors, 7 irrigation wells, UG pipe, on pvt. and all weather road. VALLEY VIEW RANCH - Lipscomb Co., TX - 177 ac. w/extraordinary 5404 sq. ft. +/- home overlooking the property w/ beautiful views of live creek, trees, wildlife (deer, quail, & turkey), covered horse training facilities, stables, excellent cattle working facilities & pens, commercial dog kennels, employee housing. We can divide (10 ac. w/main residence or 167 ac. +/- w/other improvements)! SHERMAN CO., TX - 627 acres, choice land, four 1/4 mile sprinklers, fully developed, one 1/4 mile off Hwy. 287 on paved CR - CC, 3 phase electricity, new irrigation well drilled in 2010. 1200 SOW FARROW TO FINNISH OPERATION - Moore Co., TX - New 5 yr. lease with major hog company. Two separate units, can be divided - Please contact broker for info package and price. www.scottlandcompany.com www.texascrp.com Shawn Gillispie 806/922-5532 Ben G. Scott, Broker 1-800-933-9698 day/eve TFN(8-30-12)

**Century 21**  
Golden Spread Realty

122 S Hazelwood - Vacant lot, 50x140, can be used for mobile homes - Make Offer!

MaryAnn Martinez, Realtor (806)202-1654  
Gina Deal, Broker/Owner (806)435-5444  
www.century21.com

INDEPENDENTLY OWNED & OPERATED. ©1992B and TM Century 21 Real Estate Corporation. Equal Housing Opportunity. (8-02-12)B

**Blankenship Real Estate**  
659-3052 - 670-3774

LET US HELP YOU SELL YOUR HOME.

30 Haney Completely remodeled building on 70x140 ft. lot. Ideal for office or small business.

Brick 3BR, 2B Separate dining room, basement, single car garage, fence, storage building.

NEW LISTINGS WANTED!  
Eulalia Blankenship - Sales  
Eschol Blankenship - Broker

**Shirley Howard**  
Properties  
Howard

We NEED listings! Call us now to help YOU sell your home for top dollar!

12510 Hwy 207 - Spearman: 1997 MH, 1,178 sq ft with 3BR, 2B, PLUS @ 21 acres! Water Well & Septic! REDUCED to \$110,000.

1119 S Townsend - Spearman: 2,650 total sf - 4 bed, 1 3/4 bath, basement, cov patio, and much more! REDUCED to \$110,000.

Shirley Howard, Broker/Owner 806-886-6536, Cell 806-648-4444, Work Melinda McCullough, Realtor (806) 733-5678

We would LOVE to sell your HOUSE! CALL US!

Check our websites for other properties.

MOORE/HARTLEY CO. LINE 633 AC. - Choice farm w/1/2 mile sprinkler w/some big pipe, 5 irr. wells, country road on two sides, one mile from pvt.

COUNTRY CLUB VIEW - 624.9 ac. +/-, great development potential, located between Dumas & the Dumas Municipal Golf Course on Hwy. 2203 just south of Hwy. 119. 1/2 mile sprinkler, 4 irrigation wells.

DUMAS FARMS II - 1280 acres deeded, 320 ac. for lease with purchase of property, nice 2 bdrm. mobile home w/concrete foundation, mud room and patio, 2 all-steel barns w/concrete floors, 7 irrigation wells, UG pipe, on pvt. and all weather road.

VALLEY VIEW RANCH - Lipscomb Co., TX - 177 ac. w/extraordinary 5404 sq. ft. +/- home overlooking the property w/ beautiful views of live creek, trees, wildlife (deer, quail, & turkey), covered horse training facilities, stables, excellent cattle working facilities & pens, commercial dog kennels, employee housing. We can divide (10 ac. w/main residence or 167 ac. +/- w/other improvements)! SHERMAN CO., TX - 627 acres, choice land, four 1/4 mile sprinklers, fully developed, one 1/4 mile off Hwy. 287 on paved CR - CC, 3 phase electricity, new irrigation well drilled in 2010. 1200 SOW FARROW TO FINNISH OPERATION - Moore Co., TX - New 5 yr. lease with major hog company. Two separate units, can be divided - Please contact broker for info package and price. www.scottlandcompany.com www.texascrp.com Shawn Gillispie 806/922-5532 Ben G. Scott, Broker 1-800-933-9698 day/eve TFN(8-30-12)

**ALL STATE REALTY**  
806 435-SOLD (7653)

All State Realty  
Sherrie E. Rima  
806-435-SOLD (7653)  
Craig Cooper  
806-736-8235

Interest Rates are at historic lows... Homes are available... prices are LOW!! Buy now before the rush for school starts! Seriously... WHAT are you waiting for?!? Call TODAY!

905 Cluck, Gruver - 2462 sq. ft. 4BR/2 1/4 BA, CHCA, Sunroom, Game room, Hot tub! \$195,000

605 Richardson, Gruver - Impressive!! Ready to move into NOW! 4 BR/2 Bath 1576 sq. ft. priced to SELL! \$94,000

Country Living, Hitchland TX - Country Living at its BEST!! Convenience to Town yet Peaceful surroundings 1344 sq. ft. 3 BR/1 1/4 Bath CACH. \$65,000

We have BUYERS, but we need LISTINGS!  
Call Us Today & Let us put the Two of you together!

**TIRED OF GARAGE SALE PRICES?** Let me buy your good used furniture! 2nd Chance Antiques & Furniture, Don 806-648-1480; 806-202-1391 cell. TFN(1/20/11)B

**HANDYMAN** Will help with your odd jobs. Call (817) 894-1630 or (806) 584-4793. TFN(8/23/12)B

**WANTED**

**OLD BRICK** If you have any old brick laying around, let us take it off your hands! Call 806-584-4793 and we will come pick it up. (8/16/12)B

**PUBLIC NOTICE**

**LEGAL NOTICE**  
Hansford County Commissioner's Court will receive bids until 4:00 p.m. on Wednesday, September 19, 2012 on one new 2012 or newer 1/2 or 3/4 ton regular cab, 4-wheel drive pickup with/without trade-in for Precinct 4. Bids will be opened and reviewed prior to Monday, September 24, 2012's regular Commissioners' Court meeting beginning at 10:00 a.m. Specifications are available in the County Judge's Office in the Hansford County Courthouse in Spearman. The Court reserves the right to accept or reject any or all bids.  
Benny Wilson  
Hansford County Judge  
3(8/30/12)B

**NOTICE TO BIDDERS**  
Sealed proposals for a one year contract for bulk fuel will be received by the City of

Spearman, Texas, until 11:00 a.m., September 12, 2012, and then publicly opened and read.  
The City reserves the right to reject any or all bids, to waive informalities and to accept the bid deemed to be the most advantageous to the City. All bids received after the above closing hour will be returned unopened.  
All bids shall be sealed and marked on the outer envelope "Bulk Fuel".  
Specifications and bidding documents may be secured from PO Box 37, Spearman, Texas 79081.  
2(8/23/12)B

**CRASS OCT RASP**  
**LENTO PHI ROUTE**  
**EATER EEN OPTIC**  
**FRIEDAN NEWYORK**  
**DIG TYKE**  
**JAN DOER ENDALL**  
**ALIT RUIN ARGUE**  
**NOGO ARCED ULNA**  
**INEPT OKRA BOAR**  
**SERIAL LOCH WRY**  
**MUSE HAP**  
**WATTAGE GAGARIN**  
**AREAL PEW GRADE**  
**LIEGE ANY LANES**  
**LASS LEN ESTES**

2	1	4	8	6	3	9	5	7
7	9	3	1	5	4	8	6	2
8	5	6	2	9	7	4	1	3
1	8	5	6	7	2	3	4	9
9	4	2	3	8	1	5	7	6
6	3	7	5	4	9	1	2	8
5	6	1	9	2	8	7	3	4
3	7	8	4	1	6	2	9	5
4	2	9	7	3	5	6	8	1

**HOST AN EXCHANGE STUDENT TODAY!**  
(for 3, 5 or 10 months)

Make this year the most exciting, enriching year ever for you and your family. Welcome a high school student, 15-18 years old, from Italy, France, Norway, Denmark, Spain, Germany, Brazil, Thailand or China as part of your family for a school year (or less) and make an overseas friend for life. For more information or to select your own exchange student please call:  
Marcy at 1-800-888-9040 (Toll Free) or e-mail us at info@world-heritage.org  
www.whhosts.com  
World Heritage is a public benefit, non-profit organization based in Laguna Beach, CA.

**FOR SALE BY OWNER**  
320 Acres Dryland Farm close to Spearman. 2011 FSA Payments - \$988. Serious inquiries only!  
806-872-2870  
4(8/30/12)

**MARTIN & ASSOCIATES REALTY**  
Serving Hansford County Since 1990

908 S. Dressen: 3 bed, 1 bath, CH/CA, carpet, corner lot

612 S. Evans: Don't miss out! 3 bed, 1 3/4 bath, CH/CA, big closed porch, nice yard. Includes lot and barn on south side, 614 S. Evans

Julie Martin: Broker - 659-2425

We'd Like Your Listing!  
FOR QUALITY & SERVICE CALL US TODAY!  
Equal Housing Opportunity

**hchd**  
Hansford County Hospital District  
Dr. Mark Garnett, D.O. Dr. Haishen, M.D.  
Dr. Heidi Colter, M.D. Michelle Davis, PA-C

707 S. Roland • Spearman, TX (806) 659-2535

**OPENINGS AT HANSFORD HOSPITAL**  
Hospital/Inpatient Certified Pharmacy Tech: Process hospital patient charges, records, and filling. Fill inpatient medication cart as needed. Order supplies as needed. Any and all other assignments assigned by the Pharmacist. Hospital Pharmacy experience preferred but not required.  
Great working environment and staff, quality facility providing opportunities for professional growth. Great Benefit package. Apply at 707 S. Roland, Spearman, TX or contact Jackie Nelson, HR 806-659-5841. Download application at hchd.net EEOE (8/30/12)

**DRIVE YOURSELF TO SUCCESS & EARN THE MONEY YOU DESERVE**  
Truck Supervisors

Key Energy Services is currently seeking Truck Supervisors for our Fluid Management Services location in Perryton, TX.

Requirements:  
CDL-A with Tanker.

Key Energy Services offers a very competitive compensation and benefits package including medical, vision and dental coverage, life insurance and 401(k). For questions or more information, please call 1-855-590-4817. To apply, you may visit our new career site at [www.keyenergy.com](http://www.keyenergy.com).

keyenergy.com

**"Yes"**

**Dollar General** values a positive, friendly attitude. In fact, our rapidly growing company has become the nation's largest small-format retail discounter by improving lives through service. We also serve our employees by offering competitive compensation and advancement potential. We have the following opportunities available at our store in Spearman, TX:

- Store Manager
- Sales Associates

Applicants interested in Store Management positions, send resume to [cewicker@dollargeneral.com](mailto:cewicker@dollargeneral.com). All others may apply online or download a Sales Associate application at [www.dollargeneral.com/careers](http://www.dollargeneral.com/careers).

EOE M/F/D/V

**DOLLAR GENERAL** **DC careers**  
SERVE • SOCIAL • SUCCEED

Serving others is our mission. Make it yours.

Hotline for Priority Seating - 435-3945

**MONEY'S**  
BBQ & STEAK HOUSE

Stan and Donna Zepp

New, Updated Menu Same Great Service

**TEXAS STATEWIDE CLASSIFIED ADVERTISING NETWORK**  
**TexSCAN**

**TexSCAN Week of August 26, 2012**

**CABLE/SATELLITE**  
SAVE OVER \$800 when you switch to Dish! Promotional prices start at \$19.99 a month. Call today and ask about next day installation. 1-800-491-8599

**DRIVERS**  
CALLING ALL CDL-A DRIVERS! Join the team at Averitt. Great home time & benefits. 4-months T/T experience required. Apply now! 1-888-362-8608 AVERITTcareers.com. EOE

**CDL-A DRIVERS!** Texas regional drivers needed. Take home more. Be home more. Dedicated freight and modern equipment. Dallas terminal coming soon. 1-800-392-6109. www.gorohl.com

**DRIVERS-OWNER OPERATORS** and fleet drivers TX or OK/CDL. New pay package sign on bonus. return to Texas every 6-8 days. Call 1-800-765-3952.

**DRIVERS-REFRIGERATED & Dry Van** freight. Flexible home time, annual salary \$45K-\$60K. Quarterly bonus. CDL-A, 3-months current OTR experience. 1-800-414-9569. www.drivetruck.com

**DRIVERS- SOUTHERN REGIONAL** and National runs earn 32¢-45¢ per mile. \$1200 sign-on bonus. Assigned equipment, pet policy, deBoer Transportation 1-800-825-9511. O/O's welcome! www.deboertrans.com

**DRIVERS- STUDENTS** 18-days from start to finish. Earn your CDL-A. No out-of-pocket tuition cost. Step up to a new career with FFE. www.drivette.com. 1-855-356-7122

**DRIVERS- TEAMS AND SOLOS** dedicated runs, recession proof freight. Class CDL-A and one-year experience. Lease purchase program with down payment assistance. Call 1-866-904-9230. DriveForGreatwide.com

**DRIVERS- \$2000 SIGN-ON!** Excellent home time. SW regional. Great benefits/top pay. Minimum 6-months T/T experience and Class CDL-A required. Paid orientation/training 1-888-518-7084. www.cypresstruck.com

**NOW HIRING** dedicated company drivers and O/O's. High miles, great running lanes, no Northeast. Sign-on bonus, 1-year experience required. Jacobson Companies 1-800-397-8132. www.DRIVEJTO.com

**OWNER OPERATORS** Home every other night. Dedicated to one customer. 100% fuel surcharge, lease purchase program with down payment assistance. Class CDL-A and 1-year experience. 1-866-242-4978. DriveForGreatwide.com. Text: Greatwide to 30364

**PAID CDL TRAINING!** No experience needed. Stevens Transport will sponsor the cost of your CDL training. Earn up to \$40K first year and \$70K third year. Excellent benefits! EOE. 1-800-333-8595. www.becomeadriverr.com

**EXPERIENCED FLATBED DRIVERS** Regional opportunities now open with plenty of freight and great pay. 1-800-277-0212 or primeinc.com

**YOU GOT THE DRIVE,** we have the direction. OTR drivers, APU Equipped. Pre-Pass, EZ-pass, passenger policy. Newer equipment 100% NO touch. 1-800-528-7825

**EDUCATION**  
AIRLINE CAREERS begin here. Become an aviation maintenance tech. FAA approved training. Financial aid if qualified, housing available, job placement assistance. Call Aviation Institute of Maintenance. 1-877-523-4531

**ATTEND COLLEGE ONLINE** from home. Medical, Business, Criminal Justice, Hospitality. Job placement assistance. Computer available. Financial aid if qualified. SCHEV certified. Call 1-888-205-8920. www.CenturaOnline.com

**HIGH SCHOOL PROFICIENCY** Diploma 4-week program, free brochure and full information. Call now! 1-866-562-3650. ext. 55. www.southeasternHS.com

**HELP WANTED**  
CAN YOU DIG IT? Heavy equipment school. 3-week training program. Backhoes, bulldozers, excavators. Local job placement assistance. VA benefits approved. two national certifications. 1-866-362-6497

**MISCELLANEOUS**  
SAWMILLS FROM ONLY \$3997.00. Make and save money with your own bandmill. Cut lumber any dimension. In stock ready to ship. Free information/DVD. www.NorwoodSawmills.com 1-800-578-1363. Ext. 300N

**REAL ESTATE**  
10.24 ACRES, Duval County. South Texas brush. Electricity. Deer, hog, turkey. Private locked gate entrance. \$1817 down, \$357/month. (11%, 20-years) or TX Vet. Toll-free, 1-866-286-0199. www.westernland.com

33.45 ACRES north of Brackettville. Native, exotic game, hogs, turkey. \$2258 down, \$411/month. (9.9%, 20 years) or TX Vet financing. 1-830-257-5564. www.hillcountryranches.com

\$106 MONTH BUYS land for RV, MH or cabin. Gated entry, \$690 down, (\$6900/10.91%/yr) 90-days same as cash. Guaranteed financing. 1-936-377-3235

ABSOLUTELY THE BEST VIEW Lake Medina/Bandersa 1/4 acre tract, central WISE, RV, MH or house OK only \$830 down, \$235/month (12.91%/10yr). Guaranteed financing, more information call 1-830-460-8354

AFFORDABLE RESORT LIVING on Lake Fork. RV and manufactured housing OK. Guaranteed financing with 10% down. Lots starting as low as \$6900. Call Josh. 1-903-878-7265

WEEKEND GETAWAY available on Lake Fork. Lake Livingston or Lake Medina. Rooms fully furnished! Gated community with clubhouse, swimming pool and boat ramps. Call for more information: 1-903-878-7265. 1-936-377-3235 or 1-830-460-8354

**STEEL BUILDINGS**  
STEEL BUILDINGS for homes and garages. Save thousands, low monthly payments, make offer on clearance orders. 40x60, 30x36, 25x30, 20x22. Call now. 1-800-991-9251. ask for Nicole

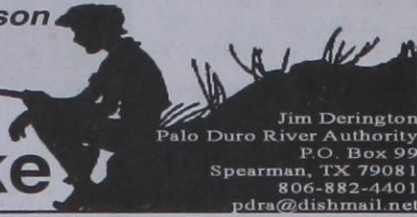
**Run Your Ad In TexSCAN!**  
Statewide Ad ..... \$500  
301 Newspapers, 942,418 Circulation  
North Region Only ..... \$230  
98 Newspapers, 263,811 Circulation  
South Region Only ..... \$230  
101 Newspapers, 366,726 Circulation  
West Region Only ..... \$230  
102 Newspapers, 311,881 Circulation  
To Order, Call This Newspaper direct, or call Texas Press Service at 1-800-749-4793 Today!

NOTICE: While most advertisers are reputable, we cannot guarantee products or services advertised. We urge readers to use caution and when in doubt, contact the Texas Attorney General at 1-800-621-0508 or the Federal Trade Commission at 1-877-FTC-HELP. The FTC web site is [www.ftc.gov/bizop](http://www.ftc.gov/bizop)  
Extend your advertising reach with TexSCAN, your Statewide Classified Ad Network.



by Dorothy Hudson

# Out at the Lake



Jim Derington  
Palo Duro River Authority  
P.O. Box 99  
Spearman, TX 79081  
806-882-4401  
pdra@dishmail.net

Lake Level--August 27, 2012--25.75 feet

One of our recent showers brought .43 inch of rain to Jim's office gauge and .50 inch to Ramon's gauge on the north side of the Lake.

Be especially alert for rattlesnakes this time of year if you are walking in the Park or around the Lake. Jim has recently seen 3 dead rattlesnakes on the highways.

There were 5 campers

behind the dam and 2 on the office side two weekends ago. Most of them were new campers that live fairly close.

Jim did see some 3 pound catfish being caught. That sounds like a good eating size.

For those interested in birds, Jim has seen a blue grosbeak at their feeder this week. These birds are considered common in the spring, summer, and fall, but I have rarely seen

them. The males are a dark blue overall with reddish wing bars. The females and fall immature birds don't have the blue color, but all of them have the thick beaks. They are often seen with buntings.

Jim has seen the dark gray white-tail doe again. He didn't have his camera, but he and Mike Wheat, our game warden, are hoping someone will get a picture of her.

**Louise Vaught Now Cen-**

**tenarian**  
Louise and Lucille Buchanan, twin daughters of J. H. and Mary Jane Thompson Buchanan, were born at Old Hansford August 5, 1912. Mr. Buchanan had moved his wife and three sons, J.B., Wilson, and Monroe, to Hansford, when he bought the Hansford Headlight in 1911. After the twins, Helen, Edna, Paul, and Virginia joined the family. Ruth, the last of the 10 children, was born in California.

Several of the Buchanans were nonagenarians when they died but Louise is the only one to celebrate 100 years. She had told her family at the Buchanan reunion this year that she was not going to have a birthday

celebration, but the Continental Retirement Center in Amarillo where she lives, gave her a celebration anyway. Her daughter Jeanne and her husband Fred Howard, grandson Jake and his wife and family all came from Pennsylvania to enjoy the party.

David Horsley mentioned in his August 20 column in the Amarillo

Globe-News that Louise Vaught was one of Amarillo's liveliest centenarians. "Louise is a joyful person, and maybe that's why she has lived so long."

We can wish Louise, as the sole survivor of her generation of the Buchanan clan, a happy belated birthday and add the wish for "many more."



These turkeys were seen near the pond, behind the dam.

# Spearman FFA Thanks You for your continued support!

The Spearman FFA Chapter would like to begin this 2012-2013 school year by saying **THANK YOU** to all of its supporters across the community. We felt like it was imperative to list those who have a major impact on our success. Also give the chance for the community to see the achievements we had in 2011-2012 as a result of their support.

### Continued Supporters

#### Stock Show Buyers for Spearman FFA

##### Grand Champion Pig

North Plains Insurance \$10.00/lb.  
Shown by Mabry Sutterfield

##### Res. Gd. Champion Pig

H&H Water Well

\$10.50/lb. Shown by Brantly Shields

##### Grand Champion Steer

Five-Star Equipment

\$3.80/lb. Shown by Lauren Patterson

##### Res. Gd. Champion Steer

Huddleston Cotton Sales

\$3.50/lb. Shown by Zane Patterson

##### Additional Buyers:

Jerry & Pat Howard; Richard Pipkin; Kyler Nollner; Archie Smith; E & M Builders Inc.; Keith, Jodie, & Tyann Hight; Billie & Joan Brown; Renner-Pearson Inc.; Coy & Nancy Kelley; First State Bank of Spearman; Mike & Patty Schnell; CHAM Farm & Ranch; North Star Ag; Cargill Ag Horizons; The Hansford Agency; S & P Farms; AgroCulture Liquid Fertilizers; Jim Shirley; Patton Custom Fertilizer, LLC; Gus Gifford; First National Bank of Spearman; Justin Gifford; Willis Boyd Dirt Service; 3-J; Cattle Company; McLeod Farms; Hansford Aviation; AGCO of Spearman; Farmer Ag Supply; Nutrena Showmaster Feeds; Mc Cattle Company; Tom & Linda Latta; Carson & Shelley Womble; C & B Feeders; Conley Farms; Farm Supply & Service; Phillip & Lynna Renner; Fred & Brenda Shieldknight; SportsZone; Hadley & Sonja Reed; Elaine Odegaard; Jason & Kendra Cantrell; Hansford Implement; Shieldknight Land & Cattle; H & H Water Well; First Bank Southwest; Five Star Equipment; Dean Cluck Feedyard; Todd & Krista Baird; Bort Insurance Company; Pat & Cathy Patterson; Sparks Brothers Spraying; Buzzard Farms; Kevin Huddleston Cotton Sales; Dave Barkley; Adobe Walls Cotton Gin; Margaret Ralston; Mike & Eric Cudd; Gruver State Bank; Holt Land & Cattle; Kaylle & Trell Etbauer; Jason & Missy Bass; Badger Resources; Hansford County Farm Bureau; Texas Farms; Western Hot Oil Service; Dumas Co-Op; Clark Dirt Contractors; Dub & Betty Womble; North Plains Insurance Agency

Thank you all for your amazing support for the Spearman FFA Chapter. This is what makes Hansford County a great place to grow up. We hope to bring you more opportunities in this upcoming year to show how your support makes a difference.

Sincerely,  
Spearman FFA Chapter



### Spearman FFA Results from 2011-2012 Major Stock shows

**Tri-State Fair 2011 Steer Show:** Zane Patterson - 5th Place Angus; Trace Patterson - 3rd Place Hereford, 4th Place Exotic; **Tri-State Fair 2011 Barrow Show:** Malory Martin - Reserve Grand Champion/Res. Hampshire; Thaxton Boyd - Champion Yorkshire; Malory Martin - Champion Crossbred; Lauren Patterson - Reserve Crossbred; Malory Martin - 1st Place Crossbred; Ryan Schnell - 2nd Place Hampshire; Mabry Sutterfield - 2nd Place Yorkshire; Richard Jarvis - 2nd Place Crossbred; Daniel Jarvis - 2nd Place Crossbred; Lauren Patterson - 2nd Place Crossbred; Brantly Shields - 2nd Place Crossbred; Trace Patterson - 3rd Place Crossbred; Trace Patterson - 5th Place Crossbred; Jennifer Crowl - 5th Place Hampshire; Jonathan Crowl - 6th Place Hampshire;

**State Fair of Texas 2011 Jr. Market Barrow Show:** Thaxton Boyd - Champion Yorkshire; Malory Martin - Class Winning Dk Cross; Zane Patterson - 4th Place Dk Cross; Mabry Sutterfield - 10th Place Yorkshire; Daniel Jarvis - 10th Place Cross; Trace Patterson - 10th Place Cross; **Other Exhibitors:** Lauren Patterson, Ryan Schnell, Richard Jarvis, Brantly Shields, Jennifer Crowl, Jonathan Crowl

**Fort Worth Stock Show 2012: Jr. Steers:** Zane Patterson - 6th Angus, Trayse Heater, Lauren Patterson, Trace Patterson; **Jr. Barrows:** Thaxton Boyd - Res. Breed WOPB; Mabry Sutterfield - 1st Place Cross; Reece Shields - 8th Place Duroc; Malory Martin - 10th Place Cross; Cooper DeArmond

**San Antonio Stock Show 2012: Jr. Market Barrow Show:** Lauren Patterson - Champion Yorkshire; Malory Martin - 1st Place Cross; Richard Jarvis - 2nd Place Hampshire; Brantly Shields - 2nd Place Hampshire; Trace Patterson - 3rd Place Cross; Lexie Jackson - 4th Place Berkshire; Reid Harrell - 5th Place Hampshire; Marlie Kelp - 5th Place Cross; Mabry Sutterfield - 8th Place Cross; Thaxton Boyd - 8th Place Cross; Reece Shields - 9th Place Cross; Lilly Patterson - 9th Place Cross; Daniel Jarvis - 10th Place Hampshire; Jace Lang-Swan - 10th Place Dark Cross; **Other Exhibitors:** Jonathan Crowl, Chaz Patterson, Sarah Jackson, Karissa Martinez, Kelsea Porter, Jesus Lucero, Zane Patterson, Trayse Heater, Joe Martinez, Alec Cenicerros, Steffan Werner, Isiah Navarette, William Jackson, Josh Martinez, Ryan Schnell, Beau Brown, Shakota Field; **Jr. Market Steer Show:** Zane Patterson - 3rd Place Hereford; Trace Patterson - 4th Place Chianina; Trayse Heater; **Jr. Market Lamb Show:** Jennifer Crowl - 8th Place MW; Jonathan Crowl

**Houston Livestock Show 2012: Jr. Market Barrows:** Mabry Sutterfield - Champion MW Division Cross; Reece Shields - Reserve MW Division Hampshire; Ryan Schnell - 1st Place Crossbred; Brock Schroeder - 2nd Place Crossbred; Lauren Patterson - 3rd Place Crossbred; Malory Martin - 4th Place Dark Cross; Shakota Field - 6th Place Crossbred; Thaxton Boyd - 6th Place Poland China; Jonathan Crowl - 6th Place Hampshire; Jennifer Crowl - 9th Place Berkshire; **Jr. Market Lambs:** Tylo Farrar; **Jr. Breeding Heifers:** Audy Reed - 8th Place Chianina; **Other Exhibitors:** Carson Pearson, Trace Patterson, Zane Patterson

### Spearman FFA Results from 2011-2012

#### County Stock Show Results

**Steer Show:** Lauren Patterson - Grand Champion; Zane Patterson - Res. Grand Champion; Trayse Heater - 1st Place; Trace Patterson - 2nd Place

**Lamb Show:** Tylo Farrar - 1st Place; Carson Pearson - 2nd Place; Karissa Martinez - 4th Place; Joe Martinez - 6th Place; Josh Martinez - 6th Place; Cooper DeArmond - 6th Place

**Heifer Show:** Audy Reed - Reserve Champion

**Swine Show:** Mabry Sutterfield - Grand Champion/Ch. Dark Cross; Malory Martin - 2nd Place Lt Cross; Brantly Shields - Reserve Champion/Ch. Hamp; Steffan Cook - 2nd Place Dk Cross; Thaxton Boyd - Champion OPB; William Jackson - 2nd Place Dk Cross; Reece Shields - Champion Duroc; Karissa Martinez - 3rd Place OPB; Jennifer Crowl - Res. Ch. OPB; Beau Brown - 3rd Place Yorkshire; Trace Patterson - Res. Ch. Lt. Cross; Allison Brown - 3rd Place Lt Cross; Jace Lang-Swan - Res. Ch. Dark Cross; Marlie Kelp - 3rd Place Lt Cross; Lauren Patterson - Res. Ch. Yorkshire; Steffan Werner - 3rd Place Lt Cross; Lexie Jackson - 1st Place OPB; Caleb Chockley - 3rd Place Dk Cross; Payton Harrell - 1st Place Hampshire; Daniel Jarvis - 3rd Place Hampshire; Ryan Schnell - 1st Place Hampshire; Kyler Cator - 4th Place Hampshire; Reid Harrell - 1st Place Hampshire; Shakota Field - 4th Place Lt Cross; Carson Pearson - 1st Place Lt Cross; Halston Kenney - 4th Place Lt Cross; Trenton Baird - 1st Place Lt Cross; Chaz Patterson - 4th Place Lt Cross; Judd Sutterfield - 1st Place Lt Cross; Baylee Baker - 4th Place Lt Cross; Lilly Patterson - 1st Place Dk Cross; Cooper DeArmond - 4th Place Lt Cross; Richard Jarvis - 1st Place Dk Cross; Isiah Navarette - 4th Place Hampshire; Sarah Jackson - 1st Place Dk Cross; Jesus Lucero - 4th Place Hampshire; Joe Martinez - 2nd Place OPB; Jonathan Crowl - 4th Place Dk Cross; Jorge Caro - 2nd Place OPB; Molly Harbour - 4th Place Dk Cross; Zane Patterson - 2nd Place Duroc; Wyatt Womble - 4th Place Dk Cross; Trayse Heater - 2nd Place Hampshire; Keegan Kelp - 5th Place Lt Cross; Colton Close - 2nd Place Hampshire; Hunter Kenney - 6th Place Duroc; Kelsea Porter - 2nd Place Hampshire; JD Reed - 6th Place Hampshire; Josh Martinez - 2nd Place Hampshire; Brock Schroeder - 6th Place Dk Cross; Tanner Baird - 2nd Place Lt Cross; Serena Harbour - 6th Place Lt Cross; Alec Cenicerros - 2nd Place Lt Cross

### Leadership Development Events

**Jr. Chapter Conducting - 3rd District:** JD Reed, Zane Hughes, Tanner Baird, Beau Brown, Clay Jackson, Brock Schroeder; **Sr. Chapter Conducting - 2nd District, 6th Area:** Jake Willimon, Lexie Jackson, Connor Willimon, Gena Hargrove, Carson Pearson, Jennifer Crowl, Ryan Schnell; **Radio Broadcast - 1st District, 7th Area:** Lauren Patterson, Allison Brown, Alec Cenicerros; **Sr. Prepared Public Speaking - 2nd District, 4th Area:** Gena Hargrove; **Extemporaneous Speaking - 2nd District, 5th Area:** Lexie Jackson

### Career Development Events

**Livestock Judging:** 10th State Contest, 5th Area I Contest, 2nd District, 4th TTU Invitational, 6th WTAMU Invitational - Trayse Heater, Jennifer Crowl, Richard Jarvis, Lexie Jackson; **Horse Judging:** 13th Area I Contest, 2nd District - Lauren Patterson, Ryan Schnell, Tylo Farrar; **Milk Quality & Products:** 12th Area I Contest, 2nd District - Tanner Baird, Zane Hughes, Cooper DeArmond; **Cotton Classifying:** 14th Area - Lexie Jackson, Jennifer Crowl, Ryan Schnell

### Spearman FFA Scholarship Winners

2011-2012 Tri-State Fair & Rodeo Calf Scramble: Richard Jarvis - \$250 Certificate; Audy Reed - \$250 Certificate; **San Antonio Jr. Livestock Show & Exposition, Jr. Market Barrow Show:** Lauren Patterson - \$10,000 Scholarship; **Texas Tech University Livestock Evaluation:** Jennifer Crowl - \$250 Certificate

### 2012 Seniors with Scholarships

Jose Manuel Martinez - \$10,000 San Antonio Livestock Exposition Scholarship; **Lauren Azlee Patterson** - \$10,000 San Antonio Livestock Exposition Scholarship