

THE HANSFORD COUNTY

THURSDAY  
NOVEMBER 29, 2001

# REPORTER STATESMAN

213 MAIN ST • SPEARMAN, TX 79081

NEWS • SPORTS • PICTURES

SERVING HANSFORD COUNTY SINCE 1907

COMP  
HANSFORD COUNTY LIBRARY  
0122 MAIN ST  
SPEARMAN TX 79081

VOL. 93 • ISSUE 48

## At A Glance

### SHS To Present "Our Town"

The Spearman High School Theatre Department will present the play "Our Town" Saturday December 1, 2001, in the Spearman High School Auditorium.

The doors will open at 7:00 p.m. with the play to begin at 7:30 p.m.

Admission is \$3.00 for adults and \$2.00 for students.

### Spearman Merchant's Association Staff You Stocking Winners

This week's winner of the Spearman Retail Merchant's Association Staff Your Stocking Drawing was Mary Hanson. Last week's winner was Sandy Pearson. Congratulations!

### Full Gospel in Perryton To Present "I'll Be Home For Christmas"

The Full Gospel Community Worship Center of Perryton, Texas, will present "I'll Be Home For Christmas" on Saturday, December 8th at 7 p.m. and Sunday, December 9th at 3 and 7 p.m. in the Perryton High School auditorium.

"I'll Be Home For Christmas" is a dramatic musical that is set from Thanksgiving Day of 1941 through December 8, the day after the bombing of Pearl Harbor. You'll share the joys and trials of a family trying to make sense of the Christmas season when worldwide war appears "just around the corner." It is a touching story of hope and community, and how we can rediscover the Prince of Peace at Christmas, no matter what our circumstances.

There will be heart-warming music, "live" radio action and drama, and an atmosphere of hope that you won't want to miss.

Admission is free. For more information, contact the Full Gospel Community Worship Center office at (806) 435-2506.

### "Parent Talks"

"Parent Talks" will be held on Thursday, November 29, 2001 from 7-8 p.m. at Gus Birdwell Elementary. This time of sharing is being presented by Spearman ISD Community Resource Program, Hansford County Library, Miss Donna's Pre-School, and Kid's Korner Inc. Daycare Center. Free childcare will be provided. Parents of children in pre-kindergarten through 2nd grade are invited to attend.

Topics for discussion will be *Encouraging Good Study Habits* and *Ways Busy Parents Can Help Children Succeed in School*. Sessions will be presented in English and Spanish.

Please call Cindy Blackman at 659-3233 with the ages and number of children who will need childcare.

Many parents tell children that school is important, but showing them can work even better. "Parent Talks" has some thing you can do.

For more information regarding these sessions, contact Karen Thompson at 659-2565, Sheri Benton at 659-2231 or Cindy Blackman at 659-3233.



## Lynx Stop Hamlin

Spearman Lynx Marty Miesner stops a Hamlin Pied Piper during Friday night's playoff game in Childress. The Lynx will play the Sonora Broncos in the next round of the playoffs on Friday, November 30th in Denver City at 7:00 p.m. A Pep Rally will be held on Thursday, November 29th in the Varsity Gym at 6:00, and school will be released at 11:30 a.m. on Friday. Photo by Gary Smith

## Emergency Farm Loan Applications Accepted

Effective October 25, 2001, the Secretary of Agriculture designated 77 counties in Oklahoma as a primary natural disaster area based on damages and losses caused by drought and excessive temperatures that occurred from June 1, 2001 and continuing. As a result of this major designation, eighteen contiguous counties in Texas were also declared eligible for Farm Service Agency (FSA) disaster emergency loans. These contiguous counties include Childress, Clay, Collingsworth, Cooke,

Dallam, Fannin, Grayson, Hansford, Hardeman, Hemphill, Lamar, Lipscomb, Montague, Ochiltree, Sherman, Wheeler, Wichita and Willbarger.

This designation makes family sized farm operators in both the primary and contiguous counties eligible to be considered for low interest emergency loans from the Farm Service Agency (FSA). FSA will consider each loan application by taking into account the extent of losses, security available, repayment ability, and other eligi-

bility requirements.

Farmers may be eligible for loans up to 80 percent of their actual losses or operating loan needed to continue in business, whichever is less (maximum amount \$500,000). The farmers must be unable to obtain credit from private commercial lenders to be eligible for the emergency loans. The interest rate on the actual loss loan is 3.75%.

As a general rule, a farmer must have suffered at least 30 percent loss of production to be eligible for an emergency loan. Proceeds from crop insurance are taken into account when determining eligibility.

Applications for loans under this emergency designation will be accepted until June 25, 2002, but farmers should apply as soon as possible. Applications may be obtained at the local FSA office, 909 West 9th, in Spearman.

FSA is a credit agency of the U.S. Department of Agriculture. It is authorized to provide disaster emergency loans to recognized farmers who work at and rely on farming for a substantial part of their living. Eligibility is extended to individual farmers who are U.S. citizens and to farming partnerships, corporations or cooperatives in which U.S. citizens hold a majority interest.

The United States Department of Agriculture (USDA) prohibits discrimination in its programs on the basis of race, color, national origin, sex, religion, age, disability, political beliefs, and marital or familial status (not all prohibited bases apply to all programs). Persons with disabilities who require alternative means for communication of program information (Braille, large print, audio-tape, etc.) should contact the USDA, Target Center at (202) 720-2600 (voice and TDD).

To file a complaint of discrimination, write USDA, Director, Office of Civil Rights, Room 326-W, Whitten Building, 1400 Independence Avenue, SW, Washington, D.C. 20250-9410 or call (202) 720-5964 (voice and TDD). USDA is an equal opportunity provider and employer.

## Gladiola Flower Club Annual Home Tour



The home of Jim and Martha Jones, 104 Barkley, is one of the houses that will be featured in this year's Gladiola Flower Club Home Tour.

The annual Gladiola Flower Club Home Tour will be Sunday, December 2, 2001, from 2:00-5:00 p.m.

The home of Jim and Martha Jones, 104 Barkley, was built by John R. Collard Sr., and has long been a "showplace" home.

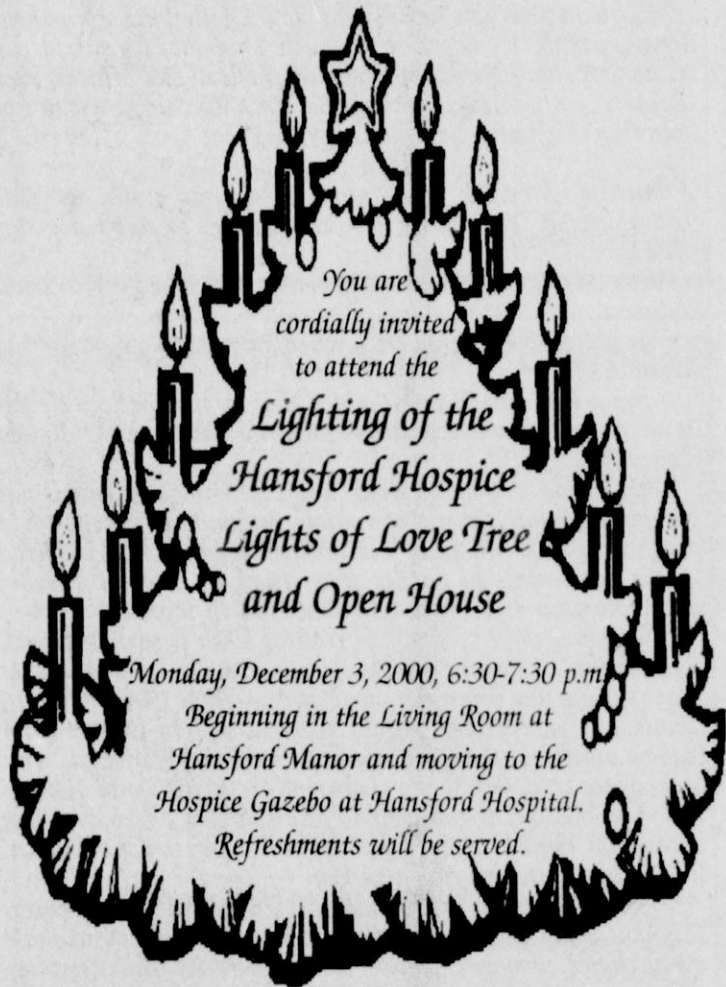
Jim and Martha purchased the home in July 1996. They have remodeled with Jim doing the built-ins and making some of the family furniture. Drapes and window treatments were by Martha and Lyn Woolley. Decorative painting by Martha, Wanda Jones, and Kelly Garnett.

This spacious two-story home has four bedrooms, three baths, kitchen, living room, dining room, breakfast nook, and is decorated in traditional decor.

Other homes featured are Bill and Lil Turner, Brian and Gina Gillispie, and Dorothy Buzzard.

Baked goods are for sale at the Buzzard home.

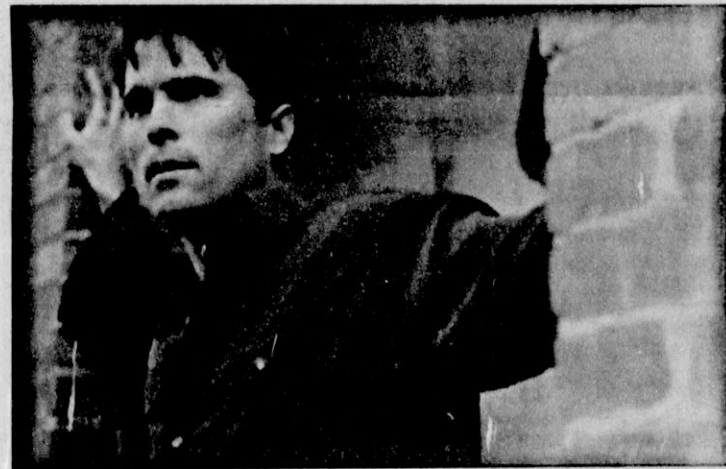
Tickets may be purchased from Club members or at the homes on tour for \$5.00.



You are cordially invited to attend the Lighting of the Hansford Hospice Lights of Love Tree and Open House

Monday, December 3, 2000, 6:30-7:30 p.m.

Beginning in the Living Room at Hansford Manor and moving to the Hospice Gazebo at Hansford Hospital. Refreshments will be served.



Stan Fletcher

## Gruver Native Releases Album

"Never Ending Love," the debut album of Gruver native Stan Fletcher, can now be found in Christian music stores throughout the nation.

Released in the spring, the album features 12 songs with words and music penned by Fletcher. The album was produced by Monte Ingersoll and Tim Jaquette and was recorded in Los Angeles.

The CD features many artists prominent in Christian music such as Bob Somma, Jeff and Vangie Gunn, and John and Annie Barbour.

Fletcher was featured in a sold-out concert at Decatur High School Performing Arts Center in Federal Way, Washington on November 18. In the audience was Fletcher's mother, Carolyn Fletcher of Gruver.

A pastor and music minister at The Church at Palisades, Fletcher and his wife Stacy and their two children reside in Federal Way, Washington.

Fletcher, a 1983 graduate of Gruver High School, has begun preparation for a second album. Information on his music and ministry can be found on his website; [www.stanfletcher.com](http://www.stanfletcher.com).

# NOTICE

The Hansford County Reporter-Statesman will be CLOSED December 3rd-7th. We will re-open on Monday, December 10th at 9 a.m.



# Laugh and Live



by Catherine R. Smith  
CathyRSmit@aol.com

My friend Deborah Jacobs sent me the following story about Thanksgiving. I enjoyed it so much (probably because I can relate to it so well) that I decided to go ahead and print it, even though it's after Thanksgiving. Besides, Ms. Stewart won't be spending Christmas with us either!

Martha Stewart will not be dining with us this Thanksgiving. I'm telling you in advance, so don't act surprised.

Since Ms. Stewart won't be coming, I've made a few small changes:

Our sidewalk will not be lined with homemade paper bag luminaries.

After a trial run, it was decided that no matter how cleverly done, rows of flaming lunch sacks do not have the desired welcoming effect.

Once inside, our guests will note that the entry hall is not decorated with the swags of Indian corn and fall foliage I had planned to make. Instead, I've gotten the grand kids involved in the decorating by having them track in colorful autumn leaves from the front yard. The mud was their idea.

The dining table will not be covered with expensive linens, fancy china, or crystal goblets. If possible, we will use dishes that match and everyone will get a fork. Since this is Thanksgiving, we will refrain from using the plastic Peter Rabbit plate and the Santa napkins from last Christmas. Our centerpiece will not be the tower of fresh fruit and flowers that I promised. Instead we will be displaying a hedgehog-like decoration hand-crafted from the finest construction paper. The artist assures me it is a turkey.

We will be dining fashionably late. The children will entertain you while you wait. I'm sure they will be happy to share every choice comment I have made regarding Thanksgiving, pilgrims and the turkey hot line. Please remember that most of these comments were made at 5:00 a.m. upon discovering that the turkey was still hard enough to cut diamonds.

As accompaniment to the children's recital, I will play a recording of tribal drumming. If the children should mention that I don't own a recording of tribal drumming, or that tribal drumming sounds suspiciously like a frozen turkey in a clothes dryer, ignore them. They are lying.

We toyed with the idea of ringing a dainty silver bell to announce the start of our feast. In the end, we chose to keep our traditional method. We've also decided against a formal seating arrangement. When the smoke alarm sounds, please gather around the table and sit where you like. In the spirit of harmony, we will ask the children to sit at a separate table. In a separate room. Maybe next door.

Now, I know you have all seen pictures of one person carving a turkey in front of a crowd of appreciative onlookers. This will not be happening at our dinner. For safety reasons, the turkey will be carved in a private ceremony. I stress "private" meaning: Do not, under any circumstances, enter the kitchen to laugh at me. Do not send small, unsuspecting children to check on my progress. I have an electric knife. The turkey is unarmed. It stands to reason that I will eventually win. When I do, we will eat.

I would like to take this opportunity to remind my young diners that "passing the rolls" is not a football play. Nor is it a request to bean someone in the head with warm tasty bread.

Before I forget, there is one last change. Instead of offering a choice between 12 different scrumptious desserts, we will be serving the traditional pumpkin pie, garnished with whipped cream and small fingerprints. You will still have a choice - take it or leave it.

May God bless and keep you; May He make his face to shine upon you, and be gracious to you; May the Lord lift up his countenance upon you, and give you peace.

(Numbers 6:24-26)

Catherine :)

## Blowin' In The Wind

by Dwayne Mitchell

Each column that I write from now until June will refer in various ways to the International Windmills' Trade Fair to be held here in June of 2002. I know that the convention is uppermost in the Southwestern Pioneer Windmill Association members' minds as they strive to get as many mills as possible up in the Windmill Park and around Spearman.

Counting all the mills that are in Spearman, owned by individuals or adopted by business or individuals or erected by the SPWA, there are more than twenty and should reach more than twenty-five, hopefully by the first of the year.

Plans are for all the J. B. Buchanan windmills to be in the J. B. Buchanan Windmill Park in southwest Spearman by June of 2002. A Currie was re-restored and recently put back up, an Eclipse is down and being restored as is a Butler, all mills from Mr. Buchanan's collection.

I am also seeing a number of the small metal mills around town. The more the merrier. Some are painted different colors, one in particular, at Mike Cudd's residence that is, of all things, green and yellow with a John Deere logo. Runs like a Deere, too!

Here are reminders of things that each of us can do. Brick and tile for the Windmill Park fence are

available at \$50 and \$100 each. Make nice Christmas presents. Call Gina at the Chamber Office or Shari at the Hansford Library.

We continue to need mills to be adopted. Adoption is a simple process, and you don't have to take the mill home with you. Some are already available and up. I wrote of some of the mills in my last column and their prices. The adoption period is for ten years, is tax deductible and very necessary for the success of SPWA. We have received many donations of tools, labor to wire the building, gas lines, windmills and towers. That has been great, but we need to get more mills adopted.

For example, the Currie 6-foot mill and the 8-foot Currie Mills, both totally restored can be adopted for \$1500 and \$2000 respectively. The Eclipse steel mill in the park can be adopted for \$1500. The OK mill, which indeed is truly an OK mill, can be adopted for \$3500. There are also two Star mills for \$4500 and \$2500. All of these mentioned mills are from the J. B. Buchanan collection.

Another mill that needs adopting is a Perkins Mill. It is probably in the \$6000 range. It won't go under your tree, but we have a full-color picture that will.

For information about adopting a mill, call Roger Buchanan or go by the Windmill barn whenever you

can catch someone there.

I don't often tout our competitors, but two surely deserve mention. Shattuck, Oklahoma, has a very nice collection of mills for display, and, of course, the mother of all windmill collections is in

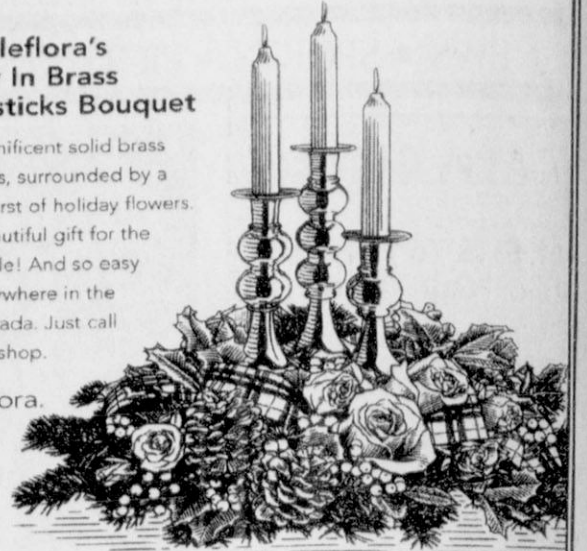
Lubbock. Lubbock park erected its 100th mill on the way to 217, but neither of these collections has the historical J. B. Buchanan windmills, which are Spearman's own to display.

### MAY ALL YOUR CHRISTMASSES BE BRIGHT

#### Give Teleflora's Holiday In Brass Candlesticks Bouquet

Three magnificent solid brass candlesticks, surrounded by a glorious burst of holiday flowers. What a beautiful gift for the holiday table! And so easy to send anywhere in the U.S. or Canada. Just call or visit our shop.

Teleflora.



#### Prairie Garden Flowers

209 Main Street • 659-2212 • 659-3329 • Spearman, TX

### Let us replenish the seed of faith through . . . DAILY BIBLE READING, PRAYER & REGULAR CHURCH ATTENDANCE

#### Spearman

**Apostolic Faith Church**  
822 S. Drensen • 659-2870  
Sunday School: 10 a.m.  
Worship Service: 11 a.m.  
Sun. Eve. 6 p.m.  
Wed. Prayer Mtg. 7 p.m.  
Pastor - Roland Haney

**First Assembly of God**  
401 N. Bernice • 659-2295  
Sunday School: 9:30 a.m.  
Worship: 10:35 a.m.  
Kid's Church: 10:35 a.m.  
Evening Worship: 7 p.m.  
Wed. Worship: 7:30 p.m.  
Youth: 7:30 Wednesday  
Pastor - Walter Greaser, Jr.

**First Christian Church**  
(Disciples of Christ)  
29 S. Bernice • 659-2036  
Sunday School: 9:45 a.m.  
Worship: 10:50 a.m.  
Minister - Gary Smith

**First Baptist Church**  
123 N. Bernice • 659-5557  
Sunday School: 9:45 a.m.  
Worship: 11 a.m.  
Evening Worship: 7 p.m.  
Wed. Fellowship Meal: 6 p.m.  
Wed. Disc. Time: 6:30 p.m.  
Wed. Youth Mtg.: 8 p.m.  
Pastor - Patrick Six

**Church of Christ**  
121 S. Haney • 659-3244  
Sunday Bible Class: 9:45 a.m.  
Worship: 10:30 a.m.  
Evening Worship: 6 p.m.  
Bible Study Wed.: 7:30 p.m.  
KRDF Radio Program  
Living W/Christ: 7:50 a.m.  
Minister - Leonard Harper

**Sacred Heart Catholic Church**  
901 Roland • 659-2792  
Sat. Night Mass: 5:30 p.m.  
Sun. Mass: 9 a.m. - English  
(aired on KRDF-FM 98.3)  
Sun. Mass: 11:30 - Spanish  
1:30 p.m. - Gruver - Christo  
Redentor Mass - Spanish  
Rev. Scott Raef

**Trinity Fellowship Church**  
717 W. 7th Ave. • 659-2671  
Sunday School: 9:30 a.m.  
Worship Service &  
Children's Church: 10:30 a.m.  
Pastor - Dennis Alger

**First Presbyterian Church**  
(Worships with Lutheran)  
1021 Cotter • 659-2033  
Sunday School: 9:45 a.m.  
Worship: 11 a.m.  
(alternates monthly between Lutheran & Presbyterian Church Bldg.)  
Pastor - Beverly Cook

**Faith Lutheran Church (ELCA)**  
1101 Bernice • 659-2252  
(Worships with First Presbyterian Church)

**First United Methodist**  
407 S. Haney • 659-5503  
Sunday School: 9:45 a.m.  
Worship: 8:30 & 11 a.m.  
Jr. High Youth: 5 p.m. Sunday  
High School: 6 p.m. Sunday  
Kids Club: 3 p.m. Wed.  
Pastor - Ken Cole

**Union Church**  
31 S. Endicott • 659-2644  
Sunday School: 9:45 a.m.  
Worship: 10:45 a.m.  
Evening Worship: 6 p.m.  
Bible Study: 7 p.m. Wed.  
Pastor - Bill Sparks

**Fellowship Baptist**  
1102 S. Archer • 659-2783  
Sunday School: 10 a.m.  
Worship: 11 a.m.  
Sun. Evening Worship: 6 p.m.  
Youth/Adult Serv.: 7:30 Wed.  
Pastor - Gene Foster

**Primera Mision Bautista**  
502 E. 7th • 659-3991  
Sunday School: 9:45 a.m.  
Worship: 11 a.m.  
Evening: 6 p.m.  
Wed. Prayer Meeting: 7 p.m.  
Thurs. Visitation: 7 p.m.

**El Aposento Alto U.P.C.I.**  
1105 S. Roland Domingos:  
Escuela-Dominical - 10 a.m.  
Culto Evangelistico - 7 p.m.  
Jueves: Oracion - 8 p.m.  
Mier. Estudio Biblico - 7 p.m.  
Pastor - A.G. Martell  
(806) 659-2153

#### Waka

Waka Church of the Brethren  
435-4598

#### Gruver

**First Baptist Church**  
402 E. Broadway • 733-2411  
Sunday School: 9:45 a.m.  
Worship: 10:50 a.m.  
Disciple Training: 6 p.m. Sunday  
Prayer Meeting: 7:30 p.m. Wednesday  
Pastor - Scott Curry

**Church of Christ**  
209 King • 733-2760  
Sunday School: 9:30 a.m.  
Worship: 10:20 a.m.  
Evening Worship: 6 p.m.  
Wed. Worship: 7:30 p.m.

**First Christian Church**  
510 King • 733-2960  
Sunday School: 10:00 a.m.  
Sunday Worship: 11 a.m.  
Youth: 7:30, Sunday  
Adult Bible Study: 7:30, Sun.  
Wed. Bible Study: 8:00 p.m.  
Pastor - Gary Gutforney

**Oslo Lutheran Church (ELCA)**  
6 Miles West & 12 Miles North of Gruver  
339-7709  
Sunday School: 9:45 a.m.  
Worship: 11 a.m.  
Pastor - Paul Fiske

**Gruver United Methodist**  
Broadway & Garrett  
733-2651  
Sunday School: 9:45 a.m.  
Worship: 8:30 & 10:50 a.m.  
Eve. Worship & UMY: 6 p.m.  
Pastor - Jerry Moore

**Spanish Cristo Redentor Church**  
Sunday Mass: 1:30 p.m.  
Friday Evening Mass  
Summer - 8:00 p.m.  
Fall/Winter - 7:30 p.m.

#### Morse

Morse Baptist Church  
733-2757  
Pastor - Mike Martin



This feature is made possible through the sponsorship of these civic minded businesses.

Compliments of . . .  
**AGCO**  
of Spearman, Inc.  
"See you in Church"  
659-3751

**PRAIRIE MOTORS INC.**  
Hwy. 207 South • P.O. Box 430  
Spearman, TX 79081 • (806) 659-2541  
www.prairiemotors.com

**BOXWELL BROS. FUNERAL HOME**

Compliments of  
**G&G FOODLINER**  
516 Main • Gruver, TX  
733-2471

**COLUMBIA Medical Center of Pampa**  
One Medical Plaza  
Pampa, Texas 79065  
(806) 665-3721

**Palo Duro Supper Club**  
22 S. Archer • Spearman  
659-2232

**Bartlett's Ace Hardware**  
105 W. Broadway • Gruver, Texas  
(806) 733-2404

**BERRY CLEANERS**  
Ann & Vernon Pipkin - Owners  
Phone 659-3122 • P.O. Box 1017  
207 Main St. • Spearman, TX

**Morse Implement & Auto Supply**  
"Join us in church this week"  
Tom Dortch 733-2668  
P.O. Box 89 • Morse, TX 79062

**Gruver Cablevision**  
308 Main  
Gruver, TX 79040  
733-5295

**Deakin ELECTRIC**  
OILFIELD • RESIDENTIAL • COMMERCIAL  
321 S. MAIN • SPEARMAN  
1-800-999-1506 Chris Deakin  
806) 659-5016 President

**Interstate Bank, ssb**  
322 Main • P.O. Box 146  
Spearman, TX • 659-2559

**CORNER SERVICE STATION**

We pay attention to Details!

Time to winterize your vehicle!  
Oil & Filter Changes  
Minor Repairs  
Vehicle Details (by appointment)  
Free pick up & delivery

101 Main Street • Spearman, Texas  
(806) 659-2722 • Joe & Nita Bynum

The **Hansford County Reporter-Statesman**

213 Main Street  
Spearman, TX 79081  
Phone - (806) 659-3434  
Fax - (806) 659-3368

Hours:  
Mon.-Thurs. (Closed Fridays)  
9 a.m.-12 p.m. & 1-5 p.m.

**Gary Smith - Publisher**  
**Catherine Smith - Editor**  
Harletta Carthel - Assist. Editor  
Contrib. Writers: Helen Fisher,  
Dorothy Hudson, Jeff Beedy  
Contrib. Photographers:  
Allen Varmon & Charlie Johnson  
N.M. Subscription Rates  
In Hansford Co. - \$25.00  
Out of County - \$30.00

The **Hansford County Reporter-Statesman (USPS 529660)** is published weekly in Spearman, TX. Periodical postage paid in Spearman, TX. POSTMASTER: Send address changes to The Hansford County Reporter-Statesman, 213 Main Street, Spearman, TX 79081.

**Publication Policy**  
The deadline to submit news and advertising to The Hansford County Reporter-Statesman is Monday at 5:00 p.m. Items accepted after the deadline will be published at a later date, as time and space permit. Publication of all items is at the discretion of the editor.

**Letter Policy**  
The Hansford County Reporter-Statesman welcomes letters to the editor on any subject. All letters must be signed and will be published with the name of the writer. Letters must include an address and telephone number for verification. Letters should be kept at a reasonable length. The editor reserves the right to edit all letters. Any letter may be rejected for publication without reason. Letters that are libelous and/or slanderous will not be published. The deadline to submit letters is noon on Monday.

**Advertising**  
Open Display rates are \$4.00 per column inch. Classified Ads are \$5 for the first 25 words and 10¢ per word for each additional word. (Additional charge for boxed classifieds.)

Member of  
Texas Press Association and  
Panhandle Press Association

**TEXAS PRESS ASSOCIATION**  
AWARD WINNER



# Happy Birthday!

Editor's Note: This Happy Birthday list is run as a public service by the Hansford County Reporter-Statesman. We apologize if any names are misspelled. If you know of a name that needs to be changed, added or deleted, please call 659-3434. Thank you, Catherine

## November 29

**Birthdays** - Brian Presley, Steven Salazar, Wanda Wagner, Genna Floyd, Robert Browning, Ciria Vela, Ted Vela, Troy Lane Brown, Brenda Salgado, Amanda Burress

**Anniversaries** - Mr. & Mrs. Kermit Ford, Mr. & Mrs. David Schick, Mr. & Mrs. Jose Garcia, Mr. & Mrs. Phil Tripp, Mr. & Mrs. Brad Hart

## November 30

**Birthdays** - Cass Cooper, Roxane Holt, Rosie McClenagan, Judy Stedje, Miranda Thoreson, Adalyn Barnes, Dan Desimone, Don Maize, Jed Meisner, Mark Nelson, Judy Speck, Steve Harnish, Ernest Bowen, Eulalia Reyes, Mary Reyes, Marion Mitchell, Lisa Payne, David Reid

**Anniversaries** - Mr. & Mrs. Lee Roy Mitchell, Mr. & Mrs. Ross Walker, Mr. & Mrs. Rick Harvey, Mr. & Mrs. Luis Salazar

## December 1

**Birthdays** - Georgia Davidson, Robert Stayton, Peggy Archer, Debra Dennis, Peggy Ellsworth, Bill Martin, Brian Paul, Shane Vela, Eleen Wright, Sha Lynn Harris, Lynn Vela, Jennifer Neff

## December 2

**Birthdays** - Audrey Beasley, Don Dillow, Paul Stavlo, Mike Close, Sharon Freeman, Kristin Dunnihoo, Ginger McClellan, Dora Womble, Jana Price, James Terry, Amanda Gaines, Blare Title, Christi Cooper, Cecilla Favela

## December 3

**Birthdays** - Shell Haynes, Bethany Harris, Lila (Mike) Hergert, Kevin Harris, Jewell King, Alvin Auld, Mark Taylor, Jenny Neff

**Anniversaries** - Mr. & Mrs. Joe Baca, Mr. & Mrs. Dave Hand, Mr. & Mrs. Elbert Dorton, Mr. & Mrs. John Haynes

## December 4

**Birthdays** - Chris Spivey, Lynn Stedje, Denise Ferguson, Heather Gikas, Kristy Easley, Imogene Baker, Joyce Duncan, Tim Fletcher, Amber Newman, Kristina Christian, Jeff McClure, T.J. McClure, Aleta Jackson

**Anniversaries** - Kent & Tammy Benton

## December 5

**Birthdays** - Martha Haden, Billy Dearmond, Mike Skinner, Dale Randall, John Pipkin, Arbeta Nobels, Gwen Smith, Norman Scroggs, Susie Oakley, Beatrice Comp, Cory Marrs

**Anniversaries** - Alfonso & Carrie Ceniceros, Mr. & Mrs. Don Kuntseman

## December 6

**Birthdays** - Ryan Ramon, Penny Kruse, Coleen Brummett, Ed Dear, Mrs. Johnny Gaitner, Cecelia Randall, Mayleea Castillo, Carolyn Harnden, Kelli Cummings, Lisa Keetch, Mary Venneman, Chevy Smith, Jerald Ray Scribner

**Anniversaries** - Burl & Nellie Buchanan, Bill & Ginger Pittman

## December 7

**Birthdays** - Sheldon Atwood, Brenda Bayless, Del Cluck, Janell Haefner, Bret Hobbs, Cynthia Williams, Emily Williams, C.L. Pierce, Sue Bowling, Carlee Dixon, H.E. Jenkins, Thane McCloy, Zach Gallimore, Dusty Hodge, Beth Dudley, Beverly Antalek

**Anniversaries** - Mr. & Mrs. Willard McCloy

## December 8

**Birthdays** - Stan TeeBeest, Reynaldo Garza, Lawrence Tindell, Scott Slater, Hershel Jones, Carmen Arjona, Matilda Entreklin, Jason Holton, Michelle Cook Kaman, Theresa Davis, Tim Weldon, Bruce Stinson, Morgan Lackey, LaVerne Parks, Fern Fulkerson

## December 9

**Birthdays** - Clayton Smith, Verna Finley, Grant Odom, Matt Overbey, Marlene Winger, J.H. Campbell Jr., Gail Vanlandingham, Elodia Flores, Melana Papay, Shawn Cook, Juan Garcia Jr., Elda DeSantiago, Maddie Rose Stork

**Anniversaries** - Mr. & Mrs. Don Knox

## December 10

**Birthdays** - Pat Barkley, Akiko Bort, Marilyn Hart, Harold King, Brent Pittman, Aaron Jackson, Kayla Pletcher, Donald Piatt, Kay Barnes, Lelia Bynum, Phyllis Collins, Linda Bartz, Bryce Reed Jarvis, Serina Diaz, Brent Wagner

**Anniversaries** - Mr. & Mrs. Ladell Scroggs, Mr. & Mrs. John Sprigg, Mr. & Mrs. Perry Lamb, Mr. & Mrs. Mark Irwin

## Our Deepest Sympathy

### DAISY JEWELL THOMAS RENNER

Longtime Hansford County resident Daisy Jewell Thomas Renner died Saturday, November 24, 2001, at the Palo Duro Care Center in Amarillo, Texas. She was 89 years old.

Services were Monday, November 27, 2001 at 1 p.m. in Spearman Church of Christ with the Rev. Leonard Harper, pastor, officiating. Burial was in Hansford Cemetery by Boxwell Brothers Funeral Home.

Born in Wichita Falls on May 3, 1912, Mrs. Renner moved with her family to Hansford County soon after her birth. She attended Old Hansford School through high school.

On January 26, 1930, she married Elba F. Thomas and they lived on the Thomas farm, northwest of Spearman, until his death on October 26, 1975. She continued to live on the Thomas farm for 50 years until she moved to Spearman. She married Lester Renner in 1980. He died that same year.

Mrs. Renner was a member of the Spearman Church of Christ. Survivors include a son and daughter-in-law, F.W. and Betty Thomas of Spearman; four sisters, Lucille Ingle of Oregon, Mary Farmer of Guymon, OK, and Ola Mae Rhoden and Alameda Huddleston, both of Texhoma, OK.; seven brothers, Howard Gore of Sunray, Ray Gore of Edgemont, SD, Bill W. Gore of Boise City, OK, Bobby Gore, Perry Gore and Jerry Gore, all of Texhoma and Jack Gore of Stratford; four grandchildren; 13 great-grandchildren; and a great-great-grandchild.

The family suggests memorials be to Spearman Church of Christ Children's Home, 121 S. Haney, Spearman, TX 79081.

## Thank You

The family of Jamie A. Sutton wishes to thank all the people who rendered emergency services at the time of his accident and death. Our community is so fortunate to have such great people.

We should also like to thank everyone for their prayers, love, support, cards, food, and contributions during this very sad and difficult time. God bless each one of you.

Noreen and Kathleen Sutton; Omar, Sharon and Brandon Sutton; Jerry & Darleen Lesley; Johnnie, Kristi, Shelby, & Madison Williams

## Thank You

To Dr. Garnett and the Hospice staff at Hansford Hospital, we extend our heartfelt thanks for your excellent care of our sister and aunt. The extra hours you enabled us to share with her were so very precious. The affection and generosity from countless friends and neighbors who sat with her will forever be remembered by our family. Our thanks to our friends at Boxwell Funeral Home for their kindness and attention in trying to address our needs. Words cannot express our love and gratitude to Rev. Ken Cole and her Christian family at the First United Methodist Church. Your prayers, concern, and outpouring love were overwhelming. A special thanks to Lynnann for making the service complete with the beautiful song. Our precious sister is with her Lord now, but the testimony and love lives on through us.

May God Bless each of you.

The family of Mabel Jameson

Myrtle DeArmond, Flora Womble, Lola and Charles Newcomb, Nieces and Nephews

## Thank You

I am honored that so many people came to my open house, November 11, in respect of Ann's memory and to view her quilts. It was a great tribute.

Thanks also for the generous contributions to the O'Loughlin Center.

The Rue Sanders Family

## A Tribute to Mabel Johnson My Sister, My Friend

*I praised her and loved her to the very end,  
We worked together; we played together;  
We always trusted one another.  
When I was down and didn't know what to do,  
She was always there to see me through.  
We called each other day and night,  
Just to make sure each was all right.  
She was there on my wedding day,  
Oh, what sweet things she had to say.  
Her Christian life showed me the way  
To live for Christ and pray each day.  
She is gone now; her battle she has won,  
But I have many sweet memories to carry me on.  
My memories I'll cherish  
With love, without end.  
I'm glad she was my Sister;  
I'm glad she was my Friend.*

by Dora Womble

## HANSFORD HAPPENINGS

### Fund Established For Al Smith Family

A dedicated fund has been established at First State Bank by the Fellowship Baptist Church to help the Al Smith family meet living expenses while Al fights leukemia. For information on how you may help, contact Gene Foster, 659-1713 (evenings) or Cecilia Foster, 659 2231 (Hansford County Library) during the day.

### Medical Fund Established for David & Hershey Turner Family

A medical fund has been established at Gruver State Bank by the First Christian Church of Gruver for David and Hershey Turner. Donations may be sent to Box 458, Gruver, TX 79040 or may be given to Margaret Ralston at Gruver State Bank.

### E-Mail Addresses

If you would like to be included on the Spearman High School e-mail list, please call the high school at 659-2584 and give Mrs. Pipkin or Mrs. Batton your e-mail address. E-Mail will be used throughout the year to communicate useful information to parents.

### Satellite Basketball Chapter of Amarillo Seeking Referees

If you are interested in being a basketball referee, you may contact Sheryll at (806) 435-2909. You must be at least 18-years-old, and out of high school.

### Festival of Arts & Crafts

Wesley United Methodist Church will be hosting its 21st Annual Festival of Arts and Crafts, December 1st, 2001 from 9:00 A.M. to 5:00 P.M., at the Community Center in Hereford, Tx. Only a limited number of booths are available. Booth fee is \$10. Applications may be obtained by writing to Ellen Collins, 801 Miles St., Hereford, Tx 79045 or call (806) 364-0774.

### Frank Phillips College Off-Campus Registration

Frank Phillips College will hold Off-Campus Registration at Spearman High School on January 7, 2002. Classes offered at Spearman High School are as follows: Intermediate College Algebra, Mon.-Wed., 5:15-6:30 p.m.; Economic Principles, Monday, 6:45-9:30 p.m.; Rhetoric & Composition, Wednesday, 6:45-9:30 p.m.; Old Testament Survey II, Thursday, 6:45-9:30 p.m.

For registration information, contact the Community Resource Office at Spearman High School, 659-3233.

### Spearman ISD Winter Band Concert & Luncheon

The Spearman ISD junior high and high school bands will have their annual Christmas Concert and Luncheon on Sunday, December 9, 2001.

The luncheon, which is open to the public, will be held from 12 noon-1:30 p.m. The cost for the luncheon is \$4 for adults, and \$2 for students.

The band concert will begin at 2:00 p.m.

### Hansford 4-H Smoke Meats

Hansford 4-H has smoked meats to sell for the holidays. Items available are: smoked turkeys - \$17, smoked hams - \$22, peppered turkey breast - \$16, smoked sausage links - \$13, peppered bacon - \$11, chicken and beef fajitas - \$10. Call the Extension office at 659-4130 or 733-2901.

We would like to thank everyone for helping support 4-H and the programs that the money is used for.

### Class of 1977 Reunion Planning Meeting

The Class of 1977 will hold a 25-year reunion planning meeting on Monday, December 3rd at 7 p.m. at Spearman City Hall.

### Hansford Hospital Auxiliary Annual Christmas Luncheon

The Hansford Hospital Auxiliary will host their annual Dutch-treat Christmas Luncheon on Monday, December 3, 2001 at 11:30 a.m. at the Palo Duro Cafe. After the meeting, they will dismiss to go to the Hospital and Manor to decorate for Christmas. This will also be the kick-off for the annual Christmas Card Fund.

Anyone interested is invited to attend the meeting and to help with decorating.

### Lights Of Love

The Christmas Season is celebrated around the world with Lights - big lights and little lights, bright lights and colored lights, lights of warmth, hope, joy and especially lights of love. During this year's holiday season, sparkling lights will adorn our Christmas tree, courtyard and gazebo at Hansford Hospital, giving a festive air to the grounds and adding a touch of cheer for everyone who passes by. You can help Hansford Hospice turn on the Christmas lights and at the same time, honor and remember special people by making a gift to illuminate the Lights of Love. Names of all honorees will be displayed on the Christmas tree and acknowledgement of the gift will be sent to donors, honorees and/or their families. The lighting of the Lights of Love tree will take place on Monday, December 3 from 6:30 - 7:30 p.m.

### Pheasant Hunter's Breakfast

Alpha Mu Psi Sorority will serve breakfast to pheasant hunters from 5:30 - 7:30 a.m. in the Gruver School Cafeteria on Saturday, December 8. The cost is \$5 per person.

### Morse To Host United We Stand/Freedom Appreciation Day

Morse Post Office extends an invitation for a United We Stand/Freedom Appreciation Day, Friday December 7, 2001, from 10:00 a.m. - 12:00 p.m. The community is invited to join for refreshment as they say "thanks" to their local heroes who at one time or another have risked their lives and well-being for our freedom.

### SHS To Present "Our Town"

The Spearman High School Theatre Department will present the play "Our Town" Saturday, December 1, 2001, in the Spearman High School Auditorium.

The doors will open at 7:00 p.m. with the play to begin at 7:30 p.m. Admission is \$3.00 for adults and \$2.00 for students.

In tribute to the passing of Mary Kay Ash



## Mary Kay Cosmetic Christmas Open House

Specials & Gifts for the Whole Family  
Saturday, December 1st, 11 a.m.-4 p.m.  
1004 Bernice, Spearman

Carolyn Taylor 659-1743

maxcarol@arn.net

## LYRIC Cinema

\*\* Movies at 7:00 p.m. - 7 Nights a Week \*\*

\*Matinee - Sat., & Sun. at 4:00\*

Showing November 30th thru December 6th

Screen 1

Screen 2

**Behind Enemy Lines**

**Harry Potter and the Sorcerer's Stone**

**Starring:**  
Gene Hackman  
Cwen Wilson

**Starring:**  
Daniel Radcliff  
Eupert Grint

**Rated PG-13**  
For War Violence  
& Language

**Rated PG**  
For Some Scary Moments  
& Mild Language

LYRIC Cinema

113 Main Spearman, Texas (806) 659-2812

Children 3 thru 11 - \$4.00 Adults - \$6.00  
Sr. Patrons (65 & over) - \$4.00

Find Us @ [www.antden.com/newweek.asp](http://www.antden.com/newweek.asp)

\*\* 4:00 Matinee \*\*

>>> Sat., & Sun. <<<

## MONUMENTS

Boxwell Brothers Funeral Home

519 Evans - Spearman

659-3802

Dear friends,  
When you buy a monument from us we make sure it is exactly what you want at a price you can afford. If it is not right, we will make it right. And you will not have to search the countryside to find us. We are here when you have a need.

Sincerely,  
Bob Boxwell

## Palo Duro Supper Club

### Daily Lunch Buffet

Sunday-Friday,

11:00 a.m. - 2:00 p.m.

**\$5<sup>97</sup>**

Buffet is all-you-can-eat, and includes salad bar

Friday Buffet - Fresh Water Catfish

Kitchen Closes at 8:00 p.m.

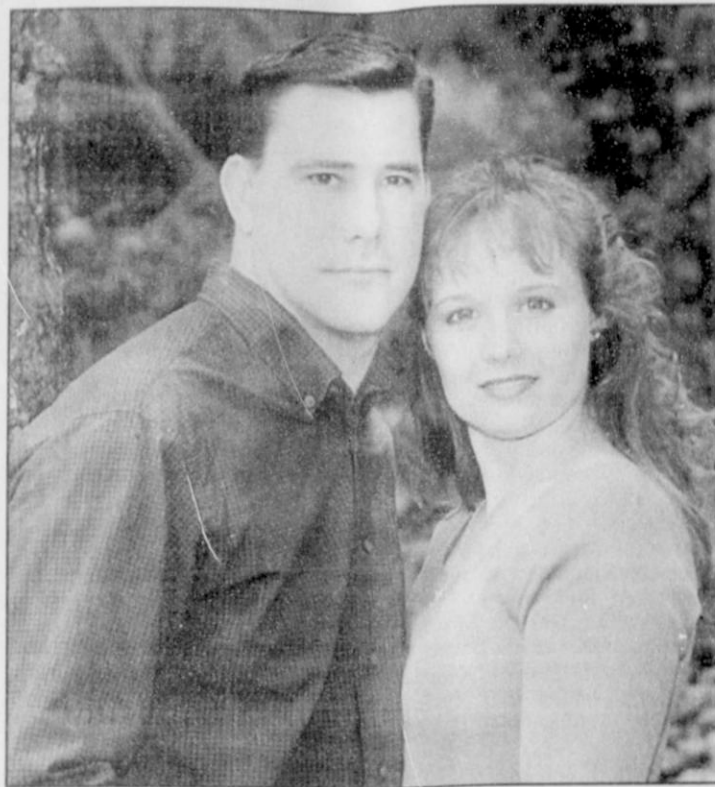
## Palo Duro Supper Club

22 S. Archer • 659-2232 • Spearman, TX





Pictured above are graduates of the Spearman High School Class of 1954. They are (L-R) Nell Close Patterson, Mary Chambers Espirrell, Patty Groves Myers, Gwen Pearson Reed, and Kay Howell Crouch (not pictured is Nancy Overton Westerfield). These ladies were members of the same class since elementary school, and have gathered yearly in October since graduation. This year they met on October 19th in Orlando, FL in the home of Patty Groves Myers.



**Brown, Murphy Wed**

Jim and Debra Brown of Austin, Texas announce the marriage of their daughter, Cami to Rob Murphy, son of Larry and Karen Murphy of Atlanta, Georgia.

The couple married on June 16, 2001 at New Hope Community Church in Austin. Their home is in San Antonio, Texas, where Cami is the Theater Director at James Madison High School and Rob is a Staff Sgt. Paramedic with the Air Force and is now on a tour of duty, serving in Turkey.

Cami is the granddaughter of J.L. and Mary Brock of Spearman, Texas and Betty Brown and the late Lawrence Brown of Hardin, Texas.



**Brown, May Wed**

Jim and Debra Brown of Austin, Texas announce the marriage of their daughter, Amanda to Colby May, son of Ed and Nancy May of Allen, Texas and Bob and Jan Pope of McKinney, Texas.

The couple married on July 28, 2001 at New Hope Community Church in Austin. Colby graduated in May from Texas Tech University in Lubbock and is now employed by C.H. Robinson Company in Houston, Texas, where Amanda, a graduate of the University of Texas, is now getting her Master's degree in Physical Therapy at Texas Women's University, Houston, Texas.

Amanda is the granddaughter of J.L. and Mary Brock of Spearman, Texas and Betty Brown and the late Lawrence Brown of Hardin, Texas.

**Houndball**

**Lady Hounds Topple Texhoma**

Persistence paid off for the Lady Hounds as they fought off a tough Texhoma Lady team, 48-38.

Leading by a single point at the end of the first and second quarters, the Lady Hounds increased their lead to seven in the third quarter, and ten by the game's end.

Three Lady Hounds, Lisa Johnson, Amy Watley, and Cassie Myatt, figured in doubled figures.

**Devils Thwart Hounds**

Sharp-shooting and stifling defense by the Texhoma Red Devils downed the Hounds 58-35 in a non-district game.

Scoring 23 points in the first quarter, the Texhoma Red Devils took an early lead which they never lost in the game. With numerous steals, the Red Devils tormented the Hounds offensive efforts.

*Thank You*

I would like to thank everyone for the wonderful baby shower given for me and Krystal. Thank you to everyone for their attendance, and for the many gifts. I was unable to attend, but I am very appreciative of the generosity of the people of Spearman.

Andrew Jacobs

**Cline Custom Application**

*For All Your Farming Needs*  
 Listing • Cultivating • Finishing  
 CRP Mowing • Wheat Planting  
 Cell: 898-2563 Home: 659-2455  
 PO Box 807 • Spearman, TX  
 gcline@arn.net • Grady Cline

**TE CLINIC**  
 1221 N. May • P.O. Box 1948 • Guyton, OK 73942  
 (580) 338-1580

**HIANTO T. TE, M.D., F.A.C.S., S.A.G.E.S.**  
 • Certified American Board of Surgery  
 • Society of American Gastrointestinal Endoscopic Surgeons  
 • Laparoscopic Surgery  
 • Gastrointestinal Endoscopy

**DEBBIE CARVAJAL TE, M.D., F.A.A.P.**  
 • Certified American Board of Pediatrics  
 • Pediatrics (Infant - Child - Adolescent)  
 • Endocrinology - Diabetes  
 • Thyroid

*Alva Monument Co.*  
 Formerly Liberal Monument & Memorial Company

*New Location:*  
 111 Tucker Road  
 Liberal, Kansas

North of the New Wal-mart

Liberal Alva  
 1-888-654-9138 1-800-344-4605

**Super Santa Savings**

**CHECK OUT THESE GREAT USED VEHICLES!**

<b>1999 Chevy Suburban</b> 4WD, White w/pewter two-tone, LT Pkg. #22003A	<b>2000 Chevy Silverado</b> 1500 Reg. Cab, 2WD, Indigo blue, TX/OK Pkg., Auto #20255D
<b>1999 Chevy Suburban</b> 4WD, Pewter w/black two-tone, LT Pkg., #21242A	<b>1999 Chrysler LHS Sedan</b> Champaign beige, fully loaded #2854A
<b>2001 GMC 1500</b> Extended Cab, 4WD, Light Pewter SLE Pkg., 5300 V8 #22011A	<b>1999 Jeep Grand Cherokee Limited</b> 4WD, Sunroof, Platinum #21233A
<b>2000 Ford Mustang</b> 3.8 V6, White, CD Player	<b>1997 Dodge Stratus Sedan</b> White, Automatic #21298A
<b>1995 Jeep Grand Cherokee</b> 4WD, Laredo, Teal blue #22078A	

**GO LYNX! Beat Sonora!**

**Bridal Registry**

*Desiree Wattier & Kevin Harris*  
*April Davis & Andy DeLaRosa*

**Celebrate**  
 Gifts for all your celebrations!  
 203 Main St. • Spearman, TX

(806) 659-3350 1-800-663-8026

**For The Bride & Groom**

*Come by and let us help you set up your special gift table*

**Couples Currently Registered**

Desiree Wattier & Kevin Harris  
 April Davis & Andy DeLaRosa  
 Deborah & Dallas Trospen

**Gordon's DRUG**

314 Main 659-2141 Spearman, Texas

Take Advantage Today, While Supplies Last!

\* All Prices Plus TT&L

**PONTIAC**  
 DRIVING EXCITEMENT.

Highway 207 South  
 Spearman, TX 79081  
 (806) 659-2541  
 www.prairiemotors.com

"IF YOU DON'T COME SEE US TODAY!"

**PRAIRIE MOTORS INC.**

"WE CAN'T SAVE YOU ANY MONEY!"  
**1-800-692-4657**

CHEVROLET • PONTIAC • OLDS • BUICK

Check Out Our Website!  
 www.prairiemotors.com

BUICK

**CHEVY TRUCKS**  
 The most dependable, longest lasting trucks on the road.

Hours:  
 Mon.-Fri. 8 a.m.-6 p.m.  
 Sat. 8 a.m.-12 p.m.  
 Sunday Closed



# Among The Neighbors

by Helen Fisher

At the convention of the Texas Cattle Feeders Association last week in Dallas, the Board of Directors was elected. Rex McCloy was one of those elected.

Texas Cattle Feeders Association represents the cattle feeding industry in Texas, Oklahoma and New Mexico. Known as Cattle Feeding Country, this area is the largest cattle feeding region in America and annually markets more than 7 million fed cattle--30% of the nation's fed cattle production.

Cattle feeding in the TCFA area is a \$5.5 billion industry, making it a significant part of the region's economy. By the time that money circulates through the hands of the people and businesses in the region, the total economic impact is \$15.5 billion.

### Thanksgiving Notes:

Doris Beck, still getting caught up on resting, enjoyed having the following as her guests: Teresa and Tim Barkley, with Timber of Gruver; Janie and Bryce Waugh, with Edee, Kayla and Morgan Parker with Shelly of Buffalo; Jason and Simie Waugh of Weatherford, OK; Jan and Chuck Picculti of San Antonio; and Shea Copelan with Kyser and Celia of Tulsa, OK.

Helen and Nolan Holt spent the holidays with her brother Arnold and Marilyn Richardson at Midland. Helen felt especially thankful to learn that her radiation treatments are finished and apparently there is no further need.

Billy and Sybil Miller had Thanksgiving with their nephew and his family, Lesly and Mac Annen of Stinnett. Other guests were Brenda and Claud Annen of Celina, TX, with Sage and Cody Annen and family of Lamar, CO.

Chris and Miranda Lopez visited her mother, Kay Loomis, over the holidays. He is a Gunnersmate 1st Class, and is stationed at Great

Lakes Naval Base.

On Friday they attended the funeral of his maternal grandmother at Littlefield. They also visited Paul and Adela Lopez, formerly of Spearman, now of Perryton. All of their family attended including Paul Jr. and Alicia who came to Spearman to see her family - the Martin Ochoas.

Sambo and Carla Conley visited friends here during the holidays, although they were with her mother in Perryton on Thanksgiving. The Conleys moved to Sudan from Spearman.

Qynn Lopez of Lubbock spent the holidays here with her parents, Rosemary and Jim Brown.

Reporting that he had consumed enough vittles that a diet is now in order, Orvill Latham is probably dieting at home. He drove to Kingfisher on Wednesday and returned Saturday, to stay in the home of his son, Terry, and his family. His other son, Scott, and wife Diana, of Lubbock, joined them. Orvill's entire family gathered, including his eight grandchildren.

Stella Cummings enjoyed having her daughter and son-in-law, Joyce and Billy Pearce, with son Chris, her son David of Gainsville, and Leo and Phyllis Cummings of Spearman. They returned to their

homes on Saturday. Stella's good friend, Frances Williams, was unable to leave her home, so Stella took her a complete Thanksgiving meal with all the trimmings.

Don and Gloria Knox spent the holidays in Hart with David and Reta Knox. They were especially pleased that Knox's daughter, Cindi and husband Sammy Loudon, with their little daughter, could be with them. They live in Dharan, Saudi Arabia. Flying here by way of London and Dallas, they enjoyed a smooth flight.

He is employed by the Aranco Oil Co. She teaches in the compound of the English and United States.

The Knox's other two daughters and husbands joined them. One lives in Tulsa and the other in Tulsa, OK.

Guests enjoying the hospitality of Irvin and Betty Davis were Phyllis Collins, Mattie Davis and Mansel Phillips of Spearman and Jerry Pat and Chris Davis, Charles Davis, Ryan and Kate Davis of Amarillo. All were especially pleased that Grace Davis flew in from Orlando, FL. She is an airline attendant for Southwest Airlines.

Adding to the renewal of family and friends, former long-time Spearman resident, Smokey Huse, called. He still misses Spearman friends, though he states that his

daughter, Anne Johnston, takes good care of him. They live in Houston and Smokey is still fishing. He admits that fishing is just a laborious way of taking it easy.

Karen Gibson Cargill of Denver City visited here several days last week with her parents, Ray and Helen Gibson, and other relatives. Her son, Jason, also came for part of the holidays.

All of Ray and Helen's family gathered in the home of Cheryl and Frank Salgado for Thanksgiving day.

Andrew Cummings, son of Linda and Doug Cummings, is here for a couple of weeks. He graduated on November 21st from the Army Air Borne school at Fort Leonardwood, MO.

He will be reporting to Fort Bragg, NC near Fayette, where he will be attached to the 82nd Army Air Borne School Division.

The many friends of Andrew wish him the best in his military career.

# Out At The Lake

by Dorothy Hudson

Lake Depth--November 26, 2001--37.33 feet

Jim and Mandy had both Erin and Hart home for the Thanksgiving Holidays.

Hart was accompanied by his wife Jennifer, and Erin brought friend Mike Bickle and his little daughter Brooke, both of Arlington.

Everyone seemed too busy with football, friends, and food to spend time at the Park. There were no campers and very few fishermen.

The Sunday Amarillo Globe-News had a puzzler for many of us. Under a headline "Area pheasant population up," Mike Miller, Texas Parks and Wildlife biologist from Pampa, reminds hunters that Texas Parks and Wildlife has leased 2,100 acres in Hansford County for public hunting, open to hunters who purchase the state's \$40 public hunting permit, available where you buy hunting licenses. The area is open for pheasant, duck, goose and crane

hunting.

Perhaps when you buy your permit, you are told where to find this 2,100 acre area. So far I haven't found anyone who knows where it is.

Miller says that pheasants and turkeys had good hatches, but bobwhites were hurt by the winter snows and their counts are among the lowest on record for the Panhandle this year.

An article in the Livestock Weekly last May amused me, so I clipped it for the prairie dog file. It seems Santa Fe, NM was having a problem with the furry little creatures in city parks, but the citizens could not stand the thought of having them gassed, so they were trapped and transplanted to other areas. Last year some were sent to the airport, but their burrowing has damaged lights and runway fixtures. Coyotes and birds that prey on the wee beasts also posed a danger to runway operations.

Now they are moving them to a new home with an 18-inch high fence around it. Below ground there will be a four-foot deep barrier to keep the prairie dogs from digging out.

They are continuing moving the dogs from the city parks. "City officials cite the danger of someone stepping into a prairie dog burrow and twisting an ankle. That, authorities say, is the reason the furry rodents were being gassed three years ago."

**OPEN EVERY SUNDAY 'TIL CHRISTMAS! 1:00-5:00 p.m.**

**Weekday Evenings Until 7 p.m.**

Foundation of Fine Jewelry



721 W. 7th • Spearman

See us for:

AUTO • HOME • CROP HAIL • FARM & RANCH • MULTIPERIL • LIVESTOCK

**INSURANCE**



**BORT AGENCY, INC.**

510 Main St. • Gruver, TX (806) 733-2456

**Machine Quilting and Monogramming**

available at **Jo's This 'N' That**

214 Main St. • Spearman **659-3999**

**Personalization & Custom Computer Designs Available**



Beauty Consultant

**Leann Gillaspie**

659-3889

America's best selling brand

## Passive Exercise Unit

### No Sweat Exercise!

**Dreamer's Salon • 306 Hancock • Spearman**

Call for your free session! 659-9907

**Benefits of passive exercise (for both women & men):**

- Exercise without Stress • Lose inches where needed
- Improved circulation over entire body • Individualized program
- No sore muscles • Complete privacy
- Firms body - tones muscles • Reduces stress
- Experience increased flexibility • No disrobing

**By appointment only:**

Tuesday-Friday, 9 a.m.-6 p.m. • Saturday, 8:30 a.m.-2:30 p.m.

Mondays: Appointments after 4:30 p.m. • Flexible evening hours

## Panhandle Diner & Deli

217 Main Street • 659-3864 • Spearman, TX


presents

### The Adventures of Bob

Movie Watching Bob enjoyed Harry Potter so much he stayed at the Lyric Theatre and watched it seven nights in a row. Competition Bob challenges anyone to break his record.

Overstuffed Bob spent Thanksgiving with the Ellsworth's. The food was great but Cautious Bob was a bit afraid to try the pumpkin pie. He has heard about the Main Street Pumpkin Game stories and was afraid of being used as this year's pumpkin (due to his head having a remarkable resemblance to the afore mentioned gourd).

Friday night, Number One Fan Bob rode with Gary to watch the Lynx play Hamlin. Gary states he was an excellent companion due to being such an interested listener and the fact that he required no bathroom stops. During the game Sports Caster Bob was both a guest commentator and stat recorder. He joined Leonard Harper for the halftime stats report. Several internet listeners have said they felt Straight Talking Bob's comments were very insightful and informative. He hopes to make the trip to Denver City this Friday for a repeat performance. Lynx Loving Bob says "Go all the way to state!"



## Stuff Your Stocking

Christmas Promotion

\$10 Purchase	\$10 Purchase
\$10 Purchase	\$10 Purchase
\$10 Purchase	\$10 Purchase
\$10 Purchase	\$10 Purchase
\$10 Purchase	\$10 Purchase

Spend \$10 one of these businesses and have your stocking stamped. When you collect ten stamps, enter your stocking for the "Stuff Your Stocking" drawings to be held November 20th, November 28th, December 5th, December 12th and December 19th.

**Sponsored by these Merchants**

Celebrate, Dr. James Pinkerton, Gordon's Drug, Hungry Cowboy, CO's Supply, Boxwell Brothers, Lyric Cinema, Touch of Sun, Prairie Motors, Agco, Cates Clothing, D&C Greenhouse, Video Madness, Britt Jarvis Law, Gemini Designs, Country Cellular, Alco, Equity Elevators, Speartex Grain, Panhandle Diner & Deli, John Hutchison Atty., Jo's This 'n That, Nursanickle Motel, First National Bank, J&M Service Center, Hickerson's Jewelers, Farmer's Ag Supply, Hansford Agency, North Plains Insurance, Interstate Bank, Edward's Tractor Repair, Larry O'Neal Apartments, Dairy Queen, DeWitt Lumber & Hardware, Kid's Stuff, KRDF-FM, Women's Division of the Spearman Chamber of Commerce, Hansford County Reporter-Statesman, R&L Attic Treasures, Jeanette's Sweet Creations, Prairie Garden Flowers, Berry Cleaners, Frank's Floor Covering, Brown Graham & Co., Five Star Equipment, Sergio's Body Shop, Hansford Vet Clinic, First State Bank, JK Farm & Ranch Supply, Deakin Electric, Hi-Plains Auto Supply, Bake R Buns, Hansford Farm Bureau, Transpetco, Lusby Cats, S&L Feeds, B&B Sales Co., Lady Fair, MurMurs, Earl's TV & Appliance



# The Gruver Grapevine

by Harletta Carthel

**Adopt a Tree for Christmas**  
The Gruver Chamber of Commerce is currently seeking interested individuals or groups to adopt a tree in the city park for Christmas decorating.

Due to the large number of lights required to decorate the gazebo and pavilion at the city park, no lights are available to decorate the numerous evergreens in the park.

Those interested in lighting a tree to brighten the holiday season may call City Hall and inform them of their interest and if the tree will be dedicated to the memory of a loved one. Individuals or groups may then select a tree, purchase lights, and adorn the adoptee. Large extension cords have been placed by the city at each of the trees to connect the lights to electricity.

The Gruver Grapevine will run a list of those adopting trees and in whose memory (if any) the trees are being adorned.

The first to make Christmas in Gruver brighter with a tree adoption is Delphine Etling.

**Lighting Contest Slated**  
The Gruver Chamber of Commerce will sponsor its annual Christmas home lighting contest. The date of judging which will be near mid December has yet to be determined, but residents are urged to make plans for the event.

**Gruver Angels Need Adoption**  
Gruver PTA currently has three remaining Gruver student angels in need of adoption.

Those selecting a Gruver angel are asked to purchase a gift for the student and return it to Main Street in Gruver by December 7th in order to have the gifts delivered before the holidays.

Those wishing to make an angel's wish come true may select an angel from the tree located in Main Street.

**Get Well Wishes**

Aubrey Rasor suffered a heart attack Saturday night, November 24. He is scheduled for a double bypass and other procedures.

Reta Gross is recuperating at home.

Our gallant Beverly Dorman Bennett underwent testing on Monday, November 26th, and began treatment on Wednesday, November 28.

Garry Hathaway suffered a heart attack Saturday, November 17. He is doing well and will be evaluated in Amarillo this week.

**New Students Register**

Gruver schools welcomed two new students this week. They are Daniel Swink, who is in Mrs. Maupin's third grade, and Kayla Swink, who is in sixth grade.

Both are children of David and Kim Swink who have moved from Borger.

**GISD Board Meeting Set**

The GISD board members will meet in a special meeting at 10:00 a.m. December 3, 2001, in the District Courtroom of Hansford County Courthouse in Spearman. During the meeting, trustees will consider and possibly draft a procedure for the election of directors

to the Hansford County Board of Directors. Also to be considered will be the upholding of the Gentlemen's Agreement for the election of directors to the appraisal board.

**Gruver Welcomes New Family**

A hearty welcome is extended to Leslie (Latta) and Coy Myring who are making their home at 412 Womble Street.

The Myrings have moved from Amarillo and have a cattle grow yard named Gruver Beef.

**Elementary Events Slated**

Cone Day at the Gruver Dairy Queen on Friday, November 30, will honor elementary accelerated readers who have met their goal this six weeks.

The third and fourth grades will view a play in Amarillo Tuesday, December 4.

**Recipes Requested**

Hansford County cooks are reminded of the December 14th deadline for recipes to be included in the benefit cookbook being compiled by the First Christian Church.

Recipes should be sent to the First Christian Church, Box 448, in Gruver or recipe forms can be obtained from Pat Morley, 733-5295, or Alice Peddy, 733-2289.

All proceeds will go to pay medical expenses of Hershey and David Turner.

**School Receives Funds on Tests Scores**

Gruver High School will receive a cash award for two students who earned college credit on Advanced Placement tests taken in the spring of 2001.

2001 graduate Holly Hart who took the Advanced Placement Calculus test and then junior Kade Carthel who took the Advanced Placement Biology are the first GHS students to receive college credit and cash for their schools through the AP tests.

Jill Watson is the AP Calculus teacher while Amy TeBeest is the AP Biology teacher. TeBeest has also served as a grader of essay questions on the national biology test for two years

**Community Calendar**

November 29-December 1 - Varsity Basketball Tournament in Fritch  
Junior Varsity Tournament in Gruver

December 3 - Gruver Junior High hosts Booker girls, boys there

December 4 - Gruver hosts West Texas

December 5 - Lion's Club, senior guests hosted.

December 6-8 - Varsity Basketball Tournament in Sunray  
December 8 - First day of Pheasant Season, Alpha Mu Psi Hunters Breakfast, 5:30 a.m. - 7:30 p.m. in school cafeteria  
December 10 - Gruver Junior High host Stratford boys, girls, there

December 11 - Junior Varsity and Varsity at Hooker, Oklahoma  
December 12 - FCCLA Christmas Luncheon

December 14 - Gruver Junior Varsity and Varsity at Turpin, Oklahoma

December 15 - A Worship Event, First Baptist Church, 7 p.m.

December 16 - A Worship Event, 10:50 p.m. First Baptist Church. Cantata, Methodist Church, 6:00 p.m.

December 17 - All Gruver Junior High teams at Booker

December 18- 21 - GHS semester tests

December 19 - Lion's Club with senior guests

December 20 - Junior varsity and varsity games with Nazareth at WTAMU

December 21 - Christmas Play and Christmas Band Concert, 8:45 a.m. Junior varsity and varsity host Goodwell. School dismisses

for holidays at 12:30 p.m.  
December 22 - Half day staff workday.

December 21-25 - all school gyms closed.

December 25 - Merry Christmas!

December 27-29-Varsity boys and girls at Canadian tournament

**Tournament Schedule Released**

GHS Varsity girls and boys basketball teams will be competing in the Sunray Invitational Tournament December 6-8.

The girls will begin play on Thursday, December 6 with a 6:00 p.m. clash with Hartley.

The boys will begin play against Dalhart at 4:30 p.m. on Thursday, December 6.

**FSA Ballots Due**


Ballots to elect a county committee member to serve on the Farm Service Agency local administrative board must be postmarked by December 3.

Individuals who have agreed to serve if elected include Billy Logsdon, B.J. Renner, Sharon Salzman, and Tim Stedje.

**Dr. Rick Sheppard, D.D.S.**  
**1-800-687-2010**  
•Family Dentistry •Braces  
146 Pioneer • Booker, TX  
**TEETH FOR A LIFETIME**

Listen to  
**KRDF - 98.3 FM**  
Hot Country Stereo  
'Till Midnight

**Are You A Victim of Domestic Violence, Sexual Abuse or Assault . . . Physical, Emotional or Sexual?**  
Call Toll Free  
**1-800-753-5308**  
We can see individuals from Hansford County anytime upon request. Call 435-5008 or 1-800-753-5308 to set up an appointment in Hansford County. We operate a safe place for victims and their children to stay in times of crisis.  
**Panhandle Crisis Center**  
Serving Hansford, Lipscomb & Ochiltree Counties  
317 S. Main • Perryton, TX  
Memorials Accepted

**First State Bank**  
*"Showing community support, dedication and service."*  
First State Bank Christmas Cash Loans up to \$500 "INTEREST FREE" for 12 Months\*  
Strength Is Our Tradition  
**SERVICE** Our Goal  
Serving Hansford County Since 1917  
  
\* Gruver  
\* Morse  
First State Bank  
Spearman  
Proceeds are issued in the form of "First State Bank Christmas Cash Certificates" redeemable at participating Hansford County Merchants  
**FSB**  
First State Bank  
Call or stop by for details  
(806) 659-5565  
Member FDIC  
\*\$500, 0% APR, 11 monthly payments of \$41.66 and one payment of \$41.74, with approved credit

  
Enjoy Christmas Music  
Eat Hot Dogs  
Celebrate the Holiday Season with Tradition  
Family, Friends &  
**First State Bank**  
Eat Lunch With Us  
Wednesday, December 5th  
13th Annual Christmas Hot Dog Cookout  
11 a.m.-1:30 p.m.  
Come Join In The Fun!  
**FSB**  
First State Bank  
Strength is our Tradition... Service our Goal  
Member FDIC  
  
Pictures with Santa  
11:30 a.m. - 1:30 p.m.



# Lynx Stifle Pied Pipers

by Jeff Beedy

The Spearman Lynx knew they had a tough task ahead of them on Friday night as they prepared to play the Hamlin Pied Pipers in the area game of the Texas High School playoffs in Childress. They didn't know, however, just how hard it would be.

It was a cool evening with a stiff breeze out of the south. Everyone was fired up and you could feel the playoff atmosphere.

Both defenses were very tough in the first two quarters as the half ended in a 0-0 tie. The Lynx burst for 21 points in the second half as they cruised to a 21-0 victory before a big crowd at Childress Stadium.

The Lynx were wanting revenge from a year ago when Hamlin upset the Lynx in a game where Hamlin made the big play. This year, the Lynx made the big plays and had a defense that would not budge! Unofficially, the Lynx held Hamlin to just 76 yards rushing compared to 285 yards rushing for the Lynx. Spearman's John Brock had another great game rushing for 194 yards on 33 carries.

Spearman's Wrecking Crew defense had another great game as they shut down Hamlin. The secondary knew they had a huge task at hand, but they came through like true champions as they did not let the Pied Pipers have any big plays. Hamlin has made big plays game after game this year, but it wasn't to be against the Wrecking Crew!

The Lynx won the toss and elected to take the wind as they kicked off to Hamlin, who would defend the north end-zone. Hamlin started their first drive on their own 32 yard line, but it was short-lived. On the second play, Hamlin went to the air where Spearman's John Brock picked off a Clint Powell pass and ran it back to the Hamlin 10 yard line. But the Lynx had a hard time moving the ball so they

tried a 24 yard field goal, but Hamlin broke through the line to block the kick.

Both teams exchanged punts on their next possessions and Hamlin started their third drive at their own 38 yard line with 5:20 left in the first quarter. On 2nd down, Hamlin's John Barrera broke loose around the right end and rambled to the Spearman 17 before being dragged down. On 3rd and 8, Spearman's Colton Miller intercepted another Clint Powell pass at the 10 yard line to kill another Piper drive.

Spearman moved the ball out to their own 44-yard line before having to punt back to Hamlin. Hamlin started their next drive at their own 18. The Pipers could not make a first down and lined up to punt. Hamlin had a receiver that was uncovered and Hamlin's Jared May, who was back in punt formation, threw the ball out to the receiver and he ran for a first down to the 36 yard line. On 3rd and 6 from the Spearman 47, Eduard Vasquez and Marty Miesner broke through the line and sacked the QB for a big loss and forced the Pipers to punt again. Neither team could move the ball after that and the half ended in a scoreless tie.

The second half started much like the first half. Hamlin had the ball to start the second half and on 3rd and 5 from their own 39, Lance Baker intercepted another Powell pass at the Spearman 41. The Lynx had a miscue on their next possession also, as the Lynx threw an interception on 3rd and 14 from the Hamlin 30.

With 3:01 left in the 3rd quarter, the Lynx started this drive from the Hamlin 42. On the first play, Brock went around the right end, thanks to a great block from Colton Miller and the rest of the offensive line, and ran 42 yards for the first score of the night. Eduard Vasquez' PAT kick was good and Spearman led

7-0. Hamlin went three and out on their next possession after Marty Miesner nailed the quarterback on 3rd and 7, forcing him to throw an incomplete pass. Spearman got the ball back at their own 36-yard line. The Lynx drove the ball to the Hamlin 46 as time expired in the 3rd quarter.

The Lynx had to go into a stiff south breeze in the final stanza, but this didn't stop them. Spearman drove down to the Piper's 20-yard line where they were facing a 2nd and 3. The Lynx were then flagged with a personal foul. On 3rd and 18 with 6:35 left in the 4th quarter, Spearman's Kevin Beedy threw a pass into the wind to cousin Tanner Beedy for a huge touchdown from 23 yards out. A two touchdown lead in this game was almost insurmountable. Vasquez' PAT kick was good and Spearman increased their lead to 14-0.

Hamlin was a team that was not going to give up until the final buzzer sounded. They started from their own 36 yard line and moved the ball down to the Spearman 31, with some help after the Lynx were flagged with a pass interference call. But the Wrecking Crew defense stood the challenge and forced Powell to throw incomplete on 4th down.

Spearman started on their own 34 and moved the ball out to their own 48-yard line. On 4th and 7 with 1:48 left in the game, the Lynx lined up to punt. They snapped the ball to Kevin Beedy, who ran around the right side and had nothing but daylight as he raced to the Hamlin 11-yard line before being dragged down. On the next play, John Brock ran off tackle from 11 yards out for the final TD of the night, to seal the victory with 1:11 left in the game. Vasquez' PAT kick was good and the score was 21-0.

Hamlin took the ball on their

final possession of the night and moved it down to the Spearman 30. J.D. Shufeldt had a big sack on the QB all the way back to the 41 as time expired and the final score was Spearman 21 Hamlin 0.

This was a hard fought game from both teams. Our hats are off to Hamlin because they had an excellent team, but our Lynx were not going to be denied this year. Spearman played very hard and played as a team. They came through when the chips were down.

This was a very exciting game to watch. The Lynx came ready to play and played with everything they had. We are so proud of you guys and we just want to wish you the best of luck next week! (Here that train a comin'!)

Spearman will now play the defending state champions in Division I, the Sonora Broncos. The game will be played in Denver City at 7:00 p.m. on Friday.

#### Offensive Stats

Rushing: John Brock 32-196 yds 2 TD's; Eduard Vasquez 8-27 yds; Colton Miller 7-25 yds; Kevin Beedy 6-42 yds; Lance Smith 1-1 yd; Total: 54-291 yds 2 TD's; Passing: Kevin Beedy 1-6-24 yds 1 TD 1 Int; Receiving: Tanner Beedy 1-24 yds 1 TD; Total Offense: 315 yds 20 1st Downs

#### Defensive Stats

Rushing: 23-71 yd; Passing: 9-25-120 yds 3 int's; Total: 191 yds 10 1st Downs

Interceptions: Lance Baker-1; Colton Miller-1; John Brock-1

#### Players of the Week

Offense - The Whole Team  
Defense - The Whole Team

#### This Week

#### Sonora Next On List

The Spearman Lynx are coming off a great win against Hamlin, but they can't savor that victory any

longer as they must get ready to play the Sonora Broncos in the next round of the playoffs. The game will be played in Denver City at 7:00 p.m. on Friday.

The Broncos are also coming off a big win against Tahoka in the area game by a score of 41-7. Sonora is also the defending state champions in Class 2A in Division I from a year ago.

Sonora is led by senior running back Bill Renfro (5-11, 185) who has 4.5 speed and who rushed for over 1700 yards last year. The Broncos also have all-state receiver James Elliott (6-3, 195) who caught 45 passes for over 1000 yards from a year ago. Their quarterback will be sophomore Scottie Moore (6-0, 175), who also has decent speed.

They have good size on the line, so the Lynx will have their hands full this Friday. Sonora likes to keep it on the ground, but they can also go to the air if they have to. They passed for 202 yards against Winters early in the year and their QB completes a high percentage of his passes, but I think the Lynx will be up to the challenge.

Sonora is 10-2 on the year with their losses coming to 3A Ballinger early in the year by a score of 26-7 and to district champ Wall. Sonora knocked Spearman out of the playoffs three years ago, so the Lynx have a revenge factor again this week. Spearman's only loss came at the hands of 3A Perryton, who is still in the playoffs.

Spearman lost the flip and that is the reason for playing in Denver City. Sonora did not want to come very far north to play because they got upset by Stratford three years ago in a snow storm after beating us the week before and they are not used to playing in cold weather. So let's just go south and beat them down there!

I know it is a long way to travel, but we need a huge crowd on hand to cheer these kids on to victory! We had a great crowd last week, so let's see if we can have an even bigger crowd this week

**SPECIAL**

**Permanent Cosmetics**

**50% Off**

Now through December

**Eyebrows • Eyeliner • Lips**

at  
**"Touch of Sun"**

802 S. Roland (across from hospital)  
Spearman • 659-9911

**Gordon's Drug & Photo**

**Gingerbread House Special**

**Package Special - \$9<sup>95</sup>**

Have your child's photo taken at our Charming Gingerbread House.

We snap the picture - proofs ready in 10 minutes.

Package includes: 1-8x10, 1-5x7, 4- Mini Wallets

By appointment only - 3:00-6:00 p.m.  
Call 659-2141 for appointment

Optional Reprints Available At Special Prices

4x6 - 40¢ each	3 1/2x5 - 30¢ each
5x7 - \$1 <sup>95</sup> each	8x10 - \$2 <sup>95</sup> each
Wallets - 39¢ each	



**Gordon's Drug & Photo**  
314 Main • Spearman  
659-2141

**Unwrap A Holiday Bargain**

**\$40 Plan\***

500 Anytime Minutes  
Unlimited Weekend Minutes  
Unlimited Evening Minutes  
500 America Toll-Free Minutes

**with FREE**  
Conference Calling  
Call Waiting  
Call Forwarding  
Text Messaging Terminated  
Caller ID  
Detailed Billing

**Check Out Our Cellular Phone Accessories.**

**They make great Stocking Stuffers!**

**\$30 Plan\***

300 Anytime Minutes  
1500 Weekend Minutes  
1500 Evening Minutes

**with FREE**  
Conference Calling  
Call Forwarding  
Text Messaging Terminated  
Call Waiting  
Detailed Billing

**See us Today!**

**Country Cellular Communications**  
720 Highway 207 S. • Spearman, TX 79081  
(806) 659-2541 • 1-800-692-4657  
Clear Across America

**CELLULARONE**  
Authorized Dealer

We do contract renewals





# CONGRATULATIONS!

## SPEARMAN LYNX

### 2001 PLAYOFFS



#### SPEARMAN LYNX

No.	Name	Position	Weight	Grade
10	John Brock	RB-SEC	185	12
11	Kevin Beedy	QB-SEC	177	11
12	Garrett Martin	QB-SEC	160	10
20	Lance Smith	RB-SEC	146	11
21	Matt Dunnihoo	RB-SEC	162	12
22	Daniel Longoria	REC-E	161	11
25	Colton Miller	RB-LB	186	11
28	Clete Vanderburg	RB-LB	198	9
30	Tanner Bandy	REC-LB	186	12
33	Marcus Vasquez	RB-LB	155	10
37	Michael Lozano	RB-LB	125	10
40	Eduard Vasquez	RB-LB	173	12
44	Gerardo Hernandez	RB-SEC	160	11
45	Lance Baker	RB-SEC	182	11
51	Harshall Hearon	T-T	232	10
58	Dustin Mackie	C-WG	239	11
60	Homer Muraz	T-T	265	12
61	Fernando Flores	G-LB	163	11
64	Coy Herrington	G-LB	217	12
65	Russell Sheets	T-E	181	10
66	Rodney Howell	G-LB	154	11
68	Marty Miesner	G-E	192	12
70	Zach Murray	T-T	221	10
71	John Thomas	T-T	231	11
72	Art Maestas	C-T	236	12
74	Jeff Swan	G-T	180	11
77	Chad Scarborough	T-T	207	12
78	Raul Zamora	T-E	181	11
80	Paul Rymun	REC-E	186	11
81	Ricky Garcia	REC-SEC	150	10
82	J.D. Shufeldt	E-E	249	12
84	Jared Lozano	REC-SEC	165	11
85	David Pipkin	RB-SEC	134	11
87	Jeremy Vera	REC-E	142	11
88	Scott Sauer	REC-SEC	155	11



The Spearman Lynx will play the Sonora Broncos in the next round of the playoffs on Friday, November 30th in Denver City at 7:00 p.m.

## GOOD LUCK, LYNX!

The following businesses wish you much luck!

<b>First National Bank</b> Spearman, TX • 659-5544 member FDIC	<b>Speartex Grain Co.</b> Spearman, TX • 659-3711	<b>Cates</b> Spearman, TX • 659-3426	<b>Golden Spread Sales Co.</b> Spearman, TX • 659-3776	<b>Simple Simon's Pizza</b> Spearman, TX • 659-9991
<b>Watley Seed Co.</b> Spearman, TX • 659-3838	<b>Hansford Abstract</b> Spearman, TX • 659-2516	<b>Interstate Bank, ssb</b> Spearman, TX • 659-2559 member FDIC	<b>Cargill Inc.</b> Spearman, TX • 659-3554	<b>H&amp;H Credit Union</b> Stinnett, TX • 878-2452
<b>Lyric Cinema</b> Spearman, TX • 659-2812	<b>Panhandle Water Well</b> 659-5959 • 662-3894	<b>Rocking F Boot &amp; Saddle Shop</b> Spearman, TX • 659-3342	<b>Clark Aerial Spraying</b> Spearman, TX • 659-2344	<b>First State Bank</b> Spearman, TX • 659-5565 member FDIC
<b>Palo Duro Supper Club</b> Spearman, TX • 659-2232	<b>Spearman Booster Club</b> Spearman, TX	<b>Spearman Equity</b> Spearman, TX • 659-2420	<b>Five Star Equipment</b> Spearman, TX • 659-3743	<b>Celebrate</b> Spearman, TX • 659-3350
<b>H&amp;H Water Well</b> Spearman, TX • 659-5577	<b>Gigot Agra Products Inc.</b> Spearman, TX • 659-3121	<b>L&amp;D Spraying</b> Spearman, TX • 659-5950	<b>IV's Hungry Cowboy</b> Spearman, TX • 659-5151	<b>Perryton &amp; Spearman Redi-Mix</b> Perryton, TX • 435-6836
<b>Lowe's Marketplace</b> Spearman, TX • 659-2522	<b>Sergio's Body Shop</b> Spearman, TX • 659-5217	<b>Hansford County Vet Clinic</b> Spearman, TX • 659-2100	<b>Hi-Plains Auto</b> Spearman, TX • 659-2506	<b>Main Street Barber</b> Spearman, TX • 659-2280
<b>Jo's This 'N That</b> Spearman, TX • 659-3999	<b>Kid's Stuff / Lady Fair</b> 659-2608 • 659-3215	<b>Dairy Queen</b> Spearman, TX • 659-3324	<b>Corner Service Station</b> Spearman, TX • 659-2722	<b>B&amp;B Sales Company</b> Spearman, TX • 659-2662
<b>Frontier Feedyard</b> Spearman, TX • 882-4251	<b>All Occasion Flowers</b> Spearman, TX • 659-5180	<b>Berry Cleaners</b> Spearman, TX • 659-3122	<b>J&amp;M Service Center</b> Spearman, TX • 659-5519	<b>Dr. James Pinkerton, DDS</b> Spearman, TX • 659-3315
<b>Vicky's Beauty Salon</b> Spearman, TX • 659-3531	<b>Transpetco I</b> Spearman, TX • 659-2596	<b>Hansford Implement Co.</b> Spearman, TX • 659-2568	<b>MurMur's Cafe</b> Spearman, TX • 659-3580	<b>Junior Lusby Cats</b> Spearman, TX • 659-3766
<b>Hansford County Reporter-Statesman</b> Spearman, TX • 659-3434	<b>Rod Sumner</b> Spearman ISD Superintendent	<b>Boxwell Brothers</b> Spearman, TX • 659-3802	<b>John L. Hutchison, Atty.</b> Spearman, TX • 659-3703	<b>Prairie Motors, Inc.</b> Spearman, TX • 659-2541
<b>Martin &amp; Associates Realty</b> Spearman, TX • 659-2425	<b>Shufeldt Rig Service, Inc.</b> Spearman, TX • 659-3821	<b>Panhandle Diner &amp; Deli</b> Spearman, TX • 659-3864	<b>DeWitt Lumber &amp; Hardware</b> Spearman, TX • 659-3792	<b>Edward's Tractor Repair</b> Spearman, TX • 659-9883
<b>Jeanette's Sweet Creations</b> Spearman, TX • 659-3328	<b>D&amp;D Cattle Hauling</b> Spearman, TX • 659-2174	<b>Mark Sheets Truck</b> Spearman, TX • 659-2773	<b>Gordon's Drug</b> Spearman, TX • 659-2141	<b>Hansford County Hospital District</b> Spearman, TX • 659-2535



# CLASSIFIED ADS

## REAL ESTATE FOR SALE

**FOR SALE:** 1120 Linn - 3BR, 3B, 2 car attached garage, attached 3rd garage w/workshop, 3 skylights, 4 sky tubes, covered patio, game room - over 2400 sq. ft. living space. Call 659-3426

**FOR SALE BY OWNER:** 735 Cotter Dr. - Large corner lot w/3BR, 2B home w/dust-stopper windows, new central heat/air, new 50-gallon water heater, new roof and outside paint. Call (806) 659-2345.

**HOUSE FOR SALE - GRUVER:** 304 Chase Street. Full basement. Call 733-2765.

**PRICE REDUCED \$10,000:** Versatile use 3250 sq. ft. shop on two lots. Office in front, full bath, high-clearance back door, electric lift to second floor. Well insulated. \$45,000 OBO. Call Doris at 1-954-8460 or Tony at 659-3345. TFN(6-28-01)B

## FOR RENT/LEASE

**FOR RENT:** One bedroom apartment. Call 659-5519.

**FOR RENT:** 1 bedroom apartment. Call 659-3260.

**FOR RENT:** 2BR apartment. Call 659-9971.

**FOR RENT:** 3BR, 1B house w/central H/A. Call 659-3341.

**FOR RENT:** 1BR Apt. - furnished, all bills paid. Call 659-2247. 1(11-29-01)P

## HELP WANTED

**HELP WANTED:** Kids' Korner, Inc. is looking for people who enjoy working with children. We have part time and substitute positions available. Must be at least 18 yrs, have a High School Diploma or GED equivalent. CPR and First Aid certified is a plus but not required. Call Sam at 659-3179 for more details. 4(11-1-01)

**HELP WANTED:** Experienced feed yard accountant needed. Knowledge of Micro Technology Feedlot Business System a plus. Candidate will work with cowboys and report directly to controller. Excel and Word is a must. Send resume to 105 Dean Cluck Avenue, Gruver, TX 79040 or e-mail: dccc@gruver.net. TFN(11-29-01)B

**HELP WANTED:** Hansford County Hospital District has openings in the Laundry Department. Applicants must be reliable, hardworking, and able to work when needed. Applications available at the Personnel Office, Hansford Hospital, 707 Roland, Spearman, TX. EOE 2(11-29-01)B

## JANITORIAL SERVICES WANTED

**ED:** The U.S. Department of Agriculture, Farm Service Agency's Hansford County USDA Service Center in Spearman, TX will be accepting bids for janitorial services of approximately 4,750 square feet of office space located at 909 W. 9th Ave in Spearman. Services will include restrooms and halls, all to be cleaned 5 days a week. Contract period is January 1, 2002 through May 31, 2004. Bid specification packages are available from 8:00 a.m. to 4:30 p.m. Monday through Friday at 909 W. 9th Ave Suite B, Spearman, TX. All applicants must furnish own equipment and supplies, and references. Final date for submitting bids is November 30, 2001. Contact Steven Orr for further information. The Hansford County FSA Committee reserves the right to reject any and all bids. FSA is an Equal Employment Opportunity Employer. 2(11-22-01)B

**HELP WANTED:** Office Manager needed. Accounting experience necessary. Salary matched to experience. Benefits and good working environment. Apply in person at Prairie Motors (806-659-2541). 5(11-1-01)B

**HELP WANTED:** Experienced accounts payable and payroll clerk needed. Send resume to 105 Dean Cluck Avenue, Gruver, TX 79040 or e-mail: dccc@gruver.net. TFN(11-29-01)B

**HELP WANTED:** North Plains Insurance is seeking to hire a secretary. Please apply in person at 715 W. 7th in Spearman. 2(11-29-01)B

**HELP WANTED:** Senior Village Nursing Home is seeking to hire a dietary person. If you are a good cook, apply. We will train. Call 435-5403. 2(11-22-01)B

## SERVICES

**HOUSE SETTLING?** Cracks in brick or walls? Doors won't close? Call Childers Brothers Stabilizing & Foundation Leveling. 1-800-299-9563 or 806-352-9563 Amarillo, TX. 52(2-8-01)P

**SNAPPER MOWERS!** Quality machines - financing available - 6 month same as cash (WAC). Visa and Mastercard accepted. ECHO chain saws, trimmers, blowers. New and used equipment. Engine parts and repairs. **10% Off Mowers.** Todd's Small Engine Repair, 101 S. Birch, Perryton, (806) 435-7682. TFN(8-30-01)4P

## SUPER BLUE

1121 Dressen  
(806) 659-3338  
Doris Beck

## WILDLIFE ART & TAXIDERMY

Guymon, OK  
(580) 468-1520 - Work  
(580) 651-6703 - Cell

## AUTOMOTIVE

**LOOKING FOR A SECOND CAR?** 1991 Seville, Bose radio system, tires are great, gets good mpg. Call 659-2345.

**FOR SALE:** 98 MUSTANG, 3.8, front wheel drive, PW, PL, PS, AM/FM cass, CD, automatic, good rubber. 806-659-3846 after 6, leave message. TFN(9-27-01)B

## FOR SALE

**FOR SALE:** Round Bail Hay - very reasonable! Call 659-3800 or 898-3475 for more information. TFN(11-15-01)B

**FOR SALE:** Italian 20-gauge over & under shotgun. Will handle 3" magnums. \$250. Call 3846 after 6 p.m. 4(11-22-01)B

## LOST & FOUND

**LOST:** 8-month-old black lab. Children's pet. Answers to "Polo." Please call 659-3185.

**LOST:** Female blonde lab. No collar. Answers to Riley. Lost from west Spearman. Reward offered. Call 659-3939 or 659-2174.

## GARAGE SALE

**GARAGE SALE:** Friday, November 30th, 8 a.m.-5 p.m., County Barn in Spearman. Lots of clothes - women, men, teen & children; household items; dishes, antiques; misc. 1(11-29-01)B

## LEGAL NOTICE

### NOTICE TO BIDDERS

Sealed bids for the sale of Lot 9, OL 31, Wilbanks Subdivision, City of Spearman, Hansford County, Texas, addressed 522 S. Bernice, zoned Single-Family Residential, will be received by the City of Spearman, Texas, until December 27, 2001, at 11 a.m. and then publicly opened and read.

The City reserves the right to reject any or all bids, to waive informalities and to accept the bid deemed to be the most advantageous to the City. All bids received after the above closing hour will be returned unopened.

Further information and bidding documents may be secured from City Hall, PO Box 37, Spearman, TX 79081. 2(11-29-01)B

### NOTICE OF HEARING

NOTICE IS HEREBY GIVEN to the public and to all interested persons that under the legal authority and jurisdiction of Title 3, Oil and Gas, Subtitles A, B, and C of the Texas Natural Resources Code, Chapters 26, 27 and 29 of the Texas Water Code, and TEX. GOV'T CODE ANN. art. §§ 2001 et seq. (2001) the RAILROAD COMMISSION OF TEXAS will hold a hearing on DECEMBER 13, 2001, at 9:00 a.m. at the William B. Travis State Office Building, 1701 N. Congress Avenue, Austin, Texas. This hearing will be conducted in conformity with the TEX. GOV'T CODE ANN. art. §§ 2001 et seq. (2001). For room assignment, on the date of the hearing please check the bulletin board in the 1st Floor lobby. Persons planning to attend this hearing are urged to contact the application (see service list) immediately prior to the hearing date to be sure that the hearing will proceed on the scheduled date.

The Commission will consider the application of Mewbourne Oil Co. for a spacing exception permit under the provisions of 16 Texas Administrative Code §3.37 (Railroad Commission Statewide Rule 37) and a density exception permit under the provisions of 16 Texas Administrative Code §3.38 (Railroad Commission Statewide Rule 38) to drill Well No. 1, Dodson "67" Lease, 605 Acres, Section 67, Block 4T, T&NO RR Co. Survey, A-399, Wildcat, Hansford (Mississippian), Hansford (Morrow, Lower), Hansford (Morrow, Middle), Hansford (Morrow, Upper), Hansford (Marmaton), Spearman (Oswego), Spearman Park (Cleveland) and Spearman, NW (Douglas) Fields, Hansford County, being 1 mile north from Spearman, Texas.

The location of this well is as follows: 990' from the north line and 2000' from the west line of lease. 990' from the north line and 2000' from the west line, Lot 12 of survey. This well is to be completed at an approximately depth of 8,200 feet.

Applicant also seeks approval pursuant to the provisions of Statewide Rule 38(d)(3), Division After Joinder or Unitization, for division of the Dodson "67" Lease into its separate tracts, with the rules of the Commission applicable to each separate tract in the Wildcat, Hansford (Mississippian), Hansford (Morrow, Lower), Hansford (Morrow, Middle), Hansford (Morrow, Upper), Hansford (Marmaton), Spearman (Oswego), Spearman Park (Cleveland) and Spearman, NW (Douglas) Fields, Hansford County, Texas.

If you have questions regarding this application, please contact the Applicant's representative Janet Burns, at (903) 561-2900. If you have any questions regarding the hearing procedure, please contact the Railroad Commission, Office of General Counsel, at (512) 463-6848.

IF A CONTINUATION IS NECESSARY, the Commission will enter such rules, regulations, and orders as in its judgment the evidence presented may justify, including placement of the proposed well at a different location from that requested by applicant, and the establishment of the amount of acreage on the applicant's tract that can reasonably be considered to be productive of hydrocarbons for the purpose of assigning an allowable.

ANY REQUEST FOR POSTPONEMENT of this hearing must be received no later than five (5) working days prior to the scheduled date shown above. Copies of such requests must be forwarded to all parties shown on the service list.

TO APPEAR IN SUPPORT OF OR IN OPPOSITION TO THIS PROCEEDING, a party other than the applicant must file with Docket Services, Office of General Counsel, at least five (5) working days in advance of the hearing date, a notice of intent to appear.

IF ANY PARTY DESIRES A WRITTEN TRANSCRIPT of the hearing,

that party should notify the Court Reporter's office at (512) 463-6926, at least five (5) working days in advance of the hearing date. If a written transcript is requested, the Commission may assess the cost of the transcript to one or more parties. Unless any party requests a written transcript, the record will be made by audio tape recording.

ANY INDIVIDUAL WITH A DISABILITY who needs auxiliary aids and services in order to have an equal opportunity to effectively communicate and participate in this hearing must request such aids or services at least two weeks prior to the scheduled hearing by notifying the Personnel office of the Railroad Commission of Texas by mail at PO Box 12967, Austin, Texas 78711-2967, or by telephone at (512) 463-7327 or TDD No. (512) 463-7284.

ALL EXHIBITS FILED AS A PART OF THE RECORD IN THIS CAUSE MUST BE SUBMITTED IN DUPLICATE. DATA IN COMMISSION RECORDS MAY BE INCORPORATED BY REFERENCE, BUT THE REFERENCE MUST BE SPECIFIC, AND IF IT INCLUDES EXHIBITS FILED IN PRIOR PROCEEDINGS BEFORE THE COMMISSION, A COPY OF SUCH EXHIBIT PROPERLY IDENTIFIED SHALL BE SUBMITTED FOR THIS RECORD. 4(11-8-01)B

### LEGAL NOTICE

The Board of Trustees of the Spearman Independent School District is accepting proposals until 1:00 p.m. on November 30, 2001 for the following vehicles:

1. 2002 Pickup, half-ton, long bed, four wheel drive, automatic transmission, cruise control, AM/FM radio, air conditioning, towing package, V-8 engine (5.3 litre or comparable), vinyl seat, rubber floor mats, white exterior color, all standard equipment, and must include Factory Sticker.

2. 2002 Suburban Style Vehicle, two wheel drive, automatic transmission, cruise control, AM/FM radio, V-8 engine (5.3 litre or comparable), front and rear air conditioning, vinyl bench seats, rubber floor mats, white exterior color, all standard equipment except no luggage rack, and must include Factory Sticker.

Please submit proposals to: Spearman ISD, Larry Murphy, 403 E. 11th Avenue, Spearman, Texas 79081

3(11-15-01)B

USDA

## VACANCY ANNOUNCEMENT

The United States Department of Agriculture has two full-time temporary positions available for Program Technicians. Apply at Hansford County Farm Service Agency, 909 W. 9th Suite B, Spearman, TX 79081. 806-659-3036

To apply submit FSA-675 to United States Department of Agriculture, Hansford County FSA Office, 909 W. 9th Suite B, Spearman, TX 79081. Attn: Steven Orr

FSA-675 is "Application for County Employment." Blank forms may be obtained from any FSA Office. The application period closes on December 5, 2001 and all applications must be received by this date.

Duties include assistance in administration of farm programs as they relate to Hansford County. Starting salary between \$18816 and \$23633 depending on qualifications.

Qualifications: High School Diploma or equivalent, General office skills, typing, filing, etc. Must be a U.S. Citizen and at least 18 years of age. Ability and willingness to work with the public and co-workers. Farm background helpful but not necessary.

USDA prohibits discrimination on the basis of race, color, national origin, gender, religion, age, disability, political beliefs, sexual orientation, and marital or family status.

EQUAL EMPLOYMENT OPPORTUNITY 2(11-22-01)B

Subscribe to the Reporter-Statesman. Call 659-3434 for details.



## CARTER GO-KARTS

12 MODELS TO CHOOSE FROM!

Lay-Away Available

Starting at \$799<sup>00</sup>

Wide Selection of Go-Cart Parts      Family owned since 1970

# PROFFITT'S LAWN & LEISURE

"Where You Still Get Service"

2401 PARAMOUNT      Mon-Fri 8-5:30      358-9726  
Sat til 4

## EXPERIENCE QUALITY

Try a Royal Copystar Copier **FREE** for a week.

We will deliver & pickup

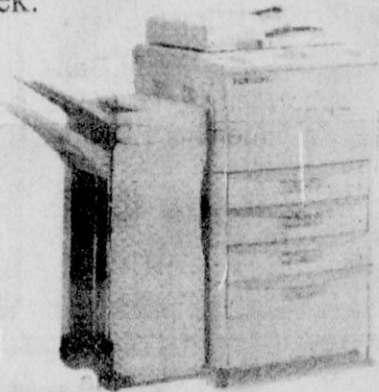
No Obligation, No Cost!

## SOUTHERN

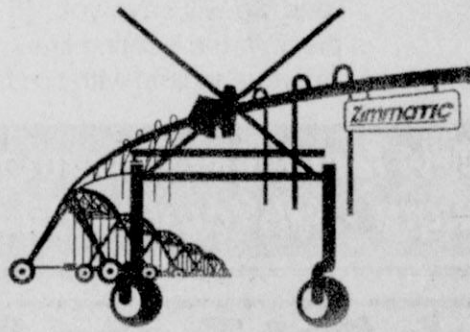
Office Supply

For all your Office and Printing Needs!

118 NW 6th Street • Guymon, OK  
(580) 338-2408



## CASH IN ON THE CORNERS



### Gain 23 to 51 Extra Acres With The New Zimmatic MAXfield Corner System

Zimmatic's reputation for durability, combined with MAXfield's continuous move design assures you performance and strength to grow on now and in the future. Come in. We'll show you the payout.

Use one of these money-saving options to gain extra production and extra cash flow, but hurry, all offers end November 30, 2001.

- Cash rebate up to \$200 per tower or \$1,600 on 8-tower Zimmatic systems.
- No down payment with 4.6% low interest. Five-year financing with no payment until January 1, 2003.
- 4.5% low interest with 5% down payment. Five-year financing with no payment until January 1, 2003.
- Interest free for 12 months with only 10% down. 4.2% effective rate for five-year financing.

## Five Star Equipment, Inc.

Spearman, TX 659-3743

**ZIMMATIC**  
STRENGTH TO GROW ON

Zimmatic is a registered trademark of Lindsay Manufacturing Co. Certain restrictions and conditions apply to each of these options. See your Zimmatic dealer for complete details.

## MARTIN & ASSOCIATES REALTY

Hansford County's ONLY locally owned and operated Realty.

Julie Martin: Broker - 659-2425  
Kym Williams: Assoc. - 733-5163

### IN SPEARMAN

1026 Dressen - 3/1 carport, 2nd floor, 1010 Haney - 4/1, fireplace  
105 Wanda - 2/1 1/2, Brick, Well Maint.  
217 Barkley - 2/1 1/2, Newly Remodeled  
810 S. Evans - 3/1 Carport, new paint, new carpet, large storage in back.

### IN GRUVER

910 Cluck - 4/1, 2000 sq. ft.  
504 4th St. - 3/1 1/2 CCG, Office, 2300 sq. ft.  
205 E. 10th - 5/2 CCG, Office, w/acres - Price Reduced

We'd Like Your Listing FOR QUALITY & SERVICE CALL US TODAY!  
Equal Housing Opportunity

## Real Estate & Rental

### Spearman Property

102 Wanda Dr. - 3BR, 1B, 1CG - PRICE REDUCED  
19 N. Hoskins - 2BR, 2B, Carports  
404 S. Hazelwood - 2BR, 1B, 1CG, Basement, New Kith.

### Gruver Property

301 King - 3BR, 2B, 1CG  
307 King - 3BR, 1 3/4B  
813 Richardson - 2BR, 1B, new paint, carpet

906 King - 4BR, 1B, fruit trees - PRICE REDUCED

1 M W of Gruver - 4BR, 2 1/2B, Shop, 3.8 acres

118 N Cooper - 4BR, 3 1/2B, 2CG, 2-Story

120 N Cooper - 4BR, 2 3/4B, 2CG, Deck, Sunroom

### Rural Property

12 mi E on 759, Cty Rd 5 - 3B, 2B, w/acres  
170 Acres/House - 3BR, 1B, Barn, Pens

### Rental Property

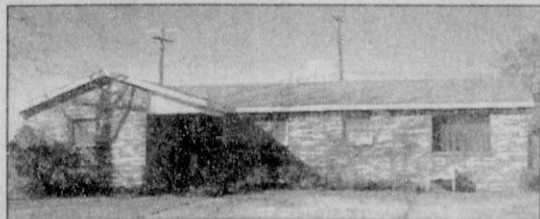
available in Spearman & Gruver

### Real Estate & Rental for all your real estate needs!

Melinda McCullough, Assoc. (806) 733-5678

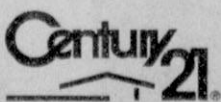
Chris Scroggs, Broker Toll Free: 1-877-664-5050

## HOME OF THE WEEK



### 210 Lonita

Our Place is what you'll be saying when you see this 2 bedroom, 1 bath home located on a corner lot. It has a storage building and a storm cellar. Affordable!



Golden Spread Realty

200 S. Main • (806) 659-5444 • Perryton, TX

©1992 and Century 21 Real Estate Corporation. Equal Housing Opportunity. INDEPENDENTLY OWNED AND OPERATED.



## Economic Injury Disaster Loans Available

Businesses in some Oklahoma, Arkansas, Colorado, Kansas, Missouri, New Mexico, and Texas counties can now apply for low interest Economic Injury Disaster Loans from the U.S. Small Business Administration (SBA). These loans are available to help businesses meet normal operating expenses that cannot be met due to the effects of a disaster.

Excessive heat and drought

incomes which may have had an adverse economic effect on businesses depending upon these producers. Farmers and ranchers are not eligible for this loan program but may be eligible for disaster assistance through other Federal agencies. However, nurseries that are victims of drought can apply.

Businesses in Childress, Clay, Collingsworth, Cooke, Dallam, Fannin, Grayson, Hansford,

Hardeman, Hamphill, Lamar, Lipscomb, Montague, Ochiltree, Sherman, Wheeler, Wichita and Wilbarger counties are eligible to apply.

To obtain an application or receive additional information, interested business owners may call the SBA toll-free at 1-800-366-6303 or TDD 817-267-4688 for the hearing impaired. The deadline for filing an application is June 15, 2002.

Due to the weather, many producers experienced crop losses and were not able to purchase goods and services at normal levels. Businesses that are dependent upon these producers may have experienced decreased sales, reduced gross profit margins, increased accounts receivable or difficulty in moving inventories at normal levels. The loan can help a business meet installments on long-term debt, accounts payable and overhead expenses that would have been met had the disaster not occurred. Refinancing of long-term debt, however, is not eligible under the program. The loan is designed for those businesses with substantial disaster-related needs and is intended to supplement monies the business owner can provide from other sources.

Loans may be approved for up to \$1,500,000 for actual disaster-related financial needs of the business. Interest rates are four percent (4%) and terms may extend to thirty (30) years, depending upon the repayment ability of the individual applicant. To qualify, businesses must be small by SBA's size standard. Businesses which can meet their financial needs through other sources are not eligible.

## Who's Who List Includes 64 From Hansford County

Included in the 35th Annual Edition of Who's Who Among American High School Students, 2000-2001 are 64 students from Hansford County.

The list, published by Educational Communications, Inc. of Lake Forest, IL is the largest recognition program and publication in the nation honoring high achieving high school students. Students are nominated by high school principals and guidance counselors, national youth groups, churches and educational organizations based upon students' academic achievement an involvement in extracurricular activities. Traditionally 99% of Who's Who students have a grade point average of 'B' or better and 97% are college bound.

This 34th edition features over 750,000 students or just 5% of the national 14 million high school students.

Who's Who students also compete for \$200,000 in scholarship awards and participate in the publication's Annual Survey of High Achievers, an annual opinion poll of teen attitudes.

Students from Hansford County include:

**Gruver**  
Sara Bass, Kimberly Boyd, Kade Carthel, Elizabeth Duncan, Kayce Howe, Christie McDowell, Brittany Morris, Tara Red, Sammie Stavlo

**Morse**  
Evan Schmidt, Jerry Womble  
**Spearman**  
Cristina Alvarado, Ashley Bates, Kevin Beedy, Tanner Beedy, Nicholas Benton, Erin Boxwell, John Brock, Travis Brown, Brianne Burkhammer, Paul

Bynum, Jeff Coates, Jessica Crossland, Andrew Cummings, Jenny Diaz, Matthew Dunnahoo, Ashlee Flowers, Stephen Foster, Ana Fraire, Laura Gillaspie, Mindee Gillaspie, Leslie Goodson, Steven Haney, Christopher Hearon, David Holt, Michel Huffaker, Daniel Longoria, Emily Longoria, Erin Lozano, Michael Lozano, Dustin Mackie, Homero

Martinez, Marty Miesner, Chelsea Nollner, David Pipkin, Kara Pipkin, Nicole Ramon, Tatum Rice, Adriana Rios, Juan Rojas, Cristina Salgado, Scott Sauer, Chad Scarborough, Dana Sharp, Clara Shieldknight, Kallie Smith, Lance Smith, Jeffrey Swan, John Thomas, Elsa Vargas, Eduard Vasquez, Lucy Villa, Stephanie Villalobos, Brady Woolley

## Wildlife Packets Help Establish Habitat In Hansford County

Managing land for wildlife is gaining interest with Texas landowners.

Whether it's deer in central Texas or quail and pheasant on the Plains, wildlife seedling packets produced by the Texas Forest Service West Texas Nursery in Lubbock are available to assist landowners in creating habitat.

"Now is the time for landowners in Hansford County to order wildlife packets from West Texas Nursery before preferred species are sold out," says Brian Scott, Texas Forest Service forester in Amarillo.

Four wildlife packets are available: Quail/Pheasant, Deer, Turkey and Squirrel. Each packet contains 100 bare-root deciduous trees and shrubs that cater specifically to the habitat needs of their labeled species.

Each packet includes the following trees: Quail/Pheasant: Russian olive, aromatic sumac, nanking cherry and plum; Deer: hackberry, flameleaf sumac, bur oak and four-wing saltbush; Turkey: hackberry, bur oak, aromatic sumac and honeysuckle; Squirrel: little walnut, shumard oak, osage orange and bur oak

Texas Forest Service recommends planting wildlife packets in blocks on grasslands, at right

angles on dry corners, in "motts" along playas, or parallel to irrigated cropland.

For example, on a dry corner five wildlife packets can be used to produce a four-row right-angle wildlife planting. The outside angle, that farthest from the circular crop land, would contain 1,250 feet (625 feet on each "leg") of plum trees; the second angle, Russian olive; the third inside angle, aromatic sumac; and the fourth angle, the closest to the cropland, nanking cherry.

For best results, it is recommended 10- to 25-foot spacing between each deciduous tree within a tree row; 6-foot spacing between each shrub within a shrub row; and 20-foot spacing between each row of trees.

Scott encourages landowners to order soon before preferred stock is sold out. To order wildlife packets or windbreak trees and shrubs, contact the Hansford County Soil and Water Conservation District at (806) 659-2330.

## WINTER IS COMING ON! ARE YOUR CATTLE INSURED FOR A WINTER STORM?

*I am dedicated to SERVING you  
with ALL your INSURANCE needs!*

Come by anytime for premium quotes or call me.

*Julie Williams Insurance Agency*  
423 Main St., Suite 106 • Gruver, TX • (806) 733-2826

**TRAMPOLINES**  
2 used rectangle trampolines  
1 new 14' round trampoline  
with 6' screen wall  
Repair Trampoline Mats  
Make Air Conditioner Covers  
3'x5' Outdoor American Flags

Call Harry Stumpf  
(806) 659-2109  
301 W. 12th  
Spearman

Eat & Be Merry At  
**MONEY'S**  
**BBQ & STEAK HOUSE**  
Hotline for Friday & Saturday Nights - 435-3945

We offer Priority Seating!  
Give us a call before leaving,  
and we will save you  
a place in the seating line.  
When you arrive, check in with the hostess.

We Are THPLC-2-B  
14 SE 3rd Ave.  
Perryton, TX

**New Menu (10 new items)**  
**Wed. Night - All-You-Can-Eat Catfish**

**Our Fresh Cut Trees Are Here!**  
Visit our Christmas Tree Forest and select your tree, cut just last week!  
Scotch Pine Fraser Fir Grand Fir Plantation Pine 4 - 12-ft.  
Or, decorate one of our real Living Christmas Trees then plant it outside after Christmas to enjoy year after year  
Austrian Pine Norway Blue Spruce Pinion Pine Dwarf Alberta Spruce

Wander through our enchanted Forest of Theme Trees  
The unique ornaments make great gifts, but also can be used as stocking stuffers or attached to the ribbons of your packages  
Purchase a single ornament or several right off the trees, and see the matching gift ideas for men, women, teens & the little folks!

Our Harry Potter Ornaments Have Arrived!  
Poinsettias will be in Saturday, December 1  
Visit our GIFT SHOP for that special gift for your special someone....from our Seraphim Angel Collection, Fontanini Heirloom Nativity figures, Frog Follies, Department 56, Santa Through the Ages, Charles Dickens figurines and musicals, Lefton, Garden Yard Art, Aima Suncatchers & so much more!

Check our Web Site often at  
[www.knights.hhtx.com](http://www.knights.hhtx.com)  
for news of our latest merchandise  
and updates on our specials!

**Knights Nursery, Garden Center & Gift Shop**  
912 S. 2nd (Hwy. 60/83) Canadian, Texas 323-5577  
New Hours: Mon-Fri 8:30-6:30, Sat 10-6, Sun 2-5

Christmas  
Decorating  
Ideas

Christmas  
Arrangements



See Us Today!

**All Occasion Flowers**  
202 N. Bernice (across from the Post Office)  
**659-5180**

We Carry

Original  
**BEAN ANGEL**  
Collectibles

Every angel represents a virtue.  
Love, Hope, Friendship, Courage, Wisdom, Faith,  
Strength, Charity and Christmas Love.

**Now 'Til Christmas...**

Buy any item from Fall & Winter Fashions & get a 2nd item of equal or lessor value for 1/2 PRICE

**Buy 2 & Save!!!**

**Lady Fair** 659-3215  
**Kid's Stuff** 659-2608

719 W 7th St. • Spearman, TX

Free Gift Wrap - Discover, MC & VISA  
(Sale includes fall & winter clothing only)

**PIZZA** **PIZZA**

**SIMPLE SIMON'S PIZZA**  
312 Main Street • Spearman, TX  
(806) 659-9991  
**Simply Great Pizzas!**

Medium 1-topping Pizza  
Medium Supreme Pizza  
Original Calizone  
**\$18<sup>99</sup>** + Tax  
Simon Size 14" for 13" more & mediums become large!

Try Simple Simon's HOT POCKET'S!  
**\$2<sup>49</sup>** + Tax

STORE HOURS:  
Sunday 11:30 a.m.-10 p.m.  
Monday-Thursday 10:30 a.m.-10 p.m.  
Friday & Saturday 10:30 a.m.-11 p.m.

We're Celebrating Our **2ND ANNIVERSARY** with a **Family Fun Feast Special**

**Don't Forget!**  
We have gift certificates for **Pizza & Videos!**  
The perfect gift for all ages!  
We have **Shrek and Lord of the Rings Collectibles**  
Great Gifts for Christmas

**Want to watch a movie?**  
Call and see if it's in, and we'll deliver it with your food order.

**659-9991**