



**COME TO THE GAME**

**SPEARMAN vs. FLOYDADA**  
on 9/23 at 7:30 p.m.  
at Floydada

**GRUVER GREYHOUNDS vs. TEXICO, NM**  
on 9/23 at 7:30 p.m.  
at Gruver

**Spearman Lynx**  
The 7th & 8th Grade Lynx will play Floydada in Floydada on September 22nd. The 7th grade will play at 5 p.m., the 8th Grade will play at 6:15. The JV will play Floydada in Spearman at 6 p.m.

**Gruver Greyhounds**  
The Gruver Jr. High and JV will play West Texas in Stinnett on Thursday, September 22nd. The Gruver JH will play at 5 p.m., followed by the JV.

**CROSS COUNTRY**

**Gruver Greyhounds/Lady Hounds**  
The Gruver Varsity Greyhounds and Lady Hounds will compete in the Lubbock Invitational meet on Saturday, September 24th. The Jr. High and JV Cross Country teams will run in Race 4 the Cure in Amarillo on September 24th.

**Spearman Lynx/Lynxettes**  
The Spearman JV and Varsity Lynx and Lynxettes will compete in the Lubbock Invitational on Saturday, September 24th.

**Weekly Update**

Texas, September 19- Average retail gasoline prices in Texas have fallen 5.2 cents per gallon in the past week, averaging \$3.39/g yesterday. This compares with the national average that has fallen 4.2 cents per gallon in the last week to \$3.61/g, according to gasoline price website TexasGasPrices.com.

Including the change in gas prices in Texas during the past week, prices yesterday were 85.0 cents per gallon higher than the same day one year ago and are 7.4 cents per gallon lower than a month ago. The national average has increased 2.4 cents per gallon during the last month and stands 88.0 cents per gallon higher than this day one year ago.

"It took the end of summer for a drop in retail gasoline prices, but I'm sure motorists won't complain that we're finally seeing some drops in prices," said Patrick DeHaan, GasBuddy.com Senior Petroleum Analyst. "We've seen wholesale prices continue to be somewhat volatile, but I believe as we enter October we'll see markets slowly quiet down with retail gasoline prices falling to \$3.35-\$3.55 on average by Thanksgiving, with the exception being typical hotspots on the West Coast," DeHaan adds.

GasBuddy operates, TexasGasPrices.com, and over 225 other local gasoline pricetracking websites that follow prices at over 125,000 gasoline stations in the United States and Canada. GasBuddy also uses Facebook (facebook.com/gasbuddy) Twitter (twitter.com/gasbuddy), and phone apps to keep motorists ahead of changing gasoline prices.

**Weather Forecast**

**THURSDAY** - Partly cloudy with a 20 percent chance of rain showers. Highs in the upper 70s. Southwest winds 5 to 10 mph.

**THURSDAY NIGHT** - Partly cloudy. Lows around 50. Southwest winds around 10 mph.

**FRIDAY** - Partly cloudy. Highs in the lower 80s.

**FRIDAY NIGHT** - Mostly clear. Lows in the mid 50s.

**SATURDAY** - Mostly sunny. Highs in the mid 80s.

**SATURDAY NIGHT** - Mostly clear. Lows in the mid 50s.

**SUNDAY** - Sunny. Highs in the mid 80s.

**SUNDAY NIGHT** - Clear. Lows in the mid 50s.

**MONDAY** - Sunny. Highs in the lower 80s.

Read more: <http://www.city-data.com/forecast/w-Spearman-Texas.html#ixzz1XwhiVZt8>

**Texas Crop & Weather**

The following specific livestock, crop and weather conditions were reported by Panhandle Extension directors: The region received from a trace to 2 inches of rain and cooler temperatures. However, more rain was needed to have a substantial effect on soil-moisture levels. Along with the rain, Deaf Smith County had a 1.5-mile-wide band of hail that traveled 4 to 5 miles, destroying crops in its wake. Some cotton producers were still irrigating. Winter wheat was being planted. Rangeland and pasture continued to be rated very poor. Livestock producers further reduced herds and were weaning calves early.

**Amarillo Venom Visit Lynxettes**



*Spearman Lynxettes Varsity Cheerleader (L-R) Morgan Ashmore, Cassie Bowers, Slade Garnett, Jayme Pack, Kyla Walker, Gena Hargrove, Brooke Walker and Paige Pierson (Louie) are pictured above with two members of the Amarillo Venom, Donta Bright and Darius Battles. Not pictured is Brooke Erynn Sanz.*

The Amarillo Venom visited the Spearman Lynx pep-rally last Friday September 16, to present them with their Favorite Local Cheer Squad certificate.

The Spearman Lynx cheer squad received 430 votes, winning the contest that was held on the new Amarillo Venom Facebook page. Second place went to the Panhandle Panthers cheer with 324 votes.

"Having the support of the Amarillo surrounding area has been great," said Owner/General Manager Stephanie Tucker. "We are looking forward to the upcoming season and working with the surrounding area communities to come out to the games and join us at the events we are

planning throughout the year."

Amarillo Venom players Donta Bright and Darius Battles traveled to Spearman Friday afternoon to attend the Lynx pep-rally held at the Lynx Football Stadium. Striker also made an appearance competing with Louie Lynx in a Punt, Pass, and Kick competition. The Spearman Lynx cheer squad was also presented with a framed picture of the squad with the title of Favorite Local Cheer squad and autographed by the Venom Players.

Bright and Battles each gave a warming pep talk to the team before tossing Venom prizes to students in the stands. Students and Staff of the Spearman High School

were welcoming of the Amarillo Venom players and staff. After the pep-rally the Amarillo Venom players and Striker were available for pictures and autographs.

"Thanks for allowing Darius and myself to have a good time in Lynx country!" said Bright. "We appreciate the hospitality we received and hope to see Lynx fans at Amarillo Venom games."

The Spearman Lynx travelled to Stinnett Friday night beating the West Texas Comanche's 31 to 14.

The AMARILLO VENOM is a proud member of the Indoor Football League.

**Gruver High School Homecoming 2011**

GHS Homecoming 2011 will feature the theme "Crazy for the Greyhounds" and will be celebrated with Red Ribbon Week, September 19th-23rd. The Homecoming Attendants for 2011 are Taylor Felderhoff, Madison McLain & Evelyn Pastrana.

Once again, the high school classes will compete for "GHS Most Spirited". 1st-4th points will be giving for: hall decorations, dress-up day participation, crazy games at the park, "Burning of the GHS" attendance, "Coins for the Cause", and class cheer. "Coins for the Cause" is a three day fundraising competition to see which class can raise the most money. All funds donated will be sent with the Gruver XC

team to the Susan G. Komen Race for the Cure held in Amarillo, Saturday, September 24th.

Homecoming Activities are as follows: **Thursday**—"Hair's to a Drug Free life!" (Crazy Hair Day), JH & JV Football @ West Texas 5 p.m.; **Friday**—"Hounds Believe, Achieve, Succeed DRUG FREE!" (Crazy Spirit Day); GHS Homecoming Pep Rally 3 p.m. in old varsity gym (HS Class Cheer Competition); 5-6:30 p.m. - Chili Supper at Gruver HS Commons, \$5 per person; Alumni dues of \$15 are payable at the Chili Supper or by mail (Gruver Alumni Association, PO Box 353, Gruver TX 79040) Alumni dues support

the GHS Alumni Scholarship Fund for graduating seniors; 6:45 p.m. - Alumni Queen Coronation, 81st GHS Alumni Homecoming Honoring classes of '31, '41, '51, '61, '71, '81, '91, '01, '11; 7 p.m. - GHS Homecoming Coronation; 7:30 p.m. - Gruver vs. Texico, NM; **Saturday**—Alumni Game, 6:30-9:30 p.m., Gruver vs. West Texas, Greyhound Stadium; 8 p.m.-12 Midnight - Alumni Dance sponsored by the Class of 2001 at the O'Loughlin Center in Spearman featuring local talent. Proceeds used for a Memorial Scholarship in honor of classmate Kirby Johnson.

**Are You Ready For Some FOOTBALL?**



Spearman photos by Tami Hargrove. Pictures available at <http://spearmansports.smugmug.com>

See related article on Page 6



# Wolf Creek Heritage Museum Notes

by Virginia Scott

**MUSEUM HAPPENINGS**  
With the beautiful weather, we had a great crowd on Sunday for our reception for Amy Winton. Over 60 people came from the surrounding area. It is nice being in the corner of a state that borders another because we can brag that people from two states came to our reception.

We thank every one for coming out to visit with Amy and the museum staff and to view her beautiful paintings. Her paintings are so beautiful, and make our real structures look so great. Her artwork will be on exhibit until end of October. They are for sale so come in and view. The museum receives a percentage of the sale, and you can deduct the cost from your taxes. It's like getting a discount on a treasure.

If you support the arts as part of your humanitarian and charity efforts, remember there are three ways to do that - support the individual artist by buying their works, support the institutions that shows their art, and support the Texas Education for the Arts (TEA) by buying license tags for the arts when you renew your license tags. (I will now get off my soapbox.)

We are continuing our cataloging of our photographs. The team is now into the large photos,

8x10 and larger, and they present a storage challenge. We did receive a huge scrapbook in our grant that will hold photographs that measure 16x24, so that is receiving a lot of them. Other challenges are framed pictures. Do we leave them framed, or do we unframe them? That is when we get out our reference books from the bookshelf "Connecting to the Collection."

A visitor came in while we were in the middle of one of these research sessions and when leaving stated that they could not believe that all that brainwork was needed just to store stuff. I think the difference between museums and grandma's is our attics. We are required to preserve and conserve historical artifacts. We thank you for the privilege.

**MUSEUM MUSINGS**

Many of us remember Dr. Goetsche as a local dentist, but did you remember that he was appointed Sheriff on January 12, 1920 to replace A. B. Griffith? He was elected Sheriff on November 2, 1920 and served until 1922.

"Doc" Goetsche, as he was known, was a pioneer dentist in Higgins, having established his home and practice there about 1898. He was born in Chicago, Illinois, in 1868, and he at-

tended dental college there.

He traveled in a light buckboard with his portable dentist chair, camping outfit, and bedroll. He explained that the cowboys riding the range could not take time to come to town for dental work, so he went to them. When an epidemic of diphtheria broke out in Eller Flats across the Canadian River, Goetsche answered the call for doctors and he assisted the other doctors by taking temperatures and giving medication until the epidemic was controlled.

He served where and when he was needed in whatever role he could perform, a true civil servant.

Here is a saying by Samuel Johnson, "The happiest conversation is that of which nothing is distinctly remembered, but a general effect of pleasing impression."

It was certainly true at the reception.

## Wolf Creek Heritage Museum

**Museum Hours:** Monday thru Friday 10 a.m. to 4 p.m., Special hours upon request.

**Museum Information:**  
13310 Hwy 305, PO Box 5, Lipscomb TX 79056; telephone: 806-852-2123; e m a i l : wolfcrk@amaonline.com; website: www.wolfcreekheritagemuseum.org

See us for:  
**AUTO • HOME • CROP HAIL • FARM & RANCH • MULTIPERIL • LIVESTOCK**

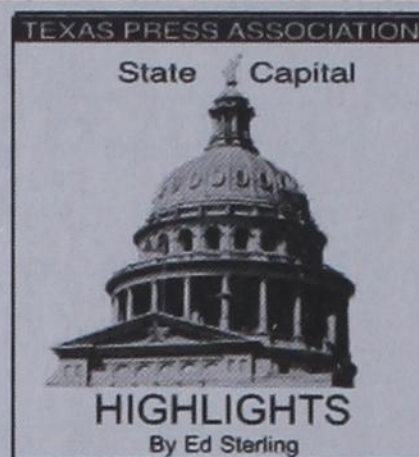
**INSURANCE**

**BORT AGENCY, INC.**  
510 Main St. • Gruver, TX (806) 733-2456

The Hansford County Reporter-Statesman is liable for errors and omissions in advertisements only when the newspaper fails to correct errors from the original layout and marked by the advertiser on a proof returned within the established time before publication. Liability of the newspaper for an alleged error in copy or publication shall not exceed the cost of the space occupied by the error.

Please report any errors in published advertisements immediately. Credit will be allowed for the first insertion only.

Notice of errors must be received in time for correction before the second insertion, or within three days of publication, or no claim for credit will be honored.



# STATE CAPITAL HIGHLIGHTS



by Ed Sterling

## Officials, power company warn of job losses over pollution rule

AUSTIN — Top state officials reacted negatively to a U.S. Environmental Protection Agency rule finalized July 6.

The "Cross State Pollution Rule" requires 27 states including Texas to improve air quality, beginning Jan. 1, by reducing power plant emissions that contribute to ozone and/or fine particle pollution in downwind states.

On Sept. 12, Dallas-based Luminant Energy announced the need to close facilities to comply with "CSAPR" would cause the loss of some 500 jobs. The same day, Gov. Rick Perry, Lt. Gov. David Dewhurst and House Speaker Joe Straus posted press statements.

Perry: "As expected, the only results of this rule will be putting Texans out of work and creating hardships for them and their families, while putting the reliability of Texas' grid in jeopardy. In the decade of the 2000's Texas reduced ozone emissions by 27 percent — more than any other state — and reduced (sulfur dioxide) emissions by 32 percent and (nitrogen oxide) emissions by 58 percent, all while remaining the nation's leading energy producer and protecting jobs."

Dewhurst: "The EPA has put a target on our back — hastily imposing punitive new regulations on an unreasonable timeline — despite the fact that Texas has improved air quality and reduced emissions substantially more than the national average."

Straus: "This is the wrong policy at the worst possible time, and I fully support the State's petition requesting the EPA to reconsider its adoption of the CSAPR."

Texas has filed legal papers petitioning for reconsideration and a stay of CSAPR and Luminant Energy has filed a legal challenge to the rule.

Meanwhile, on Sept. 15, Texas Commission on Environmental Quality Chairman Bryan Shaw, in a congressional hearing on CSAPR, said, "Under average conditions, the potential generation loss in Texas caused by this rule will have real impacts to real people. Should Texas face another sweltering summer like this past one, there is every reason to worry about loss of life."

## Jobless rate rises to 8.5 percent

The Lone Star State's seasonally adjusted unemployment rate was 8.5 percent in August.

According to U.S. Department of Labor figures released by the Texas Workforce Commission on Sept. 16, the unemployment rate for August climbed 0.1 percent from the 8.4 percent rate posted for the month of July. The percentage change reflects the loss of 1,300 nonfarm jobs.

The national unemployment rate was 9.1 percent for August.

## More take college entrance exam

The number of college-bound minority students who take the SAT college admissions test is on the increase.

College Board, the testing entity, on Sept. 14 released data that show the number of Hispanic students in Texas public schools who took the SAT between the 2006-2007 school year and the 2010-2011 school year increased by 57.7 percent.

Over the same five-year period, the number of African-American SAT examinees in the public schools increased 43.4 percent, while the number of Asian examinees in Texas increased 23.4 percent.

The number of all Texas public school students taking the test increased by 21.6 percent during this period.

## Burn bans in nearly all counties

Texas Forest Service keeps track on burn bans in effect across Texas and only a few counties did not have established burn bans in effect.

As of Sept. 18 those counties included: Hidalgo, Willacy, Jefferson and Orange. In addition, the north-east quadrant of Jack County was marked as not having a burn ban in effect.

Of seven uncontained fires in Texas on Sept. 17, the Bastrop County Complex, at 34,068 acres, was 90 percent contained. The forest service reported 1,554 homes have been destroyed in the Bastrop fire and the related Union Chapel Fire and two civilians were found dead as search crews went through the charred subdivisions.

## Federal meal programs available

Times are hard for many Texans but being in a tough spot does not mean having to go hungry. The Texas Department of Agriculture on Sept. 17 encouraged those in need of assistance to take advantage of programs that offer nutritious meals to children and adults.

About 14,000 adult and child care centers and home-based day cares in Texas are serving free or reduced-priced meals through the federally funded Child and Adult Care Food Program, CACFP.

To get information on CACFP and a wide range of other feeding programs, call (877) TEX-MEAL.

## Editors Note...

Freedom of speech is one of the guarantees of the First Amendment of our Constitution, so we encourage readers to express themselves, even if we don't agree with what is said. However, freedom involves responsibility. Therefore, the only letters we will consider publishing are from individuals who are willing for their names to appear with the letter. Letters must contain the telephone number, address and a personal signature of the writer (for verification purposes only).

We will not knowingly publish any letter containing libelous or slanderous statements, or factually incorrect information. Letters containing language or content that we feel is inappropriate will not be published.

Examples of content that will cause letters to be rejected include the following: Confusing or unclear points; Crude language; Poor taste; Disrespectful comments regarding a group's or individual's ethnicity, gender, religion, culture, sexual orientation or race; Other incendiary language or remarks; Endorsements for or complaints about individually named commercial products or services.

"Letters To The Editor," like all materials submitted to this newspaper, are subject to editing for space and clarity. The publication of any letter or article is the decision of the Editor and Publisher.

We welcome your input. You may write to us by using the online form, e-mail - reporter@spearmanreporter.com; fax - 806-398-9080; or regular mail - Letters to the Editor, c/o Hansford County Reporter-Statesman, 213 Main Street, Spearman TX 79081.

**The Hansford County Reporter-Statesman**

**The Hansford County Reporter-Statesman**  
Mailing Address - 213 Main Street • Spearman TX 79081  
Physical Address - 310 Barkley Street • Spearman TX 79081  
Phone - (806) 659-3434 • Fax - (806) 398-9080  
www.spearmanreporter.com • reporter@spearmanreporter.com  
Mon.-Thurs. 9 a.m.-12 p.m., Mon.-Wed. & 1-5 p.m.  
Closed Thurs. afternoon and all day Fri., Sat. & Sun.

**Gary Smith - Publisher** Catherine Smith - Editor  
Contributing Writers: Dorothy Hudson, Jim Derington, Merry Sparks, Cecil Biggers, Virginia Scott, Ed Sterling, Rod Sumner  
Contributing Photographers: Lisa Johnson, Tami Hargrove, Tammy Batton, Bonnie Bergan, Rod Sumner

**Subscription Rates**

In Hansford County - \$30.00 • Out of County - \$40.00  
E-Mail Subscription - \$35.00

The Hansford County Reporter-Statesman (USPS 529660) is published weekly in Spearman, TX. Periodical postage paid in Spearman, TX. **POSTMASTER:** Send address changes to: The Hansford County Reporter-Statesman, 213 Main Street, Spearman, TX 79081.

**Publication Policy**

The deadline to submit news and advertising to The Hansford County Reporter-Statesman is Monday at 5 p.m. Items submitted after the deadline will be published at a later date, as time and space permit. Publication of all items is at the discretion of the editor.

**Advertising**

Open Display rates are \$4.00 per column inch. Classified Ads are \$7 for the first 20 words and 15¢ per word for each additional word. (Additional charge for boxed classifieds.) There is a \$1 charge per week if billed.

Member of  
Gruver Chamber of Commerce  
Spearman Chamber of Commerce  
Texas Press Association and Panhandle Press Association



## TV FAMILIES

- ACROSS**
- Divisions of a family or clan
  - Threat to illegal aliens
  - Greek goddess of youth, wife of Hercules
  - Whitman's famous flower
  - "Homer Simpson's" exclamation
  - Craze
  - Pleasant odor
  - Spermatzoa counterpart
  - Tear-jerker
  - Treat cruelly
  - \*Nora plus 5 kids
  - CD—
  - Among
  - Adam's famous part
  - Often served hot with sushi
  - Relating to skin
  - \*The Formans' son on "That '70s Show"
  - \*The Cunninghams had only one on "Happy Days"
  - \*Dora the Explorer's cousin
  - Actress Sofer's given name
  - "Or else" in music
  - Mountain goat terrain
  - Render harmless
  - Upper layer of earth's crust
  - "The Simpsons" palindrome
  - \*Ozzie or Harriet
  - \*Where Stevie sleeps on "Family Guy"
  - Buddhist doctrine
  - Done before wash?
  - Xanthan —
  - \*Jim Bob and Michelle plus 19 kids
  - Make one a sir, e.g.
  - Embryo cradles
  - Pen —
  - Slobber
  - Frantic
  - Under the weather
  - Churchill/Roosevelt/Stalin meeting site
  - Throat-clearing sound
  - Tax helper
  - Sometimes used to describe dragon
  - European sea eagles
  - Bowed out, as in cards
  - Idealized image
  - Assistance
  - Plane discomfort
  - \*Thomas family friend on "What's Happening!!"
  - Adler, Sherlock
  - Holmes' romantic interest?
  - Twofold
  - Mistletoe tradition
  - Puerto —
  - \*Fred or Ethel
  - Popular jewelry stone
  - Enter user name and password
  - Lightning McQueen movie
  - The one with pants on fire
  - Done to printer cartridge
  - Artwork of many pieces
  - Neither here — there
  - \*Al and Peggy plus kids
  - Gelatin
  - No such thing as this type of victory?
  - Russian governmental agency
  - The Beehive State
  - DNA segment
- DOWN**
- Block
  - Irish name of Ireland
  - Walk, as through mud
  - Less wild
  - \*Lynette and Tom plus 6 kids
  - America's choice
  - Thanksgiving time
  - Medieval oboe
  - Beefcake
  - Fourth largest Great Lake
  - Uncouth person

These games are brought to you by the **Hansford County Reporter-Statesman**

60. Sinister  
61. Singer Fitzgerald  
62. Western cord necktie  
63. Lesotho money  
64. Distinctive elegance  
67. One of a range in Europe

**SUDOKU**  
PRESENTED BY

|   |   |   |   |   |   |   |   |   |
|---|---|---|---|---|---|---|---|---|
|   |   |   | 6 |   |   | 3 | 9 |   |
| 5 | 4 |   |   |   |   | 2 |   |   |
|   |   | 3 | 9 |   |   |   |   | 8 |
|   |   |   |   | 3 | 2 | 6 |   | 1 |
|   |   |   |   |   |   |   |   |   |
| 2 | 6 | 7 | 8 |   |   |   |   |   |
| 4 |   |   |   |   | 1 | 7 |   |   |
|   | 1 |   |   |   |   | 4 |   | 5 |
|   | 8 | 5 |   |   |   | 7 |   |   |

Fill in the blank squares in the grid, making sure that every row, column and 3-by-3 box includes all digits 1 through 9.

**CROSSWORD**  
PRESENTED BY

|    |    |    |    |    |    |    |    |    |    |    |    |    |    |
|----|----|----|----|----|----|----|----|----|----|----|----|----|----|
| 1  | 2  | 3  | 4  | 5  | 6  | 7  | 8  | 9  | 10 | 11 | 12 |    |    |
|    |    |    |    |    |    |    |    |    |    |    |    |    |    |
| 13 |    |    |    |    | 14 |    |    | 15 |    |    |    |    |    |
| 16 |    |    |    |    | 17 |    |    | 18 |    |    |    |    |    |
| 19 |    |    |    |    | 20 |    |    | 21 | 22 |    |    |    |    |
|    |    |    | 23 |    |    |    |    | 24 |    |    |    |    |    |
| 25 | 26 | 27 |    | 28 |    | 29 |    | 30 |    | 31 | 32 | 33 | 34 |
| 35 |    | 36 |    | 37 |    |    | 38 |    | 39 |    |    |    |    |
| 40 |    |    |    | 41 |    |    | 42 |    | 43 |    |    |    |    |
| 44 |    |    | 45 |    | 46 |    |    |    | 47 |    |    |    |    |
| 48 |    |    |    | 49 |    | 50 |    |    | 51 |    | 52 |    |    |
|    |    |    |    | 53 |    | 54 |    |    | 55 |    | 56 |    |    |
| 57 | 58 | 59 | 60 |    |    | 61 |    |    |    | 62 | 63 | 64 |    |
| 65 |    |    |    |    | 66 | 67 |    |    | 68 |    |    |    |    |
| 69 |    |    |    |    | 70 |    |    |    | 71 |    |    |    |    |
| 72 |    |    |    |    | 73 |    |    |    | 74 |    |    |    |    |

Fill in the blank squares in the grid, making sure that every row, column and 3-by-3 box includes all digits 1 through 9.



# Happy Birthday!

**September 22**  
**Birthday** - Charlotte Bergin, Chelsie Beth Hicks, Leon Wilson, Robert Womble, Bobby Evans, Ray Brewer, Junior Avila, Terry Delozier, Lance Harnish, Sterling Alana Brown, Amber Conley, Janice Riley, Bonnie Cox, Haylee Miesner

**Anniversary** - M/M John Williams, M/M Pat Jackson

**September 23**  
**Birthday** - Larry Babbs, Rodney Dale Clawson, Melissa Davis, Wilma Clark, Ray Ortega, Tony Papay, Will Black, Jan Hartsell, Luisa Volden, Karla Flowers, Amber Coombs, Kylie Cook, Jake Coates, Andrew Jacops, Melissa Lesly, Kylie (Snider) Moss

**Anniversary** - M/M Harvey Atwood

**September 24**  
**Birthday** - Amadeo Cazares, Martha Jo Hadley, Cindy Blackman, Deena Murrell, Tony Shapley, Amy TeBeest, Linda Venneman, Trevor Williams, Sherri Kay West, Danny McLaughlin, Mandi Lusby, Julie Hays, Dan Pearson, Jeff Hawkins, Wesley Miser, Roberta Cole, Amber Elliott, Kylie Cook, Amy Powers, Dustin Tomlin, Bradon French

**September 25**  
**Birthday** - Brooke Salmons, Ann Taylor, Charles Martin, Jesse Renteria Jr., Cecil Slater, Stacy Lesly, Marcy Vitela, Pedro Vargas, Teresa Blan, Sandy Zamora, Chuck Cook, Edwin Percy, Andrew Dalton Raper, Erynn Saenz, Sally Pittman

**Anniversary** - M/M Steve Holton, M/M Arturo Vargas

**September 26**  
**Birthday** - Whitt Barkley, Mandy Derington, David Tomlison, Tamera Shedd, Von Close, Idella Randall, Cari Babitzke Baker, Jennifer Martin, Wayne Cummings, Regan Boxwell, Wanda Reed, Sharon Whitefield, Joy Graham, Grace Davis, Torin Winkler

**Anniversary** - M/M John Patterson

**September 27**  
**Birthday** - Jim Davis, Jon Hart, Kathy Slough, Nathan Watkins, Garland Hopper, Joe Gomez, Norma Hill, Dennis Randall, Kristina Poole Howell, Sara Shufeldt, Holly Simpson, Tindle Ramon

**Anniversary** - M/M David Bergin

**September 28**  
**Birthday** - Will Crane, Mike Grotegut, Beverly Hintergardt, Mike Yanke, Kim Brock, Teddie Whitefield, Judy Reed, Jimmie Vernon, Linda Lowenhagen, Julio Garcia, Sherry Moore, Jeff Gresset, Mone Borunda, Amanda Bain

**September 29**  
**Birthday** - Dick Hintergardt, Kelly Vernon, Meguel Espinosa, Jeff Vanlandingham, Vi Kjos, Charlie Saigado, Sue McCloy, Gabriel Rodriguez, Dave Laughlin, Ruben Olivarez, Christy Lang, Phillip Terry Moore, Travis Burgess, Tara Duke, Reyna Arreola

**September 30**  
**Birthday** - Aaron Boyd, Chile Favala, Kyle Williams, Tanya Adkins, Cindi Nash, Stan Seagler, Naomi Fryrear, Jana Tindell, June Spencer, Roger Jones, F.W. Thomas, Sandy Cummings, Jean West, Dixie Williams, James Whitaker, Patrick Jerman, Sharon Bailey, Jade Shaver, Chris Cudd, Jenn Schnell, Justin Parker, Glenn Robinson, Sable Ortiz

**Anniversary** - M/M Aaron Brown, M/M A.D. Reed Jr., M/M Leon Wilson, M/M Charlie Saigado

**October 1**  
**Birthday** - Royce Mathews, Galen Slough, Merri Gale Sparks, Hector Nava, Beatrice Renteria, Brenda Pierson, Willie Clement, Sheila Watley, Colene Schaefer, Randall Schell, Angela Rodriguez, Laci Ortega, David Nash, Betty Perry, Robbie Dewberry, Jeff Shields, Maria Sibley, Lacey Decker

**Anniversary** - M/M Elwyn Young

**October 2**  
**Birthday** - Kyler Barkley, Wayne Garrett, Jeremy Tunnell, Richard Wagner, Della Reed, Kathi Gilley, Kelly Trout, Angelita Cruz, Pamela Ring, Robbi Dewberry, Jerry Jasper

**Anniversary** - M/M Scott Davis, Jim & Linda Beeson, M/M Jeff Hawkins, Mr. & Mrs Dan Desimone

**October 3**  
**Birthday** - Ruth Ann Jones, Lloyd Carroll, Doris Bateman, Eulalia Blankenship, Brian Watley, Teresa England, Timber Barkley, Chad Brown, Arlene Kennedy, Lynda Tunnell, Griffin George, Marsha Murphy

**Anniversary** - M/M Scott Davis, Jim & Linda Beeson, M/M Jeff Hawkins, Mr. & Mrs Dan Desimone

# Our Sympathy



## BILLIE "JOYCE" JOHNSON

**GRUVER** - Billie Joyce Johnson, 89, passed away early Thursday, September 15, 2011 at Hansford Hospice, Spearman, Texas.

The daughter of Laura (Gill) and Joseph O. Walker, she was born October 9, 1921 in Breckenridge, Stephens County, Texas. The Walker family lived in Levelland, Texas where Joyce attended school. She attended Texas Technological College in Lubbock, Texas. While at Texas Tech, she met William Lewis Johnson and they were married on January 28, 1940 in Liberal, Kansas. The Johnson family made their home, farming and ranching in the Oslo community. Joyce was a member of Oslo Lutheran Church and was a gifted artist. Her art, whether it be watercolors, pencil or pastels, was enjoyed by her family and many in the community.

She was preceded in death by a sister Eloise Walker, brother Joe Walker, husband Bill Johnson in 1998, a son Charles Eugene (Charlie) Johnson in 2011.

Survivors include a daughter, Eloise Carol and husband, Doug Hackett of Greenville, TX; three sons, James Elton (Jimmy) Johnson and wife, Karen; and Christopher Edward Johnson, all of Oslo, and Walter Eric Johnson of Gruver; six grandchildren, Susan Runnels, Bob Hackett, Justin Johnson, Missy Cartwright, Lucas Johnson, Lisa Johnson; and seven great grandchildren, Dakota, Levi, Will, Nick, Emma, Crosby and Milly.

Graveside services were Saturday afternoon, September 17th, 2:00 p.m. at the Oslo Lutheran Cemetery. Memorial services followed at 2:30 p.m. at Oslo Lutheran Church with Pastor Arlen Lloyd officiating. Services were under the care of Henson-Novak Funeral Directors of Guymon.

Memorials may be given to the Oslo Lutheran Church or a charity of choice, c/o Henson-Novak Funeral Directors, P.O. Box 1306, Guymon, OK 73942. www.henson-novak.com

## WALTER O. HITE

**GRUVER** - Walter O. Hite, 73, died Sunday, Sept. 18, 2011.

Graveside services will be at 2 p.m. Wednesday in Hansford Cemetery with the Rev. Brad Reeves officiating. Arrangements are by Boxwell Brothers Funeral Home of Spearman.

Mr. Hite was born May 12, 1938, in Pawhuska, Okla., to Donna and Dallas Hite. He married Raye Green on Jan. 2, 1990, in Skellytown, and worked as a cowboy.

He is survived by his wife of Gruver; a son, Eddie Ray Lick of Athens; and two grandchildren.

# Words from Faith & Grace



by Cecil R. Biggers, Lutheran Lay Minister

In the fifteenth week of Pentecost, we study Ezekiel 18: 1-4, 25-32, Psalm 25: 1-9, Philippians 2: 1-13, and Matthew 21: 23-32. We learn something of our responsibility for sin, for others, and for God.

Ezekiel speaking to the people refutes the idea that children suffer for the sins of their parents. Now we recognize that a child may be disadvantaged and suffer consequences from the mistakes of its parents, but Ezekiel is taking away the form excuses for their troubles. Each believer bears the responsibility of his/her actions. We must each accept responsibility for our own sin. God is willing to forgive each of us, if we turn away from our evil ways in repentance. God has no pleasure in the death of anyone.

The Psalmist sings a song of thanksgiving to God. The Psalmist surrenders his being to God requesting that he not be put to shame, that God teach him and lead him in God's ways, and that God forgive him and not remember the sins of his youth or his adult transgressions. A song that we all can sing.

Paul exhorts the Philippians to allow the same mind to be in them that was in Christ Jesus. The greatest enemy of the young church is disunity. If the faithful put away selfish ambition and conceit and with humility regard others as being better than themselves, it is possible for them to live the mind of Christ together. The believer is to work out his own salvation through God who is at work in them. I cannot truly believe in my Lord, Jesus Christ, or accept God's grace without the work of the Holy Spirit within me. Therefore I cannot boast of my own righteousness, but boast only of Christ crucified.

The chief priests and the Sanhedrin seek to trap Jesus into 'blasphemy'. They ask Jesus by what authority he performs his miracles and by what authority he teaches. Jesus turns the trap back on them by asking, "Did the baptism of John come from heaven, or was it of human origin?" The elders are stumped. If they admit that John was sent by God they will have to admit that Jesus is The Messiah, if they deny that John was sent by God the people will rise up against them. So they answered, "We do not know." Allowing Jesus to say, "Neither will I tell you by what authority I am doing these things. Jesus then tells another parable of two sons. A man asks one of his two sons to work in his vineyard. The son says, "I will not" and later does the work. When the father asks the other son, he says "I will", but he does nothing. Jesus asks, "Which of the two did the will of his father?" The elders answer, "The first." Note that both sons are not initially obedient; they both lack something. Jesus uses this to show that those 'sinners' who heard John believed him and God accepts them. The elders although claiming special religious knowledge did not believe John and God will hold them responsible.

May the Holy Spirit dwelling in you enable you to accept God's grace and share His steadfast love with others.

**MONUMENTS**  
**Boxwell Brothers**  
**Funeral Home**  
 519 Evans • Spearman  
 659-3802

Dear friends,  
 When you buy a monument from us we make sure it is exactly what you want at a price you can afford. If it is not right, we will make it right. And you will not have to search the countryside to find us. We are here when you have a need.  
 Sincerely,  
 Bob Boxwell

**Weatherford Construction**  
 Septic Systems

**Kirk Weatherford** (806) 336-2820  
 8125 FM 3395 Toll Free: 1-800-585-6047  
 Sanford, TX 79078 Email: kirk@weatherford-construction.com

**Actos® BLADDER CANCER?**  
 FDA Reports Increased Risk of Bladder Cancer with Extended Usage

The Type 2 diabetes drug, Actos®, has been reported to increase the risk of bladder cancer to patients with extended usage and increased cumulative dosages. Bladder cancer symptoms may include painful urination, blood in urine, frequent urination and other side effects.

If you or a loved one have taken ACTOS®, ActosPlus MET®, or Actosplus MET XR®, and have been diagnosed with bladder cancer, then call us about your legal rights. No Legal Fees or Expenses charged unless we make a recovery.

**WILLIS LAW FIRM**  
 HOUSTON, TEXAS  
 BOARD CERTIFIED  
 PERSONAL INJURY TRIAL LAWYER  
 TEXAS BOARD OF LEGAL SPECIALIZATION  
 DAVID P. WILLIS - ATTORNEY AT LAW  
**1-800-883-9858**  
 CALL FOR A FREE CASE REVIEW

**dish NETWORK**  
 AUTHORIZED RETAILER

**FREE** BLOCKBUSTER unlimited DVD by mail - in-store exchanges (for 3 mo.)

**\$19.99** a month for 12 mo. (plus tax) (\$24.99/mo.)

**FREE** HBO cinemax (31 ch. for 3 mo.)

**FREE** 2 Room HD DVR Upgrade (1 HD DVR + 1 SD DVR) (31mo. DVR service fee applies)

**1-800-655-4939** WWW.INFINITYDISH.COM

**COLLECTOR CAR AUCTION**  
**MECUM DALLAS 2011**  
 AUCTIONS OCTOBER 6th-8th  
 At The Dallas Convention Center  
 Dallas, TX

**600 VEHICLES**

Be part of the live national TV broadcast on Discovery's Velocity Network

**BUY. SELL. SPECTATE.**  
**www.MECUM.com • 815-568-8888**

**VAGINAL MESH LAWSUIT**  
 Serious Complications from Synthetic Mesh and Slings

Trans-vaginal mesh and bladder slings are synthetic medical devices used to treat pelvic organ prolapse (POP) and bladder incontinence. These products have a very high failure rate. Complications include: mesh erosion, leakage, infections, painful sexual intercourse, movement of organs and need for additional surgeries.

If you have had a mesh or sling implanted and are having problems, contact our law firm to discuss your legal options. No Legal Fees or Expenses unless we make a recovery for you.

**WILLIS LAW FIRM**  
 HOUSTON, TEXAS  
 BOARD CERTIFIED  
 PERSONAL INJURY TRIAL LAWYER  
 TEXAS BOARD OF LEGAL SPECIALIZATION  
 DAVID P. WILLIS - ATTORNEY AT LAW  
**1-800-883-9858**  
 CALL FOR A FREE CASE REVIEW

**TRUCK DRIVERS WANTED THROUGHOUT TEXAS**  
**HOME DAILY OR WEEKLY**

Hiring Solo and Team Drivers in Dedicated, Intermodal, Tanker and Van (OTR, Regional) Divisions

Sign-on Bonus May Apply - Ask Your Recruiter!

Experienced Drivers and Recent Driving School Grads Welcome

Inexperienced? Take advantage of Schneider's Tuition Reimbursement program and get your CDL at a local driving school.

Apply at [schneiderjobs.com/newjobs](http://schneiderjobs.com/newjobs)  
**1-800-44-PRIDE** for more information

**PRAIRIE MOTORS INC.**  
 Hwy. 207 South • P.O. Box 430  
 Spearman, TX 79081 • (806) 659-2541  
 www.prairiemotors.com

**MurMur's Cafe**  
 100 Roland St  
 Spearman, TX.  
 659-3580

Replenish the seed of faith through . . .  
**DAILY BIBLE READING, PRAYER & REGULAR CHURCH ATTENDANCE**

**Spearman**

**Apostolic Faith Church**  
 822 S. Drexler • 659-2870  
 Sunday School: 10 a.m.  
 Worship Service: 11 a.m.  
 Sun. Eve.: 6 p.m.  
 Wed. Prayer Mtg.: 7 p.m.  
 Pastor - Jack Cornell

**First Assembly of God**  
 401 N. Bernice • 659-2295  
 Sunday School: 9:30 a.m.  
 Worship: 10:40 a.m.  
 Evening Worship: 6 p.m.  
 Wed. Worship: 7 p.m.  
 Wed. Youth: 7 p.m.  
 Pastor - Brad Smith

**First Christian Church**  
 (Disciples of Christ)  
 29 S. Bernice • 659-2036  
 Sunday School: 9:45 a.m.  
 Worship: 10:50 a.m.  
 Minister -

**First Baptist Church**  
 123 N. Bernice • 659-5557  
 Sunday School: 9:45 a.m.  
 Worship: 11 a.m.  
 Evening Worship: 7 p.m.  
 Men's Bible Study - Wed., 7 a.m.  
 Children's Choir - Wed., 6 p.m.  
 Adult Choir - Wed., 7 p.m.  
 Wed. Bible Study: 7 p.m.  
 Pastor - Jim Medley

**Church of Christ**  
 121 S. Haney • 659-3244  
 Sunday Bible Class: 9:45 a.m.  
 Worship: 10:30 a.m.  
 Evening Worship: 6 p.m.  
 Bible Study Wed.: 7:30 p.m.

**Sacred Heart Catholic Church**  
 901 Roland • 659-2166  
 Sat. Night Mass: 5:30 p.m.  
 Sun. Mass: 9 a.m. - English  
 Sun. Mass: 11:30 a.m. - Spanish  
 Rev. Gregory Bunyan

**First United Methodist**  
 407 S. Haney • 659-5503  
 Sunday School: 9:45 a.m.  
 Worship: 8:30 & 11 a.m.  
 Jr. High Youth: 5 p.m. Sunday  
 High School: 6 p.m. Sunday  
 Kids Club: 3 p.m. Wed.  
 Pastor - Toni Bailey

**Grace Presbyterian Church**  
 (Worships with Faith Lutheran Church)  
 1101 Bernice • 659-2033

**Faith Lutheran Church (ELCA)**  
 1101 Bernice • 659-2252  
 Sunday School: 9:45 a.m.  
 Worship: 11 a.m.  
 (Worships with Grace Presbyterian Church)  
 Pastor - Cecil Biggers, PLM

**Union Church**  
 31 S. Endicot • 659-2644  
 Sunday School: 10:00 a.m.  
 Worship & Kid's Church: 11:00 a.m.  
 Wednesday Evening Worship and Bible Study Service: 7 p.m. Wed.  
 Pastor - Steve Hinshaw  
 www.unionchurchonline.org

**Fellowship Baptist**  
 1102 S. Archer • 659-2783  
 Sunday School: 10 a.m.  
 Worship: 11 a.m.  
 Sun. Evening Worship: 6 p.m.  
 Sun. Evening Spanish Worship: 7 p.m.  
 Youth/Adult Service: 7:30 Wed.  
 Pastor - Philip Hudson

**Primera Mision Bautista**  
 502 E. 7th • 659-3991  
 Sunday School: 9:45 a.m.  
 Worship: 11 a.m.  
 Evening: 6 p.m.  
 Wed. Prayer Meeting: 7 p.m.  
 Thurs. Visitation: 7 p.m.  
 Pastor Joe Garcia Jr.

**El Apuesto Alto U.P.C.I.**  
 1105 S. Roland  
 Domingos: Escuela-Domical - 10 a.m.  
 Culto Evangelistico - 7 p.m.  
 Jueves: Oracion - 8 p.m.  
 Mier: Estudio Biblico - 7 p.m.  
 Pastor - A.G. Martell  
 (806) 659-2153

**Gruver**

**First Baptist Church**  
 402 E. Broadway • 733-2411  
 Sunday School: 9:45 a.m.  
 Worship: 10:50 a.m.  
 Disciple Training: 6 p.m. Sunday  
 Prayer Meeting: 7:30 p.m. Wednesday  
 Pastor - Scott Curry

**Church of Christ**  
 209 King • 733-2760  
 Sunday School: 9:30 a.m.  
 Worship: 10:20 a.m.  
 Evening Worship: 6 p.m.  
 Wed. Worship: 7:00 p.m.  
 Minister - Gaylord Cook

**First Christian Church**  
 510 King • 733-2960  
 Sunday School: 10:00 a.m.  
 Sunday Worship: 11 a.m.  
 Youth: 7:30, Sunday  
 Adult Bible Study: 7:30, Sun.  
 Wed. Bible Study: 8:00 p.m.  
 Pastor - Gary Gurfory

**Gruver United Methodist**  
 Broadway & Garrett  
 733-2651  
 Sunday School: 9:45 a.m.  
 Worship: 8:30 & 10:50 a.m.  
 Eve. Worship & UMY: 6 p.m.  
 Pastor - George Price

**Spanish Cristo Redentor Church**  
 Hwy 15 806-659-2166  
 Gruver, TX  
 Sun. Mass: 1:30 p.m. - Spanish  
 Rev. Gregory Bunyan

**Oslo**

**Oslo Lutheran Church (ELCA)**  
 6 Miles West & 12 Miles  
 North of Gruver  
 339-7646  
 Sunday School: 9:45 a.m.  
 Worship: 11 a.m.  
 Pastor - Arlen Lloyd

**Morse**

**Morse Baptist Church**  
 733-2757  
 Pastor - Gary Stevens

**Waka**

**Church of Christ**  
 300 Rogers Ave.  
 202-1126  
 Sunday School - 9:30 a.m.  
 Sunday Worship: 10:30 a.m. & 6 p.m.  
 Wednesday Bible Study: 7 p.m.  
 Preacher - Ed Jenkins

He has showed you, O man, what is good. And what does the LORD require of you? To act justly and to love mercy and to walk humbly with your God.  
 Micah 6:8

This feature is made possible through the sponsorship of these civic minded businesses:

**Deakin ELECTRIC**  
 OILFIELD • RESIDENTIAL • COMMERCIAL  
 321 S. MAIN • SPEARMAN  
 1-800-999-1506 Chris Deakin  
 (806) 659-5016 President

**Bartlett's Lumber & Hardware**  
 105 W. Broadway • Gruver, TX  
 (806) 733-2404

**BERRY CLEANERS**  
 Ann & Vernon Pipkin - Owners  
 Phone 659-3122 • P.O. Box 1017  
 207 Main St. • Spearman, TX

**Morse Implement & Auto Supply**  
 "Join us in church"  
 Tom Dortch 733-2668  
 Box 89 • Morse, TX 79062

**PRAIRIE MOTORS INC.**  
 Hwy. 207 South • P.O. Box 430  
 Spearman, TX 79081 • (806) 659-2541  
 www.prairiemotors.com

**MurMur's Cafe**  
 100 Roland St  
 Spearman, TX.  
 659-3580

**Hansford County Reporter-Statesman**  
 "Proudly Serving Hansford County Since 1907"  
 (806) 659-3434  
 310 Barkley • Spearman, TX

**INTERSTATE BANK, sbb**  
 www.interstatebank.net  
 322 Main • P.O. Box 146  
 Spearman, TX • 659-2559



# FYI

FOR YOUR INFORMATION

**Medical Fund Established At FNB for Dynell Moore**  
Shawn and Dynell Moore, children of Johnny and Brenda Vera and Terry Moore of Spearman, have recently relocated their family to the Dallas-Fort Worth area. In March, Dynell was diagnosed with stomach cancer. She will be receiving treatments at MD Anderson in Houston and Baylor Medical Center in Fort Worth. After the birth of their second child, three tumors were discovered, two of which contained malignant cells. The tumors were safely removed at Mary Washington Hospital in Fredericksburg, VA. At which time, Dynell began oral oncology treatment to keep the cancer from spreading. The Moore's made the decision after consulting with their physician to continue an aggressive treatment program at MD Anderson Cancer Center in Houston as well as their sister facility in Fort Worth. There has been a Medical Fund established for the Moore family at First National Bank in Spearman to aid in treatment expenses. The Moore's feel extremely blessed with the early diagnoses of Dynell's condition and the support they have received from family and friends.

**Gruver FCCLAF Cheese Sale**  
Gruver FCCLAF is selling Zak's Cheese. They will be taking orders until Monday, September 25. Orders delivered on Monday, Nov. 7th. See any FCCLA member or call Mrs. Sherrill at Gruver High School.

**Gruver Volunteer Fire Department Open House October 22**  
The Gruver Volunteer Fire Department will host a Spaghetti Meal Fundraiser, Open House and Silent Auction on Saturday October 22, 2011 at the Gruver Fire Station. The meal will be held from 6-8 p.m. and the Open House will be held from 7-9 p.m. The Silent Auction winners will be announced at 9 p.m. Auction items will be available for viewing and bidding at the fire station Thursday and Friday from 5-7 p.m., and all day Saturday. All donations and proceeds will go to the Fire Department for the purchase of equipment for a new truck. The goal to meet is \$16,000.

**Bouquet Designs**  
Hansford County Library is selling raffle tickets for hand-painted tables, painted by Linda Combs. First place is a full-sized dining room table with a leaf. Second place is a side table or occasional table. Tickets are \$5 per ticket or 5 tickets for \$20. These tables are truly beautiful. All proceeds will benefit the library to help make up for lost Thrift Shop income. Tickets will be sold through Monday, November 14, 2011.

**Gladiola Flower Club Annual Nut Sale**  
It's time once again to purchase your nuts from Gladiola Flower Club. If you have purchased before, please contact your representative, if not, please call Margarette Evans at 806-659-2165. Orders must be placed no later than October 5TH. You may purchase nuts, trash mix, fruit mix, or samplers.

**Spearman Booster Club**  
If you would like to become a member of the Spearman Booster Club please contact any club member. This money helps the Spearman Booster club award scholarships to many athletes each year. Please call Kellye Buchanan 330-0364 or 659-5102 or mail membership to P.O. Box 343 Spearman.

**Greyhound Grand**  
Please support the Greyhound Booster Club and buy a square to win \$1000. Squares are numbered 1-100 and the \$ value is the number of the square. The person whose number is drawn will win \$1000. The drawing will take place November 4th at the last home football game. To buy a square, see John Haynes at Bort Agency or purchase a square at the home football games.

**New Counseling Practice in Hansford County!**  
Darlene Curry, M.Ed., M.A., L.P.C., has opened a Counseling Practice in Gruver in the hopes of adding much needed services to the panhandle area. The office is located at 430 Main Street, Ste. A in Gruver. Appointments may be made by calling 806-736-0463.

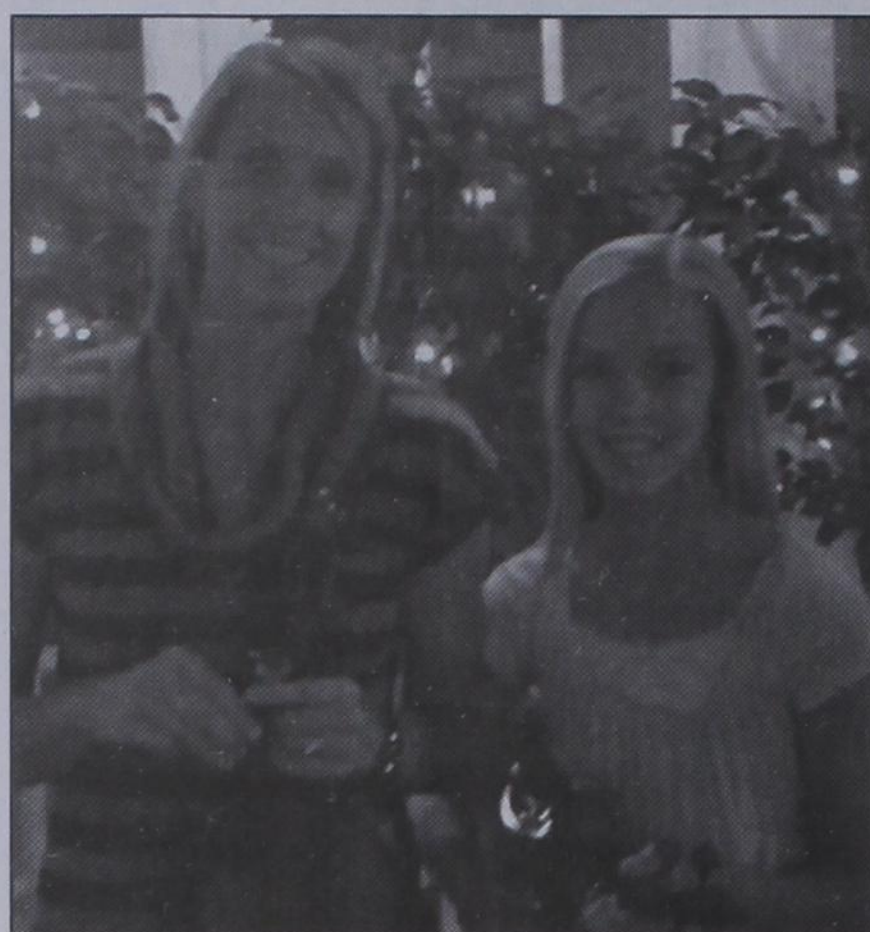
**EMT Basic Class Begins October 10th**  
EMT-BASIC classes will be held in Gruver starting October 10th. Scholarships will be available through The City of Gruver and The City of Spearman. Please contact Janet Williams at 806-570-4284 for more information.

**Hansford County Health Fair October 13**  
Mark your calendar, Hansford County Hospital Community Health Fair October 13, 2011 from 7am- 1pm. Flu shots, reduced price for men and women lab screening and many health related vendors. If your business would like to donate a door prize, please contact Jackie Nelson 806-659-5841 or bring by the hospital.

**Texas SNAP Benefits Assistance**  
Need help applying for SNAP benefits? We can help! High Plains Food Bank is providing application assistance for Texas SNAP benefits (Food Stamps) in your area. Telephone application assistance is available. If you need to apply for benefits, please call us today at 806374-8562 or 1-800-774-8564.

**Don't Text and Drive Decals**  
If you would like to purchase a lime green 'AMT 1994-2009 Don't Text and Drive' window decal in memory of Ali Tyler, please contact Stephanie Tyler at 806-736-0019. All proceeds go to the Ali Tyler Memorial Scholarship Fund. Decals are also available at Hansford County Floral Company on Main Street in Spearman.

**Help Available for Breast Cancer Survivors**  
Any woman who has had breast cancer surgery and cannot afford undergarments and prosthetics can get help from the American Cancer Society through a grant from Susan G. Komen for the Cure®. The Amarillo Area Breast Prosthesis and Lymphedema Accessory Program will provide financial help to women in need of breast forms or prostheses, mastectomy bras and accessories to help with lymphedema, which is swelling of the arm caused by a build-up of lymph fluid. For more information, call the American Cancer Society office in Amarillo at (806) 353-4307 or 1-877-227-2345.



*K. C. Garnett and her daughter, Maren Garnett, presented a delightful violin musical program at the Hospice Volunteer's Annual Family Appreciation Dinner on Monday, September 12, 2011 at the Bunkhouse in Spearman. (Photo submitted)*

**TO ALL INTERESTED PERSONS AND PARTIES:**  
DCP Midstream, LP, has applied to the Texas Commission on Environmental Quality (TCEQ) for an amendment to Air Quality Permit Number 73394, which would authorize modification to a Sherhan Gas Plant at 15150 County Road 9, Gruver, Hansford County, Texas 79040. Additional information concerning this application is contained in the public notice section of this newspaper.

**PANHANDLE EXPRESS Is Seeking Class A CDL Drivers**  
Strict Adherence to SAFETY Values and Policies • New Equipment  
Excellent Pay • Bonus Programs for Safety and Retention  
Company Paid Uniforms • 5 days driving and 2 days off.  
Must be 25 yrs of age • Must have min. 2 yrs driving exp  
Dedicated Short Haul • Company Paid Health Insurance  
Vacation pay after one year • SAFETY Values and Policies  
Please come by Hereford Downtown office at 133 W. Third Street to fill out an application and join our team of professional drivers!!  
806-364-5725 • snoyce@deafsmithproducers.com

**Sergio's Auto Sales**  
We appreciate your support!  
Sergio Vargas  
120 W Kenneth Ave • Spearman TX 79081  
(806) 659-9971 - day • (806) 330-0173 - night  
Canyon Location Phone Number: (806) 231-8388

**SERGIO'S AUTO SALES**  
**SERGIO VARGAS**  
120 W. KENNETH AVE. SPEARMAN, TX 79081  
806 659 9971 CEL. 806 330 0173

## Bob Davis Receives Golden Acres Sales Award

Bob Davis of Gruver, Texas recently received recognition from Golden Acres Genetics for outstanding customer commitment and sales achievement and was honored with a 2011 Golden Achievement Award. This recognition honors Golden Acres reselling partners whose commitment to customers is reflected in their business performance and high level of sales achievement and customer satisfaction.

Presenting the 2011 awards at the company's recent kickoff meeting in Dumas, Golden Acres president Lou Buice praised Bob Davis for "truly understanding how important customers are to Golden Acres and going out of his way to make each customer's experience a positive one."

Golden Acres seed specialist James Baxter said today's top seed resellers do more than just offer access to the latest seed technology. "A seed reseller has to be a trusted advisor who aligns his goals with the customer's success. Bob works hard to bring profitable, customized solutions to every customer, which explains his significant progress."

"Golden Acres works with some outstanding resellers throughout the South, and Bob Davis is certainly among the best of the best," said Buice. "We're proud to recognize his tremendous sales efforts and achievements during the past year."

Golden Acres Genetics is an independent and family-owned company which markets corn and grain sorghum seed and related technologies to farmers across nineteen southern states. Built on the principal of "Honoring God in all we do," we operate under the philosophy symbolized by three simple words... "Faith. Family. Farming." For more information, visit [www.GAseed.com](http://www.GAseed.com).

**Gordon's**

**Bridal Registry**

**Couples Currently Registered**

Lauren Mesneak & Andrew Dixon - T&B  
Brittney Bradley & Rhett Renner - 12/12  
Margie Saldivar Vaquera & Michael Warner  
Katie Winn & Tyler Lane  
Tana Saul & Mark Navarette

**Baby Registry**

Jackie (Sparks) & John Martin (Boy)  
Tara Reid & Domingo Salazar (Girl)  
Michelle & Jarick Howard (Boy)  
Brandi & Toby Thompson (Boy)

**Gordon's** 659-2141  
314 Main Spearman

**MITCHELL THEATRES.COM**  
GUYMON, OK • LIBERAL, KS • NEWTON, KS

**NORTHBRIDGE 8**  
Guymon, Oklahoma  
[www.northridge8.com](http://www.northridge8.com)  
580-338-3281

**SOUTHGATE 6**  
Liberal, Kansas  
[www.southgate6.com](http://www.southgate6.com)  
620-624-5573

**SEQUOYAH 8**  
Garden City, Kansas  
[www.sequoyah8.com](http://www.sequoyah8.com)  
620-275-2760

**CHISHOLM TRAIL 8**  
Newton, Kansas  
[www.chisholmtrail8.com](http://www.chisholmtrail8.com)  
316-283-0555

FRESH POPCORN EVERYDAY!  
-PARTY ROOM & ARCADE-

**Get YOUR new Tablet at PTCI!**

**BlackBerry® PlayBook™ Tablet**  
or  
**Motorola XOOM™ Tablet**

**PLUS: FREE Installation of High-Speed Internet!**

Ask about our **12-month payment plan & discounted prices!**

Offer good thru September 30, 2011  
ptci.net  
721 W 7th in Spearman 800-562-2556

Services not available in all areas. Some restrictions apply.



# 2011 GHS *the* HOMECOMING

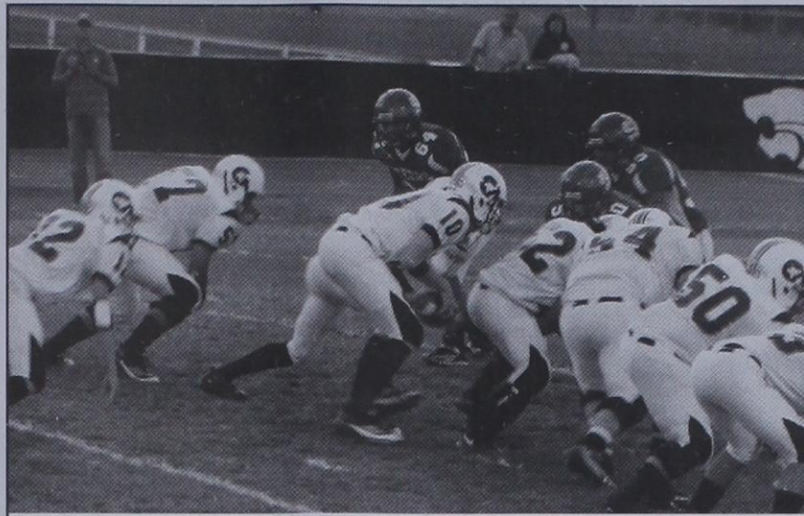


**Gruver  
Greyhounds  
vs  
Texhico, NM**

**Friday,  
Sept. 23  
7:30 p.m.  
Greyhound Stadium**

### 2011 GRUVER VARSITY GREYHOUNDS

| #  | Name             | Ht     | Wt  | Position | Gr  |
|----|------------------|--------|-----|----------|-----|
| 3  | Diego Ortiz      | 6' 0"  | 175 | TE/LB    | Jr. |
| 5  | Kramer King      | 5' 9"  | 145 | WR/DB    | Sr. |
| 10 | Korbin Irwin     | 6' 3"  | 175 | QB/R     | Jr. |
| 11 | Beau Blankenship | 6' 0"  | 160 | WR/DB    | So. |
| 12 | Colten Jackson   | 6' 0"  | 155 | TE/LB    | Jr. |
| 22 | Lupe Peña        | 5' 7"  | 140 | WR/DB    | Jr. |
| 25 | Victor Serrano   | 5' 9"  | 145 | RB/DB    | So. |
| 33 | Victor Guereca   | 5' 7"  | 135 | WR/DB    | So. |
| 44 | Cole Wills       | 5' 9"  | 155 | RB/DB    | Jr. |
| 48 | Jerrod Collier   | 5' 10" | 170 | RB/LB    | Sr. |
| 50 | Saul Suchil      | 5' 8"  | 230 | OL/DL    | Jr. |
| 52 | Johny Terrazas   | 5' 9"  | 180 | OL/LB    | So. |
| 53 | Taos Anderson    | 6' 0"  | 155 | OL/R     | Jr. |
| 54 | Forrest Lopez    | 6' 0"  | 240 | OL/DL    | Sr. |
| 55 | Simon Cuellar    | 5' 10" | 190 | OL/DL    | Fr. |
| 56 | Kolton Morrow    | 5' 9"  | 230 | OL/DL    | Jr. |
| 57 | Israel Mendoza   | 5' 11" | 215 | OL/DL    | So. |



### GRUVER HIGH SCHOOL HOMECOMING ATTENDANTS

Taylor Felderhoff  
Madison McLain  
Evelyn Pastrana

### GRUVER HIGH SCHOOL

**Athletic Director/Head Coach:** Terry Felderhoff  
**Assistant Coaches:** Jim Davis, Buster Brown, Andrew Brockman, Carlos Borunda, Wade Callaway  
**Managers:** Guy Paul Hindergardt, Scott Hindergardt, Niki Brown, Aaron Felderhoff, Karsten Irwin, Matthew Felderhoff, Creed Callaway, Keegan Callaway  
**Film:** Colton Seaney, Justin Moreno  
**Cheerleaders:** Alex Logsdon, Riki Jines, Macy McLennan, Hannah Speck, Rachel Teal, Madison Williams  
**Drum Major:** Nikki Beasley  
**Band Director:** Sandy Cross  
**Asst. Band Director:** Kate Wiggins  
**Superintendent:** David Teal  
**Principal:** Troy Seagler

### 2011 GHS Marching Band

|                     |                  |
|---------------------|------------------|
| Rayel Anderson      | Damian Pierce    |
| Selena Baraza       | Matthew Pierce   |
| Fatima Barrera      | Oziel Rey        |
| Nikki Beasley*      | Nick Rivera      |
| Zoe Cantrell        | Emilynn Robinson |
| Adam Casdorff       | Irasema Soto+    |
| Anthony Cruz        | Hannah Speck     |
| Serena Diaz         | Karen Tarango    |
| Trenton Finley      | Madi Teal        |
| Rebecca Fransen     | Rachel Teal      |
| Ady Garcia          | Paula Terrazas+  |
| Vanessa Garcia      | Rocio Terrazas+  |
| Riki Jines - Senior | Lizbeth Trejo    |
| Mattie Mayfield     | Ulysses Valverde |
| Antolina Mendoza    | Brett Wills      |
| Yadira Mendoza      |                  |
| Yesenia Monroy+     | *Drum Major      |
| Gabriel Mundo       | +Color Guard     |

### 2011 Jr. High Greyhounds

| No. | Name             | Grade |
|-----|------------------|-------|
| 2   | Justin Moreno    | 8th   |
| 4   | Karsten Irwin    | 8th   |
| 5   | Miguel Perez     | 7th   |
| 6   | Cody Waldrop     | 6th   |
| 7   | Manny Terrazas   | 7th   |
| 12  | Cole Logsdon     | 6th   |
| 15  | Juan Perez       | 6th   |
| 20  | Aaron Felderhoff | 8th   |
| 21  | Anthony Cruz     | 8th   |
| 22  | Ramiro Hernandez | 7th   |
| 24  | Gustavo Lora     | 6th   |
| 25  | Tate Tyler       | 6th   |
| 44  | Luis Trejo       | 6th   |
| 50  | Adam Casdorff    | 8th   |
| 51  | Zane Patterson   | 7th   |
| 52  | Kegan Porter     | 7th   |
| 55  | Colton Seaney    | 8th   |
| 57  | Nicholas Key     | 8th   |
| 62  | Lalo Barrera     | 7th   |
| 65  | Griffin George   | 8th   |
| 72  | Trace Patterson  | 8th   |
| 75  | Chris Lewis      | 7th   |
| 77  | Jade Red         | 6th   |
| 79  | Ulysses Valverde | 8th   |
| 80  | Trenton Finley   | 8th   |

### 2011 GRUVER JV GREYHOUNDS

| #  | Name              | Ht     | Wt  | Position | Gr  |
|----|-------------------|--------|-----|----------|-----|
| 5  | LC Perez          | 5' 9"  | 135 | RB/DB    | Fr. |
| 10 | Dax Haight        | 5' 8"  | 150 | QB/LB    | Fr. |
| 12 | Mason McLain      | 5' 7"  | 125 | WR/DB    | Fr. |
| 20 | Carson Williams   | 5' 10" | 160 | RB/DB    | Fr. |
| 21 | Jacob Collier     | 5' 10" | 170 | RB/DL    | Fr. |
| 22 | Ramon Ortiz       | 5' 6"  | 120 | WR/DB    | Fr. |
| 24 | Eddie Mendoza     | 5' 6"  | 140 | WR/LB    | So. |
| 25 | Blake Wills       | 5' 6"  | 125 | RB/DB    | Fr. |
| 34 | Brett Wills       | 5' 6"  | 120 | WR/DB    | Fr. |
| 44 | Cesar Mendoza     | 5' 8"  | 130 | WR/DB    | So. |
| 50 | Manuel Borunda    | 5' 10" | 155 | OL/R     | So. |
| 52 | Dakota Lopez      | 5' 8"  | 155 | OL/DL    | Fr. |
| 53 | Wesley Jackson    | 5' 9"  | 200 | OL/DL    | Fr. |
| 56 | Efrain Santillan  | 5' 9"  | 145 | OL/LB    | So. |
| 62 | Eddie Borunda     | 5' 7"  | 180 | OL/LB    | So. |
| 64 | Marco Ayala       | 5' 7"  | 150 | OL/DL    | Fr. |
| 75 | Misael Mendoza    | 5' 5"  | 155 | OL/LB    | Fr. |
| 77 | Ben Book          | 6' 2"  | 225 | OL/DL    | Fr. |
| 80 | Rodolfo Carrazaco | 5' 5"  | 105 | WR/DB    | Fr. |

## Good Luck from these Local Businesses:

|   |   |  |   |   |
|---|---|--|---|---|
| <b>Adobe Walls Gin, LP</b><br>Spearman • 659-2574           | <b>Cates Men &amp; Boys</b><br>Spearman • 659-3426                    | <b>Gordon's Drug</b><br>Spearman • 659-2141                          | <b>Hansford Pharmacy</b><br>Spearman • 659-2226             | <b>MurMur's Cafe</b><br>Spearman • 659-3580                                   |
| <b>Aeroflight Publications</b><br>Gruver • 733-2483         | <b>Delinda McLaughlin<br/>Photo Solutions</b><br>Spearman • 659-2800  | <b>Gruver Ford</b><br>Gruver • 733-2431                              | <b>Hi-Plains Auto Supply, Inc.</b><br>Spearman • 659-2506   | <b>North Plains Electric Coop</b><br>806-435-5482 • 800-272-5482              |
| <b>AeroTan</b><br>Gruver • 733-2483                         | <b>Dreamers</b><br>Spearman • 659-9907                                | <b>Gruver State Bank</b><br>Member FDIC<br>Gruver • 733-5061         | <b>Hoochy Poochy Parlor</b><br>Borger • 273-2724            | <b>Patterson-UTI<br/>Drilling Company LLC</b><br>Oklahoma City • 405-686-0006 |
| <b>All Occasion Flowers</b><br>Spearman • 659-5180          | <b>El Vaquero Restaurant</b><br>Gruver • 733-2407                     | <b>H&amp;H Credit Union</b><br>Stinnett • 878-2452                   | <b>Hungry Cowboy</b><br>Spearman • 659-5151                 | <b>Perryton Office Supply</b><br>Perryton • 435-4812                          |
| <b>Bartlett's Ace Hardware</b><br>Gruver • 733-2404         | <b>Equity Exchange</b><br>Spearman • 659-2420                         | <b>H&amp;H Water Well</b><br>Spearman • 659-5577                     | <b>Interstate Bank, ssb</b><br>Spearman • 659-2559          | <b>Pizza Hut</b><br>Spearman • 659-2547                                       |
| <b>Berry Cleaners</b><br>Spearman • 659-3122                | <b>First State Bank</b><br>Spearman • 659-5565<br>member FDIC         | <b>Hansford Abstract Co.</b><br>Spearman • 659-2516                  | <b>Kirk Insurance Agency</b><br>Spearman • 659-2794         | <b>Prairie Motors</b><br>Spearman • 659-2541                                  |
| <b>Bob &amp; Cathy Davis</b><br>Gruver • Spearman           | <b>Five Star Equipment</b><br>Spearman • 659-3743                     | <b>Hansford County Feeders</b><br>Gruver • 733-5025                  | <b>Jarvis Law Office, P.C.</b><br>Spearman • 659-2554       | <b>Rocking F Boot<br/>&amp; Saddle Shop</b><br>Spearman • 659-3342            |
| <b>Bort Agency</b><br>Gruver • 733-2404                     | <b>Frank Phillips College<br/>Allen Campus</b><br>Perryton • 648-1450 | <b>Hansford County Floral Co.</b><br>Spearman • 644-4000             | <b>J&amp;S Signs &amp; Engraving</b><br>Spearman • 736-7020 | <b>Sergio's Body Shop</b><br>Spearman • 659-5217                              |
| <b>Boxwell Brothers Funeral Home</b><br>Spearman • 659-3802 | <b>Frontier Feedyard</b><br>Spearman • 882-4251                       | <b>Hansford County Hospital District</b><br>Spearman • 659-2534      | <b>Lowe's Marketplace</b><br>Spearman • 659-2522            | <b>Sunray Co-Op<br/>Gruver Branch</b><br>Gruver • 733-2481                    |
| <b>Brown, Graham &amp; Co.</b><br>Spearman • 659-2538       | <b>Gigot Agri Products</b><br>Spearman • 659-3121                     | <b>Hansford County<br/>Reporter-Statesman</b><br>Spearman • 659-3434 | <b>M&amp;D Aerial, LLC</b><br>Spearman • 806-202-2360       | <b>Tong's Chinese Food</b><br>Spearman • 644-2838                             |
| <b>The Bunkhouse Restaurant</b><br>Spearman • 659-2089      | <b>Golden Spread Sales Co.</b><br>Spearman • 659-3776                 | <b>Hansford County Vet Clinic</b><br>Spearman • 659-2100             | <b>Money's</b><br>Perryton • 435-3945                       | <b>Xcel Energy</b><br>Responsible By Nature<br>Perryton • 806.435.4052        |
| <b>Cargill Ag Horizons</b><br>Spearman • 659-3554           |   |  | <b>Morse Implement</b><br>Morse • 733-2668                  |   |



# Hansford County Sports

## Spearman defense swarms West Texas High

by **Ricky Treon, Amarillo Globe-News,** ricky.treon@amarillo.com

The Spearman Lynx made a statement Friday night. They're out to hit. Hard. Spearman's defense was fast and fierce, forcing five turnovers in a 31-14 win against the West Texas High Comanches in front of about 1,500 fans at Comanche Field.

"They were crucial (turnovers)," said Spearman running back Justin Rindlisbacher, who finished with 108 rushing yards and a touchdown on nine carries. "We were able to capitalize on them."

The Lynx started the first quarter by stopping the Comanches on a fourth-and-1 on the Spearman 17-yard line.

Spearman's defense forced two fumbles in the second quarter, leading to 13 Lynx points.

Comanches quarterback Alex Ramirez lost two fumbles and threw an interception on the final play before halftime.

Both fumbles led to Lynx touchdowns, while the interception was nearly returned by Spearman safety/quarterback Jace Lang-Swan for another score.

The Comanches' final fumble came in the third quarter when Ramirez was approaching Spearman's 20-yard line.

"(Spearman) played a cleaner game, and the score showed it," West Texas High coach Keith Hardin said.

Spearman quarterback Lang-Swan scored three of Spearman's five touchdowns and led the Lynx with 129 rushing yards on 13 carries.

"West Texas High is a great opponent," Spearman coach Steve Rodman said. "I knew they would come right at us, and it was good to go toe-to-toe with them."

Both teams went in expecting their toughest test of the season.

WTSH had only given up 63 yards a game and 69 total rushing yards before Friday, but the Lynx gained 308 yards, including 290 on the ground.

Spearman had given up just one touchdown all season and 156 yards a game, but WTSH had 355 total yards.

Ramirez led the Comanches in rushing with 103 yards and a touchdown, while Chase Elliott rushed for 65 yards and another score.

"The game was like we expected it to be," Hardin said. "It was a great, physical game for both teams."

## Scores by Quarters

Spearman 6 13 6 6 — 31  
West Texas High 0 0 0 14 — 14

## Scorers

S—Jace Lang-Swan 11 run (kick failed)  
S—Lang-Swan 48 run (Alfredo Rosendo kick)  
S—Justin Rindlisbacher 3 run (pass failed)  
S—Lang-Swan 1 run (kick failed)  
WTSH—Chase Elliott 2 run (Alex Ramirez kick)  
S—Christian Fisher 9 run (Ramirez kick)  
WTSH—Ramirez 2 run (Ramirez kick)

## Statistics

|               | SL     | WT     |
|---------------|--------|--------|
| First Downs   | 14     | 20     |
| Rushing Yards | 290    | 259    |
| Passing Yards | 18     | 96     |
| Total Yards   | 308    | 355    |
| C-A-I         | 2-8-0  | 7-21-1 |
| Punts-Avg.    | 3-46.3 | 2-31   |
| Fumbles-Lost  | 3-2    | 0-0    |
| Penalties-Yds | 5-51   | 5-46.5 |

**Individual Statistics**  
Rushing—Spearman: Lang-Swan 13-129, Rindlisbacher 9-108, Brent Hanson 10-44, Fisher 1-9. West Texas High: Ramirez 15-103, Elliott 16-65, Colin Coleman 9-47, Clay Berry 3-23, Carlos Juarez 6-21.

Passing—Spearman: Lang-Swan 2-8-0—18. West Texas High: Ramirez 7-12-1—96.

Receiving—Spearman: Hanson 1-8, Stefan Cook 1-18. West Texas High: Brice Martin 4-74, Justin Holmberg 2-20, Coleman 1-2.

## Tale of the Tape: Spearman at West Texas High

by **Ricky Treon, Amarillo Globe-News**

Before I go out to cover a game, I like to put together a small notes package to use when writing my story. It's mostly stats and averages entering the game so I don't have to try to do the research and math while writing on deadline.

While writing this package Thursday night, I figured it would make an interesting blog post. So here you go, a tale of the tape for Spearman at West Texas High.

## Spearman at West Texas High Notes

**Spearman Lynx (3-0)**  
- Have given up just six points all season — a 97-yard touchdown run in the first quarter against Wheeler, kick failed.

- Have given up just 156 yards per game, including just 39 total passing yards.

- Have averaged 395.7 yards per game — 738 total rushing (242.7 ypg) and 449 total passing (149.7 ypg) — and 40.3 points per game (121 total).

- Quarterback Jace Lang-Swan has rushed for seven Spearman touchdowns and 141 yards on 25 carries (5.6 ypc). He has thrown for five touchdowns and 388

yards on 18 completions (36 attempts, one interception, 50 percent completion percentage, 21.6 yards per completion).

- Rene Pena has rushed for 142 yards on 15 carries (9.5 ypc), while Justin Rindlisbacher has rushed for 137 yards on 13 carries (10.5 ypc).

- Lang-Swan has scored 42 points (seven rushing touchdowns, 34.7 percent of total team scoring).

## West Texas High Comanches (3-0)

- Have allowed just 63 yards per game, including 69 total rushing yards.

- Have given up 19 points this year — 6.3 points per game.

- Have averaged 427 yards per game — 1,085 total rushing (361.7 ypg) and 198 total passing (66 ypg) — and 41 points per game (123 total).

- Quarterback Alex Ramirez has rushed for six touchdowns and 433 yards on 27 carries (16 ypc). He has thrown for two touchdowns on 198 yards on

eight completions (21 attempts, no interceptions, 38.1 completion percentage, 24.75 yards per completion).

- Chase Elliott has rushed for two touchdowns and 245 yards on 46 carries (5.3 ypc), while Colin Coleman has rushed for four touchdowns and 146 yards on 18 carries (8.1 ypc).

- Ramirez has scored 49 points (six rushing touchdowns, 13 points after touchdown, 39.8 percent of total team scoring).

## Hooker, OK 34, Gruver 33

Hooker, OK, scored a touchdown with 1:18 remaining to pull out a home win Friday over the Gruver Greyhounds.

Jerrod Collier rushed for 277 yards and three touchdowns for Gruver (1-3), while Beau Blankenship threw for 63 yards and another score against Hooker (1-1).

## Scores by Quarters

Gruver 0 7 13 13 — 34  
Hooker 0 6 14 14 — 33

## Scorers

## High School Football Standings

| Team           | District 1-2A Division II |     |     |     |      |      |
|----------------|---------------------------|-----|-----|-----|------|------|
|                | Dist                      | Pts | Opp | All | Pts. | Opp. |
| Spearman       | 0-0                       | 0   | 0   | 4-0 | 152  | 20   |
| Abernathy      | 0-0                       | 0   | 0   | 3-1 | 96   | 64   |
| Dimmitt        | 0-0                       | 0   | 0   | 3-1 | 109  | 104  |
| Floydada       | 0-0                       | 0   | 0   | 2-2 | 116  | 144  |
| Highland Park  | 0-0                       | 0   | 0   | 2-2 | 122  | 61   |
| Tulia          | 0-0                       | 0   | 0   | 1-3 | 43   | 70   |
| Sanford-Fritch | 0-0                       | 0   | 0   | 0-4 | 93   | 114  |

**Last week:** Wheeler 27, Highland Park 20; Canadian 44, Sanford-Fritch 6; Spearman 31, West Texas High 14; Clarendon 16, Tulia 8; Dimmitt 34, Bovina 33; Floydada 42, at Post 34; Abernathy 36, Olton 21.

**This week:** Spearman at Floydada; Abernathy at Highland Park; Sanford-Fritch at Tulia.

| Team       | District 1-1A Division II |     |     |     |      |      |
|------------|---------------------------|-----|-----|-----|------|------|
|            | Dist                      | Pts | Opp | All | Pts. | Opp. |
| Booker     | 0-0                       | 0   | 0   | 4-0 | 124  | 53   |
| Gruver     | 0-0                       | 0   | 0   | 1-3 | 75   | 117  |
| Vega       | 0-0                       | 0   | 0   | 1-3 | 93   | 100  |
| White Deer | 0-0                       | 0   | 0   | 1-3 | 96   | 133  |

**Last week:** White Deer 48, San Jacinto Christian 18; Sudan 38, Vega 20; Hooker, Okla., 34, Gruver 33; Booker 32, Beaver, Okla., 20.

**This week:** Memphis at White Deer; Vega at Sunray; Texico, N.M., at Gruver; Claude at Booker.

## PUBLIC NOTICE

Brief Explanatory Statements of Proposed Constitutional Amendments  
Special Election November 8, 2011

### Proposition Number 1 (SJR 14)

SJR 14 would amend the constitution to authorize the legislature to provide the surviving spouse of a 100 percent or totally disabled veteran with an exemption from ad valorem taxation of all or part of the market value of the surviving spouse's residence homestead as long as the surviving spouse has not remarried, the property was the residence homestead of the surviving spouse when the qualifying veteran died, and the property remains the residence homestead of the surviving spouse.

The proposed amendment would appear on the ballot as follows: "The constitutional amendment authorizing the legislature to provide for an exemption from ad valorem taxation of all or part of the market value of the residence homestead of the surviving spouse of a 100 percent or totally disabled veteran."

### Proposition Number 2 (SJR 4)

SJR 4 would amend the constitution to authorize the Texas Water Development Board to issue additional general obligation bonds on a continuing basis for one or more accounts of the Texas Water Development Fund II, with the restriction that the total amount of bonds outstanding at any time does not exceed \$6 billion.

The proposed amendment would appear on the ballot as follows: "The constitutional amendment providing for the issuance of additional general obligation bonds by the Texas Water Development Board in an amount not to exceed \$6 billion at any time outstanding."

### Proposition Number 3 (SJR 50)

SJR 50 would amend the constitution to authorize the Texas Higher Education Coordinating Board or its successors to issue and sell general obligation bonds on a continuing basis for the purpose of financing educational loans for

students, subject to certain constitutional restrictions, including a restriction as to the maximum principal amount of bonds outstanding at any one time.

The proposed amendment would appear on the ballot as follows: "The constitutional amendment providing for the issuance of general obligation bonds of the State of Texas to finance educational loans to students."

### Proposition Number 4 (HJR 63)

HJR 63 would amend the constitution to authorize the legislature to permit a county to issue bonds or notes to finance the development or redevelopment of an unproductive, underdeveloped, or blighted area within the county, and to pledge increases in ad valorem tax revenues imposed on property in the area by the county for repayment of such bonds or notes. The amendment does not provide independent authority for increasing ad valorem tax rates.

The proposed amendment would appear on the ballot as follows: "The constitutional amendment authorizing the legislature to permit a county to issue bonds or notes to finance the development or redevelopment of an unproductive, underdeveloped, or blighted area and to pledge for repayment of the bonds or notes increases in ad valorem taxes imposed by the county on property in the area. The amendment does not provide authority for increasing ad valorem tax rates."

### Proposition Number 5 (SJR 26)

SJR 26 would amend the constitution to authorize the legislature to allow cities and counties to enter into interlocal contracts with other cities and counties without having to assess an ad valorem tax and set aside a specified amount of funds for the payment of costs under the interlocal contract.

The proposed amendment would appear on the ballot as follows: "The constitutional amendment

H—Joe Bean 2 run (Guerrero Garcia kick)  
G—Victor Serrano 10 run (Lupe Pena kick)

H—Augustin Barrios 5 run (kick fail)  
G—Jerrod Collier 3 run (kick fail)

H—Anselmo Estrada 72 kickoff return (Garcia kick)  
G—Collier 25 run (Pena kick)

G—Beau Blankenship 20 pass from Korbin Irwin (Pena kick)  
H—Taylor McBee 39 run (McBee run)

G—Collier 67 run (pass fail)  
H—Joe Bean 10 run (run fail)

Permian 98; 5. Frenship 119; 6. Plainview 121; 7. Shallowater 183; 8. Leveland 215; 9. Dumas 217.

Individuals (Top 10): 1. Ana Lopez, Hereford, 11:44; 2. Miah Nelson, Odessa Permian, 11:52; 3. Rachel Lusk, Randall, 11:58; 4. Erika DeWitt, Randall, 12:12; 5. Tylo Farrar, Spearman, 12:22; 6. Emileigh Willems, Frenship, 12:28; 7. Jamia Graham, Odessa Permian, 12:29; 8. Emily Craft, Randall, 12:30; 9. Gately Garnett, Spearman, 12:33; 10. Denise Altamirano, Randall, 12:37.

## Class 3A-1A girls

Team totals (Top 10 and Amarillo-area): 1. Bushland 46; 2. Wellington 92; 3. Clarendon 126; 4. Idalou 155; 5. Spearman 176; 6. Farwell 202; 7. Bovina 222; 8. Sudan 242; 9. Lubbock Roosevelt 248; 10. Hale Center 271; 12. Vega 324; 14. Floydada 401; 15. Nazareth 411; 17. Lockney 467.

Individuals (Top 10): 1. Macy Davis, Wellington, 12:07; 2. Audrey Shelton, Clarendon, 12:49; 3. Desiire Gutierrez, Lubbock Roosevelt, 12:57; 4. Cortnie Grauel, Bushland, 13:06; 5. Maurissa Castillo, Idalou, 13:10; 6. Kenzie Shaffer, Bushland, 13:16; 7. Jaycee Caldwell, Lubbock Roosevelt, 13:24; 8. Jacei Barrera, Hale Center, 13:29; 9. Kemberley Blasingame, Vega, 13:31; 10. Morgan Lackey, Bushland, 13:32.

## Class 5A-4A girls

Team totals: 1. Randall 36; 2. Hereford 66; 3. Spearman 89; 4. Odessa

## College Corner

### Texas A&M University Graduation

Diplomas were awarded to approximately 1,800 Texas A&M University graduates during summer commencement ceremonies on August 12, 2011.

Among those receiving degrees was Brittney Bradley of Spearman. Brittney received a Bachelor of Science Degree in Health.

### Catella University Graduation

Pauline McGee is proud to announce that her daughter-in-law, Kimi McGee, graduated from Catella University on August 13, 2011. Kimi, who works for the Abilene School District, earned her Ph.D. in Education. She lives in Abilene with her husband, Gary.

All Occasion Flowers proudly serves the Spearman area. We are committed to offering only the finest floral arrangements and gifts, backed by service that is friendly and prompt.

We also deliver to the following facilities (in addition to home and business addresses):  
Boxwell Brothers Funeral Directors  
Hansford Hospital & Pharmacy  
Hansford Manor

We are open from 9 a.m. to 5 p.m., Monday through Friday. We are closed on Saturdays and Sundays.

We specialize in the following services:

- Large inventory of fresh flowers
- High-style floral arrangements
- Contemporary and traditional arrangements
- Tropicals
- Plants
- European/dish gardens
- Silk arrangements
- Dried floral arrangements
- Weddings
- Funeral designs
- Extensive gift line
- Gourmet and fruit baskets
- Gift baskets
- Greeting cards
- Candles

**All Occasion Flowers**  
202 N. Bernice (across from the Post Office)  
659-5180 • Spearman  
www.alloccasionflowersonline.com

authorizing the legislature to allow cities or counties to enter into interlocal contracts with other cities or counties without the imposition of a tax or the provision of a sinking fund."

**Proposition Number 6 (HJR 109)**  
HJR 109 would amend the constitution to increase the amount of principal that is available for withdrawal from the permanent school fund each year and would also clarify certain references to that fund in the constitution. Increased access to the principal of the state public education trust fund would be based upon HJR 109 granting the authority to consider alternative market calculations when determining the amount of principal that is available for distribution to the available school fund. HJR 109 would also provide authority to distribute to the available school fund annual revenue from school fund land or other properties up to \$300 million per year.

The proposed amendment would appear on the ballot as follows: "The constitutional amendment clarifying references to the permanent school fund, allowing the General Land Office to distribute revenue from permanent school fund land or other properties to provide additional funding for public education, and providing for the purpose of allowing increased distributions from the available school fund."

**Proposition Number 7 (SJR 28)**  
SJR 28 would amend the constitution by adding El Paso County to the list of counties authorized to create conservation and reclamation districts to develop parks and recreational facilities financed by taxes.

The proposed amendment would appear on the ballot as follows: "The constitutional amendment authorizing the legislature to permit conservation and reclamation districts in El Paso County to issue bonds supported by ad valorem taxes to fund the development and maintenance of parks and recreational facilities."

**Proposition Number 8 (SJR 16)**  
SJR 16 would amend the constitution by requiring the legislature to provide for taxation of open space land devoted to water stewardship purposes on the basis of its productive capacity.

The proposed amendment would appear on the ballot as follows: "The constitutional amendment providing for the appraisal for ad valorem tax purposes of open-space land devoted to water-stewardship purposes on the basis of its productive capacity."

**Proposition Number 9 (SJR 9)**  
SJR 9 would amend the constitution to authorize the governor, on the written recommendation and advice of the Board of Pardons and Paroles, to grant a pardon, reprieve, or commutation of punishment to a person who successfully completes a term of deferred adjudication community supervision.

The proposed amendment would appear on the ballot as follows: "The constitutional amendment authorizing the governor to grant a pardon to a person who successfully completes a term of deferred adjudication community supervision."

**Proposition Number 10 (SJR 37)**  
SJR 37 would amend the constitution by extending the length of the unexpired term that causes the automatic resignation of certain local elected officeholders if they announce candidacy or become candidates for another office from one year to one year and 30 days.

The proposed amendment would appear on the ballot as follows: "The constitutional amendment to change the length of the unexpired term that causes the automatic resignation of certain elected county or district officeholders if they become candidates for another office."

Published by Secretary of State Hope Andrade, www.sos.state.tx.us, 1-800-252-VOTE (8683).



**REAL ESTATE**

**FOR SALE:** 4BR, 2B, 2 car detached garage with 37 acres, 40x60 quonset with cement floor, horse barn and pens. Located 5 miles West of Gruver off of Hwy 15. \$140,000 firm. Contact Ben or Kerry Poer at 806-736-0230 or 806-736-5554. TFN(9/15/11)

**HELP WANTED**

**HELP WANTED:** Frontier Feedyard (located north of Spearman 25 miles or south of Hardesty 10 miles) is now hiring a pen-rider and processor. Contact Rusty @ 806 882-4251 or 806 202-6358. They are also taking applications for feed-truck drivers. Contact Ana Mendoza @ 806 882-4251. TFN(9/15/11)B

**HELP WANTED:** CDL Drivers-Tons of Work! Frac Sand Haulers. Complete bulk pneumatic rigs only. Relocate to Texas. Fuel/Quick Pay Available. 800-397-2338. 1(9/15/11)P

**HELP WANTED:** \$5,000 Sign-On Bonus! Tons of South TX work! Frac Sand Hauling. Must have tractor, pneumatic trailer, blower. 800-397-2338. 1(9/22/11)P

**HELP WANTED:** Seeking experienced Pumper for Sunray area. Send resume to PO Box 1422, Pampa TX 79066. 2(9/15/11)B

**HELP WANTED:** Seeking experienced Rig Operator and Two Rig Hands. Send resume to PO Box 1422, Pampa TX 79066. 2(9/15/11)B

**HELP WANTED:** Looking for dependable person with driver's license and leadership skills to push roustabout fencing crew. Please call 228-0739. 4(9/22/11)P

**SERVICES**

**HOOCHY POOCHY PARLOR** Call us for all your pet's grooming and boarding needs. Call now for reservations! 806-273-2724. TFN(11/2/07)B

**TIRED OF GARAGE SALE PRICES?** Let me buy your good used furniture! 2nd Chance Antiques & Furniture, Don 806-648-1480; 806-202-1391 cell. TFN(1/20/11)B

**LOST & FOUND**

**REWARD:** \$2000 cash reward for the arrest and prosecution of the person or persons who allegedly stole a 16" Bill Oliver saddle with the serial number 1193 and a pair of silver Kelly spurs with a yellow butterfly on the side, from a horse trailer belonging to the late David Johnson in Spearman, TX. If you have any information please call (940)636-5581 or (806)681-6224 or the Hansford Co. Sheriff's Office. This saddle and spurs were used in David's graveside service.

**PUBLIC NOTICE**

**NOTICE TO CONTRACTORS OF PROPOSED TEXAS DEPARTMENT OF TRANSPORTATION (TxDOT) CONTRACTS**

Sealed proposals for contracts listed below will be received by TxDOT until the date(s) shown below, and then publicly read.

**CONSTRUCTION/MAINTENANCE/BUILDING FACILITIES CONTRACT(S)**

Dist/Div: Amarillo Contract 0041-02-012 for SEAL COAT in HARTLEY County, etc will be opened on October 07, 2011 at 1:00 pm at the State Office.

Plans and specifications are available for inspection, along with bidding proposals, and applications for the TxDOT Prequalified Contractor's list, at the applicable State and/or Dist/Div Offices listed below. If applicable, bidders must submit prequalification information to TxDOT at least 10 days prior to the bid date to be eligible to bid on a project. Prequalification materials may be requested from the State Office listed below. Plans for the above contract(s) are available from TxDOT's website at www.txdot.gov and from reproduction companies at the expense of the contractor. NPO: 37780

State Office  
Constr./Maint. Division  
200 E. Riverside Dr.  
Austin, Texas 78704  
Phone: 512-416-2540

Dist/Div Office(s)  
Amarillo District  
District Engineer  
5715 Canyon Dr  
Amarillo, Texas 79105-2708  
Phone: 806-356-3283  
Minimum wage rates are set out in bidding documents and the rates will be part of the contract. TXDOT ensures that bidders will not be discriminated against on the grounds of race, color, sex, or national origin. 2(9/15/11)B

**PUBLIC NOTICE**

Applications are being taken for a part-time custodian at Hansford County Courthouse, with thirty hour week with retirement benefits. Applications are to be picked up from Donna Farris, County Court Administrator, and dropped off with her.

Benny D. Wilson  
Hansford County Judge  
TFN(9/15/11)B

**NOTICE OF APPLICATION AND PRELIMINARY DECISION FOR AN AIR QUALITY PERMIT**

**PERMIT NUMBER: 73394 APPLICATION AND PRELIMINARY DECISION.** DCP Midstream, LP, 370 17th Street, Suite 2500, Denver, CO 80202-5604, has applied to the Texas Commission on Environmental Quality (TCEQ) for an amendment to Air Quality Permit Number 73394, which would authorize modification to a Sherhan Gas Plant located at 15150 County Road 9, Gruver, Hansford County, Texas 79040. This application was submitted to the TCEQ on February 8, 2011. The amendment will authorize an increase in emissions of the following air contaminants: organic compounds.

The executive director has completed the technical review of the application and prepared a draft permit which, if approved, would establish the conditions under which the facility must operate. The executive director has made a preliminary decision to issue the permit because it meets all rules and regulations. The permit application, executive director's preliminary decision, and draft permit will be available for viewing and copying at the TCEQ central office, the TCEQ Amarillo Regional Office, and at the Hansford County Library, 122 Main Street, Spearman, Hansford County, beginning the first day of publication of this notice. The facility's compliance file, if any exists, is available for public review at the TCEQ Amarillo Regional Office, 3918 Canyon Drive, Amarillo, Texas.

**PUBLIC COMMENT/PUBLIC MEETING.** You may submit public comments or request a public meeting about

this application. The purpose of a public meeting is to provide the opportunity to submit comment or to ask questions about the application. The TCEQ will hold a public meeting if the executive director determines that there is a significant degree of public interest in the application or if requested by a local legislator. A public meeting is not a contested case hearing.

You may submit additional written public comment either electronically at [www.tceq.texas.gov/about/comments.html](http://www.tceq.texas.gov/about/comments.html) or in writing to the Texas Commission on Environmental Quality, Office of the Chief Clerk, MC-105, P.O. Box 13087, Austin, Texas 78711-3087, within 30 days of the date of newspaper publication of this notice.

**RESPONSE TO COMMENTS AND EXECUTIVE DIRECTOR ACTION.** After the deadline for public comments, the executive director will consider the comments and prepare a response to all relevant and material or significant public comments. Because no timely hearing requests have been received, after preparing the response to comments, the executive director may then issue final approval of the application. **The response to comments, along with the executive director's decision on the application will be mailed to everyone who submitted public comments or is on a mailing list for this application, and will be posted electronically to the Commissioners' Integrated Database (CID).**

**ELECTRONICALLY AVAILABLE INFORMATION.** When they become available, the executive director's response to comments and the final decision on this application will be accessible through the Commission's Web site at [www.tceq.texas.gov/goto/cid](http://www.tceq.texas.gov/goto/cid). Once you have access to the CID using the above link, enter the permit number for this application which is provided at the top of this notice.

**MAILING LIST.** You may ask to be placed on a mailing list to obtain additional information on this application by sending a request to the Office of the Chief Clerk at the address below.

**AGENCY CONTACTS AND INFORMATION.** All public comments and requests must be submitted either electronically at [www.tceq.texas.gov/about/co](http://www.tceq.texas.gov/about/co)

Comments.html, or in writing to the Texas Commission on Environmental Quality, Office of the Chief Clerk, MC-105, P.O. Box 13087, Austin, Texas 78711-3087. If you choose to communicate with the TCEQ electronically, please be aware that your email address, like your physical mailing address, will become part of the agency's public record. For more information about this permit application or the permitting process, please call the Office of Public Assistance, Toll Free, at 18006874040. Si desea informacion en Español, puede llamar al 1-800-687-4040. General information regarding the TCEQ can be found at [www.tceq.texas.gov](http://www.tceq.texas.gov). 1(9/22/11)B

**Customers of Panhandle Telecommunication Systems, Inc.:**

Effective October 1, 2011, the amount of the Federal Universal Service Charge (FUSC) appearing on your bill each month will increase as a result of an increase in the Federal Communications Commission's (FCC) universal service fund contribution factor from 14.4 percent to 15.3 percent. The new FUSC amount is calculated by multiplying the FCC's universal service contribution factor against your interstate access service charges. The federal universal service fund program is designed to help keep local telephone service rates affordable for all customers, in all areas of the United States.

**Panhandle Telecommunication Systems, Inc.**  
Ron Strecker, CEO  
PO Box 1188  
2222 NW Hwy 64  
Guymon, OK 73942  
580-338-2556  
1-800-562-2556  
1(9/22/11)B

**Customers of Panhandle Telephone Cooperative, Inc.:**

Effective October 1, 2011, the amount of the Federal Universal Service Charge (FUSC) appearing on your bill each month will increase as a result of an increase in the Federal Communications Commission's (FCC) universal service fund contribution factor from 14.4 percent to 15.3 percent. The new FUSC amount is calculated by multiplying the FCC's universal service contribution factor against your interstate access service charges. The federal universal service fund program is designed to help keep local telephone service rates affordable for all customers, in all areas of the United States.

**Panhandle Telephone Cooperative, Inc.**  
Ron Strecker, CEO  
PO Box 1188  
2222 NW Hwy 64  
Guymon, OK 73942  
580-338-2556  
1-800-562-2556  
1(9/22/11)B

**Are You A Victim of Domestic Violence, Sexual Abuse or Physical, Emotional or Sexual Assault?**

Call Toll Free Hotline  
**1-800-753-5308**

Battering Intervention & Anger Management Available

**Panhandle Crisis Center**  
Serving Hansford, Lipscomb & Ochiltree Counties  
301 S. Ash • Perryton, TX

**OUTREACH HEALTH SERVICES**

has immediate opening for **PERSONAL CARE ATTENDANT** to care for the elderly and disabled in their homes in the Spearman area. Must be 18+. Will train the right candidate. Great 401K Plan available to all employees. Please call MARY at 1-800-800-0697 806-373-0986 EOE



**We NEED listings! Call us now to help YOU sell your home for top dollar!**

**1016 S Barkley - Spearman:** 4,081 sq ft, 4 bed, 4 bath 3 lg areas, 2 Att gar, Fireplace, Corner Lot! **REDUCED AGAIN!**

**114 S Barkley - 1,290 sq ft, 3 bed, 1 1/2 bath den.**

**Shirley Howard, Broker/Owner**  
806-886-6536, Cell  
806-648-4444, Work  
**Melinda McCullough, Realtor**  
(806) 733-5678

**We would LOVE to sell your HOUSE! CALL US!**

**Check our websites for other properties.**

**VALLEY VIEW RANCH - Lipscomb Co., TX - 177 ac. w/extraordinary 5404 sq. ft. +/- home overlooking the property w/ beautiful views of live creek, trees, wildlife (deer, quail, & turkey), covered horse training facilities, stables, excellent cattle working facilities & pens, commercial dog pens, employee housing. We can divide (10 ac. w/main residence or 167 ac. +/- w/other improvements!)**

**SHERMAN CO., TX - 627 acres, choice land, four 1/4 mile sprinklers, fully developed, one 1/4 mile off Hwy. 287 on paved CR - CC, 3 phase electricity, new irrigation well drilled in 2010.**

**AMARILLO, TX. - 4 MI. N. OF LOOP 335 - development potential (wind energy, comm., res.) 4872.8 ac +/- of beautiful ranch country, pvm. on four sides. Deer, quail & dove 50% MINERALS!**

**CASTRO CO, TX. - on pvm. 1845.6 ac +/- sprinklers, irr wells, employee housing, barns, cattle pens w/covered working area, hydraulic chute & truck/cattle scale.**

**WEST OF DUMAS** on pvm. 606 ac +/-, 17 tower sprinkler, four irr. wells, excellent location for residential or commercial development.

**BUDDY CLINE ROAD - Moore Co., TX. - 1/2 section choice land, two wells (one new) and sprinklers.**

**MOORE CO., TX. - 800 ac. w/ 1/2 section rigged for sprinkler plus 480 acres of CRP. 1 1/2 miles out of Dumas with pvm. on two sides.**

**1200 SOW FALLOW TO FINISH OPERATION - Moore Co., TX - New 5 yr. lease with major brock company. Two separate units, can be divided - Please contact broker for info package and price.**

[www.scotlandcompany.com](http://www.scotlandcompany.com)  
[www.texasrcp.com](http://www.texasrcp.com)  
Shawn Gillispie 806/922-5532  
Ben G. Scott, Broker  
1-800-933-9698 day/eve  
TFN(9-15-11)

**MARTIN & ASSOCIATES REALTY**  
Serving Hansford County Since 1990  
Julie Martin: Broker - 659-2425  
**We'd Like Your Listing!**  
FOR QUALITY & SERVICE CALL US TODAY!  
Equal Housing Opportunity

**Blankenship Real Estate**  
659-3052 - 670-3774  
**LET US HELP YOU SELL YOUR HOME.**

**3BR, 2 1/2B, 2 living areas, dining area, brick, close to schools.**

**NEW LISTINGS WANTED!**  
Eulalia Blankenship - Sales  
Eschol Blankenship - Broker



**Palace Theatre**  
210 Main Street  
Canadian TX 79014  
806-323-5133  
[www.palacetheatre.com](http://www.palacetheatre.com)

**FRESH POPCORN & DRINKS! PARTY ROOM & ARCADE MOVIE RENTALS**

**Palace Theatre**  
210 Main Street  
Canadian TX 79014  
806-323-5133  
[www.palacetheatre.com](http://www.palacetheatre.com)  
The Palace Theatre meets Lucasfilm THX specifications for site and sound quality.



**Professional Drivers, why look further? Groendyke Transport offers you:**

- 75 years of stability
- The highest average pay in the area
- Flexible Home Time Plan
- Medical, Dental, Health Insurance
- 401(K) with company match
- Paid vacation
- Paid holidays
- Paid uniforms
- Quarterly safety bonus

**GROENDYKE'S BORGER TERMINAL NOW HAS FULL TIME & PART TIME OPENINGS FOR LOCAL, OUT & BACK, REGIONAL & LONG HAUL.**  
806-274-6380  
[www.groendyke.com](http://www.groendyke.com)  
Call Monday - Friday • 8 to 5 14-400-GD



**Pharmacy Assistant:** Assisting the Pharmacist with day to day operations of the pharmacy. Bookkeeping, billing, stocking inventory, etc.

**Dietary Assistant:** Preparing nutritional meals for residents, patients and HCHD employees. Assisting with all aspects of the dietary department.

**Information Technology Assistant:** Maintain daily system data backups, perform routine desktop backups, add users to domain, monitor AV log reports and/or any assigned duties by the IT Director.

Great working environment and staff, quality facility providing opportunities for professional growth. Great benefit package. Apply at 707 S Roland, Spearman, TX or contact Jackie Nelson, HR 806-659-5841. Download application at [hchd.net](http://hchd.net) EEOE (9/22/11)

|   |   |   |   |   |   |   |   |   |   |   |   |
|---|---|---|---|---|---|---|---|---|---|---|---|
| S | E | P | T | S | I | N | S | H | E | B | E |
| L | I | L | A | C | D | O | H | F | U | R | O |
| A | R | O | M | O | V | A | O | N | I | O | N |
| B | E | D | E | V | I | L | W | A | L | K | E |
| R | O | M | A | M | I | D |   |   |   |   |   |
| R | I | B | S | A | K | I | D | E | R | M | A |
| E | R | I | C | G | I | R | L | D | I | E | G |
| R | E | N | A | O | S | S | I | A | C | R | A |
| U | N | A | R | M | S | I | A | L | O | T | T |
| N | E | L | S | O | N | C | R | I | B | Z | E |
|   |   |   |   |   |   |   |   |   |   |   |   |
| D | U | G | G | A | R | S | E | N | N | O | B |
| U | T | E | R | I | P | A | L | D | R | O | O |
| M | A | N | I | C | I | L | L | Y | A | L | T |
| A | H | E | M | C | P | A | S | L | A | I | N |

|   |   |   |   |   |   |   |   |   |
|---|---|---|---|---|---|---|---|---|
| 1 | 2 | 8 | 6 | 7 | 5 | 3 | 9 | 4 |
| 5 | 9 | 4 | 8 | 1 | 3 | 2 | 6 | 7 |
| 7 | 6 | 3 | 9 | 2 | 4 | 1 | 5 | 8 |
| 8 | 5 | 9 | 4 | 3 | 2 | 6 | 7 | 1 |
| 3 | 4 | 7 | 1 | 5 | 6 | 8 | 2 | 9 |
| 2 | 1 | 6 | 7 | 8 | 9 | 5 | 4 | 3 |
| 4 | 3 | 2 | 5 | 9 | 1 | 7 | 8 | 6 |
| 9 | 7 | 1 | 2 | 6 | 8 | 4 | 3 | 5 |
| 6 | 8 | 5 | 3 | 4 | 7 | 9 | 1 | 2 |

**TEXAS STATEWIDE CLASSIFIED ADVERTISING NETWORK**  
**TexSCAN**

**TexSCAN Week of September 18, 2011 BUSINESS OPPORTUNITIES**

**THINK CHRISTMAS - START NOW!** Own a Red Hot, Dollar, Dollar Plus, Mailbox or Discount Party Store from \$51,900 worldwide. 100% turkey; 1-800-518-3064; [www.DRSS24.com](http://www.DRSS24.com)

**CABLE/SATELLITE**  
**AT&T U-VERSE** for just \$29.99/month! Save when you bundle Internet+Phone+TV and get up to \$300 back! (Select plans). Limited time call now! 1-877-577-4394

**DRIVERS**  
\$5,000 SIGN-ON Bonus! Great pay, tons of South Texas work. Frac Sand hauling; Must have tractor, pneumatic trailer and blower. 1-888-880-5918

**DRIVER-\$2000 Sign-on bonus!** Start a new career. 100% paid CDL training! No experience required. CRST Expedited. 1-800-326-2778. [www.joinCRST.com](http://www.joinCRST.com)

**DRIVER-GOOD MILES!** Regional truck drivers start at 37¢ cpm with 1+ year(s) experience. Home every week. Affordable family benefits. Call 1-888-362-8608 or visit [www.Averittcareers.com](http://www.Averittcareers.com) EOE

**DRIVERS-OWNER OPERATORS** and Fleet Drivers Texas and Oklahoma with CDL-A. \$3,000 Sign-on bonus! \$1.28 per mile. Return to Texas every 6-8 days. Call 1-800-765-3952

**EXPERIENCE FLATBED DRIVERS:** Regional opportunities now open with plenty of freight and great pay. 1-800-277-0212 or [www.primcinc.com](http://www.primcinc.com)

**FAMILY COMPANY LOOKING** for Class A Drivers Texas and Oklahoma with CDL-A. \$3,000 Sign-on bonus! \$1.28 per mile. Return to Texas every 6-8 days. Call 1-800-765-3952

**NOTICE:** While most advertisers are reputable, we cannot guarantee products or services advertised. We urge readers to use caution and when in doubt, contact the Texas Attorney General at 1-800-621-0508 or the Federal Trade Commission at 1-877-FTC-HELP. The FTC web site is [www.ftc.gov/bizop](http://www.ftc.gov/bizop)

**PAID CDL TRAINING!** No experience needed. Stevens Transport will sponsor the cost of your CDL training. Earn up to \$40K first year and \$70K third year. Excellent benefits! EOE, 1-800-333-8595. [www.becomedriver.com](http://www.becomedriver.com)

**TEXAS STAR EXPRESS** now hiring company drivers, owner operators, lease purchase, 2012 drivers, refresher course drivers. CDL Class A required. 1-800-888-0203. [www.tsexpress.com](http://www.tsexpress.com)

**TOP PAY** on excellent runs! Regional runs, steady miles, frequent hometime, new equipment. CDL-A, 6 months experience required. EOE/AAP, 1-866-322-4039 [www.Drive4Marten.com](http://www.Drive4Marten.com)

**YOU GOT THE drive,** we have the direction. OTR drivers, APU Equipped, Pre-Pass, EZ-pass, Pets / passenger policy. Newer equipment. 100% NO touch. 1-800-528-7825

**EDUCATION**  
**ATTEND COLLEGE ONLINE** from Home. Medical, business, paralegal, accounting, criminal justice. Job placement assistance, computer available, financial aid if qualified. Call 1-888-205-8920; [www.CenturaOnline.com](http://www.CenturaOnline.com)

**HIGH SCHOOL DIPLOMA** graduate in 4 weeks! Free brochure! Call now! 1-866-362-3650, ext. 55. [www.southeasternHS.com](http://www.southeasternHS.com)

**FINANCIAL**  
\$500 LOAN SERVICE: No credit refused, fast and secure. Easy on the budget. Payments spread out over three months. Toll free: 1-855-626-4373. [LoanHere.com](http://LoanHere.com)

**JOB TRAINING**  
**AIRLINES ARE HIRING** Train for high paying aviation career. FAA approved program. Financial aid if qualified, job placement assistance. Call Aviation Institute of Maintenance, 1-877-523-4531

**REAL ESTATE**

**ABSOLUTELY THE BEST VIEW** Lake Medina/Bandera 1/4 acre tract, central W/S/E. RV/motor home/house. OK only \$830 down \$235 month (12.91%/10yr). Guaranteed financing. more information call 1-830-460-8354

**AFFORDABLE RESORT LIVING** on Lake Fork. RV and manufactured housing OK! Guaranteed financing with 10% down. Lots starting as low as \$6900, Call Josh, 1-903-878-7265

**HUNTWEST TEXAS,** near Sanderson, Terrell County. Mule deer, 192.65 acres at \$265/acre. Whitetail, 157.07 acres at \$295/acre. Owner financed/TX Vet, 5% down. 1-210-734-4009. [www.westertexasland.com](http://www.westertexasland.com)

**10.1 ACRES, SOUTH** Texas brush county, north of San Diego. Deer, hogs, and quail. Private roads, locked gate, \$29,500 long term owner financing. Several to choose from. 1-866-286-0199. [www.westertexasland.com](http://www.westertexasland.com)

**676 ACRES** Reeves County, 15 Miles North Pecos River Frontage. Call Jack 214-755-6224.

**\$106 MONTH BUYS** land for RV, MH or cabin. Gated entry, \$690 down, (\$6900/10.91%/7yr) 90 days same as cash. Guaranteed financing. 1-936-377-3235

**Run Your Ad in TexSCAN! Statewide Ad.....\$500**  
301 Newspapers, 942,418 Circulation  
**North Region Only.....\$230**  
98 Newspapers, 263,811 Circulation  
**South Region Only.....\$230**  
101 Newspapers, 366,726 Circulation  
**West Region Only.....\$230**  
102 Newspapers, 311,881 Circulation  
To Order: Call This Newspaper direct, or Call Texas Press Service at 1-800-749-4793 Today!

**Extend your advertising reach with TexSCAN, your Statewide Classified Ad Network.**



## Elodia Bravo Retires from SISD



Gus Birdwell Elementary School started the school year with a new face as their school counselor. Hope Kemp who previously served as a second grade teacher for the past fourteen years replaced Jim Reeves as the new elementary counselor.

Hope is a native of Oklahoma having grown up and graduated from Del City High School in Oklahoma City. She received her undergraduate degree in elementary education at Oklahoma State University in Stillwater, Oklahoma. She started her teaching career in a small town called Fox, Oklahoma where she taught Pre-Kindergarten for three years. During the next eleven years she taught Kindergarten in Moore, Oklahoma, and San Antonio and Grapevine-Colleyville, Texas before

moving to Spearman.

In 1994 she earned her Masters Degree in Early Childhood Education from the University of Central Oklahoma, and in 2008 she received her Masters Degree in Counseling from West Texas A&M University. She said that her decision to go back and further her education was based on wanting to make a difference in a child's life. "I want the children to know they have someone they can trust and can talk to if they have a joy or a concern," she added.

Although not on the job for very long, Mrs. Kemp said she has enjoyed getting to know all the kids. She said that she has done a lot of work with the Kindergarten students thus far, and they are precious! She said one of the big advantages of her job is that she gets lots of hugs every

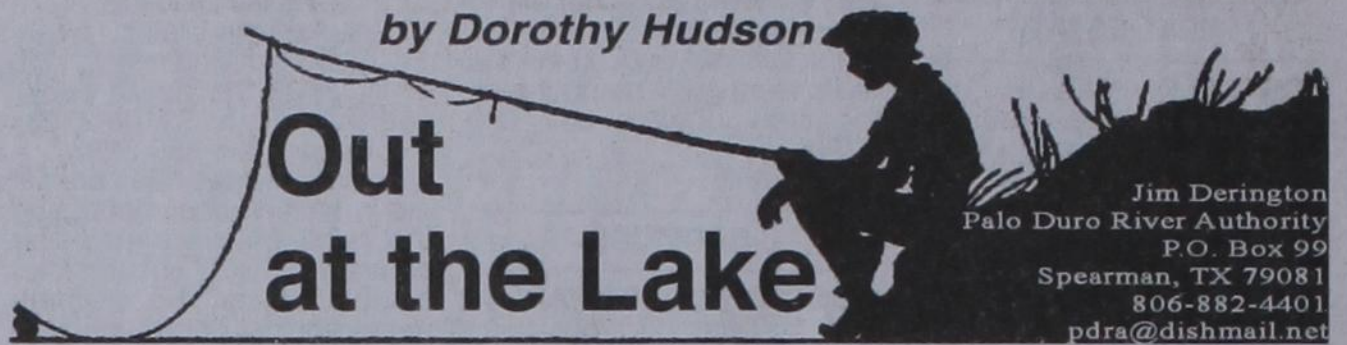
day! Mrs. Kemp indicated that the new STAAR test will be a major challenge for not only her but to the students as it is phased in and implemented over the next couple of years. "We all have a new testing system to learn," she stated.

With any new job comes its challenges, but Mrs. Kemp's words of wisdom are words each one of us can relate to, DREAM BIG! Her advice to her students is that if you work hard and stay in school your dreams can come true!

Mrs. Kemp encourages any parents of elementary students to contact her if they have any questions or problems that she can help them with. She can be reached at (806) 659-2565, etc. 3501.

by Dorothy Hudson

## Out at the Lake



Jim Derington  
Palo Duro River Authority  
P.O. Box 99  
Spearman, TX 79081  
806-882-4401  
pdra@dishmail.net



This picture shows the Powers place, on Palo Duro Creek, which was destroyed by fire on August 27.

Lake Level--September 19, 2011--34.41 feet (-0.27)

The heaviest of the 3 showers that fell at the office last week measured .46 inch. The other 2 added .10 inch more. The cooler days are still bringing visitors, as there were 6 RVs on the north side of the dam and one on the office side.

Jackson Benard of Tulia caught a 10 pound blue catfish this week. His brother from Tulia, J. B., used to fish here. He was written up with blue cats weighing 26 and 27 pounds.

Jim has spotted two foxes recently. One was eating roadkill on the highway closer to Spearman, and the second one was seen crossing the road inside the PDRA land. Both sightings were at night. He was able to tell the one in the Park was a red fox.

The book prepared for the Palo Duro River Authority called Historic Architectural Resourced of the

Palo Duro Reservoir has the history, plans, and pictures of the four homes and the Palo Duro school that were formerly on the Reservoir land. Jim looked through the Ace Powers Ranch material and did not find a picture of the neat old barn that burned recently with the other improvements there. He has found a picture of the more than a century old building.

After last week's story on the Main Street rattlesnake bite of Patricia Bratton was printed, I learned that an important detail was left out. A while after Patricia was admitted to the hospital, the pain in her ankle became excruciating. The first pain killer upset her system, but the second one controlled the pain. Even with CroFab, a rattlesnake bite is not a waltz in the park.

### Rattlesnake Story from the Past

When Gruver became a town, J. B. Dulin, an old bachelor, lived in a dugout two miles or so east of Gruver. He gave the land for the Gruver Cemetery. I learned this family story from Margaret Ralston. Her husband Cecil was the son of Mr. Dulin's niece.

"Mr. Dulin had developed a tremor that his family said came on in the following manner. He was turning a trough over to feed his horses when something bit him, but he again started turning over the trough and was bitten again. He then realized that he had been bitten twice on the same finger by a rattlesnake, hiding under the trough. He took care of it by using his pocketknife to cut off the affected finger. He believed the tremor came from some venom that had gotten into his circulation before his impromptu surgery."

Owned & Operated by Linda & Charles Stephens

## Double XXL Steakhouse

(formerly Flying X Steakhouse)

We have expanded our seating capacity to 60! We welcome large and small groups and parties. Reservations suggested.

Reserve your holiday party now!

From Stinnett: Go West on Hwy. 152 17 miles - Turn Left at Big White Sign (2 miles on Gravel Road)

From Dumas: Go East on Hwy. 152 16 miles - Turn Right at Big White Sign (2 miles on Gravel Road)

(806) 93JESUS (935-3787) www.doublexxlsteakhouse.com

Open: Friday & Saturday Night

Open anytime for parties of 8 or more

## Tong's Chinese Restaurant

(806) 644-2838

22 Archer Street • Spearman

Daily Buffet

Lunch Buffet 11 a.m.-2:30 p.m.

Dinner Buffet 5:30-9 p.m.

Open Wednesday-Monday - Closed Tuesday

## The Joy of Summer

### Available all year!

SNOW CONE STAND

Monday-Friday 2-8 p.m.

## MURMUR'S CAFE

100 S. Roland • Spearman 659-3580

## KUBOTA TACKLES ANY JOB!

SCORE A TOUCHDOWN EVERY TIME WITH KUBOTA!

### RTV1140

- 24.8 HP, 3-Cylinder Kubota Diesel Engine
- Quickly Converts from 2 to 4-Person Seating Configurations
- Orange or Realtree® Camouflage Models Available

### L3700SU

- 37.4 HP, 3-Cylinder Kubota Diesel Engine
- Category I, 3-Point Hitch
- Gear or Hydrostatic Transmission

### M135X

- 135 HP, 4-Cylinder, Turbo-Charged Direct Injection Kubota Diesel Engine
- Common Rail System Reduces Engine Noise and Emissions

### L5740

- 59 HP, 4-Cylinder Kubota Diesel Engine
- HST Plus Transmission
- Optional Grand Cab with Deluxe Features

50 DOWN, 0% A.P.R. FINANCING FOR UP TO 60\* MONTHS ON SELECT NEW KUBOTAS!

## PANHANDLE IMPLEMENT CO

710 North Main Street • Perryton, TX 806-435-6508

\*50 down, 0% A.P.R. financing for terms up to 60 months on purchases of select new Kubota equipment from available inventory at participating dealers through 9/30/2011. Example: A 60-month monthly installment payment term at 0% A.P.R. requires 60 payments of \$14.67 per \$1,000 borrowed. 0% A.P.R. interest is available to customers if no dealer documentation preparation fee is charged. Dealer charges for document preparation fee shall be in accordance with state law. Only Kubota and select Kubota performance-related Land Prides and equipment is eligible. Inclusion of ineligible equipment may result in a higher blended A.P.R. Not available for Rental, National Accounts or Governmental customers. 0% A.P.R. and low rate financing may not be available with certain instant rebate (C.I.R.) offers. Financing is available through Kubota Credit Corporation, U.S.A. 8401 Del Amo Blvd., Torrance, CA 90505, subject to credit approval. Some exceptions apply. Offer expires 9/30/2011. See us for details on these and other low-rate options or go to www.kubota.com for more information.