

SCR2
COMP
HANSFORD COUNTY LIBRARY
0122 MAIN ST
SPEARMAN TX 79081-2064



HANSFORD COUNTY THE REPORTER-STATESMAN

THURSDAY,
NOVEMBER 4, 2010

CELEBRATING 103 YEARS OF SERVICE TO HANSFORD COUNTY
HANSFORD COUNTY'S ONLY NEWSPAPER

75¢

WWW.SPEARMANREPORTER.COM

VOLUME 103 • ISSUE 44

reporter@spearmanreporter.com

COME TO THE GAME



at
Tulia
on 11/5
at 7:30 p.m. in Tulia



Gruver
Greyhounds at
Booker
on 11/5 at
7:30 p.m.
in Booker

Spearman Lynx

The Spearman Jr. High Lynx football teams (7th - 5 p.m., 8th - 6:15 p.m.) will play Tulia on 11/4. The JV Lynx (6 p.m.) will play Tulia in Spearman on 11/4. The Varsity Lynx will play Tulia in Tulia at 7:30 p.m. on 11/5 for their last district game of the season.

Gruver Greyhounds

The 7th Grade (5 p.m.) will play Vega in Gruver, and the 8th Grade (6 p.m.) will play Booker in Gruver on 11/4. The Varsity Hounds will play Booker in Booker at 7:30 p.m. on 11/5 for their last district game of the season.

CROSS COUNTRY

Gruver Greyhounds/Lady Hounds
The Gruver Varsity Cross Country teams will compete in the Regional Cross Country Meet on Saturday, November 6, 2010 at Mae Simmons Park. Times are as follows: 1A Girls - 12 noon, 1A Boys - 12:30 p.m.

Spearman Lynx/Lynxettes
The Spearman Varsity Lynx & Lynxettes will compete in the Regional Cross Country Meet on Saturday, November 6, 2010 at Mae Simmons Park. Times are as follows: 2A Girls - 1 p.m., 2A Boys - 1:30 p.m.

COME TO THE GAME

Spearman Lynx/Lynxettes

11/11 7G (5), 8G (6), JVW (6) @ Sunray
11/15 7G (5), 8G (6), JVW (6) @ Bushland
11/15 7B (5), 8B (6), 9B (6) vs Bushland
11/16 JVG (5), JVB (5), VG (6:30), VB (8) at Panhandle
11/18-20 VG @ Perryton Tourney
11/19 JVB (5), VG (6:30), VB (8) vs Sunray
11/22 VG (6:30), VB (8) vs Dimmitt at WT (Canyon)
11/22 7G (5), 8G (6), JVW (6) vs. H. Park
11/22 7B (5), 8B (6), 9B (6) @ H. Park
11/29 7G (5), 8G (6), JVW (6) @ Fritch
11/29 7B (5), 8B (6), 9B (6) vs. Fritch
11/30 JVG (5), JVB (5), VG (6:30), VB (8) vs Texhoma

Gruver Greyhounds/Lady Hounds

11/9 JVG (5:30), VG (7) vs. Amarillo Palo Duro
11/16 JVG (6), VG (7:30) vs. Fritch
11/18 & 20 JVG @ Perryton JVG Tourney
11/19 JVG (4), JVB (5), VG (6:30), VB (8) @ Dalhart
11/22 JVG (4), JVB (5), VG (6:30), VB (8) vs. Perryton
11/22 7G (6), 7B (5), 8G (5), 8B (6) @ West Texas
11/23 JVG (5), JVB (5), VG (6:30), VB (8) @ Panhandle
11/29 7G (6), 7B (5), 8G (5), 8B (6) vs. Sunray
11/30 VG (6:30), JVG (8) @ Pampa
11/30 JVB (5), VB (8) @ Boys Ranch

Weather Forecast

THURSDAY NIGHT - Mostly clear. Lows in the upper 20s. Southwest winds around 5 mph.
FRIDAY - Mostly sunny. Highs in the upper 60s. South winds 5 to 10 mph.
FRIDAY NIGHT - Mostly clear. Lows in the mid 30s. South winds 5 to 10 mph.
SATURDAY - Mostly sunny. Highs in the upper 70s.
SATURDAY NIGHT - Mostly clear. Lows in the upper 30s.
SUNDAY - Mostly sunny. Highs in the mid 70s.
SUNDAY NIGHT - Mostly clear. Lows in the upper 30s.
MONDAY - Mostly sunny. Highs in the mid 70s.
MONDAY NIGHT - Partly cloudy. Lows in the upper 30s.
TUESDAY - Partly cloudy. Highs in the mid 60s.
TUESDAY NIGHT - Mostly cloudy with a 20 percent chance of rain showers. Lows in the mid 30s.
WEDNESDAY - Mostly cloudy with a 20 percent chance of rain showers. Highs in the mid 50s.
Read more: <http://www.city-data.com/forecast/w-Spearman-Texas.html#ixzz0xgJSWQKT>

Hansford County Veterans Honored

When then-Governor Ronald Reagan introduced returning POW John McCain at a speaking engagement in 1974, the future president asked, "Where do we find such men?"

He was speaking of many veterans, when he answered, "We find them in our streets, in the office, the shops and the working places of our country and on the farms."

In other words, President Reagan was referring to ordinary people accomplishing extraordinary things. And it isn't just the men.

Fewer than 10 percent of Americans can claim the title "military veteran," and what a list of accomplishments can those 10 percent claim. From defeating Communism, Fascism and Imperialism, to keeping the peace during the Cold War and battling terrorism today, America owes a debt to her veterans that can never be fully repaid.

Historians have said that Dwight Eisenhower was prouder of being a soldier than he was of being the president. While relatively few veterans reach the rank of general, pride in ones' military service is a bond shared by nearly all who have served.

The pride is on display on every obituary page in the country, where military service—regardless of how many decades have passed and subsequent achievements reached—is mentioned with the death notice of nearly every deceased veteran.

"As leader of the nation's largest veterans organization, it is my job to remember the brave men and women who have worn the uniform of the United States military," said Clarence E. Hill, national commander of the 2.5 million-member American Legion. "The Preamble to the Constitution of The American Legion calls on us to 'preserve the memories and incidents of our associations in the Great Wars.'" But those who have not served, in fact, all Americans, should honor the patriots who have.

"The American Legion, www.legion.org, supports our heroes through programs such as Heroes to Hometowns, Operation Comfort Warriors and ready-to-assist service officers," continued Hill. "We support the families of veterans through a Family Support Network, the American Legion Legacy Scholarship Fund and Temporary Financial Assistance, just to name a few of our programs."

"We call on all Americans to thank veterans and let them know that their sacrifices are appreciated," said Hill. "Veterans Day is not about sales at the local retail mall. It's about honoring our heroes."

"While veterans are often ordinary people who accomplish extraordinary things, it is often an extraordinary family that supports the ordinary veteran," concluded Hill. "And it is the veterans that have given us this extraordinary country."

Hansford County veterans will be honored Thursday, November 11th from 9:30-10:30 a.m. in the Spearman Varsity Gym.

The program will begin with a flag ceremony and the National Anthem played by the Spearman High School Band. Mr. James Cunningham will welcome all guests and give special recognition to veterans. Patriotic selections will be performed by the Spearman School Choirs and Band.

Lewis Britt will be the featured speaker this year.

The Texas Extension Education Clubs of Hansford County help host the program and encourage all veterans to attend.

For more information, contact the Hansford County Extension Office at 659-4130.

Veterans will also be honored at the Gruver ISD Auditorium on Wednesday, November 11th at 9 a.m.

Mr. Lewis Britt, District Director for Congressman Mac Thornberry



Mr. Lewis Britt is the District Director for Congressman Mac Thornberry.

Lewis was raised on a cattle ranch in Wheeler County and graduated from Texas A&M University in 1980 with a Bachelor of Science degree in Education. Following graduation, Lewis taught school and coached in Denton before returning in 1984 to help manage the family ranch. In 1995, Lewis accepted a position with former Texas Congressman Charlie Stenholm as his agriculture legislative aide during the development of the 1996 farm bill and was later hired by the National Cattlemen's Beef Association as its Associate Director of Environmental Issues. In 1998 Lewis moved back to Amarillo and joined Congressman Mac Thornberry's staff where he currently serves as the Congressman's District Director.

In addition to his duties with the Congressman, Lewis is a member of the Northwest Texas Small Business Development Center Advisory Board and the Texas A&M College of Agriculture Development Council. He and his wife have been married 29 years, have two sons and are very active in their church.

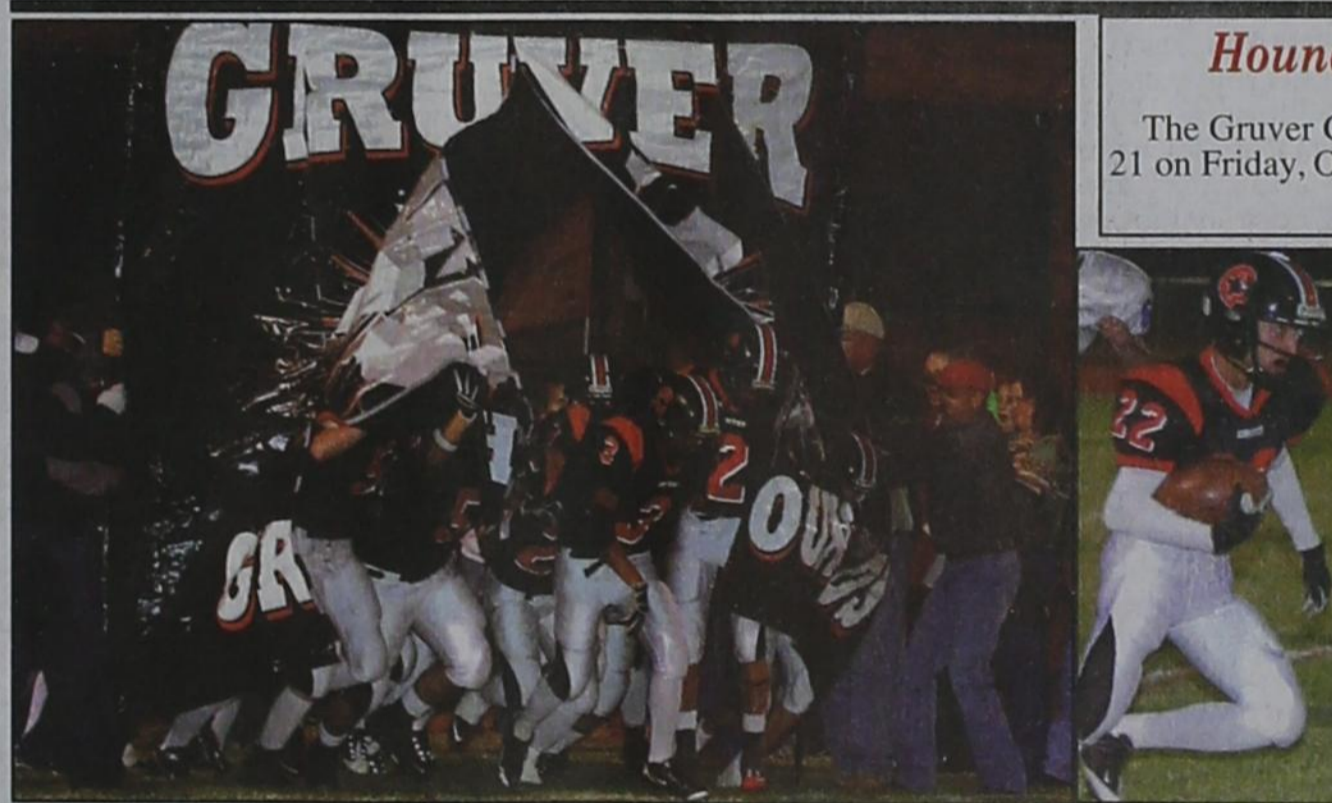
The Texas Extension Education Clubs of Hansford County help host the program and encourage all veterans to attend.

DON'T FORGET!
Standard Time
"Fall Back"
← →
2 a.m. - Sunday, November 7, 2010

Hounds Fall To White Deer

The Gruver Greyhounds lost to the White Deer, 37-21 on Friday, October 29th.

See story on page 6



FAR LEFT - The Gruver Greyhounds storm the field for their game against White Deer on Friday, October 29, 2010.

LEFT - #22 Lupe Pena carries the ball for the Gruver Greyhounds during their game against White Deer on Friday, October 29, 2010.

(Photos by Charlie Johnson)

Lynx Lose Heartbreaker To Fritch

The Spearman Lynx were defeated by the Sanford-Fritch Eagles, 18-13 on Friday, October 29, 2010.

See story on page 6

RIGHT - #Justin Rindlisbacher (12) carries the ball for the Lynx during their game against the Sanford-Fritch Eagles on Friday, October 29, 2010, while Joe Martinez (50) and Cameron Meddock (20) block for him.

(Photo by Tami Hargrove. Pictures available at <http://spearmansports.smugmug.com>)



Hansford Hospice
cordially invites
you to attend a
Memorial Service
to honor those we have
cared for and lost.
The service will be held at
2 p.m. on Sun., Nov. 14, 2010
at the First United
Methodist Church,
407 S. Haney, Spearman.

Texas Crop & Weather

The following specific livestock, crop and weather conditions were reported by Panhandle Extension directors: Temperatures were near average early in the reporting period, with the first freeze of the year mid-week, then above normal by week's end. Soil moisture levels were mostly short. The corn harvest was completed. The cotton harvest was under way with some cotton producers waiting for dry-down. Wheat was mostly in fair to good condition. Rangeland conditions were from very poor to good, with most areas reporting fair. Cattle were in good condition as producers began supplemental feeding in some areas.

WHEN DOES YOUR SUBSCRIPTION EXPIRE?

SCR1
10/10 EXPIRES
JOHN Q. PUBLIC
PO BOX 123
SPEARMAN TX 79081

Expiration dates are printed on the top of all mailing labels. Our readers can help keep the cost of subscriptions down by mailing in renewals in the appropriate month.

Thank you, Catherine Smith

THE HANSFORD COUNTY REPORTER-STATESMAN
213 Main Street • Spearman, TX 79081

Annual Subscription Rates
In Hansford County - \$30
Out of County - \$40
E-Subscription - \$35 (sent through e-mail)

Wolf Creek Heritage Museum Notes

by Virginia Scott
MUSEUM HAPPENINGS

It is great to be home. I enjoy going to the different meetings and gaining information for our work, but I get homesick after about three days. This trip was from Tuesday to Sunday, so it was a little long.

The meeting of the National Trust for Historic Preservation introduced me to a whole new group of professionals. Though the historical commission and museum professionals were there, the majority of attendees were historians and architects that specialize in the preservation and restoration of our historic places.

The theme of the conference was the "Next American City," so the focus was on the restoration of our inner cities and main streets. I learned some things that I hope we can use, such as the parts of a barn. I have a worksheet that allows us to document our historic barns. If you have an old barn we can document, there are apparently grants for restoration of the buildings.

I attended a session that discussed the surveying and documenting of ranches, farms, and homesteads that I think will be useful. I learned that documenting

our landscapes is as important as documenting our family history. A different but educational meeting.

The core team has been busy working on projects in our archive. We are extending the Dord Fitz Exhibit to the end of November. This will end our exhibits for 2010 since we will be closed for the month of December. It has been a busy year with the book project and our usual activities, plus two national meetings.

We have an addition to the museum - we will see if you can notice it when you come to visit! (Lovella had to show me.) There is always something new when I return from trips. We are always changing, so come see us.

HISTORICAL MUSINGS

I met a gentlemen from the Philadelphia area (on one of the tours at the preservation meeting) who was intrigued by the southern women depicted in sculptures and portraits at the various sites. He asked me and the other southern women present how these women became so prominent in our history. We all looked at him and said together, "they assumed the power and leadership." We encouraged him to read about southern women and

summarized to him that we are not shy. Interesting observation by him, and one I had not really thought about. I guess I just assume that was the way of the world - strong pioneer women.

On that note here are some important women from history who did historic things in November:

1) In 1872, four days after she led a march to Rochester's City Hall to demand that she be registered to vote, Susan B. Anthony defies the law by casting a ballot in a New York election.

2) In 1864, southern diarist Mary Chestnut writes of home life in the waning days of the Civil War, "A thousand dollars has slipped through my fingers already this week. At the commissaries, I spent five hundred today for sugar, candles, a lamp. When the chimney of the lamp cracks, we plaster up the place with paper - thick letter paper, preferring the highly glazed kind. In that hunt, queer old letters come to light."

3) In 1880, celebrated French actress Sarah Bernhardt makes her American debut at the age of thirty-six in Dumas Fils's *La Dame aux Camelias*. It is the first of ten American visits for Bernhardt, most of which are billed as farewell tours.

4) In 1928, anthropologist Margaret Mead arrives in Ta'u, Samoa, to begin research for her book *Coming of Age in Samoa*, which will influence the way generations of Americans view child-rearing practices.

5) In 1865, Mary Edward Walker, the first female surgeon in the U.S. Army and a Confederate Prisoner of War for four months, becomes the only woman to be awarded the Medal of Honor. The award is revoked by a review board, but restored posthumously.

This was election week, another historic election for America. I hope we did good.



STATE CAPITAL HIGHLIGHTS



by Ed Sterling

Most big newspapers favor White, but pre-election polls favor Perry

AUSTIN — By Oct. 19 — the first day of early voting before the Nov. 2 general election — the editorial boards of 12 of the larger daily newspapers had endorsed Bill White, the former mayor of Houston and the Democratic candidate for governor. And one editorial board, the *Waco Tribune-Herald's*, endorsed incumbent Republican Gov. Rick Perry.

But, by Oct. 29 — the last day of early voting — polls of likely voters showed Perry with a lead of around 10 percentage points.

Now, back to the newspapers. The 12 that endorsed White were listed as the *Amarillo Globe-News*, *Austin American-Statesman*, *Beaumont Enterprise*, *The Bryan-College Station Eagle*, the *Corpus Christi Caller-Times* and *The Dallas Morning News*. Also, *The Galveston County Daily News*, *Houston Chronicle*, *Lubbock Avalanche-Journal*, *San Angelo Standard-Times*, *San Antonio Express-News*, and *Wichita Falls Times Record News*.

A rundown of results in the major races will be in next week's column.

Thousands attend 'Sanity' event

Between 5,000 and 6,000 people gathered on the Capitol grounds Oct. 30 for the Texas version of cable television "infotainment" czar Jon Stewart's "Rally for Sanity."

The event was in tandem with Stewart's national rally on the Capitol Mall in Washington, D.C., which was attended by more than 250,000 people.

Social networking expands reach

Back on May 11, the Senate Committee on State Affairs met and heard testimony on how advances in technology and the emergence of various forms of social media have affected communications by and within governmental bodies.

So, the use of social networking by governmental officials is on the table for the upcoming session of the Texas Legislature.

Now, here's a new twist. Recently, an incumbent running for reelection posted a negative comment about his campaign opponent on the local government body's Facebook page.

The Texas Ethics Commission said the candidate's posting was not campaign speech. (The state Election Code addresses paid political advertising not social networking communications in campaigns for public office.)

Last April, Ethics Commission Advisory Opinion No. 491 said political advertising that appeared on a social networking site (like Facebook) requires a political advertising disclaimer statement that is linked to information about who paid for the advertisement.

If legislation addressing officials' use of social networking for routine communications is filed in the coming months, perhaps social networking's effects on campaign communications might also be addressed.

TCEQ-Mexico border plan in place

Did you know the Texas Commission on Environmental Quality has its own border initiative with Mexico? The initiative, created in 2008, aims to:

- Continue bi-national air quality monitoring in Ciudad Juárez;
- Develop a Lower Rio Grande water quality initiative;
- Provide technical assistance on the pretreatment of fats, oil, and grease;
- Improve municipal management of scrap tires; and
- Develop coordinated emergency response measures with the International Boundary and Water Commission.

Magazine honors two of our own

GOVERNING, a national

monthly magazine published in Washington, D.C., on Oct. 26 announced its top governing officials for the year 2010. On the list of eight honorees are two Texans.

The announcement said, "Sen. John Whitmire and Rep. Jerry A. Madden, State of Texas, teamed up to oppose funding another round of prison building in Texas, the world center of incarceration; opting instead for a smaller investment in treatment and diversion that has since become a model for corrections reformers everywhere."

A short list of Public Officials of the Year from state, city and county government have been singled out and honored for outstanding accomplishment annually by the magazine for the last 17 years.

Whitmire, D-Houston, is chair of the Senate Committee on Criminal Justice and dean of the Senate. Madden, R-Plano, is vice chair of the House Corrections Committee.

Texas wines duel with New York

The New York Giants won the Oct. 25 NFL match-up with the Dallas Cowboys at Cowboys Stadium in Arlington 41-35, but Texas beat New York 8-3 in a nearby pre-game wine-tasting contest hosted by the Texas Department of Agriculture.

The 2010 Grape and Gridiron Classic, a blind taste-testing event featuring a selection of 11 wines, was conducted in Dallas at El Centro College's Food & Hospitality Institute.

Words from Faith & Grace

by Cecil R. Biggers, Lutheran Lay Minister



We learn something of eternal life and resurrection as we study Job 1: 23-27, Psalm 17: 1-9, 2 Thessalonians 2: 1-5, 13-17, and Luke 20: 27-38.

Job is responding to the arguments of Bildad who is convinced that Job is hiding a 'secret sin'. Job wishes that his story could be written in stone; he wants to witness to future generations. Job declares "for I know that my Redeemer lives, and at the last he will stand upon the earth; and after my skin has been thus destroyed, then in my flesh I shall see God..." Job has faith that God will in the end, defend him because God knows he has not committed a mortal sin. This passage and language calls up the early Jewish idea of God presiding over a heavenly Council in which Satan is the prosecutor and God may act as defense counsel. Eternal life, possibly; faith that God will redeem, absolutely!

The Psalmist sings for the vindication of God for his faith and for protection from his enemies.

Paul is responding to a vicious rumor in the Church at Thessalonica, "The Second Coming has already happened and Thessalonians, you missed it!" Paul assures the Church that when Jesus returns, they will know it. He gives them an 'event' line. First there will be a period of rebellion against God with the Lawless One leading it. When Christ appears, he will gather his followers to him. And, in the final conflict Christ will prevail. Paul then reminds the Church at Thessalonica that they were called by God to grow and develop in God's glory and thus to help 'consecrate' the world to Christ and obtain salvation in the heavens. Eternal life, yes; resurrection, yes, all in Christ's control.

The Sadducees were a rich, conservative group who often allied themselves with the Romans. They did not believe in the concept of resurrection. They only followed the rules contained within the Torah. So they pose a question to Jesus based on Deuteronomy 25:5-10. "A certain man died childless and his brother married the widow, he died and this likewise happened through seven brothers, and at the end the widow died. Whose wife is she in heaven?" Jesus answered them by showing that our heavenly form and our heavenly way of life will be different from this life. The believer is like the angels and is a Child of God, being a child of the resurrection. He then cites the Torah, "God said to Moses, I am the God of Abraham, Isaac and Jacob." God indicates here that to Him, Abraham, Isaac and Jacob are alive even though they died long before Moses was born.

Dear Christian, the past, present and future are God's. May the Holy Spirit keep your hearts and minds in Christ Jesus that you may not doubt but continue in good works.

Wolf Creek Heritage Museum

Museum Hours: Monday thru Friday 10 a.m. to 4 p.m., Special hours upon request.

Museum Information: 13310 Hwy 305, PO Box 5, Lipscomb TX 79056; telephone: 806-852-2123; e m a i l : wolfcrk@amaonline.com; website: www.wolfcreekheritagemuseum.org

See us for:
AUTO • HOME • CROP HAIL • FARM & RANCH • MULTIPERIL • LIVESTOCK

INSURANCE

BORT AGENCY, INC.
510 Main St. • Gruver, TX
(806) 733-2456

CATCH PHRASES

- ACROSS**
1. San ___ Padres
 6. French lake
 9. FDR had three
 13. Bring upon oneself
 14. Flightless bird
 15. Where a French fry has been
 16. Parallel lines or grooves
 17. Be unwell
 18. Cambodian monetary unit, pl.
 19. "___, we have a problem"
 21. Monk's retreat
 23. Unagi
 24. "Pay as you earn" acronym
 25. "___-out!"
 28. Doctor's recommendation
 30. Ecstatic or rapturous
 35. Stages
 37. Like a bloody horror movie
 39. Defier
 40. Puerto ___
 41. Used for searching
 43. Heart of Inca empire
 44. Santa's surname
 46. 6th wife of Henry VIII
 47. State of agitated irritation
 48. Sprightliness
 50. Andre's tennis rival
 52. Type of tray
 53. Podium
 55. Shack or shanty
- DOWN**
1. "Don't ___ out what you can't take."
 2. "He's Just Not That ___ You"
 3. Very light brown
 4. Sheep's clothing to wolf
 5. Gave a formal speech
 6. *Used to describe machine
 7. Mon cher ___
 8. *Mia ___
 9. The Three Tenors, e.g.
 10. Looker or ogler
 11. Bank on
 12. Wife's title
 15. **Say hello to my little ___
- ACROSS**
20. Any branch of knowledge
 22. Used to make whiskey
 24. Possibly
 25. "May the ___ be with you"
 26. Source of indigo dye, pl.
 27. Short summary version
 29. TV opera
 31. What Lil Wayne does
 32. Madison Square Garden, e.g.
 33. Fallen angels in Persian mythology
 34. "___ or dare?"
 36. Kind of dairy cream
 38. Yesteryear
 42. Type of dental practice
 45. Sashayed
 49. Mai ___
 51. "___!" exclaimed Archimedes
 54. October's "Time" magazine, e.g.
 56. Flat cafeteria carriers
 57. Welt
 58. Squid's defense, pl.
 59. Grazing lands
 60. Notable achievement
 61. Between ids and super-egos
 62. Stuff hair
 63. Site of Trojan War
 64. Player in St. Louis
 66. Suffix that makes a

SUDOKU
PRESENTED BY
VolunteerMatch.org
Where volunteering begins.

		2		8	
6					7
		4	9		6 1
	3	5	7		2
	1		8		
2	6		3		
			3		4
5	2	6			3
3				9	

© 2010, StatePoint Media, Inc. answer on classified page
Fill in the blank squares in the grid, making sure that every row, column and 3-by-3 box includes all digits 1 through 9.

These games are brought to you by the
Hansford County Reporter-Statesman

"host" female 67. Poetic "ever"

CROSSWORD

1	2	3	4	5	6	7	8	9	10	11	12
13					14			15			
16					17			18			
19					20			21	22		
				23				24			
25	26	27	28	29	30	31	32	33	34		
35		36		37		38		39			
40				41		42		43			
44			45		46			47			
48			49		50			51	52		
			53		54			55	56		
	57	58	59			60		61	62	63	
64					65	66		67			
68					69			70			
71					72			73			

PRESENTED BY
VolunteerMatch.org
Where volunteering begins.

© 2010, StatePoint Media, Inc. answer on classified page

The Hansford County Reporter-Statesman
Mailing Address - 213 Main Street • Spearman TX 79081
Physical Address - 310 Barkley Street • Spearman TX 79081
Phone - (806) 659-3434 • Fax - (806) 398-9080
www.spearmanreporter.com • reporter@spearmanreporter.com
Mon.-Thurs. 9 a.m.-12 p.m., Mon.-Wed. & 1-5 p.m.
Closed Thurs. afternoon and all day Fri., Sat. & Sun.

Gary Smith - Publisher Catherine Smith - Editor
Contributing Writers: Dorothy Hudson, Jim Derington, Merry Sparks, Cecil Biggers
Contributing Photographers: Charlie Johnson, Lisa Johnson, Tammy Batton, Bonnie Bergan

Subscription Rates
In Hansford County - \$30.00 • Out of County - \$40.00
E-Mail Subscription - \$35.00

The Hansford County Reporter-Statesman (USPS 529660) is published weekly in Spearman, TX. Periodical postage paid in Spearman, TX. **POSTMASTER:** Send address changes to: The Hansford County Reporter-Statesman, 213 Main Street, Spearman, TX 79081.

Publication Policy
The deadline to submit news and advertising to The Hansford County Reporter-Statesman is Monday at 5 p.m. Items submitted after the deadline will be published at a later date, as time and space permit. Publication of all items is at the discretion of the editor.

Advertising
Open Display rates are \$4.00 per column inch. Classified Ads are \$6 for the first 25 words and 10¢ per word for each additional word. (Additional charge for boxed classifieds.) There is a \$1 charge per week if billed.

Member of
Gruver Chamber of Commerce
Spearman Chamber of Commerce
Texas Press Association and Panhandle Press Association

Happy Birthday!

November 4
Birthdays - Justin Armes, Clayton Henson, Todd Winders, Lee Wilhelm, Julie Jones, Matthew Stewart, Tony Herndon, George Rex, Carlos Mendoza Sr., Rhett Link, Leona Stavlo, Julie Stedje, Matt Dunning, Leona Stavlo
Anniversary - M/M John Cass

November 5
Birthdays - Fred Davidson, James Dorman, Vireta Knight, Fabian Salazar, Jerry Holton, Dixie Smith, Lisa Price, Christopher Salazar, Richard Mackie, Nicole Fox, Debbie Trejo, Karen Paschel, Lola Mendoza, Lydia DeSantiago, Roz Duncan, Beverley Mireles, Eric Cudd
Anniversary - David & Mary K. Harbour, M/M Butch Noble, M/M Bryant Layton

November 6
Birthdays - Paige Speck, Zachary Johnson, Ross Renner, Jill Watson, Don Kjos, Santiago Tercero, Calvin Bodey, Virginia Martin, Joan Hawkins, Rosa Alvarez Flores, Kiersan Lopez, Beth Dortch, Jill (Lusby) Butler, Cindy Holton, Linda Wilkerson, Tonya Mahaney, Tony Edwards, Tom Kirk, Stuart Martin, Raquel Arjona, Stacey Williams French, Dakota Lopez, Blake Burgess, Tom KirkRosa Vasquez
Anniversary - M/M David Collins, Fred & Brenda Shieldknight

November 7
Birthdays - Gerald McBride, Gary McCalman, Cleo Cotter, Kurt Bynum, Megan Woolley, Lee Roy Mitchell, Jerry Tope, Haley Lombard, Pam Largent Ortega, Matthew Jarvis
Anniversary - Victor & Debbie Schumann

November 8
Birthdays - Donnie Davis, Tara Gardiner, Sharon Reed, Santiago DeLaCruz, Kaylee Wheeler, Nathan Hanson, Linda Burke, Megan Stedje, Kristi Medford, Manda Simmons, D.A. Cator, Corey Fletcher, Amanda Wells
Anniversary - Danny & Delinda McLaughlin

November 9
Birthdays - Mark Deakin, Tracey Chisum, Gloria Alicia Alvarez, Charolette Ford, Jasmine Bravo, Samuel Hanson, Shanna

Dillard, Jessica Nicole Vela, Eloise Renner, Joe Mayo, Alfredo Mendoza, Shonna Gammon, Irasemo Soto, Pat Cudd, Beth Daniel

November 10
Birthdays - Jess Rudolph, Rick Yanke, Buddy Hopper, Bernard Dossett, Caraly Garza, Cynthia Arnold, Marilyn Wilson, Candace Sharpe, Guadalupe Trejo, Catherine Smith, Sam Gruver, Sylvia Borunda, Bobbi Kay Christian, Jessica Gallegos, Kolby Sumner, Diane Close

November 11
Birthdays - Luke Miller, Pat Overbey, Andres Rodriguez, Nichole Shearer, Matthew Stork, Tye Womble, Charles Ross III, Harriet Hutchison, Kurtis Hergert, Goldie Tucker, Heath Hergert, Callie Barkley Borger, Samantha Cazarez, Bill Watts, Liz Hickerson, Matthew Brown, Andres Rodriguez, Lupe Moreno, Alan Tarango
Anniversary - M/M Billy Snider, M/M Monty Black

November 12
Birthdays - Jennie Blankenship, Monty Cassidy, Benjamin Karlin, Bob Zimmer, Jo Nell Comegys, Cindy Avila, Sophia DeLuna, John Jackson, Helen Dry, Angie Thompson, Marolyn Scroggs, Brent Sanders, Dennis Crawford, Erica Alvarez, Buffy Adkins, Rose Isenhower, Jaime Briones, Ann Allen

November 13
Birthdays - Lucy Alvarez, Angela Grotegut, Paulette Watkins, Rhonda Williams, Michelle Garnett, Andra Camille Brown, Kent Hargis, Amy Reed, Joseph Burch, Richard Nicholas, Carly Riethmayer, Hector DeSantiago, Masen Castillo

November 14
Birthdays - Lisa Johnson, Luke Johnson, Missy Johnson, Ray Martin, Ricky Sharp, Carl Kunselman, Rhonda Tope, Norma Payne, Dolly McWhirter, Sandy Morris, Roy Pipkin, Mark Love, Jessica Crossland, Adela White, John Patterson, Judy Yarbrough, Luis C. Rodriguez, Sylvia Hodge, Shelby Ann Sasser, John Patterson
Anniversary - M/M Benny Bradvick, M/M Nathan Hanson, M/M Dave Barkley

Our Sympathy

LEONA STAVLO

GRUVER - Leona Stavlo, 84, lifelong Hansford County resident, passed away Friday, October 29, 2010 at her home in Gruver.



Leona Bernice Knutson was born November 4, 1925 to Cora (Stedje) and Emil Knutson on the farm in the Oslo community. She attended Gruver schools, graduating from GHS in 1943. She then attended two years at St. Olaf College, Northfield, MN and graduated from West Texas State College, Canyon, TX in 1948. She was married to Joel David Stavlo on April 4, 1948 at the Oslo Lutheran Church. The Stavlo family farmed and ranched. Mrs. Stavlo was active at Oslo Lutheran Church where she played the organ for many years. The Stavlos moved to Gruver in 1996. Leona had been active in the Gruver Music Club, the Station Master's House Museum and Southwest Pioneer Windmill Association and was involved in the beautification of Gruver.

She was preceded in death by her parents, husband, Joel Stavlo who passed away January 2000, her son, John Mark Stavlo, April 2003 and her brother, Emil David Knutson, June 1990.

Survivors include three daughters and their husbands, Mary Ann and Rick Andersen of Sioux Falls, SD; Alice and Randy Satrum of Parker, CO; Amy and J.P. TeBeest of Oslo; a son, Paul Stavlo and wife, Barbara of Gruver; daughter-in-law, Carol Stavlo of McKinney, TX; three sisters and their husbands, Louise and John Maakestad of Anchorage, AK; Amy and Jon Ericson of Pacific Grove, CA; and Kathryn and EG Hinchliffe of Carrollton, TX; and sister-in-law, Sarah Knutson Hogan of Amarillo, TX. She is also survived by her twelve grandchildren and spouses, Heather and Drew Williams of Aberdeen, Scotland; Noah and Chrissa Stavlo of Dallas, TX; Rob Andersen of Sioux Falls, SD; Dane and Dollie Andersen of Dell Rapids, SD; Airman Lance Andersen of Rapid City, SD; Karl and Mackenzie Satrum of Thornton, CO; Krystle Satrum of Brookline, MA; Charlie Stavlo of Austin, TX; Sammie and Wade Harkey of Oslo; Jason and Amber TeBeest of Gruver; Chad and Andrea TeBeest of Arvada, CO; and Mark and Melissa TeBeest of Oslo; five great grandchildren, Elle Stavlo, Dayton Andersen, Cora Harkey, and Abigail and Turner TeBeest; and many cousins, nieces and nephews.

Funeral services were conducted on Monday afternoon, November 1, 2010, 2:00 p.m. at the Oslo Lutheran Church with Pastor Arlen Lloyd officiating. Interment followed in the Oslo Lutheran Cemetery under the care of Henson-Novak Funeral Directors, Guymon, Oklahoma.

Visitation will be Sunday from 1-8:00 PM at the Henson-Novak Funeral Directors, 501 NW Fifth, Guymon. The family has requested memorials be to the Oslo Lutheran Church, 8605 County Rd F, Gruver, TX 79040 or the Amarillo Area Foundation for the Gruver Scholarship Fund, c/o Gruver State Bank, P.O. Box 978, Gruver, TX 79042. Friends may send condolences and sign the online guest book at www.hensonnovak.com.

LEOTA "MICKEY" DELANO



Leota "Mickey" Delano, 95, longtime Gruver, Texas resident, passed away Saturday morning, October 30, 2010, at the Hansford Manor in Spearman, Texas.

The daughter of Harry Bethel and Lillie Safronia (Alexander) Aday, she was born June 11, 1915, in Jackson County, Oklahoma. Mickey was raised in the Duke area, where she graduated from Prairie Hill School in 1935.

Mickey and Merle A. Delano were united in marriage on October 10, 1935, in Jackson Co., Oklahoma, near Duke. They made their home in Duke until 1945, when they moved to Guymon and then in 1950, they moved to Gruver.

Mickey loved painting in all medias and especially loved painting china. She taught the art of china painting up until the last few years. She was a member of the Gruver China Club and the New Hope Missionary Baptist Church in Duke.

She was preceded in death by her husband, Merle Delano; her daughter, Gloria Cooper; one grandson, Randy Hardesty; a great great granddaughter, Hannah Stephenson; four sisters: Vesta Patterson, Jenny Sledge, Pauline Powell and Zella Smith; and one brother, Deward Aday.

Survivors include two grandsons, John and his wife, Connie Hardesty of Guymon and Brad Hardesty of Gruver, Texas; one granddaughter, Lesa and her husband, Rick Marrell of Amarillo, Texas; four great grandchildren: Lexy and her husband, Justin Gift of Guymon, Melissa and her husband, Steve Jones of Amarillo, Texas, Mandy Stephenson of Pampa, Texas, and Shawn and his wife, Angel Stephenson of Dallas, Texas; twelve great great grandchildren and one sister, Iva and husband, Jimmie Jones of Amarillo, Texas, along with numerous nieces and nephews.

Graveside funeral services were conducted Tuesday afternoon, November 2nd at 2:00 p.m. at the Gruver Cemetery in Gruver, Texas, with Pastor Gary Gumfory officiating. Services were under the care of the Bunch - Roberts Funeral Home of Guymon.

The family suggests that memorials be given to the Gruver Library. Memorials will be accepted at the Bunch - Roberts Funeral Home, P.O. Box 1112, Guymon, Oklahoma 73942. Friends can sign the online guest book and leave condolences at www.bunchroberts.com.

MONUMENTS

Boxwell Brothers

Funeral Home

519 Evans • Spearman
659-3802

Dear friends,
When you buy a monument from us we make sure it is exactly what you want at a price you can afford. If it is not right, we will make it right. And you will not have to search the countryside to find us. We are here when you have a need.

Sincerely,
Bob Boxwell

STOP LEG CRAMPS BEFORE THEY STOP YOU.

Calcet® is designed to help stop low calcium leg cramps. Just ask your pharmacist.

Helps fight leg cramps

Fights those with milk allergies

Fights osteoporosis

Petite Tablet
with More Calcium & Vitamin D3

Go Painlessly™

Gunce for Dounce - Compare and Save!

The top-quality & top-value pain creme

LIMITED TIME DIRECTV OFFER!

FREE **starz** + **SHOWTIME** for 3 months!

FREE HD Access!

FREE Standard Installation 1-3 hours

Toll Free 800-214-7110

FREE HD FOR LIFE!

Only on DISH Network

- Lowest Price in America!
- \$ 24.99/mo for over 120 channels!
- \$500 Bonus!

Call Now!
1-866-799-8039

DIRECTV

Direct Sat TV
1-800-577-1322
Local installers!

285+ Channels
160+ HD Channels

\$29.99 Mo.

2 FREE Upgrades - HD DVR & HD Receiver - Ask How!

FREE **starz** & **SHOWTIME** For 3 Months

HOME PHONE SERVICE

NO Pre-Payment • NO Deposit Required!

Rates from \$6.99 per month*

(\$17/month including approximate taxes & fees)

FREE 1st Month of Service

Caller ID & Call Waiting included in Packages**

New-Talk 866.934.3448

Replenish the seed of faith through . . .

DAILY BIBLE READING, PRAYER & REGULAR CHURCH ATTENDANCE

<p>Spearman</p> <p>Apostolic Faith Church 822 S. Dressen • 659-2870 Sunday School: 10 a.m. Worship Service: 11 a.m. Sun. Eve.: 6 p.m. Wed. Prayer Mtg.: 7 p.m. Pastor - Jack Cornell</p> <p>First Assembly of God 401 N. Bernice • 659-2295 Sunday School: 9:30 a.m. Worship: 10:40 a.m. Evening Worship: 6 p.m. Wed. Worship: 7 p.m. Wed. Youth: 7 p.m. Pastor - Jerry Pollard</p> <p>First Christian Church (Disciples of Christ) 29 S. Bernice • 659-2036 Sunday School: 9:45 a.m. Worship: 10:50 a.m. Minister -</p> <p>First Baptist Church 123 N. Bernice • 659-5557 Sunday School: 9:45 a.m. Worship: 11 a.m. Evening Worship: 7 p.m. Men's Bible Study - Wed., 7 a.m. Children's Choir - Wed. 6 p.m. Adult Choir - Wed. 7 p.m. Wed. Bible Study: 7 p.m. Pastor - Jim Medley</p> <p>Church of Christ 121 S. Haney • 659-3244 Sunday Bible Class: 9:45 a.m. Worship: 10:30 a.m. Evening Worship: 6 p.m. Bible Study Wed.: 7:30 p.m.</p>	<p>Sacred Heart Catholic Church 901 Roland • 659-2166 Sat. Night Mass: 5:30 p.m. Sunday School: 10 a.m. - English Sun. Mass: 11:30 a.m. - Spanish Rev. Gregory Bunyan</p> <p>First United Methodist 407 S. Haney • 659-5503 Sunday School: 9:45 a.m. Worship: 8:30 & 11 a.m. Jr. High Youth: 5 p.m. Sunday Kids Club: 3 p.m. Wed. Pastor - Neely Landrum</p> <p>Grace Presbyterian Church (Worships with Faith Lutheran Church) 1101 Bernice • 659-2033</p> <p>Faith Lutheran Church (ELCA) 1101 Bernice • 659-2252 Sunday School: 9:45 a.m. Worship: 11 a.m. (Worships with Grace Presbyterian Church) Pastor - Cecil Biggers, PLM</p> <p>Union Church 31 S. Endicott • 659-2644 Sunday School: 10:00 a.m. Worship: 11:00 a.m. Bible Study: 7 p.m. Wed. Youth Service: 6 p.m. Wed. Pastor - Don Baltazor</p> <p>Fellowship Baptist 1102 S. Archer • 659-2783 Sunday School: 10 a.m. Worship: 11 a.m. Sun. Evening Worship: 6 p.m. Sun. Evening Spanish Worship: 7 p.m. Youth/Adult Service: 7:30 Wed. Pastor - Philip Hudson</p>	<p>Primera Mision Bautista 502 E. 7th • 659-3991 Sunday School: 9:45 a.m. Worship: 11 a.m.; Evening: 6 p.m. Wed. Prayer Meeting: 7 p.m. Thurs. Visitation: 7 p.m. Pastor Joe Garcia Jr.</p> <p>El Aposento Alto U.P.C.I. 1105 S. Roland Domingos: Escuela-Dominical - 10 a.m. Culto Evangelistico - 7 p.m. Jueves: Oracion - 8 p.m. Mier: Estudio Biblico - 7 p.m. Pastor - A.G. Martell (806) 659-2153</p>	<p>Gruver United Methodist Broadway & Garrett 733-2651 Sunday School: 9:45 a.m. Worship: 8:30 & 10:50 a.m. Eve. Worship & UMY: 6 p.m. Pastor - George Price</p> <p>Spanish Cristo Redentor Church Hwy 15 806-659-2166 Gruver, TX Sun. Mass: 1:30 p.m. - Spanish Rev. Gregory Bunyan</p>
<p>Oslo</p> <p>Oslo Lutheran Church (ELCA) 6 Miles West & 12 Miles North of Gruver 339-7646 Sunday School: 9:45 a.m. Worship: 11 a.m. Pastor - Arlen Lloyd</p>			
<p>Gruver</p> <p>First Baptist Church 402 E. Broadway • 733-2411 Sunday School: 9:45 a.m. Worship: 10:50 a.m. Disciple Training: 6 p.m. Sunday Prayer Meeting: 7:30 p.m. Wednesday Pastor - Scott Curry</p> <p>Church of Christ 209 King • 733-2760 Sunday School: 9:30 a.m. Worship: 10:20 a.m. Evening Worship: 6 p.m. Wed. Worship: 7:00 p.m. Minister - Gaylord Cook</p> <p>First Christian Church 510 King • 733-2960 Sunday School: 10:00 a.m. Sunday Worship: 11 a.m. Youth: 7:30, Sunday Adult Bible Study: 7:30, Sun. Wed. Bible Study: 8:00 p.m. Pastor - Gary Gumfory</p>			
<p>Morse</p> <p>Morse Baptist Church 733-2757 Pastor - Gary Stevens</p>			
<p>Waka</p> <p>Church of Christ 300 Rogers Ave. 202-7126 Sunday School: 9:30 a.m. & 6 p.m. Sunday Worship: 10:30 a.m. & 6 p.m. Wednesday Bible Study: 7 p.m. Pastor - Ed Jenkins</p>			

He has showed you, O man, what is good. And what does the LORD require of you? To act justly and to love mercy and to walk humbly with your God.

Micah 6:8

This feature is made possible through the sponsorship of these civic minded businesses:

<p>Deakin ELECTRIC</p> <p style="font-size: 8px;">OILFIELD • RESIDENTIAL • COMMERCIAL 321 S. MAIN • SPEARMAN</p> <p style="font-size: 8px;">1-800-999-1506 Chris Deakin (806) 659-5016 President</p>	<p>Bartlett's Lumber & Hardware</p> <p style="font-size: 8px;">105 W. Broadway • Gruver, TX (806) 733-2404</p>	<p>BERRY CLEANERS</p> <p style="font-size: 8px;">Ann & Vernon Pipkin - Owners Phone 659-3122 • P.O. Box 1017 207 Main St. • Spearman, TX</p>	<p>Morse Implement & Auto Supply</p> <p style="font-size: 8px;">"Join us in church" Tom Dortch 733-2668 Box 89 • Morse, TX 79062</p>
<p>PRAIRIE MOTORS INC.</p> <p style="font-size: 8px;">Hwy. 207 South • P.O. Box 430 Spearman, TX 79081 • (806) 659-2541 www.prairiemotors.com</p>	<p>MurMur's Cafe</p> <p style="font-size: 8px;">100 Roland St Spearman, TX. 659-3580</p>	<p>Hansford County Reporter-Statesman</p> <p style="font-size: 8px;">"Proudly Serving Hansford County Since 1907" (806) 659-3434 310 Barkley • Spearman, TX</p>	<p>INTERSTATE BANK, sssb</p> <p style="font-size: 8px;">www.interstatebank.net 322 Main • P.O. Box 146 Spearman, TX • 659-2559</p>

HYI

FOR YOUR INFORMATION

Education Fund For Johnson Children
An education fund has been set up at First National Bank for the children of David Johnson. If anyone would like to donate, they can mail to PO Box 337, Spearman, TX or bring by the bank and give to any teller.

SHS Class of 2011 To Sell Schwans Food
Spearman Class of 2011 will be selling Schwans foods to help towards the cost of Project Graduation. Orders will be taken until Friday, November 5th with a delivery date of November 13th in the Lowe's parking lot from 10 a.m. - 2 p.m. Please contact any senior to place an order, or call Sally at PTCI, Margie at 330-0778, or Missie at Dreamer's Salon 659-9907.

Sacred Heart Fundraiser November 6th
Sacred Heart Youth will be having a fundraiser in the Spearman Shopping Center. With the help of Martin Entertainment Extreme, we will have the Bungee Trampoline on November 6, 2010 from 10 a.m. - 5 p.m. Only \$10 per ride ALL PROCEEDS TO BENEFIT THE SACRED HEART YOUTH GROUP.

Benefit Craft Bazaar
A Benefit Craft Bazaar will be held on Saturday, November 6th from 9 a.m.-6 p.m. at Guymon High School. Over 65 booths of different crafts and foods will participate, including retailers from Oklahoma, Kansas, Colorado, Texas and New Mexico. Admission is free.

Enchilada Sale
The Sacred Heart Catholic Church will be selling Enchiladas on Sunday November 7th from 10:00 am to 2:00 pm in the parish hall. Carryout is available. The plate includes 3 enchiladas, rice, beans, salad and desert. The cost is \$7.00 children 4 and under eat free children ages 5 to 10 the cost is \$5.00. Come join us for delicious food. Call your order in to 806-662-6225 or 806-270-0607. You may also pre-order your dozen of enchiladas for \$10.00 a dozen.

Annual Pumpkin Patch Benefit
The 18th Annual Pumpkin Patch Benefit will be held Saturday and Sunday, November 6th & 7th. The event will be held at the Texas County Activity Center in Guymon, OK. The public is invited to attend Saturday 9 a.m.-6 p.m., and Sunday 11 a.m.-4 p.m. Admission is free. Around 100 exhibitor booths will feature a variety of arts and crafts which include floral, clothing, ceramics, candles, wood, stained glass, jewelry and more. Several artists will also exhibit their paintings, sculpture, drawings, and pottery. There will also be several pre-packaged food and commercial exhibitors this year. Lambda Psi, a chapter of Beta Sigma Phi sorority, is sponsoring the event. Proceeds from the Pumpkin Patch Benefit are donated to community services in the Oklahoma panhandle. A concession stand will be provided by the Guymon High School Band Boosters.

Enchilada Sale
The Sacred Heart Catholic Church will be selling Enchiladas on Sunday November 7th from 10:00 am to 2:00 pm in the parish hall. Carryout is available. The plate includes 3 enchiladas, rice, beans, salad and desert. The cost is \$7.00 children 4 and under eat free children ages 5 to 10 the cost is \$5.00. Come join us for delicious food. Call your order in to 806-662-6225 or 806-270-0607. You may also pre-order your dozen of enchiladas for \$10.00 a dozen.

Apostolic Faith Revival
Pastor Jack Cornell of the Spearman Apostolic Faith Church (9th & Dressen) is announcing Revival Services on November 7-10 with Evangelist and Mrs. Alvin Buschman. Alvin is a graduate of Stinnett High School and his wife, Glenda, is a graduate of Beaver High School in Beaver, OK. They attended the Apostolic Faith Bible College in Baxter Springs, KS. The Buschmans have been in ministry for 35 years. They have just completed pastoring in Cave Springs, AR for 22 years. They have 3 children, 2 boys and 1 girl. You will be blessed by their ministry of music and preaching. They are spirit anointed as they minister for the Lord. Services will begin at 11 a.m. Sunday, 6 p.m. Sunday, and 7 p.m. Monday, Tuesday and Wednesday. Pastor Cornell invites everyone to come and be blessed by these services.

GISD Bluncks Retake Day
Picture retake day will be Wednesday, November 10. This covers pre-K through 12th. We will also be taking the senior groups that day. Seniors wear jeans and bring both a black and a white t-shirt.

Veteran's Day Program
Local veterans will be honored Thursday, November 11th from 9:30-10:30 a.m. in the Spearman Varsity Gym. The program will begin with a flag ceremony and the "National Anthem" played by the Spearman High School Band. Mr. James Cunningham will welcome all guests and give special recognition to veterans. Patriotic selections will be performed by the Spearman School Choirs and Band. Speaker for the program will be Mr. Lewis Britt, District Director for Congressman Mac Thornberry. The Texas Extension Education Clubs of Hansford County help host the program and encourage all veterans to attend.

Panhandle Professional Writers
Panhandle Professional Writers will meet one week earlier than usual. On Saturday, November 13, 2010 at St. Stephen United Methodist Church West Campus located at 4415 Wesley Drive (off 45th between Coulter and Sony in Amarillo, Texas) from 9:30 a.m. until 3:30 p.m. Guest speakers for the day will be Mark D. Williams, his wife Amy Becker Williams, and Chad McPhail. The three are authors numerous books and freelance writers. They will share their strategies on taking the writer from idea to bookshelf. The meeting will run from 9:30 a.m. (registration and greeting time) to 3:30 p.m. There is a \$5.00 program guest fee which will be deferred if the guest joins PPW on that day. PPW dues are \$30.00 annually. Students with school ID will be charged a \$1.00 guest fee. Lunch is \$10.00 and requires a reservation. To facilitate the caterer, please phone Kenja Purkey at 806-570-1468 or email her at ppwlunch@gmail.com Meeting location - St. Stephen United Methodist Church West Campus at 4415 Wesley Dr. Greeting time - 9:30 a.m. Morning Session - 10-12 a.m. Lunch 12-12:45 p.m. Business Mtg. 12:45-1 p.m. Afternoon Session 1:00-3:30 p.m. \$5 for guests - \$1 students with ID Deferred if join PPW - dues \$30 per year. Lunch is \$10.00. RSVP to Kenja Purkey by 5:00 p.m. Wednesday, November 10 ppwlunch@gmail.com. See www.panhandleprowriters.org

Hansford Hospice Memorial Service
You are invited to attend the Hansford Hospice Memorial Service on Sunday, November 14th, at 2 p.m. at the First United Methodist Church in Spearman, Texas.

Pringle-Morse CISD Book Fair
Pringle-Morse CISD will hold their book fair on Nov. 15-19. Come see all the great books to purchase!

Pringle-Morse CISD Cougar Pride Selling Cookbooks
The parent-teacher organization of Pringle-Morse CISD-Cougar Pride, is selling one-of-a-kind cookbooks. The cookbooks are a collection of recipes from the 1995 cookbook and more from this year, with over 1,300 recipes included. The recipes were collected from our community, friends, and family members. The proceeds from the books goes toward school and community projects. Please contact the school at 733-2507 or cindy.lieb@region16.net if you are interested in purchasing a cookbook.

Take Off Pounds Sensibly
Take Off Pounds Sensibly meets on Tuesday mornings at 8:30 a.m. at the First Christian Church in Gruver. For more information, contact Marilyn Been at 806-733-2087.

Medical Fund for Bruce Duncan
A medical fund has been established for Bruce Duncan at First National Bank, Spearman. If you would like to make a donation you may make a deposit with any teller or mail a donation to First National Bank, Bruce Duncan Medical Fund, PO Box 337, Spearman TX 79081.

Hansford Gun Club Rifle Shoot
The Hansford Gun Club holds a .22 rifle shoot on the second Sunday of each month, starting at 1:30 p.m. at the gun range (located on Hwy. 15 between Spearman and Gruver). Everyone is invited to join the fun.

Our Sympathy

KENNETH EARL SHUFELDT, SR.
SPEARMAN - Kenneth Earl Shufeldt Sr., 87, died Sunday, Oct. 31, 2010, in Amarillo.

Graveside services were at 2 p.m. Thursday in Hansford Cemetery. Arrangements were by Boxwell Funeral Home of Spearman.

Mr. Shufeldt was born Oct. 19, 1923, in Kinmundy, Ill., to Charles and Mary Shufeldt. He was a lease operator and retired in 1985. He was a pumper for Texaco for 43 years and co-owner of Shufeldt Rig Service for 12 years after retiring. He was a Scout Master for Troop 51 for several years and coached Little League for several years. Mr. Shufeldt was a governor of the Moose Lodge in Spearman and he loved to fish.

He was preceded in death by his parents, Charles and Mary Shufeldt; and two brothers, Harold and Darrell Shufeldt.

Survivors include two sons, Kenneth Shufeldt Jr. of Amarillo and Hal Shufeldt of Spearman; a daughter, Sandra Brent of Canyon; a sister, Jean Anderson of Kinmundy; and a brother, Lawrence Shufeldt of Iuka, Ill.; six grandchildren; and eight great-grandchildren.

The family suggests memorials be to Hansford Hospice, 707 S. Roland, Spearman, TX 79081.

Friendship Quilt Guilds Annual Retreat

by Reann File

By 7 p.m. on Friday evening, October 22nd, sixteen members of the Friendship Quilt Guilds of Perryton gathered at Talon Point, near Dumas for their 10th Annual Quilting Retreat. This was a smaller group than usual due to scheduling conflicts.

The quilters spent the remainder of the weekend working on individual projects and lots of visiting and some fabric shopping at Down Home Quilts in Dumas.

The next retreat is scheduled for September 23rd through 25th of 2011.

Members attending were Peggy Cantu, Ilene Floyd, Pam Sanders, Lois Bartz, Denise Hughes, Carol McGarraugh, Kathi Holland, Carolee Campbell, Fern Lamberson, Marilyn Robins, Reann File, Fern Webster, Elaine Hoover, Anna Lee Barton, Cynthia Shuttles and Freddie Seaman.

The next meeting for the group will be November 9th at 6 p.m., and November 10th at 9 a.m. at the Community Worship Center in Perryton.

Gruver FCCLA Trip

by Cherri Sherrill, Gruver HS FCS Teacher

Gruver FCCLA officers and members went to the Shamrock Fall Leadership meeting on Tuesday October 12, 2010. The students left Gruver ISD that morning and traveled to Canadian, for a nice lunch at the Railroad Grill and then visited the Citadelle Museum. Dr. Abraham, former owner and founder of this luxurious facility, graciously visited with the group as they toured the museum explaining the history and acquisitions of multiple pieces of artwork. Along with the history of the exquisite pieces, Dr. Abraham enlightened the group about the transformation of the old Baptist church into his family home and the museum it is today. After several questions and pictures, the students headed to Shamrock.

Once in Shamrock, the group attended the Fall FCCLA Leadership Workshop. They joined up with approximately 200 students from Valley, Canadian, Perryton, Fort Elliot, McLean, Shamrock, and Bushland to learn leadership skills and details on everyday hardships. GHS had 27 students attend the workshop.

Brandi Brown, Region 1 Vice-President of Records led one of the break-out sessions on how students can "Stop the Violence: Students Taking on Prevention." Juliana Trejo and Samantha Sanchez assisted with the presentation.

APOSTOLIC FAITH CHURCH
9TH ~ DRESSEN
Spearman, TX
Pastor: Jack Cornell



Rev. & Mrs. Alvin Buschman
Sunday Services 11:00 am / 6:00 pm
November 7 - 10
7:00 pm

The Jays of Summer

Available all year!



SNOW CONE STAND

Monday-Friday
1:30-8 p.m.

MURMUR'S CAFE

100 S. Roland • Spearman
659-3580

PERTUSSIS "Whooping Cough" Advisory

Pertussis, also called "whooping cough," is being reported within our 41 county health service region. We are encouraging increased surveillance and focus on pertussis in differential diagnosis.

Pertussis Symptoms

- Coughing for longer than 14 days
- Coughing fits
- Whooping sound
- Vomiting after coughing fit

Case Definition/Case Classification

For endemic or sporadic cases, a cough illness lasting at least 2 weeks with one of the following: paroxysms of coughing, inspiratory "whoop," or post-tussive vomiting, without other apparent cause (as reported by a health professional). In outbreak settings of 3 or more cases including at least 1 laboratory-confirmed case, the case definition used can be modified to a "cough illness lasting at least 14 days."

➤ **Confirmed:** A person with an acute cough illness of any duration who is culture positive, or who meets the case definition and is either PCR positive or is epi-linked to a laboratory confirmed case

➤ **Probable:** Meets the clinical case definition and is not laboratory confirmed (not tested or tests are negative) nor epi-linked to a laboratory confirmed case

Source: Texas Department of State Health Services, Epi Case Criteria Guide, 2009

Preferred Treatment

Azithromycin, clarithromycin and erythromycin are the preferred antibiotic choices for the treatment or prophylaxis of pertussis. Also, chemoprophylaxis is recommended to all close/household contacts, especially in high risk settings using the same specified dosage schedule. Please refer to the following CDC web address below for the recommended antimicrobial agents for the treatment and post exposure prophylaxis of pertussis.

➤ <http://www.cdc.gov/pertussis/clinical/treatment.htm>

Laboratory Confirmation

Positive polymerase chain reaction (PCR) assay for B. pertussis is the Texas Department of State Health Services standard for confirming pertussis.

Vaccination Recommendation for DTaP

- 2 months of age
- 4 months of age
- 6 months of age
- 15-18 months of age

Vaccination Recommendation for Tdap

➤ 11 or 12 years of age should receive single dose of Tdap

➤ 13-18 years who have not received Tdap should receive a single dose of Tdap as their catch-up booster.

Source: Epidemiology and Prevention of Vaccine Preventable Diseases, May 2009, 11th edition.

If you have any questions regarding this public health advisory, please contact Donnie Diaz at 806 783-6467 or Kevin McClaran at 806-783-6463 at the Texas Department of State Health Services.

TWO AUCTIONS

Two Days • 71 Total Tracts in Texas

Absolute Multi-Parcel Auction

Nov. 12 at 2 p.m. in Lubbock, TX

Absolute 39+/- Acre Land Auction

Nov. 13 at 11 a.m. in Springtown, TX

United Country Alliance Auction & Realty
877-271-7891
www.TexasMultiPropertyAuction.com
Brent Graves, Texas Auctioneer's License #13507
10% Buyers Premium

Gordon's



Couples Currently Registered

- Mary Beth Hargis & Jordan Hicks - 11/20
- Taleigh Lechinger & Lance Smith - 10/23 wedding
- Kylee Howard & Jeremy Frost - 11/13 wedding
- Megan Evans & Beau Clem - 11/20 wedding
- Amanda Wells & Scott Earle - 11/20 wedding
- Kathryn Murphy & Christopher Allen
- Amanda (Bowers) & Clayton Wilkerson

Baby Registry

- Cortney & Keith Winegarner - 11/30
- LeAnn (Earle) & Ed Lackey - 11/6
- DeeDee DeLaRosa & Michael Ortega - 11/6
- Jennifer & Clint Jackson - 11/6
- Nicole & Paul Swanson - 11/20
- Tim & Charlotte Bynum
- Kellye & Roger Buchanan

Gordon's 659-2141
314 Main Spearman

Election Results

The 2010 election was held on Tuesday, November 2, 2010. Voting was held from 7 a.m. to 7 p.m.

43% of the registered voters in Hansford County voted in this midterm election. Of the 3093 registered voters, 1344 voted.

Hansford County Results

U. S. Representative District 13: Mac Thornberry (Incumbent), REP - 1,200; John T. Burwell, Jr., LIB - 40; Keith Dyer, IND - 54

Governor: Rick Perry (Incumbent), REP - 1,126; Bill White, DEM - 163; Kathie Glass, LIB - 24; Deb Shafto, GRN - 5; Andy Barron, W-I - 6

Lieutenant Governor: David Dewhurst (Incumbent), REP - 1,199; Linda Chavez-Thompson, DEM - 88; Scott Jameson, LIB - 21; Herb Gonzales, Jr., GRN - 4

Attorney General: Greg Abbott (Incumbent), REP - 1,195; Barbara Ann Radnofsky, DEM - 83; Jon Roland, LIB - 20

Comptroller of Public Accounts: Susan Combs (Incumbent), REP - 1,192; Mary J. Ruwart, LIB - 37; Edward Lindsay, GRN - 19

Commissioner of the General Land Office: Jerry Patterson (Incumbent), REP - 1,154; Hector Uribe, DEM - 69; James L. Holdar, LIB - 33

Commissioner of Agriculture: Todd Staples - Incumbent, REP - 1,142; Hank Gilbert, DEM - 92; Rick Donaldson, LIB - 32

Railroad Commissioner: David Porter, REP - 1,128; Jeff Weems, DEM - 91; Roger Gary, LIB - 26; Art Browning, GRN - 7

Justice, Supreme Court, Place 3: Debra Lehrmann, REP - 1,097; Jim Sharp, DEM - 107; William Bryan Strange, III, LIB - 26

Justice, Supreme Court, Place 5: Paul Green (Incumbent), REP - 1,111; Bill Moody, DEM - 91; Tom Oxford, LIB - 29

Justice, Supreme Court, Place 9: Eva Guzman - Incumbent, REP - 1,089; Blake Bailey, DEM - 95; Jack Armstrong, LIB - 44

Judge, Court of Criminal Appeals Place 2: Lawrence "Larry" Meyers - Incumbent, REP - 1,128; J. Randell Stevens, LIB - 63

Judge, Court of Criminal Appeals Place 5: Cheryl Johnson (Incumbent), REP - 1,107; Dave Howard, LIB - 66

Judge, Court of Criminal Appeals Place 6: Michael E. Keasler (Incumbent), REP - 1,106; Keith Hampton, DEM - 88; Robert Ravee Virasin, LIB - 22

Member, State Board of Education, District 15: Bob Craig (Incumbent), REP - 1,142; John Pekowski, LIB - 58

State Representative, District 88: Warren Chisum (Rep) - 1185

Justice, 7th Court of Appeals, District Place 4: Jim Campbell (Rep) - 1152

Uncontested Candidates Declared Elected for Hansford County

Hansford County Judge Benny Wilson, REP

District and County Clerk Kim Vera, REP

County Treasurer: Wanda Wagner, REP

County Commissioner, Precinct No. 2: David Thomas, REP

County Commissioner, Precinct No. 4: Danny Henson, REP

Justice of the Peace: Bob Davis, REP

County Chair: Dorothy Cator, REP

Statewide Results

U. S. Representative District 13: Mac Thornberry (Incumbent), REP - 111,348; John T. Burwell, Jr., LIB - 5,585; Keith Dyer, IND - 0,960

Governor: Rick Perry (Incumbent), REP - 2,560,365; Bill White, DEM - 1,919,456; Kathie Glass, LIB - 101,488; Deb Shafto, GRN - 18,054; Andy Barron, W-I - 7,730

Lieutenant Governor: David Dewhurst (Incumbent), REP - 2,851,085; Linda Chavez-Thompson, DEM - 1,560,810; Scott Jameson, LIB - 112,710; Herb Gonzales, Jr., GRN - 40,992

Attorney General: Greg Abbott (Incumbent), REP - 2,958,154; Barbara Ann Radnofsky, DEM - 1,500,913; Jon Roland, LIB - 48,749 1.87% 103,023 2.25%

Comptroller of Public Accounts: Susan Combs (Incumbent), REP - 3,087,836; Mary J. Ruwart, LIB, 378,893; Edward Lindsay, GRN, 233,060

Commissioner of the General Land Office: Jerry Patterson (Incumbent), REP, 2,807,168; Hector Uribe, DEM, 1,558,856; James L. Holdar, LIB, 136,796

Commissioner of Agriculture: Todd Staples (Incumbent), REP, 2,761,240; Hank Gilbert, DEM, 1,579,814; Rick Donaldson, LIB, 151,225

Railroad Commissioner: David Porter, REP, 2,692,237; Jeff Weems, DEM, 1,597,622; Roger Gary, LIB, 128,237; Art Browning, GRN, 66,721

Justice, Supreme Court, Place 3: Debra Lehrmann, REP, 2,716,500; Jim Sharp, DEM, 1,646,571; William Bryan Strange, III, LIB, 128,466

Justice, Supreme Court, Place 5: Paul Green (Incumbent), REP, 2,712,641; Bill Moody, DEM, 1,627,780; Tom Oxford, LIB, 133,432

Justice, Supreme Court, Place 9: Eva Guzman (Incumbent), REP, 2,727,662; Blake Bailey, DEM, 1,570,977; Jack Armstrong, LIB, 184,016

Judge, Court of Criminal Appeals Place 2: Lawrence "Larry" Meyers (Incumbent), REP - 2,976,571; J. Randell Stevens, LIB - 625,584

Judge, Court of Criminal Appeals Place 5: Cheryl Johnson (Incumbent), REP - 2,992,758; Dave Howard, LIB - 604,585

Judge, Court of Criminal Appeals Place 6: Michael E. Keasler (Incumbent), REP - 2,716,112; Keith Hampton, DEM - 1,599,014; Robert Ravee Virasin, LIB - 128,746

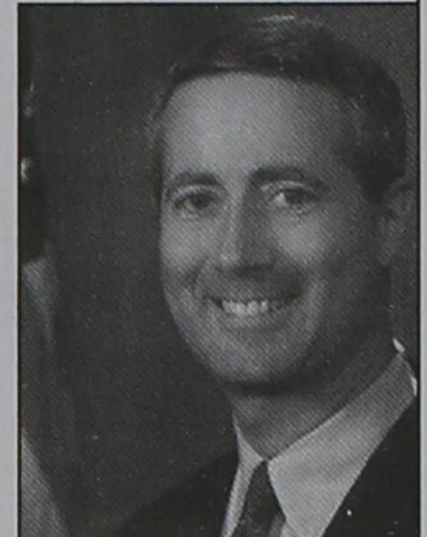
Member, State Board of Education, District 15: Bob Craig (Incumbent), REP - 214,934; John Pekowski, LIB - 26,389

Thornberry Re-elected

By Jon Mark Belue, Amarillo Globe-News

A national election that is expected to shake up the political landscape in Washington was again untouched in the 13th Congressional District.

U.S. Rep. Mac Thornberry, a Clarendon Republican, easily won his ninth congressional term Tuesday night against two opponents, one of whom was ruled ineligible in October by the election division of the Texas Secretary of State.



U.S. Rep. Mac Thornberry, R-Clarendon, remains in his District 13 seat.

Thornberry, 52, at press time had garnered 86.8 percent of the vote in the massive 44-county district. Libertarian candidate John Burwell Jr., 31, of Abilene tallied 4.3 percent. For the second time since 2004, no Democrat was nominated to run.

Keith Dyer of Iowa Park ran as an independent. His name remained on the ballot and any votes for him counted. But since Dyer voted in the Republican primary in March, he was ruled in violation of section 162.015 of the state's election code and was ineligible for office. Not that it mattered. Dyer tallied 8.9 percent.

"The key for us is people in our area believe in limited government, lower taxes and limited spending," Thornberry said Tuesday night at a Republican gathering in downtown Amarillo. "Washington got away from that the last two years, but I've always believed in it. People in this district expect me to represent their values in Washington. Generally, this is a conservative area and they expect me to reflect that."

Thornberry's decisive victory follows a dominating trend of his last three elections. Thornberry won with 77 percent and 75 percent against Democrat Roger Waun in 2008 and 2006. In 2004, he was elected with 93 percent of the vote.

In Randall County, Thornberry received 87.5 percent of the vote, while in Potter County, he was trending at 84 percent.

"I think I learned from Ron Paul that it does matter that little letter next to your name," Burwell said from Abilene.

"My thoughts and views are similar to Mac Thornberry's. I'm willing to act on them, while he's not."

Thornberry, a member of the House Armed Services and House Select Committee on Intelligence, was part of the midterm Republican revolution when first elected in 1994.

He was one of 75 Republicans elected to the House, and is one of 11 who remained entering Tuesday's election.

This midterm election could have similar results. Independent analysts Tuesday projected Republican gains of at least 50 House seats, more than the 39 needed to take control of Congress and topple Democratic House Speaker Nancy Pelosi from leadership.

"The great news is that more are coming to Washington who think like we do, and that's the bottom line of this election," Thornberry said. "It will be hard to pass all I want the next two years, but we can begin to restore that trust that's been lost in this country."

Republicans in the House have pledged to reduce the deficit and debt.

Thornberry said taking spending to 2008 levels would save \$100 billion a year, and rescinding President Barack Obama's stimulus package that hasn't been spent - depending on the day - could save \$400 million.

"So that's a place to start," he said.

Chisum: Race for Texas Speaker Not Over

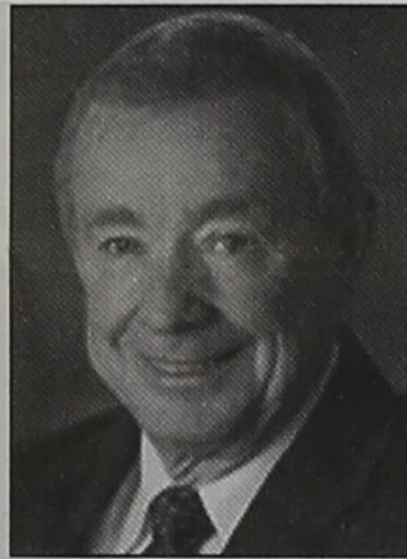
Conservative legislator Warren Chisum says he's still in the race for Texas House speaker, even though current Speaker Joe Straus contends he has enough support to win.

Chisum, a Republican from Pampa, told reporters today he'd like a closed GOP caucus meeting where Republicans can decide which speaker candidate to support before the House vote is held in January.

Democrats provided a large part of Straus' support when he was elected in 2009. Straus is a more moderate Republican from San Antonio.

After Tuesday's election, Republican upped their slim House majority by more than 20 seats, giving them a stronger say in the speakership.

Chisum says as speaker he wants to pass a measure similar to parts of the controversial Arizona law cracking down on illegal immigration.



State Representative Warren Chisum

Palace Theatre

MOVIE SHOW TIMES
Friday-Thursday - 7 p.m.
Sunday - 2 p.m.
Closed Sunday Night

FRESH POPCORN & DRINKS!
PARTY ROOM & ARCADE
MOVIE RENTALS

Palace Theatre
210 Main Street
Canadian TX 79014
806-323-5133
www.palacetheatre.com

The Palace Theatre meets Lucasfilm THX specifications for site and sound quality.

Hotline for Priority Seating - 435-3945

MONKEYS

BBQ & STEAK HOUSE

We Are THPLC-2-B

14 SE 3rd Ave. Perryton, TX

Stan and Donna Zepp

New, Updated Menu Same Great Service

WHEN DOES YOUR SUBSCRIPTION EXPIRE?

SCR1
09/10 EXPIRES
JOHN Q. PUBLIC
PO BOX 123
SPEARMAN TX 79081

Expiration dates are printed on the top of all mailing labels. Our readers can help keep the cost of subscriptions down by mailing in renewals in the appropriate month.

Thank you, Catherine Smith

THE HANSFORD COUNTY REPORTER-STATESMAN
213 Main Street • Spearman, TX 79081

Annual Subscription Rates
In Hansford County - \$30
Out of County - \$40
E-Subscription - \$35 (sent through e-mail)

MITCHELL THEATRES.COM
GUYMON, OK • LIBERAL, KS • NEWTON, KS

NORTHRIDGE 8
Guymon, Oklahoma
www.northridge8.com
580-338-3281

SOUTHGATE 6
Liberal, Kansas
www.southgate6.com
620-624-5573

SEQUOYAH 8
Garden City, Kansas
www.sequoyah8.com
620-275-2760

CHISHOLM TRAIL 8
Newton, Kansas
www.chisholmtrail8.com
316-283-0555

FRESH POPCORN EVERYDAY!
-PARTY ROOM & ARCADE-

Make the Call!

Digital TV from PTCI

\$29.99*
per month for 6 months!

Amarillo Networks in HD
Real Local Channel 2
OKC & Amarillo Networks

*includes Basic & Expanded Basic Pkgs. requires 2-year commitment
monthly rate returns to \$61.00 at 7th month.

www.ptci.net

721 W 7th in Spearman

PTCI
Communication & Broadband Solutions

prices subject to change not available in all areas some restrictions may apply

800-562-2556

Local Sports

Sanford-Fritch Captures District Crown

By Les Giles, Amarillo Globe-News

SPEARMAN - The last thing Spearman wanted to do Friday night was throw 34 passes.

But with Sanford-Fritch playing mainly seven and eight defenders in the box, that's exactly what the Lynx were forced to do in this District 1-2A Division II showdown.

As a result, the Eagles held Spearman to just 31 rushing yards, intercepted three passes and scored twice following interceptions to come away with a hard-earned 18-13 victory in front of 2,500 fans at Lynx Stadium.

The win gives Sanford-Fritch its first outright district championship since 2000, when they were members of District 1-3A.

By losing, the Lynx now will have to defeat Tulia on the road Friday to have a chance at reaching the playoffs.

"I thought our defense did a great job against them," said Eagles head coach Rick Ware. "We put them in a position of having to throw the ball to beat us."

"We capitalized on a couple of short fields to score touchdowns and that was huge. We didn't have a great game offensively, but we played solid enough."

The Eagles' only long TD drive was their first when they moved 69 yards in six plays following a Spearman punt. The TD came on the third play of the second quarter on a 10-yard run by quarterback Tate Murray and left them with a 6-0 advantage following a missed PAT.

Spearman went in front 7-6 later in the quarter by going 32 yards in six plays following a Sanford-Fritch fumble. Blayne Schroeder's 20-yard pass to Joel Mendoza and Francisco Camacho's PAT gave them the lead.

The Eagles capitalized on the first of three Schroeder interceptions to take a 12-7 lead with six seconds remaining before halftime.

Murray capped a five-play, 29-yard drive by going the final yard, and when the conversion pass failed the Eagles took a 12-7 lead to the dressing room.

They made it 18-7 in the third quarter, again capitalizing on an interception. This time they went just five yards in two plays with sophomore Colton Valle going the final 2 yards with 5:22 to play in the period.

With just more than seven minutes remaining to play, the Lynx got the ball at Sanford-Fritch's 13 following a botched punt attempt that resulted in a 13-yard loss.

Six plays later, Schroeder threw a 7-yard TD pass to Jace Lang-Swan with 4:54 to go to pull the Lynx within five points at 18-13.

The Lynx then forced two straight three-and-outs defensively and got the ball back with 1:27 remaining at their 37.

A pass completion of 13 yards, followed by two consecutive pass interference penalties gave them a first down at the Eagles' 27 with 36 seconds left.

Spearman's bid to pull out the win came up short when they netted just two yards in four plays and the Eagles ran out the final five seconds.

"They forced us to throw a lot more than we wanted," said Lynx head coach Steve Rodman. "Our game is to try and pound the ball, but we weren't able to so we had to change plans."

"Give them a lot of credit. We had our chances, but their defense rose to the occasion. Now, we'll have to win at Tulia next week to get in the playoffs."

The Lynx fall to 3-2 in district, and 7-2 overall. They travel to Tulia for the final game of the regular season on Friday, November 5, 2010. If the Lynx win, they are in the playoffs. If they lose, they are out. Everyone is encouraged to travel to Tulia to cheer the Lynx into the playoffs!!!!

Score by Quarters

Sanford-Fritch	0	12	6	0
Spearman	0	7	0	6

Scoring

SF - Tate Murray 10 run (kick blocked)
 S - Joel Mendoza 20 pass from Blayne Schroeder (Francisco Camacho kick)
 SF - Murray 1 run (pass failed)
 SF - Colton Valle 2 run (pass failed)
 S - Jace Lang-Swan 7 pass from Schroeder (pass failed)

Team statistics

	SFE	SL
First Downs	12	14
Rushing	51-170	27-31
Passing	74	112
Total Yards	244	143
C-A-I	5-10-1	13-34-3
Punts	5-28	6-30
Fumbles-Lost	1-1	2-0
Penalties	8-70	4-35

Individual statistics

Rushing - Sanford-Fritch: Colton Valle 28-140, Tate Murray 22-43, Sanchez 1- minus 13. Spearman: Cameron Meddock 7-30, Justin Rindilsbacher 3-11, Jose Mendoza 2-3, Jace Lang-Swan 3-1, Blayne Schroeder 12-minus 14.

Passing - Sanford-Fritch: Murray 5-10-1-74. Spearman: Schroeder 12-32-3-121, Mendoza 0-1-0-0, Goodheart 1-1-0-minus 9.

Receiving - Sanford-Fritch: Jonathan Blakely 4-61, Valle 1-13. Spearman: Everardo Flores 4-44, Lang-Swan 3-35, Meddock 2-16, Jeffery Thomas 1-13, Joel Mendoza 1-20, Jose Mendoza 1-5, Schroeder 1-minus 9.

Spearman 7th Grade
 The Spearman Lynx 7th grade football team lost 6-8 to the Sanford-Fritch Eagles on Thursday, October 28, 2010.

Spearman 8th Grade
 The Spearman Lynx 8th grade football team also lost 6-8 to the Sanford-Fritch Eagles on Thursday, October 28, 2010.

Spearman JV Grade
 The Spearman Lynx JV football team lost to Sanford-Fritch, 6-32, on Thursday, October 28, 2010.

Gruver Falls

to White Deer
 White Deer won by 16 over Gruver en route to clinching a playoff berth out of District 1-1A Division II.

The Bucks (6-3, 2-0) were down 21-13 before rattling off 24 unanswered points. Gruver running back Jerrod Collier ran the ball 13 times for 112 yards to give him 1,029 yards on the season.

Score by Quarters

White Deer	13	0	6	18	37
Gruver	14	0	7	0	21

Scoring

WD-Travis Chester 3 run (Kennan O'Dell kick)
 G-Jerrod Collier 80 run (pass failed)
 G-Colton Moffett 40 interception return (Payton Thoreson run)
 WD-Braden Montgomery 3 run (kick failed)
 G-Thoreson 19 run (Lupe Pena kick)
 WD-Jacob Rapstine 9 pass from Montgomery (kick failed)
 WD-Montgomery 44 run (pass failed)
 WD-Montgomery 15 run (kick failed)
 WD-Kamron Kassler 5 run pass failed

Team statistics

	WD	GG
First Downs	18	8
Rushing	291	134
Passing	47	93
Total Yards	338	227
C-A-I	3-11-1	4-14-2
Punts	4-29	4-41
Fumbles-Lost	0-0	2-2
Penalties	5-50	4-35

Globe-News HS Football Player of the Week Honorable Mention
 Jerrod Collier carried 13 times for 112 yards including an 80-yard TD run in Gruver's 37-21 loss to White Deer.

Gruver JH
 The Gruver Jr. High Hounds defeated White Deer, 44-12 on Thursday, September 30, 2010.

Gruver JV
 The Gruver Hounds JV lost to White Deer, 0-30, on Thursday, October 28, 2010.

Area Football Playoff Scenarios

A look at the football playoff picture in area districts heading into the final week of the regular season:

District 1-2A Division II
 • Who's in: Sanford-Fritch.
 • Who's out: Dimmitt, Highland Park.

• Most likely scenario: Sanford-Fritch is the district champion and will have a first-round bye. On Friday, Spearman is at Tulia, and Abernathy is at Floydada. Those four teams are tied at 3-2 in district play, and the two winners will advance to the playoffs.

District 1-1A Division II
 • Who's in: White Deer.
 • Who's out: Nobody.

• Most likely scenario: White Deer will be the district champion if it defeats Vega. If that happens, Gruver will be in the playoffs with a win against Booker. But if Booker defeats Gruver and Vega loses to White Deer, there will be a three-way tie among Gruver, Vega and Booker for the remaining two playoff berths.

HANSFORD MANOR
 707 Roland St., Spearman, TX 79081
 806-659-5848 or 806-659-2535

ADULT DAY CARE SERVICES

FREQUENTLY ASKED QUESTIONS

- What is adult day care (ADC)?**
 Hansford Manor is preparing to offer this service. It is just like nursing home care, except that it is available from 8:00 AM to 5:00 PM, Monday through Friday, only, instead of 24 hours a day like regular nursing home care.
 It is also less expensive—about 60% of the cost of regular nursing home care, and usually less than per-hour in-home care.
- Who would benefit from ADC?**
 For people who need care and help with activities of daily living, finding care at home can be very difficult. When a family member can provide care through the night, this is a service that will enable the client to live at home, but spend the day, or part of the day, at Hansford Manor.
- What are the benefits of ADC?**
 - Companionship and emotional support
 - Caregiver relief
 - A safe and secure environment
 - Assistance with personal care such as grooming, bathing, toileting, dressing, and dining.
 - Skilled nursing services, such as medication administration and supervision, wound care, diabetic monitoring, scheduled diagnostic testing, pain management, and general nursing assessment and intervention.
 - Evaluation and treatment for special needs, such as nutrition, hydration, toileting, and physical strengthening
 - Life enrichment activities and social interaction, like music, games, current affairs, entertainment, outings, crafts, cooking, reading club and exercise-group and individual.
 - Each client receives a furnished room (usually shared with one other person) with cable TV and bathroom.
 - Physician visits every 30 days for the first 90 days after admission, and every 90 days thereafter—more frequently, if needed
 - Daily lunch and twice-daily snacks
- What if I just need help for a few things, or for part of the day, or for part of the week?**
 - A number of options are being considered as we at HCHD design this program. WE NEED YOUR HELP TO DESIGN A PROGRAM THAT WILL MEET YOUR NEEDS.
 - Please tell us about your needs by answering the attached brief questionnaire.

THANK YOU. YOUR HELP IS VERY MUCH APPRECIATED!

Kindly return the questionnaire to Anne Snow, Hansford Manor, 707 Roland St., Spearman, TX 79081. Or drop it off at Hansford Hospital, Hansford Manor, or use the drive-up window at Hansford Pharmacy at the front of the hospital. For more information, call Anne Snow at 806-659-5848. Thank you.

ADULT DAY CARE QUESTIONNAIRE

- Please list the hours per day you would need to use ADC:
 _____ o'clock to _____ o'clock
- Circle the days of the week you would need ADC:
 Sun. Mon. Tues. Wed. Thurs. Fri. Sat.
- What are the main reasons you would use this service?

- What are the main barriers for you to use this service?

- If you would like us to contact you with more information, please give us your contact information, and how you would like to be contacted. Your information will not be used for any other purpose.
 Name _____
 Mailing address _____
 Phone _____
 Email _____
- Are you a caregiver, potential client, relative of a potential client, know someone who might be a client? (Circle all that apply)
- Anything you would like to add?

Shear Style Salon

Gifts for All Occasions

Store Hours: Mon-Fri 11 a.m. - 6 p.m.
 Saturday 10 a.m. - 2 p.m.

Let Us Help You Celebrate
 All Your Special Occasions!

Bridal Shower Registry
 Mary Beth Hargis & Jordan Hicks - 11/20

Baby Shower Registry
 Mariah Rodriguez & Payton Mitchell - 11/14

Christmas Open House
 Sunday, Nov. 14, 1-4 p.m.
 Drawings for Special Discounts Every 30 Minutes
 Refreshments will be served

shear style salon
 Leticia Salazar
 912 Main • Gruver, TX
 806-733-2328 • 806-736-7432

Haircuts, Perms, Color, Wax

Hair products available
 Shop hours: Mon-Fri 4:30 p.m.-7; Sat by Appointment

Owned & Operated by Linda & Charles Stephens

Double XXL Steakhouse

(formerly Flying X Steakhouse)

Make your reservations now for Christmas and New Year Parties!

From Stinnett: Go West on Hwy. 152
 17 miles - Turn Left at Big White Sign
 (About 2 miles on Gravel Road)

From Dumas: Go East on Hwy. 152
 16 miles - Turn Right at Big White Sign
 (About 2 miles on Gravel Road)

(806) 93JESUS (806) 935-3787

Open: Friday & Saturday Night
 Open anytime for parties of 8 or more
 www.doublexxlsteakhouse.com
 reservations suggested

HELP WANTED

HELP WANTED: Gigot Agra Products is looking for a full-time Service Technician. Experience desired, but not required. Benefits packages available. Come by and pick up an application today! (806) 659-3121, 506 Hwy. 207 S., Spearman TX 79081. 4/10/28/10/B

HELP WANTED: Panhandle Health Care is now accepting applications for a part-time home health aide for Spearman & the surrounding area. For more information, or to apply, please contact the office at 806-659-3110. 2/10/28/10/B

HELP WANTED: Mission Petroleum Carriers: Immediate Openings! Crude Oil Drivers. Home Daily, Competitive Weekly Pay, Great Training Pay, Excellent Benefits: Vacation, 401K, Medical, Life, Rx Plan, Dental, Vision, Class A CDL-X req. 2 yrs T/T or 1 yr w/Driving School Record. Min. age 23. Contact: Christie Lawrence 800-737-9973, Mon-Fri. 8 am - 5 pm EOE. 2/11/4/10/P

HELP WANTED: First United Methodist Church, Spearman is currently taking applications for a nursery worker. Need to be available for Sunday church services and various times throughout the week and for funerals. If interested, please come by the church to pick up an application. 806-659-5503, 407 S. Haney. TFN(11/4/10/B)

SERVICES

CLICK PAINTING & HOME REPAIR Painting, Texturing, Drywall Repair, Fencing &

FIREWOOD FOR SALE Cedar firewood for sale. Delivered & stacked, or self pickup. Call (806) 658-2573. 15/8/12/10/P

This ad is just a small sample of the properties that we currently have for sale.

Please check our Web site and give us a call! We need your listings both large and small, all types of ag properties (ESPECIALLY CRP).

HARTLEY/MOORE COUNTY LINE - corn, wheat, cotton, cattle with all the perks, 992 acres, sprinkler irrigated with some improved pasture, large brick home, large set of state of the art steel working pens with concrete feed bunks and covered working area, on pavement.

DALLAM COUNTY - Three adj. sections of dryland, some native grass, irrigation in area (new wells across the road).

SWINE PRODUCTION FACILITY - Moore Co., TX. - 1200 sow capacity, capable of running 28,000 pigs annually, computerized feed mill, flex-flo feeding system, management in place. **PRICED TO SELL! INVESTORS WELCOME!**

SEE OUR WEBSITE OR CALL US!
www.scottlandcompany.com
Shawn Gillispie 806/922-5532
Ben G. Scott, Broker
1-800-933-9698 day/eve
TFN(9-23-10)

Shirley Howard
We NEED listings!
Call us now to help YOU sell your home for top dollar!

902 9th - Gruver: Horse Stables FOR SALE! 18 pens, circular training pen, arena, & 4500 sq ft barn on 10.42 acres! **PRICE REDUCED!!**

13125 Co Rd 18A - 1.43 PLUS 504 Basements 1B, CACH, 2C Diner, 6.2 Ac, 1,800 sqft Barn!
1101 Dressen - 1.052 sqft - 3BR, 1.25B 2 car carport

Shirley Howard, Broker/Owner
806-886-6536, Cell

Melinda McCullough, Realtor
(806) 733-5678

We would LOVE to sell your HOUSE!

CALL US!

General Carpentry. Serving Perryton, Spearman & Gruver. Don Click, 648-1480, or 202-1391 (cell). TFN(10/15/09/B)

HOCHY POCHY PARLOR Call us for all your pet's grooming and boarding needs. Call now for reservations! 806-273-2724. TFN(11/2/07/B)

GARAGE SALE

ESTATE SALE, PERRYTON: Entire contents of large home and detached building. Appliances, furniture, computer misc. all household items - nice and clean. 1105 N. Western (behind high school). Thursday, Friday & Saturday, 9:30 a.m. - ? 1/11/4/10/P

PUBLIC NOTICE

TEXAS COMMISSION ON ENVIRONMENTAL QUALITY

NOTICE OF APPLICATION AND PRELIMINARY DECISION FOR TPDES PERMIT FOR MUNICIPAL WASTEWATER RENEWAL PERMIT NO. WQ0010751001

APPLICATION AND PRELIMINARY DECISION. City of Gruver, P.O. Box 947, Gruver, Texas 79040-0947, has applied to the Texas Commission on Environmental Quality (TCEQ) for a renewal of

Blankenship Real Estate
659-3052 - 670-3774

LET US HELP YOU SELL YOUR HOME.

NEW LISTINGS WANTED!
Eulalia Blankenship - Sales
Eschol Blankenship - Broker

French & Co., Realtors
273-7355
Beautiful 3 BR, 28 home in Morse, Texas. 1.06 acres. Updates Galore, Gorgeous tile & wood floors, stunning trim, custom paint, 28x33 garage & separate shop. Call Michele for details. 806 273 7355

MARTIN & ASSOCIATES REALTY
Serving Hansford County Since 1990
Julie Martin: Broker - 659-2425
We'd Like Your Listing!
FOR QUALITY & SERVICE CALL US TODAY!
Equal Housing Opportunity

Golden Spread Realty
903 S. Bernice, Spearman - 1,644 sq. ft., 3 BR, 1 3/4B, CH/CA, 1C attached & 1C detached garage, nice shop & storage building in back, RV parking with extra lot.
7959 FM 1573, GRUVER - 3BR, 1 3/4B, 2C attached garage, 1961 sq. ft. on 5 acres.
404 4th Ave, GRUVER - 2BR, 1B, 1090 sq. ft. Also available for rent.
121 S. Hwy. 207, Spearman - Apartment complex & Bunkhouse. **PRICE REDUCED - MAKE OFFER.**
Gina Deal, Broker/Owner (806)435-5444 www.century21.com
INDEPENDENTLY OWNED & OPERATED. ©1992® and™ Century 21 Real Estate Corporation. Equal Housing Opportunity. EOW(8-05-10/B)

TPDES Permit No. WQ0010751001, which authorizes the discharge of treated domestic wastewater at a daily average flow now to exceed 200,000 gallons per day. TCEQ received this application on March 4, 2010.

The facility is located approximately 0.6 mile west of State Highway 15 and approximately 0.8 mile east of State Highway 136, southeast of the City of Gruver in Hansford County, Texas 79040. The treated effluent is discharged to Farwell Draw, thence to Palo Duro Creek; thence to Palo Duro Reservoir, thence to Palo Duro Creek; thence to the Canadian River Basin in the State of Oklahoma in Segment No. 0100 of the Canadian River Basin. The unclassified receiving water uses are not significant aquatic life uses for Farwell Draw. All determinations are preliminary and subject to additional review and/or revisions.

The TCEQ Executive Director has completed the technical review of the application and prepared a draft permit. The draft permit, if approved, would establish the conditions under which the facility must operate. The Executive Director has made a preliminary decision that this permit, if issued, meets all statutory and regulatory requirements. The permits application, Executive Director's preliminary decision, and draft permit are available for viewing and copying at Gruver City Hall, 108 East Broadway Street, Gruver, Texas.

PUBLIC COMMENT/PUBLIC METING. You may submit public comments or request a public meeting about this application. The purpose of a public meeting is to provide the opportunity to submit comments or to ask questions about the application. TCEQ holds a public meeting if the Executive Director determines that there is a significant degree of public interest in the application or if requested by a local legislator. A public meeting is not a contested case hearing.

OPPORTUNITY FOR A CONTESTED CASE HEARING. After the deadline for submitting public comments, the Executive Director will consider all timely comments and prepare a response to all relevant and material, or significant public comments. Unless the application is directly referred for a contested case hearing, the response to comments will be mailed to everyone who submitted public comments and to those persons who are on the mailing list for this application. If comments are received, the mailing will also provide instructions for requesting a contested case hearing or reconsideration for the Executive Director's

hchd
Hansford County Hospital District
Openings at Hansford Hospital
LVN: Maintenance Personnel: experience a plus, but not required. Salary compensation with experience.
Assistant DON: Day shift with call. Graduate of an accredited School of Professional Nursing. BCLS, ACLS and TNCC preferred. CPR required.
RN: 7pm-7am. Graduate of an accredited School of Professional Nursing. BCLS, ACLS and TNCC preferred. CPR required. Check out our new shift differentials.

Openings at Hansford Manor
LVN: Graduate of an approved LPN/LVN program. Must be able to make independent decisions when circumstances warrant. Must possess the ability to deal tactfully with residents, family and public.
Great working environment and staff, quality facility providing opportunities for professional growth. Great benefit package. Apply at 707 S. Roland, Spearman, TX or contact Jackie Nelson at 806-659-5841. Download application at www.hchd.net EEDE (11/4/10)

decision. A contested case hearing is a legal proceeding similar to a civil trial in a state district court.

TO REQUEST A CONTESTED CASE HEARING, YOU MUST INCLUDE THE FOLLOWING ITEMS IN YOUR REQUEST: your name; address, phone; applicant's name and permit number; the location and distance of your property/activities relative to the facility; a specific description of how you would be adversely affected by the facility in a way not common to the general public; and the statement "[I/we] request a contested case hearing." If the request for contested case hearing is filed on behalf of a group or association, the request must designate the group's representative for receiving future correspondence; identify an individual member of the group who would be adversely affected by the proposed facility or activity; provide the information discussed above regarding the affected member's location and distance from the facility or activity; explain how and why the member would be affected; and explain how the interests of the group seek to protect are germane to the group's purpose.

Following the close of all applicable comment and request periods, the Executive Director will forward the application and any requests for reconsideration or for a contested case hearing to the TCEQ Commissioners for their consideration at a scheduled Commission meeting.

The Commission will only grant a contested case hearing on disputed issues of fact that are relevant and material to the Commission's decision on the application. Further, the Commission will only grant a hearing on issues that were raised on timely filed comments that were not subsequently withdrawn. TCEQ may act on an application to renew a permit for discharge of wastewater without providing an opportunity for a contested case hearing if certain criteria are met.

EXECUTIVE DIRECTOR ACTION. The Executive Director

1	3	5	2	7	6	8	9	4
6	4	9	3	8	1	2	7	5
2	8	7	4	9	5	3	6	1
8	9	3	5	6	7	4	1	2
4	7	1	9	2	8	6	5	3
5	2	6	1	4	3	7	8	9
9	1	8	7	3	2	5	4	6
7	5	2	6	1	4	9	3	8
3	6	4	8	5	9	1	2	7

D	I	E	G	O	L	A	C	T	E	R	M	
I	N	C	U	R	E	M	U	F	R	Y	E	R
S	T	R	I	A	A	T	L	R	I	E	L	S
H	O	U	S	T	O	N	P	R	I	O	R	I
E	E	L	P	A	Y	E						
F	A	R	D	O	S	E	E	N	R	A	P	T
O	N	E	S	G	O	R	Y	D	A	R	E	R
R	I	C	O	Y	A	H	O	O	P	E	R	U
C	L	A	U	S	P	A	R	R	S	N	I	T
E	S	P	R	I	T	P	E	T	E	A	S	H
W	I	L	L	I	S	F	O	R	E	S	T	
R	A	N	E	E	E	E	A	G	E	R		
A	L	K	Y	D	U	S	A	K	Y	O	T	O
M	E	S	S	E	S	T	A	S	S	A	Y	

TEXAS STATEWIDE CLASSIFIED ADVERTISING NETWORK
TexSCAN

TexSCAN Week of October 31, 2010 AUCTIONS
ABSOLUTE AUCTION A&A Amusement Company, Thursday Nov. 11th 10 a.m. Temple, TX. 61 Pool Tables, 126 Video Games, 53 Jake Boxes, supplies - more www.billhallauctioneer.com for information.
BUSINESS OPPORTUNITIES
THINK CHRISTMAS- start now! Own a red hot Dollar, Dollar Plus, Mailbox or Discount Party Store from \$51,900 worldwide! 100% Turnkey. Call now: 1-800-518-3064, www.DR554.com
WE BUY USED dry bulk pneumatic/tank trailers used for hauling sand, cement, flyash, barite, plastic beads etc. Please call 1-817-769-7704, 1-817-769-7621 or 1-817-769-7713
DRIVERS
ASAP-NEW PAY increase! 34¢-40¢ cpm. Excellent benefits. Need CDL-A and 3 months recent OTR. 1-877-258-8782. www.meltontruck.com
DRIVER-CDL-A Drive in best! My 2011 Freightliner Cascadia plus the style, miles, pay & performance bonus. \$500 sign-on for Flatbed. CDL-A, TWIC card and good driving record. Western Express: 1-866-863-4117
DRIVER-CDL-A TOP Hometeam! Solos & teams, highest team pay. CDL-A with 1 year recent OTR required. 1-800-942-2104, ext. 238 or 243 www.totalms.com
DRIVER CDL-A: REGIONAL drivers, deBoer Transportation seeking CDL-A drivers to run I-35. Stay in Texas. Home most weekends/great pay. 8 month OTR experience. 1-888-730-9312, www.deboertrans.com
DRIVER NEW PAY package! Van and refrigerated. Great benefits, flexible schedule! 98% No-touch freight. Steady miles. CDL-A, 6 months recent experience. 1-800-414-9569. www.drivknight.com
DRIVERS- COMPANY \$1000 Sign-on bonus. FFE seeks Class-A, CDL and 1 year experience for OTR. Also hiring 00's Students welcome. Call 1-800-569-9232 or recruit@flex.net
DRIVERS-FOOD TANKER drivers needed OTR positions available now. CDL-A with Tanker required. Outstanding pay & benefits; call a recruiter today! 1-877-810-1041, www.oakleytransport.com

DRIVERS- REGIONAL Van drivers. 35-37 cpm based on experience. BCBS benefits package. Home every week. CDL-A with 1 year experience required. Call 1-888-362-8608 or apply at www.averittcareers.com. EOE
DRIVERS- 100% Tuition paid CDL training! Start your new career. No credit check, no experience required! Call 1-888-417-7564, CRST EXPEDITED, www.JoinCRST.com
\$2000 BONUS- Heavy haul O/O, OTR, RGN, 2 years experience. Pay 60-78¢ van and flatbed teams. Pay 6¢ all miles. \$900/week minimum. 1-800-835-9471, www.expresswaygroup.com
FINANCIAL
BURIED IN DEBT? We can help! Save thousands and eliminate your debt up to 60%? Call now for FREE consultation. 1-800-631-9149. Rated 'A' with BBB. FYI, Inc.
CASH NOW! Get cash for your structured settlement or annuity payments. High payouts. Call J.G. Wentworth. 1-866-SETTLEMENT (1-866-738-8536). Rated A+ by the Better Business Bureau.
TIRED OF BEING IN DEBT? Decrease your debt. Increase your income. \$10K+ in credit card or IRS debt. New laws have passed to protect you! Free consultation. 1-888-456-1689.

AG LAND BUYER will pay Cash for 200 to 2500 acres in Pasture, Farm, Ranch, Other. Call Mon-Fri (9am - 5pm) 1-713-568-2524
IT'S HERE!! ELK HUNTERS/ investors: Montana Land Sale: 160 Acres, Musselshell Area \$99,900, 640 Acres, Elk Paradise \$599,900, 3000 Acres of Elk Preserve. Call for prices. 1-888-361-3006; www.WesternSkiesLand.com
LAKE VIEW L089 acres, access to pool and 330 acre lake! Access to trophy fishing lake. We caught a 12 lb. bass last week! Only \$29,900. Beautiful homes. Historical low terms Call 1-888-243-4047
STEAL MY LAKEFRONT! 1 acre dockable lakefront on Texas' 3rd largest lake. Only \$79,900. Utilities available and access to lake-side pool/park area. Lot next door listed for \$104,900. Quick sale needed. 1-214-506-1043.
STUNNING LAKEVIEW Estate size. 1 acre property with huge views of the 3rd largest lake in TX. Utilities, paved roads and access to area pool and park. Motivated seller. Listed at \$39,900, will take only \$28,950. 1-214-613-1284
9 ACRE LAKEFRONT SHORT short sale reduced from \$124,900; to only \$88,700 for quick sale. Access to huge private lake, gated, paved road. Financing available; call 1-866-730-0755 now!

GUN SHOWS
WORLD'S LARGEST GUN SHOW November 13 & 14, Tulsa, OK Fairgrounds, Saturday 8-6, Sunday 8-4. WANENMACHER PRODUCTIONS. Free appraisals. Bring your guns! www.tulsaarmsshow.com

HEALTH
IF YOU USED type 2 diabetes drug AVANDIA between 1999- present and suffered a stroke, heart attack or congestive heart failure you may be entitled to compensation. Attorney Charles Johnson, 1-800-535-5727

HELP WANTED
ABLE TO TRAVEL Hiring 6 people, Free to travel all states, resort areas. No experience necessary, paid training and transportation. Start ASAP, 1-303-895-8579

REAL ESTATE
ABSOLUTELY THE BEST VIEW Lake Medina/Bandera 1/4 acre tract, central W/E, RV/motor home/house, OK only \$830 down \$235 month (12.91%/10yr), Guaranteed financing. More information call 1-830-460-8354

AG LAND BUYER will pay Cash for 200 to 2500 acres in Pasture, Farm, Ranch, Other. Call Mon-Fri (9am - 5pm) 1-713-568-2524
IT'S HERE!! ELK HUNTERS/ investors: Montana Land Sale: 160 Acres, Musselshell Area \$99,900, 640 Acres, Elk Paradise \$599,900, 3000 Acres of Elk Preserve. Call for prices. 1-888-361-3006; www.WesternSkiesLand.com
LAKE VIEW L089 acres, access to pool and 330 acre lake! Access to trophy fishing lake. We caught a 12 lb. bass last week! Only \$29,900. Beautiful homes. Historical low terms Call 1-888-243-4047
STEAL MY LAKEFRONT! 1 acre dockable lakefront on Texas' 3rd largest lake. Only \$79,900. Utilities available and access to lake-side pool/park area. Lot next door listed for \$104,900. Quick sale needed. 1-214-506-1043.
STUNNING LAKEVIEW Estate size. 1 acre property with huge views of the 3rd largest lake in TX. Utilities, paved roads and access to area pool and park. Motivated seller. Listed at \$39,900, will take only \$28,950. 1-214-613-1284
9 ACRE LAKEFRONT SHORT short sale reduced from \$124,900; to only \$88,700 for quick sale. Access to huge private lake, gated, paved road. Financing available; call 1-866-730-0755 now!

GUN SHOWS
WORLD'S LARGEST GUN SHOW November 13 & 14, Tulsa, OK Fairgrounds, Saturday 8-6, Sunday 8-4. WANENMACHER PRODUCTIONS. Free appraisals. Bring your guns! www.tulsaarmsshow.com

HEALTH
IF YOU USED type 2 diabetes drug AVANDIA between 1999- present and suffered a stroke, heart attack or congestive heart failure you may be entitled to compensation. Attorney Charles Johnson, 1-800-535-5727

HELP WANTED
ABLE TO TRAVEL Hiring 6 people, Free to travel all states, resort areas. No experience necessary, paid training and transportation. Start ASAP, 1-303-895-8579

REAL ESTATE
ABSOLUTELY THE BEST VIEW Lake Medina/Bandera 1/4 acre tract, central W/E, RV/motor home/house, OK only \$830 down \$235 month (12.91%/10yr), Guaranteed financing. More information call 1-830-460-8354

AG LAND BUYER will pay Cash for 200 to 2500 acres in Pasture, Farm, Ranch, Other. Call Mon-Fri (9am - 5pm) 1-713-568-2524
IT'S HERE!! ELK HUNTERS/ investors: Montana Land Sale: 160 Acres, Musselshell Area \$99,900, 640 Acres, Elk Paradise \$599,900, 3000 Acres of Elk Preserve. Call for prices. 1-888-361-3006; www.WesternSkiesLand.com
LAKE VIEW L089 acres, access to pool and 330 acre lake! Access to trophy fishing lake. We caught a 12 lb. bass last week! Only \$29,900. Beautiful homes. Historical low terms Call 1-888-243-4047
STEAL MY LAKEFRONT! 1 acre dockable lakefront on Texas' 3rd largest lake. Only \$79,900. Utilities available and access to lake-side pool/park area. Lot next door listed for \$104,900. Quick sale needed. 1-214-506-1043.
STUNNING LAKEVIEW Estate size. 1 acre property with huge views of the 3rd largest lake in TX. Utilities, paved roads and access to area pool and park. Motivated seller. Listed at \$39,900, will take only \$28,950. 1-214-613-1284
9 ACRE LAKEFRONT SHORT short sale reduced from \$124,900; to only \$88,700 for quick sale. Access to huge private lake, gated, paved road. Financing available; call 1-866-730-0755 now!

GUN SHOWS
WORLD'S LARGEST GUN SHOW November 13 & 14, Tulsa, OK Fairgrounds, Saturday 8-6, Sunday 8-4. WANENMACHER PRODUCTIONS. Free appraisals. Bring your guns! www.tulsaarmsshow.com

HEALTH
IF YOU USED type 2 diabetes drug AVANDIA between 1999- present and suffered a stroke, heart attack or congestive heart failure you may be entitled to compensation. Attorney Charles Johnson, 1-800-535-5727

HELP WANTED
ABLE TO TRAVEL Hiring 6 people, Free to travel all states, resort areas. No experience necessary, paid training and transportation. Start ASAP, 1-303-895-8579

REAL ESTATE
ABSOLUTELY THE BEST VIEW Lake Medina/Bandera 1/4 acre tract, central W/E, RV/motor home/house, OK only \$830 down \$235 month (12.91%/10yr), Guaranteed financing. More information call 1-830-460-8354

be found at our web site at www.state.tx.us. Further information may also be obtained from City of Gruver at the address stated above or by calling Mr. Steve McKay, City Manager, at 806-733-2424. Issuance Date: 11/2/10. 1/11/4/10/B

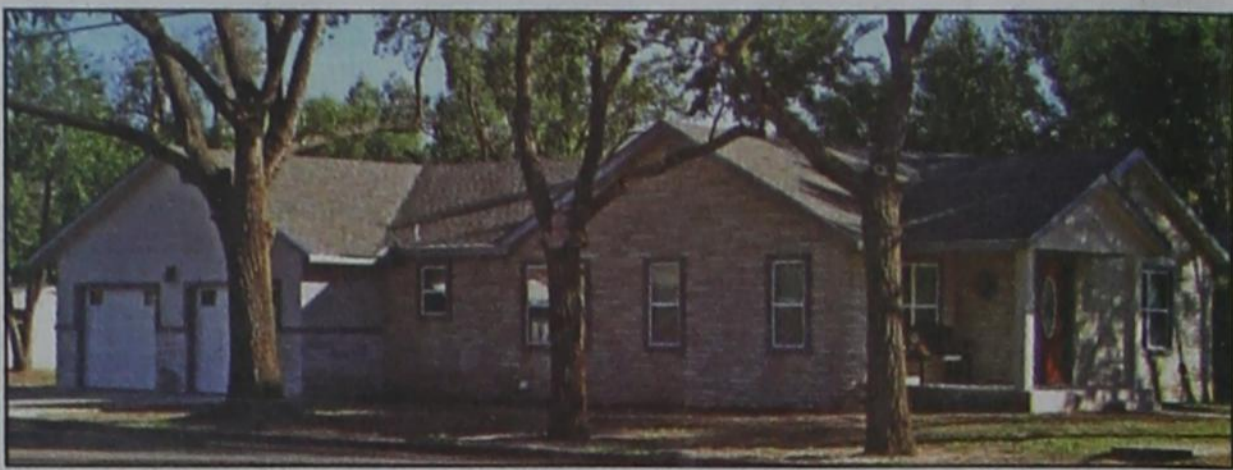
Are You A Victim of Domestic Violence, Sexual Abuse or Physical, Emotional or Sexual Assault?
Call Toll Free Hotline
1-800-753-5308
We can see individuals from Hansford County anytime upon request. Call 435-5008 or 1-800-753-5308 to set up an appointment in Hansford County. We operate a safe place for victims and their children to stay in times of crisis.
Battering Intervention & Anger Management Available
Panhandle Crisis Center
Serving Hansford, Lipscomb & Ochiltree Counties
301 S. Ash - Perryton, TX
Memorials Accepted

Please join us for our **Holiday Open House** on Wednesday, November 3rd and Thursday, November 4th at **Acquisitions** the corner of Hwys 54 & 287 in Stratford, Texas • 10 a.m. to 6 p.m.

All Occasion Flowers
would like to welcome two terrific new employees
Luann Blount and Rhonda Miller
Luann Blount came to us a couple of weeks ago as showroom coordinator and customer care specialist. She is doing a fantastic job!!
Rhonda Miller is our new designer and wedding consultant. Rhonda started her new job designing flowers for the wedding of Berta Espinosa and Robert Moore. She did a wonderful job with all the flowers.
Come in and see us if you are planning a wedding, shower, anniversary or just need gorgeous flowers for that special someone.
All Occasion Flowers
202 N. Bernice (across from the Post Office)
659-5180 • Spearman
Halloween - 10/31
Veteran's Day - 11/11
Thanksgiving - 11/26

NOTICE: While most advertisers are reputable, we cannot guarantee products or services advertised. We urge readers to use caution and when in doubt, contact the Texas Attorney General at 1-800-621-0508 or the Federal Trade Commission at 1-877-FTC-HELP. The FTC web site is www.ftc.gov/bizop
Extend your advertising reach with TexSCAN, your Statewide Classified Ad Network.

Gladiola Flower Club Home Tour



HOME OF CRYSTAL DOCKERY (OWNED BY JOEY & LYN WOOLLEY)

The Gladiola Flower Club Home Tour will be held on November 14th from 2-4 p.m. (NOTE TIME CHANGE) Homes on the tour include Richie & Karen Thompson, 1104 Linn Drive; Crystal Dockery (owned by Joey & Lyn Woolley), 701 Haney; and Willis & Sherry Boyd, 904 Willmeth.

Tickets are \$5 each for adults and children 10 and older, and may be purchased from any Club member, or at the door.

904 Willmeth

The Boyds invite you to their home on November 14, 2010 from 2-4 p.m. (NOTE TIME CHANGE)

This wonderful home was built in 1984 by Larry and Robbie Butts. In 1985, a basement and exercise room were added. Willis and Sherry Boyd purchased the home from Steve and Karen Hartgraves in 2008.

As you enter this beautiful home, you are greeted by two large side-by-side mirrors. The home has four bedrooms, three-and-a-half baths, large living room with slate rock fireplace, home office, TV/game room, and a kitchen (that was remodeled by the Hartgraves). The kitchen eating area features a built-in hutch. A storage room/potting shed and a three-car garage are also part of this intriguing home.

The Boyd home is one of the homes featured in the Gladiola Flower Club Home Tour, which will be held on November 14th from 2-4 p.m. Other homes on the tour include Karen & Richie Thompson, 1104 Linn Drive and Chrystal Dockery, 701 Haney. Tickets are \$5 each for adults and children 10 & older may be purchased from any Club member or at the door.

2010 National FFA Creed Speaking Winners



Lonnie Born

Winners of the National Creed Speaking Career Development Event (CDE) were announced Friday, October 22, 2010 during the seventh session of the 83rd National FFA Convention in Indianapolis, Ind. Dr. Kimberly Bellah of Texas served as superintendent of the event.

The top four individuals received stipends to attend the Washington Leadership Conference held annually in our nation's capital. The stipends and the Creed speaking event is sponsored by CHS of Inver Grove Heights, Minnesota and the National FFA Foundation.

The National FFA Creed Speaking CDE is designed to recognize outstanding FFA members for their ability to present the National FFA Creed in a competitive setting. Members deliver the Creed from memory and respond to three questions. The event gives FFA members the opportunity to develop their ability to communicate in a powerful, organized and professional manner.

The event, held at the Marriott Hotel in Indianapolis, Ind., is one of many educational activities at the national FFA convention in which FFA members practice the lessons taught in agricultural

education classes. Lonnie Born of Gruver FFA advanced in his FFA National Creed Speaking event. He finished in the top 16 in the nation, and received the Silver Emblem.

In the Fall of 2009 Lonnie began his FFA career at Gruver ISD. During his journey last year, he began working to become one of the best FFA creed speakers in the state of Texas. In early November, just a year ago, Lonnie competed in the Top O Texas district leadership development event in creed speaking, earning a district title. In mid-November Lonnie competed again at the area level and brought home the area title. In the first part of December he was able to continue at the state level where he would be named the state champion creed speaker of 2009. The state championship earned Lonnie a trip to compete at the national level in Indianapolis, Indiana in the Fall of 2010.

On October 21, 2010 Lonnie competed for the national title. Forty-eight different states were represented at the national contest. During the preliminary round all forty-eight states competed with six states in Lonnie's heat and he had to beat out the competition to qualify for the semifinal round of the creed speaking contest. Lonnie won his first prelim and then competed against sixteen different states with eight being in his heat during the semifinal round the afternoon of the 21st. A total of 16 different states competed in the semifinals to eliminate the competition down to the final four. The night of the 21st, the National Convention had a banquet for all 48 contestants and this is when the final four were announced.

"Lonnie did not make the final four," said Weston Born, Gruver HS FFA

sponsor. "However, being in the top 16 in the nation is quite an honor. The states of New Mexico, Oklahoma, California and Montana were announced as the final four and they competed the following day for the national title."

"Lonnie's hard work paid off when he was awarded the silver emblem award," continued Weston Born. "The top four individuals received the gold emblem award, 16 earned the silver emblem, and 28 students were awarded the bronze emblem from the National FFA Organization. I cannot express enough how Lonnie's hard work, determination, and sacrifice made this an experience of a lifetime."

Gruver FFA completed their meat sales on October 12th. The District FFA Leadership Development Events will begin on November 10th, Swine Validation will be on November 22nd, and the District FFA Banquet is scheduled for December 6th.

The National FFA Organization, formerly known as Future Farmers of America, is a national youth organization of 523,309 student members as part of 7,487 local FFA chapters in all 50 states, Puerto Rico and the Virgin Islands. The FFA mission is to make a positive difference in the lives of students by developing their potential for premier leadership, personal growth and career success through agricultural education. The National FFA Organization operates under a Federal Charter granted by the 81st United States Congress, and it is an integral part of public instruction in agriculture. The U.S. Department of Education provides leadership and helps set direction for FFA as a service to state and local agricultural education programs. For more information visit www.ffa.org, and follow us on Facebook and Twitter.

Reporter-Statesman Seeks Veterans

The Hansford County Reporter-Statesman is seeking to update our list of veterans from Hansford County. If you would like to have your name added to our list of veterans, please call the newspaper office at (806) 659-3434, fax to (806) 398-9080, e-mail information to reporter@spearmanreporter.com, or mail to 213 Main Street, Spearman, TX 79081. Names must be submitted by Nov. 8, 2010.

Veterans Day Tribute

Local veterans will be honored Thursday, November 11th from 9:30-10:30 a.m. in the Spearman Varsity Gym.

The program will begin with a flag ceremony and the "National Anthem" played by the Spearman High School Band. Mr. James Cunningham will welcome all guests and give special recognition to veterans. Patriotic selections will be performed by the Spearman School Choirs and Band.

Mr. Lewis Britt, District Director for Congressman Mac Thornberry, will be the featured speaker this year. The Texas Extension Education Clubs of Hansford County help host the program and encourage all veterans to attend.

For more information, contact the Hansford County Extension Office at 659-4130.

Reporter-Statesman Seeks Names of Veterans, Military Personnel

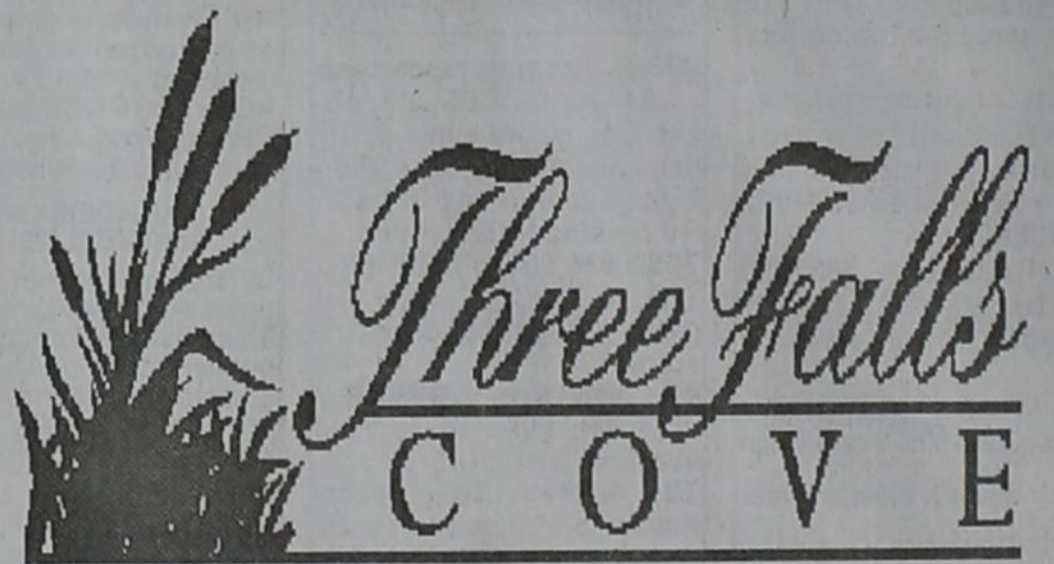
The Hansford County Reporter-Statesman is seeking to update our list of veterans from Hansford County. If you would like to have your name added to our list of veterans, please call the newspaper office at (806) 659-3434, fax to (806) 659-3368, e-mail information to cathysmith@antden.com, or mail to 213 Main Street, Spearman, TX 79081. Names must be submitted by November 8, 2010.

The Hansford County Reporter-Statesman is seeking to update our list of active military personnel and reservists from Hansford County. If you would like to have your name, or the name of a friend or relative, included in our "active service" list, please call the newspaper office at (806) 659-3434, fax to (806) 659-3368, e-mail information to cathysmith@spearmanreporter.com, or mail to 213 Main Street, Spearman, TX 79081. Names of military personnel will only be printed if we have the persons name, rank, current address, branch of service, and the names of relatives living in Hansford County.

Spearman Lynx & Lynxettes



Photos available of Spearman Lynx and Lynxette athletic events.



From Sanford, take Hwy. 1319 across the Lake Meredith Dam. About 1/2 mile after crossing the dam, turn left on Hwy. 3395. Go 2 miles until you see a pond surrounded by beautiful cottonwood trees.

For map, go to www.threefallscove.com



Kirk and Rebecca Weatherford
8125 FOM 3395
Sanford TX 79078
806-810-2366

Tong's Chinese Restaurant

(806) 644-2838
22 Archer Street • Spearman

Daily Buffet

Lunch - 11 a.m.-2:30 p.m. • Dinner - 5:30-9 p.m.
Open Wednesday-Monday - Closed Tuesday

NEW

Sushi on Sunday Buffet