



# Reporter-Statesman

Volume 86 • Issue 42

213 Main • Spearman, Texas 79081

Thursday • August 11, 1994



## News Briefs

To sign up for Meals-On-Wheels Service or to receive information, call Marsha Murphy at 659-3972 after 5:00 p.m.

Gruver I.S.D. Budget Hearing will be Friday, August 12 at 8:00 p.m.

Hansford Hospice Volunteers will meet on Monday, August 15 at Gruver State Bank. The program will be given by Charla Roberts, R.N., Hansford Hospital Hospice Patient Care Coordinator, and Quality Assurance Person. She will give the program on infectious control. Anyone interested in hearing the program or becoming a member of Hospice is invited to attend.

A Radio Auction to benefit the Golden Spread Senior Citizens will be Thursday, August 18 Art, woodcrafts and needlework are among the items to be auctioned.

Moore County Community Center in Dumas will hold its 5th Annual Club 287 Car Show on Saturday, August 20 from 10 a.m. until 8 p.m. and Sunday, August 21 from noon to 6 p.m. There will be a snack bar, live D.J. playing oldies and lots of door prizes. Cost is \$2.00 for adults, \$1.00 for children and 6 and under free.

Hansford County Farm Bureau Convention will be held Saturday, August 13 at 7:00 p.m. in the Morse I.S.D. cafeteria. Bob Stallman will be the huest speaker.

Spearman Yearbooks may be picked up at the High School on Friday, August 12, from 6:00 - 8:00 p.m. or on Monday, August 15, from 6:00 - 8:00 p.m.

## What's Inside

At the movies	2
Out at the Lake	8
Chamber Chatter	4
Hansford Happenings	10
Spearman City Lites	5
A "Center" Piece	3
Want Ads	11
Obituaries	12
Church Page	12

## Ad Index

Dairy Queen	2
Gordon's	3
Allsup's	7
Church Page	12
Classified	11
Radio Auction	5
Paschel Irrigation	8
Mission Cable	8
Acco Feeds	8
Hansford Hospital	4,5

## Weather

Day	Hi	Lo	Precip
Thu	90	62	.09
Fri	87	62	.00
Sat	95	67	.00
Sun	102	68	.00
Mon	95	68	.16
Tue	92	66	.77
Wed	--	65	.02
Total Precipitation			12.22



**CHEERLEADING CAMP** - Several local and area future cheerleaders met at Spearman High School last week to take part in the annual SHS Cheerleading Camp. The girls participating learned tumbling, cheers and other skills needed to be a cheerleader. In the photo above several youngsters try to hold Brandi Willis up as they work on building pyramids.

## Reporter-Statesman announces new deadline to be effective soon

The *Hansford County Reporter-Statesman* will soon be making a few deadline and office hour changes.

In order to meet printing and paste-up schedules, the Tuesday noon deadline has been changed to Monday at 5 p.m. The new deadline will take effect on August 22.

All copy, photos and advertisements must be at the *Reporter-Statesman* by 5 p.m. on Mondays.

Classified ads will be accepted until noon on Tuesdays.

The *Reporter-Statesman* will continue to be published on Thursdays; however, in order to meet other deadlines these changes are needed according to publisher Daniel Ramos.

"We ask that all customers and residents please take note of the change. And we hope this will enable us to give you a better prod-

uct," Ramos stated. For more information about the deadline changes, contact the staff at the *Reporter-Statesman*.

The *Reporter-Statesman* will also be making a few office hour changes. Starting August 22 the *Reporter-Statesman* office will be open from 9 a.m. to 5 p.m., and the office will be closed during the lunch hour.

## School bells ringing throughout the County

School bells will soon be ringing throughout Hansford County calling back area students for another school year.

Students enrolled in the Gruver Independent School District will begin classes on Monday, August 15.

Spearman Independent School District students report back to classes on Wednesday, August 17. New students in either school

districts are asked to contact their appropriate campus to pre-register.

Gruver ISD has scheduled two teacher staff development days. The first for August 11th and the second for the 12th.

Spearman ISD staff members are being asked to report for a staff development day on August 15th; and a preparation day on August 16th.

## Bad News

### Sonic results received

After weeks of wondering whether Spearman would or wouldn't get a Sonic Drive-In, an answer was received.

Early Monday morning Chamber Manager Cindy Blackman received the letter she had been waiting for. Unfortunately, for the City of Spearman and the surrounding area, the news was not good.

Steve and Miles Blundell, from Marlow, Oklahoma, informed Blackman that Spearman's bid for a Sonic Drive-In had been denied.

The Blundells sent Blackman a copy of the letter informing them of the decision. The letter was sent by Julie Hamilton, Real Estate Manager with Sonic Industries, Inc in Oklahoma City, Oklahoma.

Blackman, the Blundells, and Hamilton toured Spearman on July 26 to conduct a field evaluation of the area.

Hamilton wrote that, "demographics reveal a population density which is less than the standard Sonic requirements, however, in view of the new lake in the area, there was additional consideration. After our review, however, it appears that the town, at this time, lacks the population density to support a Sonic development without the support of the tourism which lake traffic can sometimes provide."

Sonic officials did note that when the lake fills then consideration towards building a Sonic would again be looked at by all parties.

## Promising weather forecast for Lakefest

Fun in the sun is what many Lakefest goers can expect. Area weathermen have given Spearman and the surrounding area a sunny forecast.

And that's just what is needed

for this weekend as the City of Spearman gets ready to celebrate Lakefest '94 at Palo Duro Lake.

Final preparations have been

See LAKEFEST, Page 10

## Meals on Wheels Program makes change Boxwell and Murphy stepping down

by Jean Ann Behney

On August 1, 1994, the two volunteer coordinators of Meals on Wheels of Spearman turned the administration of their program over to Hansford Hospital.

Candy Boxwell and Marsha Murphy, who were the catalysts for developing and implementing the public service food delivery program 16 years ago, will no longer act as Meals on Wheels of Spearman's coordinators, but will instead serve on a new advisory board for the program.

Ernestina Salgado, Hansford Hospital's food service supervisor, will replace Boxwell and Murphy as program coordinator.

"This was a planned move, and the only change for Meals on Wheels of Spearman will be that Ernestina is the person to be contacted to arrange for meal service instead of Marsha or me," Boxwell said.

Salgado can be reached at Hansford Hospital (659-2535) during regular weekday business hours. In a continuation of the original procedure, those arranging for meals should telephone by Friday prior to the week the meals are to be delivered, unless advance notice is impossible, as when a recipient is released from the hospital or Manor mid-week. Specific weekdays can be requested, as opposed to all five days.

Meals on Wheels of Spearman was begun in April of 1978 after Boxwell and Murphy, in assessing local needs in their search for mean-

ingful ways to serve the community, discovered that the town had no program for providing hot meals to shut-ins or other individuals with special needs. The program they developed was started under the auspices of the Christian Women's Fellowship group, which the two attended through their church, First Christian Church of Spearman.

"My mother-in-law helped with Perryton's Meals on Wheels program at that time, so Marsha and I studied it, plus the one in Amarillo, when we were setting up ours," Boxwell said. The women explained that every single community organization asked to provide volunteer drivers for the five-day-per-week noon meal delivery agreed to help.

"The community response was one hundred percent from the very beginning," Murphy said. "Some of our volunteers drove for more than one organization!"

The original organizations which provided Meals on Wheels drivers included: Christian Women's Fellowship, United Presbyterian Women, Sacred Heart Church, Hansford Hospital Auxiliary, Old Hansford H.D. Club, Eastern Star, Town and Country H.D. Club, 20th Century Club, Baptist Young Women, Rho Rho of Beta Sigma Phi, Servitors, Upsilon Zeta of Beta Sigma Phi, and the Serendipity H.D. Club.

After the first few years, Murphy and Boxwell divided each year into two six-month "shifts" to alternate taking and keeping track of the

meal orders and communicating these lists to the hospital and volunteer organizations. The organizations themselves each signed up for one or part of a month per year to provide drivers. Hansford Hospital provided the hot meals and the food containers, while occasional local donations paid for the insulated boxes used to transport the meals to their destinations.

The only other Meals on Wheels organization officer has been a treasurer, originally a secretary-treasurer. Connie Steger was the first to serve in this position, and Eddie Largent served as treasurer from 1980 to 1991. Margarette Evans is the current treasurer. Those duties will now be assumed by Hansford Hospital's Salgado.

Meals on Wheels of Spearman is not affiliated with federal programs with similar names and the local program receives no federal funding. Cost per meal was originally set at \$1.50 and has only recently been raised to \$2. "No one makes any profit on this, and in fact, the hospital loses money on it," reported Boxwell.

Anne snow, hospital administrator, said, "We see this as an opportunity for us to provide a public service." New coordinator Salgado will not receive any extra pay for keeping the "Wheels" turning.

Over the years, meal recipients have ranged in age from fifty years to well over ninety years, Murphy said. The only restriction is that



**ANOTHER HOT MEAL** - Inez Bennett (right) receives another hot meal from a Meals on Wheels volunteer. Bennett has been using the program for 16 years.

## Bennett has used program for 16 years

by Jean Ann Behney

"I feel like I couldn't get along without them. I'm able to stay by myself because I have the meals," says Inez Bennett.

Bennett, 94 years young, has received noontime dinners from Meals on Wheels of Spearman since the program's beginning here 16 years ago.

In the early years, she took the meals only when recovering from illnesses. Now that it is difficult for

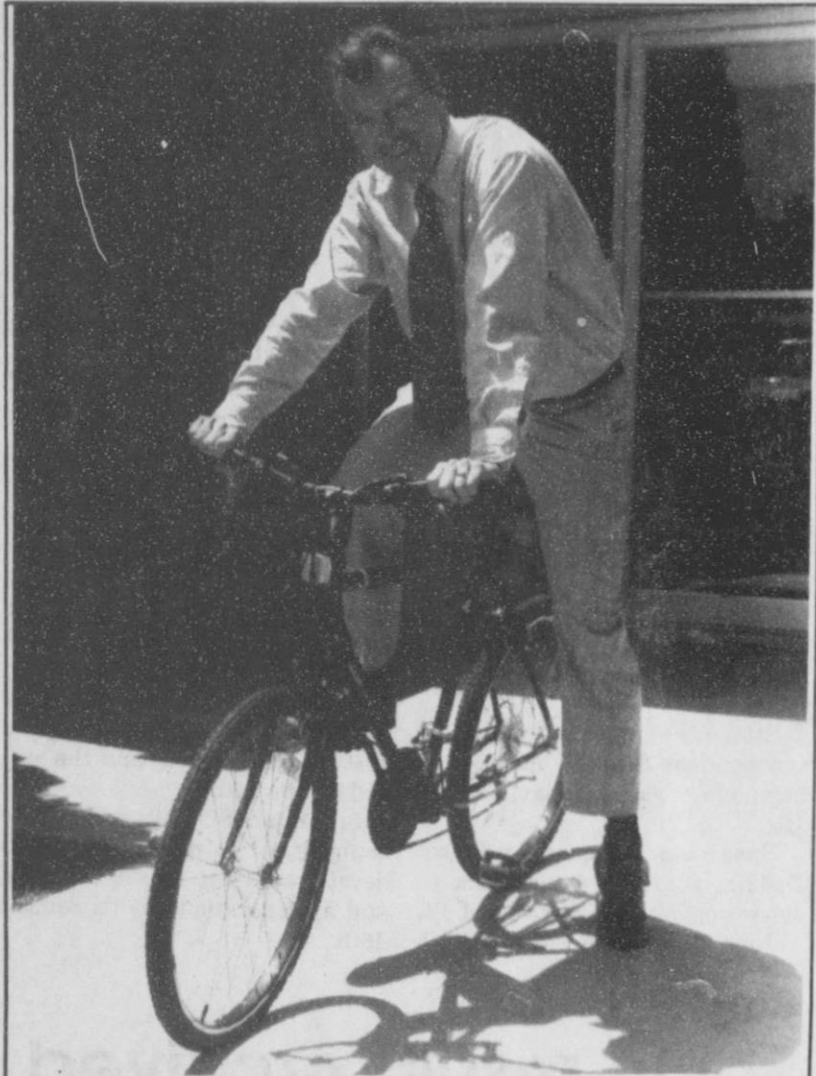
her to stand long enough to cook foods in the kitchen, her home is a regular stop for the Meals on Wheels drivers.

The petite nonagenarian is irrepressibly cheerful as she describes her own history. Bennett came to Hansford County in 1926 with her husband, Clinton F. Bennett. Born in Buffalo, Missouri, she married him in 1919 and the couple moved to the Panhandle to take up farm-

See BENNETT, Page 9

See MEALS, Page 9

# Doc Behney receives certification



**PEDDLING PHYSICIAN** - Dr. Laurence Behney of Spearman is known for peddling around town on his bicycle. However, now the local physician has added another field to his skills after recently being certified in geriatrics.

Dr. Laurence Behney received notification two weeks ago that he has qualified for a special certification in the medical field of geriatrics, or care of the elderly. Behney earned the certification by passing a national examination in the Geriatric Certification Program.

Qualifying for certification in geriatrics adds a second specialty to Behney's profession, as he is already a board-certified family practitioner. Behney said family practitioners complete a three-year residency program, as compared with the one-year internship general practitioners do. In the future, physicians wishing to certify for added qualifications in geriatric medicine will have to complete an additional year of training as residents, or return to such a program to earn the certification.

"I took the geriatrics exam in Dallas last April," Behney said during a recent interview. He explained that he first had to have his application to take the test approved. "That involved documenting that at least one-third of my practice was geriatrics and showing that I was a board-certified member of the National Academy of Family Practitioners," he said. Board-certified internal medicine doctors are also eligible to take the geriatrics examination.

Once accepted as an exam candidate, Behney flew to California in

January to take an intensive course in geriatric medicine and then studied the course materials at every spare moment until the April examination.

He estimates that there were some 350 questions on the exam, about half of which were clinical cases where, he said, "you had to describe your approach to diagnosis and management in given patient situations." He said the eight-hour exam was very comprehensive and covered a variety of topics, including the biology of aging, medical diseases, neuropsychiatry, and geriatric care issues.

Examinees sat for the test at sites in various American cities (Behney said there were probably as many as 400 physicians taking it in Dallas alone), but only the top two-thirds of the scores were accepted as passing. "The bottom third people automatically failed the test," Behney said. He said it was not easy waiting until late July to learn of his own successful results.

When asked how his being a geriatrician will change things in Hansford County, Behney grinned and said, "Well, for one thing, we're getting a new sign for the clinic!" The new sign will include both the physician's specialties: family medicine and geriatrics.

The doctor estimates that thirty to forty percent of his practice is comprised of geriatric patients. "I

like doing geriatrics, and the burgeoning number of people who will be included in this group makes it relevant to be concerned about the medical problems of the elderly, he commented.

This reason alone spurred him to prepare for and take the geriatrics exam, he said, but he added, "The other reason I did it is because it is ideal to push the span of your good health towards the length of your life, so that you can live well into your old age. We're going to see some breakthroughs in geriatric medicine in the near future,

especially in finding the causes and best treatment of dementia, or senility." Behney said he plans to keep up with these advancements in geriatrics. (See related article, "Dr. Behney Discusses Aging" in this issue.)

Hansford Hospital Administrator Anne Snow said, "We're fortunate to have as our medical advisor to the Manor a doctor who is really trained in and focused on the needs and problems of the aged."

Snow reported up to 90 percent of hospital admissions are geriatric patients.

## Geriatrics - What is it?

**Can you define "geriatrics?"**

It's the branch of medicine concerned with old age and its diseases. Some examples of these would be osteoporosis, rheumatism, dementia, and heart disease, especially congestive heart failure.

**What controls the rate at which an individual ages?**

Let's look at that in terms of disease. Fifty percent of disease is impacted by lifestyle. For example, your risk of heart attack can be reduced if you follow the recommendations of the American Heart Association, which include such things as elimination of smoking, if you smoke.

**And the other fifty percent?**

The rest breaks down like this:

Twenty percent of your health is determined by heredity. If you have a first degree relative with diabetes, your risk for this disease will be higher than someone who does not have it in their family.

Twenty percent is determined by the environment, both living and working. If you do hard physical labor on your job, for example, your musculoskeletal system is more likely to develop orthopedic impairments. To make it simpler, back pain is more frequent among firemen than doctors.

Ten percent is determined by the medical care system itself.

**What advice do you have for your elderly patients?**

First of all, before a patient ever reaches the age of 65, I recommend he or she start an exercise regimen to prevent the decline in the cardiovascular and musculoskeletal systems. I also point out the dietary guidelines put out by the American Heart Association and the American Cancer Society. In a nutshell, these recommend reducing the quantity of fat in your diet and increasing the quantity of fruits and vegetables.

**And after a person is 65 years old?**

Then I recommend the following:

#1: Prevent orthopedic impairment. This means to avoid injury to your joints or spine. For example, eliminate throw rugs in your house. If you have vision problems, make sure you have adequate lighting. Make sure your bathroom and kitchen floors are safe to walk on without tripping or sliding.

#2: Exercise! A lot of elderly people say they can't exercise because of a bad hip or knee, but they have to find a way to exercise in spite of this or their level of health will decline rapidly. A patient with a stiff joint could use a rowing machine instead of a treadmill, or exercise in a swimming pool instead of on a bicycle.

#3: Socialize and have a hobby. Both of these things are important psychologically because they lend purpose to your retirement years. A lot of people lose their sense of purpose when they are no longer supporting a family or a household economically.

**What kinds of illnesses and diseases do you frequently treat in your older patients?**

Aside from arthritis, hypertension (high blood pressure) is the leading diagnosis in the elderly. Hypertension is important because its control is paramount in reducing the risk of stroke. Hypertension is also a powerful risk factor for heart attack, congestive heart failure, and kidney disease.

**Can you predict a person's life span?**

A rule of thumb is this: If you reach age 65 and you are a female, then your expected life span will be 19 more years. If you are a male, you will have 15 more years.

**Why is there this difference between males and females?**

More men than women suffer heart attacks and cancer, and this difference is largely due to smoking, even though they may have quit in recent years.

**What's the "bottom line" on aging gracefully?**

An emphasis on prevention--prevention of injury both cardiovascular and musculo-skeletal. If you protect those two, everything else--the rest of your body organs--falls into line.

**What's a recent breakthrough in the field of geriatric medicine?**

I think the most important thing in women is the prevention of osteoporosis by use of medication: estrogen, Vitamin D and calcium in combination. Without it, the majority of elderly women will suffer severe musculoskeletal diseases as they approach their late 70s.

**What about advancements effecting elderly men?**

One would be the PSA (Prostatic Specific Antigen) test for early detection of prostate cancer.

**To what age do YOU want to live?**

Greater than one hundred, but not at any cost. I believe a person can die before his body dies. We see this all the time, and it is very sad. Let's put it this way: as long as I'm cognitively aware enough to know I'm greater than one hundred years old, I want to be alive. When people know how old they are, that's an important mark of their mental alertness. Loss of awareness to time and place is the hallmark of dementia. And in fact, that is dementia as it is defined!

**What do the elderly fear? Is it death?**

No, it isn't death, and I think that's because death comes to us all. But that doesn't mean they want to get sick and die. They don't want that to happen to them!

What old people fear is losing their autonomy--being dependent on other people. By being dependent, I mean not being able to perform basic tasks for themselves any more, such as bathing, dressing and feeding themselves. When a person has to have others do these things for him, it can create a loss of dignity and loss of the sense of purpose.

**What traits do you admire in your geriatric patients?**

Inquisitiveness and determination to stay independent. I like it when these patients demonstrate an aggressive interest in their own well-being.

**What has working with geriatric patients given you?**

A sense of optimism about my own aging, when I see those who are handling it successfully.

**Are society's perceptions about the elderly changing?**

I think some of those perceptions are staying the same, but what is changing is the population's level of concern about the problems associated with aging. There's much greater interest in health than there was 15 years ago, because the population is growing older and more fearful of the consequences of growing old.

## Taylor graduates

Air Force Airman Tracy D. Taylor, formerly from Gruver, has graduated from Air Force basic training in Lackland Air Force Base in San Antonio.

During the six weeks of training the airman studied the Air Force mission, organization and customs, and received special training in human relations.

In addition, airmen who complete basic training earn credits toward an associate degree through the Community College of the Air Force.

Taylor is the son of Donna K. and Victor K. Taylor of Gruver.

He is a 1993 graduate of Gruver High School.

**The Hansford County Reporter-Statesman**  
Serving all of Hansford County  
Spearman • Gruver • Morse

USPS 509660 • 213 Main, Box 458 • Spearman, Tx. 79081  
Published weekly at 213 Main, Spearman, Texas  
Owned & Operated by  
Texas Independent Newspapers, Inc.  
16607 Blanco Road #100 • San Antonio, Tx. 78232  
(210) 492-8907

Second class postage paid at Spearman, Texas 79081  
Any erroneous reflection upon the character of any person or firm will be gladly and promptly corrected upon being brought to the attention of the management.

Publisher - Daniel Ramos  
Production Manager - Sheila LaRochelle  
Ad Sales - Deziree Torres  
Student Assistant - Traci Martin

The publisher reserves the right to revise or reject at its option any advertisement which it deems objectionable, either in subject or phraseology, or which it may deem detrimental to its business.

Subscription Rate: Hansford County, \$19.95; out of county, \$24.95 annually.  
Postmaster: Send address changes to Hansford County Reporter-Statesman, Box 458, Spearman, Tx. 79081.

Advertising & Story Deadlines  
Tuesday, 12:00 noon

**TA** MEMBER 1994  
TEXAS PRESS ASSOCIATION

## At the movies...

Showing at the Lyric Theatre in Spearman Friday, August 12, through Tuesday, August 16, are "I Love Trouble" on screen #1 at 8:15 p.m. and "Speed" on screen #2 at 8:00 p.m.

In "I Love Trouble" Julia Roberts and Nick Nolte are rival reporters for Chicago dailies whose adversarial relationship turns ro-

matic in this fast-paced comedy. "I Love Trouble" is rated PG.

In "Speed" Keanu Reeves is a cop trapped on a runaway city bus that will explode if it goes under 50 mph. Sandra Bullock is the nervy bus driver, and Dennis Hopper is the mad bomber who puts their lives in peril. "Speed" is rated R.

### At The Lyric Theatre...

Friday, Aug. 12 - Tuesday, Aug. 16

Bargain Nights Mon. & Tue. Adults - \$4  
Fri., Sat., Sun., Adult \$5 - Child \$3 every night  
Closed Wednesday & Thursday

SCREEN 1 • 8:15 PM SCREEN 2 • 8:00 PM

I Love  
Trouble

(PG)

Speed

(R)

113 Main, Spearman

**DQ Treats & Eats**

**Full Meal Deal™**  
½-lb. Hungr-Buster®, fries, drink and a sundae.  
**\$2.99**

**DQ Kid's Pick-nic™**  
The only kid's meal that lets kids pick! Pick your favorite food, your favorite treat - even your favorite prize! Plus, you also get a drink and fries!  
**\$1.99**

On Sale at Dairy Queen® August 8-21, 1994.

©Reg. TM Am. D.Q. Corp. ®Reg. TM Tx. D.Q. Op. Coun. ©Tx. D.Q. Op. Coun. 1Pre-cooked weight. At participating Dairy Queen stores.

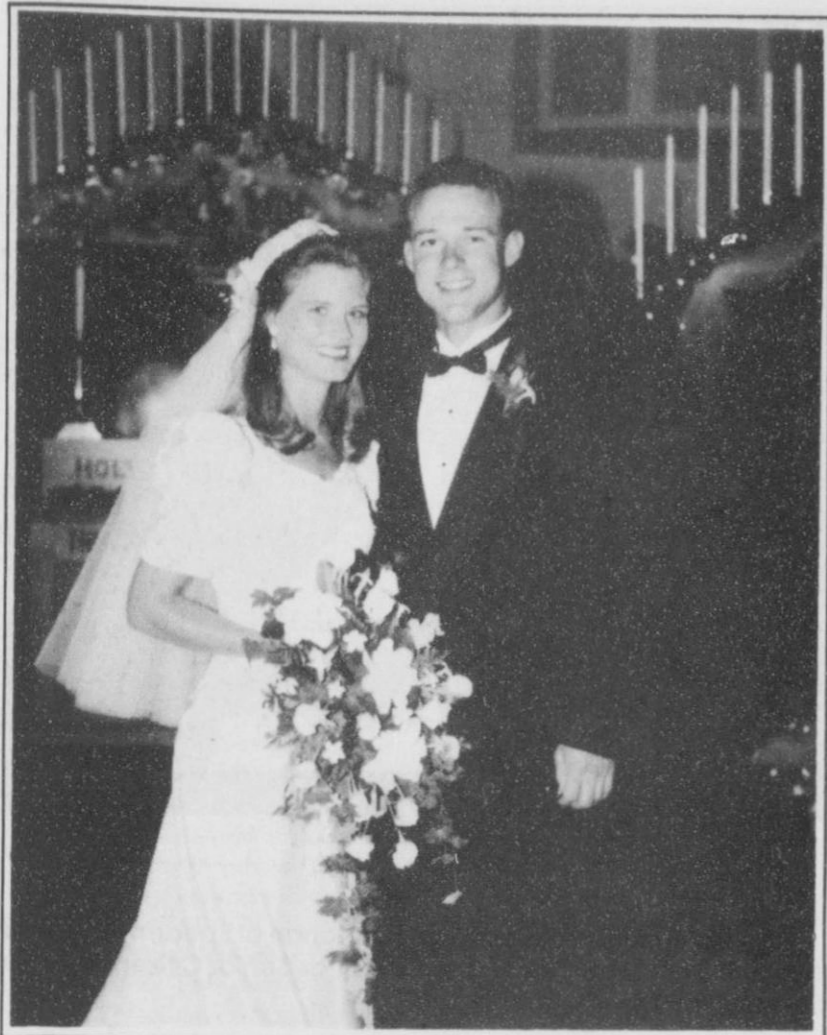
**Don't Miss Another Issue!**

**SUBSCRIBE NOW**

**\$19.95 in county**  
**\$24.95 out of county**

**Spearman Gruver**  
**REPORTER-STATESMAN**

213 Main • P.O. Box 458 • Spearman, Tx. 79081  
(806)659-3434 • 1-800-395-9482



MR. AND MRS. TERRY WRIGHT

## Butts, Wright exchange vows

Camila Leann Butts and Terry Paul Wright were married Saturday, July 23 at First United Methodist Church in Spearman. The Rev. Todd Dyess and Father Rex officiated.

The bride is the daughter of Larry and Robbie Butts of Spearman. Parents of the groom are Roger and Eleanor Wright of Perryton. Matron of honor was Cindy Franklin of Amarillo. Bridal attendants were Sally Pipes of Weatherford, Laurie Lamb of Canyon, Tiffany Grafa of Midland, Kelli Butts of Spearman and Jami Lee of Orange.

Best men were Chris Wright and Craig Wright, brothers of the groom, both of Perryton. Groomsmen were Stan Kotara of Panhandle, Brian Arrott of Bronte, Tony Pacheco of

Spearman and Cory Ramsey of Perryton.

Ushers were Mike Butts and Mac Butts, both of Spearman; and Steven Shipman and Michael Splawn, both of Perryton.

Flower girl was Lindsey Chambers. Ring bearer was Brett Chambers. Candlelighters were Cortney Chambers, Ashley Chambers and Amy Chambers.

The bride graduated summa cum laude from Texas Tech University in Lubbock with a management degree. She plans to attend graduate school in the fall to pursue a master of science degree in finance.

The groom graduated with an accounting degree from Tech. He plans to attend law school in the fall.

## A "Center" Piece

by Garland Hopper

The Golden Spread Senior Citizens Board met August 8. A discussion of the radio auction and other business was held. The auction, to be held August 18, is promising to be a big day. Items are beginning to be brought to the Center. Among the items is a queen size afghan hand crocheted, handmade garment bag with a matching umbrella, a wooden cedar lined chest locally made, and a heart hat box covered with a floral material. Other items are baked goods, clothing, cosmetics, art and China painting, and car maintenance. So many things crafted by local craftspeople.

The Senior members are going

to miss Ernestine Gray, Wilma Lackey and Eva Adkinson since they have moved to other areas. They are wished much happiness in their new homes.

August 16 will be an interesting evening. Don't miss the hayride and hamburgers! The treats are the compliments of the First State Bank. They always do good!

Tickets are available for the Cowboy Star quilt. Any Senior Citizen member may be contacted for them.

The bridge members are looking for players. If anyone is interested you may contact Jim Strawn or Pearl Pierce.

May God Bless Our Country!

## Couple completes management academy

BORGER - Tim and Karen Wright of Century 21 Best Realty recently graduated from Century 21 International Management Academy, where they and more than 200 fellow Century 21 brokers, owners and managers furthered their state-of-the-art knowledge of real estate, marketing and management.

"This is an educational program custom-designed to introduce our newly affiliated brokers and managers from around the world to the advanced marketing tools and systems provided by the Century 21 Real Estate Corporation, who moderated the five-day seminar held in Irvine, Calif.

The academy is the first in a series of concentrated management seminars and workshops developed by the corporation to help its brokers and managers in the Century 21 system better manage their business and sales associates, increase office profitability and market share, and better serve client needs.

International Management Academy attendees were welcomed by Dick Loughlin, president and chief executive officer of Century 21 Real Estate Corp., who discussed the Century 21 system's commitment to provide quality service to sellers and buyers, and the man-

dated tools and support systems that make that commitment a reality.

Various managers from the corporate office led sessions on sales management, research, advertising, marketing, decision-making, profitability, recruiting, training, motivation, referrals and sales meeting. Intensive workshops were held throughout the seminar, and a certificate of course completion was awarded to all attendees.



TIM AND KAREN WRIGHT



RONALD SAVAGE AND TAMRI TOWNSEN

## Townsen/Savage to be wed Sept. 3, 1994

Mr. and Mrs. Don Townsen of Spearman announce the engagement of their daughter, Tamri Dawn Townsen, to Ronald Eric Savage, son of Mr. and Mrs. Ron Savage of Stephenville. The wedding date has been set for September 3, 1994 in the First United Methodist Church of Spearman.

Townsen is a 1992 graduate of

Spearman High School and has been attending Abilene Christian University with a major in Exercise and Sports Management.

Savage graduated from Stephenville High School in 1989 and from Abilene Christian University with a degree in Education. He has accepted a head basketball coaching position in Tulsa, Okla.

Mr. and Mrs. Michael C. Babbs and  
Mr. and Mrs. Brad Spicey  
request the honour of your presence  
at the marriage of their children  
**Eva Dawn**  
and  
**Christopher Brad**  
on Saturday, the thirteenth of  
August  
Nineteen hundred and ninety-four  
at seven o'clock in the evening  
First Christian Church  
Gruver, Texas  
Reception following

You are invited to a  
Bridal Shower  
honoring  
**Tamri Townsen**  
Bride elect of  
**Eric Savage**  
Saturday, August 27  
2:30 - 4:00 p.m.  
O'loughlin Center  
Given by Hostesses

**DRY CLEANING**  
Shirts & Jeans  
Laundered With or Without Starch.  
FREE Pick-up and Delivery  
**1-800-232-5370**  
"It's not how cheap but how good"  
**Perryton Cleaners**

**YOU ARE INVITED TO A**

**BABY SHOWER**  
FOR  
**Halli LeeAnn**  
**Mans**  
Daughter of  
**Tony & Rhonda Mans**  
**First State Bank**  
**Hospitality Room**  
**Saturday, August 13**  
**3:00 - 4:30 P.M.**  
**SELECTIONS AT**  
**KIDS' STUFF**

**SUMMER SALE IN PROGRESS**

**50% OFF**

**ALL SUMMER**  
**MERCHANDISE**  
**GATES**  
Men's & Boys' Wear

221 Main St. Spearman, TX 79081 808-659-3246

221 S. Main St. Perryton, TX 79071 808-438-4267

**Gordon's**  
DRUG

**Bridal Gift Registry**

COME BY & LET US  
HELP YOU SET UP YOUR  
SPECIAL GIFT TABLE

**Couples Currently Registered**

Paige Pittman & Bret Bergin \*Aug. 27  
Tamri Townsen & Eric Savage \*Aug. 27  
Jeri Lyn Evans & Ramon Lozano  
\* Date of the Bridal Shower

314 MAIN PHONE 659-2141 **Gordon's** DRUG SPEARMAN TEXAS

## Pringle-Morse free and reduced-price meals

Pringle-Morse CISD today announced its policy for providing free and reduced price meals for children served under the National School Lunch Program, Commodity School Program and/or School Breakfast Program. The school has a copy of the policy, which may be reviewed by any interested party.

The household size and income criteria identified below will be used to determine eligibility for free and reduced price benefits. Children from households whose income is at or below the levels shown are eligible for free or reduced meals. Foster children that are the legal responsibility of a welfare agency or court may also be eligible for benefits regardless of the income of the household with whom they reside. Eligibility for the foster child is based on the child's income.

Application forms are being distributed to all households with a letter informing households of the

availability of free and reduced price meals for their children. Applications also are available at the principal's office. To apply for free and reduced price meals, households must fill out the application and return it to the school. Applications may be submitted anytime during the school year. The information households provide on the application will be used for the purpose of determining eligibility and verification of data. Applications may be verified by the school officials at any time during the school year.

For school officials to determine eligibility for free and reduced price benefits, households receiving food stamps or AFDC only have to list their child's name, food stamp or AFDC case number and an adult household member must sign the application. Households who do not list a food stamp or AFDC case number must list the names of all

household members, the amount and source of the income received by each household member, how often the person received it and the social security number of either the primary wage earner responsible for the care of the child or the social security number of the adult household member who signs the application. If neither household member has a Social Security number, the household member must indicate that a social security number is not available. The application must be signed by an adult household member.

Under the provision of the free and reduced price meal policy the superintendent will review applications and determine eligibility. Parents or guardians dissatisfied with the ruling of the superintendent may wish to discuss the decision with the superintendent on an informal basis. Parents wishing to make a formal appeal for a hearing

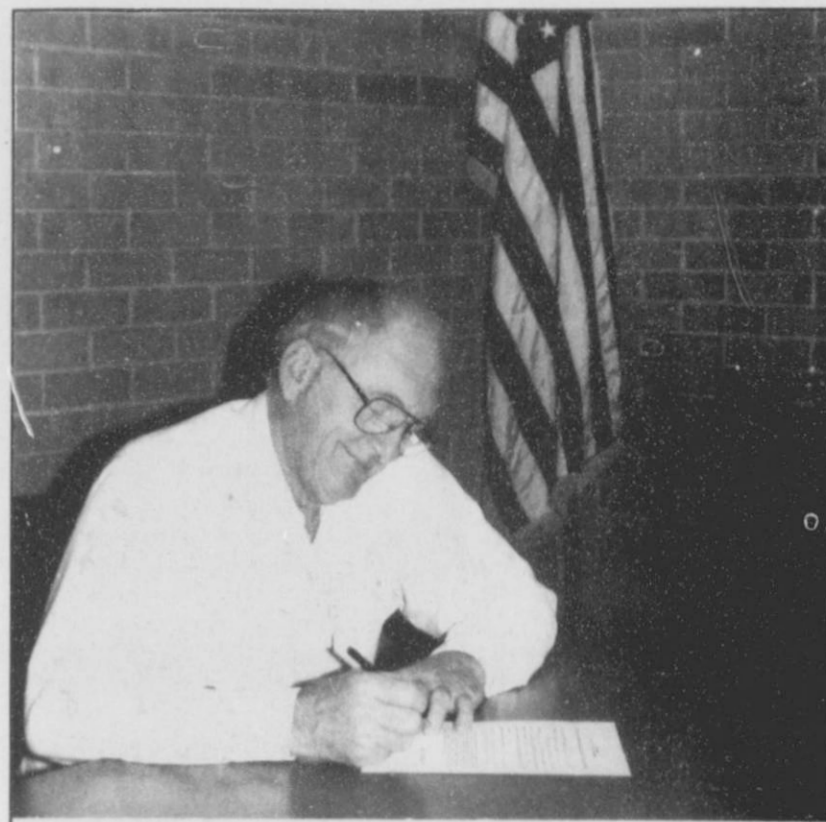
on the decision may make a request either orally or in writing to Alan Leach, Box 9, Morse, Texas 79062, telephone 806-733-2638.

Households that list a food stamp or AFDC case number must report when the household no longer received these benefits. Other households approved for benefits based on income information must report increases in household income over \$50 per month or \$600 per year and decreases in household size. Also, if a household member becomes unemployed or if the household size increases, the household should contact the school. Such changes may make the children of the household eligible for benefits if the household's income falls at or below the levels shown above.

In the operation of child feeding programs administered by the U.S. Department of Agriculture, no child will be discriminated against because of race, color, sex, national origin, age or handicap. If any member of a household believes they have been discriminated against, they should write immediately to the Secretary of Agriculture, Washington, D.C. 20250.

### 1994-95 INCOME ELIGIBILITY GUIDELINES

FAMILY SIZE	ANNUALLY		MONTHLY		WEEKLY	
	FREE	REDUCED PRICE	FREE	REDUCED PRICE	FREE	REDUCED PRICE
1	\$ 9,568	\$ 13,616	\$ 798	\$ 1,135	\$ 184	\$ 262
2	12,792	18,204	1,066	1,517	246	351
3	16,016	22,792	1,335	1,900	308	439
4	19,240	27,380	1,604	2,282	370	527
5	22,464	31,968	1,872	2,664	432	615
6	25,688	36,556	2,141	3,047	494	703
7	28,912	41,144	2,410	3,429	556	792
8	32,136	45,732	2,678	3,811	618	880
9	35,360	50,320	2,947	4,194	680	969
10	38,584	54,908	3,216	4,577	742	1,058
11	41,808	59,496	3,485	4,960	804	1,147
12	45,032	64,084	3,754	5,343	866	1,236
Each additional family member:						
	+\$ 3,224	+\$ 4,588	+\$ 269	+\$ 383	+\$ 62	+\$ 89



PROCLAMATION - Mayor Burl Buchanan of Spearman signed a proclamation declaring next week as Senior Citizen Week in Spearman.

## Chamber Chatter

by Cindy Blackman  
Chamber Manager

### Dahlia Flower Club news

The Dahlia Flower Club met Monday, August 1, 1994, in the home of Ethel Ellsworth.

The Pledge of Allegiance was led by Ethel Ellsworth and the club collect was led by Marjorie Curtis.

After the business meeting conducted by Frances Williams, President, the roll call was answered by "A vacation taken or one planned this summer."

Delicious refreshments were served to Frances Williams, Ruth Mary Whitson, Marjorie Curtis, and the hostess Ethel Ellsworth.

### Meet your Director:

President: Steve Benton  
 Years on Board: 2  
 Family: wife, Sheri; children, Kellie McWhirter Francis, Salina, Meredith and Nicholas Benton.  
 Business represented: Five Star Equipment  
 Years with business: 8  
 Goals Steve would like to see Chamber reach in 1994: Financial stability, loans and debts from past years finally put behind us. Work on ways to utilize more of City's funding for economic development. Continue to work to build up Hansford County Round-Up.  
 This is the first of several Direc-

tor profiles that the Chamber wants to present. The Chamber of Commerce functions through working committees of the organization which includes a lot of time from the Directors. The businesses they represent are investing their time and money in a Community Development Program - working together to improve the well-being of the area.

Don't forget Chamber Golf Tournament, Saturday, August 20. Call the Chamber office at 659-5555 or Hansford Golf Course, 659-2233 for more information. Here is your chance to win \$10,000 plus have a great time.

# HANSFORD COUNTY HOSPITAL DISTRICT

## Hansford County Hospital District honors outstanding employees

Hansford County Hospital District takes pride in their employees and rewards those outstanding employees by participating in the Employee of the Month Program. This program is to reward those outstanding employees that are nominated by their co-workers and are chosen by a committee that is made up of 5-7 department heads. The decisions are based on criteria as loyalty, courtesy to patients/residents, visitors, and other employees, devotion to duty, good attendance, willingness to go the extra mile, respect for others, attitude, and enthusiasm.

The award for this achievement is a reward of a plaque, one day with pay, a designated parking space for the month, announcement of award in local newspaper and automatic nomination for Employee of the Year award. The reward for the employee of the year is three hundred dollars, a plaque, three days off with pay, a designated parking space for one year, and an announcement of the award in local newspaper.

Hansford County Hospital District strives to award outstanding employees and takes pride in providing good quality service to our

patients and residents. Over the previous months the following have been selected as Employee of the Month. Hansford County Hospital District is proud of each and every one of them.

### June Employee of the Month

Francis Ortega is employee of the month for June, 1994. Francis has worked for Hansford Hospital District for 20 years. She is now Assistant Supervisor in Housekeeping. Francis's hobbies are music and cooking.

Francis is originally from Harlington, TX. Congratulations Francis. We are proud of you for your hard work in keeping our establishment up to standards.



LOUISE BEEBE

### A note from activities

As the summer draws to a close, we squeeze the days to make them last as long as possible. We have celebrated the warm summer days with such activities as cook outs, fashion shows, watermelon feeds and even a "Teddy Bear" picnic. We are looking forward to another month of sunshine - and hopefully more watermelon!

Our Christian buffet supper will be sponsored this month by the

Union Church, and will be the 15th! Our Resident birthday party will be the 26th! The Gladiola Flower Club is sponsoring our Tuesday night bingo.

We would like to thank all of you that give of your time and talents to enrich the lives of our residents. This is a busy time of year for many people, yet so many still take time to share with others. Thank you, and have a great month!

### Solid Gold Selections

Our featured resident for the month of August is Louise Beebe. Louise was born February 21, 1920 to parents Ralph and Mabel Hunt. She grew up in Chanute and Arkansas City, Kansas. She lived on the farm and rode horses with her three brothers and five sisters.

She married Wayne Alford Beebe on April 18, 1938. Louise was a

shipyard welder at Swan Island, Oregon while her children were small. She has two living children, Kenneth and Beverly, eight grandchildren and eleven great-grandchildren.

For years the people in Spearman and Gruver have enjoyed her cooking. Louise is always helping others and is loved by everyone!

## August Employee of the Month

Jim Miller R.Ph. has been chosen as August employee of the month for Hansford County Hospital District. Jim was born and raised in Shamrock, Texas. He attended Pharmacy school at Southwestern Oklahoma State University at Weatherford. In 1977 Jim and Marline married and made their home in Wheeler. They have three sons, Dillon a sophomore, Landon and eighth grader and Colton a fourth grader. Jim's hobbies are fishing, hunting, and golfing. He and Marline are very involved with their boys' activities.

Jim says he enjoys living in Spearman and plans to stay and make this their home. What he enjoys most about his job at HCHD is that he gets to do a little of everything - hospital, long term care and retail pharmacy. The variety keeps him up to date in all aspects of the pharmaceutical practice. The district recognized that we are very fortunate in having Jim as an employee and the community is fortunate to have their family.



JIM MILLER AND ANNE SNOW

## July Employee of the Month

Hansford County Hospital chose Angie Salgado as July employee of the month. Angie was born in Corpus Christi, Texas. She moved to Spearman approximately twenty years ago when she married Willie Salgado on May 4, 1974. They have three children, Sophie who attends Panhandle State University in Goodwell. Joey will be a freshman at Spearman High School. Stephan will be a seventh grader at Spearman Jr. High. Angie said her hobbies are reading and walking. She expects to be very busy this year with both boys being involved

in sports. Angie has been employed at Hansford Manor for almost six years as a certified nurse's aid. What she enjoys most about her job is that she gets to work with the residents so closely. Also she works with a lot of close friends - she has two sisters that work at the Manor too. HCHD wishes to congratulate Angie on her being voted by her peers as employee of the month.

The nursing home is very fortunate in having her as a dedicated employee.



ANGIE SALGADO

## May HCHD Employee of the Month

Judy Branstetter is employee of the month for May, 1994. Judy has worked for Hansford Hospital District for 13 years. Judy's hobbies are cross stitching, reading and shopping.

Judy graduated from RN school in December 1993.

Judy spends most of her extra time with her 3 wonderful granddaughters: Ginger - age 6, Lauren - age 5, and Whitney - age 3. Judy is originally from San Diego, California, but calls Spearman her "hometown."

Congratulations Judy. We are very proud of you and appreciate your hard work.



JUDY BRANSTETTER

### Welcome New Residents!

Bill Etling  
 Jessie Davis  
 Paul Jones  
 Athalie Traylor



### Resident Birthdays!

Myra Mitchell 4th  
 Annie Allen 9th  
 Marguerite Austin 11th  
 Lois Beeson 13th  
 Leona Nash 14th  
 Fern Pope 30th

# Spearman City Lites

by Kelvin Knauf,  
Spearman City Manager

The City Manager's Proposed Budget for the fiscal year beginning October 1, 1994 has been sent to the City Council for their review. In putting together the budget, department heads were asked to prepare preliminary budgets based on the following guidelines: (1) a declining tax base; (2) no increase from fees for service; (3) a balanced budget that does not depend on reserves for meeting operating expenses; and (4) not buying any additional equipment. The departments then prepared their budgets according to the guidelines and presented their requests to me. I reviewed the department budgets and made any necessary adjustments in the funding requests.

## General Fund Revenues

For the fourth consecutive year, the City experienced a decline in taxable property values. The taxable property values will decrease from \$47,848,604 in 1993-94 to \$47,500,000 in 1994-95, a decrease of about .7%. This decrease is the smallest decline in taxable property values in the last four years. However, there are no economic indicators which suggest that property values will be increasing anytime soon. Fees charged by the City for services are projected to increase slightly this next year. Overall General Fund revenues are expected to increase slightly from \$951,949 in 1993-94 to \$991,282 in 1994-95.

To meet the needs of the city, I am proposing that the City Council raise taxes slightly. Also, I am recommending that the swimming pool fees be decreased.

## Tax Increase

To offset the decline in property values and declining revenues from fees for service, I am proposing an increase in the tax rate from \$.006278 to \$.006300. In 1993, the City Council established a policy of gradually increasing the tax rate to \$.007000. This recommendation is consistent with that policy.

## Swimming Pool Fees

Several surveys taken this year

show that our swimming pool fees are significantly higher than swimming pool fees charged by surrounding communities. Currently, the City of Spearman charges \$1.50 for children up to 12 years old, \$2.00 for persons 13 to 18 years old, and \$2.50 for persons 19 years old and older. To make Spearman's fees more in line with those of other communities, I am recommending charging \$1.00 for children up to 12 years old and \$1.50 for persons 13 years and older. This recommendation means that our revenues from swimming pool admissions will decline from \$10,952 to \$7,338. To help offset this decline in revenues I am also recommending eliminating one job at the swimming pool, re-classifying another job and eliminating teen night on Tuesday nights.

## Other Fees

The 1994-95 Budget does not recommend any other fee increases. Last year, we revised the fee schedules to increase most fees and create new fees. I don't believe that it is prudent to increase these fees again this year.

## General Fund Expenditures

General Fund Expenditures are budgeted to decrease from \$1,097,736 in 1993-94 to \$991,282, a decrease of about 10.7 percent. The reason for this decrease is that we had some unusual expenses planned for the 1993-94 Fiscal Year and we overbudgeted for sanitation expense since we did not know if the Subtitle D requirements would be extended. No salary increases or bonus pay are being proposed in the 1994-95 Budget. The 1994-95 Proposed Budget contains \$50,000 in contingency fees to meet the unknown expense of Subtitle D, currently expected to go into effect in October, 1995.

## Unknown Expense of Subtitle D

Last year, we were uncertain about whether an extension to meeting the Subtitle D requirements would be given. Consequently, we assumed a "worst case" scenario

and budgeted to close the landfill and haul the solid waste to Amarillo.

The 1994-95 Budget anticipates keeping the landfill open for the entire fiscal year. What will happen in October, 1995 cannot be said for certain at this time. Therefore the Sanitation Budget has a \$50,000 contingency to help prepare the City for meeting the requirements of Subtitle D. If this contingency is insufficient, the staff will recommend a revised budget during the fiscal year.

## Equipment Replacement

The 1994-95 Budget includes \$18,540 for lease-purchasing a new sanitation truck. Our two sanitation trucks are starting to have major repair bills and are not always reliable. Also, if we are forced to close the landfill in October, 1995, we will have to haul our solid waste to another community, which means putting even more burden on the existing trucks. A third sanitation truck, if approved, will allow us to keep one as a spare.

## Enterprise Fund Revenues

I anticipate the Enterprise Fund revenues to decrease from \$1,784,322 in 1993-94 to \$1,398,770 in 1994-95 due to fewer bond funds being transferred to pay for the sewer plant repairs. Also, the 1993-94 budget contained \$54,000 to pay for the parking lot at the O'Loughlin Center and \$45,000 to cover anticipated legal bills. The expenses have been either reduced or eliminated for the 1994-95 Budget.

## Summary

The 1994-95 Fiscal Year will be extremely challenging. As our economy continues to decline, we will have to determine our priorities and, most likely, eliminate all but the most essential services.

Budget hearings will begin on August 16. On behalf of myself and the City staff, I pledge to you our very best efforts to make the City operate effectively and efficiently in the next fiscal year.



**FOUR GENERATIONS** - The Salgado Family got together last week to capture a fourth generation moment with family members. Pictured (from left) are Charlie Salgado, Seth Salgado, Joe Salgado and Frank Salgado. Joe Salgado is from Stanton and the other family members are from Spearman.

## ALCO CUSTOMERS

Due to manufacturer shipping delays the plaid flannel sleepwear for ladies shown on page 4 of this week's circular will not be available. We will have other sleepwear in similar styles available for \$8.99. We regret any inconvenience to our customers.

ALCO STORES, INC.

## LITTLE SCHOOL

Enroll Now for  
Pre-School Classes  
2-5 year olds  
Sept. - May  
For more information  
Call Donna Trantham  
659-2046



First Assembly of God is proud to welcome Rev. Todd Lillard, his wife Aundria & their daughter Sara.

We would like to extend an invitation to you to come meet our new pastor and his family this Sunday.

First Assembly of God  
401 N. Bernice  
Spearman, TX

Listen to the Golden Spread Senior Citizen's Center

## RADIO AUCTION

Thursday, August 18, 1994, beginning at 9:00 a.m. on KRDF-FM 98.3. Listen to KRDF-FM daily to hear about additional items to be sold.  
(Thanks to KRDF for donating all air time for the auction and pre-advertising)

The following items will be sold on the radio auction with all proceeds going to benefit the Senior Citizen's Center. These are only the items available at press time. Many other items donated by local businesses will be sold on the radio auction. There will also be many art, craft and woodworking items donated by local citizens for the sale.

- 1 Cellular phone and 1 empty ostrich egg - donated by Red Neck Ranch
- Oil, filter change & lube - donated by J & M Service Center
- A Noah's Ark Child's quilt made by Cathy Patterson
- 1 cat spay surgery - donated by Hansford Vet Clinic
- A handmade wooden cedar-lined trunk built by Eddy Clemmons
- 1 year O'Loughlin family fitness - donated by Dr. & Mrs. Lawrence Behney
- Needlepoint by Marilyn Cline
- Art by Lometa Sparks
- 1 dozen red roses - donated by Prairie Garden
- Antique Trunk - donated by Marsha Murphy
- 1 used lawn mower - donated by Jean West
- Edith Smith's famous banana bread
- 1 pair Dexter Men's shoes - choice of style & size - donated by Cates
- 1 clock - donated by I. W. Ayres
- Three-yarn wreath and 2 pillow cases - cross stitched by Mary Kay Harbour
- Art by Eloise Renner
- A child's Tricycle "Tuff Track" donated by Five Star Equipment
- Lowe's Marketplace - Two \$25.00 gift certificates for groceries
- Vogue Beauty Salon - Selected package of beauty products
- One like new Regina vacuum cleaner donated by Bob Boxwell
- 25 gallons unleaded gas and a case of oil donated by Golden Spread Sales
- 2 Dinners donated by MurMurs
- \$50 gift certificate donated by Helen Melton at Cinderella Beauty Shop
- A delicious Italian Creame or German Chocolate Cake donated by Debbie's Ready or Not
- Six Theatre Tickets - donated by Lyric Theatre
- A Hand-painted plate by Jettie Davis
- New hand-made hanging Garment Bag by Dora Womble
- Umbrella to match above bag by Jeanie Bennett
- Oil change & lube donated by Rob's Auto
- A Cathedral Window Pillow by Anita Anthony
- Eyelet Big Shirt by Avon donated by Noreen Sutton
- One ladies Sport Watch donated by Noreen Sutton
- One remote control programmable for any T.V. donated by Earl's TV
- A large beautiful afghan made by Lola Newcomb
- A western painting on windmill blade by Martha Jones
- A handmade doll by Mabel Jameson
- A used car donated by Gillaspie Auto
- A Barbie doll with homemade ensemble by Beulah Abston
- Two pair of snuff jar votive candle holders by Athalie Trayler
- An oil painting by W. Wilson donated by Athalie Trayler
- Two transmission service jobs by C&C Transmission

Many more items being added daily. If you are a business and would like to donate some merchandise call the Senior Citizen's Center at 659-3866. Also any individual who would like to donate an art or craft or has any good used serviceable item to donate is urged to call the Center. Art and Craft items can be viewed at the Senior Citizen's Center the day before and during the auction.

The Board of Directors and Employees of  
Hansford County Hospital District Wish  
to Express their Gratitude and  
Congratulations To:  
**DR. LAURENCE BEHNEY**  
on his Achievement of Board  
Certification in the Specialty of  
Geriatrics  
His Specialized Knowledge and Skill in  
the Treatment of the Aged is  
Contributing to the Quality of Life for  
our Community, and to the Quality of  
Care for our Medical Center.

## Yards of the Week...

The Spearman Chamber of Commerce has announced this week's "Yard of the Week" winners. Selected as the recipients are the following residents: Grace Simpson, her home located at 404 Drensen; Vernon and Sandy Morris, their home located at 403 S. Endicott; Lee and Marsha Shaver, their home located at 1100 S. Townsend; and Bob and Claudine Hardy, their home located at 803 Walter Wilmeth.



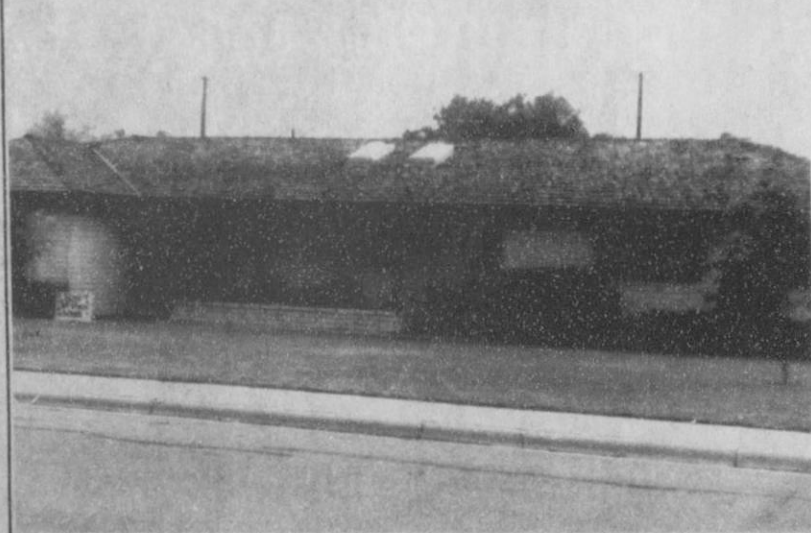
Grace Simpson



Lee and Marsha Shaver



Vernon and Sandy Morris



Bob and Claudine Hardy

## Area hospitals present Health Care Reform information

Administrators from hospitals in Borger, Canadian, Dalhart, Dumas, Pampa, and Spearman have joined together to present information to the public about pending healthcare reform legislation.

"The Texas Hospital Association has prepared a special tabloid insert for this edition of *The Hansford County Reporter-Statesman* to explain all the options involved in healthcare reform," according to Anne Wickman Snow, administrator of Hansford County Hospital District in Spearman. "Congress is currently debating the various issues on healthcare reform," Snow said. "They plan to vote on Friday, August 19, so it is important that every citizen be informed and voice an opinion quickly."

"Everyone has an opinion about what will work and what won't,"

Snow said. "As the rhetoric heats up in Washington, we were concerned that the truth would be lost."

The tabloid edition presented in today's newspaper presents factual information about each of the major bills under consideration. "As the debate progresses, some items will be added and others deleted," Snow said. "No one knows for sure what the final bill will look like. At this point the only sure thing seems to be that healthcare reform will be before Congress on August 19."

Snow noted that the important consideration is for each concerned citizen to contact his or her Congressman and Senators. "Even though we don't know exactly what the final health care bill will look like, we do know that this is probably the most far-reaching piece of legislation since Social Security was

passed," Snow said. "And we do know that it will touch every American's life for generations to come."

Snow urged everyone to read the tabloid carefully, continue to read the papers and listen to the news, and then call their representatives' offices. "Your voice counts. The staffs in these offices are busy tabulating the calls and letters they get, and those communications will sway the way your representative votes," Snow said.

Residents of Hansford County may contact U.S. Representative Larry Combest by calling his Washington office at 202 225-4005. United States Senators can be reached by calling Senator Kay Bailey Hutchison in Washington at 202 224-5922 and Senator Phil Gramm in Washington at 202 224-2934.

## Among The Neighbors

by Helen Fisher

The death of a former resident, Harold Buschman, occurred on June 20 in San Juan, Puerto Rico. Interest was also there.

Harold left Spearman with his wife, Oliva, and family in 1958 and had not returned. His brother, Benny and Mrs. Buschman, now of Stinnett, visited him in February for ten days; the first time they had seen each other in 14 years. Harold had resided in San Croi for the last ten years but returned to San Juan in order to have radiation treatments. He was an industrial painter.

His wife, Oliva, a native of Puerto Rico was a student at Goodwell with two of Harold's sisters, when she met and married Harold. They lived in Spearman until 1958 and the oldest daughter attended school here. Oliva was a charter member of the Sacred Heart Church here. She died a year ago in February.

Harold is survived by three children, two brothers, Benny of Stinnett, George of Canadian; three sisters - Grace Gift, Balko, Sarah Neely, Perryton, and Nell Gift of Alex, Arkansas.

Mrs. Joy Gonzales of Amarillo is in Spearman for several days in the home of her daughter Rebecca and Jess Moore. Rebecca fell recently, tearing ligaments in an ankle that had been broken twice. Mrs. Gonzales will be assisting with her five grandchildren.

Joyce Harper is leaving Spearman soon to make her home in San Antonio. She has sold her home here and will be living with her daughter, Carla, as they plan to buy a home there.

Carla is employed by U.P.S. in office management. Joyce and the late Carroll Harper came here in 1956. The three youngest children were born here and all four graduated from school here. Carroll passed away in the spring of 1992.

Joyce debated a long time before making the decision to leave where she has spent so many years. As none of the children live here, she came to the reluctant conclusion to move on. She will always treasure her memories and her friends of Spearman.

The best wishes of Spearman goes with Joyce.

Elmon Jacobs enjoyed his guests during part of the last weekend. His grandson, Thomas E. Bowman, Jr. and wife, Cheryl with their son, Matthew are from Denver. Thomas is the son of Eddie Bowman who formerly lived in Spearman.

### Spearman High enrollment

The class schedules will be mailed at the end of this week. Students who have questions concerning their schedule will be seen at the following times:

**August 15**  
Seniors -- 1:00 - 2:30 p.m.  
Juniors -- 2:30 - 4:00 p.m.  
**August 16**  
Sophomores -- 9:00 - 10:30 a.m.  
Freshmen -- 10:30 - 12:00 noon

All high school students new to the District may enroll on Friday, August 12 from 9:00 a.m. until 12:00 noon.

John and Juanita Japp of Caspar, Wyoming are spending several days here in the home of their daughter, Julie and Scott Martin. The time of their visit may have related to being able to spend full days with grandsons Stewart and Garrett before school starts.

Betty and James Pugh spent a relaxing weekend in Lubbock. They visited old friends from James' days in the Air Force.

Sara Dossett enjoyed four busy days last week when Buddy and Becky Dossett were here four days. They are from Harlingen and the family now includes four little girls. The youngest is four months old and met her grandmother Sara for the first time.

They also visited Becky's people in Pampa.

Denise Bridges, Carol Ann Pack and Becky Lusby spent several days last week in San Antonio at the Texas Choral Director's Association Convention.

During one session former Spearman resident, Billy Jack Glover, was on the stage in behalf of the T.C.D.A. to present a plaque to Al Skoog. He was a native of Borger and taught there and was being recognized for his contribution through the years. Billy Jack, who has been seriously ill, is still handicapped and frail but in good spirits.

After the convention the Spearman ladies went to Waco and attended the music conference for Baptist Churches. It was held on the Baylor University campus, and they were joined by Kathy Archer, Marilyn Edwards and Mary Murry. The Spearman singers sang with "The Singing Women of Texas" choir.

The home of Joan and Billy Jeff Hawkins was the scene of much activity for several days week before last.

Jerod, Joel and Jill Crawford, children of her son Jim David, came from Edmond, Oklahoma and were here for five days before the arrival of Mandi and Hayli Crawford. They are the children of her son Joe Ed. They live at Red Oak.

Joan took the first three to Ceiling, Oklahoma where they were met by their mother. Billy Jeff and Joan then took the others back to Red Oak. They went by Graham for a couple of days where they visited a cousin of Billy Jeff's.

They stayed a few days at Red Oak before returning to Spearman, again by way of Graham. Their vacation ended on Sunday.

Kyla Nelson spent a most interesting and rewarding seven weeks in San Jose, Costa Rica ending on July 12.

Kyla, the daughter of Judy and Dennis Nelson, is a senior at Texas Tech and is associated with Campus Crusade for Christians.

She was one of seven students from the U.S. who participated in the seven weeks mission on the campus of the University of Coast Rico. Their mission was one of relational ministry; building friendships; establishing credibility for the Christian Faith. It is non-denominational, and the association with other students included social life, hiking, movies, with exchange of ideas and both groups being exposed to the culture of the other.

Kyla considered it an incredible experience and hopes to return to Costa Rica some day.

She is a major in Spanish and public relations and is certified to teach. However her plans are not definite yet.

A former Spearman resident has returned to make her home here. Maureen Pierce, daughter of Pearl Pierce, has been living in Amarillo and is now employed at Hansford Manor as a L.V.N.

She and her three sons, Lyn, Mike and Rick, are living at 1010 Drensen. The boys are all out of school and employed. All the family enjoy fishing and camping. The church preference is Methodist.

Jesse Davis, one of Spearman's favorite nonagenarians caused concern last week when he stumbled in

his home, falling and breaking his pelvis bone.

Jesse is now in Hansford Manor until he recovers enough to go home. It has not been long since Jesse broke some ribs and he has had other broken bones. Could it be that Jesse just can't resist all the T.L.C. provided by the nurses?

The descendants of Hattie and Lew Andrews held their family reunion on Sunday, August 7 at the O'Loughlin Center with 42 present.

Bob and Susie Womble and Lyndon Newcomb of Morse hosted it, so the well planned entertainment and program filled the day, with considerable food and fellowship added. There were cake walks, basketball, "Newly-Wed Games" and a quaint touch was the dinner music consisted of songs by the famed Andrews Sisters, a singing group of thirty years ago.

Some nostalgia resulted from the reading of the record of the first Andrews reunion. This was in 1958 and Dennis DeArmond was the youngest, and Harvey Haney was the oldest attending.

The youngest at the 1994 reunion was Klyn Holmes of Pampa and the oldest was Mable Jameson, Spearman.

Ronnie and Deanna Womble, Morse, won the door prize. Dale Haney, Denver, came the greatest distance.

Each generation of this old family has friends in this county so follows a list of those present;

Dale Henry, Denver; Dennis DeArmond, Roswell; Billy and Louetta McCellan, Sunray; Roger and Christi West and children, Dumas; Jeanie and Hal Bennett, Stratford; Brenda Holmes and girls, Kelly McClellan, Pampa; Marvin and Louella Andrews, Joan Andrews and son, Mathew, Guymon.

Beth and Charlene Finley, Donna Medley and daughter, Amarillo; Bob and Susie Womble and boys, Lyndon Newcomb, Ronnie and

Deana Womble and boys, Jerry and Jackie Womble, Rob Womble, all of Morse.

Mable Jameson, Myrtle DeArmond, Verlin and Audrey Behne, Dora Womble, Charles and Lola Newcomb, Henrietta Andrews, Leah Baker DeArmond, Richie and Karen Thompson, Toby Thompson, all of Spearman.

Welcome guests were Cathy Bryant and Kara Saris.

Ora Lee Blackburn accompanied Bodil and Jack Bradley of Hereford the past weekend to Vinita, Okla. They attended the wedding of Ora Lee's great-granddaughter, Liz Ownbey. She was married to Brad Rice at the Methodist Church in Vinita on Saturday, in a beautiful wedding.

Liz is the daughter of Jimmy and Susan Ownbey. Robbie and Larry Butts of Spearman and Joe and Judy Hutchison and three children of Pampa also attended.

Ora Lee returned on Sunday, packed on Monday, and flew off on Tuesday. She will be spending some time with her daughter Elaine Cessnum and family in Alaska.

Four Spearman "boys" tried to snag foul balls, blast the umpires, and cheer the Texas Rangers in Arlington last Wednesday and Thursday evenings. Garrett and Stewart Martin, their dad Scott and granddad, Ray, evidently were successful as the Rangers won both games. All three generations of Martins were impressed by the new huge Ball Park at Arlington.

They had excellent seats for both games, and, though unable to bring back any foul balls, the little boys are proud of their autographs from some of the players.

### TUPPERWARE

Lori Coats  
(806) 435-2319

### HENSON CHIROPRACTIC

410 S. Davis • Spearman, Tx.

Call for Appointment • 659-5603

#### OFFICE HOURS:

Monday, Wednesday & Friday 9:00 to 5:00  
Tuesday & Thursday 9:00 to 11:30

### Picnic Place Restaurant

NOW OPEN

11 a.m. - 8 p.m.

Monday - Saturday

Serving:

Deli hot & cold sandwiches  
and a dozen flavors of ice cream



217 Main

For Take-Out Call 659-3864

### GET THE ALCO Advantage



FREE  
EVERY TUESDAY!

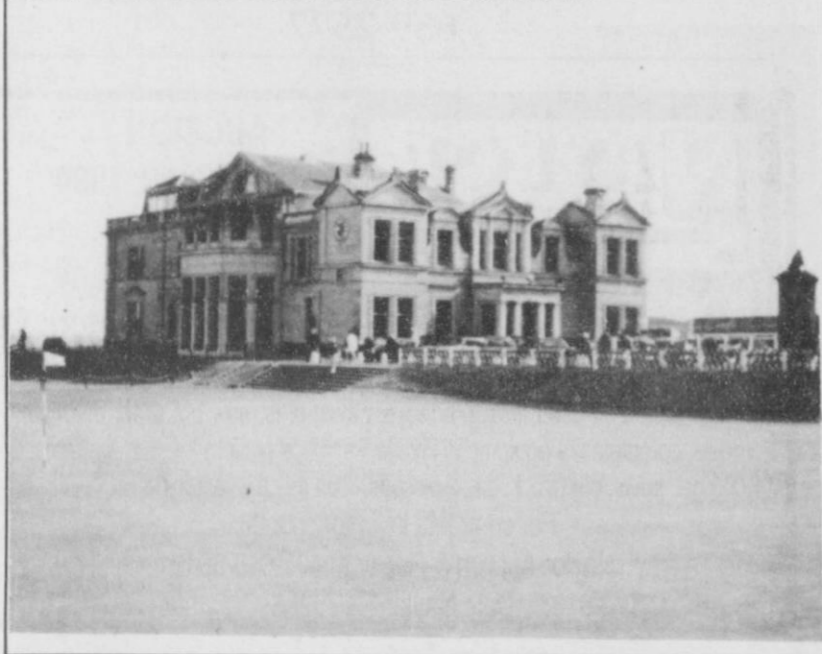
SECOND SET OF PRINTS

Receive a second set of 3" prints FREE with any exposure roll of 35mm, disc, 110 or 126 color print film left for developing and printing at our everyday prices! C-41 process only. Excludes larger 4" size prints, and photo gallery.





**GOLFING ABROAD** - Spearman's Toby Thompson got a chance of a life time to play golf in Scotland last month. He was part of Junior Rider Cup team that competed for two weeks. In the photos Thompson captured pro golfer Greg Norman walking by and a view of the club house at St. Andrews.



## Toby Thompson Golfing in Scotland

Golfing can sometimes be a relaxing past-time. Other times it can give you headaches. But for one local youngster golfing has been a key to seeing and doing things that many only dream of.

Toby Thompson, of Spearman, is known in these parts for his golfing skills. Now Toby can add parts of Scotland as territory conquered with his driver and putter.

Thompson, who graduated last year from Spearman High School, was one of 13 junior golfers who represented the United States in Scotland during a two-week golfing tour.

He was invited to play golf by Golf Ambassadors of American last year and then after discussing it with his parents he had decided to go. He qualified for an invitation after officials conducting the tour had viewed his regional golf tournament scores and had heard about Thompson through what they called the 'Texas Connection'.

The long process of raising enough funds to cover the cost of flying over there and competing began. During the course of the year Thompson, along with many family members and friends, held a series of fund raisers to help pay for his trip.

Their efforts were well rewarded when Thompson returned July 24 as a member of the winning American Junior Rider Cup Team. He also finished as the winner of the Lowest Score (with handicap) title, and was the fifth man out of a team of 13 with an average score of 81 strokes.

"It was a great trip and experience. It is something that I will never ever forget," said Thompson.

Thompson toured Scotland playing at 10 different golf courses. He also got a chance to visit the cities of Nairn, St. Andrews, Edinburgh and Ayr. He, along with the team, did some sight-seeing. They walked the Royal Mile and visited one of the Queen's castles.


The highlight of his trip, however, was when they got a chance to go see the finals of the British Open. "It was great, I got to see some great golf," he said.

Thompson noted that one of the most exciting moments while at the British Open came when Greg Norman walked by him within reaching distance.

The food and the driving were two of the things that Thompson viewed as quite different from the American way. "The food was -- different. And it was strange to watch people drive on the wrong side of the road," Thompson said. Residents in Scotland drive on the opposite sides of the roads from Americans.

"In all it was a great trip. One that I'll always remember. Everything was nice except for the plane flight," said Thompson. His flight began in Dallas. But a delay in schedules put Thompson and two others 13 hours behind the rest of the team.

Thompson will continue to play golf this school year at the college level. He will be playing for the McMurry Indians in Abilene, Texas.



### DUKE'S CHIROPRACTIC CENTER

**EVENING HOURS AVAILABLE**


- Headaches / TMJ
- Neck Pain / Stiffness
- Low Back Pain
- Shoulder / Arm Pain
- Hip / Leg Pain

- Family Health Care
- Pediatrics
- Athletic Injuries
- Numbness
- Gentle Treatment

**AUTO ACCIDENTS • WORK INJURIES**  
(Most Insurance Accepted)

**New Hours:**  
2-6 p.m. Mon. thru Fri.

## 659-5505



**Darrell D. Duke DC**

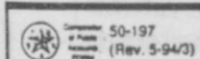
11 W. Kenneth • Spearman, Tx.

## Spearman High School alternative schedule

Spearman High School will be going to an alternative schedule for the 1994-95 school year. This type of schedule was selected after looking at many different options last spring. The Alternative Schedule concept is an offshoot of the Block Scheduling concept that has been in use in a few school districts for a number of years.

The Alternative Schedule being

utilized at SHS will consist of fifty minute classes the first and last periods of the day, which will meet every day. The schedule will also include a 25 minute tutorial period that meets every day. The other instructional periods will be 90 minutes each and will meet on alternate days. Students will be able to attempt eight credits each school year with this schedule.



### Notice of Public Hearing on Tax Increase

The SPEARMAN INDEPENDENT SCHOOL DISTRICT will hold a public hearing on a proposal to increase total tax revenues from properties on the tax roll in 1994 by 1995 percent. Your individual taxes may increase at a greater or lesser rate, or even decrease, depending on the change in the taxable value of your property in relation to the change in taxable value of all other property.

The public hearing will be held on AUGUST 18, 1994 at 7:00 P.M.  
**FOR** the proposal: James Schnell, Scott Beedy, Archie Smith, Bob Boxwell, Richard Craig Schumann  
**AGAINST** the proposal: NONE  
**PRESENT** and not voting: NONE  
**ABSENT:** Sheri Benton

The statement above shows the percentage increase the proposed rate represents over the effective tax rate that the unit published on July 25, 1994. The following table compares taxes on an average home in this taxing unit last year to taxes proposed on the average home this year. Again, your individual taxes may be higher or lower, depending on the taxable value of your property.

	Last Year	This Year
Average home value	\$ 23,970.00	\$ 30,100.00
General exemptions available (amount available on the average home, not including senior citizen's or disabled person's exemptions)	\$ 10,000.00	\$ 5,000.00
Average taxable value	\$ 13,970.00	\$ 25,100.00
Tax rate	1.19902 /\$100	1.2596 /\$100 (proposed)
Tax	\$ 167.50	\$ 316.16 (proposed)

Under this proposal taxes on the average home would Increase by \$ 148.66 or 89 percent compared with last year's taxes. Comparing tax rates without adjusting for changes in property value, the tax rate would Increase by \$ .06058 per \$100 of taxable value or 5 percent compared to last year's tax rate. These tax rate figures are not adjusted for changes in the taxable value of property.

#### Criminal Justice Mandate (for counties):

The N/A County Auditor certifies that N/A County has spent \$ N/A in the previous 12 months beginning N/A, 19    , for the maintenance and operations cost of keeping inmates sentenced to the Texas Department of Criminal Justice. N/A County Sheriff has provided information on these costs, minus the state revenues received for reimbursement of such costs.



## WIN FREE FOOD!

**Come in and Start Winning Today!**

**WIN UP TO \$1000 INSTANTLY!**

Pick up your free name ticket today!

# FINAL WEEKS OF OUR PROMOTION!!!

PRICES EFFECTIVE AUGUST 7-13, 1994

**Gruver & Spearman Only**

**FREE GAS FOR A YEAR**

**VICTOR E. PEREZ**  
ALBUQUERQUE, NEW MEXICO

**PEGGY R. RUBIO**  
BARSTOW, TEXAS

**MARIE WARREN**  
GANYON, TEXAS

**SHEILA LEWIS**  
BORGER, TEXAS

**LISA RAMIREZ**  
RUIDOSO, NEW MEXICO

**MARINA UNDERWOOD**  
WINK, TEXAS

**JIM LINDSEY**  
WEYBINGTON, TEXAS

**MICKEY WILLIAMSON**  
GUADALUPE, NEW MEXICO

**ALLSUP'S**

**\$50.00 WORTH OF GASOLINE FREE!!!**

TAKE THIS COUPON TO BIG COUNTRY FORD 2400 MABRY DR. CLOVIS, NEW MEXICO 88101. IF YOU PURCHASE A NEW VEHICLE BEFORE AUGUST 13, 1994 YOU WILL RECEIVE \$50.00 WORTH OF FREE GASOLINE COURTESY OF ALLSUP'S.

**\$1,000 WINNERS!**

**VICTORIA A. MATTHEWS**  
LAS VEGAS, NEW MEXICO

**PAM FREEMAN**  
BALFO, OKLAHOMA

**ARCHIE A. CRAWFORD**  
ALAMOGORDO, NEW MEXICO

**DAVID JONES**  
CARLSBAD, NEW MEXICO

**MARLO BOOGUA**  
GALLUP, NEW MEXICO

ALLSUP'S SAUSAGE, EGG, & BISCUIT FOR ONLY **99¢**

ALLSUP'S HOT LINKS FOR **1 99¢**

SAVE ON SHOCK TARTS FOR **2 99¢**

ALLSUP'S HOMOGENIZED MILK GALLON **\$1 99**

WILSON MEAT FRANKS 12 OZ. PKG. **69¢**

ASSORTED SARA LEE DANISH FOR **2 \$1 00**

SAVE ON TROLLI GUMMI 5.29 OZ. BAG **99¢**

DECKER CHOPPED HAM 10 OZ. PKG. **\$1 59**

PEARSON'S "BONUS" NUT ROLL 11 OZ. FOR **2 89¢**

ALL TYPES PEPSI-COLA 6 pk. 12 oz. cans **\$1. 99**

SHURFINE SQUEEZE TOMATO KETCHUP 28 OZ. **99¢**

SHURFINE PEANUT BUTTER 18 OZ. JAR **\$1 99**



## Free Food & Food Products!





# Meals

Continued from page 1

there be a need "for a hot, well-balanced meal to be brought into the home Mondays through Fridays, including holidays falling on weekdays," said Boxwell, "with meal delivery being limited to within Spearman city limits."

Reasons people sign up for the meals have included everything from health limitations to nutritional needs. "Cooking healthy meals for just yourself can be very challenging when you are older and possibly having health problems," said Boxwell. She said in many cases an individual or couple will receive the meals only temporarily until they are recovered from an illness or hospitalization.

Occasionally, a week or month of meals is purchased as gifts for elderly relatives.

Murphy and Boxwell point out that an additional advantage to having a hot meal to eat is the personal contact that recipients can receive at their homes every weekday. They said drivers and recipients alike frequently comment on the pleasure and/or security that "visit" affords them.

Some individuals receive the same foods available in the hospital cafeteria and others receive special diets, according to their medical and nutritional needs. The typical meal includes a meat entree, two vegetables, a bread, a dessert and milk.

According to the women's records, the 22,000th meal was delivered in 1990. "I estimate that we have now provided something in the neighborhood of 24,000 to 26,000 meals," Murphy said. The most meals delivered in a single day was 13, with the average number of deliveries hovering around six or seven. Boxwell and Murphy said there has never been a weekday in the 16-year history of Meals on Wheels of Spearman that no one ordered a meal, although "it got down to one or two a few times."

When asked how they were able

to coordinate Meals on Wheels of Spearman for 16 years, the women said the divided calendar helped, and that, many times, their own husbands filled in for them when they were unavailable. "A lot of the credit has to go to these guys, because they have both taken up the slack for us," Boxwell commented.

"It got to the place that I just automatically built the time into my schedule that I needed, especially those Monday morning meal call-ins to the hospital," Murphy said. "It has not always been problem-free, but considering the numbers of phone calls and people involved, it has gone remarkably smoothly," added Boxwell.

Both stressed that the accolades for the program's success go to the volunteer drivers and the organizations they represent. "There would be no Meals on Wheels of Spearman without these people," they emphasized. They said some of the drivers have delivered all 16 years.

Local organizations currently providing drivers include: Xi Zeta, Gamma Gamma, Preceptors, Gladiola Flower Club, Christian Women's Fellowship, Presbyterian Women, Senior Citizens, Hansford Hospital Auxiliary, the Union Church, Town and Country H.D. Club, the Lutheran Church, the 20th Century Club, Baptist Women, United Methodist Women, and Rho Rho.

The timing of transferring administration of the meal delivery program to Hansford Hospital is due to several factors. Both Boxwell and Murphy are working full-time in other towns now, so it has become increasingly less convenient for them to handle the telephone calls involved in setting up meal recipients, calling in orders and reminding organizations of their commitments. The women also report that Salgado had expressed an interest in coordinating the program.

"This was the perfect way to pass the program on to someone else,

because the hospital is very stable and Ernestina cares about doing this. So, the program will be perpetuated intact. Everything will stay the same—the way you pay, the way you order, the volunteer driver system through local organizations," Boxwell said.

To insure a smooth transition in the program's administration, an advisory board has been formed comprised of Snow, Boxwell, Murphy, Salgado, and three community members. Charles Newcomb will represent the Golden Spread Senior Citizens Center, Adalyn Barnes will serve as member-at-large and Margaret Evans will represent CWF of First Christian Church. Boxwell said she and Murphy plan to "phase themselves out" gradually once the transition is completed.

And what did Murphy and Boxwell get out of their volunteer efforts all these years?

"Just what I expected—the satisfaction that I was giving something back to the community," Murphy said. "I was able to directly and indirectly touch lives, and for me, that is what gives my life meaning."

Boxwell responded, "There's that satisfaction in knowing we met a need. To me, what is important is doing something that will help others. And I met some wonderful people in this community I would never have met had it not been for Meals on Wheels."

ing. "We started out in Miami as newlyweds," she says.

She describes her life as "just work, work, work" as she and C.F. raised dryland wheat and parented her niece and nephew. The niece, Wilma Reese, says her aunt was always willing to help out other families, too. When a local man lost his wife, for example, Bennett moved out to his place to cook and care for his children for a while.

Bennett stayed on the farm, just outside Spearman, for many years after her husband's death in 1950. "But it just got so I couldn't tend to it all out there by myself," she said. Today Bennett's great-niece and her husband run the farm.

Yardwork is one of Bennett's hobbies at her Spearman home. "That's her getaway," Reese affirms. Bennett is famous for her tenacity in hand-pulling weeds.

"I get out there with a screwdriver and pop 'em up," she says with enthusiasm. "You know, weeding the yard helps me deal with worries. You can't just sit around in the house waiting for bad things to happen. Out there, pulling weeds, you forget your worries."

Because it is difficult for her to stand or bend (she suffers from osteoporosis and arthritis), Bennett gamely seats herself in the grass

and crawls from weed to weed. "It takes a little scrunching around, but I can still get up," she laughs.

Other activities Bennett enjoys include reading the daily newspaper and receiving communion brought to her house by members of the First Christian Church of Spearman.

She truly believes she would not be able to live independently without Meals on Wheels food deliveries. "I generally eat a light breakfast, but then I get this good meal at noon (from Meals on Wheels)," she explains. "Sometimes I can't eat it all, and I save some for supper."

When Bennett has no noontime leftovers, she eats a sandwich or cereal for an evening meal. Pressed to reveal her favorite foods from Meals on Wheels, she is unable to name just a few. "I'm on a soft diet now, but what they bring here is good."

She credits her longevity partly to good heredity: her father and uncle both lived to be 85 years old and were "active to the last." Staying busy is another reason she feels she has lived so long. "Sometimes it takes me a while to get going of a morning, but I always get going!" Bennett says.

Advances in medicine make up a third reason, she says, explaining

that her mother died of tuberculosis at the young age of 34 years in 1915. Bennett herself suffered a heart attack in the 50s and now has a pacemaker.

"I've been busy with all my family and I helped out everyone who needed it," she says, neatly summarizing 94 years.

As our interview ends, a smiling Meals on Wheels driver is knocking at Bennett's front door with a steaming food tray in hand. "Guess it's time to eat!" Inez Bennett exclaims, and she gets up eagerly to greet the driver.

## SHS Freshman Orientation

### Freshman Orientation

Orientation for Freshmen entering Spearman High School will be held on Monday, August 15, at 7:00 p.m. in the High School Auditorium. All Freshmen and parents are encouraged to attend. This will be a time to receive assistance in finding classrooms and lockers.

**TODAY'S THE DAY**  
Stop Smoking.  
American Heart Association

Now Taking Orders  
for Colorado Peaches  
& Nectarines  
Call Bobby Smith  
at 659-3816 or 659-2786

## These Energy-Saving Tips Are Over Your Head.



Texas-New Mexico Power Company brings you reliable electric power, plus cost-cutting energy management tips. ★ For instance, your house needs proper attic ventilation. Otherwise, moisture can build up in the winter and reduce the effectiveness of insulation, and attic temperatures can rise and make your air conditioner work harder in the summer. ★ For more information, call your local TNP office for our free Energy Management Guide.



### 1994 Property Tax Rates in PALO DURO RIVER AUTHORITY

This notice concerns 1994 property tax rates for PALO DURO RIVER AUTHORITY. It presents information about three tax rates. Last year's tax rate is the actual rate the taxing unit used to determine property taxes last year. This year's effective tax rate would impose the same total taxes as last year if you compare properties taxed in both years. This year's rollback tax rate is the highest tax rate the taxing unit can set before taxpayers can start tax rollback procedures. In each case these rates are found by dividing the total amount of taxes by the tax base (the total value of taxable property) with adjustments as required by state law. The rates are given per \$100 of property value.

<b>Last year's tax rate:</b>		
Last year's operating taxes	\$ 154,484	
Last year's debt taxes	\$ 2,050,844	
Last year's total taxes	\$ 2,205,328	
Last year's tax base	\$ 1,675,526,472	
Last year's total tax rate	\$ .13162	/\$100

<b>This year's effective tax rate:</b>		
Last year's adjusted taxes (after subtracting taxes on lost property)	\$ 2,202,168	
+ This year's adjusted tax base (after subtracting value of new property)	\$ 1,686,559,688	
= This year's effective tax rate	\$ .130571	/\$100

x 1.03 = maximum rate unless unit publishes notices and holds hearing	\$ .134488	/\$100
---	------------	--------

<b>This year's rollback tax rate:</b>		
Last year's adjusted operating taxes (after subtracting taxes on lost property and adjusting for transferred function)	\$ 154,262	
+ This year's adjusted tax base	\$ 1,686,559,688	
= This year's effective operating rate	\$ .009146	/\$100
x 1.08 = this year's maximum operating rate	\$ .009877	/\$100
+ This year's debt rate	\$ .131407	/\$100
= This year's rollback rate	\$ .141284	/\$100

#### Schedule A

##### Unencumbered Fund Balances

The following estimated balances will be left in the unit's property tax accounts at the end of the fiscal year. These balances are not encumbered by a corresponding debt obligation.

Type of Property Tax Fund	Balance
M & O	43,299

#### Schedule B

##### 1994 Debt Service

The unit plans to pay the following amounts for long-term debts that are secured by property taxes. These amounts will be paid from property tax revenues (or additional sales tax revenues, if applicable).

Description of Debt	Principal or Contract Payment to be Paid from Property Taxes	Interest to be Paid from Property Taxes	Other Amounts to be Paid	Total Payment
BONDS	\$ 955,000	\$ 1,168,976	\$	\$ 2,123,976
<i>(Expand as needed)</i>				
Total required for 1994 debt service			\$ 2,123,976	
- Amount (if any) paid from funds listed in Schedule A			\$	
- Excess collections last year			\$	
= Total to be paid from taxes in 1994			\$ 2,123,976	
+ Amount added in anticipation that the unit will collect only 95 % of its taxes in 1994			\$ 111,788	
= Total Debt Levy			\$ 2,235,764	

This notice contains a summary of actual effective and rollback tax rates' calculations. You can inspect a copy of the full calculations at HANSFORD COUNTY TAX OFFICE.

Name of person preparing this notice HELEN DRY  
Title TAX ASSESSOR-COLLECTOR  
Date prepared AUGUST 08, 1994

### 1994 Property Tax Rates in HANSFORD HOSPITAL DIST

This notice concerns 1994 property tax rates for HANSFORD HOSPITAL DIST. It presents information about three tax rates. Last year's tax rate is the actual rate the taxing unit used to determine property taxes last year. This year's effective tax rate would impose the same total taxes as last year if you compare properties taxed in both years. This year's rollback tax rate is the highest tax rate the taxing unit can set before taxpayers can start tax rollback procedures. In each case these rates are found by dividing the total amount of taxes by the tax base (the total value of taxable property) with adjustments as required by state law. The rates are given per \$100 of property value.

<b>Last year's tax rate:</b>		
Last year's operating taxes	\$ 921,434	
Last year's debt taxes	\$ 474,032	
Last year's total taxes	\$ 1,395,466	
Last year's tax base	\$ 387,629,583	
Last year's total tax rate	\$ .36	/\$100

<b>This year's effective tax rate:</b>		
Last year's adjusted taxes (after subtracting taxes on lost property)	\$ 1,391,690	
+ This year's adjusted tax base (after subtracting value of new property)	\$ 399,996,342	
= This year's effective tax rate	\$ .347925	/\$100

x 1.03 = maximum rate unless unit publishes notices and holds hearing	\$ .358362	/\$100
---	------------	--------

<b>This year's rollback tax rate:</b>		
Last year's adjusted operating taxes (after subtracting taxes on lost property and adjusting for transferred function)	\$ 918,941	
+ This year's adjusted tax base	\$ 399,996,342	
= This year's effective operating rate	\$ .229737	/\$100
x 1.08 = this year's maximum operating rate	\$ .248115	/\$100
+ This year's debt rate	\$ .126629	/\$100
= This year's rollback rate	\$ .374744	/\$100

#### Schedule A

##### Unencumbered Fund Balances

The following estimated balances will be left in the unit's property tax accounts at the end of the fiscal year. These balances are not encumbered by a corresponding debt obligation.

Type of Property Tax Fund	Balance
M & O	1,116,718

#### Schedule B

##### 1994 Debt Service

The unit plans to pay the following amounts for long-term debts that are secured by property taxes. These amounts will be paid from property tax revenues (or additional sales tax revenues, if applicable).

Description of Debt	Principal or Contract Payment to be Paid from Property Taxes	Interest to be Paid from Property Taxes	Other Amounts to be Paid	Total Payment
BOND	\$ 420,000	\$ 48,030	\$ 26,000	\$ 494,030
<i>(Expand as needed)</i>				
Total required for 1994 debt service			\$ 494,030	
- Amount (if any) paid from funds listed in Schedule A			\$	
- Excess collections last year			\$	
= Total to be paid from taxes in 1994			\$ 494,030	
+ Amount added in anticipation that the unit will collect only 97.5 % of its taxes in 1994			\$ 12,667	
= Total Debt Levy			\$ 506,697	

This notice contains a summary of actual effective and rollback tax rates' calculations. You can inspect a copy of the full calculations at HANSFORD COUNTY TAX OFFICE.

Name of person preparing this notice HELEN DRY  
Title TAX ASSESSOR-COLLECTOR  
Date prepared AUGUST 08, 1994

# Hansford Happenings School Menu

To sign up for Meals-On-Wheels Service or to receive information, call Marsha Murphy at 659-3972 after 5:00 p.m.

Gruver I.S.D. Budget Hearing will be Friday August 12 at 8:00 pm.

Hansford Hospice Volunteers will meet on Monday, August 15 at Gruver State Bank. The program will be given by Charla Roberts, R.N., Hansford Hospital Hospice Patient Care Coordinator, and Quality Assurance Person. She will give the program on infectious control. Anyone interested in hearing the program or becoming a member of Hospice is invited to attend.

A Radio Auction to benefit the Golden Spread Senior Citizens will be Thursday, August 18. Art, woodcrafts and needlework are among the items to be auctioned.

Moore County Community Center in Dumas will hold a 5th Annual Club 287 Car Show on Saturday, August 20 from 10 a.m. until 8 p.m. and Sunday, August 21 from noon to 6 p.m. There will be a snack bar, live DJ playing oldies and lots of door prizes. Cost is \$2.00 for adults, \$1.00 for children 6 and under free.

Community Invited to Attend Hospice Bereavement Classes: The Hansford Hospice Volunteers will be sponsoring a Bereavement Seminar to be held on Tuesday and Thursday night, August 16th and August 18th, from 6:30 to 9:30 p.m. both nights at First State Bank, Spearman, Texas. The classes will be taught by local pastors, Beverly Cook and Dan Carter. There will be no charge for this seminar. You do not have to be a member of Hansford Hospice to attend. Everyone is invited and encouraged to attend this very informative seminar. Call Jody Hamish at 659-2535 if you are interested in attending.

Hospice Training Classes: Hansford Hospice will be having Hospice training classes from September 13th - October 13th, at the First State Bank in Spearman. Call Jody Hamish at 659-2535 if you are interested in attending.

The 1995 Spearman All-School Reunion will be held Friday, June 30 and Saturday, July 1, 1995. The first meeting of class officers and representatives will be held Tuesday, September 13 at 7 p.m. in B&B Farm Industries. Your help is needed - please attend!

Hansford County Farm Bureau Convention will be held Saturday, August 13 at 7:00 p.m. in the Morse I.S.D. cafeteria. Bob Stallman will be the guest speaker.

Spearman Yearbooks may be picked up at the High School on Friday, August 12, from 6 - 8 p.m. or on Monday, August 15, from 6 - 8 p.m.

## Spearman Menu August 17 - August 19 LUNCH

Wednesday - Pizza-sausage, spaghetti, whole kernel corn, peaches, milk.

Thursday - Jumbo corn dog, macaroni & cheese, sliced carrots, mixed fruit, milk.

Friday - Soft burritos: refried beans, seasoned ground beef, lettuce, tomato salad, onions, taco sauce, pineapple tidbits, milk.

BREAKFAST  
Wednesday - Cereal, toast, fruit juice, milk.

Thursday - Scrambled egg, toast, jelly, fruit juice, milk.

Friday - Biscuit, sausage patty, gravy, fruit juice, milk.

## Lakefest

Continued from page 1

made and organizers are ready for what promises to be another fun-filled event.

Activities kick-off with the 5k run at 7:30 a.m. followed by the biathlon. Then the beach volleyball tournament will start at 9 a.m.

Booths will open at 10 a.m. Currently there are 14 local organizations who have committed to having a booth open at Lakefest.

Fishing demonstrations will be conducted, and youngsters under the age of 12 may enter the fishing tournament. Alco will be donating a fishing tackle box for the first place winner of the tournament.

The Rainbows and Ranglers will host a square dance beginning at 7 p.m.; and the City of Spearman and K108-Radio from Amarillo will host a rock dance at 9:30 p.m.

Palo Duro Lake is located about 10 miles north of Spearman on FM 760 and east on FM 3214. All events and booths will be located on the north side of the dam.

For more information, call the City of Spearman at (806) 659-2524.

## Foundation offers free trees

Ten free Colorado blue spruce trees will be given to each person who joins The National Arbor Day Foundation during August 1994.

The free trees are part of the nonprofit Foundation's Trees for America campaign.

The trees will be shipped post-paid at the right time for planting between October 1 and December 10 with enclosed planting instructions. The six to twelve inch trees are guaranteed to grow, or they will

be replaced free of charge.

Members also receive a subscription to the Foundation's colorful bimonthly publication, Arbor Day, which includes regular features about tree planting and care.

To become a member of the Foundation and to receive the free trees, send a \$10 membership contribution to Ten Blue Spruces, National Arbor Day Foundation, 100 Arbor Avenue, Nebraska City, NE 68410, by August 31, 1994.

## 1994 Property Tax Rates in HANSFORD COUNTY

This notice concerns 1994 property tax rates for HANSFORD COUNTY. It presents information about three tax rates. Last year's tax rate is the actual rate the taxing unit used to determine property taxes last year. This year's effective tax rate would impose the same total taxes as last year if you compare properties taxed in both years. This year's rollback tax rate is the highest tax rate the taxing unit can set before taxpayers can start tax rollback procedures. In each case these rates are found by dividing the total amount of taxes by the tax base (the total value of taxable property with adjustments as required by state law). The rates are given per \$100 of property value.

	General Fund	Farm to Market/ Flood Control Fund
<b>Last year's tax rate:</b>		
Last year's operating taxes	\$ 1,223,358	\$ 288,748
Last year's debt taxes	\$ -0-	\$ -0-
Last year's total taxes	\$ 1,223,358	\$ 288,748
Last year's tax base	\$ 387,629,461	\$ 384,997,373
Last year's total tax rate	\$ .31565/100	\$ .0753/100

<b>This year's effective tax rate:</b>		
Last year's adjusted taxes (after subtracting taxes on lost property)	\$ 1,220,048	\$ 287,848
+ This year's adjusted tax base (after subtracting value of new property)	\$ 399,997,284	\$ 397,441,834
= This year's effective tax rate for each fund	\$ .305014/100	\$ .073958/100
Total effective tax rate	\$ .378972/100	

x 1.03 = maximum rate unless unit publishes notices and holds hearing \$ .390341/100

<b>This year's rollback tax rate:</b>		
Last year's adjusted operating taxes (after subtracting taxes on lost property and including taxes for state criminal justice mandate)	\$ 1,220,048	\$ 287,848
+ This year's adjusted tax base	\$ 399,997,284	\$ 397,441,834
= This year's effective operating rate	\$ .305014/100	\$ .072425/100
x 1.08 = this year's maximum operating rate	\$ .329415/100	\$ .078219/100
+ This year's debt rate	\$ -0-/100	\$ -0-/100
= This year's rollback rate for each fund	\$ .329415/100	\$ .078219/100
This year's total rollback rate	\$ .407639/100	

### Schedule A Unencumbered Fund Balances

The following estimated balances will be left in the unit's property tax accounts at the end of the fiscal year. These balances are not encumbered by a corresponding debt obligation.

Type of Property Tax Fund	Balance
M & O	614,101

### Schedule D

#### State Criminal Justice Mandate (For Counties)

The Hansford County Auditor certifies that Hansford County has spent \$ -0- in the previous 12 months beginning August 1, 1993, for the maintenance and operations cost of keeping inmates sentenced to the Texas Department of Criminal Justice. Hansford County Sheriff has provided information on these costs, minus the state revenues received for reimbursement of such costs.

This notice contains a summary of actual effective and rollback tax rates' calculations. You can inspect a copy of the full calculations at HANSFORD COUNTY TAX OFFICE.

Name of person preparing this notice: HELEN DRY  
Title: TAX ASSESSOR-COLLECTOR  
Date prepared: August 08, 1994

## 1994 PROPERTY TAX RATES IN PRINGLE-MORSE CISD

This notice concerns 1994 property tax rates for PRINGLE-MORSE C.I.S.D. It presents information about three tax rates. Last year's tax rate is the actual rate the taxing unit used to determine property taxes last year. This year's effective tax rate would impose the same total taxes as last year if you compare properties taxed in both years. This year's rollback tax rate is the highest tax rate the taxing unit can set before taxpayers can start tax rollback procedures. In each case these rates are found by dividing the total amount of taxes by the tax base (the total value of taxable property) with adjustments as required by state law. The rates are given per \$100 of property value.

<b>LAST YEAR'S TAX RATE:</b>	
Last year's operating taxes	\$ 1,212,751
Last year's debt taxes	\$ -0-
Last year's total taxes	\$ 1,212,751
Last year's tax base	\$ 98,638,348
Last year's total tax rate	\$ 1.2300/\$100

<b>THIS YEAR'S EFFECTIVE TAX RATE:</b>	
Last year's adjusted taxes (after subtracting taxes on lost property)	\$ 1,211,619
+ This year's adjusted tax base (after subtracting value of new property)	\$ 89,471,054
= This year's effective tax rate	\$ 1.3542/\$100
x 1.03 = maximum rate unless unit publishes notices and holds hearing	\$ 1.3948/\$100

<b>THIS YEAR'S ROLLBACK TAX RATE:</b>	
Last year's adjusted operating taxes (after subtracting taxes on lost property)	\$ 1,246,780
+ This year's adjusted tax base	\$ 89,561,054
= This year's effective operating rate	\$ 1.3921/\$100
x 1.08 = this year's maximum operating rate	\$ 1.4521/\$100
+ This year's debt rate	\$ .0000/\$100
= This year's rollback rate	\$ 1.4521/\$100

### SCHEDULE A UNENCUMBERED FUND BALANCES

The following estimated balances will be left in the unit's property tax accounts at the end of the fiscal year. These balances are not encumbered by a corresponding debt obligation.

Type of Property Tax Fund	Balance
Maintenance & Operation	\$325,000

### SCHEDULE B 1994 DEBT SERVICE

The unit plans to pay the following amounts for long-term debts that are secured by property taxes. These amounts will be paid from property tax revenues.

Description Of Debt	Principal or Contract Payment To Be Paid from Property Taxes	Interest To Be Paid from Property Taxes	Other Amounts To Be Paid	Total Payments
Total required for 1994 debt service			\$ -0-	
- Amount paid from funds listed in Schedule A			\$ -0-	
- Excess collections last year			\$ -0-	
= Total to be paid from taxes in 1994			\$ -0-	
+ Amount added in anticipation that the unit will collect only 97% of its taxes in 1994			\$ -0-	
= Total Debt Levy			\$ -0-	

This notice contains a summary of actual effective and rollback tax rates' calculations. You can inspect a copy of the full calculations at the Hansford Appraisal District.  
Name of person preparing this notice: Alice Peddy  
Title: Chief Appraiser  
Date prepared: July 28, 1994

## 1994 PROPERTY TAX RATES IN GRUVER I.S.D.

This notice concerns 1994 property tax rates for GRUVER I.S.D. It presents information about three tax rates. Last year's tax rate is the actual rate the taxing unit used to determine property taxes last year. This year's effective tax rate would impose the same total taxes as last year if you compare properties taxed in both years. This year's rollback tax rate is the highest tax rate the taxing unit can set before taxpayers can start tax rollback procedures. In each case these rates are found by dividing the total amount of taxes by the tax base (the total value of taxable property) with adjustments as required by state law. The rates are given per \$100 of property value.

<b>LAST YEAR'S TAX RATE:</b>	
Last year's operating taxes	\$ 2,448,613
Last year's debt taxes	\$ -0-
Last year's total taxes	\$ 2,448,613
Last year's tax base	\$221,152,744
Last year's total tax rate	\$ 1.1123/\$100

<b>THIS YEAR'S EFFECTIVE TAX RATE:</b>	
Last year's adjusted taxes (after subtracting taxes on lost property)	\$ 2,434,684
+ This year's adjusted tax base (after subtracting value of new property)	\$217,801,776
= This year's effective tax rate	\$ 1.1178/\$100
x 1.03 = maximum rate unless unit publishes notices and holds hearing	\$ 1.1513/\$100

<b>THIS YEAR'S ROLLBACK TAX RATE:</b>	
School maintenance and operations component	\$ 2,526,866
+ This year's tax base	\$217,813,713
= This year's local maintenance and operating rate	\$ 1.1601/\$100
+ \$.06 = this year's maximum operating rate	\$ 1.2201/\$100
+ This year's debt rate	\$ -0-/100
= This year's rollback rate	\$ 1.2201/\$100

### SCHEDULE A UNENCUMBERED FUND BALANCES

The following estimated balances will be left in the unit's property tax accounts at the end of the fiscal year. These balances are not encumbered by a corresponding debt obligation.

Type of Property Tax Fund	Balance
Maintenance & Operation	700,000

### SCHEDULE B 1994 DEBT SERVICE

The unit plans to pay the following amounts for long-term debts that are secured by property taxes. These amounts will be paid from property tax revenues.

Description Of Debt	Principal or Contract Payment To Be Paid from Property Taxes	Interest To Be Paid from Property Taxes	Other Amounts To Be Paid	Total Payments
Total required for 1994 debt service			\$ -0-	
- Amount paid from funds listed in Schedule A			\$ -0-	
- Excess collections last year			\$ -0-	
= Total to be paid from taxes in 1994			\$ -0-	
+ Amount added in anticipation that the unit will collect only 99% of its taxes in 1994			\$ -0-	
= Total Debt Levy			\$ -0-	

This notice contains a summary of actual effective and rollback tax rates' calculations. You can inspect a copy of the full calculations at the Hansford Appraisal District.  
Name of person preparing this notice: Alice Peddy  
Title: Chief Appraiser  
Date prepared: August 9, 1994

**"IT'S FOR YOU" ...**  
 The Classifieds Have Something For Everyone!

The Home Seller...  
 The Car Buyer...  
 The Do-It-Yourselfer...  
 The Mother's Helper...  
 The Job Seeker...  
 The Bargain Reaper...

When you want results, turn to The Classifieds.



# REPORTER-STATESMAN

Telephone: 1-800-395-9482 or (806)659-3434

**AA Realty**  
 Allen Alford - Broker • 659-3034  
 Julie Martin - Sales • 659-2425  
 Larry Trospen - Sales • 659-3491

1017 Townsend: 3/2/1 - New lower price!  
 714 Gibner: 4 BR, UNDER CONTRACT  
 1115 Dressen: 3 BR, 1 B, Gar., between 7th & 5th St., off Brandt., App., 10 acres.  
 1105 S. Haney: 3 BR, 1 1/2 B, REDUCED  
 718 Cotter - 3 BR, 1 B  
 510 S. Endlott - 3/2 UNDER CONTRACT  
 725 Cotter - 3 BR, 1 1/2 B, c.vd. patio  
 1103 S. Townsend - 3/1 1/2, good loc.  
 1107 Barkley - 3/1 1/2 Below Appraisal

NEW LISTING  
 705 Gibner - UNDER CONTRACT  
 FOR QUALITY & SERVICE CALL US TODAY  
 We Need Your Listing.

**Century 21**  
**GOLDEN SPREAD REALTY**  
 Janye Helton Pointer, Broker Owner  
 435-5444

**Crawford Addition:**  
 2 - 1 3/4 • Will look at all offers!  
 2 - 1 • Small and affordable!

**315 1/2 N. Bernice:** Lot for sale.  
**East 7th Street - 9** mobile home lots. Buy one or all!

© and ™ trademarks of Century 21 Real Estate Corporation. Equal Housing Opportunity. INDEPENDENTLY OWNED AND OPERATED

**SMITH FARM**  
 Sec. 69, Blk. 4-T, T & No Survey, Hansford Co., TX., 640 ac. more or less. Located 1 mi east of Spearman, north side of Farm Rd. 759. 1 - 8" irrig. well pumping approx. 310 gal/min., surface only. Cash to sellers.

**PONDER LAND COMPANY**  
 935-5145

**3 1/4 sections all in Blk. 1, WCCR survey, Hansford Co., SW 1/4 SEC. 1 - 160.91 ac. m/1, 1 - 8" irrig well, row watered.**  
 SEC. 2 - 648 ac. m/1, 197 ac. CRP, \$20.1 ac./yr. to buyer, bal. native grass.  
 SEC. 3 - 646 ac. m/1, 1 - " irrig. well, row watered, 400 ac. cropland, bal. pasture w/ windmill.  
 SEC. 11 - 646 ac. m/1, 632.8 ac. CRP, \$20/ac./yr. to buyer.

Co. listed with Bob Pratt Real Estate Guyton, OK. 405-338-6779.

**PONDER LAND COMPANY**  
 935-5145

**HOME FOR SALE:** 2400 sq. ft. Three bedroom, three bath, large living area, inside grill, two door refrigerator, dishwasher, furniture (opt), 6 ft. picket fence-steel posts. Garden area 640 sq. ft. Self sustaining pond 13x15, 300 sq. ft. deck with hot tub, walking and bicycle track, cabanna bar, out building, 160 sq. ft. shop, 160 sq. ft. storage, 9 hole golf course with 210 ft. stream & 5 ponds. Large carport 24x24. Total under roof 300 sq. ft. Property offered at \$55,000.00. Shown by appointment 806/659-2235.  
 S41, 2tp

**GREAT HOUSE IN GREAT LOCATION FOR SALE**  
 2100 sq. ft., basement, double car garage, 4 bedrooms, 3 baths, big den, fireplace, living room, ceiling fans, central heat and air. 702 Gibner. Call 659-3838, 659-3970, or 733-5555.  
 S42, RTN

**FOR SALE:** House for sale in Morse. 3 bedroom, 2 bath, 2 living areas, basement. Call after 9 p.m. at 733-2531.  
 S33, RTN

**FOR RENT**  
 Office Space For Rent: Pittman-Shieldknight Building. Call 659-3731.  
 S07, RTN.

**FOR RENT:** Trailer park spaces for rent. Located on S.E. 7th and Loop road, Spearman. \$30 per month. Call 435-5080.  
 S23, 1tc/RTN.

**RENT TO OWN:** Brick, 3 BDR, 1 1/2 Bath, central heat and air, single garage. \$350 a month, \$250 deposit. 659-2245 or 435-8746.  
 S41, RTN

**RENT TO OWN:** 2 BDR, 1 Bath, fenced backyard, 10% down. Call 659-2245 or 435-8746.

**MOVING NORTH - MUST SELL OR LEASE!!!!**  
 4 BRM, 3B (1 full), 2 living areas, sun room, kitchen - dining area, utility room with cabinets, storm cellar, 5 cable hook-ups, 5 phone outlets, fenced backyard. LOTS OF ROOM! Priced to Sell!!!!  
 703 Steele Drive. Call 659-3461 after 6 p.m.  
 S34, 1tc RTN

**THREE ADJACENT HOUSES FOR SALE - A.** 620 S. Bernice, 2400 sq. ft., \$30,000 - currently occupied by seller. B. 620 1/2 S. Bernice, 1200 sq. ft., \$15,000 - currently rented at \$300/mo. C. 608 S. Bernice, 1500 sq. ft., \$27,500 - currently rented at \$300/mo. Properties A&B together \$39,500; All three properties as a unit, \$65,000. Assumable loans. For more information contact Ed Pearson at 806/659-3851.  
 S31, 1tc RTN

**Three Bedroom Brick,** two baths, double garage, lots of trees, 1.8 acres, horse barn, 26 by 36 shop. 205 E. 10th, Gruver, Texas. Call J.W. Whitaker at 733-2433. Also 1983 Coachman Motor-home. S30, 1tp/RTN.

**FOR SALE:** 3 bedroom, 1 3/4 bath, 2 living areas, large utility room, new heat and air, covered patio, fenced, large storage shed, lots of storage, fresh and ready to move into. Call 659-3647.  
 S39, RTN?

**HOUSE FOR SALE AT 601 S. Archer:** 2 Bedroom, 1 bath on large lot with storm cellar. 1000 sq. feet. Asking \$15,500 or best offer. CALL AFTER 5 PM AT 659-3915.  
 S41, RTN

**HOUSE FOR SALE:** 1700 sq. ft., fresh paint, 3 BDR, large den w/ fireplace, ceiling fans throughout, large fenced yard, patio, 2 car garage. Priced to Sell!!! See at 1009 Haney or call 659-2660 after 5:00 p.m.  
 S42, 8tp

**PRICED TO SELL - Low 30's** three bedroom 1 3/4 bath, all purpose room, central air, recently remodeled kitchen. Call 659-3956 - 407 W. 12th. S30, 4tp RTN

**FOR SALE BY OWNER - 3** bedroom, 1 1/2 bath, storm door and windows, fireplace, ceiling fans, 14 closets, 1 car garage, 1728 sq. ft. \$35,000 - 605 Cluck, Gruver. Call 733-2015.  
 S28, 3tp RTN

**HOUSE FOR SALE OR RENT:** 3 BDR, 1 1/2 B, large kitchen. 703 E. 2nd. Call (806) 273-3793 or (806) 273-2768.  
 S41, 2tp

**SPACIOUS HOME FOR SALE BY OWNER**  
 3 BR, 2 B, central H & A, FP, utility room, wood floors, 1800 sq. ft., attached garage, lg. patio, fenced yard, winner yard of week, sprinkler system, 2 storage buildings  
 \$40,000  
 417 S. DRESSEN  
 659-5012

**FOR SALE**

**FOR SALE:** Sofa with hide-a-bed, queen size sleeper, \$50.00. Call 659-3461.  
 S42, 1tf

**REPO PIANO - Oak Finish - Excellent Condition - Assume Low Payment Balance - Can Be Seen Locally - Ph. 800-658-1724 - Brier & hale Music. S40, 3tc**

**FOR SALE:** Commercial building at Spearman Shopping Center - Reduced Price! Call 806/359-8330.  
 S39, 6tc

**FOR SALE:** Silver Bach & Trombone with F Trigger in Book. Call 658-2250 after 7:00 p.m.  
 S42, 2tc

**BAHAMA CRUISE!** 5 Days/4 nights, Underbooked! Must Sell!!!! \$279/Couple. Limited Tickets. (407) 767-0208, ext. 6346, Mon. - Sat., 9a.m. - 10 p.m.  
 S38, 4tp

**PETS**

**FOR SALE:** Reg. Border Collie Puppies. 16 wks. - all shots & wormed - male & female, \$200.00. Training available. Call 1-405-483-5246.  
 S41, 2tp

**For Sale**  
**Vine Ripe**  
 Tomatoes, Cantaloupe, Okra, Watermelon, Yellow Squash, Cucumbers, Excellent Sweet Corn, Onions and call 1-800-266-4891 or 665-5000 to order Blue Lake, Roma Green Beans, Black Eyed Peas, and Colorado Alberta Peaches by the bushel.  
**5 days a week at the Courthouse Square in Spearman. Epperson Market • Pampa, TX**

**SERVICES**

**PITS CLEANED:** Dragline or Loader. Call LeeRoy Mitchell, 733-2384 or 733-2175.  
 S47, 1tc/RTN.

**WEIGHT WATCHERS** is now meeting every Monday in Gruver. For more information, please call 1-800-359-3131.  
 S13, 1tc/RTN.

**CALL YOUR LOCAL Used Cow Dealer** for days a week stock removal. 659-3544 or 1-800-692-4043. Serving Cattlemen for the past 20 years.  
 G51/RTN.

**J & M Service Center 24-Hour Service** 415 Collard, Spearman 79081. 659-5519 or 659-3352. Tires, flats, oil & lube, wash, brakes, batteries and minor repairs. Now selling gas.  
 S27, 1tc/RTN.

**HELP WANTED**

**MAID WANTED:** Permanent position and part-time, apply at Nursanickel Motel.  
 S42, 1tc

**TRUCK DRIVER NEEDED:** Class A CDL required. Working out of Spearman, TX, hauling grain and cattle. Pay rate 21% of gross. Call 659-2549 or 659-3711. Nights 659-2021.  
 S42, 2tc

**WANTED:** Responsible babysitter with transportation for two children ages 6 and 3. Good pay!!! Call 659-2574 and leave message.  
 S42, 2tp

**HANSFORD HOSPITAL NEEDS DIETARY AIDE:** Must be reliable and dependable able to work weekends, holidays after school (4-7). Call 659-2535 and talk to Ernestina.  
 S42, 1tc

**HELP WANTED**

**SOCIAL SERVICES DIRECTOR NEEDED:** Hansford County Hospital District is a progressive, publicly-owned small rural medical center, including 28-bed hospital and 84-bed long term care facility with skilled unit, seeking social services director with BSW. Full benefits, including health insurance and pension plan. Long term care experience helpful. Salary well above average, negotiable. For more information or to apply, contact: Linda Sanders, Personnel Director, Hansford Manor, 707 S. Roland, Spearman, TX 79081, 806/659-2535.  
 S42, 2tc

**GARAGE SALE**

**Moving Sale**  
**Lots of Everything**  
 Furniture, house goods, plants, something for every room - boy/girl teenage clothes, ladies, XLT Tailman, yard and garden.  
 16 South James  
 Sat., Aug. 13, 9 a.m.  
 659-3647

**JOB OPPORTUNITIES**

**OWN YOUR OWN APPAREL OR SHOE STORE!** Choose: Jeans/sportswear, bridal, lingerie, maternity, or accessories store. Over 2000 name brands. \$24,900 to \$36,900: inventory, training, fixtures, grand opening, ETC. Can open 15 days. Mr. Loughlin (612) 888-6555.  
 S42, 2tp

**AUTOMOBILES**

**FOR SALE:** 1993 Plymouth Grand Voyager, 3L automatic, 14,000 miles, power locks, air, AM/FM cassette, rear window defogger, cruise, tilt wheel, 7 passenger. Very clean and well maintained. Call 659-3830 after 6:00 p.m. or leave message.  
 S42, 1tp

**FOR SALE:** 1977 Buick LeSabre, 2DR. Can be seen at Roger's Automotive in Waka. Call 659-5902.

**FOR SALE:** 1884 Ford Tempo \$1800.00 will negotiate. 70,000 original miles. Call 659-2308 after 5:00 p.m.  
 S42, 2tp

**PUBLIC NOTICE**

**TEXAS EDUCATION AGENCY**  
 Division of Career and Technology Education  
 (Public Notification of Nondiscrimination in Career and Technology Education Programs)

Gruver I.S.D. offers career and technology education programs in vocational agriculture, and vocational homemaking. Admission to these programs is based on interest, aptitude, age appropriateness, and class space. It is the policy of Gruver I.S.D. not to discriminate on the basis of race, color, national origin, sex, or handicap in its vocational programs, services, or activities as required by Title VI of the Civil Rights Act of 1964, as amended; Title IX of the Education Amendments of 1972; and Section 504 of the Rehabilitation Act 1973, as amended. For information about rights or grievance procedures, contact the Title IX Coordinator, Barry Haensch, at 601 Garrett, 806/733-2001, and/or the Section 504 coordinator, Lloyd Looper, at 601 Garrett, 806/733-2477.  
 S42, 1tc

**Precision Sweep**  
**Airseeding**  
**Quick, Economical,**  
**Minimum Tillage**  
**-200 Acres (\$6.25/A)**  
**+200 Acres (\$5.75/A)**  
**Bob Williams**  
**435-4835**

**PUBLIC NOTICE**

**LEGAL NOTICE**  
 Hansford County will receive sealed bids until 4:00 p.m., Friday, August 19, 1994 on one used tractor for Precinct #1. Bids will be opened August 22, 1994 at regular meeting of the Commissioner's Court. Specifications are available at the County Judge's office or the County Auditor's office in Hansford County Courthouse. The Court reserves the right to accept or reject any or all bids.  
 Jim D. Brown  
 Hansford County Judge  
 S41, 3tc

**PUBLIC NOTICE**

**LEGAL NOTICE**  
 Hansford County will receive sealed bids until 4:00 p.m., Friday, August 19, 1994 on one 1995 Interceptor Patrol car for the Sheriff's department with and without trade-in. Bids will be opened Monday, August 22, 1994 at the regular meeting of the Commissioners' Court. Specifications are available at the offices of the County Judge and County Auditor in the Hansford County Courthouse. The Court reserves the right to accept or reject any or all bids.  
 Jim D. Brown  
 Hansford County Judge  
 S41, 3tc

**NEW TRAMPOLINES**

**Mats & springs**  
 Resew trampoline mats.  
 Make new boat covers.  
 Call (806)659-2109  
**Harry Stumpf**  
 301 W. 12th  
 Spearman, Texas

**CLASSIFIED RATE**  
 \$4.00 first insertion  
 \$3.00 each additional insertion  
 (30 words or less)  
 13¢ each word over 30  
 Legal Notices: 15¢ per word

**JAN'S ETC.**  
**NEW & USED & ANTIQUES**  
**TOO**  
 Everything for home and family. Plains Shopping Center in Spearman  
**Open Monday - Saturday**  
 10 a.m. til 6 p.m.

**Smith's Propane & Motorhome Rentals**  
 Perryton, Tx.  
 For all your propane needs. Serving Texas & Oklahoma. Also rent a motor home for weekends or by the week for spring break or summer vacation. Call now for reservations.  
 1-800-536-5844 - 24 hrs.  
 S16-RTN

**OSGOOD MONUMENT CO.**  
 Amarillo, Texas  
 Dealers of Rock of Ages Granite, as well as all colored granites, marble and bronze memorials.

**Represented by**  
**Boxwell Bros.**  
**Funeral Home**  
 519 S. Evans  
 659-3802

**TexSCAN**  
 Statewide Classified Ad Network. Advertise in 315 Texas newspapers for \$250. Reach more than 3 MILLION Texans. Call this newspaper for details.

**ENJOY BRANSON MUSIC** shows and Silver D or City crafts festival. Free reservation service for beautiful Table Rock Lake resorts. Indian Point Chamber of Commerce, 1-800-888-3313.  
**BIG 3-DAY HORSE SALE,** August 19, 20, 21, expecting over 1,000 head, 750 already consigned. Clovis Livestock Auction, Clovis, N.M. 505-762-4422.  
**STEEL BUILDINGS, SUMMER sale.** Save 1,000's, engineer certified: 30 x 40 x 10, \$4,364; 30 x 50 x 12, \$6,927; 40 x 60 x 14, \$8,135; 50 x 75 x 14, \$10,878; 60 x 80 x 14, \$13,545; 60x100x16, \$16,721; factory direct, free brochures, 1-800-327-0790.  
**FRIENDLY TOYS AND gifts** has openings for demonstrators. No cash investment. Part time hours with full time pay. Two catalogs, over 700 items. Call 1-800-488-4875.  
**EXPERIENCED EQUIPMENT OPERATORS,** laborers and truck drivers for utility construction. Qualified individuals wanting advancement opportunities. Drug testing required. Relocate to Southwest U.S.A. area. O.J.T. call 913-829-0744, E.O.E.  
**MELTON TRUCK LINES,** hiring experienced drivers for expanded flatbed fleet. Great pay, benefits and equipment (T-600 Kenworths). Training available, minimum age 23, Contact Perry Elliott, 1-800-599-9913.  
**HAROLD IVES TRUCKING** hiring drivers. Free driver training. Students welcome. Experience pay up to 28¢ per mile. 1995 conventional KW's here. Excellent benefits: 1-800-842-0853.  
**ECK MILLER EXPANDING** need flatbed company drivers. All miles paid (new scale). Life/health, rider/bonus program. 23 year & 1 year experience. 1-800-395-3510. Owner operators also welcomed! Please inquire about new... opportunities.  
**DRIVERS: FLATBED 48 State OTR.** Assigned new conventional. Competitive pay, benefits. \$1000 sign on bonus, rider program, flexible time off. Call Roadrunner Trucking 1-800-876-7784.  
**DRIVER-NOW'S THE TIME** to join the rising star! Adding 1,200 new tractors & 3,500 new trailers. \$750 experienced sign-on bonus. Call anytime - Burlington Motor Carriers: 1-

**800-JEN-BMC, BOE ATTENTION DRIVER TEAMS:** \$15,000 in bonus. Paid monthly, quarterly & yearly, plus top mileage pay. 401(K) plan, \$500 sign-on bonus. Other paid benefits - Vacation - Health & Life - Dead head - Motel/layover - Loading & unloading. Covenant Transport 1-800-441-4394/915-852-3357, solos and students welcome.  
**BREAST IMPLANTS, FREE!** registration forms and free consultation. Call 1-800-833-9121. Women and post-implant children. Carl Waldman, board certified personal injury trial lawyer, Texas since 1978.  
**SALESMAN/WOMEN - FREE** leads, training. Entry level. 1st yr. high earning commissions potential enrolling rural Texans in our unique financial services programs. Call: 1-800-633-6508.  
**CZECH BOY INTERESTED** in sports, computers. Other Scandinavian, European, South American, Asian high school exchange students arriving August. Become a host family/AISE. Call AISE 817-467-1417 or 1-800-SIBLING.  
**IF SHAMPOOS & collars** won't solve your flea-tick problem. Happy Jack Kennel Dip will. The most effective tick & flea killer available. At TSC stores... and other feed stores.  
**BECOME A MEDICAL Transcriptionist.** Great opportunity - typing for doctors and hospitals. Home study. Free career literature. P.C.D.I., Atlanta, Georgia. 1-800-362-7070, Dept. YJ722.  
**L E A R N AUCTIONEERING I.Q.** School of Auctioneering. Train elite auctioneers, P.O. Box 579, Quitman, Texas 75783, 903-878-2225. Certified by Texas Education Agency. Next term Sep. 26, 1994.  
**S A N D I E G O BEACHFRONT** condominiums, luxurious one and two bedrooms. Great location to attractions, excellent restaurants and shopping. Daily, weekly, monthly rates. Capri Beach Accommodations, 1-800-542-2774.  
**HOME-SCHOOL! K-12!** Beautiful academic kits! Self-paced! Daily plans! Workbooks, lessons, tests, answers. Phone advisors! Legal transcripts! Meets state education requirements! Sykes Academy, 1-800-767-1711.  
**GOT A CAMPGROUND** membership or timeshare? We'll take it. America's most successful resort resale clearinghouse. Call Resort Sales Information toll free hotline 1-800-423-5967.  
**YOU CAN OWN your own home!** No downpayment on Miles materials, attractive construction financing. Call Miles Homes today, 1-800-343-2884, ext. 1.  
**754 ACRES, \$295/ACRE,** Rocksprings/Del Rio. Borders 6,000 acre ranch. Fenced two sides. Rugged hunting land. Deer, turkey, exotics, hogs, 1,100/down, \$241/month (11% - 15yrs). 210-257-5572.  
**MONEY MAKING OPPORTUNITY** catalog, hundreds of books, tapes and reports. Money making mail order ideas, self-employment opportunities. Free details, 1-800-770-8045. 24 hour recording.  
**SUNQUEST WOLFFTANNING** bids new commercial-home units from \$199. Lamps-lights-accessories. Monthly payments low as \$18. Call today, free new color catalog, 1-800-462-9197.  
**FREEDBET CONSOLIDATION.** Too many debts? Overdue bills? Cut payments 30% to 50%, reduce interest/late fees. \$4,000 - \$100,000. NCCS (non-profit) licensed/bonded, 1-800-955-0412 (M-Sat).  
**CASH FOR REAL ESTATE** notes up to 95% of your balance! No points or commissions. Cash in 5 days. Free quote. 1-800-879-2324. Open Saturdays too.  
**ADOPTION IS A loving choice.** Caring couple-love health professionals wish to adopt newborn. We understand and can help. Call 1-800-826-7924. It's illegal to be paid for anything beyond medical/legal expenses.  
**ADOPTION: ABUNDANT LOVE,** laughter, secure life await your newborn. Peace of mind for you. Loving father, stay at home mom. Allowed expenses. Wendy and John 1-800-727-9662. It's illegal to be paid for anything beyond medical/legal expenses.  
**LOOKING FOR HAPPY** family to adopt your baby to be? We are Mama "Nurse/Therapist" a "doctor", 2 year old boy, in cozy forest home with laughter, warmth, toys, books, love, joy, dog, cats. Collect 408-688-3025. It's illegal to be paid for anything beyond medical/legal expenses.

**Are You A Victim of Physical Abuse?**  
 Call Toll Free 1-800-753-5308  
 We are in Spearman on the 1st, 3rd, & 5th Wednesdays of each month at the First Presbyterian Church, 1021 Cotter. On the 2nd & 4th Wednesdays we are at the First Christian Church at 510 King in Gruver. We can come to Spearman & Gruver any time upon request. We operate a safe place for victims & their children to stay in times of crisis.  
**Panhandle Crisis Center**  
 Serving Hansford, Lipscomb & Ochiltree Counties  
 317 S. Main Memorials Accepted Perryton, Tx.

# Obituaries

**Margaret Lee Fortner**  
GRUVER - Margaret Lee Fortner, 54, died Tuesday, August 2, 1994.

Services were at 2 p.m. Thursday in the Church of Christ in Gruver with Bob Setliff, minister, officiating. Burial was in Gruver Cemetery by Boxwell Brothers Funeral Home of Spearman.

Mrs. Fortner was born in Las Vegas, N.M. She was a 1958 graduate of Gruver High School. She moved to Amarillo five years ago from Hereford. She married Rod Washburn in 1957. She married

Clifford Fortner in 1980. She was a cowhand and a truck driver. A son, Russell Washburn, preceded her in death.

Survivors include a daughter, Cherral White of Amarillo; two sons, Roy Don Washburn of Amarillo and Randell Clark Washburn of Borger; her mother, Violet Lee of Gruver; a sister, Gail McMillan of Abilene; two brothers, Kenneth Lee of Irving and Dean Lee of Gruver; and six grandchildren.

The family suggests memorials to Harrington Cancer Center.

## TEXAS TOPICS

### Texas Expert Gives Health Hints

(NAPS)—Dr. Kevin Raef, president of the Texas Chiropractic Association, reports that the personal computer is becoming more and more a pain in the neck. Doctors of chiropractic say people who work with computers often complain about stiff muscles, as well as neck and back pain.

In addition, children who sit virtually motionless for hours playing computer or video games are just as susceptible to these problems. Muscles are not capable of holding the body erect for long periods of time. Sitting erect places strain on the spine, eventually causing neck and back pain.

"Back pain is the second most common physical ailment after the common cold," says Dr. Raef. "In fact, 80 percent of all Americans will suffer from some type of back pain in their life. More and more resulting from the use of personal computers."

Dr. Raef offers some hints to help avoid this problem:

- \* Position the monitor at eye level.
- \* Use a computer desk that places the keyboard 25 inches high.
- \* Sit in a comfortable chair that allows the knees to bend at a level higher than the hips. This promotes better posture.
- \* Do not cross or sit on your legs or feet.
- \* Take frequent stretching breaks to minimize muscle stiffness.

In addition, Dr. Raef recom-



mends three neck/back stretches for computer users.

1) Turn your head to the right as far as you can without causing discomfort. Then nod your head up and down. Repeat these steps on the left side. Repeat eight to ten times.

2) Face straight ahead and lift your shoulders in a shrugging motion as far as you can. Hold to the count of three. Repeat ten times.

3) Place your hands on your shoulders with your elbows out to the side. Raise your elbows as high as possible then move them forward, down and back in a circular motion. Repeat five to ten times.

Take care of your back, Dr. Raef says, and it will back you up for years to come.

For additional information concerning chiropractic care call, (214) 994-1515.

## Let us replenish the seed of faith through... REGULAR CHURCH ATTENDANCE, DAILY BIBLE READING & PRAYER



**HI-PLAINS  
AUTO SUPPLY, INC.**  
Mobile Oil for Irrigation  
& Industrial Purposes  
118 Main • Spearman  
659-2506 • (800)657-8742

**Palo Duro  
Supper Club**  
22 S. Archer,  
659-2232

**C.O.'S SUPPLY CO.**  
Plumbing & Tire  
Sales & Service  
421 W. Kenneth • Spearman  
659-3781 or 659-3555

**Bartlett's Ace  
Hardware**  
105 W. Broadway  
733-2404

**GILLASPIE**  
AUTO & TRUCK CENTER, INC.  
CHEVROLET • OLDS • PONTIAC • BUICK  
CHRYSLER • PLYMOUTH • DODGE  
1105 W. South • P.O. Box 430 • (800)659-2541  
SPEARMAN, TEXAS 79081

**THE HANSFORD COUNTY  
REPORTER-STATESMAN**  
Serving The Communities Of  
Spearman, Gruver & Morse  
213 Main • 659-3434  
1-800-395-9482

**REINKE  
IRRIGATION  
SYSTEMS** Paschel  
Irrigation  
(806)659-5228 • 1-800-659-6580  
Corner Airport Rd. & Hwy 15 West  
Spearman, Tx.

**Gruver Cablevision**  
Quality Family Entertainment  
with  
"the Disney Channel"  
308 Main • 733-5295

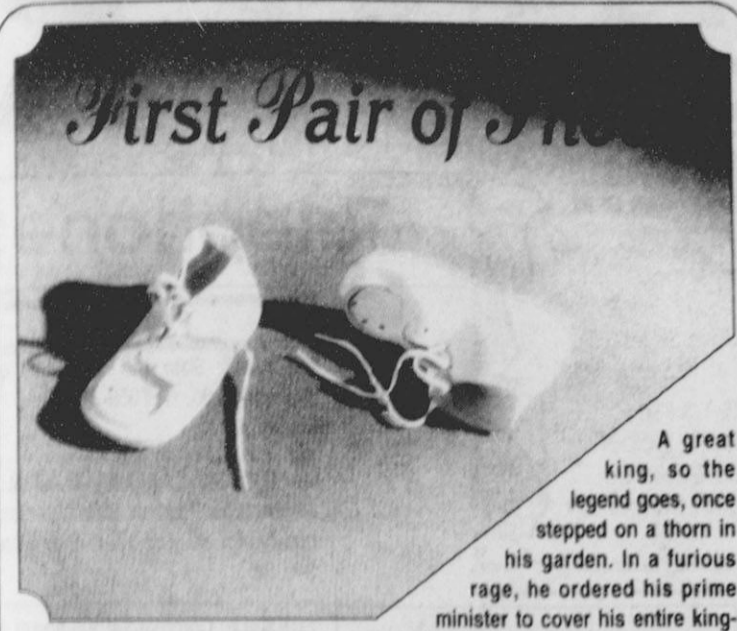
**Morse Implement  
Company**  
"Join us in church  
this week"

**Boxwell Bros.  
Funeral Home**

**THE HANSFORD COUNTY  
REPORTER-STATESMAN**  
Serving The Communities Of  
Spearman, Gruver & Morse  
213 Main • 659-3434  
1-800-395-9482

**CORONADO  
HOSPITAL**  
Pampa, Texas  
(806)665-3721

Compliments of  
**G&G  
FOODLINER**  
516 Main • Gruver  
733-2471



**First Pair of Shoes**

A great king, so the legend goes, once stepped on a thorn in his garden. In a furious rage, he ordered his prime minister to cover his entire kingdom with leather. "Your majesty," replied the wise prime minister, "let me cover your feet with leather, and wherever you go, you will be protected." And so the first pair of shoes was made!

A child whose first pair of shoes appealed to our photographer has a long way to travel. His or her journey through life will not be free of thorns, and more than shoes will be needed to make that journey!

The child will need to develop that spiritual fiber which will do for his or her character what the first pair of shoes did for the king's feet. We can't carpet the whole world - but we can acquire the faith and courage which will enable us to climb life's most rugged trails.

Our churches and synagogues bring such qualities to the life of mankind. They point the way to happy, wholesome living - for the grown-up with the burdens of life on his shoulders - and for the little tot in his first pair of shoes.

Scriptures Selected by The American Bible Society  
Copyright 1994, Keister-Williams Newspaper Services, P. O. Box 8005, Charlottesville, VA 22906

### In Spearman...

**Apostolic Faith Church**  
822 S. Drensen • 659-2870  
Sunday School: 10 a.m.  
Worship: 11 a.m.  
Evening Worship: 6 p.m. Sun.  
Wed. Prayer Meeting: 7:30 p.m.  
Pastor James Brown

**First Assembly of God**  
401 N. Bernice • 659-2295  
Sunday School: 9:45 a.m.  
Worship: 11 a.m.  
Evening Worship: 7 p.m.  
Wednesday Worship: 7:30 p.m.  
Youth: 7:30 Wednesday

**First Christian Church  
(Disciples of Christ)**  
29 S. Bernice • 659-2036  
Sunday School: 9:45 a.m.  
Worship: 10:50 a.m.  
Women's Bible Study: 2 p.m. Wed.  
Youth: Wed. 6 p.m. & Sun. 5 p.m.  
Pastor LaVern Draper

**First Baptist Church**  
123 N. Bernice • 659-5557  
Sunday School: 9:45 a.m.  
Worship: 11 a.m.  
Evening Worship: 7 p.m.  
Jr. High Youth: 6 p.m. Wed.  
High School Youth: 7 p.m. Wed.  
Youth Choir: 6 p.m. Sun.  
Pastor Kyle Henderson

**Church of Christ**  
121 S. Haney • 659-3244  
Sunday Bible Class: 9:45 a.m.  
Worship: 10:30 a.m.  
Evening Worship: 6 p.m.  
Bible Study Wed. 7:30 p.m.  
KRDF Radio Program  
Living With Christ 7:50 a.m. M-F  
Minister Arnis Pape

**Fellowship Baptist**  
1102 S. Archer • 659-2783  
Sunday School: 10 a.m.  
Worship: 11 a.m.  
Evening Worship: 6 p.m. Sunday  
Youth & Adult Serv.: 7:30 Wed.  
Pastor Rick Fincher

**Primera Mission Bautista**  
502 E. 7th • 659-3991  
Sunday School: 9:45 a.m.  
Worship: 11 a.m.  
Pastor Guadalupe Carranza, Jr.

**Trinity Community Church**  
717 W. 7th Ave. • 659-2671  
Celebration of Praise 10:15  
Worship Service and  
Children's Church 10:30  
Sunday Evening 6:30 p.m.  
Wednesday evening: 7 p.m.  
Pastor Dan Carter

**Faith Lutheran Church  
(ELCA)**  
1101 Bernice • 659-2252  
(Worships with First Presbyterian Church)

**First Presbyterian Church  
(Worships with Faith Lutheran Church)**  
1021 Cotter • 659-2033  
Sunday School: 9:45 a.m. at Lutheran Church  
Worship: 11 a.m. (alternates monthly between addresses above)  
Pastor Beverly Cook

**First United Methodist**  
407 S. Haney • 659-5503  
Sunday School: 9:45 a.m.  
Worship: 11 a.m.  
Jr. High Youth: 5 p.m. Sun.  
High School: 6 p.m. Sun.  
Pastor Jeff Lust

**Union Church**  
31 S. Endicott • 659-2644  
Sunday School: 9:45 a.m.  
Worship: 10:45 a.m.  
Evening Worship: 6:30 p.m.  
Bible Study: 7:00 p.m. Wed.  
Pastor Billy Stanford

**Sacred Heart Catholic Church**  
901 Roland • 659-2166  
Sat. Night Mass: 7 p.m.  
Sunday Mass: 9:00 a.m. - English  
11:30 a.m. - Spanish  
Rev. Fernand Couture

**This feature is  
made possible  
through the  
Sponsorship of  
these Civic Minded  
Businesses**

"WE SUPPORT OUR LOCAL CHURCHES"  
**CAPROCK #1 & #2**  
Mike Heard, Gen. Mgr.  
(806)733-5043 or 733-5025  
**QUALITY BRAND**  
"Custom Cattle Feeding"

### In Gruver...

**First Baptist Church**  
402 E. Broadway • 733-2411  
Sunday School: 9:45 a.m.  
Worship: 10:50 a.m.  
Disciple Training: 6 p.m. Sunday  
Prayer Meeting: 7:30 p.m. Wednesday  
Pastor Larry Miller

**Church of Christ**  
209 King • 733-2760  
Sunday School: 9:30 a.m.  
Worship: 10:20 a.m.  
Evening Worship: 6 p.m.  
Wed. Evening Worship: 7:30 p.m.  
Minister Bob Setliff

**First Christian Church**  
510 King • 733-2960  
Sunday School: 9:45 a.m.  
Worship: 11 a.m.  
Wed. Bible Study: 7:30 p.m.  
Youth: 6:30 Wednesday  
Pastor Gary Gumfory

**Oslo Lutheran Church (ECLA)**  
Nest of Gruver on Hwy 15 & N. FM 1162  
339-7646

Sunday School: 9:45 a.m.  
Worship: 11 a.m.  
Morning Prayer: 9 a.m. Wed.  
Pioneer Clubs (Grades 1-6):  
4-5:30 p.m. Wednesday  
Pastor John R. Chandler

**Community Bible Church  
(Interdenominational)**  
Hwy. 15 • 733-2443  
Sunday School: 10 a.m.  
Worship: 11 a.m.  
Wed. Prayer Meeting: 7 p.m.

**First United Methodist**  
Broadway & Garrett • 733-2651  
Sunday School: 9:45 a.m.  
Worship: 8:30 a.m. & 10:50 a.m.  
Evening Worship: 7 p.m.  
Pastor Lewis Holland

### In Morse...

**Morse Baptist Church**  
Pastor Mike Martin  
733-2757

**Henton & Co., P.C.**  
Certified Public  
Accountants  
221 Sanders • Spearman • 659-2518

**BERRY CLEANERS**  
DAN DESIMONE - OWNER  
Phone 659-3122 • P.O. Box 1017  
207 Main St. • Spearman, Tx. 79081

**GRUVER FORD**  
Ford FORD  
531 Main • Gruver • 733-2431

**Interstate  
Savings  
& Loan**  
322 Main • Spearman • 659-2559

**Hagerman  
Services**  
Backhoe • Dozer • Welding  
North Hwy. 15 • Spearman  
659-5131

**Gordon Drugs**  
Dependable Prescription  
Service  
314 Main • Spearman  
659-2141  
Jim Evans

Compliments of...  
**AGCO**  
of Spearman, Inc.  
"See you in Church"  
659-3751

**BE A GOOD  
NEIGHBOR** Volunteer.  
American Heart Association

### Letters to the Editor

The Reporter-Statesman welcomes letters to the editor on subjects of interest to its readers. Short letters are most likely to be chosen for publication, but the use of any material is at the discretion of the editor.

Editing may be necessary for space and clarity or to avoid obscenity, libel or invasion of privacy, but ideas will not be altered.

Upon request, editors will use initials only, but only rarely and for compelling reasons. A signed letter carries more weight with readers.

Letters do not necessarily reflect the editorial policies or beliefs of this newspaper.

All letters must bear the handwritten signature of the writer and include address and phone number(s) for verification purposes (address and phone number will not be printed).

**Don't Miss  
Another Issue!**

**SUBSCRIBE  
NOW**

**\$19.95 in county  
\$24.95 out of county**

Compliments of  
**REPORTER-STATESMAN**  
Spearman Gruver  
213 Main • P.O. Box 456 • Spearman, Tx. 79081  
(806)659-3434 • 1-800-395-9482