

The Hansford County Reporter Statesman

PROUDLY SERVING HANSFORD COUNTY SINCE 1907

reporter@spearmanreporter.com

VOLUME 102 • ISSUE 3

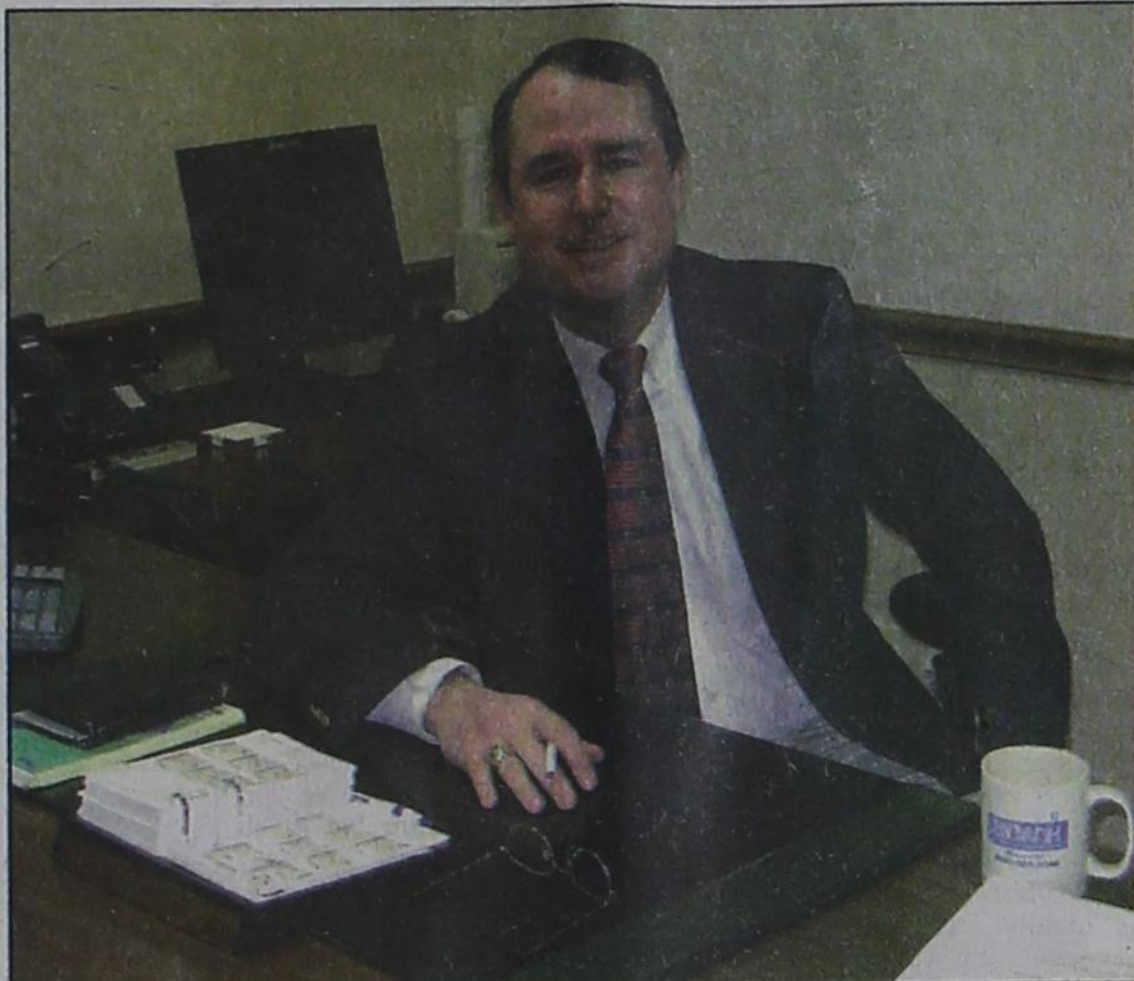
WWW.SPEARMANREPORTER.COM

THURSDAY, JANUARY 15, 2009

SCH2
COMP
HANSFORD COUNTY LIBRARY
0122 MAIN ST
SPEARMAN TX 79081-2064



Kegan Garnett of Spearman was named to the 2008 Class 2A-3A Golden Spread Super Team as Punter on January 1, 2009. The 5-11, 170-lb. senior was also named All-District 1-2A first-teamer at running back and punter.



Bret Burgin, Vice President and Advisory Director at First National Bank

Burgin Joins First National Bank

Bret Burgin will be joining First National Bank as a Vice President and Advisory Director on Monday January 12.

Bret has been employed by First State Bank Spearman for 18 years—primarily as an agriculture loan officer. He graduated from Oktaha, Oklahoma, high school and from Texas A & M University. Bret was a member of A&M's livestock judging team.

Bret has been involved with the 4-H judging teams in Hansford County as their coach for 18 years. The teams have had great success having qualified for the state contest 13 times, qualifying for the national contest 4 times and winning on 3 of those trips to nationals. Ten of the students have gone on to attend college on livestock judging scholarships.

He is a member and past president of the Spearman Lions Club. Bret has served as a volunteer fireman in Spearman for 17 years and is currently the assistant fire chief. He has been chairman of the First United Methodist Church's finance committee for 9 years and is currently a member of that committee.

Bret is married to Paige Pittman and they have two children—Jaci age eleven and Carter age eight. Bret's primary duties will be as a loan officer for First National.

Spearman Chamber of Commerce Banquet

The Spearman Chamber of Commerce Banquet will be held on Thursday, January 22, 2009 at 6 p.m. Tickets are \$20 for adults and \$8 for children 12 and under.

The theme for the event is "College Night." Krista Kirkland Gerlich, the West Texas A&M Women's Basketball Coach, will be the guest speaker. Krista is a former Lynxette and a member of the Texas Tech University championship team.

Corporate tables are available for \$150 (includes 8 tickets). Advance corporate table purchasers will be able to decorate their own table with schools colors of their choice.

The dress code will be casual and spirited with favorite school attire.

Everyone is invited to come together in recognition of all the success in the past year and all the great things to come in 2009.

Advance tickets are available at the Spearman Chamber of Commerce, 806-659-5555.

Weather Forecast

THURSDAY NIGHT - Partly cloudy. Lows around 16. South winds 10 to 15 mph.

FRIDAY - Partly cloudy. Warmer. Highs in the mid 50s. Southwest winds 10 to 15 mph.

FRIDAY NIGHT - Partly cloudy. Lows in the mid 20s.

SATURDAY - Partly cloudy. Highs in the upper 50s.

SATURDAY NIGHT - Partly cloudy. Lows in the mid 20s.

SUNDAY - Partly cloudy. Highs around 60.

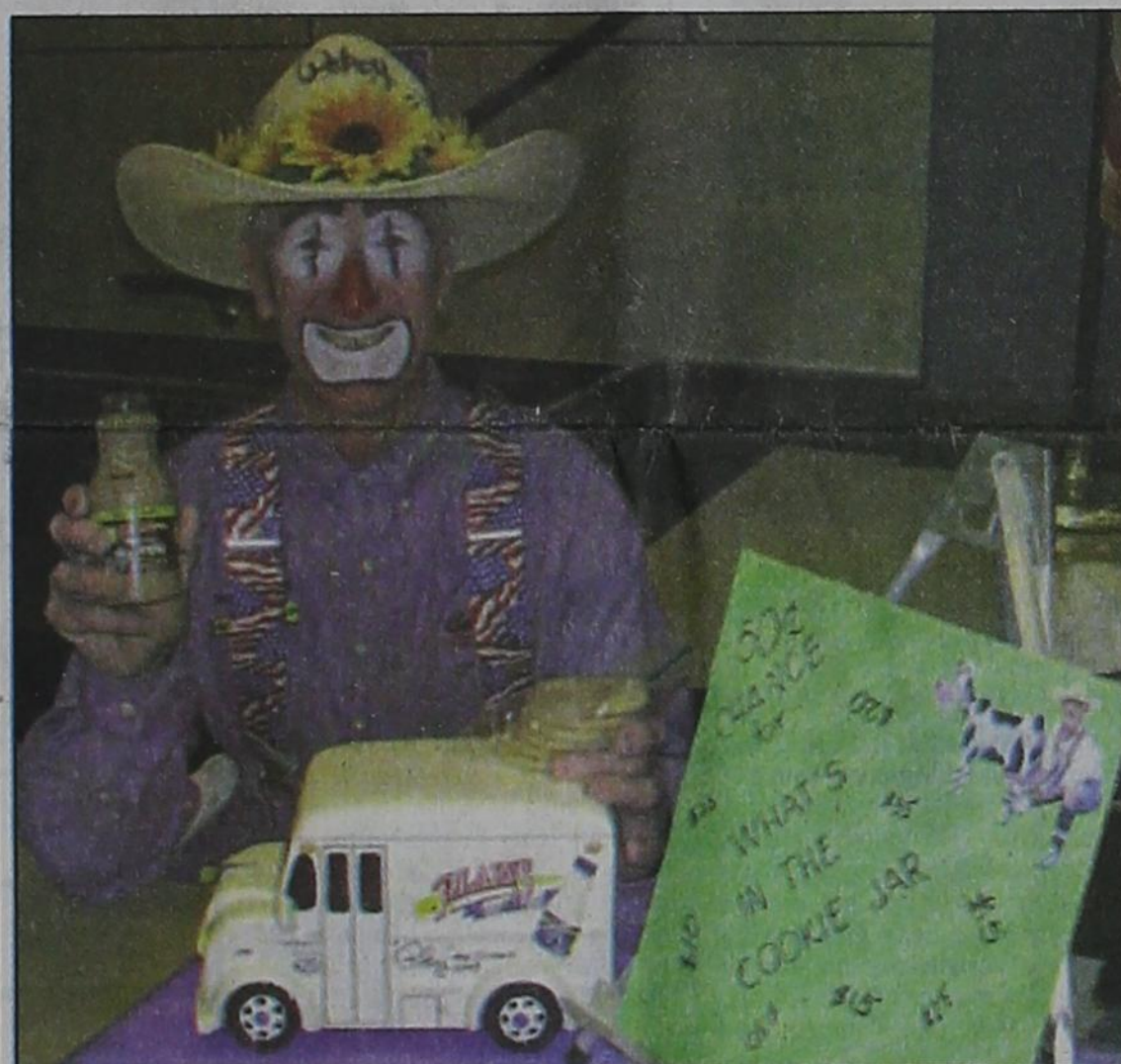
SUNDAY NIGHT - Partly cloudy. Lows in the mid 20s.

MARTIN LUTHER KING JR DAY - Partly cloudy. Highs in the lower 60s.

MONDAY NIGHT - Partly cloudy. Lows in the mid 20s.

TUESDAY - Mostly sunny. Highs around 60.

Hansford Hospice Hosts Pancake Supper



Pokey the Clown attended the Hospice Pancake Supper and brought milk and orange juice that was donated by Plains Dairy.

The Hansford Hospice Pancake Supper held Friday night, January 9th, was very successful in raising funds for our Hospice program, thanks to the efforts of so many people in our community. The Hospice Volunteers would like to thank Harry Stumpf and the Lion's Club members who were a tremendous help in cooking the pancakes and helped in many ways to make the supper a success. We would like to thank the Spearman School District for providing us a wonderful facility for the Pancake Supper and thanks goes to school cafeteria employee, Tina Adams, who assisted us in the kitchen. We would like to thank the Spearman National Honor Society who helped us serve the pancakes and helped at the ticket desk. We would like to thank Mary Mayfield who provided us music of her late husband, Smokey Mayfield. Pokey the Clown through the efforts of Judy Tindell, volunteered to come to our pancake supper and he arranged for Plains Dairy to provide the milk and orange juice and Judy also was a great

help in preparing the pancakes. Also thanks goes to the Hansford Observer, KXDJ, Spearman Reporter, and Cindy Blackman for providing us publicity for this event. Also Cindy Blackman assisted in many other ways in helping the Volunteers plan the supper. Most of all we want to thank everyone who came out and supported our Hospice program by attending the Pancake Supper.

When Hansford Hospice began almost 18 years ago, we were told a community this small could not support a Hospice program. Due to the overwhelming support of this community through memorials, donations, and your participation in our fund raising events over the years, Hansford Hospice has been able to serve the needs of many patients in Hansford County.

The Hansford Hospice Volunteers were very appreciative of the efforts of the Lions' Club who came and helped!



Edwin Percy pays Hospice Volunteer, Celia Krug, for his pancakes and sausage at the Hospice Pancake Supper.



Lions' Club members, Harry Stumpf, and Rev. Jim Reeves and their assistant, preparing pancake batter for the Hospice Pancake Supper.

NWT Conference of UMC Offers Support to Lockney

The Northwest Texas Conference of The United Methodist Church offers its prayers and support to the people of Lockney.

The Lockney School District suffered a great loss when Lockney High School was severely damaged in a suspicious fire Sunday night. In addition to that loss, the Junior High School suffered significant smoke and water damage and will be forced to close its doors for several weeks while clean-up efforts take place.

In response to this tragedy, the First Baptist Church and First United Methodist Church in Lockney will open their doors to the staff and students of those schools. The High School will be meeting at First Baptist Church and the Junior High School will be meeting at First United Methodist Church in Lockney.

An immediate call for school supplies is being sent out throughout the NWTX Conference. We ask that, as a Conference and Community, we step up to the task.

Bring or send NEW items to:

- St. Stephen United Methodist Church, 4600 S. Western in Amarillo (806)355-7271
- St. John's United Methodist Church, 1501 University Avenue, Lubbock, TX (806-762-0123)
- FUMC Plainview, 1001 W 7th, Plainview, TX 79072 (806)293-3658.

Donations will be collected and delivered to the Lockney School District.

Should you desire to send financial assistance, mail or deliver your donation to: Treasurer, NWTX Conference Office, 1415 Avenue M, Lubbock, TX 79401. The monies will be collected and utilized for recovery assistance. Make the following notation on your check: Lockney Fire Fund.

We are encouraging people in the Big Spring and Abilene District to make monetary donations instead of supplies.

It also should be remembered that more than a building was lost in this fire. A community is hurting. Memories have been lost forever and recovery from the pain will take some time. Please remember the emotional, physical and spiritual needs of this community in your prayers, your giving and your service.

COME TO THE GAME

Spearman Lynx/Lynxettes

- 1/16 JVG (6), JVB (6), VG (7:30), VB (7:30) at River Road*
- 1/19 7th B (5), 8th B (6), 9th B (7:30) at Bushland
- 1/19 7th B (5), 8th B (6), 9th B (7:30) vs Bushland
- 1/20 JVB (5), JVG (5), VG (6), VB (7:30) vs Fritch*
- 1/22 & 24 7th B, 7th G, 8th B, 8th G @ Spearman JH Tournament
- 1/23 JVB (5), JVG (5), VG (6), VB (7:30) at Panhandle*
- 1/26 7th G (5), 8th G (6), 9th G (7:30) vs River Road
- 1/26 7th B (5), 8th B (6), 9th B (7:30) at River Road
- 1/27 JVB (5), JVG (5), VG (6), VB (7:30) at Highland Park*
- 1/30 JVB (5), JVG (5), VG (6), VB (7:30) at Bushland*

Gruver Greyhounds/Lady Hounds

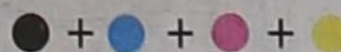
- 1/19 7th B (5), 8th B (6), JV B Red at Stratford
- 1/19 7th G (5), 8th G (6), JV G Red vs Stratford*
- 1/20 JVG (4), JVB (5:15), VG (6:30), VB (8) vs Boys Ranch*
- 1/22 & 24 7th B, 7th G, 8th B, 8th G @ Spearman JH Tournament
- 1/23 JVG (5), JVB (5), VG (6:30), VB (8) at West Texas*
- 1/26 7th B (5), 8th B (6), JV B Red vs Sunray
- 1/26 7th G (5), 8th G (6), JV G Red at Sunray*
- 1/27 JVG (5), JVB (5), VG (6:30), VB (8) at Stratford*
- 1/30 JVG (4), JVB (5:15), VG (6:30), VB (8) at vs Sunray*

*District Game



(Photos by Tami Hargrove, http://spearmansports.smugmug.com)

On January 6, 2009, the Spearman Lynx defeated the White Deer Bucks 68-25. The Lynxettes defeated the White Deer Does 65-25. On January 9, 2009, the Spearman Lynx defeated the Stratford Elk 68-44. The Lynxettes defeated the Highland Park Lady Hornets 58-32 in their district opener. For more basketball news, see page 6.



Lullabies, Legends & Lies by Parson Smith, the Prime Minister of Laughter

Much thanks to Jeff Knighton for sending this shocking news our way... Texas Judge gives 7 year old right to decide custody Dallas, TX, January 6, 2009

requiring that family unity be maintained to the highest degree possible. The boy surprised the court when he proclaimed that his aunt beat him more than his parents and he adamantly refused to live with her.

After two recesses to check legal references and confer with the child welfare officials, the judge granted temporary custody to the Dallas Cowboys, whom the boy firmly believes are not capable of beating anyone.

State Capital HIGHLIGHTS

AUSTIN - State Rep. Joe Straus, R-San Antonio, pulled together 88 vote pledges in the first week of 2009 - more than enough to earn his election as speaker of the Texas House.

STRAUS PREVAILS IN RACE TO BECOME NEXT SPEAKER

Incumbent Speaker Tom Craddick, R-Midland, dropped his bid for a fourth term when it became clear Straus would prevail. Shortly thereafter, Rep. John Smither, R-Amarillo had gained the support of many long-term Craddick allies and other House members, but he ended his quest, seeing that the projected vote count for Straus would be insurmountable.

general defended the president-elect's right to say the words "so help me God" while reciting the presidential oath of office. Abbott's office said the brief was filed in an effort to defeat a legal challenge filed on Dec. 30 by parties claiming that the traditions of an inaugural prayer and an oath of office that includes the words "so help me God" violate the Establishment Clause of the First Amendment.

Wolf Creek Heritage Museum Notes

MUSEUM HAPPENINGS I mentioned last week that our board will be organizing our historical commission and museum management this year. Our first meeting will be next Wednesday at 4 p.m. at the museum.

display all of January and February. We are continuing our building fund efforts. Our goal is \$200,000 and we have raised \$120,000. We will be focusing on grants this year to assist us in meeting our goal, however we hope to have several fundraising efforts to assist as well.

moved to Lipscomb County in 1908. He quit school when he was sixteen to work on farms and ranches in the area. He had many occupations from road construction, service station, to burlap bag faculty. He operated the Higgins Bag Company until 1966.

News From Gruver

Gruver Blood Drive A blood drive was held in Gruver on January 7th. Coffee Memorial Blood Center received 17 donations during the blood drive. The Coffee Memorial Blood Drive would like to thank everyone for supporting Coffee Memorial Blood Center and the patients of the High Plains Region...

Author Visits Elementary Author Eddie Bowman aka Chester Drawers visited Gruver Elementary on Friday, January 9, 2009. He spoke to the elementary children about his series of books and talk to them about his process of writing.

Gruver Jr. High 5th & 6th Graders Launch Rockets The 5th and 6th graders launched their model rockets on Wednesday, January 7th. The model rockets were assembled to culminate a science study on forces and motion taught by Mrs. Lexy Glass.

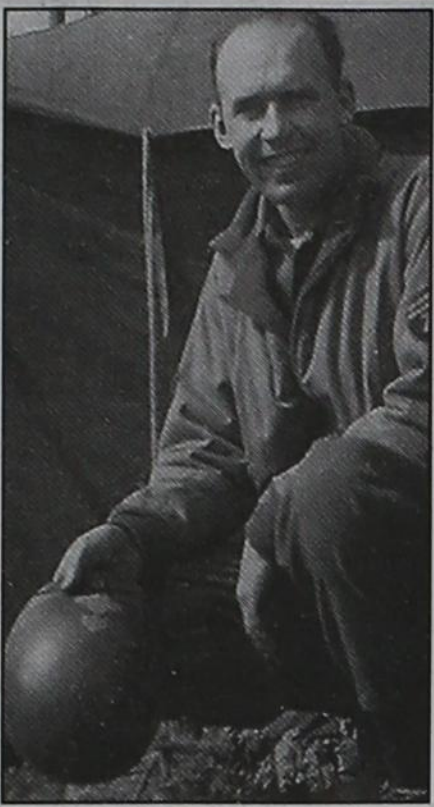
Weatherford Construction Septic Systems Kirk Weatherford (806) 336-2820

SUDOKU PRESENTED BY VolunteerMatch.org Where volunteering begins. Grid with numbers 8, 2, 7, 5, 1, 3, 4, 1, 5, 3, 6, 2, 7, 8, 5, 7, 8, 3, 9, 5, 2, 5, 7, 4, 9, 7, 6, 2, 3, 9.

THE GRAMMY'S These games are brought to you by the Hansford County Reporter-Statesman. ACROSS 1. Muhammad's birthplace 53. What vendors do 22. Beak or snout ornaments in Doric order 54. As opposed to wants 24. Made up of fibers 55. Art degree?, pl. 57. Side shot 25. *Brothers nominated for "Best New Artist" 26. Beside, archaic 27. Capital of Switzerland 29. Castle defense 31. Short for intercontinental ballistic missile 32. *Jordin Sparks, Chris Brown song 33. One of a series of 34. Sharp slope 36. *De La ____, Grammy-winning hip-hop group 38. African chieftain 42. A defendant is better off with one of these 45. *Coldplay's "Viva __" 49. Electric fish 51. Famous desert 56. Site of witch trials 57. Elizabeth Gilbert's "Eat, __, Love" 58. Steak preference 59. Candid 60. Swimming shoes 61. As opposed to own 62. *Dixie Chicks' "Not Ready To Make __" 63. Indian flatbread 64. Pharaohs' cobras 67. Contend

The Hansford County Reporter-Statesman 213 Main Street • Spearman, TX 79081 Phone - (806) 659-3434 • Fax - (806) 398-9080 www.spearmanreporter.com reporter@spearmanreporter.com cathy.smith@valomet.com Mon.-Thurs. 9 a.m.-12 p.m., Mon.-Wed. & 1-5 p.m. Closed Thurs. afternoon and all day Fri., Sat. & Sun. Gary Smith - Publisher Catherine Smith - Editor Contributing Writers: Dorothy Hudson, Jim Derington, Merry Sparks, Cecil Biggers Contributing Photographer: Charlie Johnson Subscription Rates In Hansford County - \$30.00 • Out of County - \$40.00 The Hansford County Reporter-Statesman (USPS 529660) is published weekly in Spearman, TX. Periodical postage paid in Spearman, TX. POSTMASTER: Send address changes to: The Hansford County Reporter-Statesman, 213 Main Street, Spearman, TX 79081. The deadline to submit news and advertising to The Hansford County Reporter-Statesman is Monday at 5 p.m. Items submitted after the deadline will be published at a later date, as time and space permit. Publication of all items is at the discretion of the editor. Advertising Open Display rates are \$4.00 per column inch. Classified Ads are \$6 for the first 25 words and 10c per word for each additional word. (Additional charge for boxed classifieds.) There is a \$1 charge per week if billed. Member of Gruver Chamber of Commerce Spearman Chamber of Commerce Texas Press Association and Panhandle Press Association

HANSFORD COUNTY



James Arthur Stedje

Continued from last week

"Another time I was out fixing a line and I was coming back when a jeep pulled up and it was O.J. Hoel. I knew that he was in Italy, but had no idea where. I rode back to my outfit with him. This was the place where the Germans were shelling and one came through our roof and landed in the next room. This time I was alone on the switchboard, and the rest of the guys had gone to the caves. I couldn't leave the switchboard! We had all these twenty lines that came in there, but only three lines were left after the Germans got through shelling!

"One night I had dug my foxhole under a trailer, and had three sand sacks around my head area. Next morning, I found a piece of shrapnel in one of the sacks. (I have it in my memory box in the office.) I did get a piece of shrapnel in my arm which I dug out with my knife the next morning. One of the guys in our outfit got killed that night.

"I remember how we were busy all the time in Italy. Each day we made trips of more than twenty miles for grocery supply. One day I rode along with one guy in the truck hauling supplies. O.J. was stationed near where the food supply was stored, and he was on one of our trucks marked 'Signal Corps.' He asked the driver if he knew James Stedje and he said, 'Yes, I'll bring him down tomorrow on our load.' I spent the night with O.J., and we slept under a half-ton truck. That night we were bombed again. Two bombs dropped close to us and left two holes big enough to drive a truck in. I caught a ride back to my outfit the next day. It is interesting to know we

had to keep busy hauling because our kitchens were feeding 16,000 to 17,000 men a day. Ours was for three hundred men.

"I got sick with a gall bladder attack and went to the hospital. I am sure the K-rations were what caused it. This little hot-shot doctor decided that I needed an operation. I did not submit to it, and I think I made him mad! I didn't want him practicing on me, so I told him 'No! Just go ahead and send me back up with my outfit. I would get over it somehow.' I still have my gall bladder at the age of 92!! It was after the war was over, and I was still overseas, but back in Naples, and I got hepatitis. I sure turned yellow as did several of the other men, but we survived and felt pretty good after getting out of hospital.

"After we took Rome, we were able to go there and see it. It was interesting. When we were walking in the streets, people would put their hands up like 'Heil Hitler.' Then they would see that we were Americans, and their fingers would wave at us. I drove a truck, and so I hauled one hundred miles back to the Post Office. There were about seven trucks, and I hauled for seven days. I remember one load was all German rifles. Thus the war was over! One day I took a load of boys to Venice sightseeing, only I had to stay with the truck to keep away stealing. I could not eat in front of all the hungry kids, so I left my food on the truck and walked off. When I came back, there was not a crumb left.

"Sightseeing was a way of killing time, and we didn't know how long it would be until we could go home. I remember the song 'Sentimental Journey' was popular at the time when we were waiting to come home. I moved a load of stuff to a place where the company gathered, and that is where we broke up. A part of our company was sent on to Japan; those boys were disappointed that they didn't get to go home at that time.

"I got out of the service and came home October 31, 1945. I came to Amarillo and spent the night. The next day Marie [James' sister] came over from Pampa where she had been teaching and got me. She had my car. One of the first people I saw was Rob Alexander at the Amarillo Hotel. When he asked me what I was going to do, I said, 'Oh, get married and start a family.' I had no idea who I was going to marry, but marry I did.

"While I had been gone, Ada Joyce Spivey had written me more letters than anybody else. So, I

knew she was the one! Yes, Ada Joyce had worked at the Gruver Elevators during the war and had spent a year at secretarial school in Long Beach, California staying with her Aunt Ada Ward.

"I always said that when I came home from the service, I would come through Gruver, which I did. Ada Joyce was so excited and happy to see me! She had not seen me in uniform and still says, 'I'll never forget the day! Ada Joyce and I married on February 3, 1946.'

James returned to being a farmer. He and Ada Joyce had three children: Mike Stedje (Judy), Lynn Stedje (Jan) and Marilyn Doege (Jack). The sons with their families continue to farm in the Oslo Community. Marilyn and her family live in Dallas.

In 1975, James and Ada Joyce went to Europe on an American Express tour. James was able to show Ada Joyce where had served in WWII.

James died in Guymon, Oklahoma March 2, 2003 at 93. He is buried in the Oslo Lutheran Church cemetery.

Editor's note-- The 88th Infantry was driving through the Dolomite Alps toward Innsbruck, Austria when the hostilities ended for them on May 2, 1945. They had spent 344 days in combat, sustained 15,173 casualties (killed, wounded, or missing).

BBBS Volunteer of the Month



Big Sister Stephanie Brock is pictured with her Little Sister, Taylor.

Stephanie Brock has been named Big Brothers Big Sisters Volunteer of the Month for December 2008. Brock and her Little Sister, Taylor, now a fifth grader, meet together weekly as part of the Bigs in Schools program at Spearman Elementary. They were matched in October 2007.

The Big Brothers Big Sisters organization matches caring volunteers with kids who can benefit from extra time, attention and support. Through these professionally supported relationships, children learn new skills, have different experiences and develop friendships that increase their confidence and

help them deal with life's ups and downs.

Bigs in Schools is the school based mentoring program option that allows volunteers to meet with a Little Brother or Sister once a week on the school campus during the school day. Many people find this way of working with children easy to fit into their schedule since they don't have planned contact with the child outside of school in the evenings or on the weekends. They spend thirty to fifty minutes together each week playing games, reading, working on homework or just talking.

The Volunteer of the Month

Award recognizes a volunteer Big Brother/Sister who has connected with the Little Brother/Sister in a special way or gone above and beyond to establish and nurture the relationship. It is designed to communicate appreciation for the difference the volunteer is making in the child's life.

"These two have a very special connection," said Julie Stedje, the agency's Match Support Specialist. "Stephanie has been able to provide a very close, understanding relationship where Taylor feels free to talk about her feelings and experiences. Stephanie can really understand Taylor's situation and this is helping her immensely. As I visit with Taylor and Stephanie, their affection and appreciation for each other is very evident! I think Stephanie very deserving to be the Volunteer of the Month."

The match enjoys painting, playing games, talking and doing arts and crafts projects in their time together. Taylor has especially enjoyed making scrapbooks. "Stephanie is very creative and funny," Taylor said. "She is a good listener."

"She is a precious girl," Brock said of her Little Sister. "We have become very close and I treasure my time with her."

Brock has served as a mentor to children in Spearman schools since 2002.

Taylor is one over 90 children matched in BBBS school and community based programs in Perryton, Spearman, Gruver and Booker. Anyone interested in learning more about the program may call Lopez at 434-0016.

North Plains Groundwater Conservation District Board Proposes Rule Changes

The North Plains Groundwater Conservation District Board of Directors recently proposed changes to District Rules reducing the Allowable Annual Production limits. The Board has proposed a gradual reduction of the groundwater production limit to reach one and one-half (1 1/2) acre-feet per acre per year from the current two acre-feet per acre by January 1, 2012. Increasing groundwater demand along with declining saturated thickness levels from the aquifers within the District requires stronger conservation measures. The Board anticipates the reductions will assist the area in saving the District's groundwater resources for future generations in the Northern Panhandle.

Additionally, the Board is proposing additional conservation measures to reward producers that save water below the production limit. If the producer saves groundwater below the production limit then the producer may use a portion of that water during either of the following two years. This conservation measure will allow some flexibility for producers during years of inconsistent rainfall, allowing them to reserve groundwater for use during drought years.

The District also proposes reducing the density of wells that may be drilled within the District. Current rules allow one well per 80 acres, or 8 wells per section. The proposed rule would change that density to one well allowed per 110 acres, or six wells per section. This

conservation measure will assist in addressing future drilling throughout the District.

The Board is also proposing to add two new well categories to the District's current well classification system. A new small well "S" classification for wells that pump 0-17 gallons per minute is proposed for wells not used for exempt or domestic and livestock purposes. Small well owners that pump water for other than domestic or livestock use are already required to report their annual production. This proposed rule change will clarify that they must report their water use just like all of the other non-exempt wells in the District. A new "E" classification would be added for wells that pump 1,300-1,800 gallons per minute.

To simplify the rules, the District proposes to amend timelines for well construction permits and test hole permits to extend the time the permits are effective and remove the permit extension process. Current rules allow well construction permits to expire after 120 days if the owner has not requested a 30 day extension. The proposed rule change will simplify the well construction permit by providing for a 150 day well construction permit with no extensions granted by the District staff. Currently, the rules allow test hole permits to expire after 45 days if the property owner has not requested a 15 day extension. The new rules will allow a 60 day test hole permit with no extensions from the

staff. If a driller or property owner needs an extension to a permit they can request an exception from the Board.

Another new requirement that is proposed is that a producer must inform the District of any metering changes within 30 days. Land owners will also be required to designate who will report the sale of water rights to the District. Both of these measures will allow the District to be as accurate as possible in calculating annual production of groundwater within the District.

In other business, the Board of Directors approved the proposal of the Desired Future Conditions (DFC) for the Ogallala Aquifer within the District. There were seven public meetings held throughout the District in 2008 to obtain comments from the public on setting the DFC, and there was a large turn-out of interested persons for this Board meeting as well. After listening to the comments from the residents of the District, the Board proposed a DFC of at least 40% of the Aquifer to be remaining in 50 years for Dallam, Hartley, Moore, and Sherman Counties and proposed a DFC of at least 50% of the Aquifer to be remaining in 50 years in Hansford, Hutchinson, Ochiltree, and Lipscomb Counties within the District. The District proposed two DFCs because the uses or conditions for the Aquifer within the District differ substantially from one geographic area to another. These proposed DFCs were based

on the District's evaluation of Aquifer characteristics, Aquifer storage, managed available groundwater, current demand and estimated future demand, as well as evaluation of DFC effects on other Districts and District stakeholder desires. The proposed DFCs were presented to the other Districts in GMA 1, and will also be presented to the Texas Water Development Board for final approval.

The Board approved fourteen well permits as active and complete wells, and set the date for the next meeting. That meeting will be held immediately after the Rule Change Hearing at 9:00 a.m. on January 20, 2009 at the Amarillo College Moore County Campus Auditorium at 1220 East 1st Street in Dumas. The public is invited to attend.

Pictures and information for this feature may be submitted to the Reporter-Statesman (310 Barkley Street), mailed to WW II Memories, % Reporter-Statesman, 213 Main Street, Spearman TX 79081, emailed to reporter@spearmanreporter.com, or they may be given to Dorothy Hudson, 733-2562, 806 Cluck Avenue, Gruver TX 79040, or emailed to dhudson862@gruver.net.

Alva Monument Co.

Formerly Liberal Monument & Memorial Company

New Location:
111 Tucker Road
Liberal, Kansas

North of the New Wal-mart

Hoochy Poochy Parlor



Professional Award
Winning Stylist

Carmon Baker

A true professional and award winning creative groomer, Carmon has earned numerous awards for her excellent work and demonstrated professional technique. She has served the Texas Panhandle for the past 37 years. Catering to the small to medium pampered pet, we always do our best.

Please visit us for a free estimate on your pet care needs.

Hours:
Mon.-Fri., 8 a.m. until done
Saturday by appointment only

806-273-2724
806-674-5409
116 Madison
421 E. 10th St.
Borger, TX 79007
goingtothedogs@cablcone.net



and Missy

"The Hoochy Poochy"

This land is your land...but who owns the water?

Whose water is this anyway?

- Do you know your Water Rights?
- Do you know which Water District you're in?
- Do you know how and when to get a water permit?
- Do you know how to buy and sell water rights?
- Do you know the state of the Aquifer?

Don't miss the **Groundwater Seminar** that provides answers to these questions plus crucial information for 2009.

Speakers include: General Managers of the Districts
• Texas Water Development Board • State Legislators

Friday, January 30th
Time: 10am-2pm with lunch provided
Where: Frank Phillip's Conference Center, Borger
Cost: \$10
Reservations: 806.468.3300
or Web reservations: sprouselaw.com

SPROUSESHRADERSMITH

We Know Law

701 S. Taylor, Suite 500
Amarillo, Texas 79101
806.468.3300
www.sprouselaw.com



HELP WANTED

HELP WANTED: Gigot Agra Products, Valley Center Pivot Dealer, is seeking additional service technicians at our Spearman location. Experience desired, but not required. Benefit package is available. Send resume to PO Box 1413, Guyton OK 73942, or call 580-338-2536 or 806-659-3121. TFN(9-18-08)B

HELP WANTED: General mechanic for automotive, irrigation work and tire repair. Tools provided. Apply at Morse Implement and Auto Supply in Morse. Call 06-733-2668. Ask for Tom or Gary. Good pay and working conditions. TFN(10-02-08)

HELP WANTED: Hansford County Library is now accepting resumes for part-time employment. Position includes working with the public and some computer knowledge. Must be able to multitask. Send resumes to 122 Main, Spearman TX 79081. TFN(11-13-08)B

HELP WANTED: Duties include elevator operations, warehouse and fertilizer maintenance, some clerical and computer. English a must, bilingual is good. Must have valid driver's license. Good Benefits, vacation, insurance and retirement. Contact Sandy Earp, Spearman Equity, 104 Collard, Spearman, TX. 806-659-2420 or 806-270-0073. TFN(12-11-08)B

HELP WANTED: First State Bank, Spearman, has full time positions open for a Teller. Applicant must have a high school diploma or equivalent, typing and some ten-key skills required, customer relation and telephone skills are very important. Computer skills in word-processing and spreadsheets is helpful but not required. Benefit program includes group hospitalization insurance, retirement, vacation pay, sick leave pay and holiday pay. Apply with Ginger Turner at First State Bank, PO Box 247, Spearman, TX. 79081, telephone #806) 659-5565. An Equal Opportunity Employer. 2(1-15-09)

HELP WANTED: First State Bank is now taking applications for a full time building and yard maintenance person. Applicant should be self-motivated, have mechanical skills and be in good health and physical condition. A strong work ethic is a must. Benefit program includes group hospitalization insurance, retirement, paid vacation and a sick leave program. Contact Ginger Turner, 659-5565. An Equal Opportunity Employer. 2(1-15-09)

SERVICES

HOOCHY POOCHY PARLOR Call us for all your pet's grooming and boarding needs. Call now for reservations! 806-273-2724. TFN(11-2-07)

MITCHELL THEATRES
NORTHDRIDGE CINEMA 8
Guyton, Oklahoma
FRESH POPCORN EVERYDAY!
-PARTY ROOM & ARCADE-
Call for Showtimes
580-338-3281
www.northridge8.com

Jan. 15
Martin Luther King Jr. BD
(observed Jan. 19th)
Jan. 26
Australia Day
Jan. 26
Chinese New Year
Feb. 1
Super Bowl Sunday
Feb. 2
Ground Hog Day
Feb. 12
Abraham Lincoln's BD
All Occasion Flowers
202 N. Bernice (across from the Post Office)
659-5180 • Spearman

AMERICAN LOG HOMES
Must Have The Ability To Purchase a Home from \$14,750
HAS DEALERSHIPS AVAILABLE IN SELECTED AREAS
* \$6500 to \$20,000 Profit Per Sale * Company Furnished Leads
* You Pay DEALER PRICE ONLY * Protected Sales Territory
* No Franchise Fees * Large Selection of Models
* Work From Your Home Office
Call Mr. Roy for FREE Information and Our Catalog of House Plans at
1-877-676-3642
www.thegreatamericanlogco.com
LIVE THE AMERICAN DREAM AND EARN HUGE PROFITS!

FREE DIRECTV 4 ROOM SYSTEM!
265+ ALL DIGITAL CHANNELS!
130 HD CHANNELS! Channel Pkgs. Start \$29.99 / mo
FREE HBO, Showtime & Starz for 3 Months!
Packages Start only \$29.99
FREE DVR/HD
No Start Up Costs!
We're Local Installers!
Toll Free 800-214-7110

LANDMAN TRAINING
Job Placement Assistance
Earn a six figure income!
January 22nd, 23rd, 24th, 2009
Petroleum Landman Institute, LLC
Baton Rouge, Louisiana
All instructors are Landmen
with over 55 years of combined experience.
"For Contact Information, Please See Website"
www.landmanschools.com

www.spearmanreporter.com
www.spearmantexas.biz

Century 21
Golden Spread Realty
101 Wanda Dr., SPEARMAN - 1,321 sq. ft., 3BR, 1B, fireplace.
Gina Deal, Broker/Owner
(806)435-5444
www.century21.com
INDEPENDENTLY OWNED & OPERATED.
©1992 and TM Century 21 Real Estate Corporation. Equal Housing Opportunity.
EOW(12-11-08)B

Blankenship Real Estate
659-3052 - 670-3774
3BR/1B Home (Spearman) - 2 living areas, nice front backyard, storage, close to school and hospital!
NEW LISTINGS WANTED!
Eulalia Blankenship - Sales
Eschol Blankenship - Broker

hchd
Hansford County Hospital District
Openings at Hansford Manor
LVN: Full Time and Part Time needed
Housekeeper: Part Time 4:00pm - 8:00 pm 5 days a week and 8:00am - 5:00pm 3 days a week. Keeping our manor clean and sanitary for our residents, patients and family members
Great working environment and staff, quality facility providing opportunities for professional growth. Great benefit package. Apply at 707 S. Roland, Spearman, TX or contact Jackie Nelson at 806-659-5841. Download application at www.hchd.net
EEDE 2(12-25-08)B

Shirley Howard Properties
We're out of houses! We NEED listings!
Call us now to help YOU sell your home for top dollar!
Shirley Howard, Broker/Owner
806-886-6536, Cell
Melinda McCullough, Realtor
(806) 733-5678
We would LOVE to sell your HOUSE!
CALL US!

See us for:
AUTO • HOME • CROP HAIL • FARM & RANCH • MULTIPERIL • LIVESTOCK
INSURANCE
BORT AGENCY, INC.
510 Main St. • Gruver, TX
(806) 733-2456

MEGGA BOA ODES
ATOLL ADD ELENA
RURAL LEI AGAIN
KIDROCK ENGARDE
AWL FUEL
JAB SEMI BEINGS
ONES ROBE SCOUT
NERO KARMA BATE
ANNUL TOIL MITE
STELAE IRIS RAP
VEND BAS
PROFIL E RIHANNA
RAPID EVE ALIAS
ARENA DIN RECAP
YENS SET AMENS

1	4	5	9	6	8	3	2	7
6	8	2	7	5	3	1	4	9
9	3	7	4	1	2	6	8	5
3	9	6	5	2	7	8	1	4
2	5	1	8	4	6	9	7	3
4	7	8	3	9	1	5	6	2
5	1	3	6	7	4	2	9	8
8	2	4	1	3	9	7	5	6
7	6	9	2	8	5	4	3	1

MARTIN & ASSOCIATES REALTY
Serving Hansford County for 14 years
Julie Martin: Broker - 659-2425
1111 S. Townsend - Split level, 3/2/1 Are you looking for a home with that brand new feeling? This home has been redone throughout: all new flooring, paint, fixtures, baths, remodeled kitchen w/new appliances, granite counter tops; split level deck. **REDUCED!**
We'd Like Your Listing!
FOR QUALITY & SERVICE CALL US TODAY!
Equal Housing Opportunity

Hotline for Priority Seating - 435-3945
100 MONKEYS 100
BBQ & STEAK HOUSE
We Are THPLC-2-B
14 SE 3rd Ave. Perryton, TX
Stan and Donna Zepp
Under New Ownership
Same Great Service & Menu!

TEXAS STATEWIDE CLASSIFIED ADVERTISING NETWORK
TexSCAN
TexSCAN Week of January 11, 2009
BUSINESS OPPORTUNITIES
100% RECESSION PROOF! Do you earn \$800 in a day? Your own local candy route. 25 machines and candy. All for \$9,995. 1-888-625-5481. Multi Vend, LLC.
AMERICAN LOG HOMES Dealerships available. Pay dealer price only. Recession proof business. Do-it-yourself customers, \$6500 to \$20,000 profit per sale. No franchise fees, \$5000.00 deposit required towards first house. Company furnished leads. Better Business Bureau accredited. For free catalog of house plans Call Mr. Pat at 1-877-676-3642, www.thegreatamericanlogco.com
INCHES-A-WEIGH is looking for franchise owners in your area. \$45 Billion Industry! Upscale weight loss center. Great income potential! Turnkey, Training, Support. Financing available. Free information 24/7 Limited locations! 1-888-392-9996 Ext. 1
DRIVERS
13 DRIVERS NEEDED Sign-On Bonus 35-41 cpm. Earn over \$1000 weekly, excellent benefits. Need CDL-A & 3 months recent OTR. 1-877-258-8782. www.meltontruck.com
ARROW TRUCKING FLATBED Contractors: Partner with us! Local & regional. No age limit on equipment. 70% REV & other great advantages! 1-800-759-2009. ext. 2311, www.arrowtrucking.com
CDL-A DRIVERS: EXPANDING Fleet offering Regional/OTR runs. Outstanding pay package. Excellent benefits. Generous hometime. \$300 lease special on Volkswagens. National Carriers, 1-888-707-7729. www.nationalcarriers.com
DRIVER: JOIN PTL today! Company Drivers-Earn up to 40¢ cpm. 1/2 cpm increase every 60K miles. Average 2,800 miles/week. CDL-A required. www.ptl-inc.com 1-877-740-6262.
HELP WANTED
BETWEEN HIGH SCHOOL and College? Travel and Have Fun with young successful business group. No experience necessary. 2 weeks paid training. Lodging, transportation provided. 1-877-646-5050.
HOMES FOR SALE
FREE FORECLOSURE LISTINGS Over 200,000 properties nationwide. Low down payment. Call Now! Consumer Resource Network. 1-800-446-9804
FORECLOSURES & BANK REPOS! 4BR/3BA \$30,357 or \$245/month! 3BR/2BA \$10,300 or \$199/month! (5% down, 30 years, buy@8%) These Homes won't last! For listings call 1-800-544-6258 Ext. 9847
MISCELLANEOUS
AIRLINES ARE HIRING. Train for high paying aviation maintenance career. FAA approved program. Financial aid if qualified. Housing available. Call Aviation Institute of Maintenance, 1-888-349-5387.
ATTEND COLLEGE ONLINE from home. Medical, Business, Paralegal, Computers, Criminal Justice. Job placement assistance. Computer available. Financial aid if qualified. Call 1-866-858-2121. www.CenturaOnline.com
REAL ESTATE
AFFORDABLE COUNTRY LIVING. 3.21 acres, north of Brady. Central water, electricity. Large oak, mesquite trees. Newer mobiles allowed. Low down, low monthly payments. 1-800-876-9720. www.texasranchland.com
TEXAS & OLD MEXICO: Affordable hunting & fishing property. 100 acres for \$79,000 with 10% down & no credit check. All sizes available up to 20,000 acres. Call 1-877-77-BIGLAND (1-877-772-4452)
Run Your Ad in TexSCAN!
Statewide Ad\$450
303 Newspapers, 1,017,914 Circulation
North Region Only\$195
98 Newspapers, 276,893 Circulation
South Region Only\$195
103 Newspapers, 488,823 Circulation
West Region Only\$195
102 Newspapers, 252,398 Circulation
To Order: Call This Newspaper direct, or call TexScan Press Service at 1-800-749-4793 Today!
Extend your advertising reach with TexSCAN, your Statewide Classified Ad Network.

Jeffrey's Steaks & More
511 Plains Shopping Center
Spearman, Texas (806) 644-0953
For the best good ole country cooking around, don't drive out of town - get it right here at home!
Daily Lunch Buffet (11 a.m.-2 p.m., Tuesday-Friday, 11 a.m.-3 p.m., Sunday)
Includes 2-3 meats, 5-6 vegetables, homemade rolls and homemade desserts
Hours: Tues.-Thurs., 11 a.m.-9 p.m.; Fri., 11 a.m.-10 p.m.; Sat., 2-10 p.m.; Sun. 11 a.m.-3 p.m.

Tong's Chinese Restaurant
(806) 644-2838
22 Archer Street • Spearman
Buffet Specials
Monday: Chicken w/Spiced Salt, Mongolian Beef, Sweet & Sour Chicken, Fried Rice, Etc. - \$6.75
Tuesday: Grilled Pork Chop, Black Pepper Chicken, Rice Noodles, Egg Roll, Etc. - \$6.99
Wednesday: Fried Shrimp, BBQ Chicken, Pork Sub Gum, Chop Suey, Lo Mein, Etc. - \$6.99
Thursday: BBQ Pork Ribs, Pepper Chicken, Won Ton Soup, Seafood Bun, Etc. - \$6.99
Friday: Shrimp w/Spiced Salt, Sesame Chicken, Broccoli Chicken, Vegetables, Etc. - \$7.25
Saturday: Catfish, Pepper Steak, Egg Drop Soup, Stir-Fry Mixed Vegetables, Etc. - \$7.25
Sunday: Roast Beef, Grilled Shrimp, Biscuits, French Fries, Mushrooms, Etc. - \$7.25
Lunch Buffet 11 a.m.-2:30 (7 Days A Week)
Dinner Buffet 5:30-9 P.M. (Monday-Saturday)

by Jim Derington

Out at the Lake

Jim Derington
Palo Duro River Authority
P.O. Box 99
Spearman, TX 79081
806-882-4401
pdra@dishmail.net



Whitetail deer grazing near Lake Palo Duro.

Lake Level—January 12, 2009—21.67 feet (-0.17)

If any of the readers are interested in seeing porcupines in a tree, you might still catch them in the trees just south of the bridge over the Palo Duro Creek in the Park. One of the three Jim had seen was killed on the road last Thursday. He saw the other two still in the same area on Sunday. It is a sight most of us don't get to see.

This is the week of the Eagle Count sponsored jointly by the U. S. Army Corps of Engineers and

the United States Geological Survey. There are 4 mature and 2 immature eagles for Jim to report this year. The eagles are known as fish eaters, but they also have a taste for goose. The eagle count usually goes up when the numbers of geese increase.

So far this year, we have not had any big flocks of the beautiful snow geese, but there are usually a few mixed with the Canada geese.

The coyotes seem to be overcoming the mange. Although there are still some with scruffy fur, healthy looking coyotes are being reported. Perhaps this will reduce the jackrabbit population.

Over the Christmas holidays Trudy Hart became a member of the "I've Seen the Mountain Lion" Club. Trudy, a student at Texas Tech, was at her home on Farm Road 520 southeast of the Palo Duro Feedlot when she heard the family dogs go into a barking frenzy. She turned on the outside lights and saw what at first glance seemed to be a large yellow Labrador about 50 yards from the house. Then she noticed the size, the rounded ears, and the long tail, and she knew it had to be a mountain lion. It did not stay long but turned and ran north west into the night.

Spearman's Christy Lang Lends Talent to OPSU's Lady Aggies

New Mexico Highlands Gets 68-64 Win over Lady Aggies

By Scott Puryear of OPSU Sports on 01/03/2009

The Oklahoma Panhandle State women's basketball team defended their home court against New Mexico Highlands on Friday night and fell 68-64 in a very close game that went to overtime before a winner was decided.

The first half was a tight one with several lead changes and NMH held a 20-17 advantage with five minutes left before the break. However, near the 4:30 mark, OPSU's Nicole Candelaria nailed a three-point bomb to tie the score at 20 points.

The Lady Aggies kept up the pressure at both ends of the court and earned a 24-20 lead with 3:30 to go. Fans knew they were in for a good game as things remained close and the Lady Aggies led by just a single point at the half (32-31).

In the second half, defense was the rule and with 12 minutes left to play in the game, things were tied at 39-39. However, an NMH run gave them a 48-41 advantage with five minutes to play.

There was no quit in the Lady Aggies and an Amanda Boggs deuce cut the NMH advantage to 48-46, and with 2:29 on the clock a Halee Edwards' free throw kept OPSU within two at 49-47. The Lady Aggies soon made up the difference; regulation time was over and the score was tied 52-52.

The five minute overtime period got underway and both teams worked hard for a win. NMH came out fast and with two minutes left, they held a 62-58 advantage. The Lady Aggies (now 1-11) kept their heads high and kept fighting, but clutch free throws by NMH sealed their second win of the season, 68-64.

Christy Lang (freshman) had a nice game for the Lady Aggies with 19 points and five rebounds while teammate Lauren Cherry scored ten and pulled down nine rebounds. Rachel Beck added nine points and six rebounds; Candelaria scored eight and pulled down six rebounds, while Edwards scored six points and had a game high five assists.

Lady Aggies Fall to Texas A&M International, 86-66

By Scott Puryear of OPSU Sports on 01/11/2009

In somewhat of a "Tale of Two Halves," the Oklahoma Panhandle State women's basketball team lost (86-66) to Texas A&M International in Laredo on Saturday afternoon.

In the early going, TAMI came out very fast on their way to a 44-15 halftime advantage, but the Lady Aggies fought back with a 51-point second half. It was the second Heartland Conference contest for both teams.

TAMI had five players score in double figures, led by Mary Tobias' 20.

Christy Lang led OPSU with 12 points, while teammates Kariz Bioni and Rachel Beck both added nine. Bioni was the Lady Aggie rebound leader with eight and Natasha Normand pulled down seven. Halee Edwards scored seven, had six rebounds, six assists and a pair of steals.

With the win, TAMI moved to 2-0 in the Heartland and 5-9 overall for the 2008-09 season. The loss put the Lady Aggies at 0-2 in the league and 1-13 overall.

The Lady Aggies will be back in Goodwell for a three game home stand beginning on Thursday with a 5:30 p.m. matchup with another Heartland rival - Newman University. On Saturday afternoon they will host Lincoln at 2:00 and on the following Thursday evening they will host the University of Texas-Permian Basin at 5:30.

Plenty of Basketball at OPSU this Weekend

By Scott Puryear of OPSU Sports on 01/14/2009

There will be plenty of men's and women's college basketball action at Oklahoma Panhandle State University on Thursday evening as well as Saturday afternoon.

On Thursday, the teams from Newman University will be in Goodwell to match up with the Lady Aggies and the Aggies. Tip-off for the women's game is set for 5:30 p.m. and the men are set to go at 8:00.

On Saturday afternoon the men's and women's squads from Lincoln University will be on campus for more Heartland Conference action. The women's game is scheduled to begin at 2:00 p.m. and the men are set to go at 4:30.

All games can be heard in the Goodwell-Guymon area on KPSU radio (91.7 FM). Internet broadcasts will also be available - log on to www.opsu.edu and click on Athletics to find the link.

North Plains Groundwater Conservation District Reminds Water Users that Annual Groundwater Production Reports are Due

The forms for reporting 2008 annual groundwater production were mailed to landowners who pumped groundwater within North Plains Groundwater District during 2008. The forms were mailed out on November 10 and 12, and well owners are reminded that the forms are due at any time between now and March 1, 2009. For many who have completed their production for the year, this earlier mailing of forms will allow them to complete the paperwork and return it sooner. Groundwater production reporting is not required from domestic or stock wells, but agricultural producers who irrigate, municipalities, CAFO's and industries who use water are required to report their groundwater usage each year to the District.

The new forms this year now fulfill the District rule requiring that water usage be reported in acre-feet. The forms contain the multiplication factors to aid well owners in completing this item, and there is now a handy instruction guide as an aid to filling out the forms as well.

Once the report is completed and received back in the District office, well owners will receive a blue post card stating that their report has been received. Once the data has been reviewed, a yellow post card will follow telling the well owner either that their report is complete and satisfactory, or that there is data missing and the report is incomplete.

Reports are already being received back in the office, and well owners are encouraged to complete and mail in the paperwork as early as possible. Those who have not filed their production reports by

March 1 will be subject to fines for non-compliance.

The District would like to remind those reporting that the forms must be signed and dated, and must have all supporting documentation attached. The District is no longer accepting faxed copies of bills from the gas or electric supply companies, so well owners are now responsible for obtaining these

records themselves and sending them in attached to the production reports.

District staff is available to assist anyone who desires help filling out the forms, or to answer any questions about the forms and reporting process. Christie Frost, Karen Mannis, and Casey Tice will be available by calling the District office at 806-935-6401.

Serenity Massage

Annette Keith



High Plains Shopping Mall
511 Hwy. 207
Spearman
(next door to Jeffrey's Steaks)

806-659-5679
806-341-8941

Certified in deep tissue, sports, therapeutic, relaxation, prenatal, postpartum and infant massage.

Hours by appointment
Monday-Friday

Spearman Chamber of Commerce Minutes

As recorded by Secretary-Treasurer Teresa Barkley

The Spearman Chamber of Commerce Board of Directors met on January 8, 2009.

Members present were: Keith Hight, Cass Lasater, Ed Hanson, Alvin Byers, Kyla Ortiz, Teresa Barkley, Cindy Blackman and Landon Jackson.

President Alvin Byers called the meeting to order and led the Board of Directors in prayer.

Alvin presented minutes from the last meeting. There were no corrections. Motion was made by Cass Lasater to accept minutes as read. Motion was seconded by Landon Jackson. Motion carried. Alvin presented the financial report. Cass made a motion to accept the financial statement. Cindy Blackman seconded the motion. Motion carried.

Old Business: Keith presented the End of the Year Expense Report. Brief discussion was held about the fact that the 2008 Estimated Budget had projected for expenses of \$30,000.00 and actual money spent was \$18,594.95 using

only 62% of the projected budget.

New Business: The projected 2009 Budget was then presented by Keith. He conducted a brief discussion and explanation about a few changes in the new budget. He pointed out to the Board that he had reduced the amount spent on special programs due to the fact that the Chamber would "probably" not purchase hats for the golf tournament participants this year as that is done only every other year. The new budget was lowered for wages and taxes due to the fact that there is not a part-time employee at this time. This projected budget reflected an increase in the scholarships given by the Chamber from \$1,500 to \$2,000. There was also an increase in the utilities due to the higher cost of gas.

President Byers thanked Manager Hight for his budget presentation and commended him on his excellent management skills in 2008. Cindy Blackman moved that we approve the new 2009 Budget and Spearman City Manager Ed Hanson seconded. Motion carried.

Discussion was held in regards to the upcoming Annual Chamber Banquet to be on January 22nd at 6:00 p.m. in The O'Loughlin

Center. Teresa reported that the

Lions Club had approved the use of their Purple Flags for decorations and Cindy was volunteered to seek permission from the school to use their trophies as center pieces for the tables. Former Citizen of the Year James Cunningham will present this year's award recipient with Mayor Brian Gillespie presenting the Business of the Year Award. Cheryl Gibson-Salgado will present the Miss Hansford Pageant Winners. Ron Antalek will present Fireman of the Year. Cobbler will be served for dessert in place of the cheese cake and will be prepared by the Board members.

Cindy reminded us of the Hospice Pancake Fund Raiser this Friday, January 9th, and motioned that the Spearman Chamber of Commerce donate \$50 to this worthy cause. Discussion was held and motioned was amended to \$100. Teresa Barkley seconded the motion. Motion carried.

Due to numerous scheduling conflicts in February it was unanimously decided to hold the next Chamber meeting on March 5, 2009. Cindy motioned to adjourn and Cass seconded. Motion carried.

Subscriber Appreciation Queen of Hearts Valentine Package



at the Ashmore Inn & Suites in Amarillo

Accommodations include:

- One Night in a Deluxe King Guestroom
- Turn-down Service with Schokolads Gourmet Chocolates
- Valentine Poem
- Chilled Cider with Keepsake Champagne Flutes
- Deluxe Continental Breakfast
- Late Check-out of 1 p.m. Package valued at \$158.70

Sponsored by The Hansford County Reporter-Statesman

Offer expires February 14, 2008. Must be at least 21. Valid credit card required.

Reservation must be made in advance. Certificate not valid on premium dates.

Open to paid subscribers of The Hansford County Reporter-Statesman

Entry deadline is January 31, 2009. Winner announced February 5, 2009.

Subscribers may enter by mailing your name, address and phone number to The Hansford County Reporter-Statesman, 213 Main Street, Spearman TX 79081; or e-mail to: reporter@spearmanreporter.com

Hoochy Poochy Parlor

For Boarding reservations and grooming appointments, call now!

Hoochy Poochy Parlor
421 E. 10th St.
Borger, TX 79007
806-273-2724
hoochypoochy@att.net
www.hoochypoochy.net
Hours:
Mon.-Fri., 8 a.m.-5 p.m.
Saturday by appointment only

Please visit us for a free estimate on your pet care needs.

We put the Hoochy in your Poochy