

| WEATHER     |    |    |        |
|-------------|----|----|--------|
| Day         | HI | Lo | Precip |
| Thu         | 58 | 24 | .00    |
| Fri         | 63 | 43 | .00    |
| Sat         | 64 | 32 | .00    |
| Sun         | 69 | 37 | .00    |
| Mon         | 59 | 38 | .00    |
| Tue         | 56 | 31 | .00    |
| 1992 Precip |    |    | 1.02   |

# The Hansford County Reporter-Statesman

Serving All of Hansford County

12 pages

| INSIDE          |     |
|-----------------|-----|
| City Lives      | 2   |
| Spearman C of C | 5-8 |
| Sports          | 9   |
| News about kids | 10  |
| Want Ads        | 11  |
| Obituaries      | 12  |

VOL. 84, NO. 17

213 Main

Spearman, Hansford County, Texas

25\*

THURSDAY, FEBRUARY 20, 1992

## No bids taken on boat dock by PDRA

by JoAnn Morton  
Editor

Bids for construction of a boat dock and a parking lot were to be opened at the Tuesday, Feb. 11 meeting of the Palo Duro River Authority but no bids were taken, according to PDRA General Manager Johnnie C. Lee.

Lee explained that the consulting engineer for the project was unable to attend the meeting because of weather, and the PDRA board could not award the bid at that time.

Action on the bids was tabled until 6 p.m. on Wednesday, Feb. 19, when the board was scheduled to open bids on the parking lot. Lee said that bids on the boat dock would be taken at a later date because clarifications need to be made regarding that project.

In other business, the board adopted a resolution regarding the re-issue of bonds to finance the Palo Duro Dam project, and authorized the purchase of a packer to pack the roads in the dam area.

Regular business for the PDRA board included approval of minutes of the previous meeting, approval of the treasurer's report, approval of claims for payment, and a general discussion of the project.



Mr. and Miss Hansford Manor were named Thursday, Feb. 13 at Hansford Manor in Spearman. Participants included (l-r) R.P. Stout of Stinnett, first runner-up for Mr. Hansford Manor; Richard Shedeck of Spearman, Mr. Hansford Manor; Louise Beebe of Spearman, Miss Hansford Manor; Sadie Sutton of Gruver, first runner-up for Miss Hansford Manor; and (standing) vocalist Laquita Evans of Spearman, who entertained Hansford Manor residents that day.

## Plant repair bids rejected by Gruver

by JoAnn Morton  
Editor

Bids for repair of Gruver's wastewater treatment plant were rejected by the Gruver City Commission at its Wednesday, Feb. 12 meeting.

According to Gruver City Manager A.J. Ratliff, two bids were received for the wastewater treatment plant repairs - one from L.A. Fuller & Son in the amount of \$54,300, and one from Rhoades Construction in the amount of \$56,600. Ratliff said the low bid was much higher than the city commission had anticipated and both bids were rejected.

He said the commission decided to rebid, for materials only, and use city labor for the project.

In other business, the commission called a City Officer's Election for Saturday, May 2, to elect one Gruver City Commission member to a two-year term of office. The newly-elected commissioner will replace Buster Davis, whose term is due to expire.

First day for potential candidates to file for the city commission seat was Monday, Feb. 17. The filing period ends March 18.

The commission heard a representative from the Panhandle Regional Planning Commission, who

presented a well-head protection plan for the city water wells. Ratliff explained that the plan was written by the Texas Water Commission for the protection of city water wells, and the PRPC made recommendations for carrying out the plan. Commission members took no action on the presentation.

A lease-purchase agreement for a truck for the city sanitation department was awarded to Ford Motor Credit Company at a 6.55 percent rate. Cost of the truck is \$77,120, said Ratliff.

Annexation of Cooper Street and Highway 278 was discussed, and the commission will hold public hearings on the annexation in the near future.

A resolution requesting a school crossing zone on Highway 15 was adopted by the commission. Ratliff explained the crossing zone would be located north of the school, between the Etling Addition and the school. The school crossing zone request is being made to the Department of Transportation, for the placement of warning lights and the institution of a 20-mph speed zone.

Regular business for the Gruver City Commission included approval of minutes of the previous meeting, and approval of accounts payable for the month of January.

## Gruver youth show livestock

Gruver 4-H and FFA members prepared for the Hansford County Livestock Show, scheduled for March 13 and 14, by having a practice show Monday, Feb. 17 in the Gruver county barn.

Results of the Gruver Practice

Show include:

### STEERS

Class I: 1st - Stacey Williams; 2nd - Chad Stork; 3rd - Chris Stork; 4th - Lee Stedje  
Class II: 1st - Traci Smith; 2nd - Lee Stedje; 3rd - Casey Smith; 4th - Heather Gammon; 5th - Clayton Thompson

Class III: 1st - Clint Williams; 2nd - Brant Armes; 3rd - Cherlyn Thompson; 4th - Brad Holt

Clint Williams - Grand Champion; Traci Smith - Reserve Grand Champion; Brant Armes - Junior Showmanship; Traci Smith - Senior Showmanship; David Armes - Adult Showmanship

### SHEEP

Class I Dorset: 1st - Kyle Deeds; 2nd - Krystle Deeds; 3rd - Jarrod Hoel

Class II: 1st - Kathy Slough; 2nd - Davida Nash; 3rd - Amber Roberts; 4th - Galen Slough; 5th - Gregg Slough; 6th - Sharlet Slough

Class III: 1st - Autumn Bateman; 2nd - Cherlyn Thompson; 3rd - Jake McCullough; 4th - Kenny Slough; 5th - Clayton Thompson

Class IV: 1st - Cori Lowe; 2nd - Brant Armes; 3rd - Shea Lowe; 4th - Heather Gammon; 5th - Christi Pittman; 6th - Clayton Thompson

Class V: 1st - Dawn McCullough; 2nd - Brant Armes; 3rd - Bray Armes; 4th - Jeremy Tunnell; 5th - Tim Tunnell

Cori Lowe - Grand Champion; Dawn McCullough - Reserve Grand Champion; Brant Armes - Junior Showmanship; Dawn McCullough - Senior Showmanship; Keith Bateman - Adult Showmanship

### SWINE

Class I Lt. Wt. Duroc: 1st - Wynn Maupin; 2nd - Travis Ferguson; 3rd - Krystle Deeds; 4th - Autumn Bateman; 5th - Weslyn Maupin

Class II Med. Wt. Duroc: 1st - Shea Lowe; 2nd - Chad Stork; 3rd - Sammy Renteria; 4th - Wylee Maupin; 5th - Teal Armes

Class III Heavy Wt. Duroc: 1st - Clint Bell; 2nd - Hart Derington; 3rd - Isaias Arzate; 4th - Autumn Bateman

Shea Lowe - Breed Champion; Wynn Maupin - Reserve Breed Champion

Class IV Lt. Wt. Hamps: 1st - Rex Ralston; 2nd - Max Davis; 3rd - Crystal Christian; 4th - Cody Barkley; 5th - Weslyn Maupin; 6th - Kyle McNett; 7th - Kade Carthel  
Class V Hamps: 1st - Trevor

Ferguson; 2nd - Kathy Slough; 3rd - Wylee Maupin; 4th - Lee Blevins; 5th - Justin Carthel; 6th - Kathy Slough; 7th - Leslie Fiel

Class VI Hamps: 1st - Sharlet Slough; 2nd - Erin Derington; 3rd - Joshua Nash; 4th - Eric Titus; 5th - Brock Irwin; 6th - Jake McCullough

Class VII Hamps: 1st - Sharlet Slough; 2nd - Brant Armes; 3rd - Bray Armes; 4th - Dusty Eckhardt; 5th - Traci Smith; 6th - Dawn McCullough

Rex Ralston - Breed Champion; Sharlet Slough - Reserve Breed Champion

Class VIII Yorks: 1st - Max Davis; 2nd - Jarrod Hoel; 3rd - Brady Tidwell; 4th - Nickolas Slough; 5th - Roma Tomlinson; 6th - Wylee Maupin

Class IX Yorks: 1st - Chris Stork; 2nd - Paul Renteria; 3rd - Clint Williams; 4th - Robert Whitaker; 5th - Jarrod Hoel; 6th - Robert Whitaker; 7th - Robert Whitaker

Class X Yorks: 1st - Galen Slough; 2nd - Bailey Barkley; 3rd - Galen Slough; 4th - Kenny Slough; 5th - Kim Wagner; 6th - Davida Nash

Galen Slough - Breed Champion; Max Davis - Reserve Breed Champion

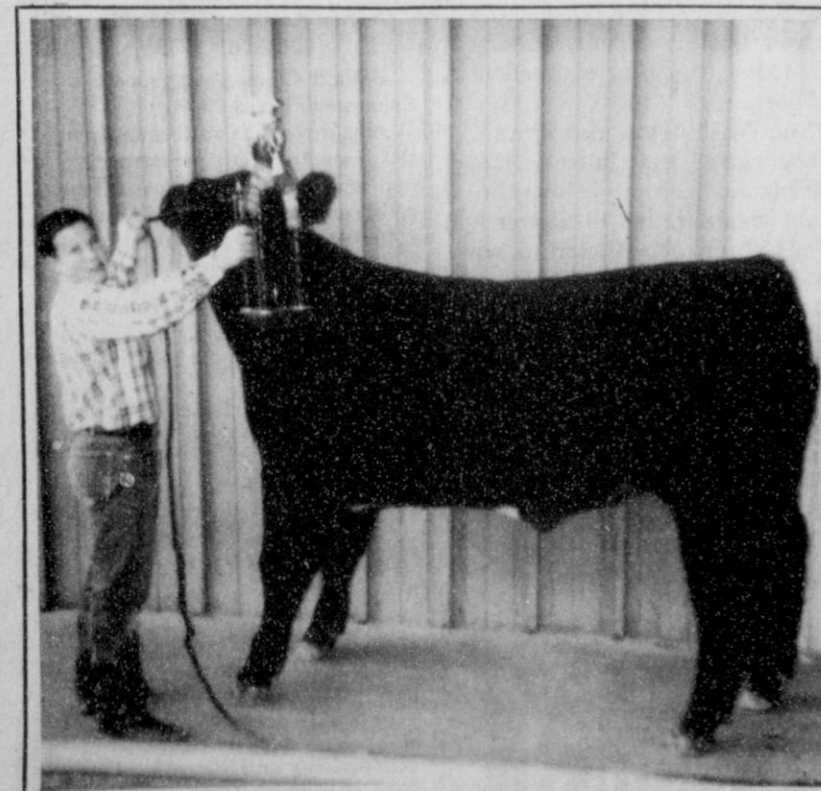
Class XI O.P.B.: 1st - Kyle Deeds; 2nd - Kylee Barkley; Reserve Breed Champion;

See stock page 12



(photo courtesy Hansford County Extension Service)

Cori Lowe exhibited the Grand Champion Lamb at the Gruver Practice Livestock Show, Monday, Feb. 17 in the Gruver county barn.



(photo courtesy Hansford County Extension Service)

Clint Williams exhibited the Grand Champion Steer at the Gruver Practice Livestock Show, Monday, Feb. 17 in the Gruver county barn.



Spearman High School students who competed in a recent UIL Literary Practice Meet in Canadian and were placed among the top six competitors in their respective events included (l-r) Leslie Swan, Amber Cates, Josie Holt, Laura Pearson, Alfonso Martinez, Brad Butler and Elizabeth Pipkin. See related story on page 10.

## City Lites

by Kelvin Knauf  
Spearman City Manager

The City has implemented a public access channel on cable television. Citizens who have cable tv can turn to channel 30 to get information on City activities.

These activities currently are: city council agendas, vacant position announcements, bids the City is taking for goods and services, and the upcoming City Council election schedule.

In addition to these activities, we will provide notices of the activities of non-profit organizations. Any non-profit organization who has a fund raiser, banquet or other activity can have a notice put on channel 30 by calling me at 659-2524.

In the future, we will add notices of interest to citizens such as streets which will be crack sealed this summer, swimming pool hours, new landfill hours, and other seasonal activities. In addition to notices, we are also available to broadcast videotape materials over cable tv. We currently are investigating the capability of videotapes on such topics as crime prevention, fire prevention, recycling, hazardous materials, potholes, citizen orientation video and other topics.

During this time of year, potholes become a major problem for many cities. Fortunately, in Spearman we do not have a serious pothole problem with our streets. The foresight of the current City Council and prior City Councils

made prevention of potholes and other street problems a top priority.

Potholes are caused when the pavement or the material beneath the pavement (the base or the sub-base) cannot support the weight of the traffic on the pavement. Often, water seeps into the subbase either through cracks in the pavement or from standing water along the side of the pavement. This water can cause the subbase to shift, leaving nothing to support the pavement. Traffic causes the pavement to weaken, crack and cave in. In winter, the water may freeze, pushing the pavement up. In either case, potholes will appear.

Fortunately, the City has an active preventive maintenance program to seal pavement cracks before there is serious water damage. In our crack sealing program, the entire surface of the street is sealed with a thin coat of asphalt tar mixed with crushed stone to make it water resistant.

By having a program, which crack seals every paved street once every five years, the City Council has committed to a program of preventive street maintenance rather than a reactive program. This preventive maintenance program, according to studies in other cities, has one-fourth the cost of a reactive "wait-until-the-street-is-totally-deteriorated" program.

## Hansford Happenings

**Spearman La Leche League Group** will meet Friday, Feb. 21 at 9:30 a.m. at 407 S. Haney in the First United Methodist Church nursery room. The group informally discusses different phases of breastfeeding and offers mother-to-mother help, including the latest medical research. The topic for this meeting is "The Birth of Your Baby and Baby's First Weeks." Expectant mothers are especially encouraged to attend. All women who are interested in breastfeeding are invited, as are their babies. More information about the Spearman La Leche League Group can be obtained by calling 659-2962.

**Hansford Hospital Auxiliary** will sponsor a blood drive on Monday, Feb. 24 from 2 to 7 p.m. in the Sacred Heart Catholic Church Parish Hall.

**Spearman Chamber of Commerce's annual banquet** is scheduled for Saturday, Feb. 22 at 7 p.m. in the Spearman High School cafeteria. Featured speaker will be Bill Brown of Lubbock. Awards to be presented include Citizen of the Year, Citizen Over the Years, Women's Division Member of the Year, Rotary Club Employee of the Year and the Spearman Volunteer Fire Department Fireman of the Year. Tickets are priced at \$17.50 for chamber members and \$20 for non-members. Tickets are available by calling 659-5555.

**The First United Methodist Church** will have its 21st annual Missionary Conference on Sunday, Feb. 23. Mission speakers for the annual event will be the Rev. Jo Carr, Pampa District Superintendent, Janice Sladek, lay missionary from Stratford, and Joe and Lucy Poole, lay missionaries from Trinity United Methodist Church in Amarillo. At 9:45 a.m., Janice Sladek will show slides and present a talk about her work in Guatemala, Honduras, El Salvador and Thailand. At the 11 a.m. worship service, Jo Carr will speak about her mission work in Africa. At 6:30 p.m. in the fellowship hall, there will be a snack supper and afterward, Mr. and Mrs. Joe Poole will tell of their work in Haiti. The public is invited to attend.

**Perryton Family Services Center** is now scheduling appointments in Spearman. In the lobby of the Baker Hotel, 420 Davis, for mental health services to residents of Hansford County. John R. O'Nan is director and therapist for Perryton Family Services Center. Appointments can be scheduled by calling 435-3671.

## Hansford Activity Center seeks funding, comments

by Robbie Dewberry  
Hansford Activity Center president

The Hansford County Activity Center is planning a fund drive in the hope of keeping the Center alive and running. We are not asking for donations at this time. We would like you to take a few minutes and complete the survey so we might have a better idea of what amount of support we can count on.

The Activity Center currently has the following programs and activities: Aerobics five days a week; Tumbling for ages 3 years to 6th grade; Karate instruction for grades 4-8; Basketball program for kids; Racquetball court; Weight and sauna; Skate night; and Spring Baseball program.

In order to more efficiently serve

the community, it is felt that the Activity Center needs an employee to be at the center for several hours every day, instead of volunteers opening the Center for only two hours on Monday, Wednesday and Friday. We need your support.

Family memberships will be available for \$125 per year, payable at \$62.50 at the time of sign up and \$10 per month until the balance is paid. This entitles members to use of the Center, racquetball, weight room, sauna and whirlpool, and a reduced participation fee in any sponsored activity. Single adult memberships are also available for \$85 per year, and child memberships for \$40.

Please indicate below your interest in keeping the Center open, and any donation you would be willing to make.

**PLEASE RETURN BY FEBRUARY 21**

Mail completed forms to HANSFORD COUNTY ACTIVITY CENTER  
P.O. BOX 7  
SPEARMAN, TX 79081

or take by the hospital to Karen Lair, or Hansford Abstract, 16 S. Haney, to Donna McCubbin

YES, I am interested in the Activity Center remaining open

NO, I do not wish the Center to remain open

I PLEDGE THE FOLLOWING MONIES TOWARD OPERATION OF THE ACTIVITY CENTER:

|           |         |
|-----------|---------|
| PER MONTH | NAME    |
| PER YEAR  | ADDRESS |

THANK YOU.

## SMITH'S MOTOR HOME RENTALS SALES & SERVICE

Plan Now And Reserve A Nice Deluxe Motor Home For Your Vacation And Weekend Trips. Very Reasonable Rates. Call Lewis Smith 806-435-5844 or Toll Free (800) 753-6330 Loop 143 East, Box 131, Perryton, TX 79070

We Also Sell & Deliver Propane Serving Texas & Oklahoma Both Residential & Commercial

## At The Lyric Theatre . . .

Friday, Feb. 21 - Tuesday, Feb. 25  
Bargain Nights Mon. & Tue. All Seats \$3  
Closed Wednesday & Thursday  
Screen 1 - 7:30 p.m. Screen 2 - 7:15 p.m.



113 Main, Spearman

## Police Files

**Spearman Police Department**

The Spearman Police Department logged 31 calls for service between Feb. 10 and 16. Included in those calls were one report of theft, one traffic violation, three reports of suspicious activity, two reports of lost property, two ambulance calls, and two miscellaneous calls for officers. SPD officers investigated one accident and were called to unlock six vehicles for residents. Officers served one warrant and checked on one open door. A total of 11 calls for animal control were logged.

On Tuesday, Feb. 11 at 10:23 p.m., an 18 year old man was arrested on outstanding warrants from the Department of Public Safety.

Officers were called to the scene of a two-vehicle accident at Pizza Hut on Wednesday, Feb. 12 at 7:53 p.m. The two vehicles collided as one was backing from a parking space and the other was entering the parking lot of the business, according to a police incident report.

A billfold and cash were reported lost in the 500 block of Highway 207 South on Wednesday, Feb. 12 between 11:20 a.m. and noon. Reported loss totaled about \$15.

**Gruver Police Department**

Gruver Police Department answered a call Monday, Feb. 10 in the alley between the 700 block of King and Main Street. A fire was reported at that location, which was found to be trash being burned without a permit.

On the same day, police were called to unlock a vehicle at the high school parking lot.

Also on Feb. 10, the Federal Aviation Administration in Fort Worth requested that the Gruver Police Department check at the Gruver airport for an overdue aircraft. On Tuesday, Feb. 11, the

Ochiltree County Sheriff's Department requested another check for the aircraft. The craft was later determined to have crashed in Lipscomb County.

An animal attack was reported in the 600 block of King on Feb. 11. A German Shepherd had attacked a small dog, resulting in injury requiring treatment by a veterinarian. Gruver Police Chief Steve Gaines said the German Shepherd's owner received a warning for allowing the animal to run at large, and agreed to pay restitution for veterinary bills incurred by the smaller dog's owner.

On Wednesday, Feb. 12, a report was received that a dog was chasing children in the 200 block of Cluck. The owner of the dog was contacted and advised to restrain the animal.

Also on Feb. 12, Gruver police provided backup for Gruver EMS on an ambulance call in the 700 block of Womble. A child was transported to Hansford Hospital.

On Feb. 14, a fire was reported west of Gruver on Highway 15. The fire was determined to be a controlled burn of a stubble field.

Also on Feb. 14, Gruver police served a capias profine. The subject made payoff and was released, according to Gaines.

On Saturday, Feb. 15, a false call was placed to 9-1-1 from a location northeast of Gruver.

A theft report was taken from Allsup's on Sunday, Feb. 16.

Gaines said that four citations and two warnings were issued last week. Two citations were issued for violations of driver's license restriction "B," one citation was issued for permitting an unlicensed minor to drive, and one citation was issued for speeding.

One warning was issued for equipment violation and one warning was issued for allowing a dog to run at large.

## Our Legacy of Leadership

by Congressman Larry Combest

Both men are seen as historic giants, well-known by their last names: Washington, the Father of our Country and Lincoln, the man who preserved the Union. They are our great legacy of leadership, but they lived so long ago that it may make it difficult for us to fully appreciate their leadership today. During the Winter of Valley Forge and again throughout his command in the Revolutionary War, General George Washington was an inspiring leader under the harshest of conditions. President Abraham Lincoln, although he said he felt controlled by events, inspired leadership with the words of the Gettysburg Address and the Emancipation Proclamation.

These leaders were honest with their intentions, and true to their commitments. "Honest Abe" was both steel and velvet, according to his biographer Carl Sandburg. While Lincoln held the country in gentle hands, he also kept the Union together by using every means available to him - including a bloody Civil War. A century before, George Washington, whom fables claimed could not tell a lie, won unanimous re-election to a second term as the country's first President, staying true to the principles of freedom and liberty.

While Washington and Lincoln may seem larger than life to us, it is helpful to realize that in his time, Lincoln was perhaps in as much awe of George Washington as we are today. In tribute to Washington, President Lincoln owned a ring with a setting that held a sliver of wood from the coffin of Washington. Lincoln's ring is now on display just a few feet away from a worn satchel of General Washington's. Both items are inside the National Museum of American History near the Washington Monument and the Lincoln Memorial in Washington, D.C.

These great men of our first two

centuries also shared small ironies. For instance, the Confederate General who opposed Lincoln's army, Robert E. Lee, married Martha Washington's great-granddaughter. Also, without a change in the calendar system, both Presidents' birthdays would seem to be only one day apart. Washington was actually born under the old style calendar on February 11. However, by 1751, the calendar system we now use had adjusted Washington's date of birth to February 22. Today, in honor of these two great leaders, many states now observe the birthdays for Washington and Lincoln together, on Presidents' Day.

### The Hansford County Reporter-Statesman "Serving All Of Hansford County"

USPS 509660  
213 Main, Box 458, 659-3434  
Spearman, TX 79081  
Published Weekly at  
213 Main, Spearman, Texas  
Owned and Operated by:  
**Texas Independent Newspapers, Inc.**  
15915 Alsace  
San Antonio, TX 78232  
(512) 545-1739

Second Class postage paid at Spearman, Texas 79081.

Any erroneous reflection upon the character of any person or firm appearing in these pages will be gladly and promptly corrected upon being brought to the attention of the management.

**Publisher** - Robert M. Hulett  
**Editor** - JoAnn Morton  
**Bookkeeper** - Sheila LaRochelle

**Subscription Rate:** Hansford County, \$19.95; out of county, \$24.95 annually.

**Postmaster:** Send address changes to Hansford County Reporter-Statesman, Box 458, Spearman, TX 79081.

The publisher reserves the right to revise or reject at its option any advertisement which it deems objectionable, either in subject or phraseology, or which it may deem detrimental to its business.

**Advertising and Story Deadlines:**  
Tuesday, 12:00 p.m.

**TA** MEMBER  
TEXAS PRESS ASSOCIATION



## PHIL BLACK

Republican for

84th District Court Judge

...  
**VOTE**  
**MARCH 10**  
**REPUBLICAN**  
**PRIMARY**  
...

- 14 YEAR AS AN ACTIVE PRACTICING ATTORNEY
- FORMER CITY PROSECUTOR
- FORMER ASSISTANT DISTRICT ATTORNEY
- INSTRUCTOR OF CRIMINAL LAW AND CIVIL LITIGATION AT FRANK PHILLIPS COLLEGE
- BORN AND RAISED IN THE TEXAS PANHANDLE

### Felony Prosecution Experience

PHIL BLACK Has It All....  
The EXPERIENCE...The DEDICATION...  
The GOOD JUDGMENT...The ABILITY...  
The COMPASSION...The MATURITY!

Phil Black Is A Credit to the Texas Panhandle's 84th Judicial District!

**A firm hand...  
A just hand...  
Elect Phil Black**

Pol. Adv. Pd. for by the Committee to Elect Phil Black, Tom Snider, Treas. P.O. Box 3335, Borger, TX.

# Reynolds celebrate anniversary



MR. & MRS. CECIL REYNOLDS

Friends and relatives of Cecil and Ellen Reynolds gathered at Ivey's Hungry Cowboy banquet room Sunday, Feb. 9, to celebrate the Reynolds' 45th wedding anniversary. The reception was hosted by their daughters, Becky Hall of Amarillo and Katherine Coventry of St. Louis.

The banquet room was decorated in their favorite colors, green and burgundy. Crepe paper streamers, balloons, wedding bells and flowers made a perfect setting for the occasion. The serving table was covered with white lace over a burgundy cloth. A three-tiered wedding cake accented with a bride and groom centered the table along with matching napkins, finger sandwiches, punch and nuts. Serving at the table were Kate Farris and Pauline McGee, friends of the family.

The highlight of the reception was the renewal of Cecil and Ellen's marriage vows. The Rev. LaVern Draper officiated at the ceremony. Their attendants were R.T. and Kate Farris, friends of the couple.

Tasha Hall, the Reynolds' granddaughter, presided at the registry table. Special guests were Mattie Reynolds, Cecil's mother; and Atta Lou Chisum, Ellen's mother.

A host of friends from Spearman

REPORTER-STATESMAN CLASSIFIEDS WORK!

attended, along with out-of-town guests including Keith Goheen, the photographer; Marge Rich, Pete Minden, Roger and Diana Hayes, Billy Rhea Rue, and Pearl Franklin of Amarillo; Cecil and Deane Chisum and sons, Atta Lou Chisum, John and Mary Lee Bayless, Doug and Johnnie Meader, and Orlanda and Anita Reynolds of Borger; C.D. and Jimmy Riggins, Brent and Teresa Creswell, Lois Lee Taylor, Florence Janzen, and Harvey and Cavita Kile of Perryton; Pat and Chuck Cudd and B.J. and Nathalie Turner of Waka; Becky and Misty Peery of Fritch; Thelma and Bill Gilbert of Hurst; James and Sammie McNulty of Yuma, Ariz.; Albert and Mildred Reynolds of Booker; Sharon and Delvin Reynolds, and Gene and Ramona Reynolds of Gruver; and Harvey and Jerry Harmon of Roswell, N.M.

The evening was spent visiting and reminiscing with friends and opening the many gifts and cards.



The engagement of Krystal Stokes and Kevin Hare has been announced by the parents of the bride-elect, Larry and Yvonda Stokes of Amarillo. Krystal is the granddaughter of John and Edith Pipkin of Spearman. The prospective groom is the son of Larry and Dee Hare of Amarillo. The couple plans to be married July 24 at Westcliff Bible Church in Amarillo. The couple plans to be married July 24 at Westcliff Bible Church in Amarillo. Miss Stokes attended Friends University at Wichita, Kan. She plans to receive a degree in elementary education from West Texas State University in May. She works for Casual Corner. Hare majors in business administration at West Texas State University. He plays soccer for the semi-pro soccer team, the Amarillo Challengers, and works for Judy's Card Cottage.

# Among the Neighbors

by Helen Fisher

In this column last week two lines were dropped in an item regarding a trip of Altha Groves, which left the meaning unclear. Altha was met at Waxahachie by Mr. and Mrs. Stuart Maloney and Mr. and Mrs. Jerry Maloney, and they accompanied her to Burleson to attend the funeral of Rosemary Malone Evans, formerly of Spearman.

Estella Garnett Morris of Amarillo took time from her busy schedule to visit her brother Wesley and Magda Garnett one day last week. She also spent some time with nephew Mike Garnett and his family. They drove around Spearman to see if Estella could locate some of her old school day haunts. She enjoyed the memories revived, but there was also a tinge of sadness for all that was - and is no more.

Although she has battled the wind in this country for many years, Marie Sparks was taken unawares last Friday. Just as she opened a door from the outside, the wind gusted with such force she was thrown to the ground. An ambulance was summoned and she was transported to Hansford Hospital. She expects to be hospitalized for several days as she suffered two fractures.

Jenney Connally spent the weekend with her grandparents, F.W. and Betty Thomas and Doug and Mary Ruth Connally. She also had a good visit with great-grandmothers Willie Wallis and Jewell Thomas.

Jenney is living in Kansas City, Mo., where she is employed by a bank.

Not as a guest but as a new resident is Wanda Simmons, who has come to make her home with her sister, Wilma Clark. She is from the Simi Valley in California, which is one of the areas now devastated by the awful floods. No doubt for that reason she is better able to endure the recent Panhandle winds. However, she is no stranger to this climate as she is a native of Darrouzett, as is Wilma.

The neighbors join in welcoming her to Spearman and suggest that she be on the alert if Wilma should revert to that school teacher discipline with her!!

Susan Sheets Noel made a quick trip from Dallas on Saturday to see her parents, Bruce and Freda Sheets.

Sympathy is extended to Elmon Jacobs and other family members on the passing of his wife, Alteena. Services were Friday at Hansford Cemetery.

Elmon's brother Ledru Jacobs, who is retired and living at Palmer Lake, Colo., was able to be here as was Elmon's sister, Thelma and Mitchell Modric of Enid. They were all former Spearman residents.

The Hansford County Historical Society is making an effort to compile a record of all the old rural schools in the county. Many of the older generation have fond and interesting memories of these small schools scattered over the area. The society would especially welcome old photographs and any facts relating to the schools - locations, names, etc. No doubt in many an attic there are old photographs, perhaps left by a long gone relative, which would serve this purpose.

The members of the Society give freely of their time for the benefit of all, especially for coming generations. Certainly it would be an expression of appreciation to make an effort to locate some of these articles.

The entire community is saddened by the untimely passing of Tommy Gumfory, 43. Tommy was a lifelong resident of Gruver, the son of the late Bill and Annie Ruth McClellan Gumfory. He married the former Carla Archer and also leaves three children.

Services were held in Gruver on Wednesday. Condolences are offered Carla and his children and to a host of other relatives and many, many friends.

Beth Ann Flowers visited over

**TEXAS**

It's Like A Whole Other Country.

the week-end with her parents, Roy and Ann Flowers. Another guest was Bob Reeves of Dallas. Beth Ann lives in Dallas and has very interesting employment with Star Enterprises - a firm involved with Texaco Company in a joint venture with Saudi Arabia.

Maurine Cope was highly entertained over the week-end by her four year old granddaughter and two year old grandson. They, with her daughter Susan and Benny Rodriguez, their parents, spent the week-end here. They live near Canyon and spent several days here. It has been their practice for a number of years to share Valentine holidays together.

The long and painful struggle for Marguerite Jenkins is at last over and she went to her eternal rest on Monday. Marguerite had suffered extremely poor health for many years, but always she was cheerful and optimistic, and served as an example of patience under adversity. Services for her were held Wednesday morning and interment was at Holt Cemetery.

It is hoped that Phil and other family members will find some consolation in the knowledge that so many share their grief.

## THANK YOU

The H&S EMS and the Volunteer Fire Department would like to thank the members of Rho Rho for their gift of stuffed animals. These toys will be put to good use by both departments, and we appreciate the fact that your club considered our needs.

## Thank You

*I would like to thank all my friends for all the cards, gifts, flowers, plants and prayers that were sent to me during my stay in the hospital after surgery.*

*It's the thoughts like these that make one get well sooner.*

*Rita Weaver*

## Museum receives several contributions

Several memorial contributions and donations have been made to the Stationmaster's House Museum in Spearman recently.

Memorial contributions have included:

In memory of Oakes Scroggs, Hennie Miller and Marie Crawford, from Gus and Clementine Renner;

In memory of Mr. and Mrs. A.L. Blankenship, Tom Jones, Mildred Hintergardt and H.B. Parks, from Sonny and Jennie Blankenship;

In memory of Viola Graves, from Albert and JoAnne Graves.

Donations have been received from Billy Jack Glover and from

Marshall Cator.

Curator of the Stationmaster's House Museum, Shirley Stafford, submitted her resignation and the museum board employed Barbara Rojas, who helped with the museum last summer, as the new curator. Everyone is invited to come by the museum and welcome Barbara back.

George Finley, Spearman postmaster, recently donated a painting to the Stationmaster's House Museum. The painting, by J.M. Flagg, depicts a Pony Express mail carrier and previously hung in the Spearman Post Office's old location.

## EXERCISE

Does Your Heart Good.

American Heart Association

*Lordy, Lordy!  
Thought she was already 40!*



*Happy Birthday!*

## FINAL MARKDOWN SALE! TRUCKLOAD SHOE SALE

Pampa and Perryton Footprints  
Women's Shoes up to 70% off  
717 W 7th  
(NEXT DOOR TO KIDS STUFF & LADY FAIR)  
-- Last days of truckload sale --

## Final Markdown Sale

Up to 70% on  
Fall and Winter Merchandise  
Hurry & Save!

**KIDS' STUFF**

719 W 7th

*Lady Fair*

## On The Go With Joy

by Joy Henderson

Things have been a little better since M.H. got out of the machinery end of the farming business. I don't have the problems with my laundry since he no longer piddles around near the diesel, oil or whatever it was that created all those big black stains on his shirts, coats, boots, pants. These were literally impossible to remove. However, that problem was replaced by another one.

Seems like working around the pig barn and using bleach to disinfect the stalls, etc., has caused big white spots on his britches legs or sometimes a mishap with battery acid eats holes in his jeans.

Well, "little spouse on the prairie" Lana said, "Melvin can deny it all he wants to, but when I wash his brand new dress jeans and three little holes appear in the crotch, I know he's been climbing over fences

in them."

Why is it that we sternly warn them about the consequences of doing farm work in their good clothes, but they end up doing some of those little piddly tasks without changing into some old work clothes? As a result, nearly all of us have a closet full of tell-tale signs of twice-worn shirts with greasy spots on the front, long sleeved Western shirts marred by little holes from welding sparks; dress pants with seats ripped out - not the seam - but just to the right of it; t-shirts splattered with aluminum paint and others with rust on them. Men, you can't hide them from us.

Of course not all the catastrophes are their own doing ... like when he wore his new insulated jacket to the sale barn and the guy behind him burned a hole in the back of it with a cigar. Or like in the

Henderons' case, when the husband or son backed up to a heater to get warm and they were a little too close.

What is so odd is that the guys think they can fool us by saying the fabric is snagged because it is supposed to be that way or that the pants look like they have grass stains because the light in the room gives them a funny look.

Or how about the husband who tries to make it up to us by offering to fix Sunday dinner after church? While I was changing out of my Sunday best I could hear such a clatter in the kitchen and then I rounded the corner to check on him - there he was, in his best 3-piece suit, in true form.

He was hovering over the fryer after dumping freshly sliced wet French fries into a pan of hot grease - he was wearing a not-so-wide grin. According to Lana, that is an unmistakable expression somewhere between a grin and a grimace.

\*\*\*\*

Our community is saddened at the passing of Tommy Gumfory. Tommy was waiting for a liver transplant, but died with complications.

Even though Gruver has lost a citizen, we rejoice at the birth of Leigh Anne Winger.

Leigh Anne Winger was born on Feb. 11, 1992, in the Ochiltree General Hospital at Perryton, Texas. She arrived at 8:03 a.m., weighing 8 pounds, 11 1/4 ounces and was 21 inches long. Her proud parents are Davin and Teague Winger. She has two brothers, Ryan and Reid, to help show her the way.

Adoring grandparents are Val and Marlene Winger of Gruver and Ed and Lucy Johnston of Dallas. She has two great-grandmothers, Pauline Winger of Gruver and Lucy Mahorner of Mobile, Ala. Leigh Anne was named after aunts Courtney Anne and Elizabeth Leigh Johnston of Dallas. Congratulations to all.

Bob and Connie Burgoon enjoyed several family members as guests in their home recently. Son Andrew from Canyon had a brief visit and Connie's mom Pauline Dosier of Rhome, along with aunt Edna Ezel from Dallas, were here.

B.J. and Glenda Renner enjoyed another brief visit from their daughter Viva from Nashville, Tenn. Also seen Sunday were cousins Bret Hobbs with a friend, Connie Fullwood; Trevor Williams with wife Cynthia, Rod, Mica and Sydney, all from Lubbock. Cody Mac was sick Sunday so he probably kept Grandpa Tony company at home.

Virginia Fowler visited in the home of her daughter, Sandra Gumfory.

Another birth announcement is that of Megan Alexandra McClenagan, born Feb. 11, 1992, weighing 6 pounds, 4 ounces.

Proud parents are Warren and Marian McClenagan. She has a host of grandparents and great-grandparents. Those that I know of are Dean and Rosie McClenagan, Ona McClenagan and I.W. Ayres.

It was real good to see Johnny "UPS" Gilbert back delivering our UPS packages again. His story shows how love for a person and his work can pay off when a community gets involved in other people and helping fight for their rights.

## Burgoon, Duncan exchange vows

Paramount Terrace Christian Church in Amarillo was the setting as double ring vows were pledged by Amy Elizabeth Burgoon and John Clifton Duncan in ceremonies conducted by Minister Buddy Mills on Feb. 8.

A background of heart shaped and arched candelabra entwined with Japanese ivy and greenery, accented with white bows, formed a grouping for the nuptial service. Candelighters were the bride's brother, Andrew Burgoon, and Ron Green of Gruver.

Attending the guest registry was Debi Harper, sister of the groom. Ushering duties were handled by Jim Bob Burgoon of Lubbock, brother of the bride; William Burgoon of Borger, brother of the bride; Todd Harper of Edmond, Okla., brother-in-law of the groom; Ron Green of Gruver; and Andrew Burgoon of Gruver.

Musical selections highlighting the ceremony included "Pacabel Cannon in D," "And Can It Be," "Immanuel," "Thank You," "Two Loves," "I Will Be Here," "Parents Prayer," "For You," and "All My Life" for the recessional.

Bridal attendants included matron of honor Rena Adams of Lubbock; brides' matron Lori Rhodes of Paradise, Texas; Janette Hayhurst of Powder Springs, Ga., and bridesmaids Sandra McLenna of Texas City, Texas, and Melissa Bryant of Amarillo. The attendants were attired in tea length dresses with fitted black velvet bodices and white moire satin skirts.

The groom's brother, Rob Duncan of Lubbock, served as best man. Groomsmen were Robert Moore of Ennis; Larry Hazelip of Arlington, cousin of the groom; Kevin Bryan of Long Beach, Calif.; and Barry Chase of McAllen, Texas. They wore matching black tuxedos with red accents.

The groom wore a black tuxedo and a red rose boutonniere accented with babies breath.

Escorted and given in marriage by her father, the bride wore a traditional white designer gown of regal satin crowned with a Queen Anne neckline. The bodice was encrusted with pearls and clusters of jeweled flowers and molded medallions. The Edwardian style sleeves were accented with lace insets of French re-embroidered lace highlighted with pearls and jewels.

The sheath princess style dress featured a slim skirt of mermaid flowing satin. The low back of the gown plunged to a centered designer bow and a runner of pearl buttons. The chapel length train was accented with French lace insets, sunburst medallion sprays, and was decorated at the hem with double edged European lace.

Seed pearls and white satin flowers accented the bridal headpiece and white whisper tulle that composed her shoulder length veil.

The bridal bouquet was composed of white and red cascading roses atop a white satin covered Bible, which had been carried also by her mother. Inside the Bible were lace handkerchiefs belonging to the bride's maternal great-grandmother, Mattie Bates Amyx. The bride also wore the traditional blue garter and inside her shoe was a penny minted in the year of her



MRS. JOHN CLIFTON DUNCAN  
(nee Amy Elizabeth Burgoon)

birth.

A reception following the ceremony was held in the church's fellowship area. The bride's table was highlighted by a five-tiered spiral cake, red and black candles encircled with pearls, whisper tulle

and the bridal bouquet. Serving at the bride's table were Laneida Burnam of Abilene, Carol Massie of Canyon, Anne Potts of Lubbock and Sammie Oakley of Canyon.

The groom's table was covered with red and black and topped with a white lace cloth crocheted by the bride's grandmother, Pauline Dosier. The table was appointed with a silver service and a pair of miniature touring bicycles bearing a "Just Married" banner. Serving chocolate cake to the guests were Melody Gavlik of Clovis, N.M., and Cathy Cline of Albuquerque, N.M.

The bride is a 1991 graduate of West Texas State University, receiving a bachelor of arts degree in general studies. She is currently pursuing a bachelor of science degree in elementary education at WTSU.

The groom attended Oklahoma Christian University in Edmond, Okla. He received a bachelor of arts degree in communications from Lubbock Christian University in Lubbock and currently serves as youth minister for the 16th and Pile Church of Christ in Clovis, N.M.

The couple will be at home at 701-B Ross in Clovis, following a honeymoon in New Mexico and Colorado.

## Club news

### GRUVER MUSIC CLUB

The Gruver Federated Music Club met Feb. 11 in the Methodist Church sanctuary. Vice President Trixie Holt called the meeting to order and the club read the collect.

Holt then introduced the program, vocal selections sung by Gyene Spivey.

Secretary Marlene Winger called roll and read the minutes of the last meeting, which were approved. It was decided to again sponsor the poster contest for school children, which promotes National Music Week in May.

Holt gave the current musical note and Frances Murrell gave the hymn of the month. Marguerite Nelson gave the study of "Get to the Heart - the story of Barbara Mandrell."

Valentine refreshments were served by Carolyn Hicks.

## QUILT CLASSES

FEB. 28 & 29 - Dresden Hearts - Advanced

MAR. 21 - Churn Dash - Beginners

MAR. 28 - Star - Repeat Intermediate

APR. 25 - Tulip & Rosebud - Intermediate

MAY 16 - Log Cabin - Beginner

MAY 30 - Amish Sampler - Beginner to Intermediate

For more information come by or call

**Jo's This n' That**

216 Main • Spearman, TX • 659-3999

Clip this ad and get 20% off on material  
(One per person per class)

214 Main 659-2767 Spearman, Texas

## Chalor's Bridal Gift Registry

Stephanie McCravey & Bob Cook  
Shayla Waters & Travis Buzzard  
Kelli Crawford & Read Cates  
April Sinclair & Will Black  
Crista Urban & Keith Burch  
Ginger Pearson & Kevin Nelson  
Haley Lair & Monte Morris  
Linda Seaman & Norman Scroggs

## THANK YOU

We would like to thank each one for the prayers, cards, prayer-grams, and the food, flowers, and the donations in memory of our loved one, to the ladies from the Baptist Church, and the First Christian Church, for the meals they served.

Special thanks to Dr. Behney and the nurses for their kind care.

Special thanks to Rev. Russ Gibbs and to Rev. Larry Miller. May God Bless each of you.

Ellen Babbs  
Judy Murray & family  
Larry Babbs & family  
Mike Babbs & family  
Chris Babbs & family

ELECT

# BILL SMITH

Republican

84th District Judge

Proven - 11 Years Hutchinson County Attorney

Consistent - 16 Years Continuous Law Practice

Conscientious - Efficient Administrator & Successful Businessman

Caring - Dedicated Husband & Father

"A + For The Court"

Pd. Pol. Adv. by Bill Smith Campaign, Mark Dill, Treas., 515 Austin, Borger, TX 79007



## FOX SUMMER GAMES

**THE SIMPSONS BASEBALL SPECIAL**  
All-star guests  
Jose Canseco, Darryl Strawberry,  
Don Mattingly and more.  
7:00pm

**DREXELL'S CLASS WITH JASON PRIESTLEY**  
7:30pm

**90210 ON THE BEACH**  
8:00pm

**PLUS SPECTACULAR STUNTS FROM SUPER DAVE ALL NIGHT LONG!**  
From Hawaii, more fun in the sun with superstar daredevil, Super Dave Osborne!

CABLE CH. 22 GRUVER 14 SPEARMAN

# Spearman Chamber of Commerce Annual Banquet



Saturday  
February 22  
7 p.m.  
Spearman  
High School  
Cafeteria

Reaching For  
The Gold  
In 1992

Working to make  
Spearman and  
Hansford County  
a prosperous  
and healthy place  
to live

SPEARMAN CHAMBER OF COMMERCE  
ANNUAL BANQUET  
FEBRUARY 22, 1992

- ENTERTAINMENT.....JANIE KUNSELMAN
- MASTER OF CEREMONIES.....BOB BOXWELL
- INVOCATION.....RUSS GIBBS
- ACKNOWLEDGEMENTS.....BOB BOXWELL
- INTRODUCTION OF OUT OF TOWN GUESTS
- ROTARY EMPLOYEE OF THE YEAR.....STEVE BENTON
- FIREMAN OF THE YEAR.....RONNIE ANTALEK
- OUTGOING CHAMBER PRESIDENT.....LENIS SIMPSON
- INCOMING CHAMBER PRESIDENT.....RANDY KIRK
- OUTGOING WDSCC PRESIDENT.....LORETTO COOK
- INCOMING WDSCC PRESIDENT.....PATTI SCHNELL
- WDSCCMEMBER OF THE YEAR
- INTRODUCTION OF SPEAKER.....BOB BOXWELL
- SPEAKER.....BILL BROWN
- PRESENTATION OF CITIZEN OF THE YEAR
- PRESENT FLAG TO CITIZEN OF THE YEAR.....DAVID SWINFORD
- PRESENTATION OF CITIZEN OVER THE YEARS
- DOOR PRIZE: 2 PEOPLE/2 NIGHTS .....CINDY BLACKMAN

THE AUSLANDER - RED RIVER, N.M.

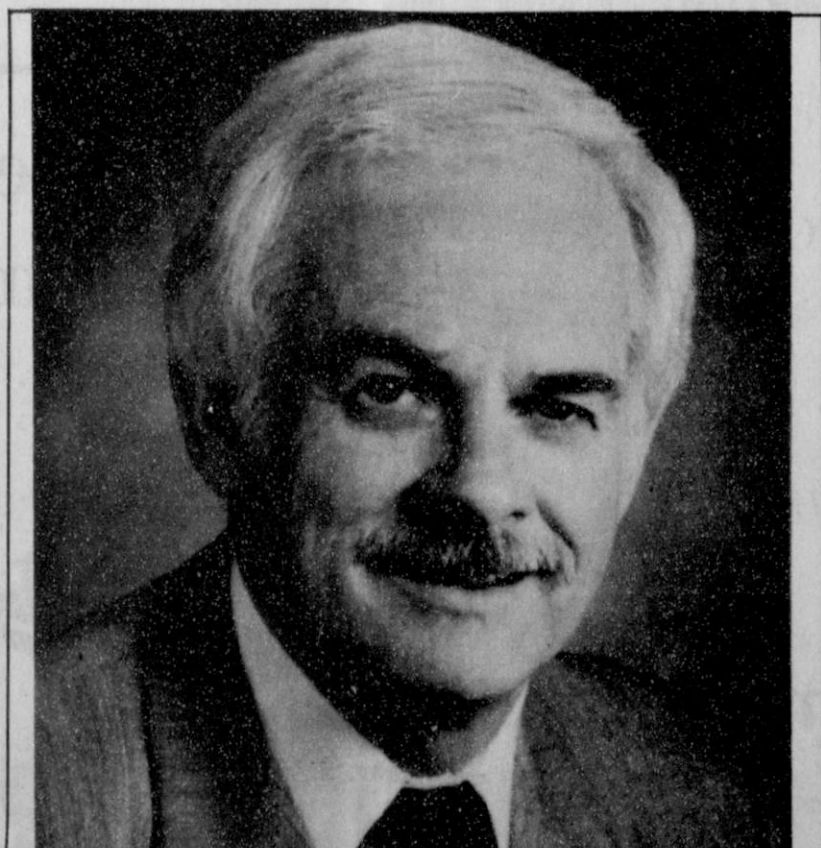
ACKNOWLEDGEMENTS

- ENTERTAINMENT.....Janie Kunselman
- SERVERS.....JUNIOR HIGH CHEERLEADERS
- DECORATIONS.....WDSCC & COMMITTEE
- MEAL.....IVEY'S HUNGRY COWBOY
- ENGRAVING PLAQUES.....HICKERSON JEWELRY
- SCRAPBOOK.....MAE WOFFORD
- HIGH SCHOOL MAINTENANCE STAFF  
AND CAFETERIA PERSONNEL

Featured Entertainment



Janie Kunselman, Piano



Bill Brown, Speaker

First National Bank Spearman

729 W. 7TH  
P O BOX 337  
SPEARMAN, TEXAS 79081  
(806) 659-5544

MEMBER FDIC

Supporter  
and  
Proud  
Member  
of

The Spearman  
Chamber of  
Commerce

**CITIZEN OF THE DECADE**  
 1979 - C.A. "Clay" Gibner  
 1989 - C. Ralph Blodgett

# PROGRESS

Our Chamber of Commerce is on the job, keeping the wheels of progress in motion through the years.

Business, industry, technology and the people of our fine community assure our future!

Hi Plains Auto Supply  
 118 Main 659 - 2506

## Congratulations!

TO THIS YEAR'S  
**HARD-WORKING**  
**CHAMBER OF COMMERCE**  
**BOARD. Now Let's Get Behind**  
**Our New Board, And WORK!**

**WE PLEDGE OUR**  
**CONTINUED SUPPORT!**

**Berry Cleaners**  
 207 Main  
 659 - 3122

# 1992 Spearman Chamber of Commerce



**Randy Kirk**  
 President



**Stephanie Crossland**  
 Vice-President



**Cheryl Sander**  
 Secretary



**Lenis Simpson**  
 Director



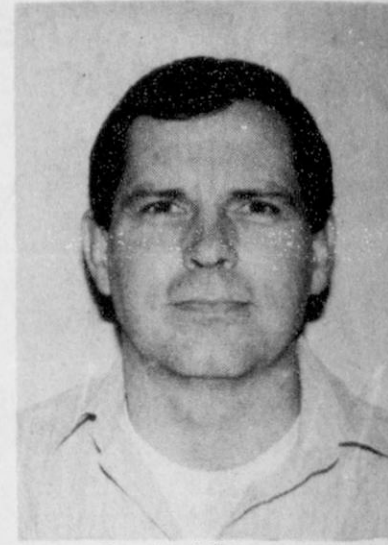
**Brenda Pierson**  
 Director



**Clay Schnell**  
 Director



**Kathy Boyd**  
 Director



**Craig Vinson**  
 Director

# Spearman Chamber of Commerce members

J.E. Blackburn  
 Cinderella Beauty Salon  
 Corner Service Station  
 Gordon's Drug  
 Hansford Abstract  
 Henson Chiropractic  
 Hi-Plains Conoco  
 Hickerson Jewelry  
 Don Kunselman  
 Hansford Glass Inc.  
 Hansford County Reporter-Statesman  
 Gary Ellsworth  
 Hergert Motors  
 Spearman Cattle Feeders  
 Video Hut  
 White House Lumber

Adela's Flowers  
 ChaLor's Inc.  
 D & M Service  
 First National Bank  
 Hansford Family Medicine Clinic  
 Sam's Shoe Clinic  
 Transpetco  
 North Plains Insurance  
 The Bunkhouse  
 Jan's Nearly New Fashions  
 Texas-New Mexico Power Co.  
 AGCO of Spearman  
 ALCO  
 B & B Farm Industries  
 B & B Sales  
 Beedy Furniture  
 Berry Cleaners  
 Daniel Boyd Ditching  
 Boxwell Brothers  
 J.L. Brock Agency  
 Brown, Graham & Co., P.C.  
 Buster's Dusters  
 Lloyd Buzzard  
 Cargill Industries  
 Celebrate  
 C.O.'s Supply  
 Cates Men & Boys Wear  
 Stan Cobb, D.D.S.  
 Country Stitches  
 John R. Collard Office  
 Gene & Francis Cudd  
 Cunningham Insurance  
 Pete Fisher  
 Athena Energy, Inc.  
 Dairy Queen  
 Enron  
 First State Bank  
 Five Star Equipment

General Telephone Co.  
 Gigot Agra Products  
 Gillaspie Chev-Olds  
 Golden Spread Sales  
 H & H Water Well Service  
 The Hansford Agency  
 Hansford Vet Clinic  
 Hansford Implement  
 Henton & Co., P.C.  
 Hi-Plains Supply  
 Horizon Oil & Gas  
 John Hutchison Law  
 Interstate Savings & Loan  
 I.V.'s Hungry Cowboy  
 J.G.'s  
 Billy Britt Jarvis Law  
 KRDF-FM Radio  
 Kids' Stuff  
 Lady Fair  
 Johnnie Lee  
 L & L Coffee Service  
 Lusby Cats  
 Lyric Theatre  
 Dr. Billy Nowlin  
 Nursanickel Motel  
 Perryton Coca-Cola Co.  
 Bill Pittman  
 Prairie Garden Flowers  
 Dr. Charles Ridge  
 Phillip Renner Farms  
 Southern Office Supply  
 Spearman Auto Supply  
 Spearman Industrial Engine  
 Spearman Moose Lodge  
 Pizza Hut  
 Spearman Redi-Mix  
 Tharin Company  
 Thriftway  
 Hansford Co. Compost

West Texas Gas Co.  
 Mr. & Mrs. Allen Alford  
 Buford & Karen Babitzke  
 Charles Ball  
 Steve & Sheri Benton  
 Eschol & Eulalia Blankenship  
 David & Kathy Boyd  
 Granville & Muriel Boyd  
 Rosa Lee Butt  
 Mr. Frank Buzzard  
 Mr. & Mrs. E.J. Callaway  
 Deacon & Willie Clement  
 Bob Collier  
 Mike & Pat Cudd  
 Irvin & Betty Davis  
 Travis Davis

## Ambassadors welcome



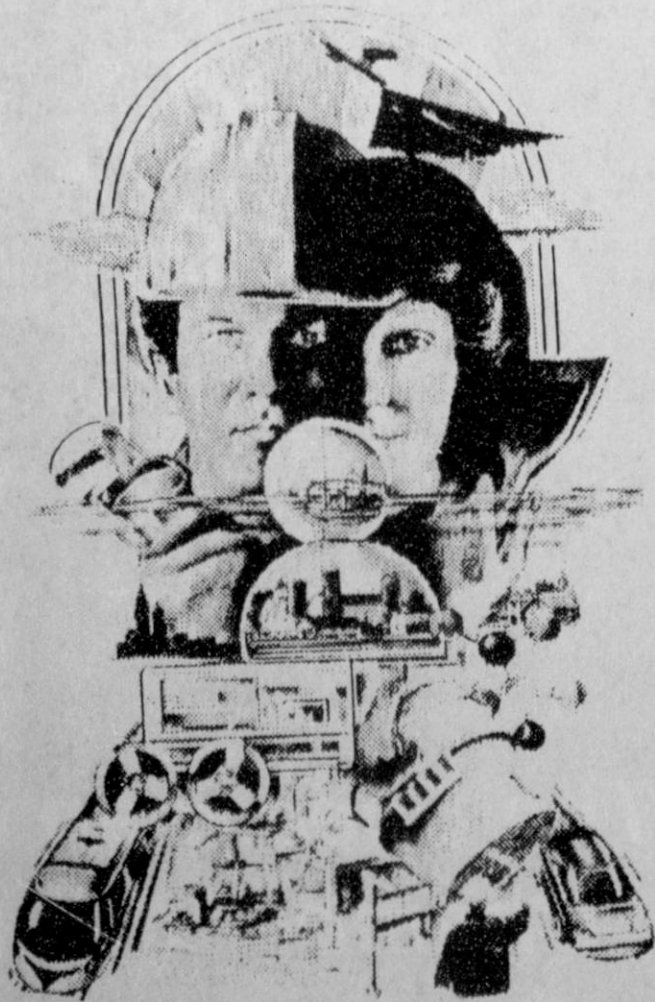
**Larry Butler**  
 Ambassadors President

We Support The  
 Spearman Chamber Of  
 Commerce

Debbie's Ready Or Not  
 315 1/2 Main  
 Spearman  
 659 - 3328

Brock Ins. Agency  
 121 Main  
 Spearman  
 659 - 2514

*Ever-Planning*  
*Ever-Achieving*  
*For the*  
*Growth of*  
*Our Community*  
*The Chamber*  
*and You.*



## Hansford County Farm Bureau

307 W. Davis 659 - 3133

## Shape Your Community



The Future Of  
 Spearman Is In  
 Our Hands.  
 Let's All Work  
 Together With  
 Our Chamber of  
 Commerce!



Spearman, Texas

# erce Board of Directors



Larry Trospen  
Director



Patti Schnell  
WDSCC President



Travis Wolf  
Director



Judy Tindell  
Director

### CITIZEN OVER THE YEARS

- 1983 - Rosa Lee Butt
- 1984 - Mary Lou Wysong
- 1985 - Frances Stumpf
- 1986 - Betty Jean Davis
- 1987 - R.L. McFarlin
- 1988 - R.C. "Pete" Fisher
- 1989 - Virginia Head
- 1990 - Dr. Tom Latta

## Support Our Chamber

*It Takes Two  
To Make Things  
Happen...  
Your Chamber  
And You*

Safety Glass Co.  
316 W. Kenneth 659-2090

## Moving ahead!

*The future of our  
community is important...  
And it takes dedicated  
people working together to  
make things happen.*

*Support the Chamber!*  
**THE BUNKHOUSE**  
212 MAIN  
659 - 2476

## Retiring board members



Stan Cobb  
Director



Stephen Poole



Helen Melton



Loretto Cook



Kevin Bynum



Jackie Pearson

Rick & Cheryl Sander  
Rex Sanders Jr.  
Mike & Patti Schnell  
Burton Schubert  
Mr. & Mrs. Jimmy Shieldknight  
Lenis & Holly Simpson  
Robert Tanner  
Rusty & Judy Tindell  
Mr. & Mrs. Loyall Turner  
Burton Williams  
Sam & Mary Lou Wysong -  
Honorary Members

## members

- Todd & Shyrie Dyess
- Helen Etter
- Bob & Joan Farr
- Helen Fisher
- Mr. & Mrs. Ed Garner
- Virginia Head
- Randy & Teresa Kirk
- R.L. McClellan
- Mr. & Mrs. Wilson McClellan
- Jack & Dolly McWhirter
- Jim & Martha McWilliams
- Don & Lynanne Maize
- Stephen & Susan Poole
- Joe & Beth Raper
- Mr. & Mrs. N.F. Renner

## welcome new businesses

by Larry Butler, president

The official "greeters" of the Spearman Chamber of Commerce - the Ambassadors. Very few communities in our great state are blessed with the receptiveness and warmth extended to new members of the community and especially new business ventures.

The Ambassadors are an extension of the Chamber, comprised of local community leaders extending assistance and recognition whenever the opportunity arises.

Even in a time of economic recession, Spearman as a community, has been afforded the opportunity of welcoming numerous new business entities to our community. Ribbon cutting ceremonies are extended on each and every occasion of a business opening.

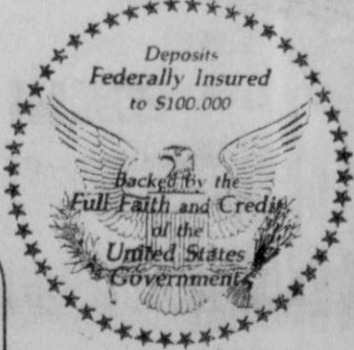
The Ambassadors and the Chamber stand ready to assist these new enterprises in every way possible, realizing their existence means the continuation of the good life - Spearman.

# LOOK AHEAD...

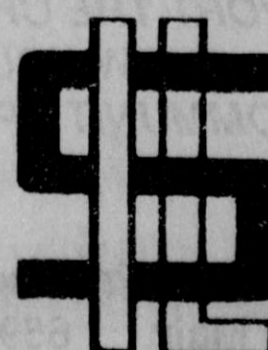
For What We Can Do For "Our Town"  
Through The Chamber Of Commerce



Congratulations Randy Kirk!  
Here's to a Successful Year as President  
of Chamber of Commerce



**Interstate Savings**  
AND LOAN ASSOCIATION  
—SPEARMAN OFFICE—  
P.O. BOX 146  
SPEARMAN, TEXAS 79061



## right now

is the best time to  
join with the  
Chamber of Commerce to  
make things happen in  
Spearman!

*Chalor's*  
214 MAIN  
SPEARMAN, TEXAS 79081



Cindy Blackman  
Chamber Director

## Working with Spearman businesses is positive experience

by Cindy Blackman  
You know the old saying, "Time flies when you're having fun?" That's what these last eight months have been like. Working with the different businesses in Spearman has been a good and positive experience. As always, we had our quarterly membership luncheons with a good attendance from our chamber members - with any-

where from 50 to 60 making the noon meal each time.

Our Round-Up was a success this year even if Mother Nature did pull one of her usual stunts. I still say the Chamber should work with the farmers and ranchers and anytime they need rain, we could plan something! Thanks to everyone who worked on the Round-Up. We had a Rodeo Queen Contest and looks like we may be keeping that in our celebration activities.

The Chamber held its first an-

nual Golf Tournament in June. We had about 20 teams from all over the Panhandle to enter. This is also scheduled for June 1992.

Our \$10,000 Bash! winners were Craig and Cindy Clyburn. They were unable to attend that night so we had to track them down to tell them the good news. Craig said he would rather hear from Ed McMahon but I was close enough.

Spearman Chamber of Commerce played a big role in the P.D.R.A. lake and dam dedica-

tion in October. I still feel the lake is going to be an asset to our town if we just give it some time to be developed.

I'm excited about the year ahead. Even though we had one of our grocery stores to close, we managed to open a new ALCO store which employs 25 to 30 people. Cargill, Inc. also came to town with several employees. During 1991, we had ribbon cuttings or welcomed 10 new businesses to town. That's good!!

Following our last board meet-

ing, I know this year will be a year that we try some new things to benefit our town. Community projects that will improve the image of our town is one of them. This is a board who will work together and donate their time to these projects. Look for good things to come out of our Chamber.

Looking ahead, the future for Spearman and Hansford County looks bright. And through its membership, the Spearman Chamber of Commerce will work to be a benefit to our community.

Invest in  
Spearman's Future...  
Join The Chamber!

YOU'RE the WINNER

When you Support the  
Chamber of Commerce

**KIDS' STUFF**

659-2608

719 W. 7th • Spearman

*Lady Fair*

659-3215

## New president has positive attitude



Randy Kirk  
President

by Randy Kirk

As Chamber President for 1992, I will do my best to instill a positive attitude for Spearman and the surrounding area. The saying, "Attitude is everything" has become my motto, and for the most part, this is true for all situations. You can either work to make something better, or give up. I'm not going to give up.

As for the activities for this year, we will continue with the

same format we have had in the past years. We will be working to refine and to develop them into activities that will be more enjoyable for you and hopefully more profitable for our community. We will be promoting our new lake and having activities at the lake as we can develop them.

Something I have felt strongly about for a number of years, is that we need to bring the three

communities of Morse, Gruver, and Spearman together as a united body. I see the need for this increasing as we face the uncertainty of how the State government looks upon rural areas.

We have a tremendous resource of talented people in these three communities and when we stand united together, we can make a difference.

## Past president enjoyed chamber association



Lenis Simpson

by Lenis Simpson

As President of the Chamber of Commerce during 1991, I thoroughly enjoyed the association with all the staff and Directors who served the Chamber this past year and would like to take this

opportunity to thank them for all their work and dedication.

There are also many other people too numerous to mention that dedicated a lot of hours to various projects sponsored by the Chamber. To all of you, thanks for your help and support.

I believe the Chamber is on the right track, and under the new slate of officers for the upcoming year, I am sure they will continue to grow and benefit all the citizens of our community.

One measure of success for any Chamber of Commerce is the stability of businesses in the community while taking into account the current economic climate. In the past year we have seen many businesses close their doors. But, even in these economic times, it always seems like a new business is eager to open in its place. The Chamber is, and always will

be, there to help this new enterprise in any way possible.

Compared to the current economic and business atmosphere of other communities close to Spearman, I believe this city holds a lot of promise, today and in the future.

### CITIZEN OF THE YEAR

1956 - Mrs. R.B. Archer, Sr.

1957 - B.J. Copeland

1958 - Oscar Donnell

1961 - Frank Massad

1963 - John R. Collard, Jr.

1965 - Sam Watson, Jr.

1967 - J.B. Cooke

1969 - Mrs. E.A. Greever & Jesse Davis

1970 - Mrs. Frank Massad & Bruce Sheets

1971 - Harry Stumpf

1972 - Dean Weese

1973 - Charlene Bulls

1974 - L.L. Anthony

1975 - J.L. Brock

1976 - Dee Jackson

1977 - Frances Loftin

1978 - C. Ralph Blodgett

1979 - Jim McLain

1980 - Orvil Brummett

1981 - Junior Lusby

1982 - Gene Cudd

1983 - Jackie Pearson

1984 - Marsha Murphy

1985 - Judy Nelson

1986 - Janie Kunselman

1987 - Mike Cudd

1988 - Nina Hendricks

1989 - Pat Dear

1990 - John Scott

# we Salute



Spearman  
Chamber of  
Commerce...

"Making  
Things  
Happen"

Celebrate  
203 Main 659 - 3350

# TEXAS

It's Like A Whole Other Country.

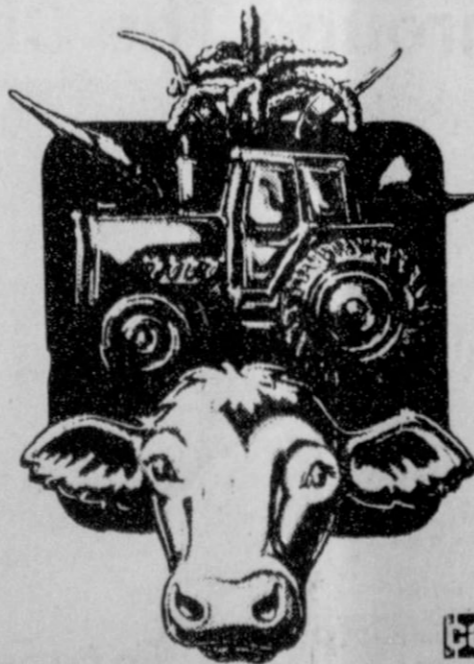
## PROGRESS

Progress is people caring and working together with their Chamber of Commerce to achieve goals for a bright future.

C & C Transmission  
1421 Gruver Highway  
Spearman  
659 - 3724

the best is yet to come through

# PROGRESS!



case

— Support The Chamber! —  
FIVE STAR EQUIPMENT  
Highway 15 West  
659 - 3743

## COMMUNITY PROGRESS

BY WORKING TOGETHER...  
POOLING OUR IDEAS AND  
SKILLS, WE HAVE A BETTER  
CHANCE OF GROWING...  
AND DEVELOPING INTO THE  
COMMUNITY WE WANT TO BE.

"SUPPORT THE CHAMBER &  
SHOW YOUR  
COMMUNITY PRIDE!"

McClure Paint and Supply  
307 Main 659 - 2830

Using our  
Resources ...  
For Everyone's  
Benefit

By Supporting Our  
Chamber Of Commerce  
We Are Supporting  
Our Community.

Hansford Implement  
Hwy 207 South  
659 - 2568






# Murrell sets record in 800 meters for SMU

Spearman's Heather Murrell took third in the 800 meters in the Southwest Conference Indoor Track Championship held at Will Rogers Memorial Coliseum in Fort Worth, Feb. 14 and 15.

Competing for Southern Methodist University, Murrell finished with a school record time of 2:13.67, behind Shola Lynch of Texas, the current SWC Indoor 800 meter record holder, and Barbara Selkridge, also of Texas. Murrell had qualified fifth in Friday's prelims.

"I really wanted to run a 2:10 today. I am still learning how to run this race," Murrell said afterwards.

Greg Duhamel, SMU's distance and cross country coach, said of Murrell's performance, "This was only Heather's second 800 meter race, ever. She is my first Conference medalist. She has had a very good two days."

Murrell also started the Mustangs' 4 x 800 relay. She and teammates, freshman Laurie Guerra, freshman Tiffany Veekner and senior Angie Carter, brought the baton in fourth place behind the teams from Rice, Baylor and Texas.

Murrell, a four-time Texas state champion in the 400 meters while competing for Spearman High School, is a third-year letterman for the SMU Mustangs. She has competed in the 400 meters and 400 meter hurdles individually for



Heather Murrell

the past two years. The 4 x 400 and 4 x 800 relays have also been on her agenda, along with cross country competition in the fall.

The SMU women will begin their outdoor season March 14 with a meet at North Texas State University in Denton and will continue a heavy schedule through the SWC Outdoor Championship held on the campus of Texas A&M, May 2 and 3.

With the qualifying marks for the NCAA finals always on the competitor's mind, Murrell summarized Saturday's accomplishment with a smile. "I am looking forward to outdoor."

# Memphis outguns Gruver 60 - 53 in practice game

by Bob Bort

The Gruver Greyhounds, champions of District 1-A, met the District 2-A champion Memphis Cyclones in a practice game Tuesday, Feb. 18, at Borger's Tex Hanna Fieldhouse. The Cyclones showed why they are unbeaten this season, by using the inside play of Larry Johnson and the outside shooting of Jay Runnels to defeat Gruver, 60-53.

But the story of the game was an eight minute stretch where the Hounds were ice-cold, and were outscored 16-0. Take away that stretch from midway through the first quarter and the Hounds outscored Memphis 53-44.

Kevin Spivey hit the first shot of the game to give the Hounds a 2-0 lead, but the Hounds could manage only 2-19 from that point to midway in the second quarter. Meanwhile, Memphis hit their first seven shots, and came out on fire.

Trent Seagler hit from under the basket with 4:41 left in the first quarter to tie the game 6-6, but it wasn't until Shannon Pool hit on a jumper with 4:44 left in the half before the Hounds scored again, and they trailed at that point, 22-6. Try as they might, the Hounds couldn't come back from that deficit.

For the first half, the Hounds were 7-32 (22%) while the Cyclones were 13-21 (62%). For the game the Hounds shot 20-64 (31%) while Memphis was 21-36 (58%). Memphis was hot and Gruver was cold. On a hot night the Hounds would beat this team, and that's what it's going to take in the playoffs for the Hounds to succeed. They need to save the cold nights for the practice games.

The Hounds will play another practice game, following the girls' bi-district game, at 8 p.m. on Friday at the WTSU Fieldhouse in Canyon. That game will be against Tulia, a team which beat the Hounds earlier this season, 64-60, at Fritch.

The Hounds are preparing for their bi-district matchup with the Claude Mustangs, the runners-up in District 2-A, on Thursday, Feb. 27 at 7 p.m. at Borger's Tex Hanna

Fieldhouse.

On Friday, Feb. 14, it was the Valentine's Day massacre for the Gruver Greyhounds over the Wheeler Mustangs, in the final scheduled game of the year. Gruver destroyed the Mustangs 85-40, and they showed a lot of offensive might to go with their tremendous defense.

The Hounds led 20-8 in the first quarter, when they went on an unbelievable 24-1 run to open the game up before halftime, 44-9. Everyone was hot - the Hounds had five different players hit 3-pointers.

The Hounds did everything right, it seemed - they scored from outside, they scored from inside, they rebounded well, they pressured Wheeler with an awesome defense. If there was a flaw, it was their free throw shooting, where they were only 12-21. But it's hard to find flaws with the way they played against the Mustangs. Their shooting percentage was over 50% from the field.

The Hounds simply came out fired up for this, their final home game. Credit the five starters, all seniors - Chad Brown, Matthew Hoel, Marty McCloy, Shannon Pool and Trent Seagler. They started it, and the Hounds never let up.

The Hounds finish the regular season 25-4, 6-0 in district competition, with an 11-game winning streak.

GRU (25-4) 27-49-65-85  
WHE (6-16) 8-11-18-40  
3-Point shots: Brady Pool-2, Kevin Spivey-2, Chad Brown, Ryan Mathews, Marty McCloy

G- Trent Seagler-17, Shannon Pool-12, Kevin Spivey-10, Chad Brown-9, Matthew Hoel-8, Luke Miller-7, Ryan Mathews-6, Brady Pool-6, Carey Kauffman-5, Marty McCloy-5

GRU (25-5) 6-17-29-53  
MEM (14-0) 14-29-43-60  
3-Point shots: Kevin Spivey-4, Matthew Hoel

G- Trent Seagler-19, Kevin Spivey-14, Matthew Hoel-7, Shannon Pool-4, Chad Brown-3, Carey Kauffman-2, Marty McCloy-2, Brady Pool-2

pt.), Etheredge-15, Frick-10, Renteria-2.

Vs. Wheeler, Sat.  
Gru. 46 - Whe. 28  
Odom-4, Price-23 (6-3 pt.), Dawson-4, Etheredge-9, Gaines-6.

Gruver Boys-J.V.  
White Deer Tourney  
Feb. 13-15

Won Consolation  
Vs. Panhandle, Thurs.  
Gru. 43 - Pan. 44

Odom-3 (1-3 pt.), Foster-3, Price-16, Dawson-5 (1-3 pt.), Barkley-2, Etheredge-7, Frick-8, Gaines-1.

Vs. Groom  
Gru. 65 - Gro. 20  
Odom-9, Foster-2, Ferguson-3, Price-13 (2-3 pt.), Dawson-11 (1-3

# Lady Hounds ready to battle with Valley

by Bob Bort

The Gruver Lady Hounds are in the playoffs, and ready to do battle with the Valley High School Lady Patriots Friday, Feb. 21 at 6:30 p.m. at the West Texas State Fieldhouse ("The Box") on the campus of WTSU in Canyon.

The champions of District 1-A, the Lady Hounds will be favored over the 2nd place team from District 2-A in this Class A Bi-District matchup, but anything goes in the playoffs. The Lady Hounds are 20-10, and have played a tougher schedule than the Lady Pats, who are 13-12.

The Gruver-Valley game will be followed by a practice game between the Greyhounds and the Tulia Hornets at 8 p.m.

This year the Gruver girls have their best team since perhaps 1986, and maybe even since 1963-64, the last time Gruver had any success at all in the playoffs.

Gruver warmed up for the playoffs with a game against the District 2-AA champions, the Panhandle Pantherettes, and were beaten 50-35. Gruver needs the experience of a few years in the playoffs, and they will be able to dispose of teams like Panhandle.

Neither team played particularly well in appearance, but the Pantherettes shot 9-15 (60%) for the first half, and 21-38 (55%) for the game. That is remarkably good. The Lady Hounds shot 14-31 (45%), not a bad percentage, but they weren't getting the shots, and Panhandle was getting good ones under the basket.

The intensity of the district competition which had just concluded

was not there for the Gruver ladies, but it will be back for certain this Friday in the big game against Valley.

Last Friday, Valentine's Day, the Lady Hounds had no love lost for the Wheeler Mustangettes, as they trounced them 66-45 to finish district competition 6-0, and ensure their first 20-win season in 28 years.

The Lady Hounds again started slow, leading only 24-20 at halftime. But Gruver coach Steve Myatt is getting used to giving pep talks at halftime, and again the Gruver ladies blitzed the competition in the second half.

Gruver outscored Wheeler 16-2 at the start of the third quarter, to lead 40-22, and the game was over. Julie Meyer with 10 points, and Wynn Maupin with 6 were the main instigators in the third quarter blitz. Meyer is able to drive inside, then with a nice touch hit on her soft jumper.

Sara Jones is 4-4 from the field, with three 3-pointers, since being called up to the varsity for the past three games. Pretty nice shooting.

WHEELER (11-16) 4 20 26 45  
GRUVER (20-09) 11 24 44 66  
3-point Shots: Sara Jones - 2, Traci Crawford.

G-Julie Meyer-15, Wynn Maupin-14, Sara Jones-8, Holly Venneman-8, Traci Crawford-6, Mika McLain-6, Tisha Ralston-5, Anissa Ryan-2, Monica Ward-2.  
PANHANDLE (25-5) 16 20 35 50  
GRUVER (20-10) 4 14 20 35

G-Holly Venneman-11, Cora Meyer-6, Wynn Maupin-5, Mika McLain-4, Julie Meyer-4, Anissa Ryan-3, Kasey Davis-2.

## Roundball roundup

Spearman Boys-Varsity  
Vs. West Texas  
Spr. 57 - W.T. 61  
Scoring: Cody Pipkin-13, Brian Beck-4, Russell Shaver-16 (2-3 pt.), Khris Kelp-13 (3-3 pt.), Brady Reed-2, Mark Eakin-2, Darian Hawkins-4, Mike Hager-3

Spearman Boys-JV  
White Deer Tourney  
Feb. 13-15  
Won Tournament  
Vs. Groom, Thurs.

Scoring: Troy Law-2, Cass Lasater-2, Wes Dyess-9, Toby Thompson-8, Justin Boyd-11, Matt Archer-3, Dee Mayfield-6, Jason Swink-3, Jason Varnon-6, Clint Schnell-8, Brandon Vanderburg-4

Vs. Panhandle, Sat.  
Scoring: Law-7 (1-3 pt), Lasater-2, Dyess-7 (1-3 pt), Thompson-11 (2-3 pt), Archer-2, Sherman Jones-1, Varnon-7, Schnell-1, Vanderburg-8

Vs. Canadian, Sat.  
Scoring: Dyes-14 (1-3 pt), Thompson-5 (1-3 pt), Archer-3 (1-3 pt), Mayfield-2, Swink-2, Jones-9 (1-3 pt), Varnon-6, Vanderburg-4, Schnell-2

Spearman Girls-Varsity  
At West Texas  
Spr. 38 - W.T. 33  
Scoring: Mendy Lasater-1, Jill Lusby-5 (1-3 pt), Michelle Garnett-11, Joy Gafford-3, Melodie Schuman-4, Tamri Townsen-7, Laura Pearson-7

Spearman Girls-JV  
White Deer Tourney  
Feb. 13-15  
Finished Third  
Vs. Groom, Thurs.

Spr. 46 - Gro. 3  
Scoring: Lisa Lillard-9, Nikki Strawn-6, Sara Sanders-5, Holly Jarvis-6, Carrie Pearson-6, Shea Crawford-4, Tommie Latta-2, Telie O'Quin-8

Vs. Panhandle, Sat.  
Spr. 42 - Pan. 45  
Scoring: Lillard-3, Ashley Shieldknight-4, Jarvis-14, Pearson-7, Crawford-4, O'Quin-8, Tracy Tigrett-2

Vs. White Deer  
Spr. 38 - W.D. 11  
Scoring: Strawn-3, Shieldknight-2, Sanders-6, Jarvis-9, Pearson-10, Crawford-8, O'Quin-4

## Roundball roundup

Gruver Basketball  
Roundup  
Canadian Tourney  
Gruver Girls - J.V.  
Feb. 13-15

Vs. Panhandle, Thurs.  
Gru. 22 - Pan. 53  
Andee Salmans-1, Shana Jarvis-6, Wendy Rodriguez-2, Janyth Hart-4, Kim Venneman-2, Jana McCloy-2, Kaycee Haenisch-5 (1-3 pt.)

Vs. Groom  
Gru. 34 - Gro. 20  
Salmans-5, Jarvis-6, Rodriguez-2, Gina Hoel-4, Janelle Haefner-2, McCloy-3, Haenisch-12 (2-3pt)

Vs. Canadian, Sat.  
Gru. 26 - Can. 39  
Salmans-1, Jarvis-3, Rodriguez-3, Hoel-5, Hart - 2, Haefner-3, McCloy-1, Haenish-8.

## REAL ESTATE OPPORTUNITIES Sealed Bid Offering

Sec. 8, Blk. JT, TWNG Survey, Ochiltree County, Texas - NO MINERALS.  
Location: 2 Miles South of Farnsworth, Texas on Farm & Market Road 376.  
Description: 180 acres farmland  
110 acres of C.R.P. w/6 years remaining on contract  
350 acres in wetlands  
Contact: Neal Flathers for sealed bid information. Phone 435-7015 or come by 200 S. Main, Perryton, Texas.  
Owner's Option: Owner can take or reject any or all bids. Accepted bids will have the right to raise bids against accepted bids.  
Contract Facts: Escrow deposit of 5% will be required on Date of Contract. Bids will be opened 2-28-92.

FARM & RANCH LAND FOR SALE  
640 acres of excellent dryland wheatland. Small farm house and buildings. Located East of Perryton.  
2 Sections of excellent, rolling grassland with some minerals. Beautiful Wolf Creek caprock grassland. Excellent fences & good watering facilities. Located 1 mile from Wolf Creek Park.  
2 & 1/4 Sections of excellent grassland located Southeast of Perryton.  
2 Sections excellent dryland wheatland. Located in Southeast Ochiltree County.

FARM & RANCH DIVISION  
NEAL FLATHERS  
DEPT. MANAGER/SALES ASSOC.  
Phone 806-435-7015  
Eves. Ph. 806-658-4418  
SALES ASSOCIATES:  
BETH DEHTAN  
806-435-5444/Eves: 806-658-9358  
JANET TREGELLAS  
Day/Eve. 806-658-2290



**TRINITY COMMUNITY CHURCH**  
Invites You To Attend Services  
**Sunday, February 23**  
**10:45 a.m. and 6:30 p.m.**  
To Hear  
**JERRY PHILLIPS**  
A well-traveled evangelist, pastor and teacher, Jerry was the first pastor of Trinity Fellowship in Amarillo. His humorous and passionate ministry will help you see God as Father more plainly.

**Rob's Auto Service**  
100 N. Bernice • Spearman, TX  
659-2381  
"BE KIND TO YOUR VEHICLE"  
SPECIAL  
Feb. 21st thru March 6th  
Fuel Injector Cleaning  
\$35.00 (Tax included)  
Give your vehicle these advantages:  
• Improved driveability  
• Improved fuel control  
• Improved engine efficiency and power  
• Reduction in exhaust emissions  
• Rob Shields • Wesley Brown

**NORTHROP KING**  
NK DEALER  
Deduct 10% on all grain sorghum and corn seed if bill is paid by 10th of the month following bill.  
Deduct another 5% if prepaid by February 29th: 10 + 5 = 15%  
Deduct another 2% if prepaid by April 30th: 10 + 2 = 12%  
CORN SEED:  
NK9540 - P30 80,000 Kernels \$70.00  
NK7759 - P30 80,000 Kernels \$50.00  
GRAIN SORGHUM SEED:  
NK383Y CREAM - Early Maturing \$45.00  
NK714Y CREAM - Medium Maturing \$43.00  
NK300 - Long Season \$42.50  
\*Add \$10.00 per bag for Concept Safened Grain Sorghum  
**B&B FARM INDUSTRIES INC.**  
659-5507  
703 COLLARD • SPEARMAN, TX

©1991 Century 21 Real Estate Corporation is a franchise for the N.A.F. and is not a member of the Equal Housing Opportunity. Equal Housing Opportunity is a F.A.R.C.O. MEMBER. EQUAL OPPORTUNITY. EQUAL OPPORTUNITY. EQUAL OPPORTUNITY.

## Karen's Kozy Korner

by Karen Babitzke  
Extension Agent

The Internal Revenue Service is giving up to \$2,000 to low-income families who qualify for Earned Income Credits (EIC) on their tax returns. The trouble is that many just don't apply.

Many families miss the opportunity to receive this tax credit because they don't make enough money to owe taxes, so they don't file an income tax return. Also, people don't know the EIC is available or how to file for it.

It is believed that more than 12 million families now qualify for the EIC. It is available to working parents who earned an adjusted gross income of less than \$21,250 in 1991, and who have at least one child who has been living at home for more than six months. Both married and single parents can qualify.

The EIC is a refundable credit, which means that eligible working families can receive it even if they owe no federal income tax or have no income tax withheld from their paychecks. Those who owe no income tax receive a check from the IRS in the amount of their credit.

If a family does owe income tax, the EIC reduces the amount of taxes owed. If the family's credit is greater than the taxes owed, the family's tax bill will be reduced to zero and the IRS will send the family a check for the remaining amount of its EIC.

To receive the EIC, a person must file a federal income tax return, either 1040 or 1040A, and a new form called "Schedule EIC." A taxpayer can fill out both sides of the form or fill out only the first side and allow the IRS to complete the rest and calculate the credit.

Those families who use the "married couple filing separately" sta-

tus should check with the IRS to see if they qualify to receive the EIC.

The amount of refund families receive depends on how much income was earned and whether they qualify for two extra EIC benefits that are now available:

\*The basic EIC for 1991 for families with one child is worth a maximum of \$1,192. The maximum is \$1,235 for those with more than one child. Most families who earned between \$6,000 and \$13,000 last year should receive at least \$1,000.

\*Families with a child born in 1991 can receive an extra benefit of up to \$357.

\*Families that pay at least part of the premiums for a health insurance policy that includes health care coverage for a child may receive an extra credit of up to \$428.

Low-income parents with a foster child also may qualify for the EIC. However, the foster child must have lived with the family for that entire year.

More information on the EIC and free assistance is available in most areas at Volunteer Income Tax Assistance (VITA) clinics.

Call the local IRS office or (800) 829-1040 to find out the location of the nearest VITA clinic in your area.

### Extension Service Offers Workshop for Volunteers

Learning to assume roles of leadership in the community and for the family is the theme of a four-part Family Community Leadership (FCL) Workshop scheduled March 12 and 26 and April 9 and 23 at the Texas A&M Research and Extension Center, 6500 Amarillo Blvd. West.

Each workshop will begin at 9:00 a.m. and end at 5:00 p.m. Registration is \$36.00 and includes the costs of materials, meals and refreshments.

The FCL program is designed to assist individuals in the community who want to make a difference in the quality of life for the family and the community as a whole.

The workshops are conducted by highly trained extension educators who assist each participant in developing leadership and decision-making skills which they, in turn,

teach to other community groups.

Dr. Judy K. Flynn, District Extension Director, said, "Countless public policy issues affect the quality of today's family life in our area and people of the Panhandle care about those issues."

Developing leadership skills is essential, particularly for women, who are and want to become involved in the decision making process that drives all types of public policy, says Flynn.

The FCL program offers participants in-depth training on ways to become agents for change and how to conduct group meetings. Other discussion topics include managing conflict, building coalitions and establishing teamwork. Proven techniques will be provided on handling group stress, motivating others for change, handling power, and talking to decision-makers. Speakers will discuss the use of persuasion, ways to develop listening skills, and the art of negotiating.

"This program works because participants completing the FCL Workshops are expected to commit 66 hours of community service activities and to teach others in their communities about leadership," says Flynn.

Sponsors of the program are the Texas Agricultural Extension Service, Texas Extension Homemakers Association, and the W.K. Kellogg Foundation. The workshops are open to anyone in the community, regardless of age, race, religion, national origin, sex, handicap or veteran status.

For information about the FCL program and workshop, contact Dr. Judy Flynn at 806-359-5401 or Karen Babitzke, Hansford County Extension Agent, at 659-2030 or 733-2901.

## FFA judging teams plan clinic, contests

by Spearman FFA Chapter

Tryouts for Land, Range & Pasture, Livestock and Horse Judging will be taking place within the next couple of weeks. The judging teams are planning to go to Texas A&M on March 7, for a judging clinic, to learn more about each judging contest.

The teams have scheduled contests at Sweetwater, Abilene, Texas Tech, Clarendon, West Texas State University and Tarleton. Also, land judging teams will attend the Ochiltree County invitational land judging contest on March 24.

Youths traveling to the Houston stock show include Jeremy Hunter, Brandon Sutton, Jeremy Willingham, Barry Eddleman, Taydawn Elliott, Eddie Herrington



Students of Carla's Dance Studio in Spearman competing in the Danceamerica Contest in Dallas on Feb. 1 included (left photo, seated, l-r) Traci Martin, Toni Davis, (standing, l-r) Jocelyn Edwards, Haley Farber, Ashley Phillips and Amber LaRochelle (right photo). Winners who will compete at Nationals this July are Jocelyn Edwards, tap solo; Ashley Phillips, jazz solo; and clogging group Haley Farber, Amber LaRochelle, Ashley Phillips and Jocelyn Edwards. Anyone interested in helping sponsor any of the girls at Nationals can contact Carla Barkley at 659-3335. At the contest in Dallas, Haley Farber placed third in her solo jazz division, Toni Davis and Traci Martin placed second in duo-trio jazz division, and Jocelyn Edwards and Ashley Phillips placed second in tap duo-trio division.

## SHS students attend UIL meet

Seventeen Spearman High School students participated in the Canadian UIL Practice Meet held Saturday, Feb. 15.

Events, students participating and their placement, if any, included:

Poetry Interpretation - Elizabeth Pipkin first; Extemporaneous Persuasive Speaking - Elizabeth Pipkin third; Ready Writing - Laura Pearson second, Chris Hornsby, Robert Needham; Literary Criticism - Amber Cates fifth, Alfonso

Martinez sixth;

Spelling - Leslie Swan fifth, James Macias, Sally Puentes; Calculator - Josie Holt sixth, John Holt; Current Issues & Events - Brad Butler sixth, Sonya Tindell, Karina Magana; Editorial Writing - Robert Needham; Feature Writ-

ing - Robert Needham; Headline Writing - Sonya Tindell;

Accounting - James Macias, Maria Sumner; Number Sense - Alfonso Martinez, James Macias; Mathematics - Tim Dooley, Brad Butler, Alma Martinez; Science - Brad Butler.

## Cub Scout Pack 578 celebrates anniversary

by Linda Cummings

Cub Scout Pack 578 celebrated its 25th anniversary on Saturday, Feb. 15. Cubmaster Andy Scarborough told the history of the pack and acknowledged the many volunteers who have given time to help.

Sheldon Johnson, district executive, presented Linda Cummings with her Wood Badge Beads that she had earned.

Debbie Hornsby presented the first year Webelos with the following activity pins: Micah Antalek, Jake Coates, Matthew Davis, Clint Edwards, Ricky Goodson, Joshua Lackey, David Parker, Chris Schmehr, Aaron Thompson and Glen Rowers, Readyman; and Glen

Rowers, the Religious Emblem knot.

Larry Hornsby presented the second year Webelos with the following: Earl Wattier, Craftsman; and Jay Fight, Traveler.

B.J. Parker presented the following: David Sharp, Bear badge, Gold Arrow and Silver Arrow; Wayne McCubbin, Silver Arrow; and Andrew Cummings, Silver Arrow.

Andy Scarborough presented T.J. Vasquez, Nicholas Benton and Jared Shufeldt with their Wolf Badges.

Refreshments, provided by Debbie Pearson and other donors, were served following the presentations and the group enjoyed fun and fellowship.

**Elect Phil Black 84th District Judge**

Pol. Ad. P. 3 for by Circle 16 Elect Phil Black, Tom Sinder, Treas. P.O. Box 3336, Barger, TX



### WINTER CLEARANCE SALE

- 91 Lincoln Town Car - 4 Dr - Silver Rose - Burgundy Cloth 14,000 miles! Factory warranty remaining! Keyless entry, auto light dimmers, dual power seats, windows, locks, tilt, cruise, AM/FM cass, rear defroster, Michelins & mags. Compare with new at \$35,000! **CASH \$22,900**
- 91 Ford Aerostar XLT Extended Van - Light Met. Brown 12,000 miles! Factory warranty remaining! 4.0 liter V6, lumbar seats, rear air, power windows & locks, tilt, cruise, AM/FM cass, rear defroster, 8 pass. seating, Michelins & mags. **CASH \$15,900**
- 91 Ford T-Bird - 2 Dr - Metallic Red - Gray Cloth 10,600 miles! Factory warranty remaining! 3.8 EFI V6, power seat, windows, locks, tilt, cruise, AM/FM stereo. **CASH \$12,500**
- 90 Chevy Corsica LTZ - 4 Dr - Bright Met. Blue - Gray Cloth 20,000 miles! Factory warranty remaining! 3.1 EFI V6, mag wheels, power windows, locks, tilt, cruise, AM/FM cass, luggage rack, rear defroster. **CASH \$9950**
- 90 Ford Mustang LX - 2 Dr - White - Burgundy Cloth 39,000 miles! Factory warranty remaining! 4 cyl EFI, automatic, air, cruise, AM/FM cass. This would make an excellent, economical, school car! **CASH \$7250**
- 89 Buick Regal Limited - 2 Dr - Gold - Saddle Tan Cloth 50,000 miles! Factory warranty remaining! V6, power seat, windows, locks, tilt, cruise, AM/FM cass, rear defroster, wire wheels. Compare with new at \$21,000! **CASH \$8950**
- 89 Mercury Sable GS - 4 Dr - Gold - Tan Cloth 50,000 miles! Factory warranty remaining! 3.8 EFI V6, power seat, windows, locks, tilt, cruise, AM/FM cass, rear defroster, mag wheels. **CASH \$8500**
- 87 GMC Safari SLE Minivan - Charcoal/Silver - Gray Cloth 62,000 miles! 4.3 EFI V6, 8 pass seating, power windows & locks, tilt, cruise, AM/FM cass, trailer hitch, rally wheels, new steel radials. **CASH \$8500**
- 87 Oldsiera Cutlass Cruiser Wagon - 4 Dr - Charcoal 47,000 miles! 2.8 EFI V6, power seat, windows, locks, tilt, cruise, AM/FM cass, 3rd seat, luggage rack, mag wheels. **CASH \$5950**
- 86 Buick Century 100 - 4 Dr - Tan Cloth 58,000 miles! V6, a/c, windows, locks, tilt, cruise, AM/FM cass. This would be an excellent, economical school car! **CASH \$4950**
- 85 Chevy Impala - 4 Dr - Metallic Brown - Saddle Tan Cloth 77,000 miles! 305 V8, power steering, brakes, air, tilt & cruise. This car is good & dependable transportation! **CASH \$3250**
- 82 Ford Thunderbird - 2 Dr - Gold/Tan - Saddle Tan Cloth Only 50,500 miles! Economical V6, tilt, cruise, AM/FM stereo, Landau vinyl top, wire wheels! You've got to see this one. This would make a great school car! **CASH \$3250**

TOP QUALITY CARS & TRUCKS ... AT AFFORDABLE PRICES!!  
**HERGERT MOTORS**  
Donnie Hergert, Owner  
S. Hwy. 207 - Box 425 - (806) 659-3723  
SPEARMAN, TEXAS 79081

## B & B FARM INDUSTRIES, INC.

10% Discount given on all Corn and Grain Sorghum Sales if bill is paid by 10th of the month following billing.  
Extra Discount given for Prepayments.

We have a good supply of:

**CHILLOCO OAT SEED**

**ROX ORANGE CANE**

**EARLY SUMAC (RED TOP)**

**HEGARI**

**SORGO-SUDAN CROSS**

**G4673B - FUNK'S CORN**

**ASGROW TOPAZ**

**ASGROW A504 (EARLY CREAM)**

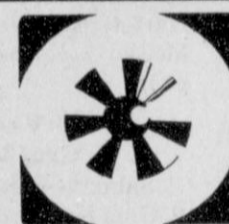
**HI-PERFORMER CHEROKEE**

659-5507

703 COLLARD • SPEARMAN, TX



The average surface temperature of the earth is 57 degrees Fahrenheit.



REGIONAL EYE CENTER

GEORGE R. WALTERS, M.D., P.A. Is Pleased To Announce The Association Of

**MARK F. HOLLINGSWORTH, M.D.**

In The Practice Of General Ophthalmology Diseases And Surgery Of The Eye

107 W. 30th Street  
1-806-665-0051

Out Of Town Patients 1-800-322-3931

## THANK YOU

Many thanks to Five Star Equipment for purchasing my steer at the Livestock Show.

**Tanner Chase**

# WANT ADS Work Wonders!

# Reporter-Statesman CLASSIFIEDS 659-3434

**NOTICE**  
Deadline to place or cancel classified line ads is Tuesday noon for Thursday insertion.

**CLASSIFIED RATE**  
\$4.00 first insertion  
\$3.00 each additional insertion (30 words or less)  
13¢ each word over 30  
Legal Notices: 15¢ per word

Ads must be paid in full in cash before publication, unless advertiser has established credit with the Reporter-Statesman. Payment for out of state classifieds must be in the form of a money order or cashier's check. No tearsheets provided for classified ads. Tearsheets provided on request for legal notices.

**REAL ESTATE**

**HAPPILY EVER AFTER** in this 4 bedroom, 3 bath, 2-story home. Beautiful yard, sprinkler. Call Julie Martin, 659-2425, AA Realty. S15-3tc

**FOR SALE:** 3 Bedroom, 2 bath home. Sunken living room, parquet floors, fireplace, covered patio, 2 car garage, sprinkler system, 2193 sq. ft. living space, excellent location. Call 659-3587 or 659-5022. S33-RTN

**COUNTRY LIVIN'** - Five acres of land, a mobile home and barn in the country. Call 659-5233. S14-4tc

**AA Realty**

Allen Alford-Broker-659-3034  
Julie Martin-Sales-659-2425  
Dennis Nelson-Sales-659-3608  
Larry Trosper-Sales-3491

13 S. Brandt - **SOLD**  
1108 S. Arct - **UNDER CONTRACT**  
712 Collier-2/2

1025 Townsend-3/2-2-Wonderful inside!  
106 Cnty Rd #1-Two story-Must sell!  
110 Cnty Rd #1-2/1-1-Must sell!  
605 S. Archer-Lot & Trailer-Great Buy!  
729 Cotter Dr-**SOLD** Obl. Garage  
515 Evans-3 BR-2Bath

Homes to Show Not Listed  
Just Call For Showings  
FOR QUALITY & SERVICE CALL US TODAY

**Century 21**

**GOLDEN SPREAD REALTY**  
Jany Helton Pointer, Broker Owner, 435-5444  
Jennifer Nollner, Sales Associate 659-5243

821 Drensen - 5/2, lots of house for the money! Call today!  
621 Roland - 3/2, Expansive, not expensive!  
207 James - Large bonus room with basement for play area!  
701 Wilbanks - 3/2 - **UNDER CONTRACT!** Must see!  
407 W. 12th - 4/13/4, quiet street, carport!  
514 Hazelwood - 3/13/4, FDIC property!  
515 S. Bernice - 4/13/4, extra large lot & close to school!  
18 S. James - 3/2, extra large basement and large back!  
505 Haney - 3/11/2, owner will sell or rent!  
703 E. Second - 3/11/2, great location!  
1014 S. Haney - 2/1, starter home with bonus room!  
501 Oklahoma - 3/11/2, beautiful hardwood floors!  
206 Lonita - 2/1, central heat & air!  
308 Hazelwood - 2/1, for the thrifty!  
611 S. Evans - 3/13/4, affordable!  
Barn Off Cou **UNDER CONTRACT**  
315 1/2 N. Bernice - Lot for sale!  
221 S. Ba **UNDER CONTRACT!**

**ADVERTISING PROVISIONS**

- Publisher reserves the right to reject, edit, revise and properly classify any advertisement at his sole discretion.
- Advertiser assumes all liability for advertisements printed pursuant to his instruction and shall indemnify and hold the publisher harmless from and against any and all claims and damages, including all costs incurred by publisher in connection therewith. Advertiser represents that all advertising copy is truthful and not misleading. Advertiser shall indemnify and hold publisher harmless from any claim against publisher arising out of or in connection with publication of advertising (except for modifications made by publisher without Advertiser's approval) including, but not limited to, claims for libel, invasion of privacy, commercial appropriation of one's name or likeness, copyright infringement, trademark, trade name or patent infringement, commercial defamation, false advertising, or any other claim whether based in tort or contract, or on account of any state or federal statute, including state and federal deceptive trade practices acts. If advertiser claims copyright ownership in any of the advertising published, advertiser must include proper notice of its copyright claim in the body of the advertisement, otherwise copyright ownership shall remain in the publisher.
- Advertiser agrees to check advertisement in the first issue in which it appears and report any error at once as publisher assumes no responsibility for errors after the first insertion. For any error which is the fault of the publisher and of which publisher has been timely notified, publisher will reprint the corrected advertisement for one extra insertion or refund the proportionate cost of the advertisement containing the error. Publisher shall have no responsibility for errors appearing in the copy submitted by advertiser.

**REAL ESTATE**

**THREE BEDROOM STUCCO** home with detached 36 x 24 garage on three lots, 55 x 140. Located at 30 S. Brandt, Spearman. Call 659-3683 after 5 p.m., ask for Albert (Butch) Baker. S14-4tp

**DRY WHEATLAND**, north of Gruver. Priced right at \$325/acre, but will consider all offers. Presently Farmed. (602) 420-1498, leave message. S16-2tp

**FOR SALE:** Home, shop on 3.4 acres, 1213 Hwy 15, completely remodeled, 2317 sq. ft. (living space) home w/basement, 3 bedroom, 2 bath, dining room, den & pantry, all new central heat & air & utilities, 960 sq. ft. carport, covered porch & storage building w/ city utilities. Shop building-2600 sq. ft. Assume loan. Call 659-5131 for appointment. S17-4tp

**FOR RENT**

**FOR RENT** - 3 bedroom, 2 bath house, Harris Addition, Gruver. Call 733-2517. S08-RTNvc

**AUTOMOBILES**

**FOR SALE:** 1978 Ford LTD, V8, excellent work car! Runs great! \$875. 659-2619. S17-1tc

**LIVESTOCK**

**40TH ANNUAL** Panhandle State University Performance Tested Bull Sale. Saturday, February 22, 1992, 1:00 p.m. CST, University Farm, Goodwell, Oklahoma. Bulls have been fed a Growing Ration. Selling 100 Bulls - Angus, Charolais, Hereford, Salers, Simmental. Bulls will be Fertility Tested. (405) 349-2611 Ext 262 or 221, (405) 349-2514 (Home). S14-4tc

**FARM PRODUCTS**

**Hard Red Spring Wheat**  
**Spring Oats**  
**Watley Seed Co.**  
Spearman, Texas  
1-800-338-2885

**MISC. FOR SALE**

**JAN'S ETC.**  
**NEW & USED & ANTIQUES TOO**  
Everything for home and family.  
Plains Shopping Center in Spearman.  
Open Monday - Saturday  
9:30 a.m. - 6:00 p.m.

**NEW TRAMPOLINES**  
Mats and springs. Resew trampoline mats. Make new boat covers.  
Call 806-659-2109  
Harry Stumpf  
301 W. 12th  
Spearman, Texas

**PERSONAL**

**IS DRINKING AFFECTING** your life negatively? Join us at AA or Al-Anon. Tuesdays at 8 p.m. at 30 Hwy 760 (three blocks south of the Moose). S06-17tp

**REPORTER-STATESMAN CLASSIFIEDS WORK!**

**Today's Best Buys**

**DUBUQUE FRANKS**  
12 Oz. ....2/\$1  
**ALLSUP'S CONVENIENCE STORE**

**LOST & FOUND**

**REWARD OFFERED** for return of two missing adult boxers, one male, one female. 435-5758. S16-2tp

**GARAGE SALES**

**THREE FAMILY** Garage sale, 1119 Linn Drive, Friday, February 21 from 9 - ? and Saturday, February 22 from 9 - ? Lots of boys and girls clothes, waterbed, moped and lots of misc. S17-1tc

**LAST CHANCE! MOVING SALE!**  
19.2 Kenmore refrig. \$350; Action Lane recliner \$100; 5 pc. complete bdrm suit \$300; king softside waterbed \$195; RCA console color TV \$100; plus Garage Sale Sat., 8-12 only! 802 Drensen, 659-2619. S17-1tp

**JOB OPPORTUNITIES**

**WANTED: MARKETING EXECUTIVES** with an Inc. 500 Company. Unlimited potential. Free training. Full or part-time help needed. Excellent income available. Orientation at Golden Age Center, 105 E. Broadway, Gruver, TX, Feb. 20, 8:00 p.m. Presented by Chad Wilson. Everyone invited. S16-2tp

**SPECIAL NOTICE**

**THE KNACK SHOPPE**  
A Video Specialty Store  
Wide Selection of Movies  
• VCR & TV Rentals  
• Nintendo Games & Units  
• Sega Genesis Games & Units  
• Blank Tapes • Popcorn • Snacks  
659-5046 317 Main St. Spearman

**SERVICES**

**CALL YOUR LOCAL** Used Cow Dealer for 7 days a week dead stock removal. 659-3544 or 1-800-692-4043. Serving Cattlemen for the past 20 years. G51-RTN

**HANDYMAN** - You want it done and can't or don't want to do it yourself!! Call Uncle Ed (Pearson), 659-3328 - Anytime - Anything! House, yard, fence, car, garage, etc. (Clean up, repair, paint, trim trees & bushes, etc.) S15-1tcRTN

**BATHTUB & SINK** refinishing, countertop recoloring. Cedric Cryer, 1-800-743-7451. S15-4tp

**JACK OF ALL TRADES!** We do anything and everything: Painting, tree trimming, mowing, yard work & clean up, landscaping, roofing, fence building (all types). You need it done, call David Pearson at 659-3352. S43-1tcRTN

**OSGOOD MONUMENT CO.**  
Amarillo, Texas  
Dealers of Rock of Ages Granite, as well as all colored granites, marble and bronze memorials.  
Represented by  
**BOXWELL BROS. FUNERAL HOME**  
519 S. Evans  
659-3802

**Are You A Victim of Physical Abuse?**  
Call Toll Free 1-800-753-5308

We are in Spearman on the 1st and 3rd Wednesdays of each month, from 9:30 to 11:30 a.m. Call for an appointment. Also, we can come to Spearman at any time upon request. We also operate a safe place for victims and their children to stay in times of crisis.

**Panhandle Crisis Center**  
Serving Hansford, Lipscomb and Ochiltree Counties  
317 S. Main

**SITUATION WANTED**

**WOULD LIKE TO** work on a farm or do any type of work. 659-5013. Jesus Espinosa. S17-1tp

**PUBLIC NOTICES**

**NOTICE TO BIDDERS**  
Sealed proposals addressed to Mr. Kelvin Knauf, City Manager, P.O. Box 37, Spearman, Texas 79081 for Sealcoating will be received by the City of Spearman, at City Hall, 30 SW Court, Spearman, Texas until March 10, 1992, at 2:00 p.m. Plans and Specifications may be obtained from Brandt Engineers, Inc., 4537 Canyon Drive, Amarillo, Texas 79110, 806-353-7233 in the following manner:  
**Bona Fide Bidders:** Upon payment of \$50.00, of which all will be refunded upon submission of a bid and return of the plans and specifications in good condition with the bid, or return of the plans and specifications in good condition BEFORE the bid opening.  
**Suppliers and Subcontractors:** Upon payment of \$50.00, NONREFUNDABLE. Bid security in the amount of 5% of the total bid must be submitted. Bidders to submit cashier's check, certified check, or bid bond payable to the Owner as guaranty the bidder will enter into contract and execute bonds in the forms provided. Performance and Payment bonds shall be set forth in the contract documents. The Owner reserves the right to reject any or all bids and to waive any informalities. In case of ambiguity or lack of clearness in stating the prices in the bids, to adopt such interpretations as may be most advantageous to the Owner, or to reject the bid. No bid may be withdrawn until the expiration of 45 days from the bid date. S17-2tc34.80

**NOTICE TO ALL PERSONS HAVING CLAIMS AGAINST THE ESTATE OF HARRISON B. PARKS, DECEASED**  
Notice is hereby given that original Letters Testamentary for the Estate of HARRISON B. PARKS were issued on February 3, 1992 in Cause No. 2017 pending in the County Court of Hansford County, Texas to: EDITH LAVERNE PARKS, WADE BAILEY PARKS and LYNN ALVA PARKS. The residence of such Executors is Hansford County, Texas. The post office address is EDITH LAVERNE PARKS, P.O. Box 87, Morse, TX 79062; WADE BAILEY PARKS, P.O. Box 48, Morse, TX 79062; LYNN ALVA PARKS, P.O. Box 105, Morse, TX 79062.  
All persons having claims against this Estate which is currently being administered are required to present them within the time and in the manner prescribed by law.  
DATED the 14th day of Feb., 1992.  
-s-BILLY BRITT JARVIS  
State Bar #10585000  
P.O. Box 515  
Spearman, Texas 79081  
(806) 659-2554  
ATTORNEY FOR THE ESTATE OF HARRISON B. PARKS  
S17-1tc20.85

**NOTICE OF SHERIFFS SALE**  
THE STATE OF TEXAS  
COUNTY OF HANSFORD  
By virtue of an Order of Sale issued out of the Honorable 84TH Judicial District Court of Hansford County, on the 6 day of Feb., 1992 by the Clerk thereof, in the case of HANSFORD COUNTY VS. FOX, J.W. JR., Cause #269, and to me, as Sheriff, directed and delivered, I will proceed to sell, at 1:00 O'CLOCK P.M. on the 3RD DAY OF MARCH, 1992 which is the first Tuesday day of month, at the OFFICIAL door of the Courthouse of said Hansford County, in the City of SPEARMAN Texas, the following described property, to wit: Lot 1, Block 11 of the Glover Terrace Addition to the City of Spearman, Hansford County, Texas Levied on the 7 day of Feb. 1992 as the property of J.W. FOX, JR. BY VIRTUE OF A WARRANTY DEED IN VOLUME 69, PAGE 473, OF THE OFFICIAL RECORDS OF HANSFORD COUNTY, TEXAS to satisfy a judgment amounting to \$15,894.45 with interest from the 3RD DAY OF OCTOBER, 1991 at 10 per cent, per annum, and all costs of suit in favor of CITY OF SPEARMAN, SPEARMAN INDEPENDENT SCHOOL DISTRICT AND HANSFORD COUNTY.  
GIVEN UNDER MY HAND THIS 7 day of Feb., 1992.  
R.L. McFarlin, Jr., SHERIFF  
HANSFORD COUNTY, TEXAS  
BY -s- Dennis Cline, DEPUTY  
S16-3tc30.00

**SERVICES**

**PRO-PAINTER'S**  
**SANDBLASTING**  
**SPRAY PAINTING**  
Industrial, Residential  
Farm & Oilfield Equipment  
- CALL -  
659-3690

Stay in touch! with  
G & G ELECTRONICS  
Cellphone USA  
\*2-way Radio  
\*Mobile Telephones  
\*\$35/month No Air Time  
\*Repeater Spaces  
\*Pagers  
\*Satellite Work  
Call Bruce Duncan (806) 659-3673

**NOTICE**  
Wallace Monument Co.  
Monuments, Curbing,  
Grave Covers  
1-800-999-9506  
Local Representative  
**LEONARD JAMESON**  
Spearman, Texas

**PUBLIC NOTICES**

**NOTICE OF SHERIFFS SALE**  
THE STATE OF TEXAS  
COUNTY OF HANSFORD  
By virtue of an Order of Sale issued out of the Honorable 84TH Judicial District Court of Hansford County, on the 6 day of Feb., 1992 by the Clerk thereof, in the case of HANSFORD COUNTY VS. FOX, J.W. JR., Cause #269, and to me, as Sheriff, directed and delivered, I will proceed to sell, at 1:00 O'CLOCK P.M. on the 3RD DAY OF MARCH, 1992 which is the first Tuesday day of month, at the OFFICIAL door of the Courthouse of said Hansford County, in the City of SPEARMAN Texas, the following described property, to wit: Lot 1, Block 11 of the Glover Terrace Addition to the City of Spearman, Hansford County, Texas Levied on the 7 day of Feb. 1992 as the property of J.W. FOX, JR. BY VIRTUE OF A WARRANTY DEED IN VOLUME 69, PAGE 473, OF THE OFFICIAL RECORDS OF HANSFORD COUNTY, TEXAS to satisfy a judgment amounting to \$15,894.45 with interest from the 3RD DAY OF OCTOBER, 1991 at 10 per cent, per annum, and all costs of suit in favor of CITY OF SPEARMAN, SPEARMAN INDEPENDENT SCHOOL DISTRICT AND HANSFORD COUNTY.  
GIVEN UNDER MY HAND THIS 7 day of Feb., 1992.  
R.L. McFarlin, Jr., SHERIFF  
HANSFORD COUNTY, TEXAS  
BY -s- Dennis Cline, DEPUTY  
S16-3tc30.00

**NOTICE OF SHERIFFS SALE**  
THE STATE OF TEXAS  
COUNTY OF HANSFORD  
By virtue of an Order of Sale issued out of the Honorable 84TH Judicial District Court of Hansford County, on the 6 day of Feb., 1992 by the Clerk thereof, in the case of HANSFORD COUNTY VS. HARGROVE, HILOUS, Cause #461, and to me, as Sheriff, directed and delivered, I will proceed to sell, at 1:00 O'CLOCK P.M. on the 3RD DAY OF MARCH, 1992, which is the first Tuesday day of month, at the OFFICIAL door of the Courthouse of said Hansford County, in the City of SPEARMAN Texas, the following described property, to wit: All of Lot Number Three (3), Block Number Twenty (20), Original Town of Spearman, Hansford County, Texas  
Levied on the 7 day of Feb. 1992 as the property of HILOUS HARGROVE BY VIRTUE OF ANY INTEREST HE MAY CLAIM IN THE PROPERTY SET OUT HEREIN BELOW to satisfy a judgment amounting to \$1,023.13 with interest from the 3RD DAY OF OCTOBER, 1991 at 10 per cent, per annum, and all costs of suit in favor of CITY OF SPEARMAN, SPEARMAN INDEPENDENT SCHOOL DISTRICT AND HANSFORD COUNTY.  
GIVEN UNDER MY HAND THIS 7 day of Feb. 1992.  
R.L. McFarlin, SHERIFF  
HANSFORD COUNTY, TEXAS  
BY -s- Dennis Cline, DEPUTY  
S16-3tc29.55

**NOTICE OF PUBLIC HEARING**  
The Planning Board of Adjustment of the City of Gruver will hold PUBLIC HEARING to discuss a zoning variance which has been applied for by Benny & Melinda McCullough.  
The variance applies to property located in Block 23, Lots 1-10, and all of Block 24, Original Town Addition of Gruver. The applicants wish to place a barn and pens on the North 225 feet of the property described below and increase the number of pairs of horses (mare and colt) occupying the property from five to ten pairs.  
Property Description: Lots 1-10, Block 23, and all of Block 24 of the Original Town Addition of Gruver, 203 West Seventh.  
The public hearing will be held on Tuesday, March 10, 1992 at 5:00 P.M. at the City Hall, 108 East Broadway.  
S17-2tc19.80

**PUBLIC NOTICES**

**NOTICE OF PUBLIC HEARING**  
NOTICE IS HEREBY GIVEN TO ALL INTERESTED PERSONS, THAT:  
The City of Gruver, Texas proposes to institute annexation proceedings to enlarge and extend the boundary limits of said City to include the following described territory, to-wit:  
All of Cooper Avenue from State Farm to Market Highway 278 South to a point 200 feet South of the South-side of Tenth Street and  
All of State Farm to Market Highway 278 from McCree Avenue East to East Property line of Cooper Avenue.  
A public hearing will be held by and before the City Commission of the City of Gruver, Texas on the 4th day of March 1992 at 4:00 P.M. in the City Commission Chamber of the City Hall of the City of Gruver, Texas for all persons interested in the above proposed annexation. At said time and place all such persons shall have the right to appear and be heard. Of all said matters and things, all persons interested in the things and matters mentioned, will take notice.  
By order of the City Commission of the City of Gruver, Texas this the 12th day of February, 1992.  
Keith Gibson, Mayor  
S17-1tc28.80

**NOTICE TO BIDDERS**  
Sealed Proposals addressed to Keith Gibson, Mayor, City of Gruver, Texas, P.O. Box 947, Gruver, Texas 79040 for:  
**SEALCOATING**  
will be received by the City of Gruver, Texas, at City Hall, Gruver, Texas until:  
**MARCH 10, 1992**  
3:00 P.M.  
Plans and specifications may be obtained from the Engineers, Brandt Engineers, Inc., 4537 Canyon Drive, Amarillo, Texas, 79110, phone (806) 353-7233 in the following manner:  
**Bona Fide Bidders:** One set upon payment of \$50.00, of which all will be refunded upon submission of a bid and return of the plans and specifications in good condition with the bid, or return of the plans and specifications in good condition BEFORE the bid opening.  
**Suppliers, Subcontractors, and additional sets for Bidders:** Upon payment of \$50.00, NONREFUNDABLE. Bid security in the amount of 5% of the total bid must be submitted. Bidders to submit cashier's check, certified check, or bid bond payable to the Owner as guaranty the bidder will enter into contract and execute bonds in the forms provided. Performance and Payment bonds shall be set forth in the Contract documents. The Owner reserves the right to reject any or all bids and to waive any informalities. In case of ambiguity or lack of clearness in stating the prices in the bids, to adopt such interpretations as may be most advantageous to the Owner, or to reject the bid. No bid may be withdrawn until the expiration of 45 days from the bid date.  
KEITH GIBSON, MAYOR  
CITY OF GRUVER, TEXAS  
S17-2tc37.05

Notice is hereby given in accordance with the Texas Alcoholic Beverage Code that Palo Duro Supper Club, an unincorporated association of persons, has applied for a private club registration permit doing business as Palo Duro Supper Club, located at 22 S. Archer, City of Spearman County of Hansford. The Officers are as follows: Reba Kay Hamilton, President; J.L. Hamilton, Vice President; Donna Jo Hendrickson, Secretary/Treasurer.  
S17-2tc9.60

**Count on the Classifieds to Do the Job**

**TexSCAN**  
Statewide Classified Advertising Network  
Advertise in 283 Texas newspapers for only \$250.  
Reach 3 MILLION Texans. Call this newspaper for details.

**DEER HUNTERS SPECIAL:** 25 acres, 2795/acre, wooded, excellent hunting, adjoins paved road. Texas veteran or owner financing, prime acreage. Fox Realty, 500 Buchanan Dr., BURNET, TX 1-800-725-3699.

**ARE YOU COLLECTING PAYMENTS** on real estate you've sold? We'll give you cash now for these payments! Call National Fidelity Corporation today! 1-800-364-1072.

**MAKE A FRIEND... FOR LIFE!** Scandinavian, European, Yugoslavian, Australian high school exchange students arriving in August. Host families needed! American Intercultural Student Exchange. Call tollfree 1-800-SIBLING.

**WOLFF TANNING BEDS:** New commercial-home units from \$199. Lamps, lotions, accessories. Monthly payments low as \$18. Call today. FREE NEW color catalog. 1-800-228-6292.

**LAST CHANCE: BUY STATE** of Texas repossessed land. 4% interest, 30 years, 0 down, \$92/mo. Deal ends Feb. 29, 1992. Call 1-800-275-REPO.

**ANNOUNCEMENT: HAVE YOU** had a silicone breast implant? For information on your rights call "Waldman Smallwood Grossman" Carpenter Attorneys. 1-800-833-9121. \*\*Board Certified \*\*Not Board Certified.

**DRIVER - CELADON DRIVERS** enjoy excellent pay and benefits, quarterly bonuses, modern Air Ride Tractors and good traffic lanes. Call 1-800-729-9770. Must have a valid CDL.

**PIONEER STEEL BUILDINGS**  
24'X30'X10...\$2,995; 30'X40'X10...\$4,185;  
40'X50'X12...\$6,195; 40'X75'X14...\$8,595;  
50'X100'X14...\$11,999.8  
80'X100'X16...\$19,995.8 and  
100'X100'X16...\$23,795. Erection available. All sizes! Colors! 1-800-637-5414.

**COVENANT TRANSPORT:** Hiring tractor trailer drivers. New equipment coming in! 1 yr. O.T.R. Teams 27-31¢ incentives. Benefits. Minimum age 23. Single 19-22¢ 1-800-441-4394.

**BECOME A PARALEGAL:** Join America's fastest growing profession. Work with attorneys. Lawyer instructed home study. The finest paralegal program available. Free catalogue. 1-800-362-7070 Dept. LB72202.

**CASH PAID FOR OLD** Navajo rugs, blankets, Indian pottery and old cowboy items. All photos returned. J. Clark, 48 Monte Alto Rd., Santa Fe, NM 87505, 505-984-8835 collect.

**START YOUR OWN** carpet cleaning business for under \$2,000! Price includes superb quality equipment, chemicals and personalized training at your location or ours. 713-261-5487/Houston.

**ADOPITION: YOUR NEWBORN** will have a full-time mother and devoted professional father to share all the love, happiness and security that we can provide. Call Chris and Jim collect 404-509-1246. Expenses paid, legal/confidential. It's illegal to be paid for anything beyond legal/medical expenses.

### Obituaries

**Alteena Harvey Jacobs**  
Alteena "Teena" Harvey Jacobs, 75, of Spearman, died Friday, Feb. 14.

Mrs. Jacobs, born in Temple, Okla., moved to Hansford County 70 years ago from Erick, Okla. She married Elmon Jacobs in 1955 at Woodward, Okla. She was a homemaker and hospital dietitian. She was a member of First Baptist Church and the Order of the Eastern Star Chapter No. 721 in Spearman.

Survivors include her husband; a son, Thomas E. "Eddie" Bowman of Englewood, Colo.; three sisters, Louise Archer of Spearman, Margaret Ayres of Baton Rouge, La., and Mattie Rhea Martin of Welton, Ariz.; a brother, T.C. Harvey Jr. of Spearman; two grandchildren; and four great-grandchildren.

Graveside services were conducted Monday, Feb. 17 in Hansford Cemetery with the Rev. Russ Gibbs officiating. The family requests memorials be to a favorite charity.

**Rosa Lee Hill**  
DUMAS - Rosa Lee Hill, 78, of Spearman, died Thursday, Feb. 13

at Memorial Hospital of Dumas. Mrs. Hill was born Jan. 27, 1914 in Whittier, Calif. She had been a resident of Spearman and Hansford County since 1940. She married Mickle Hill in Oct. 23, 1933. He preceded her in death on June 1, 1980. She was a farmer, a rancher, and a homemaker. She was a member of First Baptist Church of Spearman.

Survivors include a son, Billy C. Hill of Dumas; a brother, Dave Hand Sr. of Spearman; two granddaughters, Jodi Robinett and Janet Sauer; and three great-grandsons, Chad and Cole Robinett and Scott Sauer.

Funeral services were conducted Saturday, Feb. 15 in First Baptist Church of Spearman with the Rev. Russ Gibbs, pastor, officiating. Burial was in Hansford Cemetery by Morrison Funeral Directors of Dumas.

The family requests memorials be to Memorial Hospice of Dumas, or a favorite charity.

**Marguerite Jenkins**  
Marguerite Jenkins, 70, died Monday, Feb. 17.

Mrs. Jenkins was born in Mangum, Okla., and had lived in

the Holt community, south of Spearman, for 62 years. She married Phil Jenkins in 1939 at Spearman. She was a homemaker and a member of First Baptist Church, the Hutchinson County Home Demonstration Club, Order of the Eastern Star and Parent-Teacher Association.

Survivors include her husband; a son, Stephen Jenkins of Colleyville; a daughter, Kathy Jenkins of Manchaca; her mother, Myrtle Ivy Stephens of Amarillo; two sisters, Gerry Simon of Amarillo and Billie Jean Craze of National City, Calif.; a brother, James Stephen of Borger; and three grandchildren.

Funeral services were conducted Wednesday, Feb. 19 in First Baptist Church with the Rev. Russ Gibbs, pastor, and the Rev. Lealand Grimmer, pastor of Apostolic Faith Church, officiating. Burial was in Holt Cemetery.

The family requests memorials be to a favorite charity.

**Thomas M. Gumfory**  
Thomas M. "Tommy" Gumfory, 43, of Gruver, died Sunday, Feb. 16.

Mr. Gumfory was born in Perryton and had lived in Gruver most of his life. He married Carla Archer in 1968 at Gruver. He was an attorney and graduated from Texas Tech University and St. Mary's Law School. He was a member of the Texas Bar Association, the Northeast Texas Bar Association and Sigma Alpha Epsilon fraternity, and served on the board of directors of the Hansford County

Heart Association. He was a member of First Christian Church.

Survivors include his wife; two daughters, Kathryn Gumfory and Julie Gumfory, both of the home; a son, Garrett Gumfory of the home; and three brothers, Gary Gumfory of Gruver, Larry Gumfory of Arlington and Jerry Gumfory of Las Vegas, Nev.

Funeral services were conducted Wednesday, Feb. 19 in First Christian Church of Gruver with the Rev. Gary Gumfory, pastor, and the Rev. Larry Miller, pastor of First Baptist Church, officiating. Burial was in Gruver Cemetery.

The family requests memorials be to the American Liver Foundation, the American Heart Association, or a favorite charity.

### School menu

SPEARMAN ISD  
FEB. 24-25

**Monday** - steak fingers elementary, steak fritters jr. high & high school, 1/2 baked potato, sour cream, bacon bits, hot rolls, butter, fruit, milk

**Tuesday** - burritos, pinto beans, spinach, dill spears, cake, milk  
Salad bar daily at high school, hamburger choice daily at jr. high

### Stock from page 1

3rd - Brady Tidwell

Class XII Crosses: 1st - Gregg Slough; 2nd - Nickolas Slough; 3rd - Jared Christian; 4th - Amber Roberts; 5th - Crystal Gruver; 6th - Sheri Fiel

Class XIII Crosses: 1st - Kenny Slough; 2nd - Cody Barkley; 3rd - Rex Ralston; 4th - Tek Ferguson; 5th - Bryn Lowe; 6th - Wes Babbs; 7th - Kevin McNett

Class XIV Crosses: 1st - Kenny Slough; 2nd - Bray Armes; 3rd - Chris Winter; 4th - Ki Ki Carthel; 5th - Kyle Winter; 6th - Casey Smith

Class XV: 1st - Justin Carthel; 2nd - Kelly Boone; 3rd - Dawn McCullough; 4th - Cori Lowe; 5th - Traci Smith

Justin Carthel - Breed Champion; Kelly Boone - Reserve Breed Champion; Justin Carthel - Grand Champion; Rex Ralston - Reserve Grand Champion; Kelly Boone - Junior Showmanship; Rex Ralston - Senior Showmanship; Andy Hoel - Adult Showmanship

### REPORTER-STATESMAN CLASSIFIEDS WORK!

## PCC helps victims of family violence here

Family violence, which is the intentional use or threat of physical force by one adult member of a family or household against another, is against the law in Texas. Yet it happens with a shocking frequency.

More than 100,000 Texas women and children are assaulted in their own homes at least once a week. It can happen to anyone, regardless of social economic, or educational level. It occurs among all age groups, and it happens everywhere - on the farm, in small towns, or large cities.

Chances are that someone you know - your sister, mother, friend, or co-worker - is a victim of family violence. The first step you can take to help someone is to learn more about this problem.

The Panhandle Crisis Center offers many different programs and services that assist battered women

## Hospice group plans sock hop, training

The Hansford Hospice volunteers held their monthly meeting in the community room of First State Bank on Feb. 17. The meeting was called to order by Verna Lee Shirley, president. Lloyd McWhirter led the group in prayer.

Plans were discussed to hold a sock hop in conjunction with the Hansford Showtime Car Club's Spearman meeting, to be held May 9.

The next hospice training course is scheduled to begin in late March. Anyone interested in the 30-hour course should contact Brenda Wall at 659-2535.

Carol Hergert, hospice nurse, presented a hands-on patient care training program.

Members present were Dolly McWhirter, Doris Wilde, Brenda Wall, Carol Hergert, Connie Gammill, Kay Vernon, Garland Hopper, Edith Womble, Jack McWhirter, Betty Pugh, Mable Wisian, Robbie Reid, JoLinda Hutchison, Ruth Bryan, Beth Phelps, Sandy Russell, Wanda Stewart, Betty Davis, Muriel Boyd, Verna Lee Shirley and Charolette Jackson.

and their children in Hansford, Lipscomb and Ochiltree Counties. These programs can provide safety, shelter, advocacy, support and other needed services. All services are provided free to victims of domestic violence and their children.

Cherri Sherrill is the Outreach Worker for Hansford County. Office hours are at the First Presbyterian Church in Spearman on the first and third Wednesdays of each month, from 9:30 a.m. to 11:30 a.m. The church is located at 1021 Cotter Drive. Appointments for additional times can be made by calling the PCC at 800-753-5308 or (806) 435-5008.

Sherrill is also available to speak to clubs, churches, or other organizations about family violence.

### PUBLIC NOTICES

**SPEARMAN INDEPENDENT SCHOOL DISTRICT** is soliciting bids on the following computer equipment and software. All equipment and software must be IBM OR compatible. Bids will be received until 4:00 p.m. on March 6, 1992, at 403 E. 11th Street in Spearman, Texas 79081.

SOFTWARE:  
\*EdLAN (1.1)  
\*Netware from IBM (2.2)  
IBM Classroom LAN Administration System

(1.4)  
IBM Linkway (2.01)  
Microsoft Works (2.0A)  
LANSchool (3.01)  
Excelsior grade2 (1.0)  
Excelsior QUIZ (2.5)  
Express Publisher (2.0)  
People Sharing Information Network (PSinet)

HARDWARE:  
FILE SERVER  
COMPUTER  
\*386, 33mhz (25mhz min), 4M, 320M Hd (180M Hd min)

\*486, 33mhz, 4M, 320M Hd (180M Hd min), equipped with VGA color monitor, 3.5 floppy, Tape Backup  
PRINTER  
\*Laser Printer (10 pages per minute), 1 MB Memory expansion, 20 ft. cable

\*NETWORK HARDWARE  
Token Ring Network Adapter  
Token Ring Adapter Cable  
Token Ring Multistation Access Unit  
Workstation Network Adapters and Cables

TEACHER'S WORKSTATION  
\*386, 33mhz (25 mhz min), 4M, 80M Hd, 3.5 and 5.25 floppy, VGA color monitor, Mouse

STUDENT'S WORKSTATION  
\*386, 25mhz (16 mhz min), 1M, 40M Hd, 3.5 floppy

\*386, 25mhz (16mhz min), 1M, 40M Hd, 3.5 floppy, equipped with VGA color monitor, Mouse  
\*Bid as separate items

The board of trustees reserves the right to accept or reject any or all bids.  
Questions regarding the bid should be directed to Mr. Jimmy Kirkland at (806) 659-2584.  
S17-11c32.25

### TEXAS EDUCATION AGENCY DIVISIONS OF VOCATIONAL EDUCATION FUNDING & COMPLIANCE

Gruver I.S.D. offers vocational programs in agriculture and home economics. Admission to these programs is open enrollment.

It is the policy of Gruver I.S.D. not to discriminate on the basis of race, color, national origin, sex, or handicap in its vocational programs, services, or activities as required by Title IX of the Civil Rights Act of 1964, as amended, Title IX of the Education Amendments of 1972, and Section 504 of the Rehabilitation Act of 1973, as amended.

It is the policy of Gruver I.S.D. not to discriminate on the basis of race, color, national origin, sex, handicap, or age in its employment practices as required by Title VI of the Civil Rights Act of 1964, as amended, and Section 504 of the Rehabilitation Act of 1973, as amended.

Gruver I.S.D. will take steps to assure that lack of English language skills will not be a barrier to admission and participation in all educational and vocational programs.

For information about your rights or grievance procedures, contact the Title IX Coordinator, Tommy Cathay, at 601 Garrett, (806) 733-2001, and/or the Section 504 Coordinator, Clay Montgomery, at 600 Garrett, (806) 733-2091.  
S17-11c29.40

**HENSON CHIROPRACTIC**  
410 S. Davis • Spearman, TX  
Call for Appointment • 659-5603  
Office Hours: Mon, Wed, Fri - 9:00 to 5:00  
Tue, Thu - 9:00 to 11:30

SPECIALS GOOD WHILE SUPPLIES LAST. PRICES EFFECTIVE FEBRUARY 20-26, 1992  
305 W. KENNETH, SPEARMAN  
101 MAIN, GRUVER  
WE ACCEPT FOOD STAMPS AND MANUFACTURERS' COUPONS  
MONEY ORDERS 29¢

**ALLSUP'S**  
SHURFINE SUGAR 4 LB. BAG \$1.49  
PEPSI ALL TYPES PEPSI-COLA 6 PACK/12 OZ. CANS \$1.89  
CORN KING BACON 12 OZ. PKG. 79¢  
TOM'S TOASTED PEANUTS TUBE NUTS 2 \$1 FOR  
CHEETOS SNACKS 5 1/2 OZ. BAG 99¢

**HOT FOODS MENU** AVAILABLE AT ALL ALLSUP'S LOCATIONS  
BARBECUE BEEF SANDWICH 99¢  
BARBECUE PORK RIBS (LB.) \$3.99  
BARBECUE WHOLE CHICKEN \$3.99  
ALLSUP'S BURRITO 79¢  
BREAKFAST BURRITO 99¢  
BURRITO BEEF & SALSA \$1.19  
DELICIOUS CHEESEBURGER 79¢  
CHICKEN FRIED STEAK \$1.59  
3 COUNT CHICKEN STRIPS \$1.49  
W/POTATO WEDGES/ CHICKEN (2 PCS) BISCUIT \$1.99  
9 PIECE BOX CHICKEN \$5.99  
BEEF & CHEESE CHIMICHANGA (MEAD) \$1.19  
CORN DOG 69¢  
DELICIOUS HAMBURGER 59¢  
WILSON HOT LINKS 99¢  
SAUSAGE ON A STICK \$1.39  
SAUSAGE & BISCUIT 79¢  
SAUSAGE EGG & BISCUIT \$1.09  
SAUTEYEA SAUSAGE 99¢  
4 COUNT STEAK FINGERS \$1.00

CALL-IN ORDERS WELCOME CHECK OUR WEEKLY SPECIALS

DUBUQUE FRANKS 12 OZ. 2/\$1  
KRAFT MACARONI & CHEESE DINNER 7 1/4 OZ. 69¢  
SHURFINE FLOUR 5 LBS. 79¢  
PAGE PAPER TOWELS 2/\$1  
PAGE BATHROOM TISSUE 69¢  
CARNATION HOT COCOA MIX 10 PACK BOX 99¢  
TIC TAC BREATH MINTS 1/2 OZ. 3/\$1

You are cordially invited to hear **Buster and Debbie Reedy** in special performances of **Christian Country Music** Sunday, February 23 10:50 a.m. and 6:30 p.m. at **Union Church** 31 S. Endicott • Spearman, TX

For beautiful nails use **Mary Kay's** 5-step nail care program! **Mary Kay COSMETICS**  
Leann Gillaspie Beauty Consultant 659-3889  
OUT-OF-TOWN MAIL ORDERS WELCOME

**LOOK UP**  
You can prevent an accident by making sure there are no power lines nearby before you cut down or prune trees.  
Pruning tools, saws or branches contacting a line could turn you into a conductor of electricity and cause serious injury.  
If you have branches that are close to power lines, call your local TNP office to report the problem.  
If the branches are too close, we'll trim them away from the line for you.

**Before you cut down**